



REDISTRICTING 2021

District 11 Meeting 10-25-21

MIAMI-DADE COUNTY – PROPOSED DISTRICTS FOR
COMMUNITY OUTREACH

ARCBridge Consulting & Training Inc.

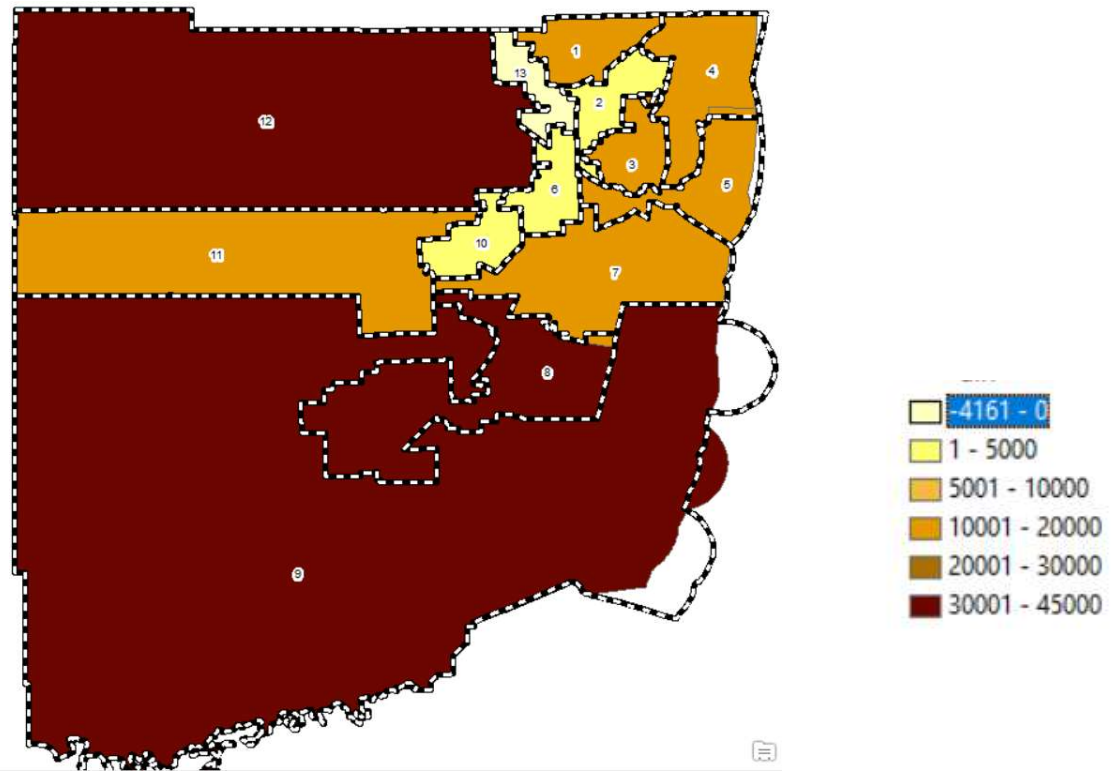
www.arcbridge.com

2010 & 2020 - PL94-171 Census Data - Gain 205,332

	2020				2010				2021/2010			
TOTAL DISTRICT	Total Pop	% Total	Voting Age	% Voting	Total Pop	% Total	Voting Age	% Voting	Diff Total	Diff %	Diff VAP	Diff %
HISPANIC	1,856,938	68.73%	1,522,567	69.89%	1,623,859	65.05%	1,295,007	66.39%	233,079	14.35%	227,560	17.57%
NH WHITE	361,517	13.38%	283,196	13.00%	383,551	15.36%	298,743	15.31%	-22,034	-5.74%	-15,547	-5.20%
NH BLACK	378,756	14.02%	291,617	13.39%	425,650	17.05%	307,838	15.78%	-46,894	-11.02%	-16,221	-5.27%
NH NATIVE	1,589	0.06%	1,161	0.05%	2,014	0.08%	1,444	0.07%	-425	-21.10%	-283	-19.60%
ASIAN	41,672	1.54%	35,272	1.62%	35,841	1.44%	29,533	1.51%	5,831	16.27%	5,739	19.43%
HAWAIIAN PI	385	0.01%	330	0.02%	468	0.02%	385	0.02%	-83	-17.74%	-55	-14.29%
OTHER	14,667	0.54%	9,278	0.43%	4,953	0.20%	3,256	0.17%	9,714	196.12%	6,022	184.95%
MIXED 2+	46,243	1.71%	35,199	1.62%	20,099	0.81%	14,501	0.74%	26,144	130.08%	20,698	142.73%
Totals	2,701,767	100.00%	2,178,620	100.00%	2,496,435	100.00%	1,950,707	100.00%	205,332	8.23%	227,913	11.68%
Voting Age %			80.64%				78.14%					

Growth by District

District	Change in Population
District 1	13,184
District 2	718
District 3	18,369
District 4	13,395
District 5	18,893
District 6	183
District 7	16,223
District 8	43,370
District 9	31,826
District 10	3,739
District 11	15,503
District 12	34,090
District 13	-4,161
Total Change	205,332



Overall District Statistics

	2020	2010	Difference
Ideal Population	207,828	192,033	15,795
Maximum Deviation in the AS-IS Plan	30.12%	9.52%	20.60%
Maximum Deviation in the Proposed Plan	9.56%		

Comparison with ideal population

District	Total Pop	Voting Age	Growth	Deviation	% Deviation	Proposed Plan
District 1	196,915	153,814	13,184	-10,913	-5.25%	-5.07%
District 2	183,911	144,314	718	-23,917	-11.51%	-4.42%
District 3	202,030	162,004	18,369	-5,798	-2.79%	-4.49%
District 4	198,409	162,299	13,395	-9,419	-4.53%	-4.45%
District 5	220,370	188,681	18,893	12,542	6.03%	3.17%
District 6	188,314	158,944	183	-19,514	-9.39%	-0.76%
District 7	217,331	178,089	16,223	9,503	4.57%	3.91%
District 8	244,849	186,084	43,370	37,021	17.81%	4.49%
District 9	232,225	176,785	31,826	24,397	11.74%	3.96%
District 10	194,496	162,090	3,739	-13,332	-6.42%	3.40%
District 11	215,785	174,823	15,503	7,957	3.83%	4.32%
District 12	224,879	180,802	34,090	17,051	8.20%	-2.75%
District 13	182,253	149,891	-4,161	-25,575	-12.31%	-1.30%
All Districts	2,701,767	1,148,145				

- >10% Below
- <10% Below
- None
- <10% Above
- >10% Above

Redistricting Requirements

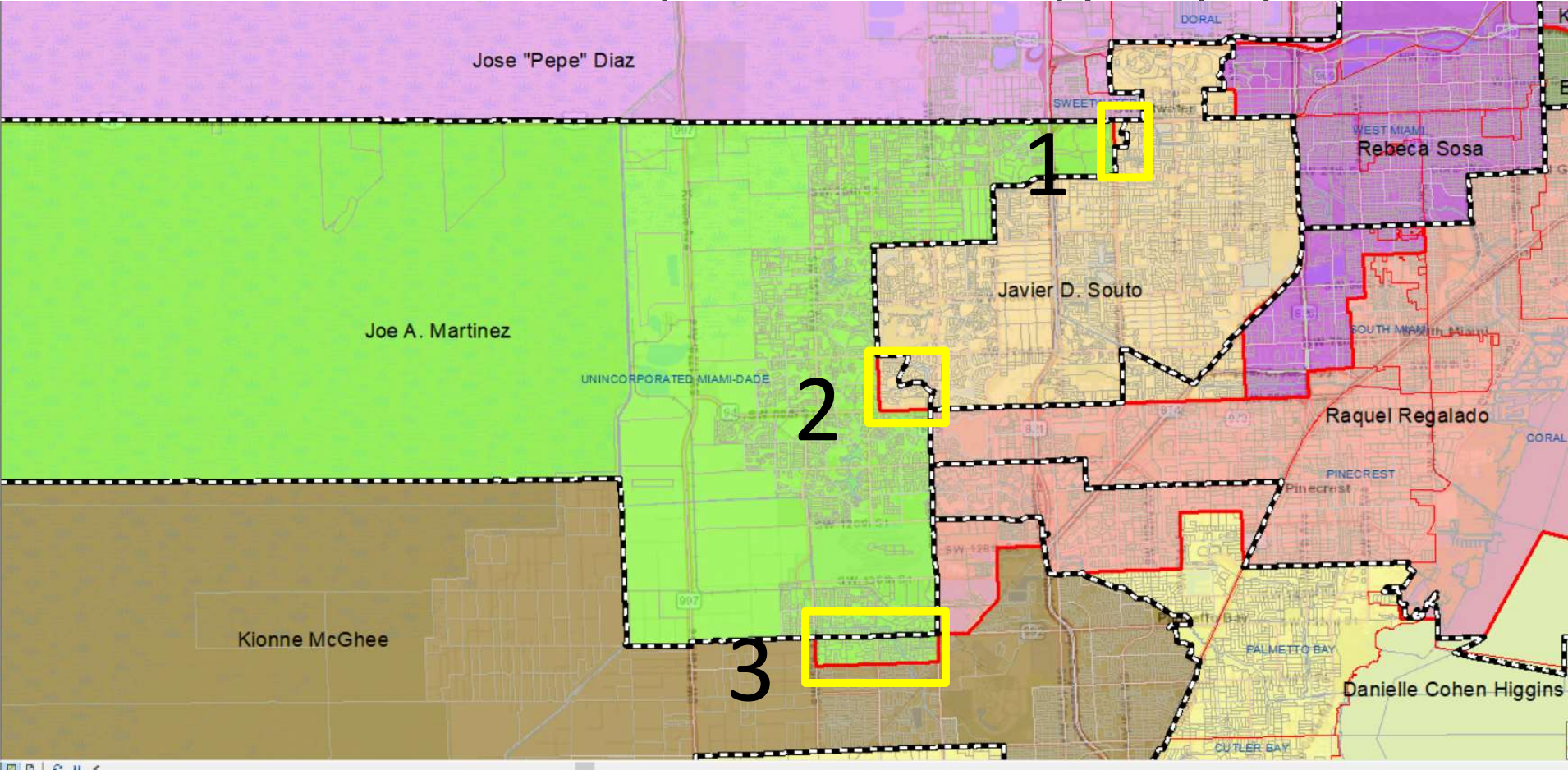
- Equal Population – All Districts should have equal population - as equal as possible
- The Maximum Deviation should not be more than 10% . Maximum Deviation is the difference between the most populated district and the least populated district.
- Districts should be Compact
- Districts should be Contiguous
- Protect Incumbency
- Minorities should be fairly represented
- ***Cannot work with one district only – the neighboring districts get affected. We need to look at the Maximum Deviation for all the districts***

District 11 Data

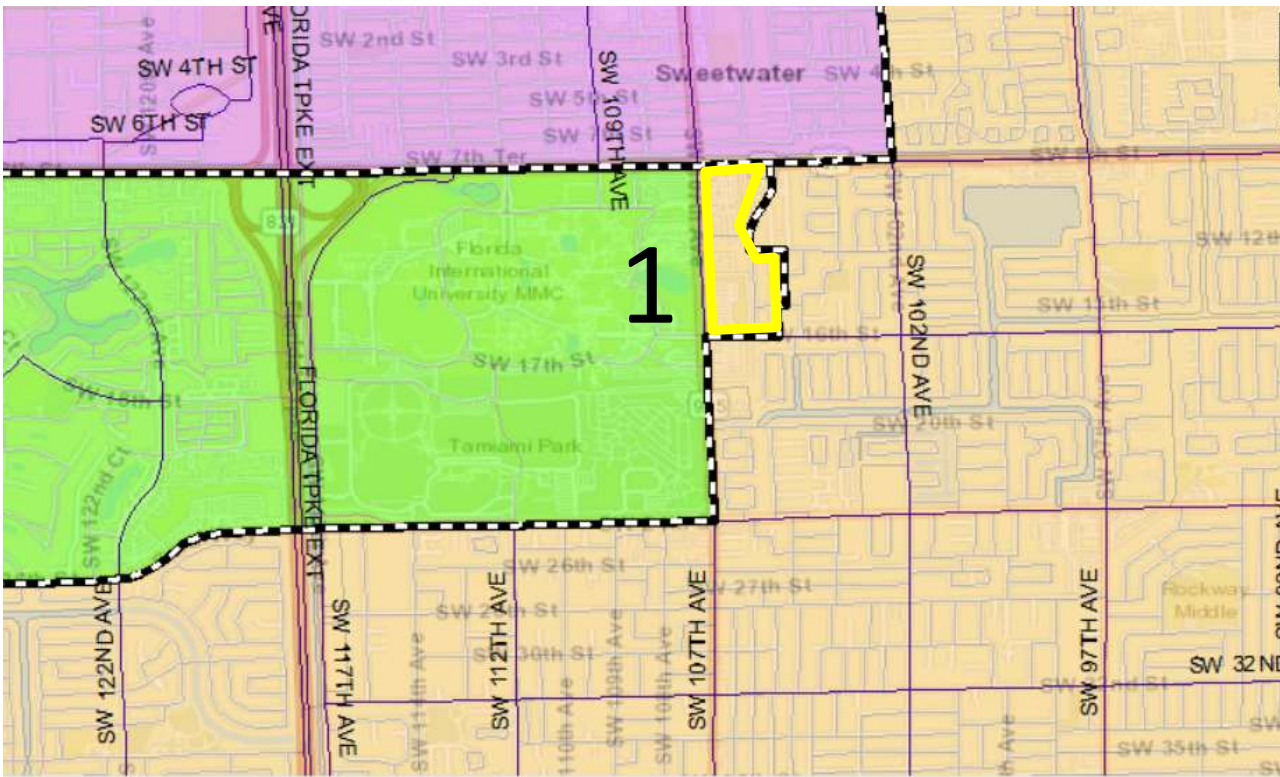
	Total Pop 2010	Total Pop 2020	Difference	Ideal Population	Deviation	% Deviation	% Deviation in Proposed Plan
District 11	200,282	215,785	15,503	207,828	7,957	3.83%	4.32%

DISTRICT 11	2010 Districts		2020 Current Districts		Proposed Plan	
HISPANIC	166,216	82.99%	183,518	85.05%	183,997	84.87%
NH WHITE	21,015	10.49%	17,510	8.11%	17,681	8.16%
NH BLACK	7,217	3.60%	6,713	3.11%	6,962	3.21%
NH NATIVE	121	0.06%	114	0.05%	115	0.05%
NH ASIAN	3,994	1.99%	4,535	2.10%	4,558	2.10%
NH HAWAIIAN PI	22	0.01%	34	0.02%	34	0.02%
NH OTHER	347	0.17%	990	0.46%	1,012	0.47%
NH MIXED 2+	1,350	0.67%	2,371	1.10%	2,440	1.13%
Totals	200,282	100.00%	215,785	100.00%	216,799	100.00%

District 11 – Proposed Changes (3)



District 11 – Proposed Change 1

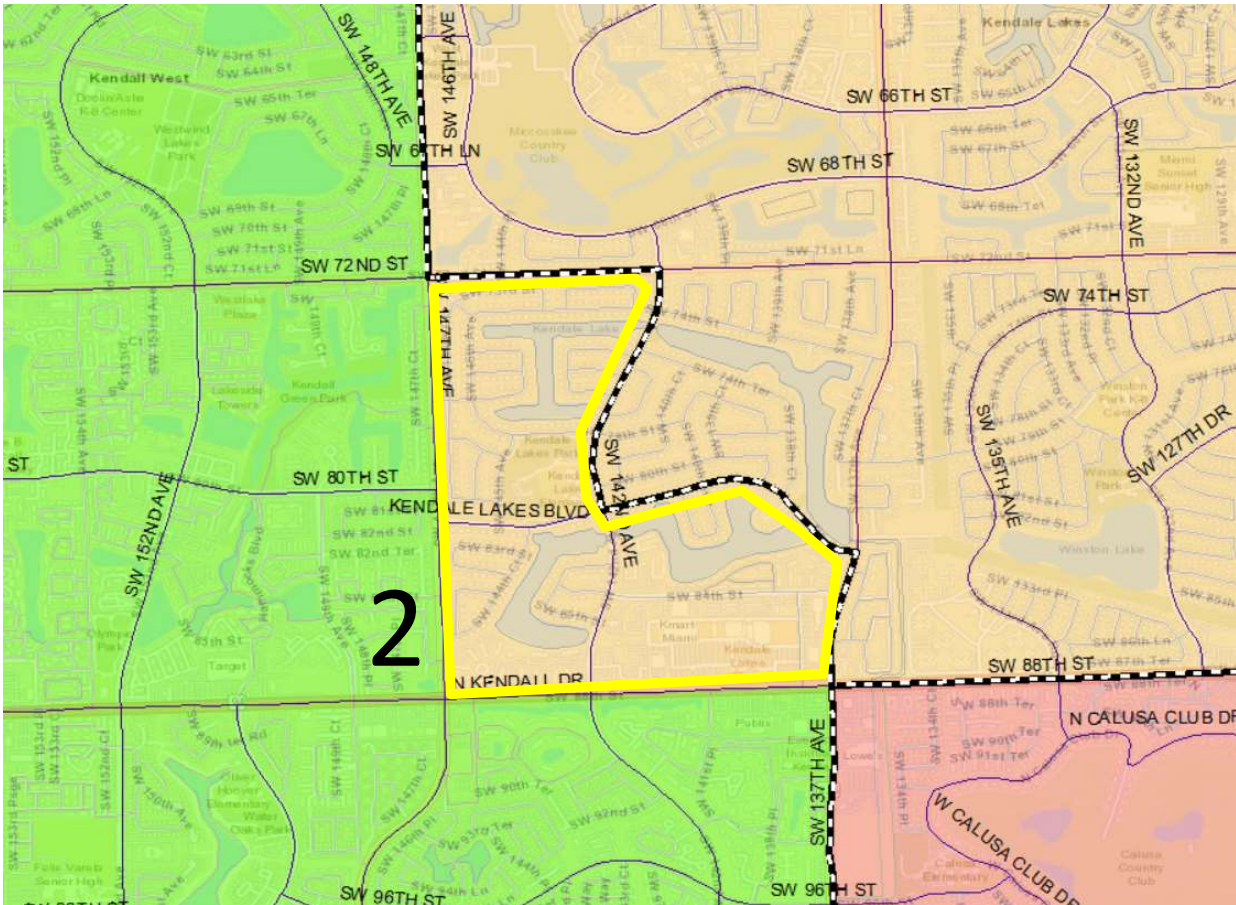


Area east of SW 107th Ave
Moved to District 10

Total Selected: 989
Info:

HISP:	740
NHWHT:	98
NHBLK:	49
NHAIAN:	01
NHASIAN:	87
NHHOPI:	00
NHOTHER:	09
NHP2MRCE:	05

District 11 – Proposed Change 2

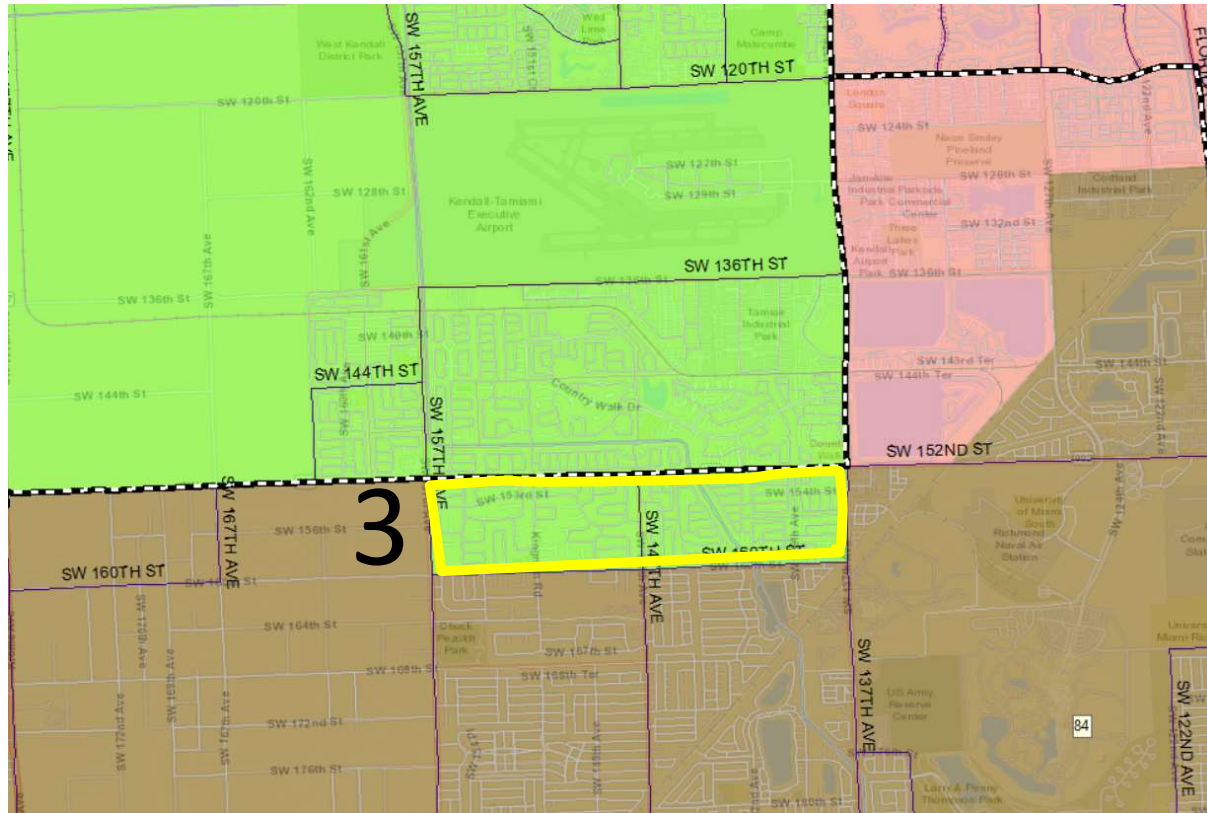


Area east of SW 147th Ave
And north of Kendall Drive
Moved to District 10

Total Selected: 5,524
Info:

HISP: 4,717
NHWH: 593
NHBLK: 89
NHAIAN: 00
NHAASIAN: 62
NHNHOPI: 00
NHOHER: 18
NHP2MRCE: 45

District 11 – Proposed Change 3



Moved are from District 9 to District 11
 Area south of SW 152nd St
 West of SW 137th Ave to SW 160th st
 To SW 157th Ave

Total Selected:	7,464
Info:	
HISP:	5,885
NHWHT:	852
NHBLK:	387
NHAIAN:	02
NHASIAN:	171
NHNHOPI:	00
NHOTHER:	49
NHP2MRCE:	118

District 11 - Data

	Total Pop 2010	Total Pop 2020	Difference	Ideal Population	Deviation	% Deviation	% Deviation in Proposed Plan
District 11	200,282	215,785	15,503	207,828	7,957	3.83%	4.32%

DISTRICT 11	2010 Districts		2020 Current Districts		Proposed Plan	
HISPANIC	166,216	82.99%	183,518	85.05%	183,997	84.87%
NH WHITE	21,015	10.49%	17,510	8.11%	17,681	8.16%
NH BLACK	7,217	3.60%	6,713	3.11%	6,962	3.21%
NH NATIVE	121	0.06%	114	0.05%	115	0.05%
NH ASIAN	3,994	1.99%	4,535	2.10%	4,558	2.10%
NH HAWAIIAN PI	22	0.01%	34	0.02%	34	0.02%
NH OTHER	347	0.17%	990	0.46%	1,012	0.47%
NH MIXED 2+	1,350	0.67%	2,371	1.10%	2,440	1.13%
Totals	200,282	100.00%	215,785	100.00%	216,799	100.00%