



REDISTRICTING 2021

District 7 Meeting 10-26-21

MIAMI-DADE COUNTY – PROPOSED DISTRICTS FOR
COMMUNITY OUTREACH

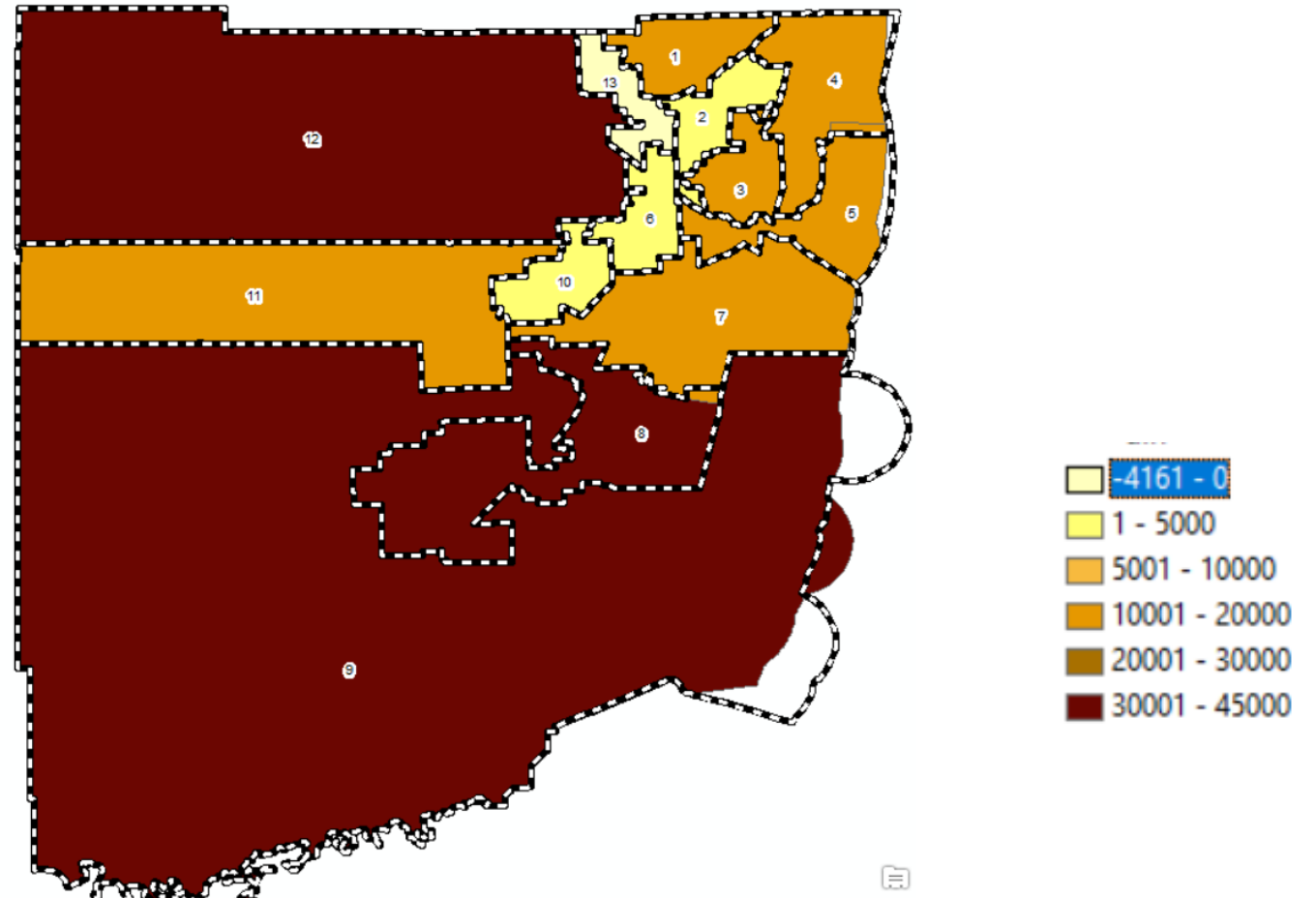
ARCBridge Consulting & Training Inc.
www.arcbridge.com

2010 & 2020 - PL94-171 Census Data - Gain 205,332

	2020				2010				2021/2010			
TOTAL DISTRICT	Total Pop	% Total	Voting Age	% Voting	Total Pop	% Total	Voting Age	% Voting	Diff Total	Diff %	Diff VAP	Diff %
HISPANIC	1,856,938	68.73%	1,522,567	69.89%	1,623,859	65.05%	1,295,007	66.39%	233,079	14.35%	227,560	17.57%
NH WHITE	361,517	13.38%	283,196	13.00%	383,551	15.36%	298,743	15.31%	-22,034	-5.74%	-15,547	-5.20%
NH BLACK	378,756	14.02%	291,617	13.39%	425,650	17.05%	307,838	15.78%	-46,894	-11.02%	-16,221	-5.27%
NH NATIVE	1,589	0.06%	1,161	0.05%	2,014	0.08%	1,444	0.07%	-425	-21.10%	-283	-19.60%
ASIAN	41,672	1.54%	35,272	1.62%	35,841	1.44%	29,533	1.51%	5,831	16.27%	5,739	19.43%
HAWAIIAN PI	385	0.01%	330	0.02%	468	0.02%	385	0.02%	-83	-17.74%	-55	-14.29%
OTHER	14,667	0.54%	9,278	0.43%	4,953	0.20%	3,256	0.17%	9,714	196.12%	6,022	184.95%
MIXED 2+	46,243	1.71%	35,199	1.62%	20,099	0.81%	14,501	0.74%	26,144	130.08%	20,698	142.73%
Totals	2,701,767	100.00%	2,178,620	100.00%	2,496,435	100.00%	1,950,707	100.00%	205,332	8.23%	227,913	11.68%
Voting Age %			80.64%				78.14%					

Growth by District

District	Change in Population
District 1	13,184
District 2	718
District 3	18,369
District 4	13,395
District 5	18,893
District 6	183
District 7	16,223
District 8	43,370
District 9	31,826
District 10	3,739
District 11	15,503
District 12	34,090
District 13	-4,161
Total Change	205,332



Overall District Statistics

	2020	2010	Difference
Ideal Population	207,828	192,033	15,795
Maximum Deviation in the AS-IS Plan	30.12%	9.52%	20.60%
Maximum Deviation in the Proposed Plan	9.56%		

District	Total Pop	Voting Age	Growth	Deviation	% Deviation	Proposed Plan
District 1	196,915	153,814	13,184	-10,913	-5.25%	-5.07%
District 2	183,911	144,314	718	-23,917	-11.51%	-4.42%
District 3	202,030	162,004	18,369	-5,798	-2.79%	-4.49%
District 4	198,409	162,299	13,395	-9,419	-4.53%	-4.45%
District 5	220,370	188,681	18,893	12,542	6.03%	3.17%
District 6	188,314	158,944	183	-19,514	-9.39%	-0.76%
District 7	217,331	178,089	16,223	9,503	4.57%	3.91%
District 8	244,849	186,084	43,370	37,021	17.81%	4.49%
District 9	232,225	176,785	31,826	24,397	11.74%	3.96%
District 10	194,496	162,090	3,739	-13,332	-6.42%	3.40%
District 11	215,785	174,823	15,503	7,957	3.83%	4.32%
District 12	224,879	180,802	34,090	17,051	8.20%	-2.75%
District 13	182,253	149,891	-4,161	-25,575	-12.31%	-1.30%
All Districts	2,701,767	1,148,145				

Comparison with ideal population

- > 10% Below
- < 10% Below
- None
- < 10% Above
- > 10% Above

Redistricting Requirements

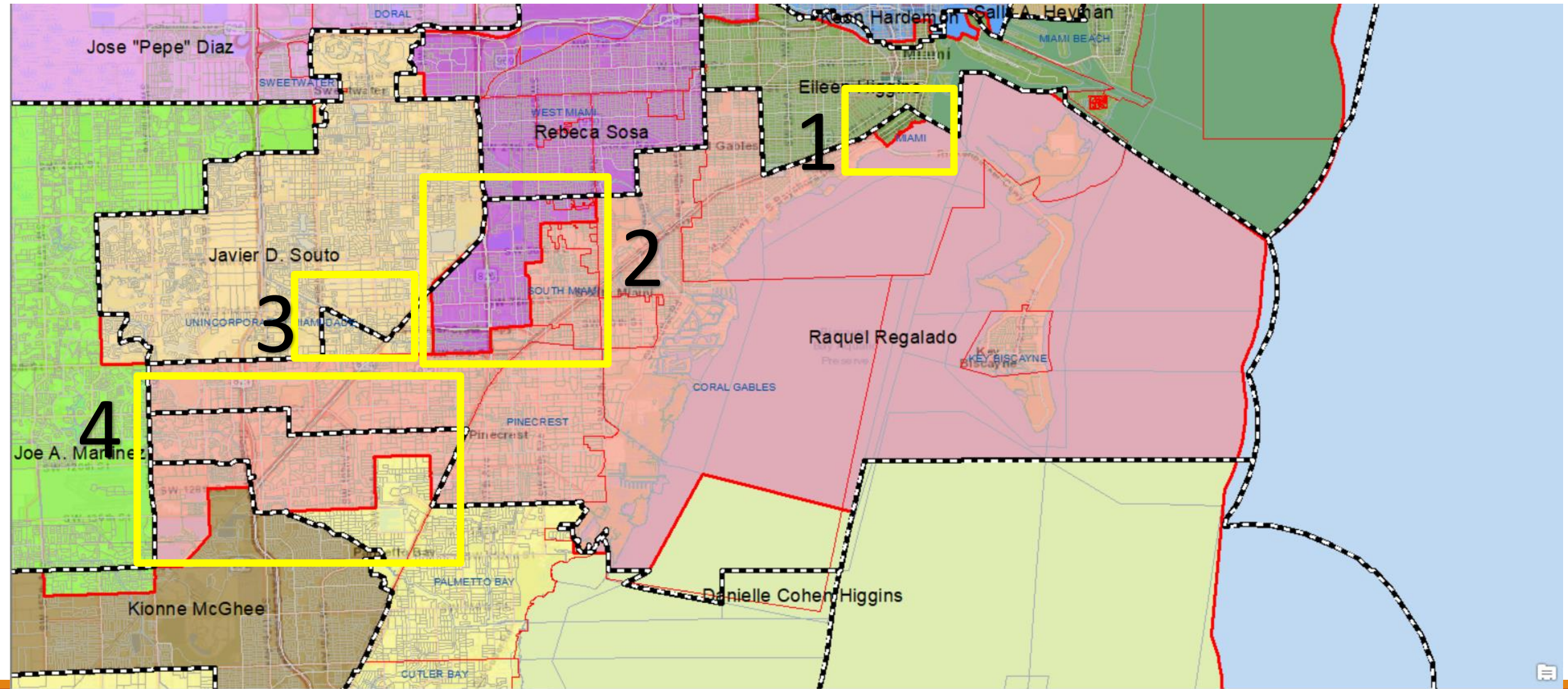
- Equal Population – All Districts should have equal population - as equal as possible
- The Maximum Deviation should not be more than 10% . Maximum Deviation is the difference between the most populated district and the least populated district.
- Districts should be Compact
- Districts should be Contiguous
- Protect Incumbency
- Minorities should be fairly represented
- ***Cannot work with one district only – the neighboring districts get affected. We need to look at the Maximum Deviation for all the districts***

District 7 Data

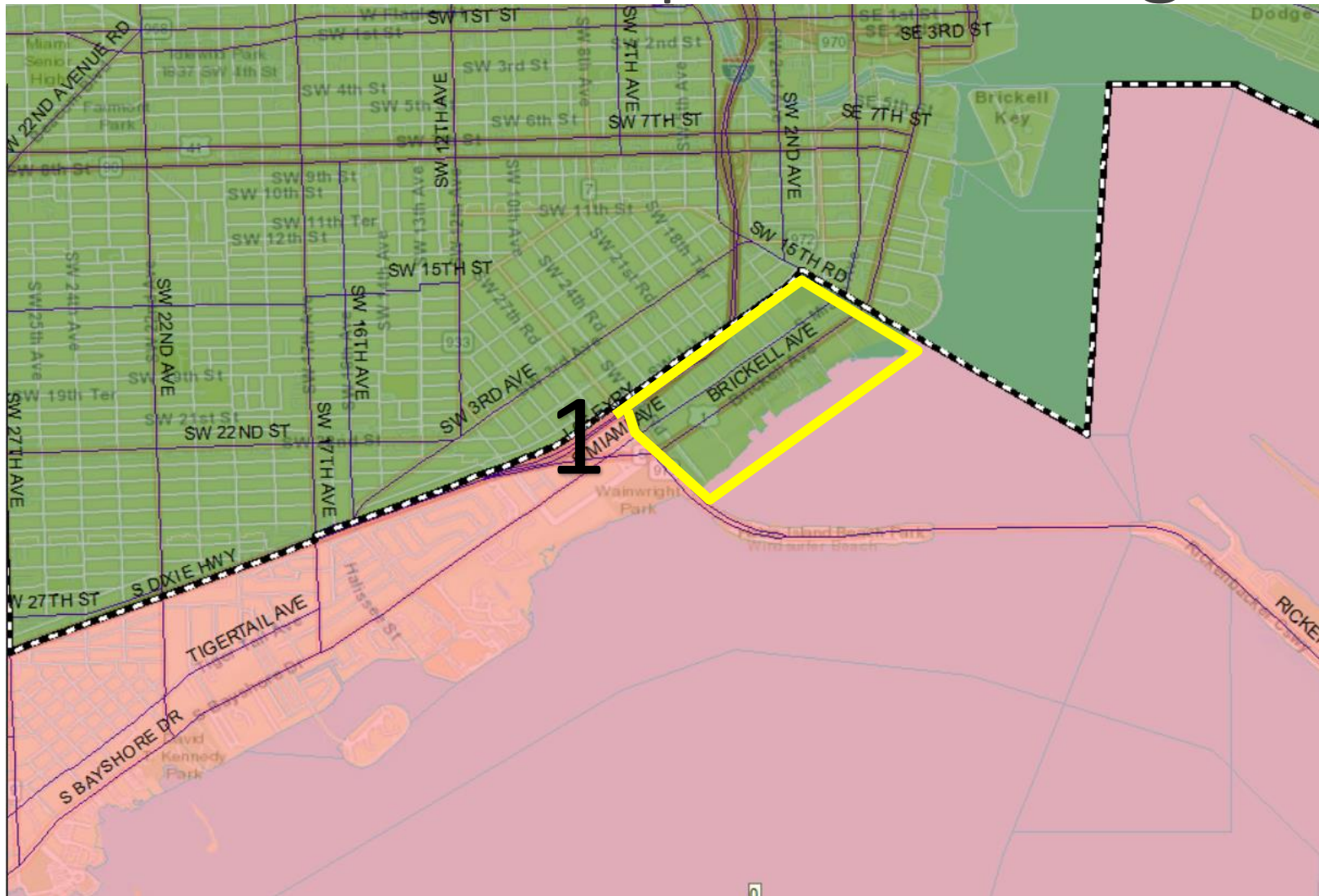
	Total Pop 2010	Total Pop 2020	Difference	Ideal Population	Deviation	% Deviation	% Deviation in Proposed Plan
District 7	201,108	217,331	16,223	207,828	9,503	4.57%	3.91%

DISTRICT 7	2010 Districts		2020 Current Districts		Proposed Plan	
HISPANIC	119,104	59.22%	140,289	64.55%	137,680	63.75%
NH WHITE	65,467	32.55%	55,688	25.62%	55,569	25.73%
NH BLACK	8,856	4.40%	8,508	3.91%	9,318	4.31%
NH NATIVE	98	0.05%	107	0.05%	104	0.05%
NH ASIAN	5,286	2.63%	5,740	2.64%	6,129	2.84%
NH HAWAIIAN PI	38	0.02%	56	0.03%	62	0.03%
NH OTHER	469	0.23%	1,381	0.64%	1,381	0.64%
NH MIXED 2+	1,790	0.89%	5,562	2.56%	5,710	2.64%
Totals	201,108	100.00%	217,331	100.00%	215,953	100.00%

District 7 – Proposed Changes (4)



District 7 – Proposed Change 1

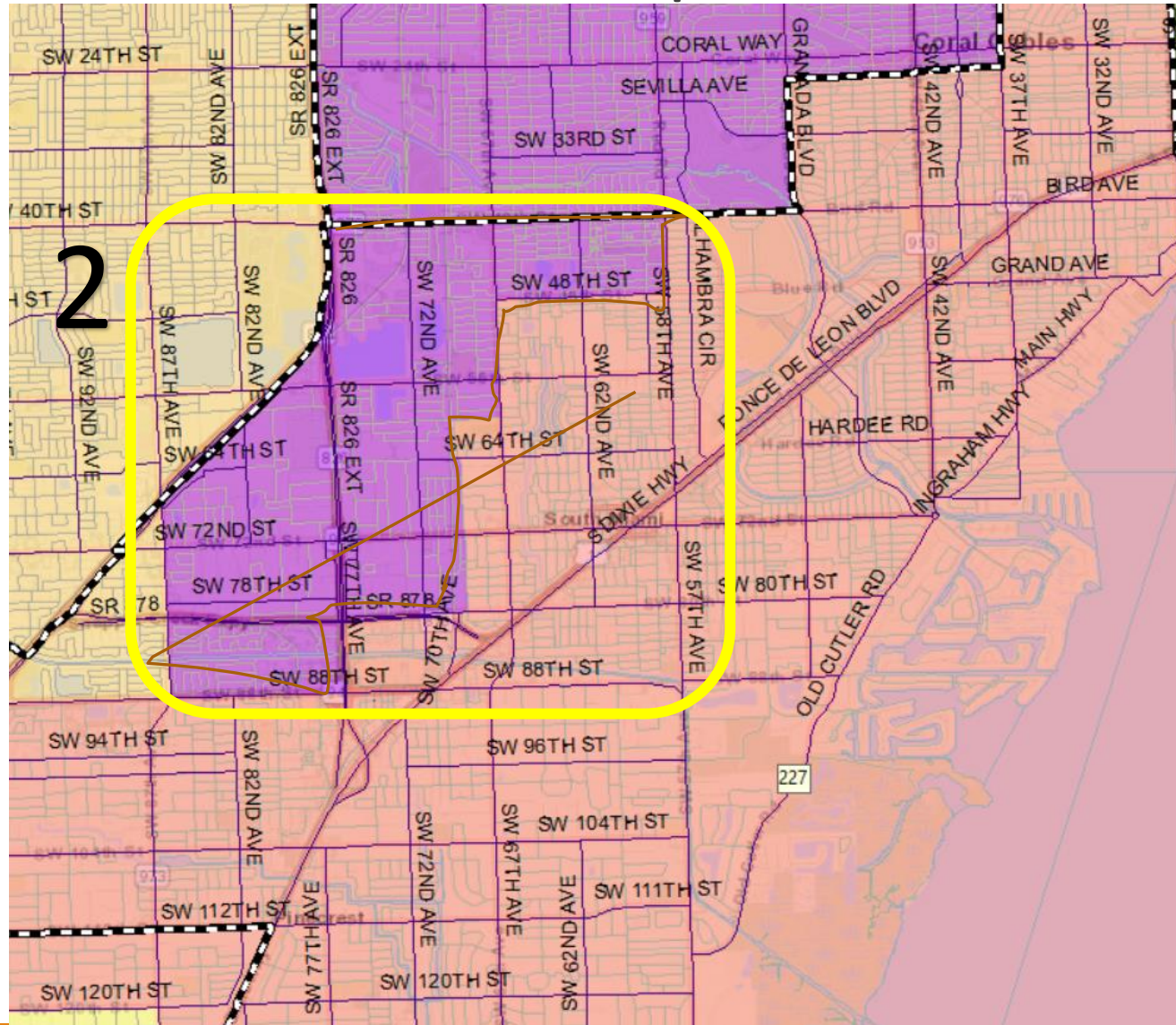


Moved to District 5
From S Dixie HWY to
Rickenbacker cswy
(includes Brickell Ave,
S. Miami Ave)

Total Selected: 8,009
Info:

HISP: 5,350
NHWHT: 2,112
NHBLK: 85
NHAIAN: 03
NHASIAN: 114
NHNHOPI: 00
NHOTHER: 71
NHP2MRCE: 274

District 7 – Proposed Change 2



Moved to District 6
From SW 40th St in the North
To SW 57th Ave to SW 48th St
To SW 67th Ave along the boundary
of the City of South Miami to
SR878/SW 80th St to SR 826 Ext to
N. Kendall Dr or SW 88th St to SW 87th Ave
To SR 874 to SW 40th St.

Total Selected: 19,793
Info:
HISP: 14,419
NHWHT: 4,113
NHBLK: 336
NHAIAN: 14
NHASIAN: 417
NHNHOPI: 02
NHOTHER: 104
NHP2MRCE: 388

District 7 Data

	Total Pop 2010	Total Pop 2020	Difference	Ideal Population	Deviation	% Deviation	% Deviation in Proposed Plan
District 7	201,108	217,331	16,223	207,828	9,503	4.57%	3.91%

DISTRICT 7	2010 Districts		2020 Current Districts		Proposed Plan	
HISPANIC	119,104	59.22%	140,289	64.55%	137,680	63.75%
NH WHITE	65,467	32.55%	55,688	25.62%	55,569	25.73%
NH BLACK	8,856	4.40%	8,508	3.91%	9,318	4.31%
NH NATIVE	98	0.05%	107	0.05%	104	0.05%
NH ASIAN	5,286	2.63%	5,740	2.64%	6,129	2.84%
NH HAWAIIAN PI	38	0.02%	56	0.03%	62	0.03%
NH OTHER	469	0.23%	1,381	0.64%	1,381	0.64%
NH MIXED 2+	1,790	0.89%	5,562	2.56%	5,710	2.64%
Totals	201,108	100.00%	217,331	100.00%	215,953	100.00%