



NORTHEAST CORRIDOR RAPID TRANSIT IMPLEMENTATION

PRESENTED BY

MIAMI-DADE COUNTY DEPARTMENT OF
TRANSPORTATION AND PUBLIC WORKS (DTPW)

FEBRUARY 22, 2023

Byenveni nan Reyinyon Virtuel Piblik Lansmaan Reyalizasyon Transpò Rapid Koridò Nòdès
Depatman Transpò ak Travo Piblik (DTPW Konte Miami-Dade la
Jodi a se 22 fevriye 2023

Introductions

DEPARTMENT OF TRANSPORTATION AND PUBLIC WORKS (DTPW) STAFF

- Eulois Cleckley | Director and CEO
- James Fisher | Deputy Director - Finance and Admin.
- Josenrique Cueto | Deputy Director. Dept. of Regulatory and Economic Resources
- Bobbie Carmona | Manager, Marketing & Communications
- Maria Perdomo | SMART Program Manager
- Juan Mendieta | Chief External Affairs Officer
- Javier Bustamante | Assistant Right of Way Manager
- James Rowan | Chief, Office of Civil Rights and Labor Relations
- Paola Baez | Chief, Multimodal Development Section

MODERATOR and PRESENTER

- Lynn Hogan | Parsons Public Information Officer

PROJECT TEAM

- Lisa Colmenares | Chief Planning Officer
- Sandra Antonio | DTPW Public Information Officer
- Odalys Delgado | Parsons Project Manager
- Yvette Holt | Holt Comm. Public Information Officer
- Josh Bair | HNTB Civil Engineer Track
- Charles Serig | HNTB Stations Architect
- Morteza Alian | Parsons Civil Engineer Rail Yard
- Eneida Martinez | Parsons Civil Engineer Park-and-Ride/Mobility Hubs
- Juan Morrison | Parsons Safety Analyst

Non mwen se Lynn Hogan, mwen se yon ofisye enfòmasyon piblik pou pwojè sa a e se mwen ki va moderatè ak prezantatè aswè a. Nan panèl la, nou genyen reprezantan Depatman Transpò ak Travo Piblik:

Eulois Cleckley | Direktè

James Fisher | Direktè Adjwen - Finans ak Administrasyon

Josenrique Cueto | Direktè Adjwen. Depatman Regilasyon ak Resous Ekonomik

Bobbie Carmona | Manadjè, Maketing ak Kominikasyon

Maria Perdomo | Manadjè Pwogram

Juan Mendieta | Chè Ofisye Afè Ekstèn

Jaiver Bustamante | Manadjè Adjwen Dwa Pasaj

James Rowan | Chèf, Biwo Dwa Sivil ak Relasyon Travay

Manm ekip etid ki nan panèl la aswè a:

Lisa Colmenares | Chèf Ofisye Planifikasyon

Sandra Antonio | Ofisye Enfòmasyon Piblik DTPW

Luis Espinoza | Administratè Pwojè Espesyal DTPW

Odalys Delgado | Manadjè Pwojè Parsons

Yvette Holt | Ofisye Enfòmasyon Piblik Holt Comm.

Josh Bair | Enjenyè Sivil HNTB

Charles Serig | Achitèk Estasyon HNTB

Morteza Alian | Enjenyè Sivil Lakou Tren Parsons

Eneida Martinez | Parsons Civil Engineer Park & Ride/Mobility Hubs

Enjenyè Sivil Park & Ride/Sant Mobilite Parsons

Juan Morrison | Analis Sekirite Parsons

Guidelines

Pou kenbe yon fowòm ki an sekirite e respektab, nou mande patisipan yo respekte direktiv sa yo pandan pati kesyon repons la.

- Tout mikwofòn patisipan yo ap rete sou silans, amwens ke yo ouvè yo pou moun pale
- Leve men pou w ka poze yon kesyon
- Yo p ap tolere betiz oswa langaj ki pa apwopriye
- Lè w ap pale, fè atansyon ak bri kote w ye a
- Tan pou moun pale limite a de minit
- Yo ap mete deyò moun ki vyole regleman reyinyon sa a

Règ

Pou kenbe yon fowòm ki an sekirite e respektab, nou mande patisipan yo respekte direktiv sa yo pandan pati kesyon repons la.

- Tout mikwofòn patisipan yo ap rete sou silans, amwens ke yo ouvè yo pou moun pale
- Leve men pou w ka poze yon kesyon
- Yo p ap tolere betiz oswa langaj ki pa apwopriye
- Lè w ap pale, fè atansyon ak bri kote w ye a
- Tan pou moun pale limite a de minit
- Yo ap mete deyò moun ki vyole regleman reyinyon sa a



Aplikasyon Transpò Rapid Koridò Nòdès

PRESENTED BY

DEPATMAN KONTE MIAMI-DADE OF
TRANSPÒ AK TRAVAY PIBLIK (DTPW)

Depatman Transpò ak Travo Piblik Konte Miami-Dade (DTPW) ap dirije Pwojè Reyalizasyon Transpò Rapid Koridò Nòdès la.

Presentation Outline

Project History

Purpose and Need

Project Overview

Engineering and Environmental Analyses

Project Milestones

Public Engagement

Question and Answer Session

Prezantasyon

Prezantasyon sa a gen ladan enfòmasyon sou istorik pwojè Koridò Nòdès la, objektif ak bezwen nouvo sèvis sa a, yon apèsi sou aktivite pwojè yo, ki gen ladan analiz jeni ak anviwònman ki ap fèt, etap enpòtan pwojè nou a, ak aktivite angajman piblik..

Va gen yon sesyon Kesyon ak Repons apre prezantasyon sa a, kote nou va pran kòmantè ak kesyon ou epi ba ou plizyè fason ou ka poze ekip etid la kesyon apre reyinyon jodi a.

Northeast Corridor History

NORTHEAST CORRIDOR LAND USE SCENARIO & VISIONING PLANNING

PROJECT GOALS

- The goal of the Land Use Scenario and Visioning Planning Study is to integrate transportation and land use planning to maximize the effectiveness of transit investments in the corridor.
- The purpose of the SMART Plan is to provide mobility options for Miami-Dade County residents and visitors and promote economic competitiveness by investing in the County's transportation infrastructure while protecting the environment and maximizing the efficiency of the existing transportation system.

Data Gathering

- Identified stakeholders and key participants
- Coordinated work with other related projects
- Completed and reviewed related studies
- Reviewed best practices used nationwide
- Reviewed data from TPO and partner agencies

Public Outreach

- Created a Study Advisory Committee (SAC) with public and private stakeholders, and representatives from each municipality, but not the limits during the process
- The Planning Charrette Series were held in February 2018 and November 2018 providing convenient opportunities for the community to participate. During these meetings, participants created a land use vision for the corridor.

Land Use Strategies

- Developed a vision for the Northeast Corridor
- Initiated and refined the results of the scenario planning efforts
- Assessed possible scenarios as a result of a detailed scenario development, evaluation, and selection process, why the land use supports the LPA
- Developed a series of station area plans

Scenario Building

- Created a land use scenario development framework to support vision and identify demand
- Tested and evaluated scenarios
- Completed report for potential Comprehensive Plan changes
- Prepared an assortment of visualization products to enhance and communicate results

These steps help the TPO in studying the relationship between transit and land use

Why We Are Here—SMART Plan Purpose

Land Use integrated around transit is important:

- From a functional and feasible perspective

TPO is studying land use for ALL six SMART Plan corridors:

- To support the County's Transit Vision

Because:

- It is vital to our quality of life



First Last Mile Connections:

- Extend the range of Transit Supportive Areas
- Facilitate access to the Transit Core
- Facilitate mobility in Transit Neighborchoods

Locally Preferred Alternative TPO Resolution #18-2021 Commuter Rail Service Northeast Corridor

| | |
|------|---|
| 1996 | Northeast Dade Transit Improvement Study |
| 2003 | SFRTA South Florida Transit Analysis Study |
| 2004 | FDOT Passenger Rail Component of Florida Rail Plan |
| 2005 | Southeast Florida East Coast Corridor (SFCEC) Study CUTR Bus Rapid Transit Opportunities Study |
| 2013 | SFECC Study Rebranded as Tri-Rail Coastal Link Study |
| 2016 | Miami-Dade SMART Program Begins |
| 2021 | TPO Northeast Corridor Land Use Scenario & Visioning Planning Completed |
| 2022 | DTPW Northeast Corridor Study Begins |

7

Istwa Koridò Nòdès



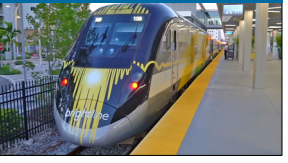
Depi kòmansman ane 1990 yo, yo te etidye fason pou amelyore mobilite nan nòdès Konte Miami-Dade.

Nan kòmansman ane 2000 yo, Konte a, ansanm avèk Depatman Transpò ak Otorite Transpò Rejyonal Sid Florid te evalye opòtinite transpò rapid tren ak otobis pandan popilasyon zòn nan ak bezwen transpò yo te ap ogmante .

...e an 2016, Òganizasyon Planifikasyon Transpò Miami-Dade, oswa TPO, Konsèy Gouvènman an te adopte ak andose ofisyèlman pwopozisyon Plan Estratejik Transpò Rapid Zòn Miami la (oswa SMART). Plan SMART gen objektif pou avanse koridò transpò rapid nan zòn nan, ki gen ladan Koridò Nòdès la, pou li kapab reyalize pwojè transpò piblik nan Konte Miami-Dade .

...An 2021, yo te devlope yon senaryo itilizasyon tè ak yon etid planifikasyon vizyon pou Koridò Nòdès la an koperasyon ak moun ki gen enterè nan kominote a pou sipòte bezwen transpò ak vizyon Konte a. Rezilta etid sa a te konfime altènativ prefere pou koridò sa a, ki baze sou opinyon kominote a ansanm ak previzyon kwasans popilasyon, bezwen travay ak transpò piblik. Nouvo sèvis tren koridò FEC a ta bay aksè a tout sant vil lokal yo ak gwgran orijin ak destinasyon yo jwenn nan yon ka mil nan koridò a.

Comparing Rail Transit Alternatives

| | Metro Rapid Transit | Commuter Rail | Intercity Rail |
|-----------------------------|---|--|---|
| |  |  |  |
| EXAMPLES | Metrorail | Tri-Rail or SunRail | Brightline |
| TRAVELS ON | Dedicated Rail Line | Shared Rail Line | Shared Rail Line |
| CONNECTS | Transit Centers within a City | Communities in a Metro Area | Cities within a Region |
| FREQUENCY (HEADWAYS) | 10-15 Minutes | 30-60 Minutes | Hourly |

NORTHEAST CORRIDOR

8



Konpare altènativ transpò pa tren yo

Ki sa ki Commuter Rail ye?

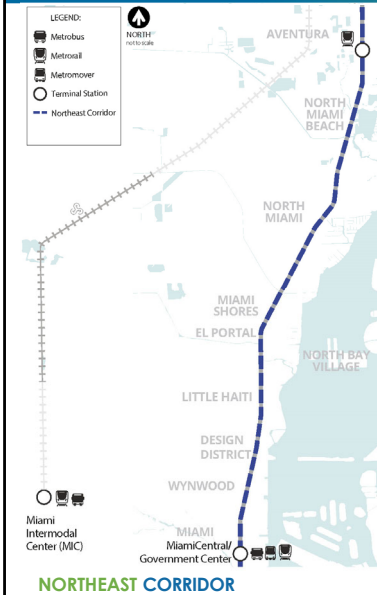
Tablo sa a montre yon konparezon ant Metro Rapid Transit, Commuter Rail ak Intercity Rail

MetroRail se sistèm transpò rapid metwo Konte a – ki vwayaje sou yon liy tren patikilye ant sant transpò piblik yo sou depasman 10 a 15 minit, ki se frekans sèvis transpò piblik la va rete nan yon arè oswa estasyon patikilye.

Sistèm Commuter Rail tankou Tri-Rail ak SunRail an plas pou konekte kominote nan yon zòn metwopolotèn. Yo opere sou menm liy tren ak tren ki vwayaje ant yon vil a yon lòt ak tren machandiz, men yo rete nan plis estasyon epi yo ofri depasman (ki se tan ki genyen ant arive tren nan yon estasyon) soti 30 minit rive yon èdtan.

Brightline se nouvo Rail Intercity nou an ki vwayaje sou Liy Rail FEC epi li konekte ki nan yon rejyon. Brightline konekte Miami ak Fort Lauderdale ak West Palm Beach kounye a epi byento li va konekte Miami ak Orlando. Vwayaje sou distans ki pi long, sèvis Brightline opere sou depasman chak èdtan.

Northeast Corridor Overview



PROJECT DESCRIPTION

- One of the six rapid transit corridors of the Miami-Dade County Strategic Miami Area Rapid Transit (SMART) Program
- Commuter rail corridor

PROJECT LIMITS

- Along the existing Florida East Coast (FEC) railway
 - from Downtown Miami - Miami Central Station
 - to the City of Aventura – Aventura Station
 - distance of approximately 13.5 miles

Apèsi sou Koridò Nòdès

Koridò Nòdès la se youn nan sis koridò transpò rapid nan Pwogram Estratejik Transpò Rapid (SMART) Konte Miami-Dade.

Nouvo koridò tren banlye sa a pral konekte minisipalite ak kominote yo sou pati nòdès Konte Miami-Dade.

Koridò Nòdès la sou liy tren Kòt Lès Florid (FEC) ki egziste deja a, e li va soti nan estasyon Miami Central anba lavil Miami pou rive nan vil Aventura, nan nò Estasyon Aventura pou yon distans anviwon 13.5 mil.

Konte a ap travay an patenarya avèk Depatman Transpò Florid (FDOT), Administrasyon Transpò Federal (FTA), Administrasyon Vwa Feye Federal (FRA), Òganizasyon Planifikasyon Transpò Konte Miami-Dade (TPO), Otorite Transpò Rejyonal Sid Florid la (SFRTA), Transpò Konte Broward, PalmTran , Brightline, FEC Railway, ak minisipalite yo pou livre pwojè sa a.

Northeast Corridor Purpose and Need

PURPOSE

- Increase regional mobility
- Provide congestion relief on roadways
- Provide rapid transit service to meet the transportation needs of residents.

NEED

- Improve multimodal connectivity along the corridor and around the stations
- Reduce traffic impacts on its roadways and minimize motor vehicle pollutants
- Support economic development

Objektif ak bezwen koridò Nòdès

Objektif pwojè Koridò Nòdès la se ogmante mobilite renyonal, bay soulajman ras a anbouteyaj sou wout yo epi bay yon sèvis transpò rapid pou satisfè bezwen transpò rezidan zòn yo.

Pwojè Koridò Nòdès la va finalman amelyore koneksyon miltimodal sou koridò a ak ozalantou estasyon tren yo pwopoze yo, diminye enpak blokis yo, epi ede minimize polisyon veyikil a motè lakoz sou wout zòn yo, pandan nou ap sipòte devlopman ekonomik.

Corridor Users

EXISTING AND FUTURE USERS OF THE CORRIDOR

- **Freight:** Up to 24 trains daily
- **Brightline:** Intercity passenger rail, up to 36 trains daily
- **SFRTA Tri-Rail:** Future commuter rail, 28 trains daily
- **Northeast Corridor:** Planned commuter rail, 54 trains daily (approximate)



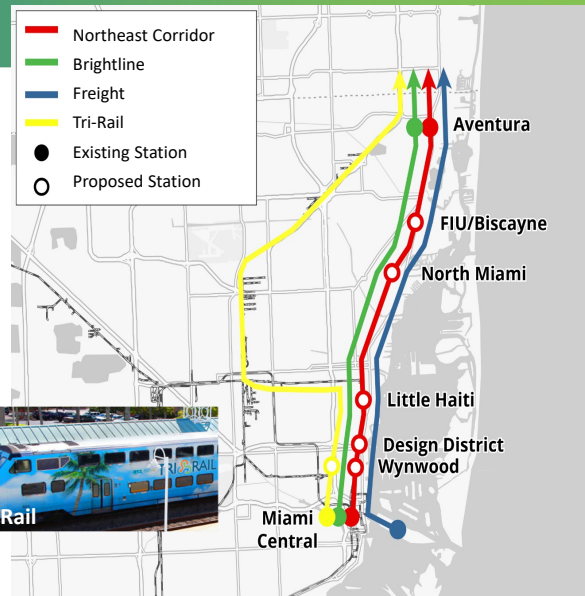
Freight



Brightline



Tri-Rail



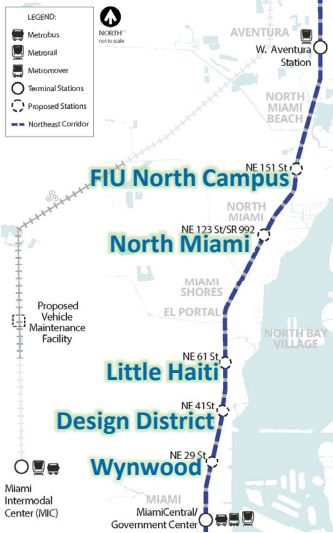
Itilizatè koridò yo

Itilizatè ki deja egziste ak pwochen itilizatè koridò FEC Railway gen ladan:

FEC Railway, avèk 24 tren machandiz ki itilize koridò a chak jou ak Brightline, avèk 36 tren chak jou .

Sèvis tren Tri-Rail Otorite Transpò Rejyonal Sid Florid (SFRTA) ki gen 28 tren chak jou planifye pou yon avni ki pwòch epi pwojè sa a, Koridò Nòdès la, ta ofri sèvis tren ak 54 tren chak jou, dapre estimasyon ki fèt.

Proposed Stations



PROPOSED NEW STATIONS and AFFILIATED PARK-AND-RIDE/MOBILITY HUB LOCATIONS

- Wynwood
- Design District
- Little Haiti
- North Miami
- Florida International University (FIU) North Campus/Biscayne

PARK-AND-RIDE/MOBILITY HUB FEATURES

- Paid and Handicap Parking
- Lighting
- Canopies at passenger drop-off/pick-up areas
- Electric Vehicle Spaces and Charging Stations

NORTHEAST CORRIDOR

12



Estasyon yo pwopoze yo

Koridò Nòdès la ap gen ladan konstriksyon senk nouvo estasyon tren ak pak ki asosye ak menm bagay la tou sou Railway FEC la.

Estasyon yo pwopoze:

tou pre Nòdès 29th Street nan Wynwood

tou pre Nòdès 41st Lari nan Distri a Design

toupre Nòdès 61yèm lari nan Ti Ayiti

tou pre Nòdès 123rd Street / Eta wout 992 nan Nò Miyami

Nòdès 151 lari nan Nò Florid Entènasyonal Kanpis

CLICK Sant Mobilite Park-ak-Ride Mobility pral bay estanda peye ak aksesib espas pakin pou moun ki andikape ansanm ak zòn ki byen limen ak anvan yo depoze ak kap chèche pasaje tren. Chak nan pak-ak-woulib la pral tou ekipe ak espas machin elektrik ak yon machin estasyon rechèch elektrik.

Proposed Stations



- Built within FEC Rail right of way
- No business or residential displacements
- Two 400-foot-long platforms
- Features lighting, ticket kiosks, canopies

Pwopozisyon Sant

Platfòm estasyon tren yo va konstwi nan dwa pasaj FEC Railway ki egziste deja epi yo pa p twò lwen okenn biznis oswa rezidans. Chak estasyon ta genyen de platfòm anbakman ki gen 400 pye longè sou chak bò FEC Railway la. Eksepte estasyon FIU/Biscayne la, ki gen dwa pase limite, platfòm yo ka elaji alavni jiska 500 pye.

Chak estasyon ap gen ekleraj, kyòsk pou tikè, ak ovan.

Proposed End of Line Station Improvements



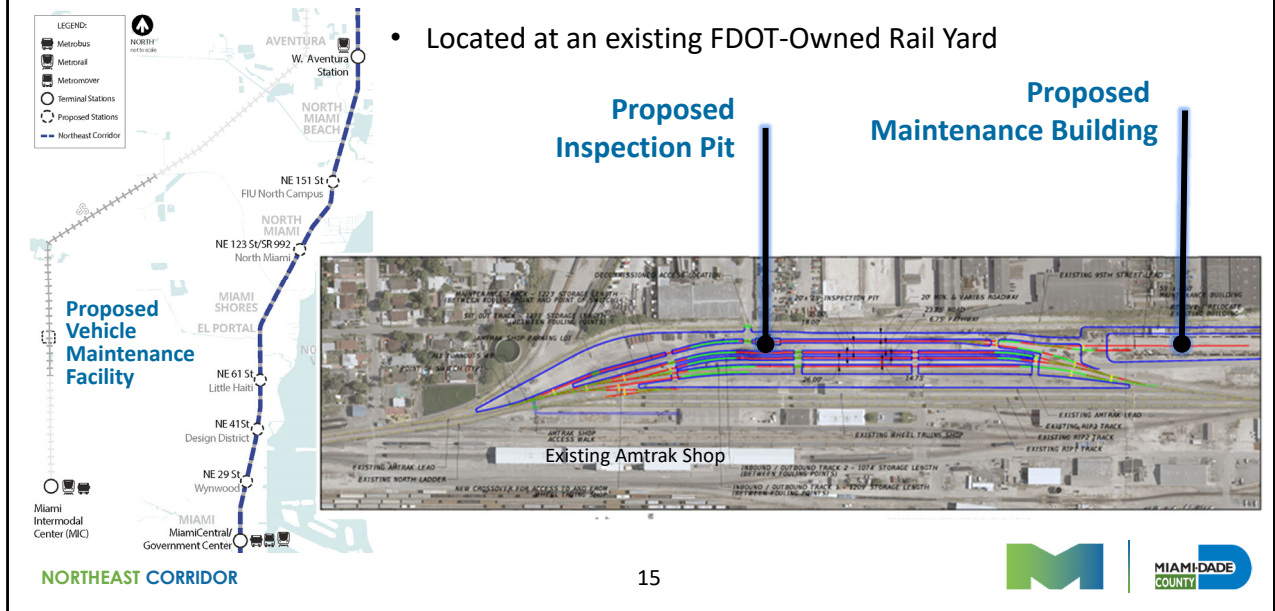
Amelyorasyon Estasyon Fen Liy yo Pwopoze a

Modifikasyon pou Aventura ak estasyon Santral Miami yo te planifye nan fen liy ki egziste deja yo.

Pou akomode nouvo sèvis pasaje yo Koridò Sèvis, tribin estasyon ki deja egziste nan estasyon sa yo ka pwolonje.

Yo pwopoze tou siy ak karakteristik sekirite, tankou ekleraj,.

Proposed Vehicle Maintenance Facilities



Pwopoze enstalasyon antretyen machin

Etablisman Antretyen machin ki pwopoze a nan Koridò Nòdès FEC nan Lwès FEC Railway Corridor nan yon Tribinal FDOT ki deja egziste Tren ki deja egziste tou sèvi kòm yon lakou antretyen pou Amtrak ak Tri-Rail.

Pwopozisyon devlopman nan lakou sa a pou pwojè Koridò Nòdès la gen ladan bilding pou antretyen limyè ak sèvis tren, tankou yon nouvo bilding antretyen ak espas enspeksyon tren, pandan y ap sèvis ki deja egziste nan lakou a tren, tankou lave oto ak antretyen wou.

Yo pwopoze tou nouvo tren ak wout andedan lakou tren.

Lè yo pa nan sèvis, yo ka magazen jiska sèt koridò nòdès nan lakou tren sa a.

Proposed Service



Conceptual Illustration

WEEKDAYS

- 60-minute headways off-peak
- 30-minute headways from 6 a.m. to 9 a.m. and 3 p.m. to 7 p.m.

WEEKENDS

- 60-minute headways

SERVICE SPAN

- 5 a.m. – Midnight daily

Pwopozisyon Sèvis

Yon fwa sèvis tren Korido Nodes 'bati, li pral prezante, 60 minit chanjman (tan ant tren) pandan lè ki pa ede nan jou lasemèn ak wikenn. Pandan èdtan yo nan èdtan pik (ant 6 a.m. ak 9 a.m. ak ant 3 pm ak 7 pm) pral gen chanjman 30-minit, tren yo ta dwe vini chak 30 minit. Yo te kapab bay sèvis chak jou soti nan 5 a.m. a minwi.

Traffic Analysis

TRAFFIC DATA COLLECTION

- Traffic Volumes
- Spot speed data
- Queue lengths at intersections and for gate closures
- Traffic signal pre-emption

TRAFFIC ANALYSIS

- 76 intersections for analysis
- Traffic simulation models
- Intersection safety analysis

SAFETY ANALYSIS

- Along grade crossings
- System hazard and vulnerability analyses



Analiz Trafik

Depatman an ap fè anpil koleksyon done ak analiz enpak trafik pou pwojè sa a, ki gen ladan:

- Volim nan trafik otomobil ak tren
- Done sou Vites
- Done atant nan entèseksyon ak fèmte pòtay
- e siyal /sikilasyon prevansyon

Avèk done sa yo, nò ap evalye 78 76 pasaj travèse tren ak adjasan a koridò a epi nou ap itilize modèl simulation nan wout eta a chwazi ak plizyè senaryo matche ak tren.

Efò sa a ansanm ak analiz sekirite nan entèseksyon yo pral ede nou idantifye amelyorasyon nan koridò a amelyore operasyon trafik ak sekirite, epi nou pral fè analiz asire ke nouvo sistèm transpò sa a se fleksib nan menas la nan danje ak frajilite.

Environmental Analysis

Natural Environment



Wetlands and Floodplains
Protected Species (Wildlife)
Habitat
Water Quality

Physical Environment



Contamination
Existing Infrastructure
(Utilities, Bus Stops, Lighting)
Noise and Vibration

Social Environment



Historic/Archeological Sites
Community Features
Residents and Businesses
Title VI and Under-Represented
Populations

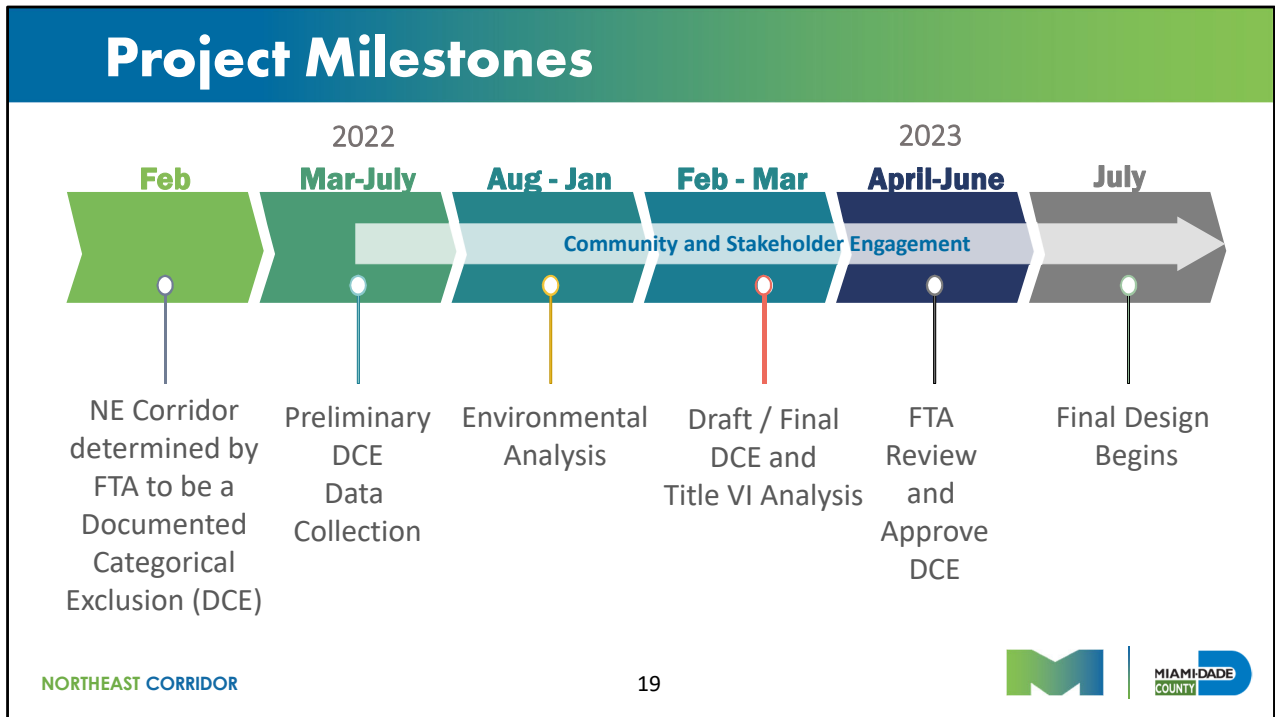
A Documented Categorical Exclusion (DCE) will be prepared for this project

Analiz anviwònmantal

Depatman an ap evalue tou ak idantifye fason pou redwi efè anviwònman an nan pwojè potansyèl ki gen ladan,

- Anviwònman natirèl la, tankou zile ak plenn inondasyon, espès pwoteje ak abita, ak kalite dlo.
- Anviwònman fizik la gen ladan idantifikasyon sit ki kontamine, ak efè sou enfrastrikti ki deja egziste tankou sèvis piblik, ak yon evalyasyon nan bri potansyèl ak efè Vibration.
- Anviwònman Sosyal la gen ladan evalyasyon an nan sit istorik ak akeyolojik sou koridò a kòm byen ke efè sou karakteristik kominote a tankou pak ak enstalasyon piblik, ak efè sou rezidan yo ak biznis nan zòn nan, ansanm ak minorite yo ak lòt VI, oswa mal reprezante popilasyon yo.

Depatman an pral dokimante analiz anviwònman an nan yon Eksklizyon Kategori Dokimante. Eksklizyon kategorikman se aksyon an ke FTA a te detèmine, pa règleman, nòmalman li pa gen yon efè enpòtan sou anviwònman imen an. Pa gen okenn evalyasyon anviwònman ni deklarasyon enpak anviwònman an obligatwa.



Etap Pwojè yo

Kounye a, pwojè sa a nan Pwojè Pwosesis Devlopman atravè Pwogram Sibvansyon Investisman FTA New Starts ak DTPW ap swiv Lwa sou Règleman Sou Anviwònman Nasyonal (NEPA) pwosesis, ki enplike nan moun ki gen enterè angaje yo nan pwojè a pou opinyon yo pandan etid sa a. Nan sezon prentan 2023, Depatman Transpò ak Travay Piblik ap òganize yon reyinyon piblik pou prezante rezilta jeni ak analiz anviwònman an ak VI anvan ou soumèt eskizyon final la dokimante nan FTA. Depatman an ap kenbe tou reyinyon kontinyèl ak moun ki gen enterè pandan tan sa a nan reyinyon teknik ak kominote yo

Public Engagement

PUBLIC MEETINGS

- Virtual Kickoff Meeting
- Pop-up Meetings in Local Communities
- Hybrid Title VI Public Meeting
- Hybrid Final Public Meeting

OTHER STAKEHOLDER MEETINGS

- Agency Technical Meetings
- Community Meetings
- Municipality and County Briefings

MIAMI-DADE COUNTY DEPARTMENT OF TRANSPORTATION AND PUBLIC WORKS (DTPW)
NORTH EAST CORRIDOR RAPID TRANSIT PROJECT

VIRTUAL PUBLIC KICKOFF MEETING
Wednesday, February 22, 2023
From 6:30 p.m. to 8:00 p.m.

REUNIÓN PÚBLICA VIRTUAL INICIAL
miércoles, 22 de febrero de 2023
a partir de las 18:30 a las 20:00

PREMYE REYINYON PUBLIK VITVEL
Makredi 22 fevriye 2023
soti 6:30 p.m. jiska 8:00 p.m.

Project website
Sitio web del proyecto
Entènèt pwojè
<https://www.miamidade.gov/transportation/smart-program-northeast-corridor.aspx>

Visit the project web page
[miamidade.gov/smartprogram](https://www.miamidade.gov/smartprogram)



NORTHEAST CORRIDOR



Angajman Piblik

Angajman piblik se yon pati enpòtan nan pwojè sa a ak pwosesis devlopman pwojè a.. Pandan etid la, Depatman an ap kenbe reyinyon piblik ak kominote a pou kenbe ou enfòm sou pwogrè nan jeni ak analiz anviwònman an. Nou pral rankontre tou ak anpil ajans, kominote, ak sèvis ki gen yon pati nan pwojè sa a.

Pop-up meetings in local communities are planned and dates and times will be provided on the project website.

Ou ka jwenn enfòmasyon mete ajou sou pwojè a ak anons reyinyon sou paj entènèt Nòdès Koridò, [miamidade.gov](https://www.miamidade.gov) oswa tcheke kòd la QR afiche.

Non-Discrimination Statement

Any person who believes that he or she has been subjected to discrimination based upon race, color, national origin, sex, religion, age, disability, family or marital status in any of Miami Dade County services or activities may file a complaint with the Miami Dade County Title VI/Nondiscrimination Coordinator:

James Rowan, Chief
Office of Civil Rights and Labor Relations
Department of Transportation and Public Works
701 NW 1st Court, 17th Floor
Miami, Florida 33136
Email: james.rowan@miamidade.gov
Phone: (786) 469-5042
Hearing Impaired: RELAY 711

Deklarasyon sou non diskriminasyon

Konte Miami-Dade angaje li pou bay aksè egal a sèvis san ras, koulè, orijin nasyonal, relijyon, sèks, laj, andikap, fanmi oswa sivil an akò ak Lwa sou Dwa Sivil VI nan lane 1964. Konte Miami Dade kwè ke pi bon pwogram ak sèvis yo soti nan konsiderasyon ak anpil atansyon sou bezwen tout kominote li yo lè kominote sa yo patisipe nan pwosesis desizyon transpò a. Nenpòt moun ki kwè ke yo te diskrimine kont ras, koulè, orijin nasyonal, sèks, relijyon, laj, andikap, fanmi oswa eta sivil nan nenpòt sèvis konte Miami Dade County oswa aktivite ka depoze yon plent nan Miami Dade County Co-ordinator VI /Nondiscrimination:

James Rowan, Chèf Biwo Dwa Sivil ak Relasyon Travay
Department of Transportation and Public Works
701 NW 1st Court, 17th Floor
Miami, Florida 33136
Imèl: james.rowan@miamidade.gov
Telefòn: (786) 469-5042 Odyans: RELÈ 711

Your Input Matters!

DTPW PUBLIC INFORMATION OFFICER

Ms. Sandra Antonio

Tel: 305-375-2810

Email: SMARTNortheast@miamidade.gov

DTPW NORTHEAST CORRIDOR PROJECT MANAGER

Ms. Lisa Colmenares, AICP | Chief Planning Officer

Tel: 786-469-5394

Email: MariaElisa.Colmenares@miamidade.gov

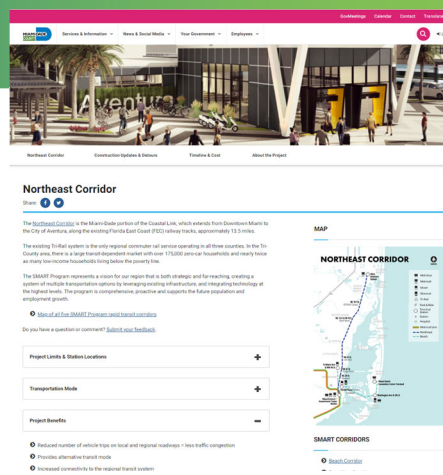
CONSULTANT PROJECT MANAGER

Ms. Odalys Delgado, AICP

Tel: 305-507-5583

Email: Odalys.Delgado@Parsons.com

NORTHEAST CORRIDOR



Visit the project web page
miamidade.gov/smartprogram



Opinyon ou enpòtan!

Opinyon ou sou pwojè amelyorasyon transpò sa a enpòtan pou nou.

Ou lib pou soumèt kesyon oswa kòmantè lè w kontakte Ofisye ENFÒMASYON PIBLIK DTPW A

pa telefòn nan 786-476-2852 oswa pa imèl: SMARTNortheast@miamidade.gov

DTPW KORID PROJECT MANAGER NODES

Lisa Colmenares | Chèf Ofisye Planifikasyon, telefòn 786-469-5394 oswa imèl:

Mariaelisa.Colmenares@miamidade.gov

oswa KONSILTAN, MANADJÈ PWOJÈ A

Madam Odalys Delgado, telefòn 305-507-5583 oswa imèl: Odalys.Delgado@parsons.com

Gen plis enfòmasyon sou pwojè a disponib sou entènèt lè ou vizite:

miamidade.gov/smartprogram

oswa pa optik kòd la QR afiche