



TRANSPORTATION AND PUBLIC WORKS

RIDERSHIP TECHNICAL REPORT

Division of Performance and Materials Management



Table of Contents

<i>Table of Contents</i>	2-3
All Modes Overview	4
Total Monthly Weekday, Saturday and Sunday Monthly Boardings By Mode	5
Average Weekday, Saturday and Sunday Boardings by Mode	6
Metrobus Total Monthly Ridership Comparisons by Fiscal Year	7
Metrorail Total Monthly Ridership Comparisons by Fiscal Year	8
Metromover Total Monthly Ridership Comparisons by Fiscal Year	9
STS Total Monthly Ridership Comparisons by Fiscal Year	10
All-Modes Combined Total Monthly Ridership Comparisons By Fiscal Year	11
All Modes Combined Total Monthly and Average Weekday Ridership – Year over Year Comparison Charts	12
Average Weekday Ridership – Modal Splits	13
Daily Ridership for All Modes Combined since February 1, 2020	14
Metrobus	15
Metrobus Average Weekday Boardings by Route	16-18
Metrobus Average Saturday Boardings by Route	19-20
Metrobus Average Sunday Boardings by Route	21-22
Metrobus Monthly Total Boardings by Route	23-25
Year-over-Year Bus Ridership by Route Service Type	26-27
Bus Routes as Ranked by Percentage of Average Weekday Ridership	28
Metrobus Cumulative Percentage Average Weekday Ridership Share by Route (Top 75%)	29
Total Monthly and Average Weekday Rail Ridership – Year over Year Comparison Charts	30
Bus “Top 5 / Bottom 5” Routes Average Weekday Ridership Performance	31
Daily Metrobus Ridership since February 1, 2020	32
Metrobus Parking Patronage Summary	33

Table of Contents (continued)

Metrorail	34
Metrorail Average Weekday Boardings by Station	35
Metrorail Average Saturday Boardings by Station	36
Metrorail Average Sunday Boardings by Station	37
Metrorail Total Monthly Boardings by Station	38
Metrorail Cumulative Percentage Average Weekday Ridership Share	39
Total Monthly and Average Weekday Rail Ridership – Year over Year Comparison Charts	40
“Top 5 / Bottom 5” Stations Average Weekday Ridership Performance	41
Daily Metrorail Ridership since February 1, 2020	42
Metrorail Parking Patronage Summary	43
Metromover	44
Monthly and Average Daily Mover Boardings by Station	45
Metromover Cumulative Percentage Average Weekday Ridership Share	46
Total Monthly and Average Weekday Mover Ridership – Year over Year Comparison Charts	47
“Top 5 / Bottom 5” Stations Average Weekday Ridership Performance	48
Daily Metromover Ridership since February 1, 2020	49
Special Transportation Services (STS)	50
STS Monthly and Average Daily Boardings	51
Total Monthly and Average Weekday STS Ridership – Year over Year Comparison Charts	52
Daily STS Ridership since February 1, 2020	53
Ridership Seasonality	54
Ridership Seasonality – Percent Ridership Share by Month and Calendar year for Each Mode	55

All Modes Overview



**TOTAL MONTHLY WEEKDAY, SATURDAY AND SUNDAY BOARDINGS BY MODE
March 2021**

TRAVEL MODE	MONTH'S TOTAL WEEKDAYS RIDERSHIP	MONTH'S TOTAL SATURDAYS RIDERSHIP	MONTH'S TOTAL SUNDAYS RIDERSHIP	TOTAL MONTHLY RIDERSHIP	% CHANGE vs Mar 2020 TOTAL MONTH RIDERSHIP
METROBUS (1)	3,060,412	335,449	264,778	3,660,639	16.7%
METRORAIL (2)	781,450	77,977	57,670	917,097	-10.7%
METROMOVER (3)	240,897	36,578	25,027	302,502	-31.4%
STS PARATRANSIT (4)	97,266	9,057	6,607	112,930	26.0%
TOTAL	4,180,025	459,061	354,082	4,993,168	6.4%

- (1) As a result of the SARS-CoV-2 pandemic, Metrobus rides became fare-free on March 22, 2020; consequently, NextFare System farebox data was replaced by bus automatic passenger counter data starting on that date.
- (2) As a result of the SARS-CoV-2 pandemic, Metrorail rides became fare-free on March 22, 2020; consequently, NextFare System faregate data was replaced manually-counted data and other estimates starting on that date.
- (3) Beginning March 13, 2020 (day of National Emergency Declaration due to SARS-CoV-2 pandemic), only raw data from Metromover automatic passenger counters is reported; no estimates are performed after March 13, 2020.
- (4) Paratransit ridership data as reported by the contractor.

**AVERAGE WEEKDAY, SATURDAY AND SUNDAY BOARDINGS BY MODE
March 2021**

Travel Mode	Average Weekday	Average Saturday	Average Sunday	% Change Mar 2020 Weekday	% Change Mar 2020 Saturday	% Change Mar 2020 Sunday
METROBUS	133,218	83,862	66,206	13.0%	22.9%	20.5%
METRORAIL	34,699	19,870	14,633	-14.8%	26.7%	7.0%
METROMOVER	10,802	9,375	6,816	-35.7%	1.4%	-1.6%
STS PARATRANSIT	4,229	2,264	1,652	18.8%	60.2%	45.1%
Totals (1)	182,948	115,371	89,307	2.2%	22.0%	16.4%

METROBUS TOTAL MONTHLY RIDERSHIP COMPARISONS BY FISCAL YEAR

Bus	Variance			Variance		Variance		Variance		Variance
	FY 17	FY 18	17 to 18	FY 19	18 to 19	FY 20	19 to 20	FY 21	20 to 21	17 to 21
Oct	4,925,781	4,709,590	-4.4%	4,554,886	-3.3%	4,507,012	-1.1%	2,805,139	-37.8%	-43.1%
Nov	5,181,524	4,522,250	-12.7%	4,245,535	-6.1%	4,197,225	-1.1%	2,651,290	-36.8%	-48.8%
Dec	5,192,692	4,380,099	-15.6%	4,081,581	-6.8%	4,126,990	1.1%	3,022,530	-26.8%	-41.8%
Jan	5,084,085	4,307,001	-15.3%	4,195,911	-2.6%	4,316,998	2.9%	3,082,746	-28.6%	-39.4%
Feb	4,914,307	4,208,811	-14.4%	3,994,019	-5.1%	4,123,083	3.2%	3,076,966	-25.4%	-37.4%
Mar	5,287,813	4,534,564	-14.2%	4,266,768	-5.9%	3,136,162	-26.5%	3,660,639	16.7%	-30.8%
Apr	4,895,697	4,360,997	-10.9%	4,291,135	-1.6%	1,544,316	-64.0%			
May	5,087,877	4,277,628	-15.9%	4,330,922	1.2%	1,734,609	-59.9%			
Jun	4,586,556	4,009,340	-12.6%	3,823,863	-4.6%	2,210,725	-42.2%			
Jul	4,539,259	4,080,664	-10.1%	4,094,906	0.3%	2,366,749	-42.2%			
Aug	4,780,589	4,326,980	-9.5%	4,109,613	-5.0%	2,422,014	-41.1%			
Sep	3,524,818	4,041,992	14.7%	3,971,220	-1.8%	2,546,923	-35.9%			
FY Total	58,000,998	51,759,916	-10.8%	49,960,359	-3.5%	37,232,806	-25.5%			

METRORAIL TOTAL MONTHLY RIDERSHIP COMPARISONS BY FISCAL YEAR

Rail	Variance			Variance		Variance		Variance		Variance
	FY 17	FY 18	17 to 18	FY 19	18 to 19	FY 20	19 to 20	FY 21	20 to 21	17 to 21
Oct	1,670,933	1,708,564	2.3%	1,757,225	2.8%	1,643,166	-6.5%	769,525	-53.2%	-53.9%
Nov	1,734,267	1,609,888	-7.2%	1,656,929	2.9%	1,469,448	-11.3%	699,492	-52.4%	-59.7%
Dec	1,734,768	1,517,341	-12.5%	1,553,804	2.4%	1,433,928	-7.7%	769,194	-46.4%	-55.7%
Jan	1,743,638	1,615,576	-7.3%	1,708,695	5.8%	1,576,340	-7.7%	799,119	-49.3%	-54.2%
Feb	1,676,215	1,545,581	-7.8%	1,501,458	-2.9%	1,549,118	3.2%	730,792	-52.8%	-56.4%
Mar	1,926,434	1,700,714	-11.7%	1,554,851	-8.6%	1,027,319	-33.9%	917,097	-10.7%	-52.4%
Apr	1,677,459	1,619,890	-3.4%	1,559,446	-3.7%	287,803	-81.5%			
May	1,787,885	1,618,504	-9.5%	1,531,597	-5.4%	337,696	-78.0%			
Jun	1,605,234	1,524,311	-5.0%	1,359,966	-10.8%	608,758	-55.2%			
Jul	1,500,243	1,527,380	1.8%	1,419,158	-7.1%	632,964	-55.4%			
Aug	1,693,524	1,632,471	-3.6%	1,463,646	-10.3%	641,275	-56.2%			
Sep	1,234,135	1,530,088	24.0%	1,427,726	-6.7%	654,244	-54.2%			
Total	19,984,735	19,150,308	-4.2%	18,494,501	-3.4%	11,862,059	-35.9%			

METROMOVER TOTAL MONTHLY RIDERSHIP COMPARISONS BY FISCAL YEAR

Mover	Variance			Variance		Variance		Variance		Variance
	FY 17	FY 18	17 to 18	FY 19	18 to 19	FY 20	19 to 20	FY 21	20 to 21	17 to 21
Oct	814,781	751,323	-7.8%	790,533	5.2%	831,234	5.1%	250,044	-69.9%	-69.3%
Nov	841,679	729,519	-13.3%	735,198	0.8%	799,632	8.8%	232,422	-70.9%	-72.4%
Dec	858,961	748,797	-12.8%	767,239	2.5%	849,832	10.8%	251,019	-70.5%	-70.8%
Jan	852,788	772,122	-9.5%	746,728	-3.3%	847,773	13.5%	255,968	-69.8%	-70.0%
Feb	780,514	698,107	-10.6%	675,160	-3.3%	855,398	26.7%	260,332	-69.6%	-66.6%
Mar	949,045	859,143	-9.5%	737,814	-14.1%	441,200	-40.2%	302,502	-31.4%	-68.1%
Apr	802,778	740,036	-7.8%	795,696	7.5%	130,549	-83.6%			
May	814,791	694,106	-14.8%	734,645	5.8%	146,454	-80.1%			
Jun	737,042	641,675	-12.9%	701,318	9.3%	203,637	-71.0%			
Jul	796,649	700,462	-12.1%	739,814	5.6%	210,596	-71.5%			
Aug	788,734	768,728	-2.5%	739,785	-3.8%	205,995	-72.2%			
Sep	425,641	698,505	64.1%	699,879	0.2%	219,696	-68.6%			
Total	9,463,403	8,802,523	-7.0%	8,863,809	0.7%	5,741,996	-35.2%			

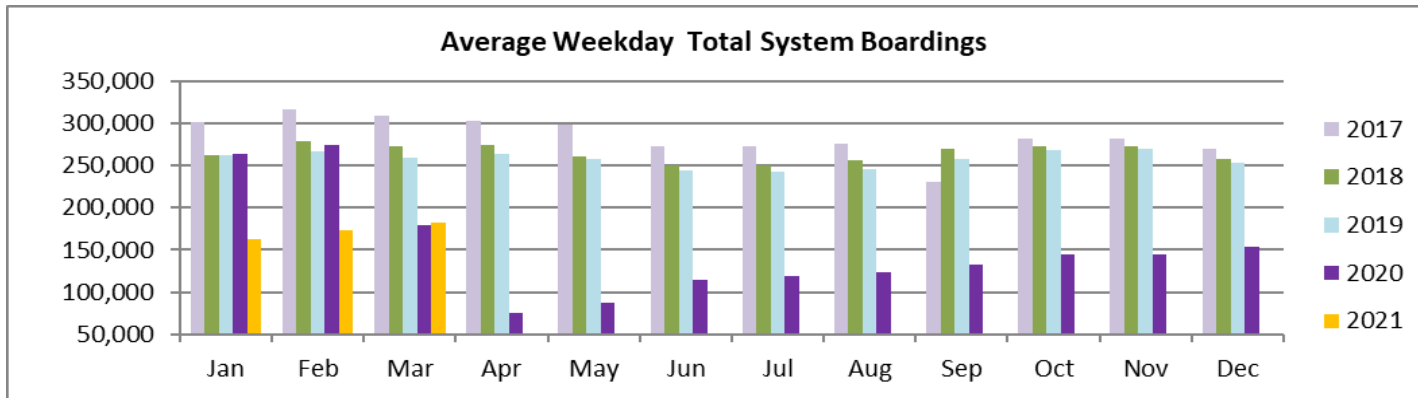
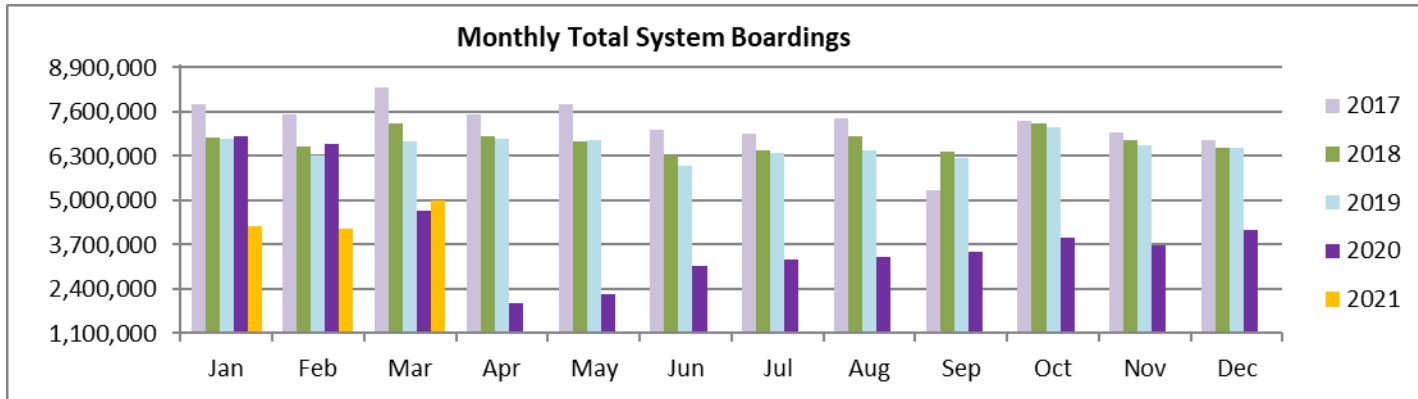
SPECIAL TRANSPORTATION SERVICES (STS) TOTAL MONTHLY RIDERSHIP COMPARISONS BY FISCAL YEAR

STS			Variance			Variance			Variance		
	FY 17	FY 18	17 to 18	FY 19	18 to 19	FY 20	19 to 20	FY 21	20 to 21	Variance	17 to 21
Oct	132,211	153,409	16.0%	162,564	6.0%	162,704	0.1%	97,388	-40.1%		-26.3%
Nov	137,030	143,375	4.6%	145,653	1.6%	144,366	-0.9%	89,387	-38.1%		-34.8%
Dec	133,439	136,955	2.6%	136,110	-0.6%	138,642	1.9%	96,366	-30.5%		-27.8%
Jan	134,273	140,042	4.3%	146,268	4.4%	149,114	1.9%	97,928	-34.3%		-27.1%
Feb	134,089	139,032	3.7%	141,396	1.7%	144,392	2.1%	98,285	-31.9%		-26.7%
Mar	153,790	150,384	-2.2%	153,191	1.9%	89,634	-41.5%	112,930	26.0%		-26.6%
Apr	137,217	148,879	8.5%	155,808	4.7%	26,877	-82.7%				
May	151,138	152,164	0.7%	158,665	4.3%	39,654	-75.0%				
Jun	140,623	143,653	2.2%	141,320	-1.6%	59,093	-58.2%				
Jul	133,656	141,020	5.5%	148,232	5.1%	61,765	-58.3%				
Aug	145,760	151,750	4.1%	147,331	-2.9%	66,563	-54.8%				
Sep	100,010	142,360	42.3%	141,387	-0.7%	80,346	-43.2%				
Total	1,633,236	1,743,023	6.7%	1,777,925	2.0%	1,163,150	-34.6%				

ALL-MODES COMBINED TOTAL MONTHLY RIDERSHIP COMPARISONS BY FISCAL YEAR

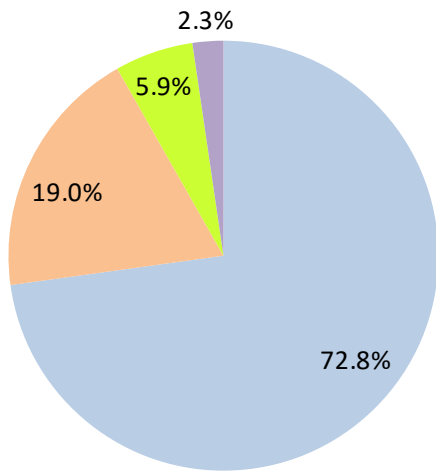
All Modes Month	Boardings					Variances				
	FY 17	FY 18	FY 19	FY 20	FY 21	17 TO 18	18 TO 19	19 TO 20	20 TO 21	17 TO 21
Oct	7,543,706	7,322,886	7,265,208	7,144,116	3,922,096	-2.9%	-0.8%	-1.7%	-45.1%	-48.0%
Nov	7,894,500	7,005,032	6,783,315	6,610,671	3,672,591	-11.3%	-3.2%	-2.5%	-44.4%	-53.5%
Dec	7,919,860	6,783,192	6,538,734	6,549,392	4,139,109	-14.4%	-3.6%	0.2%	-36.8%	-47.7%
Jan	7,814,784	6,834,741	6,797,602	6,890,225	4,235,761	-12.5%	-0.5%	1.4%	-38.5%	-45.8%
Feb	7,505,125	6,591,531	6,312,033	6,671,991	4,166,375	-12.2%	-4.2%	5.7%	-37.6%	-44.5%
Mar	8,317,082	7,244,805	6,712,624	4,694,315	4,993,168	-12.9%	-7.3%	-30.1%	6.4%	-40.0%
Apr	7,513,151	6,869,802	6,802,085	1,989,545		-8.6%	-1.0%	-70.8%		
May	7,841,691	6,742,402	6,755,829	2,258,413		-14.0%	0.2%	-66.6%		
Jun	7,069,455	6,318,979	6,026,467	3,082,213		-10.6%	-4.6%	-48.9%		
Jul	6,969,807	6,449,526	6,402,110	3,272,074		-7.5%	-0.7%	-48.9%		
Aug	7,408,607	6,879,929	6,460,375	3,335,847		-7.1%	-6.1%	-48.4%		
Sep	5,284,604	6,412,945	6,240,212	3,501,209		21.4%	-2.7%	-43.9%		
FY Total	89,082,372	81,455,770	79,096,594	56,000,011		-8.6%	-2.9%	-29.2%		

TOTAL MONTHLY AND AVERAGE WEEKDAY RIDERSHIP YEAR OVER YEAR COMPARISON CHARTS – ALL MODES COMBINED



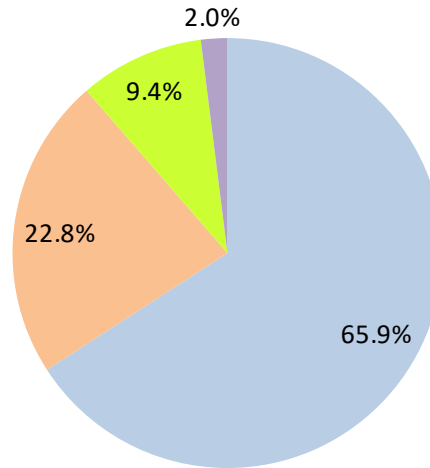
AVERAGE WEEKDAY RIDERSHIP - MODAL SPLITS

March 2021



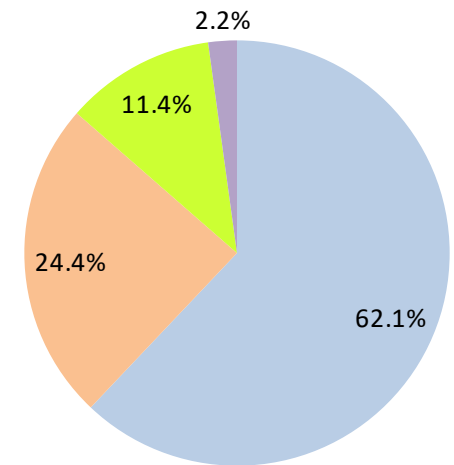
182,948 boardings

March 2020



178,978 boardings

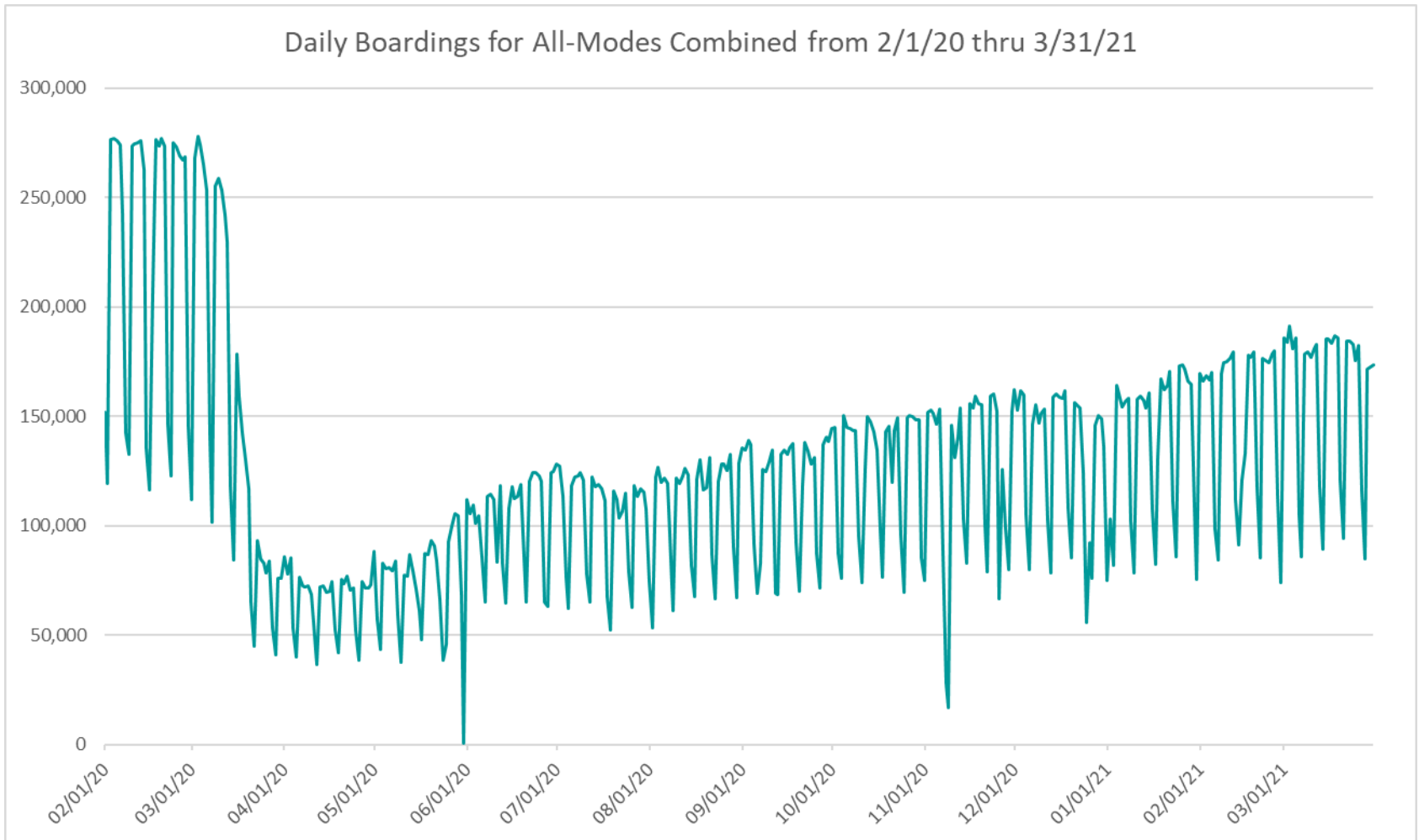
March 2019



259,301 boardings



DAILY RIDERSHIP FOR ALL MODES COMBINED SINCE FEBRUARY 1, 2020



- (1) National Emergency was declared on 3/13/20 as a result of the SARS-CoV-2 pandemic.
- (2) There was no Metrobus, Metrorail and Metromover service on 5/31/20, as a safety precaution.
- (3) The dip at the start of the second week of November 2020 is due to Hurricane Eta.
- (4) Periodic (weekly) variations are prominent, since weekday ridership is almost always significantly higher than weekend ridership.

Metrobus



METROBUS AVERAGE WEEKDAY BOARDINGS BY ROUTE (†)

Route	Average Weekday	Average Weekday	Percent Change	Average Weekday	Percent Change	Average Weekday	Percent Change	Average Weekday	Percent Change
	Mar-21	Mar-20 (a)	YOY	Feb-20	Current vs Feb-20	Feb-21	MOM	Mar-19	YO2Y
Average Weekdays									
1 (*)	220	162	36.0%	184	19.8%	149	47.9%	259	-14.9%
2	2,219	1,796	23.6%	3,102	-28.5%	2,050	8.3%	2,214	0.2%
3	4,940	3,458	42.9%	5,137	-3.8%	4,405	12.1%	4,686	5.4%
7	2,420	2,087	15.9%	3,501	-30.9%	2,061	17.4%	3,232	-25.1%
8	4,279	2,579	65.9%	3,909	9.5%	3,634	17.8%	3,713	15.3%
9	6,182	3,681	67.9%	5,528	11.8%	5,621	10.0%	4,753	30.1%
10	1,886	1,631	15.7%	2,482	-24.0%	1,718	9.8%	2,355	-19.9%
11	6,488	5,312	22.1%	7,292	-11.0%	5,813	11.6%	7,351	-11.7%
12	2,016	2,056	-2.0%	2,779	-27.5%	2,079	-3.0%	2,566	-21.4%
16	1,436	1,321	8.7%	1,862	-22.9%	1,365	5.2%	1,770	-18.9%
17	3,113	2,717	14.5%	3,878	-19.7%	2,905	7.2%	3,501	-11.1%
19	1,196	947	26.2%	1,542	-22.5%	1,103	8.4%	1,612	-25.8%
21	1,566	1,497	4.7%	1,817	-13.8%	1,668	-6.1%	1,780	-12.0%
22	2,874	2,656	8.2%	3,640	-21.0%	2,678	7.3%	3,645	-21.2%
24 - Coral Way Limited	1,335	1,257	6.2%	1,340	-0.3%	1,400	-4.6%	1,822	-26.7%
27	5,635	4,939	14.1%	6,972	-19.2%	5,624	0.2%	6,347	-11.2%
29 (*)	397	380	4.5%	534	-25.6%	378	5.2%	714	-44.4%
31 - BUSWAY LOCAL	717	816	-12.1%	1,089	-34.2%	553	29.6%	1,152	-37.7%
32	1,709	1,708	0.1%	2,390	-28.5%	1,508	13.3%	2,248	-24.0%
33	1,127	1,188	-5.1%	1,687	-33.2%	1,061	6.2%	1,566	-28.1%
34 EXPRESS (*)	840	1,179	-28.8%	2,008	-58.2%	837	0.4%	2,082	-59.7%
35 (*)	1,795	2,000	-10.2%	2,421	-25.8%	1,776	1.1%	2,255	-20.4%
36	1,751	1,825	-4.1%	2,536	-31.0%	1,870	-6.4%	2,204	-20.6%
37	2,961	2,325	27.4%	3,273	-9.5%	2,805	5.6%	3,155	-6.1%
38	4,452	4,711	-5.5%	6,361	-30.0%	4,479	-0.6%	6,545	-32.0%
39 EXPRESS (*)	259	479	-46.0%	893	-71.0%	233	11.1%	912	-71.6%
40	1,272	1,208	5.3%	1,772	-28.2%	1,155	10.2%	1,782	-28.6%
42	749	620	20.8%	820	-8.7%	707	6.0%	774	-3.2%
46 - LIBERTY CITY CONN. (*)	24	36	-31.2%	41	-40.0%	26	-5.7%	48	-49.2%
51 - FLAGLER MAX	2,558	2,000	27.9%	3,109	-17.7%	2,177	17.5%	3,052	-16.2%
52	918	914	0.4%	1,261	-27.2%	920	-0.2%	1,293	-29.0%
54	2,400	2,347	2.2%	2,940	-18.4%	2,521	-4.8%	2,943	-18.5%
56 (*)	206	230	-10.4%	354	-41.8%	193	6.4%	406	-49.3%
57 (*)	327	276	18.6%	433	-24.5%	285	14.8%	402	-18.6%
62	1,606	1,505	6.8%	1,815	-11.5%	1,637	-1.8%	1,866	-13.9%
71 (*)	410	417	-1.7%	711	-42.3%	382	7.4%	723	-43.3%
72 (*)	437	518	-15.7%	781	-44.1%	418	4.6%	765	-42.9%

(†) In this table and those which follow, "YOY" stands for "year-over-year", "MOM" for "month-over-month" and "YO2Y" for "year over two years", i.e., current month vs 12 months prior, one month prior, and 24 months prior, respectively.

(a) Due to effects from the SARS-CoV-2 pandemic; rides were fare-free beginning March 22, 2020.

METROBUS AVERAGE WEEKDAY BOARDINGS BY ROUTE

Route <i>Average Weekdays</i>	Average Weekday	Average Weekday	Percent Change	Average Weekday	Percent Change	Average Weekday	Percent Change	Average Weekday	Percent Change
	Mar-21	Mar-20	YOY	Feb-20	Current vs Feb-20	Feb-21	MOM	Mar-19	YO2Y
73	1,504	1,434	4.8%	2,124	-29.2%	1,675	-10.2%	2,194	-31.5%
75	1,219	1,059	15.2%	1,429	-14.6%	1,049	16.2%	1,300	-6.2%
77	6,935	5,315	30.5%	7,129	-2.7%	6,413	8.1%	6,407	8.2%
79		240		361				381	
82 - WESTCHESTER CIRC. (*)	28	43	-34.2%	62	-53.8%	29	-3.6%	66	-57.1%
87	1,228	1,054	16.5%	1,499	-18.1%	1,166	5.3%	1,589	-22.7%
88	1,798	1,422	26.4%	2,076	-13.4%	1,676	7.2%	2,183	-17.6%
93 - BISCAYNE MAX	1,897	2,216	-14.4%	3,334	-43.1%	1,753	8.2%	3,313	-42.7%
95 EXPRESS (*)	430	1,204	-64.2%	1,690	-74.5%	397	8.5%	2,045	-79.0%
99	1,288	1,055	22.1%	1,473	-12.5%	1,219	5.7%	1,392	-7.5%
101 - A (*)	126	110	15.2%	177	-28.6%	110	14.7%	150	-15.8%
102 - B	1,248	1,094	14.1%	1,778	-29.8%	1,010	23.5%	1,679	-25.6%
103 - C	281	327	-14.2%	463	-39.3%	315	-10.9%	432	-35.0%
104	407	524	-22.3%	837	-51.4%	361	12.7%	959	-57.5%
105 - E	1,293	896	44.2%	1,287	0.4%	1,048	23.4%	1,181	9.4%
107 - G	1,242	1,140	8.9%	1,713	-27.5%	1,050	18.3%	1,590	-21.9%
108 - H	438	337	30.1%	473	-7.2%	400	9.5%	499	-12.2%
110 - J	2,901	1,923	50.9%	2,508	15.7%	2,701	7.4%	2,576	12.6%
112 - L	7,006	5,749	21.9%	7,636	-8.2%	7,280	-3.8%	7,164	-2.2%
113 - M	584	678	-13.9%	866	-32.5%	611	-4.4%	736	-20.6%
115 (*)	194	127	52.0%	180	7.5%	172	12.8%	131	47.9%
119 - S	8,600	6,349	35.4%	8,970	-4.1%	8,229	4.5%	8,970	-4.1%
120 - BEACH MAX	4,997	4,420	13.0%	6,667	-25.1%	4,760	5.0%	5,969	-16.3%
132 TRI-RAIL (DORAL)	15	12	26.4%	16	-0.9%	22	-28.5%	18	-14.6%
135 (*)	857	984	-12.9%	1,399	-38.7%	800	7.2%	1,297	-33.9%
136	72	90	-19.9%	126	-42.6%	62	16.0%	145	-50.1%
137 - WEST DADE CONN.	1,196	1,068	12.0%	1,626	-26.4%	1,101	8.6%	1,690	-29.2%
150 - MIAMI BEACH AIRPORT FLYER (*)	1,301	1,201	8.3%	1,867	-30.3%	1,145	13.6%	1,806	-28.0%
155 - BISCAYNE GARDENS CIRCULATOR (*)	32	37	-13.3%	44	-28.1%	29	8.2%	42	-23.9%
175 - NW MIAMI-DADE EXPRESS		36		33					
183	2,644	2,055	28.7%	3,149	-16.0%	2,501	5.7%	3,110	-15.0%
195 EXPRESS - BROWARD BLVD		282		372				459	
196 EXPRESS - SHERIDAN ST		254		383				406	
200 - CUTLER BAY LOCAL	124	111	11.4%	158	-21.7%	126	-2.2%	168	-26.5%
202 - LITTLE HAITI CONN. (*)	134	124	8.0%	140	-4.0%	117	14.3%	140	-4.0%
204 KILLIAN KAT		611		1,071				1,138	

METROBUS AVERAGE WEEKDAY BOARDINGS BY ROUTE

Route	Average Weekday	Average Weekday	Percent Change	Average Weekday	Percent Change	Average Weekday	Percent Change	Average Weekday	Percent Change		
	Average Weekdays			Mar-21	Mar-20	YOY	Feb-20	Current vs Feb-20	Feb-21	MOM	Mar-19
207 (7st) - LITTLE HAVANA CIRC	773	1,083	-28.6%	1,489	-48.1%	766	0.8%	1,444	-46.5%		
208 (8st) - LITTLE HAVANA CIRC	844	990	-14.7%	1,308	-35.4%	761	10.9%	1,193	-29.2%		
210 - SKYLAKE CIRC (*)	357	215	65.9%	282	26.6%	327	9.2%	290	22.9%		
211 - OVERTOWN CIRC. (*)	44	57	-23.7%	58	-24.7%	48	-8.8%	71	-38.8%		
212 - SWEETWATER CIRC. (*)	14	13	8.6%	15	-3.3%	13	6.0%	48	-70.1%		
217 - BUNCHE PARK CIRC (*)	67	75	-10.4%	97	-30.9%	67	1.1%	64	5.0%		
238 EAST/WEST CONN.	387	307	25.7%	449	-14.0%	327	18.1%	509	-24.0%		
246 - NIGHT OWL	84	91	-8.6%	94	-10.7%	86	-3.3%	96	-13.4%		
248 - PRINCETON CIRCULATOR (*)	95	104	-8.2%	135	-29.2%	83	14.9%	112	-14.8%		
252 - CORAL REEF MAX	510	560	-8.9%	851	-40.1%	492	3.5%	925	-44.9%		
254 - BROWNSVILLE CIRC. (*)	13	19	-30.8%	19	-31.4%	21	-37.0%	37	-64.1%		
267 - LUDLAM LIMITED (*)	104	103	0.9%	149	-30.3%	116	-10.1%	156	-33.4%		
272 SUNSET KAT (*)	257	377	-31.8%	550	-53.3%	259	-0.6%	549	-53.2%		
277 - 7th AVENUE MAX	556	444	25.2%	683	-18.6%	463	20.1%	594	-6.4%		
286 - NORTH POINTE CIRC. (*)	39	61	-35.7%	97	-59.7%	33	18.9%	109	-64.1%		
287 - SAGA BAY MAX	166	225	-26.3%	358	-53.7%	147	12.7%	353	-53.0%		
288 - KENDALL CRUISER		482		762				845			
295 EXPRESS - BROWARD BLVD - CIVIC CENTER		194		233				249			
296 EXPRESS - SHERIDAN ST - CIVIC CENTER		176		215				224			
297-27th AVENUE ORANGE MAX	894	923	-3.1%	1,356	-34.1%	888	0.7%	1,381	-35.2%		
301 DADE-MONROE EXPRESS(*)	922	630	46.4%	841	9.6%	890	3.6%	864	6.7%		
302 CARD SOUND EXPRESS(*)	84	67	24.5%	86	-2.6%	79	6.3%	79	5.8%		
344 (*)	77	72	6.8%	96	-19.5%	76	1.4%	111	-30.4%		
500	52	27	94.9%	81	-35.6%	63	-17.7%	49	7.1%		
836 EXPRESS	70	135	-48.3%								
GREEN HILLS SHUTTLE (*)	7	6	25.0%	9	-22.2%	7	3.7%	11	-34.9%		
KINGS CREEK SHUTTLE (*)	8	11	-28.6%	13	-42.3%	8	0.0%	16	-52.1%		
SIERRALAKES SHUTTLE (*)	16	31	-47.2%	45	-63.9%	19	-14.5%	21	-24.1%		
ROBERT SHARP SHUTTLE (*)	19	17	12.5%	10	104.2%	22	-11.8%	27	-28.8%		
AHEPA SHUTTLE (*)	20	31	-36.3%	21	-4.8%	20	-2.5%	22	-9.2%		
Total	133,218	117,884	13.0%	167,711	-20.6%	125,599	6.1%	162,266	-17.9%		

- (*) The following routes are entirely operated under contract: 1, 29, 34, 35, 39, 46, 56, 57, 71, 72, 82, 95, 101-A, 115, 135, 150, 155, 202, 210, 211, 212, 217, 248, 254, 267, 272, 286, 301, 302 and 344, although some supplemental runs may be performed by DTPW. Conversely, a few routes that are nominally run by DTPW may have a few supplemental runs operated by contractors; Dade-Monroe routes 301 and 302 as well as six Lifeline routes are also under contracted operation.
- (1) Includes shuttles and those routes which were not run both years.
- (2) Several express routes were suspended at the end of March or the beginning of April 2020, due to the SARS-CoV-2 pandemic, while other routes had alignment and schedule modifications made to them, in an ongoing effort to optimize service delivery.

METROBUS AVERAGE SATURDAY BOARDINGS BY ROUTE

Route	Average Saturday	Average Saturday	Percent Change	Average Saturday	Percent Change	Average Saturday	Percent Change	Average Saturday	Percent Change
Average Saturdays	Mar-21	Mar-20	YOY	Feb-20	Current vs Feb-20	Feb-21	MOM	Mar-19	YO2Y
1 (*)	201	156	28.8%	215	-6.4%	181	11.3%	237	-14.9%
2	1,206	1,150	4.8%	1,616	-25.4%	1,016	18.7%	1,413	-14.7%
3	4,388	3,606	21.7%	5,229	-16.1%	4,255	3.1%	5,521	-20.5%
7	1,340	1,152	16.3%	1,887	-29.0%	1,218	10.0%	2,220	-39.6%
8	2,478	1,398	77.2%	2,027	22.2%	2,216	11.8%	2,152	15.1%
9	3,290	2,252	46.1%	3,034	8.4%	3,105	6.0%	3,357	-2.0%
10	1,608	1,383	16.3%	1,896	-15.2%	1,724	-6.7%	1,807	-11.0%
11	3,547	3,911	-9.3%	5,182	-31.6%	3,535	0.3%	5,813	-39.0%
16	1,363	1,262	8.0%	1,566	-13.0%	1,420	-4.0%	1,515	-10.1%
17	2,123	1,778	19.4%	2,363	-10.2%	1,919	10.6%	2,546	-16.6%
22	1,991	1,682	18.4%	2,084	-4.5%	1,888	5.5%	2,093	-4.9%
24 - Coral Way Limited	1,003	744	34.9%	1,165	-13.9%	1,084	-7.5%	1,285	-21.9%
27	4,087	2,985	36.9%	4,034	1.3%	4,094	-0.2%	4,427	-7.7%
31 - BUSWAY LOCAL	871	589	47.8%	896	-2.7%	922	-5.5%	957	-9.0%
32	921	797	15.5%	1,029	-10.5%	902	2.1%	1,107	-16.8%
33	968	693	39.6%	951	1.8%	708	36.6%	991	-2.3%
35 (*)	1,135	1,006	12.9%	1,372	-17.3%	1,242	-8.6%	1,224	-7.3%
36	1,392	918	51.7%	1,289	7.9%	1,166	19.3%	1,355	2.7%
37	1,799	1,529	17.6%	2,090	-14.0%	1,792	0.4%	2,228	-19.3%
38	3,368	3,595	-6.3%	4,715	-28.6%	3,299	2.1%	5,103	-34.0%
40	616	452	36.3%	655	-6.0%	597	3.2%	726	-15.2%
42	475	420	13.1%	552	-13.9%	615	-22.8%	568	-16.4%
52	690	439	57.3%	686	0.6%	562	22.9%	698	-1.1%
54	1,629	1,255	29.8%	1,727	-5.7%	1,697	-4.0%	1,831	-11.0%
62	1,211	1,096	10.4%	1,343	-9.9%	1,213	-0.2%	1,388	-12.8%
71 (*)	219	167	31.1%	252	-12.9%	205	7.1%	247	-11.2%
72 (*)	254	211	20.4%	350	-27.3%	269	-5.6%	517	-50.9%
73	784	601	30.5%	860	-8.9%	832	-5.8%	949	-17.4%
75	487	375	29.8%	468	4.1%	437	11.4%	487	0.1%
77	3,651	3,498	4.4%	4,197	-13.0%	3,223	13.3%	4,090	-10.7%
87	472	303	55.5%	402	17.2%	424	11.3%	516	-8.7%
88	1,328	1,119	18.7%	1,620	-18.0%	1,362	-2.5%	1,824	-27.2%
99	899	631	42.5%	849	5.9%	855	5.1%	944	-4.8%

METROBUS AVERAGE SATURDAY BOARDINGS BY ROUTE

Route <i>Average Saturdays</i>	Average Saturday	Average Saturday	Percent Change	Average Saturday	Percent Change	Average Saturday	Percent Change	Average Saturday	Percent Change
	Mar-21	Mar-20	YOY	Feb-20	Current vs Feb-20	Feb-21	MOM	Mar-19	YO2Y
101 - A (*)	69	58	19.1%	71	-3.2%	58	18.6%	71	-3.5%
102 - B	707	552	28.1%	851	-16.9%	575	23.1%	912	-22.4%
103 - C	409	230	77.4%	315	29.8%	349	17.0%	309	32.4%
104	209	283	-26.1%	468	-55.3%	182	15.3%	552	-62.1%
105 - E	699	544	28.3%	619	12.8%	743	-6.0%	654	6.8%
107 - G	1,228	757	62.2%	1,066	15.1%	1,098	11.8%	1,168	5.1%
108 - H	469	264	77.6%	372	25.9%	395	18.8%	442	6.0%
110 - J	1,795	1,306	37.4%	1,952	-8.1%	1,848	-2.9%	1,933	-7.2%
112 - L	5,294	4,511	17.4%	5,667	-6.6%	5,268	0.5%	5,991	-11.6%
113 - M	546	343	59.1%	503	8.5%	481	13.4%	485	12.5%
115 (*)	165	80	107.2%	82	100.4%	135	22.3%	67	144.4%
119 - S	6,308	4,834	30.5%	6,861	-8.1%	6,421	-1.8%	7,083	-11.0%
120 - BEACH MAX	3,648	2,992	21.9%	4,744	-23.1%	3,723	-2.0%	4,708	-22.5%
135 (*)	362	409	-11.6%	539	-32.9%	367	-1.6%	489	-26.1%
137 - WEST DADE CONN.	919	718	28.0%	1,027	-10.5%	876	5.0%	1,204	-23.7%
150 - MIAMI BEACH AIRPORT FLYER (*)	1,368	978	39.9%	1,604	-14.7%	1,256	8.9%	1,634	-16.3%
183	1,951	1,351	44.4%	1,790	9.0%	1,722	13.3%	1,866	4.6%
200 - CUTLER BAY LOCAL	87	62	40.2%	119	-26.8%	108	-19.4%	133	-34.2%
202 - LITTLE HAITI CONN. (*)	94	60	55.2%	50	86.3%	109	-14.4%	62	51.3%
207 (7st) - LITTLE HAVANA CIRC	768	607	26.4%	1,032	-25.6%	926	-17.0%	1,075	-28.6%
208 (8st) - LITTLE HAVANA CIRC	882	715	23.3%	1,044	-15.6%	684	28.9%	1,067	-17.3%
210 - SKYLAKE CIRC (*)	131	117	12.0%	165	-20.8%	148	-11.8%	191	-31.5%
246 - NIGHT OWL	93	77	21.6%	84	10.2%	89	4.8%	79	18.0%
252 - CORAL REEF MAX	206	221	-6.7%	302	-31.7%	275	-25.0%	348	-40.7%
286 - NORTH POINTE CIRC. (*)	31	28	10.7%	41	-24.0%	34	-9.5%	69	-55.2%
301 DADE-MONROE EXPRESS(*)	871	578	50.8%	801	8.7%	915	-4.8%	837	4.1%
302 CARD SOUND EXPRESS(*)	79	47	69.9%	57	39.6%	89	-10.7%	64	23.8%
338 - WEEKEND EXPRESS	158	100	57.6%	237	-33.2%	206	-23.4%	236	-33.0%
500	99	25	294.0%	70	40.7%	91	7.9%	55	80.4%
12/21 WEEKEND INTERL.	2,362	2,198	7.5%	2,528	-6.5%	2,148	10.0%	2,682	-11.9%
FEDERATION GARDENS SHUTTLE (*)	22	19	18.9%	28	-22.5%	17	29.4%	27	-17.9%
Total	83,862	68,256	22.9%	93,742	-10.5%	81,346	3.1%	98,678	-15.0%

METROBUS AVERAGE SUNDAY BOARDINGS BY ROUTE

Route	Average Sunday	Average Sunday	Percent Change	Average Sunday	Percent Change	Average Sunday	Percent Change	Average Sunday	Percent Change
Average Sundays	Mar-21	Mar-20	YOY	Feb-20	Current vs Feb-20	Feb-21	MOM	Mar-19	YO2Y
1 (*)	168	129	30.2%	201	-16.2%	155	8.4%	188	-10.3%
2	699	815	-14.3%	1,335	-47.6%	635	10.0%	1,077	-35.1%
3	4,055	3,131	29.5%	4,353	-6.8%	3,904	3.9%	4,434	-8.5%
7	1,112	988	12.5%	1,654	-32.8%	816	36.2%	1,569	-29.1%
8	1,742	1,323	31.7%	1,746	-0.2%	1,409	23.7%	1,537	13.3%
9	2,205	1,919	14.9%	2,549	-13.5%	2,508	-12.1%	2,171	1.5%
10	1,265	1,042	21.3%	1,441	-12.2%	1,004	25.9%	1,315	-3.8%
11	2,503	2,818	-11.2%	3,917	-36.1%	2,229	12.3%	4,044	-38.1%
16	778	644	20.9%	997	-21.9%	661	17.8%	892	-12.8%
17	1,704	1,245	36.8%	1,833	-7.1%	1,298	31.3%	1,813	-6.1%
22	1,714	1,190	44.1%	1,548	10.7%	1,351	26.9%	1,538	11.5%
24 - Coral Way Limited	962	666	44.4%	905	6.4%	803	19.9%	1,024	-6.1%
27	2,615	2,305	13.5%	2,918	-10.4%	2,895	-9.7%	3,036	-13.9%
31 - BUSWAY LOCAL	517	473	9.4%	715	-27.7%	550	-6.0%	681	-24.1%
32	600	625	-4.0%	772	-22.2%	546	10.0%	727	-17.5%
33	506	475	6.4%	607	-16.7%	494	2.3%	592	-14.7%
35 (*)	816	899	-9.3%	942	-13.4%	906	-10.0%	731	11.6%
36	1,300	939	38.5%	1,111	17.1%	1,098	18.4%	1,086	19.8%
37	1,535	1,186	29.4%	1,739	-11.7%	1,111	38.2%	1,686	-8.9%
38	3,228	3,121	3.4%	4,147	-22.2%	2,766	16.7%	4,191	-23.0%
40	391	306	27.6%	447	-12.7%	336	16.2%	486	-19.6%
42	349	279	25.2%	416	-16.1%	313	11.5%	368	-5.2%
52	436	372	17.2%	466	-6.4%	422	3.4%	468	-6.7%
54	1,128	919	22.7%	1,171	-3.7%	1,115	1.2%	1,173	-3.9%
62	795	722	10.2%	891	-10.7%	949	-16.2%	811	-2.0%
71 (*)	153	96	59.0%	162	-5.4%	129	18.8%	162	-5.6%
72 (*)	237	179	32.3%	265	-10.5%	217	9.1%	292	-19.0%
73	421	320	31.6%	495	-15.0%	362	16.3%	455	-7.5%
75	320	207	54.3%	271	18.0%	361	-11.4%	248	28.9%
77	2,697	2,211	22.0%	2,815	-4.2%	2,655	1.6%	2,804	-3.8%
87	273	214	27.8%	319	-14.3%	215	26.9%	322	-15.2%
88	1,045	861	21.5%	1,286	-18.7%	768	36.1%	1,349	-22.5%
99	667	466	43.1%	658	1.4%	612	8.9%	624	6.9%

METROBUS AVERAGE SUNDAY BOARDINGS BY ROUTE

Route	Average Sunday	Average Sunday	Percent Change	Average Sunday	Percent Change	Average Sunday	Percent Change	Average Sunday	Percent Change
Average Sundays	Mar-21	Mar-20	YOY	Feb-20	Current vs Feb-20	Feb-21	MOM	Mar-19	YO2Y
101 - A (*)	47	38	22.4%	56	-16.2%	72	-35.6%	56	-16.4%
102 - B	594	503	18.1%	717	-17.1%	520	14.3%	727	-18.3%
103 - C	249	179	39.0%	212	17.7%	232	7.2%	227	9.5%
104	111	201	-44.7%	317	-65.0%	221	-49.7%	384	-71.1%
105 - E	810	475	70.4%	616	31.6%	632	28.2%	641	26.3%
107 - G	880	604	45.6%	895	-1.7%	912	-3.4%	807	9.1%
108 - H	429	240	79.0%	328	30.7%	358	19.9%	351	22.1%
110 - J	1,167	1,079	8.1%	1,638	-28.8%	1,319	-11.5%	1,491	-21.7%
112 - L	5,163	3,580	44.2%	4,804	7.5%	3,824	35.0%	4,632	11.5%
113 - M	411	306	34.1%	431	-4.5%	323	27.2%	388	5.9%
115 (*)	111	63	77.1%	80	39.1%	130	-14.1%	60	84.2%
119 - S	6,438	5,222	23.3%	7,141	-9.8%	6,319	1.9%	7,054	-8.7%
120 - BEACH MAX	2,305	2,355	-2.1%	3,469	-33.5%	2,259	2.0%	3,031	-24.0%
135 (*)	283	268	5.5%	349	-19.0%	240	17.9%	393	-28.0%
137 - WEST DADE CONN.	775	601	28.8%	879	-11.9%	623	24.4%	924	-16.2%
150 - MIAMI BEACH AIRPORT FLYER (*)	1,383	1,100	25.8%	1,574	-12.1%	1,277	8.4%	1,547	-10.6%
183	1,419	908	56.3%	1,413	0.4%	1,291	9.9%	1,402	1.2%
200 - CUTLER BAY LOCAL	48	27	74.0%	59	-18.5%	58	-17.3%	60	-20.0%
202 - LITTLE HAITI CONN. (*)	98	60	62.7%	39	151.9%	109	-9.9%	47	109.9%
207 (7st) - LITTLE HAVANA CIRC	514	541	-4.9%	796	-35.4%	500	2.8%	729	-29.5%
208 (8st) - LITTLE HAVANA CIRC	783	644	21.7%	911	-14.0%	424	84.9%	822	-4.7%
210 - SKYLAKE CIRC (*)	117	128	-8.3%	143	-18.0%	117	0.0%	158	-25.9%
246 - NIGHT OWL	80	82	-2.7%	87	-8.3%	68	17.3%	132	-39.6%
252 - CORAL REEF MAX	187	145	28.8%	199	-5.8%	198	-5.2%	253	-25.9%
301 DADE-MONROE EXPRESS (*)	903	615	46.9%	751	20.2%	850	6.2%	821	10.0%
302 CARD SOUND EXPRESS (*)	52	47	10.6%	57	-8.8%	53	-2.3%	59	-12.5%
338 - WEEKEND EXPRESS	112	146	-23.7%	252	-55.8%	106	5.2%	225	-50.4%
500	77	43	79.3%	83	-7.3%	59	31.2%	43	79.3%
12/21 WEEKEND INTERL.	1,726	1,675	3.0%	2,048	-15.7%	1,626	6.2%	2,126	-18.8%
Total	66,206	54,961	20.5%	75,428	-12.2%	60,308	9.8%	73,485	-9.9%

METROBUS TOTAL MONTHLY BOARDINGS BY ROUTE

Route Monthly Total	Total Month	Total Month	Percent Change	Total Month	Percent Change	Total Month	Percent Change	Total Month	Percent Change
	Mar-21	Mar-20	YOY	Feb-20	Current vs Feb-20	Feb-21	MOM	Mar-19	YO2Y
1 (*)	6,546	4,835	35.4%	5,558	17.8%	4,324	51.4%	7,558	-13.4%
2	58,653	48,183	21.7%	75,463	-22.3%	47,595	23.2%	58,935	-0.5%
3	147,390	106,148	38.9%	146,294	0.7%	120,733	22.1%	148,187	-0.5%
7	65,460	55,461	18.0%	86,077	-24.0%	49,350	32.6%	86,811	-24.6%
8	115,298	68,939	67.2%	95,295	21.0%	87,176	32.3%	96,410	19.6%
9	164,154	99,596	64.8%	135,924	20.8%	134,863	21.7%	127,458	28.8%
10	54,879	46,627	17.7%	64,874	-15.4%	45,275	21.2%	65,067	-15.7%
11	173,423	146,586	18.3%	187,425	-7.5%	139,312	24.5%	203,653	-14.8%
12	46,369	45,239	2.5%	55,585	-16.6%	41,575	11.5%	53,878	-13.9%
16	41,587	37,330	11.4%	49,061	-15.2%	35,614	16.8%	49,202	-15.5%
17	86,893	73,119	18.8%	96,715	-10.2%	70,956	22.5%	95,323	-8.8%
19	27,501	20,841	32.0%	30,847	-10.8%	22,066	24.6%	33,855	-18.8%
21	36,025	32,927	9.4%	36,341	-0.9%	33,360	8.0%	37,387	-3.6%
22	80,926	71,104	13.8%	89,404	-9.5%	66,510	21.7%	94,701	-14.5%
24 - Coral Way Limited	38,568	33,959	13.6%	36,237	6.4%	35,549	8.5%	49,805	-22.6%
27	156,405	132,129	18.4%	171,282	-8.7%	140,425	11.4%	170,599	-8.3%
29 (*)	9,137	8,361	9.3%	10,684	-14.5%	7,552	21.0%	14,998	-39.1%
31 - BUSWAY LOCAL	22,050	22,678	-2.8%	29,125	-24.3%	16,953	30.1%	32,382	-31.9%
32	45,396	43,896	3.4%	56,027	-19.0%	35,951	26.3%	56,378	-19.5%
33	31,806	31,282	1.7%	40,918	-22.3%	26,034	22.2%	40,801	-22.0%
34 EXPRESS (*)	19,313	25,936	-25.5%	40,159	-51.9%	16,730	15.4%	43,714	-55.8%
35 (*)	49,096	52,521	-6.5%	59,041	-16.8%	44,116	11.3%	57,127	-14.1%
36	51,031	48,515	5.2%	61,606	-17.2%	46,449	9.9%	58,493	-12.8%
37	81,446	63,187	28.9%	82,870	-1.7%	67,699	20.3%	85,821	-5.1%
38	128,771	133,625	-3.6%	167,379	-23.1%	113,842	13.1%	183,910	-30.0%
39 EXPRESS (*)	5,948	10,536	-43.5%	17,853	-66.7%	4,656	27.7%	19,153	-68.9%
40	33,289	29,911	11.3%	40,497	-17.8%	26,828	24.1%	43,482	-23.4%
42	20,518	16,711	22.8%	20,825	-1.5%	17,847	15.0%	20,928	-2.0%
46 - LIBERTY CITY CONN. (*)	562	781	-28.0%	814	-31.0%	518	8.5%	1,010	-44.4%
51 - FLAGLER MAX	58,825	43,991	33.7%	62,186	-5.4%	43,549	35.1%	64,100	-8.2%
52	25,614	23,732	7.9%	30,522	-16.1%	22,331	14.7%	32,971	-22.3%
54	66,217	61,256	8.1%	72,125	-8.2%	61,670	7.4%	76,816	-13.8%
56 (*)	4,732	5,051	-6.3%	7,071	-33.1%	3,867	22.4%	8,528	-44.5%
57 (*)	7,523	6,066	24.0%	8,665	-13.2%	5,699	32.0%	8,443	-10.9%
62	44,968	41,097	9.4%	46,582	-3.5%	41,380	8.7%	50,188	-10.4%
71 (*)	10,918	10,329	5.7%	16,118	-32.3%	8,965	21.8%	17,230	-36.6%
72 (*)	12,006	13,132	-8.6%	18,433	-34.9%	10,295	16.6%	20,105	-40.3%

METROBUS TOTAL MONTHLY BOARDINGS BY ROUTE

Route	Total Month	Total Month	Percent Change	Total Month	Percent Change	Total Month	Percent Change	Total Month	Percent Change
	Mar-21	Mar-20	YOY	Feb-20	Current vs Feb-20	Feb-21	MOM	Mar-19	YO2Y
Monthly Total									
73	39,406	35,557	10.8%	48,767	-19.2%	38,278	2.9%	53,103	-25.8%
75	31,274	25,823	21.1%	31,994	-2.3%	24,172	29.4%	30,968	1.0%
77	184,891	141,969	30.2%	174,833	5.8%	151,767	21.8%	169,015	9.4%
79		5,269		7,228				8,010	
82 - WESTCHESTER CIRC. (*)	852	1,112	-23.4%	1,482	-42.5%	749	13.8%	1,648	-48.3%
87	31,229	25,471	22.6%	33,273	-6.1%	25,881	20.7%	37,554	-16.8%
88	50,841	40,067	26.9%	54,772	-7.2%	42,047	20.9%	61,706	-17.6%
93 - BISCAYNE MAX	43,637	48,759	-10.5%	66,684	-34.6%	35,056	24.5%	69,571	-37.3%
95 EXPRESS (*)	9,901	26,485	-62.6%	33,796	-70.7%	7,937	24.7%	42,950	-76.9%
99	35,889	28,057	27.9%	36,325	-1.2%	30,250	18.6%	37,081	-3.2%
101 - A (*)	3,367	2,834	18.8%	4,114	-18.2%	2,724	23.6%	3,785	-11.0%
102 - B	33,918	28,791	17.8%	42,683	-20.5%	24,588	37.9%	43,444	-21.9%
103 - C	9,092	9,020	0.8%	11,682	-22.2%	8,633	5.3%	11,760	-22.7%
104	10,644	13,663	-22.1%	20,351	-47.7%	8,832	20.5%	24,810	-57.1%
105 - E	35,766	24,269	47.4%	31,302	14.3%	26,458	35.2%	31,279	14.3%
107 - G	36,990	31,131	18.8%	43,178	-14.3%	29,032	27.4%	43,265	-14.5%
108 - H	13,673	9,665	41.5%	12,624	8.3%	11,013	24.2%	14,452	-5.4%
110 - J	78,573	52,925	48.5%	66,481	18.2%	66,686	17.8%	71,223	10.3%
112 - L	202,974	162,412	25.0%	200,268	1.4%	181,971	11.5%	203,563	-0.3%
113 - M	17,258	17,821	-3.2%	21,548	-19.9%	15,435	11.8%	19,814	-12.9%
115 (*)	5,558	3,435	61.8%	4,334	28.2%	4,491	23.8%	3,388	64.0%
119 - S	248,782	185,129	34.4%	242,257	2.7%	215,536	15.4%	259,064	-4.0%
120 - BEACH MAX	138,736	120,988	14.7%	170,942	-18.8%	119,122	16.5%	164,057	-15.4%
132 TRI-RAIL (DORAL)	340	269	26.4%	312	9.0%	432	-21.3%	380	-10.5%
135 (*)	22,297	24,628	-9.5%	32,067	-30.5%	18,426	21.0%	31,649	-29.5%
136	1,666	1,990	-16.3%	2,524	-34.0%	1,249	33.4%	3,050	-45.4%
137 - WEST DADE CONN.	34,283	29,368	16.7%	41,167	-16.7%	28,010	22.4%	46,123	-25.7%
150 - MIAMI BEACH AIRPORT FLYER (*)	40,933	35,839	14.2%	51,651	-20.8%	33,037	23.9%	53,836	-24.0%
155 - BISCAYNE GARDENS CIRCULATOR (*)	728	803	-9.3%	881	-17.4%	585	24.4%	873	-16.6%
175 - NW MIAMI-DADE EXPRESS		643		661					
183	74,296	55,160	34.7%	77,570	-4.2%	62,068	19.7%	81,646	-9.0%
195 EXPRESS - BROWARD BLVD		5,353		7,441				9,642	
196 EXPRESS - SHERIDAN ST		4,834		7,658				8,532	
200 - CUTLER BAY LOCAL	2,098	2,825	-25.7%	3,984	-47.3%	2,880	-27.2%	4,490	-53.3%
202 - LITTLE HAITI CONN. (*)	3,852	3,275	17.6%	3,200	20.4%	3,219	19.7%	3,477	10.8%
204 KILLIAN KAT		13,446		21,418				23,889	

METROBUS TOTAL MONTHLY BOARDINGS BY ROUTE

Route Monthly Total	Total Month	Total Month	Percent Change	Total Month	Percent Change	Total Month	Percent Change	Total Month	Percent Change
	Mar-21	Mar-20	YOY	Feb-20	Current vs Feb-20	Feb-21	MOM	Mar-19	YO2Y
207 (7st) - LITTLE HAVANA CIRC	22,899	28,956	-20.9%	38,127	-39.9%	21,031	8.9%	39,346	-41.8%
208 (8st) - LITTLE HAVANA CIRC	26,077	27,858	-6.4%	35,018	-25.5%	19,656	32.7%	34,489	-24.4%
210 - SKYLAKE CIRC (*)	9,197	5,838	57.5%	7,033	30.8%	7,593	21.1%	7,840	17.3%
211 - OVERTOWN CIRC. (*)	1,003	1,258	-20.3%	1,159	-13.5%	956	4.9%	1,497	-33.0%
212 - SWEETWATER CIRC. (*)	328	289	13.5%	295	11.2%	269	21.9%	1,000	-67.2%
217 - BUNCHE PARK CIRC (*)	1,548	1,653	-6.4%	1,949	-20.6%	1,331	16.3%	1,346	15.0%
238 EAST/WEST CONN.	8,890	6,764	31.4%	8,987	-1.1%	6,546	35.8%	10,685	-16.8%
246 - NIGHT OWL	2,612	2,727	-4.2%	2,641	-1.1%	2,354	11.0%	3,080	-15.2%
248 - PRINCETON CIRCULATOR (*)	2,189	2,282	-4.1%	2,690	-18.6%	1,657	32.1%	2,345	-6.7%
252 - CORAL REEF MAX	13,294	13,920	-4.5%	19,325	-31.2%	11,736	13.3%	22,438	-40.8%
254 - BROWNSVILLE CIRC. (*)	303	419	-27.7%	384	-21.1%	418	-27.5%	771	-60.7%
267 - LUDLAM LIMITED (*)	2,388	2,263	5.5%	2,978	-19.8%	2,310	3.4%	3,274	-27.1%
272 SUNSET KAT (*)	5,913	8,298	-28.7%	11,004	-46.3%	5,173	14.3%	11,536	-48.7%
277 - 7th AVENUE MAX	12,791	9,772	30.9%	13,669	-6.4%	9,261	38.1%	12,474	2.5%
286 - NORTH POINTE CIRC. (*)	1,024	1,451	-29.4%	2,145	-52.3%	795	28.8%	2,638	-61.2%
287 - SAGA BAY MAX	3,815	4,951	-22.9%	7,160	-46.7%	2,944	29.6%	7,415	-48.6%
288 - KENDALL CRUISER		10,605		15,249				17,743	
295 EXPRESS - BROWARD BLVD - CIVIC CENTER		3,690		4,668				5,223	
296 EXPRESS - SHERIDAN ST - CIVIC CENTER		3,340		4,297				4,701	
297-27th AVENUE ORANGE MAX	20,563	20,303	1.3%	27,125	-24.2%	17,760	15.8%	28,994	-29.1%
301 DADE-MONROE EXPRESS (*)	28,302	19,237	47.1%	23,838	18.7%	24,853	13.9%	26,439	7.0%
302 CARD SOUND EXPRESS (*)	2,456	1,905	28.9%	2,236	9.8%	2,147	14.4%	2,284	7.5%
338 - WEEKEND EXPRESS	1,078	1,132	-4.8%	2,191	-50.8%	1,143	-5.7%	2,303	-53.2%
344 (*)	1,777	1,592	11.6%	1,919	-7.4%	1,524	16.6%	2,330	-23.7%
500	1,901	903	110.5%	2,301	-17.4%	1,867	1.8%	1,510	25.9%
836 EXPRESS	557	2,426	-77.0%						
12/21 WEEKEND INTERL.	16,353	17,168	-4.7%	20,830	-21.5%	15,094	8.3%	24,036	-32.0%
GREEN HILLS SHUTTLE (*)	35	28	25.0%	36	-2.8%	27	29.6%	43	-18.6%
KINGS CREEK SHUTTLE (*)	30	42	-28.6%	52	-42.3%	30	0.0%	47	-36.2%
SIERRALAKES SHUTTLE (*)	65	123	-47.2%	180	-63.9%	76	-14.5%	107	-39.3%
ROBERT SHARP SHUTTLE (*)	97	69	40.6%	38	155.3%	88	10.2%	109	-11.0%
AHEPA SHUTTLE (*)	79	124	-36.3%	83	-4.8%	81	-2.5%	87	-9.2%
FEDERATION GARDENSSHUTTLE (*)	88	74	18.9%	142	-38.0%	68	29.4%	134	-34.3%
Total	3,660,639	3,136,162	16.7%	4,123,083	-11.2%	3,076,966	19.0%	4,266,768	-14.2%

YEAR-OVER-YEAR BUS RIDERSHIP BY ROUTE SERVICE TYPE

Boardings by Service Type and Route	Average Weekday	Average Weekday	Percent Change	Average Saturday	Average Saturday	Percent Change	Average Sunday	Average Sunday	Percent Change	Total Monthly	Total Monthly	Percent Change
	Mar-21	Mar-20	21 vs 20	Mar-21	Mar-20	21 vs 20	Mar-21	Mar-20	21 vs 20	Mar-21	Mar-20	21 vs 20
Express Routes												
34 EXPRESS (*)	840	1,179	-28.8%							19,313	25,936	-25.5%
39 EXPRESS (*)	259	479	-46.0%							5,948	10,536	-43.5%
95-EXPRESS (*)	430	1,204	-64.2%							9,901	26,485	-62.6%
150-MIAMI BEACH AIRPORT FLYER (*)	1,301	1,201	8.3%	1,368	978	39.9%	1,383	1,100	25.8%	40,933	35,839	14.2%
175 - NW MIAMI-DADE EXPRESS		36									643	
195 EXPRESS - BROWARD BLVD		282									5,353	
196 EXPRESS - SHERIDAN ST		254									4,834	
295 EXPRESS - BROWARD BLVD - CIVIC CENTER		194									3,690	
296 EXPRESS - SHERIDAN ST - CIVIC CENTER		176									3,340	
204 KAT-KILLIAN		611									13,446	
288 KENDALL CRUISER		482									10,605	
338 - WEEKEND EXPRESS				158	100	57.6%	112	146	-23.7%	1,078	1,132	-4.8%
836 EXPRESS	70	135	-48.3%							557	2,426	-77.0%
Subtotal Express Routes	2,900	6,233	-53.5%	1,526	1,078	41.6%	1,495	1,246	19.9%	77,730	144,265	-46.1%
Percentage of All Bus Routes	2.2%	5.3%		1.8%	1.6%		2.3%	2.3%		2.1%	4.6%	
Contracted Regular & Circulator Routes												
1	220	162	36.0%	201	156	28.8%	168	129	30.2%	6,546	4,835	35.4%
29	397	380	4.5%							9,137	8,361	9.3%
35	1,795	2,000	-10.2%	1,135	1,006	12.9%	816	899	-9.3%	49,096	52,521	-6.5%
46 - LIBERTY CITY CONN.	24	36	-31.2%							562	781	-28.0%
56	206	230	-10.4%							4,732	5,051	-6.3%
57	327	276	18.6%							7,523	6,066	24.0%
71	410	417	-1.7%	219	167	31.1%	153	96	59.0%	10,918	10,329	5.7%
72	437	518	-15.7%	254	211	20.4%	237	179	32.3%	12,006	13,132	-8.6%
82 - WESTCHESTER CIRC	28	43	-34.2%	50	41					852	1,112	-23.4%
101 - A	126	110	15.2%	69	58	19.1%	47	38	22.4%	3,367	2,834	18.8%
115	194	127	52.0%	165	80	107.2%	111	63	77.1%	5,558	3,435	61.8%
135	857	984	-12.9%	362	409		283	268		22,297	24,628	-9.5%
155 - BISCAYNE GARDENS CIRC	32	37	-13.3%							728	803	-9.3%
202 - LITTLE HAITI CONN.	134	124	8.0%	94	60	55.2%	98	60	62.7%	3,852	3,275	17.6%
210 - SKYLAKE CIRC	357	215	65.9%	131	117	12.0%	117	128	-8.3%	9,197	5,838	57.5%
211-OVERTOWN CIRC	44	57	-23.7%							1,003	1,258	-20.3%
212-SWEETWATER CIRC	14	13	8.6%							328	289	13.5%
217 - BUNCHE PARK CIRC	67	75	-10.4%							1,548	1,653	-6.4%
248 - PRINCETON CIRCULATOR	95	104	-8.2%							2,189	2,282	-4.1%
254-BROWNSVILLE CIRC	13	19	-30.8%							303	419	-27.7%
267-LUDLAM LIMITED	104	103	0.9%							2,388	2,263	5.5%
272 KAT-SUNSET	257	377	-31.8%							5,913	8,298	-28.7%
286-NORTH POINTE CIRC	39	61	-35.7%	31	28	10.7%				1,024	1,451	-29.4%
344	77	72	6.8%							1,777	1,592	11.6%
Subtotal Contracted Reg. & Circ. Routes	6,256	6,540	-4.3%	2,709	2,332	16.2%	2,030	1,861	9.1%	162,844	162,506	0.2%
Percentage of All Bus Routes	4.7%	5.5%		3.2%	3.4%		3.1%	3.4%		4.4%	5.2%	

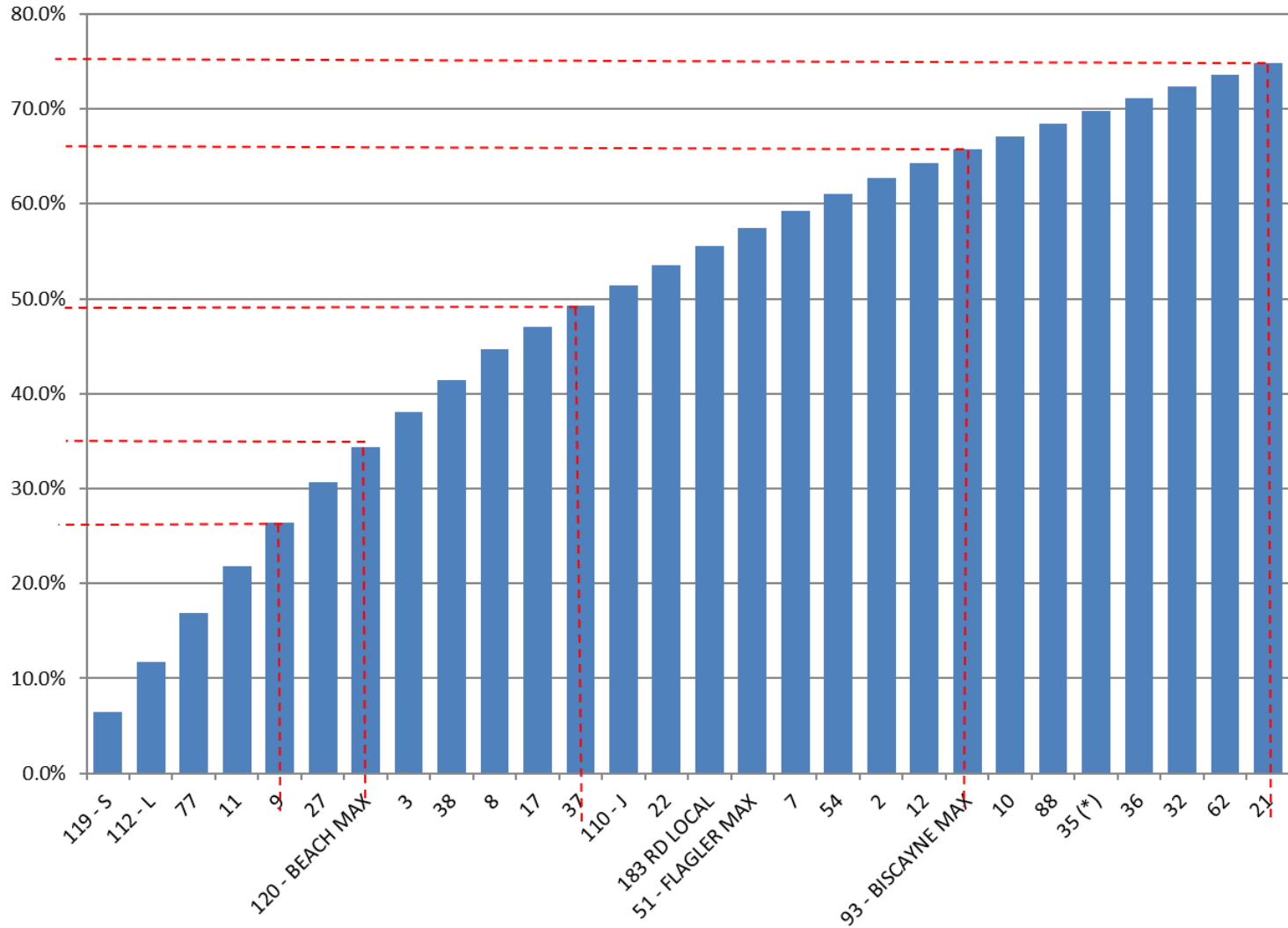
YEAR-OVER-YEAR BUS RIDERSHIP BY ROUTE SERVICE TYPE

Boardings by Service Type and Route	Average Weekday	Average Weekday	Percent Change	Average Saturday	Average Saturday	Percent Change	Average Sunday	Average Sunday	Percent Change	Total Monthly	Total Monthly	Percent Change
	Mar-21	Mar-20	21 vs 20	Mar-21	Mar-20	21 vs 20	Mar-21	Mar-20	21 vs 20	Mar-21	Mar-20	21 vs 20
Other Contracted Express Routes												
301-DADE MONROE EXPRESS	922	630	46.4%	871	578	50.8%	903	615	46.9%	28,302	19,237	47.1%
302-CARD SOUND EXPRESS	84	67	24.5%	79	47	69.9%	52	47	10.6%	2,456	1,905	28.9%
Subtotal Contracted Express Routes	1,006	697	44.3%	950	624	52.2%	955	662	44.3%	30,758	21,142	45.5%
Percentage of All Bus Routes	0.8%	0.6%		1.1%	0.9%		1.4%	1.2%		0.8%	0.7%	
Limited Stop Routes												
51-FLAGLER MAX	2,558	2,000	27.9%							58,825	43,991	33.7%
93 - BISCAYNE MAX	1,897	2,216	-14.4%							43,637	48,759	-10.5%
120 - BEACH MAX	4,997	4,420	13.0%	3,648	2,992	21.9%	2,305	2,355	-2.1%	138,736	120,988	14.7%
252-CORAL REEF MAX	510	560	-8.9%	206	221	-6.7%	187	145	28.8%	13,294	13,920	-4.5%
277-7TH AVENUE MAX	556	444	25.2%							12,791	9,772	30.9%
287-SAGA BAY MAX	166	225	-26.3%							3,815	4,951	-22.9%
297-27th AVENUE ORANGE MAX	894	923	-3.1%							20,563	20,303	1.3%
Subtotal Limited Stop (MAX) Routes	11,577	10,788	7.3%	3,854	3,213	19.9%	2,493	2,500	-0.3%	291,661	262,684	11.0%
Percentage of All Bus Routes	8.7%	9.2%		4.6%	4.7%		3.8%	4.5%		8.0%	8.4%	
Free Route												
132 - TRI-RAIL DORAL	15	12	26.4%							340	269	26.4%
Percentage of All Bus Routes	0.0%	0.0%								0.0%	0.0%	
Shuttles												
55-MARLINS SHUTTLE												
Percentage of All Bus Routes												
Contractor-Operated Lifeline Routes												
GREEN HILLS SHUTTLE	7	6	25.0%							35	28	25.0%
KINGS CREEK SHUTTLE	8	11	-28.6%							30	42	-28.6%
SIERRA LAKES SHUTTLE	16	31	-47.2%							65	123	-47.2%
ROBERT SHARP SHUTTLE	19	17	12.5%							97	69	40.6%
AHEPA SHUTTLE	20	31	-36.3%							79	124	-36.3%
FEDERATION GARDENS SHUTTLE				22	19	18.9%				88	74	18.9%
Subtotal Contractor-Operated Lifeline Routes	70	95	-26.5%	22	19	18.9%				394	460	-14.3%
Percentage of All Bus Routes	0.1%	0.1%		0.0%	0.0%		0.0%	0.0%		0.0%	0.0%	
Other Circulator Route												
200-CUTLER BAY LOCAL	124	111	11.4%	87	62	40.2%	48	27		2,098	2,825	-25.7%
Percentage of All Bus Routes	0.1%	0.1%		0.1%	0.1%		0.1%	0.0%		0.1%	0.1%	
All Other (Regular) Routes	111,270	93,408	19.1%	74,714	60,928	22.6%	59,187	48,664	21.6%	3,094,814	2,542,011	21.7%
Percentage of All Bus Routes	83.5%	79.2%		89.1%	89.3%		89.4%	88.5%		84.5%	81.1%	
Total Bus System (1)	133,218	117,884	13.0%	83,862	68,256	22.9%	66,206	54,961	20.5%	3,660,639	3,136,162	16.7%

(*) Express routes under contracted operation.

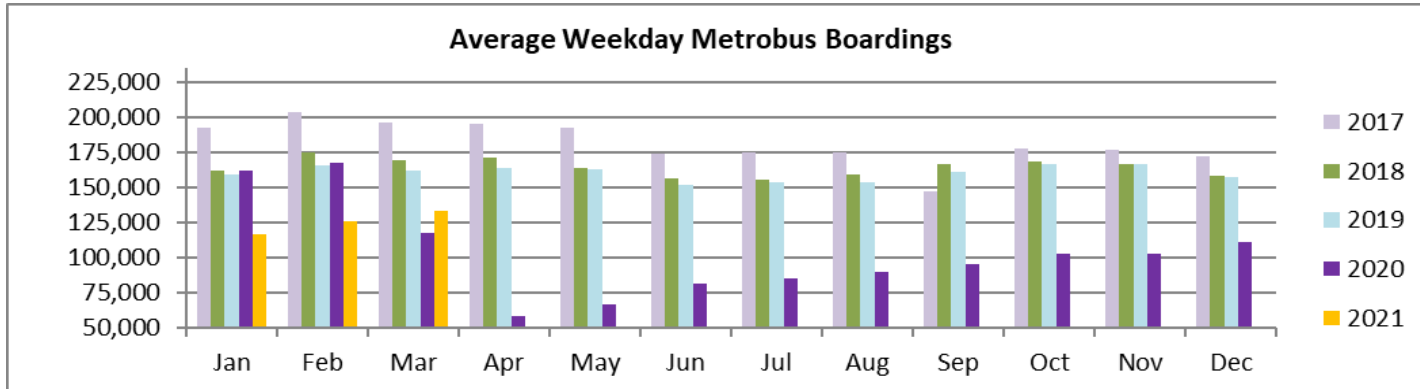
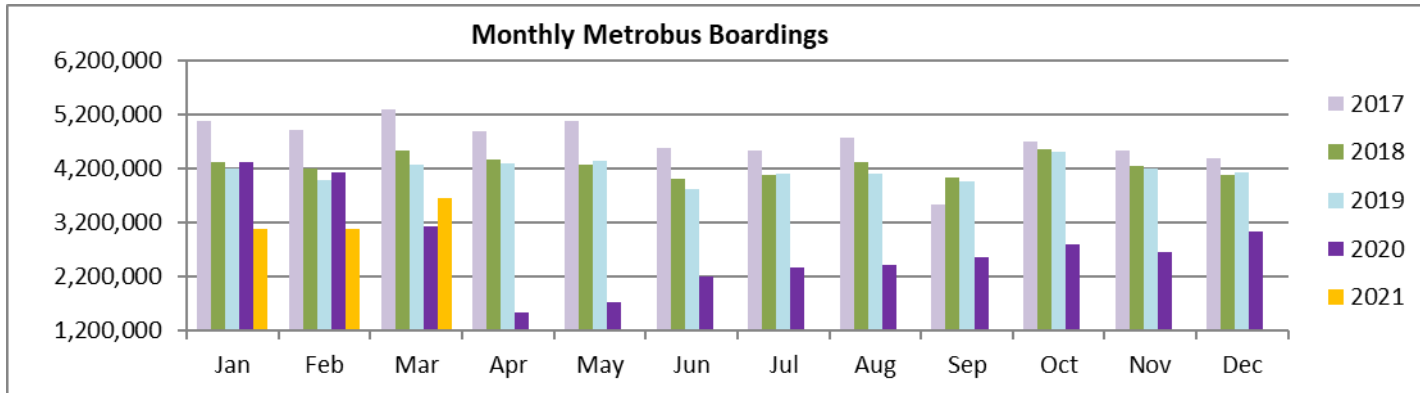
(1) Several express routes were suspended at the end of March or the beginning of April 2020, due to the SARS-CoV-2 pandemic, while other routes had alignment and schedule modifications made to them, in an ongoing effort to optimize service delivery.

**Bus - Cumulative Percentage Average Weekday Ridership Share
Top 1/4, 1/3, 1/2, 2/3 and 3/4 of Routes**



(*) Route entirely run by contractor

TOTAL MONTHLY AND AVERAGE WEEKDAY RIDERSHIP YEAR OVER YEAR COMPARISON CHARTS – METROBUS



**“TOP 5 / BOTTOM 5” BUS ROUTES AVERAGE WEEKDAY RIDERSHIP PERFORMANCE
YEAR OVER YEAR COMPARISONS**

Route	Mar-21	Mar-20	Absolute Delta (1)	Percent Delta (2)
9 (†)	6,182	3,681	2,500	67.9%
119 – S (†)	8,600	6,349	2,251	35.4%
8 (†)	4,279	2,579	1,700	65.9%
77 (†)	6,935	5,315	1,620	30.5%
3 (†)	4,940	3,458	1,482	42.9%
95 EXPRESS (*)	430	1,204	-773	-64.2%
34 EXPRESS (*)	840	1,179	-339	-28.8%
93 - BISCAYNE MAX	1,897	2,216	-319	-14.4%
207 (7st) - LITTLE HAVANA CIRC	773	1,083	-310	-28.6%
38 (†)	4,452	4,711	-259	-5.5%

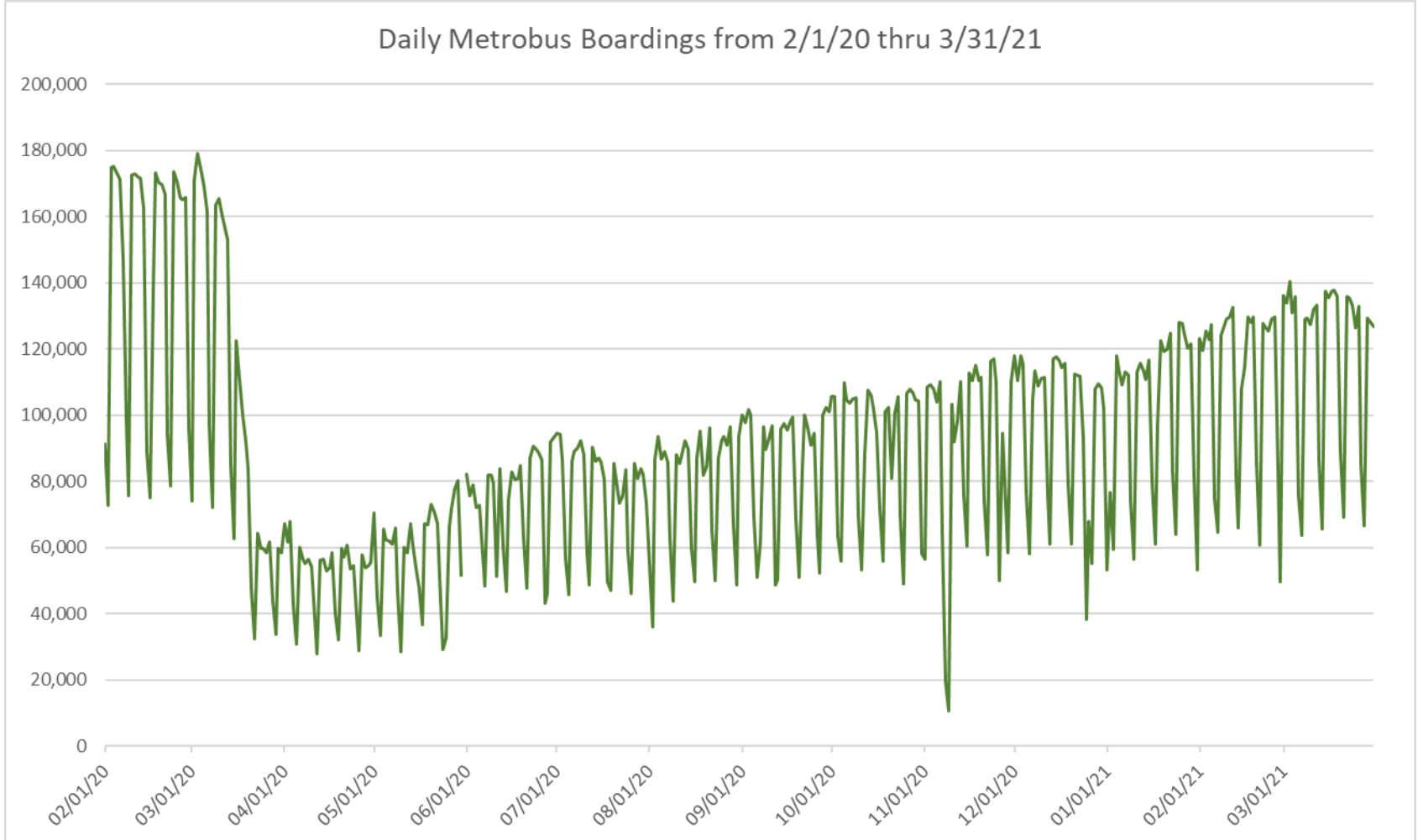
(†) Route with supplementals run by contractor.

(*) Route entirely run by contractor.

(1) Averages rounded to the nearest boarding, data as reported by APC system or/and contractor, depending on route; Lifelines excluded.

(2) As a result of the SARS-CoV-2 pandemic, rides were fare-free beginning March 22, 2020; more bus routes began reporting YOY gains in March 2021, since March 2020 was the first month showing clear reduction effects on ridership from the SARS-CoV-2 pandemic.

DAILY METROBUS RIDERSHIP SINCE FEBRUARY 1, 2020



- (1) National Emergency was declared on 3/13/20 as a result of the SARS-CoV-2 pandemic.
- (2) There was no Metrobus, Metrorail and Metromover service on 5/31/20, as a safety precaution.
- (3) The dip at the start of the second week of November 2020 is due to Hurricane Eta.
- (4) Periodic (weekly) variations are prominent, since weekday ridership is almost always significantly higher than weekend ridership.

METROBUS PARKING PATRONAGE SUMMARY March 2021

PARK-RIDE LOT	ACTUAL AVAILABLE SPACES	ACTUAL OCCUPANCY	PERCENT OCCUPANCY
Transitway / SW 152nd St	200	44	22%
Transitway / SW 168th St	149	38	26%
Transitway / SW 200th Street (effective February 2020)	100	33	33%
Transitway / SW 112 Ave (Target)	450	60	13%
Transitway / SW 244th St	95	27	28%
Transitway / SW 296th St	139	43	31%
Transitway / SW 344th St	248	130	52%
Coral Reef Drive 117/ Turnpike	95	60	63%
Golden Glades- East Lot	535	136	25%
Golden Glades- West Lot	1,007	57	6%
Hammocks Town Center (SW 152 Ave / SW 104 St)	50	0	0%
Kendall Dr./SW 127th Ave	161	8	5%
West Kendall Transit Term (Kendall Dr / SW162 Ave)	40	3	8%
NW 7th Avenue Transit Village (NW 7 Ave / NW 62 St)	25	18	72%
Miami Gardens Dr. / NW 73rd Ave	136	0	0%
Dolphin Station (effective Mar 2020)	348	32	9%
I-75 / Miami Gardens Dr (effective June 2019)	298	0	0%
TOTAL	4,076	689	17%

Note: some park-ride lots are joint-use and the number of park-ride vehicles may exceed the number of spaces allocated.

Metrorail



March 2021

METRORAIL AVERAGE WEEKDAY BOARDINGS BY STATION (†)

Average Weekdays	Average Weekday	Average Weekday	Percent Change	Average Weekday	Percent Change	Average Weekday	Percent Change	Average Weekday	Percent Change
STATIONS	Mar-21	Mar-20 (*)	YOY	Feb-20	Current vs Feb-20	Feb-21	MOM	Mar-19	YO2Y
ALLAPATTAH	1,299	1,324	-1.9%	1,942	-33.1%	1,245	4.3%	1,782	-27.1%
BRICKELL	4,350	3,854	12.9%	6,529	-33.4%	3,974	9.4%	6,136	-29.1%
BROWNSVILLE	720	650	10.7%	862	-16.5%	707	1.8%	790	-8.9%
CIVIC CENTER	2,878	3,686	-21.9%	6,143	-53.1%	2,797	2.9%	5,656	-49.1%
COCONUT GROVE	1,095	1,151	-4.9%	1,795	-39.0%	1,020	7.4%	1,625	-32.6%
CULMER	917	919	-0.2%	1,392	-34.1%	904	1.5%	1,182	-22.4%
DADELAND NORTH	3,589	3,407	5.3%	5,926	-39.4%	3,312	8.3%	5,729	-37.4%
DADELAND SOUTH	3,305	4,302	-23.2%	7,150	-53.8%	3,179	4.0%	6,661	-50.4%
DOUGLAS ROAD	1,526	2,225	-31.4%	3,624	-57.9%	1,434	6.4%	3,502	-56.4%
DR. MARTIN LUTHER KING, JR.	810	794	2.0%	1,157	-29.9%	806	0.5%	1,070	-24.3%
EARLINGTON HEIGHTS	1,020	1,135	-10.2%	1,662	-38.6%	1,019	0.1%	1,500	-32.0%
GOVERNMENT CENTER	3,887	6,116	-36.4%	10,557	-63.2%	3,517	10.5%	9,827	-60.4%
HIALEAH	761	824	-7.7%	1,253	-39.2%	721	5.6%	1,260	-39.6%
MIAMI INTERNATIONAL AIRPORT	779	1,106	-29.6%	1,711	-54.5%	712	9.4%	1,637	-52.4%
NORTHSIDE	1,133	1,066	6.3%	1,476	-23.2%	1,104	2.7%	1,353	-16.3%
OKEECHOBEE	704	758	-7.1%	1,164	-39.5%	690	2.2%	1,149	-38.7%
OVERTOWN / ARENA	844	1,413	-40.3%	2,274	-62.9%	782	7.9%	2,139	-60.6%
PALMETTO	854	965	-11.5%	1,543	-44.7%	819	4.2%	1,459	-41.5%
SANTA CLARA	539	541	-0.4%	812	-33.6%	521	3.5%	754	-28.6%
SOUTH MIAMI	1,194	1,676	-28.7%	3,015	-60.4%	1,140	4.8%	2,832	-57.8%
TRI-RAIL	805	758	6.2%	1,207	-33.3%	794	1.5%	1,182	-31.9%
UNIVERSITY	892	1,217	-26.7%	2,784	-67.9%	849	5.2%	2,248	-60.3%
VIZCAYA	795	846	-6.0%	1,390	-42.8%	761	4.4%	1,313	-39.5%
TOTAL	34,699	40,737	-14.8%	67,367	-48.5%	32,807	5.8%	62,786	-44.7%

(†) In this table and those which follow, "YOY" stands for "year-over-year", "MOM" for "month-over-month" and "YO2Y" for "year over two years", i.e., current month vs 12 months prior, one month prior and 24 months prior, respectively.

(*) Due to effects from the SARS-CoV-2 pandemic; rides were fare-free beginning March 22, 2020.

METRORAIL AVERAGE SATURDAY BOARDINGS BY STATION

Average Saturdays	Average Saturday	Average Saturday	Percent Change	Average Saturday	Percent Change	Average Saturday	Percent Change	Average Saturday	Percent Change
STATIONS	Mar-21	Mar-20	YOY	Feb-20	Current vs Feb-20	Feb-21	MOM	Mar-19	YO2Y
ALLAPATTAH	843	679	24.1%	1,051	-19.8%	821	2.6%	1,031	-18.2%
BRICKELL	2,662	1,623	64.0%	2,811	-5.3%	2,558	4.1%	2,861	-7.0%
BROWNSVILLE	498	376	32.4%	520	-4.3%	517	-3.7%	522	-4.6%
CIVIC CENTER	743	585	27.0%	959	-22.6%	692	7.4%	979	-24.2%
COCONUT GROVE	711	542	31.1%	928	-23.4%	685	3.8%	879	-19.1%
CULMER	554	502	10.3%	721	-23.2%	588	-5.7%	663	-16.5%
DADELAND NORTH	1,858	1,037	79.1%	1,994	-6.8%	1,786	4.0%	2,042	-9.0%
DADELAND SOUTH	2,033	1,575	29.1%	2,625	-22.5%	1,991	2.1%	2,590	-21.5%
DOUGLAS ROAD	752	827	-9.1%	1,319	-43.0%	722	4.1%	1,381	-45.6%
DR. MARTIN LUTHER KING, JR.	534	420	27.2%	625	-14.6%	543	-1.6%	624	-14.5%
EARLINGTON HEIGHTS	673	646	4.1%	935	-28.1%	684	-1.6%	892	-24.5%
GOVERNMENT CENTER	2,348	2,181	7.7%	4,262	-44.9%	1,970	19.2%	3,964	-40.8%
HIALEAH	449	356	26.2%	583	-22.9%	448	0.3%	609	-26.3%
MIAMI INTERNATIONAL AIRPORT	697	821	-15.1%	1,330	-47.6%	662	5.3%	1,317	-47.1%
NORTHSIDE	842	650	29.5%	878	-4.1%	858	-1.8%	898	-6.3%
OKEECHOBEE	369	248	48.6%	408	-9.6%	336	9.9%	433	-14.8%
OVERTOWN / ARENA	471	370	27.3%	678	-30.6%	442	6.6%	620	-24.1%
PALMETTO	340	258	31.6%	458	-25.8%	351	-3.1%	436	-22.1%
SANTA CLARA	317	273	16.2%	422	-24.8%	321	-1.1%	416	-23.8%
SOUTH MIAMI	650	656	-0.9%	1,256	-48.2%	673	-3.3%	1,330	-51.1%
TRI-RAIL	518	318	62.8%	614	-15.6%	469	10.4%	579	-10.5%
UNIVERSITY	531	337	57.5%	714	-25.6%	438	21.3%	697	-23.8%
VIZCAYA	479	400	19.8%	622	-23.0%	457	4.9%	990	-51.6%
TOTAL	19,870	15,680	26.7%	26,714	-25.6%	19,008	4.5%	26,752	-25.7%

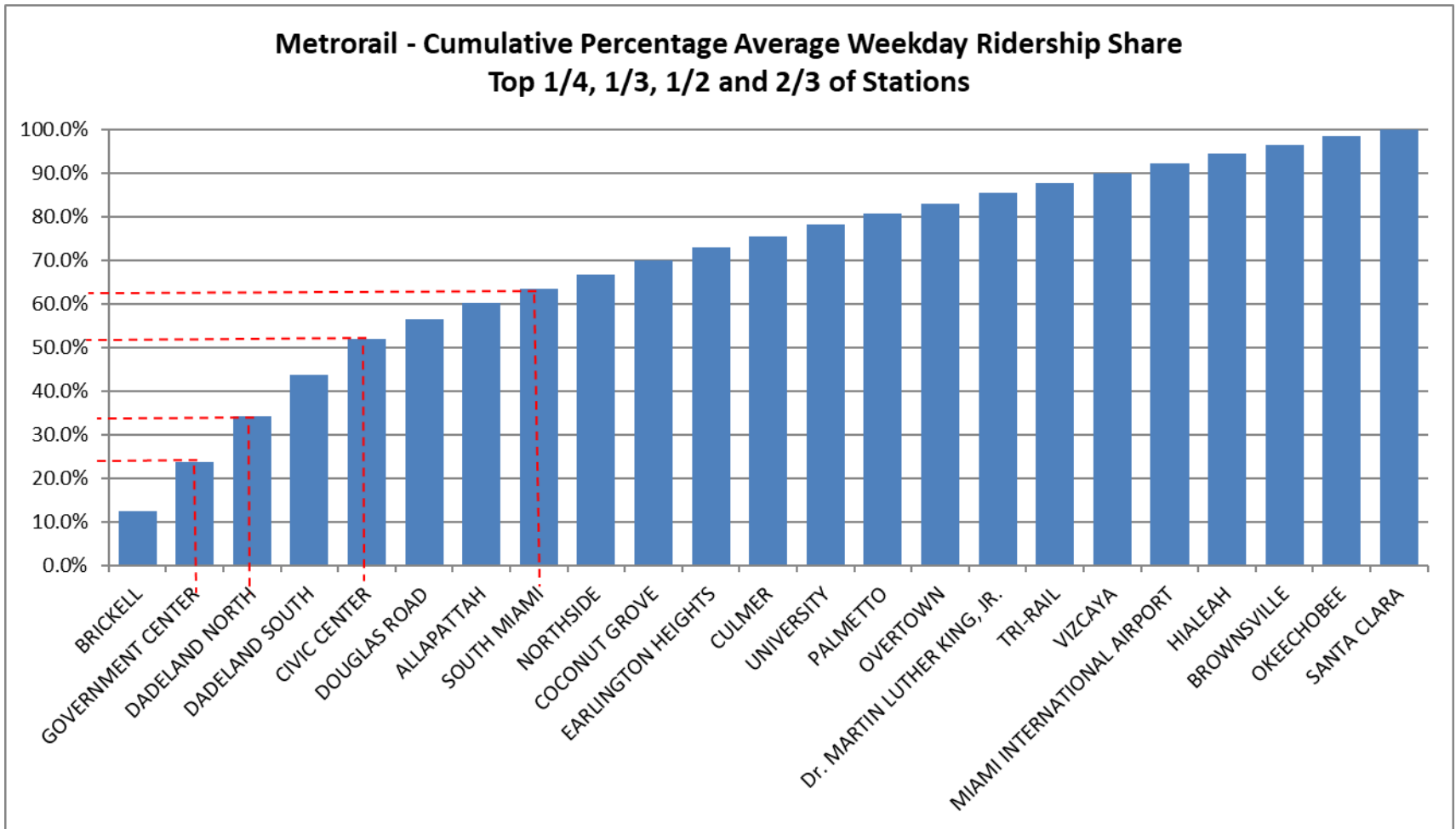
METRORAIL AVERAGE SUNDAY BOARDINGS BY STATION

Average Sundays	Average Sunday	Average Sunday	Percent Change	Average Sunday	Percent Change	Average Sunday	Percent Change	Average Sunday	Percent Change
STATIONS	Mar-21	Mar-20	YOY	Feb-20	Current vs Feb-20	Feb-21	MOM	Mar-19	YO2Y
ALLAPATTAH	605	543	11.4%	791	-23.5%	639	-5.3%	739	-18.2%
BRICKELL	2,112	1,549	36.3%	2,379	-11.2%	2,014	4.9%	2,237	-5.6%
BROWNSVILLE	358	286	25.1%	406	-11.9%	413	-13.3%	402	-11.0%
CIVIC CENTER	540	548	-1.5%	791	-31.8%	579	-6.8%	760	-29.0%
COCONUT GROVE	512	475	7.8%	838	-39.0%	516	-0.9%	703	-27.2%
CULMER	443	429	3.4%	616	-28.0%	496	-10.6%	546	-18.8%
DADELAND NORTH	1,306	901	45.0%	1,685	-22.5%	1,329	-1.7%	1,452	-10.0%
DADELAND SOUTH	1,491	1,377	8.3%	2,210	-32.5%	1,559	-4.4%	1,958	-23.9%
DOUGLAS ROAD	432	650	-33.5%	1,090	-60.3%	451	-4.2%	1,012	-57.3%
DR. MARTIN LUTHER KING, JR.	393	302	30.1%	506	-22.3%	441	-10.7%	438	-10.2%
EARLINGTON HEIGHTS	508	523	-3.0%	799	-36.5%	542	-6.4%	741	-31.5%
GOVERNMENT CENTER	1,775	1,951	-9.0%	4,044	-56.1%	1,624	9.3%	2,922	-39.3%
HIALEAH	330	288	14.4%	472	-30.1%	323	2.2%	463	-28.8%
MIAMI INTERNATIONAL AIRPORT	669	909	-26.4%	1,343	-50.2%	625	7.0%	1,249	-46.5%
NORTHSIDE	611	534	14.4%	653	-6.4%	679	-10.0%	664	-7.9%
OKEECHOBEE	212	189	12.0%	273	-22.6%	231	-8.3%	262	-19.3%
OVERTOWN / ARENA	405	353	14.6%	544	-25.6%	394	2.9%	523	-22.6%
PALMETTO	201	169	19.1%	336	-40.2%	208	-3.2%	280	-28.3%
SANTA CLARA	222	185	20.1%	280	-20.7%	232	-4.5%	257	-13.6%
SOUTH MIAMI	478	596	-19.8%	987	-51.6%	545	-12.4%	897	-46.7%
TRI-RAIL	379	297	27.5%	528	-28.2%	367	3.3%	502	-24.6%
UNIVERSITY	333	308	8.1%	608	-45.3%	331	0.6%	495	-32.8%
VIZCAYA	322	317	1.5%	524	-38.6%	352	-8.6%	1,011	-68.1%
TOTAL	14,633	13,677	7.0%	22,701	-35.5%	14,887	-1.7%	20,515	-28.7%

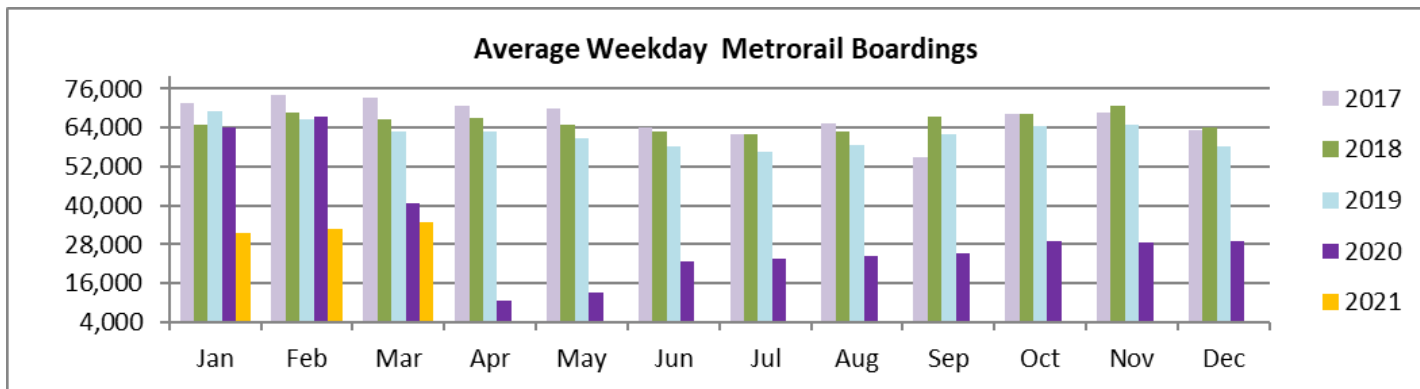
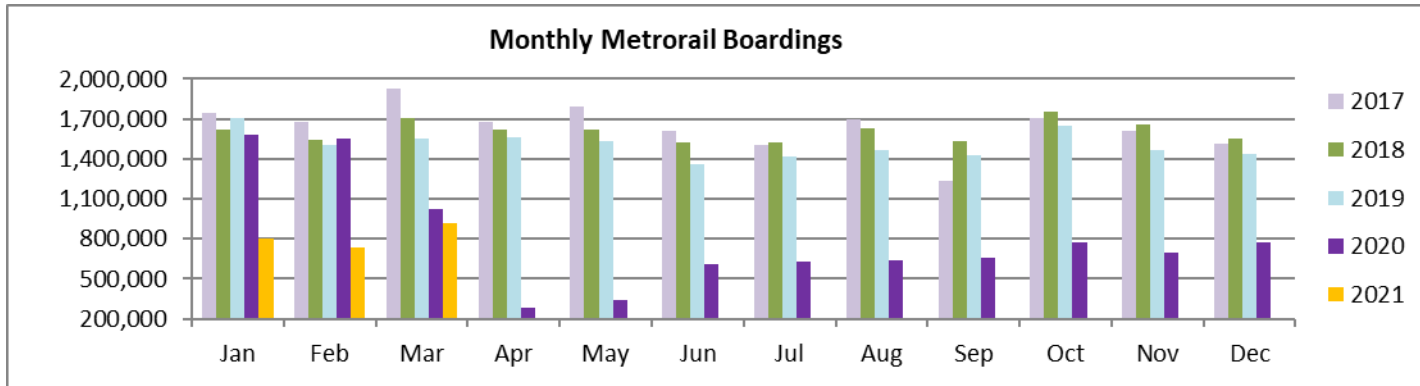
METRORAIL TOTAL MONTHLY BOARDINGS BY STATION

Monthly Totals	Total Month	Total Month	Percent Change	Total Month	Percent Change	Total Month	Percent Change	Total Month	Percent Change
STATIONS	Mar-21	Mar-20	YOY	Feb-20	Current vs Feb-20	Feb-21	MOM	Mar-19	YO2Y
ALLAPATTAH	35,664	34,556	3.2%	46,868	-23.9%	28,409	25.5%	46,269	-22.9%
BRICKELL	119,140	99,031	20.3%	152,259	-21.8%	90,514	31.6%	154,349	-22.8%
BROWNSVILLE	19,973	17,232	15.9%	21,285	-6.2%	16,514	20.9%	21,199	-5.8%
CIVIC CENTER	71,326	86,182	-17.2%	128,921	-44.7%	55,925	27.5%	127,468	-44.0%
COCONUT GROVE	30,077	29,866	0.7%	43,580	-31.0%	23,307	29.0%	42,037	-28.5%
CULMER	25,088	24,372	2.9%	33,497	-25.1%	20,702	21.2%	30,862	-18.7%
DADELAND NORTH	95,200	83,606	13.9%	132,894	-28.4%	72,434	31.4%	137,782	-30.9%
DADELAND SOUTH	90,122	107,832	-16.4%	162,416	-44.5%	71,906	25.3%	162,630	-44.6%
DOUGLAS ROAD	20,847	55,505	-62.4%	82,141	-74.6%	30,720	-32.1%	85,517	-75.6%
DR. MARTIN LUTHER KING, JR.	22,343	20,665	8.1%	27,980	-20.1%	18,561	20.4%	27,781	-19.6%
EARLINGTON HEIGHTS	28,185	30,180	-6.6%	40,697	-30.7%	23,391	20.5%	39,656	-28.9%
GOVERNMENT CENTER	105,902	153,030	-30.8%	243,414	-56.5%	78,039	35.7%	240,794	-56.0%
HIALEAH	20,621	20,997	-1.8%	29,516	-30.1%	16,159	27.6%	31,823	-35.2%
MIAMI INTERNATIONAL AIRPORT	23,381	32,171	-27.3%	46,115	-49.3%	18,131	29.0%	47,202	-50.5%
NORTHSIDE	31,878	28,730	11.0%	36,127	-11.8%	26,183	21.8%	36,230	-12.0%
OKEECHOBEE	18,522	18,624	-0.5%	26,026	-28.8%	14,763	25.5%	27,611	-32.9%
OVERTOWN / ARENA	22,905	34,336	-33.3%	49,911	-54.1%	17,508	30.8%	50,628	-54.8%
PALMETTO	21,800	23,105	-5.6%	33,944	-35.8%	17,122	27.3%	34,218	-36.3%
SANTA CLARA	14,552	13,917	4.6%	19,245	-24.4%	11,641	25.0%	19,207	-24.2%
SOUTH MIAMI	31,984	42,476	-24.7%	69,412	-53.9%	25,570	25.1%	70,613	-54.7%
TRI-RAIL	22,111	19,443	13.7%	29,120	-24.1%	17,775	24.4%	30,227	-26.9%
UNIVERSITY	23,983	29,672	-19.2%	61,253	-60.8%	18,530	29.4%	53,164	-54.9%
VIZCAYA	21,493	21,790	-1.4%	32,497	-33.9%	16,988	26.5%	37,584	-42.8%
TOTAL	917,097	1,027,319	-10.7%	1,549,118	-40.8%	730,792	25.5%	1,554,851	-41.0%

METRORAIL CUMULATIVE PERCENTAGE RIDERSHIP SHARE



TOTAL MONTHLY AND AVERAGE WEEKDAY RIDERSHIP YEAR OVER YEAR COMPARISON CHARTS – METRORAIL



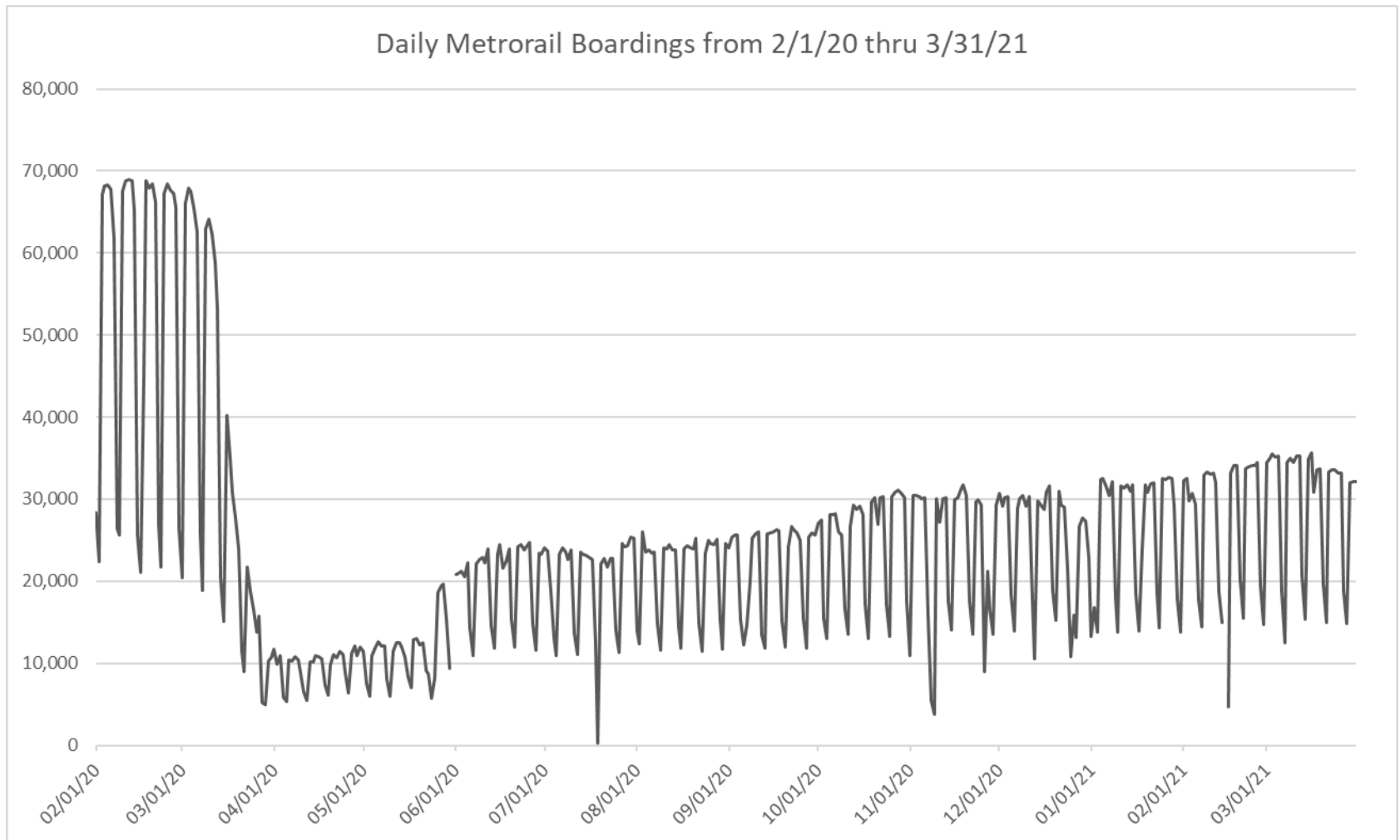
**“TOP 5 / BOTTOM 5” RAIL STATIONS AVERAGE WEEKDAY RIDERSHIP PERFORMANCE
YEAR OVER YEAR COMPARISONS**

Station	Mar-21	Mar-20	Absolute Delta (1)	Percent Delta (†)
BRICKELL	4,350	3,854	495	12.9%
DADELAND NORTH	3,589	3,407	182	5.3%
BROWNSVILLE	720	650	70	10.7%
NORTHSIDE	1,133	1,066	67	6.3%
TRI-RAIL	805	758	47	6.2%
GOVERNMENT CENTER	3,887	6,116	-2,229	-36.4%
DADELAND SOUTH	3,305	4,302	-997	-23.2%
CIVIC CENTER	2,878	3,686	-808	-21.9%
DOUGLAS ROAD	1,526	2,225	-699	-31.4%
OVERTOWN	844	1,413	-570	-40.3%

(1) Averages rounded to the nearest boarding.

(†) Some Metrorail stations began reporting YOY gains in March 2021, since March 2020 was the first month showing clear reduction effects on ridership from the SARS-CoV-2 pandemic.

DAILY METRORAIL RIDERSHIP SINCE FEBRUARY 1, 2020



- (1) National Emergency was declared on 3/13/20 as a result of the SARS-CoV-2 pandemic.
- (2) There was no Metrobus, Metrorail and Metromover service on 5/31/20, as a safety precaution.
- (3) The dip at the start of the second week of November 2020 is due to Hurricane Eta; these are *raw data* from the Unleash Live contractor AI video system.
- (4) Periodic (weekly) variations are prominent, since weekday ridership is almost always significantly higher than weekend ridership.

METRORAIL PARKING PATRONAGE SUMMARY
March 2021

PARK-RIDE LOT	ACTUAL CAPACITY (1)	ACTUAL OCCUPANCY (2)	PERCENT OCCUPANCY
DADELAND SOUTH	1,280		
DADELAND NORTH	1,963		
SOUTH MIAMI	1,081		
UNIVERSITY	260		
DOUGLAS ROAD	150		
COCONUT GROVE	100		
VIZCAYA	120		
CULMER	40		
SANTA CLARA	61		
ALLAPATTAH	74		
EARLINGTON HEIGHTS	361		
BROWNSVILLE	100		
DR. MARTIN LUTHER KING JR. (MDT)	62		
DR. MARTIN LUTHER KING JR. (GARAGE)	631		
NORTHSIDE	197		
HIALEAH	338		
OKEECHOBEE	1,398		
PALMETTO	700		
TOTAL	8,916		

- (1) Number of spaces could vary each week; shown are available spaces during final week of month; the capacities shown here date from March 2020.
(2) Averages rounded to nearest unit; no counts effected in February 2021 due to reassignment of staff as result of SARS-CoV-2 pandemic.

Metromover



March 2021

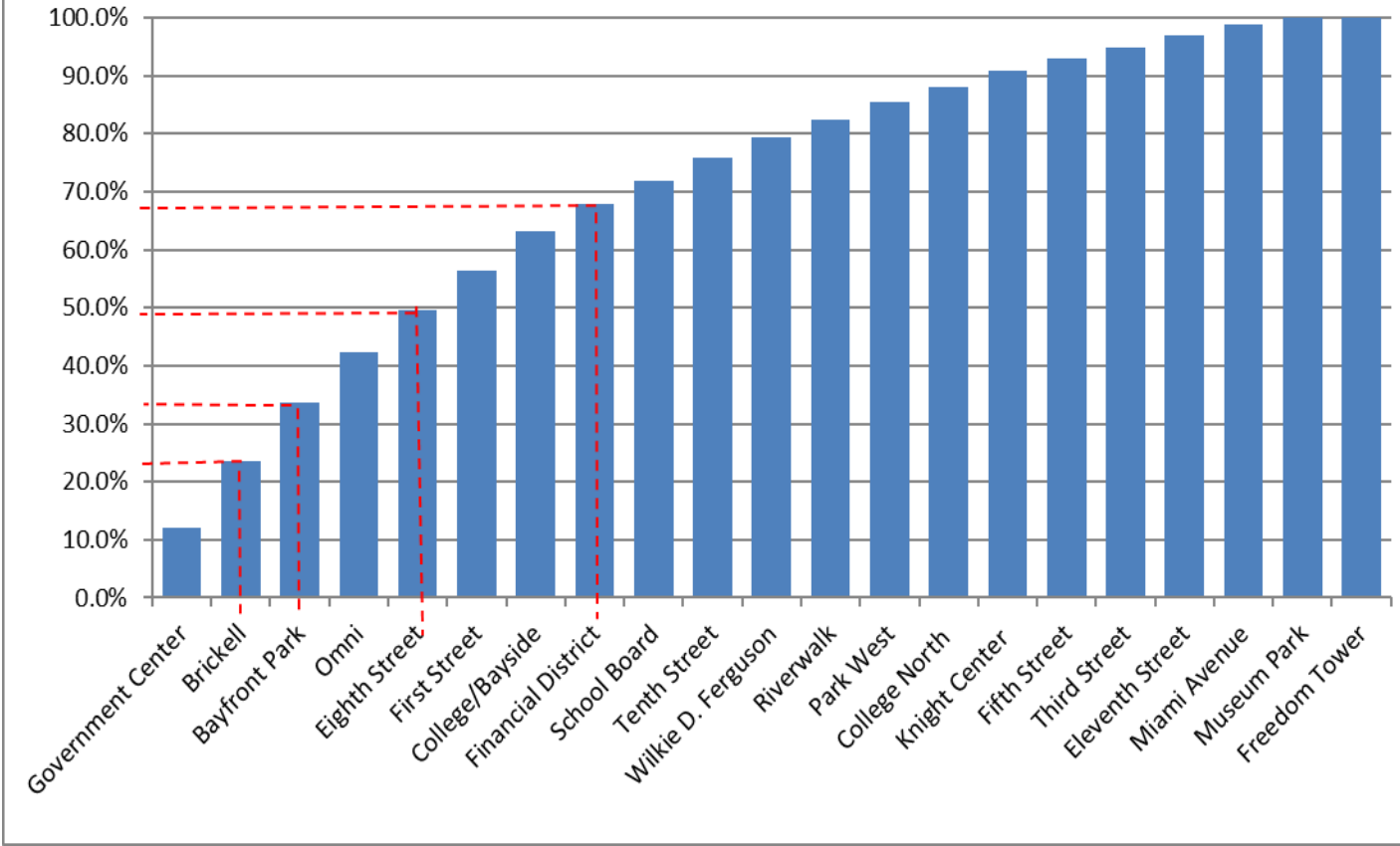
METROMOVER MONTHLY AND AVERAGE DAILY BOARDINGS BY STATION

	Average Weekday	Average Weekday	Percent Change	Average Saturday	Average Saturday	Percent Change	Average Sunday	Average Sunday	Percent Change	Total Monthly	Total Monthly	Percent Change
STATIONS	Mar-21	Mar-20	21 vs 20	Mar-21	Mar-20	21 vs 20	Mar-21	Mar-20	21 vs 20	Mar-21	Mar-20	21 vs 20
School Board	446	538	-17.0%	392	425	-7.9%	302	287	5.1%	13,040	14,967	-12.9%
Omni	938	1,306	-28.1%	893	1,059	-15.7%	713	667	6.9%	28,004	36,300	-22.9%
Museum Park	125	78	59.8%	217	62	250.6%	162	91	78.8%	4,380	2,416	81.3%
Eleventh Street	216	167	29.4%	153	178	-14.1%	62	93	-32.9%	5,828	4,846	20.3%
Park West	327	219	49.3%	229	137	66.8%	149	97	53.2%	9,033	5,854	54.3%
Freedom Tower		299			161			150			7,961	
Government Center	1,295	3,625	-64.3%	921	865	6.4%	668	723	-7.6%	30,659	86,831	-64.7%
Miami Avenue	211	269	-21.6%	184	217	-15.1%	141	118	19.5%	5,944	7,379	-19.4%
Third Street	218	113	93.2%	153	85	79.5%	166	89	87.1%	6,282	3,263	92.5%
Knight Center	280	629	-55.4%	174	270	-35.7%	129	174	-26.0%	7,656	15,781	-51.5%
Bayfront Park	1,089	1,835	-40.7%	1,059	1,151	-8.0%	710	916	-22.5%	32,129	49,561	-35.2%
First Street	740	1,046	-29.2%	641	684	-6.3%	406	462	-12.0%	20,468	28,050	-27.0%
College/Bayside	737	113	555.1%	700	47	1381.5%	423	89	373.9%	21,441	3,110	589.4%
College North	285	242	17.6%	189	44	335.1%	111	91	21.7%	7,753	5,960	30.1%
Wilkie D. Ferguson	376	456	-17.5%	326	217	50.2%	186	169	10.5%	10,689	11,733	-8.9%
Riverwalk	345	496	-30.5%	330	307	7.3%	223	212	5.4%	10,143	13,196	-23.1%
Fifth Street	230	342	-32.8%	201	231	-13.0%	192	209	-8.2%	6,661	9,489	-29.8%
Eighth Street	776	1,146	-32.3%	772	828	-6.8%	555	636	-12.9%	23,154	31,717	-27.0%
Tenth Street	422	490	-13.7%	295	288	2.2%	280	219	27.9%	10,466	13,017	-19.6%
Brickell	1,261	2,570	-50.9%	1,207	1,586	-23.9%	1,095	1,142	-4.1%	37,121	68,602	-45.9%
Financial District	485	821	-40.9%	343	406	-15.5%	143	296	-51.6%	11,651	21,167	-45.0%
TOTAL	10,802	16,798	-35.7%	9,375	9,249	1.4%	6,816	6,928	-1.6%	302,502	441,200	-31.4%

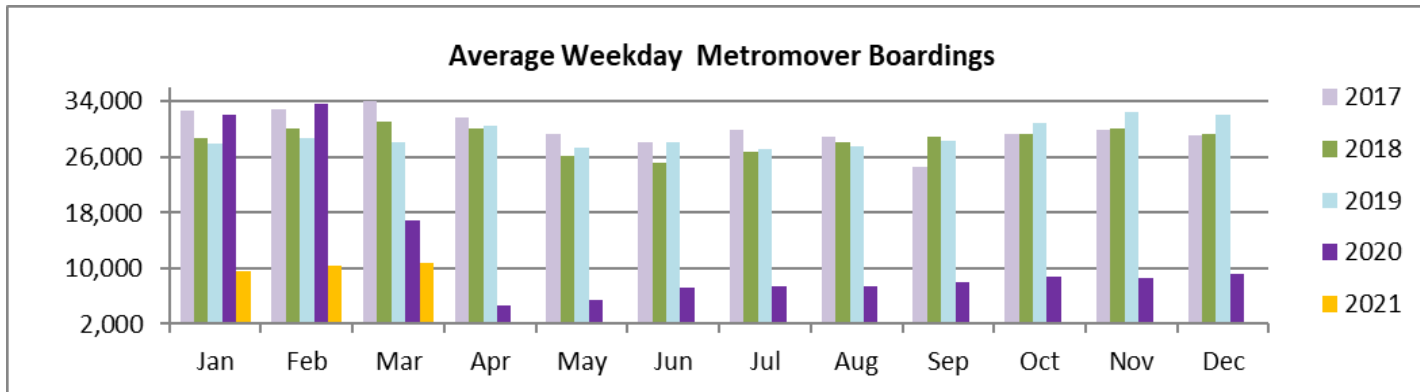
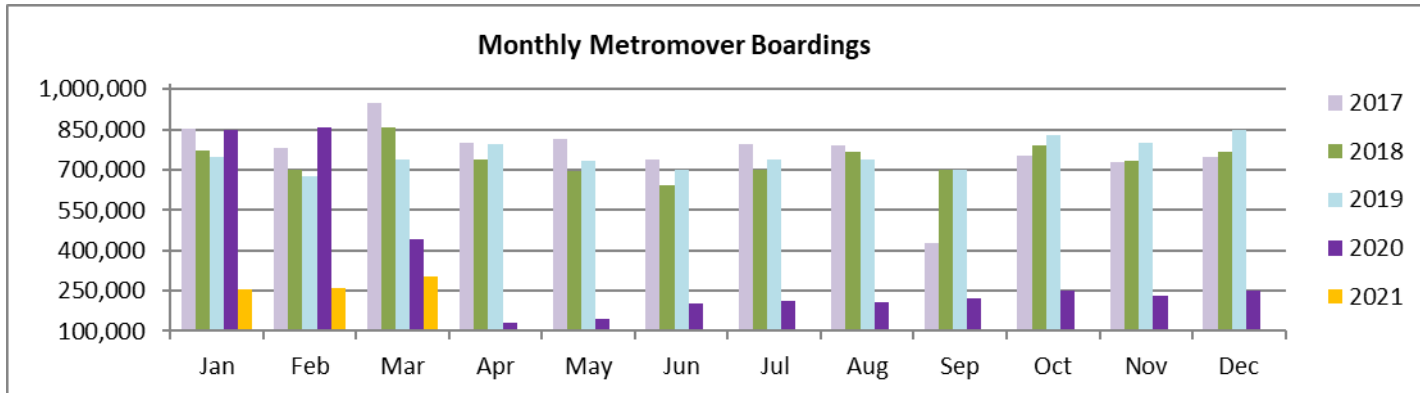
(1) Freedom Tower Station was closed for construction throughout March 2021.

(*) APC Vendor UTA's system did not report boardings data at several stations on several days in March 2021; the average daily ridership calculations take this into account.

Metromover - Cumulative Average Weekday Ridership Percentage Share Top 1/4, 1/3, 1/2 and 2/3 of Stations



TOTAL MONTHLY AND AVERAGE WEEKDAY RIDERSHIP YEAR OVER YEAR COMPARISON CHARTS – METROMOVER



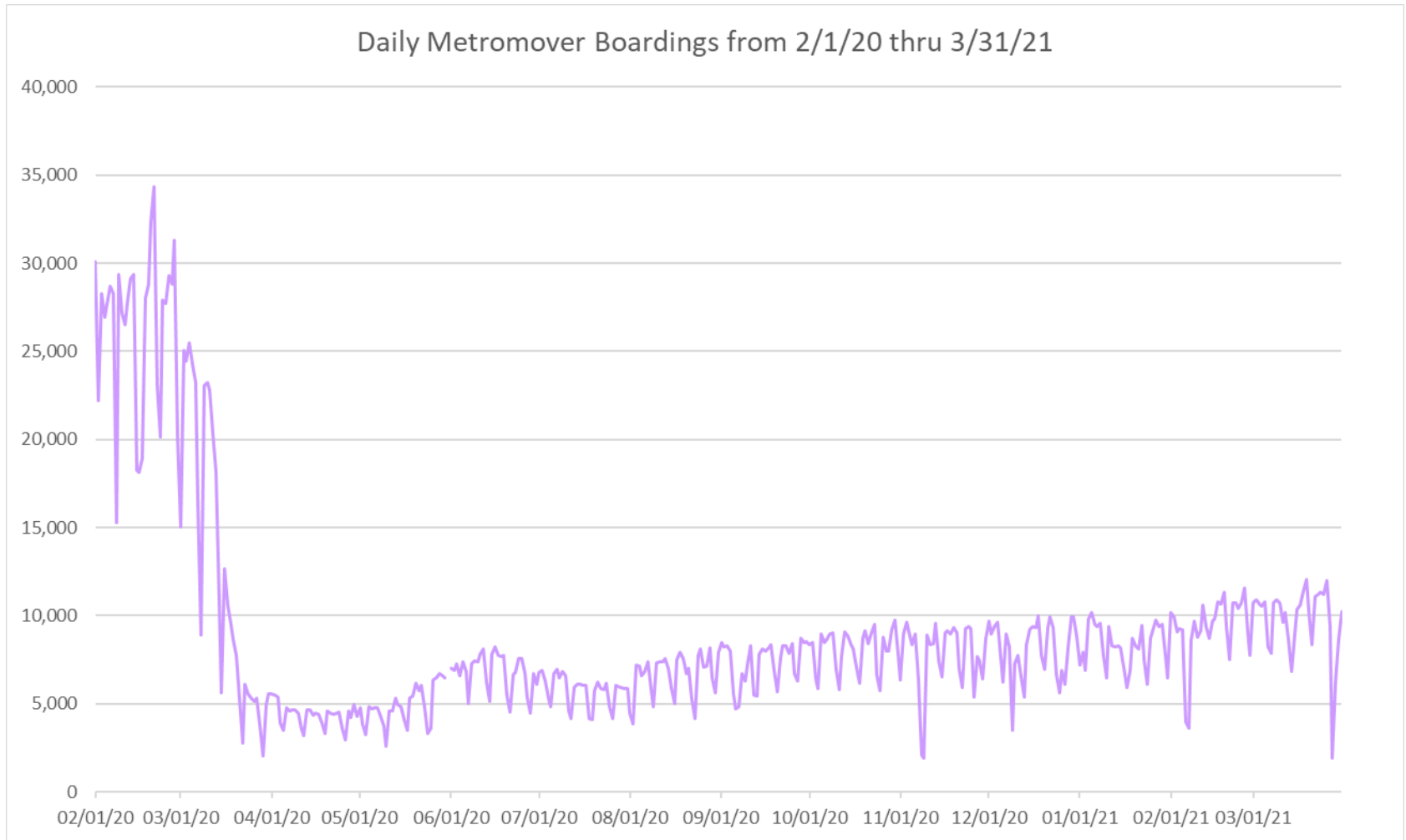
**“TOP 5 / BOTTOM 5” MOVER STATIONS AVERAGE WEEKDAY RIDERSHIP PERFORMANCE
YEAR OVER YEAR COMPARISONS**

Station	Mar-21	Mar-20	Absolute Delta (1)	Percent Delta (†)
College/Bayside	737	113	624	555.1%
Park West	327	219	108	49.3%
Third Street	218	113	105	93.2%
Eleventh Street	216	167	49	29.4%
Museum Park	125	78	47	59.8%
Government Center	1,295	3,625	-2,331	-64.3%
Brickell	1,261	2,570	-1,309	-50.9%
Bayfront Park	1,089	1,835	-746	-40.7%
Eighth Street	776	1,146	-370	-32.3%
Omni	938	1,306	-367	-28.1%

(1) Averages rounded to the nearest boarding.

(†) Some Metromover stations began reporting YOY gains in March 2021, since March 2020 was the first month showing clear reduction effects on ridership from the SARS-CoV-2 pandemic.

DAILY METROMOVER RIDERSHIP SINCE FEBRUARY 1, 2020



- (1) National Emergency was declared on 3/13/20 as a result of the SARS-CoV-2 pandemic.
- (2) There was no Metrobus, Metrorail and Metromover service on 5/31/20, as a safety precaution.
- (3) The dip at the start of the second week of November 2020 is due to Hurricane Eta; these are *raw data* from the UTA contractor APC system.
- (4) Periodic (weekly) variations are prominent, since weekday ridership is almost always significantly higher than weekend ridership.

Special Transportation Services

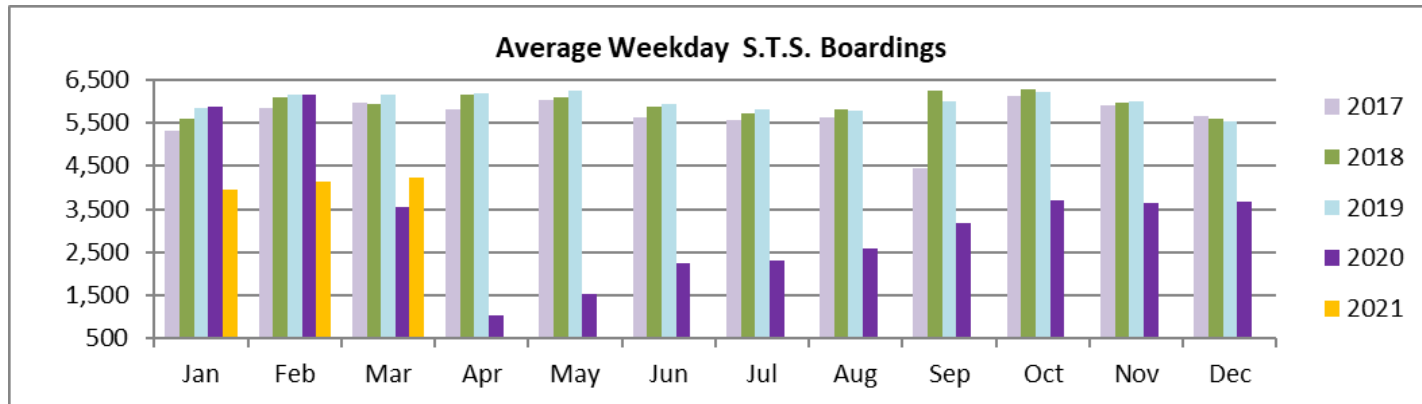
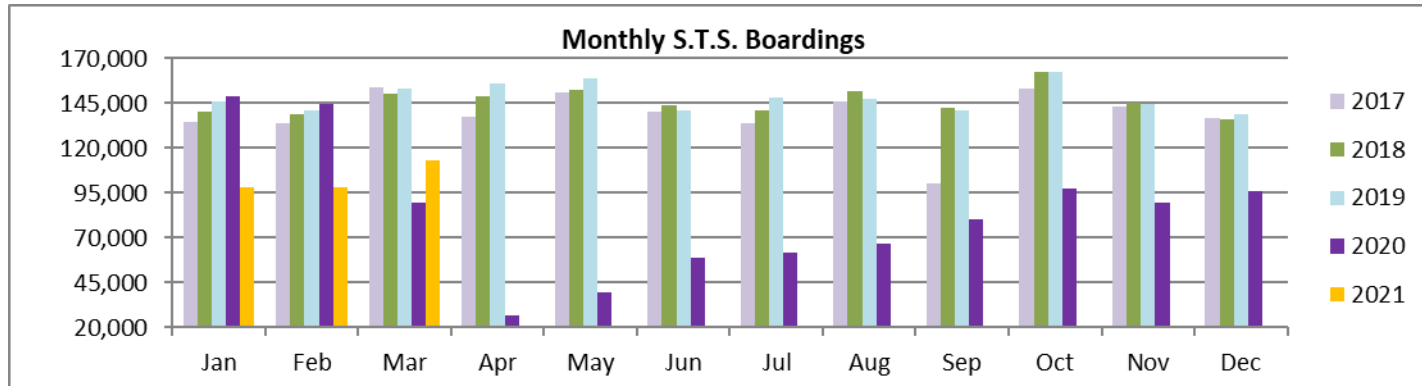


**STS MONTHLY AND AVERAGE DAILY BOARDINGS
March 2021**

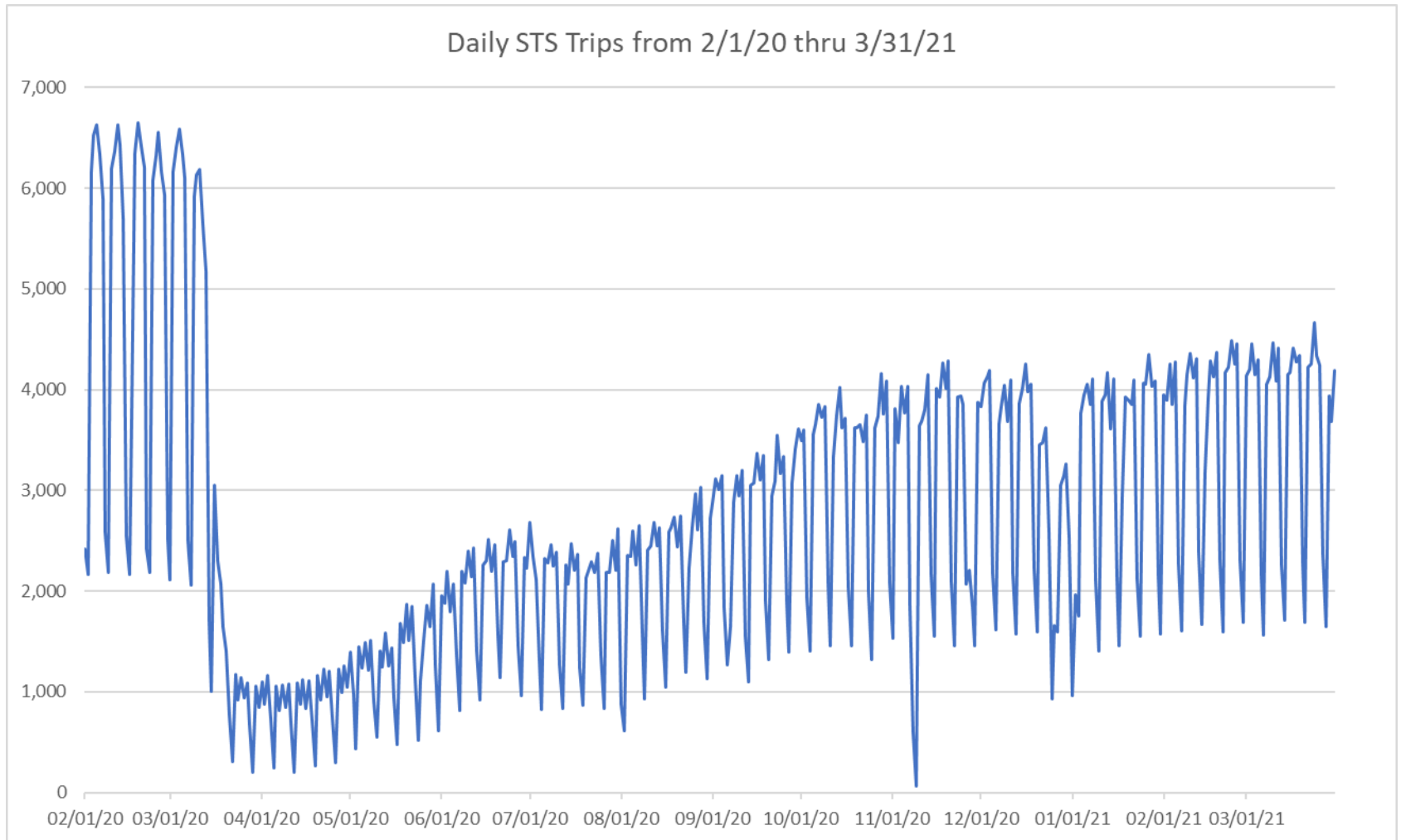
Clients	Ambulatory	Wheelchair	Total Clients
Average Weekday	3,448	781	4,229
Average Saturday	1,849	415	2,264
Average Sunday	1,436	216	1,652
Total Monthly	92,443	20,487	112,930
% Change Mar 2020 Weekday	21.8%	7.2%	18.8%
% Change Mar 2020 Saturday	71.2%	24.5%	60.2%
% Change Mar 2020 Sunday	62.4%	-15.2%	45.1%
% Change Mar 2020 Month Total	30.2%	10.0%	26.0%
% Change Mar 2019 Weekday	-30.9%	-33.5%	-31.4%
% Change Mar 2019 Saturday	-5.8%	-30.6%	-11.6%
% Change Mar 2019 Sunday	-13.5%	-58.5%	-24.2%
% Change Mar 2019 Month Total	-24.8%	-32.3%	-26.3%

(*) Trip count data provided by STS contractor.

TOTAL MONTHLY AND AVERAGE WEEKDAY RIDERSHIP YEAR OVER YEAR COMPARISON CHARTS – SPECIAL TRANSPORTATION SERVICES (S.T.S.)

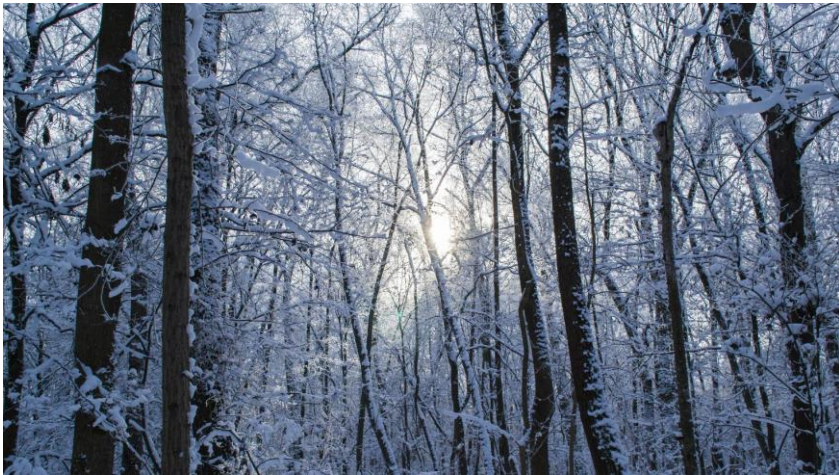


DAILY STS RIDERSHIP SINCE FEBRUARY 1, 2020

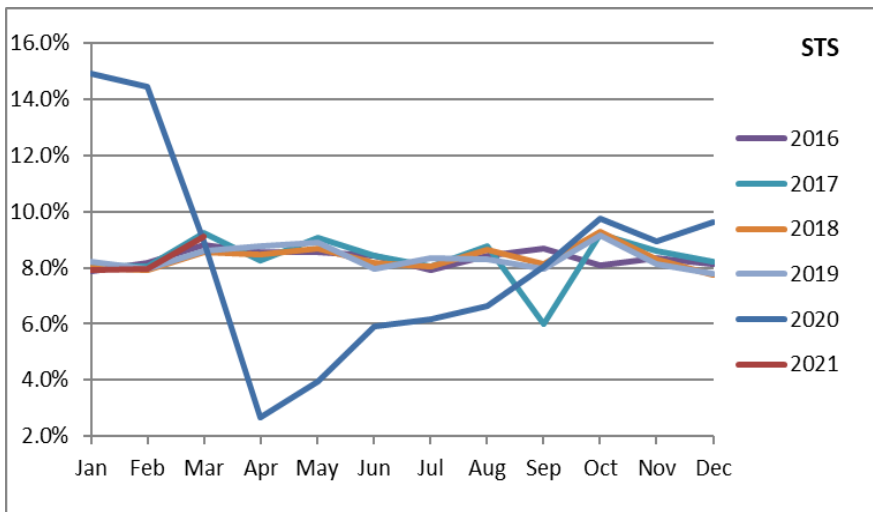
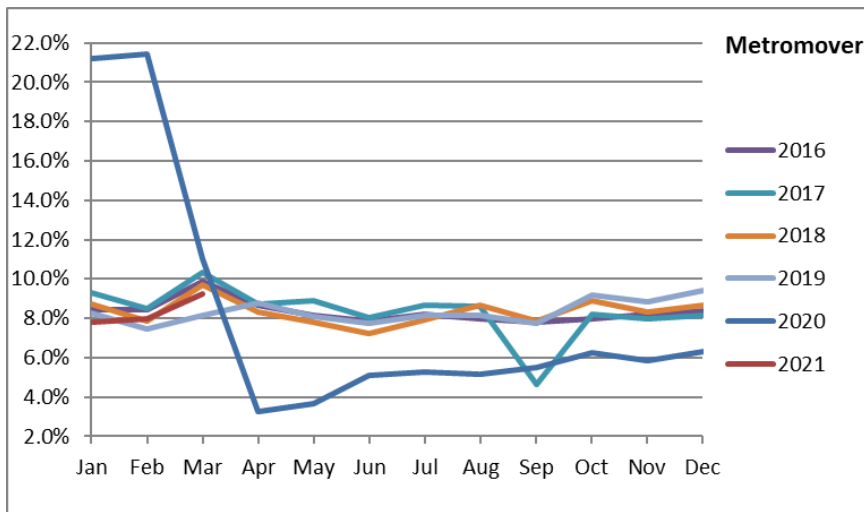
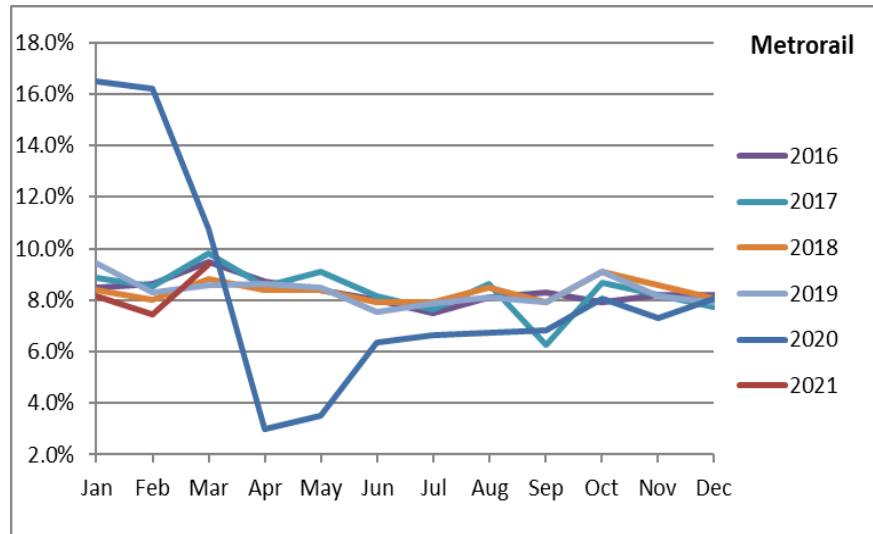
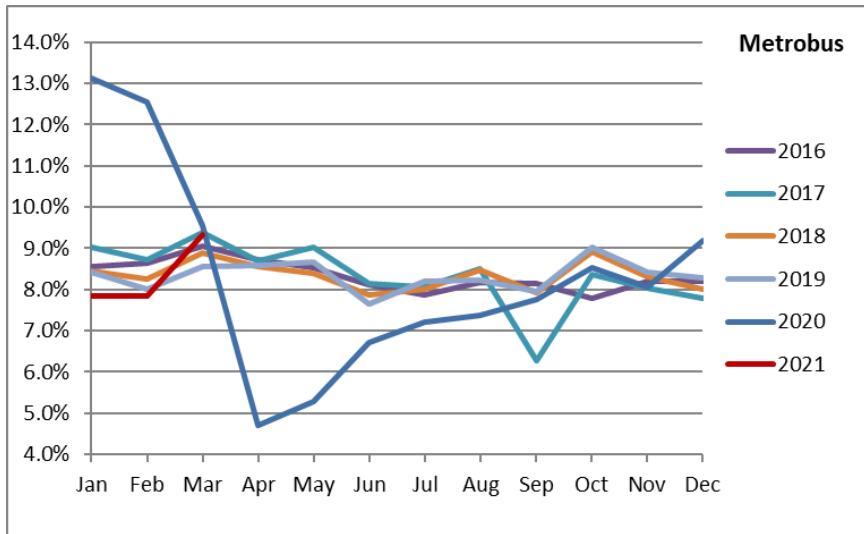


- (1) National Emergency was declared on 3/13/20 as a result of the SARS-CoV-2 pandemic.
- (2) The dip at the start of the second week of November 2020 is due to Hurricane Eta.
- (3) Periodic (weekly) variations are prominent, since weekday ridership is almost always significantly higher than weekend ridership.

Ridership Seasonality



RIDERSHIP SEASONALITY – PERCENT RIDERSHIP SHARE BY MONTH AND CALENDAR YEAR FOR EACH MODE



Note: the prominent dips seen in the fall of 2017 and beginning in the spring of 2020 thru the fall of 2020 are due to Hurricane Irma and the SARS-CoV-2 pandemic, respectively.