



# TRANSPORTATION AND PUBLIC WORKS

## RIDERSHIP TECHNICAL REPORT

*Division of Performance and Materials Management*



# Table of Contents

<i>Table of Contents</i>	2-3
<b>All Modes Overview</b>	<b>4</b>
Total Monthly Weekday, Saturday and Sunday Monthly Boardings By Mode	5
Average Weekday, Saturday and Sunday Boardings by Mode	6
Metrobus Total Monthly Ridership Comparisons by Fiscal Year	7
Metrorail Total Monthly Ridership Comparisons by Fiscal Year	8
Metromover Total Monthly Ridership Comparisons by Fiscal Year	9
STS Total Monthly Ridership Comparisons by Fiscal Year	10
All-Modes Combined Total Monthly Ridership Comparisons By Fiscal Year	11
All Modes Combined Total Monthly and Average Weekday Ridership – Year over Year Comparison Charts	12
Average Weekday Ridership – Modal Splits	13
Daily Ridership for All Modes Combined since February 1, 2020	14
<b>Metrobus</b>	<b>15</b>
Metrobus Average Weekday Boardings by Route	16-18
Metrobus Average Saturday Boardings by Route	19-20
Metrobus Average Sunday Boardings by Route	21-22
Metrobus Monthly Total Boardings by Route	23-25
Metrobus Holiday Boardings by Route	26
Year-over-Year Bus Ridership by Route Service Type	27-28
Bus Routes as Ranked by Percentage of Average Weekday Ridership	29
Metrobus Cumulative Percentage Average Weekday Ridership Share by Route (Top 75%)	30
Total Monthly and Average Weekday Rail Ridership – Year over Year Comparison Charts	31
Bus “Top 5 / Bottom 5” Routes Average Weekday Ridership Performance	32
Daily Metrobus Ridership since February 1, 2020	33
Metrobus Parking Patronage Summary	34

## Table of Contents (continued)

<b>Metrorail</b>	<b>35</b>
Metrorail Average Weekday Boardings by Station	36
Metrorail Average Saturday Boardings by Station	37
Metrorail Average Sunday Boardings by Station	38
Metrorail Total Monthly Boardings by Station	39
Metrorail Holiday Boardings	40
Metrorail Cumulative Percentage Average Weekday Ridership Share	41
Total Monthly and Average Weekday Rail Ridership – Year over Year Comparison Charts	42
“Top 5 / Bottom 5” Stations Average Weekday Ridership Performance	43
Daily Metrorail Ridership since February 1, 2020	44
Metrorail Parking Patronage Summary	45
<b>Metromover</b>	<b>46</b>
Monthly and Average Daily Mover Boardings by Station	47
Metromover Cumulative Percentage Average Weekday Ridership Share	48
Total Monthly and Average Weekday Mover Ridership – Year over Year Comparison Charts	49
“Top 5 / Bottom 5” Stations Average Weekday Ridership Performance	50
Daily Metromover Ridership since February 1, 2020	51
<b>Special Transportation Services (STS)</b>	<b>52</b>
STS Monthly and Average Daily Boardings	53
Total Monthly and Average Weekday STS Ridership – Year over Year Comparison Charts	54
Daily STS Ridership since February 1, 2020	55
<b>Ridership Seasonality</b>	<b>56</b>
Ridership Seasonality – Percent Ridership Share by Month and Calendar year for Each Mode	57

# All Modes Overview



## TOTAL MONTHLY WEEKDAY, SATURDAY AND SUNDAY BOARDINGS BY MODE September 2021

TRAVEL MODE	MONTH'S TOTAL WEEKDAYS RIDERSHIP	MONTH'S TOTAL SATURDAYS RIDERSHIP	MONTH'S TOTAL SUNDAYS RIDERSHIP	TOTAL MONTHLY RIDERSHIP	% CHANGE vs Sep 2020 TOTAL MONTH RIDERSHIP
<b>METROBUS</b> (1)	2,357,941	264,051	255,118	2,877,110	13.0%
<b>METRORAIL</b> (2)	682,542	55,744	57,463	795,749	21.6%
<b>METROMOVER</b> (3)	259,338	34,866	37,711	331,915	51.1%
<b>STS PARATRANSIT</b> (4)	98,700	8,567	8,139	115,406	43.6%
<b>TOTAL</b>	<b>3,398,521</b>	<b>363,228</b>	<b>358,431</b>	<b>4,120,180</b>	<b>17.7%</b>

(\*) September 6, 2021 - (Labor Day Holiday) ridership was as follows:

Metrobus	58,397
Metrail	14,003
Metromover	8,043
STS	1,861

- (1) Metrobus fares resumed on June 1, 2021, following a 14-month period of fare-free rides as a result of the SARS-CoV-2 pandemic. The NextFare System farebox data replaced the bus automatic passenger counter data as ridership data of record starting on that date.
- (2) Metrorail fares resumed on June 1, 2021, following a 14-month period of fare-free rides as a result of the SARS-CoV-2 pandemic. The NextFare System faregate data replaced the video data as ridership data of record starting on that date.
- (3) Beginning March 13, 2020 (day of National Emergency Declaration due to SARS-CoV-2 pandemic), only raw data from Metromover automatic passenger counters is reported; no estimates are performed after March 13, 2020.
- (4) Paratransit ridership data as reported by the contractor.

**AVERAGE WEEKDAY, SATURDAY AND SUNDAY BOARDINGS BY MODE  
September 2021**

<b>Travel Mode</b>	<b>Average Weekday</b>	<b>Average Saturday</b>	<b>Average Sunday (*)</b>	<b>% Change Sep 2020 Weekday</b>	<b>% Change Sep 2020 Saturday</b>	<b>% Change Sep 2020 Sunday</b>
<b>METROBUS</b>	112,359	66,057	51,045	17.9%	5.9%	-0.2%
<b>METRORAIL</b>	32,502	13,936	10,865	28.2%	-5.8%	-9.1%
<b>METROMOVER</b>	12,913	9,377	8,077	61.3%	51.9%	46.2%
<b>STS PARATRANSIT</b>	4,700	2,142	1,628	48.6%	19.3%	21.0%
<b>Totals</b>	<b>162,474</b>	<b>91,511</b>	<b>71,614</b>	<b>23.3%</b>	<b>7.5%</b>	<b>2.4%</b>

(\*) Average Sunday ridership includes Labor Day for Metrobus and STS but excludes it for Metrorail and Metromover.

(\*\*) Average ridership is calculated and published only for those days and stations with nontrivial amounts of reported data.

## METROBUS TOTAL MONTHLY RIDERSHIP COMPARISONS BY FISCAL YEAR

Bus	Variance			Variance		Variance		Variance		Variance	
	FY 17	FY 18	17 to 18	FY 19	18 to 19	FY 20	19 to 20	FY 21	20 to 21	19 to 21	17 to 21
<b>Oct</b>	4,925,781	4,709,590	-4.4%	4,554,886	-3.3%	4,507,012	-1.1%	2,805,139	-37.8%	-38.4%	-43.1%
<b>Nov</b>	5,181,524	4,522,250	-12.7%	4,245,535	-6.1%	4,197,225	-1.1%	2,651,290	-36.8%	-37.6%	-48.8%
<b>Dec</b>	5,192,692	4,380,099	-15.6%	4,081,581	-6.8%	4,126,990	1.1%	3,022,530	-26.8%	-25.9%	-41.8%
<b>Jan</b>	5,084,085	4,307,001	-15.3%	4,195,911	-2.6%	4,316,998	2.9%	3,082,746	-28.6%	-26.5%	-39.4%
<b>Feb</b>	4,914,307	4,208,811	-14.4%	3,994,019	-5.1%	4,123,083	3.2%	3,076,966	-25.4%	-23.0%	-37.4%
<b>Mar</b>	5,287,813	4,534,564	-14.2%	4,266,768	-5.9%	3,136,162	-26.5%	3,660,639	16.7%	-14.2%	-30.8%
<b>Apr</b>	4,895,697	4,360,997	-10.9%	4,291,135	-1.6%	1,544,316	-64.0%	3,625,048	134.7%	-15.5%	-26.0%
<b>May</b>	5,087,877	4,277,628	-15.9%	4,330,922	1.2%	1,734,609	-59.9%	3,683,343	112.3%	-15.0%	-27.6%
<b>Jun</b>	4,586,556	4,009,340	-12.6%	3,823,863	-4.6%	2,210,725	-42.2%	2,672,570	20.9%	-30.1%	-41.7%
<b>Jul</b>	4,539,259	4,080,664	-10.1%	4,094,906	0.3%	2,366,749	-42.2%	2,769,907	17.0%	-32.4%	-39.0%
<b>Aug</b>	4,780,589	4,326,980	-9.5%	4,109,613	-5.0%	2,422,014	-41.1%	2,843,552	17.4%	-30.8%	-40.5%
<b>Sep</b>	3,524,818	4,041,992	14.7%	3,971,220	-1.8%	2,546,923	-35.9%	2,877,110	13.0%	-27.6%	-18.4%
<b>FY Total</b>	<b>58,000,998</b>	<b>51,759,916</b>	<b>-10.8%</b>	<b>49,960,359</b>	<b>-3.5%</b>	<b>37,232,806</b>	<b>-25.5%</b>	<b>36,770,840</b>	<b>-1.2%</b>	<b>-26.4%</b>	<b>-36.6%</b>

## METRORAIL TOTAL MONTHLY RIDERSHIP COMPARISONS BY FISCAL YEAR

Rail	Variance			Variance		Variance		Variance		Variance	
	FY 17	FY 18	17 to 18	FY 19	18 to 19	FY 20	19 to 20	FY 21	20 to 21	19 to 21	17 to 21
<b>Oct</b>	1,670,933	1,708,564	2.3%	1,757,225	2.8%	1,643,166	-6.5%	769,525	-53.2%	-56.2%	-53.9%
<b>Nov</b>	1,734,267	1,609,888	-7.2%	1,656,929	2.9%	1,469,448	-11.3%	699,492	-52.4%	-57.8%	-59.7%
<b>Dec</b>	1,734,768	1,517,341	-12.5%	1,553,804	2.4%	1,433,928	-7.7%	769,194	-46.4%	-50.5%	-55.7%
<b>Jan</b>	1,743,638	1,615,576	-7.3%	1,708,695	5.8%	1,576,340	-7.7%	799,119	-49.3%	-53.2%	-54.2%
<b>Feb</b>	1,676,215	1,545,581	-7.8%	1,501,458	-2.9%	1,549,118	3.2%	730,792	-52.8%	-51.3%	-56.4%
<b>Mar</b>	1,926,434	1,700,714	-11.7%	1,554,851	-8.6%	1,027,319	-33.9%	917,097	-10.7%	-41.0%	-52.4%
<b>Apr</b>	1,677,459	1,619,890	-3.4%	1,559,446	-3.7%	287,803	-81.5%	827,414	187.5%	-46.9%	-50.7%
<b>May</b>	1,787,885	1,618,504	-9.5%	1,531,597	-5.4%	337,696	-78.0%	887,111	162.7%	-42.1%	-50.4%
<b>Jun</b>	1,605,234	1,524,311	-5.0%	1,359,966	-10.8%	608,758	-55.2%	723,469	18.8%	-46.8%	-54.9%
<b>Jul</b>	1,500,243	1,527,380	1.8%	1,419,158	-7.1%	632,964	-55.4%	722,159	14.1%	-49.1%	-51.9%
<b>Aug</b>	1,693,524	1,632,471	-3.6%	1,463,646	-10.3%	641,275	-56.2%	749,578	16.9%	-48.8%	-55.7%
<b>Sep</b>	1,234,135	1,530,088	24.0%	1,427,726	-6.7%	654,244	-54.2%	795,749	21.6%	-44.3%	-35.5%
<b>Total</b>	<b>19,984,735</b>	<b>19,150,308</b>	<b>-4.2%</b>	<b>18,494,501</b>	<b>-3.4%</b>	<b>11,862,059</b>	<b>-35.9%</b>	<b>9,390,699</b>	<b>-20.8%</b>	<b>-49.2%</b>	<b>-53.0%</b>



## METROMOVER TOTAL MONTHLY RIDERSHIP COMPARISONS BY FISCAL YEAR

Mover	Variance			Variance		Variance		Variance		Variance	
	FY 17	FY 18	17 to 18	FY 19	18 to 19	FY 20	19 to 20	FY 21	20 to 21	19 to 21	17 to 21
<b>Oct</b>	814,781	751,323	-7.8%	790,533	5.2%	831,234	5.1%	250,044	-69.9%	-68.4%	-69.3%
<b>Nov</b>	841,679	729,519	-13.3%	735,198	0.8%	799,632	8.8%	232,422	-70.9%	-68.4%	-72.4%
<b>Dec</b>	858,961	748,797	-12.8%	767,239	2.5%	849,832	10.8%	251,019	-70.5%	-67.3%	-70.8%
<b>Jan</b>	852,788	772,122	-9.5%	746,728	-3.3%	847,773	13.5%	255,968	-69.8%	-65.7%	-70.0%
<b>Feb</b>	780,514	698,107	-10.6%	675,160	-3.3%	855,398	26.7%	260,332	-69.6%	-61.4%	-66.6%
<b>Mar</b>	949,045	859,143	-9.5%	737,814	-14.1%	441,200	-40.2%	302,502	-31.4%	-59.0%	-68.1%
<b>Apr</b>	802,778	740,036	-7.8%	795,696	7.5%	130,549	-83.6%	310,772	138.1%	-60.9%	-61.3%
<b>May</b>	814,791	694,106	-14.8%	734,645	5.8%	146,454	-80.1%	292,922	100.0%	-60.1%	-64.0%
<b>Jun</b>	737,042	641,675	-12.9%	701,318	9.3%	203,637	-71.0%	286,145	40.5%	-59.2%	-61.2%
<b>Jul</b>	796,649	700,462	-12.1%	739,814	5.6%	210,596	-71.5%	368,847	75.1%	-50.1%	-53.7%
<b>Aug</b>	788,734	768,728	-2.5%	739,785	-3.8%	205,995	-72.2%	344,319	67.1%	-53.5%	-56.3%
<b>Sep</b>	425,641	698,505	64.1%	699,879	0.2%	219,696	-68.6%	331,915	51.1%	-52.6%	-22.0%
<b>Total</b>	<b>9,463,403</b>	<b>8,802,523</b>	<b>-7.0%</b>	<b>8,863,809</b>	<b>0.7%</b>	<b>5,741,996</b>	<b>-35.2%</b>	<b>3,487,207</b>	<b>-39.3%</b>	<b>-60.7%</b>	<b>-63.2%</b>

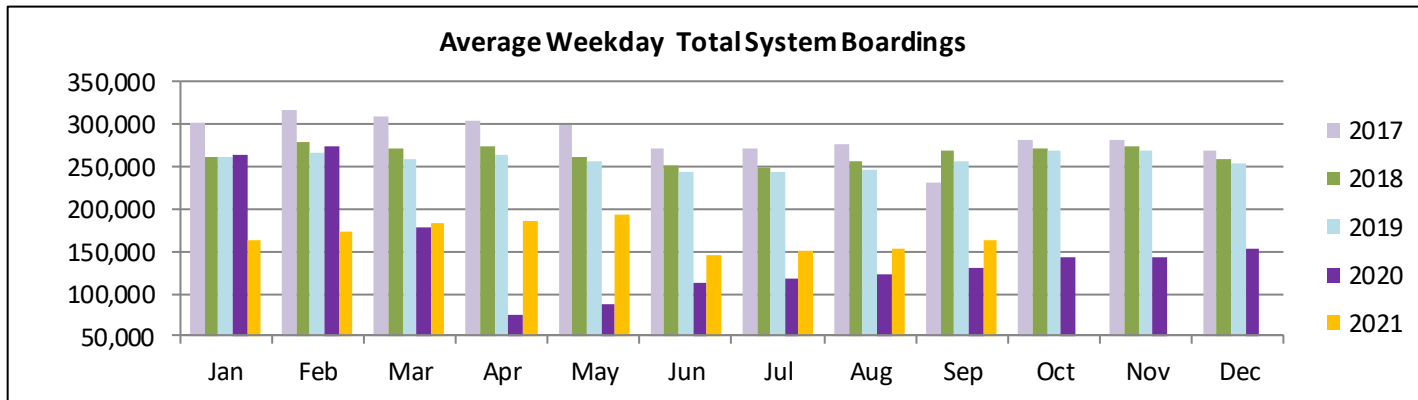
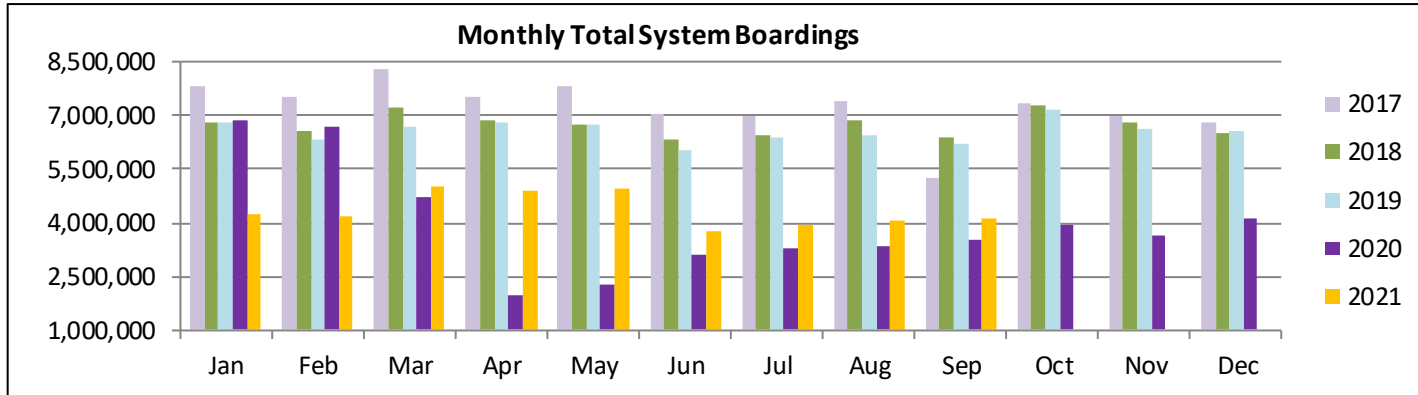
## SPECIAL TRANSPORTATION SERVICES (STS) TOTAL MONTHLY RIDERSHIP COMPARISONS BY FISCAL YEAR

STS			Variance			Variance			Variance			Variance
	FY 17	FY 18	17 to 18	FY 19	18 to 19	FY 20	19 to 20	FY 21	20 to 21	19 to 21	17 to 21	
<b>Oct</b>	132,211	153,409	16.0%	162,564	6.0%	162,704	0.1%	97,388	-40.1%	-40.1%	-26.3%	
<b>Nov</b>	137,030	143,375	4.6%	145,653	1.6%	144,366	-0.9%	89,387	-38.1%	-38.6%	-34.8%	
<b>Dec</b>	133,439	136,955	2.6%	136,110	-0.6%	138,642	1.9%	96,366	-30.5%	-29.2%	-27.8%	
<b>Jan</b>	134,273	140,042	4.3%	146,268	4.4%	149,114	1.9%	97,928	-34.3%	-33.0%	-27.1%	
<b>Feb</b>	134,089	139,032	3.7%	141,396	1.7%	144,392	2.1%	98,285	-31.9%	-30.5%	-26.7%	
<b>Mar</b>	153,790	150,384	-2.2%	153,191	1.9%	89,634	-41.5%	112,930	26.0%	-26.3%	-26.6%	
<b>Apr</b>	137,217	148,879	8.5%	155,808	4.7%	26,877	-82.7%	120,122	346.9%	-22.9%	-12.5%	
<b>May</b>	151,138	152,164	0.7%	158,665	4.3%	39,654	-75.0%	118,636	199.2%	-25.2%	-21.5%	
<b>Jun</b>	140,623	143,653	2.2%	141,320	-1.6%	59,093	-58.2%	112,397	90.2%	-20.5%	-20.1%	
<b>Jul</b>	133,656	141,020	5.5%	148,232	5.1%	61,765	-58.3%	110,059	78.2%	-25.8%	-17.7%	
<b>Aug</b>	145,760	151,750	4.1%	147,331	-2.9%	66,563	-54.8%	110,766	66.4%	-24.8%	-24.0%	
<b>Sep</b>	100,010	142,360	42.3%	141,387	-0.7%	80,346	-43.2%	115,406	43.6%	-18.4%	15.4%	
<b>Total</b>	<b>1,633,236</b>	<b>1,743,023</b>	<b>6.7%</b>	<b>1,777,925</b>	<b>2.0%</b>	<b>1,163,150</b>	<b>-34.6%</b>	<b>1,279,670</b>	<b>10.0%</b>	<b>-28.0%</b>	<b>-21.6%</b>	

## ALL-MODES COMBINED TOTAL MONTHLY RIDERSHIP COMPARISONS BY FISCAL YEAR

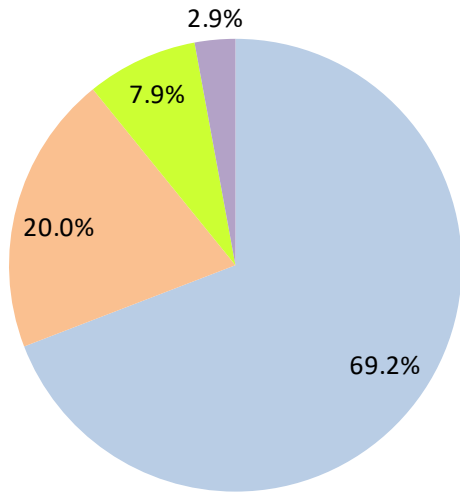
All Modes Month	Boardings					Variances					
	FY 17	FY 18	FY 19	FY 20	FY 21	17 TO 18	18 TO 19	19 TO 20	20 TO 21	19 TO 21	17 TO 21
<b>Oct</b>	7,543,706	7,322,886	7,265,208	7,144,116	3,922,096	-2.9%	-0.8%	-1.7%	-45.1%	-46.0%	-48.0%
<b>Nov</b>	7,894,500	7,005,032	6,783,315	6,610,671	3,672,591	-11.3%	-3.2%	-2.5%	-44.4%	-45.9%	-53.5%
<b>Dec</b>	7,919,860	6,783,192	6,538,734	6,549,392	4,139,109	-14.4%	-3.6%	0.2%	-36.8%	-36.7%	-47.7%
<b>Jan</b>	7,814,784	6,834,741	6,797,602	6,890,225	4,235,761	-12.5%	-0.5%	1.4%	-38.5%	-37.7%	-45.8%
<b>Feb</b>	7,505,125	6,591,531	6,312,033	6,671,991	4,166,375	-12.2%	-4.2%	5.7%	-37.6%	-34.0%	-44.5%
<b>Mar</b>	8,317,082	7,244,805	6,712,624	4,694,315	4,993,168	-12.9%	-7.3%	-30.1%	6.4%	-25.6%	-40.0%
<b>Apr</b>	7,513,151	6,869,802	6,802,085	1,989,545	4,883,356	-8.6%	-1.0%	-70.8%	145.5%	-28.2%	-35.0%
<b>May</b>	7,841,691	6,742,402	6,755,829	2,258,413	4,982,012	-14.0%	0.2%	-66.6%	120.6%	-26.3%	-36.5%
<b>Jun</b>	7,069,455	6,318,979	6,026,467	3,082,213	3,794,581	-10.6%	-4.6%	-48.9%	23.1%	-37.0%	-46.3%
<b>Jul</b>	6,969,807	6,449,526	6,402,110	3,272,074	3,970,972	-7.5%	-0.7%	-48.9%	21.4%	-38.0%	-43.0%
<b>Aug</b>	7,408,607	6,879,929	6,460,375	3,335,847	4,048,215	-7.1%	-6.1%	-48.4%	21.4%	-37.3%	-45.4%
<b>Sep</b>	5,284,604	6,412,945	6,240,212	3,501,209	4,120,180	21.4%	-2.7%	-43.9%	17.7%	-34.0%	-22.0%
<b>FY Total</b>	<b>89,082,372</b>	<b>81,455,770</b>	<b>79,096,594</b>	<b>56,000,011</b>	<b>50,928,416</b>	<b>-8.6%</b>	<b>-2.9%</b>	<b>-29.2%</b>	<b>-9.1%</b>	<b>-35.6%</b>	<b>-42.8%</b>

## TOTAL MONTHLY AND AVERAGE WEEKDAY RIDERSHIP YEAR OVER YEAR COMPARISON CHARTS – ALL MODES COMBINED



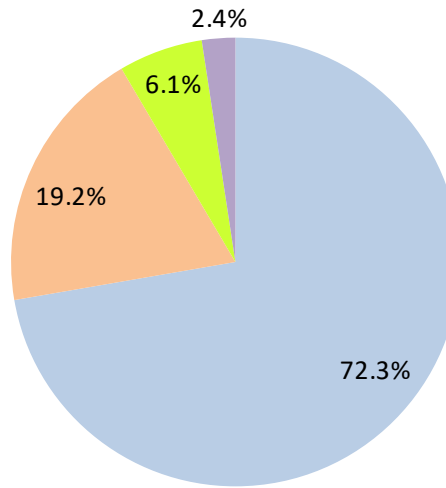
# AVERAGE WEEKDAY RIDERSHIP - MODAL SPLITS

September 2021



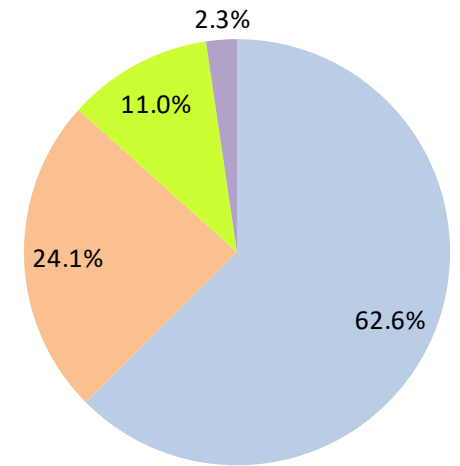
boardings

September 2020



boardings

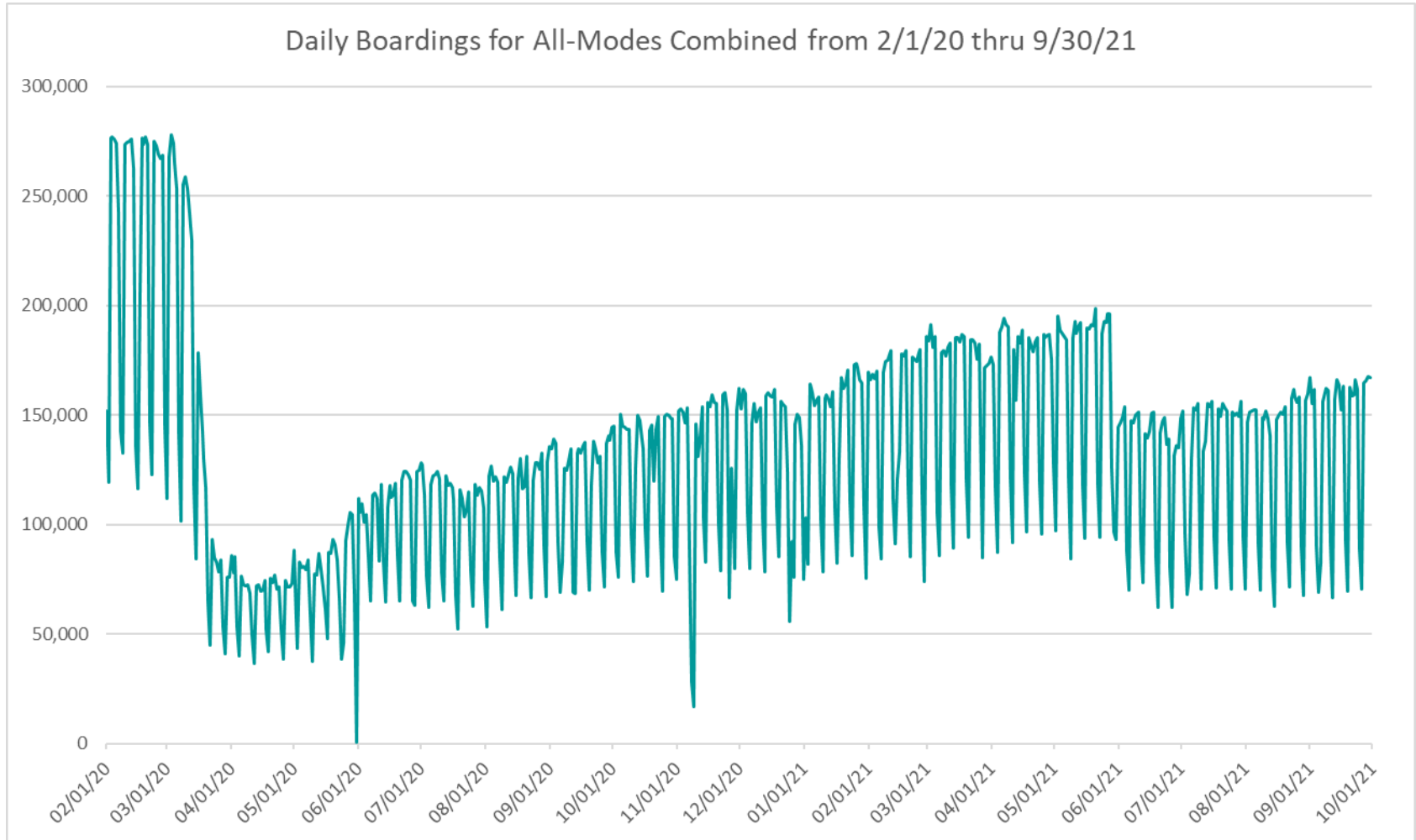
September 2019



boardings



## DAILY RIDERSHIP FOR ALL MODES COMBINED SINCE FEBRUARY 1, 2020



- (1) National Emergency was declared on 3/13/20 as a result of the SARS-CoV-2 pandemic.
- (2) There was no Metrobus, Metrorail and Metromover service on 5/31/20, as a safety precaution.
- (3) The dip at the start of the second week of November 2020 is due to Hurricane Eta.
- (4) The reduction seen beginning 6/1/21 is partly due to the resumption of fares for bus and rail, and partly the result of having resumed reporting Cubic farebox data rather than bus APC counts, as well as Cubic rail faregate counts instead of video camera counts on that date.
- (5) Periodic (weekly) variations are prominent, since weekday ridership is almost always significantly higher than weekend or holiday ridership.

# Metrobus



## METROBUS AVERAGE WEEKDAY BOARDINGS BY ROUTE (†)

Route <i>weekdays</i>	Average Weekday	Average Weekday	Percent Change	Average Weekday	Percent Change	Average Weekday	Percent Change	Average Weekday	Percent Change
	Sep-21	Sep-20	YOY	Feb-20	Current vs Feb-20	Aug-21	MOM	Sep-19	YO2Y
1 (*)	181	194	-6.7%	184	-1.7%	142	27.4%	290	-37.7%
2	2,088	1,630	28.1%	3,102	-32.7%	1,781	17.3%	2,416	-13.6%
3	4,070	3,019	34.8%	5,137	-20.8%	3,844	5.9%	4,746	-14.3%
7	2,452	1,896	29.3%	3,501	-30.0%	2,122	15.5%	3,254	-24.7%
8	3,508	2,906	20.7%	3,909	-10.2%	3,409	2.9%	3,772	-7.0%
9	4,725	3,901	21.1%	5,528	-14.5%	4,607	2.6%	5,248	-10.0%
10	1,467	960	52.9%	2,482	-40.9%	1,471	-0.3%	2,105	-30.3%
11	6,404	4,520	41.7%	7,292	-12.2%	5,728	11.8%	7,023	-8.8%
12	1,762	1,732	1.7%	2,779	-36.6%	1,617	8.9%	2,766	-36.3%
16	1,124	917	22.6%	1,862	-39.7%	1,126	-0.2%	1,749	-35.8%
17	2,342	2,002	17.0%	3,878	-39.6%	2,091	12.0%	3,796	-38.3%
19	907	699	29.7%	1,542	-41.2%	784	15.6%	1,578	-42.5%
21	1,149	1,492	-23.0%	1,817	-36.7%	1,083	6.1%	1,817	-36.7%
22	2,340	1,732	35.1%	3,640	-35.7%	2,228	5.0%	3,559	-34.2%
24 - Coral Way Limited	843	1,230	-31.5%	1,340	-37.0%	924	-8.7%	1,735	-51.4%
27	4,896	3,821	28.1%	6,972	-29.8%	4,581	6.9%	6,639	-26.3%
29 (*)	289	308	-6.2%	534	-45.9%	279	3.6%	669	-56.8%
31 - BUSWAY LOCAL	648	577	12.2%	1,089	-40.5%	628	3.1%	1,044	-38.0%
32	1,471	1,638	-10.2%	2,390	-38.5%	1,373	7.1%	2,384	-38.3%
33	1,005	664	51.4%	1,687	-40.4%	947	6.2%	1,687	-40.4%
34 EXPRESS	528	720	-26.7%	2,008	-73.7%	761	-30.6%	1,900	-72.2%
35	1,540	1,497	2.9%	2,421	-36.4%	1,323	16.5%	2,354	-34.6%
36	1,659	1,637	1.3%	2,536	-34.6%	1,597	3.9%	2,395	-30.7%
37	2,542	1,876	35.5%	3,273	-22.3%	2,364	7.5%	3,262	-22.1%
38	4,051	3,433	18.0%	6,361	-36.3%	3,635	11.4%	6,462	-37.3%
39 EXPRESS	156	152	2.7%	893	-82.5%	140	11.5%	937	-83.3%
40	1,193	1,004	18.9%	1,772	-32.6%	1,112	7.4%	1,713	-30.3%
42	626	408	53.7%	820	-23.6%	584	7.2%	848	-26.1%
46 - LIBERTY CITY CONN. (*)	18	13	38.0%	41	-55.3%	14	32.5%	25	-28.1%
51 - FLAGLER MAX	2,281	1,654	37.9%	3,109	-26.6%	2,141	6.5%	3,127	-27.0%
52	1,006	675	48.9%	1,261	-20.3%	789	27.5%	1,266	-20.6%
54	1,978	2,109	-6.2%	2,940	-32.7%	1,888	4.7%	2,908	-32.0%
55 MARLINS SHUTTLE								46	
56 (*)	276	157	75.4%	354	-22.0%	226	22.2%	369	-25.3%
57	236	240	-1.8%	433	-45.6%	268	-12.0%	407	-42.0%
62	1,214	1,501	-19.2%	1,815	-33.1%	1,172	3.6%	1,825	-33.5%
71 (*)	432	305	41.5%	711	-39.2%	373	15.8%	563	-23.3%
72 (*)	430	361	19.0%	781	-44.9%	415	3.6%	722	-40.4%

(†) In this table and those which follow, "YOY" stands for "year-over-year", "MOM" for "month-over-month" and "YO2Y" for "year over two years", i.e., current month vs 12 months prior, one month prior, and 24 months prior, respectively.

(\*) Contracted routes

(\*\*) Due to effects from the SARS-CoV-2 pandemic; rides were fare-free beginning March 22, 2020; fares were reinstated on June 1, 2021, in part accounting for the drop in ridership from May 2021.



## METROBUS AVERAGE WEEKDAY BOARDINGS BY ROUTE

Route <i>weekdays</i>	Average Weekday	Average Weekday	Percent Change	Average Weekday	Percent Change	Average Weekday	Percent Change	Average Weekday	Percent Change
	Sep-21	Sep-20	YOY	Feb-20	Current vs Feb-20	Aug-21	MOM	Sep-19	YO2Y
73	1,527	1,098	39.1%	2,124	-28.1%	1,420	7.6%	2,153	-29.1%
75	922	626	47.5%	1,429	-35.4%	788	17.0%	1,508	-38.8%
77	5,375	4,373	22.9%	7,129	-24.6%	5,296	1.5%	7,175	-25.1%
79 STREET MAX				361				318	
82 - WESTCHESTER CIRC. (*)	31	26	18.1%	62	-49.2%	30	3.2%	54	-41.9%
87	1,000	783	27.7%	1,499	-33.3%	973	2.8%	1,544	-35.2%
88	1,983	1,281	54.9%	2,076	-4.5%	1,902	4.3%	2,001	-0.9%
93 - BISCAYNE MAX	1,809	1,352	33.9%	3,334	-45.7%	1,711	5.7%	3,199	-43.4%
95 EXPRESS	307	289	6.3%	1,690	-81.8%	445	-31.1%	1,803	-83.0%
99	1,074	853	26.0%	1,473	-27.0%	948	13.4%	1,449	-25.8%
101 - A (*)	121	92	31.3%	177	-31.7%	121	0.1%	156	-22.5%
102 - B	1,320	793	66.5%	1,778	-25.7%	1,227	7.7%	1,617	-18.3%
103 - C	184	139	32.5%	463	-60.4%	203	-9.3%	403	-54.4%
104	586	285	105.4%	837	-30.0%	535	9.6%	934	-37.3%
105 - E	855	657	30.1%	1,287	-33.6%	857	-0.3%	1,125	-24.0%
107 - G	1,125	751	49.7%	1,713	-34.3%	1,110	1.3%	1,635	-31.2%
108 - H	284	186	53.2%	473	-39.8%	268	6.0%	435	-34.6%
110 - J	1,833	1,628	12.6%	2,508	-26.9%	1,747	5.0%	2,447	-25.1%
112 - L	6,616	6,383	3.7%	7,636	-13.4%	6,330	4.5%	7,161	-7.6%
113 - M	404	350	15.3%	866	-53.3%	393	2.8%	793	-49.1%
115 (*)	136	212	-35.8%	180	-24.5%	136	0.0%	144	-5.5%
119 - S	6,885	6,158	11.8%	8,970	-23.2%	6,761	1.8%	7,799	-11.7%
120 - BEACH MAX	3,766	3,813	-1.2%	6,667	-43.5%	3,777	-0.3%	5,866	-35.8%
132 TRI-RAIL (DORAL)	10	13	-27.4%	16	-37.4%	13	-25.9%	14	-32.4%
135	531	655	-19.0%	1,399	-62.1%	565	-6.1%	1,291	-58.9%
136	105	49	116.4%	126	-16.8%	102	2.7%	142	-25.8%
137 - WEST DADE CONN.	1,002	790	26.8%	1,626	-38.4%	903	10.9%	1,644	-39.1%
150 - MIAMI BEACH AIRPORT FLYER	738	819	-9.9%	1,867	-60.5%	960	-23.2%	1,604	-54.0%
155 - BISCAYNE GARDENS CIRCULATOR (*)	26	30	-11.8%	44	-40.2%	25	5.3%	44	-39.9%
175 - NW MIAMI-DADE EXPRESS				33					
183	2,097	1,810	15.9%	3,149	-33.4%	1,848	13.5%	2,917	-28.1%
195 EXPRESS - BROWARD BLVD				372				415	
196 EXPRESS - SHERIDAN ST				383				382	
200 - CUTLER BAY LOCAL (††)	1	35	-97.2%	158	-99.4%	74	-98.6%	160	-99.4%
202 - LITTLE HAITI CONN. (*)	72	105	-31.6%	140	-48.4%	84	-13.8%	136	-47.1%
204 KILLIAN KAT				1,071				1,034	

(††) Due to various communications system and process issues, the NextFare System did not capture most of the Cutler Bay Local ridership in September 2021.

## METROBUS AVERAGE WEEKDAY BOARDINGS BY ROUTE

Route <i>weekdays</i>	Average Weekday	Average Weekday	Percent Change	Average Weekday	Percent Change	Average Weekday	Percent Change	Average Weekday	Percent Change
	Sep-21	Sep-20	YOY	Feb-20	Current vs Feb-20	Aug-21	MOM	Sep-19	YO2Y
207 (7st) - LITTLE HAVANA CIRC	759	925	-18.0%	1,489	-49.1%	725	4.6%	1,474	-48.5%
208 (8st) - LITTLE HAVANA CIRC	803	925	-13.1%	1,308	-38.6%	775	3.6%	1,422	-43.5%
210 - SKYLAKE CIRC (*)	304	168	80.7%	282	7.9%	261	16.6%	297	2.2%
211 - OVERTOWN CIRC. (*)	61	35	73.3%	58	4.7%	34	79.6%	66	-8.1%
212 - SWEETWATER CIRC. (*)	30	20	45.9%	15	101.5%	31	-4.0%	38	-21.4%
217 - BUNCHE PARK CIRC. (*)	52	72	-28.2%	97	-46.9%	40	28.7%	59	-11.8%
238 EAST/WEST CONN.	284	210	34.8%	449	-36.9%	252	12.7%	450	-36.9%
246 - NIGHT OWL	10	1	839.6%	94	-89.0%	10	7.9%	90	-88.6%
248 - PRINCETON CIRCULATOR (*)	62	71	-12.6%	135	-54.0%	62	0.1%	116	-46.7%
252 - CORAL REEF MAX	463	307	50.7%	851	-45.6%	434	6.6%	858	-46.0%
254 - BROWNSVILLE CIRC. (*)	33	12	163.8%	19	71.1%	7	391.7%	15	122.8%
267 - LUDLAM LIMITED (*)	110	84	31.2%	149	-26.0%	100	10.2%	122	-9.9%
272 SUNSET KAT (*)	288	215	33.7%	550	-47.7%	279	2.9%	526	-45.3%
277 - 7th AVENUE MAX	353	356	-0.9%	683	-48.3%	294	20.1%	601	-41.2%
286 - NORTH POINTE CIRC. (*)	36	37	-2.1%	97	-62.9%	34	7.5%	75	-52.0%
287 - SAGA BAY MAX	164	98	66.8%	358	-54.2%	165	-0.5%	332	-50.7%
288 - KENDALL CRUISER				762				782	
295 EXPRESS - BROWARD BLVD - CIVIC CENTER				233				233	
296 EXPRESS - SHERIDAN ST - CIVIC CENTER				215				228	
297-27th AVENUE ORANGE MAX	674	665	1.4%	1,356	-50.3%	600	12.4%	1,300	-48.1%
301 DADE-MONROE EXPRESS (*)	991	747	32.5%	841	17.7%	1,023	-3.2%	737	34.4%
302 CARD SOUND EXPRESS (*)	70	47	49.0%	86	-19.0%	81	-13.3%	66	6.1%
344 (*)	48	51	-6.6%	96	-50.2%	51	-5.7%	88	-45.7%
500		40		81		23		30	
836 EXPRESS	119					96	24.2%		
GREEN HILLS SHUTTLE (*)	6	6	0.0%	9	-33.3%	5	11.1%	6	-3.2%
KINGS CREEK SHUTTLE (*)	15	19	-22.1%	13	12.3%	10	46.0%	14	8.1%
SIERRALAKES SHUTTLE (*)	18	24	-24.0%	45	-59.4%	17	9.0%	26	-28.4%
ROBERT SHARP SHUTTLE (*)	24	29	-17.2%	10	152.6%	18	33.3%	5	405.3%
AHEPA SHUTTLE (*)	21	25	-13.5%	21	2.2%	19	13.1%	23	-6.8%
<b>Total</b>	<b>112,359</b>	<b>95,266</b>	<b>17.9%</b>	<b>167,711</b>	<b>-33.0%</b>	<b>106,560</b>	<b>5.4%</b>	<b>160,982</b>	<b>-30.2%</b>

(\*) The following routes are entirely operated under contract: 1, 29, 46, 56, 71, 72, 82, 101-A, 115, 155, 202, 210, 211, 212, 217, 248, 254, 267, 272, 286, 301, 302 and 344, although some supplemental runs may be performed by DTPW. Conversely, a few routes that are nominally run by DTPW may have a few supplemental runs operated by contractors; Dade-Monroe routes 301 and 302 as well as six Lifeline routes are also under contracted operation.

(1) Includes shuttles and those routes which were not run both years.

(2) Several express routes were suspended beginning at the end of March 2020, due to the SARS-CoV-2 pandemic, while other routes had alignment and schedule modifications made to them, in an ongoing effort to optimize service delivery.

## METROBUS AVERAGE SATURDAY BOARDINGS BY ROUTE

Route	Average Saturday	Average Saturday	Percent Change	Average Saturday	Percent Change	Average Saturday	Percent Change	Average Saturday	Percent Change
	Sep-21	Sep-20	YOY	Feb-20	Current vs Feb-20	Aug-21	MOM	Sep-19	YO2Y
<b>Saturdays</b>									
1 (*)	160	178	-10.3%	215	-25.7%	131	21.7%	243	-34.3%
2	1,381	1,176	17.4%	1,616	-14.6%	1,244	11.0%	1,456	-5.2%
3	3,519	2,902	21.3%	5,229	-32.7%	3,785	-7.0%	5,053	-30.4%
7	1,591	1,182	34.6%	1,887	-15.7%	1,214	31.0%	1,801	-11.7%
8	1,679	1,749	-4.0%	2,027	-17.2%	1,684	-0.3%	1,909	-12.0%
9	2,478	2,358	5.1%	3,034	-18.3%	2,483	-0.2%	3,087	-19.7%
10	1,462	1,294	13.0%	1,896	-22.9%	1,370	6.8%	1,708	-14.4%
11	3,905	3,212	21.6%	5,182	-24.7%	4,012	-2.7%	5,287	-26.1%
16	1,022	931	9.9%	1,566	-34.7%	1,116	-8.4%	1,399	-26.9%
17	1,665	1,443	15.4%	2,363	-29.5%	1,527	9.0%	2,449	-32.0%
22	1,367	1,506	-9.2%	2,084	-34.4%	1,346	1.5%	2,005	-31.8%
24 - Coral Way Limited	622	729	-14.7%	1,165	-46.7%	501	24.1%	1,189	-47.7%
27	2,900	3,225	-10.1%	4,034	-28.1%	2,654	9.3%	3,982	-27.2%
31 - BUSWAY LOCAL	536	703	-23.8%	896	-40.2%	473	13.2%	856	-37.4%
32	728	789	-7.7%	1,029	-29.2%	681	6.9%	1,003	-27.4%
33	652	513	27.1%	951	-31.4%	580	12.4%	919	-29.1%
35	881	896	-1.6%	1,372	-35.8%	704	25.2%	1,123	-21.6%
36	962	1,051	-8.5%	1,289	-25.4%	926	3.9%	1,212	-20.6%
37	1,499	1,161	29.1%	2,090	-28.3%	1,434	4.5%	2,076	-27.8%
38	3,087	2,708	14.0%	4,715	-34.5%	3,068	0.6%	4,750	-35.0%
40	449	372	20.7%	655	-31.5%	460	-2.4%	642	-30.1%
42	443	412	7.6%	552	-19.7%	388	14.2%	535	-17.1%
52	553	447	23.7%	686	-19.4%	373	48.0%	660	-16.3%
54	1,194	1,541	-22.5%	1,727	-30.8%	1,132	5.5%	1,676	-28.7%
55 MARLINS SHUTTLE								65	
62	917	1,287	-28.7%	1,343	-31.7%	830	10.5%	1,184	-22.5%
71 (*)	166	150	10.1%	252	-34.3%	149	11.4%	192	-13.7%
72 (*)	289	207	40.1%	350	-17.3%	341	-15.1%	335	-13.5%
73	646	575	12.3%	860	-25.0%	631	2.3%	1,034	-37.6%
75	335	339	-1.1%	468	-28.4%	350	-4.3%	460	-27.1%
77	3,152	2,294	37.4%	4,197	-24.9%	3,186	-1.1%	4,015	-21.5%
87	307	337	-9.0%	402	-23.8%	335	-8.4%	427	-28.2%
88	1,226	1,020	20.1%	1,620	-24.4%	1,200	2.1%	1,522	-19.5%
99	626	561	11.6%	849	-26.3%	619	1.2%	885	-29.3%

## METROBUS AVERAGE SATURDAY BOARDINGS BY ROUTE

Route	Average Saturday	Average Saturday	Percent Change	Average Saturday	Percent Change	Average Saturday	Percent Change	Average Saturday	Percent Change
	Sep-21	Sep-20	YOY	Feb-20	Current vs Feb-20	Aug-21	MOM	Sep-19	YO2Y
<b>Saturdays</b>									
101 - A (*)	42	41	2.5%	71	-41.0%	54	-22.7%	60	-29.8%
102 - B	475	485	-2.1%	851	-44.2%	438	8.4%	726	-34.7%
103 - C	159	109	46.4%	315	-49.4%	153	4.3%	288	-44.8%
104	269	43	531.8%	468	-42.7%	205	30.8%	503	-46.6%
105 - E	487	355	37.2%	619	-21.4%	459	6.1%	602	-19.2%
107 - G	917	586	56.7%	1,066	-14.0%	823	11.5%	1,050	-12.6%
108 - H	239	241	-0.8%	372	-35.9%	267	-10.4%	359	-33.5%
110 - J	1,261	1,369	-7.9%	1,952	-35.4%	1,315	-4.1%	1,867	-32.5%
112 - L	4,410	4,570	-3.5%	5,667	-22.2%	4,158	6.0%	5,660	-22.1%
113 - M	259	304	-14.8%	503	-48.6%	304	-14.8%	480	-46.1%
115 (*)	92	121	-24.0%	82	11.6%	93	-1.3%	97	-5.7%
119 - S	4,706	4,728	-0.5%	6,861	-31.4%	4,530	3.9%	6,632	-29.0%
120 - BEACH MAX	2,898	3,002	-3.5%	4,744	-38.9%	2,831	2.3%	4,464	-35.1%
135	157	258	-39.1%	539	-70.8%	200	-21.2%	496	-68.3%
137 - WEST DADE CONN.	737	590	25.0%	1,027	-28.2%	684	7.8%	1,046	-29.5%
150 - MIAMI BEACH AIRPORT FLYER	564	769	-26.6%	1,604	-64.8%	854	-34.0%	1,402	-59.8%
183	1,287	1,230	4.6%	1,790	-28.1%	1,147	12.2%	1,731	-25.7%
200 - CUTLER BAY LOCAL (††)	9	43	-79.2%	119	-92.4%	47	-80.9%	135	-93.3%
202 - LITTLE HAITI CONN. (*)	55	49	12.8%	50	9.6%	56	-2.2%	67	-17.6%
207 (7st) - LITTLE HAVANA CIRC	687	740	-7.1%	1,032	-33.5%	701	-2.0%	943	-27.1%
208 (8st) - LITTLE HAVANA CIRC	787	822	-4.3%	1,044	-24.7%	713	10.3%	995	-20.9%
210 - SKYLAKE CIRC (*)	103	131	-21.6%	165	-37.7%	119	-13.5%	180	-42.8%
246 - NIGHT OWL				84		1		74	
252 - CORAL REEF MAX	154	178	-13.8%	302	-49.2%	167	-8.1%	283	-45.7%
286 - NORTH POINTE CIRC. (*)	29	30	-4.2%	41	-29.5%	29	-1.7%	56	-48.4%
301 DADE-MONROE EXPRESS(*)	1,009	753	34.0%	801	26.0%	970	4.0%	753	34.0%
302 CARD SOUND EXPRESS(*)	43	30	46.6%	57	-23.6%	47	-7.5%	52	-16.8%
338 - WEEKEND EXPRESS	123	82	49.7%	237	-48.1%	123	-0.4%	202	-39.2%
500		29		70				40	
12/21 WEEKEND INTERL.	1,660	1,432	15.9%	2,528	-34.4%	1,673	-0.8%	2,568	-35.4%
FEDERATION GARDENS SHUTTLE (*)	20	17	15.9%	28	-29.6%	19	6.7%	25	-18.4%
<b>Total</b>	<b>66,057</b>	<b>62,401</b>	<b>5.9%</b>	<b>93,742</b>	<b>-29.5%</b>	<b>64,123</b>	<b>3.0%</b>	<b>91,008</b>	<b>-27.4%</b>

## METROBUS AVERAGE SUNDAY BOARDINGS BY ROUTE

Route	Average Sunday	Average Sunday	Percent Change	Average Sunday	Percent Change	Average Sunday	Percent Change	Average Sunday	Percent Change
	Sep-21	Sep-20	YOY	Feb-20	Current vs Feb-20	Aug-21	MOM	Sep-19	YO2Y
<b>Sundays</b>									
1 (*)	134	171	-21.3%	201	-33.2%	130	3.5%	216	-37.8%
2	670	584	14.9%	1,335	-49.8%	699	-4.1%	949	-29.4%
3	3,134	2,598	20.7%	4,353	-28.0%	3,055	2.6%	3,737	-16.1%
7	993	885	12.3%	1,654	-40.0%	1,012	-1.9%	1,369	-27.5%
8	1,361	1,366	-0.4%	1,746	-22.1%	1,235	10.2%	1,484	-8.3%
9	2,052	2,021	1.5%	2,549	-19.5%	1,922	6.7%	2,200	-6.7%
10	1,184	880	34.5%	1,441	-17.9%	1,103	7.3%	1,237	-4.3%
11	2,780	2,749	1.2%	3,917	-29.0%	2,597	7.1%	3,673	-24.3%
16	683	609	12.3%	997	-31.4%	699	-2.2%	813	-15.9%
17	1,112	970	14.7%	1,833	-39.3%	1,113	-0.1%	1,535	-27.5%
22	995	983	1.2%	1,548	-35.8%	1,011	-1.6%	1,349	-26.3%
24 - Coral Way Limited	685	643	6.5%	905	-24.3%	688	-0.5%	870	-21.2%
27	1,974	2,459	-19.7%	2,918	-32.4%	1,704	15.8%	2,808	-29.7%
31 - BUSWAY LOCAL	380	563	-32.5%	715	-46.9%	365	4.1%	594	-36.0%
32	456	558	-18.2%	772	-40.9%	378	20.7%	678	-32.7%
33	425	393	8.2%	607	-29.9%	382	11.5%	501	-15.0%
35	776	801	-3.1%	942	-17.6%	606	28.1%	776	0.0%
36	846	1,039	-18.6%	1,111	-23.8%	809	4.6%	971	-12.8%
37	1,221	1,107	10.3%	1,739	-29.8%	1,049	16.4%	1,520	-19.6%
38	2,644	2,483	6.5%	4,147	-36.2%	2,621	0.8%	3,844	-31.2%
40	348	332	4.9%	447	-22.1%	301	15.5%	425	-18.1%
42	278	292	-4.8%	416	-33.3%	212	30.7%	321	-13.4%
52	387	429	-9.8%	466	-17.1%	258	49.8%	453	-14.7%
54	825	1,039	-20.5%	1,171	-29.5%	767	7.7%	1,110	-25.7%
55 MARLINS SHUTTLE								66	
62	584	822	-29.0%	891	-34.5%	580	0.6%	779	-25.1%
71 (*)	105	148	-29.2%	162	-35.4%	98	7.0%	129	-18.9%
72 (*)	256	143	79.3%	265	-3.1%	241	6.6%	244	5.1%
73	372	260	43.1%	495	-24.7%	317	17.6%	367	1.6%
75	180	249	-27.9%	271	-33.7%	185	-3.1%	246	-26.8%
77	2,271	2,285	-0.6%	2,815	-19.3%	2,104	7.9%	2,484	-8.6%
87	197	253	-22.1%	319	-38.4%	199	-1.1%	287	-31.5%
88	914	676	35.3%	1,286	-28.9%	848	7.8%	1,105	-17.3%
99	587	462	27.3%	658	-10.7%	509	15.4%	578	1.7%

## METROBUS AVERAGE SUNDAY BOARDINGS BY ROUTE

Route	Average Sunday	Average Sunday	Percent Change	Average Sunday	Percent Change	Average Sunday	Percent Change	Average Sunday	Percent Change
	Sep-21	Sep-20	YOY	Feb-20	Current vs Feb-20	Aug-21	MOM	Sep-19	YO2Y
<b>Sundays</b>									
101 - A (*)	42	33	26.7%	56	-24.7%	34	22.2%	42	-0.1%
102 - B	562	532	5.6%	717	-21.6%	471	19.3%	600	-6.3%
103 - C	89	131	-31.8%	212	-57.7%	102	-12.4%	163	-45.0%
104	171	73	135.6%	317	-45.9%	143	20.2%	299	-42.6%
105 - E	447	384	16.3%	616	-27.4%	439	1.9%	481	-7.1%
107 - G	636	527	20.7%	895	-28.9%	641	-0.7%	705	-9.8%
108 - H	236	228	3.6%	328	-28.2%	195	20.9%	281	-16.0%
110 - J	1,013	1,035	-2.1%	1,638	-38.2%	943	7.4%	1,268	-20.1%
112 - L	3,074	3,508	-12.3%	4,804	-36.0%	3,241	-5.1%	3,958	-22.3%
113 - M	236	206	14.7%	431	-45.2%	244	-3.4%	350	-32.7%
115 (*)	92	114	-18.8%	80	15.3%	97	-5.3%	73	26.6%
119 - S	4,574	4,893	-6.5%	7,141	-35.9%	4,666	-2.0%	5,889	-22.3%
120 - BEACH MAX	1,958	1,849	5.9%	3,469	-43.6%	1,834	6.8%	2,840	-31.1%
135	83	216	-61.7%	349	-76.3%	193	-57.1%	317	-73.9%
137 - WEST DADE CONN.	578	568	1.8%	879	-34.2%	523	10.6%	787	-26.6%
150 - MIAMI BEACH AIRPORT FLYER	622	945	-34.2%	1,574	-60.5%	819	-24.1%	1,196	-48.0%
183	1,109	1,028	7.8%	1,413	-21.5%	971	14.1%	1,208	-8.3%
200 - CUTLER BAY LOCAL (††)	4	43	-89.8%	59	-92.6%	44	-90.1%	43	-89.9%
202 - LITTLE HAITI CONN. (*)	52	52	0.4%	39	33.8%	54	-3.0%	48	8.4%
207 (7st) - LITTLE HAVANA CIRC	404	516	-21.7%	796	-49.3%	413	-2.1%	655	-38.4%
208 (8st) - LITTLE HAVANA CIRC	630	632	-0.3%	911	-30.9%	518	21.6%	788	-20.1%
210 - SKYLAKE CIRC (*)	126	124	1.3%	143	-12.2%	130	-3.7%	140	-10.3%
246 - NIGHT OWL	5	1	400.0%	87	-94.3%	3	50.0%	88	-94.3%
252 - CORAL REEF MAX	127	161	-21.1%	199	-36.1%	124	2.8%	212	-40.0%
301 DADE-MONROE EXPRESS(*)	935	640	46.3%	751	24.5%	998	-6.3%	657	42.3%
302 CARD SOUND EXPRESS(*)	64	30	112.0%	57	11.6%	75	-15.2%	44	46.2%
338 - WEEKEND EXPRESS	126	89	42.2%	252	-49.9%	130	-3.2%	197	-35.8%
500		33		83				42	
12/21 WEEKEND INTERL.	1,242	1,305	-4.8%	2,048	-39.3%	1,203	3.2%	1,878	-33.9%
<b>Total</b>	<b>51,045</b>	<b>51,136</b>	<b>-0.2%</b>	<b>75,428</b>	<b>-32.3%</b>	<b>49,043</b>	<b>4.1%</b>	<b>64,958</b>	<b>-21.4%</b>

## METROBUS TOTAL MONTHLY BOARDINGS BY ROUTE

Route	Total Month	Total Month	Percent Change	Total Month	Percent Change	Total Month	Percent Change	Total Month	Percent Change
	Sep-21	Sep-20	YOY	Feb-20	Current vs Feb-20	Aug-21	MOM	Sep-19	YO2Y
<b>Monthly Total</b>									
1 (*)	5,108	5,658	-9.7%	5,558	-8.1%	4,297	18.9%	8,077	-36.8%
2	52,723	42,901	22.9%	75,463	-30.1%	47,646	10.7%	59,830	-11.9%
3	115,206	88,411	30.3%	146,294	-21.3%	114,981	0.2%	137,554	-16.2%
7	62,816	49,987	25.7%	86,077	-27.0%	56,600	11.0%	80,504	-22.0%
8	87,188	76,387	14.1%	95,295	-8.5%	87,906	-0.8%	91,970	-5.2%
9	119,400	103,343	15.5%	135,924	-12.2%	120,891	-1.2%	130,511	-8.5%
10	42,580	29,809	42.8%	64,874	-34.4%	43,358	-1.8%	56,360	-24.4%
11	164,000	123,277	33.0%	187,425	-12.5%	155,044	5.8%	183,647	-10.7%
12	36,998	38,107	-2.9%	55,585	-33.4%	35,583	4.0%	55,318	-33.1%
16	31,101	26,323	18.2%	49,061	-36.6%	32,728	-5.0%	45,451	-31.6%
17	61,412	53,698	14.4%	96,715	-36.5%	57,672	6.5%	94,933	-35.3%
19	19,042	15,384	23.8%	30,847	-38.3%	17,250	10.4%	31,550	-39.6%
21	24,139	32,824	-26.5%	36,341	-33.6%	23,827	1.3%	36,338	-33.6%
22	59,577	48,052	24.0%	89,404	-33.4%	59,454	0.2%	87,285	-31.7%
24 - Coral Way Limited	23,624	32,558	-27.4%	36,237	-34.8%	25,779	-8.4%	44,683	-47.1%
27	124,276	106,788	16.4%	171,282	-27.4%	119,924	3.6%	165,560	-24.9%
29 (*)	6,069	6,779	-10.5%	10,684	-43.2%	6,138	-1.1%	13,388	-54.7%
31 - BUSWAY LOCAL	17,643	17,756	-0.6%	29,125	-39.4%	17,543	0.6%	27,875	-36.7%
32	36,077	41,412	-12.9%	56,027	-35.6%	34,819	3.6%	55,761	-35.3%
33	25,843	18,233	41.7%	40,918	-36.8%	25,058	3.1%	40,412	-36.1%
34 EXPRESS	11,086	15,849	-30.1%	40,159	-72.4%	16,738	-33.8%	38,008	-70.8%
35	39,750	39,723	0.1%	59,041	-32.7%	34,942	13.8%	56,218	-29.3%
36	42,916	44,376	-3.3%	61,606	-30.3%	42,880	0.1%	58,566	-26.7%
37	65,482	50,345	30.1%	82,870	-21.0%	62,979	4.0%	82,666	-20.8%
38	110,632	96,296	14.9%	167,379	-33.9%	105,345	5.0%	171,304	-35.4%
39 EXPRESS	3,276	3,343	-2.0%	17,853	-81.7%	3,077	6.5%	18,732	-82.5%
40	28,598	24,891	14.9%	40,497	-29.4%	27,804	2.9%	39,382	-27.4%
42	16,316	11,782	38.5%	20,825	-21.7%	15,465	5.5%	21,017	-22.4%
46 - LIBERTY CITY CONN. (*)	382	290	31.7%	814	-53.1%	302	26.5%	506	-24.5%
51 - FLAGLER MAX	47,897	36,389	31.6%	62,186	-23.0%	47,102	1.7%	62,530	-23.4%
52	25,262	18,357	37.6%	30,522	-17.2%	20,142	25.4%	30,684	-17.7%
54	50,438	56,722	-11.1%	72,125	-30.1%	49,902	1.1%	71,522	-29.5%
55 MARLINS SHUTTLE								536	
56 (*)	5,790	3,459	67.4%	7,071	-18.1%	4,964	16.6%	7,378	-21.5%
57	4,950	5,283	-6.3%	8,665	-42.9%	5,896	-16.0%	8,131	-39.1%
62	32,071	41,461	-22.6%	46,582	-31.2%	32,000	0.2%	45,904	-30.1%
71 (*)	10,258	7,907	29.7%	16,118	-36.4%	9,294	10.4%	12,800	-19.9%
72 (*)	11,473	9,350	22.7%	18,433	-37.8%	11,698	-1.9%	17,240	-33.5%

## METROBUS TOTAL MONTHLY BOARDINGS BY ROUTE

Route <b>Monthly Total</b>	Total Month	Total Month	Percent Change	Total Month	Percent Change	Total Month	Percent Change	Total Month	Percent Change
	Sep-21	Sep-20	YOY	Feb-20	Current vs Feb-20	Aug-21	MOM	Sep-19	YO2Y
73	36,514	27,486	32.8%	48,767	-25.1%	35,337	3.3%	49,400	-26.1%
75	21,611	16,116	34.1%	31,994	-32.5%	19,669	9.9%	33,471	-35.4%
77	136,839	114,530	19.5%	174,833	-21.7%	139,774	-2.1%	174,470	-21.6%
79 STREET MAX				7,228				6,357	
82 - WESTCHESTER CIRC. (*)	775	686	13.0%	1,482	-47.7%	749	3.5%	1,233	-37.1%
87	23,207	19,584	18.5%	33,273	-30.3%	23,728	-2.2%	34,306	-32.4%
88	51,123	34,956	46.2%	54,772	-6.7%	50,875	0.5%	52,733	-3.1%
93 - BISCAYNE MAX	37,997	29,737	27.8%	66,684	-43.0%	37,645	0.9%	63,972	-40.6%
95 EXPRESS	6,446	6,355	1.4%	33,796	-80.9%	9,799	-34.2%	36,052	-82.1%
99	28,004	22,856	22.5%	36,325	-22.9%	25,870	8.2%	35,979	-22.2%
101 - A (*)	2,914	2,320	25.6%	4,114	-29.2%	3,043	-4.2%	3,608	-19.2%
102 - B	32,436	21,517	50.7%	42,683	-24.0%	31,089	4.3%	38,832	-16.5%
103 - C	4,939	4,006	23.3%	11,682	-57.7%	5,576	-11.4%	10,186	-51.5%
104	14,230	6,733	111.3%	20,351	-30.1%	13,293	7.0%	22,478	-36.7%
105 - E	22,133	17,415	27.1%	31,302	-29.3%	22,890	-3.3%	27,801	-20.4%
107 - G	30,475	20,982	45.2%	43,178	-29.4%	30,927	-1.5%	41,139	-25.9%
108 - H	8,105	5,957	36.1%	12,624	-35.8%	7,940	2.1%	11,819	-31.4%
110 - J	48,612	45,425	7.0%	66,481	-26.9%	48,401	0.4%	64,012	-24.1%
112 - L	171,945	172,726	-0.5%	200,268	-14.1%	172,091	-0.1%	189,610	-9.3%
113 - M	10,694	9,743	9.8%	21,548	-50.4%	11,079	-3.5%	19,889	-46.2%
115 (*)	3,684	5,598	-34.2%	4,334	-15.0%	3,851	-4.3%	3,704	-0.5%
119 - S	186,287	173,956	7.1%	242,257	-23.1%	190,188	-2.1%	217,831	-14.5%
120 - BEACH MAX	100,458	103,296	-2.7%	170,942	-41.2%	103,584	-3.0%	152,212	-34.0%
132 TRI-RAIL (DORAL)	127	296	-57.1%	312	-59.3%	224	-43.3%	289	-56.1%
135 (*)	11,946	16,301	-26.7%	32,067	-62.7%	13,606	-12.2%	29,704	-59.8%
136	2,204	1,067	106.6%	2,524	-12.7%	2,249	-2.0%	2,830	-22.1%
137 - WEST DADE CONN.	26,880	22,019	22.1%	41,167	-34.7%	25,219	6.6%	41,785	-35.7%
150 - MIAMI BEACH AIRPORT FLYER	20,862	24,879	-16.1%	51,651	-59.6%	28,640	-27.2%	44,866	-53.5%
155 - BISCAYNE GARDENS CIRCULATOR (*)	553	657	-15.8%	881	-37.2%	550	0.5%	876	-36.9%
175 - NW MIAMI-DADE EXPRESS				661					
183	54,734	48,854	12.0%	77,570	-29.4%	50,105	9.2%	72,509	-24.5%
195 EXPRESS - BROWARD BLVD				7,441				8,299	
196 EXPRESS - SHERIDAN ST				7,658				7,648	
200 - CUTLER BAY LOCAL (††)	32	1,118	-97.1%	3,984	-99.2%	1,942	-98.4%	3,992	-99.2%
202 - LITTLE HAITI CONN. (*)	1,995	2,723	-26.7%	3,200	-37.7%	2,333	-14.5%	3,284	-39.3%
204 KILLIAN KAT				21,418				20,670	



## METROBUS TOTAL MONTHLY BOARDINGS BY ROUTE

Route  <b>Monthly Total</b>	Total Month	Total Month	Percent Change	Total Month	Percent Change	Total Month	Percent Change	Total Month	Percent Change
	Sep-21	Sep-20	YOY	Feb-20	Current vs Feb-20	Aug-21	MOM	Sep-19	YO2Y
207 (7st) - LITTLE HAVANA CIRC	20,698	25,370	-18.4%	38,127	-45.7%	20,819	-0.6%	37,180	-44.3%
208 (8st) - LITTLE HAVANA CIRC	23,167	26,160	-11.4%	35,018	-33.8%	22,494	3.0%	37,140	-37.6%
210 - SKYLAKE CIRC (*)	7,423	4,721	57.2%	7,033	5.5%	6,862	8.2%	7,506	-1.1%
211 - OVERTOWN CIRC. (*)	1,274	770	65.5%	1,159	9.9%	743	71.5%	1,320	-3.5%
212 - SWEETWATER CIRC. (*)	624	448	39.3%	295	111.5%	681	-8.4%	756	-17.5%
217 - BUNCHE PARK CIRC (*)	1,086	1,585	-31.5%	1,949	-44.3%	884	22.9%	1,172	-7.3%
238 EAST/WEST CONN.	5,957	4,629	28.7%	8,987	-33.7%	5,538	7.6%	8,990	-33.7%
246 - NIGHT OWL	92	28	228.6%	2,641	-96.5%	106	-13.2%	2,619	-96.5%
248 - PRINCETON CIRCULATOR (*)	1,300	1,558	-16.6%	2,690	-51.7%	1,360	-4.4%	2,324	-44.1%
252 - CORAL REEF MAX	10,972	8,116	35.2%	19,325	-43.2%	10,840	1.2%	19,563	-43.9%
254 - BROWNSVILLE CIRC. (*)	690	274	151.8%	384	79.7%	147	369.4%	295	133.9%
267 - LUDLAM LIMITED (*)	2,315	1,849	25.2%	2,978	-22.3%	2,200	5.2%	2,447	-5.4%
272 SUNSET KAT (*)	6,038	4,731	27.6%	11,004	-45.1%	6,146	-1.8%	10,513	-42.6%
277 - 7th AVENUE MAX	7,414	7,838	-5.4%	13,669	-45.8%	6,465	14.7%	12,010	-38.3%
286 - NORTH POINTE CIRC. (*)	871	929	-6.2%	2,145	-59.4%	854	2.0%	1,724	-49.5%
287 - SAGA BAY MAX	3,441	2,161	59.2%	7,160	-51.9%	3,622	-5.0%	6,648	-48.2%
288 - KENDALL CRUISER				15,249				15,641	
295 EXPRESS - BROWARD BLVD - CIVIC CENTER				4,668				4,655	
296 EXPRESS - SHERIDAN ST - CIVIC CENTER				4,297				4,555	
297-27th AVENUE ORANGE MAX	14,161	14,625	-3.2%	27,125	-47.8%	13,200	7.3%	25,997	-45.5%
301 DADE-MONROE EXPRESS(*)	29,516	22,014	34.1%	23,838	23.8%	31,384	-6.0%	21,699	36.0%
302 CARD SOUND EXPRESS(*)	1,959	1,270	54.3%	2,236	-12.4%	2,335	-16.1%	1,787	9.6%
338 - WEEKEND EXPRESS	1,122	743	51.0%	2,191	-48.8%	1,145	-2.0%	1,988	-43.6%
344 (*)	1,004	1,126	-10.8%	1,919	-47.7%	1,115	-10.0%	1,761	-43.0%
500		1,119		2,301		139		1,017	
836 EXPRESS	2,508					2,115	18.6%		
12/21 WEEKEND INTERL.	12,848	10,948	17.4%	20,830	-38.3%	12,708	1.1%	21,541	-40.4%
GREEN HILLS SHUTTLE (*)	18	24	-25.0%	36	-50.0%	27	-33.3%	31	-41.9%
KINGS CREEK SHUTTLE (*)	73	75	-2.7%	52	40.4%	40	82.5%	54	35.2%
SIERRALAKES SHUTTLE (*)	73	96	-24.0%	180	-59.4%	67	9.0%	102	-28.4%
ROBERT SHARP SHUTTLE (*)	120	145	-17.2%	38	215.8%	72	66.7%	19	531.6%
AHEPA SHUTTLE (*)	106	98	8.2%	83	27.7%	75	41.3%	91	16.5%
FEDERATION GARDENS SHUTTLE (*)	80	69	15.9%	142	-43.7%	75	6.7%	98	-18.4%
<b>Total</b>	<b>2,877,110</b>	<b>2,546,923</b>	<b>13.0%</b>	<b>4,123,083</b>	<b>-30.2%</b>	<b>2,843,552</b>	<b>1.2%</b>	<b>3,971,220</b>	<b>-27.6%</b>

## METROBUS HOLIDAY BOARDINGS BY ROUTE

### Labor Day Holiday

ROUTES	Labor Day 2020	Labor Day 2021	Pct Delta	ROUTES	Labor Day 2020	Labor Day 2021	Pct Delta
1	190	160	-15.8%	88	935	923	-1.3%
2	1,187	787	-33.7%	99	431	627	45.5%
3	2,667	3,913	46.7%	101	52	78	50.0%
7	1,180	1,453	23.1%	102	93	803	763.4%
8	1,963	1,800	-8.3%	103	51	85	66.7%
9	2,588	2,475	-4.4%	104	199	183	-8.0%
10	1,573	1,329	-15.5%	105	451	457	1.3%
11	2,390	3,469	45.1%	107	585	758	29.6%
12	816	786	-3.7%	108	320	262	-18.1%
16	621	802	29.1%	110	1,257	1,175	-6.5%
17	1,177	1,030	-12.5%	112	4,881	3,559	-27.1%
21	722	782	8.3%	113	228	264	15.8%
22	1,138	1,160	1.9%	115	127	111	-12.6%
24	501	636	26.9%	119	5,709	4,795	-16.0%
27	2,563	2,086	-18.6%	120	2,381	2,073	-12.9%
31	659	400	-39.3%	135	529	65	-87.7%
32	783	584	-25.4%	137	527	637	20.9%
33	297	527	77.4%	150	707	733	3.7%
35	1,177	862	-26.8%	183	1,226	1,183	-3.5%
36	1,116	884	-20.8%	202	112	32	-71.4%
37	1,316	1,401	6.5%	207	710	492	-30.7%
38	2,779	2,600	-6.4%	208	512	783	52.9%
40	479	498	4.0%	210	191	226	18.3%
42	190	241	26.8%	246		9	
52	402	556	38.3%	252	144	173	20.1%
54	1,092	940	-13.9%	301	741	864	16.6%
62	681	736	8.1%	302	24	65	170.8%
71	241	96	-60.2%	338	60	98	63.3%
72	206	266	29.1%				
73	413	464	12.3%				
75	359	192	-46.5%				
77	2,642	2,684	1.6%				
87	261	285	9.2%	<b>Total (1)</b>	<b>59,552</b>	<b>58,397</b>	<b>-1.9%</b>

## YEAR-OVER-YEAR BUS RIDERSHIP BY ROUTE SERVICE TYPE

Boardings by Service Type and Route	Average	Average	Percent	Average	Average	Percent	Average	Average	Percent	Total	Total	Percent
	Weekday	Weekday	Change	Saturday	Saturday	Change	Sunday	Sunday	Change	Monthly	Monthly	Change
	Sep-21	Sep-20	21 vs 20	Sep-21	Sep-20	21 vs 20	Sep-21	Sep-20	21 vs 20	Sep-21	Sep-20	21 vs 20
<b>Express Routes (1)</b>												
34 EXPRESS	528	720	-26.7%							11,086	15,849	-30.1%
39 EXPRESS	156	152	2.7%							3,276	3,343	-2.0%
95-EXPRESS	307	289	6.3%							6,446	6,355	1.4%
150-MIAMI BEACH AIRPORT FLYER	738	819	-9.9%	564	769	-26.6%	622	945	-34.2%	20,862	24,879	-16.1%
175 - NW MIAMI-DADE EXPRESS												
195 EXPRESS - BROWARD BLVD												
196 EXPRESS - SHERIDAN ST												
295 EXPRESS - BROWARD BLVD - CIVIC CENTER												
296 EXPRESS - SHERIDAN ST - CIVIC CENTER												
204 KAT-KILLIAN												
288 KENDALL CRUISER												
338 - WEEKEND EXPRESS		60		123	82	49.7%	126	89	42.2%	1,122	743	51.0%
836 EXPRESS	119									2,508		
<b>Subtotal Express Routes</b>	<b>1,848</b>	<b>2,041</b>	<b>-9.4%</b>	<b>687</b>	<b>851</b>	<b>-19.3%</b>	<b>748</b>	<b>1,034</b>	<b>-27.6%</b>	<b>45,300</b>	<b>51,169</b>	<b>-11.5%</b>
<b>Percentage of All Bus Routes</b>	<b>1.6%</b>	<b>2.1%</b>		<b>1.0%</b>	<b>1.4%</b>		<b>1.5%</b>	<b>2.0%</b>		<b>1.6%</b>	<b>2.0%</b>	
<b>Contracted Regular &amp; Circulator Routes</b>												
1	181	194	-6.7%	160	178	-10.3%	134	171	-21.3%	5,108	5,658	-9.7%
29	289	308	-6.2%							6,069	6,779	-10.5%
46 - LIBERTY CITY CONN.	18	13	38.0%							382	290	31.7%
56	276	157	75.4%							5,790	3,459	67.4%
71	432	305	41.5%	166	150	10.1%	105	148	-29.2%	10,258	7,907	29.7%
72	430	361	19.0%	289	207	40.1%	256	143	79.3%	11,473	9,350	22.7%
82 - WESTCHESTER CIRC	31	26	18.1%	30	26	14.4%				775	686	13.0%
101 - A	121	92	31.3%	42	41	2.5%	42	33	26.7%	2,914	2,320	25.6%
115	136	212	-35.8%	92	121	-24.0%	92	114	-18.8%	3,684	5,598	-34.2%
155 - BISCAYNE GARDENS CIRC	26	30	-11.8%							553	657	-15.8%
202 - LITTLE HAITI CONN.	72	105	-31.6%	55	49	12.8%	52	52	0.4%	1,995	2,723	-26.7%
210 - SKYLAKE CIRC	304	168	80.7%	103	131	-21.6%	126	124	1.3%	7,423	4,721	57.2%
211-OVERTOWN CIRC	61	35	73.3%							1,274	770	65.5%
212-SWEETWATER CIRC	30	20	45.9%							624	448	39.3%
217 - BUNCHE PARK CIRC	52	72	-28.2%							1,086	1,585	-31.5%
248 - PRINCETON CIRCULATOR	62	71	-12.6%							1,300	1,558	-16.6%
254-BROWNSVILLE CIRC	33	12	163.8%							690	274	151.8%
267-LUDLAM LIMITED	110	84	31.2%							2,315	1,849	25.2%
272 KAT-SUNSET	288	215	33.7%							6,038	4,731	27.6%
286-NORTH POINTE CIRC	36	37	-2.1%	29	30	-4.2%				871	929	-6.2%
344	48	51	-6.6%							1,004	1,126	-10.8%
<b>Subtotal Contracted Reg. &amp; Circ. Routes</b>	<b>3,035</b>	<b>2,571</b>	<b>18.1%</b>	<b>964</b>	<b>932</b>	<b>3.5%</b>	<b>807</b>	<b>784</b>	<b>3.0%</b>	<b>71,626</b>	<b>63,418</b>	<b>12.9%</b>
<b>Percentage of All Bus Routes</b>	<b>2.7%</b>	<b>2.7%</b>		<b>1.5%</b>	<b>1.5%</b>		<b>1.6%</b>	<b>1.5%</b>		<b>2.5%</b>	<b>2.5%</b>	

(1) Several express routes were suspended beginning at the end of March 2020, due to the SARS-CoV-2 pandemic, while other routes had alignment and schedule modifications made to them, in an ongoing effort to optimize service delivery..

(\*) Express routes under contracted operation.

## YEAR-OVER-YEAR BUS RIDERSHIP BY ROUTE SERVICE TYPE

Boardings by Service Type and Route	Average Weekday	Average Weekday	Percent Change	Average Saturday	Average Saturday	Percent Change	Average Sunday	Average Sunday	Percent Change	Total Monthly	Total Monthly	Percent Change
	Sep-21	Sep-20	21 vs 20	Sep-21	Sep-20	21 vs 20	Sep-21	Sep-20	21 vs 20	Sep-21	Sep-20	21 vs 20
<b>Contracted Express Routes</b>												
301-DADE MONROE EXPRESS	991	747	32.5%	1,009	753	34.0%	935	640	46.3%	29,516	22,014	34.1%
302-CARD SOUND EXPRESS	70	47	49.0%	43	30	46.6%	64	30	112.0%	1,959	1,270	54.3%
<b>Subtotal Contracted Express Routes</b>	<b>1,060</b>	<b>794</b>	<b>33.5%</b>	<b>1,053</b>	<b>783</b>	<b>34.5%</b>	<b>999</b>	<b>670</b>	<b>49.2%</b>	<b>31,475</b>	<b>23,284</b>	<b>35.2%</b>
<b>Percentage of All Bus Routes</b>	<b>0.9%</b>	<b>0.8%</b>		<b>1.6%</b>	<b>1.3%</b>		<b>2.0%</b>	<b>1.3%</b>		<b>1.1%</b>	<b>0.9%</b>	
<b>Limited Stop Routes</b>												
51-FLAGLER MAX	2,281	1,654	37.9%							47,897	36,389	31.6%
79 STREET MAX												
93 - BISCAYNE MAX	1,809	1,352	33.9%							37,997	29,737	27.8%
120 - BEACH MAX	3,766	3,813	-1.2%	2,898	3,002	-3.5%	1,958	1,849	5.9%	100,458	103,296	-2.7%
252-CORAL REEF MAX	463	307	50.7%	154	178	-13.8%	127	161	-21.1%	10,972	8,116	35.2%
277-7TH AVENUE MAX	353	356	-0.9%							7,414	7,838	-5.4%
287-SAGA BAY MAX	164	98	66.8%							3,441	2,161	59.2%
297-27th AVENUE ORANGE MAX	674	665	1.4%							14,161	14,625	-3.2%
<b>Subtotal Limited Stop (MAX) Routes</b>	<b>9,510</b>	<b>8,246</b>	<b>15.3%</b>	<b>3,051</b>	<b>3,180</b>	<b>-4.1%</b>	<b>2,085</b>	<b>2,010</b>	<b>3.7%</b>	<b>222,340</b>	<b>202,162</b>	<b>10.0%</b>
<b>Percentage of All Bus Routes</b>	<b>8.5%</b>	<b>8.7%</b>		<b>4.6%</b>	<b>5.1%</b>		<b>4.1%</b>	<b>3.9%</b>		<b>7.7%</b>	<b>7.9%</b>	
<b>Free Route</b>												
132 - TRI-RAIL DORAL	10	13	-27.4%							127	296	-57.1%
<b>Percentage of All Bus Routes</b>	<b>0.0%</b>	<b>0.0%</b>								<b>0.0%</b>	<b>0.0%</b>	
<b>Shuttles</b>												
55-MARLINS SHUTTLE												
<b>Percentage of All Bus Routes</b>												
<b>Contractor-Operated Lifeline Routes</b>												
GREEN HILLS SHUTTLE	6	6	0.0%							18	24	-25.0%
KINGS CREEK SHUTTLE	15	19	-22.1%							73	75	-2.7%
SIERRA LAKES SHUTTLE	18	24	-24.0%							73	96	-24.0%
ROBERT SHARP SHUTTLE	24	29	-17.2%							120	145	-17.2%
AHEPA SHUTTLE	21	25	-13.5%							106	98	8.2%
FEDERATION GARDENS SHUTTLE				20	17	15.9%				80	69	15.9%
<b>Subtotal Contractor-Operated Lifeline Routes</b>	<b>84</b>	<b>102</b>	<b>-17.8%</b>	<b>20</b>	<b>17</b>	<b>15.9%</b>				<b>470</b>	<b>507</b>	<b>-7.3%</b>
<b>Percentage of All Bus Routes</b>	<b>0.1%</b>	<b>0.1%</b>		<b>0.0%</b>	<b>0.0%</b>					<b>0.0%</b>	<b>0.0%</b>	
<b>Other Circulator Route</b>												
200-CUTLER BAY LOCAL (††)	1	35	-97.2%	9	43	-79.2%	4	43	-89.8%	32	1,118	-97.1%
<b>Percentage of All Bus Routes</b>	<b>0.0%</b>	<b>0.0%</b>		<b>0.0%</b>	<b>0.1%</b>		<b>0.0%</b>	<b>0.1%</b>		<b>0.0%</b>	<b>0.0%</b>	
<b>All Other (Regular) Routes</b>	<b>96,811</b>	<b>81,464</b>	<b>18.8%</b>	<b>60,273</b>	<b>56,595</b>	<b>6.5%</b>	<b>46,402</b>	<b>46,597</b>	<b>-0.4%</b>	<b>2,505,740</b>	<b>2,204,969</b>	<b>13.6%</b>
<b>Percentage of All Bus Routes</b>	<b>86.2%</b>	<b>85.5%</b>		<b>91.2%</b>	<b>90.7%</b>		<b>90.9%</b>	<b>91.1%</b>		<b>87.1%</b>	<b>86.6%</b>	
<b>Total Bus System (1)</b>	<b>112,359</b>	<b>95,266</b>	<b>17.9%</b>	<b>66,057</b>	<b>62,401</b>	<b>5.9%</b>	<b>51,045</b>	<b>51,136</b>	<b>-0.2%</b>	<b>2,877,110</b>	<b>2,546,923</b>	<b>13.0%</b>

(††) Due to various communications system and process issues, the NextFare System did not capture most of the Cutler Bay Local ridership in September 2021.

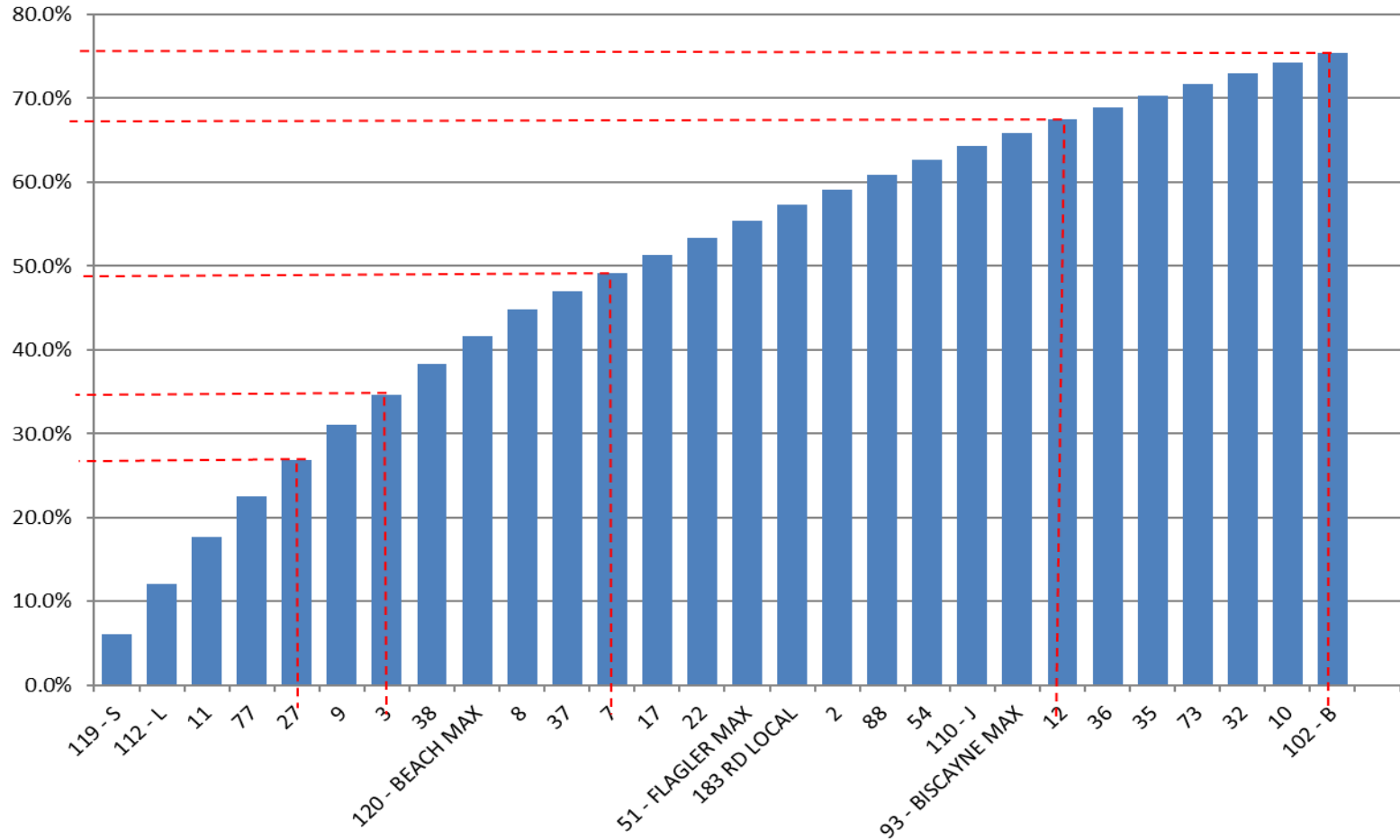
## Bus Routes as Ranked by Percentage of Average Weekday Ridership

Rank	Route	Average Weekday	Percent Share	Cumul Pct Share	Rank	Route	Average Weekday	Percent Share	Cumul Pct Share	Rank	Route	Average Weekday	Percent Share	Cumul Pct Share		
1	119	6,885	6.1%	6.1%	36	33	1,005	0.9%	83.4%	71	101	121	0.1%	99.1%		
2	112	6,616	5.9%	12.0%	37	137	1,002	0.9%	84.3%	72	836	119	0.1%	99.2%		
3	11	6,404	5.7%	17.7%	38	87	1,000	0.9%	85.2%	73	267	110	0.1%	99.3%		
4	77	5,375	4.8%	22.5%	39	301	991	0.9%	86.0%	74	136	105	0.1%	99.4%		
5	27	4,896	4.4%	26.9%	40	75	922	0.8%	86.9%	75	202	72	0.1%	99.5%		
6	9	4,725	4.2%	31.1%	41	19	907	0.8%	87.7%	76	302	70	0.1%	99.6%		
7	3	4,070	3.6%	34.7%	42	105	855	0.8%	88.4%	77	248	62	0.1%	99.6%		
8	38	4,051	3.6%	38.3%	43	24	843	0.8%	89.2%	78	211	61	0.1%	99.7%		
9	120	3,766	3.4%	41.6%	44	208	803	0.7%	89.9%	79	217	52	0.0%	99.7%		
10	8	3,508	3.1%	44.8%	45	207	759	0.7%	90.6%	80	344	48	0.0%	99.8%		
11	37	2,542	2.3%	47.0%	46	150	738	0.7%	91.2%	81	286	36	0.0%	99.8%		
12	7	2,452	2.2%	49.2%	47	297	674	0.6%	91.8%	82	254	33	0.0%	99.8%		
13	17	2,342	2.1%	51.3%	48	31	648	0.6%	92.4%	83	82	31	0.0%	99.8%		
14	22	2,340	2.1%	53.4%	49	42	626	0.6%	93.0%	84	212	30	0.0%	99.9%		
15	51	2,281	2.0%	55.4%	50	104	586	0.5%	93.5%	85	155	26	0.0%	99.9%		
16	183	2,097	1.9%	57.3%	51	135	531	0.5%	94.0%	86	RS	24	0.0%	99.9%		
17	2	2,088	1.9%	59.1%	52	34	528	0.5%	94.4%	87	AS	21	0.0%	99.9%		
18	88	1,983	1.8%	60.9%	53	252	463	0.4%	94.8%	88	SL	18	0.0%	99.9%		
19	54	1,978	1.8%	62.7%	54	71	432	0.4%	95.2%	89	46	18	0.0%	100.0%		
20	110	1,833	1.6%	64.3%	55	72	430	0.4%	95.6%	90	KC	15	0.0%	100.0%		
21	93	1,809	1.6%	65.9%	56	113	404	0.4%	96.0%	91	246	10	0.0%	100.0%		
22	12	1,762	1.6%	67.5%	57	277	353	0.3%	96.3%	92	132	10	0.0%	100.0%		
23	36	1,659	1.5%	68.9%	58	95	307	0.3%	96.5%	93	GH	6	0.0%	100.0%		
24	35	1,540	1.4%	70.3%	59	210	304	0.3%	96.8%	94	200	1	0.0%	100.0%		
25	73	1,527	1.4%	71.7%	60	29	289	0.3%	97.1%							
26	32	1,471	1.3%	73.0%	61	272	288	0.3%	97.3%							
27	10	1,467	1.3%	74.3%	62	108	284	0.3%	97.6%							
28	102	1,320	1.2%	75.5%	63	238	284	0.3%	97.8%							
29	62	1,214	1.1%	76.5%	64	56	276	0.2%	98.1%							
30	40	1,193	1.1%	77.6%	65	57	236	0.2%	98.3%							
31	21	1,149	1.0%	78.6%	66	103	184	0.2%	98.5%							
32	107	1,125	1.0%	79.6%	67	1	181	0.2%	98.6%							
33	16	1,124	1.0%	80.6%	68	287	164	0.1%	98.8%							
34	99	1,074	1.0%	81.6%	69	39	156	0.1%	98.9%							
35	52	1,006	0.9%	82.5%	70	115	136	0.1%	99.0%							
												entirely contracted				
												contracted supplementals				
												<b>Total Boardings</b>		<b>112,359</b>	<b>100.0%</b>	<b>0.0%</b>

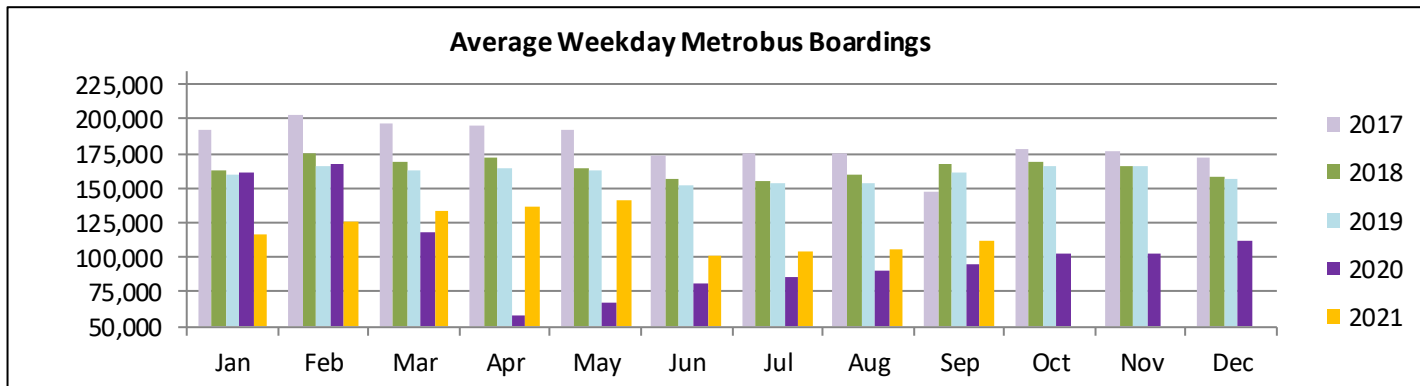
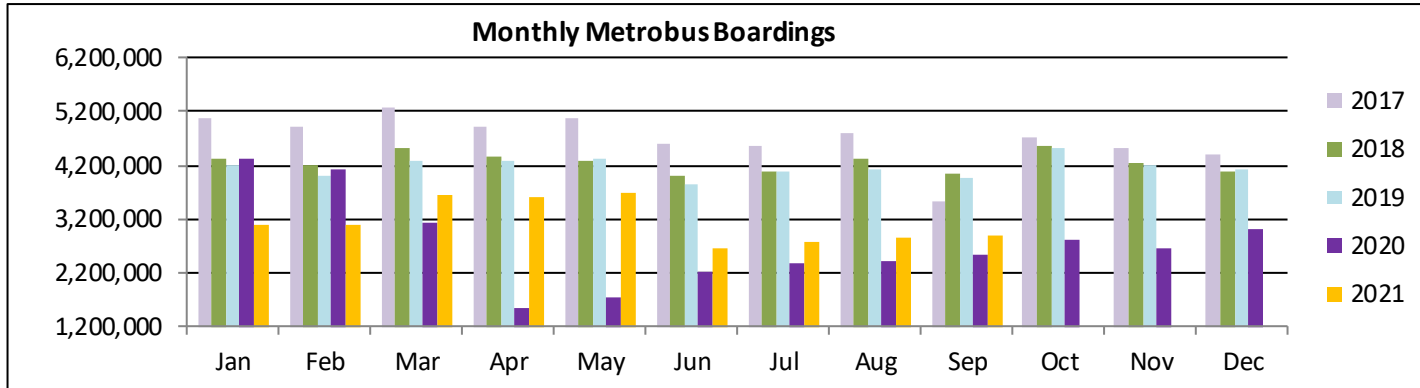
(1) Average weekday ridership rounded to the nearest unit; the routes shaded in blue are directly operated, with supplemental runs provided by contractors.

(2) Includes the five Lifeline Shuttles that operate on weekdays: Ahepa, Green Hills, Kings Creek, Robert Sharp and Sierra Lakes.

**Bus - Cumulative Percentage Average Weekday Ridership Share  
Top 1/4, 1/3, 1/2, 2/3 and 3/4 of Routes**



## TOTAL MONTHLY AND AVERAGE WEEKDAY RIDERSHIP YEAR OVER YEAR COMPARISON CHARTS – METROBUS



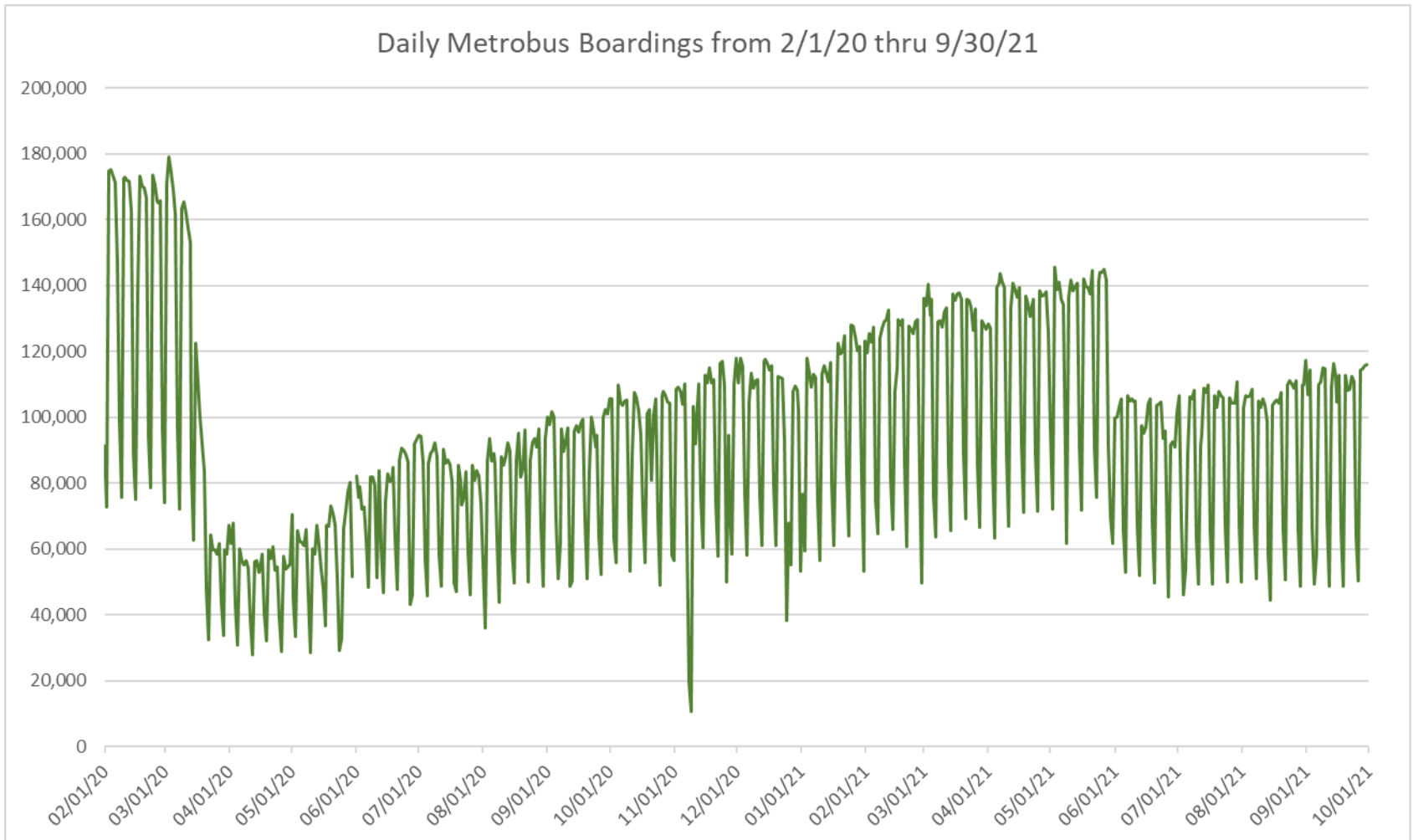
**“TOP 5 / BOTTOM 5” BUS ROUTES AVERAGE WEEKDAY RIDERSHIP PERFORMANCE  
YEAR OVER YEAR COMPARISONS**

<b>Route</b>	<b>Sep-21</b>	<b>Sep-20</b>	<b>Absolute Delta (1)</b>	<b>Percent Delta (2)</b>
<b>11</b>	6,404	4,520	1,884	41.7%
<b>27</b>	4,896	3,821	1,075	28.1%
<b>3</b>	4,070	3,019	1,051	34.8%
<b>77</b>	5,375	4,373	1,002	22.9%
<b>9</b>	4,725	3,901	824	21.1%
<b>24</b>	843	1,230	-387	-31.5%
<b>21</b>	1,149	1,492	-343	-23.0%
<b>62</b>	1,214	1,501	-288	-19.2%
<b>34 EXPRESS</b>	528	720	-193	-26.7%
<b>32</b>	1,471	1,638	-167	-10.2%

- (1) Averages rounded to the nearest boarding, data as reported by APC system or/and contractor, depending on route; Lifelines excluded.  
(2) As a result of the SARS-CoV-2 pandemic, rides were fare-free beginning March 22, 2020; many bus routes continued reporting YOY gains in September 2021, since September 2020 showed clear reduction effects on ridership from the SARS-CoV-2 pandemic. Fares were reinstated June 1, 2021, and ridership data from the farebox system rather than the automatic passenger counter system is utilized from that date going forward.



## DAILY METROBUS RIDERSHIP SINCE FEBRUARY 1, 2020



- (1) National Emergency was declared on 3/13/20 as a result of the SARS-CoV-2 pandemic.
- (2) There was no Metrobus, Metrorail and Metromover service on 5/31/20, as a safety precaution.
- (3) The dip at the start of the second week of November 2020 is due to Hurricane Eta.
- (4) The reduction seen beginning 6/1/21 is partly due to the resumption of fares and partly the result of resuming reporting Cubic farebox data rather than bus APC counts.
- (5) Periodic (weekly) variations are prominent, since weekday ridership is almost always significantly higher than weekend or holiday ridership.

## METROBUS PARKING PATRONAGE SUMMARY September 2021

PARK-RIDE LOT	ACTUAL AVAILABLE SPACES	ACTUAL OCCUPANCY	PERCENT OCCUPANCY
Transitway / SW 152nd St	200	65	33%
Transitway / SW 168th St	149	73	49%
Transitway / SW 200th Street (effective February 2020)	100	26	26%
Transitway / SW 112 Ave (Target)	450	103	23%
Transitway / SW 244th St	95	34	36%
Transitway / SW 296th St	139	48	35%
Transitway / SW 344th St	248	131	53%
Coral Reef Drive 117/ Turnpike	95	52	55%
Golden Glades - East Lot	535	215	40%
Golden Glades - West Lot	1,007	0	0%
Hammocks Town Center (SW 152 Ave / SW 104 St)	50	0	0%
Kendall Dr./SW 127th Ave	161	8	5%
West Kendall Transit Term (Kendall Dr / SW162 Ave)	40	5	13%
NW 7th Avenue Transit Village (NW 7 Ave / NW 62 St)	25	21	84%
Miami Gardens Dr. / NW 73rd Ave	136	0	0%
Dolphin Station (effective Mar 2020)	348	50	14%
I-75 / Miami Gardens Dr (effective June 2019)	298	0	0%
<b>TOTAL</b>	<b>4,076</b>	<b>831</b>	<b>20%</b>

*Note: some park-ride lots are joint-use and the number of park-ride vehicles may exceed the number of spaces allocated.*

# Metrorail



September 2021

## METRORAIL AVERAGE WEEKDAY BOARDINGS BY STATION (†)

<b>Weekdays</b>	<b>Average Weekday</b>	<b>Average Weekday</b>	<b>Percent Change</b>	<b>Average Weekday</b>	<b>Percent Change</b>	<b>Average Weekday</b>	<b>Percent Change</b>	<b>Average Weekday</b>	<b>Percent Change</b>
<b>STATIONS</b>	<b>Sep-21</b>	<b>Sep-20</b>	<b>YOY</b>	<b>Feb-20</b>	<b>Current vs Feb-20</b>	<b>Aug-21</b>	<b>MOM</b>	<b>Sep-19</b>	<b>YO2Y</b>
ALLAPATTAH	1,006	986	2.0%	1,942	-48.2%	941	6.9%	1,771	-43.2%
BRICKELL	3,268	3,131	4.4%	6,529	-49.9%	3,072	6.4%	5,931	-44.9%
BROWNSVILLE	570	674	-15.5%	862	-33.9%	527	8.1%	811	-29.8%
CIVIC CENTER	2,880	2,073	38.9%	6,143	-53.1%	2,673	7.8%	5,821	-50.5%
COCONUT GROVE	1,004	735	36.5%	1,795	-44.1%	953	5.3%	1,584	-36.6%
CULMER	760	793	-4.2%	1,392	-45.4%	674	12.8%	1,259	-39.6%
DADELAND NORTH	2,627	2,234	17.6%	5,926	-55.7%	2,304	14.0%	5,673	-53.7%
DADELAND SOUTH	3,118	2,441	27.8%	7,150	-56.4%	2,822	10.5%	6,793	-54.1%
DOUGLAS ROAD	2,067	1,038	99.1%	3,624	-43.0%	1,781	16.1%	3,133	-34.0%
DR. MARTIN LUTHER KING, JR.	643	729	-11.9%	1,157	-44.4%	607	5.9%	1,054	-39.0%
EARLINGTON HEIGHTS	889	722	23.2%	1,662	-46.5%	797	11.6%	1,525	-41.7%
GOVERNMENT CENTER	4,382	2,824	55.2%	10,557	-58.5%	3,966	10.5%	9,503	-53.9%
HIALEAH	756	775	-2.5%	1,253	-39.7%	694	9.0%	1,218	-37.9%
MIAMI INTERNATIONAL AIRPORT	665	539	23.3%	1,711	-61.2%	665	-0.1%	1,542	-56.9%
NORTHSIDE	862	831	3.7%	1,476	-41.6%	836	3.2%	1,355	-36.4%
OKEECHOBEE	616	541	13.9%	1,164	-47.1%	557	10.6%	1,148	-46.4%
OVERTOWN / ARENA	824	619	33.2%	2,274	-63.8%	754	9.4%	2,068	-60.1%
PALMETTO	833	693	20.2%	1,543	-46.0%	755	10.3%	1,402	-40.6%
SANTA CLARA	415	459	-9.8%	812	-48.9%	386	7.3%	718	-42.2%
SOUTH MIAMI	1,449	892	62.5%	3,015	-51.9%	1,278	13.4%	2,736	-47.0%
TRI-RAIL	723	673	7.5%	1,207	-40.1%	690	4.8%	1,045	-30.8%
UNIVERSITY	1,393	414	236.3%	2,784	-50.0%	924	50.8%	2,643	-47.3%
VIZCAYA	753	541	39.2%	1,390	-45.8%	635	18.6%	1,228	-38.7%
<b>TOTAL</b>	<b>32,502</b>	<b>25,358</b>	<b>28.2%</b>	<b>67,367</b>	<b>-51.8%</b>	<b>29,290</b>	<b>11.0%</b>	<b>61,961</b>	<b>-47.5%</b>

(†) In this table and those which follow, "YOY" stands for "year-over-year", "MOM" for "month-over-month" and "YO2Y" for "year over two years", i.e., current month vs 12 months prior, one month prior and 24 months prior, respectively.

(\*) Due to effects from the SARS-CoV-2 pandemic; rides were fare-free beginning March 22, 2020; fares were reinstated on June 1, 2021, in part accounting for the drop in ridership from May 2021.

## METRORAIL AVERAGE SATURDAY BOARDINGS BY STATION

<b>Saturdays</b>	Average Saturday	Average Saturday	Percent Change	Average Saturday	Percent Change	Average Saturday	Percent Change	Average Saturday	Percent Change
<b>STATIONS</b>	Sep-21	Sep-20	YOY	Feb-20	Current vs Feb-20	Aug-21	MOM	Sep-19	YO2Y
ALLAPATTAH	577	576	0.1%	1,051	-45.1%	562	2.7%	957	-39.7%
BRICKELL	1,596	1,954	-18.3%	2,811	-43.2%	1,562	2.1%	2,395	-33.4%
BROWNSVILLE	367	464	-20.9%	520	-29.4%	330	11.3%	507	-27.6%
CIVIC CENTER	466	559	-16.7%	959	-51.5%	474	-1.7%	895	-47.9%
COCONUT GROVE	526	432	21.7%	928	-43.4%	518	1.4%	748	-29.7%
CULMER	342	511	-33.0%	721	-52.5%	356	-3.9%	614	-44.3%
DADELAND NORTH	1,003	1,225	-18.1%	1,994	-49.7%	984	1.9%	1,690	-40.6%
DADELAND SOUTH	1,366	1,474	-7.4%	2,625	-48.0%	1,264	8.0%	2,411	-43.3%
DOUGLAS ROAD	817	632	29.3%	1,319	-38.1%	800	2.1%	1,130	-27.7%
DR. MARTIN LUTHER KING, JR.	326	473	-31.0%	625	-47.8%	317	2.9%	551	-40.8%
EARLINGTON HEIGHTS	507	483	5.1%	935	-45.8%	486	4.3%	851	-40.4%
GOVERNMENT CENTER	1,844	1,694	8.9%	4,262	-56.7%	1,764	4.5%	3,333	-44.7%
HIALEAH	380	425	-10.6%	583	-34.9%	348	9.1%	556	-31.8%
MIAMI INTERNATIONAL AIRPORT	520	527	-1.2%	1,330	-60.9%	536	-2.9%	1,132	-54.0%
NORTHSIDE	528	602	-12.3%	878	-39.8%	534	-1.0%	798	-33.8%
OKEECHOBEE	262	316	-16.9%	408	-35.8%	248	6.0%	363	-27.8%
OVERTOWN / ARENA	300	354	-15.2%	678	-55.7%	279	7.7%	493	-39.1%
PALMETTO	243	298	-18.4%	458	-46.9%	227	7.0%	382	-36.3%
SANTA CLARA	215	276	-22.1%	422	-49.0%	214	0.7%	356	-39.6%
SOUTH MIAMI	647	534	21.1%	1,256	-48.5%	626	3.4%	1,055	-38.7%
TRI-RAIL	336	415	-19.1%	614	-45.3%	311	8.0%	471	-28.7%
UNIVERSITY	440	240	83.6%	714	-38.4%	368	19.7%	608	-27.7%
VIZCAYA	329	331	-0.5%	622	-47.0%	332	-0.9%	470	-29.9%
<b>TOTAL</b>	<b>13,936</b>	<b>14,793</b>	<b>-5.8%</b>	<b>26,714</b>	<b>-47.8%</b>	<b>13,438</b>	<b>3.7%</b>	<b>22,761</b>	<b>-38.8%</b>

## METRORAIL AVERAGE SUNDAY BOARDINGS BY STATION

<b>Sundays</b>	Average Sunday	Average Sunday	Percent Change	Average Sunday	Percent Change	Average Sunday	Percent Change	Average Sunday	Percent Change
<b>STATIONS</b>	Sep-21	Sep-20	YOY	Feb-20	Current vs Feb-20	Aug-21	MOM	Sep-19	YO2Y
ALLAPATTAH	412	465	-11.4%	791	-47.9%	404	1.9%	676	-39.1%
BRICKELL	1,271	1,550	-18.0%	2,379	-46.6%	1,239	2.6%	1,799	-29.3%
BROWNSVILLE	252	385	-34.5%	406	-38.0%	258	-2.5%	381	-33.9%
CIVIC CENTER	345	493	-29.9%	791	-56.4%	364	-5.2%	704	-51.0%
COCONUT GROVE	427	372	14.9%	838	-49.1%	376	13.6%	577	-26.0%
CULMER	296	426	-30.6%	616	-52.0%	302	-2.0%	455	-35.1%
DADELAND NORTH	820	970	-15.4%	1,685	-51.4%	745	10.1%	1,252	-34.5%
DADELAND SOUTH	1,089	1,232	-11.6%	2,210	-50.7%	1,002	8.6%	1,800	-39.5%
DOUGLAS ROAD	593	461	28.8%	1,090	-45.6%	567	4.5%	772	-23.2%
DR. MARTIN LUTHER KING, JR.	254	382	-33.5%	506	-49.8%	235	8.0%	403	-37.0%
EARLINGTON HEIGHTS	376	399	-5.7%	799	-52.9%	344	9.4%	636	-40.8%
GOVERNMENT CENTER	1,384	1,380	0.3%	4,044	-65.8%	1,331	4.0%	2,349	-41.1%
HIALEAH	266	329	-19.2%	472	-43.7%	257	3.4%	396	-32.9%
MIAMI INTERNATIONAL AIRPORT	565	502	12.6%	1,343	-57.9%	539	4.9%	1,119	-49.5%
NORTHSIDE	427	516	-17.3%	653	-34.6%	423	0.8%	623	-31.6%
OKEECHOBEE	146	201	-27.3%	273	-46.6%	122	19.3%	227	-35.8%
OVERTOWN / ARENA	260	367	-29.2%	544	-52.3%	263	-1.5%	379	-31.6%
PALMETTO	148	208	-28.8%	336	-56.0%	132	11.8%	228	-35.1%
SANTA CLARA	147	214	-31.5%	280	-47.6%	143	2.4%	229	-36.0%
SOUTH MIAMI	484	396	22.2%	987	-51.0%	476	1.7%	725	-33.3%
TRI-RAIL	278	332	-16.3%	528	-47.3%	255	8.8%	412	-32.6%
UNIVERSITY	360	132	174.0%	608	-40.8%	252	42.7%	397	-9.3%
VIZCAYA	268	246	8.9%	524	-48.9%	258	3.8%	365	-26.5%
<b>TOTAL</b>	<b>10,865</b>	<b>11,952</b>	<b>-9.1%</b>	<b>22,701</b>	<b>-52.1%</b>	<b>10,288</b>	<b>5.6%</b>	<b>16,905</b>	<b>-35.7%</b>

## METRORAIL TOTAL MONTHLY BOARDINGS BY STATION

<b>Monthly Totals</b>	<b>Total Month</b>	<b>Total Month</b>	<b>Percent Change</b>	<b>Total Month</b>	<b>Percent Change</b>	<b>Total Month</b>	<b>Percent Change</b>	<b>Total Month</b>	<b>Percent Change</b>
<b>STATIONS</b>	<b>Sep-21</b>	<b>Sep-20</b>	<b>YOY</b>	<b>Feb-20</b>	<b>Current vs Feb-20</b>	<b>Aug-21</b>	<b>MOM</b>	<b>Sep-19</b>	<b>YO2Y</b>
ALLAPATTAH	25,620	25,482	0.5%	46,868	-45.3%	24,971	2.6%	43,214	-40.7%
BRICKELL	81,807	81,669	0.2%	152,259	-46.3%	80,020	2.2%	138,586	-41.0%
BROWNSVILLE	14,787	18,023	-18.0%	21,285	-30.5%	14,207	4.1%	20,472	-27.8%
CIVIC CENTER	64,252	48,412	32.7%	128,921	-50.2%	62,520	2.8%	124,087	-48.2%
COCONUT GROVE	25,339	19,110	32.6%	43,580	-41.9%	24,917	1.7%	37,962	-33.3%
CULMER	18,869	20,925	-9.8%	33,497	-43.7%	17,749	6.3%	30,279	-37.7%
DADELAND NORTH	63,476	56,896	11.6%	132,894	-52.2%	58,348	8.8%	127,402	-50.2%
DADELAND SOUTH	76,684	63,586	20.6%	162,416	-52.8%	72,162	6.3%	155,912	-50.8%
DOUGLAS ROAD	49,896	26,752	86.5%	82,141	-39.3%	45,224	10.3%	71,713	-30.4%
DR. MARTIN LUTHER KING, JR.	16,172	19,153	-15.6%	27,980	-42.2%	15,800	2.4%	25,611	-36.9%
EARLINGTON HEIGHTS	22,688	19,129	18.6%	40,697	-44.3%	21,192	7.1%	37,580	-39.6%
GOVERNMENT CENTER	106,675	73,105	45.9%	243,414	-56.2%	100,960	5.7%	216,868	-50.8%
HIALEAH	18,776	19,749	-4.9%	29,516	-36.4%	17,935	4.7%	28,867	-35.0%
MIAMI INTERNATIONAL AIRPORT	19,041	16,058	18.6%	46,115	-58.7%	19,478	-2.2%	41,945	-54.6%
NORTHSIDE	22,449	22,624	-0.8%	36,127	-37.9%	22,641	-0.8%	33,874	-33.7%
OKEECHOBEE	14,787	13,716	7.8%	26,026	-43.2%	13,846	6.8%	25,733	-42.5%
OVERTOWN / ARENA	19,870	16,257	22.2%	49,911	-60.2%	19,014	4.5%	45,480	-56.3%
PALMETTO	19,296	16,874	14.4%	33,944	-43.2%	18,177	6.2%	30,873	-37.5%
SANTA CLARA	10,347	11,894	-13.0%	19,245	-46.2%	10,070	2.8%	17,109	-39.5%
SOUTH MIAMI	35,502	22,907	55.0%	69,412	-48.9%	32,999	7.6%	63,104	-43.7%
TRI-RAIL	18,026	17,537	2.8%	29,120	-38.1%	17,708	1.8%	25,026	-28.0%
UNIVERSITY	32,855	10,406	215.7%	61,253	-46.4%	23,058	42.5%	57,513	-42.9%
VIZCAYA	18,535	13,980	32.6%	32,497	-43.0%	16,582	11.8%	28,516	-35.0%
<b>TOTAL</b>	<b>795,749</b>	<b>654,244</b>	<b>21.6%</b>	<b>1,549,118</b>	<b>-48.6%</b>	<b>749,578</b>	<b>6.2%</b>	<b>1,427,726</b>	<b>-44.3%</b>

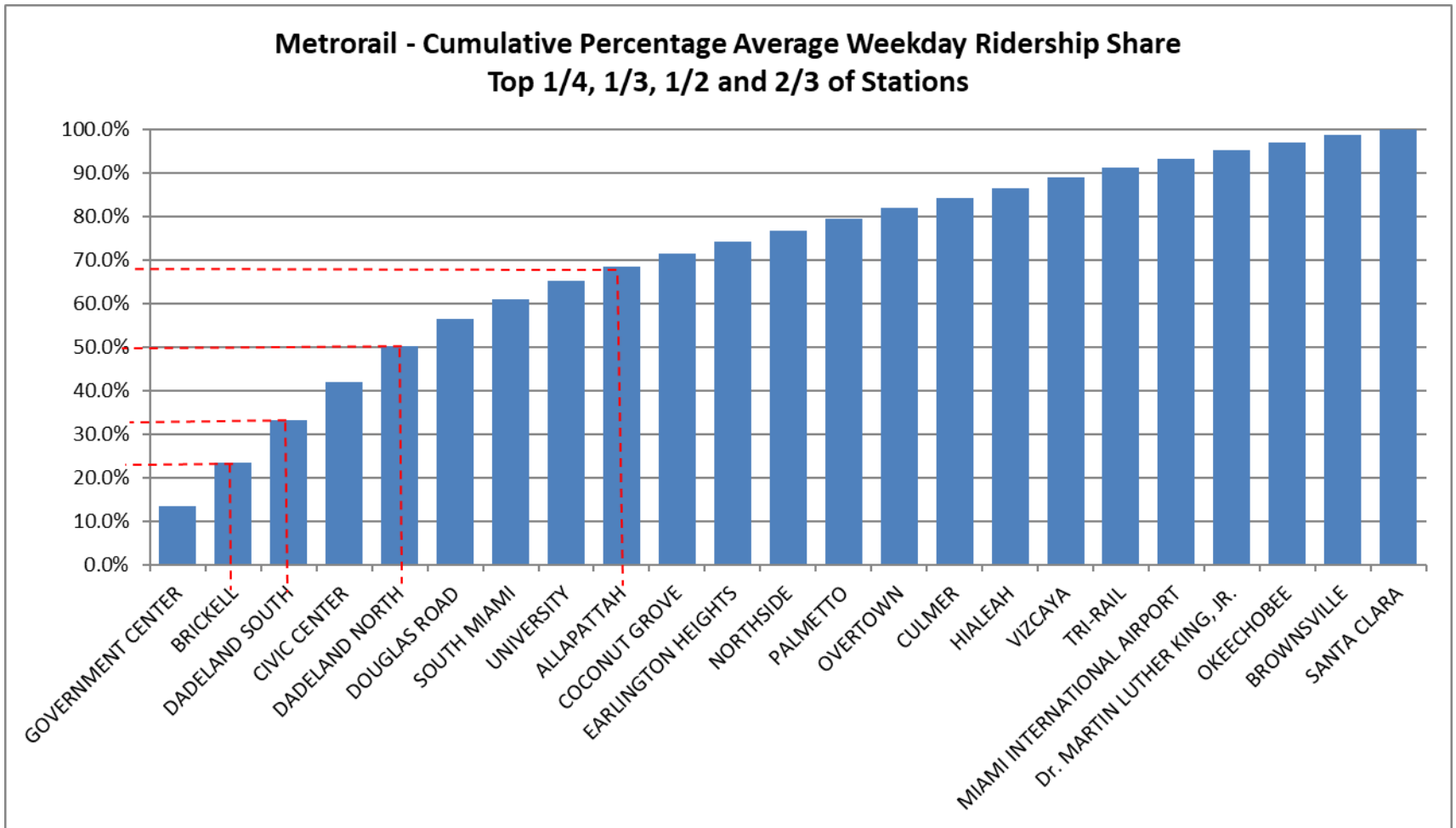
## METRORAIL HOLIDAY BOARDINGS BY STATION

### Labor Day Holiday

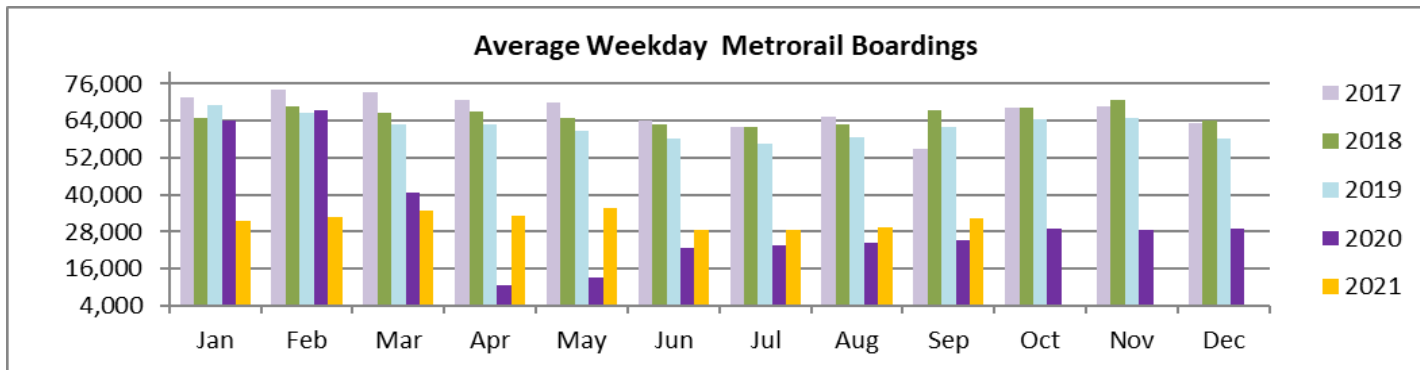
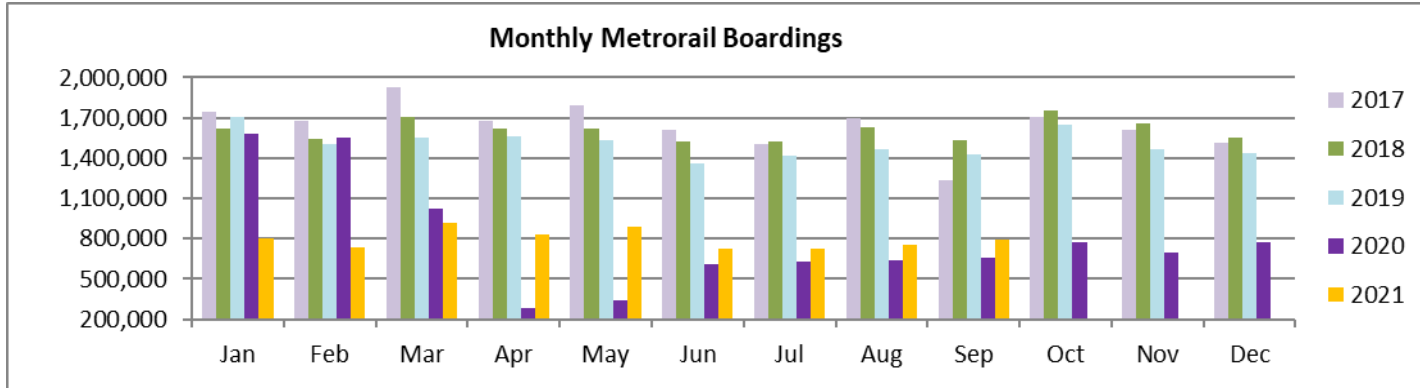
	Labor Day	Labor Day	Percent Change
STATIONS	2020	2021	21 vs 20
ALLAPATTAH	604	535	-11.4%
BRICKELL	1,910	1,706	-10.7%
BROWNSVILLE	469	349	-25.6%
CIVIC CENTER	667	523	-21.6%
COCONUT GROVE	452	452	0.0%
CULMER	532	368	-30.8%
DADELAND NORTH	1,206	1,026	-14.9%
DADELAND SOUTH	1,510	1,390	-7.9%
DOUGLAS ROAD	579	844	45.8%
DR. MARTIN LUTHER KING, JR.	416	352	-15.4%
EARLINGTON HEIGHTS	442	477	7.9%
GOVERNMENT CENTER	1,503	1,740	15.8%
HIALEAH	465	324	-30.3%
MIAMI INTERNATIONAL AIRPORT	627	745	18.8%
NORTHSIDE	696	520	-25.3%
OKEECHOBEE	295	226	-23.4%
OVERTOWN / ARENA	378	321	-15.1%
PALMETTO	302	242	-19.9%
SANTA CLARA	286	195	-31.8%
SOUTH MIAMI	457	551	20.6%
TRI-RAIL	418	382	-8.6%
UNIVERSITY	221	395	78.7%
VIZCAYA	317	340	7.3%
<b>TOTAL</b>	<b>14,752</b>	<b>14,003</b>	<b>-5.1%</b>



# METRORAIL CUMULATIVE PERCENTAGE RIDERSHIP SHARE



## TOTAL MONTHLY AND AVERAGE WEEKDAY RIDERSHIP YEAR OVER YEAR COMPARISON CHARTS – METRORAIL



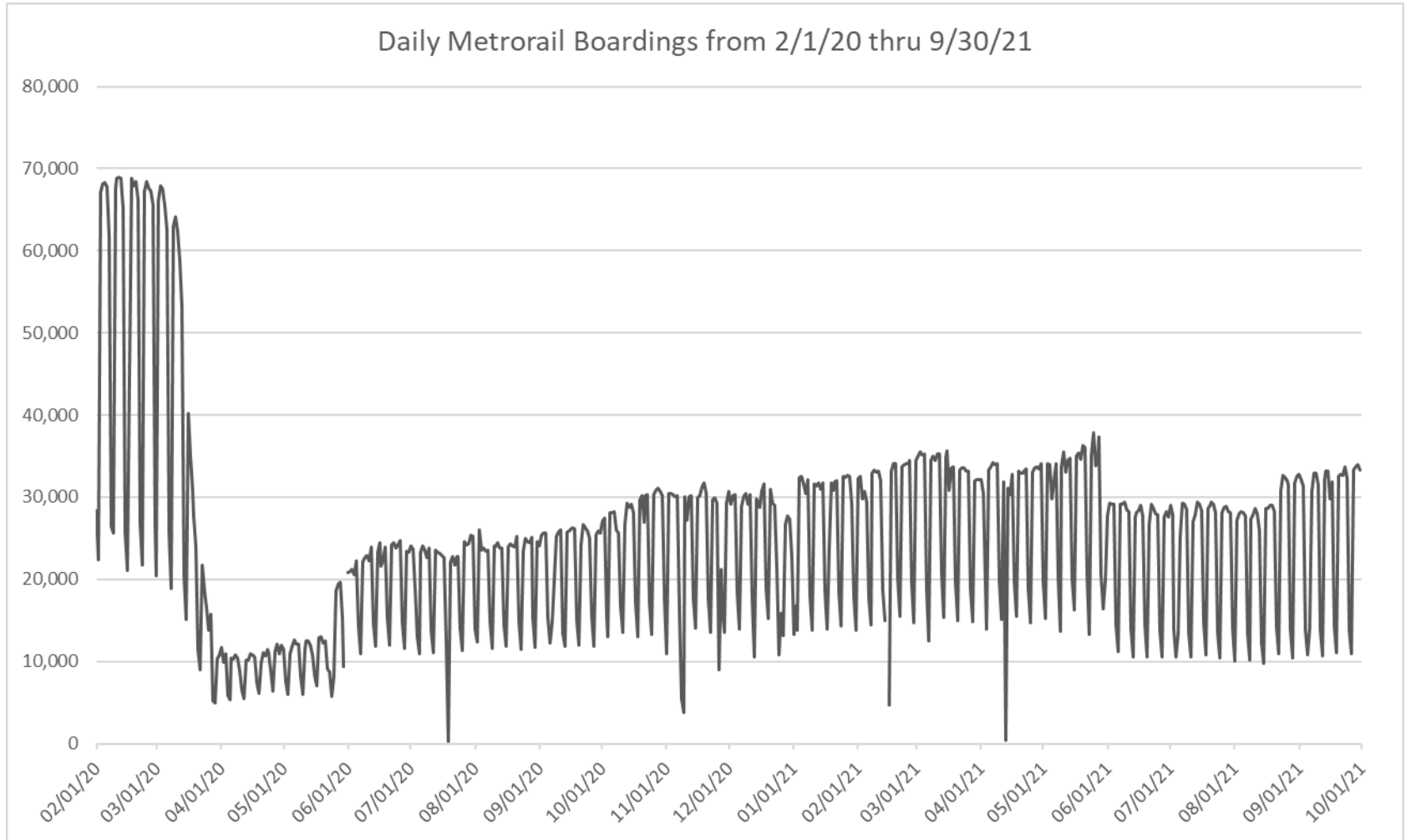
**“TOP 5 / BOTTOM 5” RAIL STATIONS AVERAGE WEEKDAY RIDERSHIP PERFORMANCE  
YEAR OVER YEAR COMPARISONS**

<b>Station</b>	<b>Sep-21</b>	<b>Sep-20</b>	<b>Absolute Delta (1)</b>	<b>Percent Delta</b>
GOVERNMENT CENTER	4,382	2,824	1,558	55.2%
DOUGLAS ROAD	2,067	1,038	1,029	99.1%
UNIVERSITY	1,393	414	979	236.3%
CIVIC CENTER	2,880	2,073	807	38.9%
DADELAND SOUTH	3,118	2,441	677	27.8%
BROWNSVILLE	570	674	-105	-15.5%
Dr. MARTIN LUTHER KING, JR.	643	729	-87	-11.9%
SANTA CLARA	415	459	-45	-9.8%
CULMER	760	793	-33	-4.2%
HIALEAH	756	775	-19	-2.5%

(1) Averages rounded to the nearest boarding.

(2) As a result of the SARS-CoV-2 pandemic, rides were fare-free beginning March 22, 2020; many rail stations continued reporting YOY gains in September 2021, since September 2020 showed clear reduction effects on ridership from the SARS-CoV-2 pandemic. Fares were reinstated June 1, 2021, and ridership data from the faregate system rather than the video camera counter system is utilized from that date going forward.

## DAILY METRORAIL RIDERSHIP SINCE FEBRUARY 1, 2020



- (1) National Emergency was declared on 3/13/20 as a result of the SARS-CoV-2 pandemic.
- (2) There was no Metrobus, Metrorail and Metromover service on 5/31/20, as a safety precaution.
- (3) The dip at the start of the second week of November 2020 is due to Hurricane Eta; these are *raw data* from the Unleash Live contractor AI video system.
- (4) The dip on 4/13/21 is due to a loss of connectivity at all stations, affecting a few stations over the next two days as well.
- (5) The reduction seen beginning 6/1/21 is partly due to the resumption of fares and partly the result of resuming reporting Cubi faregate data rather than video camera counts.
- (6) Periodic (weekly) variations are prominent, since weekday ridership is almost always significantly higher than weekend or holiday ridership.

## METRORAIL PARKING PATRONAGE SUMMARY September 2021

PARK-RIDE LOT	ACTUAL CAPACITY (1)	ACTUAL OCCUPANCY (2), (3)	PERCENT OCCUPANCY
DADELAND SOUTH	1,260	445	35%
DADELAND NORTH	1,963	676	34%
SOUTH MIAMI	837	229	27%
UNIVERSITY	230	91	40%
DOUGLAS ROAD	230	191	83%
COCONUT GROVE	100	8	8%
VIZCAYA	120	44	37%
CULMER	40	8	21%
SANTA CLARA	61	39	64%
ALLAPATTAH	74	3	4%
EARLINGTON HEIGHTS	361	42	12%
BROWNSVILLE	100	40	40%
DR. MARTIN LUTHER KING JR. (MDT)	62	47	76%
DR. MARTIN LUTHER KING JR. (GARAGE)	631	81	13%
NORTHSIDE	100	56	56%
HIALEAH	338	33	10%
OKEECHOBEE	1,256	141	11%
PALMETTO	700	147	21%
<b>TOTAL</b>	<b>8,463</b>	<b>2,322</b>	<b>27%</b>

- (1) Number of spaces could vary each week; shown are available spaces during final week of month, as submitted by DTPW Safety & Security office.  
(2) All occupancy data provided by DTPW Safety & Security office.  
(3) Daily averages rounded to nearest unit, with fewer counts at some stations due to shortage of DTPW Safety & Security office staff; calculations are based on counted days only per raw data submitted, with resulting average daily occupancy shown.

# Metromover



September 2021

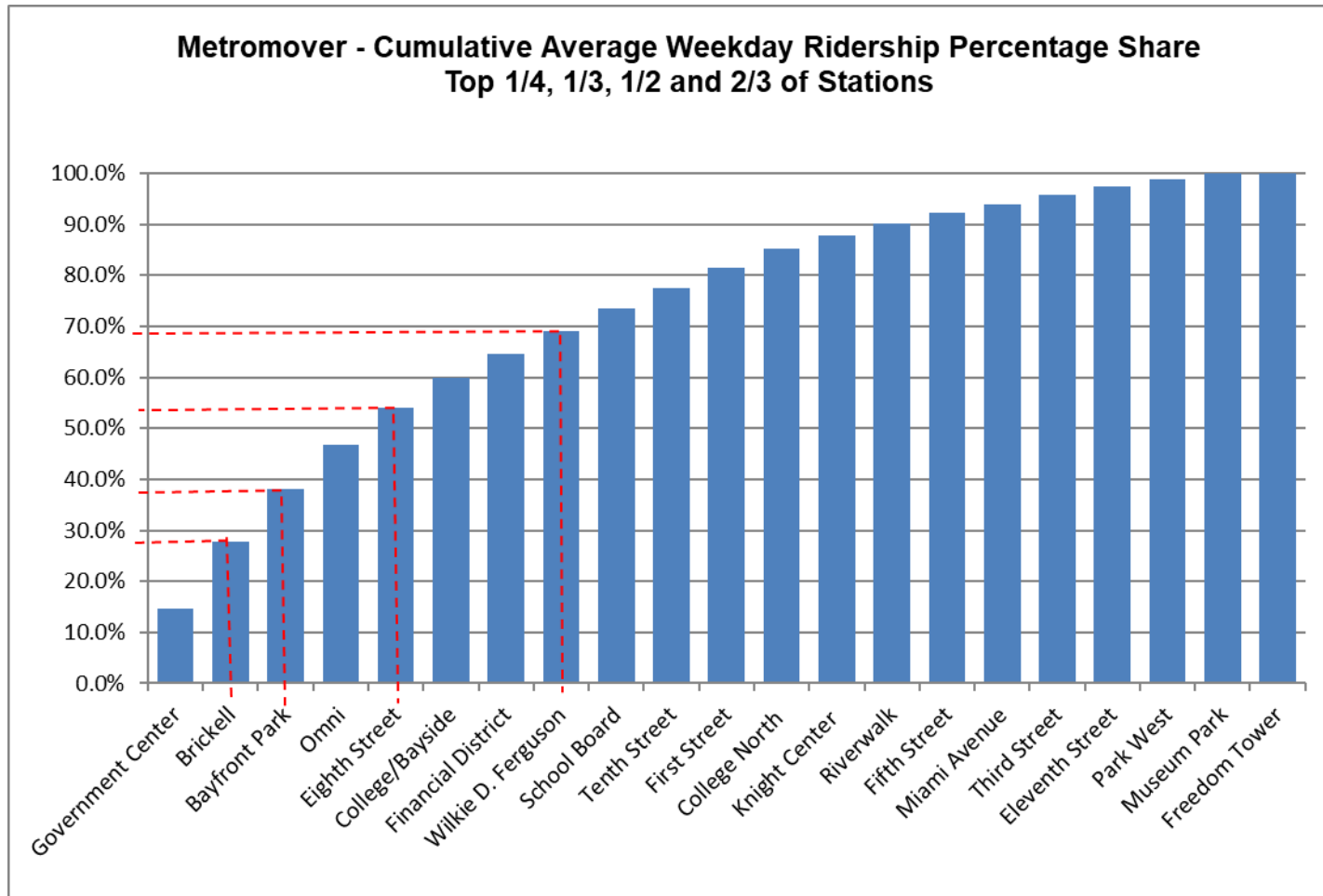
## METROMOVER MONTHLY AND AVERAGE DAILY BOARDINGS BY STATION

	Average Weekday	Average Weekday	Percent Change	Average Saturday	Average Saturday	Percent Change	Average Sunday	Average Sunday	Percent Change	Labor Day	Labor Day	Percent Change	Total Monthly	Total Monthly	Percent Change
STATIONS	Sep-21	Sep-20	21 vs 20	Sep-21	Sep-20	21 vs 20	Sep-21	Sep-20	21 vs 20	Sep-21	Sep-20	21 vs 20	Sep-21	Sep-20	21 vs 20
School Board	553	360	53.7%	409	302	35.7%	386	252	53.1%	444	298	49.0%	15,229	10,062	51.4%
Omni	1,110	737	50.7%	862	625	37.9%	723	544	32.9%	835	593	40.8%	30,490	20,740	47.0%
Museum Park	163	75	116.3%	231	112	106.1%	183	113	61.3%	239	100	139.0%	4,583	2,587	77.2%
Eleventh Street	211	149	41.7%	147	105	39.2%	117	75	57.4%	164	68	141.2%	5,645	3,910	44.4%
Park West	170	198	-14.3%	114	122	-6.6%	106	123	-13.7%	50	98	-49.0%	4,325	5,238	-17.4%
<b>Freedom Tower (1)</b>															
Government Center	1,902	1,143	66.5%	1,240	874	42.0%	1,081	724	49.3%	1,248	695	79.6%	50,484	31,078	62.4%
Miami Avenue	238	252	-5.5%	160	195	-17.7%	133	173	-23.1%	165	207	-20.3%	4,799	6,966	-31.1%
Third Street	229	176	29.8%	152	127	19.5%	134	124	8.5%	145	119	21.8%	6,096	4,824	26.4%
Knight Center	357	261	36.7%	211	159	32.8%	162	132	22.3%	246	141	74.5%	9,224	6,782	36.0%
Bayfront Park	1,337	788	69.6%	1,035	622	66.3%	949	647	46.6%	895	531	68.5%	36,900	22,157	66.5%
First Street	518	524	-1.2%	397	430	-7.6%	360	357	1.0%	280			12,389	14,147	-12.4%
College/Bayside	762	432	76.3%	453	296	52.9%	418	269	55.3%				13,626	11,338	20.2%
College North	460	211	118.2%	275	109	151.8%	206	89	131.5%	241	89	170.8%	11,823	5,308	122.7%
Wilkie D. Ferguson	585	253	131.4%	432	193	123.6%	360	183	96.5%		172		11,521	6,983	65.0%
Riverwalk	300	186	61.0%	257	124	107.7%	215	107	101.6%	191	119	60.5%	8,374	4,950	69.2%
Fifth Street	254	172	48.1%	186	127	46.7%	151	98	53.6%	119	110	8.2%	6,799	4,612	47.4%
Eighth Street	947	489	93.5%	739	470	57.4%	663	376	76.2%	852	395	115.7%	26,337	14,051	87.4%
Tenth Street	532	301	76.9%	401	242	66.0%	324	221	46.8%	376	222	69.4%	14,441	8,383	72.3%
Brickell	1,679	1,050	59.8%	1,300	858	51.5%	1,135	864	31.3%	1,240	881	40.7%	46,226	29,825	55.0%
Financial District	608	247	145.8%	379	83	357.6%	275	58	372.1%	313			12,604	5,755	119.0%
<b>TOTAL</b>	<b>12,913</b>	<b>8,003</b>	<b>61.3%</b>	<b>9,377</b>	<b>6,172</b>	<b>51.9%</b>	<b>8,077</b>	<b>5,526</b>	<b>46.2%</b>	<b>8,043</b>	<b>4,838</b>	<b>66.2%</b>	<b>331,915</b>	<b>219,696</b>	<b>51.1%</b>

(1) Freedom Tower Station was closed for construction.

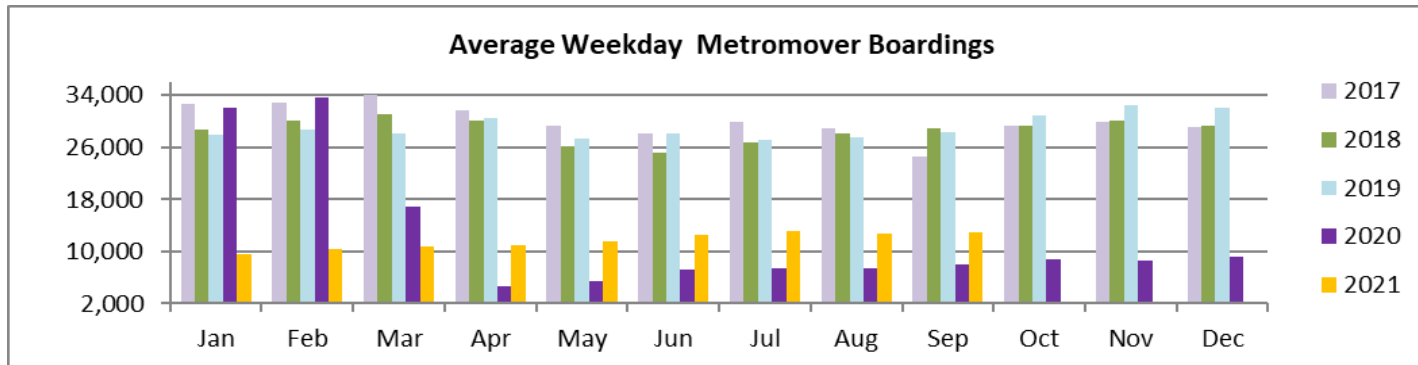
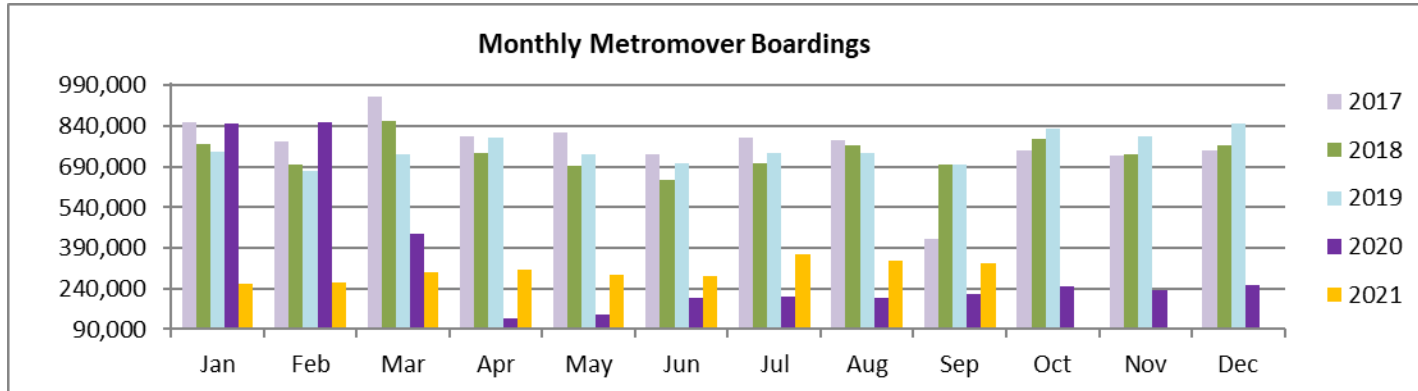
(\*) APC system did not report boardings data at several stations on several days in September 2021; the average daily ridership calculations take this into account.

## METROMOVER CUMULATIVE PERCENTAGE RIDERSHIP SHARE





## TOTAL MONTHLY AND AVERAGE WEEKDAY RIDERSHIP YEAR OVER YEAR COMPARISON CHARTS – METROMOVER



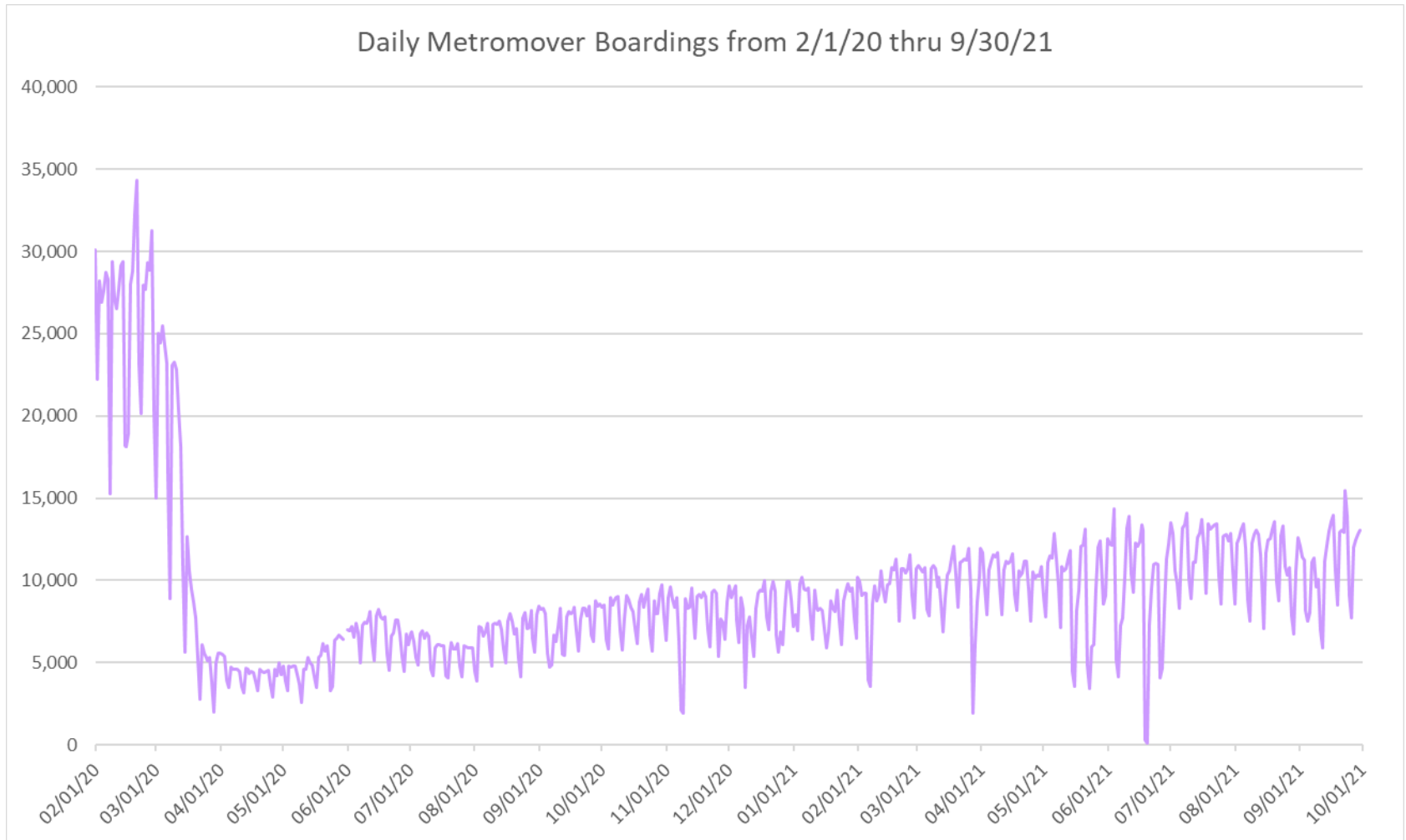
**“TOP 5 / BOTTOM 5” MOVER STATIONS AVERAGE WEEKDAY RIDERSHIP PERFORMANCE  
YEAR OVER YEAR COMPARISONS**

<b>Station</b>	<b>Sep-21</b>	<b>Sep-20</b>	<b>Absolute Delta (1)</b>	<b>Percent Delta</b>
Government Center	1,902	1,143	760	66.5%
Brickell	1,679	1,050	628	59.8%
Bayfront Park	1,337	788	549	69.6%
Eighth Street	947	489	457	93.5%
Omni	1,110	737	374	50.7%
Park West	170	198	-28	-14.3%
Miami Avenue	238	252	-14	-5.5%
First Street	518	524	-6	-1.2%
Third Street	229	176	53	29.8%
Eleventh Street	211	149	62	41.7%

(1) Averages rounded to the nearest boarding.

(†) Nearly all Metromover stations reporting YOY gains in September 2021, as September 2020 showed clear reduction effects on ridership from the SARS-CoV-2 pandemic.

## DAILY METROMOVER RIDERSHIP SINCE FEBRUARY 1, 2020



- (1) National Emergency was declared on 3/13/20 as a result of the SARS-CoV-2 pandemic.
- (2) There was no Metrobus, Metrorail and Metromoverservice on 5/31/20, as a safety precaution.
- (3) The dip at the start of the second week of November 2020 is due to Hurricane Eta; these are *raw data* from the UTA contractor APC system. Other more recent dips are due to various station closures (mostly on weekends) for system maintenance purposes.
- (4) Periodic (weekly) variations are prominent, since weekday ridership is almost always significantly higher than weekend or holiday ridership.

## Special Transportation Services

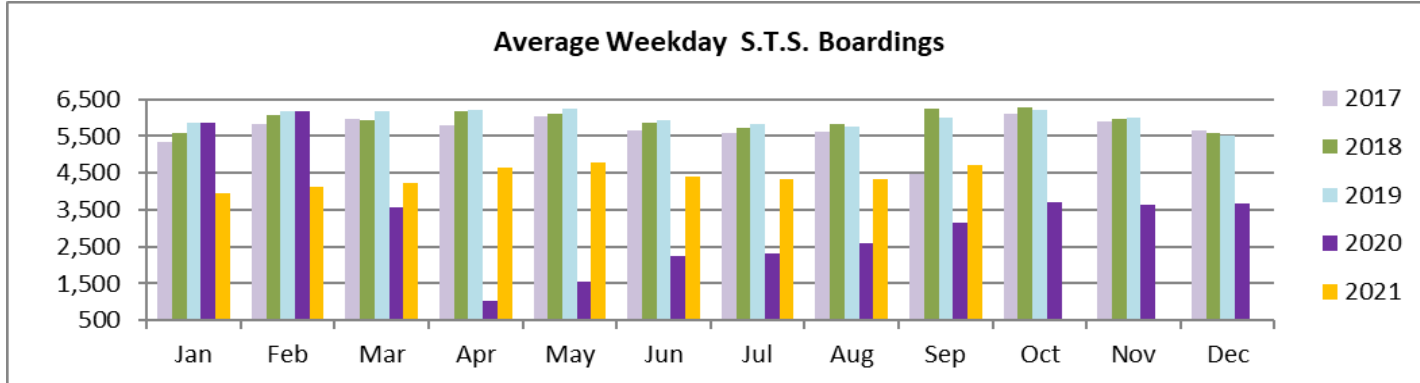
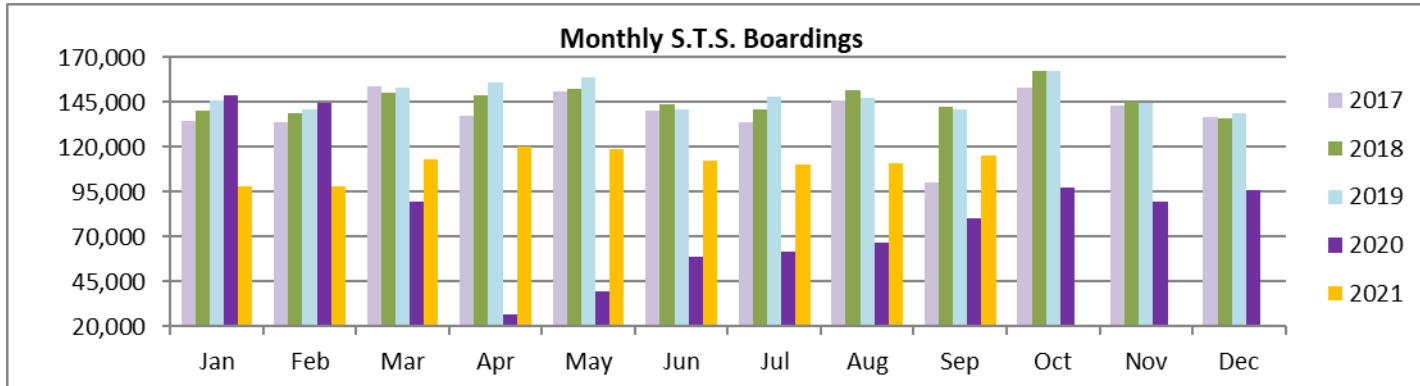


**STS MONTHLY AND AVERAGE DAILY BOARDINGS**  
**September 2021**

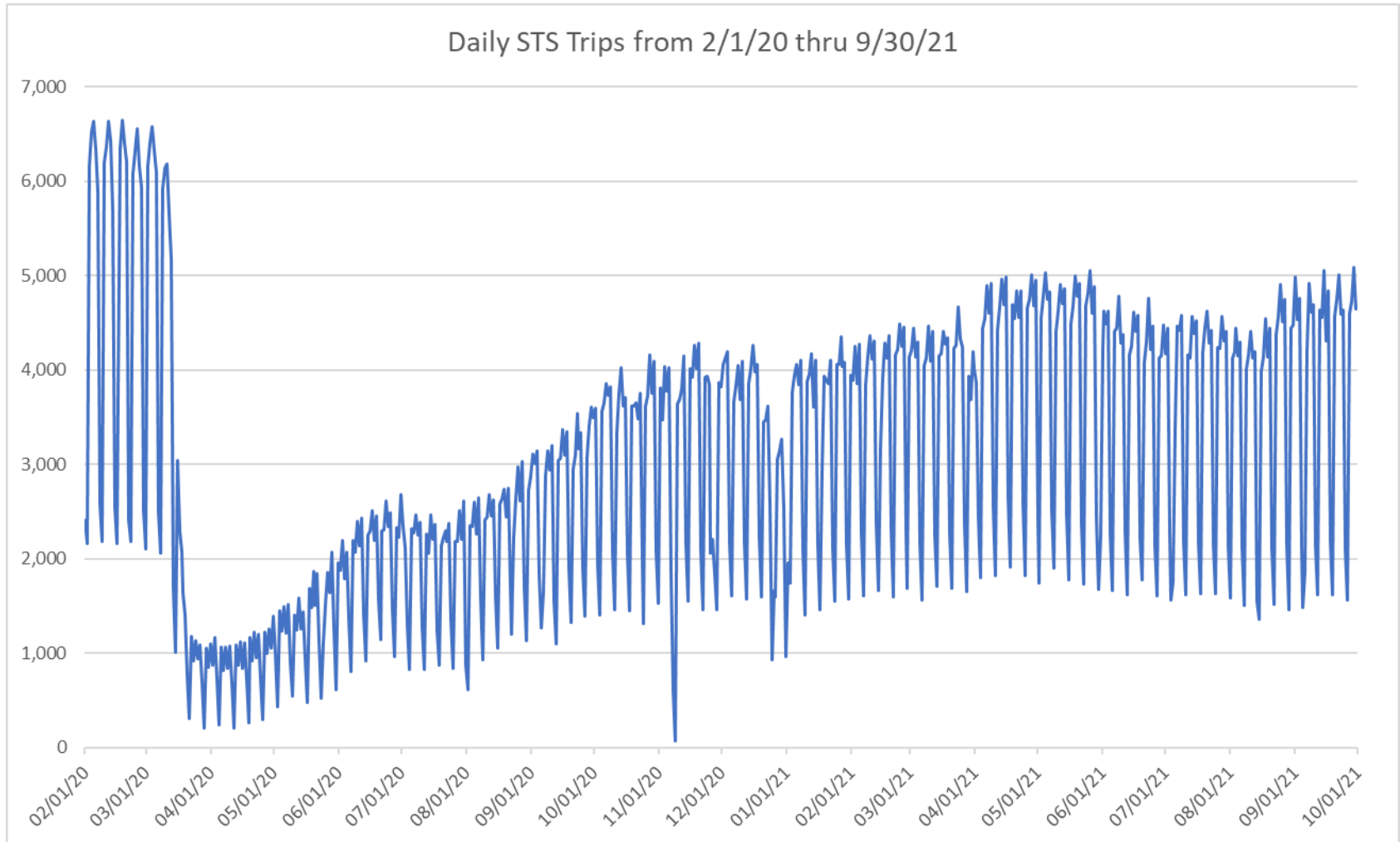
<b>Measure</b>	<b>timeline</b>	<b>Ambulatory</b>	<b>Wheelchair</b>	<b>Total Clients (*)</b>
<b>Average Weekday</b>	Sep-21	3,869	831	<b>4,700</b>
<b>Average Saturday</b>	Sep-21	1,732	410	<b>2,142</b>
<b>Average Sunday</b>	Sep-21	1,350	278	<b>1,628</b>
<b>Total Monthly</b>	<b>Sep-21</b>	<b>94,924</b>	<b>20,482</b>	<b>115,406</b>
<b>Average Weekday</b>	Sep-20	2,628	536	<b>3,164</b>
<b>Average Saturday</b>	Sep-20	1,491	304	<b>1,795</b>
<b>Average Sunday</b>	Sep-20	1,140	205	<b>1,345</b>
<b>Total Monthly</b>	<b>Sep-20</b>	<b>66,844</b>	<b>13,502</b>	<b>80,346</b>
<b>Average Weekday</b>	Sep-19	4,850	1,155	<b>6,005</b>
<b>Average Saturday</b>	Sep-19	2,032	556	<b>2,587</b>
<b>Average Sunday</b>	Sep-19	1,406	418	<b>1,823</b>
<b>Total Monthly</b>	<b>Sep-19</b>	<b>113,557</b>	<b>27,830</b>	<b>141,387</b>
<b>% Change Current vs. Sep 2020 Weekday</b>		47.2%	55.0%	48.6%
<b>% Change Current vs. Sep 2020 Saturday</b>		16.2%	34.8%	19.3%
<b>% Change Current vs. Sep 2020 Sunday</b>		18.4%	35.6%	21.0%
<b>% Change Current vs. Sep 2020 Month Total</b>		<b>42.0%</b>	<b>51.7%</b>	<b>43.6%</b>
<b>% Change Current vs. Sep 2019 Weekday</b>		-20.2%	-28.1%	-21.7%
<b>% Change Current vs. Sep 2019 Saturday</b>		-14.7%	-26.3%	-17.2%
<b>% Change Current vs. Sep 2019 Sunday</b>		-4.0%	-33.4%	-10.7%
<b>% Change Current vs. Sep 2019 Month Total</b>		<b>-16.4%</b>	<b>-26.4%</b>	<b>-18.4%</b>

(\*) Trip count data provided by STS contractor.

## TOTAL MONTHLY AND AVERAGE WEEKDAY RIDERSHIP YEAR OVER YEAR COMPARISON CHARTS – SPECIAL TRANSPORTATION SERVICES (S.T.S.)

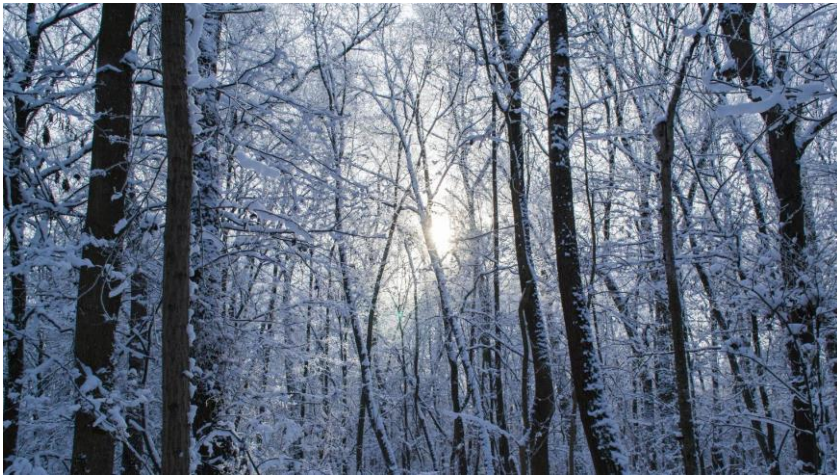


## DAILY STS RIDERSHIP SINCE FEBRUARY 1, 2020



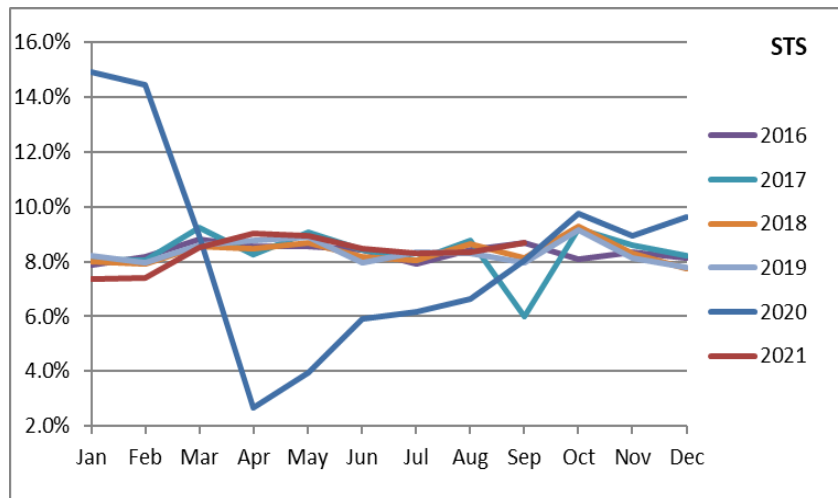
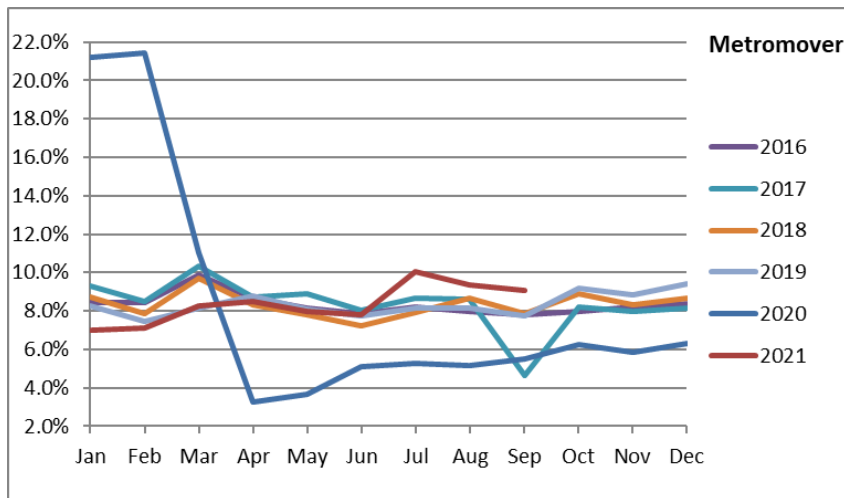
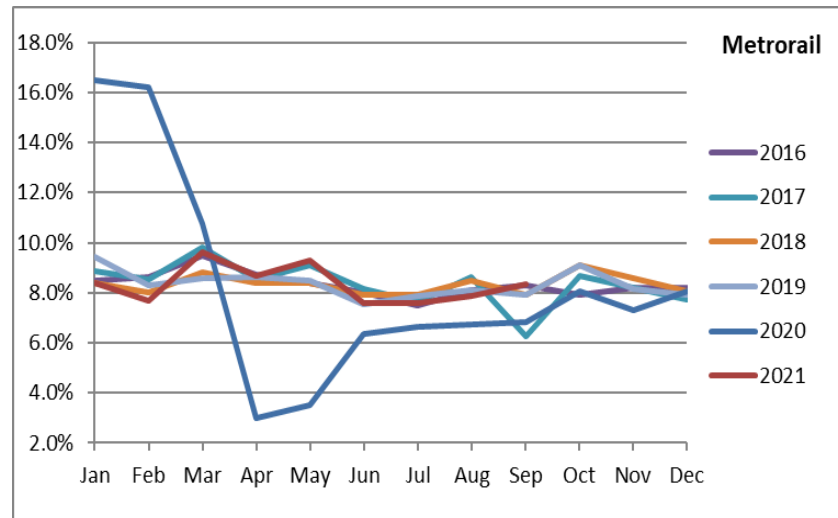
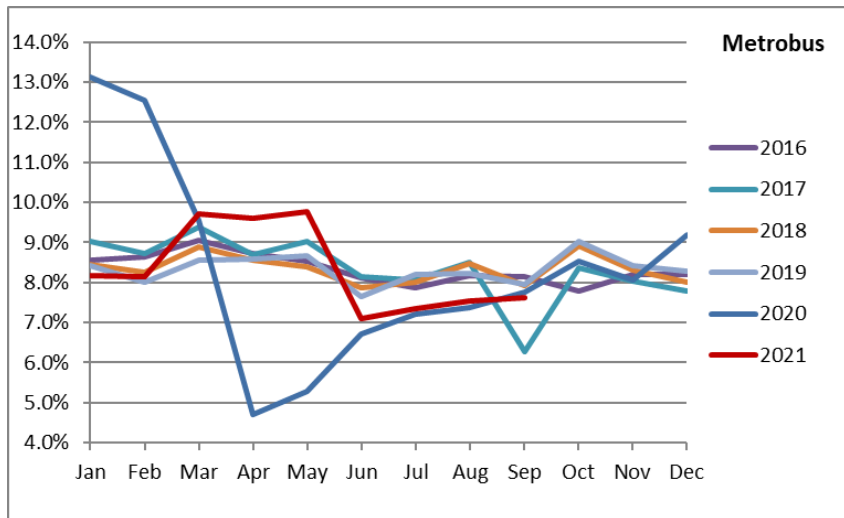
- (1) National Emergency was declared on 3/13/20 as a result of the SARS-CoV-2 pandemic.
- (2) The dip at the start of the second week of November 2020 is due to Hurricane Eta.
- (3) Periodic (weekly) variations are prominent, since weekday ridership is almost always significantly higher than weekend or holiday ridership.

# Ridership Seasonality





# RIDERSHIP SEASONALITY – PERCENT RIDERSHIP SHARE BY MONTH AND CALENDAR YEAR FOR EACH MODE



Note: the prominent dips seen in the fall of 2017 and beginning in the spring of 2020 are due to Hurricane Irma and the SARS-CoV-2 pandemic, respectively. Reductions in Bus and Rail ridership share seen beginning in June 2021 are due to reinstatement of fares as well changes in reporting tools and datasets, as discussed earlier in this report.