



TRANSPORTATION AND PUBLIC WORKS

RIDERSHIP TECHNICAL REPORT

Division of Performance and Materials Management



Table of Contents

<i>Table of Contents</i>	2-3
All Modes Overview	4
Total Monthly Weekday, Saturday and Sunday Monthly Boardings By Mode	5
Average Weekday, Saturday and Sunday Boardings by Mode	6
Metrobus Total Monthly Ridership Comparisons by Fiscal Year	7
Metrorail Total Monthly Ridership Comparisons by Fiscal Year	8
Metromover Total Monthly Ridership Comparisons by Fiscal Year	9
STS Total Monthly Ridership Comparisons by Fiscal Year	10
All-Modes Combined Total Monthly Ridership Comparisons By Fiscal Year	11
All Modes Combined Total Monthly and Average Weekday Ridership – Year over Year Comparison Charts	12
Average Weekday Ridership – Modal Splits	13
Daily Ridership for All Modes Combined since February 1, 2020	14
Metrobus	15
Metrobus Average Weekday Boardings by Route	16-18
Metrobus Average Saturday Boardings by Route	19-20
Metrobus Average Sunday Boardings by Route	21-22
Metrobus Monthly Total Boardings by Route	23-25
Metrobus Holiday Boardings by Route	26
Year-over-Year Bus Ridership by Route Service Type	27-28
Bus Routes as Ranked by Percentage of Average Weekday Ridership	29
Metrobus Cumulative Percentage Average Weekday Ridership Share by Route (Top 75%)	30
Total Monthly and Average Weekday Bus Ridership – Year over Year Comparison Charts	31
Bus “Top 5 / Bottom 5” Routes Average Weekday Ridership Performance	32
Daily Metrobus Ridership since February 1, 2020	33
Metrobus Parking Patronage Summary	34

Table of Contents (continued)

Metrorail	35
Metrorail Average Weekday Boardings by Station	36
Metrorail Average Saturday Boardings by Station	37
Metrorail Average Sunday Boardings by Station	38
Metrorail Total Monthly Boardings by Station	39
Metrorail Holiday Boardings by Station	40
Metrorail Cumulative Percentage Average Weekday Ridership Share	41
Total Monthly and Average Weekday Rail Ridership – Year over Year Comparison Charts	42
“Top 5 / Bottom 5” Stations Average Weekday Ridership Performance	43
Daily Metrorail Ridership since February 1, 2020	44
Metrorail Parking Patronage Summary	45
Metromover	46
Monthly and Average Daily Mover Boardings by Station	47
Metromover Cumulative Percentage Average Weekday Ridership Share	48
Total Monthly and Average Weekday Mover Ridership – Year over Year Comparison Charts	49
“Top 5 / Bottom 5” Stations Average Weekday Ridership Performance	50
Daily Metromover Ridership since February 1, 2020	51
Special Transportation Services (STS)	52
STS Monthly and Average Daily Boardings	53
Total Monthly and Average Weekday STS Ridership – Year over Year Comparison Charts	54
Daily STS Ridership since February 1, 2020	55
Ridership Seasonality	56
Ridership Seasonality – Percent Ridership Share by Month and Calendar year for Each Mode	57

All Modes Overview



**TOTAL MONTHLY WEEKDAY, SATURDAY AND SUNDAY BOARDINGS BY MODE
June 2022**

TRAVEL MODE	MONTH'S TOTAL WEEKDAYS RIDERSHIP (*)	MONTH'S TOTAL SATURDAYS RIDERSHIP	MONTH'S TOTAL SUNDAYS RIDERSHIP	TOTAL MONTHLY RIDERSHIP	% CHANGE vs Jun 2021 TOTAL MONTH RIDERSHIP
METROBUS (1)	2,584,410	259,875	219,774	3,064,059	14.6%
METRORAIL (2)	850,010	68,667	56,800	975,477	34.8%
METROMOVER (3)	382,095	49,733	45,458	477,286	66.8%
STS PARATRANSIT (4)	96,167	6,835	6,052	109,054	-3.0%
TOTAL	3,912,682	385,110	328,084	4,625,876	21.9%

(*) Total weekday ridership includes Monday, June 20, 2022 - Juneteenth, a County-observed holiday. Ridership numbers for that day were as follows:

Metrobus	108,703
Metrorail	29,123
Metromover	15,544
STS	3,388

- (1) Metrobus fares resumed on June 1, 2021, following a 14-month period of fare-free rides as a result of the SARS-CoV-2 pandemic. The NextFare System farebox data replaced the bus automatic passenger counter data as ridership data of record starting on that date.
- (2) Metrorail fares resumed on June 1, 2021, following a 14-month period of fare-free rides as a result of the SARS-CoV-2 pandemic. The NextFare System faregate data replaced the video data as ridership data of record starting on that date.
- (3) Beginning March 13, 2020 (day of National Emergency Declaration due to SARS-CoV-2 pandemic), only raw data from Metromover automatic passenger counters is reported; no estimates are performed after March 13, 2020.
- (4) Paratransit ridership data as reported by the contractor.

AVERAGE WEEKDAY, SATURDAY AND SUNDAY BOARDINGS BY MODE
June 2022

Travel Mode	Average Weekday (*)	Average Saturday	Average Sunday	% Change Jun 2021 Weekday	% Change Jun 2021 Saturday	% Change Jun 2021 Sunday
METROBUS	117,563	65,066	54,945	16.8%	-0.2%	10.0%
METRORAIL	39,090	17,167	14,200	37.4%	21.5%	32.6%
METROMOVER	17,492	12,433	11,365	39.6%	34.0%	44.8%
STS PARATRANSIT	4,371	1,709	1,513	-0.7%	-23.2%	-9.2%
Totals (**)	178,515	96,374	82,022	22.3%	6.1%	16.9%

(*) Average weekday ridership includes Juneteenth for Metrobus and STS but excludes it for Metrorail and Metromover.

(**) Average ridership is calculated and published only for those days and stations with nontrivial amounts of reported data.

METROBUS TOTAL MONTHLY RIDERSHIP COMPARISONS BY FISCAL YEAR

Bus Month	FY 18	FY 19	Variance 18 to 19	FY 20	Variance 19 to 20	FY 21	FY 22	Variance 21 to 22	Variance 19 to 22	Variance 18 to 22
Oct	4,709,590	4,554,886	-3.3%	4,507,012	-1.1%	2,805,139	3,081,157	9.8%	-32.4%	-34.6%
Nov	4,522,250	4,245,535	-6.1%	4,197,225	-1.1%	2,651,290	3,056,726	15.3%	-28.0%	-32.4%
Dec	4,380,099	4,081,581	-6.8%	4,126,990	1.1%	3,022,530	3,123,883	3.4%	-23.5%	-28.7%
Jan	4,307,001	4,195,911	-2.6%	4,316,998	2.9%	3,082,746	3,029,055	-1.7%	-27.8%	-29.7%
Feb	4,208,811	3,994,019	-5.1%	4,123,083	3.2%	3,076,966	2,995,789	-2.6%	-25.0%	-28.8%
Mar	4,534,564	4,266,768	-5.9%	3,136,162	-26.5%	3,660,639	3,218,562	-12.1%	-24.6%	-29.0%
Apr	4,360,997	4,291,135	-1.6%	1,544,316	-64.0%	3,625,048	3,105,797	-14.3%	-27.6%	-28.8%
May	4,277,628	4,330,922	1.2%	1,734,609	-59.9%	3,683,343	3,097,574	-15.9%	-28.5%	-27.6%
Jun	4,009,340	3,823,863	-4.6%	2,210,725	-42.2%	2,672,570	3,064,059	14.6%	-19.9%	-23.6%
Jul	4,080,664	4,094,906	0.3%	2,366,749	-42.2%	2,769,907				
Aug	4,326,980	4,109,613	-5.0%	2,422,014	-41.1%	2,843,552				
Sep	4,041,992	3,971,220	-1.8%	2,546,923	-35.9%	2,877,110				
FY Total	51,759,916	49,960,359	-3.5%	37,232,806	-25.5%	36,770,840				

METRORAIL TOTAL MONTHLY RIDERSHIP COMPARISONS BY FISCAL YEAR

Rail Month	FY 18	FY 19	Variance 18 to 19	FY 20	Variance 19 to 20	FY 21	FY 22	Variance 21 to 22	Variance 19 to 22	Variance 18 to 22
Oct	1,708,564	1,757,225	2.8%	1,643,166	-6.5%	769,525	844,383	9.7%	-51.9%	-50.6%
Nov	1,609,888	1,656,929	2.9%	1,469,448	-11.3%	699,492	850,881	21.6%	-48.6%	-47.1%
Dec	1,517,341	1,553,804	2.4%	1,433,928	-7.7%	769,194	860,436	11.9%	-44.6%	-43.3%
Jan	1,615,576	1,708,695	5.8%	1,576,340	-7.7%	799,119	832,924	4.2%	-51.3%	-48.4%
Feb	1,545,581	1,501,458	-2.9%	1,549,118	3.2%	730,792	905,162	23.9%	-39.7%	-41.4%
Mar	1,700,714	1,554,851	-8.6%	1,027,319	-33.9%	917,097	1,084,978	18.3%	-30.2%	-36.2%
Apr	1,619,890	1,559,446	-3.7%	287,803	-81.5%	827,414	1,027,139	24.1%	-34.1%	-36.6%
May	1,618,504	1,531,597	-5.4%	337,696	-78.0%	887,111	1,023,322	15.4%	-33.2%	-36.8%
Jun	1,524,311	1,359,966	-10.8%	608,758	-55.2%	723,469	975,477	34.8%	-28.3%	-36.0%
Jul	1,527,380	1,419,158	-7.1%	632,964	-55.4%	722,159				
Aug	1,632,471	1,463,646	-10.3%	641,275	-56.2%	749,578				
Sep	1,530,088	1,427,726	-6.7%	654,244	-54.2%	795,749				
FY Total	19,150,308	18,494,501	-3.4%	11,862,059	-35.9%	9,390,699				

METROMOVER TOTAL MONTHLY RIDERSHIP COMPARISONS BY FISCAL YEAR

Mover	Variance			Variance			Variance	Variance	Variance	
Month	FY 18	FY 19	18 to 19	FY 20	19 to 20	FY 21	FY 22	21 to 22	19 to 22	18 to 22
Oct	751,323	790,533	5.2%	831,234	5.1%	250,044	389,065	55.6%	-50.8%	-48.2%
Nov	729,519	735,198	0.8%	799,632	8.8%	232,422	418,929	80.2%	-43.0%	-42.6%
Dec	748,797	767,239	2.5%	849,832	10.8%	251,019	450,320	79.4%	-41.3%	-39.9%
Jan	772,122	746,728	-3.3%	847,773	13.5%	255,968	451,566	76.4%	-39.5%	-41.5%
Feb	698,107	675,160	-3.3%	855,398	26.7%	260,332	465,968	79.0%	-31.0%	-33.3%
Mar	859,143	737,814	-14.1%	441,200	-40.2%	302,502	535,857	77.1%	-27.4%	-37.6%
Apr	740,036	795,696	7.5%	130,549	-83.6%	310,772	495,982	59.6%	-37.7%	-33.0%
May	694,106	734,645	5.8%	146,454	-80.1%	292,922	455,120	55.4%	-38.0%	-34.4%
Jun	641,675	701,318	9.3%	203,637	-71.0%	286,145	477,286	66.8%	-31.9%	-25.6%
Jul	700,462	739,814	5.6%	210,596	-71.5%	368,847				
Aug	768,728	739,785	-3.8%	205,995	-72.2%	344,319				
Sep	698,505	699,879	0.2%	219,696	-68.6%	331,915				
FY Total	8,802,523	8,863,809	0.7%	5,741,996	-35.2%	3,487,207				

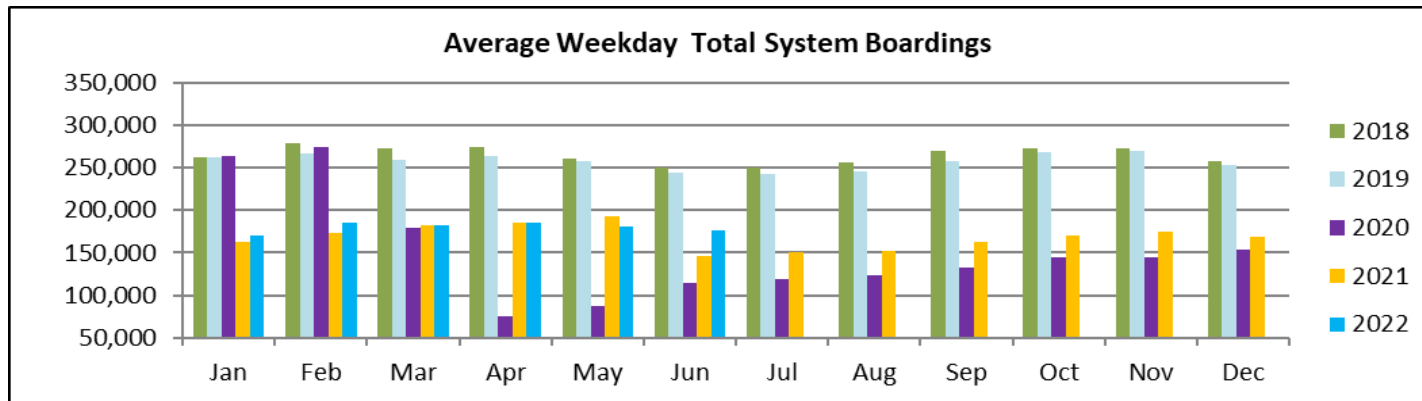
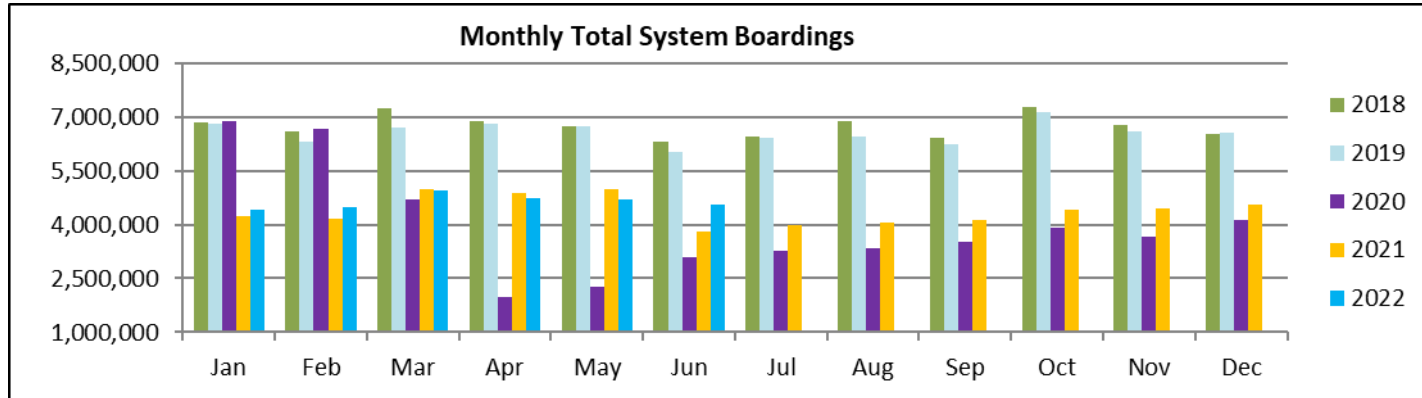
SPECIAL TRANSPORTATION SERVICES (STS) TOTAL MONTHLY RIDERSHIP COMPARISONS BY FISCAL YEAR

STS			Variance					Variance	Variance	Variance
Month	FY 18	FY 19	18 to 19	FY 20	19 to 20	FY 21	FY 22	21 to 22	19 to 22	18 to 22
Oct	153,409	162,564	6.0%	162,704	0.1%	97,388	115,122	18.2%	-29.2%	-25.0%
Nov	143,375	145,653	1.6%	144,366	-0.9%	89,387	110,289	23.4%	-24.3%	-23.1%
Dec	136,955	136,110	-0.6%	138,642	1.9%	96,366	104,496	8.4%	-23.2%	-23.7%
Jan	140,042	146,268	4.4%	149,114	1.9%	97,928	97,541	-0.4%	-33.3%	-30.3%
Feb	139,032	141,396	1.7%	144,392	2.1%	98,285	105,706	7.6%	-25.2%	-24.0%
Mar	150,384	153,191	1.9%	89,634	-41.5%	112,930	120,718	6.9%	-21.2%	-19.7%
Apr	148,879	155,808	4.7%	26,877	-82.7%	120,122	114,912	-4.3%	-26.2%	-22.8%
May	152,164	158,665	4.3%	39,654	-75.0%	118,636	114,505	-3.5%	-27.8%	-24.7%
Jun	143,653	141,320	-1.6%	59,093	-58.2%	112,397	109,054	-3.0%	-22.8%	-24.1%
Jul	141,020	148,232	5.1%	61,765	-58.3%	110,059				
Aug	151,750	147,331	-2.9%	66,563	-54.8%	110,766				
Sep	142,360	141,387	-0.7%	80,346	-43.2%	115,406				
FY Total	1,743,023	1,777,925	2.0%	1,163,150	-34.6%	1,279,670				

ALL-MODES COMBINED TOTAL MONTHLY RIDERSHIP COMPARISONS BY FISCAL YEAR

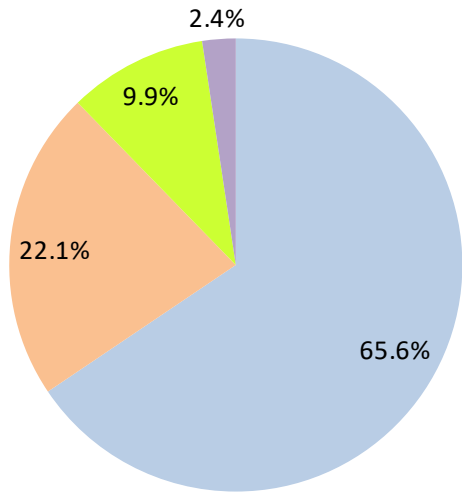
All Modes Month						Variances					
	FY 18	FY 19	FY 20	FY 21	FY 22	18 TO 19	19 TO 20	20 TO 21	21 TO 22	19 TO 22	18 TO 22
Oct	7,322,886	7,265,208	7,144,116	3,922,096	4,429,727	-0.8%	-1.7%	-45.1%	12.9%	-39.0%	-39.5%
Nov	7,005,032	6,783,315	6,610,671	3,672,591	4,436,825	-3.2%	-2.5%	-44.4%	20.8%	-34.6%	-36.7%
Dec	6,783,192	6,538,734	6,549,392	4,139,109	4,539,135	-3.6%	0.2%	-36.8%	9.7%	-30.6%	-33.1%
Jan	6,834,741	6,797,602	6,890,225	4,235,761	4,411,086	-0.5%	1.4%	-38.5%	4.1%	-35.1%	-35.5%
Feb	6,591,531	6,312,033	6,671,991	4,166,375	4,472,625	-4.2%	5.7%	-37.6%	7.4%	-29.1%	-32.1%
Mar	7,244,805	6,712,624	4,694,315	4,993,168	4,960,115	-7.3%	-30.1%	6.4%	-0.7%	-26.1%	-31.5%
Apr	6,869,802	6,802,085	1,989,545	4,883,356	4,743,830	-1.0%	-70.8%	145.5%	-2.9%	-30.3%	-30.9%
May	6,742,402	6,755,829	2,258,413	4,982,012	4,690,521	0.2%	-66.6%	120.6%	-5.9%	-30.6%	-30.4%
Jun	6,318,979	6,026,467	3,082,213	3,794,581	4,625,876	-4.6%	-48.9%	23.1%	21.9%	-23.2%	-26.8%
Jul	6,449,526	6,402,110	3,272,074	3,970,972		-0.7%	-48.9%	21.4%			
Aug	6,879,929	6,460,375	3,335,847	4,048,215		-6.1%	-48.4%	21.4%			
Sep	6,412,945	6,240,212	3,501,209	4,120,180		-2.7%	-43.9%	17.7%			
FY Total	81,455,770	79,096,594	56,000,011	50,928,416		-2.9%	-29.2%	-9.1%			

TOTAL MONTHLY AND AVERAGE WEEKDAY RIDERSHIP YEAR OVER YEAR COMPARISON CHARTS – ALL MODES COMBINED



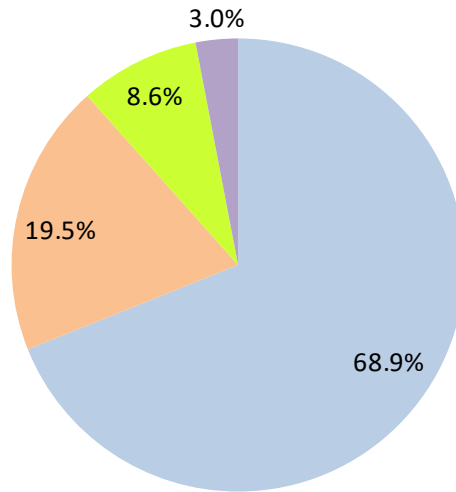
AVERAGE WEEKDAY RIDERSHIP - MODAL SPLITS

June 2022



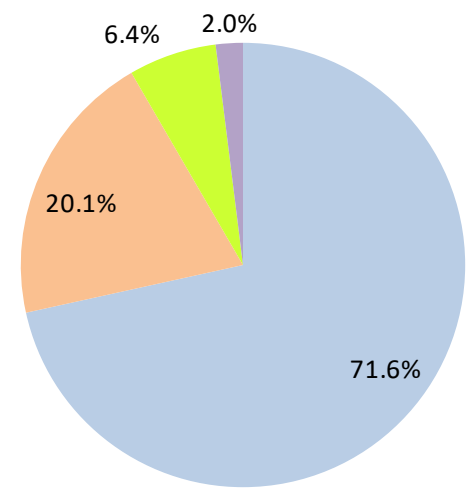
boardings

June 2021



boardings

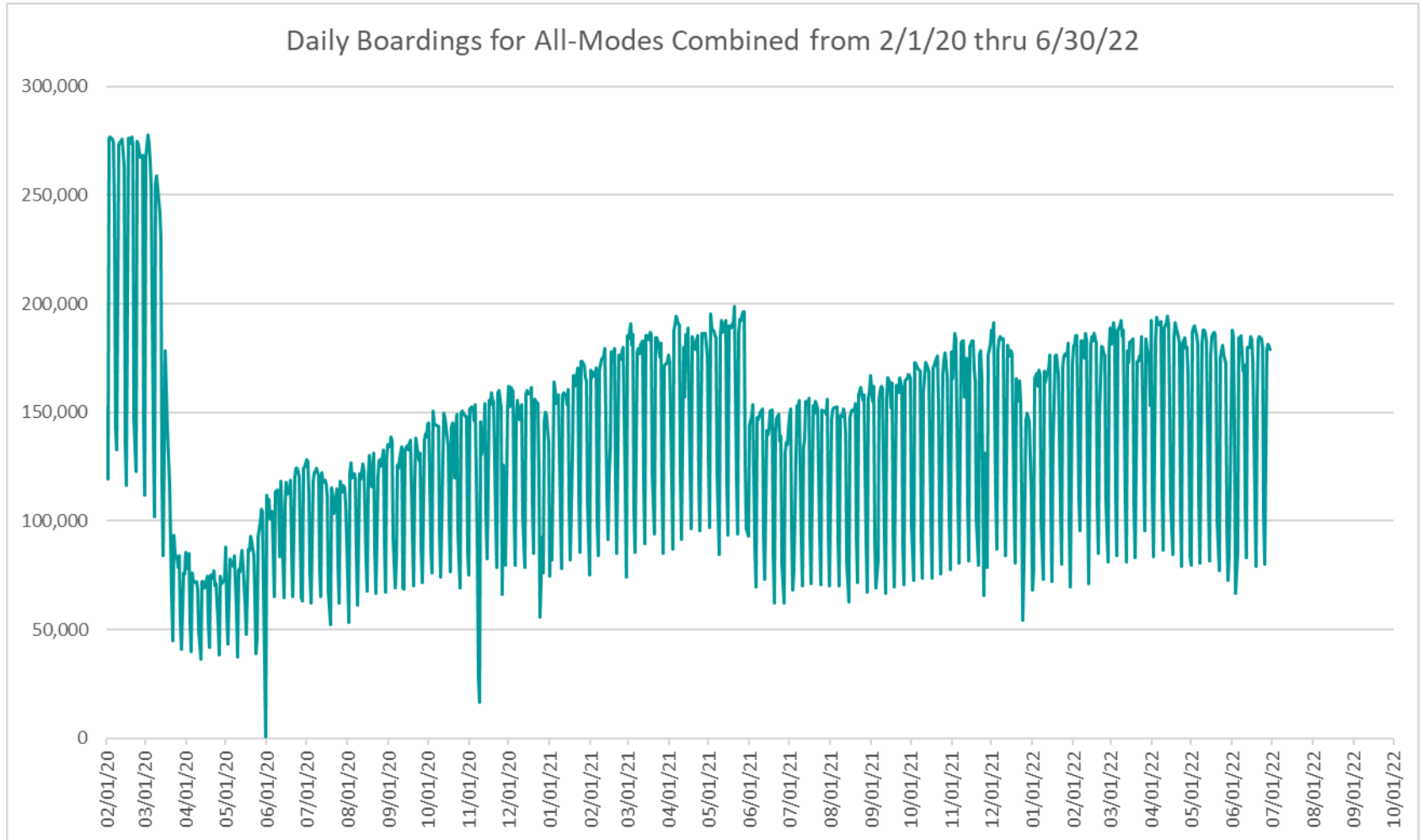
June 2020



boardings



DAILY RIDERSHIP FOR ALL MODES COMBINED SINCE FEBRUARY 1, 2020



- (1) National Emergency was declared on 3/13/20 as a result of the SARS-CoV-2 pandemic.
- (2) There was no Metrobus, Metrorail and Metromover service on 5/31/20, as a safety precaution.
- (3) The dip at the start of the second week of November 2020 is due to Hurricane Eta.
- (4) The reduction seen beginning 6/1/21 is partly due to the resumption of fares for bus and rail, and partly the result of having resumed reporting Cubic farebox data rather than bus APC counts, as well as Cubic rail faregate counts instead of video camera counts on that date.
- (5) Periodic (weekly) variations are prominent, since weekday ridership is almost always significantly higher than weekend or holiday ridership.

Metrobus



METROBUS AVERAGE WEEKDAY BOARDINGS BY ROUTE (†)

Route weekdays	Average Weekday	Average Weekday	Percent Change	Average Weekday	Percent Change	Average Weekday	Percent Change	Average Weekday	Percent Change
	Jun-22	Jun-21	YOY	Feb-20	Current vs Feb-20	May-22	MOM	Jun-20	YO2Y
1 (*)	143	142	0.8%	184	-22.5%	153	-6.5%	156	-8.3%
2	1,805	1,731	4.3%	3,102	-41.8%	1,926	-6.3%	1,362	32.6%
3	3,609	4,063	-11.2%	5,137	-29.8%	3,673	-1.7%	2,246	60.7%
7	2,884	2,145	34.5%	3,501	-17.6%	2,945	-2.1%	1,624	77.6%
8	3,286	3,192	2.9%	3,909	-15.9%	3,231	1.7%	1,801	82.4%
9	3,815	4,173	-8.6%	5,528	-31.0%	3,791	0.6%	2,925	30.5%
10	1,569	1,254	25.1%	2,482	-36.8%	1,674	-6.3%	853	84.0%
11	6,229	5,338	16.7%	7,292	-14.6%	6,190	0.6%	3,478	79.1%
12	1,537	1,504	2.2%	2,779	-44.7%	1,563	-1.7%	1,645	-6.5%
16	1,361	950	43.2%	1,862	-26.9%	1,280	6.3%	830	64.0%
17	2,274	2,008	13.2%	3,878	-41.4%	2,467	-7.8%	2,353	-3.4%
19	819	674	21.6%	1,542	-46.9%	828	-1.0%	625	31.0%
21	1,053	882	19.4%	1,817	-42.0%	1,177	-10.5%	1,392	-24.3%
22	2,506	1,946	28.8%	3,640	-31.1%	2,493	0.5%	1,644	52.4%
24 - Coral Way Limited	1,575	829	90.0%	1,340	17.6%	1,379	14.2%	920	71.2%
27	4,782	4,125	15.9%	6,972	-31.4%	5,039	-5.1%	3,634	31.6%
29 (*)	371	317	17.3%	534	-30.5%	485	-23.4%	251	48.2%
31 - BUSWAY LOCAL	709	521	36.1%	1,089	-34.9%	713	-0.5%	556	27.6%
32	1,759	1,197	47.0%	2,390	-26.4%	1,696	3.7%	1,423	23.7%
33	1,236	850	45.4%	1,687	-26.8%	1,294	-4.5%	694	78.0%
34 EXPRESS	958	938	2.2%	2,008	-52.3%	960	-0.2%	475	101.5%
35	1,477	1,366	8.1%	2,421	-39.0%	1,561	-5.4%	1,369	7.9%
36	1,862	1,305	42.7%	2,536	-26.6%	1,994	-6.7%	1,396	33.4%
37	2,605	2,142	21.6%	3,273	-20.4%	2,683	-2.9%	1,790	45.5%
38	3,652	3,102	17.7%	6,361	-42.6%	3,487	4.7%	3,077	18.7%
39 EXPRESS		270		893				77	
40	1,410	967	45.8%	1,772	-20.4%	1,393	1.2%	765	84.4%
42	694	531	30.8%	820	-15.4%	697	-0.5%	380	82.7%
46 - LIBERTY CITY CONN. (*)	16	14	17.5%	41	-61.0%	27	-41.3%	21	-25.9%
51 - FLAGLER MAX	2,815	1,904	47.9%	3,109	-9.5%	2,670	5.4%	1,134	148.3%
52	847	648	30.8%	1,261	-32.9%	898	-5.7%	605	39.9%
54	2,176	1,712	27.1%	2,940	-26.0%	2,164	0.5%	1,977	10.1%
55 MARLINS SHUTTLE									
56 (*)	286	191	49.8%	354	-19.2%	315	-9.5%	134	112.3%
57	300	293	2.4%	433	-30.8%	308	-2.5%	170	76.0%
62	1,146	1,037	10.5%	1,815	-36.9%	1,232	-7.0%	1,260	-9.1%
71 (*)	528	404	30.8%	711	-25.6%	541	-2.3%	278	89.8%
72 (*)	552	387	42.8%	781	-29.3%	574	-3.8%	366	50.7%

(†) In this table and those which follow, "YOY" stands for "year-over-year", "MOM" for "month-over-month" and "YO2Y" for "year over two years", i.e., current month vs 12 months prior, one month prior, and 24 months prior, respectively.

(*) Contracted routes

(**) Due to effects from the SARS-CoV-2 pandemic; rides were fare-free beginning March 22, 2020; fares were reinstated on June 1, 2021, in part accounting for the drop in ridership from May 2021.

METROBUS AVERAGE WEEKDAY BOARDINGS BY ROUTE

Route <i>weekdays</i>	Average Weekday	Average Weekday	Percent Change	Average Weekday	Percent Change	Average Weekday	Percent Change	Average Weekday	Percent Change
	Jun-22	Jun-21	YOY	Feb-20	Current vs Feb-20	May-22	MOM	Jun-20	YO2Y
73	2,142	1,317	62.6%	2,124	0.8%	2,204	-2.8%	799	168.0%
75	679	642	5.8%	1,429	-52.5%	775	-12.4%	515	31.7%
77	5,017	4,689	7.0%	7,129	-29.6%	4,882	2.8%	3,703	35.5%
79 STREET MAX	284			361	-21.3%	346	-17.8%		
82 - WESTCHESTER CIRC. (*)	38	27	42.8%	62	-38.4%	37	2.7%	28	33.4%
87	1,350	964	40.0%	1,499	-9.9%	1,407	-4.0%	708	90.6%
88	1,615	1,579	2.3%	2,076	-22.2%	1,596	1.2%	1,129	43.1%
93 - BISCAYNE MAX	2,079	1,431	45.2%	3,334	-37.6%	2,229	-6.7%	1,446	43.8%
95 EXPRESS	763	528	44.5%	1,690	-54.8%	771	-1.0%	84	804.6%
99	1,145	882	29.8%	1,473	-22.3%	1,154	-0.9%	746	53.4%
101 - A (*)	195	132	47.5%	177	10.3%	195	-0.1%	86	126.5%
102 - B	1,349	1,212	11.3%	1,778	-24.1%	1,327	1.6%	832	62.2%
103 - C		182		463				143	
104	500	487	2.6%	837	-40.3%	536	-6.7%	280	78.4%
105 - E	912	796	14.5%	1,287	-29.1%	846	7.8%	646	41.3%
107 - G	1,209	992	21.9%	1,713	-29.4%	1,114	8.5%	846	42.9%
108 - H	327	228	43.8%	473	-30.7%	340	-3.7%	222	47.6%
110 - J	2,056	2,164	-5.0%	2,508	-18.0%	2,043	0.6%	1,502	36.9%
112 - L	5,660	5,772	-1.9%	7,636	-25.9%	5,520	2.5%	4,683	20.8%
113 - M	460	350	31.7%	866	-46.8%	463	-0.6%	355	29.8%
115 (*)	153	171	-10.9%	180	-15.3%	172	-11.2%	167	-8.8%
119 - S	6,759	6,973	-3.1%	8,970	-24.6%	6,855	-1.4%	5,160	31.0%
120 - BEACH MAX	4,769	4,188	13.9%	6,667	-28.5%	4,890	-2.5%	3,276	45.5%
132 TRI-RAIL (DORAL)	2	13	-83.1%	16	-85.6%	3	-27.0%	11	-80.4%
135	820	679	20.9%	1,399	-41.4%	840	-2.3%	474	73.0%
136	106	73	44.3%	126	-16.4%	117	-9.9%	35	202.7%
137 - WEST DADE CONN.	1,383	801	72.7%	1,626	-14.9%	1,365	1.3%	613	125.8%
150 - MIAMI BEACH AIRPORT FLYER	1,338	1,347	-0.7%	1,867	-28.3%	1,387	-3.6%	661	102.4%
155 - BISCAYNE GARDENS CIRCULATOR (*)	40	21	95.8%	44	-8.9%	39	2.3%	30	33.0%
175 - NW MIAMI-DADE EXPRESS				33					
183	2,013	1,711	17.7%	3,149	-36.1%	2,002	0.6%	1,822	10.5%
195 EXPRESS - BROWARD BLVD				372					
196 EXPRESS - SHERIDAN ST				383					
200 - CUTLER BAY LOCAL	92	81	12.9%	158	-41.7%	56	63.4%	92	0.4%
202 - LITTLE HAITI CONN. (*)	114	100	13.2%	140	-18.7%	99	15.0%	90	26.4%
204 KILLIAN KAT	488			1,071	-54.5%	510	-4.4%		

METROBUS AVERAGE WEEKDAY BOARDINGS BY ROUTE

Route <i>weekdays</i>	Average Weekday	Average Weekday	Percent Change	Average Weekday	Percent Change	Average Weekday	Percent Change	Average Weekday	Percent Change
	Jun-22	Jun-21	YOY	Feb-20	Current vs Feb-20	May-22	MOM	Jun-20	YO2Y
207 (7st) - LITTLE HAVANA CIRC	1,045	648	61.4%	1,489	-29.8%	1,101	-5.1%	912	14.6%
208 (8st) - LITTLE HAVANA CIRC	968	558	73.5%	1,308	-25.9%	1,033	-6.3%	867	11.7%
210 - SKYLAKE CIRC (*)	325	275	18.3%	282	15.4%	325	0.0%	181	79.9%
211 - OVERTOWN CIRC. (*)	90	27	232.1%	58	55.8%	86	5.1%	46	94.5%
212 - SWEETWATER CIRC. (*)	22	25	-13.5%	15	48.5%	23	-4.9%	19	13.7%
217 - BUNCHE PARK CIRC (*)	57	45	26.6%	97	-41.2%	73	-21.1%	54	5.8%
238 EAST/WEST CONN.	372	278	33.7%	449	-17.2%	400	-7.0%	76	390.3%
241 TUTTLE LIMITED	76					91	-16.0%		
246 - NIGHT OWL	50	10	419.9%	94	-46.6%	46	8.9%	4	1202.0%
248 - PRINCETON CIRCULATOR (*)	77	79	-2.1%	135	-42.8%	93	-16.9%	80	-4.1%
252 - CORAL REEF MAX	585	402	45.6%	851	-31.3%	612	-4.5%	245	138.1%
254 - BROWNSVILLE CIRC. (*)	6	46	-87.4%	19	-69.7%	5	13.1%	37	-84.2%
267 - LUDLAM LIMITED (*)	142	96	47.6%	149	-4.7%	133	6.5%	71	101.1%
272 SUNSET KAT (*)	310	278	11.6%	550	-43.7%	319	-2.8%	213	45.6%
277 - 7th AVENUE MAX	379	302	25.5%	683	-44.6%	433	-12.6%	331	14.3%
286 - NORTH POINTE CIRC. (*)	61	32	90.9%	97	-37.1%	63	-3.0%	36	68.4%
287 - SAGA BAY MAX	194	146	32.7%	358	-45.8%	210	-7.3%	97	99.5%
288 - KENDALL CRUISER	405			762	-46.9%	447	-9.5%		
295 EXPRESS - BROWARD BLVD - CIVIC CENTER				233					
296 EXPRESS - SHERIDAN ST - CIVIC CENTER				215					
297-27th AVENUE ORANGE MAX	790	548	44.2%	1,356	-41.8%	824	-4.1%	669	18.0%
301 DADE-MONROE EXPRESS(*)	751	964	-22.1%	841	-10.7%	741	1.4%	635	18.2%
302 CARD SOUND EXPRESS(*)	84	75	11.8%	86	-2.4%	81	4.3%	42	102.2%
344 (*)	43	66	-34.5%	96	-55.1%	48	-9.4%	50	-14.4%
500	12			81	-84.9%	14	-14.2%		
836 EXPRESS	141	73	94.5%			139	1.9%		
GREEN HILLS SHUTTLE (*)	6	18	-68.5%	9	-36.1%	4	43.8%	6	-1.4%
KINGS CREEK SHUTTLE (*)	21	18	14.0%	13	60.0%	23	-8.6%	4	389.4%
SIERRALAKES SHUTTLE (*)	19	16	17.5%	45	-58.9%	17	12.1%	20	-6.3%
ROBERT SHARP SHUTTLE (*)	16	21	-24.3%	10	64.2%	35	-55.4%	12	30.0%
AHEPA SHUTTLE (*)	15	22	-32.1%	21	-29.6%	16	-8.8%	20	-26.1%
Total	117,563	100,645	16.8%	167,711	-29.9%	119,055	-1.3%	81,597	44.1%

(*) The following routes are entirely operated under contract: 1, 29, 46, 56, 71, 72, 82, 101-A, 115, 155, 202, 210, 211, 212, 217, 246, 248, 254, 267, 272, 286, 301, 302 and 344.

(1) Includes shuttles and those routes which were not run both years.

(2) Several express routes were suspended beginning at the end of March 2020, due to the SARS-CoV-2 pandemic, while other routes had alignment and schedule modifications made to them, in an ongoing effort to optimize service delivery.

METROBUS AVERAGE SATURDAY BOARDINGS BY ROUTE

Route	Average Saturday	Average Saturday	Percent Change	Average Saturday	Percent Change	Average Saturday	Percent Change	Average Saturday	Percent Change
	Jun-22	Jun-21	YOY	Feb-20	Current vs Feb-20	May-22	MOM	Jun-20	YO2Y
Saturdays									
1 (*)	182	186	-2.0%	215	-15.2%	167	9.3%	176	3.8%
2	882	946	-6.7%	1,616	-45.4%	1,112	-20.6%	1,026	-14.0%
3	3,256	4,066	-19.9%	5,229	-37.7%	3,875	-16.0%	2,778	17.2%
7	1,496	1,308	14.4%	1,887	-20.8%	1,666	-10.2%	892	67.8%
8	1,956	1,969	-0.6%	2,027	-3.5%	1,868	4.7%	1,288	51.9%
9	2,165	2,539	-14.7%	3,034	-28.6%	2,243	-3.5%	2,240	-3.3%
10	1,154	1,048	10.2%	1,896	-39.1%	1,232	-6.3%	1,455	-20.7%
11	4,016	3,651	10.0%	5,182	-22.5%	3,869	3.8%	3,491	15.0%
16	1,014	1,021	-0.6%	1,566	-35.2%	1,084	-6.4%	945	7.4%
17	1,399	1,579	-11.4%	2,363	-40.8%	1,374	1.9%	1,615	-13.3%
22	1,425	1,340	6.3%	2,084	-31.6%	1,583	-10.0%	1,152	23.6%
24 - Coral Way Limited	844	741	13.9%	1,165	-27.6%	1,124	-24.9%	759	11.2%
27	2,530	2,925	-13.5%	4,034	-37.3%	2,703	-6.4%	2,434	4.0%
31 - BUSWAY LOCAL	483	623	-22.5%	896	-46.1%	514	-6.0%	655	-26.2%
32	774	698	10.9%	1,029	-24.7%	877	-11.7%	799	-3.1%
33	695	685	1.5%	951	-26.9%	830	-16.3%	566	22.7%
35	1,006	896	12.3%	1,372	-26.7%	1,021	-1.5%	916	9.9%
36	942	879	7.2%	1,289	-26.9%	1,270	-25.8%	1,089	-13.5%
37	1,448	1,330	8.9%	2,090	-30.7%	1,479	-2.1%	1,495	-3.1%
38	2,765	2,435	13.6%	4,715	-41.4%	2,811	-1.6%	2,554	8.3%
40	496	473	5.0%	655	-24.2%	603	-17.7%	307	61.5%
42	450	418	7.7%	552	-18.4%	498	-9.6%	399	12.9%
52	377	410	-7.9%	686	-45.0%	424	-10.9%	407	-7.2%
54	1,263	1,267	-0.3%	1,727	-26.9%	1,409	-10.3%	1,474	-14.3%
55 MARLINS SHUTTLE									
62	860	863	-0.4%	1,343	-36.0%	916	-6.1%	1,118	-23.1%
71 (*)	224	165	36.0%	252	-11.0%	256	-12.5%	111	102.3%
72 (*)	268	245	9.4%	350	-23.3%	331	-18.9%	220	21.8%
73	839	705	18.9%	860	-2.5%	994	-15.6%	385	117.8%
75	269	330	-18.4%	468	-42.5%	328	-17.9%	267	0.9%
77	3,144	2,998	4.8%	4,197	-25.1%	3,312	-5.1%	2,043	53.9%
87	391	314	24.8%	402	-2.8%	437	-10.5%	225	73.9%
88	1,178	1,009	16.7%	1,620	-27.3%	1,299	-9.3%	776	51.8%
99	707	573	23.4%	849	-16.7%	738	-4.2%	584	21.0%

METROBUS AVERAGE SATURDAY BOARDINGS BY ROUTE

Route Saturdays	Average Saturday	Average Saturday	Percent Change	Average Saturday	Percent Change	Average Saturday	Percent Change	Average Saturday	Percent Change
	Jun-22	Jun-21	YOY	Feb-20	Current vs Feb-20	May-22	MOM	Jun-20	YO2Y
101 - A (*)	49	64	-23.5%	71	-31.1%	61	-20.1%	40	21.1%
102 - B	460	652	-29.6%	851	-46.0%	678	-32.3%	302	52.3%
103 - C		124		315				253	
104	239	262	-9.0%	468	-49.1%	300	-20.4%	152	57.2%
105 - E	500	427	17.2%	619	-19.2%	528	-5.3%	392	27.5%
107 - G	755	700	8.0%	1,066	-29.2%	893	-15.4%	593	27.5%
108 - H	277	254	8.8%	372	-25.7%	284	-2.5%	278	-0.6%
110 - J	1,228	1,231	-0.2%	1,952	-37.1%	1,459	-15.8%	1,140	7.7%
112 - L	4,266	4,514	-5.5%	5,667	-24.7%	4,477	-4.7%	3,873	10.1%
113 - M	320	175	83.5%	503	-36.3%	300	6.9%	243	32.1%
115 (*)	90	217	-58.5%	82	9.2%	103	-12.9%	119	-24.4%
119 - S	4,924	5,600	-12.1%	6,861	-28.2%	5,548	-11.3%	3,759	31.0%
120 - BEACH MAX	3,223	2,471	30.4%	4,744	-32.1%	3,385	-4.8%	2,663	21.0%
135	292	304	-4.0%	539	-45.9%	280	4.3%	440	-33.8%
137 - WEST DADE CONN.	919	712	29.2%	1,027	-10.5%	1,021	-10.0%	642	43.3%
150 - MIAMI BEACH AIRPORT FLYER	1,267	1,244	1.9%	1,604	-21.0%	1,375	-7.9%	677	87.1%
183	1,191	1,343	-11.3%	1,790	-33.4%	1,294	-8.0%	811	46.9%
200 - CUTLER BAY LOCAL	15	64	-75.9%	119	-87.1%	27	-43.9%	70	-78.1%
202 - LITTLE HATI CONN. (*)	36	57	-37.2%	50	-29.3%	40	-11.3%	42	-14.5%
207 (7st) - LITTLE HAVANA CIRC	352	590	-40.3%	1,032	-65.9%	556	-36.7%	443	-20.5%
208 (8st) - LITTLE HAVANA CIRC	546	547	-0.2%	1,044	-47.8%	694	-21.3%	624	-12.6%
210 - SKYLAKE CIRC (*)	136	136	0.0%	165	-17.6%	183	-25.8%	102	34.0%
241 TUTTLE LIMITED	41					46	-11.4%		
246 - NIGHT OWL	46	4	1043.8%	84	-45.8%	49	-5.7%		
252 - CORAL REEF MAX	220	203	8.5%	302	-27.1%	190	16.1%	145	51.6%
286 - NORTH POINTE CIRC. (*)	44	29	51.7%	41	7.8%	58	-24.5%	26	69.2%
301 DADE-MONROE EXPRESS (*)	706	980	-28.0%	801	-11.9%	748	-5.7%	706	0.0%
302 CARD SOUND EXPRESS (*)	56	73	-23.7%	57	-1.9%	52	6.2%	30	83.5%
338 - WEEKEND EXPRESS	186	137	36.0%	237	-21.4%	176	5.5%	89	108.4%
500	12	4	200.0%	70	-82.9%	12	0.0%		
12/21 WEEKEND INTERL.	1,701	1,399	21.6%	2,528	-32.7%	1,878	-9.4%	1,997	-14.8%
FEDERATION GARDENSSHUTTLE (*)	34	17	103.0%	28	18.0%	21	61.4%	33	0.5%
Total	65,066	65,182	-0.2%	93,742	-30.6%	70,994	-8.4%	57,348	13.5%

METROBUS AVERAGE SUNDAY BOARDINGS BY ROUTE

Route	Average Sunday	Average Sunday	Percent Change	Average Sunday	Percent Change	Average Sunday	Percent Change	Average Sunday	Percent Change
	Sundays	Jun-22	Jun-21	YOY	Feb-20	Current vs Feb-20	May-22	MOM	Jun-20
1 (*)	218	128	69.8%	201	8.5%	173	25.7%	144	51.2%
2	742	780	-4.9%	1,335	-44.4%	690	7.5%	565	31.2%
3	3,079	3,296	-6.6%	4,353	-29.3%	3,085	-0.2%	2,391	28.8%
7	1,272	1,005	26.6%	1,654	-23.1%	1,132	12.4%	745	70.7%
8	1,592	1,066	49.3%	1,746	-8.8%	1,258	26.6%	1,065	49.5%
9	1,839	2,173	-15.3%	2,549	-27.9%	1,741	5.7%	1,554	18.4%
10	1,025	983	4.2%	1,441	-28.9%	1,092	-6.2%	911	12.4%
11	2,819	2,270	24.2%	3,917	-28.0%	2,468	14.2%	2,527	11.6%
16	615	613	0.3%	997	-38.3%	684	-10.1%	691	-11.0%
17	1,353	1,040	30.0%	1,833	-26.2%	1,151	17.5%	1,233	9.8%
22	1,222	887	37.7%	1,548	-21.1%	1,244	-1.7%	1,004	21.7%
24 - Coral Way Limited	834	563	48.3%	905	-7.8%	826	1.1%	599	39.3%
27	2,065	1,975	4.6%	2,918	-29.2%	1,954	5.7%	2,131	-3.1%
31 - BUSWAY LOCAL	348	368	-5.5%	715	-51.3%	352	-1.1%	471	-26.2%
32	472	333	41.9%	772	-38.9%	490	-3.7%	558	-15.5%
33	444	346	28.4%	607	-26.9%	455	-2.5%	418	6.0%
35	736	651	13.0%	942	-21.9%	654	12.5%	637	15.6%
36	894	729	22.6%	1,111	-19.5%	870	2.7%	1,125	-20.6%
37	1,328	1,005	32.1%	1,739	-23.7%	1,113	19.3%	1,033	28.5%
38	2,843	2,353	20.8%	4,147	-31.4%	2,435	16.8%	2,608	9.0%
40	393	298	31.7%	447	-12.2%	351	11.8%	276	42.3%
42	297	229	29.8%	416	-28.6%	327	-9.2%	244	22.0%
52	285	304	-6.3%	466	-39.0%	298	-4.4%	294	-3.2%
54	875	755	15.9%	1,171	-25.2%	832	5.2%	960	-8.8%
55 MARLINS SHUTTLE									
62	556	456	21.9%	891	-37.6%	549	1.2%	712	-22.0%
71 (*)	178	106	67.9%	162	9.9%	130	36.7%	107	67.1%
72 (*)	305	167	82.6%	265	15.1%	277	9.9%	139	119.5%
73	448	233	92.3%	495	-9.6%	451	-0.8%	263	70.3%
75	188	193	-2.6%	271	-30.5%	199	-5.3%	251	-24.9%
77	2,223	2,193	1.4%	2,815	-21.0%	2,049	8.5%	1,807	23.0%
87	262	215	21.7%	319	-17.9%	253	3.5%	175	49.7%
88	930	679	36.9%	1,286	-27.7%	871	6.7%	665	39.9%
99	487	442	10.2%	658	-25.9%	484	0.7%	381	27.8%

METROBUS AVERAGE SUNDAY BOARDINGS BY ROUTE

Route	Average Sunday	Average Sunday	Percent Change	Average Sunday	Percent Change	Average Sunday	Percent Change	Average Sunday	Percent Change
	Jun-22	Jun-21	YOY	Feb-20	Current vs Feb-20	May-22	MOM	Jun-20	YO2Y
Sundays									
101 - A (*)	41	38	7.9%	56	-26.1%	49	-15.5%	28	46.4%
102 - B	425	488	-12.9%	717	-40.7%	562	-24.4%	400	6.3%
103 - C		92		212				145	
104	230	137	68.7%	317	-27.4%	207	11.2%	87	163.9%
105 - E	508	445	14.1%	616	-17.5%	408	24.5%	425	19.5%
107 - G	779	589	32.3%	895	-13.0%	661	17.8%	558	39.6%
108 - H	274	218	25.5%	328	-16.7%	251	9.0%	252	8.7%
110 - J	1,361	1,012	34.5%	1,638	-16.9%	1,057	28.8%	895	52.1%
112 - L	3,395	3,535	-4.0%	4,804	-29.3%	3,529	-3.8%	3,092	9.8%
113 - M	247	241	2.5%	431	-42.7%	264	-6.6%	181	36.2%
115 (*)	64	184	-65.2%	80	-20.0%	81	-21.3%	98	-34.4%
119 - S	5,469	5,180	5.6%	7,141	-23.4%	5,555	-1.6%	4,608	18.7%
120 - BEACH MAX	2,181	2,050	6.4%	3,469	-37.1%	2,286	-4.6%	1,747	24.8%
135	272	210	29.7%	349	-22.2%	229	18.8%	328	-17.1%
137 - WEST DADE CONN.	752	521	44.5%	879	-14.4%	652	15.3%	550	36.9%
150 - MIAMI BEACH AIRPORT FLYER	1,277	1,405	-9.2%	1,574	-18.9%	1,125	13.5%	725	76.1%
183	976	941	3.7%	1,413	-30.9%	1,039	-6.0%	850	14.8%
200 - CUTLER BAY LOCAL	2	41	-95.1%	59	-96.6%	7	-71.4%	33	-93.8%
202 - LITTLE HATI CONN. (*)	34	57	-40.1%	39	-12.8%	38	-10.1%	51	-33.7%
207 (7st) - LITTLE HAVANA CIRC	403	496	-18.7%	796	-49.4%	437	-7.8%	365	10.4%
208 (8st) - LITTLE HAVANA CIRC	490	514	-4.8%	911	-46.3%	481	1.8%	534	-8.3%
210 - SKYLAKE CIRC (*)	176	104	69.0%	143	22.9%	173	1.5%	106	65.8%
241 TUTTLE LIMITED	32					88	-63.8%		
246 - NIGHT OWL	60			87	-31.6%	54	10.2%	3	2280.0%
252 - CORAL REEF MAX	171	155	10.8%	199	-13.8%	163	5.2%	136	25.7%
301 DADE-MONROE EXPRESS(*)	653	959	-31.9%	751	-13.0%	624	4.7%	581	12.5%
302 CARD SOUND EXPRESS(*)	63	45	39.8%	57	11.0%	61	4.0%	30	109.1%
338 - WEEKEND EXPRESS	113	153	-25.9%	252	-55.1%	178	-36.4%	83	37.3%
500	10	1	875.0%	83	-88.2%	18	-46.3%	2	387.5%
12/21 WEEKEND INTERL.	1,329	1,319	0.7%	2,048	-35.1%	1,385	-4.1%	1,664	-20.2%
Total	54,945	49,957	10.0%	75,428	-27.2%	52,593	4.5%	47,236	16.3%

METROBUS TOTAL MONTHLY BOARDINGS BY ROUTE

Route Monthly Total	Total Month	Total Month	Percent Change	Total Month	Percent Change	Total Month	Percent Change	Total Month	Percent Change
	Jun-22	Jun-21	YOY	Feb-20	Current vs Feb-20	May-22	MOM	Jun-20	YO2Y
1 (*)	4,739	4,371	8.4%	5,558	-14.7%	4,909	-3.5%	4,701	0.8%
2	46,206	44,986	2.7%	75,463	-38.8%	49,027	-5.8%	36,318	27.2%
3	104,723	118,827	-11.9%	146,294	-28.4%	111,133	-5.8%	70,081	49.4%
7	74,523	56,434	32.1%	86,077	-13.4%	75,296	-1.0%	42,280	76.3%
8	86,483	82,363	5.0%	95,295	-9.2%	82,864	4.4%	49,039	76.4%
9	99,955	110,657	-9.7%	135,924	-26.5%	99,027	0.9%	79,515	25.7%
10	43,231	35,704	21.1%	64,874	-33.4%	46,639	-7.3%	28,228	53.1%
11	164,384	141,114	16.5%	187,425	-12.3%	160,277	2.6%	100,585	63.4%
12	33,819	33,088	2.2%	55,585	-39.2%	32,832	3.0%	36,184	-6.5%
16	36,453	27,444	32.8%	49,061	-25.7%	35,315	3.2%	24,802	47.0%
17	61,035	54,654	11.7%	96,715	-36.9%	64,200	-4.9%	63,160	-3.4%
19	18,020	14,822	21.6%	30,847	-41.6%	17,382	3.7%	13,755	31.0%
21	23,170	19,401	19.4%	36,341	-36.2%	24,710	-6.2%	30,614	-24.3%
22	65,715	51,721	27.1%	89,404	-26.5%	66,140	-0.6%	44,798	46.7%
24 - Coral Way Limited	41,366	23,456	76.4%	36,237	14.2%	38,402	7.7%	25,667	61.2%
27	123,586	110,347	12.0%	171,282	-27.8%	128,362	-3.7%	98,211	25.8%
29 (*)	8,169	6,966	17.3%	10,684	-23.5%	10,186	-19.8%	5,512	48.2%
31 - BUSWAY LOCAL	18,929	15,433	22.7%	29,125	-35.0%	19,139	-1.1%	16,731	13.1%
32	43,688	30,453	43.5%	56,027	-22.0%	42,063	3.9%	36,726	19.0%
33	31,735	22,817	39.1%	40,918	-22.4%	33,225	-4.5%	19,206	65.2%
34 EXPRESS	21,070	20,625	2.2%	40,159	-47.5%	20,156	4.5%	10,456	101.5%
35	39,466	36,243	8.9%	59,041	-33.2%	40,797	-3.3%	36,331	8.6%
36	48,298	35,136	37.5%	61,606	-21.6%	52,184	-7.4%	39,562	22.1%
37	68,423	56,465	21.2%	82,870	-17.4%	68,930	-0.7%	49,500	38.2%
38	102,780	87,397	17.6%	167,379	-38.6%	99,086	3.7%	88,336	16.4%
39 EXPRESS		5,933		17,853				154	
40	34,577	24,359	41.9%	40,497	-14.6%	33,768	2.4%	19,151	80.5%
42	18,256	14,258	28.0%	20,825	-12.3%	18,598	-1.8%	10,927	67.1%
46 - LIBERTY CITY CONN. (*)	349	297	17.5%	814	-57.1%	568	-38.6%	471	-25.9%
51 - FLAGLER MAX	61,937	41,888	47.9%	62,186	-0.4%	56,076	10.5%	24,946	148.3%
52	21,277	17,099	24.4%	30,522	-30.3%	22,345	-4.8%	16,122	32.0%
54	56,413	45,753	23.3%	72,125	-21.8%	56,063	0.6%	53,218	6.0%
55 MARLINS SHUTTLE									
56 (*)	6,281	4,194	49.8%	7,071	-11.2%	6,624	-5.2%	2,958	112.3%
57	6,599	6,444	2.4%	8,665	-23.8%	6,463	2.1%	3,749	76.0%
62	30,872	28,081	9.9%	46,582	-33.7%	32,833	-6.0%	35,041	-11.9%
71 (*)	13,232	9,973	32.7%	16,118	-17.9%	13,164	0.5%	6,993	89.2%
72 (*)	14,441	10,159	42.1%	18,433	-21.7%	15,038	-4.0%	9,498	52.0%

METROBUS TOTAL MONTHLY BOARDINGS BY ROUTE

Route	Total Month	Total Month	Percent Change	Total Month	Percent Change	Total Month	Percent Change	Total Month	Percent Change
	Monthly Total	Jun-22	Jun-21	YOY	Feb-20	Current vs Feb-20	May-22	MOM	Jun-20
73	52,257	32,723	59.7%	48,767	7.2%	52,970	-1.3%	20,172	159.1%
75	16,756	16,205	3.4%	31,994	-47.6%	18,773	-10.7%	13,404	25.0%
77	131,839	123,918	6.4%	174,833	-24.6%	128,062	2.9%	96,859	36.1%
79 STREET MAX	6,257			7,228	-13.4%	7,266	-13.9%		
82 - WESTCHESTER CIRC. (*)	1,009	683	47.7%	1,482	-31.9%	934	8.0%	749	34.7%
87	32,316	23,330	38.5%	33,273	-2.9%	32,811	-1.5%	17,180	88.1%
88	43,957	41,484	6.0%	54,772	-19.7%	43,926	0.1%	30,590	43.7%
93 - BISCAYNE MAX	45,738	31,492	45.2%	66,684	-31.4%	46,816	-2.3%	31,804	43.8%
95 EXPRESS	16,789	11,618	44.5%	33,796	-50.3%	16,187	3.7%	1,856	804.6%
99	29,955	23,454	27.7%	36,325	-17.5%	30,097	-0.5%	20,279	47.7%
101 - A (*)	4,652	3,318	40.2%	4,114	13.1%	4,637	0.3%	2,168	114.6%
102 - B	33,222	31,228	6.4%	42,683	-22.2%	33,962	-2.2%	21,109	57.4%
103 - C		4,863		11,682				4,736	
104	12,869	12,313	4.5%	20,351	-36.8%	13,691	-6.0%	7,119	80.8%
105 - E	24,098	21,009	14.7%	31,302	-23.0%	22,326	7.9%	17,472	37.9%
107 - G	32,733	26,974	21.4%	43,178	-24.2%	30,939	5.8%	23,212	41.0%
108 - H	9,402	6,897	36.3%	12,624	-25.5%	9,780	-3.9%	6,997	34.4%
110 - J	55,587	56,573	-1.7%	66,481	-16.4%	55,083	0.9%	41,187	35.0%
112 - L	155,149	159,178	-2.5%	200,268	-22.5%	154,989	0.1%	130,891	18.5%
113 - M	12,395	9,352	32.5%	21,548	-42.5%	12,505	-0.9%	9,494	30.6%
115 (*)	3,970	5,369	-26.1%	4,334	-8.4%	4,506	-11.9%	4,543	-12.6%
119 - S	190,265	196,512	-3.2%	242,257	-21.5%	199,476	-4.6%	146,983	29.4%
120 - BEACH MAX	126,525	110,224	14.8%	170,942	-26.0%	129,941	-2.6%	89,721	41.0%
132 TRI-RAIL (DORAL)	27	226	-88.1%	312	-91.3%	37	-27.0%	252	-89.3%
135 (*)	20,298	16,983	19.5%	32,067	-36.7%	20,130	0.8%	13,504	50.3%
136	2,322	1,609	44.3%	2,524	-8.0%	2,460	-5.6%	767	202.7%
137 - WEST DADE CONN.	37,119	22,549	64.6%	41,167	-9.8%	36,669	1.2%	18,243	103.5%
150 - MIAMI BEACH AIRPORT FLYER	39,602	40,223	-1.5%	51,651	-23.3%	41,382	-4.3%	20,147	96.6%
155 - BISCAYNE GARDENS CIRCULATOR (*)	883	451	95.8%	881	0.2%	824	7.2%	664	33.0%
175 - NW MIAMI-DADE EXPRESS				661					
183	52,956	46,767	13.2%	77,570	-31.7%	53,440	-0.9%	46,723	13.3%
195 EXPRESS - BROWARD BLVD				7,441					
196 EXPRESS - SHERIDAN ST				7,658					
200 - CUTLER BAY LOCAL	1,428	2,043	-30.1%	3,984	-64.2%	1,045	36.7%	2,424	-41.1%
202 - LITTLE HAITI CONN. (*)	2,776	2,659	4.4%	3,200	-13.3%	2,460	12.8%	2,347	18.3%
204 KILLIAN KAT	10,728			21,418	-49.9%	10,712	0.1%		

METROBUS TOTAL MONTHLY BOARDINGS BY ROUTE

Route Monthly Total	Total Month	Total Month	Percent Change	Total Month	Percent Change	Total Month	Percent Change	Total Month	Percent Change
	Jun-22	Jun-21	YOY	Feb-20	Current vs Feb-20	May-22	MOM	Jun-20	YO2Y
207 (7st) - LITTLE HAVANA CIRC	26,016	18,591	39.9%	38,127	-31.8%	27,980	-7.0%	23,289	11.7%
208 (8st) - LITTLE HAVANA CIRC	25,444	16,526	54.0%	35,018	-27.3%	27,352	-7.0%	23,712	7.3%
210 - SKYLAKE CIRC (*)	8,400	7,004	19.9%	7,033	19.4%	8,599	-2.3%	4,805	74.8%
211 - OVERTOWN CIRC. (*)	1,986	598	232.1%	1,159	71.4%	1,804	10.1%	1,021	94.5%
212 - SWEETWATER CIRC. (*)	482	557	-13.5%	295	63.4%	484	-0.4%	424	13.7%
217 - BUNCHE PARK CIRC (*)	1,260	995	26.6%	1,949	-35.4%	1,525	-17.4%	1,191	5.8%
238 EAST/WEST CONN.	8,188	6,125	33.7%	8,987	-8.9%	8,403	-2.6%	1,670	390.3%
241 TUTTLE LIMITED	1,970					2,619	-24.8%		
246 - NIGHT OWL	1,519	52	2821.2%	2,641	-42.5%	1,480	2.6%	33	4503.0%
248 - PRINCETON CIRCULATOR (*)	1,693	1,729	-2.1%	2,690	-37.1%	1,945	-13.0%	1,766	-4.1%
252 - CORAL REEF MAX	14,426	10,264	40.5%	19,325	-25.4%	14,594	-1.2%	6,526	121.1%
254 - BROWNSVILLE CIRC. (*)	128	1,015	-87.4%	384	-66.7%	108	18.5%	809	-84.2%
267 - LUDLAM LIMITED (*)	3,123	2,116	47.6%	2,978	4.9%	2,798	11.6%	1,553	101.1%
272 SUNSET KAT (*)	6,816	6,107	11.6%	11,004	-38.1%	6,696	1.8%	4,681	45.6%
277 - 7th AVENUE MAX	8,337	6,642	25.5%	13,669	-39.0%	9,101	-8.4%	7,292	14.3%
286 - NORTH POINTE CIRC. (*)	1,518	819	85.3%	2,145	-29.2%	1,554	-2.3%	901	68.5%
287 - SAGA BAY MAX	4,271	3,219	32.7%	7,160	-40.3%	4,400	-2.9%	2,141	99.5%
288 - KENDALL CRUISER	8,904			15,249	-41.6%	9,393	-5.2%		
295 EXPRESS - BROWARD BLVD - CIVIC CENTER				4,668					
296 EXPRESS - SHERIDAN ST - CIVIC CENTER				4,297					
297-27th AVENUE ORANGE MAX	17,373	12,052	44.2%	27,125	-36.0%	17,294	0.5%	14,717	18.0%
301 DADE-MONROE EXPRESS (*)	21,958	28,968	-24.2%	23,838	-7.9%	22,290	-1.5%	19,118	14.9%
302 CARD SOUND EXPRESS (*)	2,327	2,129	9.3%	2,236	4.1%	2,269	2.6%	1,158	100.9%
338 - WEEKEND EXPRESS	825	1,158	-28.8%	2,191	-62.3%	1,597	-48.3%	687	20.1%
344 (*)	948	1,448	-34.5%	1,919	-50.6%	999	-5.1%	1,108	-14.4%
500	356	5	7020.0%	2,301	-84.5%	442	-19.5%	2	17700.0%
836 EXPRESS	3,108	1,525	103.8%			2,912	6.7%		
12/21 WEEKEND INTERL.	12,118	10,873	11.5%	20,830	-41.8%	15,819	-23.4%	14,641	-17.2%
GREEN HILLS SHUTTLE (*)	23	73	-68.5%	36	-36.1%	16	43.8%	35	-34.3%
KINGS CREEK SHUTTLE (*)	104	73	42.5%	52	100.0%	91	14.3%	17	511.8%
SIERRALAKES SHUTTLE (*)	74	63	17.5%	180	-58.9%	66	12.1%	79	-6.3%
ROBERT SHARP SHUTTLE (*)	78	103	-24.3%	38	105.3%	140	-44.3%	48	62.5%
AHEPA SHUTTLE (*)	73	86	-15.1%	83	-12.0%	64	14.1%	79	-7.6%
FEDERATION GARDENS SHUTTLE (*)	134	66	103.0%	142	-5.6%	83	61.4%	100	34.0%
Total	3,064,059	2,672,570	14.6%	4,123,083	-25.7%	3,097,574	-1.1%	2,210,725	38.6%

METROBUS HOLIDAY BOARDINGS BY ROUTE Juneteenth

ROUTES	Juneteenth 2021	Juneteenth 2022	Pct Delta	ROUTES	Juneteenth 2021	Juneteenth 2022	Pct Delta	ROUTES	Juneteenth 2021	Juneteenth 2022	Pct Delta
1	137	171	24.8%	62	1,201	934	-22.2%	195			
2	1,568	1,567	-0.1%	71	400	536	34.0%	196			
3	4,769	3,337	-30.0%	72	418	501	19.9%	200	77	97	26.0%
7	2,043	2,595	27.0%	73	1,331	2,216	66.5%	202	61	135	121.3%
8	3,452	3,192	-7.5%	75	574	518	-9.8%	204		416	
9	4,299	3,876	-9.8%	77	5,275	4,192	-20.5%	207	566	786	38.9%
10	1,395	1,362	-2.4%	79		273		208	612	884	44.4%
11	5,326	6,041	13.4%	82	30	32	6.7%	210	305	350	14.8%
12	1,775	956	-46.1%	87	926	1,203	29.9%	211	31	65	109.7%
16	945	1,183	25.2%	88	1,661	1,590	-4.3%	212	30	19	-36.7%
17	1,576	2,184	38.6%	93	1,422	1,615	13.6%	217	43	66	53.5%
19	775	741	-4.4%	95	403	325	-19.4%	238	316	302	-4.4%
21	955	790	-17.3%	99	815	1,095	34.4%	241		57	
22	1,917	2,261	17.9%	101	105	160	52.4%	246	2	61	2950.0%
24	980	1,615	64.8%	102	1,146	1,387	21.0%	248	63	81	28.6%
27	4,364	4,601	5.4%	103	253			252	430	536	24.7%
29	313	350	11.8%	104	605	459	-24.1%	254	50	5	-90.0%
31	391	611	56.3%	105	756	943	24.7%	267	86	118	37.2%
32	1,274	1,641	28.8%	107	1,175	1,067	-9.2%	272	268	281	4.9%
33	703	1,179	67.7%	108	201	299	48.8%	277	306	293	-4.2%
34	902	672	-25.5%	110	2,417	2,061	-14.7%	286	28	58	107.1%
35	1,607	1,320	-17.9%	112	5,695	5,094	-10.6%	287	118	156	32.2%
36	1,369	1,896	38.5%	113	344	463	34.6%	288		329	
37	2,427	2,538	4.6%	115	149	126	-15.4%	295			
38	3,201	3,559	11.2%	119	6,967	6,649	-4.6%	296			
39	191			120	4,926	4,511	-8.4%	297	513	683	33.1%
40	1,005	1,277	27.1%	132	26	1	-96.2%	301	950	629	-33.8%
42	517	681	31.7%	135	680	778	14.4%	302	65	93	43.1%
46	9	20	122.2%	136	63	117	85.7%	344	60	33	-45.0%
51	1,900	2,508	32.0%	137	863	1,293	49.8%	500		11	
52	629	733	16.5%	150	1,413	1,236	-12.5%	836		72	
54	1,584	2,224	40.4%	155	26	40	53.8%				
56	159	226	42.1%	175							
57	282	305	8.2%	183	1,644	2,155	31.1%				
								Total (1)	103,629	108,697	4.9%

(1) Excludes Lifeline shuttles and some routes not run both years.

YEAR-OVER-YEAR BUS RIDERSHIP BY ROUTE SERVICE TYPE

Boardings by Service Type and Route	Average Weekday	Average Weekday	Percent Change	Average Saturday	Average Saturday	Percent Change	Average Sunday	Average Sunday	Percent Change	Total Monthly	Total Monthly	Percent Change
	Jun-22	Jun-21	22 vs 21	Jun-22	Jun-21	22 vs 21	Jun-22	Jun-21	22 vs 21	Jun-22	Jun-21	22 vs 21
Directly Operated Express Routes (1)												
34 EXPRESS	958	938	2.2%							21,070	20,625	2.2%
39 EXPRESS		270									5,933	
95-EXPRESS	763	528	44.5%							16,789	11,618	44.5%
150-MIAMI BEACH AIRPORT FLYER	1,338	1,347	-0.7%	1,267	1,244	1.9%	1,277	1,405	-9.2%	39,602	40,223	-1.5%
175 - NW MIAMI-DADE EXPRESS												
195 EXPRESS - BROWARD BLVD												
196 EXPRESS - SHERIDAN ST												
295 EXPRESS - BROWARD BLVD - CIVIC CENTER												
296 EXPRESS - SHERIDAN ST - CIVIC CENTER												
204 KAT-KILLIAN	488									10,728		
288 KENDALL CRUISER	405									8,904		
338 - WEEKEND EXPRESS				186	137	36.0%	113	153	-25.9%	825	1,158	-28.8%
836 EXPRESS	141	73								3,108	1,525	103.8%
Subtotal Express Routes	4,092	3,155	29.7%	1,453	1,380	5.3%	1,390	1,558	-10.8%	101,026	81,082	24.6%
Percentage of All Bus Routes	3.5%	3.1%		2.2%	2.1%		2.5%	3.1%		3.3%	3.0%	
Contracted Routes												
1	143	142	0.8%	182	186	-2.0%	218	128	69.8%	4,739	4,371	8.4%
29	371	317	17.3%							8,169	6,966	17.3%
35												
46 - LIBERTY CITY CONN.	16	14	17.5%							349	297	17.5%
56	286	191	49.8%							6,281	4,194	49.8%
71	528	404	30.8%	224	165	36.0%	178	106	67.9%	13,232	9,973	32.7%
72	552	387	42.8%	268	245	9.4%	305	167	82.6%	14,441	10,159	42.1%
82 - WESTCHESTER CIRC	38	27	42.8%	44	25	76.8%				1,009	683	47.7%
101 - A	195	132	47.5%	49	64	-23.5%	41	38	7.9%	4,652	3,318	40.2%
115	153	171	-10.9%	90	217	-58.5%	64	184	-65.2%	3,970	5,369	-26.1%
155 - BISCAZYNE GARDENS CIRC	40	21	95.8%							883	451	95.8%
202 - LITTLE HAITI CONN.	114	100	13.2%	36	57	-37.2%	34	57	-40.1%	2,776	2,659	4.4%
210 - SKYLAKE CIRC	325	275	18.3%	136	136	0.0%	176	104	69.0%	8,400	7,004	19.9%
211-OVERTOWN CIRC	90	27	232.1%							1,986	598	232.1%
212-SWEETWATER CIRC	22	25	-13.5%							482	557	-13.5%
217 - BUNCHE PARK CIRC	57	45	26.6%							1,260	995	26.6%
248 - PRINCETON CIRCULATOR	77	79	-2.1%							1,693	1,729	-2.1%
254-BROWNSVILLE CIRC	6	46	-87.4%							128	1,015	-87.4%
286-NORTH POINTE CIRC	61	32	90.9%	44	29	51.7%				1,518	819	85.3%
344	43	66	-34.5%							948	1,448	-34.5%
Subtotal Contracted Reg. & Circ. Routes	3,117	2,499	24.7%	1,072	1,123	-4.5%	1,015	784	29.5%	76,916	62,605	22.9%
Percentage of All Bus Routes	2.7%	2.5%		1.6%	1.7%		1.8%	1.6%		2.5%	2.3%	

(1) Several express routes were suspended beginning at the end of March 2020, due to the SARS-CoV-2 pandemic, while other routes had alignment and schedule modifications made to them, in an ongoing effort to optimize service delivery.

YEAR-OVER-YEAR BUS RIDERSHIP BY ROUTE SERVICE TYPE

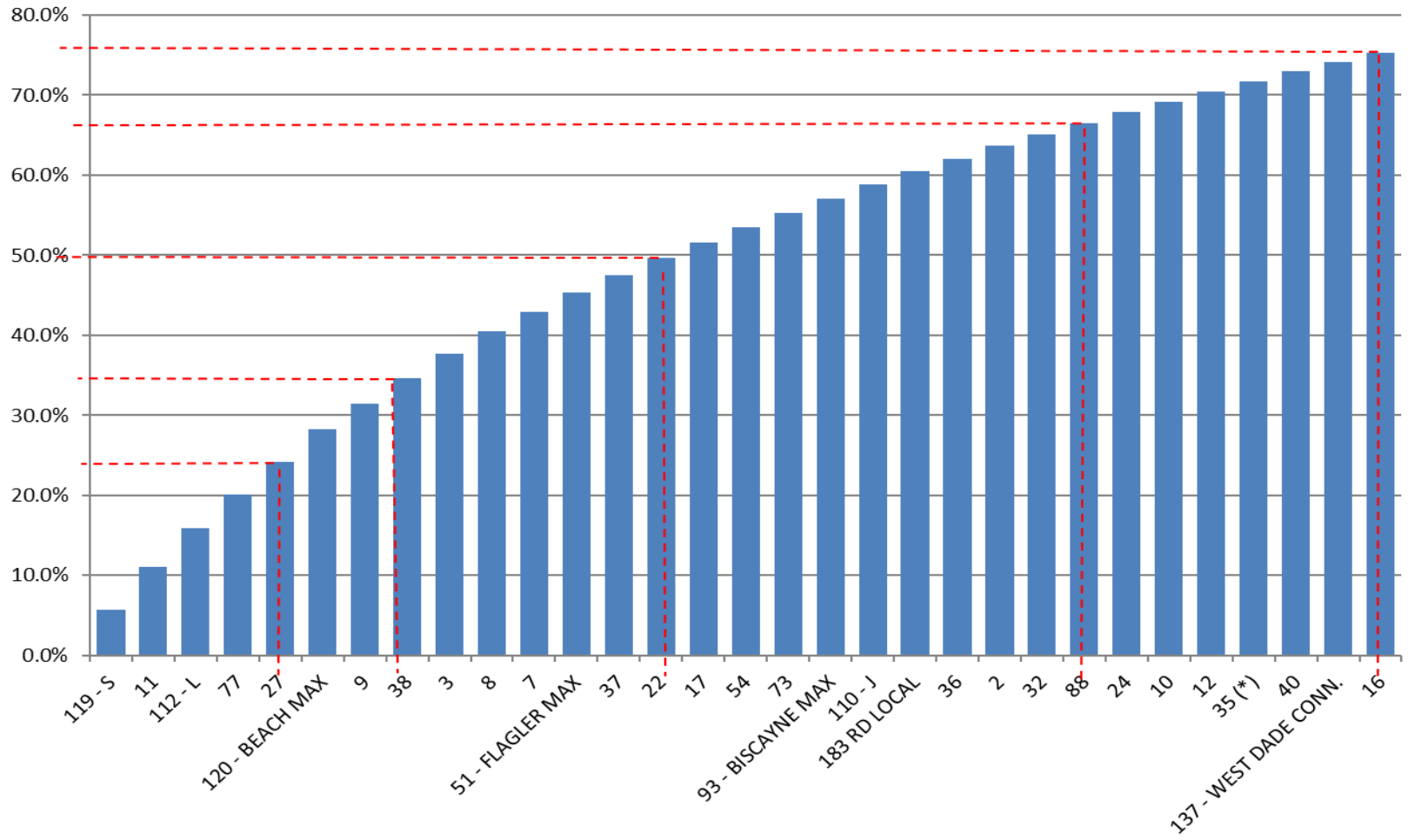
Boardings by Service Type and Route	Average Weekday	Average Weekday	Percent Change	Average Saturday	Average Saturday	Percent Change	Average Sunday	Average Sunday	Percent Change	Total Monthly	Total Monthly	Percent Change
	Jun-22	Jun-21	22 vs 21	Jun-22	Jun-21	22 vs 21	Jun-22	Jun-21	22 vs 21	Jun-22	Jun-21	22 vs 21
Contracted Express Routes												
272 SUNSET-KAT	310	278	11.6%							6,816	6,107	11.6%
301-DADE MONROE EXPRESS	751	964	-22.1%	706	980	-28.0%	653	959	-31.9%	21,958	28,968	-24.2%
302-CARD SOUND EXPRESS	84	75	11.8%	56	73	-23.7%	63	45	39.8%	2,327	2,129	9.3%
Subtotal Contracted Express Routes	1,145	1,317	-13.1%	761	1,053	-27.7%	717	1,004	-28.7%	31,101	37,204	-16.4%
Percentage of All Bus Routes	1.0%	1.3%		1.2%	1.6%		1.3%	2.0%		1.0%	1.4%	
Limited Stop Routes												
24-CORAL WAY LIMITED	1,575	829	90.0%	844	741	13.9%	834	563	48.3%	41,366	23,456	76.4%
51-FLAGLER MAX	2,815	1,904	47.9%							61,937	41,888	47.9%
79 STREET MAX	284									6,257		
93 - BISCAYNE MAX	2,079	1,431	45.2%							45,738	31,492	45.2%
120 - BEACH MAX	4,769	4,188	13.9%	3,223	2,471	30.4%	2,181	2,050	6.4%	126,525	110,224	14.8%
241 TUTTLE LIMITED	76			41			32			1,970		
252-CORAL REEF MAX	585	402	45.6%	220	203	8.5%	171	155	10.8%	14,426	10,264	40.5%
267-LUDLAM LIMITED (contracted)	142	96	47.6%							3,123	2,116	47.6%
277-7TH AVENUE MAX	379	302	25.5%							8,337	6,642	25.5%
287-SAGA BAY MAX	194	146	32.7%							4,271	3,219	32.7%
297-27th AVENUE ORANGE MAX	790	548	44.2%							17,373	12,052	44.2%
Subtotal Limited Stop Routes	13,688	9,847	39.0%	4,328	3,415	26.7%	3,219	2,767	16.3%	331,323	241,353	37.3%
Percentage of All Bus Routes	11.6%	9.8%		6.7%	5.2%		5.9%	5.5%		10.8%	9.0%	
Directly Operated Free Routes												
132 -TRI-RAIL DORAL	2	13	-83.1%							27	226	-88.1%
200-CUTLER BAY LOCAL	92	81	12.9%	15	64	-75.9%	2	41	-95.1%	1,428	2,043	-30.1%
Subtotal Free Directly Operated Routes	94	95	-0.6%	15	64	-75.9%	2	41	-95.1%	1,455	2,269	-35.9%
Percentage of All Bus Routes	0.0%	0.0%								0.0%	0.0%	
Shuttles												
55-MARLINS SHUTTLE												
Percentage of All Bus Routes												
Contractor-Operated Lifeline Routes												
GREEN HILLS SHUTTLE	6	18	-68.5%							23	73	-68.5%
KINGS CREEK SHUTTLE	21	18	14.0%							104	73	42.5%
SIERRA LAKES SHUTTLE	19	16	17.5%							74	63	17.5%
ROBERT SHARP SHUTTLE	16	21	-24.3%							78	103	-24.3%
AHEPA SHUTTLE	15	22	-32.1%							73	86	-15.1%
FEDERATION GARDENS SHUTTLE				34	17	103.0%				134	66	103.0%
Subtotal Contractor-Operated Lifeline Routes	75	94	-20.2%	34	17	103.0%				486	464	4.7%
Percentage of All Bus Routes	0.1%	0.1%		0.1%	0.0%					0.0%	0.0%	
Other Circulator Route												
200-CUTLER BAY LOCAL	92	81	12.9%	15	64	-75.9%	2	41	-95.1%	1,428	2,043	-30.1%
Percentage of All Bus Routes	0.1%	0.1%		0.0%	0.1%		0.0%	0.1%		0.0%	0.1%	
All Other (Regular) Routes	95,351	83,638	14.0%	57,403	58,131	-1.3%	48,603	43,804	11.0%	2,521,752	2,247,593	12.2%
Percentage of All Bus Routes	81.1%	83.1%		88.2%	89.2%		88.5%	87.7%		82.3%	84.1%	
Total Bus System	117,563	100,645	16.8%	65,066	65,182	-0.2%	54,945	49,957	10.0%	3,064,059	2,672,570	14.6%

Bus Routes as Ranked by Percentage of Average Weekday Ridership June 2022

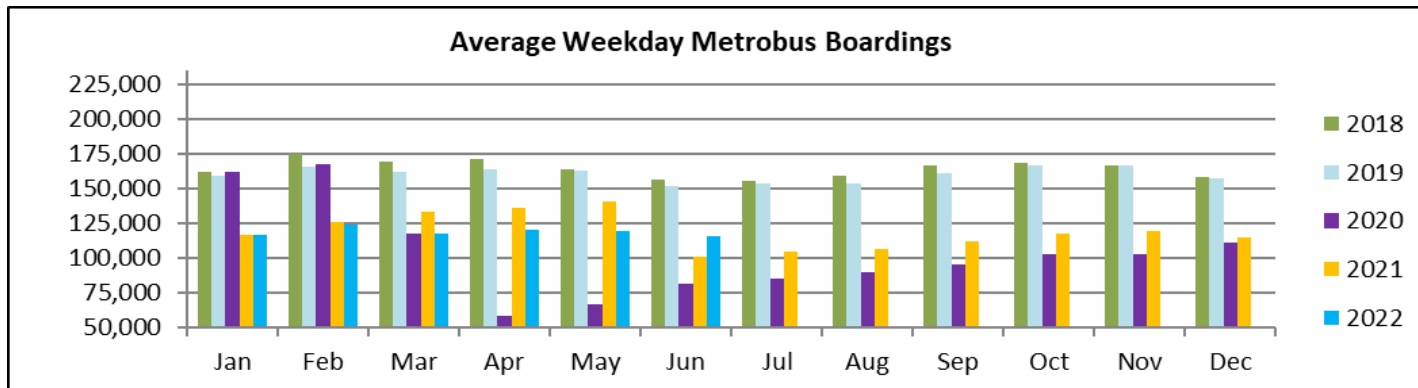
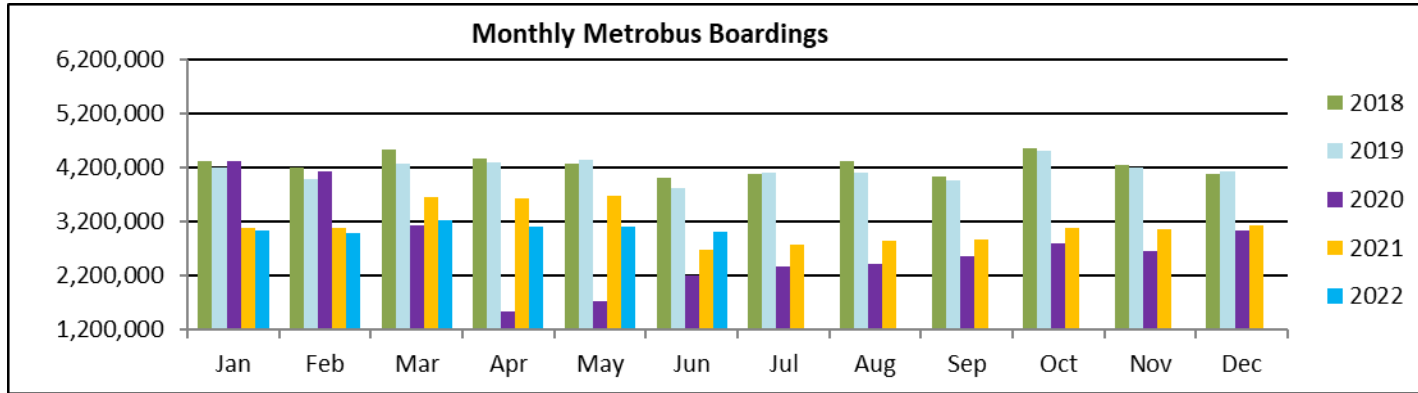
Rank	Route	Average Weekday	Percent Share	Cumul Pct Share	Rank	Route	Average Weekday	Percent Share	Cumul Pct Share	Rank	Route	Average Weekday	Percent Share	Cumul Pct Share	
1	119	6,759	5.7%	5.7%	36	107	1,209	1.0%	80.8%	71	115	153	0.1%	98.7%	
2	11	6,229	5.3%	11.0%	37	62	1,146	1.0%	81.8%	72	1	143	0.1%	98.9%	
3	112	5,660	4.8%	15.9%	38	99	1,145	1.0%	82.7%	73	267	142	0.1%	99.0%	
4	77	5,017	4.3%	20.1%	39	21	1,053	0.9%	83.6%	74	836	141	0.1%	99.1%	
5	27	4,782	4.1%	24.2%	40	207	1,045	0.9%	84.5%	75	202	114	0.1%	99.2%	
6	120	4,769	4.1%	28.3%	41	208	968	0.8%	85.3%	76	136	106	0.1%	99.3%	
7	9	3,815	3.2%	31.5%	42	34	958	0.8%	86.1%	77	200	92	0.1%	99.4%	
8	38	3,652	3.1%	34.6%	43	105	912	0.8%	86.9%	78	211	90	0.1%	99.4%	
9	3	3,609	3.1%	37.7%	44	52	847	0.7%	87.6%	79	302	84	0.1%	99.5%	
10	8	3,286	2.8%	40.5%	45	135	820	0.7%	88.3%	80	248	77	0.1%	99.6%	
11	7	2,884	2.5%	42.9%	46	19	819	0.7%	89.0%	81	241	76	0.1%	99.6%	
12	51	2,815	2.4%	45.3%	47	297	790	0.7%	89.7%	82	286	61	0.1%	99.7%	
13	37	2,605	2.2%	47.5%	48	95	763	0.6%	90.4%	83	217	57	0.0%	99.7%	
14	22	2,506	2.1%	49.7%	49	301	751	0.6%	91.0%	84	246	50	0.0%	99.8%	
15	17	2,274	1.9%	51.6%	50	31	709	0.6%	91.6%	85	344	43	0.0%	99.8%	
16	54	2,176	1.9%	53.5%	51	42	694	0.6%	92.2%	86	155	40	0.0%	99.9%	
17	73	2,142	1.8%	55.3%	52	75	679	0.6%	92.8%	87	82	38	0.0%	99.9%	
18	93	2,079	1.8%	57.0%	53	252	585	0.5%	93.3%	88	212	22	0.0%	99.9%	
19	110	2,056	1.7%	58.8%	54	72	552	0.5%	93.7%	89	KC	21	0.0%	99.9%	
20	183	2,013	1.7%	60.5%	55	71	528	0.4%	94.2%	90	SL	19	0.0%	99.9%	
21	36	1,862	1.6%	62.1%	56	104	500	0.4%	94.6%	91	46	16	0.0%	100.0%	
22	2	1,805	1.5%	63.6%	57	204	488	0.4%	95.0%	92	RS	16	0.0%	100.0%	
23	32	1,759	1.5%	65.1%	58	113	460	0.4%	95.4%	93	AS	15	0.0%	100.0%	
24	88	1,615	1.4%	66.5%	59	288	405	0.3%	95.8%	94	500	12	0.0%	100.0%	
25	24	1,575	1.3%	67.8%	60	277	379	0.3%	96.1%	95	254	6	0.0%	100.0%	
26	10	1,569	1.3%	69.2%	61	238	372	0.3%	96.4%	96	GH	6	0.0%	100.0%	
27	12	1,537	1.3%	70.5%	62	29	371	0.3%	96.7%	97	132	2	0.0%	100.0%	
28	35	1,477	1.3%	71.7%	63	108	327	0.3%	97.0%						
29	40	1,410	1.2%	72.9%	64	210	325	0.3%	97.3%						
30	137	1,383	1.2%	74.1%	65	272	310	0.3%	97.5%						
31	16	1,361	1.2%	75.3%	66	57	300	0.3%	97.8%						
32	87	1,350	1.1%	76.4%	67	56	286	0.2%	98.0%						
33	102	1,349	1.1%	77.6%	68	79	284	0.2%	98.3%						
34	150	1,338	1.1%	78.7%	69	101	195	0.2%	98.4%						
35	33	1,236	1.1%	79.7%	70	287	194	0.2%	98.6%						
												Total Boardings	117,563	100.0%	100.0%

- (1) Average weekday ridership rounded to the nearest unit.
(2) Includes the five Lifeline Shuttles that operate on weekdays: Ahepa, Green Hills, Kings Creek, Robert Sharp and Sierra Lakes.

**Bus - Cumulative Percentage Average Weekday Ridership Share
Top 1/4, 1/3, 1/2, 2/3 and 3/4 of Routes**



TOTAL MONTHLY AND AVERAGE WEEKDAY RIDERSHIP YEAR OVER YEAR COMPARISON CHARTS – METROBUS



**“TOP 5 / BOTTOM 5” BUS ROUTES AVERAGE WEEKDAY RIDERSHIP PERFORMANCE
YEAR OVER YEAR COMPARISONS**

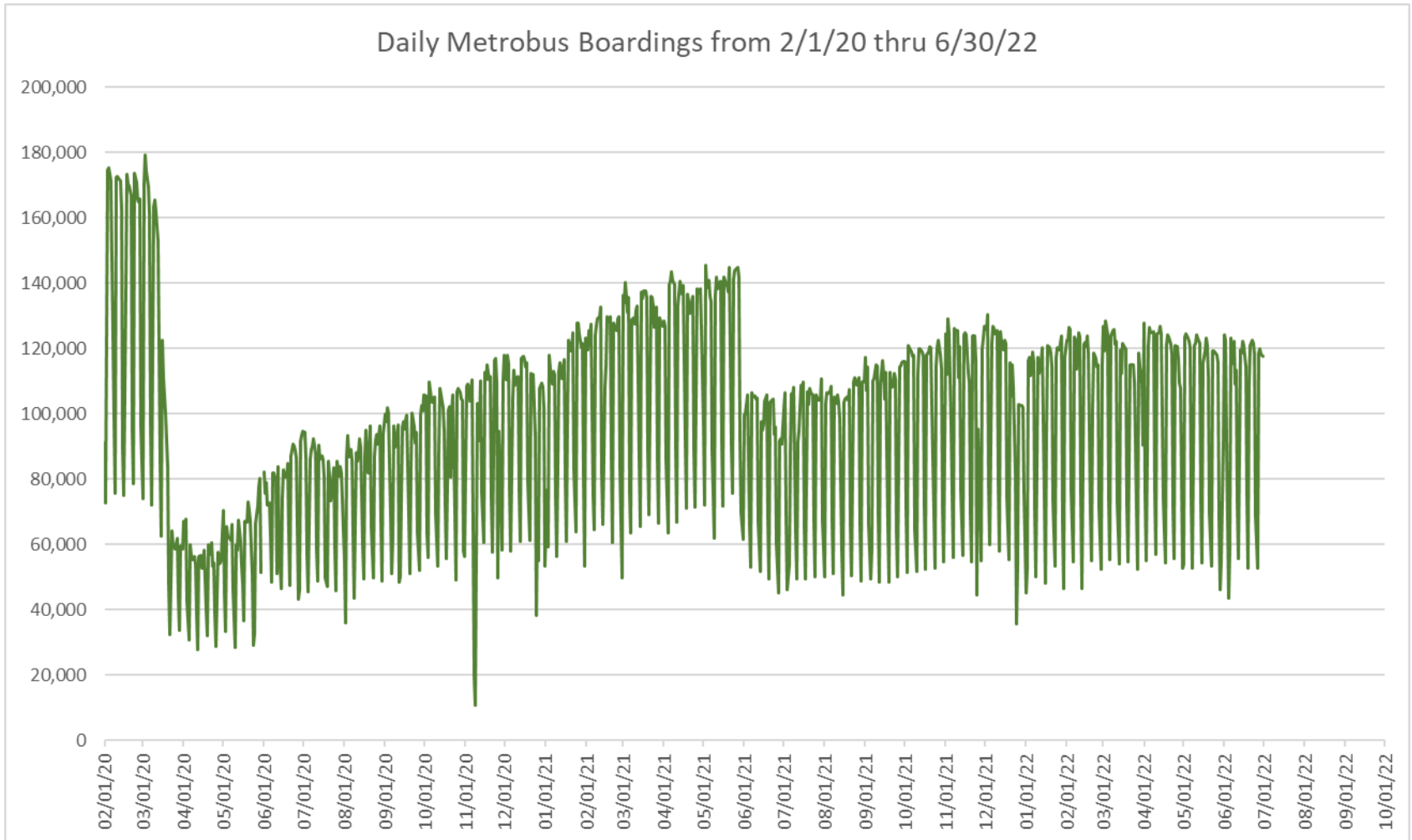
Route	Jun-22	Jun-21	Absolute Delta (1)	Percent Delta (2)
51 - FLAGLER MAX	2,815	1,904	911	47.9%
11	6,229	5,338	892	16.7%
73	2,142	1,317	825	62.6%
24	1,575	829	746	90.0%
7	2,884	2,145	739	34.5%
3	3,609	4,063	-454	-11.2%
9	3,815	4,173	-358	-8.6%
119 - S	6,759	6,973	-214	-3.1%
301 DADE-MONROE EXPRESS (*)	751	964	-213	-22.1%
112 - L	5,660	5,772	-112	-1.9%

(1) Averages rounded to the nearest boarding, data as reported by NFS and/or APC system, depending on year; Lifelines excluded.

(2) As a result of the SARS-CoV-2 pandemic, rides were fare-free beginning March 22, 2020; many bus routes continued reporting YOY gains in June 2022, since June 2021 still showed clear reduction effects on ridership from the SARS-CoV-2 pandemic. Fares were reinstated June 1, 2021, and ridership data from the farebox system rather than the automatic passenger counter system is utilized from that date going forward.

(*) Contracted route.

DAILY METROBUS RIDERSHIP SINCE FEBRUARY 1, 2020



- (1) National Emergency was declared on 3/13/20 as a result of the SARS-CoV-2 pandemic.
- (2) There was no Metrobus, Metrorail and Metromover service on 5/31/20, as a safety precaution.
- (3) The dip at the start of the second week of November 2020 is due to Hurricane Eta.
- (4) The reduction seen beginning 6/1/21 is partly due to the resumption of fares and partly the result of resuming reporting Cubic farebox data rather than bus APC counts.
- (5) Periodic (weekly) variations are prominent, since weekday ridership is almost always significantly higher than weekend or holiday ridership.

METROBUS PARKING PATRONAGE SUMMARY June 2022

PARK-RIDE LOT	ACTUAL AVAILABLE SPACES	ACTUAL OCCUPANCY	PERCENT OCCUPANCY
Transitway / SW 152nd St	200	127	64%
Transitway / SW 168th St (Closed for construction January 2022)	149	0	0%
Transitway / SW 200th Street (effective February 2020)	100	29	29%
Transitway / SW 112 Ave (Target)	450	120	27%
Transitway / SW 244th St	95	42	44%
Transitway / SW 296th St	139	14	10%
Transitway / SW 344th St	248	144	58%
Coral Reef Drive 117/ Tumpike	95	79	83%
Golden Glades Facility	2,150	304	14%
Hammocks Town Center (SW 152 Ave / SW 104 St)	50	18	36%
Kendall Dr./SW 127th Ave	161	10	6%
West Kendall Transit Term (Kendall Dr / SW162 Ave)	40	14	35%
NW 7th Avenue Transit Village (NW 7 Ave / NW 62 St)	25	22	88%
Miami Gardens Dr. / NW 73rd Ave	136	0	0%
Dolphin Station (effective Mar 2020)	348	56	16%
I-75 / Miami Gardens Dr (effective June 2019)	298	0	0%
TOTAL	4,684	979	21%

Note: some park-ride lots are joint-use and the number of park-ride vehicles may exceed the number of spaces allocated.

Metrorail



METRORAIL AVERAGE WEEKDAY BOARDINGS BY STATION (†)

Weekdays	Average Weekday	Average Weekday	Percent Change	Average Weekday	Percent Change	Average Weekday	Percent Change	Average Weekday	Percent Change
STATIONS	Jun-22	Jun-21	YOY	Feb-20	Current vs Feb-20	May-22	MOM	Jun-20	YO2Y
ALLAPATTAH	1,382	972	42.3%	1,942	-28.8%	1,408	-1.8%	906	52.6%
BRICKELL	4,085	3,012	35.7%	6,529	-37.4%	4,285	-4.7%	2,715	50.5%
BROWNSVILLE	617	512	20.7%	862	-28.4%	634	-2.6%	728	-15.2%
CIVIC CENTER	3,399	2,510	35.4%	6,143	-44.7%	3,429	-0.9%	1,819	86.9%
COCONUT GROVE	1,223	937	30.5%	1,795	-31.9%	1,287	-5.0%	618	97.8%
CULMER	775	659	17.6%	1,392	-44.3%	872	-11.1%	789	-1.8%
DADELAND NORTH	3,200	2,171	47.4%	5,926	-46.0%	3,436	-6.9%	1,583	102.2%
DADELAND SOUTH	3,626	2,725	33.1%	7,150	-49.3%	3,715	-2.4%	2,394	51.5%
DOUGLAS ROAD	2,333	1,702	37.1%	3,624	-35.6%	2,605	-10.4%	881	164.8%
DR. MARTIN LUTHER KING, JR.	753	607	24.0%	1,157	-34.9%	779	-3.4%	660	14.1%
EARLINGTON HEIGHTS	1,122	794	41.4%	1,662	-32.5%	1,160	-3.2%	819	37.1%
GOVERNMENT CENTER	5,358	3,912	36.9%	10,557	-49.3%	5,709	-6.2%	2,488	115.3%
HIALEAH	924	703	31.4%	1,253	-26.2%	994	-7.0%	704	31.2%
MIAMI INTERNATIONAL AIRPORT	1,070	704	52.1%	1,711	-37.4%	1,140	-6.2%	473	126.1%
NORTHSIDE	1,101	805	36.8%	1,476	-25.4%	1,119	-1.5%	877	25.6%
OKEECHOBEE	727	601	21.0%	1,164	-37.5%	739	-1.7%	530	37.3%
OVERTOWN / ARENA	1,289	726	77.6%	2,274	-43.3%	1,333	-3.3%	633	103.5%
PALMETTO	1,042	742	40.3%	1,543	-32.5%	1,055	-1.2%	608	71.4%
SANTA CLARA	557	419	32.9%	812	-31.4%	556	0.1%	421	32.4%
SOUTH MIAMI	1,629	1,297	25.6%	3,015	-46.0%	1,734	-6.1%	873	86.7%
TRI-RAIL	931	704	32.3%	1,207	-22.9%	914	1.8%	608	53.1%
UNIVERSITY	1,069	604	77.1%	2,784	-61.6%	1,177	-9.2%	294	263.3%
VIZCAYA	878	633	38.7%	1,390	-36.8%	984	-10.8%	469	87.1%
TOTAL	39,090	28,448	37.4%	67,367	-42.0%	41,065	-4.8%	22,889	70.8%

(†) In this table and those which follow, "YOY" stands for "year-over-year", "MOM" for "month-over-month" and "YO2Y" for "year over two years", i.e., current month vs 12 months prior, one month prior and 24 months prior, respectively.

(*) Due to effects from the SARS-CoV-2 pandemic; rides were fare-free beginning March 22, 2020; fares were reinstated on June 1, 2021, in part accounting for the drop in ridership from May 2021.

METRORAIL AVERAGE SATURDAY BOARDINGS BY STATION

Saturdays	Average Saturday	Average Saturday	Percent Change	Average Saturday	Percent Change	Average Saturday	Percent Change	Average Saturday	Percent Change
STATIONS	Jun-22	Jun-21	YOY	Feb-20	Current vs Feb-20	May-22	MOM	Jun-20	YO2Y
ALLAPATTAH	769	600	28.1%	1,051	-26.9%	848	-9.3%	649	18.5%
BRICKELL	2,090	1,771	18.1%	2,811	-25.6%	2,119	-1.4%	1,940	7.8%
BROWNSVILLE	372	326	14.2%	520	-28.4%	405	-8.2%	575	-35.3%
CIVIC CENTER	612	517	18.4%	959	-36.2%	655	-6.6%	535	14.4%
COCONUT GROVE	621	528	17.7%	928	-33.1%	725	-14.3%	414	49.9%
CULMER	406	393	3.4%	721	-43.6%	430	-5.5%	552	-26.4%
DADELAND NORTH	1,186	956	24.0%	1,994	-40.5%	1,306	-9.2%	1,020	16.3%
DADELAND SOUTH	1,531	1,290	18.7%	2,625	-41.7%	1,624	-5.7%	1,717	-10.8%
DOUGLAS ROAD	1,035	839	23.4%	1,319	-21.6%	1,177	-12.1%	625	65.5%
DR. MARTIN LUTHER KING, JR.	406	353	15.0%	625	-35.0%	427	-4.9%	509	-20.2%
EARLINGTON HEIGHTS	639	522	22.5%	935	-31.7%	690	-7.3%	558	14.6%
GOVERNMENT CENTER	2,255	1,851	21.8%	4,262	-47.1%	2,668	-15.5%	1,288	75.0%
HIALEAH	467	366	27.7%	583	-19.9%	506	-7.8%	441	5.8%
MIAMI INTERNATIONAL AIRPORT	845	570	48.2%	1,330	-36.5%	920	-8.2%	407	107.6%
NORTHSIDE	658	540	21.7%	878	-25.1%	664	-1.0%	708	-7.2%
OKEECHOBEE	257	300	-14.5%	408	-37.2%	296	-13.3%	289	-11.2%
OVERTOWN / ARENA	458	332	38.1%	678	-32.5%	495	-7.4%	550	-16.7%
PALMETTO	335	262	28.1%	458	-26.9%	338	-0.8%	289	16.1%
SANTA CLARA	292	246	18.8%	422	-30.8%	305	-4.3%	272	7.5%
SOUTH MIAMI	775	648	19.6%	1,256	-38.3%	843	-8.1%	580	33.7%
TRI-RAIL	388	340	14.0%	614	-36.9%	414	-6.3%	403	-3.7%
UNIVERSITY	359	218	65.1%	714	-49.7%	386	-7.0%	157	128.7%
VIZCAYA	413	365	13.2%	622	-33.6%	514	-19.6%	286	44.5%
TOTAL	17,167	14,129	21.5%	26,714	-35.7%	18,754	-8.5%	14,761	16.3%

METRORAIL AVERAGE SUNDAY BOARDINGS BY STATION

Sundays	Average Sunday	Average Sunday	Percent Change	Average Sunday	Percent Change	Average Sunday	Percent Change	Average Sunday	Percent Change
STATIONS	Jun-22	Jun-21	YOY	Feb-20	Current vs Feb-20	May-22	MOM	Jun-20	YO2Y
ALLAPATTAH	619	399	55.1%	791	-21.8%	597	3.6%	451	37.3%
BRICKELL	1,713	1,369	25.1%	2,379	-28.0%	1,790	-4.3%	1,586	8.0%
BROWNSVILLE	281	248	13.2%	406	-30.8%	310	-9.4%	420	-33.1%
CIVIC CENTER	526	412	27.5%	791	-33.6%	524	0.2%	436	20.5%
COCONUT GROVE	525	419	25.3%	838	-37.4%	541	-2.9%	354	48.4%
CULMER	358	297	20.4%	616	-41.9%	351	2.0%	418	-14.4%
DADELAND NORTH	939	756	24.2%	1,685	-44.3%	963	-2.5%	725	29.6%
DADELAND SOUTH	1,328	1,039	27.7%	2,210	-39.9%	1,259	5.4%	1,427	-7.0%
DOUGLAS ROAD	802	573	39.9%	1,090	-26.4%	829	-3.4%	453	77.1%
DR. MARTIN LUTHER KING, JR.	340	247	37.8%	506	-32.9%	322	5.6%	391	-13.2%
EARLINGTON HEIGHTS	527	375	40.5%	799	-34.1%	518	1.7%	444	18.6%
GOVERNMENT CENTER	1,953	1,402	39.2%	4,044	-51.7%	2,006	-2.7%	997	95.8%
HIALEAH	350	262	33.5%	472	-25.9%	351	-0.5%	325	7.7%
MIAMI INTERNATIONAL AIRPORT	835	568	47.1%	1,343	-37.8%	857	-2.6%	434	92.5%
NORTHSIDE	522	425	22.9%	653	-20.0%	510	2.3%	511	2.2%
OKEECHOBEE	159	157	1.0%	273	-42.0%	161	-1.6%	173	-8.2%
OVERTOWN / ARENA	403	274	47.1%	544	-26.0%	448	-10.1%	529	-23.8%
PALMETTO	190	157	20.8%	336	-43.5%	183	3.8%	203	-6.5%
SANTA CLARA	236	151	56.5%	280	-15.7%	223	5.7%	183	28.9%
SOUTH MIAMI	634	459	38.1%	987	-35.7%	616	3.0%	422	50.5%
TRI-RAIL	323	280	15.1%	528	-38.9%	318	1.4%	318	1.4%
UNIVERSITY	298	164	81.8%	608	-51.0%	299	-0.6%	113	162.9%
VIZCAYA	345	277	24.3%	524	-34.3%	397	-13.3%	230	50.1%
TOTAL	14,200	10,710	32.6%	22,701	-37.4%	14,374	-1.2%	11,540	23.1%

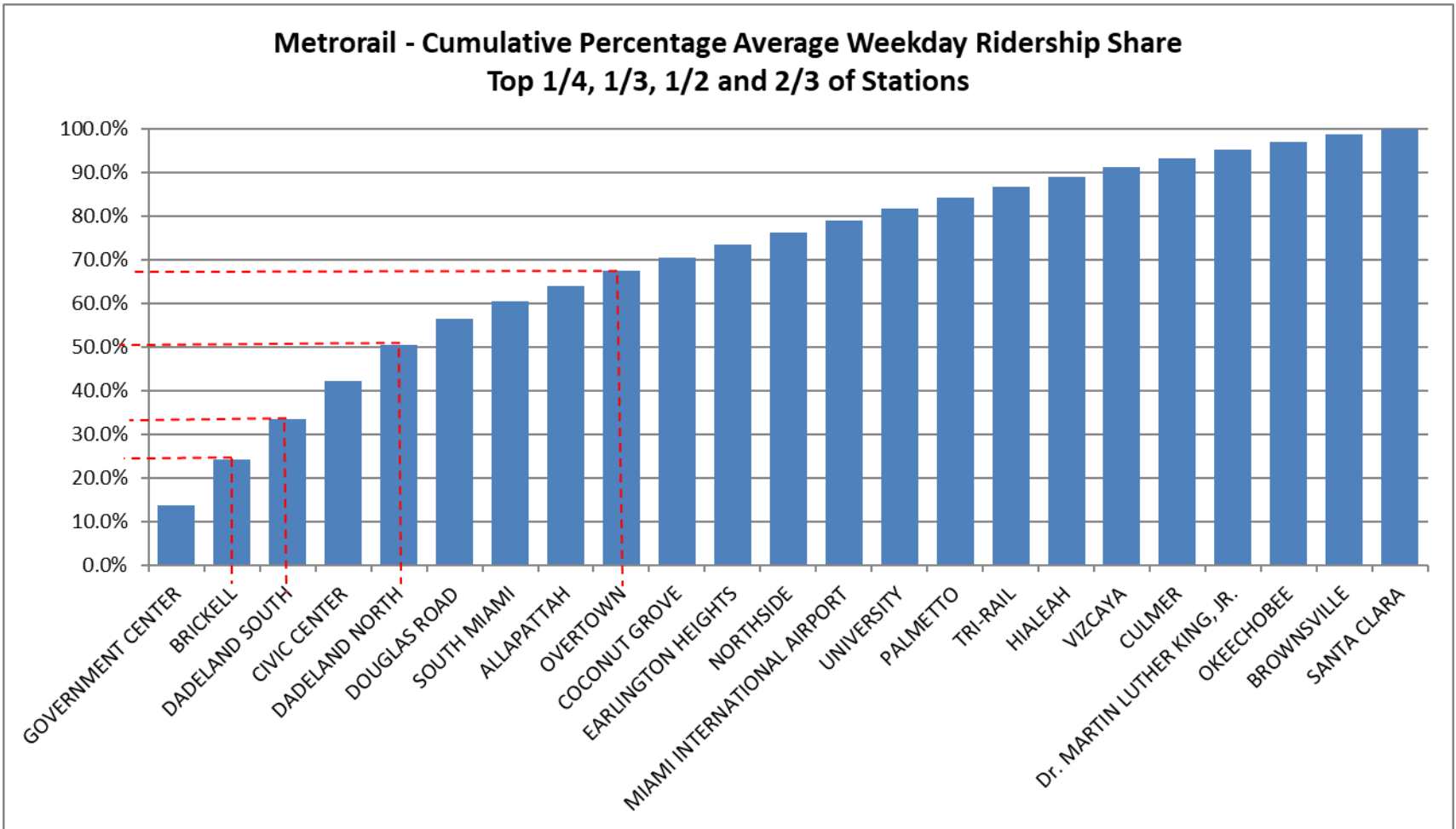
METRORAIL TOTAL MONTHLY BOARDINGS BY STATION

Monthly Totals	Total Month	Total Month	Percent Change	Total Month	Percent Change	Total Month	Percent Change	Total Month	Percent Change
STATIONS	Jun-22	Jun-21	YOY	Feb-20	Current vs Feb-20	May-22	MOM	Jun-20	YO2Y
ALLAPATTAH	35,772	25,357	41.1%	46,868	-23.7%	36,669	-2.4%	24,325	47.1%
BRICKELL	104,297	78,739	32.5%	152,259	-31.5%	109,379	-4.6%	73,831	41.3%
BROWNSVILLE	16,088	13,525	19.0%	21,285	-24.4%	16,796	-4.2%	19,989	-19.5%
CIVIC CENTER	77,307	58,891	31.3%	128,921	-40.0%	77,408	-0.1%	43,896	76.1%
COCONUT GROVE	31,356	24,403	28.5%	43,580	-28.0%	33,187	-5.5%	16,674	88.1%
CULMER	19,933	17,214	15.8%	33,497	-40.5%	22,256	-10.4%	21,245	-6.2%
DADELAND NORTH	77,744	54,383	43.0%	132,894	-41.5%	83,050	-6.4%	41,800	86.0%
DADELAND SOUTH	90,182	69,123	30.5%	162,416	-44.5%	91,956	-1.9%	65,239	38.2%
DOUGLAS ROAD	58,302	43,049	35.4%	82,141	-29.0%	64,466	-9.6%	23,696	146.0%
DR. MARTIN LUTHER KING, JR.	19,404	15,694	23.6%	27,980	-30.7%	20,055	-3.2%	18,116	7.1%
EARLINGTON HEIGHTS	29,152	21,058	38.4%	40,697	-28.4%	30,282	-3.7%	22,018	32.4%
GOVERNMENT CENTER	133,185	98,531	35.2%	243,414	-45.3%	142,014	-6.2%	63,879	108.5%
HIALEAH	23,522	17,908	31.3%	29,516	-20.3%	25,051	-6.1%	18,557	26.8%
MIAMI INTERNATIONAL AIRPORT	30,285	20,060	51.0%	46,115	-34.3%	32,912	-8.0%	13,776	119.8%
NORTHSIDE	28,834	21,543	33.8%	36,127	-20.2%	29,302	-1.6%	24,173	19.3%
OKEECHOBEE	17,497	14,996	16.7%	26,026	-32.8%	17,785	-1.6%	13,500	29.6%
OVERTOWN / ARENA	31,309	18,217	71.9%	49,911	-37.3%	32,373	-3.3%	18,245	71.6%
PALMETTO	24,790	17,942	38.2%	33,944	-27.0%	24,595	0.8%	15,338	61.6%
SANTA CLARA	14,268	10,760	32.6%	19,245	-25.9%	14,318	-0.3%	11,070	28.9%
SOUTH MIAMI	41,129	32,837	25.3%	69,412	-40.7%	43,508	-5.5%	23,199	77.3%
TRI-RAIL	23,206	17,988	29.0%	29,120	-20.3%	22,747	2.0%	16,254	42.8%
UNIVERSITY	25,681	14,782	73.7%	61,253	-58.1%	28,083	-8.6%	7,554	240.0%
VIZCAYA	22,234	16,469	35.0%	32,497	-31.6%	25,130	-11.5%	12,384	79.5%
TOTAL	975,477	723,469	34.8%	1,549,118	-37.0%	1,023,322	-4.7%	608,758	60.2%

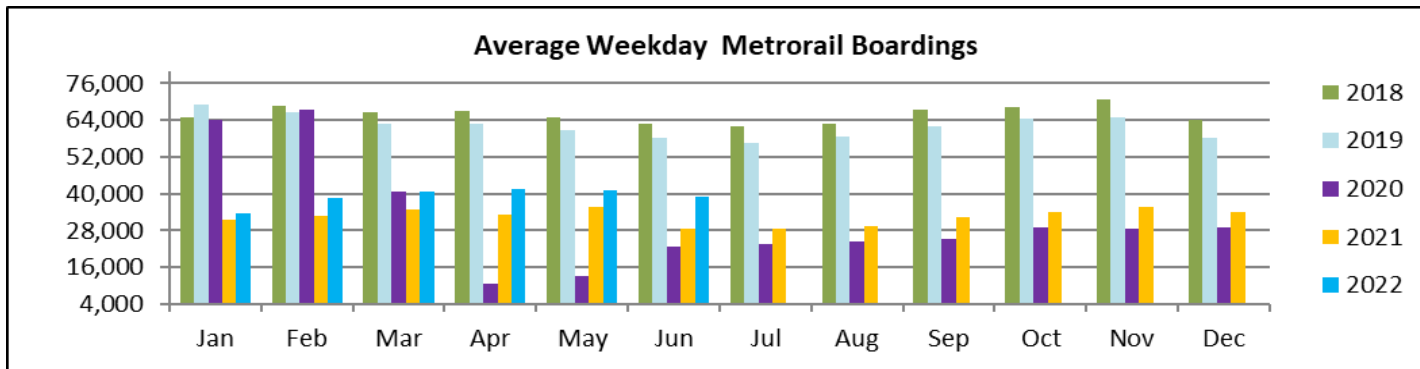
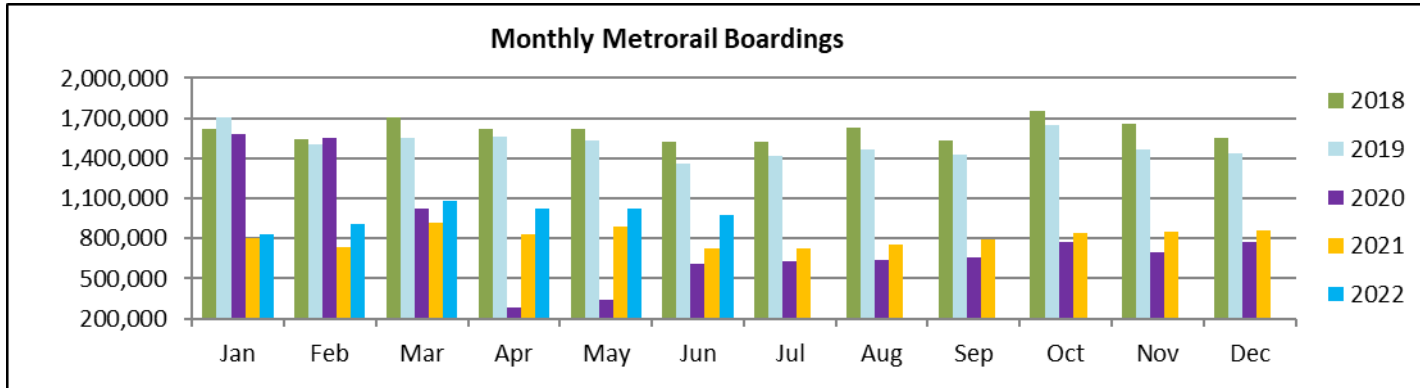
METRORAIL HOLIDAY BOARDINGS BY STATION Juneteenth

	Juneteenth	Juneteenth	Percent Change
STATIONS	2021	2022	22 vs 21
ALLAPATTAH	959	1,196	24.7%
BRICKELL	2,937	3,292	12.1%
BROWNSVILLE	488	516	5.7%
CIVIC CENTER	2,464	1,372	-44.3%
COCONUT GROVE	939	1,095	16.6%
CULMER	611	601	-1.6%
DADELAND NORTH	1,938	2,045	5.5%
DADELAND SOUTH	2,588	2,610	0.9%
DOUGLAS ROAD	1,667	1,961	17.6%
DR. MARTIN LUTHER KING, JR.	554	617	11.4%
EARLINGTON HEIGHTS	801	918	14.6%
GOVERNMENT CENTER	3,355	3,846	14.6%
HIALEAH	627	851	35.7%
MIAMI INTERNATIONAL AIRPORT	733	1,093	49.1%
NORTHSIDE	776	986	27.1%
OKEECHOBEE	553	567	2.5%
OVERTOWN/ ARENA	555	798	43.8%
PALMETTO	677	814	20.2%
SANTA CLARA	377	464	23.1%
SOUTH MIAMI	1,179	1,282	8.7%
TRI-RAIL	731	821	12.3%
UNIVERSITY	580	608	4.8%
VIZCAYA	612	770	25.8%
TOTAL	26,701	29,123	9.1%

METRORAIL CUMULATIVE PERCENTAGE RIDERSHIP SHARE



TOTAL MONTHLY AND AVERAGE WEEKDAY RIDERSHIP YEAR OVER YEAR COMPARISON CHARTS – METRORAIL

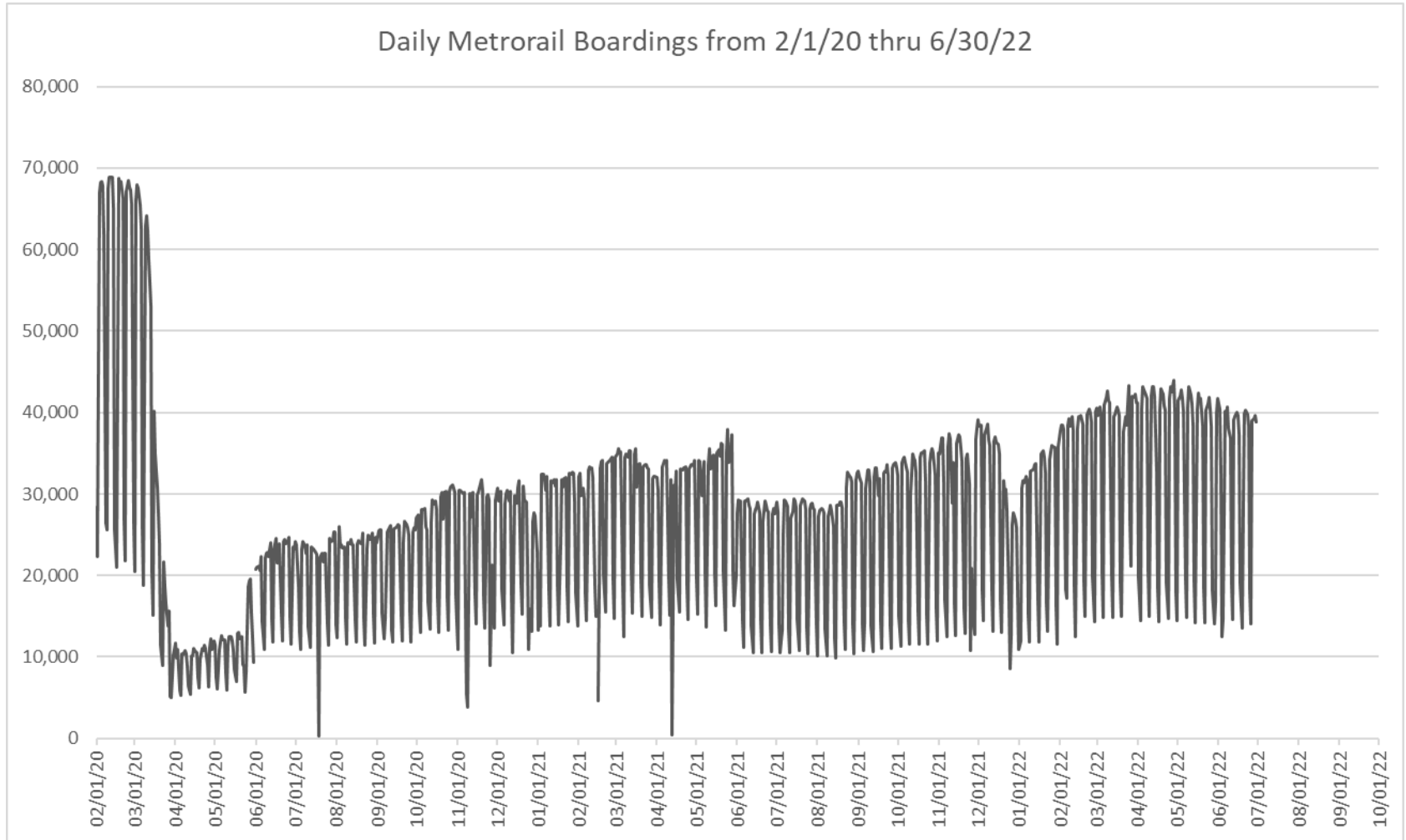


**“TOP 5 / BOTTOM 5” RAIL STATIONS AVERAGE WEEKDAY RIDERSHIP PERFORMANCE
YEAR OVER YEAR COMPARISONS**

Station	Jun-22	Jun-21	Absolute Delta (1)	Percent Delta
GOVERNMENT CENTER	5,358	3,912	1,445	36.9%
BRICKELL	4,085	3,012	1,074	35.7%
DADELAND NORTH	3,200	2,171	1,029	47.4%
DADELAND SOUTH	3,626	2,725	901	33.1%
CIVIC CENTER	3,399	2,510	889	35.4%
BROWNSVILLE	617	512	106	20.7%
CULMER	775	659	116	17.6%
OKEECHOBEE	727	601	126	21.0%
SANTA CLARA	557	419	138	32.9%
Dr. MARTIN LUTHER KING, JR.	753	607	146	24.0%

- (1) Averages rounded to the nearest boarding.
- (2) As a result of the SARS-CoV-2 pandemic, rides were fare-free beginning March 22, 2020; all rail stations continued reporting YOY gains in June 2022, since June 2021 still showed clear reduction effects on ridership from the SARS-CoV-2 pandemic. Fares were reinstated June 1, 2021, and ridership data from the faregate system rather than the video camera counter system is utilized from that date going forward.

DAILY METRORAIL RIDERSHIP SINCE FEBRUARY 1, 2020



- (1) National Emergency was declared on 3/13/20 as a result of the SARS-CoV-2 pandemic.
- (2) There was no Metrobus, Metrorail and Metromover service on 5/31/20, as a safety precaution.
- (3) The dip at the start of the second week of November 2020 is due to Hurricane Eta; these are *raw data* from the Unleash Live contractor AI video system.
- (4) The dip on 4/13/21 is due to a loss of connectivity at all stations, affecting a few stations over the next two days as well.
- (5) The reduction seen beginning 6/1/21 is partly due to the resumption of fares and partly the result of resuming reporting Cubi faregate data rather than video camera counts.
- (6) Periodic (weekly) variations are prominent, since weekday ridership is almost always significantly higher than weekend or holiday ridership.

METRORAIL PARKING PATRONAGE SUMMARY June 2022

PARK-RIDE LOT	ACTUAL CAPACITY (1)	ACTUAL OCCUPANCY (2)	PERCENT OCCUPANCY
DADELAND SOUTH	1,260	591	47%
DADELAND NORTH	1,963	922	47%
SOUTH MIAMI	1,081	294	27%
UNIVERSITY	260	155	60%
DOUGLAS ROAD	222	154	69%
COCONUT GROVE	100	31	31%
VIZCAYA	120	39	33%
CULMER	40	10	26%
SANTA CLARA	61	37	61%
ALLAPATTAH	74	3	3%
EARLINGTON HEIGHTS	361	149	41%
BROWNSVILLE	100	67	67%
(* DR. MARTIN LUTHER KING JR. (MDT))	62	0	0%
(* DR. MARTIN LUTHER KING JR. (GARAGE))	631	0	0%
NORTHSIDE	126	70	55%
HIALEAH	338	38	11%
OKEECHOBEE	818	143	18%
PALMETTO	700	141	20%
TOTAL	8,317	2,844	34%

- (1) Number of spaces could vary each week; shown are available spaces during final week of month, as submitted by DTPW Safety & Security office.
(2) All sampled occupancy data provided by DTPW Safety & Security office; calculations are revisions to those submitted by that entity.
(3) Daily averages rounded to nearest unit, with fewer counts at some stations due to shortage of DTPW Safety & Security office staff; calculations are based on sampled counted days only per raw data submitted, with resulting average daily occupancy shown.
(*) Closed throughout the month, per the DTPW Safety & Security office.

Metromover



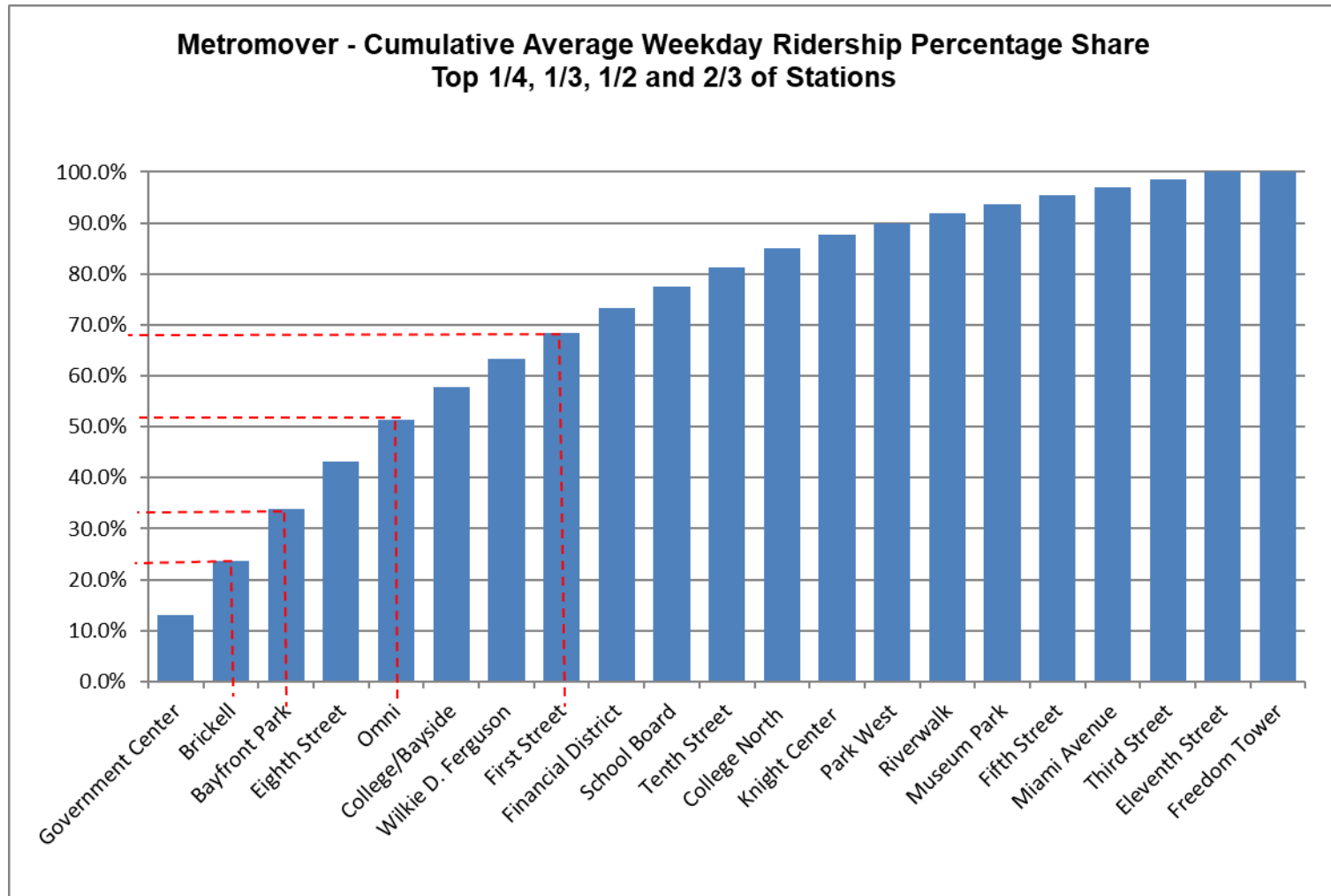
METROMOVER MONTHLY AND AVERAGE DAILY BOARDINGS BY STATION

	Average Weekday	Average Weekday	Percent Change	Average Saturday	Average Saturday	Percent Change	Average Sunday	Average Sunday	Percent Change	June 2022	June 2021	Percent Change	Total Monthly	Total Monthly	Percent Change
STATIONS	Jun-22	Jun-21	22 vs 21	Jun-22	Jun-21	22 vs 21	Jun-22	Jun-21	22 vs 21	Jun-22	Jun-21	22 vs 21	Jun-22	Jun-21	22 vs 21
School Board	745	519	43.6%	524	386	35.7%	497	336	47.8%	661	429	54.1%	20,394	13,491	51.2%
Omni	1,433	975	46.9%	1,078	766	40.7%	987	666	48.1%	1,314	964	36.3%	39,670	25,744	54.1%
Museum Park	312	181	72.1%	364	434	-16.2%	328	204	60.8%	371			9,692	3,902	148.4%
Eleventh Street	245	217	13.0%	176	116	51.0%	140	91	53.3%	233	212	9.9%	6,644	5,508	20.6%
Park West	386	202	91.7%	305	144	111.5%	241	142	69.5%	368			9,892	3,915	152.7%
Freedom Tower (*)															
Government Center	2,293	1,748	31.2%	1,500	815	84.0%	1,392	670	107.9%	1,861	1,639	13.5%	61,588	44,287	39.1%
Miami Avenue	285	238	20.1%	220	193	13.7%	152	136	11.4%	224			7,702	4,843	59.0%
Third Street	263	204	29.2%	190	156	21.7%	177	125	40.8%	253	201	25.9%	7,249	5,326	36.1%
Knight Center	478	354	34.8%	318	165	92.9%	258	155	66.5%	337	328	2.7%	12,673	8,729	45.2%
Bayfront Park	1,789	1,390	28.8%	1,182	1,029	14.8%	1,097	1,038	5.7%	1,661	1,370	21.2%	48,349	36,750	31.6%
First Street	903	800	12.8%	734	701	4.7%	667	615	8.5%	864			25,423	12,518	103.1%
College/Bayside	1,110	758	46.5%	760	725	4.8%	780	600	29.9%	1,144	766	49.3%	30,621	10,431	193.6%
College North	646	287	125.3%	394	155	154.4%	313	117	168.5%	534			16,922	5,989	182.6%
Wilkie D. Ferguson	964	466	106.9%	636	306	108.1%	584	254	130.4%	760			25,877	10,433	148.0%
Riverwalk	360	377	-4.4%	252	224	12.7%	186	230	-19.2%	259	256	1.2%	9,576	9,530	0.5%
Fifth Street	298	300	-0.6%	237	248	-4.6%	182	183	-0.7%	266	234	13.7%	8,199	7,823	4.8%
Eighth Street	1,638	914	79.2%	1,180	690	71.1%	1,238	634	95.4%	1,432	427	235.4%	45,503	20,438	122.6%
Tenth Street	655	525	24.8%	558	366	52.3%	427	354	20.7%	585	502	16.5%	18,283	13,689	33.6%
Brickell	1,844	1,483	24.3%	1,418	1,266	12.0%	1,341	994	34.9%	1,676			51,429	31,430	63.6%
Financial District	843	593	42.2%	409	392	4.3%	380	307	23.9%	741			21,600	11,369	90.0%
TOTAL	17,492	12,529	39.6%	12,433	9,278	34.0%	11,365	7,850	44.8%	15,544	7,328	112.1%	477,286	286,145	66.8%

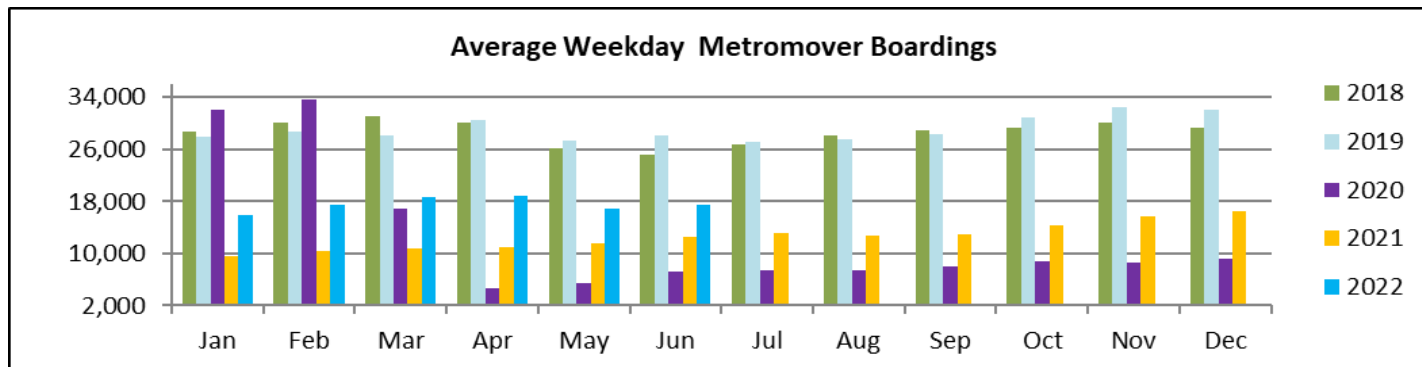
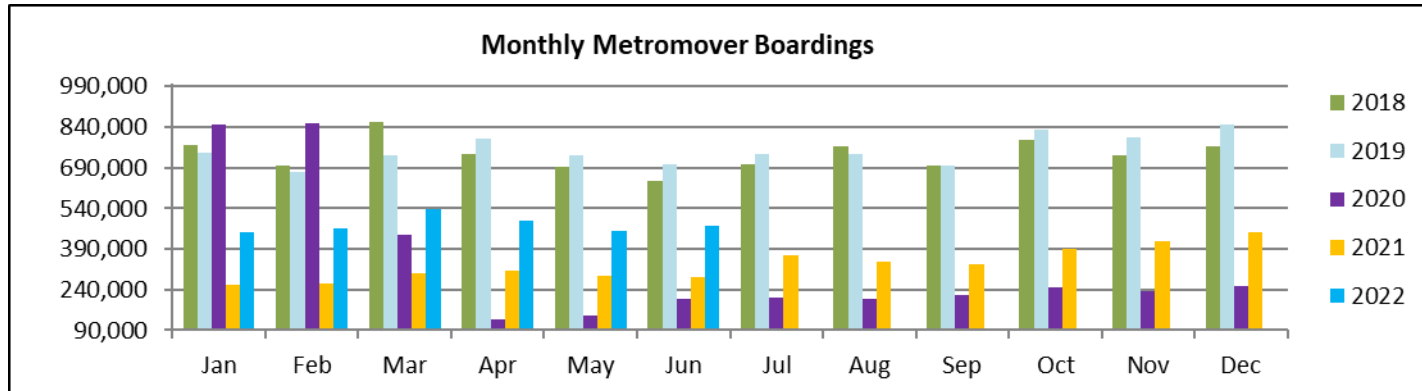
(1) Freedom Tower Station was closed for construction.

(*) APC system did not report boardings data at several stations on several days in June 2022; the average daily ridership calculations take this into account.

METROMOVER CUMULATIVE PERCENTAGE RIDERSHIP SHARE



TOTAL MONTHLY AND AVERAGE WEEKDAY RIDERSHIP YEAR OVER YEAR COMPARISON CHARTS – METROMOVER



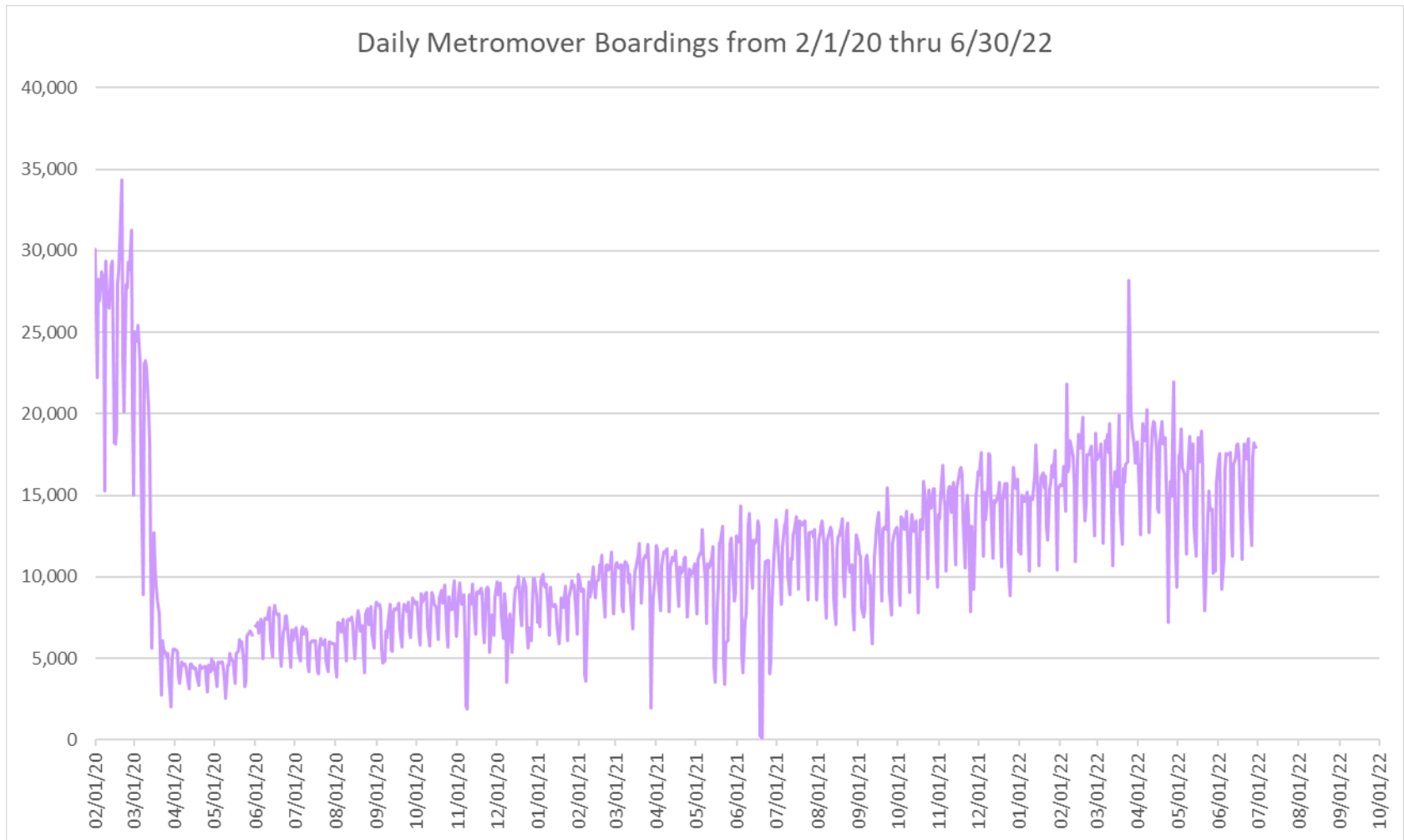
**“TOP 5 / BOTTOM 5” MOVER STATIONS AVERAGE WEEKDAY RIDERSHIP PERFORMANCE
YEAR OVER YEAR COMPARISONS**

Station	Jun-22	Jun-21	Absolute Delta (1)	Percent Delta
Eighth Street	1,638	914	724	79.2%
Government Center	2,293	1,748	545	31.2%
Wilkie D. Ferguson	964	466	498	106.9%
Omni	1,433	975	458	46.9%
Bayfront Park	1,789	1,390	400	28.8%
Riverwalk	360	377	-17	-4.4%
Fifth Street	298	300	-2	-0.6%
Eleventh Street	245	217	28	13.0%
Miami Avenue	285	238	48	20.1%
Third Street	263	204	59	29.2%

(1) Averages rounded to the nearest boarding.

(†) All but two Metromover stations reported YOY gains in June 2022, as June 2021 showed clear ongoing reduction effects on ridership from the SARS-CoV-2 pandemic.

DAILY METROMOVER RIDERSHIP SINCE FEBRUARY 1, 2020



- (1) National Emergency was declared on 3/13/20 as a result of the SARS-CoV-2 pandemic.
- (2) There was no Metrobus, Metrorail and Metromover service on 5/31/20, as a safety precaution.
- (3) The dip at the start of the second week of November 2020 is due to Hurricane Eta; these are *raw data* from the UTA contractor APC system. Other more recent dips are due to various station closures (mostly on weekends) for system maintenance purposes.
- (4) Periodic (weekly) variations are prominent, since weekday ridership is almost always significantly higher than weekend or holiday ridership.

Special Transportation Services

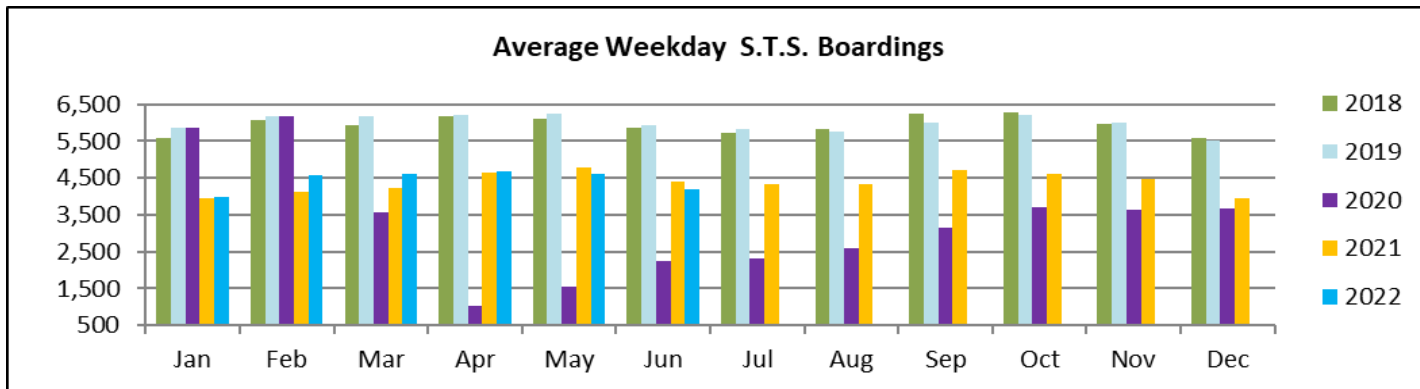
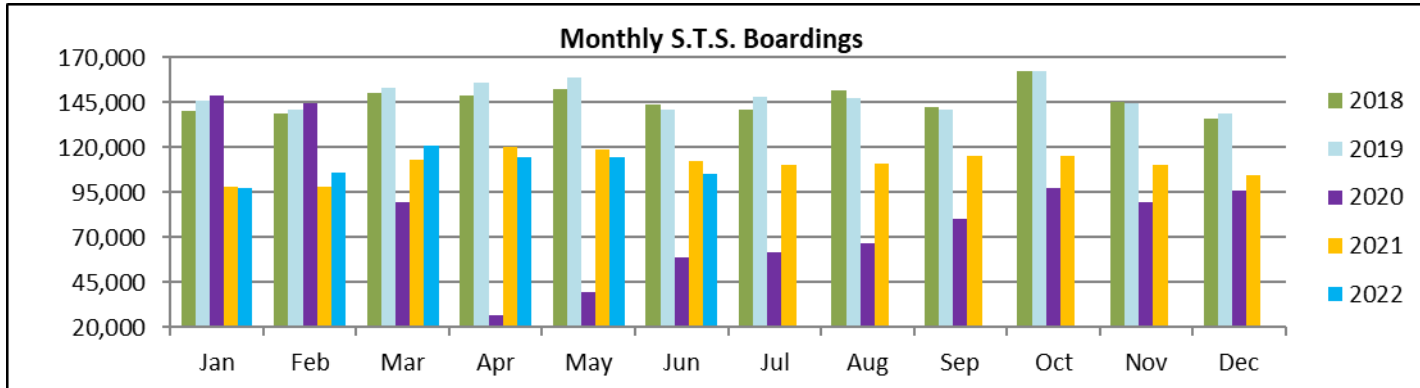


**STS MONTHLY AND AVERAGE DAILY BOARDINGS
June 2022**

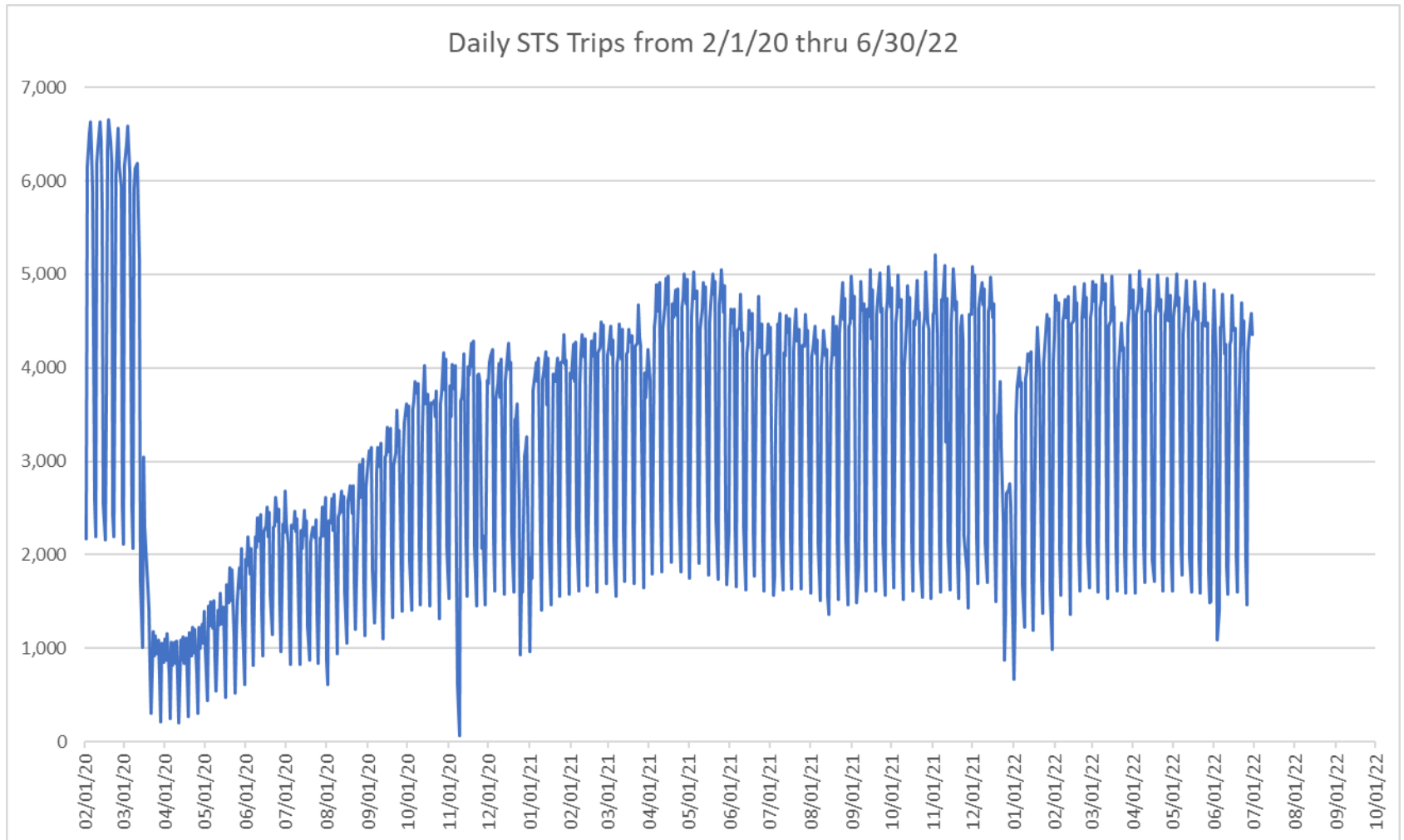
Measure	timeline	Ambulatory	Wheelchair	Total Clients (*)
Average Weekday	Jun-22	3,605	766	4,371
Average Saturday	Jun-22	1,405	304	1,709
Average Sunday	Jun-22	1,243	270	1,513
Total Monthly	Jun-22	89,913	19,141	109,054
Average Weekday	Jun-21	3,620	782	4,402
Average Saturday	Jun-21	1,821	404	2,225
Average Sunday	Jun-21	1,416	250	1,666
Total Monthly	Jun-21	92,576	19,821	112,397
Average Weekday	Jun-20	1,808	440	2,248
Average Saturday	Jun-20	1,173	278	1,450
Average Sunday	Jun-20	819	141	959
Total Monthly	Jun-20	47,741	11,352	59,093
% Change Current vs. Jun 2021 Weekday		-0.4%	-2.1%	-0.7%
% Change Current vs. Jun 2021 Saturday		-22.8%	-24.8%	-23.2%
% Change Current vs. Jun 2021 Sunday		-12.2%	7.9%	-9.2%
% Change Current vs. Jun 2021 Month Total		-2.9%	-3.4%	-3.0%
% Change Current vs. Jun 2020 Weekday		99.4%	74.1%	94.4%
% Change Current vs. Jun 2020 Saturday		19.8%	9.4%	17.8%
% Change Current vs. Jun 2020 Sunday		51.9%	92.0%	57.8%
% Change Current vs. Jun 2020 Month Total		88.3%	68.6%	84.5%

(*) Trip count data provided by STS contractor.

TOTAL MONTHLY AND AVERAGE WEEKDAY RIDERSHIP YEAR OVER YEAR COMPARISON CHARTS – SPECIAL TRANSPORTATION SERVICES (S.T.S.)

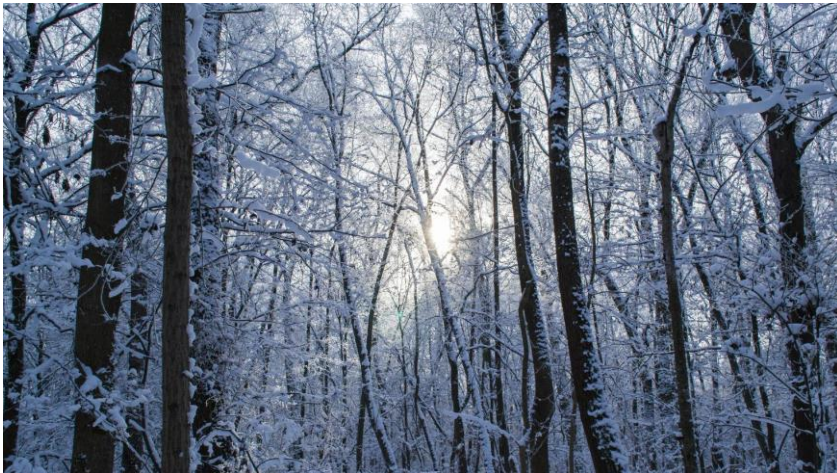


DAILY STS RIDERSHIP SINCE FEBRUARY 1, 2020

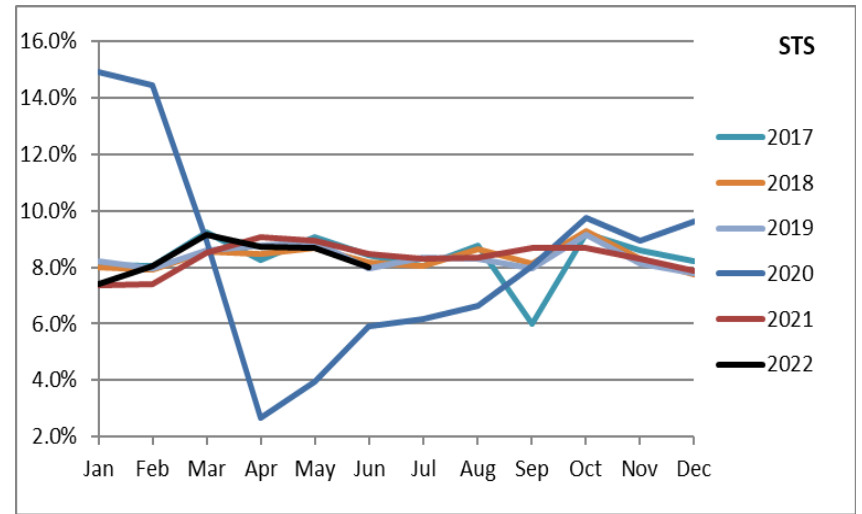
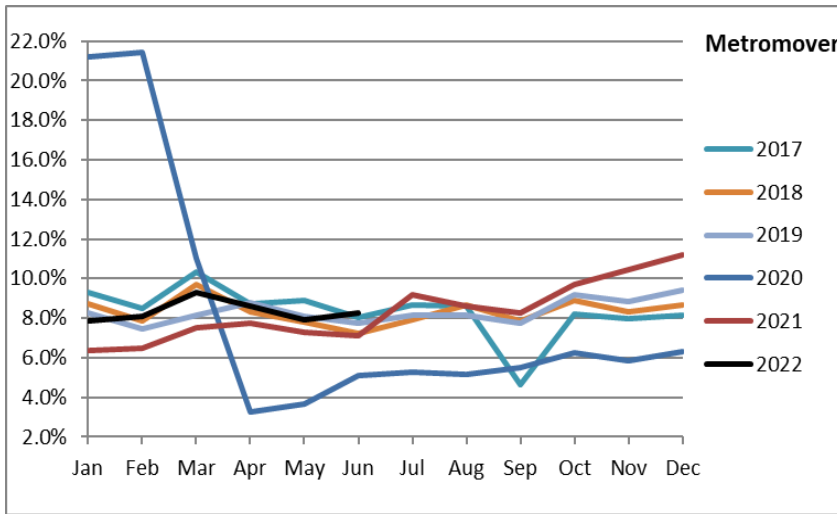
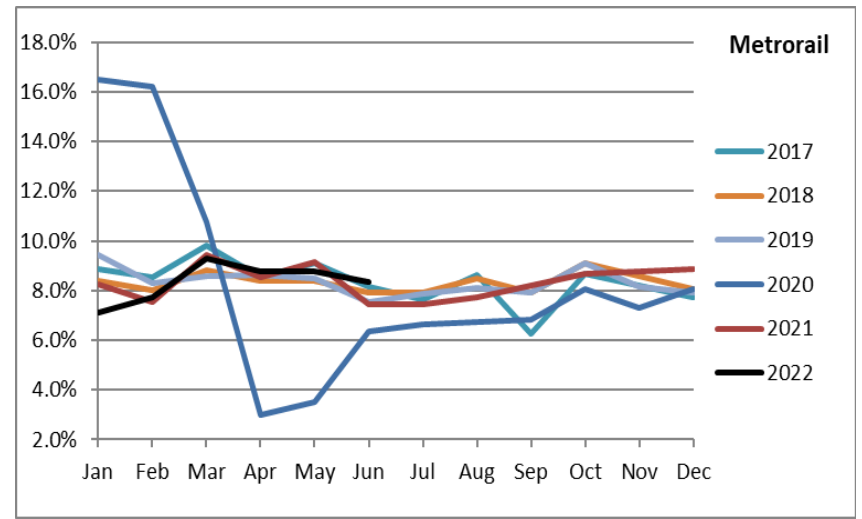
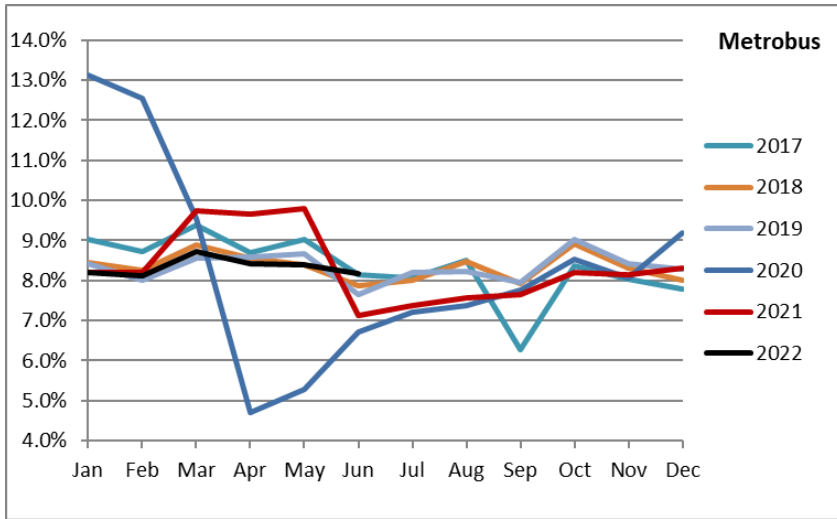


- (1) National Emergency was declared on 3/13/20 as a result of the SARS-CoV-2 pandemic.
- (2) The dip at the start of the second week of November 2020 is due to Hurricane Eta.
- (3) Periodic (weekly) variations are prominent, since weekday ridership is almost always significantly higher than weekend or holiday ridership.

Ridership Seasonality



RIDERSHIP SEASONALITY – PERCENT RIDERSHIP SHARE BY MONTH AND CALENDAR YEAR FOR EACH MODE



Note: the prominent dips seen in the fall of 2017 and beginning in the spring of 2020 are due to Hurricane Irma and the SARS-CoV-2 pandemic, respectively. Reductions in Bus and Rail ridership share seen beginning in June 2021 are due to reinstatement of fares as well changes in reporting tools and datasets, as discussed earlier in this report.