



TRANSPORTATION AND PUBLIC WORKS

RIDERSHIP TECHNICAL REPORT

Division of Performance and Materials Management



Table of Contents

<i>Table of Contents</i>	2-3
All Modes Overview	4
Total Monthly Weekday, Saturday and Sunday Monthly Boardings By Mode	5
Average Weekday, Saturday and Sunday Boardings by Mode	6
Metrobus Total Monthly Ridership Comparisons by Fiscal Year	7
Metrorail Total Monthly Ridership Comparisons by Fiscal Year	8
Metromover Total Monthly Ridership Comparisons by Fiscal Year	9
STS Total Monthly Ridership Comparisons by Fiscal Year	10
All-Modes Combined Total Monthly Ridership Comparisons By Fiscal Year	11
All Modes Combined Total Monthly and Average Weekday Ridership – Year over Year Comparison Charts	12
Average Weekday Ridership – Modal Splits	13
Daily Ridership for All Modes Combined since February 1, 2020	14
Metrobus	15
Metrobus Average Weekday Boardings by Route	16-18
Metrobus Average Saturday Boardings by Route	19-20
Metrobus Average Sunday Boardings by Route	21-22
Metrobus Monthly Total Boardings by Route	23-25
Metrobus Holiday Boardings by Route	26
Year-over-Year Bus Ridership by Route Service Type	27-28
Bus Routes as Ranked by Percentage of Average Weekday Ridership	29
Metrobus Cumulative Percentage Average Weekday Ridership Share by Route (Top 75%)	30
Total Monthly and Average Weekday Bus Ridership – Year over Year Comparison Charts	31
Bus “Top 5 / Bottom 5” Routes Average Weekday Ridership Performance	32
Daily Metrobus Ridership since February 1, 2020	33
Metrobus Parking Patronage Summary	34

Table of Contents (continued)

Metrorail	35
Metrorail Average Weekday Boardings by Station	36
Metrorail Average Saturday Boardings by Station	37
Metrorail Average Sunday Boardings by Station	38
Metrorail Total Monthly Boardings by Station	39
Metrorail Holiday Boardings by Station	40
Metrorail Cumulative Percentage Average Weekday Ridership Share	41
Total Monthly and Average Weekday Rail Ridership – Year over Year Comparison Charts	42
“Top 5 / Bottom 5” Stations Average Weekday Ridership Performance	43
Daily Metrorail Ridership since February 1, 2020	44
Metrorail Parking Patronage Summary	45
Metromover	46
Monthly and Average Daily Mover Boardings by Station	47
Metromover Cumulative Percentage Average Weekday Ridership Share	48
Total Monthly and Average Weekday Mover Ridership – Year over Year Comparison Charts	49
“Top 5 / Bottom 5” Stations Average Weekday Ridership Performance	50
Daily Metromover Ridership since February 1, 2020	51
Special Transportation Services (STS)	52
STS Monthly and Average Daily Boardings	53
Total Monthly and Average Weekday STS Ridership – Year over Year Comparison Charts	54
Daily STS Ridership since February 1, 2020	55
Ridership Seasonality	56
Ridership Seasonality – Percent Ridership Share by Month and Calendar year for Each Mode	57

All Modes Overview



**TOTAL MONTHLY WEEKDAY, SATURDAY AND SUNDAY BOARDINGS BY MODE
July 2022**

TRAVEL MODE	MONTH'S TOTAL WEEKDAYS RIDERSHIP	MONTH'S TOTAL SATURDAYS RIDERSHIP	MONTH'S TOTAL SUNDAYS RIDERSHIP	TOTAL MONTHLY RIDERSHIP	% CHANGE vs Jul 2021 TOTAL MONTH RIDERSHIP
METROBUS (1)	2,467,757	382,441	339,796	3,189,994	15.2%
METRORAIL (2)	777,230	90,822	85,279	953,331	32.0%
METROMOVER (3)	361,121	71,519	79,454	512,094	38.8%
STS PARATRANSIT (4)	87,944	9,771	9,473	107,188	-2.6%
TOTAL	3,694,052	554,553	514,002	4,762,607	19.9%

(*) Total weekday ridership includes Monday, July 4, 2022 – Independence Day.
Ridership numbers for that day were as follows:

Metrobus	57,237
Metrorail	16,660
Metromover	18,532
STS	1,558

- (1) Metrobus fares resumed on June 1, 2021, following a 14-month period of fare-free rides as a result of the SARS-CoV-2 pandemic. The NextFare System farebox data replaced the bus automatic passenger counter data as ridership data of record starting on that date.
- (2) Metrorail fares resumed on June 1, 2021, following a 14-month period of fare-free rides as a result of the SARS-CoV-2 pandemic. The NextFare System faregate data replaced the video data as ridership data of record starting on that date.
- (3) Beginning March 13, 2020 (day of National Emergency Declaration due to SARS-CoV-2 pandemic), only raw data from Metromover automatic passenger counters is reported; no estimates are performed after March 13, 2020.
- (4) Paratransit ridership data as reported by the contractor.

**AVERAGE WEEKDAY, SATURDAY AND SUNDAY BOARDINGS BY MODE
July 2022**

Travel Mode	Average Weekday	Average Saturday	Average Sunday (*)	% Change Jul 2021 Weekday	% Change Jul 2021 Saturday	% Change Jul 2021 Sunday
METROBUS	123,497	76,525	56,675	18.4%	15.3%	14.0%
METRORAIL	38,862	18,164	13,724	36.6%	30.8%	30.1%
METROMOVER	19,175	15,316	12,870	46.9%	39.4%	39.1%
STS PARATRANSIT	4,397	1,954	1,579	1.5%	-10.3%	-3.8%
Totals	185,931	111,960	84,847	23.8%	19.8%	19.2%

(*) Average Sunday ridership includes July 4th for Metrobus and STS but excludes it for Metrorail and Metromover.

(**) Average ridership is calculated and published only for those days and stations with nontrivial amounts of reported data.

METROBUS TOTAL MONTHLY RIDERSHIP COMPARISONS BY FISCAL YEAR

Bus Month	FY 18	FY 19	Variance 18 to 19	FY 20	Variance 19 to 20	FY 21	FY 22	Variance 21 to 22	Variance 19 to 22	Variance 18 to 22
Oct	4,709,590	4,554,886	-3.3%	4,507,012	-1.1%	2,805,139	3,081,157	9.8%	-32.4%	-34.6%
Nov	4,522,250	4,245,535	-6.1%	4,197,225	-1.1%	2,651,290	3,056,726	15.3%	-28.0%	-32.4%
Dec	4,380,099	4,081,581	-6.8%	4,126,990	1.1%	3,022,530	3,123,883	3.4%	-23.5%	-28.7%
Jan	4,307,001	4,195,911	-2.6%	4,316,998	2.9%	3,082,746	3,029,055	-1.7%	-27.8%	-29.7%
Feb	4,208,811	3,994,019	-5.1%	4,123,083	3.2%	3,076,966	2,995,789	-2.6%	-25.0%	-28.8%
Mar	4,534,564	4,266,768	-5.9%	3,136,162	-26.5%	3,660,639	3,218,562	-12.1%	-24.6%	-29.0%
Apr	4,360,997	4,291,135	-1.6%	1,544,316	-64.0%	3,625,048	3,105,797	-14.3%	-27.6%	-28.8%
May	4,277,628	4,330,922	1.2%	1,734,609	-59.9%	3,683,343	3,097,574	-15.9%	-28.5%	-27.6%
Jun	4,009,340	3,823,863	-4.6%	2,210,725	-42.2%	2,672,570	3,064,059	14.6%	-19.9%	-23.6%
Jul	4,080,664	4,094,906	0.3%	2,366,749	-42.2%	2,769,907	3,189,994	15.2%	-22.1%	-21.8%
Aug	4,326,980	4,109,613	-5.0%	2,422,014	-41.1%	2,843,552				
Sep	4,041,992	3,971,220	-1.8%	2,546,923	-35.9%	2,877,110				
FY Total	51,759,916	49,960,359	-3.5%	37,232,806	-25.5%	36,770,840				

METRORAIL TOTAL MONTHLY RIDERSHIP COMPARISONS BY FISCAL YEAR

Rail	Variance			Variance			Variance		Variance	
Month	FY 18	FY 19	18 to 19	FY 20	19 to 20	FY 21	FY 22	21 to 22	19 to 22	18 to 22
Oct	1,708,564	1,757,225	2.8%	1,643,166	-6.5%	769,525	844,383	9.7%	-51.9%	-50.6%
Nov	1,609,888	1,656,929	2.9%	1,469,448	-11.3%	699,492	850,881	21.6%	-48.6%	-47.1%
Dec	1,517,341	1,553,804	2.4%	1,433,928	-7.7%	769,194	860,436	11.9%	-44.6%	-43.3%
Jan	1,615,576	1,708,695	5.8%	1,576,340	-7.7%	799,119	832,924	4.2%	-51.3%	-48.4%
Feb	1,545,581	1,501,458	-2.9%	1,549,118	3.2%	730,792	905,162	23.9%	-39.7%	-41.4%
Mar	1,700,714	1,554,851	-8.6%	1,027,319	-33.9%	917,097	1,084,978	18.3%	-30.2%	-36.2%
Apr	1,619,890	1,559,446	-3.7%	287,803	-81.5%	827,414	1,027,139	24.1%	-34.1%	-36.6%
May	1,618,504	1,531,597	-5.4%	337,696	-78.0%	887,111	1,023,322	15.4%	-33.2%	-36.8%
Jun	1,524,311	1,359,966	-10.8%	608,758	-55.2%	723,469	975,477	34.8%	-28.3%	-36.0%
Jul	1,527,380	1,419,158	-7.1%	632,964	-55.4%	722,159	953,331	32.0%	-32.8%	-37.6%
Aug	1,632,471	1,463,646	-10.3%	641,275	-56.2%	749,578				
Sep	1,530,088	1,427,726	-6.7%	654,244	-54.2%	795,749				
FY Total	19,150,308	18,494,501	-3.4%	11,862,059	-35.9%	9,390,699				

METROMOVER TOTAL MONTHLY RIDERSHIP COMPARISONS BY FISCAL YEAR

Mover			Variance			Variance			Variance	Variance	Variance
Month	FY 18	FY 19	18 to 19	FY 20	19 to 20	FY 21	FY 22	21 to 22	19 to 22	18 to 22	
Oct	751,323	790,533	5.2%	831,234	5.1%	250,044	389,065	55.6%	-50.8%	-48.2%	
Nov	729,519	735,198	0.8%	799,632	8.8%	232,422	418,929	80.2%	-43.0%	-42.6%	
Dec	748,797	767,239	2.5%	849,832	10.8%	251,019	450,320	79.4%	-41.3%	-39.9%	
Jan	772,122	746,728	-3.3%	847,773	13.5%	255,968	451,566	76.4%	-39.5%	-41.5%	
Feb	698,107	675,160	-3.3%	855,398	26.7%	260,332	465,968	79.0%	-31.0%	-33.3%	
Mar	859,143	737,814	-14.1%	441,200	-40.2%	302,502	535,857	77.1%	-27.4%	-37.6%	
Apr	740,036	795,696	7.5%	130,549	-83.6%	310,772	495,982	59.6%	-37.7%	-33.0%	
May	694,106	734,645	5.8%	146,454	-80.1%	292,922	455,120	55.4%	-38.0%	-34.4%	
Jun	641,675	701,318	9.3%	203,637	-71.0%	286,145	477,286	66.8%	-31.9%	-25.6%	
Jul	700,462	739,814	5.6%	210,596	-71.5%	368,847	512,094	38.8%	-30.8%	-26.9%	
Aug	768,728	739,785	-3.8%	205,995	-72.2%	344,319					
Sep	698,505	699,879	0.2%	219,696	-68.6%	331,915					
FY Total	8,802,523	8,863,809	0.7%	5,741,996	-35.2%	3,487,207					

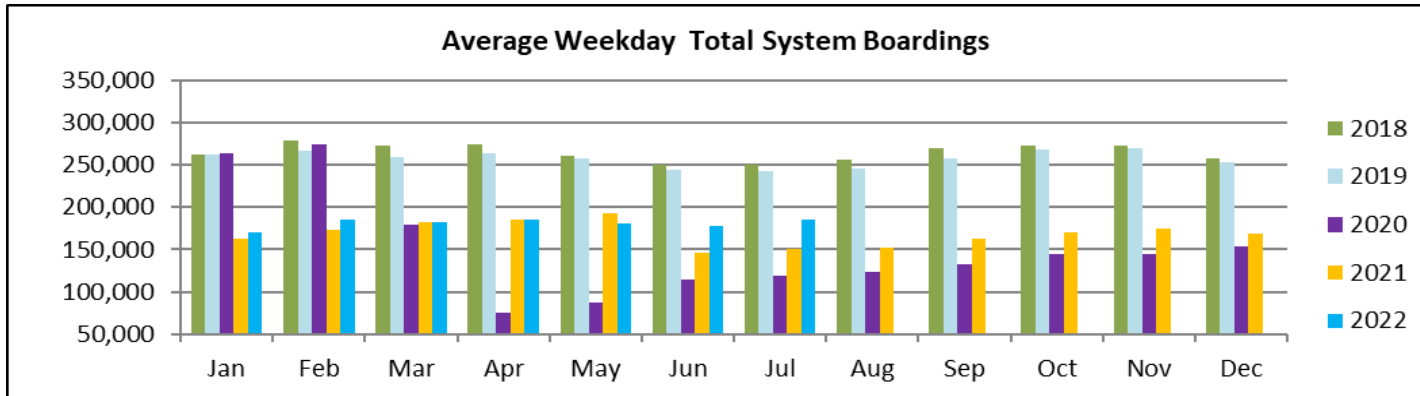
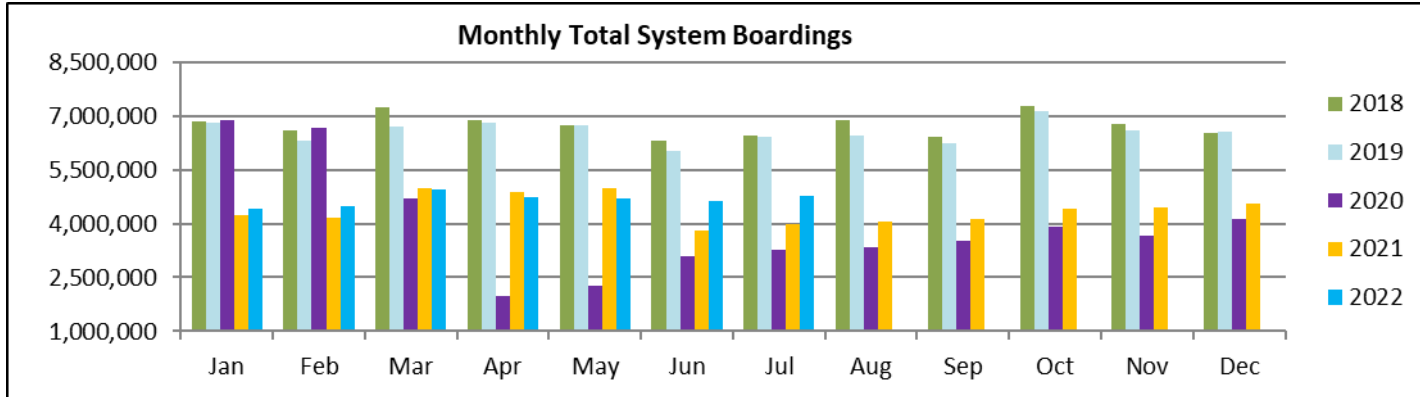
SPECIAL TRANSPORTATION SERVICES (STS) TOTAL MONTHLY RIDERSHIP COMPARISONS BY FISCAL YEAR

STS										
Month	FY 18	FY 19	Variance 18 to 19	FY 20	Variance 19 to 20	FY 21	FY 22	Variance 21 to 22	Variance 19 to 22	Variance 18 to 22
Oct	153,409	162,564	6.0%	162,704	0.1%	97,388	115,122	18.2%	-29.2%	-25.0%
Nov	143,375	145,653	1.6%	144,366	-0.9%	89,387	110,289	23.4%	-24.3%	-23.1%
Dec	136,955	136,110	-0.6%	138,642	1.9%	96,366	104,496	8.4%	-23.2%	-23.7%
Jan	140,042	146,268	4.4%	149,114	1.9%	97,928	97,541	-0.4%	-33.3%	-30.3%
Feb	139,032	141,396	1.7%	144,392	2.1%	98,285	105,706	7.6%	-25.2%	-24.0%
Mar	150,384	153,191	1.9%	89,634	-41.5%	112,930	120,718	6.9%	-21.2%	-19.7%
Apr	148,879	155,808	4.7%	26,877	-82.7%	120,122	114,912	-4.3%	-26.2%	-22.8%
May	152,164	158,665	4.3%	39,654	-75.0%	118,636	114,505	-3.5%	-27.8%	-24.7%
Jun	143,653	141,320	-1.6%	59,093	-58.2%	112,397	109,054	-3.0%	-22.8%	-24.1%
Jul	141,020	148,232	5.1%	61,765	-58.3%	110,059	107,188	-2.6%	-27.7%	-24.0%
Aug	151,750	147,331	-2.9%	66,563	-54.8%	110,766				
Sep	142,360	141,387	-0.7%	80,346	-43.2%	115,406				
FY Total	1,743,023	1,777,925	2.0%	1,163,150	-34.6%	1,279,670				

ALL-MODES COMBINED TOTAL MONTHLY RIDERSHIP COMPARISONS BY FISCAL YEAR

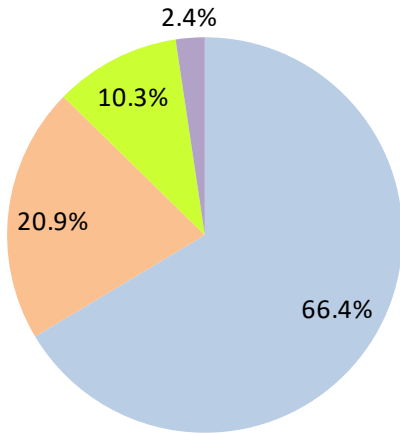
All Modes	Variances											
	Month	FY 18	FY 19	FY 20	FY 21	FY 22	18 TO 19	19 TO 20	20 TO 21	21 TO 22	19 TO 22	18 TO 22
Oct	7,322,886	7,265,208	7,144,116	3,922,096	4,429,727		-0.8%	-1.7%	-45.1%	12.9%	-39.0%	-39.5%
Nov	7,005,032	6,783,315	6,610,671	3,672,591	4,436,825		-3.2%	-2.5%	-44.4%	20.8%	-34.6%	-36.7%
Dec	6,783,192	6,538,734	6,549,392	4,139,109	4,539,135		-3.6%	0.2%	-36.8%	9.7%	-30.6%	-33.1%
Jan	6,834,741	6,797,602	6,890,225	4,235,761	4,411,086		-0.5%	1.4%	-38.5%	4.1%	-35.1%	-35.5%
Feb	6,591,531	6,312,033	6,671,991	4,166,375	4,472,625		-4.2%	5.7%	-37.6%	7.4%	-29.1%	-32.1%
Mar	7,244,805	6,712,624	4,694,315	4,993,168	4,960,115		-7.3%	-30.1%	6.4%	-0.7%	-26.1%	-31.5%
Apr	6,869,802	6,802,085	1,989,545	4,883,356	4,743,830		-1.0%	-70.8%	145.5%	-2.9%	-30.3%	-30.9%
May	6,742,402	6,755,829	2,258,413	4,982,012	4,690,521		0.2%	-66.6%	120.6%	-5.9%	-30.6%	-30.4%
Jun	6,318,979	6,026,467	3,082,213	3,794,581	4,625,876		-4.6%	-48.9%	23.1%	21.9%	-23.2%	-26.8%
Jul	6,449,526	6,402,110	3,272,074	3,970,972	4,762,607		-0.7%	-48.9%	21.4%	19.9%	-25.6%	-26.2%
Aug	6,879,929	6,460,375	3,335,847	4,048,215			-6.1%	-48.4%	21.4%			
Sep	6,412,945	6,240,212	3,501,209	4,120,180			-2.7%	-43.9%	17.7%			
FY Total	81,455,770	79,096,594	56,000,011	50,928,416			-2.9%	-29.2%	-9.1%			

TOTAL MONTHLY AND AVERAGE WEEKDAY RIDERSHIP YEAR OVER YEAR COMPARISON CHARTS – ALL MODES COMBINED



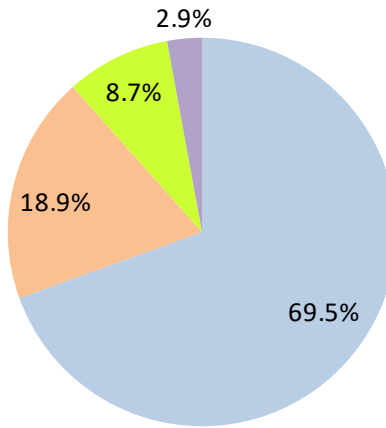
AVERAGE WEEKDAY RIDERSHIP - MODAL SPLITS

July 2022



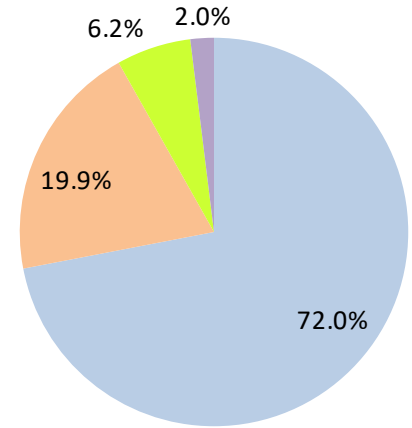
boardings

July 2021



boardings

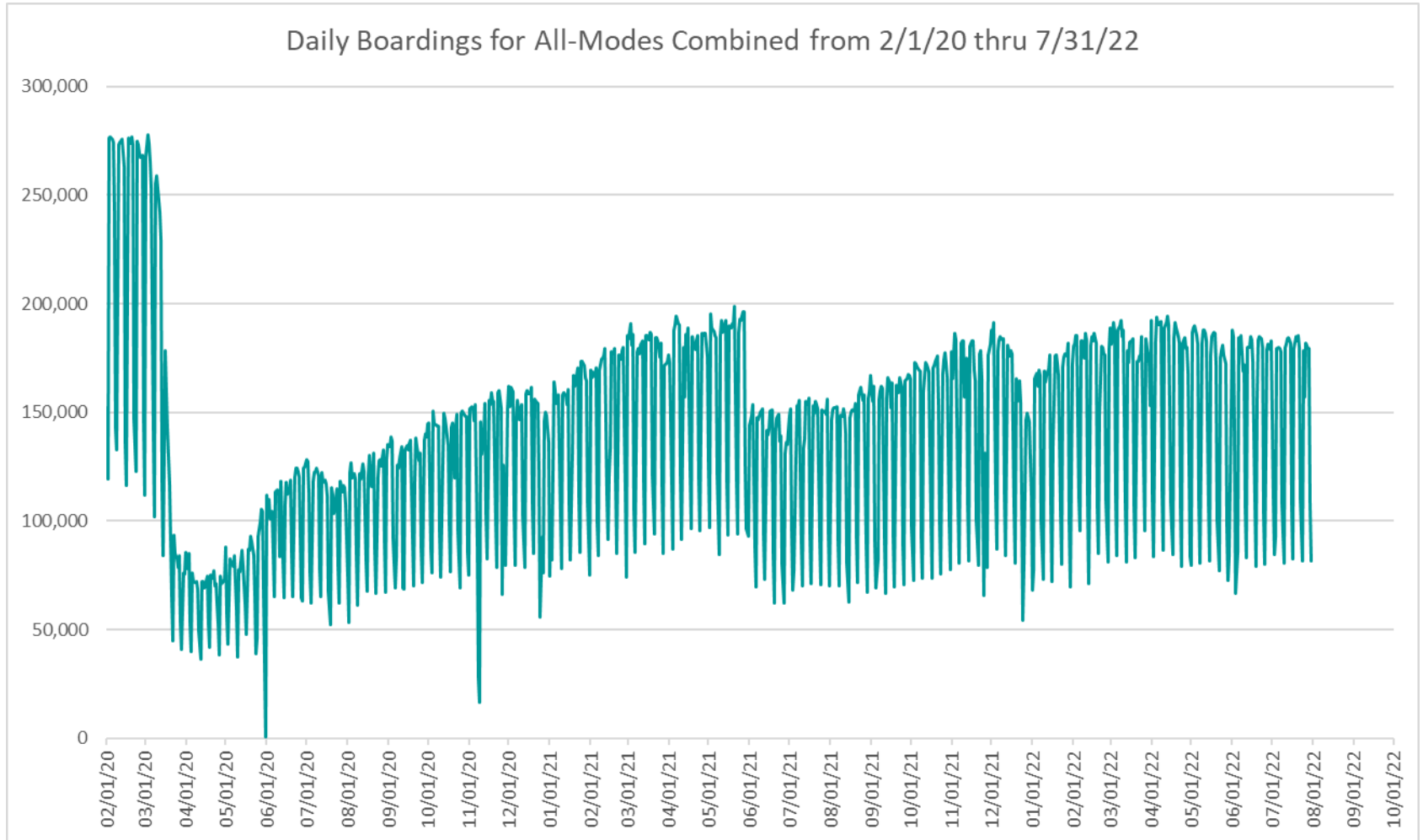
July 2020



boardings



DAILY RIDERSHIP FOR ALL MODES COMBINED SINCE FEBRUARY 1, 2020



- (1) National Emergency was declared on 3/13/20 as a result of the SARS-CoV-2 pandemic.
- (2) There was no Metrobus, Metrorail and Metromover service on 5/31/20, as a safety precaution.
- (3) The dip at the start of the second week of November 2020 is due to Hurricane Eta.
- (4) The reduction seen beginning 6/1/21 is partly due to the resumption of fares for bus and rail, and partly the result of having resumed reporting Cubic farebox data rather than bus APC counts, as well as Cubic rail faregate counts instead of video camera counts on that date.
- (5) Periodic (weekly) variations are prominent, since weekday ridership is almost always significantly higher than weekend or holiday ridership.

Metrobus



METROBUS AVERAGE WEEKDAY BOARDINGS BY ROUTE (†)

Route weekdays	Average Weekday	Average Weekday	Percent Change	Average Weekday	Percent Change	Average Weekday	Percent Change	Average Weekday	Percent Change
	Jul-22	Jul-21	YOY	Feb-20	Current vs Feb-20	Jun-22	MOM	Jul-20	YO2Y
1 (*)	164	143	14.6%	184	-10.7%	143	15.1%	151	8.6%
2	1,811	1,874	-3.3%	3,102	-41.6%	1,805	0.3%	1,458	24.2%
3	3,795	3,828	-0.9%	5,137	-26.1%	3,609	5.2%	2,894	31.1%
7	2,982	2,095	42.3%	3,501	-14.8%	2,884	3.4%	1,654	80.3%
8	3,470	3,207	8.2%	3,909	-11.2%	3,286	5.6%	2,284	52.0%
9	4,138	4,419	-6.4%	5,528	-25.1%	3,815	8.5%	3,324	24.5%
10	1,711	1,267	35.0%	2,482	-31.1%	1,569	9.0%	792	116.1%
11	6,396	5,589	14.5%	7,292	-12.3%	6,229	2.7%	4,055	57.7%
12	1,803	1,610	12.0%	2,779	-35.1%	1,537	17.3%	1,423	26.7%
16	1,410	1,115	26.4%	1,862	-24.3%	1,361	3.6%	816	72.7%
17	2,591	2,164	19.8%	3,878	-33.2%	2,274	14.0%	2,118	22.3%
19	952	750	26.9%	1,542	-38.3%	819	16.3%	634	50.2%
21	1,193	1,112	7.3%	1,817	-34.3%	1,053	13.3%	1,393	-14.3%
22	2,794	2,049	36.3%	3,640	-23.2%	2,506	11.5%	1,633	71.1%
24 - Coral Way Limited	1,546	843	83.4%	1,340	15.4%	1,575	-1.8%	977	58.3%
27	4,887	4,345	12.5%	6,972	-29.9%	4,782	2.2%	3,350	45.9%
29 (*)	422	292	44.4%	534	-21.0%	371	13.6%	229	84.5%
31 - BUSWAY LOCAL	707	537	31.7%	1,089	-35.1%	709	-0.4%	488	45.0%
32	1,817	1,326	37.1%	2,390	-24.0%	1,759	3.3%	1,348	34.8%
33	1,274	942	35.2%	1,687	-24.5%	1,236	3.1%	576	121.2%
34 EXPRESS	976	1,028	-5.0%	2,008	-51.4%	958	1.9%	584	67.2%
35	1,575	1,056	49.2%	2,421	-34.9%	1,477	6.6%	1,349	16.7%
36	1,998	1,598	25.0%	2,536	-21.2%	1,862	7.3%	1,504	32.9%
37	2,387	2,291	4.2%	3,273	-27.1%	2,605	-8.4%	1,771	34.8%
38	4,007	3,344	19.8%	6,361	-37.0%	3,652	9.7%	3,397	18.0%
39 EXPRESS		161		893				99	
40	1,461	1,014	44.1%	1,772	-17.6%	1,410	3.6%	863	69.3%
42	716	569	25.7%	820	-12.7%	694	3.1%	466	53.5%
46 - LIBERTY CITY CONN. (*)	14	13	5.4%	41	-65.6%	16	-11.7%	14	3.5%
51 - FLAGLER MAX	2,760	2,095	31.7%	3,109	-11.2%	2,815	-2.0%	1,403	96.7%
52	874	666	31.1%	1,261	-30.7%	847	3.2%	601	45.3%
54	2,169	1,827	18.7%	2,940	-26.2%	2,176	-0.3%	2,142	1.3%
55 MARLINS SHUTTLE									
56 (*)	307	212	45.0%	354	-13.1%	286	7.7%	130	136.3%
57	315	307	2.7%	433	-27.3%	300	5.1%	213	48.3%
62	1,171	1,081	8.2%	1,815	-35.5%	1,146	2.1%	1,380	-15.2%
71 (*)	562	378	48.9%	711	-20.9%	528	6.4%	319	76.2%
72 (*)	567	397	42.7%	781	-27.5%	552	2.6%	348	63.0%

(†) In this table and those which follow, "YOY" stands for "year-over-year", "MOM" for "month-over-month" and "YO2Y" for "year over two years", i.e., current month vs 12 months prior, one month prior, and 24 months prior, respectively.

(*) Contracted routes

(**) Due to effects from the SARS-CoV-2 pandemic; rides were fare-free beginning March 22, 2020; fares were reinstated on June 1, 2021, in part accounting for the drop in ridership from May 2021.

METROBUS AVERAGE WEEKDAY BOARDINGS BY ROUTE

Route weekdays	Average Weekday	Average Weekday	Percent Change	Average Weekday	Percent Change	Average Weekday	Percent Change	Average Weekday	Percent Change
	Jul-22	Jul-21	YOY	Feb-20	Current vs Feb-20	Jun-22	MOM	Jul-20	YO2Y
73	2,240	1,384	61.9%	2,124	5.5%	2,142	4.6%	834	168.7%
75	720	737	-2.3%	1,429	-49.6%	679	6.1%	657	9.5%
77	5,712	5,178	10.3%	7,129	-19.9%	5,017	13.9%	3,819	49.6%
79 STREET MAX	268			361	-26.0%	284	-5.9%		
82 - WESTCHESTER CIRC. (*)	61	27	123.4%	62	-1.4%	38	60.0%	26	136.0%
87	1,410	950	48.5%	1,499	-6.0%	1,350	4.4%	646	118.4%
88	1,732	1,747	-0.9%	2,076	-16.6%	1,615	7.2%	1,136	52.4%
93 - BISCAYNE MAX	2,306	1,749	31.9%	3,334	-30.8%	2,079	10.9%	1,433	61.0%
95 EXPRESS	728	589	23.5%	1,690	-56.9%	763	-4.6%	287	153.2%
99	1,190	872	36.4%	1,473	-19.2%	1,145	3.9%	836	42.3%
101 - A (*)	185	141	31.6%	177	4.7%	195	-5.1%	88	109.6%
102 - B	1,325	1,264	4.8%	1,778	-25.5%	1,349	-1.8%	754	75.7%
103 - C		223		463				118	
104	558	477	17.1%	837	-33.3%	500	11.7%	211	165.1%
105 - E	1,107	850	30.3%	1,287	-14.0%	912	21.4%	641	72.7%
107 - G	1,407	988	42.4%	1,713	-17.9%	1,209	16.4%	850	65.6%
108 - H	359	273	31.2%	473	-24.1%	327	9.6%	249	44.3%
110 - J	2,016	1,704	18.3%	2,508	-19.6%	2,056	-2.0%	1,439	40.1%
112 - L	6,191	6,256	-1.0%	7,636	-18.9%	5,660	9.4%	5,092	21.6%
113 - M	509	408	24.7%	866	-41.2%	460	10.6%	317	60.5%
115 (*)	130	161	-19.5%	180	-27.9%	153	-14.9%	171	-24.1%
119 - S	6,851	6,833	0.3%	8,970	-23.6%	6,759	1.4%	5,486	24.9%
120 - BEACH MAX	5,007	3,492	43.4%	6,667	-24.9%	4,769	5.0%	3,369	48.6%
132 TRI-RAIL (DORAL)	5	8	-32.1%	16	-65.5%	2	139.3%	10	-44.0%
135	850	688	23.6%	1,399	-39.2%	820	3.6%	486	75.1%
136	101	95	5.6%	126	-20.2%	106	-4.6%	47	113.9%
137 - WEST DADE CONN.	1,447	882	64.0%	1,626	-11.0%	1,383	4.6%	650	122.5%
150 - MIAMI BEACH AIRPORT FLYER	1,426	1,419	0.5%	1,867	-23.6%	1,338	6.6%	794	79.5%
155 - BISCAYNE GARDENS CIRCULATOR (*)	38	23	60.5%	44	-14.6%	40	-6.3%	32	18.5%
175 - NW MIAMI-DADE EXPRESS				33					
183	2,139	1,795	19.2%	3,149	-32.1%	2,013	6.3%	1,844	16.0%
195 EXPRESS - BROWARD BLVD				372					
196 EXPRESS - SHERIDAN ST				383					
200 - CUTLER BAY LOCAL	118	71	66.8%	158	-25.4%	92	28.1%	90	31.1%
202 - LITTLE HAITI CONN. (*)	109	95	14.5%	140	-22.3%	114	-4.4%	99	9.4%
204 KILLIAN KAT	460			1,071	-57.0%	488	-5.6%		

METROBUS AVERAGE WEEKDAY BOARDINGS BY ROUTE

Route weekdays	Average Weekday	Average Weekday	Percent Change	Average Weekday	Percent Change	Average Weekday	Percent Change	Average Weekday	Percent Change
	Jul-22	Jul-21	YOY	Feb-20	Current vs Feb-20	Jun-22	MOM	Jul-20	YO2Y
207 (7st) - LITTLE HAVANA CIRC	991	714	38.8%	1,489	-33.5%	1,045	-5.2%	621	59.4%
208 (8st) - LITTLE HAVANA CIRC	990	755	31.2%	1,308	-24.3%	968	2.2%	762	29.9%
210 - SKYLAKE CIRC (*)	277	266	4.3%	282	-1.6%	325	-14.7%	183	51.4%
211 - OVERTOWN CIRC. (*)	86	31	176.2%	58	49.1%	90	-4.3%	43	99.3%
212 - SWEETWATER CIRC. (*)	25	28	-10.9%	15	68.5%	22	13.4%	16	52.8%
217 - BUNCHE PARK CIRC (*)	70	40	74.2%	97	-27.9%	57	22.7%	56	25.7%
238 EAST/WEST CONN.	399	269	48.2%	449	-11.2%	372	7.2%	183	118.2%
241 TUTTLE LIMITED	87					76	14.5%		
246 - NIGHT OWL	50	3	1363.2%	94	-46.8%	50	-0.3%	10	393.2%
248 - PRINCETON CIRCULATOR (*)	97	62	56.4%	135	-27.6%	77	26.6%	73	33.0%
252 - CORAL REEF MAX	591	434	36.3%	851	-30.5%	585	1.1%	271	117.8%
254 - BROWNSVILLE CIRC. (*)	5	31	-82.7%	19	-72.4%	6	-8.9%	31	-83.0%
267 - LUDLAM LIMITED (*)	141	94	51.0%	149	-5.1%	142	-0.5%	71	98.1%
272 SUNSET KAT (*)	333	271	22.7%	550	-39.5%	310	7.5%	199	67.1%
277 - 7th AVENUE MAX	461	292	57.9%	683	-32.6%	379	21.6%	322	43.0%
286 - NORTH POINTE CIRC. (*)	56	38	48.7%	97	-42.0%	61	-7.7%	17	235.5%
287 - SAGA BAY MAX	184	172	7.4%	358	-48.5%	194	-5.0%	77	140.0%
288 - KENDALL CRUISER	284			762	-62.8%	405	-29.9%		
295 EXPRESS - BROWARD BLVD - CIVIC CENTER				233					
296 EXPRESS - SHERIDAN ST - CIVIC CENTER				215					
297-27th AVENUE ORANGE MAX	784	615	27.5%	1,356	-42.2%	790	-0.7%	601	30.3%
301 DADE-MONROE EXPRESS(*)	781	974	-19.8%	841	-7.1%	751	4.0%	705	10.8%
302 CARD SOUND EXPRESS(*)	82	89	-8.4%	86	-5.5%	84	-3.2%	47	74.9%
344 (*)	45	52	-14.9%	96	-53.5%	43	3.5%	45	-1.1%
500	13			81	-84.4%	12	3.5%	0	2545.0%
836 EXPRESS	149	90	64.7%			141	5.2%		
GREEN HILLS SHUTTLE (*)	4	6	-29.4%	9	-55.6%	6	-30.4%	6	-30.4%
KINGS CREEK SHUTTLE (*)	20	8	156.4%	13	53.8%	21	-3.8%	6	244.8%
SIERRALAKES SHUTTLE (*)	20	19	5.3%	45	-56.0%	19	7.0%	33	-40.7%
ROBERT SHARP SHUTTLE (*)	31	20	53.8%	10	223.7%	16	97.1%	14	113.5%
AHEPA SHUTTLE (*)	17	22	-24.7%	21	-19.3%	15	14.7%	19	-13.7%
Total	123,497	104,317	18.4%	167,711	-26.4%	117,563	5.0%	85,101	45.1%

(*) The following routes are entirely operated under contract: 1, 29, 46, 56, 71, 72, 82, 101-A, 115, 155, 202, 210, 211, 212, 217, 246, 248, 254, 267, 272, 286, 301, 302 and 344.

(1) Includes shuttles and those routes which were not run both years.

(2) Several express routes were suspended beginning at the end of March 2020, due to the SARS-CoV-2 pandemic, while other routes had alignment and schedule modifications made to them, in an ongoing effort to optimize service delivery.

METROBUS AVERAGE SATURDAY BOARDINGS BY ROUTE

Route	Average Saturday	Average Saturday	Percent Change	Average Saturday	Percent Change	Average Saturday	Percent Change	Average Saturday	Percent Change
	Jul-22	Jul-21	YOY	Feb-20	Current vs Feb-20	Jun-22	MOM	Jul-20	YO2Y
Saturdays									
1 (*)	181	173	4.7%	215	-15.6%	182	-0.5%	166	9.4%
2	1,098	1,120	-2.0%	1,616	-32.0%	882	24.5%	816	34.7%
3	4,189	3,732	12.2%	5,229	-19.9%	3,256	28.7%	2,807	49.2%
7	1,697	1,345	26.2%	1,887	-10.1%	1,496	13.5%	906	87.3%
8	2,092	1,762	18.7%	2,027	3.2%	1,956	6.9%	1,497	39.8%
9	2,702	2,467	9.5%	3,034	-10.9%	2,165	24.8%	2,273	18.8%
10	1,356	1,470	-7.8%	1,896	-28.5%	1,154	17.4%	1,294	4.8%
11	4,934	3,869	27.5%	5,182	-4.8%	4,016	22.9%	2,991	65.0%
16	1,273	1,024	24.4%	1,566	-18.7%	1,014	25.5%	1,104	15.4%
17	1,837	1,626	13.0%	2,363	-22.3%	1,399	31.3%	1,534	19.8%
22	1,794	1,389	29.2%	2,084	-13.9%	1,425	26.0%	1,464	22.6%
24 - Coral Way Limited	1,167	763	53.0%	1,165	0.1%	844	38.3%	616	89.4%
27	3,278	2,969	10.4%	4,034	-18.7%	2,530	29.6%	2,452	33.7%
31 - BUSWAY LOCAL	641	567	13.1%	896	-28.5%	483	32.7%	532	20.5%
32	751	709	5.9%	1,029	-27.0%	774	-3.1%	627	19.8%
33	897	657	36.5%	951	-5.6%	695	29.1%	439	104.4%
35	1,126	616	82.7%	1,372	-17.9%	1,006	12.0%	806	39.7%
36	1,141	968	17.9%	1,289	-11.5%	942	21.1%	1,025	11.3%
37	1,623	1,556	4.3%	2,090	-22.4%	1,448	12.1%	1,147	41.5%
38	3,024	2,998	0.9%	4,715	-35.9%	2,765	9.4%	2,842	6.4%
40	577	423	36.2%	655	-11.9%	496	16.2%	379	52.2%
42	512	378	35.4%	552	-7.3%	450	13.7%	313	63.7%
52	525	355	47.9%	686	-23.5%	377	39.1%	441	18.9%
54	1,463	1,176	24.4%	1,727	-15.3%	1,263	15.9%	1,331	10.0%
55 MARLINS SHUTTLE									
62	932	953	-2.2%	1,343	-30.6%	860	8.4%	1,148	-18.9%
71 (*)	252	156	61.7%	252	-0.1%	224	12.3%	91	176.5%
72 (*)	312	314	-0.9%	350	-10.9%	268	16.2%	170	83.6%
73	928	688	34.9%	860	7.9%	839	10.7%	468	98.4%
75	326	346	-5.9%	468	-30.4%	269	21.1%	299	8.9%
77	3,930	2,997	31.1%	4,197	-6.4%	3,144	25.0%	2,501	57.1%
87	459	315	45.6%	402	14.1%	391	17.4%	173	166.2%
88	1,167	1,130	3.2%	1,620	-28.0%	1,178	-0.9%	819	42.4%
99	790	682	15.9%	849	-6.9%	707	11.8%	604	30.8%

METROBUS AVERAGE SATURDAY BOARDINGS BY ROUTE

Route Saturdays	Average Saturday	Average Saturday	Percent Change	Average Saturday	Percent Change	Average Saturday	Percent Change	Average Saturday	Percent Change
	Jul-22	Jul-21	YOY	Feb-20	Current vs Feb-20	Jun-22	MOM	Jul-20	YO2Y
101 - A (*)	64	67	-4.2%	71	-9.0%	49	32.1%	41	57.1%
102 - B	605	649	-6.8%	851	-28.9%	460	31.6%	345	75.4%
103 - C		165		315				106	
104	351	200	76.1%	468	-25.0%	239	47.3%	66	430.4%
105 - E	610	488	24.8%	619	-1.5%	500	21.9%	390	56.2%
107 - G	973	656	48.3%	1,066	-8.8%	755	28.8%	621	56.7%
108 - H	323	232	39.6%	372	-13.2%	277	16.9%	260	24.4%
110 - J	1,475	1,330	10.9%	1,952	-24.5%	1,228	20.1%	880	67.6%
112 - L	4,596	4,217	9.0%	5,667	-18.9%	4,266	7.7%	3,425	34.2%
113 - M	349	322	8.3%	503	-30.6%	320	9.0%	197	77.5%
115 (*)	76	93	-18.3%	82	-7.5%	90	-15.3%	123	-38.2%
119 - S	5,600	5,033	11.3%	6,861	-18.4%	4,924	13.7%	4,131	35.6%
120 - BEACH MAX	3,620	2,674	35.4%	4,744	-23.7%	3,223	12.3%	2,696	34.3%
135	323	297	8.7%	539	-40.0%	292	10.9%	209	55.0%
137 - WEST DADE CONN.	1,030	732	40.8%	1,027	0.3%	919	12.1%	539	91.2%
150 - MIAMI BEACH AIRPORT FLYER	1,131	1,443	-21.6%	1,604	-29.5%	1,267	-10.7%	684	65.4%
183	1,486	1,261	17.8%	1,790	-17.0%	1,191	24.7%	1,089	36.5%
200 - CUTLER BAY LOCAL	93	61	52.4%	119	-22.3%	15	504.3%	50	84.4%
202 - LITTLE HAITI CONN. (*)	39	59	-34.1%	50	-22.3%	36	9.9%	46	-15.2%
207 (7st) - LITTLE HAVANA CIRC	599	672	-10.8%	1,032	-41.9%	352	70.3%	388	54.4%
208 (8st) - LITTLE HAVANA CIRC	776	621	24.8%	1,044	-25.7%	546	42.2%	538	44.3%
210 - SKYLAKE CIRC (*)	162	136	19.8%	165	-1.6%	136	19.4%	92	77.5%
241 TUTTLE LIMITED	39					41	-4.8%		
246 - NIGHT OWL	54	9	502.2%	84	-35.8%	46	18.5%	1	7126.7%
252 - CORAL REEF MAX	271	191	42.0%	302	-10.2%	220	23.1%	149	82.0%
286 - NORTH POINTE CIRC. (*)	48	35	35.2%	41	16.7%	44	8.2%	20	135.1%
301 DADE-MONROE EXPRESS(*)	699	922	-24.2%	801	-12.8%	706	-0.9%	719	-2.7%
302 CARD SOUND EXPRESS(*)	56	82	-32.1%	57	-1.4%	56	0.5%	32	77.1%
338 - WEEKEND EXPRESS	104	178	-41.4%	237	-56.0%	186	-44.0%	58	79.7%
500	14			70	-80.3%	12	15.0%		
12/21 WEEKEND INTERL.	1,925	1,825	5.5%	2,528	-23.8%	1,701	13.2%	1,825	5.5%
FEDERATION GARDENS SHUTTLE (*)	21	24	-14.8%	28	-26.8%	34	-37.9%	12	78.3%
Total	76,525	66,397	15.3%	93,742	-18.4%	65,066	17.6%	55,814	37.1%

METROBUS AVERAGE SUNDAY BOARDINGS BY ROUTE

Route Sundays	Average Sunday	Average Sunday	Percent Change	Average Sunday	Percent Change	Average Sunday	Percent Change	Average Sunday	Percent Change
	Jul-22	Jul-21	YOY	Feb-20	Current vs Feb-20	Jun-22	MOM	Jul-20	YO2Y
1 (*)	185	132	40.4%	201	-7.7%	218	-14.9%	137	35.3%
2	748	772	-3.1%	1,335	-44.0%	742	0.8%	546	37.0%
3	3,190	3,075	3.7%	4,353	-26.7%	3,079	3.6%	2,151	48.3%
7	1,225	916	33.7%	1,654	-25.9%	1,272	-3.7%	712	72.0%
8	1,522	1,264	20.4%	1,746	-12.8%	1,592	-4.4%	1,140	33.6%
9	2,015	1,957	3.0%	2,549	-20.9%	1,839	9.6%	1,625	24.0%
10	1,082	912	18.6%	1,441	-24.9%	1,025	5.6%	960	12.7%
11	3,152	2,372	32.9%	3,917	-19.5%	2,819	11.8%	2,304	36.8%
16	727	629	15.6%	997	-27.0%	615	18.2%	624	16.6%
17	1,251	1,148	9.0%	1,833	-31.7%	1,353	-7.5%	1,149	9.0%
22	1,269	993	27.9%	1,548	-18.0%	1,222	3.9%	1,154	10.0%
24 - Coral Way Limited	833	676	23.1%	905	-8.0%	834	-0.2%	631	32.0%
27	1,934	2,028	-4.6%	2,918	-33.7%	2,065	-6.3%	1,924	0.5%
31 - BUSWAY LOCAL	439	427	2.7%	715	-38.6%	348	26.2%	411	6.8%
32	524	425	23.1%	772	-32.2%	472	11.0%	545	-3.9%
33	543	414	31.2%	607	-10.5%	444	22.4%	323	67.9%
35	715	395	80.9%	942	-24.1%	736	-2.9%	662	7.9%
36	912	775	17.6%	1,111	-17.9%	894	2.0%	880	3.7%
37	1,153	1,107	4.1%	1,739	-33.7%	1,328	-13.1%	1,037	11.2%
38	2,697	2,352	14.7%	4,147	-35.0%	2,843	-5.1%	2,740	-1.5%
40	356	324	9.6%	447	-20.5%	393	-9.4%	294	20.8%
42	296	257	15.2%	416	-28.8%	297	-0.3%	247	19.7%
52	331	285	16.0%	466	-29.0%	285	16.3%	293	13.1%
54	856	815	5.0%	1,171	-26.9%	875	-2.2%	943	-9.3%
55 MARLINS SHUTTLE									
62	557	504	10.5%	891	-37.4%	556	0.3%	888	-37.2%
71 (*)	164	107	52.2%	162	0.9%	178	-8.1%	94	74.9%
72 (*)	273	209	30.9%	265	3.2%	305	-10.3%	178	53.4%
73	452	362	24.9%	495	-8.6%	448	1.0%	262	72.5%
75	227	191	18.5%	271	-16.3%	188	20.4%	169	34.5%
77	2,910	2,303	26.4%	2,815	3.4%	2,223	30.9%	2,243	29.8%
87	240	208	15.3%	319	-24.8%	262	-8.4%	154	55.8%
88	991	861	15.1%	1,286	-22.9%	930	6.7%	686	44.5%
99	587	490	19.7%	658	-10.8%	487	20.4%	393	49.4%

METROBUS AVERAGE SUNDAY BOARDINGS BY ROUTE

Route	Average Sunday	Average Sunday	Percent Change	Average Sunday	Percent Change	Average Sunday	Percent Change	Average Sunday	Percent Change
	Jul-22	Jul-21	YOY	Feb-20	Current vs Feb-20	Jun-22	MOM	Jul-20	YO2Y
Sundays									
101 - A (*)	45	48	-7.7%	56	-19.8%	41	8.5%	49	-9.2%
102 - B	619	552	12.2%	717	-13.6%	425	45.8%	395	57.0%
103 - C		124		212				101	
104	242	163	48.2%	317	-23.7%	230	5.0%	108	123.9%
105 - E	506	453	11.8%	616	-17.8%	508	-0.3%	436	16.1%
107 - G	681	482	41.4%	895	-23.9%	779	-12.6%	508	34.0%
108 - H	286	260	9.7%	328	-13.0%	274	4.4%	243	17.7%
110 - J	1,140	1,087	4.8%	1,638	-30.4%	1,361	-16.3%	811	40.6%
112 - L	3,632	3,072	18.2%	4,804	-24.4%	3,395	7.0%	3,243	12.0%
113 - M	265	254	4.4%	431	-38.4%	247	7.6%	122	117.8%
115 (*)	73	105	-30.2%	80	-8.3%	64	14.6%	104	-29.7%
119 - S	5,415	4,708	15.0%	7,141	-24.2%	5,469	-1.0%	4,425	22.4%
120 - BEACH MAX	2,210	1,657	33.4%	3,469	-36.3%	2,181	1.3%	1,753	26.0%
135	187	247	-24.2%	349	-46.4%	272	-31.1%	168	11.3%
137 - WEST DADE CONN.	766	531	44.4%	879	-12.8%	752	1.9%	476	61.2%
150 - MIAMI BEACH AIRPORT FLYER	1,247	1,510	-17.4%	1,574	-20.8%	1,277	-2.3%	706	76.7%
183	1,160	1,075	7.9%	1,413	-17.9%	976	18.8%	917	26.5%
200 - CUTLER BAY LOCAL	30	19	59.6%	59	-48.7%	2	1400.0%	32	-4.8%
202 - LITTLE HAITI CONN. (*)	31	46	-31.3%	39	-19.7%	34	-7.8%	48	-34.0%
207 (7st) - LITTLE HAVANA CIRC	465	508	-8.5%	796	-41.6%	403	15.2%	482	-3.5%
208 (8st) - LITTLE HAVANA CIRC	625	529	18.3%	911	-31.4%	490	27.7%	557	12.3%
210 - SKYLAKE CIRC (*)	147	143	2.6%	143	2.6%	176	-16.5%	132	11.1%
241 TUTTLE LIMITED	40					32	24.9%		
246 - NIGHT OWL	57	1	5633.3%	87	-34.1%	60	-3.6%	4	1538.1%
252 - CORAL REEF MAX	183	161	13.8%	199	-7.9%	171	6.9%	101	81.6%
301 DADE-MONROE EXPRESS(*)	671	908	-26.1%	751	-10.7%	653	2.7%	669	0.3%
302 CARD SOUND EXPRESS(*)	78	57	37.0%	57	36.5%	63	23.1%	38	107.6%
338 - WEEKEND EXPRESS	154	136	13.2%	252	-38.7%	113	36.3%	63	146.1%
500	11			83	-86.5%	10	14.9%	1	1393.3%
12/21 WEEKEND INTERL.	1,355	1,206	12.4%	2,048	-33.8%	1,329	2.0%	1,722	-21.3%
Total	56,675	49,731	14.0%	75,428	-24.9%	54,945	3.2%	46,902	20.8%

METROBUS TOTAL MONTHLY BOARDINGS BY ROUTE

Route	Total Month	Total Month	Percent Change	Total Month	Percent Change	Total Month	Percent Change	Total Month	Percent Change
	Monthly Total	Jul-22	Jul-21	YOY	Feb-20	Current vs Feb-20	Jun-22	MOM	Jul-20
1 (*)	5,304	4,535	17.0%	5,558	-4.6%	4,739	11.9%	4,688	13.1%
2	46,198	48,807	-5.3%	75,463	-38.8%	46,206	0.0%	38,983	18.5%
3	115,980	114,434	1.4%	146,294	-20.7%	104,723	10.7%	86,391	34.3%
7	75,466	55,304	36.5%	86,077	-12.3%	74,523	1.3%	44,508	69.6%
8	89,003	82,475	7.9%	95,295	-6.6%	86,483	2.9%	63,068	41.1%
9	108,361	114,928	-5.7%	135,924	-20.3%	99,955	8.4%	92,046	17.7%
10	47,485	38,515	23.3%	64,874	-26.8%	43,231	9.8%	27,220	74.4%
11	171,502	148,563	15.4%	187,425	-8.5%	164,384	4.3%	114,446	49.9%
12	36,065	33,814	6.7%	55,585	-35.1%	33,819	6.6%	32,726	10.2%
16	38,924	31,676	22.9%	49,061	-20.7%	36,453	6.8%	25,683	51.6%
17	68,518	59,309	15.5%	96,715	-29.2%	61,035	12.3%	59,441	15.3%
19	19,045	15,753	20.9%	30,847	-38.3%	18,020	5.7%	14,578	30.6%
21	23,860	23,352	2.2%	36,341	-34.3%	23,170	3.0%	32,030	-25.5%
22	72,457	54,945	31.9%	89,404	-19.0%	65,715	10.3%	48,029	50.9%
24 - Coral Way Limited	41,757	24,898	67.7%	36,237	15.2%	41,366	0.9%	27,454	52.1%
27	125,732	116,235	8.2%	171,282	-26.6%	123,586	1.7%	94,558	33.0%
29 (*)	8,439	6,135	37.6%	10,684	-21.0%	8,169	3.3%	5,261	60.4%
31 - BUSWAY LOCAL	19,974	16,238	23.0%	29,125	-31.4%	18,929	5.5%	14,986	33.3%
32	43,233	33,511	29.0%	56,027	-22.8%	43,688	-1.0%	35,688	21.1%
33	33,223	25,144	32.1%	40,918	-18.8%	31,735	4.7%	16,293	103.9%
34 EXPRESS	19,528	21,578	-9.5%	40,159	-51.4%	21,070	-7.3%	13,430	45.4%
35	41,426	27,223	52.2%	59,041	-29.8%	39,466	5.0%	36,911	12.2%
36	51,131	42,279	20.9%	61,606	-17.0%	48,298	5.9%	42,205	21.1%
37	62,774	61,422	2.2%	82,870	-24.3%	68,423	-8.3%	49,475	26.9%
38	111,439	96,978	14.9%	167,379	-33.4%	102,780	8.4%	100,447	10.9%
39 EXPRESS		3,377		17,853				2,280	
40	34,232	25,031	36.8%	40,497	-15.5%	34,577	-1.0%	22,535	51.9%
42	18,646	15,126	23.3%	20,825	-10.5%	18,256	2.1%	12,963	43.8%
46 - LIBERTY CITY CONN. (*)	280	279	0.4%	814	-65.6%	349	-19.8%	311	-10.0%
51 - FLAGLER MAX	55,199	43,997	25.5%	62,186	-11.2%	61,937	-10.9%	32,268	71.1%
52	22,081	17,195	28.4%	30,522	-27.7%	21,277	3.8%	16,767	31.7%
54	55,836	48,324	15.5%	72,125	-22.6%	56,413	-1.0%	58,357	-4.3%
55 MARLINS SHUTTLE									
56 (*)	6,147	4,452	38.1%	7,071	-13.1%	6,281	-2.1%	2,992	105.4%
57	6,303	6,446	-2.2%	8,665	-27.3%	6,599	-4.5%	4,888	28.9%
62	31,413	29,996	4.7%	46,582	-32.6%	30,872	1.8%	39,882	-21.2%
71 (*)	13,487	9,245	45.9%	16,118	-16.3%	13,232	1.9%	8,080	66.9%
72 (*)	14,533	10,955	32.7%	18,433	-21.2%	14,441	0.6%	9,390	54.8%

METROBUS TOTAL MONTHLY BOARDINGS BY ROUTE

Route Monthly Total	Total Month	Total Month	Percent Change	Total Month	Percent Change	Total Month	Percent Change	Total Month	Percent Change
	Jul-22	Jul-21	YOY	Feb-20	Current vs Feb-20	Jun-22	MOM	Jul-20	YO2Y
73	52,161	34,314	52.0%	48,767	7.0%	52,257	-0.2%	22,100	136.0%
75	17,384	18,165	-4.3%	31,994	-45.7%	16,756	3.7%	16,990	2.3%
77	151,356	135,244	11.9%	174,833	-13.4%	131,839	14.8%	106,819	41.7%
79 STREET MAX	5,351			7,228	-26.0%	6,257	-14.5%		
82 - WESTCHESTER CIRC. (*)	1,416	708	100.0%	1,482	-4.5%	1,009	40.3%	664	113.3%
87	31,936	22,559	41.6%	33,273	-4.0%	32,316	-1.2%	16,156	97.7%
88	46,416	46,645	-0.5%	54,772	-15.3%	43,957	5.6%	32,157	44.3%
93 - BISCAYNE MAX	46,129	36,719	25.6%	66,684	-30.8%	45,738	0.9%	32,949	40.0%
95 EXPRESS	14,558	12,375	17.6%	33,796	-56.9%	16,789	-13.3%	6,611	120.2%
99	31,262	24,180	29.3%	36,325	-13.9%	29,955	4.4%	23,213	34.7%
101 - A (*)	4,293	3,532	21.5%	4,114	4.4%	4,652	-7.7%	2,392	79.5%
102 - B	33,236	32,557	2.1%	42,683	-22.1%	33,222	0.0%	20,302	63.7%
103 - C		6,132		11,682				3,530	
104	14,370	11,821	21.6%	20,351	-29.4%	12,869	11.7%	5,539	159.4%
105 - E	28,223	22,547	25.2%	31,302	-9.8%	24,098	17.1%	18,047	56.4%
107 - G	37,094	26,438	40.3%	43,178	-14.1%	32,733	13.3%	24,057	54.2%
108 - H	10,505	8,200	28.1%	12,624	-16.8%	9,402	11.7%	7,728	35.9%
110 - J	54,522	47,873	13.9%	66,481	-18.0%	55,587	-1.9%	39,850	36.8%
112 - L	168,588	167,821	0.5%	200,268	-15.8%	155,149	8.7%	143,789	17.2%
113 - M	13,521	11,457	18.0%	21,548	-37.3%	12,395	9.1%	8,571	57.8%
115 (*)	3,416	4,378	-22.0%	4,334	-21.2%	3,970	-14.0%	4,842	-29.5%
119 - S	197,516	192,196	2.8%	242,257	-18.5%	190,265	3.8%	160,395	23.1%
120 - BEACH MAX	131,502	94,988	38.4%	170,942	-23.1%	126,525	3.9%	95,281	38.0%
132 TRI-RAIL (DORAL)	70	111	-36.9%	312	-77.6%	27	159.3%	221	-68.3%
135 (*)	19,742	17,161	15.0%	32,067	-38.4%	20,298	-2.7%	12,676	55.7%
136	2,014	2,003	0.5%	2,524	-20.2%	2,322	-13.3%	1,083	86.0%
137 - WEST DADE CONN.	38,686	24,834	55.8%	41,167	-6.0%	37,119	4.2%	19,015	103.4%
150 - MIAMI BEACH AIRPORT FLYER	41,652	44,561	-6.5%	51,651	-19.4%	39,602	5.2%	23,827	74.8%
155 - BISCAYNE GARDENS CIRCULATOR (*)	752	492	52.8%	881	-14.6%	883	-14.8%	730	3.0%
175 - NW MIAMI-DADE EXPRESS				661					
183	57,170	49,375	15.8%	77,570	-26.3%	52,956	8.0%	50,421	13.4%
195 EXPRESS - BROWARD BLVD				7,441					
196 EXPRESS - SHERIDAN ST				7,658					
200 - CUTLER BAY LOCAL	2,015	1,879	7.2%	3,984	-49.4%	1,428	41.1%	2,391	-15.7%
202 - LITTLE HAITI CONN. (*)	2,554	2,515	1.6%	3,200	-20.2%	2,776	-8.0%	2,657	-3.9%
204 KILLIAN KAT	9,204			21,418	-57.0%	10,728	-14.2%		

METROBUS TOTAL MONTHLY BOARDINGS BY ROUTE

Route Monthly Total	Total Month	Total Month	Percent Change	Total Month	Percent Change	Total Month	Percent Change	Total Month	Percent Change
	Jul-22	Jul-21	YOY	Feb-20	Current vs Feb-20	Jun-22	MOM	Jul-20	YO2Y
207 (7st) - LITTLE HAVANA CIRC	25,595	20,883	22.6%	38,127	-32.9%	26,016	-1.6%	17,770	44.0%
208 (8st) - LITTLE HAVANA CIRC	27,424	21,596	27.0%	35,018	-21.7%	25,444	7.8%	21,899	25.2%
210 - SKYLAKE CIRC (*)	7,236	6,973	3.8%	7,033	2.9%	8,400	-13.9%	5,105	41.7%
211 - OVERTOWN CIRC. (*)	1,728	657	163.0%	1,159	49.1%	1,986	-13.0%	997	73.3%
212 - SWEETWATER CIRC. (*)	497	586	-15.2%	295	68.5%	482	3.1%	374	32.9%
217 - BUNCHE PARK CIRC (*)	1,405	847	65.9%	1,949	-27.9%	1,260	11.5%	1,285	9.3%
238 EAST/WEST CONN.	7,982	5,657	41.1%	8,987	-11.2%	8,188	-2.5%	4,207	89.7%
241 TUTTLE LIMITED	2,181					1,970	10.7%		
246 - NIGHT OWL	1,610	27	5863.0%	2,641	-39.0%	1,519	6.0%	249	546.6%
248 - PRINCETON CIRCULATOR (*)	1,948	1,308	48.9%	2,690	-27.6%	1,693	15.1%	1,684	15.7%
252 - CORAL REEF MAX	14,278	10,868	31.4%	19,325	-26.1%	14,426	-1.0%	7,241	97.2%
254 - BROWNSVILLE CIRC. (*)	106	644	-83.5%	384	-72.4%	128	-17.2%	718	-85.2%
267 - LUDLAM LIMITED (*)	2,825	1,964	43.8%	2,978	-5.1%	3,123	-9.5%	1,640	72.3%
272 SUNSET KAT (*)	6,661	5,700	16.9%	11,004	-39.5%	6,816	-2.3%	4,585	45.3%
277 - 7th AVENUE MAX	9,217	6,129	50.4%	13,669	-32.6%	8,337	10.6%	7,410	24.4%
286 - NORTH POINTE CIRC. (*)	1,364	971	40.5%	2,145	-36.4%	1,518	-10.1%	467	192.1%
287 - SAGA BAY MAX	3,689	3,608	2.2%	7,160	-48.5%	4,271	-13.6%	1,768	108.7%
288 - KENDALL CRUISER	5,677			15,249	-62.8%	8,904	-36.2%		
295 EXPRESS - BROWARD BLVD - CIVIC CENTER				4,668					
296 EXPRESS - SHERIDAN ST - CIVIC CENTER				4,297					
297-27th AVENUE ORANGE MAX	15,678	12,909	21.5%	27,125	-42.2%	17,373	-9.8%	13,834	13.3%
301 DADE-MONROE EXPRESS(*)	23,146	29,604	-21.8%	23,838	-2.9%	21,958	5.4%	21,763	6.4%
302 CARD SOUND EXPRESS(*)	2,376	2,563	-7.3%	2,236	6.3%	2,327	2.1%	1,348	76.3%
338 - WEEKEND EXPRESS	1,293	1,571	-17.7%	2,191	-41.0%	825	56.7%	483	167.7%
344 (*)	892	1,101	-19.0%	1,919	-53.5%	948	-5.9%	1,037	-14.0%
500	378			2,301	-83.6%	356	6.2%	14	2600.0%
836 EXPRESS	2,973	1,895	56.9%			3,108	-4.3%		
12/21 WEEKEND INTERL.	17,755	15,151	17.2%	20,830	-14.8%	12,118	46.5%	14,187	25.1%
GREEN HILLS SHUTTLE (*)	12	17	-29.4%	36	-66.7%	23	-47.8%	23	-47.8%
KINGS CREEK SHUTTLE (*)	80	39	105.1%	52	53.8%	104	-23.1%	29	175.9%
SIERRALAKES SHUTTLE (*)	99	94	5.3%	180	-45.0%	74	33.8%	167	-40.7%
ROBERT SHARP SHUTTLE (*)	123	80	53.8%	38	223.7%	78	57.7%	72	70.8%
AHEPA SHUTTLE (*)	67	89	-24.7%	83	-19.3%	73	-8.2%	97	-30.9%
FEDERATION GARDENS SHUTTLE (*)	104	122	-14.8%	142	-26.8%	134	-22.4%	35	197.1%
Total	3,189,994	2,769,907	15.2%	4,123,083	-22.6%	3,064,059	4.1%	2,366,749	34.8%

METROBUS HOLIDAY BOARDINGS BY ROUTE Independence Day

ROUTES	Independence Day		Pct	ROUTES	Independence Day		Pct
	2021	2022	Delta		2021	2022	Delta
1	107	128	19.6%	88	927	997	7.6%
2	1,047	821	-21.6%	99	546	597	9.3%
3	3,417	3,413	-0.1%	101	76	81	6.6%
7	979	1,295	32.3%	102	728	582	-20.1%
8	1,248	1,706	36.7%	103	169		
9	2,302	1,566	-32.0%	104	248	311	25.4%
10	933	1,099	17.8%	105	471	450	-4.5%
11	2,548	3,223	26.5%	107	570	635	11.4%
12	787	820	4.2%	108	337	320	-5.0%
16	674	867	28.6%	110	1,253	825	-34.2%
17	1,320	1,225	-7.2%	112	3,462	3,689	6.6%
21	564	641	13.7%	113	303	231	-23.8%
22	1,195	1,424	19.2%	115	110	83	-24.5%
24	678	764	12.7%	119	4,193	5,244	25.1%
27	2,473	2,226	-10.0%	120	1,711	2,491	45.6%
31	583	463	-20.6%	135	254	188	-26.0%
32	556	496	-10.8%	137	507	799	57.6%
33	444	569	28.2%	150	1,619	1,217	-24.8%
35	464	687	48.1%	183	1,175	1,356	15.4%
36	748	920	23.0%	200	35		
37	1,080	1,139	5.5%	202	2	35	1650.0%
38	2,231	2,308	3.5%	207	578	444	-23.2%
40	382	444	16.2%	208	570	555	-2.6%
42	236	345	46.2%	210	222	155	-30.2%
52	223	419	87.9%	241		56	
54	950	867	-8.7%	246	1	37	3600.0%
62	500	510	2.0%	252	186	206	10.8%
71	84	90	7.1%	301	719	640	-11.0%
72	183	240	31.1%	302	53	87	64.2%
73	432	472	9.3%	338	114		
75	140	190	35.7%				
77	2,929	3,267	11.5%				
87	238	282	18.5%	Total (1)	53,814	57,237	6.4%

(1) Excludes Lifeline shuttles and some routes not run both years.

YEAR-OVER-YEAR BUS RIDERSHIP BY ROUTE SERVICE TYPE

Boardings by Service Type and Route	Average Weekday	Average Weekday	Percent Change	Average Saturday	Average Saturday	Percent Change	Average Sunday	Average Sunday	Percent Change	Total Monthly	Total Monthly	Percent Change
	Jul-22	Jul-21	22 vs 21	Jul-22	Jul-21	22 vs 21	Jul-22	Jul-21	22 vs 21	Jul-22	Jul-21	22 vs 21
Directly Operated Express Routes (1)												
34 EXPRESS	976	1,028	-5.0%							19,528	21,578	-9.5%
39 EXPRESS		161									3,377	
95-EXPRESS	728	589	23.5%							14,558	12,375	17.6%
150-MIAMI BEACH AIRPORT FLYER	1,426	1,419	0.5%	1,131	1,443	-21.6%	1,247	1,510	-17.4%	41,652	44,561	-6.5%
175 - NW MIAMI-DADE EXPRESS												
195 EXPRESS - BROWARD BLVD												
196 EXPRESS - SHERIDAN ST												
295 EXPRESS - BROWARD BLVD - CIVIC CENTER												
296 EXPRESS - SHERIDAN ST - CIVIC CENTER												
204 KAT-KILLIAN	460									9,204		
288 KENDALL CRUISER	284									5,677		
338 - WEEKEND EXPRESS		0		104	178	-41.4%	154	136	13.2%	1,293	1,571	-17.7%
836 EXPRESS	149	90	64.7%							2,973	1,895	56.9%
Subtotal Express Routes	4,023	3,287	22.4%	1,235	1,620	-23.8%	1,401	1,647	-14.9%	94,885	85,357	11.2%
Percentage of All Bus Routes	3.3%	3.2%		1.6%	2.4%		2.5%	3.3%		3.0%	3.1%	
Contracted Routes												
1	164	143	14.6%	181	173	4.7%	185	132	40.4%	5,304	4,535	17.0%
29	422	292	44.4%							8,439	6,135	37.6%
35												
46 - LIBERTY CITY CONN	14	13	5.4%							280	279	0.4%
56	307	212	45.0%							6,147	4,452	38.1%
71	562	378	48.9%	252	156	61.7%	164	107	52.2%	13,487	9,245	45.9%
72	567	397	42.7%	312	314	-0.9%	273	209	30.9%	14,533	10,955	32.7%
82 - WESTCHESTER CIRC	61	27	123.4%	41	28	47.1%				1,416	708	100.0%
101 - A	185	141	31.6%	64	67	-4.2%	45	48	-7.7%	4,293	3,532	21.5%
115	130	161	-19.5%	76	93	-18.3%	73	105	-30.2%	3,416	4,378	-22.0%
155 - BISCAYNE GARDENS CIRC	38	23	60.5%							752	492	52.8%
202 - LITTLE HAITI CONN.	109	95	14.5%	39	59	-34.1%	31	46	-31.3%	2,554	2,515	1.6%
210 - SKYLAKE CIRC	277	266	4.3%	162	136	19.8%	147	143	2.6%	7,236	6,973	3.8%
211-OVERTOWN CIRC	86	31	176.2%							1,728	657	163.0%
212-SWEETWATER CIRC	25	28	-10.9%							497	586	-15.2%
217 - BUNCHE PARK CIRC	70	40	74.2%							1,405	847	65.9%
248 - PRINCETON CIRCULATOR	97	62	56.4%							1,948	1,308	48.9%
254-BROWNSVILLE CIRC	5	31	-82.7%							106	644	-83.5%
286-NORTH POINTE CIRC	56	38	48.7%	48	35	35.2%				1,364	971	40.5%
344	45	52	-14.9%							892	1,101	-19.0%
Subtotal Contracted Reg. & Circ. Routes	3,221	2,431	32.5%	1,175	1,061	10.7%	918	790	16.2%	75,797	60,313	25.7%
Percentage of All Bus Routes	2.6%	2.3%		1.5%	1.6%		1.6%	1.6%		2.4%	2.2%	

(1) Several express routes were suspended beginning at the end of March 2020, due to the SARS-CoV-2 pandemic, while other routes had alignment and schedule modifications made to them, in an ongoing effort to optimize service delivery..

YEAR-OVER-YEAR BUS RIDERSHIP BY ROUTE SERVICE TYPE

Boardings by Service Type and Route	Average Weekday	Average Weekday	Percent Change	Average Saturday	Average Saturday	Percent Change	Average Sunday	Average Sunday	Percent Change	Total Monthly	Total Monthly	Percent Change
	Jul-22	Jul-21	22 vs 21	Jul-22	Jul-21	22 vs 21	Jul-22	Jul-21	22 vs 21	Jul-22	Jul-21	22 vs 21
Contracted Express Routes												
272 SUNSET-KAT	333	271	22.7%							6,661	5,700	16.9%
301-DADE MONROE EXPRESS	781	974	-19.8%	699	922	-24.2%	671	908	-26.1%	23,146	29,604	-21.8%
302-CARD SOUND EXPRESS	82	89	-8.4%	56	82	-32.1%	78	57	37.0%	2,376	2,563	-7.3%
Subtotal Contracted Express Routes	1,196	1,334	-10.4%	755	1,004	-24.8%	749	965	-22.4%	32,183	37,867	-15.0%
Percentage of All Bus Routes	1.0%	1.3%		1.0%	1.5%		1.3%	1.9%		1.0%	1.4%	
Limited Stop Routes												
24-CORAL WAY LIMITED	1,546	843	83.4%	1,167	763	53.0%	833	676	23.1%	41,757	24,898	67.7%
51-FLAGLER MAX	2,760	2,095	31.7%							55,199	43,997	25.5%
79 STREET MAX	268									5,351		
93 - BISCAYNE MAX	2,306	1,749	31.9%							46,129	36,719	25.6%
120 - BEACH MAX	5,007	3,492	43.4%	3,620	2,674	35.4%	2,210	1,657	33.4%	131,502	94,988	38.4%
241 TUTTLE LIMITED	87			39			40			2,181		
252-CORAL REEF MAX	591	434	36.3%	271	191	42.0%	183	161	13.8%	14,278	10,868	31.4%
267-LUDLAM LIMITED (contracted)	141	94	51.0%							2,825	1,964	43.8%
277-7TH AVENUE MAX	461	292	57.9%							9,217	6,129	50.4%
287-SAGA BAY MAX	184	172	7.4%							3,689	3,689	2.2%
297-27th AVENUE ORANGE MAX	784	615	27.5%							15,678	12,909	21.5%
Subtotal Limited Stop Routes	14,137	9,784	44.5%	5,097	3,628	40.5%	3,265	2,494	30.9%	327,806	236,080	38.9%
Percentage of All Bus Routes	11.4%	9.4%		6.7%	5.5%		5.8%	5.0%		10.3%	8.5%	
Directly Operated Free Routes												
132 -TRI-RAIL DORAL	5	8	-32.1%							70	111	-36.9%
200-CUTLER BAY LOCAL	118	71	66.8%	93	61	52.4%	30	19	59.6%	2,015	1,879	7.2%
Subtotal Free Directly Operated Routes	123	78	56.8%	93	61	52.4%	30	19	59.6%	2,085	1,990	4.8%
Percentage of All Bus Routes	0.0%	0.0%								0.0%	0.0%	
Shuttles												
55-MARLINS SHUTTLE												
Percentage of All Bus Routes												
Contractor-Operated Lifeline Routes												
GREEN HILLS SHUTTLE	4	6	-29.4%							12	17	-29.4%
KINGS CREEK SHUTTLE	20	8	156.4%							80	39	105.1%
SIERRA LAKES SHUTTLE	20	19	5.3%							99	94	5.3%
ROBERT SHARP SHUTTLE	31	20	53.8%							123	80	53.8%
AHEPA SHUTTLE	17	22	-24.7%							67	89	-24.7%
FEDERATION GARDENS SHUTTLE				21	24	-14.8%				104	122	-14.8%
Subtotal Contractor-Operated Lifeline Routes	91	75	22.5%	21	24	-14.8%				485	441	10.0%
Percentage of All Bus Routes	0.1%	0.1%		0.0%	0.0%					0.0%	0.0%	
Other Circulator Route												
200-CUTLER BAY LOCAL	118	71	66.8%	93	61	52.4%	30	19	59.6%	2,015	1,879	7.2%
Percentage of All Bus Routes	0.1%	0.1%		0.1%	0.1%		0.1%	0.0%		0.1%	0.1%	
All Other (Regular) Routes												
	100,707	87,328	15.3%	68,150	58,998	15.5%	50,313	43,816	14.8%	2,656,753	2,347,859	13.2%
Percentage of All Bus Routes	81.5%	83.7%		89.1%	88.9%		88.8%	88.1%		83.3%	84.8%	
Total Bus System	123,497	104,317	18.4%	76,525	66,397	15.3%	56,675	49,731	14.0%	3,189,994	2,769,907	15.2%

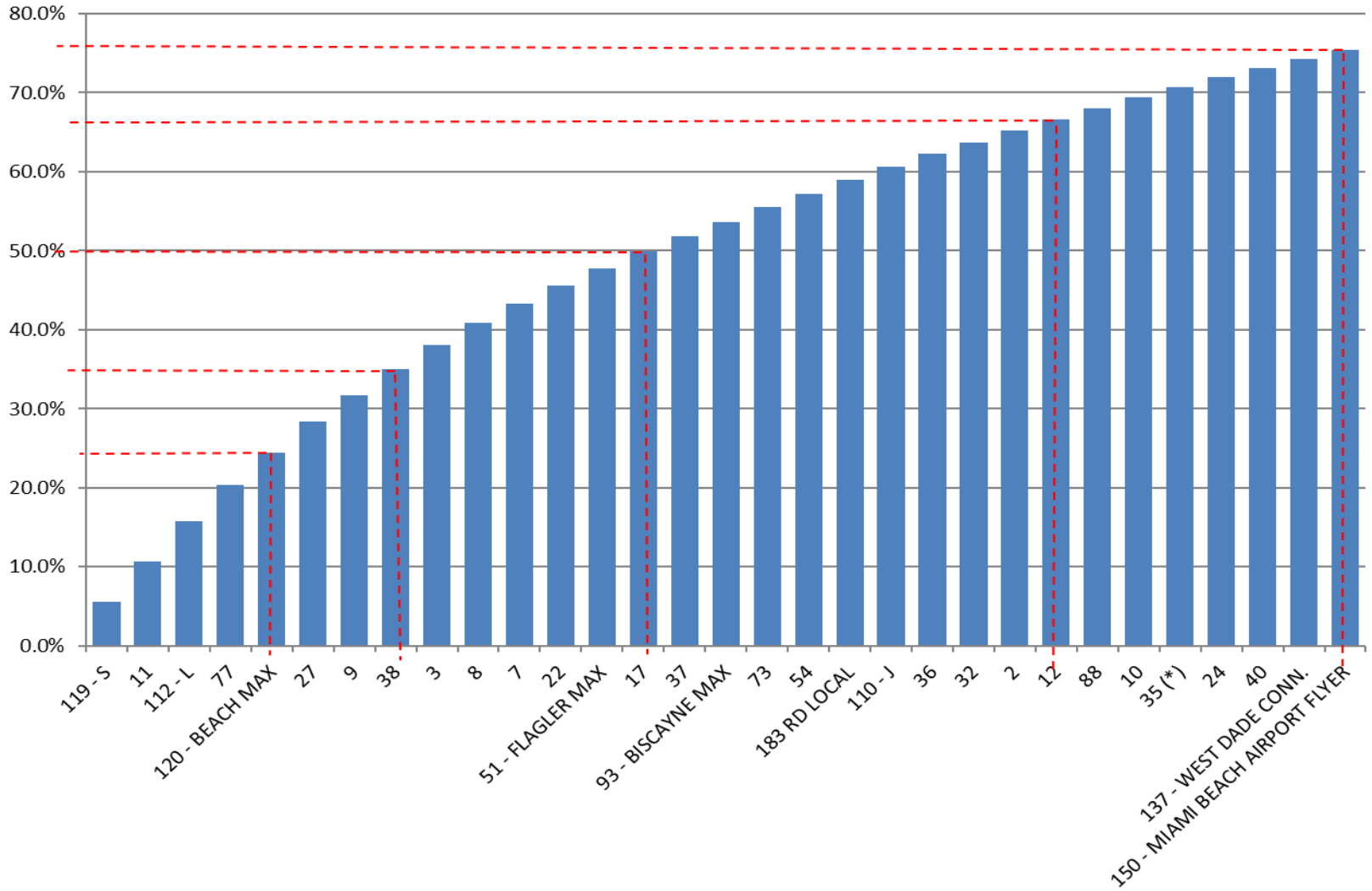
Bus Routes as Ranked by Percentage of Average Weekday Ridership July 2022

Rank	Route	Average Weekday	Percent Share	Cumul Pct Share	Rank	Route	Average Weekday	Percent Share	Cumul Pct Share	Rank	Route	Average Weekday	Percent Share	Cumul Pct Share
1	119	6,851	5.5%	5.5%	36	33	1,274	1.0%	81.0%	71	1	164	0.1%	98.7%
2	11	6,396	5.2%	10.7%	37	21	1,193	1.0%	81.9%	72	836	149	0.1%	98.8%
3	112	6,191	5.0%	15.7%	38	99	1,190	1.0%	82.9%	73	267	141	0.1%	99.0%
4	77	5,712	4.6%	20.4%	39	62	1,171	0.9%	83.8%	74	115	130	0.1%	99.1%
5	120	5,007	4.1%	24.4%	40	105	1,107	0.9%	84.7%	75	200	118	0.1%	99.2%
6	27	4,887	4.0%	28.4%	41	207	991	0.8%	85.5%	76	202	109	0.1%	99.3%
7	9	4,138	3.4%	31.7%	42	208	990	0.8%	86.3%	77	136	101	0.1%	99.3%
8	38	4,007	3.2%	35.0%	43	34	976	0.8%	87.1%	78	248	97	0.1%	99.4%
9	3	3,795	3.1%	38.0%	44	19	952	0.8%	87.9%	79	241	87	0.1%	99.5%
10	8	3,470	2.8%	40.9%	45	52	874	0.7%	88.6%	80	211	86	0.1%	99.6%
11	7	2,982	2.4%	43.3%	46	135	850	0.7%	89.3%	81	302	82	0.1%	99.6%
12	22	2,794	2.3%	45.5%	47	297	784	0.6%	89.9%	82	217	70	0.1%	99.7%
13	51	2,760	2.2%	47.8%	48	301	781	0.6%	90.6%	83	82	61	0.0%	99.7%
14	17	2,591	2.1%	49.9%	49	95	728	0.6%	91.2%	84	286	56	0.0%	99.8%
15	37	2,387	1.9%	51.8%	50	75	720	0.6%	91.7%	85	246	50	0.0%	99.8%
16	93	2,306	1.9%	53.7%	51	42	716	0.6%	92.3%	86	344	45	0.0%	99.8%
17	73	2,240	1.8%	55.5%	52	31	707	0.6%	92.9%	87	155	38	0.0%	99.9%
18	54	2,169	1.8%	57.2%	53	252	591	0.5%	93.4%	88	RS	31	0.0%	99.9%
19	183	2,139	1.7%	59.0%	54	72	567	0.5%	93.8%	89	212	25	0.0%	99.9%
20	110	2,016	1.6%	60.6%	55	71	562	0.5%	94.3%	90	KC	20	0.0%	99.9%
21	36	1,998	1.6%	62.2%	56	104	558	0.5%	94.7%	91	SL	20	0.0%	100.0%
22	32	1,817	1.5%	63.7%	57	113	509	0.4%	95.1%	92	AS	17	0.0%	100.0%
23	2	1,811	1.5%	65.2%	58	277	461	0.4%	95.5%	93	46	14	0.0%	100.0%
24	12	1,803	1.5%	66.6%	59	204	460	0.4%	95.9%	94	500	13	0.0%	100.0%
25	88	1,732	1.4%	68.0%	60	29	422	0.3%	96.2%	95	132	5	0.0%	100.0%
26	10	1,711	1.4%	69.4%	61	238	399	0.3%	96.6%	96	254	5	0.0%	100.0%
27	35	1,575	1.3%	70.7%	62	108	359	0.3%	96.9%	97	GH	4	0.0%	100.0%
28	24	1,546	1.3%	71.9%	63	272	333	0.3%	97.1%					
29	40	1,461	1.2%	73.1%	64	57	315	0.3%	97.4%					
30	137	1,447	1.2%	74.3%	65	56	307	0.2%	97.6%					
31	150	1,426	1.2%	75.4%	66	288	284	0.2%	97.9%					
32	87	1,410	1.1%	76.6%	67	210	277	0.2%	98.1%					
33	16	1,410	1.1%	77.7%	68	79	268	0.2%	98.3%					
34	107	1,407	1.1%	78.9%	69	101	185	0.1%	98.4%					
35	102	1,325	1.1%	79.9%	70	287	184	0.1%	98.6%					
											Total Boardings	123,497	100.0%	100.0%

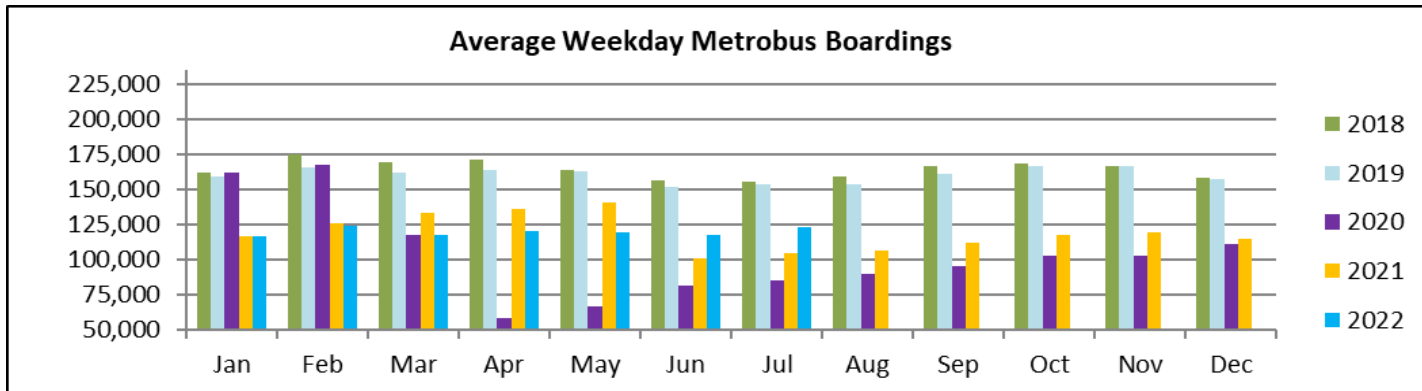
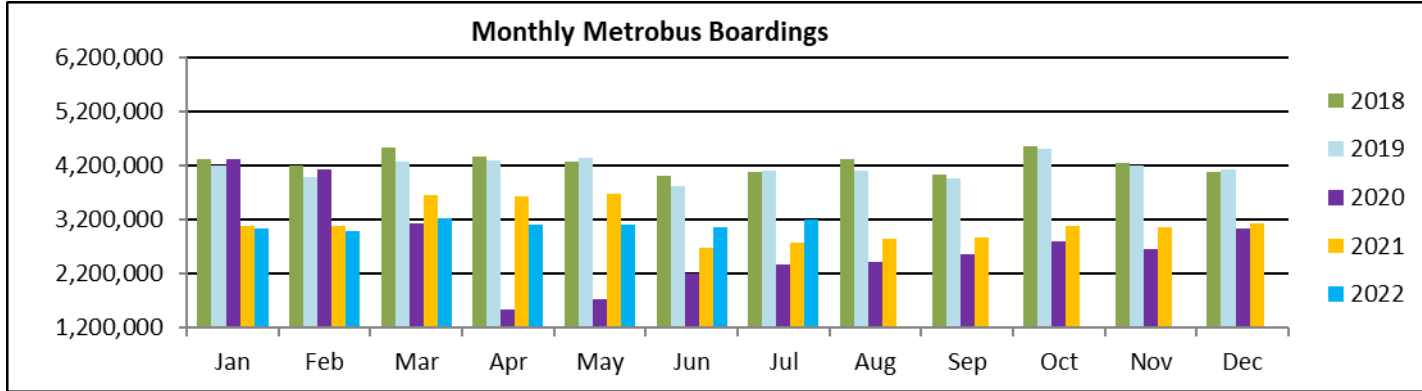
(1) Average weekday ridership rounded to the nearest unit.

(2) Includes the five Lifeline Shuttles that operate on weekdays: Ahepa, Green Hills, Kings Creek, Robert Sharp and Sierra Lakes.

**Bus - Cumulative Percentage Average Weekday Ridership Share
Top 1/4, 1/3, 1/2, 2/3 and 3/4 of Routes**



TOTAL MONTHLY AND AVERAGE WEEKDAY RIDERSHIP YEAR OVER YEAR COMPARISON CHARTS – METROBUS



**“TOP 5 / BOTTOM 5” BUS ROUTES AVERAGE WEEKDAY RIDERSHIP PERFORMANCE
YEAR OVER YEAR COMPARISONS**

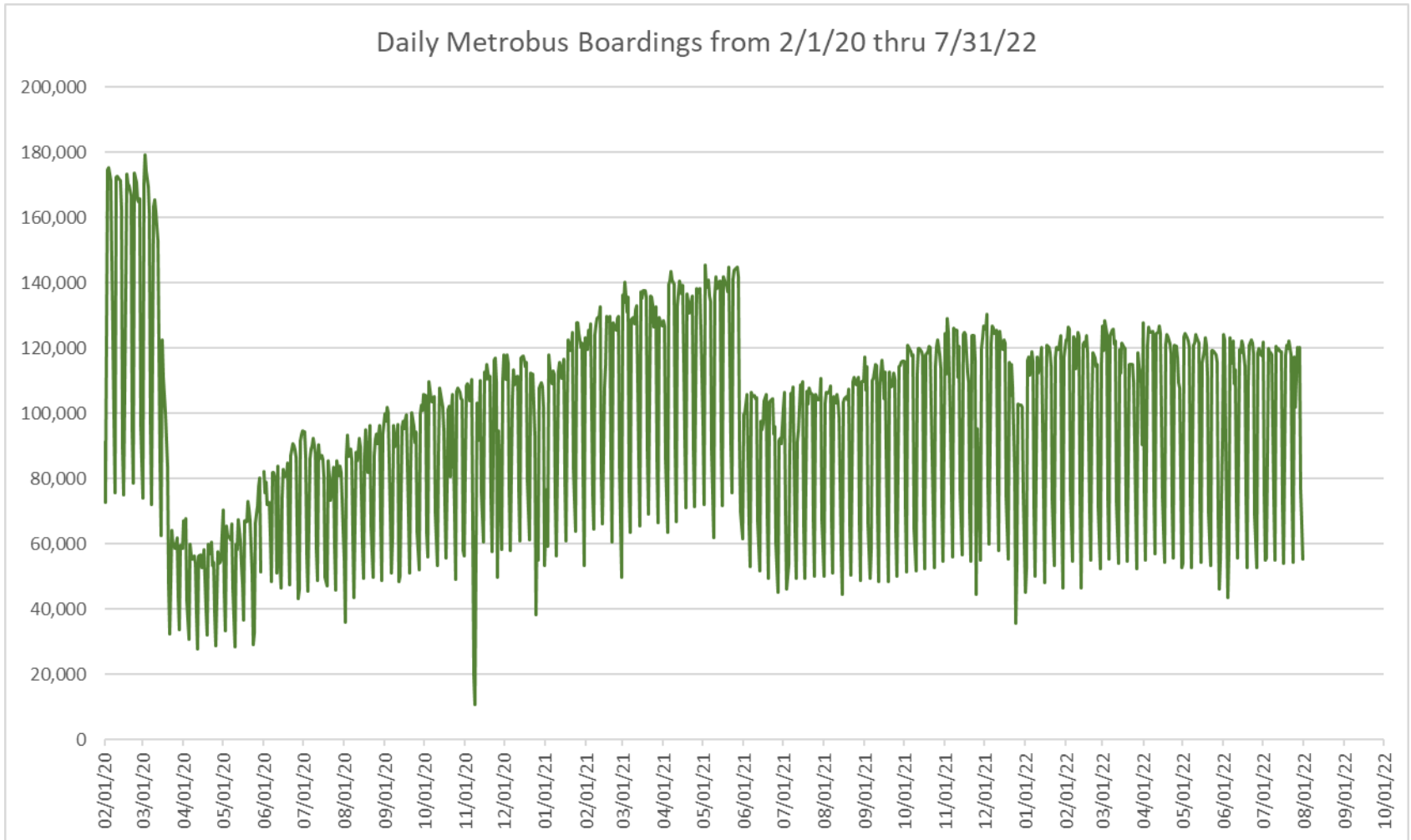
Route	Jul-22	Jul-21	Absolute Delta (1)	Percent Delta (2)
120 - BEACH MAX	5,007	3,492	1,515	43.4%
7	2,982	2,095	886	42.3%
73	2,240	1,384	856	61.9%
11	6,396	5,589	808	14.5%
22	2,794	2,049	744	36.3%
9	4,138	4,419	-281	-6.4%
301 DADE-MONROE EXPRESS (*)	781	974	-193	-19.8%
112 - L	6,191	6,256	-65	-1.0%
2	1,811	1,874	-63	-3.3%
34 EXPRESS	976	1,028	-51	-5.0%

(1) Averages rounded to the nearest boarding, data as reported by NFS and/or APC system, depending on year; Lifelines excluded.

(2) As a result of the SARS-CoV-2 pandemic, rides were fare-free beginning March 22, 2020; many bus routes continued reporting YOY gains in July 2022, since July 2021 still showed clear reduction effects on ridership from the SARS-CoV-2 pandemic. Fares were reinstated June 1, 2021, and ridership data from the farebox system rather than the automatic passenger counter system is utilized from that date going forward.

(*) Contracted route.

DAILY METROBUS RIDERSHIP SINCE FEBRUARY 1, 2020



- (1) National Emergency was declared on 3/13/20 as a result of the SARS-CoV-2 pandemic.
- (2) There was no Metrobus, Metrorail and Metromover service on 5/31/20, as a safety precaution.
- (3) The dip at the start of the second week of November 2020 is due to Hurricane Eta.
- (4) The reduction seen beginning 6/1/21 is partly due to the resumption of fares and partly the result of resuming reporting Cubic farebox data rather than bus APC counts.
- (5) Periodic (weekly) variations are prominent, since weekday ridership is almost always significantly higher than weekend or holiday ridership.

METROBUS PARKING PATRONAGE SUMMARY July 2022

PARK-RIDE LOT	ACTUAL AVAILABLE SPACES	ACTUAL OCCUPANCY	PERCENT OCCUPANCY
Transitway / SW 152nd St	200	103	52%
Transitway / SW 168th St (Closed for construction January 2022)	149	0	0%
Transitway / SW 200th Street (effective February 2020)	100	26	26%
Transitway / SW 112 Ave (Target)	450	106	24%
Transitway / SW 244th St	95	54	57%
Transitway / SW 296th St	139	16	12%
Transitway / SW 344th St	248	156	63%
Coral Reef Drive 117/ Turnpike	95	76	80%
Golden Glades Facility	2,150	318	15%
Hammocks Town Center (SW 152 Ave / SW 104 St)	50	12	24%
Kendall Dr./SW 127th Ave	161	9	6%
West Kendall Transit Term (Kendall Dr / SW162 Ave)	40	11	28%
NW 7th Avenue Transit Village (NW 7 Ave / NW 62 St)	25	16	64%
Miami Gardens Dr. / NW 73rd Ave	136	0	0%
Dolphin Station (effective Mar 2020)	348	61	18%
I-75 / Miami Gardens Dr (effective June 2019)	298	0	0%
TOTAL	4,684	964	21%

Note: some park-ride lots are joint-use and the number of park-ride vehicles may exceed the number of spaces allocated.

Metrorail



July 2022

METRORAIL AVERAGE WEEKDAY BOARDINGS BY STATION (†)

Weekdays	Average Weekday	Average Weekday	Percent Change	Average Weekday	Percent Change	Average Weekday	Percent Change	Average Weekday	Percent Change
STATIONS	Jul-22	Jul-21	YOY	Feb-20	Current vs Feb-20	Jun-22	MOM	Jul-20	YO2Y
ALLAPATTAH	1,386	951	45.8%	1,942	-28.6%	1,382	0.3%	924	50.0%
BRICKELL	4,012	2,998	33.8%	6,529	-38.6%	4,085	-1.8%	2,743	46.3%
BROWNSVILLE	623	506	23.0%	862	-27.7%	617	0.9%	733	-15.0%
CIVIC CENTER	3,402	2,651	28.4%	6,143	-44.6%	3,399	0.1%	1,769	92.3%
COCONUT GROVE	1,196	913	31.1%	1,795	-33.4%	1,223	-2.2%	619	93.3%
CULMER	757	670	13.0%	1,392	-45.6%	775	-2.3%	795	-4.8%
DADELAND NORTH	3,148	2,221	41.7%	5,926	-46.9%	3,200	-1.6%	1,960	60.6%
DADELAND SOUTH	3,609	2,755	31.0%	7,150	-49.5%	3,626	-0.5%	2,385	51.3%
DOUGLAS ROAD	2,312	1,633	41.6%	3,624	-36.2%	2,333	-0.9%	912	153.4%
DR. MARTIN LUTHER KING, JR.	757	602	25.8%	1,157	-34.5%	753	0.6%	671	12.9%
EARLINGTON HEIGHTS	1,133	796	42.3%	1,662	-31.8%	1,122	1.0%	805	40.8%
GOVERNMENT CENTER	5,319	3,896	36.5%	10,557	-49.6%	5,358	-0.7%	2,652	100.6%
HIALEAH	949	667	42.3%	1,253	-24.2%	924	2.7%	709	33.9%
MIAMI INTERNATIONAL AIRPORT	1,063	676	57.2%	1,711	-37.9%	1,070	-0.7%	480	121.6%
NORTHSIDE	1,104	844	30.7%	1,476	-25.2%	1,101	0.2%	875	26.1%
OKEECHOBEE	744	574	29.7%	1,164	-36.1%	727	2.4%	480	55.0%
OVERTOWN / ARENA	1,266	746	69.6%	2,274	-44.3%	1,289	-1.8%	634	99.7%
PALMETTO	1,044	761	37.0%	1,543	-32.4%	1,042	0.2%	612	70.4%
SANTA CLARA	561	397	41.1%	812	-30.9%	557	0.7%	419	33.8%
SOUTH MIAMI	1,597	1,259	26.8%	3,015	-47.0%	1,629	-2.0%	902	77.0%
TRI-RAIL	945	674	40.2%	1,207	-21.7%	931	1.5%	662	42.6%
UNIVERSITY	1,066	626	70.2%	2,784	-61.7%	1,069	-0.3%	311	242.9%
VIZCAYA	870	625	39.3%	1,390	-37.4%	878	-0.9%	425	104.6%
TOTAL	38,862	28,441	36.6%	67,367	-42.3%	39,090	-0.6%	23,478	65.5%

(†) In this table and those which follow, "YOY" stands for "year-over-year", "MOM" for "month-over-month" and "YO2Y" for "year over two years", i.e., current month vs 12 months prior, one month prior and 24 months prior, respectively.

(*) Due to effects from the SARS-CoV-2 pandemic; rides were fare-free beginning March 22, 2020; fares were reinstated on June 1, 2021, in part accounting for the drop in ridership from May 2021.

METRORAIL AVERAGE SATURDAY BOARDINGS BY STATION

Saturdays	Average Saturday	Average Saturday	Percent Change	Average Saturday	Percent Change	Average Saturday	Percent Change	Average Saturday	Percent Change
STATIONS	Jul-22	Jul-21	YOY	Feb-20	Current vs Feb-20	Jun-22	MOM	Jul-20	YO2Y
ALLAPATTAH	809	575	40.6%	1,051	-23.0%	769	5.3%	571	41.8%
BRICKELL	2,135	1,592	34.1%	2,811	-24.1%	2,090	2.1%	1,630	31.0%
BROWNSVILLE	399	335	19.1%	520	-23.3%	372	7.2%	524	-23.9%
CIVIC CENTER	631	500	26.2%	959	-34.2%	612	3.2%	492	28.4%
COCONUT GROVE	643	518	24.1%	928	-30.7%	621	3.6%	365	76.5%
CULMER	428	391	9.5%	721	-40.6%	406	5.4%	516	-17.0%
DADELAND NORTH	1,241	968	28.2%	1,994	-37.7%	1,186	4.7%	983	26.3%
DADELAND SOUTH	1,729	1,289	34.1%	2,625	-34.2%	1,531	12.9%	1,422	21.5%
DOUGLAS ROAD	1,107	801	38.2%	1,319	-16.1%	1,035	7.0%	562	97.2%
DR. MARTIN LUTHER KING, JR.	441	343	28.6%	625	-29.4%	406	8.7%	462	-4.4%
EARLINGTON HEIGHTS	687	487	41.2%	935	-26.5%	639	7.5%	533	28.9%
GOVERNMENT CENTER	2,433	1,988	22.4%	4,262	-42.9%	2,255	7.9%	1,475	65.0%
HIALEAH	481	375	28.3%	583	-17.4%	467	3.1%	356	35.3%
MIAMI INTERNATIONAL AIRPORT	845	569	48.6%	1,330	-36.5%	845	0.1%	391	116.0%
NORTHSIDE	665	558	19.2%	878	-24.2%	658	1.2%	624	6.6%
OKEECHOBEE	294	259	13.7%	408	-27.9%	257	14.8%	243	21.2%
OVERTOWN / ARENA	470	308	52.3%	678	-30.7%	458	2.6%	377	24.6%
PALMETTO	351	254	38.2%	458	-23.3%	335	4.8%	274	28.1%
SANTA CLARA	327	218	50.0%	422	-22.6%	292	11.8%	248	32.0%
SOUTH MIAMI	840	641	31.0%	1,256	-33.1%	775	8.4%	495	69.7%
TRI-RAIL	475	331	43.6%	614	-22.7%	388	22.6%	362	31.4%
UNIVERSITY	307	222	38.5%	714	-57.0%	359	-14.4%	141	118.3%
VIZCAYA	424	365	16.4%	622	-31.7%	413	2.8%	262	62.0%
TOTAL	18,164	13,888	30.8%	26,714	-32.0%	17,167	5.8%	13,304	36.5%

METRORAIL AVERAGE SUNDAY BOARDINGS BY STATION

Sundays	Average Sunday	Average Sunday	Percent Change	Average Sunday	Percent Change	Average Sunday	Percent Change	Average Sunday	Percent Change
STATIONS	Jul-22	Jul-21	YOY	Feb-20	Current vs Feb-20	Jun-22	MOM	Jul-20	YO2Y
ALLAPATTAH	604	416	45.4%	791	-23.6%	619	-2.3%	423	42.8%
BRICKELL	1,654	1,265	30.7%	2,379	-30.5%	1,713	-3.4%	1,427	15.9%
BROWNSVILLE	314	235	33.8%	406	-22.6%	281	11.9%	399	-21.3%
CIVIC CENTER	507	419	21.1%	791	-36.0%	526	-3.6%	428	18.4%
COCONUT GROVE	478	396	20.9%	838	-42.9%	525	-8.9%	351	36.2%
CULMER	333	313	6.4%	616	-45.9%	358	-7.0%	427	-22.0%
DADELAND NORTH	878	712	23.3%	1,685	-47.9%	939	-6.5%	743	18.2%
DADELAND SOUTH	1,298	1,026	26.5%	2,210	-41.3%	1,328	-2.2%	1,225	5.9%
DOUGLAS ROAD	748	549	36.2%	1,090	-31.4%	802	-6.7%	416	79.9%
DR. MARTIN LUTHER KING, JR.	328	236	39.1%	506	-35.3%	340	-3.6%	384	-14.8%
EARLINGTON HEIGHTS	512	396	29.3%	799	-36.0%	527	-2.8%	443	15.6%
GOVERNMENT CENTER	1,859	1,456	27.7%	4,044	-54.0%	1,953	-4.8%	1,296	43.4%
HIALEAH	349	286	21.9%	472	-26.1%	350	-0.3%	292	19.5%
MIAMI INTERNATIONAL AIRPORT	843	542	55.6%	1,343	-37.2%	835	0.9%	433	94.6%
NORTHSIDE	537	433	24.0%	653	-17.8%	522	2.8%	501	7.0%
OKEECHOBEE	167	133	26.2%	273	-38.8%	159	5.5%	171	-2.4%
OVERTOWN / ARENA	400	273	46.8%	544	-26.4%	403	-0.6%	346	15.7%
PALMETTO	193	156	23.3%	336	-42.7%	190	1.4%	196	-1.7%
SANTA CLARA	213	142	50.0%	280	-23.9%	236	-9.7%	165	28.8%
SOUTH MIAMI	601	455	32.2%	987	-39.1%	634	-5.2%	418	43.7%
TRI-RAIL	317	278	13.9%	528	-39.9%	323	-1.7%	324	-2.2%
UNIVERSITY	247	170	45.7%	608	-59.3%	298	-16.9%	113	118.9%
VIZCAYA	345	262	31.4%	524	-34.3%	345	0.0%	218	58.1%
TOTAL	13,724	10,546	30.1%	22,701	-39.5%	14,200	-3.4%	11,140	23.2%

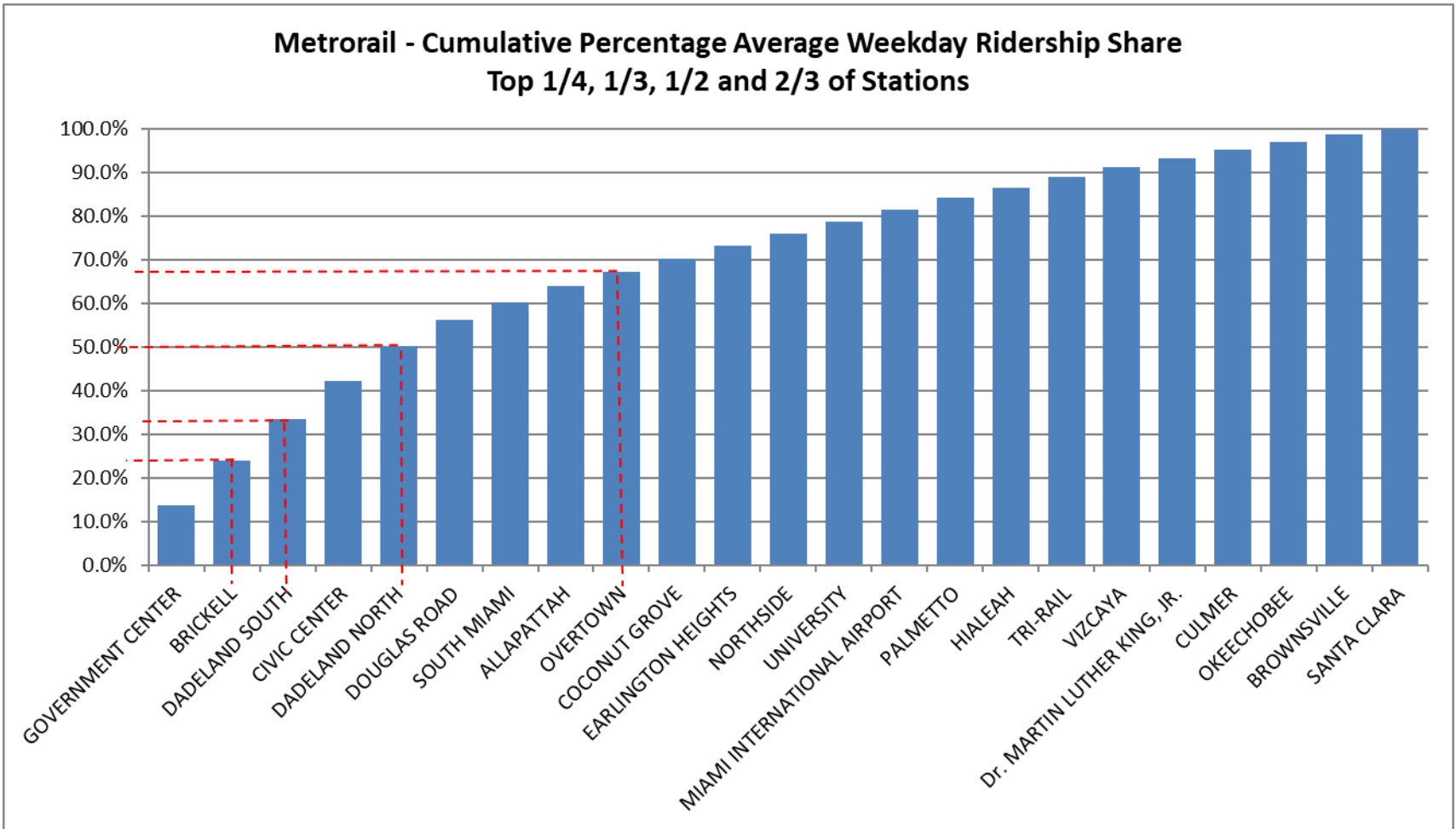
METRORAIL TOTAL MONTHLY BOARDINGS BY STATION

Monthly Totals	Total Month	Total Month	Percent Change	Total Month	Percent Change	Total Month	Percent Change	Total Month	Percent Change
STATIONS	Jul-22	Jul-21	YOY	Feb-20	Current vs Feb-20	Jun-22	MOM	Jul-20	YO2Y
ALLAPATTAH	35,475	24,997	41.9%	46,868	-24.3%	35,772	-0.8%	25,080	41.4%
BRICKELL	101,071	77,691	30.1%	152,259	-33.6%	104,297	-3.1%	75,141	34.5%
BROWNSVILLE	16,390	13,574	20.7%	21,285	-23.0%	16,088	1.9%	20,484	-20.0%
CIVIC CENTER	74,345	60,414	23.1%	128,921	-42.3%	77,307	-3.8%	43,468	71.0%
COCONUT GROVE	30,081	23,761	26.6%	43,580	-31.0%	31,356	-4.1%	17,000	76.9%
CULMER	19,330	17,682	9.3%	33,497	-42.3%	19,933	-3.0%	21,941	-11.9%
DADELAND NORTH	74,642	55,169	35.3%	132,894	-43.8%	77,744	-4.0%	51,481	45.0%
DADELAND SOUTH	88,877	69,677	27.6%	162,416	-45.3%	90,182	-1.4%	64,951	36.8%
DOUGLAS ROAD	56,346	41,214	36.7%	82,141	-31.4%	58,302	-3.4%	24,736	127.8%
DR. MARTIN LUTHER KING, JR.	19,380	15,636	23.9%	27,980	-30.7%	19,404	-0.1%	18,835	2.9%
EARLINGTON HEIGHTS	29,240	21,202	37.9%	40,697	-28.2%	29,152	0.3%	22,246	31.4%
GOVERNMENT CENTER	130,695	99,217	31.7%	243,414	-46.3%	133,185	-1.9%	71,380	83.1%
HIALEAH	23,456	17,348	35.2%	29,516	-20.5%	23,522	-0.3%	18,749	25.1%
MIAMI INTERNATIONAL AIRPORT	30,764	19,950	54.2%	46,115	-33.3%	30,285	1.6%	14,283	115.4%
NORTHSIDE	28,696	22,784	25.9%	36,127	-20.6%	28,834	-0.5%	24,521	17.0%
OKEECHOBEE	17,445	14,080	23.9%	26,026	-33.0%	17,497	-0.3%	12,578	38.7%
OVERTOWN / ARENA	30,098	18,606	61.8%	49,911	-39.7%	31,309	-3.9%	17,317	73.8%
PALMETTO	23,821	18,144	31.3%	33,944	-29.8%	24,790	-3.9%	15,774	51.0%
SANTA CLARA	14,157	10,261	38.0%	19,245	-26.4%	14,268	-0.8%	11,214	26.2%
SOUTH MIAMI	39,801	32,014	24.3%	69,412	-42.7%	41,129	-3.2%	24,195	64.5%
TRI-RAIL	23,208	17,303	34.1%	29,120	-20.3%	23,206	0.0%	17,868	29.9%
UNIVERSITY	24,375	15,151	60.9%	61,253	-60.2%	25,681	-5.1%	8,076	201.8%
VIZCAYA	21,638	16,284	32.9%	32,497	-33.4%	22,234	-2.7%	11,645	85.8%
TOTAL	953,331	722,159	32.0%	1,549,118	-38.5%	975,477	-2.3%	632,964	50.6%

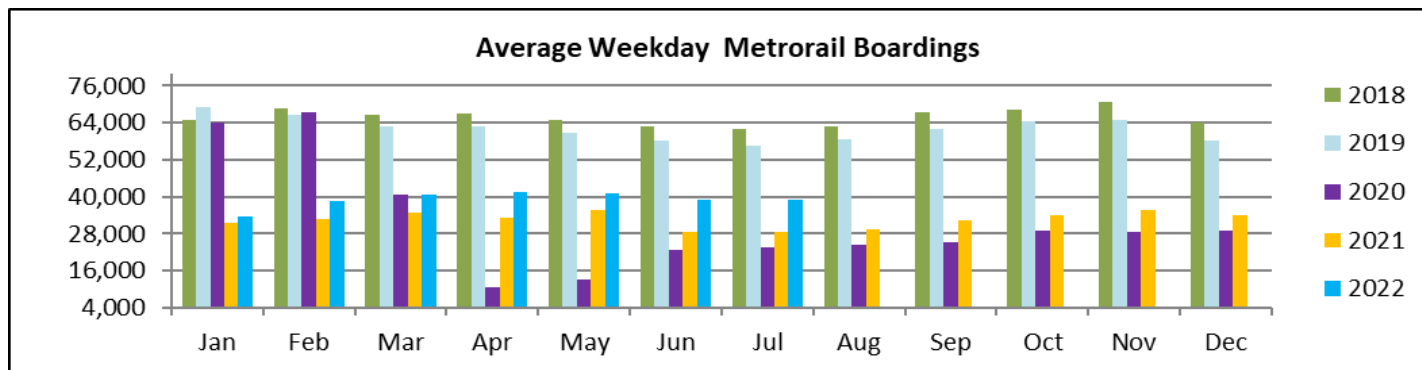
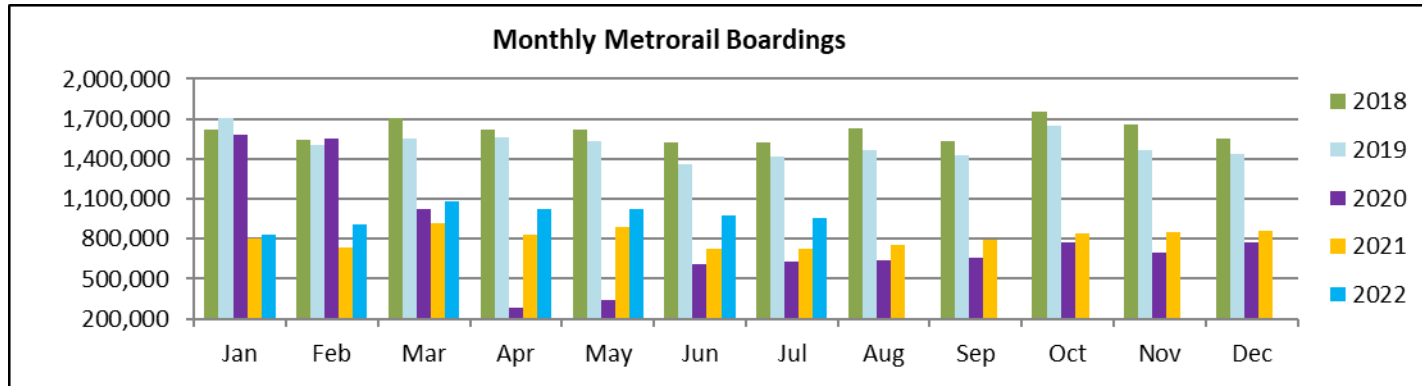
METRORAIL HOLIDAY BOARDINGS BY STATION Independence Day

	Independence Day	Independence Day	Percent Change
STATIONS	2021	2022	22 vs 21
ALLAPATTAH	497	692	39.2%
BRICKELL	1,702	1,892	11.2%
BROWNSVILLE	328	369	12.5%
CIVIC CENTER	575	612	6.4%
COCONUT GROVE	422	551	30.6%
CULMER	413	389	-5.8%
DADELAND NORTH	833	1,079	29.5%
DADELAND SOUTH	1,284	1,564	21.8%
DOUGLAS ROAD	718	840	17.0%
DR. MARTIN LUTHER KING, JR.	335	393	17.3%
EARLINGTON HEIGHTS	462	582	26.0%
GOVERNMENT CENTER	1,641	2,843	73.2%
HIALEAH	321	324	0.9%
MIAMI INTERNATIONAL AIRPORT	746	1,073	43.8%
NORTHSIDE	535	615	15.0%
OKEECHOBEE	207	250	20.8%
OVERTOWN/ ARENA	298	424	42.3%
PALMETTO	258	232	-10.1%
SANTA CLARA	258	244	-5.4%
SOUTH MIAMI	545	656	20.4%
TRI-RAIL	391	355	-9.2%
UNIVERSITY	214	286	33.6%
VIZCAYA	295	395	33.9%
TOTAL	13,278	16,660	25.5%

METRORAIL CUMULATIVE PERCENTAGE RIDERSHIP SHARE



TOTAL MONTHLY AND AVERAGE WEEKDAY RIDERSHIP YEAR OVER YEAR COMPARISON CHARTS – METRORAIL

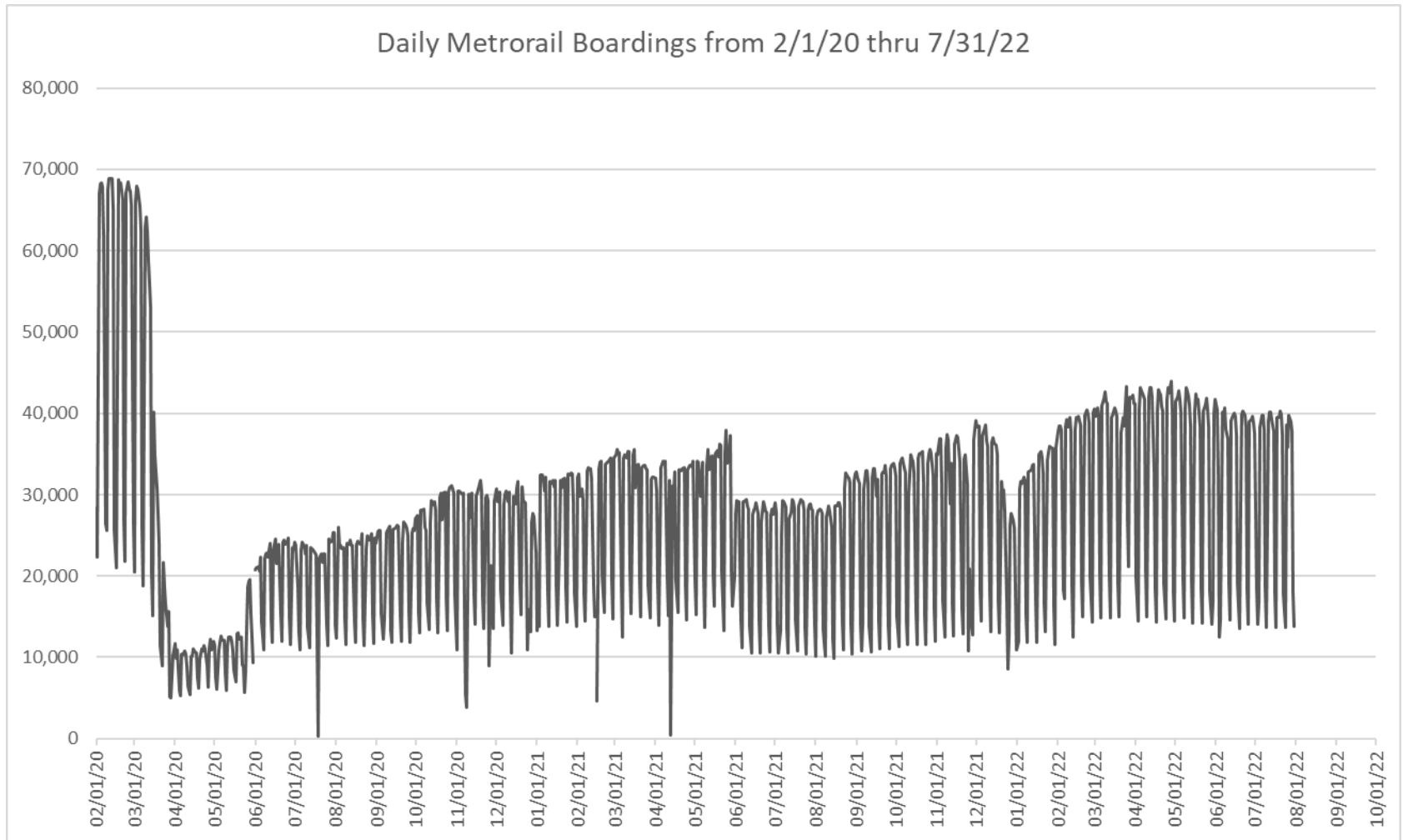


**“TOP 5 / BOTTOM 5” RAIL STATIONS AVERAGE WEEKDAY RIDERSHIP PERFORMANCE
YEAR OVER YEAR COMPARISONS**

Station	Jul-22	Jul-21	Absolute Delta (1)	Percent Delta
GOVERNMENT CENTER	5,319	3,896	1,424	36.5%
BRICKELL	4,012	2,998	1,013	33.8%
DADELAND NORTH	3,148	2,221	927	41.7%
DADELAND SOUTH	3,609	2,755	855	31.0%
CIVICCENTER	3,402	2,651	752	28.4%
CULMER	757	670	87	13.0%
BROWNSVILLE	623	506	116	23.0%
Dr. MARTIN LUTHER KING, JR.	757	602	155	25.8%
SANTA CLARA	561	397	163	41.1%
OKEECHOBEE	744	574	171	29.7%

- (1) Averages rounded to the nearest boarding.
- (2) As a result of the SARS-CoV-2 pandemic, rides were fare-free beginning March 22, 2020; all rail stations continued reporting YOY gains in July 2022, since July 2021 still showed clear reduction effects on ridership from the SARS-CoV-2 pandemic. Fares were reinstated June 1, 2021, and ridership data from the faregate system rather than the video camera counter system is utilized from that date going forward.

DAILY METRORAIL RIDERSHIP SINCE FEBRUARY 1, 2020



- (1) National Emergency was declared on 3/13/20 as a result of the SARS-CoV-2 pandemic.
- (2) There was no Metrobus, Metrorail and Metromover service on 5/31/20, as a safety precaution.
- (3) The dip at the start of the second week of November 2020 is due to Hurricane Eta; these are *raw data* from the Unleash Live contractor AI video system.
- (4) The dip on 4/13/21 is due to a loss of connectivity at all stations, affecting a few stations over the next two days as well.
- (5) The reduction seen beginning 6/1/21 is partly due to the resumption of fares and partly the result of resuming reporting Cubi faregate data rather than video camera counts.
- (6) Periodic (weekly) variations are prominent, since weekday ridership is almost always significantly higher than weekend or holiday ridership.

METRORAIL PARKING PATRONAGE SUMMARY July 2022

PARK-RIDE LOT	ACTUAL CAPACITY (1)	ACTUAL OCCUPANCY (2)	PERCENT OCCUPANCY
DADELAND SOUTH	1,260	546	43%
DADELAND NORTH	1,963	892	45%
SOUTH MIAMI	1,081	294	27%
UNIVERSITY	260	105	40%
DOUGLAS ROAD	222	145	65%
COCONUT GROVE	100	27	27%
VIZCAYA	120	36	30%
CULMER	40	11	28%
SANTA CLARA	61	36	59%
ALLAPATTAH	74	3	4%
EARLINGTON HEIGHTS	361	134	37%
BROWNSVILLE	100	64	64%
(* DR. MARTIN LUTHER KING JR. (MDT))	62	0	0%
(* DR. MARTIN LUTHER KING JR. (GARAGE))	631	0	0%
NORTHSIDE	197	71	36%
HIALEAH	338	42	12%
OKEECHOBEE	1,398	137	10%
PALMETTO	700	145	21%
TOTAL	8,968	2,688	30%

- (1) Number of spaces could vary each week; shown are available spaces during final week of month, as submitted by DTPW Safety & Security office.
(2) All sampled occupancy data provided by DTPW Safety & Security office; calculations are revisions to those submitted by that entity.
(3) Daily averages rounded to nearest unit, with fewer counts at some stations due to shortage of DTPW Safety & Security office staff; calculations are based on sampled counted days only per raw data submitted, with resulting average daily occupancy shown.
(*) Closed throughout the month, per the DTPW Safety & Security office.

Metromover



July 2022

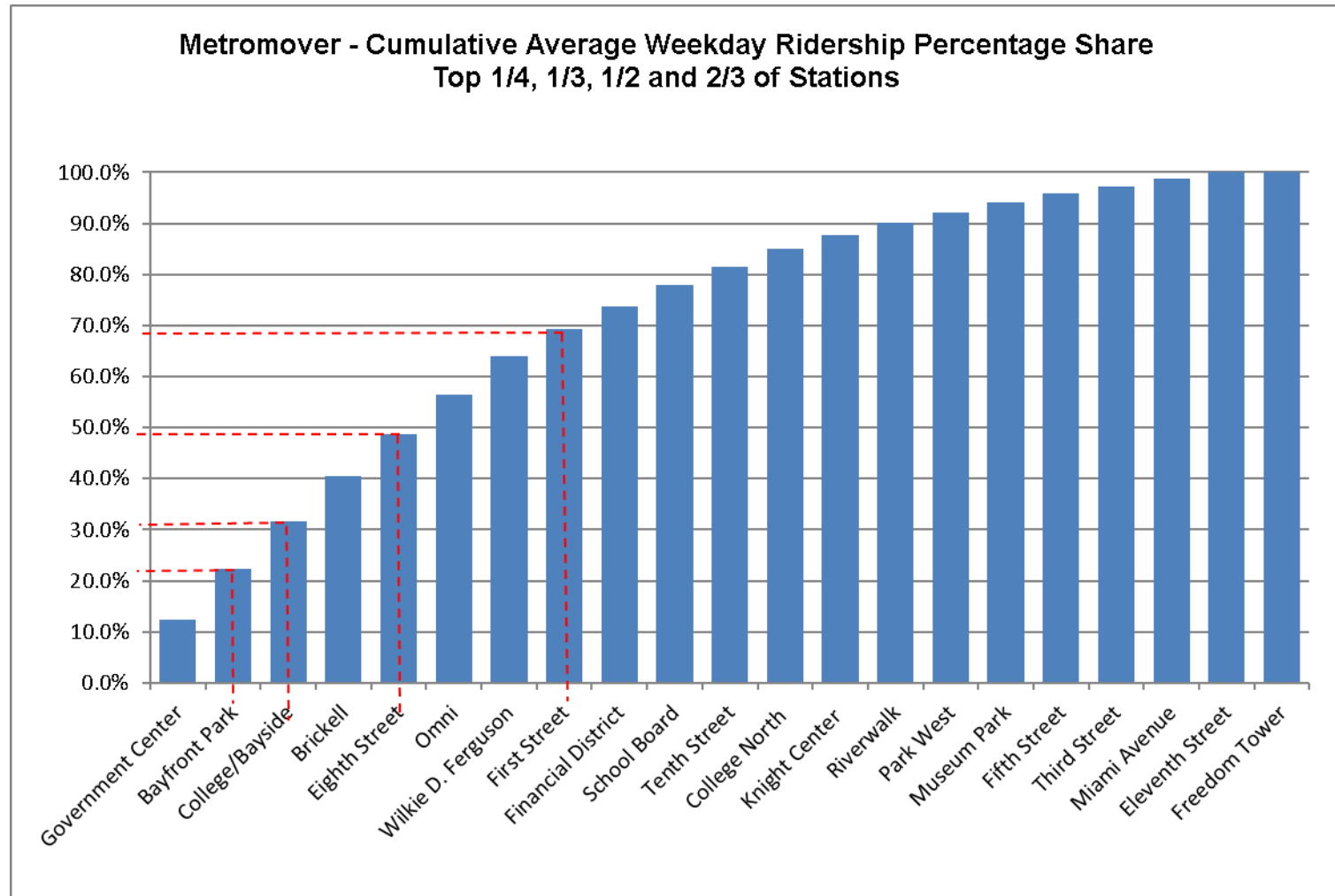
METROMOVER MONTHLY AND AVERAGE DAILY BOARDINGS BY STATION

	Average Weekday	Average Weekday	Percent Change	Average Saturday	Average Saturday	Percent Change	Average Sunday	Average Sunday	Percent Change	Independence Day	Independence Day	Percent Change	Total Monthly	Total Monthly	Percent Change
STATIONS	Jul-22	Jul-21	22 vs 21	Jul-22	Jul-21	22 vs 21	Jul-22	Jul-21	22 vs 21	Jul-22	Jul-21	22 vs 21	Jul-22	Jul-21	22 vs 21
School Board	802	514	56.0%	652	428	52.2%	556	395	40.7%	788	385	104.7%	22,856	14,895	53.4%
Omni	1,475	981	50.4%	1,212	859	41.1%	998	720	38.7%	1,239	701	76.7%	41,796	28,472	46.8%
Museum Park	375	232	61.6%	537	303	76.9%	469	243	92.9%	413	255	62.0%	11,554	7,612	51.8%
Eleventh Street	230	205	12.2%	211	161	30.5%	164	120	36.8%	224	119	88.2%	6,696	5,708	17.3%
Park West	392	321	22.0%	331	299	10.7%	268	218	22.8%		175		9,235	9,284	-0.5%
Freedom Tower (1)															
Government Center	2,390	1,817	31.6%	1,682	1,339	25.6%	1,392	1,111	25.4%	2,362	1,100	114.7%	65,532	50,386	30.1%
Miami Avenue	286	214	33.7%	212	188	13.1%	189	160	18.1%	276			7,992	3,738	113.8%
Third Street	287	212	35.3%	217	173	25.2%	197	148	32.9%	327	163	100.6%	8,144	6,081	33.9%
Knight Center	519	357	45.4%	355	196	81.4%	302	175	73.1%	305	218	39.9%	13,972	9,393	48.7%
Bayfront Park	1,873	1,438	30.3%	1,486	1,276	16.4%	1,393	1,180	18.1%	3,102	829	274.2%	54,958	42,123	30.5%
First Street	995	837	18.8%	801	688	16.4%	735	614	19.8%	1,022	606	68.6%	28,593	24,076	18.8%
College/Bayside	1,788	783	128.3%	1,699	814	108.8%	1,039	655	58.7%	1,619	596	171.6%	25,926	20,566	26.1%
College North	648	327	97.9%	464	244	89.6%	343	145	136.1%	392	129	203.9%	14,629	8,804	66.2%
Wilkie D. Ferguson	1,472	517	184.9%	879	399	120.1%	873	290	200.9%	900	347	159.4%	39,088	14,351	172.4%
Riverwalk	458	304	50.6%	294	228	29.0%	245	212	15.5%	390	250	56.0%	12,253	8,630	42.0%
Fifth Street	339	303	11.8%	234	225	4.1%	194	196	-1.1%	320	180	77.8%	9,249	8,463	9.3%
Eighth Street	1,560	1,134	37.6%	1,453	1,089	33.4%	1,254	944	32.9%	1,709	742	130.3%	46,438	33,773	37.5%
Tenth Street	693	512	35.4%	563	398	41.4%	469	344	36.5%	627	236	165.7%	19,646	14,347	36.9%
Brickell	1,720	1,545	11.4%	1,550	1,351	14.7%	1,344	1,113	20.7%	1,976	944	109.3%	50,849	44,588	14.0%
Financial District	874	498	75.6%	486	328	48.0%	446	274	62.9%	541	364	48.6%	22,688	13,557	67.4%
TOTAL	19,175	13,049	46.9%	15,316	10,988	39.4%	12,870	9,255	39.1%	18,532	8,339	122.2%	512,094	368,847	38.8%

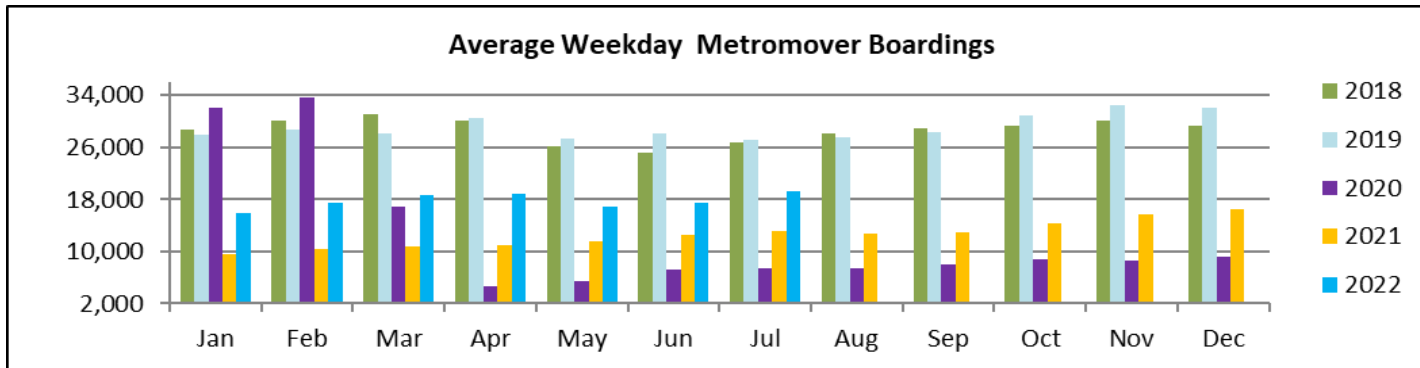
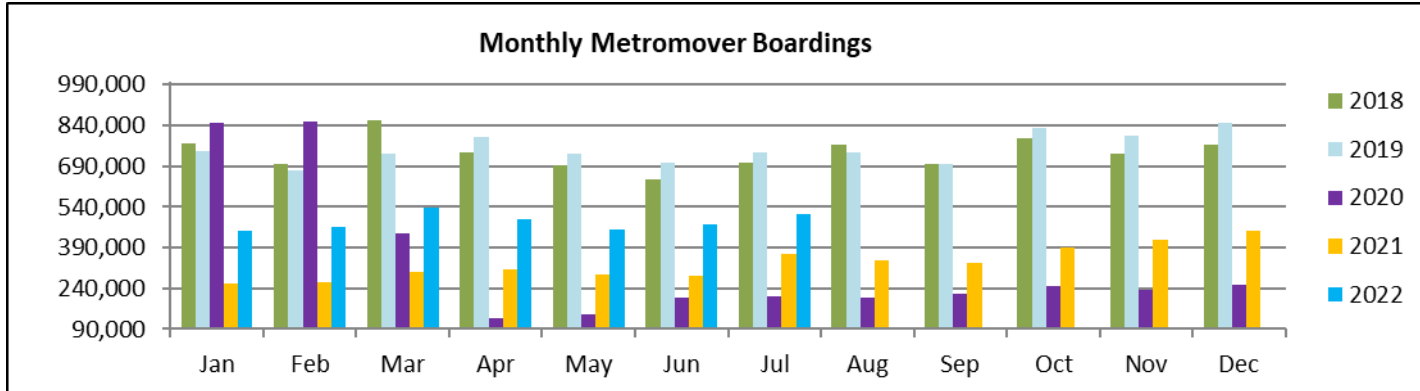
(1) Freedom Tower Station was closed for construction.

(*) APC system did not report boardings data at several stations on several days in July 2022; the average daily rider ship calculations take this into account.

METROMOVER CUMULATIVE PERCENTAGE RIDERSHIP SHARE



TOTAL MONTHLY AND AVERAGE WEEKDAY RIDERSHIP YEAR OVER YEAR COMPARISON CHARTS – METROMOVER



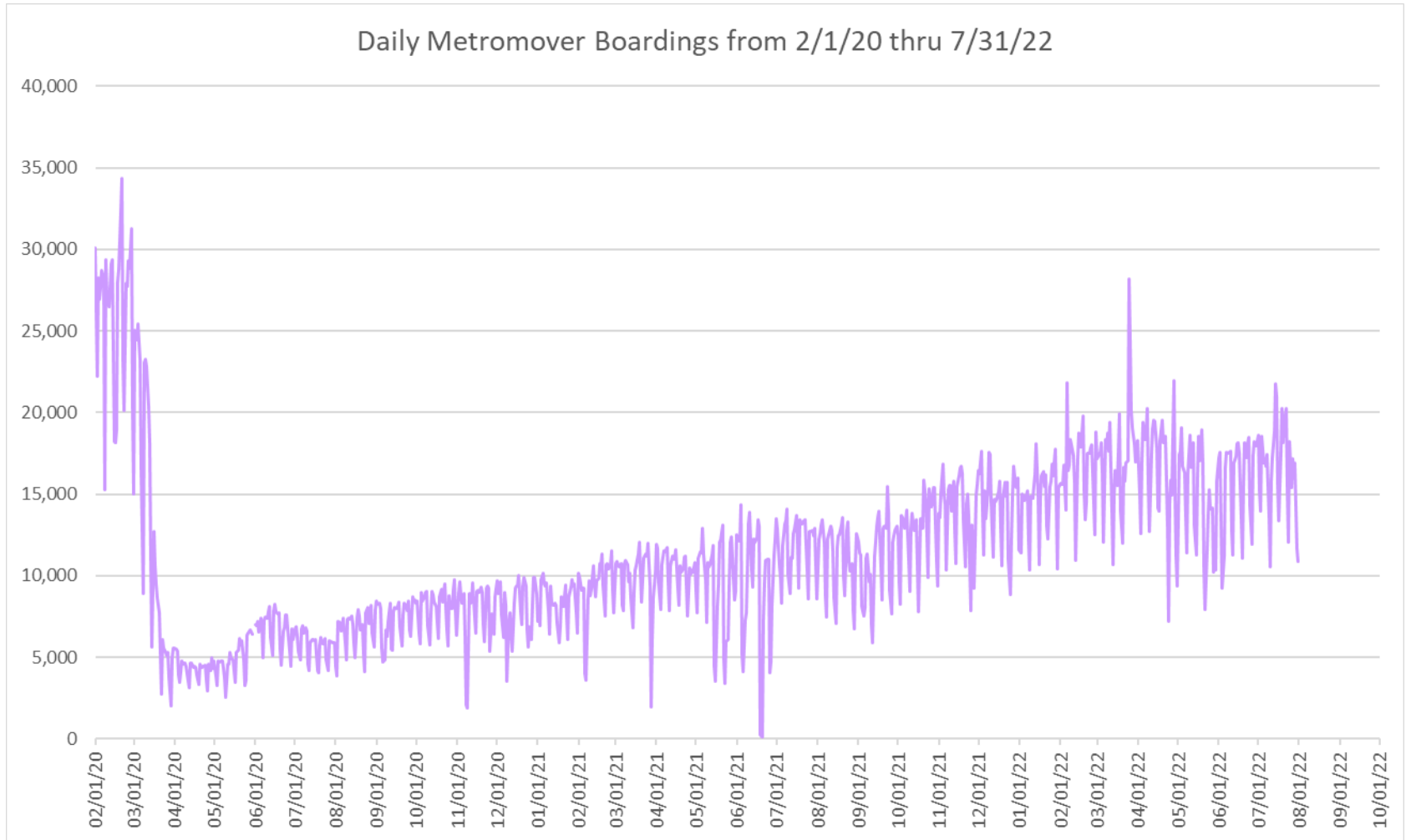
**“TOP 5 / BOTTOM 5” MOVER STATIONS AVERAGE WEEKDAY RIDERSHIP PERFORMANCE
YEAR OVER YEAR COMPARISONS**

Station	Jul-22	Jul-21	Absolute Delta (1)	Percent Delta
College/Bayside	1,788	783	1,005	128.3%
Wilkie D. Ferguson	1,472	517	955	184.9%
Government Center	2,390	1,817	573	31.6%
Omni	1,475	981	494	50.4%
Bayfront Park	1,873	1,438	435	30.3%
Eleventh Street	230	205	25	12.2%
Fifth Street	339	303	36	11.8%
Park West	392	321	70	22.0%
Miami Avenue	286	214	72	33.7%
Third Street	287	212	75	35.3%

(1) Averages rounded to the nearest boarding.

(†) All Metromover stations reported YOY gains in July 2022, as July 2021 showed clear ongoing reduction effects on ridership from the SARS-CoV-2 pandemic.

DAILY METROMOVER RIDERSHIP SINCE FEBRUARY 1, 2020



- (1) National Emergency was declared on 3/13/20 as a result of the SARS-CoV-2 pandemic.
- (2) There was no Metrobus, Metrorail and Metromover service on 5/31/20, as a safety precaution.
- (3) The dip at the start of the second week of November 2020 is due to Hurricane Eta; these are *raw data* from the UTA contractor APC system. Other more recent dips are due to various station closures (mostly on weekends) for system maintenance purposes.
- (4) Periodic (weekly) variations are prominent, since weekday ridership is almost always significantly higher than weekend or holiday ridership.

Special Transportation Services

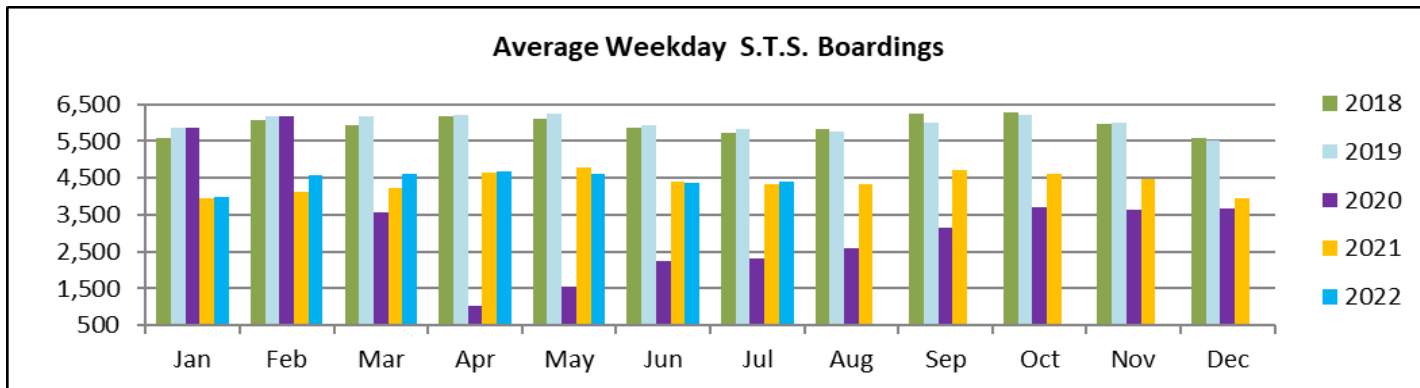
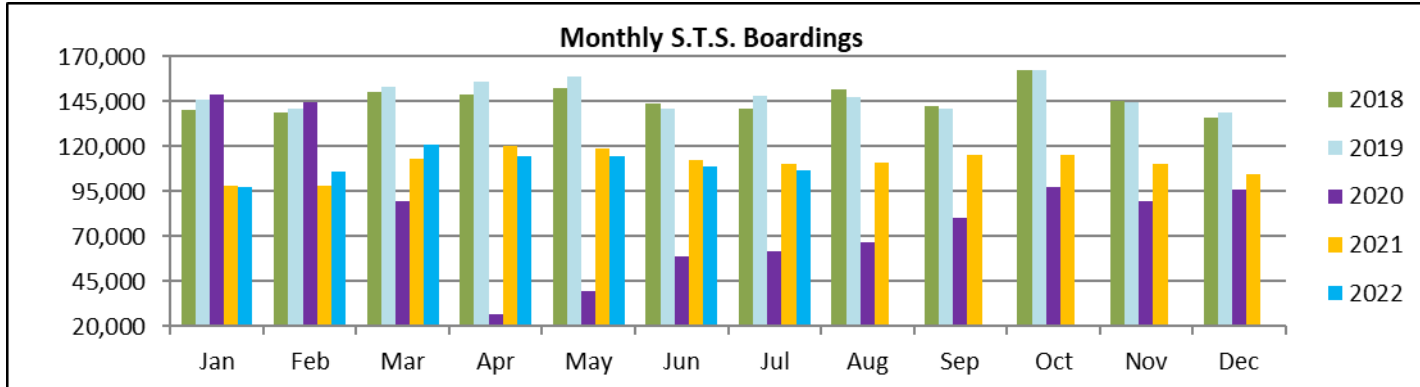


STS MONTHLY AND AVERAGE DAILY BOARDINGS
July 2022

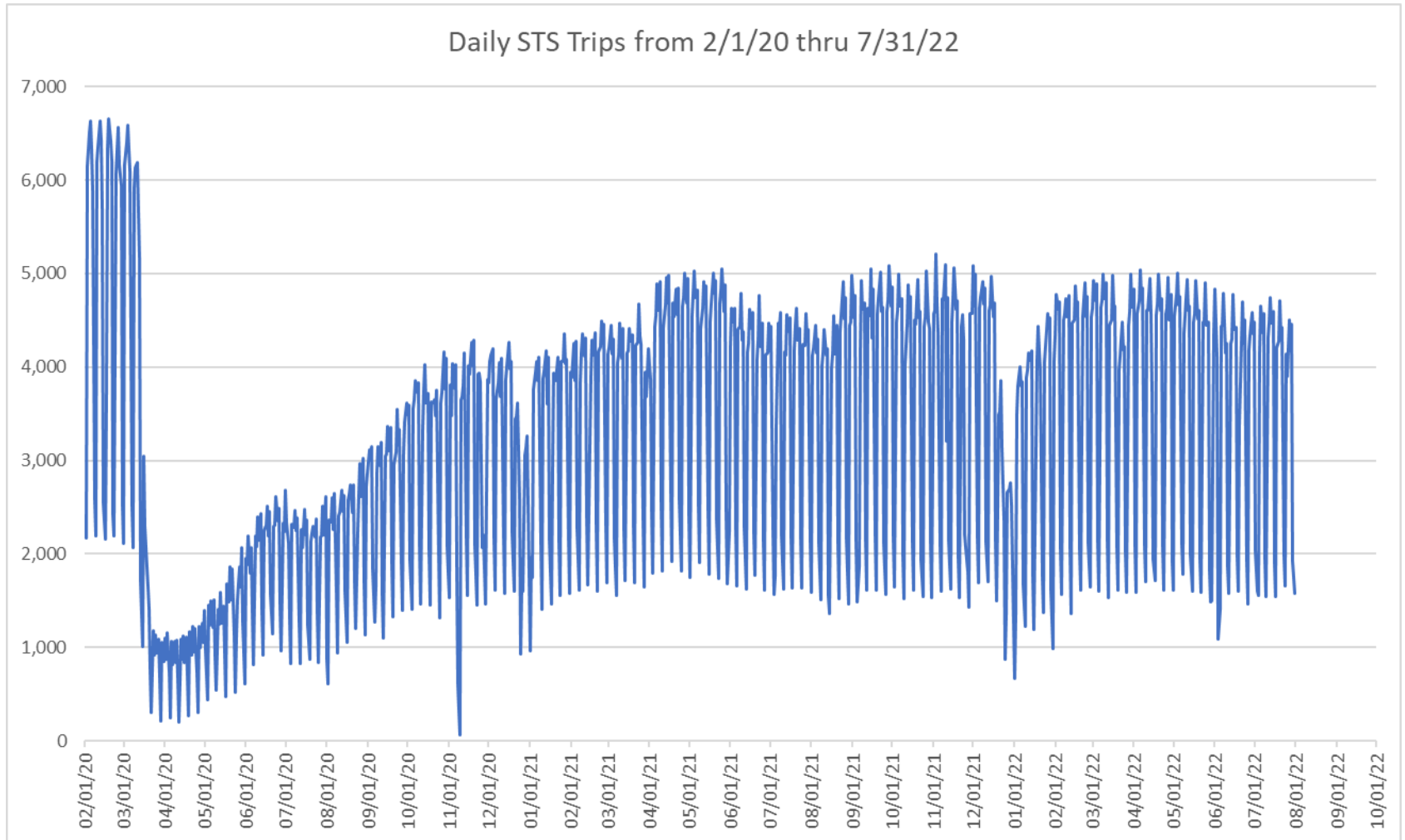
Measure	timeline	Ambulatory	Wheelchair	Total Clients (*)
Average Weekday	Jul-22	3,621	776	4,397
Average Saturday	Jul-22	1,615	339	1,954
Average Sunday	Jul-22	1,282	297	1,579
Total Monthly	Jul-22	88,186	19,002	107,188
Average Weekday	Jul-21	3,546	785	4,331
Average Saturday	Jul-21	1,767	413	2,180
Average Sunday	Jul-21	1,354	286	1,641
Total Monthly	Jul-21	90,077	19,982	110,059
Average Weekday	Jul-20	1,871	439	2,310
Average Saturday	Jul-20	1,080	241	1,321
Average Sunday	Jul-20	726	114	840
Total Monthly	Jul-20	50,256	11,509	61,765
% Change Current vs. Jul 2021 Weekday		2.1%	-1.1%	1.5%
% Change Current vs. Jul 2021 Saturday		-8.6%	-17.9%	-10.3%
% Change Current vs. Jul 2021 Sunday		-5.3%	3.6%	-3.8%
% Change Current vs. Jul 2021 Month Total		-2.1%	-4.9%	-2.6%
% Change Current vs. Jul 2020 Weekday		93.5%	77.0%	90.4%
% Change Current vs. Jul 2020 Saturday		49.6%	40.8%	48.0%
% Change Current vs. Jul 2020 Sunday		76.6%	160.2%	88.0%
% Change Current vs. Jul 2020 Month Total		75.5%	65.1%	73.5%

(*) Trip count data provided by STS contractor.

TOTAL MONTHLY AND AVERAGE WEEKDAY RIDERSHIP YEAR OVER YEAR COMPARISON CHARTS – SPECIAL TRANSPORTATION SERVICES (S.T.S.)

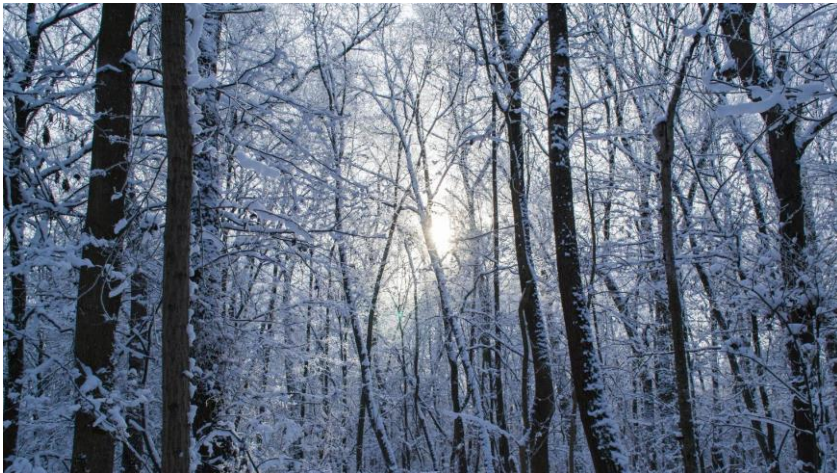


DAILY STS RIDERSHIP SINCE FEBRUARY 1, 2020

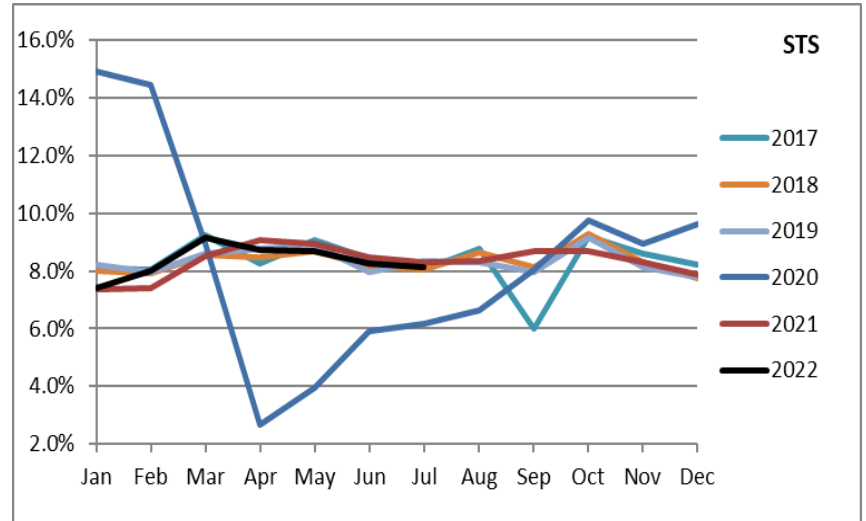
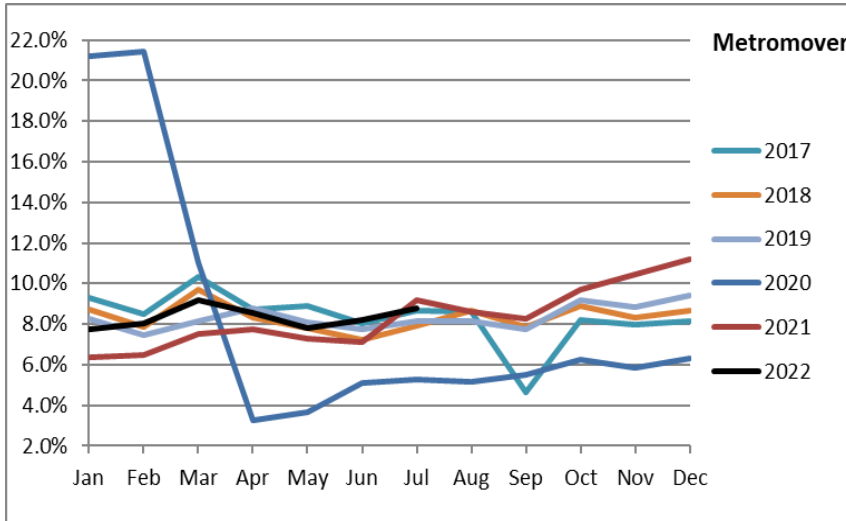
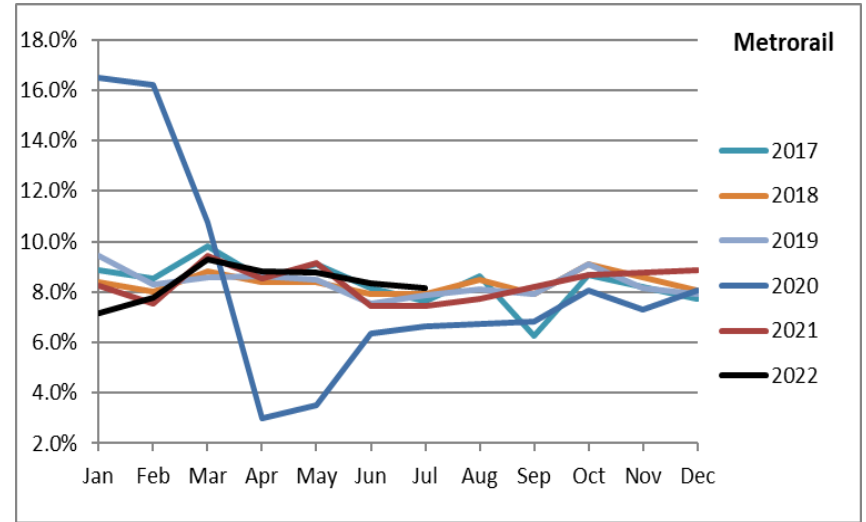
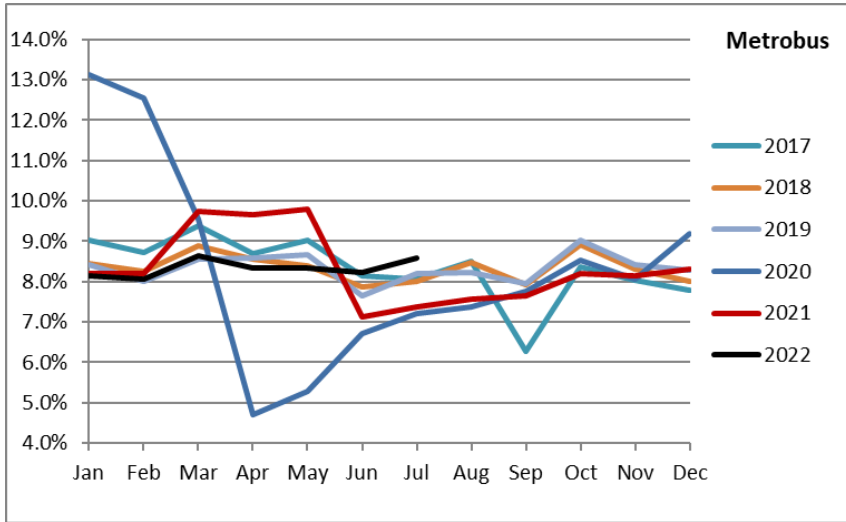


- (1) National Emergency was declared on 3/13/20 as a result of the SARS-CoV-2 pandemic.
- (2) The dip at the start of the second week of November 2020 is due to Hurricane Eta.
- (3) Periodic (weekly) variations are prominent, since weekday ridership is almost always significantly higher than weekend or holiday ridership.

Ridership Seasonality



RIDERSHIP SEASONALITY – PERCENT RIDERSHIP SHARE BY MONTH AND CALENDAR YEAR FOR EACH MODE



Note: the prominent dips seen in the fall of 2017 and beginning in the spring of 2020 are due to Hurricane Irma and the SARS-CoV-2 pandemic, respectively. Reductions in Bus and Rail ridership share seen beginning in June 2021 are due to reinstatement of fares as well changes in reporting tools and datasets, as discussed earlier in this report.