



# TRANSPORTATION AND PUBLIC WORKS

## RIDERSHIP TECHNICAL REPORT

*Division of Performance and Materials Management*



# Table of Contents

<i>Table of Contents</i>	2-3
<b>All Modes Overview</b>	<b>4</b>
Total Monthly Weekday, Saturday and Sunday Monthly Boardings By Mode	5
Average Weekday, Saturday and Sunday Boardings by Mode	6
Metrobus Total Monthly Ridership Comparisons by Fiscal Year	7
Metrorail Total Monthly Ridership Comparisons by Fiscal Year	8
Metromover Total Monthly Ridership Comparisons by Fiscal Year	9
STS Total Monthly Ridership Comparisons by Fiscal Year	10
All-Modes Combined Total Monthly Ridership Comparisons By Fiscal Year	11
All Modes Combined Total Monthly and Average Weekday Ridership – Year over Year Comparison Charts	12
Average Weekday Ridership – Modal Splits	13
Daily Ridership for All Modes Combined since February 1, 2020	14
<b>Metrobus</b>	<b>15</b>
Metrobus Average Weekday Boardings by Route	16-18
Metrobus Average Saturday Boardings by Route	19-20
Metrobus Average Sunday Boardings by Route	21-22
Metrobus Monthly Total Boardings by Route	23-25
Metrobus Holiday Boardings by Route	26
Year-over-Year Bus Ridership by Route Service Type	27-28
Bus Routes as Ranked by Percentage of Average Weekday Ridership	29
Metrobus Cumulative Percentage Average Weekday Ridership Share by Route (Top 75%)	30
Total Monthly and Average Weekday Bus Ridership – Year over Year Comparison Charts	31
Bus “Top 5 / Bottom 5” Routes Average Weekday Ridership Performance	32
Daily Metrobus Ridership since February 1, 2020	33
Metrobus Parking Patronage Summary	34

## Table of Contents (continued)

<b>Metrorail</b>	<b>35</b>
Metrorail Average Weekday Boardings by Station	36
Metrorail Average Saturday Boardings by Station	37
Metrorail Average Sunday Boardings by Station	38
Metrorail Total Monthly Boardings by Station	39
Metrorail Holiday Boardings by Station	40
Metrorail Cumulative Percentage Average Weekday Ridership Share	41
Total Monthly and Average Weekday Rail Ridership – Year over Year Comparison Charts	42
“Top 5 / Bottom 5” Stations Average Weekday Ridership Performance	43
Daily Metrorail Ridership since February 1, 2020	44
Metrorail Parking Patronage Summary	45
<b>Metromover</b>	<b>46</b>
Monthly and Average Daily Mover Boardings by Station	47
Metromover Cumulative Percentage Average Weekday Ridership Share	48
Total Monthly and Average Weekday Mover Ridership – Year over Year Comparison Charts	49
“Top 5 / Bottom 5” Stations Average Weekday Ridership Performance	50
Daily Metromover Ridership since February 1, 2020	51
<b>Special Transportation Services (STS)</b>	<b>52</b>
STS Monthly and Average Daily Boardings	53
Total Monthly and Average Weekday STS Ridership – Year over Year Comparison Charts	54
Daily STS Ridership since February 1, 2020	55
<b>Ridership Seasonality</b>	<b>56</b>
Ridership Seasonality – Percent Ridership Share by Month and Calendar year for Each Mode	57

# All Modes Overview



**TOTAL MONTHLY WEEKDAY, SATURDAY AND SUNDAY BOARDINGS BY MODE**  
**September 2022**

<b>TRAVEL MODE</b>	<b>MONTH'S TOTAL WEEKDAYS RIDERSHIP</b>	<b>MONTH'S TOTAL SATURDAYS RIDERSHIP</b>	<b>MONTH'S TOTAL SUNDAYS RIDERSHIP</b>	<b>TOTAL MONTHLY RIDERSHIP</b>	<b>% CHANGE vs Sep 2021 TOTAL MONTH RIDERSHIP</b>
<b>METROBUS (1)</b>	2,518,651	308,438	296,483	3,123,572	8.6%
<b>METRORAIL (2)</b>	860,138	76,672	75,521	1,012,331	27.2%
<b>METROMOVER (3)</b>	228,572	37,416	39,197	305,185	-8.1%
<b>STS PARATRANSIT (4)</b>	92,231	8,138	8,419	108,788	-5.7%
<b>TOTAL</b>	<b>3,699,592</b>	<b>430,664</b>	<b>419,620</b>	<b>4,549,876</b>	<b>10.4%</b>

(\*) Total Sunday ridership includes Monday, September 5, 2022 – Labor Day.  
Ridership numbers for that day were as follows:

Metrobus	66,528
Metrorail	17,449
Metromover	8,199
STS	1,687

- (1) Metrobus fares resumed on June 1, 2021, following a 14-month period of fare-free rides as a result of the SARS-CoV-2 pandemic. The NextFare System farebox data replaced the bus automatic passenger counter data as ridership data of record starting on that date.
- (2) Metrorail fares resumed on June 1, 2021, following a 14-month period of fare-free rides as a result of the SARS-CoV-2 pandemic. The NextFare System faregate data replaced the video data as ridership data of record starting on that date.
- (3) Beginning March 13, 2020 (day of National Emergency Declaration due to SARS-CoV-2 pandemic), only raw data from Metromover automatic passenger counters is reported; no estimates are performed after March 13, 2020.
- (4) Paratransit ridership data as reported by the contractor.

**AVERAGE WEEKDAY, SATURDAY AND SUNDAY BOARDINGS BY MODE  
September 2022**

<b>Travel Mode</b>	<b>Average Weekday</b>	<b>Average Saturday</b>	<b>Average Sunday (*)</b>	<b>% Change Sep 2021 Weekday</b>	<b>% Change Sep 2021 Saturday</b>	<b>% Change Sep 2021 Sunday</b>
<b>METROBUS</b>	126,001	77,148	59,332	12.1%	16.8%	16.2%
<b>METRORAIL</b>	43,007	19,168	14,518	32.3%	37.5%	33.6%
<b>METROMOVER</b>	14,130	11,526	9,568	9.4%	22.9%	18.5%
<b>STS PARATRANSIT</b>	4,612	2,035	1,684	-1.9%	-5.0%	3.4%
<b>Totals (**)</b>	<b>187,750</b>	<b>109,876</b>	<b>85,102</b>	<b>15.6%</b>	<b>20.1%</b>	<b>18.8%</b>

(\*) Average Sunday ridership includes Labor Day, September 5th for Metrobus and STS but excludes it for Metrorail and Metromover.

(\*\*) Average ridership is calculated and published only for those days and stations with nontrivial amounts of reported data.

## METROBUS TOTAL MONTHLY RIDERSHIP COMPARISONS BY FISCAL YEAR

<b>Bus Month</b>	<b>FY 18</b>	<b>FY 19</b>	<b>Variance 18 to 19</b>	<b>FY 20</b>	<b>Variance 19 to 20</b>	<b>FY 21</b>	<b>FY 22</b>	<b>Variance 21 to 22</b>	<b>Variance 19 to 22</b>	<b>Variance 18 to 22</b>
<b>Oct</b>	4,709,590	4,554,886	-3.3%	4,507,012	-1.1%	2,805,139	3,081,157	9.8%	-32.4%	-34.6%
<b>Nov</b>	4,522,250	4,245,535	-6.1%	4,197,225	-1.1%	2,651,290	3,056,726	15.3%	-28.0%	-32.4%
<b>Dec</b>	4,380,099	4,081,581	-6.8%	4,126,990	1.1%	3,022,530	3,123,883	3.4%	-23.5%	-28.7%
<b>Jan</b>	4,307,001	4,195,911	-2.6%	4,316,998	2.9%	3,082,746	3,029,055	-1.7%	-27.8%	-29.7%
<b>Feb</b>	4,208,811	3,994,019	-5.1%	4,123,083	3.2%	3,076,966	2,995,789	-2.6%	-25.0%	-28.8%
<b>Mar</b>	4,534,564	4,266,768	-5.9%	3,136,162	-26.5%	3,660,639	3,218,562	-12.1%	-24.6%	-29.0%
<b>Apr</b>	4,360,997	4,291,135	-1.6%	1,544,316	-64.0%	3,625,048	3,105,797	-14.3%	-27.6%	-28.8%
<b>May</b>	4,277,628	4,330,922	1.2%	1,734,609	-59.9%	3,683,343	3,097,574	-15.9%	-28.5%	-27.6%
<b>Jun</b>	4,009,340	3,823,863	-4.6%	2,210,725	-42.2%	2,672,570	3,064,059	14.6%	-19.9%	-23.6%
<b>Jul</b>	4,080,664	4,094,906	0.3%	2,366,749	-42.2%	2,769,907	3,189,994	15.2%	-22.1%	-21.8%
<b>Aug</b>	4,326,980	4,109,613	-5.0%	2,422,014	-41.1%	2,843,552	3,442,006	21.0%	-16.2%	-20.5%
<b>Sep</b>	4,041,992	3,971,220	-1.8%	2,546,923	-35.9%	2,877,110	3,123,572	8.6%	-21.3%	-22.7%
<b>FY Total</b>	<b>51,759,916</b>	<b>49,960,359</b>	<b>-3.5%</b>	<b>37,232,806</b>	<b>-25.5%</b>	<b>36,770,840</b>	<b>37,528,174</b>	<b>2.1%</b>	<b>-24.9%</b>	<b>-27.5%</b>

## METRORAIL TOTAL MONTHLY RIDERSHIP COMPARISONS BY FISCAL YEAR

<b>Rail</b>			<b>Variance</b>		<b>Variance</b>			<b>Variance</b>	<b>Variance</b>	<b>Variance</b>
<b>Month</b>	<b>FY 18</b>	<b>FY 19</b>	<b>18 to 19</b>	<b>FY 20</b>	<b>19 to 20</b>	<b>FY 21</b>	<b>FY 22</b>	<b>21 to 22</b>	<b>19 to 22</b>	<b>18 to 22</b>
<b>Oct</b>	1,708,564	1,757,225	2.8%	1,643,166	-6.5%	769,525	844,383	9.7%	-51.9%	-50.6%
<b>Nov</b>	1,609,888	1,656,929	2.9%	1,469,448	-11.3%	699,492	850,881	21.6%	-48.6%	-47.1%
<b>Dec</b>	1,517,341	1,553,804	2.4%	1,433,928	-7.7%	769,194	860,436	11.9%	-44.6%	-43.3%
<b>Jan</b>	1,615,576	1,708,695	5.8%	1,576,340	-7.7%	799,119	832,924	4.2%	-51.3%	-48.4%
<b>Feb</b>	1,545,581	1,501,458	-2.9%	1,549,118	3.2%	730,792	905,162	23.9%	-39.7%	-41.4%
<b>Mar</b>	1,700,714	1,554,851	-8.6%	1,027,319	-33.9%	917,097	1,084,978	18.3%	-30.2%	-36.2%
<b>Apr</b>	1,619,890	1,559,446	-3.7%	287,803	-81.5%	827,414	1,027,139	24.1%	-34.1%	-36.6%
<b>May</b>	1,618,504	1,531,597	-5.4%	337,696	-78.0%	887,111	1,023,322	15.4%	-33.2%	-36.8%
<b>Jun</b>	1,524,311	1,359,966	-10.8%	608,758	-55.2%	723,469	975,477	34.8%	-28.3%	-36.0%
<b>Jul</b>	1,527,380	1,419,158	-7.1%	632,964	-55.4%	722,159	953,331	32.0%	-32.8%	-37.6%
<b>Aug</b>	1,632,471	1,463,646	-10.3%	641,275	-56.2%	749,578	1,076,490	43.6%	-26.5%	-34.1%
<b>Sep</b>	1,530,088	1,427,726	-6.7%	654,244	-54.2%	795,749	1,012,331	27.2%	-29.1%	-33.8%
<b>FY Total</b>	<b>19,150,308</b>	<b>18,494,501</b>	<b>-3.4%</b>	<b>11,862,059</b>	<b>-35.9%</b>	<b>9,390,699</b>	<b>11,446,854</b>	<b>21.9%</b>	<b>-38.1%</b>	<b>-40.2%</b>



## METROMOVER TOTAL MONTHLY RIDERSHIP COMPARISONS BY FISCAL YEAR

<b>Mover</b>			<b>Variance</b>		<b>Variance</b>			<b>Variance</b>	<b>Variance</b>	<b>Variance</b>
<b>Month</b>	<b>FY 18</b>	<b>FY 19</b>	<b>18 to 19</b>	<b>FY 20</b>	<b>19 to 20</b>	<b>FY 21</b>	<b>FY 22</b>	<b>21 to 22</b>	<b>19 to 22</b>	<b>18 to 22</b>
<b>Oct</b>	751,323	790,533	5.2%	831,234	5.1%	250,044	389,065	55.6%	-50.8%	-48.2%
<b>Nov</b>	729,519	735,198	0.8%	799,632	8.8%	232,422	418,929	80.2%	-43.0%	-42.6%
<b>Dec</b>	748,797	767,239	2.5%	849,832	10.8%	251,019	450,320	79.4%	-41.3%	-39.9%
<b>Jan</b>	772,122	746,728	-3.3%	847,773	13.5%	255,968	451,566	76.4%	-39.5%	-41.5%
<b>Feb</b>	698,107	675,160	-3.3%	855,398	26.7%	260,332	465,968	79.0%	-31.0%	-33.3%
<b>Mar</b>	859,143	737,814	-14.1%	441,200	-40.2%	302,502	535,857	77.1%	-27.4%	-37.6%
<b>Apr</b>	740,036	795,696	7.5%	130,549	-83.6%	310,772	495,982	59.6%	-37.7%	-33.0%
<b>May</b>	694,106	734,645	5.8%	146,454	-80.1%	292,922	455,120	55.4%	-38.0%	-34.4%
<b>Jun</b>	641,675	701,318	9.3%	203,637	-71.0%	286,145	477,286	66.8%	-31.9%	-25.6%
<b>Jul</b>	700,462	739,814	5.6%	210,596	-71.5%	368,847	512,094	38.8%	-30.8%	-26.9%
<b>Aug</b>	768,728	739,785	-3.8%	205,995	-72.2%	344,319	508,359	47.6%	-31.3%	-33.9%
<b>Sep</b>	698,505	699,879	0.2%	219,696	-68.6%	331,915	305,185	-8.1%	-56.4%	-56.3%
<b>FY Total</b>	<b>8,802,523</b>	<b>8,863,809</b>	<b>0.7%</b>	<b>5,741,996</b>	<b>-35.2%</b>	<b>3,487,207</b>	<b>5,465,731</b>	<b>56.7%</b>	<b>-38.3%</b>	<b>-37.9%</b>

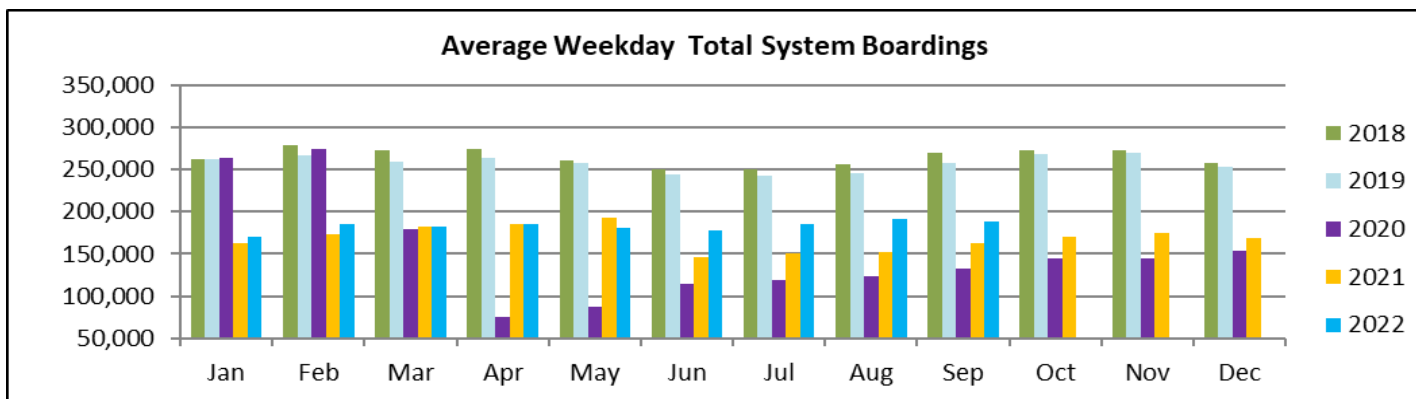
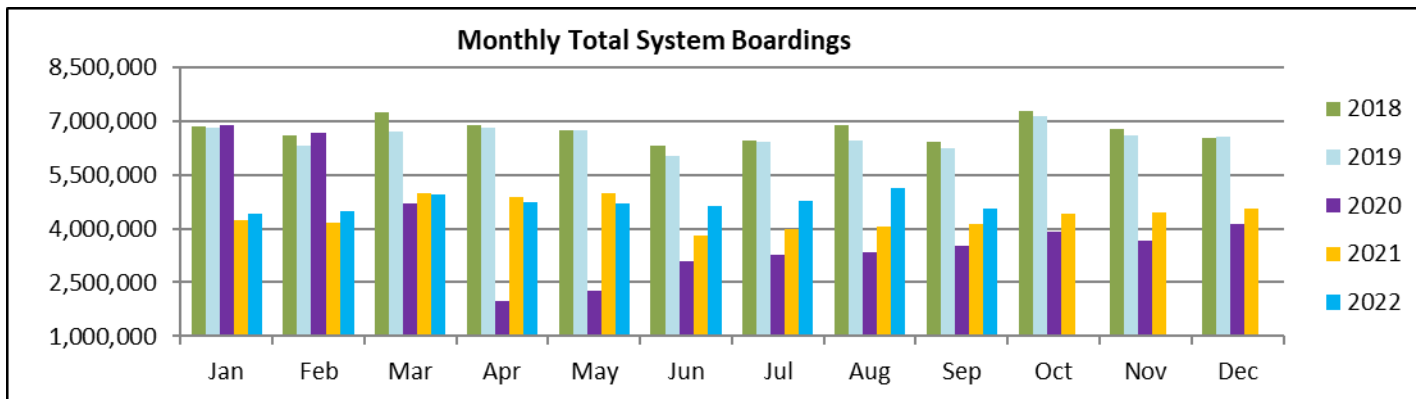
## SPECIAL TRANSPORTATION SERVICES (STS) TOTAL MONTHLY RIDERSHIP COMPARISONS BY FISCAL YEAR

<b>STS</b>			<b>Variance</b>				<b>Variance</b>		<b>Variance</b>		<b>Variance</b>	
<b>Month</b>	<b>FY 18</b>	<b>FY 19</b>	<b>18 to 19</b>	<b>FY 20</b>	<b>19 to 20</b>	<b>FY 21</b>	<b>FY 22</b>	<b>21 to 22</b>	<b>19 to 22</b>	<b>18 to 22</b>		
<b>Oct</b>	153,409	162,564	6.0%	162,704	0.1%	97,388	115,122	18.2%	-29.2%	-25.0%		
<b>Nov</b>	143,375	145,653	1.6%	144,366	-0.9%	89,387	110,289	23.4%	-24.3%	-23.1%		
<b>Dec</b>	136,955	136,110	-0.6%	138,642	1.9%	96,366	104,496	8.4%	-23.2%	-23.7%		
<b>Jan</b>	140,042	146,268	4.4%	149,114	1.9%	97,928	97,541	-0.4%	-33.3%	-30.3%		
<b>Feb</b>	139,032	141,396	1.7%	144,392	2.1%	98,285	105,706	7.6%	-25.2%	-24.0%		
<b>Mar</b>	150,384	153,191	1.9%	89,634	-41.5%	112,930	120,718	6.9%	-21.2%	-19.7%		
<b>Apr</b>	148,879	155,808	4.7%	26,877	-82.7%	120,122	114,912	-4.3%	-26.2%	-22.8%		
<b>May</b>	152,164	158,665	4.3%	39,654	-75.0%	118,636	114,505	-3.5%	-27.8%	-24.7%		
<b>Jun</b>	143,653	141,320	-1.6%	59,093	-58.2%	112,397	109,054	-3.0%	-22.8%	-24.1%		
<b>Jul</b>	141,020	148,232	5.1%	61,765	-58.3%	110,059	107,188	-2.6%	-27.7%	-24.0%		
<b>Aug</b>	151,750	147,331	-2.9%	66,563	-54.8%	110,766	117,941	6.5%	-19.9%	-22.3%		
<b>Sep</b>	142,360	141,387	-0.7%	80,346	-43.2%	115,406	108,788	-5.7%	-23.1%	-23.6%		
<b>FY Total</b>	<b>1,743,023</b>	<b>1,777,925</b>	<b>2.0%</b>	<b>1,163,150</b>	<b>-34.6%</b>	<b>1,279,670</b>	<b>1,326,260</b>	<b>3.6%</b>	<b>-25.4%</b>	<b>-23.9%</b>		

## ALL-MODES COMBINED TOTAL MONTHLY RIDERSHIP COMPARISONS BY FISCAL YEAR

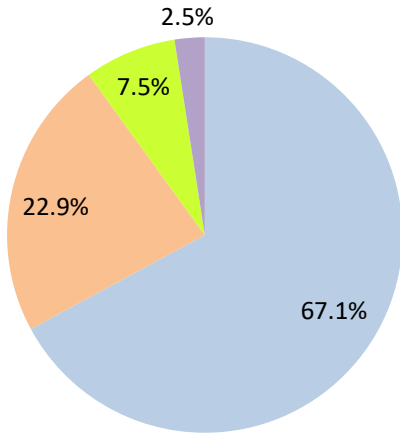
All Modes	Variances										
	Month	FY 18	FY 19	FY 20	FY 21	FY 22	18 TO 19	19 TO 20	20 TO 21	21 TO 22	19 TO 22
<b>Oct</b>	7,322,886	7,265,208	7,144,116	3,922,096	4,429,727	-0.8%	-1.7%	-45.1%	12.9%	-39.0%	-39.5%
<b>Nov</b>	7,005,032	6,783,315	6,610,671	3,672,591	4,436,825	-3.2%	-2.5%	-44.4%	20.8%	-34.6%	-36.7%
<b>Dec</b>	6,783,192	6,538,734	6,549,392	4,139,109	4,539,135	-3.6%	0.2%	-36.8%	9.7%	-30.6%	-33.1%
<b>Jan</b>	6,834,741	6,797,602	6,890,225	4,235,761	4,411,086	-0.5%	1.4%	-38.5%	4.1%	-35.1%	-35.5%
<b>Feb</b>	6,591,531	6,312,033	6,671,991	4,166,375	4,472,625	-4.2%	5.7%	-37.6%	7.4%	-29.1%	-32.1%
<b>Mar</b>	7,244,805	6,712,624	4,694,315	4,993,168	4,960,115	-7.3%	-30.1%	6.4%	-0.7%	-26.1%	-31.5%
<b>Apr</b>	6,869,802	6,802,085	1,989,545	4,883,356	4,743,830	-1.0%	-70.8%	145.5%	-2.9%	-30.3%	-30.9%
<b>May</b>	6,742,402	6,755,829	2,258,413	4,982,012	4,690,521	0.2%	-66.6%	120.6%	-5.9%	-30.6%	-30.4%
<b>Jun</b>	6,318,979	6,026,467	3,082,213	3,794,581	4,625,876	-4.6%	-48.9%	23.1%	21.9%	-23.2%	-26.8%
<b>Jul</b>	6,449,526	6,402,110	3,272,074	3,970,972	4,762,607	-0.7%	-48.9%	21.4%	19.9%	-25.6%	-26.2%
<b>Aug</b>	6,879,929	6,460,375	3,335,847	4,048,215	5,144,796	-6.1%	-48.4%	21.4%	27.1%	-20.4%	-25.2%
<b>Sep</b>	6,412,945	6,240,212	3,501,209	4,120,180	4,549,876	-2.7%	-43.9%	17.7%	10.4%	-27.1%	-29.1%
<b>FY Total</b>	<b>81,455,770</b>	<b>79,096,594</b>	<b>56,000,011</b>	<b>50,928,416</b>	<b>55,767,019</b>	<b>-2.9%</b>	<b>-29.2%</b>	<b>-9.1%</b>	<b>9.5%</b>	<b>-29.5%</b>	<b>-31.5%</b>

## TOTAL MONTHLY AND AVERAGE WEEKDAY RIDERSHIP YEAR OVER YEAR COMPARISON CHARTS – ALL MODES COMBINED



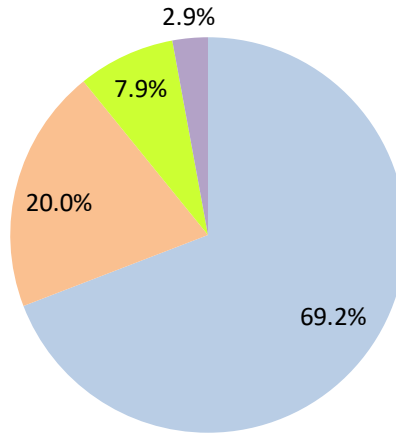
# AVERAGE WEEKDAY RIDERSHIP - MODAL SPLITS

September 2022



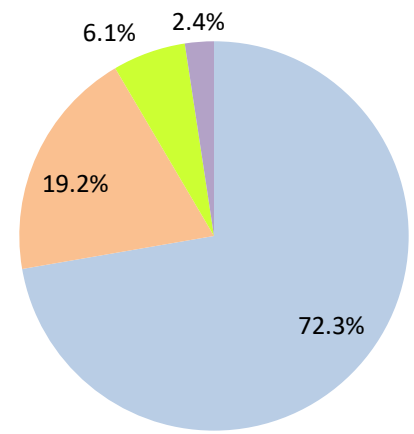
boardings

September 2021



boardings

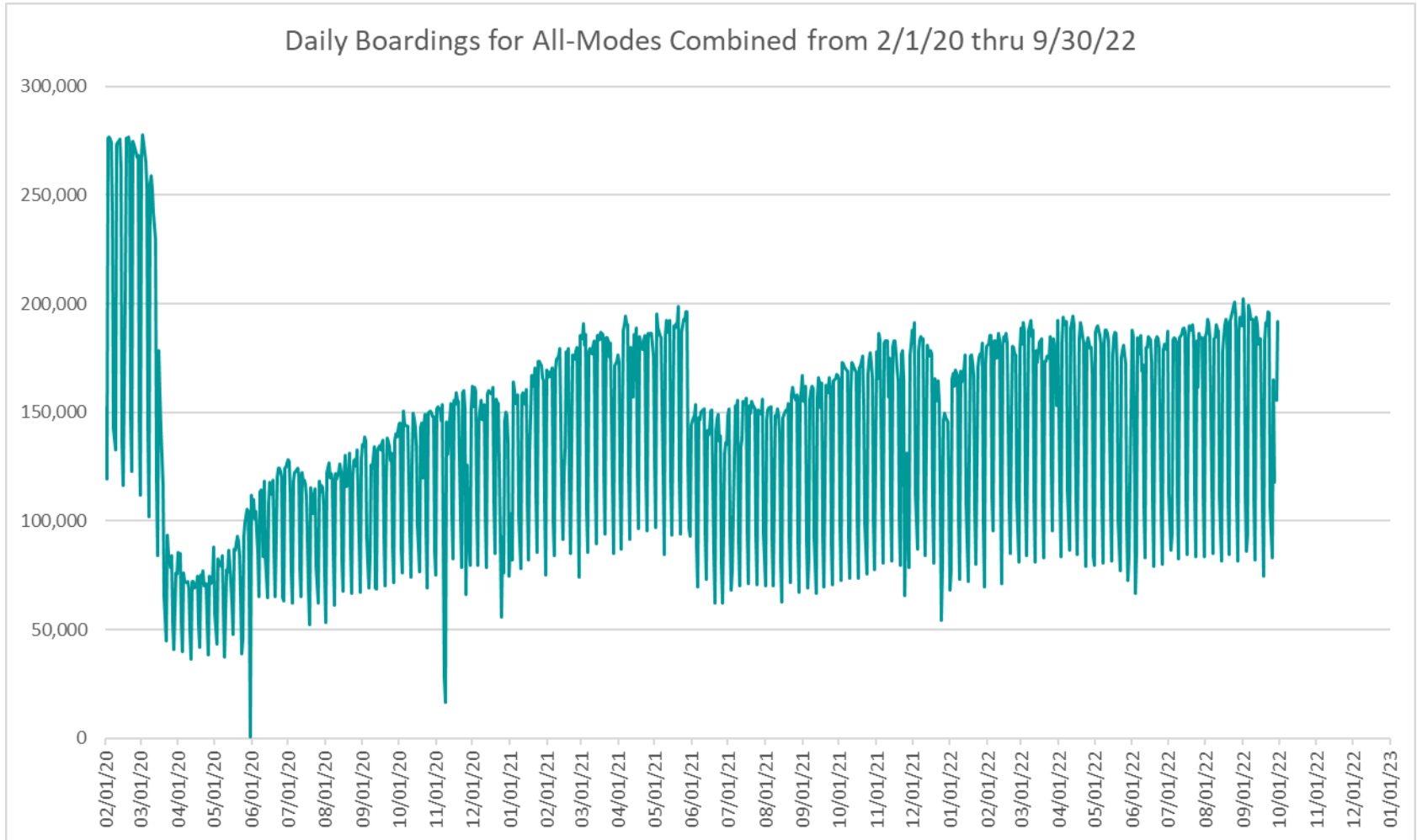
September 2020



boardings



## DAILY RIDERSHIP FOR ALL MODES COMBINED SINCE FEBRUARY 1, 2020



- (1) National Emergency was declared on 3/13/20 as a result of the SARS-CoV-2 pandemic.
- (2) There was no Metrobus, Metrorail and Metromover service on 5/31/20, as a safety precaution, and no service for any of the four modes on 9/28/22 as a result of Hurricane Ian..
- (3) The dip at the start of the second week of November 2020 is due to Hurricane Eta.
- (4) The reduction seen beginning 6/1/21 is partly due to the resumption of fares for bus and rail, and partly the result of having resumed reporting Cubic farebox data rather than bus APC counts, as well as Cubic rail faregate counts instead of video camera counts on that date.
- (5) Periodic (weekly) variations are prominent, since weekday ridership is almost always significantly higher than weekend or holiday ridership.

# Metrobus



## METROBUS AVERAGE WEEKDAY BOARDINGS BY ROUTE (†)

Route	Average Weekday	Average Weekday	Percent Change	Average Weekday	Percent Change	Average Weekday	Percent Change	Average Weekday	Percent Change
	<b>weekdays</b> Sep-22	Sep-21	YOY	Feb-20	Current vs Feb-20	Aug-22	MOM	Sep-20	YO2Y
1 (*)	169	181	-6.4%	184	-8.0%	195	-13.0%	194	-12.7%
2	1,874	2,088	-10.3%	3,102	-39.6%	1,869	0.3%	1,630	14.9%
3	3,792	4,070	-6.8%	5,137	-26.2%	3,576	6.0%	3,019	25.6%
7	2,986	2,452	21.8%	3,501	-14.7%	3,075	-2.9%	1,896	57.5%
8	3,479	3,508	-0.8%	3,909	-11.0%	3,412	2.0%	2,906	19.7%
9	4,270	4,725	-9.6%	5,528	-22.7%	4,243	0.7%	3,901	9.5%
10	1,681	1,467	14.6%	2,482	-32.3%	1,602	4.9%	960	75.2%
11	6,364	6,404	-0.6%	7,292	-12.7%	6,393	-0.4%	4,520	40.8%
12	2,018	1,762	14.5%	2,779	-27.4%	1,941	4.0%	1,732	16.5%
16	1,438	1,124	27.9%	1,862	-22.8%	1,350	6.5%	917	56.8%
17	2,632	2,342	12.3%	3,878	-32.1%	2,717	-3.1%	2,002	31.4%
19	1,018	907	12.3%	1,542	-34.0%	980	4.0%	699	45.6%
21	1,262	1,149	9.8%	1,817	-30.6%	1,166	8.2%	1,492	-15.4%
22	2,892	2,340	23.6%	3,640	-20.6%	2,863	1.0%	1,732	67.0%
24 - Coral Way Limited	1,628	843	93.0%	1,340	21.5%	1,634	-0.3%	1,230	32.3%
27	4,848	4,896	-1.0%	6,972	-30.5%	4,959	-2.2%	3,821	26.9%
29 (*)	397	289	37.4%	534	-25.7%	396	0.3%	308	28.9%
31 - BUSWAY LOCAL	755	648	16.5%	1,089	-30.7%	736	2.5%	577	30.8%
32	1,936	1,471	31.6%	2,390	-19.0%	1,786	8.4%	1,638	18.2%
33	1,273	1,005	26.6%	1,687	-24.6%	1,348	-5.6%	664	91.6%
34 EXPRESS	1,006	528	90.6%	2,008	-49.9%	1,046	-3.8%	720	39.6%
35	1,818	1,540	18.0%	2,421	-24.9%	1,722	5.5%	1,497	21.4%
36	1,989	1,659	19.9%	2,536	-21.6%	1,958	1.6%	1,637	21.5%
37	2,385	2,542	-6.2%	3,273	-27.1%	2,506	-4.9%	1,876	27.1%
38	4,195	4,051	3.6%	6,361	-34.1%	4,166	0.7%	3,433	22.2%
39 EXPRESS		156		893				152	
40	1,541	1,193	29.1%	1,772	-13.1%	1,549	-0.6%	1,004	53.5%
42	689	626	10.1%	820	-15.9%	649	6.2%	408	69.1%
46 - LIBERTY CITY CONN. (*)	35	18	93.5%	41	-13.5%	15	137.4%	13	167.0%
51 - FLAGLER MAX	3,050	2,281	33.7%	3,109	-1.9%	2,917	4.6%	1,654	84.4%
52	977	1,006	-2.9%	1,261	-22.5%	921	6.0%	675	44.7%
54	2,054	1,978	3.8%	2,940	-30.2%	2,180	-5.8%	2,109	-2.6%
55 MARLINS SHUTTLE									
56 (*)	325	276	18.0%	354	-8.0%	309	5.3%	157	107.0%
57	338	236	43.5%	433	-21.9%	330	2.4%	240	40.8%
62	1,216	1,214	0.2%	1,815	-33.0%	1,225	-0.8%	1,501	-19.0%
71 (*)	656	432	51.9%	711	-7.6%	579	13.4%	305	115.1%
72 (*)	589	430	37.0%	781	-24.6%	589	0.1%	361	63.0%

(†) In this table and those which follow, "YOY" stands for "year-over-year", "MOM" for "month-over-month" and "YO2Y" for "year over two years", i.e., current month vs 12 months prior, one month prior, and 24 months prior, respectively.

(\*) Contracted routes

(\*\*) Due to effects from the SARS-CoV-2 pandemic; rides were fare-free beginning March 22, 2020; fares were reinstated on June 1, 2021, in part accounting for the drop in ridership from May 2021.



## METROBUS AVERAGE WEEKDAY BOARDINGS BY ROUTE

Route	Average Weekday	Average Weekday	Percent Change	Average Weekday	Percent Change	Average Weekday	Percent Change	Average Weekday	Percent Change
	weekdays Sep-22	Sep-21	YOY	Feb-20	Current vs Feb-20	Aug-22	MOM	Sep-20	YO2Y
73	2,373	1,527	55.4%	2,124	11.7%	2,352	0.9%	1,098	116.2%
75	866	922	-6.2%	1,429	-39.4%	846	2.3%	626	38.4%
77	5,568	5,375	3.6%	7,129	-21.9%	5,658	-1.6%	4,373	27.3%
79 STREET MAX	279			361	-22.9%	287	-2.8%		
82 - WESTCHESTER CIRC. (*)	60	31	91.3%	62	-2.8%	60	-0.3%	26	125.9%
87	1,502	1,000	50.3%	1,499	0.2%	1,475	1.8%	783	91.9%
88	1,818	1,983	-8.3%	2,076	-12.4%	1,807	0.6%	1,281	42.0%
93 - BISCAYNE MAX	2,329	1,809	28.7%	3,334	-30.2%	2,247	3.6%	1,352	72.3%
95 EXPRESS	750	307	144.3%	1,690	-55.6%	829	-9.6%	289	159.6%
99	1,144	1,074	6.4%	1,473	-22.3%	1,227	-6.8%	853	34.1%
101 - A (*)	227	121	88.1%	177	28.5%	204	11.6%	92	147.0%
102 - B	1,355	1,320	2.6%	1,778	-23.8%	1,410	-3.9%	793	70.8%
103 - C		184		463				139	
104	677	586	15.5%	837	-19.2%	625	8.2%	285	137.3%
105 - E	1,076	855	25.8%	1,287	-16.4%	1,052	2.2%	657	63.6%
107 - G	1,379	1,125	22.6%	1,713	-19.5%	1,473	-6.3%	751	83.6%
108 - H	333	284	17.0%	473	-29.6%	345	-3.7%	186	79.3%
110 - J	2,093	1,833	14.1%	2,508	-16.6%	2,138	-2.1%	1,628	28.6%
112 - L	5,978	6,616	-9.6%	7,636	-21.7%	6,336	-5.7%	6,383	-6.3%
113 - M	537	404	33.1%	866	-37.9%	538	-0.1%	350	53.4%
115 (*)	122	136	-10.6%	180	-32.5%	134	-9.3%	212	-42.6%
119 - S	6,566	6,885	-4.6%	8,970	-26.8%	6,929	-5.2%	6,158	6.6%
120 - BEACH MAX	4,776	3,766	26.8%	6,667	-28.4%	5,116	-6.6%	3,813	25.3%
132 TRI-RAIL (DORAL)	3	10	-66.5%	16	-79.0%	5	-39.1%	13	-75.7%
135	920	531	73.4%	1,399	-34.2%	898	2.4%	655	40.5%
136	166	105	58.3%	126	31.7%	106	56.0%	49	242.6%
137 - WEST DADE CONN.	1,559	1,002	55.6%	1,626	-4.1%	1,542	1.1%	790	97.3%
150 - MIAMI BEACH AIRPORT FLYER	1,463	738	98.3%	1,867	-21.6%	1,597	-8.4%	819	78.6%
155 - BISCAYNE GARDENS CIRCULATOR (*)	43	26	61.8%	44	-3.3%	36	18.0%	30	42.6%
175 - NW MIAMI-DADE EXPRESS				33					
183	2,226	2,097	6.1%	3,149	-29.3%	2,281	-2.4%	1,810	23.0%
195 EXPRESS - BROWARD BLVD				372					
196 EXPRESS - SHERIDAN ST				383					
200 - CUTLER BAY LOCAL	99	1	9785.0%	158	-37.3%	106	-7.2%	35	180.6%
202 - LITTLE HAITI CONN. (*)	87	72	20.1%	140	-38.0%	107	-19.1%	105	-17.9%
204 KILLIAN KAT	478			1,071	-55.4%	473	1.0%		

## METROBUS AVERAGE WEEKDAY BOARDINGS BY ROUTE

Route	Average Weekday	Average Weekday	Percent Change	Average Weekday	Percent Change	Average Weekday	Percent Change	Average Weekday	Percent Change
	Sep-22	Sep-21	YOY	Feb-20	Current vs Feb-20	Aug-22	MOM	Sep-20	YO2Y
<b>weekdays</b>									
207 (7st) - LITTLE HAVANA CIRC	1,155	759	52.3%	1,489	-22.4%	1,139	1.4%	925	24.9%
208 (8st) - LITTLE HAVANA CIRC	1,047	803	30.4%	1,308	-19.9%	1,041	0.6%	925	13.2%
210 - SKYLAKE CIRC (*)	345	304	13.6%	282	22.5%	293	18.0%	168	105.3%
211 - OVERTOWN CIRC. (*)	75	61	23.8%	58	29.6%	86	-12.2%	35	114.6%
212 - SWEETWATER CIRC. (*)	15	30	-50.4%	15	0.0%	23	-36.0%	20	-27.6%
217 - BUNCHE PARK CIRC (*)	62	52	20.7%	97	-36.0%	64	-3.2%	72	-13.4%
238 EAST/WEST CONN.	423	284	49.2%	449	-5.8%	432	-1.9%	210	101.2%
241 TUTTLE LIMITED	89					74	20.7%		
246 - NIGHT OWL	53	10	415.1%	94	-43.6%	52	2.4%	1	4740.0%
248 - PRINCETON CIRCULATOR (*)	126	62	103.8%	135	-6.2%	110	14.6%	71	78.1%
252 - CORAL REEF MAX	676	463	46.0%	851	-20.6%	650	4.0%	307	120.0%
254 - BROWNSVILLE CIRC. (*)	6	33	-82.3%	19	-69.8%	8	-28.3%	12	-53.4%
267 - LUDLAM LIMITED (*)	160	110	45.0%	149	7.4%	144	10.7%	84	90.3%
272 SUNSET KAT (*)	344	288	19.8%	550	-37.4%	347	-0.9%	215	60.1%
277 - 7th AVENUE MAX	552	353	56.2%	683	-19.3%	521	6.0%	356	54.8%
286 - NORTH POINTE CIRC. (*)	68	36	88.5%	97	-30.1%	63	6.9%	37	84.5%
287 - SAGA BAY MAX	199	164	21.6%	358	-44.3%	187	6.3%	98	102.8%
288 - KENDALL CRUISER	262			762	-65.6%	298	-12.1%		
295 EXPRESS - BROWARD BLVD - CIVIC CENTER				233					
296 EXPRESS - SHERIDAN ST - CIVIC CENTER				215					
297-27th AVENUE ORANGE MAX	821	674	21.7%	1,356	-39.5%	791	3.7%	665	23.5%
301 DADE-MONROE EXPRESS (*)	699	991	-29.4%	841	-16.9%	771	-9.3%	747	-6.4%
302 CARD SOUND EXPRESS (*)	87	70	24.2%	86	0.6%	77	12.3%	47	85.0%
344 (*)	56	48	16.3%	96	-42.1%	52	6.7%	51	8.6%
500	13			81	-83.8%	13	0.1%	40	-66.7%
836 EXPRESS	158	119	32.3%			147	7.6%		
GREEN HILLS SHUTTLE (*)	6	6	0.0%	9	-33.3%	4	50.0%	6	0.0%
KINGS CREEK SHUTTLE (*)	22	15	52.1%	13	70.8%	20	9.6%	19	18.4%
SIERRA LAKES SHUTTLE (*)	17	18	-9.0%	45	-63.1%	18	-6.5%	24	-30.8%
ROBERT SHARP SHUTTLE (*)	14	24	-41.7%	10	47.4%	15	-4.1%	29	-51.7%
AHEPA SHUTTLE (*)	28	21	32.1%	21	34.9%	17	67.2%	25	14.3%
<b>Total</b>	<b>126,001</b>	<b>112,359</b>	<b>12.1%</b>	<b>167,711</b>	<b>-24.9%</b>	<b>126,601</b>	<b>-0.5%</b>	<b>95,266</b>	<b>32.3%</b>

(\*) The following routes are entirely operated under contract: 1, 29, 46, 56, 71, 72, 82, 101-A, 115, 155, 202, 210, 211, 212, 217, 246, 248, 254, 267, 272, 286, 301, 302 and 344.

(1) Includes shuttles and those routes which were not run both years.

(2) Several express routes were suspended beginning at the end of March 2020, due to the SARS-CoV-2 pandemic, while other routes had alignment and schedule modifications made to them, in an ongoing effort to optimize service delivery.

## METROBUS AVERAGE SATURDAY BOARDINGS BY ROUTE

Route	Average Saturday	Average Saturday	Percent Change	Average Saturday	Percent Change	Average Saturday	Percent Change	Average Saturday	Percent Change
	Sep-22	Sep-21	YOY	Feb-20	Current vs Feb-20	Aug-22	MOM	Sep-20	YO2Y
<b>Saturdays</b>									
1 (*)	97	160	-39.3%	215	-54.9%	186	-47.8%	178	-45.5%
2	950	1,381	-31.2%	1,616	-41.2%	1,059	-10.2%	1,176	-19.2%
3	4,235	3,519	20.4%	5,229	-19.0%	3,872	9.4%	2,902	46.0%
7	1,674	1,591	5.2%	1,887	-11.3%	1,797	-6.9%	1,182	41.6%
8	2,059	1,679	22.6%	2,027	1.5%	1,974	4.3%	1,749	17.7%
9	2,543	2,478	2.7%	3,034	-16.2%	2,685	-5.3%	2,358	7.9%
10	1,488	1,462	1.8%	1,896	-21.5%	1,497	-0.6%	1,294	15.0%
11	4,749	3,905	21.6%	5,182	-8.4%	4,936	-3.8%	3,212	47.8%
16	1,124	1,022	10.0%	1,566	-28.2%	1,195	-5.9%	931	20.8%
17	1,824	1,665	9.6%	2,363	-22.8%	1,755	4.0%	1,443	26.5%
22	1,710	1,367	25.1%	2,084	-18.0%	1,808	-5.4%	1,506	13.5%
24 - Coral Way Limited	1,157	622	86.2%	1,165	-0.7%	1,069	8.2%	729	58.7%
27	3,266	2,900	12.6%	4,034	-19.0%	3,335	-2.1%	3,225	1.2%
31 - BUSWAY LOCAL	569	536	6.2%	896	-36.5%	656	-13.3%	703	-19.1%
32	931	728	27.8%	1,029	-9.6%	854	9.0%	789	17.9%
33	852	652	30.6%	951	-10.4%	824	3.4%	513	66.1%
35	1,036	881	17.7%	1,372	-24.5%	1,019	1.7%	896	15.7%
36	1,085	962	12.8%	1,289	-15.9%	930	16.6%	1,051	3.2%
37	1,651	1,499	10.2%	2,090	-21.0%	1,618	2.0%	1,161	42.3%
38	3,258	3,087	5.5%	4,715	-30.9%	3,121	4.4%	2,708	20.3%
40	553	449	23.3%	655	-15.5%	550	0.6%	372	48.9%
42	519	443	17.2%	552	-5.9%	438	18.6%	412	26.0%
52	554	553	0.3%	686	-19.2%	460	20.4%	447	24.1%
54	1,472	1,194	23.2%	1,727	-14.8%	1,403	4.9%	1,541	-4.5%
55 MARLINS SHUTTLE									
62	1,032	917	12.5%	1,343	-23.2%	958	7.7%	1,287	-19.8%
71 (*)	252	166	52.3%	252	0.1%	237	6.4%	150	67.7%
72 (*)	344	289	18.9%	350	-1.6%	373	-7.8%	207	66.6%
73	1,088	646	68.5%	860	26.4%	1,006	8.2%	575	89.1%
75	343	335	2.2%	468	-26.8%	319	7.5%	339	1.1%
77	3,616	3,152	14.7%	4,197	-13.8%	3,382	6.9%	2,294	57.6%
87	465	307	51.5%	402	15.5%	529	-12.1%	337	37.9%
88	1,344	1,226	9.6%	1,620	-17.1%	1,259	6.8%	1,020	31.7%
99	757	626	20.9%	849	-10.9%	659	14.9%	561	35.0%

## METROBUS AVERAGE SATURDAY BOARDINGS BY ROUTE

Route	Average Saturday	Average Saturday	Percent Change	Average Saturday	Percent Change	Average Saturday	Percent Change	Average Saturday	Percent Change
Saturdays	Sep-22	Sep-21	YOY	Feb-20	Current vs Feb-20	Aug-22	MOM	Sep-20	YO2Y
101 - A (*)	63	42	50.3%	71	-11.4%	74	-14.6%	41	54.0%
102 - B	695	475	46.5%	851	-18.3%	543	28.0%	485	43.4%
103 - C		159		315				109	
104	359	269	33.7%	468	-23.4%	338	6.2%	43	744.7%
105 - E	560	487	15.0%	619	-9.6%	588	-4.9%	355	57.8%
107 - G	829	917	-9.7%	1,066	-22.3%	867	-4.5%	586	41.5%
108 - H	281	239	17.8%	372	-24.4%	311	-9.6%	241	16.8%
110 - J	1,511	1,261	19.8%	1,952	-22.6%	1,714	-11.8%	1,369	10.4%
112 - L	4,731	4,410	7.3%	5,667	-16.5%	5,144	-8.0%	4,570	3.5%
113 - M	346	259	33.8%	503	-31.2%	351	-1.3%	304	14.0%
115 (*)	70	92	-24.3%	82	-15.5%	55	26.9%	121	-42.4%
119 - S	5,663	4,706	20.3%	6,861	-17.5%	5,607	1.0%	4,728	19.8%
120 - BEACH MAX	3,803	2,898	31.3%	4,744	-19.8%	3,645	4.3%	3,002	26.7%
135	370	157	135.2%	539	-31.3%	437	-15.3%	258	43.3%
137 - WEST DADE CONN.	1,083	737	46.9%	1,027	5.4%	1,100	-1.6%	590	83.5%
150 - MIAMI BEACH AIRPORT FLYER	1,452	564	157.5%	1,604	-9.5%	1,586	-8.4%	769	88.9%
183	1,530	1,287	18.9%	1,790	-14.5%	1,366	12.0%	1,230	24.4%
200 - CUTLER BAY LOCAL	109	9	1111.1%	119	-8.6%	88	24.2%	43	152.0%
202 - LITTLE HAITI CONN. (*)	42	55	-24.1%	50	-16.8%	42	0.0%	49	-14.4%
207 (7st) - LITTLE HAVANA CIRC	753	687	9.6%	1,032	-27.1%	730	3.2%	740	1.8%
208 (8st) - LITTLE HAVANA CIRC	810	787	2.9%	1,044	-22.5%	845	-4.2%	822	-1.5%
210 - SKYLAKE CIRC (*)	102	103	-1.0%	165	-38.3%	116	-12.1%	131	-22.3%
241 TUTTLE LIMITED	45					40	13.9%		
246 - NIGHT OWL	45			84	-46.4%	44	3.4%		
252 - CORAL REEF MAX	302	154	96.9%	302	0.1%	245	23.2%	178	69.8%
286 - NORTH POINTE CIRC. (*)	61	29	110.4%	41	48.3%	50	22.2%	30	101.7%
301 DADE-MONROE EXPRESS (*)	757	1,009	-25.0%	801	-5.5%	807	-6.2%	753	0.5%
302 CARD SOUND EXPRESS (*)	69	43	60.1%	57	22.3%	74	-6.1%	30	134.7%
338 - WEEKEND EXPRESS	154	123	25.2%	237	-35.1%	112	36.9%	82	87.4%
500	17			70	-76.4%	16	3.1%	29	-43.6%
12/21 WEEKEND INTERL.	1,884	1,660	13.5%	2,528	-25.5%	1,830	3.0%	1,432	31.6%
FEDERATION GARDENS SHUTTLE (*)	23	20	13.8%	28	-19.9%	27	-14.2%	17	31.9%
<b>Total</b>	<b>77,148</b>	<b>66,057</b>	<b>16.8%</b>	<b>93,742</b>	<b>-17.7%</b>	<b>76,593</b>	<b>0.7%</b>	<b>62,401</b>	<b>23.6%</b>

## METROBUS AVERAGE SUNDAY BOARDINGS BY ROUTE

Route	Average Sunday	Average Sunday	Percent Change	Average Sunday	Percent Change	Average Sunday	Percent Change	Average Sunday	Percent Change
	Sep-22	Sep-21	YOY	Feb-20	Current vs Feb-20	Aug-22	MOM	Sep-20	YO2Y
<b>Sundays</b>									
1 (*)	177	134	31.9%	201	-11.8%	202	-12.3%	171	3.8%
2	762	670	13.6%	1,335	-42.9%	721	5.7%	584	30.6%
3	3,316	3,134	5.8%	4,353	-23.8%	3,074	7.9%	2,598	27.7%
7	1,352	993	36.1%	1,654	-18.3%	1,266	6.8%	885	52.8%
8	1,627	1,361	19.6%	1,746	-6.8%	1,550	5.0%	1,366	19.1%
9	2,142	2,052	4.4%	2,549	-16.0%	1,904	12.5%	2,021	6.0%
10	1,038	1,184	-12.3%	1,441	-28.0%	1,022	1.5%	880	18.0%
11	2,980	2,780	7.2%	3,917	-23.9%	2,865	4.0%	2,749	8.4%
16	777	683	13.7%	997	-22.0%	719	8.1%	609	27.7%
17	1,297	1,112	16.6%	1,833	-29.2%	1,346	-3.7%	970	33.8%
22	1,281	995	28.8%	1,548	-17.2%	1,215	5.5%	983	30.4%
24 - Coral Way Limited	934	685	36.4%	905	3.3%	761	22.7%	643	45.3%
27	2,159	1,974	9.4%	2,918	-26.0%	1,903	13.5%	2,459	-12.2%
31 - BUSWAY LOCAL	467	380	23.0%	715	-34.6%	398	17.4%	563	-16.9%
32	640	456	40.4%	772	-17.1%	545	17.6%	558	14.8%
33	526	425	23.6%	607	-13.3%	517	1.8%	393	33.8%
35	776	776	0.1%	942	-17.5%	762	1.9%	801	-3.0%
36	823	846	-2.7%	1,111	-25.9%	833	-1.2%	1,039	-20.8%
37	1,347	1,221	10.3%	1,739	-22.5%	1,377	-2.1%	1,107	21.7%
38	2,812	2,644	6.4%	4,147	-32.2%	2,642	6.4%	2,483	13.2%
40	419	348	20.4%	447	-6.3%	375	11.9%	332	26.3%
42	310	278	11.6%	416	-25.5%	291	6.5%	292	6.3%
52	419	387	8.3%	466	-10.2%	372	12.5%	429	-2.3%
54	951	825	15.2%	1,171	-18.8%	953	-0.2%	1,039	-8.4%
55 MARLINS SHUTTLE									
62	596	584	2.1%	891	-33.1%	520	14.7%	822	-27.5%
71 (*)	179	105	71.1%	162	10.5%	181	-1.2%	148	21.2%
72 (*)	331	256	28.9%	265	25.0%	347	-4.8%	143	131.2%
73	421	372	13.2%	495	-14.8%	374	12.7%	260	61.9%
75	233	180	29.8%	271	-13.9%	215	8.3%	249	-6.4%
77	2,710	2,271	19.3%	2,815	-3.7%	2,668	1.6%	2,285	18.6%
87	303	197	54.2%	319	-5.0%	285	6.4%	253	20.1%
88	959	914	4.9%	1,286	-25.4%	935	2.7%	676	42.0%
99	571	587	-2.9%	658	-13.3%	526	8.5%	462	23.6%

## METROBUS AVERAGE SUNDAY BOARDINGS BY ROUTE

Route	Average Sunday	Average Sunday	Percent Change	Average Sunday	Percent Change	Average Sunday	Percent Change	Average Sunday	Percent Change
	Sundays	Sep-22	Sep-21	YOY	Feb-20	Current vs Feb-20	Aug-22	MOM	Sep-20
101 - A (*)	53	42	27.8%	56	-3.8%	36	49.4%	33	61.8%
102 - B	582	562	3.7%	717	-18.7%	656	-11.2%	532	9.5%
103 - C		89		212				131	
104	306	171	78.6%	317	-3.4%	238	28.8%	73	320.9%
105 - E	523	447	17.1%	616	-15.0%	495	5.7%	384	36.2%
107 - G	686	636	7.9%	895	-23.4%	693	-0.9%	527	30.2%
108 - H	276	236	17.3%	328	-15.8%	301	-8.2%	228	21.5%
110 - J	1,210	1,013	19.5%	1,638	-26.1%	1,140	6.2%	1,035	17.0%
112 - L	3,874	3,074	26.0%	4,804	-19.4%	3,901	-0.7%	3,508	10.4%
113 - M	279	236	18.3%	431	-35.2%	242	15.5%	206	35.8%
115 (*)	59	92	-36.2%	80	-26.5%	55	6.4%	114	-48.2%
119 - S	5,631	4,574	23.1%	7,141	-21.1%	5,313	6.0%	4,893	15.1%
120 - BEACH MAX	2,641	1,958	34.9%	3,469	-23.9%	2,420	9.1%	1,849	42.8%
135	232	83	180.6%	349	-33.5%	157	47.9%	216	7.5%
137 - WEST DADE CONN.	888	578	53.6%	879	1.0%	796	11.6%	568	56.4%
150 - MIAMI BEACH AIRPORT FLYER	1,323	622	112.8%	1,574	-15.9%	1,375	-3.8%	945	40.0%
183	1,070	1,109	-3.5%	1,413	-24.3%	984	8.7%	1,028	4.1%
200 - CUTLER BAY LOCAL	51	4	1076.9%	59	-12.8%	48	6.3%	43	20.0%
202 - LITTLE HAITI CONN. (*)	38	52	-26.4%	39	-1.5%	40	-4.0%	52	-26.2%
207 (7st) - LITTLE HAVANA CIRC	460	404	13.9%	796	-42.2%	510	-9.8%	516	-10.9%
208 (8st) - LITTLE HAVANA CIRC	684	630	8.6%	911	-24.9%	516	32.6%	632	8.3%
210 - SKYLAKE CIRC (*)	100	126	-20.2%	143	-29.9%	134	-24.9%	124	-19.2%
241 TUTTLE LIMITED	46					47	-0.7%		
246 - NIGHT OWL	61	5	1120.0%	87	-29.9%	64	-4.3%	1	6000.0%
252 - CORAL REEF MAX	193	127	52.3%	199	-2.7%	200	-3.4%	161	20.1%
301 DADE-MONROE EXPRESS (*)	645	935	-31.1%	751	-14.2%	691	-6.6%	640	0.8%
302 CARD SOUND EXPRESS (*)	80	64	25.8%	57	40.4%	68	18.5%	30	166.7%
338 - WEEKEND EXPRESS	177	126	40.3%	252	-29.8%	173	2.3%	89	99.4%
500	15			83	-81.4%	16	-5.2%	33	-53.7%
12/21 WEEKEND INTERL.	1,509	1,242	21.5%	2,048	-26.3%	1,338	12.8%	1,305	15.6%
<b>Total</b>	<b>59,332</b>	<b>51,045</b>	<b>16.2%</b>	<b>75,428</b>	<b>-21.3%</b>	<b>56,308</b>	<b>5.4%</b>	<b>51,136</b>	<b>16.0%</b>

## METROBUS TOTAL MONTHLY BOARDINGS BY ROUTE

Route	Total Month	Total Month	Percent Change	Total Month	Percent Change	Total Month	Percent Change	Total Month	Percent Change
<b>Monthly Total (1)</b>	Sep-22	Sep-21	YOY	Feb-20	Current vs Feb-20	Aug-22	MOM	Sep-20	YO2Y
1 (*)	4,658	5,108	-8.8%	5,558	-16.2%	6,026	-22.7%	5,658	-17.7%
2	45,086	52,723	-14.5%	75,463	-40.3%	50,108	-10.0%	42,901	5.1%
3	109,352	115,206	-5.1%	146,294	-25.3%	110,032	-0.6%	88,411	23.7%
7	73,179	62,816	16.5%	86,077	-15.0%	82,967	-11.8%	49,987	46.4%
8	85,956	87,188	-1.4%	95,295	-9.8%	92,564	-7.1%	76,387	12.5%
9	106,290	119,400	-11.0%	135,924	-21.8%	115,940	-8.3%	103,343	2.9%
10	44,758	42,580	5.1%	64,874	-31.0%	46,923	-4.6%	29,809	50.1%
11	161,183	164,000	-1.7%	187,425	-14.0%	178,232	-9.6%	123,277	30.7%
12	40,360	36,998	9.1%	55,585	-27.4%	44,634	-9.6%	38,107	5.9%
16	37,133	31,101	19.4%	49,061	-24.3%	38,713	-4.1%	26,323	41.1%
17	66,415	61,412	8.1%	96,715	-31.3%	74,889	-11.3%	53,698	23.7%
19	20,367	19,042	7.0%	30,847	-34.0%	22,532	-9.6%	15,384	32.4%
21	25,233	24,139	4.5%	36,341	-30.6%	26,811	-5.9%	32,824	-23.1%
22	71,077	59,577	19.3%	89,404	-20.5%	77,947	-8.8%	48,052	47.9%
24 - Coral Way Limited	41,860	23,624	77.2%	36,237	15.5%	44,894	-6.8%	32,558	28.6%
27	120,821	124,276	-2.8%	171,282	-29.5%	135,009	-10.5%	106,788	13.1%
29 (*)	7,941	6,069	30.8%	10,684	-25.7%	9,104	-12.8%	6,779	17.1%
31 - BUSWAY LOCAL	19,705	17,643	11.7%	29,125	-32.3%	21,146	-6.8%	17,756	11.0%
32	45,644	36,077	26.5%	56,027	-18.5%	46,676	-2.2%	41,412	10.2%
33	31,485	25,843	21.8%	40,918	-23.1%	36,373	-13.4%	18,233	72.7%
34 EXPRESS	20,121	11,086	81.5%	40,159	-49.9%	24,059	-16.4%	15,849	27.0%
35	44,387	39,750	11.7%	59,041	-24.8%	46,738	-5.0%	39,723	11.7%
36	48,231	42,916	12.4%	61,606	-21.7%	52,087	-7.4%	44,376	8.7%
37	61,031	65,482	-6.8%	82,870	-26.4%	69,630	-12.3%	50,345	21.2%
38	110,987	110,632	0.3%	167,379	-33.7%	118,863	-6.6%	96,296	15.3%
39 EXPRESS		3,276		17,853				3,343	
40	35,118	28,598	22.8%	40,497	-13.3%	39,333	-10.7%	24,891	41.1%
42	17,414	16,316	6.7%	20,825	-16.4%	17,849	-2.4%	11,782	47.8%
46 - LIBERTY CITY CONN. (*)	704	382	84.3%	814	-13.5%	341	106.5%	290	142.8%
51 - FLAGLER MAX	61,003	47,897	27.4%	62,186	-1.9%	67,080	-9.1%	36,389	67.6%
52	23,850	25,262	-5.6%	30,522	-21.9%	24,523	-2.7%	18,357	29.9%
54	51,719	50,438	2.5%	72,125	-28.3%	59,564	-13.2%	56,722	-8.8%
55 MARLINS SHUTTLE									
56 (*)	6,508	5,790	12.4%	7,071	-8.0%	7,106	-8.4%	3,459	88.1%
57	6,764	4,950	36.6%	8,665	-21.9%	7,595	-10.9%	5,283	28.0%
62	31,419	32,071	-2.0%	46,582	-32.6%	34,090	-7.8%	41,461	-24.2%
71 (*)	15,032	10,258	46.5%	16,118	-6.7%	14,986	0.3%	7,907	90.1%
72 (*)	14,816	11,473	29.1%	18,433	-19.6%	16,421	-9.8%	9,350	58.5%

(1) All DTPW travel modes, including Metrobus, were closed on 9/28/22 due to Hurricane Ian; the storm also reduced total boardings on a few other days.

## METROBUS TOTAL MONTHLY BOARDINGS BY ROUTE

Route	Total Month	Total Month	Percent Change	Total Month	Percent Change	Total Month	Percent Change	Total Month	Percent Change
<b>Monthly Total</b>	<b>Sep-22</b>	<b>Sep-21</b>	<b>YOY</b>	<b>Feb-20</b>	<b>Current vs Feb-20</b>	<b>Aug-22</b>	<b>MOM</b>	<b>Sep-20</b>	<b>YO2Y</b>
73	53,911	36,514	47.6%	48,767	10.5%	59,617	-9.6%	27,486	96.1%
75	19,849	21,611	-8.2%	31,994	-38.0%	21,600	-8.1%	16,116	23.2%
77	139,375	136,839	1.9%	174,833	-20.3%	154,325	-9.7%	114,530	21.7%
79 STREET MAX	5,570			7,228	-22.9%	6,590	-15.5%		
82 - WESTCHESTER CIRC. (*)	1,355	775	74.8%	1,482	-8.6%	1,572	-13.8%	686	97.5%
87	33,421	23,207	44.0%	33,273	0.4%	37,183	-10.1%	19,584	70.7%
88	46,539	51,123	-9.0%	54,772	-15.0%	50,342	-7.6%	34,956	33.1%
93 - BISCAYNE MAX	46,573	37,997	22.6%	66,684	-30.2%	51,677	-9.9%	29,737	56.6%
95 EXPRESS	14,998	6,446	132.7%	33,796	-55.6%	19,071	-21.4%	6,355	136.0%
99	28,754	28,004	2.7%	36,325	-20.8%	32,970	-12.8%	22,856	25.8%
101 - A (*)	5,065	2,914	73.8%	4,114	23.1%	5,122	-1.1%	2,320	118.3%
102 - B	32,785	32,436	1.1%	42,683	-23.2%	37,230	-11.9%	21,517	52.4%
103 - C		4,939		11,682				4,006	
104	16,500	14,230	16.0%	20,351	-18.9%	16,685	-1.1%	6,733	145.1%
105 - E	26,367	22,133	19.1%	31,302	-15.8%	28,530	-7.6%	17,415	51.4%
107 - G	34,331	30,475	12.7%	43,178	-20.5%	40,113	-14.4%	20,982	63.6%
108 - H	9,163	8,105	13.1%	12,624	-27.4%	10,394	-11.8%	5,957	53.8%
110 - J	53,948	48,612	11.0%	66,481	-18.9%	60,585	-11.0%	45,425	18.8%
112 - L	157,856	171,945	-8.2%	200,268	-21.2%	181,915	-13.2%	172,726	-8.6%
113 - M	13,527	10,694	26.5%	21,548	-37.2%	14,735	-8.2%	9,743	38.8%
115 (*)	3,005	3,684	-18.4%	4,334	-30.7%	3,525	-14.8%	5,598	-46.3%
119 - S	182,121	186,287	-2.2%	242,257	-24.8%	203,058	-10.3%	173,956	4.7%
120 - BEACH MAX	123,939	100,458	23.4%	170,942	-27.5%	141,929	-12.7%	103,296	20.0%
132 TRI-RAIL (DORAL)	36	127	-71.7%	312	-88.5%	86	-58.1%	296	-87.8%
135 (*)	21,040	11,946	76.1%	32,067	-34.4%	23,040	-8.7%	16,301	29.1%
136	3,323	2,204	50.8%	2,524	31.7%	2,449	35.7%	1,067	211.4%
137 - WEST DADE CONN.	39,951	26,880	48.6%	41,167	-3.0%	43,050	-7.2%	22,019	81.4%
150 - MIAMI BEACH AIRPORT FLYER	41,685	20,862	99.8%	51,651	-19.3%	48,574	-14.2%	24,879	67.6%
155 - BISCAYNE GARDENS CIRCULATOR (*)	852	553	54.1%	881	-3.3%	830	2.7%	657	29.7%
175 - NW MIAMI-DADE EXPRESS				661					
183	55,980	54,734	2.3%	77,570	-27.8%	61,859	-9.5%	48,854	14.6%
195 EXPRESS - BROWARD BLVD				7,441					
196 EXPRESS - SHERIDAN ST				7,658					
200 - CUTLER BAY LOCAL	2,668	32	8237.5%	3,984	-33.0%	2,992	-10.8%	1,118	138.6%
202 - LITTLE HAITI CONN. (*)	2,091	1,995	4.8%	3,200	-34.7%	2,789	-25.0%	2,723	-23.2%
204 KILLIAN KAT	9,557			21,418	-55.4%	10,886	-12.2%		



## METROBUS TOTAL MONTHLY BOARDINGS BY ROUTE

Route	Total Month	Total Month	Percent Change	Total Month	Percent Change	Total Month	Percent Change	Total Month	Percent Change
	Sep-22	Sep-21	YOY	Feb-20	Current vs Feb-20	Aug-22	MOM	Sep-20	YO2Y
<b>Monthly Total</b>									
207 (7st) - LITTLE HAVANA CIRC	28,411	20,698	37.3%	38,127	-25.5%	31,155	-8.8%	25,370	12.0%
208 (8st) - LITTLE HAVANA CIRC	27,605	23,167	19.2%	35,018	-21.2%	29,392	-6.1%	26,160	5.5%
210 - SKYLAKE CIRC (*)	7,814	7,423	5.3%	7,033	11.1%	7,729	1.1%	4,721	65.5%
211 - OVERTOWN CIRC. (*)	1,502	1,274	17.9%	1,159	29.6%	1,967	-23.6%	770	95.1%
212 - SWEETWATER CIRC. (*)	295	624	-52.7%	295	0.0%	530	-44.3%	448	-34.2%
217 - BUNCHE PARK CIRC (*)	1,248	1,086	14.9%	1,949	-36.0%	1,482	-15.8%	1,585	-21.3%
238 EAST/WEST CONN.	8,467	5,957	42.1%	8,987	-5.8%	9,930	-14.7%	4,629	82.9%
241 TUTTLE LIMITED	2,187					2,036	7.4%		
246 - NIGHT OWL	1,542	92	1576.1%	2,641	-41.6%	1,616	-4.6%	28	5407.1%
248 - PRINCETON CIRCULATOR (*)	2,523	1,300	94.1%	2,690	-6.2%	2,532	-0.4%	1,558	61.9%
252 - CORAL REEF MAX	15,697	10,972	43.1%	19,325	-18.8%	16,730	-6.2%	8,116	93.4%
254 - BROWNSVILLE CIRC. (*)	116	690	-83.2%	384	-69.8%	186	-37.6%	274	-57.7%
267 - LUDLAM LIMITED (*)	3,198	2,315	38.1%	2,978	7.4%	3,322	-3.7%	1,849	73.0%
272 SUNSET KAT (*)	6,887	6,038	14.1%	11,004	-37.4%	7,990	-13.8%	4,731	45.6%
277 - 7th AVENUE MAX	11,031	7,414	48.8%	13,669	-19.3%	11,973	-7.9%	7,838	40.7%
286 - NORTH POINTE CIRC. (*)	1,599	871	83.6%	2,145	-25.5%	1,658	-3.6%	929	72.1%
287 - SAGA BAY MAX	3,985	3,441	15.8%	7,160	-44.3%	4,312	-7.6%	2,161	84.4%
288 - KENDALL CRUISER	5,239			15,249	-65.6%	6,854	-23.6%		
295 EXPRESS - BROWARD BLVD - CIVIC CENTER				4,668					
296 EXPRESS - SHERIDAN ST - CIVIC CENTER				4,297					
297-27th AVENUE ORANGE MAX	16,417	14,161	15.9%	27,125	-39.5%	18,204	-9.8%	14,625	12.3%
301 DADE-MONROE EXPRESS (*)	20,240	29,516	-31.4%	23,838	-15.1%	23,723	-14.7%	22,014	-8.1%
302 CARD SOUND EXPRESS (*)	2,413	1,959	23.2%	2,236	7.9%	2,343	3.0%	1,270	90.0%
338 - WEEKEND EXPRESS	1,169	1,122	4.2%	2,191	-46.6%	1,141	2.5%	743	57.3%
344 (*)	1,112	1,004	10.8%	1,919	-42.1%	1,198	-7.2%	1,126	-1.2%
500	406			2,301	-82.4%	431	-5.8%	1,119	-63.7%
836 EXPRESS	3,159	2,508	26.0%			3,377	-6.5%		
12/21 WEEKEND INTERL.	15,083	12,848	17.4%	20,830	-27.6%	12,669	19.1%	10,948	37.8%
GREEN HILLS SHUTTLE (*)	18	18	0.0%	36	-50.0%	20	-10.0%	24	-25.0%
KINGS CREEK SHUTTLE (*)	111	73	52.1%	52	113.5%	81	37.0%	75	48.0%
SIERRA LAKES SHUTTLE (*)	83	73	13.7%	180	-53.9%	71	16.9%	96	-13.5%
ROBERT SHARP SHUTTLE (*)	42	120	-65.0%	38	10.5%	73	-42.5%	145	-71.0%
AHEPA SHUTTLE (*)	140	106	32.1%	83	68.7%	67	109.0%	98	42.9%
FEDERATION GARDENS SHUTTLE (*)	91	80	13.8%	142	-35.9%	106	-14.2%	69	31.9%
<b>Total</b>	<b>3,123,572</b>	<b>2,877,110</b>	<b>8.6%</b>	<b>4,123,083</b>	<b>-24.2%</b>	<b>3,442,006</b>	<b>-9.3%</b>	<b>2,546,923</b>	<b>22.6%</b>

# METROBUS HOLIDAY BOARDINGS BY ROUTE

## Labor Day

ROUTES	Labor Day 2021	Labor Day 2022	Pct Delta	ROUTES	Labor Day 2021	Labor Day 2022	Pct Delta
1	160	197	23.1%	88	923	1,167	26.4%
2	787	1,005	27.7%	99	627	580	-7.5%
3	3,913	3,510	-10.3%	101	78	112	43.6%
7	1,453	1,489	2.5%	102	803	592	-26.3%
8	1,800	2,077	15.4%	103	85		
9	2,475	2,529	2.2%	104	183	385	110.4%
10	1,329	1,130	-15.0%	105	457	689	50.8%
11	3,469	3,152	-9.1%	107	758	821	8.3%
12	786	728	-7.4%	108	262	283	8.0%
16	802	825	2.9%	110	1,175	1,431	21.8%
17	1,030	1,450	40.8%	112	3,559	4,369	22.8%
21	782	1,014	29.7%	113	264	317	20.1%
22	1,160	1,401	20.8%	115	111	97	-12.6%
24	636	1,145	80.0%	119	4,795	5,910	23.3%
27	2,086	2,720	30.4%	120	2,073	2,974	43.5%
31	400	368	-8.0%	135	65	266	309.2%
32	584	804	37.7%	137	637	1,011	58.7%
33	527	729	38.3%	150	733	1,322	80.4%
35	862	834	-3.2%	183	1,183	1,407	18.9%
36	884	921	4.2%	200	0	43	
37	1,401	1,343	-4.1%	202	32	26	-18.8%
38	2,600	2,666	2.5%	207	492	664	35.0%
40	498	497	-0.2%	208	783	817	4.3%
42	241	348	44.4%	210	226	152	-32.7%
52	556	532	-4.3%	241		52	
54	940	1,081	15.0%	246	9	58	544.4%
62	736	732	-0.5%	252	173	168	-2.9%
71	96	178	85.4%	301	864	657	-24.0%
72	266	347	30.5%	302	65	97	49.2%
73	464	476	2.6%	338	98	178	81.6%
75	192	265	38.0%	500		13	
77	2,684	2,987	11.3%				
87	285	390	36.8%				
				<b>Total (1)</b>	<b>58,397</b>	<b>66,528</b>	<b>13.9%</b>

(1) Excludes Lifeline shuttles and some routes not run both years.

## YEAR-OVER-YEAR BUS RIDERSHIP BY ROUTE SERVICE TYPE

Boardings by Service Type and Route	Average Weekday	Average Weekday	Percent Change	Average Saturday	Average Saturday	Percent Change	Average Sunday	Average Sunday	Percent Change	Total Monthly	Total Monthly	Percent Change
	Sep-22	Sep-21	22 vs 21	Sep-22	Sep-21	22 vs 21	Sep-22	Sep-21	22 vs 21	Sep-22	Sep-21	22 vs 21
<b>Directly Operated Express Routes (1)</b>												
34 EXPRESS	1,006	528	90.6%							20,121	11,086	81.5%
39 EXPRESS		156									3,276	
95-EXPRESS	750	307	144.3%							14,998	6,446	132.7%
150-MIAMI BEACH AIRPORT FLYER	1,463	738	98.3%	1,452	564	157.5%	1,323	622	112.8%	41,685	20,862	99.8%
175 - NW MIAMI-DADE EXPRESS												
195 EXPRESS - BROWARD BLVD												
196 EXPRESS - SHERIDAN ST												
295 EXPRESS - BROWARD BLVD - CIVIC CENTER												
296 EXPRESS - SHERIDAN ST - CIVIC CENTER												
204 KAT-KILLIAN	478									9,557		
288 KENDALL CRUISER	262									5,239		
338 - WEEKEND EXPRESS				154	123	25.2%	177	126	40.3%	1,169	1,122	4.2%
836 EXPRESS	158	119	32.3%							3,159	2,508	26.0%
<b>Subtotal Express Routes</b>	<b>4,117</b>	<b>1,848</b>	<b>122.7%</b>	<b>1,605</b>	<b>687</b>	<b>133.9%</b>	<b>1,500</b>	<b>748</b>	<b>100.5%</b>	<b>95,928</b>	<b>45,300</b>	<b>111.8%</b>
<b>Percentage of All Bus Routes</b>	<b>3.3%</b>	<b>1.6%</b>		<b>2.1%</b>	<b>1.0%</b>		<b>2.5%</b>	<b>1.5%</b>		<b>3.1%</b>	<b>1.6%</b>	
<b>Contracted Routes</b>												
1	169	181	-6.4%	97	160	-39.3%	177	134	31.9%	4,658	5,108	-8.8%
29	397	289	37.4%							7,941	6,069	30.8%
35												
46 - LIBERTY CITY CONN.	35	18	93.5%							704	382	84.3%
56	325	276	18.0%							6,508	5,790	12.4%
71	656	432	51.9%	252	166	52.3%	179	105	71.1%	15,032	10,258	46.5%
72	589	430	37.0%	344	289	18.9%	331	256	28.9%	14,816	11,473	29.1%
82 - WESTCHESTER CIRC	60	31	91.3%	40	30	34.5%				1,355	775	74.8%
101 - A	227	121	88.1%	63	42	50.3%	53	42	27.8%	5,065	2,914	73.8%
115	122	136	-10.6%	70	92	-24.3%	59	92	-36.2%	3,005	3,684	-18.4%
155 - BISCAYNE GARDENS CIRC	43	26	61.8%							852	553	54.1%
202 - LITTLE HAITI CONN.	87	72	20.1%	42	55	-24.1%	38	52	-26.4%	2,091	1,995	4.8%
210 - SKYLAKELAKE CIRC	345	304	13.6%	102	103	-1.0%	100	126	-20.2%	7,814	7,423	5.3%
211-OVERTOWN CIRC	75	61	23.8%							1,502	1,274	17.9%
212-SWEETWATER CIRC	15	30	-50.4%							295	624	-52.7%
217 - BUNCHE PARK CIRC	62	52	20.7%							1,248	1,086	14.9%
248 - PRINCETON CIRCULATOR	126	62	103.8%							2,523	1,300	94.1%
254-BROWNSVILLE CIRC	6	33	-82.3%							116	690	-83.2%
286-NORTH POINTE CIRC	68	36	88.5%	61	29	110.4%				1,599	871	83.6%
344	56	48	16.3%							1,112	1,004	10.8%
<b>Subtotal Contracted Reg. &amp; Circ. Routes</b>	<b>3,464</b>	<b>2,637</b>	<b>31.3%</b>	<b>1,069</b>	<b>964</b>	<b>10.9%</b>	<b>937</b>	<b>807</b>	<b>16.2%</b>	<b>78,236</b>	<b>63,273</b>	<b>23.6%</b>
<b>Percentage of All Bus Routes</b>	<b>2.7%</b>	<b>2.3%</b>		<b>1.4%</b>	<b>1.5%</b>		<b>1.6%</b>	<b>1.6%</b>		<b>2.5%</b>	<b>2.2%</b>	

(1) Several express routes were suspended beginning at the end of March 2020, due to the SARS-CoV-2 pandemic, while other routes had alignment and schedule modifications made to them, in an ongoing effort to optimize service delivery.

## YEAR-OVER-YEAR BUS RIDERSHIP BY ROUTE SERVICE TYPE

Boardings by Service Type and Route	Average Weekday	Average Weekday	Percent Change	Average Saturday	Average Saturday	Percent Change	Average Sunday	Average Sunday	Percent Change	Total Monthly	Total Monthly	Percent Change
	Sep-22	Sep-21	22 vs 21	Sep-22	Sep-21	22 vs 21	Sep-22	Sep-21	22 vs 21	Sep-22	Sep-21	22 vs 21
<b>Contracted Express Routes</b>												
272 SUNSET-KAT	344	288	19.8%							6,887	6,038	14.1%
301-DADE MONROE EXPRESS	699	991	-29.4%	757	1,009	-25.0%	645	935	-31.1%	20,240	29,516	-31.4%
302-CARD SOUND EXPRESS	87	70	24.2%	69	43	60.1%	80	64	25.8%	2,413	1,959	23.2%
<b>Subtotal Contracted Express Routes</b>	<b>1,131</b>	<b>1,348</b>	<b>-16.1%</b>	<b>826</b>	<b>1,053</b>	<b>-21.5%</b>	<b>725</b>	<b>999</b>	<b>-27.5%</b>	<b>29,540</b>	<b>37,513</b>	<b>-21.3%</b>
<b>Percentage of All Bus Routes</b>	<b>0.9%</b>	<b>1.2%</b>		<b>1.1%</b>	<b>1.6%</b>		<b>1.2%</b>	<b>2.0%</b>		<b>0.9%</b>	<b>1.3%</b>	
<b>Limited Stop Routes</b>												
24-CORAL WAY LIMITED	1,628	843	93.0%	1,157	622	86.2%	934	685	36.4%	41,860	23,624	77.2%
51-FLAGLER MAX	3,050	2,281	33.7%							61,003	47,897	27.4%
79 STREET MAX	279									5,570		
93 - BISCAYNE MAX	2,329	1,809	28.7%							46,573	37,997	22.6%
120 - BEACH MAX	4,776	3,766	26.8%	3,803	2,898	31.3%	2,641	1,958	34.9%	123,939	100,458	23.4%
241 TUTTLE LIMITED	89			45			46			2,187		
252-CORAL REEF MAX	676	463	46.0%	302	154	96.9%	193	127	52.3%	15,697	10,972	43.1%
267-LUDLAM LIMITED (contracted)	160	110	45.0%							3,198	2,315	38.1%
277-7TH AVENUE MAX	552	353	56.2%							11,031	7,414	48.8%
287-SAGA BAY MAX	199	164	21.6%							3,985	3,441	15.8%
297-27th AVENUE ORANGE MAX	821	674	21.7%							16,417	14,161	15.9%
<b>Subtotal Limited Stop Routes</b>	<b>14,558</b>	<b>10,464</b>	<b>39.1%</b>	<b>5,308</b>	<b>3,673</b>	<b>44.5%</b>	<b>3,815</b>	<b>2,770</b>	<b>37.7%</b>	<b>331,460</b>	<b>248,279</b>	<b>33.5%</b>
<b>Percentage of All Bus Routes</b>	<b>11.6%</b>	<b>9.3%</b>		<b>6.9%</b>	<b>5.6%</b>		<b>6.4%</b>	<b>5.4%</b>		<b>10.6%</b>	<b>8.6%</b>	
<b>Directly Operated Free Routes</b>												
132-TRI-RAIL DORAL	3	10	-66.5%							36	127	-71.7%
200-CUTLER BAY LOCAL	99	1	9785.0%	109	9	1111.1%	51	4	1076.9%	2,668	32	8237.5%
<b>Subtotal Free Directly Operated Routes</b>	<b>102</b>	<b>11</b>	<b>848.3%</b>	<b>109</b>	<b>9</b>	<b>1111.1%</b>	<b>51</b>	<b>4</b>	<b>1076.9%</b>	<b>2,704</b>	<b>159</b>	<b>1600.6%</b>
<b>Percentage of All Bus Routes</b>	<b>0.0%</b>	<b>0.0%</b>								<b>0.0%</b>	<b>0.0%</b>	
<b>Shuttles</b>												
55-MARLINS SHUTTLE												
<b>Percentage of All Bus Routes</b>												
<b>Contractor-Operated Lifeline Routes</b>												
GREEN HILLS SHUTTLE	6	6	0.0%							18	18	0.0%
KINGS CREEK SHUTTLE	22	15	52.1%							111	73	52.1%
SIERRA LAKES SHUTTLE	17	18	-9.0%							83	73	13.7%
ROBERT SHARP SHUTTLE	14	24	-41.7%							42	120	-65.0%
AHEPA SHUTTLE	28	21	32.1%							140	106	32.1%
FEDERATION GARDENS SHUTTLE				23	20	13.8%				91	80	13.8%
<b>Subtotal Contractor-Operated Lifeline Routes</b>	<b>87</b>	<b>84</b>	<b>3.3%</b>	<b>23</b>	<b>20</b>	<b>13.8%</b>				<b>485</b>	<b>470</b>	<b>3.2%</b>
<b>Percentage of All Bus Routes</b>	<b>0.1%</b>	<b>0.1%</b>		<b>0.0%</b>	<b>0.0%</b>					<b>0.0%</b>	<b>0.0%</b>	
<b>Other Circulator Route</b>												
200-CUTLER BAY LOCAL	99	1	9785.0%	109	9	1111.1%	51	4	1076.9%	2,668	32	8237.5%
<b>Percentage of All Bus Routes</b>	<b>0.1%</b>	<b>0.0%</b>		<b>0.1%</b>	<b>0.0%</b>		<b>0.1%</b>	<b>0.0%</b>		<b>0.1%</b>	<b>0.0%</b>	
<b>All Other (Regular) Routes</b>	<b>102,543</b>	<b>95,967</b>	<b>6.9%</b>	<b>68,208</b>	<b>59,652</b>	<b>14.3%</b>	<b>52,304</b>	<b>45,717</b>	<b>14.4%</b>	<b>2,585,219</b>	<b>2,482,116</b>	<b>4.2%</b>
<b>Percentage of All Bus Routes</b>	<b>81.4%</b>	<b>85.4%</b>		<b>88.4%</b>	<b>90.3%</b>		<b>88.2%</b>	<b>89.6%</b>		<b>82.8%</b>	<b>86.3%</b>	
<b>Total Bus System</b>	<b>126,001</b>	<b>112,359</b>	<b>12.1%</b>	<b>77,148</b>	<b>66,057</b>	<b>16.8%</b>	<b>59,332</b>	<b>51,045</b>	<b>16.2%</b>	<b>3,123,572</b>	<b>2,877,110</b>	<b>8.6%</b>

## Bus Routes as Ranked by Percentage of Average Weekday Ridership September 2022

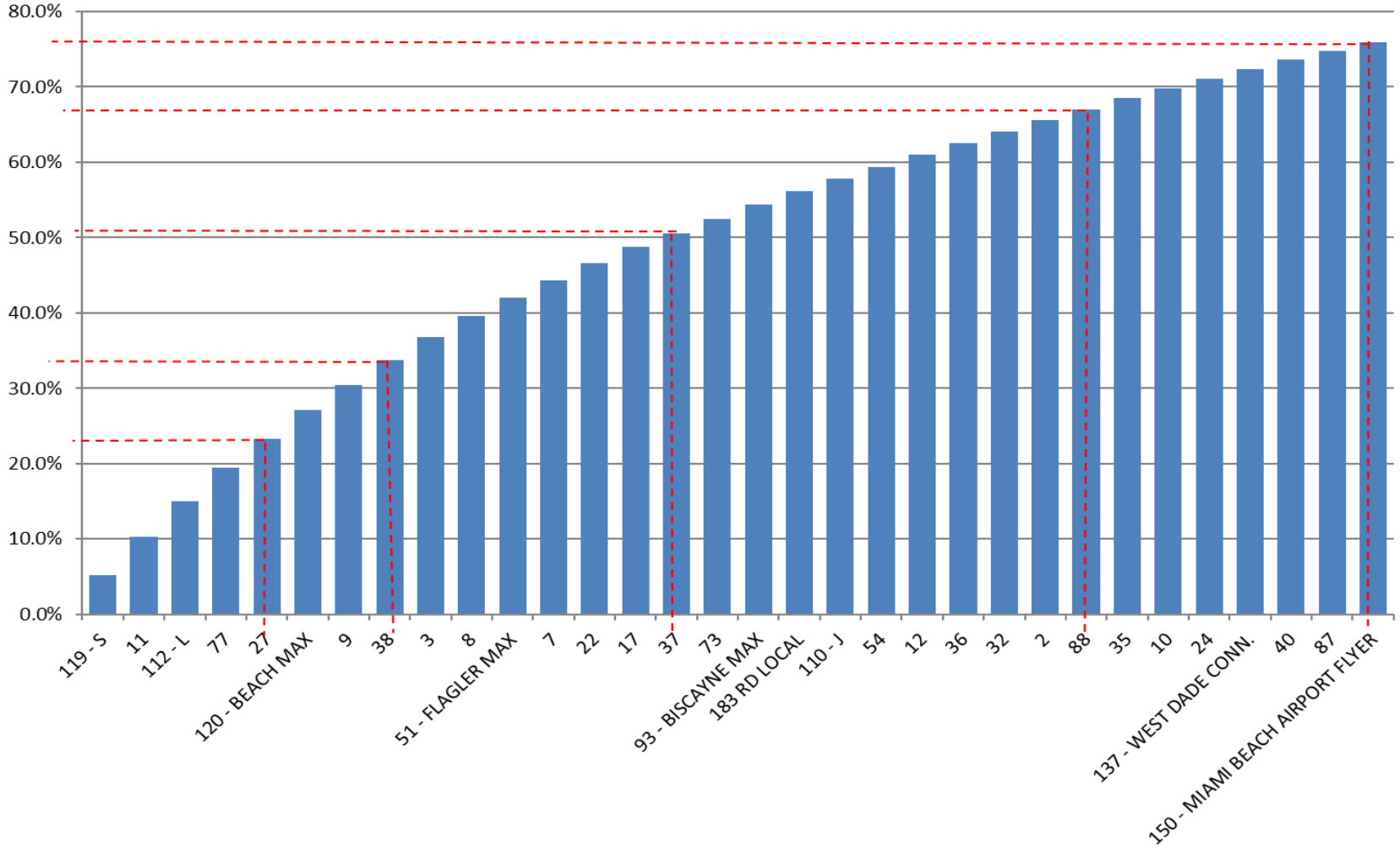
Rank	Route	Average Weekday	Percent Share	Cumul Pct Share	Rank	Route	Average Weekday	Percent Share	Cumul Pct Share	Rank	Route	Average Weekday	Percent Share	Cumul Pct Share	
1	119	6,566	5.2%	5.2%	36	33	1,273	1.0%	80.3%	71	1	169	0.1%	98.7%	
2	11	6,364	5.1%	10.3%	37	21	1,262	1.0%	81.3%	72	136	166	0.1%	98.8%	
3	112	5,978	4.7%	15.0%	38	62	1,216	1.0%	82.2%	73	267	160	0.1%	98.9%	
4	77	5,568	4.4%	19.4%	39	207	1,155	0.9%	83.1%	74	836	158	0.1%	99.1%	
5	27	4,848	3.8%	23.3%	40	99	1,144	0.9%	84.0%	75	248	126	0.1%	99.2%	
6	120	4,776	3.8%	27.1%	41	105	1,076	0.9%	84.9%	76	115	122	0.1%	99.3%	
7	9	4,270	3.4%	30.5%	42	208	1,047	0.8%	85.7%	77	200	99	0.1%	99.3%	
8	38	4,195	3.3%	33.8%	43	19	1,018	0.8%	86.5%	78	241	89	0.1%	99.4%	
9	3	3,792	3.0%	36.8%	44	34	1,006	0.8%	87.3%	79	302	87	0.1%	99.5%	
10	8	3,479	2.8%	39.6%	45	52	977	0.8%	88.1%	80	202	87	0.1%	99.5%	
11	51	3,050	2.4%	42.0%	46	135	920	0.7%	88.8%	81	211	75	0.1%	99.6%	
12	7	2,986	2.4%	44.3%	47	75	866	0.7%	89.5%	82	286	68	0.1%	99.7%	
13	22	2,892	2.3%	46.6%	48	297	821	0.7%	90.2%	83	217	62	0.0%	99.7%	
14	17	2,632	2.1%	48.7%	49	31	755	0.6%	90.8%	84	82	60	0.0%	99.8%	
15	37	2,385	1.9%	50.6%	50	95	750	0.6%	91.4%	85	344	56	0.0%	99.8%	
16	73	2,373	1.9%	52.5%	51	301	699	0.6%	91.9%	86	246	53	0.0%	99.8%	
17	93	2,329	1.8%	54.4%	52	42	689	0.5%	92.5%	87	155	43	0.0%	99.9%	
18	183	2,226	1.8%	56.1%	53	104	677	0.5%	93.0%	88	46	35	0.0%	99.9%	
19	110	2,093	1.7%	57.8%	54	252	676	0.5%	93.6%	89	AS	28	0.0%	99.9%	
20	54	2,054	1.6%	59.4%	55	71	656	0.5%	94.1%	90	KC	22	0.0%	99.9%	
21	12	2,018	1.6%	61.0%	56	72	589	0.5%	94.5%	91	SL	17	0.0%	100.0%	
22	36	1,989	1.6%	62.6%	57	277	552	0.4%	95.0%	92	212	15	0.0%	100.0%	
23	32	1,936	1.5%	64.1%	58	113	537	0.4%	95.4%	93	RS	14	0.0%	100.0%	
24	2	1,874	1.5%	65.6%	59	204	478	0.4%	95.8%	94	500	13	0.0%	100.0%	
25	88	1,818	1.4%	67.1%	60	238	423	0.3%	96.1%	95	GH	6	0.0%	100.0%	
26	35	1,818	1.4%	68.5%	61	29	397	0.3%	96.4%	96	254	6	0.0%	100.0%	
27	10	1,681	1.3%	69.8%	62	210	345	0.3%	96.7%	97	132	3	0.0%	100.0%	
28	24	1,628	1.3%	71.1%	63	272	344	0.3%	97.0%						
29	137	1,559	1.2%	72.4%	64	57	338	0.3%	97.3%						
30	40	1,541	1.2%	73.6%	65	108	333	0.3%	97.5%						
31	87	1,502	1.2%	74.8%	66	56	325	0.3%	97.8%						
32	150	1,463	1.2%	75.9%	67	79	279	0.2%	98.0%						
33	16	1,438	1.1%	77.1%	68	288	262	0.2%	98.2%						
34	107	1,379	1.1%	78.2%	69	101	227	0.2%	98.4%						
35	102	1,355	1.1%	79.2%	70	287	199	0.2%	98.5%						
												entirely contracted			
											<b>Total Boardings</b>	<b>126,001</b>	<b>100.0%</b>	<b>100.0%</b>	

(1) Average weekday ridership rounded to the nearest unit.

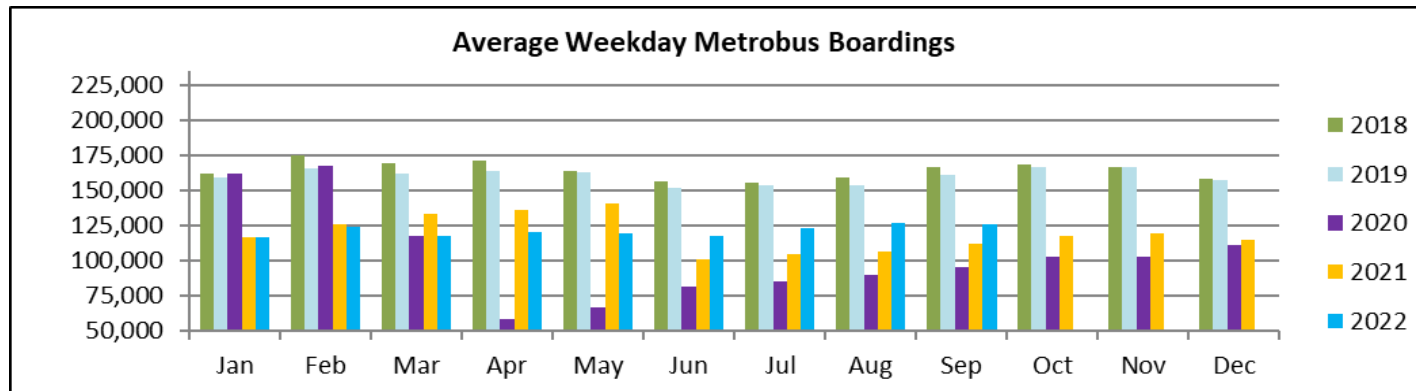
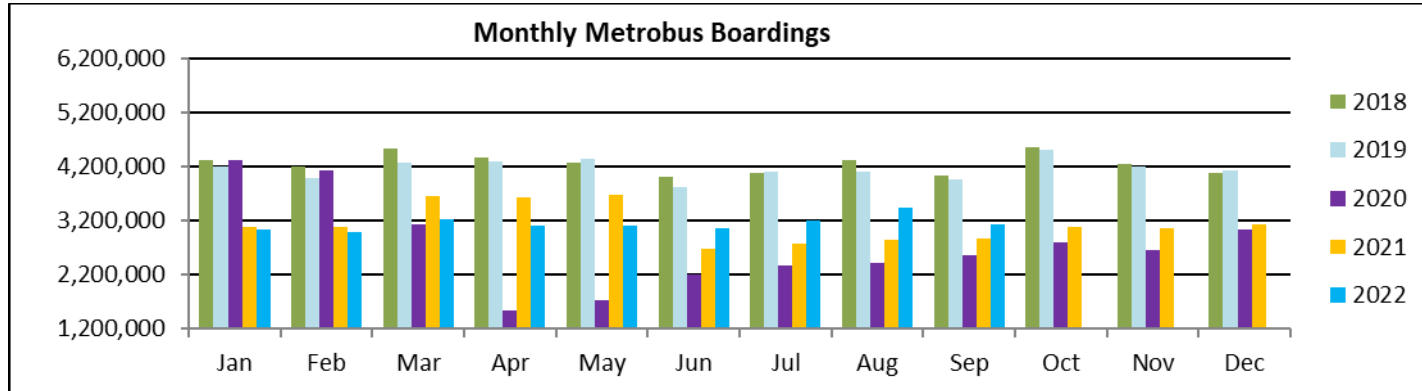
(2) Includes the five Lifeline Shuttles that operate on weekdays: Ahepa, Green Hills, Kings Creek, Robert Sharp and Sierra Lakes.

# METROBUS CUMULATIVE PERCENTAGE RIDERSHIP SHARE

Bus - Cumulative Percentage Average Weekday Ridership Share  
Top 1/4, 1/3, 1/2, 2/3 and 3/4 of Routes



## TOTAL MONTHLY AND AVERAGE WEEKDAY RIDERSHIP YEAR OVER YEAR COMPARISON CHARTS – METROBUS



**“TOP 5 / BOTTOM 5” BUS ROUTES AVERAGE WEEKDAY RIDERSHIP PERFORMANCE  
YEAR OVER YEAR COMPARISONS**

<b>Route</b>	<b>Sep-22</b>	<b>Sep-21</b>	<b>Absolute Delta (1)</b>	<b>Percent Delta (2)</b>
<b>120 - BEACH MAX</b>	4,776	3,766	1,010	26.8%
<b>73</b>	2,373	1,527	846	55.4%
<b>24</b>	1,628	843	785	93.0%
<b>51 - FLAGLER MAX</b>	3,050	2,281	769	33.7%
<b>150 - MIAMI BEACH AIRPORT FLYER</b>	1,463	738	725	98.3%
<b>112 - L</b>	5,978	6,616	-638	-9.6%
<b>9</b>	4,270	4,725	-455	-9.6%
<b>119 - S</b>	6,566	6,885	-320	-4.6%
<b>301 DADE-MONROE EXPRESS (*)</b>	699	991	-291	-29.4%
<b>3</b>	3,792	4,070	-278	-6.8%

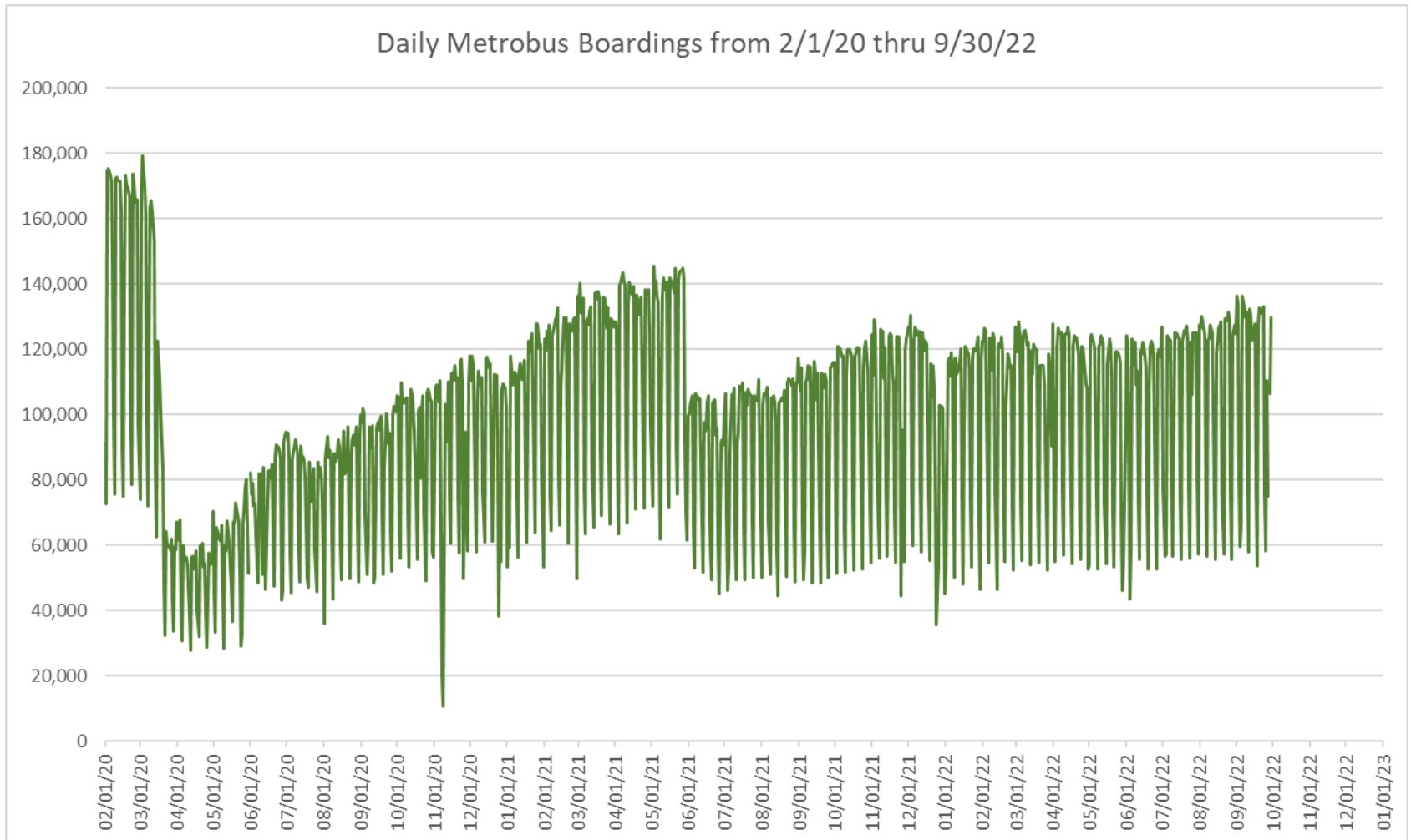
(1) Averages rounded to the nearest boarding, data as reported by NFS and/or APC system, depending on year; Lifelines excluded.

(2) As a result of the SARS-CoV-2 pandemic, rides were fare-free beginning March 22, 2020; many bus routes continued reporting YOY gains in September 2022, since September 2021 still showed clear reduction effects on ridership from the SARS-CoV-2 pandemic. Fares were reinstated June 1, 2021, and ridership data from the farebox system rather than the automatic passenger counter system is utilized from that date going forward.

(\*) Contracted route.



## DAILY METROBUS RIDERSHIP SINCE FEBRUARY 1, 2020



- (1) National Emergency was declared on 3/13/20 as a result of the SARS-CoV-2 pandemic.
- (2) There was no Metrobus, Metrorail and Metromover service on 5/31/20, as a safety precaution, and no service for any of the four modes on 9/28/22 as a result of Hurricane Ian.
- (3) The dip at the start of the second week of November 2020 is due to Hurricane Eta.
- (4) The reduction seen beginning 6/1/21 is partly due to the resumption of fares and partly the result of resuming reporting Cubic farebox data rather than bus APC counts.
- (5) Periodic (weekly) variations are prominent, since weekday ridership is almost always significantly higher than weekend or holiday ridership.

## METROBUS PARKING PATRONAGE SUMMARY September 2022

PARK-RIDE LOT	ACTUAL AVAILABLE SPACES	ACTUAL OCCUPANCY	PERCENT OCCUPANCY
Transitway / SW 152nd St	200	94	47%
Transitway / SW 168th St (*)	149	0	0%
Transitway / SW 200th Street (effective February 2020)	100	27	27%
Transitway / SW 112 Ave (Target)	450	117	26%
Transitway / SW 244th St	95	61	64%
Transitway / SW 296th St	139	13	9%
Transitway / SW 344th St	248	175	71%
Coral Reef Drive 117/ Turnpike	95	100	105%
Golden Glades Facility	2,150	315	15%
Hammocks Town Center (SW 152 Ave / SW 104 St)	50	12	24%
Kendall Dr./SW 127th Ave	161	14	9%
West Kendall Transit Term (Kendall Dr / SW162 Ave)	40	9	23%
NW 7th Avenue Transit Village (NW 7 Ave / NW 62 St)	25	21	84%
Miami Gardens Dr. / NW 73rd Ave	136	0	0%
Dolphin Station (effective Mar 2020)	348	70	20%
I-75 / Miami Gardens Dr (**)	298	0	0%
<b>TOTAL</b>	<b>4,684</b>	<b>1,028</b>	<b>22%</b>

(\*) Closed for construction beginning January 2022

(\*\*) Route 175 Suspended 3/27/2020

# Metrorail



September 2022

## METRORAIL AVERAGE WEEKDAY BOARDINGS BY STATION (†)

<b>Weekdays</b>	Average Weekday	Average Weekday	Percent Change	Average Weekday	Percent Change	Average Weekday	Percent Change	Average Weekday	Percent Change
<b>STATIONS</b>	Sep-22	Sep-21	YOY	Feb-20	Current vs Feb-20	Aug-22	MOM	Sep-20	YO2Y
ALLAPATTAH	1,459	1,006	45.0%	1,942	-24.9%	1,430	2.0%	986	47.9%
BRICKELL	4,442	3,268	35.9%	6,529	-32.0%	4,267	4.1%	3,131	41.9%
BROWNSVILLE	665	570	16.8%	862	-22.8%	643	3.5%	674	-1.3%
CIVIC CENTER	3,612	2,880	25.4%	6,143	-41.2%	3,570	1.2%	2,073	74.2%
COCONUT GROVE	1,273	1,004	26.9%	1,795	-29.1%	1,265	0.7%	735	73.1%
CULMER	883	760	16.3%	1,392	-36.5%	857	3.1%	793	11.4%
DADELAND NORTH	3,532	2,627	34.5%	5,926	-40.4%	3,368	4.9%	2,234	58.1%
DADELAND SOUTH	3,919	3,118	25.7%	7,150	-45.2%	3,778	3.7%	2,441	60.6%
DOUGLAS ROAD	2,663	2,067	28.8%	3,624	-26.5%	2,526	5.4%	1,038	156.5%
DR. MARTIN LUTHER KING, JR.	774	643	20.3%	1,157	-33.1%	756	2.3%	729	6.0%
EARLINGTON HEIGHTS	1,170	889	31.6%	1,662	-29.6%	1,169	0.1%	722	62.1%
GOVERNMENT CENTER	5,833	4,382	33.1%	10,557	-44.7%	5,581	4.5%	2,824	106.5%
HIALEAH	1,044	756	38.2%	1,253	-16.6%	998	4.6%	775	34.8%
MIAMI INTERNATIONAL AIRPORT	1,101	665	65.7%	1,711	-35.6%	1,070	2.9%	539	104.3%
NORTHSIDE	1,155	862	33.9%	1,476	-21.7%	1,155	0.0%	831	38.9%
OKEECHOBEE	792	616	28.6%	1,164	-32.0%	787	0.6%	541	46.5%
OVERTOWN/ ARENA	1,305	824	58.3%	2,274	-42.6%	1,280	1.9%	619	110.8%
PALMETTO	1,111	833	33.4%	1,543	-28.0%	1,095	1.4%	693	60.4%
SANTA CLARA	557	415	34.4%	812	-31.4%	560	-0.6%	459	21.2%
SOUTH MIAMI	1,822	1,449	25.7%	3,015	-39.6%	1,728	5.4%	892	104.2%
TRI-RAIL	913	723	26.2%	1,207	-24.4%	934	-2.3%	673	35.7%
UNIVERSITY	1,970	1,393	41.4%	2,784	-29.3%	1,427	38.0%	414	375.4%
VIZCAYA	1,012	753	34.5%	1,390	-27.2%	951	6.4%	541	87.2%
<b>TOTAL</b>	<b>43,007</b>	<b>32,502</b>	<b>32.3%</b>	<b>67,367</b>	<b>-36.2%</b>	<b>41,197</b>	<b>4.4%</b>	<b>25,358</b>	<b>69.6%</b>

(†) In this table and those which follow, "YOY" stands for "year-over-year", "MOM" for "month-over-month" and "YO2Y" for "year over two years", i.e., current month vs 12 months prior, one month prior and 24 months prior, respectively.

(\*) Due to effects from the SARS-CoV-2 pandemic; rides were fare-free beginning March 22, 2020; fares were reinstated on June1, 2021, in part accounting for the drop in ridership from May 2021.

## METRORAIL AVERAGE SATURDAY BOARDINGS BY STATION

<b>Saturdays</b>	Average Saturday	Average Saturday	Percent Change	Average Saturday	Percent Change	Average Saturday	Percent Change	Average Saturday	Percent Change
<b>STATIONS</b>	Sep-22	Sep-21	YOY	Feb-20	Current vs Feb-20	Aug-22	MOM	Sep-20	YO2Y
ALLAPATTAH	856	577	48.4%	1,051	-18.6%	822	4.2%	576	48.5%
BRICKELL	2,215	1,596	38.8%	2,811	-21.2%	2,067	7.2%	1,954	13.4%
BROWNSVILLE	402	367	9.5%	520	-22.7%	393	2.3%	464	-13.5%
CIVIC CENTER	657	466	41.0%	959	-31.5%	617	6.4%	559	17.4%
COCONUT GROVE	690	526	31.2%	928	-25.7%	683	1.0%	432	59.7%
CULMER	435	342	27.3%	721	-39.6%	440	-1.1%	511	-14.8%
DADELAND NORTH	1,339	1,003	33.5%	1,994	-32.9%	1,325	1.1%	1,225	9.3%
DADELAND SOUTH	1,748	1,366	28.0%	2,625	-33.4%	1,700	2.8%	1,474	18.6%
DOUGLAS ROAD	1,135	817	38.9%	1,319	-14.0%	1,088	4.3%	632	79.7%
DR. MARTIN LUTHER KING, JR.	437	326	34.0%	625	-30.0%	422	3.6%	473	-7.5%
EARLINGTON HEIGHTS	698	507	37.7%	935	-25.4%	686	1.9%	483	44.7%
GOVERNMENT CENTER	2,494	1,844	35.3%	4,262	-41.5%	2,434	2.5%	1,694	47.3%
HIALEAH	498	380	31.2%	583	-14.6%	494	0.9%	425	17.3%
MIAMI INTERNATIONAL AIRPORT	934	520	79.5%	1,330	-29.8%	908	2.8%	527	77.4%
NORTHSIDE	732	528	38.6%	878	-16.6%	704	4.0%	602	21.6%
OKEECHOBEE	296	262	12.8%	408	-27.6%	282	5.0%	316	-6.3%
OVERTOWN/ ARENA	487	300	62.0%	678	-28.2%	375	29.9%	354	37.4%
PALMETTO	353	243	45.3%	458	-22.9%	339	4.1%	298	18.6%
SANTA CLARA	331	215	53.8%	422	-21.5%	243	36.2%	276	19.8%
SOUTH MIAMI	913	647	41.1%	1,256	-27.3%	845	8.0%	534	70.8%
TRI-RAIL	434	336	29.3%	614	-29.3%	439	-1.0%	415	4.6%
UNIVERSITY	622	440	41.4%	714	-12.9%	491	26.8%	240	159.6%
VIZCAYA	464	329	40.8%	622	-25.5%	448	3.5%	331	40.0%
<b>TOTAL</b>	<b>19,168</b>	<b>13,936</b>	<b>37.5%</b>	<b>26,714</b>	<b>-28.2%</b>	<b>18,242</b>	<b>5.1%</b>	<b>14,793</b>	<b>29.6%</b>

## METRORAIL AVERAGE SUNDAY BOARDINGS BY STATION

<b>Sundays</b>	Average Sunday	Average Sunday	Percent Change	Average Sunday	Percent Change	Average Sunday	Percent Change	Average Sunday	Percent Change
STATIONS	Sep-22	Sep-21	YOY	Feb-20	Current vs Feb-20	Aug-22	MOM	Sep-20	YO2Y
ALLAPATTAH	576	412	39.7%	791	-27.2%	598	-3.8%	465	23.8%
BRICKELL	1,763	1,271	38.7%	2,379	-25.9%	1,681	4.9%	1,550	13.7%
BROWNSVILLE	315	252	24.9%	406	-22.5%	297	6.0%	385	-18.2%
CIVIC CENTER	536	345	55.2%	791	-32.3%	503	6.5%	493	8.7%
COCONUT GROVE	494	427	15.8%	838	-41.1%	523	-5.5%	372	33.0%
CULMER	316	296	6.9%	616	-48.7%	330	-4.2%	426	-25.8%
DADELAND NORTH	1,008	820	22.9%	1,685	-40.2%	969	4.0%	970	3.9%
DADELAND SOUTH	1,346	1,089	23.7%	2,210	-39.1%	1,260	6.9%	1,232	9.3%
DOUGLAS ROAD	796	593	34.2%	1,090	-26.9%	775	2.7%	461	72.9%
DR. MARTIN LUTHER KING, JR.	352	254	38.4%	506	-30.5%	331	6.4%	382	-7.9%
EARLINGTON HEIGHTS	532	376	41.3%	799	-33.5%	538	-1.1%	399	33.3%
GOVERNMENT CENTER	1,876	1,384	35.5%	4,044	-53.6%	1,835	2.2%	1,380	35.9%
HIALEAH	374	266	40.9%	472	-20.7%	360	3.8%	329	13.9%
MIAMI INTERNATIONAL AIRPORT	846	565	49.7%	1,343	-37.0%	877	-3.5%	502	68.6%
NORTHSIDE	547	427	28.2%	653	-16.2%	538	1.6%	516	6.1%
OKEECHOBEE	165	146	13.2%	273	-39.5%	164	1.1%	201	-17.7%
OVERTOWN/ ARENA	389	260	49.7%	544	-28.6%	274	41.7%	367	6.0%
PALMETTO	208	148	40.7%	336	-38.1%	202	3.1%	208	0.1%
SANTA CLARA	220	147	50.0%	280	-21.4%	206	6.9%	214	2.8%
SOUTH MIAMI	643	484	32.9%	987	-34.8%	619	3.9%	396	62.3%
TRI-RAIL	351	278	26.1%	528	-33.6%	350	0.3%	332	5.5%
UNIVERSITY	524	360	45.4%	608	-13.9%	433	21.0%	132	298.3%
VIZCAYA	345	268	28.7%	524	-34.2%	336	2.7%	246	40.2%
<b>TOTAL</b>	<b>14,518</b>	<b>10,865</b>	<b>33.6%</b>	<b>22,701</b>	<b>-36.0%</b>	<b>13,996</b>	<b>3.7%</b>	<b>11,952</b>	<b>21.5%</b>

## METRORAIL TOTAL MONTHLY BOARDINGS BY STATION

<b>Monthly Totals (1)</b>	Total Month	Total Month	Percent Change	Total Month	Percent Change	Total Month	Percent Change	Total Month	Percent Change
<b>STATIONS</b>	Sep-22	Sep-21	YOY	Feb-20	Current vs Feb-20	Aug-22	MOM	Sep-20	YO2Y
ALLAPATTAH	35,612	25,620	39.0%	46,868	-24.0%	38,579	-7.7%	25,482	39.8%
BRICKELL	106,840	81,807	30.6%	152,259	-29.8%	113,144	-5.6%	81,669	30.8%
BROWNSVILLE	16,529	14,787	11.8%	21,285	-22.3%	17,545	-5.8%	18,023	-8.3%
CIVIC CENTER	77,654	64,252	20.9%	128,921	-39.8%	86,580	-10.3%	48,412	60.4%
COCONUT GROVE	30,856	25,339	21.8%	43,580	-29.2%	33,915	-9.0%	19,110	61.5%
CULMER	21,085	18,869	11.7%	33,497	-37.1%	22,794	-7.5%	20,925	0.8%
DADELAND NORTH	81,262	63,476	28.0%	132,894	-38.9%	86,642	-6.2%	56,896	42.8%
DADELAND SOUTH	92,351	76,684	20.4%	162,416	-43.1%	98,740	-6.5%	63,586	45.2%
DOUGLAS ROAD	62,096	49,896	24.5%	82,141	-24.4%	65,542	-5.3%	26,752	132.1%
DR. MARTIN LUTHER KING, JR.	19,027	16,172	17.7%	27,980	-32.0%	20,396	-6.7%	19,153	-0.7%
EARLINGTON HEIGHTS	28,918	22,688	27.5%	40,697	-28.9%	31,781	-9.0%	19,129	51.2%
GOVERNMENT CENTER	136,400	106,675	27.9%	243,414	-44.0%	145,428	-6.2%	73,105	86.6%
HIALEAH	24,791	18,776	32.0%	29,516	-16.0%	26,367	-6.0%	19,749	25.5%
MIAMI INTERNATIONAL AIRPORT	30,143	19,041	58.3%	46,115	-34.6%	31,752	-5.1%	16,058	87.7%
NORTHSIDE	28,908	22,449	28.8%	36,127	-20.0%	31,532	-8.3%	22,624	27.8%
OKEECHOBEE	17,965	14,787	21.5%	26,026	-31.0%	19,888	-9.7%	13,716	31.0%
OVERTOWN/ ARENA	30,017	19,870	51.1%	49,911	-39.9%	32,039	-6.3%	16,257	84.6%
PALMETTO	24,757	19,296	28.3%	33,944	-27.1%	27,361	-9.5%	16,874	46.7%
SANTA CLARA	13,595	10,347	31.4%	19,245	-29.4%	14,685	-7.4%	11,894	14.3%
SOUTH MIAMI	43,268	35,502	21.9%	69,412	-37.7%	45,602	-5.1%	22,907	88.9%
TRI-RAIL	21,798	18,026	20.9%	29,120	-25.1%	24,638	-11.5%	17,537	24.3%
UNIVERSITY	44,562	32,855	35.6%	61,253	-27.2%	36,525	22.0%	10,406	328.2%
VIZCAYA	23,897	18,535	28.9%	32,497	-26.5%	25,015	-4.5%	13,980	70.9%
<b>TOTAL</b>	<b>1,012,331</b>	<b>795,749</b>	<b>27.2%</b>	<b>1,549,118</b>	<b>-34.7%</b>	<b>1,076,490</b>	<b>-6.0%</b>	<b>654,244</b>	<b>54.7%</b>

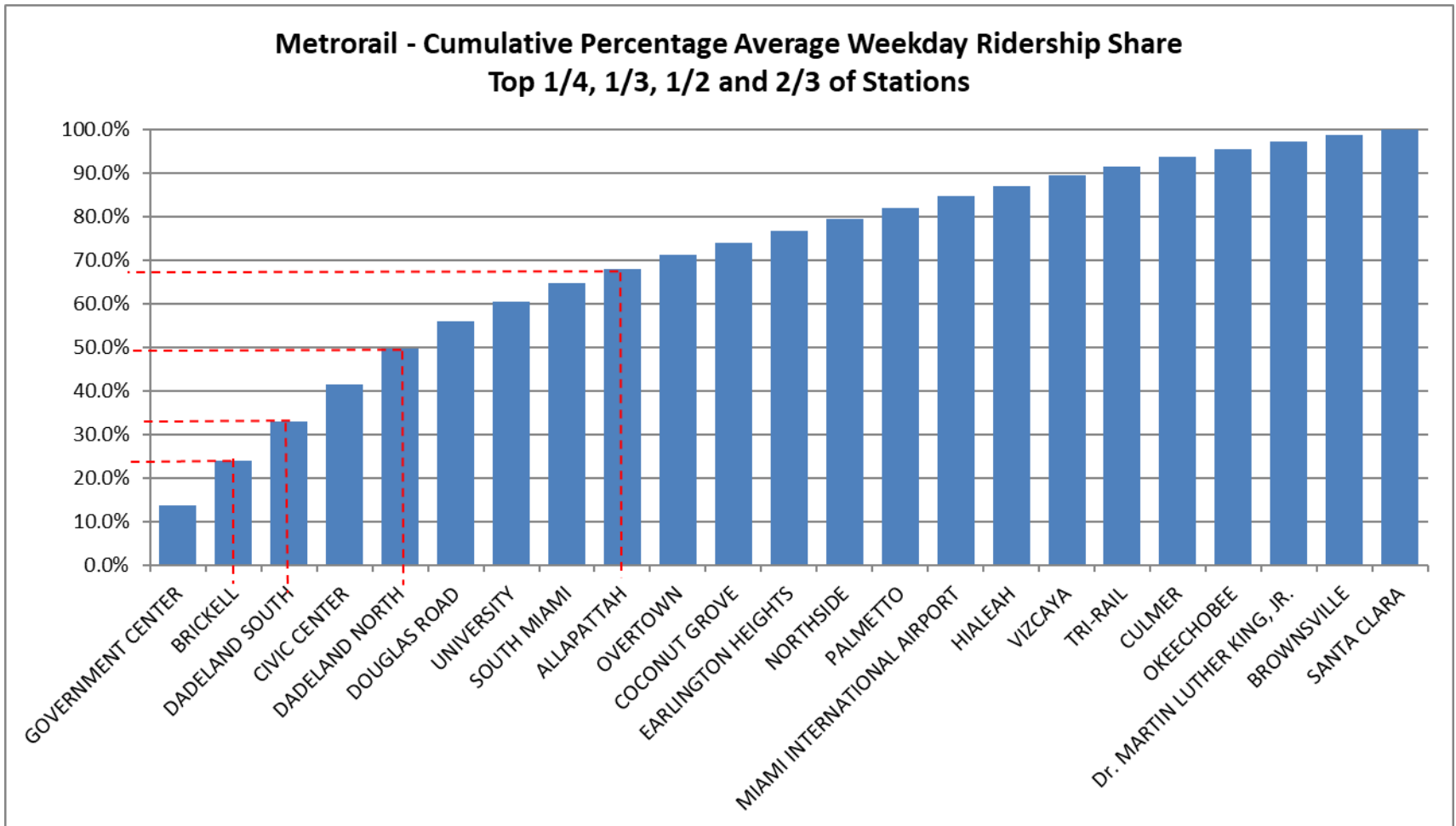
(1) All DTPW travel modes, including Metrorail, were closed on 9/28/22 due to Hurricane Ian; the storm also reduced total boardings on a few other days.

## METRORAIL HOLIDAY BOARDINGS BY STATION Labor Day

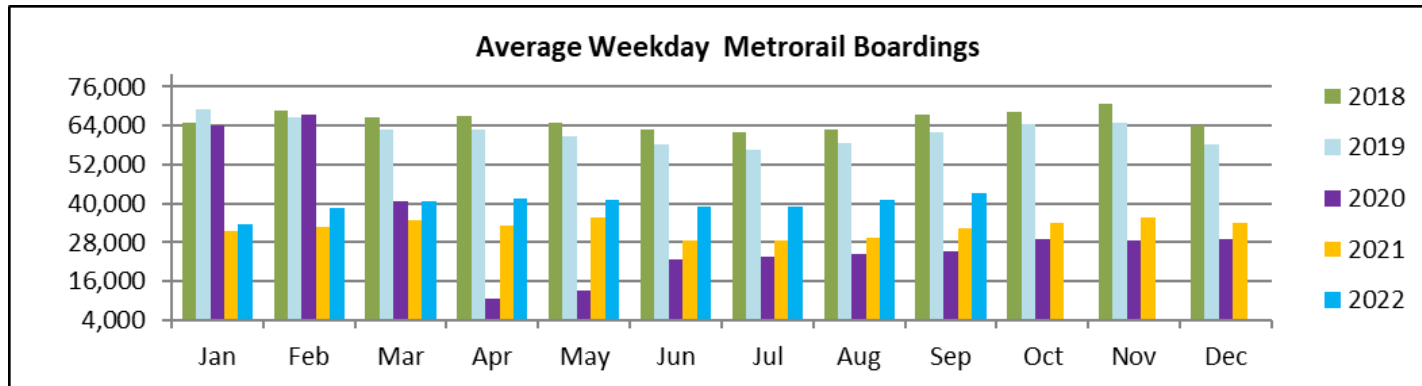
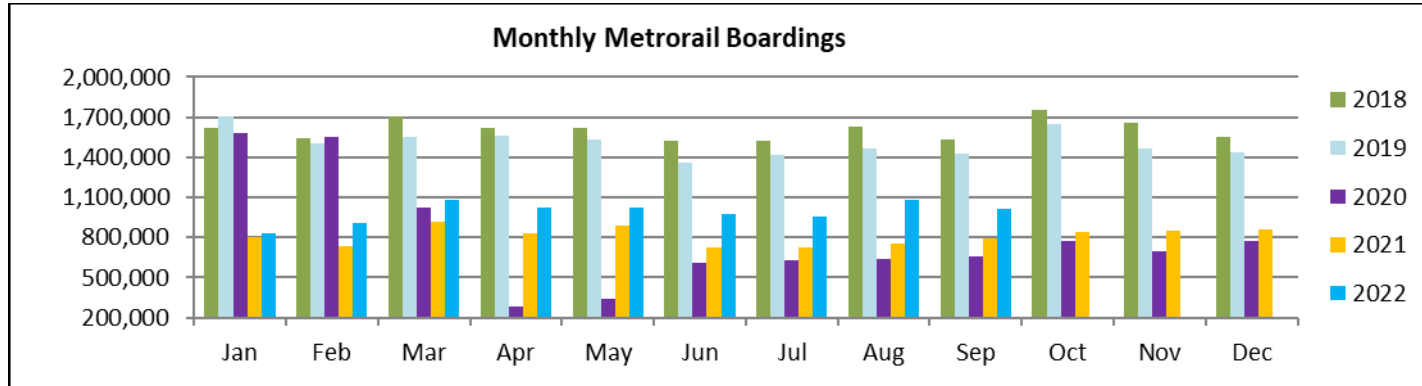
	Labor Day	Labor Day	Percent Change
STATIONS	2021	2022	22 vs 21
ALLAPATTAH	535	703	31.4%
BRICKELL	1,706	2,095	22.8%
BROWNSVILLE	349	361	3.4%
CIVIC CENTER	523	643	22.9%
COCONUT GROVE	452	654	44.7%
CULMER	368	413	12.2%
DADELAND NORTH	1,026	1,233	20.2%
DADELAND SOUTH	1,390	1,596	14.8%
DOUGLAS ROAD	844	1,107	31.2%
DR. MARTIN LUTHER KING, JR.	352	400	13.6%
EARLINGTON HEIGHTS	477	596	24.9%
GOVERNMENT CENTER	1,740	2,260	29.9%
HIALEAH	324	418	29.0%
MIAMI INTERNATIONAL AIRPORT	745	999	34.1%
NORTHSIDE	520	697	34.0%
OKEECHOBEE	226	283	25.2%
OVERTOWN/ ARENA	321	427	33.0%
PALMETTO	242	290	19.8%
SANTA CLARA	195	253	29.7%
SOUTH MIAMI	551	614	11.4%
TRI-RAIL	382	403	5.5%
UNIVERSITY	395	587	48.6%
VIZCAYA	340	417	22.6%
<b>TOTAL</b>	<b>14,003</b>	<b>17,449</b>	<b>24.6%</b>



## METRORAIL CUMULATIVE PERCENTAGE RIDERSHIP SHARE



## TOTAL MONTHLY AND AVERAGE WEEKDAY RIDERSHIP YEAR OVER YEAR COMPARISON CHARTS – METRORAIL

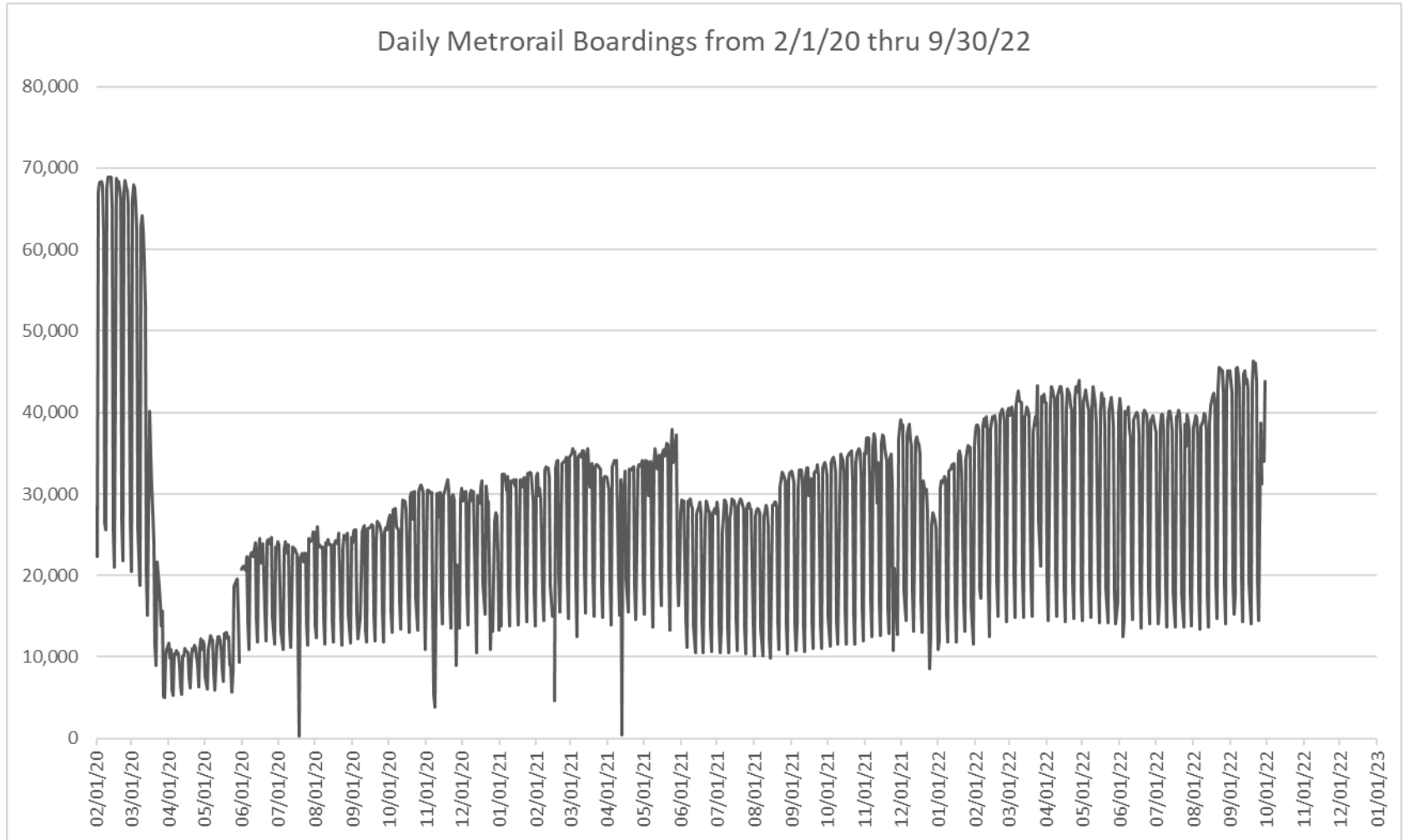


**“TOP 5 / BOTTOM 5” RAIL STATIONS AVERAGE WEEKDAY RIDERSHIP PERFORMANCE  
YEAR OVER YEAR COMPARISONS**

<b>Station</b>	<b>Sep-22</b>	<b>Sep-21</b>	<b>Absolute Delta (1)</b>	<b>Percent Delta</b>
GOVERNMENT CENTER	5,833	4,382	1,451	33.1%
BRICKELL	4,442	3,268	1,173	35.9%
DADELAND NORTH	3,532	2,627	905	34.5%
DADELAND SOUTH	3,919	3,118	801	25.7%
CIVIC CENTER	3,612	2,880	732	25.4%
BROWNSVILLE	665	570	95	16.8%
CULMER	883	760	124	16.3%
Dr. MARTIN LUTHER KING, JR.	774	643	131	20.3%
SANTA CLARA	557	415	142	34.4%
OKEECHOBEE	792	616	176	28.6%

- (1) Averages rounded to the nearest boarding; all stations reported net gains over pandemic month September 2021.
- (2) As a result of the SARS-CoV-2 pandemic, rides were fare-free beginning March 22, 2020; all rail stations continued reporting YOY gains in September 2022, since September 2021 still showed clear reduction effects on ridership from the SARS-CoV-2 pandemic. Fares were reinstated June 1, 2021, and ridership data from the faregate system rather than the video camera counter system is utilized from that date going forward.

## DAILY METRORAIL RIDERSHIP SINCE FEBRUARY 1, 2020



- (1) National Emergency was declared on 3/13/20 as a result of the SARS-CoV-2 pandemic.
- (2) There was no Metrobus, Metrorail and Metromover service on 5/31/20, as a safety precaution, and no service for any of the four modes on 9/28/22 as a result of Hurricane Ian..
- (3) The dip at the start of the second week of November 2020 is due to Hurricane Eta; these are *raw data* from the Unleash Live contractor AI video system.
- (4) The dip on 4/13/21 is due to a loss of connectivity at all stations, affecting a few stations over the next two days as well.
- (5) The reduction seen beginning 6/1/21 is partly due to the resumption of fares and partly the result of resuming reporting Cubic faregate data rather than video camera counts.
- (6) Periodic (weekly) variations are prominent, since weekday ridership is almost always significantly higher than weekend or holiday ridership.

## METRORAIL PARKING PATRONAGE SUMMARY September 2022

PARK-RIDE LOT	ACTUAL CAPACITY (1)	ACTUAL OCCUPANCY (2)	PERCENT OCCUPANCY
DADELAND SOUTH	1,260	582	46%
DADELAND NORTH	1,963	807	41%
SOUTH MIAMI	837	263	31%
UNIVERSITY	230	105	46%
DOUGLAS ROAD	190	145	76%
COCONUT GROVE	100	32	32%
VIZCAYA	120	35	29%
CULMER	40	10	25%
SANTA CLARA	61	35	58%
ALLAPATTAH	74	3	4%
EARLINGTON HEIGHTS	361	132	37%
BROWNSVILLE	100	66	66%
DR. MARTIN LUTHER KING JR. (MDT)	62	0	0%
DR. MARTIN LUTHER KING JR. (GARAGE)	631	0	0%
NORTHSIDE	100	69	69%
HIALEAH	338	40	12%
OKEECHOBEE	1,256	129	10%
PALMETTO	700	136	19%
<b>TOTAL</b>	<b>8,423</b>	<b>2,589</b>	<b>31%</b>

- (1) Number of spaces could vary each week; shown are available spaces during final week of month, as submitted by DTPW Safety & Security office.
- (2) All sampled occupancy data provided by DTPW Safety & Security office; calculations are revisions to those submitted by that entity.
- (3) Daily averages rounded to nearest unit, with fewer counts at some stations due to shortage of DTPW Safety & Security office staff; calculations are based on sampled counted days only per raw data submitted, with resulting average daily occupancy shown.
- (\*) Closed throughout the month, per the DTPW Safety & Security office.

# Metromover



## METROMOVER MONTHLY AND AVERAGE DAILY BOARDINGS BY STATION

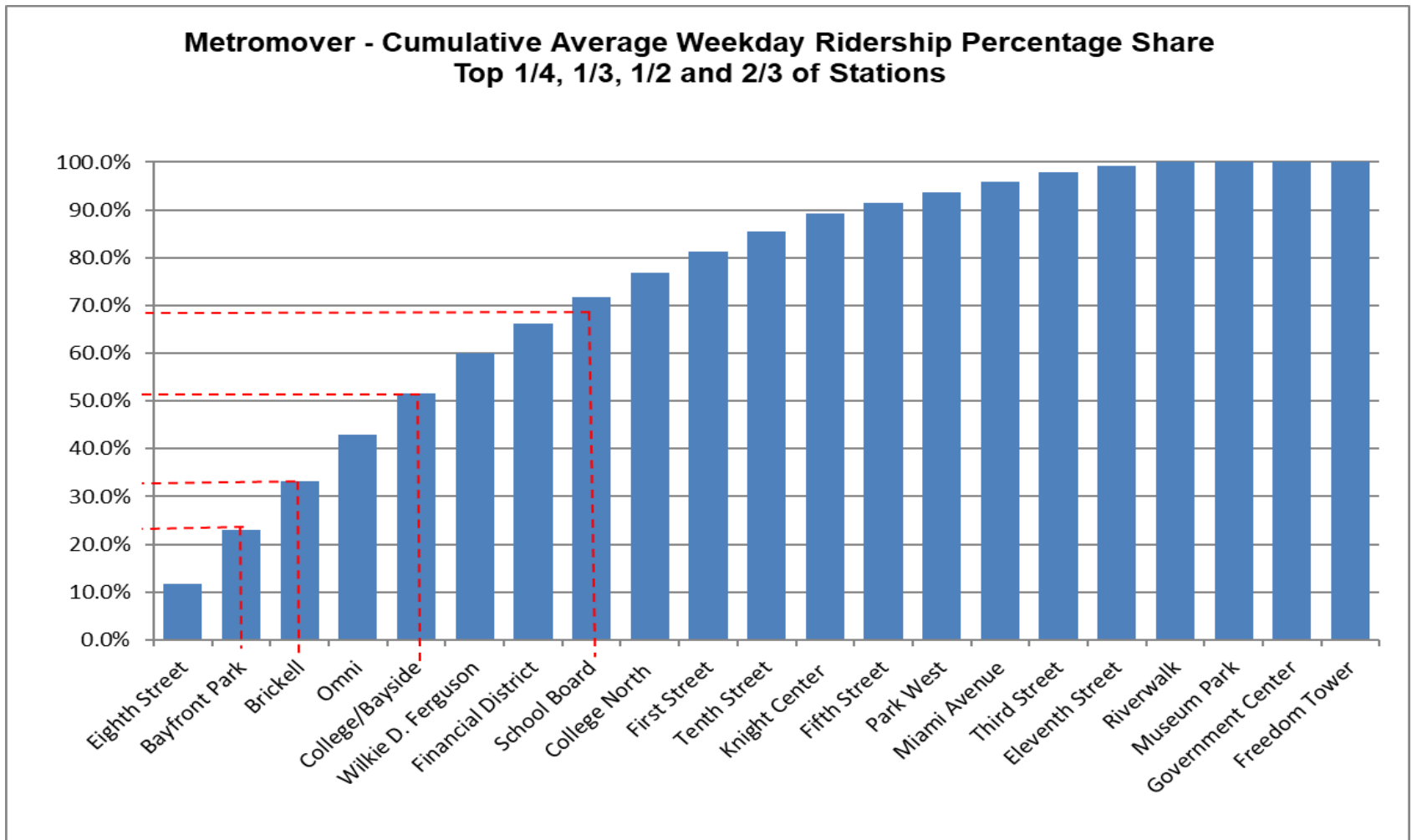
	Average Weekday	Average Weekday	Percent Change	Average Saturday	Average Saturday	Percent Change	Average Sunday	Average Sunday	Percent Change	Labor Day	Labor Day	Percent Change	Total Monthly	Total(1) Monthly	Percent Change
STATIONS	Sep-22	Sep-21	22 vs 21	Sep-22	Sep-21	22 vs 21	Sep-22	Sep-21	22 vs 21	Sep-22	Sep-21	21 vs 20	Sep-22	Sep-21	22 vs 21
School Board	788	553	42.6%	612	409	49.6%	566	386	46.9%	604	444	36.0%	21,083	15,229	38.4%
Omni	1,365	1,110	22.9%	1,008	862	17.0%	929	723	28.5%	961	835	15.1%	36,014	30,490	18.1%
Museum Park (2)		163			231			183			239			4,583	
Eleventh Street	198	211	-6.1%	240	147	63.5%	164	117	39.7%	177	164	7.9%	5,747	5,645	1.8%
Park West	316	170	86.0%	385	114	238.2%	296	106	179.9%	322	50	544.0%	6,471	4,325	49.6%
Freedom Tower (3)															
Government Center (2)		1,902			1,240			1,081			1,248			50,484	
Miami Avenue	307	238	29.0%	257	160	60.6%	167	133	25.8%	181	165	9.7%	6,062	4,799	26.3%
Third Street	279	229	21.7%	237	152	56.7%	195	134	45.8%	198	145	36.6%	5,678	6,096	-6.9%
Knight Center	514	357	44.2%	395	211	87.2%	282	162	74.8%	276	246	12.2%	13,268	9,224	43.8%
Bayfront Park	1,611	1,337	20.5%	1,290	1,035	24.7%	1,139	949	20.1%	972	895	8.6%	42,902	36,900	16.3%
First Street	627	518	21.0%	551	397	38.9%	478	360	32.7%		280		5,415	12,389	-56.3%
College/Bayside	1,238	762	62.4%	1,034	453	128.4%	891	418	113.4%				11,827	13,626	-13.2%
College North	713	460	55.0%	454	275	65.3%	351	206	70.4%	361	241	49.8%	12,042	11,823	1.9%
Wilkie D. Ferguson	1,185	585	102.8%	782	432	81.2%	611	360	69.6%	663			23,806	11,521	106.6%
Riverwalk	116	300	-61.4%	79	257	-69.5%	64	215	-70.1%	42	191	-78.0%	2,930	8,374	-65.0%
Fifth Street	318	254	25.4%	266	186	42.6%	192	151	27.7%	250	119	110.1%	8,450	6,799	24.3%
Eighth Street	1,639	947	73.2%	1,563	739	111.5%	1,262	663	90.5%	1,013	852	18.9%	45,094	26,337	71.2%
Tenth Street	608	532	14.3%	557	401	38.9%	435	324	34.2%	426	376	13.3%	16,550	14,441	14.6%
Brickell	1,446	1,679	-13.8%	1,333	1,300	2.6%	1,111	1,135	-2.0%	1,274	1,240	2.7%	27,407	46,226	-40.7%
Financial District	862	608	41.8%	484	379	27.9%	434	275	57.9%	479	313	53.0%	14,439	12,604	14.6%
<b>TOTAL</b>	<b>14,130</b>	<b>12,913</b>	<b>9.4%</b>	<b>11,526</b>	<b>9,377</b>	<b>22.9%</b>	<b>9,568</b>	<b>8,077</b>	<b>18.5%</b>	<b>8,199</b>	<b>8,043</b>	<b>1.9%</b>	<b>305,185</b>	<b>331,915</b>	<b>-8.1%</b>

(1) All DTPW travel modes, including Metromover, were closed on 9/28/22 due to Hurricane Ian; the storm also reduced total boardings on a few other days.

(2) The APC system reported no data reported at Government Center and Museum Park stations; the causes are under research. The system did not report boardings data at several additional stations on several days in September 2022; the average daily ridership calculations take this into account.

(3) Freedom Tower Station was closed for construction.

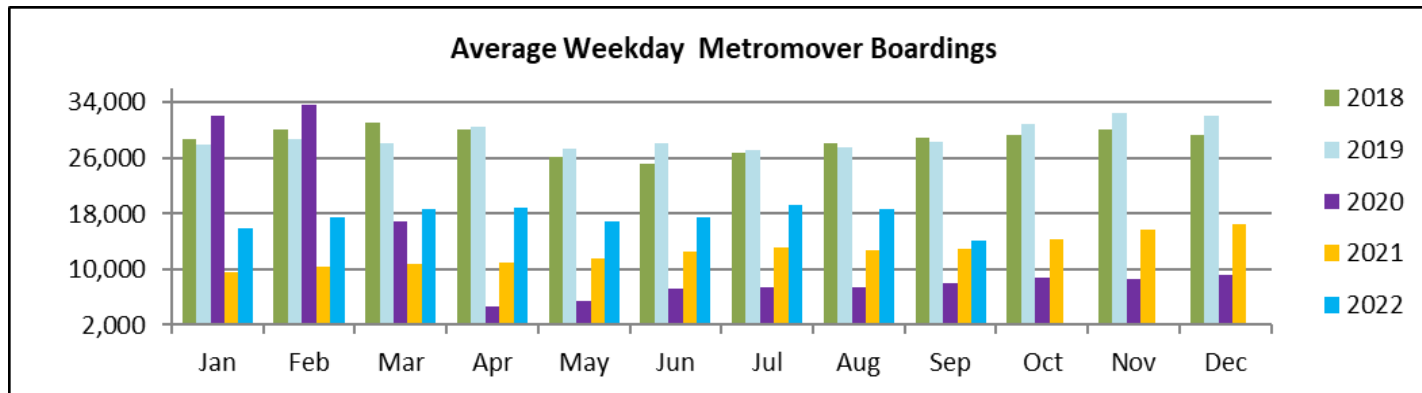
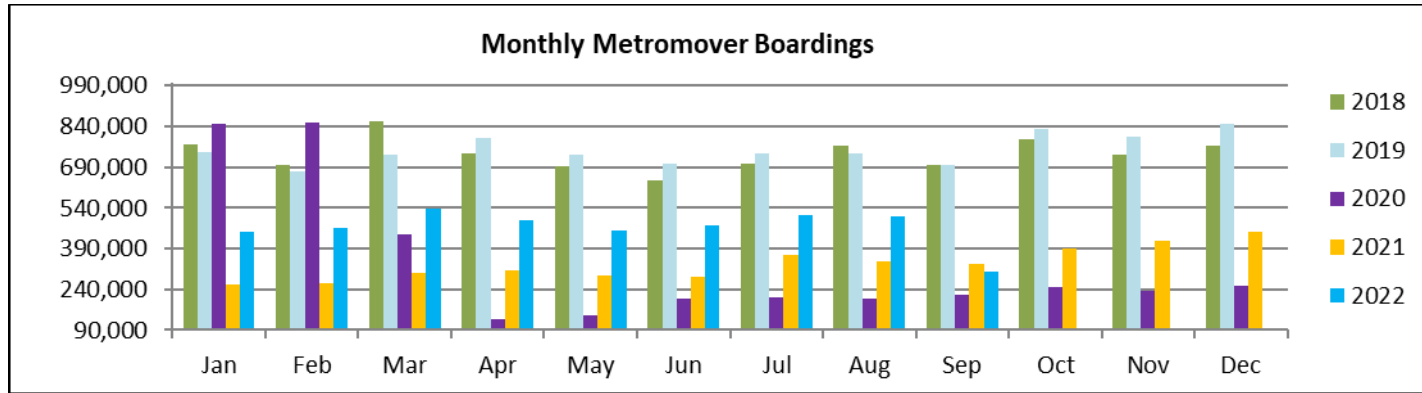
## METROMOVER CUMULATIVE PERCENTAGE RIDERSHIP SHARE



(\*) In addition to Freedom Tower Station being closed, two stations did not report ridership during the entire month of September; the causes are being researched.



# TOTAL MONTHLY AND AVERAGE WEEKDAY RIDERSHIP YEAR OVER YEAR COMPARISON CHARTS – METROMOVER



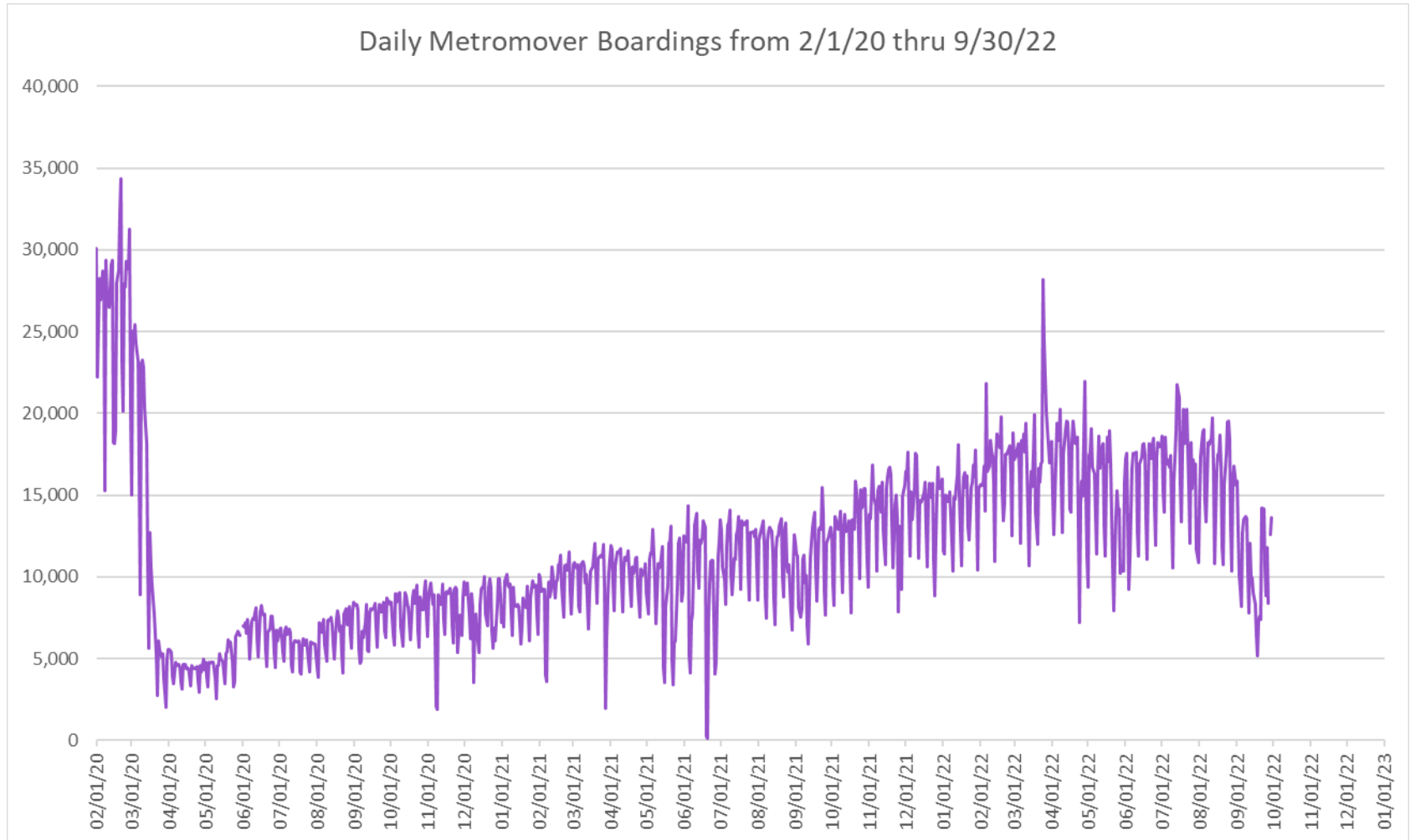
**“TOP 5 / BOTTOM 5” MOVER STATIONS AVERAGE WEEKDAY RIDERSHIP PERFORMANCE  
YEAR OVER YEAR COMPARISONS**

<b>Station(*)</b>	<b>Sep-22</b>	<b>Sep-21</b>	<b>Absolute Delta (1)</b>	<b>Percent Delta</b>
Eighth Street	1,639	947	692	73.2%
Wilkie D. Ferguson	1,185	585	601	102.8%
College/Bayside	1,238	762	476	62.4%
Bayfront Park	1,611	1,337	274	20.5%
Omni	1,365	1,110	255	22.9%
Brickell	1,446	1,679	-232	-13.8%
Riverwalk	116	300	-184	-61.4%
Eleventh Street	198	211	-13	-6.1%
Third Street	279	229	50	21.7%
Fifth Street	318	254	64	25.4%

(\*) Two stations did not report ridership during the entire month of September; the causes are being researched.

(1) Averages rounded to the nearest boarding.

## DAILY METROMOVER RIDERSHIP SINCE FEBRUARY 1, 2020



- (1) National Emergency was declared on 3/13/20 as a result of the SARS-CoV-2 pandemic.
- (2) There was no Metrobus, Metrorail and Metromover service on 5/31/20, as a safety precaution, and no service for any of the four modes on 9/28/22 as a result of Hurricane Ian..
- (3) The dip at the start of the second week of November 2020 is due to Hurricane Eta; these are *raw data* from the UTA contractor APC system. Other more recent dips are due to various station closures (mostly on weekends) for system maintenance purposes.
- (4) Periodic (weekly) variations are prominent, since weekday ridership is almost always significantly higher than weekend or holiday ridership.

## Special Transportation Services



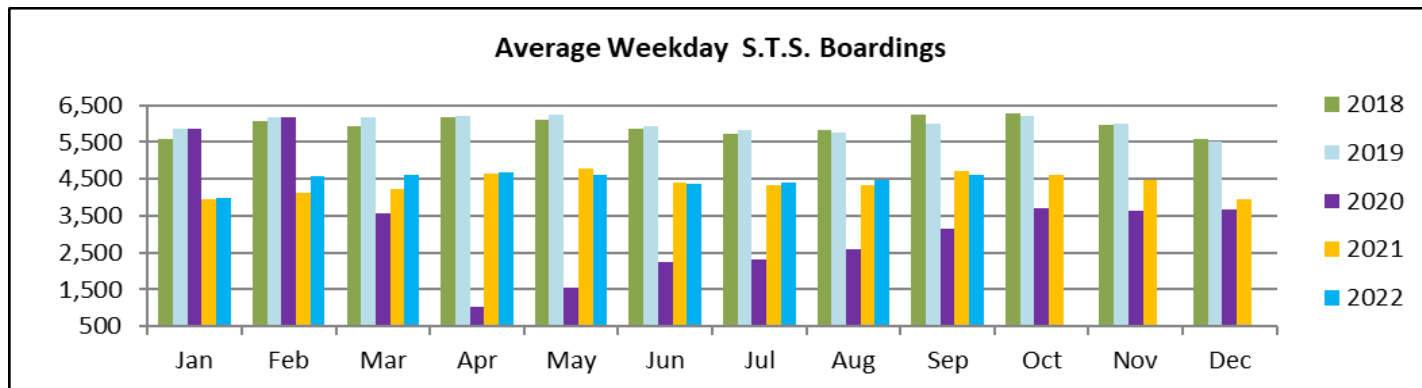
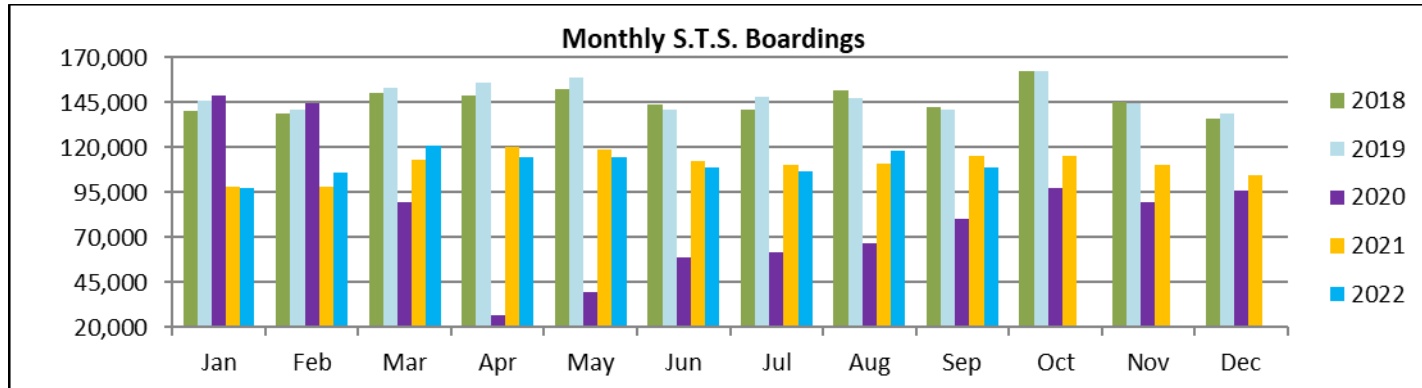
**STS MONTHLY AND AVERAGE DAILY BOARDINGS**  
**September 2022**

Measure	Timeline	Ambulatory	Wheelchair	Total Clients (*)
<b>Average Weekday</b>	Sep-22	3,817	795	<b>4,612</b>
<b>Average Saturday</b>	Sep-22	1,662	373	<b>2,035</b>
<b>Average Sunday</b>	Sep-22	1,359	325	<b>1,684</b>
<b>Total Monthly</b>	<b>Sep-22</b>	<b>89,777</b>	<b>19,011</b>	<b>108,788</b>
<b>Average Weekday</b>	Sep-21	3,869	831	<b>4,700</b>
<b>Average Saturday</b>	Sep-21	1,732	410	<b>2,142</b>
<b>Average Sunday</b>	Sep-21	1,350	278	<b>1,628</b>
<b>Total Monthly</b>	<b>Sep-21</b>	<b>94,924</b>	<b>20,482</b>	<b>115,406</b>
<b>Average Weekday</b>	Sep-20	2,628	536	<b>3,164</b>
<b>Average Saturday</b>	Sep-20	1,491	304	<b>1,795</b>
<b>Average Sunday</b>	Sep-20	1,140	205	<b>1,345</b>
<b>Total Monthly</b>	<b>Sep-20</b>	<b>66,844</b>	<b>13,502</b>	<b>80,346</b>
<b>% Change Current vs. Sep 2021 Weekday (**)</b>		-1.3%	-4.4%	-1.9%
<b>% Change Current vs. Sep 2021 Saturday</b>		-4.1%	-9.0%	-5.0%
<b>% Change Current vs. Sep 2021 Sunday</b>		0.7%	16.9%	3.4%
<b>% Change Current vs. Sep 2021 Month Total</b>		<b>-5.4%</b>	<b>-7.2%</b>	<b>-5.7%</b>
<b>% Change Current vs. Sep 2020 Weekday</b>		45.3%	48.2%	45.8%
<b>% Change Current vs. Sep 2020 Saturday</b>		11.5%	22.6%	13.3%
<b>% Change Current vs. Sep 2020 Sunday</b>		19.2%	58.5%	25.2%
<b>% Change Current vs. Sep 2020 Month Total</b>		<b>34.3%</b>	<b>40.8%</b>	<b>35.4%</b>

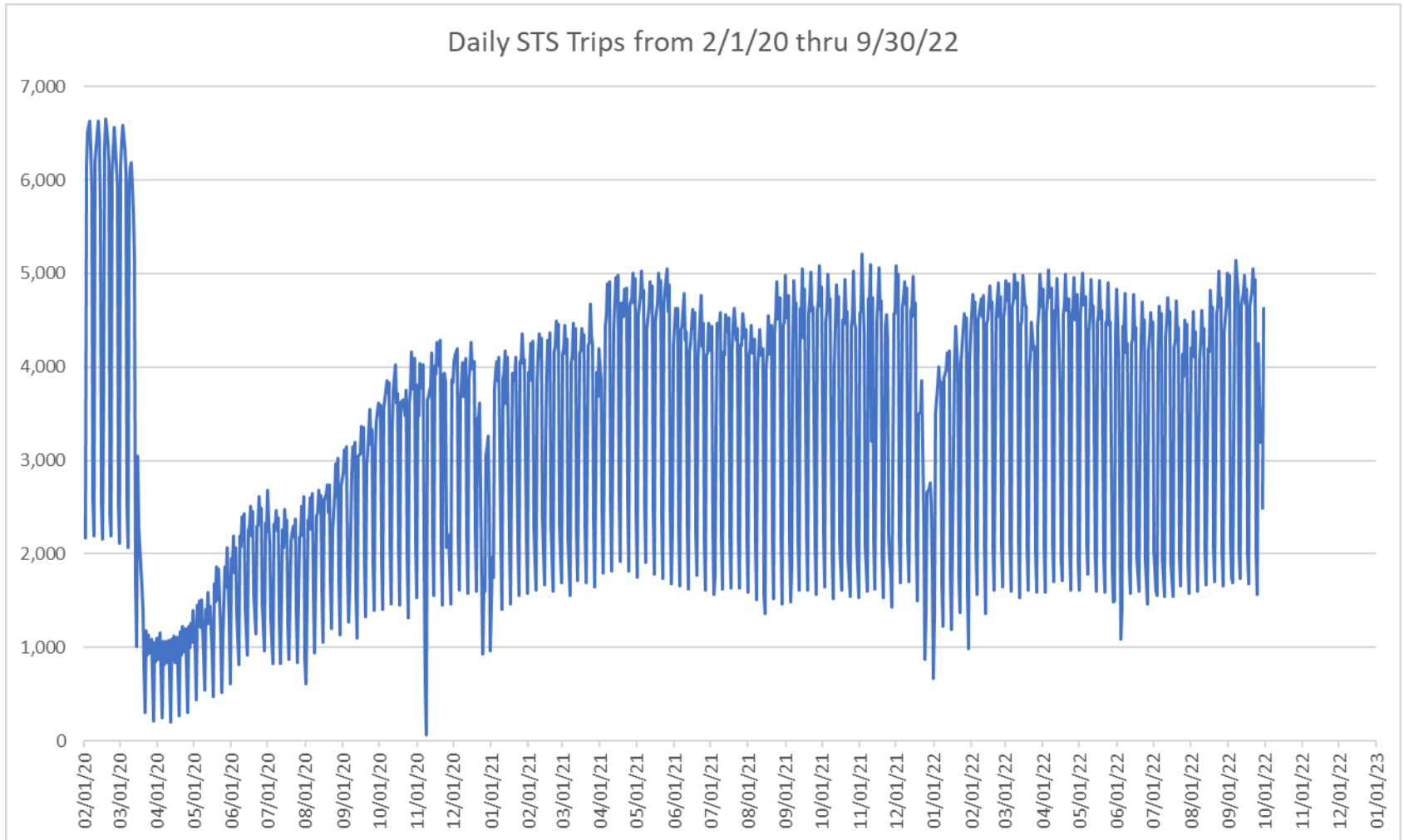
(\*) Trip count data provided by STS contractor.

(\*\*) All DTPW travel modes, including Paratransit, were closed on 9/28/22 due to Hurricane Ian; the storm also reduced trips on a few other days.

## TOTAL MONTHLY AND AVERAGE WEEKDAY RIDERSHIP YEAR OVER YEAR COMPARISON CHARTS – SPECIAL TRANSPORTATION SERVICES (S.T.S.)

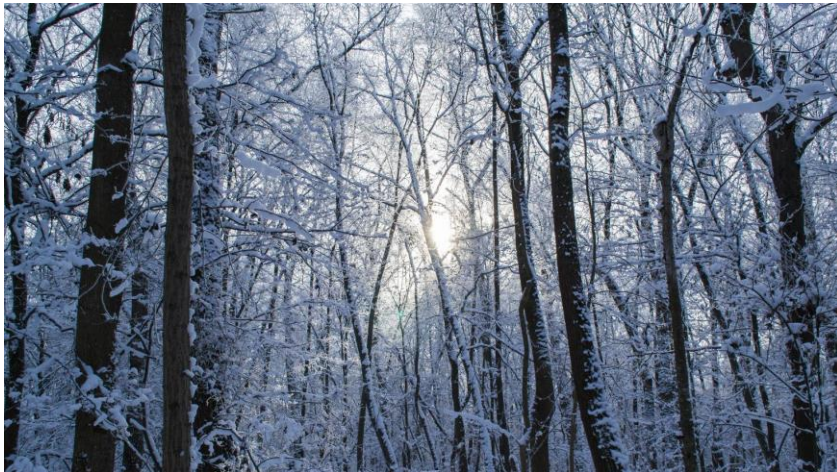


## DAILY STS RIDERSHIP SINCE FEBRUARY 1, 2020



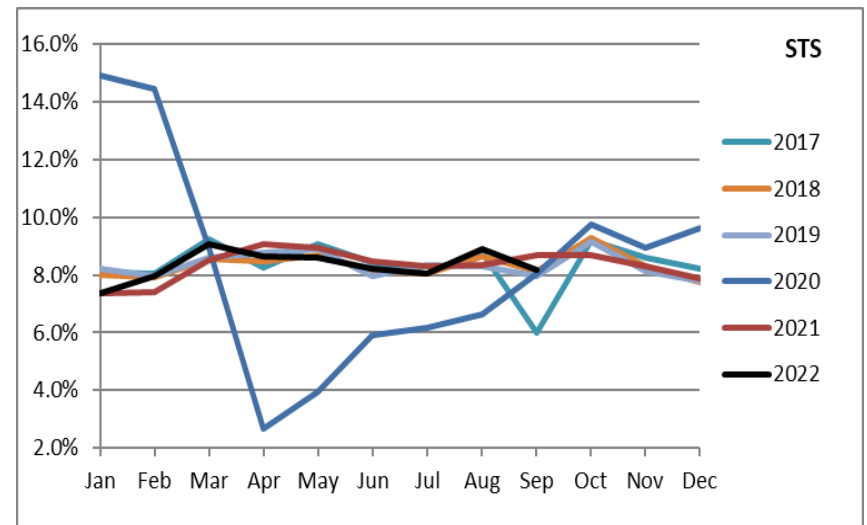
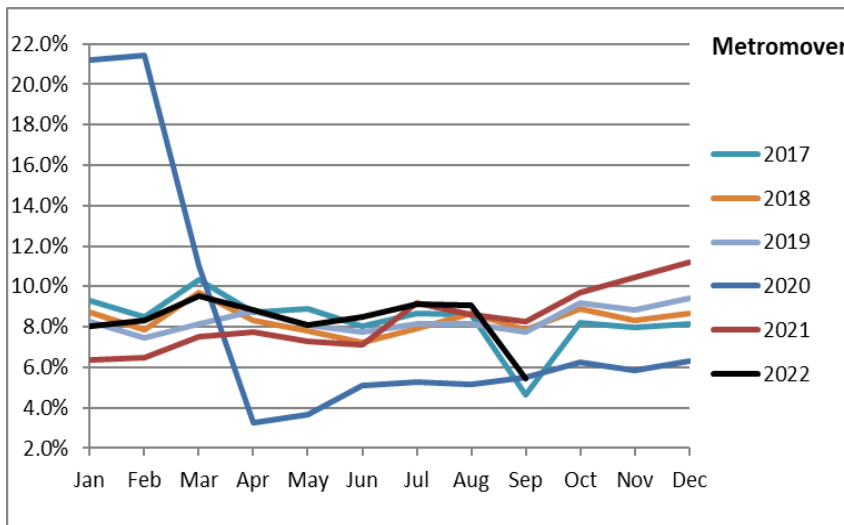
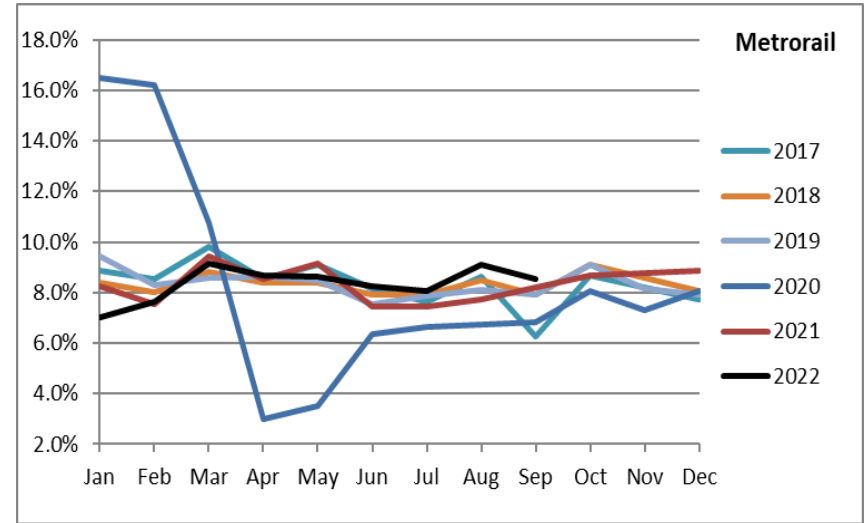
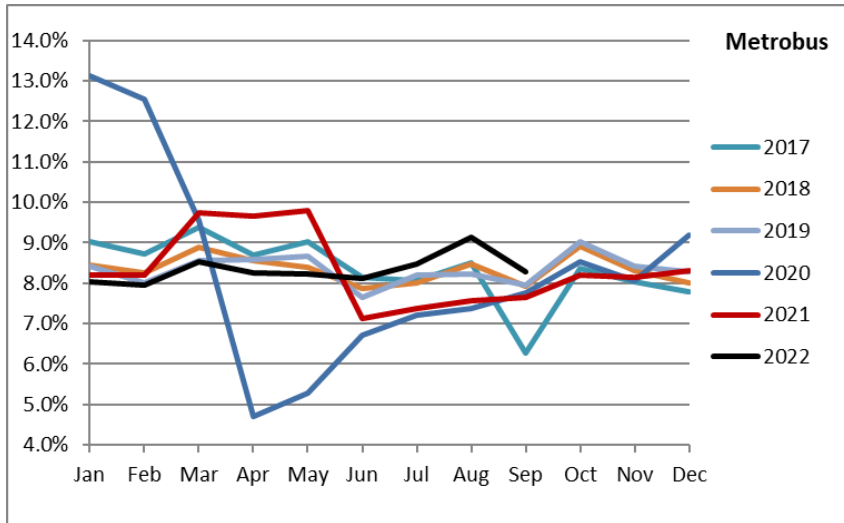
- (1) National Emergency was declared on 3/13/20 as a result of the SARS-CoV-2 pandemic.
- (2) There was no service (for any of the four modes) on 9/28/22 as a result of Hurricane Ian.
- (3) The dip at the start of the second week of November 2020 is due to Hurricane Eta.
- (4) Periodic (weekly) variations are prominent, since weekday ridership is almost always significantly higher than weekend or holiday ridership.

# Ridership Seasonality





# RIDERSHIP SEASONALITY – PERCENT RIDERSHIP SHARE BY MONTH AND CALENDAR YEAR FOR EACH MODE



Note: the prominent dips seen in the fall of 2017 and beginning in the spring of 2020 are due to Hurricane Irma and the SARS-CoV-2 pandemic, respectively. Reductions in Bus and Rail ridership share seen beginning in June 2021 are due to reinstatement of fares as well changes in reporting tools and datasets, as discussed earlier in this report.