



# TRANSPORTATION AND PUBLIC WORKS

## RIDERSHIP TECHNICAL REPORT

*Division of Performance and Materials Management*



October 2023

# Table of Contents

|   |           |
|---|-----------|
| <i>Table of Contents</i>  | 2-3       |
| <b>All Modes Overview</b>   | <b>4</b>  |
| Total Monthly Weekday, Saturday and Sunday Monthly Boardings By Mode                              | 5         |
| Average Weekday, Saturday and Sunday Boardings by Mode  | 6         |
| Metrobus Total Monthly Ridership Comparisons by Fiscal Year                                       | 7         |
| Metrorail Total Monthly Ridership Comparisons by Fiscal Year                                      | 8         |
| Metromover Total Monthly Ridership Comparisons by Fiscal Year                                     | 9         |
| STS Total Monthly Ridership Comparisons by Fiscal Year  | 10        |
| All-Modes Combined Total Monthly Ridership Comparisons By Fiscal Year                             | 11        |
| All Modes Combined Total Monthly and Average Weekday Ridership – Year over Year Comparison Charts | 12        |
| Average Weekday Ridership – Modal Splits  | 13        |
| Daily Ridership for All Modes Combined since 2/1/20   | 14        |
| <br>  |           |
| <b>Metrobus</b>   | <b>15</b> |
| Metrobus Average Weekday Boardings by Route   | 16-18     |
| Metrobus Average Saturday Boardings by Route  | 19-20     |
| Metrobus Average Sunday Boardings by Route  | 21-22     |
| Metrobus Monthly Total Boardings by Route   | 23-25     |
| Year-over-Year Bus Ridership by Route Service Type  | 26-27     |
| Bus Routes as Ranked by Percentage of Average Weekday Ridership                                   | 28        |
| Metrobus Cumulative Percentage Average Weekday Ridership Share by Route (Top 75%)                 | 29        |
| Total Monthly and Average Weekday Bus Ridership – Year over Year Comparison Charts                | 30        |
| Bus “Top 5 / Bottom 5” Routes Average Weekday Ridership Performance                               | 31        |
| Daily Metrobus Ridership since 2/1/20   | 32        |
| Metrobus Parking Patronage Summary  | 33        |

## Table of Contents (continued)

|  |           |
|--|-----------|
| <b>Metrorail</b>   | <b>34</b> |
| Metrorail Average Weekday Boardings by Station   | 35        |
| Metrorail Average Saturday Boardings by Station  | 36        |
| Metrorail Average Sunday Boardings by Station  | 37        |
| Metrorail Total Monthly Boardings by Station   | 38        |
| Metrorail Cumulative Percentage Average Weekday Ridership Share                          | 39        |
| Total Monthly and Average Weekday Rail Ridership – Year over Year Comparison Charts      | 40        |
| “Top 5 / Bottom 5” Stations Average Weekday Ridership Performance                        | 41        |
| Daily Metrorail Ridership since 2/1/20   | 42        |
| Metrorail Parking Patronage Summary  | 43        |
| <br>   |           |
| <b>Metromover</b>  | <b>44</b> |
| Monthly and Average Daily Mover Boardings by Station                                     | 45        |
| Metromover Cumulative Percentage Average Weekday Ridership Share                         | 46        |
| Total Monthly and Average Weekday Mover Ridership – Year over Year Comparison Charts     | 47        |
| “Top 5 / Bottom 5” Stations Average Weekday Ridership Performance                        | 48        |
| Daily Metromover Ridership since 2/1/20  | 49        |
| <br>   |           |
| <b>Special Transportation Services (STS)</b>   | <b>50</b> |
| STS Monthly and Average Daily Boardings  | 51        |
| Total Monthly and Average Weekday STS Ridership – Year over Year Comparison Charts       | 52        |
| Daily STS Ridership since 2/1/20   | 53        |
| <br>   |           |
| <b>Ridership Seasonality</b>   | <b>54</b> |
| Ridership Seasonality – Percent Ridership Share by Month and Calendar Year for Each Mode | 55        |

# All Modes Overview



**TOTAL MONTHLY WEEKDAY, SATURDAY AND SUNDAY BOARDINGS BY MODE  
October 2023**

| <b>TRAVEL MODE</b>         | <b>MONTH'S TOTAL WEEKDAYS RIDERSHIP</b> | <b>MONTH'S TOTAL SATURDAYS RIDERSHIP</b> | <b>MONTH'S TOTAL SUNDAYS RIDERSHIP</b> | <b>TOTAL MONTHLY RIDERSHIP</b> | <b>% CHANGE vs Oct 2022 TOTAL MONTH RIDERSHIP</b> |
|----------------------------|---|--|--|--------------------------------|---|
| <b>METROBUS (1)</b>        | 4,075,696                               | 429,322                                  | 407,133                                | 4,912,151                      | 5.0%  |
| <b>METRORAIL (2)</b>       | 1,086,732                               | 77,674                                   | 72,690                                 | 1,237,096                      | 17.5%   |
| <b>METROMOVER</b>          | 487,007                                 | 60,077                                   | 67,395                                 | 614,479                        | 19.5%   |
| <b>STS PARATRANSIT (3)</b> | 112,660                                 | 8,822                                    | 9,476                                  | 130,958                        | 7.2%  |
| <b>TOTAL</b>               | <b>5,762,095</b>                        | <b>575,895</b>                           | <b>556,694</b>                         | <b>6,894,684</b>               | <b>8.2%</b>                                       |

- (1) Bus ridership reporting through automatic passenger counters coupled with a new enhanced sensor system resumed on October 1, 2022.
- (2) Metrorail fares resumed on June 1, 2021, following a 14-month period of fare-free rides as a result of the SARS-CoV-2 pandemic. The NextFare System faregate data replaced the video data as ridership data of record starting on that date.
- (3) Paratransit ridership data as reported by the contractor and subsequently audited by the Department.

**AVERAGE WEEKDAY, SATURDAY AND SUNDAY BOARDINGS BY MODE  
October 2023**

| <b>Travel Mode</b>     | <b>Average Weekday</b> | <b>Average Saturday</b> | <b>Average Sunday</b> | <b>% Change Oct 2022 Weekday</b> | <b>% Change Oct 2022 Saturday</b> | <b>% Change Oct 2022 Sunday</b> |
|------------------------|------------------------|-------------------------|-----------------------|----------------------------------|-----------------------------------|---------------------------------|
| <b>METROBUS</b>        | 185,320                | 107,331                 | 81,427                | 3.6%                             | 1.7%                              | 2.6%                            |
| <b>METRORAIL</b>       | 49,735                 | 19,419                  | 14,538                | 16.7%                            | 5.3%                              | 6.1%                            |
| <b>METROMOVER</b>      | 22,286                 | 15,019                  | 13,479                | 15.1%                            | 3.3%                              | 5.7%                            |
| <b>STS PARATRANSIT</b> | 5,121                  | 2,206                   | 1,895                 | 4.3%                             | 3.5%                              | 12.5%                           |
| <b>Totals</b>          | <b>262,462</b>         | <b>143,974</b>          | <b>111,339</b>        | <b>6.8%</b>                      | <b>2.4%</b>                       | <b>3.5%</b>                     |

(\*) Average ridership is calculated and published only for those days and stations or routes with nontrivial amounts of reported data.

## METROBUS TOTAL MONTHLY RIDERSHIP COMPARISONS BY FISCAL YEAR

| <b>Bus Month</b> | <b>FY 19</b>      | <b>FY 20</b>      | <b>Variance 19 to 20</b> | <b>FY 21</b>      | <b>FY 22</b>      | <b>FY 23</b>      | <b>FY 24</b> | <b>Variance 19 to 23</b> | <b>Variance 22 to 23</b> | <b>Variance 19 to 24</b> | <b>Variance 23 to 24</b> |
|------------------|-------------------|-------------------|--------------------------|-------------------|-------------------|-------------------|--------------|--------------------------|--------------------------|--------------------------|--------------------------|
| <b>Oct</b>       | 4,554,886         | 4,507,012         | -1.1%                    | 2,805,139         | 3,081,157         | 4,679,725         | 4,912,151    | 2.7%                     | 51.9%                    | 7.8%                     | 5.0%                     |
| <b>Nov</b>       | 4,245,535         | 4,197,225         | -1.1%                    | 2,651,290         | 3,056,726         | 4,549,666         |              | 7.2%                     | 48.8%                    |                          |                          |
| <b>Dec</b>       | 4,081,581         | 4,126,990         | 1.1%                     | 3,022,530         | 3,123,883         | 4,677,460         |              | 14.6%                    | 49.7%                    |                          |                          |
| <b>Jan</b>       | 4,195,911         | 4,316,998         | 2.9%                     | 3,082,746         | 3,029,055         | 4,785,128         |              | 14.0%                    | 58.0%                    |                          |                          |
| <b>Feb</b>       | 3,994,019         | 4,123,083         | 3.2%                     | 3,076,966         | 2,995,789         | 4,526,317         |              | 13.3%                    | 51.1%                    |                          |                          |
| <b>Mar</b>       | 4,266,768         | 3,136,162         | -26.5%                   | 3,660,639         | 3,218,562         | 5,183,872         |              | 21.5%                    | 61.1%                    |                          |                          |
| <b>Apr</b>       | 4,291,135         | 1,544,316         | -64.0%                   | 3,625,048         | 3,105,797         | 4,618,302         |              | 7.6%                     | 48.7%                    |                          |                          |
| <b>May</b>       | 4,330,922         | 1,734,609         | -59.9%                   | 3,683,343         | 3,097,574         | 4,953,197         |              | 14.4%                    | 59.9%                    |                          |                          |
| <b>Jun</b>       | 3,823,863         | 2,210,725         | -42.2%                   | 2,672,570         | 3,064,059         | 4,545,050         |              | 18.9%                    | 48.3%                    |                          |                          |
| <b>Jul</b>       | 4,094,906         | 2,366,749         | -42.2%                   | 2,769,907         | 3,189,994         | 4,484,458         |              | 9.5%                     | 40.6%                    |                          |                          |
| <b>Aug</b>       | 4,109,613         | 2,422,014         | -41.1%                   | 2,843,552         | 3,442,006         | 4,756,063         |              | 15.7%                    | 38.2%                    |                          |                          |
| <b>Sep</b>       | 3,971,220         | 2,546,923         | -35.9%                   | 2,877,110         | 3,123,572         | 4,525,426         |              | 14.0%                    | 44.9%                    |                          |                          |
| <b>FY Total</b>  | <b>49,960,359</b> | <b>37,232,806</b> | <b>-25.5%</b>            | <b>36,770,840</b> | <b>37,528,174</b> | <b>56,284,664</b> |              | <b>12.7%</b>             | <b>50.0%</b>             |                          |                          |

## METRORAIL TOTAL MONTHLY RIDERSHIP COMPARISONS BY FISCAL YEAR

| <b>Rail<br/>Month</b> | <b>FY 19</b>      | <b>FY 20</b>      | <b>Variance<br/>19 to 20</b> | <b>FY 21</b>     | <b>FY 22</b>      | <b>FY 23</b>      | <b>FY 24</b> | <b>Variance<br/>19 to 23</b> | <b>Variance<br/>22 to 23</b> | <b>Variance<br/>19 to 24</b> | <b>Variance<br/>23 to 24</b> |
|-----------------------|-------------------|-------------------|------------------------------|------------------|-------------------|-------------------|--------------|------------------------------|------------------------------|------------------------------|------------------------------|
| <b>Oct</b>            | 1,757,225         | 1,643,166         | -6.5%                        | 769,525          | 844,383           | 1,053,191         | 1,237,096    | -40.1%                       | 24.7%                        | -29.6%                       | 17.5%                        |
| <b>Nov</b>            | 1,656,929         | 1,469,448         | -11.3%                       | 699,492          | 850,881           | 1,055,066         |              | -36.3%                       | 24.0%                        |                              |                              |
| <b>Dec</b>            | 1,553,804         | 1,433,928         | -7.7%                        | 769,194          | 860,436           | 1,063,096         |              | -31.6%                       | 23.6%                        |                              |                              |
| <b>Jan</b>            | 1,708,695         | 1,576,340         | -7.7%                        | 799,119          | 832,924           | 1,127,340         |              | -34.0%                       | 35.3%                        |                              |                              |
| <b>Feb</b>            | 1,501,458         | 1,549,118         | 3.2%                         | 730,792          | 905,162           | 1,072,791         |              | -28.6%                       | 18.5%                        |                              |                              |
| <b>Mar</b>            | 1,554,851         | 1,027,319         | -33.9%                       | 917,097          | 1,084,978         | 1,239,336         |              | -20.3%                       | 14.2%                        |                              |                              |
| <b>Apr</b>            | 1,559,446         | 287,803           | -81.5%                       | 827,414          | 1,027,139         | 1,087,816         |              | -30.2%                       | 5.9%                         |                              |                              |
| <b>May</b>            | 1,531,597         | 337,696           | -78.0%                       | 887,111          | 1,023,322         | 1,151,819         |              | -24.8%                       | 12.6%                        |                              |                              |
| <b>Jun</b>            | 1,359,966         | 608,758           | -55.2%                       | 723,469          | 975,477           | 1,066,861         |              | -21.6%                       | 9.4%                         |                              |                              |
| <b>Jul</b>            | 1,419,158         | 632,964           | -55.4%                       | 722,159          | 953,331           | 1,022,937         |              | -27.9%                       | 7.3%                         |                              |                              |
| <b>Aug</b>            | 1,463,646         | 641,275           | -56.2%                       | 749,578          | 1,076,490         | 1,174,138         |              | -19.8%                       | 9.1%                         |                              |                              |
| <b>Sep</b>            | 1,427,726         | 654,244           | -54.2%                       | 795,749          | 1,012,331         | 1,146,864         |              | -19.7%                       | 13.3%                        |                              |                              |
| <b>FY Total</b>       | <b>18,494,501</b> | <b>11,862,059</b> | <b>-35.9%</b>                | <b>9,390,699</b> | <b>11,446,854</b> | <b>13,261,255</b> |              | <b>-28.3%</b>                | <b>15.9%</b>                 |                              |                              |



## METROMOVER TOTAL MONTHLY RIDERSHIP COMPARISONS BY FISCAL YEAR

| <b>Mover<br/>Month</b> | <b>FY 19</b>     | <b>FY 20</b>     | <b>Variance<br/>19 to 20</b> | <b>FY 21</b>     | <b>FY 22</b>     | <b>FY 23</b>     | <b>FY 24</b> | <b>Variance<br/>19 to 23</b> | <b>Variance<br/>22 to 23</b> | <b>Variance<br/>19 to 24</b> | <b>Variance<br/>23 to 24</b> |
|------------------------|------------------|------------------|------------------------------|------------------|------------------|------------------|--------------|------------------------------|------------------------------|------------------------------|------------------------------|
| <b>Oct</b>             | 790,533          | 831,234          | 5.1%                         | 250,044          | 389,065          | 514,308          | 614,479      | -34.9%                       | 32.2%                        | -22.3%                       | 19.5%                        |
| <b>Nov</b>             | 735,198          | 799,632          | 8.8%                         | 232,422          | 418,929          | 439,150          |              | -40.3%                       | 4.8%                         |                              |                              |
| <b>Dec</b>             | 767,239          | 849,832          | 10.8%                        | 251,019          | 450,320          | 426,073          |              | -44.5%                       | -5.4%                        |                              |                              |
| <b>Jan</b>             | 746,728          | 847,773          | 13.5%                        | 255,968          | 451,566          | 498,566          |              | -33.2%                       | 10.4%                        |                              |                              |
| <b>Feb</b>             | 675,160          | 855,398          | 26.7%                        | 260,332          | 465,968          | 459,264          |              | -32.0%                       | -1.4%                        |                              |                              |
| <b>Mar</b>             | 737,814          | 441,200          | -40.2%                       | 302,502          | 535,857          | 558,396          |              | -24.3%                       | 4.2%                         |                              |                              |
| <b>Apr</b>             | 795,696          | 130,549          | -83.6%                       | 310,772          | 495,982          | 565,943          |              | -28.9%                       | 14.1%                        |                              |                              |
| <b>May</b>             | 734,645          | 146,454          | -80.1%                       | 292,922          | 455,120          | 547,948          |              | -25.4%                       | 20.4%                        |                              |                              |
| <b>Jun</b>             | 701,318          | 203,637          | -71.0%                       | 286,145          | 477,286          | 632,423          |              | -9.8%                        | 32.5%                        |                              |                              |
| <b>Jul</b>             | 739,814          | 210,596          | -71.5%                       | 368,847          | 512,094          | 635,954          |              | -14.0%                       | 24.2%                        |                              |                              |
| <b>Aug</b>             | 739,785          | 205,995          | -72.2%                       | 344,319          | 508,359          | 657,267          |              | -11.2%                       | 29.3%                        |                              |                              |
| <b>Sep</b>             | 699,879          | 219,696          | -68.6%                       | 331,915          | 305,185          | 610,810          |              | -12.7%                       | 100.1%                       |                              |                              |
| <b>FY Total</b>        | <b>8,863,809</b> | <b>5,741,996</b> | <b>-35.2%</b>                | <b>3,487,207</b> | <b>5,465,731</b> | <b>6,546,102</b> |              | <b>-26.1%</b>                | <b>19.8%</b>                 |                              |                              |

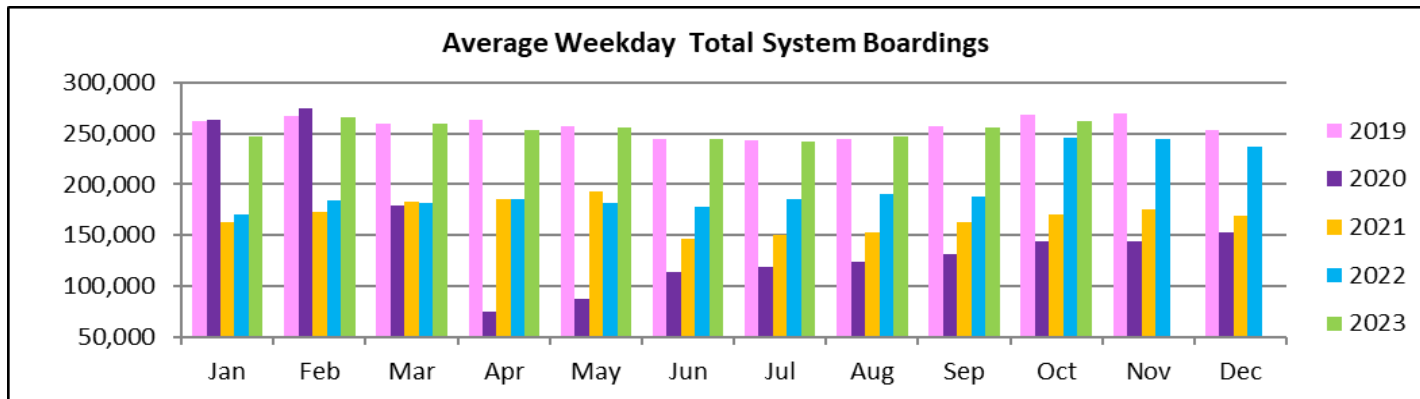
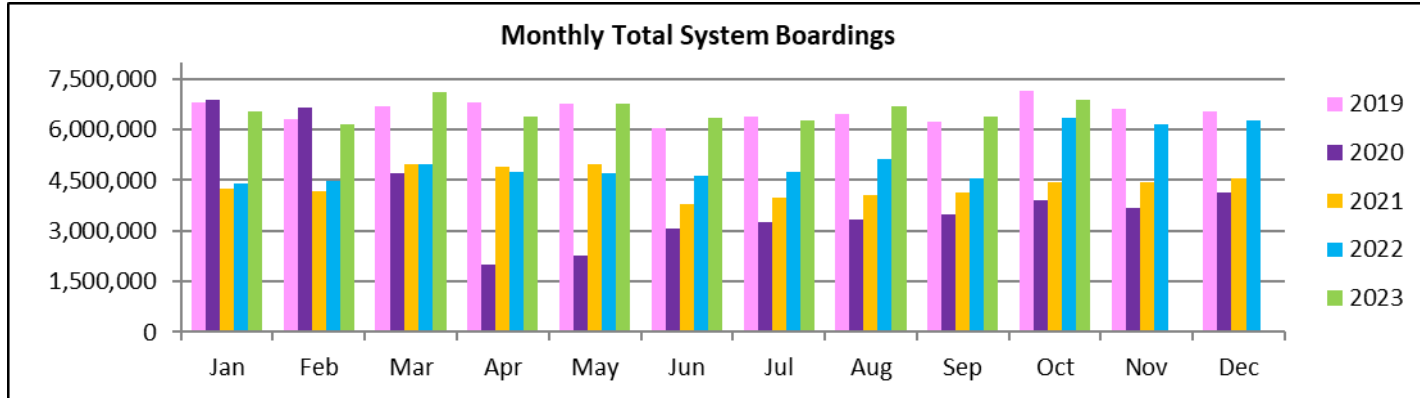
## SPECIAL TRANSPORTATION SERVICES (STS) TOTAL MONTHLY RIDERSHIP COMPARISONS BY FISCAL YEAR

| <b>STS<br/>Month</b> | <b>FY 19</b>     | <b>FY 20</b>     | <b>Variance<br/>19 to 20</b> | <b>FY 21</b>     | <b>FY 22</b>     | <b>FY 23</b>     | <b>FY 24</b> | <b>Variance<br/>19 to 23</b> | <b>Variance<br/>22 to 23</b> | <b>Variance<br/>19 to 24</b> | <b>Variance<br/>23 to 24</b> |
|----------------------|------------------|------------------|------------------------------|------------------|------------------|------------------|--------------|------------------------------|------------------------------|------------------------------|------------------------------|
| <b>Oct</b>           | 162,564          | 162,704          | 0.1%                         | 97,388           | 115,122          | 122,189          | 130,958      | -24.8%                       | 6.1%                         | -19.4%                       | 7.2%                         |
| <b>Nov</b>           | 145,653          | 144,366          | -0.9%                        | 89,387           | 110,289          | 111,578          |              | -23.4%                       | 1.2%                         |                              |                              |
| <b>Dec</b>           | 136,110          | 138,642          | 1.9%                         | 96,366           | 104,496          | 112,019          |              | -17.7%                       | 7.2%                         |                              |                              |
| <b>Jan</b>           | 146,268          | 149,114          | 1.9%                         | 97,928           | 97,541           | 112,632          |              | -23.0%                       | 15.5%                        |                              |                              |
| <b>Feb</b>           | 141,396          | 144,392          | 2.1%                         | 98,285           | 105,706          | 111,748          |              | -21.0%                       | 5.7%                         |                              |                              |
| <b>Mar</b>           | 153,191          | 89,634           | -41.5%                       | 112,930          | 120,718          | 126,819          |              | -17.2%                       | 5.1%                         |                              |                              |
| <b>Apr</b>           | 155,808          | 26,877           | -82.7%                       | 120,122          | 114,912          | 116,882          |              | -25.0%                       | 1.7%                         |                              |                              |
| <b>May</b>           | 158,665          | 39,654           | -75.0%                       | 118,636          | 114,505          | 127,782          |              | -19.5%                       | 11.6%                        |                              |                              |
| <b>Jun</b>           | 141,320          | 59,093           | -58.2%                       | 112,397          | 109,054          | 119,527          |              | -15.4%                       | 9.6%                         |                              |                              |
| <b>Jul</b>           | 148,232          | 61,765           | -58.3%                       | 110,059          | 107,188          | 113,623          |              | -23.3%                       | 6.0%                         |                              |                              |
| <b>Aug</b>           | 147,331          | 66,563           | -54.8%                       | 110,766          | 117,941          | 125,510          |              | -14.8%                       | 6.4%                         |                              |                              |
| <b>Sep</b>           | 141,387          | 80,346           | -43.2%                       | 115,406          | 108,788          | 122,065          |              | -13.7%                       | 12.2%                        |                              |                              |
| <b>FY Total</b>      | <b>1,777,925</b> | <b>1,163,150</b> | <b>-34.6%</b>                | <b>1,279,670</b> | <b>1,326,260</b> | <b>1,422,374</b> |              | <b>-20.0%</b>                | <b>7.2%</b>                  |                              |                              |

## ALL-MODES COMBINED TOTAL MONTHLY RIDERSHIP COMPARISONS BY FISCAL YEAR

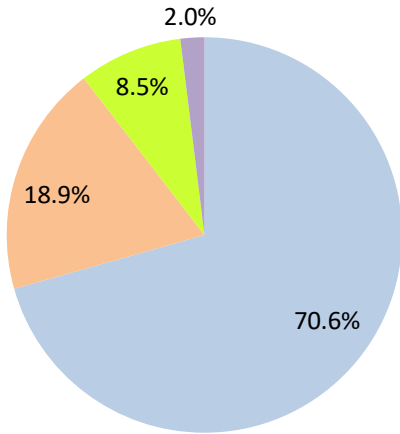
| <b>All Modes</b> |                   |                   |                   |                   |                   |              |                 |                 |                 |                 |                 |                 |                 |
|------------------|-------------------|-------------------|-------------------|-------------------|-------------------|--------------|-----------------|-----------------|-----------------|-----------------|-----------------|-----------------|-----------------|
| <b>Month</b>     | <b>FY 19</b>      | <b>FY 20</b>      | <b>FY 21</b>      | <b>FY 22</b>      | <b>FY 23</b>      | <b>FY 24</b> | <b>19 TO 20</b> | <b>20 TO 21</b> | <b>21 TO 22</b> | <b>22 TO 23</b> | <b>19 TO 23</b> | <b>23 TO 24</b> | <b>19 TO 24</b> |
| <b>Oct</b>       | 7,265,208         | 7,144,116         | 3,922,096         | 4,429,727         | 6,369,413         | 6,894,684    | -1.7%           | -45.1%          | 12.9%           | 43.8%           | -12.3%          | 8.2%            | -5.1%           |
| <b>Nov</b>       | 6,783,315         | 6,610,671         | 3,672,591         | 4,436,825         | 6,155,460         |              | -2.5%           | -44.4%          | 20.8%           | 38.7%           | -9.3%           |                 |                 |
| <b>Dec</b>       | 6,538,734         | 6,549,392         | 4,139,109         | 4,539,135         | 6,278,648         |              | 0.2%            | -36.8%          | 9.7%            | 38.3%           | -4.0%           |                 |                 |
| <b>Jan</b>       | 6,797,602         | 6,890,225         | 4,235,761         | 4,411,086         | 6,523,666         |              | 1.4%            | -38.5%          | 4.1%            | 47.9%           | -4.0%           |                 |                 |
| <b>Feb</b>       | 6,312,033         | 6,671,991         | 4,166,375         | 4,472,625         | 6,170,120         |              | 5.7%            | -37.6%          | 7.4%            | 38.0%           | -2.2%           |                 |                 |
| <b>Mar</b>       | 6,712,624         | 4,694,315         | 4,993,168         | 4,960,115         | 7,108,423         |              | -30.1%          | 6.4%            | -0.7%           | 43.3%           | 5.9%            |                 |                 |
| <b>Apr</b>       | 6,802,085         | 1,989,545         | 4,883,356         | 4,743,830         | 6,388,943         |              | -70.8%          | 145.5%          | -2.9%           | 34.7%           | -6.1%           |                 |                 |
| <b>May</b>       | 6,755,829         | 2,258,413         | 4,982,012         | 4,690,521         | 6,780,746         |              | -66.6%          | 120.6%          | -5.9%           | 44.6%           | 0.4%            |                 |                 |
| <b>Jun</b>       | 6,026,467         | 3,082,213         | 3,794,581         | 4,625,876         | 6,363,861         |              | -48.9%          | 23.1%           | 21.9%           | 37.6%           | 5.6%            |                 |                 |
| <b>Jul</b>       | 6,402,110         | 3,272,074         | 3,970,972         | 4,762,607         | 6,256,972         |              | -48.9%          | 21.4%           | 19.9%           | 31.4%           | -2.3%           |                 |                 |
| <b>Aug</b>       | 6,460,375         | 3,335,847         | 4,048,215         | 5,144,796         | 6,712,978         |              | -48.4%          | 21.4%           | 27.1%           | 30.5%           | 3.9%            |                 |                 |
| <b>Sep</b>       | 6,240,212         | 3,501,209         | 4,120,180         | 4,549,876         | 6,405,165         |              | -43.9%          | 17.7%           | 10.4%           | 40.8%           | 2.6%            |                 |                 |
| <b>FY Total</b>  | <b>79,096,594</b> | <b>56,000,011</b> | <b>50,928,416</b> | <b>55,767,019</b> | <b>77,514,395</b> |              | <b>-29.2%</b>   | <b>-9.1%</b>    | <b>9.5%</b>     | <b>39.0%</b>    | <b>-2.0%</b>    |                 |                 |

## TOTAL MONTHLY AND AVERAGE WEEKDAY RIDERSHIP YEAR OVER YEAR COMPARISON CHARTS – ALL MODES COMBINED



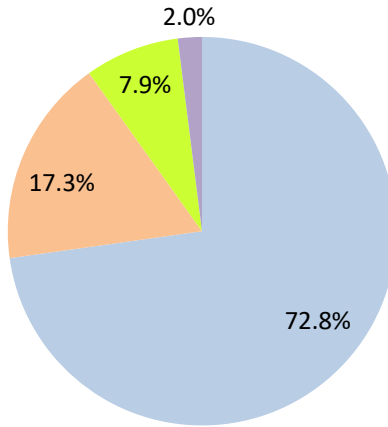
# AVERAGE WEEKDAY RIDERSHIP - MODAL SPLITS

October 2023



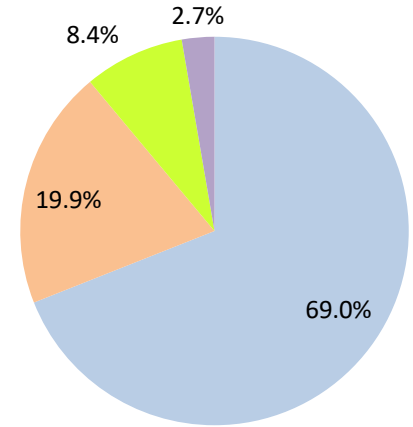
boardings

October 2022



boardings

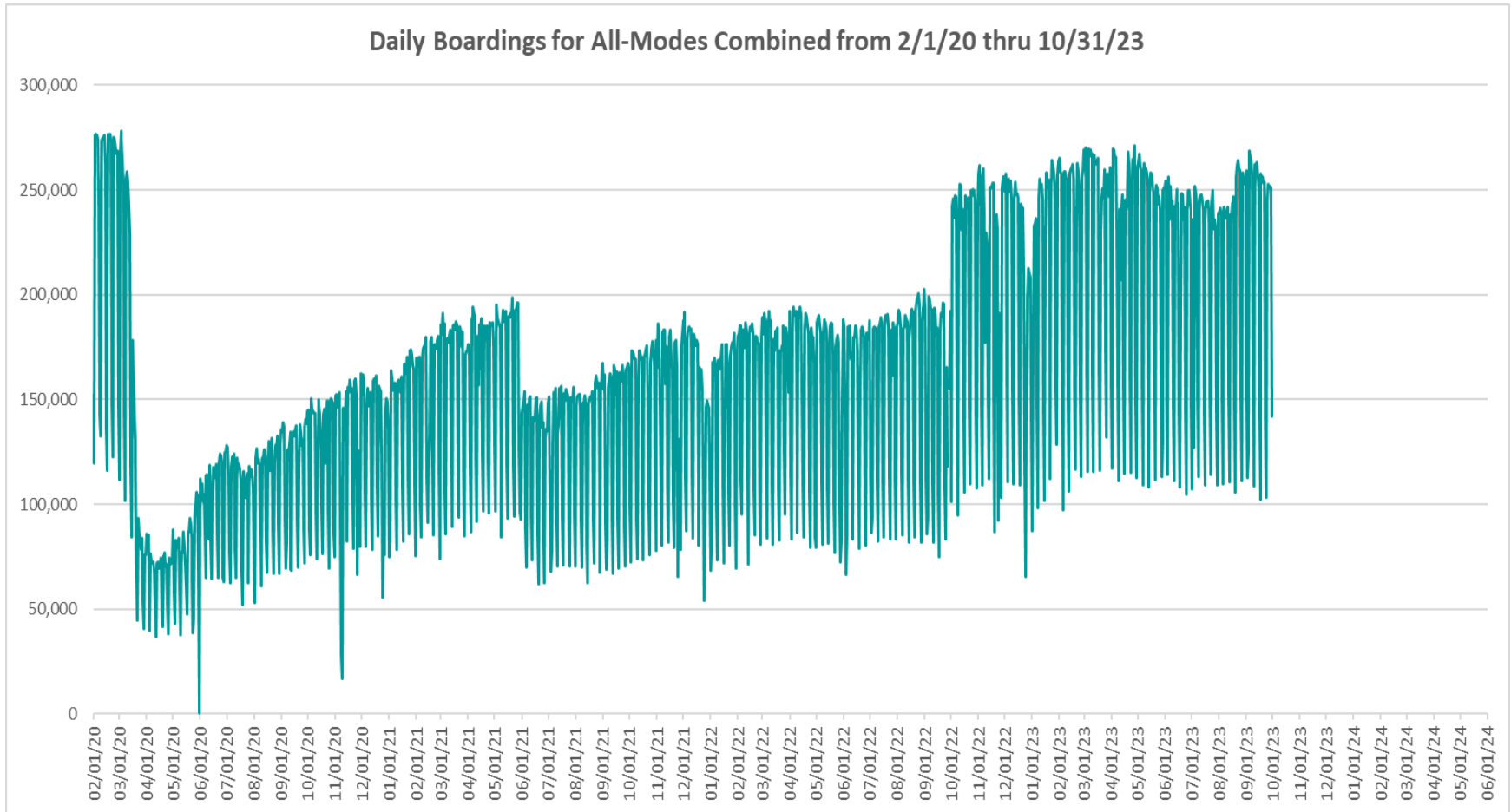
October 2021



boardings



## DAILY RIDERSHIP FOR ALL MODES COMBINED SINCE FEBRUARY 1, 2020



- (1) There was no Metrobus, Metrorail and Metromover service on 5/31/20, as a safety precaution, and no service for any of the four modes on 9/28/22 as a result of Hurricane Ian..
- (2) The dip at the start of the second week of November 2020 is due to Hurricane Eta.
- (3) The reduction seen beginning 6/1/21 is partly due to the resumption of fares for bus and rail, and partly the result of having resumed reporting Cubic farebox data rather than bus APC counts, as well as Cubic rail faregate counts instead of video camera counts on that date. The jump seen at the start of October 2022 is due to the return to APC bus ridership counts reporting begun on 10/1/22.
- (4) Periodic (weekly) variations are prominent, since weekday ridership is almost always significantly higher than weekend or holiday ridership.

# Metrobus



## METROBUS AVERAGE WEEKDAY BOARDINGS BY ROUTE (†)

| Route                       | Average Weekday           | Average Weekday | Percent Change | Average Weekday | Percent Change    | Average Weekday | Percent Change | Average Weekday | Percent Change |
|-----------------------------|---------------------------|-----------------|----------------|-----------------|-------------------|-----------------|----------------|-----------------|----------------|
|                             | <b>weekdays</b><br>Oct-23 | Oct-22          | YOY            | Feb-20          | Current vs Feb-20 | Sep-23          | MOM            | Oct-21          | YO2Y           |
| 1 (*)                       | 225                       | 214             | 5.0%           | 184             | 22.0%             | 222             | 1.2%           | 179             | 25.1%          |
| 2                           | 2,977                     | 2,722           | 9.3%           | 3,102           | -4.0%             | 2,980           | -0.1%          | 2,172           | 37.0%          |
| 3                           | 5,416                     | 5,365           | 0.9%           | 5,137           | 5.4%              | 5,272           | 2.7%           | 4,109           | 31.8%          |
| 7                           | 4,021                     | 3,873           | 3.8%           | 3,501           | 14.8%             | 3,948           | 1.9%           | 2,536           | 58.6%          |
| 8                           | 4,650                     | 4,774           | -2.6%          | 3,909           | 19.0%             | 4,593           | 1.2%           | 3,700           | 25.7%          |
| 9                           | 6,490                     | 6,104           | 6.3%           | 5,528           | 17.4%             | 6,462           | 0.4%           | 4,780           | 35.8%          |
| 10                          | 2,443                     | 2,355           | 3.7%           | 2,482           | -1.5%             | 2,440           | 0.1%           | 1,481           | 65.0%          |
| 11                          | 9,621                     | 8,400           | 14.5%          | 7,292           | 31.9%             | 9,340           | 3.0%           | 6,841           | 40.6%          |
| 12                          | 2,891                     | 2,769           | 4.4%           | 2,779           | 4.0%              | 2,983           | -3.1%          | 1,939           | 49.1%          |
| 16                          | 2,009                     | 1,991           | 0.9%           | 1,862           | 7.9%              | 1,959           | 2.6%           | 1,185           | 69.5%          |
| 17                          | 4,133                     | 3,763           | 9.8%           | 3,878           | 6.6%              | 4,026           | 2.6%           | 2,432           | 70.0%          |
| 19                          | 1,807                     | 1,549           | 16.6%          | 1,542           | 17.1%             | 1,855           | -2.6%          | 966             | 87.0%          |
| 21                          | 2,107                     | 1,809           | 16.5%          | 1,817           | 16.0%             | 2,048           | 2.9%           | 1,220           | 72.7%          |
| 22                          | 4,502                     | 4,219           | 6.7%           | 3,640           | 23.7%             | 4,434           | 1.6%           | 2,430           | 85.3%          |
| 24 - Coral Way Limited      | 2,195                     | 2,207           | -0.5%          | 1,340           | 63.9%             | 2,161           | 1.6%           | 790             | 177.9%         |
| 26                          | 1,877                     | 2,055           | -8.6%          | 1,778           | 5.6%              | 1,825           | 2.9%           | 1,365           | 37.6%          |
| 27                          | 7,110                     | 6,816           | 4.3%           | 6,972           | 2.0%              | 6,945           | 2.4%           | 5,030           | 41.3%          |
| 29 (*)                      | 516                       | 427             | 20.7%          | 534             | -3.5%             | 521             | -1.0%          | 293             | 76.0%          |
| 31 - BUSWAY LOCAL           |                           | 1,055           |                | 1,089           |                   |                 |                | 614             |                |
| 32                          | 2,699                     | 2,647           | 2.0%           | 2,390           | 12.9%             | 2,647           | 2.0%           | 1,547           | 74.5%          |
| 33                          | 1,967                     | 1,849           | 6.4%           | 1,687           | 16.6%             | 1,826           | 7.7%           | 1,063           | 85.1%          |
| 34 TRANSITWAY EXPRESS       | 1,636                     | 1,491           | 9.8%           | 2,008           | -18.5%            | 1,569           | 4.3%           | 628             | 160.6%         |
| 35                          | 3,070                     | 2,735           | 12.3%          | 2,421           | 26.8%             | 2,986           | 2.8%           | 1,623           | 89.1%          |
| 36                          | 2,645                     | 2,775           | -4.7%          | 2,536           | 4.3%              | 2,592           | 2.0%           | 1,820           | 45.3%          |
| 37                          | 3,475                     | 3,606           | -3.6%          | 3,273           | 6.2%              | 3,385           | 2.7%           | 2,720           | 27.8%          |
| 38 TRANSITWAY MAX           | 5,714                     | 6,183           | -7.6%          | 6,361           | -10.2%            | 4,529           | 26.2%          | 4,243           | 34.7%          |
| 39 TRANSITWAY EXPRESS       | 742                       |                 |                | 893             | -16.8%            | 674             | 10.1%          | 173             | 328.0%         |
| 40                          | 2,344                     | 2,214           | 5.9%           | 1,772           | 32.3%             | 2,258           | 3.8%           | 1,249           | 87.7%          |
| 42                          | 1,001                     | 1,038           | -3.6%          | 820             | 22.0%             | 1,012           | -1.1%          | 638             | 57.0%          |
| 46 - LIBERTY CITY CONN. (*) | 22                        | 24              | -10.7%         | 41              | -46.7%            | 19              | 12.3%          | 18              | 17.4%          |
| 51 - FLAGLER MAX            | 3,824                     | 3,827           | -0.1%          | 3,109           | 23.0%             | 3,717           | 2.9%           | 2,420           | 58.0%          |
| 52                          | 1,390                     | 1,350           | 3.0%           | 1,261           | 10.2%             | 1,375           | 1.1%           | 1,098           | 26.7%          |
| 54                          | 3,086                     | 3,137           | -1.6%          | 2,940           | 4.9%              | 3,068           | 0.6%           | 2,077           | 48.6%          |
| 56 (*)                      | 391                       | 352             | 10.9%          | 354             | 10.5%             | 374             | 4.6%           | 284             | 37.8%          |
| 57                          | 522                       | 466             | 12.0%          | 433             | 20.6%             | 525             | -0.4%          | 262             | 99.3%          |
| 62                          | 2,496                     | 1,723           | 44.8%          | 1,815           | 37.5%             | 2,388           | 4.5%           | 1,225           | 103.8%         |
| 71 (*)                      | 825                       | 712             | 15.9%          | 711             | 16.1%             | 775             | 6.5%           | 459             | 79.7%          |
| 72 (*)                      | 670                       | 628             | 6.7%           | 781             | -14.3%            | 725             | -7.6%          | 469             | 42.8%          |

(†) In this table and those which follow, "YOY" stands for "year-over-year", "MOM" for "month-over-month" and "YO2Y" for "year over two years", i.e., current month vs 12 months prior, one month prior, and 24 months prior, respectively.

(\*) Contracted routes



## METROBUS AVERAGE WEEKDAY BOARDINGS BY ROUTE

| Route                                 | Average Weekday           | Average Weekday | Percent Change | Average Weekday | Percent Change    | Average Weekday | Percent Change | Average Weekday | Percent Change |
|---------------------------------------|---------------------------|-----------------|----------------|-----------------|-------------------|-----------------|----------------|-----------------|----------------|
|                                       | <b>weekdays</b><br>Oct-23 | Oct-22          | YOY            | Feb-20          | Current vs Feb-20 | Sep-23          | MOM            | Oct-21          | YO2Y           |
| 73                                    | 2,868                     | 3,005           | -4.6%          | 2,124           | 35.0%             | 2,792           | 2.7%           | 1,685           | 70.2%          |
| 75                                    | 1,594                     | 1,374           | 16.0%          | 1,429           | 11.6%             | 1,483           | 7.5%           | 917             | 73.8%          |
| 77                                    | 9,959                     | 8,731           | 14.1%          | 7,129           | 39.7%             | 9,456           | 5.3%           | 5,842           | 70.5%          |
| 79 STREET MAX                         | 469                       | 432             | 8.7%           | 361             | 29.8%             | 455             | 3.0%           |                 |                |
| 82 - WESTCHESTER CIRC. (*)            | 61                        | 58              | 5.3%           | 62              | -1.2%             | 73              | -16.4%         | 37              | 66.2%          |
| 87                                    | 1,924                     | 1,892           | 1.7%           | 1,499           | 28.3%             | 1,893           | 1.6%           | 1,054           | 82.5%          |
| 88                                    | 2,419                     | 2,371           | 2.0%           | 2,076           | 16.5%             | 2,385           | 1.4%           | 2,012           | 20.2%          |
| 93 - BISCAYNE MAX                     | 3,666                     | 3,384           | 8.3%           | 3,334           | 9.9%              | 3,490           | 5.0%           | 1,935           | 89.5%          |
| 95 EXPRESS                            | 1,195                     | 1,400           | -14.6%         | 1,690           | -29.3%            | 1,146           | 4.3%           | 330             | 262.6%         |
| 99                                    | 1,899                     | 1,547           | 22.7%          | 1,473           | 29.0%             | 1,834           | 3.5%           | 1,082           | 75.5%          |
| 101 - A (*)                           | 178                       | 214             | -17.2%         | 177             | 0.4%              | 177             | 0.4%           | 122             | 45.7%          |
| 103 - C                               |                           |                 |                | 463             |                   |                 |                | 181             |                |
| 104                                   | 1,024                     | 901             | 13.6%          | 837             | 22.4%             | 1,029           | -0.5%          | 646             | 58.6%          |
| 105 - E                               | 1,402                     | 1,451           | -3.4%          | 1,287           | 8.9%              | 1,360           | 3.0%           | 931             | 50.6%          |
| 107 - G                               | 2,099                     | 1,864           | 12.6%          | 1,713           | 22.5%             | 1,984           | 5.8%           | 1,134           | 85.1%          |
| 108 - H                               | 487                       | 522             | -6.6%          | 473             | 3.1%              | 486             | 0.2%           | 294             | 65.4%          |
| 110 - J                               | 2,955                     | 2,989           | -1.2%          | 2,508           | 17.8%             | 2,981           | -0.9%          | 1,922           | 53.7%          |
| 112 - L                               | 8,481                     | 8,417           | 0.8%           | 7,636           | 11.1%             | 8,249           | 2.8%           | 6,965           | 21.8%          |
| 113 - M                               | 887                       | 753             | 17.8%          | 866             | 2.5%              | 892             | -0.6%          | 374             | 137.1%         |
| 115 (*)                               | 151                       | 134             | 12.9%          | 180             | -16.2%            | 146             | 3.4%           | 149             | 1.6%           |
| 119 - S                               | 9,588                     | 9,770           | -1.9%          | 8,970           | 6.9%              | 9,244           | 3.7%           | 7,120           | 34.7%          |
| 120 - BEACH MAX                       | 6,128                     | 6,843           | -10.5%         | 6,667           | -8.1%             | 5,945           | 3.1%           | 4,163           | 47.2%          |
| 132 TRI-RAIL (DORAL)                  | 37                        | 49              | -24.8%         | 16              | 134.3%            | 39              | -6.9%          | 13              | 191.1%         |
| 135                                   | 1,755                     | 1,407           | 24.8%          | 1,399           | 25.5%             | 1,688           | 4.0%           | 587             | 199.3%         |
| 136                                   | 162                       | 149             | 8.3%           | 126             | 28.1%             | 149             | 8.6%           | 105             | 54.5%          |
| 137 - WEST DADE CONN.                 | 2,119                     | 2,084           | 1.7%           | 1,626           | 30.4%             | 2,166           | -2.1%          | 1,095           | 93.6%          |
| 150 - MIAMI BEACH AIRPORT FLYER       | 2,149                     | 2,054           | 4.6%           | 1,867           | 15.1%             | 2,151           | -0.1%          | 839             | 156.3%         |
| 155 - BISCAYNE GARDENS CIRCULATOR (*) | 45                        | 37              | 21.0%          | 44              | 1.6%              | 49              | -9.3%          | 32              | 40.5%          |
| 175 - NW MIAMI-DADE EXPRESS           |                           |                 |                | 33              |                   |                 |                |                 |                |
| 183                                   | 3,653                     | 3,305           | 10.5%          | 3,149           | 16.0%             | 3,464           | 5.4%           | 2,025           | 80.4%          |
| 195 EXPRESS - BROWARD BLVD            |                           |                 |                | 372             |                   |                 |                |                 |                |
| 196 EXPRESS - SHERIDAN ST             |                           |                 |                | 383             |                   |                 |                |                 |                |
| 200 - CUTLER BAY LOCAL                | 176                       | 115             | 52.7%          | 158             | 11.5%             | 201             | -12.3%         | 98              | 80.1%          |
| 202 - LITTLE HAITI CONN. (*)          | 110                       | 86              | 28.4%          | 140             | -21.0%            | 112             | -1.7%          | 47              | 135.3%         |
| 204 KILLIAN KAT                       | 620                       | 1,140           | -45.7%         | 1,071           | -42.1%            | 620             | 0.0%           |                 |                |

## METROBUS AVERAGE WEEKDAY BOARDINGS BY ROUTE

| Route                                     | Average Weekday | Average Weekday | Percent Change | Average Weekday | Percent Change | Average Weekday   | Percent Change | Average Weekday | Percent Change |
|---|-----------------|-----------------|----------------|-----------------|----------------|-------------------|----------------|-----------------|----------------|
|   | weekdays        | Oct-23          | Oct-22         | YOY             | Feb-20         | Current vs Feb-20 | Sep-23         | MOM             | Oct-21         |
| 207 (7st) - LITTLE HAVANA CIRC            | 1,819           | 1,770           | 2.8%           | 1,489           | 22.2%          | 1,681             | 8.2%           | 763             | 138.3%         |
| 208 (8st) - LITTLE HAVANA CIRC            | 1,659           | 1,630           | 1.8%           | 1,308           | 26.9%          | 1,536             | 8.0%           | 772             | 114.8%         |
| 210 - SKYLAKE CIRC (*)                    | 471             | 319             | 47.6%          | 282             | 67.3%          | 393               | 20.0%          | 266             | 77.0%          |
| 211 - OVERTOWN CIRC. (*)                  | 71              | 98              | -27.3%         | 58              | 22.9%          | 83                | -14.6%         | 83              | -13.9%         |
| 212 - SWEETWATER CIRC. (*)                | 22              | 21              | 5.0%           | 15              | 52.2%          | 29                | -21.8%         | 42              | -46.4%         |
| 217 - BUNCHE PARK CIRC (*)                | 80              | 64              | 24.6%          | 97              | -18.0%         | 74                | 8.0%           | 69              | 15.9%          |
| 238 EAST/WEST CONN.                       | 593             | 580             | 2.1%           | 449             | 31.9%          | 601               | -1.4%          | 334             | 77.6%          |
| 241 TUTTLE LIMITED                        | 348             | 165             | 110.7%         |                 |                | 306               | 13.6%          |                 |                |
| 246 - NIGHT OWL                           | 61              | 55              | 9.5%           | 94              | -35.2%         | 56                | 8.7%           | 52              | 16.8%          |
| 248 - PRINCETON CIRCULATOR (*)            | 161             | 120             | 34.4%          | 135             | 19.8%          | 155               | 4.0%           | 76              | 113.4%         |
| 252 - CORAL REEF MAX                      | 1,051           | 965             | 8.9%           | 851             | 23.5%          | 989               | 6.3%           | 499             | 110.7%         |
| 254 - BROWNSVILLE CIRC. (*)               | 5               | 6               | -19.8%         | 19              | -75.1%         | 6                 | -20.5%         | 13              | -64.5%         |
| 267 - LUDLAM LIMITED (*)                  | 162             | 159             | 2.0%           | 149             | 8.9%           | 152               | 6.7%           | 110             | 47.8%          |
| 272 SUNSET KAT (*)                        | 428             | 355             | 20.6%          | 550             | -22.2%         | 446               | -3.9%          | 320             | 33.7%          |
| 277 - 7th AVENUE MAX                      | 879             | 850             | 3.5%           | 683             | 28.7%          | 851               | 3.3%           | 385             | 128.6%         |
| 286 - NORTH POINTE CIRC. (*)              | 93              | 77              | 20.9%          | 97              | -4.7%          | 88                | 5.2%           | 36              | 156.6%         |
| 287 - SAGA BAY MAX                        | 341             | 302             | 12.9%          | 358             | -4.8%          | 324               | 5.3%           | 176             | 93.3%          |
| 288 - KENDALL CRUISER                     | 372             | 944             | -60.6%         | 762             | -51.2%         | 367               | 1.3%           |                 |                |
| 295 EXPRESS - BROWARD BLVD - CIVIC CENTER |                 |                 |                | 233             |                |                   |                |                 |                |
| 296 EXPRESS - SHERIDAN ST - CIVIC CENTER  |                 |                 |                | 215             |                |                   |                |                 |                |
| 297-27th AVENUE ORANGE MAX                | 1,229           | 1,286           | -4.4%          | 1,356           | -9.4%          | 1,215             | 1.2%           | 653             | 88.3%          |
| 301 DADE-MONROE EXPRESS (*)               | 955             | 778             | 22.7%          | 841             | 13.5%          | 993               | -3.8%          | 998             | -4.3%          |
| 302 CARD SOUND EXPRESS (*)                | 91              | 96              | -5.2%          | 86              | 5.1%           | 87                | 3.7%           | 71              | 27.4%          |
| 344 (*)                                   | 76              | 54              | 40.2%          | 96              | -21.1%         | 72                | 5.8%           | 61              | 24.9%          |
| 500                                       | 71              | 59              | 20.2%          | 81              | -12.5%         | 69                | 2.5%           |                 |                |
| 836 EXPRESS                               | 247             | 356             | -30.7%         |                 |                | 255               | -3.1%          | 122             | 101.8%         |
| 837 EXPRESS                               | 195             |                 |                |                 |                | 187               | 4.3%           |                 |                |
| GREEN HILLS SHUTTLE (*)                   | 5               | 4               | 18.2%          | 9               | -42.2%         | 6                 | -13.3%         | 5               | -1.0%          |
| KINGS CREEK SHUTTLE (*)                   | 14              | 19              | -26.7%         | 13              | 5.8%           | 9                 | 48.6%          | 7               | 89.7%          |
| SIERRA LAKES SHUTTLE (*)                  | 16              | 15              | 3.3%           | 45              | -65.6%         | 15                | 3.3%           | 34              | -54.7%         |
| ROBERT SHARP SHUTTLE (*)                  | 23              | 21              | 9.5%           | 10              | 142.1%         | 21                | 9.5%           | 21              | 9.5%           |
| AHEPA SHUTTLE (*)                         | 18              | 17              | 6.0%           | 21              | -14.5%         | 14                | 26.8%          | 18              | -1.4%          |
| <b>Total</b>                              | <b>185,320</b>  | <b>178,888</b>  | <b>3.6%</b>    | <b>167,711</b>  | <b>10.5%</b>   | <b>179,668</b>    | <b>3.1%</b>    | <b>117,796</b>  | <b>57.3%</b>   |

(\*) The following routes are entirely operated under contract: 1, 29, 46, 56, 71, 72, 82, 101-A, 115, 155, 202, 210, 211, 212, 217, 246, 248, 254, 267, 272, 286, 301, 302 and 344.

(1) Includes shuttles and those routes which were not run both years.

(2) Several express routes were suspended beginning at the end of March 2020, due to the SARS-CoV-2 pandemic, while other routes had alignment and schedule modifications made to them, in an ongoing effort to optimize service delivery.

## METROBUS AVERAGE SATURDAY BOARDINGS BY ROUTE

| Route                             | Average Saturday | Average Saturday | Percent Change | Average Saturday | Percent Change    | Average Saturday | Percent Change | Average Saturday | Percent Change |
|-----------------------------------|------------------|------------------|----------------|------------------|-------------------|------------------|----------------|------------------|----------------|
|                                   | Oct-23           | Oct-22           | YOY            | Feb-20           | Current vs Feb-20 | Sep-23           | MOM            | Oct-21           | YO2Y           |
| <b>Saturdays</b>                  |                  |                  |                |                  |                   |                  |                |                  |                |
| 1 (*)                             | 163              | 123              | 33.2%          | 215              | -24.1%            | 156              | 4.4%           | 150              | 9.1%           |
| 2                                 | 1,605            | 1,544            | 4.0%           | 1,616            | -0.7%             | 1,579            | 1.6%           | 1,301            | 23.4%          |
| 3                                 | 5,754            | 5,934            | -3.0%          | 5,229            | 10.0%             | 5,565            | 3.4%           | 3,694            | 55.7%          |
| 7                                 | 1,972            | 1,988            | -0.8%          | 1,887            | 4.5%              | 2,017            | -2.3%          | 1,685            | 17.0%          |
| 8                                 | 2,334            | 2,603            | -10.3%         | 2,027            | 15.1%             | 2,476            | -5.7%          | 1,809            | 29.0%          |
| 9                                 | 3,677            | 3,373            | 9.0%           | 3,034            | 21.2%             | 3,734            | -1.5%          | 2,421            | 51.9%          |
| 10                                | 2,107            | 2,053            | 2.7%           | 1,896            | 11.2%             | 1,995            | 5.6%           | 1,576            | 33.7%          |
| 11                                | 5,787            | 6,372            | -9.2%          | 5,182            | 11.7%             | 6,277            | -7.8%          | 4,518            | 28.1%          |
| 16                                | 1,662            | 1,721            | -3.5%          | 1,566            | 6.1%              | 1,696            | -2.0%          | 1,262            | 31.7%          |
| 17                                | 2,553            | 2,461            | 3.8%           | 2,363            | 8.0%              | 2,424            | 5.3%           | 1,575            | 62.1%          |
| 22                                | 2,425            | 2,384            | 1.7%           | 2,084            | 16.4%             | 2,317            | 4.7%           | 1,459            | 66.2%          |
| <b>24 - Coral Way Limited</b>     | 1,400            | 1,471            | -4.8%          | 1,165            | 20.2%             | 1,341            | 4.4%           | 458              | 205.6%         |
| 26                                | 966              | 1,006            | -4.0%          | 851              | 13.5%             | 964              | 0.1%           | 550              | 75.6%          |
| 27                                | 4,006            | 4,160            | -3.7%          | 4,034            | -0.7%             | 4,017            | -0.3%          | 2,884            | 38.9%          |
| <b>31 - BUSWAY LOCAL</b>          |                  | 1,008            |                | 896              |                   |                  |                | 640              |                |
| 32                                | 1,261            | 1,281            | -1.6%          | 1,029            | 22.6%             | 1,129            | 11.7%          | 676              | 86.5%          |
| 33                                | 1,239            | 1,116            | 11.1%          | 951              | 30.4%             | 1,158            | 7.0%           | 668              | 85.5%          |
| 35                                | 1,540            | 1,381            | 11.5%          | 1,372            | 12.3%             | 1,422            | 8.3%           | 1,043            | 47.7%          |
| 36                                | 1,677            | 1,388            | 20.8%          | 1,289            | 30.0%             | 1,588            | 5.6%           | 940              | 78.3%          |
| 37                                | 2,062            | 2,146            | -3.9%          | 2,090            | -1.4%             | 2,013            | 2.4%           | 1,464            | 40.8%          |
| <b>38 TRANSITWAY MAX</b>          | 6,328            | 5,055            | 25.2%          | 4,715            | 34.2%             | 5,657            | 11.9%          | 3,290            | 92.3%          |
| 40                                | 926              | 845              | 9.6%           | 655              | 41.5%             | 877              | 5.6%           | 466              | 98.6%          |
| 42                                | 617              | 659              | -6.4%          | 552              | 11.8%             | 609              | 1.2%           | 411              | 50.0%          |
| 52                                | 694              | 631              | 9.8%           | 686              | 1.1%              | 699              | -0.8%          | 561              | 23.5%          |
| 54                                | 1,925            | 2,057            | -6.4%          | 1,727            | 11.5%             | 1,907            | 0.9%           | 1,316            | 46.3%          |
| 62                                | 1,823            | 1,373            | 32.8%          | 1,343            | 35.7%             | 1,782            | 2.3%           | 833              | 119.0%         |
| 71 (*)                            | 238              | 298              | -20.4%         | 252              | -5.7%             | 256              | -7.2%          | 145              | 64.0%          |
| 72 (*)                            | 357              | 356              | 0.2%           | 350              | 2.0%              | 351              | 1.7%           | 326              | 9.5%           |
| 73                                | 1,202            | 1,334            | -10.0%         | 860              | 39.6%             | 1,272            | -5.6%          | 769              | 56.2%          |
| 75                                | 550              | 487              | 13.0%          | 468              | 17.5%             | 490              | 12.2%          | 320              | 72.1%          |
| 77                                | 5,510            | 5,381            | 2.4%           | 4,197            | 31.3%             | 5,633            | -2.2%          | 3,386            | 62.7%          |
| <b>82 - WESTCHESTER CIRC. (*)</b> | 38               | 40               | -5.6%          | 50               | -25.1%            | 49               | -22.6%         | 43               | -11.4%         |
| 87                                | 532              | 595              | -10.7%         | 402              | 32.1%             | 554              | -4.1%          | 350              | 51.7%          |
| 88                                | 1,661            | 1,795            | -7.5%          | 1,620            | 2.5%              | 1,666            | -0.3%          | 1,416            | 17.3%          |
| 99                                | 1,106            | 973              | 13.6%          | 849              | 30.3%             | 1,085            | 1.9%           | 627              | 76.5%          |

## METROBUS AVERAGE SATURDAY BOARDINGS BY ROUTE

| Route                           | Average Saturday | Average Saturday | Percent Change | Average Saturday | Percent Change    | Average Saturday | Percent Change | Average Saturday | Percent Change |
|---------------------------------|------------------|------------------|----------------|------------------|-------------------|------------------|----------------|------------------|----------------|
| <b>Saturdays</b>                | Oct-23           | Oct-22           | YOY            | Feb-20           | Current vs Feb-20 | Sep-23           | MOM            | Oct-21           | YO2Y           |
| 101 - A (*)                     | 93               | 59               | 58.1%          | 71               | 31.7%             | 64               | 46.6%          | 56               | 67.1%          |
| 103 - C                         |                  |                  |                | 315              |                   |                  |                | 135              |                |
| 104                             | 445              | 454              | -2.0%          | 468              | -5.1%             | 463              | -4.1%          | 318              | 40.0%          |
| 105 - E                         | 772              | 751              | 2.8%           | 619              | 24.7%             | 736              | 4.9%           | 537              | 43.7%          |
| 107 - G                         | 1,297            | 1,253            | 3.5%           | 1,066            | 21.6%             | 1,287            | 0.8%           | 826              | 57.0%          |
| 108 - H                         | 401              | 461              | -13.2%         | 372              | 7.6%              | 393              | 1.8%           | 240              | 67.0%          |
| 110 - J                         | 1,394            | 2,135            | -34.7%         | 1,952            | -28.6%            | 2,088            | -33.2%         | 1,306            | 6.8%           |
| 112 - L                         | 7,094            | 6,749            | 5.1%           | 5,667            | 25.2%             | 6,567            | 8.0%           | 4,309            | 64.6%          |
| 113 - M                         | 577              | 611              | -5.5%          | 503              | 14.8%             | 569              | 1.4%           | 252              | 128.9%         |
| 115 (*)                         | 80               | 65               | 22.3%          | 82               | -3.3%             | 78               | 1.4%           | 93               | -14.7%         |
| 119 - S                         | 8,118            | 7,804            | 4.0%           | 6,861            | 18.3%             | 7,329            | 10.8%          | 5,037            | 61.2%          |
| 120 - BEACH MAX                 | 5,637            | 5,142            | 9.6%           | 4,744            | 18.8%             | 5,176            | 8.9%           | 3,218            | 75.2%          |
| 135                             | 556              | 485              | 14.5%          | 539              | 3.2%              | 532              | 4.5%           | 219              | 153.5%         |
| 137 - WEST DADE CONN.           | 1,337            | 1,382            | -3.3%          | 1,027            | 30.1%             | 1,342            | -0.4%          | 816              | 63.8%          |
| 150 - MIAMI BEACH AIRPORT FLYER | 2,161            | 1,987            | 8.8%           | 1,604            | 34.7%             | 2,073            | 4.2%           | 825              | 161.9%         |
| 183                             | 1,960            | 1,962            | -0.1%          | 1,790            | 9.5%              | 2,068            | -5.2%          | 1,317            | 48.7%          |
| 200 - CUTLER BAY LOCAL          | 152              | 106              | 42.6%          | 119              | 27.3%             | 160              | -5.4%          | 33               | 364.5%         |
| 202 - LITTLE HAITI CONN. (*)    | 22               | 33               | -33.7%         | 50               | -56.2%            | 24               | -9.1%          | 65               | -66.3%         |
| 207 (7st) - LITTLE HAVANA CIRC  | 929              | 1,024            | -9.4%          | 1,032            | -10.1%            | 850              | 9.2%           | 650              | 42.9%          |
| 208 (8st) - LITTLE HAVANA CIRC  | 1,030            | 1,036            | -0.6%          | 1,044            | -1.4%             | 1,054            | -2.3%          | 783              | 31.5%          |
| 210 - SKYLAKE CIRC (*)          | 217              | 120              | 80.7%          | 165              | 31.7%             | 243              | -10.7%         | 129              | 68.7%          |
| 241 TUTTLE LIMITED              | 222              | 138              | 61.0%          |                  |                   | 206              | 7.6%           |                  |                |
| 246 - NIGHT OWL                 | 61               | 47               | 28.2%          | 84               | -28.3%            | 51               | 18.6%          | 58               | 4.9%           |
| 252 - CORAL REEF MAX            | 375              | 384              | -2.4%          | 302              | 24.1%             | 366              | 2.3%           | 205              | 83.2%          |
| 286 - NORTH POINTE CIRC. (*)    | 61               | 60               | 1.7%           | 41               | 49.5%             | 65               | -6.7%          | 34               | 81.5%          |
| 301 DADE-MONROE EXPRESS (*)     | 885              | 785              | 12.7%          | 801              | 10.5%             | 921              | -3.9%          | 1,103            | -19.7%         |
| 302 CARD SOUND EXPRESS (*)      | 94               | 84               | 11.9%          | 57               | 66.1%             | 80               | 18.1%          | 49               | 93.4%          |
| 338 - WEEKEND EXPRESS           | 259              | 293              | -11.6%         | 237              | 9.6%              | 227              | 14.2%          | 145              | 79.3%          |
| 500                             | 104              | 54               | 92.8%          | 70               | 48.2%             | 79               | 30.7%          |                  |                |
| 12/21 WEEKEND INTERL.           | 3,290            | 2,615            | 25.8%          | 2,528            | 30.1%             | 3,013            | 9.2%           | 1,714            | 92.0%          |
| FEDERATION GARDENS SHUTTLE (*)  | 20               | 22               | -7.4%          | 28               | -29.6%            | 28               | -29.1%         | 20               | 1.0%           |
| <b>Total</b>                    | <b>107,331</b>   | <b>105,494</b>   | <b>1.7%</b>    | <b>93,742</b>    | <b>14.5%</b>      | <b>104,890</b>   | <b>2.3%</b>    | <b>69,520</b>    | <b>54.4%</b>   |

## METROBUS AVERAGE SUNDAY BOARDINGS BY ROUTE

| Route<br><b>Sundays</b> | Average Sunday | Average Sunday | Percent Change | Average Sunday | Percent Change    | Average Sunday | Percent Change | Average Sunday | Percent Change |
|-------------------------|----------------|----------------|----------------|----------------|-------------------|----------------|----------------|----------------|----------------|
|                         | Oct-23         | Oct-22         | YOY            | Feb-20         | Current vs Feb-20 | Sep-23         | MOM            | Oct-21         | YO2Y           |
| 1 (*)                   | 149            | 130            | 14.6%          | 201            | -25.9%            | 144            | 3.0%           | 131            | 13.8%          |
| 2                       | 1,214          | 1,060          | 14.5%          | 1,335          | -9.0%             | 1,114          | 9.0%           | 887            | 36.9%          |
| 3                       | 4,408          | 4,463          | -1.2%          | 4,353          | 1.3%              | 4,625          | -4.7%          | 3,181          | 38.6%          |
| 7                       | 1,632          | 1,469          | 11.1%          | 1,654          | -1.3%             | 1,744          | -6.4%          | 963            | 69.5%          |
| 8                       | 1,838          | 1,876          | -2.0%          | 1,746          | 5.3%              | 1,860          | -1.2%          | 1,457          | 26.1%          |
| 9                       | 2,756          | 2,737          | 0.7%           | 2,549          | 8.1%              | 2,849          | -3.3%          | 2,040          | 35.1%          |
| 10                      | 1,632          | 1,471          | 11.0%          | 1,441          | 13.2%             | 1,620          | 0.8%           | 1,179          | 38.4%          |
| 11                      | 3,803          | 4,206          | -9.6%          | 3,917          | -2.9%             | 4,070          | -6.6%          | 3,254          | 16.9%          |
| 16                      | 1,023          | 1,031          | -0.8%          | 997            | 2.6%              | 1,034          | -1.1%          | 616            | 66.0%          |
| 17                      | 1,920          | 1,688          | 13.7%          | 1,833          | 4.7%              | 1,790          | 7.2%           | 1,154          | 66.3%          |
| 22                      | 1,915          | 1,782          | 7.4%           | 1,548          | 23.7%             | 1,806          | 6.0%           | 1,127          | 69.8%          |
| 24 - Coral Way Limited  | 1,108          | 1,198          | -7.5%          | 905            | 22.5%             | 1,140          | -2.8%          | 547            | 102.4%         |
| 26                      | 871            | 994            | -12.4%         | 717            | 21.5%             | 852            | 2.2%           | 484            | 79.9%          |
| 27                      | 3,146          | 3,146          | 0.0%           | 2,918          | 7.8%              | 3,000          | 4.8%           | 1,921          | 63.7%          |
| 31 - BUSWAY LOCAL       |                | 679            |                | 715            |                   |                |                | 484            |                |
| 32                      | 768            | 777            | -1.1%          | 772            | -0.5%             | 736            | 4.4%           | 457            | 68.1%          |
| 33                      | 729            | 661            | 10.3%          | 607            | 20.1%             | 709            | 2.9%           | 379            | 92.3%          |
| 35                      | 1,175          | 1,095          | 7.4%           | 942            | 24.8%             | 1,234          | -4.7%          | 816            | 44.1%          |
| 36                      | 1,160          | 1,148          | 1.1%           | 1,111          | 4.5%              | 1,201          | -3.4%          | 828            | 40.1%          |
| 37                      | 1,755          | 1,798          | -2.4%          | 1,739          | 0.9%              | 1,709          | 2.7%           | 1,180          | 48.7%          |
| 38 TRANSITWAY MAX       | 4,957          | 4,400          | 12.7%          | 4,147          | 19.6%             | 4,431          | 11.9%          | 2,705          | 83.3%          |
| 40                      | 542            | 535            | 1.4%           | 447            | 21.2%             | 580            | -6.5%          | 320            | 69.4%          |
| 42                      | 425            | 442            | -3.9%          | 416            | 2.1%              | 449            | -5.4%          | 269            | 58.0%          |
| 52                      | 496            | 498            | -0.2%          | 466            | 6.5%              | 585            | -15.2%         | 360            | 38.0%          |
| 54                      | 1,181          | 1,234          | -4.3%          | 1,171          | 0.8%              | 1,251          | -5.6%          | 860            | 37.3%          |
| 62                      | 1,040          | 881            | 18.0%          | 891            | 16.8%             | 1,069          | -2.7%          | 552            | 88.4%          |
| 71 (*)                  | 187            | 187            | 0.2%           | 162            | 15.4%             | 166            | 12.9%          | 103            | 81.6%          |
| 72 (*)                  | 259            | 323            | -19.8%         | 265            | -2.0%             | 290            | -10.6%         | 256            | 1.4%           |
| 73                      | 602            | 566            | 6.4%           | 495            | 21.7%             | 670            | -10.1%         | 424            | 42.0%          |
| 75                      | 352            | 304            | 15.5%          | 271            | 29.9%             | 312            | 12.8%          | 235            | 49.7%          |
| 77                      | 3,980          | 3,665          | 8.6%           | 2,815          | 41.4%             | 3,856          | 3.2%           | 2,461          | 61.7%          |
| 87                      | 362            | 376            | -3.9%          | 319            | 13.4%             | 380            | -4.8%          | 236            | 53.3%          |
| 88                      | 1,255          | 1,337          | -6.1%          | 1,286          | -2.4%             | 1,294          | -3.0%          | 955            | 31.5%          |
| 99                      | 887            | 761            | 16.6%          | 658            | 34.8%             | 855            | 3.8%           | 516            | 72.0%          |

## METROBUS AVERAGE SUNDAY BOARDINGS BY ROUTE

| Route<br><b>Sundays</b>         | Average Sunday | Average Sunday | Percent Change | Average Sunday | Percent Change    | Average Sunday | Percent Change | Average Sunday | Percent Change |
|---------------------------------|----------------|----------------|----------------|----------------|-------------------|----------------|----------------|----------------|----------------|
|                                 | Oct-23         | Oct-22         | YOY            | Feb-20         | Current vs Feb-20 | Sep-23         | MOM            | Oct-21         | YO2Y           |
| 101 - A (*)                     | 53             | 45             | 18.8%          | 56             | -4.5%             | 57             | -6.7%          | 39             | 37.3%          |
| 103 - C                         |                |                |                | 212            |                   |                |                | 103            |                |
| 104                             | 348            | 365            | -4.8%          | 317            | 9.7%              | 343            | 1.3%           | 194            | 78.9%          |
| 105 - E                         | 634            | 681            | -6.9%          | 616            | 3.0%              | 661            | -4.0%          | 498            | 27.4%          |
| 107 - G                         | 1,036          | 978            | 5.9%           | 895            | 15.7%             | 1,029          | 0.7%           | 573            | 80.9%          |
| 108 - H                         | 363            | 462            | -21.5%         | 328            | 10.5%             | 411            | -11.7%         | 214            | 69.3%          |
| 110 - J                         | 1,699          | 1,793          | -5.3%          | 1,638          | 3.7%              | 1,862          | -8.8%          | 1,083          | 56.9%          |
| 112 - L                         | 4,837          | 4,940          | -2.1%          | 4,804          | 0.7%              | 5,099          | -5.1%          | 2,986          | 62.0%          |
| 113 - M                         | 444            | 370            | 20.0%          | 431            | 3.2%              | 418            | 6.3%           | 280            | 58.7%          |
| 115 (*)                         | 66             | 52             | 27.5%          | 80             | -17.8%            | 73             | -9.9%          | 98             | -33.1%         |
| 119 - S                         | 7,612          | 7,747          | -1.7%          | 7,141          | 6.6%              | 7,750          | -1.8%          | 5,119          | 48.7%          |
| 120 - BEACH MAX                 | 3,492          | 3,653          | -4.4%          | 3,469          | 0.7%              | 3,449          | 1.3%           | 2,074          | 68.4%          |
| 135                             | 474            | 360            | 31.6%          | 349            | 35.7%             | 403            | 17.5%          | 60             | 692.3%         |
| 137 - WEST DADE CONN.           | 956            | 1,020          | -6.3%          | 879            | 8.7%              | 1,064          | -10.2%         | 609            | 56.9%          |
| 150 - MIAMI BEACH AIRPORT FLYER | 1,966          | 1,911          | 2.9%           | 1,574          | 25.0%             | 1,959          | 0.4%           | 692            | 184.0%         |
| 183                             | 1,569          | 1,488          | 5.4%           | 1,413          | 11.1%             | 1,609          | -2.4%          | 1,007          | 55.9%          |
| 200 - CUTLER BAY LOCAL          | 86             | 60             | 44.1%          | 59             | 47.4%             | 75             | 15.5%          | 4              | 2362.9%        |
| 202 - LITTLE HAITI CONN. (*)    | 21             | 29             | -27.4%         | 39             | -45.6%            | 30             | -29.8%         | 63             | -66.5%         |
| 207 (7st) - LITTLE HAVANA CIRC  | 648            | 729            | -11.1%         | 796            | -18.6%            | 664            | -2.5%          | 389            | 66.7%          |
| 208 (8st) - LITTLE HAVANA CIRC  | 862            | 823            | 4.7%           | 911            | -5.4%             | 904            | -4.6%          | 385            | 124.0%         |
| 210 - SKYLAKE CIRC (*)          | 194            | 62             | 212.2%         | 143            | 35.8%             | 221            | -12.1%         | 102            | 91.1%          |
| 241 TUTTLE LIMITED              | 187            | 123            | 52.4%          |                |                   | 207            | -9.4%          |                |                |
| 246 - NIGHT OWL                 | 65             | 67             | -3.3%          | 87             | -25.7%            | 56             | 14.9%          | 30             | 118.2%         |
| 252 - CORAL REEF MAX            | 331            | 303            | 9.4%           | 199            | 66.7%             | 314            | 5.4%           | 150            | 120.6%         |
| 301 DADE-MONROE EXPRESS (*)     | 867            | 677            | 28.0%          | 751            | 15.4%             | 864            | 0.3%           | 973            | -10.9%         |
| 302 CARD SOUND EXPRESS (*)      | 72             | 71             | 0.3%           | 57             | 25.6%             | 72             | -0.6%          | 52             | 37.2%          |
| 338 - WEEKEND EXPRESS           | 247            | 267            | -7.3%          | 252            | -1.8%             | 235            | 5.5%           | 135            | 83.5%          |
| 500                             | 70             | 36             | 93.4%          | 83             | -15.4%            | 70             | -0.6%          |                |                |
| 12/21 WEEKEND INTERL.           | 2,700          | 1,351          | 99.9%          | 2,048          | 31.9%             | 2,409          | 12.1%          | 1,333          | 102.6%         |
| <b>Total</b>                    | <b>81,427</b>  | <b>79,381</b>  | <b>2.6%</b>    | <b>75,428</b>  | <b>8.0%</b>       | <b>81,731</b>  | <b>-0.4%</b>   | <b>52,688</b>  | <b>54.5%</b>   |

## METROBUS TOTAL MONTHLY BOARDINGS BY ROUTE

| Route                       | Total Month | Total Month | Percent Change | Total Month | Percent Change    | Total Month | Percent Change | Total Month | Percent Change |
|-----------------------------|-------------|-------------|----------------|-------------|-------------------|-------------|----------------|-------------|----------------|
|                             | Oct-23      | Oct-22      | YOY            | Feb-20      | Current vs Feb-20 | Sep-23      | MOM            | Oct-21      | YO2Y           |
| <b>Monthly Total</b>        |             |             |                |             |                   |             |                |             |                |
| 1 (*)                       | 6,337       | 5,753       | 10.2%          | 5,558       | 14.0%             | 5,941       | 6.7%           | 5,170       | 22.6%          |
| 2                           | 77,976      | 70,182      | 11.1%          | 75,463      | 3.3%              | 73,061      | 6.7%           | 56,563      | 37.9%          |
| 3                           | 164,203     | 164,656     | -0.3%          | 146,294     | 12.2%             | 156,392     | 5.0%           | 120,662     | 36.1%          |
| 7                           | 104,507     | 98,608      | 6.0%           | 86,077      | 21.4%             | 97,756      | 6.9%           | 66,495      | 57.2%          |
| 8                           | 120,821     | 122,650     | -1.5%          | 95,295      | 26.8%             | 113,537     | 6.4%           | 94,039      | 28.5%          |
| 9                           | 171,265     | 158,735     | 7.9%           | 135,924     | 26.0%             | 162,147     | 5.6%           | 122,685     | 39.6%          |
| 10                          | 70,338      | 67,070      | 4.9%           | 64,874      | 8.4%              | 66,869      | 5.2%           | 44,878      | 56.7%          |
| 11                          | 253,837     | 229,293     | 10.7%          | 187,425     | 35.4%             | 238,529     | 6.4%           | 182,518     | 39.1%          |
| 12                          | 63,603      | 58,148      | 9.4%           | 55,585      | 14.4%             | 59,652      | 6.6%           | 40,722      | 56.2%          |
| 16                          | 55,959      | 55,579      | 0.7%           | 49,061      | 14.1%             | 52,826      | 5.9%           | 34,274      | 63.3%          |
| 17                          | 110,727     | 99,770      | 11.0%          | 96,715      | 14.5%             | 101,592     | 9.0%           | 64,711      | 71.1%          |
| 19                          | 39,745      | 32,532      | 22.2%          | 30,847      | 28.8%             | 37,093      | 7.1%           | 20,284      | 95.9%          |
| 21                          | 46,355      | 37,994      | 22.0%          | 36,341      | 27.6%             | 40,961      | 13.2%          | 25,628      | 80.9%          |
| 22                          | 118,329     | 109,432     | 8.1%           | 89,404      | 32.4%             | 109,281     | 8.3%           | 63,968      | 85.0%          |
| 24 - Coral Way Limited      | 59,432      | 59,693      | -0.4%          | 36,237      | 64.0%             | 55,632      | 6.8%           | 21,615      | 175.0%         |
| 26                          | 49,521      | 53,157      | -6.8%          | 42,683      | 16.0%             | 45,589      | 8.6%           | 33,825      | 46.4%          |
| 27                          | 188,160     | 179,670     | 4.7%           | 171,282     | 9.9%              | 173,978     | 8.2%           | 129,664     | 45.1%          |
| 29 (*)                      | 11,342      | 8,971       | 26.4%          | 10,684      | 6.2%              | 10,418      | 8.9%           | 6,151       | 84.4%          |
| 31 - BUSWAY LOCAL           |             | 30,583      |                | 29,125      |                   |             |                | 18,513      |                |
| 32                          | 68,263      | 65,876      | 3.6%           | 56,027      | 21.8%             | 62,261      | 9.6%           | 38,147      | 78.9%          |
| 33                          | 51,871      | 47,716      | 8.7%           | 40,918      | 26.8%             | 45,847      | 13.1%          | 27,549      | 88.3%          |
| 34 TRANSITWAY EXPRESS       | 36,002      | 31,310      | 15.0%          | 40,159      | -10.4%            | 31,375      | 14.7%          | 13,185      | 173.1%         |
| 35                          | 79,573      | 69,806      | 14.0%          | 59,041      | 34.8%             | 72,991      | 9.0%           | 43,387      | 83.4%          |
| 36                          | 70,698      | 70,950      | -0.4%          | 61,606      | 14.8%             | 65,781      | 7.5%           | 47,067      | 50.2%          |
| 37                          | 93,471      | 95,439      | -2.1%          | 82,870      | 12.8%             | 86,306      | 8.3%           | 70,337      | 32.9%          |
| 38 TRANSITWAY MAX           | 175,803     | 177,111     | -0.7%          | 167,379     | 5.0%              | 141,014     | 24.7%          | 119,073     | 47.6%          |
| 39 TRANSITWAY EXPRESS       | 16,333      |             |                | 17,853      | -8.5%             | 13,489      | 21.1%          | 3,643       | 348.3%         |
| 40                          | 57,992      | 53,384      | 8.6%           | 40,497      | 43.2%             | 52,436      | 10.6%          | 30,156      | 92.3%          |
| 42                          | 26,611      | 27,305      | -2.5%          | 20,825      | 27.8%             | 25,525      | 4.3%           | 16,788      | 58.5%          |
| 46 - LIBERTY CITY CONN. (*) | 477         | 510         | -6.5%          | 814         | -41.4%            | 386         | 23.6%          | 388         | 22.9%          |
| 51 - FLAGLER MAX            | 84,135      | 80,369      | 4.7%           | 62,186      | 35.3%             | 74,340      | 13.2%          | 50,823      | 65.5%          |
| 52                          | 35,844      | 34,005      | 5.4%           | 30,522      | 17.4%             | 33,917      | 5.7%           | 27,658      | 29.6%          |
| 54                          | 81,490      | 82,339      | -1.0%          | 72,125      | 13.0%             | 77,158      | 5.6%           | 54,495      | 49.5%          |
| 56 (*)                      | 8,598       | 7,401       | 16.2%          | 7,071       | 21.6%             | 7,476       | 15.0%          | 5,956       | 44.4%          |
| 57                          | 11,491      | 9,794       | 17.3%          | 8,665       | 32.6%             | 10,491      | 9.5%           | 5,504       | 108.8%         |
| 62                          | 67,398      | 47,461      | 42.0%          | 46,582      | 44.7%             | 62,012      | 8.7%           | 32,640      | 106.5%         |
| 71 (*)                      | 20,040      | 17,375      | 15.3%          | 16,118      | 24.3%             | 17,597      | 13.9%          | 10,884      | 84.1%          |
| 72 (*)                      | 17,459      | 16,578      | 5.3%           | 18,433      | -5.3%             | 17,703      | -1.4%          | 12,758      | 36.8%          |

## METROBUS TOTAL MONTHLY BOARDINGS BY ROUTE

| Route<br><b>Monthly Total</b>         | Total Month | Total Month | Percent Change | Total Month | Percent Change    | Total Month | Percent Change | Total Month | Percent Change |
|---------------------------------------|-------------|-------------|----------------|-------------|-------------------|-------------|----------------|-------------|----------------|
|                                       | Oct-23      | Oct-22      | YOY            | Feb-20      | Current vs Feb-20 | Sep-23      | MOM            | Oct-21      | YO2Y           |
| 73                                    | 70,903      | 72,603      | -2.3%          | 48,767      | 45.4%             | 65,546      | 8.2%           | 41,346      | 71.5%          |
| 75                                    | 39,021      | 32,811      | 18.9%          | 31,994      | 22.0%             | 33,669      | 15.9%          | 22,026      | 77.2%          |
| 77                                    | 261,039     | 228,587     | 14.2%          | 174,833     | 49.3%             | 236,567     | 10.3%          | 151,912     | 71.8%          |
| 79 STREET MAX                         | 10,318      | 9,063       | 13.8%          | 7,228       | 42.8%             | 9,103       | 13.3%          |             |                |
| 82 - WESTCHESTER CIRC. (*)            | 1,488       | 1,412       | 5.4%           | 1,482       | 0.4%              | 1,698       | -12.4%         | 981         | 51.7%          |
| 87                                    | 46,254      | 44,586      | 3.7%           | 33,273      | 39.0%             | 42,522      | 8.8%           | 25,061      | 84.6%          |
| 88                                    | 66,138      | 65,447      | 1.1%           | 54,772      | 20.8%             | 62,498      | 5.8%           | 54,104      | 22.2%          |
| 93 - BISCAYNE MAX                     | 80,650      | 71,061      | 13.5%          | 66,684      | 20.9%             | 69,806      | 15.5%          | 40,633      | 98.5%          |
| 95 EXPRESS                            | 26,295      | 29,394      | -10.5%         | 33,796      | -22.2%            | 22,923      | 14.7%          | 6,922       | 279.9%         |
| 99                                    | 50,634      | 41,160      | 23.0%          | 36,325      | 39.4%             | 46,388      | 9.2%           | 28,429      | 78.1%          |
| 101 - A (*)                           | 4,545       | 5,020       | -9.5%          | 4,114       | 10.5%             | 4,140       | 9.8%           | 3,032       | 49.9%          |
| 103 - C                               |             |             |                | 11,682      |                   |             |                | 4,984       |                |
| 104                                   | 26,049      | 23,022      | 13.1%          | 20,351      | 28.0%             | 24,618      | 5.8%           | 16,117      | 61.6%          |
| 105 - E                               | 37,092      | 37,638      | -1.5%          | 31,302      | 18.5%             | 34,185      | 8.5%           | 24,721      | 50.0%          |
| 107 - G                               | 56,547      | 50,289      | 12.4%          | 43,178      | 31.0%             | 51,253      | 10.3%          | 30,806      | 83.6%          |
| 108 - H                               | 14,133      | 15,570      | -9.2%          | 12,624      | 12.0%             | 13,743      | 2.8%           | 8,454       | 67.2%          |
| 110 - J                               | 79,080      | 82,419      | -4.1%          | 66,481      | 19.0%             | 79,369      | -0.4%          | 52,312      | 51.2%          |
| 112 - L                               | 239,146     | 235,196     | 1.7%           | 200,268     | 19.4%             | 223,305     | 7.1%           | 182,752     | 30.9%          |
| 113 - M                               | 24,040      | 20,710      | 16.1%          | 21,548      | 11.6%             | 22,778      | 5.5%           | 10,515      | 128.6%         |
| 115 (*)                               | 3,968       | 3,392       | 17.0%          | 4,334       | -8.4%             | 3,678       | 7.9%           | 4,078       | -2.7%          |
| 119 - S                               | 281,456     | 282,925     | -0.5%          | 242,257     | 16.2%             | 260,282     | 8.1%           | 200,290     | 40.5%          |
| 120 - BEACH MAX                       | 174,819     | 187,672     | -6.8%          | 170,942     | 2.3%              | 162,014     | 7.9%           | 113,881     | 53.5%          |
| 132 TRI-RAIL (DORAL)                  | 804         | 1,021       | -21.3%         | 312         | 157.7%            | 785         | 2.4%           | 113         | 611.5%         |
| 135 (*)                               | 43,211      | 33,772      | 27.9%          | 32,067      | 34.8%             | 38,429      | 12.4%          | 13,494      | 220.2%         |
| 136                                   | 3,557       | 3,134       | 13.5%          | 2,524       | 40.9%             | 2,977       | 19.5%          | 2,198       | 61.8%          |
| 137 - WEST DADE CONN.                 | 56,750      | 55,773      | 1.8%           | 41,167      | 37.9%             | 55,343      | 2.5%           | 30,118      | 88.4%          |
| 150 - MIAMI BEACH AIRPORT FLYER       | 65,763      | 62,630      | 5.0%           | 51,651      | 27.3%             | 63,175      | 4.1%           | 25,201      | 161.0%         |
| 155 - BISCAYNE GARDENS CIRCULATOR (*) | 985         | 777         | 26.8%          | 881         | 11.8%             | 987         | -0.2%          | 669         | 47.2%          |
| 175 - NW MIAMI-DADE EXPRESS           |             |             |                | 661         |                   |             |                |             |                |
| 183                                   | 96,050      | 86,669      | 10.8%          | 77,570      | 23.8%             | 87,671      | 9.6%           | 54,140      | 77.4%          |
| 195 EXPRESS - BROWARD BLVD            |             |             |                | 7,441       |                   |             |                |             |                |
| 196 EXPRESS - SHERIDAN ST             |             |             |                | 7,658       |                   |             |                |             |                |
| 200 - CUTLER BAY LOCAL                | 4,907       | 3,249       | 51.0%          | 3,984       | 23.2%             | 5,187       | -5.4%          | 1,179       | 316.2%         |
| 202 - LITTLE HAITI CONN. (*)          | 2,620       | 2,115       | 23.9%          | 3,200       | -18.1%            | 2,516       | 4.1%           | 1,626       | 61.1%          |
| 204 KILLIAN KAT                       | 13,632      | 23,942      | -43.1%         | 21,418      | -36.4%            | 12,398      | 10.0%          |             |                |



## METROBUS TOTAL MONTHLY BOARDINGS BY ROUTE

| Route<br><b>Monthly Total</b>             | Total Month      | Total Month      | Percent Change | Total Month      | Percent Change    | Total Month      | Percent Change | Total Month      | Percent Change |
|---|------------------|------------------|----------------|------------------|-------------------|------------------|----------------|------------------|----------------|
|   | Oct-23           | Oct-22           | YOY            | Feb-20           | Current vs Feb-20 | Sep-23           | MOM            | Oct-21           | YO2Y           |
| 207 (7st) - LITTLEHAVANA CIRC             | 46,970           | 45,932           | 2.3%           | 38,127           | 23.2%             | 41,191           | 14.0%          | 21,222           | 121.3%         |
| 208 (8st) - LITTLEHAVANA CIRC             | 44,922           | 43,518           | 3.2%           | 35,018           | 28.3%             | 40,501           | 10.9%          | 22,060           | 103.6%         |
| 210 - SKYLAKE CIRC (*)                    | 12,211           | 7,620            | 60.2%          | 7,033            | 73.6%             | 10,177           | 20.0%          | 6,745            | 81.0%          |
| 211 - OVERTOWN CIRC. (*)                  | 1,567            | 2,058            | -23.9%         | 1,159            | 35.2%             | 1,668            | -6.1%          | 1,737            | -9.8%          |
| 212 - SWEETWATER CIRC. (*)                | 494              | 449              | 10.0%          | 295              | 67.5%             | 574              | -13.9%         | 879              | -43.8%         |
| 217 - BUNCHE PARK CIRC (*)                | 1,759            | 1,348            | 30.5%          | 1,949            | -9.7%             | 1,481            | 18.8%          | 1,449            | 21.4%          |
| 238 EAST/WEST CONN.                       | 13,036           | 12,183           | 7.0%           | 8,987            | 45.1%             | 12,020           | 8.5%           | 7,008            | 86.0%          |
| 241 TUTTLELIMITED                         | 9,471            | 4,768            | 98.6%          |                  |                   | 8,181            | 15.8%          |                  |                |
| 246 - NIGHT OWL                           | 1,899            | 1,733            | 9.6%           | 2,641            | -28.1%            | 1,652            | 15.0%          | 1,100            | 72.6%          |
| 248 - PRINCETON CIRCULATOR (*)            | 3,546            | 2,518            | 40.8%          | 2,690            | 31.8%             | 3,099            | 14.4%          | 1,586            | 123.6%         |
| 252 - CORAL REEF MAX                      | 26,285           | 23,702           | 10.9%          | 19,325           | 36.0%             | 23,174           | 13.4%          | 12,253           | 114.5%         |
| 254 - BROWNSVILLE CIRC. (*)               | 105              | 125              | -16.0%         | 384              | -72.7%            | 120              | -12.5%         | 282              | -62.8%         |
| 267 - LUDLAM LIMITED (*)                  | 3,567            | 3,337            | 6.9%           | 2,978            | 19.8%             | 3,039            | 17.4%          | 2,303            | 54.9%          |
| 272 SUNSET KAT (*)                        | 9,423            | 7,456            | 26.4%          | 11,004           | -14.4%            | 8,911            | 5.7%           | 6,725            | 40.1%          |
| 277 - 7th AVENUE MAX                      | 19,345           | 17,848           | 8.4%           | 13,669           | 41.5%             | 17,025           | 13.6%          | 8,078            | 139.5%         |
| 286 - NORTH POINTE CIRC. (*)              | 2,279            | 1,907            | 19.5%          | 2,145            | 6.2%              | 2,085            | 9.3%           | 925              | 146.4%         |
| 287 - SAGA BAY MAX                        | 7,499            | 6,339            | 18.3%          | 7,160            | 4.7%              | 6,473            | 15.9%          | 3,703            | 102.5%         |
| 288 - KENDALL CRUISER                     | 8,189            | 19,831           | -58.7%         | 15,249           | -46.3%            | 7,346            | 11.5%          |                  |                |
| 295 EXPRESS - BROWARD BLVD - CIVIC CENTER |                  |                  |                | 4,668            |                   |                  |                |                  |                |
| 296 EXPRESS - SHERIDAN ST - CIVIC CENTER  |                  |                  |                | 4,297            |                   |                  |                |                  |                |
| 297-27th AVENUE ORANGE MAX                | 27,047           | 26,999           | 0.2%           | 27,125           | -0.3%             | 24,295           | 11.3%          | 13,927           | 94.2%          |
| 301 DADE-MONROE EXPRESS (*)               | 28,889           | 23,656           | 22.1%          | 23,838           | 21.2%             | 28,782           | 0.4%           | 31,331           | -7.8%          |
| 302 CARD SOUND EXPRESS (*)                | 2,728            | 2,785            | -2.0%          | 2,236            | 22.0%             | 2,506            | 8.9%           | 1,998            | 36.5%          |
| 338 - WEEKEND EXPRESS                     | 2,274            | 2,801            | -18.8%         | 2,191            | 3.8%              | 2,308            | -1.5%          | 1,397            | 62.8%          |
| 344 (*)                                   | 1,666            | 1,134            | 46.9%          | 1,919            | -13.2%            | 1,431            | 16.4%          | 1,273            | 30.9%          |
| 500                                       | 2,324            | 1,688            | 37.7%          | 2,301            | 1.0%              | 2,132            | 9.0%           |                  |                |
| 836 EXPRESS                               | 5,428            | 7,480            | -27.4%         |                  |                   | 5,092            | 6.6%           | 2,568            | 111.4%         |
| 837 EXPRESS                               | 4,281            |                  |                |                  |                   | 3,733            | 14.7%          |                  |                |
| 12/21 WEEKEND INTERL.                     | 26,661           | 19,830           | 34.4%          | 20,830           | 28.0%             | 27,107           | -1.6%          | 15,235           | 75.0%          |
| GREEN HILLS SHUTTLE (*)                   | 26               | 22               | 18.2%          | 36               | -27.8%            | 18               | 44.4%          | 21               | 23.8%          |
| KINGS CREEK SHUTTLE (*)                   | 55               | 75               | -26.7%         | 52               | 5.8%              | 37               | 48.6%          | 29               | 89.7%          |
| SIERRA LAKES SHUTTLE (*)                  | 62               | 60               | 3.3%           | 180              | -65.6%            | 75               | -17.3%         | 171              | -63.7%         |
| ROBERT SHARP SHUTTLE (*)                  | 92               | 84               | 9.5%           | 38               | 142.1%            | 84               | 9.5%           | 84               | 9.5%           |
| AHEPA SHUTTLE (*)                         | 71               | 67               | 6.0%           | 83               | -14.5%            | 56               | 26.8%          | 72               | -1.4%          |
| FEDERATION GARDENS SHUTTLE (*)            | 80               | 108              | -25.9%         | 142              | -43.7%            | 141              | -43.3%         | 99               | -19.2%         |
| <b>Total</b>                              | <b>4,912,151</b> | <b>4,679,725</b> | <b>5.0%</b>    | <b>4,123,083</b> | <b>19.1%</b>      | <b>4,525,426</b> | <b>8.5%</b>    | <b>3,081,157</b> | <b>59.4%</b>   |

## YEAR-OVER-YEAR BUS RIDERSHIP BY ROUTE SERVICE TYPE

| Boardings by Service Type and Route                | Average Weekday | Average Weekday | Percent Change | Average Saturday | Average Saturday | Percent Change | Average Sunday | Average Sunday | Percent Change | Total Monthly  | Total Monthly  | Percent Change |
|--|-----------------|-----------------|----------------|------------------|------------------|----------------|----------------|----------------|----------------|----------------|----------------|----------------|
|  | Oct-23          | Oct-22          | 23 vs 22       | Oct-23           | Oct-22           | 23 vs 22       | Oct-23         | Oct-22         | 23 vs 22       | Oct-23         | Oct-22         | 23 vs 22       |
| <b>Directly Operated Express Routes (1)</b>        |                 |                 |                |                  |                  |                |                |                |                |                |                |                |
| 34 EXPRESS   | 1,636           | 1,491           | 9.8%           |                  |                  |                |                |                |                | 36,002         | 31,310         | 15.0%          |
| 39 EXPRESS   | 742             |                 |                |                  |                  |                |                |                |                | 16,333         |                |                |
| 95-EXPRESS   | 1,195           | 1,400           | -14.6%         |                  |                  |                |                |                |                | 26,295         | 29,394         | -10.5%         |
| 150-MIAMI BEACH AIRPORT FLYER                      | 2,149           | 2,054           | 4.6%           | 2,161            | 1,987            | 8.8%           | 1,966          | 1,911          | 2.9%           | 65,763         | 62,630         | 5.0%           |
| 175 - NW MIAMI-DADE EXPRESS                        |                 |                 |                |                  |                  |                |                |                |                |                |                |                |
| 195 EXPRESS - BROWARD BLVD                         |                 |                 |                |                  |                  |                |                |                |                |                |                |                |
| 196 EXPRESS - SHERIDAN ST                          |                 |                 |                |                  |                  |                |                |                |                |                |                |                |
| 295 EXPRESS - BROWARD BLVD - CIVIC CENTER          |                 |                 |                |                  |                  |                |                |                |                |                |                |                |
| 296 EXPRESS - SHERIDAN ST - CIVIC CENTER           |                 |                 |                |                  |                  |                |                |                |                |                |                |                |
| 204 KAT-KILLIAN                                    | 620             | 1,140           |                |                  |                  |                |                |                |                | 13,632         | 23,942         | -43.1%         |
| 288 KENDALL CRUISER                                | 372             | 944             |                |                  |                  |                |                |                |                | 8,189          | 19,831         | -58.7%         |
| 338 - WEEKEND EXPRESS                              |                 |                 |                | 259              | 293              | -11.6%         | 247            | 267            | -7.3%          | 2,274          | 2,801          | -18.8%         |
| 836 EXPRESS  | 247             | 356             | -30.7%         |                  |                  |                |                |                |                | 5,428          | 7,480          | -27.4%         |
| 837 EXPRESS  | 195             |                 |                |                  |                  |                |                |                |                | 4,281          |                |                |
| <b>Subtotal Express Routes</b>                     | <b>7,157</b>    | <b>7,386</b>    | <b>-3.1%</b>   | <b>2,420</b>     | <b>2,280</b>     | <b>6.1%</b>    | <b>2,214</b>   | <b>2,178</b>   | <b>1.6%</b>    | <b>178,197</b> | <b>177,388</b> | <b>0.5%</b>    |
| <b>Percentage of All Bus Routes</b>                | <b>3.9%</b>     | <b>4.1%</b>     |                | <b>2.3%</b>      | <b>2.2%</b>      |                | <b>2.7%</b>    | <b>2.7%</b>    |                | <b>3.6%</b>    | <b>3.8%</b>    |                |
| <b>Contracted Routes</b>                           |                 |                 |                |                  |                  |                |                |                |                |                |                |                |
| 1  | 225             | 214             | 5.0%           | 163              | 123              | 33.2%          | 149            | 130            | 14.6%          | 6,337          | 5,753          | 10.2%          |
| 29   | 516             | 427             | 20.7%          |                  |                  |                |                |                |                | 11,342         | 8,971          | 26.4%          |
| 46 - LIBERTY CITY CONN.                            | 22              | 24              | -10.7%         |                  |                  |                |                |                |                | 477            | 510            | -6.5%          |
| 56   | 391             | 352             | 10.9%          | 0                | 0                |                |                |                |                | 8,598          | 7,401          | 16.2%          |
| 71   | 825             | 712             | 15.9%          | 238              | 298              | -20.4%         | 187            | 187            | 0.2%           | 20,040         | 17,375         | 15.3%          |
| 72   | 670             | 628             | 6.7%           | 357              | 356              | 0.2%           | 259            | 323            | -19.8%         | 17,459         | 16,578         | 5.3%           |
| 82 - WESTCHESTER CIRC                              | 61              | 58              | 5.3%           | 38               | 40               | -5.6%          | 0              | 0              |                | 1,488          | 1,412          | 5.4%           |
| 101 - A  | 178             | 214             | -17.2%         | 93               | 59               | 58.1%          | 53             | 45             | 18.8%          | 4,545          | 5,020          | -9.5%          |
| 115  | 151             | 134             | 12.9%          | 80               | 65               | 22.3%          | 66             | 52             | 27.5%          | 3,968          | 3,392          | 17.0%          |
| 155 - BISCAYNE GARDENS CIRC                        | 45              | 37              | 21.0%          |                  |                  |                |                |                |                | 985            | 777            | 26.8%          |
| 202 - LITTLE HAITI CONN.                           | 110             | 86              | 28.4%          | 22               | 33               | -33.7%         | 21             | 29             | -27.4%         | 2,620          | 2,115          | 23.9%          |
| 210 - SKYLAKE CIRC                                 | 471             | 319             | 47.6%          | 217              | 120              | 80.7%          | 194            | 62             | 212.2%         | 12,211         | 7,620          | 60.2%          |
| 211-OVERTOWN CIRC                                  | 71              | 98              | -27.3%         |                  |                  |                |                |                |                | 1,567          | 2,058          | -23.9%         |
| 212-SWEETWATER CIRC                                | 22              | 21              | 5.0%           |                  |                  |                |                |                |                | 494            | 449            | 10.0%          |
| 217 - BUNCHE PARK CIRC                             | 80              | 64              | 24.6%          |                  |                  |                |                |                |                | 1,759          | 1,348          | 30.5%          |
| 246 - NIGHT OWL                                    | 61              | 55              | 9.5%           | 61               | 47               | 28.2%          | 65             | 67             | -3.3%          | 1,899          | 1,733          | 9.6%           |
| 248 - PRINCETON CIRCULATOR                         | 161             | 120             | 34.4%          |                  |                  |                |                |                |                | 3,546          | 2,518          | 40.8%          |
| 254-BROWNSVILLE CIRC                               | 5               | 6               | -19.8%         |                  |                  |                |                |                |                | 105            | 125            | -16.0%         |
| 286-NORTH POINTE CIRC                              | 93              | 77              | 20.9%          | 61               | 60               | 1.7%           |                |                |                | 2,279          | 1,907          | 19.5%          |
| 344  | 76              | 54              | 40.2%          |                  |                  |                |                |                |                | 1,666          | 1,134          | 46.9%          |
| <b>Subtotal Contracted Reg. &amp; Circ. Routes</b> | <b>4,232</b>    | <b>3,701</b>    | <b>14.3%</b>   | <b>1,329</b>     | <b>1,201</b>     | <b>10.6%</b>   | <b>994</b>     | <b>894</b>     | <b>11.2%</b>   | <b>103,385</b> | <b>88,196</b>  | <b>17.2%</b>   |
| <b>Percentage of All Bus Routes</b>                | <b>2.3%</b>     | <b>2.1%</b>     |                | <b>1.2%</b>      | <b>1.1%</b>      |                | <b>1.2%</b>    | <b>1.1%</b>    |                | <b>2.1%</b>    | <b>1.9%</b>    |                |

(1) Several express routes were suspended beginning at the end of March 2020, due to the SARS-CoV-2 pandemic, while other routes had alignment and schedule modifications made to them, in an ongoing effort to optimize service delivery..

## YEAR-OVER-YEAR BUS RIDERSHIP BY ROUTE SERVICE TYPE

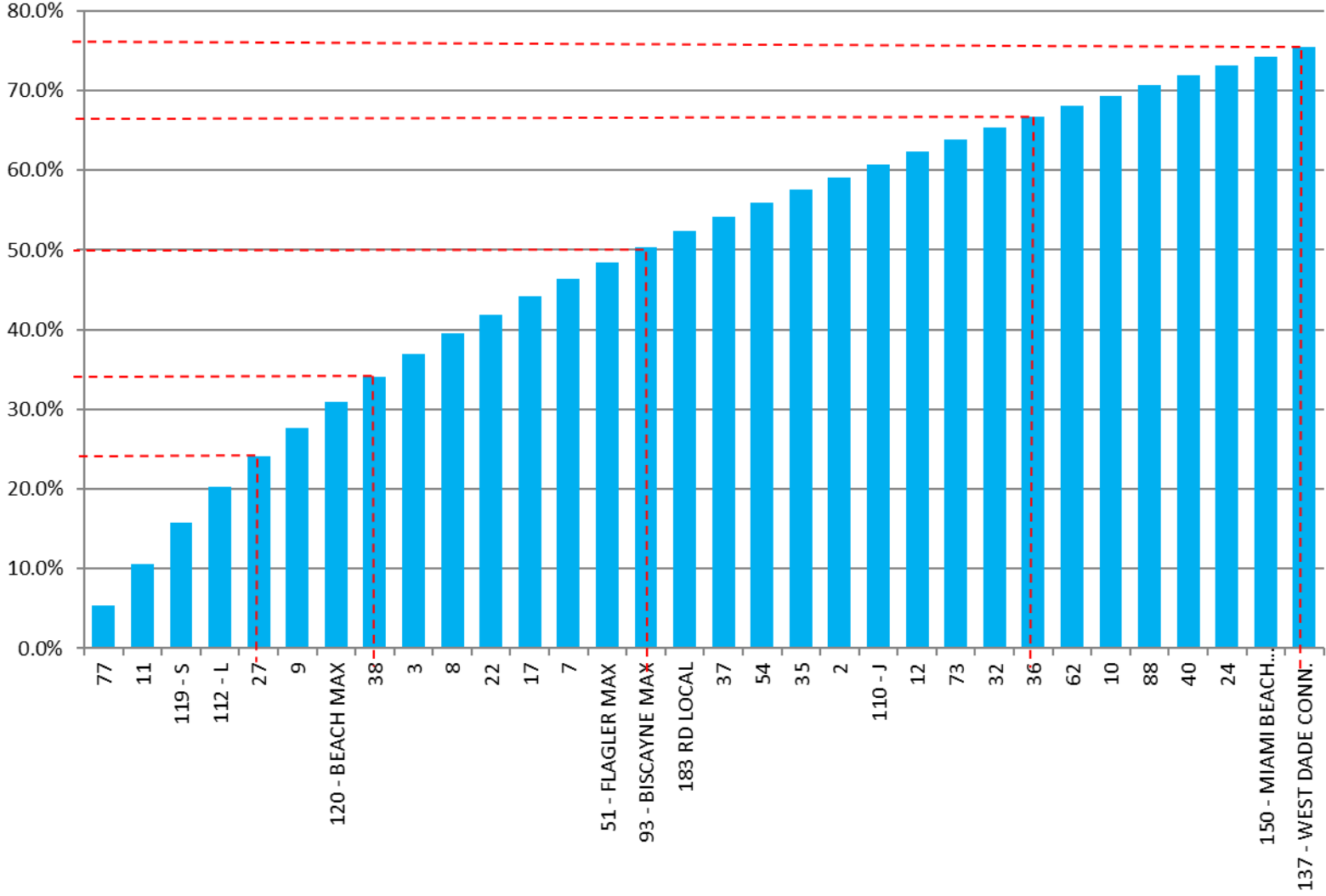
| Boardings by Service Type and Route                 | Average Weekday | Average Weekday | Percent Change | Average Saturday | Average Saturday | Percent Change | Average Sunday | Average Sunday | Percent Change | Total Monthly    | Total Monthly    | Percent Change |
|---|-----------------|-----------------|----------------|------------------|------------------|----------------|----------------|----------------|----------------|------------------|------------------|----------------|
|   | Oct-23          | Oct-22          | 23 vs 22       | Oct-23           | Oct-22           | 23 vs 22       | Oct-23         | Oct-22         | 23 vs 22       | Oct-23           | Oct-22           | 23 vs 22       |
| <b>Contracted Express Routes</b>                    |                 |                 |                |                  |                  |                |                |                |                |                  |                  |                |
| 272 SUNSET-KAT                                      | 428             | 355             | 20.6%          |                  |                  |                |                |                |                | 9,423            | 7,456            | 26.4%          |
| 301-DADE MONROE EXPRESS                             | 955             | 778             | 22.7%          | 885              | 785              | 12.7%          | 867            | 677            | 28.0%          | 28,889           | 23,656           | 22.1%          |
| 302-CARD SOUND EXPRESS                              | 91              | 96              | -5.2%          | 94               | 84               | 11.9%          | 72             | 71             | 0.3%           | 2,728            | 2,785            | -2.0%          |
| <b>Subtotal Contracted Express Routes</b>           | <b>1,474</b>    | <b>1,229</b>    | <b>19.9%</b>   | <b>979</b>       | <b>869</b>       | <b>12.6%</b>   | <b>938</b>     | <b>748</b>     | <b>25.4%</b>   | <b>41,040</b>    | <b>33,897</b>    | <b>21.1%</b>   |
| <b>Percentage of All Bus Routes</b>                 | <b>0.8%</b>     | <b>0.7%</b>     |                | <b>0.9%</b>      | <b>0.8%</b>      |                | <b>1.2%</b>    | <b>0.9%</b>    |                | <b>0.8%</b>      | <b>0.7%</b>      |                |
| <b>Limited Stop Routes</b>                          |                 |                 |                |                  |                  |                |                |                |                |                  |                  |                |
| 24-CORAL WAY LIMITED                                | 2,195           | 2,207           | -0.5%          | 1,400            | 1,471            | -4.8%          | 1,108          | 1,198          | -7.5%          | 59,432           | 59,693           | -0.4%          |
| 51-FLAGLER MAX                                      | 3,824           | 3,827           | -0.1%          |                  |                  |                |                |                |                | 84,135           | 80,369           | 4.7%           |
| 79 STREET MAX                                       | 469             | 432             | 8.7%           |                  |                  |                |                |                |                | 10,318           | 9,063            | 13.8%          |
| 93 - BISCAYNE MAX                                   | 3,666           | 3,384           | 8.3%           |                  |                  |                |                |                |                | 80,650           | 71,061           | 13.5%          |
| 120 - BEACH MAX                                     | 6,128           | 6,843           | -10.5%         | 5,637            | 5,142            | 9.6%           | 3,492          | 3,653          | -4.4%          | 174,819          | 187,672          | -6.8%          |
| 241 TUTTLE LIMITED                                  | 348             | 165             | 110.7%         | 222              | 138              | 61.0%          | 187            | 123            | 52.4%          | 9,471            | 4,768            | 98.6%          |
| 252-CORAL REEF MAX                                  | 1,051           | 965             | 8.9%           | 375              | 384              | -2.4%          | 331            | 303            | 9.4%           | 26,285           | 23,702           | 10.9%          |
| 267-LUDLAM LIMITED (contracted)                     | 162             | 159             | 2.0%           |                  |                  |                |                |                |                | 3,567            | 3,337            | 6.9%           |
| 277-7TH AVENUE MAX                                  | 879             | 850             | 3.5%           |                  |                  |                |                |                |                | 19,345           | 17,848           | 8.4%           |
| 287-SAGA BAY MAX                                    | 341             | 302             | 12.9%          |                  |                  |                |                |                |                | 7,499            | 6,339            | 18.3%          |
| 297-27th AVENUE ORANGE MAX                          | 1,229           | 1,286           | -4.4%          |                  |                  |                |                |                |                | 27,047           | 26,999           | 0.2%           |
| <b>Subtotal Limited Stop Routes</b>                 | <b>20,293</b>   | <b>20,419</b>   | <b>-0.6%</b>   | <b>7,634</b>     | <b>7,134</b>     | <b>7.0%</b>    | <b>5,119</b>   | <b>5,277</b>   | <b>-3.0%</b>   | <b>502,568</b>   | <b>490,851</b>   | <b>2.4%</b>    |
| <b>Percentage of All Bus Routes</b>                 | <b>11.0%</b>    | <b>11.4%</b>    |                | <b>7.1%</b>      | <b>6.8%</b>      |                | <b>6.3%</b>    | <b>6.6%</b>    |                | <b>10.2%</b>     | <b>10.5%</b>     |                |
| <b>Directly Operated Free Routes</b>                |                 |                 |                |                  |                  |                |                |                |                |                  |                  |                |
| 132 -TRI-RAIL DORAL                                 | 37              | 49              | -24.8%         |                  |                  |                |                |                |                | 804              | 1,021            | -21.3%         |
| 200-CUTLER BAY LOCAL                                | 176             | 115             | 52.7%          | 152              | 106              | 42.6%          | 86             | 60             | 44.1%          | 4,907            | 3,249            | 51.0%          |
| <b>Subtotal Free Directly Operated Routes</b>       | <b>212</b>      | <b>164</b>      | <b>29.7%</b>   | <b>152</b>       | <b>106</b>       | <b>42.6%</b>   | <b>86</b>      | <b>60</b>      | <b>44.1%</b>   | <b>5,711</b>     | <b>4,270</b>     | <b>33.7%</b>   |
| <b>Percentage of All Bus Routes</b>                 | <b>0.1%</b>     | <b>0.1%</b>     |                | <b>0.1%</b>      | <b>0.1%</b>      |                | <b>0.1%</b>    | <b>0.1%</b>    |                | <b>0.1%</b>      | <b>0.1%</b>      |                |
| <b>Contractor-Operated Lifeline Routes</b>          |                 |                 |                |                  |                  |                |                |                |                |                  |                  |                |
| GREEN HILLS SHUTTLE                                 | 5               | 4               | 18.2%          |                  |                  |                |                |                |                | 26               | 22               | 18.2%          |
| KINGS CREEK SHUTTLE                                 | 14              | 19              | -26.7%         |                  |                  |                |                |                |                | 55               | 75               | -26.7%         |
| SIERRA LAKES SHUTTLE                                | 16              | 15              | 3.3%           |                  |                  |                |                |                |                | 62               | 60               | 3.3%           |
| ROBERT SHARP SHUTTLE                                | 23              | 21              | 9.5%           |                  |                  |                |                |                |                | 92               | 84               | 9.5%           |
| AHEPA SHUTTLE                                       | 18              | 17              | 6.0%           |                  |                  |                |                |                |                | 71               | 67               | 6.0%           |
| FEDERATION GARDENS SHUTTLE                          |                 |                 |                | 20               | 22               | -7.4%          |                |                |                | 80               | 108              | -25.9%         |
| <b>Subtotal Contractor-Operated Lifeline Routes</b> | <b>75</b>       | <b>76</b>       | <b>-0.9%</b>   | <b>20</b>        | <b>22</b>        | <b>-7.4%</b>   |                |                |                | <b>386</b>       | <b>416</b>       | <b>-7.2%</b>   |
| <b>Percentage of All Bus Routes</b>                 | <b>0.0%</b>     | <b>0.0%</b>     |                | <b>0.0%</b>      | <b>0.0%</b>      |                |                |                |                | <b>0.0%</b>      | <b>0.0%</b>      |                |
| <b>All Other (Regular) Routes</b>                   |                 |                 |                |                  |                  |                |                |                |                |                  |                  |                |
|   | <b>151,877</b>  | <b>145,913</b>  | <b>4.1%</b>    | <b>94,797</b>    | <b>93,881</b>    | <b>1.0%</b>    | <b>72,076</b>  | <b>70,224</b>  | <b>2.6%</b>    | <b>4,080,864</b> | <b>3,884,707</b> | <b>5.0%</b>    |
| <b>Percentage of All Bus Routes</b>                 | <b>82.0%</b>    | <b>81.6%</b>    |                | <b>88.3%</b>     | <b>89.0%</b>     |                | <b>88.5%</b>   | <b>88.5%</b>   |                | <b>83.1%</b>     | <b>83.0%</b>     |                |
| <b>Total Bus System</b>                             | <b>185,320</b>  | <b>178,888</b>  | <b>3.6%</b>    | <b>107,331</b>   | <b>105,494</b>   | <b>1.7%</b>    | <b>81,427</b>  | <b>79,381</b>  | <b>2.6%</b>    | <b>4,912,151</b> | <b>4,679,725</b> | <b>5.0%</b>    |

## Bus Routes as Ranked by Percentage of Average Weekday Ridership October 2023

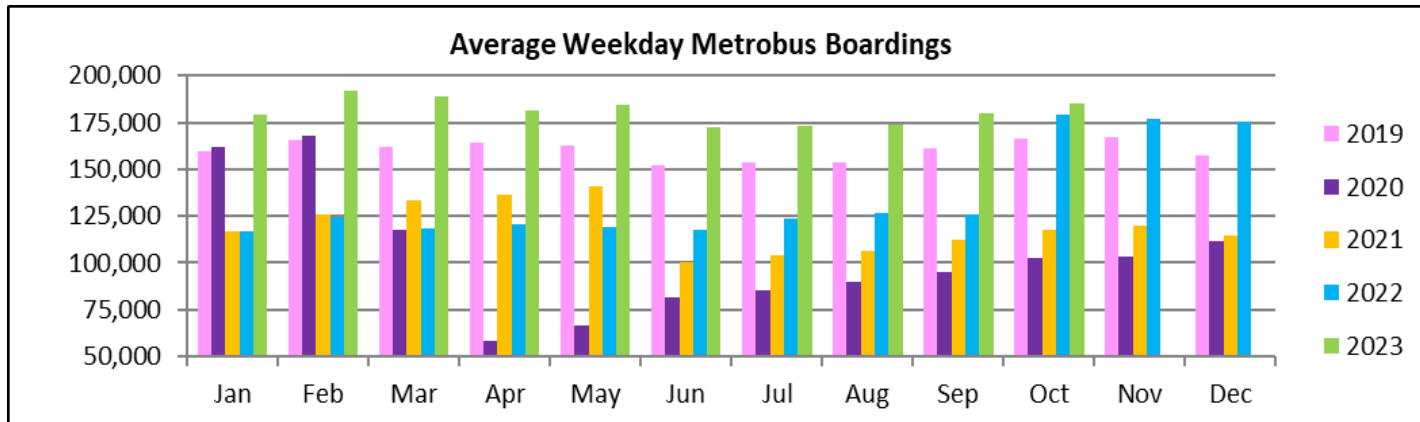
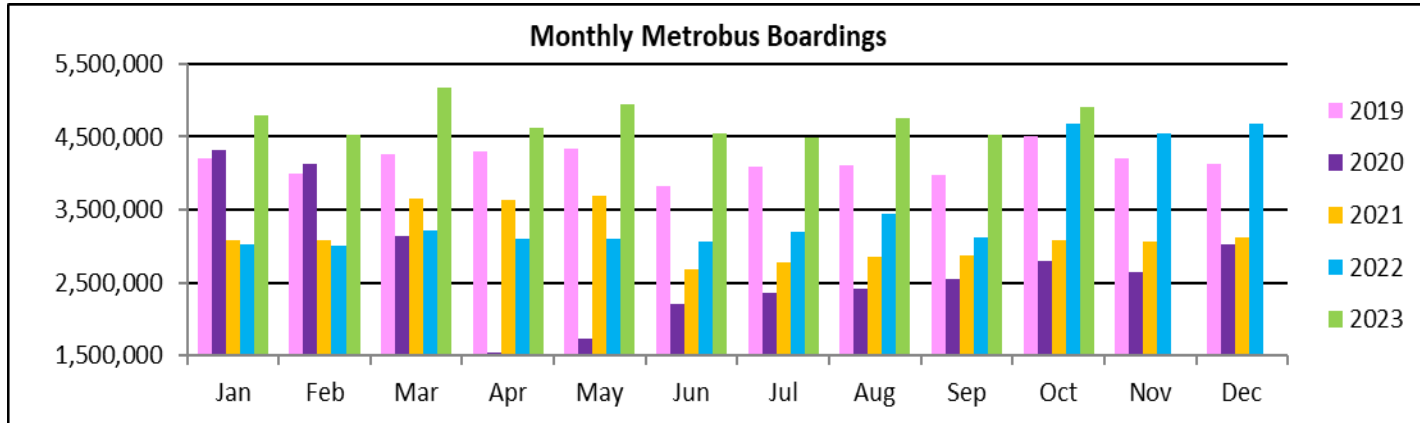
| Rank                   | Route | Average Weekday | Percent Share | Cumul Pct Share | Rank | Route | Average Weekday | Percent Share | Cumul Pct Share | Rank                | Route | Average Weekday | Percent Share | Cumul Pct Share |
|------------------------|-------|-----------------|---------------|-----------------|------|-------|-----------------|---------------|-----------------|---------------------|-------|-----------------|---------------|-----------------|
| 1                      | 77    | 9,959           | 5.4%          | 5.4%            | 36   | 33    | 1,967           | 1.1%          | 79.8%           | 71                  | 836   | 247             | 0.1%          | 98.7%           |
| 2                      | 11    | 9,621           | 5.2%          | 10.6%           | 37   | 87    | 1,924           | 1.0%          | 80.9%           | 72                  | 1     | 225             | 0.1%          | 98.9%           |
| 3                      | 119   | 9,588           | 5.2%          | 15.7%           | 38   | 99    | 1,899           | 1.0%          | 81.9%           | 73                  | 837   | 195             | 0.1%          | 99.0%           |
| 4                      | 112   | 8,481           | 4.6%          | 20.3%           | 39   | 26    | 1,877           | 1.0%          | 82.9%           | 74                  | 101   | 178             | 0.1%          | 99.1%           |
| 5                      | 27    | 7,110           | 3.8%          | 24.2%           | 40   | 207   | 1,819           | 1.0%          | 83.9%           | 75                  | 200   | 176             | 0.1%          | 99.2%           |
| 6                      | 9     | 6,490           | 3.5%          | 27.7%           | 41   | 19    | 1,807           | 1.0%          | 84.9%           | 76                  | 267   | 162             | 0.1%          | 99.2%           |
| 7                      | 120   | 6,128           | 3.3%          | 31.0%           | 42   | 135   | 1,755           | 0.9%          | 85.8%           | 77                  | 136   | 162             | 0.1%          | 99.3%           |
| 8                      | 38    | 5,714           | 3.1%          | 34.0%           | 43   | 208   | 1,659           | 0.9%          | 86.7%           | 78                  | 248   | 161             | 0.1%          | 99.4%           |
| 9                      | 3     | 5,416           | 2.9%          | 37.0%           | 44   | 34    | 1,636           | 0.9%          | 87.6%           | 79                  | 115   | 151             | 0.1%          | 99.5%           |
| 10                     | 8     | 4,650           | 2.5%          | 39.5%           | 45   | 75    | 1,594           | 0.9%          | 88.5%           | 80                  | 202   | 110             | 0.1%          | 99.6%           |
| 11                     | 22    | 4,502           | 2.4%          | 41.9%           | 46   | 105   | 1,402           | 0.8%          | 89.2%           | 81                  | 286   | 93              | 0.0%          | 99.6%           |
| 12                     | 17    | 4,133           | 2.2%          | 44.1%           | 47   | 52    | 1,390           | 0.8%          | 90.0%           | 82                  | 302   | 91              | 0.0%          | 99.7%           |
| 13                     | 7     | 4,021           | 2.2%          | 46.3%           | 48   | 297   | 1,229           | 0.7%          | 90.6%           | 83                  | 217   | 80              | 0.0%          | 99.7%           |
| 14                     | 51    | 3,824           | 2.1%          | 48.4%           | 49   | 95    | 1,195           | 0.6%          | 91.3%           | 84                  | 344   | 76              | 0.0%          | 99.7%           |
| 15                     | 93    | 3,666           | 2.0%          | 50.3%           | 50   | 252   | 1,051           | 0.6%          | 91.8%           | 85                  | 211   | 71              | 0.0%          | 99.8%           |
| 16                     | 183   | 3,653           | 2.0%          | 52.3%           | 51   | 104   | 1,024           | 0.6%          | 92.4%           | 86                  | 500   | 71              | 0.0%          | 99.8%           |
| 17                     | 37    | 3,475           | 1.9%          | 54.2%           | 52   | 42    | 1,001           | 0.5%          | 92.9%           | 87                  | 82    | 61              | 0.0%          | 99.9%           |
| 18                     | 54    | 3,086           | 1.7%          | 55.9%           | 53   | 301   | 955             | 0.5%          | 93.5%           | 88                  | 246   | 61              | 0.0%          | 99.9%           |
| 19                     | 35    | 3,070           | 1.7%          | 57.5%           | 54   | 113   | 887             | 0.5%          | 93.9%           | 89                  | 155   | 45              | 0.0%          | 99.9%           |
| 20                     | 2     | 2,977           | 1.6%          | 59.1%           | 55   | 277   | 879             | 0.5%          | 94.4%           | 90                  | 132   | 37              | 0.0%          | 99.9%           |
| 21                     | 110   | 2,955           | 1.6%          | 60.7%           | 56   | 71    | 825             | 0.4%          | 94.9%           | 91                  | RS    | 23              | 0.0%          | 99.9%           |
| 22                     | 12    | 2,891           | 1.6%          | 62.3%           | 57   | 39    | 742             | 0.4%          | 95.3%           | 92                  | 212   | 22              | 0.0%          | 100.0%          |
| 23                     | 73    | 2,868           | 1.5%          | 63.8%           | 58   | 72    | 670             | 0.4%          | 95.6%           | 93                  | 46    | 22              | 0.0%          | 100.0%          |
| 24                     | 32    | 2,699           | 1.5%          | 65.3%           | 59   | 204   | 620             | 0.3%          | 95.9%           | 94                  | AS    | 18              | 0.0%          | 100.0%          |
| 25                     | 36    | 2,645           | 1.4%          | 66.7%           | 60   | 238   | 593             | 0.3%          | 96.3%           | 95                  | SL    | 16              | 0.0%          | 100.0%          |
| 26                     | 62    | 2,496           | 1.3%          | 68.1%           | 61   | 57    | 522             | 0.3%          | 96.5%           | 96                  | KC    | 14              | 0.0%          | 100.0%          |
| 27                     | 10    | 2,443           | 1.3%          | 69.4%           | 62   | 29    | 516             | 0.3%          | 96.8%           | 97                  | GH    | 5               | 0.0%          | 100.0%          |
| 28                     | 88    | 2,419           | 1.3%          | 70.7%           | 63   | 108   | 487             | 0.3%          | 97.1%           | 98                  | 254   | 5               | 0.0%          | 100.0%          |
| 29                     | 40    | 2,344           | 1.3%          | 71.9%           | 64   | 210   | 471             | 0.3%          | 97.3%           | entirely contracted |       |                 |               |                 |
| 30                     | 24    | 2,195           | 1.2%          | 73.1%           | 65   | 79    | 469             | 0.3%          | 97.6%           |                     |       |                 |               |                 |
| 31                     | 150   | 2,149           | 1.2%          | 74.3%           | 66   | 272   | 428             | 0.2%          | 97.8%           |                     |       |                 |               |                 |
| 32                     | 137   | 2,119           | 1.1%          | 75.4%           | 67   | 56    | 391             | 0.2%          | 98.0%           |                     |       |                 |               |                 |
| 33                     | 21    | 2,107           | 1.1%          | 76.6%           | 68   | 288   | 372             | 0.2%          | 98.2%           |                     |       |                 |               |                 |
| 34                     | 107   | 2,099           | 1.1%          | 77.7%           | 69   | 241   | 348             | 0.2%          | 98.4%           |                     |       |                 |               |                 |
| 35                     | 16    | 2,009           | 1.1%          | 78.8%           | 70   | 287   | 341             | 0.2%          | 98.6%           |                     |       |                 |               |                 |
| <b>Total Boardings</b> |       |                 |               |                 |      |       |                 |               |                 |                     |       | <b>185,320</b>  | <b>100.0%</b> | <b>100.0%</b>   |

(1) Average weekday ridership rounded to the nearest unit.  
(2) Includes the five Lifeline Shuttles that operate on weekdays: Ahepa, Green Hills, Kings Creek, Robert Sharp and Sierra Lakes.

**Bus - Cumulative Percentage Average Weekday Ridership Share  
Top 1/4, 1/3, 1/2, 2/3 and 3/4 of Routes**



## TOTAL MONTHLY AND AVERAGE WEEKDAY RIDERSHIP YEAR OVER YEAR COMPARISON CHARTS – METROBUS

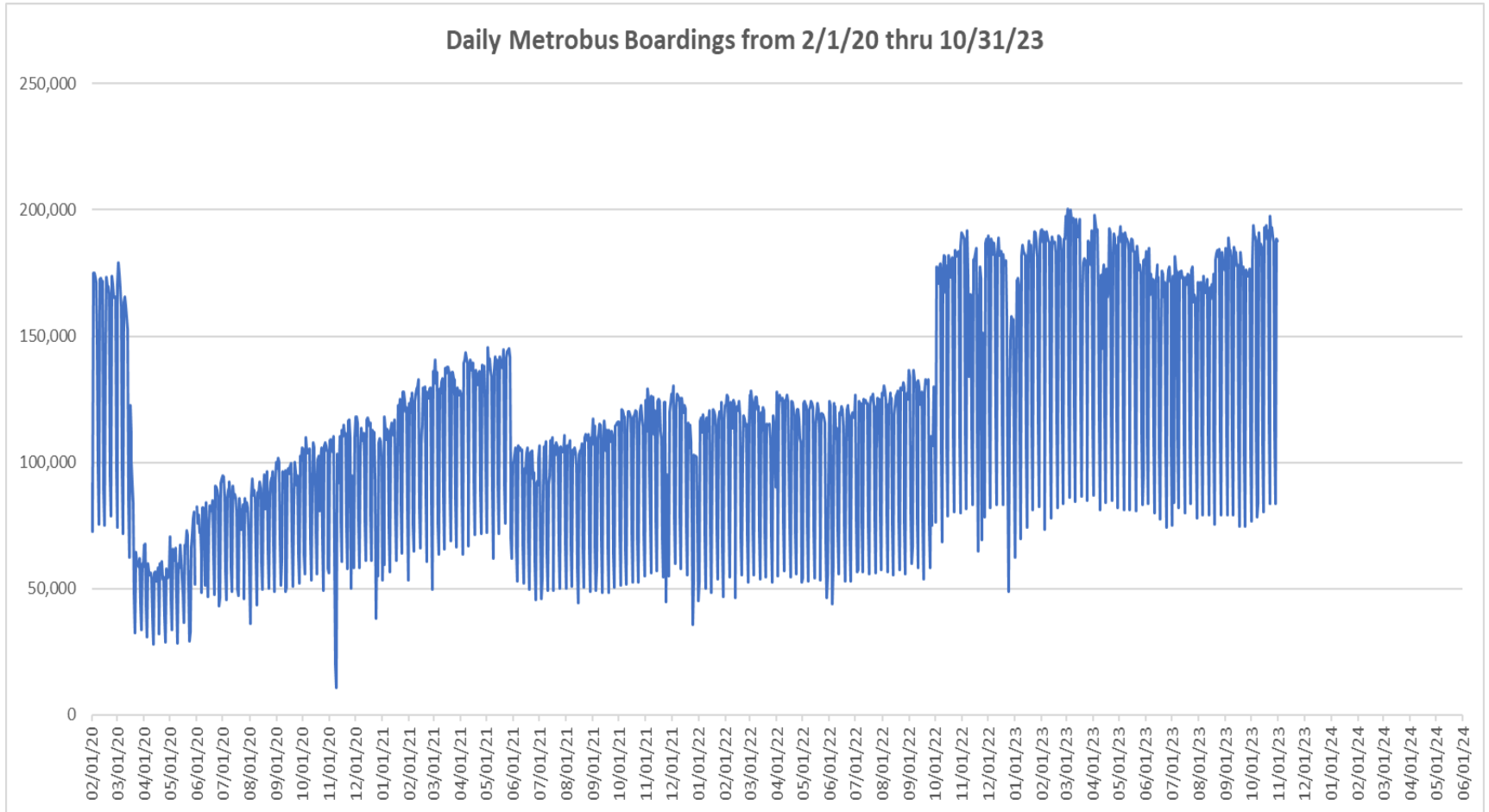


**“TOP 5 / BOTTOM 5” BUS ROUTES AVERAGE WEEKDAY RIDERSHIP PERFORMANCE  
YEAR OVER YEAR COMPARISONS**

| <b>Route</b>                 | <b>Oct-23</b> | <b>Oct-22</b> | <b>Absolute<br/>Delta (1)</b> | <b>Percent<br/>Delta (2)</b> |
|------------------------------|---------------|---------------|-------------------------------|------------------------------|
| <b>77</b>                    | 9,959         | 8,731         | 1,228                         | 14.1%                        |
| <b>11</b>                    | 9,621         | 8,400         | 1,221                         | 14.5%                        |
| <b>62</b>                    | 2,496         | 1,723         | 772                           | 44.8%                        |
| <b>9</b>                     | 6,490         | 6,104         | 386                           | 6.3%                         |
| <b>17</b>                    | 4,133         | 3,763         | 369                           | 9.8%                         |
| <b>120 - BEACH MAX</b>       | 6,128         | 6,843         | -715                          | -10.5%                       |
| <b>288 - KENDALL CRUISER</b> | 372           | 944           | -572                          | -60.6%                       |
| <b>204 KILLIAN KAT</b>       | 620           | 1,140         | -520                          | -45.7%                       |
| <b>38</b>                    | 5,714         | 6,183         | -469                          | -7.6%                        |
| <b>95 EXPRESS</b>            | 1,195         | 1,400         | -204                          | -14.6%                       |

- (1) Averages rounded to the nearest boarding, data as reported by farebox (NFS) and/or automatic passenger counter (APC) system, depending on year; Lifeline shuttles excluded.
- (2) As a result of the SARS-CoV-2 pandemic, rides were fare-free beginning March 22, 2020. Fares were reinstated June 1, 2021, and ridership data from the farebox rather than the APC system was utilized from that date thru the end of October 2022. Beginning October 1, 2022, ridership is again reported from the APC system coupled with new enhanced sensor technology.
- (\*) Contracted route.

## DAILY METROBUS RIDERSHIP SINCE FEBRUARY 1, 2020



- (1) There was no Metrobus, Metrorail and Metromover service on 5/31/20, as a safety precaution, and no service for any of the four modes on 9/28/22 as a result of Hurricane Ian..
- (2) The dip at the start of the second week of November 2020 is due to Hurricane Eta.
- (3) The reduction seen beginning 6/1/21 is partly due to the resumption of fares and partly the result of resuming reporting Cubic farebox data rather than bus APC counts; the jump seen at the start of October 2022 is due to the return to APC bus ridership counts reporting beginning 10/1/22.
- (4) Periodic (weekly) variations are prominent, since weekday ridership is almost always significantly higher than weekend or holiday ridership.



## METROBUS PARKING PATRONAGE SUMMARY

### October 2023

| PARK-RIDE LOT                                       | ACTUAL<br>AVAILABLE<br>SPACES | ACTUAL<br>OCCUPANCY | PERCENT<br>OCCUPANCY |
|---|-------------------------------|---------------------|----------------------|
| Transitway / SW 152nd St                            | 200                           | 124                 | 62%                  |
| Transitway / SW 168th St (*)                        | 149                           | 0                   | 0%                   |
| Transitway / SW 200th Street                        | 100                           | 33                  | 33%                  |
| Transitway / SW 112 Ave (Target)                    | 450                           | 103                 | 23%                  |
| Transitway / SW 244th St                            | 95                            | 80                  | 84%                  |
| Transitway / SW 296th St                            | 139                           | 23                  | 17%                  |
| Transitway / SW 344th St                            | 248                           | 167                 | 67%                  |
| Coral Reef Drive 117/ Turnpike                      | 95                            | 75                  | 79%                  |
| Golden Glades Facility                              | 2,150                         | 395                 | 18%                  |
| Hammocks Town Center (SW 152 Ave / SW 104 St)       | 50                            | 13                  | 26%                  |
| Kendall Dr./SW 127th Ave                            | 161                           | 9                   | 6%                   |
| West Kendall Transit Term (Kendall Dr / SW162 Ave)  | 40                            | 10                  | 25%                  |
| NW 7th Avenue Transit Village (NW 7 Ave / NW 62 St) | 25                            | 19                  | 76%                  |
| Miami Gardens Dr. / NW 73rd Ave                     | 136                           | 0                   | 0%                   |
| Dolphin Station                                     | 348                           | 69                  | 20%                  |
| Tamiami Station (eff 11-2022)                       | 442                           | 52                  | 12%                  |
| I-75 / Miami Gardens Dr (**)                        | 298                           | 0                   | 0%                   |
| <b>TOTAL</b>  | <b>5,126</b>                  | <b>1,172</b>        | <b>23%</b>           |

(\*) Closed for construction beginning January 2022

(\*\*) Route 175 Suspended 3/27/2020

# Metrorail



October 2023

## METRORAIL AVERAGE WEEKDAY BOARDINGS BY STATION (†)

| <b>Weekdays</b>             | <b>Average Weekday</b> | <b>Average Weekday</b> | <b>Percent Change</b> | <b>Average Weekday</b> | <b>Percent Change</b>    | <b>Average Weekday</b> | <b>Percent Change</b> | <b>Average Weekday</b> | <b>Percent Change</b> |
|-----------------------------|------------------------|------------------------|-----------------------|------------------------|--------------------------|------------------------|-----------------------|------------------------|-----------------------|
| <b>STATIONS</b>             | <b>Oct-23</b>          | <b>Oct-22</b>          | <b>YOY</b>            | <b>Feb-20</b>          | <b>Current vs Feb-20</b> | <b>Sep-23</b>          | <b>MOM</b>            | <b>Oct-21</b>          | <b>YO2Y</b>           |
| ALLAPATTAH                  | 1,616                  | 1,486                  | 8.8%                  | 1,942                  | -16.8%                   | 1,584                  | 2.0%                  | 1,074                  | 50.5%                 |
| BRICKELL                    | 5,158                  | 4,316                  | 19.5%                 | 6,529                  | -21.0%                   | 5,097                  | 1.2%                  | 3,351                  | 53.9%                 |
| BROWNSVILLE                 | 695                    | 659                    | 5.6%                  | 862                    | -19.3%                   | 681                    | 2.2%                  | 579                    | 20.1%                 |
| CIVIC CENTER                | 4,439                  | 3,647                  | 21.7%                 | 6,143                  | -27.7%                   | 4,469                  | -0.7%                 | 2,999                  | 48.0%                 |
| COCONUT GROVE               | 1,390                  | 1,307                  | 6.3%                  | 1,795                  | -22.6%                   | 1,346                  | 3.2%                  | 1,050                  | 32.4%                 |
| CULMER                      | 1,042                  | 883                    | 18.0%                 | 1,392                  | -25.2%                   | 1,024                  | 1.8%                  | 805                    | 29.3%                 |
| DADELAND NORTH              | 4,091                  | 3,392                  | 20.6%                 | 5,926                  | -31.0%                   | 4,055                  | 0.9%                  | 2,775                  | 47.4%                 |
| DADELAND SOUTH              | 4,719                  | 3,986                  | 18.4%                 | 7,150                  | -34.0%                   | 4,607                  | 2.4%                  | 3,249                  | 45.2%                 |
| DOUGLAS ROAD                | 3,038                  | 2,661                  | 14.2%                 | 3,624                  | -16.2%                   | 2,702                  | 12.4%                 | 2,185                  | 39.1%                 |
| DR. MARTIN LUTHER KING, JR. | 843                    | 764                    | 10.3%                 | 1,157                  | -27.1%                   | 860                    | -2.0%                 | 675                    | 24.9%                 |
| EARLINGTON HEIGHTS          | 1,352                  | 1,192                  | 13.5%                 | 1,662                  | -18.6%                   | 1,308                  | 3.3%                  | 943                    | 43.3%                 |
| GOVERNMENT CENTER           | 6,896                  | 5,968                  | 15.5%                 | 10,557                 | -34.7%                   | 6,768                  | 1.9%                  | 4,636                  | 48.8%                 |
| HIALEAH                     | 800                    | 1,026                  | -22.0%                | 1,253                  | -36.1%                   | 891                    | -10.1%                | 801                    | -0.1%                 |
| MIAMI INTERNATIONAL AIRPORT | 1,331                  | 1,124                  | 18.4%                 | 1,711                  | -22.2%                   | 1,319                  | 0.9%                  | 722                    | 84.5%                 |
| NORTHSIDE                   | 1,253                  | 1,142                  | 9.8%                  | 1,476                  | -15.1%                   | 1,241                  | 1.0%                  | 937                    | 33.7%                 |
| OKEECHOBEE                  | 891                    | 648                    | 37.5%                 | 1,164                  | -23.4%                   | 857                    | 4.0%                  | 631                    | 41.3%                 |
| OVERTOWN / ARENA            | 1,749                  | 1,240                  | 41.1%                 | 2,274                  | -23.1%                   | 1,716                  | 1.9%                  | 888                    | 97.0%                 |
| PALMETTO                    | 1,241                  | 1,070                  | 16.0%                 | 1,543                  | -19.6%                   | 1,247                  | -0.5%                 | 876                    | 41.6%                 |
| SANTA CLARA                 | 704                    | 592                    | 19.0%                 | 812                    | -13.3%                   | 672                    | 4.7%                  | 442                    | 59.1%                 |
| SOUTH MIAMI                 | 2,088                  | 1,834                  | 13.9%                 | 3,015                  | -30.7%                   | 2,033                  | 2.7%                  | 1,519                  | 37.5%                 |
| TRI-RAIL                    | 1,114                  | 910                    | 22.4%                 | 1,207                  | -7.7%                    | 1,067                  | 4.3%                  | 754                    | 47.6%                 |
| UNIVERSITY                  | 2,189                  | 1,778                  | 23.1%                 | 2,784                  | -21.4%                   | 2,305                  | -5.0%                 | 1,329                  | 64.8%                 |
| VIZCAYA                     | 1,096                  | 1,011                  | 8.5%                  | 1,390                  | -21.1%                   | 1,068                  | 2.7%                  | 816                    | 34.4%                 |
| <b>TOTAL</b>                | <b>49,735</b>          | <b>42,634</b>          | <b>16.7%</b>          | <b>67,367</b>          | <b>-26.2%</b>            | <b>48,917</b>          | <b>1.7%</b>           | <b>34,035</b>          | <b>46.1%</b>          |

(†) In this table and those which follow, "YOY" stands for "year-over-year", "MOM" for "month-over-month" and "YO2Y" for "year over two years", i.e., current month vs 12 months prior, one month prior and 24 months prior, respectively.

## METRORAIL AVERAGE SATURDAY BOARDINGS BY STATION

| <b>Saturdays</b>            | Average Saturday | Average Saturday | Percent Change | Average Saturday | Percent Change    | Average Saturday | Percent Change | Average Saturday | Percent Change |
|-----------------------------|------------------|------------------|----------------|------------------|-------------------|------------------|----------------|------------------|----------------|
| STATIONS                    | Oct-23           | Oct-22           | YOY            | Feb-20           | Current vs Feb-20 | Sep-23           | MOM            | Oct-21           | YO2Y           |
| ALLAPATTAH                  | 797              | 822              | -3.1%          | 1,051            | -24.2%            | 772              | 3.1%           | 634              | 25.6%          |
| BRICKELL                    | 2,254            | 2,082            | 8.3%           | 2,811            | -19.8%            | 2,216            | 1.7%           | 1,741            | 29.5%          |
| BROWNSVILLE                 | 411              | 418              | -1.7%          | 520              | -20.9%            | 398              | 3.1%           | 350              | 17.5%          |
| CIVIC CENTER                | 712              | 631              | 12.8%          | 959              | -25.8%            | 736              | -3.2%          | 511              | 39.3%          |
| COCONUT GROVE               | 659              | 675              | -2.5%          | 928              | -29.1%            | 645              | 2.0%           | 579              | 13.8%          |
| CULMER                      | 455              | 416              | 9.4%           | 721              | -36.9%            | 462              | -1.6%          | 387              | 17.5%          |
| DADELAND NORTH              | 1,265            | 1,264            | 0.1%           | 1,994            | -36.6%            | 1,311            | -3.6%          | 1,106            | 14.3%          |
| DADELAND SOUTH              | 1,876            | 1,711            | 9.6%           | 2,625            | -28.5%            | 1,803            | 4.1%           | 1,434            | 30.8%          |
| DOUGLAS ROAD                | 1,119            | 1,117            | 0.2%           | 1,319            | -15.2%            | 879              | 27.3%          | 929              | 20.5%          |
| DR. MARTIN LUTHER KING, JR. | 465              | 441              | 5.5%           | 625              | -25.6%            | 370              | 25.6%          | 349              | 33.3%          |
| EARLINGTON HEIGHTS          | 745              | 665              | 12.0%          | 935              | -20.4%            | 632              | 17.9%          | 545              | 36.7%          |
| GOVERNMENT CENTER           | 2,596            | 2,481            | 4.7%           | 4,262            | -39.1%            | 2,464            | 5.4%           | 1,979            | 31.2%          |
| HIALEAH                     | 403              | 521              | -22.7%         | 583              | -30.9%            | 412              | -2.1%          | 384              | 4.8%           |
| MIAMI INTERNATIONAL AIRPORT | 937              | 899              | 4.2%           | 1,330            | -29.5%            | 936              | 0.1%           | 587              | 59.7%          |
| NORTHSIDE                   | 737              | 735              | 0.3%           | 878              | -16.1%            | 727              | 1.3%           | 603              | 22.3%          |
| OKEECHOBEE                  | 324              | 229              | 41.5%          | 408              | -20.6%            | 298              | 9.0%           | 283              | 14.7%          |
| OVERTOWN / ARENA            | 570              | 437              | 30.2%          | 678              | -16.0%            | 548              | 4.0%           | 330              | 72.4%          |
| PALMETTO                    | 368              | 378              | -2.9%          | 458              | -19.8%            | 360              | 2.1%           | 307              | 19.6%          |
| SANTA CLARA                 | 311              | 311              | -0.1%          | 422              | -26.3%            | 321              | -3.2%          | 237              | 31.4%          |
| SOUTH MIAMI                 | 903              | 848              | 6.4%           | 1,256            | -28.1%            | 868              | 4.1%           | 729              | 23.8%          |
| TRI-RAIL                    | 510              | 424              | 20.3%          | 614              | -17.0%            | 477              | 6.8%           | 353              | 44.5%          |
| UNIVERSITY                  | 558              | 496              | 12.5%          | 714              | -21.8%            | 658              | -15.2%         | 456              | 22.4%          |
| VIZCAYA                     | 446              | 446              | -0.1%          | 622              | -28.3%            | 470              | -5.1%          | 354              | 26.1%          |
| <b>TOTAL</b>                | <b>19,419</b>    | <b>18,449</b>    | <b>5.3%</b>    | <b>26,714</b>    | <b>-27.3%</b>     | <b>18,763</b>    | <b>3.5%</b>    | <b>15,166</b>    | <b>28.0%</b>   |

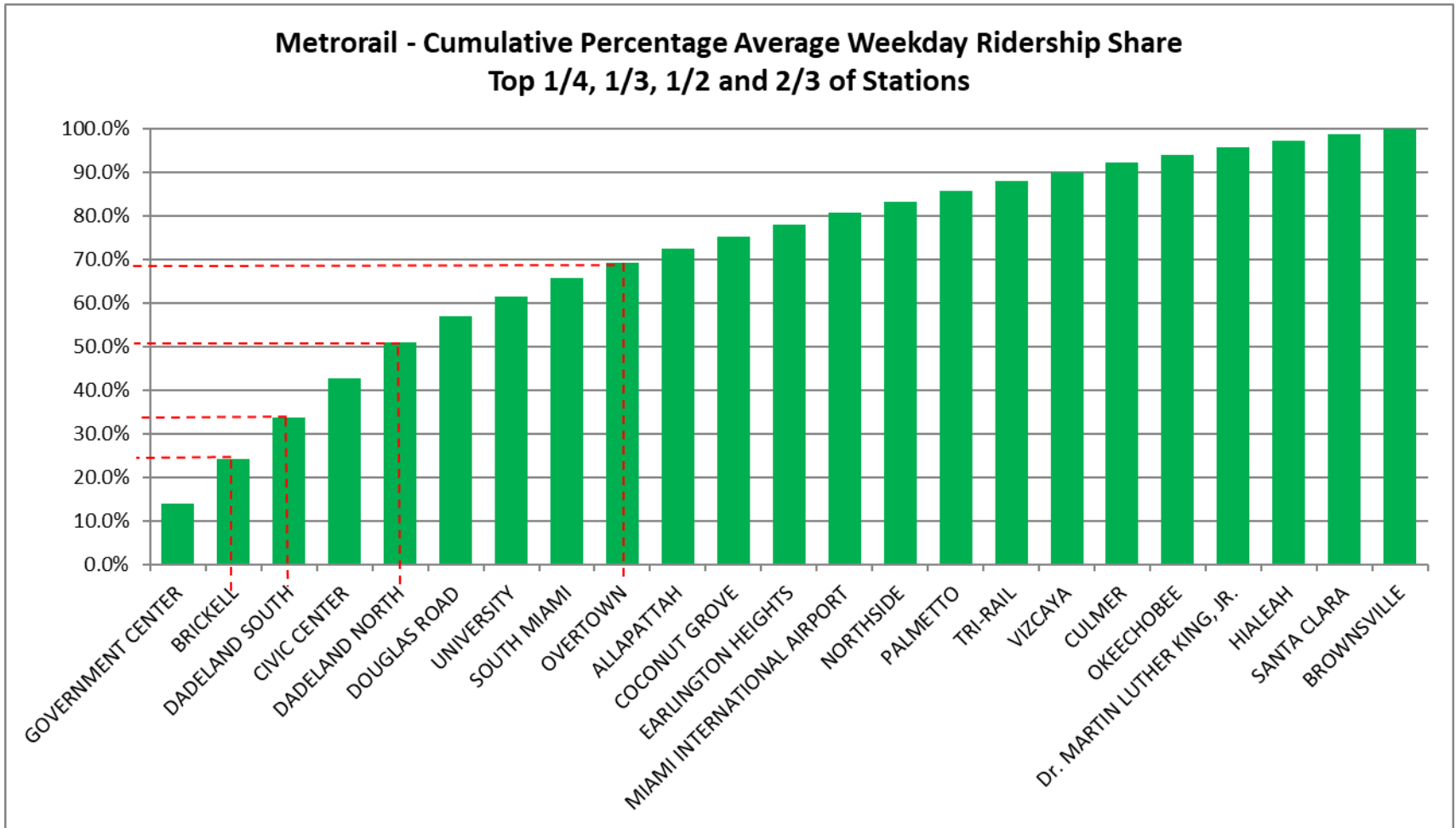
## METRORAIL AVERAGE SUNDAY BOARDINGS BY STATION

| <b>Sundays</b>              | Average Sunday | Average Sunday | Percent Change | Average Sunday | Percent Change    | Average Sunday | Percent Change | Average Sunday | Percent Change |
|-----------------------------|----------------|----------------|----------------|----------------|-------------------|----------------|----------------|----------------|----------------|
| STATIONS                    | Oct-23         | Oct-22         | YOY            | Feb-20         | Current vs Feb-20 | Sep-23         | MOM            | Oct-21         | YO2Y           |
| ALLAPATTAH                  | 596            | 579            | 2.9%           | 791            | -24.7%            | 580            | 2.7%           | 433            | 37.6%          |
| BRICKELL                    | 1,749          | 1,576          | 11.0%          | 2,379          | -26.5%            | 1,676          | 4.3%           | 1,327          | 31.8%          |
| BROWNSVILLE                 | 282            | 277            | 1.7%           | 406            | -30.6%            | 267            | 5.4%           | 264            | 6.5%           |
| CIVIC CENTER                | 526            | 508            | 3.5%           | 791            | -33.5%            | 553            | -4.8%          | 402            | 30.8%          |
| COCONUT GROVE               | 494            | 502            | -1.8%          | 838            | -41.1%            | 467            | 5.8%           | 397            | 24.5%          |
| CULMER                      | 327            | 316            | 3.5%           | 616            | -46.9%            | 325            | 0.7%           | 317            | 3.2%           |
| DADELAND NORTH              | 928            | 916            | 1.3%           | 1,685          | -44.9%            | 970            | -4.3%          | 822            | 13.0%          |
| DADELAND SOUTH              | 1,428          | 1,254          | 13.9%          | 2,210          | -35.4%            | 1,365          | 4.6%           | 1,109          | 28.8%          |
| DOUGLAS ROAD                | 774            | 766            | 1.0%           | 1,090          | -29.0%            | 580            | 33.5%          | 657            | 17.8%          |
| DR. MARTIN LUTHER KING, JR. | 359            | 351            | 2.2%           | 506            | -29.1%            | 350            | 2.5%           | 287            | 25.0%          |
| EARLINGTON HEIGHTS          | 533            | 477            | 11.8%          | 799            | -33.3%            | 527            | 1.2%           | 415            | 28.4%          |
| GOVERNMENT CENTER           | 2,005          | 1,854          | 8.2%           | 4,044          | -50.4%            | 1,923          | 4.3%           | 1,550          | 29.3%          |
| HIALEAH                     | 319            | 388            | -17.9%         | 472            | -32.5%            | 288            | 10.6%          | 280            | 13.6%          |
| MIAMI INTERNATIONAL AIRPORT | 858            | 862            | -0.5%          | 1,343          | -36.1%            | 928            | -7.5%          | 648            | 32.5%          |
| NORTHSIDE                   | 562            | 536            | 4.7%           | 653            | -13.9%            | 554            | 1.4%           | 460            | 22.1%          |
| OKEECHOBEE                  | 199            | 154            | 29.1%          | 273            | -27.2%            | 186            | 6.9%           | 150            | 32.7%          |
| OVERTOWN / ARENA            | 441            | 319            | 38.3%          | 544            | -18.9%            | 417            | 5.8%           | 292            | 51.2%          |
| PALMETTO                    | 222            | 193            | 15.1%          | 336            | -33.9%            | 201            | 10.6%          | 161            | 38.0%          |
| SANTA CLARA                 | 207            | 204            | 1.7%           | 280            | -25.8%            | 201            | 3.2%           | 157            | 32.3%          |
| SOUTH MIAMI                 | 606            | 607            | -0.2%          | 987            | -38.6%            | 623            | -2.7%          | 541            | 12.0%          |
| TRI-RAIL                    | 367            | 323            | 13.8%          | 528            | -30.5%            | 339            | 8.3%           | 307            | 19.7%          |
| UNIVERSITY                  | 427            | 394            | 8.3%           | 608            | -29.9%            | 487            | -12.4%         | 328            | 30.1%          |
| VIZCAYA                     | 331            | 348            | -5.0%          | 524            | -36.9%            | 308            | 7.3%           | 274            | 20.6%          |
| <b>TOTAL</b>                | <b>14,538</b>  | <b>13,706</b>  | <b>6.1%</b>    | <b>22,701</b>  | <b>-36.0%</b>     | <b>14,113</b>  | <b>3.0%</b>    | <b>11,577</b>  | <b>25.6%</b>   |

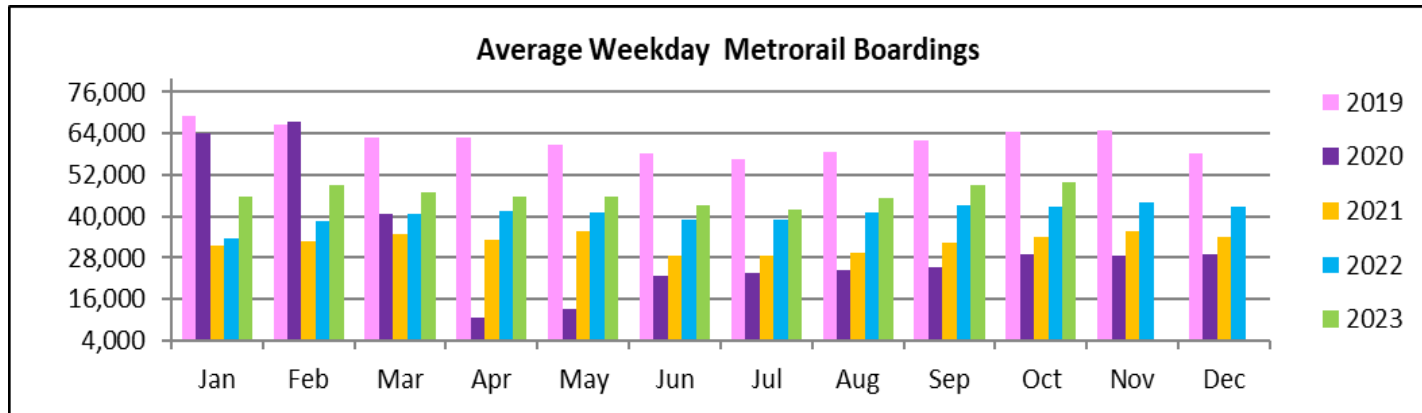
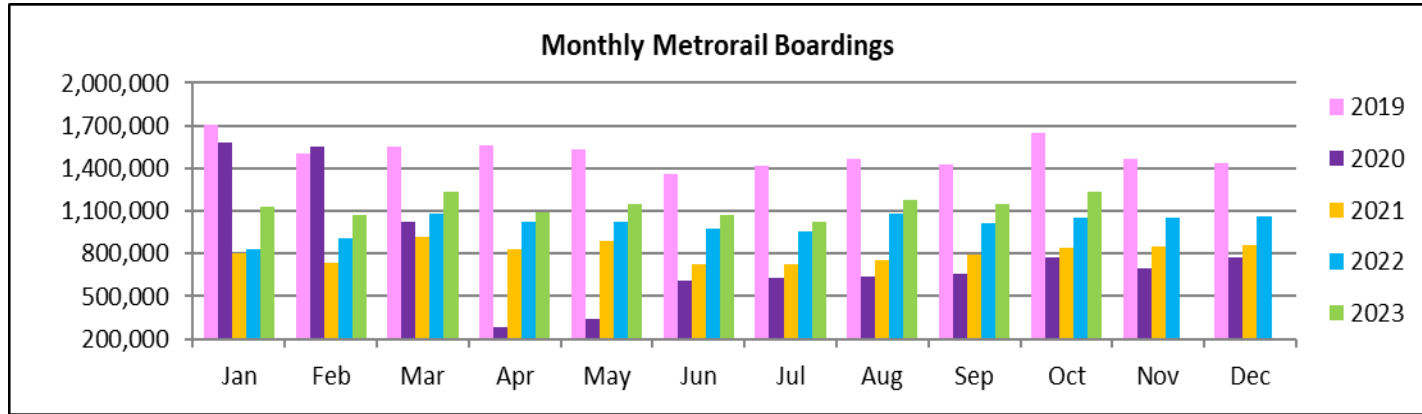
## METRORAIL TOTAL MONTHLY BOARDINGS BY STATION

| <b>Monthly Totals</b>       | Total Month      | Total Month      | Percent Change | Total Month      | Percent Change    | Total Month      | Percent Change | Total Month    | Percent Change |
|-----------------------------|------------------|------------------|----------------|------------------|-------------------|------------------|----------------|----------------|----------------|
| <b>STATIONS</b>             | Oct-23           | Oct-22           | YOY            | Feb-20           | Current vs Feb-20 | Sep-23           | MOM            | Oct-21         | YO2Y           |
| ALLAPATTAH                  | 41,576           | 38,141           | 9.0%           | 46,868           | -11.3%            | 38,642           | 7.6%           | 27,803         | 49.5%          |
| BRICKELL                    | 130,471          | 108,793          | 19.9%          | 152,259          | -14.3%            | 122,044          | 6.9%           | 85,515         | 52.6%          |
| BROWNSVILLE                 | 18,310           | 17,265           | 6.1%           | 21,285           | -14.0%            | 17,002           | 7.7%           | 15,226         | 20.3%          |
| CIVIC CENTER                | 102,333          | 81,816           | 25.1%          | 128,921          | -20.6%            | 96,104           | 6.5%           | 66,983         | 52.8%          |
| COCONUT GROVE               | 35,491           | 33,271           | 6.7%           | 43,580           | -18.6%            | 32,636           | 8.7%           | 26,839         | 32.2%          |
| CULMER                      | 26,293           | 22,193           | 18.5%          | 33,497           | -21.5%            | 24,511           | 7.3%           | 20,396         | 28.9%          |
| DADELAND NORTH              | 98,950           | 81,726           | 21.1%          | 132,894          | -25.5%            | 92,788           | 6.6%           | 67,396         | 46.8%          |
| DADELAND SOUTH              | 117,607          | 98,093           | 19.9%          | 162,416          | -27.6%            | 108,323          | 8.6%           | 80,481         | 46.1%          |
| DOUGLAS ROAD                | 74,846           | 65,283           | 14.6%          | 82,141           | -8.9%             | 61,807           | 21.1%          | 53,656         | 39.5%          |
| DR. MARTIN LUTHER KING, JR. | 22,114           | 19,944           | 10.9%          | 27,980           | -21.0%            | 20,894           | 5.8%           | 17,274         | 28.0%          |
| EARLINGTON HEIGHTS          | 35,203           | 30,615           | 15.0%          | 40,697           | -13.5%            | 32,136           | 9.5%           | 24,540         | 43.5%          |
| GOVERNMENT CENTER           | 170,596          | 146,132          | 16.7%          | 243,414          | -29.9%            | 157,399          | 8.4%           | 114,138        | 49.5%          |
| HIALEAH                     | 20,938           | 26,049           | -19.6%         | 29,516           | -29.1%            | 21,349           | -1.9%          | 20,050         | 4.4%           |
| MIAMI INTERNATIONAL AIRPORT | 37,249           | 32,482           | 14.7%          | 46,115           | -19.2%            | 35,981           | 3.5%           | 21,319         | 74.7%          |
| NORTHSIDE                   | 33,204           | 30,324           | 9.5%           | 36,127           | -8.1%             | 31,352           | 5.9%           | 24,913         | 33.3%          |
| OKEECHOBEE                  | 21,755           | 15,483           | 40.5%          | 26,026           | -16.4%            | 19,676           | 10.6%          | 15,332         | 41.9%          |
| OVERTOWN / ARENA            | 42,478           | 29,739           | 42.8%          | 49,911           | -14.9%            | 39,226           | 8.3%           | 21,539         | 97.2%          |
| PALMETTO                    | 29,706           | 25,310           | 17.4%          | 33,944           | -12.5%            | 27,844           | 6.7%           | 20,638         | 43.9%          |
| SANTA CLARA                 | 17,704           | 14,976           | 18.2%          | 19,245           | -8.0%             | 16,110           | 9.9%           | 11,224         | 57.7%          |
| SOUTH MIAMI                 | 52,310           | 45,764           | 14.3%          | 69,412           | -24.6%            | 48,248           | 8.4%           | 38,089         | 37.3%          |
| TRI-RAIL                    | 28,164           | 22,790           | 23.6%          | 29,120           | -3.3%             | 25,504           | 10.4%          | 19,139         | 47.2%          |
| UNIVERSITY                  | 52,350           | 41,815           | 25.2%          | 61,253           | -14.5%            | 51,915           | 0.8%           | 31,732         | 65.0%          |
| VIZCAYA                     | 27,448           | 25,187           | 9.0%           | 32,497           | -15.5%            | 25,373           | 8.2%           | 20,161         | 36.1%          |
| <b>TOTAL</b>                | <b>1,237,096</b> | <b>1,053,191</b> | <b>17.5%</b>   | <b>1,549,118</b> | <b>-20.1%</b>     | <b>1,146,864</b> | <b>7.9%</b>    | <b>844,383</b> | <b>46.5%</b>   |

# METRORAIL CUMULATIVE PERCENTAGE RIDERSHIP SHARE



# TOTAL MONTHLY AND AVERAGE WEEKDAY RIDERSHIP YEAR OVER YEAR COMPARISON CHARTS – METRORAIL



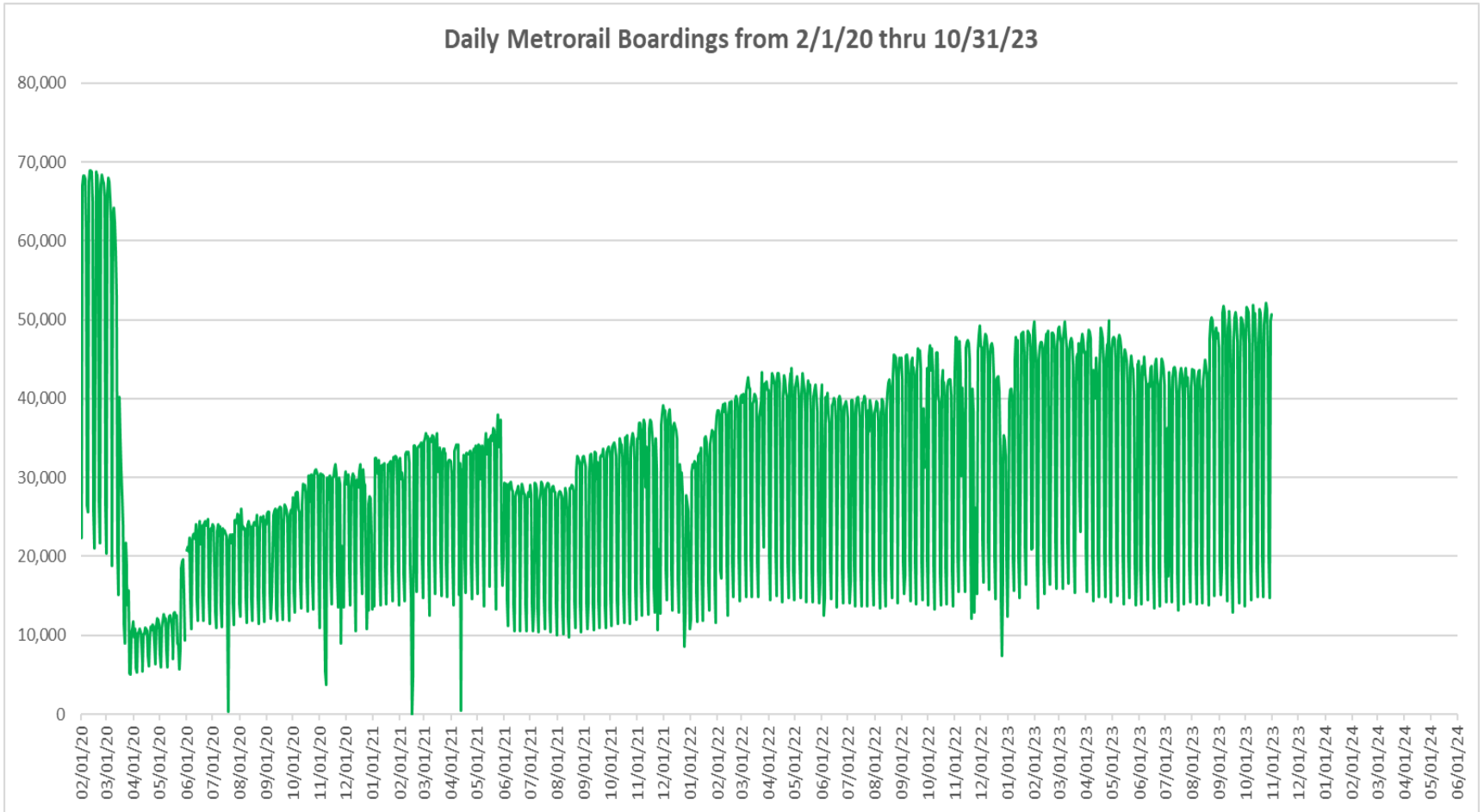


**“TOP 5 / BOTTOM 5” RAIL STATIONS AVERAGE WEEKDAY RIDERSHIP PERFORMANCE  
YEAR OVER YEAR COMPARISONS**

| <b>Station</b>              | <b>Oct-23</b> | <b>Oct-22</b> | <b>Absolute<br/>Delta (1)</b> | <b>Percent<br/>Delta</b> |
|-----------------------------|---------------|---------------|-------------------------------|--------------------------|
| GOVERNMENT CENTER           | 6,896         | 5,968         | 928                           | 15.5%                    |
| BRICKELL                    | 5,158         | 4,316         | 842                           | 19.5%                    |
| CIVIC CENTER                | 4,439         | 3,647         | 792                           | 21.7%                    |
| DADELAND SOUTH              | 4,719         | 3,986         | 733                           | 18.4%                    |
| DADELAND NORTH              | 4,091         | 3,392         | 699                           | 20.6%                    |
| HIALEAH                     | 800           | 1,026         | -226                          | -22.0%                   |
| BROWNSVILLE                 | 695           | 659           | 37                            | 5.6%                     |
| Dr. MARTIN LUTHER KING, JR. | 843           | 764           | 78                            | 10.3%                    |
| COCONUT GROVE               | 1,390         | 1,307         | 82                            | 6.3%                     |
| VIZCAYA                     | 1,096         | 1,011         | 86                            | 8.5%                     |

- (1) Averages rounded to the nearest boarding.
- (2) As a result of the SARS-CoV-2 pandemic, rides were fare-free beginning March 22, 2020; nearly all rail stations continued reporting YOY gains in October 2023, as October 2022 still showed clear residual effects on ridership from the SARS-CoV-2 pandemic. Fares were reinstated June 1, 2021, and ridership data from the faregate system rather than the video camera counter system is utilized from that date going forward.

## DAILY METRORAIL RIDERSHIP SINCE FEBRUARY 1, 2020



- (1) There was no Metrobus, Metrorail and Metromover service on 5/31/20, as a safety precaution, and no service for any of the four modes on 9/28/22 as a result of Hurricane Ian..
- (2) The dip at the start of the second week of November 2020 is due to Hurricane Eta; these are *raw data* from the Unleash Live contractor AI video system.
- (3) The dip on 4/13/21 is due to a loss of connectivity at all stations, affecting a few stations over the next two days as well.
- (4) The reduction seen beginning 6/1/21 is partly due to the resumption of fares and partly the result of resuming reporting Cubic faregate data rather than video camera counts.
- (5) Periodic (weekly) variations are prominent, since weekday ridership is almost always significantly higher than weekend or holiday ridership.

## METRORAIL PARKING PATRONAGE SUMMARY October 2023

| PARK-RIDE LOT                       | ACTUAL<br>CAPACITY (1) | ACTUAL<br>OCCUPANCY (2) | PERCENT<br>OCCUPANCY |
|-------------------------------------|------------------------|-------------------------|----------------------|
| DADELAND SOUTH                      | 1,260                  | 803                     | 64%                  |
| DADELAND NORTH                      | 1,963                  | 747                     | 38%                  |
| SOUTH MIAMI                         | 1,081                  | 283                     | 26%                  |
| UNIVERSITY                          | 260                    | 184                     | 71%                  |
| DOUGLAS ROAD                        | 222                    | 0                       | 0%                   |
| COCONUT GROVE                       | 100                    | 55                      | 55%                  |
| VIZCAYA                             | 120                    | 47                      | 39%                  |
| CULMER                              | 25                     | 16                      | 65%                  |
| SANTA CLARA                         | 61                     | 41                      | 67%                  |
| ALLAPATTAH                          | 74                     | 8                       | 11%                  |
| EARLINGTON HEIGHTS                  | 361                    | 145                     | 40%                  |
| BROWNSVILLE                         | 100                    | 73                      | 73%                  |
| DR. MARTIN LUTHER KING JR. (MDT)    | 62                     | 0                       | 0%                   |
| DR. MARTIN LUTHER KING JR. (GARAGE) | 631                    | 0                       | 0%                   |
| NORTHSIDE                           | 100                    | 78                      | 78%                  |
| HIALEAH                             | 338                    | 40                      | 12%                  |
| OKEECHOBEE                          | 1,398                  | 139                     | 10%                  |
| PALMETTO                            | 700                    | 141                     | 20%                  |
| <b>TOTAL</b>                        | <b>8,856</b>           | <b>2,802</b>            | <b>32%</b>           |

- (1) Number of spaces could vary each week; shown are available spaces during final week of month, as submitted by DTPW Safety & Security office.  
(2) All sampled occupancy data provided by DTPW Safety & Security office; calculations are revisions to those submitted by that entity.  
(3) Daily averages rounded to nearest unit, with fewer counts at some stations due to shortage of DTPW Safety & Security office staff; calculations are based on sampled counted days only per raw data submitted, with resulting average daily occupancy shown.  
(\*) Closed throughout the month, per the DTPW Safety & Security office.

# Metromover



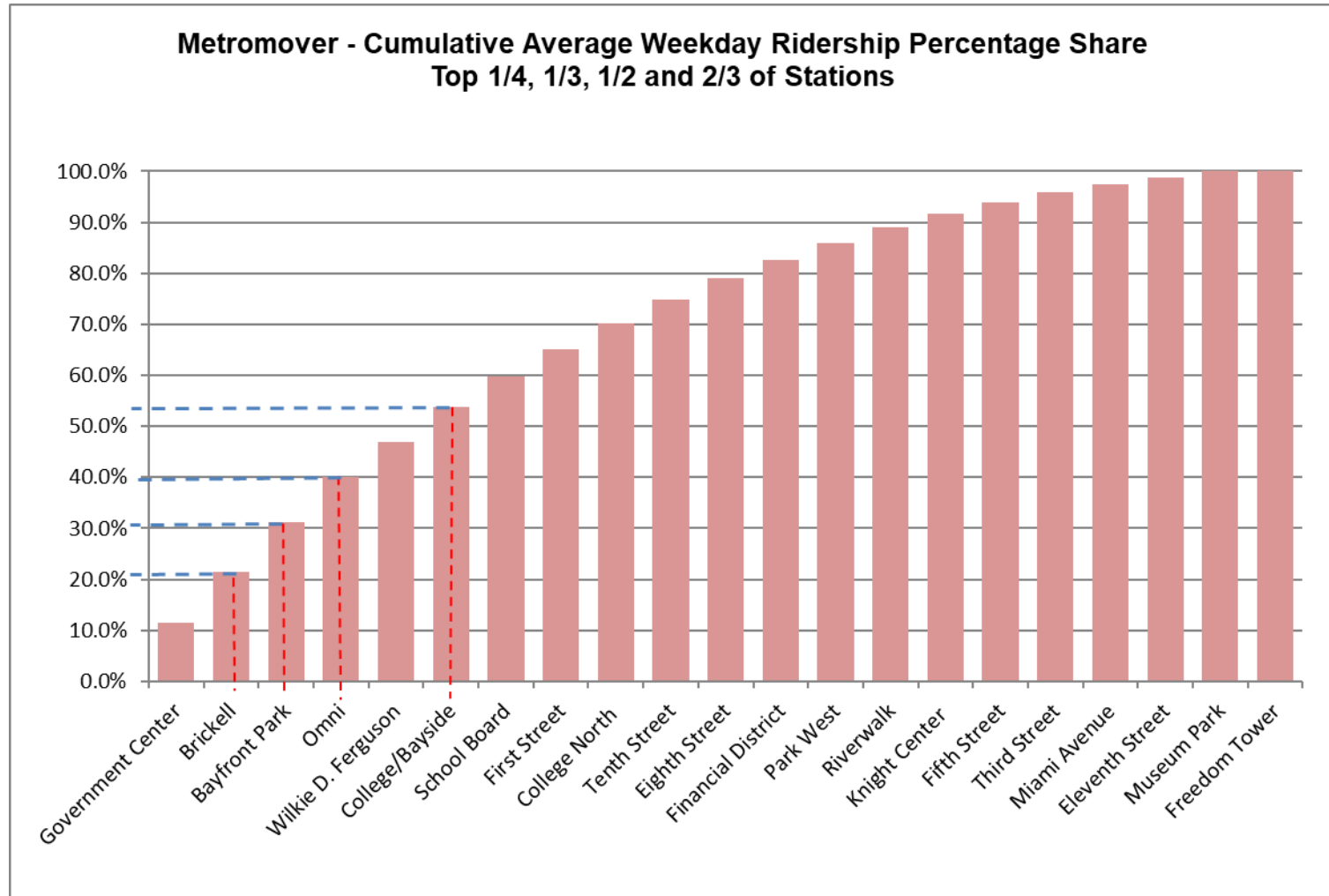
October 2023

## METROMOVER MONTHLY AND AVERAGE DAILY BOARDINGS BY STATION

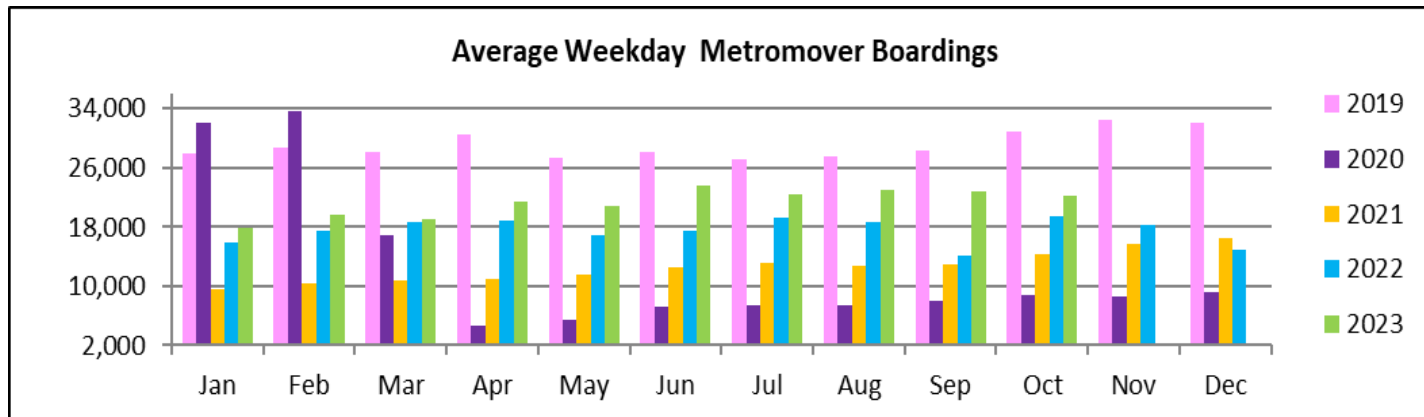
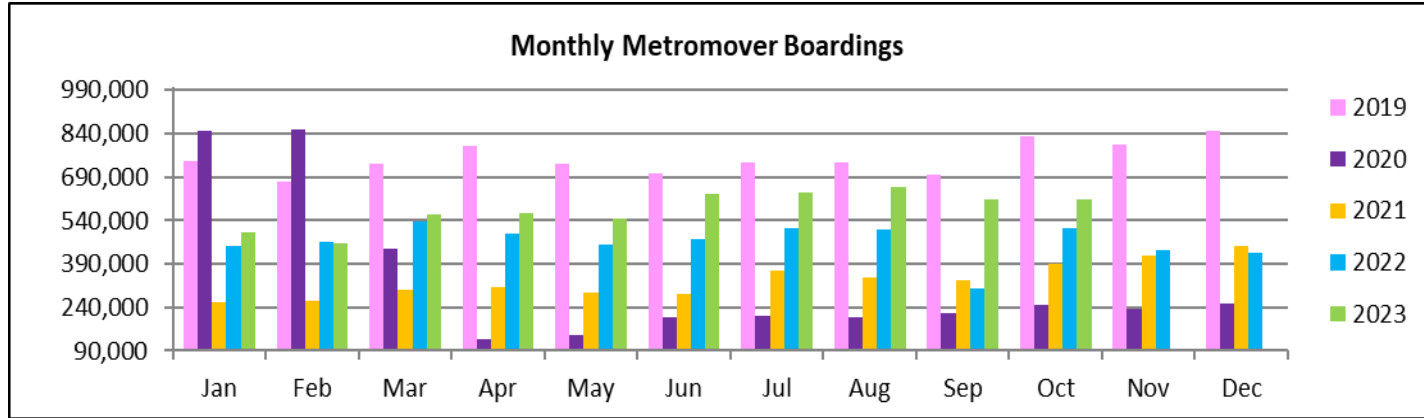
|                    | Average Weekday | Average Weekday | Percent Change | Average Saturday | Average Saturday | Percent Change | Average Sunday | Average Sunday | Percent Change | Total Monthly  | Total Monthly  | Percent Change |
|--------------------|-----------------|-----------------|----------------|------------------|------------------|----------------|----------------|----------------|----------------|----------------|----------------|----------------|
| STATIONS           | Oct-23          | Oct-22          | 23 vs 22       | Oct-23           | Oct-22           | 23 vs 22       | Oct-23         | Oct-22         | 23 vs 22       | Oct-23         | Oct-22         | 23 vs 22       |
| School Board       | 1,288           | 1,062           | 21.2%          | 942              | 792              | 18.8%          | 837            | 700            | 19.6%          | 36,217         | 29,819         | 21.5%          |
| Omni               | 2,004           | 1,525           | 31.4%          | 1,285            | 1,108            | 16.0%          | 1,270          | 958            | 32.5%          | 55,301         | 42,140         | 31.2%          |
| Museum Park        | 274             | 268             | 2.2%           | 422              | 371              | 13.8%          | 314            | 364            | -13.8%         | 9,262          | 9,345          | -0.9%          |
| Eleventh Street    | 295             | 259             | 14.1%          | 230              | 318              | -27.7%         | 216            | 187            | 15.7%          | 8,483          | 7,918          | 7.1%           |
| Park West          | 739             | 653             | 13.2%          | 665              | 591              | 12.6%          | 584            | 521            | 12.0%          | 21,874         | 19,527         | 12.0%          |
| Freedom Tower (1)  |                 |                 |                |                  |                  |                |                |                |                |                |                |                |
| Government Center  | 2,562           | 2,316           | 10.6%          | 1,663            | 1,602            | 3.8%           | 1,442          | 1,333          | 8.2%           | 69,822         | 52,843         | 32.1%          |
| Miami Avenue       | 349             | 294             | 18.5%          | 269              | 203              | 32.5%          | 210            | 191            | 10.3%          | 9,753          | 5,960          | 63.6%          |
| Third Street       | 434             | 207             | 109.6%         | 317              | 157              | 102.6%         | 349            | 180            | 93.7%          | 12,532         | 5,999          | 108.9%         |
| Knight Center      | 589             | 541             | 8.9%           | 375              | 358              | 4.8%           | 271            | 284            | -4.7%          | 15,662         | 14,468         | 8.3%           |
| Bayfront Park      | 2,173           | 1,819           | 19.4%          | 1,497            | 1,315            | 13.8%          | 1,314          | 1,452          | -9.5%          | 59,919         | 51,757         | 15.8%          |
| First Street       | 1,224           | 541             | 126.2%         | 975              | 504              | 93.4%          | 878            | 453            | 93.9%          | 35,129         | 9,926          | 253.9%         |
| College/Bayside    | 1,530           | 1,745           | -12.3%         | 1,133            | 1,310            | -13.5%         | 1,045          | 1,123          | -6.9%          | 43,226         | 41,166         | 5.0%           |
| College North      | 1,110           | 919             | 20.9%          | 620              | 599              | 3.5%           | 515            | 480            | 7.3%           | 29,333         | 24,685         | 18.8%          |
| Wilkie D. Ferguson | 1,543           | 1,246           | 23.8%          | 1,002            | 793              | 26.4%          | 837            | 710            | 17.9%          | 41,996         | 33,460         | 25.5%          |
| Riverwalk          | 698             | 459             | 52.3%          | 441              | 314              | 40.4%          | 460            | 301            | 52.7%          | 19,338         | 12,681         | 52.5%          |
| Fifth Street       | 522             | 400             | 30.6%          | 376              | 321              | 17.1%          | 290            | 245            | 18.5%          | 14,365         | 9,867          | 45.6%          |
| Eighth Street      | 940             | 1,419           | -33.7%         | 501              | 1,312            | -61.8%         | 445            | 1,101          | -59.6%         | 24,620         | 41,963         | -41.3%         |
| Tenth Street       | 1,060           | 902             | 17.5%          | 688              | 707              | -2.7%          | 634            | 583            | 8.7%           | 29,013         | 25,245         | 14.9%          |
| Brickell           | 2,201           | 1,821           | 20.9%          | 1,268            | 1,345            | -5.8%          | 1,261          | 1,161          | 8.6%           | 59,411         | 50,703         | 17.2%          |
| Financial District | 750             | 957             | -21.7%         | 353              | 524              | -32.7%         | 308            | 425            | -27.6%         | 19,223         | 24,836         | -22.6%         |
| <b>TOTAL</b>       | <b>22,286</b>   | <b>19,354</b>   | <b>15.1%</b>   | <b>15,019</b>    | <b>14,542</b>    | <b>3.3%</b>    | <b>13,479</b>  | <b>12,753</b>  | <b>5.7%</b>    | <b>614,479</b> | <b>514,308</b> | <b>19.5%</b>   |

(1) Freedom Tower Station was closed for construction.

# METROMOVER CUMULATIVE PERCENTAGE RIDERSHIP SHARE



# TOTAL MONTHLY AND AVERAGE WEEKDAY RIDERSHIP YEAR OVER YEAR COMPARISON CHARTS – METROMOVER



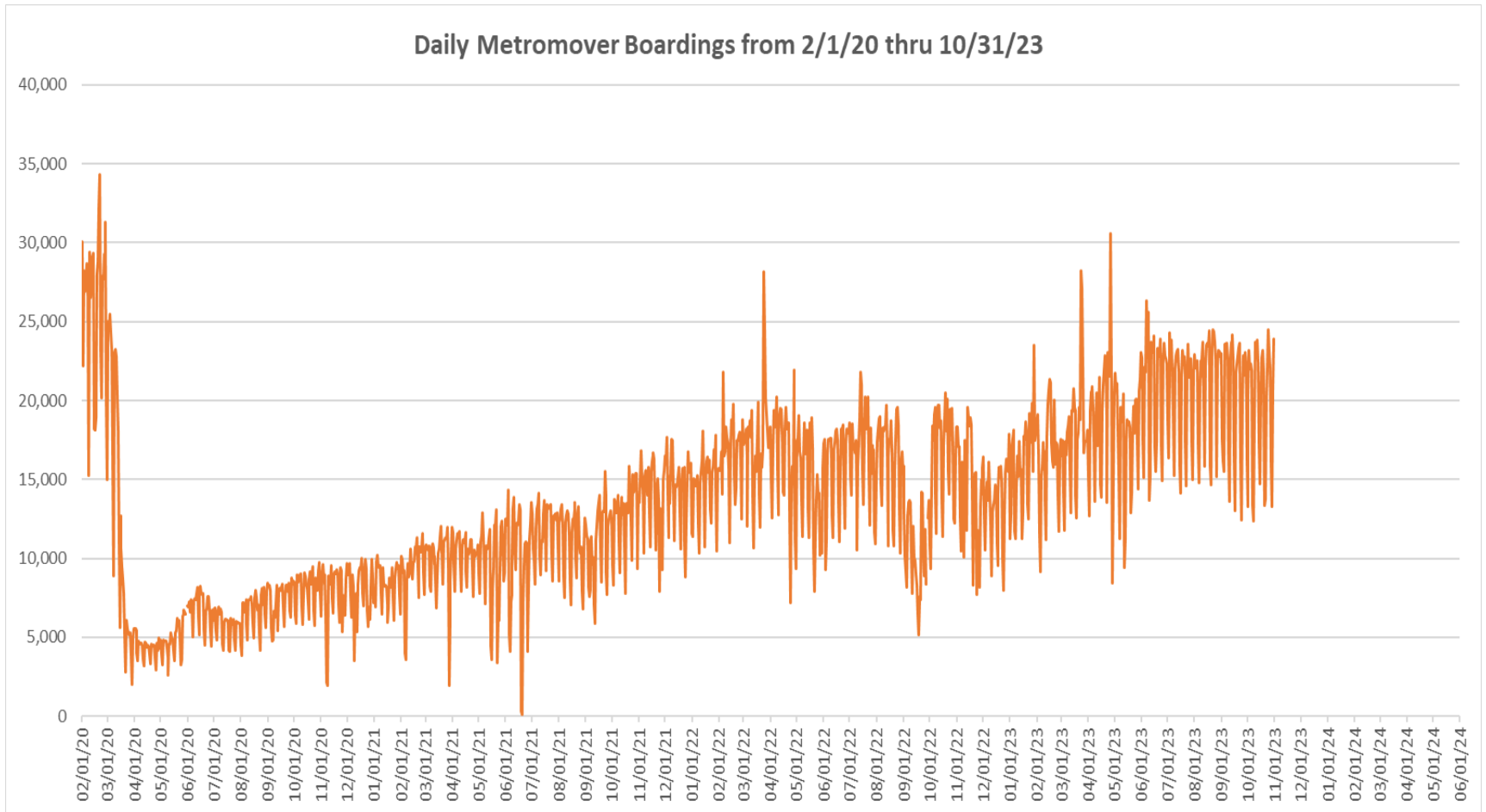
**“TOP 5 / BOTTOM 5” MOVER STATIONS AVERAGE WEEKDAY RIDERSHIP PERFORMANCE  
YEAR OVER YEAR COMPARISONS**

| <b>Station</b>     | <b>Oct-23</b> | <b>Oct-22</b> | <b>Absolute<br/>Delta (1)</b> | <b>Percent<br/>Delta</b> |
|--------------------|---------------|---------------|-------------------------------|--------------------------|
| First Street       | 1,224         | 541           | 683                           | 126.2%                   |
| Omni               | 2,004         | 1,525         | 479                           | 31.4%                    |
| Brickell           | 2,201         | 1,821         | 380                           | 20.9%                    |
| Bayfront Park      | 2,173         | 1,819         | 353                           | 19.4%                    |
| Wilkie D. Ferguson | 1,543         | 1,246         | 297                           | 23.8%                    |
| Eighth Street      | 940           | 1,419         | -479                          | -33.7%                   |
| College/Bayside    | 1,530         | 1,745         | -215                          | -12.3%                   |
| Financial District | 750           | 957           | -208                          | -21.7%                   |
| Museum Park        | 274           | 268           | 6                             | 2.2%                     |
| Eleventh Street    | 295           | 259           | 36                            | 14.1%                    |

(1) Averages rounded to the nearest boarding.



## DAILY METROMOVER RIDERSHIP SINCE FEBRUARY 1, 2020



- (1) There was no Metrobus, Metrorail and Metromover service on 5/31/20, as a safety precaution, and no service for any of the four modes on 9/28/22 as a result of Hurricane Ian..
- (2) The dip at the start of the second week of November 2020 is due to Hurricane Eta; these are *raw data* from the UTA contractor APC system. Other more recent dips are due to various station closures (mostly on weekends) for system maintenance purposes.
- (3) Periodic (weekly) variations are prominent, since weekday ridership is almost always significantly higher than weekend or holiday ridership.

## Special Transportation Services

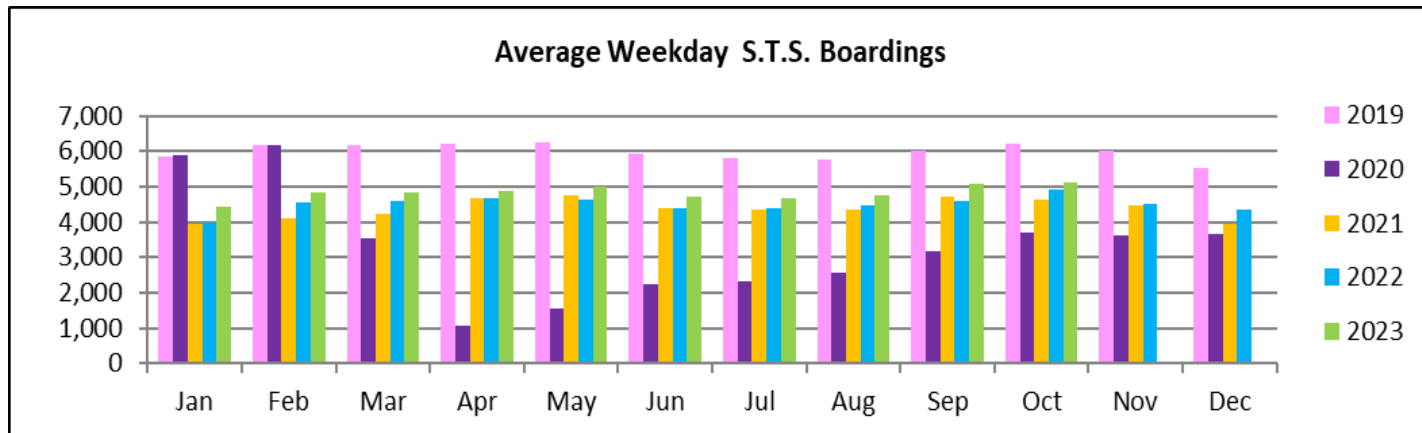
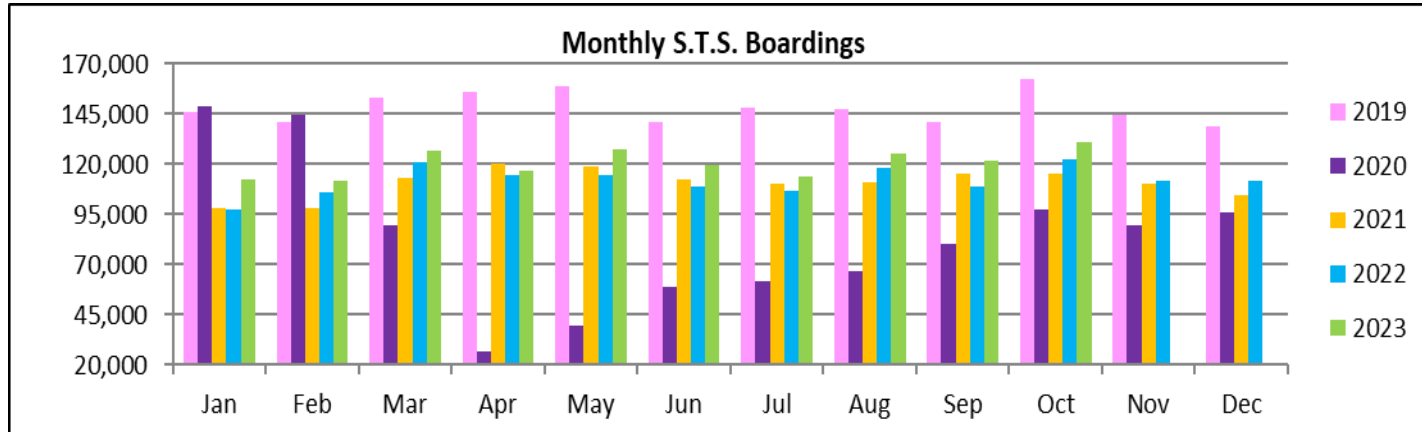


**STS MONTHLY AND AVERAGE DAILY BOARDINGS  
October 2023**

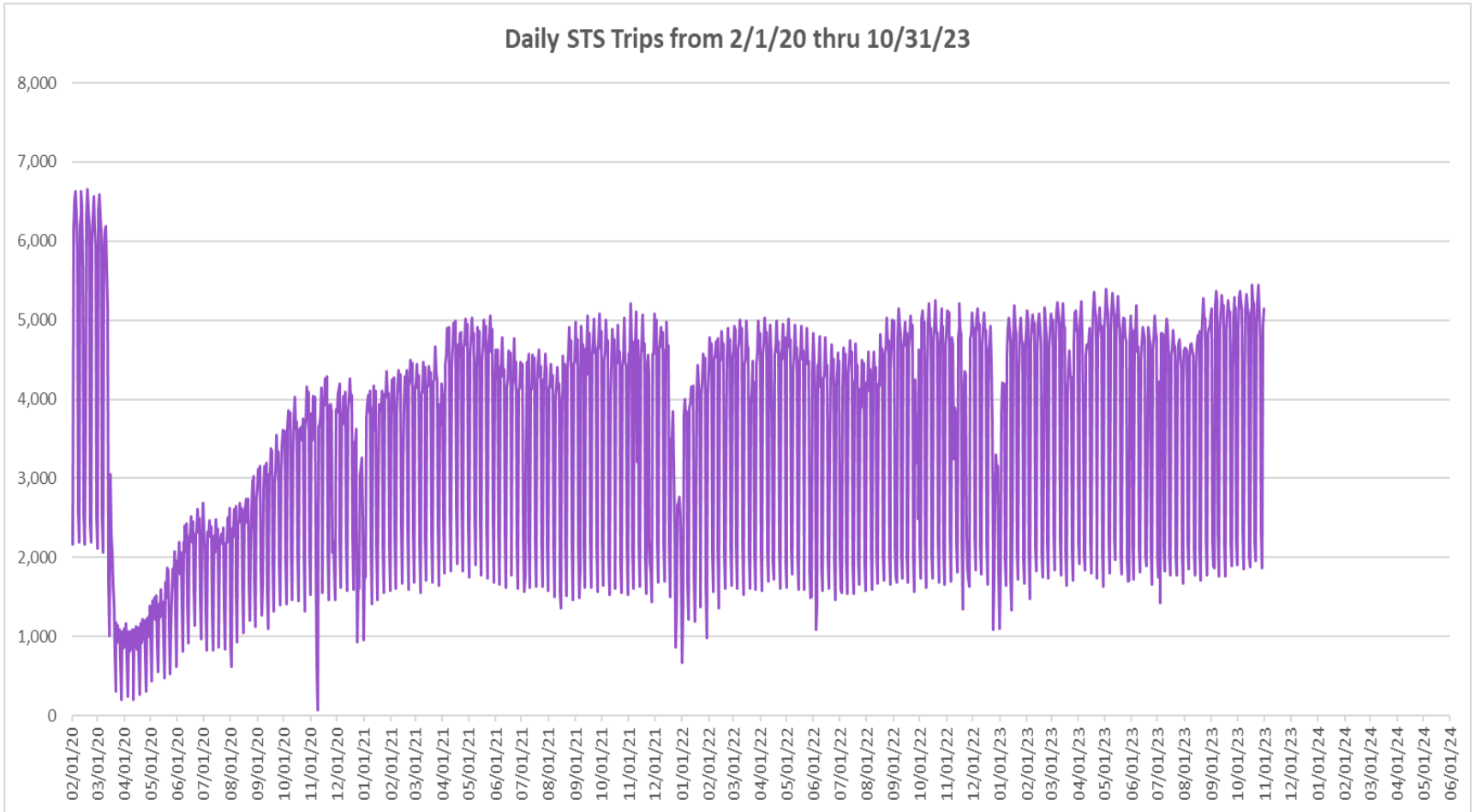
| Measure  | timeline      | Ambulatory     | Wheelchair    | Total Clients (*) |
|--|---------------|----------------|---------------|-------------------|
| <b>Average Weekday</b>                               | Oct-23        | 4,287          | 834           | <b>5,121</b>      |
| <b>Average Saturday</b>                              | Oct-23        | 1,806          | 400           | <b>2,206</b>      |
| <b>Average Sunday</b>                                | Oct-23        | 1,570          | 325           | <b>1,895</b>      |
| <b>Total Monthly</b>                                 | <b>Oct-23</b> | <b>109,386</b> | <b>21,572</b> | <b>130,958</b>    |
| <b>Average Weekday</b>                               | Oct-22        | 4,049          | 861           | <b>4,910</b>      |
| <b>Average Saturday</b>                              | Oct-22        | 1,760          | 371           | <b>2,131</b>      |
| <b>Average Sunday</b>                                | Oct-22        | 1,389          | 296           | <b>1,685</b>      |
| <b>Total Monthly</b>                                 | <b>Oct-22</b> | <b>100,781</b> | <b>21,408</b> | <b>122,189</b>    |
| <b>Average Weekday</b>                               | Oct-21        | 3,793          | 823           | <b>4,615</b>      |
| <b>Average Saturday</b>                              | Oct-21        | 1,655          | 412           | <b>2,067</b>      |
| <b>Average Sunday</b>                                | Oct-21        | 1,300          | 272           | <b>1,572</b>      |
| <b>Total Monthly</b>                                 | <b>Oct-21</b> | <b>94,422</b>  | <b>20,700</b> | <b>115,122</b>    |
| <b>% Change Current vs. October 2022 Weekday</b>     |               | 5.9%           | -3.1%         | 4.3%              |
| <b>% Change Current vs. October 2022 Saturday</b>    |               | 2.6%           | 7.8%          | 3.5%              |
| <b>% Change Current vs. October 2022 Sunday</b>      |               | 13.0%          | 10.0%         | 12.5%             |
| <b>% Change Current vs. October 2022 Month Total</b> |               | <b>8.5%</b>    | <b>0.8%</b>   | <b>7.2%</b>       |
| <b>% Change Current vs. October 2021 Weekday</b>     |               | 13.0%          | 1.4%          | 11.0%             |
| <b>% Change Current vs. October 2021 Saturday</b>    |               | 9.1%           | -3.1%         | 6.7%              |
| <b>% Change Current vs. October 2021 Sunday</b>      |               | 20.7%          | 19.5%         | 20.5%             |
| <b>% Change Current vs. October 2021 Month Total</b> |               | <b>15.8%</b>   | <b>4.2%</b>   | <b>13.8%</b>      |

(\*) Trip count data provided by STS contractor.

## TOTAL MONTHLY AND AVERAGE WEEKDAY RIDERSHIP YEAR OVER YEAR COMPARISON CHARTS – SPECIAL TRANSPORTATION SERVICES (S.T.S.)

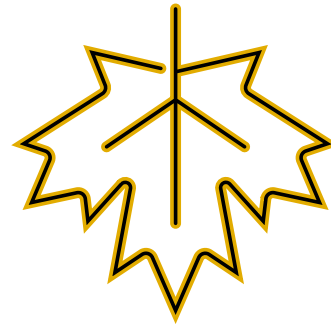
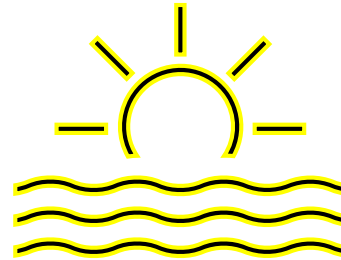
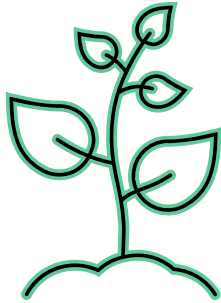


## DAILY STS RIDERSHIP SINCE FEBRUARY 1, 2020

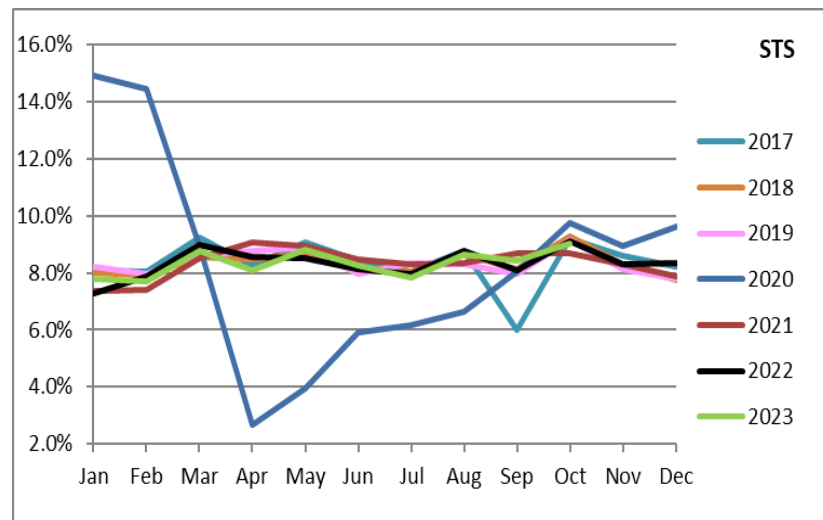
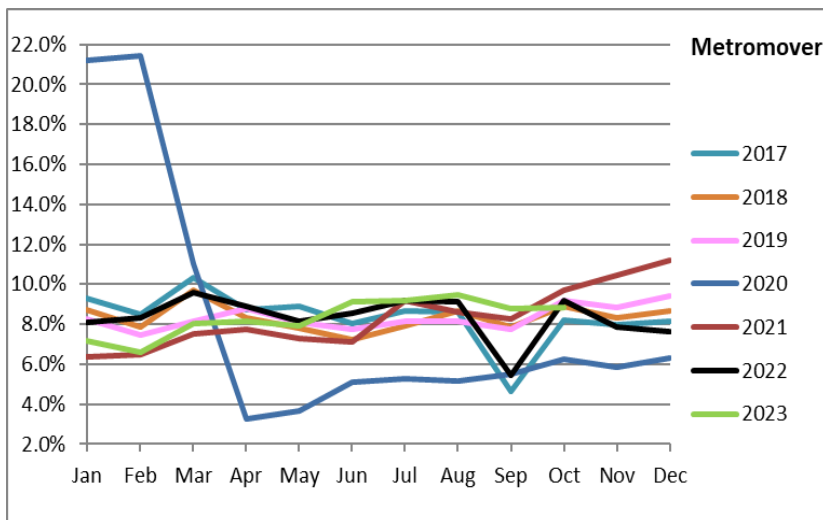
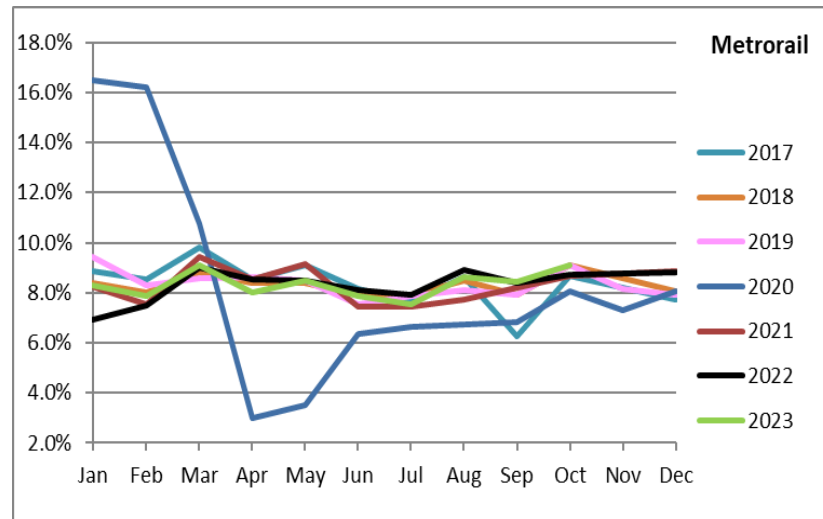
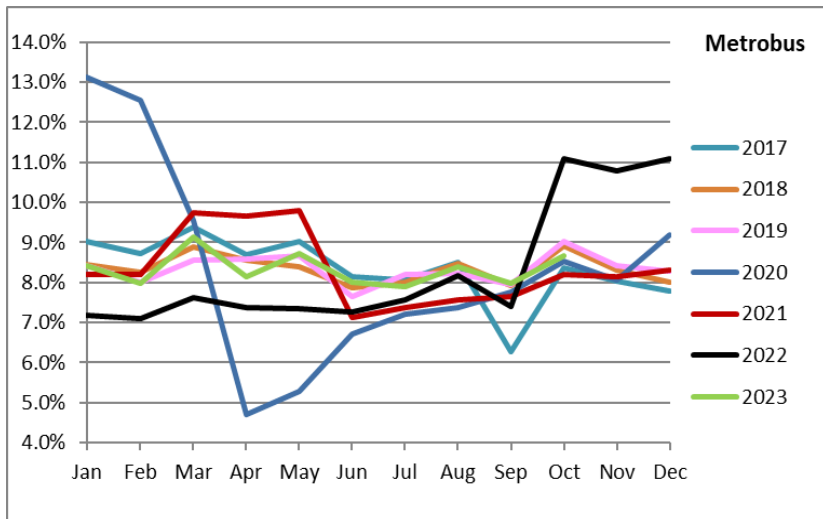


- (1) There was no service (for any of the four modes) on 9/28/22 as a result of Hurricane Ian.
- (2) The dip at the start of the second week of November 2020 is due to Hurricane Eta.
- (3) Periodic (weekly) variations are prominent, since weekday ridership is almost always significantly higher than weekend or holiday ridership.

# Ridership Seasonality



# RIDERSHIP SEASONALITY – PERCENT RIDERSHIP SHARE BY MONTH AND CALENDAR YEAR FOR EACH MODE



Note: the prominent dips seen in the fall of 2017 and beginning in the spring of 2020 are due to Hurricane Irma and the SARS-CoV-2 pandemic, respectively. Reductions in Bus and Rail ridership share seen beginning in June 2021 are due to reinstatement of fares as well changes in reporting tools and datasets, as discussed earlier in this report. The prominent peaks on Metrobus seen beginning October 2022 are due from a changeover from farebox counts to ridership obtained from new automatic passenger counter (APC) technology.