



BUILDING AND NEIGHBORHOOD COMPLIANCE DEPARTMENT (BNC)
BOARD AND CODE ADMINISTRATION DIVISION

MIAMI-DADE COUNTY
PRODUCT CONTROL SECTION
11805 SW 26 Street, Room 208
Miami, Florida 33175-2474
T (786) 315-2590 F (786) 315-2599

www.miamidade.gov/building

NOTICE OF ACCEPTANCE (NOA)

Barrette Outdoor Living, Inc.
740 N. Main Street
Bulls Gap, TN 37711

SCOPE:

This NOA is being issued under the applicable rules and regulations governing the use of construction materials. The documentation submitted has been reviewed and accepted by Miami-Dade County BNC-Product Control Section to be used in Miami Dade County and other areas where allowed by the Authority Having Jurisdiction (AHJ).

This NOA shall not be valid after the expiration date stated below. The Miami-Dade County Product Control Section (In Miami Dade County) and/or the AHJ (in areas other than Miami Dade County) reserve the right to have this product or material tested for quality assurance purposes. If this product or material fails to perform in the accepted manner, the manufacturer will incur the expense of such testing and the AHJ may immediately revoke, modify, or suspend the use of such product or material within their jurisdiction. BNC reserves the right to revoke this acceptance, if it is determined by Miami-Dade County Product Control Section that this product or material fails to meet the requirements of the applicable building code.

This product is approved as described herein, and has been designed to comply with the High Velocity Hurricane Zone of the Florida Building Code.

DESCRIPTION: Extruded PVC Vinyl Fencing

APPROVAL DOCUMENT: Drawing No. USF2010N0AAY, titled "Active Yards Fence Systems", sheets 1 through 11 of 11, prepared by Rick Boyette Consulting, Inc., dated March 10, 2011, signed and sealed by Richard Ovid Boyette, P.E., on March 10, 2011, bearing the Miami-Dade County Product Control Approval stamp with the Notice of Acceptance number and the approval date by the Miami-Dade County Product Control Section.

MISSILE IMPACT RATING: None

LABELING: Each fence section shall bear a permanent label with the manufacturer's name or logo, Bulls Gap, TN and the following statement: "Miami-Dade County Product Control Approved", unless otherwise noted herein.

RENEWAL of this NOA shall be considered after a renewal application has been filed and there has been no change in the applicable building code negatively affecting the performance of this product.

TERMINATION of this NOA will occur after the expiration date or if there has been a revision or change in the materials, use, and/or manufacture of the product or process. Misuse of this NOA as an endorsement of any product, for sales, advertising or any other purposes shall automatically terminate this NOA. Failure to comply with any section of this NOA shall be cause for termination and removal of NOA.

ADVERTISEMENT: The NOA number preceded by the words Miami-Dade County, Florida, and followed by the expiration date may be displayed in advertising literature. If any portion of the NOA is displayed, then it shall be done in its entirety.

INSPECTION: A copy of this entire NOA shall be provided to the user by the manufacturer or its distributors and shall be available for inspection at the job site at the request of the Building Official.

This NOA consists of this page 1, evidence submitted page E-1 as well as approval document mentioned above. The submitted documentation was reviewed by **Helmy A. Makar, P.E., M.S.**



Helmy A. Makar
04/07/2011

NOA No. 10-1217.02
Expiration Date: 04/07/2016
Approval Date: 04/07/2011

Barrette Outdoor Living, Inc.

NOTICE OF ACCEPTANCE: EVIDENCE SUBMITTED

A. DRAWINGS

1. *Drawing No. USF2010N0AAY, titled " Active Yards Fence Systems ", sheets 1 through 11 of 11, prepared by Rick Boyette Consulting, Inc., dated March 10, 2011, signed and sealed by Richard Ovid Boyette, P.E., on March 10, 2011.*

B. TESTS

1. *Test report on Uniform Static Air Pressure Test, prepared by Architectural Testing, Report # 97220.01-119-18, dated August 6, 2010, signed and sealed by Joseph A. Reed, P.E.*

C. CALCULATIONS

1. *Calculation to comply with FBC 2007 edition, 3 sheets, prepared by Rick Boyette Consulting, Inc., dated January 26, 2009, signed and sealed by Richard Boyette, P.E.*

D. QUALITY ASSURANCE

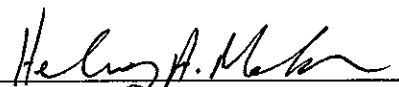
1. *By Miami-Dade County Building and neighborhood Compliance Department (BNC).*

E. MATERIAL CERTIFICATIONS

1. *Extruded Profile (Phantom) Specification sheets.*

F. STATEMENTS

1. *Letter regarding the lack of financial interest, prepared by Rick Boyette Consulting, Inc., dated August 19, 2010, signed and sealed by Richard Boyette, P.E.*



Helmy A. Makar, P.E., M.S.
BNC, Product Control Unit Supervisor
NOA No. 10-1217.02
Expiration Date: 04/07/2016
Approval Date: 04/07/2011

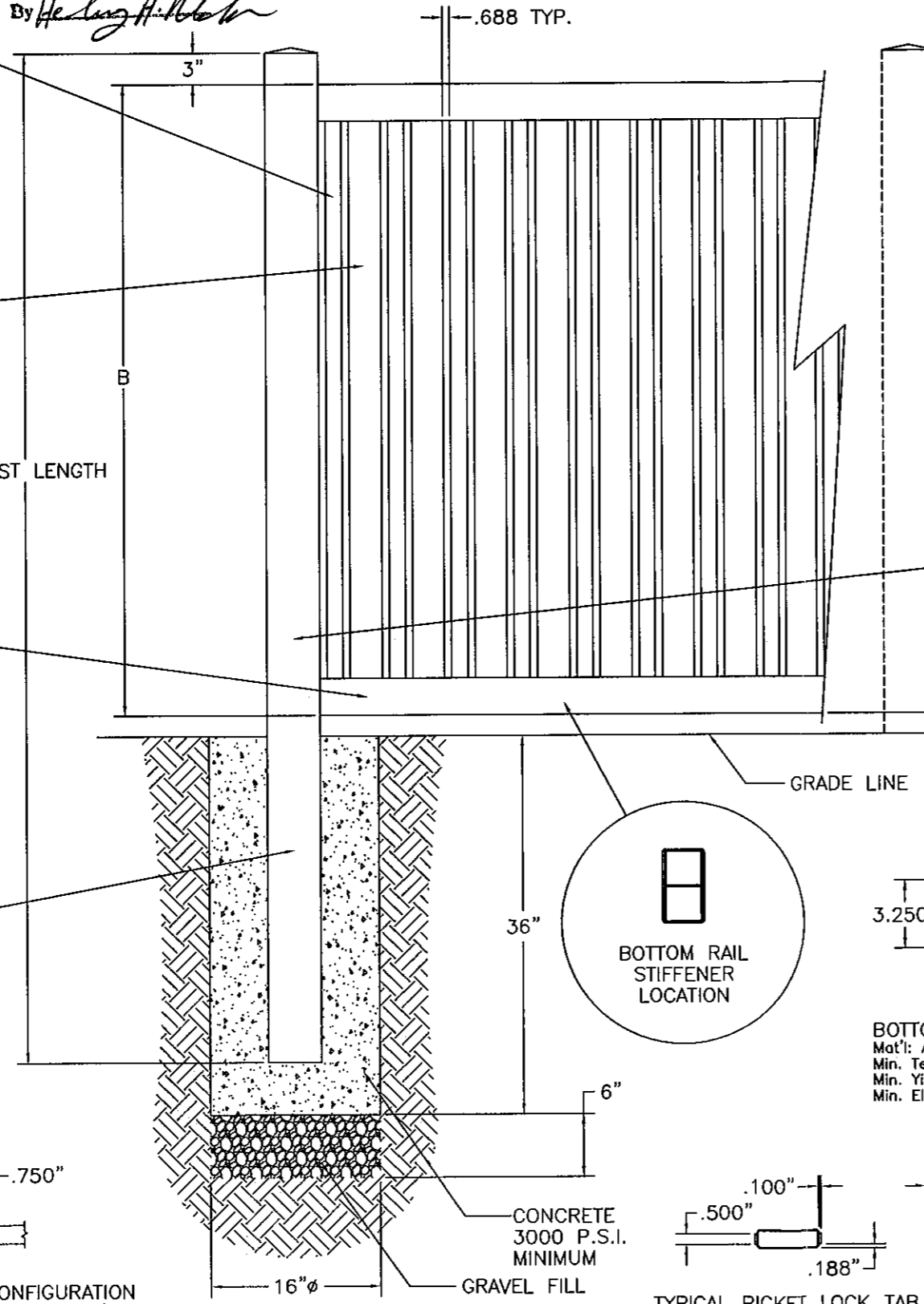
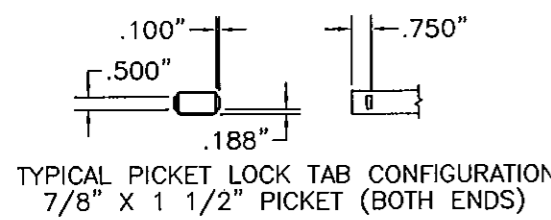
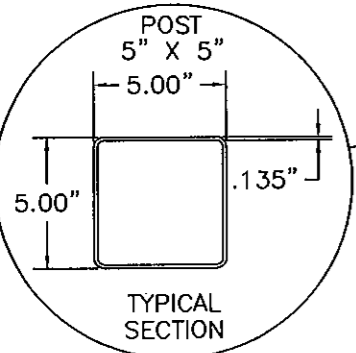
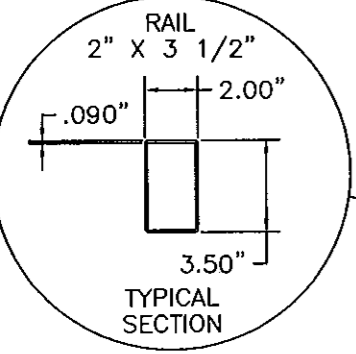
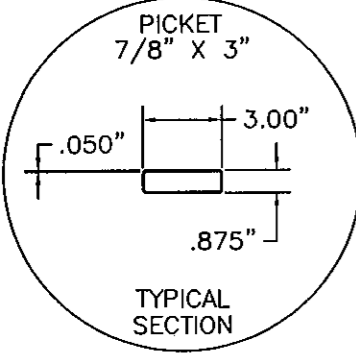
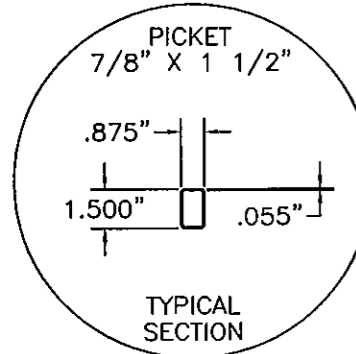
8' CYPRESS CLOSED ALTERNATING PICKET PANEL

CONFIGURATION DESIGNATION	NOMINAL PANEL HEIGHT	A	B
CYPRESS CLOSED ALTERNATING 4'	4'	84"	48 1/2"
CYPRESS CLOSED ALTERNATING 5'	5'	96"	60"

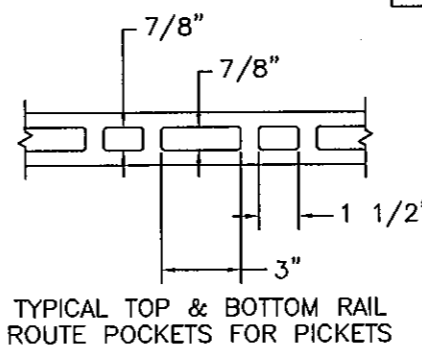
Approved as complying with the Florida Building Code
 Date 04/07/2011
 NOA# 0-1217-02
 Miami Dade Product Control

By *Richard Ovid Boyette*

WIND LOAD RATING
 THIS FENCE, ITS VERTICAL SUPPORTS AND FOUNDATIONS, ARE IN COMPLIANCE WITH 2007 FLORIDA BUILDING CODE WITH 2009 SUPPLEMENT SEC.1612.2.1; ASCE 7-05 SEC. 6.5.14. THIS FENCE IS APPROVED FOR SUSTAINED WIND VELOCITY OF 75 MPH (90 MPH FOR 3 SECOND GUST) WHEN THE POST CENTERS ARE LOCATED 96" ON CENTER.



POSTS LOCATED 96" ON CENTER

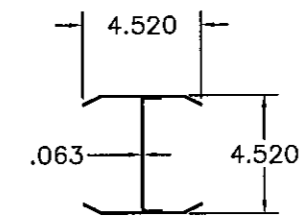


PVC MATERIAL SPECIFICATIONS

ASTM Cell Classification 1-40323-13-0101 (D4216)

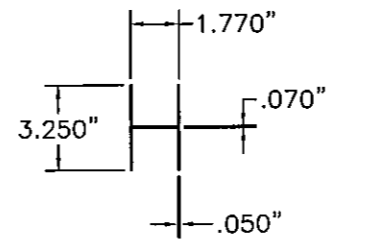
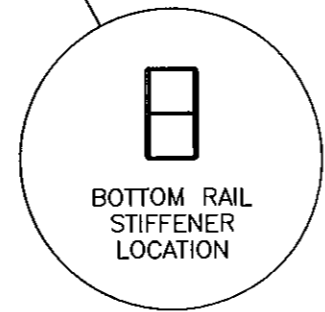
Specifications	Value	ASTM
Specific Gravity (±0.02) 0.125" Specimen	1.45	D-792
Izod Impact FT*lbs/in notch	17.0	D-256
Tensile Yield Strength, PSI	6,200	D-638
Tensile Modulus, PSI	365,000	D-638
Flexural Yield Strength, PSI	12,000	D-790
Flexural Modulus, PSI	410,000	D-790
DTUL@264 PSI, Degrees Celsius	72	D-648
TiO2 - Titanium Dioxide UV Inhibitor	10/100	-

PVC FENCE (ON SITE KIT ASSEMBLED STYLE)
 8' WIDE SECTION CYPRESS CLOSED ALTERNATING PICKET

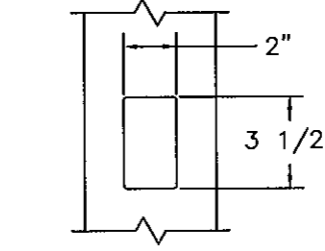


POST STIFFENER
 Mat'l: Commercial Quality
 ASTM-A4569-CS-TYPE B
 Chemically Treated Dry Galvanized
 Min. Tensile: 50 KSI
 Min. Yield: 38 KSI
 Min. Elongation: 20%

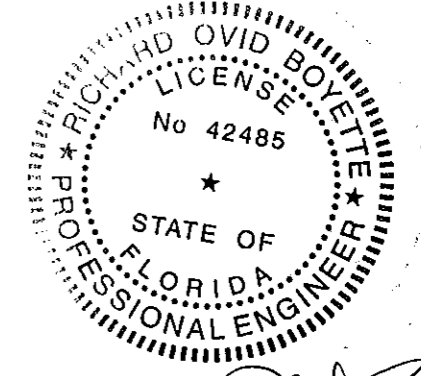
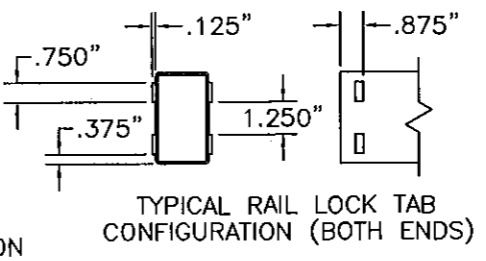
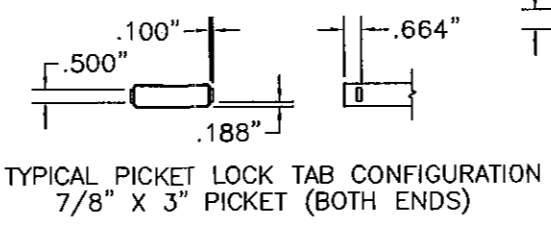
DRAWING NO. USF2010NOAAY
 SHEET 1 OF 11
 CONFIGURATION AY19
 DATE: 2/26/2010
 BARRETTE OUTDOOR LIVING
 7830 FREEWAY CIRCLE
 MIDDLEBURG HEIGHTS, OH 44130
 440-891-0790



BOTTOM RAIL STIFFENER
 Mat'l: Aluminum 6005-T5 or 6061-T6
 Min. Tensile: 38 KSI
 Min. Yield: 35 KSI
 Min. Elongation: 8%



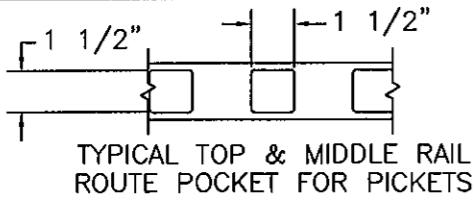
TYPICAL POST ROUTE POCKET FOR RAILS



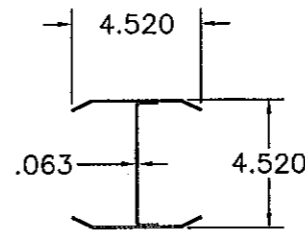
Richard Ovid Boyette
 APPROVED MAR 10 2011

Richard Boyette, FL P.E. 42485
 Rick Boyette Consulting, Inc. CoA #9707
 4031 Coconut Boulevard
 Royal Palm Beach, Florida 33411
 (561) 790-5766

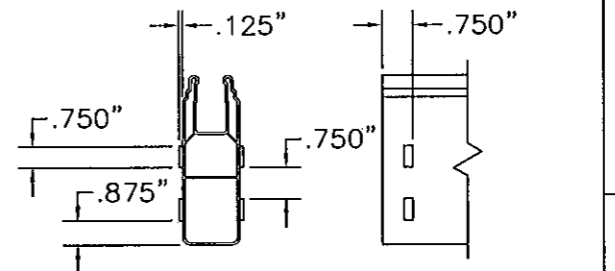
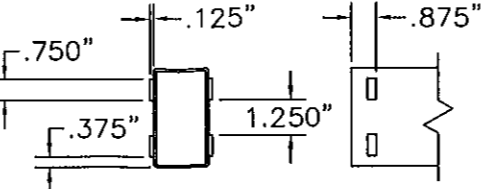
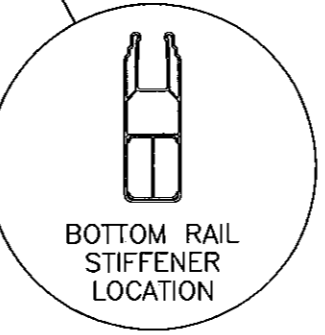
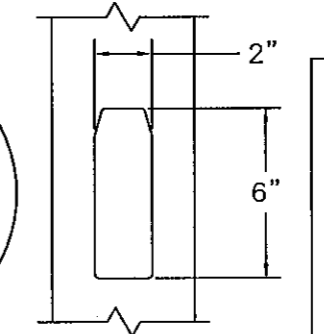
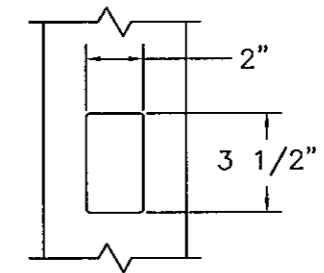
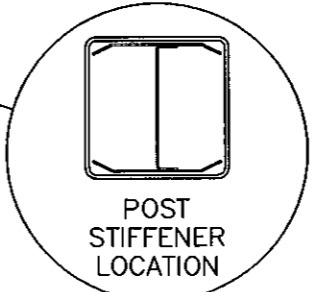
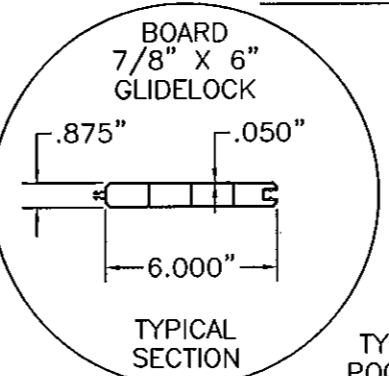
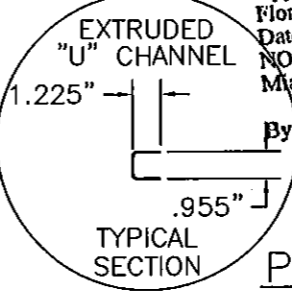
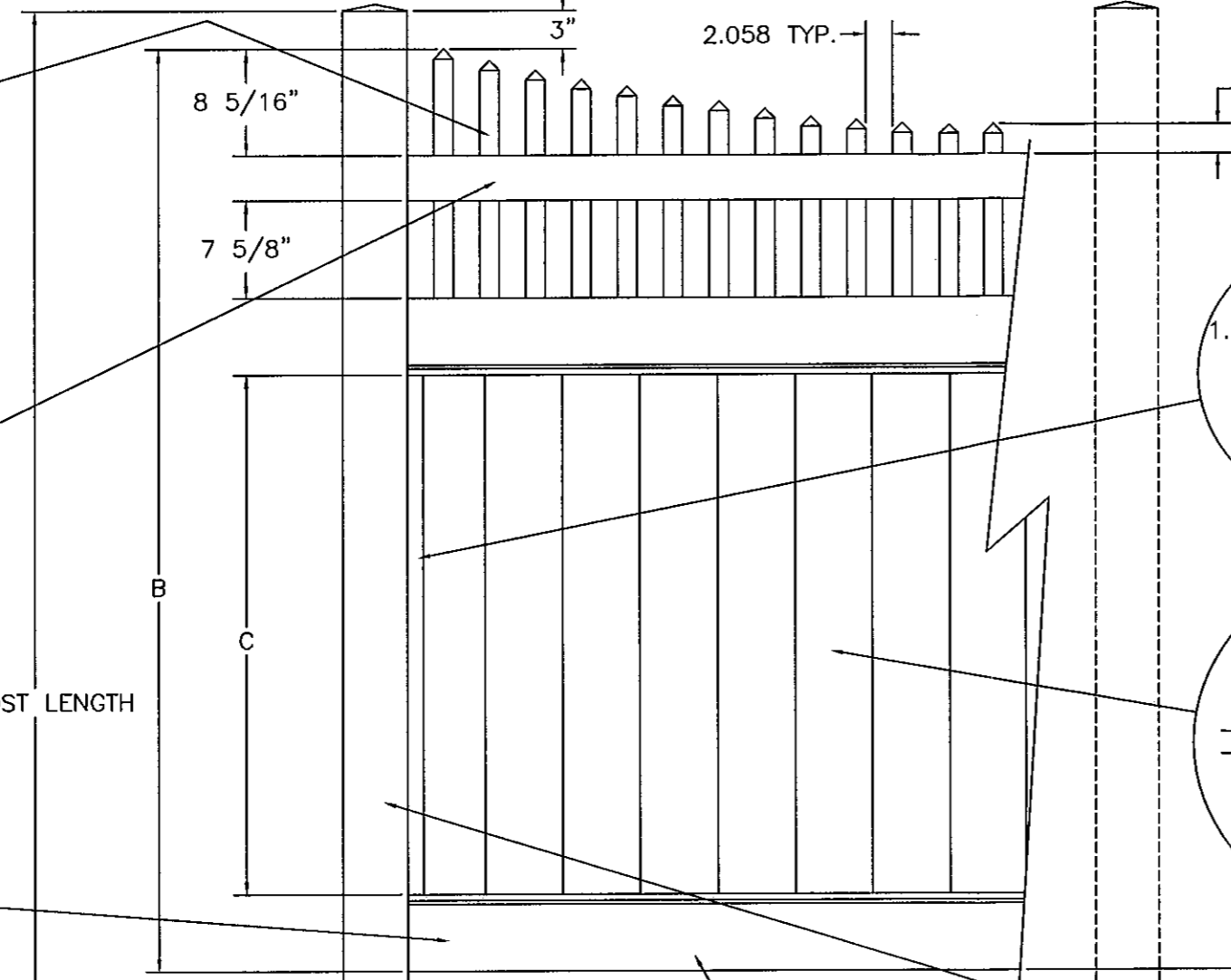
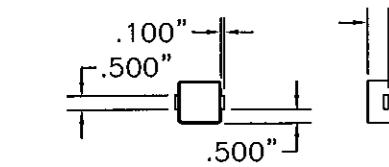
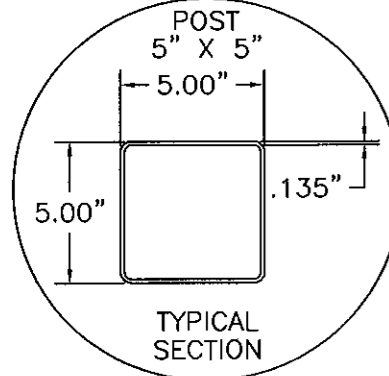
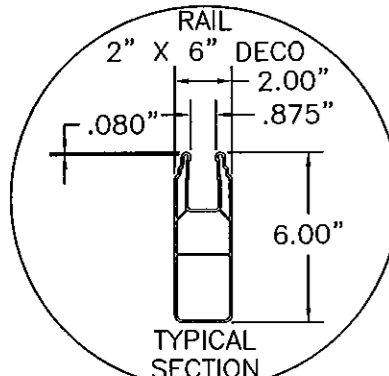
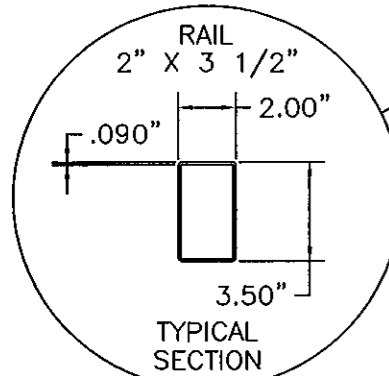
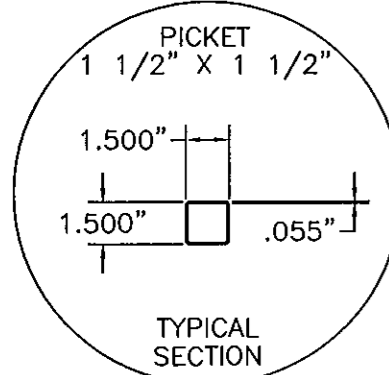
POSTS LOCATED 96" ON CENTER



8' ASPEN OPEN TOP SCALLOP PANEL				
CONFIGURATION DESIGNATION	NOMINAL PANEL HEIGHT	A	B	C
ASPEN OPEN TOP SCALLOP 4'	4'	84"	48"	16 9/16"
ASPEN OPEN TOP SCALLOP 5'	5'	96"	60"	28 9/16"
ASPEN OPEN TOP SCALLOP 6'	6'	108"	72"	40 9/16"



WIND LOAD RATING
 THIS FENCE, ITS VERTICAL SUPPORTS AND FOUNDATIONS, ARE IN COMPLIANCE WITH 2007 FLORIDA BUILDING CODE WITH 2009 SUPPLEMENT SEC.1612.2.1; ASCE 7-05 SEC. 6.5.14. THIS FENCE IS APPROVED FOR SUSTAINED WIND VELOCITY OF 75 MPH (90 MPH FOR 3 SECOND GUST) WHEN THE POST CENTERS ARE LOCATED 96" ON CENTER.



POST STIFFENER
 Mat'l: Commercial Quality
 ASTM-A4569-CS-TYPE B
 Chemically Treated Dry
 Galvanized
 Min. Tensile: 50 KSI
 Min. Yield: 38 KSI
 Min. Elongation: 20%

Approved as complying with the
 Florida Building Code
 Date 04/07/2011
 NOA# 16-1217-02
 Miami Dade Product Control
 By *[Signature]*

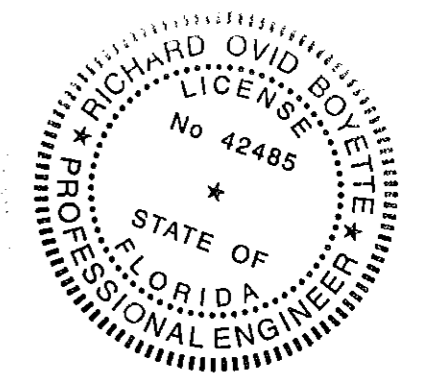
PVC MATERIAL SPECIFICATIONS

ASTM Cell Classification 1-40323-13-0101 (D4216)

Specifications	Value	ASTM
Specific Gravity (±0.02) Specimin	1.45	D-792
Izod Impact FT*lbs/in notch	17.0	D-256
Tensile Yield Strength, PSI	6,200	D-638
Tensile Modulus, PSI	365,000	D-638
Flexural Yield Strength, PSI	12,000	D-790
Flexural Modulus, PSI	410,000	D-790
DTUL@264 PSI, Degrees Celsius	72	D-648
TiO2 - Titanium Dioxide UV Inhibitor	10/100	-

PVC FENCE (ON SITE KIT ASSEMBLED STYLE)
 8' WIDE SECTION ASPEN OPEN TOP SCALLOP

DRAWING NO. USF2010NOAAY
 SHEET 2 OF 11
 CONFIGURATION AY21
 DATE: 2/26/2010
 BARRETTE OUTDOOR LIVING
 7830 FREEWAY CIRCLE
 MIDDLEBURG HEIGHTS, OH 44130
 440-891-0790



[Signature]

APPROVED MAR 10 2011
 Richard Boyette, FL P.E. 42485
 Rick Boyette Consulting, Inc. CoA #9707
 4031 Coconut Boulevard
 Royal Palm Beach, Florida 33411

TYPICAL PICKET LOCK TAB CONFIGURATION (BOTTOM END ONLY)

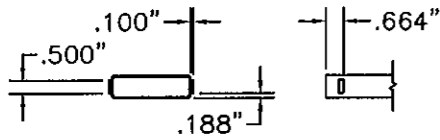
CONCRETE 3000 P.S.I. MINIMUM

TYPICAL TOP RAIL LOCK TAB CONFIGURATION (BOTH ENDS)

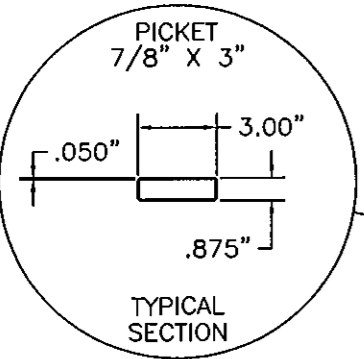
TYPICAL BOTTOM & MIDDLE RAIL LOCK

8' GREENBRIER CLOSED PICKET PANEL

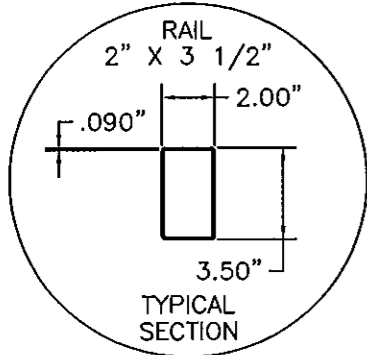
CONFIGURATION DESIGNATION	NOMINAL PANEL HEIGHT	A	B	C
GREENBRIER CLOSED PICKET 3'	3'	60"	36"	22"
GREENBRIER CLOSED PICKET 4'	4'	84"	48 1/2"	34"



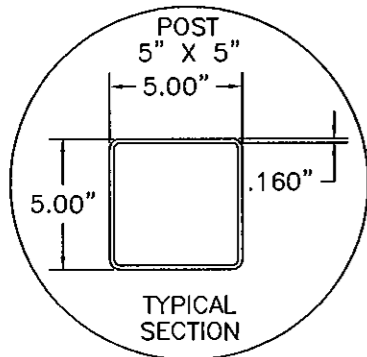
TYPICAL PICKET LOCK TAB CONFIGURATION
7/8" X 3" PICKET (BOTH ENDS)



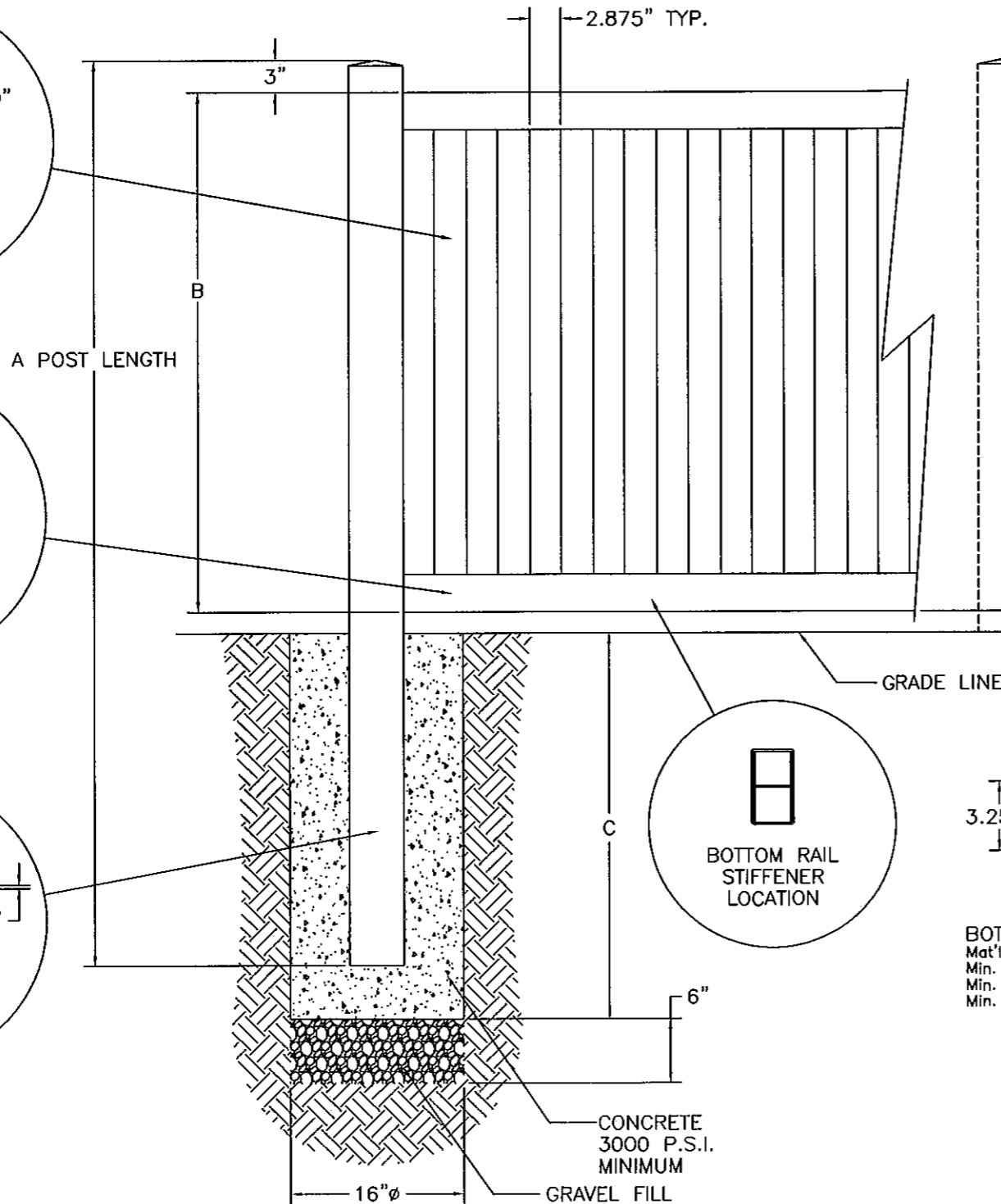
TYPICAL SECTION



TYPICAL SECTION



TYPICAL SECTION



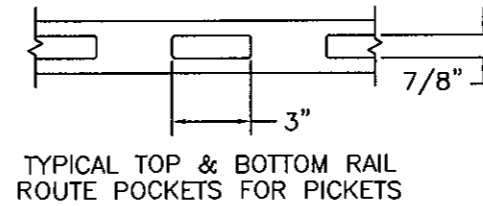
POSTS LOCATED 96" ON CENTER

WIND LOAD RATING
THIS FENCE, ITS VERTICAL SUPPORTS AND FOUNDATIONS, ARE IN COMPLIANCE WITH 2007 FLORIDA BUILDING CODE WITH 2009 SUPPLEMENT SEC.1612.2.1; ASCE 7-05 SEC. 6.5.14. THIS FENCE IS APPROVED FOR SUSTAINED WIND VELOCITY OF 75 MPH (90 MPH FOR 3 SECOND GUST) WHEN THE POST CENTERS ARE LOCATED 96" ON CENTER.

PVC MATERIAL SPECIFICATIONS

ASTM Cell Classification 1-40323-13-0101 (D4216)

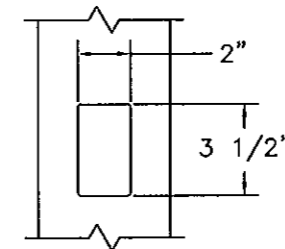
Specifications	Value	ASTM
Specific Gravity (± 0.02) 0.125" Specimen	1.45	D-792
Izod Impact FT*lbs/in notch	17.0	D-256
Tensile Yield Strength, PSI	6,200	D-638
Tensile Modulus, PSI	365,000	D-638
Flexural Yield Strength, PSI	12,000	D-790
Flexural Modulus, PSI	410,000	D-790
DTUL@264 PSI, Degrees Celsius	72	D-648
TiO2 - Titanium Dioxide UV Inhibitor	10/100	-



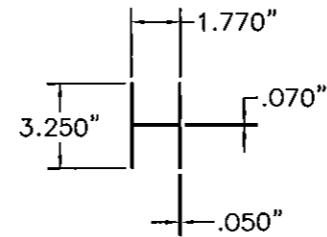
TYPICAL TOP & BOTTOM RAIL
ROUTE POCKETS FOR PICKETS

PVC FENCE (ON SITE KIT ASSEMBLED STYLE)
8' WIDE SECTION GREENBRIER CLOSED PICKET

DRAWING NO. USF2010NOAY
SHEET 3 OF 11
CONFIGURATION AY22
DATE: 2/26/2010
BARRETTE OUTDOOR LIVING
7830 FREEWAY CIRCLE
MIDDLEBURG HEIGHTS, OH 44130
440-891-0790

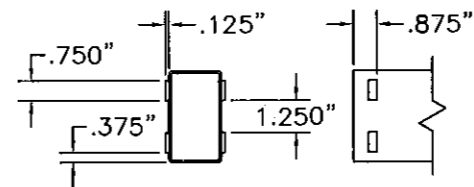


TYPICAL POST ROUTE
POCKET FOR RAILS

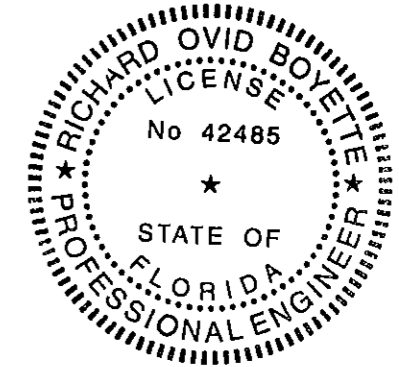


BOTTOM RAIL STIFFENER
Mat'l: Aluminum 6005-T5 or 6061-T6
Min. Tensile: 38 KSI
Min. Yield: 35 KSI
Min. Elongation: 8%

Approved as complying with the
Florida Building Code
Date 04/07/2011
NOA# 10-1217-02
Miami Dade Product Control
By *[Signature]*



TYPICAL RAIL LOCK TAB
CONFIGURATION (BOTH ENDS)



[Signature]
APPROVED MAR 10 2011

Richard Boyette, FL P.E. 42485
Rick Boyette Consulting, Inc. CoA #9707
4031 Coconut Boulevard
Royal Palm Beach, Florida 33411
(561) 790-5766

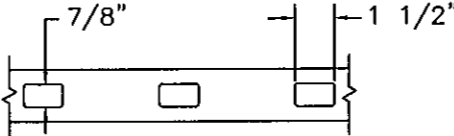
WIND LOAD RATING

THIS FENCE, ITS VERTICAL SUPPORTS AND FOUNDATIONS, ARE IN COMPLIANCE WITH 2007 FLORIDA BUILDING CODE WITH 2009 SUPPLEMENT SEC.1612.2.1; ASCE 7-05 SEC. 6.5.14. THIS FENCE IS APPROVED FOR SUSTAINED WIND VELOCITY OF 75 MPH (90 MPH FOR 3 SECOND GUST) WHEN THE POST CENTERS ARE LOCATED 96" ON CENTER.

PVC MATERIAL SPECIFICATIONS

ASTM Cell Classification 1-40323-13-0101 (D4216)

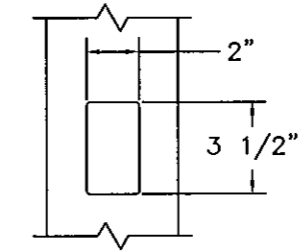
Specifications	Value	ASTM
Specific Gravity (± 0.02)	1.45	D-792
Izod Impact FT*lbs/in notch	17.0	D-256
Tensile Yield Strength, PSI	6,200	D-638
Tensile Modulus, PSI	365,000	D-638
Flexural Yield Strength, PSI	12,000	D-790
Flexural Modulus, PSI	410,000	D-790
DTUL@264 PSI, Degrees Celsius	72	D-648
TiO2 - Titanium Dioxide UV Inhibitor	10/100	-



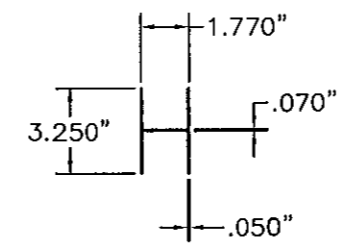
TYPICAL TOP, MIDDLE & BOTTOM RAIL ROUTE POCKET FOR PICKETS

**PVC FENCE (ON SITE KIT ASSEMBLED STYLE)
5" X 8' WIDE SECTION
COTTONWOOD CLOSED PICKET 3-RAIL PANEL**

DRAWING NO. USF2010NOAAY
SHEET 4 OF 11
CONFIGURATION AY23
DATE: 2/26/2010
BARRETTE OUTDOOR LIVING
7830 FREEWAY CIRCLE
MIDDLEBURG HEIGHTS, OH 44130
440-891-0790

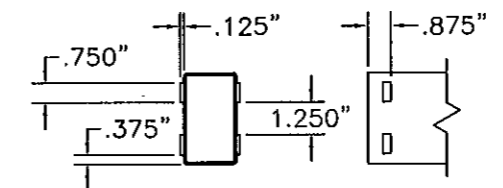


TYPICAL POST ROUTE POCKET FOR RAILS

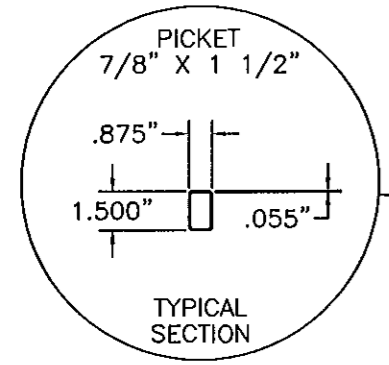


BOTTOM RAIL STIFFENER
Mat'l: Aluminum 6005-T5 or 6061-T6
Min. Tensile: 38 KSI
Min. Yield: 35 KSI
Min. Elongation: 8%

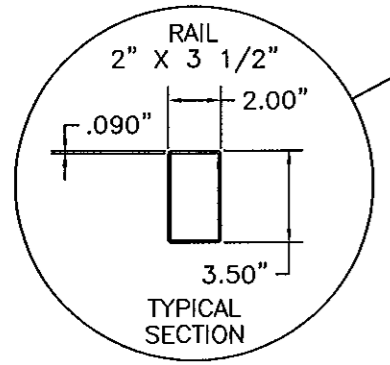
Approved as complying with the Florida Building Code
Date 04/07/2011
NOA# 10-1217-02
Miami Dade Product Control
By *[Signature]*



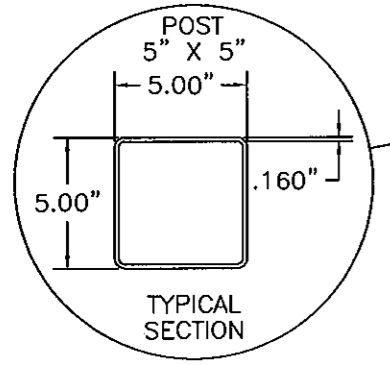
TYPICAL RAIL LOCK TAB CONFIGURATION (BOTH ENDS)



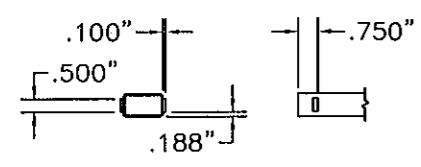
TYPICAL SECTION



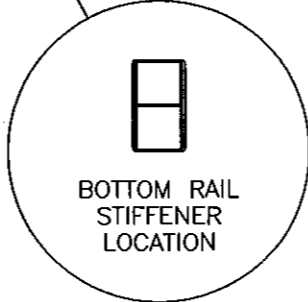
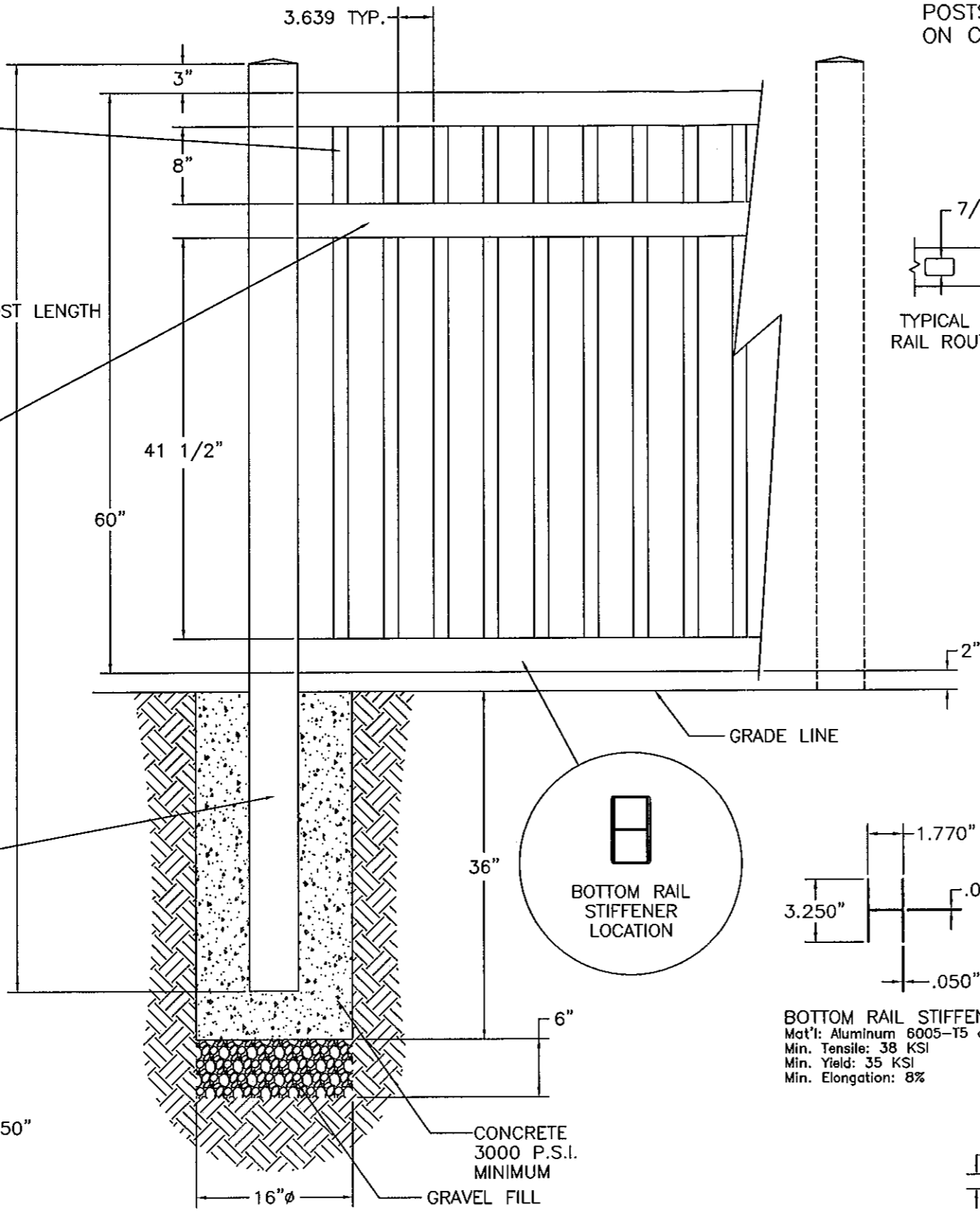
TYPICAL SECTION



TYPICAL SECTION



TYPICAL PICKET LOCK TAB CONFIGURATION (BOTH ENDS)



BOTTOM RAIL STIFFENER LOCATION

[Signature]

APPROVED MAR 10 2011

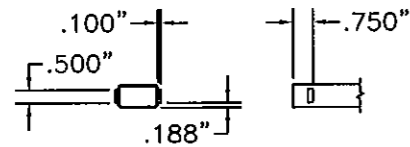
Richard Boyette, FL P.E. 42485
Rick Boyette Consulting, Inc. CoA #9707
4031 Coconut Boulevard
Royal Palm Beach, Florida 33411
(561) 790-5766

8' HAWTHORN CLOSED PICKET PANEL

CONFIGURATION DESIGNATION	NOMINAL PANEL HEIGHT	A	B	C
HAWTHORN CLOSED PICKET 3'	3'	60"	36"	22"
HAWTHORN CLOSED PICKET 4'	4'	84"	48 1/2"	34"

WIND LOAD RATING

THIS FENCE, ITS VERTICAL SUPPORTS AND FOUNDATIONS, ARE IN COMPLIANCE WITH 2007 FLORIDA BUILDING CODE WITH 2009 SUPPLEMENT SEC.1612.2.1; ASCE 7-05 SEC. 6.5.14. THIS FENCE IS APPROVED FOR SUSTAINED WIND VELOCITY OF 75 MPH (90 MPH FOR 3 SECOND GUST) WHEN THE POST CENTERS ARE LOCATED 96" ON CENTER.



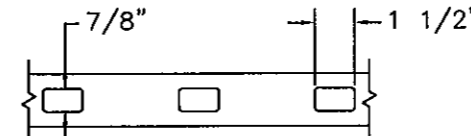
TYPICAL PICKET LOCK TAB CONFIGURATION (BOTH ENDS)

POSTS LOCATED 96" ON CENTER

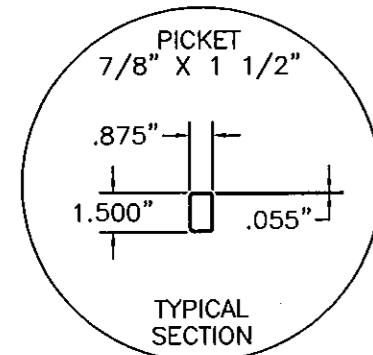
PVC MATERIAL SPECIFICATIONS

ASTM Cell Classification 1-40323-13-0101 (D4216)

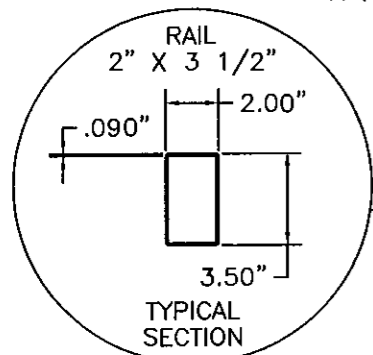
Specifications	Value	ASTM
Specific Gravity (± 0.02) 0.125" Specimen	1.45	D-792
Izod Impact FT*lbs/in notch	17.0	D-256
Tensile Yield Strength, PSI	6,200	D-638
Tensile Modulus, PSI	365,000	D-638
Flexural Yield Strength, PSI	12,000	D-790
Flexural Modulus, PSI	410,000	D-790
DTUL@264 PSI, Degrees Celsius	72	D-648
TiO2 - Titanium Dioxide UV Inhibitor	10/100	-



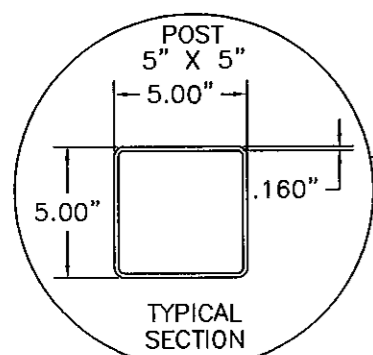
TYPICAL TOP & BOTTOM RAIL ROUTE POCKET FOR PICKETS



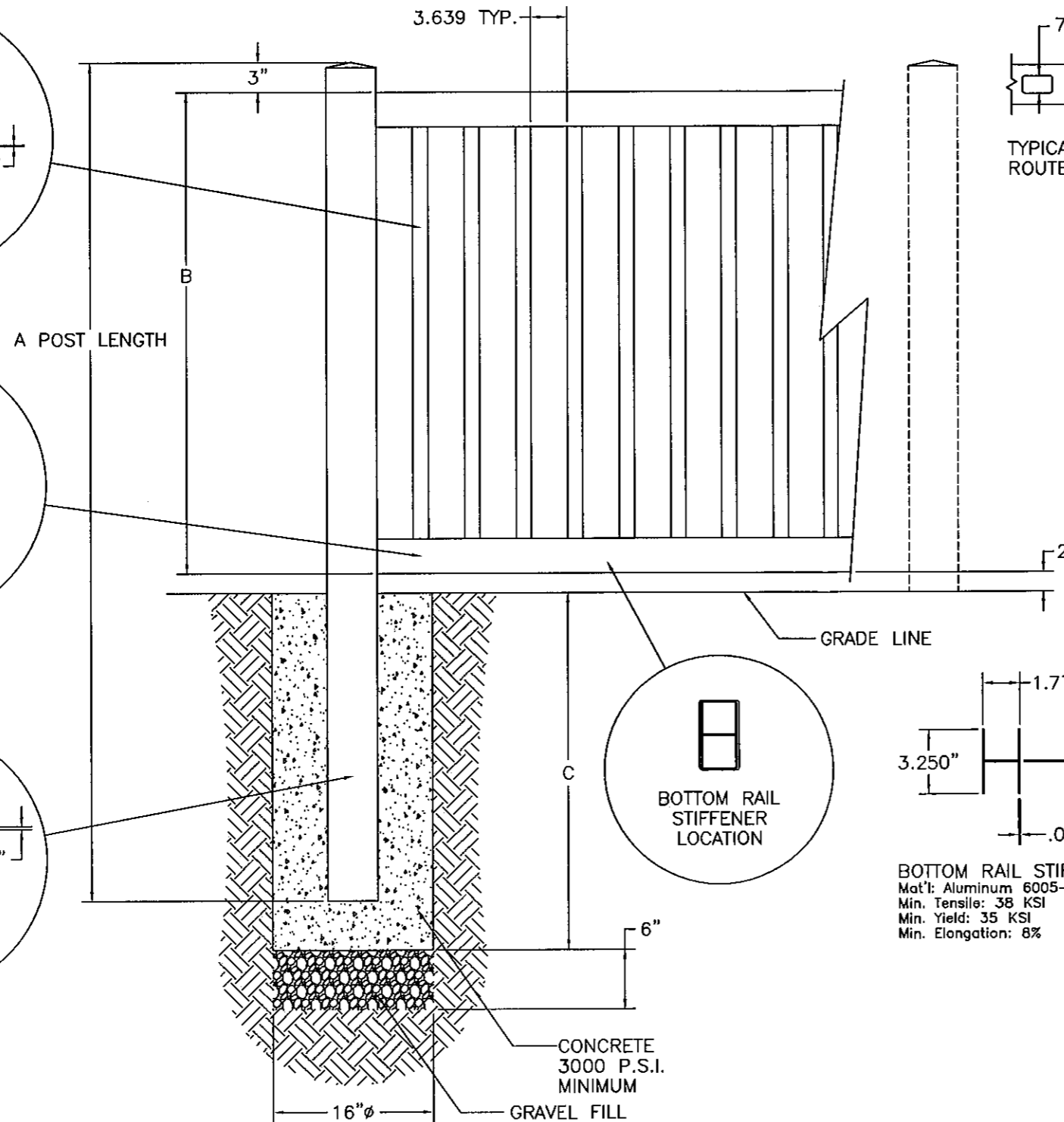
TYPICAL SECTION



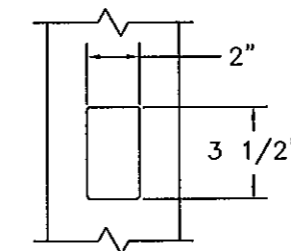
TYPICAL SECTION



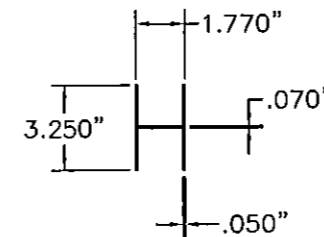
TYPICAL SECTION



PVC FENCE (ON SITE KIT ASSEMBLED STYLE)
8' WIDE SECTION HAWTHORN CLOSED PICKET

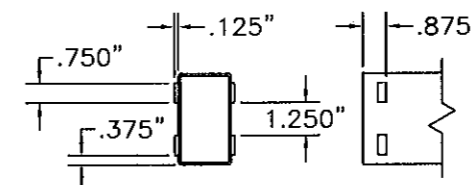


TYPICAL POST ROUTE POCKET FOR RAILS



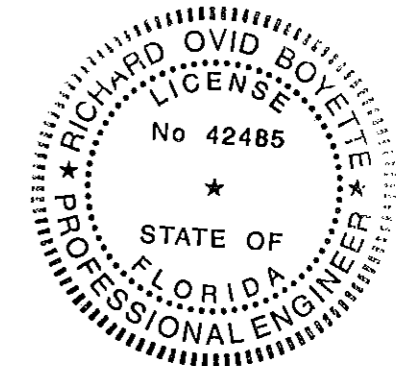
BOTTOM RAIL STIFFENER
Mat'l: Aluminum 6005-T5 or 6061-T6
Min. Tensile: 38 KSI
Min. Yield: 35 KSI
Min. Elongation: 8%

Approved as complying with the Florida Building Code
Date 04/07/2011
NOA# 10-1217-02
Miami Dade Product Control
By *Richard A. Boyette*



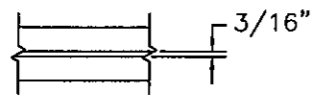
TYPICAL RAIL LOCK TAB CONFIGURATION (BOTH ENDS)

DRAWING NO. USF2010NOAAY
SHEET 5 OF 11
CONFIGURATION AY26
DATE: 2/26/2010
BARRETTE OUTDOOR LIVING
7830 FREEWAY CIRCLE
MIDDLEBURG HEIGHTS, OH 44130
440-891-0790



Richard Ovid Boyette

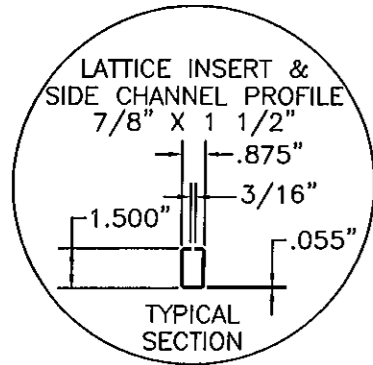
APPROVED MAR 10 2011
Richard Boyette, FL P.E. 42485
Rick Boyette Consulting, Inc. CoA #9707
4031 Coconut Boulevard
Royal Palm Beach, Florida 33411
(561) 790-5766



8' ARROWWOOD LATTICE TOP PANEL				
CONFIGURATION DESIGNATION	HEIGHT	A	B	C
ARROWHEAD LATTICE TOP 4'	4'	84"	48"	19 1/2"
ARROWHEAD LATTICE TOP 5'	5'	96"	60"	31 1/2"
ARROWHEAD LATTICE TOP 6'	6'	108"	72"	43 1/2"

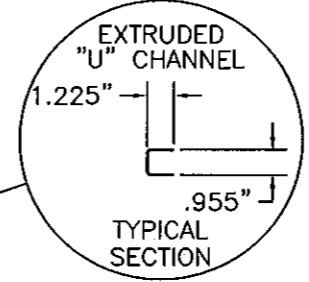
POSTS LOCATED 96" ON CENTER

WIND LOAD RATING
 THIS FENCE, ITS VERTICAL SUPPORTS AND FOUNDATIONS, ARE IN COMPLIANCE WITH 2007 FLORIDA BUILDING CODE WITH 2009 SUPPLEMENT SEC.1612.2.1; ASCE 7-05 SEC. 6.5.14. THIS FENCE IS APPROVED FOR SUSTAINED WIND VELOCITY OF 75 MPH (90 MPH FOR 3 SECOND GUST) WHEN THE POST CENTERS ARE LOCATED 96" ON CENTER.



TYPICAL DECO RAIL ROUTE SLOT FOR LATTICE

14" X 90" X 3/16" THICK LATTICE INSERT



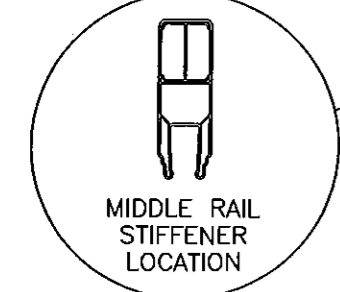
PVC MATERIAL SPECIFICATIONS

ASTM Cell Classification 1-40323-13-0101 (D4216)

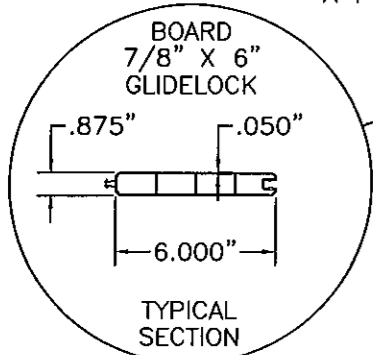
Specifications	Value	ASIM
Specific Gravity (±0.02) Specimin	1.45	D-792
Izod Impact FT*lbs/in notch	17.0	D-256
Tensile Yield Strength, PSI	6,200	D-638
Tensile Modulus, PSI	365,000	D-638
Flexural Yield Strength, PSI	12,000	D-790
Flexural Modulus, PSI	410,000	D-790
DTUL@264 PSI, Degrees Celsius	72	D-648
TI02 - Titanium Dioxide UV Inhibitor	10/100	-

PVC FENCE (ON SITE KIT ASSEMBLED STYLE)

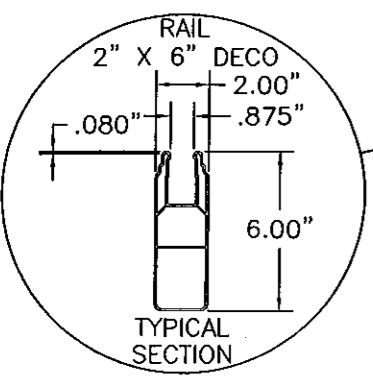
8' WIDE SECTION ARROWWOOD LATTICE TOP



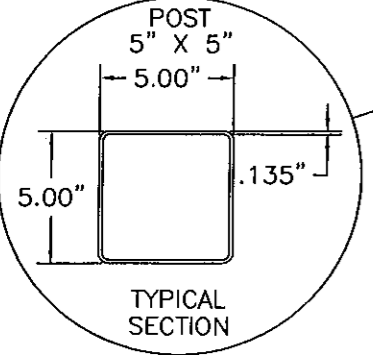
MIDDLE RAIL STIFFENER LOCATION



TYPICAL SECTION

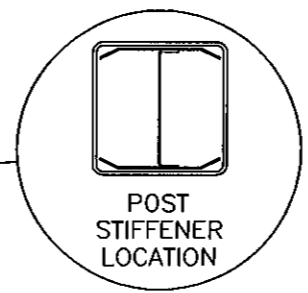


TYPICAL SECTION

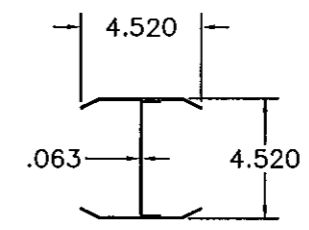


TYPICAL SECTION

A POST LENGTH

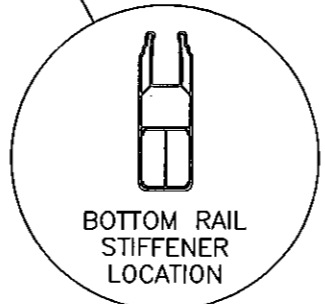
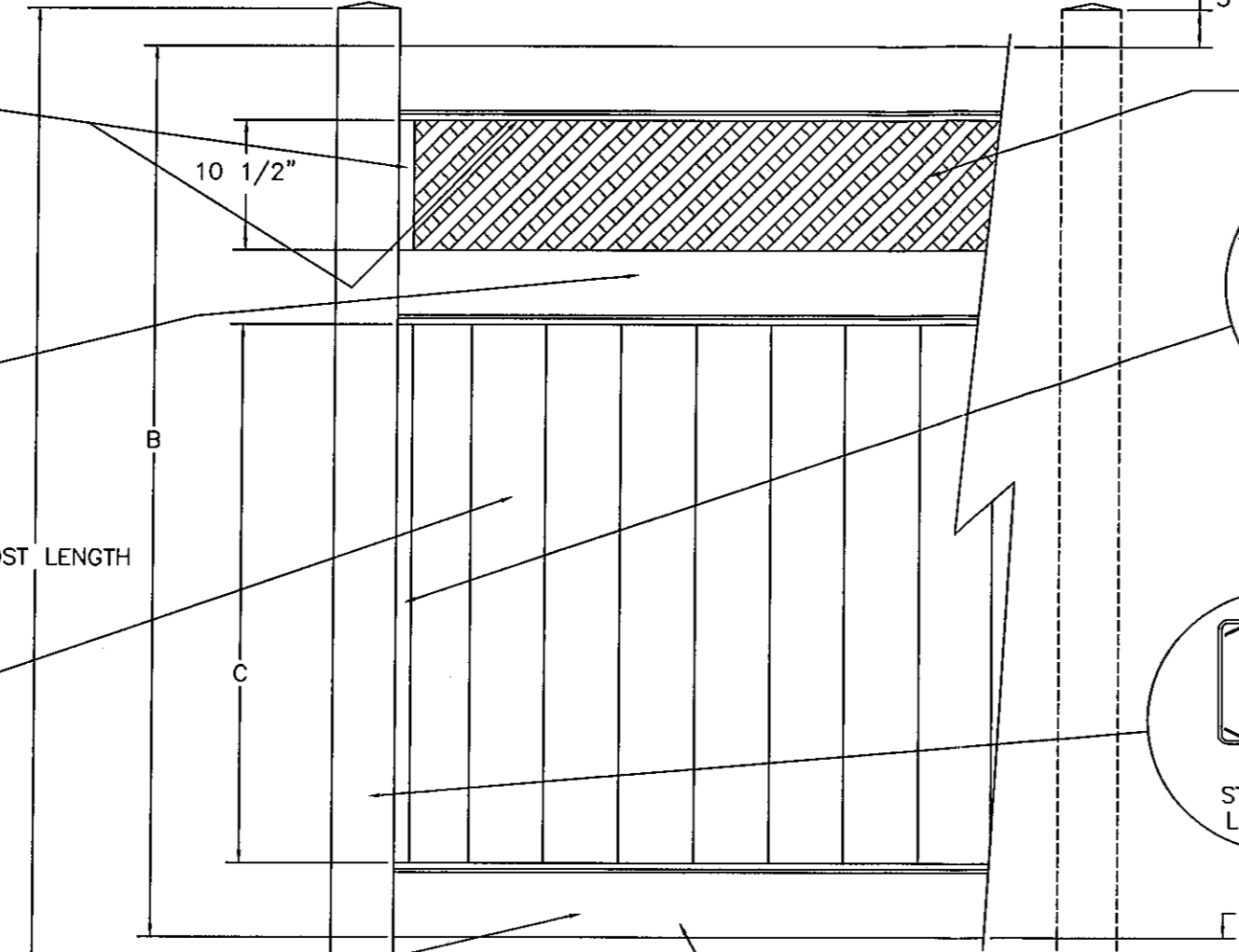


POST STIFFENER LOCATION

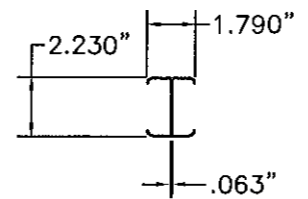


POST STIFFENER
 Mat'l: Commercial Quality
 ASTM-A4569-CS-TYPE B
 Chemically Treated Dry
 Galvanized
 Min. Tensile: 50 KSI
 Min. Yield: 38 KSI
 Min. Elongation: 20%

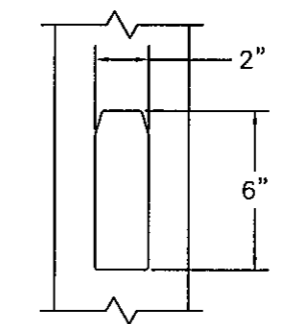
DRAWING NO. USF2010NOAAY
 SHEET 6 OF 11
 CONFIGURATION AY28
 DATE: 2/26/2010
 BARRETTE OUTDOOR LIVING
 7830 FREEWAY CIRCLE
 MIDDLEBURG HEIGHTS, OH 44130
 440-891-0790



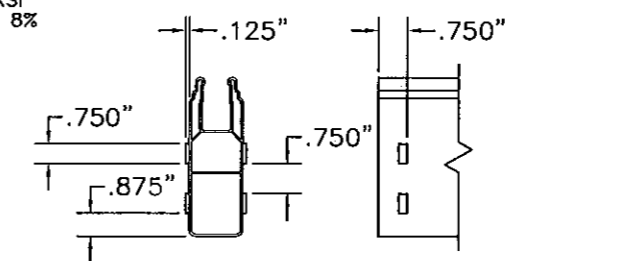
BOTTOM RAIL STIFFENER LOCATION



MIDDLE & BOTTOM RAIL STIFFENER
 Mat'l: Aluminum 6005-T5 or 6061-T6
 Min. Tensile: 38 KSI
 Min. Yield: 35 KSI
 Min. Elongation: 8%

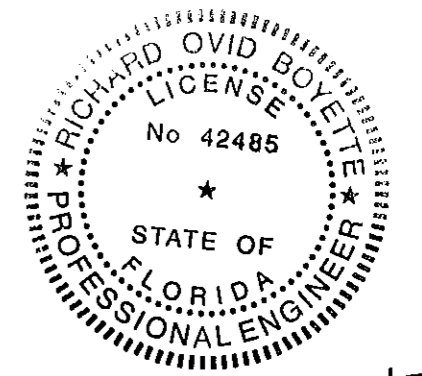


TYPICAL POST ROUTE POCKET FOR RAILS



TYPICAL TOP, BOTTOM, & MIDDLE RAIL LOCK TAB CONFIGURATION (BOTH ENDS)

Approved as complying with the Florida Building Code
 Date 04/07/2011
 NOA# 16-1217-02
 Miami Dade Product Control
 By Helmut A. Mehn



APPROVED MAR 10 2011
 Richard Boyette, FL P.E. 42485
 Rick Boyette Consulting, Inc. CoA #9707
 4031 Coconut Boulevard
 Royal Palm Beach, Florida 33411
 (561) 790-5766

8' DOGWOOD PRIVACY PANEL
(BARBED RAIL OPTION)

CONFIGURATION DESIGNATION	NOMINAL PANEL HEIGHT	A	B	C
DOGWOOD 4'	4'	84"	48"	36"
DOGWOOD 5'	5'	96"	60"	48"
DOGWOOD 6'	6'	108"	72"	60"

POSTS LOCATED 96"
ON CENTER

WIND LOAD RATING
THIS FENCE, ITS VERTICAL SUPPORTS AND FOUNDATIONS, ARE IN COMPLIANCE WITH 2007 FLORIDA BUILDING CODE WITH 2009 SUPPLEMENT SEC.1612.2.1; ASCE 7-05 SEC. 6.5.14. THIS FENCE IS APPROVED FOR SUSTAINED WIND VELOCITY OF 75 MPH (90 MPH FOR 3 SECOND GUST) WHEN THE POST CENTERS ARE LOCATED 96" ON CENTER.

PVC MATERIAL SPECIFICATIONS

ASTM Cell Classification 1-40323-13-0101 (D4216)

Specifications	Value	ASTM
Specific Gravity (± 0.02)	1.45	D-792
Izod Impact FT*lbs/in notch	17.0	D-256
Tensile Yield Strength, PSI	6,200	D-638
Tensile Modulus, PSI	365,000	D-638
Flexural Yield Strength, PSI	12,000	D-790
Flexural Modulus, PSI	410,000	D-790
DTUL@264 PSI, Degrees Celsius	72	D-648
TiO2 - Titanium Dioxide UV Inhibitor	10/100	-

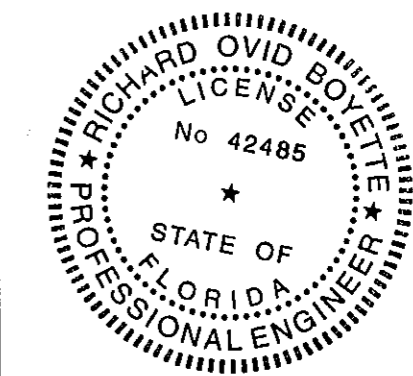
PVC FENCE (ON SITE KIT ASSEMBLED STYLE)

8' WIDE SECTION DOGWOOD PRIVACY

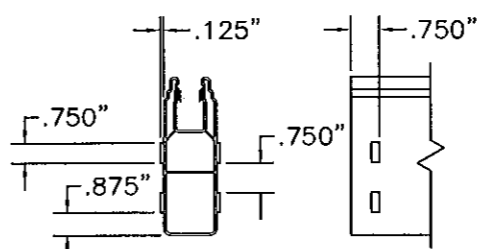
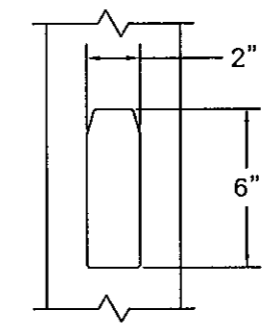
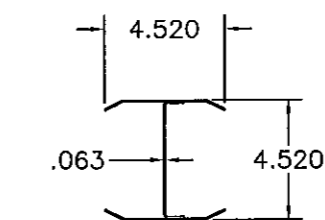
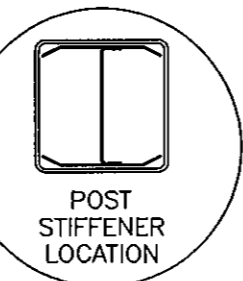
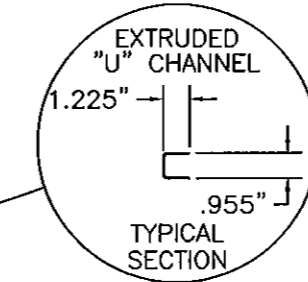
DRAWING NO. USF2010NOAAY
SHEET 7 OF 11
CONFIGURATION AY30A
DATE: 2/26/2010

BARRETTE OUTDOOR LIVING
7830 FREEWAY CIRCLE
MIDDLEBURG HEIGHTS, OH 44130
440-891-0790

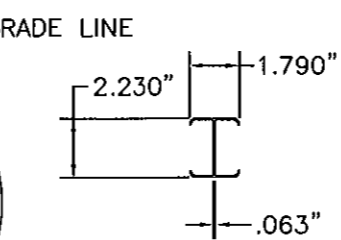
POST STIFFENER
Mat'l: Commercial Quality
ASTM-A4569-CS-TYPE B
Chemically Treated Dry
Galvanized
Min. Tensile: 50 KSI
Min. Yield: 38 KSI
Min. Elongation: 20%



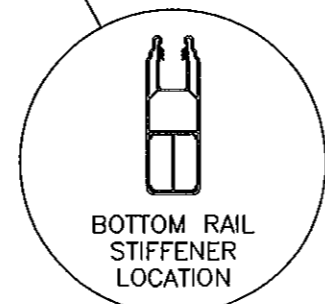
Richard Ovid Boyette
APPROVED MAR 10 2011
Richard Boyette, FL P.E. 42485
Rick Boyette Consulting, Inc. CoA #9707
4031 Coconut Boulevard
Royal Palm Beach, Florida 33411
(561) 790-5766



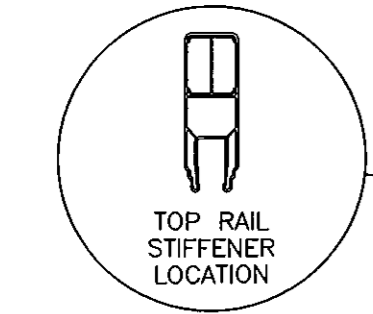
TYPICAL TOP & BOTTOM RAIL LOCK TAB CONFIGURATION (BOTH ENDS)



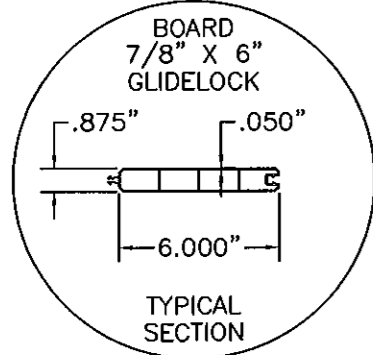
TOP & BOTTOM RAIL STIFFENER
Mat'l: Aluminum 6005-T5 or 6061-T6
Min. Tensile: 38 KSI
Min. Yield: 35 KSI
Min. Elongation: 8%



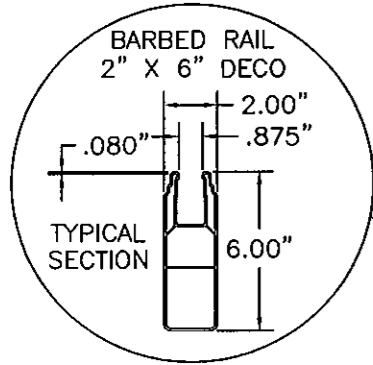
BOTTOM RAIL STIFFENER LOCATION



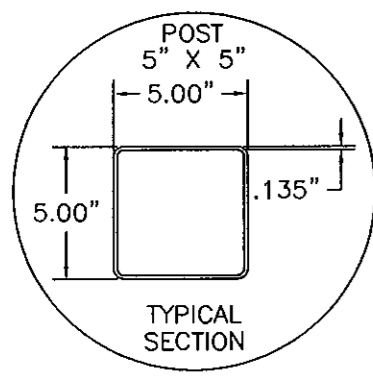
TOP RAIL STIFFENER LOCATION



TYPICAL SECTION



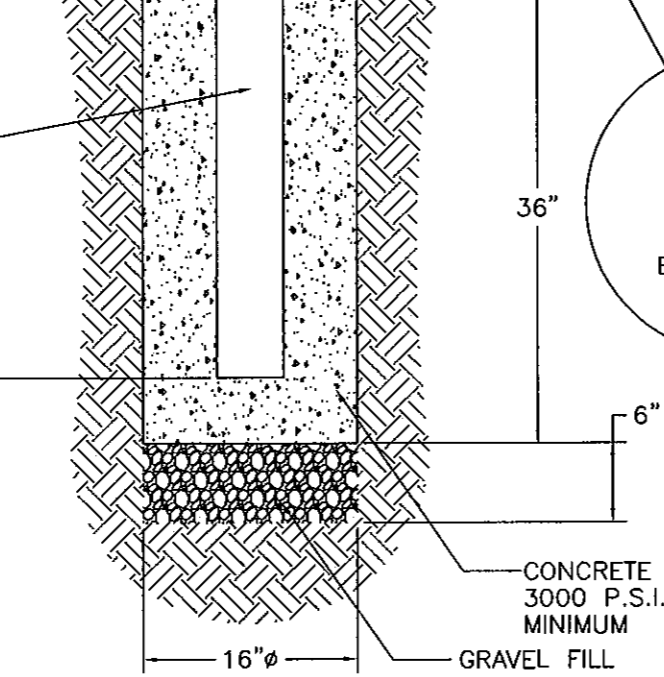
TYPICAL SECTION



TYPICAL SECTION

A POST LENGTH

B
C



CONCRETE 3000 P.S.I. MINIMUM
GRAVEL FILL

Approved as complying with the Florida Building Code
Date 04/07/2011
NOA# 10-1217-02
Miami Dade Product Control
By *Halley A. Kuhn*

8' DOGWOOD PRIVACY PANEL
(SCREWED BOARD OPTION)

CONFIGURATION	NOMINAL PANEL HEIGHT	A	B	C
DOGWOOD 4'	4'	84"	48"	36"
DOGWOOD 5'	5'	96"	60"	48"
DOGWOOD 6'	6'	108"	72"	60"

"U" CHANNEL TO BE SECURED TO EACH POST USING #10 X 3/4" ALUMINUM SELF-DRILLING PANHEAD SQUARE DRIVE SCREW (3) EQUALLY SPACED MIN.

WIND LOAD RATING

THIS FENCE, ITS VERTICAL SUPPORTS AND FOUNDATIONS, ARE IN COMPLIANCE WITH 2007 FLORIDA BUILDING CODE WITH 2009 SUPPLEMENT SEC.1612.2.1; ASCE 7-05 SEC. 6.5.14. THIS FENCE IS APPROVED FOR SUSTAINED WIND VELOCITY OF 75 MPH (90 MPH FOR 3 SECOND GUST) WHEN THE POST CENTERS ARE LOCATED 96" ON CENTER.

PVC MATERIAL SPECIFICATIONS

ASTM Cell Classification 1-40323-13-0101 (D4216)

Specifications	Value	ASTM	
Specific Gravity (± 0.02)	0.125" Specimin	1.45	D-792
Izod Impact FT*lbs/in notch		17.0	D-256
Tensile Yield Strength, PSI		6,200	D-638
Tensile Modulus, PSI		365,000	D-638
Flexural Yield Strength, PSI		12,000	D-790
Flexural Modulus, PSI		410,000	D-790
DTUL@264 PSI, Degrees Celsius		72	D-648
TiO2 - Titanium Dioxide UV Inhibitor		10/100	-

PVC FENCE (ON SITE KIT ASSEMBLED STYLE)

8' WIDE SECTION DOGWOOD PRIVACY

DRAWING NO. USF2010NOAAY

SHEET 8 OF 11

CONFIGURATION AY30B

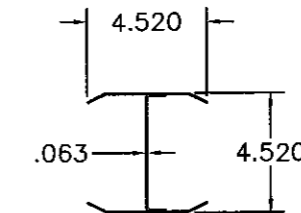
DATE: 2/26/2010

BARRETTE OUTDOOR LIVING

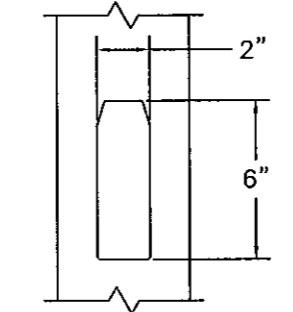
7830 FREEWAY CIRCLE

MIDDLEBURG HEIGHTS, OH 44130

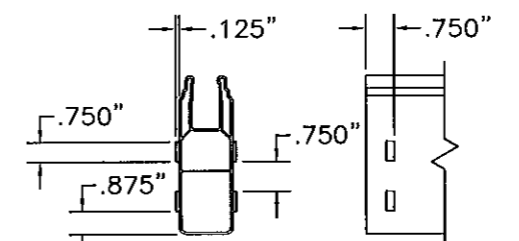
440-891-0790



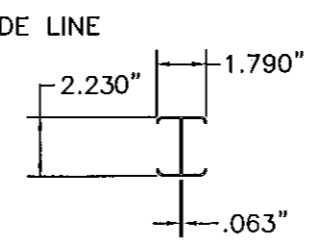
POST STIFFENER
Mat'l: Commercial Quality
ASTM-A4569-CS-TYPE B
Chemically Treated Dry Galvanized
Min. Tensile: 50 KSI
Min. Yield: 38 KSI
Min. Elongation: 20%



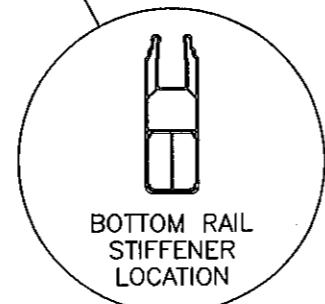
TYPICAL POST ROUTE POCKET FOR RAILS



TYPICAL TOP & BOTTOM RAIL LOCK TAB CONFIGURATION (BOTH ENDS)



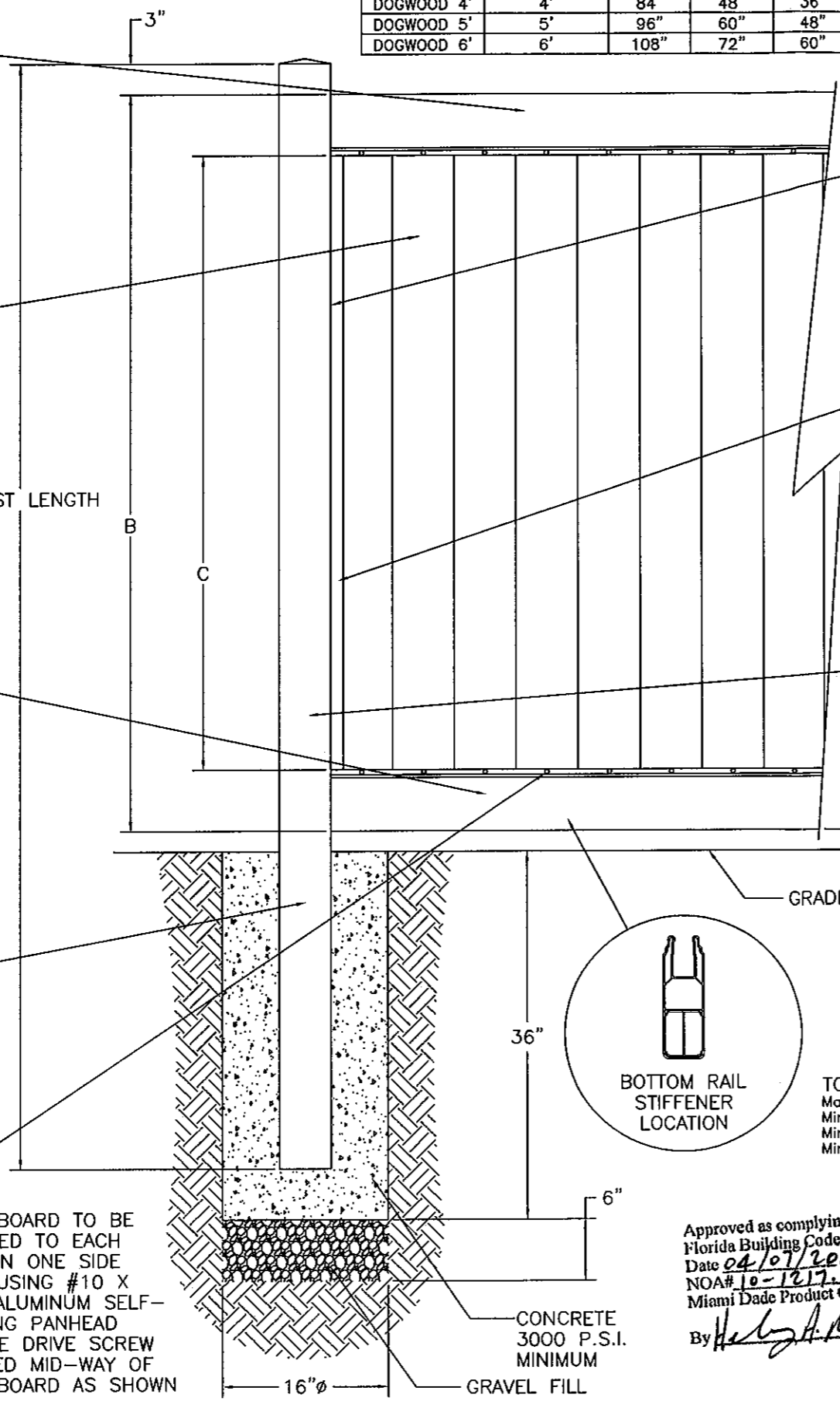
TOP & BOTTOM RAIL STIFFENER
Mat'l: Aluminum 6005-T5 or 6061-T6
Min. Tensile: 38 KSI
Min. Yield: 35 KSI
Min. Elongation: 8%



BOTTOM RAIL STIFFENER LOCATION

Approved as complying with the Florida Building Code
Date 04/07/2011
NOA# 10-1217.02
Miami Dade Product Control
By *[Signature]*

POSTS LOCATED 96" ON CENTER

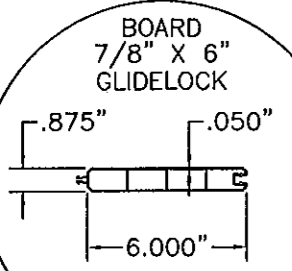


EACH BOARD TO BE SECURED TO EACH RAIL ON ONE SIDE ONLY USING #10 X 3/4" ALUMINUM SELF-DRILLING PANHEAD SQUARE DRIVE SCREW LOCATED MID-WAY OF EACH BOARD AS SHOWN

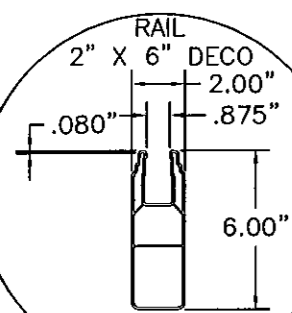
CONCRETE 3000 P.S.I. MINIMUM
GRAVEL FILL



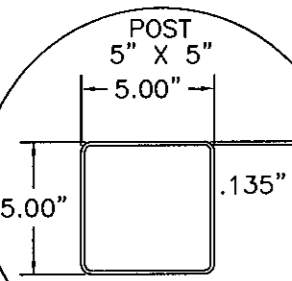
TOP RAIL STIFFENER LOCATION



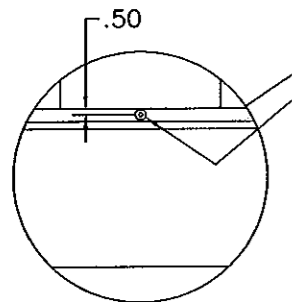
TYPICAL SECTION



TYPICAL SECTION



TYPICAL SECTION



TYPICAL SECTION

**8' DOGWOOD PRIVACY PANEL
(EXTRA LOCK TAB OPTION)**

CONFIGURATION DESIGNATION	NOMINAL PANEL HEIGHT	A	B	C
DOGWOOD 4'	4'	84"	48"	36"
DOGWOOD 5'	5'	96"	60"	48"
DOGWOOD 6'	6'	108"	72"	60"

"U" CHANNEL TO BE SECURED TO EACH POST USING #10 X 3/4" ALUMINUM SELF-DRILLING PANHEAD SQUARE DRIVE SCREW (3) EQUALLY SPACED MIN.

WIND LOAD RATING
THIS FENCE, ITS VERTICAL SUPPORTS AND FOUNDATIONS, ARE IN COMPLIANCE WITH 2007 FLORIDA BUILDING CODE WITH 2009 SUPPLEMENT SEC.1612.2.1; ASCE 7-05 SEC. 6.5.14. THIS FENCE IS APPROVED FOR SUSTAINED WIND VELOCITY OF 75 MPH (90 MPH FOR 3 SECOND GUST) WHEN THE POST CENTERS ARE LOCATED 96" ON CENTER.

PVC MATERIAL SPECIFICATIONS

ASTM Cell Classification 1-40323-13-0101 (D4216)

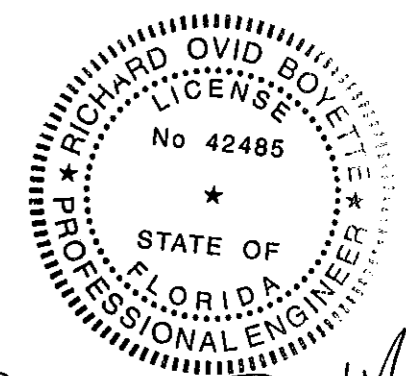
Specifications	Value	ASTM
Specific Gravity (± 0.02)	0.125" Specimin 1.45	D-792
Izod Impact FT*lbs/in notch	17.0	D-256
Tensile Yield Strength, PSI	6,200	D-638
Tensile Modulus, PSI	365,000	D-638
Flexural Yield Strength, PSI	12,000	D-790
Flexural Modulus, PSI	410,000	D-790
DTUL@264 PSI, Degrees Celsius	72	D-648
TiO2 - Titanium Dioxide UV Inhibitor	10/100	-

**PVC FENCE (ON SITE KIT ASSEMBLED STYLE)
8' WIDE SECTION DOGWOOD PRIVACY**

DRAWING NO. USF2010NOAAY
SHEET 9 OF 11
CONFIGURATION AY30C
DATE: 2/26/2010
BARRETTE OUTDOOR LIVING
7830 FREEWAY CIRCLE
MIDDLEBURG HEIGHTS, OH 44130
440-891-0790

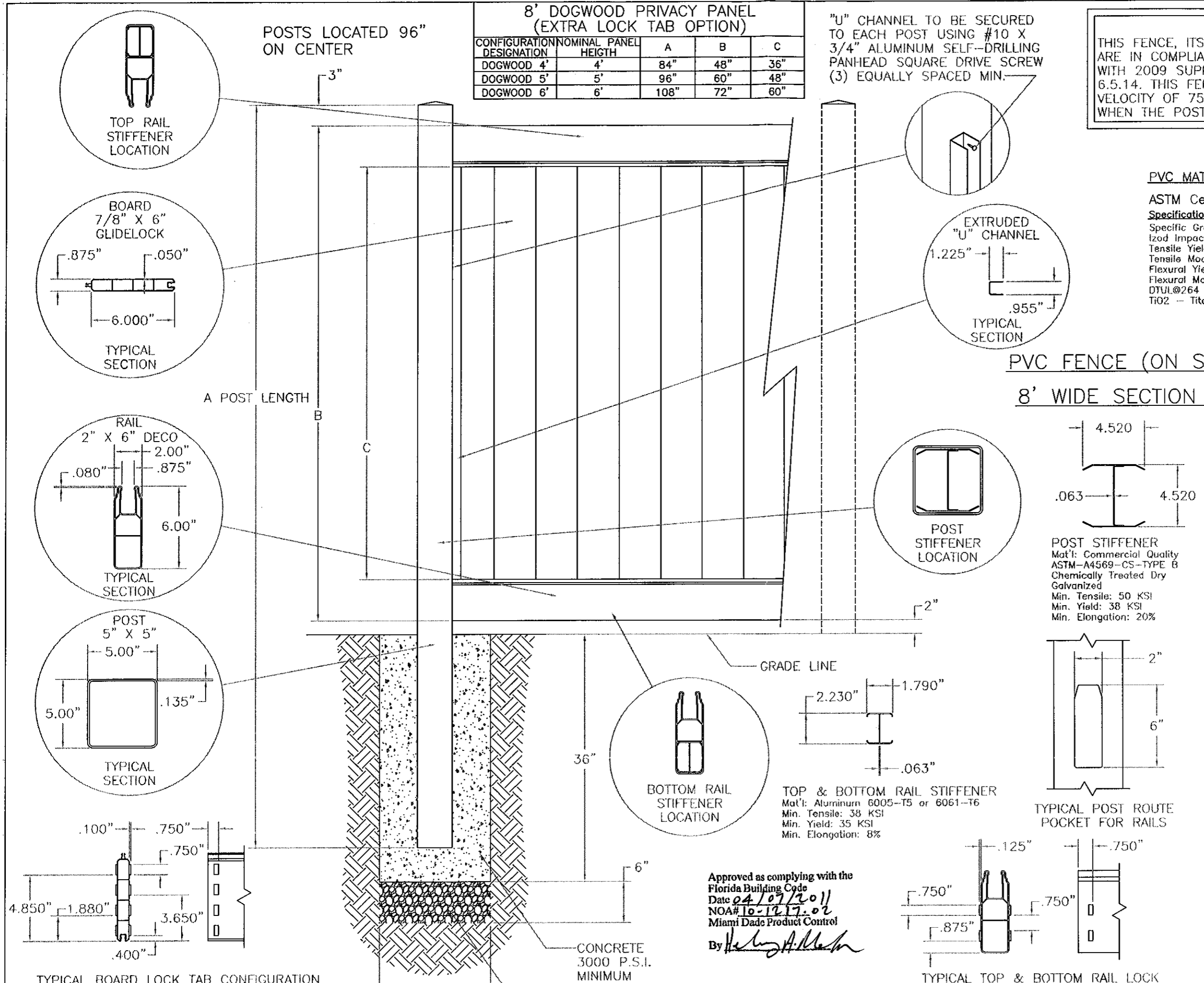
POST STIFFENER
Mat'l: Commercial Quality
ASTM-A4569-CS-TYPE B
Chemically Treated Dry Galvanized
Min. Tensile: 50 KSI
Min. Yield: 38 KSI
Min. Elongation: 20%

TOP & BOTTOM RAIL STIFFENER
Mat'l: Aluminum 6005-T5 or 6061-T6
Min. Tensile: 38 KSI
Min. Yield: 35 KSI
Min. Elongation: 8%



Richard Ovid Boyette
APPROVED MAR 10 2011

Richard Boyette, FL P.E. 42485
Rick Boyette Consulting, Inc. CoA #9707
4031 Coconut Boulevard
Royal Palm Beach, Florida 33411



Approved as complying with the Florida Building Code
Date 04/07/2011
NOA# 10-1217.02
Miami Dade Product Control
By *Healy A. Allen*

TYPICAL BOARD LOCK TAB CONFIGURATION

TYPICAL TOP & BOTTOM RAIL LOCK

**8' DOGWOOD PRIVACY PANEL
(12.8" GLIDELOCK BOARD OPTION)**

CONFIGURATION DESIGNATION	NOMINAL PANEL HEIGHT	A	B	C
DOGWOOD 4'	4'	84"	48"	36"
DOGWOOD 5'	5'	96"	60"	48"
DOGWOOD 6'	6'	108"	72"	60"

"U" CHANNEL TO BE SECURED TO EACH POST USING #10 X 3/4" ALUMINUM SELF-DRILLING PANHEAD SQUARE DRIVE SCREW (3) EQUALLY SPACED MIN.

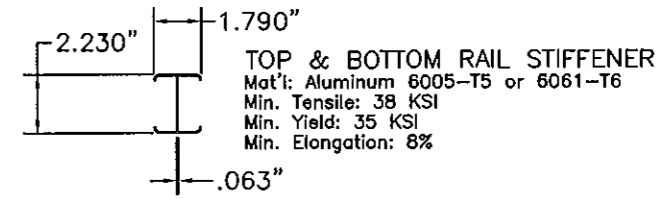
WIND LOAD RATING

THIS FENCE, ITS VERTICAL SUPPORTS AND FOUNDATIONS, ARE IN COMPLIANCE WITH 2007 FLORIDA BUILDING CODE WITH 2009 SUPPLEMENT SEC.1612.2.1; ASCE 7-05 SEC. 6.5.14. THIS FENCE IS APPROVED FOR SUSTAINED WIND VELOCITY OF 75 MPH (90 MPH FOR 3 SECOND GUST) WHEN THE POST CENTERS ARE LOCATED 96" ON CENTER.

PVC MATERIAL SPECIFICATIONS

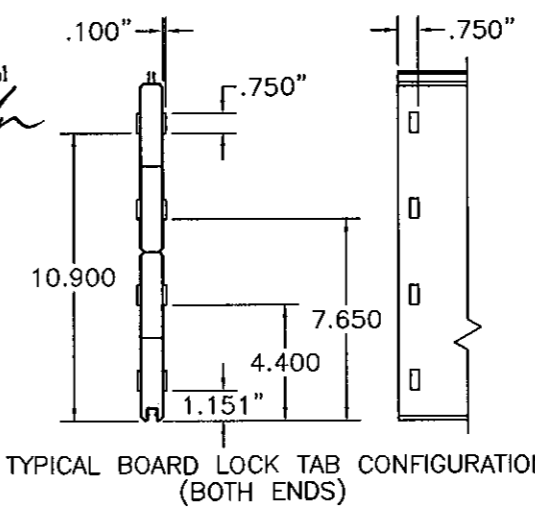
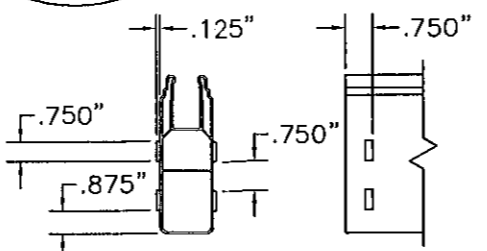
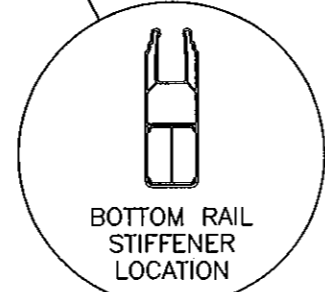
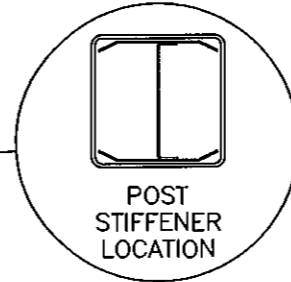
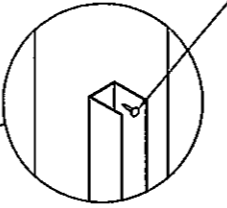
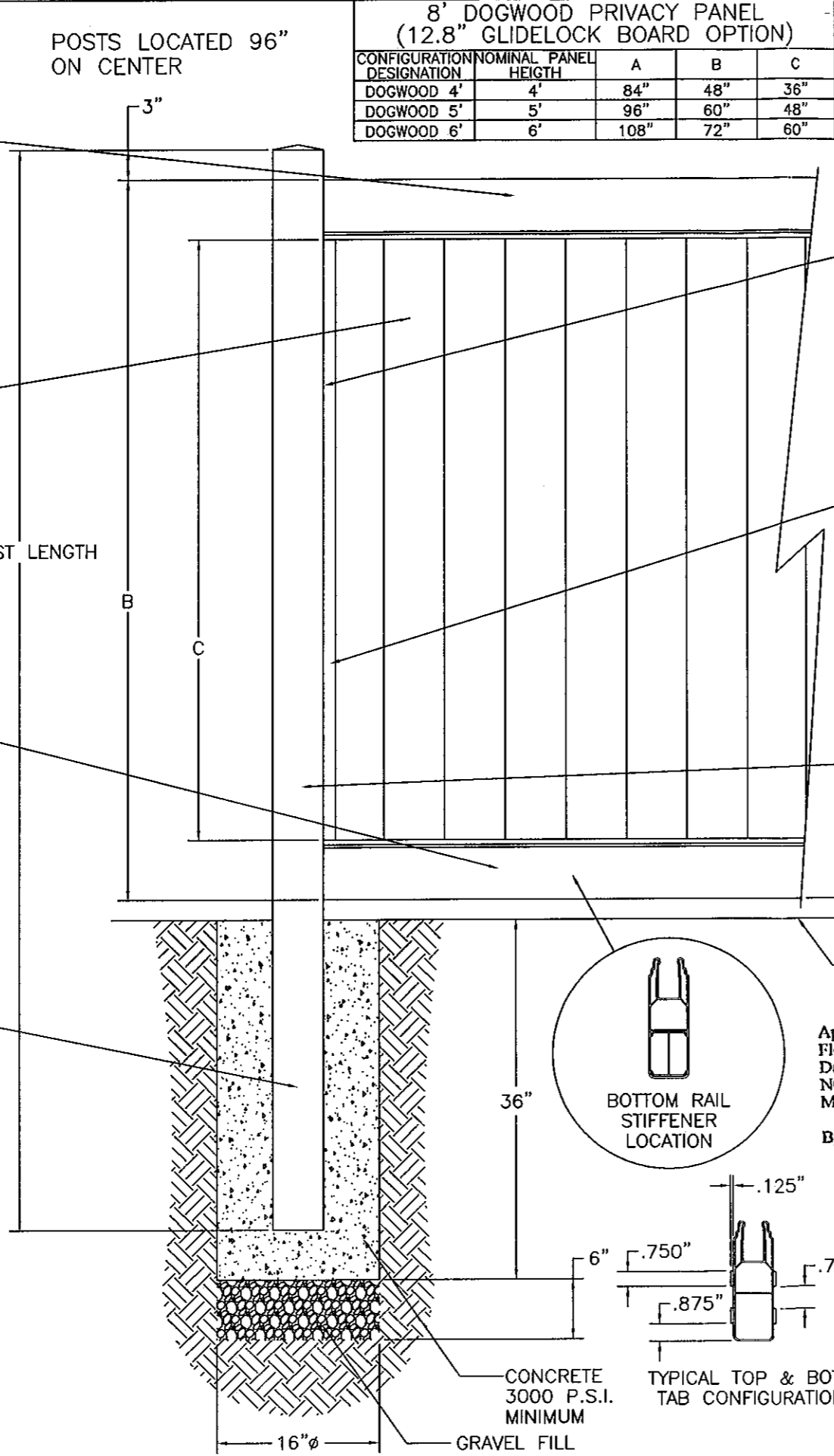
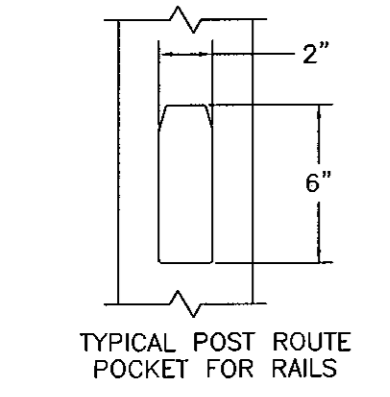
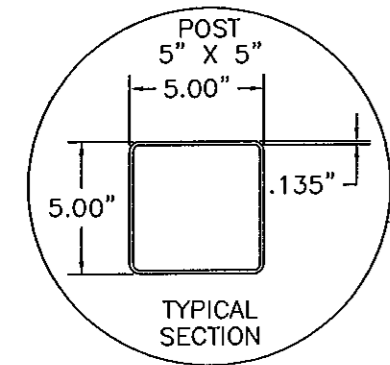
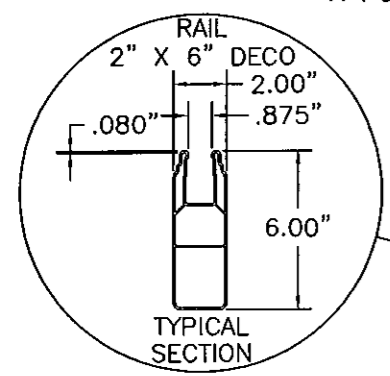
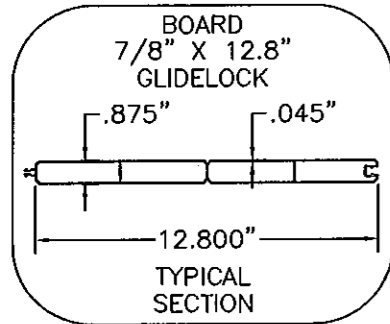
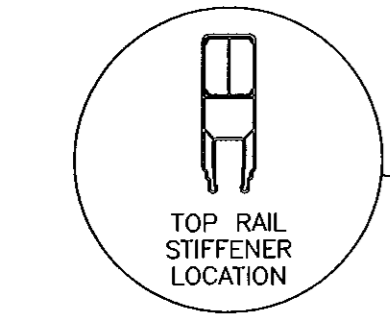
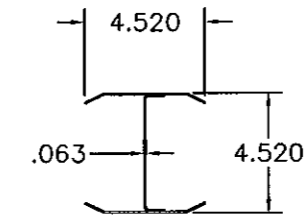
ASTM Cell Classification 1-40323-13-0101 (D4216)

Specifications	Value	ASTM
Specific Gravity (±0.02) 0.125" Specimen	1.45	D-792
Izod Impact FT*lbs/in notch	17.0	D-256
Tensile Yield Strength, PSI	6,200	D-638
Tensile Modulus, PSI	365,000	D-638
Flexural Yield Strength, PSI	12,000	D-790
Flexural Modulus, PSI	410,000	D-790
DTUL@264 PSI, Degrees Celsius	72	D-648
TiO2 - Titanium Dioxide UV Inhibitor	10/100	-

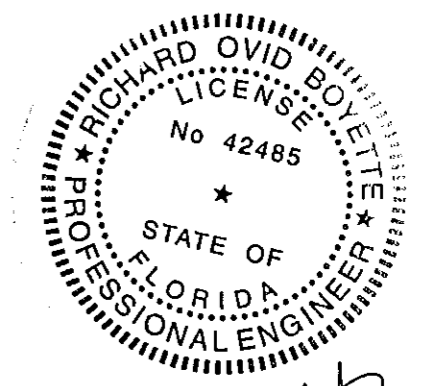


**PVC FENCE (ON SITE KIT ASSEMBLED STYLE)
8' WIDE SECTION DOGWOOD PRIVACY**

DRAWING NO. USF2010NOAAY
SHEET 10 OF 11
CONFIGURATION AY30D
DATE: 2/26/2010
BARRETTE OUTDOOR LIVING
7830 FREEWAY CIRCLE
MIDDLEBURG HEIGHTS, OH 44130
440-891-0790



Approved as complying with the Florida Building Code
Date 04/07/2011
NOA#10-1217-02
Miami Dade Product Control
By *Helga A. Miller*



Richard Ovid Boyette
APPROVED MAR 10 2011

Richard Boyette, FL P.E. 42485
Rick Boyette Consulting, Inc. CoA #9707
4031 Coconut Boulevard
Royal Palm Beach, Florida 33411
(561) 790-5766

8' JUNIPER CLOSED SPINDLE TOP PANEL

CONFIGURATION DESIGNATION	NOMINAL PANEL HEIGHT	A	B	C
JUNIPER CLOSED SPINDLE 4'	4'	84"	48"	19 1/2"
JUNIPER CLOSED SPINDLE 5'	5'	96"	60"	31 1/2"
JUNIPER CLOSED SPINDLE 6'	6'	108"	72"	43 1/2"

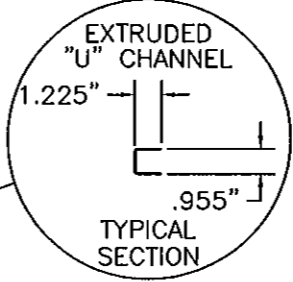
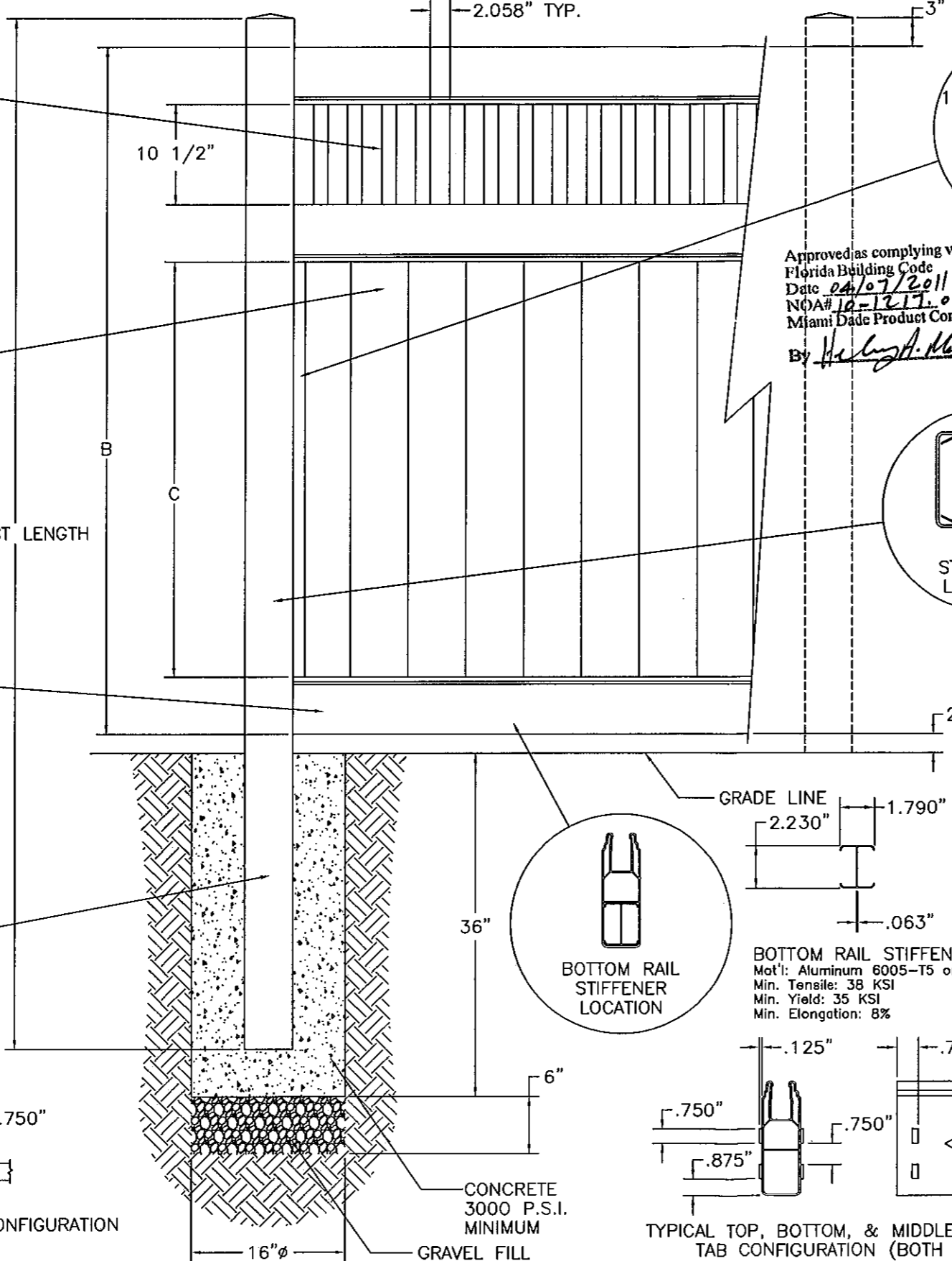
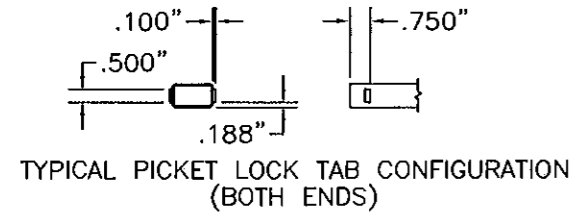
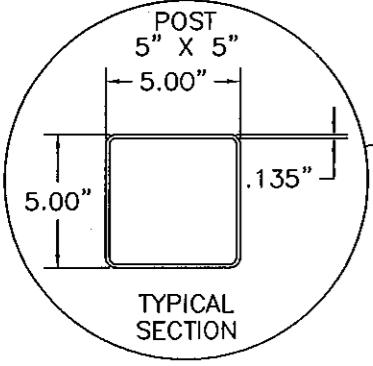
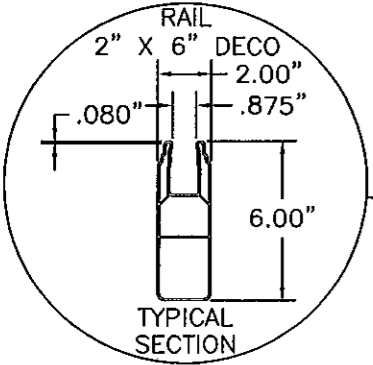
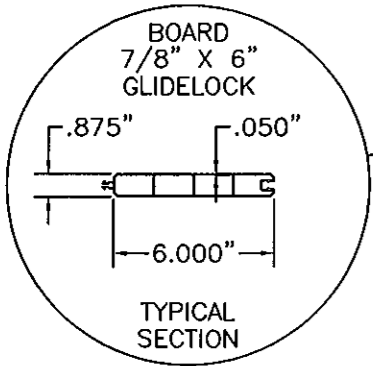
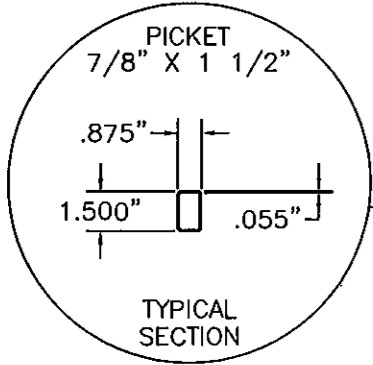
POSTS LOCATED 96" ON CENTER

WIND LOAD RATING
 THIS FENCE, ITS VERTICAL SUPPORTS AND FOUNDATIONS, ARE IN COMPLIANCE WITH 2007 FLORIDA BUILDING CODE WITH 2009 SUPPLEMENT SEC.1612.2.1; ASCE 7-05 SEC. 6.5.14. THIS FENCE IS APPROVED FOR SUSTAINED WIND VELOCITY OF 75 MPH (90 MPH FOR 3 SECOND GUST) WHEN THE POST CENTERS ARE LOCATED 96" ON CENTER.

PVC MATERIAL SPECIFICATIONS

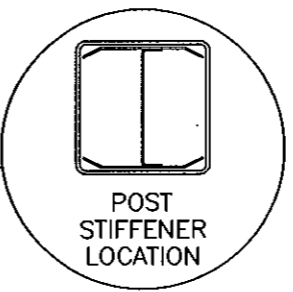
ASTM Cell Classification 1-40323-13-0101 (D4216)

Specifications	Value	ASTM
Specific Gravity (±0.02) 0.125" Specimin	1.45	D-792
Izod Impact FT*lbs/in notch	17.0	D-256
Tensile Yield Strength, PSI	6,200	D-638
Tensile Modulus, PSI	365,000	D-638
Flexural Yield Strength, PSI	12,000	D-790
Flexural Modulus, PSI	410,000	D-790
DTUL@264 PSI, Degrees Celsius	72	D-648
TI02 - Titanium Dioxide UV Inhibitor	10/100	-

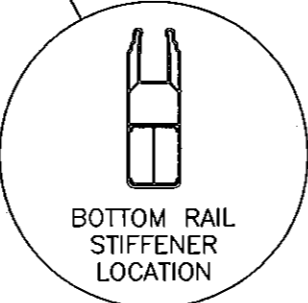
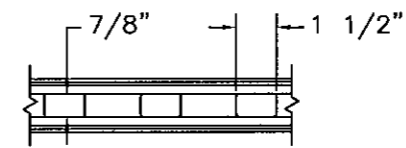
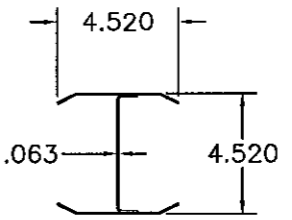


Approved as complying with the Florida Building Code
 Date 04/07/2011
 NOA# 10-1217.02
 Miami Dade Product Control
 By *Heather M. M...*

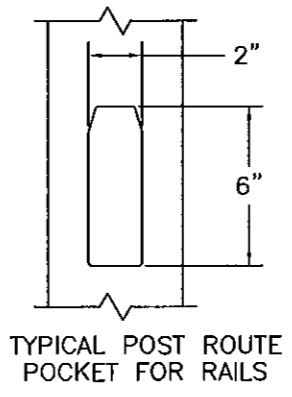
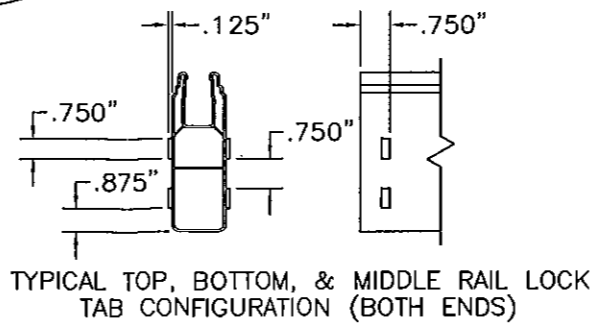
PVC FENCE (ON SITE KIT ASSEMBLED STYLE)
 8' WIDE SECTION JUNIPER CLOSED SPINDLE TOP



POST STIFFENER
 Mat'l: Commercial Quality
 ASTM-A4569-CS-TYPE B
 Chemically Treated Dry Galvanized
 Min. Tensile: 50 KSI
 Min. Yield: 38 KSI
 Min. Elongation: 20%



BOTTOM RAIL STIFFENER
 Mat'l: Aluminum 6005-T5 or 6061-T6
 Min. Tensile: 38 KSI
 Min. Yield: 35 KSI
 Min. Elongation: 8%



DRAWING NO. USF2010NOAAY
 SHEET 11 OF 11
 CONFIGURATION AY33
 DATE: 2/26/2010
 BARRETTE OUTDOOR LIVING
 7830 FREEWAY CIRCLE
 MIDDLEBURG HEIGHTS, OH 44130
 440-891-0790

APPROVED MAR 10 2011

Richard Boyette, FL P.E. 42485
 Rick Boyette Consulting, Inc. CoA #9707
 4031 Coconut Boulevard
 Royal Palm Beach, Florida 33411
 (561) 790-5766