



DEPARTMENT OF PERMITTING, ENVIRONMENT, AND REGULATORY AFFAIRS (PERA)
BOARD AND CODE ADMINISTRATION DIVISION

MIAMI-DADE COUNTY
PRODUCT CONTROL SECTION
11805 SW 26 Street, Room 208
Miami, Florida 33175-2474
T (786) 315-2590 F (786) 315-2599
www.miamidade.gov/pera

NOTICE OF ACCEPTANCE (NOA)

American Buildings Company
1150 State Docks Road
Eufaula, AL. 36027

SCOPE:

This NOA is being issued under the applicable rules and regulations governing the use of construction materials. The documentation submitted has been reviewed and accepted by Miami-Dade County PERA - Product Control Section to be used in Miami Dade County and other areas where allowed by the Authority Having Jurisdiction (AHJ).

This NOA shall not be valid after the expiration date stated below. The Miami-Dade County Product Control Section (In Miami Dade County) and/or the AHJ (in areas other than Miami Dade County) reserve the right to have this product or material tested for quality assurance purposes. If this product or material fails to perform in the accepted manner, the manufacturer will incur the expense of such testing and the AHJ may immediately revoke, modify, or suspend the use of such product or material within their jurisdiction. PERA reserves the right to revoke this acceptance, if it is determined by Miami-Dade County Product Control Section that this product or material fails to meet the requirements of the applicable building code.

This product is approved as described herein, and has been designed to comply with the Florida Building Code including the High Velocity Hurricane Zone of the Florida Building Code.

DESCRIPTION: LOC-Seam 360 Metal Roof Panel over Metal Deck

LABELING: Each unit shall bear a permanent label with the manufacturer's name or logo, city, state and following statement: "Miami-Dade County Product Control Approved", unless otherwise noted herein.

RENEWAL of this NOA shall be considered after a renewal application has been filed and there has been no change in the applicable building code negatively affecting the performance of this product.

TERMINATION of this NOA will occur after the expiration date or if there has been a revision or change in the materials, use, and/or manufacture of the product or process. Misuse of this NOA as an endorsement of any product, for sales, advertising or any other purposes shall automatically terminate this NOA. Failure to comply with any section of this NOA shall be cause for termination and removal of NOA.

ADVERTISEMENT: The NOA number preceded by the words Miami-Dade County, Florida, and followed by the expiration date may be displayed in advertising literature. If any portion of the NOA is displayed, then it shall be done in its entirety.

INSPECTION: A copy of this entire NOA shall be provided to the user by the manufacturer or its distributors and shall be available for inspection at the job site at the request of the Building Official.

This NOA consists of pages 1 through 6.

The submitted documentation was reviewed by Alex Tigera.



NOA No.: 11-0824.06
Expiration Date: 01/12/17
Approval Date: 01/12/12
Page 1 of 6

ROOFING SYSTEM APPROVAL:

Category: Roofing
Sub-Category: Metal, Panels (Non-Structural)
Material: Steel
Deck Type: Steel
Maximum Design Pressure -81.9 psf

TRADE NAMES OF PRODUCTS MANUFACTURED OR LABELED BY APPLICANT:

<u>Product</u>	<u>Dimensions</u>	<u>Test Specifications</u>	<u>Product Description</u>
Loc-Seam 360	Length: various Height: 2" Width: 16" Thickness 0.023 Yield Strength: Min 50 ksi	TAS 110	Corrosion resistant, galvalume, preformed, standing seam, coated, pre-finished, metal panels.
Panel Clips	Length: 3" Width: 1-1/2" Height: 2-3/8" Thickness 0.026	TAS 110	Corrosion resistant, two piece formed, painted or unpainted steel clips for metal panel installation.
Clip Bearing Plate	Length: 4" Width: 4-7/8" Thickness 0.060"	TAS 110	Corrosion resistant, galvalume, preformed, square supporting plate used under panel clips.
End Lap Stiffener	Length: 12-1/2" Width: 15-1/2" Thickness 0.060"	TAS 110	Corrosion resistant, galvalume, preformed, half-circle tabs, stiffening plate utilized at end laps.

MANUFACTURING LOCATION

1. Eufaula, AL.

EVIDENCE SUBMITTED:

<u>Test Agency</u>	<u>Test Identifier</u>	<u>Test Name/Report</u>	<u>Date</u>
PRI Construction Materials Technologies	ABC-004-02-01	ASTM B 117	03/31/11
PRI Construction Materials Technologies	ABC-004-02-02	ASTM G 155	03/31/11
Farabaugh Engineering and Testing Inc.	T249-11	TAS 125	07/29/11
Farabaugh Engineering and Testing Inc.	T243-11	TAS 100	07/18/11



NOA No.: 11-0824.06
 Expiration Date: 01/12/17
 Approval Date: 01/12/12
 Page 2 of 6

APPROVED ASSEMBLIES:

System: Loc-Seam 360 Metal Panel with Mechanically Crimped Seam
Deck Type: Steel, Insulated
Deck Description: Metal roof deck 22 MSG, G60 coated steel. Minimum 33ksi
Slope Range: 2": 12" or greater
Maximum Uplift Pressure: See Table A below

Deck Attachment: Minimum 22 ga. Type B steel deck secured to minimum .06” thick supports spaced at a maximum of 5 ft o.c. with 5/16” puddle welds located 6” o.c. and 1” x 7/8” steel weld washers at bottom of each flute.

Insulation: (Requires listed bearing plate for clip attachment) Minimum ¾” to maximum 4” thick of an approved rigid board insulation with current NOA with a minimum 25psi compressive strength fastened with approved fasteners and plates. Fastening density shall be in compliance with applicable Building Code and Roofing Application Standard RAS 117.

Underlayment: Minimum underlayment shall be an ASTM D 226 Type II installed with a minimum 4” side-lap and 6” end-laps. Underlayment shall be fastened with corrosion resistant fasteners and plates, spaced 12” o.c. at all laps and two staggered rows 24” o.c. in the field of the roll. Or, any approved underlayment having a current NOA.

Bearing Plate: Fastened the approved clip bearing plate over the prepared roofing with four (4) #12 self-drilling screws of sufficient length to penetrate through bottom flange of the metal deck a minimum of ½”.

Fire Barrier Board: Any approved fire barrier having a current NOA. Refer to a current fire directory listing for fire ratings of this roofing system assembly as well as the location of the fire barrier within the assembly. See Limitation # 1.

Valleys: Valley construction shall be in compliance with Roofing Application Standard RAS 133 and with American Buildings Company current published installation instructions.

Metal Panels and Accessories: Install the "Loc-Seam 360 Metal Panel" panels including flashings penetrations, valleys, end laps and accessories in compliance American Building Company’s current, published installation instructions and in compliance with the minimum requirements detailed in Roofing Application Standard RAS 133.

Loc-Seam 360 panels shall be installed with approved clips (3” long x 2” tall), attached to the bearing plates with two (2) corrosion resistant #12 x 1-¼” self-drilling screws at a spacing not exceed the clip spacing specified below in **Table A**. Standing seams shall be mechanically seamed to a full 180° seam, (double lock).

TABLE A		
MAXIMUM DESIGN PRESSURES		
Roof Areas	Field	Perimeter and Corner¹
Maximum Design Pressures	69.5 psf	81.9 psf
Maximum Clip Spacing	30” o.c.	15” o.c.

1. Extrapolation shall not be allowed



NOA No.: 11-0824.06
 Expiration Date: 01/12/17
 Approval Date: 01/12/12
 Page 3 of 6

LIMITATIONS

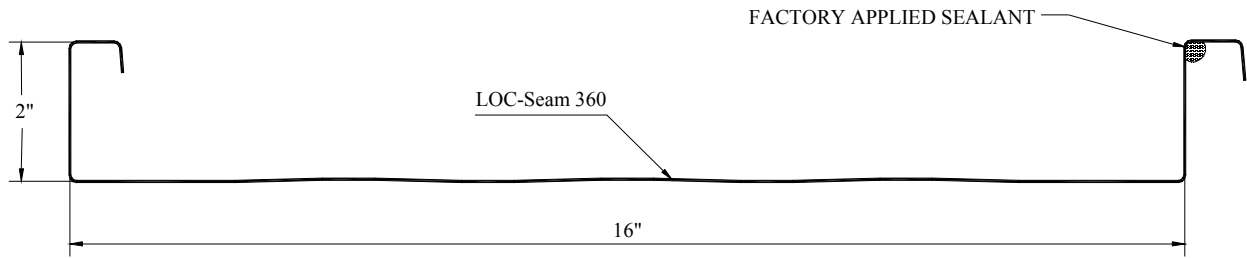
1. Fire classification is not part of this acceptance; refer to a current Approved Roofing Materials Directory for fire ratings of this product.
2. The maximum designed pressure listed herein shall be applicable to all roof pressure zones (i.e. field, perimeters, and corners). Neither rational analysis, nor extrapolation shall be permitted for enhanced fastening at enhanced pressure zones (i.e. perimeters, extended corners and corners).
3. Panels may be rolls formed in continuous lengths from eave to ridge. Maximum lengths shall be as described in Roofing Application Standard RAS 133
4. All panels shall be permanently labeled with the manufacturer's name and/or logo, and the following statement: "Miami-Dade County Product Control Approved" **or** with the Miami-Dade County Product Control Seal as seen below. All clips shall be permanently labeled with the manufacturer's name and/or logo, and/or model.



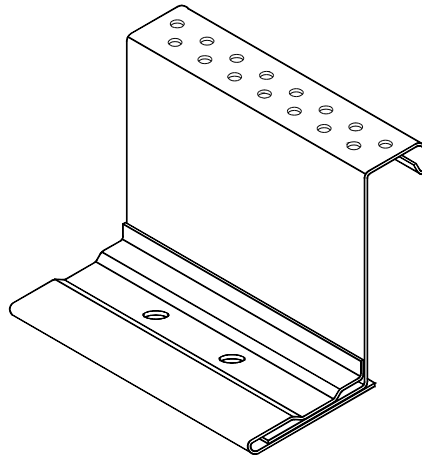
5. All products listed herein shall have a quality assurance audit in accordance with the Florida Building Code and Rule 9B-72 of the Florida Administrative Code.



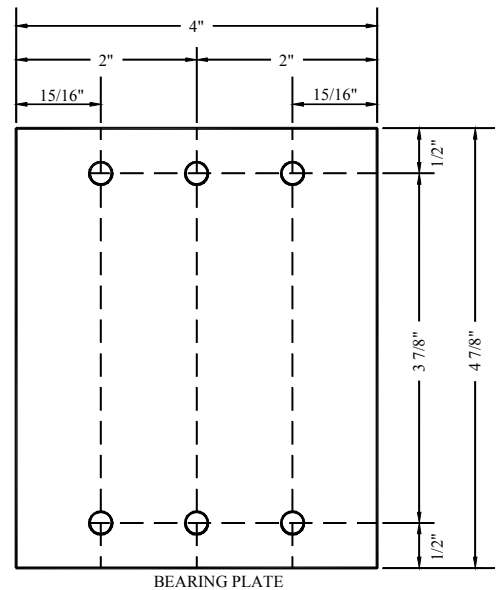
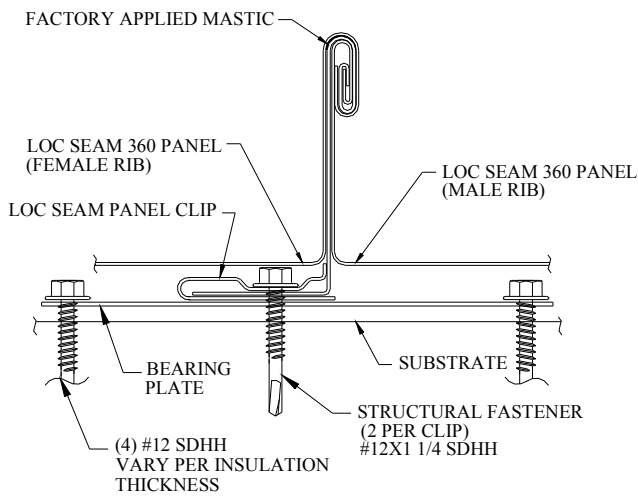
PROFILE DRAWINGS



LOC-SEAM 360 METAL PANEL

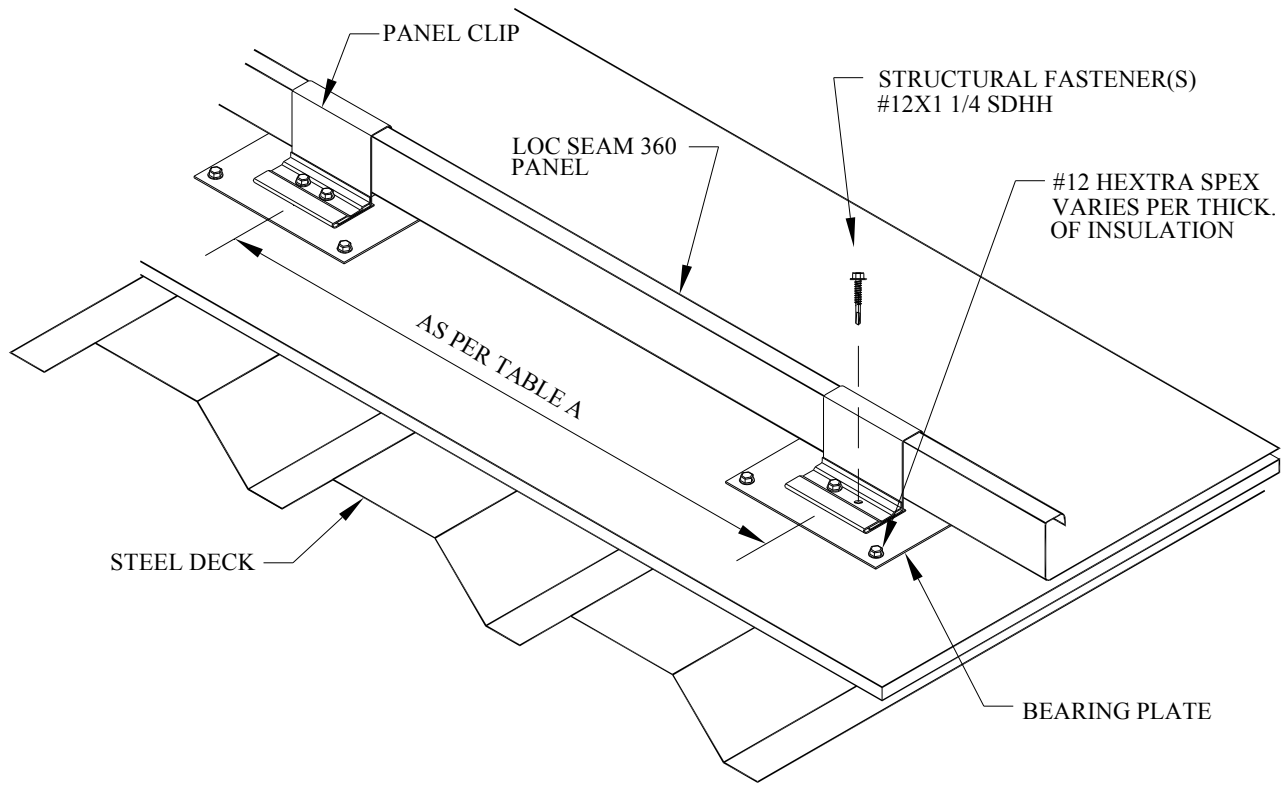


PANEL CLIP



BEARING PLATE AND PANEL CLIP DETAIL





LOC-SEAM 360 ROOF PANEL AND PANEL CLIPS

END OF THIS ACCEPTANCE

