



**DEPARTMENT OF PERMITTING, ENVIRONMENT, AND REGULATORY
AFFAIRS (PERA)
BOARD AND CODE ADMINISTRATION DIVISION
NOTICE OF ACCEPTANCE (NOA)**

**MIAMI-DADE COUNTY
PRODUCT CONTROL SECTION**
11805 SW 26 Street, Room 208
Miami, Florida 33175-2474
T (786) 315-2590 F (786) 315-2599
www.miamidade.gov/pera/

Trulite Window & Door Solutions, LLC
8130 NW 74th Avenue
Medley, FL 33166

SCOPE:

This NOA is being issued under the applicable rules and regulations governing the use of construction materials. The documentation submitted has been reviewed and accepted by Miami-Dade County PERA - Product Control Section to be used in Miami Dade County and other areas where allowed by the Authority Having Jurisdiction (AHJ).

This NOA shall not be valid after the expiration date stated below. The Miami-Dade County Product Control Section (In Miami Dade County) and/or the AHJ (in areas other than Miami Dade County) reserve the right to have this product or material tested for quality assurance purposes. If this product or material fails to perform in the accepted manner, the manufacturer will incur the expense of such testing and the AHJ may immediately revoke, modify, or suspend the use of such product or material within their jurisdiction. PERA reserves the right to revoke this acceptance, if it is determined by Miami-Dade County Product Control Section that this product or material fails to meet the requirements of the applicable building code.

This product is approved as described herein, and has been designed to comply with the Florida Building Code, including the High Velocity Hurricane Zone.

DESCRIPTION: Series "10100" White PVC Horizontal Sliding Window – L.M.I.

APPROVAL DOCUMENT: Drawing No. **W09-52**, titled "Series 10100 PVC Horiz. Sliding Wdw. (L.M.I./S.M.I.)" Sheets 1 through 8 of 8, dated 09/30/09 with revision B dated 12/23/11, prepared by Al-Farooq Corporation, signed and sealed by Javad Ahmad, P.E., bearing the Miami-Dade County Product Control Revision stamp with the Notice of Acceptance number and expiration date by the Miami-Dade County Product Control Section.

MISSILE IMPACT RATING: Large and Small Missile Impact Resistant

LABELING: Each unit shall bear a permanent label with the manufacturer's name or logo, city, state, model/series, and following statement: "Miami-Dade County Product Control Approved", unless otherwise noted herein.

RENEWAL of this NOA shall be considered after a renewal application has been filed and there has been no change in the applicable building code negatively affecting the performance of this product.

TERMINATION of this NOA will occur after the expiration date or if there has been a revision or change in the materials, use, and/or manufacture of the product or process. Misuse of this NOA as an endorsement of any product, for sales, advertising or any other purposes shall automatically terminate this NOA. Failure to comply with any section of this NOA shall be cause for termination and removal of NOA.

ADVERTISEMENT: The NOA number preceded by the words Miami-Dade County, Florida, and followed by the expiration date may be displayed in advertising literature. If any portion of the NOA is displayed, then it shall be done in its entirety.

INSPECTION: A copy of this entire NOA shall be provided to the user by the manufacturer or its distributors and shall be available for inspection at the job site at the request of the Building Official.

This NOA revises NOA # 10-0518.12 and consists of this page 1 and evidence pages E-1 and E-2, as well as approval document mentioned above.

The submitted documentation was reviewed by **Manuel Perez, P.E.**



NOA No. 12-0118.23
Expiration Date: January 06, 2015
Approval Date: March 15, 2012
Page 1

NOTICE OF ACCEPTANCE: EVIDENCE SUBMITTED

A. DRAWINGS

1. Manufacturer's die drawings and sections.
2. Drawing No. **W09-52**, titled "Series 10100 PVC Horiz. Sliding Wdw. (L.M.I./S.M.I.)" Sheets 1 through 8 of 8, dated 09/30/09 with revision B dated 12/23/11, prepared by Al-Farooq Corporation, signed and sealed by Javad Ahmad, P.E.

B. TESTS

1. Test reports on: 1) Air Infiltration Test, per FBC, TAS 202-94
2) Uniform Static Air Pressure Test, Loading per FBC TAS 202-94
3) Water Resistance Test, per FBC, TAS 202-94
4) Large Missile Impact Test, per FBC, TAS 201-94
5) Cyclic Wind Pressure Loading per FBC, TAS 203-94
6) Forced Entry Test, per FBC 2411.3.2.1 (b) and TAS 202-94
along with marked-up drawings and installation diagram of PVC horizontal sliding window, prepared by Fenestration Testing Laboratory, Test Report No. **FTL-5931** dated 05/28/09, signed and sealed by Julio E. Gonzalez, P.E.
(Submitted under previous NOA#09-1006.09)

C. CALCULATIONS

1. Anchor verification calculations and structural analysis, complying with FBC-2007 and FBC-2010, dated 09/28/09 and updated on 01/04/12, prepared, signed and sealed by Javad Ahmad, P.E.
2. Glazing complies with ASTM E1300-04

D. QUALITY ASSURANCE

1. Miami-Dade Department of Permitting, Environment, and Regulatory Affairs (PERA).

E. MATERIAL CERTIFICATIONS

1. Notice of Acceptance No. **11-0325.05** "issued to Solutia, Inc. for their **"Saflex and Vanceva clear and color interlayers"** dated 05/05/11, expiring on 05/21/16


Manuel Perez, P.E.
Product Control Examiner
NOA No. 12-0118.23

Expiration Date: January 06, 2015
Approval Date: March 15, 2012

Trulite Window & Door Solutions, LLC

NOTICE OF ACCEPTANCE: EVIDENCE SUBMITTED

F. STATEMENTS

1. Statement letter of conformance, complying with the FBC-2010, and of no financial interest, dated January 4, 2012, signed and sealed by Javad Ahmad, P.E.
2. Florida Dept of State, listing of Trulite Window & Door Solutions, LLC (Foreign Limited Liability Co.), managed by Arch Intermediate Holding, LLC, Tamarac, Fl., dated 02/03/10.
3. Certificate of registration of name change from "Trulite Residential Windows, LLC" to "Trulite Window & Door Solutions, LLC" issued by State of Delaware on 10/28/11, signed by J.W. Bullock.
4. Certificate of registration of name change from "Arch Windows, LLC" to Trulite Residential Windows, LLC" issued by State of Delaware on 07/27/11, signed by J.W. Bullock.
5. Florida Department of State, listing of Arch Window, LLC (Foreign Limited Liability Co.), managed by Arch Intermediate Holding, LLC, Tamarac, Florida, dated 01/22/10.
6. Certificate of registration of Arch Windows, LLC (Delaware) in State of Florida dated 02/04/10, managed by Arch Intermediate Holding, LLC.

G. OTHER

1. Notice of Acceptance No. **10-0518.12**, issued to Arch Windows, LLC dba AWP, for their Series "10100" White PVC Horizontal Sliding Window – L.M.I.", approved on 08/25/10 and expiring on 01/06/15.


Manuel Perez, P.E.
Product Control Examiner
NOA No. 12-0118.23

Expiration Date: January 06, 2015
Approval Date: March 15, 2012

THESE WINDOWS ARE RATED FOR LARGE & SMALL MISSILE IMPACT.
SHUTTERS ARE NOT REQUIRED.

SERIES 10100 PVC HORIZONTAL SLIDING WINDOW

DESIGN LOAD RATINGS FOR THESE WINDOWS TO BE AS PER
CHARTS SHOWN ON SHEET 3.

APPROVAL APPLIES TO SINGLE UNITS OR SIDE BY SIDE
COMBINATIONS OF H.R./H.R. OR HORIZONTAL ROLLING WITH OTHER
WINDOW TYPES IN MODULES OF TWO OR MORE WINDOWS USING
MIAMI-DADE COUNTY APPROVED MULLIONS IN BETWEEN.
LOWER DESIGN PRESSURE FROM WINDOWS OR MULLION APPROVAL
WILL APPLY TO ENTIRE SYSTEM.

THIS PRODUCT HAS BEEN DESIGNED AND TESTED TO COMPLY WITH THE
REQUIREMENTS OF THE FLORIDA BUILDING CODE INCLUDING HIGH VELOCITY
HURRICANE ZONE (HVHZ).

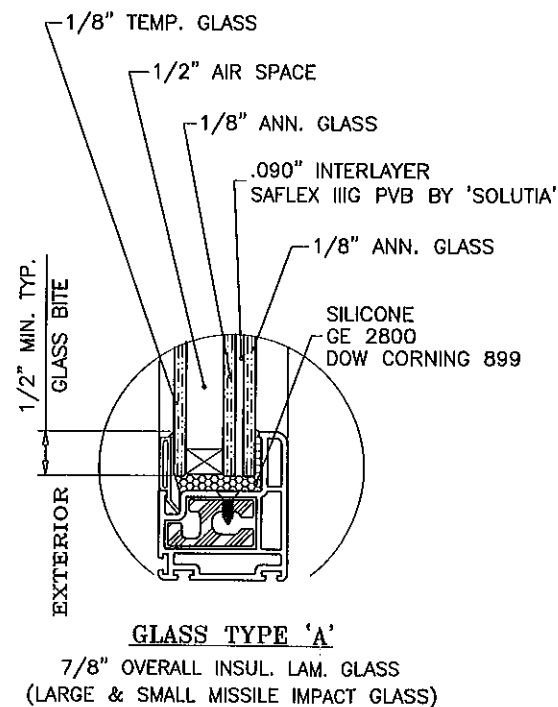
WOOD BUCKS BY OTHERS, MUST BE ANCHORED PROPERLY TO TRANSFER
LOADS TO THE STRUCTURE.

ANCHORS SHALL BE AS LISTED, SPACED AS SHOWN ON DETAILS, ANCHORS
EMBEDMENT TO BASE MATERIAL SHALL BE BEYOND WALL DRESSING OR STUCCO.

ANCHORING OR LOADING CONDITIONS NOT SHOWN IN THESE DETAILS ARE
NOT PART OF THIS APPROVAL.

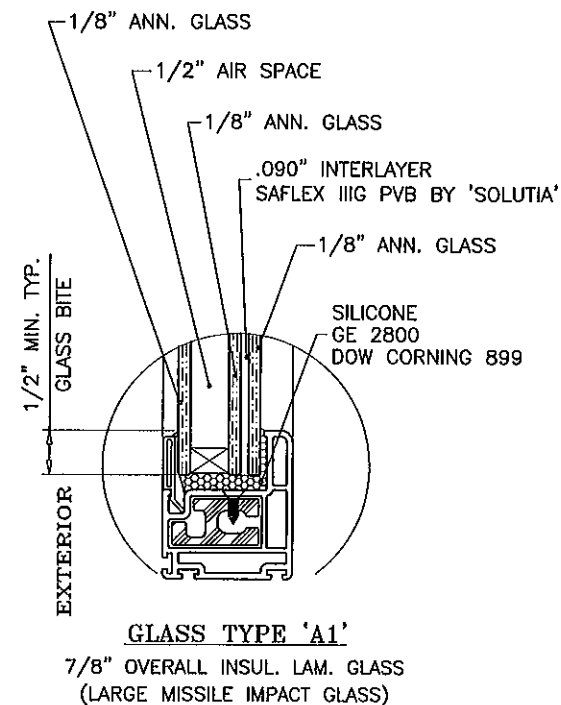
A LOAD DURATION INCREASE IS USED IN DESIGN OF ANCHORS INTO WOOD ONLY.

MATERIALS INCLUDING BUT NOT LIMITED TO STEEL/METAL SCREWS, THAT COME
INTO CONTACT WITH OTHER DISSIMILAR MATERIALS SHALL MEET THE
REQUIREMENTS OF THE FLORIDA BLDG. CODE SECTION 2003.8.4.



GLASS TYPE 'A'

7/8" OVERALL INSUL. LAM. GLASS
(LARGE & SMALL MISSILE IMPACT GLASS)



GLASS TYPE 'A1'

7/8" OVERALL INSUL. LAM. GLASS
(LARGE MISSILE IMPACT GLASS)

GLAZING OPTIONS

INSULATING LAM. GLASS
LARGE & SMALL MISSILE IMPACT

Engr: JAVAD AHMAD
CIVIL
FLA. PE # 70592
C.A.N. 3538

JAN 14 2012

PRODUCT REVISED
as complying with the Florida
Building Code
Acceptance No 12-0118.23
Expiration Date JAN 6 2015
By *Manuel Perez*
Miami Dade Product Control

SERIES 10100 PVC HORIZ. SLIDING WDW. (L.M.I./S.M.I.)
TRULITE WINDOW & DOOR SOLUTIONS, LLC
8130 N.W. 74TH AVE.
MEDLEY, FL. 33166
TEL (305) 887-2646 FAX (305) 883-1309

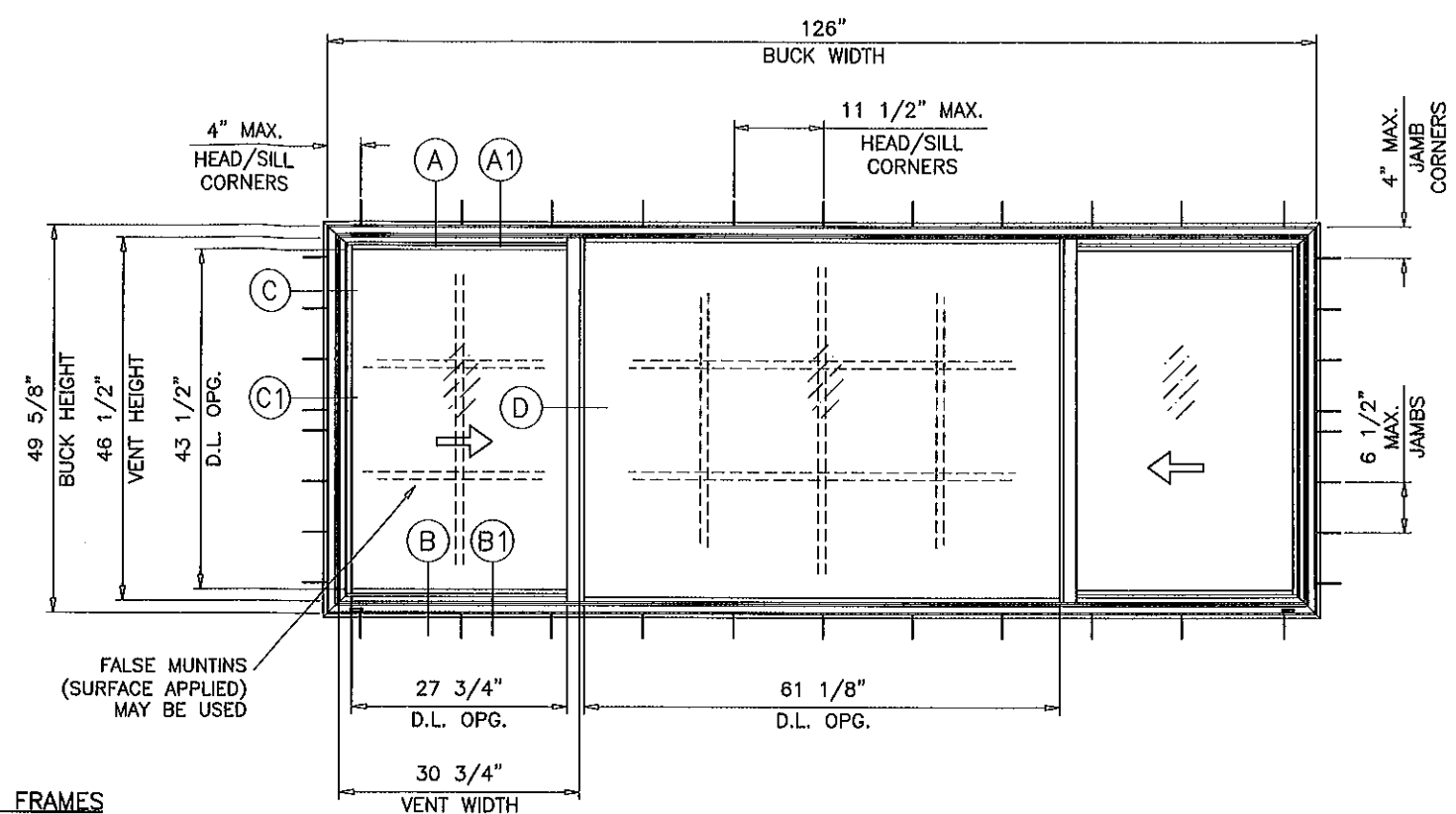
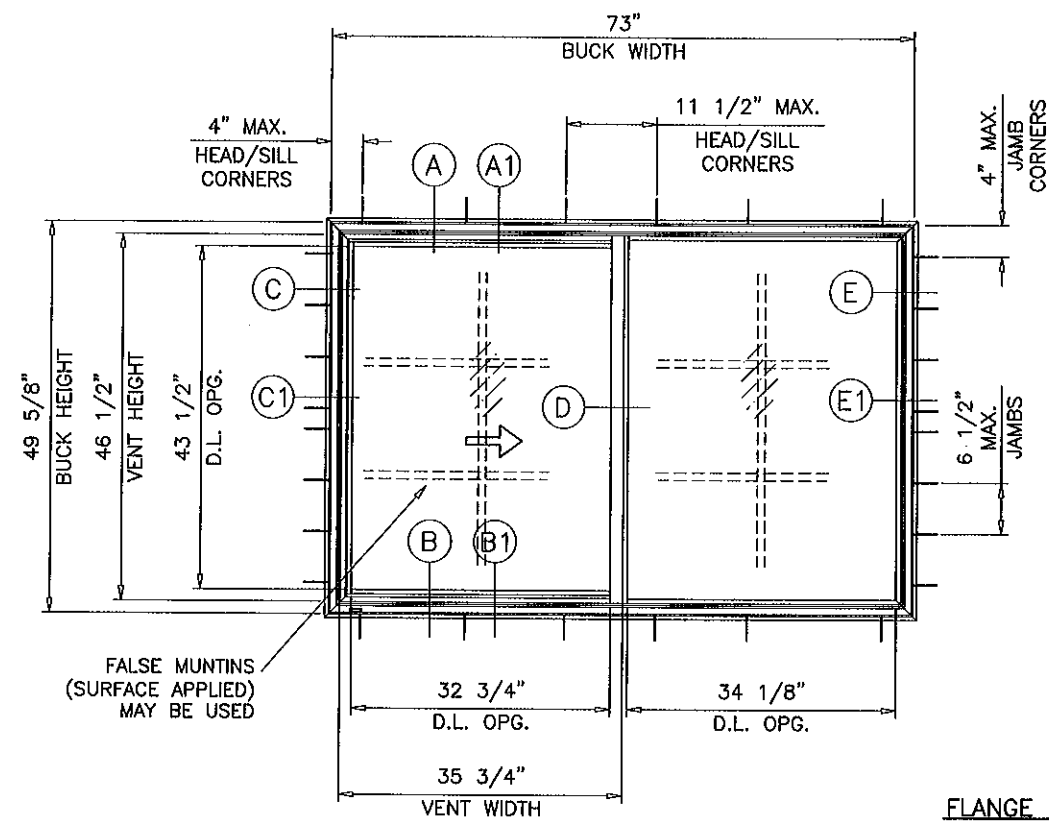
revisions:	no	date	by	description
	A	05.06.10	MANUF.	NAME REVISED
	B	12.23.11	UPDATED TO 2010 FBC,	NAME REV

date: 09-30-09
scale: 1/2" = 1'-0"
dr. by: HAMID
chk. by:

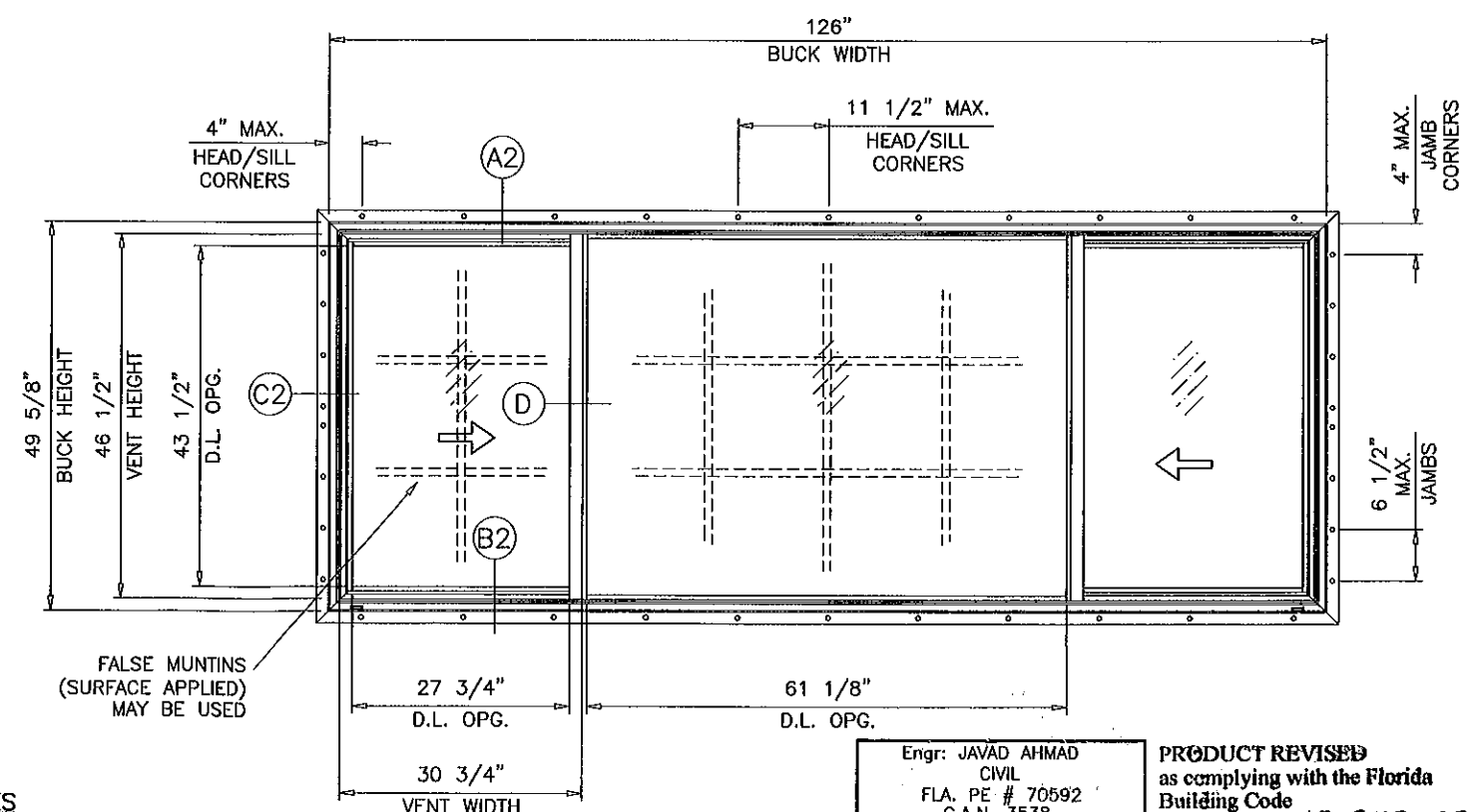
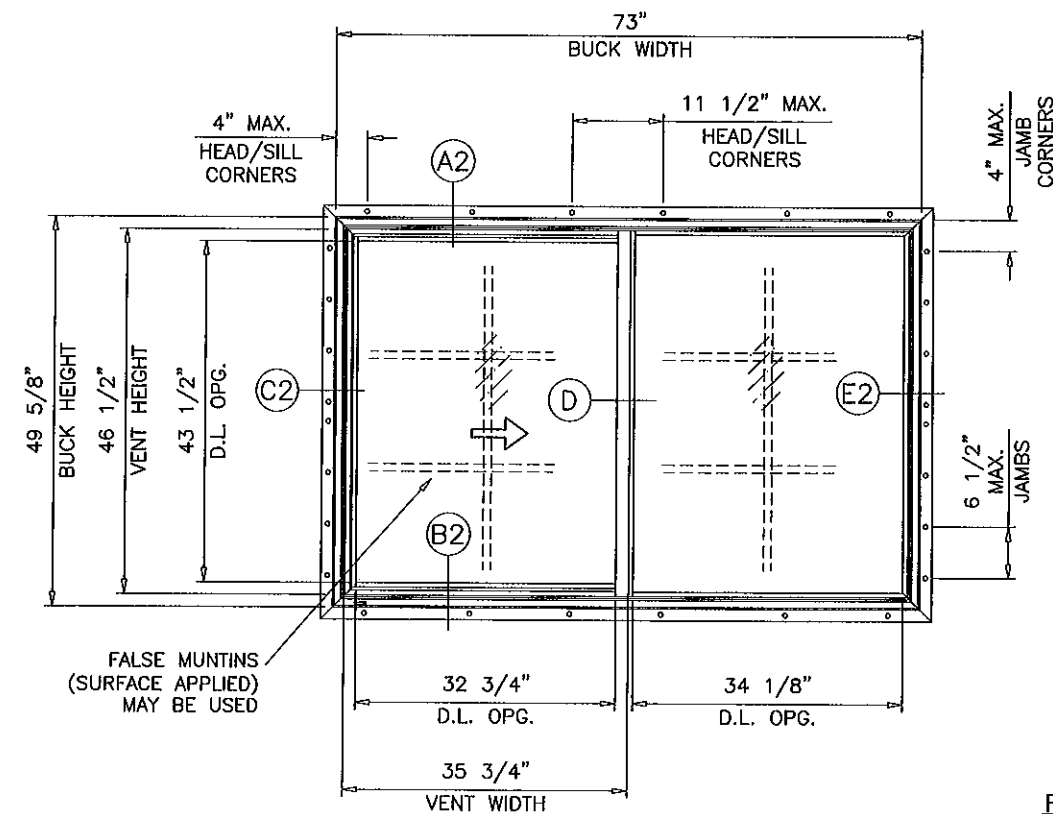
drawing no.
W09-52

sheet 1 of 8

AL-FAROOQ CORPORATION
ENGINEERS & PRODUCT DEVELOPMENT
1235 S.W. 87 AVE
MIAMI, FLORIDA 33174
TEL (305) 264-8100 FAX (305) 262-6978
COMP-ANL\W09-52AWP



FLANGE & FLUSH FRAMES
TYPICAL ELEVATIONS



FIN FRAMES
TYPICAL ELEVATIONS

Engr: JAVAD AHMAD
CIVIL
FLA. PE # 70592
C.A.N. 3538

JAN 11 2012

PRODUCT REVISED
as complying with the Florida
Building Code
Acceptance No 12-0112-23
Expiration Date JAN 6, 2015
By *Mamun Per*
Miami Dade Product Control

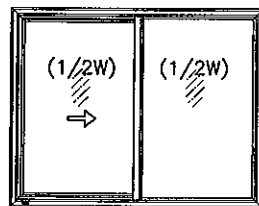
AL-FAROOQ CORPORATION
ENGINEERS & PRODUCT DEVELOPMENT
1235 S.W. 87 AVE
MIAMI, FLORIDA 33174
TEL (305) 264-8100 FAX (305) 262-6978
COMP-ANL\W09-52AWP

SERIES 10100 PVC HORIZ. SLIDING WDW. (L.M.I./S.M.I.)
TRULITE WINDOW & DOOR SOLUTIONS, LLC
8130 N.W. 74TH AVE.
MEDLEY, FL. 33166
TEL (305) 887-2646 FAX (305) 883-1309

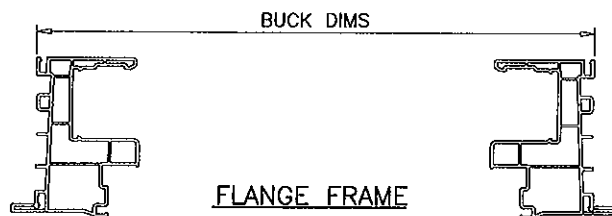
date: 09-30-09		revisions:	
scale: 1/2"=1'-0"		no	date by description
dr. by: HAMID		A	05.06.10 MANUF. NAME REVISED
chk. by:		B	12.23.11 MANUF. NAME REVISED

DESIGN LOAD CAPACITY - PSF (XO OR OX SIZES)				
BUCK DIMS.		A	GLASS TYPES 'A' & 'A1'	
WIDTH	HEIGHT		EXT.(+)	INT.(-)
25-1/2"	25" (4)	4	65.0	65.0
36"		4	65.0	65.0
52-1/8"		5	65.0	65.0
73"		7	65.0	65.0
25-1/2"	37-3/8" (6)	4	65.0	65.0
36"		4	65.0	65.0
52-1/8"		5	65.0	65.0
73"		7	65.0	65.0
25-1/2"	49-5/8" (8)	4	65.0	65.0
36"		4	65.0	65.0
52-1/8"		5	65.0	65.0
73"		7	65.0	65.0
23"	23" (4)	4	65.0	65.0
35"		4	65.0	65.0
47"		5	65.0	65.0
59"		6	65.0	65.0
71"	35" (6)	4	65.0	65.0
35"		4	65.0	65.0
47"		5	65.0	65.0
59"		6	65.0	65.0
71"	47" (7)	4	65.0	65.0
35"		4	65.0	65.0
47"		5	65.0	65.0
59"		6	65.0	65.0
71"	49-5/8" (8)	4	65.0	65.0
35"		4	65.0	65.0
47"		5	65.0	65.0
59"		6	65.0	65.0
71"	71" (8)	4	65.0	65.0
35"		4	65.0	65.0
47"		5	65.0	65.0
59"		6	65.0	65.0

A = NO. OF ANCHORS PER HEAD & SILL
() = NO. OF ANCHORS PER JAMB

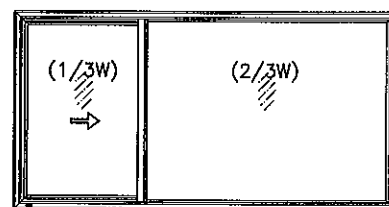


OPERATING VENTS TO BE 1/2 OF THE WINDOW WIDTH
'XO OR OX'

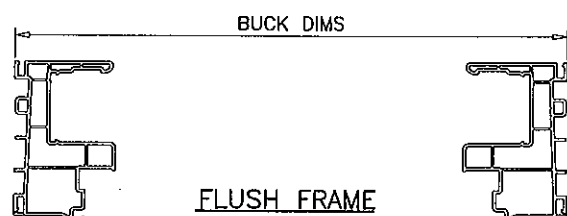


DESIGN LOAD CAPACITY - PSF (XO OR OX SIZES)				
BUCK DIMS.		A	GLASS TYPES 'A' & 'A1'	
WIDTH	HEIGHT		EXT.(+)	INT.(-)
54-5/8"	25" (4)	5	65.0	65.0
78-3/4"		8	65.0	65.0
82-3/8"		8	65.0	65.0
54-5/8"	37-3/8" (6)	5	65.0	65.0
78-3/4"		8	65.0	65.0
82-3/8"		8	65.0	65.0
54-5/8"	49-5/8" (8)	5	65.0	65.0
78-3/4"		8	62.8	62.8
82-3/8"		8	63.7	63.7
53-1/8"	23" (4)	5	65.0	65.0
62-1/8"		6	65.0	65.0
71-1/2"		7	65.0	65.0
80-1/8"		8	65.0	65.0
89-1/8"	35" (6)	5	65.0	65.0
62-1/8"		6	65.0	65.0
71-1/2"		7	65.0	65.0
80-1/8"		8	65.0	65.0
89-1/8"	47" (7)	5	65.0	65.0
62-1/8"		6	65.0	65.0
71-1/2"		7	65.0	65.0
80-1/8"		8	64.5	64.5
53-1/8"	49-5/8" (8)	5	65.0	65.0
62-1/8"		6	65.0	65.0
71-1/2"		7	65.0	65.0
80-1/8"		8	65.0	65.0

A = NO. OF ANCHORS PER HEAD & SILL
() = NO. OF ANCHORS PER JAMB

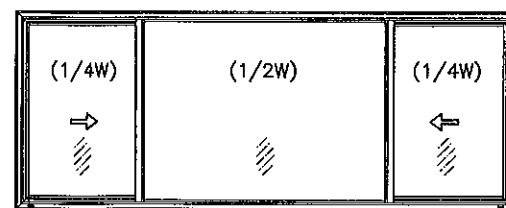


OPERATING VENTS TO BE 1/3 OF THE WINDOW WIDTH
'XO OR OX'

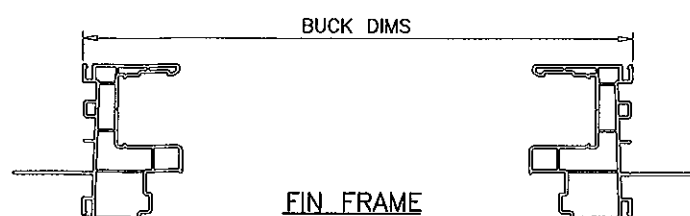


DESIGN LOAD CAPACITY - PSF (XOX SIZES)				
BUCK DIMS.		A	GLASS TYPES 'A' & 'A1'	
WIDTH	HEIGHT		EXT.(+)	INT.(-)
73"	25" (4)	7	65.0	65.0
105-1/4"		10	65.0	65.0
110"		10	65.0	65.0
73"	37-3/8" (6)	9	65.0	65.0
105-1/4"		12	65.0	65.0
110"		12	65.0	65.0
73"	49-5/8" (8)	9	65.0	65.0
105-1/4"		12	62.8	62.8
110"		12	63.7	63.7
71"	23" (4)	7	65.0	65.0
83"		8	65.0	65.0
95"		9	65.0	65.0
107"		10	65.0	65.0
119"	35" (6)	11	65.0	65.0
125"		11	65.0	65.0
71"	47" (7)	7	65.0	65.0
83"		8	65.0	65.0
95"		9	65.0	65.0
107"		10	64.5	64.5
71"	49-5/8" (8)	7	65.0	65.0
83"		8	65.0	65.0
95"		9	65.0	65.0
107"		10	65.0	65.0

A = NO. OF ANCHORS PER HEAD & SILL
() = NO. OF ANCHORS PER JAMB



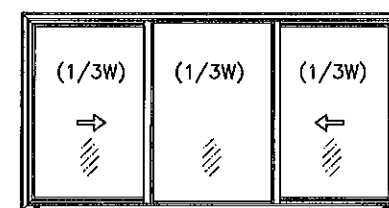
OPERATING VENTS TO BE 1/4 OF THE WINDOW WIDTH
'XOX'



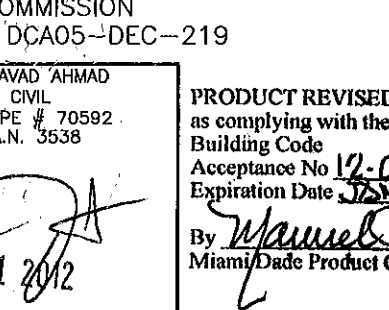
NOTE:
GLASS CAPACITIES ON THIS SHEET ARE
BASED ON ASTM E1300-04 (3 SEC. GUSTS)
AND FLORIDA BUILDING COMMISSION
DECLARATORY STATEMENT DCA05-DEC-219

DESIGN LOAD CAPACITY - PSF (XOX SIZES)				
BUCK DIMS.		A	GLASS TYPES 'A' & 'A1'	
WIDTH	HEIGHT		EXT.(+)	INT.(-)
73"	25" (4)	7	65.0	65.0
105-1/4"		10	65.0	65.0
110"		10	65.0	65.0
73"	37-3/8" (6)	9	65.0	65.0
105-1/4"		12	65.0	65.0
110"		12	65.0	65.0
73"	49-5/8" (8)	9	65.0	65.0
105-1/4"		12	65.0	65.0
110"		12	65.0	65.0
71"	23" (4)	7	65.0	65.0
83"		8	65.0	65.0
95"		9	65.0	65.0
107"		10	65.0	65.0
119"	35" (6)	11	65.0	65.0
125"		11	65.0	65.0
71"	47" (7)	7	65.0	65.0
83"		8	65.0	65.0
95"		9	65.0	65.0
107"		10	65.0	65.0
71"	49-5/8" (8)	7	65.0	65.0
83"		8	65.0	65.0
95"		9	65.0	65.0

A = NO. OF ANCHORS PER HEAD & SILL
() = NO. OF ANCHORS PER JAMB



OPERATING VENTS TO BE 1/3 OF THE WINDOW WIDTH
'XOX'



Engr: JAVAD AHMAD
CIVIL
FLA. PE # 70592
C.A.N. 3538
JAN 11 2012

PRODUCT REVISED
as complying with the Florida
Building Code
Acceptance No 12-0118-23
Expiration Date 6.2015
By *Mamuel Perez*
Miami Dade Product Control

AL-FAROOQ CORPORATION
ENGINEERS & PRODUCT DEVELOPMENT
1235 S.W. 87 AVE
MIAMI, FLORIDA 33174
TEL (305) 262-6978
FAX (305) 262-8100

SERIES 10100 PVC HORIZ. SLIDING WDW. (L.M.I./S.M.I.)

TRULITE WINDOW & DOOR SOLUTIONS, LLC
8130 N.W. 74TH AVE.
MEDLEY, FL. 33166
TEL (305) 887-2646
FAX (305) 883-1309

revisions:

no	date	by	description
A	05.06.10		MANUF. NAME REVISED
B	12.23.11		MANUF. NAME REVISED

date: 09-30-09

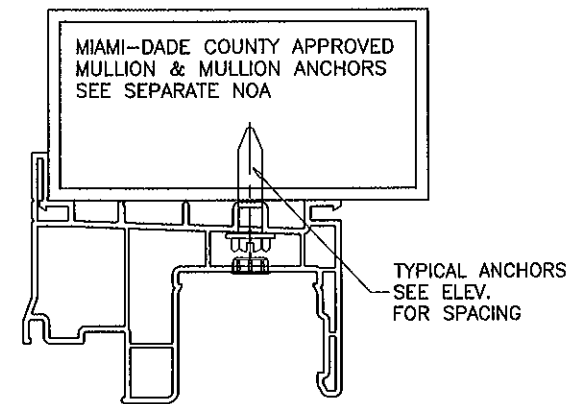
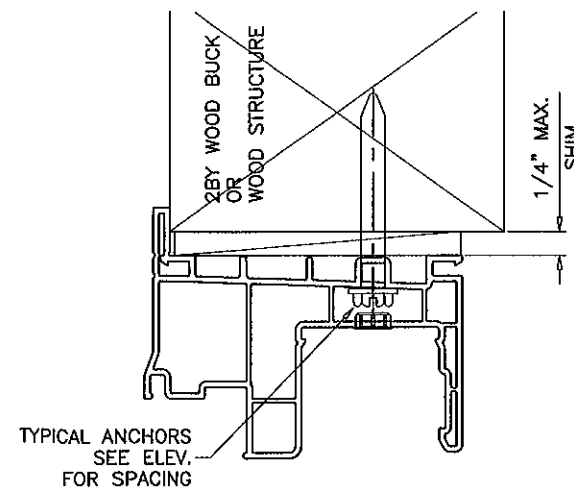
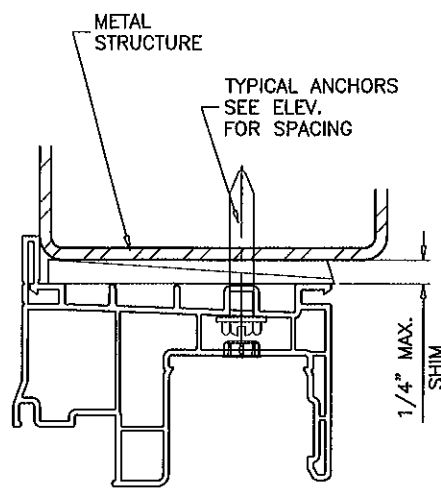
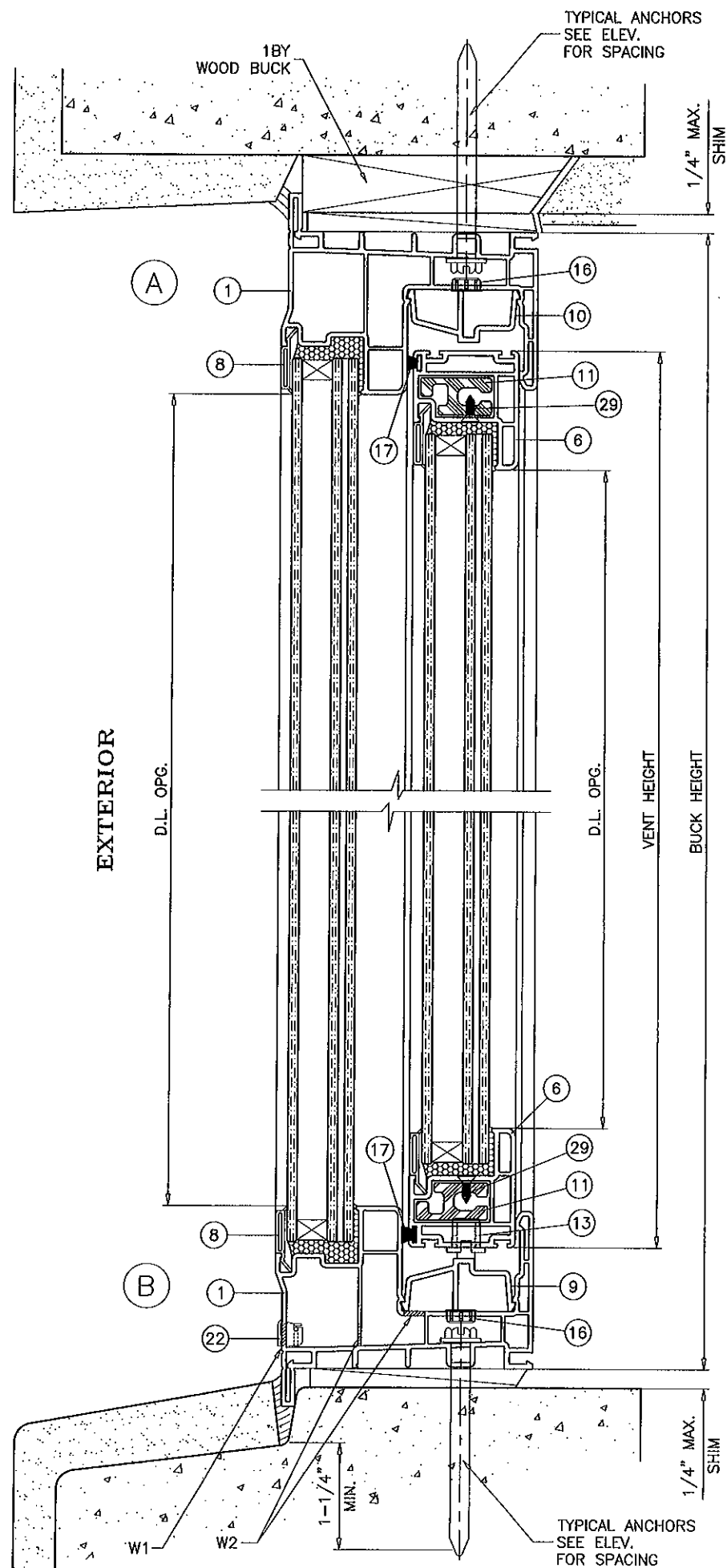
scale: -

dr. by: HAMID

chk. by:

drawing no.
W09-52

sheet 3 of 8



WOOD BUCKS AND METAL STRUCTURE NOT BY TRULITE
MUST SUSTAIN LOADS IMPOSED BY GLAZING SYSTEM
AND TRANSFER THEM TO THE BUILDING STRUCTURE.

WEEPHOLES:

W1 = 1/4" X 1" WEEP SLOT AT 4" FROM EACH END
WITH PLASTIC BAFFLE.

W2 = 1/4" X 1" WEEP SLOT AT 4" FROM EACH END

SEALANT:

ALL JOINTS AND FRAME CONNECTIONS SEALED WITH
JOINT SEALER.

TYPICAL ANCHORS: SEE ELEV. FOR SPACING

1/4" DIA. TAPCON BY 'ITW' (Fu=120 KSI, Fy=92 KSI)

1/4" DIA. ULTRACON BY 'ELCO' (Fu=177 KSI, Fy=155 KSI)

INTO 2BY WOOD BUCKS OR WOOD STRUCTURES

1-3/8" MIN. PENETRATION INTO WOOD

THRU 1BY BUCKS INTO CONC. OR MASONRY

1-1/4" MIN. EMBED INTO CONC. OR MASONRY

DIRECTLY INTO CONC. OR MASONRY

1-1/4" MIN. EMBED INTO CONC. OR MASONRY

#12 SMS OR SELF DRILLING SCREWS (GRADE 2 CRS)

INTO METAL STRUCTURES

STEEL : 12 GA. MIN. (Fy = 36 KSI MIN.)

ALUMINUM : 1/8" THK. MIN. (6063-T5 MIN.)

(STEEL IN CONTACT WITH ALUMINUM TO BE PLATED OR PAINTED)

#12 SMS OR SELF DRILLING SCREWS (GRADE 2 CRS)

INTO MIAMI-DADE COUNTY APPROVED MULLIONS (MIN. THK. = .090")
(NO SHIM SPACE)

TYPICAL EDGE DISTANCE

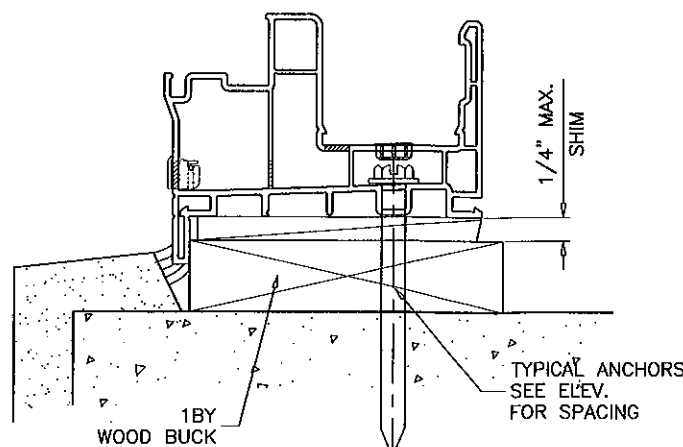
INTO CONCRETE AND MASONRY = 1-1/2" MIN.

INTO WOOD STRUCTURE = 1" MIN.

INTO METAL STRUCTURE = 3/4" MIN.

CONCRETE AT HEAD, SILL OR JAMBS f'c = 3000 PSI MIN.

C-90 HOLLOW/FILLED BLOCK AT JAMBS f'm = 2000 PSI MIN.



Engr: JAVAD AHMAD
CIVIL
FLA. PE # 70592
C.A.N. 3538

JAN 11 2012

PRODUCT REVISED
as complying with the Florida
Building Code
Acceptance No. 12-0118-23
Expiration Date: 06/06/2015
By: *Mamun Faraz*
Miami Dade Product Control

SERIES 10100 PVC HORIZ. SLIDING WDW. (L.M.I./S.M.I.)

TRULITE WINDOW & DOOR SOLUTIONS, LLC

8130 N.W. 74TH AVE.

MEDLEY, FL. 33166

TEL. (305) 887-2646

FAX (305) 883-1309

revisions:

date: 09-30-09

scale: 1/2" = 1"

dr. by: HAMID

chk. by:

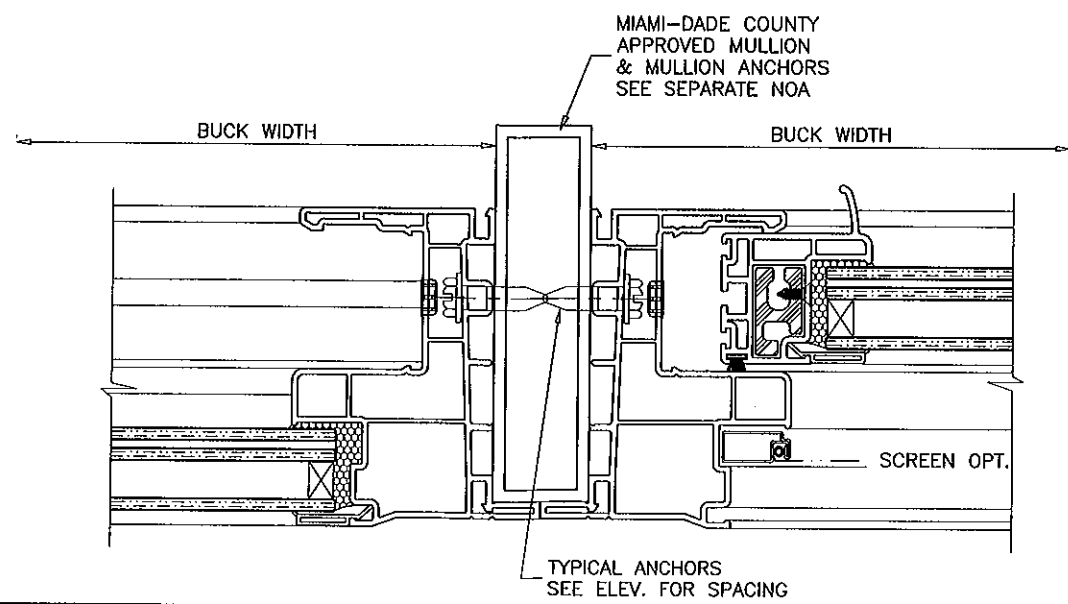
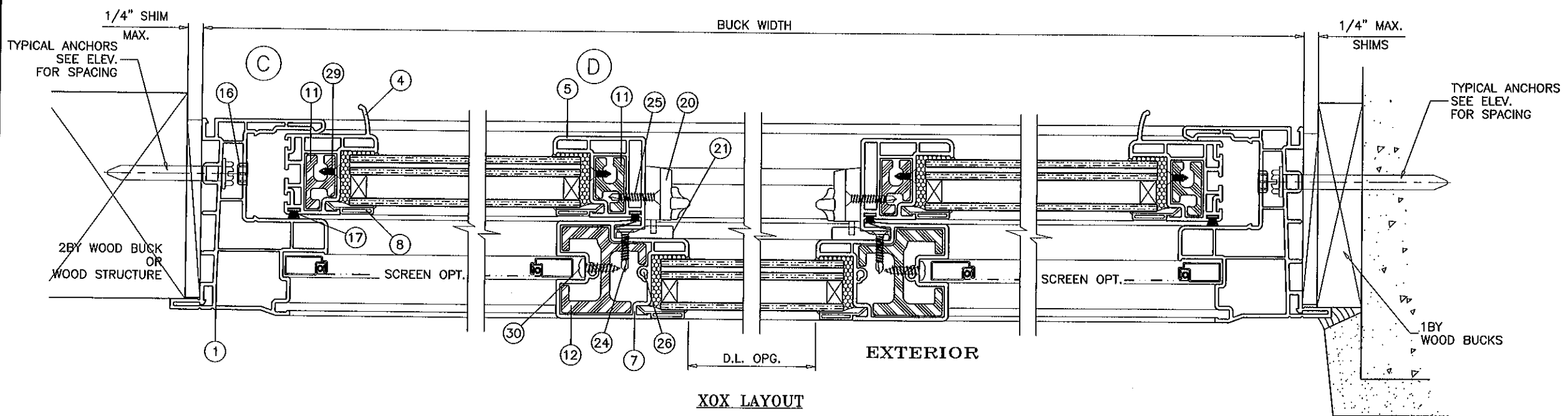
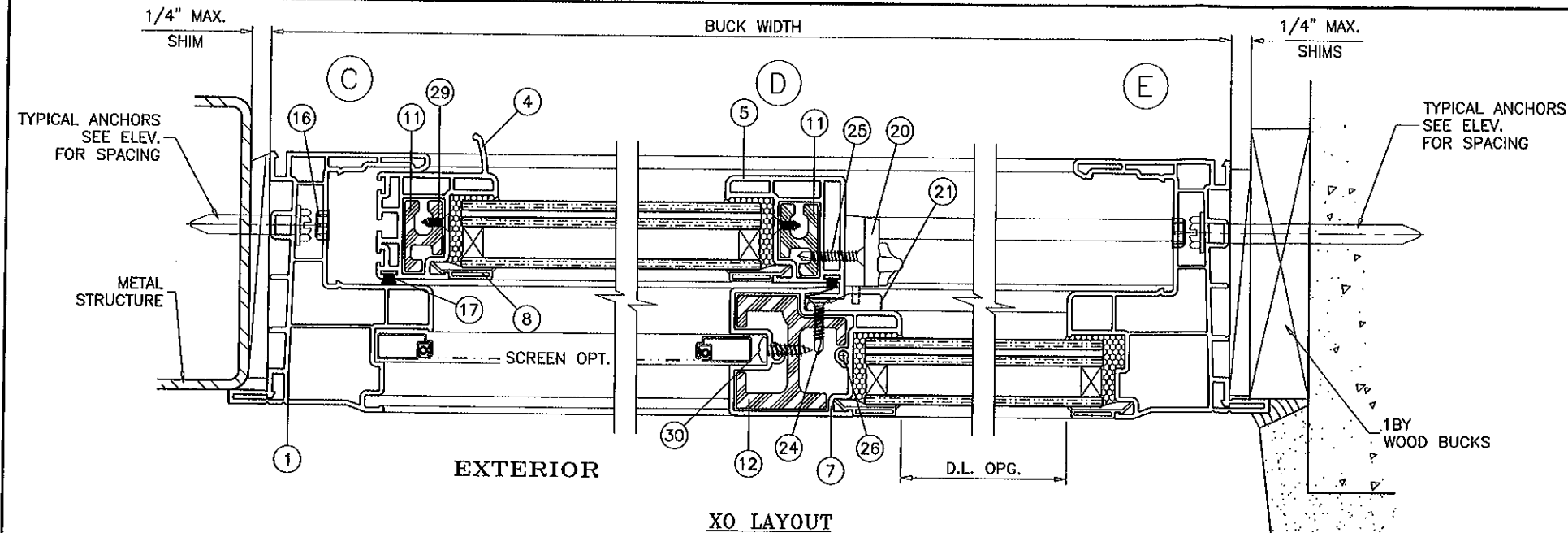
drawing no.

W09-52

sheet 4 of 8

AL-FAROOQ CORPORATION
ENGINEERS & PRODUCT DEVELOPMENT
1235 S.W. 87 AVE
MIAMI, FLORIDA 33174
TEL. (305) 264-8100
FAX. (305) 262-6978

COMP-ANL\W09-52AWP




Engr: JAVAD AHMAD
CIVIL
FLA. PE # 70592
C.A.N. 3538

JAN 11 2012

PRODUCT REVISED
as complying with the Florida
Building Code
Acceptance No 12-0118-23
Expiration Date JAN. 6, 2015

By *Manuel*
Miami Dade Product Control



AL-FAROOQ CORPORATION
ENGINEERS & PRODUCT DEVELOPMENT
1235 S.W. 87 AVE
MIAMI, FLORIDA 33174
TEL (305) 264-8100 FAX (305) 262-6978
COMP-ANL W09-S2AWP

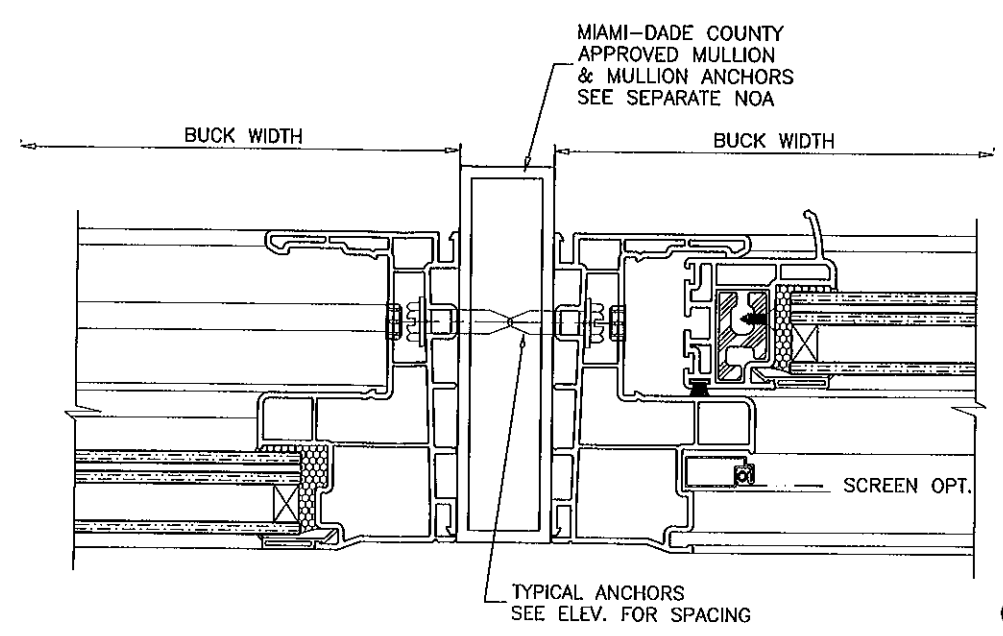
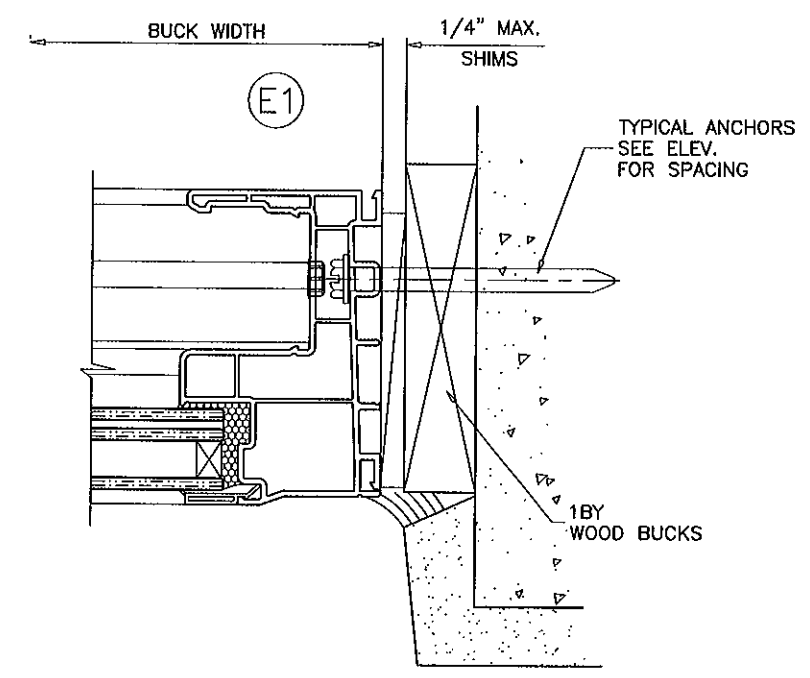
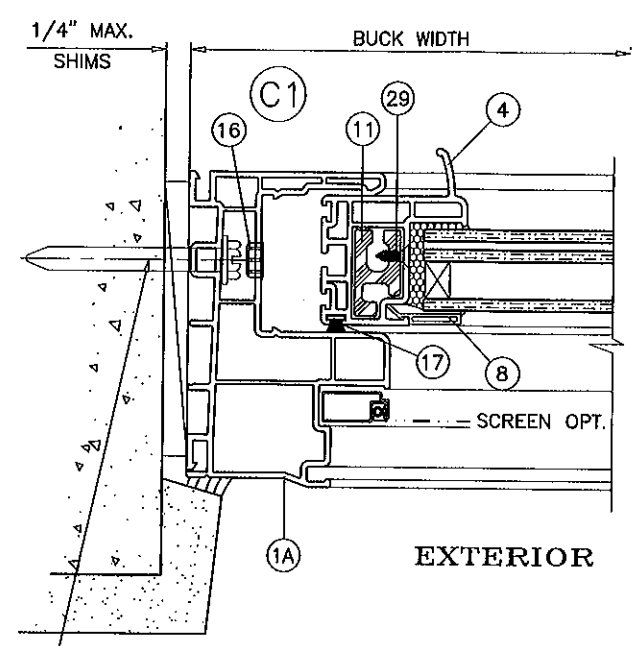
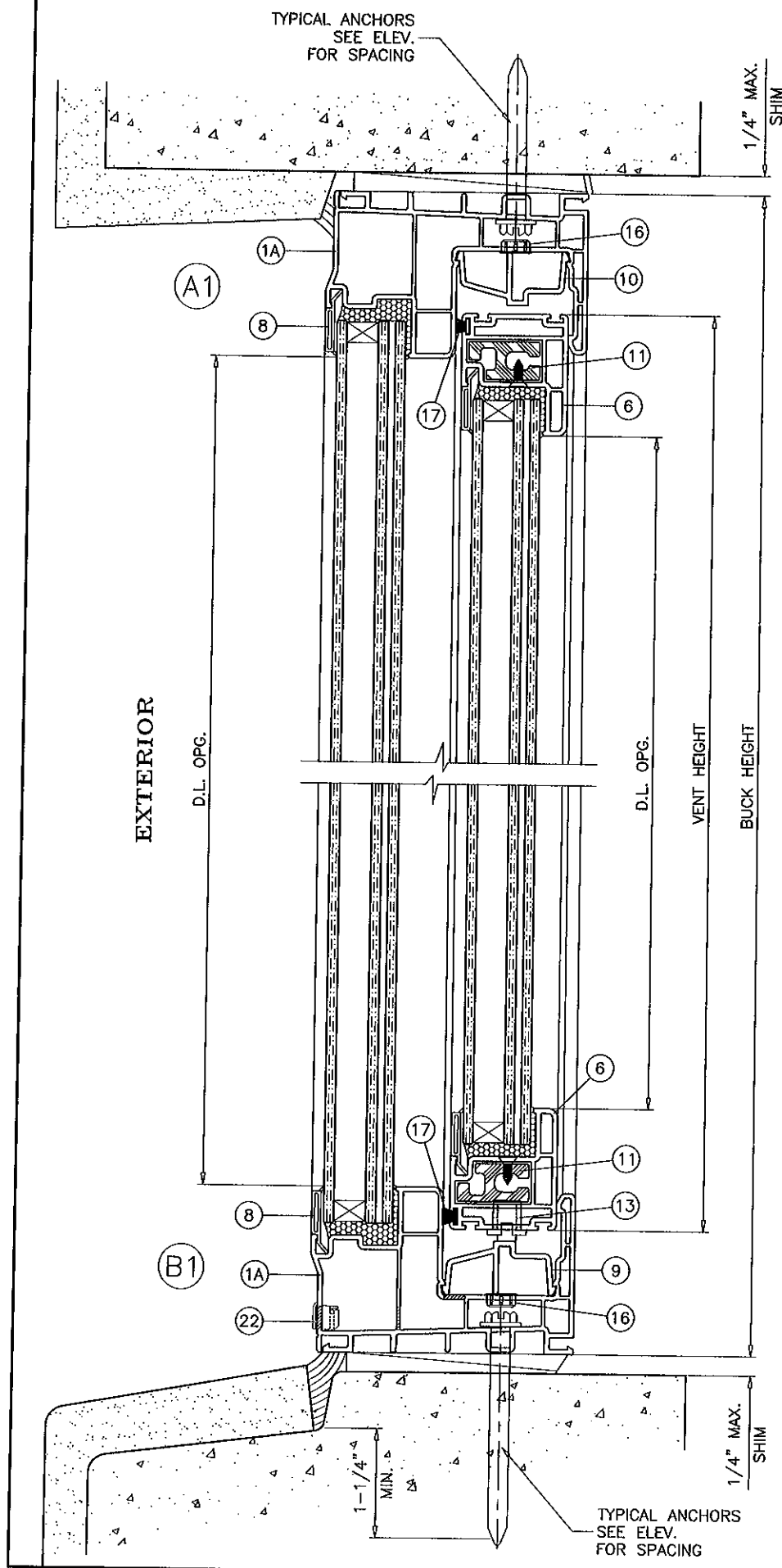
SERIES 10100 PVC HORIZ. SLIDING WDW. (L.M.I./S.M.I.)

TRULITE WINDOW & DOOR SOLUTIONS, LLC
8130 N.W. 74TH AVE.
MEDLEY, FL. 33166
TEL (305) 887-2646 FAX (305) 883-1309

revisions:	
no	date by description
A	05.06.10 MANUF. NAME REVISED
B	12.23.11 MANUF. NAME REVISED

date: 09-30-09	scale: 1/2" = 1"	dr. by: HAMID	chk. by:
----------------	------------------	---------------	----------

drawing no.	W09-52
sheet	5 of 8



Engr. JAVAD AHMAD
CIVIL
FLA. PE # 70592
C.A.N. 3538

JAVAD AHMAD
JAN 11 2012

PRODUCT REVISED
as complying with the Florida
Building Code
Acceptance No. 12-0112-23
Expiration Date JAN. 6, 2015

By *Manuel Jerez*
Miami/Dade Product Control

AL-FAROOQ CORPORATION
ENGINEERS & PRODUCT DEVELOPMENT
1235 S.W. 87 AVE
MIAMI, FLORIDA 33174
TEL. (305) 264-8100 FAX. (305) 262-6978
COMP-ANL\W09-52AWP

SERIES 10100 PVC HORIZ. SLIDING WDW. (L.M.I./S.M.I.)

TRULITE WINDOW & DOOR SOLUTIONS, LLC
8130 N.W. 74TH AVE.
MEDLEY, FL. 33166
TEL. (305) 887-2646 FAX (305) 883-1309

revisions:		no	date	by	description
		A	05.06.10	MANUF.	NAME REVISED
		B	12.23.11	MANUF.	NAME REVISED

date: 09-30-09

scale: 1/2" = 1"

dr. by: HAMID

chk. by:

drawing no.
W09-52

sheet 6 of 8

ILLUSTRATIVE DTLS. ONLY
EXT. OR INT. FINISHES
NOT BY AWP

TYPICAL ANCHORS
SEE ELEV.
FOR SPACING

EXTERIOR

D.L. OPG.

EXTERIOR

D.L. OPG.

VENT HEIGHT

BUCK HEIGHT

1/2" MIN.

1/4" MAX.
GAP

1/2" MIN.

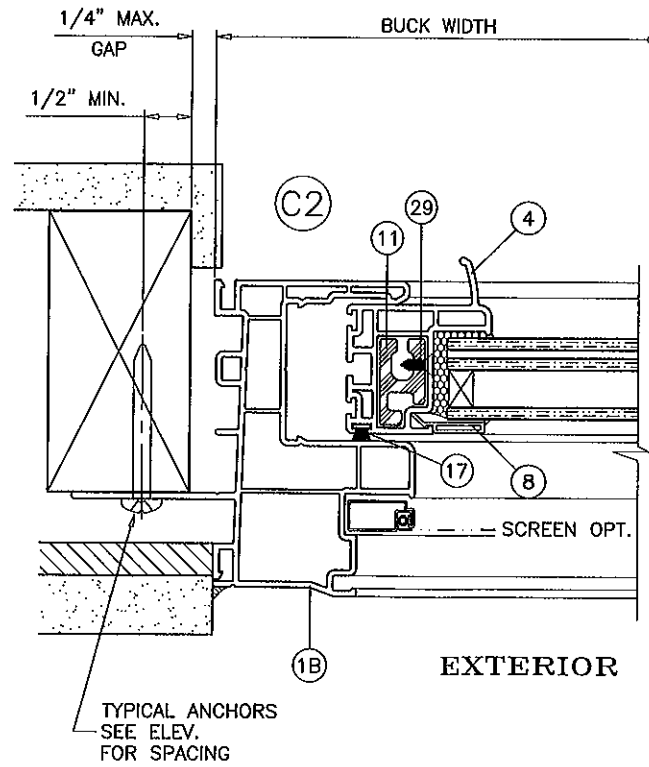
1/4" MAX.
GAP

TYPICAL ANCHORS
SEE ELEV.
FOR SPACING

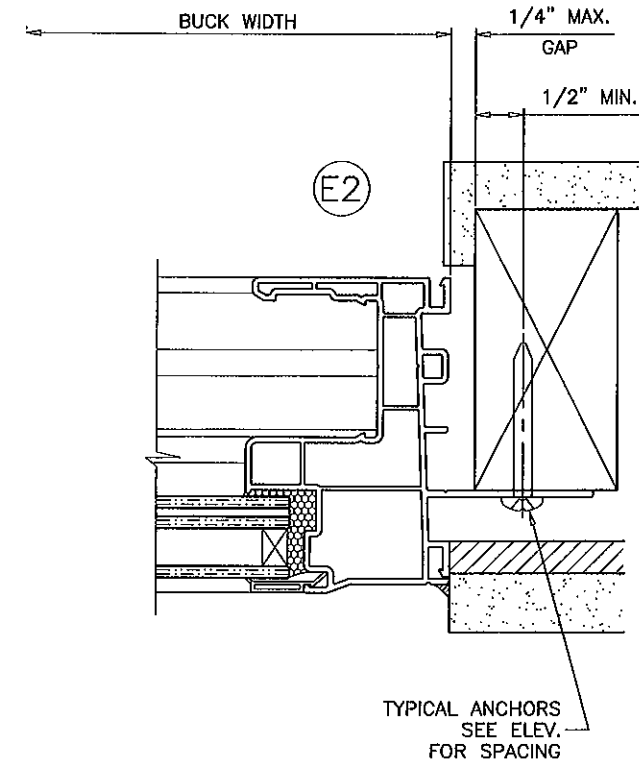
TYPICAL ANCHORS: SEE ELEV. FOR SPACING

#12 SMS (GRADE 2 CRS)

INTO 2BY WOOD BUCKS OR WOOD STRUCTURES
1-3/8" MIN. PENETRATION INTO WOOD



EXTERIOR



Engr: JAVAD AHMAD
CIVIL
FLA. PE # 70592
C.A.N. 3538

JAN 11 2012

PRODUCT REVISED
as complying with the Florida
Building Code
Acceptance No. 12-0118.23
Expiration Date JAN 6, 2015
By *Mamuel Saez*
Miami Trade Product Control

revisions:

no	date	by	description
A	05.06.10		MANUF. NAME REVISED
B	12.23.11		MANUF. NAME REVISED

date: 09-30-09

scale: 1/2" = 1"

dr. by: HAMID

chk. by:

drawing no.
W09-52

sheet 7 of 8

AL-FAROOQ CORPORATION

ENGINEERS & PRODUCT DEVELOPMENT

1235 S.W. 87 AVE
MIAMI, FLORIDA 33174

TEL (305) 264-8100

FAX (305) 262-6978

COMP-ANL W09-52AWP

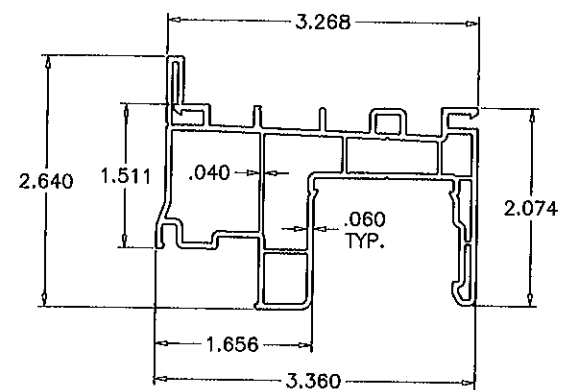
SERIES 10100 PVC HORIZ. SLIDING WDW. (L.M.I./S.M.I.)

TRULITE WINDOW & DOOR SOLUTIONS, LLC

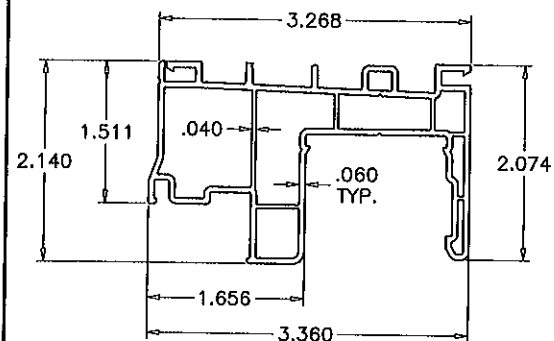
8130 N.W. 74TH AVE.
MEDLEY, FL. 33166

TEL (305) 887-2646

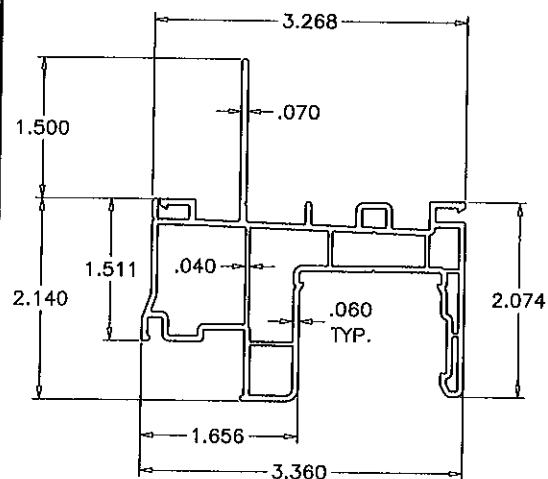
FAX (305) 883-1309



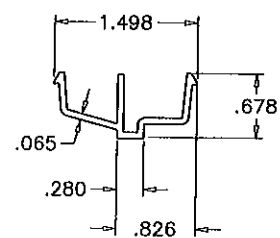
① FLANGE FRAME



①A FLUSH FRAME

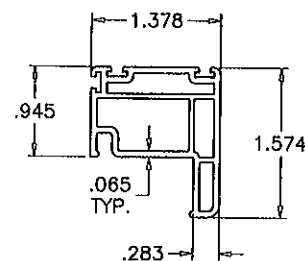


①B FIN FRAME

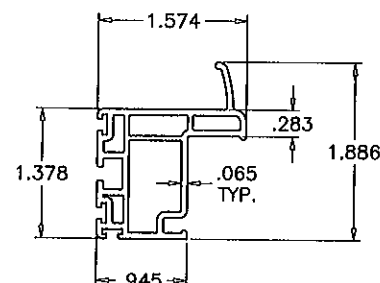


⑨ ROLLER TRACK

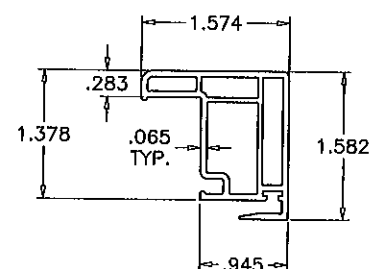
⑩ VENT ANTI-LIFT DEVICE



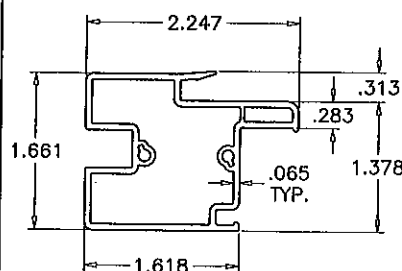
⑥ VENT TOP & BOTTOM RAIL



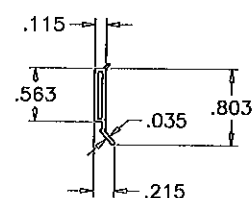
④ VENT LOCK STILE



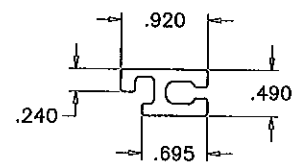
⑤ VENT INTERLOCK STILE



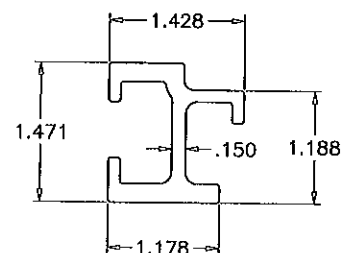
⑦ FIXED INTERLOCK STILE



⑧ GLAZING BEAD

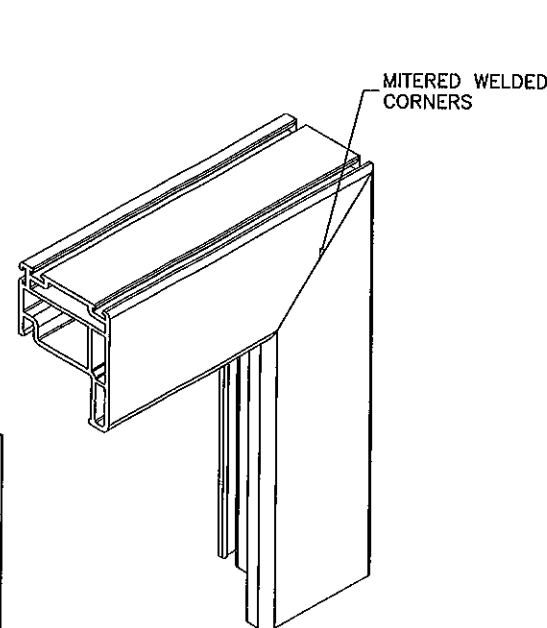


⑪ VENT REINFORCEMENT

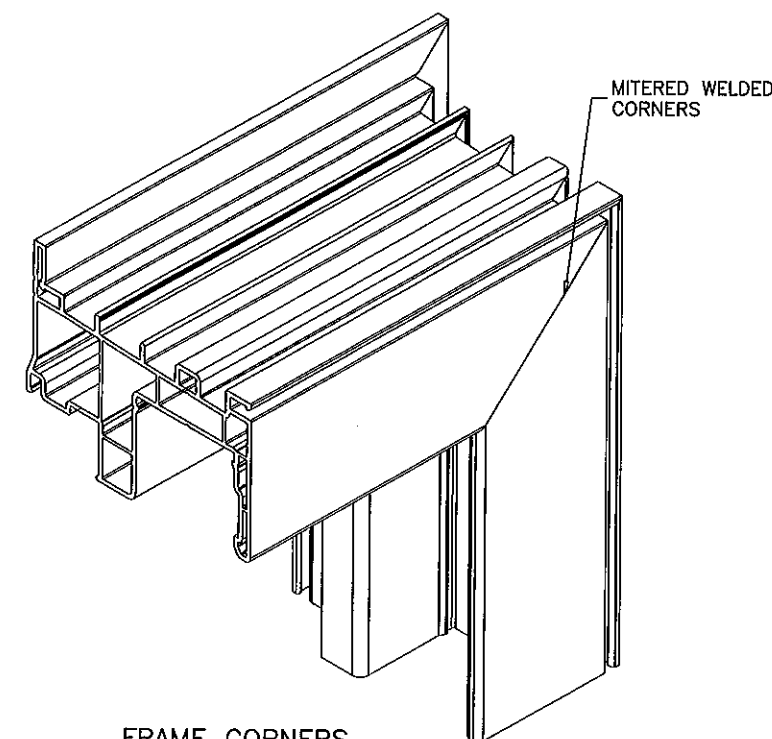


⑫ FIX. INTERLOCK REINF.

ITEM	PART #	QUANTITY	DESCRIPTION	MATERIAL	MANF./SUPPLIER/REMARKS
1	YV-10101	1	FLANGE FRAME	PVC	-
1A	YV-10101	2	FLUSH FRAME	PVC	-
1B	YV-10101	1	FIN FRAME	PVC	-
4	YV-10003	2	VENT LOCK STILE	PVC	-
5	YV-10004	2	VENT INTERLOCK STILE	PVC	-
6	YV-10005	4	VENT TOP & BOTTOM RAIL	PVC	-
7	YV-10006	2	FRAME FIXED INTERLOCK	PVC	-
8	YV-10007	12	GLAZING BEAD	PVC	-
9	YV-10102	1	ROLLER TRACK	PVC	-
10	YV-10102	2/VENT	VENT ANTI-LIFT DEVICE (4" LONG, AT TOP)	PVC	-
11	YE-1104	4/VENT	VENT REINFORCEMENT	6063-T6	-
12	YE-1103	1 EACH	FIXED INTERLOCK REINFORCEMENT	6063-T6	-
13	YH-1609	2/VENT	ROLLER ASSEMBLY (MOD. 110-2402-92)	NYLON/BRASS	RO-MAI
16	YH-1316	AS REQ'D.	Ø 3/8" HOLE PLUG (MOD. C-13856)	NYLON	ASHLAND
17	YH-602	AS REQ'D.	.187" x .330" FIN SEAL WEATHERSTRIP	-	ULTRAFAB
20	YH-595	2/VENT	SWEEP LOCK (MOD. 677208)	-	DECO
21	YH-597	2/VENT	FACE MOUNTED KEEPER (MOD. 677133)	-	DECO
22	YH-1610	2	WEEP HOLE COVER	-	ASHLAND
24	YF-82	2/KEEPER	#6 x 3/4" F.H. TEK. SQ.DR. KEEPER SCREW	CAD PLATED CRS.	-
25	YF-83	2/LOCK	#8 x 7/8" F.H. TEK. PH.DR. SWEEP LOCK SCREW	CAD PLATED CRS.	-
26	YF-78SH	4	#8 x 2-1/2" P.H. SS. SQ.DR. FIXED MR. SCREW	S. STEEL	-
29	YF-92	14/VENT	#8 x 3/8" F.H. PH.DR. VENT REINF. SCREW	CAD PLATED CRS	-
30	YF-21SS	5/VENT	#8 x 1/2" P.H. SS. PH.DR. FIXED MR. REINF. SCREW	S. STEEL	-



VENT CORNERS



FRAME CORNERS

Engr: JAVAD AHMAD
CIVIL
FLA. PE # 70592
C.A.N. 3538

JAN 11 2012

PRODUCT REVISED
as complying with the Florida
Building Code
Acceptance No. 12-0118-23
Expiration Date JAN 6, 2015
By *Manuel Perez*
Miami Dade Product Control

SERIES 10100 PVC HORIZ. SLIDING WDW. (L.M.I./S.M.I.)
TRULITE WINDOW & DOOR SOLUTIONS, LLC
8130 N.W. 74TH AVE.
MEDLEY, FL. 33166
TEL. (305) 887-2646 FAX (305) 883-1309

no	date	by	description
A	05.06.10	MANUF.	NAME REVISED
B	12.23.11	MANUF.	NAME REVISED

date: 09-30-09
scale: 1/2" = 1"
dr. by: HAMID
chk. by:

drawing no.
W09-52
sheet 8 of 8

AL-FAROOQ CORPORATION
ENGINEERS & PRODUCT DEVELOPMENT
1235 S.W. 87 AVE
MIAMI, FLORIDA 33174
TEL. (305) 264-8100 FAX. (305) 262-6978
COMP-ANL W09-52AWP