


Moving to a New Normal Dashboard

June 21, 2020




Daily Summary

1 Downward trajectory of documented cases within a 14-day period



As of **06/21/2020**
New Positives: **710**
Trend: 

2 14 consecutive days where positive test rate is below 10% on average

As of **06/21/2020**
Average of the Last 14 Days  **10.50%**

3 30% Total and ICU Bed Capacity Available*

As of **06/21/2020**

COVID non-ICU Admissions	579	
non-ICU Bed Capacity	2,684	 21.57%
COVID ICU Admissions	135	
ICU Bed Capacity	483	 27.95%

4 Schedule viral testing of healthcare workers including in nursing homes

In Progress

5 Plan in place to monitor and manage hospital capacity and vulnerable populations

In Progress

6 Countywide contact tracing program with a target headcount of 100 tracers by May 31

Complete

FDOH has more than 175 contact tracers in place and will be provided additional resources as needed.

7 Sector safety guidelines developed and communicated

In Progress

Yellow Phase guidelines have been communicated and are being monitored

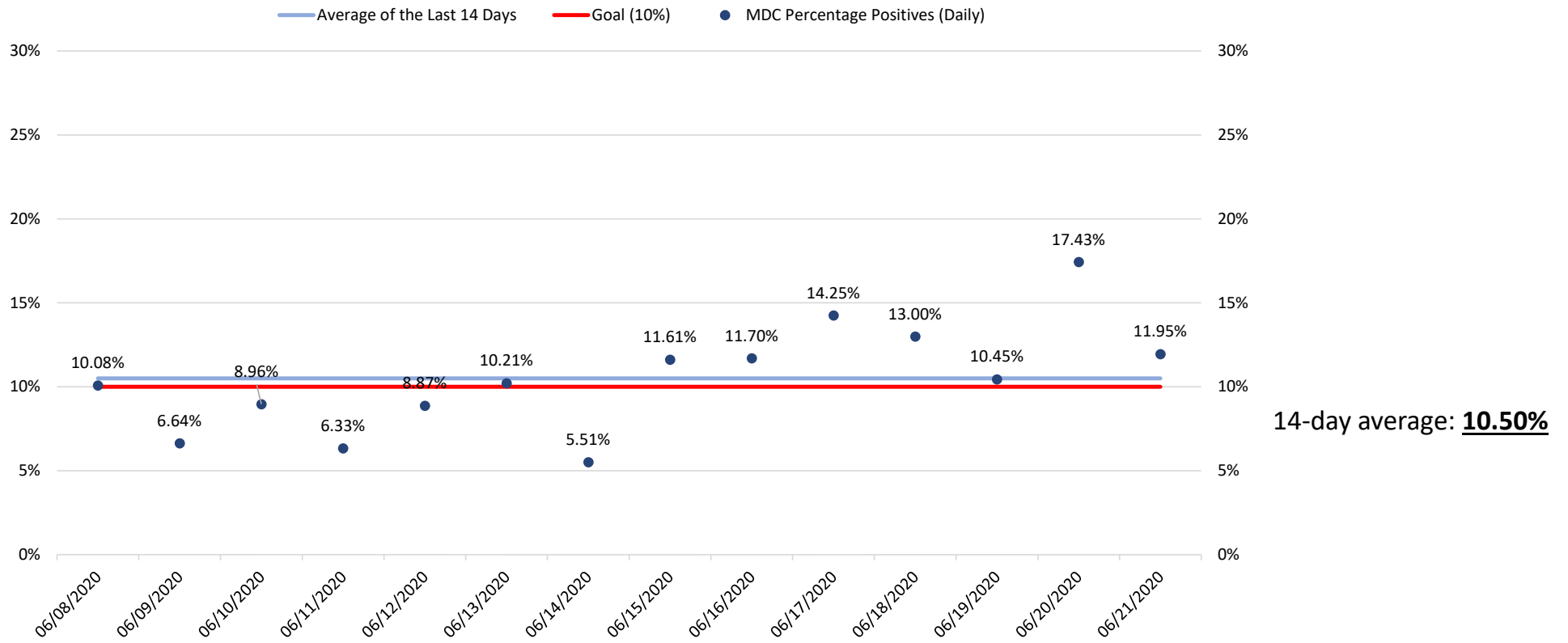
8 Plan in place to open public transit that protects workers and commuters

In Progress

Guidelines have been communicated and are being monitored

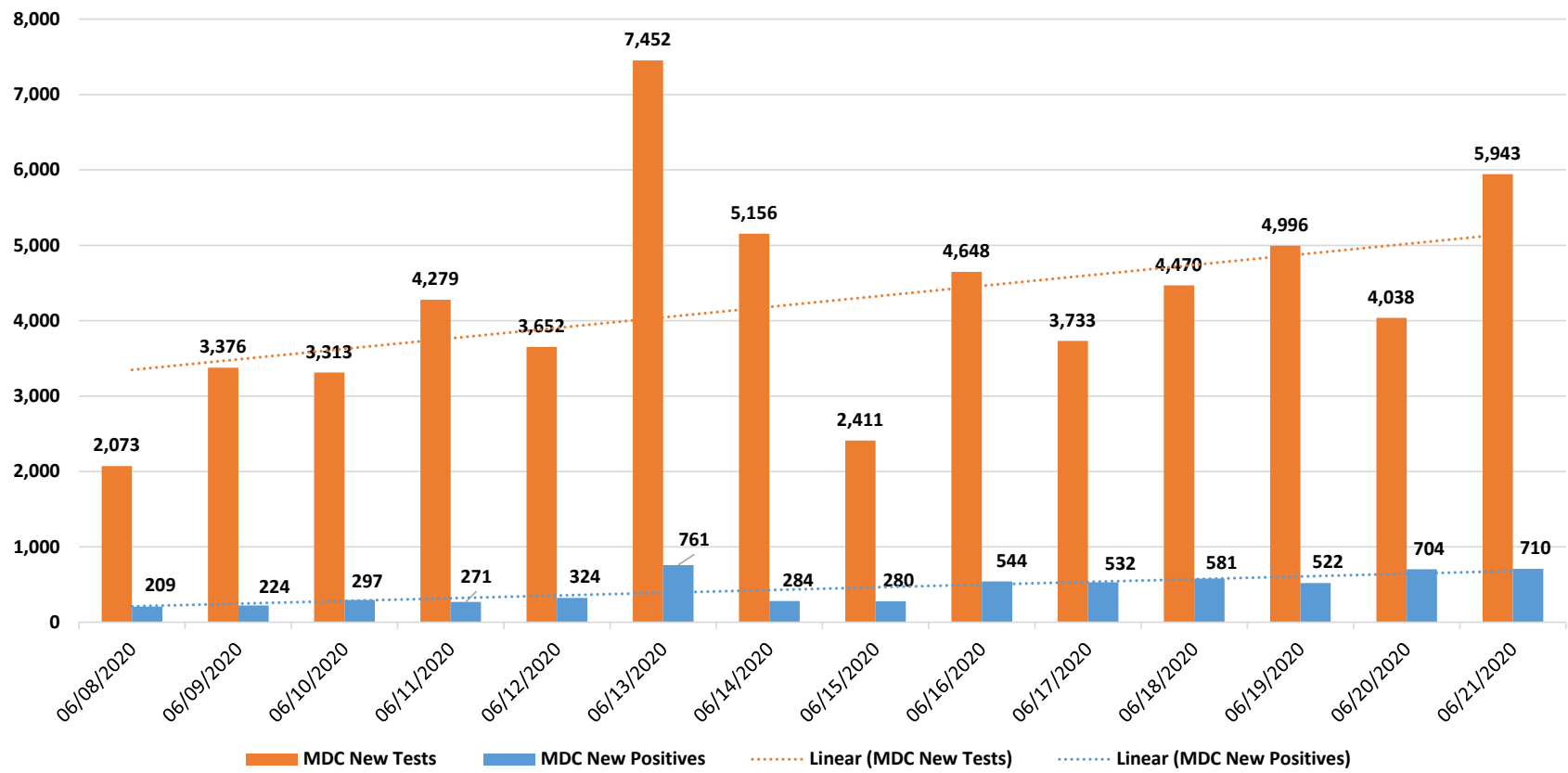
** Does not include the 1,801 acute care and ICU beds that may be converted*

Daily Positive Cases out of Total Tests



Source: Daily reports published by the Florida Division of Emergency Management

New Positive Cases



New tests figures for 6/19 and 6/20 may be updated once clarification is received by the FDOH
 Source: Daily reports published by the Florida Division of Emergency Management

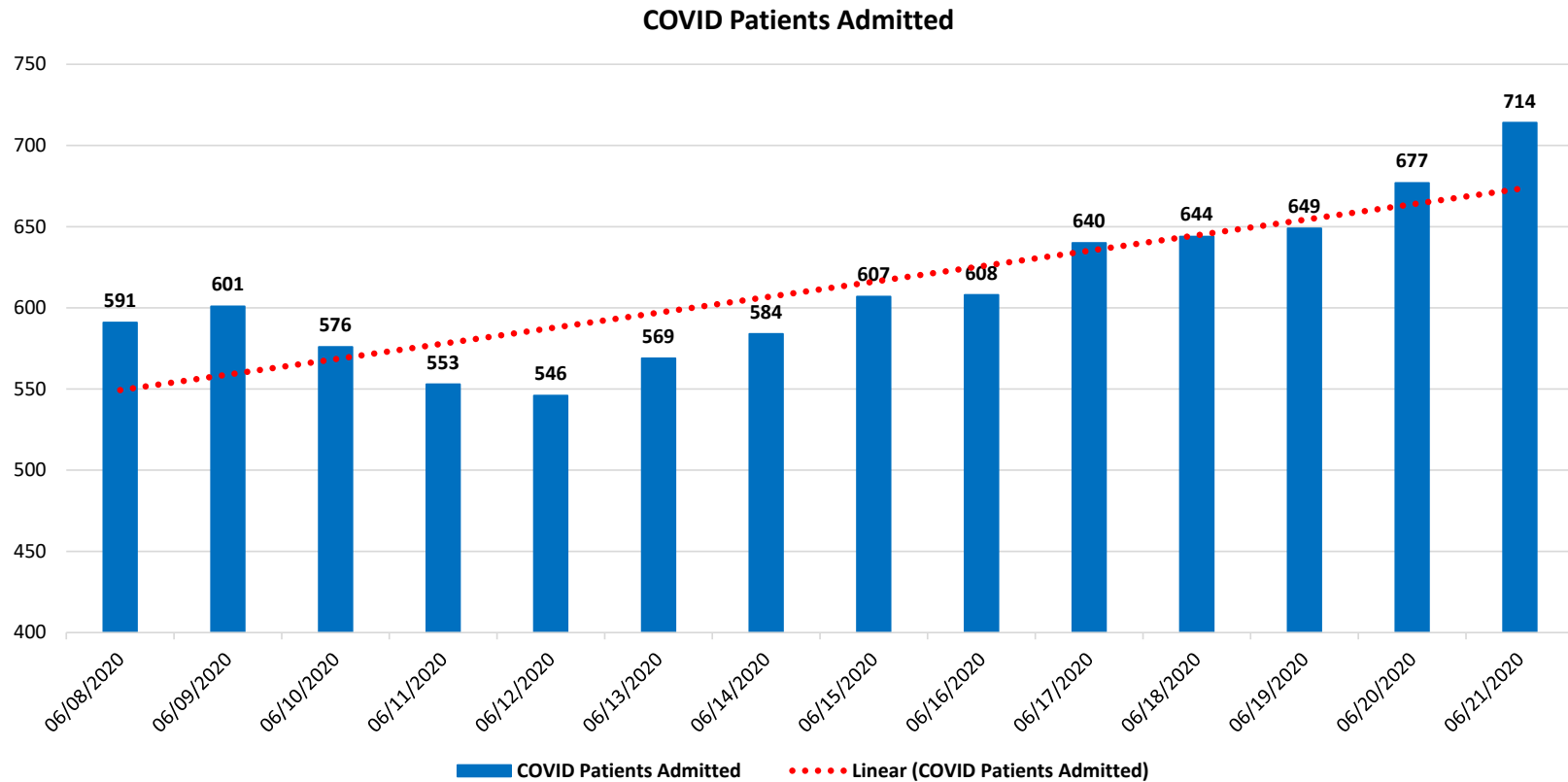
Florida Influenza Surveillance Reports Influenza-like Illness (ILI) Cases

		Miami-Dade	Statewide
	Week of:		
Week 13	March 22, 2020	↔	↓
Week 14	March 29, 2020	↔	↓
Week 15	April 5, 2020	↓	↓
Week 16	April 12, 2020	↓	↓
Week 17	April 19, 2020	↓	↓
Week 18	April 26, 2020	↓	↓
Week 19	May 3, 2020	↓	↓
Week 20	May 10, 2020	↓	↓
Weeks 21 & 22*	May 17, 2020	↓	↓

* Weeks 21 and 22 were reported in a singular report

Source: <http://www.floridahealth.gov/diseases-and-conditions/influenza/florida-influenza-surveillance-report-archive/index.html>

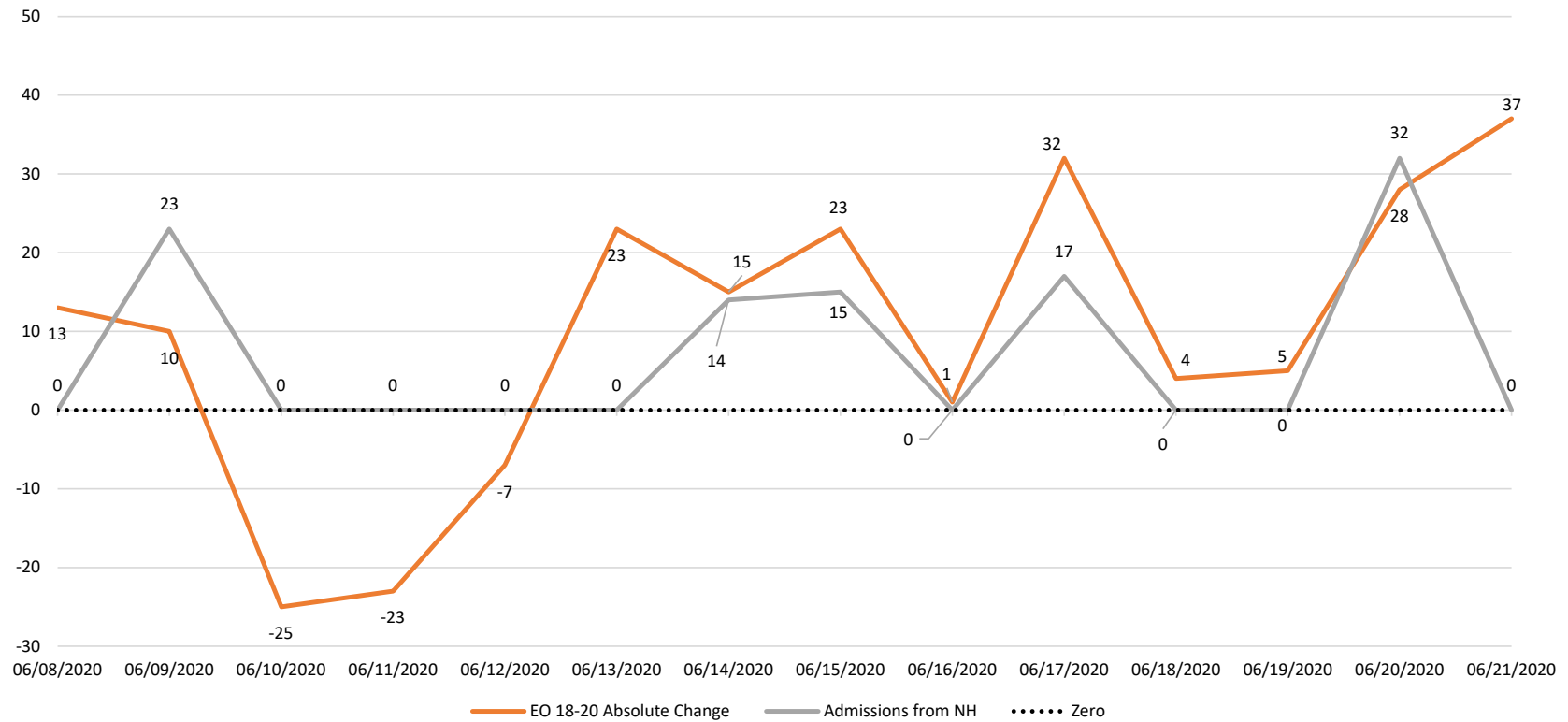
COVID-19 Admitted Patients



Source: Self-reported by hospitals as required by Emergency Order 18-20

COVID-19 Admitted Patients from Nursing Homes

Change in Hospital Admissions and Admissions from Nursing Homes



Source: Emergency Order 18-20 and available Long-Term Care Facilities data provided by the Agency for Healthcare Administration

DAILY COVID-19 HOSPITAL STATISTICAL REPORT

Date: 06/21/2020 10:57

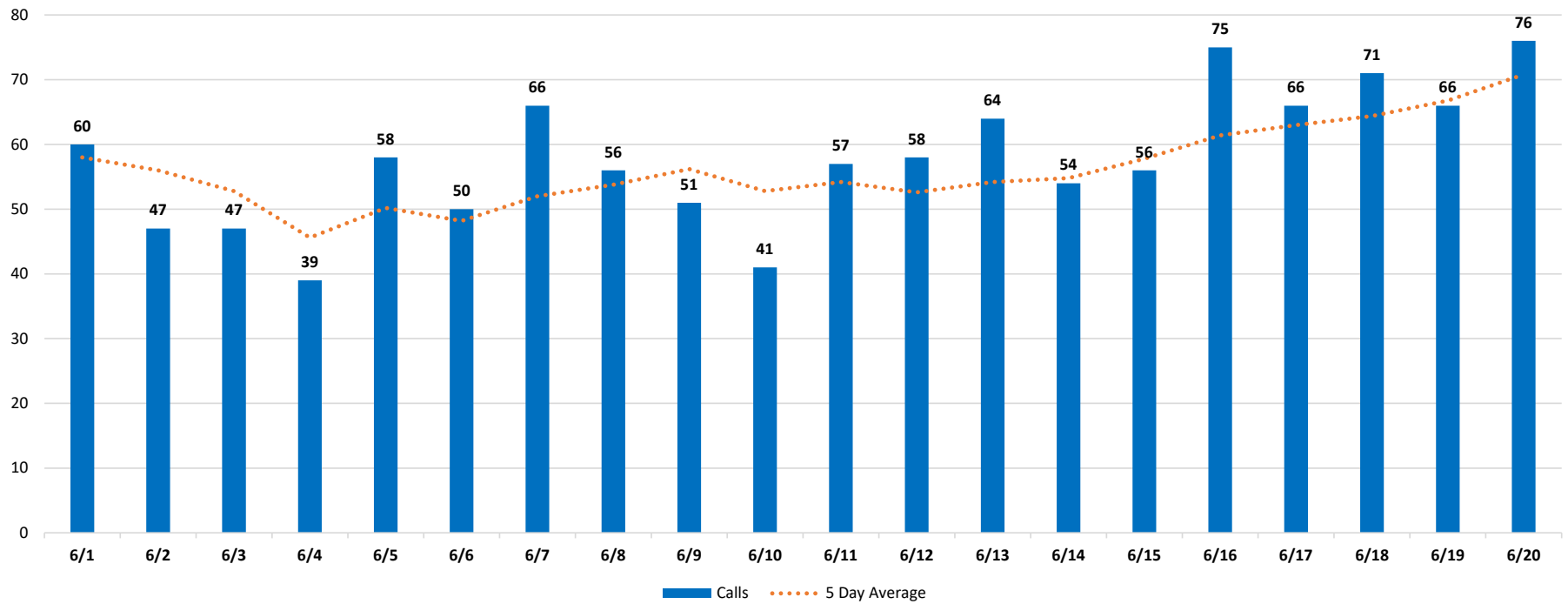
Available Beds	06/10/2020	06/11/2020	06/12/2020	06/13/2020	06/14/2020	06/15/2020	06/16/2020	06/17/2020	06/18/2020	06/19/2020	06/20/2020	06/21/2020
Acute Care Beds	2,796	2,764	2,765	2,815	2,852	2,808	2,669	2,692	2,696	2,646	2,655	2,684
Beds that may be converted to Acute Care Beds	1,254	1,246	1,229	1,232	1,248	1,256	1,189	1,281	1,265	1,210	1,264	1,285
ICU Beds	457	457	447	451	465	496	452	451	442	456	450	483
Beds that may be converted to ICU Beds	522	519	509	517	513	513	599	525	526	518	517	516
Ventilators												
Ventilators available for deployment	854	855	864	849	868	862	838	854	847	841	858	863
Ventilators on standby	158	146	155	161	161	161	158	165	164	152	157	163
Respirators/Anesthesia Machines that maybe converted to Ventilators	466	464	464	464	466	466	466	466	466	466	466	466
COVID19 Cases												
COVID Patients Admitted	576	553	546	569	584	607	608	640	644	649	677	714
COVID Patients in ICU Beds	81	91	90	97	99	109	122	119	121	120	128	135
COVID Patients in Non-ICU Beds	495	462	456	472	485	498	486	521	523	529	549	579
COVID Patients on ventilators	48	49	48	51	55	57	59	65	60	64	61	64
COVID19 Patients												
New COVID Patients	49	54	61	76	50	65	68	87	75	64	108	105
COVID Patients Discharged	79	83	84	134	52	36	95	95	112	90	104	65

*This data has been collected and compiled based on Emergency Order 18-20, as of the time noted. The information is submitted by the respective facilities and has not been audited.

** As certain data points are clarified, information reported for prior periods may change

Miami-Dade Fire Rescue Calls

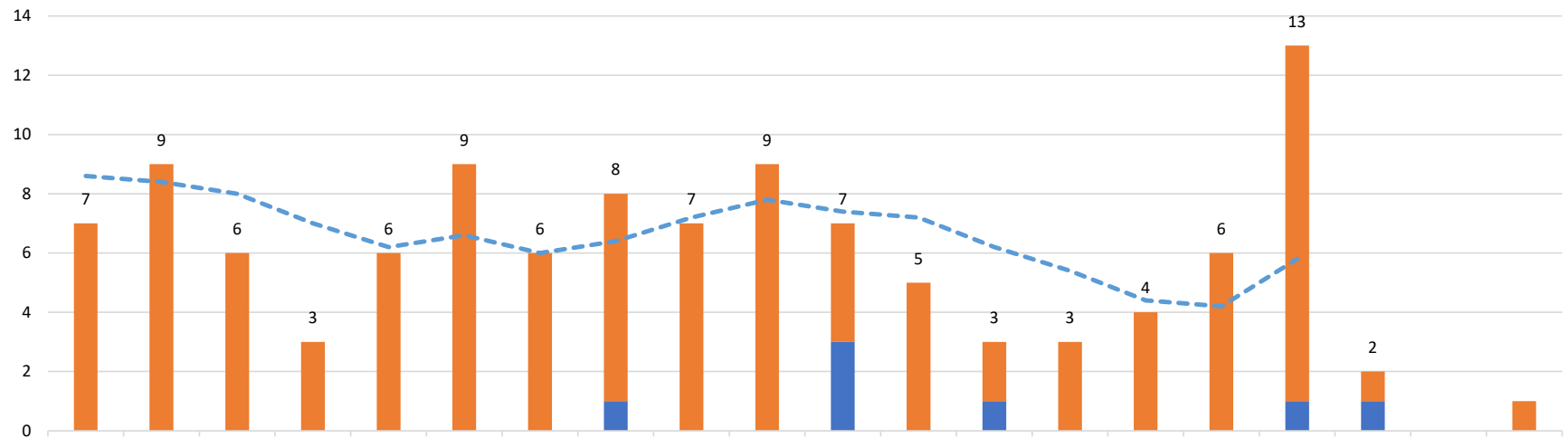
MDFR Suspected COVID-19 Calls



Source: Miami-Dade Fire Rescue

Medical Examiner

Deaths by Day



	6/1	6/2	6/3	6/4	6/5	6/6	6/7	6/8	6/9	6/10	6/11	6/12	6/13	6/14	6/15	6/16	6/17	6/18	6/19	6/20
Above 60	7	9	6	3	6	9	6	7	7	9	4	5	2	3	4	6	12	1		1
Under 60								1			3		1				1	1		
Grand Total	7	9	6	3	6	9	6	8	7	9	7	5	3	3	4	6	13	2		
5 Day Average	8.6	8.4	8	7	6.2	6.6	6	6.4	7.2	7.8	7.4	7.2	6.2	5.4	4.4	4.2	5.8			

■ Under 60
 ■ Above 60
 Grand Total
 - - - 5 Day Average

The 5 day rolling average does not include the last 3 days to allow for the ME to certify recent deaths
 Source: Miami-Dade Medical Examiner