

# Moving to a New Normal Dashboard


---

June 23, 2020




# Daily Summary

## 1 Downward trajectory of documented cases within a 14-day period



As of **06/23/2020**  
New Positives: **583**  
Trend: 

## 2 14 consecutive days where positive test rate is below 10% on average\*

As of **06/23/2020**  
Average of the Last 14 Days  **12.40%**

## 3 30% Total and ICU Bed Capacity Available\*\*

As of **06/23/2020**

COVID non-ICU Admissions	663	
non-ICU Bed Capacity	2,623	 <b>25.28%</b>
COVID ICU Admissions	155	
ICU Bed Capacity	466	 <b>33.26%</b>

## 4 Schedule viral testing of healthcare workers including in nursing homes

*In Progress*

## 5 Plan in place to monitor and manage hospital capacity and vulnerable populations

*In Progress*

## 6 Countywide contact tracing program with a target headcount of 100 tracers by May 31

*Complete*

FDOH has more than 175 contact tracers in place

## 7 Sector safety guidelines developed and communicated

*In Progress*

Yellow Phase guidelines have been communicated and are being monitored

## 8 Plan in place to open public transit that protects workers and commuters

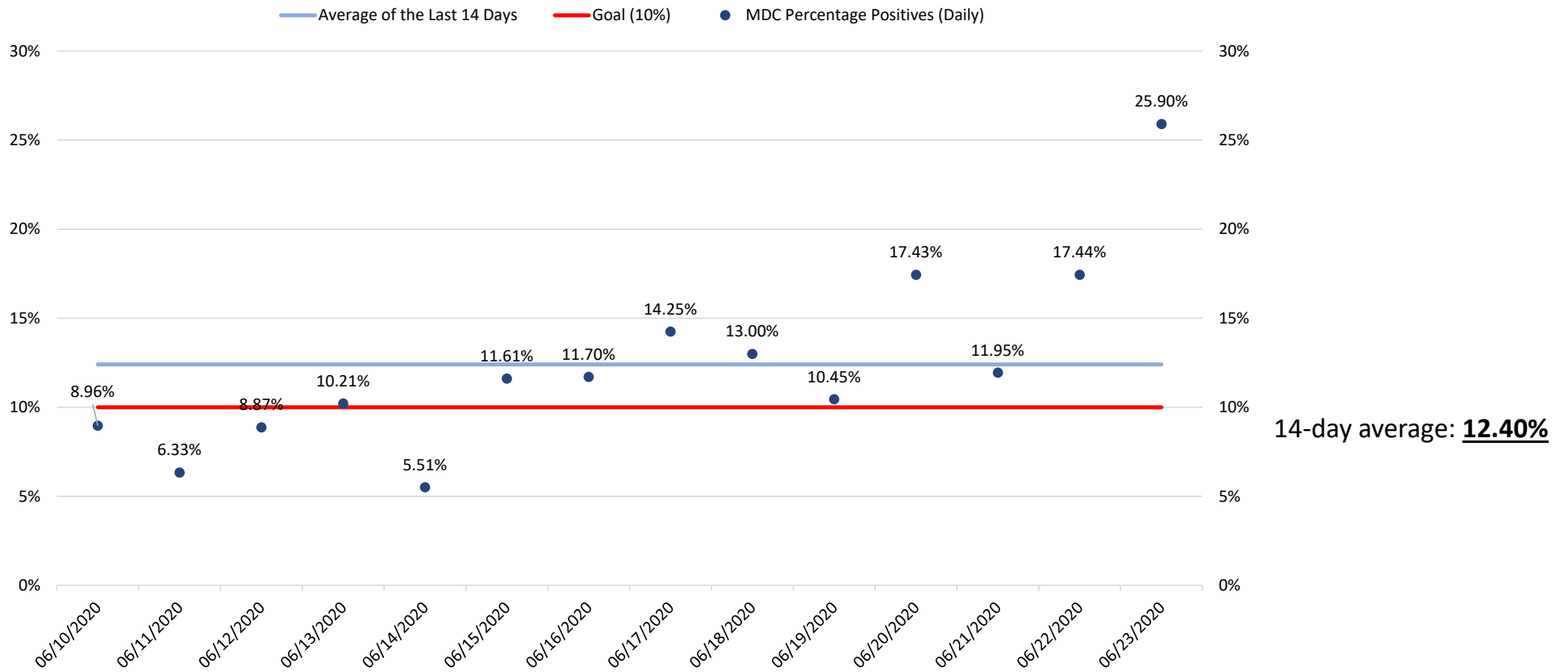
*In Progress*

Guidelines have been communicated and are being monitored

*\* Reflects the positive rate for the test results reported today*

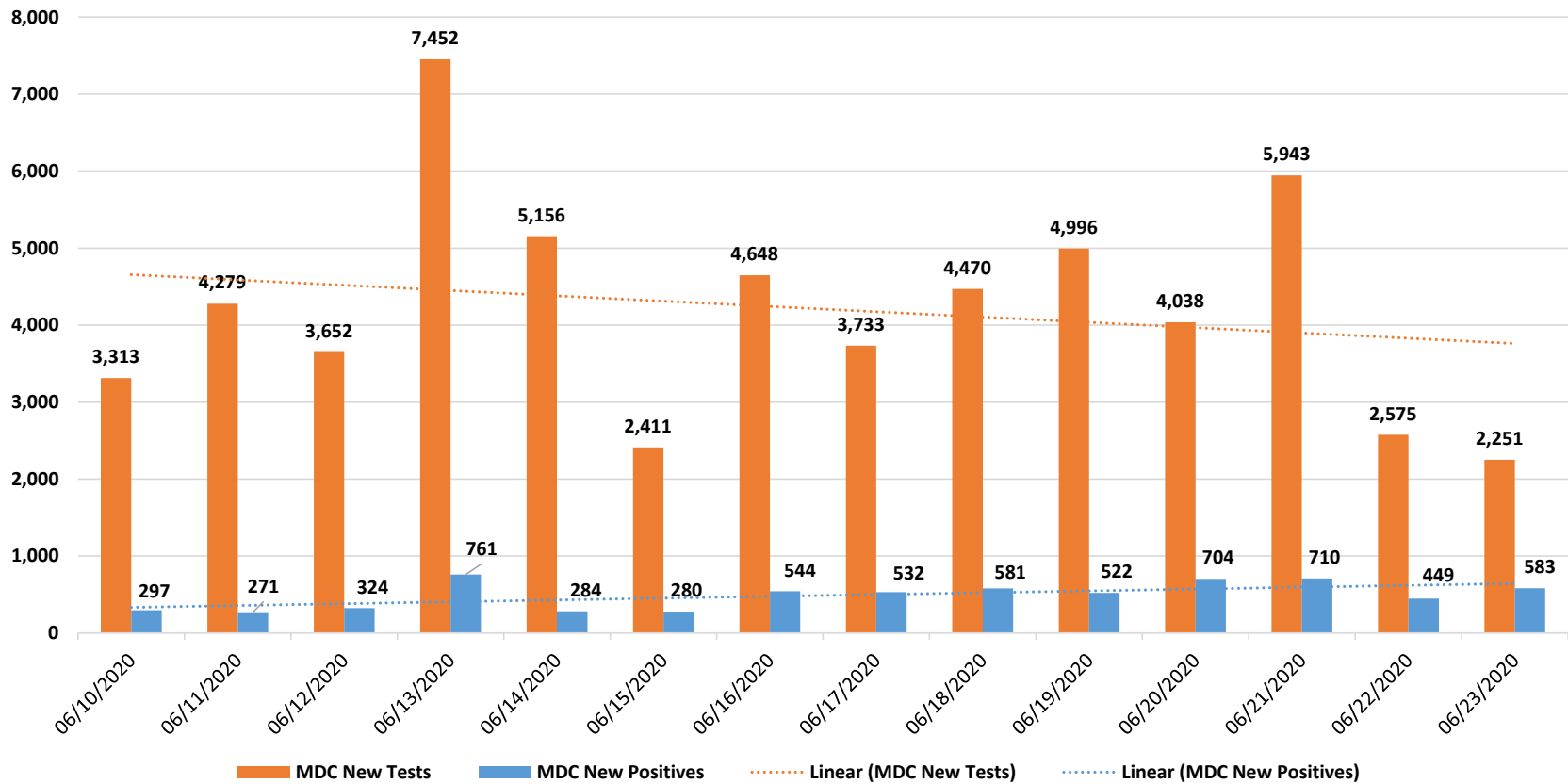
*\*\* Percentage represents the number of COVID positive patients utilizing hospital beds; does not include the 1,808 acute care and ICU beds that may be converted*

# Daily Positive Cases out of Total Tests



Source: Daily reports published by the Florida Division of Emergency Management

# New Positive Cases



New tests figures for 6/19 and 6/20 may be updated once clarification is received by the FDOH  
 Source: Daily reports published by the Florida Division of Emergency Management

# Florida Influenza Surveillance Reports Influenza-like Illness (ILI) Cases

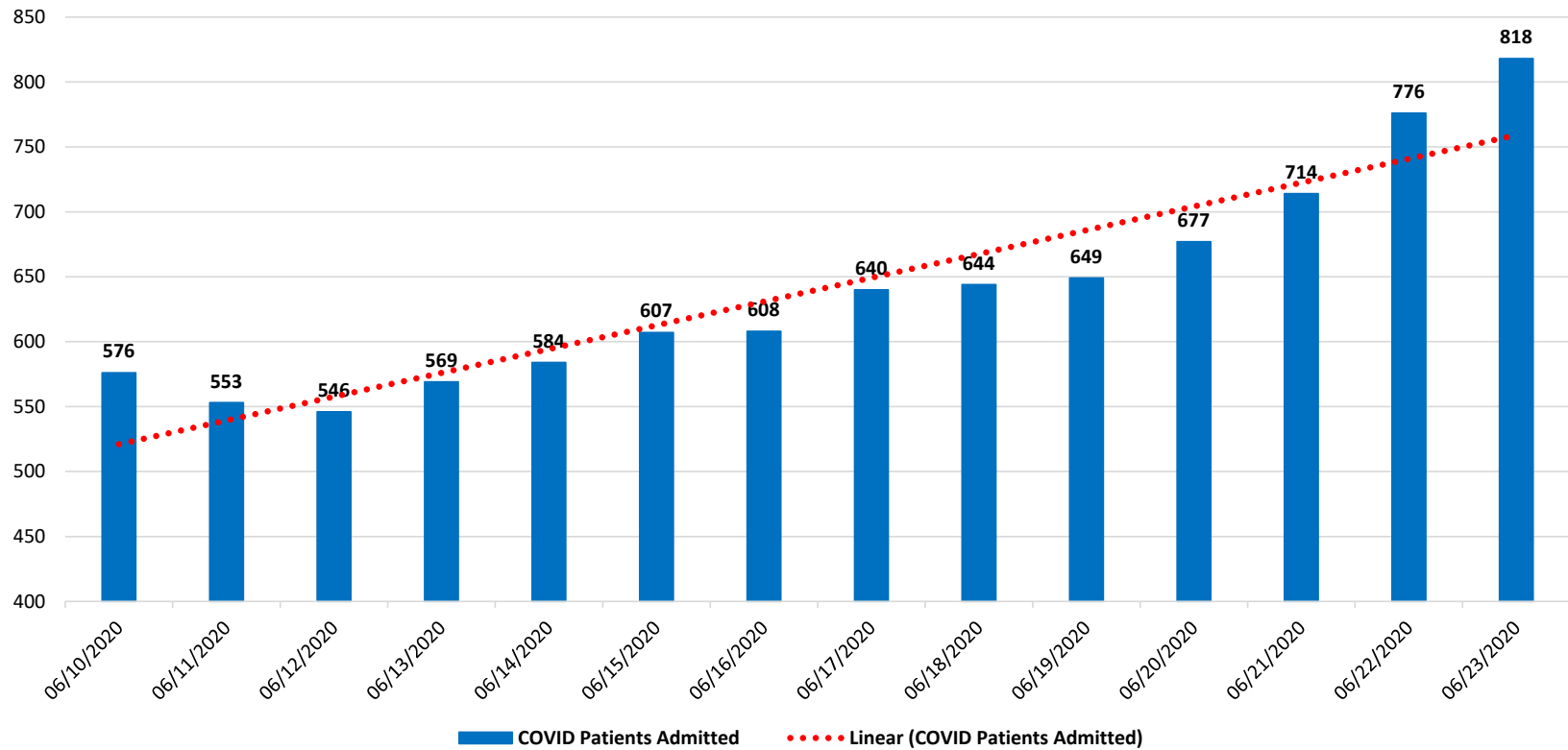
		Miami-Dade	Statewide
	<b>Week of:</b>		
Week 13	March 22, 2020	↔	↓
Week 14	March 29, 2020	↔	↓
Week 15	April 5, 2020	↓	↓
Week 16	April 12, 2020	↓	↓
Week 17	April 19, 2020	↓	↓
Week 18	April 26, 2020	↓	↓
Week 19	May 3, 2020	↓	↓
Week 20	May 10, 2020	↓	↓
Weeks 21 & 22*	May 17, 2020	↓	↓

\* Weeks 21 and 22 were reported in a singular report

Source: <http://www.floridahealth.gov/diseases-and-conditions/influenza/florida-influenza-surveillance-report-archive/index.html>

# COVID-19 Admitted Patients

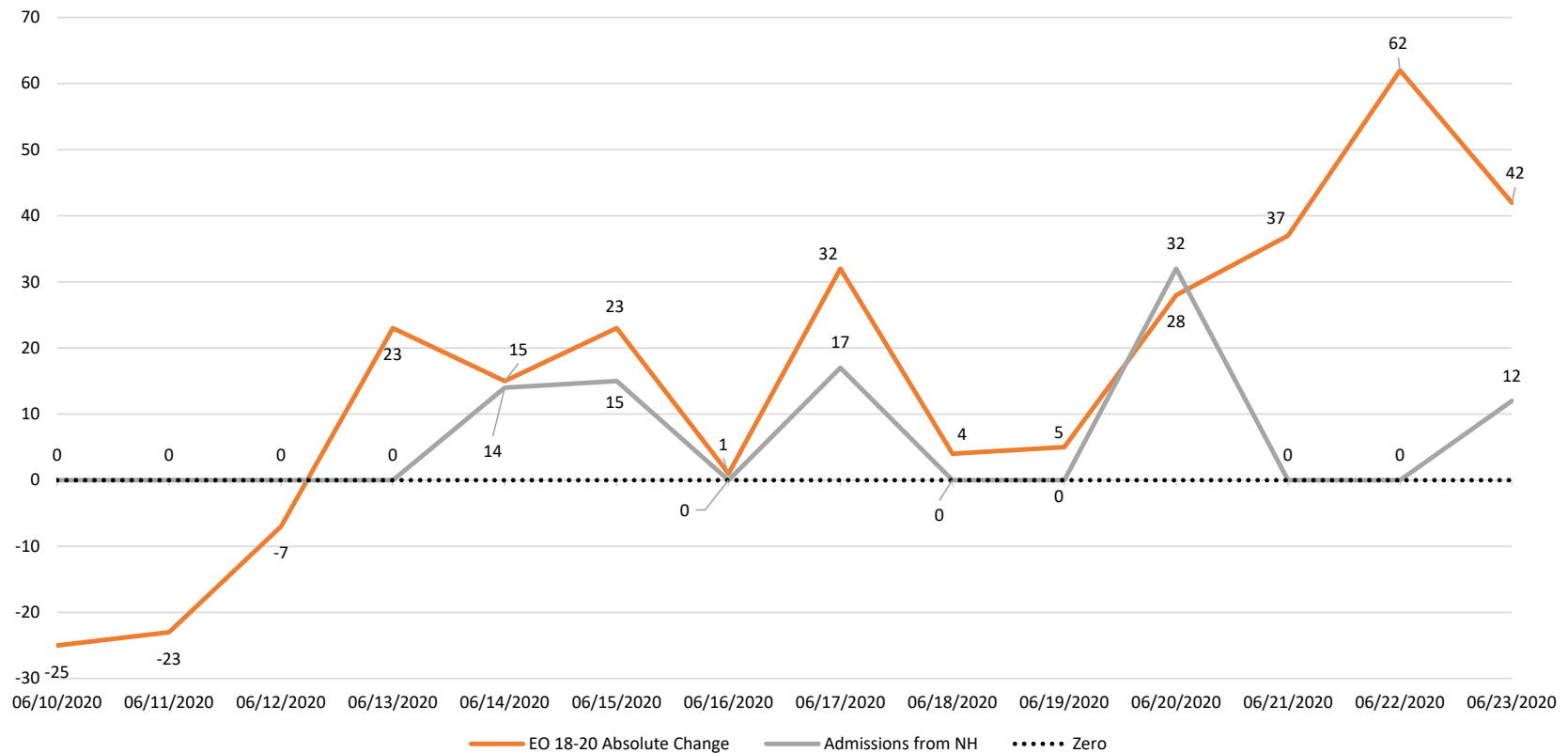
COVID Patients Admitted



Source: Self-reported by hospitals as required by Emergency Order 18-20

# COVID-19 Admitted Patients from Nursing Homes

## Change in Hospital Admissions and Admissions from Nursing Homes



Source: Emergency Order 18-20 and available Long-Term Care Facilities data provided by the Agency for Healthcare Administration

**DAILY COVID-19 HOSPITAL STATISTICAL REPORT**

Date: 06/23/2020 11:43

	06/12/2020	06/13/2020	06/14/2020	06/15/2020	06/16/2020	06/17/2020	06/18/2020	06/19/2020	06/20/2020	06/21/2020	06/22/2020	06/23/2020
<b>Available Beds</b>												
Acute Care Beds	2,765	2,815	2,852	2,808	2,669	2,692	2,696	2,646	2,655	2,684	2,699	2,623
Beds that may be converted to Acute Care Beds	1,229	1,232	1,248	1,256	1,189	1,281	1,265	1,210	1,264	1,285	1,293	1,294
ICU Beds	447	451	465	496	452	451	442	456	450	483	501	466
Beds that may be converted to ICU Beds	509	517	513	513	599	525	526	518	517	516	514	514
<b>Ventilators</b>												
Ventilators available for deployment	864	849	868	862	838	854	847	841	858	863	864	834
Ventilators on standby	155	161	161	161	158	165	164	152	157	163	158	157
Respirators/Anesthesia Machines that maybe converted to Ventilators	464	464	466	466	466	466	466	466	466	466	466	466
<b>COVID19 Cases</b>												
COVID Patients Admitted	546	569	584	607	608	640	644	649	677	714	776	818
COVID Patients in ICU Beds	90	97	99	109	122	119	121	120	128	135	157	155
COVID Patients in Non-ICU Beds	456	472	485	498	486	521	523	529	549	579	619	663
COVID Patients on ventilators	48	51	55	57	59	65	60	64	61	64	75	75
<b>COVID19 Patients</b>												
New COVID Patients	61	76	50	65	68	87	75	64	108	105	107	114
COVID Patients Discharged	84	134	52	36	95	95	112	90	104	65	48	108

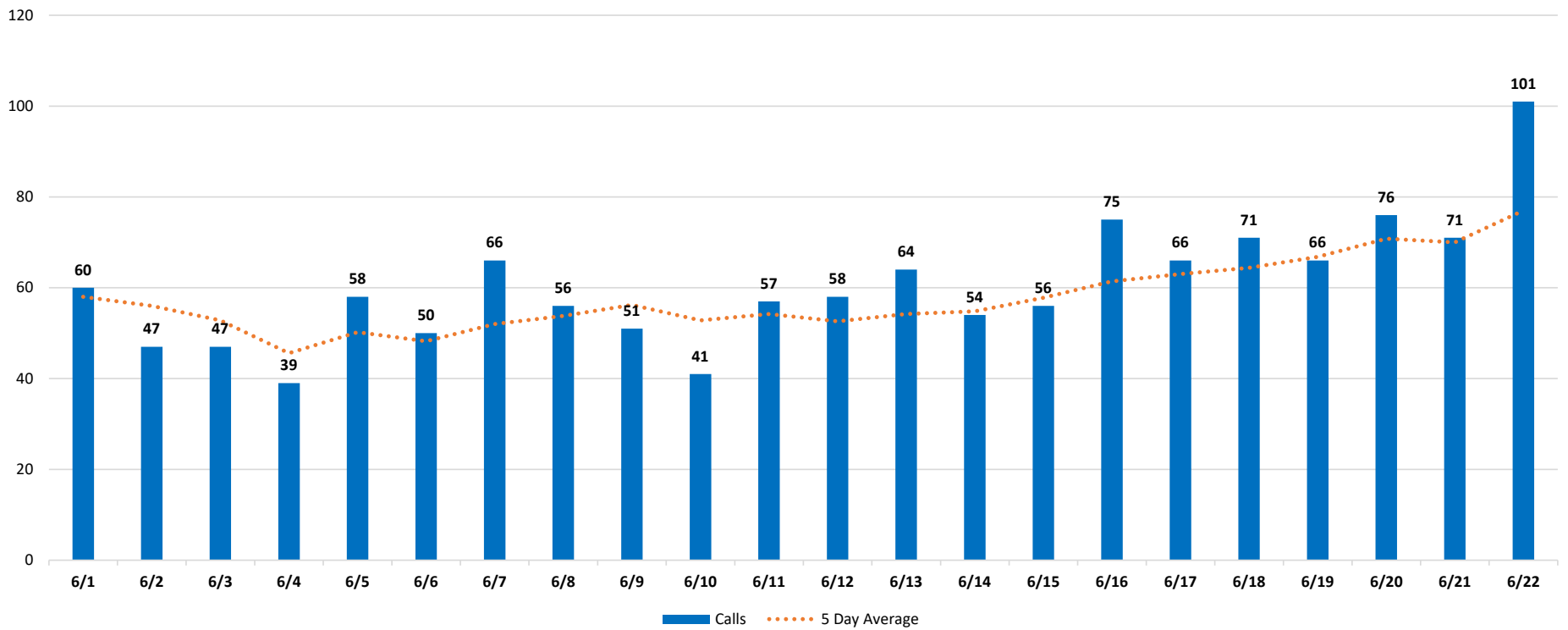
\*This data has been collected and compiled based on Emergency Order 18-20, as of the time noted. The information is submitted by the respective facilities and has not been audited

\*\* As certain data points are clarified, information reported for prior periods may change



# Miami-Dade Fire Rescue Calls

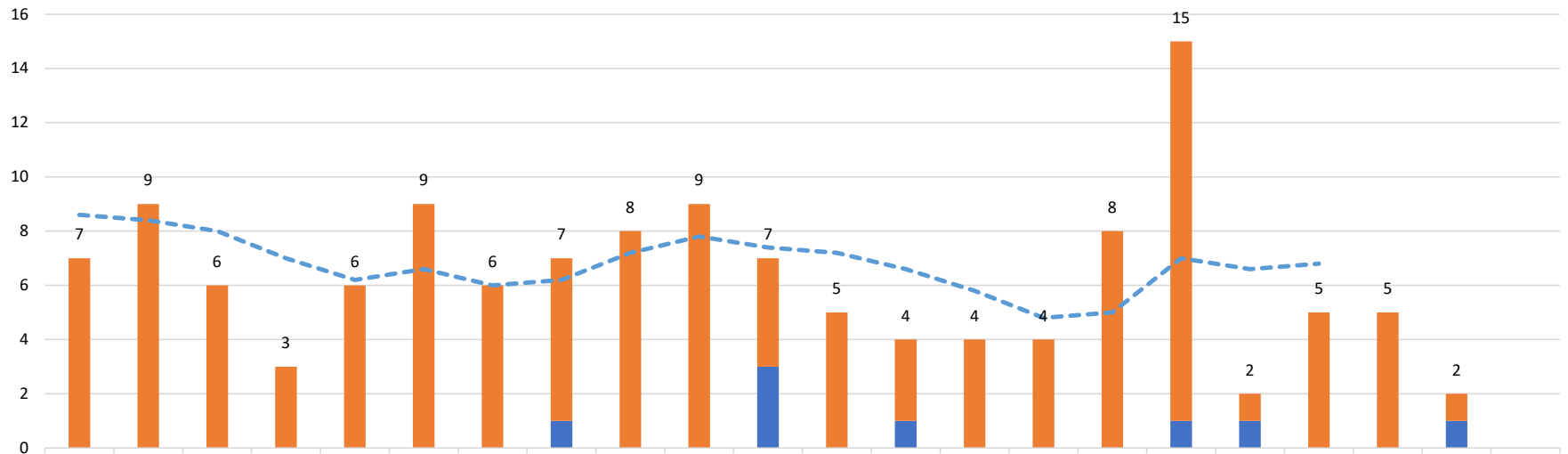
## MDFR Suspected COVID-19 Calls



Source: Miami-Dade Fire Rescue

# Medical Examiner

Deaths by Day



	6/1	6/2	6/3	6/4	6/5	6/6	6/7	6/8	6/9	6/10	6/11	6/12	6/13	6/14	6/15	6/16	6/17	6/18	6/19	6/20	6/21	6/22
Above 60	7	9	6	3	6	9	6	6	8	9	4	5	3	4	4	8	14	1	5	5	1	
Under 60								1			3		1				1	1			1	
Grand Total	7	9	6	3	6	9	6	7	8	9	7	5	4	4	4	8	15	2	5	5	2	
5 Day Average	8.6	8.4	8	7	6.2	6.6	6	6.2	7.2	7.8	7.4	7.2	6.6	5.8	4.8	5	7	6.6	6.8			

■ Under 60   
 ■ Above 60   
 Grand Total   
 - - - 5 Day Average

The 5 day rolling average does not include the last 3 days to allow for the ME to certify recent deaths

Source: Miami-Dade Medical Examiner