

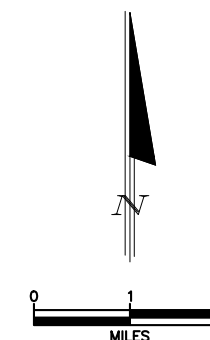
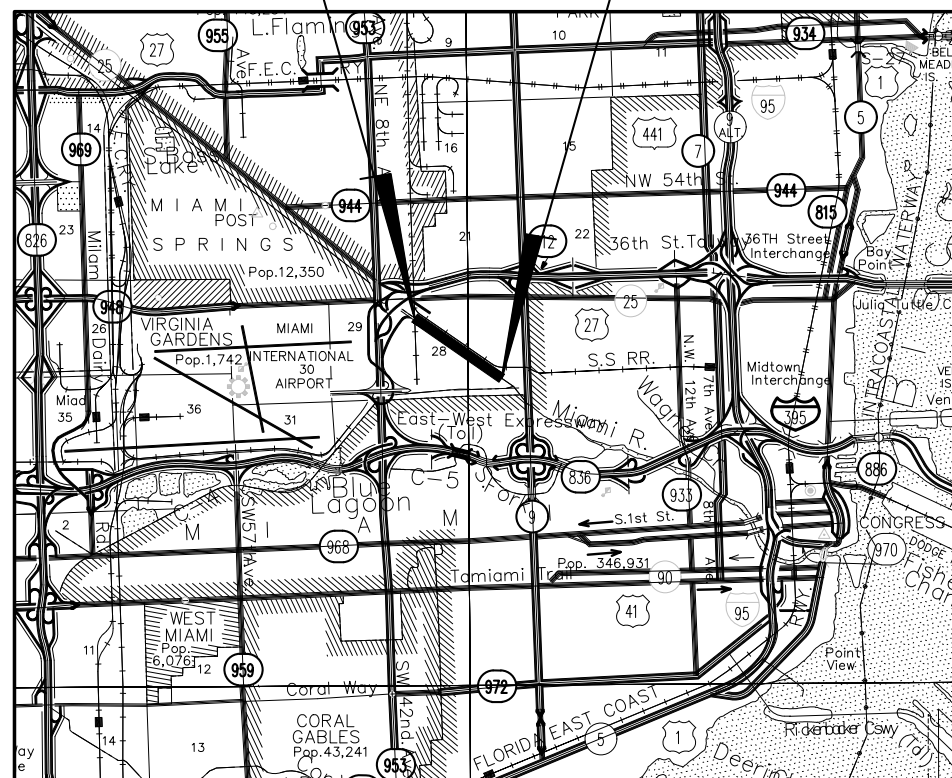
PLANS FOR PROPOSED
IMPROVEMENTS TO
NW SOUTH RIVER DRIVE
FROM NW 32 Ave TO NW 38 Ave)
MIAMI-DADE COUNTY PROJECT NO. 20210085
ROAD IMPACT FEE (RIF)

NOTE:

ATTENTION IS DIRECTED TO THE FACT THAT THESE PLANS MAY HAVE BEEN REDUCED IN SIZE BY REPRODUCTION. THIS MUST BE CONSIDERED WHEN OBTAINING SCALED DATA.

SHT. No.	SHEET DESCRIPTION
1	COVER SHEET
2	TYPICAL SECTION
3	SUMMARY OF QUANTITIES
4	GENERAL NOTES
5	STORMWATER POLLUTION PREVENTION PLANS
6	INLET PROTECTION SYSTEMS DETAILS
7	SEDIMENT BARRIERS DETAILS
8-12	ROAD PLANS
13-18	SIGNING & PAVEMENT MARKING PLANS

BEGIN PROJECT STA 60+23.34
END PROJECT STA 14+95



	LENGTH OF JOB	
	LIN. FT.	MILES
ROADWAY	4,528.34	0.858
BRIDGE		
GROSS LENGTH OF JOB	4,528.34	0.858
EXCEPTIONS		
NET LENGTH OF JOB	4,528.34	0.858

STANDARD INDEX DRAWINGS

SHT. No.	INDEX. No.	SHEET DESCRIPTION
19	SD 1.1 & SD 2.2	DRAINAGE DETAILS

BY



MIAMI-DADE COUNTY
DEPARTMENT OF TRANSPORTATION AND PUBLIC WORKS
HIGHWAY DIVISION

STEPHEN P. CLARK CENTER
111 NW 1 ST
MIAMI, FLORIDA 33128

THESE PLANS HAVE BEEN PREPARED IN ACCORDANCE WITH AND ARE GOVERNED BY THE MIAMI-DADE COUNTY PUBLIC WORKS DEPARTMENT STANDARDS AND SPECIFICATIONS PARTS 1, 2 AND 3. THE MANUAL OF UNIFORM MINIMUM STANDARDS FOR DESIGN, CONSTRUCTION AND MAINTENANCE FOR STREETS AND HIGHWAYS. THE FLORIDA DEPARTMENT OF TRANSPORTATION FY 2021-22 STANDARD PLANS FOR ROAD AND BRIDGE CONSTRUCTION, AND THE FLORIDA DEPARTMENT OF TRANSPORTATION JULY 2021 STANDARD SPECIFICATIONS EBOOK, AS AMENDED BY CONTRACT DOCUMENTS.

ENGINEER OF RECORD:

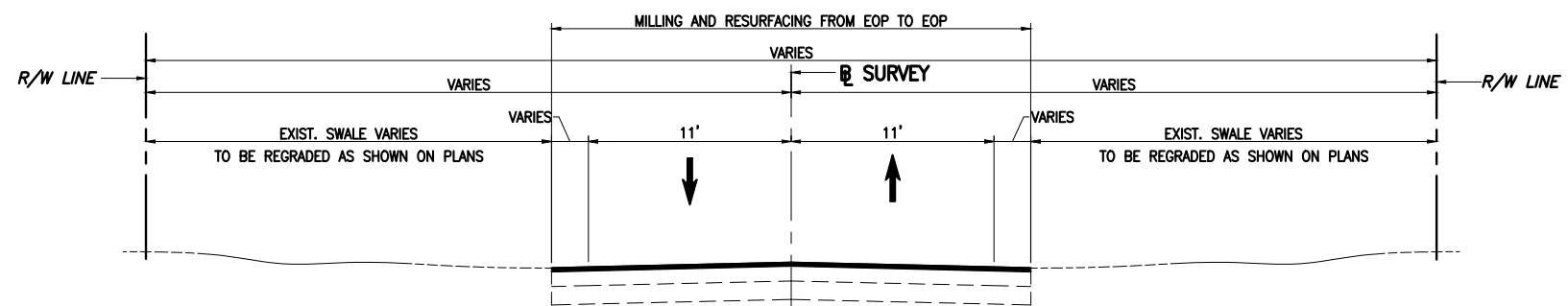
LEANDRO J. OÑA, P.E.
FLORIDA REGISTRATION P.E. No. 25588

APPROVED	_____	COUNTY ENGINEER
RECOMMENDED	_____	ASSISTANT DIRECTOR
SUBMITTED	_____	HIGHWAY DIVISION
PROPOSED	_____	CHECK L.O.
DESIGN	A.M.	DRAWN J.M.
DATE	_____	SHEET 1 OF 19

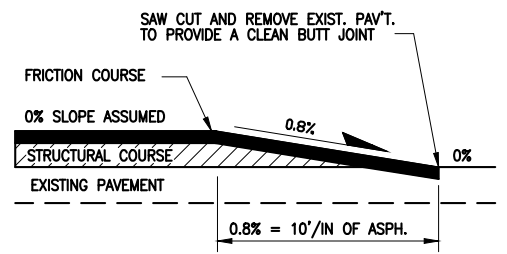


Call 811 or visit www.sunshine811.com two full business days before digging to have buried facilities located and marked.

Check positive response codes before you dig!



TYPICAL SECTION
NW SOUTH RIVER DRIVE
STA. 60+23.34 TO STA. 14+95
MILLING & RESURFACING
 MILL EXISTING ASPHALT PAVEMENT (1" AVG. DEPTH) RESURFACE WITH HMA, FRICTION COURSE, TRAFFIC C, FC-9.5 (1")



NOTE: TO BE USED AT BEGINNING AND END OF PROJECT AND AT INTERSECTING STREETS.

FEATHERING DETAIL
 N.T.S.

TYPICAL SECTION NOTES:

1. ALL EXISTING LIMEROCK BASE THAT IS REMOVED IS TO BE INCORPORATED INTO THE STABILIZED PORTION OF THE SUBGRADE AND IS NOT TO BE USED IN CONSTRUCTION OF THE PROPOSED BASE.
2. EXTEND LIMEROCK BASE (8" THICK) 6" OUTSIDE EDGES OF PAVEMENT AT ALL CONNECTIONS AND INTERSECTIONS TO COUNTY STREETS AND ROADS.
3. STABILIZE ALL TURNOUTS AND INTERSECTIONS TO COUNTY ROADS AND STREETS TO A DEPTH OF 12" (MIN CBR OF 30) AND 12" OUTSIDE EDGES OF PAVEMENT, 6" BACK OF CURB.
4. DROP CURB & DRIVEWAY CONNECTIONS SHALL BE PROVIDED FOR ACCESS TO ALL PRIVATE PROPERTIES ADJACENT TO THE PROJECT CONSTRUCTION. FINAL LOCATION OF DRIVEWAY ACCESS TO BE DETERMINED BY THE ENGINEER.

P:\Highway\Highway\NW South River Drive (NW 32 Ave to NW 38 Ave)\Plans\2 Revised Scope - Milling and Resurfacing Project\CD\02 TYP-SEC.dwg Jul 31, 2023 - 9:38am E210983

REVISIONS					
DATE	BY	DESCRIPTION	DATE	BY	DESCRIPTION

DESIGNED BY	NAME	DATE	DRAWN BY	NAME	DATE
	J.M.			J.M.	
CHECKED BY	J.G.		CHECKED BY	J.G.	
SUPERVISED BY	L.J.O.				

MIAMI-DADE COUNTY
DEPARTMENT OF TRANSPORTATION AND PUBLIC WORKS HIGHWAY DIVISION
 STEPHEN P. CLARK CENTER
 111 NW 1 ST
 MIAMI, FLORIDA 33128

TYPICAL SECTION

SUMMARY OF QUANTITIES

PAY ITEM NO.	ITEM	UNIT	TOTAL QUANTITY
102-1A	MAINTENANCE OF TRAFFIC	L.S.	1
102-60A	WORK ZONE SIGNS (TEMPORARY, TYPE "B")	E.A./DAY	3,950
102-74-1	BARRICADES (TEMPORARY I, II, VP & DRUM)	E.A./DAY	10,900
102-74-2	BARRICADES (TEMPORARY, TYPE III, 6')	E.A./DAY	2,300
102-76A	FLASHING ARROW BOARD (TEMPORARY, MULTIMODE) / ADVANCE WARNING ARROW PANEL	E.A./DAY	180
102-77	HIGH INTENSITY FLASHING LIGHTS (TEMPORARY TYPE "B")	E.A./DAY	1,150
102-81	VEHICULAR IMPACT ATTENUATOR (INCLUDING RELOCATION & RESET) (TO BE USED WHEN REQUIRED)	E.A.	3
102-99	VARIABLE MESSAGE SIGN (TEMPORARY)	E.A./DAY	60
104-10-3	SEDIMENT BARRIERS	L.F.	427
104-18	INLET PROTECTION SYSTEM	EACH	31
110-1-1B	CLEARING AND GRUBBING	L.S.	1
120-8E	REGRADE EXISTING SWALE	S.Y.	1,635
200-1-1A	LIMEROCK BASE (6") (PRIMED)	S.Y.	130
327-70-01	MILLING EXISTING ASPHALT PAVEMENT (1" AVG. DEPTH)	S.Y.	13,678
337-8-32	HOT MIX ASPHALT FRICTION COURSE (TRAFFIC C), FC-9.5 (1" RUBBER	TON	753
425-1-610	INLET SWALE [(TYPE P-10)(42" Inside dimension, circular or square)]	EACH	3
425-5	ADJUST MANHOLE (this item is contingent upon field conditions and my be increased, decreased or eliminated by the engineer)	EACH	25
425-6	ADJUST EXISTING VALVES BOXES (MIAMI DADE COUNTY) (this item is contingent upon field conditions and my be increased, decreased or eliminated by the engineer)	EACH	25
425-74-1	MANHOLES AND INLETS, CLEANING & SEALING (<10')	EACH	21
443-70-4-3	EXFILTRATION DRAIN (24") (INCLUDES, BALLAST ROCK, TRENCH, AND PLASTIC FILTER FABRIC)	L.F.	300
575-1-1	SODDING (PENSACOLA BAHIA OR MATCH EXISTING) (INCLUDES WATERING AND MAINTENANCE)	S.Y.	1,635

PAY ITEM NOTES

- 102-1A TO BE ACCOMPLISHED IN ACCORDANCE WITH THE FLORIDA DEPARTMENT OF TRANSPORTATION INDEX 600 SERIES, THE MANUAL OF UNIFORM TRAFFIC CONTROL DEVICES FOR STREETS AND HIGHWAYS, U.S. DEPARTMENT OF TRANSPORTATION FEDERAL HIGHWAY ADMINISTRATION (ANSI D6 1-1978), PUBLIC WORKS MANUAL OF METROPOLITAN DADE COUNTY, AND THE LATEST REVISIONS OF THE AFORE MENTIONED MANUALS. INCLUDES THE COST OF FURNISHING, INSTALLING, MAINTAINING, AND REMOVING ALL ITEMS OF MAINTENANCE OF TRAFFIC NOT PAID FOR UNDER SEPARATE ITEMS INCLUDING BUT NOT LIMITED TO SIGNS, BARRICADES, FLASHING LIGHTS, TEMPORARY PAVEMENT, TEMPORARY PAVEMENT MARKINGS, TRAFFIC SIGNAL MODIFICATION FOR TRAFFIC CONTROL, ETC.
- 110-1-1B INCLUDES REMOVAL OF EXISTING PAVEMENT, CONCRETE SIDEWALK, DRIVEWAYS, CURB AND GUTTER, EXISTING STORM SEWERS (DRAINAGE STRUCTURES, PIPES, FRENCH DRAIN AND/OR SLAB COVER TRENCHES. COST OF REMOVAL, DISPOSAL, BACKFILLING AND COMPACTING IS ALSO INCLUDED), MISCELLANEOUS CONCRETE, VEGETATION, TREES AND DEBRIS TO BE DISPOSED OF IN LEGAL AREAS PROVIDED BY THE CONTRACTOR. INCLUDES THE COST OF CLEANING-OUT ALL EXISTING DRAINAGE STRUCTURES WHICH ARE TO REMAIN WITHIN THE LIMITS OF CONSTRUCTION.
- 120-8E INCLUDES LIMEROCK AND ALL MATERIALS TO BE USED IN THE RE-GRADING/RESTORATION. MAY BE INCREASED OR DECREASED AS DIRECTED BY THE ENGINEER.
- 425-1-610 INLETS INCLUDES 30x10 FEET ASPHALT CONCRETE AND 6" LIMEROCK
- 443-70-4-3 INCLUDES THE COST OF EXCAVATION TO PLAN ELEVATION, PERFORATED PIPE, PEACOCK BALLAST ROCK, PLASTIC FILTER FABRIC AND BACKFILLING WITH SELECT FILL (SEE DETAIL OF EXFILTRATION DRAIN TO DETERMINE NON-PERFORATED PIPE QUANTITY) AND ALL APPLICABLE ITEMS REQUIRED TO CONSTRUCT EXFILTRATION DRAIN.
- 575-1-1 INCLUDES SOD TO BE USED IN THE RESTORATION OF LAWNS AND MAY BE INCREASED OR DECREASED AS DIRECTED BY THE ENGINEER. PENSACOLA OR TO MATCH EXISTING SOD.

* ADDITIONAL QUANTITIES ARE CONTINGENT, TO BE USED AS DIRECTED BY THE ENGINEER AND HAVE BEEN INCLUDED IN THE TOTAL QUANTITY AMOUNT SHOWN ON THE SUMMARY OF PAY ITEMS.

P:\Highway\Highway\NW South River Drive (NW 32 Ave to NW 38 Ave)\Plans\2 Revised Scope - Milling and Resurfacing Project\CD\03 SUMM-QNTS.dwg Jul 31, 2023 - 9:36am E210983

REVISIONS							
DATE	BY	DESCRIPTION	DATE	BY	DESCRIPTION	DATE	BY

DESIGNED BY	J.M.	DATE		DRAWN BY	J.M.	DATE	
CHECKED BY	J.G.			CHECKED BY	J.G.		
SUPERVISED BY: L.J.O.							

MIAMI-DADE COUNTY

DEPARTMENT OF TRANSPORTATION AND PUBLIC WORKS HIGHWAY DIVISION

STEPHEN P. CLARK CENTER
 111 NW 1 ST
 MIAMI, FLORIDA 33128

SUMMARY OF QUANTITIES

GENERAL NOTES

1. B.M. DATA IS NATIONAL GEODETIC VERTICAL DATUM OF 1929 (N.G.V.D.--29). ANY N.G.V.D. BENCH MARK MONUMENTS WITHIN THE LIMITS OF CONSTRUCTION IS TO BE PROTECTED AND PROPERLY REFERENCED BY A REGISTERED-LAND SURVEYOR IN ACCORDANCE WITH THE MINIMUM TECHNICAL STANDARDS OF THE FLORIDA BOARD OF PROFESSIONAL LAND SURVEYORS PRIOR TO BEGINNING WORK AT THE SITE. IF ANY MONUMENT IS IN DANGER OF DAMAGE, THE PROJECT ENGINEER SHALL NOTIFY THE BUREAU OF SURVEYING AND MAPPING, FLORIDA DIVISION OF STATE LANDS, 3900 COMMONWEALTH BLVD., MAIL STATION 100, TALLAHASSEE, FLORIDA 32399-3000 TELEPHONE (850) 245-2118.
2. ALL PUBLIC LAND CORNERS AND MONUMENTS WITHIN THE LIMITS OF CONSTRUCTION ARE TO BE PROTECTED BY THE CONTRACTOR AS FOLLOWS: CORNERS AND MONUMENTS IN CONFLICT WITH THE WORK AND IN DANGER OF BEING DAMAGED, DESTROYED, OR COVERED SHALL BE PROPERLY REFERENCED BY A REGISTERED-LAND SURVEYOR IN ACCORDANCE WITH THE MINIMUM TECHNICAL STANDARDS OF THE FLORIDA BOARD OF PROFESSIONAL LAND SURVEYORS PRIOR TO BEGINNING WORK AT THE SITE. THE CONTRACTOR SHALL RETAIN THE LAND SURVEYOR TO REFERENCE, AND RESTORE UPON COMPLETION OF THE WORK, ALL SUCH CORNERS AND MONUMENTS AND SHALL FURNISH TO MIAMI-DADE COUNTY PUBLIC WORKS DEPARTMENT A SIGNED AND SEALED COPY OF THE LAND SURVEYOR'S REFERENCE DRAWING.
3. ALL STATIONS AND OFFSETS REFER TO [BASELINE] OF CONSTRUCTION, UNLESS OTHERWISE STATED.
4. ALL GRADES SHOWN IN PLAN ARE FINISHED GRADES.
5. THE CONTRACTOR SHALL PAINT ALL STATIONS WITH STENCILED NUMBERS ON THE FACE OF CURB:
 - A. FROM THE BEGINNING OF THE PROJECT WHERE THE CURB IS TO REMAIN.
 - B. AT NEW CURB NOT LATER THAN 72 HOURS AFTER BEING POURED.
 - C. WHERE CURB DOES NOT EXIST AND SHALL NOT BE CONSTRUCTED, THE CONTRACTOR SHALL MAINTAIN STATIONING WITH SURVEYING STAKES. CONTRACTOR SHALL MAINTAIN THE STATION MARKS VISIBLE UNTIL FINAL INSPECTION.
6. ALL CONSTRUCTION SHALL BE IN STRICT ACCORDANCE WITH THE REQUIREMENTS OF THE MIAMI-DADE COUNTY PUBLIC WORKS DEPARTMENT, AND ANY OTHER STATE OR LOCAL AGENCY WITH JURISDICTION. IT IS THE INTENT OF THESE PLANS TO BE IN ACCORDANCE WITH APPLICABLE CODES AND AUTHORITIES HAVING JURISDICTION. ANY DISCREPANCIES BETWEEN THESE PLANS AND APPLICABLE CODES SHALL BE IMMEDIATELY BROUGHT TO THE ATTENTION OF THE ENGINEER.
8. CONTRACTOR SHALL COMPLY WITH THE REQUIREMENTS OF THE EPA AND THE NATIONAL POLLUTION DISCHARGE ELIMINATION SYSTEM (NPDES).
9. THE LOCATION AND SIZE OF THE UTILITIES SHOWN IN THE PLANS ARE BASED ON THE BEST AVAILABLE INFORMATION AND SHOULD BE CONSIDERED APPROXIMATE ONLY. ADDITIONAL UTILITIES MAY EXIST WHICH ARE NOT SHOWN ON THESE DRAWINGS. THE CONTRACTOR SHALL VERIFY ALL UTILITIES BY ELECTRONIC METHODS AND BY PRE-TRENCHING IN COORDINATION WITH ALL UTILITY COMPANIES, PRIOR TO BEGINNING ANY CONSTRUCTION OPERATION. ANY AND ALL CONFLICTS OF EXISTING UTILITIES WITH PROPOSED IMPROVEMENTS MUST BE RESOLVED BY THE ENGINEER AND THE OWNER. THIS WORK BY THE CONTRACTOR SHALL BE CONSIDERED INCIDENTAL TO THE CONTRACT AND NO ADDITIONAL COMPENSATION SHALL BE ALLOWED.
10. [BASELINE CONTROL SURVEY CONDUCTED BY MIAMI-DADE COUNTY.] PLEASE CALL MR. JEFFREY D. WHITMORE (305) 375-2657 CONCERNING SURVEY RELATED QUESTIONS.
11. EXISTING TOPOGRAPHIC INFORMATION WAS OBTAINED FROM SURVEY PREPARED BY MIAMI-DADE COUNTY.
12. CONTRACTOR SHALL CONTACT SUNSHINE STATE ONE--CALL AT 1-(800)-432-4770 AT LEAST 48 HOURS PRIOR TO PERFORMING ANY DIGGING TO VERIFY THE EXACT LOCATION OF EXISTING UTILITIES. A CONTRACTOR'S REPRESENTATIVE MUST BE PRESENT WHEN UTILITY COMPANIES LOCATE THEIR FACILITIES.
13. THE CONTRACTOR IS TO USE CAUTION WHEN WORKING IN OR AROUND AREAS OF OVERHEAD AND UNDERGROUND UTILITIES.
14. MIAMI-DADE WATER AND SEWER DEPARTMENT REQUIRES THAT ACCESS TO ALL WATER AND SEWER VALVES, SANITARY MANHOLES, AND OTHER CONTROL MECHANISMS BE MAINTAINED THROUGHOUT CONSTRUCTION IN THE EVENT OF AN EMERGENCY TO ENSURE THE PUBLIC HEALTH AND SAFETY. COVERING VALVE BOXES AND MANHOLES CAN BE CONSIDERED UNAUTHORIZED OBSTRUCTION OF AND TAMPERING WITH DEPARTMENT UTILITIES. ALL REQUESTS FOR UTILITY ADJUSTMENTS MUST BE MADE IN WRITING AT LEAST TWO (2) WEEKS IN ADVANCE. FOR MANHOLE AND VALVES, CONTACT THE CONSTRUCTION MANAGEMENT SECTION, PUMP STATIONS UNIT, 3071 SW 38 AVENUE, FAX NO. 305-668-3626. THE DEPARTMENT WILL MAKE ONE FINAL AND PERMANENT ADJUSTMENT AT NO COST TO THE REQUESTING AGENCY. FOR THE ADJUSTMENT OF WATER METERS, CONTACT THE CHIEF OF METER OPERATIONS AND MAINTENANCE, FAX NO. 305-545-3482. FOR ANY FIRE HYDRANTS THAT ARE DAMAGED OR BUMPED DURING CONSTRUCTION, CONTACT THE MDWASD HYDRANT SHOP AT 305-805-4575 BEFORE POURING CONCRETE FOR THE SIDEWALK. IN THE EVENT OF A WATER OR SEWER EMERGENCY, CONTACT MIAMI DADE WATER AND SEWER DEPARTMENT AT 305-274-9272. THIS LINE IS OPEN 24 HOURS, 7 DAYS A WEEK.
15. KNOWN UTILITY COMPANIES IN THE PROJECT LIMITS INCLUDE, BUT ARE NOT LIMITED TO:

HOMESTEAD ELECTRIC	MANUEL CID	(305) 224-4721
MIAMI-DADE WASD	PATRIC CHONG	(786) 552-4416
FLORIDA GAS TRANSMISSION CO	JOSEPH SANCHEZ	(407) 838-7171
FP&L DISTRIBUTION	JOHN GIRALDO	(305) 442-5172
AT&T	HENRY URENA	(305) 913-1408
MCI	MCIU01 INVESTIGATIONS	(469) 886-4091
COMCAST	LEONARD MAXWELL	(754) 221-125
16. THE CONTRACTOR IS ADVISED THAT PROPERTIES ADJACENT TO THE PROJECT HAVE ELECTRIC, TELEPHONE, GAS, WATER, AND/OR SEWER SERVICE LATERALS WHICH MAY NOT BE SHOWN IN PLANS. THE CONTRACTOR MUST REQUEST THE LOCATION OF THESE LATERAL SERVICES FROM THE UTILITY COMPANIES. THE ADDITIONAL COST OF EXCAVATING, INSTALLING, BACKFILLING, AND COMPACTING AROUND THESE LATERAL SERVICES MUST BE INCLUDED IN THE BID RELATED ITEM FOR THE WORK BEING DONE.
17. THE CONTRACTOR MUST MAINTAIN CLEARANCES AS REQUIRED BY OSHA WHILE WORKING IN THE PROXIMITY OF FPL'S HIGH-VOLTAGE TRANSMISSION CONDUCTORS AND LOW VOLTAGE DISTRIBUTION CONDUCTORS.
18. THE ROADWAY CONTRACTOR MUST MAINTAIN ACCESS TO ALL PFL FACILITIES AT ALL TIMES DURING HIS CONSTRUCTION.
19. ALL EXISTING FACILITIES MUST REMAIN ENERGIZED DURING ROAD CONSTRUCTION.
20. ANY DAMAGE TO PUBLIC OR PRIVATE PROPERTY SHALL BE RESTORED BY THE CONTRACTOR AT NO ADDITIONAL COST TO THE OWNER.
21. ANY ENCROACHMENT WITHIN THE LIMITS OF CONSTRUCTION SHALL BE RELOCATED OR PROTECTED BY THE ADJACENT PROPERTY OWNER AT THEIR EXPENSE.
22. CLEARING AND GRUBBING, GRADING AND OTHER INCIDENTAL WORK NECESSARY FOR HARMONIZATION OUTSIDE R/W SHALL BE INCLUDED IN RELATED BID ITEMS.
23. ALL GRASS AREAS AFFECTED BY CONSTRUCTION SHALL BE RE-SODDED. COST TO BE INCLUDED UNDER PAY ITEM 575-1-1.
24. THE CONTRACTOR SHOULD TAKE SPECIAL NOTE OF SOIL CONDITIONS THROUGHOUT THIS PROJECT. ANY SPECIAL SHORING, SHEETING OR OTHER PROCEDURES NECESSARY TO PROTECT ADJACENT PROPERTY, PUBLIC OR PRIVATE, DURING THE EXCAVATION OF SUBSOIL MATERIAL AND EXFILTRATION TRENCH, OR FILLING OF ANY AREA, OR FOR ANY OPERATION DURING CONSTRUCTION, SHALL BE THE SOLE RESPONSIBILITY OF THE CONTRACTOR.
25. IF SHEETING, SHORING, OR DEWATERING, INCLUDING WELL POINTS ARE NECESSARY, THE CONTRACTOR MUST MONITOR AND CONTROL ALL WORK THAT MAY CAUSE CRACKING TO ANY ADJACENT BUILDING, STRUCTURE, OR PROPERTY AREA. THE CONTRACTOR SHALL BE RESPONSIBLE FOR ANY DAMAGES CAUSED BY THESE OPERATIONS. COST OF SHEETING, SHORING, OR DEWATERING SHALL BE INCLUDED IN THE RELATED BID ITEM FOR THE WORK BEING DONE.
26. THE CONTRACTOR SHALL BE RESPONSIBLE FOR OBTAINING THE DEWATERING PERMIT. COST OF THE PERMIT AND DEWATERING SHALL BE INCLUDED IN THE THE RELATED BID ITEM FOR THE WORK BEING DONE.
27. THE CONTRACTOR WILL RESTRICT PERSONNEL, THE USE OF EQUIPMENT, AND THE STORAGE OF MATERIALS TO AREAS WITHIN THE LIMITS OF CONSTRUCTION AND DESIGNATED STAGING AREA.
28. EXPLORATORY OR PRE-TRENCHING IN THE ALIGNMENT AND GRADE OF PROPOSED PIPES STRUCTURES, FRENCH DRAINS, CONDUITS, POLE FOUNDATIONS AND/OR SUB-GRADE SHALL BE PERFORMED SEVEN DAYS IN ADVANCE OF ITS CONSTRUCTION AS DIRECTED BY THE ENGINEER. THE CONTRACTOR SHALL PROVIDE UNDERGROUND UTILITY OWNERS AND THE DEPARTMENT WITH IMMEDIATE NOTIFICATION OF ANY CONFLICT WITH PROPOSED CONSTRUCTION. THIS NOTIFICATION SHALL PROVIDE SURVEY INFORMATION ABOUT EXISTING UTILITY ALIGNMENT, GRADE AND POSSIBLE CONFLICTS. PAYMENT FOR EXPLORATORY OR PRE-TRENCHING, SURVEY AND BACKFILLING SHALL BE INCLUDED IN THE COST OF THE RELATED BID ITEM FOR THE WORK BEING DONE.
29. ALL DITCH EXCAVATIONS SHALL BE PERFORMED IN FULL COMPLIANCE WITH THE PROVISIONS OF THE TRENCH SAFETY ACT.
30. ALL EXCESS MATERIAL, AS DESIGNATED BY THE ENGINEER, IS TO BE DISPOSED BY THE CONTRACTOR IN AREAS PROVIDED BY HIM WITHIN 72 HOURS OF BEING DEPOSITED IN THE CONSTRUCTION AREA AND AT THE CONTRACTOR'S EXPENSE.
31. ALL DISPOSAL OF MATERIALS, RUBBISH, AND DEBRIS SHALL BE MADE AT A LEGAL DISPOSAL SITE OR BY OTHER PRIOR APPROVED MANNER. MATERIAL CLEARED FROM THE SITE AND DEPOSITED ON ADJACENT OR NEARBY PROPERTY WILL NOT BE CONSIDERED AS HAVING BEEN DISPOSED OF SATISFACTORILY.
32. ANY KNOWN OR SUSPECTED HAZARDOUS MATERIAL FOUND ON THE PROJECT BY THE CONTRACTOR SHALL BE IMMEDIATELY REPORTED TO THE PROJECT ENGINEER, WHO SHALL DIRECT THE CONTRACTOR TO PROTECT THE AREA OF KNOWN OR SUSPECTED CONTAMINATION FROM FURTHER ACCESS. THE ENGINEER WILL ARRANGE FOR INVESTIGATION, IDENTIFICATION, AND REMEDIATION OF THE HAZARDOUS MATERIAL. THE CONTRACTOR SHALL NOT RETURN TO THE AREA OF CONTAMINATION UNTIL APPROVAL IS PROVIDED BY THE PROJECT ENGINEER.
33. EXISTING ABOVE GROUND FEATURES ARE SHOWN ACCORDING TO THE BEST AVAILABLE DATA AND MAY NOT ACCURATELY REFLECT PRESENT CONDITIONS. CONTRACTOR SHALL BE RESPONSIBLE FOR FAMILIARIZING HIMSELF WITH CURRENT SITE CONDITIONS, AND SHALL REPORT DISCREPANCIES TO THE ENGINEER PRIOR TO STARTING WORK.
34. CONTRACTOR IS TO VERIFY THE EXACT LOCATION OF ALL EXISTING TREES, STRUCTURES AND UTILITIES, WHICH MAY NOT BE SHOWN ON PLANS. ANY STRUCTURE, PAVEMENT, TREES OR OTHER EXISTING IMPROVEMENT NOT SPECIFIED FOR REMOVAL WHICH IS TEMPORARY DAMAGED, EXPOSED OR IN ANY WAY DISTURBED BY CONSTRUCTION PERFORMED UNDER THIS CONTRACT, SHALL BE REPAIRED, PATCHED OR REPLACED AT NO ADDITIONAL COST TO THE OWNER.
35. CONTRACTOR TO RELOCATE TREES AS DIRECTED BY THE ENGINEER. CONTRACTOR SHALL AVOID DAMAGE TO ANY EXISTING TREES TO REMAIN. EXISTING TREES SHALL BE REMOVED ONLY IF REQUIRED FOR CONSTRUCTION. THOSE TREES NOT INTERFERING WITH CONSTRUCTION SHALL BE PROTECTED IN PLACE.
36. THE CONTRACTOR SHALL USE A STREET SWEEPER (USING WATER) OR OTHER EQUIPMENT CAPABLE OF CONTROLLING AND REMOVING DUST. APPROVAL OF THE USE OF SUCH EQUIPMENT IS CONTINGENT UPON ITS DEMONSTRATED ABILITY TO DO THE WORK.
37. THE CONTRACTOR SHALL PREPARE AND SUBMIT SHOP DRAWINGS FOR ALL ITEMS USED IN THIS PROJECT.
38. WHEN DISSIMILAR MATERIAL CONNECTIONS ARE MADE, SUCH AS CONCRETE TO METAL, THE DISSIMILAR MATERIAL SHALL BE SEPARATED BY COATING THE CONTACT SURFACE WITH BITUMASTIC MATERIAL.
39. THE CONTRACTOR IS RESPONSIBLE FOR KEEPING EXISTING AND NEW INLETS CLEAN OF MILLING MATERIAL, LIMEROCK, DEBRIS, ETC. DURING THE CONSTRUCTION AT NO ADDITIONAL COST TO THE OWNER. ALL LINES AND STRUCTURES SHALL BE CLEANED PRIOR TO FINAL INSPECTION AND ACCEPTANCE.
40. CAST IRON PRODUCTS: HEAVY-DUTY CLASSIFICATION SUITABLE FOR HIGHWAY TRAFFIC LOADS OR 16,000 LBS WHEEL LOADS.
41. STEEL GRATING AND COVERS: TRAFFIC CLASSIFICATION H-20; 16,000 LBS OVER 8"x20" AREA.
42. EXISTING MANHOLES AND INLETS SCHEDULED TO REMAIN SHALL BE THOROUGHLY CLEANED BY REMOVING ALL DEBRIS AND SEDIMENTS, AND THE INTERIOR SHALL BE SEALED WITH AN APPROVED NON-TOXIC BITUMASTIC SEALANT.
43. PRIOR TO CONSTRUCTION THE CONTRACTOR WILL INSPECT ALL EXISTING STRUCTURES WHICH ARE TO REMAIN AND NOTIFY THE ENGINEER OF ANY OBVIOUS STRUCTURAL DEFICIENCIES.
44. CONTRACTOR SHALL ADJUST ALL EXISTING CATCH BASINS, GRATES, AND STORM MANHOLE COVERS TO MEET NEW GRADES WHERE APPLICABLE.
45. ELEVATIONS AND OFFSETS SHOWN AT DRAINAGE STRUCTURES REFER TO EDGE OF PAVEMENT UNLESS OTHERWISE NOTED.
46. RADII ON CURB RETURNS ARE TO THE EDGE OF PAVEMENT UNLESS OTHERWISE NOTED.
47. PRIOR TO CONSTRUCTION THE CONTRACTOR WILL VERIFY INVERT ELEVATIONS OF ALL PIPES WHICH ARE TO REMAIN AND NOTIFY THE ENGINEER OF ANY ELEVATION DEVIATIONS.
48. THERE SHALL BE NO MORE THAN THREE LATERAL DRAINAGE INSTALLATIONS WITHOUT BACKFILLING. BACKFILLING OF LATERAL DRAINAGE SHALL NOT LAG MORE THAN 72 HOURS BEHIND THE START OF EXCAVATION.
49. SPECIAL ATTENTION IS DIRECTED TO THE FACT THAT PORTIONS OF SOME DRAINAGE STRUCTURES EXTEND INTO THE STABILIZED PORTION OF THE ROADBED AND EXTREME CAUTION SHOULD BE USED IN THE STABILIZING OPERATIONS AT THESE LOCATIONS.
50. THE CONTRACTOR SHALL BE RESPONSIBLE FOR THE PROVISION, INSTALLATION, AND MAINTENANCE OF ALL TRAFFIC CONTROL AND SAFETY DEVICES, IN ACCORDANCE WITH SPECIFICATIONS OUTLINED IN THE PUBLIC WORKS DEPARTMENT MANUAL, THE MANUAL OF UNIFORM TRAFFIC CONTROL DEVICES, AND THE FDOT DESIGN STANDARDS.
51. WHERE NEW PAVEMENT MEETS EXISTING, CONNECTION SHALL BE MADE IN A NEAT STRAIGHT LINE AND FLUSH WITH THE EXISTING PAVEMENT.
52. THE LOCATION OF SOME DRIVEWAYS IS APPROXIMATE. VERIFICATION OF EXACT LOCATION AND DIMENSIONS IS RECOMMENDED.
53. EXISTING DRIVEWAYS WITHIN THE LIMITS OF THIS PROJECT ARE TO BE REPLACED AT THE SAME LOCATION AND WIDTH, UNLESS OTHERWISE SHOWN IN PLANS.
54. WHERE CONNECTIONS TO EXISTING SIDEWALKS AND DRIVEWAYS ARE NOT INDICATED ON PLANS, PROPER CONNECTIONS ARE TO BE MADE AS DIRECTED BY THE ENGINEER. DROP CURB AND DRIVEWAY CONNECTIONS SHALL BE PROVIDED FOR ACCESS TO ALL PRIVATE PROPERTIES ADJACENT TO THE PROJECT. PAYMENT SHALL BE INCLUDED IN THE COST OF RELATED BID ITEMS.
55. COMPLETE AS-BUILT INFORMATION RELATIVE TO LOCATION AND DEPTH OF PIPES, MANHOLES, ETC. SHALL BE ACCURATELY RECORDED BY THE CONTRACTOR AND SUBMITTED TO THE ENGINEER PRIOR TO FINAL ACCEPTANCE OF THE WORK. ALL ELEVATIONS SHALL BE TAKEN BY A FLORIDA REGISTERED SURVEYOR AND SHOWN ON THE RECORD DRAWINGS.
56. DESIGN WATER TABLE ELEVATION: 2.0 FT
57. MIAMI-DADE COUNTY FLOOD CRITERIA ELEVATION: 5.5 FT
58. THE INFORMATION PROVIDED IN THESE DRAWINGS IS SOLELY TO ASSIST THE CONTRACTOR IN ASSESSING THE NATURE AND EXTENT OF CONDITIONS WHICH WILL BE ENCOUNTERED DURING THE COURSE OF WORK. THE CONTRACTORS ARE DIRECTED, PRIOR TO BIDDING, TO CONDUCT WHATEVER INVESTIGATIONS THEY DEEM NECESSARY TO ARRIVE AT THEIR OWN CONCLUSION REGARDING THE ACTUAL CONDITIONS THAT WILL BE ENCOUNTERED, AND UPON WHICH BIDS WILL BE BASED.
63. SHOP DRAWINGS FOR SIGNAL EQUIPMENT AND MAST--ARMS ARE TO BE DELIVERED TO TRAFFIC SIGNALS AND SIGN DIVISION LOCATED AT 7100 NW 36 ST MIAMI, FL 33166 TO THE ATTENTION OF OSCAR RUBIO IN ORDER TO ASSURE EQUIPMENT MEETS THE MDC STANDARDS.

REVISIONS

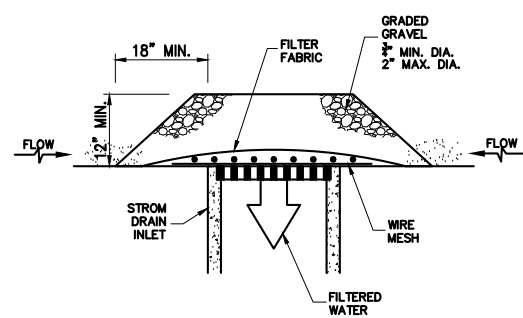
DATE	BY	DESCRIPTION	DATE	BY	DESCRIPTION

NAME	DATE	NAME	DATE
DESIGNED BY: J.M.		DRAWN BY: J.M.	
CHECKED BY: J.G.		CHECKED BY: J.G.	
SUPERVISED BY: L.J.O.			

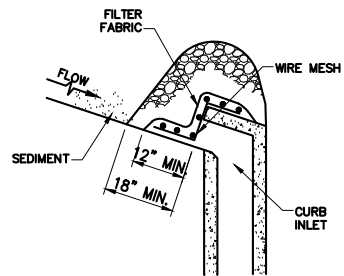
MIAMI-DADE COUNTY DEPARTMENT OF TRANSPORTATION AND PUBLIC WORKS HIGHWAY DIVISION
 STEPHEN P. CLARK CENTER
 111 NW 1 ST
 MIAMI, FLORIDA 33128

GENERAL NOTES

P:\Highway\Highway\NW South River Drive (NW 32 Ave to NW 38 Ave)\Plans\2 Revised Scope - Milling and Resurfacing Project\CD\04 GNRL-NOTES.dwg Jul 31, 2023 - 9:38am E210983



DROP INLET PROTECTION-GRAVEL

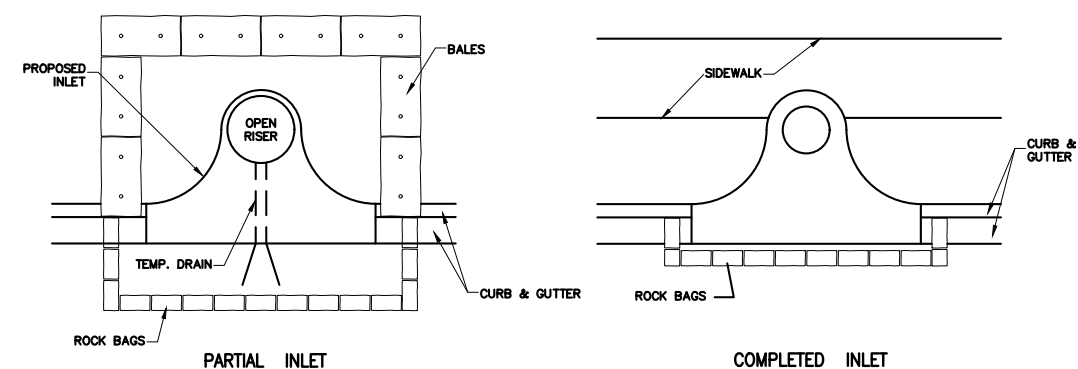


CURB INLET PROTECTION-GRAVEL

GRAVEL APPLICATIONS (TYP.)
OR APPROVED ALTERNATIVE

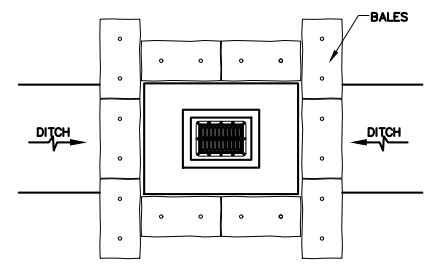
NOTES FOR INLET PROTECTION GRAVEL:

- 1- INSTALLATION/APPLICATION CRITERIA:
 - PLACE WIRE MESH (WITH 1/2 INCH OPENINGS) OVER THE INLET GRATE EXTENDING ONE FOOT PAST THE GRATE IN ALL DIRECTIONS.
 - PLACE FILTER FABRIC OVER THE MESH. FILTER FABRIC SHOULD BE SELECTED BASED ON SOIL TYPE.
 - PLACE GRADED GRAVEL, TO A MINIMUM DEPTH OF 12 INCHES, OVER THE FILTER FABRIC AND EXTENDING 18 INCHES PAST THE GRATE IN ALL DIRECTIONS.
- 2- MAINTENANCE:
 - INSPECT INLET PROTECTION AFTER EVERY LARGE STORM EVENT AND AT A MINIMUM OF ONCE MONTHLY.
 - REMOVE SEDIMENT ACCUMULATED WHEN IT REACHES 4 INCHES IN DEPTH.
 - REPLACE FILTER FABRIC AND CLEAN OR REPLACE GRAVEL IF CLOGGING IS APPARENT.
- 3- LIMITATIONS:
 - RECOMMENDED FOR MAXIMUM DRAINAGE AREA OF ONE ACRE.
 - EXCESS FLOWS MAY BYPASS THE INLET REQUIRING DOWN GRADIENT CONTROLS.
 - PONDING WILL OCCUR AT INLET.

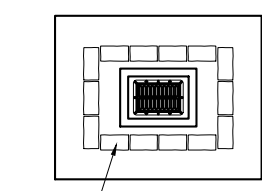


PARTIAL INLET

COMPLETED INLET



DITCH BOTTOM INLET



SWALE INLET

PROTECTION ALONG INLETS WITH ROCK BAGS BALES
OR APPROVED ALTERNATIVES

NOTES FOR SYNTHETIC BALES OR BALE TYPE BARRIERS:

- 1-TYPE I AND II SYNTHETIC BARRIER SHOULD BE SPACED IN ACCORDANCE WITH CHART 1, SHEET 1 OF 2010 FDOT DESIGN STANDARDS INDEX 102.
- 2-BALES SHALL BE ANCHORED WITH TWO (2) 1"x2" (or 1" dia.) x 4' WOOD STAKES. STAKES OF OTHER MATERIAL OR SHAPE PROVIDING EQUIVALENT STRENGTH MAY BE USED IF APPROVED BY THE ENGINEER. STAKES OTHER THAN WOOD SHALL BE REMOVED UPON COMPLETION OF THE PROJECT.
- 3-RAILS AND POSTS SHALL BE 2"x4" WOOD. OTHER MATERIALS PROVIDING EQUIVALENT STRENGTH MAYBE USED IF APPROVED BY THE ENGINEER.
- 4-ADJACENT BALES SHALL BE BUTTED FIRMLY TOGETHER.
- 5-WHERE USED IN CONJUNCTION WITH SILT FENCE, BALES SHALL BE PLACED ON THE UPSTREAM SIDE OF THE FENCE.

INLET PROTECTION SYSTEM (TYP.)
OR APPROVED ALTERNATIVE

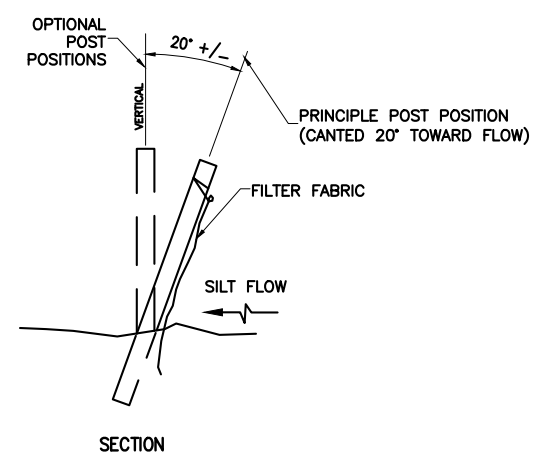
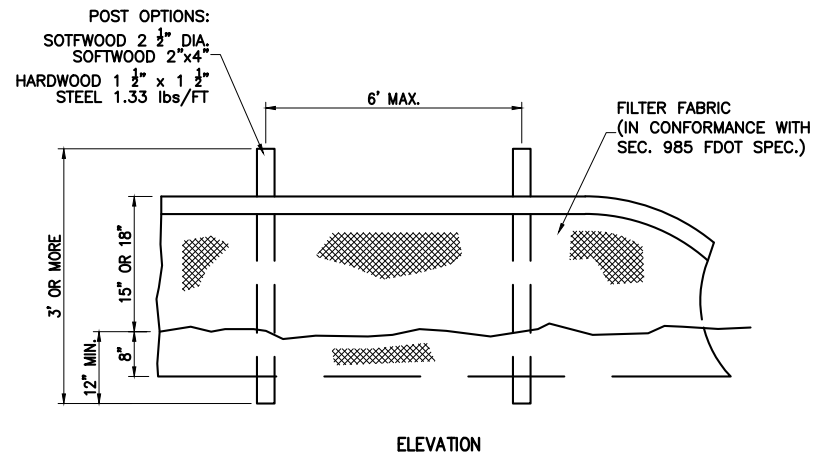
P:\Highway\Highway\NW South River Drive (NW 32 Ave to NW 38 Ave)\Plans\2 Revised Scope - Milling and Resurfacing Project\CD\06 INLT-PROTN-SYSTEM-DET.dwg Jul 31, 2023 - 9:36am E210983

REVISIONS					
DATE	BY	DESCRIPTION	DATE	BY	DESCRIPTION

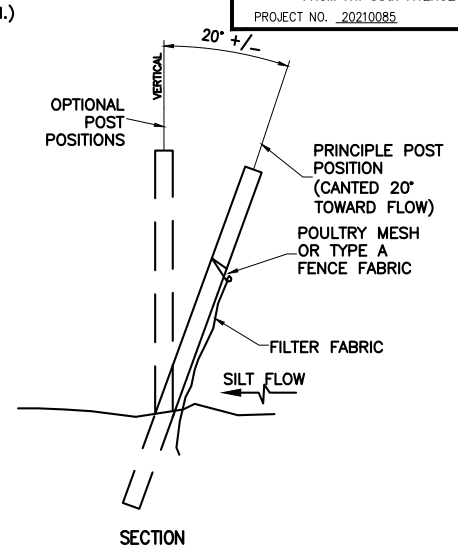
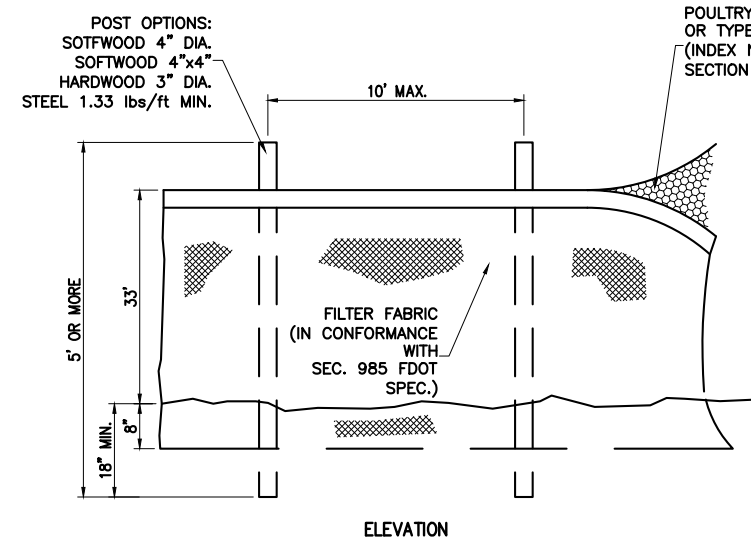
DESIGNED BY	NAME	DATE	DRAWN BY	NAME	DATE
	J.M.			J.M.	
CHECKED BY	J.G.		CHECKED BY	J.G.	
SUPERVISED BY:	L.J.O.				

MIAMI-DADE COUNTY
 DEPARTMENT OF TRANSPORTATION AND PUBLIC WORKS HIGHWAY DIVISION
 STEPHEN P. CLARK CENTER
 111 NW 1 ST
 MIAMI, FLORIDA 33128

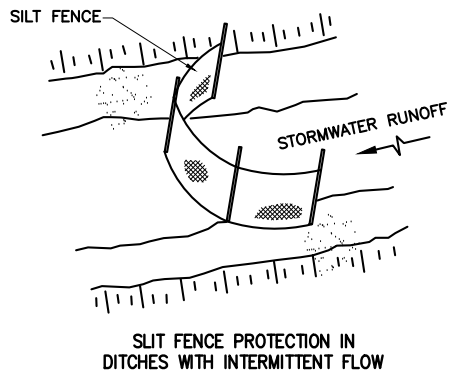
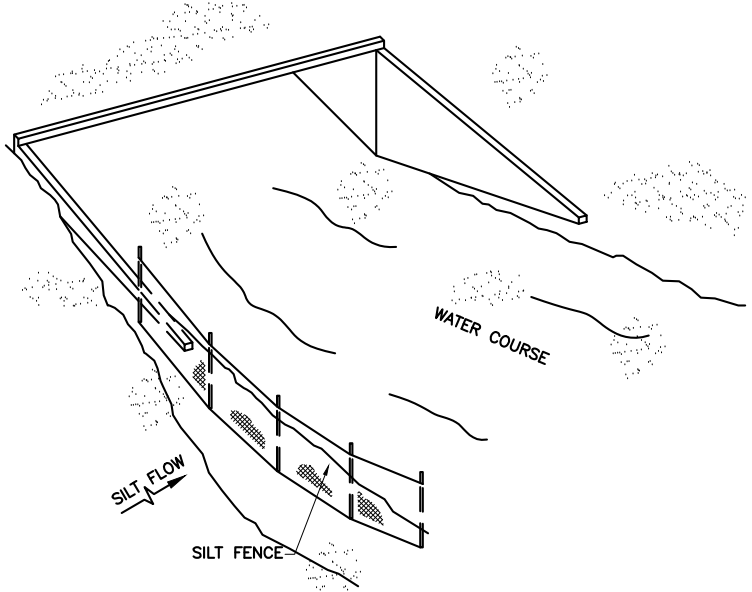
INLET PROTECTION SYSTEMS
DETAILS



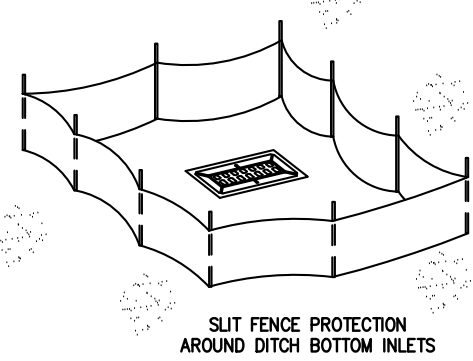
TYPE III SILT FENCE (TYP.)



TYPE IV SILT FENCE (TYP.)



SILT FENCE PROTECTION IN DITCHES WITH INTERMITTENT FLOW

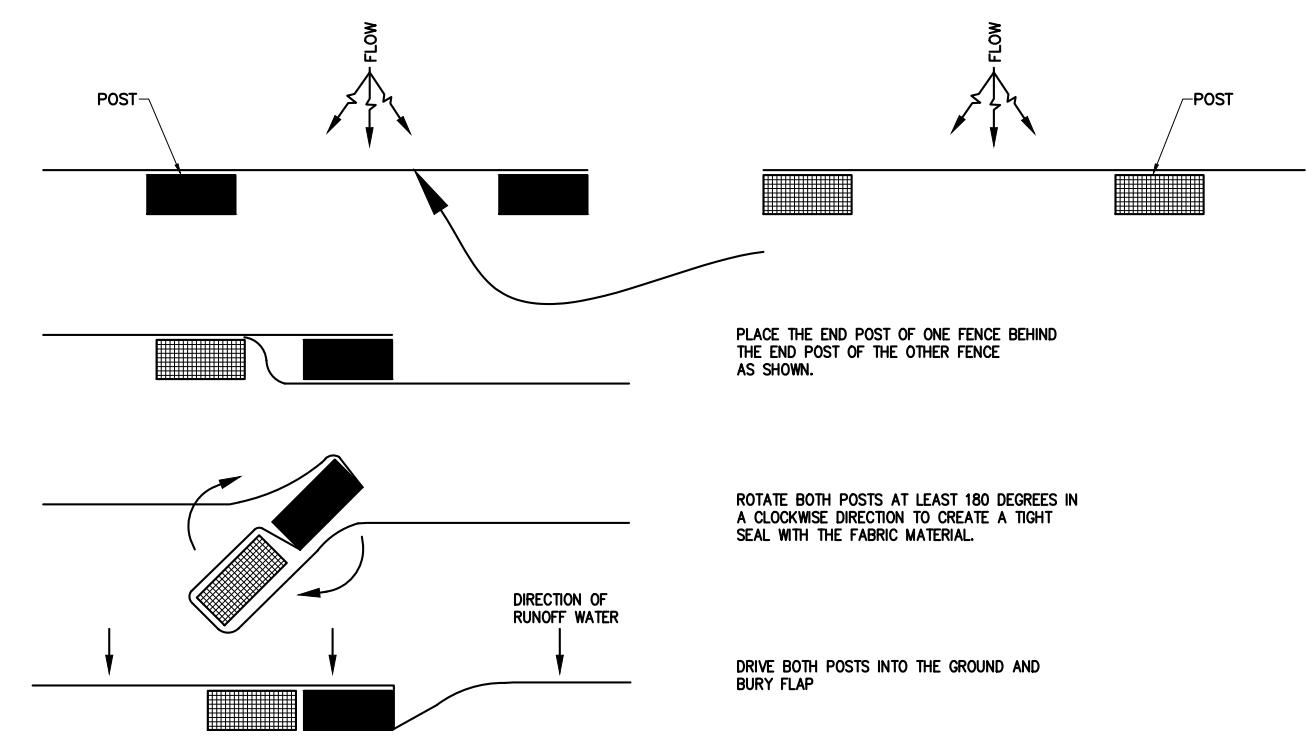


SILT FENCE PROTECTION AROUND DITCH BOTTOM INLETS

SILT FENCE APPLICATIONS (TYP.)

NOTES FOR SILT FENCES:

- 1- TYPE III SILT FENCE TO BE USED AT MOST LOCATIONS. WHERE USED IN DITCHES, THE SPACING FOR TYPE III SILT FENCE SHALL BE IN ACCORDANCE WITH CHART 1, SHEET 1 OF 2010 FDOT DESIGN STANDARDS INDEX 102.
- 2- TYPE IV SILT FENCE TO BE USED WHERE LARGE SEDIMENT LOADS ARE ANTICIPATED. SUGGESTED USE IS WHERE FILL SLOPE IS 1:2 OR STEEPER AND LENGTH OF SLOPE EXCEEDS 25 FEET. AVOID USE WHERE THE DETAINED WATER MAY BACK INTO TRAVEL LANES OR OFF THE RIGHT OF WAY.



PLACE THE END POST OF ONE FENCE BEHIND THE END POST OF THE OTHER FENCE AS SHOWN.

ROTATE BOTH POSTS AT LEAST 180 DEGREES IN A CLOCKWISE DIRECTION TO CREATE A TIGHT SEAL WITH THE FABRIC MATERIAL.

DRIVE BOTH POSTS INTO THE GROUND AND BURY FLAP

JOINING TWO SILT FENCES (TYP.)

- 3- DO NOT CONSTRUCT SILT FENCES ACROSS PERMANENT FLOWING WATERCOURSES. SILT FENCES ARE TO BE AT UPLAND LOCATIONS AND TURBIDITY BARRIERS USED AT PERMANENT BODIES OF WATER.
- 4- WHERE USED AS SLOPE PROTECTION, SILT FENCE IS TO BE CONSTRUCTED ON 0% LONGITUDINAL GRADE TO AVOID CHANNELIZING RUNOFF ALONG THE LENGTH OF THE FENCE.

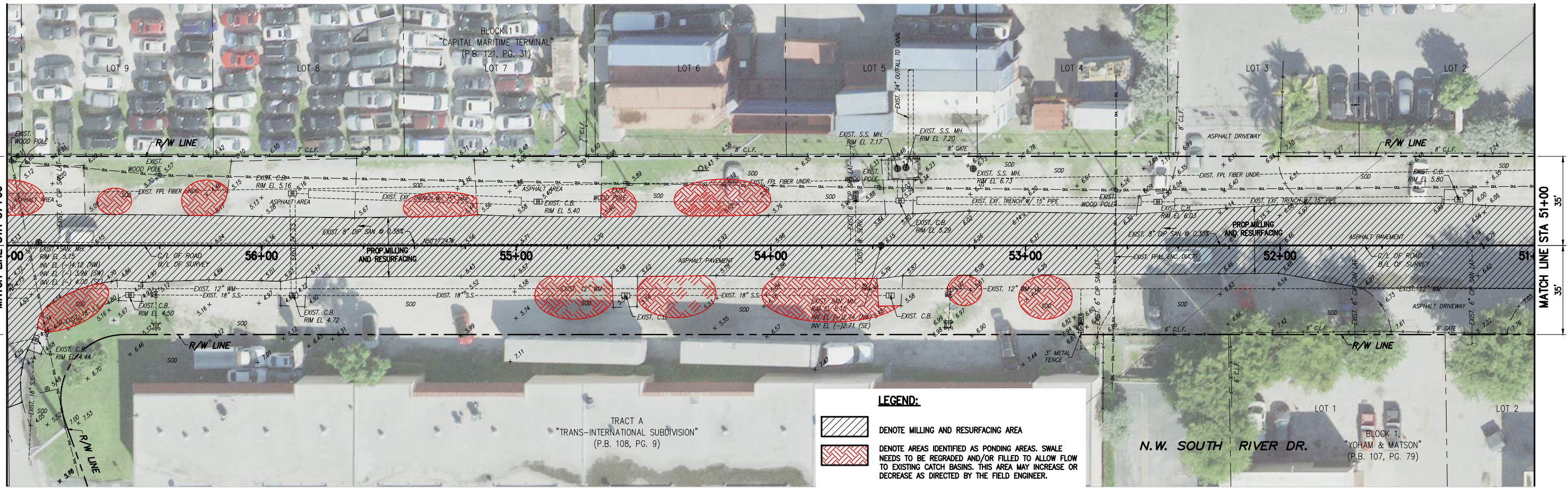
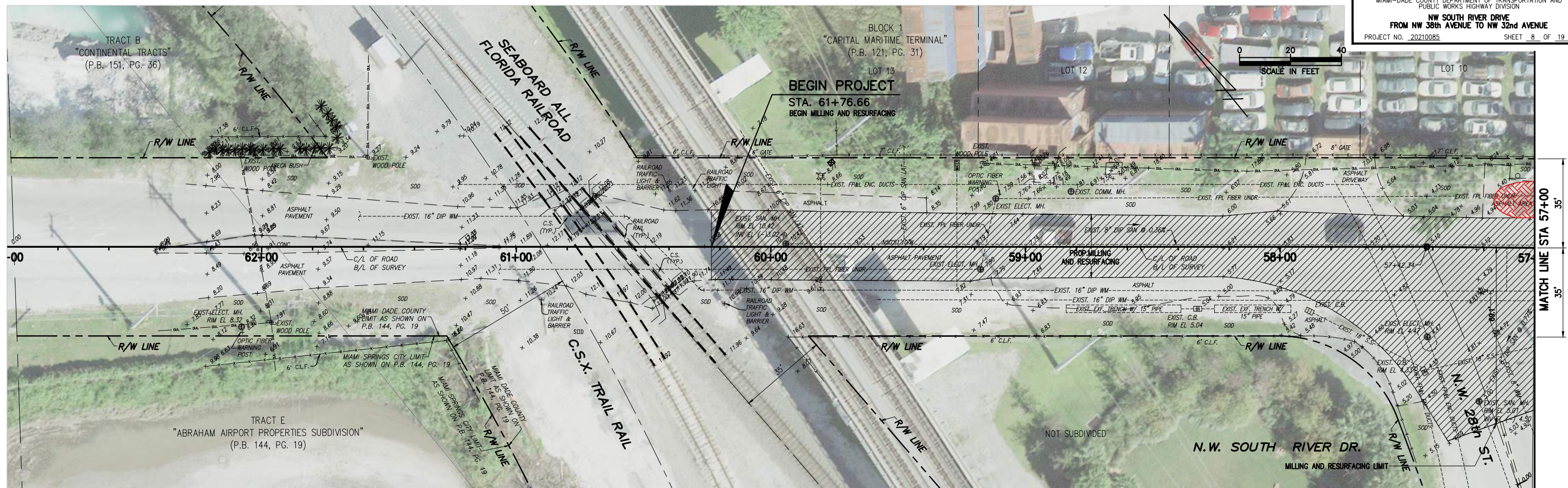
SEDIMENT BARRIERS (TYP.) OR APPROVED ALTERNATIVE

P:\HwyPlanning\Highway\NW South River Drive (NW 32 Ave to NW 38 Ave)\Plans\2 Revised Scope - Milling and Resurfacing Project\CD\07 SEDIMENT-BARR-DRAWING.dwg Jul 31, 2023 - 9:36am E210983

REVISIONS					
DATE	BY	DESCRIPTION	DATE	BY	DESCRIPTION

DESIGNED BY	NAME	DATE	DRAWN BY	NAME	DATE
J.M.	J.M.		J.M.	J.M.	
CHECKED BY	J.G.		CHECKED BY	J.G.	
SUPERVISED BY	L.J.O.				

MIAMI-DADE COUNTY DEPARTMENT OF TRANSPORTATION AND PUBLIC WORKS HIGHWAY DIVISION
 STEPHEN P. CLARK, CENTER
 111 NW 1 ST
 MIAMI, FLORIDA 33128



LEGEND:

- DENOTE MILLING AND RESURFACING AREA
- DENOTE AREAS IDENTIFIED AS PONDING AREAS. SWALE NEEDS TO BE REGRADED AND/OR FILLED TO ALLOW FLOW TO EXISTING CATCH BASINS. THIS AREA MAY INCREASE OR DECREASE AS DIRECTED BY THE FIELD ENGINEER.

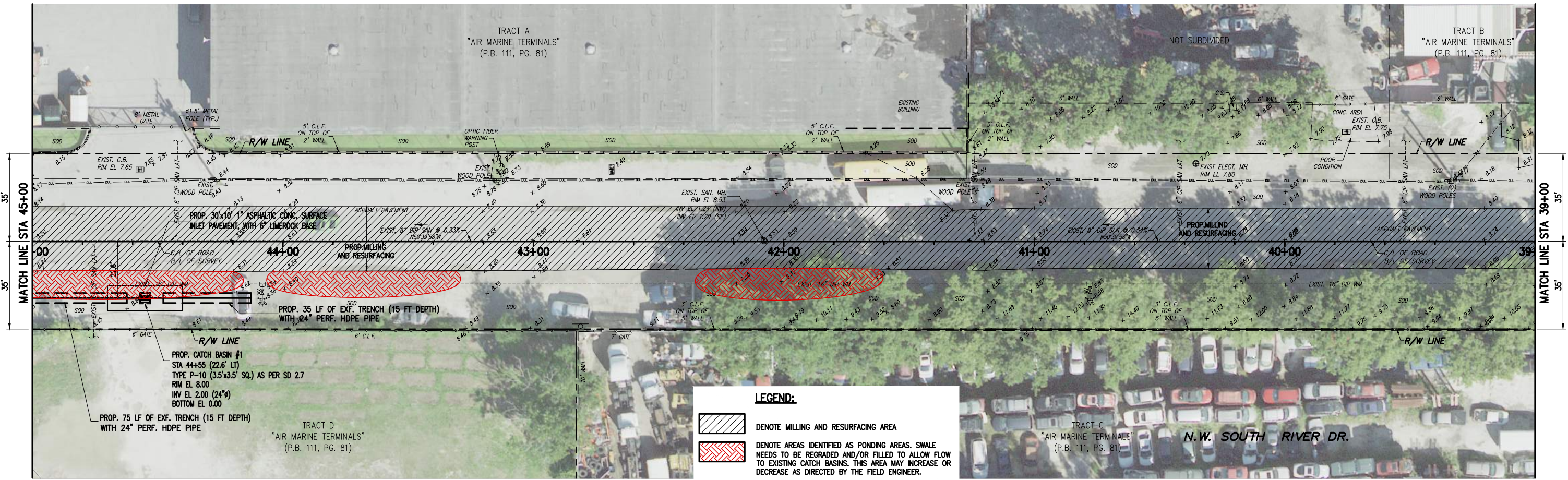
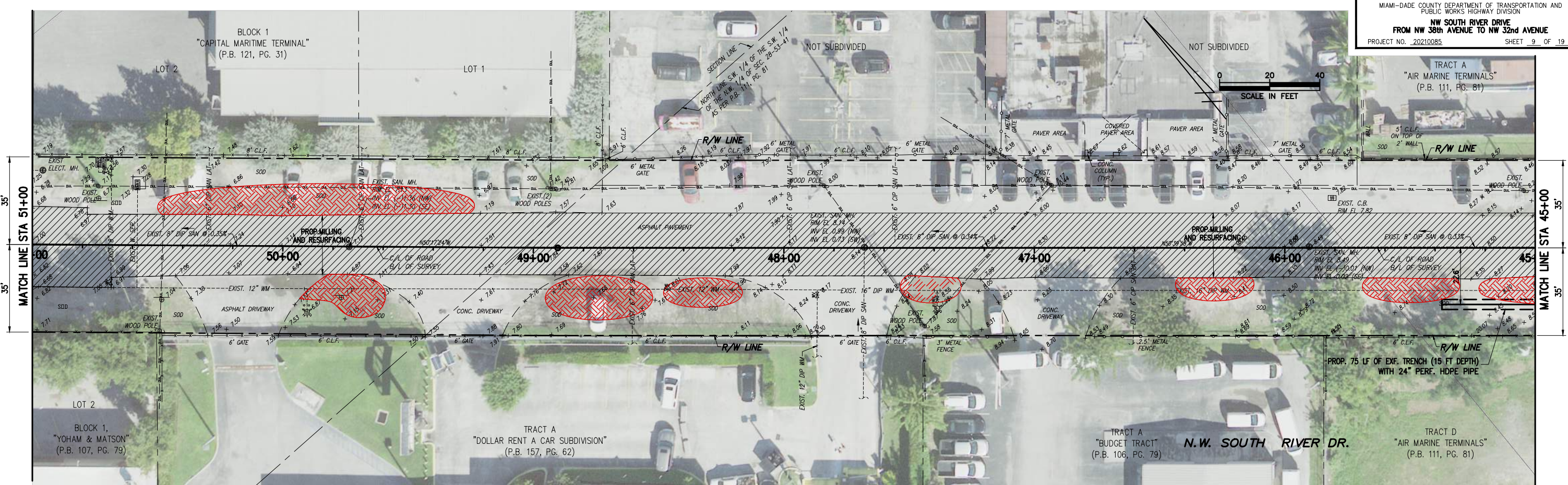
P:\Highway\Highway\NW South River Drive (NW 32 Ave to NW 38 Ave)\Plans\2 Revised Scope - Milling and Resurfacing Project\CD\08 ROAD-PLANS.dwg Jul 31, 2023 - 9:39am E210985

REVISIONS							
DATE	BY	DESCRIPTION	DATE	BY	DESCRIPTION	DATE	BY

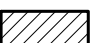
NAME	DATE	NAME	DATE
DESIGNED BY: J.M.		DRAWN BY: J.M.	
CHECKED BY: J.G.		CHECKED BY: J.G.	
SUPERVISED BY: L.J.O.			


MIAMI-DADE COUNTY
 DEPARTMENT OF TRANSPORTATION AND PUBLIC WORKS HIGHWAY DIVISION
 STEPHEN P. CLARK CENTER
 111 NW 1st ST
 MIAMI, FLORIDA 33128

ROAD PLAN



LEGEND:

 DENOTE MILLING AND RESURFACING AREA

 DENOTE AREAS IDENTIFIED AS PONDING AREAS. SWALE NEEDS TO BE REGRADED AND/OR FILLED TO ALLOW FLOW TO EXISTING CATCH BASINS. THIS AREA MAY INCREASE OR DECREASE AS DIRECTED BY THE FIELD ENGINEER.

P:\Highway\Highway\NW South River Drive (NW 32 Ave to NW 38 Ave)\Plans\2 Revised Scope - Milling and Resurfacing Project\CD\08 ROAD-PLANS.dwg Jul 31, 2023 - 9:39am E210983

REVISIONS					
DATE	BY	DESCRIPTION	DATE	BY	DESCRIPTION

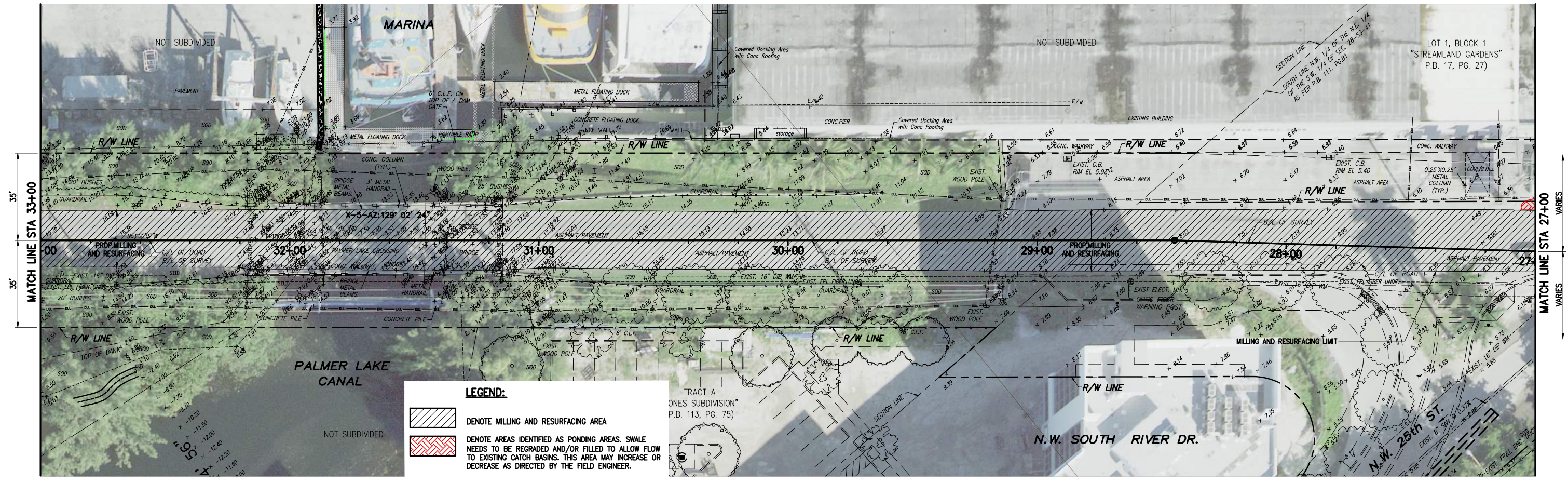
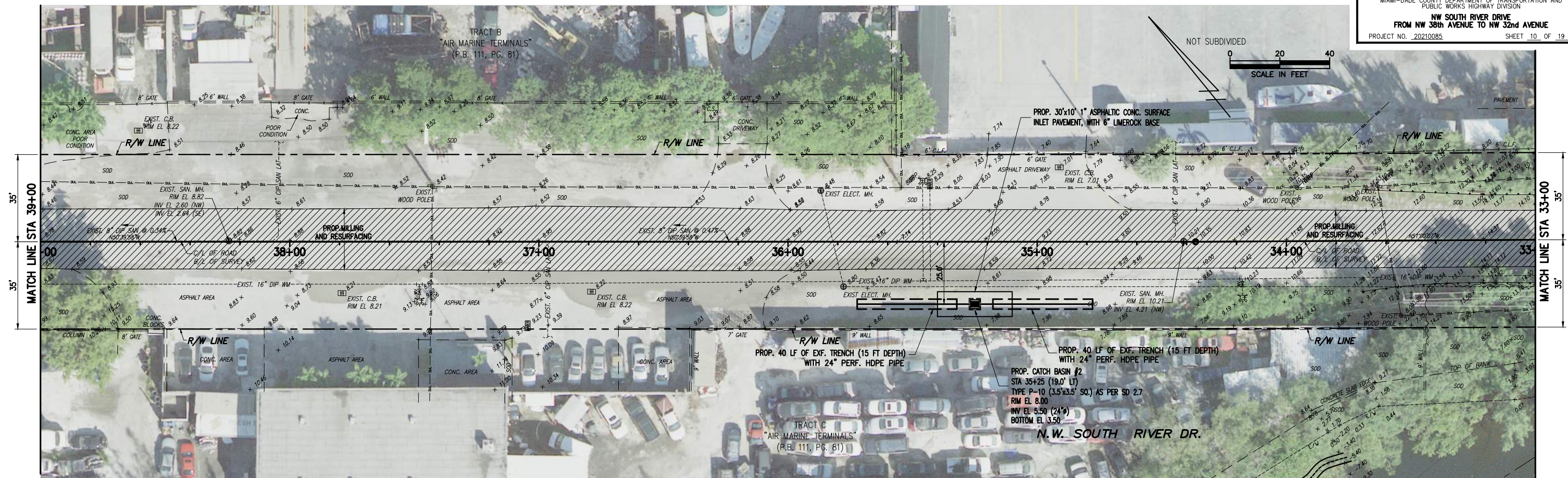
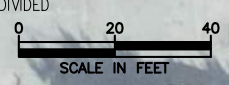
DESIGNED BY	NAME	DATE	DRAWN BY	NAME	DATE
	J.M.			J.M.	
CHECKED BY	J.G.		CHECKED BY	J.G.	
SUPERVISED BY	L.J.O.				

MIAMI-DADE COUNTY

DEPARTMENT OF TRANSPORTATION AND PUBLIC WORKS HIGHWAY DIVISION

STEPHEN P. CLARK CENTER
 111 NW 1 ST
 MIAMI, FLORIDA 33128

ROAD PLAN



LEGEND:

- DENOTE MILLING AND RESURFACING AREA
- DENOTE AREAS IDENTIFIED AS PONDING AREAS. SWALE NEEDS TO BE REGRADED AND/OR FILLED TO ALLOW FLOW TO EXISTING CATCH BASINS. THIS AREA MAY INCREASE OR DECREASE AS DIRECTED BY THE FIELD ENGINEER.

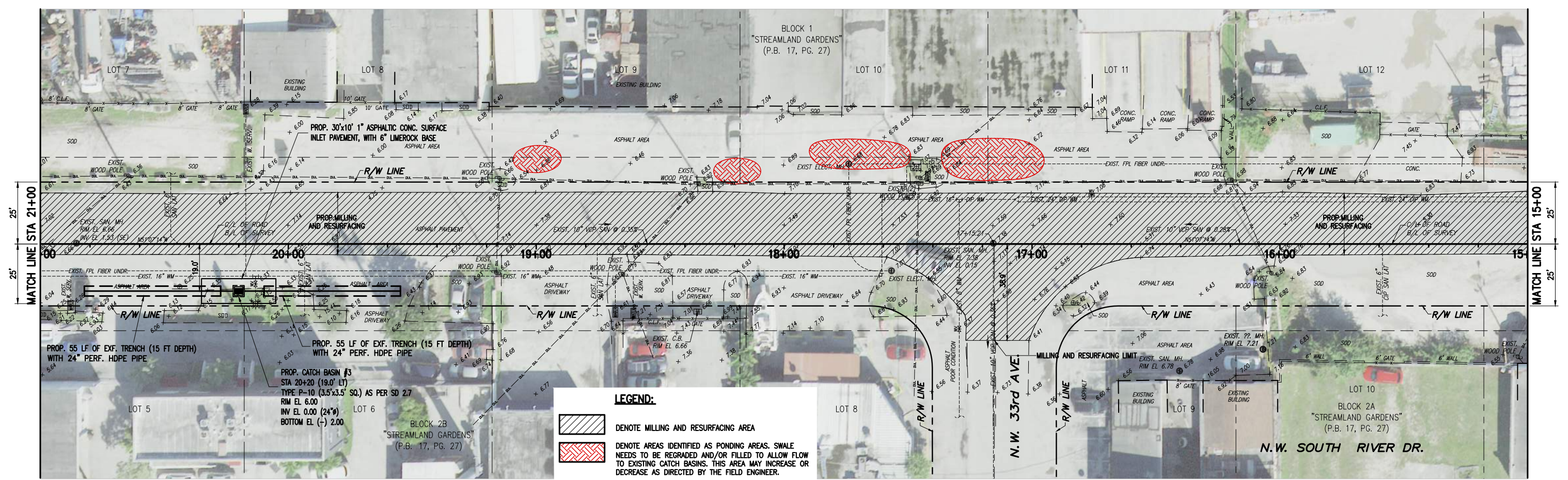
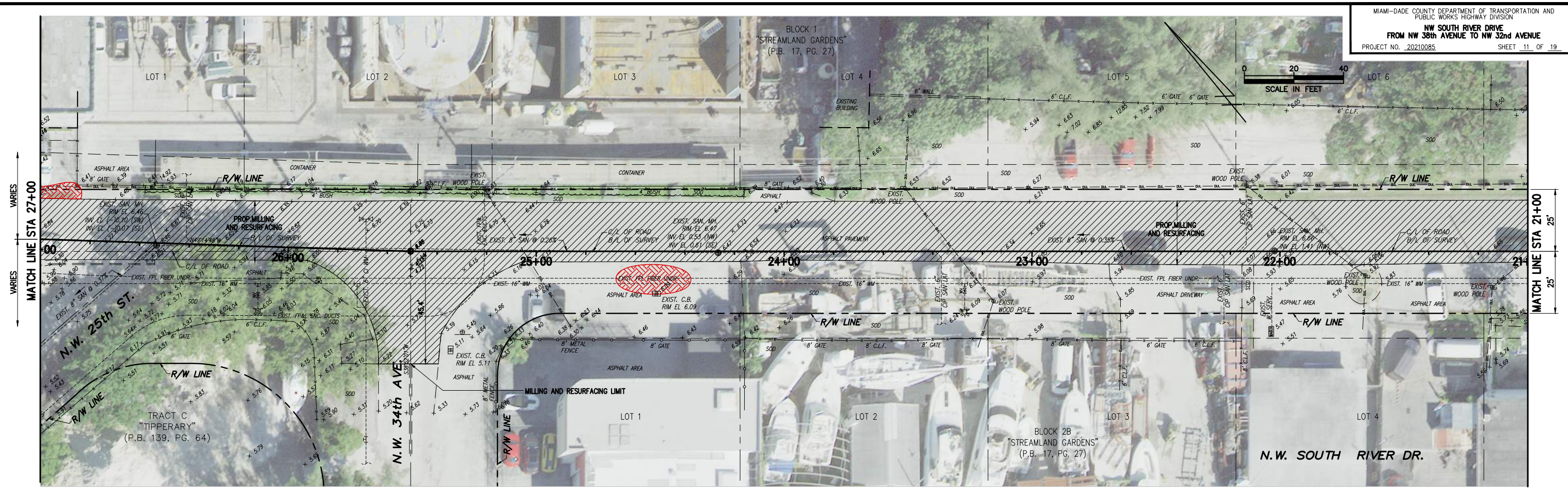
P:\Highway\Highway\NW South River Drive (NW 32 Ave to NW 38 Ave)\Plans\2 Revised Scope - Milling and Resurfacing Project\CD\08 ROAD-PLANS.dwg Jul 31, 2023 - 9:39am E210983

REVISIONS					
DATE	BY	DESCRIPTION	DATE	BY	DESCRIPTION

NAME	DATE	NAME	DATE
DESIGNED BY: J.M.		DRAWN BY: J.M.	
CHECKED BY: J.G.		CHECKED BY: J.G.	
SUPERVISED BY: L.J.O.			

MIAMI-DADE COUNTY
 DEPARTMENT OF TRANSPORTATION AND PUBLIC WORKS
 HIGHWAY DIVISION
 STEPHEN P. CLARK CENTER
 111 NW 1 ST
 MIAMI, FLORIDA 33128

ROAD PLAN



P:\Highway\Highway\NW South River Drive (NW 32 Ave to NW 38 Ave)\Plans\2 Revised Scope - Milling and Resurfacing Project\CD\08 ROAD-PLANS.dwg Jul 31, 2023 - 9:40am E210983

REVISIONS					
DATE	BY	DESCRIPTION	DATE	BY	DESCRIPTION

NAME	DATE	NAME	DATE
DESIGNED BY: J.M.		DRAWN BY: J.M.	
CHECKED BY: J.G.		CHECKED BY: J.G.	
SUPERVISED BY: L.J.O.			

MIAMI-DADE COUNTY
 DEPARTMENT OF TRANSPORTATION AND PUBLIC WORKS
 HIGHWAY DIVISION
 STEPHEN P. CLARK CENTER
 111 NW 1 ST
 MIAMI, FLORIDA 33128

ROAD PLAN



- LEGEND:**
- DENOTE MILLING AND RESURFACING AREA
 - DENOTE AREAS IDENTIFIED AS PONDING AREAS. SWALE NEEDS TO BE REGRADED AND/OR FILLED TO ALLOW FLOW TO EXISTING CATCH BASINS. THIS AREA MAY INCREASE OR DECREASE AS DIRECTED BY THE FIELD ENGINEER.

P:\HwyPlanning\Highway\NW South River Drive (NW 32 Ave to NW 38 Ave)\Plans\2 Revised Scope - Milling and Resurfacing Project\CD\08 ROAD-PLANS.dwg Jul 31, 2023 - 9:39am E210983

REVISIONS					
DATE	BY	DESCRIPTION	DATE	BY	DESCRIPTION

NAME	DATE	NAME	DATE
DESIGNED BY: J.M.		DRAWN BY: J.M.	
CHECKED BY: J.G.		CHECKED BY: J.G.	
SUPERVISED BY: L.J.O.			

MIAMI-DADE COUNTY

DEPARTMENT OF TRANSPORTATION AND PUBLIC WORKS HIGHWAY DIVISION

STEPHEN P. CLARK, CENTER
 111 NW 1 ST
 MIAMI, FLORIDA 33128

ROAD PLAN

SUMMARY OF QUANTITIES

PAY ITEM NO.	DESCRIPTION	UNIT	SHEET NUMBER												TOTAL THIS SHEET		GRAND TOTAL	
			14		15		16		17		18		ORIG.	FINAL	ORIG.	FINAL		
			ORIG.	FINAL	ORIG.	FINAL	ORIG.	FINAL	ORIG.	FINAL	ORIG.	FINAL						
700-1-11B	SINGLE POST SIGN, F&I GROUND MOUNT, UP TO 12 SF	AS.	1		3		1		2		0				6			
	D3-1 (STREET NAME SIGN)	AS.	1		0		0		4		0				5			
	R1-1 (STOP SIGN)	AS.	1		0		0		2		0				3			
	R2-130 (SPEED 30 SIGN)	AS.	0		0		1		0		0				1			
	R7-1 (NO PARKING ANY TIME SIGN)	AS.	0		3		0		0		0				3			
700-1-60	SINGLE POST SIGN, REMOVE	AS.	1		3		0		2		0				5			
706-1-12A	MARKER PAVEMENT RETRO-REFLECTIVE (YELLOW / YELLOW)	EA.	28		30		46		30		0				134			
711-11-160	THERMOPLASTIC (WHITE) (MESSAGE)	EA.	2		0		0		0		0				2			
711-11-121	THERMOPLASTIC (WHITE) (SOLID) (6")	LF.	1,874		2,400		2,411		2,458		10				9,153			
711-11-125	THERMOPLASTIC (WHITE) (SOLID) (24")	LF.	94		0		0		34		0				128			
711-11-221	THERMOPLASTIC (YELLOW) (SOLID) (6")	LF.	468		0		1,270		74		0				1,812			
711-11-241B	THERMOPLASTIC (STANDARD) (YELLOW) (SKIP 10'-30') (6")	LF.	570		1,200		431		965		0				3,166			

NOTES

- ALL SIGNING AND PAVEMENT MARKINGS SHALL CONFORM WITH THE CURRENT EDITION OF THE MANUAL OF UNIFORM TRAFFIC CONTROL DEVICES FOR STREETS AND HIGHWAYS AND THE FLORIDA DEPARTMENT OF TRANSPORTATION DESIGN STANDARDS.
- ALL EXISTING SIGNS ARE TO REMAIN UNLESS OTHERWISE SPECIFIED. BEFORE STARTING THE PROJECT, THE CONTRACTOR WILL REVIEW EXISTING SIGNS SHOWN ON THE PLANS TO BE RELOCATED OR TO REMAIN. THE CONTRACTOR WILL NOTIFY IN WRITING TO THE PROJECT ENGINEER OF ANY MISSING SIGNS BEFORE CONSTRUCTION STARTS. SIGNS DAMAGED BY THE CONTRACTOR'S OPERATIONS WILL BE REPLACED AT NO COST TO THE DEPARTMENT. IF EXISTING SIGNS TO BE RELOCATED HAVE A DAMAGED POLE OR A POLE NOT MEETING HEIGHT SPECIFICATION REQUIREMENTS, THE COST OF A NEW POLE WILL BE INCLUDED IN THE RELOCATION BID ITEM.
- ALL PAVEMENT MARKINGS, MESSAGES, AND ARROWS SHALL BE THERMOPLASTIC UNLESS OTHERWISE NOTED.
- REFLECTIVE PAVEMENT MARKERS ARE TO BE PLACED ALONG THE ENTIRE LENGTH OF THE PROJECT.
- MATCH EXISTING PAVEMENT MARKINGS AT THE BEGINNING AND AT THE END OF THE PROJECT AND AT ALL SIDE STREETS WITHOUT JOGS OR OFFSETS.
- THE CONTRACTOR SHALL REMOVE EXISTING MARKINGS BY FDOT APPROVED METHOD WITHOUT DAMAGE TO THE FRICTION COURSE.
- SIGN ASSEMBLY LOCATIONS SHOWN ON PLANS WHICH ARE IN CONFLICT WITH LIGHTING, UTILITIES, DRIVEWAYS, WHEELCHAIR RAMPS, ETC. MAY BE ADJUSTED SLIGHTLY AS DIRECTED BY THE ENGINEER. EXTREME LOCATION CHANGES MUST BE APPROVED BY MIAMI-DADE SIGNALS AND SIGNS DIVISION.
- THE CONTRACTOR SHALL RELOCATE ALL EXISTING POST-MOUNTED STREET NAME AND STOP SIGNS TO A VISIBLE AREA UNDISTURBED BY THE CONSTRUCTION SO AS TO MINIMIZE DAMAGE TO THE SIGNS. NEW STREET NAME SIGNS WILL BE ATTACHED AT THE TOP OF THE NEW STOP SIGNS ON MINOR SIDE STREETS AT THE END OF CONSTRUCTION.
- THE CONTRACTOR SHALL INSTALL ADVANCED WARNING SIGNS W3-1 (STOP AHEAD) AND W3-3A (SIGNAL AHEAD) ON RESPECTIVE SIDE STREETS ACCORDING TO STANDARDS AS DIRECTED BY THE ENGINEER.
- EXTRUDED ALUMINUM SIGN SUPPORT CLAMPS ARE NOT ACCEPTABLE. ALL RELOCATED SIGNS MUST COMPLY WITH THE DESIGN STANDARDS AS IF THEY WERE NEW SIGNS. IF EXISTING CLAMPS, BRACKETS, POLES, ETC. NEED TO BE REPLACED THE COST SHALL BE INCLUDED IN THE RELOCATION PAY ITEM.
- ANY SIGNING MATERIALS, INCLUDING SUPPORTS, TO BE REMOVED AS NOTED ON PLAN SHEETS, SHALL BE DELIVERED BY THE CONTRACTOR IN EXISTING CONDITION, IN CARE OF THE STOREKEEPER AT THE MIAMI-DADE COUNTY MAINTENANCE YARD, 7100 NW 36 STREET, MIAMI, FL 33166.
- SCHOOL CROSSING SIGNAGE AND SCHOOL SPEED ZONE SIGNAGE TO CONFORM WITH MUTCD/FDOT STANDARDS (FLUORESCENT YELLOW-GREEN BACKGROUNDS).
- REFLECTIVE PAVEMENT MARKERS AS PER FDOT STANDARD INDEX NO 706-001.

P:\Highway\Highway\NW South River Drive (NW 32 Ave to NW 38 Ave)\Plans\2 Revised Scope - Milling and Resurfacing Project\CD\13 SIGN-PMT-MRKG-QNTS.dwg Jul 31, 2023 - 9:40am E210983

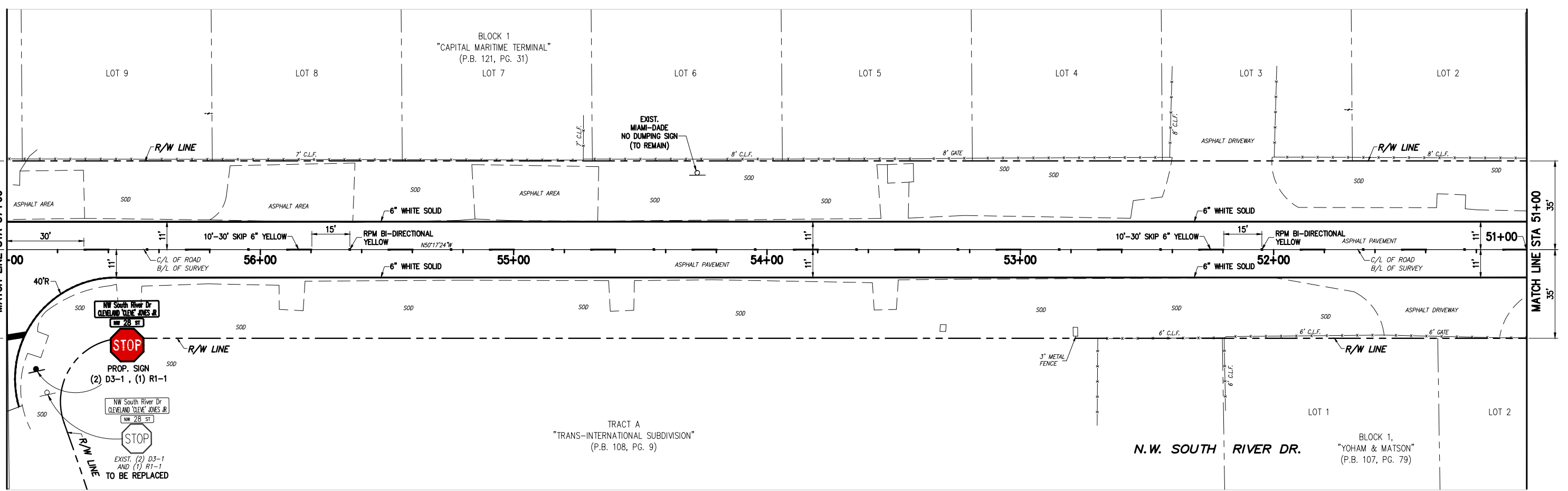
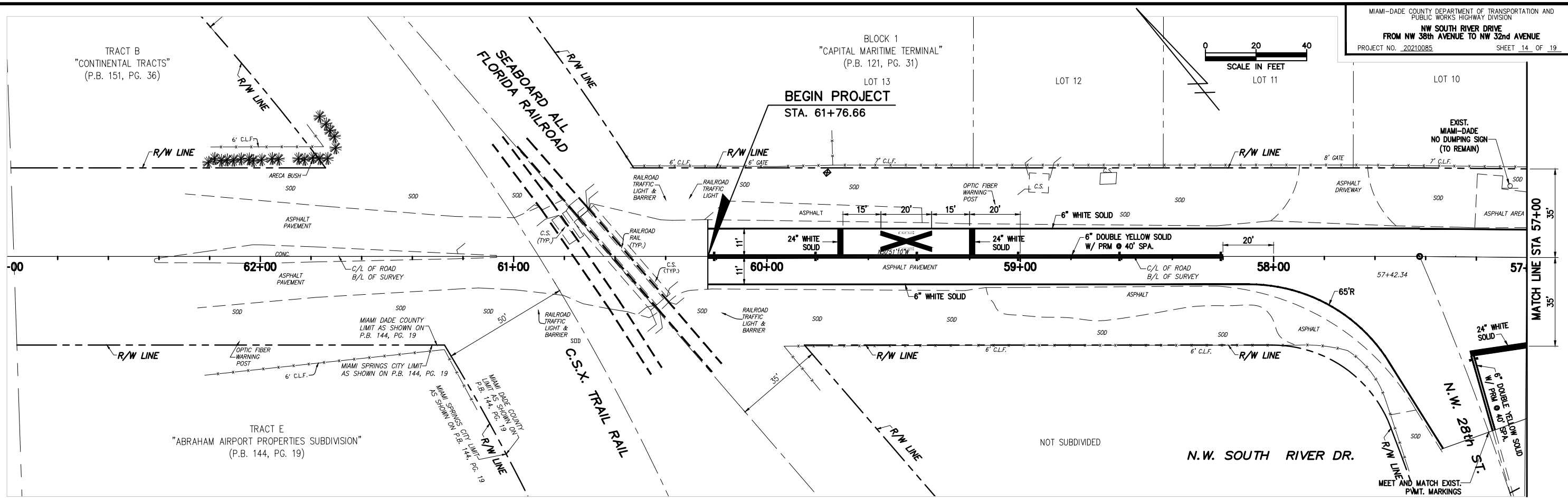
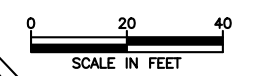
REVISIONS

DATE	BY	DESCRIPTION	DATE	BY	DESCRIPTION

DESIGNED BY	NAME	DATE	DRAWN BY	NAME	DATE
	J.M.			J.M.	
CHECKED BY	J.G.		CHECKED BY	J.G.	
SUPERVISED BY:	L.J.O.				

MIAMI-DADE COUNTY
 DEPARTMENT OF TRANSPORTATION AND PUBLIC WORKS HIGHWAY DIVISION
 STEPHEN P. CLARK, CENTER
 111 NW 1 ST
 MIAMI, FLORIDA 33128

SIGNING & PAVEMENT MARKINGS SUMMARY OF QUANTITIES



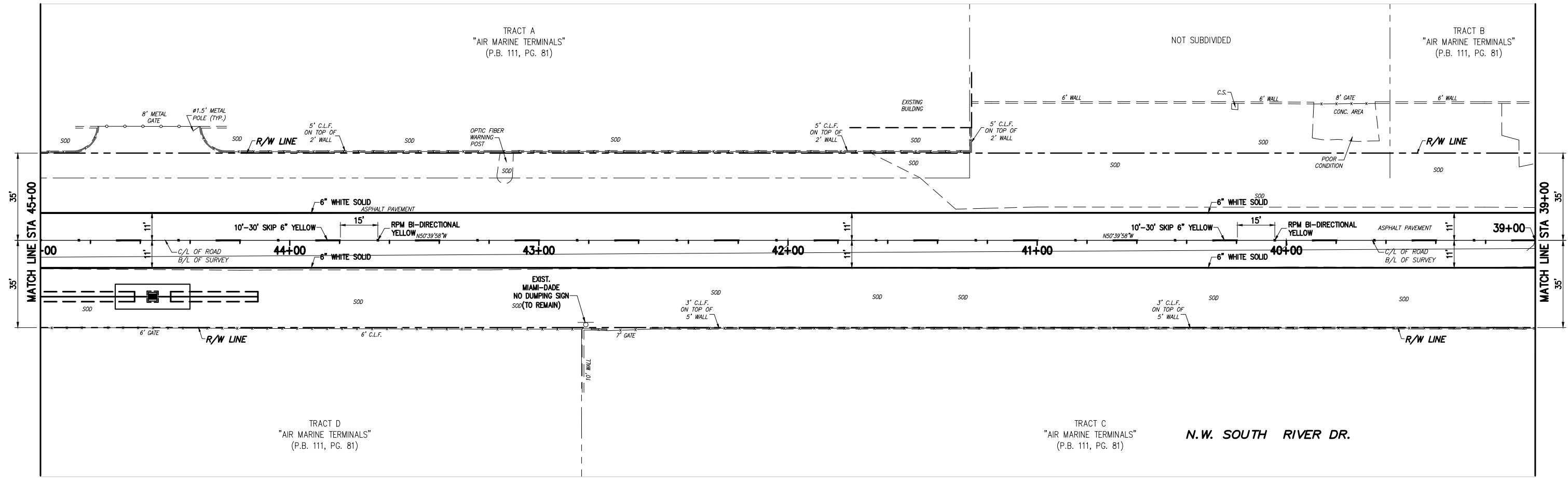
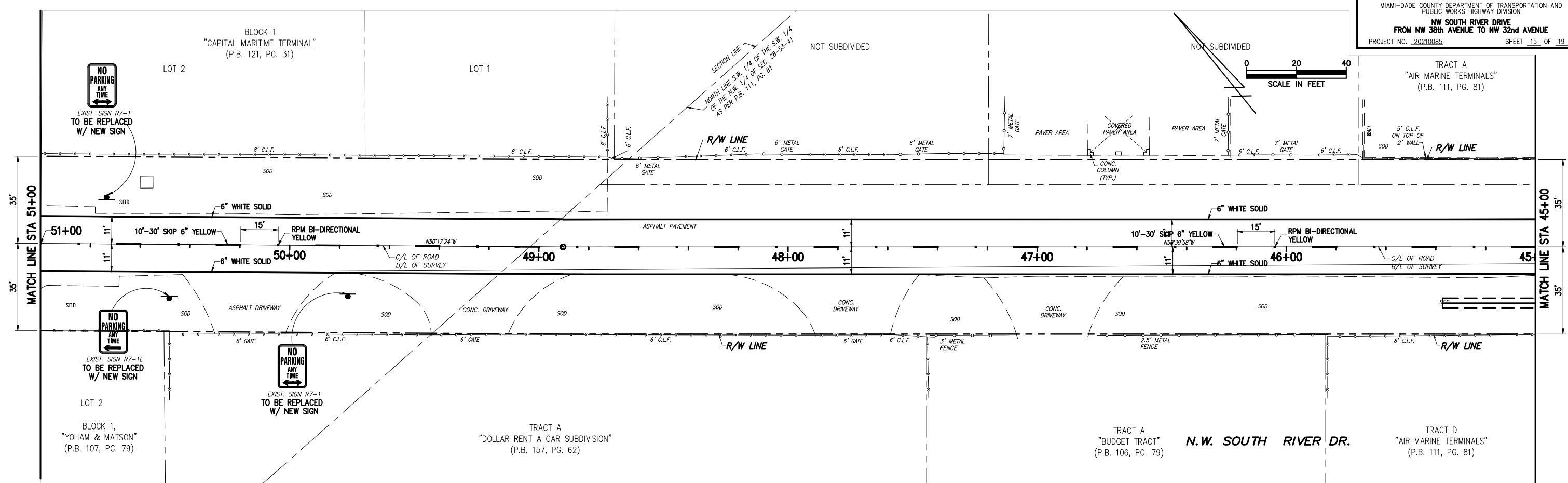
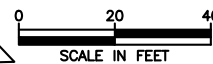
P:\Highway\Highway\NW South River Drive (NW 32 Ave to NW 38 Ave)\Plans\2 Revised Scope - Milling and Resurfacing Project\CD\14_PVMT-MRKNG-PLANS.dwg Jul 31, 2023 - 9:40am E210983

REVISIONS					
DATE	BY	DESCRIPTION	DATE	BY	DESCRIPTION

NAME	DATE	NAME	DATE
DESIGNED BY: J.M.		DRAWN BY: J.M.	
CHECKED BY: J.G.		CHECKED BY: J.G.	
SUPERVISED BY: L.J.O.			

MIAMI-DADE COUNTY
 DEPARTMENT OF TRANSPORTATION AND PUBLIC WORKS HIGHWAY DIVISION
 STEPHEN P. CLARK CENTER
 111 NW 1 ST
 MIAMI, FLORIDA 33128

SIGNING AND MARKING PLAN



P:\Highway\Highway\NW South River Drive (NW 32 Ave to NW 38 Ave)\Plans\2 Revised Scope - Milling and Resurfacing Project\CD\14 PMT-MRKING-PLANS.dwg Jul 31, 2023 - 9:40am E210983

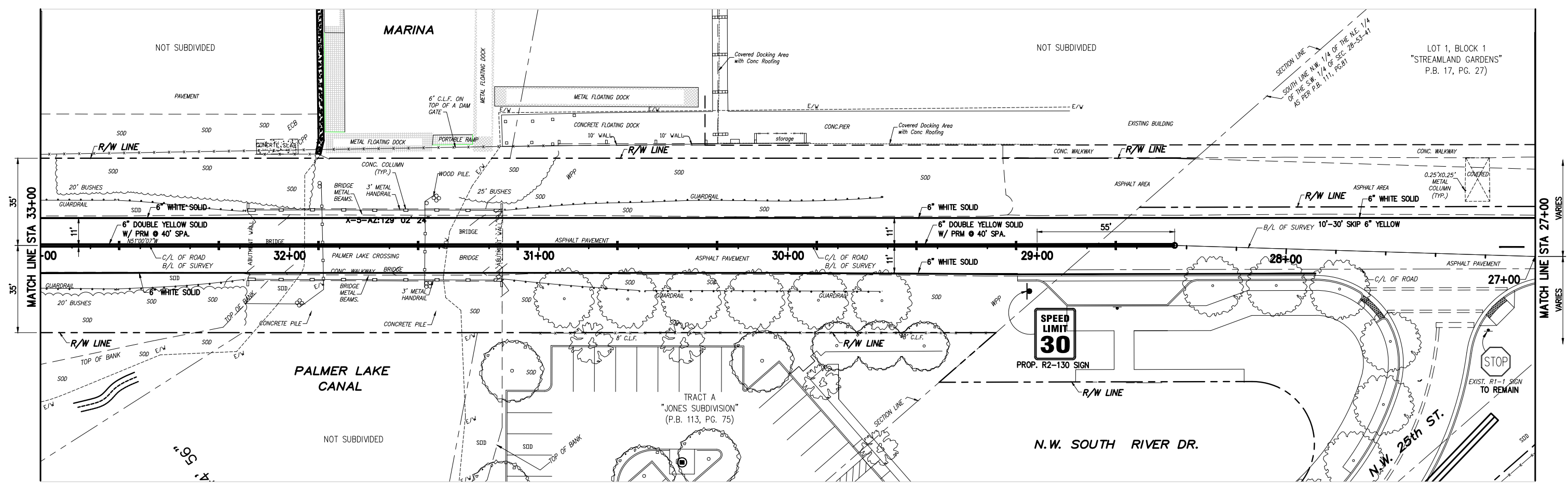
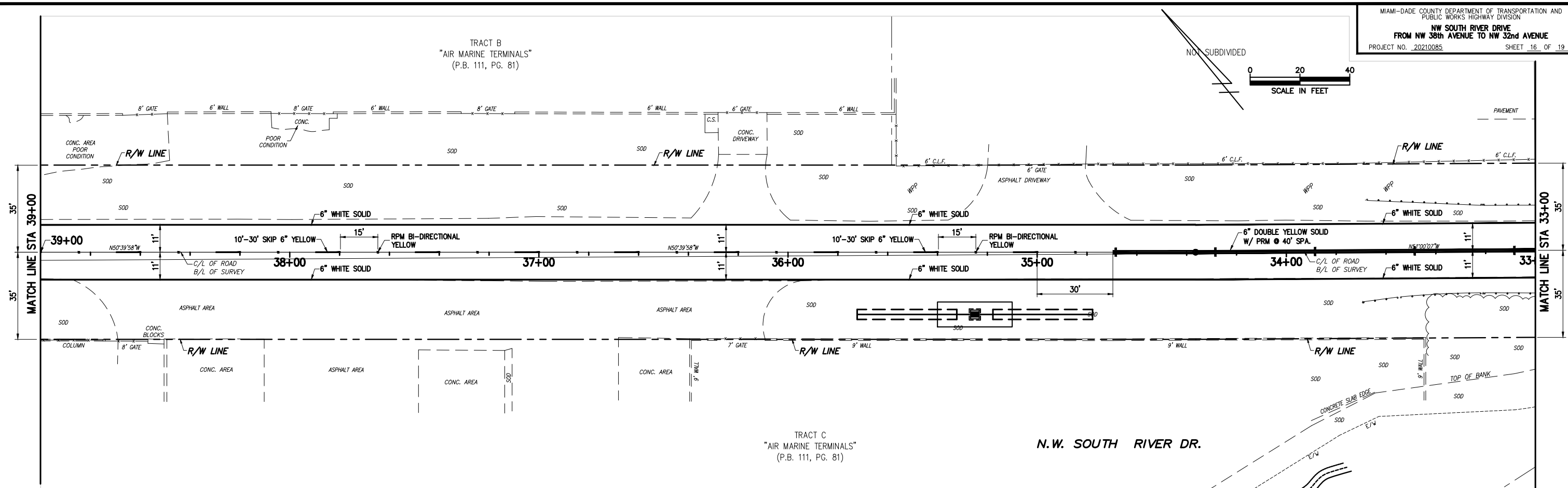
REVISIONS

DATE	BY	DESCRIPTION	DATE	BY	DESCRIPTION

NAME	DATE	NAME	DATE
DESIGNED BY: J.M.		DRAWN BY: J.M.	
CHECKED BY: J.G.		CHECKED BY: J.G.	
SUPERVISED BY: L.J.O.			

MIAMI-DADE COUNTY
 DEPARTMENT OF TRANSPORTATION AND PUBLIC WORKS HIGHWAY DIVISION
 STEPHEN P. CLARK CENTER
 111 NW 1 ST
 MIAMI, FLORIDA 33128

SIGNING AND MARKING PLAN



REVISIONS

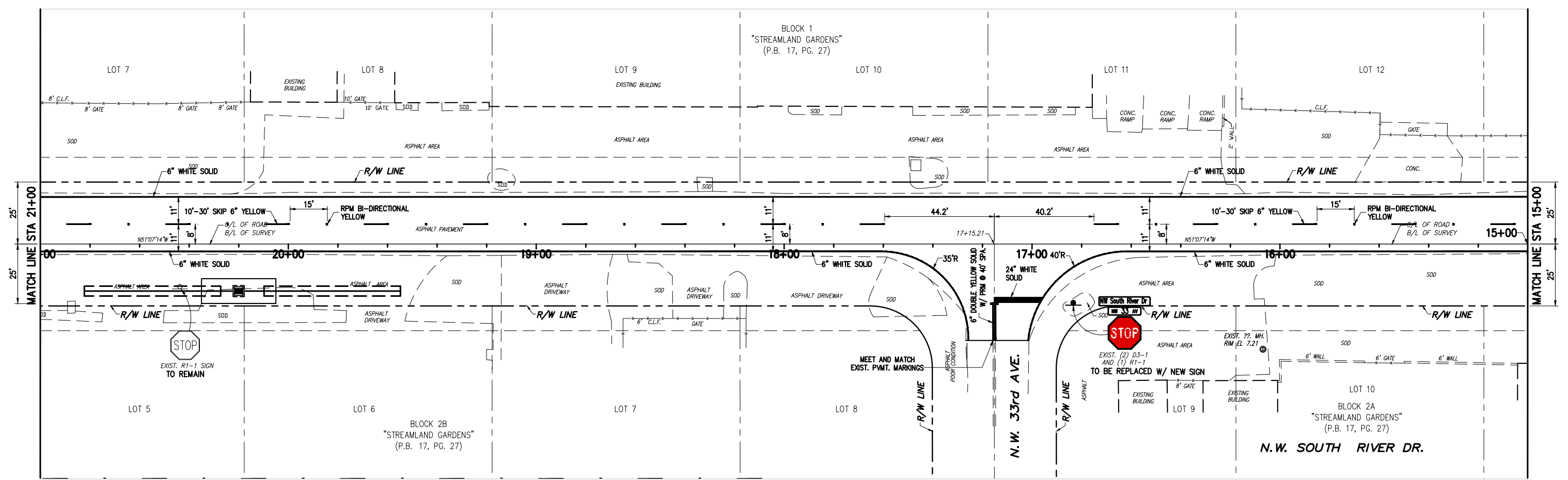
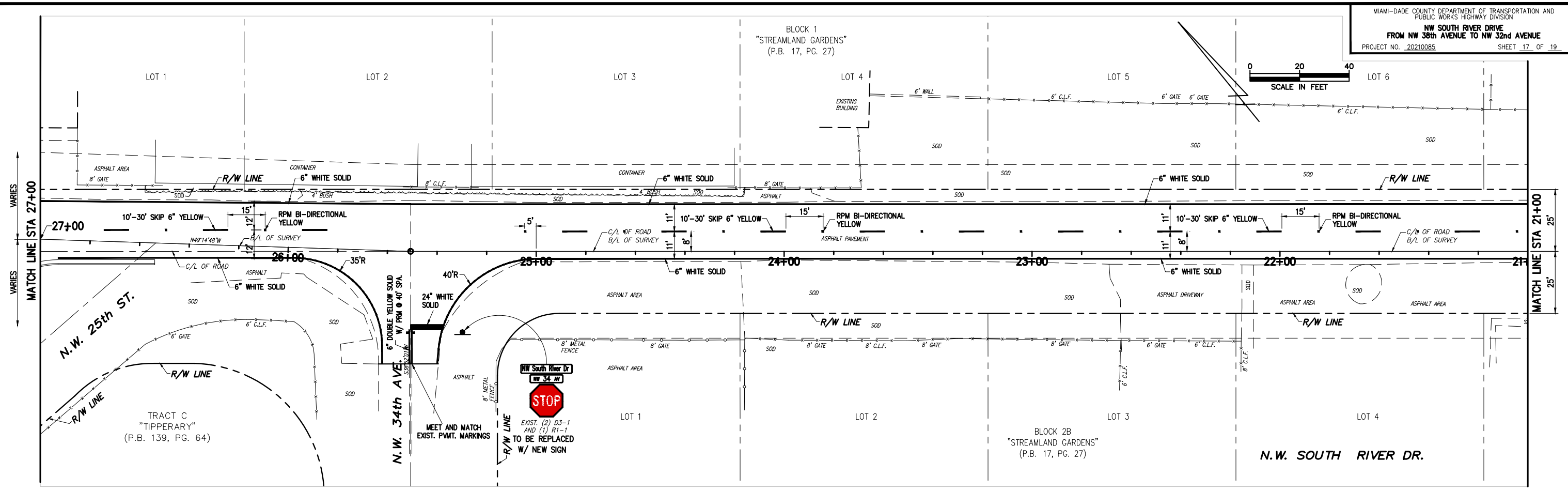
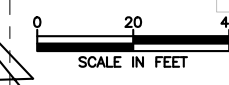
DATE	BY	DESCRIPTION	DATE	BY	DESCRIPTION

DESIGNED BY	NAME	DATE	DRAWN BY	NAME	DATE
	J.M.			J.M.	
CHECKED BY	J.G.		CHECKED BY	J.G.	
SUPERVISED BY	L.J.O.				

DEPARTMENT OF TRANSPORTATION AND PUBLIC WORKS HIGHWAY DIVISION
 MIAMI-DADE COUNTY
 STEPHEN P. CLARK CENTER
 111 NW 1 ST
 MIAMI, FLORIDA 33128

SIGNING AND MARKING PLAN

P:\Highway\Highway NW South River Drive (NW 32 Ave to NW 38 Ave)\Plans\2 Revised Scope - Milling and Resurfacing Project\CD\14 PMT-MRKING-PLANS.dwg Jul 31, 2023 - 9:40am E210983



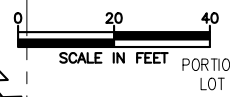
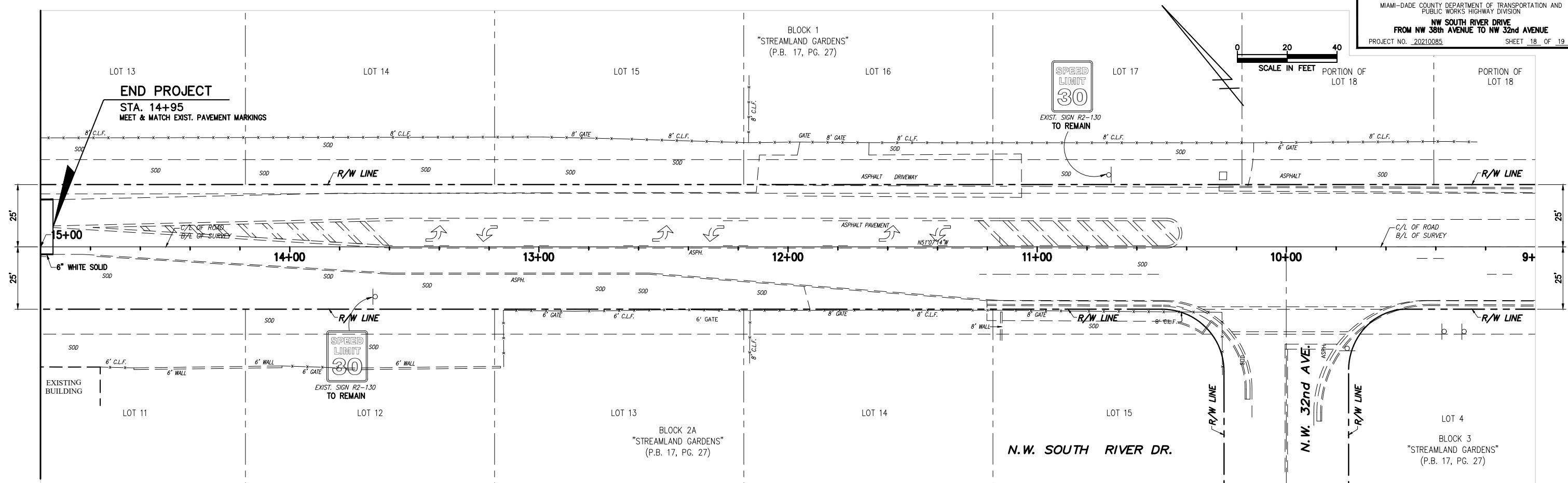
P:\Highway\Highway\NW South River Drive (NW 32 Ave to NW 38 Ave)\Plans\2 Revised Scope - Milling and Resurfacing Project\CD\14 PMT-MRKNG-PLANS.dwg Jul 31, 2023 - 9:40am E210983

REVISIONS					
DATE	BY	DESCRIPTION	DATE	BY	DESCRIPTION

NAME	DATE	NAME	DATE
DESIGNED BY: J.M.		DRAWN BY: J.M.	
CHECKED BY: J.G.		CHECKED BY: J.G.	
SUPERVISED BY: L.J.O.			

MIAMI-DADE COUNTY
 DEPARTMENT OF TRANSPORTATION AND PUBLIC WORKS HIGHWAY DIVISION
 STEPHEN P. CLARK CENTER
 111 NW 1st St
 MIAMI, FLORIDA 33128

SIGNING AND MARKING PLAN



P:\Highway\Highway\NW South River Drive (NW 32 Ave to NW 38 Ave)\Plans\2 Revised Scope - Milling and Resurfacing Project\CD\14 PMT-MRKING-PLANS.dwg Jul 31, 2023 - 9:40am E210983

REVISIONS					
DATE	BY	DESCRIPTION	DATE	BY	DESCRIPTION

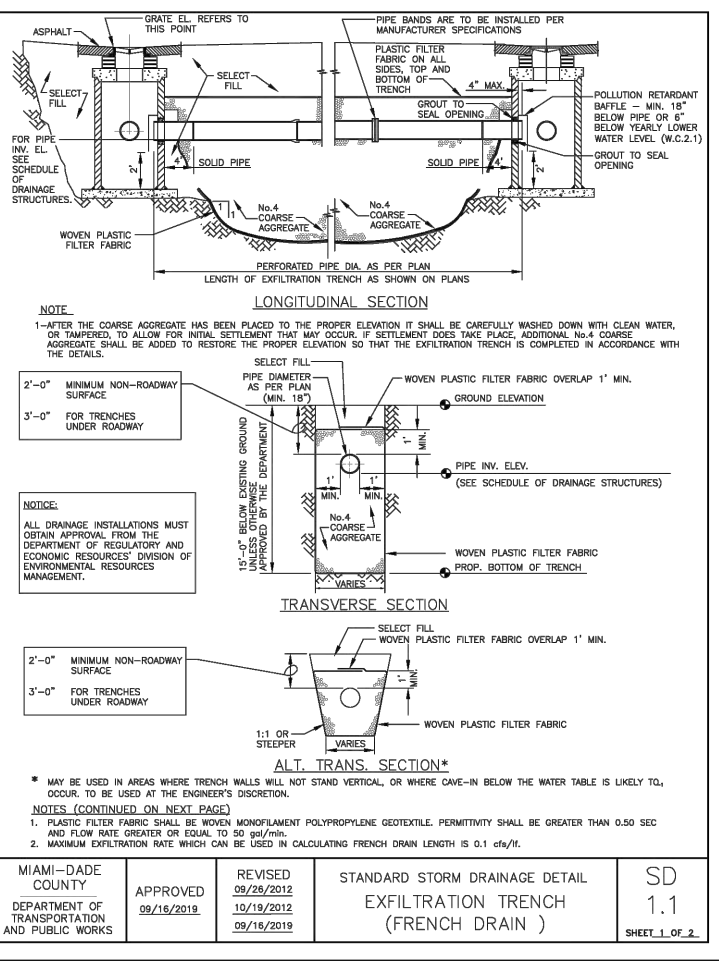
DESIGNED BY	NAME	DATE	DRAWN BY	NAME	DATE
	J.M.			J.M.	
CHECKED BY	J.G.		CHECKED BY	J.G.	
SUPERVISED BY:	L.J.O.				

MIAMI-DADE COUNTY

DEPARTMENT OF TRANSPORTATION AND PUBLIC WORKS HIGHWAY DIVISION

STEPHEN P. CLARK, CENTER
 111 NW 1 ST
 MIAMI, FLORIDA 33128

SIGNING AND MARKING PLAN



NOTES (CONTINUED)

- THE MINIMUM PIPE DIAMETER FOR DRAINAGE SYSTEM WITHIN THE ROADWAY RIGHT-OF-WAY SHALL BE 18 INCHES. 15 INCH PIPE MAY BE USED IN PRIVATE ROADWAYS.
- NO TREES TO BE PLANTED WITHIN 5 FEET OF THE EDGE OF THE TRENCH.
- TYPE "P" S.D. 2.6 STRUCTURE IS RECOMMENDED FOR SMALL DRAINAGE AREAS LESS THAN 0.2 ACRE PER CATCH BASIN.
- TYPE "J" S.D. 2.6 STRUCTURE IS RECOMMENDED FOR AREAS LARGER THAN 0.2 ACRE.
- ALL INVERTS OF PERFORATED PIPES TO BE AT MEAN HIGH OCTOBER WATER TABLE W.C. 2.2.
- PIPES CAN BE ALLOWED BELOW MEAN HIGH OCTOBER WATER TABLE DUE TO UTILITY CONFLICTS OR IN ORDER TO PROVIDE THE REQUIRED MINIMUM COVER.
- NEOPRENE GASKET REQUIRED FOR BAFFLES ON ALL CONTACT EDGES MOUNTED ON WALL.
- OIL AND GREASE BAFFLE IS REQUIRED FOR ALL DRAINAGE STRUCTURES PRECEDING AN OUTFALL OR EXFILTRATION TRENCHES, IN PROJECTS LOCATED IN WETFIELD PROTECTION AREAS, ROAD INTERSECTIONS WITH TRAFFIC LIGHTS, AND LARGE PARKING LOTS WHICH INCLUDE 15 PARKING SPACES OR MORE.
- OIL AND GREASE BAFFLE MAY BE WAIVED IN SUBURBAN RESIDENTIAL AREAS.

GENERAL NOTES FOR PIPE CULVERTS

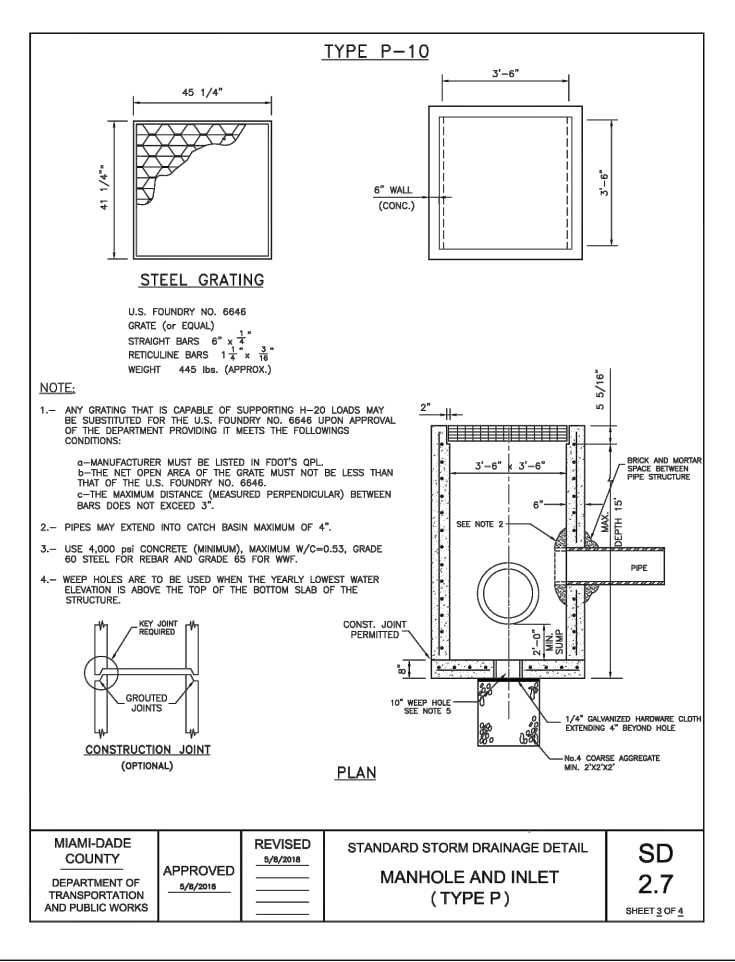
CONTRACTOR HAS THE OPTION OF INSTALLING ANY PIPE MEETING THE REQUIREMENTS OF SECTION 443-2 OF THE FDOT STANDARD SPECIFICATIONS FOR ROAD AND BRIDGE CONSTRUCTION AS LONG AS THE MANUFACTURER IS LISTED, AT THE TIME OF PIPE INSTALLATION, IN FDOT'S LIST OF PRODUCERS WITH ACCEPTED QUALITY CONTROL PROGRAMS. PIPES WITH LESS THAN A 100-YEAR CERTIFICATION CANNOT BE USED ON SECTION LINE, HALF SECTION LINE, COLLECTOR ROADWAYS, AND ARTERIALS. 50-YEAR PIPE CERTIFICATION REQUIRED FOR ALL OTHER MINOR/LOCAL ROADWAYS.

PIPE DIAMETER (Inches)	OUTER SHELL	LINER
	No. of 3/8" Dia. Holes (PER LIN. FT. OF PIPE)	No. of 5/8" Dia. Holes (PER LIN. FT. OF PIPE)
15	100	50
18	120	60
24	160	80
30	200	100
36	240	120
42	275	140
48	315	150
54	355	180
60	395	200
72	470	235
84	550	275

NOTE:

PERFORATIONS SHALL BE UNIFORMLY SPACED AROUND THE FULL PERIPHERY OF THE PIPE TO WITHIN 4" OF EACH END OF EACH LENGTH OF PIPE. THE NUMBER OF PERFORATIONS PER LINEAR FOOT OF PIPE AND THE DIAMETER OF THE PERFORATIONS SHALL BE AS SHOWN ON THE ABOVE TABLE.

MIAMI-DADE COUNTY DEPARTMENT OF TRANSPORTATION AND PUBLIC WORKS	APPROVED 09/16/2019	REVISED 09/26/2012 10/19/2012 09/16/2019	STANDARD STORM DRAINAGE DETAIL EXFILTRATION TRENCH (FRENCH DRAIN)	SD 1.1 SHEET 1 OF 2
---	---------------------	--	---	---------------------



Standard Detail	Width (ft)	Length (ft)	Height (ft)	Wall Thickness (in)	Wall Steel	Top Slab Thickness (in)	Top Slab Steel	Bottom Slab Thickness (in)	Bottom Slab Steel
2.2	3	3	0.0 - 5.0	6	#4@10"H #4@10"V	8	#4@5" E.W.	8	#4@10" E.W.
2.2	3	3	5.1 - 10.0	6	#4@7.5"H #4@10"V	8	#4@5" E.W.	8	#4@10" E.W.
2.2	3	3	10.1 - 15.0	6	#5@7.5"H #4@10"V	8	#4@5" E.W.	8	#4@10" E.W.

Standard Detail	Dia. (ft)	Height (ft)	Wall Thickness (in)	Wall Steel	Top Slab Thickness (in)	Top Slab Steel	Bottom Slab Thickness (in)	Bottom Slab Steel
2.2	3	0.0 - 5.0	6	8 X 8 W20 #4@10"E.W.	8	#4@5" E.W.	8	#4@10" E.W.
2.2	3	5.1 - 15.0	6	8 X 8 W20 #4@10"E.W.	8	#4@5" E.W.	8	#4@10" E.W.

MIAMI-DADE COUNTY DEPARTMENT OF TRANSPORTATION AND PUBLIC WORKS	APPROVED 5/9/2018	REVISED 5/9/2018	STANDARD STORM DRAINAGE DETAIL PRECAST CATH BASIN (TYPE D-3)	SD 2.2 SHEET 2 OF 2
---	-------------------	------------------	--	---------------------

P:\Highway\Highway\NW South River Drive (NW 32 Ave to NW 38 Ave)\Plans\2 Revised Scope - Milling and Resurfacing Project\CD\15 DRNCE DETS.dwg Jul 31, 2023 - 10:05am E210983

REVISIONS						DESIGN/CHECK/REVISIONS					
DATE	BY	DESCRIPTION	DATE	BY	DESCRIPTION	DATE	BY	DESCRIPTION	DATE	BY	DESCRIPTION

DESIGNED BY	J.M.	DATE		DRAWN BY	J.M.
CHECKED BY	J.G.	DATE		CHECKED BY	J.G.
SUPERVISED BY: L.J.O.					

MIAMI-DADE COUNTY DEPARTMENT OF TRANSPORTATION AND PUBLIC WORKS	STEPHEN P. CLARK, CENTER 111 NW 1 ST MIAMI, FLORIDA 33128
---	---

DRAINAGE DETAILS