

PLANS FOR PROPOSED
INTERSECTION IMPROVEMENTS TO
SW 109 AVE. & SW 32 ST
MIAMI-DADE COUNTY PROJECT NO. 20220058
RIF DISTRICT 10

COMPONENTS OF CONTRACT PLANS SET

ROADWAY, SIGNING AND MARKING PLANS
LIGHTING PLANS

INDEX OF SHEETS

SHT. No. SHEET DESCRIPTION

ROADWAY PLANS

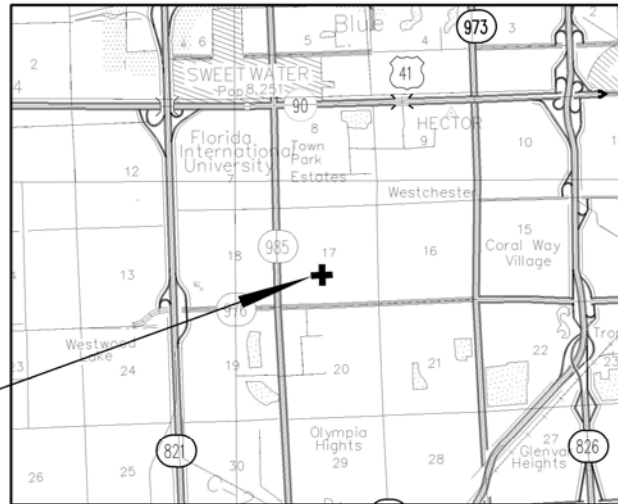
- | | |
|---|--------------------------------------|
| 1 | COVER SHEET |
| 2 | GENERAL NOTES |
| 3 | SUMMARY OF QUANTITIES |
| 4 | ROADWAY PLAN |
| 5 | PAVEMENT MARKINGS PLAN |
| 6 | SIGNING PLAN |
| 7 | GRADING AND DRAINAGE DETAILS PLAN |
| 8 | STORMWATER POLLUTION PREVENTION PLAN |
| 9 | INLET PROTECTION SYSTEM DETAILS |

STANDARD INDEX DRAWINGS

SHT. No. SHEET DESCRIPTION

- | | |
|--------------------|--|
| SD 1.1 | EXFILTRATION TRENCH (FRENCH DRAIN) |
| SD 2.7 | MANHOLE AND INLET (TYPE P) |
| R 2.1 | 60' R/W - 2 LANES SWALE |
| R 3.1 | 70' R/W - 2 LANES SWALE |
| R 13.1 | SIDEWALK CONSTRUCTION |
| R 14.1 | CURB AND GUTTER SECTIONS |
| R 14.2 | CURB SECTIONS |
| R 15.1 | STREET INTERSECTION SWALE |
| FDOT INDEX 520-010 | MEDIAN OPENING FLUME |
| FDOT INDEX 706-001 | TYPICAL PLACEMENT OF RAISED PAVEMENT MARKERS |
| FDOT INDEX 711-001 | PAVEMENT MARKINGS |

THESE PLANS HAVE BEEN PREPARED IN ACCORDANCE WITH AND ARE GOVERNED BY THE MIAMI-DADE COUNTY PUBLIC WORKS DEPARTMENT STANDARDS AND SPECIFICATIONS PARTS 1, 2 AND 3, THE MANUAL OF UNIFORM MINIMUM STANDARDS FOR DESIGN, CONSTRUCTION AND MAINTENANCE FOR STREETS AND HIGHWAYS, THE FLORIDA DEPARTMENT OF TRANSPORTATION ROADWAY AND TRAFFIC DESIGN STANDARDS, AND THE FLORIDA DEPARTMENT OF TRANSPORTATION STANDARD SPECIFICATIONS, AS AMENDED BY CONTRACT DOCUMENTS.



PROJECT LOCATION

PREPARED FOR

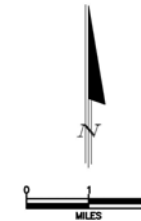


MIAMI-DADE COUNTY
DEPARTMENT OF TRANSPORTATION AND PUBLIC WORKS
HIGHWAY ENGINEERING DIVISION

STEPHEN P. CLARK CENTER
111 NW 1 ST
MIAMI, FLORIDA 33128

NOTE:

ATTENTION IS DIRECTED TO THE FACT THAT THESE PLANS MAY HAVE BEEN REDUCED IN SIZE BY REPRODUCTION. THIS MUST BE CONSIDERED WHEN OBTAINING SCALED DATA.



THIS ITEM HAS BEEN DIGITALLY SIGNED
AND SEALED BY YANEK FERNANDEZ, P.E.
ON THE DATE ADJACENT TO THE SEAL.
PRINTED COPIES OF THIS DOCUMENT ARE
NOT CONSIDERED SIGNED AND SEALED
AND THE SIGNATURE MUST BE KEPT
ON ANY ELECTRONIC COPIES.

THE ABOVE NAMED PROFESSIONAL ENGINEER SHALL BE
RESPONSIBLE FOR THE FOLLOWING SHEETS IN ACCORDANCE
WITH RULE 61G15-23.004, F.A.C.

SHT. No. SHEET DESCRIPTION

- | | |
|---|--------------------------------------|
| 1 | COVER SHEET |
| 2 | GENERAL NOTES |
| 3 | SUMMARY OF QUANTITIES |
| 4 | ROADWAY PLAN |
| 5 | PAVEMENT MARKINGS PLAN |
| 6 | SIGNING PLAN |
| 7 | GRADING AND DRAINAGE DETAILS PLAN |
| 8 | STORMWATER POLLUTION PREVENTION PLAN |
| 9 | INLET PROTECTION SYSTEM DETAILS |

APPROVED	COUNTY ENGINEER	
RECOMMENDED	ASSISTANT DIRECTOR	
SUBMITTED	HIGHWAY ENGINEERING DIVISION	
DESIGN	CHECK	Y.F.
DATE	9-3-2024	SHEET 1 OF 9

GENERAL NOTES:

- ALL ELEVATIONS REFER TO THE MSL, 1929 NATIONAL GEODETIC VERTICAL DATUM (NGVD).
- ALL DRAINAGE CONSTRUCTION SHALL BE IN STRICT ACCORDANCE WITH THE PERMITTING REQUIREMENTS OF MIAMI DADE COUNTY REGULATORY AND ECONOMIC RESOURCES AND THE MIAMI-DADE COUNTY DEPARTMENT OF TRANSPORTATION AND PUBLIC WORKS.
- IT IS THE INTENT THESE PLANS TO BE IN ACCORDANCE WITH APPLICABLE CODES AND AUTHORITIES HAVING JURISDICTION. ANY DISCREPANCIES BETWEEN THESE PLANS AND APPLICABLE CODES SHALL BE IMMEDIATELY BROUGHT TO THE ATTENTION OF THE ENGINEER.
- CATCH BASINS, SEEPAGE DRAINS, PAVEMENT RESTORATION AND PAVEMENT AROUND CATCH BASINS TO BE ACCORDING TO THE DETAILS AND APPLICABLE REQUIREMENTS OF THE MIAMI-DADE COUNTY DEPARTMENT OF TRANSPORTATION AND PUBLIC WORKS.
- WHERE NEW PAVEMENT MEETS EXISTING, CONNECTION SHALL BE MADE IN A NEAT STRAIGHT LINE AND FLUSH WITH EXISTING PAVEMENT.
- CONTRACTOR IS TO VERIFY THE EXACT LOCATION OF ALL EXISTING TREES, STRUCTURES, AND UTILITIES WITH MAY NOT BE SHOWN ON PLANS. ANY EXISTING STRUCTURE, PAVEMENT, TREES OR OTHER EXISTING IMPROVEMENT NOT SPECIFIED FOR REMOVAL WHICH IS TEMPORARILY DAMAGED, EXPOSED OR IN ANY WAY DISTURBED BY CONSTRUCTION PERFORMED UNDER THIS CONTRACT, SHALL BE REPAIRED, PATCHED OR REPLACED AT NO ADDITIONAL COST TO THE OWNER.
- THE LOCATION AND SIZE OF ALL EXISTING UTILITIES SHOWN ON THESE DRAWINGS ARE APPROXIMATE; ADDITIONAL UTILITIES MAY EXIST WHICH ARE NOT SHOWN ON THESE DRAWINGS. THE CONTRACTOR SHALL BE RESPONSIBLE FOR THE LOCATION OF ALL EXISTING UTILITIES. THE CONTRACTOR SHALL VERIFY ALL UTILITIES BY ELECTRONIC METHODS AND BY HAND EXCAVATION IN COORDINATION WITH ALL UTILITY COMPANIES. PRIOR TO BEGINNING ANY CONSTRUCTION OPERATION, ANY AND ALL CONFLICTS OF EXISTING UTILITIES WITH PROPOSED IMPROVEMENTS MUST BE RESOLVED BY THE ENGINEER AND THE OWNER. THIS WORK BY THE CONTRACTOR SHALL BE CONSIDERED INCIDENTAL TO THE CONTRACT AND NO ADDITIONAL COMPENSATION SHALL BE ALLOWED.
- CONTRACTOR SHALL CONTACT THE SUNSHINE STATE ONE CALL OF FLORIDA, INC. AT 1 (800) 432-4770 AT LEAST 48 HOURS PRIOR TO PERFORMING ANY DIGGING TO VERIFY THE EXACT LOCATION OF EXISTING UTILITIES.
- EXISTING TREES SHALL BE REMOVED ONLY IF REQUIRED FOR CONSTRUCTION. THOSE TREES NOT INTERFERING WITH CONSTRUCTION SHALL BE PROTECTED IN PLACE. THE CONTRACTOR IS ADVISED THAT A TREE PERMIT MAY BE REQUIRED FOR TREE REMOVAL. CONTRACTOR SHALL NOTIFY REGULATORY AND ECONOMIC RESOURCES DEPARTEMENT AND MUNICIPALITIES WITH JURIDICITION PRIOR TO REMOVING ANY TREES.
- EXISTING GRADES WERE TAKEN FROM THE BEST AVAILABLE DATA AND MAY NOT ACCURATELY REFLECT PRESENT CONDITIONS. CONTRACTOR SHALL BE RESPONSIBLE FOR FAMILIARIZING HIMSELF WITH CURRENT SITE CONDITIONS, AND SHALL REPORT ANY DISCREPANCIES TO THE ENGINEER PRIOR TO STARTING WORK.
- THE CONTRACTOR SHALL PREPARE AND SUBMIT SHOP DRAWINGS FOR ALL ITEMS LISTED IN PROJECT SPECIFICATION.
- UNDER NO CIRCUMSTANCES SHALL THE CONTRACTOR LEAVE EXCAVATED TRENCHES, OR PARTS OF, EXPOSED OR OPEN AT THE END OF THE WORKING DAY, WEEKENDS, HOLIDAYS OR OTHER TIMES. WHEN THE CONTRACTOR IS NOT WORKING, UNLESS OTHERWISE DETERMINED, ANY TRENCH SHALL BE COVERED, FIRMLY SECURED AND MARKED ACCORDINGLY FOR PEDESTRIAN TRAFFIC.
- THE CONTRACTOR SHALL MAINTAIN ACCESS TO ALL ADJACENT PROPERTIES AT ALL TIMES.
- ALL EXCAVATED MATERIAL REMOVED FROM THIS PROJECT SHALL BE DISPOSED OF PROPERLY BY THE CONTRACTOR AT THE CONTRACTOR'S EXPENSE.
- CAST IRON PRODUCTS: HEAVY-DUTY CLASSIFICATION SUITABLE FOR HIGHWAY TRAFFIC LOADS, OR 16,000 LB. WHEEL LOADS.
- STEEL GRATING AND COVERS: TRAFFIC CLASSIFICATION H-20 AASHTO H20: 16,000 LBS. OVER 8" X 20" AREA.
- ALL STRUCTURES MUST BE CAPABLE OF SUSTAINING HEAVY TRAFFIC LOADS.
- ALL GRASS AREAS AFFECTED BY CONSTRUCTION SHALL BE RE-SODDED.
- THE CONTRACTOR SHALL BE RESPONSIBLE FOR THE PROVISION, INSTALLATION AND MAINTENANCE OF ALL TRAFFIC CONTROL AND SAFETY DEVICES, IN ACCORDANCE WITH SPECIFICATIONS OUTLINED IN SECTION C2 AND SECTION R19 OF THE PUBLIC WORKS DEPARTMENT MANUAL. IN ADDITION, THE CONTRACTOR IS RESPONSIBLE FOR THE RESETTING OF ALL TRAFFIC CONTROL AND INFORMATION SIGNING REMOVED DURING CONSTRUCTION PERIOD.
- EXCAVATED OR OTHER MATERIAL STORED ADJACENT TO OR PARTIALLY UPON A ROADWAY PAVEMENT SHALL BE ADEQUATELY MARKED FOR TRAFFIC SAFETY AT ALL TIMES.
- TEMPORARY PATCH MATERIAL MUST BE ON THE JOB SITE WHENEVER PAVEMENT IS CUT, OR THE INSPECTOR WILL SHUT THE JOB DOWN.
- CONTRACTOR SHALL MAINTAIN TRAFFIC ACCORDING TO CORRESPONDING TYPICAL CONTROL DETAIL AS OUTLINED IN MIAMI-DADE COUNTY PUBLIC WORKS MANUAL.
- CONTRACTOR SHALL MAINTAIN AT LEAST THE FOLLOWING NUMBER OF TRAFFIC LANES FOR CORRESPONDING TIME PERIODS: MONDAY - FRIDAY 7-9 A.M. AND 4-6 P.M.; NO INTERRUPTION TO TRAFFIC IS PERMITTED.
ALL OTHER TIMES:
A) MAINTAIN ONE LANE FOR TWO-WAY OPERATION WITH FLAGMEN.
B) MAINTAIN ONE LANE IN EACH DIRECTION FOR TRAFFIC.
- CONTRACTOR MUST PROVIDE FLASHER ARROW BOARD FOR ANY LANE THAT IS CLOSED OR DIVERTED.
- CONTRACTOR SHALL NOTIFY LAW ENFORCEMENT AND FIRE PROTECTION SERVICES TWENTY-FOUR (24) HOURS IN ADVANCE OF THE DETOUR IN ACCORDANCE WITH SECTION 336.07 OF FLORIDA STATUTES.
- COMPLETE AS-BUILT INFORMATION RELATIVE TO LOCATION AND DEPTH OF PIPES, MANHOLES, ETC. SHALL BE ACCURATELY RECORDED BY THE CONTRACTOR. THREE (3) SETS LABELED "AS-BUILT" MUST BE SUBMITTED, SIGNED AND SEALED BY A PROFESSIONAL ENGINEER REGISTERED IN THE STATE OF FLORIDA, TO THE ENGINEER OF RECORD PRIOR TO FINAL ACCEPTANCE OF THE WORK.
- IT IS RESPONSIBILITY OF THE CONTRACTOR TO SELECT AND OBTAIN THE APPROPRIATE PERMISSION FROM MIAMI-DADE COUNTY OR APPLICABLE AGENCY THAT HAS JURISDICTION ON THE "PROPOSED" STAGING AREAS.
- DRAINAGE/UTILITY TRENCHES SHALL NOT BE LEFT OPEN OVERNIGHT. A TEMPORARY COVER WITH A CAPACITY OF H-20 LOADING SHALL BE PLACED AS DIRECTED BY THE ENGINEER AT NO EXTRA COST TO MIAMI-DADE COUNTY.
- PROVIDE FLOWABLE FILL OVER PIPE AS COVER WHERE MINIMUM PIPE COVER OF 2 FEET CANNOT BE ACCOMPLISHED UNDER PAVED AREAS. HOWEVER, THE COVER WITH FLOWABLE FILL SHALL BE NO LESS THAN 12 INCHES.
- ALL STATIONS AND OFFSETS REFER TO [CENTERLINE]/[BASELINE] OF CONSTRUCTION, UNLESS OTHERWISE STATED.
- CONTRACTOR SHALL COMPLY WITH THE REQUIREMENTS OF THE EPA AND THE NATIONAL POLLUTION DISCHARGE ELIMINATION SYSTEM (NPDES).
- MIAMI-DADE WATER AND SEWER DEPARTMENT REQUIRES THAT ACCESS TO ALL WATER AND SEWER VALVES, SANITARY MANHOLES, AND OTHER CONTROL MECHANISMS BE MAINTAINED THROUGHOUT CONSTRUCTION IN THE EVENT OF AN EMERGENCY TO ENSURE THE PUBLIC HEALTH AND SAFETY. COVERING VALVE BOXES AND MANHOLES CAN BE CONSIDERED UNAUTHORIZED CONSTRUCTION OF AND TAMPERING WITH DEPARTMENT UTILITIES. ALL REQUESTS FOR UTILITY ADJUSTMENTS MUST BE MADE IN WRITING AT LEAST TWO (2) WEEKS IN ADVANCE. FOR MANHOLE AND VALVES, CONTACT UTILITY COORDINATOR PATRICK CHONG AT 786-268-5255. THE DEPARTMENT WILL MAKE ONE FINAL AND PERMANENT ADJUSTMENT AT NO COST TO THE REQUESTING AGENCY. FOR THE ADJUSTMENT OF WATER METERS, CONTACT THE CHIEF OF METER OPERATIONS AND MAINTENANCE: 786-268-5489. FOR ANY FIRE HYDRANTS THAT ARE DAMAGED OR BUMPED DURING CONSTRUCTION, CONTACT THE MDWASD HYDRANT SHOP AT 305-552-4926. BEFORE POURING CONCRETE FOR THE SIDEWALK. IN THE EVENT OF A WATER OR SEWER EMERGENCY, WASD EMERGENCY NUMBER 305-552-8901. THIS LINE IS OPEN 24 HOURS, 7 DAYS A WEEK.
- THE CONTRACTOR IS ADVISED THAT PROPERTIES ADJACENT TO THE PROJECT HAVE ELECTRIC, TELEPHONE, GAS, WATER AND/OR SEWER SERVICE. LATERALS WHICH MAY NOT BE SHOWN IN PLANS. THE CONTRACTOR MUST REQUEST THE LOCATION OF THESE LATERAL SERVICES FROM THE UTILITY COMPANIES. THE ADDITIONAL COST OF EXCAVATING, INSTALLING, BACKFILLING, AND COMPACTING AROUND THESE SERVICES MUST BE INCLUDED IN THE BID RELATED ITEM FOR THE WORK BEING DONE.
- THE CONTRACTOR SHOULD TAKE SPECIAL NOTE OF SOIL CONDITIONS THROUGHOUT THIS PROJECT. ANY SPECIAL SHORING, SHEETING OR OTHER PROCEDURES NECESSARY TO PROTECT ADJACENT PROPERTY, PUBLIC OR PRIVATE, DURING THE EXCAVATION OF SUBSOIL MATERIAL AND EXFILTRATION TRENCH, OR FILLING OF ANY AREA, OR FOR ANY OPERATION DURING CONSTRUCTION, SHALL BE THE SOLE RESPONSIBILITY OF THE CONTRACTOR.
- IF SHEETING, SHORING OR DEWATERING, INCLUDING WELL POINTS ARE NECESSARY, THE CONTRACTOR MUST MONITOR AND CONTROL ALL WORK THAT MAY CAUSE CRACKING TO ANY ADJACENT BUILDING, STRUCTURE, OR PROPERTY AREA. THE CONTRACTOR SHALL BE RESPONSIBLE FOR ANY DAMAGES CAUSED BY THESE OPERATIONS. COST OF SHEETING, SHORING, OR DEWATERING, SHALL BE INCLUDED IN THE RELATED BID ITEM FOR THE WORK BEING DONE.
- ALL DITCH EXCAVATIONS SHALL BE PERFORMED IN FULL COMPLIANCE WITH THE PROVISIONS OF THE TRENCH SAFETY ACT.
- ANY KNOWN OR SUSPECTED HAZARDOUS MATERIAL FOUND ON THE PROJECT BY THE CONTRACTOR SHALL BE IMMEDIATELY REPORTED TO THE PROJECT ENGINEER, WHO SHALL DIRECT THE CONTRACTOR TO PROTECT THE AREA OF KNOWN OR SUSPECTED CONTAMINATION FROM FURTHER ACCESS. THE ENGINEER WILL ARRANGE FOR INVESTIGATION, IDENTIFICATION AND REMEDIATION OF THE HAZARDOUS MATERIAL. THE CONTRACTOR SHALL NOT RETURN TO THE AREA OF CONTAMINATION UNTIL APPROVAL IS PROVIDED BY THE PROJECT ENGINEER.
- THE CONTRACTOR SHALL USE A STREET SWEEPER (USING WATER) OR OTHER EQUIPMENT CAPABLE OF CONTROLLING AND REMOVING DUST. APPROVAL OF THE USE OF SUCH EQUIPMENT IS CONTINGENT UPON ITS DEMONSTRATED ABILITY TO DO THE WORK.
- WHEN DISSIMILAR MATERIAL CONNECTIONS ARE MADE, SUCH AS CONCRETE TO METAL, THE DISSIMILAR MATERIAL SHALL BE SEPARATED BY COATING THE CONTACT SURFACE WITH BITUMASTIC MATERIAL.
- PRIOR TO CONSTRUCTION THE CONTRACTOR WILL INSPECT ALL EXISTING STRUCTURES WHICH ARE TO REMAIN AND NOTIFY THE ENGINEER OF ANY OBVIOUS STRUCTURAL DEFICIENCIES.
- CLEAN EXIST. DRAINAGE STRUCTURES.
- REGRADE AND/OR OVERBUILD AS NECESSARY TO DRAIN PROPERLY.
- MILL EXISTING ASPHALT PAVEMENT (1.0" AVG. DEPTH). RESURFACE USING FRICTION COURSE FC-9.5 (1.0")
- PROPOSED ISLAND RADIUS IS 2.0' UNLESS NOTICED OTHERWISE.
- WHERE CONNECTIONS TO EXISTING SIDEWALKS AND DRIVEWAYS ARE NOT INDICATED ON PLANS, PROPER CONNECTIONS ARE TO BE MADE AS DIRECTED BY THE ENGINEER. DROP CURB AND DRIVEWAY CONNECTIONS SHALL BE PROVIDED FOR ACCESS TO ALL PRIVATE PROPERTIES ADJACENT TO THE PROJECT. PAYMENT SHALL BE INCLUDED IN THE COST OF RELATED BID ITEMS.
- CONTRACTOR TO INSTALL 1/2" PERFORMED EXPANSION JOINT WHEN PROPOSED SIDEWALK IMPROVEMENTS IS IMMEDIATELY ADJACENT TO EXISTING CONCRETE SLAB AND/OR BUILDING.
- THE SIDEWALK AT DRIVEWAY TURNOUTS SHALL BE 6" CONCRETE.
- ALL BUS STOP SIGNS TO BE FURNISHED BY MIAMI-DADE TRANSPORTATION AND PUBLIC WORKS DEPARTMENT. ENGINEER TO CONTACT MIAMI-DADE COUNTY TRANSPORTATION AND PUBLIC WORKS DEPARTMENT AT (305) 637-3753 ONE (1) WEEK PRIOR TO POURING SIDEWALKS AND COORDINATE THE REMOVAL AND REPLACEMENT OF BUS STOP SIGNS AND BENCHES.
- THE INFORMATION PROVIDED IN THESE DRAWINGS IS SOLELY TO ASSIST THE CONTRACTOR IN ASSESSING THE NATURE AND EXTENT OF CONDITIONS WHICH WILL BE ENCOUNTERED DURING THE COURSE OF WORK. THE CONTRACTORS ARE DIRECTED, PRIOR TO BIDDING, TO CONDUCT WHATEVER INVESTIGATIONS THEY DEEM NECESSARY TO ARRIVE AT THEIR OWN CONCLUSION REGARDING THE ACTUAL CONDITIONS THAT WILL BE ENCOUNTERED AND UPON WHICH BIDS WILL BE BASED.
- ANY SURVEY MONUMENT, BENCH MARK, ETC., FOUND DURING CONSTRUCTION ACTIVITIES ARE TO BE RESTORED TO IT IS ORIGINAL LOCATION AND COORDINATES AS DEPICTED IN COUNTY RECORDS PLAT AND BOOK. RESTORATION WILL BE AT NO ADDITIONAL COST AND MUST BE SHOWN ON AS-BUILT PLANS.
- FOR THE INSTALLATION OF SOD IN SWALE AREAS ADJACENT TO ROADWAYS, SIDEWALKS, DRIVEWAY APPROACHES OR ANY OTHER PAVED SURFACES, THE SWALE MUST BE RESTORED TO FORM A "V" SHAPE AS PER THE DETAILS INCLUDED IN THE MIAMI DADE COUNTY PUBLIC WORKS MANUAL. SPECIFICALLY, THE ELEVATION OF THE TOP OF THE SOD MUST MATCH THE ABUTTING AREAS (EDGE OF PAVEMENT, SIDEWALK OR DRIVEWAY APPROACH) AND THE CENTERLINE OF THE SWALE SHALL BE ON AVERAGE 3 INCHES BELOW THE ROADWAY EDGE OF PAVEMENT ELEVATION UNLESS OTHERWISE DIRECTED BY THE ENGINEER.
- CONTRACTOR SHALL CONTACT TRANSIT DEPARTMENT FOR BUS STOP RELOCATION (RACNEL RODRIGUEZ - 7864695328 RACNEL.RODRIGUEZ@MIAMIADADE.GOV) AT LEAST 30 DAYS PRIOR TO PERFORMING ANY WORK.

\\TRANSPORTATION\DESIGN\PROJECTS\SW\MIAMI-DADE\SW 109 AVE & SW 32 ST\DWG\DWG 20220058.DWG SECTION 109 AVE & SW 32 ST - 24'x48' - 1/2"=1'-0" - 1/2"=1'-0" - 1/2"=1'-0"

REVISIONS					
DATE	BY	DESCRIPTION	DATE	BY	DESCRIPTION

MIAMI-DADE COUNTY
HIGHWAY DIVISION

NAME	DATE	NAME	DATE
DESIGNED	07	DRAWN	07
CHECKED	07	CHECKED	07
SUPERVISED BY: TONY FERNANDEZ			



GENERAL NOTES

\\TRANSPORTATION\DESIGN\PROJECTS\TRAFFIC CALIBRATION\SW SECTION\SW 109 AVE & SW 32 ST\road design\2 29 24.dwg Sep 04, 2024 - 1:17pm E329237

SUMMARY OF QUANTITIES

MIAMI-DADE COUNTY DEPARTMENT OF TRANSPORTATION AND
PUBLIC WORKS HIGHWAY DIVISION
SW 109 AVE. & SW 32 ST.
PROJECT NO. 20220058 SHEET 3 OF 9

PAY ITEM NO.	DESCRIPTION	UNIT	QUANTITY
102-1M	MOT 2%	LS	1
102-74-2	BARRICADES (TEMPORARY, TYPE III, 6")	EA/DAY	4,320
102-91-1A	PAVEMENT MARKING TEMPORARY (Solid) (Any width) (Yellow or White) (Paint)	L.F.	5,555
104-18	Inlet Protection System	EA	13
110-1-1D	CLEARING AND GRUBBING .5%	LS	1
110-4-1-1	REMOVAL AND DISPOSAL OF EXISTING CURB AND GUTTER	L.F.	66
110-4-10B	REMOVE AND DISPOSE EXISTING SIDEWALK	S.Y.	95
120-1	REGULAR EXCAVATION	C.Y.	740
160-4	TYPE "B" STABILIZATION (12" Thick) (Min. C.B.R. 30)	S.Y.	1,151
162-5	FINISH SOIL LAYER (Landscaping)	C.Y.	560
200-1-10	LIMEROCK BASE (8" Thick, Primed)	S.Y.	1,151
327-70	MILLING EXISTING PAVEMENT [(1")](Payment for greater cuts will be paid proportionally)	S.Y.	3,395
334-2-13-1	Hot Mix Asphalt, Traffic C, SP-9.5	TON	115
337-8-42	Hot Mix Asphalt Friction Course, Traffic C, FC-9.5, PG 76-22	TON	211
350-30-13	Concrete Pavement for Circle Apron 12" Depth	S.Y.	105
425-1	INLET [(Swale) (3 foot inside dimension, circular or square)]	EA	2
425-1-610	INLET SWALE [(TYPE P-10)(42" Inside dimension, circular or square)]	EA	5
425-1-907	POLLUTION RETARDANT BAFFLE (With neoprene gasket at all contact edges)	EA	4
425-5	ADJUST MANHOLE(This item is contingent upon field conditions and may be increased, decreased or eliminated by the Engineer)	EA	6
425-6	ADJUST EXISTING VALVE BOXES (MIAMI DADE COUNTY) (This item is contingent upon field conditions and may be increased, decreased or eliminated by the Engineer)	EA	6
425-82	MODIFY STRUCTURE-Cut to enlarge opening as needed in order to accommodate pipe due to utility conflict(s), brick and mortar as needed.	EA	5
430-171-115	PIPE CULVERT - 15" Diameter	L.F.	115
430-171-124	PIPE CULVERT 24" DIAMETER	L.F.	22
443-70-4-3	FRENCH DRAIN (24" Diameter perforated pipe; trench depth 15 ft BLS)	L.F.	275
520-2	CONCRETE CURB AND/OR GUTTER(Any type , including base preparation)	L.F.	3,335
522-1(1)	CONCRETE SIDEWALK [4" THICK, 3,000 P.S.I. concrete at 28 days (includes the cost of pedestrian ramps and sidewalks curbs)	S.Y.	95
522-2	CONCRETE SIDEWALK (6" THICK, 3,000 P.S.I. concrete at 28 days (includes pedestrian ramps and sidewalks curbs)	S.Y.	130
527-2	DETECTABLE WARNING ON WALKING SURFACE	S.F.	265
575-1-1	SODDING (Pensacola Bahia or match existing) (includes watering)	S.Y.	305
580-336-1	TREES TRIMMING	EA	6
580-332-1B	TREES REMOVAL (Cut and Remove)	E.A	9
700-40-01	ROADSIDE SIGNS ((SINGLE POST) (LESS THAN 12 S.F.))	AS.	35
700-46-22	RESET EXISTING POST AND SIGN	EA	4
700-48-18	SIGN PANEL (LESS THAN 15 SF.)	EA	20
700-48-60A	REMOVE EXISTING SIGNS & POSTS	AS.	4
706-1-12	REFLECTIVE PAVEMENT MARKERS (class B, mono or bi-directional, all colors)	EA	305
710-11-160	PAINTED PAVEMENT MARKINGS (Standard) (White) (Message)	EA	20
711-11-121	THERMOPLASTIC (White) (Solid) (6")	L.F.	2,530
711-11-123	THERMOPLASTIC (White) (Solid) (12")	L.F.	350
711-11-125	THERMOPLASTIC (White) (Solid) (24")	L.F.	270
711-11-160	THERMOPLASTIC (White) (Message)	EA	20
711-11-221	THERMOPLASTIC (Yellow) (Solid) (6")	L.F.	2,655
711-11-224	THERMOPLASTIC (Yellow) (Solid) (18")	L.F.	110

REVISIONS

DATE	BY	DESCRIPTION	DATE	BY	DESCRIPTION	DATE	BY	DESCRIPTION

MIAMI-DADE COUNTY
HIGHWAY DIVISION

DESIGNED BY	NAME	DATE	DRAWN BY	NAME	DATE
CHECKED BY	YF		CHECKED BY	YF	8-18-2023
SUPERVISED BY: YANEX FERNANDEZ					



SUMMARY OF QUANTITIES

\\TRANSPORTATION\DESIGN\PROJECTS\TRAFFIC\COUNTDOWN\SECTION\SW 109th Ave & SW 32nd St\109th Ave & SW 32nd St.dwg 29 24 Aug 2024 10:30am 23/7537

GENERAL NOTES:

- REGRADE AND/OR OVERBUILD AS NECESSARY TO DRAIN PROPERLY.
- CLEAN EXIST. DRAINAGE STRUCTURES.
- MILL EXISTING ASPHALT PAVEMENT (1.0" AVG. DEPTH)
- RESURFACE USING FRICTION COURSE FC-9.5 (1.0")
- PROPOSED ISLAND RADIUS IS 2.0' U.N.O.

LEGEND:

- DENOTES NEW CONSTRUCTION
 - 12" STABILIZED SUB-GRADE LBR40
 - LIMEROCK BASE 8" THICK (PRIMED)
 - TYPE SP STRUCTURAL COURSE (SP-9.5) (2" THICK)
 - FRICTION COURSE FC-9.5 (1" THICK)
- DENOTES SODDED AREA TO MATCH EXISTING
- REMOVE AND/OR RELOCATE EXIST. TREE

MATCH LINE STA 15+15.00

END CONST. TYPE F
C&G. MATCH EXIST.
PAVEMENT
+24.54
10.71'(L)

END PROJECT
END CONSTRUCTION
STA:16+30.00
MATCH EXIST. ELEV.
LIMITS OF MILLING &
RESURFACING

END CONST. TYPE F
C&G. MATCH EXIST.
PAVEMENT
+24.47
13.54'(R)

MIAMI-DADE COUNTY DEPARTMENT OF TRANSPORTATION AND
PUBLIC WORKS HIGHWAY DIVISION
SW 109th Ave. & SW 32nd St.
PROJECT NO. 20220058
SHEET 4 OF 9

0 20 40
SCALE-IN-FOOT

BEGIN PROJECT
BEGIN CONSTRUCTION
STA:12+33.95
MATCH EXIST. ELEV.
LIMITS OF MILLING &
RESURFACING

BEGIN CONST. TYPE F
C&G. MATCH EXIST.
PAVEMENT & ELEV.
+38.90
11.93'(L)

RELOCATE EXIST. BUS STOP
BY DTPW BUS CONTRACTOR

CONST. 5' WIDE CONC.
CONNECTOR W/ DWS
CONST. 10' WIDE PED.
REFUGE W/ DWS.

CONST. 10' WIDE PED.
REFUGE W/ DWS.

CONST. 5' WIDE CONC.
LANDING W/ DWS

+93.12
15.88'(L)
EL.7.90

BEGIN CONST. SWK.
MATCH EXIST. ELEV.
+92.9

CONST. 10' WIDE PED.
REFUGE W/ DWS.

REMOVE
EXIST. C&G

PROP. 8.25'
WIDE COLORED
CONCRETE
PAVEMENT

CONNECT TO EXIST.
SWK. MATCH EXIST.
SWK. ELEV. (TYP)

CONST. CR-C MOD.
RAMP W/ DWS AS
PER MDC ARTICLE 527

+92.01
16.06'(R)
EL.7.85

RELOCATE THREE (3)
PROP. PALM TREES

+56.25
17.47'(L)
EL.8.12

MATCH LINE STA 15+15.00

CONST. 5' WIDE CONC.
CONNECTOR W/ DWS
CONST. 10' WIDE PED.
REFUGE W/ DWS.

END CONST. TYPE F
C&G. MATCH EXIST.
PAVEMENT & ELEV.
+55.77
13.26'(L)

MATCH LINE STA 11+40.00

BEGIN CONST. TYPE F
C&G. MATCH EXIST.
PAVEMENT & ELEV.
+38.99
12.05'(R)

RECONSTRUCT EXIST.
BUS STOP BY DTPW
BUS CONTRACTOR

CONST. 5' WIDE
CONC. CONNECTOR
W/ DWS

BEGIN CONST. SWK.
MATCH EXIST. ELEV.
STA:14+48.9
EL.7.75

EXIST. WM TO BE
RELOCATED BY OTHERS

END CONST. SWK.
MATCH EXIST. ELEV.
STA:12+65.6

CONST. 10' WIDE PED.
REFUGE W/ DWS.

MATCH LINE STA 11+40.00

CONST. CR-C MOD. RAMP W/
DWS AS PER MDC ARTICLE 527

+76.42
15.76'(R)
EL.7.60

CONSTRUCT TYPE D CURB
ON MEDIAN ISLAND (TYP.)

CONST. 5' WIDE CONC.
CONNECTOR W/ DWS

END CONST. TYPE F
C&G. MATCH EXIST.
PAVEMENT & ELEV.
+98.64
10.70'(R)

END PROJECT
END CONSTRUCTION
STA:18+03.6
MATCH EXIST. ELEV.
LIMITS OF MILLING &
RESURFACING

35 MPH
(DESIGN SPEED)

REFLECTIVE YELLOW PAINT

6" THERMOPLASTIC YELLOW

BI-DIRECTIONAL YELLOW
R.P.M.'s @ 12" O.C.

OVERBUILD AS
NECESSARY TO
HIGHER ELEVATION

TYPE RA CURB. 3" DROP FROM
TOP OF CURB TO EOP

BI-DIRECTIONAL
YELLOW R.P.M.'s
@ 12" O.C.

VARIES

1% TO 2%

REMOVE ASPHALT &
BASE FOR LANDSCAPE

TYPE D CURB

12" COLORED CONCRETE
PAVEMENT
AMS-STD-595-21105 RED

12" STABILIZED SUBGRADE
MINIMUM CBR 30

- THE R.P.M.'s MOUNTED ON THE CURB SHALL BE PLACED FACING THE ONCOMING TRAFFIC FROM THE APPROACHES.
- THE R.P.M.'s MOUNTED ON THE CURB SHALL BE PLACED FACING THE ONCOMING TRAFFIC WITHIN THE CIRCLE.

CROSS SECTION OF CIRCLE
N.T.S.

DATE		BY	DESCRIPTION	DATE		BY	DESCRIPTION

MIAMI-DADE COUNTY
HIGHWAY DIVISION

DESIGNED BY	NAME	DATE	CHECKED BY	NAME	DATE
GT			GT		8-18-2023
YF			YF		

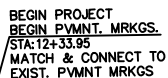
SUPERVISED BY: YANKE FERNANDEZ

DATE		BY	DESCRIPTION

MIAMI-DADE
COUNTY

DEPARTMENT OF TRANSPORTATION
AND PUBLIC WORKS
HIGHWAY DIVISION
SHARON A. CLARK, CHIEF
STATE, FLORIDA 2023

ROADWAY PLAN



END PROJECT
END PVMNT. MRKGS.
STA: 18+03.6
MATCH & CONNECT TO
EXIST. PVMNT MRKGS

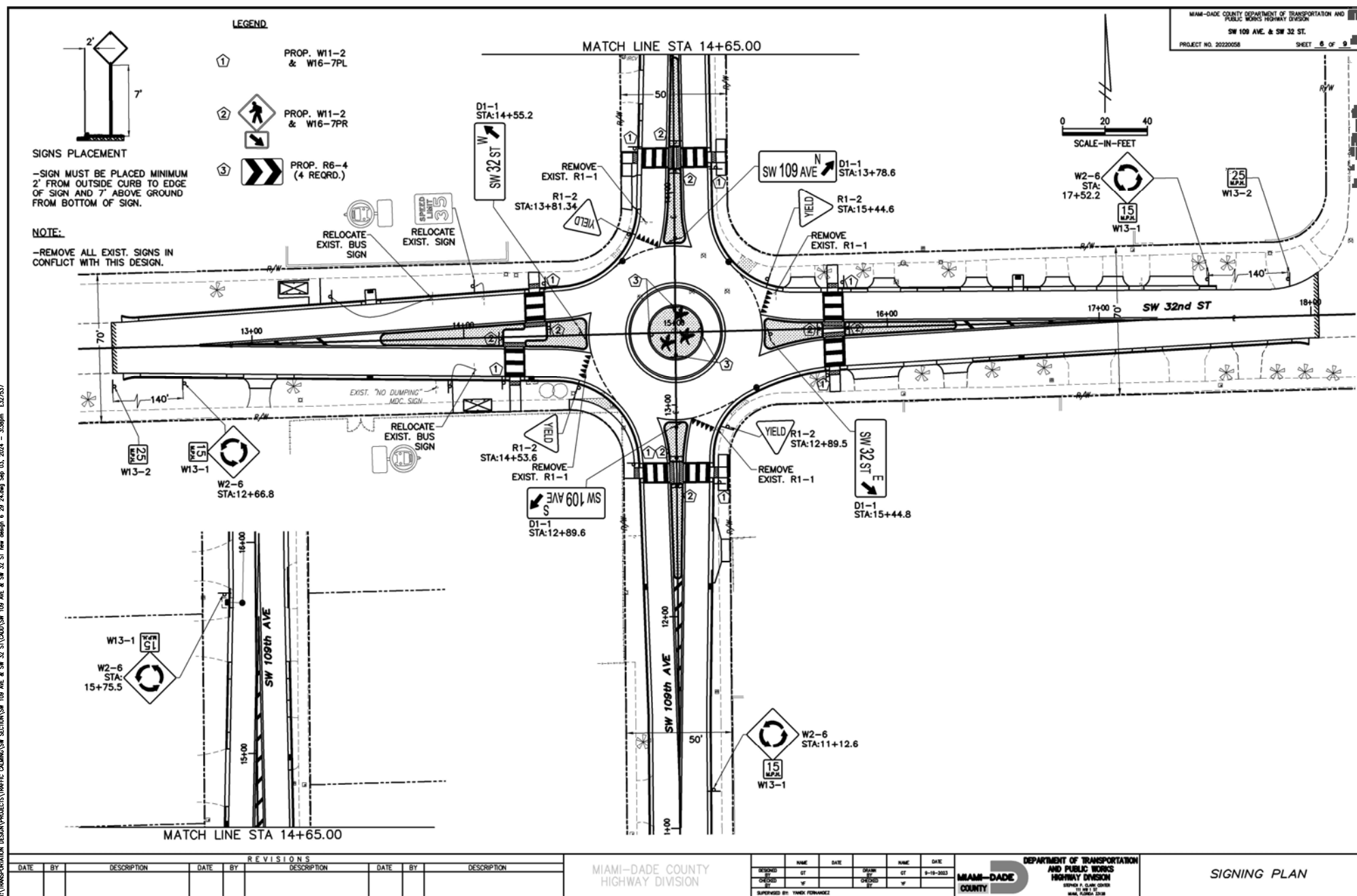
END PROJECT
END PVMNT. MRKGS.
STA: 16+30.00
MATCH & CONNECT TO
EXIST. PVMNT MRKGS

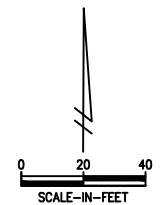
BEGIN PROJECT
BEGIN PVMNT. MRKGS.
STA:11+24.9
MATCH & CONNECT TO
EXIST. PVMNT MRKGS.

MIAMI-DADE COUNTY
HIGHWAY DIVISION

MIAMI-DADE COUNTY
DEPARTMENT OF TRANSPORTATION
AND PUBLIC WORKS
HIGHWAY DIVISION
STEPHEN P. CLARK CENTER
111 NW 1 ST
MIAMI, FL 33136

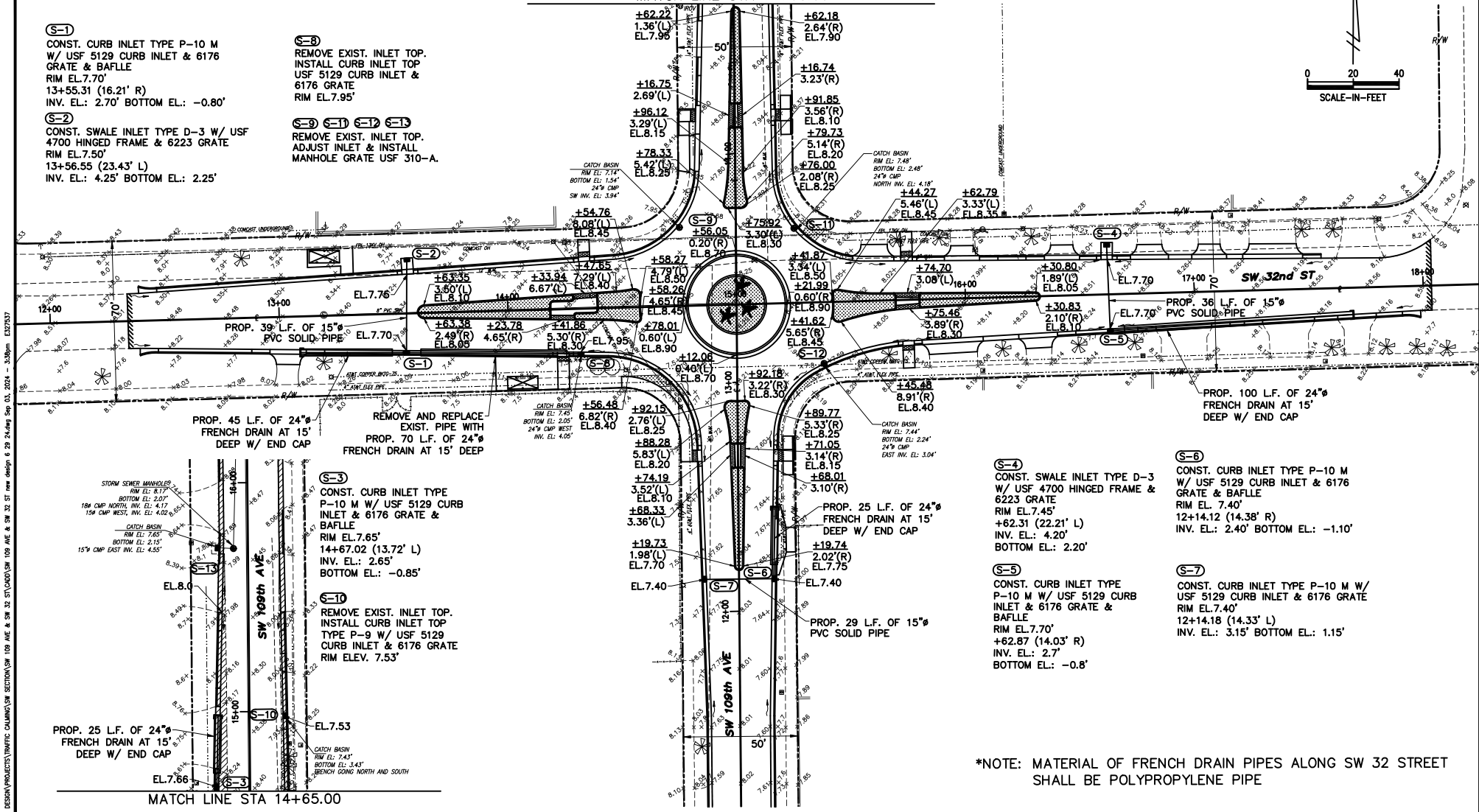
PAVEMENT MARKINGS PLAN





- (S-1)**
CONST. CURB INLET TYPE P-10 M
W/ USF 5129 CURB INLET & 6176
GRATE & BAFFLE
RIM EL. 7.70'
13+55.31 (16.21' R)
INV. EL.: 2.70' BOTTOM EL.: -0.80'
- (S-2)**
CONST. SWALE INLET TYPE D-3 W/ USF
4700 HINGED FRAME & 6223 GRATE
RIM EL. 7.50'
13+56.55 (23.43' L)
INV. EL.: 4.25' BOTTOM EL.: 2.25'
- (S-3)**
REMOVE EXIST. INLET TOP.
INSTALL CURB INLET TOP
USF 5129 CURB INLET &
6176 GRATE
RIM EL. 7.95'
- (S-4)**
REMOVE EXIST. INLET TOP.
ADJUST INLET & INSTALL
MANHOLE GRATE USF 310-A.

MATCH LINE STA 14+65.00



- (S-4)**
CONST. SWALE INLET TYPE D-3
W/ USF 4700 HINGED FRAME &
6223 GRATE
RIM EL. 7.45'
+62.31 (22.21' L)
INV. EL.: 4.20'
BOTTOM EL.: 2.20'
- (S-5)**
CONST. CURB INLET TYPE
P-10 M W/ USF 5129 CURB
INLET & 6176 GRATE &
BAFFLE
RIM EL. 7.70'
+62.87 (14.03' R)
INV. EL.: 2.7'
BOTTOM EL.: -0.8'
- (S-6)**
CONST. CURB INLET TYPE P-10 M
W/ USF 5129 CURB INLET & 6176
GRATE & BAFFLE
RIM EL. 7.40'
12+14.12 (14.38' R)
INV. EL.: 2.40' BOTTOM EL.: -1.10'
- (S-7)**
CONST. CURB INLET TYPE P-10 M W/
USF 5129 CURB INLET & 6176 GRATE
RIM EL. 7.40'
12+14.18 (14.33' L)
INV. EL.: 3.15' BOTTOM EL.: 1.15'

*NOTE: MATERIAL OF FRENCH DRAIN PIPES ALONG SW 32 STREET
SHALL BE POLYPROPYLENE PIPE

REVISIONS				REVISIONS			
DATE	BY	DESCRIPTION	DATE	BY	DESCRIPTION	DATE	BY

MIAMI-DADE COUNTY
HIGHWAY DIVISION

DESIGNED BY	DATE	CHECKED BY	DATE

SUPERVISED BY: YANKE FERNANDEZ

DEPARTMENT OF TRANSPORTATION
AND PUBLIC WORKS
HIGHWAY DIVISION

**MIAMI-DADE
COUNTY**

STANDARD & CLARK COVER
STATE, FLORIDA 2018

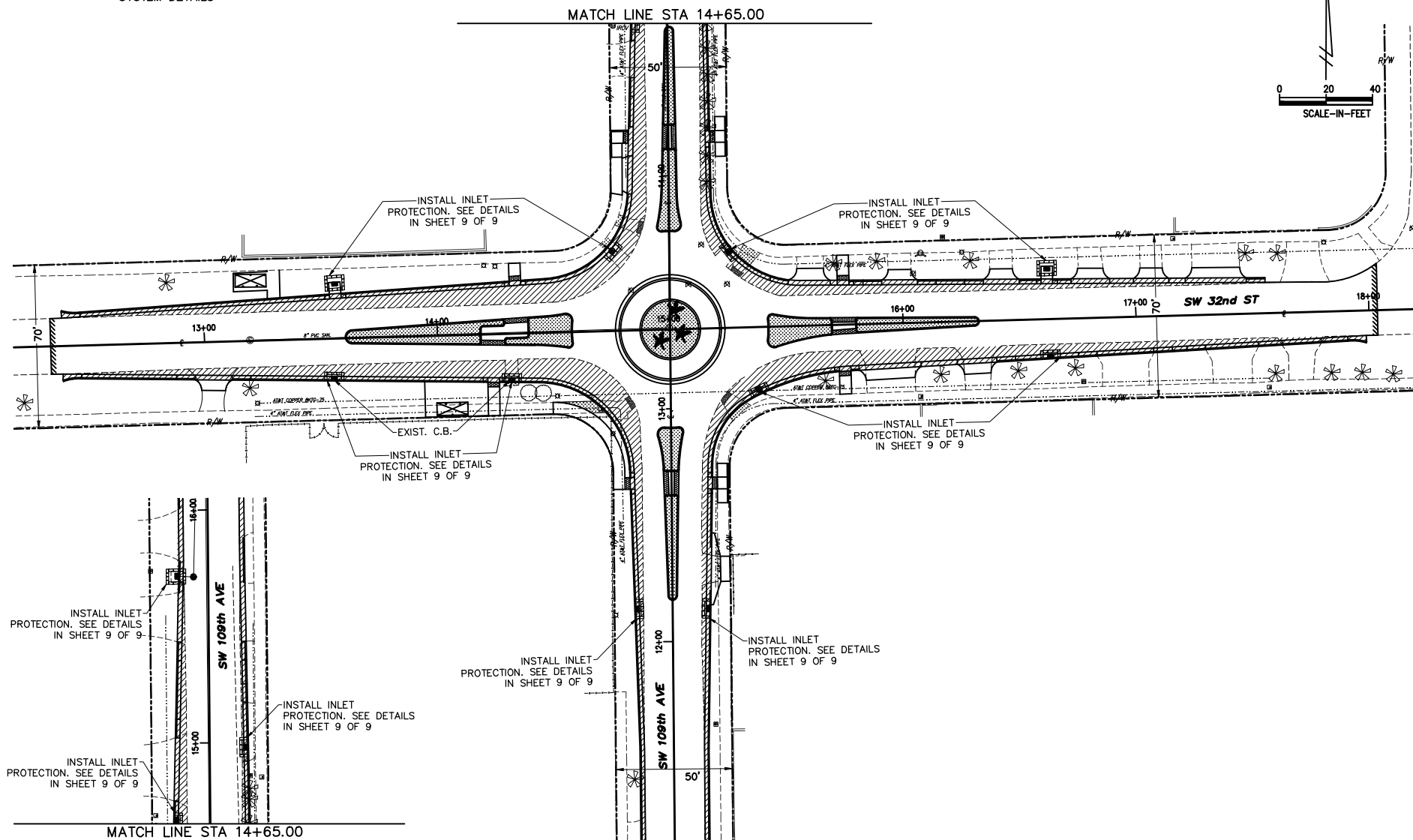
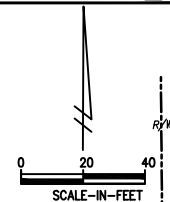
GRADING AND DRAINAGE
DETAILS PLAN

PROP. ROCK BAGS
SEE INLET PROTECTION
SYSTEM DETAILS

MIAMI-DADE COUNTY DEPARTMENT OF TRANSPORTATION AND
PUBLIC WORKS HIGHWAY DIVISION

SW 109 AVE. & SW 32 ST.

PROJECT NO. 20220058 SHEET 8 OF 9

[illegible]MIAMI-DADE COUNTY
HIGHWAY DIVISION

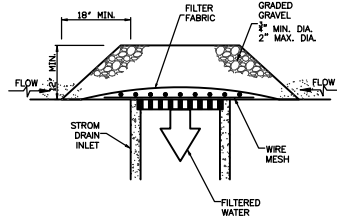
	NAME	DATE		NAME	DATE
DESIGNED BY	GT		DRAWN BY	GT	9-19-
CHECKED BY	YF		CHECKED BY	YF	
SUPERVISED BY: YAMIK FERNANDEZ					

SUPERVISED BY: YANK FERNANDEZ

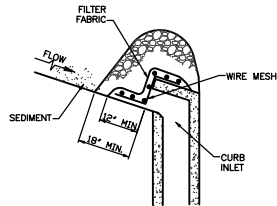


**STORMWATER POLLUTION
PREVENTION PLAN**

\\TRANSPORTATION\DESIGN\PROJECTS\TRAFFIC CALIBRATION\SW SECTION\SW 109 AVE & SW 32 ST\DWG\SW 109 AVE & SW 32 ST.dwg Sep 03, 2024 - 3:08pm E327537



DROP INLET PROTECTION-GRAVEL



CURB INLET PROTECTION-GRAVEL

GRAVEL APPLICATIONS (TYP.)
OR APPROVED ALTERNATIVE

NOTES FOR INLET PROTECTION GRAVEL:

1- INSTALLATION/APPLICATION CRITERIA:

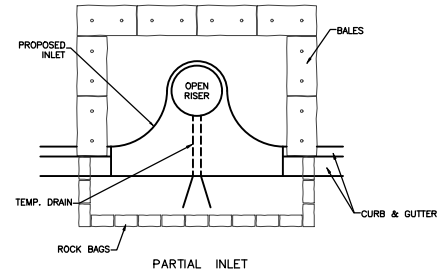
- PLACE WIRE MESH (WITH 1/2 INCH OPENINGS) OVER THE INLET GRATE EXTENDING ONE FOOT PAST THE GRATE IN ALL DIRECTIONS.
- PLACE FILTER FABRIC OVER THE MESH. FILTER FABRIC SHOULD BE SELECTED BASED ON SOIL TYPE.
- PLACE GRADED GRAVEL, TO A MINIMUM DEPTH OF 12 INCHES, OVER THE FILTER FABRIC AND EXTENDING 18 INCHES PAST THE GRATE IN ALL DIRECTIONS.

2- MAINTENANCE:

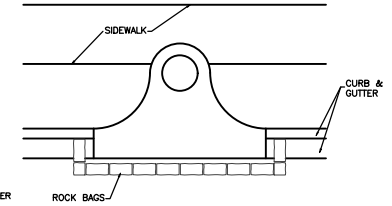
- INSPECT INLET PROTECTION AFTER EVERY LARGE STORM EVENT AND AT A MINIMUM OF ONCE MONTHLY.
- REMOVE SEDIMENT ACCUMULATED WHEN IT REACHES 4 INCHES IN DEPTH.
- REPLACE FILTER FABRIC AND CLEAN OR REPLACE GRAVEL IF CLOGGING IS APPARENT.

3- LIMITATIONS:

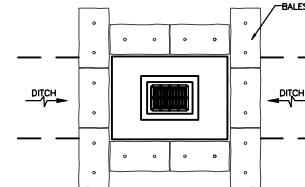
- RECOMMENDED FOR MAXIMUM DRAINAGE AREA OF ONE ACRE.
- EXCESS FLOWS MAY BYPASS THE INLET REQUIRING DOWN GRADIENT CONTROLS.
- PONDING WILL OCCUR AT INLET.



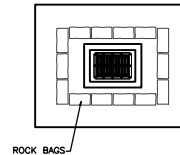
PARTIAL INLET



COMPLETED INLET



DITCH BOTTOM INLET



SWALE INLET

PROTECTION ALONG INLETS WITH ROCK BAGS BALES
OR APPROVED ALTERNATIVES

NOTES FOR SYNTHETIC BALES OR BALE TYPE BARRIERS:

- TYPE I AND II SYNTHETIC BARRIER SHOULD BE SPACED IN ACCORDANCE WITH CHART 1, SHEET 1 OF 2010 FDOT DESIGN STANDARDS INDEX 102.
- BALES SHALL BE ANCHORED WITH TWO (2) 1"x2" (or 1" dia.) x 4' WOOD STAKES. STAKES OF OTHER MATERIAL OR SHAPE PROVIDING EQUIVALENT STRENGTH MAY BE USED IF APPROVED BY THE ENGINEER. STAKES OTHER THAN WOOD SHALL BE REMOVED UPON COMPLETION OF THE PROJECT.
- RAILS AND POSTS SHALL BE 2"x4" WOOD. OTHER MATERIALS PROVIDING EQUIVALENT STRENGTH MAYBE USED IF APPROVED BY THE ENGINEER.
- ADJACENT BALES SHALL BE BUTTED FIRMLY TOGETHER.
- WHERE USED IN CONJUNCTION WITH SILT FENCE, BALES SHALL BE PLACED ON THE UPSTREAM SIDE OF THE FENCE.

INLET PROTECTION SYSTEM (TYP.)
OR APPROVED ALTERNATIVE

REVISIONS					
DATE	BY	DESCRIPTION	DATE	BY	DESCRIPTION

MIAMI-DADE COUNTY
HIGHWAY DIVISION

DESIGNED BY	NAME	DATE	CHECKED BY	NAME	DATE
GT			GT		8-18-2023

SUPERVISED BY: YANEX FERNANDEZ



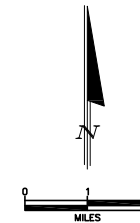
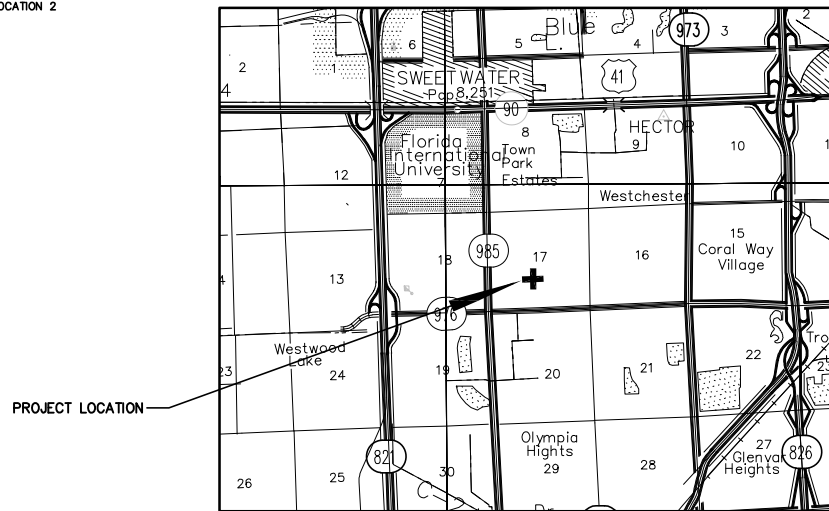
INLET PROTECTION SYSTEM
DETAILS

LIGHTING PLANS FOR PROPOSED
INTERSECTION IMPROVEMENTS TO
SW 109 AVE. & SW 32 ST
MIAMI-DADE COUNTY PROJECT NO. 20220058
RIF DISTRICT 10

INDEX OF SHEETS

SHT. No.	SHEET DESCRIPTION
1	COVER SHEET
2	TABULATION OF LIGHTING QUANTITIES
3	POLE DATA & LEGEND
4	LIGHTING GENERAL NOTES
5-6	LIGHTING PLAN
7	CONDUIT BURIAL DETAILS
8	CONVENTIONAL POLE DETAIL
9	FOUNDATION DETAIL
10	MISCELLANEOUS DETAILS 1
11	SLAB DETAILS FOR INTERMEDIATE PULL BOX LOCATION 1
12	SLAB DETAILS FOR INTERMEDIATE PULL BOX LOCATION 2
13	SERVICE POINT DETAILS
14-16	UTILITY CONFLICT POLE

NOTE:
ATTENTION IS DIRECTED TO THE FACT THAT THESE PLANS MAY HAVE
BEEN REDUCED IN SIZE BY REPRODUCTION. THIS MUST BE CONSIDERED
WHEN OBTAINING SCALED DATA.



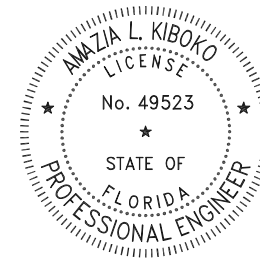
PREPARED FOR



MIAMI-DADE COUNTY
DEPARTMENT OF TRANSPORTATION AND PUBLIC WORKS
HIGHWAY ENGINEERING DIVISION

STEPHEN P. CLARK CENTER
111 NW 1 ST
MIAMI, FLORIDA 33128

THESE PLANS HAVE BEEN PREPARED IN ACCORDANCE WITH AND ARE GOVERNED BY THE
MIAMI-DADE COUNTY PUBLIC WORKS DEPARTMENT STANDARDS AND SPECIFICATIONS PARTS 1,
2 AND 3, THE MANUAL OF UNIFORM MINIMUM STANDARDS FOR DESIGN, CONSTRUCTION AND
MAINTENANCE FOR STREETS AND HIGHWAYS, THE FLORIDA DEPARTMENT OF TRANSPORTATION
ROADWAY AND TRAFFIC DESIGN STANDARDS, AND THE FLORIDA DEPARTMENT OF
TRANSPORTATION STANDARD SPECIFICATIONS, AS AMENDED BY CONTRACT DOCUMENTS.



THIS ITEM HAS BEEN DIGITALLY SIGNED
AND SEALED BY AMAZIA L. KIBOKO, P.E.
ON THE DATE ADJACENT TO THE SEAL.
PRINTED COPIES OF THIS DOCUMENT ARE
NOT CONSIDERED SIGNED AND SEALED
AND THE SIGNATURE MUST BE VERIFIED
ON ANY ELECTRONIC COPIES.

APPROVED	COUNTY ENGINEER
RECOMMENDED	ASSISTANT DIRECTOR
SUBMITTED	HIGHWAY ENGINEERING DIVISION
DESIGN	A.L.K.
DRAWN	E.D.J.
DATE	07-25-24
SHEET	1 OF 16

THE OFFICIAL RECORD OF THIS SHEET IS THE ELECTRONIC FILE DIGITALLY SIGNED AND SEALED UNDER RULE 61G15-31.004, F.A.C.

TABULATION OF LIGHTING QUANTITIES

PAY ITEM NO.	DESCRIPTION	UNIT	SHEET NUMBER														TOTAL THIS SHEET		GRAND TOTAL	
			L-4														ORIG.	FINAL	ORIG.	FINAL
			ORIG.	FINAL	ORIG.	FINAL	ORIG.	FINAL	ORIG.	FINAL	ORIG.	FINAL	ORIG.	FINAL	ORIG.	FINAL				
630-2-11	CONDUIT, FURNISH & INSTALL, OPEN TRENCH	LF	1121																1121	
630-2-12	CONDUIT, FURNISH & INSTALL, DIRECTIONAL BORE	EA	216																216	
635-2-11	PULL BOX (13" X 24" COVER SIZE)	EA	22																22	
639-1-121	ELECTRICAL POWER SERVICE, F&I, UNDERGROUND, METER FURNISHED BY POWER COMPANY	EA	1																1	
641-2-11	PRESTRESSED CONCRETE POLE, F&I, TYPE P-II PEDESTAL	EA	1																1	
715-1-12	CONDUCTOR (INSULATED, NO. 6)	LF	4011																4011	
715-4-13	LIGHT POLE COMPLETE, F&I, STANDARD FOUNDATION, 40' MOUNTING HEIGHT, 10' ARM LENGTH	EA	11																11	
715-4-32	LIGHT POLE COMPLETE, F&I, UTILITY CONFLICT POLE, 35' MOUNTING HEIGHT, 16' ARM LENGTH - SEE INDEX 715-003	EA	1																1	
715-7-11	LOAD CENTER, F&I, SECONDARY VOLTAGE	EA	1																1	
715-11-211	LUMINAIRE, F&I- REPLACE EXISTING LUMINAIRE ON EXISTING POLE/ARM, ROADWAY, COBRA HEAD (ON FPL WOOD POLE)	EA	4																4	
715-500-1A	POLE CABLE DISTRIBUTION, MC SQUARE, DOT 3 (F&I)	EA	10																10	

- ITEMS 715-1-12 INCLUDE CONDUCTORS AS INDICATED IN THE PLANS, THE FDOT DESIGN STANDARDS AND MIAMI-DADE COUNTY MAINTENANCE AGENCY SPECIFICATIONS. PAYMENT SHALL BE MADE BASED ON LINEAR FEET OF SINGLE CONDUCTOR. FOR PAY ITEM 715-1-13 INCLUDES 1000 LF FOR SERVICE POINT FEEDER.
- ITEMS 630-2-11 AND 630-2-12 INCLUDE CONDUIT, ELBOWS, SWEEPS, CONNECTING HARDWARE, TRENCHING AND BACKFILL AS INDICATED IN THE PLANS, THE FDOT DESIGN STANDARDS, AND MIAMI-DADE COUNTY MAINTENANCE AGENCY SPECIFICATIONS. THE LINEAR FOOT PRICE FOR CONDUIT SHALL ALSO INCLUDE THE COST OF RESTORING CUT PAVEMENT, SIDEWALKS, SOD, ETC., TO ITS ORIGINAL OR BETTER CONDITION. SOD SHALL BE REPLACED IN LIKE KIND OF THE ADJACENT SURROUNDINGS.
- ITEM 715-7-11 INCLUDES SERVICE POLE INSULATORS, WEATHERHEADS, TRANSFORMERS, ENCLOSURES, PANELBOARDS, BREAKERS, FUSES, LIGHTNING PROTECTOR, PHOTO-ELECTRIC ASSEMBLY, CONDUIT, FEEDER CONDUCTORS, PULLBOX, AND MISCELLANEOUS HARDWARE FOR A COMPLETE INSTALLATION AS PER PLANS AND MIAMI-DADE COUNTY STANDARD SERVICE POINT DETAIL. ALSO INCLUDES THE COST OF FURNISHING AND INSTALLING TYPE N-11 CONCRETE POLE.
- ITEM 715-500-1: THE POLE CABLE DISTRIBUTION SYSTEM (PCDS) SHALL BE INSTALLED IN THE PULLBOX ADJACENT TO THE LIGHT POLE AND SHALL BE OF THE MODULAR SUBMERSIBLE TYPE AS PER THE STANDARD SPECIFICATIONS AND DESIGN STANDARD CABLE DISTRIBUTION.
- ITEM 715-4-13 INCLUDES THE POLE, BRACKET ARM, LUMINAIRE WITH LAMP, ANCHOR BOLTS WITH LOCK NUTS AND WASHERS, FRANGIBLE BASE, FOUNDATION AND SURGE PROTECTOR AS INDICATED IN THE DESIGN STANDARDS. THE COST OF RESTORING SOD IN LIKE KIND OF THE ADJACENT SURROUNDINGS, AROUND EACH POLE, TO ITS ORIGINAL OR BETTER CONDITION IS INCLUDED IN THIS PAY ITEM WHEN APPLICABLE.
- 20% ADDITIONAL LIGHT POLE ASSEMBLIES TO BE DELIVERED TO THE TSS WAREHOUSE AND/OR YARD. THE 20% IS ALREADY ADDED INTO THE SUMMARY OF QUANTITIES.

REVISIONS											
DATE	BY	DESCRIPTION	DATE	BY	DESCRIPTION	DATE	BY	DESCRIPTION	DATE	BY	DESCRIPTION



GOAL ASSOCIATES INC.
Certificate of Authorization No. 36957
14750 NW 77th Court, Suite 300
Miami, Florida 33167 (785) 490-3360
ANAKIA L. KIBOKO, P.E., P.T.O.E.
P.E. License No. 49923

DESIGNED BY
CHECKED BY
SUPERVISED BY

NAME	DATE	NAME	DATE

MIAMI-DADE
COUNTY

DEPARTMENT OF TRANSPORTATION
AND PUBLIC WORKS
HIGHWAY DIVISION
STEPHEN P. CLARK, CHIEF
101 NW 15
MIAMI, FLORIDA 33128

TABULATION OF LIGHTING
QUANTITIES

POLE DATA

[illegible]

LEGEND

SYMBOLS



DESCRIPTION

259 WATT LED LUMINAIRE WITH ALUMINUM GROUND MOUNTED POLE WITH ONE LUMINAIRE, POLE BASE AND PULL BOX. WIRED FOR 240 VOLT OPERATION. 24,516 LUMENS, TYPE 3 DISTRIBUTION, 3000K CCT, 7 PIN PHOTOCONTROL RECEPTACLE WITH SHORTING CAP. PROVIDE UBICUQA UBICELL SMART LIGHTING CONTROL PER LUMINAIRE IN ADDITION TO XXXXX CAP. (MOUNTING HEIGHT AS SHOWN). USE AMERICAN ELECTRIC LIGHTING SERIES: ATBFL XXXXX R3 JK. IES FILE: ATBFL XXXXX R3. IES OR EQUAL.

MAX CD. 20,816.2 AT HORIZONTAL: 57.5, VERTICAL: 67.5

259 WATT LED LUMINAIRE WITH ALUMINUM GROUND MOUNTED UTILITY CONFLICT POLE WITH ONE LUMINAIRE, POLE BASE AND PULL BOX. WIRED FOR 240 VOLT OPERATION. 24,516 LUMENS, TYPE 3 DISTRIBUTION, 3000K CCT, 7 PIN PHOTOCONTROL, RECEPTACLE WITH SHORTING CAP, PROVIDE UBICQUA UBICELL SMART LIGHTING CONTROL PER LUMINAIRE IN ADDITION TO SHORTING CAP. (MOUNTING HEIGHT AS SHOWN). USE AMERICAN ELECTRIC LIGHTING SERIES: ATBLF XXXXX R3 3K. IES FILE: ATBLF XXXXX R3, IES OR EQUAL.

MAX CD. 20,816.2 AT HORIZONTAL: 57.5, VERTICAL: 67.5

FPL TO RETROFIT EXIST. LIGHT POLE WITH 284 WATT LED LUMINAIRE, WIRED FOR 240 VOLT OPERATION, 32449 H LUMENS, TYPE N DISTRIBUTION, 300K CCT, 1 PIN PHOTOCONTROL RECEPTACLE WITH SHORTING CAP. PROVIDE UBICQUA UBICELL SMART LIGHTING CONTROL PER LUMINAIRE IN ADDITION TO SHORTING CAP. (MOUNTING HEIGHT AS SHOWN). USE AMERICAN ELECTRIC LIGHTING SERIES: ATB2 P604 R4 3K. IES FILE: ATB2 P604 R4 3K OR EQUAL.
MAX CD. 22,509.8 AT HORIZONTAL: 50, VERTICAL: 72.5.

EXISTING POLE TO REMAIN.

EXISTING POLE TO REMAIN, LUMINAIRE TO BE REMOVED.

SYMBOLS

**DESCRIPTION**

2" SCHEDULE 40 PVC DIRECTIONAL BORE CONDUIT WITH 2 #6 AWG XLP-RHW
CONDUCTORS FOR PHASE CONDUCTORS AND 1 #6 AWG FOR GROUND
UNLESS SPECIFIED IN PLANS. COLOR CODE FOR 120 / 240 VOLT SINGLE PHASE CONDUCTOR
INSULATION TO BE WHITE-NEUTRAL, BLACK UNGROUNDED AND RED UNGROUNDED PHASE CONDUCTORS.

2" SCHEDULE 40 PVC UNDERGROUND CONDUIT WITH 2 #6 AWG XLP-RHW
CONDUCTORS FOR PHASE CONDUCTORS AND 1 #6 AWG FOR GROUND
UNLESS SPECIFIED IN PLANS. COLOR CODE FOR 120 / 240 VOLT POWER SYSTEM CONDUCTOR
INSULATION TO BE WHITE-NEUTRAL, BLACK UNGROUNDED AND RED UNGROUNDED PHASE CONDUCTORS.

PROPOSED PULL BOX.

PROPOSED LOAD CENTER. SEE SHEET L-6 FOR DETAILS.

[illegible]

GOAL ASSOCIATES INC.
Certificate of Authorization No.: 30697
14750 NW 77th Court, Suite 320
Miami, Florida 33016 (786)-600-3350
AMAZIA L. KIBOKO, P.E., PTOE.
P.E. License No. 49523

	NAME	DATE		NAME	DATE
DESIGNED BY			DRAWN BY		
CHECKED BY			CHECKED BY		

MIAMI-DADE
COUNTY

DEPARTMENT OF TRANSPORTATION
AND PUBLIC WORKS
HIGHWAY DIVISION
STEPHEN P. CLARK, GOVT.
111 NW 1 ST
MIAMI, FLORIDA 33128

POLE DATA & LEGEND

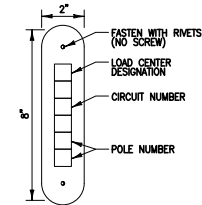
THE OFFICIAL RECORD OF THIS SHEET IS THE ELECTRONIC FILE DIGITALLY SIGNED AND SEALED UNDER RULE 6G15-31.004, F.A.C.

LIGHTING GENERAL NOTES

1. POWER COMPANY SHALL PROVIDE INCOMING SERVICE AT LOCATION SPECIFIED IN ACCORDANCE WITH THE PLANS. THE DATE REQUIRED FOR INCOMING SERVICE TO BE COMPLETED MUST BE COORDINATED BY THE CONTRACTOR WITH THE POWER COMPANY AT THE PRE CONSTRUCTION MEETING.
2. ALL EXPOSED CONDUIT OR SURFACE MOUNTED CONDUIT SHALL BE GALVANIZED STEEL AND GROUNDED.
3. CONTRACTOR SHALL BE RESPONSIBLE FOR LOCATING AND AVOIDING ALL UNDERGROUND AND STRUCTURAL CONFLICTS IN COOPERATION WITH THE UTILITY COMPANY(S).
4. STATIONING MAY BE ADJUSTED AS DIRECTED TO AVOID UTILITY OR STRUCTURAL CONFLICTS NOT INDICATED IN THE PLANS.
5. SIDEWALK SLABS DAMAGED DURING CONSTRUCTION SHALL BE REPLACED IN FULL AND COLORED WHEN NECESSARY TO MATCH THE EXISTING SIDEWALK.
6. CONTRACTOR MUST MAINTAIN THE EXISTING LIGHTING SYSTEM IN OPERATION OR SUPPLY A TEMPORARY ONE UNTIL THE NEW LIGHTING SYSTEM CAN BE ACTIVATED. IF THE EXISTING LIGHTING SYSTEM IS OWNED BY F.P.A.M. SEE FOOT SPECIFICATION FOR ROADWAY LIGHTING SPECIAL PROVISIONS, SECTION 715. THIS ITEM SHALL INCLUDED IN PAY ITEM #102-1, MAINTENANCE OF TRAFFIC.
7. ALL MATERIAL, UNLESS OTHERWISE SPECIFIED, SHALL BE UNDERWRITERS LABORATORY APPROVED.
8. POLES, BRACKET ARMS, AND TRANSFORMER BASES SHALL BE ALUMINUM AND DESIGNED IN ACCORDANCE WITH LOCAL DESIGN CRITERIA USING THE APPLICABLE EQUATIONS FOUND IN THE AASHTO PUBLICATION "STANDARD SPECIFICATIONS FOR HIGHWAY, SIGNS, LUMINAIRES, AND TRAFFIC SIGNALS," CURRENT EDITION.
9. THE WIRES AT THE POLE, HANDHOLE, AND PULL BOXES SHALL BE LOOPED AS INDICATED IN THE PLAN DETAIL WITH SUFFICIENT LENGTH TO COMPLETELY REMOVE CONNECTORS TO THE OUTSIDE, TO MAKE THEM ACCESSIBLE FOR CHANGING FUSES AND TROUBLE SHOOTING THE SYSTEM.
10. THE LUMINAIRE MANUFACTURER SHALL PLACE A PERMANENT TAG ON THE LUMINAIRE HOUSING ON WHICH IS IMPRINTED THE FOLLOWING INFORMATION: WATTAGE, BALLAST TYPE, LAMP SHOWN ON DESIGN PLANS, LAMP SETTING (POSITION IN LUMINAIRE), I.E.S., LIGHT DISTRIBUTION WITH THIS LAMP IN THE POSITION SPECIFIED, INPUT VOLTAGE AND POWER FACTOR, LUMINAIRE PHOTOMETRIC SUBMITTALS REQUIRED.
11. GROUND RODS SHALL HAVE A RESISTANCE TO GROUND NOT TO EXCEED 25 OHMS. WHERE THE RESISTANCE IS NOT AS LOW AS 25 OHMS, TWO OR MORE GROUND RODS CONNECTED IN PARALLEL SHALL BE USED.
12. CONTRACTOR WILL INCLUDE IN THE COST OF THE LIGHTING POLE ANY LEVELING AND GRADING REQUIRED TO INSURE THAT ALL POLES ARE INSTALLED AT THE PROPER ELEVATION.
13. ALL SALVAGEABLE MATERIALS AND ALL MATERIALS TO BE FURNISHED BY THE CONTRACTOR SHALL BE TRANSPORTED AND OFF LOADED TO THE FOLLOWING LOCATION FOR INSPECTION AND ACCEPTANCE BY THE COUNTY:
MIAMI-DADE COUNTY MAINTENANCE YARD
7100 NW 36th STREET
MIAMI, FL 33166
TELEPHONE: (305) 592-3580
14. CONTRACTOR MUST CONTACT AT&T, FP&L, AND OTHER UTILITY COMPANIES PRIOR TO THE COMMENCEMENT OF CONSTRUCTION AND MUST NOTIFY ENGINEER AND MIAMI-DADE COUNTY IF FIELD CONDITIONS DIFFER FROM CONDITIONS INDICATED ON THESE DRAWINGS.
15. IN ACCORDANCE WITH THE NATIONAL ELECTRIC CODE (N.E.C.) OR WITH THE MIAMI-DADE COUNTY STANDARDS, THE CONTRACTOR MUST IDENTIFY ALL CIRCUITS AND EQUIPMENT INCLUDING THE PROPOSED LIGHT POLE ASSEMBLIES.
16. PULL BOXES, JUNCTION BOXES, AND ALL ELECTRICAL WORK MUST CONFORM TO N.E.C. (LATEST REQUIREMENTS), THE NATIONAL ELECTRICAL SAFETY CODE AND MIAMI-DADE COUNTY STANDARDS.
17. USE PVC SCHEDULE 40 CONDUIT THROUGHOUT THE ENTIRE UNDERGROUND SYSTEM, AT STREET CROSSINGS THE CONDUIT SHOULD BE EMBEDDED IN 1:10 CONCRETE MIXTURE.
18. ANY INCIDENTAL ITEMS OR ACCESSORIES REQUIRED TO COMPLETE THE WORK FOR A GIVEN BID ITEM, SHALL BE INCLUDED IN THE CONTRACT UNIT PRICE BID FOR THAT SPECIFIC ITEM AS INDICATED IN THE BID FORM. INCIDENTAL ITEMS MAY INCLUDE, BUT ARE NOT LIMITED TO: ELBOWS, SPLIT BOLT CONNECTORS, FUSES AND FUSE HOLDERS, ELECTRICAL TAPE, SCOTCHWOTE, PVC GLUE, TRENCHING, BACKFILLING, PAVEMENT RESTORATION, CONCRETE SLAB REPLACEMENT, ETC.
19. POLES SHALL HAVE A FRANGIBLE TRANSFORMER BASE.
20. ALL GROUNDING CONNECTIONS SHALL BE EXOTHERMICALLY WELDED FOLLOWING THE MANUFACTURER'S GUIDELINES.
21. CONTRACTOR MUST MINIMIZE TRENCHING ACROSS STREETS BY COORDINATING THE LIGHT PLANS WITH THE SIGNALIZATION INTERCONNECT CONDUIT/WIRING AS DEPICTED ON THESE DRAWINGS.
22. MAINTAINING AGENCY FOR LIGHTING IS MIAMI-DADE COUNTY. CONTRACTOR MUST CONTACT/COORDINATE WITH APPLICABLE COUNTY OFFICIALS AND INSPECTORS PRIOR TO CONSTRUCTION.
23. CONTRACTOR SHALL MAINTAIN SAFE ACCESS TO SIDE STREETS, PRIVATE, AND COMMERCIAL DRIVEWAYS AT ALL TIMES DURING CONSTRUCTION.
24. ALL CONDUIT TRENCHING MUST BE PROPERLY BACKFILLED TO PROVIDE SAFE CROSSING AT THE END OF EACH WORK DAY OR WHENEVER THE WORK ONE BECOMES INACTIVE.
25. THE CONTRACTOR MUST EXERCISE EXTREME CAUTION WHEN WORKING THE VICINITY OF EXISTING AND PROPOSED UNDERGROUND AND OVERHEAD UTILITIES.
26. ALL UNDERGROUND PHASE CONDUCTORS SHALL BE RHH-RHW-XLP.
27. ALL CONDUITS THAT WILL REMAIN EMPTY AS SPARES SHALL BE CLEANED INSIDE AND BOTH ENDS CAPPED. PLACE PULLBOXES AT THE ENDS OF THE CONDUITS.
28. ELECTRONIC SIGNED/SEALED AS-BUILD BY THE EOR TO BE PROVIDED TO THE COUNTY PM. CONTRACTOR TO GIVE GPS COORDINATE FILE FOR BOTH LIGHT POLES AND LOAD CENTER TO THE COUNTY PM. IN ADDITION TO THE GPS COORDINATES, ADDITIONAL ATTRIBUTES FOR THE PROJECT ARE TO BE SUBMITTED BUT WILL NEED TO BE COORDINATED WITH COUNTY STAFF FOR THE COUNTY ARCGIS DATA.
29. TRIM ALL TREES IN CONTACT WITH PROPOSED LIGHT POLES. ANY TREES TRIMMING TO BE PAID UNDER PAY ITEM 580-B-1.

SIGNALIZED INTERSECTION & ROUNDABOUT

1. HORIZOTNAL ILLUMINATION 1.5 TO 3.0 F.C.
2. UNIFORMITY RATIO (3.0 : 1 TO 4.0 : 1)
3. MAXIMUM TO MINIMUM RATIO (LESS THAN 10 : 1)
4. VERTICAL ILLUMINATION 1.0 TO 1.5 F.C.
5. UNIFORMITY RATIO N/A
6. MAXIMUM TO MINIMUM RATIO N/A



POLE IDENTIFICATION TAG DETAIL
SEE NOTES BELOW

NOTES:

1-FURNISH AND INSTALL AN ALUMINUM IDENTIFICATION TAG ON EACH ROADWAY LIGHTING STANDARD. TAGS SHALL BE 2" X 8" IN SIZE WITH BLACK LETTERS ON YELLOW BACKGROUND, ATTACHED WITH RIVETS (NO SCREWS). NUMBERS SHALL BE AS SHOWN ON THE POLE IDENTIFICATION TAG DETAIL. TAG SHALL BE PLACED 5' ABOVE GRADE FACING TRAFFIC (WHEN PRACTICABLE).

REVISIONS					
DATE	BY	DESCRIPTION	DATE	BY	DESCRIPTION



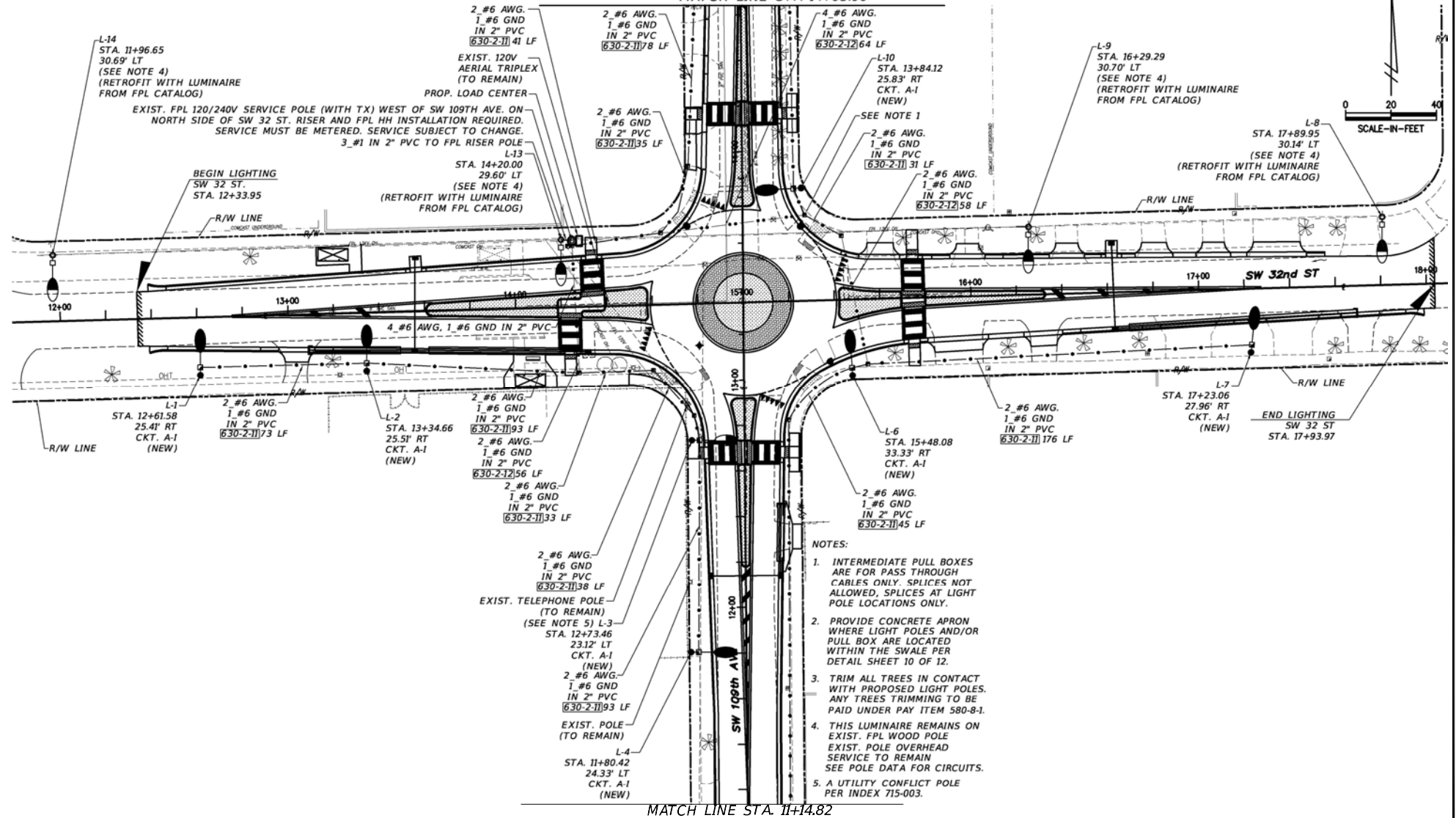
GOAL ASSOCIATES INC.
Certificate of Authorization No. 35857
14750 NW 77th Court, Suite 300
Miami, Florida 33176 (785) 490-0300
ANANDA L. KIBOKO, P.E., P.T.O.E.
P.E. License No. 49823

DESIGNED BY	NAME	DATE	DRAWN BY	NAME	DATE
CHECKED BY			CHECKED BY		
SUPERVISED BY:					

MIAMI-DADE COUNTY	DEPARTMENT OF TRANSPORTATION AND PUBLIC WORKS HIGHWAY DIVISION STEPHEN P. QUINN, CENTER 101 NW 15 MIAMI, FLORIDA 33128
-------------------	--

LIGHTING GENERAL NOTES

MATCH LINE STA 14+65.00



MATCH LINE STA 11+14.82

REVISIONS

DATE	BY	DESCRIPTION	DATE	BY	DESCRIPTION	DATE	BY	DESCRIPTION



GOAL ASSOCIATES INC.
Certified of Professional Engineering
14780 NW 77th Court, Suite 300
Miami, Florida 33193 (781) 490-8800
AMATEL, INCORPORATED, P.E., P.T.C.E.
P.E. License No. 49823

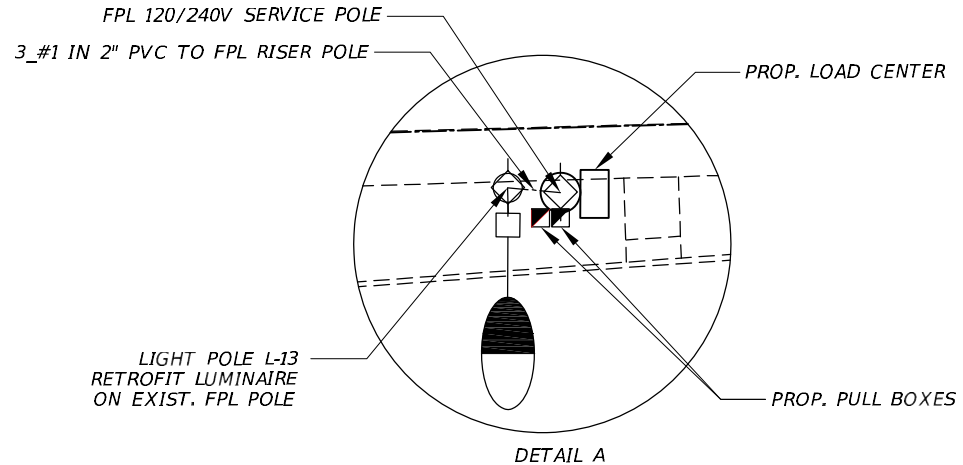
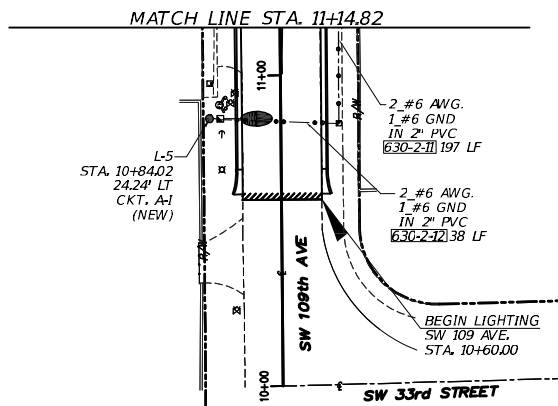
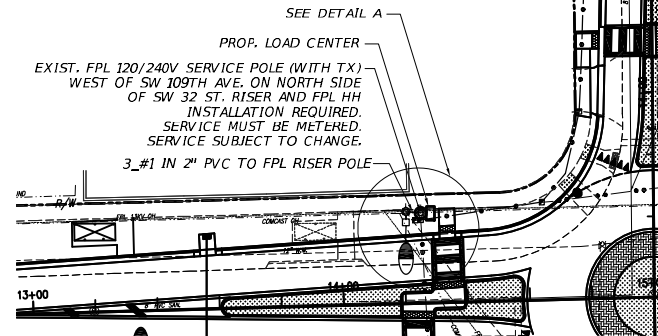
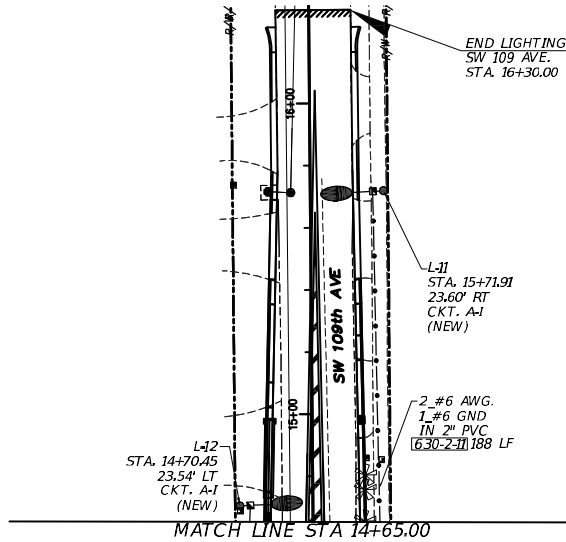
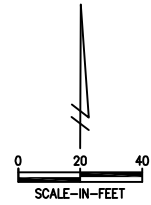
REVISION	NAME	DATE	BY	DATE



DEPARTMENT OF TRANSPORTATION
AND PUBLIC WORKS
HIGHWAY DIVISION
KIPRIS P. GARCIA, CIVIL ENGINEER
STATE LICENSE NO. 12129

LIGHTING PLAN

THE OFFICIAL RECORD OF THIS SHEET IS THE ELECTRONIC FILE DIGITALLY SIGNED AND SEALED UNDER RULE 61G15-33.004, F.A.C.



REVISIONS					
DATE	BY	DESCRIPTION	DATE	BY	DESCRIPTION



GOAL ASSOCIATES, INC.
Certificate of Authorization No. 30897
14780 NW 77th Court, Suite 300
Miami, Florida 33187 (781) 980-3800
AMAZIA L. KIBICKO, P.E., PTOE.
P.E. License No. 48823

DESIGNED	NAME	DATE	DRAWN	NAME	DATE
SUPERVISED BY:					

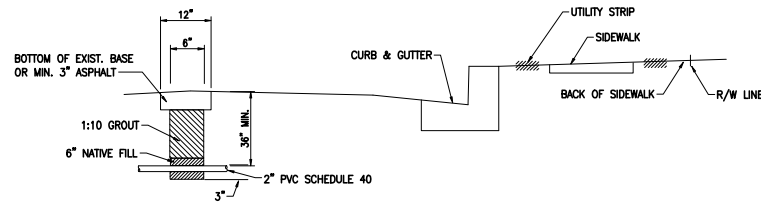


DEPARTMENT OF TRANSPORTATION
AND PUBLIC WORKS
HIGHWAY DIVISION
VERNON F. CLARK, CHIEF
101 NW 1st Street
MIAMI, FLORIDA 33138

LIGHTING PLAN

① OPTION

CONDUIT BURIED WHEN CROSSING ROAD

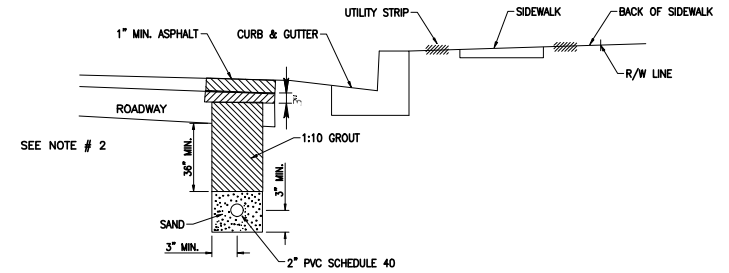


NOTE:

- TRENCH NOT TO BE OPENED MORE THAN 250' AT A TIME.
- * MAY BE ADJUSTED IN FIELD DUE TO FIELD CONDITIONS AS DIRECTED BY THE ENGINEER.

② OPTION

CONDUIT BURIAL IN ROADWAY

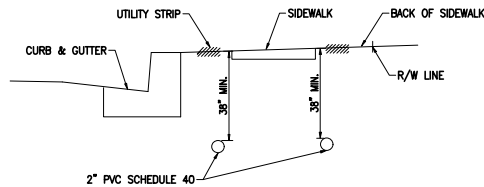


NOTES:

- TRENCH NOT TO BE OPENED MORE THAN 250' AT A TIME.
- THIS AREA SHALL BE BACKFILLED WITH TYPE S-1 ASPHALTIC CONCRETE TO WITHIN 1 INCH OF FINISHED GRADE.
- * MAY BE ADJUSTED IN FIELD DUE TO FIELD CONDITIONS AS DIRECTED BY THE ENGINEER.

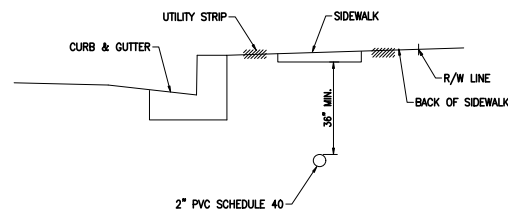
③ OPTION

CONDUIT IN UTILITY AND BACK OF SIDEWALK



④ OPTION

CONDUIT UNDER SIDEWALK

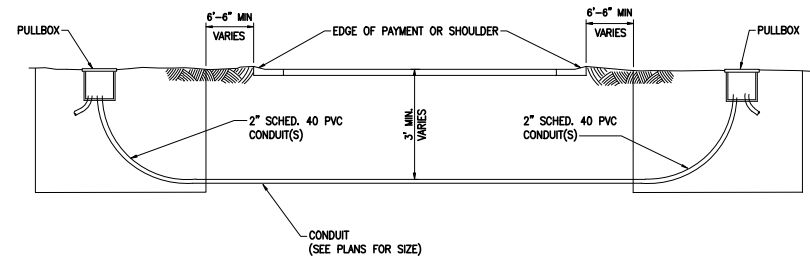


NOTE:

- IN PLACING CONDUIT UNDER SIDEWALK REPLACEMENT OF ENTIRE SIDEWALK SECTION SHALL BE NECESSARY.

⑤ OPTION

CONDUIT DIRECTIONAL BORE



NOTE:

- DIRECTIONAL BORING OPERATIONS SHALL BE DONE IN ACCORDANCE WITH THE F.D.O.T. UTILITY ACCOMMODATION MANUAL.

THE OFFICIAL RECORD OF THIS SHEET IS THE ELECTRONIC FILE DIGITALLY SIGNED AND SEALED UNDER RULE 61G15-31.004, F.A.C.

REVISIONS					
DATE	BY	DESCRIPTION	DATE	BY	DESCRIPTION



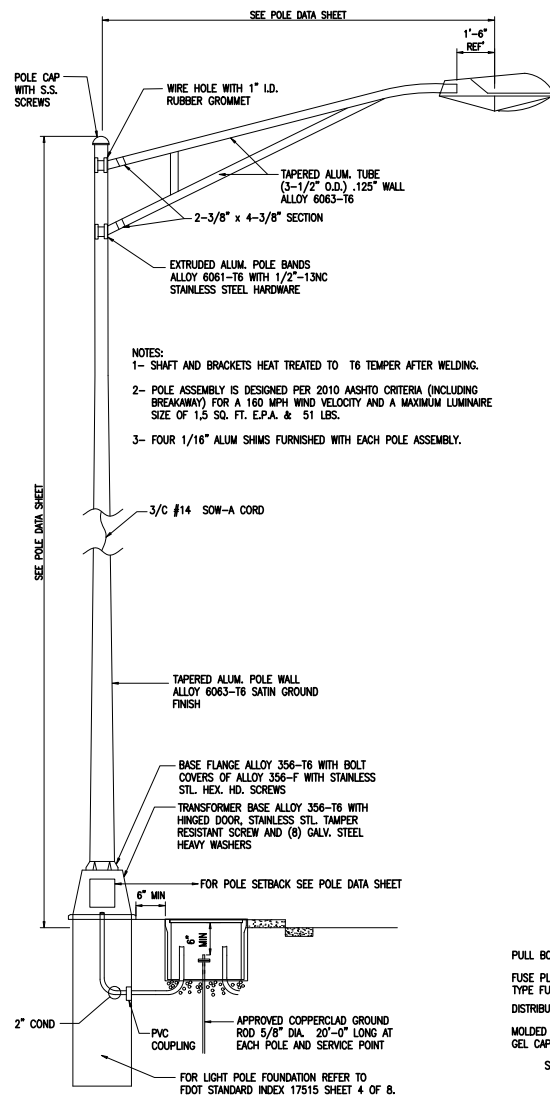
GOAL ASSOCIATES INC.
Certificate of Authorization No. 36887
14790 NW 77th Court, Suite 300
Miami, Florida 33186 (785) 400-3360
AMANDA L. KIBOKO, P.E., P.T.O.E.
P.E. License No. 48923

DESIGNED BY	NAME	DATE	DRAWN BY	NAME	DATE
CHECKED BY			CHECKED BY		

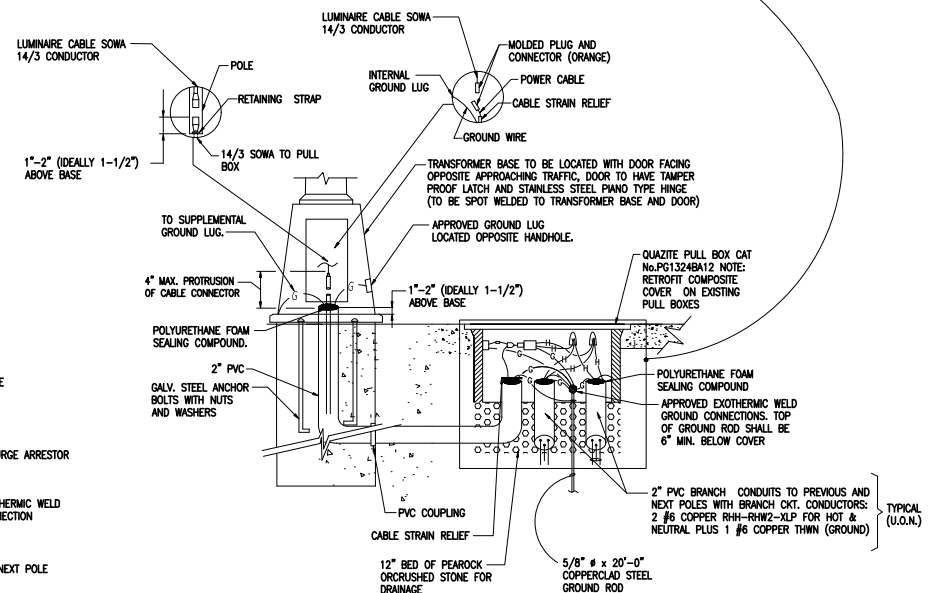
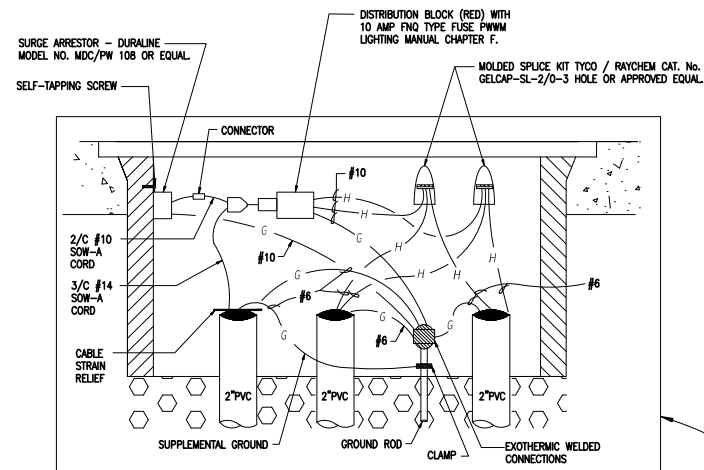
SUPERVISED BY:

MIAMI-DADE COUNTY	DEPARTMENT OF TRANSPORTATION AND PUBLIC WORKS HIGHWAY DIVISION STEPHEN P. CLINE, CHIEF 101 NW 15 ST MIAMI, FLORIDA 33128
-------------------	--

CONDUIT BURIAL DETAILS



TYPICAL METAL POLE INSTALLATION DETAIL
N.T.S.



POLE WIRING DETAIL WITH PULL BOX
N.T.S.

[illegible]

GOAL ASSOCIATES INC.
Certificate of Authorization No.: 30697
14750 NW 77th Court, Suite 320
Miami, Florida 33016 (785)-600-3350
AMAZIA L. KIBOKO, P.E., PTOE.
P.E. License No. 49523

	NAME	DATE		NAME	DATE
DESIGNED BY			DRAWN BY		
CHECKED BY			CHECKED BY		
<small> 10-10-2008 14:00:00 10-10-2008 14:00:00 </small>					

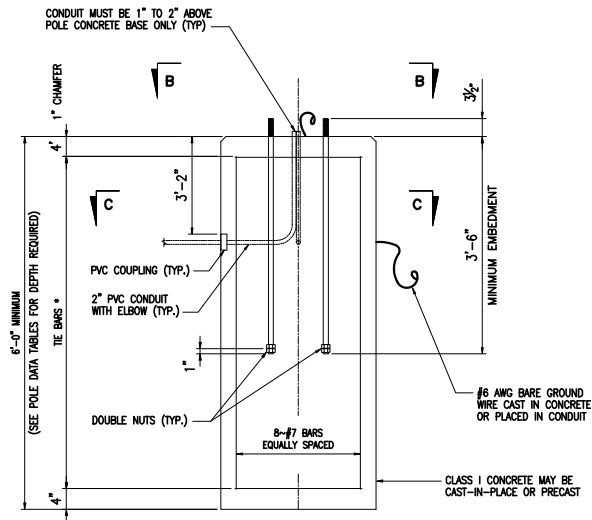
SUPERVISED BY _____

MIAMI-DADE
COUNTY

DEPARTMENT OF TRANSPORTATION
AND PUBLIC WORKS
HIGHWAY DIVISION
STEPHEN P. CLARK CENTER
111 NW 1 ST
MIAMI, FLORIDA 33128

CONVENTIONAL POLE DETAIL

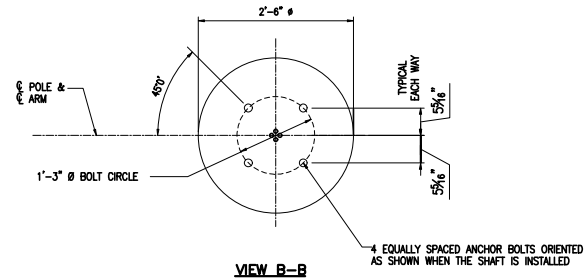
THE OFFICIAL RECORD OF THIS SHEET IS THE ELECTRONIC FILE DIGITALLY SIGNED AND SEALED UNDER RULE 61G15-31.004, F.A.C.



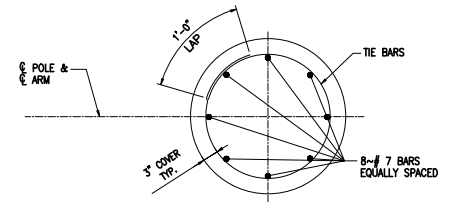
FOUNDATION

DRILLED SHAFT FOUNDATION DETAILS

- * #4 TIE BARS @ 12" CENTERS (MAX.) OR D10 (OR W10) SPIRAL
@ 6" PITCH, 3 FLAT TURNS TOP AND 1 FLAT TURN BOTTOM.



VIEW B-B



SECTION C-C

FOUNDATION TABLE W/ARM

WIND SPEED (MPH)	DESIGN MOUNTING HEIGHT (FT)	TOTAL DEPTH (FT) **
160	35	8
160	40 & 45	9
160	50	10

** DEPTHS SHOWN IN TABLE ARE FOR GRADES FLATTER THAN 1:4.
FOR GRADES UP TO 1:2 ADD 2'-6" TO FOUNDATION DEPTHS SHOWN IN TABLE.

FOUNDATION TABLE W/TOP MOUNT

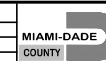
WIND SPEED (MPH)	DESIGN MOUNTING HEIGHT (FT)	TOTAL DEPTH (FT) **
160	40 & 45	7
160	50	8

REVISIONS					
DATE	BY	DESCRIPTION	DATE	BY	DESCRIPTION



GOAL ASSOCIATES INC.
Certificate of Authorization No. 30697
14750 NW 77th Court, Suite 320
Miami, Florida 33176 (785) 490-3350
ANAKIA L. KIBIKOLA, P.E., P.T.O.C.
P.E. License No. 48923

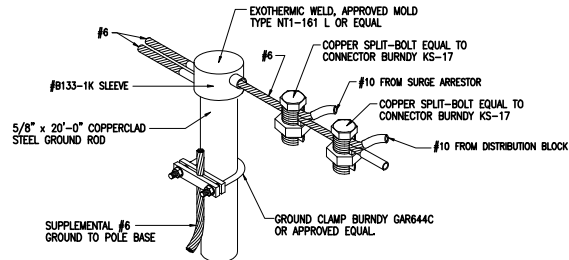
DESIGNED BY	NAME	DATE	DRAWN BY	NAME	DATE
CHECKED BY			CHECKED BY		
SUPERVISED BY:					



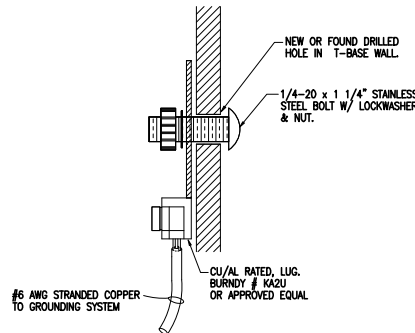
DEPARTMENT OF TRANSPORTATION
AND PUBLIC WORKS
HIGHWAY DIVISION
STEPHEN P. CLARK, CHIEF
101 NW 15
MIAMI, FLORIDA 33128

FOUNDATION DETAIL

THE OFFICIAL RECORD OF THIS SHEET IS THE ELECTRONIC FILE DIGITALLY SIGNED AND SEALED UNDER RULE 61G15-3.004, F.A.C.



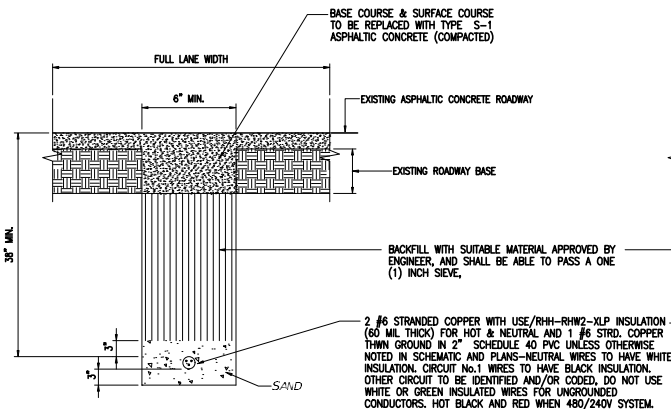
**CABLE TO GROUND ROD DETAIL
(COPPER WIRE FOR GROUNDING)**
N.T.S.



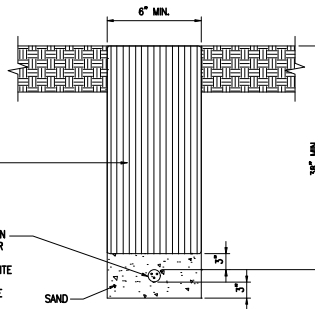
**GROUND LUG DETAIL
(COPPER WIRE FOR GROUNDING)**
N.T.S.

PULL BOX SPECIFICATION.

- ALL STREET LIGHT PULLBOXES SHALL HAVE AN OPEN-BOTTOM, QUARTZ POLYMER CONCRETE DESIGN OR PRECAST CONCRETE DESIGN CONSTRUCTED OF CLASS 1 CONCRETE HAVING A MINIMUM COMPRESSIVE STRENGTH OF 2,500 PSI AT TWENTY- EIGHT (28) DAYS. POLYMER CONCRETE PULLBOX SHALL BE QUARTZ PRODUCT NO. PG1324BA12 OR APPROVED EQUIVALENT. CONCRETE PULLBOX SHALL BE BROOKS 3B SERIES OR APPROVED EQUIVALENT. IN EITHER CASE, BOTH PULLBOXES SHALL BE CONSTRUCTED PER ABOVE SPECIFIED MANUFACTURERS SIZE, MATERIALS AND PERFORMANCE SPECIFICATIONS. THEREFORE, BELOW SPECIFIED PULLBOX COVER SHALL BE FULLY INTER- CHANGEABLE WITH EITHER PULLBOX. ALL PULLBOX COVERS FURNISHED AND INSTALLED SHALL BE POLYMER CONCRETE QUARTZ PRODUCT NO. PG1324H00 OR APPROVED EQUIVALENT. NO OTHER DESIGN, SIZE, MODIFICATION OR MATERIALS SHALL BE ACCEPTABLE. PULLBOX COVERS SHALL BE MARKED "STREET LIGHTING" OR "ELECTRIC/ MIAMI-DADE HD" .
- IN SITUATIONS WHERE PULLBOX IS LOCATED OUTSIDE OF SIDEWALK, I.E. SWALE AREA. THE PULLBOX IS TO HAVE A 6"x5" MIN CONCRETE APRON (6" THICK) PLACED AROUND IT. COST OF CONCRETE APRON IS TO BE INCLUDED IN THE PULLBOX INSTALLATION COST.

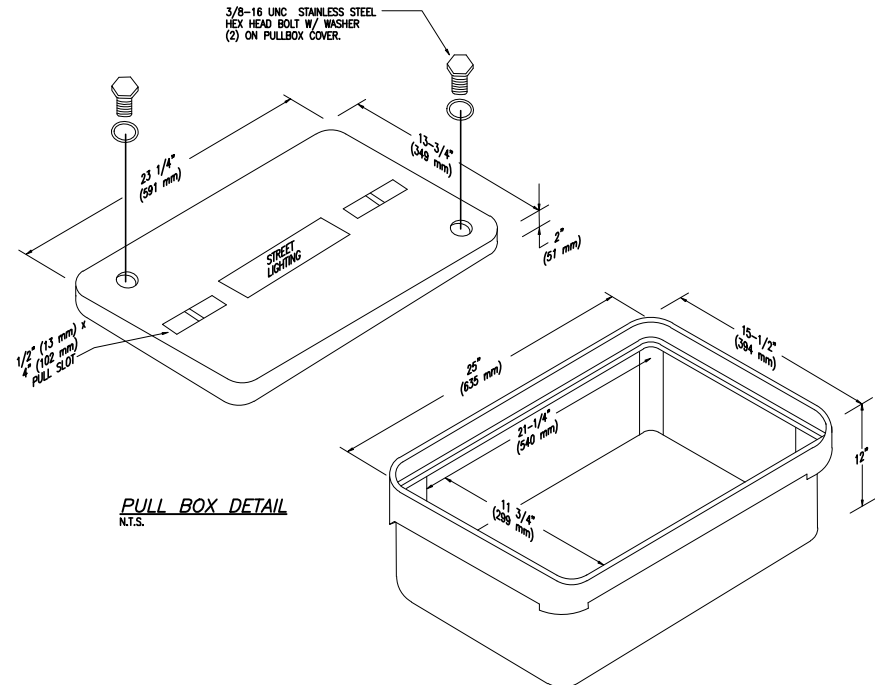


TRENCH DETAIL (ROAD)
N.T.S.



TRENCH DETAIL (SWALE)
N.T.S.

* IF IN THE OPINION OF THE ENGINEER, APPRECIABLE SETTLEMENT OCCURS DURING THE ONE YEAR GUARANTEE PERIOD, THE CONTRACTOR WILL BE REQUIRED TO RESTORE THE AREA OF CUT TO ADJACENT ROADWAY ELEVATION. SEE "TRAFFIC CONTROL EQUIPMENT SPECIFICATIONS AND STANDARDS FOR THE MTCSDC".



PULL BOX DETAIL
N.T.S.



GOAL ASSOCIATES INC.
Certificate of Authorization No. 33857
14780 NW 77th Court, Suite 300
Miami, Florida 33186 (754) 400-3300
AVANCEA L. HEBRON, P.E., PTOE
P.E. License No. 49823

DESIGNED BY	NAME	DATE	DRAWN BY	NAME	DATE
CHECKED BY			CHECKED BY		
APPROVED BY			APPROVED BY		

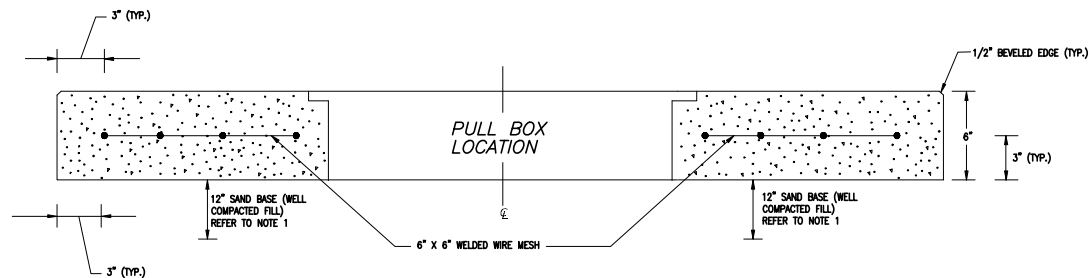
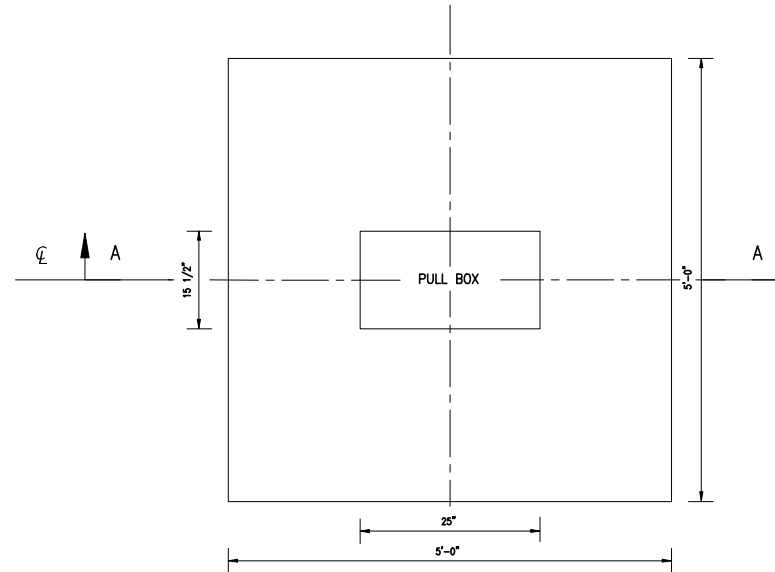
MIAMI-DADE COUNTY
DEPARTMENT OF TRANSPORTATION AND PUBLIC WORKS
HIGHWAY DIVISION
STEPHEN P. QUINN, CHIEF
MIAMI, FLORIDA 33128

**MISCELLANEOUS
DETAILS 1**

THE OFFICIAL RECORD OF THIS SHEET IS THE ELECTRONIC FILE DIGITALLY SIGNED AND SEALED UNDER RULE 61G15-13.004, F.A.C.

NOTES:

- 1- USE COMPACTED SELECT MATERIAL IN ACCORDANCE WITH FDOT STANDARD INDEX 505.
- 2- CONCRETE SHALL BE CLASS NS WITH A MINIMUM STRENGTH AT 28 DAYS OF $f'c=2.5$ KSI.
- 3- OUTSIDE EDGE OF SLAB SHALL BE CAST AGAINST FORM-WORK.
- 4- THE PULL BOX SHOWN IS 13" x 24" (INTERIOR DIMENSIONS) & 15 1/2" x 25" (EXTERIOR DIMENSIONS); OTHERS APPROVED UNDER SECTION 635 OF THE STANDARD SPECIFICATIONS MAY USED.
- 5- SLABS TO BE PLACED AROUND ALL POLES AND PULL BOXES IN RURAL LOCATIONS. IN URBAN AREAS OR WHERE SPACE IS LIMITED SLAB DIMENSIONS MAY BE ADJUSTED AS SHOWN IN THE PLANS.
- 6- CONCRETE FOR SLABS AROUND PULL BOXES BE INCLUDED IN THE PRICE OF PULL BOX.
- 7- CONCRETE FINISH TO BE LIGHT BROOM FINISH AND SLOPING AWAY FROM CENTERS.



REVISIONS					
DATE	BY	DESCRIPTION	DATE	BY	DESCRIPTION



GOAL ASSOCIATES INC.
Certificate of Authorization No. 36887
14750 NW 77th Court, Suite 320
Miami, Florida 33176 (785) 400-3350
ANNA L. KIBOKO, P.E., P.T.O.E.
P.E. License No. 48923

DESIGNED BY	NAME	DATE	DRAWN BY	NAME	DATE
CHECKED BY			CHECKED BY		

SUPERVISED BY:



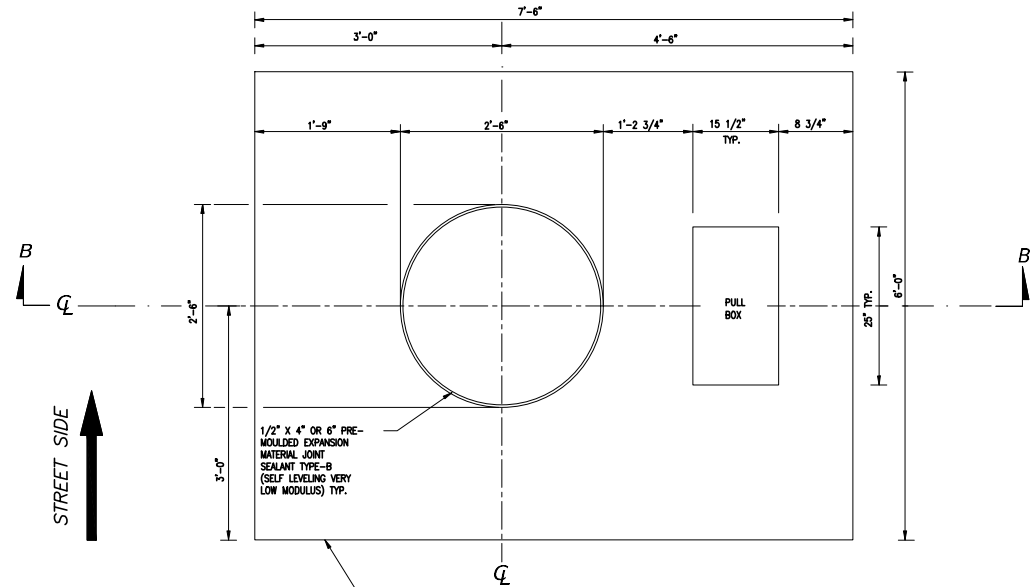
DEPARTMENT OF TRANSPORTATION
AND PUBLIC WORKS
HIGHWAY DIVISION
STEPHEN P. CLARK, CHIEF
101 NW 15
MIAMI, FLORIDA 33128

**SLAB DETAILS FOR
INTERMEDIATE
PULL BOX LOCATIONS 1**

THE OFFICIAL RECORD OF THIS SHEET IS THE ELECTRONIC FILE DIGITALLY SIGNED AND SEALED UNDER RULE 61G15-31.004, F.A.C.

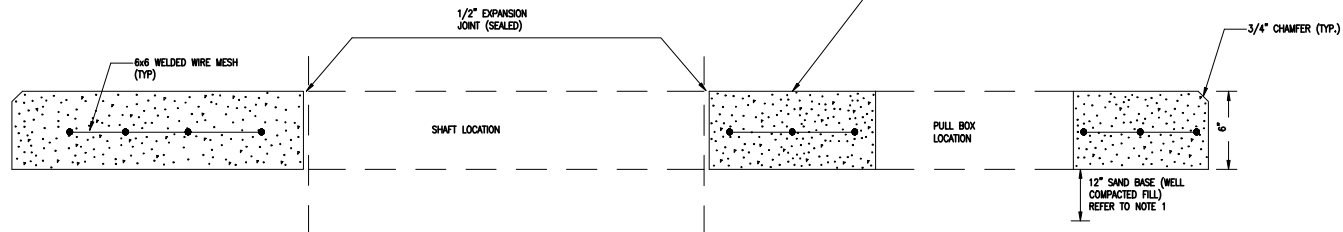
NOTES:

- 1- THIS DETAIL IS APPLICABLE FOR INSTALLATION IN SOD AREA AND NOT FOR SIDEWALK.
- 2- USE COMPACTED SELECT MATERIAL IN ACCORDANCE WITH FDOT STANDARD INDEX 505.
- 3- CONCRETE SHALL BE CLASS NS WITH A MINIMUM STRENGTH AT 28 DAYS OF $f'c=2.5$ KSI.
- 4- OUTSIDE EDGE OF SLAB SHALL BE CAST AGAINST FORMWORK.
- 5- THE PULL BOX SHOWN IS 13" X 24" (INTERIOR DIMENSIONS) & 15 1/2" X 25" (EXTERIOR DIMENSIONS); OTHERS APPROVED UNDER SECTION 635 OF THE STANDARD SPECIFICATIONS MAY BE USED.
- 6- SLABS TO BE PLACED AROUND ALL POLES AND PULL BOXES. IN URBAN AREAS OR WHERE SPACE IS LIMITED SLAB DIMENSIONS MAY BE ADJUSTED AS SHOWN IN THE PLANS.
- 7- CONCRETE FOR SLABS AROUND POLES AND PULL BOXES SHALL BE INCLUDED IN THE PRICE OF POLE OR PULL BOX.
- 8- THE EXPANSION JOINT SHALL CONSIST OF 1/2" OF CLOSED-CELL POLYETHYLENE FOAM EXPANSION MATERIAL. THE TOP 1/4" OF EXPANSION MATERIAL SHALL BE REMOVED AFTER POURING THE SLAB AND SEALED WITH AN APL APPROVED TYPE A SEALANT MEETING THE REQUIREMENTS OF SECTION 932.
- 9- THIS DETAIL IS APPLICABLE FOR: POLE NO. L-1, L-2, L-4, L-5, L-7 & L-12



SLAB DETAILS
N.T.S.

PER FDOT 17502 (SHEET 7 OF 7)
AND ON THE MARKING ON THE PREVIOUS SHEET 2 OF 3



SECTION B-B

REVISIONS					
DATE	BY	DESCRIPTION	DATE	BY	DESCRIPTION



GOAL ASSOCIATES INC.
Certificate of Authorization No. 36887
14790 NW 77th Court, Suite 300
Miami, Florida 33176 (785) 490-3360
ANALISA L. KIBOKO, P.E., P.T.O.E.
P.E. License No. 48923

DESIGNED BY	NAME	DATE	DRAWN BY	NAME	DATE
CHECKED BY			CHECKED BY		

SUPERVISED BY:



DEPARTMENT OF TRANSPORTATION
AND PUBLIC WORKS
HIGHWAY DIVISION
STEPHEN P. CLARK, CHIEF
101 NW 15
MIAMI, FLORIDA 33125

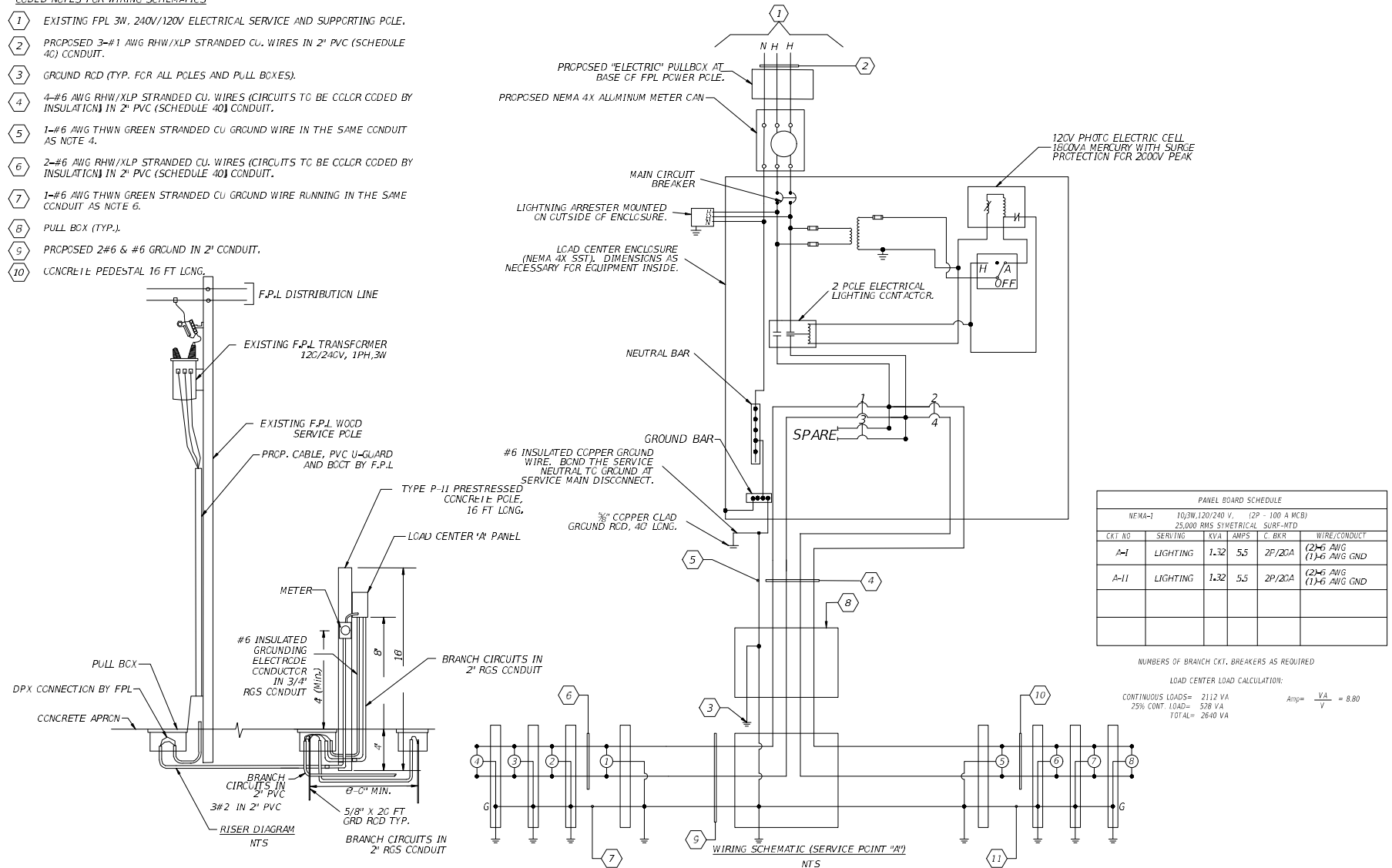
SLAB DETAILS FOR
INTERMEDIATE
PULL BOX LOCATIONS 2

WIRING SCHEMATIC (SERVICE POINT "A")

NTS

CODED NOTES FOR WIRING SCHEMATICS

- 1 EXISTING FPL 3W, 240V/120V ELECTRICAL SERVICE AND SUPPORTING POLE.
- 2 PROPOSED 3-#1 AWG RHW/XLP STRANDED CU. WIRES IN 2" PVC (SCHEDULE 40) CONDUIT.
- 3 GROUND RCD (TYP. FOR ALL POLES AND PULL BOXES).
- 4 4-#6 AWG RHW/XLP STRANDED CU. WIRES (CIRCUITS TO BE COLOR CODED BY INSULATION) IN 2" PVC (SCHEDULE 40) CONDUIT.
- 5 1-#6 AWG THWN GREEN STRANDED CU GROUND WIRE IN THE SAME CONDUIT AS NOTE 4.
- 6 2-#6 AWG RHW/XLP STRANDED CU. WIRES (CIRCUITS TO BE COLOR CODED BY INSULATION) IN 2" PVC (SCHEDULE 40) CONDUIT.
- 7 1-#6 AWG THWN GREEN STRANDED CU GROUND WIRE RUNNING IN THE SAME CONDUIT AS NOTE 6.
- 8 PULL BOX (TYP.).
- 9 PROPOSED 2#6 & #6 GROUND IN 2" CONDUIT.
- 10 CONCRETE PEDESTAL 16 FT LONG.



PANEL BOARD SCHEDULE					
NEMA-1 10/3W, 120/240 V, (2P - 100 A MCB) 25,000 RMS SYMMETRICAL SURF-MTD					
CKT NO	SERVING	KVA	AMPS	C. BKR	WIRE/CONDUIT
A-I	LIGHTING	1.32	5.5	2P/20A	(2)#6 AWG (1)#6 AWG GND
A-II	LIGHTING	1.32	5.5	2P/20A	(2)#6 AWG (1)#6 AWG GND

NUMBERS OF BRANCH CKT. BREAKERS AS REQUIRED

LOAD CENTER LOAD CALCULATION:

CONTINUOUS LOADS= 2112 VA
25% CONT. LOAD= 578 VA
TOTAL= 2690 VA

Ang= $\frac{VA}{V} = 8.80$

REVISIONS					
DATE	BY	DESCRIPTION	DATE	BY	DESCRIPTION



GOAL ASSOCIATES INC.
Certificate of Authorization No. 30697
14750 NW 77th Court, Suite 320
Miami, Florida 33196 (786) 405-3350
AMAZIA L. KIBIKO, P.E., PTOE,
P.E. License No. 45523

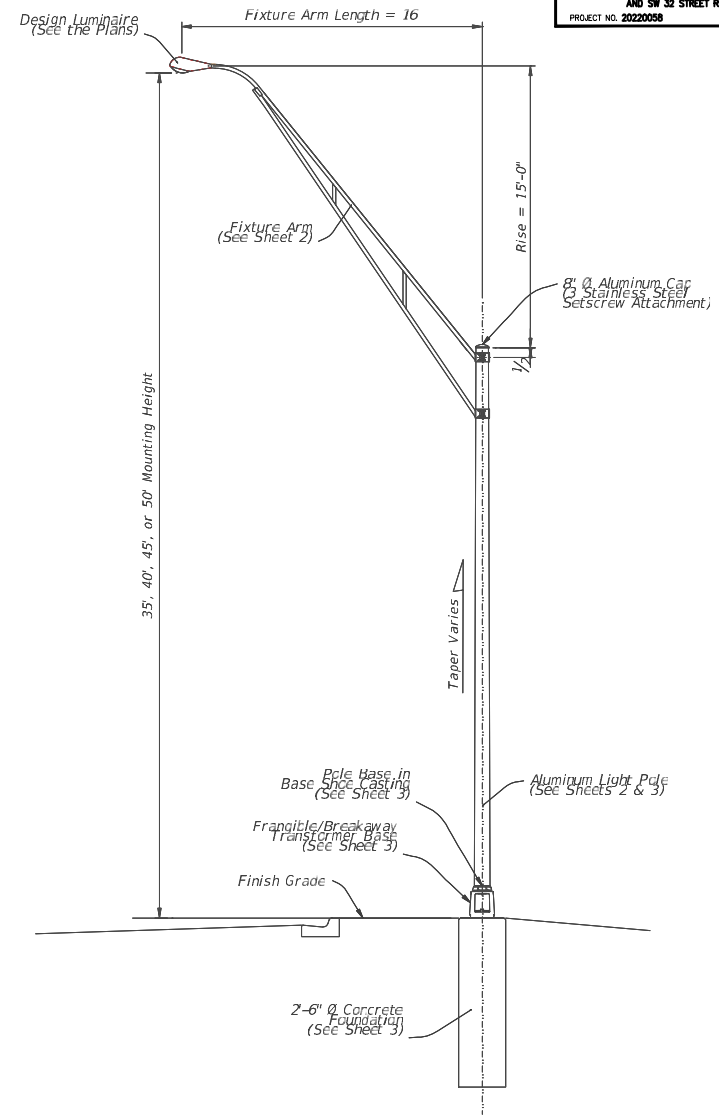
DESIGNED BY	NAME	DATE	DRAWN BY	NAME	DATE
CHECKED BY					
SUPERVISED BY					

MIAMI-DADE COUNTY
DEPARTMENT OF TRANSPORTATION AND PUBLIC WORKS
HIGHWAY DIVISION
STREET & GUYTON CENTER
1111 NW 1 ST
MIAMI, FL 33128

SERVICE POINT DETAILS

GENERAL NOTES:

1. **LUMINAIRE LOAD:** Poles are designed to support the following:
 - a. Luminaire Effective Projected Area (EPA): 1.55 SF
 - b. Luminaire Weight: 75 Lb.
2. **SHOP DRAWINGS:** This Index is considered fully detailed; only submit shop drawings for minor modifications not included in the Plans.
3. **MATERIALS:**
 - A. Pole, Arm Tubes, Strut Tubes, Bars, Plates, Stiffeners: ASTM B221, Alloy 6063-T6 or Alloy 6061-T6
 - B. Pole Connection Extrusion Clamp: ASTM B221, Alloy 6061-T6
 - C. Caps and Covers: ASTM B26, Alloy 319-F
 - D. Aluminum Weld Material: ER 4043
 - E. Transformer Frangible Base Materials: ASTM B26 or ASTM B108, Alloy 356-T6
 - F. Base, Base Nuts and Washers:
 - a. Base: ASTM F436 Type 1
 - b. Nuts: ASTM A563 Grade DH Heavy-Hex
 - c. Washer: ASTM F436 Type 1
 - G. Anchor Bolts, Nuts, and Washers:
 - a. Anchor Bolts: ASTM F1554 Grade 55
 - b. Nuts: ASTM A563 Grade A Heavy-Hex
 - H. Clamp Hardware: See Sheet
 - I. Stainless Steel Cap Fasteners: ASTM F593 Alloy Group 2, Condition C, 1/4" or 5/16"
 - J. Nut Covers: ASTM B26 (319-F)
 - K. Concrete: Class II
 - L. Reinforcing Steel: Specification 415
4. **FABRICATION:**
 - A. Weld Arm and Pole Alloy in the T4 temper using 4043 filler. Age the Arm and Pole artificially to the T6 temper after welding.
 - B. Transverse welds are only allowed at the base.
 - C. Light Pole Properties: Taper as required to provide a round top C.D. of 8" and a base C.D. of 10" for all pole heights. Portions of the pole near the base shoe and at the arm connections may be held constant to simplify fabrication. Maintain pole wall thickness of 0.315" min.
 - D. Fixture Arm Tube Properties: See Sheet 2.
 - E. Provide a knock at top of pole for electrical wires.
 - F. Perform all welding in accordance with AWS D1.2.
 - G. Identification Tag: (Submit details for approval.)
 - a. 4" x 4" (Max) aluminum identification tag.
 - b. Locate on the inside of the transformer base and visible from the door opening.
 - c. Secure to transformer base with 1/4" diameter stainless steel rivets or screws.
 - d. Include the following information on the ID Tag:
 1. Financial Project ID
 2. Pole Height
 3. Manufacturer's Name
5. **COATINGS/FINISH:**
 - A. Pole and Arm Finish: 50 grit satin rubbed.
 - B. Galvanize Steel Bolts, Screws, Nuts and Washers: ASTM F2329
 - C. Hot Dip Galvanize miscellaneous steel items: ASTM A123
6. **CONSTRUCTION:**
 - A. Foundation: Specification 455, except payment for the foundation is included in the cost of the pole.
 - B. Frangible Base, Base Shoe, and Pole Connection Extrusion Clamp:
 - a. Certify that the Pole Connection Extrusion Clamp, Frangible Transformer Base, and Base Shoe Design are capable of providing the required capacity, assuming a design wind speed of 180 mph.
 - b. Certify the Base conforms to the FHWA required AASHTO Frangibility Requirements, tested under NCHRP Report 350 Guidelines (e.g., Akron Foundry TB1-17).
 - c. Do not erect pole without Luminaire attached.



LIGHT POLE - ELEVATION

REVISIONS					
DATE	BY	DESCRIPTION	DATE	BY	DESCRIPTION

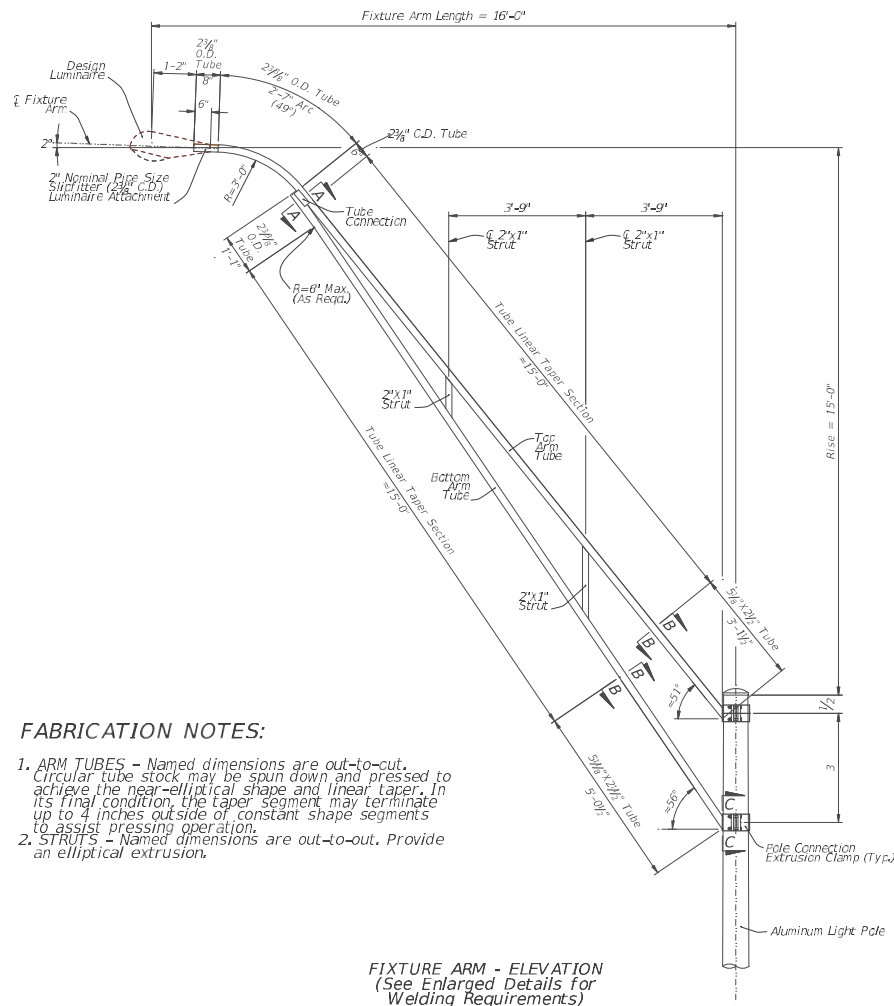


GOAL ASSOCIATES INC.
Certificate of Authorization No. 30697
14750 NW 77th Court, Suite 320
Miami, Florida 33216 (786)-808-3330

DESIGNED BY	NAME	DATE	DRAWN BY	NAME	DATE
CHECKED BY					
SUPERVISED BY					

MIAMI-DADE COUNTY	DEPARTMENT OF TRANSPORTATION AND PUBLIC WORKS HIGHWAY DIVISION SIGNED: P. CARL DOWNS DATE: 11/18/21 SCALE: AS SHOWN
-------------------	---

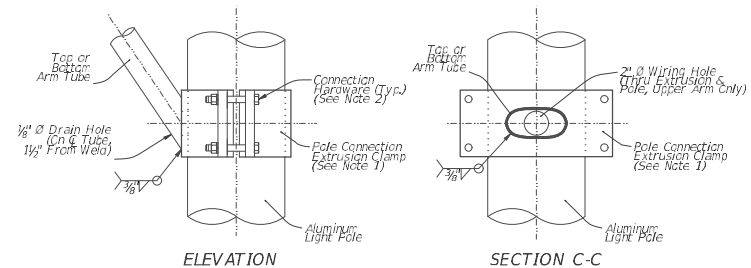
UTILITY CONFLICT POLE



FABRICATION NOTES:

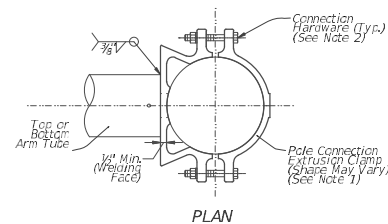
1. ARM TUBES - Named dimensions are out-to-cut. Circular tube stock may be spun down and pressed to achieve the near-elliptical shape and linear taper. In its final condition, the taper segment may terminate up to 4 inches outside of constant shape segments to assist pressing operation.
2. STRUTS - Named dimensions are out-to-out. Provide an elliptical extrusion.

FIXTURE ARM - ELEVATION
(See Enlarged Details for
Welding Requirements)



ELEVATION

SECTION C-C

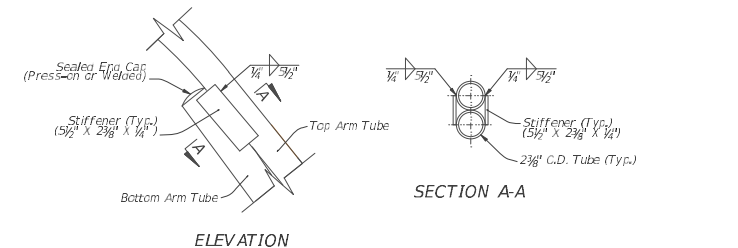


PLAN

POLE CONNECTION NOTES:

1. The Pole Connection Extrusion Clamp shown may vary by manufacturer. Provide a design that meets the requirements of General Note 6.0.0, including the connection hardware sizing.
2. Provide connection hardware with 131NC A191 Grade 316 stainless steel 1/4 inch min. O.D. nuts and 1/4 inch x 1/2 inch washers. Use flat washers per ASTM F430 & F594G, Alloy Group 2, Condition CW1.

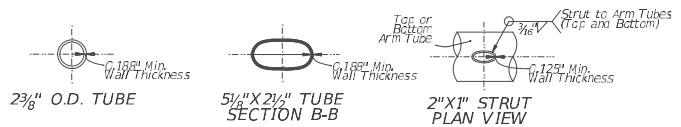
POLE CONNECTION DETAILS



ELEVATION

SECTION A-A

TUBE CONNECTION DETAILS



2 1/2" O.D. TUBE

5/8" X 2 1/2" TUBE

2" X 1" STRUT

TUBE SECTION DETAILS

FIXTURE ARM ASSEMBLY

REVISIONS					
DATE	BY	DESCRIPTION	DATE	BY	DESCRIPTION

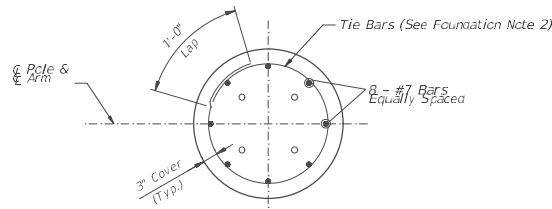


GOAL ASSOCIATES INC.
Certificate of Authorization No. 30687
14750 NW 77th Court, Suite 320
Miami, Florida 33196 (785) 500-3350
AMAZON L. KIBIKO, P.E., PTOE.
P.E. License No. 49023

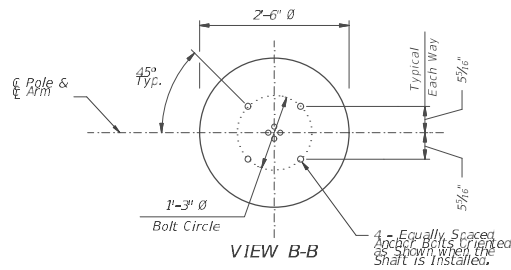
DESIGNED BY	NAME	DATE	DRAWN BY	NAME	DATE

DEPARTMENT OF TRANSPORTATION AND PUBLIC WORKS HIGHWAY DIVISION	MIAMI-DADE COUNTY

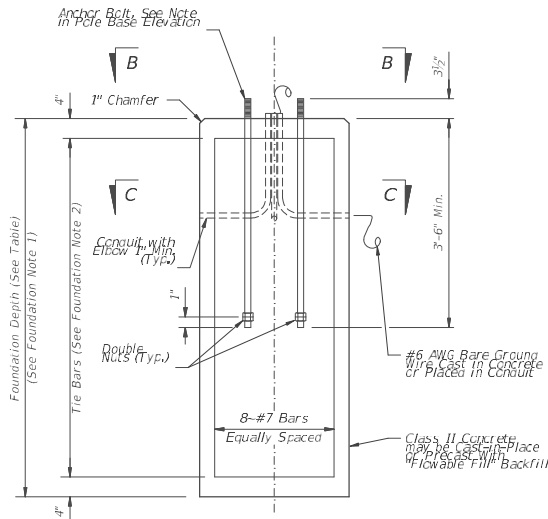
UTILITY CONFLICT POLE



SECTION C-C



VIEW B-B

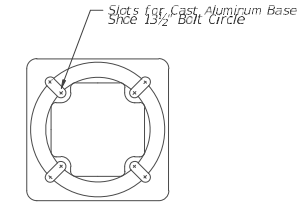


FOUNDATION ELEVATION

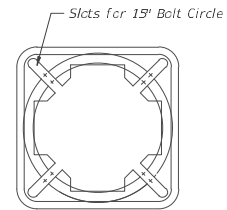
FOUNDATION DEPTHS		
Luminaire Mounting Height	≤ 40 Ft.	45-50 Ft.
Depth	8'-0"	9'-0"

FOUNDATION NOTES:

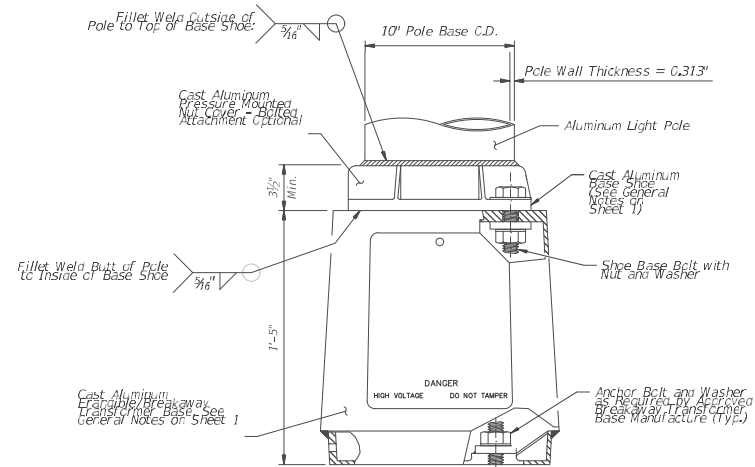
1. Depths shown are for slopes equal to or flatter than 1:1. For slopes steeper than 1:1, add 1' to foundation depths shown.
2. Foundation tie bars: #4 tie bars @ 12" center (max.) for pole for which shaft @ 8" dia. 3" max turn top and 1" max turn bottom.
3. For precast foundations, the circular cross section shown may be substituted with an octagonal shape. The oct to oval distance between 4-8" depending on the reinforcement diameter and center of reinforcement diameter and center of cover.



TOP VIEW TRANSFORMER BASE



BOTTOM VIEW TRANSFORMER BASE



POLE BASE ELEVATION

FOUNDATION AND BASE DETAILS

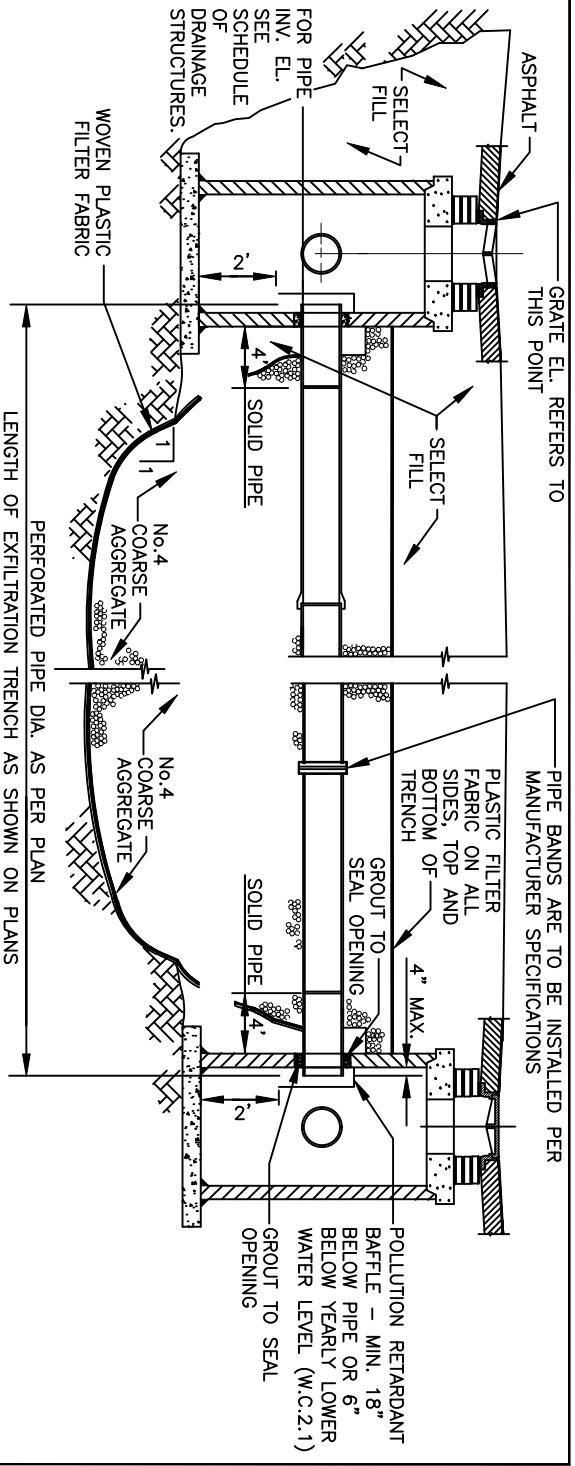
REVISIONS					
DATE	BY	DESCRIPTION	DATE	BY	DESCRIPTION

GOAL ASSOCIATES INC.
Certificate of Authorization No. 30691
14750 NW 77th Court, Suite 220
Miami, Florida 33016 (786) 400-3360
AMANDA L. KEBICKO, P.E., PTOE
P.E. License No. 49023

DESIGNED BY	NAME	DATE	DRAWN BY	NAME	DATE
CHECKED BY					
SUPERVISED BY					

MIAMI-DADE COUNTY
DEPARTMENT OF TRANSPORTATION AND PUBLIC WORKS
HIGHWAY DIVISION
STEPHEN P. DEANE, CENTER
MAN, P.E. License No. 30691

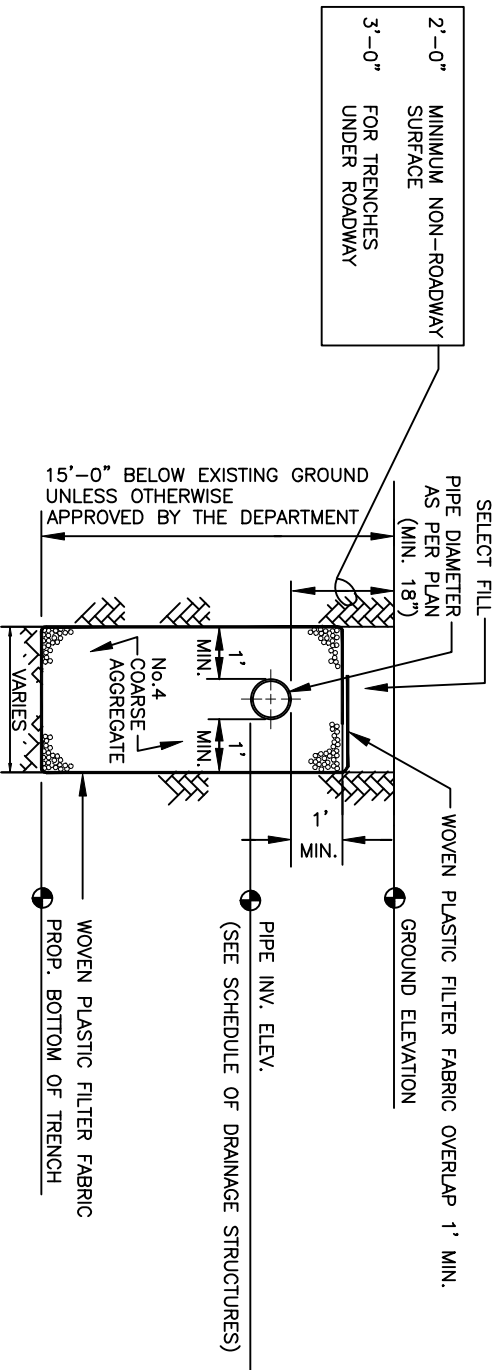
UTILITY CONCLIT POLE



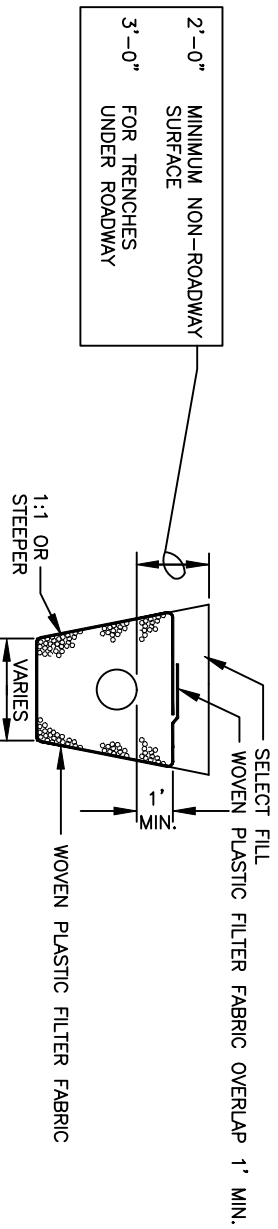
NOTE

1-AFTER THE COARSE AGGREGATE HAS BEEN PLACED TO THE PROPER ELEVATION IT SHALL BE CAREFULLY WASHED DOWN WITH CLEAN WATER, OR TAMPERED, TO ALLOW FOR INITIAL SETTLEMENT THAT MAY OCCUR. IF SETTLEMENT DOES TAKE PLACE, ADDITIONAL No. 4 COARSE AGGREGATE SHALL BE ADDED TO RESTORE THE PROPER ELEVATION SO THAT THE EXFILTRATION TRENCH IS COMPLETED IN ACCORDANCE WITH THE DETAILS.

LONGITUDINAL SECTION



TRANSVERSE SECTION



ALT. TRANS. SECTION*

* MAY BE USED IN AREAS WHERE TRENCH WALLS WILL NOT STAND VERTICAL, OR WHERE CAVE-IN BELOW THE WATER TABLE IS LIKELY TO OCCUR. TO BE USED AT THE ENGINEER'S DISCRETION.

NOTES (CONTINUED ON NEXT PAGE)

1. PLASTIC FILTER FABRIC SHALL BE WOVEN MONOFLAMENT POLYPROPYLENE GEOTEXTILE. PERMITTIVITY SHALL BE GREATER THAN 0.50 SEC AND FLOW RATE GREATER OR EQUAL TO 50 gal/min.
2. MAXIMUM EXFILTRATION RATE WHICH CAN BE USED IN CALCULATING FRENCH DRAIN LENGTH IS 0.1 cfs/ft.

MIAMI-DADE COUNTY	APPROVED 04/16/2015	REVISED 02/08/2011 09/26/2012 10/19/2012	STANDARD STORM DRAINAGE DETAIL EXFILTRATION TRENCH (FRENCH DRAIN)	SD 1.1 SHEET 1 OF 2
DEPARTMENT OF TRANSPORTATION AND PUBLIC WORKS				

NOTES CONTINUED

- 3. THE MINIMUM PIPE DIAMETER FOR DRAINAGE SYSTEM WITHIN THE ROADWAY RIGHT-OF-WAY SHALL BE 18 INCHES. 15 INCH PIPE MAY BE USED IN PRIVATE ROADWAYS.
- 4. NO TREES TO BE PLANTED WITHIN 5 FEET OF THE EDGE OF THE TRENCH.
- 5. TYPE "P" S.D. 2.6 STRUCTURE IS RECOMMENDED FOR SMALL DRAINAGE AREAS LESS THAN 0.2 ACRE PER CATCH BASIN.
- 6. TYPE "J" S.D. 2.6 STRUCTURE IS RECOMMENDED FOR AREAS LARGER THAN 0.2 ACRE.
- 7. ALL INVERTS OF PERFORATED PIPES TO BE AT MEAN HIGH OCTOBER WATER TABLE W.C. 2.2.
- 8. PIPES CAN BE ALLOWED BELOW MEAN HIGH OCTOBER WATER TABLE DUE TO UTILITY CONFLICTS OR IN ORDER TO PROVIDE THE REQUIRED MINIMUM COVER.
- 9. NEOPRENE GASKET REQUIRED FOR BAFFLES ON ALL CONTACT EDGES MOUNTED ON WALL.
- 10. OIL AND GREASE BAFFLE IS REQUIRED FOR ALL DRAINAGE STRUCTURES PRECEDING AN OUTFALL OR EXFILTRATION TRENCHES, IN PROJECTS LOCATED IN WELLFIELD PROTECTION AREAS, ROAD INTERSECTIONS WITH TRAFFIC LIGHTS, AND LARGE PARKING LOTS WHICH INCLUDE 15 PARKING SPACES OR MORE.
- 11. OIL AND GREASE BAFFLE MAY BE WAIVED IN SUBURBAN RESIDENTIAL AREAS.

GENERAL NOTES FOR PIPE CULVERTS

CONTRACTOR HAS THE OPTION OF INSTALLING ANY PIPE MEETING THE REQUIREMENTS OF SECTION 443-2 OF THE FDOT STANDARD SPECIFICATIONS FOR ROAD AND BRIDGE CONSTRUCTION AS LONG AS THE MANUFACTURER IS LISTED, AT THE TIME OF PIPE INSTALLATION, IN FDOT'S LIST OF PRODUCERS WITH ACCEPTED QUALITY CONTROL PROGRAMS. PIPES WITH LESS THAN A 100-YEAR CERTIFICATION CANNOT BE USED ON SECTION LINE, HALF SECTION LINE, COLLECTOR ROADWAYS, AND ARTERIALS. 50-YEAR PIPE CERTIFICATION REQUIRED FOR ALL OTHER MINOR/LOCAL ROADWAYS.

MINIMUM NUMBER OF PERFORATION IN PIPE CULVERTS			
PIPE DIAMETER (inches)	OUTER SHELL		LINER
	No. of $\frac{3}{8}$ " Dia. Holes (PER LIN. FT. OF PIPE)		No. of $\frac{5}{8}$ " Dia. Holes (PER LIN. FT. OF PIPE)
15	100		50
18	120		60
24	160		80
30	200		100
36	240		120
42	275		140
48	315		150
54	355		180
60	395		200
72	470		235
84	550		275

NOTE:

PERFORATIONS SHALL BE UNIFORMLY SPACED AROUND THE FULL PERIPHERY OF THE PIPE TO WITHIN 4" OF EACH END OF EACH LENGTH OF PIPE. THE NUMBER OF PERFORATIONS PER LINEAR FOOT OF PIPE AND THE DIAMETER OF THE PERFORATIONS SHALL BE AS SHOWN ON THE ABOVE TABLE.

METROPOLITAN
DADE COUNTY
PUBLIC WORKS
DEPARTMENT

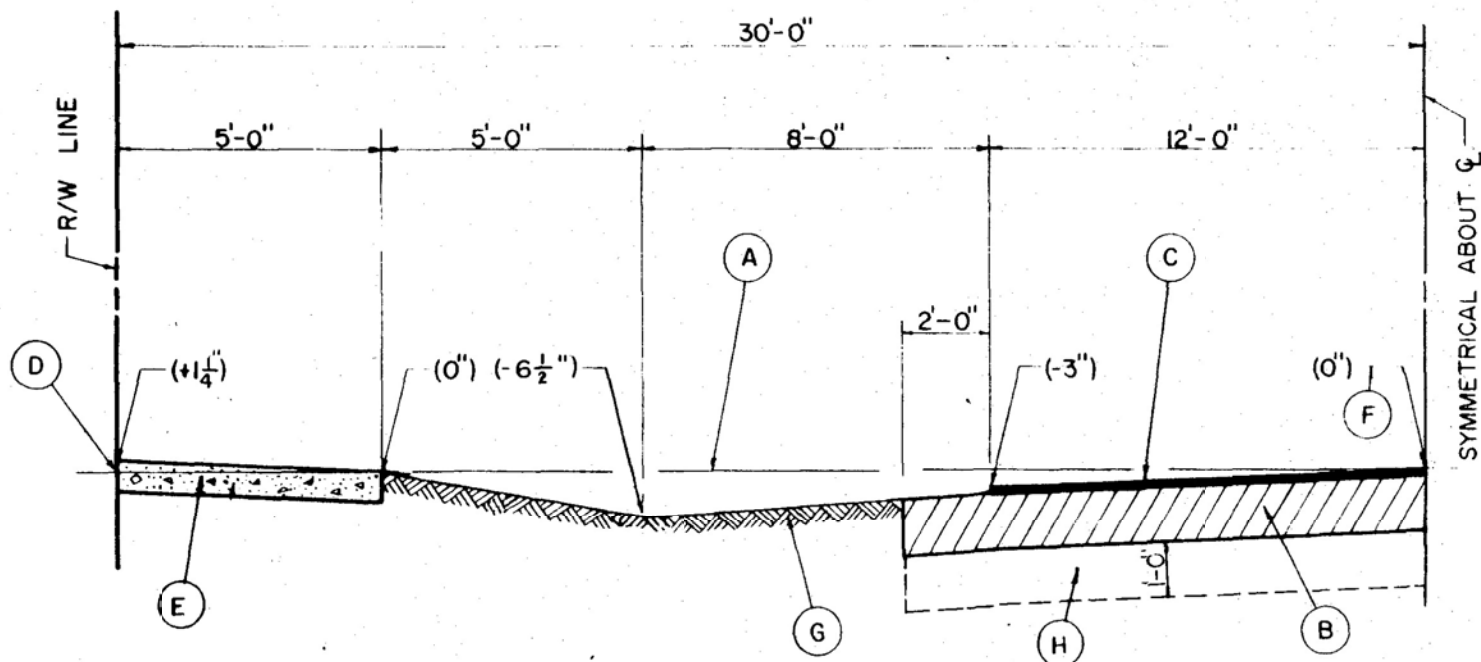
APPROVED
6/5/61

REVISED
8/5/83
6/4/86

STANDARD ROAD DETAIL
60' R/W - 2 LANES
SWALE

R
2.1
SHEET 1 OF 1

WATER CONTROL		SEC. D 4
STABILIZING		SEC. 33
CONC. SIDEWALK	R-13.1	SEC. 145
ASPHALTIC CONCRETE		SEC. 133
BASE COURSE		SEC. 51
ITEM	CROSS REF.	SPEC. REF.



- (A) LEVEL LINE
- (B) BASE COURSE, PRIMED ENTIRE WIDTH
- (C) ASPHALTIC CONCRETE SURFACE COURSE 1" THICK
- (D) RIGHT-OF-WAY LINE AT OR ABOVE FLOOD CRITERIA
- (E) CONCRETE SIDEWALK WHERE REQUIRED
- (F) OFFSET FROM LEVEL LINE
- (G) SWALE (SOLID SOD), SEE R-146 FOR SPECIAL DRAINAGE CONDITIONS
- (H) STABILIZED SUBGRADE

NOTE: PRIVATE DRIVEWAY APPROACHES TO
ALWAYS BE A STRAIGHT SLOPE.