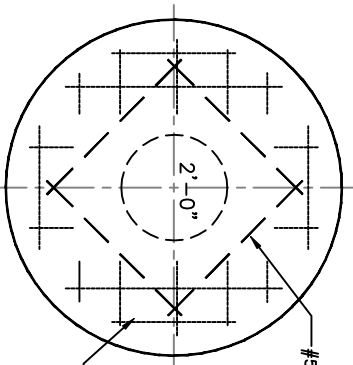
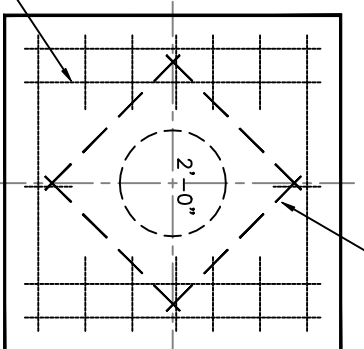


# P-71

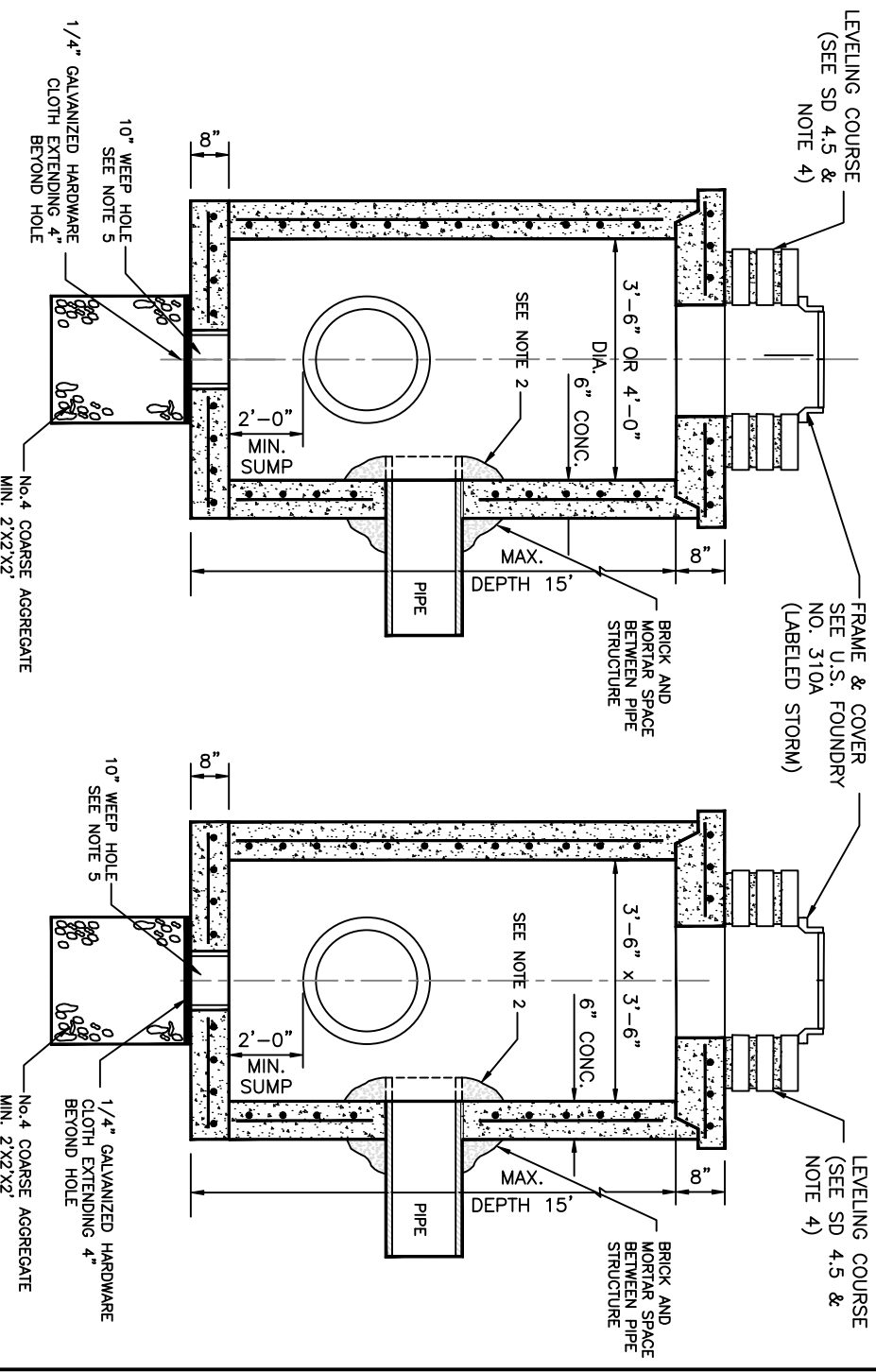


ROUND TOP

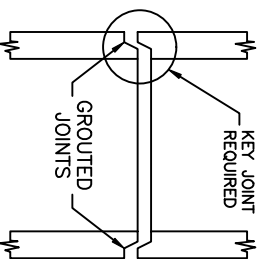


SQUARE TOP

REINFORCEMENT AS PER  
TABLE ON SHEET 4 OF 4



SECTION



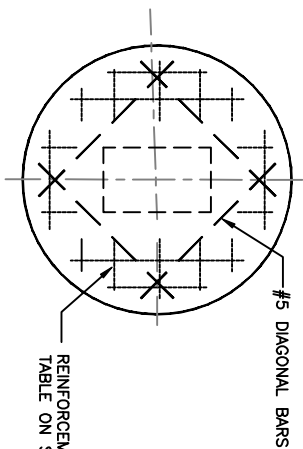
CONSTRUCTION JOINT

(OPTIONAL)

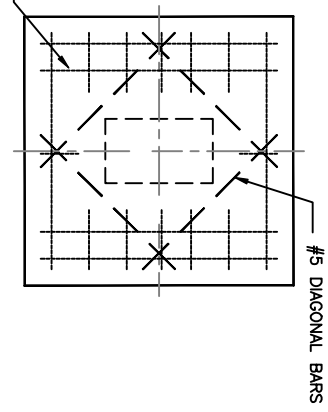
## NOTES:

- 1.- CAST TOP SLAB TO FIT WALL USED.
- 2.- PIPES MAY EXTEND INTO CATCH BASIN A MAXIMUM OF 4".
- 3.- USE 4,000 psi CONCRETE. (MINIMUM), MAXIMUM W/C=0.53, GRADE 60 STEEL FOR REBAR AND GRADE 65 FOR WWF.
- 4.- A SMOOTH LINE OF MORTAR 1/2" THICK INSIDE AND OUTSIDE.
- 5.- WEEP HOLES ARE TO BE USED WHEN THE YEARLY LOWEST WATER ELEVATION IS ABOVE THE TOP OF THE BOTTOM SLAB OF THE STRUCTURE.

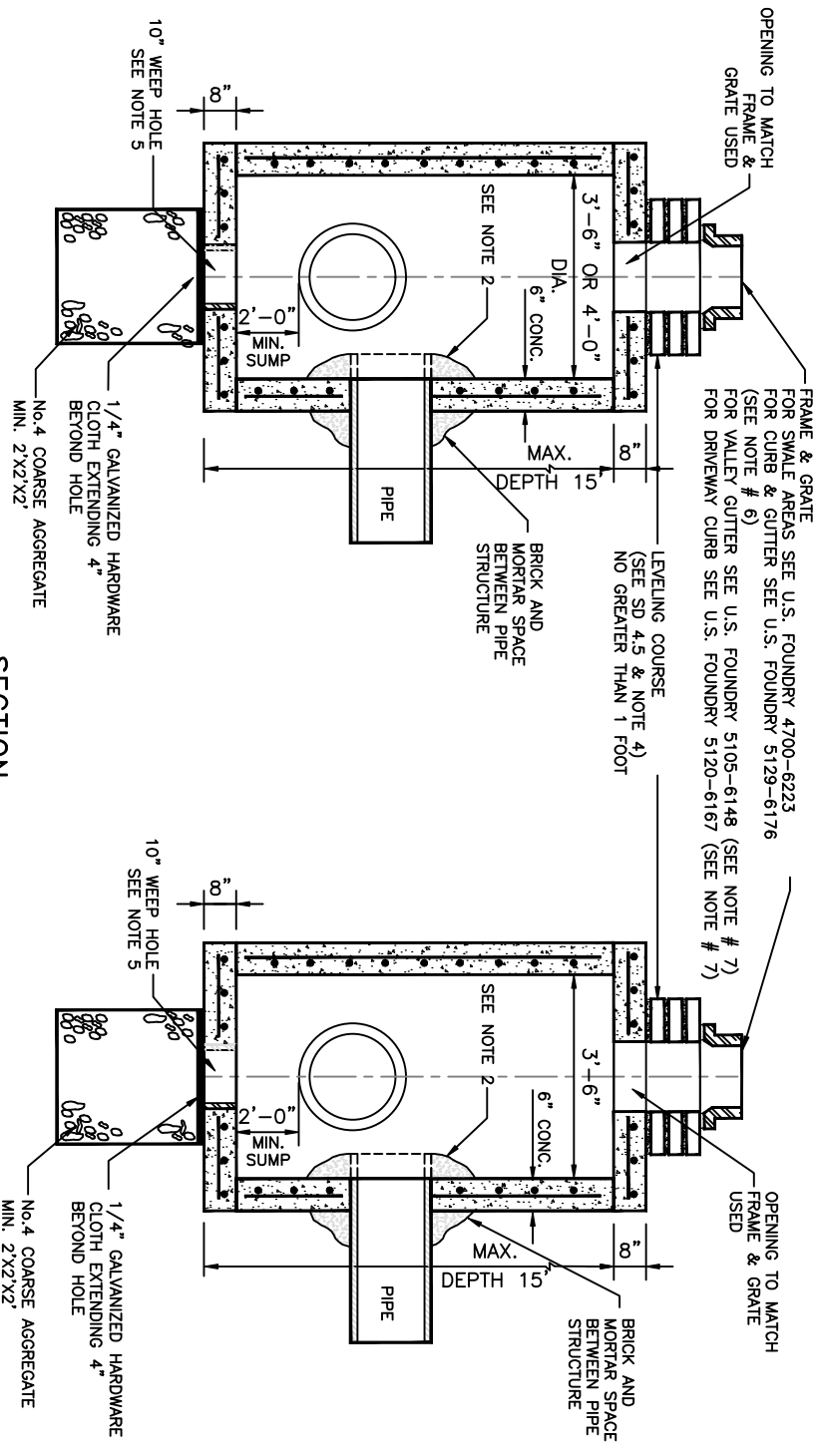
MIAMI-DADE COUNTY	APPROVED 5/8/2018	REVISED 5/8/2018	STANDARD STORM DRAINAGE DETAIL MANHOLE AND INLET (TYPE P)	SD 2.7 SHEET 1 OF 4
DEPARTMENT OF TRANSPORTATION AND PUBLIC WORKS				



ROUND TOP



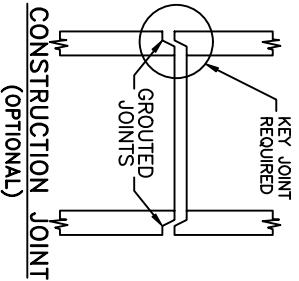
SQUARE TOP



SECTION

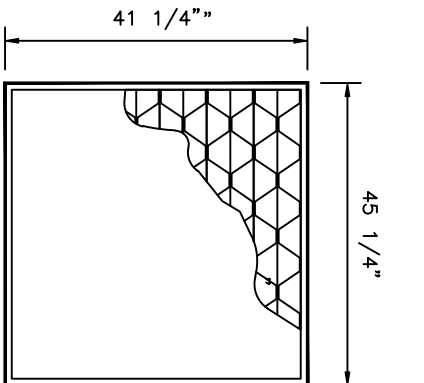
NOTES:

- 1.- CAST TOP SLAB TO FIT WALL USED.
- 2.- PIPES MAY EXTEND INTO CATCH BASIN A MAXIMUM OF 4".
- 3.- USE 4,000 psi CONCRETE. (MINIMUM), MAXIMUM W/C=0.53, GRADE 60 STEEL FOR REBAR AND GRADE 65 FOR WWF.
- 4.- A SMOOTH LINE OF MORTAR 1/2" THICK INSIDE AND OUTSIDE.
- 5.- WEEP HOLES ARE TO BE USED WHEN THE YEARLY LOWEST WATER ELEVATION IS ABOVE THE TOP OF THE BOTTOM SLAB OF THE STRUCTURE.
- 6.- USF 5129-6176 MAY ONLY USED WHEN STRUCTURES ARE TO BE PLACED WITHIN THE RADIUS OF A CORNER AND ITS USE MUST BE APPROVED BY THE DEPARTMENT. THE USE OF THIS FRAME AND GRATE IS NOT INTENDED TO REPLACE STANDARD CURB INLET TOPS. FOR CURB INLETS PLEASE REFER TO FDOT DESIGN STANDARDS INDEX 210 AND 211. INSTALLATION IN OTHER LOCATIONS IS NOT PERMITTED UNLESS APPROVED BY THE DEPARTMENT AS A RESULT OF MITIGATING CIRCUMSTANCES.



MIAMI-DADE COUNTY DEPARTMENT OF TRANSPORTATION AND PUBLIC WORKS	APPROVED 5/8/2018	REVISED 5/8/2018	STANDARD STORM DRAINAGE DETAIL MANHOLE AND INLET (TYPE P)	SD 2.7 SHEET 2 OF 4
---	----------------------	---------------------	---	---------------------------

# TYPE P-10



## STEEL GRATING

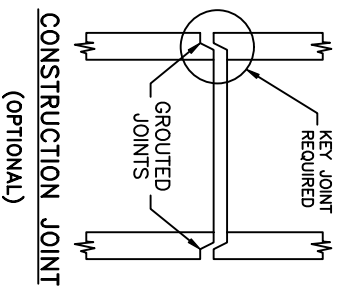
U.S. FOUNDRY NO. 6646  
 GRATE (or EQUAL)  
 STRAIGHT BARS  $6" \times \frac{1}{4}"$   
 RETICULINE BARS  $1\frac{1}{4}" \times \frac{3}{16}"$   
 WEIGHT 445 lbs. (APPROX.)

### NOTE:

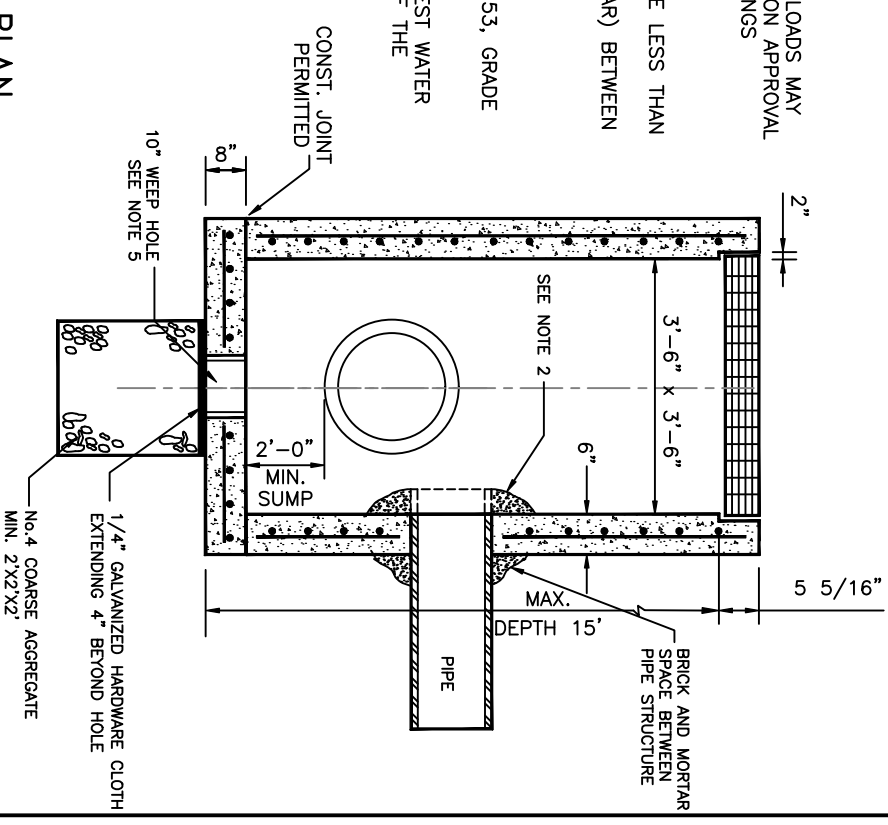
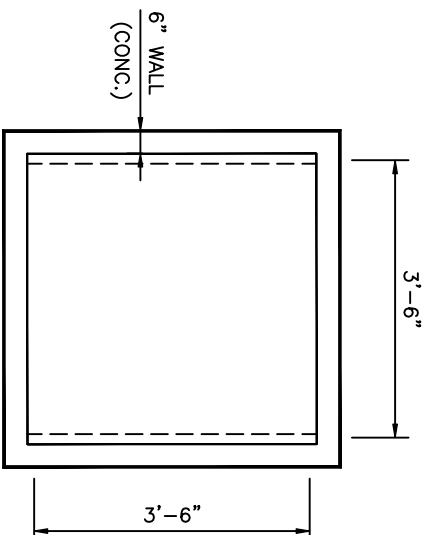
- ANY GRATING THAT IS CAPABLE OF SUPPORTING H-20 LOADS MAY BE SUBSTITUTED FOR THE U.S. FOUNDRY NO. 6646 UPON APPROVAL OF THE DEPARTMENT PROVIDING IT MEETS THE FOLLOWINGS CONDITIONS:

a-MANUFACTURER MUST BE LISTED IN FDOT'S QPL.  
 b-THE NET OPEN AREA OF THE GRATE MUST NOT BE LESS THAN THAT OF THE U.S. FOUNDRY NO. 6646.  
 c-THE MAXIMUM DISTANCE (MEASURED PERPENDICULAR) BETWEEN BARS DOES NOT EXCEED 3".

- PIPES MAY EXTEND INTO CATCH BASIN MAXIMUM OF 4".
- USE 4,000 psi CONCRETE (MINIMUM), MAXIMUM W/C=0.53, GRADE 60 STEEL FOR REBAR AND GRADE 65 FOR WWF.
- WEEP HOLES ARE TO BE USED WHEN THE YEARLY LOWEST WATER ELEVATION IS ABOVE THE TOP OF THE BOTTOM SLAB OF THE STRUCTURE.



CONSTRUCTION JOINT  
 (OPTIONAL)



PLAN

MIAMI-DADE COUNTY	APPROVED 5/8/2018	REVISED 5/8/2018	STANDARD STORM DRAINAGE DETAIL MANHOLE AND INLET (TYPE P)	SD 2.7 SHEET 3 OF 4
DEPARTMENT OF TRANSPORTATION AND PUBLIC WORKS				

### SQUARE STRUCTURE

Standard Detail	Width (ft)	Length (ft)	Height (ft)	Wall Thickness (in)	Wall Steel	Top Slab Thickness (in)	Top Slab Steel	Bottom Slab Thickness (in)	Bottom Slab Steel
2.7	3.5	3.5	0.0 - 5.0	6.0	<u>#4@10"H</u> #4@10"V	8.0	<u>#4@7"</u> E.W.	8.0	<u>#4@10"</u> E.W.
2.7	3.5	3.5	5.1 - 10.0	6.0	<u>#4@9"H</u> #4@10"V	8.0	<u>#4@6"</u> E.W.	8.0	<u>#4@10"</u> E.W.
2.7	3.5	3.5	10.1-15.0	6.0	<u>#5@6"H</u> #4@10"V	8.0	<u>#4@6.5"</u> E.W.	8.0	<u>#4@10"</u> E.W.

### ROUND STRUCTURE

Standard Detail	Dia. (ft) Min.	Dia. (ft) Max.	Height (ft)	Wall Thickness (in)	Wall Steel	Top Slab Thickness (in)	Top Slab Steel	Bottom Slab Thickness (in)	Bottom Slab Steel
2.7	3.5	4.0	0.0 - 5.0	6.0	8 x 8 W20 or #4@10"E.W.	8.0	<u>#4@7"</u> E.W.	8.0	<u>#4@10"</u> E.W.
2.7	3.5	4.0	5.1 - 10.0	6.0	8 x 8 W20 or #4@10"E.W.	8.0	<u>#4@6"</u> E.W.	8.0	<u>#4@10"</u> E.W.
2.7	3.5	4.0	10.1 - 15.0	6.0	8 x 8 W20 or #4@10"E.W.	8.0	<u>#4@6.5"</u> E.W.	8.0	<u>#4@10"</u> E.W.

MIAMI-DADE  
COUNTY  
DEPARTMENT OF  
TRANSPORTATION  
AND PUBLIC WORKS

APPROVED  
5/8/2018

REVISED  
5/8/2018

STANDARD STORM DRAINAGE DETAIL  
MANHOLE AND INLET  
(TYPE P )

SD  
2.7  
SHEET 4 OF 4

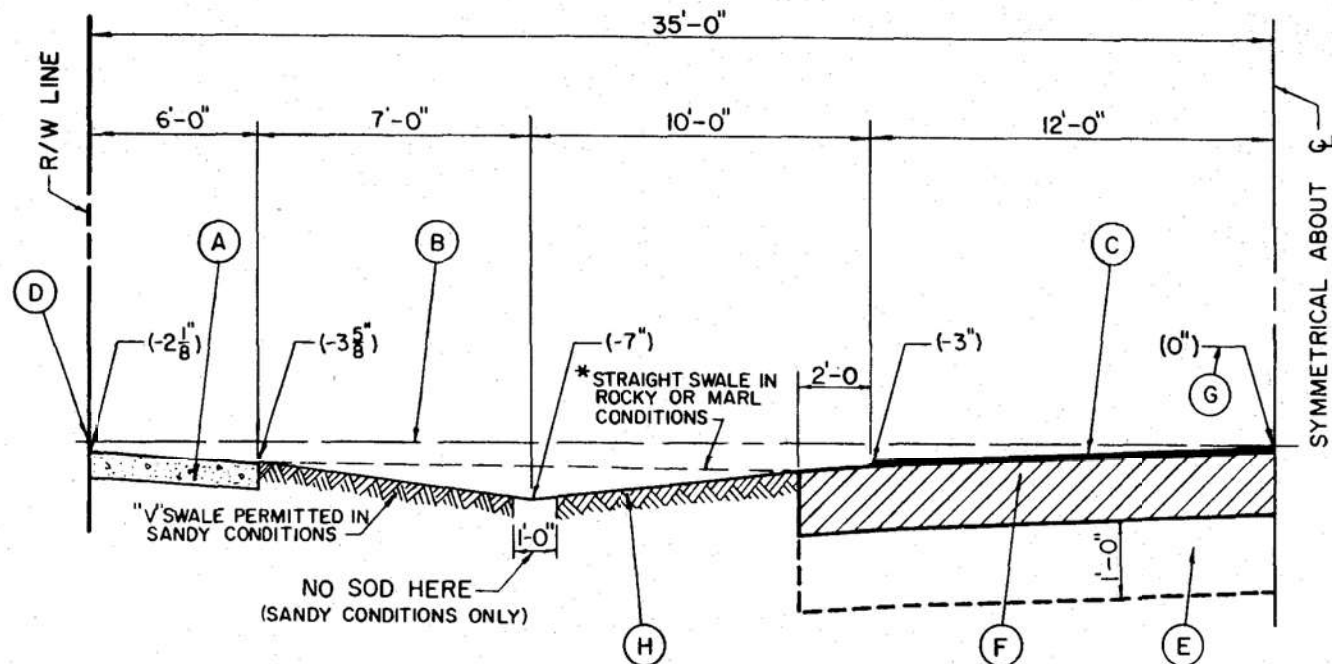
METROPOLITAN  
DADE COUNTY  
PUBLIC WORKS  
DEPARTMENT

APPROVED  
6/5/61

REVISED  
8/5/83

STANDARD ROAD DETAIL  
70' R/W - 2 LANES  
SWALE

R  
3.1  
SHEET 1 OF 1



- (A) CONCRETE SIDEWALK WHERE REQUIRED
- (B) LEVEL LINE
- (C) ASPHALTIC CONCRETE SURFACE COURSE 1" THICK
- (D) RIGHT-OF-WAY LINE AT OR ABOVE FLOOD CRITERIA
- (E) STABILIZED SUBGRADE
- (F) BASE COURSE, PRIMED ENTIRE WIDTH
- (G) OFFSET FROM LEVEL LINE
- (H) SWALE (SOLID SOD), SEE R-14.6 FOR SPECIAL DRAINAGE CONDITIONS

\* PRIVATE DRIVEWAY APPROACHES  
TO ALWAYS BE A STRAIGHT SLOPE.

STABILIZING		SEC. 33
CONC. SIDEWALK	R-13.1	SEC. 145
ASPHALTIC CONCRETE		SEC. 133
BASE COURSE		SEC. 51-54
ITEM	CROSS REF.	SPEC. REF.

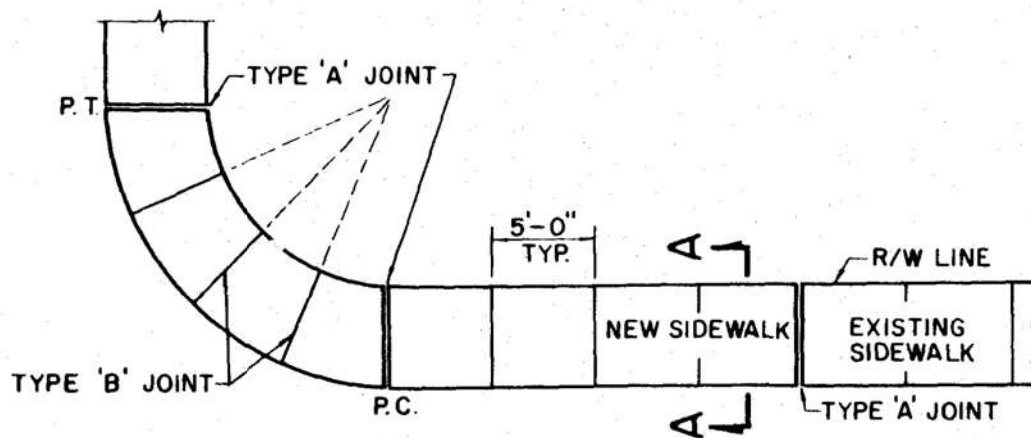
METROPOLITAN  
DADE COUNTY  
PUBLIC WORKS  
DEPARTMENT

APPROVED  
6/5/61

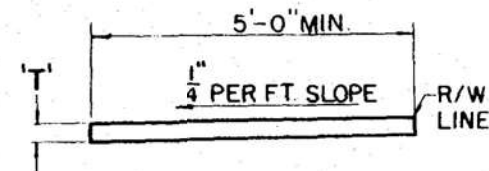
REVISED  
5/17/72  
2/22/77  
6/4/86

STANDARD ROAD DETAIL  
SIDEWALK CONSTRUCTION

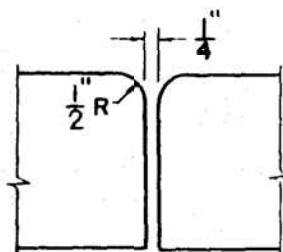
R 13.1  
SHEET 1 OF 1



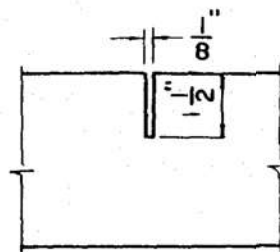
PLAN



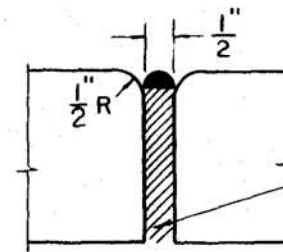
SECTION A-A



TYPE 'A'  
(OPEN TYPE JOINTS)



TYPE 'B'  
(SAWED JOINTS)



TYPE 'C'  
(EXPANSION JOINTS)

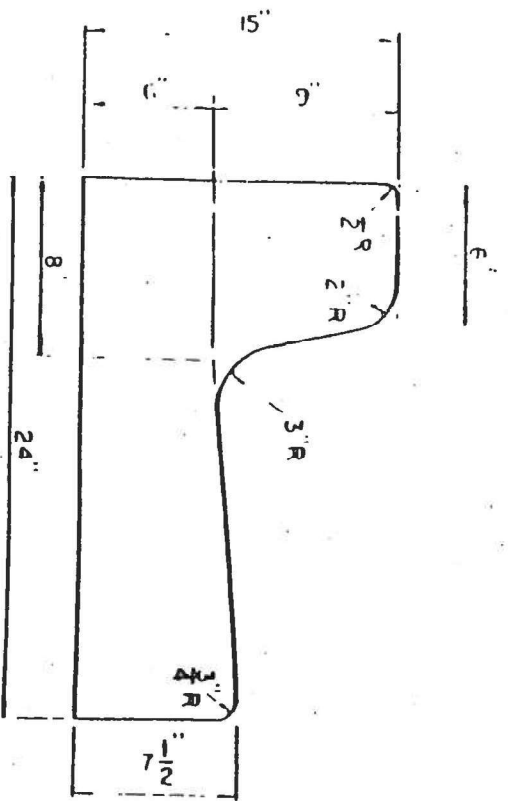
SIDEWALK JOINTS

TABLE OF SIDEWALK THICKNESS - 'T'	
LOCATION	T
RESIDENTIAL AREAS	4"
AT DRIVEWAYS AND OTHER AREAS	6"

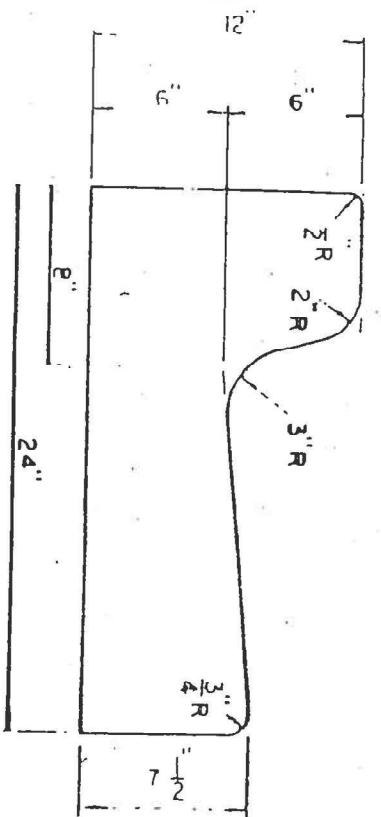
TABLE OF SIDEWALK JOINTS	
TYPE	LOCATION
'A'	P.C. AND P.T. OF CURVES. JUNCTION OF EXISTING AND NEW SIDEWALKS.
'B'	5'-0" CENTER TO CENTER ON SIDEWALKS.
'C'	*WHERE SIDEWALK ABUTS CONCRETE CURBS, DRIVEWAYS, AND SIMILAR STRUCTURES.

ST. INTERSECTION C & G	R-15.2	
CONC. SIDEWALK		SEC. 145
ITEM	CROSS REF.	SPEC. REF.

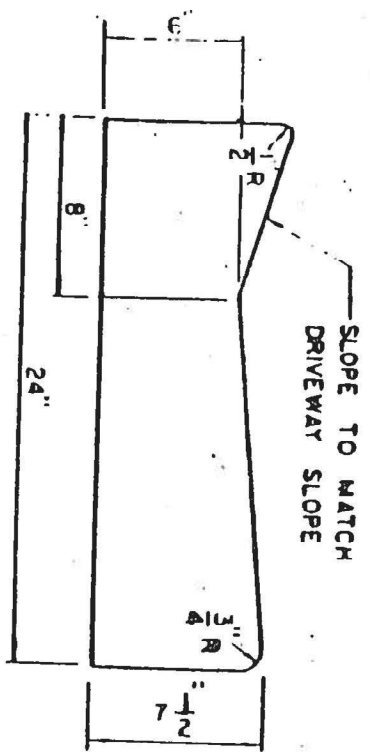
\* AT THE DISCRETION  
OF THE ENGINEER



9" CURB AND GUTTER



6" CURB AND GUTTER  
(TYPE F)



DRIVEWAY CURB

BY MT. ENDINGS	R-22.1
DRIVEWAY CURB	
CURB & GUTTER	
ITEM	CROSS REF. SPEC. REF.

TROPOLITAN  
ADE COUNTY  
PUBLIC WORKS  
DEPARTMENT

APPROVED  
6/5/85

REVISED

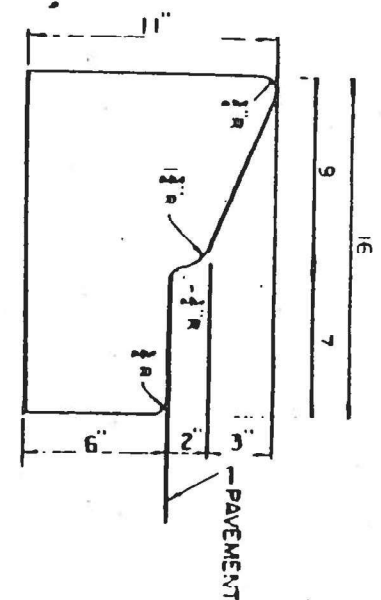
6/4/85

1/1/86

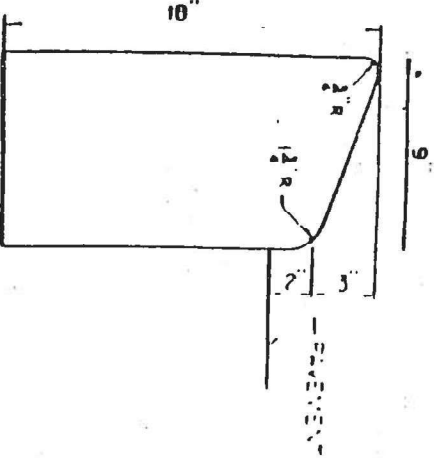
STANDARD ROAD DETAIL  
CURB AND GUTTER  
SECTIONS

R  
14.1

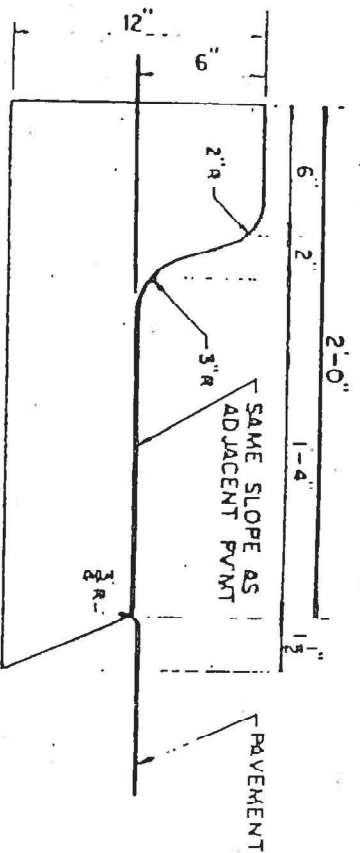
SHEET 1 OF 1



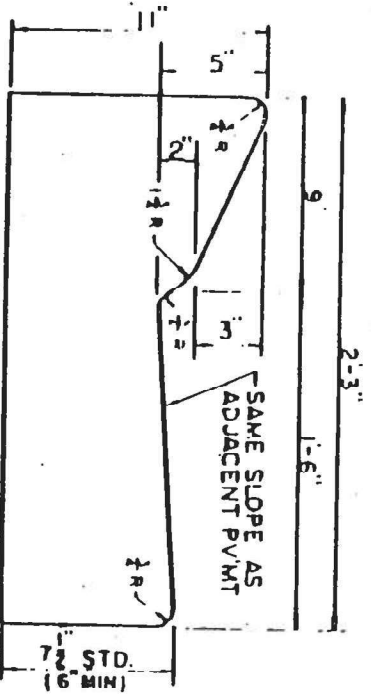
**TYPE 'A' MEDIAN CURB**



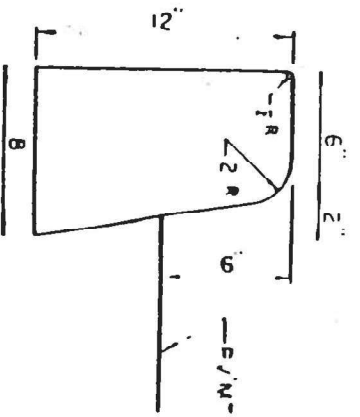
**TYPE 'B' MEDIAN CURB**



**TYPE 'C' MEDIAN CURB**



**TYPE 'E' MEDIAN CURB & GUTTER**



**TYPE 'D' MEDIAN CURB**

PAVEMENT ENDINGS	R-22
MEDIAN CURB	
STRAIGHT CURB	
ITEM	CROSS SPEC REF

STANDARD ROAD DETAIL

CURB SECTIONS

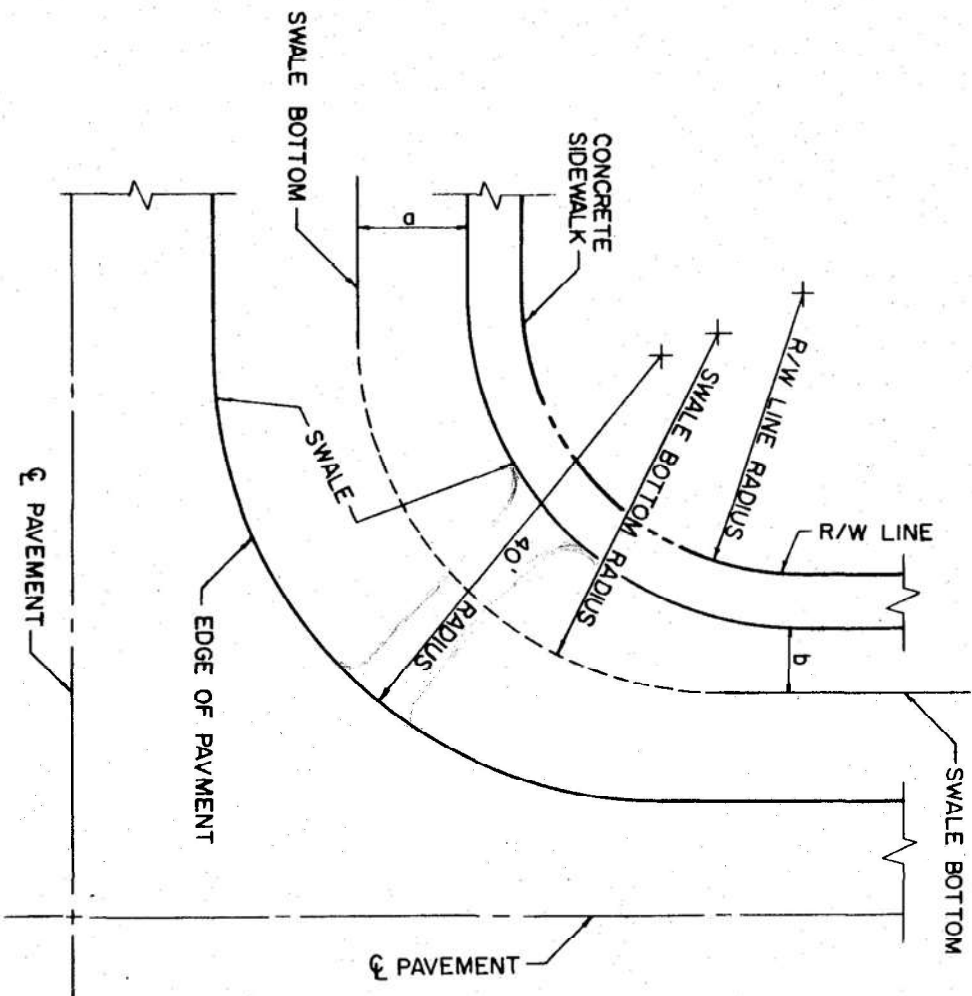
METROPOLITAN  
DADE COUNTY  
PUBLIC WORKS  
DEPARTMENT

APPROVED  
6/5/6

REVISED  
8/3/66  
3/2/78  
4/2/82

R  
14.2  
SHEET OF

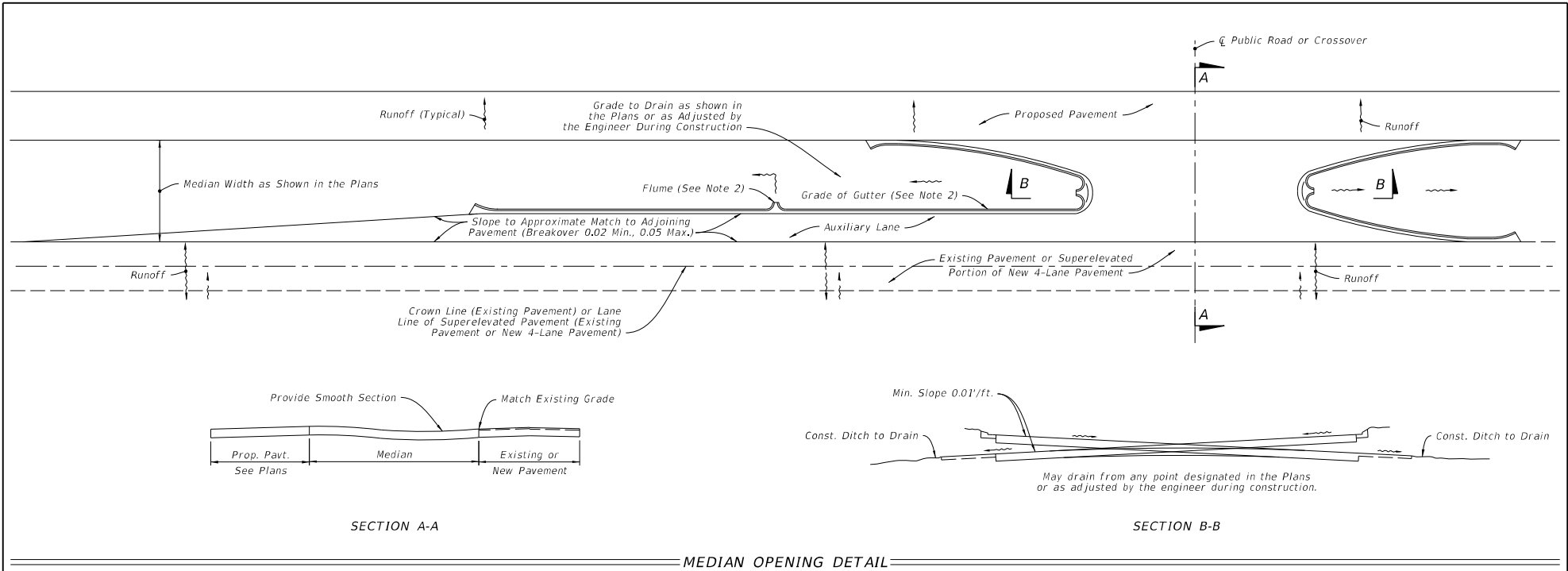




$$\text{SWALE BOTTOM RADIUS} = \left( \frac{a+b}{2} \right) + (\text{R/W LINE RADIUS} + \text{SIDEWALK WIDTH})$$

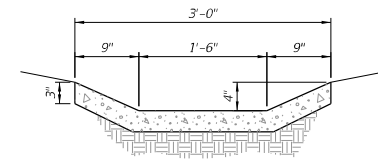
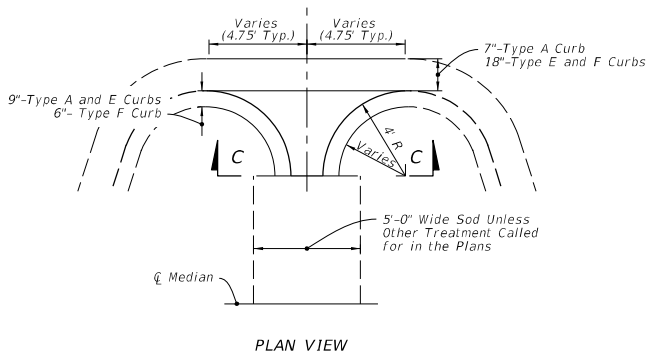
CONC. SIDEWALK	R-13.1	SEC. 145	
ITEM	CROSS REF.	SPEC. REF.	

METROPOLITAN DADE COUNTY PUBLIC WORKS DEPARTMENT	APPROVED 6/5/61	REVISED	STANDARD ROAD DETAIL STREET INTERSECTION SWALE	R 15.1 SHEET 1 OF 1
---	--------------------	---------	--	---------------------------



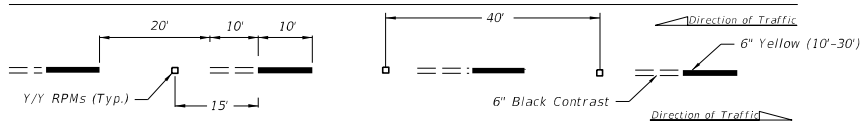
#### NOTES:

1. These details are to apply to projects which provide for the conversion of 2-lane sections to 4-lane divided highway sections and for superelevated sections of new 4-lane divided highways. Layout above is illustration only.
2. See Plans for flume length and location and grade of gutter. Flume locations may be adjusted by the Engineer during construction. If necessary to provide minimum gutter grade, warp surface of the median pavement within limits of the median curb or curb and gutter.

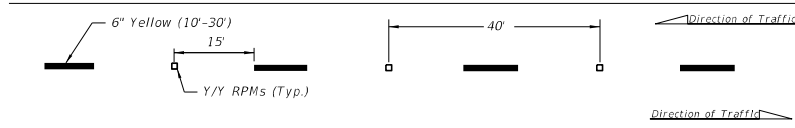


#### FLUME DETAIL

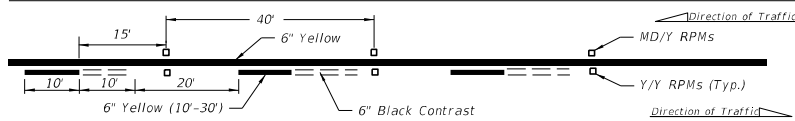
LAST REVISION 11/01/21	DESCRIPTION:	FDOT FY 2024-25 STANDARD PLANS	MEDIAN OPENING FLUME	INDEX 520-010	SHEET 1 of 1
------------------------------	--------------	--------------------------------------	----------------------	------------------	-----------------



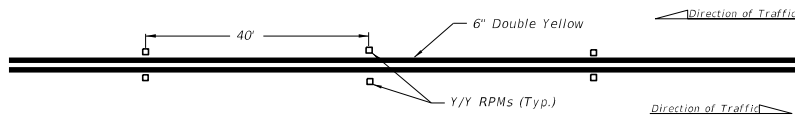
ALTERNATING SKIP LINE



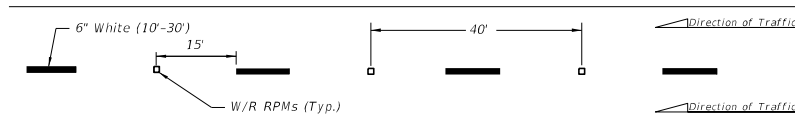
SKIP LINE



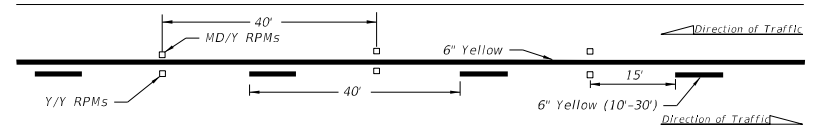
SOLID LINE WITH ALTERNATING SKIP



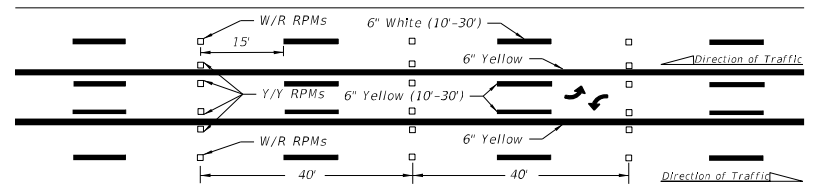
DOUBLE SOLID LINE



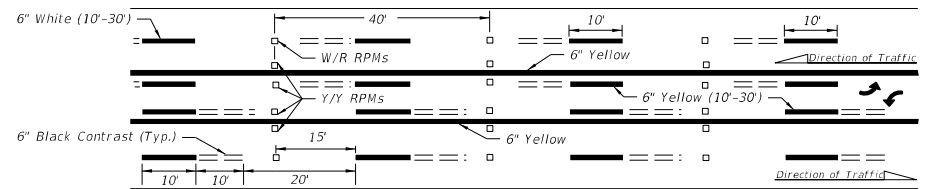
MULTILANE



SOLID LINE WITH SKIP



SKIP LINE WITH TWO-WAY LEFT TURN LANE



ALTERNATING SKIP LINE WITH TWO-WAY LEFT TURN LANE

**NOTES:**

1. Offset all RPMs 1" from solid longitudinal lines unless otherwise noted or shown.
2. Spacing may be reduced for sharp curves if required.
3. For placement of RPMs on ramps, see Index 711-003.
4. Make the traffic face of the RPM the same color as the pavement marking that it is supplementing.

**LEGEND:**

B/C = BACK OF CURB  
 EOP = EDGE OF PAVEMENT  
 RPM = RAISED PAVEMENT MARKER  
 W/R = WHITE/RED RPM  
 Y/Y = YELLOW/YELLOW RPM  
 Y/R = YELLOW/RED RPM  
 MD/Y = MONO-DIRECTIONAL YELLOW RPM

LAST  
REVISION  
11/01/18

DESCRIPTION:

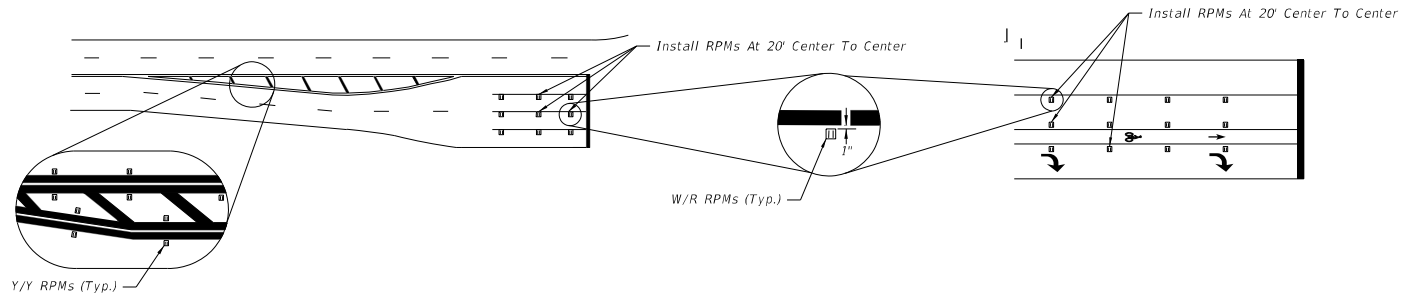


FY 2023-24  
STANDARD PLANS

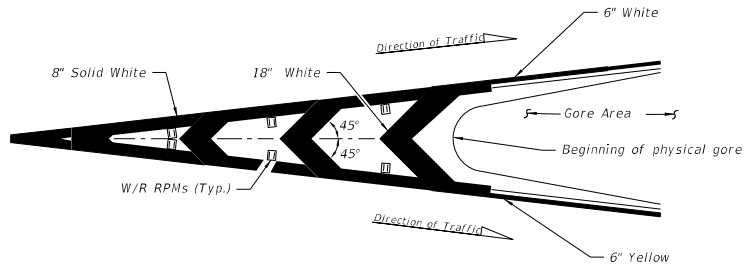
**TYPICAL PLACEMENT OF  
RAISED PAVEMENT MARKERS**

INDEX  
706-001

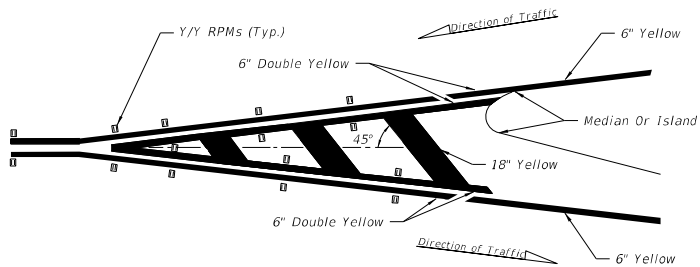
SHEET  
1 of 6



### RPM PLACEMENT AT INTERSECTIONS



### RPM PLACEMENT AT TRAFFIC CHANNELIZATION AT GORE (Traffic Flows In Same Direction)



### RPM PLACEMENT AT TRAFFIC SEPARATION (Traffic Flows In Opposite Direction)

#### NOTE:

Center the Raised Pavement Markers between chevrons and crosshatching.

#### LEGEND:

B/C = BACK OF CURB

EOP = EDGE OF PAVEMENT

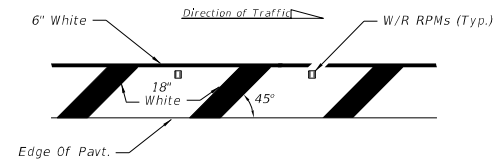
RPM = RAISED PAVEMENT MARKER

W/R = WHITE/RED RPM

Y/Y = YELLOW/YELLOW RPM

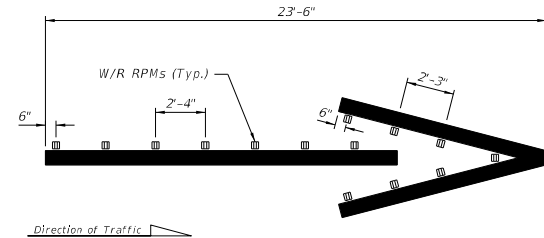
Y/R = YELLOW/RED RPM

MD/Y = MONO-DIRECTIONAL  
YELLOW RPM



Right side of the roadway shown. For the left side of roadway, the pavement marking is yellow and oriented opposite hand.

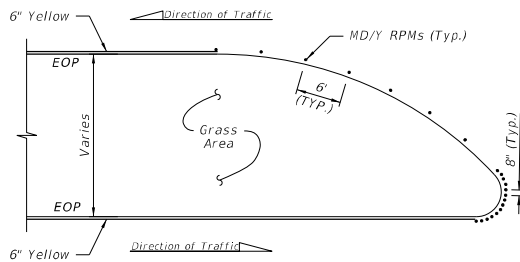
### RPM PLACEMENT AT ROADSIDE CROSSHATCHING



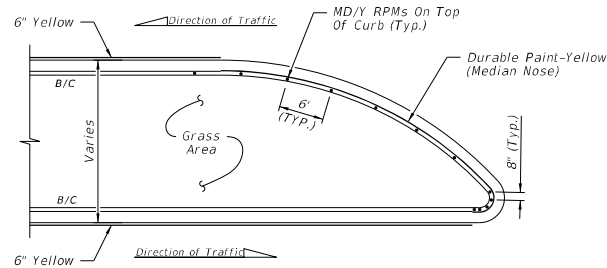
### WRONG-WAY ARROW

6/8/2023 7:25:06 AM

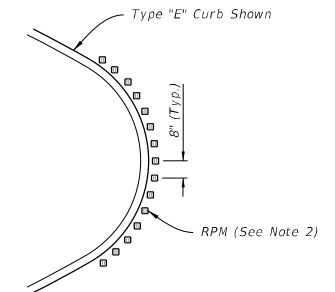
LAST REVISION 11/01/21	DESCRIPTION:	FDOT	FY 2023-24 STANDARD PLANS	TYPICAL PLACEMENT OF RAISED PAVEMENT MARKERS	INDEX 706-001	SHEET 2 of 6
------------------------------	--------------	------	------------------------------	---	------------------	-----------------



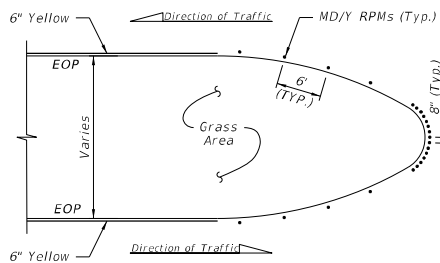
DETAIL "A"



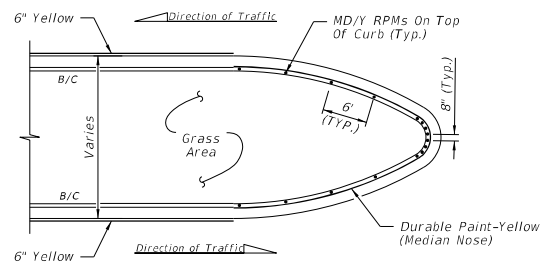
DETAIL "D"



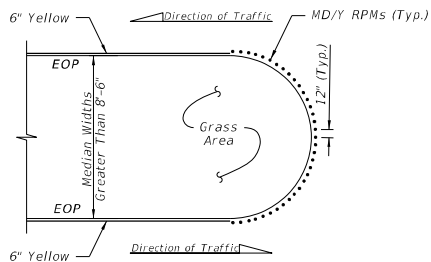
RPM ORIENTATION DETAIL



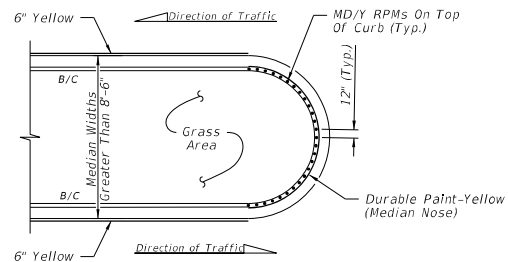
DETAIL "B"



DETAIL "E"



DETAIL "C"



DETAIL "F"

FLUSH MEDIAN OPENINGS  
(Type "E" Curb Similar. See Note 1)

TYPE "D" OR "F" CURB

RPM PLACEMENT AT MEDIAN OPENINGS  
(When called for in the Plans)

POSTED SPEED LIMIT MPH	"Y" FEET
30 OR LESS	10
35	20
40	20
45	30
50 OR MORE	40

**LEGEND:**

B/C = BACK OF CURB

EOP = EDGE OF PAVEMENT

RPM = RAISED PAVEMENT MARKER

W/R = WHITE/RED RPM

Y/Y = YELLOW/YELLOW RPM

Y/R = YELLOW/RED RPM

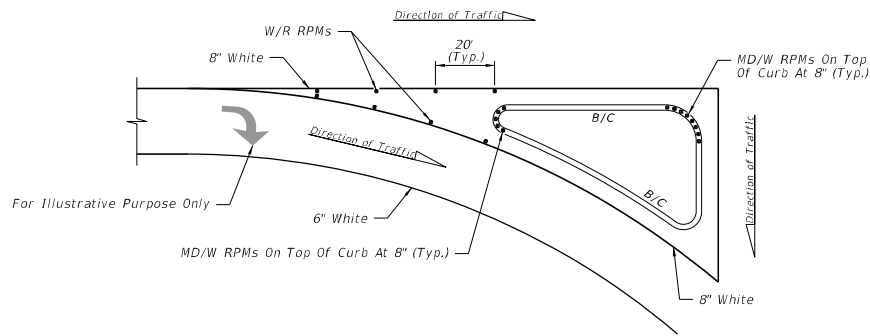
MD/Y = MONO-DIRECTIONAL  
YELLOW RPM

**NOTES:**

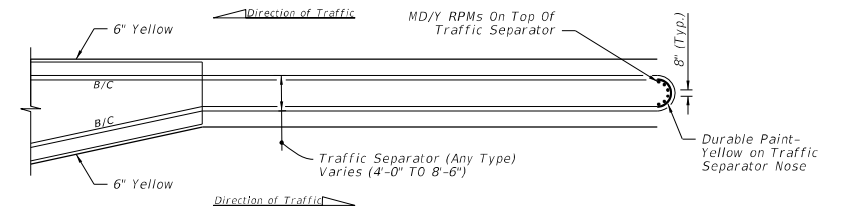
1. For Type "E" Curb, install RPMs along the pavement edge marking using the same spacing shown.
2. Orient traffic faces of RPMs in curb median radii to be parallel to direction of travel lanes.
3. Use epoxy adhesive to install RPMs on concrete median nose curbs.
4. Install RPMs on clean, unpainted surface. Do not paint curb surface where RPMs will be placed.

10/6/2022 2:40:51 PM

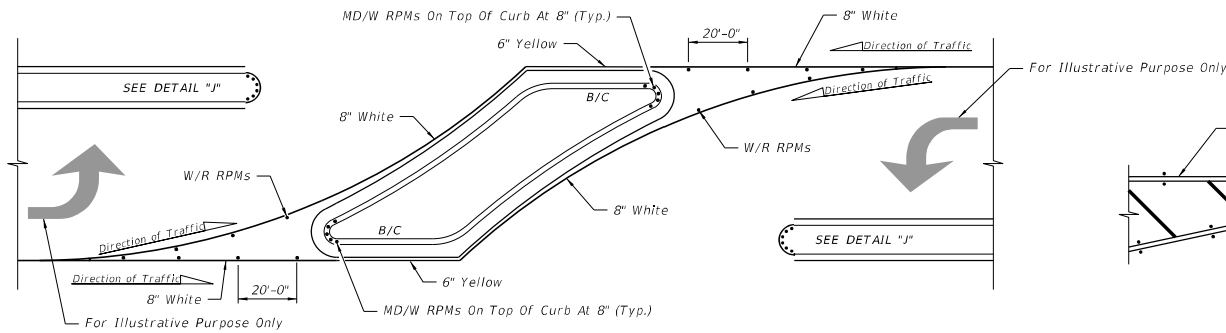
LAST REVISION 11/01/21	DESCRIPTION:	FDOT FY 2023-24 STANDARD PLANS	TYPICAL PLACEMENT OF RAISED PAVEMENT MARKERS	INDEX 706-001	SHEET 3 of 6
------------------------------	--------------	--------------------------------------	---	------------------	-----------------



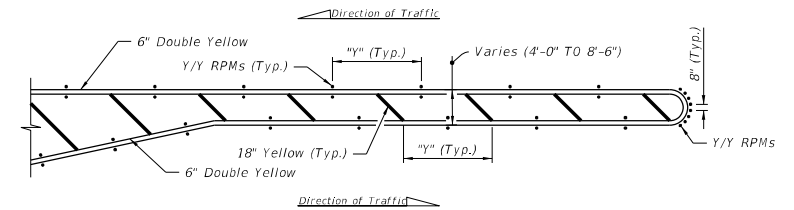
DETAIL "G"



DETAIL "J"



DETAIL "H"



DETAIL "K"

**RPM PLACEMENT AT ISLANDS**  
(When called for in the Plans)

**RPM PLACEMENT AT TRAFFIC SEPARATORS**  
(When called for in the Plans)

POSTED SPEED LIMIT MPH	"Y" FEET
30 OR LESS	10
35	20
40	20
45	30
50 OR MORE	40

**NOTES:**

- For Type "E" Curb install RPMs along the pavement edge marking using the same spacing shown.
- Orient traffic faces of RPMs in median radii to be parallel to direction of travel lanes.

**LEGEND:**

- B/C = BACK OF CURB  
EOP = EDGE OF PAVEMENT  
RPM = RAISED PAVEMENT MARKER  
W/R = WHITE/RED RPM  
Y/Y = YELLOW/YELLOW RPM  
Y/R = YELLOW/RED RPM  
MD/Y = MONO-DIRECTIONAL YELLOW RPM  
MD/W = MONO-DIRECTIONAL WHITE RPM



FY 2023-24  
STANDARD PLANS

**TYPICAL PLACEMENT OF  
RAISED PAVEMENT MARKERS**

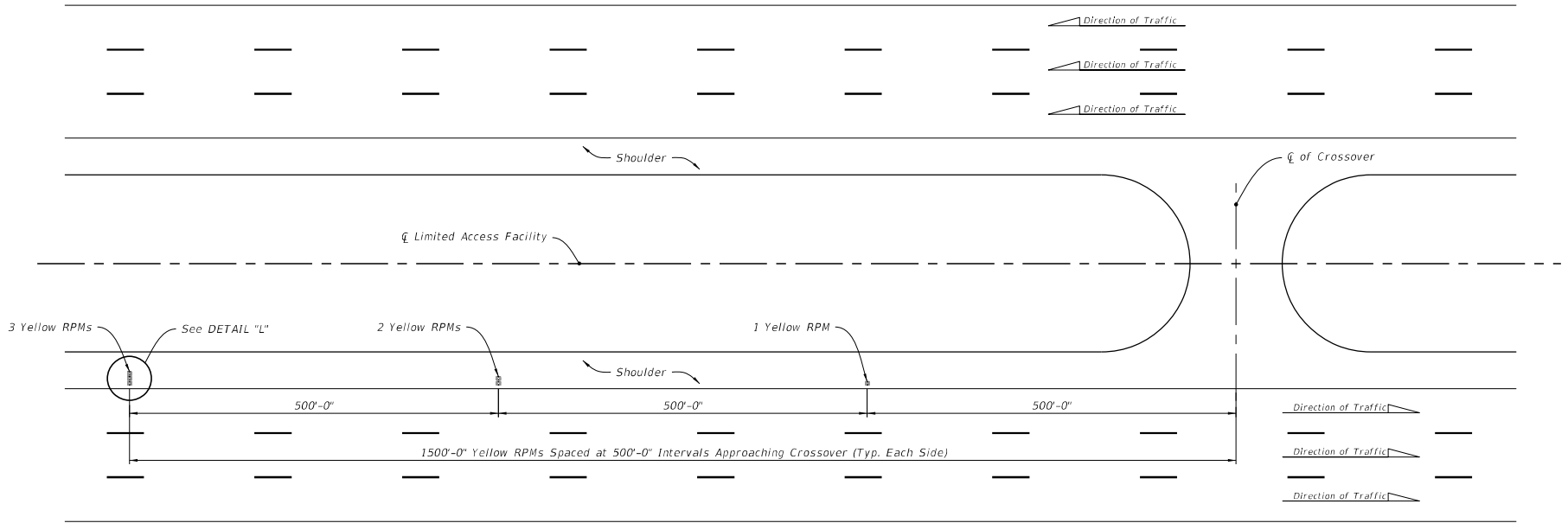
INDEX  
706-001

SHEET  
4 of 6

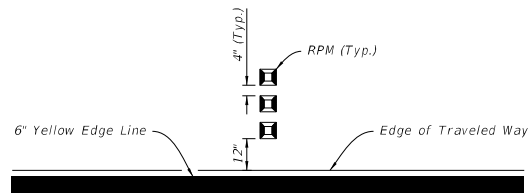
LAST  
REVISION  
11/01/21

REVISION

DESCRIPTION:

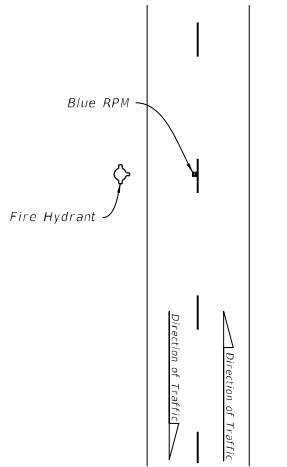


RPM PLACEMENT FOR CROSSOVERS ON LIMITED ACCESS ROADWAYS

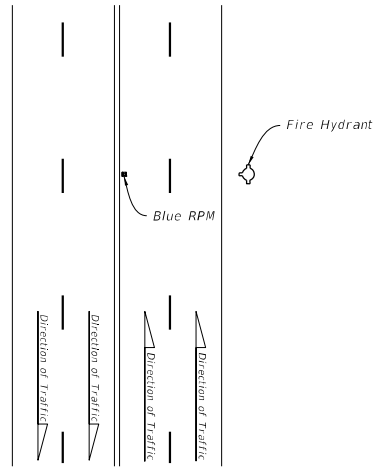


DETAIL "L"

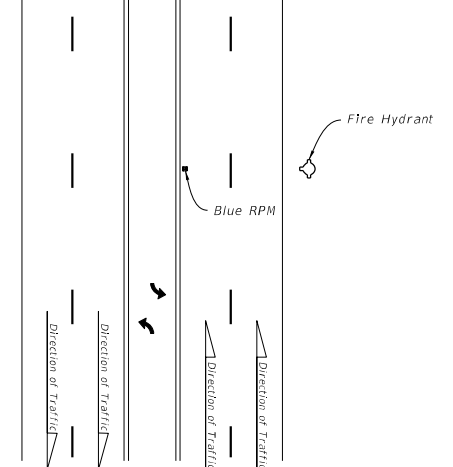
<div> <div>10/16/2022</div> <div>2:40:52 PM</div> </div>	<div> <div>LAST REVISION</div> <div>11/01/18</div> </div>	<div> <div>DESCRIPTION:</div> <div> <div> <div>FDOT</div> <div>FY 2023-24</div> <div>STANDARD PLANS</div> </div> </div> </div>	<div> <div>TYPICAL PLACEMENT OF RAISED PAVEMENT MARKERS</div> </div>	<div> <div>INDEX</div> <div>706-001</div> </div>	<div> <div>SHEET</div> <div>5 of 6</div> </div>
--	---	--	--	--	---



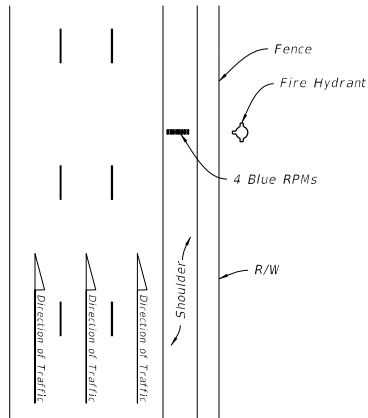
TWO-LANE ROADWAY



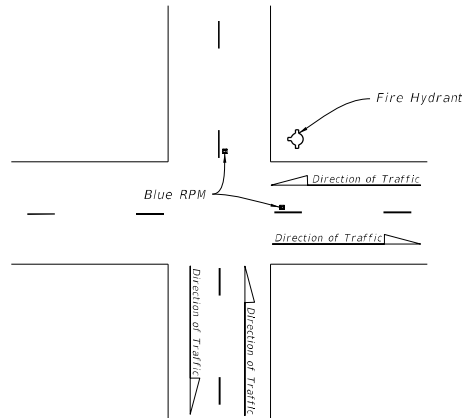
MULTILANE ROADWAY



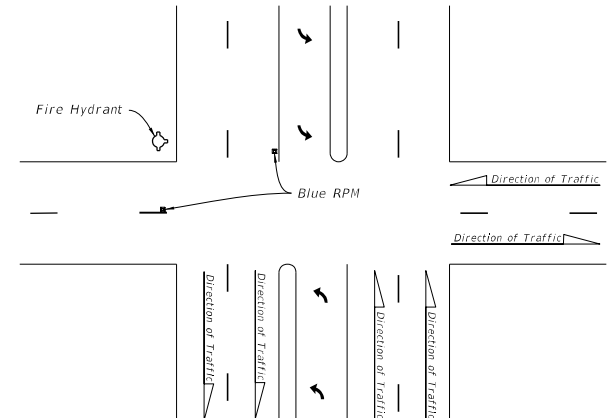
MULTILANE ROADWAY  
WITH TURN LANE



LIMITED ACCESS ROADWAY



TWO-LANE ROADWAY  
AT INTERSECTION



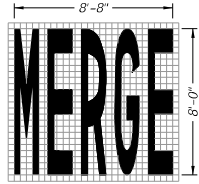
MULTILANE ROADWAY AT INTERSECTION

BLUE RPM PLACEMENT

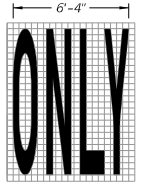
10/6/2022 2:40:52 PM

LAST REVISION 11/01/18	DESCRIPTION:	FDOT FY 2023-24 STANDARD PLANS	TYPICAL PLACEMENT OF RAISED PAVEMENT MARKERS	INDEX 706-001	SHEET 6 of 6
------------------------------	--------------	--------------------------------------	---	------------------	-----------------

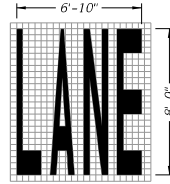




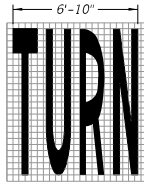
34 S.F.



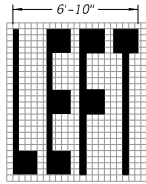
22 S.F.



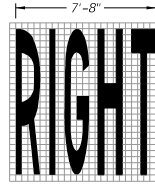
23 S.F.



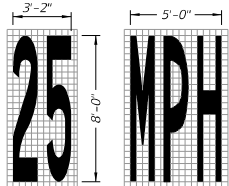
24 S.F.



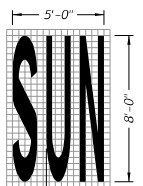
20 S.F.



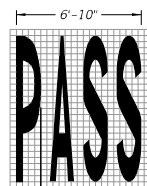
26 S.F.



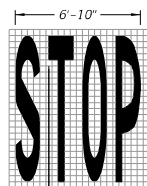
13 S.F.



20 S.F.



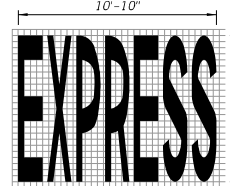
23 S.F.



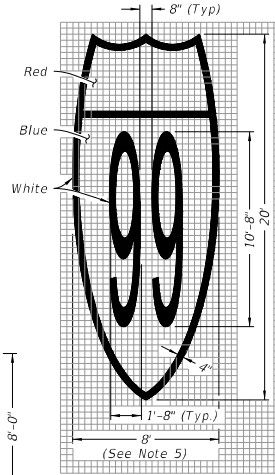
22 S.F.



20 S.F.

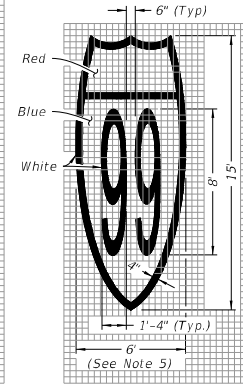


43 S.F.



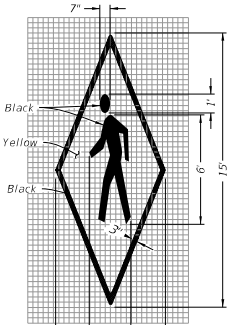
Route Shield for Limited Access Roadways (Interstate Route Shield Shown; U.S. and State Route Shield Similar)

128 S.F.



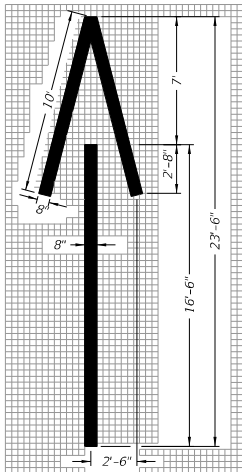
Route Shield for Arterials and Collectors (Interstate Route Shield Shown; U.S. and State Route Shield Similar)

72 S.F.

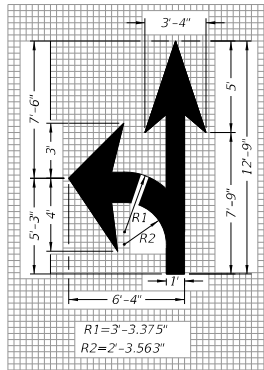


In Pavement Warning Marking

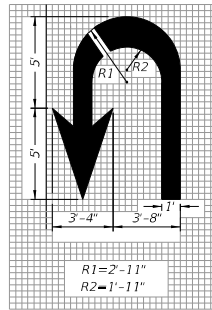
45 S.F.



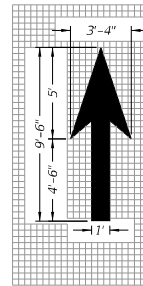
Wrong-Way Arrow  
24 S.F.



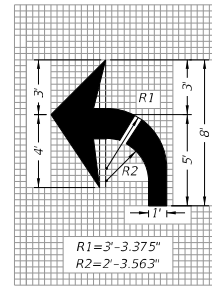
Turn and Through Lane-Use Arrow  
29 S.F.



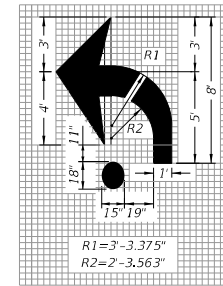
U Turn Lane-Use Arrow  
27 S.F.



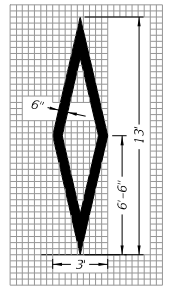
Through Lane-Use Arrow  
12 S.F.



Turn Lane-Use Arrow (Left Turn Shown - Right Turn Similar)  
17 S.F.



Roundabout Approach Arrow  
19 S.F.



Preferential Lane Symbol  
11 S.F.

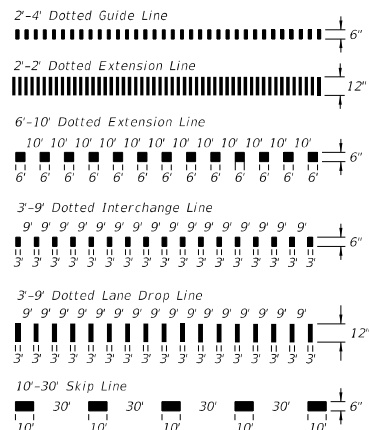
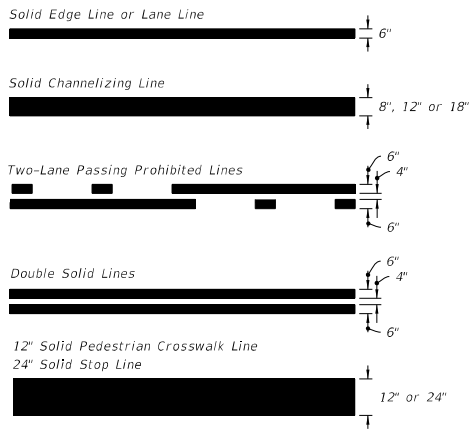
#### PAVEMENT MESSAGES NOTES:

1. Place all pavement messages 25' back from the stop line.
2. Dimensions are within 1" ±.
3. All grids are 4" x 4".
4. All pavement messages must be white except Route Shields and In Pavement Warning Markings.
5. Increase width of route shield for routes with three digits.

#### PAVEMENT MESSAGE AND ARROW DETAILS

10/17/2022 2:50:10 PM

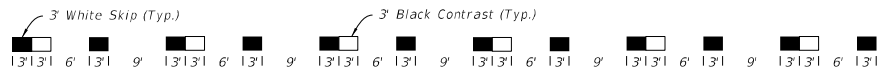
LAST REVISION	DESCRIPTION:	FY 2023-24 STANDARD PLANS	PAVEMENT MARKINGS	INDEX	SHEET
11/01/21				711-001	1 of 13



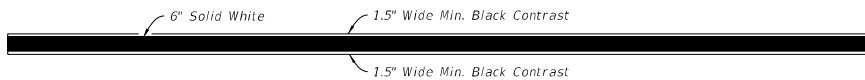
PAVEMENT MARKING LINES



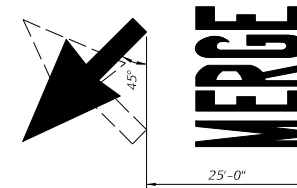
10'-30' SKIP LINE WITH CONTRAST MARKINGS



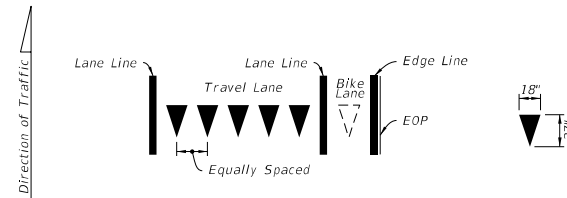
DOTTED LINE WITH ALTERNATING CONTRAST MARKINGS  
(3'-9' Dotted Line Shown, Other Dotted Lines Similar)



LONGITUDINAL SOLID LANE LINE WITH CONTRAST MARKINGS  
(Not For Use On Edge Lines)



MARKINGS FOR MERGE

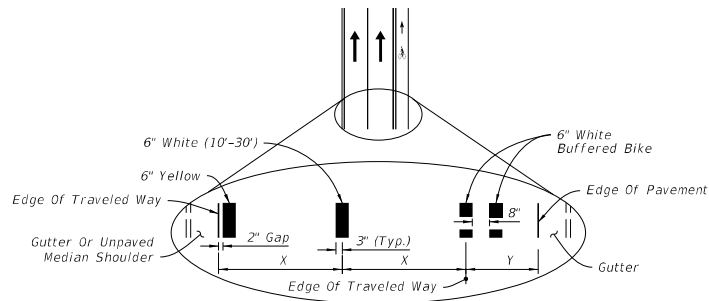


Yield Lines consist of five - 18" X 27" white triangles which face traffic. Equally space triangles within traffic lane. When a bike lane is present, add one additional triangle in the center of the bike lane.

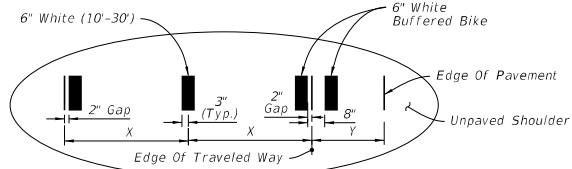
YIELD LINES

10/17/2022 2:50:13 PM

LAST REVISION 11/01/22	DESCRIPTION:	FDOT FY 2023-24 STANDARD PLANS	PAVEMENT MARKINGS	INDEX 711-001	SHEET 2 of 13
------------------------------	--------------	--------------------------------------	-------------------	------------------	------------------



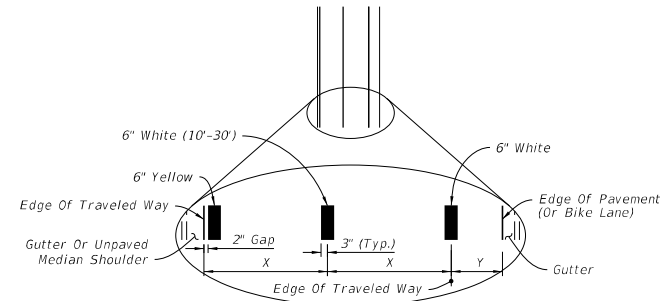
**CURB AND GUTTER**



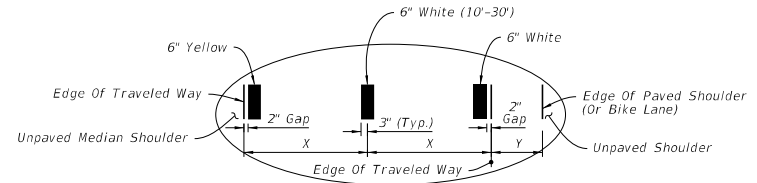
**FLUSH SHOULDER**

X = LANE WIDTH (FT.)  
Y = BUFFERED BIKE LANE WIDTH (FT.)

**STRIPING FOR BUFFERED BIKE LANE**



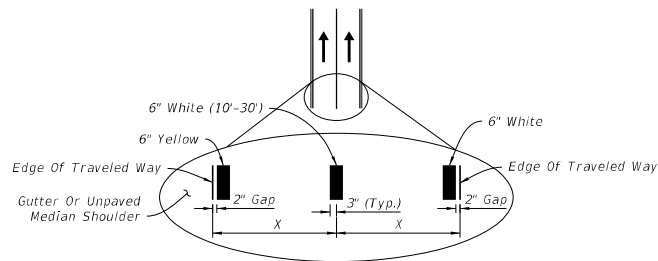
**CURB AND GUTTER**



**FLUSH SHOULDER**

X = LANE WIDTH (FT.)  
Y = PAVED SHOULDER / BIKE LANE

**STRIPING WITH SHOULDER OR NON-BUFFERED BIKE LANE**



X = LANE WIDTH (FT.)

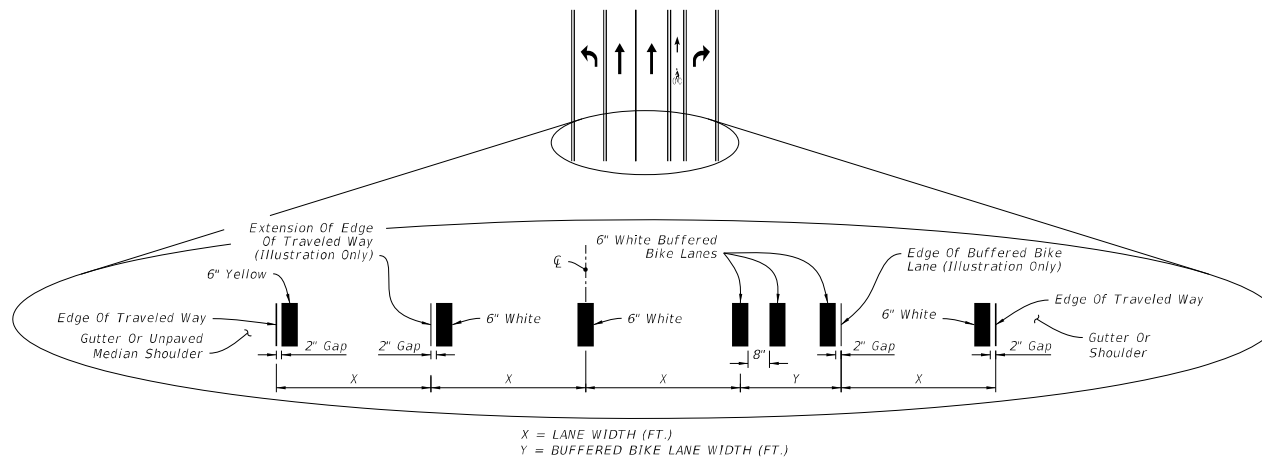
**STRIPING WITH NO SHOULDER OR BIKE LANE**

**NOTES:**

1. Lane widths (X) may not be same for each lane in the section.
2. For placement of RPMs, see Index 706-001.

**PLACEMENT OF LONGITUDINAL PAVEMENT MARKINGS**

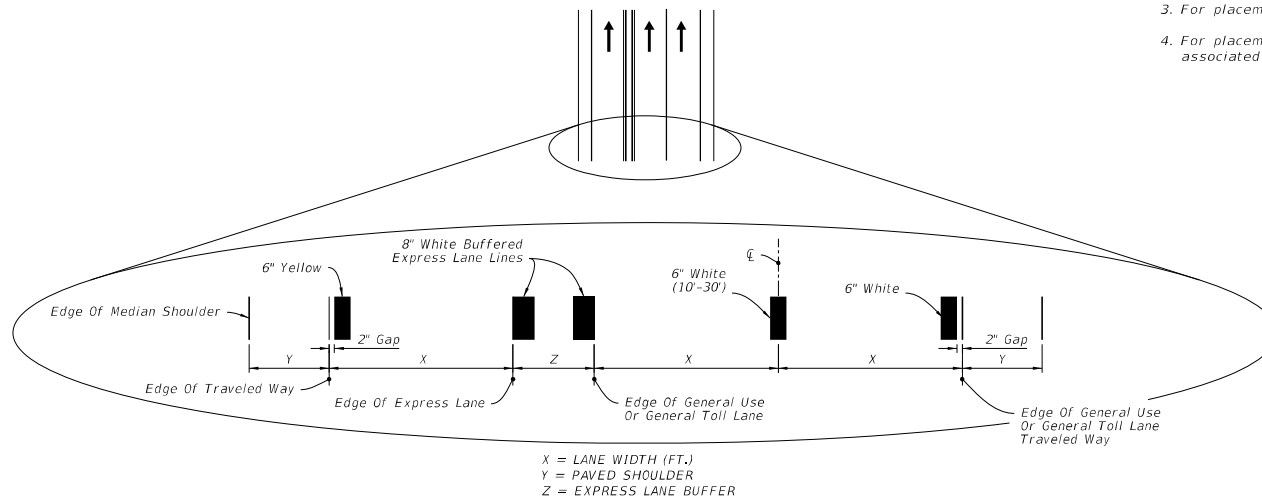
LAST REVISION 11/01/21	DESCRIPTION:	FDOT FY 2023-24 STANDARD PLANS	PAVEMENT MARKINGS	INDEX 711-001	SHEET 3 of 13
------------------------------	--------------	--------------------------------------	-------------------	------------------	------------------



INTERSECTION APPROACH STRIPING WITH TURN LANES AND BUFFERED BIKE LANE KEY HOLE

**NOTES:**

1. Lane widths (X) may not be same for each lane in the section.
3. For placement of RPMs, see Index 706-001.
4. For placement of Express Lane markers and associated RPMs, see the Plans.

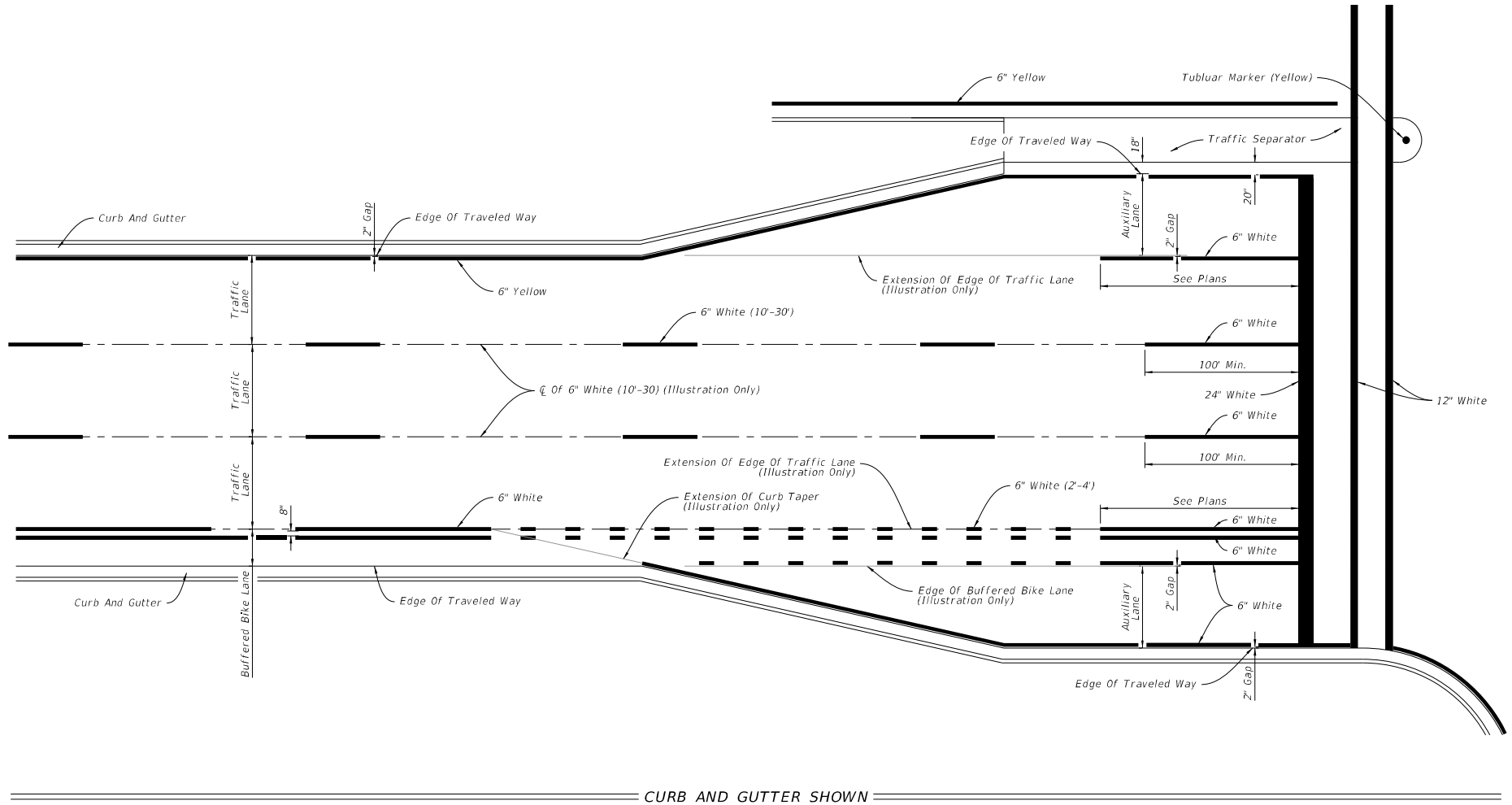


BUFFERED EXPRESS LANE STRIPING


PLACEMENT OF LONGITUDINAL PAVEMENT MARKINGS

LAST REVISION 11/01/21	DESCRIPTION:	FDOT FY 2023-24 STANDARD PLANS	PAVEMENT MARKINGS	INDEX 711-001	SHEET 4 of 13
------------------------------	--------------	--------------------------------------	-------------------	------------------	------------------

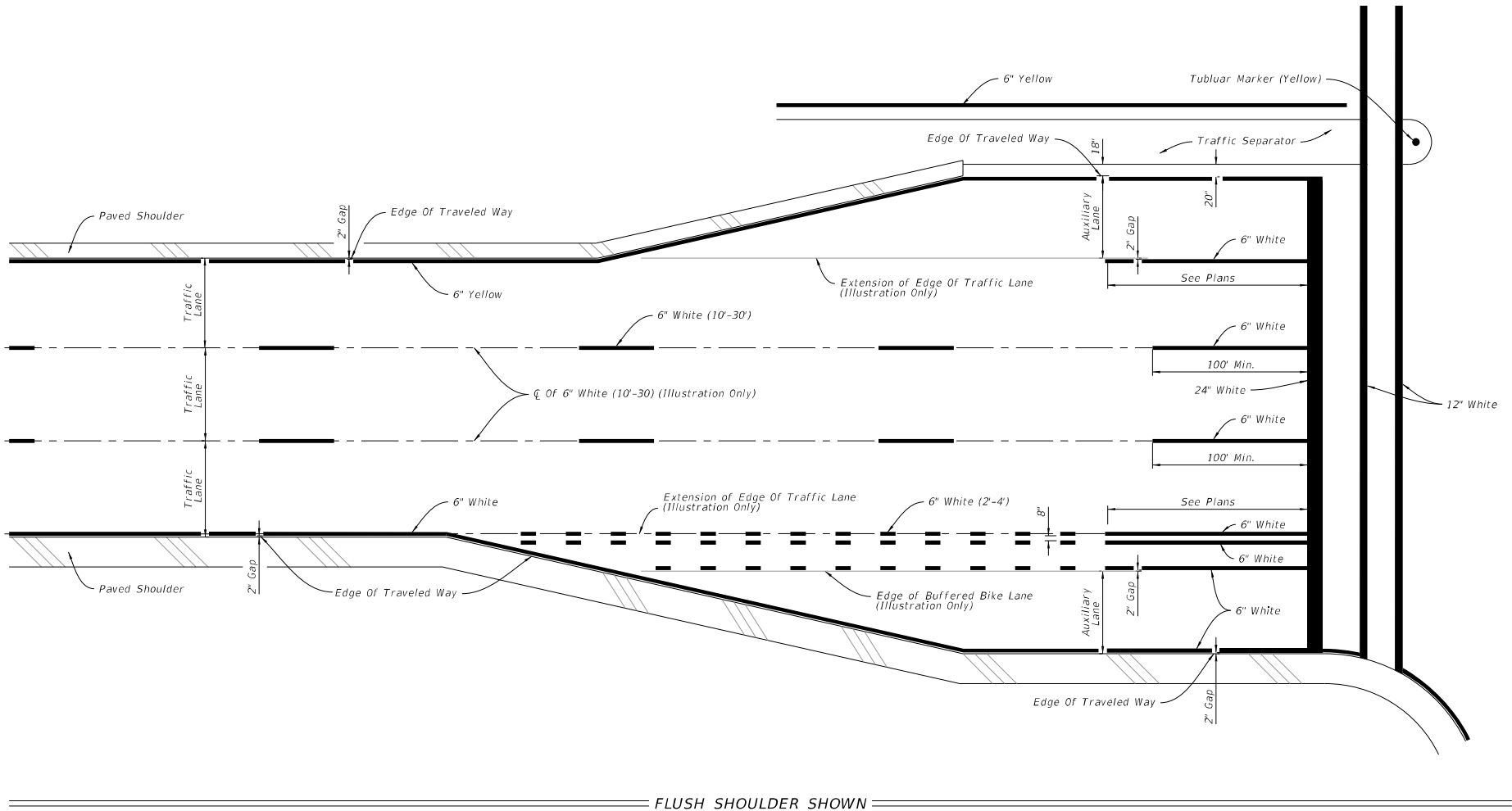
10/17/2022 2:50:19 PM



PLACEMENT OF LONGITUDINAL PAVEMENT MARKINGS

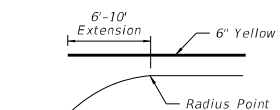
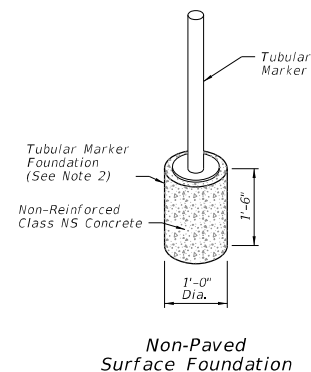
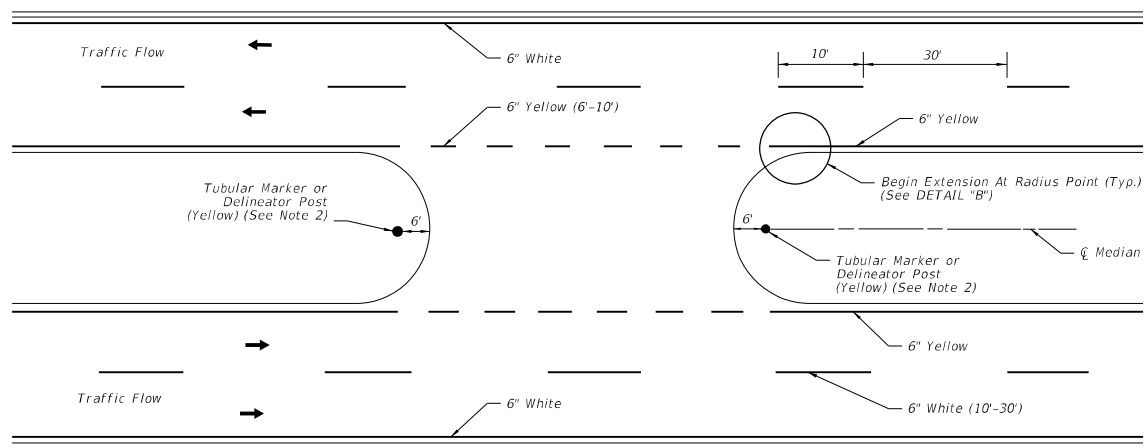
LAST REVISION 11/01/21	DESCRIPTION:	 <b>FY 2023-24 STANDARD PLANS</b>	<b>PAVEMENT MARKINGS</b>	INDEX <b>711-001</b>	SHEET <b>5 of 13</b>
------------------------------	--------------	--	--------------------------	-------------------------	-------------------------

10/17/2022 2:50:21 PM

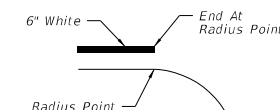


PLACEMENT OF LONGITUDINAL PAVEMENT MARKINGS

<p>LAST REVISION 11/01/21</p>	<p>DESCRIPTION:</p>	<p><b>FDOT</b> FY 2023-24 STANDARD PLANS</p>	<p>PAVEMENT MARKINGS</p>	<p>INDEX 711-001</p>	<p>SHEET 6 of 13</p>
---------------------------------------	---------------------	--	--------------------------	--------------------------	--------------------------

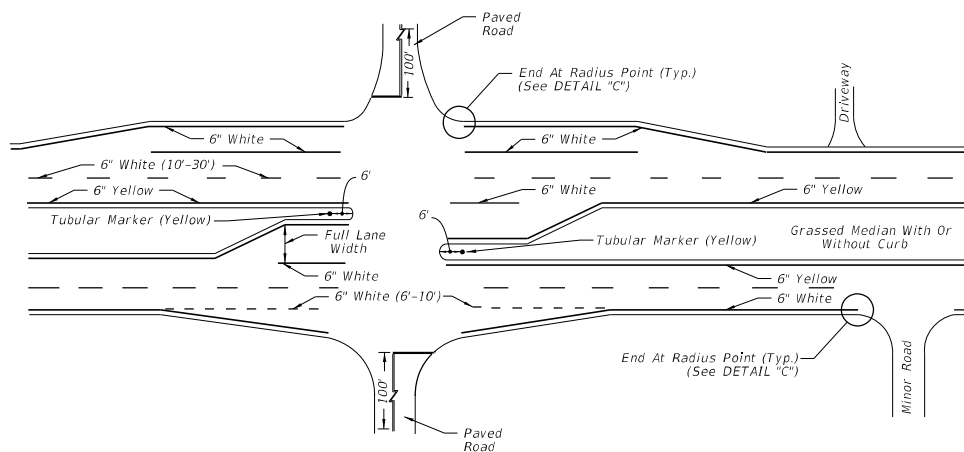


DETAIL "B"



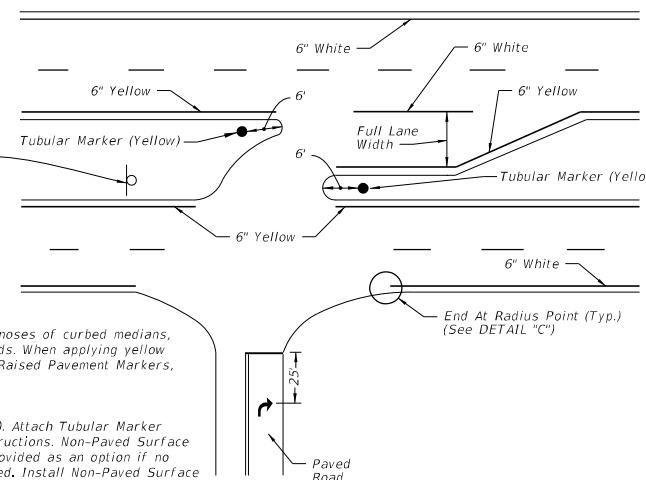
DETAIL "C"

## PAVEMENT MARKINGS AND DELINEATORS FOR MEDIAN CROSSOVER



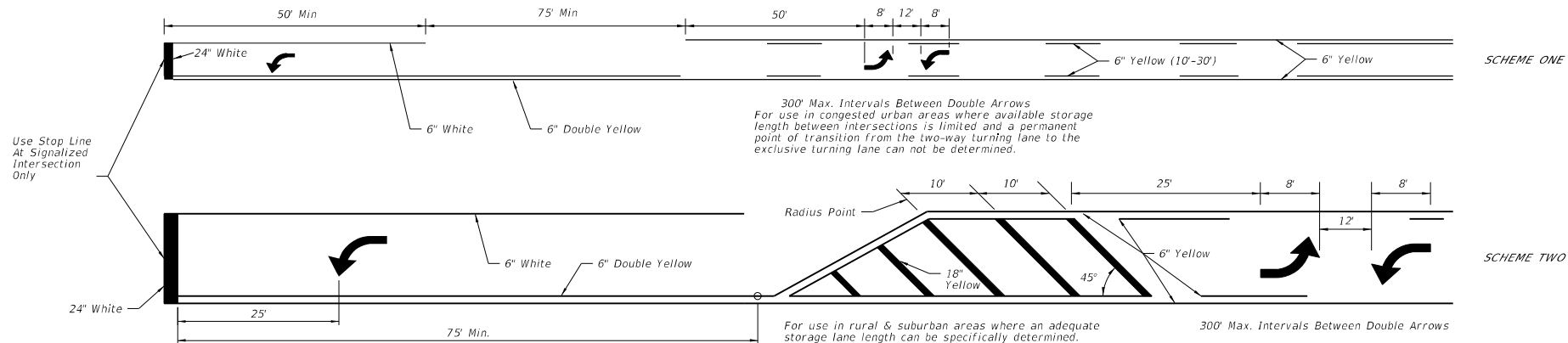
### NOTES:

1. Apply yellow reflective paint to the noses of curbed medians, traffic separators, and raised islands. When applying yellow reflective paint in conjunction with Raised Pavement Markers, see Index 706-001.
2. Options for grassed medians:
  - A. Option 1: Tubular Marker (Yellow). Attach Tubular Marker according to manufacturer's instructions. Non-Paved Surface Foundation (See Detail "A") is provided as an option if no other suitable surface is provided. Install Non-Paved Surface Foundation flush with the surrounding ground surface.
  - B. Option 2: Delineator Post. Use yellow retro-reflective sheeting on both sides of the delineator. Install the post so that the top is 4'-0" above the grade at the edge of the pavement.
3. Extend double yellow centerlines 100' back from intersection on all approaches or 50' for unmarked cross roads.



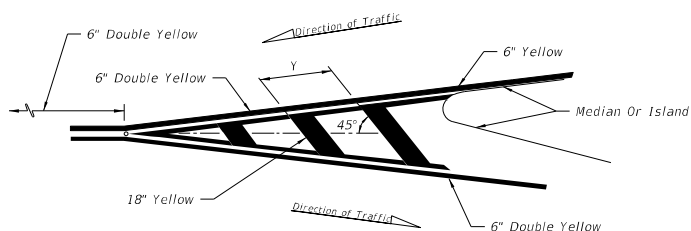
## PAVEMENT MARKINGS FOR INTERSECTIONS WITH MAJOR AND MINOR ROADS

LAST REVISION 11/01/21	DESCRIPTION:	FDOT FY 2023-24 STANDARD PLANS	PAVEMENT MARKINGS	INDEX 711-001	SHEET 7 of 13
------------------------------	--------------	--------------------------------------	-------------------	------------------	------------------

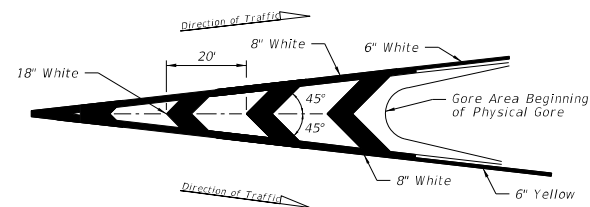


**TWO WAY LEFT TURN LANE**  
(With Single Lane Left Turn Channelization)

POSTED SPEED LIMIT MPH	ft/m (FT.)
30 OR LESS	10
35	20
40	20
45	30
50 OR MORE	40



**MARKINGS FOR TRAFFIC SEPARATION**



**TRAFFIC CHANNELIZATION AT GORE**



FY 2023-24  
STANDARD PLANS

**PAVEMENT MARKINGS**

INDEX  
711-001

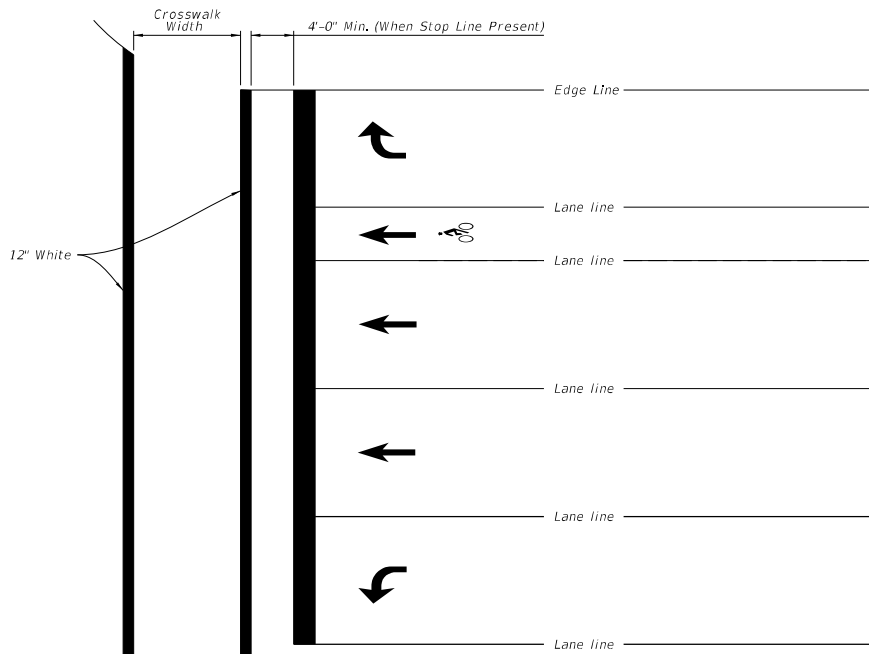
SHEET  
8 of 13

LAST  
REVISION  
11/01/21

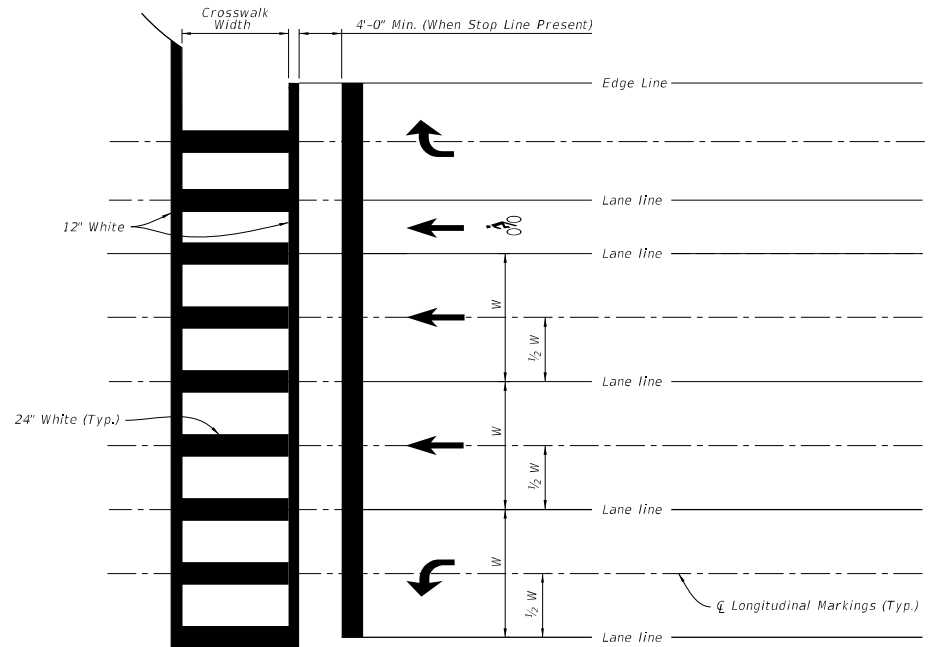
DESCRIPTION:

10/17/2022 2:50:25 PM





STANDARD CROSSWALK DETAILS



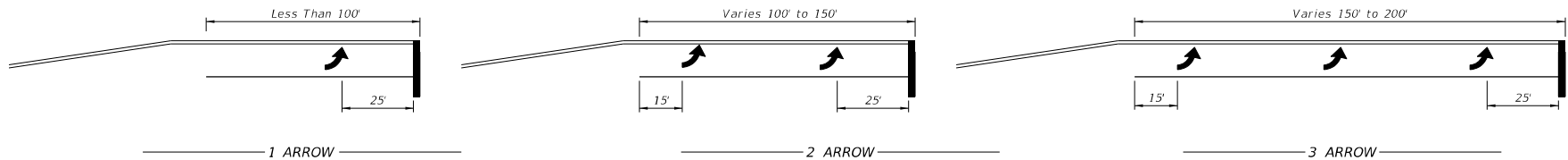
SPECIAL EMPHASIS CROSSWALK DETAILS

**NOTES:**

1. For crosswalk width, exceed width of the adjacent sidewalk, but do not make width less than 6' for intersection crosswalks and 10' for midblock crosswalks. Measure width from the inside of the transverse crosswalk markings.
2. When the Special Emphasis Crosswalk is not perpendicular to the lane lines, make the longitudinal markings parallel to the lane lines.
3. Refer to Index 522-002 when Curb Ramps are present.

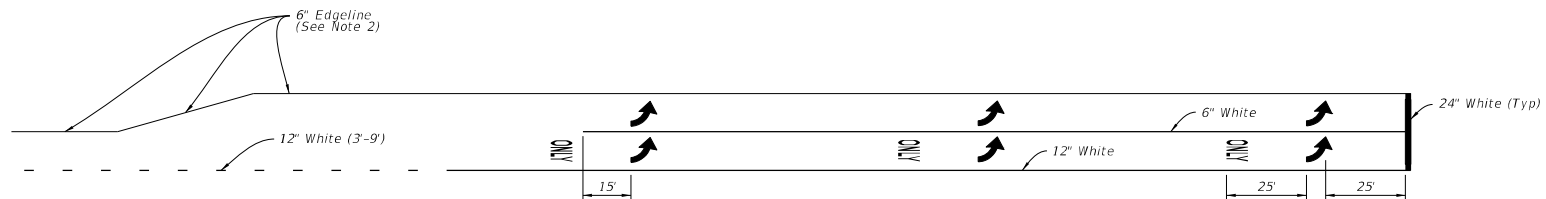
10/17/2022 2:50:27 PM

LAST REVISION 11/01/21	DESCRIPTION:	FDOT FY 2023-24 STANDARD PLANS	PAVEMENT MARKINGS	INDEX 711-001	SHEET 9 of 13
------------------------------	--------------	--------------------------------------	-------------------	------------------	------------------

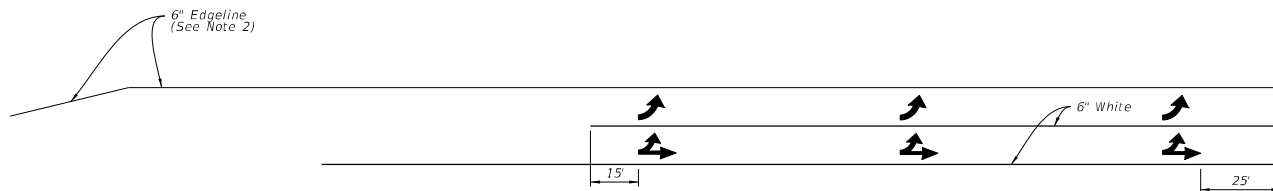


Arrow should be evenly spaced between first and last arrow. Turn lanes longer than 200' add one arrow for each 100' additional length.

### ARROW SPACING



Through Lane Becomes Exclusive Left Turn (Drop Lane)




Through Lane Becomes Optional Left Turn

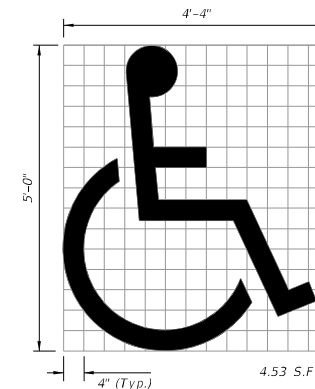
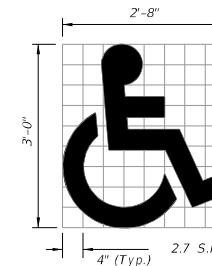
### TURNS LANE MARKINGS

**NOTES:**

1. This Index also applies to right turn lanes.
2. Make Edgeline pavement markings yellow for left-turn lanes and white for right-turn lanes.

### ARROW SPACING AND TURN LANE MARKINGS

LAST REVISION 11/01/21	DESCRIPTION:	 <b>FY 2023-24 STANDARD PLANS</b>	<b>PAVEMENT MARKINGS</b>	INDEX <b>711-001</b>	SHEET <b>10 of 13</b>
------------------------------	--------------	--	--------------------------	-------------------------	--------------------------



===== UNIVERSAL SYMBOL OF ACCESSIBILITY =====



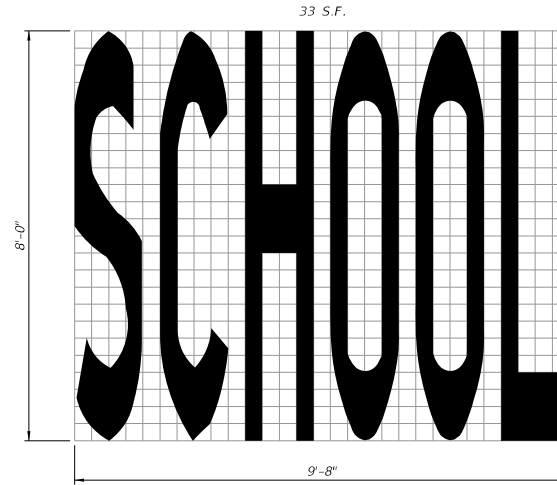
1. Dimensions are to the centerline of markings.
2. An Access Aisle is required for each accessible space when angle parking is used.
3. Criteria for pavement markings only, not public sidewalk curb ramp locations. For ramp locations refer to plans.
4. Mount FTP-22-06 sign below the FTP-21-06 sign.
5. Use of the pavement symbol in accessible parking spaces is optional. The optional symbol is a white symbol either 3'-0" or 5'-0" high and white in color.

\*FOR ACCESSIBLE MARKINGS - SEE ABOVE

DIMENSIONS					
△ θ	"A"	"B"	"C"	"D"	"E"
45°	17'-0"	12'-9"	7'-0"	24'-0"	17'-0"

## = PAVEMENT MARKING FOR PARKING

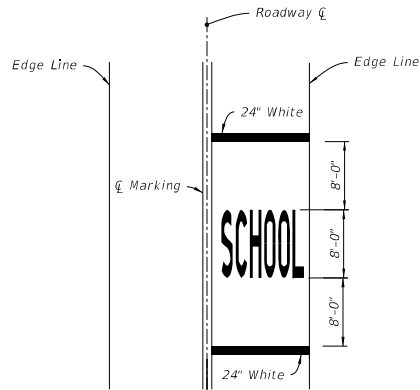
10/17/2022 2:50:33 PM



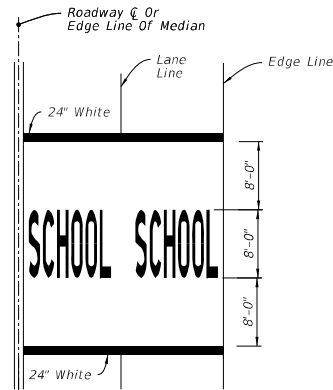
SCHOOL PAVEMENT MARKING

NOTES:

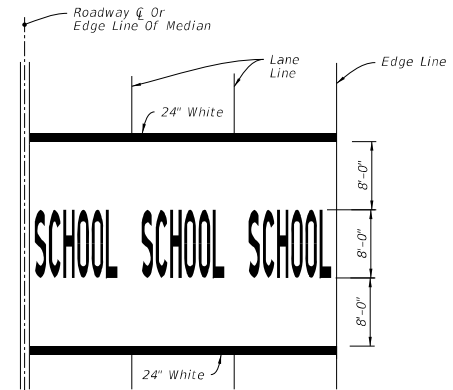
1. All grids are 4" x 4".
2. Pavement Marking Should Not Extend Into Opposing Lane.
3. Center School Pavement Marking in Lane.



SINGLE-LANE APPROACH




TWO-LANE APPROACH



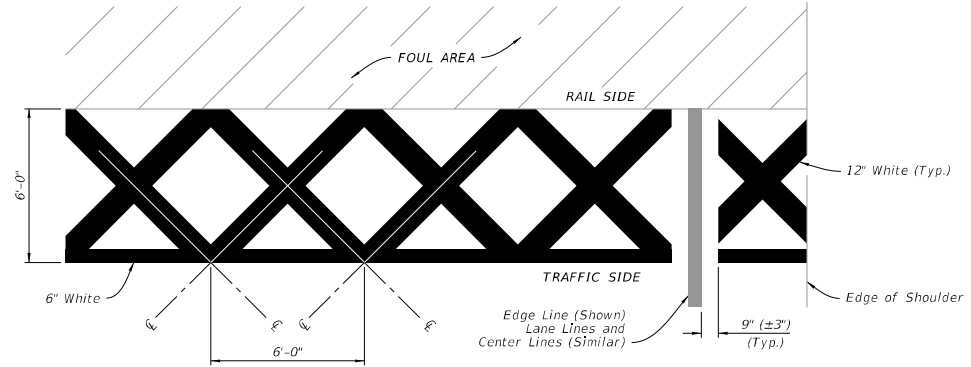
MULTI-LANE APPROACH  
(Three or More)

MARKINGS FOR SCHOOL ZONES

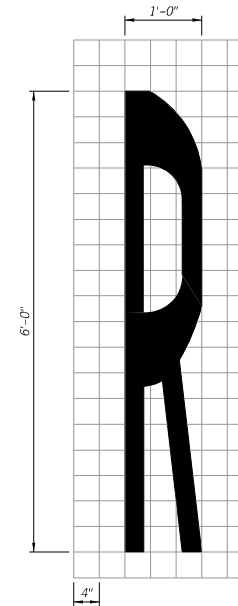
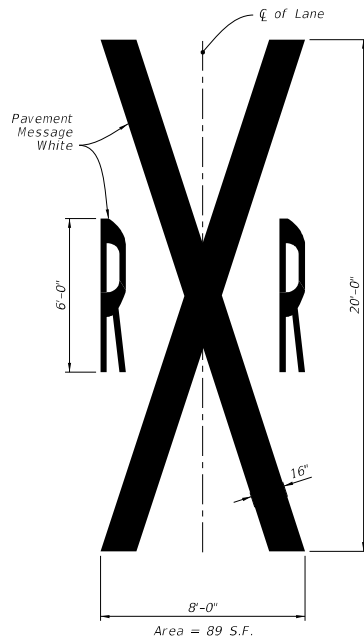
LAST REVISION 11/01/21	DESCRIPTION:	 FY 2023-24 STANDARD PLANS	PAVEMENT MARKINGS	INDEX 711-001	SHEET 12 of 13
------------------------------	--------------	--	-------------------	------------------	-------------------

**NOTE:**

Orient Railroad Dynamic Envelope Marking as shown in the Plans.



RAILROAD DYNAMIC ENVELOPE (RDE) PAVEMENT MARKING DETAIL



RAILROAD CROSSING PAVEMENT MESSAGE

10/17/2022 2:50:35 PM	LAST REVISION 11/01/21	DESCRIPTION:	FDOT FY 2023-24 STANDARD PLANS	PAVEMENT MARKINGS	INDEX 711-001	SHEET 13 of 13
--------------------------	------------------------------	--------------	--------------------------------------	-------------------	------------------	-------------------