

PROPOSED EXPANSION FOR TRIUMPHANT CHURCH OF GOD OF PHROPECY

EXISTING SITE CONDITIONS

RECEIVED BY CLERK
 Item # 07-15
 CAB # 15 Exhibit # 4-1
 JUN 26 2007
 CLERK OF THE BOARD



④ REAR VIEW (WEST)



⑤ NORTH VIEW



⑥ FRONT VIEW (EXISTING OFFICE BUILDING)



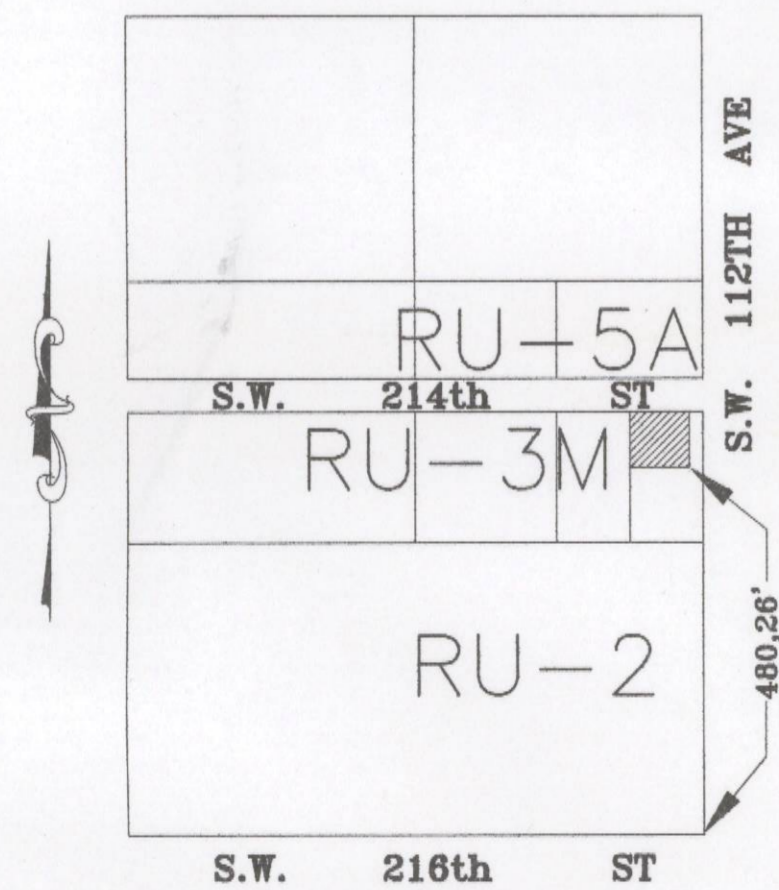
③ SOUTH VIEW



DIGITAL ORTHOPHOTOGRAPHY - 2006



① FRONT VIEW (EAST)



LOCATION MAP
 N.T.S.



② SOUTH EAST VIEW

SEAL	CARLOS J. MOURIN
	PROFESSIONAL ARCHITECT STATE OF FLORIDA LICENSE No. 7671
	8280 SW 139th TERRACE VILLAGE OF PALMETTO BAY, FLORIDA 33158
	PHONE: (305) 322-9097 FAX: (305) 255-1931