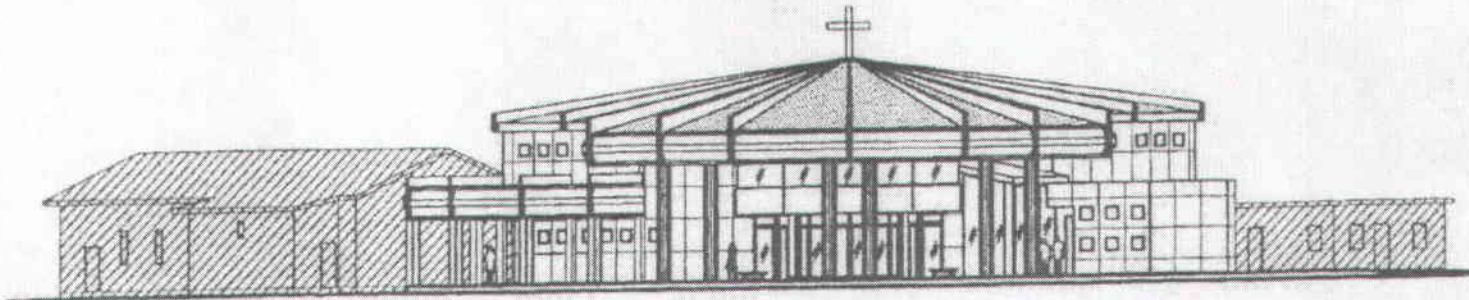


PROPOSED EXPANSION FOR
TRIUMPHANT CHURCH
OF GOD OF PHROPHECY



MAIN ELEVATION
10/14/05

207 015
RECEIVED
JUL 17 2006

ZONING HEARING SECTION
MIAMI DADE PLANNING AND ZONING DEPT.

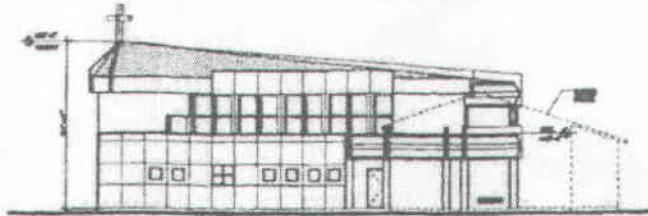
BY [Signature]

ALLEN FAR
DESIGN ASSOC.
ARCHITECTS • ENGINEERS • INTERIORS
1000 N.E. 11th Avenue • Suite 1000 • Miami, FL 33132
Tel: (305) 571-1111 • Fax: (305) 571-1112

OWNER: J. [Signature]
DATE: [Signature]

MIAMI DADE COUNTY
PLANNING AND ZONING DEPARTMENT
1115 N.W. 41st Ave.
MIAMI, FLORIDA 33134

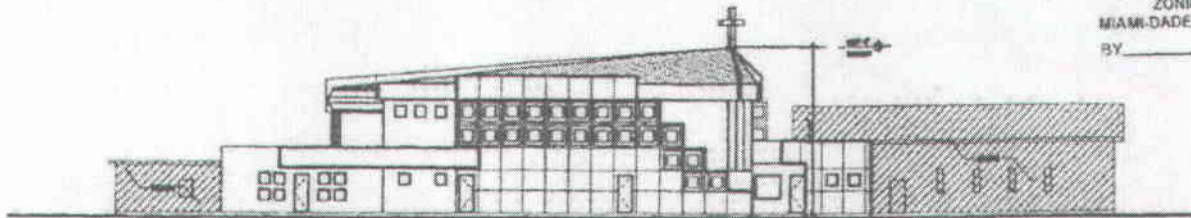
PROJECT NO. [Signature]
DATE: [Signature]
A-1
1 of 1



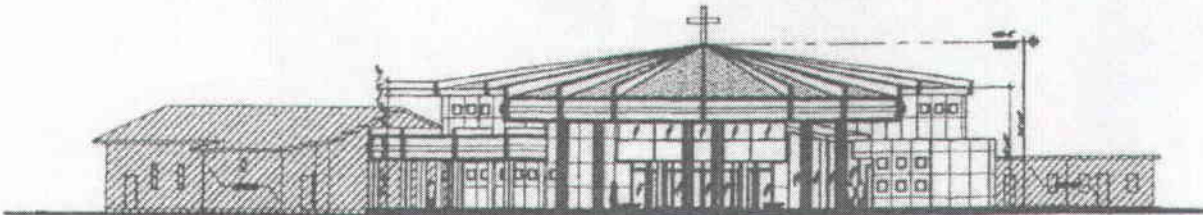
WEST ELEVATION

207015
RECEIVED
 2006 JUL 17 2006

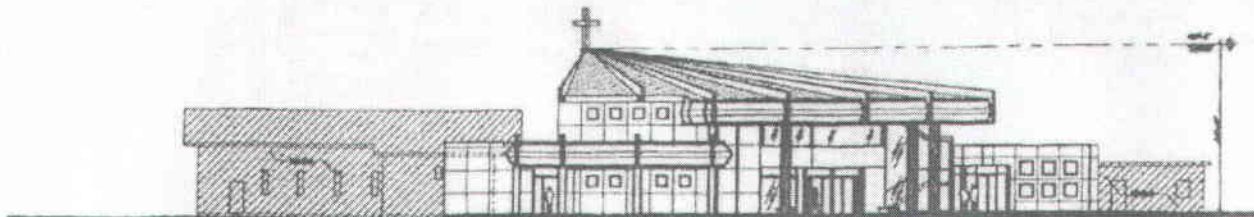
ZONING HEARING SECTION
 MIAMI-DADE PLANNING AND ZONING DEPT.
 BY _____



NORTH ELEVATION



MAIN ELEVATION



SOUTH ELEVATION

ALLEN FAR
 DESIGN ASSOC.
 ARCHITECTS - ENGINEERS - INTERIORS
 1000 N.W. 10th St. • Suite 1000 • Miami, FL 33136
 (305) 571-1111 • Fax: (305) 571-1112

CHARTERED PROFESSIONAL ARCHITECTS

PROJECT CHECKLIST
 PRELIMINARY DESIGN ✓
 PERMITTING ✓
 CONSTRUCTION ADMINISTRATION ✓
 POST-OCCUPANCY EVALUATION ✓

DATE: 07/17/06

SCALE: 1/8" = 1'-0"

A-4