

# Learn More About Miami-Dade Animal Services

## Our Mission

Our mission is to save the lives of abandoned animals in our care, protect animals from cruelty, reunite lost pets with their owners, protect people and pets in our community from health-related issues and ensure the public's safety.

## Our Commitment

**What does No-Kill mean?** "No-Kill" signifies a dedication to saving the lives of animals, ensuring 90% or more have a positive outcome.

Miami-Dade Animal Services (ASD) proudly upholds these principles and has maintained No-Kill status since 2015, reflecting our commitment to saving lives and promoting humane treatment for all animals in our care.

## Programs and Services

We are dedicated to advancing animal welfare through various programs, including:

- Low-cost and free spay/neuter surgeries
- Preventive veterinary care for owned pets
- Free sterilization of community cats
- Comprehensive pet retention programs
- Expanded Trap, Neuter, Vaccinate and Return (TNVR) services to provide Free sterilization of community cats
- Humane law enforcement investigations

## Length of Stay

We aim to find loving homes for our shelter pets as quickly as possible:

- **Average Stay for Dogs:** About 75 days. Extended stays can increase stress, hindering adoption chances.
- **Shorter Stays for Cats and Kittens:** Often as low as 10 days, reflecting the community's growing support for feline adoptions.
- **Impact of Extended Stays:** Prolonged shelter time can affect animals well-being and behavior, making it harder for them to show their true personalities. We actively work to minimize the length of stay for all animals.

## Humane Euthanasia Protocol

**The decision to humanely euthanize an animal is never taken lightly and is guided by strict protocols that prioritize public safety and animal welfare.**

- The **Save Charlie Act** passed in 2020, ensures that euthanasia is only considered in cases where:
  - an animal has proven to be dangerous with a poor to grave prognosis for rehabilitation
  - irremediably suffering with a poor to grave prognosis for being able to live without unnecessary physical pain or suffering, even with prompt, necessary, and comprehensive veterinary care.

In 2024, euthanasia was necessary for 87 animals due to injury, 249 animals due to illness and 94 animals due to behavioral concerns.

- **What is a humane euthanasia deadline?** It is a compassionate decision to end suffering and a call for help for our shelter pets.
- **How it helps:** This deadline highlights our commitment to finding positive outcomes for these animals.
  - We actively engage with partners and rescue organizations to explore all options for assistance, striving to find loving homes before considering euthanasia.
  - By adopting, the community can make a meaningful impact, and through collaboration and education, we aim to reduce the need for euthanasia, ensuring every animal has the chance for a fulfilling life.



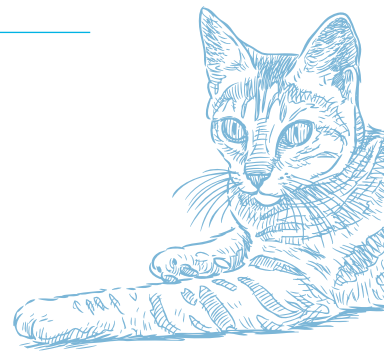
## Animal Care and Welfare

### • Animal Care:

- Animals in our care are fed twice daily, walked at least once a day, and participate in playgroups if eligible.
- Daily sanitation of kennels along with spot checks throughout the day to maintain a healthy environment.

### • Medical Evaluation: Upon arrival, every animal receives a basic medical evaluation, including:

- Physical examination
- Vaccinations
- Heartworm testing and prevention
- Flea and tick prevention
- Microchipping
- Deworming
- All pets are sterilized before being released for adoption or transfer to rescue partners when medically possible



## What About the Medley Facility?

The Medley Facility, which was previously the original Miami-Dade Animal Services shelter, continues to play a crucial role in our mission to care for animals in need, especially during times of overpopulation.

- **Overflow Shelter:** When our Pet Adoption and Protection Center reaches capacity, Medley serves as an overflow shelter. It is open to the public on weekends and on weekdays by appointment, allowing community connections with pets in need.
- **Extreme Weather Precautions:** Since the Medley Facility is situated outdoors, we take extra precautions to protect the animals during extreme weather conditions:
  - **Hot Weather:** We provide cooling bandanas, iced water bowls, and fans to keep pets comfortable.
  - **Cold Weather:** For temperatures below 65°F, pets receive additional bedding and blankets, and may be brought indoors to avoid drafts.
  - **Rainy Season and Natural Disasters:** During periods of heavy rain or potential flooding, we prioritize the safety of our animals by moving them indoors.
- **Foster Care During Emergencies:** We encourage the community to foster pets during extreme weather events, enabling us to give extra care to our most vulnerable animals.



## Community Engagement and Programs

- We are proud to have the support of industry experts such as **Best Friends Animal Society** who have named ASD a leading shelter due to our long history of performance excellence in the animal sheltering community, including being one of the first shelters to implement managed intake at a large-scale.
- ASD also partners and works closely with other industry experts such as the **American Society for the Prevention of Cruelty to Animals** and the **Humane Society of the United States**.
- We partner with **over 150 rescue organizations** to save lives and find homes for animals.
- Our programs aim for continued success, including:
  - Pet adoptions
  - Comprehensive veterinary care
  - A foster program that protects the most vulnerable animals
  - Interstate transport programs
  - Mobile adoption events to increase departmental presence in the community,
  - Pet retention services aimed at deterring owners from surrendering their pet into ASD's care
  - Reunification of lost pets with their families
- ASD provides **over 30,000** spay/neuter surgeries annually, significantly contributing to reducing the overpopulation of pets in our community.

## Support and Donations

There are several ways you can show support and make a difference in the lives of animals in need:

### • How to get involved:

- **Volunteer, foster, or adopt—** Join our dedicated community—your involvement can transform the lives of our shelter pets!
- **Monetary and In-Kind Donations:** You can make a donation [online](#) or in person at our shelter!
- **Social Media Advocacy:** Follow us on social media and share our posts to raise awareness about our programs, services, and adoptable animals. Your voice can connect us with potential adopters and supporters!

