



DEPARTMENT OF REGULATORY AND ECONOMIC RESOURCES (RER)
BOARD AND CODE ADMINISTRATION DIVISION

MIAMI-DADE COUNTY
PRODUCT CONTROL SECTION
11805 SW 26 Street, Room 208
Miami, Florida 33175-2474
T (786)315-2590 F (786) 31525-99

NOTICE OF ACCEPTANCE (NOA)

www.miamidade.gov/economy

Tag and Stick, LLC
3771 NW 126 Avenue
Coral Springs, FL. 33065

SCOPE:

This NOA is being issued under the applicable rules and regulations governing the use of construction materials. The documentation submitted has been reviewed and accepted by Miami-Dade County RER - Product Control Section to be used in Miami Dade County and other areas where allowed by the Authority Having Jurisdiction (AHJ).

This NOA shall not be valid after the expiration date stated below. The Miami-Dade County Product Control Section (In Miami Dade County) and/or the AHJ (in areas other than Miami Dade County) reserve the right to have this product or material tested for quality assurance purposes. If this product or material fails to perform in the accepted manner, the manufacturer will incur the expense of such testing and the AHJ may immediately revoke, modify, or suspend the use of such product or material within their jurisdiction. RER reserves the right to revoke this acceptance, if it is determined by Miami-Dade County Product Control Section that this product or material fails to meet the requirements of the applicable building code.

This product is approved as described herein, and has been designed to comply with the Florida Building Code including the High Velocity Hurricane Zone of the Florida Building Code.

DESCRIPTION: Tag & Stick MTP

LABELING: Each unit shall bear a permanent label with the manufacturer's name or logo, city, state and following statement: "Miami-Dade County Product Control Approved", unless otherwise noted herein.

RENEWAL of this NOA shall be considered after a renewal application has been filed and there has been no change in the applicable building code negatively affecting the performance of this product.

TERMINATION of this NOA will occur after the expiration date or if there has been a revision or change in the materials, use, and/or manufacture of the product or process. Misuse of this NOA as an endorsement of any product, for sales, advertising or any other purposes shall automatically terminate this NOA. Failure to comply with any section of this NOA shall be cause for termination and removal of NOA.

ADVERTISEMENT: The NOA number preceded by the words Miami-Dade County, Florida, and followed by the expiration date may be displayed in advertising literature. If any portion of the NOA is displayed, then it shall be done in its entirety.

INSPECTION: A copy of this entire NOA shall be provided to the user by the manufacturer or its distributors and shall be available for inspection at the job site at the request of the Building Official.

This NOA revises NOA# 23-0228.04 and consists of pages 1 through 11.
The submitted documentation was reviewed by Alex Tigera.

07/04/24



NOA No.: 23-0621.02
Expiration Date: 04/11/28
Approval Date: 07/04/24
Page 1 of 11

ROOFING COMPONENT APPROVAL

Category: Roofing
Sub-Category: Underlayment
Materials SBS

PRODUCT DESCRIPTION

<u>Product</u>	<u>Dimensions</u>	<u>Test Specifications</u>	<u>Product Description</u>
Tag & Stick MTP	Width = 36" Length = 66.8' (200 sq.ft.)	TAS 103 and ASTM D 1970	A fiberglass reinforced SBS modified bitumen underlayment with an 18-inch selvage edge, an 18-inch woven fabric top surface to form a 36" wide roll. The underside of the 18-inch woven fabric is a self adhering modified bitumen with a removable silicone release film. The product design allows for mechanical attachment of the 18-inch selvage edge (base-layer of underlayment) followed by a self-adhering top layer underlayment, (the woven fabric top surface), resulting in a two-ply underlayment system, within the same roll.

MANUFACTURING LOCATION

1. Tuscaloosa, AL.

EVIDENCE SUBMITTED

<u>Test Agency</u>	<u>Test Identifier</u>	<u>Test Name/Report</u>	<u>Date</u>
PRI Constructoin Materials Technologies, LLC	1581T0003	TAS 114 (J) / FM 4474	07/14/20
NEMO ETC, LLC.	E40480.03.12-R2	TAS 117 (B) TAS 114 (C)	03/01/12
	4j-TAG-19-SSUDL-01.A	TAS 103 / TAS 110	11/18/19
	4j-TAG-22-SSUDL-01.A	ASTM D1970	02/23/23
	4j-TAG-22-SSUDL-01.B.R1	TAS 103	02/23/23



NOA No.: 23-0621.02
 Expiration Date: 04/11/28
 Approval Date: 07/04/24
 Page 2 of 11

APPROVED ASSEMBLIES:

Deck Type 1:	Wood, non-insulated
Deck Description:	¹⁹ / ₃₂ " or greater plywood, PS 1-09, Grade CDX plywood attached with 8d ring shank nails, 6-in. o.c.
Base Sheet / Membrane:	Tag and Stick MTP underlayment System
Fastening:	See Installation Procedure Below
Surfacing:	Approved for Adhered Roof Tile using TILE BOND™ Roof Tile Adhesive (HFC Formulation) or APOC Polyset® AH-160 (HFC, HFO 1, and HFO 2 Formulations) , Mechanically Fastened Roof Tile, Metal Roofing, Wood Shake & Shingles, Quarry Slate, and Asphaltic Shingle assemblies.
Underlayment Uplift Design Pressure:	-67.5 psf* (See General Limitation #7).

*** Underlayment Uplift Design Pressure rating above is included for additional analysis of the underlayment assembly only by the Authority Having Jurisdiction. This value does not include the roof system. Refer to roof system NOA for maximum design pressure of the final roof assembly.**

INSTALLATION PROCEDURES

Starter Course:	Apply 18-inch wide Half Sheet (the nailable portion of the Tag & Stick MTP) parallel to the eave and fasten 12-inch o.c. at a row within 2-inches of the top edge, 12-inch o.c. at a row 9-inch from the top edge off set six inches from the other row of fasteners and 6-inch wide end (vertical) laps. Tack-down the eave edge sufficiently to hold in place prior to installation of the edge metal detail. See details herein.
Subsequent Courses:	Align and apply subsequent courses overlapping the previous course or starter course with the 18-inch wide self-adhering portion of the sheet. Fasten nailable portion 12-inch o.c. at a row within 2-inches of the top edge of the sheet, 12-inch o.c. at a row within 2-inches of the lap-line (surface fabric) and 12-inch o.c. at one row centered between the top and bottom rows. Remove plastic release film and step-in / roll-in in accordance with Tag & Stick, LLC published instructions. See details herein.
Edge Details	Install hips, ridges, gables and valleys in accordance with Tag & Stick LLC's published installation instructions and as detailed herein. Flashing details are subject to the limitations set forth in the applicable RAS Standard.



NOA No.: 23-0621.02
Expiration Date: 04/11/28
Approval Date: 07/04/24
Page 3 of 11

LIMITATIONS

1. Fire classification is not part of this acceptance; refer to a current Approved Roofing Materials Directory for fire ratings of this product.
2. This acceptance is for prepared roofing applications. Minimum deck requirements shall be in compliance with applicable building code.
3. Tag & Stick MTP underlayment may be used in asphaltic shingles, metal panels, wood shakes and shingles, quarry slate, and mechanically or adhesive-set tile roof assemblies with TILE BOND™ Roof Tile Adhesive (HFC Formulation) or APOC Polyset® AH-160 (HFC, HFO 1, and HFO 2 Formulations).
4. Tag & Stick MTP underlayment shall not be left exposed to weather for longer than 180 days.
5. During the roof loading phase, when the pitch is 6:12 or less, the tile shall be stacked in stacks of five tiles or less directly on the woven fabric surface of Tag & Stick MTP. On pitches greater than 6:12, loading boards or battens are required to support the tile. Loading boards or battens will support many combinations for stacking the roof tile; however, vertical stacks should not exceed ten roof tiles per stack when using loading boards.
6. Refer to prepared Roofing System Product Control Notice of Acceptance for listed approval of this product with specific prepared roofing products.
7. Perimeter and corner areas shall comply with the enhanced uplift pressure requirements of these areas. Fastener densities shall be increased for both insulation and base sheet as calculated in compliance with Roofing Application Standard RAS 117. Calculations prepared, signed and sealed by a Florida registered Professional Engineer, Registered Architect, or Registered Roof Consultant. **(When this limitation is specifically referred within this NOA, General Limitation #9 will not be applicable).**
8. Tag & Stick MTP underlayment may be used with any approved roof covering Notice of Acceptance listing Tag & Stick MTP underlayment as a component part of an assembly in the Notice of Acceptance. If Tag & Stick MTP underlayment is not listed, a request may be made to the Authority Having Jurisdiction (AHJ) or the Miami-Dade County Product Control Department for approval provided that appropriate documentation is provided to detail compatibility of the products, wind uplift resistance, and fire testing results.
9. The maximum designed pressure limitation listed shall be applicable to all roof pressure zones (i.e. field, perimeters, and corners). Neither rational analysis, nor extrapolation shall be permitted for enhanced fastening at enhanced pressure zones (i.e. perimeters, extended corners and corners). **(When this limitation is specifically referred within this NOA, General Limitation #7 will not be applicable).**
10. Tag & Stick MTP underlayment shall be applied to a smooth, clean and dry surface with deck free of irregularities. All nails in the deck shall be carefully checked for protruding heads. Re-fasten any loose decking panels. Sweep the deck thoroughly to remove any dust and debris prior to application
11. All products listed herein shall have a quality assurance audit in accordance with the Florida Building Code and Rule 61G20-3 of the Florida Administrative Code.

LABELING

1. All membranes or packaging shall bear the imprint or identifiable marking of the manufacturer's name or logo and the following statement: "Miami-Dade County Product Control Approved" or the Miami-Dade County Product Control Seal as shown below.



BUILDING PERMIT REQUIREMENTS

1. Application for building permit shall be accompanied by copies of the following:
 - 1.1 This Notice of Acceptance.
 - 1.2 Any other documents required by the Building Official or the applicable code in order to properly evaluate the installation of this system.

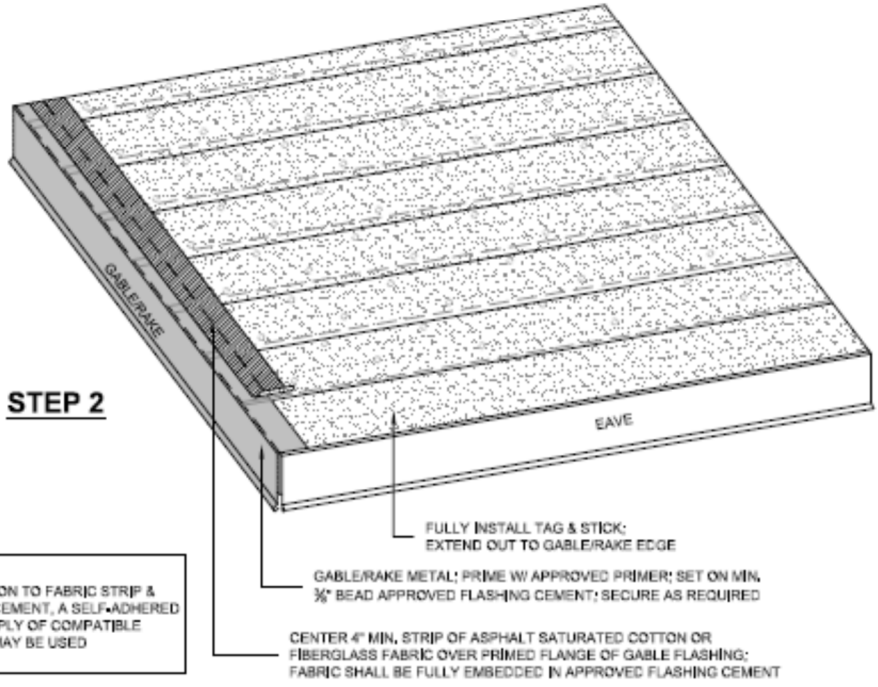
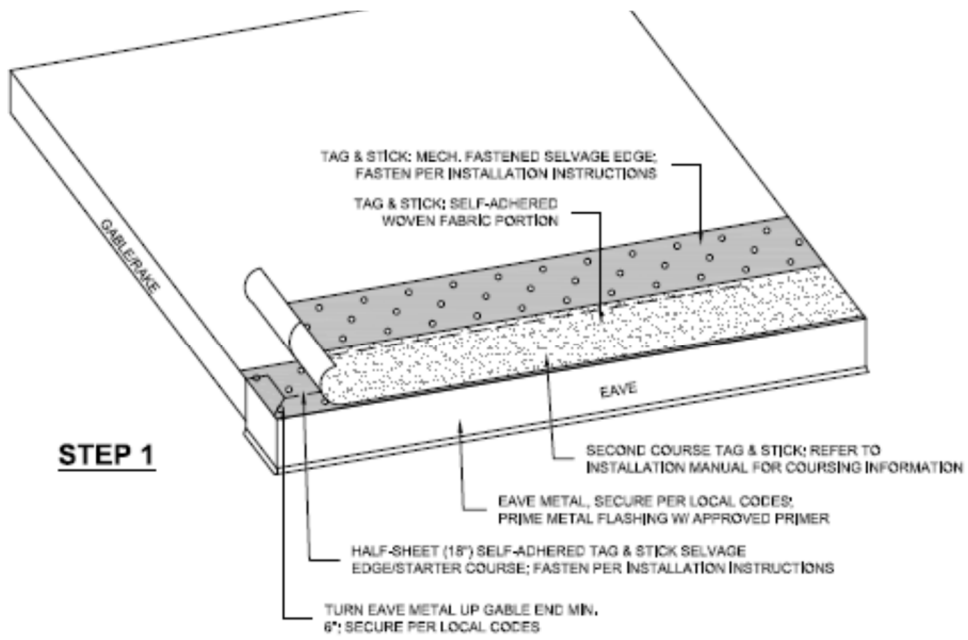
TAG & STICK GUIDELINES

1. Tag & Stick MTP underlayment should always be stored, installed and used in accordance with good roofing practices including all applicable building and safety codes.
2. Prior to installation, the roof deck must be clean and free from any moisture, ice, dust, loose nails, protrusions, voids, and other debris.
3. Do not walk on the 18" Starter Half Sheet until two rows of fasteners are installed.
4. Installation over wet or frozen substrates may result in moisture migration causing buckles in the membrane. These events will normally be observed at the joints of the substrate and may telegraph through to the roof covering if corrective actions are not taken.
5. For proper adhesion, apply only when the air, deck and material temperature is 40°F or higher. For applications where the air, deck or material temperature is below 40°F, allow the material to warm before removing the release film.
6. Immediately fastening the product in colder climates as it is rolled out is unacceptable and may result in buckles. Allow the underlayment to completely relax before fastening.
7. During cold weather application it is recommended that material be cut into smaller sections and placed in the sun to allow the membrane to warm up. Warming the membrane before application will allow the membrane to relax.
8. The self-adhesive portion should be rolled in place with a weighted roller or walked in by the weight of the installer to ensure positive contact with the tagged portion of the underlayment. When walking in, the installer should ensure that the 18" Woven Fabric is fully adhered to the tagged portion.
9. Always install from the lowest point on the roof deck. Tag & Stick products should be installed in straight lines parallel to the eave
10. At end laps and other sheet to sheet applications where the self-adhered portion is contacting the Woven Fabric, the use of high quality trowelable grade SBS compatible mastic (Plastic Cement) is recommended. Only SBS compatible coatings should be used
11. This product is a moisture/vapor barrier. Prior to installation, ensure that the roof system provides adequate ventilation to prevent moisture build up in the interior structure.
12. Use extreme caution during installation. Do not walk or traverse on product unless dry, as it may become slippery when exposed to moisture.
13. Do not lay rolls on their sides. Product roll should remain in manufacturer's packaging until use and store under cover at temperatures suitable for application.



INSTALLATION DETAILS

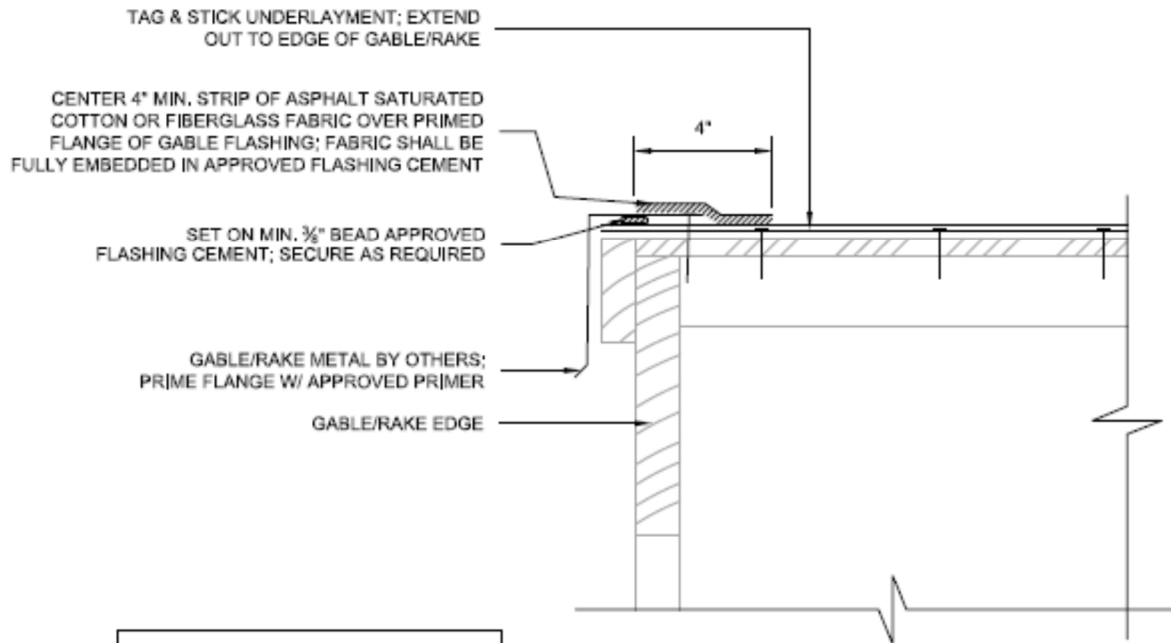
GABLE TO EAVE TRANSITIONS



NOTE:
AS AN OPTION TO FABRIC STRIP & FLASHING CEMENT, A SELF-ADHERED STRIPPING PLY OF COMPATIBLE MATERIAL MAY BE USED

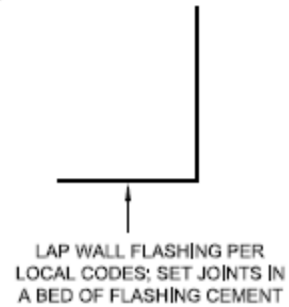
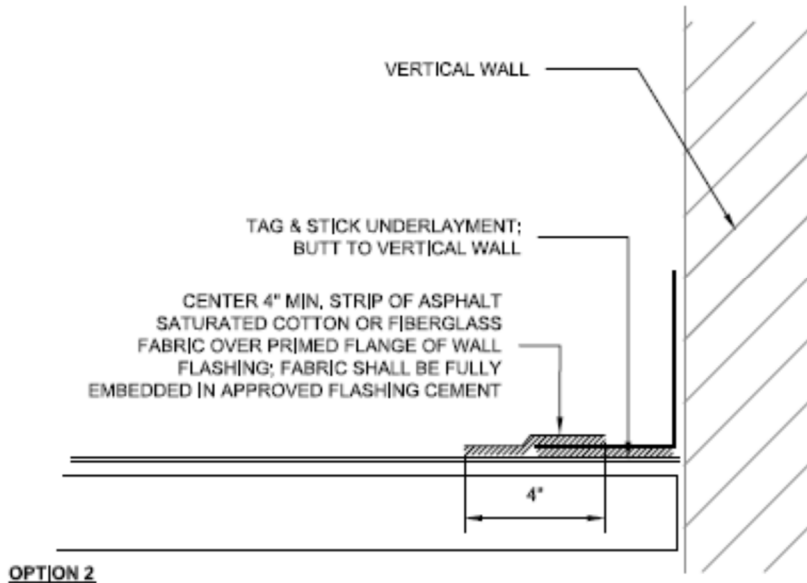
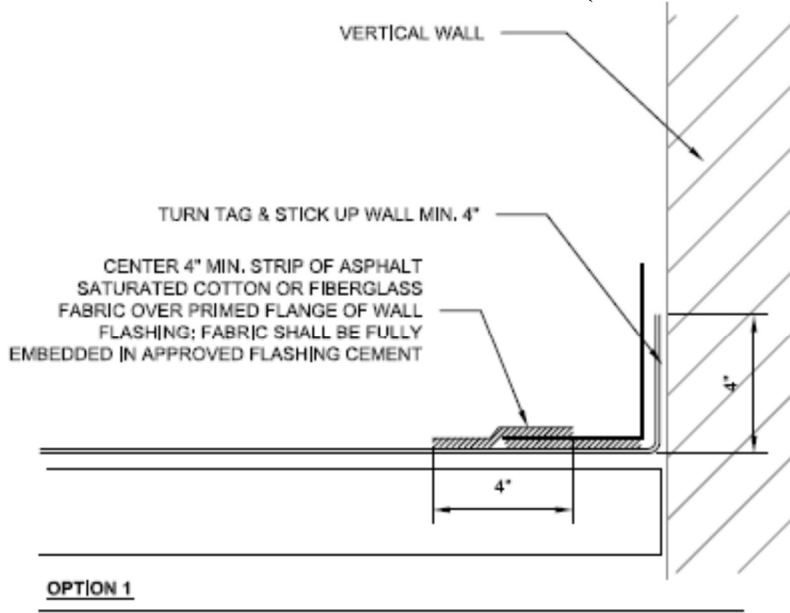


GABLE EDGE



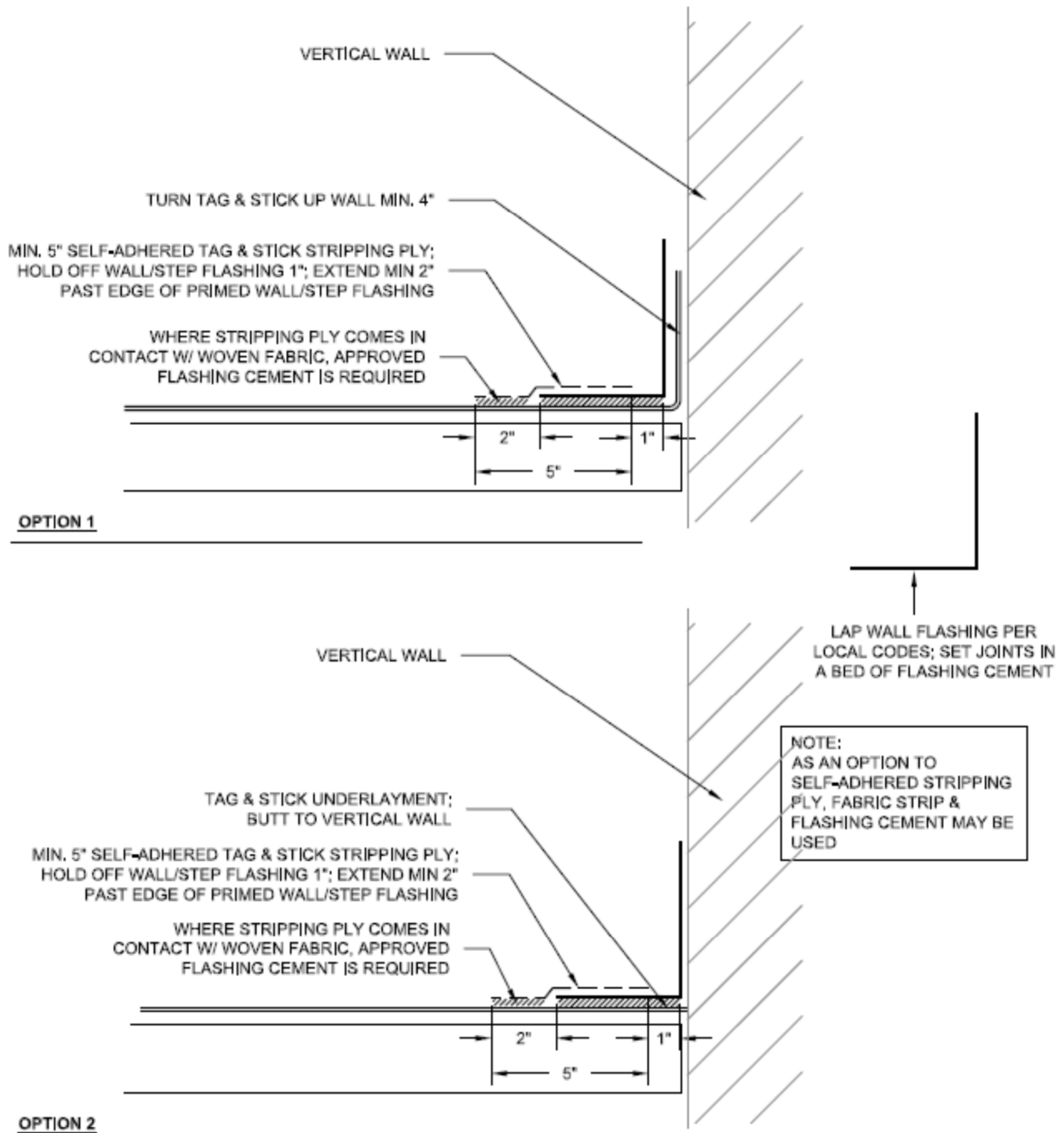
NOTE:
AS AN OPTION TO FABRIC STRIP & FLASHING CEMENT, A SELF-ADHERED STRIPPING PLY OF COMPATIBLE MATERIAL MAY BE USED

WALL STEP FLASHINGS (OPTIONS 1 AND 2)

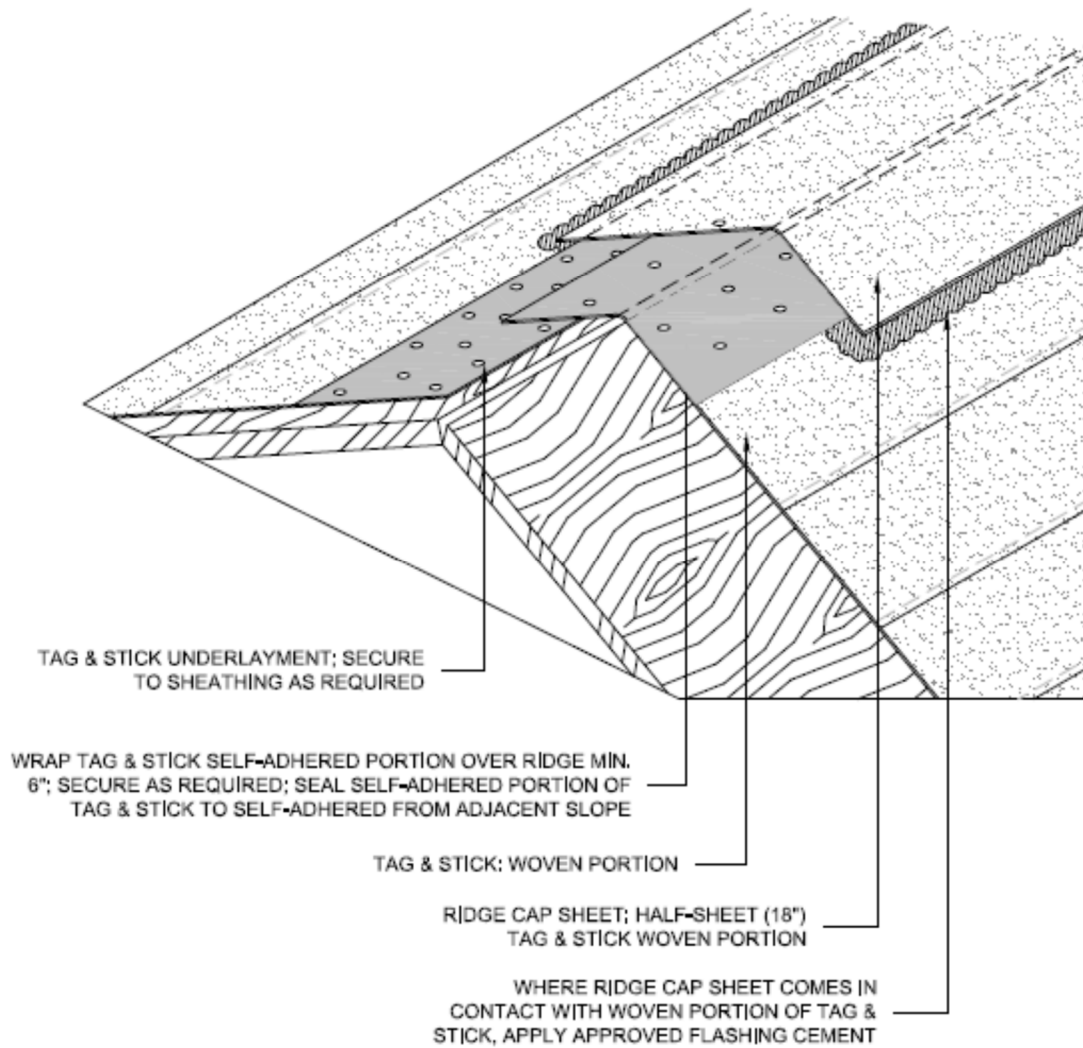


NOTE:
AS AN OPTION TO FABRIC STRIP
& FLASHING CEMENT, A SELF-
ADHERED STRIPPING PLY OF
COMPATIBLE MATERIAL MAY BE
USED

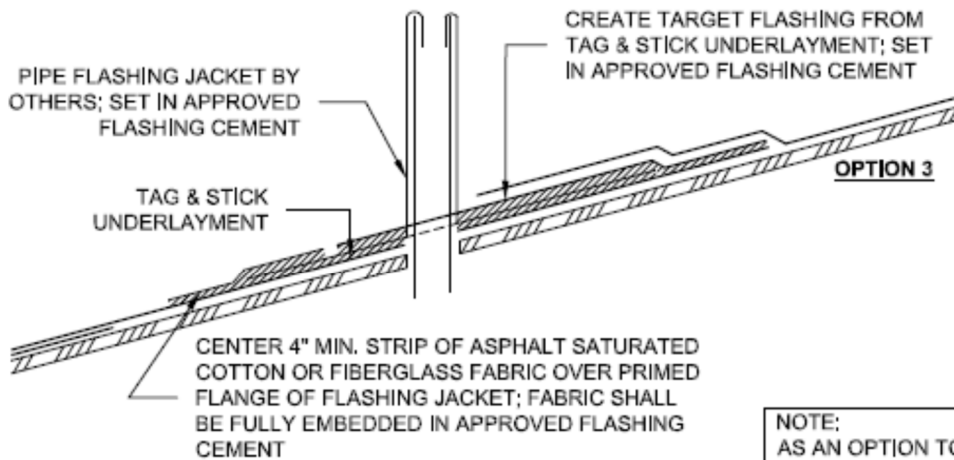
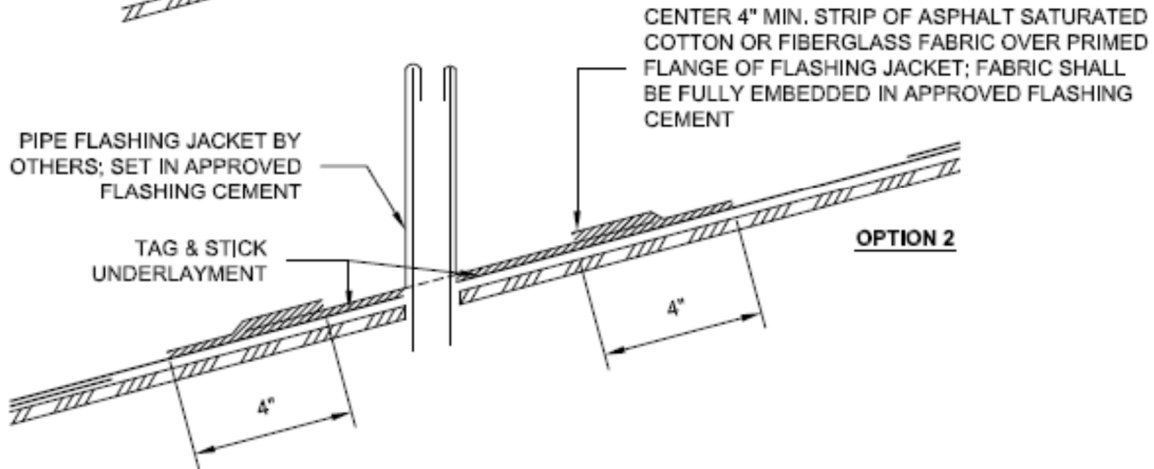
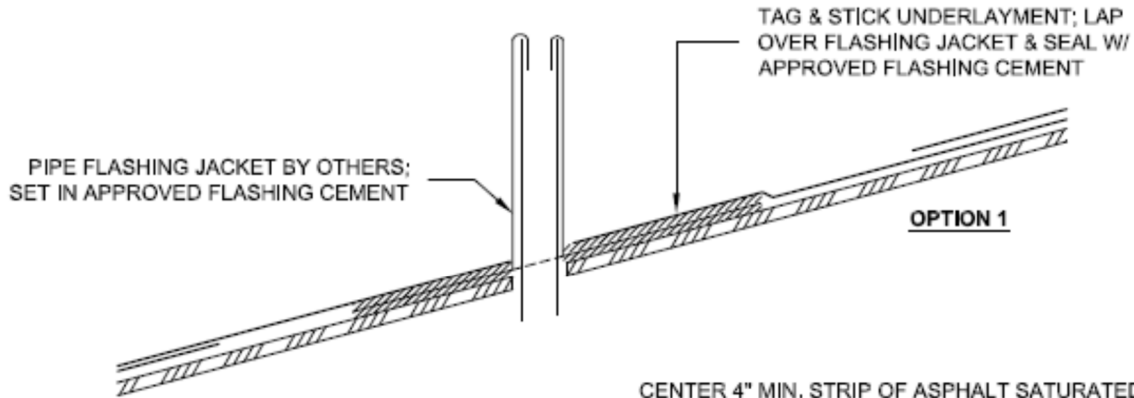
WALL STEP FLASHINGS – ALTERNATE (OPTIONS 1 AND 2)



RIDGE DETAIL



ROOF PENETRATIONS



NOTE:
 AS AN OPTION TO FABRIC STRIP & FLASHING CEMENT, A SELF-ADHERED STRIPPING PLY OF COMPATIBLE MATERIAL MAY BE USED

END OF THIS ACCEPTANCE

