



DEPARTMENT OF REGULATORY AND ECONOMIC RESOURCES (RER)
BOARD AND CODE ADMINISTRATION DIVISION

NOTICE OF ACCEPTANCE (NOA)

MIAMI-DADE COUNTY
PRODUCT CONTROL SECTION

11805 SW 26 Street, Room 208
Miami, Florida 33175-2474
T (786) 315-2590 F (786) 315-2599

www.miamidade.gov/economy

Shanghai YY Windows CO. LTD.
No. 9300 Hunan Highway,
PuDong New Area, Shanghai, China, 201399

SCOPE:

This NOA is being issued under the applicable rules and regulations governing the use of construction materials. The documentation submitted has been reviewed and accepted by Miami-Dade County RER -Product Control Section to be used in Miami Dade County and other areas where allowed by the Authority Having Jurisdiction (AHJ).

This NOA shall not be valid after the expiration date stated below. The Miami-Dade County Product Control Section (In Miami Dade County) and/or the AHJ (in areas other than Miami Dade County) reserve the right to have this product or material tested for quality assurance purposes. If this product or material fails to perform in the accepted manner, the manufacturer will incur the expense of such testing and the AHJ may immediately revoke, modify, or suspend the use of such product or material within their jurisdiction. RER reserves the right to revoke this acceptance, if it is determined by Miami-Dade County Product Control Section that this product or material fails to meet the requirements of the applicable building code.

This product is approved as described herein and has been designed to comply with the Florida Building Code, including the High Velocity Hurricane Zone.

DESCRIPTION: Series “YY-150” Aluminum Project Out Window Systems - L.M.I.

APPROVAL DOCUMENT: Drawing No. **AD 23-05**, titled “YY 150 Aluminum Project Out Window Systems (L.M.I.)”, sheets 1 through 9 of 9, dated April 26, 2023, prepared by MCY Engineering, Inc., signed and sealed by Yiping Wang, P.E., bearing the Miami-Dade County Product Control Approval stamp with the Notice of Acceptance number and approval date by the Miami-Dade County Product Control Section.

MISSILE IMPACT RATING: Large and Small Missile Impact Resistant

Limitations:

LABELING: Each unit shall bear a permanent label with the manufacturer's name or logo, **Shanghai, China**, series, and the following statement: "Miami-Dade County Product Control Approved", unless otherwise noted herein.

RENEWAL of this NOA shall be considered after a renewal application has been filed and there has been no change in the applicable building code negatively affecting the performance of this product.

TERMINATION of this NOA will occur after the expiration date or if there has been a revision or change in the materials, use, and/or manufacture of the product or process. Misuse of this NOA as an endorsement of any product, for sales, advertising or any other purposes shall automatically terminate this NOA. Failure to comply with any section of this NOA shall be cause for termination and removal of NOA.

ADVERTISEMENT: The NOA number preceded by the words Miami-Dade County, Florida, and followed by the expiration date may be displayed in advertising literature. If any portion of the NOA is displayed, then it shall be done in its entirety.

INSPECTION: A copy of this entire NOA shall be provided to the user by the manufacturer or its distributors and shall be available for inspection at the job site at the request of the Building Official.

This NOA consists of this page 1 and evidence pages E-1, as well as approval document mentioned above.

The submitted documentation was reviewed by **Sifang Zhao, P.E.**



S.Z.
07/25/2024

NOA No. 23-0731.03
Expiration Date: July 25, 2029
Approval Date: July 25, 2024

NOTICE OF ACCEPTANCE: EVIDENCE SUBMITTED

A. DRAWINGS

1. Manufacturer's die drawings and sections.
2. Drawing No. **AD 23-05**, titled "YY 150 Aluminum Project Out Window Systems (L.M.I.)", sheets 1 through 9 of 9, dated April 26, 2023, prepared by MCY Engineering, Inc., signed and sealed by Yiping Wang, P.E.

B. TESTS

1. Test reports on:
 - 1) Air Infiltration Test, per FBC, TAS 202-94
 - 2) Uniform Static Air Pressure Test, Loading per FBC, TAS 202-94
 - 3) Water Resistance Test, per FBC, TAS 202-94
 - 4) Forced Entry Test, per FBC, and TAS 202-94
 - 6) Large Missile Impact Test per FBC, TAS 201-94
 - 7) Cyclic Wind Pressure Loading per FBC, TAS 203-94

along with marked-up drawings and installation diagram of aluminum project out window, prepared by Intertek Testing, Shanghai, China., Test Report No. **210525009SHF-001**, dated 08/30/2021, signed and sealed by Vinu Abraham, P.E.

C. CALCULATIONS

1. Anchor verification calculations and structural analysis, complying with FBC-8th Edition dated 11/03/2023, prepared by MCY Engineering, Inc., signed and sealed by Yipping wang, P.E.
2. Glazing complies with ASTM E1300-04 & -09.

D. QUALITY ASSURANCE

1. Miami-Dade Department of Regulatory and Economic Resources (RER).

E. MATERIAL CERTIFICATIONS

1. Notice of Acceptance No. **23-0717.30** issued to Kuraray America, Inc. for the "Sentry Glass ® Interlayer", expiring on 07/4/28.

F. STATEMENTS

1. Statement letter of conformance, complying with **FBC2023 (8th Edition)** and "No financial interest" dated 11/03/2023, issued by MCY Engineering, Inc., signed and sealed by Yiping Wang, P.E.
2. Distributor Agreement, between manufacturer Shanghai YY Windows Co. LTD, China and DGC Development Corp., USA (Distributor) dated 05/31/2024, signed by Yvonne Yang, director and Daniel Jorge Oliveira, CEO on behalf of their respective companies.

G. OTHER

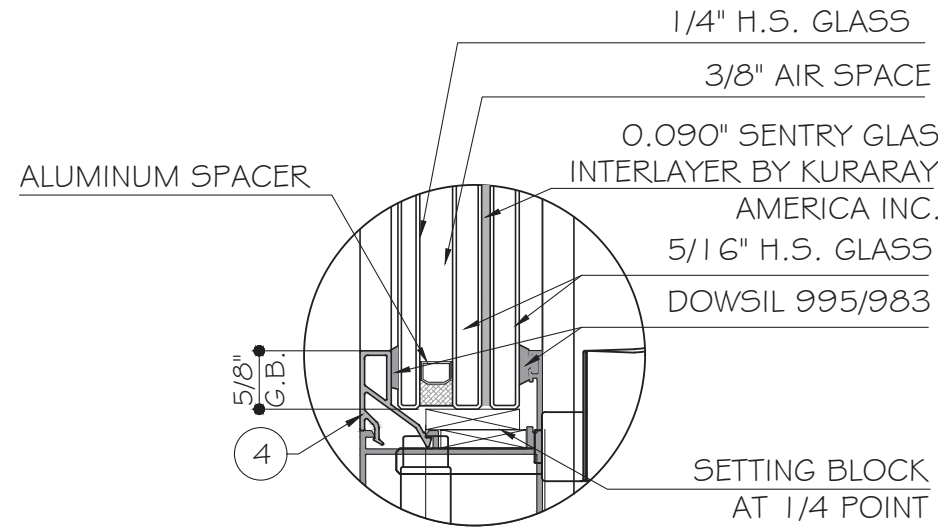
1. None.



Sifang Zhao, P.E.
Product Control Examiner
NOA No. 23-0731.03
Expiration Date: July 25, 2029
Approval Date: July 25, 2024

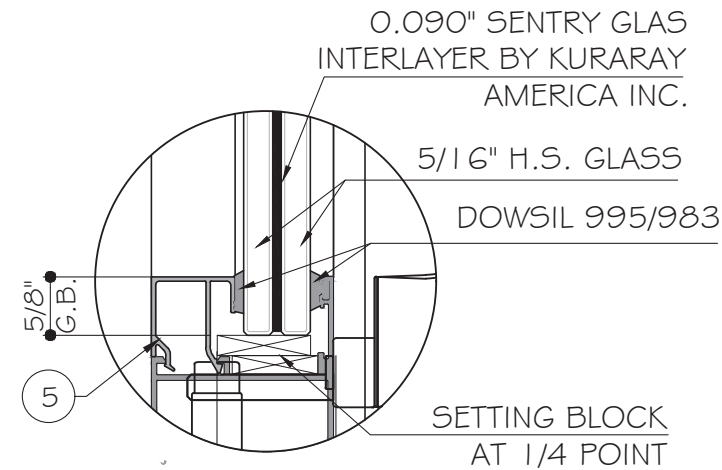
SHANGHAI YY WINDOWS CO., LTD

YY150 PROJECT OUT WINDOW SYSTEMS - L.M.I.



GLASS TYPE 'G1'

1-5/16" NOMINAL OVERALL
INSULATED LAMINATED GLASS



GLASS TYPE 'G2'

1-1/16" NOMINAL OVERALL
LAMINATED GLASS

NOTE:
GLASS COMPLIES WITH ASTM E1300-16
(3 SEC. GUSTS).

GENERAL NOTES:

- THIS PRODUCT HAS BEEN DESIGNED AND TESTED TO COMPLY WITH THE REQUIREMENTS OF THE 8TH EDITION FLORIDA BUILDING CODE (2023) INCLUDING HIGH VELOCITY HURRICANE ZONE (HVHZ).
- WINDOWS RATED FOR LARGE MISSILE IMPACT, SYSTEM TESTED FOR IMPACT LEVEL "D".
- THESE WINDOWS ARE APPROVED FOR AIR AND WATER INFILTRATION.
- ANCHORS SHALL BE AS LISTED, SPACED AS SHOWN ON DETAILS. ANCHORS EMBEDMENT TO BASE MATERIAL SHALL BE BEYOND WALL DRESSING OR STUCCO.
- ANCHORING OR LOADING CONDITIONS NOT SHOWN IN THESE DETAILS ARE NOT PART OF THIS APPROVAL.
- MATERIALS INCLUDING BUT NOT LIMITED TO STEEL/ METAL SCREWS THAT COME INTO CONTACT WITH OTHER DISSIMILAR MATERIALS SHALL MEET THE REQUIREMENTS OF THE 8TH EDITION FLORIDA BUILDING CODE (2023) SECTION AS APPLICABLE.
- METAL STRUCTURAL BY OTHERS TO BE DESIGNED TO SUPPORT THE LOADS IMPOSED BY THIS GLAZING SYSTEM AND TO TRANSFER SUCH LOADS TO THE BUILDING MAIN STRUCTURE.
- ULTIMATE LOAD OBTAINED FROM ASCE 7-22, MULTIPLY BY 0.6 SHALL BE LESS THAN OR EQUAL TO MAX. DESIGN LOAD IN THIS DOCUMENT. THE DESIGN LOADS SHOWN IN THIS DOCUMENT ARE ALLOWABLE DESIGN LOADS.
- MANUFACTURER'S LABEL SHALL BE LOCATED ON A READILY VISIBLE LOCATION IN ACCORDANCE WITH SECTION 1709.9.3 OF FLORIDA BUILDING CODE LABELING TO COMPLY WITH SECTION 1709.9.2.
- SEALANT: ALL FRAME CORNERS, JOINTS, MULLION SEAMS AND PERIMETER GLAZING BEAD TO FRAME INSTALLATION FASTENERS SEALED WITH SILICONE SEALANT.

INSTRUCTIONS:

USE CHARTS AS FOLLOWS.

- STEP 1: DETERMINE DESIGN WIND LOAD REQUIREMENTS BASED ON WIND VELOCITY, BLDG. HEIGHT, WIND ZONE USING APPLICABLE ASCE 7-22 STANDARD.
- STEP 2: SEE SHEET E1 FOR DESIGN LOAD CAPACITY OF DESIRED GLASS SIZE BASED ON APPLICABLE WIND DURATION.
- STEP 3: SEE ANCHOR TYPE ON SHEET D1. FOR ANCHOR SPACING SEE ELEVATION ON SHEET E1.
- STEP 4: THE LOWEST VALUE RESULTING FROM STEPS 2 & 3 THAT EXCEED THE DESIGN WIND PRESSURES DETERMINED THRU STEP 1 SHALL APPLY TO ENTIRE SYSTEM.

ABBREVIATIONS AND SYMBOLS	
D.L.O. - DAYLITE OPENING	
F.H. - FRAME HEIGHT	
F.W. - FRAME WIDTH	
W/ - WITH	
W/O - WITHOUT	
O.C. - ON CENTER	
G.B. - GLASS BITE	

MIAMI-DADE COUNTY

PRODUCT APPROVED
as complying with the Florida
Building Code

NOA-No. 23-0731.03

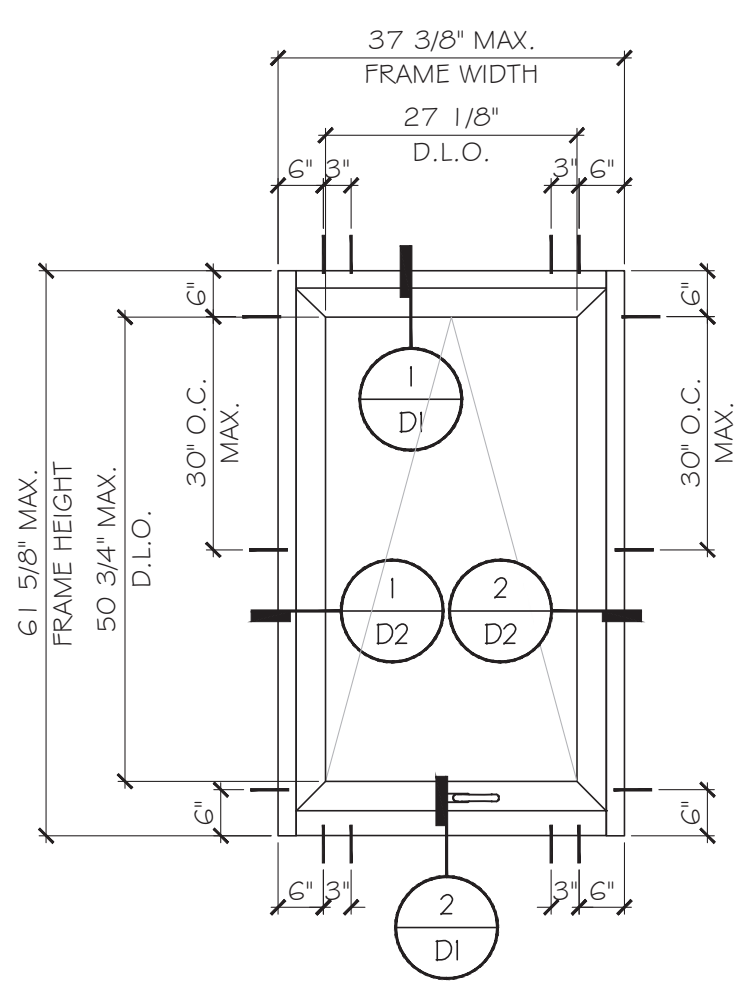
Approval Date 07/25/2024

By **Miami-Dade Product Control**

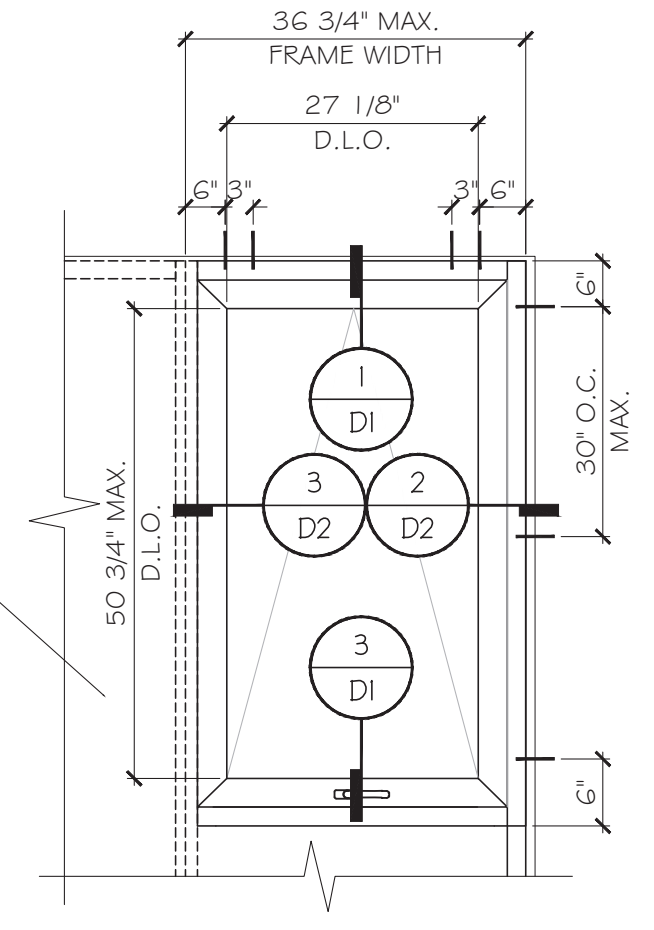
YI PING WANG, P.E.
FLORIDA REGISTRATION
No. 55983
C.A.N. 28577

November 13th, 2023

MCY ENGINEERING, INC.		GLAZING CONSULTANTS	
12781 MIRAMAR PKWY., STE. 301		MIRAMAR, FL. 33027	
www.MCYEngineering.com		P: 305.271.0117	
mcy@mcyengineering.com		www.MCYEngineering.com	
YY150 PROJECT OUT WINDOW SYSTEM LMI			
SHANGHAI YY WINDOWS CO.,LTD			
NO.9300 Hunan High way, PUDONG NEW AREA,SHANGHAI CHINA			
TEL. +86 021-68221481/ +86 021-68221484			
EMAIL: yvonre@yyconstruction.com			
NEW APPROVAL	MCY	11.13.2023	Description
1			Drawn By MCY
Drawn Date 11.13.2023	Drawn By MCY	Date	Rev. No.
DRAWING NO.			
AD23-05			
C1			
Sheet No.			
1 OF 9			




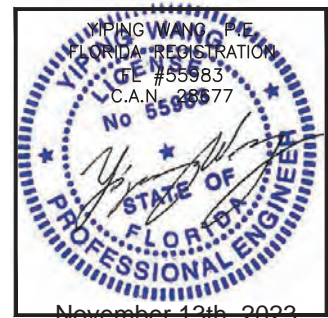
SEE SEPARATE
STOREFRONT
APPROVAL



TYPICAL EXTERIOR ELEVATION

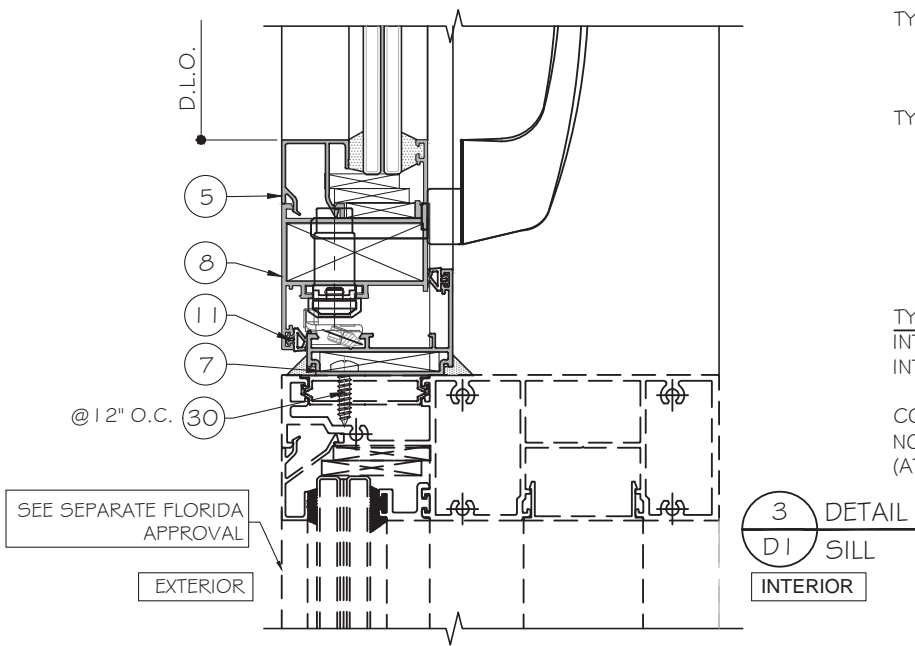
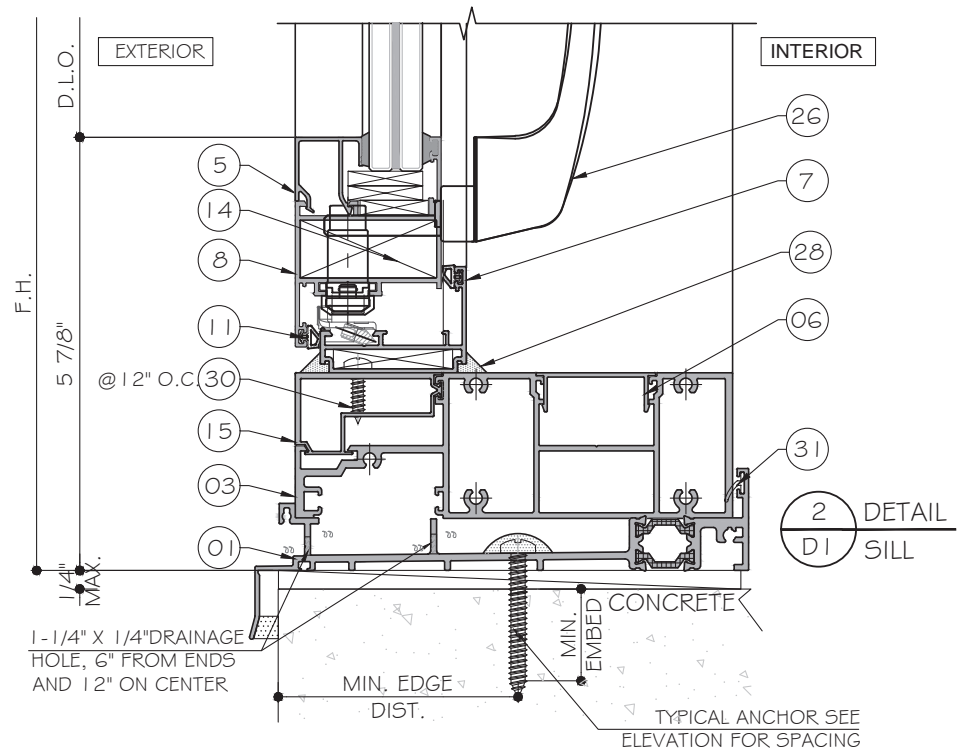
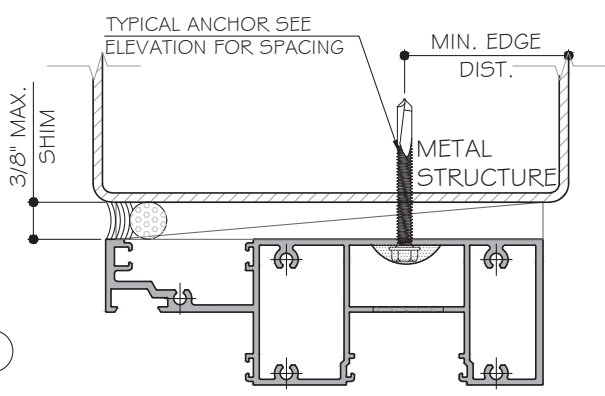
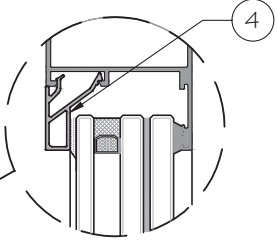
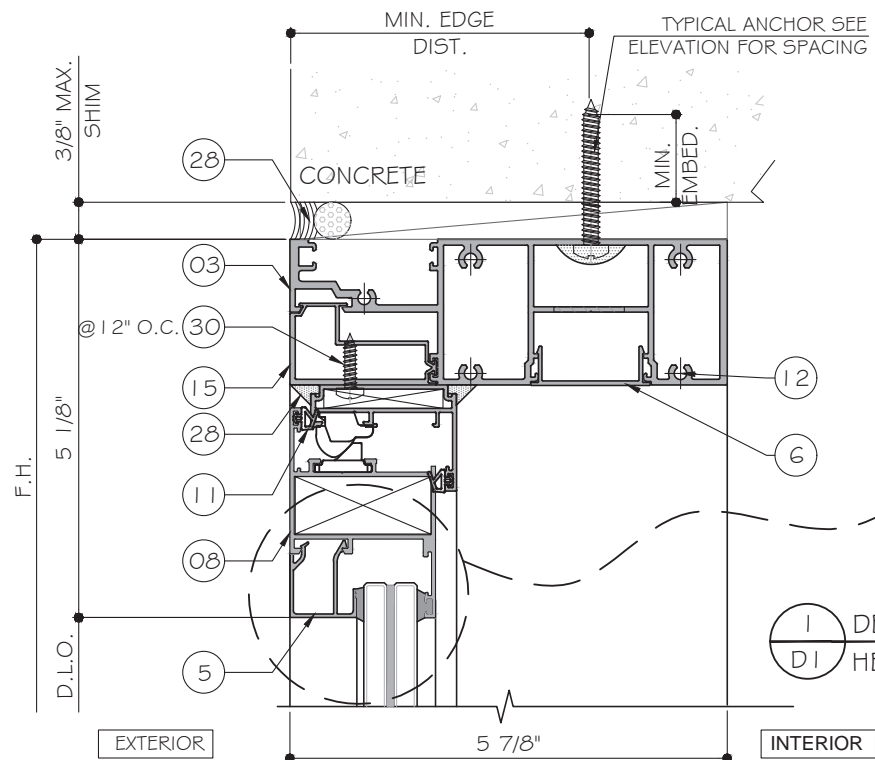
DESIGN LOAD
FOR SIZE SHOWN ABOVE OR SMALLER AS PERMITTED BY FBC
+70 PSF -70 PSF

MIAMI-DADE COUNTY
PRODUCT APPROVED
as complying with the Florida
Building Code
NOA-No. 23-0731.03
Approval Date 07/25/2024
By 
Miami-Dade Product Control



November 13th, 2023

MCY ENGINEERING, INC. GLAZING CONSULTANTS 12781 MIRAMAR PKWY., STE. 301 MIRAMAR, FL 33027 P: 305.271.0117 www.MCYEngineering.com mcy@mcyengineering.com																																																							
YYI 50 PROJECT OUT WINDOW SYSTEM LMI SHANGHAI YY WINDOWS CO.,LTD NO.9300 Hunan high way, PUDONG NEW AREA,SHANGHAI CHINA TEL. +86 021-68221481/ +86 021-68221484 EMAIL: ywone@yyconstruction.com	<table border="1" style="width: 100%; border-collapse: collapse;"> <tr> <td style="width: 10%;">NEW APPROVAL</td> <td style="width: 10%;">MCY</td> <td style="width: 10%;">11.13.2023</td> <td style="width: 10%;">Drawn By</td> <td style="width: 10%;">Date</td> <td style="width: 10%;">Description</td> </tr> <tr> <td>1</td> <td></td> <td></td> <td></td> <td></td> <td></td> </tr> <tr> <td>Drawn Date</td> <td>Drawn By</td> <td colspan="4"></td> </tr> <tr> <td>11.13.2023</td> <td>MCY</td> <td colspan="4"></td> </tr> <tr> <td colspan="6" style="text-align: center;">DRAWING NO.</td> </tr> <tr> <td colspan="6" style="text-align: center;">AD23-05</td> </tr> <tr> <td colspan="6" style="text-align: center;">E1</td> </tr> <tr> <td colspan="6" style="text-align: center;">Sheet No.</td> </tr> <tr> <td colspan="6" style="text-align: center;">2 OF 9</td> </tr> </table>	NEW APPROVAL	MCY	11.13.2023	Drawn By	Date	Description	1						Drawn Date	Drawn By					11.13.2023	MCY					DRAWING NO.						AD23-05						E1						Sheet No.						2 OF 9					
NEW APPROVAL	MCY	11.13.2023	Drawn By	Date	Description																																																		
1																																																							
Drawn Date	Drawn By																																																						
11.13.2023	MCY																																																						
DRAWING NO.																																																							
AD23-05																																																							
E1																																																							
Sheet No.																																																							
2 OF 9																																																							



TYPICAL ANCHOR TYPES:
SEE ELEVATIONS FOR SPACING

TYPE "A": 5/16" DIA. ULTRACON+ BY 'DEWALT' (Fu= 177 KSI, Fy= 155 KSI)
DIRECTLY INTO CONCRETE
WITH 1 3/4" MIN. EMBED INTO CONCRETE

TYPE "A1": 5/16" DIA. ULTRACON+ BY 'DEWALT' (Fu= 177 KSI, Fy= 155 KSI)
INTO GROUT FILLED BLOCKS(JAMB ONLY)
WITH 1 3/4" MIN. EMBED (JAMB ONLY)

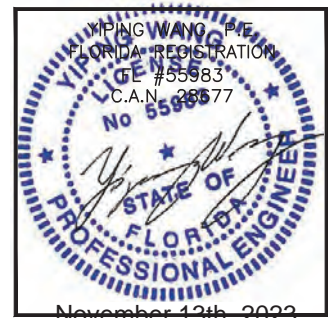
TYPE "B": 5/16" SMS OR SELF DRILLING SCREW(GRADE 5) (Fu= 120 KSI, Fy=90 KSI)
INTO APPROVED MULLIONS
(1/8" THK. MIN.) INTO METAL STRUCTURE

STEEL: 12 GA. MIN. (Fy=36 KSI MIN.)
ALUMINUM: 1/8" THK. MIN. (6063-T5 MIN.)
(STEEL IN CONTACT WITH ALUMINUM TO BE ISOLATED OR PAINTED)

TYPICAL ANCHOR EDGE DISTANCE:
INTO CONCRETE AND MASONRY = 2 1/2" MIN.
INTO METAL STRUCTURE = 3/4" MIN.

CONCRETE f'c = 3000 psi MIN.
NORMAL STRENGTH GROUT FILLED BLOCK
(AT JAMB ONLY)

MIAMI-DADE COUNTY
PRODUCT APPROVED
as complying with the Florida
Building Code
NOA-No. 23-0731.03
Approval Date 07/25/2024
By *[Signature]*
Miami-Dade Product Control



November 13th, 2023

MCY ENGINEERING, INC.
GLAZING CONSULTANTS
12781 MIRAMAR PKWY., STE. 301
MIRAMAR, FL. 33027 P: 305.271.0117
www.MCYEngineering.com mcy@mcyengineering.com

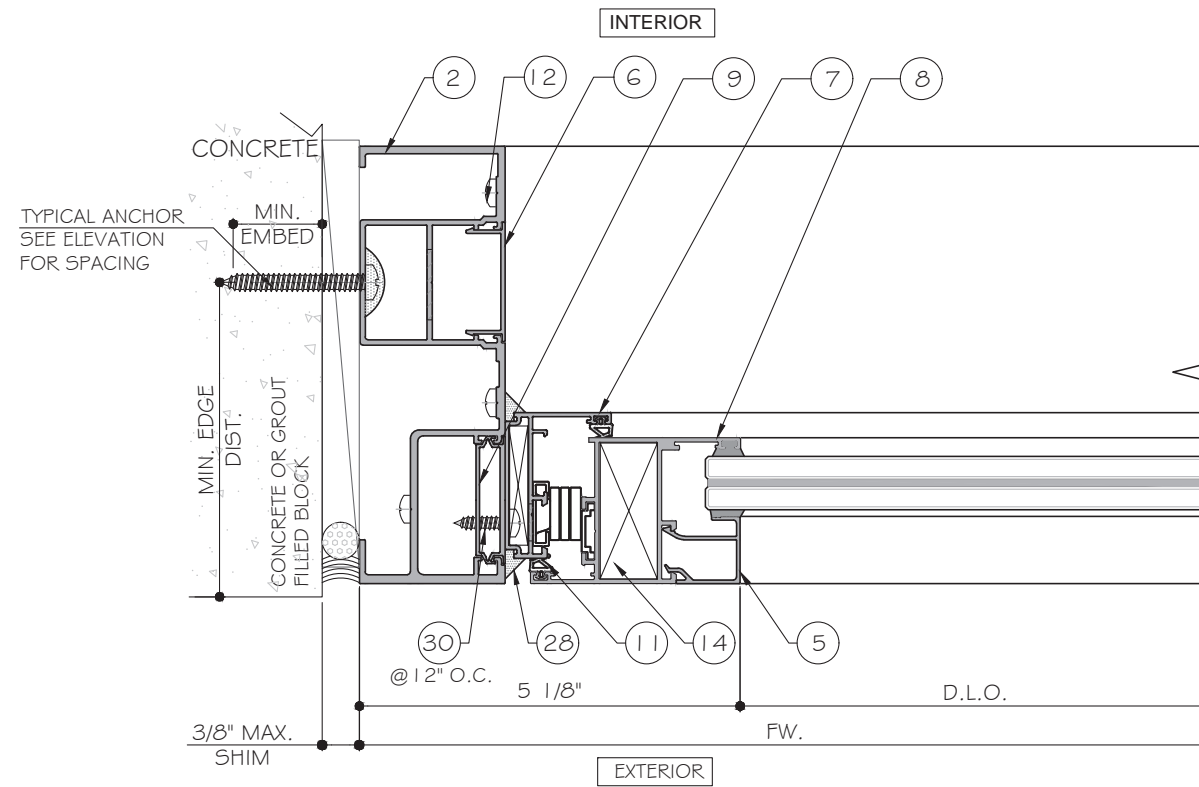
YY150 PROJECT OUT WINDOW SYSTEM LMI
SHANGHAI YY WINDOWS CO.,LTD
NO.9300 Hunan high way, PUDONG NEW AREA,SHANGHAI CHINA
TEL. +86 021-68221481/ +86 021-68221484
EMAIL: yvonre@yyconstruction.com

Rev. No.	Date	Drawn By	Description
1	11.13.2023	MCY	NEW APPROVAL

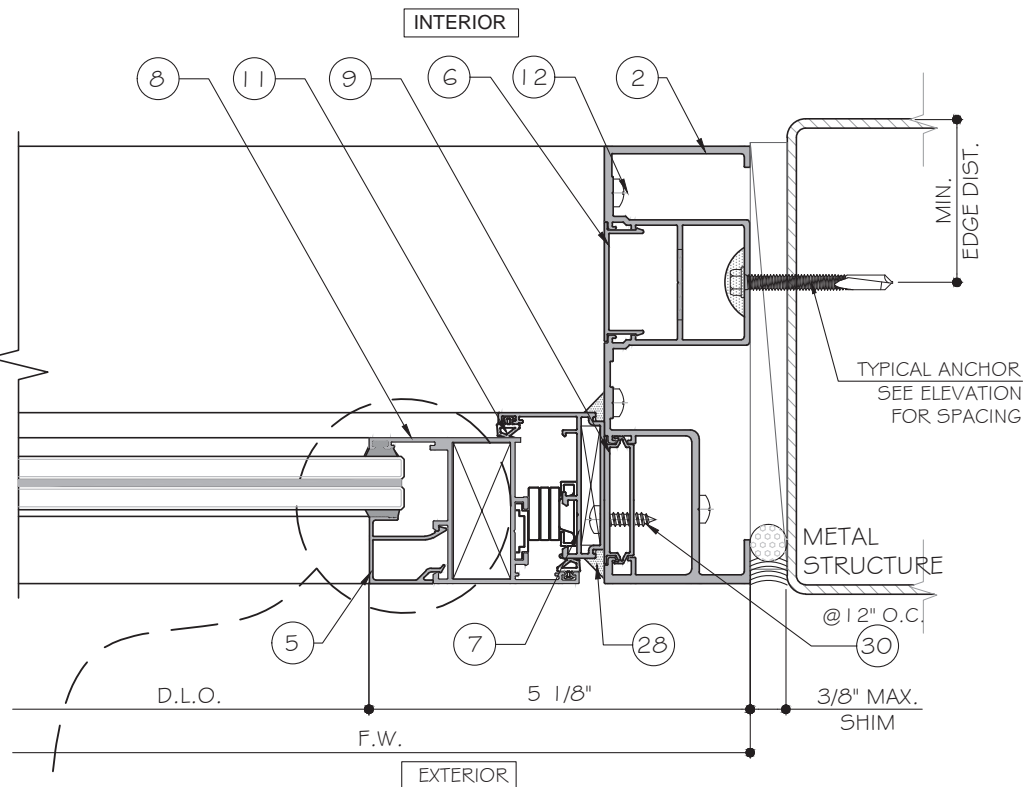
Drawn Date 11.13.2023 Drawn By MCY

DRAWING NO. AD23-05

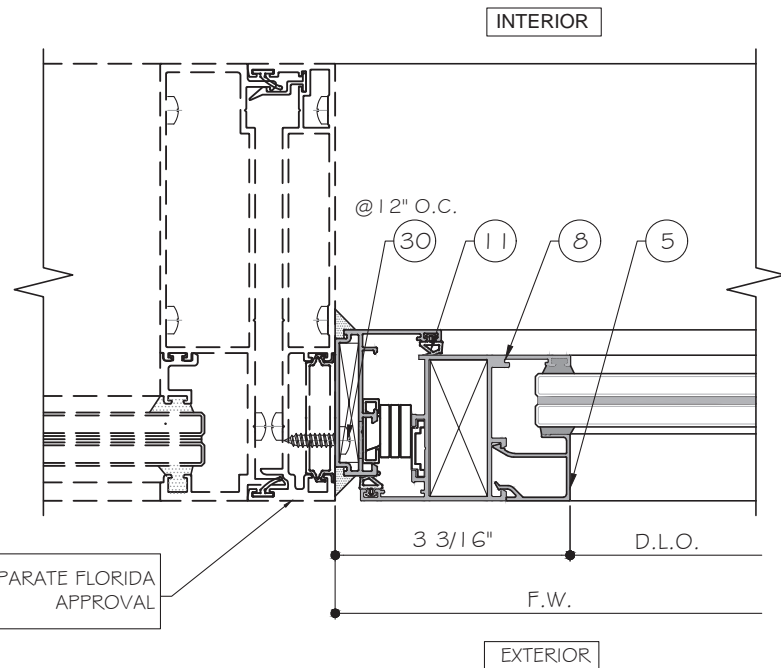
D1
Sheet No. 3 OF 9



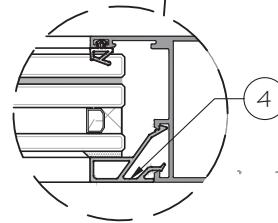
1 DETAIL
D2 JAMB



2 DETAIL
D2 JAMB



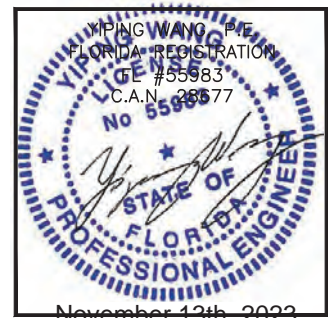
3 DETAIL
D2



4

SEE SEPARATE FLORIDA APPROVAL

MIAMI-DADE COUNTY
PRODUCT APPROVED
 as complying with the Florida Building Code
 NOA-No. 23-0731.03
 Approval Date 07/25/2024
 By *[Signature]*
 Miami-Dade Product Control

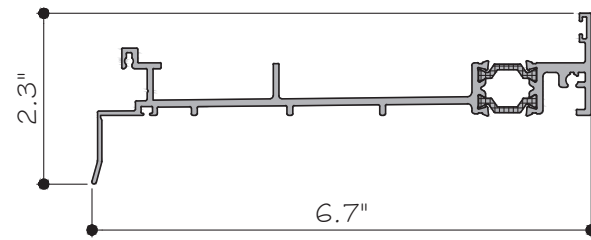


November 13th, 2023

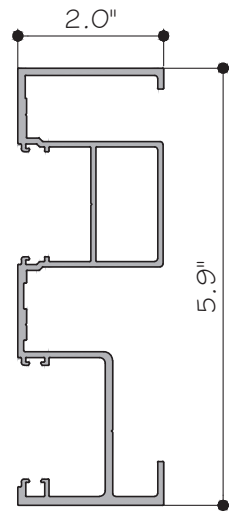
MCY ENGINEERING, INC.
 GLAZING CONSULTANTS
 12781 MIRAMAR PKWY., STE. 301
 MIRAMAR, FL. 33027 P: 305.271.0117
 www.MCYEngineering.com mcy@mcyengineering.com

YYI 50 PROJECT OUT WINDOW SYSTEM LMI
 SHANGHAI YY WINDOWS CO.,LTD
 NO.9300 Hunan high way, PUDONG NEW AREA,SHANGHAI CHINA
 TEL. +86 021-68221481/ +86 021-68221484
 EMAIL: yvonne@yyconstruction.com

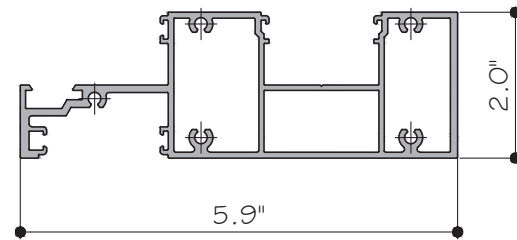
Rev. No.	Date	Drawn By	Description
1	11.13.2023	MCY	NEW APPROVAL
Drawn Date 11.13.2023		Drawn By MCY	
DRAWING NO. AD23-05			
D2			
Sheet No. 4 OF 9			



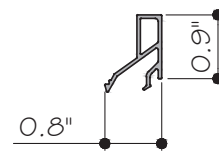
1 SUB SILL YY150-50
ALUM. 6063-T6



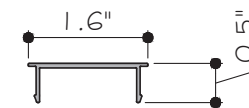
2 JAMB Y150-22
ALUM. 6063-T6



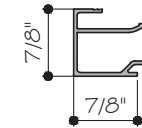
3 TRANSOM YY150-23
ALUM. 6063-T6



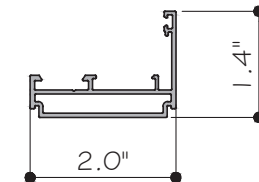
4 SASH BEAD YY100-20
ALUM. 6063-T6



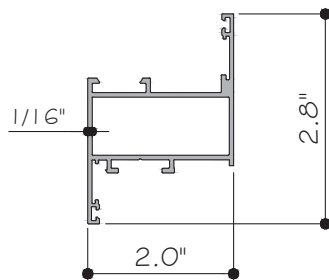
6 CAP YY150-47
ALUM. 6063-T6



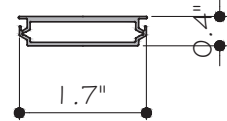
5 SASH BEAD YY86-31
ALUM. 6063-T6



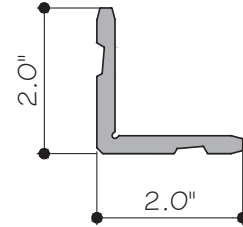
7 AWING FRAME YY100-9
ALUM. 6063-T6



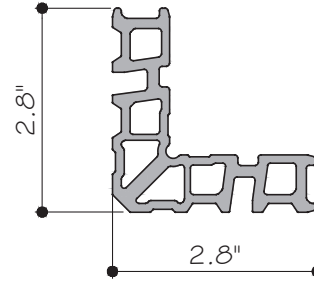
8 SASH YY86-5
ALUM. 6063-T6



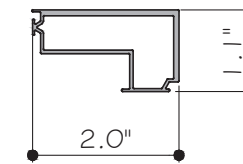
9 ADJUSTER YY100-58
ALUM. 6063-T6



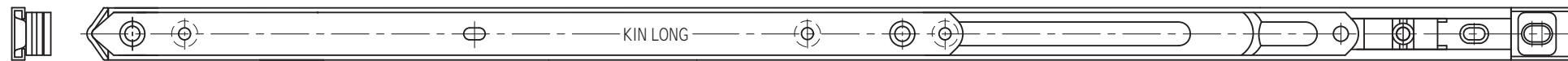
13 JOINT ANGLE YY86-15
ALUM. 6063-T6



14 JOINT ANGLE JM0017
ALUM. 6063-T6

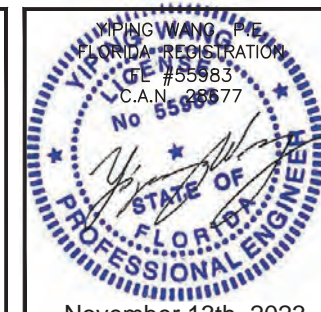


15 ADJUSTER YY150-51
ALUM. 6063-T6



17 FRICTION STAY
FJ900A-18" SUS304

MIAMI-DADE COUNTY
PRODUCT APPROVED
as complying with the Florida Building Code
NOA-No. 23-0731.03
Approval Date 07/25/2024
By *[Signature]*
Miami-Dade Product Control



November 13th, 2023

MCY ENGINEERING, INC.
GLAZING CONSULTANTS
12781 MIRAMAR PKWY., STE. 301
MIRAMAR, FL. 33027 P: 305.271.0117
www.MCYEngineering.com mcy@mcyengineering.com

YY150 PROJECT OUT WINDOW SYSTEM LMI
SHANGHAI YY WINDOWS CO.,LTD
NO.9300 Hunan high way, PUDONG NEW AREA,SHANGHAI CHINA
TEL. +86 021-68221481/ +86 021-68221484
EMAIL: yvonre@yyconstruction.com

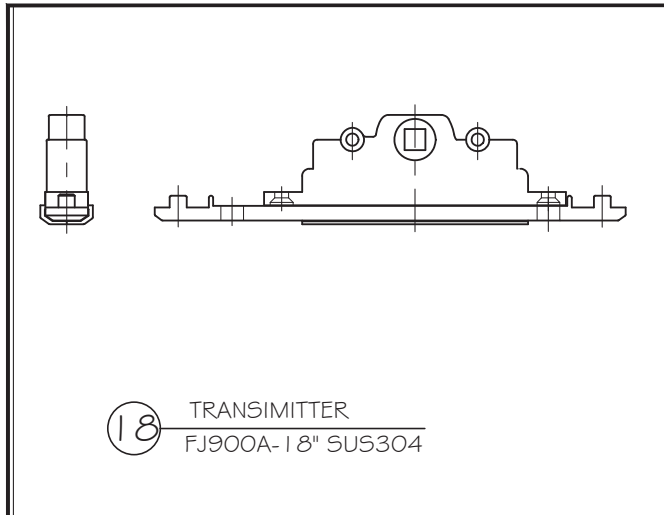
Rev. No.	Date	Drawn By	Description
1	11.13.2023	MCY	NEW APPROVAL

Drawn Date 11.13.2023
Drawn By MCY

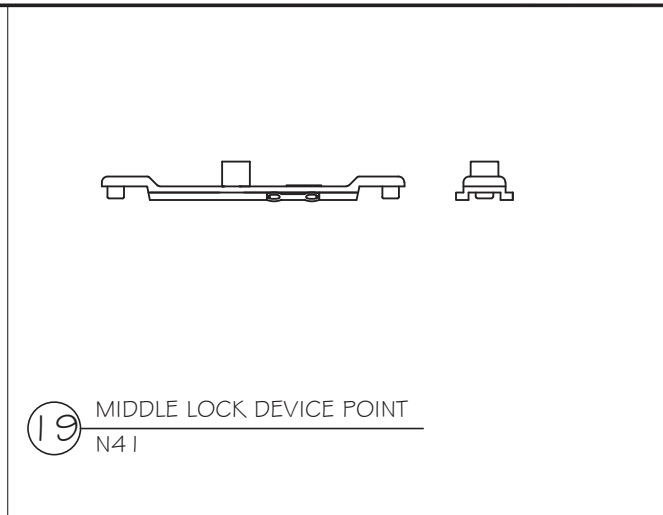
DRAWING NO. AD23-05

PARTS 1

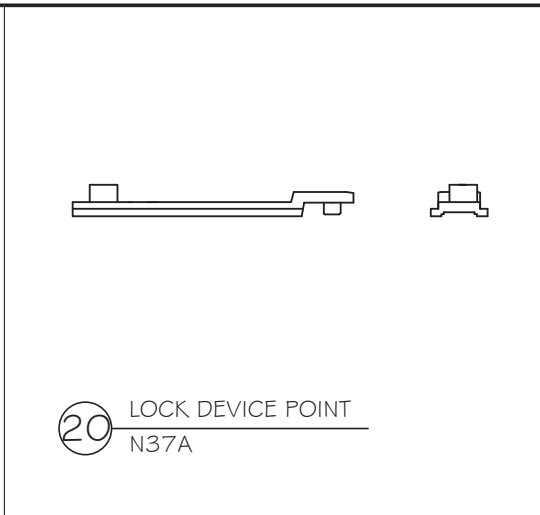
Sheet No. 5 OF 9



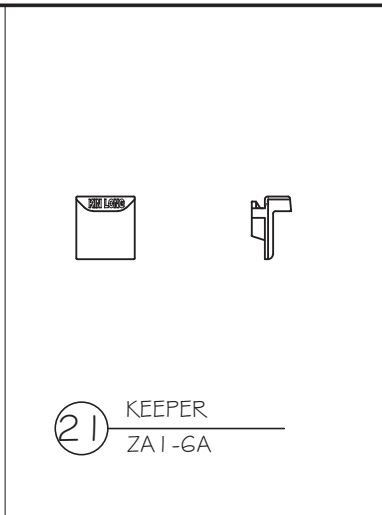
18 TRANSMITTER
FJ900A-18" SUS304



19 MIDDLE LOCK DEVICE POINT
N41



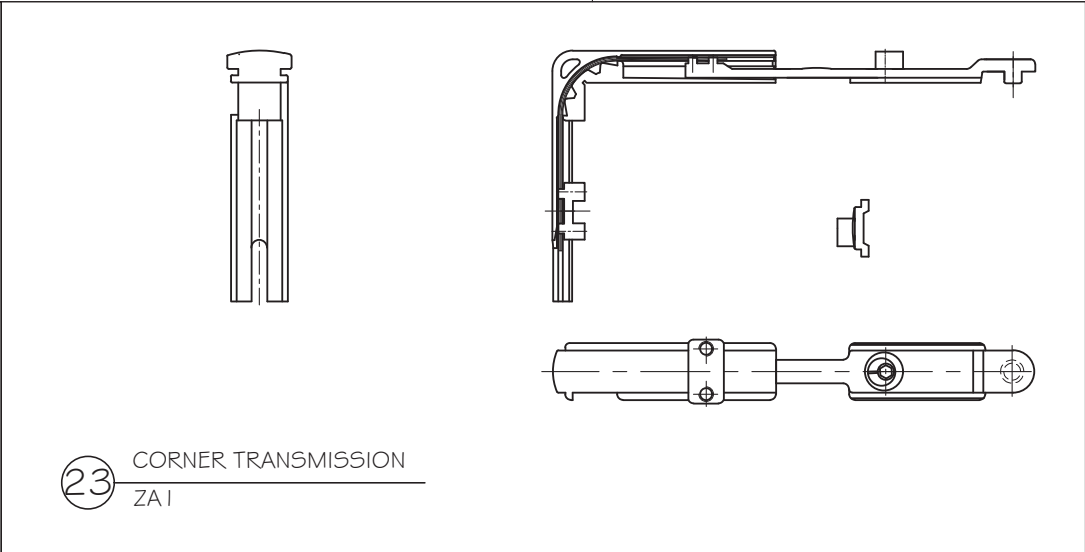
20 LOCK DEVICE POINT
N37A



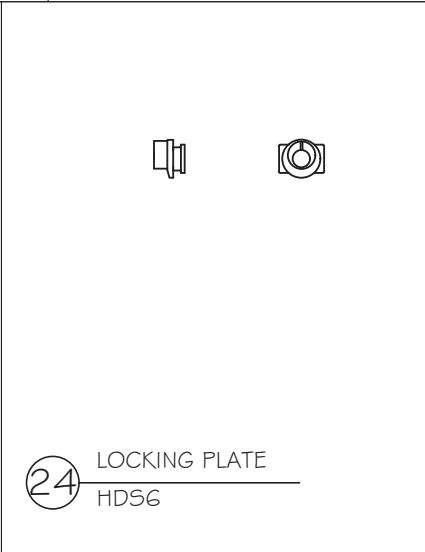
21 KEEPER
ZA1-GA



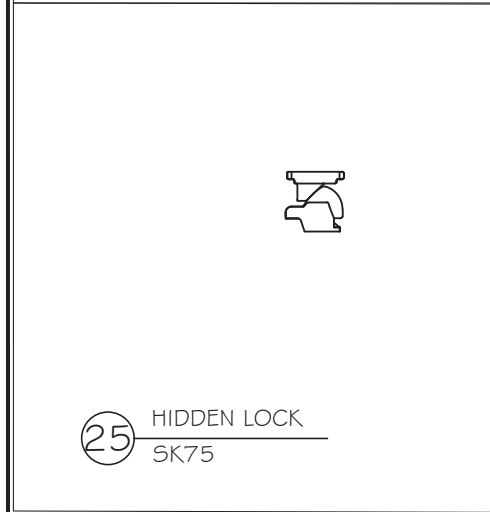
22 TRANSMISSION ROD
HP56457B



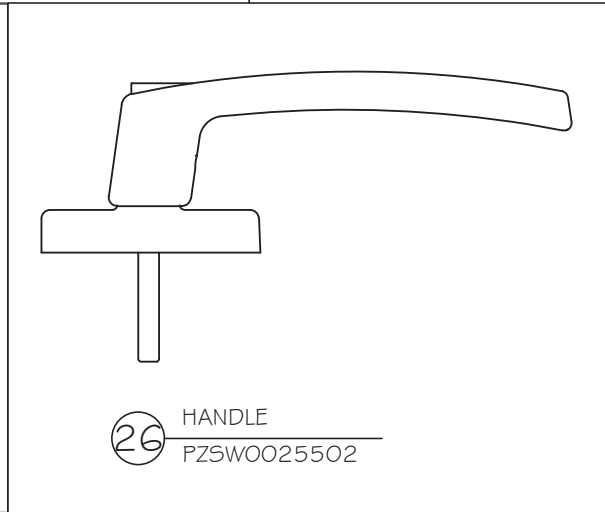
23 CORNER TRANSMISSION
ZA1



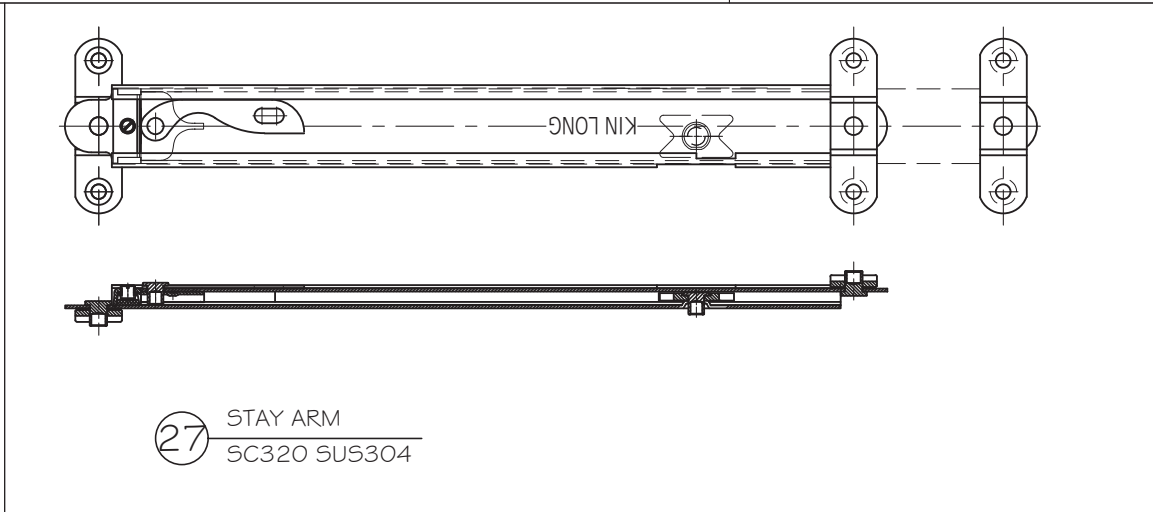
24 LOCKING PLATE
HDS6



25 HIDDEN LOCK
SK75

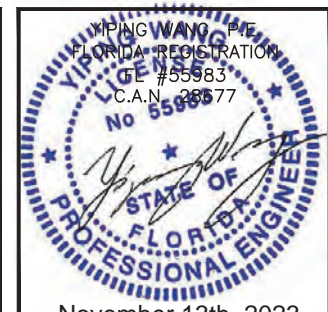


26 HANDLE
PZSW0025502



27 STAY ARM
SC320 SUS304

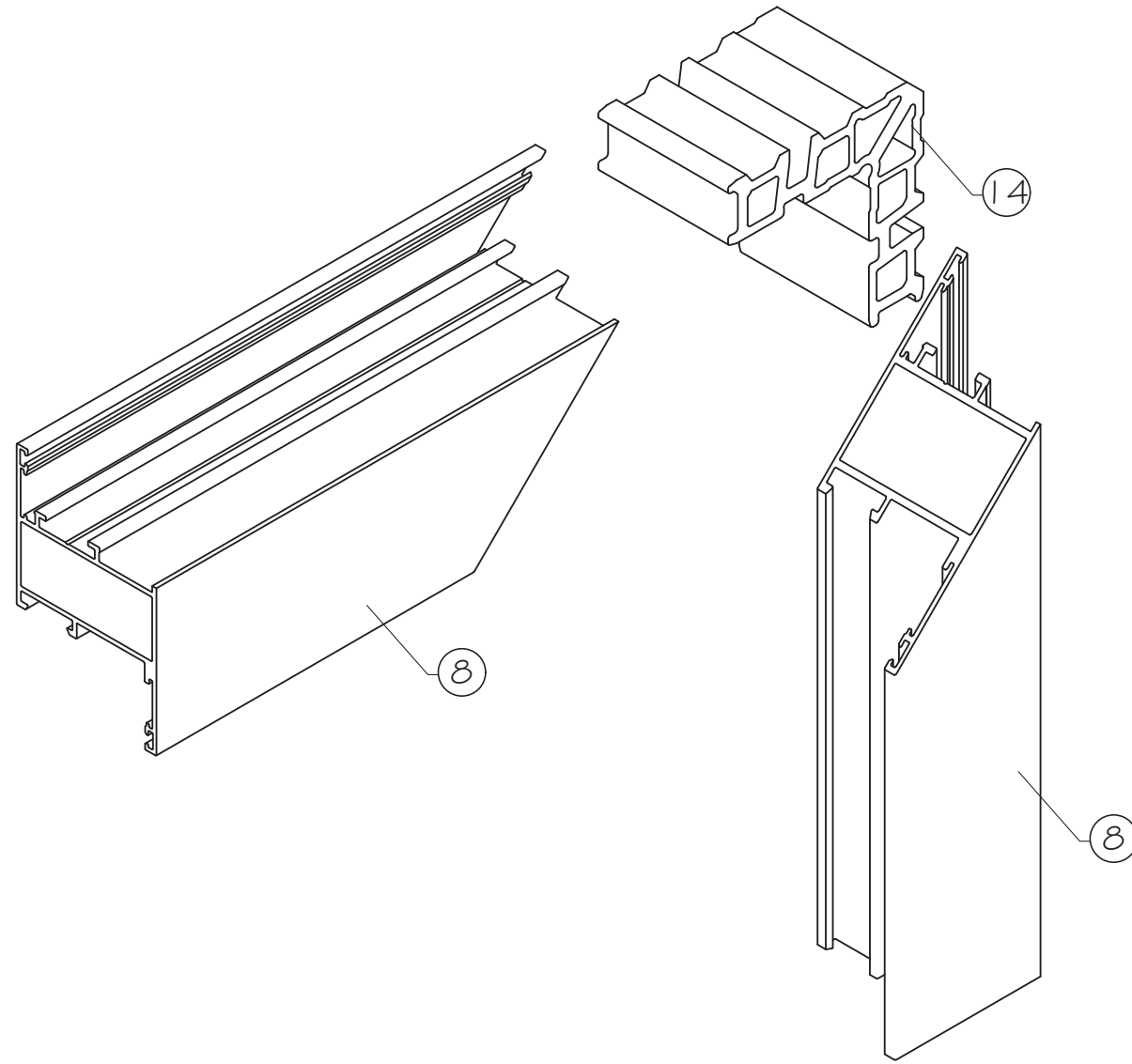
MIAMI-DADE COUNTY
PRODUCT APPROVED
as complying with the Florida
Building Code
NOA-No. 23-0731.03
Approval Date 07/25/2024
By
Miami-Dade Product Control



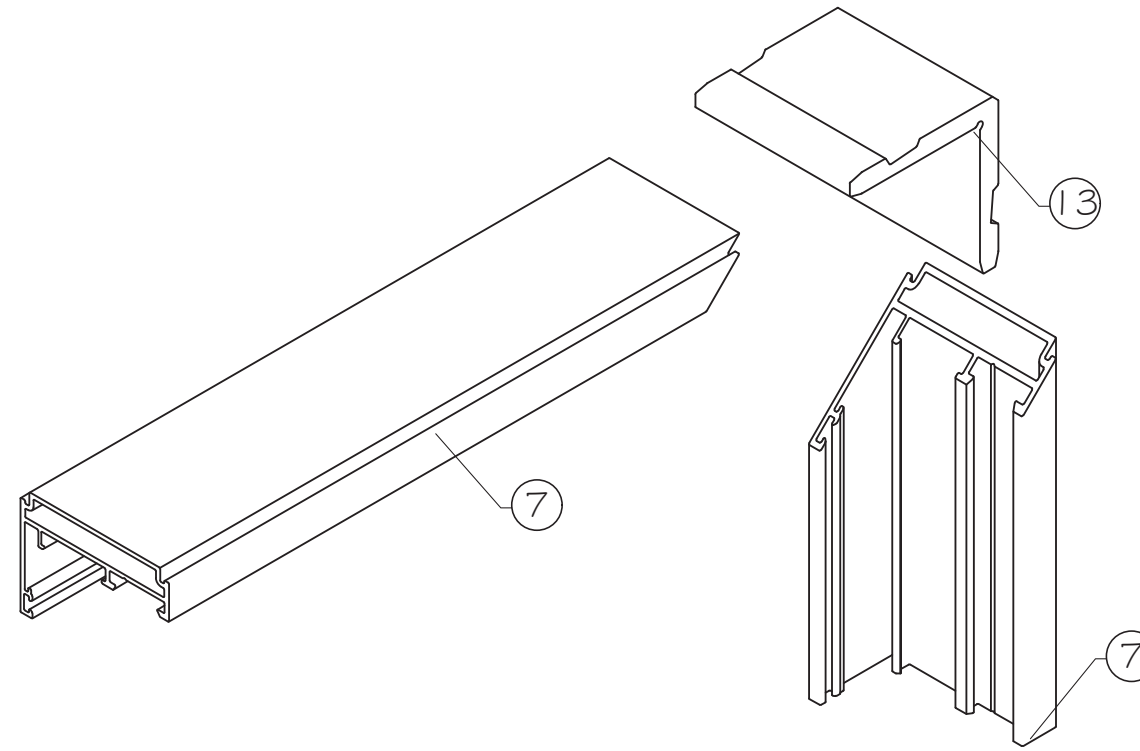
MCY ENGINEERING, INC.
GLAZING CONSULTANTS
12781 MIRAMAR PKWY., STE. 301
MIRAMAR, FL. 33027 P: 305.271.0117
www.MCYEngineering.com mcy@mcyengineering.com

YY150 PROJECT OUT WINDOW SYSTEM LMI
SHANGHAI YY WINDOWS CO.,LTD
NO.9300 Hunan high way, PUDONG NEW AREA,SHANGHAI CHINA
TEL: +86 021-68221481/ +86 021-68221484
EMAIL: yvonre@yyconstruction.com

Rev. No.	Date	Drawn By	Description
1	11.13.2023	MCY	NEW APPROVAL
Drawn Date 11.13.2023		Drawn By MCY	
DRAWING NO. AD23-05			
PARTS 2			
Sheet No. 6 OF 9			

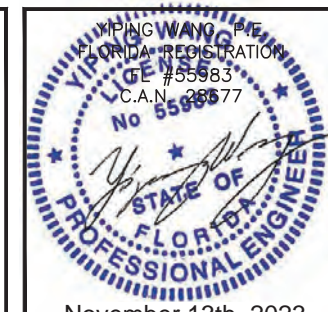


CORNER ASSEMBLY



CORNER ASSEMBLY

MIAMI-DADE COUNTY
PRODUCT APPROVED
 as complying with the Florida
 Building Code
 NOA-No. 23-0731.03
 Approval Date 07/25/2024
 By *[Signature]*
 Miami-Dade Product Control

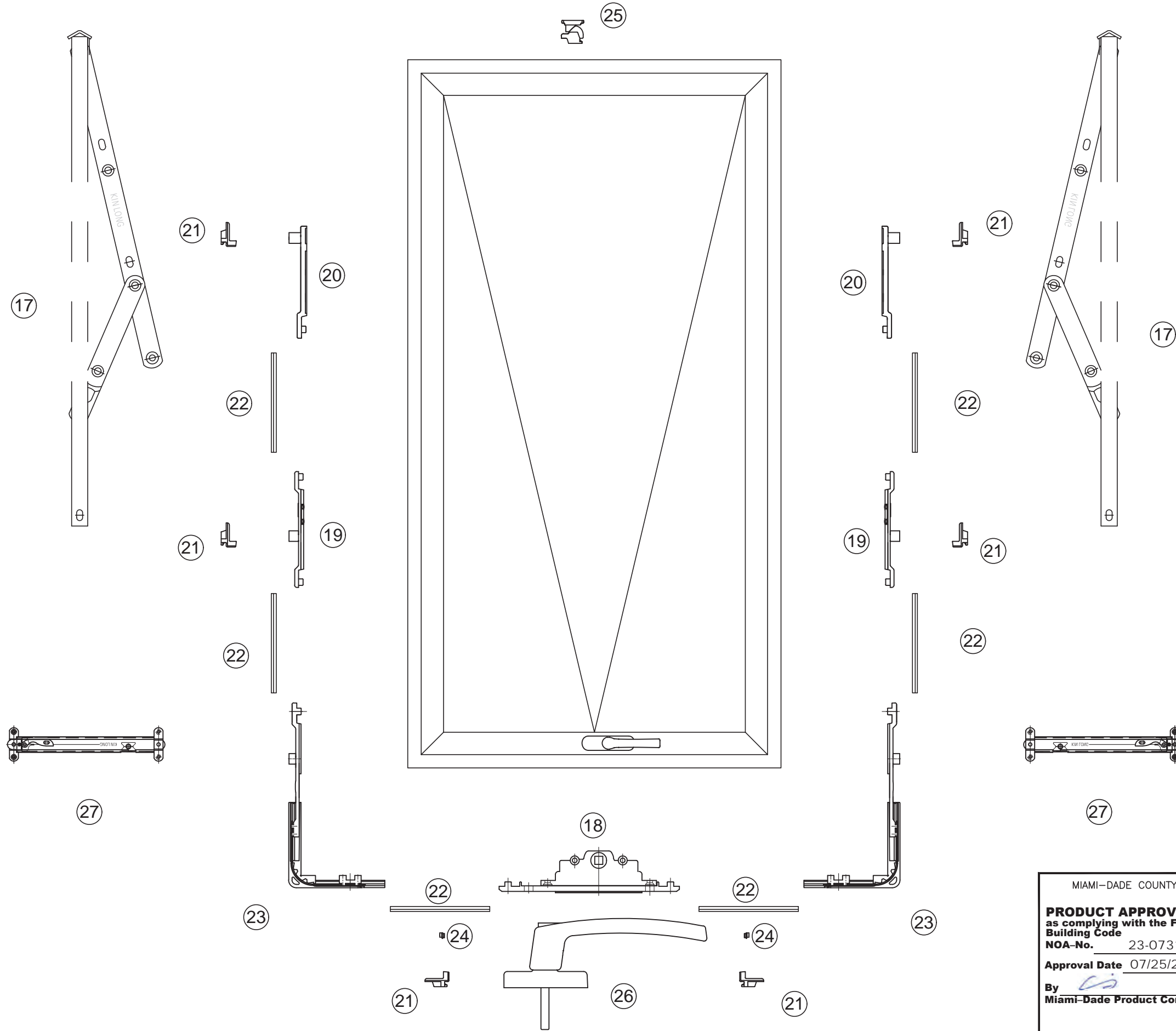


November 13th, 2023

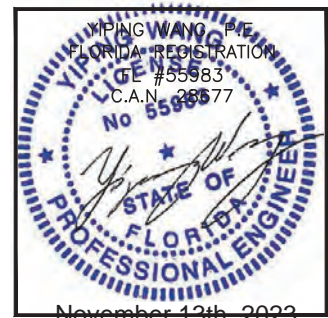
MCY ENGINEERING, INC.
 GLAZING CONSULTANTS
 12781 MIRAMAR PKWY., STE. 301
 MIRAMAR, FL. 33027 P: 305.271.0117
 www.MCYEngineering.com mcy@mcyengineering.com

YYI 50 PROJECT OUT WINDOW SYSTEM LMI
 SHANGHAI YY WINDOWS CO.,LTD
 NO.9300 Hunan high way, PUDONG NEW AREA,SHANGHAI CHINA
 TEL. +86 021-68221481/ +86 021-68221484
 EMAIL: yvonre@yyconstruction.com

Rev. No.	Date	Drawn By	Description
1	11.13.2023	MCY	NEW APPROVAL
Drawn Date		Drawn By	
11.13.2023		MCY	
DRAWING NO.			
AD23-05			
ISO			
Sheet No.			
7 OF 9			



MIAMI-DADE COUNTY
PRODUCT APPROVED
 as complying with the Florida
 Building Code
 NOA-No. 23-0731.03
 Approval Date 07/25/2024
 By *[Signature]*
 Miami-Dade Product Control



November 13th, 2023

MCY ENGINEERING, INC.
 GLAZING CONSULTANTS
 12781 MIRAMAR PKWY., STE. 301
 MIRAMAR, FL. 33027 P: 305.271.0117
 www.MCYEngineering.com mcy@mcyengineering.com

YYI 50 PROJECT OUT WINDOW SYSTEM LMI
 SHANGHAI YY WINDOWS CO.,LTD
 NO.9300 Hunan high way, PUDONG NEW AREA,SHANGHAI CHINA
 TEL. +86 02 1-6822 1481/ +86 02 1-6822 1484
 EMAIL: yvonre@yyconstruction.com

Rev. No.	Date	Drawn By	Description
1	11.13.2023	MCY	NEW APPROVAL

Drawn Date 11.13.2023 Drawn By MCY

DRAWING NO. AD23-05

ISO

Sheet No. 8 OF 9

BILL OF MATERIALS

ITEM	PART	DESCRIPTION	MATERIAL	MANUF. / REMARKS
1	YY150-50	SUBSILL	ALUM. 6063-T6	-
2	YY150-22	JAMB	ALUM. 6063-T6	-
3	YY150-23	HEAD/ SILL/ JAMB	ALUM. 6063-T6	-
4	YY100-20	SASH BEAD	ALUM. 6063-T6	-
5	YY86-31	SASH BEAD	ALUM. 6063-T6	-
6	YY150-47	CAP	ALUM. 6063-T6	-
7	YY100-9	AWING FRAME	ALUM. 6063-T6	-
8	YY86-5	SASH	ALUM. 6063-T6	-
9	YY100-58	ADJUSTER	ALUM. 6063-T6	-
10	YY100-7	BEAD	ALUM. 6063-T6	-
11	--	EPDM GASKET	EPDM	DUROMETER 70±5 SHORE A
12	--	#10 S.S SELF-TAPPING SCREW	STAINLESS STEEL. 304	-
13	YY86-15	JOINT ANGLE	ALUM. 6063-T6	-
14	JM0017	JOINT ANGLE	ALUM. 6063-T6	-
15	YY150-51	ADJUSTER	ALUM. 6063-T6	-
16	--	SETTING BLOCK	TPE	SHORE HARDNESS 65-80
17	FJ900A-18"	FRICTION STAY	SUS 304	KIN LONG
18	FJ900A-18"	TRANSIMITTER	SUS 304	-
19	N41	MIDDLE LOCK DEVICE POINT	-	-
20	N37A	LOCK DEVICE POINT	-	KIN LONG
21	ZA1-6A	KEEPER	-	KIN LONG
22	HP56757B	TRANSMISSION ROD	-	-
23	ZA1	CORNER TRANSMISSION	-	KIN LONG
24	HDS6	LOCKING PLATE	-	-
25	SK75	HIDDEN LOCK	-	-
26	PZSW0025502	HANDLE	-	KIN LONG
27	SC320	STAY ARM	SUS304	-
28	--	WEATHER SEALANT	DOWSIL 795 OR 790	DOW CORNING
29	--	STRUCTURAL SILICONE	DOWSIL 995 OR 983	DOW CORNING
30	--	#12 S.S SELF-TAPPING SCREW	STAINLESS STEEL. 304	-
31	--	EPDM GASKET	EPDM	DUROMETER 70±5 SHORE A

MCY ENGINEERING, INC.
GLAZING CONSULTANTS
12781 MIRAMAR PKWY., STE. 301
MIRAMAR, FL. 33027 P: 305.271.0117
www.MCYEngineering.com mcy@mcyengineering.com

YY150 PROJECT OUT WINDOW SYSTEM LMI
SHANGHAI YY WINDOWS CO.,LTD
NO.9300 Hunan high way, PUDONG NEW AREA,SHANGHAI CHINA
TEL: +86 021-68221481/ +86 021-68221484
EMAIL: ywone@yyconstruction.com

NEW APPROVAL											
11.13.2023	MCY										
Drawn Date	Drawn By										
11.13.2023	MCY										

MIAMI-DADE COUNTY
PRODUCT APPROVED
as complying with the Florida Building Code
NOA-No. 23-0731.03
Approval Date 07/25/2024
By
Miami-Dade Product Control

YIPING WANG, P.E.
FLORIDA REGISTRATION
#55983
C.A.N. 28577

November 13th, 2023

DRAWING NO.
AD23-05
BOM
Sheet No.
9 OF 9