



DEPARTMENT OF REGULATORY AND ECONOMIC RESOURCES (RER)
 BOARD AND CODE ADMINISTRATION DIVISION
NOTICE OF ACCEPTANCE (NOA)

E.S. Windows, LLC
3550 NW 49 Street
Miami, FL 33142

SCOPE:

This NOA is being issued under the applicable rules and regulations governing the use of construction materials. The documentation submitted has been reviewed and accepted by Miami-Dade County RER -Product Control Section to be used in Miami Dade County and other areas where allowed by the Authority Having Jurisdiction (AHJ).

This NOA shall not be valid after the expiration date stated below. The Miami-Dade County Product Control Section (In Miami Dade County) and/or the AHJ (in areas other than Miami-Dade County) reserve the right to have this product or material tested for quality assurance purposes. If this product or material fails to perform in the accepted manner, the manufacturer will incur the expense of such testing and the AHJ may immediately revoke, modify, or suspend the use of such product or material within their jurisdiction. RER reserves the right to revoke this acceptance, if it is determined by Miami-Dade County Product Control Section that this product or material fails to meet the requirements of the applicable building code.

This product is approved as described herein and has been designed to comply with the Florida Building Code, including the High Velocity Hurricane Zone.

DESCRIPTION: Series “SGD-2040-2 Tracks” Aluminum Sliding Glass Doors w/wo Reinforcements –LMI

APPROVAL DOCUMENT: Drawing No. **AD23-70**, titled “Series ES-SGD 2040 Sliding Glass Door (LMI)”, sheets 1 through 18 of 18, prepared by MCY Engineering, dated May 29, 2024, signed and sealed by Yipping Wang, P.E., bearing the Miami-Dade County Product Control Approval stamp with the Notice of Acceptance number and approval date by the Miami-Dade County Product Control Section.

MISSILE IMPACT RATING: Large and Small Missile Impact Resistant

Limitations:

1. Wet-glazed (G1, G1L), Un-reinforced SGD is limited to DP= +/- 80 PSF max.
2. Dry-glazed (G2, G2L), Reinforced SGD is limited to DP= +/- 100 PSF max.
3. Lower value from Glass, reinforcement and head/Sill anchor shall control entire system.
4. ½ quantity of anchors to be used at Free jambs VS anchors at Interlock/Lock stiles. Only Conc. at sill applicable.
5. Max 4-panels or less, laminated or insulated (dry or wet glazed glass options).

LABELING: Each unit shall bear a permanent label with the manufacturer's name or logo, **Barranquilla, Columbia** and series and following statement: "Miami-Dade County Product Control Approved", noted herein.

RENEWAL of this NOA shall be considered after a renewal application has been filed and there has been no change in the applicable building code negatively affecting the performance of this product.

TERMINATION of this NOA will occur after the expiration date or if there has been a revision or change in the materials, use, and/or manufacture of the product or process. Misuse of this NOA as an endorsement of any product, for sales, advertising or any other purposes shall automatically terminate this NOA. Failure to comply with any section of this NOA shall be cause for termination and removal of NOA.

ADVERTISEMENT: The NOA number preceded by the words Miami-Dade County, Florida, and followed by the expiration date may be displayed in advertising literature. If any portion of the NOA is displayed, then it shall be done in its entirety.

INSPECTION: A copy of this entire NOA shall be provided to the user by the manufacturer or its distributors and shall be available for inspection at the job site at the request of the Building Official.

This NOA consists of this page 1 and evidence pages E-1, as well as approval document mentioned above.

The submitted documentation was reviewed by **Ishaq I. Chanda, P.E.** *Ishaq I. Chanda*



NOTICE OF ACCEPTANCE: EVIDENCE SUBMITTED

1. EVIDENCE SUBMITTED

A. DRAWINGS

1. Manufacturer's die drawings and sections.
2. Drawing No. **AD23-70**, titled "Series ES-SGD 2040 Sliding Glass Door (LMI)", sheets 1 through 18 of 18, prepared by MCY Engineering, dated May 29, 2024, signed and sealed by Yipping Wang, P.E.

B. TESTS

1. Test reports on:
 - 1) Air Infiltration Test, per FBC, TAS 202-94
 - 2) Uniform Static Air Pressure Test, Loading per FBC TAS 202-94
 - 3) Water Resistance Test, per FBC, TAS 202-94
 - 4) Large Missile Impact Test per FBC, TAS 201-94
 - 5) Cyclic Wind Pressure Loading per FBC, TAS 203-94
 - 6) Forced Entry Test, per FBC 2411 3.2.1, TAS 202-94

Along with marked-up drawings and installation diagram of OXXO & XOX aluminum SGD, prepared by Black Water Testing Laboratories, Test Report No. **BT-ESW-17-026**, dated 12/12/17, signed and sealed by Late Costantin Bortes, P.E.

Notes: this test report has clarification letters, issued by Black Water Testing Services dated 03/20/24 and 05/28/24.

C. CALCULATIONS

1. Anchor verification calculations and structural analysis, complying with FBC-2023 (8th Edition), prepared by MCY Engineering, dated 03/25/24, signed and sealed by Yipping Wang, P.E.
2. Glazing complies w/ ASTM E1300-09 and -16.

D. QUALITY ASSURANCE

1. Miami Dade Department of Regulatory and Economic Resources (RER).

E. MATERIAL CERTIFICATIONS

1. Notice of Acceptance No. **22-1116.01** issued to **Kuraray America, Inc.** for their "SentryGlas® (Clear and White) Glass Interlayers", expiring on 07/04/28.

F. STATEMENTS

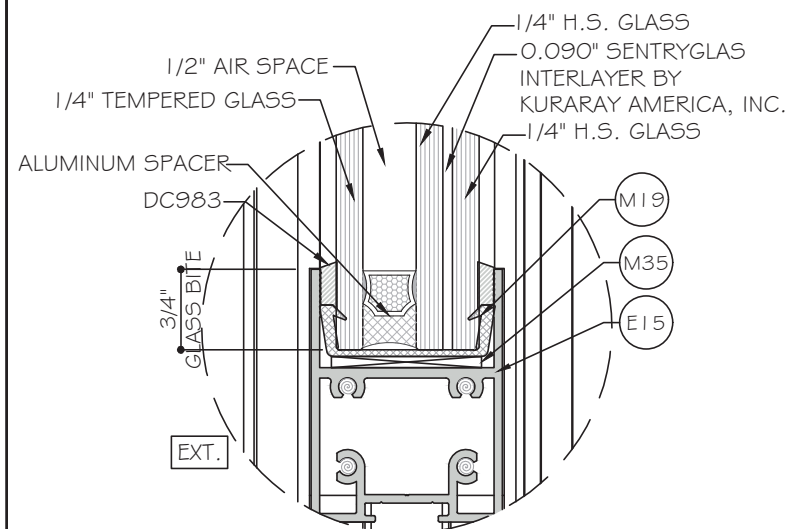
1. Statement letter of conformance, complying with **FBC 8th Edition (2023)**, prepared by MCY Engineering, dated 03/25/24, signed and sealed by Yipping Wang, P.E.
2. Distribution agreement between ES Windows, LLC (distributor) and Energia Solar, S.A, (manufacturer, dated 08/01/18, signed by MS. Carla Garcia (MGR) and Ms. Evelyn Deas (MGR) respectively (submitted under previous approvals).
3. Statement letter dated June 12, 2024, issued by ES identifying threshold test for water Resistant test, signed by Samir Sabbagh, Manager, Design Eng. director.

G. OTHER

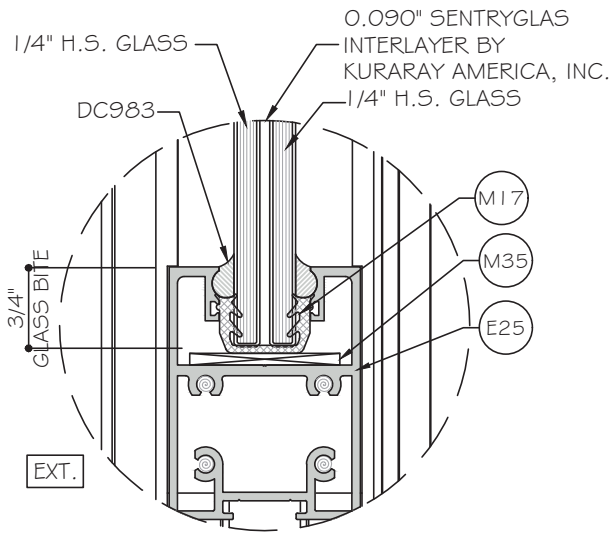
1. Silicone Rubber Technical data sheet per ASTM 1115, issued by Extrusiones Sellando, Columbia.

Ishaq I. Chanda

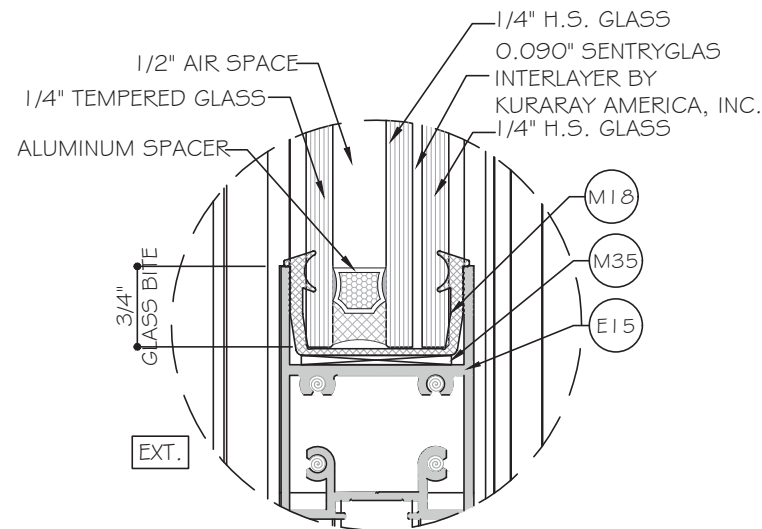
Ishaq I. Chanda, P.E.
Product Control Unit Supervisor
NOA No. 23-1222.07
Expiration Date: July 05, 2029
Approval Date: July 05, 2024



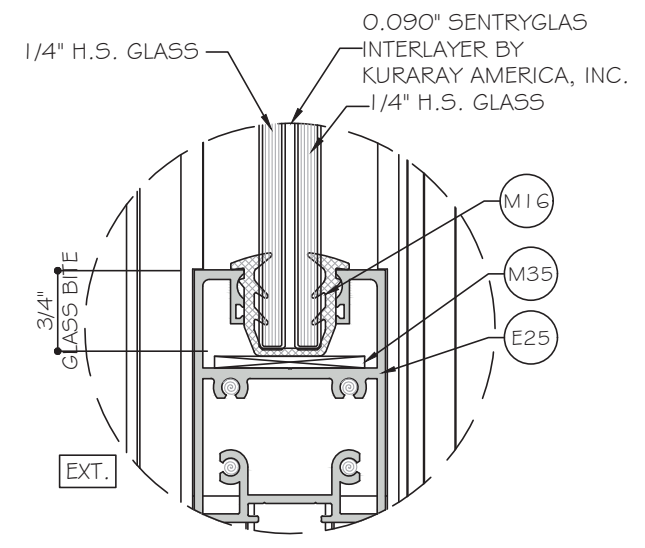
GLASS TYPE 'G1' WET GLAZED
1 5/16" NOMINAL OVERALL
(NON-REINF. SYSTEM)



GLASS TYPE 'G1L' WET GLAZED
9/16" NOMINAL OVERALL
(NON-REINF. SYSTEM)



GLASS TYPE 'G2' DRY GLAZED
1 5/16" NOMINAL OVERALL
(REINF. SYSTEM)



GLASS TYPE 'G2L' DRY GLAZED
9/16" NOMINAL OVERALL
(REINF. SYSTEM)

SEE DESIGN PRESSURE ON SHEET 02 & 03

DOORS RATED FOR LARGE AND SMALL MISSILE IMPACT.
IMPACT SHUTTERS ARE NOT REQUIRED.

LAMINATED GLASS AND
INSULATED-LAMINATED GLASS
LARGE AND SMALL MISSILE IMPACT.

PRODUCT APPROVED
as complying with the Florida
Building Code

NOA-No. 23-1222.07

Approval Date 07/05/2024

By *Ishag I. Chank*
Miami-Dade Product Control

NOTE:
GLASS COMPLIES WITH ASTM E1300-09
(3 SEC. GUSTS).

SERIES SGD 2040 SLIDING GLASS DOOR

APPLICABLE EGRESS REQUIREMENTS PER FBC TO BE REVIEWED BY BUILDING OFFICIAL.

THIS PRODUCT HAS BEEN DESIGNED AND TESTED TO COMPLY WITH THE REQUIREMENTS OF THE FLORIDA BUILDING CODE 8TH EDITION (2023) INCLUDING HIGH VELOCITY HURRICANE ZONE (HVHZ).

THESE DOORS ARE APPROVED FOR AIR AND WATER INFILTRATION.

ANCHORS SHALL BE AS LISTED, SPACED AS SHOWN ON DETAILS. ANCHORS EMBEDMENT TO BASE MATERIAL SHALL BE BEYOND WALL DRESSING OR STUCCO.

ANCHORING OR LOADING CONDITIONS NOT SHOWN IN THESE DETAILS ARE NOT PART OF THIS APPROVAL.

MATERIALS INCLUDING BUT NOT LIMITED TO STEEL/METAL SCREWS THAT COME INTO CONTACT WITH OTHER DISSIMILAR MATERIALS SHALL MEET THE REQUIREMENTS OF THE FLORIDA BUILDING CODE 8TH EDITION (2023) SECTION AS APPLICABLE.

METAL STRUCTURES OR WOOD STRUCTURES BY OTHERS TO BE DESIGNED TO SUPPORT THE LOADS IMPOSED BY THE GLAZING SYSTEM AND TO TRANSFER SUCH LOADS TO THE BUILDING MAIN STRUCTURE.

ULTIMATE LOAD OBTAINED FROM ASCE 7-22, MULTIPLY BY 0.6 SHALL BE LESS THAN OR EQUAL TO MAX. DESIGN LOAD IN THIS DOCUMENT. THE DESIGN LOADS SHOWN IN THIS DOCUMENT ARE ALLOWABLE DESIGN LOADS.

MANUFACTURER'S LABEL SHALL BE LOCATED ON A READILY VISIBLE LOCATION IN ACCORDANCE WITH SECTION 1709.9.3 OF FLORIDA BUILDING CODE LABELING TO COMPLY WITH SECTION 1709.9.2.

INSTRUCTIONS:

USE CHARTS AS FOLLOWS

STEP 1: DETERMINE DESIGN WIND LOAD REQUIREMENT BASED ON WIND VELOCITY, BLDG HEIGHT, WIND ZONE USING APPLICABLE ASCE 7-22 STANDARD.

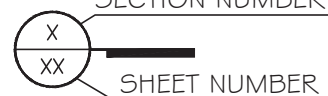
STEP 2: SEE ALLOWABLE CONFIGURATIONS ON PAGE 02-05. SEE CHARTS ON PAGE 02 & 03 FOR ALLOWABLE DESIGN LOAD BASED ON DESIRED GLASS TYPE AND REINFORCEMENT.

STEP 3: SEE PAGE 11 FOR TYPICAL ANCHOR TYPES.

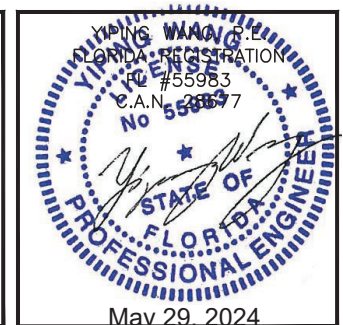
STEP 4: THE LOWEST VALUE RESULTING FROM STEPS 2 THRU 3 SHALL APPLY TO ENTIRE SYSTEM.

ABBREVIATIONS AND SYMBOLS

D.L.O. - DAYLITE OPENING	☐ - CENTER LINE
F.H. - FRAME HEIGHT	S.S. - STAINLESS STEEL
F.W. - FRAME WIDTH	H.S. - HEAT STRENGTHENED
LG. - LONG	SSG - STRUCTURAL SILICONE GLAZED
STL. - STEEL	TEMP. - TEMPERED
ALUM. - ALUMINUM	O.C. - ON CENTER
MULL. - MULLION	G.B. - GLASS BITE
HORIZ. - HORIZONTAL	SECTION NUMBER
W/ - WITH	
W/O - WITHOUT	
VERT. - VERTICAL	
T.H. - TRANSOM HEIGHT	



MIAMI DADE COUNTY

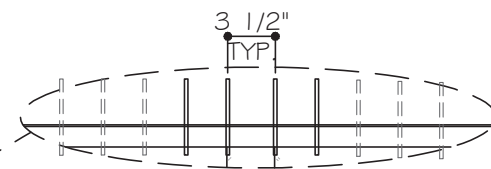
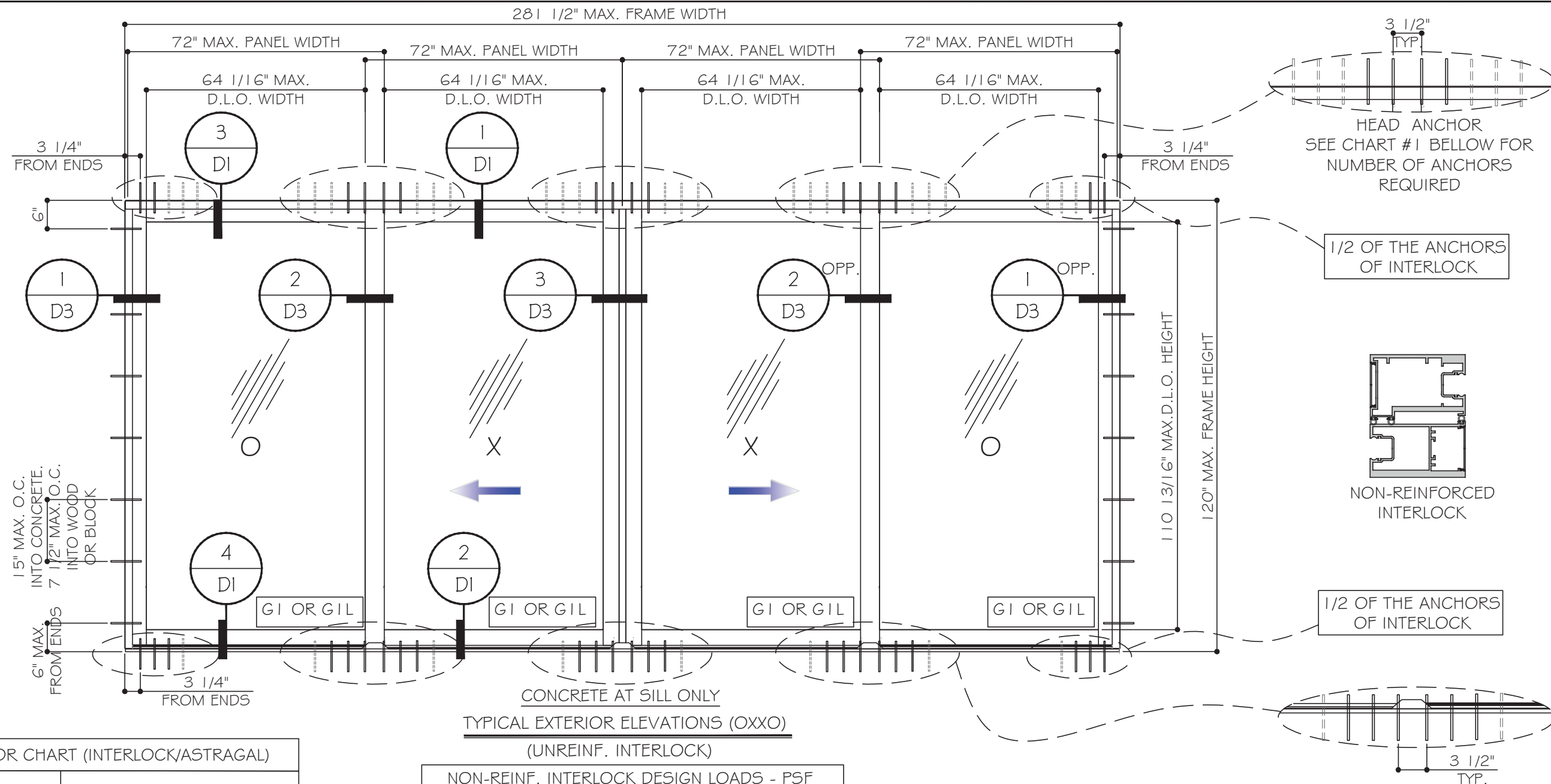


ES-SGD2040 SLIDING GLASS DOOR-L.M.I.

ES WINDOWS, INC.
10665 NE Quaybridge Ct.
Miami, FL 33138
TEL. (305) 624-7775

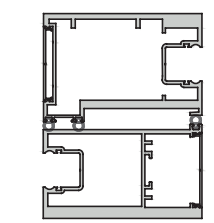
MCY ENGINEERING, INC.
GLAZING CONSULTANTS
12781 MIRAMAR PARKWAY #301
MIRAMAR, FL 33027 P: 305.271.0117
www.MCYEngineering.com mcy@mcyengineering.com

Drawn Date	Scale
05.29.2024	AS SHOWN
DRAWING NO.	
AD23-70	
COVER	
Sheet No.	
01 OF 18	



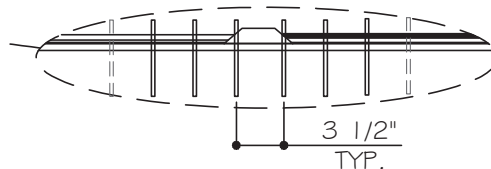
HEAD ANCHOR
SEE CHART #1 BELOW FOR
NUMBER OF ANCHORS
REQUIRED

1/2 OF THE ANCHORS
OF INTERLOCK



NON-REINFORCED
INTERLOCK

1/2 OF THE ANCHORS
OF INTERLOCK



SILL ANCHOR
SEE CHART #2 BELOW FOR
NUMBER OF ANCHORS
REQUIRED

CHART #1

HEAD ANCHOR CHART (INTERLOCK/ASTRAGAL)		
ANCHOR TYPE	SUBSTRATE	# OF ANCHOR REQUIRED
		MAX. DESIGN LOAD +/- 80 PSF
A	CONCRETE MIN. 3 ksi	(8)
	WOOD*	(8)
B	CONCRETE MIN. 3 ksi	(6)
	WOOD*	(10)
C	CONCRETE MIN. 3.5 ksi	(6)
D	G063-T5 MIN.	(6)
E	G063-T6 MIN.	(4)

CONCRETE AT SILL ONLY
TYPICAL EXTERIOR ELEVATIONS (OXXO)
(UNREINF. INTERLOCK)

NON-REINF. INTERLOCK DESIGN LOADS - PSF (FOR SIZES SHOWN ABOVE OR SMALLER) AS PERMITTED BY FBC			
PANEL WIDTH	FRAME HEIGHT	MAX. DESIGN LOAD	GLASS TYPE
72"	120"	+/- 80	G1 & GIL

D.L.O. WIDTH = PANEL WIDTH - 7.9375"
D.L.O. HEIGHT = FRAME HEIGHT - 9.1875"

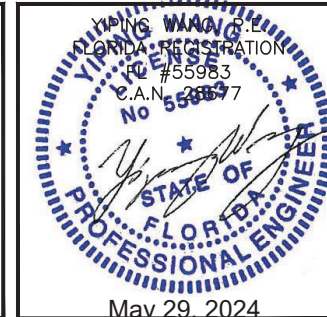
CHART #2

SILL ANCHOR CHART (INTERLOCK/ASTRAGAL)		
ANCHOR TYPE	SUBSTRATE	# OF ANCHOR REQUIRED
		MAX. DESIGN LOAD +/- 80 PSF
A	CONCRETE MIN. 3 ksi	(8)
B	CONCRETE MIN. 3 ksi	(6)
C	CONCRETE MIN. 3.5 ksi	(6)

* - DIRECTLY INTO WOOD
OR THRU WOOD BUCK INTO
CONCRETE

PRODUCT APPROVED
as complying with the Florida
Building Code
NOA-No. 23-1222.07
Approval Date 07/05/2024
By *Ishtaq I. Chaudhry*
Miami-Dade Product Control

MIAMI DADE COUNTY



MCY ENGINEERING, INC.
GLAZING CONSULTANTS
12781 MIRAMAR PARKWAY #301
MIRAMAR, FL 33027
P: 305.271.0117
www.MCYEngineering.com mcy@mcyengineering.com

ES-SGD2040 SLIDING GLASS DOOR-L.M.I.
ES WINDOWS, INC.
10663 NE Quaybridge Ct.
Miami, FL 33138
TEL. (305) 624-7775

Rev. No.	Date	Drawn By	Description
05-29-2024	James		NEW APPLICATION
05-29-2024	James		

Drawn Date: 05.29.2024 Scale: AS SHOWN
DRAWING NO. AD23-70
Sheet No. E1
02 OF 18

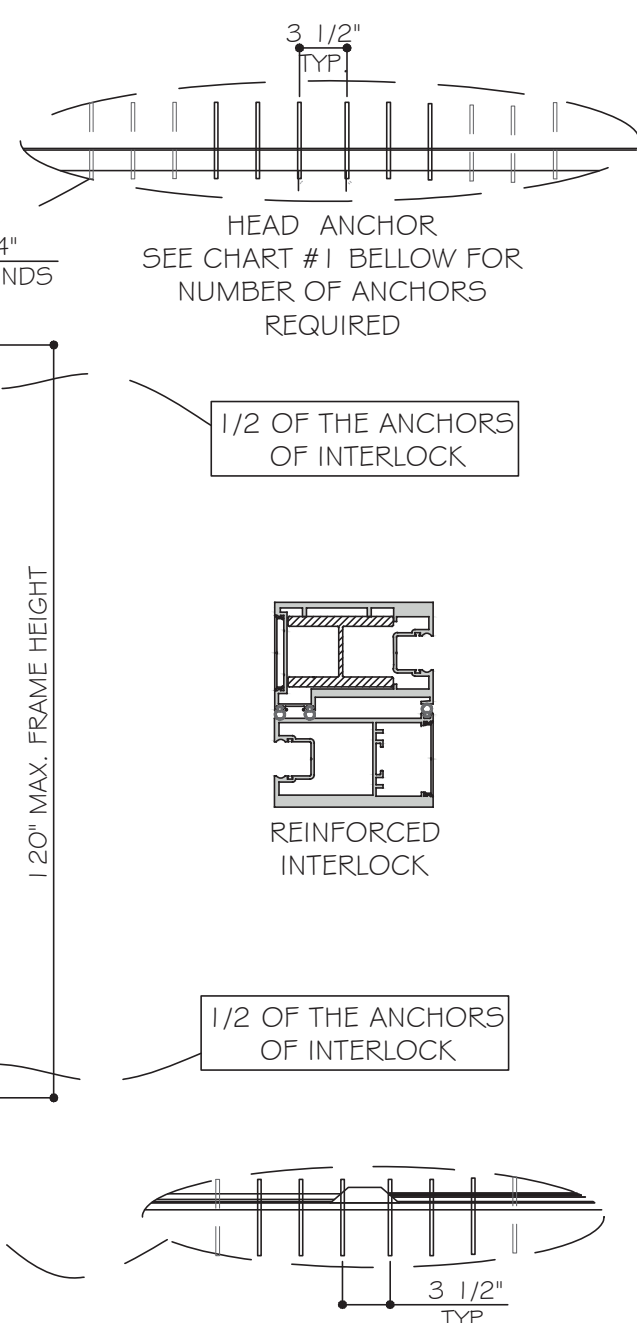
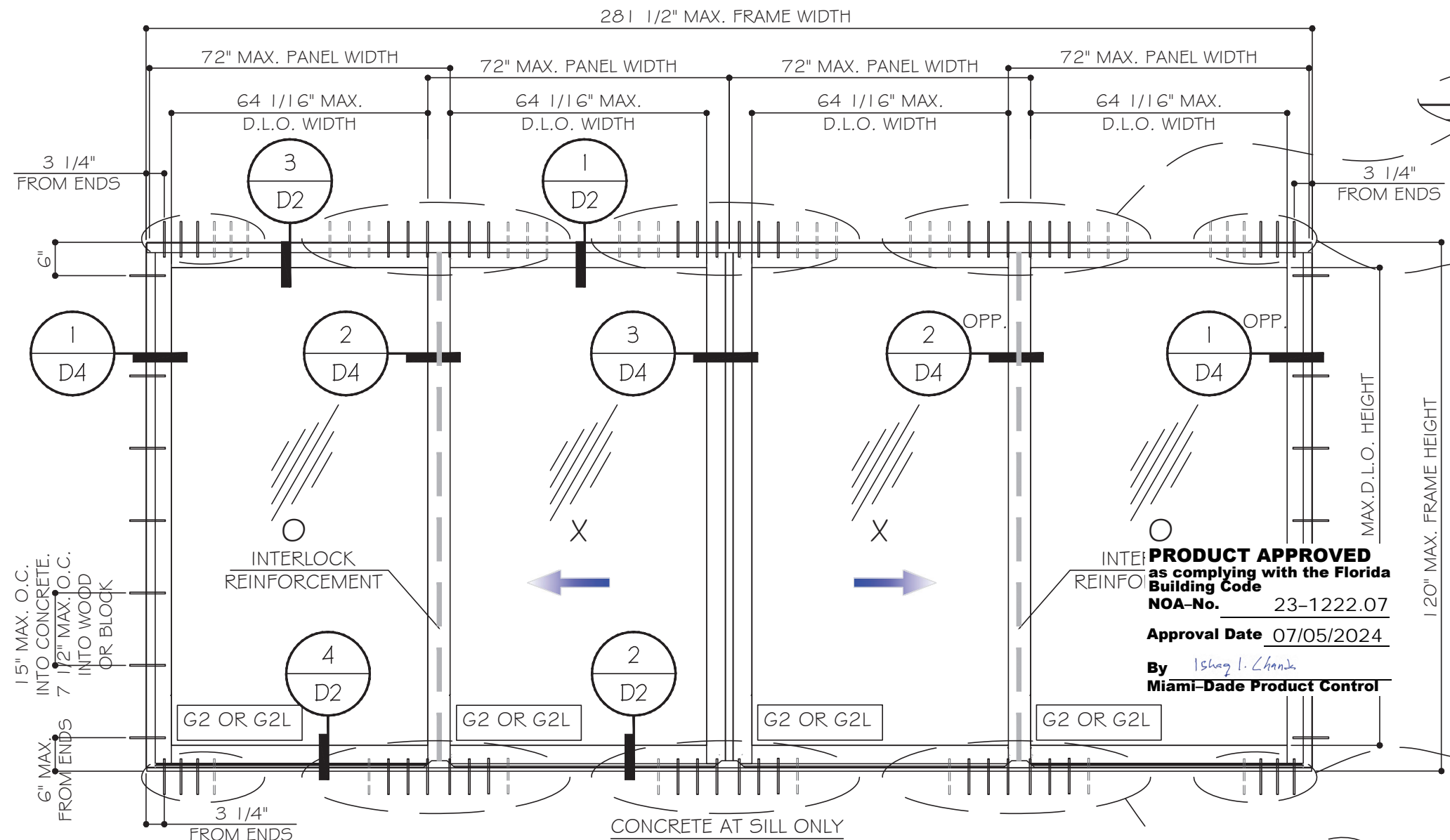


CHART #1

HEAD ANCHOR CHART (INTERLOCK/ASTRAGAL)		
ANCHOR TYPE	SUBSTRATE	# OF ANCHOR REQUIRED
		MAX. DESIGN LOAD +/- 100 PSF
A	CONCRETE MIN. 3 ksi	(8)
	WOOD*	(10)
B	CONCRETE MIN. 3 ksi	(8)
	WOOD*	(12)
C	CONCRETE MIN. 3.5 ksi	(6)
D	GOG3-T5 MIN.	(8)
E	GOG3-T6 MIN.	(6)

CHART #2

SILL ANCHOR CHART (INTERLOCK/ASTRAGAL)		
ANCHOR TYPE	SUBSTRATE	# OF ANCHOR REQUIRED
		MAX. DESIGN LOAD +/- 100 PSF
A	CONCRETE MIN. 3 ksi	(8)
B	CONCRETE MIN. 3 ksi	(8)
C	CONCRETE MIN. 3.5 ksi	(6)

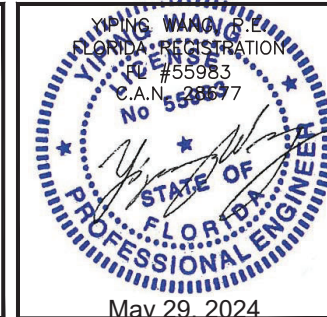
TYPICAL EXTERIOR ELEVATIONS (OXXO)
(REINF. INTERLOCK)

REINF. INTERLOCK DESIGN LOADS - PSF			
(FOR SIZES SHOWN ABOVE OR SMALLER) AS PERMITTED BY FBC			
PANEL WIDTH	FRAME HEIGHT	MAX. DESIGN LOAD	GLASS TYPE
72"	120"	+/- 80	G2 & G2L
66"	120"	+/- 85	G2 & G2L
60"	120"	+/- 95	G2 & G2L
54"	120"	+/- 100	G2 & G2L

D.L.O. WIDTH = PANEL WIDTH - 7.9375"
D.L.O. HEIGHT = FRAME HEIGHT - 9.1875"

* - DIRECTLY INTO WOOD
OR THRU WOOD BUCK INTO
CONCRETE

MIAMI DADE COUNTY

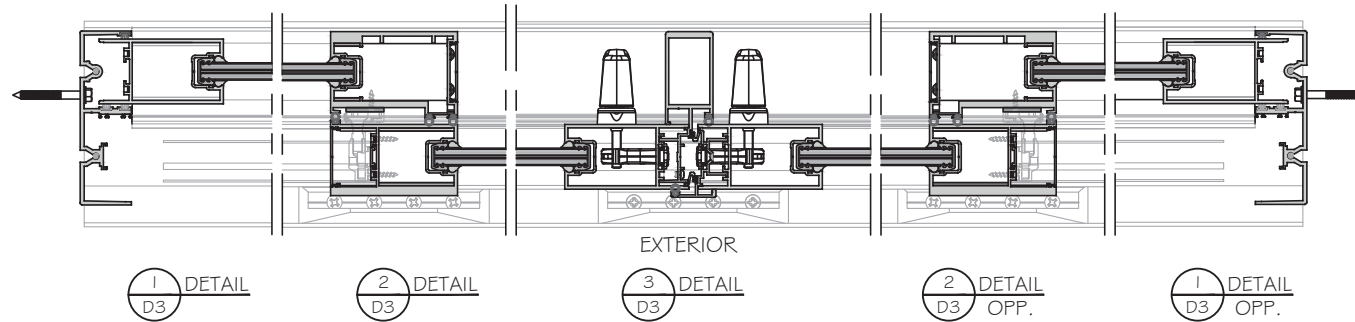
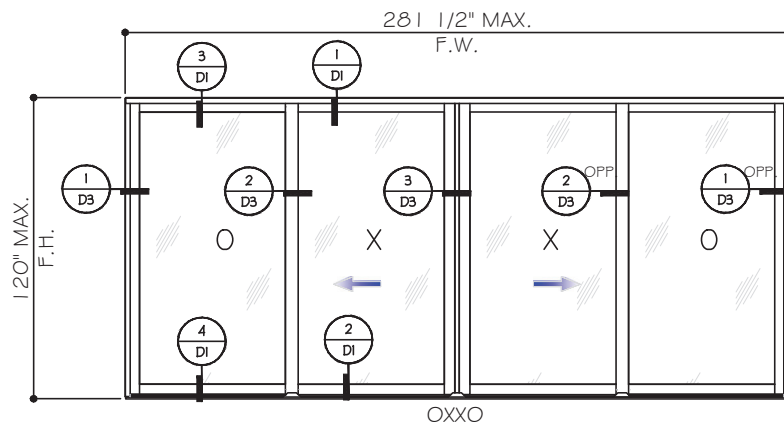
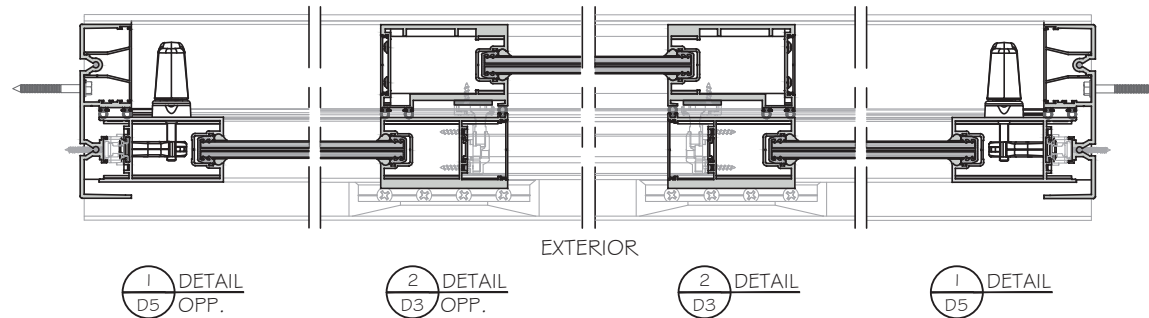
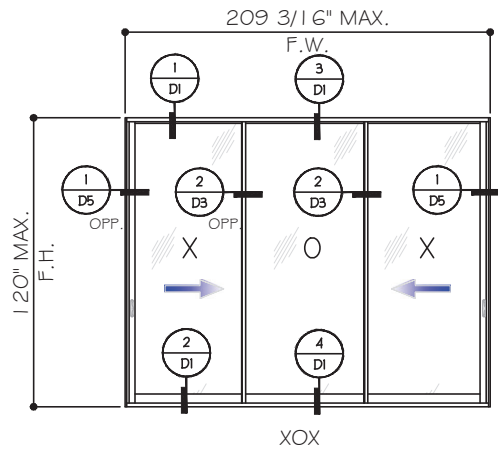
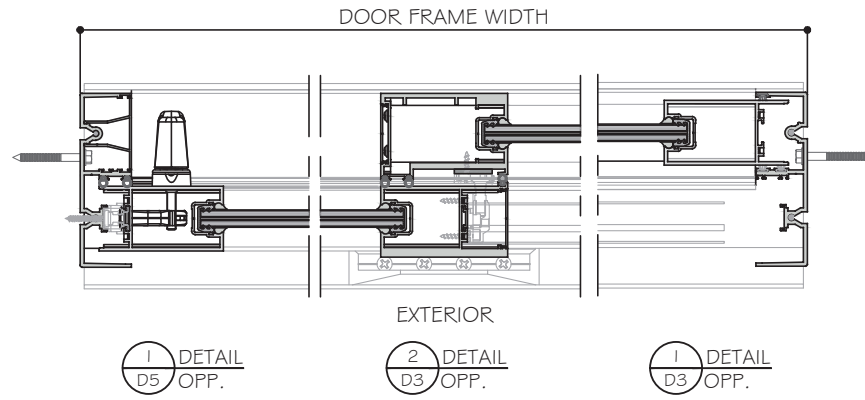
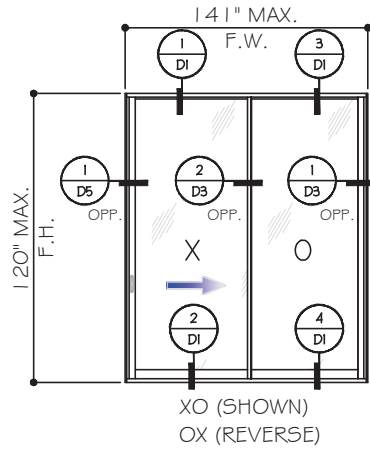


MCY ENGINEERING, INC.
GLAZING CONSULTANTS
12781 MIRAMAR PARKWAY #301
MIRAMAR, FL 33027
P: 305.271.0117
www.MCYEngineering.com mcy@mcyengineering.com

ES-SGD2040 SLIDING GLASS DOOR-L.M.I.
ES WINDOWS, INC.
10663 NE Quaybridge Ct.
Miami, FL 33138
TEL. (305) 624-7775

Drawn Date 05.29.2024	Scale AS SHOWN
Drawn By James	Date
Rev. No.	Description
DRAWING NO. AD23-70	
Sheet No. E2	
03 OF 18	

APPROVED CONFIGURATIONS



NOTE: SEE DESIGN LOAD ON SHEET O2 FOR INTERLOCK W/O REINFORCEMENT.

WET GLAZED LAMINATED GLASS G I L SHOWN.
SEE SHEET O1 FOR WET GLAZED INSULATED LAMINATED GLASS G I.

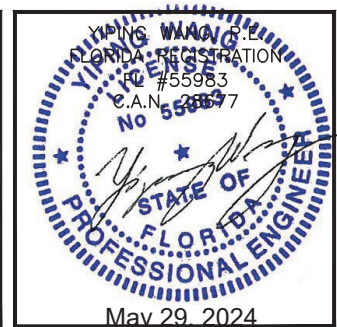
- NOTES:
1. CONFIGURATIONS SHOWN FOR ILLUSTRATION PURPOSES ONLY.
 2. DOOR SHALL MEET EGRESS REQUIREMENTS AS APPLICABLE PER FBC.
 3. FOR REINFORCEMENT REQUIREMENT SEE SHEET O3.

PRODUCT APPROVED
as complying with the Florida
Building Code
NOA-No. 23-1222.07

Approval Date 07/05/2024

By *Ishay I. Chanda*
Miami-Dade Product Control

MIAMI DADE COUNTY



ES-SGD2040 SLIDING GLASS DOOR-L.M.I.

ES WINDOWS, INC.

10663 NE Quaybridge Ct.
Miami, FL 33138
TEL. (305) 624-7775

MCY ENGINEERING, INC.
GLAZING CONSULTANTS
12781 MIRAMAR PARKWAY #301
MIRAMAR, FL 33027 P: 305.271.0117
www.MCYEngineering.com mcy@mcyengineering.com

Rev. No.	Date	Drawn By	Description
01	05-29-2024	James	NEW APPLICATION

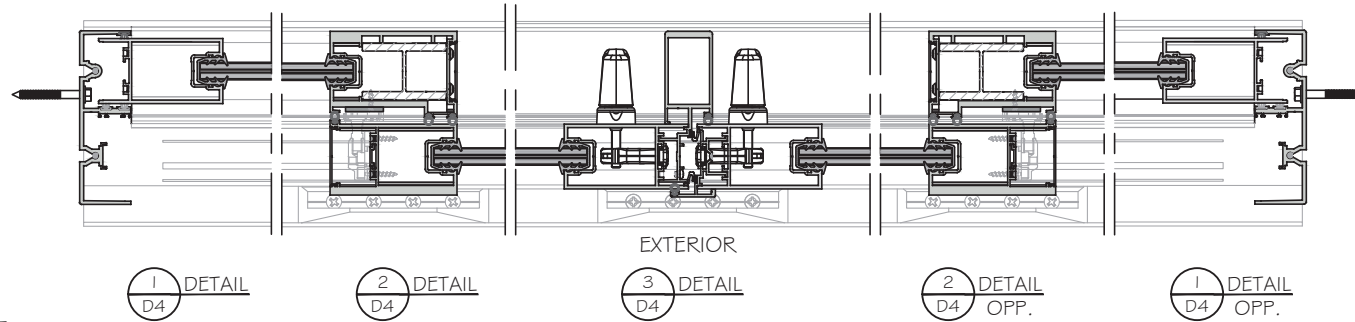
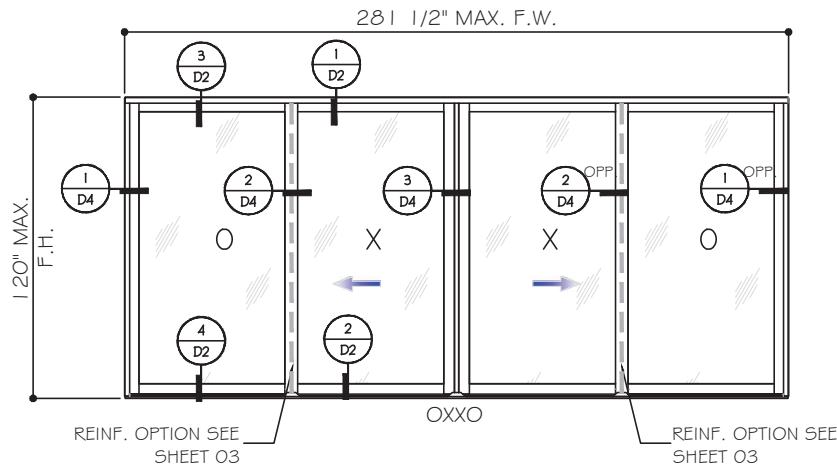
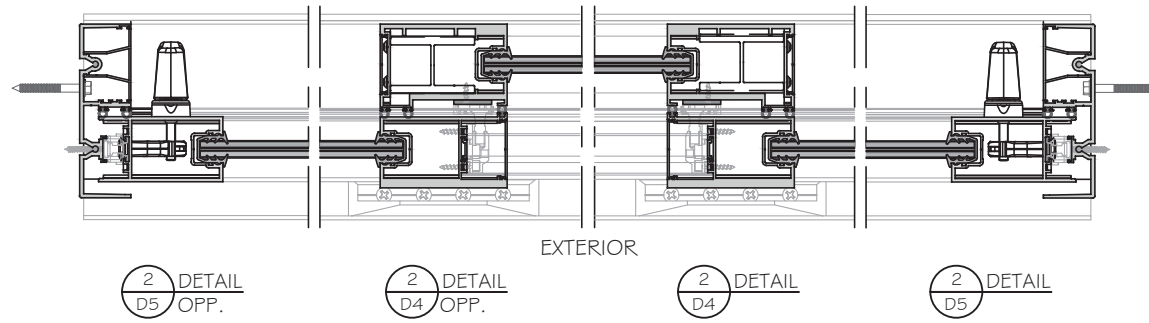
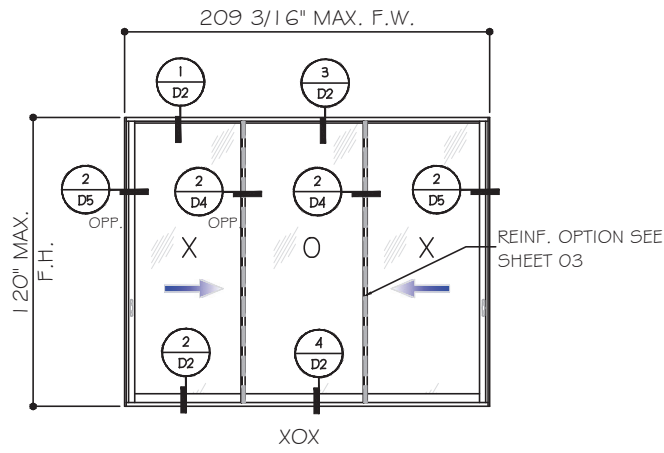
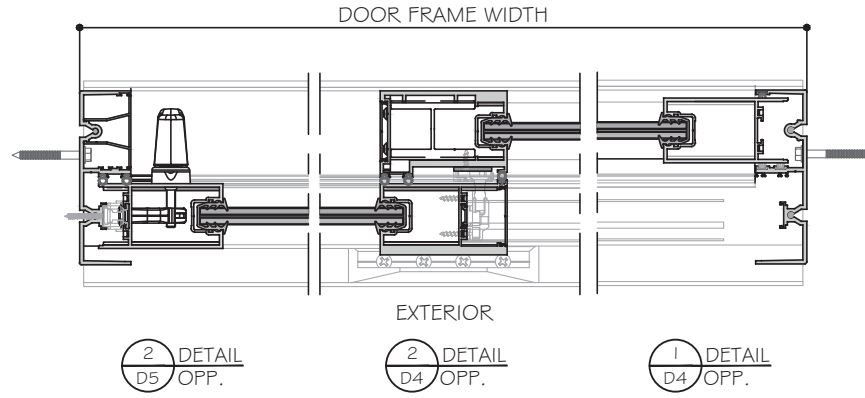
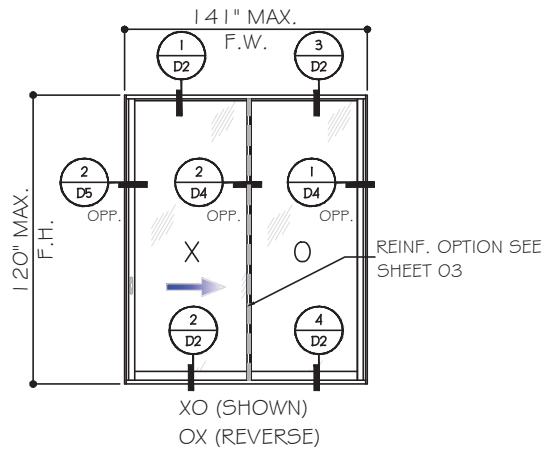
Drawn Date 05.29.2024 Scale AS SHOWN

DRAWING NO. AD23-70

E3

Sheet No. 04 OF 18

APPROVED CONFIGURATIONS



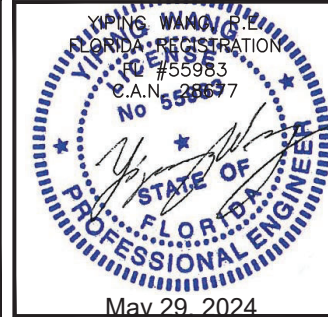
NOTE: SEE DESIGN LOAD ON SHEET 03 FOR INTERLOCK W/ REINFORCEMENT.

DRY GLAZED LAMINATED GLASS G2L SHOWN.
SEE SHEET 01 FOR DRY GLAZED INSULATED LAMINATED GLASS G2.

- NOTES:
1. CONFIGURATIONS SHOWN FOR ILLUSTRATION PURPOSES ONLY.
 2. DOOR SHALL MEET EGRESS REQUIREMENTS AS APPLICABLE PER FBC.
 3. FOR REINFORCEMENT REQUIREMENT SEE SHEET 03.

PRODUCT APPROVED
as complying with the Florida
Building Code
NOA-No. 23-1222.07
Approval Date 07/05/2024
By *Ishay I. Chank*
Miami-Dade Product Control

MIAMI DADE COUNTY



ES-SGD2040 SLIDING GLASS DOOR-L.M.I.

ES WINDOWS, INC.
10653 NE Quaybridge Ct.
Miami, FL 33138
TEL. (305) 624-7775

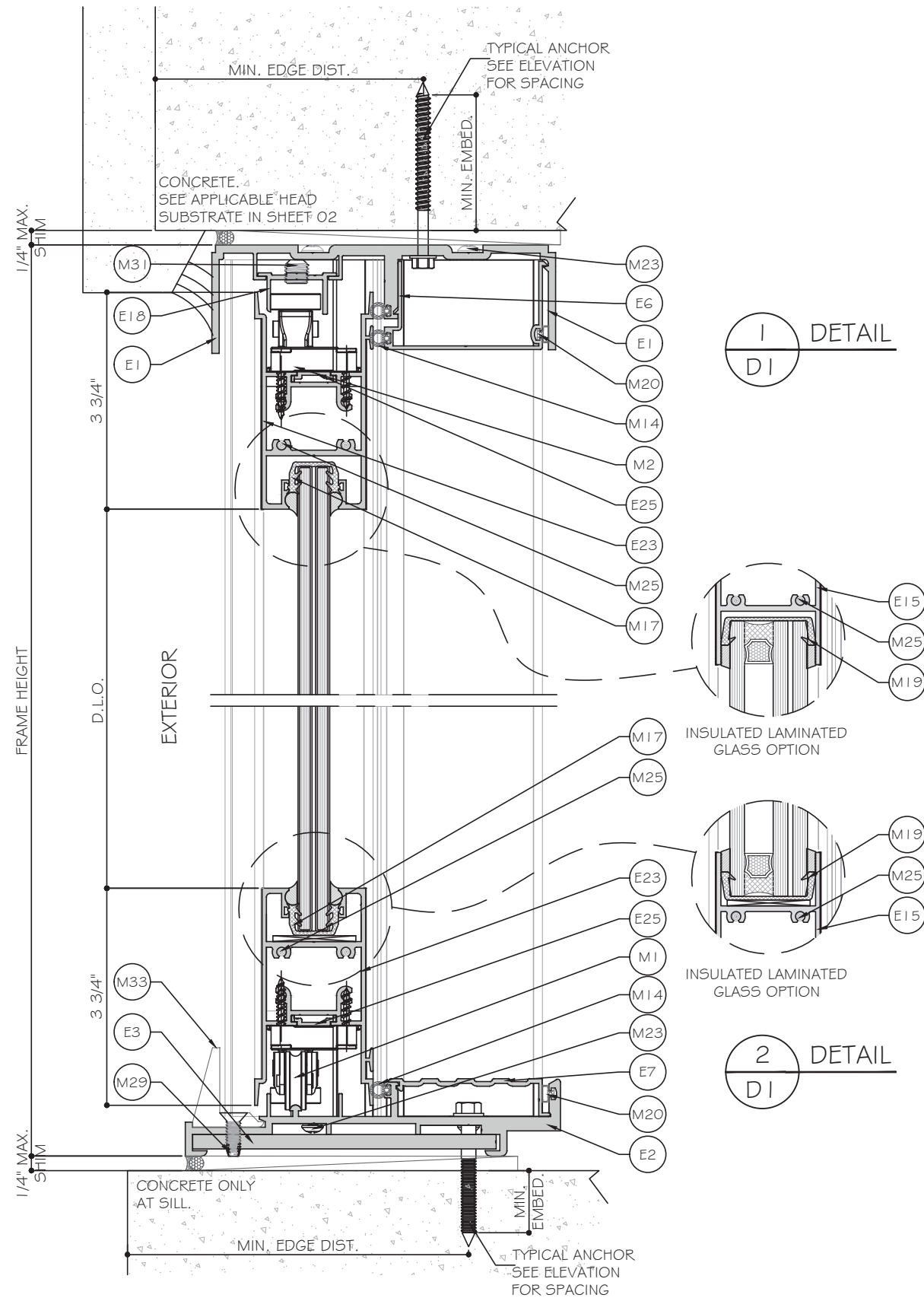
MCY ENGINEERING, INC.
GLAZING CONSULTANTS
12781 MIRAMAR PARKWAY #301
MIRAMAR, FL 33027 P. 305.271.0117
www.MCYEngineering.com mcy@mcyengineering.com

REV.	DATE	BY	DESCRIPTION
05.29.2024	James	Drawn	NEW APPLICATION
05.29.2024	James	By	
05.29.2024	James	Date	
05.29.2024	James	Rev. No.	
05.29.2024	James	Scale	AS SHOWN
05.29.2024	James	Drawn Date	

DRAWING NO. AD23-70

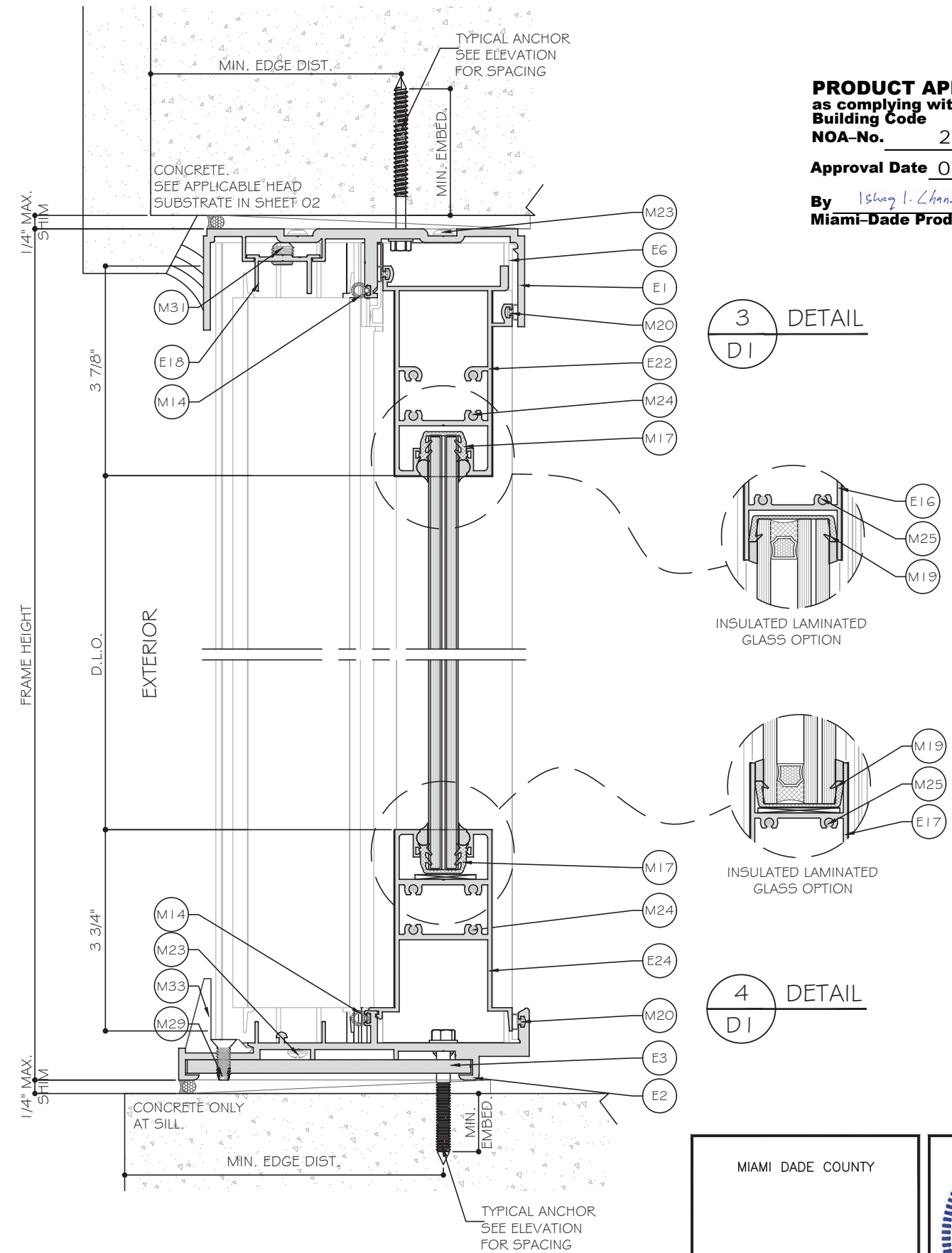
Sheet No. E4

05 OF 18



1
DI
DETAIL

2
DI
DETAIL



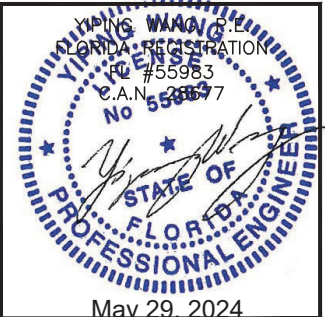
3
DI
DETAIL

4
DI
DETAIL

PRODUCT APPROVED
 as complying with the Florida
 Building Code
 NOA-No. 23-1222.07
 Approval Date 07/05/2024
 By *Ishtay I. Chande*
 Miami-Dade Product Control

WET GLAZED OPTION SHOWN.

MIAMI DADE COUNTY

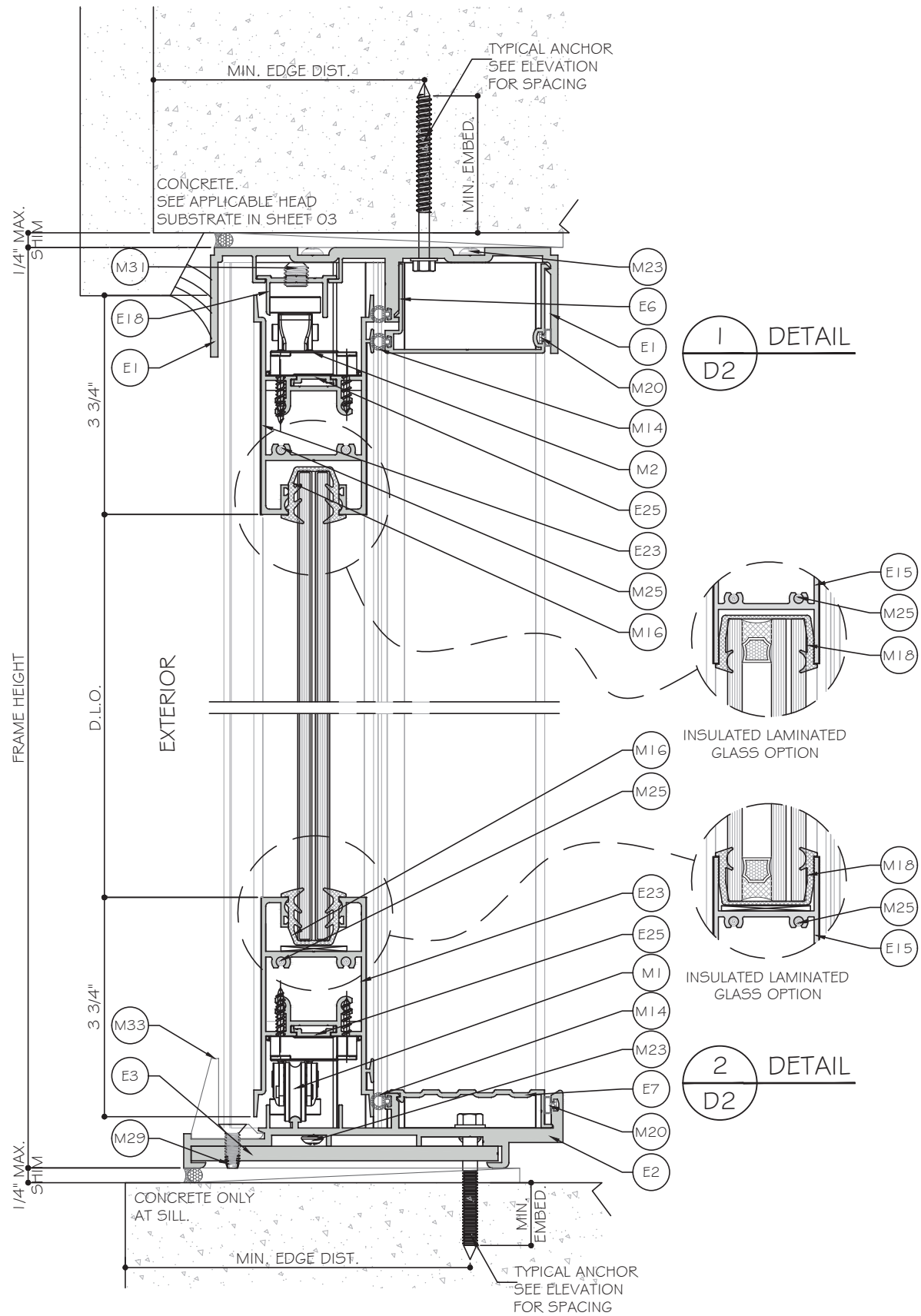


MCY ENGINEERING, INC.
 GLAZING CONSULTANTS
 12781 MIRAMAR PARKWAY #301
 MIRAMAR, FL 33027
 P: 305.271.0117
 www.MCYEngineering.com mcy@mcyengineering.com

ES-SGD2040 SLIDING GLASS DOOR-L.M.I.
ES WINDOWS, INC.
 10653 NE Quaybridge Ct.
 Miami, FL 33138
 TEL. (305) 624-7775

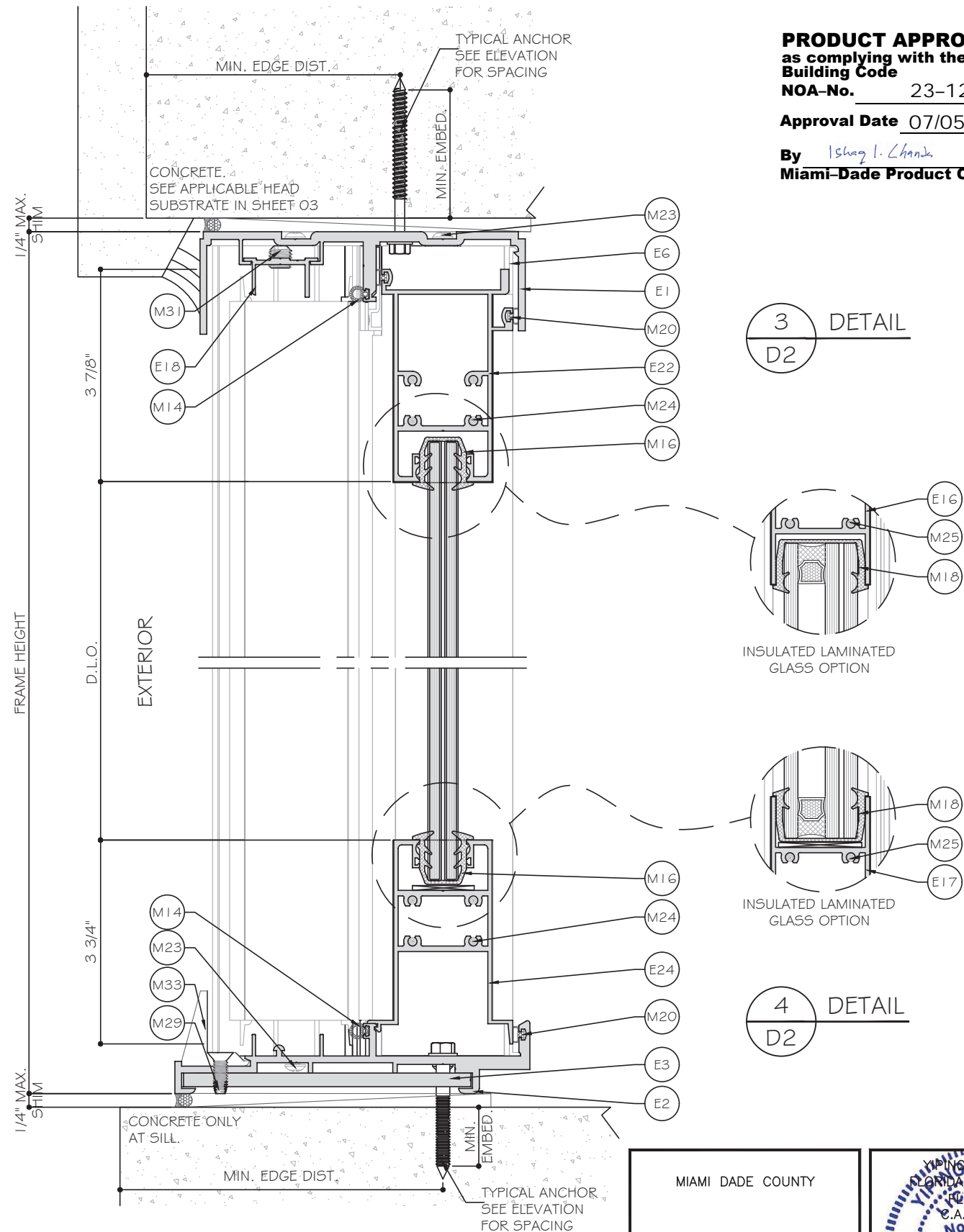
Rev. No.	Date	Drawn By	Description
05-29-2024	James		NEW APPLICATION

Drawn Date: 05.29.2024
 Scale: AS SHOWN
 DRAWING NO. AD23-70
 Sheet No. 06 OF 18



1
D2
DETAIL

2
D2
DETAIL



3
D2
DETAIL

4
D2
DETAIL

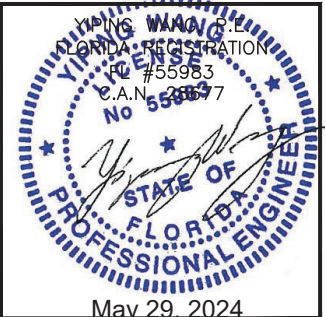
PRODUCT APPROVED
 as complying with the Florida
 Building Code
 NOA-No. 23-1222.07
 Approval Date 07/05/2024
 By *Ishag I. Chanda*
 Miami-Dade Product Control

MCY ENGINEERING, INC.
 GLAZING CONSULTANTS
 12781 MIRAMAR PARKWAY #301
 MIRAMAR, FL 33027
 P: 305.271.0117
 www.MCYEngineering.com mcy@mcyengineering.com

ES-SGD2040 SLIDING GLASS DOOR-L.M.I.
ES WINDOWS, INC.
 10653 NE Quaybridge Ct.
 Miami, FL 33138
 TEL: (305) 624-7775

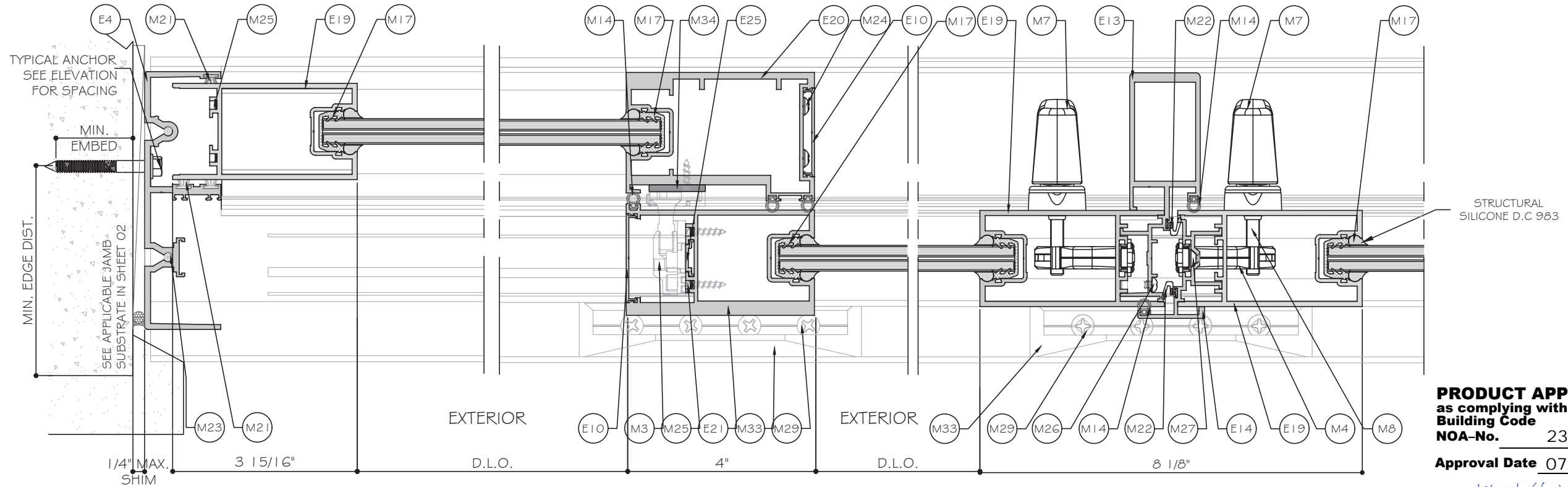
DRY GLAZED OPTION SHOWN.

MIAMI DADE COUNTY

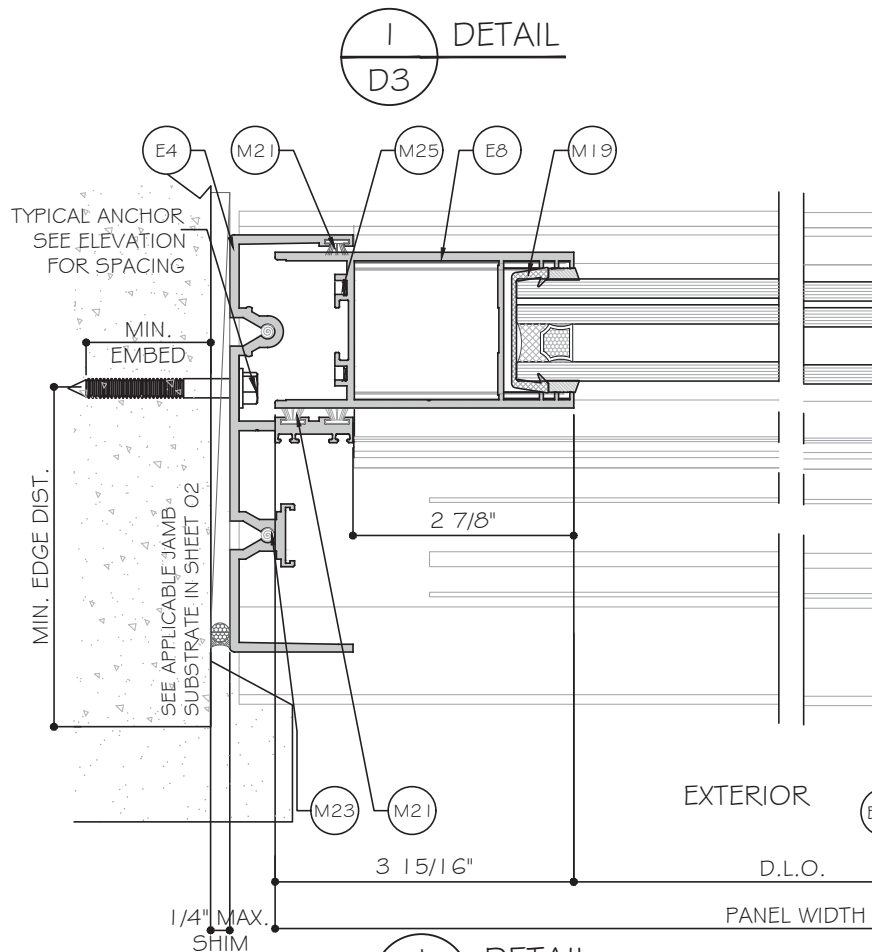


Rev. No.	Date	Drawn By	Description
05-29-2024	James		NEW APPLICATION
05-29-2024	James		NEW APPLICATION

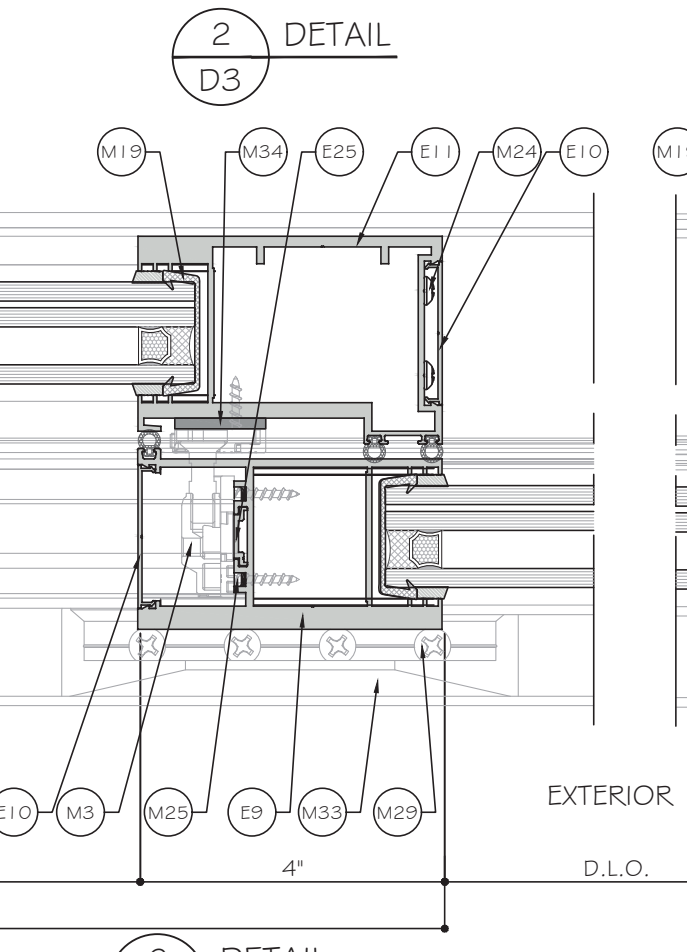
Drawn Date: 05.29.2024 Scale: AS SHOWN
 DRAWING NO. AD23-70
 Sheet No. 07 OF 18



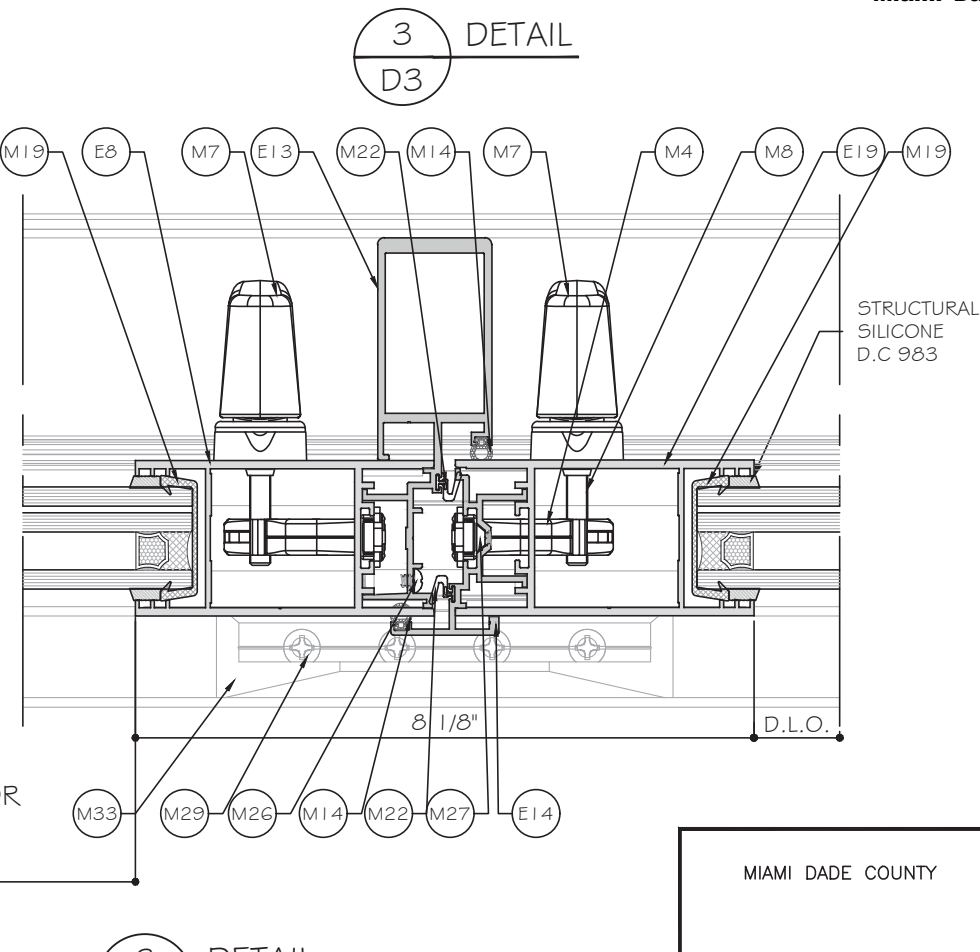
PRODUCT APPROVED
as complying with the Florida Building Code
NOA-No. 23-1222.07
Approval Date 07/05/2024
By *Ismael I. Chantz*
Miami-Dade Product Control



1 D3 DETAIL
INSULATED LAMINATED GLASS OPTION



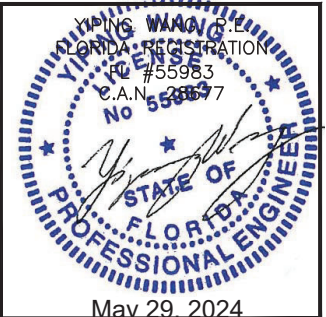
2 D3 DETAIL
INSULATED LAMINATED GLASS OPTION



3 D3 DETAIL
INSULATED LAMINATED GLASS OPTION

WET GLAZED OPTION SHOWN.

MIAMI DADE COUNTY

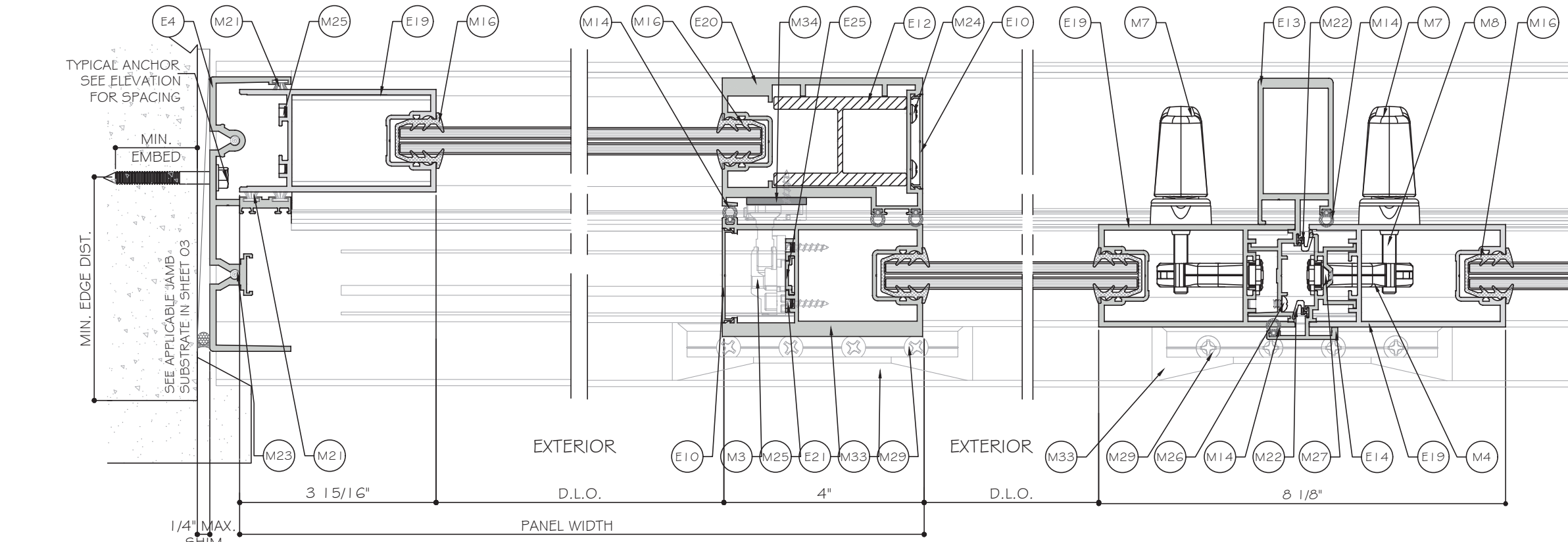


MCY ENGINEERING, INC.
GLAZING CONSULTANTS
12781 MIRAMAR PARKWAY #301
MIRAMAR, FL 33027 P: 305.271.0117
www.MCYEngineering.com mcy@mcyengineering.com

ES-SGD2040 SLIDING GLASS DOOR-L.M.I.
ES WINDOWS, INC.
10663 NE Quaybridge Ct.
Miami, FL 33138
TEL. (305) 624-7775

Rev. No.	Date	Drawn By	Description
01	05/29/2024	James	NEW APPLICATION

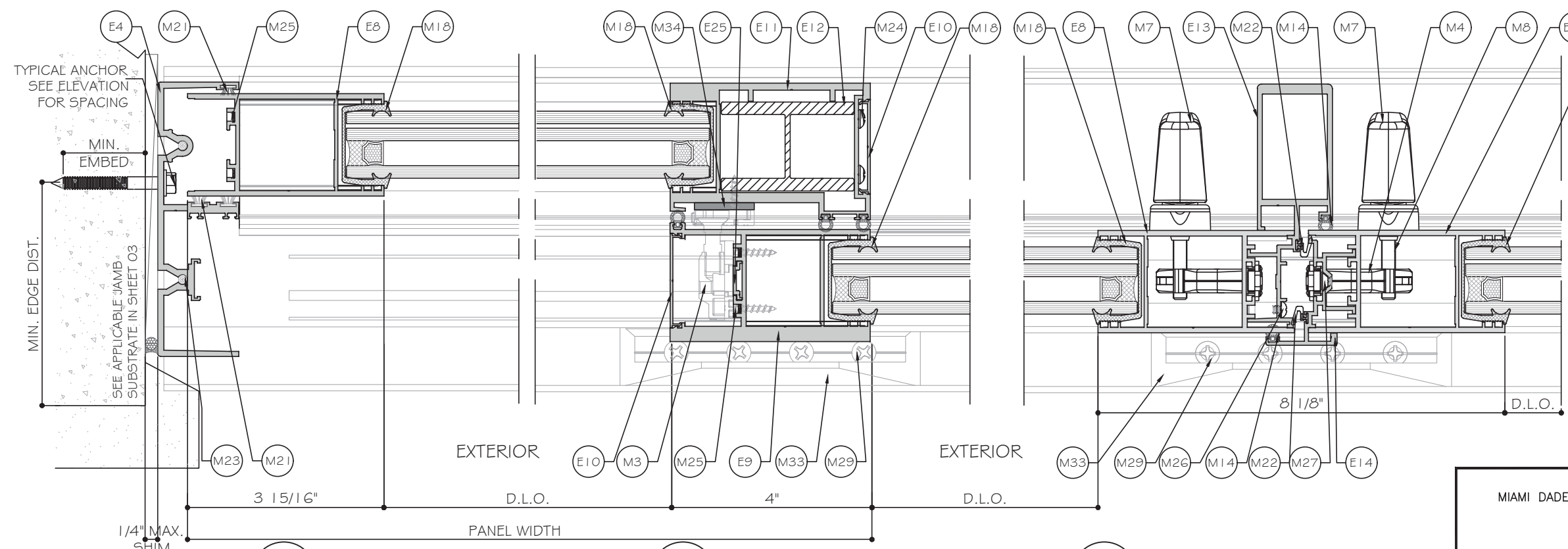
Drawn Date: 05/29/2024 Scale: AS SHOWN
DRAWING NO. AD23-70
Sheet No. 08 OF 18



1 DETAIL
D4

2 DETAIL
D4

3 DETAIL
D4



1 DETAIL
D4

2 DETAIL
D4

3 DETAIL
D4

INSULATED LAMINATED
GLASS OPTION

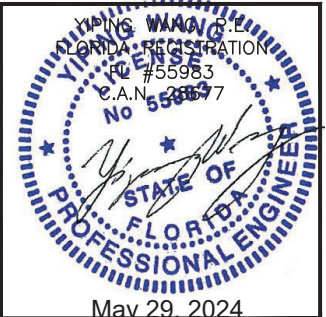
INSULATED LAMINATED
GLASS OPTION

INSULATED LAMINATED
GLASS OPTION

PRODUCT APPROVED
as complying with the Florida
Building Code
NOA-No. 23-1222.07
Approval Date 07/05/2024
By *Ishay I. Chank*
Miami-Dade Product Control

DRY GLAZED OPTION SHOWN.

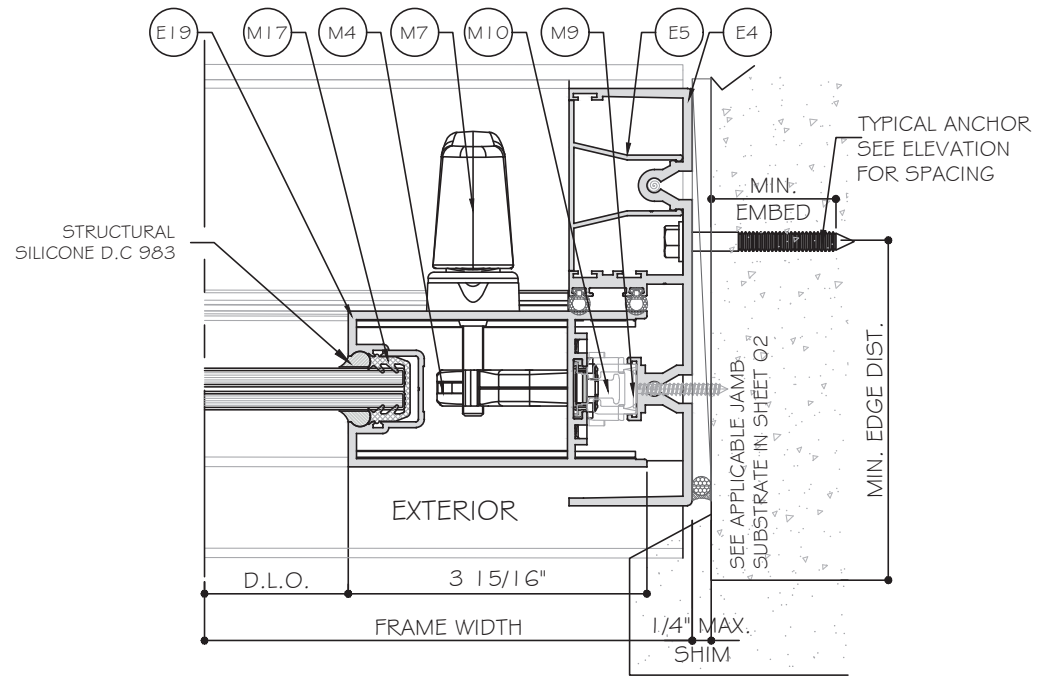
MIAMI DADE COUNTY



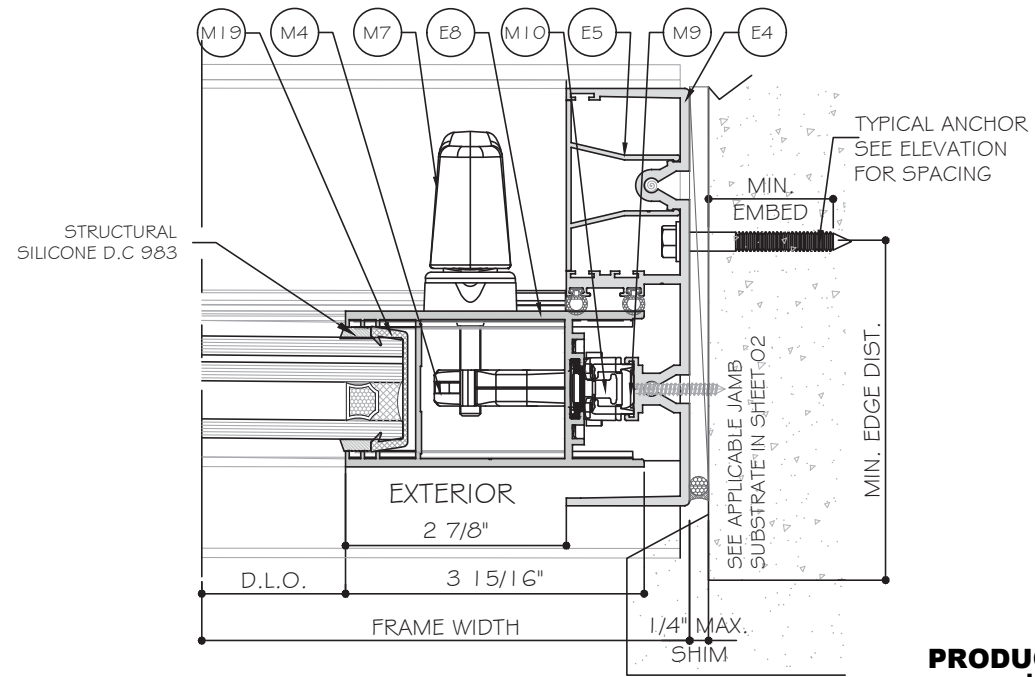
MCY ENGINEERING, INC.
GLAZING CONSULTANTS
12781 MIRAMAR PARKWAY #301
MIRAMAR, FL 33027 P: 305.271.0117
www.MCYEngineering.com mcy@mcyengineering.com

ES-SGD2040 SLIDING GLASS DOOR-L.M.I.
ES WINDOWS, INC.
10653 NE Quaybridge Ct.
Miami, FL 33138
TEL. (305) 624-7775

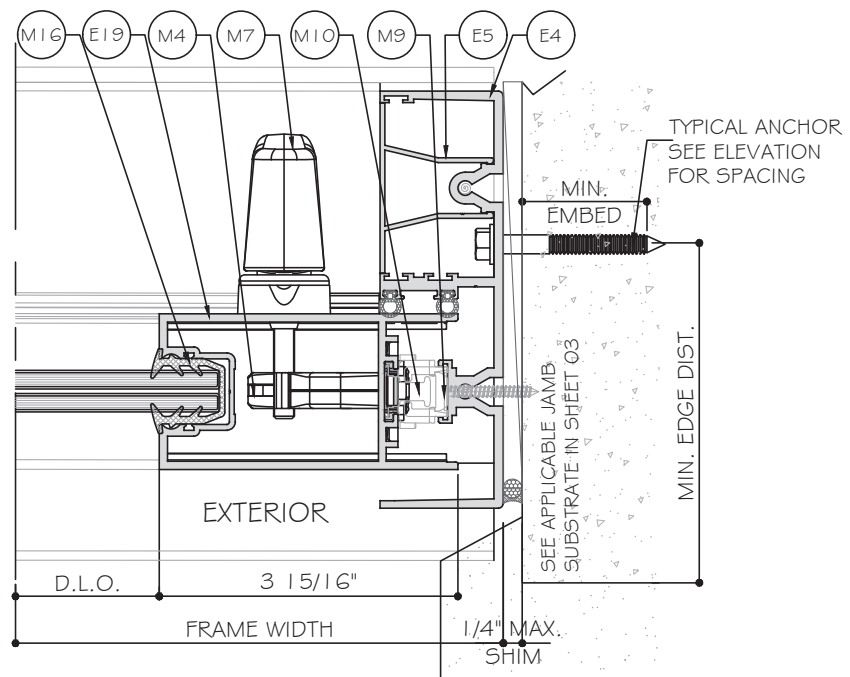
Rev. No.	Date	Drawn By	Description
01	05/29/2024	James	NEW APPLICATION
Drawn Date: 05/29/2024		Scale: AS SHOWN	
DRAWING NO. AD23-70			
Sheet No. 09 OF 18			



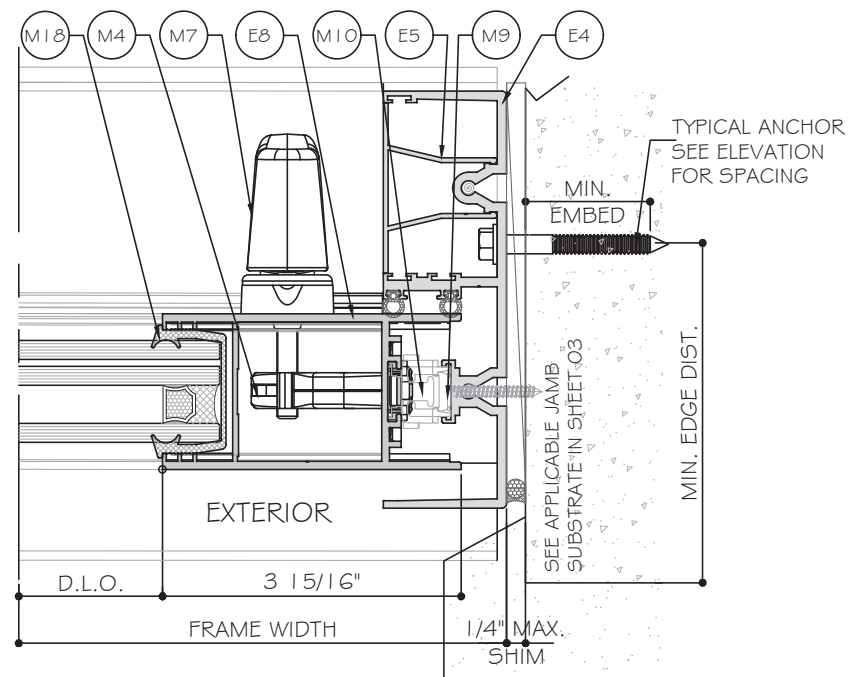
1
D5 DETAIL



1
D5 DETAIL
INSULATED LAMINATED
GLASS OPTION



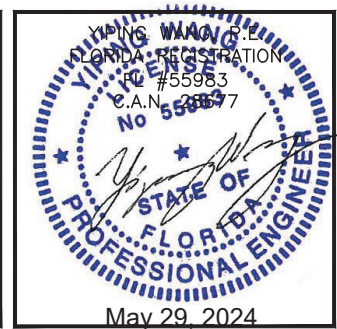
2
D5 DETAIL



2
D5 DETAIL
INSULATED LAMINATED
GLASS OPTION

PRODUCT APPROVED
as complying with the Florida
Building Code
NOA-No. 23-1222.07
Approval Date 07/05/2024
By Ishag I. Chank
Miami-Dade Product Control

MIAMI DADE COUNTY

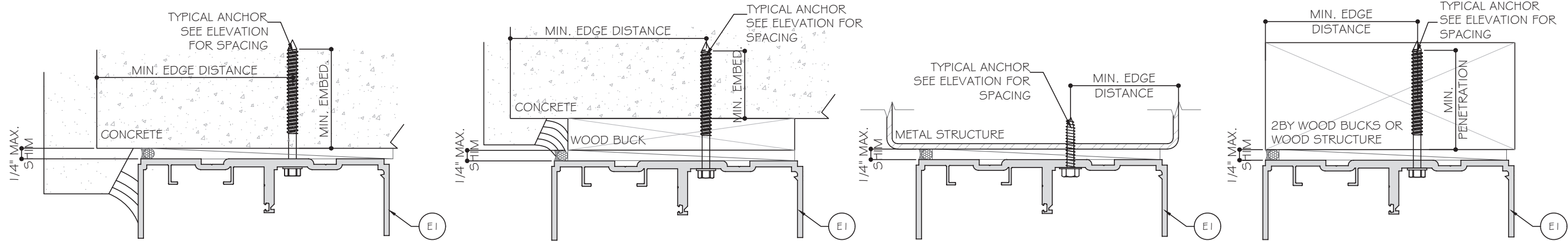


ES-SGD2040 SLIDING GLASS DOOR-L.M.I.

ES WINDOWS, INC.
10663 NE Quaybridge Ct.
Miami, FL 33138
TEL. (305) 624-7775

MCY ENGINEERING, INC.
GLAZING CONSULTANTS
12781 MIRAMAR PARKWAY #301
MIRAMAR, FL 33027 P: 305.271.0117
www.MCYEngineering.com mcy@mcyengineering.com

Rev. No.	Date	Drawn By	Description
01	05/29/2024	James	NEW APPLICATION
Drawn Date: 05/29/2024 Scale: AS SHOWN Drawing No.: AD23-70 Sheet No.: D5 10 OF 18			



TYPICAL ANCHOR TYPES:

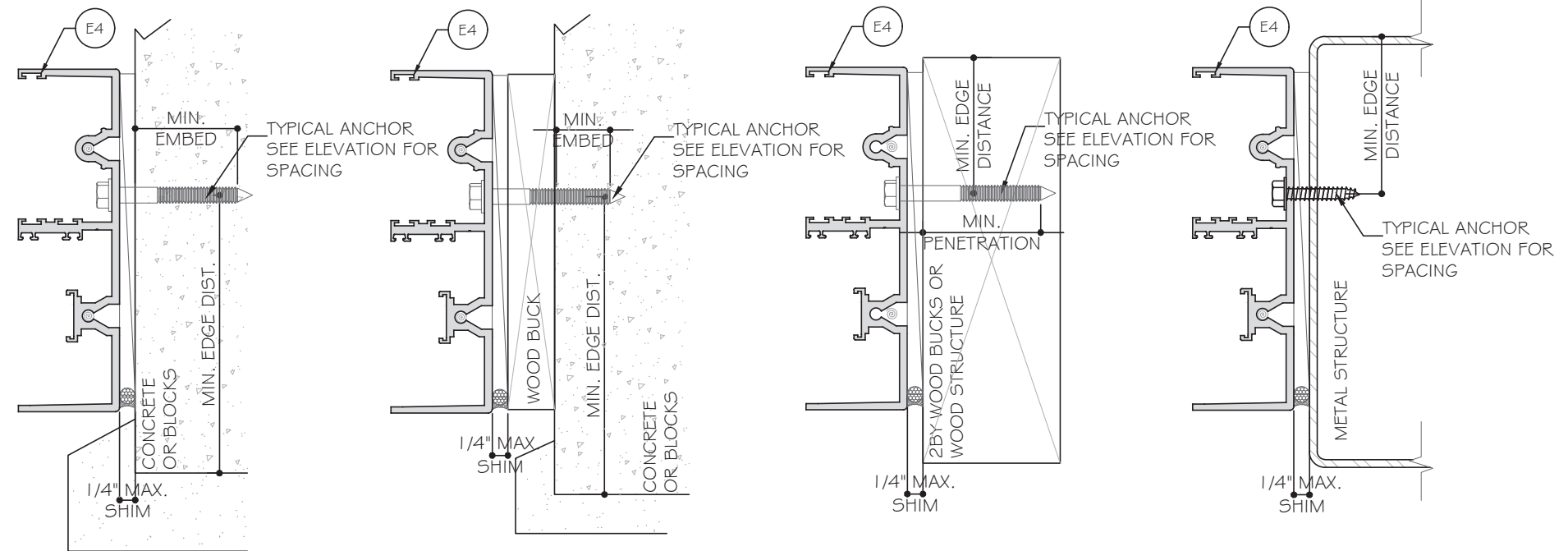
TYPE "A": 1/4" DIA. HILTI KWIKCON+ ($F_u=138$ KSI, $F_y=137$ KSI)
 INTO 2BY WOOD BUCKS OR WOOD STRUCTURE
 1 1/2" MIN. PENETRATION
 THRU 1 BY OR 2BY WOOD BUCKS INTO CONCRETE OR MASONRY
 1 3/4" MIN. EMBED
 DIRECTLY INTO CONCRETE OR MASONRY
 1 3/4" MIN. EMBED

TYPE "B": 1/4" DIA. ULTRACON+ BY 'DEWALT' ($F_u=164$ KSI, $F_y=148$ KSI)
 INTO 2BY WOOD BUCKS OR WOOD STRUCTURE
 1 1/2" MIN. PENETRATION
 THRU 1X OR 2X WOOD BUCK INTO CONCRETE OR MASONRY
 1 3/4" MIN. EMBED
 DIRECTLY INTO CONCRETE OR MASONRY
 1 3/4" MIN. EMBED

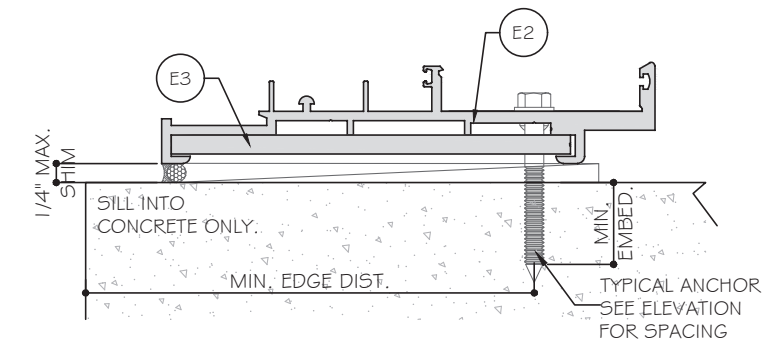
TYPE "C": 5/16" ULTRACON BY 'DEWALT' ($F_u=177$ KSI, $F_y=155$ KSI)
 DIRECTLY INTO CONCRETE $f'_c=3500$ PSI MIN.
 WITH 1 3/4" MIN. EMBED

TYPE "D": 1/4" SMS SCREW ($F_u=120$ KSI, $F_y=92$ KSI)
 INTO METAL STRUCTURE OR FLORIDA APPROVED MULLION
 (3) THREADS MIN. PENETRATION BEYOND METAL SUBSTRATE
 ALUMINUM: 1/8" MIN. THK(GO63-T5 MIN.)

TYPE "E": 1/4" DIA. TEKS/DRIL-FLEX SCREW GRADE 5 ($F_u=120$ KSI, $F_y=92$ KSI)
 INTO METAL STRUCTURE OR FLORIDA APPROVED MULLION
 (3) THREADS MIN. PENETRATION BEYOND METAL SUBSTRATE
 ALUMINUM: 1/8" MIN. THK (GO63-T6 MIN.)
 STEEL: 1/8" THK. MIN. ($F_y=36$ ksi)
 (STEEL IN CONTACT WITH ALUMINUM TO BE PAINTED OR PLATED)



NOTE:
 1X OR 2X WOOD BUCKS/ METAL STRUCTURE BY OTHERS MUST BE PROPERLY SECURED TO SUPPORT LOADS IMPOSED BY GLAZING SYSTEM AND TRANSFER THEM TO THE BUILDING STRUCTURES.

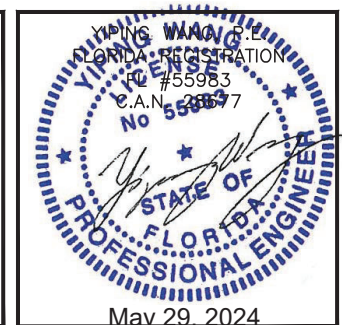


EDGE DISTANCE:
 CONCRETE OR MASONRY: 2 1/2" MIN.
 WOOD: 1" MIN.
 METAL: 3/4" MIN.

SUBSTRATE:
 CONCRETE = 3000 PSI.
 WOOD: SG=0.55
 C-90 HOLLOW/GROUT FILLED BLOCK $f'_m=2$ KSI MIN. AT JAMB ONLY

PRODUCT APPROVED
 as complying with the Florida Building Code
 NOA-No. 23-1222.07
 Approval Date 07/05/2024
 By Ishay I. Chank
 Miami-Dade Product Control

MIAMI DADE COUNTY

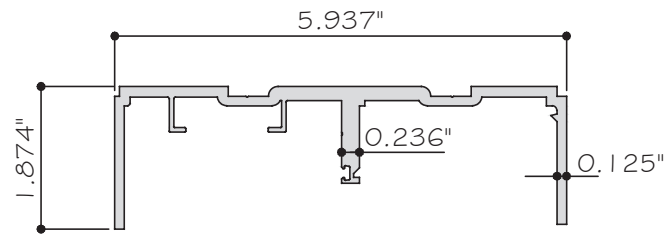


MCY ENGINEERING, INC.
 GLAZING CONSULTANTS
 12781 MIRAMAR PARKWAY #301
 MIRAMAR, FL 33027 P: 305.271.0117
 www.MCYEngineering.com mcy@mcyengineering.com

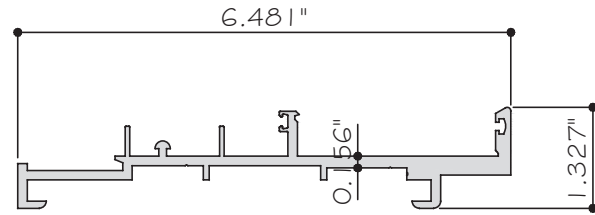
ES-SGD2040 SLIDING GLASS DOOR-L.M.I.
ES WINDOWS, INC.
 10663 NE Quaybridge Ct.
 Miami, FL 33138
 TEL. (305) 624-7775

Rev. No.	Date	Drawn By	Description
01	05/29/2024	James	NEW APPLICATION
02	05/29/2024	James	REVISED

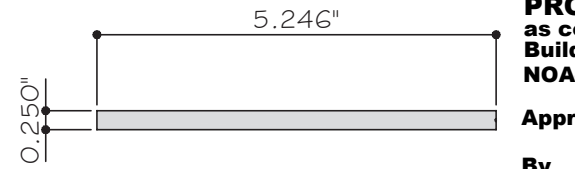
Drawn Date: 05/29/2024 Scale: AS SHOWN
 DRAWING NO. AD23-70
 Sheet No. 11 OF 18



E1 HEAD FRAME
ES-SGD2040-001 6063-T6

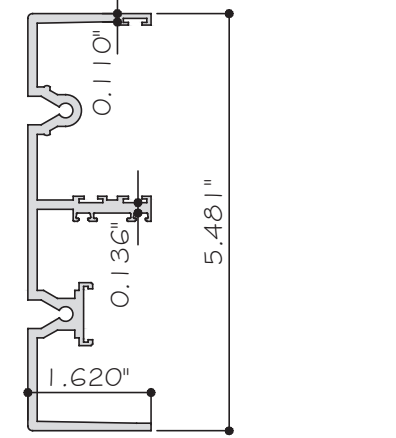


E2 SILL FRAME
ES-SGD2040-002 6063-T6

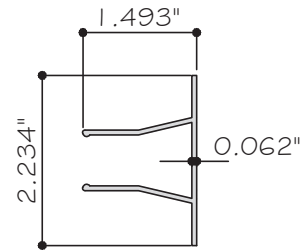


E3 FRAME REINFORCEMENT PLATE
ES-SGD2040-003 6063-T6

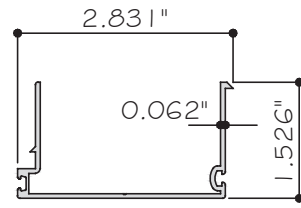
PRODUCT APPROVED
as complying with the Florida
Building Code
NOA-No. 23-1222.07
Approval Date 07/05/2024
By *Ishag I. Chande*
Miami-Dade Product Control



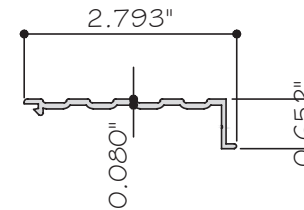
E4 JAMB FRAME
ES-SGD2040-004 6063-T6



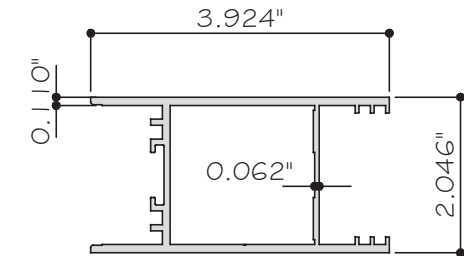
E5 FRAME JAMB COVER
ES-SGD2040-005 6063-T6



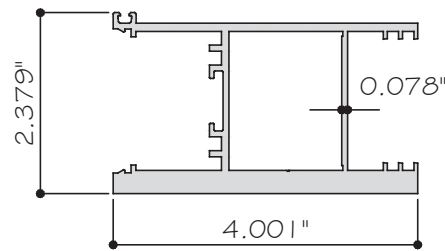
E6 HEAD SCREW COVER
ES-SGD2040-006 6063-T6



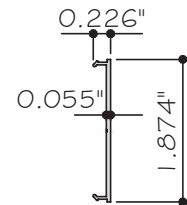
E7 THRESHOLD COVER
ES-SGD2040-007 6063-T6



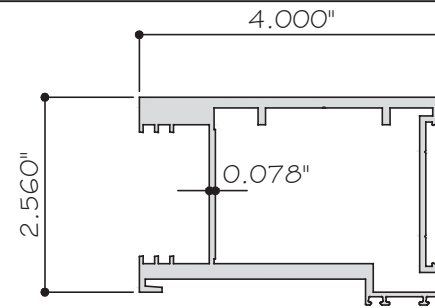
E8 REVERSIBLE LOCK STILE
ES-SGD2040-008 6063-T6



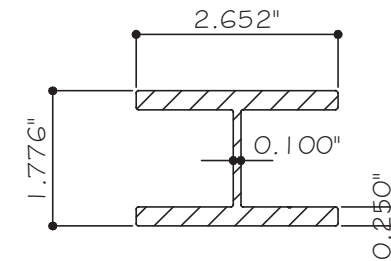
E9 MOVING PANEL INTERLOCK
ES-SGD2040-009 6063-T6



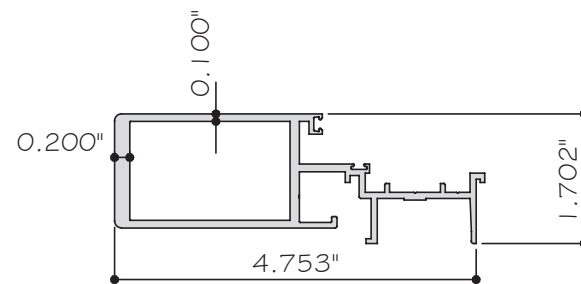
E10 VERTICAL INTERLOCK/STILE COVER
ES-SGD2040-010 6063-T6



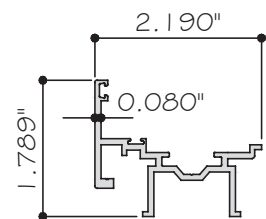
E11 FIXED PANEL INTERLOCK
ES-SGD2040-011 6063-T6



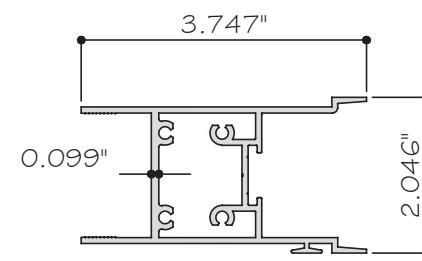
E12 FIXED PANEL REINFORCEMENT
ES-SGD2040-012 6063-T6



E13 ASTRAGAL
ES-SGD2040-013 6063-T6

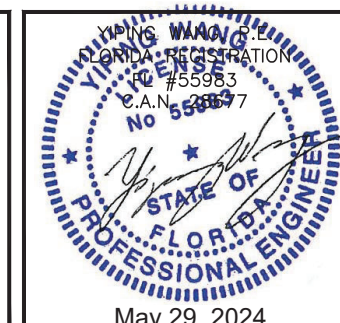


E14 ADAPTOR ASTRAGAL
ES-SGD2040-014 6063-T6



E15 MOVIL PANEL TOP/BOTTOM RAIL
ES-SGD2040-015 6063-T6

MIAMI DADE COUNTY



MCY ENGINEERING, INC.
GLAZING CONSULTANTS
12781 MIRAMAR PARKWAY #301
MIRAMAR, FL 33027 P: 305.271.0117
www.MCYEngineering.com mcy@mcyengineering.com

ES-SGD2040 SLIDING GLASS DOOR-L.M.I.

ES WINDOWS, INC.
10663 NE Quaybridge Ct.
Miami, FL 33138
TEL. (305) 624-7775

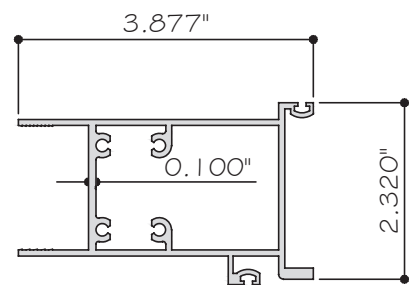
Rev. No.	Date	Drawn By	Description
01	05/29/2024	James	NEW APPLICATION

Drawn Date: 05/29/2024 Scale: AS SHOWN

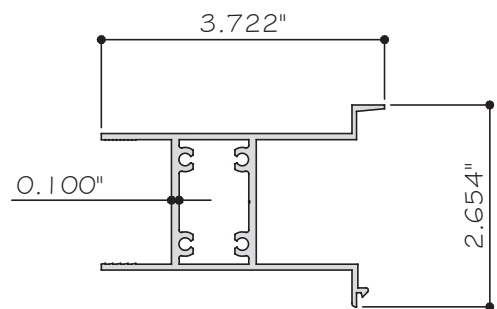
DRAWING NO. AD23-70

PARTS

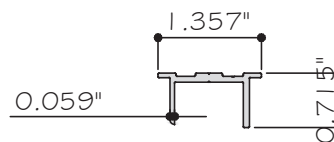
Sheet No. 12 OF 18



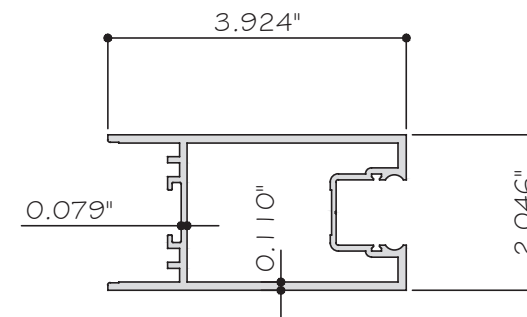
E16 FIXED PANEL TOP RAIL
ES-SGD2040-016 6063-T6



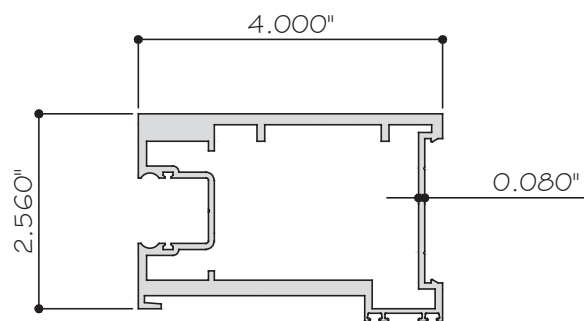
E17 FIXED PANEL BOTTOM RAIL
ES-SGD2040-017 6063-T6



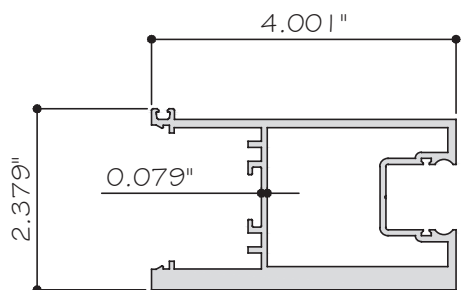
E18 FRAME HEAD INSERT
ES-SGD2040-018 6063-T6



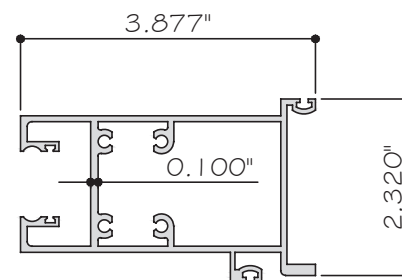
E19 REVERSIBLE LOCK STILE FOR LAMINATED
ES-SGD2040-019 6063-T6



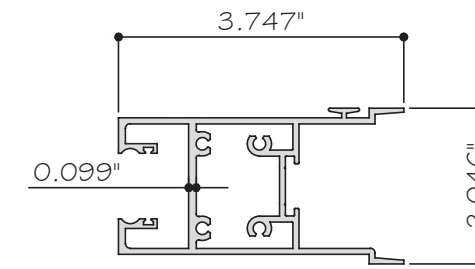
E20 FIXED PANEL INTERLOCK FOR LAM.
ES-SGD2040-020 6063-T6



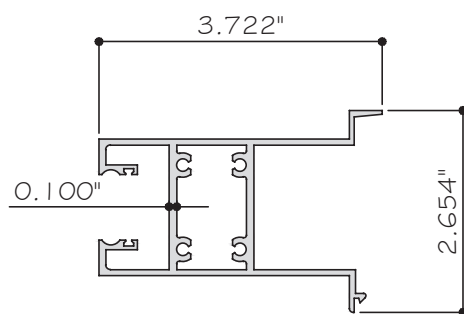
E21 MOVIL PANEL INTERLOCK FOR LAM.
ES-SGD2040-021 6063-T6



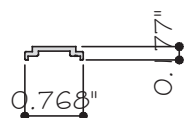
E22 FIXED PANEL TOP RAIL FOR LAM.
ES-SGD2040-022 6063-T6



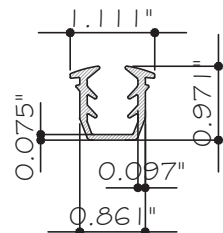
E23 MOVIL PANEL TOP/BOTTOM RAIL FOR LAM.
ES-SGD2040-023 6063-T6



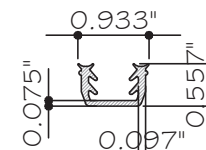
E24 FIXED PANEL BOTTOM RAIL FOR LAM.
ES-SGD2040-024 6063-T6



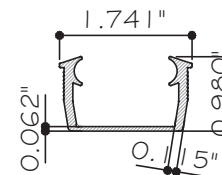
E25 CONNECTING RODS
ES-SGD2040-025 6063-T6



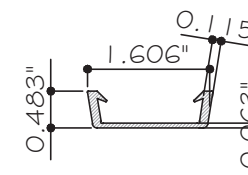
M16 LAM. GLAZING (DRY GLAZED)
ES-SGD2020-G01 SILICONE (EXTRUSIONES S.A.)



M17 LAM. GLAZING (WET GLAZED)
ES-SGD2020-G02 SILICONE (EXTRUSIONES S.A.)



M18 INSULATED. GLAZING (DRY GLAZED)
ES-SGD2040-G01 SILICONE (EXTRUSIONES S.A.)

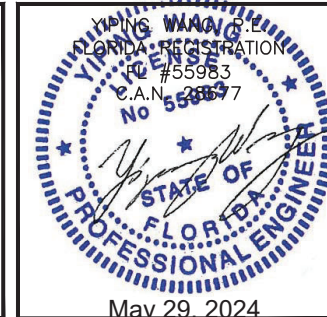


M19 INSULATED. GLAZING (WET GLAZED)
ES-SGD2040-G02 SILICONE (EXTRUSIONES S.A.)

GASKET (M16,M17,M18,M19):
 HARDNESS = 70± 5 (ASTM D2240)
 TENSILE STRENGTH > 5MPA (ASTM D412)
 ELONGATION AT BREAK > 125 % (ASTM D412)
 TEAR STRENGTH > 9.0 KN/m (ASTM D624)
 LOW TEMPERATURE FLEXIBILITY = -40° C (ASTM D2137)
 COMPRESSION SET < 15% (ASTM D395)

PRODUCT APPROVED
 as complying with the Florida
 Building Code
 NOA-No. 23-1222.07
 Approval Date 07/05/2024
 By *Ishaq I. Chank*
 Miami-Dade Product Control

MIAMI DADE COUNTY

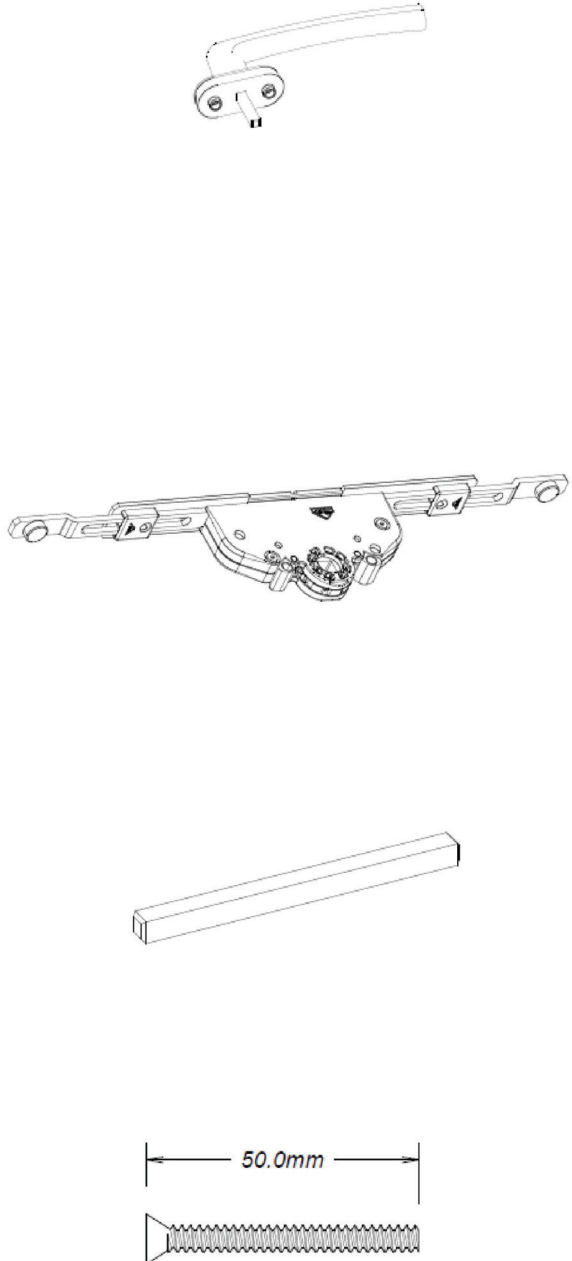
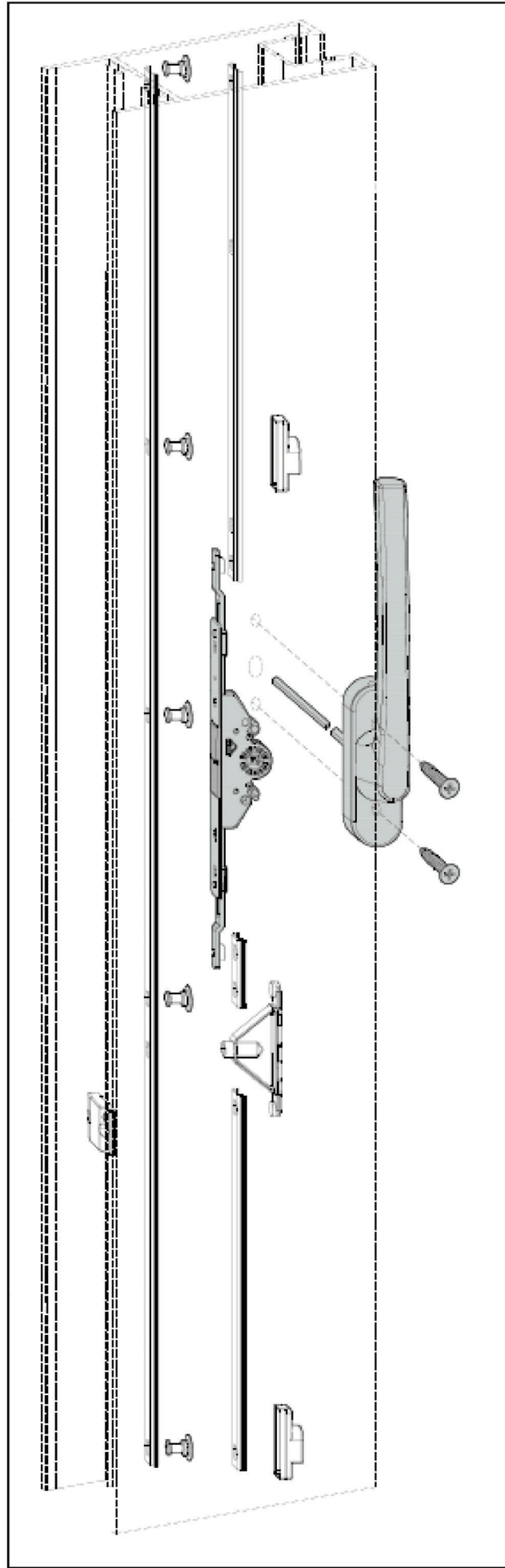


MCY ENGINEERING, INC.
 GLAZING CONSULTANTS
 12781 MIRAMAR PARKWAY #301
 MIRAMAR, FL 33027 P: 305.271.0117
 www.MCYEngineering.com mcy@mcyengineering.com

ES-SGD2040 SLIDING GLASS DOOR-L.M.I.
ES WINDOWS, INC.
 10663 NE Quaybridge Ct.
 Miami, FL 33138
 TEL. (305) 624-7775

Rev. No.	Date	Drawn By	Description
01	05/29/2024	James	NEW APPLICATION

Drawn Date: 05/29/2024 Scale: AS SHOWN
 DRAWING NO. AD23-70
 PARTS
 Sheet No. 13 OF 18



HANDLE

REF: INOWA HANDLE - FINISH
MATERIAL: ALUMINUM

QTY.	FINISH	SAP
	799005 - SILVER	30048421
	798990 - BLACK	30048422
	798991 - WHITE	30048423

DESC. SAP: 799005 INOWA HANDLE SILVER

MORTISE LOCK 40mm

REF: 625433
MATERIAL: ZINC

QTY.	FINISH	SAP
	NATURAL	30035070

DESC. SAP: ALU F.E.G. NIRO 40MM/BSET 280MM 625433

INTERIOR HANDLE SPINDLE

REF: PL150 S-HANDL 737985
MATERIAL: STAINLESS STEEL

QTY.	FINISH	SAP
	NATURAL	30035050

DESC. SAP: PATIO INOWA SPINDLE PL150 S-HANDL 737985

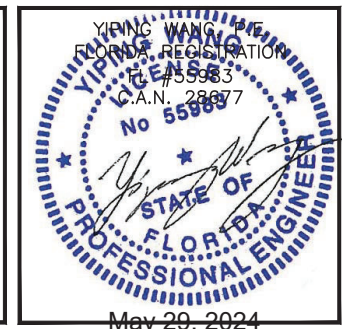
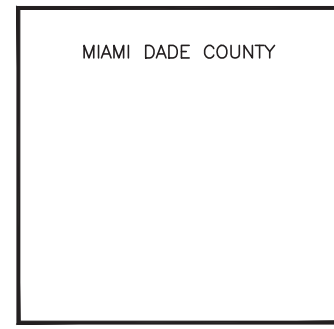
HANDLE SCREW

REF: M5 X 50 PHIL FLAT HEAD
MATERIAL: STAINLESS STEEL

QTY.	FINISH	SAP
	NATURAL	30035051

DESC. SAP: SCREW M5 X 50 PHIL FLAT HEAD - M1-3061

PRODUCT APPROVED
as complying with the Florida
Building Code
NOA-No. 23-1222.07
Approval Date 07/05/2024
By Ishag I. Lhanda
Miami-Dade Product Control

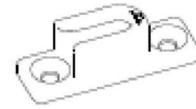
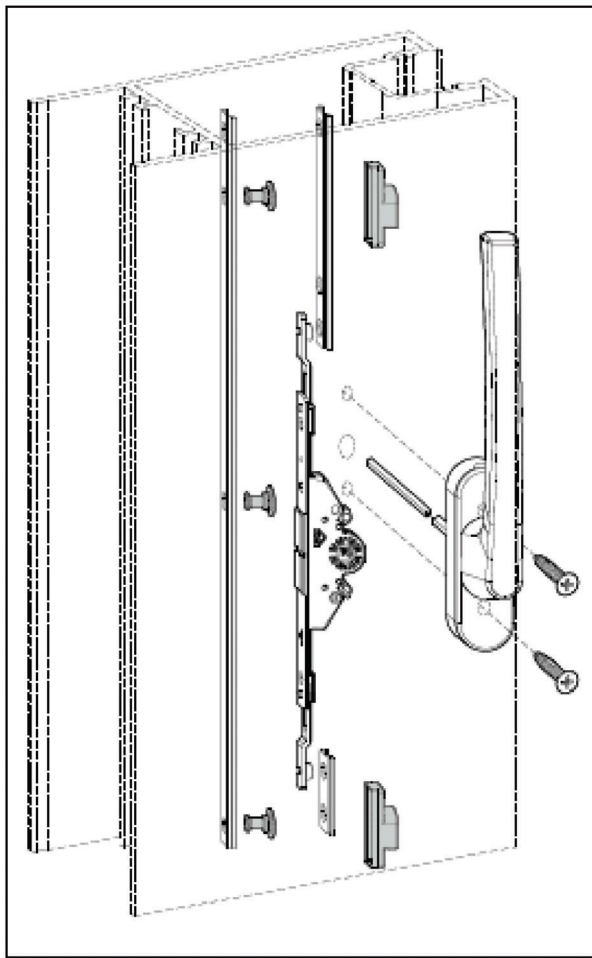


MCY ENGINEERING, INC.
GLAZING CONSULTANTS
12781 MIRAMAR PARKWAY #301
MIRAMAR, FL 33027 P: 305.271.0117
www.MCYEngineering.com mcy@mcyengineering.com

ES-SGD2040 SLIDING GLASS DOOR-L.M.I.
ES WINDOWS, INC.
10653 NE Quaybridge Ct.
Miami, FL 33138
TEL: (305) 624-7775

REV.	DATE	BY	DESCRIPTION
03	05/29/2024	Jianch	NEW APPLICATION

Drawn Date 05.29.2024 Scale AS SHOWN
DRAWING NO. AD23-70
LOCK
Sheet No. 14 OF 18



STRIKER

REF: 744684
 MATERIAL: ZAMAK

QTY.	FINISH	SAP
	NATURAL	30035069

DESC. SAP: PATIO INOWA AL SEC STRIKER 12.4 - 744684



SEC LOCKING 15.5

REF: 757585
 MATERIAL: STAINLESS STEEL

QTY.	FINISH	SAP
	NATURAL	30035068

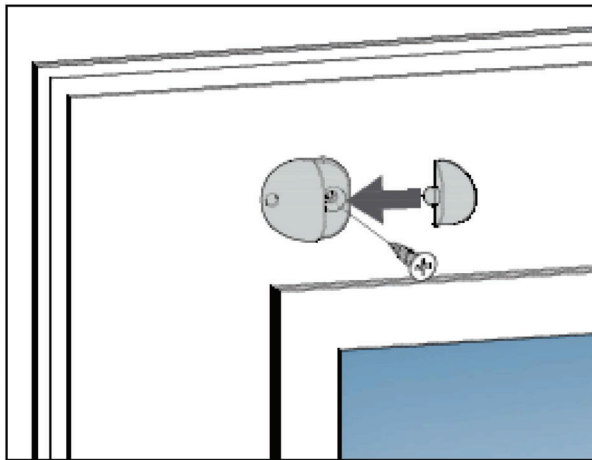
DESC. SAP: PATIO INOWA AL SECLOCKING CAM15.5 757585

PRODUCT APPROVED
 as complying with the Florida
 Building Code

NOA-No. 23-1222.07

Approval Date 07/05/2024

By *Ishag I. Chank*
 Miami-Dade Product Control

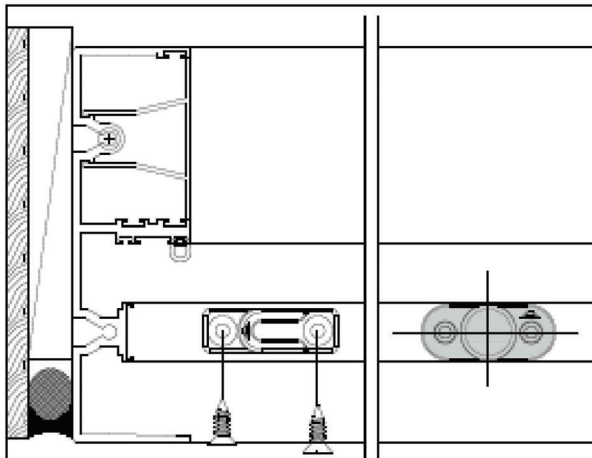


BUMPER

REF: RAD BUFFER STOP-FINISH
 MATERIAL: ALUMINUM

QTY.	FINISH	SAP
	BLACK	30035074
	WHITE	30035075
	GREY BROWN	30035073
	SILVER	30035076

DESC. SAP: RAD BUFFER STOP BLACK 335555



PATIO INOWA STOP

REF: 757701
 MATERIAL: ZAMAK

QTY.	FINISH	SAP
	NATURAL	30035067

DESC. SAP: PATIO INOWA STOP 16.5 757701

MIAMI DADE COUNTY



ES-SGD2040 SLIDING GLASS DOOR-L.M.I.

ES WINDOWS, INC.
 10653 NE Quaybridge Ct.
 Miami, FL 33138
 TEL: (305) 624-7775

MCY ENGINEERING, INC.
 GLAZING CONSULTANTS
 12781 MIRAMAR PARKWAY #301
 MIRAMAR, FL 33027 P: 305.271.0117
 www.MCYEngineering.com mcy@mcyengineering.com

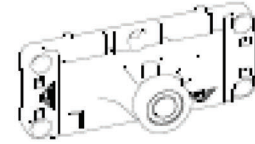
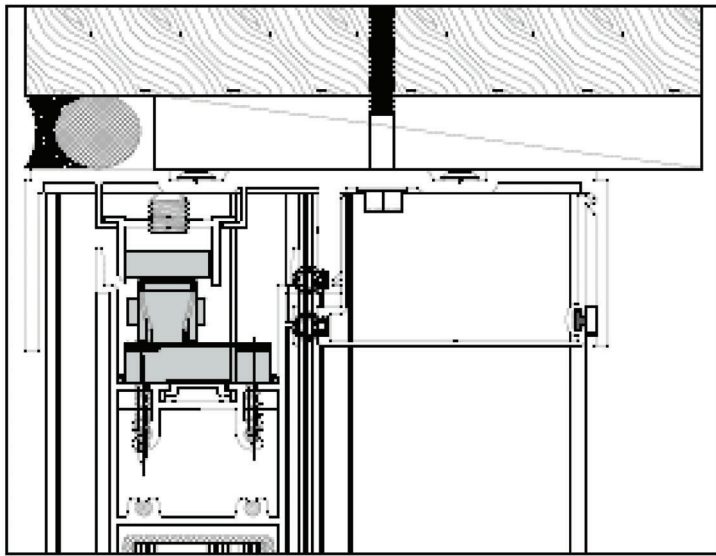
Rev. No.	Date	Drawn By	Description
03	05/29/2024	Jianch	NEW APPLICATION

Drawn Date 05.29.2024 Scale AS SHOWN

DRAWING NO. AD23-70

LOCK

Sheet No. 15 OF 18

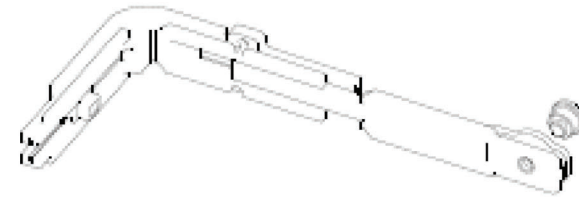
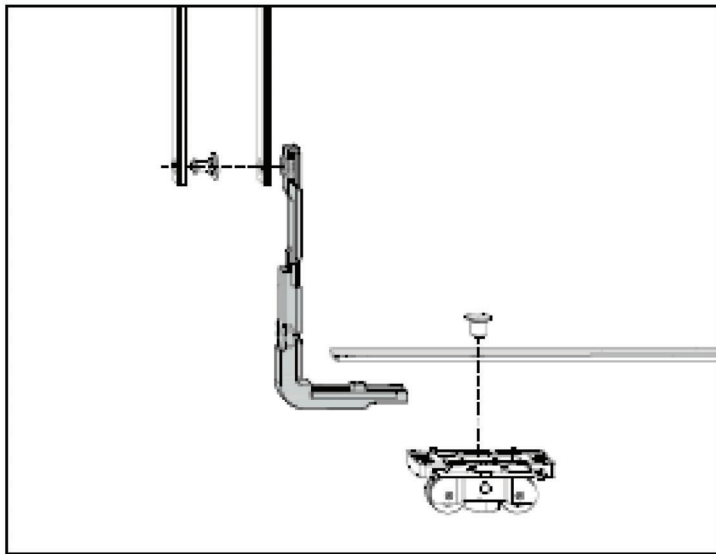


TOP ROLLER BOGIE

REF: 635-(ORIENTATION)
 MATERIAL: ALUMINUM

QTY.	FINISH	SAP
	LEFT	30035059
	RIGHT	30035060

DESC. SAP: PATIO INOWA AL CONTROL UNIT RH 635303.

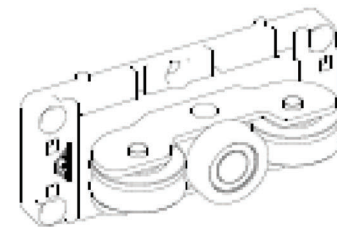
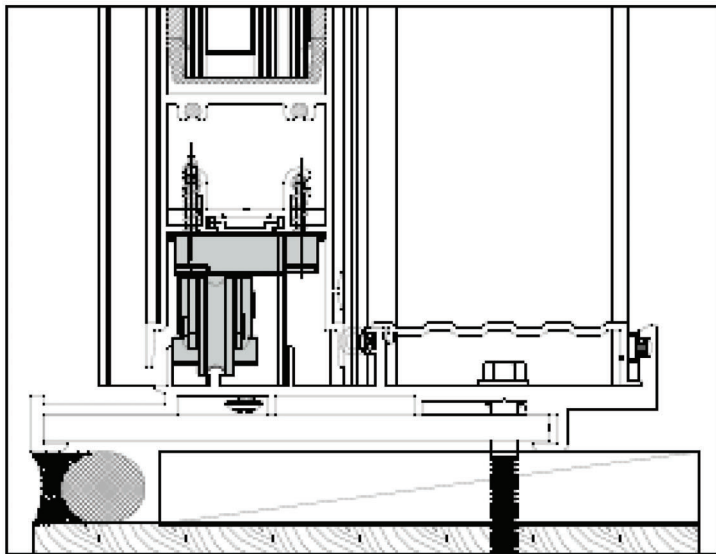


CORNER DRIVE

REF: 776328
 MATERIAL: ZAMAK

QTY.	FINISH	SAP
	NATURAL	30035064

DESC. SAP: PATIO INOWA CORNER DRIVE 776328



BOTTOM ROLLER BOGIE

REF: 635-(ORIENTATION)
 MATERIAL: ALUMINUM

QTY.	FINISH	SAP
	LEFT	30035057
	RIGHT	30035058

DESC. SAP: PATIO INOWA AL BOGIE LH 635295

PRODUCT APPROVED
 as complying with the Florida
 Building Code
 NOA-No. 23-1222.07
 Approval Date 07/05/2024
 By *Ishag I. Chande*
 Miami-Dade Product Control

MIAMI DADE COUNTY



ES-SGD2040 SLIDING GLASS DOOR-L.M.I.

ES WINDOWS, INC.
 10653 NE Quaybridge Ct.
 Miami, FL 33138
 TEL: (305) 624-7775

MCY ENGINEERING, INC.
 GLAZING CONSULTANTS
 12781 MIRAMAR PARKWAY #301
 MIRAMAR, FL 33027 P: 305.271.0117
 www.MCYEngineering.com mcy@mcyengineering.com

Rev. No.	Date	Drawn By	Description
05-29-2024	Jianch		REV APPLICATION

Drawn Date 05.29.2024 Scale AS SHOWN

DRAWING NO. AD23-70

ROLLER

Sheet No. 16 OF 18

ES-SGD2040 EXTRUSIONS LIST

CODE	PART	DESCRIPTION	MATERIAL
E1	ES-SGD2040-001	FRAME HEAD	ALUMINUM 6063-T6
E2	ES-SGD2040-002	FRAME SILL	ALUMINUM 6063-T6
E3	ES-SGD2040-003	FRAME REINFORCEMENT PLATE	ALUMINUM 6063-T6
E4	ES-SGD2040-004	FRAME JAMB	ALUMINUM 6063-T6
E5	ES-SGD2040-005	FRAME JAMB COVER	ALUMINUM 6063-T6
E6	ES-SGD2040-006	HEAD SCREW COVER	ALUMINUM 6063-T6
E7	ES-SGD2040-007	THRESHOLD COVER	ALUMINUM 6063-T6
E8	ES-SGD2040-008	REVERSIBLE LOCK STILE	ALUMINUM 6063-T6
E9	ES-SGD2040-009	MOVING PANEL INTERLOCK	ALUMINUM 6063-T6
E10	ES-SGD2040-010	VERTICAL INTERLOCK/STYLE COVER	ALUMINUM 6063-T6
E11	ES-SGD2040-011	FIXED PANEL INTERLOCK	ALUMINUM 6005-T5
E12	ES-SGD2040-012	FIXED PANEL REINFORCEMENT	ALUMINUM 6005-T5
E13	ES-SGD2040-013	ASTRAGAL	ALUMINUM 6005-T5
E14	ES-SGD2040-014	ADAPTOR ASTRAGAL	ALUMINUM 6005-T5
E15	ES-SGD2040-015	MOVIL PANEL TOP/BOTTOM RAIL	ALUMINUM 6063-T6
E16	ES-SGD2040-016	FIXED PANEL TOP RAIL	ALUMINUM 6063-T6
E17	ES-SGD2040-017	FIXED PANEL BOTTOM RAIL	ALUMINUM 6063-T6
E18	ES-SGD2040-018	FRAME HEAD INSERT	ALUMINUM 6063-T6
E19	ES-SGD2040-019	REVERSIBLE LOCK STILE FOR LAMINATED	ALUMINUM 6063-T6
E20	ES-SGD2040-020	FIXED PANEL INTERLOCK FOR LAMINATED	ALUMINUM 6005-T5
E21	ES-SGD2040-021	MOVIL PANEL INTERLOCK FOR LAMINATED	ALUMINUM 6063-T6
E22	ES-SGD2040-022	FIXED PANEL TOP RAIL FOR LAMINATED	ALUMINUM 6063-T6
E23	ES-SGD2040-023	MOVIL PANEL TOP & BOTTOM RAIL FOR LAMINATED	ALUMINUM 6063-T6
E24	ES-SGD2040-024	FIXED PANEL BOTTOM RAIL FOR LAMINATED	ALUMINUM 6063-T6
E25	ES-SGD2040-025	CONNECTING RODS	ALUMINUM 6063-T6
M1	30035057 / 30035058	PATIO INOWA, INTERIOR ROLLER (L OR R)	ALUMINUM
M2	30035059 / 30035060	PATIO INOWA, SUPERIOR ROLLER (L OR R)	ALUMINUM
M3	30035061 / 30035063	PATIO INOWA CENTER CLOSERS (L OR R)	ALUMINUM
M4	30035070	PATIO INOWA ESPAGNOLETTE 40MM MORTICE	ALUMINUM
M5	30035064	PATIO INOWA CORNER DRIVE	ALUMINUM
M6	30035065	PATIO INOWA CENTER CLOSER STRICKER	ALUMINUM
M7	30035048	PATIO INOWA INTERIOR HANDLE	ALUMINUM

PRODUCT APPROVED
as complying with the Florida
Building Code
NOA-No. 23-1222.07
Approval Date 07/05/2024
By Ishag I. Chank
Miami-Dade Product Control

MIAMI DADE COUNTY



MCY ENGINEERING, INC.
GLAZING CONSULTANTS
12781 MIRAMAR PARKWAY #301
MIRAMAR, FL. 33027 P: 305.271.0117
www.MCYEngineering.com mcy@mcyengineering.com

ES-SGD2040 SLIDING GLASS DOOR-L.M.I.
ES WINDOWS, INC.
10663 NE Quaybridge Ct.
Miami, FL 33138
TEL. (305) 624-7775

Rev. No.	Date	Drawn By	Description
03	05/29/2024	James	NEW APPLICATION

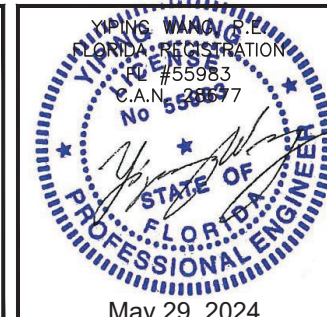
Drawn Date	Scale
05/29/2024	AS SHOWN
DRAWING NO.	
AD23-70	
BOM	
Sheet No.	
17 OF 18	

ES-SGD2040 EXTRUSIONS LIST

CODE	PART	DESCRIPTION	MATERIAL
M8	30035050	PATIO INOWA SPINDLE INTERIOR HANDLE	STAINLESS STEEL
M9	30035069	PATIO INOWA AL SEC STRUKER 12.4	STAINLESS STEEL
M10	30035068	PATIO INOWA SEC LOCKING CAM 15.5	STAINLESS STEEL
M11	-	PATIO INOWA CONTROL CAM 13 MM	STAINLESS STEEL
M12	30035067	PATIO INOWA STOP 16.5 MM	-
M13	30035075	PATIO INOWA RAD BUFFER STOP	-
M14	ES-SGD2040-G03	PERIMETRAL GASKET FOR FRAME & SASHES	CLOSED CELL EPDM
M15	ES-SGD2040 GASKET CORNER	MOLDED CORNER	CLOSED CELL EPDM
M16	ES-SGD2020-G01	LAMINATED GLAZING (EXTRUSIONES S.A.)	SILICONE 70±5 DURO.
M17	ES-SGD2020-G02	LAMINATED GLAZING (EXTRUSIONES S.A.)	SILICONE 70±5 DURO.
M18	ES-SGD2040-G01	INSULATED GLAZING (EXTRUSIONES S.A.)	SILICONE 70±5 DURO.
M19	ES-SGD2040-G02	INSULATED GLAZING (EXTRUSIONES S.A.)	SILICONE 70±5 DURO.
M20	V-026	FIXED PANELS, SILL & HEAD COVER	EPDM
M21	W21225NK	JAMB PILE	WEATHERSTRIPPING
M22	QEZ-447-1	QLON	FOAM ALL STRUCTURE
M23	#12X1-1/2" P.H. ST/ST	FOR FRAME ASSEMBLY	STAINLESS STEEL
M24	#10X1-1/2" P.H. ST/ST	FOR FIXED PANELS ASSEMBLY	STAINLESS STEEL
M25	#10X1-1/2" F.H. ST/ST	FOR ACTIVE PANELS ASSEMBLY	STAINLESS STEEL
M26	#8X1-1/2" P.H. ST/ST	ASTRAGAL ASSEMBLY	STAINLESS STEEL
M27	#10X2" F.H. ST/ST	ADAPTOR ASSEMBLY	STAINLESS STEEL
M28	#8X1" F.H. ST/ST	MISCELLANEOUS ASSEMBLY	STAINLESS STEEL
M30	#8X1/2" F.H. ST/ST	BUMPERS ASSEMBLY	STAINLESS STEEL
M29	1/4"-20 X 3/4" F.H. ST/ST	FOR FIXED PANEL CLIP	STAINLESS STEEL
M31	ALLEN AC M10x10mm ST/ST	HEAD INSERT SCREW	STAINLESS STEEL
M32	M5x50mm FH ST/ST	FOR HANDLE ASSEMBLY	STAINLESS STEEL
M33	PS01-5001-117 2400ST-011	RETAINER CLIP/SILL TRACK 6"	6063-T6
M34	CENTRE CLOSER SPACER SHIM 3mm	SPACER	PVC
M35	SETTING BLOCK FOR GLASS	@ 1/4 POINTS. 2 X D.L.O.	EPDM 85 +/-5 DUROMETER

PRODUCT APPROVED
 as complying with the Florida
 Building Code
 NOA-No. 23-1222.07
 Approval Date 07/05/2024
 By Ishaq I. Chank
 Miami-Dade Product Control

MIAMI DADE COUNTY



MCY ENGINEERING, INC.
 GLAZING CONSULTANTS
 12781 MIRAMAR PARKWAY #301
 MIRAMAR, FL 33027 P: 305.271.0117
 www.MCYEngineering.com mcy@mcyengineering.com

ES-SGD2040 SLIDING GLASS DOOR-L.M.I.
ES WINDOWS, INC.
 10663 NE Quaybridge Ct.
 Miami, FL 33138
 TEL. (305) 624-7775

Rev. No.	Date	Drawn By	Description
01	05/29/2024	James	NEW APPLICATION

Drawn Date: 05/29/2024 Scale: AS SHOWN

DRAWING NO. AD23-70

BOM

Sheet No. 18 OF 18