



DEPARTMENT OF REGULATORY AND ECONOMIC RESOURCES (RER)
BOARD AND CODE ADMINISTRATION DIVISION

MIAMI-DADE COUNTY
PRODUCT CONTROL SECTION
11805 SW 26 Street, Room 208
Miami, Florida 33175-2474
T (786) 315-2590 F (786) 315-2599

www.miamidade.gov/economy

NOTICE OF ACCEPTANCE (NOA)

Velux America, LLC
104 Ben Casey Drive
Ft. Mill, SC 29708

SCOPE:

This NOA is being issued under the applicable rules and regulations governing the use of construction materials. The documentation submitted has been reviewed and accepted by Miami-Dade County RER- Product Control Section to be used in Miami Dade County and other areas where allowed by the Authority Having Jurisdiction (AHJ).

This NOA shall not be valid after the expiration date stated below. The Miami-Dade County Product Control Section (In Miami Dade County) and/or the AHJ (in areas other than Miami Dade County) reserve the right to have this product or material tested for quality assurance purposes. If this product or material fails to perform in the accepted manner, the manufacturer will incur the expense of such testing and the AHJ may immediately revoke, modify, or suspend the use of such product or material within their jurisdiction. RER reserves the right to revoke this acceptance, if it is determined by Miami-Dade County Product Control Section that this product or material fails to meet the requirements of the applicable building code.

This product is approved as described herein and has been designed to comply with the High Velocity Hurricane Zone of the Florida Building Code.

DESCRIPTION: Horizon C-Series Multiwall Polycarbonate Panel for Canopy/Skylight - LMI

APPROVAL DOCUMENT: Drawing No. 5237256, titled "Horizon C-Series Multiwall Polycarbonate Panel for Canopy/Skylight - LMI", sheets 1 through 4 of 4, dated February 12, 2024, prepared by VELUX America LLC, signed and sealed by Alan George Kinne, P.E., on July 17, 2024, bearing the Miami-Dade County Product Control Approval stamp with the Notice of Acceptance number and the approval date by the Miami-Dade County Product Control Section.

MISSILE IMPACT RATING: Large and Small Missile Impact Resistant.

LABELING: Each panel shall bear a permanent label with the manufacturer's name or logo, city, state and the following statement: "Miami-Dade County Product Control Approved", unless otherwise noted herein.

RENEWAL of this NOA shall be considered after a renewal application has been filed and there has been no change in the applicable building code negatively affecting the performance of this product.

TERMINATION of this NOA will occur after the expiration date or if there has been a revision or change in the materials, use, and/or manufacture of the product or process. Misuse of this NOA as an endorsement of any product, for sales, advertising or any other purposes shall automatically terminate this NOA. Failure to comply with any section of this NOA shall be cause for termination and removal of NOA.

ADVERTISEMENT: The NOA number preceded by the words Miami-Dade County, Florida, and followed by the expiration date may be displayed in advertising literature. If any portion of the NOA is displayed, then it shall be done in its entirety.

INSPECTION: A copy of this entire NOA shall be provided to the user by the manufacturer or its distributors and shall be available for inspection at the job site at the request of the Building Official.

This NOA consists of this page 1, evidence submitted page E-1 as well as approval document mentioned above.

The submitted documentation was reviewed by **Helmy A. Makar, P.E., M.S.**



Helmy A. Makar
08/01/24

NOA No. 24-0513.06
Expiration Date: 08/01/2029
Approval Date: 08/01/2024

Velux America, LLC

NOTICE OF ACCEPTANCE: EVIDENCE SUBMITTED

A. DRAWINGS

1. *Drawing No. 5237256, titled "Horizon C-Series Multiwall Polycarbonate Panel for Canopy/Skylight - LMI", sheets 1 through 4 of 4, dated February 12, 2024, prepared by VELUX America LLC, signed and sealed by Alan George Kinne, P.E., on July 17, 2024.*

B. TESTS

1. *Test report on Uniform Static Air Pressure Test per TAS 202, Cyclic Pressure Per TAS 203, and Large Impact Test Per TAS 201 on a Corrugated Polycarbonate Panel for Canopy/Skylight, prepared by NCTL, Report No. NCTL-110-26023-R2, dated May 26, 2023, signed and sealed by Michael d. Stremmel, P.E., on July 17, 2024.*

C. CALCULATIONS

1. *Calculations titled "Anchor Calculations, dated April 09, 2024, pages 1 through 11, prepared by Alan George Kinne, P.E. signed and sealed by Alan George Kinne, P.E., on April 09, 2024.*

D. QUALITY ASSURANCE

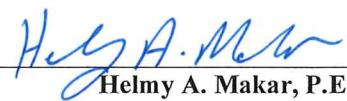
1. *By Miami-Dade County Department of Regulatory and Economic Resources.*

E. MATERIAL CERTIFICATION

1. *None.*

F. STATEMENTS

1. *Florida Building Code 2023 Edition compliance letter issued by Alan George Kinne, P.E., dated 07/17/2024, signed and sealed by Alan George Kinne, P.E., on 07/17/2024.*



Helmy A. Makar, P.E., M.S.
Product Control Section Supervisor
NOA No. 24-0513.06
Expiration Date: 08/01/2029
Approval Date: 08/01/2024

GENERAL NOTES:

1. HORIZON C-SERIES MULTIWALL POLYCARBONATE LARGE MISSILE IMPACT RESISTANT CANOPY/SKYLIGHT SYSTEM PRODUCT APPROVAL DOCUMENT (P.A.D.) HAS BEEN VERIFIED FOR COMPLIANCE IN ACCORDANCE WITH THE 2023 (8TH EDITION) OF THE FLORIDA BUILDING CODE. THIS SKYLIGHT MAY BE INSTALLED IN HIGH VELOCITY HURRICANE ZONES.

DESIGN LIVE & WIND LOADS SHALL BE DETERMINED AS PER CHAPTER 16 OF THE ABOVE MENTIONED CODE, USING ASCE 7-22 STANDARD (FBC 2023) AND SHALL NOT EXCEED THE MAXIMUM (A.S.D.) DESIGN PRESSURE RATINGS INDICATED ON NOTE 3 BELOW.

IN ORDER TO VERIFY THE ABOVE CONDITION, ULTIMATE DESIGN WIND LOADS PER ASCE 7-22 SHALL BE FIRST REDUCED TO A.S.D. DESIGN WIND LOADS BY MULTIPLYING THEM BY 0.6 IN ORDER TO COMPARE THESE W/ MAX. (A.S.D.) DESIGN PRESSURE RATINGS INDICATED ON NOTE 3 BELOW.

IN ORDER TO VERIFY THAT FASTENERS & ANCHORS ON THIS P.A.D. ARE NOT OVERSTRESSED FOR EVERY SINGLE APPLICATION OF THIS SKYLIGHT SYSTEM UNDER A.S.D DESIGN PRESSURE RATINGS INDICATED ON NOTE 2 BELOW, A 33% INCREASE IN ALLOWABLE STRESS FOR WIND LOADS SHALL NOT BE USED IN THEIR ANALYSIS.

SHOP DRAWINGS SHALL BE SUBMITTED FOR EVERY PERMIT. CALCULATIONS SHALL BE SUBMITTED IF STRUCTURE FOR CANOPY/SKYLIGHT IS SUPPLIED BY VELUX, OR ANCHORS AND SUBSTRATE ARE DIFFERENT THAN WHAT IS QUALIFIED ON THIS P.A.D. DRAWINGS MAY INCLUDE LARGER CANOPY/SKYLIGHT WIDTH, LENGTH, RADIUS, ALONG WITH SLOPE ANGLES BETWEEN 9-60 DEGREES, LARGER CROSS SECTION SUPPORT STRUCTURE (MAY BE BY VELUX) AND CONFIGURATIONS SHOWN ON SHEET 2, BUT A.S.D. DESIGN PRESSURE RATING AS WELL AS MAX. PURLIN SPACING SHALL NOT EXCEED THOSE INDICATED ON THIS DRAWING. (SEE NOTES 3 AND 15 RESPECTIVELY)

THIS P.A.D. COVERS RADIUS CANOPIES/SKYLIGHTS. OTHER SHAPES/CONFIGURATIONS W/ SLOPED OR RADIUS POLYCARBONATE MAY BE ALSO ACCEPTED, PROVIDED THAT ABOVE MENTIONED CONDITIONS ARE COMPLIED WITH. THE DESIGN OF LARGER COMPONENTS FOR LARGER CANOPIES/SKYLIGHTS SHALL BE PERFORMED BY A FLORIDA P.E. AND REVIEWED BY THE STRUCTURAL PLANS EXAMINER OF THE CORRESPONDING BUILDING DEPARTMENT ON A JOB SPECIFIC BASIS. (SEE NOTE 4).
2. A.S.D. DESIGN PRESSURE RATING AT ROOF IS: +50.0 PSF (WINDWARD SIDE), -75.0 PSF (LEEWARD SIDE).
A.S.D. DESIGN PRESSURE RATING AT WALL IS: +50.0, -75.0 PSF.
A.S.D. DESIGN PRESSURE RATING AND LARGE MISSILE IMPACT RESISTANCE OBTAINED THRU TESTING AS PER SECTION 1626.2 OF THE FLORIDA BUILDING CODE, PER PROTOCOLS TAS 201, 202, 203, PER NCTL REPORT NCTL-110-26023-1. WATER AND AIR INFILTRATION TESTING HAS BEEN PERFORMED AS PER PROTOCOL TAS 202, QUALIFYING ASTM E 331 AND ASTM E 283 RESPECTIVELY.
3. STRUCTURAL ADEQUACY OF SUPPORTING STRUCTURAL MEMBERS IS NOT PART OF THIS P.A.D. STRUCTURAL DESIGN OF THE STRUCTURE THAT WILL PROVIDE SUPPORT TO THIS CANOPY/SKYLIGHT SHALL BE PERFORMED BY A FLORIDA P.E. DESIGN SHALL INCLUDE INCLUDE AND TAKE INTO CONSIDERATION LOADS TRANSFERRED FROM THIS CANOPY/SKYLIGHT TO THE SUPPORT STRUCTURE, BASED ON DEAD, LIVE & WIND LOADS AND USING THE LOAD COMBINATIONS AS PER A.S.C.E. 7 STANDARD. ADEQUACY OF SUPPORTING STRUCTURAL MEMBERS SHALL BE REVIEWED BY THE STRUCTURAL PLANS EXAMINER OF THE CORRESPONDING BUILDING DEPARTMENT ON A JOB SPECIFIC BASIS.
4. ALL ALUMINUM EXTRUSIONS SHALL BE ALUMINUM ASSOCIATION 6063-T6 ALLOY AND TEMPER, U.N.O.
5. ALL ALUMINUM SHEET SHALL BE ALUMINUM ASSOCIATION 1100-H14 OR 5052-H32 ALLOY AND HARDNESS.

6. ALL ALUMINUM EXTRUSIONS IN CONTACT WITH DISSIMILAR MATERIALS SHALL COMPLY WITH SECTION 111-6 OF THE 2020 ALUMINUM DESIGN MANUAL.
7. PAINT, FINISH AND COLOR TO BE SELECTED BY ARCHITECT OF RECORD FOR THE JOB IN COORDINATION W/ VELUX AND SHALL COMPLY WITH AAMA 1600 SPECIFICATION, SECTION 3.11.
8. IT SHALL BE THE RESPONSIBILITY OF THE CONTRACTOR TO VERIFY THE SOUNDNESS OF THE STRUCTURE WHERE THIS SKYLIGHT IS TO BE ATTACHED TO INSURE PROPER ANCHORAGE. SEE NOTE 4. CONTRACTOR IS TO SEAL/CAULK W/ SEALANT ALL SKYLIGHT COMPONENT EDGES AS INDICATED ON THIS DRAWING TO PREVENT WIND/RAIN INTRUSION.
9. SKYLIGHT INSTALLATION SHALL COMPLY WITH SPECS INDICATED IN THIS DRAWING PLUS ANY BUILDING AND ZONING REGULATIONS PROVIDED BY THE JURISDICTION WHERE PERMIT IS APPLIED TO.
10. SKYLIGHT MANUFACTURER'S LABEL SHALL BE PLACED ON A READILY VISIBLE LOCATION. ONE LABEL SHALL BE PLACED FOR EVERY UNIT. LABEL SHALL COMPLY WITH SECTION 2405.5
11. (A) THE PRODUCT APPROVAL DOCUMENT (P.A.D.) PREPARED BY THIS ENGINEER IS GENERIC AND DOES NOT PROVIDE INFORMATION FOR A SITE SPECIFIC PROJECT.
(B) CONTRACTOR TO BE RESPONSIBLE FOR THE SELECTION, PURCHASE AND INSTALLATION INCLUDING LIFE SAFETY OF THIS PRODUCT BASED ON THIS PRODUCT APPROVAL PROVIDED HE/SHE DOES NOT DEVIATE FROM THE CONDITIONS DETAILED ON THIS DOCUMENT. CONSTRUCTION SAFETY AT SITE IS THE CONTRACTOR'S RESPONSIBILITY.
(C) THIS PRODUCT APPROVAL DOCUMENT WILL BE CONSIDERED INVALID IF MODIFIED.
(D) SITE SPECIFIC PROJECTS SHALL BE PREPARED BY A FLORIDA REGISTERED ENGINEER OR ARCHITECT WHICH WILL BECOME THE PROFESSIONAL OF RECORD (P.O.R.) FOR THE PROJECT AND WHO WILL BE RESPONSIBLE FOR THE PROPER USE OF THE P.A.D. PROFESSIONAL OF RECORD, ACTING AS DELEGATED ENGINEER TO THE P.A.D., SHALL SUBMIT TO THIS LATTER THE SITE SPECIFIC DRAWINGS FOR REVIEW.
(E) ORIGINAL P.A.D. SHALL BEAR THE DATE AND ORIGINAL SEAL AND SIGNATURE OF THE PROFESSIONAL ENGINEER THAT PREPARED IT.
12. THIS P.A.D. QUALIFIES:
 - (A) POLYCARBONATE MULTIWALL PANEL
40'-0" MAXIMUM LENGTH
3'-6" MAX. PURLIN SPACING
 - (B) MIN BEND RADIUS: 8'-0" (= /> RECOMMENDED MIN REQUIRED)
 - (C) SLOPE: 9° THRU 60°
 - (D) UNIT LENGTH: UNLIMITED (600MM PANEL WIDTH)
 - (E) ADDITIONAL ARCHITECTURAL CONFIGURATIONS AS SHOWN ON SHEET 2
 - (F) J-CHANNEL: ANCHORED TO STRUCTURE. STRUCTURE MAY OR MAY NOT BE BY VELUX.
 - (G) ATTACHMENT OF PANEL CLIPS TO MIN. 6063-T52 3/8" WALL THICKNESS ALUMINUM OR MIN. A36 3/8" WALL THICKNESS STEEL

HORIZON C-SERIES MULTIWALL
POLYCARBONATE LARGE MISSILE
IMPACT RESISTANT
CANOPY/SKYLIGHT

MAIMI-DADE COUNTY

Approved as complying with the
Florida Building Code
Date 08/01/24
NOA# 24-0513.06
Miami Dade Product Control
By H. J. A. Kinne

P.E. SEAL / SIGNATURE / DATE



TABLE OF CONTENTS:

SHEET 1	COVERSHEET WITH GENERAL NOTES & PART NUMBER REFERENCE
SHEET 2	PLAN AND ELEVATION VIEW OF TEST UNIT
SHEET 3	TEST UNIT SECTION DETAILS
SHEET 4	MATERIALS TO BE QUALIFIED

VELUX PART No.	DESCRIPTION
SPEC1	#12 X 1" GR. 5 UNDERCUT FH SCREW
SPEC2	18-8/GR.5 #10 OR #12 X 1" PANCAKE SCREW
AL06	.062 ALUMINUM SHEET
300876	SEALANT: SILICONE: CLR
300369	J-CHANNEL, 20mm 626 PANELS
303894	TAPE: BUTYL 1/8" X 1/2"

VELUX AMERICA LLC
85 SPENCER DRIVE
UNIT A
P.O. BOX 559
WELLS, ME 04090
(207) 216-4500

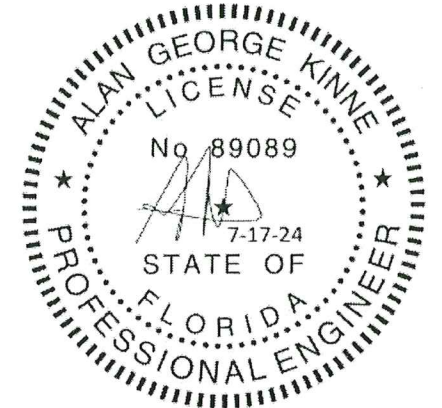
SAP ORDER# 5023390655	OPPORTUNITY# 5237256	REV 0	SHEET 1 OF 4
--------------------------	-------------------------	----------	-----------------

HORIZON C-SERIES MULTIWALL
POLYCARBONATE LARGE MISSILE
IMPACT RESISTANT
CANOPY/SKYLIGHT

MAIMI-DADE COUNTY

Approved as complying with the
Florida Building Code
Date: 06/01/24
NOA: 2470513.06
Miami Dade Product Control
By: *H. A. Miller*

P.E. SEAL / SIGNATURE / DATE

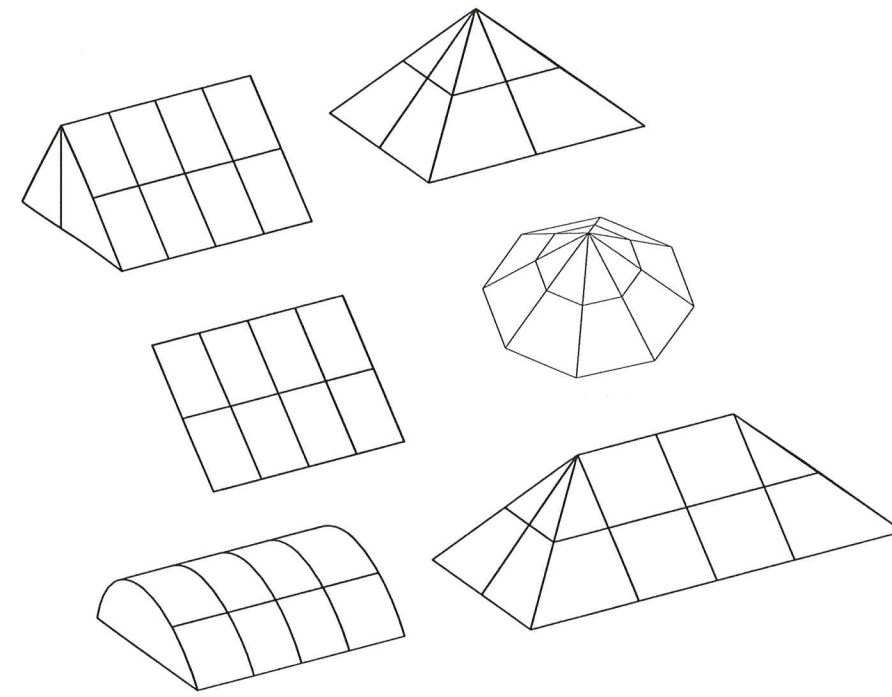
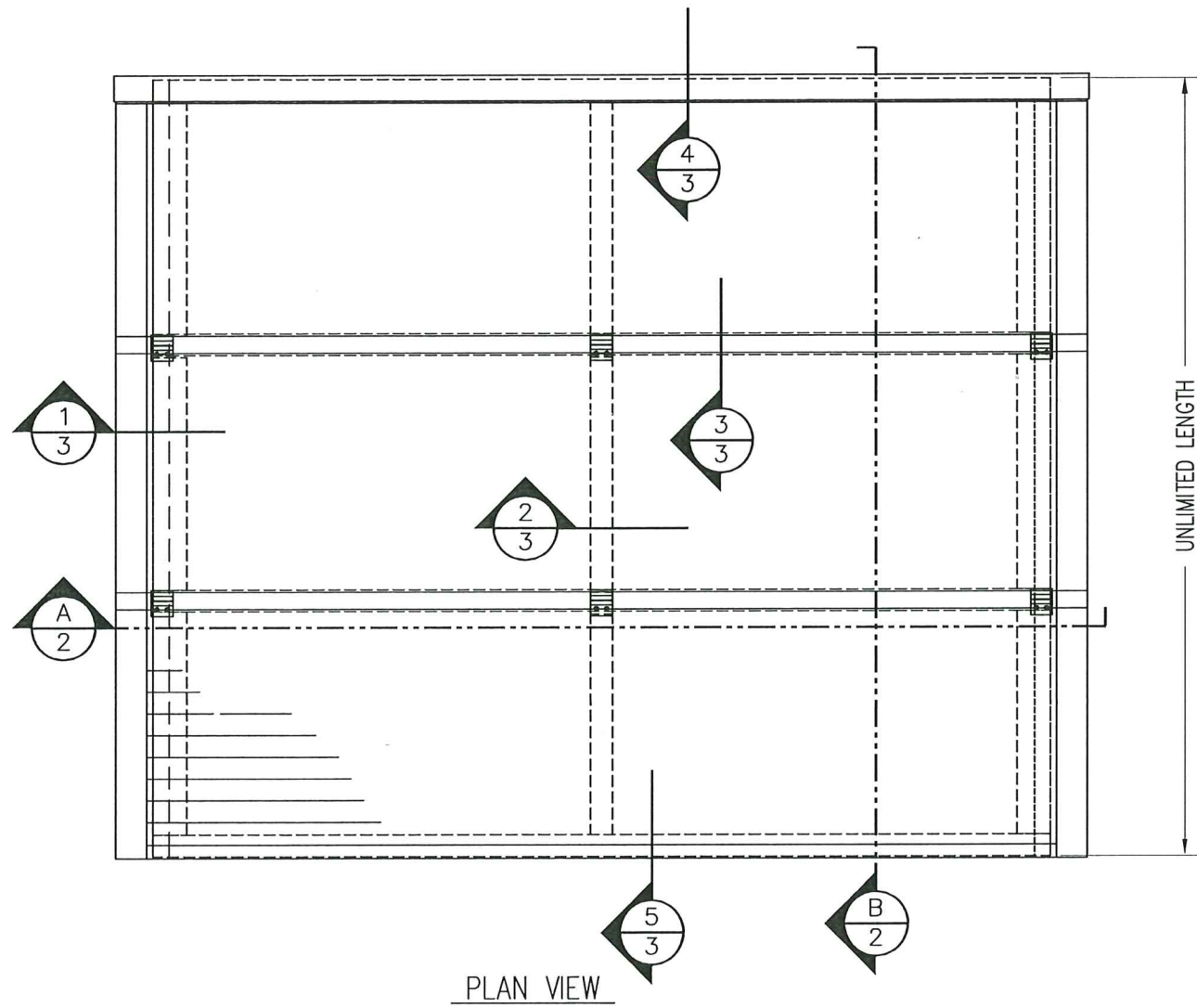


#	REVISION	DATE	DRAWN BY
0	ORIGINAL ISSUE	2/12/24	DON S

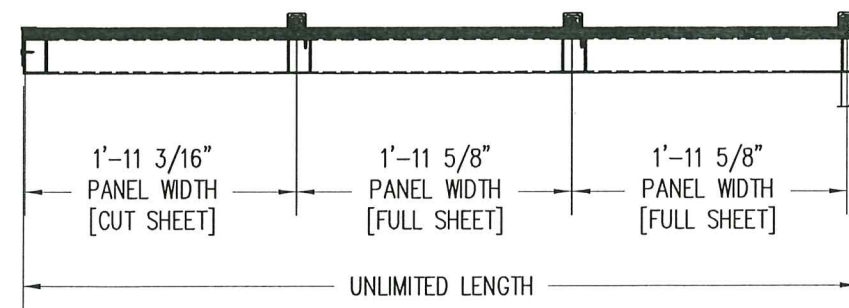
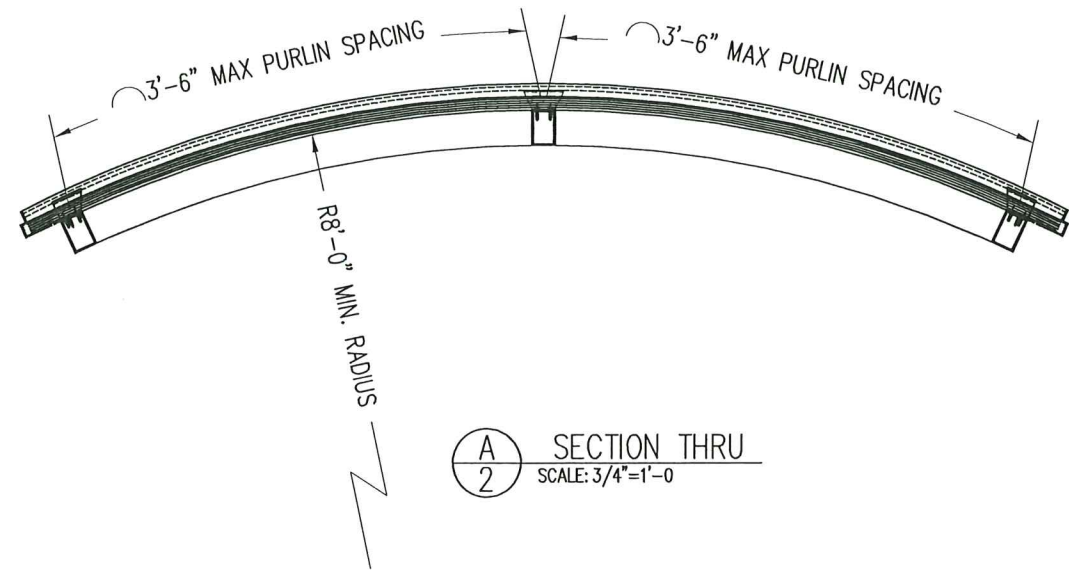
VELUX Commercial

VELUX AMERICA LLC
85 SPENCER DRIVE
UNIT A
P.O. BOX 559
WELLS, ME 04090
(207) 216-4500

SAP ORDER#	OPPORTUNITY#	REV	SHEET
5023390655	5237256	0	2 OF 4



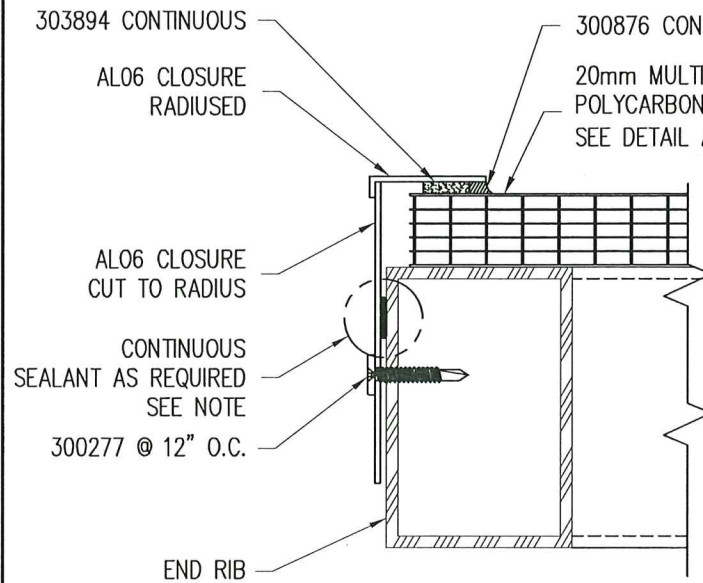
OTHER SHAPES AND CONFIGURATIONS QUALIFIED



B/2 SECTION THRU
SCALE: 3/4"=1'-0"

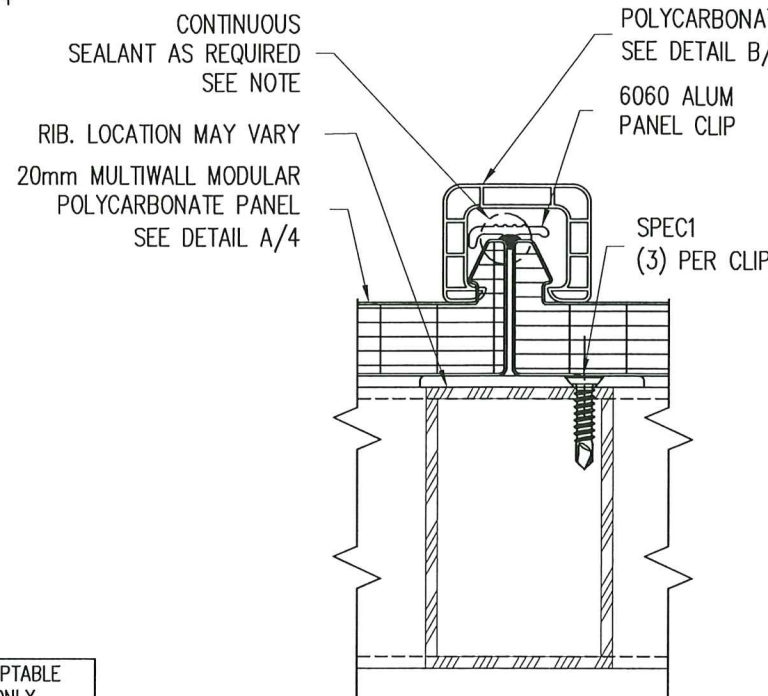
+50/-75 PSF DESIGN PRESSURE RATING

HORIZON C-SERIES MULTIWALL
POLYCARBONATE LARGE MISSILE
IMPACT RESISTANT
CANOPY/SKYLIGHT

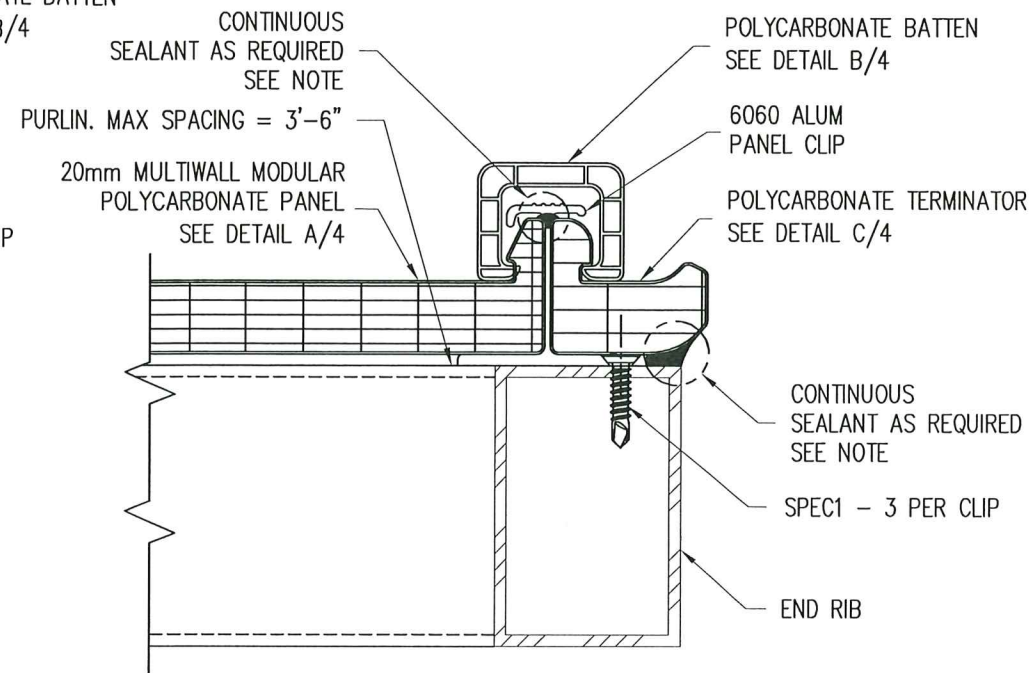


5 WALL END SECTION
SCALE: 6"=1'-0"

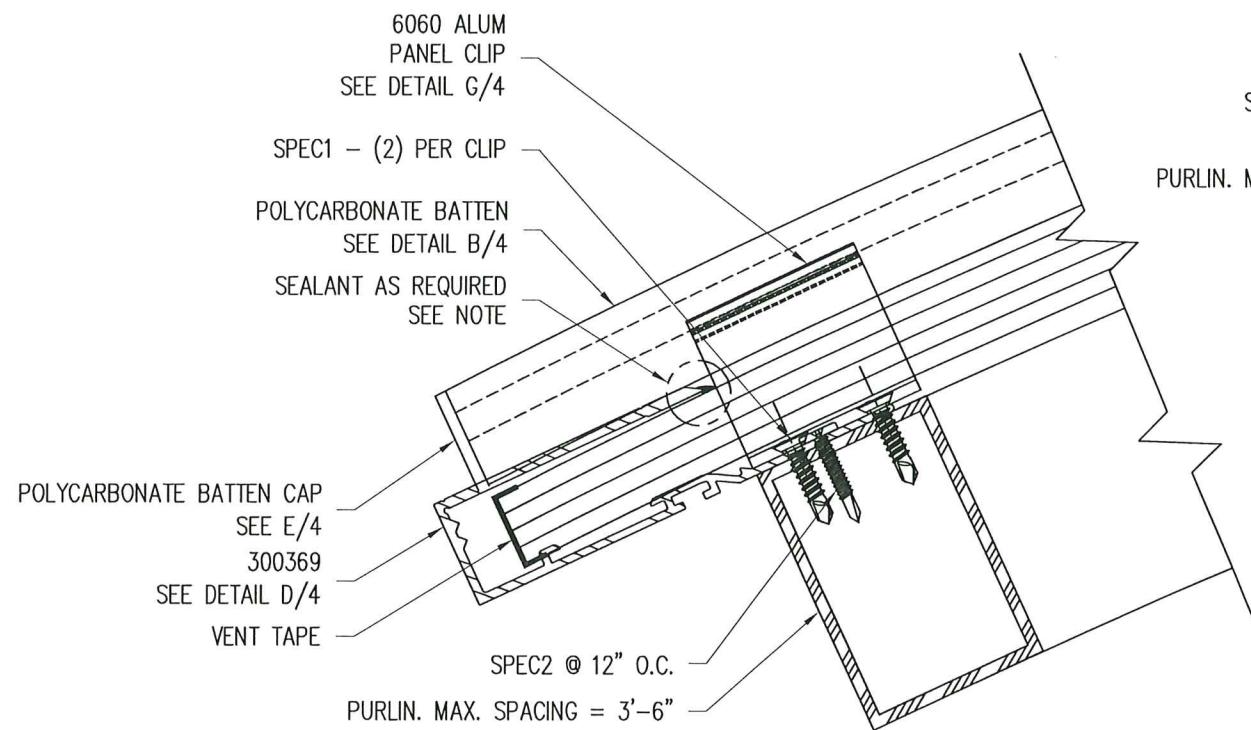
IF ZERO OR NO WATER IS ACCEPTABLE
APPLY SEALANT AT SEAMS ONLY



3 BATTEN SECTION
SCALE: 6"=1'-0"

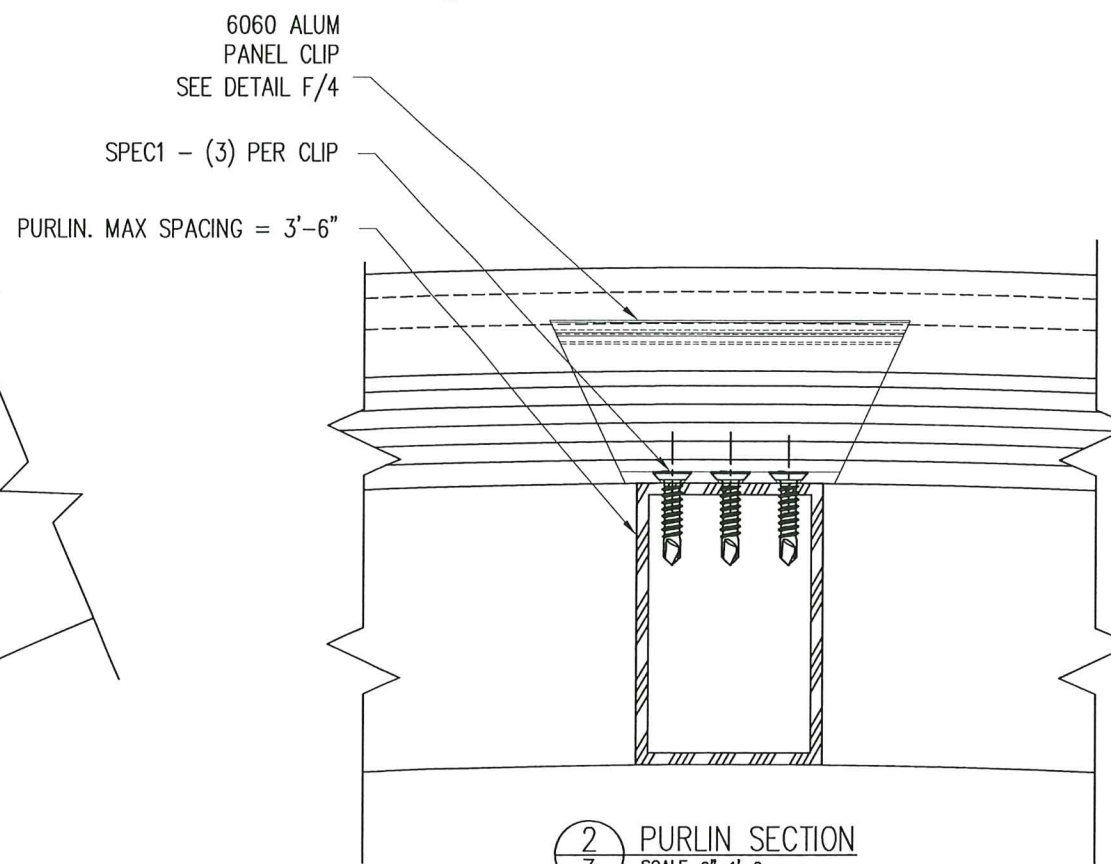


4 END SECTION
SCALE: 6"=1'-0"



1 J-RECEIVER SECTION
SCALE: 6"=1'-0"

W = WEEP

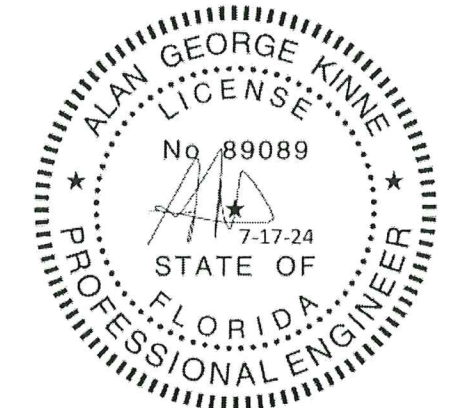


2 PURLIN SECTION
SCALE: 6"=1'-0"

MAIMI-DADE COUNTY

Approved as complying with the
Florida Building Code
Date 08/01/24
NOA#24-6513.06
Miami Dade Product Control
By *H. A. Miller*

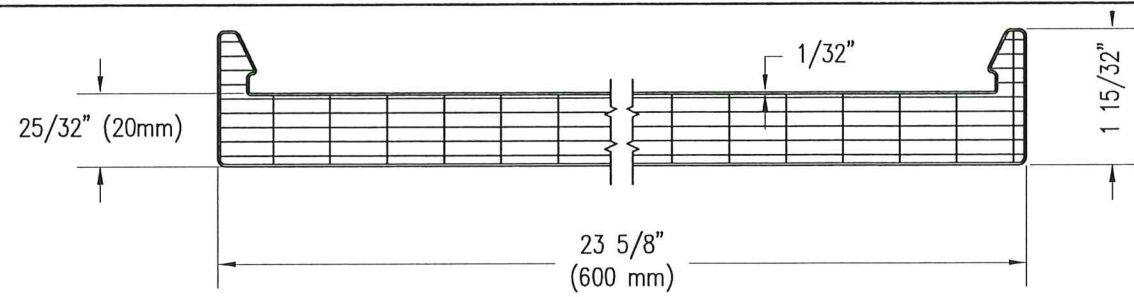
P.E. SEAL / SIGNATURE / DATE



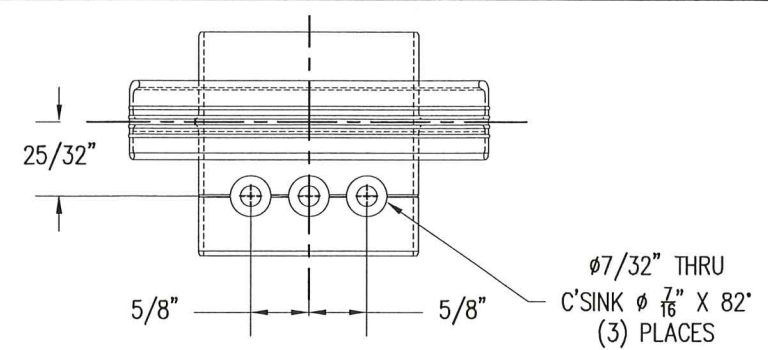
#	REVISION	DATE	DRAWN BY
0	ORIGINAL ISSUE	2/12/24	DON S

VELUX Commercial
VELUX AMERICA LLC
85 SPENCER DRIVE
UNIT A
P.O. BOX 559
WELLS, ME 04090
(207) 216-4500

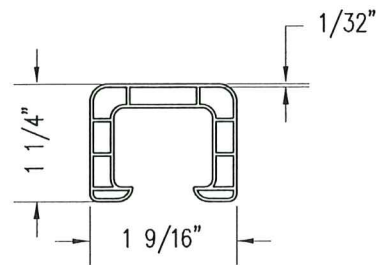
SAP ORDER# 5023390655	OPPORTUNITY# 5237256	REV 0	SHEET 3 OF 4
--------------------------	-------------------------	----------	-----------------



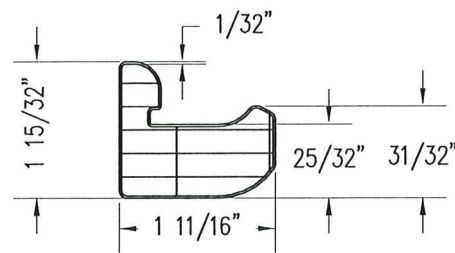
A POLYCARBONATE 626 20MM PANEL
SCALE: 6"=1'-0"



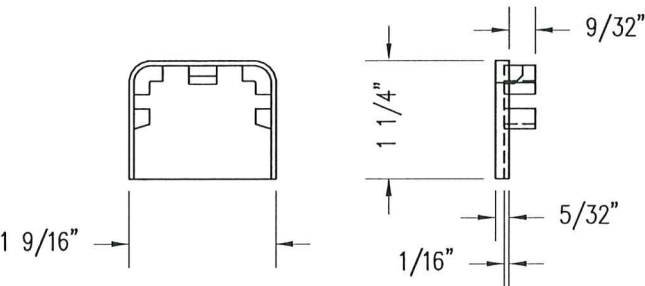
F 6060 PANEL CLIP DETAIL - PURLIN/SLOPE
SCALE: 6"=1'-0"
ALUM: 6060 MIN



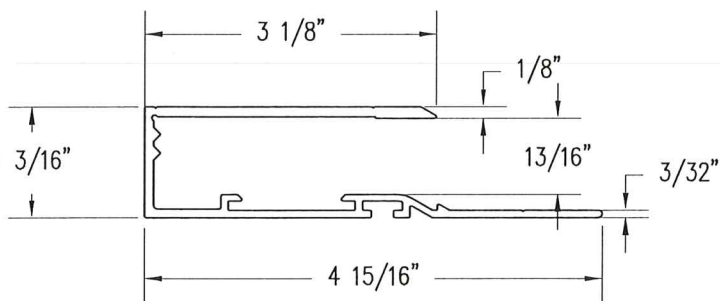
B POLYCARBONATE 626 20MM BATTEN
SCALE: 6"=1'-0"



C POLYCARBONATE 626 20MM TERMINAL END
SCALE: 6"=1'-0"

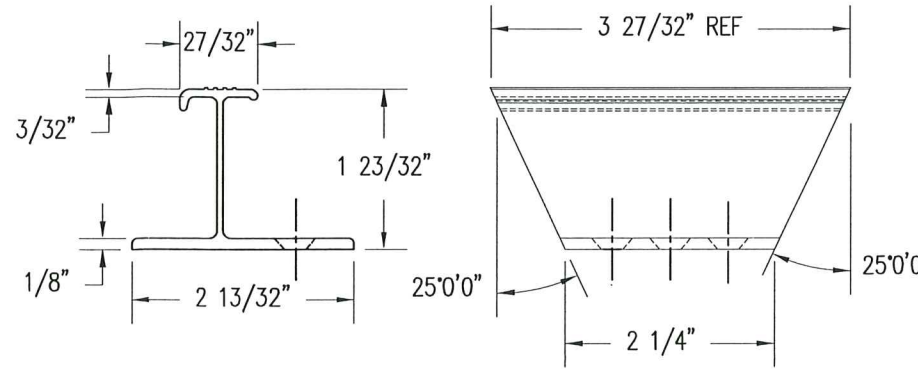


E POLYCARBONATE 626 20MM BATTEN END CAP
SCALE: 6"=1'-0"



D ALUMINIM J-RECEIVER
SCALE: 6"=1'-0"

W = WEEP



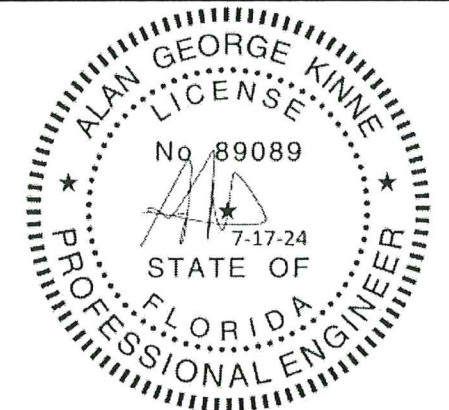
G 6060 PANEL CLIP DETAIL - J-RECEIVER
SCALE: 6"=1'-0"
ALUM: 6060 MIN

HORIZON C-SERIES MULTIWALL
POLYCARBONATE LARGE MISSILE
IMPACT RESISTANT
CANOPY/SKYLIGHT

MAIMI-DADE COUNTY

Approved as complying with u.
Florida Building Code
Date 08/01/24
NOA# 24-0578.06
Miami Dade Product Control
By *H. J. A. Miller*

P.E. SEAL / SIGNATURE / DATE



#	REVISION	DATE	DRAWN BY
0	ORIGINAL ISSUE	2/12/24	DON S

VELUX Commercial
VELUX AMERICA LLC
85 SPENCER DRIVE
UNIT A
P.O. BOX 559
WELLS, ME 04090
(207) 216-4500

SAP ORDER#	OPPORTUNITY#	REV	SHEET
5023390655	5237256	0	4 OF 4