



DEPARTMENT OF REGULATORY AND ECONOMIC RESOURCES (RER)
 BOARD AND CODE ADMINISTRATION DIVISION

NOTICE OF ACCEPTANCE (NOA)

Horton Automatics Division of Overhead Door
4242 Baldwin Boulevard, Corpus Christi, TX 78405

SCOPE:

This NOA is being issued under the applicable rules and regulations governing the use of construction materials. The documentation submitted has been reviewed and accepted by Miami-Dade County RER -Product Control Section to be used in Miami Dade County and other areas where allowed by the Authority Having Jurisdiction (AHJ).

This NOA shall not be valid after the expiration date stated below. The Miami-Dade County Product Control Section (In Miami Dade County) and/or the AHJ (in areas other than Miami Dade County) reserve the right to have this product or material tested for quality assurance purposes. If this product or material fails to perform in the accepted manner, the manufacturer will incur the expense of such testing and the AHJ may immediately revoke, modify, or suspend the use of such product or material within their jurisdiction. RER reserves the right to revoke this acceptance, if it is determined by Miami-Dade County Product Control Section that this product or material fails to meet the requirements of the applicable building code.

This product is approved as described herein and has been designed to comply with the Florida Building Code, including the High Velocity Hurricane Zone.

DESCRIPTION: Series "110" (O-Sx-Sx-O) and Series "310" (So-Sx-Sx-So) and (So-Sx) Aluminum Automatic Sliding Door (Steel Reinforced) w/ Breakout-LMI

APPROVAL DOCUMENT: Drawing No. **040302-L Rev 3**, titled "Series 110/310 Large Missile Impact", sheets 1 through 8 of 8, prepared by manufacturer, dated 03/02/04 and last revised on 10-08-18, signed and sealed by John E. Scates, P.E., bearing the Miami-Dade County Product Control Renewal stamp with the Notice of Acceptance number and expiration date by the Miami-Dade County Product Control Section.

MISSILE IMPACT RATING: Large and Small Missile Impact Resistant

Limitations:

1. Series **110** (O-Sx-Sx-O) is rated at DP= +/- **55** PSF w/Fixed Push bar & AR top/bottom Flush bolts w/MS18505 lock, having Max 4-panels (192"Wx104"H unit). The Series **310** (So-Sx-Sx-So) with AR **G-86** panic device is limited to DP = +/- **45** PSF & max unit size 168" WX 96H. See sheet **3** for glazing details
2. Applicable O-Sx **or** So-Sx is qualified w/max unit size 96" Wx104" H with hardware limitations.
3. Not approved where water infiltration is required.
4. Electrical/ Electronic functions are not part of this approval and to be reviewed by an appropriate Bldg. official.
5. Anchors referenced at Equal spacing must not exceed 12" unless otherwise noted.

LABELING: Each unit shall bear a permanent label with the manufacturer's name or logo, city, state and series and following statement: "Miami-Dade County Product Control Approved", noted herein.

RENEWAL of this NOA shall be considered after a renewal application has been filed and there has been no change in the applicable building code negatively affecting the performance of this product.

TERMINATION of this NOA will occur after the expiration date or if there has been a revision or change in the materials, use, and/or manufacture of the product or process. Misuse of this NOA as an endorsement of any product, for sales, advertising or any other purposes shall automatically terminate this NOA. Failure to comply with any section of this NOA shall be cause for termination and removal of NOA.

ADVERTISEMENT: The NOA number preceded by the words Miami-Dade County, Florida, and followed by the expiration date may be displayed in advertising literature. If any portion of the NOA is displayed, then it shall be done in its entirety.

INSPECTION: A copy of this entire NOA shall be provided to the user by the manufacturer or its distributors and shall be available for inspection at the job site at the request of the Building Official.

This NOA **renews #23-0622.15**, consists of this page 1 and evidence pages E-1, E-2, E-3, E-4 & E-5, as well as approval document mentioned above.

The submitted documentation was reviewed by **Ishaq I. Chanda, P.E.** *Ishaq I. Chanda*



Horton Automatics Division of Overhead Door

NOTICE OF ACCEPTANCE: EVIDENCE SUBMITTED

1. Evidence submitted under previous approvals

A. DRAWINGS

1. Manufacturer's die drawings and sections (Submitted under files below).
2. Drawing No. **040302-L Rev 2**, titled "Series 110/310 Large Missile Impact", sheets 1 through 8 of 8, prepared by manufacturer, dated 03/02/04 and last revised on 04/08/16, signed and sealed by John E. Scates, P.E.

B. TESTS (Submitted under files #15-0922.14/#14-0602.05/#12-0801.07/# 09-0624.04)

1. Test reports on:
 - 1) Air Infiltration Test, per FBC, TAS 202-94
 - 2) Uniform Static Air Pressure Test, Loading per FBC TAS 202-94
 - 3) Water Resistance Test, per FBC, TAS 202-94 (Not conducted)
 - 4) Large Missile Impact Test per FBC, TAS 201-94
 - 5) Cyclic Wind Pressure Loading per FBC, TAS 203-94
 - 6) Forced Entry Test, per FBC 2411 3.2.1, TAS 202-94

along with installation diagram of aluminum automatic sliding glass doors, prepared by Hurricane Testing Laboratories, Test Report No(s) **HTL- 0322-0908-03 (Sp# 6), HTL-0322-0611-03 (Sp # 1 &2), HTL-0322-0119-04 9 (sp#1)**, all signed and sealed dated 02/16/04 by Vinu J. Abraham, P.E.

C. CALCULATIONS

1. Anchor verification calculations and structural analysis complying w/ FBC 2014 (5th edition), dated 09/11/15, prepared, signed and sealed by John E. Scates, P.E.
2. Glazing complies w/ ASTM-E-1300-02, -04 & -09.

D. QUALITY ASSURANCE

1. Miami Dade Department of Regulatory and Economic Resources (RER).

E. MATERIAL CERTIFICATIONS

1. Notice of Acceptance No. **14-0423.11** issued to OldCastle Building Envelope (NJ) for "Stromglass laminated glass: Saflex-CP composite glass interlayer w/ PETcore", expiring on 10/11/18.
2. Technical data sheet for glazing bead item # 57, ExxonMobil Chemical's SantopreneTM 121-67W175 thermoplastic, extruded by Central Chemical Inc.

F. STATEMENTS

1. Statement letter of conformance to FBC 2014(5th Edition) & "No financial interest", dated SEP 11, 2015, signed & sealed by John E. Scates, P.E.
2. Addendum letter dated 06-12-08, issued by Hurricane Testing lab, signed and sealed by Vinu Abraham, P. E.
3. Lab compliance as part of the above referenced test report.

G. OTHER

1. This NOA revises & renews #14-0602.05, expiring 07/15/23.

2. Evidence submitted under previous approvals (#17-0828.07).

A. DRAWINGS

1. None.

B. TESTS

1. None.

Ishaq I. Chanda

Ishaq I. Chanda, P.E.
Product Control Unit Supervisor
NOA No. 24-0626.02
Expiration Date: July 15, 2029
Approval Date: August 01, 2024

Horton Automatics Division of Overhead Door

NOTICE OF ACCEPTANCE: EVIDENCE SUBMITTED

2. Evidence submitted under previous approvals (continue):

C. CALCULATIONS

1. None

D. QUALITY ASSURANCE

1. Miami Dade Department of Regulatory and Economic Resources (RER).

E. MATERIAL CERTIFICATIONS

1. Notice of Acceptance No. **14-0423.11** issued to OldCastle Building Envelope (NJ) for” Stromglass laminated glass: Saflex-CP composite glass interlayer w/ PETcore”, expiring on 10/11/18.
2. Technical data sheet for glazing bead item # 57, ExxonMobil Chemical’s Santoprene™ 121-67W175 thermoplastic, extruded by Central Chemical Inc.

F. STATEMENTS

1. Statement letters of conformance to FBC 2017(6th Edition) & FBC 2014 (5th Edition) dated 11/02/17, prepared, signed and sealed by John E. Scates, P.E.

G. OTHER

1. This NOA revises NOA # 15-0922.14, expiring 07/15/2023.

3. Evidence submitted under previous approval

A. DRAWINGS

1. Drawing No. **040302-L Rev 3**, titled “Series 110/310 Large Missile Impact”, sheets 1 through 8 of 8, prepared by manufacturer, dated 03/02/04 and last revised on 10-08-18, signed and sealed by John E. Scates, P.E., (Note: This revision consists of updating setting block at glazing detail)

B. TESTS

1. None

C. CALCULATIONS

1. None

D. QUALITY ASSURANCE

1. Miami Dade Department of Regulatory and Economic Resources (RER).

E. MATERIAL CERTIFICATIONS

1. Notice of Acceptance No. **18-0611.01** issued to OldCastle Building Envelope (NJ) for” Stromglass laminated glass: Saflex-CP composite glass interlayer w/ PETcore”, expiring on 11/11/23.

F. STATEMENTS (submitted under #17-0828.07)

1. Statement letters of conformance to FBC 2017(6th Edition) & FBC 2014 (5th Edition) dated 11/02/17, prepared, signed and sealed by John E. Scates, P.E.

G. OTHER

1. This NOA revises NOA # 17-0828.07, expiring 07/15/2023.

Ishaq I. Chanda

Ishaq I. Chanda, P.E.
Product Control Unit Supervisor
NOA No. 24-0626.02
Expiration Date: July 15, 2029
Approval Date: August 01, 2024

Horton Automatics Division of Overhead Door

NOTICE OF ACCEPTANCE: EVIDENCE SUBMITTED

4. Evidence submitted under previous approval

A. DRAWINGS

1. Drawing No. **040302-L Rev 3**, titled “Series 110/310 Large Missile Impact”, sheets 1 through 8 of 8, prepared by manufacturer, dated 03/02/04 and last revised on 10-08-18, signed and sealed by John E. Scates, P.E.

B. TESTS

1. None.

C. CALCULATIONS

1. None.

D. QUALITY ASSURANCE

1. Miami Dade Department of Regulatory and Economic Resources (RER).

E. MATERIAL CERTIFICATIONS

1. Notice of Acceptance No. **18-0611.01** issued to OldCastle Building Envelope (NJ) for” Stromglass laminated glass: Saflex-CP composite glass interlayer w/ PETcore”, expiring on 11/11/23.

F. STATEMENTS

1. Statement letters of conformance to FBC 2020 (7th Edition) & “NO financial interest” dated 08/28/20, prepared, signed and sealed by John E. Scates, P.E.

G. OTHER

1. This NOA revises NOA # **18-1025. 13**, expiring 07/15/2023.

Ishaq I. Chanda

Ishaq I. Chanda, P.E.
Product Control Unit Supervisor
NOA No. 24-0626.02
Expiration Date: July 15, 2029
Approval Date: August 01, 2024

Horton Automatics Division of Overhead Door

NOTICE OF ACCEPTANCE: EVIDENCE SUBMITTED

5. Evidence submitted under previous approval

A. DRAWINGS

1. Drawing No. **040302-L Rev 3**, titled “Series 110/310 Large Missile Impact”, sheets 1 through 8 of 8, prepared by manufacturer, dated 03/02/04 and last revised on 10-08-18, signed and sealed by John E. Scates, P.E.

B. TESTS

1. None.

C. CALCULATIONS

1. None.

D. QUALITY ASSURANCE

1. Miami Dade Department of Regulatory and Economic Resources (RER).

E. MATERIAL CERTIFICATIONS

1. Notice of Acceptance No. **18-0611.01** issued to OldCastle Building Envelope (NJ) for” Stromglass laminated glass: Saflex-CP composite glass interlayer w/ PETcore”, expiring on 11/11/23.

F. STATEMENTS

1. Statement letters of conformance to FBC 2023 (**8th** Edition) & “No financial interest” dated 06/23/23, prepared, signed and sealed by John E. Scates, P.E.
2. Statement letters of conformance to FBC 2020 (**7th** Edition) & “NO financial interest” dated 08/28/20, prepared, signed and sealed by John E. Scates, P.E.

G. OTHER

1. This NOA **revises & renews NOA # 20-0915.09**, updates FBC 2023, expiring 07/15/2028.

Ishaq I. Chanda

Ishaq I. Chanda, P.E.
Product Control Unit Supervisor
NOA No. 24-0626.02
Expiration Date: July 15, 2029
Approval Date: August 01, 2024

Horton Automatics Division of Overhead Door

NOTICE OF ACCEPTANCE: EVIDENCE SUBMITTED

6. New Evidence submitted

A. DRAWINGS

1. Drawing No. **040302-L Rev 3**, titled "Series 110/310 Large Missile Impact", sheets 1 through 8 of 8, prepared by manufacturer, dated 03/02/04 and last revised on 10-08-18, signed and sealed by John E. Scates, P.E.

B. TESTS

1. None.

C. CALCULATIONS

1. None.

D. QUALITY ASSURANCE

1. Miami Dade Department of Regulatory and Economic Resources (RER).

E. MATERIAL CERTIFICATIONS

1. Notice of Acceptance No. **23-0713.04** issued to OldCastle Building Envelope (NJ) for "Stromglass laminated glass: Saflex-CP composite glass interlayer w/ PETcore", expiring on 12/11/28.

F. STATEMENTS

1. Statement letters of conformance to FBC 2023 (**8th** Edition) & "No financial interest" dated 07/22/24, prepared, signed and sealed by John E. Scates, P.E.
2. Statement letters of conformance to FBC 2023 (**8th** Edition) & "No financial interest" dated 06/23/23, prepared, signed and sealed by John E. Scates, P.E.

G. OTHER

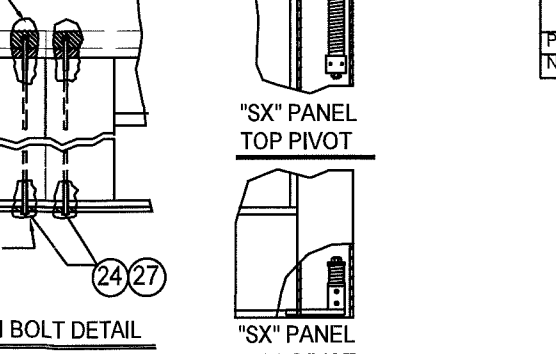
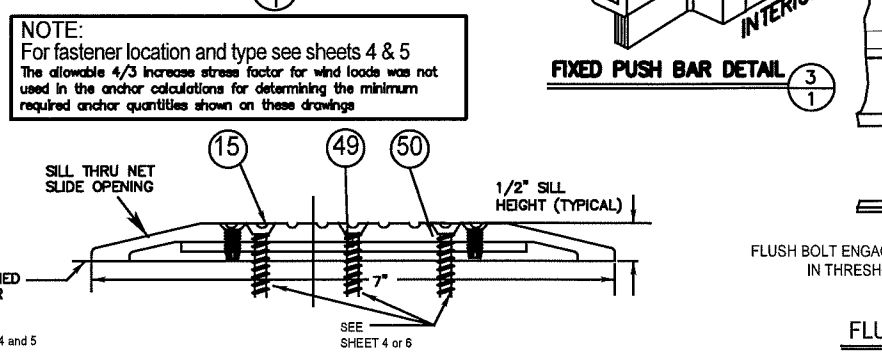
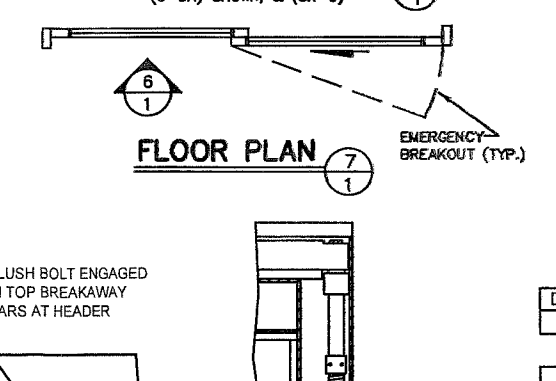
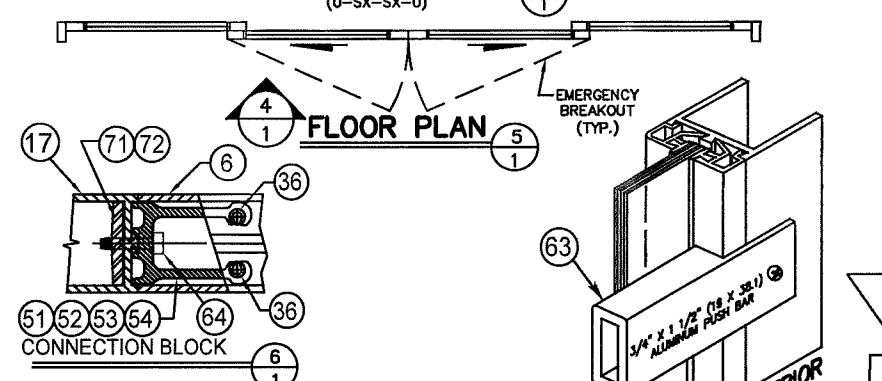
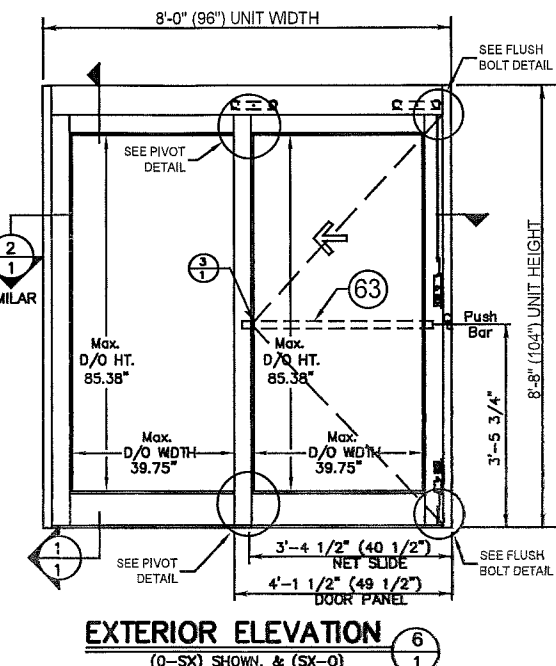
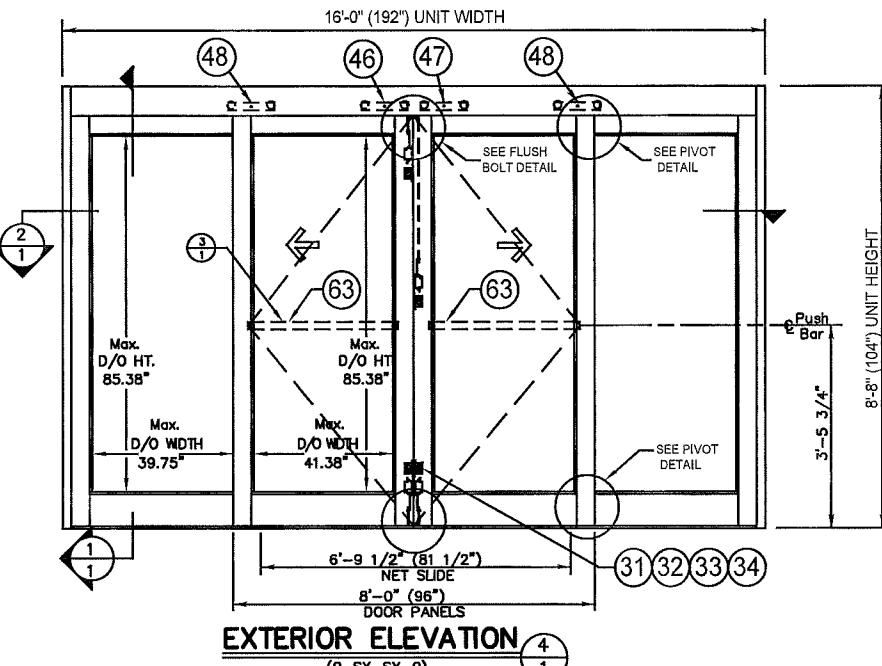
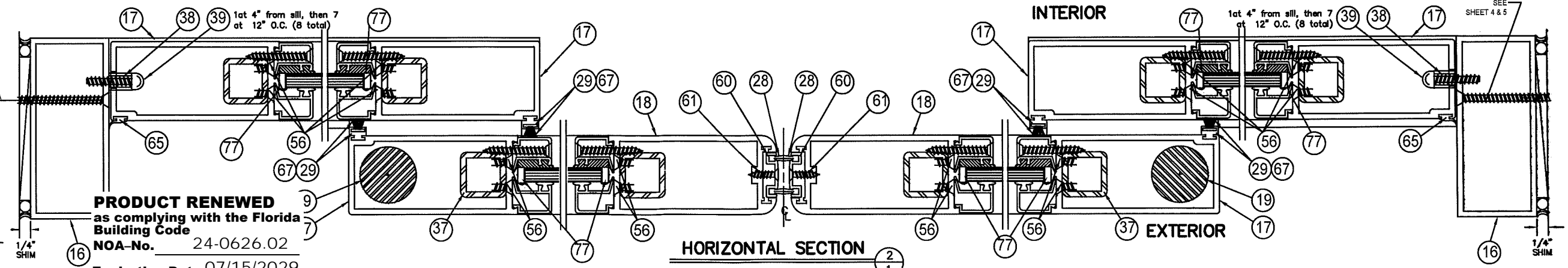
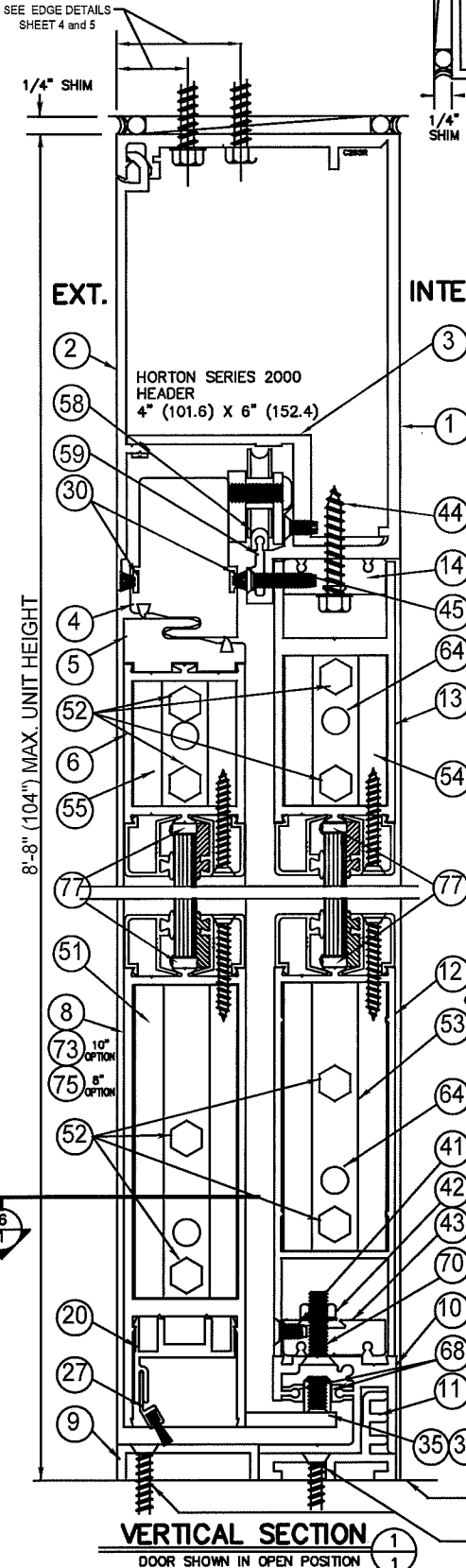
1. This NOA renews NOA # **23-0622.15**, expiring 07/15/2029.

Ishaq I. Chanda

Ishaq I. Chanda, P.E.
Product Control Unit Supervisor
NOA No. 24-0626.02
Expiration Date: July 15, 2029
Approval Date: August 01, 2024

PRODUCT REVISED
 as complying with the Florida
 Building Code
 NOA-No. 20-0915.09
 Expiration Date 07/15/2023
 By *Ishag I. Chande*
 Miami-Dade Product Control

PRODUCT RENEWED
 as complying with the Florida
 Building Code
 NOA-No. 24-0626.02
 Expiration Date 07/15/2029
 By *Ishag I. Chande*
 Miami-Dade Product Control



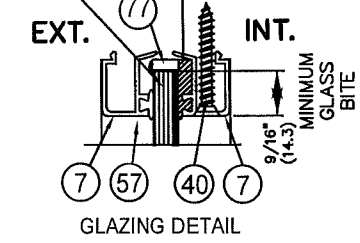
- NOTES:**
- This product has been designed and tested to comply with the current Florida Building Code, including High Velocity Hurricane Zone (HVHZ).
 - Electrical/Electronic functions are not part of this approval and must be reviewed by appropriate building official.
 - See anchor installation details concerning types, substrate, edge distance, spacing and embedment on sheet 4 & 5.
 - 1x or 2x wood bucks by others must be secured properly to transfer loads using appropriate fasteners and quantities. Fasteners to secure wood buck must penetrate concrete or grouted CMU jamb substrate minimum 2.0" at head and sill.
 - Permit holder shall verify the adequacy of the existing structure to withstand additional imposed loads.
 - 1/4" max shim allowed. Type of shim to comply with Florida Building Code and be capable of resisting frame rotation.
 - All structural extrusions are 6063-T5 Aluminum with typical thickness of 1/8", unless otherwise specified.
 - Item 77, glazing block, snap-in nylon 6-6, min hardness Rockwell M85 (Total 4-blocks per glass panel)

Door Panel Sizes:	"O" Panel	"SX" Panel
(W x H)	41.88" x 82.19"	42.88" x 81.75"

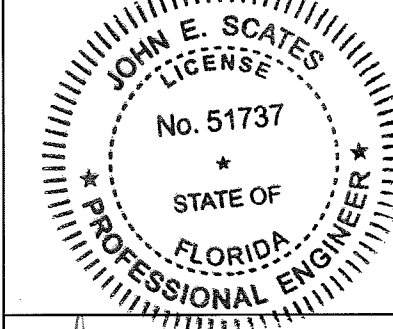
	Where Water Infiltration Requirement is needed	Where Water Infiltration Requirement is NOT needed
Positive	Not Approved	± 55 PSF
Negative	Not Approved	± 55 PSF

16' x 8'-8" (192"x104") (O-SX-SX-O)
 8' x 8'-8" (96"x104") (O-SX, SX-O)
 Series 110 Large Missile Impact

* 0.325" Nominal Heat Strengthened Glass - Old Castle Storm Glass consists of 0.125" heat strengthened glass + 0.075" Soflex-CP composite interlayer w/ PETcoore + 0.125" heat strengthened glass
 * Interior wet glazed with Dow Corning 995 using glazing bead (0.848" x 0.821) without vinyl wedge. The glazing bead on the interior side operable & fixed panels fastened to the rolls & stiles with a #10 x 1.5" FHMS 4" from each end and 12" on center.
 * Exterior side snap-in glazing bead with vinyl wedge
 * Minimum glass bite 9/16"
 * See note 8 (Item 77)



JOHN E. SCATES
 2560 King Arthur Blvd., Ste 124-54
 Lewisville, TX 75056
 FL PE 51737



John E. Scates 10/18/18

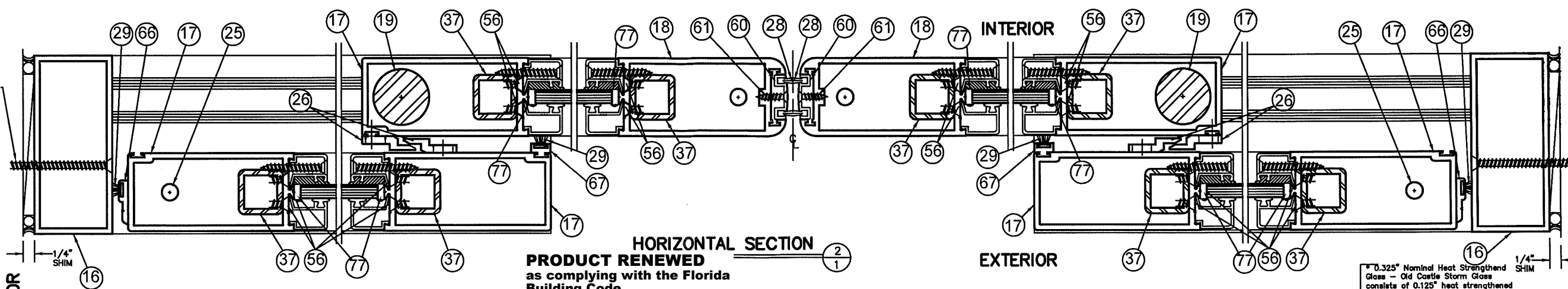
PRODUCT REVISED
 as complying with the Florida
 Building Code
 Acceptance No. 18-1025-13
 Expiration Date 07/15/2023
 By *Ishag I. Chande*
 Miami-Dade Product Control

NO.	REVISION DESCRIPTION	DATE	ARCHITECT:
1	REVISED PER METRO DADE MARK-UPS	12/04/09	CONTRACTOR:
2	NOA REVISIONS	9/03/15	SERIES: 2001/110
3	UPDATED GLAZING DETAIL	09/11/18	TYPE: "O-SX-SX-O", "O-SX" & "SX-O"
4			STYLE: MEDIUM
5			FINISH:
6			ACTUATION:
7			
8			

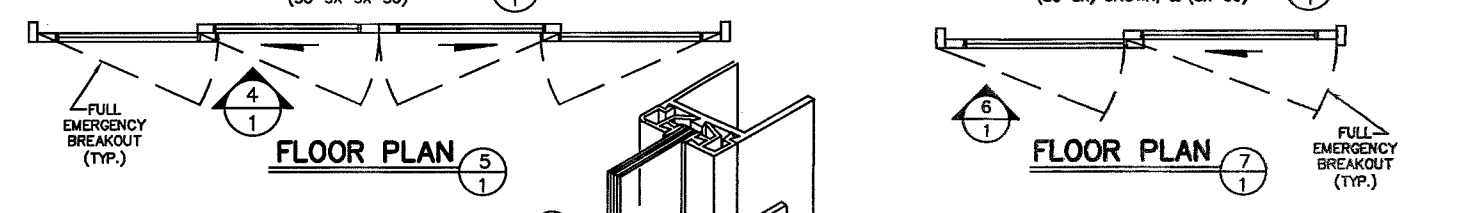
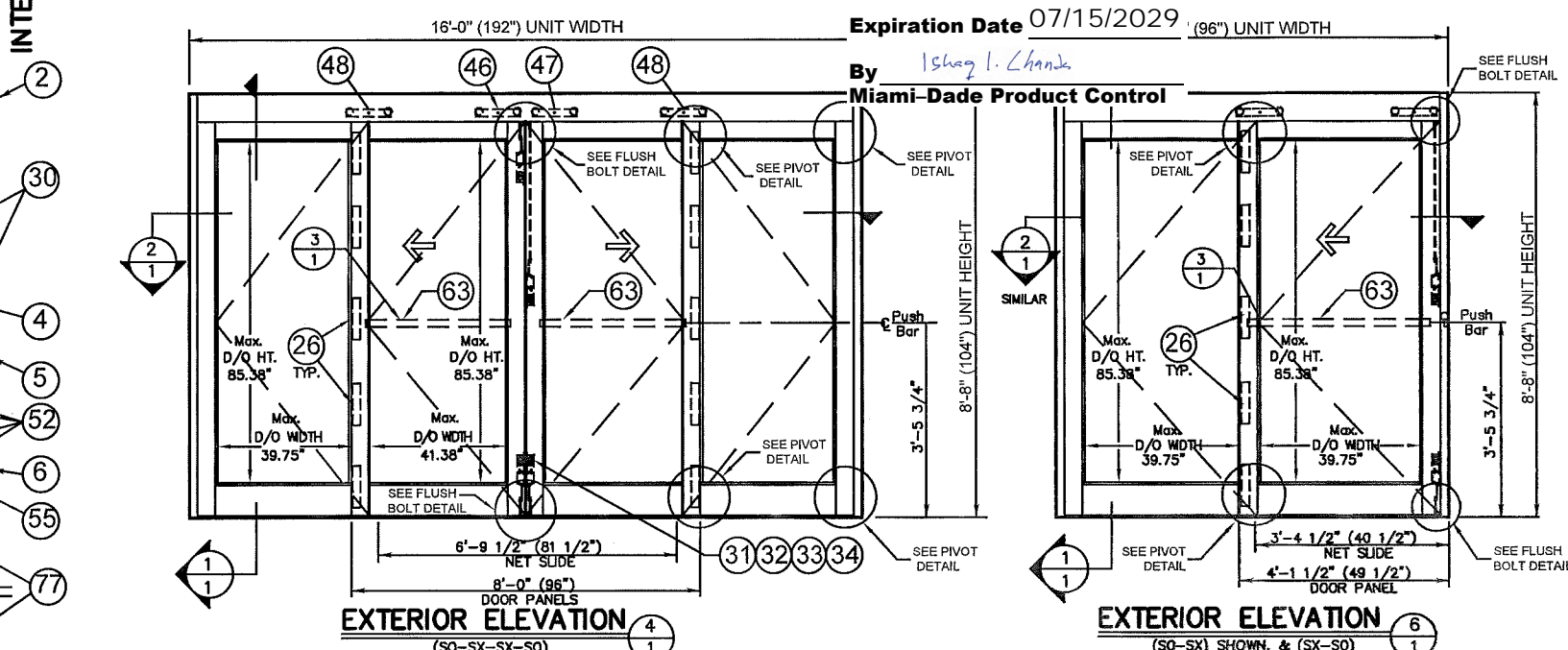
Dwg. No. 040302-L

A DIVISION OF OVERHEAD DOOR CORP.
 4242 BALDWIN BOULEVARD
 CORPUS CHRISTI, TEXAS 78405-3399
 361-888-5591 1-800-531-3111
 FAX: 361-888-6510, 1-800-531-3108
JOHN E. SCATES
 DISTRIBUTOR:
 DWN: L.Rod P.O. # SHEET 1 of 8
 CRK: J. LACKY DATE 3-02-04 REVISION 3

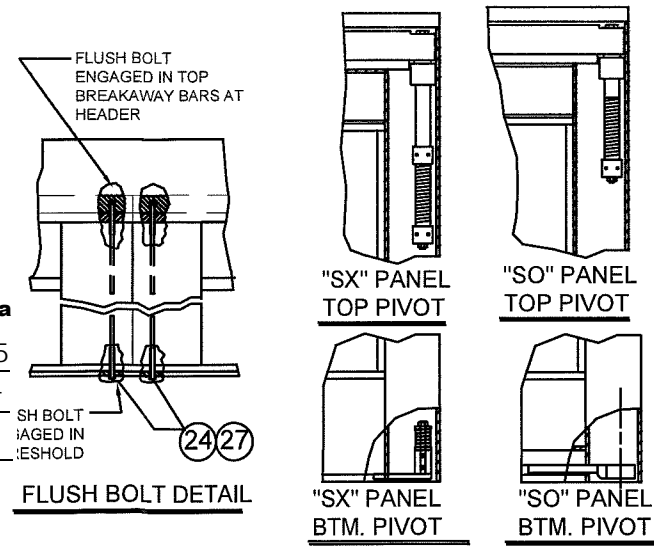
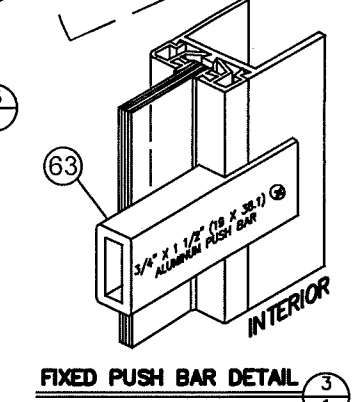
PRODUCT REVISED
 as complying with the Florida
 Building Code
 NOA-No. 20-0915.09
 Expiration Date 07/15/2023
 By *Ishag I. Chande*
 Miami-Dade Product Control



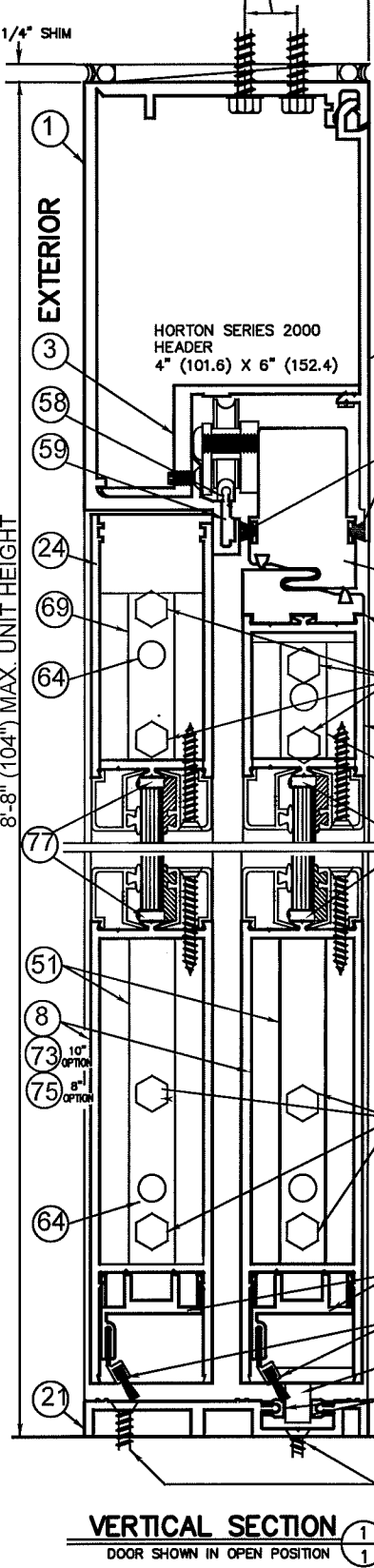
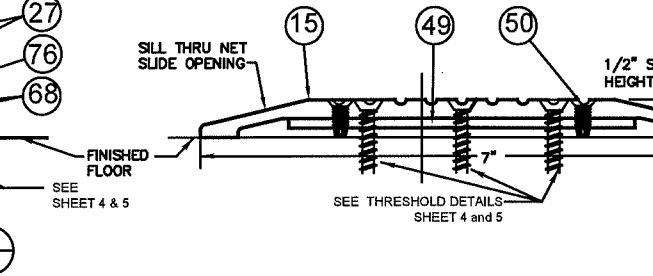
PRODUCT RENEWED
 as complying with the Florida
 Building Code
 NOA-No. 24-0626.02
 Expiration Date 07/15/2029
 By *Ishag I. Chande*
 Miami-Dade Product Control



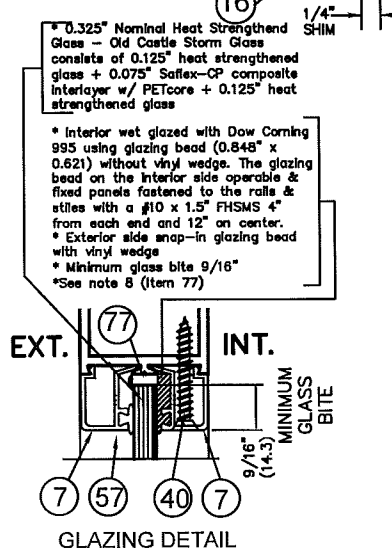
NOTE:
 For fastener location and type see sheets 4 & 5
 The allowable 4/3 increase stress factor for wind loads was not used in the anchor calculations for determining the minimum required anchor quantities shown on these drawings



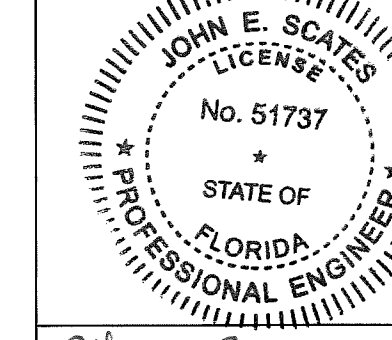
PRODUCT RENEWED
 as complying with the Florida
 Building Code
 NOA-No. 23-0622.15
 Expiration Date 07/15/2024
 By *Ishag I. Chande*
 Miami-Dade Product Control



NOTES:
 1. This product has been designed and tested to comply with the current Florida Building Code, including High Velocity Hurricane Zone (HVHZ).
 2. Electrical/Electronic functions are not part of this approval and must be reviewed by appropriate building official.
 3. See anchor installation details concerning types, substrate, edge distance, spacing and embedment on sheet 4 & 5.
 4. 1x or 2x wood bucks by others must be secured properly to transfer loads using appropriate fasteners and quantities. Fasteners to secure wood buck must penetrate concrete or grouted CMU jamb substrate minimum 2.0" at head and sill.
 5. Permit holder shall verify the adequacy of the existing structure to withstand additional imposed loads.
 6. 1/4" max shim allowed. Type of shim to comply with Florida Building Code and be capable of resisting frame rotation.
 7. All structural extrusions are 6063-T5 Aluminum with typical thickness of 1/8", unless otherwise specified.
 8. Item 77, glazing block, snap-in nylon 6-6, min hardness Rockwell M85 (Total 4-blocks per glass panel)



JOHN E. SCATES
 2560 King Arthur Blvd., Ste 124-54
 Lewisville, TX 75056
 FL PE 51737



John E. Scates 10/2/18
PRODUCT REVISED
 as complying with the Florida
 Building Code
 Acceptance No. 16-1025/13
 Expiration Date 7/15/23
 By *Ishag I. Chande*
 Miami-Dade Product Control

	Where Water Infiltration Requirement is needed	Where Water Infiltration Requirement is NOT needed
Positive	Not Approved	± 55 PSF
Negative	Not Approved	± 55 PSF

16' x 8'-8" (192" X 104") (SO-SX-SX-SO) & 8' x 8'-8" (96" X 104") (SO-SX) & (SX-SO) Series 310 Large Missile Impact

NO.	REVISION DESCRIPTION	DATE	ARCHITECT:
1	REVISED PER METRO DADE MARK-UPS	12/04/08	CONTRACTOR:
2	REVISED NOA DRAWINGS	06/03/15	SERIES: 2000 110310
3	UPDATED GLAZING DETAIL	06/11/18	STYLE: MEDIUM
4			ACTUATION:
5			
6			
7			
8			

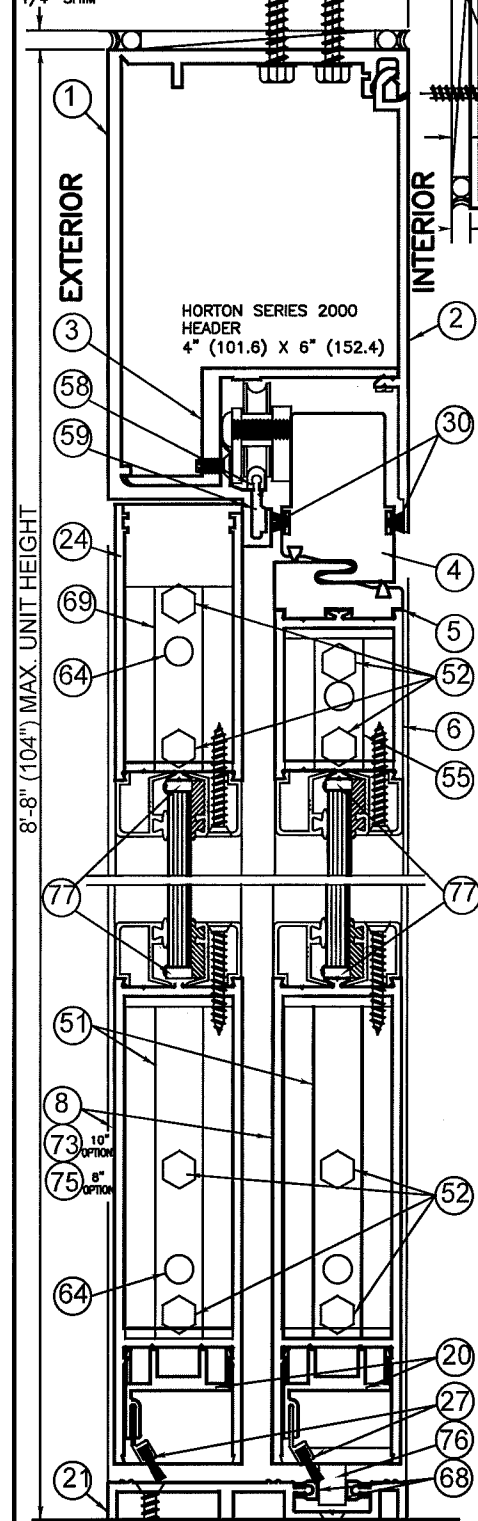
A DIVISION OF OVERHEAD DOOR CORP.
 4242 BALDWIN BOULEVARD
 CORPUS CHRISTI, TEXAS 78405-3399
 361-888-5591 1-800-531-3111
 FAX: 361-888-6510, 1-800-531-3108
JOHN E. SCATES
 DISTRIBUTOR:
 DWN: Lrod P.O. # 2 of 8
 GHJ: LACKY DATE 3-02-04 REVISION 3

Dwg. No. 040302-L

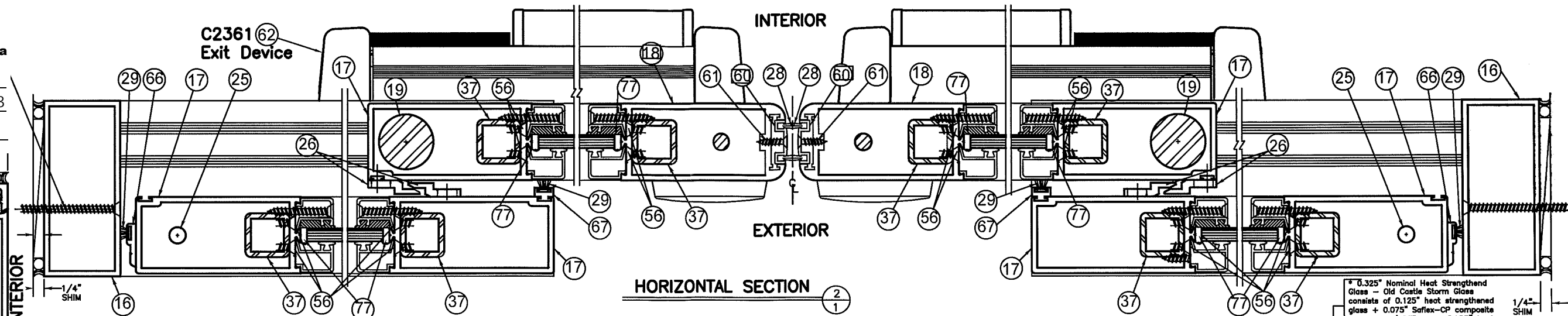
PRODUCT REVISED
as complying with the Florida
Building Code
NOA-No. 20-0915.09

Expiration Date 07/15/2023

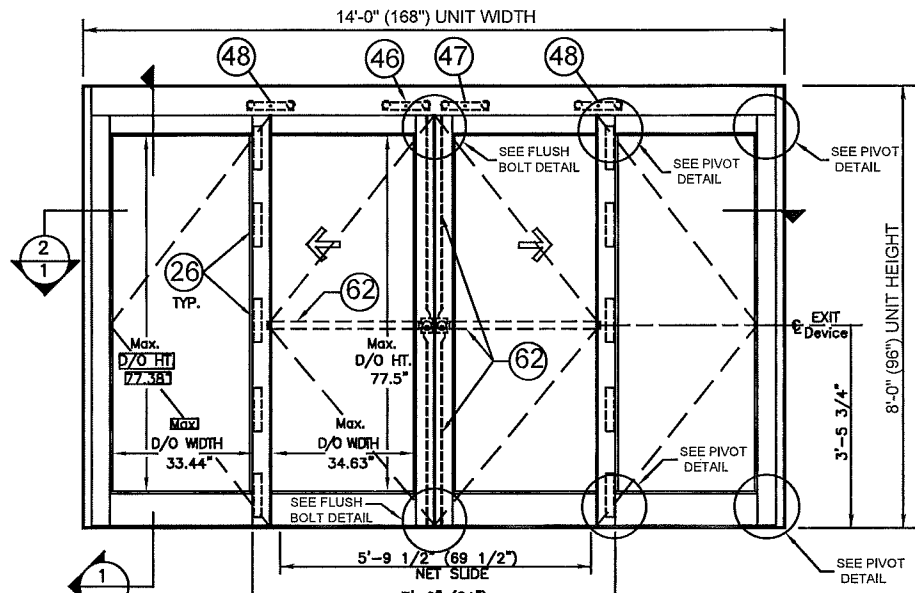
By *Ishag I. Chank*
Miami-Dade Product Control



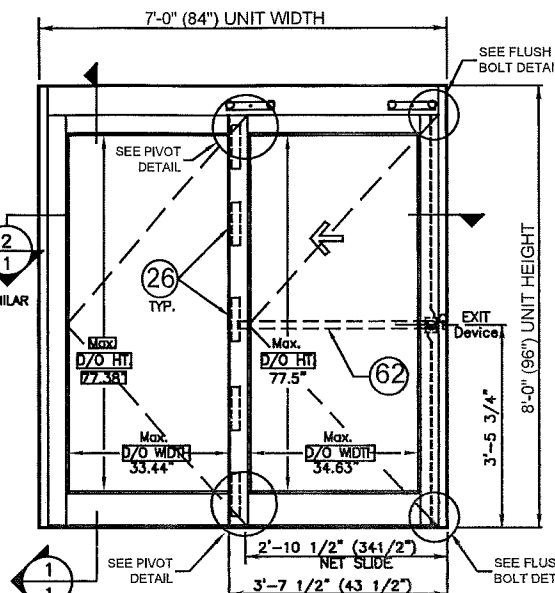
VERTICAL SECTION
DOOR SHOWN IN OPEN POSITION



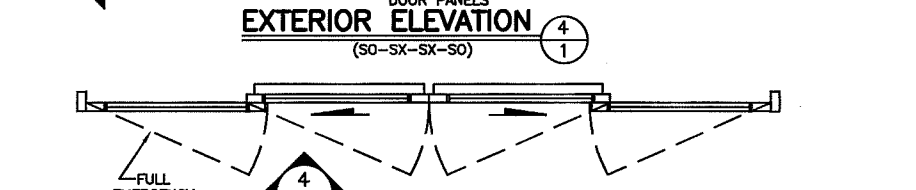
HORIZONTAL SECTION



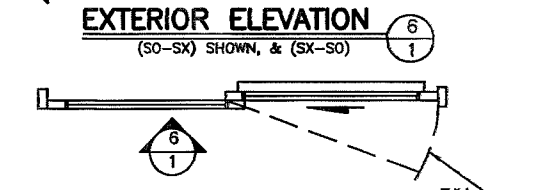
EXTERIOR ELEVATION
(SO-SX-SX-SO)



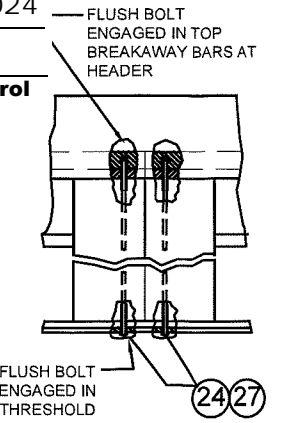
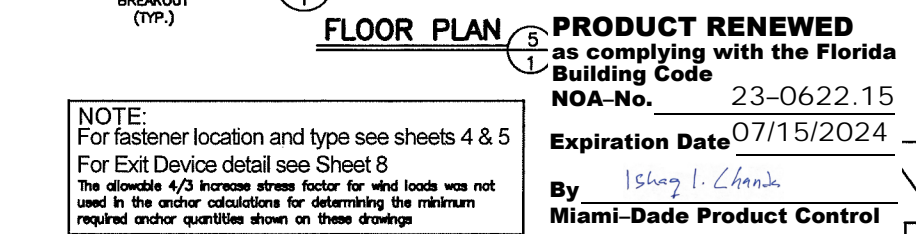
EXTERIOR ELEVATION
(SO-SX) SHOWN, & (SX-SO)



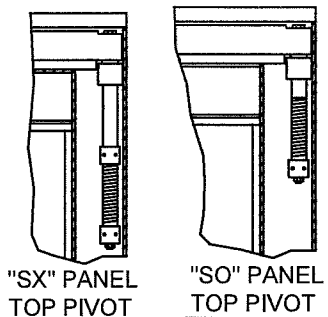
FLOOR PLAN



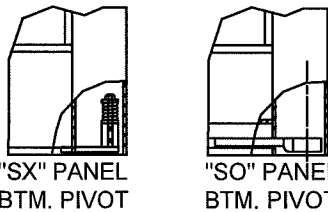
FLOOR PLAN



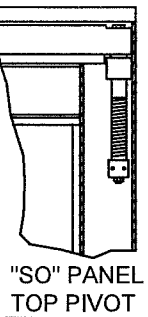
FLUSH BOLT DETAIL



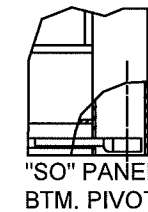
"SX" PANEL TOP PIVOT



"SX" PANEL BTM. PIVOT



"SO" PANEL TOP PIVOT



"SO" PANEL BTM. PIVOT

NOTE:
For fastener location and type see sheets 4 & 5
For Exit Device detail see Sheet 8
The allowable 4/3 increase stress factor for wind loads was not used in the anchor calculations for determining the minimum required anchor quantities shown on these drawings

PRODUCT RENEWED
as complying with the Florida
Building Code
NOA-No. 23-0622.15
Expiration Date 07/15/2024
By *Ishag I. Chank*
Miami-Dade Product Control

PRODUCT RENEWED
as complying with the Florida
Building Code
NOA-No. 24-0626.02
Expiration Date 07/15/2029
By *Ishag I. Chank*
Miami-Dade Product Control

- NOTES:**
- This product has been designed and tested to comply with the current Florida Building Code, including High Velocity Hurricane Zone (HVHZ).
 - Electrical/Electronic functions are not part of this approval and must be reviewed by appropriate building official.
 - See anchor installation details concerning types, substrate, edge distance, spacing and embedment on sheet 4 & 5.
 - 1x or 2x wood bucks by others must be secured properly to transfer loads using appropriate fasteners and quantities. Fasteners to secure wood buck must penetrate concrete or grouted CMU jamb substrate minimum 2.0" at head and sill.
 - Permit holder shall verify the adequacy of the existing structure to withstand additional imposed loads.
 - 1/4" max shim allowed. Type of shim to comply with Florida Building Code and be capable of resisting frame rotation.
 - All structural extrusions are 6063-T5 Aluminum with typical thickness of 1/8", unless otherwise specified.
 - Item 77 glazing block, snap-in nylon 6-6, min hardness Rockwell M85 (Total 4-blocks per glass panel)

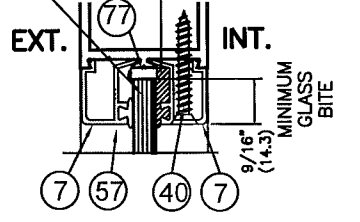
* 0.325" Nominal Heat Strengthened Glass - Old Castle Storm Glass consists of 0.125" heat strengthened glass + 0.075" Saflex-CP composite interlayer w/ PETcore + 0.125" heat strengthened glass

* Interior wet glazed with Dow Corning 995 using glazing bead (0.848" x 0.621) without vinyl wedge. The glazing bead on the interior side operable & fixed panels fastened to the rails & sills with #10 x 1.5" FHSMs 4" from each end and 12" on center.

* Exterior side snap-in glazing bead with vinyl wedge

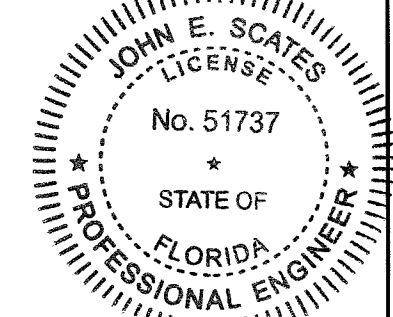
* Minimum glass bite 9/16"

* See note 8 (Item 77)



GLAZING DETAIL

JOHN E. SCATES
2560 King Arthur Blvd., Ste 124-54
Lewisville, TX 75056
FL PE 51737



John E. Scates
10/18/19

	Where Water Infiltration Requirement is needed	Where Water Infiltration Requirement is NOT needed
Positive	Not Approved	± 45 PSF
Negative	Not Approved	± 45 PSF

14 x 8'-0" (168" X 96") (SO-SX-SX-SO) & 7' x 8'-0" (84" X 96") (SO-SX) & (SX-SO) w/ AR Panic Exit Device & Concealed Rod (See Sheet 8)
Series 310 Large Missile Impact

NO.	REVISIONS DESCRIPTION	DATE	ARCHITECT:
1	REVISED PER METRO DADE MARK-UPS	12/04/00	CONTRACTOR:
2	REVISED NOA DRAWINGS	06/03/15	SERIES 2000 110/310 TYPE SO-SX-SX-SO, "SO-SX" & "SX-SO"
3	UPDATED GLAZING DETAIL	06/11/18	STYLE: MEDIUM FINISH:
4			ACTUATION:
5			
6			
7			
8			

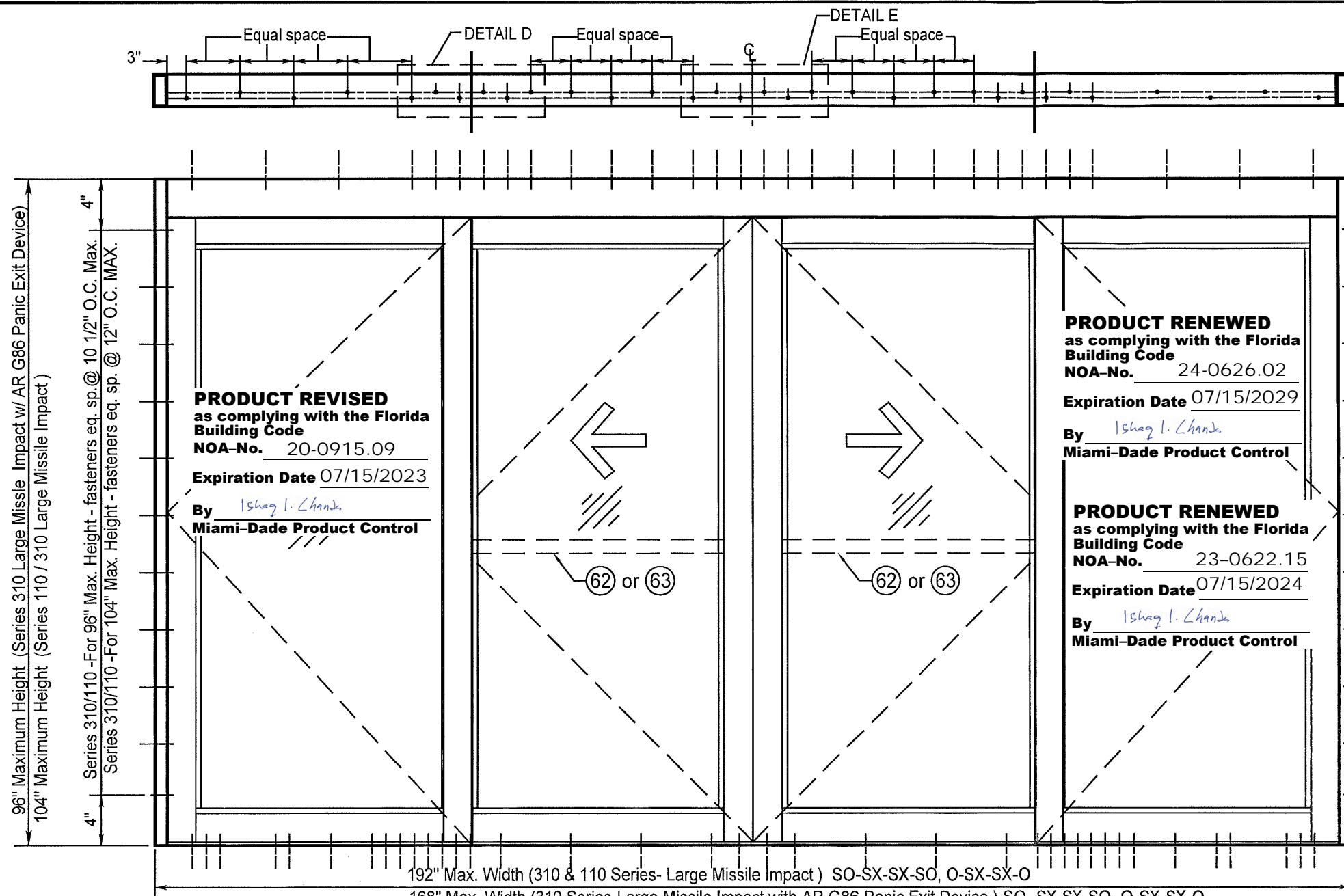
PRODUCT RENEWED
as complying with the Florida
Building Code
Acceptance No. 18-1025.13
Expiration Date 07/15/23
By *Ishag I. Chank*
Miami-Dade Product Control

A DIVISION OF OVERHEAD DOOR CORP.
4242 BALDWIN BOULEVARD
CORPUS CHRISTI, TEXAS 78405-3399
361-888-5591 1-800-531-3111
FAX: 361-888-6510, 1-800-531-3108

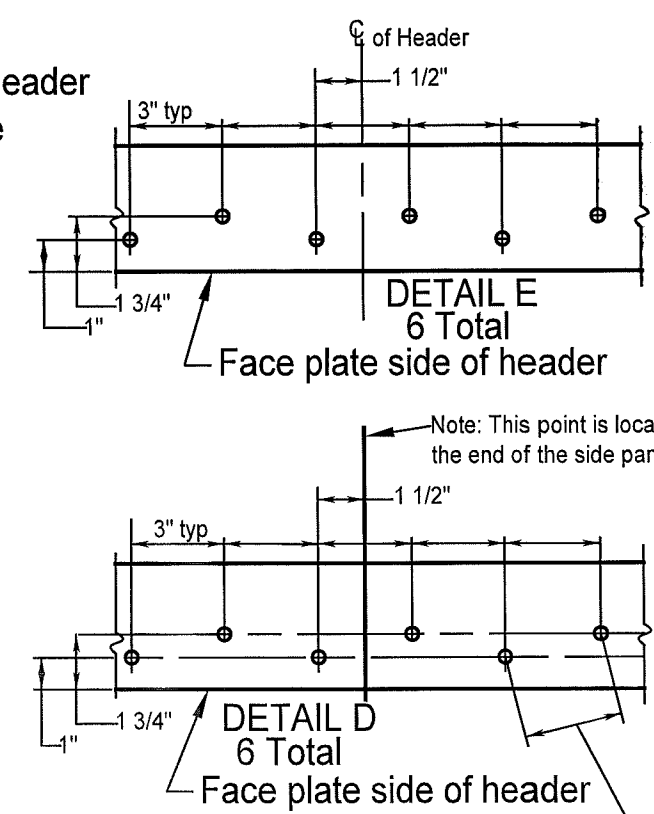
LOCATION:
JOB **METRO-DADE**

DISTRIBUTOR:
DWN: Rod P.O. # 3 of 8
GHC: J. LACKEY DATE 3-02-04 REVISION 3

Dwg. No. 040302-L



For wood substrate jambs orient as shown here
TYPE 110 & 310 Header
 (Refer to Faceplate Location)



PRODUCT REVISED
 as complying with the Florida Building Code
 NOA-No. 20-0915.09
 Expiration Date 07/15/2023
 By *Ishag I. Chank*
 Miami-Dade Product Control

PRODUCT RENEWED
 as complying with the Florida Building Code
 NOA-No. 24-0626.02
 Expiration Date 07/15/2029
 By *Ishag I. Chank*
 Miami-Dade Product Control

PRODUCT RENEWED
 as complying with the Florida Building Code
 NOA-No. 23-0622.15
 Expiration Date 07/15/2024
 By *Ishag I. Chank*
 Miami-Dade Product Control

The frame must be shimmed with a type of shim complying with the Florida Building Code and is capable of resisting the frame's rotation-1/4" thk. Max

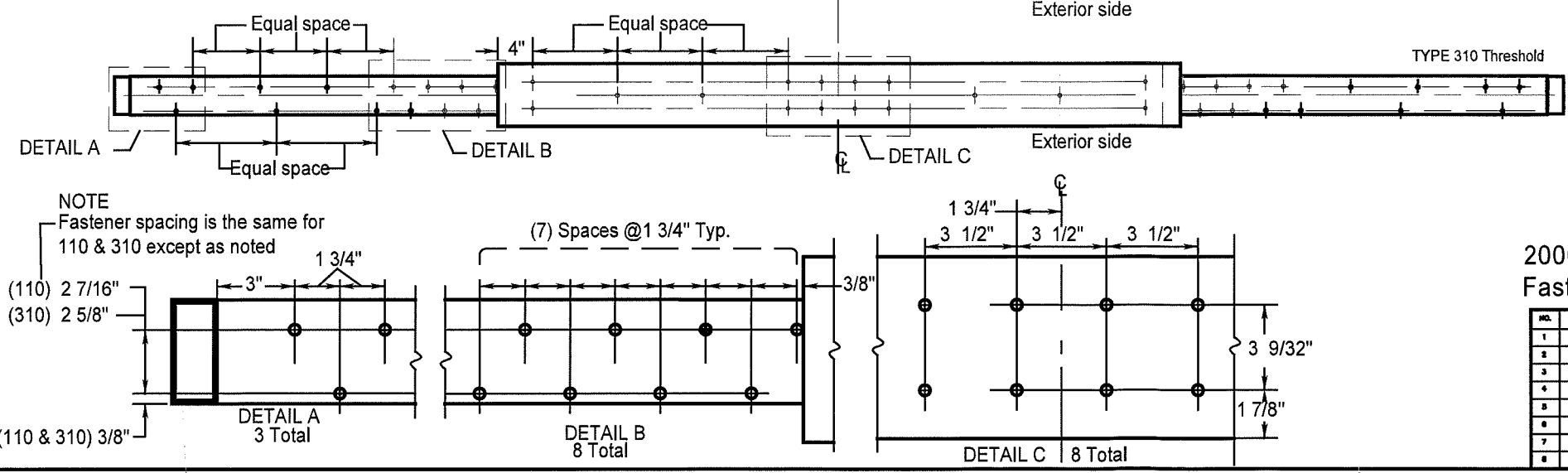
The 4/3 increase stress factor for wind loads was not used in the anchor calculations.

HEADER
 Steel (0.125" Thick, Fy=36 KSI)- INTERCORP #14 Steel HWH Self-Drilling Screw, 0.625" Min. Edge Distance (Full Thread Engagement)
 Aluminum(0.125" Thick Min./6063-T5)- 1/4"-14 HWH Sheetmetal Screw, 1" Min. Edge Distance. (Full Thread Engagement)
JAMBS
 Steel (0.125" Thick, Fy=36 KSI)- ITW TEKS SCREW #14-20, FH w/WINGS Self-Drilling Screw 0.625" Minimum Edge Distance
 Concrete(3350 PSI)- Crete-Flex SS4 1/4" FH Concrete Screw/Anchor, 1.75" Embed, 2.5" Min. Edge Distance
 Masonry(Solid CMU Block)- Crete-Flex SS4 1/4" FH Concrete Screw/Anchor, 1.25" Embed, 2.5" Min. Edge Distance
 Aluminum(0.125" Thick Minimum/6063-T5)- 1/4"-14 FH Sheetmetal Screw, 1" Min. Edge Distance.
 Wood(#2 SYP)-1/4" x 4" Long Lag Bolt 2.75" Minimum Penetration, 1" Minimum Edge Distance (2) 2 X 8 W/ Min G = .55

JOHN E. SCATES
 2560 King Arthur Blvd., Ste 124-54
 Lewisville, TX 75056
 FL PE 51737

John E. Scates 10/18/18

THRESHOLD
 Steel (0.125" Thick, Fy=36 KSI)- ITW TEKS SCREW #14-20 PFH w/Wings Self-Drilling Screw, 0.625" Minimum Edge Distance (Full Thread Engagement)
 Concrete(3350 PSI)- Crete-Flex SS4 FH 1/4" Concrete Screw 1.75" Embed, 2.5" Minimum Edge Distance
 Aluminum(0.125" Thick Minimum/6063-T5)- 1/4"-14 FH Sheetmetal Screw, 1" Minimum Edge Distance (Full Thread Engagement)



NOTE
 Fastener spacing is the same for 110 & 310 except as noted

(110) 2 7/16"
 (310) 2 5/8"

DETAIL A 3 Total

(7) Spaces @ 1 3/4" Typ.

DETAIL B 8 Total

DETAIL C 8 Total

2000 110 & 310 Bi-Parts Large Missile Impact Fastener Locations

NO.	REVISIONS DESCRIPTION	DATE	ARCHITECT:
1	REVISED PER METRO DADE	12/04/09	CONTRACTOR:
2	REVISED NOA DRAWINGS	09/03/19	SERIES: 2000-110/310 TYPE: "SO-SX-SX-SO", "O-SX-SX-O"
3	UPDATED GLAZING DETAIL	06/11/18	STYLE: MEDIUM FINISH:
4			ACTUATION:
5			
6			
7			
8			

Bi-Part Fastener Locations
 Dwg. No. 040302-L

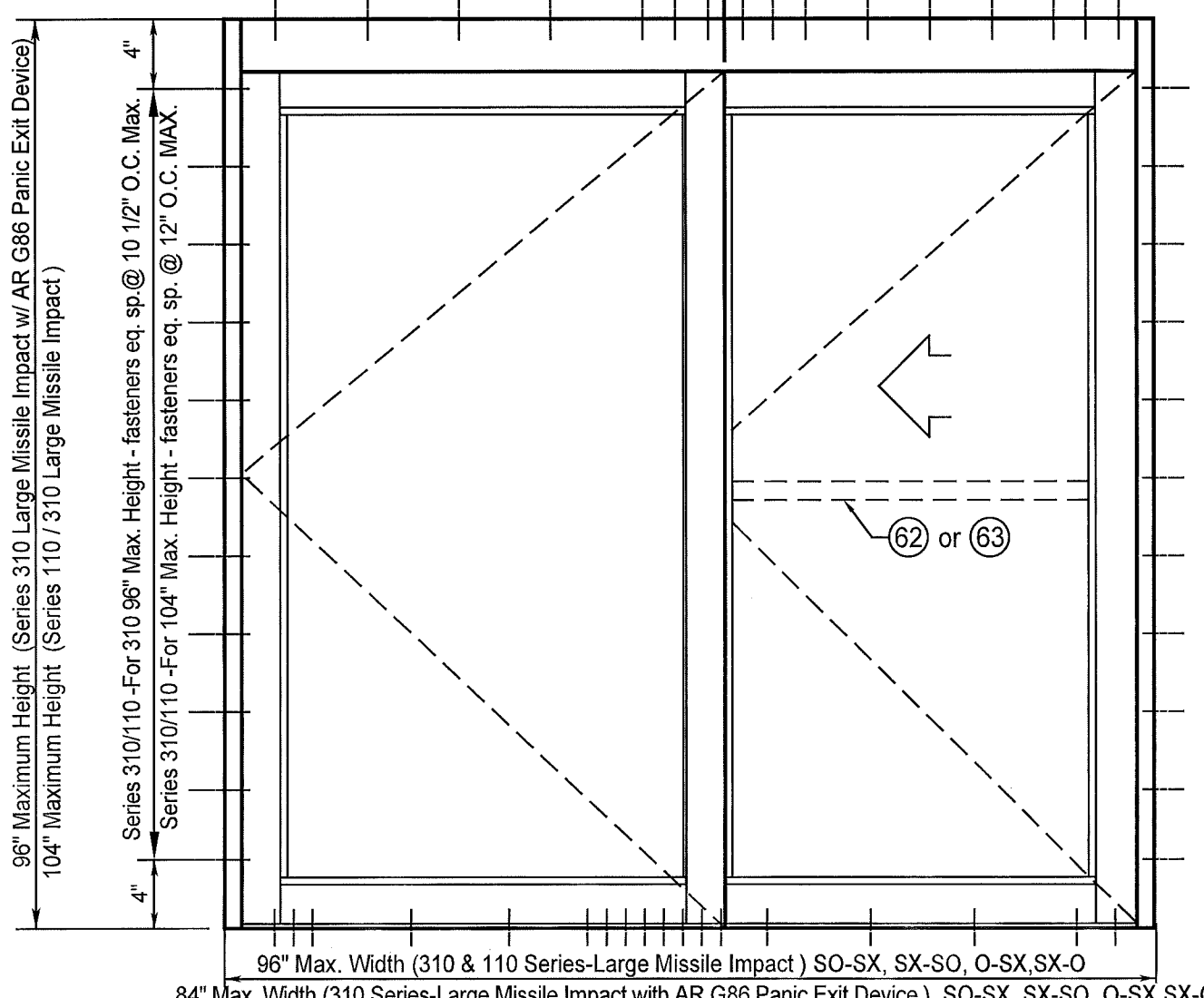
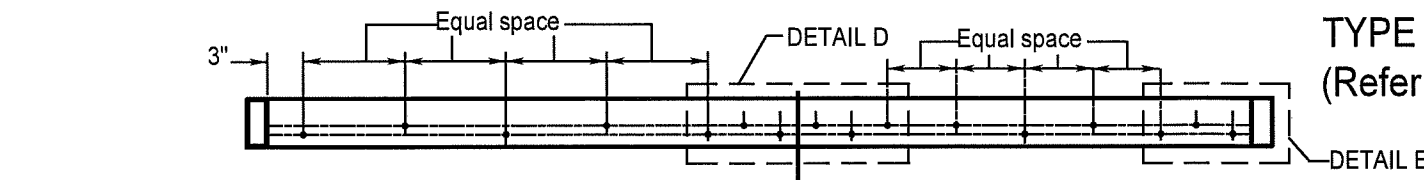
PRODUCT REVISED
 as complying with the Florida Building Code
 Acceptance No. 18-1025.13
 Expiration Date 7/15/23
 By *Ishag I. Chank*
 Miami-Dade Product Control

A DIVISION OF OVERHEAD DOOR CORP
 4242 BALDWIN BOULEVARD
 CORPUS CHRISTI, TEXAS 78405-3399
 361-888-5591 1-800-531-3111
 FAX: 361-888-6510, 1-800-531-3108

Horton
 AUTOMATIC

JOB METRO-DADE

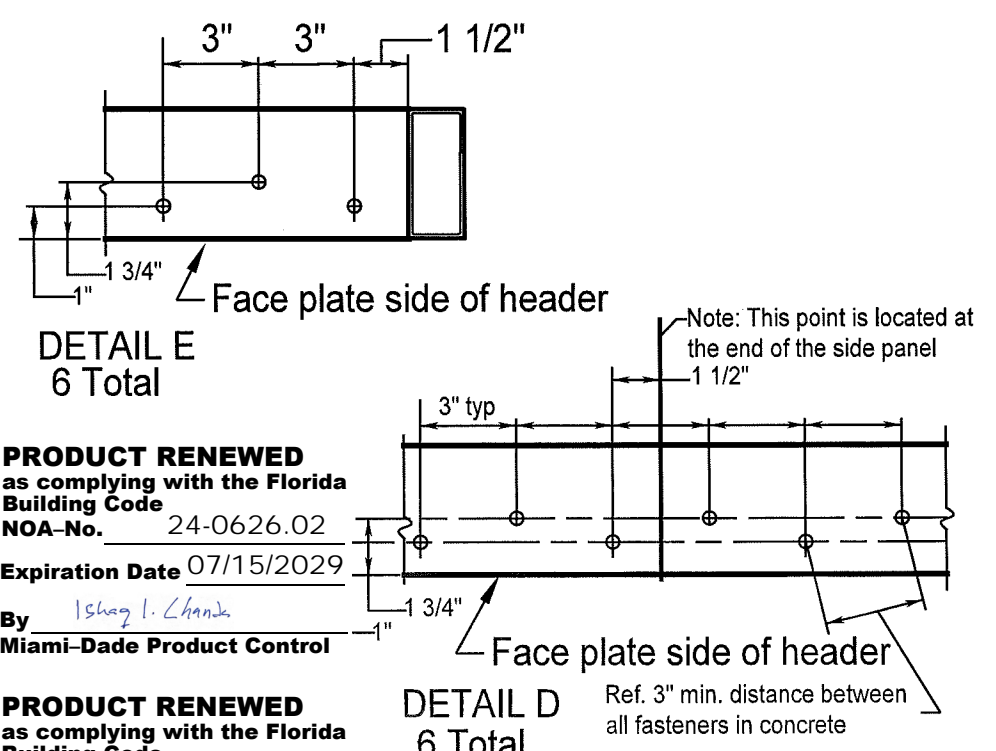
LOCATION:
 DISTRIBUTOR:
 DWN: LRod P.O. #
 CHK: J.LACKY DATE 3-02-04 SHEET 4 of 8



TYPE 110 & 310 Header
(Refer to Faceplate Location)

HEADER
 Steel (0.125" Thick, Fy=36 KSI) - INTERCORP #14 Steel HWH Self-Drilling Screw, 0.625" Min. Edge Distance (Full Thread Engagement)
 Aluminum (0.125" Thick Min./6063-T5) - 1/4"-14 HWH Sheetmetal Screw, 1" Min. Edge Distance. (Full Thread Engagement)
JAMBS
 Steel (0.125" Thick, Fy=36 KSI) - ITW TEKS SCREW #14-20, FH w/WINGS Self-Drilling Screw 0.625" Minimum Edge Distance
 Concrete (3350 PSI) - Crete-Flex SS4 1/4" FH Concrete Screw/Anchor, 1.75" Embed, 2.5" Min. Edge Distance
 Masonry (Solid CMU Block) - Crete-Flex SS4 1/4" FH Concrete Screw/Anchor, 1.25" Embed, 2.5" Min. Edge Distance
 Aluminum (0.125" Thick Minimum/6063-T5) - 1/4"-14 FH Sheetmetal Screw, 1" Min. Edge Distance.
 Wood (#2 SYP) - 1/4" x 4" Long Lag Bolt 2.75" Minimum Penetration, 1" Minimum Edge Distance (2) 2 X 8 W/ Min G = .55

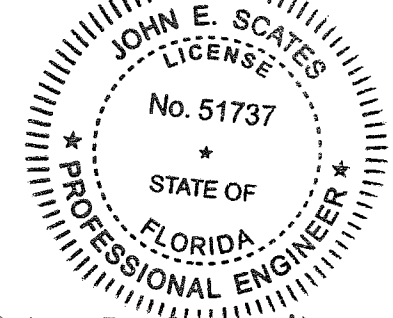
THRESHOLD
 Steel (0.125" Thick, Fy=36 KSI) - ITW TEKS SCREW #14-20 PFH w/WINGS Self-Drilling Screw, 0.625" Minimum Edge Distance (Full Thread Engagement)
 Concrete (3350 PSI) - Crete-Flex SS4 FH 1/4" Concrete Screw 1.75" Embed, 2.5" Minimum Edge Distance
 Aluminum (0.125" Thick Minimum/6063-T5) - 1/4"-14 FH Sheetmetal Screw, 1" Minimum Edge Distance (Full Thread Engagement)



DETAIL E
6 Total
PRODUCT RENEWED
 as complying with the Florida Building Code
 NOA-No. 24-0626.02
 Expiration Date 07/15/2029
 By Ishaq I. Chanda
 Miami-Dade Product Control

DETAIL D
6 Total
PRODUCT RENEWED
 as complying with the Florida Building Code
 NOA-No. 23-0622.15
 Expiration Date 07/15/2024
 By Ishaq I. Chanda
 Miami-Dade Product Control

JOHN E. SCATES
 2560 King Arthur Blvd., Ste 124-54
 Lewisville, TX 75056
 FL PE 51737



John E. Scates 10/8/18

PRODUCT REVISED
 as complying with the Florida Building Code
 NOA-No. 20-0915.09
 Expiration Date 07/15/2023
 By Ishaq I. Chanda
 Miami-Dade Product Control

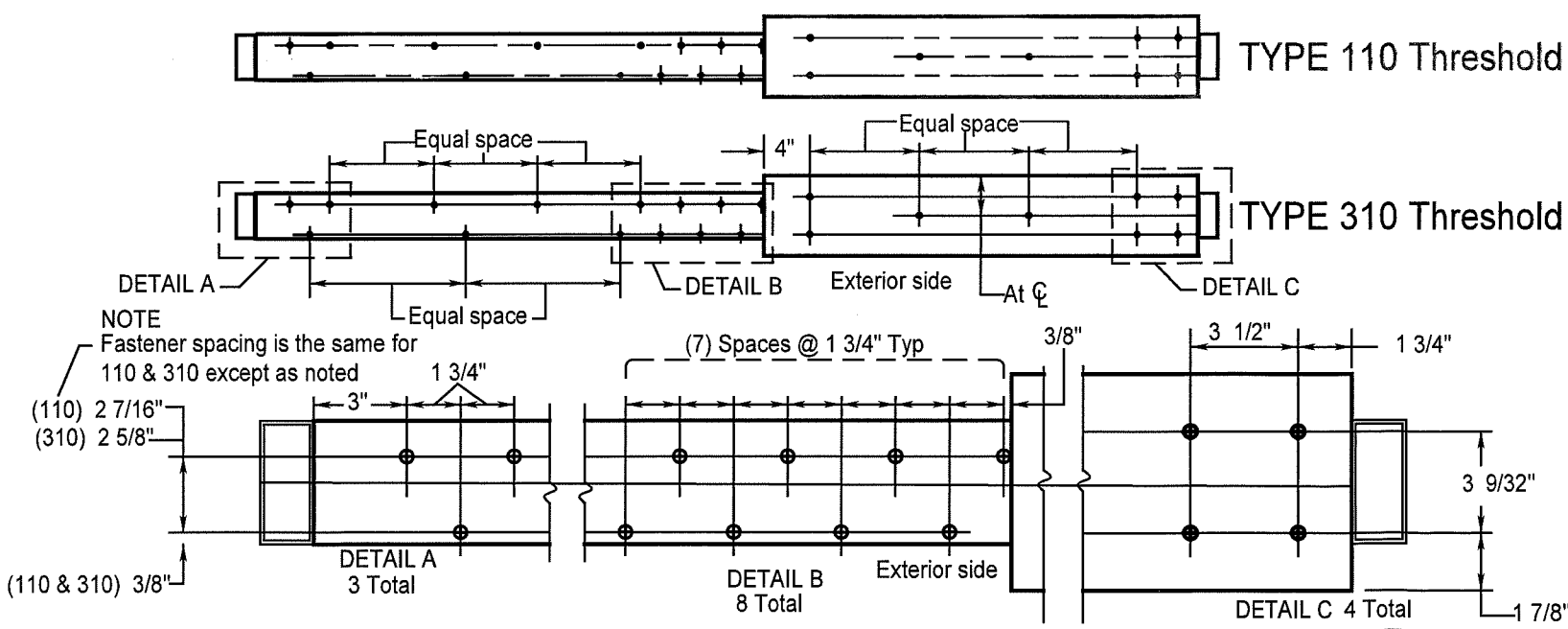
PRODUCT REVISED
 as complying with the Florida Building Code
 Acceptance No. 18-1025.13
 Expiration Date 7/15/23
 By Ishaq I. Chanda
 Miami-Dade Product Control

The frame must be shimmed with a type of shim complying with the Florida Building Code and is capable of resisting the frame's rotation-1/4" thk. Max

The 4/3 increase stress factor for wind loads was not used in the anchor calculations.

TYPE 110 Threshold

TYPE 310 Threshold



2000 110 & 310 Single Slide Large Missile Impact Fastener Locations

NO.	REVISIONS DESCRIPTION	DATE	ARCHITECT:
1	REVISED PER METRO DADE	12/04/09	CONTRACTOR:
2	REVISED FOR NOA	09/09/15	SERIES2000 110/310 TYPE: S0-SX" & "SX-SO", O-SX" & "SX-O"
3	UPDATING GLAZING DETAIL	09/11/18	STYLE: MEDIUM FINISH:
4			ACTUATION:
5			
6			
7			
8			

Single Slide Fastener Locations
 Dwg. No. 040302-L

Horton AUTOMATION
 A DIVISION OF OVERHEAD DOOR CORP.
 4242 BALDWIN BOULEVARD
 CORPUS CHRISTI, TEXAS 78405-3399
 361-888-5591 1-800-531-3111
 FAX: 361-888-6510, 1-800-531-3108

METRO-DADE
 LOCATION:
 DISTRIBUTOR:
 DWN: LRod P.O. # SHEET 5 of 8
 CHK: J. LACKEY DATE 3-02-04 REVISION 3

ITEM #	HORTON PART NUMBER	DESCRIPTION
1	C00265.000R	ALUMINUM EXTRUSION: HEADER
2	C00266.000R	ALUMINUM EXTRUSION:FACEPLATE
3	C00264.000R	ALUMINUM EXTRUSION:TRAY
4	C00314.000R	ALUMINUM EXTRUSION:INTERLOCK TOP
5	C00327.000R	ALUMINUM EXTRUSION:INTERLOCK LOWER
6	C00337.000R	ALUMINUM EXTRUSION:TOP RAIL
7	C00370.0001	ALUMINUM EXTRUSION:GLASS STOP
8	C00283.0000	ALUMINUM EXTRUSION:BOTTOM RAIL
9	C00315.0000	ALUMINUM EXTRUSION:TRACK FILLER
10	C00330.0001	ALUMINUM EXTRUSION: BOTTOM GUIDE
11	C00386.0001	ALUMINUM EXTRUSION: ADAPTOR
12	C00342.04FL	ALUMINUM EXTRUSION: BOTTOM RAIL
13	C02801.000AB	ALUMINUM EXTRUSION: HORIZONTAL RAIL
14	C02899.0002	ALUMINUM EXTRUSION: CORNER BLOCK (used as reinforcement)
15	C00390.0000	ALUMINUM EXTRUSION: THRESHOLD 7"
16	C00300.000AB	ALUMINUM EXTRUSION: JAMB TUBE 4" X 1-3/4"
17	C00323.0000	ALUMINUM EXTRUSION: VERTICAL RAIL
18	C00363.0000	ALUMINUM EXTRUSION: VERTICAL RAIL
19	C00818.000R	BAR TORSION (serves as slide panel top pivot)
20	C02798.0001	ALUMINUM EXTRUSION: ADAPTOR
21	C02873.0000	THRESHOLD
22	C00379.001ABC	GLASS STOP
23	C00338.000R	GLASS STOP
24	C00343.001R	ALUMINUM EXTRUSION; HORIZONTAL RAIL
25	C00589.0000	PIVOT
26	C00888.002AB	CLIP INTERLOCK
27	C00524.00FL	WEATHERSEAL BRUSH Felton #490621
28	C00350.0000	NOSING SEAL SCHLEGEL #1104-5101
29	C00397.0000	ADAPTOR FOR ITEM 67
30	C00293.0000	WEATHERSEAL BRUSH Schlegel #8430-5016-7
31	C00454.0000	LOCK, MAX SECURITY AR MS1850S
32	C00463.0000	THUMBTURN AR 4066
33	C00487.0000	EXIT INDICATOR AR 4089
34	C00883.0000	THRESHOLD BOLT AR 4015 EXTENDING INTO HEAD AND SILL 1/2"
35	C00843.01FL	BOTTOM GUIDE DOOR MOUNTED
36	C00844.01FL	BOTTOM GUIDE DOOR MOUNTED
37	C01987.0000	STEEL TUBE 1"x1"x1/8" A500 (FULL LENGTH PANEL STILES)
38	C00426.0001	5/16 SPACER
39	C00453.0000	#10 X 5/8 PHSMS
40	C00450.0000	#10 X 1-1/2 FHSMS
41	C00437.0000	#10-24 X 1/2" FHMS EVERY 12" IN SIDELITES
42	C00404.0000	1/4-20 LOCKNUT
43	C02899.0002	ALUMINUM EXTRUSION: CORNER BLOCK (used as reinforcement)
44	C00417.0000	#14 X 1-1/2 HWSMS EVERY 12" IN SIDELITES
45	C07141.0000	#10-24 X 1" FHMS EVERY 12" IN SIDELITES
46	C02130.01FL	DRIVE WHEEL ASSEMBLY
47	C00815.0RFL	WHEEL ASSEMBLY
48	C00817.00FL	IDLER WHEEL ASSEMBLY
49	C00448.0000	PLATE, 4-5/8" X 8" X 1/8" ALUMINUM LOCATED UNDER THRESHOLD AT LOCK BOLTS
50	C00437.0000	#10-24 X 1/2" FHMS

51	C00693.0003	CORNER BLOCK
52	C08150.0000	1/4-20 X 3/4 HHMB
53	C00536.0004	CORNER BLOCK
54	C09490.0001	CORNER BLOCK
55	C01044.0001	CORNER BLOCK
56	C00437.0000	#10-24 X 1/2" FHMS 2 EACH AT EVERY 12"
57	C00341.0001	VINYL GLAZING BULB
58	C00291.0001	TRACK CAP
59	C00380.0001	TRACK
60	C00358.000R	ALUMINUM EXTRUSION: ASTRAGAL
61	C00664.001AB	#8 X 3/4 FHSMS
62	C02361.0000	EXIT DEVICE ADAM'S RITE G86H W/ CONCEALED ROD
63	C00278.001ABC	FIXED PUSHBAR; ALUMINUM TUBE
64	C09719.0000	3/8-16 ALL THREAD THRU BOLT IN ALL HORIZONTALS
65	C00371.000R	WEATHERSTRIP; PANEL TO JAMB
66	C00398.0000	ALUMINUM EXTRUSION; MOHAIR ADAPTOR
67	C00389.00FL	ADAPTER FOR ITEM 29
68	C00289.0000	TRACK CAP
69	C00536.0003	CORNER BLOCK
70	C08141.0000	1/4-20 X 1" FHMS
71	C01046.0000	BACKUP PLATE
72	C00538.000R	BACKUP PLATE
73	C02966.0002/C02967.0002	ALUMINUM EXTRUSION:BOTTOM RAIL 10"
74	C00345.005AB	ALUMINUM EXTRUSION:BOTTOM RAIL 9"
75	C02797.000AB	ALUMINUM EXTRUSION:BOTTOM RAIL 8"
76	C00852.0004	BOTTOM GUIDE DOOR MOUNTED
77	C00552.0003	GLAZING BLOCK, SNAP-IN NYLON 6-6 MIN HARDNESS ROCKWELL M85

WEATHERSEALS:

C389-FL INTERLOCK SEAL SCHLEGEL CORP. FINSEAL #7595-6011-0
C350 NOSING SEAL SCHLEGEL CORP. SKIRTING SEAL#1104-5101
C524-FL SLIDE PANEL BOTTOM SEAL FELTON NYLON BRISTLE #490621
C293 SLIDE PANEL TOP SEAL SCHLEGEL #8430-5016-7

HARDWARE:

C454 MAX SECURITY LOCK ADAMS-RITE #MS1850S-250-628
C463 THUMBTURN ADAMS-RITE #4066
C487 EXIT INDICATOR ADAMS-RITE #4089
C883 THRESHOLD BOLT ADAMS-RITE #4015
C815-RFL, C817-FL, C2130-1FL SLIDE TOP ROLLER ASSEMBLIES
C843-1FL & C844-1FL BOTTOM GUIDES

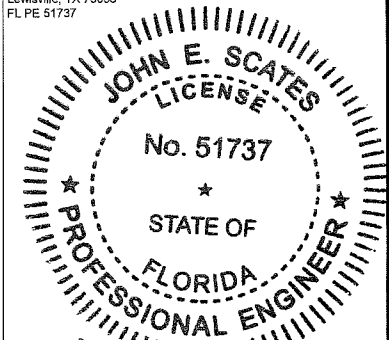
Series 310 / 110 Large Missile Impact

PRODUCT RENEWED
as complying with the Florida
Building Code
NOA-No. 24-0626.02
Expiration Date 07/15/2029
By Ishag I. Chande
Miami-Dade Product Control

PRODUCT RENEWED
as complying with the Florida
Building Code
NOA-No. 23-0622.15
Expiration Date 07/15/2024
By Ishag I. Chande
Miami-Dade Product Control

PRODUCT REVISED
as complying with the Florida
Building Code
NOA-No. 20-0915.09
Expiration Date 07/15/2023
By Ishag I. Chande
Miami-Dade Product Control

JOHN E. SCATES
2560 King Arthur Blvd., Ste 124-54
Lewisville, TX 75056
FL PE 51737



John E. Scates
10/8/18

PRODUCT REVISED
as complying with the Florida
Building Code
Acceptance No 18-1025-13
Expiration Date 7/15/23
By Ishag I. Chande
Miami-Dade Product Control

NO.	REVISIONS DESCRIPTION	DATE	ARCHITECT:
1	REVISED PER METRO DUE MARK-UPS	12/04/08	
2	REVISED PER NOA DRAWINGS	09/02/13	
3	UPDATED GLAZING DETAIL	09/11/18	
4			
5			
6			
7			
8			

CONTRACTOR:	ARCHITECT:
STILE: MEDIUM FINISH:	ACTUATION:
Bill of materials	
Dwg. No. 040302-L	

A DIVISION OF OVERHEAD DOOR CORP. 4242 BALDWIN BOULEVARD CORPUS CHRISTI, TEXAS 78405-3399 361-888-5591 1-800-531-3111 FAX: 361-888-6510, 1-800-531-3108	
Horton AUTOMATION	
JOB METRO-DADE	
LOCATION:	
DISTRIBUTOR:	
DWN: Lrgd	P.O. #
CHK: J. LACKEY	DATE 3-02-04
SHEET 6 of 6	REVISION 3

PRODUCT REVISED
as complying with the Florida
Building Code
NOA-No. 20-0915.09

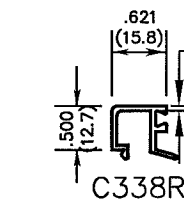
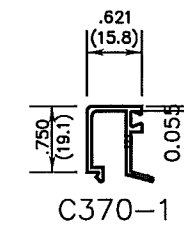
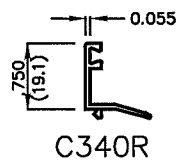
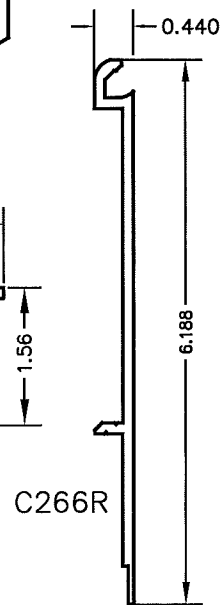
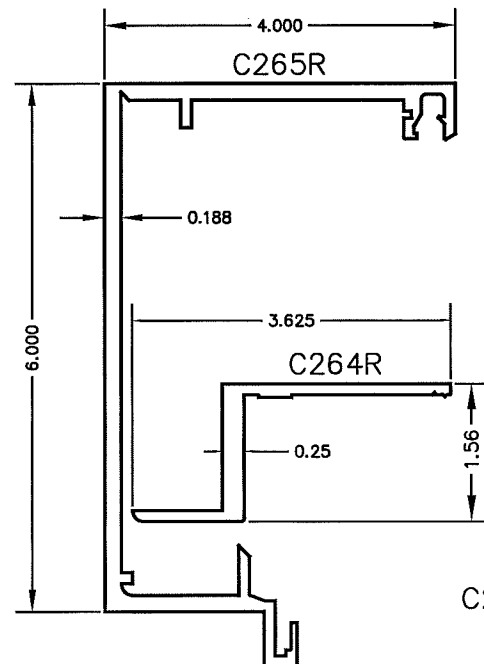
Expiration Date 07/15/2023

By *Ishag I. Chank*
Miami-Dade Product Control

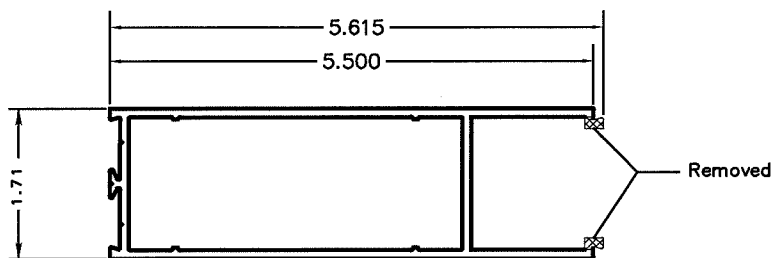
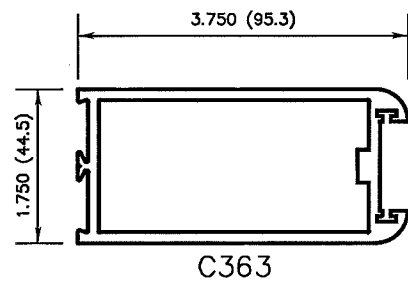
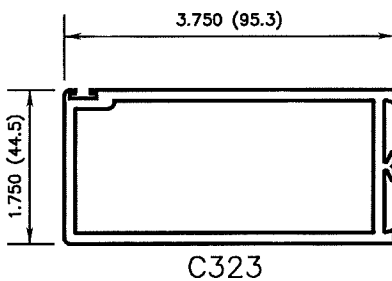
PRODUCT RENEWED
as complying with the Florida
Building Code
NOA-No. 24-0626.02

Expiration Date 07/15/2029

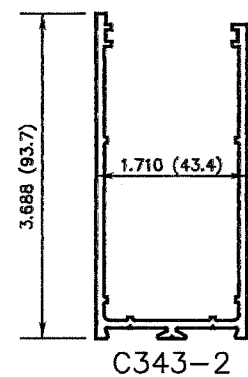
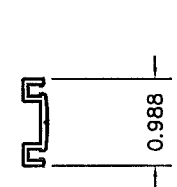
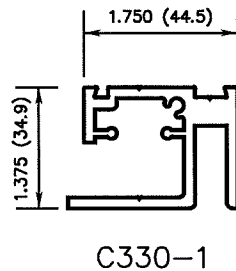
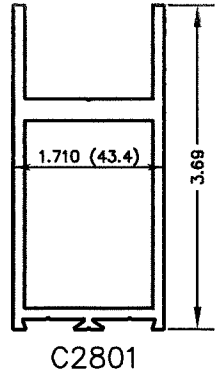
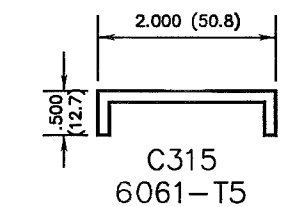
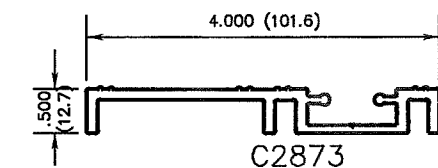
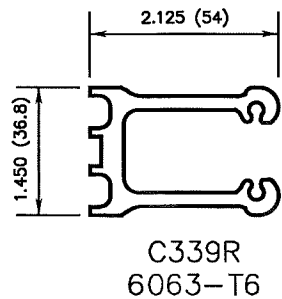
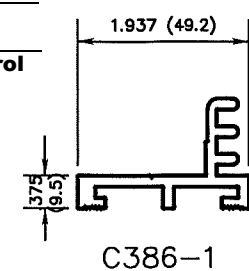
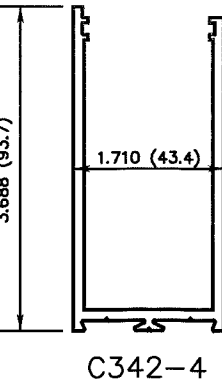
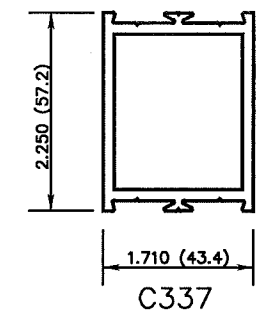
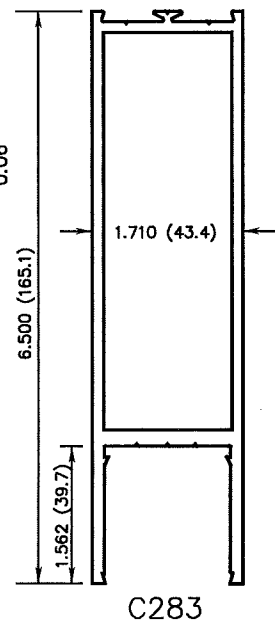
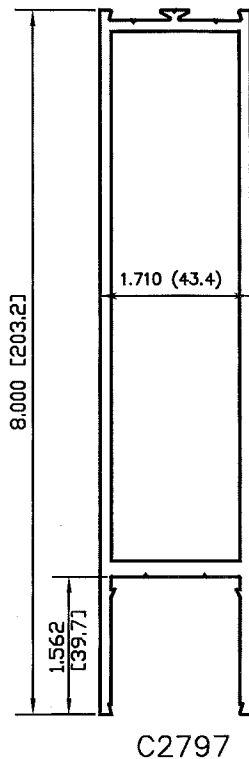
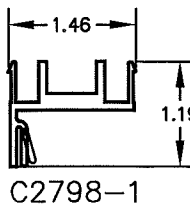
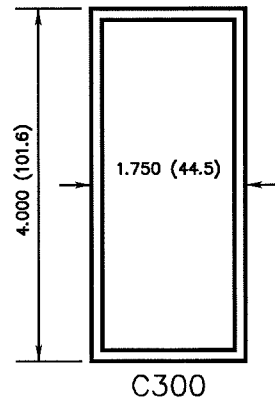
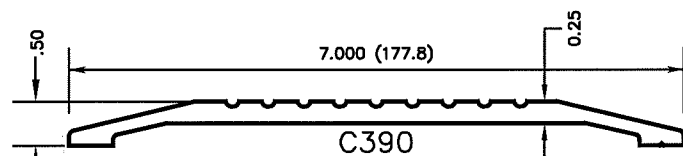
By *Ishag I. Chank*
Miami-Dade Product Control



4" X 6"
(101.6) (152.4)
ASSEMBLED



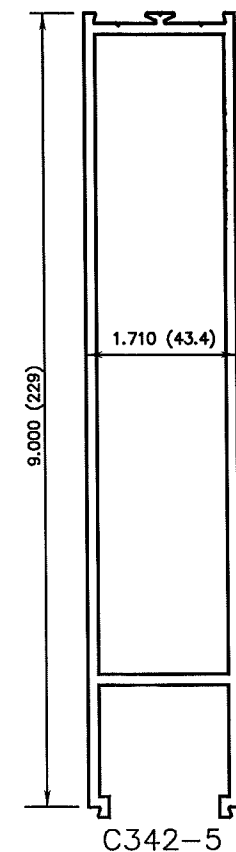
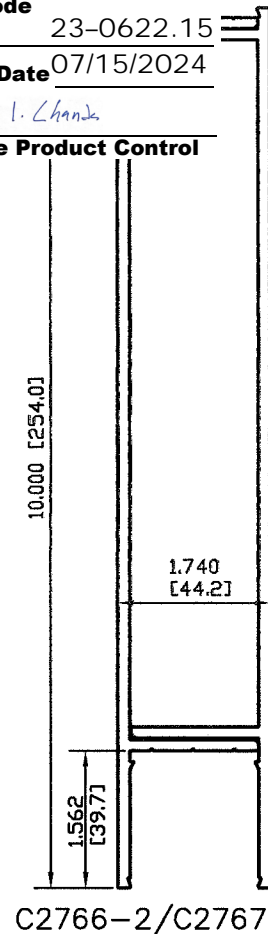
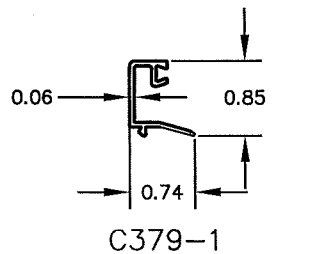
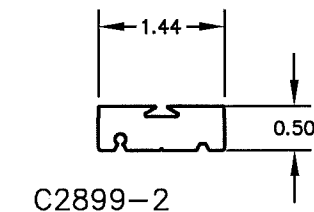
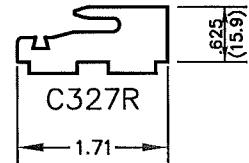
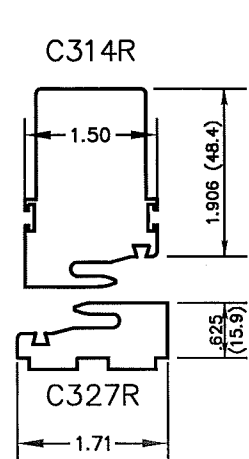
C 342-4 NOTE: For C342-4FL
This rail is ripped



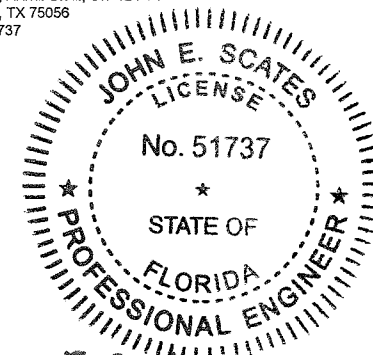
PRODUCT RENEWED
as complying with the Florida
Building Code
NOA-No. 23-0622.15

Expiration Date 07/15/2024

By *Ishag I. Chank*
Miami-Dade Product Control



JOHN E. SCATES
2560 King Arthur Blvd., Ste 124-54
Lewisville, TX 75056
FL PE 51737



John E. Scates 10/8/18

PRODUCT REVISED
as complying with the Florida
Building Code
Acceptance No. 18-1025.13
Expiration Date 07/15/23
Ishag I. Chank
Miami-Dade Product Control

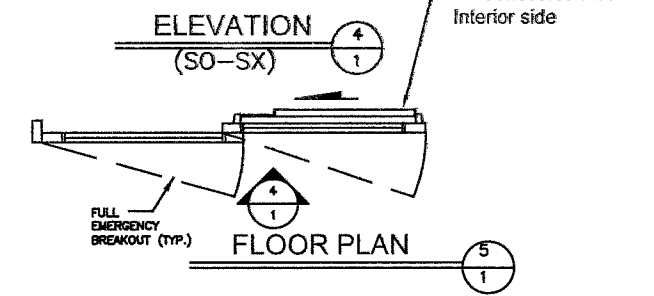
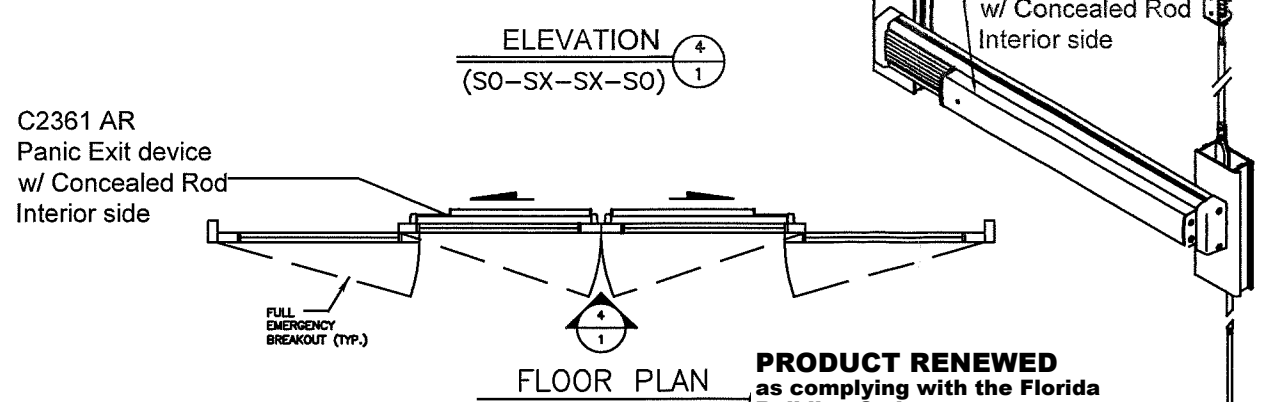
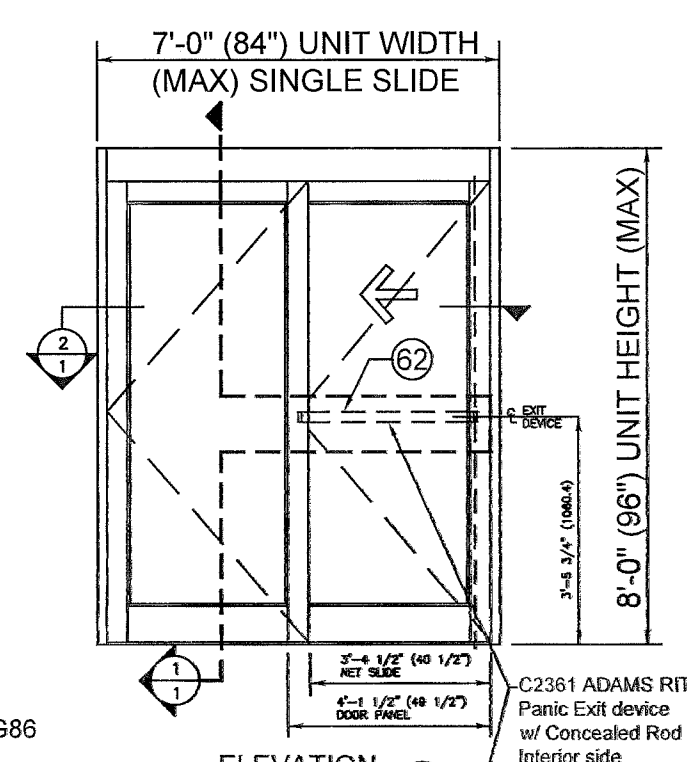
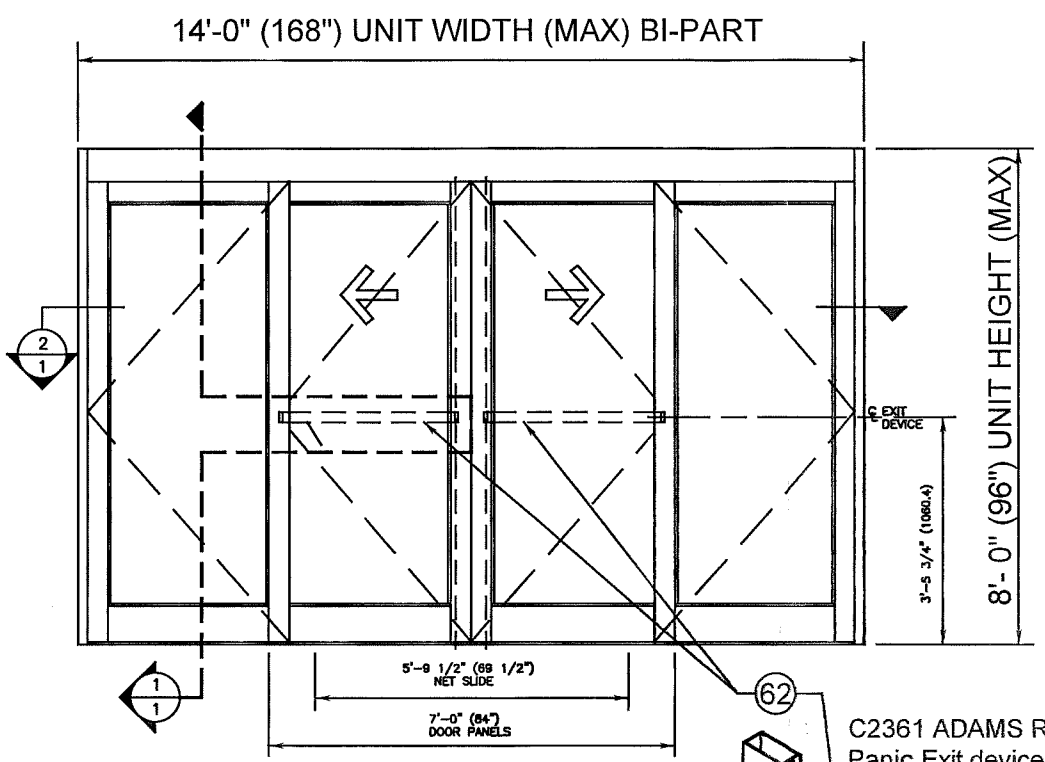
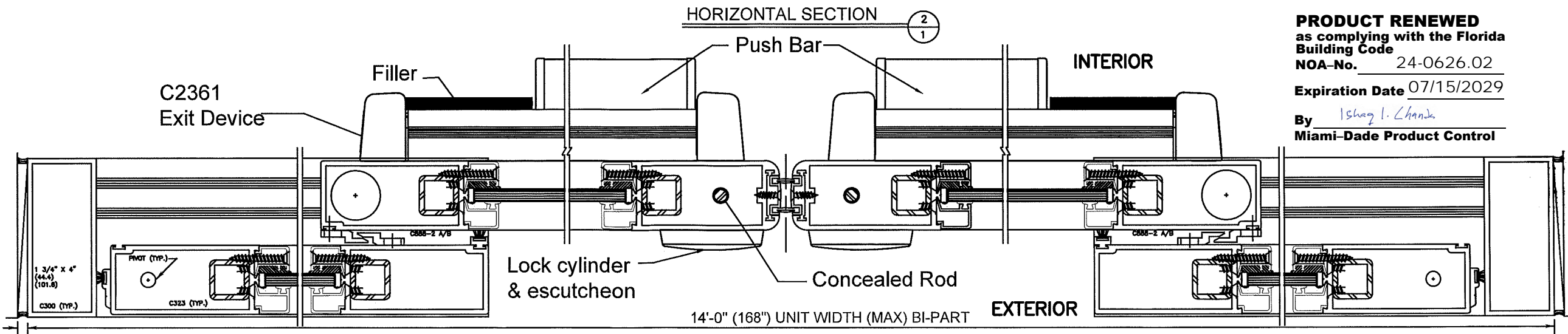
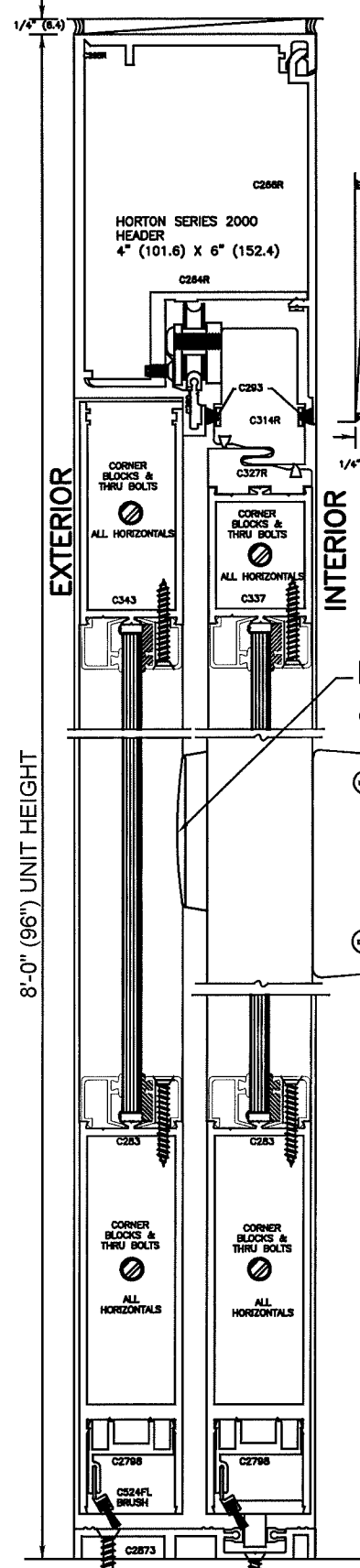
ALL EXTRUSIONS ARE 6063-T5 UNLESS
OTHERWISE NOTED & t min=1/8"

Series 310 & 110 Large Missile Impact

NO.	REVISIONS DESCRIPTION	DATE	ARCHITECT:
1	REVISED PER METRO DADE MARK-UPS	12/04/09	CONTRACTOR:
2	REVISED NOA DRAWINGS	06/02/15	SERIES: 2001-310/110 TYPE:
3	UPDATED GLAZING DETAIL	06/11/18	STYLE: MEDIUM FINISH:
4			ACTUATION:
5			
6			
7			
8			

Extrusion chart
Dwg. No. 040302-L

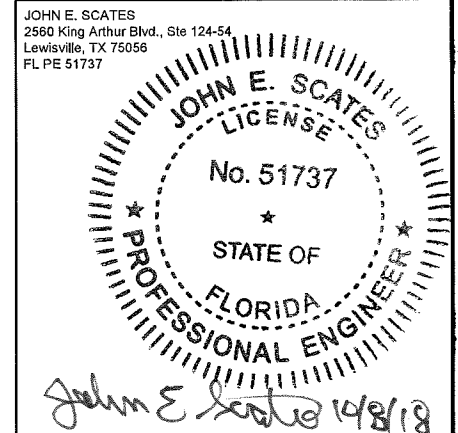
A DIVISION OF OVERHEAD DOOR CORP. 4242 BALDWIN BOULEVARD CORPUS CHRISTI, TEXAS 78405-3399 361-888-5591 1-800-531-3111 361-888-6510, 1-800-531-3108			
Horton AUTOMATION			
JOB METRO-DADE			
LOCATION:			
DISTRIBUTOR:			
DWN: L Rod	P.O. #	SHEET 7 of 8	
CHK: J. LACKEY	DATE 3-02-04	REVISION 3	



14 x 8'-0" (168" X 96") (SO-SX-SX-SO) & 7' x 8'-0" (84" X 96") (SO-SX) & (SX-SO) w/ AR Panic Exit Device & Concealed Rod (See Sheet 3) Series 310 Large Missile Impact

PRODUCT RENEWED
as complying with the Florida Building Code
NOA-No. 24-0626.02
Expiration Date 07/15/2029
By Ishag I. Chank
Miami-Dade Product Control

PRODUCT REVISED
as complying with the Florida Building Code
NOA-No. 20-0915.09
Expiration Date 07/15/2023
By Ishag I. Chank
Miami-Dade Product Control



PRODUCT REVISED
as complying with the Florida Building Code
Acceptance No. 18-1025.13
Expiration Date 7/15/23
Ishag I. Chank
Miami-Dade Product Control

PRODUCT RENEWED
as complying with the Florida Building Code
NOA-No. 23-0622.15
Expiration Date 07/15/2024
By Ishag I. Chank
Miami-Dade Product Control

NO.	REVISIONS DESCRIPTION	DATE	ARCHITECT:
1	REVISED PER METRO DADE MARK-UPS	12/4/08	CONTRACTOR:
2	REVISED NOA DRAWINGS	06/02/15	SERIES: 2000-310 TYPE:
3	UPDATED GLAZING DETAIL	06/11/18	STYLE: MEDIUM FINISH:
4			ACTUATION:
5			
6			
7			
8			

A DIVISION OF OVERHEAD DOOR CORP.
4242 BALDWIN BOULEVARD
CORPUS CHRISTI, TEXAS 78405-3399
361-888-5591 1-800-531-3111
FAX: 361-888-6510, 1-800-531-3108

Horton
A DIVISION OF OVERHEAD DOOR CORP.
JOB METRO-DADE

LOCATION:
DISTRIBUTOR:
DWN: L Rod P.O. #
CRK: J. LACKEY DATE 3-02-04 SHEET 8 of 8 REVISION 3