



DEPARTMENT OF REGULATORY AND ECONOMIC RESOURCES (RER)
BOARD AND CODE ADMINISTRATION DIVISION

NOTICE OF ACCEPTANCE (NOA)

MIAMI-DADE COUNTY
PRODUCT CONTROL SECTION

11805 SW 26 Street, Room 208
Miami, Florida 33175-2474
T (786) 315-2590 F (786) 315-2599

www.miamidade.gov/economy

Clopay Corporation
8585 Duke Boulevard
Mason, OH 45040

SCOPE:

This NOA is being issued under the applicable rules and regulations governing the use of construction materials. The documentation submitted has been reviewed and accepted by Miami-Dade County RER-Product Control Section to be used in Miami-Dade County and other areas, where allowed by the Authority Having Jurisdiction (AHJ).

This NOA shall not be valid after the expiration date stated below. The Miami-Dade County Product Control Section (In Miami-Dade County) and/or the AHJ (in areas other than Miami-Dade County) reserve the right to have this product or material tested for quality assurance purposes. If this product or material fails to perform in the accepted manner, the manufacturer will incur the expense of such testing and the AHJ may immediately revoke, modify, or suspend the use of such product or material within their jurisdiction. RER reserves the right to revoke this acceptance, if it is determined by Miami-Dade County Product Control Section that this product or material fails to meet the requirements of the applicable building code.

This product is approved as described herein and has been designed to comply with the Florida Building Code, including the High Velocity Hurricane Zone.

DESCRIPTION: 2” Gallery Steel Pan W8 DP50 Sectional Garage Door up to 9’-0” Wide w/ Optional Impact Resistant Lites

APPROVAL DOCUMENT: Drawing No. **104121**, titled “Gallery 2” Pan Single Car +50/-58 PSF, sheets 1 through 5 of 5, dated 07/08/2008, with revision 9 dated 10/21/2024, prepared by Clopay Corporation, signed and sealed by Mark Westerfield, P.E., bearing the Miami-Dade County Product Control revision stamp with the Notice of Acceptance number and expiration date by the Miami-Dade County Product Control Section.

MISSILE IMPACT RATING: Large and Small Missile Impact Resistant

LABELING: A permanent label with the manufacturer’s name or logo, manufacturing address, model number, the positive and negative design pressure rating, indicate impact rated if applicable, installation instruction drawing reference number, approval number (NOA), the applicable test standards, and the statement reading ‘Miami-Dade County Product Control Approved’ is to be located on the door’s side track, bottom angle, or inner surface of a panel.

RENEWAL of this NOA shall be considered after a renewal application has been filed and there has been no change in the applicable building code negatively affecting the performance of this product.

TERMINATION of this NOA will occur after the expiration date or if there has been a revision or change in the materials, use, and/or manufacture of the product or process. Misuse of this NOA as an endorsement of any product, for sales, advertising or any other purposes shall automatically terminate this NOA. Failure to comply with any section of this NOA shall be cause for termination and removal of NOA.

ADVERTISEMENT: The NOA number preceded by the words Miami-Dade County, Florida, and followed by the expiration date may be displayed in advertising literature. If any portion of the NOA is displayed, then it shall be done in its entirety.

INSPECTION: A copy of this entire NOA shall be provided to the user by the manufacturer or its distributors and shall be available for inspection at the job site at the request of the Building Official.

This NOA **renews and revises NOA # 23-0928.69** and consists of this page 1 and evidence pages E-1, E-2, E-3 and E-4, as well as approval document mentioned above.

The submitted documentation was reviewed by **Carlos M. Utrera, P.E.**



11/21/24

NOA-No 24-1029.01

Expiration Date: December 16, 2029

Approval Date: November 27, 2024

NOTICE OF ACCEPTANCE: EVIDENCE SUBMITTED

1. EVIDENCE SUBMITTED UNDER PREVIOUS NOA's

A. DRAWINGS

1. Drawing No. **104121**, titled "Gallery 2" Pan Single Car +50/-58 PSF, sheets 1 through 5 of 5, dated 07/08/2008, with revision **05** dated 2/2015, prepared by Clopay Building Products Company, signed and sealed by Scott Hamilton, P.E. **"Submitted under NOA # 15-0225.25"**
2. Drawing No. **104121**, titled "Gallery 2" Pan Single Car +50/-58 PSF, sheets 1 through 5 of 5, dated 07/08/2008, with revision **06** dated 7/2017, prepared by Clopay Building Products Company, signed and sealed by Scott Hamilton, P.E. on 09/24/2019. **"Submitted under NOA # 19-1001.09"**

B. TESTS

1. Test reports on
 - 1) Uniform Static Air Pressure Test, Loading per FBC TAS 202-94
 - 2) Large Missile Impact Test per FBC, TAS 201-94
 - 3) Cyclic Wind Pressure Loading per FBC, TAS 203-94
 - 4) Forced Entry Test, per FBC, TAS 202-94
 - 5) Tensile Test per ASTM E8

Along with marked-up drawings and installation diagram of 9'x 8', 24ga steel garage door Model GD4S with Lexan MR10 windows, prepared by American Test Lab, Inc., Test Report No. **ATLNC 0312.01-13**, dated 05/01/2013, signed and sealed by David W. Johnson, P.E. **"Submitted under NOA # 14-0610.03"**

2. Test reports on
 - 1) Uniform Static Air Pressure Test, Loading per FBC TAS 202-94
 - 2) Large Missile Impact Test per FBC, TAS 201-94
 - 3) Cyclic Wind Pressure Loading per FBC, TAS 203-94
 - 4) Forced Entry Test, per FBC, TAS 202-94
 - 5) Tensile Test per ASTM E8

Along with marked-up drawings and installation diagram of 16'2"x 8', 27ga steel garage door Model GD2LPW8 with MAK SL and/or MAK 15 windows, prepared by American Test Lab, Inc., Test Report No. **ATLNC 1105-01-13**, dated 01/14/2014, signed and sealed by David W. Johnson, P.E. **"Submitted under NOA # 14-0610.03"**

3. Test reports on
 - 1) Uniform Static Air Pressure Test, Loading per FBC TAS 202-94
 - 2) Large Missile Impact Test per FBC, TAS 201-94
 - 3) Cyclic Wind Pressure Loading per FBC, TAS 203-94
 - 4) Forced Entry Test, per FBC, TAS 202-94
 - 5) Tensile Test per ASTM E8

Along with marked-up drawings and installation diagram of a 9'x 8', 24ga, Model GD4S steel garage door, prepared by American Test Lab, Inc., Test Report No. **ATLNC 1202.01-08**, dated 12/17/2008, signed and sealed by David W. Johnson, P.E. **"Submitted under NOA # 09-0929.11"**



Carlos M. Utrera, P.E.
Product Control Examiner
NOA-No 24-1029.01
Expiration Date: December 16, 2029
Approval Date: November 27, 2024

Clopay Corporation

NOTICE OF ACCEPTANCE: EVIDENCE SUBMITTED

C. CALCULATIONS

1. Jamb anchoring calculations, prepared by Clopay Building Products Company, dated 09/24/2009, signed and sealed by Scott Hamilton, P.E. ***“Submitted under NOA # 09-0929.11”***
2. Jamb anchoring calculations prepared by Clopay Building Products Company, dated 06/06/2014, signed and sealed by Scott Hamilton, P. E. ***“Submitted under NOA # 14-0610.03”***

D. QUALITY ASSURANCE

1. Miami-Dade Department of Regulatory and Economic Resources (RER)

E. MATERIAL CERTIFICATIONS

1. NOA No. **15-0915.08** issued to SABIC Innovative Plastics, US LLC for their Lexan Polycarbonate Sheet Products, approved on 12/10/2015, expiring on 07/17/2018.
2. NOA No. **17-0410.01** issued to Bayer Material Science LLC (MA) for their Makrolon Polycarbonate Sheets, approved on 06/08/2017, expiring on 08/27/2022.

F. STATEMENTS

1. Statement letter of code conformance with the 2010 and the 5th edition (2014) FBC and Statement letter of no financial interest issued by Clopay Building Products Company, dated 02/18/2015, signed and sealed by Scott Hamilton, P.E. ***“Submitted under NOA # 15-0225.25”***
2. Statement letter of code conformance to **7th Edition (2020) FBC**, issued by Clopay Building Products Company, dated 10/04/2017, signed and sealed by Scott Hamilton, P.E. ***“Submitted under NOA #17-1016.22”***

2. EVIDENCE SUBMITTED UNDER NOA # 20-0922.43

A. DRAWINGS

1. Drawing No. **104121**, titled “Gallery 2” Pan Single Car +50/-58 PSF, sheets 1 through 5 of 5, dated 07/08/2008, with revision **07** dated 09/09/2020, prepared by Clopay Building Products Company, signed and sealed by Scott Hamilton, P.E.

B. TESTS

1. None.

C. CALCULATIONS

1. None.



Carlos M. Utrera, P.E.
Product Control Examiner
NOA-No 24-1029.01
Expiration Date: December 16, 2029
Approval Date: November 27, 2024

Clopay Corporation

NOTICE OF ACCEPTANCE: EVIDENCE SUBMITTED

2. EVIDENCE SUBMITTED UNDER NOA # 20-0922.43 (Continued)

D. QUALITY ASSURANCE

1. Miami-Dade Department of Regulatory and Economic Resources (RER)

E. MATERIAL CERTIFICATIONS

1. None.

F. STATEMENTS

1. Statement letter of code conformance to **7th Edition (2020) FBC**, issued by Clopay Building Products Company, dated 10/04/2017, signed and sealed by Scott Hamilton, P.E.

3. EVIDENCE SUBMITTED UNDER NOA # 23-0928.69

A. DRAWINGS

1. Drawing No. **104121**, titled "Gallery 2" Pan Single Car +50/-58 PSF, sheets 1 through 5 of 5, dated 07/08/2008, with revision **08** dated 09/06/2023, prepared by Clopay Building Products Company, signed and sealed by Scott Hamilton, P.E.

B. TESTS

1. None.

C. CALCULATIONS

1. None.

D. QUALITY ASSURANCE

1. Miami-Dade Department of Regulatory and Economic Resources (RER)

E. MATERIAL CERTIFICATIONS

1. None.

F. STATEMENTS

1. Statement letter of code conformance to **8th Edition (2023) FBC**, issued by Clopay Building Products Company, dated 09/15/2023, signed and sealed by Scott Hamilton, P.E.



Carlos M. Utrera, P.E.
Product Control Examiner
NOA-No 24-1029.01
Expiration Date: December 16, 2029
Approval Date: November 27, 2024

NOTICE OF ACCEPTANCE: EVIDENCE SUBMITTED

4. NEW EVIDENCE SUBMITTED

A. DRAWINGS

1. Drawing No. **104121**, titled "Gallery 2" Pan Single Car +50/-58 PSF, sheets 1 through 5 of 5, dated 07/08/2008, with revision 9 dated 10/21/2024, prepared by Clopay Corporation, signed and sealed by Mark Westerfield, P.E.

B. TESTS

1. Test reports on 1) Uniform Static Air Pressure Test, Loading per FBC TAS 202-94
2) Large Missile Impact Test per FBC, TAS 201-94
3) Cyclic Wind Pressure Loading per FBC, TAS 203-94
4) Forced Entry Test, per FBC, TAS 202-94
5) Tensile Test per ASTM E8
along with marked-up drawings and installation diagram of 9'x 8', 24ga steel garage door Model GD4S with Polycarbonate windows, prepared by American Test Lab, Inc., Test Report No. **ATLNC 0423.02-24**, dated 10/08/2024, signed and sealed by David W. Johnson, P.E.

C. CALCULATIONS

1. Jamb anchoring calculations, prepared by Clopay Corporation, dated 10/21/2024, signed and sealed by Mark Westerfield, P.E.

D. QUALITY ASSURANCE

1. Miami-Dade Department of Regulatory and Economic Resources (RER).

E. MATERIAL CERTIFICATIONS

1. None.

F. STATEMENTS

1. Statement letter of code conformance to the 8th edition (2023) of the FBC, issued by Clopay Corporation, dated 10/21/2024, signed and sealed by Mark Westerfield, P.E.
2. Statement letter of no financial interest, issued by Clopay Corporation, dated 10/21/2024, signed and sealed by Mark Westerfield, P.E.



Carlos M. Utrera, P.E.
Product Control Examiner
NOA-No 24-1029.01
Expiration Date: December 16, 2029
Approval Date: November 27, 2024

MODELS	SHORT
CLOPAY GALLERY	GD4S, GR4S
HOLMES ARTISTRY	AR4S
IDEAL EXPRESSIONS	ED4S

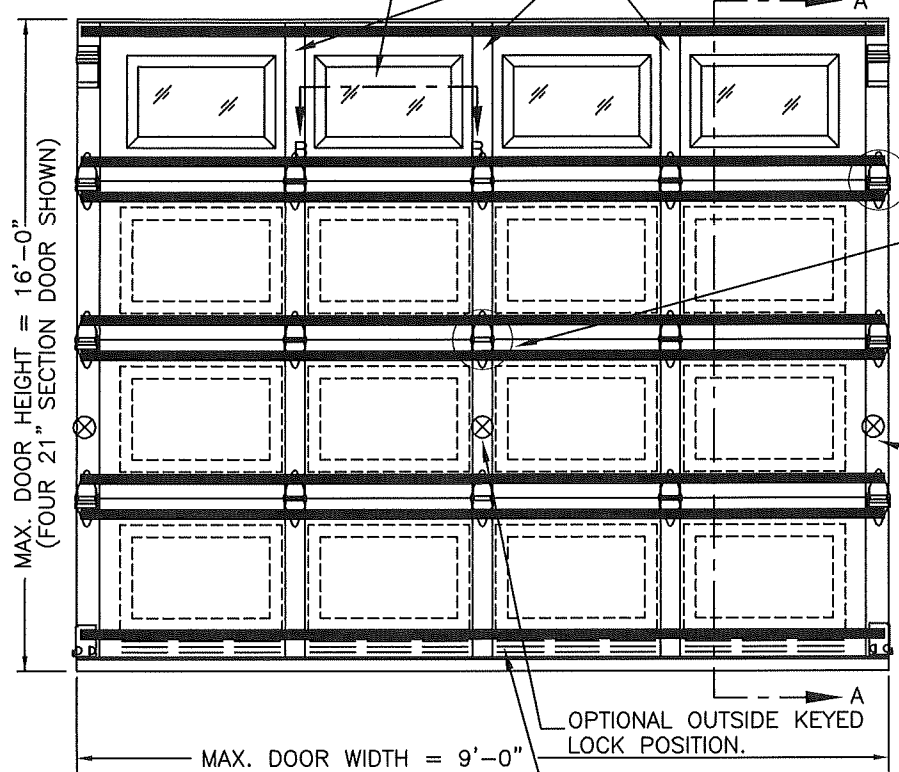
SEE SHEET 5 FOR "GRAND HARBOR" MODELS.

SHEET:
1 OF 5

REVISIONS					
REV. NO.	ZONE:	DATE:	ECN NO.	APPVD:	DESCRIPTION
07	-	9/9/20	-	SH	UPDATED TITLE BLOCK AND CODE COMPLIANCE STATEMENT TO 7TH
08	-	9/6/23	-	JDW	UPDATED CODE COMPLIANCE STATEMENT TO ADD 8TH EDITION FBC
09	-	10/21/24	-	MWW	REVISED JAMB CALCULATIONS AS PART OF 10-YEAR RETEST

OPTIONAL IMPACT RESISTANT GLAZING. MAXIMUM GLAZING SIZE (DLO) IS 16-1/2"x13". SEE SECTION B-B ON SHEET 2 FOR DETAILS. GLAZING MAY BE INSTALLED IN TOP SECTION (SHOWN) OR INTERMEDIATE SECTION (NOT SHOWN).

INTERMEDIATE STILE ARE ATTACHED WITH TOG-L-LOC (TOP & BOTTOM) AND URETHANE ADHESIVE (ALONG CENTER). (1) BETWEEN EACH EMBOSS.



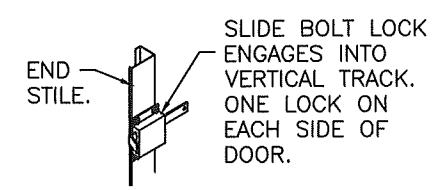
VIEW "B"

VIEW "C". (1) EACH STILE LOCATION.

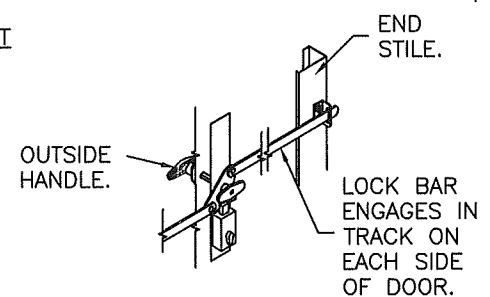
TWO POINT LOCKING INTO TRACK.

LOCATION OF OPTIONAL VENTS. TOTAL VENT OPENINGS: 60 IN² PER VEHICLE.

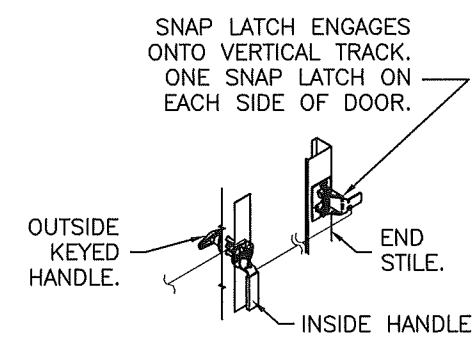
DOOR HEIGHT	# OF SECTIONS
UP TO 6'0"	3
6'3" TO 8'0"	4
8'3" TO 10'0"	5
10'3" TO 12'0"	6
12'3" TO 14'0"	7
14'3" TO 16'0"	8
MAX SECTION HEIGHT: 24'	



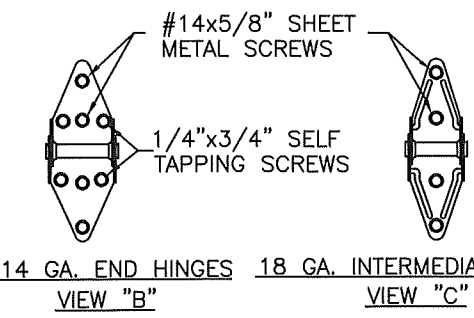
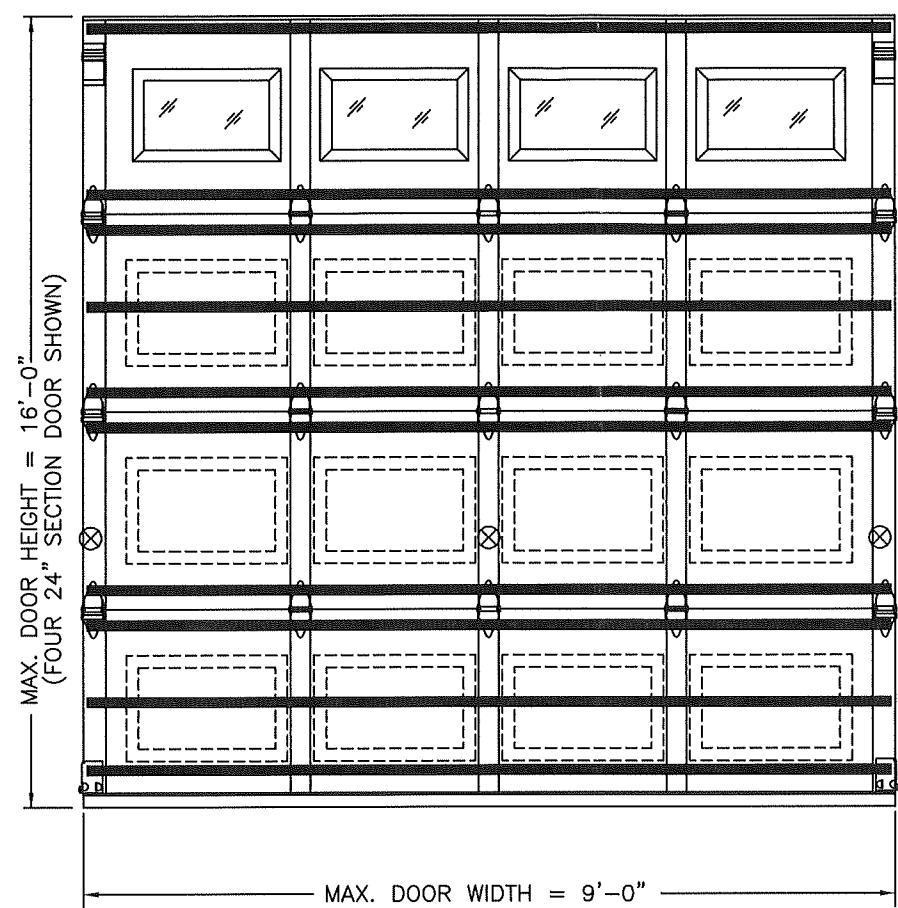
INSIDE SLIDE BOLT LOCK OPTION.



OUTSIDE KEYED LOCK WITH LOCK BAR LOCKING.



OUTSIDE KEYED LOCK WITH SNAP LATCH LOCK OPTION.



14 GA. END HINGES 18 GA. INTERMEDIATE HINGE
VIEW "B" VIEW "C"

DESIGN LOADS: +50.0 P.S.F. & -58.0 P.S.F.

Unless Stated Otherwise TOLERANCES are

.0	= ±.031
.00	= ±.015
.000	= ±.005
.0000	= ±.001
Degrees	= ±1/2'

Unless Stated Otherwise DIMENSIONS ARE IN INCHES.

Clopay CORPORATION
8585 Duke Boulevard
Mason, OH 45040 USA
Tel. No. 513-770-4800
Fax No. 513-770-4853

DESCRIPTION: GALLERY 2" PAN SINGLE CAR +50/-58 PSF

DRAWN BY: BFA DATE: 7/8/08
CHECKED BY: -- DATE: --

DWG. NO.: 104121

MANUFACTURING PRODUCT CODE
PAN-2F443

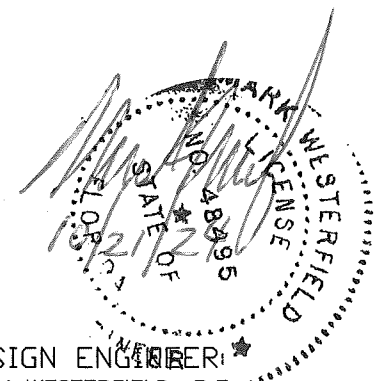
PART NO.: N/A

WINDLOAD RATING
W8 DP50

SCALE: NTS
SHEET 1 OF 5
VER: M-D

THIS PRODUCT CONFORMS TO THE REQUIREMENTS OF 8TH EDITION OF THE FLORIDA BUILDING CODE

PRODUCT REVISED
as complying with the Florida Building Code
NOA-No. 24-1029.01
Expiration Date 12/16/2029
By *[Signature]*
Miami-Dade Product Control



DESIGN ENGINEER:
MARK WESTERFIELD, P.E.
FLORIDA LICENSE No. 48495

4

3

2

1

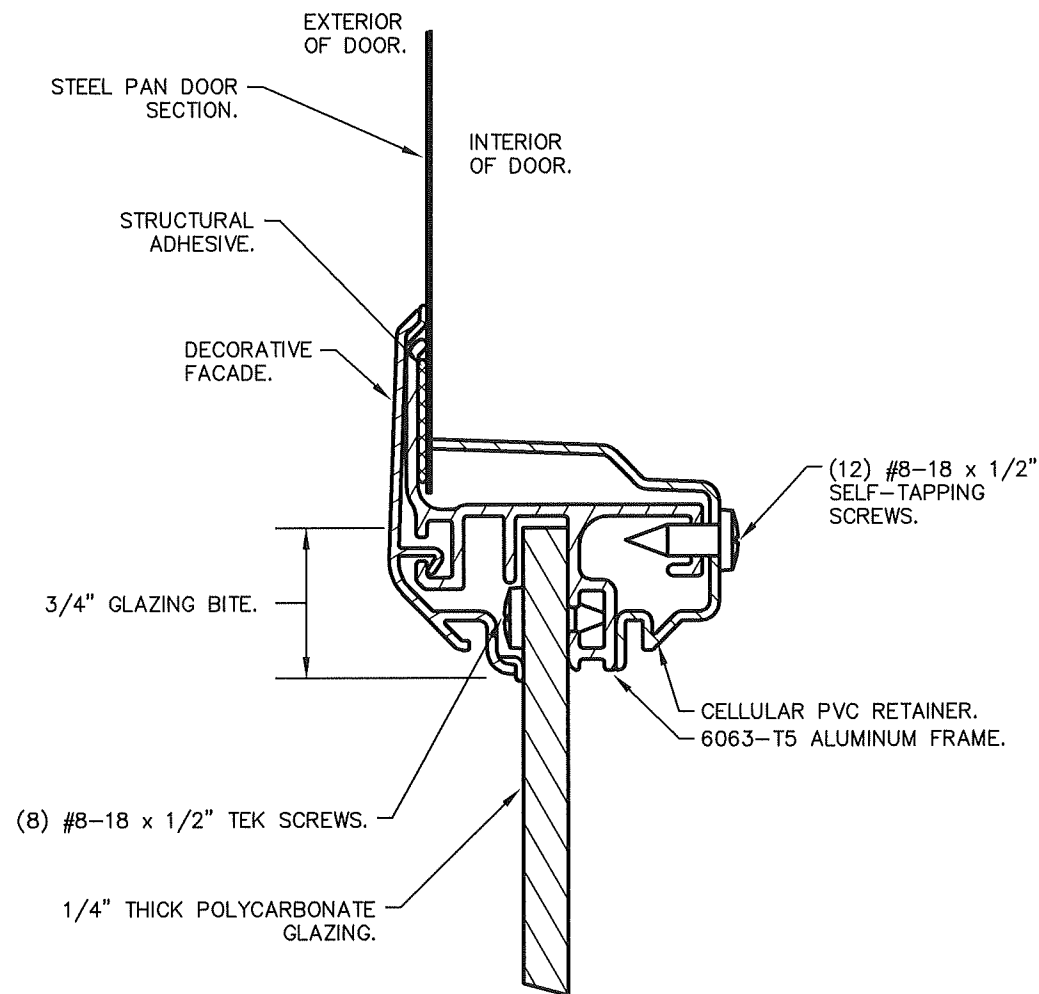
MODELS	SHORT
CLOPAY GALLERY	GD4S, GR4S
HOLMES ARTISTRY	AR4S
IDEAL EXPRESSIONS	ED4S
SEE SHEET 5 FOR "GRAND HARBOR" MODELS.	

SHEET
2 OF 5

REVISIONS					
REV. NO.	ZONE:	DATE:	ECN NO.	APPVD:	DESCRIPTION
08	-	-	-	-	SEE REVISION HISTORY ON SHEET ONE.

IMPACT-RESISTANT CONSTRUCTION:
 SOLID DOORS (NO GLAZING) OR DOORS WITH OPTIONAL IMPACT-RESISTANT GLAZING ARE IMPACT-RESISTANT. OPTIONAL IMPACT RESISTANT ASSEMBLY CONSISTS OF ALUMINUM FRONT FRAME AND SABIC IP LEXAN 9034 (VERSIONS ALSO APPROVED: MR10, 9030, 90318, 90316, 90317, 90311, 90314, 90355) OR BAYER MAKROLON GP (VERSIONS ALSO APPROVED: SL, AR, 15), APPROVED CC1 PLASTICS IN ACCORDANCE WITH IBC/FBC 2606 AND APPROVED C1 PLASTICS IN ACCORDANCE WITH FBC 2612. THE ENTIRE DOOR ASSEMBLY INSTALLED IN COMPLIANCE WITH THIS SECTION MEETS THE WIND LOAD REQUIREMENTS OF THE FLORIDA BUILDING CODE AND INTERNATIONAL BUILDING CODE AND IS LARGE- AND SMALL-MISSILE IMPACT RESISTANT.

SECTION B-B (IMPACT-RESISTANT GLAZING OPTION)



DESIGN LOADS: +50.0 P.S.F. & -58.0 P.S.F.

Unless Stated Otherwise
 TOLERANCES are
 .0 = ±.031
 .00 = ±.015
 .000 = ±.005
 .0000 = ±.001
 Degrees = ±1/2'
 Unless Stated Otherwise
 DIMENSIONS ARE IN INCHES.

Clopay CORPORATION
 8585 Duke Boulevard
 Mason, OH 45040 USA
 Tel. No. 513-770-4800
 Fax No. 513-770-4853

MANUFACTURING PRODUCT CODE
 PAN-2F443

PART NO.: N/A

WINDLOAD RATING
 W8 DP50

DESCRIPTION: GALLERY 2" PAN SINGLE CAR +50/-58 PSF

DRAWN BY: BFA	DATE: 7/8/08	SCALE: NTS	DWG. SIZE B
CHECKED BY: --	DATE: --	SHEET 2 OF 5	

DWG. NO.: 104121

VER: M-D

PRODUCT REVISED
 as complying with the Florida
 Building Code

NOA-No. 24-1029.01

Expiration Date 12/16/2029

By *[Signature]*
 Miami-Dade Product Control

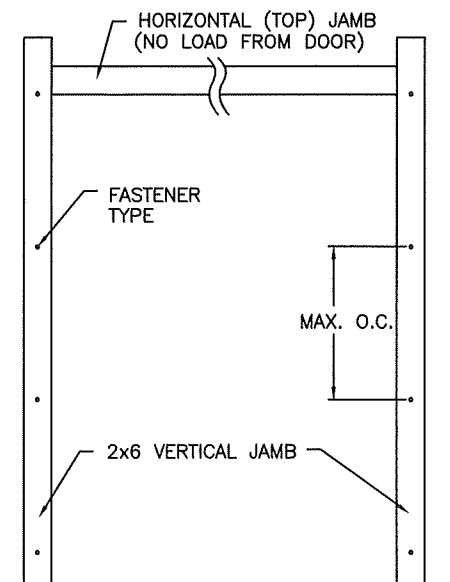
[Signature]
 DESIGN ENGINEER
 MARK WESTERFIELD, P.E.
 FLORIDA LICENSE No. 48495

MODELS	SHORT
CLOPAY GALLERY	GD4S, GR4S
HOLMES ARTISTRY	AR4S
IDEAL EXPRESSIONS	ED4S
SEE SHEET 5 FOR "GRAND HARBOR" MODELS.	

SHEET: 3 OF 5

REVISIONS					DESCRIPTION
REV. NO.	ZONE:	DATE:	ECN NO.	APPVD:	
08	-	-	-	-	SEE REVISION HISTORY ON SHEET ONE.

D



JAMB TO SUPPORTING STRUCTURE ATTACHMENT

- NOTES:
1. ALL THE LOAD FROM THE DOOR IS TRANSFERRED TO THE TRACK AND THEN FROM THE TRACK TO THE 2x6 VERTICAL SYP (GRADE #2 OR BETTER) JAMBS. NO LOAD FROM THE DOOR IS TRANSFERRED TO THE HORIZONTAL (TOP) JAMB.
 2. EACH VERTICAL JAMB SEES A MAXIMUM DESIGN LOAD OF +225 LB & -261 LB. PER LINEAR FOOT OF JAMB.
 3. ALL JAMB FASTENERS MAY BE (BUT ARE NOT REQUIRED TO BE) COUNTERSUNK TO PROVIDE A FLUSH MOUNTING SURFACE.
 4. A 1/3 STRESS INCREASE FOR WIND LOAD WAS NOT USED IN THE CALCULATION OF ALLOWABLE LOADS FOR ANCHORS AND FASTENERS FOR STEEL, CONCRETE AND MASONRY.

PREPARATION OF JAMBS BY OTHERS

NOTE: THE DESIGN OF THE SUPPORTING STRUCTURAL ELEMENTS SHALL BE THE RESPONSIBILITY OF THE PROFESSIONAL OF RECORD FOR THE BUILDING OR STRUCTURE AND IN ACCORDANCE WITH CURRENT BUILDING CODES FOR THE LOADS LISTED ON THIS DRAWING.

C

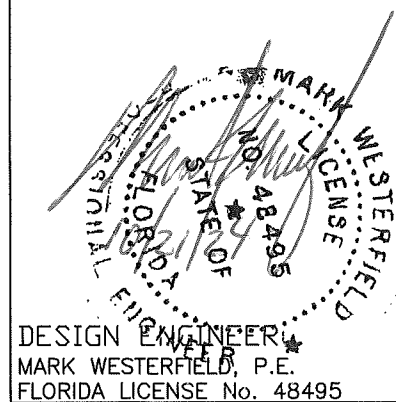
2x6 JAMB TO SUPPORTING STRUCTURE ATTACHMENT
(NOT TO BE USED FOR ATTACHMENT OF TRACK ANGLE TO 2x6 VERTICAL JAMBS OR SUPPORTING STRUCTURE)

BUILDING TYPE	FASTENER TYPE	MAXIMUM ON-CENTER DISTANCE BETWEEN FASTENERS*	MIN. DIA. STEEL WASHERS REQUIRED
HOLLOW CMU BLOCK WALL	1/4" x 1-1/4" MIN. EMBED CARBON STEEL CONCRETE SCREW	9-1/2"	1" O.D.
GROUT-FILLED CMU BLOCK	1/4" x 1-3/4" MIN. EMBED CARBON STEEL CONCRETE SCREW	19-1/2"	1" O.D.
2000 PSI MIN. CONCRETE	1/4" x 1-3/4" MIN. EMBED TAPCON CONCRETE ANCHOR	23-1/2"	1" O.D.
4000 PSI MIN. CONCRETE	1/4" x 1-3/4" MIN. EMBED TAPCON CONCRETE ANCHOR	24"	1" O.D.
2500 PSI MIN. CONCRETE	3/8" X 3" NOMINAL EMBED HILTI KWIK BOLT TZ2 CONCRETE ANCHOR	24"	1-1/2" O.D.
WOOD FRAME (SYP 0.55 SG)	1/2" X 1-1/2" EMBED LAG SCREW (ASTM A307, GRADE A)	24"	1-3/8" O.D.

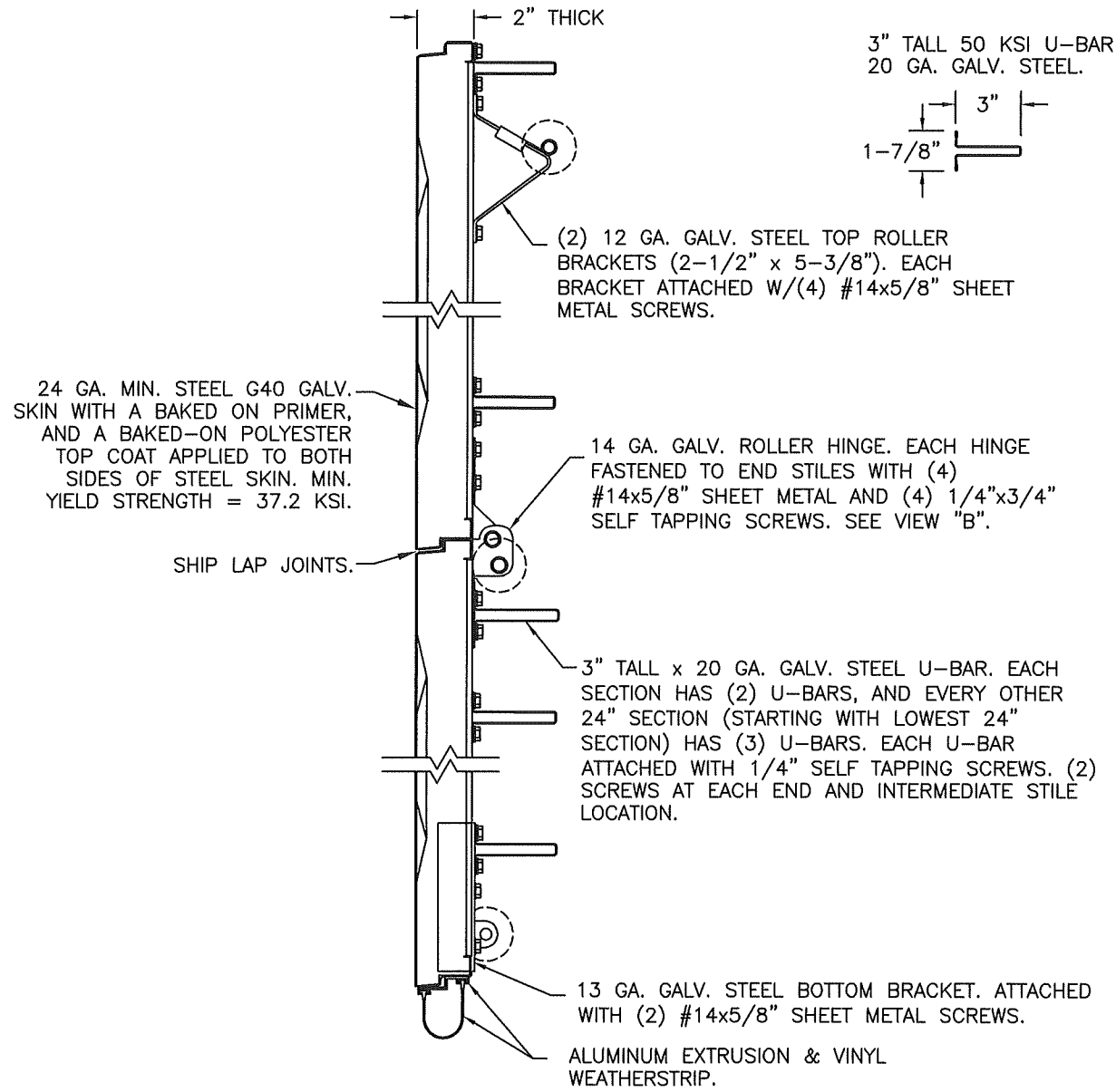
* FIRST (BOTTOM) ANCHOR STARTING AT NO MORE THAN HALF OF THE MAXIMUM ON-CENTER DISTANCE. HIGHEST ANCHOR INSTALLED AT LEAST AS HIGH AS THE DOOR OPENING.
CLOPAY DOES NOT SUPPLY JAMB ATTACHMENT FASTENERS.
MINIMUM DISTANCE BETWEEN CENTER OF ANCHOR AND EDGE OF CONCRETE BLOCK: 2-1/2", EXCLUDING STUCCO THICKNESS.

B

A



PRODUCT REVISED
as complying with the Florida Building Code
NOA-No. 24-1029.01
Expiration Date 12/16/2029
By *[Signature]*
Miami-Dade Product Control



SECTION A-A (SIDE VIEW)

DESIGN LOADS: +50.0 P.S.F. & -58.0 P.S.F.

Unless Stated Otherwise TOLERANCES are .0 = ±.031 .00 = ±.015 .000 = ±.005 .0000 = ±.001 Degrees = ±1/2' Unless Stated Otherwise DIMENSIONS ARE IN INCHES.	Clipay CORPORATION 8585 Duke Boulevard Mason, OH 45040 USA Tel. No. 513-770-4800 Fax No. 513-770-4853	MANUFACTURING PRODUCT CODE PAN-2F443
		PART NO.: N/A
DESCRIPTION: GALLERY 2" PAN SINGLE CAR +50/-58 PSF		WINDLOAD RATING W8 DP50
DRAWN BY: BFA	DATE: 7/8/08	SCALE: NTS
CHECKED BY: --	DATE: --	SHEET 3 OF 5
DWG. NO.: 104121	VER: M-D	DWG. SIZE B

4

3

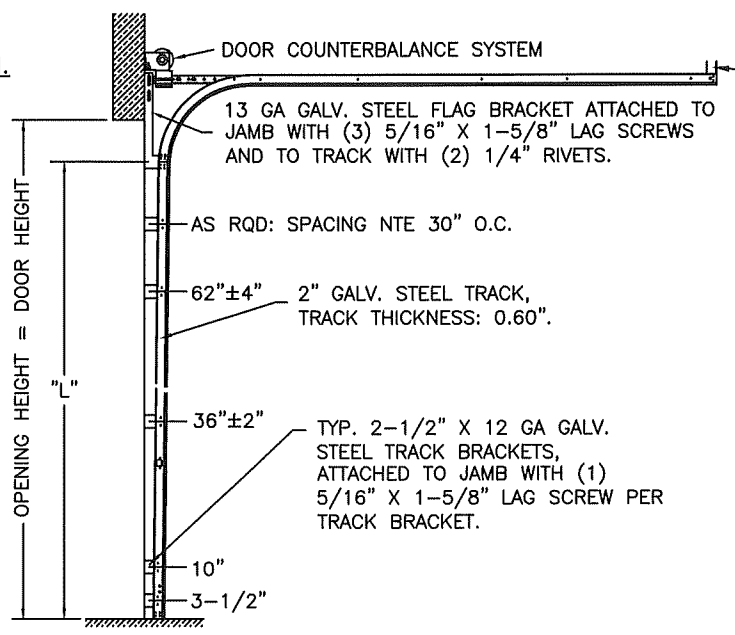
2

1

MODELS	SHORT
CLOPAY GALLERY	GD4S, GR4S
HOLMES ARTISTRY	AR4S
IDEAL EXPRESSIONS	ED4S
SEE SHEET 5 FOR "GRAND HARBOR" MODELS.	

SHEET:	REVISIONS					
	REV. NO.	ZONE:	DATE:	ECN NO.	APPVD:	DESCRIPTION
4 OF 5	08	-	-	-	-	SEE REVISION HISTORY ON SHEET ONE.

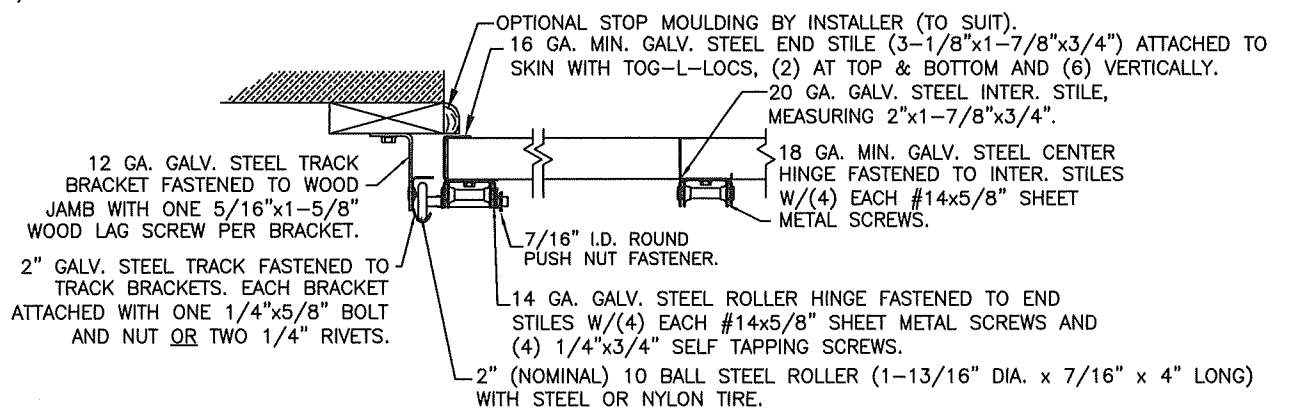
2" TRACK CONFIGURATION.



DOOR HEIGHT	"L"
6'-6"	70"
7'-0"	76"
7'-6"	82"
8'-0"	88"
8'-6"	94"
9'-0"	100"
9'-6"	106"
10'-0"	112"
10'-6"	118"
11'-0"	124"
11'-6"	130"
12'-0"	136"
12'-6"	142"
13'-0"	148"
13'-6"	154"
14'-0"	160"
14'-6"	166"
15'-0"	172"
15'-6"	178"
16'-0"	184"

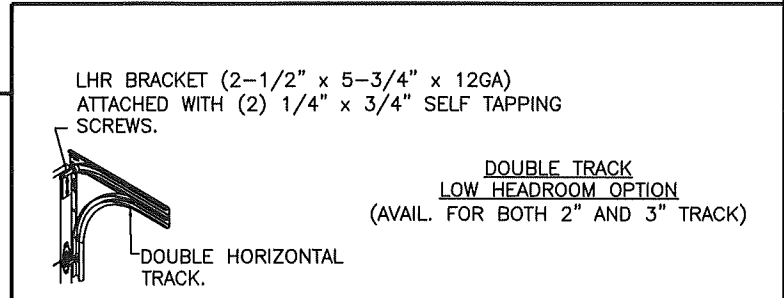
HORIZONTAL TRACK SUPPORT BY DOOR INSTALLER (TO SUIT).

JAMB CONFIGURATION.



SECTION C-C

PREPARATION OF JAMBS BY OTHERS.



NOTE: TRACK CONFIGURATION ABOVE THE DOOR OPENING DOES NOT AFFECT THE WIND LOAD RATING OF THIS DOOR.

3" TRACK IS ALSO AVAILABLE.

DESIGN ENGINEER
MARK WESTERFIELD
FLORIDA LICENSE No. 48498

PRODUCT REVISED
as complying with the Florida Building Code
NOA-No. 24-1029.01
Expiration Date 12/16/2029
By *[Signature]*
Miami-Dade Product Control

DESIGN LOADS: +50.0 P.S.F. & -58.0 P.S.F.

Unless Stated Otherwise TOLERANCES are

.0	= ±.031
.00	= ±.015
.000	= ±.005
.0000	= ±.001
Degrees	= ±1/2'

Unless Stated Otherwise DIMENSIONS ARE IN INCHES.

Clopay CORPORATION
8585 Duke Boulevard
Mason, OH 45040 USA
Tel. No. 513-770-4800
Fax No. 513-770-4853

MANUFACTURING PRODUCT CODE
PAN-2F443

PART NO.: N/A

WINDLOAD RATING
W8 DP50

DESCRIPTION: GALLERY 2" PAN SINGLE CAR +50/-58 PSF	SCALE: NTS	DWG. SIZE B
DRAWN BY: BFA	DATE: 7/8/08	SHEET 4 OF 5
CHECKED BY: --	DATE: --	VER: M-D
DWG. NO.: 104121		

CLOPAY 'GRAND HARBOR' SERIES: GHnn, GHRnn, GHRVnn

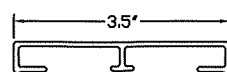
HOLMES 'EVANSTON' SERIES: SPnn, SPVnn

IDEAL 'STONE MANOR' SERIES: SMnn

NOTE: "nn" REPRESENTS THE ARRANGEMENT OF THE DECORATIVE OVERLAYS. THE FIRST DIGIT WILL HAVE A VALUE FROM 1 TO 2 AND THE SECOND DIGIT WILL HAVE A VALUE FROM 1 TO 3.

SHEET: 5 OF 5

REVISIONS					
REV. NO.	ZONE	DATE	ECN NO.	APPVD:	DESCRIPTION
08	-	-	-	-	SEE REVISION HISTORY ON SHEET ONE.

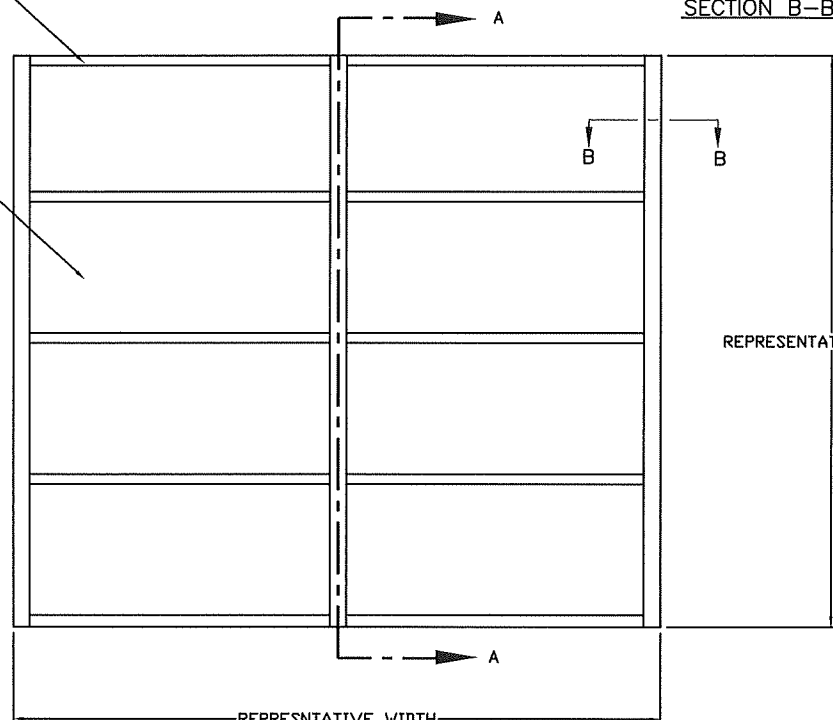


DECORATIVE OVERLAYS MAY BE HORIZONTAL, VERTICAL, AND DIAGONAL (DIAGONAL NOT SHOWN).

SECTION B-B (OVERLAY DETAIL)

DECORATIVE OVERLAYS OF PULTRUDED POLYESTER RESIN FIBERGLASS ADHERED TO OUTSIDE SKIN WITH PERMANENT ADHESIVE.

WOOD-GRAIN EMBOSSED STEEL PAN DOOR SKIN.



OUTSIDE ELEVATION VIEW

SECTION A-A (SIDE VIEW)

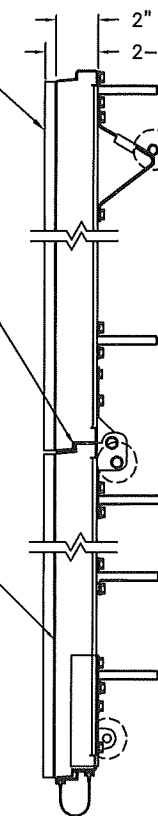
DECORATIVE OVERLAYS OF PULTRUDED POLYESTER RESIN FIBERGLASS ADHERED TO OUTSIDE SKIN WITH PERMANENT ADHESIVE.

SHIP LAP JOINTS.

24 GA. MIN. STEEL GALVANIZED SKIN WITH A BAKED-ON PRIMER, AND A BAKED-ON POLYESTER TOP COAT APPLIED TO BOTH SIDES OF STEEL SKIN.

2" THICK BASE DOOR.

2-1/2" THICK WITH OVERLAYS.



SECTION A-A (SIDE VIEW)

PRODUCT REVISED
as complying with the Florida Building Code
NOA-No. 24-1029.01
Expiration Date 12/16/2029
By *[Signature]*
Miami-Dade Product Control

"GRAND HARBOR" TYPE OVERLAY DOORS

NOTES:

- "GRAND HARBOR" TYPE DOORS USE THE SAME REINFORCEMENTS AND BASE SECTION CONSTRUCTION AND TRACK CONFIGURATION DESCRIBED ON SHEETS 1-4 OF THIS DRAWING.
- "GRAND HARBOR" TYPE DOORS ARE IMPACT RESISTANT AS SOLID DOORS ONLY.

PROFESSIONAL ENGINEER
MARK WESTERFIELD, P.E.
FLORIDA LICENSE NO. 48495

DESIGN LOADS: +50.0 P.S.F. & -58.0 P.S.F.

Unless Stated Otherwise
TOLERANCES are
.0 = ±.031
.00 = ±.015
.000 = ±.005
.0000 = ±.001
Degrees = ±1/2'
Unless Stated Otherwise
DIMENSIONS ARE IN INCHES.

Clopay CORPORATION
8585 Duke Boulevard
Mason, OH 45040 USA
Tel. No. 513-770-4800
Fax No. 513-770-4853

MANUFACTURING PRODUCT CODE SP0-2F449	
PART NO.: N/A	
WINDLOAD RATING W8 DP50	
DESCRIPTION: GALLERY 2" PAN SINGLE CAR +50/-58 PSF	
DRAWN BY: BFA	DATE: 7/8/08
CHECKED BY: --	DATE: --
DWG. NO.: 104121	VER: M-D

SCALE: NTS
SHEET 5 OF 5
DWG. SIZE B