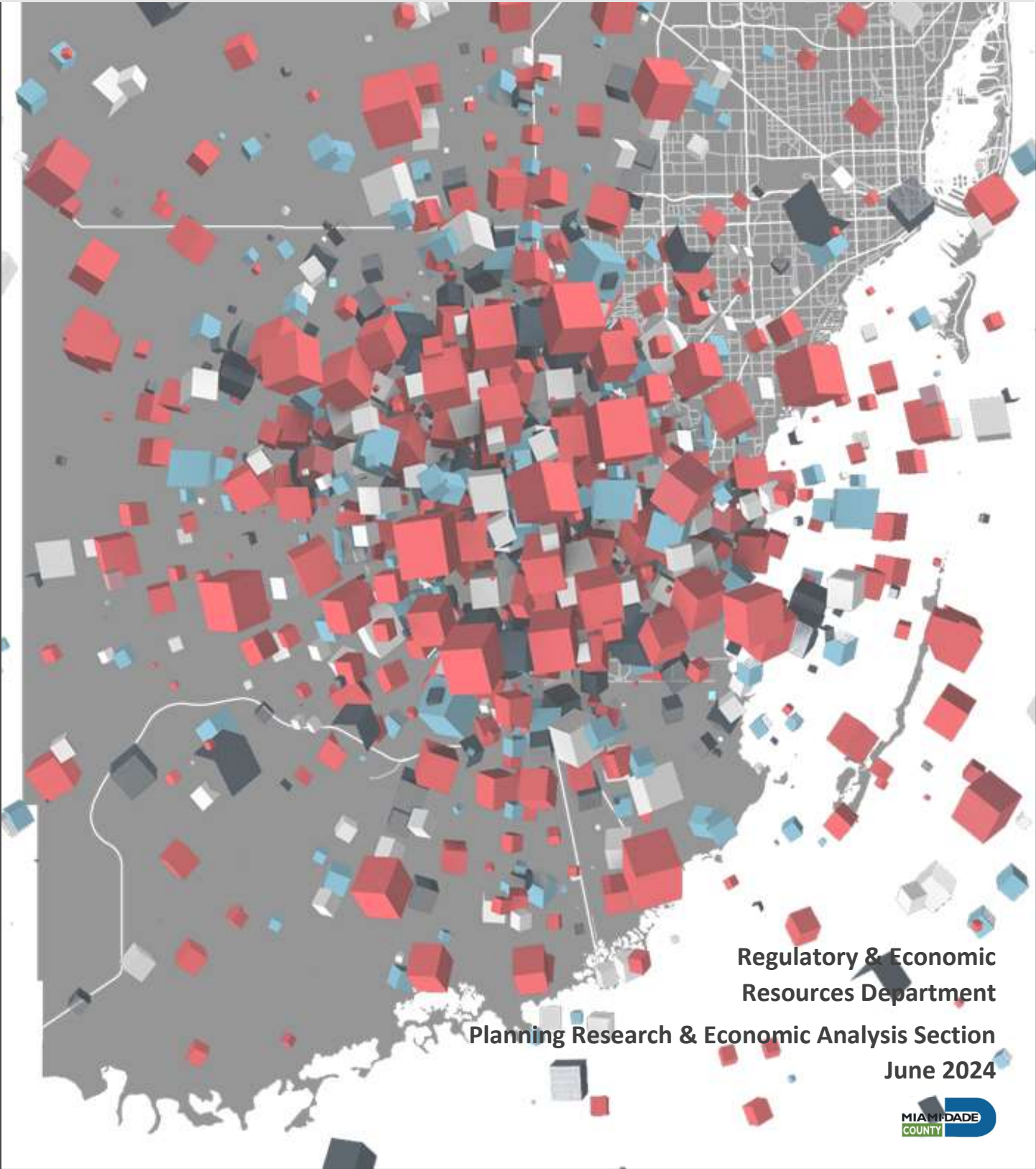


# Miami-Dade County Profiles American Community Survey



Regulatory & Economic  
Resources Department

Planning Research & Economic Analysis Section

June 2024



## Table of Contents

MIAMI-DADE COUNTY ECONOMIC CHARACTERISTICS - HIGHLIGHTS.....	1
MIAMI-DADE COUNTY SOCIAL CHARACTERISTICS - HIGHLIGHTS .....	12
MIAMI-DADE COUNTY HOUSING CHARACTERISTICS - HIGHLIGHTS.....	16
MIAMI-DADE DEMOGRAPHIC CHARACTERISTICS - HIGHLIGHTS .....	20
1-YEAR ESTIMATES SUMMARY DATA TABLES .....	23

Note on Data Sources: The following report draws on the American Community Survey (ACS) 1-year Estimates. The ACS provides a wide range of important statistics about people and housing for every community in the nation. This survey is the only source of local estimates for most of the 40 topics it covers for communities across the nation. For example, it produces statistics for language, education, commuting, employment, mortgage status and rent, as well as income, poverty and health insurance. The one-year statistics are available for all 50 states, the District of Columbia, Puerto Rico, every congressional district, and all counties and places with populations of 65,000 or more. The ACS replaces the Decennial Census long form which, beginning in 2010, is no longer collected. It is produced as a one-year survey for geographies with populations greater than 65,000 and as a rolling five-year survey for all geographies in the U.S. down to the census block group level.

Specifically, the following report draws on a series of four summary tables that provide selected characteristics at the county-wide level for economic, social, housing, and demographic variables. Use of these tables provide the dataset to produce a quick snapshot of Miami-Dade County conditions as well as a comparison with all other counties with a population of at least 65,000.

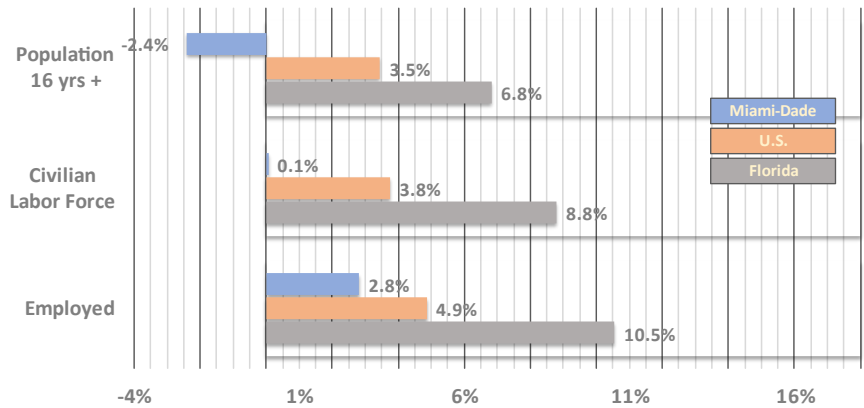
Note the Census Bureau has decided not to release the 2020 ACS 1-year estimates because the survey gathered approximately two-thirds of its normal response volume due to the pandemic-related challenges (the lowest response rate in recorded history).

# MIAMI-DADE COUNTY ECONOMIC CHARACTERISTICS HIGHLIGHTS

Chart E1. Between 2017 and 2022 the civilian labor force shows a sluggish 0.1% growth in Miami-Dade County, slower than the nation and much slower than Florida. County employment grew 2.8%, while the nation's labor force grew 4.9% and Florida's, 10.5%, which was 3.8 times faster than Miami-Dade County.

Miami-Dade County's 16 years+ population decreased by 2.4% between 2017 and 2022.

Chart E1. Percent Change of Labor Force, 2017-2022



Data Source: US Census Bureau ACS1-year Estimates, 2017 & 2022.

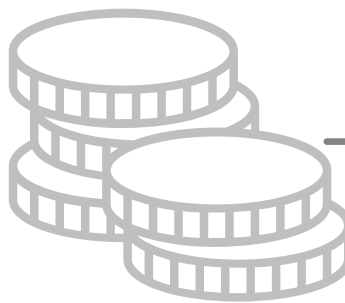
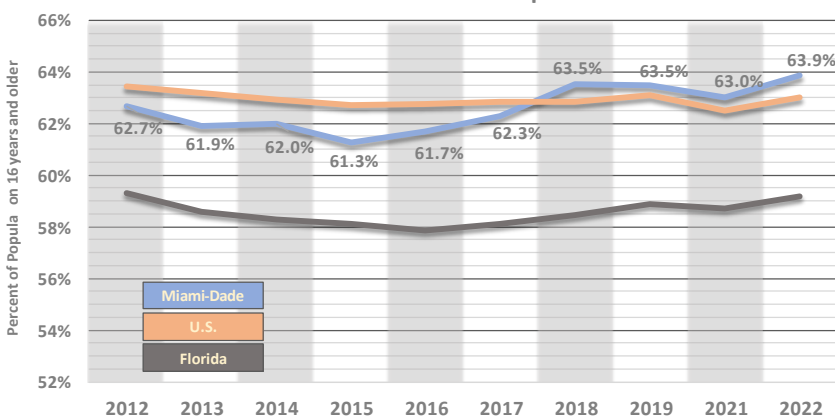


Chart E2. Labor Force Participation Rate



Data Source: US Census Bureau ACS1-year Estimates, 2012-2022.

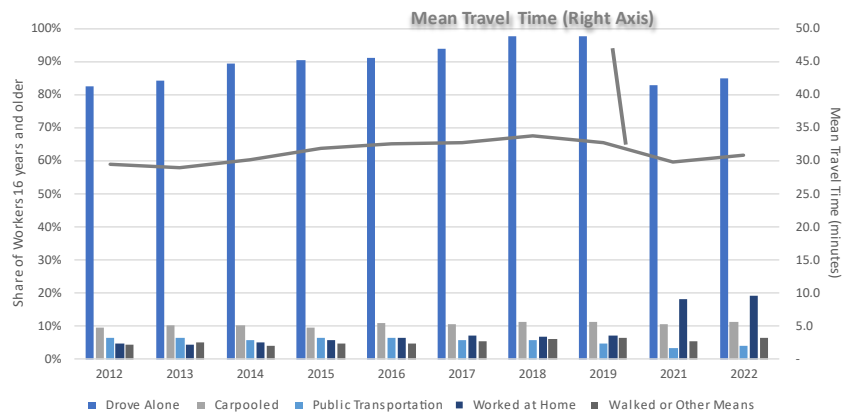
Chart E2. The Miami-Dade County labor force participation rate has consistently trailed the U.S. in recent years. However, a steady increase since 2015 has pushed the county past the national rate, 63.9% versus 63.0% in the 2022 data. The Florida statewide rate remains much lower at 59.2% in 2022 reflecting an older population statewide. The rapid growth in the county's participation rate may help explain record low unemployment as workers not previously counted as unemployed re-enter the labor force to take jobs.



# ECONOMIC CHARACTERISTICS – HIGHLIGHTS (Continued)

Chart E3. Driving alone remained the top choice for Miami-Dade County commuters even as average commuting time decreased. Over the last ten years, the share driving alone peaked to 93.8% of workers in 2019 then dropped to 85.1% in 2022. Over the last decade, the average travel time to work grew from 29.5 minutes to 33.7 minutes in 2018. It then dropped to 30.8 minutes in 2022, likely a result of the pandemic.

Chart E3. Share of Workers 16 and over by Commuting Choice



Data Source: US Census Bureau ACS 1-year Estimates, 2012 - 2022.

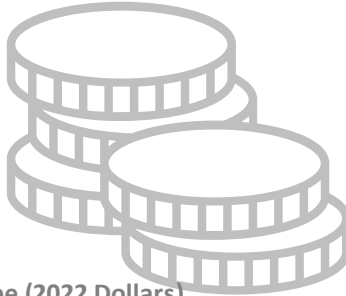
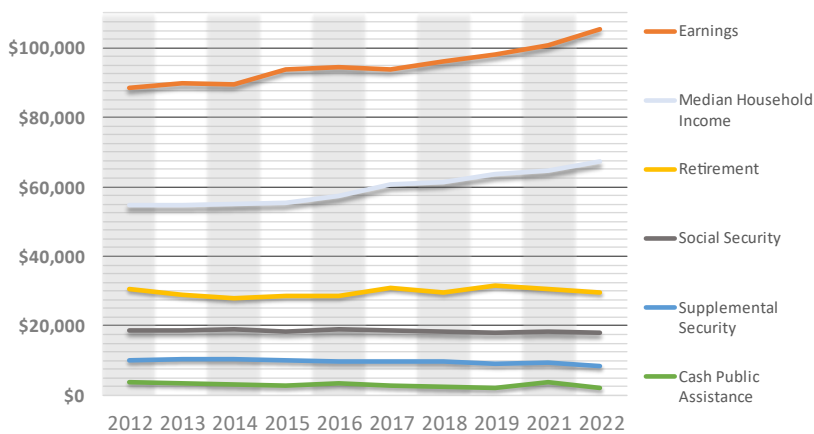


Chart E4. Household Income by Type (2022 Dollars)



Data Source: US Census Bureau ACS 1-year Estimates, 2012 - 2022

Chart E4. Led by earnings from work, up by 12.3% over the last 5 years, incomes for most households were up in 2022. It is important to note that these are average earnings or incomes and can be greatly impacted by a small number of very high incomes. The median household income, considered the "typical" income, is also shown here and was up 11.0%.

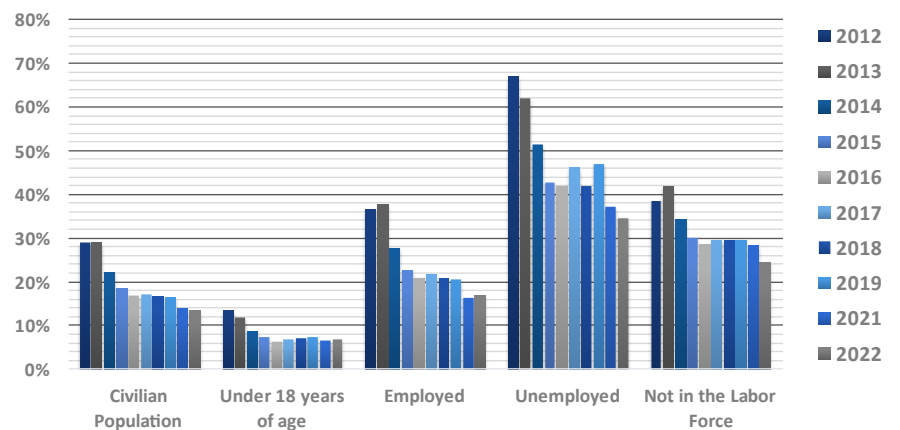




# ECONOMIC CHARACTERISTICS – HIGHLIGHTS (Continued)

Chart E5. Following the enactment of the Affordable Care Act in 2010 and full implementation in 2014, the number of Miami-Dade County residents lacking health insurance decreased for every group reported. This across-the-board improvement ended in 2016 and began again in 2021 for most groups. The share of children under 18 years of age without insurance went up from 6.4% in 2016 to 7.3% in 2019 but dropped down to 6.8% in 2022. The shares of uninsured among the employed, the unemployed and those not in the labor force flattened out over 2016 to 2019 and improved again over the last few years. Overall, Miami-Dade County has 13.5% of its residents without health insurance in 2022.

Chart E5. Persons Lacking Health Insurance Coverage



Data Source: US Census Bureau ACS 1-year Estimates, 2012 - 2022

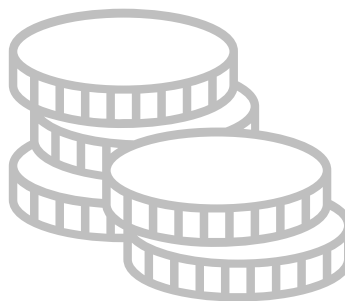
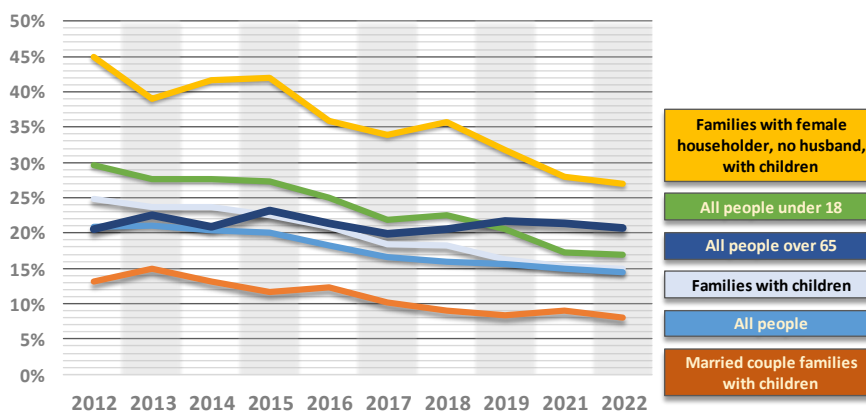


Chart E6. Percentage of Families and People Below the Poverty Level



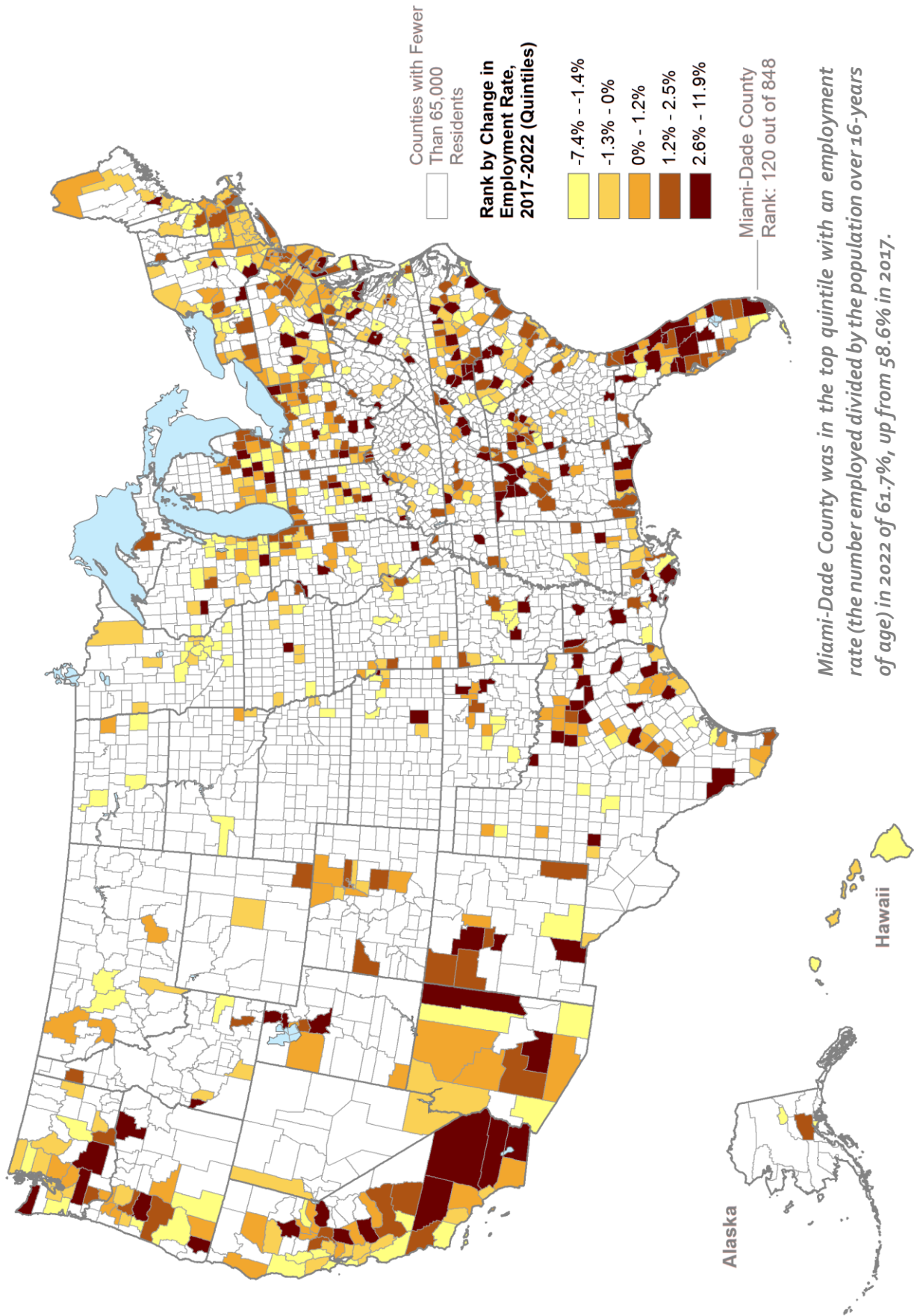
Data Source: US Census Bureau ACS 1-year Estimates, 2011 - 2022.

Chart E6. The poverty rate has continued to decline from the peaks set in 2012 and 2013 for the total population, dropping from 21% in 2013 to 14% in 2022. However, the last five year's data shows an increase in poverty for the elderly, up 0.8% between 2017 and 2022. The biggest drop over the last decade was observed for families with a female householder (no husband) with children, from 44.9% in 2012 to 26.9% in 2022.





# Map E1: Counties with Populations Greater than 65,000 Ranked by Employment Rate Growth Between 2017 and 2022

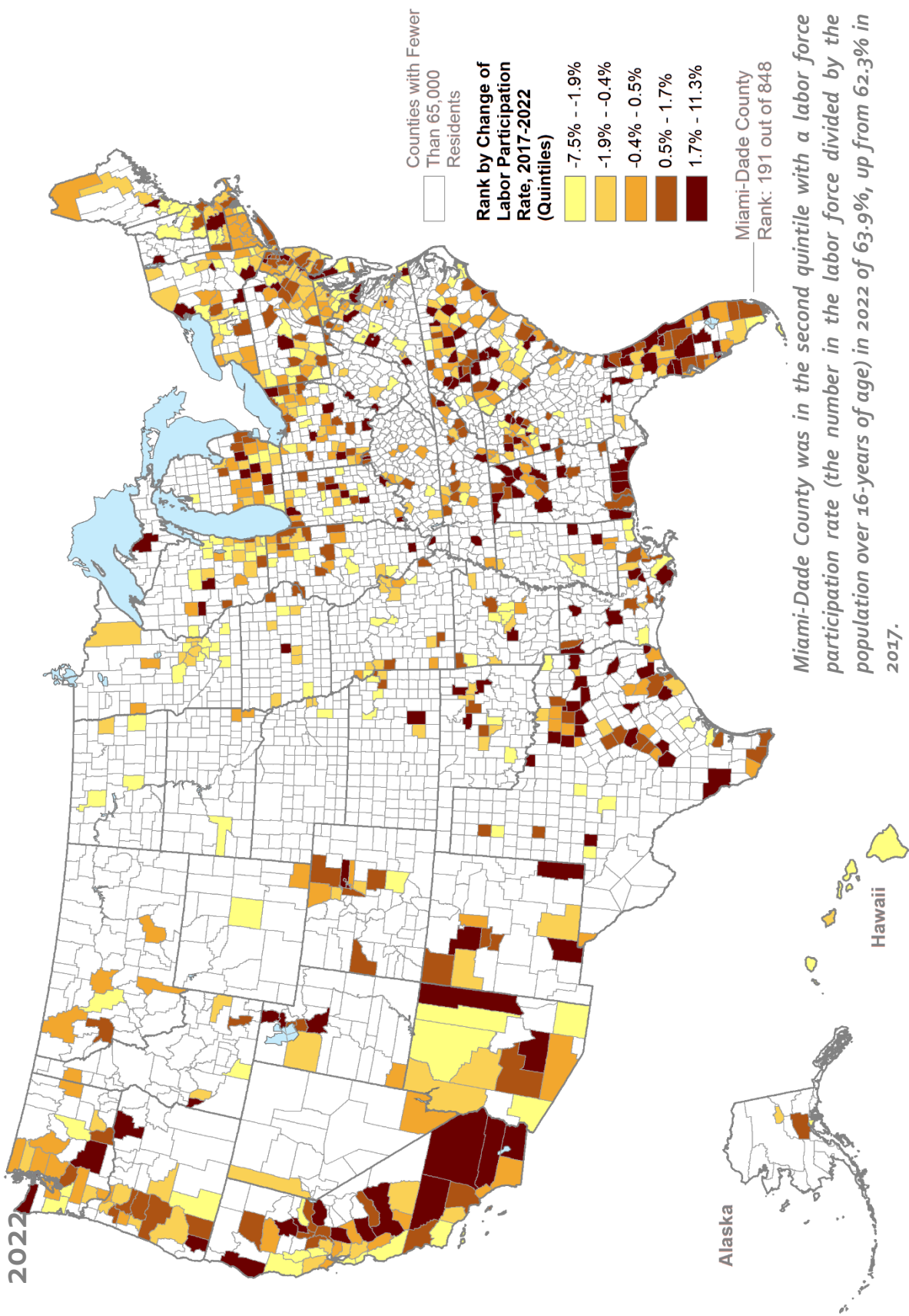


*Miami-Dade County was in the top quintile with an employment rate (the number employed divided by the population over 16-years of age) in 2022 of 61.7%, up from 58.6% in 2017.*

Data Source: US Census Bureau 2017 & 2022 American Community Survey 1-Year Estimates.



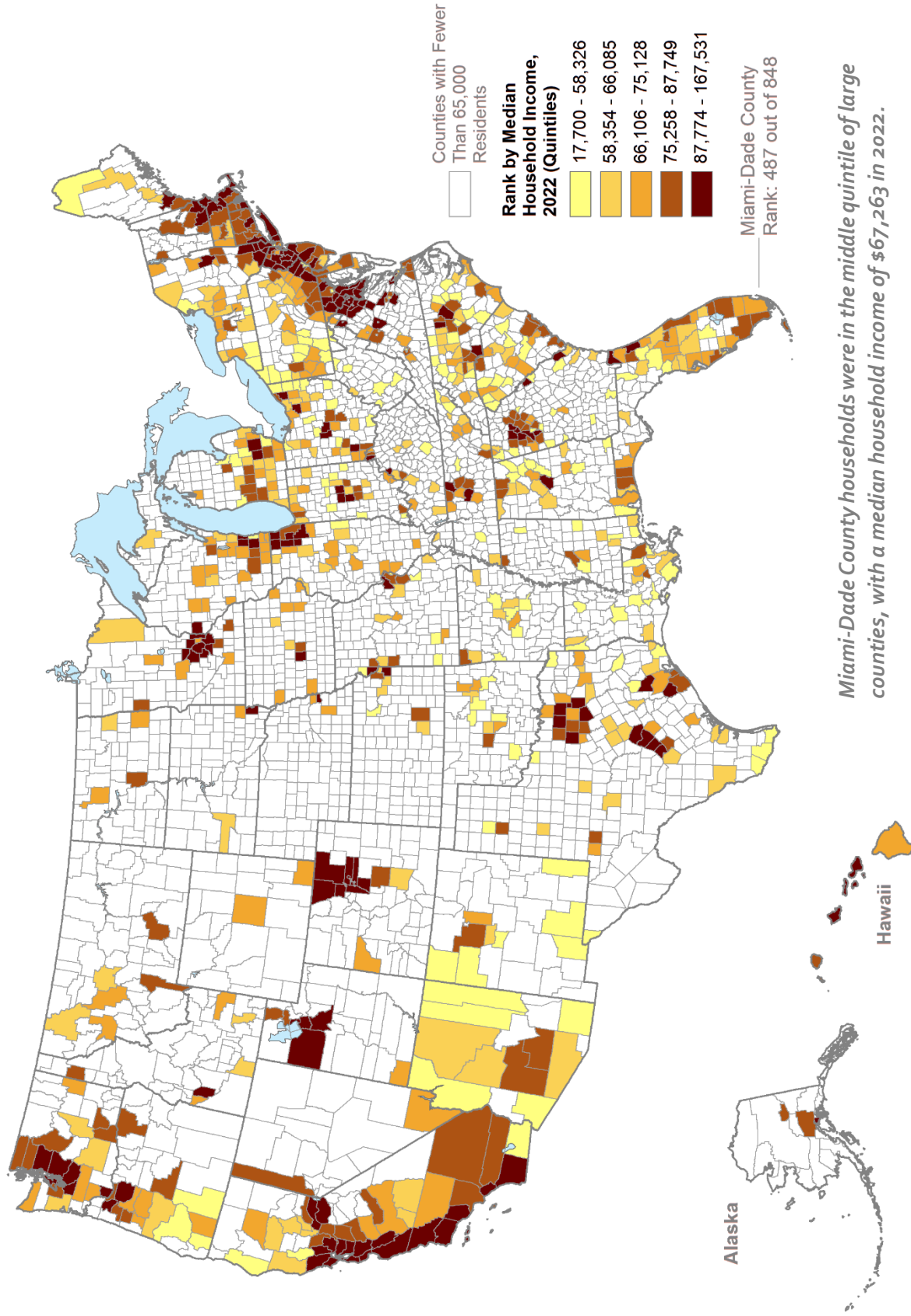
# Map E2: Counties with Populations Greater than 65,000 Ranked by Growth in the Labor Force Participation Rate Between 2017 and 2022



Data Source: US Census Bureau 2017 & 2022 American Community Survey 1-year Estimates.



# Map E3: Counties with Populations Greater than 65,000 Ranked by the Median Household Income in 2022



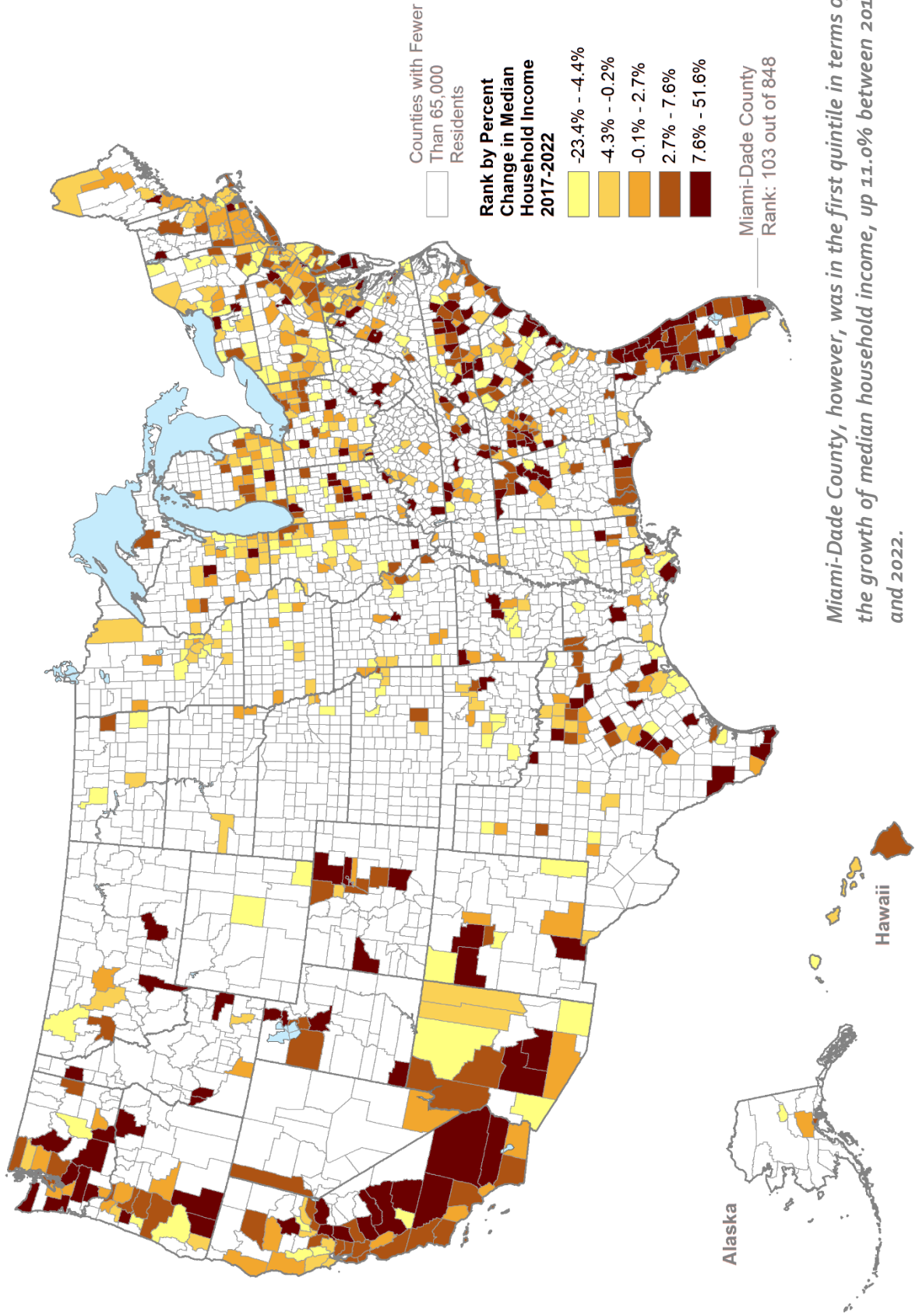
*Miami-Dade County households were in the middle quintile of large counties, with a median household income of \$67,263 in 2022.*

Data Source: US Census Bureau 2022 American Community Survey 1-year Estimates.





# Map E4: Counties with Populations Greater than 65,000 Ranked by the Change in Median Household Income Between 2017 and 2022



*Miami-Dade County, however, was in the first quintile in terms of the growth of median household income, up 11.0% between 2017 and 2022.*

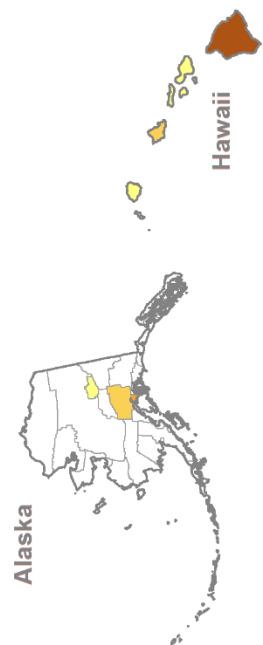
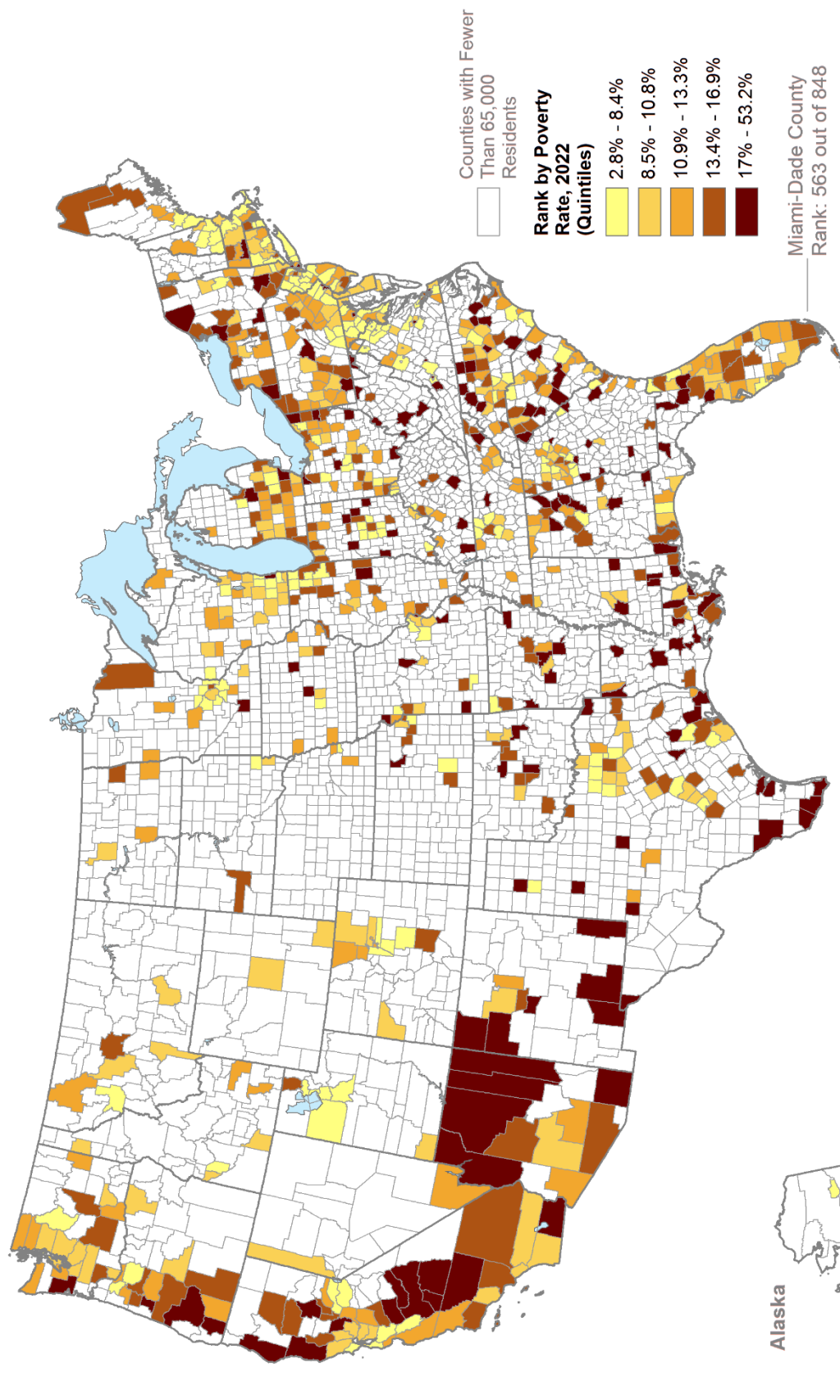
Data Source: US Census Bureau 2017 & 2022 American Community Survey 1-year Estimates.





# Map E5: Counties with Populations Greater than 65,000 Ranked by Poverty in 2022

2022

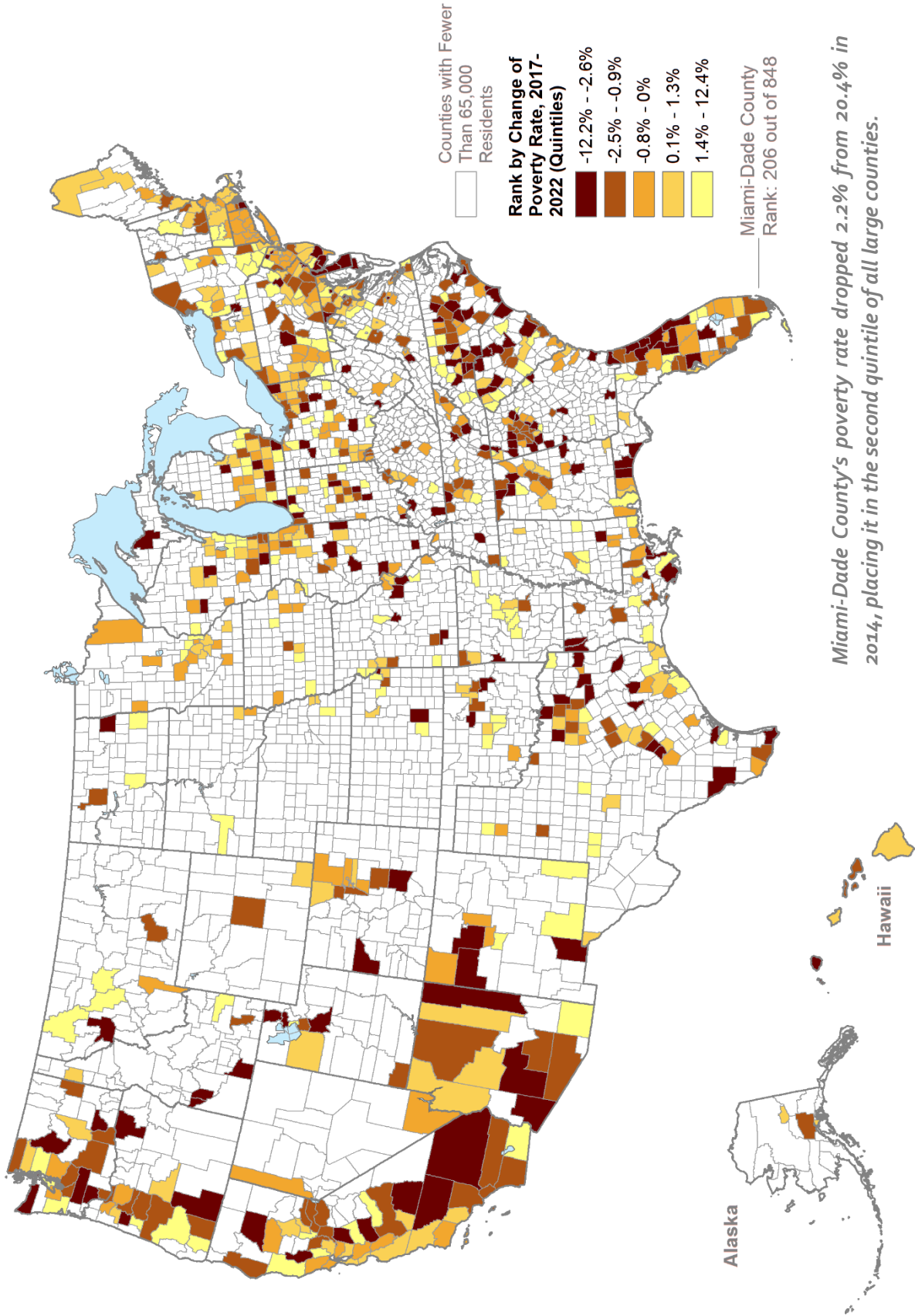


*Low household incomes translate into high poverty rates. Miami-Dade County's poverty rate of 14.4% places the county in the bottom half, the fourth quintile of large counties.*

Data Source: US Census Bureau 2022 American Community Survey 1-year Estimates.



# Map E6: Counties with Populations Greater than 65,000 Ranked by the Change in Poverty Between 2017 and 2022

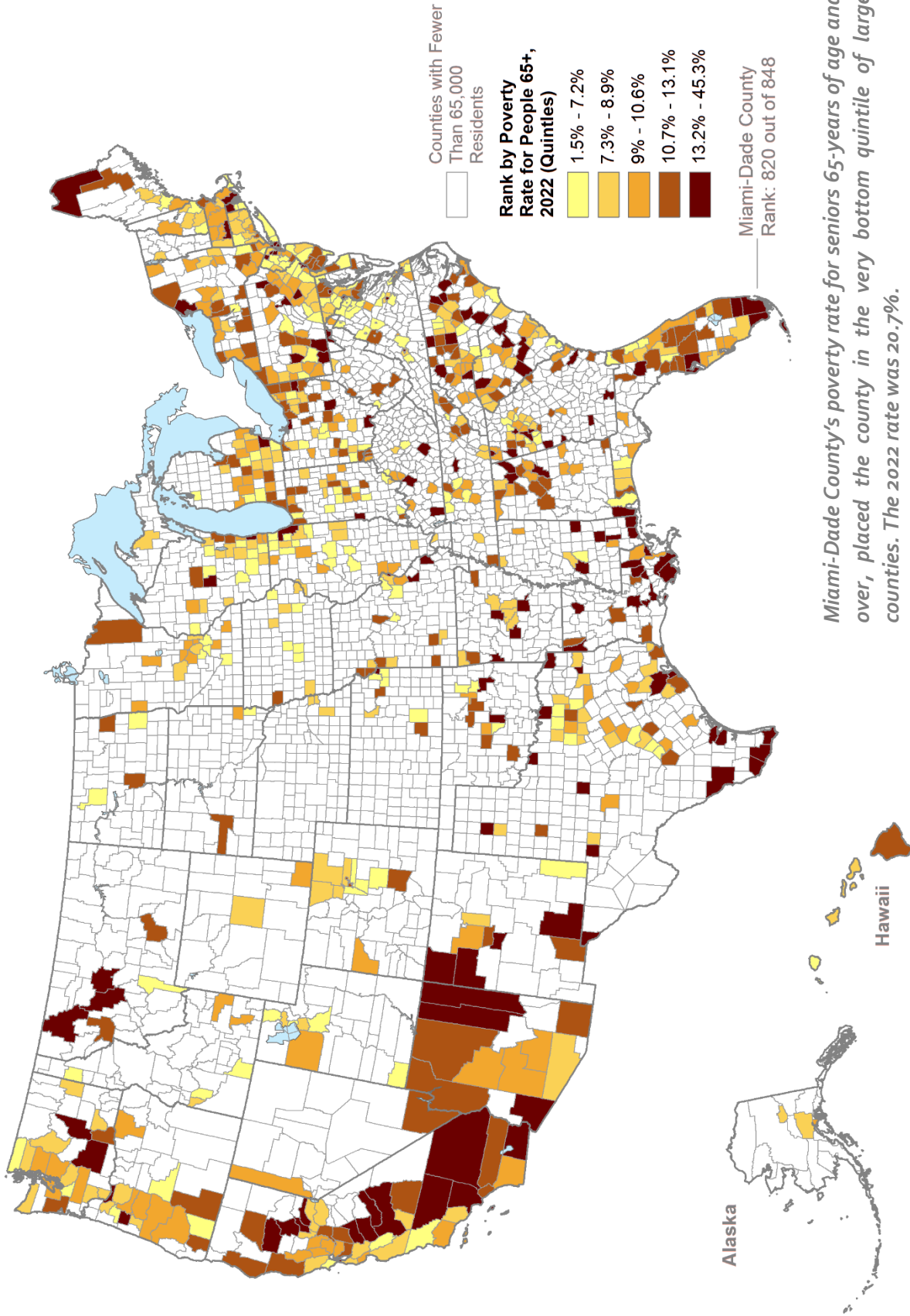


*Miami-Dade County's poverty rate dropped 2.2% from 20.4% in 2014, placing it in the second quintile of all large counties.*

Data Source: US Census Bureau 2017 & 2022 American Community Survey 1-year Estimates.



# Map E7: Counties with Populations Greater than 65,000 Ranked by Poverty in 2022 for the Population 65 years and older



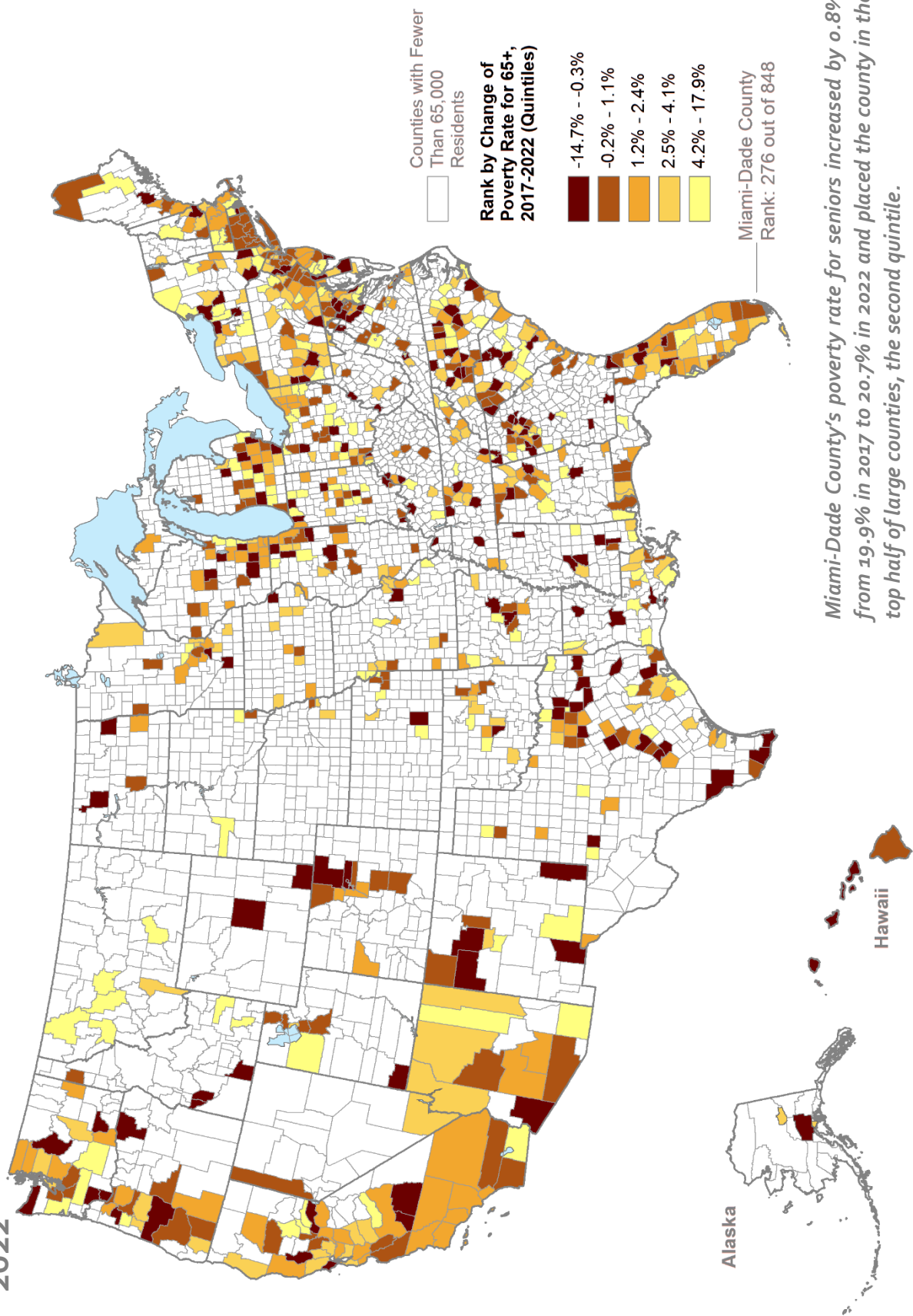
*Miami-Dade County's poverty rate for seniors 65-years of age and over, placed the county in the very bottom quintile of large counties. The 2022 rate was 20.7%.*

Data Source: US Census Bureau 2022 American Community Survey 1-year Estimates.



# Map E8: Counties with Populations Greater than 65,000 Ranked by the Change in Poverty for the Population 65 and over Between 2017 and 2022

2022

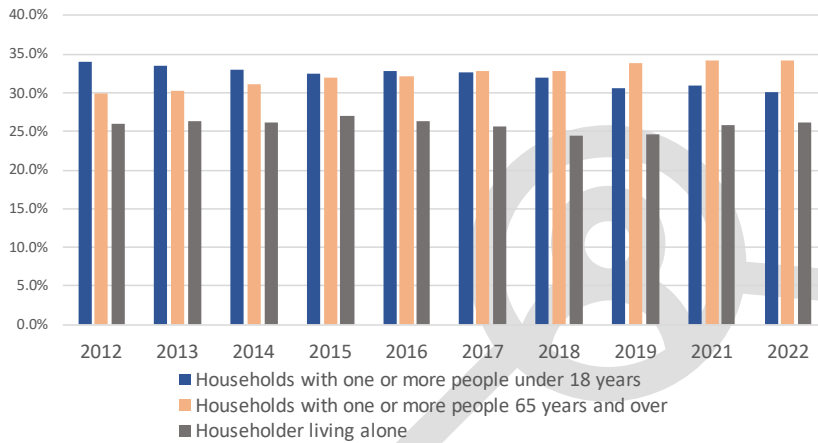


*Miami-Dade County's poverty rate for seniors increased by 0.8% from 19.9% in 2017 to 20.7% in 2022 and placed the county in the top half of large counties, the second quintile.*

Data Source: US Census Bureau 2017 & 2022 American Community Survey 1-year Estimates.

# MIAMI-DADE COUNTY SOCIAL CHARACTERISTICS - HIGHLIGHTS

**Chart S1: Share of Miami -Dade Households by Type**

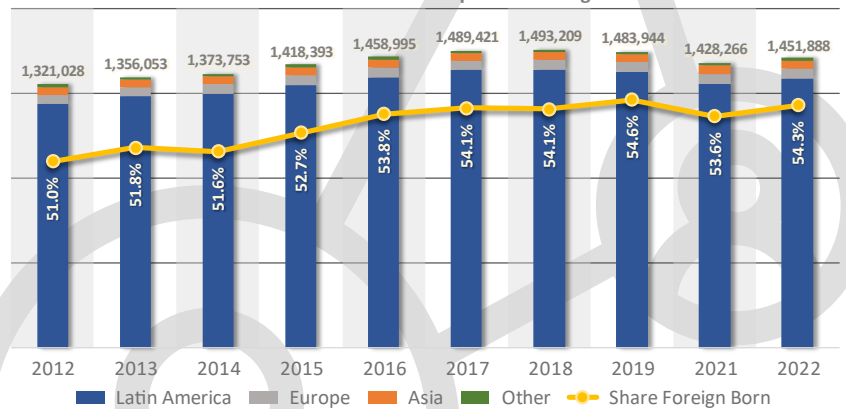


Data Source: US Census Bureau ACS 1-year Estimates, 2012 - 2022.

Chart S1. The share of households with one or more persons under 18 years old declined from 33.2% in 2012 to 30.0% in 2022. At the same time, the share of households with one or more people 65 years and over increased from 29.9% in 2012 to 34.2% in 2022. Householders living alone fluctuated over the last decade between 24.4% and 27.0%.

**Chart S2: Foreign-born Population by World Region of Birth**

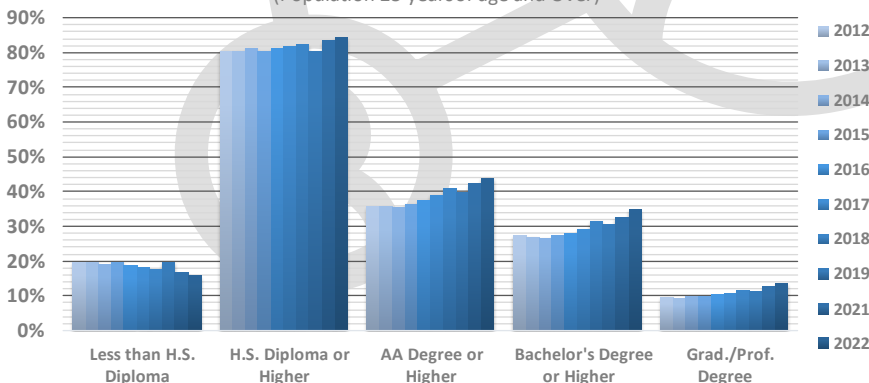
And the Share of the Total Population Foreign Born



Data Source: US Census Bureau ACS 1-year Estimates, 2012 - 2022.

Chart S2. The share of foreign-born residents increased from 51.0% in 2012 to 54.3% in 2022 to total 1,451,888 residents. Immigrants from Latin America account for 92.9% of the total, which has remained very consistent over the last 10 years. Immigrants grew 9.9% from 2012 to 2022, 3-times faster than the total population during the same period.

**Chart S3: Highest Level of Educational Attainment**  
(Population 25 years of age and Over)



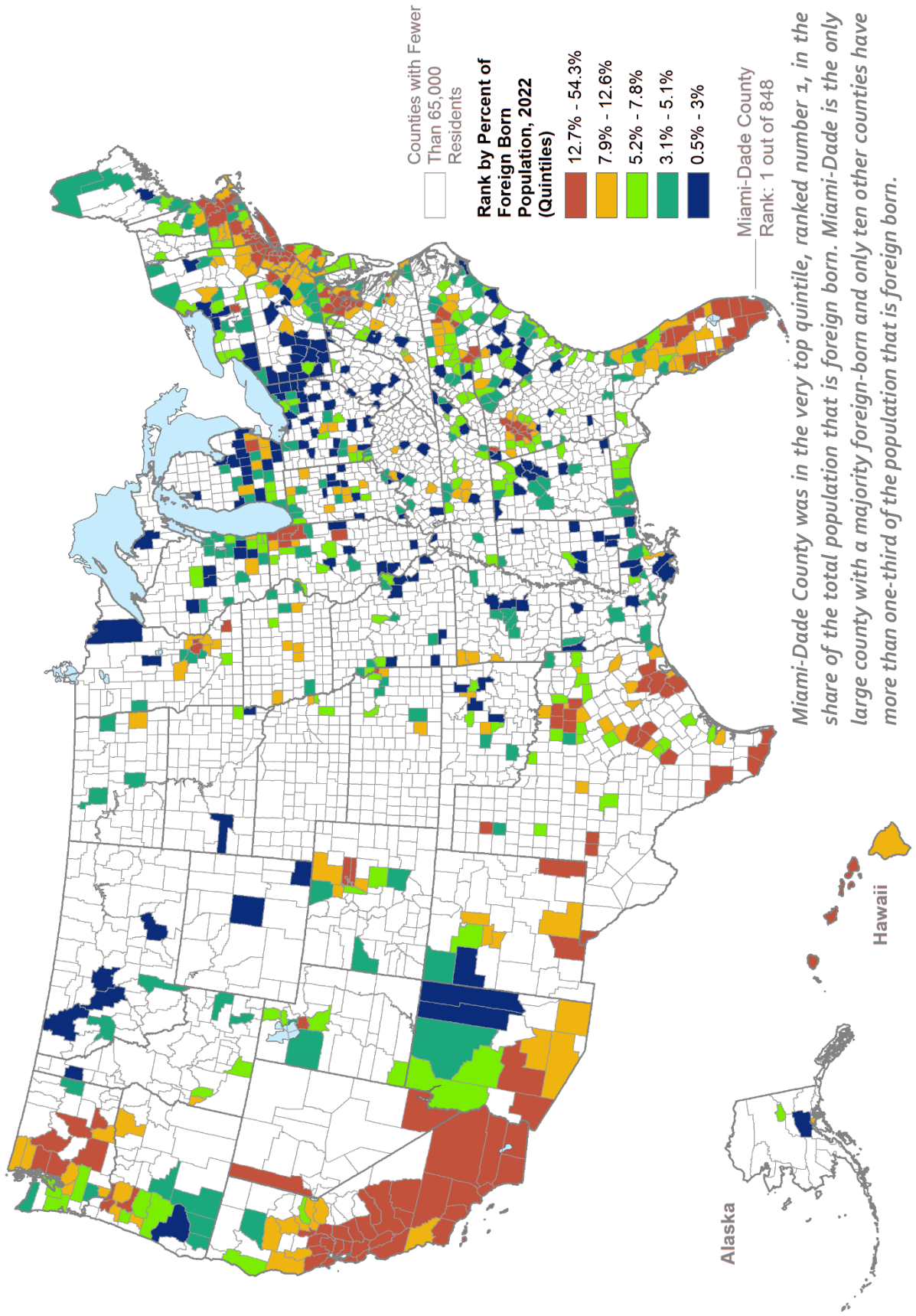
Data Source: US Census Bureau ACS 1-year Estimates, 2012 - 2022.

Chart S3. The data illustrates improvement across all levels of higher education between 2012 and 2022. The share of residents with less than a high-school education dropped from 19.6% to 15.7%. The share with at least an associate degree increased by 8.1% from 35.9% to 44.0%, and those with at least a bachelor's degree increased 7.5% from 27.3% to 34.8%.



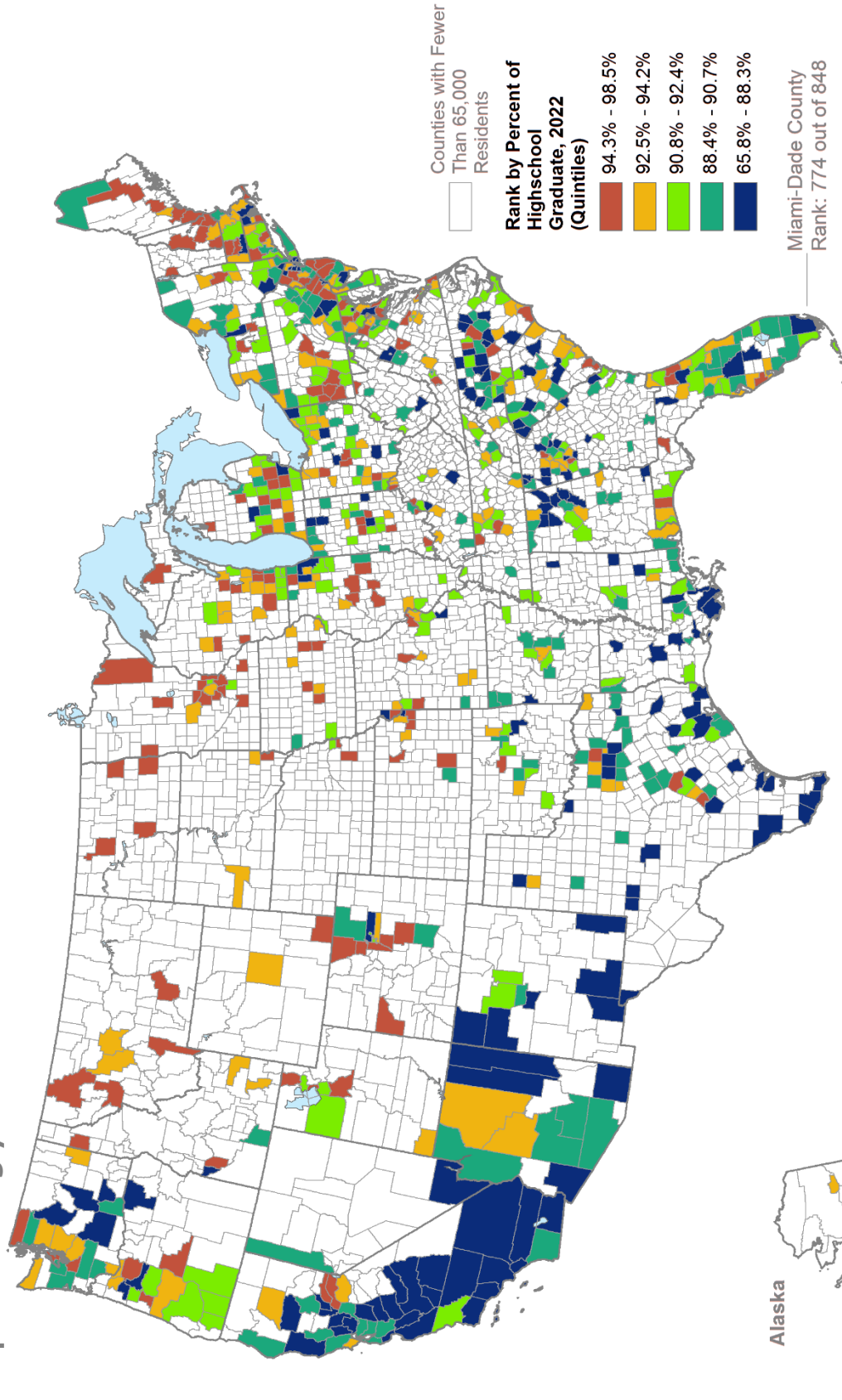


# Map S1: Counties with Populations Greater than 65,000 Ranked by the Share of Population that is Foreign Born in 2022



Data Source: US Census Bureau 2022 American Community Survey 1-year Estimates.

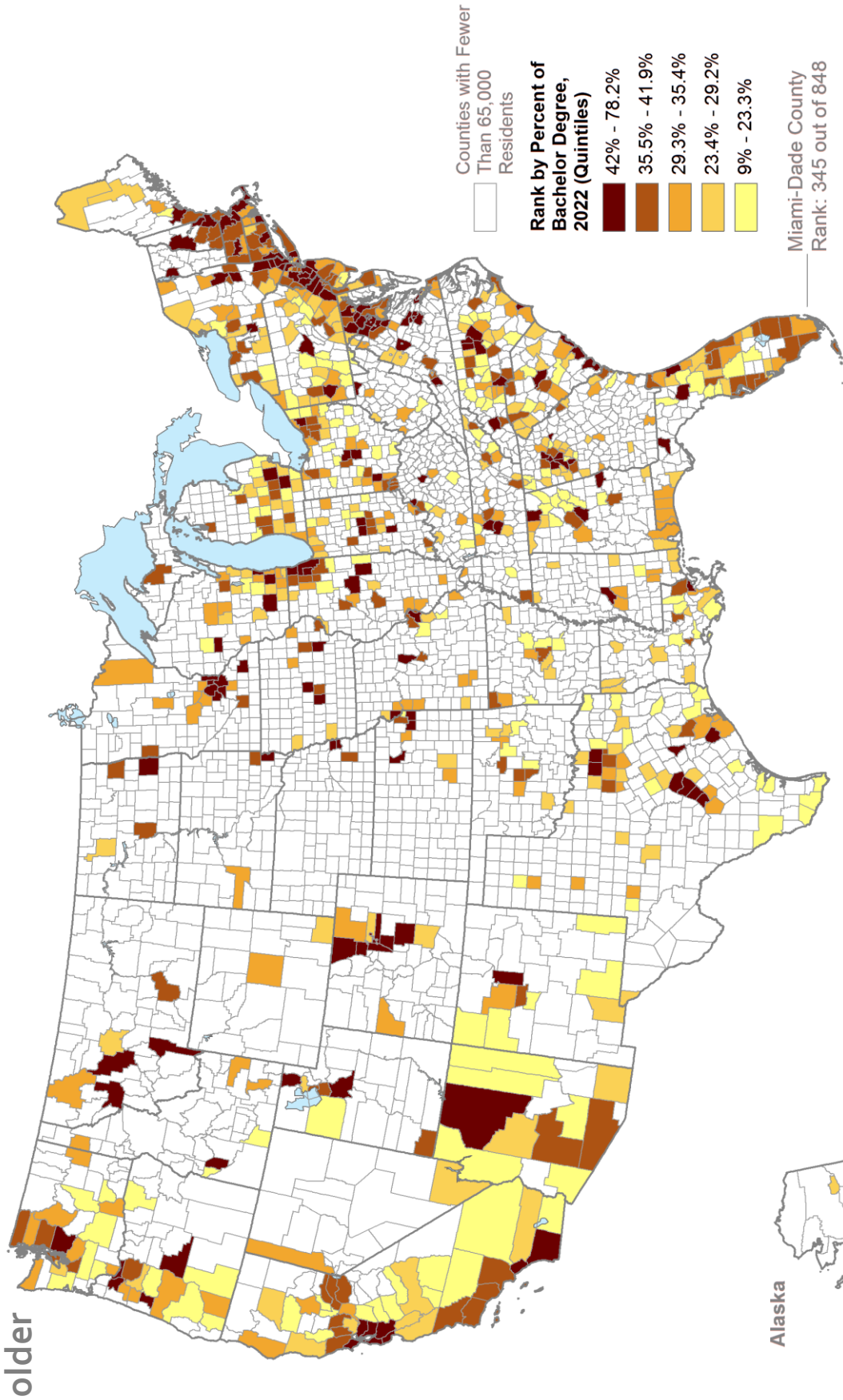
# Map S2: Counties with Populations Greater than 65,000 Ranked by Educational Attainment: High School Completion or Higher as a Share of the Population 25 years and older



*Miami-Dade County fell into the very bottom quintile in terms of the adult population with at least a high school diploma, at 84.3% in 2022.*

Data Source: US Census Bureau 2022 American Community Survey 1-year Estimates.

**Map S3: Counties with Populations Greater than 65,000 Ranked by Educational Attainment: Bachelor's Degree or Higher as a Share of the Population 25 years and older**



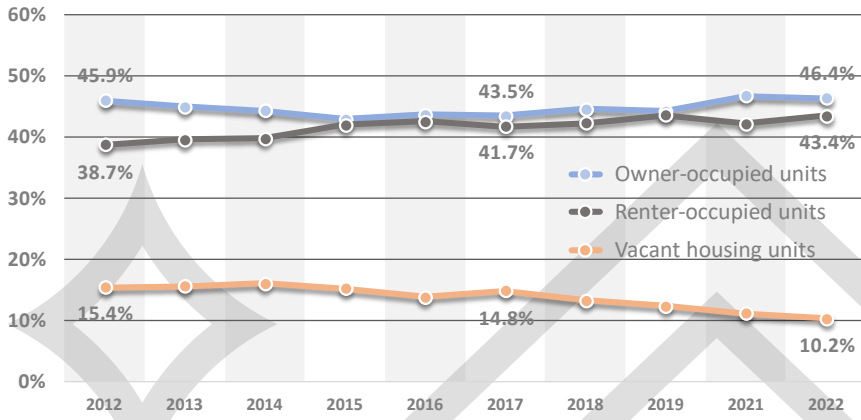
*Miami-Dade County fared much better in terms of the share of the adult population with at least a Bachelor's degree, falling into the middle quintile, at 34.8% in 2022.*

Data Source: US Census Bureau 2022 American Community Survey 1-year Estimates.



# MIAMI-DADE COUNTY HOUSING CHARACTERISTICS - HIGHLIGHTS

Chart H1: Housing Occupancy Status by Tenure

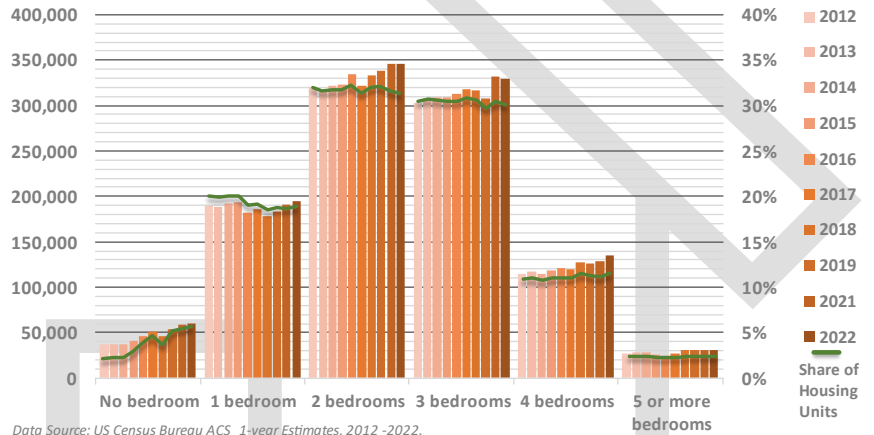


Data Source: US Census Bureau ACS 1-year Estimates, 2012 -2022.

Chart H1: Following the collapse of the housing bubble, between 2007 and 2015 there was a significant shift away from home ownership and toward rental. In 2007, 51.6% of households were owners and 34.1% rented. In 2015, those shares were 42.9% and 41.9%, respectively. Since then, the trend had stabilized with relatively equal shares of owners and renters through 2022. The gap slightly widened again after COVID-19.

Chart H2: The fastest-growing segment of housing by number of bedrooms are efficiencies, up 63.4% over the last 10 years. Next were 4-bedroom units, up 17.7%. The number of one-bedroom units was virtually unchanged, up 2.8%. The green line in the chart shows the share of each bedroom size of total units. One-, two- and three-bedroom units all fell in share with one-bedroom units down from 19.1% of all units in 2012 to 17.8% in 2022. Efficiency units increased from 3.7% of all units in 2012 to 5.5% in 2022.

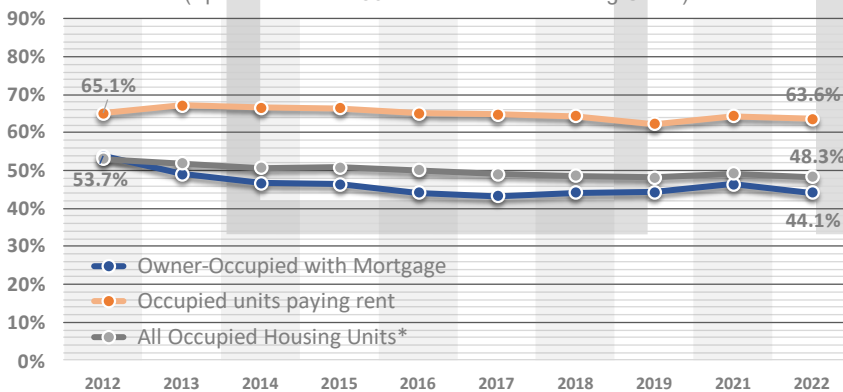
Chart H2: Bedrooms per housing Unit



Data Source: US Census Bureau ACS 1-year Estimates, 2012 -2022.

Chart H3: Housing Cost Burden

(Spend more than 30% of Income on Housing Costs)



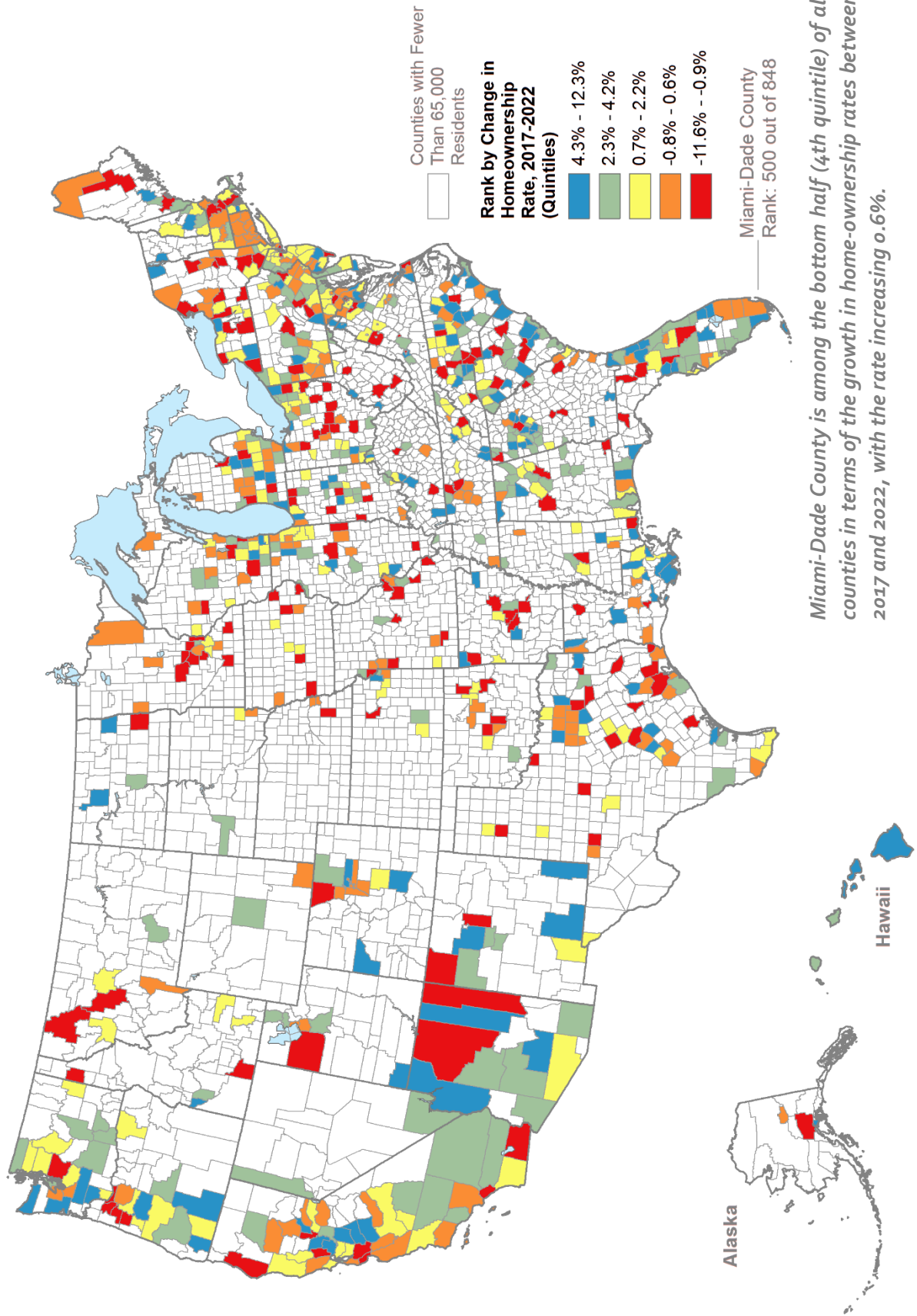
\* All Occupied Units include owner-occupied units with and without a mortgage and occupied units paying rent.  
Data Source: US Census Bureau ACS 1-year Estimates, 2012 -2022.

Chart H3: Housing cost burden has eased over the last 10 years for owner households with a mortgage, from 65.1% in 2012 to 44.1% in 2022. The rate for renter households has remained high over the decade from 63.6%, in 2012 and slightly decreased to 63.6% in 2022. Combined, 48.3% all Miami-Dade County households are housing-cost-burdened in 2022.





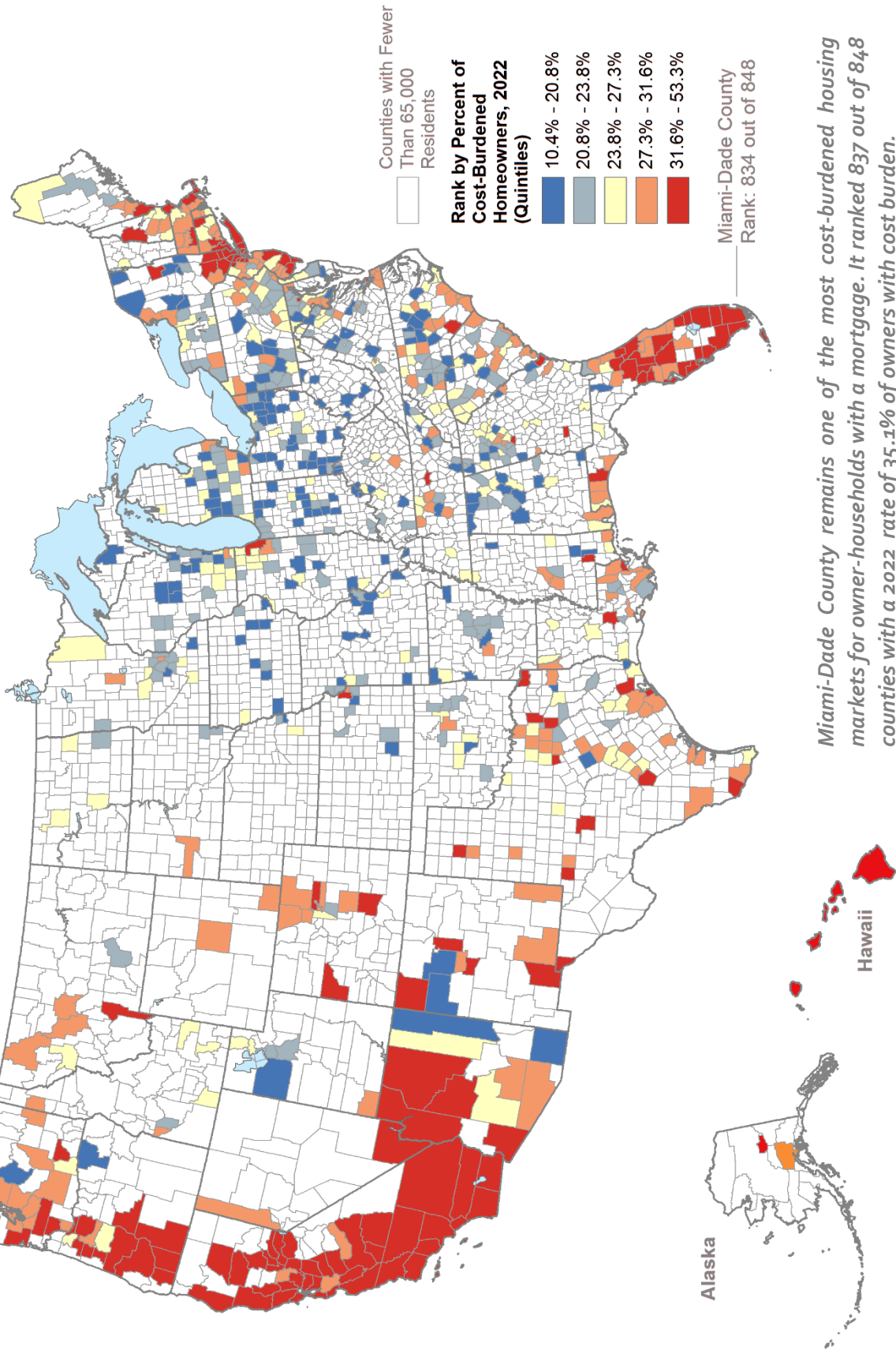
# Map H1: Counties with Populations Greater than 65,000 Ranked by the Change in Homeownership Rates between 2017 and 2022



Data Source: US Census Bureau 2017 & 2022 American Community Survey 1-year Estimates.



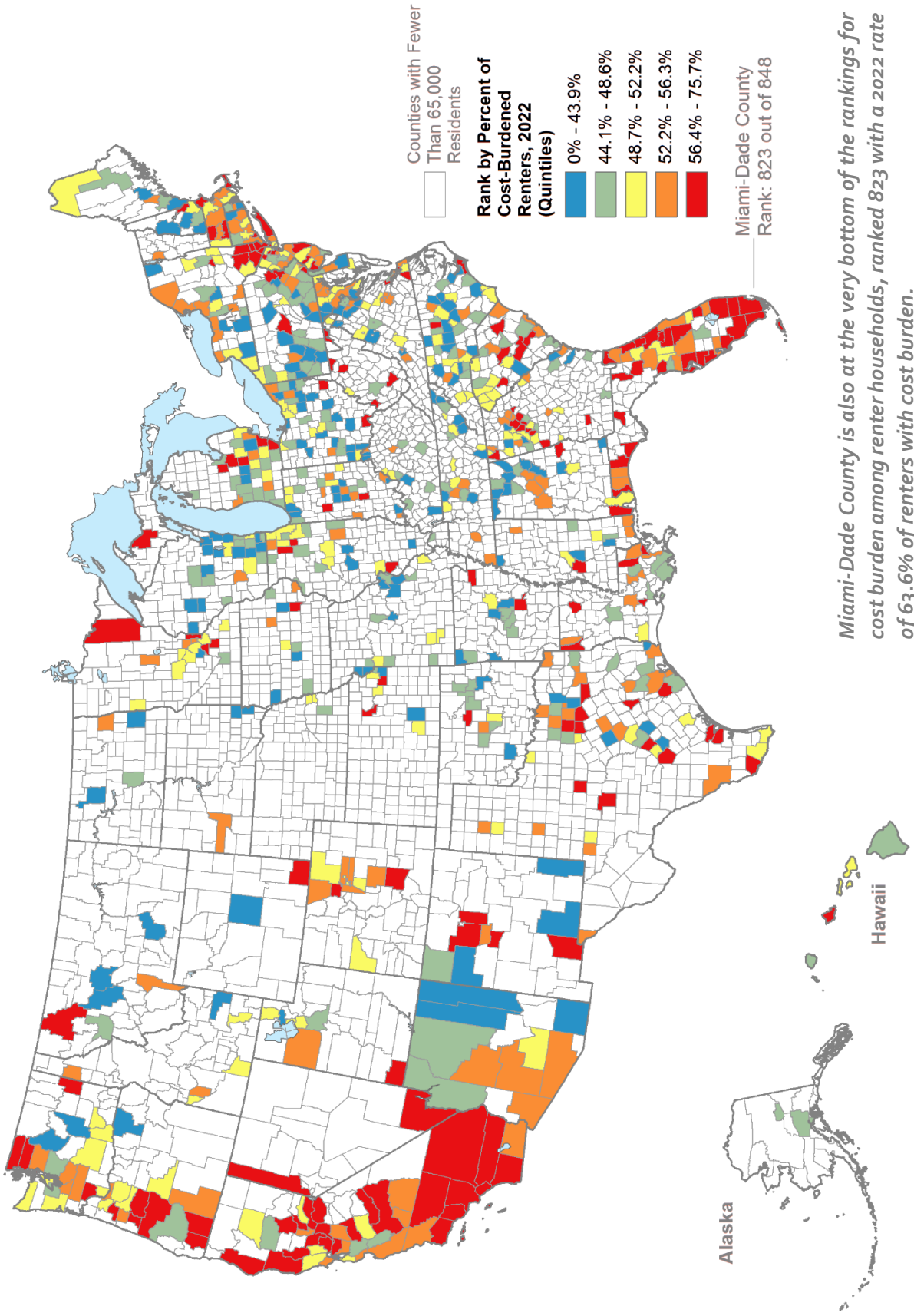
# Map H2: Counties with Populations Greater than 65,000 Ranked by the Rate of Cost Burden for Owner Households with a Mortgage (Pay more than 30% for housing)



*Miami-Dade County remains one of the most cost-burdened housing markets for owner-households with a mortgage. It ranked 837 out of 848 counties with a 2022 rate of 35.1% of owners with cost burden.*

Data Source: US Census Bureau 2022 American Community Survey 1-year Estimates.

### Map H3: Counties with Populations Greater than 65,000 Ranked by the Rate of Cost Burden for Renter Households (Pay more than 30% for housing)

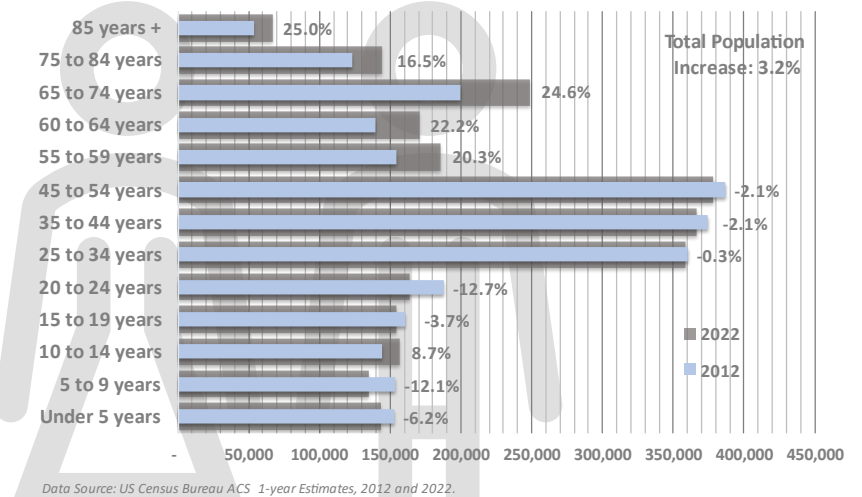


Data Source: US Census Bureau 2022 American Community Survey 1-year Estimates.

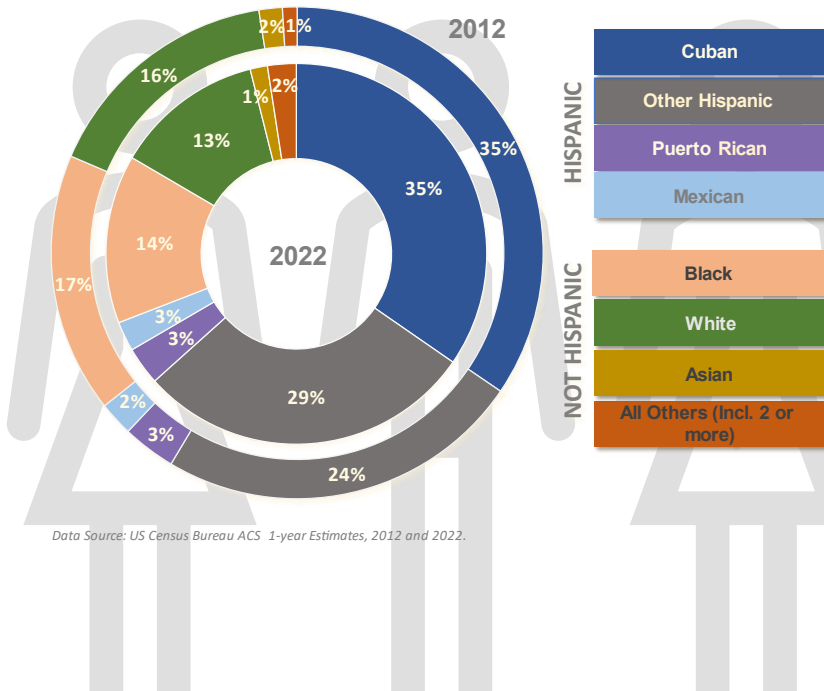
# MIAMI-DADE DEMOGRAPHIC CHARACTERISTICS - HIGHLIGHTS

*Chart D1: Population in every age cohort over 55 years old grew during the last decade, while nearly every age cohort below 55 decreased, except those between ages 10 to 14. In broader categories, between 2012 and 2022 the population over 65 years of age grew 22.0%, between 15 and 64 years grew 0.9%, and under 15 years declined 3.5%. Over that time, the median age added more than two years to surpass 40 at 40.9 years of age.*

**Chart D1: Population and Percent Change by Age Groups: 2012 to 2022**

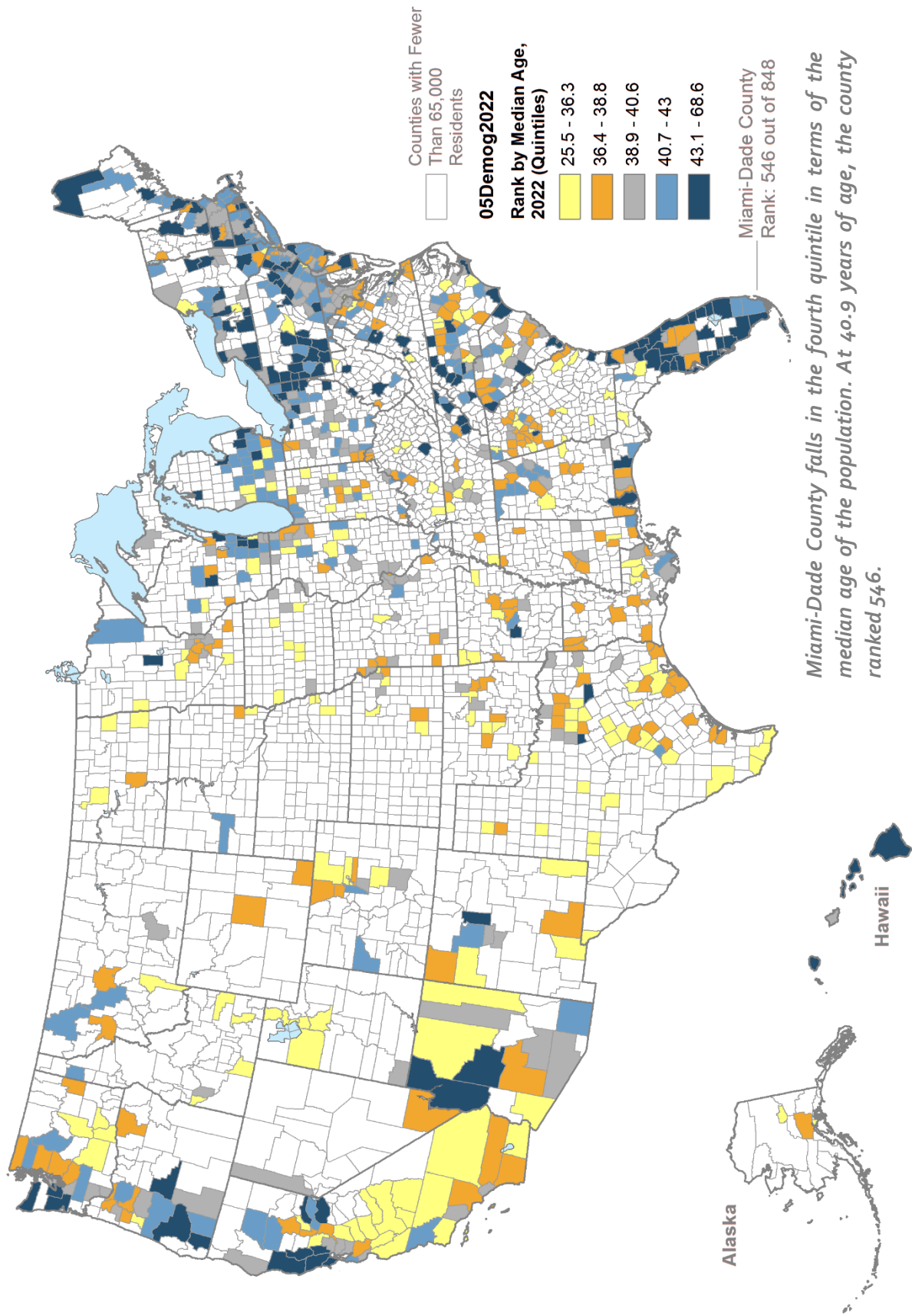


**Chart D2: Hispanic & Non-Hispanic Population 2012 & 2022**



*Chart D2: Miami-Dade County occupies a rare place among large U.S. counties. In 2022, the county's population was 69.4% Hispanic, up from 65.2% Hispanic in 2012. The Black-Not-Hispanic population, while it grew between 2012 and 2022, declined as a share of the total from 17.4% to 14.4%. The White-Not-Hispanic population declined in both numbers and share, from 16.3% in 2012 to 12.7% in 2022.*

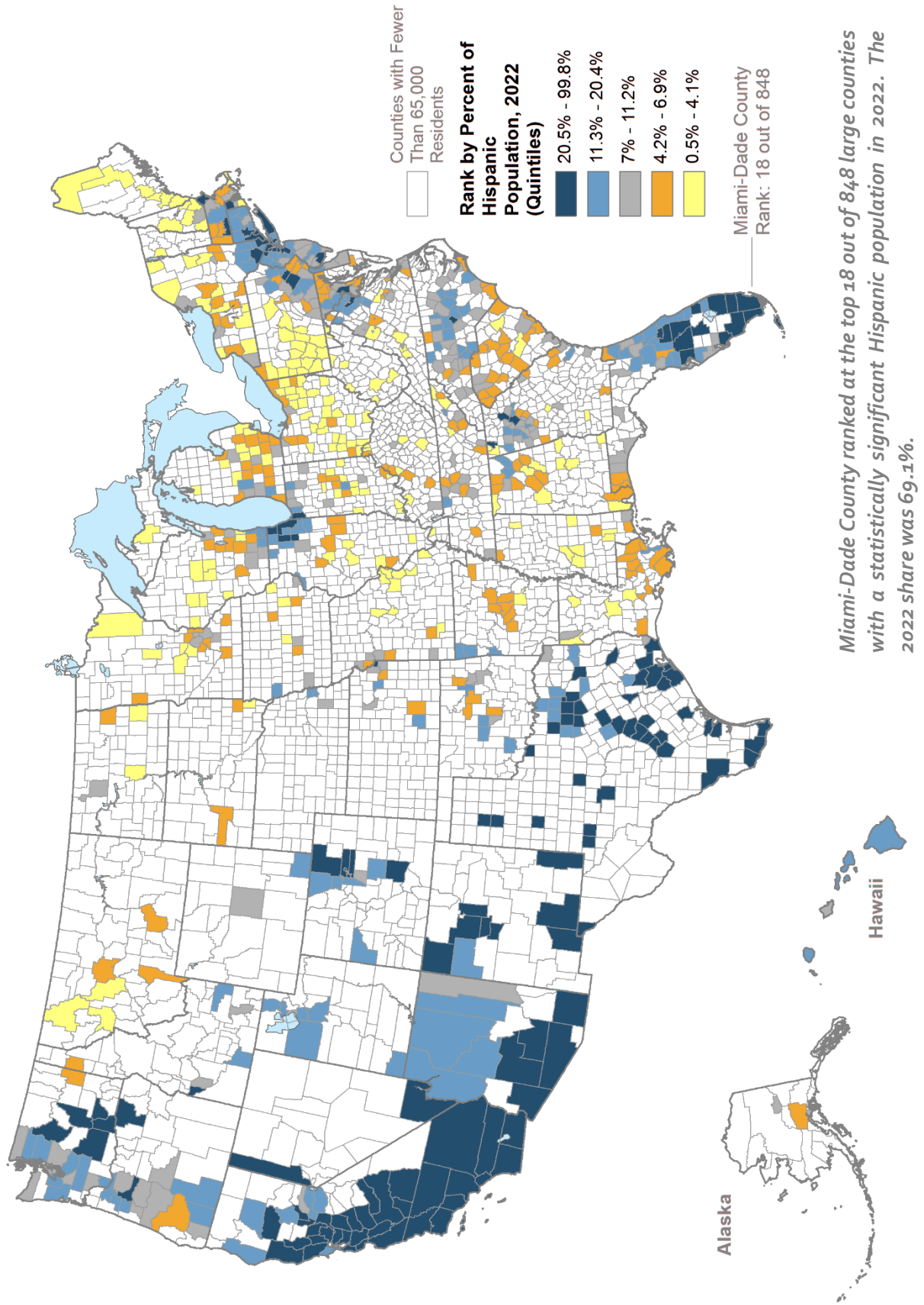
# Map D1: Counties with Populations Greater than 65,000 Ranked by Median Age (Youngest to Oldest)



Data Source: US Census Bureau 2022 American Community Survey 1-year Estimates.

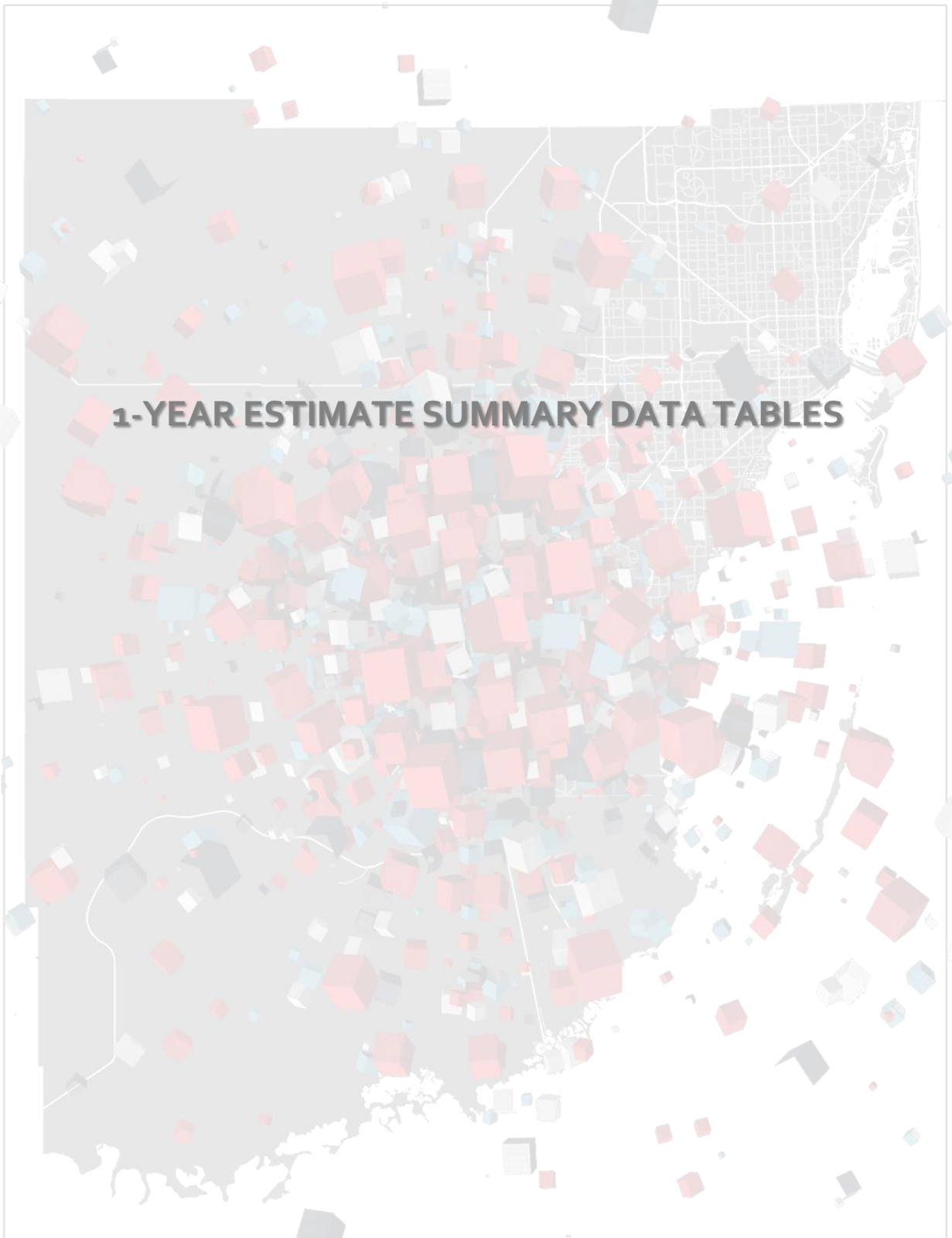


# Map D2: Counties with Populations Greater than 65,000 Ranked by the Hispanic Share of the Population



Data Source: US Census Bureau 2022 American Community Survey 1-year Estimates.





**1-YEAR ESTIMATE SUMMARY DATA TABLES**

# Miami-Dade County Selected Economic Characteristics

## Employment & Labor Force

June, 2024

	2022	2021	2019	2018	2017	2021 - 22 % change	2017 - 22 % change
<b>EMPLOYMENT STATUS</b>							
<b>Population 16 years and over</b>	<b>2,204,709</b>	<b>2,191,172</b>	<b>2,230,221</b>	<b>2,265,718</b>	<b>2,259,197</b>	<b>0.6%</b>	<b>-2.4%</b>
In labor force	1,409,359	1,385,234	1,418,421	1,440,469	1,408,195	1.7%	0.1%
Civilian labor force	1,407,784	1,380,903	1,416,190	1,439,031	1,406,936	1.9%	0.1%
Employed	1,360,654	1,297,349	1,367,125	1,373,136	1,323,402	4.9%	2.8%
Unemployed	47,130	83,554	49,065	65,895	83,534	-43.6%	-43.6%
Armed Forces	1,575	4,331	2,230	1,438	1,259	-63.6%	25.1%
Not in labor force	795,350	805,938	811,800	825,249	851,002	-1.3%	-6.5%
Civilian labor force	1,407,784	1,380,903	1,415,808	1,439,031	1,406,936	1.9%	0.1%
Unemployment Rate	3.3%	6.1%	3.5%	4.6%	5.9%	-2.8%	-44.4%
<b>Females 16 years and over</b>	<b>1,129,531</b>	<b>1,127,282</b>	<b>1,158,001</b>	<b>1,178,542</b>	<b>1,174,481</b>	<b>0.2%</b>	<b>-3.8%</b>
In labor force	658,260	644,286	673,957	682,515	660,579	2.2%	-0.4%
Civilian labor force	658,207	643,701	673,957	682,121	660,466	2.3%	-0.3%
Employed	635,157	602,388	647,323	647,998	619,473	5.4%	2.5%
Own children of the householder under 6 years	161,888	163,523	176,915	182,107	179,806	-1.0%	-10.0%
All parents in family in labor force	116,710	109,885	125,433	124,177	120,172	6.2%	-2.9%
Own children of the householder 6 to 17 years	343,081	352,389	346,053	351,354	357,401	-2.6%	-4.0%
All parents in family in labor force	253,950	263,788	258,848	261,031	267,911	-3.7%	-5.2%
<b>COMMUTING TO WORK</b>							
<b>Workers 16 years and over</b>	<b>1,338,487</b>	<b>1,277,221</b>	<b>1,348,877</b>	<b>1,355,325</b>	<b>1,301,764</b>	<b>4.8%</b>	<b>2.8%</b>
Car, truck, or van -- drove alone	902,386	879,997	1,034,589	1,037,176	994,712	2.5%	-9.3%
Car, truck, or van -- carpooled	118,513	112,495	118,701	117,965	112,921	5.3%	5.0%
Public transportation (excluding taxicab)	44,567	34,707	51,257	61,974	60,767	28.4%	-26.7%
Walked	27,609	24,850	26,978	26,191	23,043	11.1%	19.8%
Other means	42,733	31,723	41,815	39,991	32,927	34.7%	29.8%
Worked at home	202,679	193,449	75,537	72,028	77,394	4.8%	161.9%
Mean travel time to work (minutes)	30.8	29.8	32.8	33.7	32.7	3.4%	-5.8%
<b>OCCUPATION</b>							
<b>Civilian employed population 16 years and over</b>	<b>1,360,654</b>	<b>1,297,349</b>	<b>1,366,451</b>	<b>1,373,136</b>	<b>1,323,402</b>	<b>4.9%</b>	<b>2.8%</b>
Management, professional, and related occupations	519,118	480,074	470,059	447,565	430,772	8.1%	20.5%
Service occupations	256,133	239,834	273,290	283,978	276,556	6.8%	-7.4%
Sales and office occupations	296,476	288,758	325,215	346,067	348,866	2.7%	-15.0%
Natural resources, construction, and maintenance occupations	130,860	129,333	136,645	138,521	131,080	1.2%	-0.2%
Production, transportation, and material moving occupations	158,067	159,350	161,241	157,005	136,128	-0.8%	16.1%
<b>INDUSTRY</b>							
<b>Civilian employed population 16 years and over</b>	<b>1,360,654</b>	<b>1,297,349</b>	<b>1,366,451</b>	<b>1,373,136</b>	<b>1,323,402</b>	<b>4.9%</b>	<b>2.8%</b>
Agriculture, forestry, fishing and hunting, and mining	10,983	9,645	9,565	9,686	9,529	13.9%	15.3%
Construction	121,093	114,776	114,782	115,496	106,094	5.5%	14.1%
Manufacturing	61,180	62,181	56,024	62,237	55,047	-1.6%	11.1%
Wholesale trade	42,491	38,798	47,826	52,813	46,472	9.5%	-8.6%
Retail trade	141,635	151,810	165,341	146,583	155,871	-6.7%	-9.1%
Transportation and warehousing, and utilities	119,868	109,534	121,614	114,447	102,850	9.4%	16.5%
Information	25,109	24,387	25,963	25,309	24,977	3.0%	0.5%
Finance and insurance, and real estate and rental and leasing	113,479	108,161	101,117	106,949	107,490	4.9%	5.6%
Professional, scientific, and management, and administrative and waste management services	194,119	185,084	185,837	183,887	176,733	4.9%	9.8%
Educational services, and health care and social assistance	276,352	256,606	271,924	277,613	269,831	7.7%	2.4%
Arts, entertainment, and recreation, and accommodation, and food services	130,349	120,728	150,310	149,016	146,747	8.0%	-11.2%
Other services, except public administration	77,034	70,711	77,888	81,503	80,046	8.9%	-3.8%
Public administration	46,962	44,928	39,627	47,597	41,715	4.5%	12.6%
<b>CLASS OF WORKER</b>							
<b>Civilian employed population 16 years and over</b>	<b>1,360,654</b>	<b>1,297,349</b>	<b>1,366,451</b>	<b>1,373,136</b>	<b>1,323,402</b>	<b>4.9%</b>	<b>2.8%</b>
Private wage and salary workers	1,103,653	1,050,010	1,138,254	1,148,896	1,095,957	5.1%	0.7%
Government workers	129,923	124,885	117,515	120,102	120,568	4.0%	7.8%
Self-employed workers in own not incorporated business	124,337	119,122	107,950	101,217	104,811	4.4%	18.6%
Unpaid family workers	2,741	3,332	2,733	2,921	2,066	-17.7%	32.7%



# Miami-Dade County Selected Economic Characteristics

## Household Income

	2022	2021	2019	2018	2017	2021 - 22 % change	2017 - 22 % change
<b>INCOME AND BENEFITS (IN CURRENT DOLLARS)</b>							
<b>Total households</b>	<b>983,509</b>	<b>963,477</b>	<b>912,805</b>	<b>895,801</b>	<b>872,495</b>	<b>2.1%</b>	<b>12.7%</b>
Less than \$10,000	64,084	72,966	73,024	77,063	80,652	-12.2%	-20.5%
\$10,000 to \$14,999	46,166	47,366	48,379	42,248	50,174	-2.5%	-8.0%
\$15,000 to \$24,999	79,184	89,935	89,455	105,202	97,511	-12.0%	-18.8%
\$25,000 to \$34,999	80,233	84,947	94,019	88,404	88,934	-5.5%	-9.8%
\$35,000 to \$49,999	101,892	119,664	111,362	114,747	119,464	-14.9%	-14.7%
\$50,000 to \$74,999	165,222	166,521	164,305	158,503	150,977	-0.8%	9.4%
\$75,000 to \$99,999	128,423	117,929	104,973	99,105	92,547	8.9%	38.8%
\$100,000 to \$149,999	140,873	126,482	116,839	104,568	102,647	11.4%	37.2%
\$150,000 to \$199,999	74,462	59,194	48,379	48,898	39,923	25.8%	86.5%
\$200,000 or more	102,970	78,473	62,071	57,063	49,666	31.2%	107.3%
<b>Median household income (dollars)</b>	<b>67,263</b>	<b>59,044</b>	<b>55,171</b>	<b>52,205</b>	<b>49,930</b>	<b>13.9%</b>	<b>34.7%</b>
<b>Mean household income (dollars)</b>	<b>101,964</b>	<b>88,649</b>	<b>82,803</b>	<b>79,418</b>	<b>73,762</b>	<b>15.0%</b>	<b>38.2%</b>
CPI South Florida (2022=100)	100.0	91.2	86.7	85.2	82.4	9.6%	21.4%
<b>Median household income (2022 dollars)</b>	<b>67,263</b>	<b>64,707</b>	<b>63,658</b>	<b>61,268</b>	<b>60,604</b>	<b>4.0%</b>	<b>11.0%</b>
<b>Mean household income (2022 dollars)</b>	<b>101,964</b>	<b>97,151</b>	<b>95,540</b>	<b>93,205</b>	<b>89,530</b>	<b>5.0%</b>	<b>13.9%</b>
<b>INCOME AND BENEFITS (IN CURRENT DOLLARS)</b>							
<b>Total households</b>	<b>983,509</b>	<b>963,477</b>	<b>912,805</b>	<b>895,801</b>	<b>872,495</b>	<b>2.1%</b>	<b>12.7%</b>
With earnings	799,439	776,594	733,895	726,589	699,116	2.9%	14.3%
Mean earnings (dollars)	105,331	91,760	84,998	81,870	77,271	14.8%	36.3%
With Social Security	289,640	290,558	274,754	268,751	263,000	-0.3%	10.1%
Mean Social Security income (dollars)	17,837	16,792	15,648	15,518	15,265	6.2%	16.8%
With retirement income	123,979	119,376	105,885	76,043	74,753	3.9%	65.9%
Mean retirement income (dollars)	29,420	27,780	27,486	25,170	25,591	5.9%	15.0%
With Supplemental Security Income	69,482	69,589	68,460	59,585	65,394	-0.2%	6.3%
Mean Supplemental Security Income (dollars)	8,364	8,465	7,988	8,182	7,985	-1.2%	4.7%
With cash public assistance income	34,850	49,927	28,297	24,917	20,683	-30.2%	68.5%
Mean cash public assistance income (dollars)	2,077	3,484	1,751	2,034	2,255	-40.4%	-7.9%
With Food Stamp/SNAP benefits in the past 12 months	210,645	242,839	198,079	224,295	223,879	-13.3%	-5.9%
<b>Families</b>	<b>658,613</b>	<b>652,109</b>	<b>633,834</b>	<b>622,526</b>	<b>597,706</b>	<b>1.0%</b>	<b>10.2%</b>
Less than \$10,000	27,091	26,821	26,621	29,127	29,480	1.0%	-8.1%
\$10,000 to \$14,999	12,808	18,568	22,184	21,469	25,564	-31.0%	-49.9%
\$15,000 to \$24,999	46,984	52,602	58,947	67,966	62,774	-10.7%	-25.2%
\$25,000 to \$34,999	51,749	58,753	66,553	66,650	65,219	-11.9%	-20.7%
\$35,000 to \$49,999	71,812	86,340	81,765	83,104	87,177	-16.8%	-17.6%
\$50,000 to \$74,999	119,826	117,438	118,527	115,863	108,326	2.0%	10.6%
\$75,000 to \$99,999	89,931	86,347	76,060	73,513	69,214	4.2%	29.9%
\$100,000 to \$149,999	102,565	95,554	91,906	80,996	79,645	7.3%	28.8%
\$150,000 to \$199,999	55,781	46,049	38,664	38,170	30,458	21.1%	83.1%
\$200,000 or more	80,066	63,637	51,974	45,668	39,849	25.8%	100.9%
<b>Median family income (dollars)</b>	<b>74,762</b>	<b>66,634</b>	<b>61,413</b>	<b>58,389</b>	<b>55,676</b>	<b>12.2%</b>	<b>34.3%</b>
<b>Mean family income (dollars)</b>	<b>113,547</b>	<b>99,066</b>	<b>92,403</b>	<b>86,633</b>	<b>81,033</b>	<b>14.6%</b>	<b>40.1%</b>
<b>Per capita income (dollars)</b>	<b>38,062</b>	<b>33,016</b>	<b>29,760</b>	<b>28,208</b>	<b>25,996</b>	<b>15.3%</b>	<b>46.4%</b>
CPI South Florida (2022=100)	100.0	91.2	86.7	85.2	82.4	9.6%	21.4%
<b>Median family income (2022 dollars)</b>	<b>74,762</b>	<b>73,025</b>	<b>70,860</b>	<b>68,525</b>	<b>67,578</b>	<b>2.4%</b>	<b>10.6%</b>
<b>Mean family income (2022 dollars)</b>	<b>113,547</b>	<b>108,568</b>	<b>106,617</b>	<b>101,673</b>	<b>98,356</b>	<b>4.6%</b>	<b>15.4%</b>
<b>Per capita income (2022 dollars)</b>	<b>38,062</b>	<b>36,183</b>	<b>34,338</b>	<b>33,105</b>	<b>31,553</b>	<b>5.2%</b>	<b>20.6%</b>
<b>Nonfamily households</b>	<b>324,896</b>	<b>311,368</b>	<b>278,971</b>	<b>273,275</b>	<b>274,789</b>	<b>4.3%</b>	<b>18.2%</b>
Median nonfamily income (dollars)	40,778	36,007	32,130	32,695	30,489	13.3%	33.7%
Mean nonfamily income (dollars)	68,551	59,608	54,954	57,604	52,574	15.0%	30.4%
Median earnings for workers (dollars)	38,320	33,739	31,094	30,280	28,310	13.6%	35.4%
Median earnings for male full-time, year-round workers (dollars)	50,559	45,938	40,317	38,978	37,136	10.1%	36.1%
Median earnings for female full-time, year-round workers (dollars)	41,429	39,952	32,474	34,618	31,869	3.7%	30.0%

# Miami-Dade County Selected Economic Characteristics

## Poverty & Health Insurance Coverage

	2022	2021	2019	2018	2017	2021 - 22 % change	2017 - 22 % change
<b>HEALTH INSURANCE COVERAGE</b>							
Civilian Noninstitutionalized Population	2,651,246	2,640,092	2,696,151	2,738,060	2,727,281	0.4%	-2.8%
With health insurance coverage	2,292,724	2,272,022	2,256,678	2,284,638	2,258,816	0.9%	1.5%
With private health insurance coverage	1,501,811	1,526,441	1,466,706	1,471,532	1,425,188	-1.6%	5.4%
With public health coverage	919,040	898,549	895,122	917,274	943,849	2.3%	-2.6%
No health insurance coverage	358,522	368,070	439,473	453,422	468,465	-2.6%	-23.5%
Civilian Noninstitutionalized Population Under 18 years	560,036	565,886	581,053	590,331	589,588	-1.0%	-5.0%
No health insurance coverage	38,362	37,006	42,417	41,534	39,519	3.7%	-2.9%
Civilian noninstitutionalized population 18 to 64 years	1,641,294	1,630,067	1,670,914	1,706,788	1,706,762	0.7%	-3.8%
In labor force:	1,301,213	1,281,457	1,321,496	1,347,604	1,318,230	1.5%	-1.3%
Employed:	1,258,439	1,204,355	1,276,874	1,287,195	1,239,619	4.5%	1.5%
With health insurance coverage	1,047,097	1,009,256	1,013,838	1,019,219	971,616	3.7%	7.8%
With private health insurance	958,396	940,251	956,379	953,315	901,257	1.9%	6.3%
With public coverage	110,489	97,150	70,228	79,970	87,057	13.7%	26.9%
No health insurance coverage	211,342	195,099	263,036	267,976	268,003	8.3%	-21.1%
Unemployed:	42,774	77,102	44,622	60,409	78,611	-44.5%	-45.6%
With health insurance coverage	28,036	48,382	23,694	35,075	42,248	-42.1%	-33.6%
With private health insurance	19,429	35,468	17,179	24,888	28,921	-45.2%	-32.8%
With public coverage	9,567	15,136	7,720	10,803	14,658	-36.8%	-34.7%
No health insurance coverage	14,738	28,720	20,928	25,334	36,363	-48.7%	-59.5%
Not in labor force:	340,081	348,610	349,418	359,184	388,532	-2.4%	-12.5%
With health insurance coverage	256,788	250,592	246,689	253,224	274,325	2.5%	-6.4%
With private health insurance	158,261	163,029	146,406	155,856	158,680	-2.9%	-0.3%
With public coverage	112,505	102,693	112,513	107,209	125,299	9.6%	-10.2%
No health insurance coverage	83,293	98,018	102,729	105,960	114,207	-15.0%	-27.1%
<b>PERCENTAGE OF FAMILIES WHOSE INCOME IN THE PAST 12 MONTHS IS BELOW THE POVERTY LEVEL</b>							
Percentage of all families	10.9%	11.7%	12.0%	13.2%	13.8%	-0.8%	-21.0%
Percentage of all families with related children under 18 years	14.9%	15.2%	16.2%	18.2%	18.4%	-0.3%	-19.0%
Percentage of all families with related children under 5 years only	14.2%	20.6%	16.4%	14.6%	13.9%	-6.4%	2.2%
Percentage of married couple families	7.6%	8.6%	7.6%	8.2%	9.4%	-1.0%	-19.1%
Percentage of married couple families with related children under 18 years	8.1%	9.1%	8.3%	9.1%	10.2%	-1.0%	-20.6%
Percentage of married couple families with related children under 5 years only	9.4%	12.8%	7.9%	6.8%	10.3%	-3.4%	-8.7%
Percentage of families with female householder, no husband present	18.5%	20.2%	22.9%	25.1%	24.3%	-1.7%	-23.9%
Percentage of families with female householder, no husband present with related children under 18 years	26.9%	27.9%	31.8%	35.7%	33.9%	-1.0%	-20.6%
Percentage of families with female householder, no husband present with related children under 5 years only	23.7%	37.9%	36.4%	34.8%	22.9%	-14.2%	3.5%
<b>PERCENTAGE OF PEOPLE WHOSE INCOME IN THE PAST 12 MONTHS IS BELOW THE POVERTY LEVEL</b>							
Percentage of all people	14.4%	14.9%	15.6%	16.0%	16.6%	-0.5%	-13.3%
Percentage of all people under 18 years	17.0%	17.2%	20.5%	22.5%	21.8%	-0.2%	-22.0%
Percentage of related children under 18 years	16.7%	17.0%	20.3%	22.3%	21.5%	-0.3%	-22.3%
Percentage of related children under 5 years	18.8%	21.2%	24.1%	23.0%	22.8%	-2.4%	-17.5%
Percentage of related children 5 to 17 years	16.0%	15.5%	18.8%	22.0%	21.1%	0.5%	-24.2%
Percentage of all people 18 years and over	13.8%	14.4%	14.3%	14.3%	15.3%	-0.6%	-9.8%
Percentage of all people 18 to 64 years	11.9%	12.5%	12.4%	12.7%	14.2%	-0.6%	-16.2%
Percentage of all people 65 years and over	20.7%	21.3%	21.7%	20.6%	19.9%	-0.6%	4.0%
Percentage of all people in families	10.8%	11.6%	12.3%	13.3%	13.5%	-0.8%	-20.0%
Percentage of all unrelated individuals 15 years and over	29.4%	30.0%	31.9%	29.6%	32.0%	-0.6%	-8.1%

Data Source: US Census Bureau, 2017-2022 American Community Survey 1-year Estimates.



# Miami-Dade County Selected Social Characteristics

## Household Types, Marital Status & Fertility

June, 2024

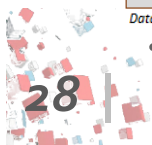
	2022	2021	2019	2018	2017	2021 - 22 % change	2017 - 22 % change
<b>HOUSEHOLDS BY TYPE</b>							
<b>Total households</b>	<b>983,509</b>	<b>963,477</b>	<b>912,805</b>	<b>895,801</b>	<b>872,495</b>	<b>2.1%</b>	<b>12.7%</b>
Family households (families)	n/a	n/a	n/a	622,526	597,706		
With own children under 18 years	n/a	n/a	n/a	243,834	247,081		
Married-couple family	405,943	413,773	400,251	394,815	376,175	-1.9%	7.9%
With own children under 18 years	151,432	158,174	144,745	154,216	152,993	-4.3%	-1.0%
Cohabiting-couple household	93,088	78,559	65,230	n/a	n/a	n/a	n/a
With own children under 18 years	33,840	30,454	25,486	n/a	n/a	n/a	n/a
Male householder, no wife present, family	n/a	n/a	n/a	60,883	63,353		
With own children under 18 years	n/a	n/a	n/a	19,513	23,120		
Male householder, no spouse/partner present (2019+)	190,190	179,967	169,083	n/a	n/a	n/a	n/a
With own children of the householder under 18 years (2019+)	11,311	10,721	11,549	n/a	n/a	n/a	n/a
Householder living alone (2019+)	120,751	114,270	103,959	n/a	n/a	n/a	n/a
Householder living alone, 65 years and over (2019+)	32,820	29,244	28,258	n/a	n/a	n/a	n/a
Female householder, no husband present, family	n/a	n/a	n/a	166,828	158,178		
With own children under 18 years	n/a	n/a	n/a	70,105	70,968		
Female householder, no spouse/partner present (2019+)	294,288	291,178	278,241	n/a	n/a	n/a	n/a
With own children of the householder under 18 years (2019+)	57,537	58,035	56,365	n/a	n/a	n/a	n/a
Householder living alone (2019+)	136,883	134,233	120,206	n/a	n/a	n/a	n/a
Householder living alone, 65 years and over (2019+)	68,763	66,838	63,217	n/a	n/a	n/a	n/a
Nonfamily households	n/a	n/a	n/a	273,275	274,789		
Householder living alone	257,634	248,503	224,165	219,017	224,394	3.7%	14.8%
65 years and over	101,583	96,082	91,475	84,484	84,696	5.7%	19.9%
Households with one or more people under 18 years	295,214	297,665	279,885	286,598	284,771	-0.8%	3.7%
Households with one or more people 65 years and over	336,176	328,824	308,293	294,464	285,767	2.2%	17.6%
Average household size	2.7	2.7	2.9	3.0	3.1	-2.2%	-13.9%
Average family size	3.2	3.3	3.5	3.7	3.8	-2.4%	-14.8%
<b>RELATIONSHIP</b>							
Population in households	2,630,655	2,625,601	2,675,285	2,716,712	2,705,229	0.2%	-2.8%
Householder	983,509	963,477	912,805	895,801	872,495	2.1%	12.7%
Spouse	404,792	412,483	400,248	394,147	376,568	-1.9%	7.5%
Child	94,233	79,823	822,871	867,387	879,900	18.1%	-89.3%
Other relatives	738,867	773,956	374,416	390,839	407,148	-4.5%	81.5%
Nonrelatives	317,058	314,940	99,719	168,538	169,118	0.7%	87.5%
Unmarried partner	92,196	80,922	65,226	56,817	60,871	13.9%	51.5%
<b>MARITAL STATUS</b>							
Males 15 years and over	1,091,745	1,077,575	1,085,613	1,103,342	1,099,277	1.3%	-0.7%
Never married	432,540	409,094	422,194	437,669	443,515	5.7%	-2.5%
Now married, except separated	491,949	501,443	501,729	499,803	478,502	-1.9%	2.8%
Separated	25,881	30,509	28,579	24,341	35,162	-15.2%	-26.4%
Widowed	23,864	25,692	26,831	26,631	26,279	-7.1%	-9.2%
Divorced	117,511	110,837	106,280	114,898	115,819	6.0%	1.5%
Females 15 years and over	1,146,675	1,141,206	1,172,878	1,193,197	1,189,397	0.5%	-3.6%
Never married	387,083	379,277	387,732	396,522	400,671	2.1%	-3.4%
Now married, except separated	453,729	460,573	475,863	460,943	448,292	-1.5%	1.2%
Separated	33,953	34,451	40,362	46,896	45,053	-1.4%	-24.6%
Widowed	101,469	97,702	104,650	108,875	110,064	3.9%	-7.8%
Divorced	170,441	169,203	164,271	179,961	185,317	0.7%	-8.0%
<b>FERTILITY</b>							
Number of women 15 to 50 years old who had a birth in the past 12 months	24,807	27,096	26,339	31,797	29,872	-8.4%	-17.0%
Unmarried women (widowed, divorced, and never married)	11,100	12,523	10,093	14,475	12,419	-11.4%	-10.6%
Per 1,000 unmarried women	29	33	26	36	30	-12.1%	-3.3%
Per 1,000 women 15 to 50 years old	40	43	41	48	45	-7.0%	-11.1%
Per 1,000 women 15 to 19 years old	3	6	11	5	6	-50.0%	-50.0%
Per 1,000 women 20 to 34 years old	56	71	65	72	68	-21.1%	-17.6%
Per 1,000 women 35 to 50 years old	36	29	27	38	34	24.1%	5.9%
<b>GRANDPARENTS</b>							
Number of grandparents living with own grandchildren under 18 years	75,768	83,963	87,626	91,566	90,758	-9.8%	-16.5%
Responsible for grandchildren	14,876	8,931	13,247	18,337	16,522	66.6%	-10.0%
Years responsible for grandchildren							
Less than 1 year	3,378	2,223	2,736	2,595	3,171	52.0%	6.5%
1 or 2 years	2,275	1,985	3,501	3,317	5,511	14.6%	-58.7%
3 or 4 years	2,545	639	1,981	2,732	1,021	298.3%	149.3%
5 or more years	6,678	4,084	5,029	9,693	6,819	63.5%	-2.1%
Characteristics of grandparents responsible for own grandchildren under 18 years	14,876	8,931	13,247	18,337	16,522	66.6%	-10.0%
Who are female (%)	71.0	68.8	66.4	69.1	62.6	2.2	8.4
Who are married (%)	59.1	66.6	55.9	64.2	64.0	-7.6	-4.9
<b>SCHOOL ENROLLMENT</b>							
Population 3 years and over enrolled in school	610,964	625,934	672,687	676,289	658,985	-2.4%	-7.3%
Nursery school, preschool	42,616	37,997	48,798	51,009	45,827	12.2%	-7.0%
Kindergarten	36,989	29,461	30,118	30,938	30,828	25.6%	20.0%
Elementary school (grades 1-8)	229,757	243,389	248,406	248,281	244,306	-5.6%	-6.0%
High school (grades 9-12)	124,594	124,559	134,564	133,988	129,383	0.0%	-3.7%
College or graduate school	177,008	190,528	210,801	212,073	208,641	-7.1%	-15.2%

# Miami-Dade County Selected Social Characteristics

## Education, Veteran and Disability Status, and Place of Birth

	2022	2021	2019	2018	2017	2021 - 22	2017 - 22
<b>EDUCATIONAL ATTAINMENT</b>							
<b>Population 25 years and over</b>	<b>1,919,710</b>	<b>1,911,144</b>	<b>1,941,926</b>	<b>1,971,126</b>	<b>1,961,363</b>	<b>0.4%</b>	<b>-2.1%</b>
Less than 9th grade	144,619	159,091	184,601	178,730	193,414	-9.1%	-25.2%
9th to 12th grade, no diploma	157,090	159,303	197,038	166,027	163,291	-1.4%	-3.8%
High school graduate (includes equivalency)	528,420	518,819	507,716	529,601	548,006	1.9%	-3.6%
Some college, no degree	245,678	268,280	284,248	292,060	293,388	-8.4%	-16.3%
Associate's degree	175,832	187,751	173,187	184,806	187,832	-6.3%	-6.4%
Bachelor's degree	409,183	379,889	374,163	391,447	370,227	7.7%	10.5%
Graduate or professional degree	258,888	238,011	220,973	228,455	205,205	8.8%	26.2%
Percent high school graduate or higher	84.3%	83.3%	80.3%	82.5%	81.8%	0.9%	2.5%
Percent bachelor's degree or higher	34.8%	32.3%	30.6%	31.4%	29.3%	2.5%	5.5%
<b>VETERAN STATUS</b>							
<b>Civilian population 18 years and over</b>	<b>2,143,300</b>	<b>2,121,464</b>	<b>2,165,187</b>	<b>2,201,424</b>	<b>2,193,299</b>	<b>1.0%</b>	<b>-2.3%</b>
Civilian veterans	47,509	45,848	44,665	50,492	47,921	3.6%	-0.9%
<b>DISABILITY STATUS OF THE CIVILIAN NONINSTITUTIONALIZED POPULATION</b>							
<b>Population 5 years and over</b>	<b>2,651,246</b>	<b>2,640,092</b>	<b>2,696,151</b>	<b>2,738,060</b>	<b>2,727,281</b>	<b>0.4%</b>	<b>-2.8%</b>
With a disability	273,841	284,792	273,609	276,505	276,148	-3.8%	-0.8%
<b>Population under 18 years (2008 and forward)</b>	<b>528,719</b>	<b>536,690</b>	<b>549,232</b>	<b>558,289</b>	<b>556,705</b>	<b>-1.5%</b>	<b>-5.0%</b>
With a disability	17,099	16,655	17,493	18,746	15,707	2.7%	8.9%
<b>Population 18 to 64 years (2008 and forward)</b>	<b>1,672,611</b>	<b>1,659,263</b>	<b>1,702,735</b>	<b>1,738,830</b>	<b>1,739,645</b>	<b>0.8%</b>	<b>-3.9%</b>
With a disability	113,540	121,594	114,219	111,210	120,185	-6.6%	-5.5%
<b>Population 65 years and over</b>	<b>449,916</b>	<b>444,139</b>	<b>444,184</b>	<b>440,941</b>	<b>430,931</b>	<b>1.3%</b>	<b>4.4%</b>
With a disability	143,202	146,543	141,897	146,549	140,256	-2.3%	2.1%
<b>RESIDENCE 1 YEAR AGO</b>							
<b>Population 1 year and over</b>	<b>2,650,982</b>	<b>2,635,361</b>	<b>2,688,796</b>	<b>2,735,048</b>	<b>2,723,489</b>	<b>0.6%</b>	<b>-2.7%</b>
Same house	2,338,977	2,315,680	2,374,136	2,406,255	2,401,671	1.0%	-2.6%
Different house in the U.S.	241,699	290,952	272,303	290,976	265,895	-16.9%	-9.1%
Same county	176,996	226,888	224,553	236,958	212,083	-22.0%	-16.5%
Different county	64,703	64,064	47,750	54,018	53,812	1.0%	20.2%
Same state	24,500	24,115	23,296	29,514	28,095	1.6%	-12.8%
Different state	40,203	39,949	24,454	24,504	25,717	0.6%	56.3%
Abroad	70,306	28,729	42,357	37,817	55,923	144.7%	25.7%
<b>PLACE OF BIRTH</b>							
<b>Total population</b>	<b>2,673,837</b>	<b>2,662,777</b>	<b>2,716,940</b>	<b>2,761,581</b>	<b>2,751,796</b>	<b>0.4%</b>	<b>-2.8%</b>
Native	1,221,949	1,234,511	1,232,996	1,268,372	1,262,375	-1.0%	-3.2%
Born in United States	1,135,924	1,148,391	1,156,361	1,187,755	1,189,515	-1.1%	-4.5%
State of residence	845,813	873,335	879,318	894,727	895,814	-3.2%	-5.6%
Different state	290,111	275,056	277,043	293,028	293,701	5.5%	-1.2%
Born in Puerto Rico, U.S. Islands, or abroad-American parent(s)	86,025	86,120	76,635	80,617	72,860	-0.1%	18.1%
Foreign born	1,451,888	1,428,266	1,483,944	1,493,209	1,489,421	1.7%	-2.5%
<b>U.S. CITIZENSHIP STATUS</b>							
<b>Foreign-born population</b>	<b>1,451,888</b>	<b>1,428,266</b>	<b>1,483,944</b>	<b>1,493,209</b>	<b>1,489,421</b>	<b>1.7%</b>	<b>-2.5%</b>
Naturalized U.S. citizen	869,830	892,800	887,450	871,699	851,148	-2.6%	2.2%
Not a U.S. citizen	582,058	535,466	596,494	621,510	638,273	8.7%	-8.8%
<b>YEAR OF ENTRY</b>							
<b>Population born outside the United States</b>	<b>1,537,913</b>	<b>1,514,386</b>	<b>1,560,579</b>	<b>1,573,826</b>	<b>1,562,281</b>	<b>1.6%</b>	<b>-1.6%</b>
Native	86,025	86,120	76,635	80,617	72,860	-0.1%	18.1%
Entered 2010 or later	35,861	29,922	23,905	24,573	16,780	19.8%	113.7%
Entered before 2010	50,164	56,198	52,730	56,044	56,080	-10.7%	-10.5%
Foreign born	1,451,888	1,428,266	1,483,944	1,493,209	1,489,421	1.7%	-2.5%
Entered 2000 or later							
Entered before 2000							
Entered 2010 or later	557,848	467,302	415,391	381,680	343,942	19.4%	62.2%
Entered before 2010	894,040	960,964	1,068,553	1,111,529	1,145,479	-7.0%	-22.0%
<b>WORLD REGION OF BIRTH OF FOREIGN BORN</b>							
<b>Foreign-born population, excluding population born at sea</b>	<b>1,451,888</b>	<b>1,428,266</b>	<b>1,483,944</b>	<b>1,493,209</b>	<b>1,489,421</b>	<b>1.7%</b>	<b>-2.5%</b>
Europe	48,190	53,472	48,613	47,698	45,165	-9.9%	6.7%
Asia	38,726	41,251	37,696	41,776	40,062	-6.1%	-3.3%
Africa	8,890	7,637	9,717	5,299	8,407	16.4%	5.7%
Oceania	771	825	579	1,113	206	-6.5%	274.3%
Latin America	1,348,156	1,319,575	1,383,356	1,392,862	1,391,086	2.2%	-3.1%
Northern America	7,155	5,506	3,983	4,461	4,495	29.9%	59.2%
<b>LANGUAGE SPOKEN AT HOME</b>							
<b>Population 5 years and over</b>	<b>2,530,515</b>	<b>2,517,017</b>	<b>2,559,743</b>	<b>2,602,232</b>	<b>2,593,221</b>	<b>0.5%</b>	<b>-2.4%</b>
English only	633,746	636,673	614,661	669,209	638,863	-0.5%	-0.8%
Language other than English	1,896,769	1,880,344	1,945,082	1,933,023	1,954,358	0.9%	-2.9%
Speak English less than "very well"	868,396	850,972	887,952	880,166	916,854	2.0%	-5.3%
Spanish	1,676,193	1,657,215	1,711,601	1,713,363	1,722,749	1.1%	-2.7%
Speak English less than "very well"	801,670	783,421	812,541	805,286	835,761	2.3%	-4.1%
Other Indo-European languages	182,777	185,516	196,946	176,720	191,415	-1.5%	-4.5%
Speak English less than "very well"	55,749	55,370	63,590	57,034	66,778	0.7%	-16.5%
Asian and Pacific Islander languages	24,494	21,877	18,546	26,033	25,297	12.0%	-3.2%
Speak English less than "very well"	8,190	8,948	6,721	12,510	11,026	-8.5%	-25.7%
Other languages	13,305	15,736	17,989	16,907	14,897	-15.4%	-10.7%
Speak English less than "very well"	2,787	3,233	5,100	5,336	3,289	-13.8%	-15.3%
<b>COMPUTERS AND INTERNET USE</b>							
<b>Total Households</b>	<b>983,509</b>	<b>963,477</b>	<b>895,801</b>	<b>895,801</b>	<b>872,495</b>	<b>2.1%</b>	<b>12.7%</b>
With a computer	951,418	929,063	837,519	837,519	793,492	2.4%	19.9%
With a broadband Internet subscription	866,688	843,000	711,708	711,708	670,157	2.8%	29.3%

Data Source: US Census Bureau, 2017-2022 American Community Survey 1-year Estimates.



# Miami-Dade County Selected Housing Characteristics

## Housing Structure and Age

June, 2024

	2022	2021	2019	2018	2017	2021 - 22 % change	2017 - 22 % change
<b>HOUSING OCCUPANCY</b>							
Total housing units	1,095,510	1,084,304	1,040,743	1,032,000	1,024,289	1.0%	7.0%
Occupied housing units	983,509	963,477	912,732	895,801	872,495	2.1%	12.7%
Vacant housing units	112,001	120,827	128,011	136,199	151,794	-7.3%	-26.2%
Homeowner vacancy rate	1.3	1.3	1.7	1.9	1.6	0.0	-0.3
Rental vacancy rate	5.6	4.9	5.3	5.8	6.7	0.7	-1.1
<b>UNITS IN STRUCTURE</b>							
1-unit, detached	417,969	431,873	413,175	413,085	406,617	-3.2%	2.8%
1-unit, attached	110,431	105,579	95,748	99,267	100,758	4.6%	9.6%
2 units	23,322	19,910	17,693	15,028	16,336	17.1%	42.8%
3 or 4 units	36,012	36,963	35,385	34,636	34,612	-2.6%	4.0%
5 to 9 units	55,677	53,941	54,119	51,881	53,153	3.2%	4.7%
10 to 19 units	72,832	71,125	68,689	72,658	71,907	2.4%	1.3%
20 or more units	363,975	351,378	342,404	332,560	327,578	3.6%	11.1%
Mobile home	14,742	12,971	13,530	12,309	13,193	13.7%	11.7%
Boat, RV, van, etc.	550	564	0	576	135	-2.5%	307.4%
<b>ROOMS: Total housing units</b>	<b>1,095,510</b>	<b>1,084,304</b>	<b>1,040,743</b>	<b>1,032,000</b>	<b>1,024,289</b>	<b>1.0%</b>	<b>7.0%</b>
1 room	56,013	54,709	49,956	43,604	48,801	2.4%	14.8%
2 rooms	66,541	50,985	54,119	43,076	50,858	30.5%	30.8%
3 rooms	186,038	188,592	186,293	183,192	175,670	-1.4%	5.9%
4 rooms	251,797	251,278	248,738	242,835	233,961	0.2%	7.6%
5 rooms	196,335	199,477	195,660	195,326	203,721	-1.6%	-3.6%
6 rooms	158,488	153,718	143,623	154,893	145,767	3.1%	8.7%
7 rooms	84,004	89,164	79,096	83,202	85,470	-5.8%	-1.7%
8 rooms	50,557	54,584	45,793	47,953	42,066	-7.4%	20.2%
9 rooms or more	45,737	41,797	37,467	37,919	37,975	9.4%	20.4%
Median (rooms)	4.4	4.5	4.4	4.5	4.5	-2.2%	-2.2%
<b>BEDROOMS: Total housing units</b>	<b>1,095,510</b>	<b>1,084,304</b>	<b>1,040,743</b>	<b>1,032,000</b>	<b>1,024,289</b>	<b>1.0%</b>	<b>7.0%</b>
No bedroom	59,807	58,276	54,119	46,127	51,004	2.6%	17.3%
1 bedroom	194,479	190,332	183,171	178,383	185,810	2.2%	4.7%
2 bedrooms	346,020	345,368	338,241	333,408	322,299	0.2%	7.4%
3 bedrooms	328,821	331,607	308,060	316,406	318,106	-0.8%	3.4%
4 bedrooms	135,324	128,236	125,930	127,158	120,161	5.5%	12.6%
5 or more bedrooms	31,059	30,485	31,222	30,518	26,909	1.9%	15.4%
<b>HOUSING TENURE: Occupied housing units</b>	<b>983,509</b>	<b>963,477</b>	<b>912,805</b>	<b>895,801</b>	<b>872,495</b>	<b>2.1%</b>	<b>12.7%</b>
Owner-occupied	507,879	505,982	460,054	459,732	445,138	0.4%	14.1%
Renter-occupied	475,630	457,495	452,751	436,069	427,357	4.0%	11.3%
Average household size of owner-occupied unit	2.84	2.92	3.11	3.19	3.30	-2.7%	-13.9%
Average household size of renter-occupied unit	2.5	2.51	2.75	2.87	2.89	-0.4%	-13.5%
<b>VEHICLES AVAILABLE</b>							
<b>Occupied housing units</b>	<b>983,509</b>	<b>963,477</b>	<b>912,805</b>	<b>895,801</b>	<b>872,495</b>	<b>2.1%</b>	<b>12.7%</b>
No vehicles available	96,631	94,644	93,106	89,082	89,214	2.1%	8.3%
1 vehicle available	385,655	371,045	345,953	336,430	333,351	3.9%	15.7%
2 vehicles available	342,687	339,197	313,092	317,470	306,051	1.0%	12.0%
3 or more vehicles available	158,536	158,591	160,654	152,819	143,879	0.0%	10.2%

# Miami-Dade County Selected Housing Characteristics

## Housing Characteristics, Value and Costs

	2022	2021	2019	2018	2017	2021 - 22 % change	2017 - 22 % change
<b>HOUSE HEATING FUEL</b>							
<b>Occupied housing units</b>	<b>983,509</b>	<b>963,477</b>	<b>912,805</b>	<b>895,801</b>	<b>872,495</b>	<b>2.1%</b>	<b>12.7%</b>
Utility gas	34,766	31,281	21,907	24,750	23,556	11.1%	47.6%
Bottled, tank, or LP gas	5,777	4,523	3,651	4,050	2,588	27.7%	123.2%
Electricity	886,880	876,030	850,734	826,721	808,492	1.2%	9.7%
Fuel oil, kerosene, etc.	1854	1440	912,805	1387	855	28.8%	116.8%
Coal or coke	0	318	0	0	95		
Wood	68	179	0	91	445	-62.0%	-84.7%
Solar energy	1395	1662	0	470	441	-16.1%	216.3%
Other fuel	395	526	912,805	420	180	-24.9%	119.4%
No fuel used	52,374	47,518	34,687	37,912	35,843	10.2%	46.1%
<b>SELECTED CHARACTERISTICS</b>							
<b>Occupied housing units</b>	<b>983,509</b>	<b>963,477</b>	<b>912,805</b>	<b>895,801</b>	<b>872,495</b>	<b>2.1%</b>	<b>12.7%</b>
Lacking complete plumbing facilities	4,275	4,652	4,564	3,236	2,470	-8.1%	73.1%
Lacking complete kitchen facilities	8,163	9,832	8,215	5,502	6,780	-17.0%	20.4%
No telephone service available	13,608	12,018	21,907	16,444	17,010	13.2%	-20.0%
<b>OCCUPANTS PER ROOM</b>							
1.00 or less	912,527	896,893	853,473	839,170	816,055	1.7%	11.8%
1.01 to 1.50	42,598	37,844	36,512	35,843	35,583	12.6%	19.7%
1.51 or more	28,384	28,740	22,820	20,788	20,857	-1.2%	36.1%
<b>VALUE</b>							
<b>Owner-occupied units</b>	<b>507,879</b>	<b>505,982</b>	<b>459,877</b>	<b>459,732</b>	<b>445,138</b>	<b>0.4%</b>	<b>14.1%</b>
Less than \$50,000	14,064	14,407	9,198	10,408	11,054	-2.4%	27.2%
\$50,000 to \$99,999	7,241	9,026	8,738	13,837	19,320	-19.8%	-62.5%
\$100,000 to \$149,999	9,005	14,661	21,614	23,814	36,655	-38.6%	-75.4%
\$150,000 to \$199,999	20,892	31,969	41,849	44,373	55,431	-34.6%	-62.3%
\$200,000 to \$299,999	54,954	88,584	114,509	119,312	114,884	-38.0%	-52.2%
\$300,000 to \$499,999	191,390	210,488	173,374	159,493	129,013	-9.1%	48.3%
\$500,000 to \$999,999	154,916	101,507	64,843	63,047	55,526	52.6%	179.0%
\$1,000,000 or more	55,417	35,340	25,753	25,448	23,255	56.8%	138.3%
Median (dollars)	\$453,300	\$374,700	\$330,500	\$317,100	\$288,100	21.0%	57.3%
CPI South Florida - Housing (2022=100)	100.0	91.2	86.7	85.2	82.4	9.6%	21.4%
Median ( 2022 dollars)	\$453,300	\$410,638	\$381,340	\$372,149	\$349,689	10.4%	29.6%
<b>MORTGAGE STATUS &amp; SEL. MONTHLY OWNER COSTS</b>							
<b>Owner-occupied units</b>	<b>507,879</b>	<b>505,982</b>	<b>459,877</b>	<b>459,732</b>	<b>445,138</b>	<b>0.4%</b>	<b>14.1%</b>
Housing units with a mortgage	292,430	301,777	279,431	275,354	276,712	-3.1%	5.7%
Less than \$500	2,546	2,768	1,397	1,198	1,649	-8.0%	54.4%
\$500 to \$999	14,551	21,029	23,193	27,369	31,826	-30.8%	-54.3%
\$1,000 to \$1,499	41,686	58,383	63,151	64,246	73,288	-28.6%	-43.1%
\$1,500 to \$1,999	60,816	66,642	68,181	65,771	63,278	-8.7%	-3.9%
\$2,000 to \$2,499	57,215	59,813	51,695	45,620	45,966	-4.3%	24.5%
\$2,500 to \$2,999	40,421	38,350	29,061	27,966	25,079	5.4%	61.2%
\$3,000 or more	75,195	54,792	42,474	43,184	35,626	37.2%	111.1%
Median (dollars)	\$2,233	\$2,017	\$1,874	\$1,846	\$1,727	10.7%	29.3%
Median ( 2022 dollars)	\$2,233	\$2,210	\$2,162	\$2,166	\$2,096	1.0%	6.5%
Housing units without a mortgage	215,449	204,205	180,446	184,378	168,426	5.5%	27.9%
Less than \$250	11,919	12,274	15,518	12,642	13,879	-2.9%	-14.1%
\$250 to \$399	24,856	28,262	28,150	30,489	34,047	-12.1%	-27.0%
\$400 to \$599	42,628	47,145	40,420	47,644	38,386	-9.6%	11.1%
\$600 to \$799	39,962	37,823	33,743	32,705	28,645	5.7%	39.5%
\$800 to \$999	27,198	26,747	20,571	20,499	17,846	1.7%	52.4%
\$1,000 or more	68,886	51,954	42,044	40,399	35,623	32.6%	93.4%
Median (dollars)	\$739	\$674	\$632	\$608	\$589	9.6%	25.5%
Median ( 2022 dollars)	\$739	\$739	\$729	\$714	\$715	0.0%	3.4%



# Miami-Dade County Selected Housing Characteristics

## Renter's Costs

	2022	2021	2019	2018	2017	2021 - 22 % change	2017 - 22 % change
<b>SEL. MONTHLY OWNER COSTS: PRCNTG OF HOUSEHOLD INCOME</b>							
Owner-occupied units	507,879	505,982	459,877	459,732	445,138	0.4%	14.1%
Housing unit with a mortgage	290,017	298,842	276,765	272,342	274,364	-3.0%	5.7%
Less than 20.0 percent	93,845	88,564	84,690	85,640	83,953	6.0%	11.8%
20.0 to 24.9 percent	39,862	39,555	38,470	38,145	39,829	0.8%	0.1%
25.0 to 29.9 percent	28,285	32,269	30,998	28,445	31,972	-12.3%	-11.5%
30.0 to 34.9 percent	25,720	22,110	24,355	25,614	24,184	16.3%	6.4%
35.0 percent or more	102,305	116,344	98,252	94,498	94,426	-12.1%	8.3%
Not computed	2,413	2,935	2,666	3,012	2,348	-17.8%	2.8%
Housing unit without a mortgage	211,852	199,964	177,822	179,775	165,354	5.9%	28.1%
Less than 10.0 percent	75,368	71,428	66,150	61,572	55,735	5.5%	35.2%
10.0 to 14.9 percent	35,523	37,576	29,874	34,371	31,400	-5.5%	13.1%
15.0 to 19.9 percent	22,430	21,381	21,161	19,929	20,268	4.9%	10.7%
20.0 to 24.9 percent	18,281	13,405	13,870	14,515	13,009	36.4%	40.5%
25.0 to 29.9 percent	12,206	10,384	9,247	10,295	8,101	17.5%	50.7%
30.0 to 34.9 percent	7,347	7,133	6,579	8,435	6,053	3.0%	21.4%
35.0 percent or more	40,697	38,657	30,941	30,658	30,788	5.3%	32.2%
Not computed	3,597	4,241	2,624	4,603	3,072	-15.2%	17.1%
<b>GROSS RENT</b>							
Occupied units paying rent	461,311	442,683	442,329	424,914	413,499	4.2%	11.6%
Less than \$500	25,834	29,023	30,078	29,200	31,827	-11.0%	-18.8%
\$500 to \$999	37,277	45,442	58,387	77,554	87,991	-18.0%	-57.6%
\$1,000 to \$1,499	123,474	142,526	162,777	152,837	148,269	-13.4%	-16.7%
\$1,500 to \$1,999	133,409	127,041	116,333	105,310	92,345	5.0%	44.5%
\$2,000 to \$2,499	72,163	60,503	49,099	39,677	34,561	19.3%	108.8%
\$2,500 to \$2,999	32,803	19,282	14,597	12,328	9,117	70.1%	259.8%
\$3,000 or more	36,351	18,866	10,616	8,008	9,389	92.7%	287.2%
No rent paid	14,319	14,812	10,599	11,155	13,858	-3.3%	3.3%
Median (dollars)	\$1,665	\$1,517	\$1,408	\$1,349	\$1,290	9.8%	29.1%
Median ( 2022 dollars)	\$1,665	\$1,662	\$1,625	\$1,583	\$1,566	0.2%	6.3%
<b>GROSS RENT AS A PERCENTAGE OF HOUSEHOLD INCOME</b>							
Occupied units paying rent	450,447	430,316	430,270	413,924	400,295	4.7%	12.5%
Less than 15.0 percent	30,263	29,522	29,689	24,199	22,499	2.5%	34.5%
15.0 to 19.9 percent	38,103	32,435	34,422	33,814	28,921	17.5%	31.7%
20.0 to 24.9 percent	47,135	45,906	44,748	43,884	43,493	2.7%	8.4%
25.0 to 29.9 percent	48,465	45,869	53,353	45,944	45,920	5.7%	5.5%
30.0 to 34.9 percent	41,113	39,760	44,748	40,328	37,490	3.4%	9.7%
35.0 percent or more	245,368	236,824	223,310	225,755	221,972	3.6%	10.5%
Not computed	25,183	27,179	22,658	22,145	27,062	-7.3%	-6.9%

Data Source: US Census Bureau, 2017-2022 American Community Survey 1-year Estimates.

# Miami-Dade County Selected Demographic Characteristics

June, 2024

	2022	2021	2019	2018	2017	2021 - 22 % change	2017 - 22 % change
<b>SEX AND AGE</b>							
Total population	2,673,837	2,662,777	2,716,940	2,761,581	2,751,796	0.4%	-2.8%
Male	1,314,494	1,304,203	1,320,433	1,339,698	1,335,329	0.8%	-1.6%
Female	1,359,343	1,358,574	1,396,507	1,421,883	1,416,467	0.1%	-4.0%
Under 5 years	143,322	145,760	157,583	159,349	158,575	-1.7%	-9.6%
5 to 9 years	135,181	146,267	138,564	147,193	151,053	-7.6%	-10.5%
10 to 14 years	156,914	151,969	163,016	158,500	153,494	3.3%	2.2%
15 to 19 years	154,612	153,800	154,866	157,396	157,112	0.5%	-1.6%
20 to 24 years	164,098	153,837	163,016	168,017	170,199	6.7%	-3.6%
25 to 34 years	358,832	359,237	383,089	394,438	395,237	-0.1%	-9.2%
35 to 44 years	366,488	366,048	369,504	379,245	379,990	0.1%	-3.6%
45 to 54 years	378,341	381,098	391,239	405,026	408,304	-0.7%	-7.3%
55 to 59 years	185,583	192,386	192,903	185,134	183,701	-3.5%	1.0%
60 to 64 years	170,925	163,291	152,149	159,315	155,168	4.7%	10.2%
65 to 74 years	248,694	247,244	241,808	240,150	236,011	0.6%	5.4%
75 to 84 years	143,904	137,793	143,998	138,885	141,129	4.4%	2.0%
85 years and over	66,943	64,047	65,207	68,933	61,823	4.5%	8.3%
Median age (years)	40.9	40.9	40.5	40.1	40.1	0.0%	2.0%
18 years and over	2,144,875	2,125,795	2,167,261	2,202,862	2,194,558	0.9%	-2.3%
21 years and over	2,051,001	2,033,885	2,067,591	2,108,300	2,098,355	0.8%	-2.3%
62 years and over	555,999	541,174	543,388	538,252	530,020	2.7%	4.9%
65 years and over	459,541	449,084	452,047	447,968	438,963	2.3%	4.7%
18 years and over	2,144,875	2,125,795	2,167,261	2,202,862	2,194,558	0.9%	-2.3%
Male	1,043,924	1,030,821	1,040,285	1,056,037	1,051,135	1.3%	-0.7%
Female	1,100,951	1,094,974	1,126,976	1,146,825	1,143,423	0.5%	-3.7%
65 years and over	459,541	449,084	452,047	447,968	438,963	2.3%	4.7%
Male	191,735	188,914	188,052	186,077	182,310	1.5%	5.2%
Female	267,806	260,170	263,995	261,891	256,653	2.9%	4.3%
<b>RACE</b>							
Total population	2,673,837	2,662,777	2,716,940	2,761,581	2,751,796	0.4%	-2.8%
One race	1,398,035	1,333,156	2,664,201	2,714,030	2,708,622	4.9%	-48.4%
Two or more races	1,275,802	1,329,621	52,739	47,551	43,174	-4.0%	2855.0%
One race	1,398,035	1,333,156	2,664,201	2,714,030	2,708,622	4.9%	-48.4%
White	717,549	656,781	2,053,027	2,054,029	2,076,706	9.3%	-65.4%
Black or African American	396,620	398,301	456,189	472,958	474,196	-0.4%	-16.4%
American Indian and Alaska Native	9,069	7,945	4,788	5,983	5,037	14.1%	80.0%
Asian	42,820	41,526	42,480	44,830	47,099	3.1%	-9.1%
Asian Indian	11,062	11,424	13,788	9,752	11,535	-3.2%	-4.1%
Chinese	11,135	13,062	9,050	15,818	15,196	-14.8%	-26.7%
Filipino	8,420	6,823	5,287	4,770	6,849	23.4%	2.9%
Japanese	910	437	1,746	1,417	2,485	108.2%	-63.4%
Korean	1,914	855	2,321	2,230	1,497	123.9%	27.9%
Vietnamese	3,056	2,575	2,363	1,661	2,992	18.7%	2.1%
Other Asian	6,323	6,350	7,925	9,182	6,545	-0.4%	-3.4%
Native Hawaiian and Other Pacific Islander	692	484	986	361	196	43.0%	253.1%
Some other race	13,120	228,119	106,731	135,869	105,388	-94.2%	-87.6%
White and Black or African American	13,120	18,509	20,052	14,998	15,496	-29.1%	-15.3%
White and American Indian and Alaska Native	4,297	3,496	2,374	2,977	4,248	2.2%	1.2%
White and Asian	8,081	5,448	7,691	7,405	3,817	48.3%	111.7%
Black or African American & American Indian & Alaska Native	583	884	546	633	645	-34.0%	-9.6%
<b>Race alone or in combination with one or more other races</b>							
Total population	2,673,837	2,662,777	2,716,940	2,761,581	2,751,796	0.4%	-2.8%
White	1,951,840	1,945,704	2,097,478	2,094,088	2,112,758	0.3%	-7.6%
Black or African American	461,629	464,293	483,615	494,873	497,537	-0.6%	-7.2%
American Indian and Alaska Native	20,218	21,333	10,868	10,939	11,466	-5.2%	76.3%
Asian	60,719	56,174	57,056	57,791	54,343	8.1%	11.7%
Native Hawaiian and Other Pacific Islander	2,322	3,052	2,717	2,762	1,508	-23.9%	54.0%
Some other race	1,474,358	1,522,869	122,262	151,655	120,753	-3.2%	1121.0%
<b>HISPANIC OR LATINO AND RACE</b>							
Total population	2,673,837	2,662,777	2,716,940	2,761,581	2,751,796	0.4%	-2.8%
Hispanic or Latino (of any race)	1,848,083	1,838,864	1,885,556	1,907,130	1,887,266	0.5%	-2.1%
Mexican	67,483	60,960	59,773	64,493	70,637	10.7%	-4.5%
Puerto Rican	86,519	90,954	97,810	96,626	93,190	-4.9%	-7.2%
Cuban	926,031	926,815	986,249	999,602	1,000,518	-0.1%	-7.4%
Other Hispanic or Latino	768,050	760,135	741,725	746,409	722,921	1.0%	6.2%
Not Hispanic or Latino	825,754	823,913	831,384	854,451	864,530	0.2%	-4.5%
White alone	338,770	334,050	347,768	355,253	360,449	1.4%	-6.0%
Black or African American alone	382,733	382,195	415,692	427,194	434,406	0.1%	-11.9%
American Indian and Alaska Native alone	1,593	1,186	2,717	2,032	1,659	34.3%	-4.0%
Asian alone	39,208	39,746	40,754	42,283	44,246	-1.4%	-14.4%
Native Hawaiian and Other Pacific Islander alone	692	276	0	307	88	150.7%	686.4%
Some other race alone	12,689	13,524	8,151	9,121	7,550	-6.2%	68.1%
Two or more races	50,069	52,936	16,302	18,261	16,132	-5.4%	210.4%
Two races including Some other race	24,184	23,602	0	1,758	3,163	2.5%	664.6%
Two races excluding Some other race, & Three or more races	25,885	29,334	16,302	16,503	12,969	-11.8%	99.6%
Total housing units	1,095,510	1,084,304	1,040,743	1,032,000	1,024,289	1.0%	7.0%
<b>Citizen voting age population, 18 and over population</b>							
Male	766,104	784,604	760,784	765,446	753,002	-2.4%	1.7%
Female	854,665	861,220	864,822	876,294	860,357	-0.8%	-0.7%

Data Source: US Census Bureau, 2017-2022 American Community Survey 1-year Estimates.

