

# Moving to a New Normal Dashboard

---

July 30, 2020



# Daily Summary

## Daily Notes:


Effective July 28th and in consultation with local hospitals, the available bed metrics reported now consistently include all acute care and ICU beds in the hospital and not just vacant beds. This will allow the County to better assess the impact of COVID on hospital capacity and better aligns the data with the reopening gating criteria.

## Moving to a New Normal Dashboard Summary

### 1) Downward trajectory of documented cases within a 14-day period

As of : **07/30/2020**

New Positives: **2,773**

Trend: 

### 2) 14 consecutive days where positive test rate is below 10% on average

Daily Positive Rate: 17.8%

14-day Average: 18.7%

Cumulative Positive Rate: 18.93%

Total Positives 115,916

Total People Tested 612,433

JHS Positive Rate: 27%

### 3) 30% Total and ICU Bed Capacity Available\*

As of : **07/30/2020**

COVID non-ICU Admissions: 1,513

Available non-ICU beds: 5,193

COVID ICU Admissions: 548

Available ICU beds: 912

### 4) Miami-Dade Fire Rescue COVID Calls

Calls for: **07/29/2020**

Suspected COVID-19 Calls: 145

5-day Average: 139

### 5) Plan in place to monitor and manage hospital capacity and vulnerable

*In Progress*

### 6) Lab Turnaround Time Reported by FDOH

Cases Reported on: **07/28/2020**

less than 3 days: 58.08%

4 - 7 days: 31.65%

7 or more days: 10.27%

### 7) Countywide contact tracing program with a target headcount of 100 tracers by May 31

*Complete*

### 8) Sector safety guidelines developed and communicated

*In Progress*

### 9) Plan in place to open public transit that protects workers and commuters

*In Progress*

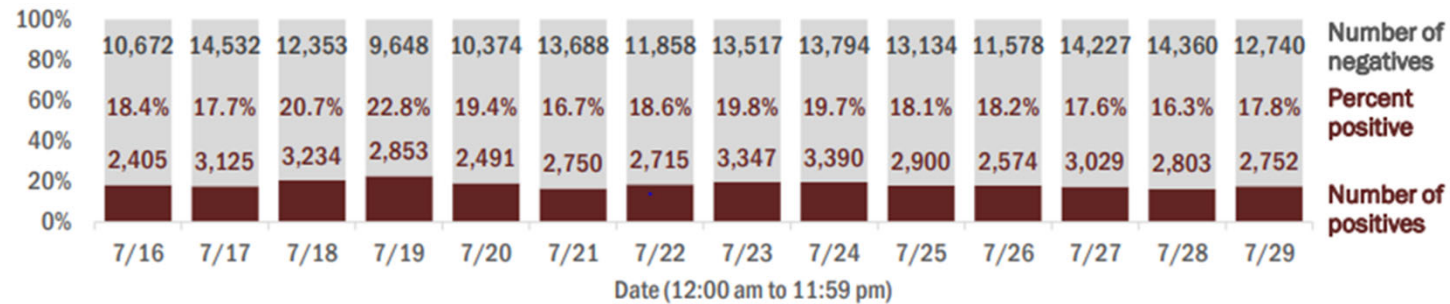
\* Percentage represents the number of COVID positive patients utilizing hospital beds; does not include the 1,213 acute care and ICU beds that may be converted

# COVID-19 Daily Positive Rate

## Laboratory testing for Florida residents and non-Florida residents over the past 2 weeks

### Percent positivity for new cases

These counts include the number of people for whom the department received PCR or antigen laboratory results by day. This percent is the number of people who test positive for the first time divided by all the people tested that day, excluding people who have previously tested positive.

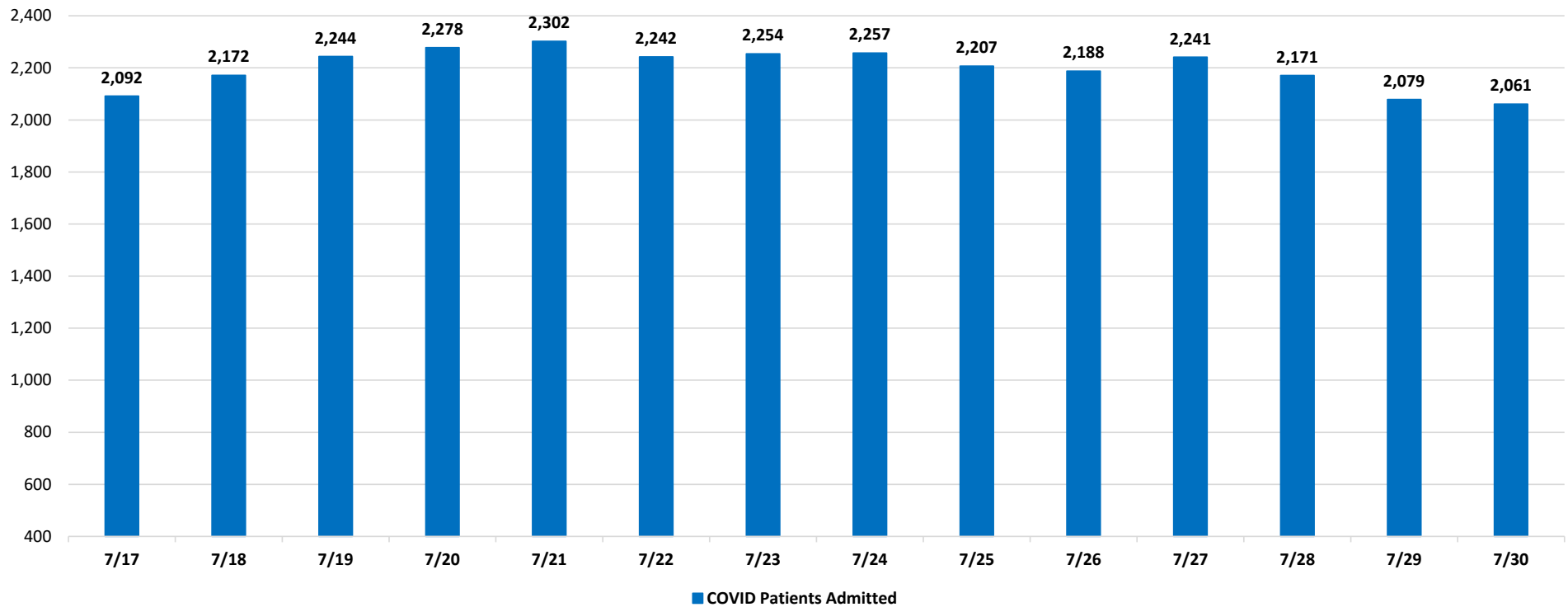


**14-day average: 18.70%**

Source: The daily positivity rate as reported by the State of Florida on the "County Report"  
[http://ww11.doh.state.fl.us/comm/partners/covid19\\_report\\_archive/county\\_reports\\_latest.pdf](http://ww11.doh.state.fl.us/comm/partners/covid19_report_archive/county_reports_latest.pdf)

# COVID-19 Admitted Patients

COVID Patients Admitted



Source: Self-reported by hospitals as required by Emergency Order 18-20

**DAILY COVID-19 HOSPITAL STATISTICAL REPORT**

as of: 07/30/2020 11:14

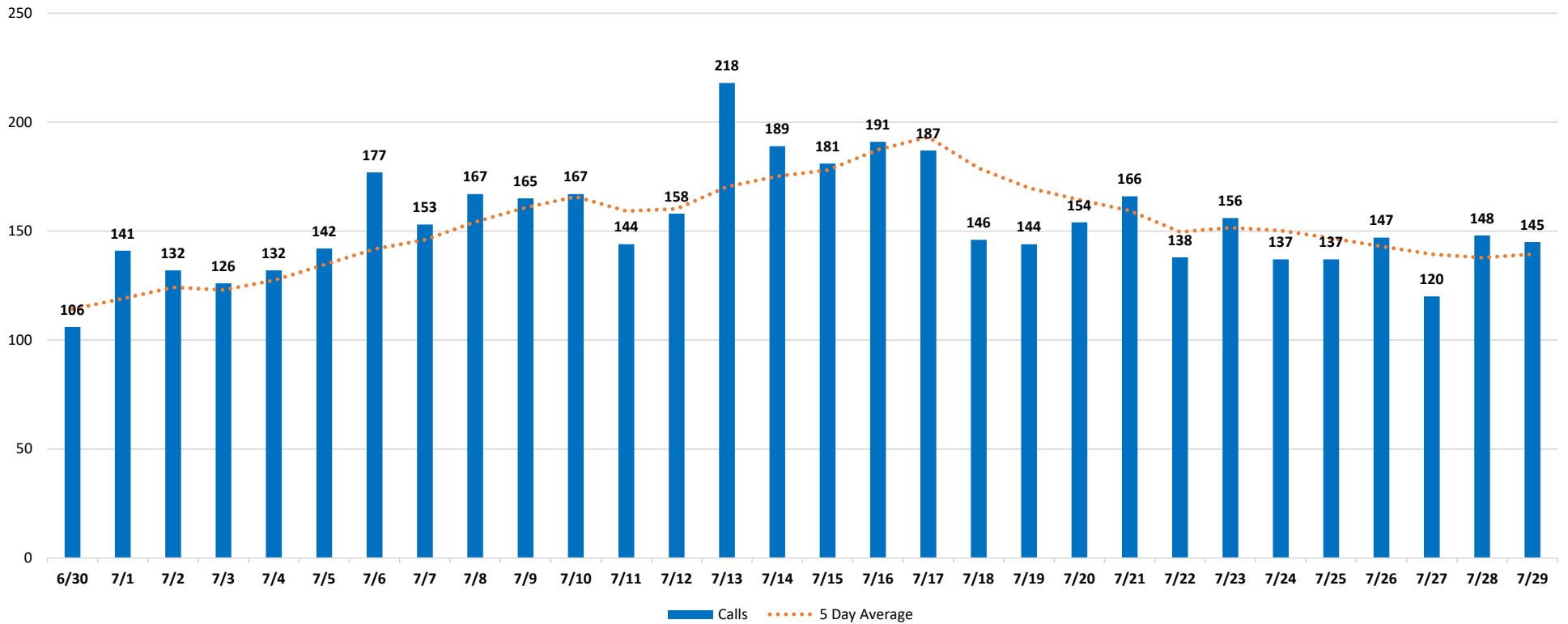
<b>Available Beds</b>	<b>07/17/2020</b>	<b>07/18/2020</b>	<b>07/19/2020</b>	<b>07/20/2020</b>	<b>07/21/2020</b>	<b>07/22/2020</b>	<b>07/23/2020</b>	<b>07/24/2020</b>	<b>07/25/2020</b>	<b>07/26/2020</b>	<b>07/27/2020</b>	<b>07/28/2020</b>	<b>07/29/2020</b>	<b>07/30/2020</b>
Acute Care Beds	2,563	2,514	2,604	2,509	2,551	2,600	2,646	2,651	2,642	2,581	2,573	4,973	5,195	5,193
Beds that may be converted to Acute Care Beds	809	813	802	823	801	783	783	767	767	767	766	766	771	772
ICU Beds	386	396	398	394	396	389	400	386	401	388	397	852	900	912
Beds that may be converted to ICU Beds	458	457	457	456	460	460	459	459	457	455	457	441	441	441
<b>Ventilators</b>														
Ventilators available for deployment	725	746	740	718	696	711	730	710	724	705	702	706	719	731
Ventilators on standby	98	97	99	73	105	107	101	100	114	117	116	110	119	112
Respirators/Anesthesia Machines that maybe converted to Ventilators	467	467	467	466	467	467	467	440	441	439	440	441	440	441
<b>COVID-19 Cases</b>														
COVID Patients Admitted	2,092	2,172	2,244	2,278	2,302	2,242	2,254	2,257	2,207	2,188	2,241	2,171	2,079	2,061
COVID Patients in ICU Beds	459	484	507	513	523	507	527	547	550	568	564	557	549	548
COVID Patients in Non-ICU Beds	1,633	1,688	1,737	1,765	1,779	1,735	1,727	1,710	1,657	1,620	1,677	1,614	1,530	1,513
COVID Patients on ventilators	266	269	286	293	320	320	331	344	330	337	338	334	337	329
<b>COVID-19 Patients</b>														
New COVID Patients	177	212	153	180	212	191	167	212	128	141	151	146	141	169
COVID Patients Discharged	187	206	130	145	235	283	271	227	241	182	149	233	358	226

\*This data has been collected and compiled based on Emergency Order 18-20, as of the time noted. The information is submitted by the respective facilities and has not been audited.

\*\* As certain data points are clarified, information reported for prior periods may change

# Miami-Dade Fire Rescue Calls

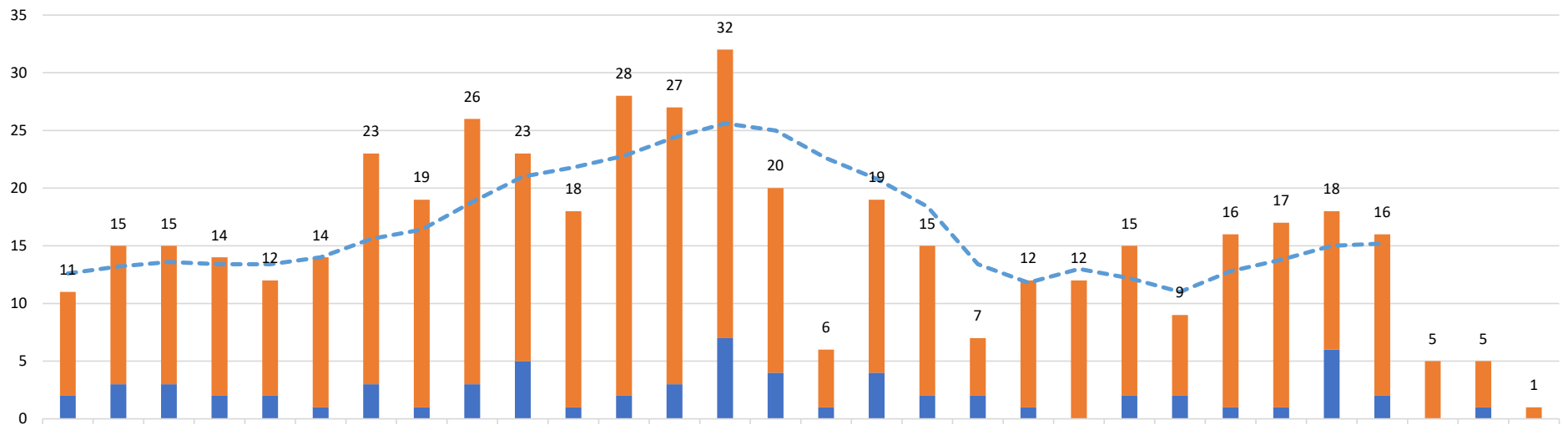
## MDFR Suspected COVID-19 Calls



Source: Miami-Dade Fire Rescue

# Medical Examiner

Deaths by Day



	6/30	7/1	7/2	7/3	7/4	7/5	7/6	7/7	7/8	7/9	7/10	7/11	7/12	7/13	7/14	7/15	7/16	7/17	7/18	7/19	7/20	7/21	7/22	7/23	7/24	7/25	7/26	7/27	7/28	7/29
Above 60	9	12	12	12	10	13	20	18	23	18	17	26	24	25	16	5	15	13	5	11	12	13	7	15	16	12	14	5	4	1
Under 60	2	3	3	2	2	1	3	1	3	5	1	2	3	7	4	1	4	2	2	1		2	2	1	1	6	2	1		
Grand Total	11	15	15	14	12	14	23	19	26	23	18	28	27	32	20	6	19	15	7	12	12	15	9	16	17	18	16	5	5	1
5 Day Average	12.6	13.2	13.6	13.4	13.4	14	15.6	16.4	18.8	21	21.8	22.8	24.4	25.6	25	22.6	20.8	18.4	13.4	11.8	13	12.2	11	12.8	13.8	15	15.2			

■ Under 60   
 ■ Above 60   
 Grand Total   
 - - - 5 Day Average

The 5 day rolling average does not include the last 3 days to allow for the ME to certify recent deaths

Source: Miami-Dade Medical Examiner