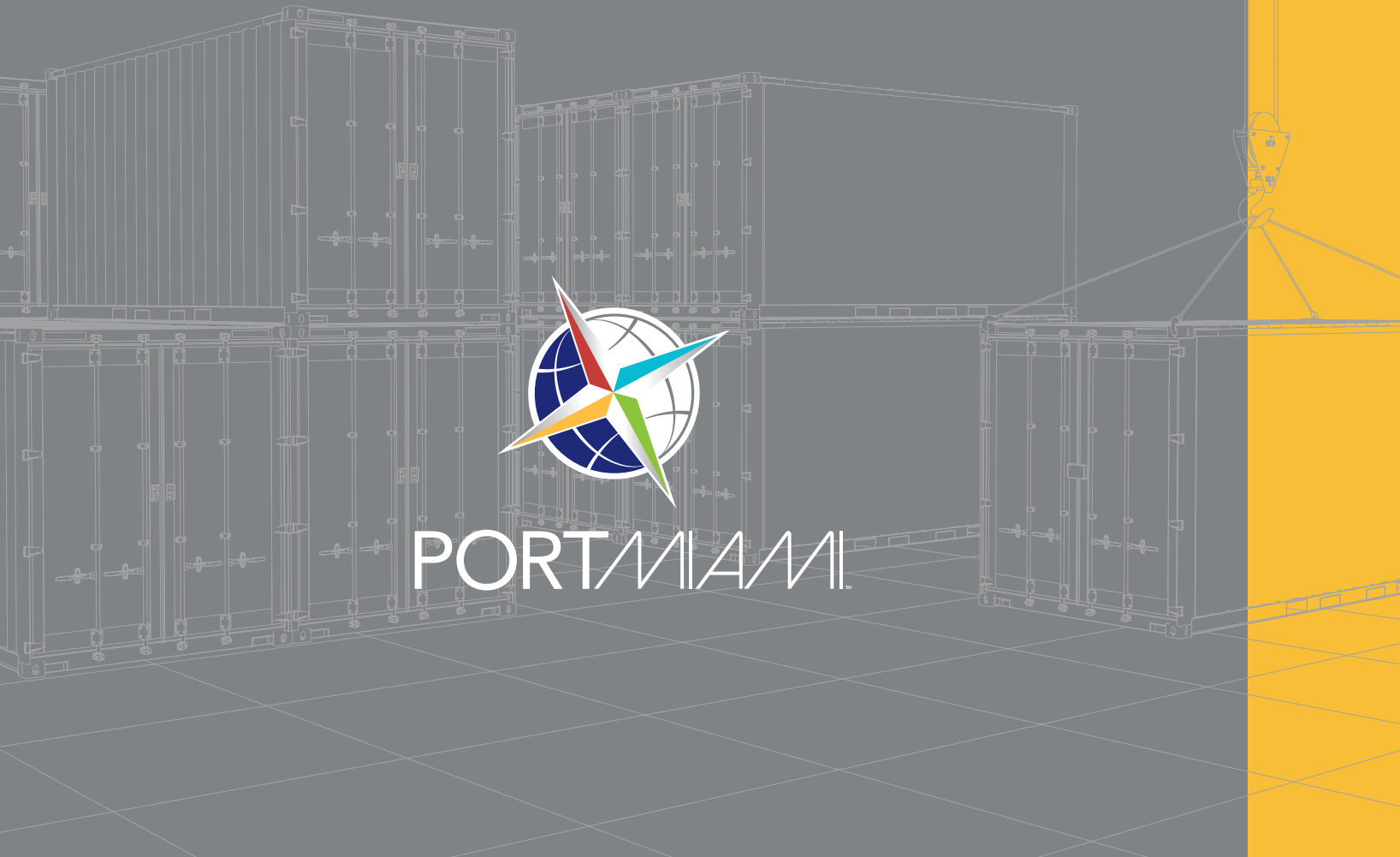




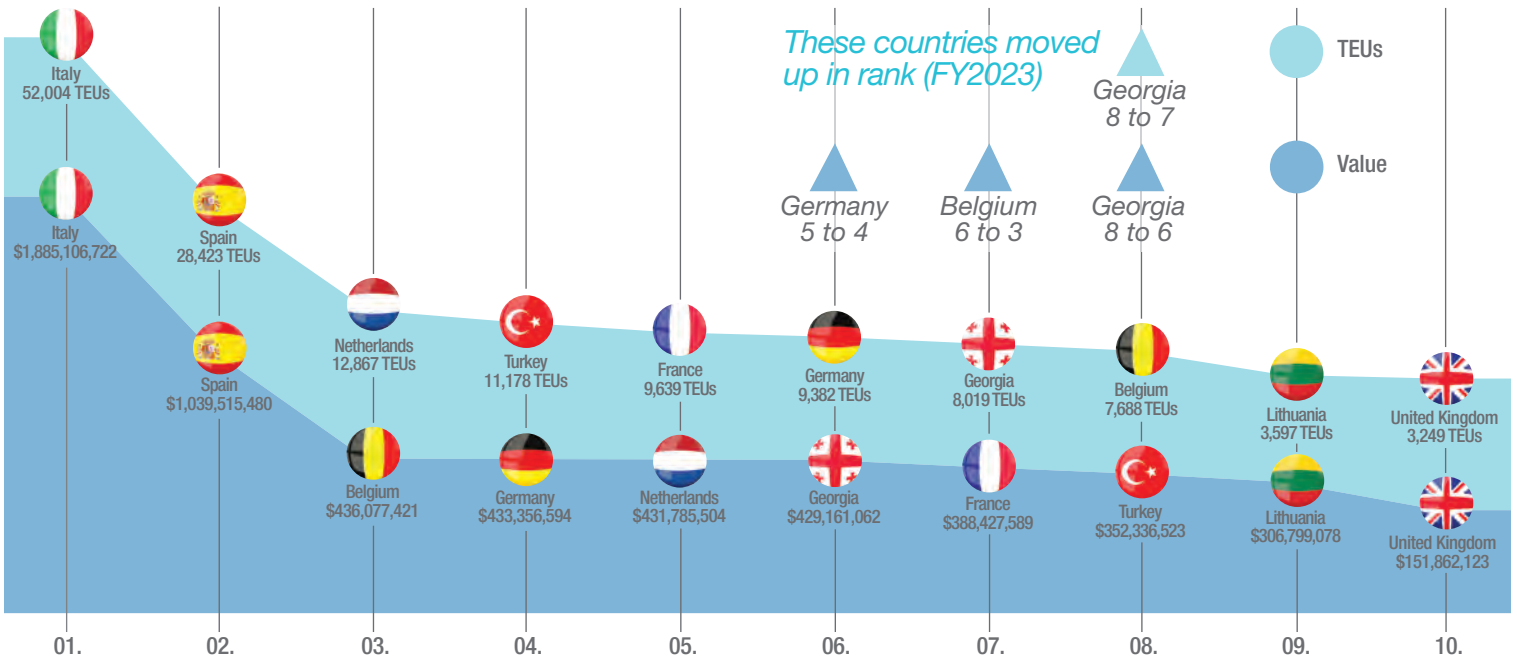
Europe Statistics FY 2023



Top 10 Trade Partners: Overall

Europe represents 20% of all trade with PortMiami – 226,835 TEUs with a total value of \$6.2 Billion (FY 2023.)

Its top ten trading partners represent 146,046 TEUs with a total value of \$5.8 Billion (FY 2023.)



CARGO FACTS FY2023

202
Total Cargo
Ships Docked

226,835
Total
TEUs

\$6,248,181,389
Total
Value

2,468,275
Total
Tonnage

3
Direct Services
to the Region

Top 10 Trade Partners: Imports

	COUNTRY	TEUs
01.	Italy	46,274
02.	Spain	24,822
03.	Turkey	10,762
04.	Netherlands	9,658
05.	France	8,709
06.	Germany	7,138
07.	Belgium	6,365
08.	United Kingdom	2,034
09.	Egypt	1,803
10.	Portugal	1,740

	COUNTRY	VALUE
01.	Italy	\$1,518,192,882
02.	Spain	\$850,789,766
03.	France	\$342,254,675
04.	Germany	\$334,867,598
05.	Turkey	\$329,067,850
06.	Belgium	\$317,092,875
07.	Netherlands	\$288,917,650
08.	Lithuania	\$147,897,381
09.	United Kingdom	\$91,097,849
10.	Egypt	\$61,259,979

IMPORTS: 62%

Trade
Balance

EXPORTS: 38%

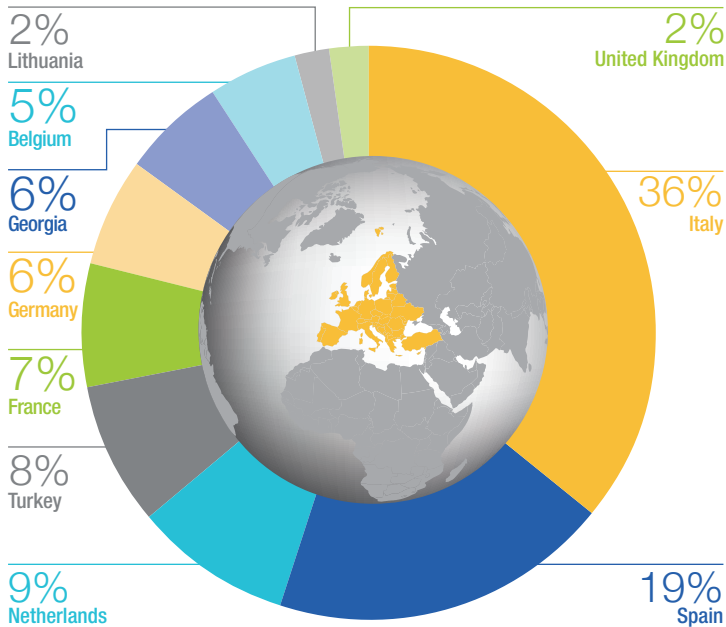
Top 10 Trade Partners: Exports

	COUNTRY	TEUs
01.	Georgia	7,881
02.	Italy	5,730
03.	Spain	3,601
04.	Netherlands	3,210
05.	Lithuania	3,192
06.	Germany	2,243
07.	Belgium	1,323
08.	United Kingdom	1,215
09.	Greece	1,076
10.	France	931

	COUNTRY	VALUE
01.	Georgia	\$425,029,197
02.	Italy	\$366,913,840
03.	Spain	\$188,725,714
04.	Lithuania	\$158,901,697
05.	Netherlands	\$142,867,854
06.	Belgium	\$118,984,546
07.	Germany	\$98,488,996
08.	United Kingdom	\$60,764,274
09.	France	\$46,172,914
10.	Greece	\$42,809,795

Market Share by Region

PortMiami trades with 40 European nations. More than 50% of all trade within the region is with Italy and Spain.



Top 10 Commodities: Overall

	COMMODITY	TEUs
01.	Beverages	32,498
02.	Fruit & Vegetables	15,166
03.	Ceramics & Glass	11,407
04.	Machinery	11,232
05.	Furniture	11,214
06.	Minerals	10,749
07.	Prepared Foods	8,799
08.	Iron/Steel/Aluminum	4,159
09.	Plastics/Rubber	3,943
10.	Paper & Products	3,646

	COMMODITY	VALUE
01.	Machinery	\$1,504,681,473
02.	Beverages	\$797,985,565
03.	Vehicle Parts	\$760,458,036
04.	Fruit & Vegetables	\$507,367,760
05.	Cosmetics Pharma	\$464,991,959
06.	Prepared Foods	\$359,878,845
07.	Minerals	\$217,342,097
08.	Iron/Steel/Aluminum	\$213,259,313
09.	Apparel/Textiles	\$206,126,366
10.	Scrap Metal	\$195,737,857

SOUTH FLORIDA ADVANTAGES FY2023



#1

Fastest-Growing State in the US (Florida)



#1

Ecommerce State in the US (Florida)



150+

Foreign Trade Zone Sites



67,000+

Logistics Companies in Florida



2

European Services Linking PortMiami and Mexico

Fast Facts

Beverages, cosmetics/pharma and ceramics/glass are growing commodities at PortMiami.

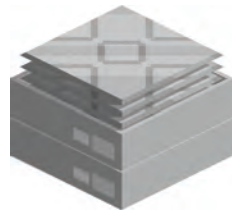


Beverages

Top trading partners like Italy, Spain, Germany and the United Kingdom move beverages of all types including wines, beer as well as other distilled spirits in and out of the US through PortMiami.

Ceramics & Glass

Miami Dade County is the fastest-growing county in Florida and one of the fastest in the nation. This has created a boom in development and an increased demand for ceramic tiles and glass products.



Cosmetics & Pharmaceuticals

The rising global population and heightened healthcare awareness are driving the demand for pharmaceutical and cosmetic products. This represents a fast-growing market for PortMiami.

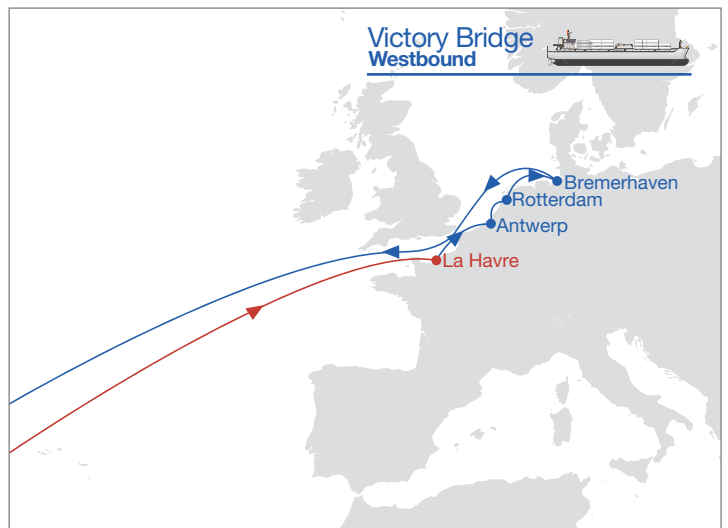
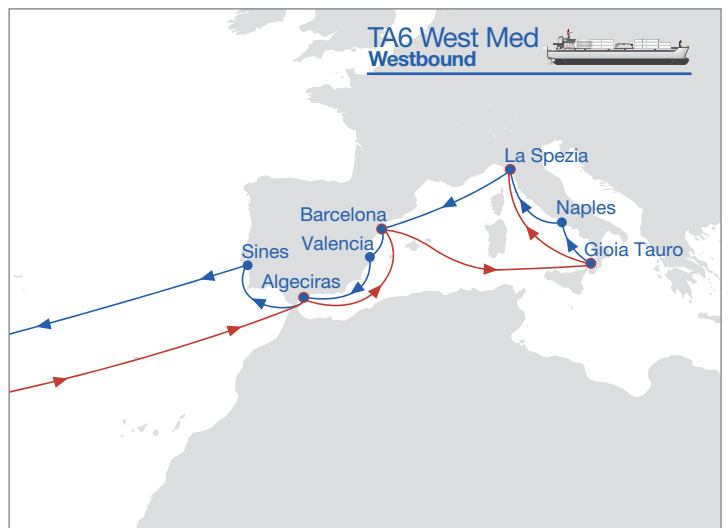
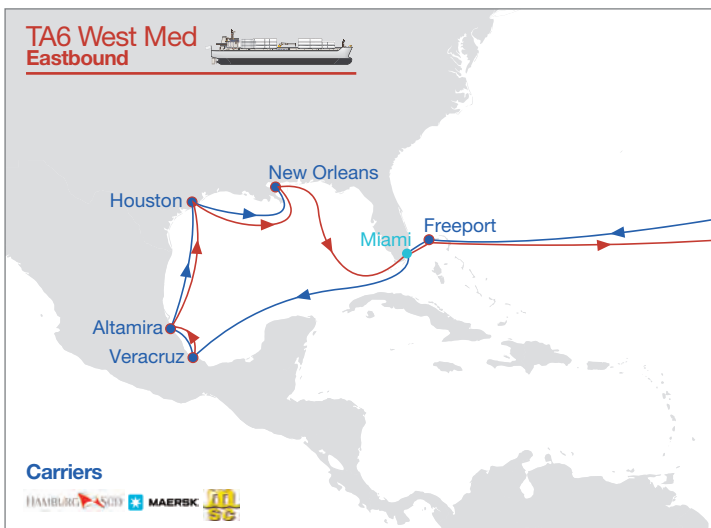
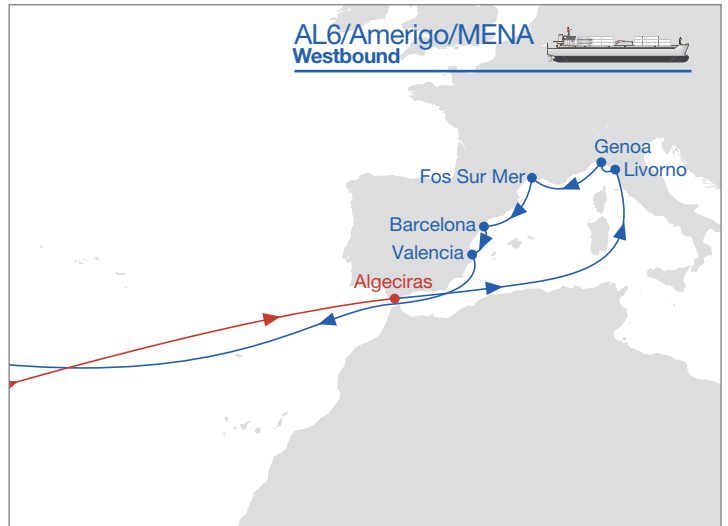
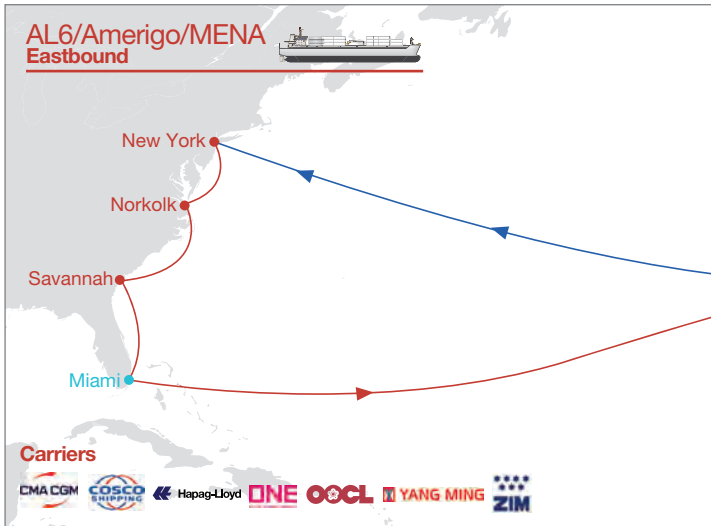
Top 10 Commodities: Imports

	COMMODITY	TEUs
01.	Beverages	32,498
02.	Fruit & Vegetables	15,166
03.	Ceramics & Glass	11,407
04.	Machinery	11,232
05.	Furniture	11,214
06.	Minerals	10,749
07.	Prepared Foods	8,799
08.	Iron/Steel/Aluminum	4,159
09.	Plastics/Rubber	3,943
10.	Paper & Products	3,646

Top 10 Commodities: Exports

	COMMODITY	TEUs
01.	Vehicle Parts	14,689
02.	Machinery	5,815
03.	Fruit & Vegetables	3,544
04.	Beverages	1,201
05.	Consolidated Cargo	990
06.	Paper & Products	860
07.	Chemicals	845
08.	Iron/Steel/Aluminum	807
09.	Cosmetics Pharma	803
10.	Meat and Edible Offal	700

Services: 14 European and 2 Mexican Ports Called



Destinations

- **Belgium**
 - Antwerp
- **France**
 - Fos Sur Mer
 - La Havre
- **Germany**
 - Bremerhaven
- **Italy**
 - Genoa
 - Gioia Tauro
 - La Spezia
 - Livorno
 - Naples
- **Netherlands**
 - Rotterdam
- **Portugal**
 - Sines
- **Spain**
 - Algeciras
 - Barcelona
 - Valencia
- **Mexico**
 - Altamira
 - Veracruz

Terminals



1015 N. America Way • 2nd Floor
Miami, Florida 33155
(305) 347-4800