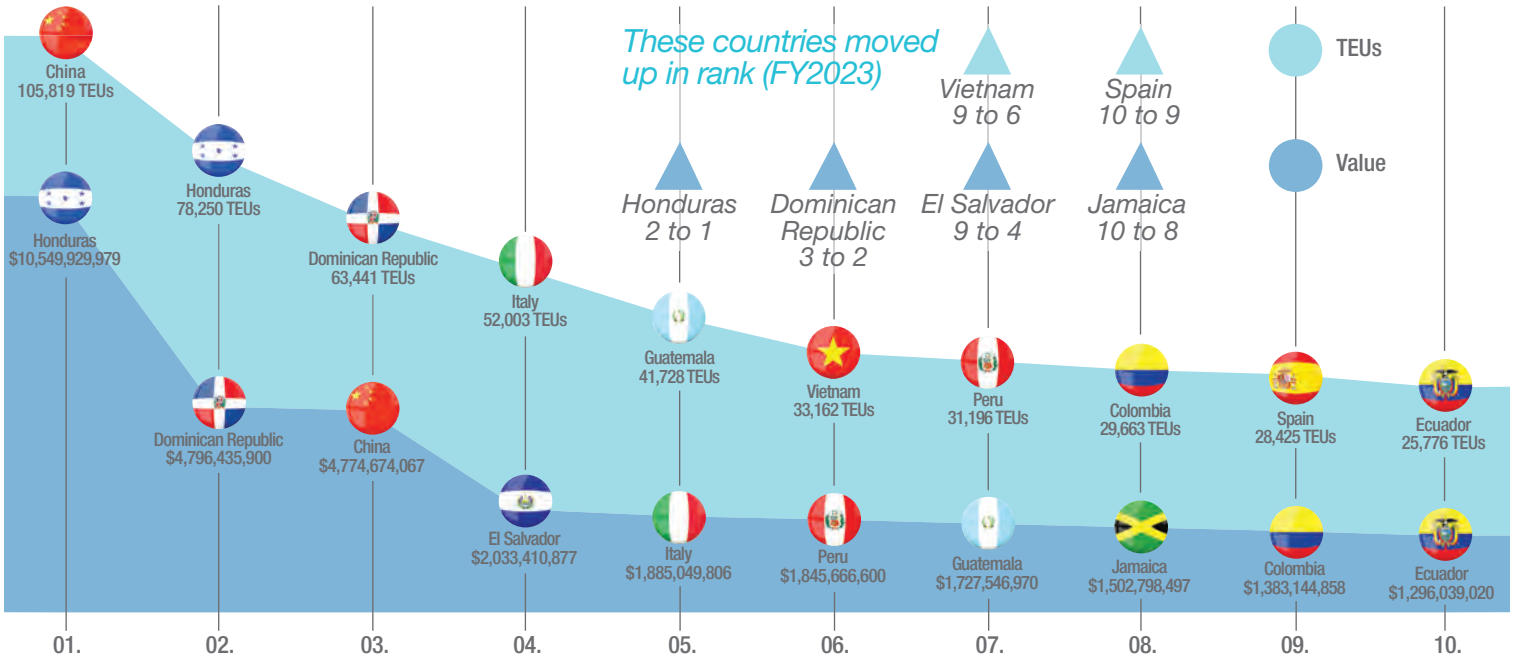


Top 10 Trade Partners: Overall

PortMiami's top ten trade partners represent 677,694 TEUs with a total value of \$40.3 Billion (FY 2023.)

Primary regions include: Latin America and the Caribbean, Asia and Europe.



CARGO FACTS FY2023

- 885** Total Cargo Ships Docked
- 1,098,322** Total TEUs
- \$47,821,049,992** Total Value
- 9,716,931** Total Tonnage
- 20+** Regular Services Worldwide

Top 10 Trade Partners: Imports

	COUNTRY	TEUs
01.	China	103,960
02.	Italy	46,273
03.	Honduras	36,890
04.	Dominican Republic	32,174
05.	Guatemala	30,862
06.	Vietnam	28,609
07.	Spain	24,824
08.	Peru	21,221
09.	Ecuador	19,054
10.	Colombia	16,719

	COUNTRY	VALUE
01.	China	\$4,564,486,059
02.	Dominican Republic	\$2,732,186,160
03.	Honduras	\$2,488,603,472
04.	Italy	\$1,518,135,966
05.	Vietnam	\$977,857,117
06.	Guatemala	\$940,711,761
07.	Spain	\$850,860,748
08.	Nicaragua	\$782,485,603
09.	Peru	\$698,076,746
10.	El Salvador	\$658,365,105

IMPORTS: 54%
EXPORTS: 46%
 Trade Balance

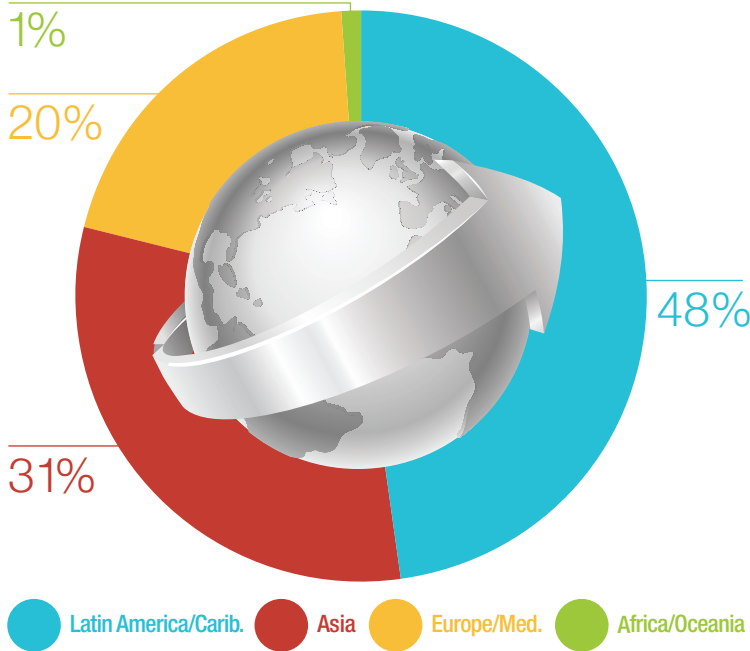
Top 10 Trade Partners: Exports

	COUNTRY	TEUs
01.	Honduras	41,361
02.	Dominican Republic	31,267
03.	Jamaica	20,747
04.	Colombia	12,943
05.	El Salvador	11,991
06.	India	11,261
07.	Guatemala	10,866
08.	Peru	9,975
09.	Panama	9,547
10.	Georgia	7,892

	COUNTRY	VALUE
01.	Honduras	\$8,061,326,507
02.	Dominican Republic	\$2,064,249,740
03.	El Salvador	\$1,375,045,772
04.	Jamaica	\$1,332,435,963
05.	Peru	\$1,147,589,854
06.	Colombia	\$818,179,105
07.	Guatemala	\$786,835,209
08.	Panama	\$764,955,057
09.	Ecuador	\$649,501,618
10.	Georgia	\$425,357,625

Market Share by Region

PortMiami trades with over 140 nations. Roughly 50% of all trade is with Latin America and the Caribbean.



Top 10 Commodities: Overall

	COMMODITY	TEUs
01.	Fruit & Vegetables	114,853
02.	Apparel/Textiles	109,300
03.	Machinery	93,062
04.	Furniture	77,203
05.	Iron/Steel/Aluminum	55,649
06.	Plastics/Rubber	51,208
07.	Paper & Products	47,848
08.	Vehicle Parts	46,978
09.	Beverages	46,080
10.	Prepared Foods	35,513

	COMMODITY	VALUE
01.	Machinery	\$10,592,462,116
02.	Apparel/Textiles	\$8,431,038,899
03.	Scrap Metal	\$7,565,628,225
04.	Vehicle Parts	\$2,810,191,678
05.	Fruit & Vegetables	\$2,754,959,247
06.	Iron/Steel/Aluminum	\$1,853,931,644
07.	Plastics/Rubber	\$1,829,826,506
08.	Furniture	\$1,797,508,338
09.	Cosmetics & Pharma	\$1,527,157,164
10.	Tobacco	\$1,228,161,051

RAIL FACTS FY2023



351

Miles of Total Track (FL)



9000

Linear Feet of On-Dock Rail



73

Acres Servicing Miami (Hialeah Rail Yard)

MEXICO FY2023



59%

Increase in Overall Trade with Mexico over 2022



79%

Increase in Imports with Mexico over 2022

Fast Facts

These three commodities represent 301,356 TEUs and a value of \$12.9 Billion for PortMiami.

Fruits & Vegetables

Fruits and Vegetables is the number one commodity at PortMiami. A vital gateway for perishables from Latin America and The Caribbean the Port reaches 70% of the US population, in 1-4 days.



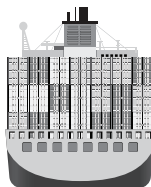
Apparel & Textiles



Apparel & Textiles is the number two commodity for PortMiami. Top trading partners like Honduras El Salvador and Guatemala move products like t-shirts, casual wear, under garments and towels in and out of the US through PortMiami.

Mexico to Miami: The All-Water Alternative

Moving cargo to Florida's mega markets via the all-water route is faster, safer, more efficient and less expensive than over the border. Avoid the congestion and see smooth movement of cargo to Miami.



Top 10 Commodities: Imports

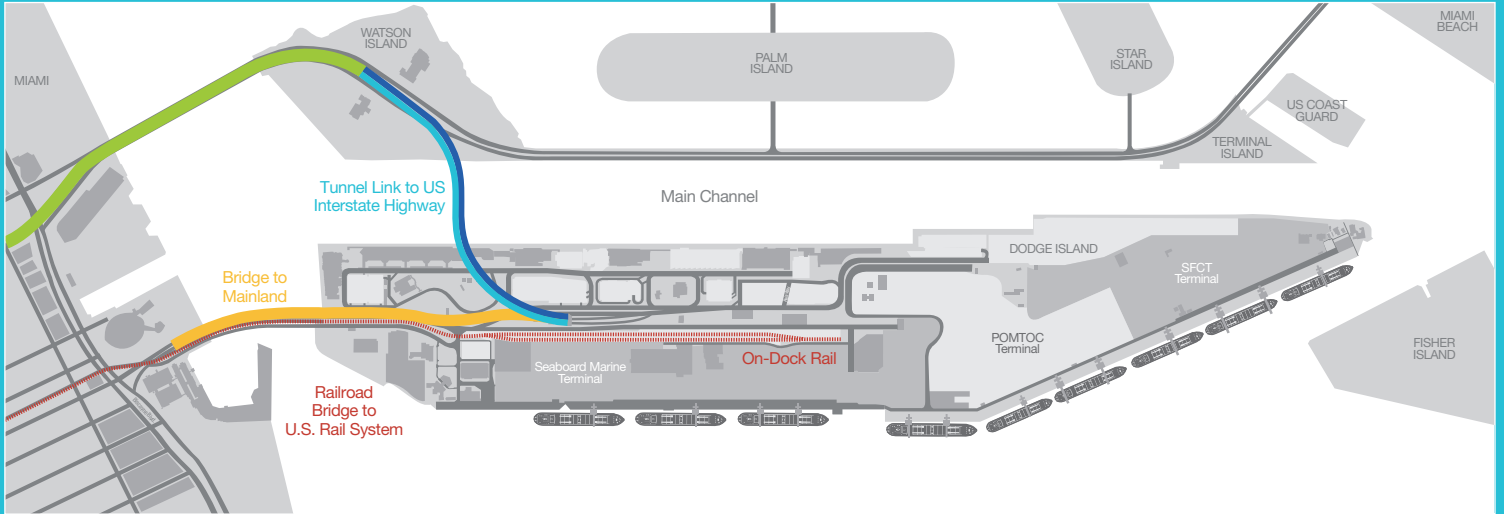
	COMMODITY	TEUs
01.	Fruit & Vegetables	93,130
02.	Apparel/Textiles	71,144
03.	Machinery	56,764
04.	Furniture	55,269
05.	Plastics/Rubber	39,217
06.	Beverages	38,450
07.	Iron/Steel/Aluminum	26,418
08.	Paper & Products	22,778
09.	Ceramics & Glass	22,243
10.	Prepared Foods	21,580

Top 10 Commodities: Exports

	COMMODITY	TEUs
01.	Apparel/Textiles	38,156
02.	Machinery	36,298
03.	Vehicles	35,665
04.	Iron/Steel/Aluminum	29,231
05.	Paper & Products	25,070
06.	Furniture	21,934
07.	Fruit & Vegetables	21,723
08.	Chemicals	13,939
09.	Prepared Foods	13,933
10.	Plastics/Rubber	11,991

Connectivity

PortMiami has superior connectivity. The Port connects the seaport to the rest of the Eastern US via an on dock rail network as well as the interstate highways. With 3,000 miles of freight rail tracks and over 122,000 miles of highway, Florida has one of the most extensive multi-modal transportation systems in the world with Miami leading.



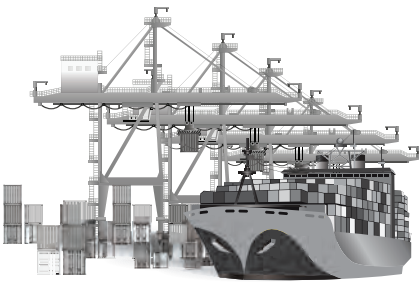
- Direct access to interstate highway system via tunnel including: SR 836, I-75, I-95 and Florida's Turnpike
- No Stoplights from PortMiami to Orlando, Atlanta, Chicago and beyond
- Eliminates truck idling and lowers emissions
- Open 24/7 and no tolls



- Connects to US Railway network direct from the port
- Fast, reliable transit times
- Less expensive
- Moves large cargo volumes
- Currently expanding on-dock rail

Infrastructure

PortMiami has exceptional infrastructure. The Port has invested over \$1 billion in capital investments to facilitate the movement of cargo. PortMiami is the deepest shipping channel in the Southeast US. The port is only 2.5 nautical miles to the Atlantic Ocean. The -50/-52 foot water draft (the equivalent to the expanded Panama Canal) handles vessels of more than 15,000 TEUs.



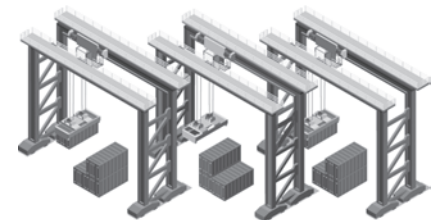
State-of-the-Art Cranes

PortMiami has 13 ship-to-shore cranes including six super Post-Panamax, with plans to add more.



Reliable Reefer Racks

Reefer cargo has increased 58% (FY19-FY23.) PortMiami has 1170 reefer plugs containers to guarantee that perishables are delivered fresh to the retailers.



eRTG Cranes

PortMiami has 16 eRTGs that can stack containers up to six high helping densify the port while reducing carbon emissions

Carriers



Terminals



PORTMIAMI
www.portmiami.biz

1015 N. America Way • 2nd Floor
Miami, Florida 33155
(305) 347-4800