

FY 2024-25 Proposed Budget and Multi-Year Capital Plan

Seaport

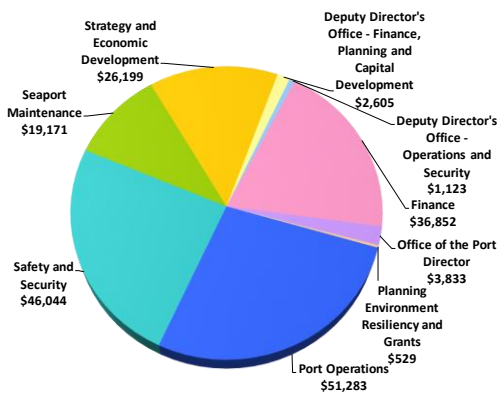
The Seaport Department manages and operates the Dante B. Fascell Port of Miami or PortMiami. PortMiami is the busiest passenger cruise port in the world and the 12th busiest cargo container port in the United States.

As part of the Economic Development strategic area, Seaport is responsible for meeting the infrastructure needs of the cruise and cargo industries, managing the Port efficiently and effectively and maintaining, renovating and expanding the Port's facilities. Seaport promotes cruise and cargo growth through infrastructure enhancements and throughput capacity improvements combined with an aggressive foreign and domestic marketing program.

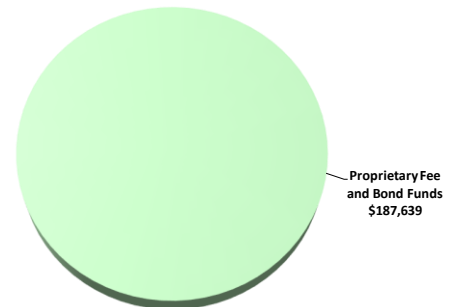
As the second largest economic engine in Miami-Dade County, PortMiami contributes \$61 billion annually to the local economy and supports more than 340,000 jobs in South Florida. Seaport works with the maritime, cruise and cargo industries; truckers; freight forwarders; various federal and state agencies; the Sheriff of Miami-Dade and Fire Rescue departments; and all the ancillary service providers that support these customers.

FY 2024-25 Proposed Operating Budget

Expenditures by Activity
(dollars in thousands)

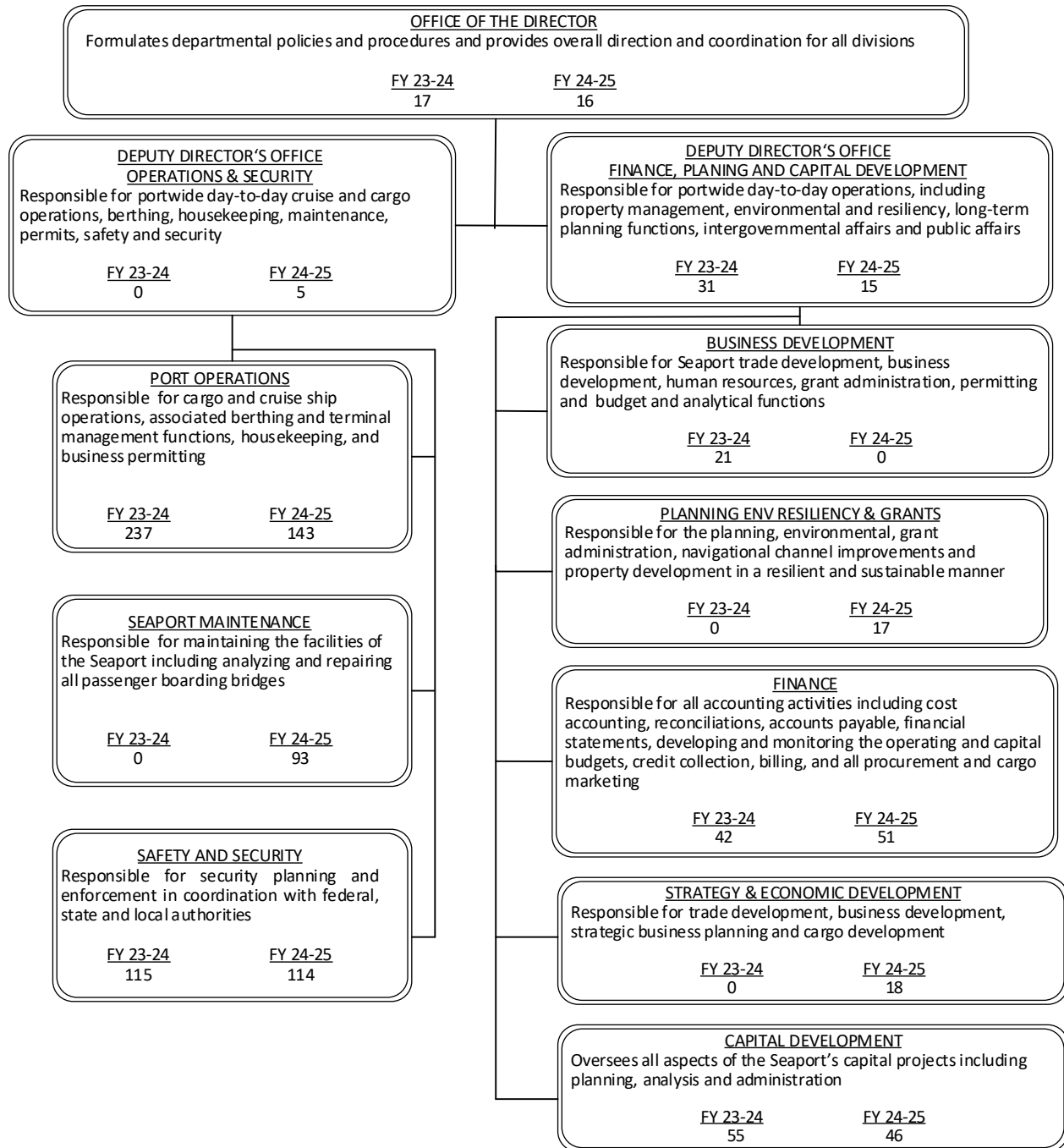


Revenues by Source
(dollars in thousands)



FY 2024-25 Proposed Budget and Multi-Year Capital Plan

TABLE OF ORGANIZATION



The FY 2024-25 total number of full-time equivalent positions is 586.8 (518 FTE and 68.8 PTE)

FY 2024-25 Proposed Budget and Multi-Year Capital Plan

DIVISION: OFFICE OF THE PORT DIRECTOR

The Office of the Port Director formulates departmental policies and procedures and provides overall direction, intergovernmental affairs, public affairs, and coordination of all divisions.

Strategic Plan Objectives

- ED1-4: Continue to leverage Miami-Dade County's strengths in international commerce, natural resources, and recreational and cultural attractions

Departmental Objectives	Performance Measures	Measure Type	Good Direction	FY 21-22	FY 22-23	FY 23-24	FY 23-24	FY 24-25
				Actual	Actual	Budget	Projection	Target
Increase maritime revenue to the Port	Number of TEUs (Twenty Foot Equivalent) (in thousands)*	OC	↑	1,198	1,098	1,250	1,098	1,121
	Cruise passengers (in thousands)**	OC	↑	4,023	7,299	6,850	6,700	7,500

* FY 2022-23 Actual was slightly lower, expected to continue through a portion or all of FY 2024-25

** FY 2023-24 Projection was adjusted to reflect the department's end-of-year projection

DIVISION COMMENTS

- The FY 2024-25 Proposed Budget includes a departmental reorganization that transfers one position to the Deputy Director's Office - Finance, Planning and Capital Development

DIVISION: DEPUTY DIRECTOR'S OFFICE - FINANCE, PLANNING AND CAPITAL DEVELOPMENT

The Office of the Deputy Port Director is responsible for business development, human resources, finance administration, grant administration, capital development, property management and long-term planning functions including environmental resiliency.

- Guides organizational development and performance excellence initiatives
- Provides management direction and administration of all departmental operations and personnel

Strategic Plan Objectives

- ED1-5: Provide world-class airport and seaport facilities

Departmental Objectives	Performance Measures	Measure Type	Good Direction	FY 21-22	FY 22-23	FY 23-24	FY 23-24	FY 24-25
				Actual	Actual	Budget	Projection	Target
Meet budget targets	Seaport Tenant Occupancy Rates	OC	↑	99%	100%	95%	95%	95%

DIVISION COMMENTS

- The FY 2024-25 Proposed Budget includes a departmental reorganization that transfers one position from the Director's Office and seventeen positions to Planning Environment Resiliency and Grants

FY 2024-25 Proposed Budget and Multi-Year Capital Plan

DIVISION: DEPUTY DIRECTOR'S OFFICE - OPERATIONS AND SECURITY

The Office of the Deputy Port Director is responsible for port-wide day-to-day cruise and cargo operations, berthing, housekeeping, maintenance, permits, safety, and security.

DIVISION COMMENTS

- The FY 2024-25 Proposed Budget includes a departmental reorganization that transfers five positions from Port Operations to the Deputy Director's Office - Operations and Security

DIVISION: PORT OPERATIONS

The Port Operations Division is responsible for port-wide day-to-day operations associated with berthing and terminal management functions, housekeeping and maintenance functions including passenger boarding bridges.

- Coordinates PortMiami Crane Management, Inc.'s functions
- Coordinates operations and berthing activities and terminal management functions
- Maintains passenger loading operations

Strategic Plan Objectives

- ED1-5: Provide world-class airport and seaport facilities

Departmental Objectives	Performance Measures	Measure Type	Good Direction	FY 21-22	FY 22-23	FY 23-24	FY 23-24	FY 24-25
				Actual	Actual	Budget	Projection	Target
Improve the Quality and Efficiency of Port Operations	Seaport Gantry Crane availability	EF	↑	98%	98%	99%	99%	99%

DIVISION COMMENTS

- The FY 2024-25 Proposed Budget includes a departmental reorganization that transfers five positions to the Deputy Director's Office - Operations and Security, ninety-three positions to Seaport Maintenance, three positions from Strategy and Economic Development and one position from Safety Security

DIVISION: SEAPORT MAINTENANCE

The Seaport Maintenance Division is responsible for maintaining the facilities of the Seaport including analyzing and repairing all passenger boarding bridges

DIVISION COMMENTS

- The FY 2024-25 Proposed Budget includes a departmental reorganization that transfers 93 positions from Port Operations to Seaport Maintenance

FY 2024-25 Proposed Budget and Multi-Year Capital Plan

DIVISION: SAFETY AND SECURITY

The Safety and Security Division is responsible for security planning and enforcement in coordination with federal, state and local authorities.

- Coordinates with federal, state and local law enforcement partners
- Ensures adherence to the Facilities Security Plan (FSP) as mandated by the Maritime Transportation Security Act
- Manages all public safety and seaport security efforts, including protection of all PortMiami buildings and property

Strategic Plan Objectives

- PS3-3: Protect key infrastructure and enhance security in large gathering places

Departmental Objectives	Performance Measures	Measure Type	Good Direction	FY 21-22	FY 22-23	FY 23-24	FY 23-24	FY 24-25
				Actual	Actual	Budget	Projection	Target
Ensure public safety and security at the Port	Number of Personnel to Meet Security Goals	OP	↑	76	73	77	76	77

DIVISION COMMENTS

- The FY 2024-25 Proposed Budget includes a departmental reorganization that transfers one position to Port Operations from Safety and Security

DIVISION: PLANNING ENVIRONMENT RESILIENCY AND GRANTS

The Office of Planning Environment Resiliency & Grants administration provides grant administration, property management and long-term planning functions including environmental resiliency.

Strategic Plan Objectives

- ED1-5: Provide world-class airport and seaport facilities

Departmental Objectives	Performance Measures	Measure Type	Good Direction	FY 21-22	FY 22-23	FY 23-24	FY 23-24	FY 24-25
				Actual	Actual	Budget	Projection	Target
Meet budget targets	Seaport Tenant Occupancy Rates	OC	↑	99%	100%	95%	95%	95%

DIVISION COMMENTS

- The FY 2024-25 Proposed Budget includes a departmental reorganization that transfers 17 positions from the Deputy Director's Office - Finance, Planning and Capital Development to Planning Environment Resiliency and Grants

FY 2024-25 Proposed Budget and Multi-Year Capital Plan

DIVISION: FINANCE

The Finance Division is responsible for accounting and budget activities, procurement and contracts.

- Responsible for all accounting activities including cost accounting, reconciliations, grants accounting, accounts payable, financial reporting, credit/collections and billing
- Coordinates capital and operational budget activities
- Manages financial activities for gantry cranes
- Develops and implements financial strategies to enhance revenues and reduce expenditures
- Responsible for procurement, contracting, information technology and materials management functions of the Department

Strategic Plan Objectives

- ED1-5: Provide world-class airport and seaport facilities

Departmental Objectives	Performance Measures	Measure Type	Good Direction	FY 21-22	FY 22-23	FY 23-24	FY 23-24	FY 24-25
				Actual	Actual	Budget	Projection	Target
Improve the Quality and Efficiency of Port Operations	Percentage of Goods & Services Requisition completed	OC	↑	94%	95%	95%	95%	95%

DIVISION COMMENTS

- The FY 2024-25 Proposed Budget includes a departmental reorganization that transfers nine positions from Capital Development to the Finance Division

DIVISION: STRATEGY AND ECONOMIC DEVELOPMENT

The Strategy and Economic Division is responsible for trade development, business development, strategic business planning and cargo development.

- Develops and negotiates short- and long-term agreements for on-Port business activities
- Plans and recommends future business and economic development
- Responsible for long term planning of Seaport activities

DIVISION COMMENTS

- The FY 2024-25 Proposed Budget includes the renaming of the Business Development Division to Strategy and Economic Development Division
- The FY 2024-25 Proposed Budget includes a departmental reorganization that transfers three positions to Port Operations from Strategy and Economic Development

FY 2024-25 Proposed Budget and Multi-Year Capital Plan

DIVISION: CAPITAL DEVELOPMENT

The Capital Development Division manages implementation of capital improvement programs.

- Coordinates Seaport design, engineering and construction management activities
- Coordinates environmental issues with various local, state and federal agencies
- Performs the Port's property, facilities and equipment maintenance functions

Strategic Plan Objectives

- ED1-5: Provide world-class airport and seaport facilities

Departmental Objectives	Performance Measures	Measure Type	Good Direction	FY 21-22	FY 22-23	FY 23-24	FY 23-24	FY 24-25
				Actual	Actual	Budget	Projection	Target
Improve the Quality and Efficiency of Port Operations	Percentage of projects completed on time and within budget	EF	↑	98%	98%	98%	98%	98%

DIVISION COMMENTS

- The FY 2024-25 Proposed Budget includes a departmental reorganization that transfers nine positions to Finance from Capital Development

ADDITIONAL INFORMATION



The Department is currently assuming approximately 7.5 million passengers for FY 2023-24; as the fiscal year progresses and actual performance is experienced, the Department's proposed budget may need to be adjusted



The Seaport's Promotional Fund is budgeted at \$900,000 in FY 2024-25 and will be used for activities pursuant to Administrative Order 7-32 as applicable; these funds are not proposed as competitive grant funding but rather as allocations for limited programs that promote Port maritime activities in the Cargo and Cruise Marketing Programs and community outreach

- In FY 2024-25, Seaport will continue its Memorandums of Understanding with the Internal Compliance Department to conduct audits of various departmental operations and services (\$219,000), the Department of Transportation and Public Works to continue taxi-cab inspection (\$100,000), the Department of Solid Waste Management for mosquito control (\$8,000), the Human Resources Department for compensation analyst (\$56,000), and the County Attorney's Office for legal services (\$1 million)

CAPITAL BUDGET HIGHLIGHTS AND OPERATIONAL IMPACTS



The Seaport Department has undertaken significant infrastructure projects to ensure the resilience of our facilities and all Port properties; the Department's 2050 Master Plan lays out the efficient and best use of the Port; the Seaport's Climate Action Strategy (CAS) aligns with the County's CAS and lays out the goals the Department will attempt to attain through the capital projects identified in the 2050 Master Plan; the Department's CAS also identifies additional targets in combatting sea level rise and storm surge, electrical capacity, construction of sustainable facilities and protecting Biscayne Bay; Seaport has been a large provider of mitigation efforts in Biscayne Bay



As part of the Mayor's resiliency efforts, the Seaport has proactively completed a series of emission reduction initiatives such as being the first US port to electrify all its cargo gantry cranes, by upgrading the cargo security gates to reduce truck idling times, by partnering with the Florida Department of Transportation on the direct highway access tunnel which reduces emissions, and by reactivating the intermodal rail yard - which have all assisted in reducing the County's carbon footprint

FY 2024-25 Proposed Budget and Multi-Year Capital Plan



The Seaport's capital improvement plan includes new cruise terminals AA and AAA to support the expanded operations of MSC Cruise Lines (total program cost \$169.999 million; \$25.2 million in FY 2024-25; capital program #2000000570); and the construction of a new Berth 10 to facilitate additional cruise ships (total program cost \$185 million; \$30 million in FY 2024-25; capital program #2000001343); all terminals will be LEED Silver certified and are funded with Future Financing bond proceeds and Seaport Bonds and Loans



In anticipation of the Port receiving larger container ships, the Department will add four additional gantry cranes with an option for an additional four gantry cranes as needed; these additional cranes will allow the Port to handle more than one million five hundred TEUs annually; the capital program is funded with Future Financing bond proceeds (\$117.632 million) and Seaport bonds/loans (\$1.368 million) (total program cost \$119 million; \$8.632 million in FY 2024-25; capital program #200000131)



In FY 2024-25, the Department continues to work on the LEED Silver certified Cruise Campus project which includes construction of RCG Global Headquarters increasing employment in the County by an estimated 1,000; the capital program is funded with Seaport bonds (\$459.246 million) and Tenant Financing (\$11.754 million) (total program cost \$621 million; \$254.858 million in FY 2024-25; capital program #2000001290)



In FY 2024-25, the Seaport will continue to repair and upgrade the north bulkhead; the capital program is expected to add at least 75 years of life to the Port's cruise business; included in the north bulkhead rehabilitation project are cruise terminals B, C, D, E, F and G; the capital program is funded with a grant from the Florida department of Environmental Protection (\$288,000), Future Financing bond proceeds (\$453.840 million, and Seaport bonds and loans (\$5.654 million) (total program cost \$459.782 million; \$34.84 million in FY 2024-25; capital program #644300)



Seaport's FY 2024-25 Proposed Budget and Multi-Year Capital Plan includes constructing additional rail capacity and increasing cargo gate optimization to reduce traffic congestion at the Port as part of the Department's resiliency initiative to lower carbon emissions at the Port; the capital program is funded with a US DOT grant (\$16 million), Future Financing bond proceeds (\$26 million), and Seaport bonds/loans (\$75,000) (total program cost \$42.075 million; \$14 million in FY 2024-25; capital program #2000002955)



As part of the Department's resiliency initiative, Seaport's FY 2024-25 Proposed Budget and Multi-Year Capital Plan includes the Shore Power capital program which will allow ships to turn off their primary engines while docked resulting in reduced carbon air emissions; in 2021, Miami-Dade County committed to providing the infrastructure necessary to allow cruise ships to plug into the electrical grid at the Port to help cut carbon dioxide emissions; in 2022, the Seaport announced that it was expanding it's plans for offering shore power at five terminals; in early 2024, Seaport will be the first port on the East Coast to provide Shore Power at five cruise terminals with the ability to plug in three cruise vessels simultaneously (total program cost \$174 million; \$25 million in FY 2024-25; capital program #2000001675)



In FY 2024-25, Seaport will replace Port Offices and Port Services currently provided in the World Trade Center being demolished to construct new Cruise Terminal G; as part of the Mayor's resiliency efforts, the new buildings will be LEED Silver certified; the capital program is funded with Future Financing bond proceeds (\$126.5 million) and Seaport bonds/loans (\$500,000) (total program cost \$127 million; \$5 million in FY 2024-25; capital program #2000004017)



The Department's FY 2024-25 Proposed Budget and Multi-Year Capital Plan includes the purchase of eight vehicles (\$342,000) to replace its aging fleet, four of the eight vehicles are Electric Vehicle (EV) which fall under the Mayor's Green Initiative Plan; Over the next five years, the Department is planning to spend \$596,000 to replace 11 vehicles as part of its fleet replacement plan; the fleet replacement plan will provide operational savings to the Department in the long-term as it will reduce maintenance costs, fuel consumption and overtime as a result of equipment failure; the County's fleet replacement plan is included under Non-Departmental capital program #2000000511

FY 2024-25 Proposed Budget and Multi-Year Capital Plan

SELECTED ITEM HIGHLIGHTS AND DETAILS

Line-Item Highlights	(dollars in thousands)				
	Actual FY 21-22	Actual FY 22-23	Budget FY 23-24	Projection FY 23-24	Proposed FY 24-25
Advertising	39	41	35	280	280
Fuel	394	332	324	297	319
Overtime	1,090	2,688	2,014	3,864	2,823
Rent	169	201	193	268	271
Security Services	-38	-40	0	1	2
Temporary Services	0	26	350	11	250
Travel and Registration	117	299	492	536	512
Utilities	7,804	8,391	11,841	11,969	10,711

Proposed

Fee Adjustments	Current Fee FY 23-24	Proposed Fee FY 24-25	Dollar Impact FY 24-25
• Various cargo dockage and wharfage rates	Various	Various	\$1,456,000
• Various crane charges	Various	Various	\$413,000
• Various passenger dockage and wharfage rates	Various	Various	\$11,648,925
• Water use per ton	3.42	3.52	\$39,200

FY 2024-25 Proposed Budget and Multi-Year Capital Plan

OPERATING FINANCIAL SUMMARY

(dollars in thousands)	Actual	Actual	Budget	Proposed	(dollars in thousands)	Total Funding		Total Positions	
	FY 21-22	FY 22-23	FY 23-24	FY 24-25		Expenditure By Program	Budget FY 23-24	Proposed FY 24-25	Budget FY 23-24
Revenue Summary					Strategic Area: Economic Development				
Carryover	124,180	197,082	234,922	308,813	Office of the Port Director	3,829	3,833	17	16
FDOT Revenues	17,000	17,000	17,000	17,000	Deputy Director's Office - Finance, Planning and Capital Development	2,773	2,605	31	15
Proprietary Fees	174,678	270,506	266,242	271,379	Deputy Director's Office - Operations and Security	0	1,123	0	5
Total Revenues	315,858	484,588	518,164	597,192	Port Operations	72,547	51,283	237	143
Operating Expenditures Summary					Seaport Maintenance	0	19,171	0	93
Salary	13,548	29,102	37,013	40,311	Safety and Security	32,046	46,044	115	114
Fringe Benefits	10,035	21,849	20,129	22,597	Planning Environment	0	529	0	17
Court Costs	14	29	15	16	Resiliency and Grants	52,428	36,852	42	51
Contractual Services	15,375	19,673	26,003	25,962	Finance	5,119	26,199	21	18
Other Operating	12,091	24,761	32,669	42,273	Strategy and Economic Development	0	0	55	46
Charges for County Services	21,262	31,331	37,738	41,469	Capital Development	168,742	187,639	518	518
Grants to Outside Organizations	40	5	0	0	Total Operating Expenditures				
Capital	606	3,832	15,175	15,011					
Total Operating Expenditures	72,971	130,582	168,742	187,639					
Non-Operating Expenditures Summary									
Transfers	0	109	800	90,024					
Distribution of Funds In Trust	5	0	0	0					
Debt Service	0	37	78,494	0					
Depreciation, Amortizations and Depletion	0	0	0	0					
Reserve	0	0	270,128	319,529					
Total Non-Operating Expenditures	5	146	349,422	409,553					

FY 2024-25 Proposed Budget and Multi-Year Capital Plan

CAPITAL BUDGET SUMMARY

(dollars in thousands)	PRIOR	FY 24-25	FY 25-26	FY 26-27	FY 27-28	FY 28-29	FY 29-30	FUTURE	TOTAL
Revenue									
FDOT Funds	169,267	7,188	8,954	710	710	0	0	0	186,829
Federal Transportation Grant	26,595	0	0	0	0	0	0	0	26,595
Florida Department of Environmental Protection	288	0	0	0	0	0	0	0	288
Future Financing	0	370,067	514,894	477,959	169,393	185,802	72,116	492,180	2,282,411
General Construction Overhead	12,600	0	0	0	0	0	0	0	12,600
Seaport Bonds/Loans	903,512	8,250	750	0	0	0	0	0	912,512
Seaport Revenue Bonds 2023	458,983	0	0	0	0	0	0	0	458,983
Tenant Financing	11,754	2,217	2,217	2,217	156,649	0	0	0	175,054
US DOT	2,831	20,856	21,027	14,334	23,356	9,000	9,000	135,000	235,404
US Department of Environmental Protection Agency	2,264	0	0	0	0	0	0	0	2,264
US Department of Homeland Security	1,639	1,423	0	0	0	0	0	0	3,062
Total:	1,589,733	410,001	547,842	495,220	350,108	194,802	81,116	627,180	4,296,002
Expenditures									
Strategic Area: ED									
Seaport - Cargo Facility Improvements	70,075	65,590	96,091	99,805	4,000	0	0	0	335,561
Seaport - Cruise Terminal Expansions	130,639	2,000	0	0	0	0	0	0	132,639
Seaport - Cruise Terminal Renovations	26,188	10,500	2,500	0	0	0	0	0	39,188
Seaport - Infrastructure Improvements	148,313	103,383	64,968	111,122	53,984	130,802	43,616	333,980	990,168
Seaport - Miscellaneous Facility Improvements	85,882	271,358	114,640	19,193	195,959	0	0	0	687,032
Seaport - New Cruise Terminals	482,666	156,700	235,000	155,000	36,675	22,000	7,000	28,000	1,123,041
Seaport - New Port Facilities	500	5,000	20,000	40,000	50,000	11,500	0	0	127,000
Seaport - Resiliency Projects	109,000	25,000	40,000	0	0	0	0	0	174,000
Seaport - Roadway Improvements	34,330	1,010	3,990	15,000	15,000	15,000	15,000	35,000	134,330
Seaport - Security	1,757	1,526	500	500	500	500	500	0	5,783
Seaport - Specialty Equipment	1,368	8,632	60,000	49,000	0	0	0	0	119,000
Seaport - Transportation Improvements	75	14,000	14,000	14,000	0	0	0	0	42,075
Strategic Area: TM									
Seaport - Cargo Facility Improvements	0	10	0	0	14,990	15,000	15,000	225,000	270,000
Seaport - Cruise Terminal Renovations	1,135	100	0	0	0	0	0	0	1,235
Seaport - Dredging	109,700	50	0	0	0	0	0	0	109,750
Seaport - Transportation Improvements	0	0	0	0	0	0	0	5,200	5,200
Total:	1,201,628	664,859	651,689	503,620	371,108	194,802	81,116	627,180	4,296,002

FY 2024-25 Proposed Budget and Multi-Year Capital Plan

FUNDED CAPITAL PROGRAMS

(dollars in thousands)

BRIGHTLINE

PROGRAM #: 2000001320



DESCRIPTION: Construct a LEED Silver certified train station, where applicable, for passengers and employees at the Seaport

LOCATION: Dante B. Fascell Port of Miami-Dade District Located: 5
 Port of Miami District(s) Served: Countywide

REVENUE SCHEDULE:	PRIOR	2024-25	2025-26	2026-27	2027-28	2028-29	2029-30	FUTURE	TOTAL
Future Financing	0	0	0	0	0	0	0	5,200	5,200
TOTAL REVENUES:	0	0	0	0	0	0	0	5,200	5,200
EXPENDITURE SCHEDULE:	PRIOR	2024-25	2025-26	2026-27	2027-28	2028-29	2029-30	FUTURE	TOTAL
Art Allowance	0	0	0	0	0	0	0	78	78
Construction	0	0	0	0	0	0	0	5,122	5,122
TOTAL EXPENDITURES:	0	0	0	0	0	0	0	5,200	5,200

BULKHEAD REHABILITATION - BAYS 148-155 & 165-177

PROGRAM #: 2000004235



DESCRIPTION: Repair and upgrade cargo berthing infrastructure to allow for more efficient crane operations

LOCATION: Dante B. Fascell Port of Miami-Dade District Located: 5,Countywide
 Port of Miami District(s) Served: N/A

REVENUE SCHEDULE:	PRIOR	2024-25	2025-26	2026-27	2027-28	2028-29	2029-30	FUTURE	TOTAL
Future Financing	0	8,668	12,966	0	0	0	0	0	21,634
Seaport Bonds/Loans	1,000	0	0	0	0	0	0	0	1,000
US DOT	0	6,172	1,875	0	0	0	0	0	8,047
TOTAL REVENUES:	1,000	14,840	14,841	0	0	0	0	0	30,681
EXPENDITURE SCHEDULE:	PRIOR	2024-25	2025-26	2026-27	2027-28	2028-29	2029-30	FUTURE	TOTAL
Construction	1,000	14,840	14,841	0	0	0	0	0	30,681
TOTAL EXPENDITURES:	1,000	14,840	14,841	0	0	0	0	0	30,681

FY 2024-25 Proposed Budget and Multi-Year Capital Plan

CARGO YARD OPTIMIZATION

PROGRAM #: 2000004018



DESCRIPTION: Provide various infrastructure upgrades to include a new gate management system and yard optimization
 LOCATION: Dante B. Fascell Port of Miami-Dade District Located: 5
 Port of Miami District(s) Served: 13, Countywide

REVENUE SCHEDULE:	PRIOR	2024-25	2025-26	2026-27	2027-28	2028-29	2029-30	FUTURE	TOTAL
Future Financing	0	4,000	8,500	18,000	4,000	0	0	0	34,500
Seaport Bonds/Loans	500	0	0	0	0	0	0	0	500
TOTAL REVENUES:	500	4,000	8,500	18,000	4,000	0	0	0	35,000
EXPENDITURE SCHEDULE:	PRIOR	2024-25	2025-26	2026-27	2027-28	2028-29	2029-30	FUTURE	TOTAL
Construction	500	4,000	8,500	18,000	4,000	0	0	0	35,000
TOTAL EXPENDITURES:	500	4,000	8,500	18,000	4,000	0	0	0	35,000

CONSTRUCTION SUPERVISION

PROGRAM #: 6430061



DESCRIPTION: Provide supervision of on-going construction projects at the Seaport
 LOCATION: Dante B. Fascell Port of Miami-Dade District Located: 5
 Port of Miami District(s) Served: Countywide

REVENUE SCHEDULE:	PRIOR	2024-25	2025-26	2026-27	2027-28	2028-29	2029-30	FUTURE	TOTAL
Future Financing	0	9,500	9,785	10,079	10,381	10,692	11,013	0	61,450
General Construction Overhead	10,752	0	0	0	0	0	0	0	10,752
Seaport Bonds/Loans	29,204	0	0	0	0	0	0	0	29,204
TOTAL REVENUES:	39,956	9,500	9,785	10,079	10,381	10,692	11,013	0	101,406
EXPENDITURE SCHEDULE:	PRIOR	2024-25	2025-26	2026-27	2027-28	2028-29	2029-30	FUTURE	TOTAL
Construction	39,541	9,500	9,785	10,079	10,381	10,692	11,013	0	100,991
Planning and Design	415	0	0	0	0	0	0	0	415
TOTAL EXPENDITURES:	39,956	9,500	9,785	10,079	10,381	10,692	11,013	0	101,406

CRUISE TERMINAL B

PROGRAM #: 2000000571



DESCRIPTION: Construct a new LEED Silver Terminal B to accommodate Norwegian Cruise Line operations
 LOCATION: Dante B. Fascell Port of Miami-Dade District Located: 5
 Port of Miami District(s) Served: Countywide

REVENUE SCHEDULE:	PRIOR	2024-25	2025-26	2026-27	2027-28	2028-29	2029-30	FUTURE	TOTAL
Future Financing	0	500	0	0	0	0	0	0	500
Seaport Bonds/Loans	237,742	0	0	0	0	0	0	0	237,742
TOTAL REVENUES:	237,742	500	0	0	0	0	0	0	238,242
EXPENDITURE SCHEDULE:	PRIOR	2024-25	2025-26	2026-27	2027-28	2028-29	2029-30	FUTURE	TOTAL
Construction	237,742	500	0	0	0	0	0	0	238,242
TOTAL EXPENDITURES:	237,742	500	0	0	0	0	0	0	238,242

FY 2024-25 Proposed Budget and Multi-Year Capital Plan

CRUISE TERMINAL BERTH 10 - NEW

PROGRAM #: 2000001343



DESCRIPTION: Design and construct a new LEED Silver certified Berth 10 to facilitate additional cruise ships
 LOCATION: Dante B. Fascell Port of Miami-Dade District Located: 5
 Port of Miami District(s) Served: Countywide

REVENUE SCHEDULE:	PRIOR	2024-25	2025-26	2026-27	2027-28	2028-29	2029-30	FUTURE	TOTAL
Future Financing	0	30,000	40,000	65,000	29,675	15,000	0	0	179,675
Seaport Bonds/Loans	5,325	0	0	0	0	0	0	0	5,325
TOTAL REVENUES:	5,325	30,000	40,000	65,000	29,675	15,000	0	0	185,000
EXPENDITURE SCHEDULE:	PRIOR	2024-25	2025-26	2026-27	2027-28	2028-29	2029-30	FUTURE	TOTAL
Art Allowance	0	0	600	975	450	225	0	0	2,250
Construction	5,325	30,000	39,400	64,025	29,225	14,775	0	0	182,750
TOTAL EXPENDITURES:	5,325	30,000	40,000	65,000	29,675	15,000	0	0	185,000

CRUISE TERMINAL C - RENOVATIONS

PROGRAM #: 2000000923



DESCRIPTION: Provide renovations to combine terminals B and C to accommodate various cruise lines
 LOCATION: Dante B. Fascell Port of Miami-Dade District Located: 5
 Port of Miami District(s) Served: Countywide

REVENUE SCHEDULE:	PRIOR	2024-25	2025-26	2026-27	2027-28	2028-29	2029-30	FUTURE	TOTAL
FDOT Funds	970	0	0	0	0	0	0	0	970
Future Financing	0	500	0	0	0	0	0	0	500
Seaport Bonds/Loans	20,980	0	0	0	0	0	0	0	20,980
TOTAL REVENUES:	21,950	500	0	0	0	0	0	0	22,450
EXPENDITURE SCHEDULE:	PRIOR	2024-25	2025-26	2026-27	2027-28	2028-29	2029-30	FUTURE	TOTAL
Construction	21,950	500	0	0	0	0	0	0	22,450
TOTAL EXPENDITURES:	21,950	500	0	0	0	0	0	0	22,450

CRUISE TERMINAL F - EXPANSION (PHASE 2)

PROGRAM #: 2000000979



DESCRIPTION: Expand Terminal F to accommodate additional Carnival Cruise Lines ships
 LOCATION: Dante B. Fascell Port of Miami-Dade District Located: 5
 Port of Miami District(s) Served: Countywide

REVENUE SCHEDULE:	PRIOR	2024-25	2025-26	2026-27	2027-28	2028-29	2029-30	FUTURE	TOTAL
Future Financing	0	2,000	0	0	0	0	0	0	2,000
General Construction Overhead	3	0	0	0	0	0	0	0	3
Seaport Bonds/Loans	130,636	0	0	0	0	0	0	0	130,636
TOTAL REVENUES:	130,639	2,000	0	0	0	0	0	0	132,639
EXPENDITURE SCHEDULE:	PRIOR	2024-25	2025-26	2026-27	2027-28	2028-29	2029-30	FUTURE	TOTAL
Art Allowance	1,784	0	0	0	0	0	0	0	1,784
Construction	103,208	2,000	0	0	0	0	0	0	105,208
Infrastructure Improvements	25,647	0	0	0	0	0	0	0	25,647
TOTAL EXPENDITURES:	130,639	2,000	0	0	0	0	0	0	132,639

FY 2024-25 Proposed Budget and Multi-Year Capital Plan

CRUISE TERMINAL F - RENOVATIONS

PROGRAM #: 200000060



DESCRIPTION: Provide various renovations to cruise Terminal F for new cruise services
 LOCATION: Dante B. Fascell Port of Miami-Dade District Located: 5
 Port of Miami District(s) Served: Countywide

REVENUE SCHEDULE:	PRIOR	2024-25	2025-26	2026-27	2027-28	2028-29	2029-30	FUTURE	TOTAL
FDOT Funds	1,035	0	0	0	0	0	0	0	1,035
Future Financing	0	100	0	0	0	0	0	0	100
Seaport Bonds/Loans	100	0	0	0	0	0	0	0	100
TOTAL REVENUES:	1,135	100	0	0	0	0	0	0	1,235
EXPENDITURE SCHEDULE:	PRIOR	2024-25	2025-26	2026-27	2027-28	2028-29	2029-30	FUTURE	TOTAL
Construction	1,135	100	0	0	0	0	0	0	1,235
TOTAL EXPENDITURES:	1,135	100	0	0	0	0	0	0	1,235

CRUISE TERMINAL G - NEW

PROGRAM #: 2000001291



DESCRIPTION: Design and construct a new LEED Silver certified cruise terminal to support expanding operations, including garage, terminal and related infrastructure
 LOCATION: Dante B. Fascell Port of Miami-Dade District Located: 5
 Port of Miami District(s) Served: N/A

REVENUE SCHEDULE:	PRIOR	2024-25	2025-26	2026-27	2027-28	2028-29	2029-30	FUTURE	TOTAL
Future Financing	0	100,000	185,000	83,000	0	0	0	0	368,000
Seaport Bonds/Loans	8,000	0	0	0	0	0	0	0	8,000
TOTAL REVENUES:	8,000	100,000	185,000	83,000	0	0	0	0	376,000
EXPENDITURE SCHEDULE:	PRIOR	2024-25	2025-26	2026-27	2027-28	2028-29	2029-30	FUTURE	TOTAL
Art Allowance	0	1,321	1,321	1,321	0	0	0	0	3,963
Construction	7,652	90,868	175,868	73,868	0	0	0	0	348,256
Planning and Design	348	7,811	7,811	7,811	0	0	0	0	23,781
TOTAL EXPENDITURES:	8,000	100,000	185,000	83,000	0	0	0	0	376,000

FY 2024-25 Proposed Budget and Multi-Year Capital Plan

CRUISE TERMINAL J - RENOVATIONS

PROGRAM #: 642930



DESCRIPTION: Upgrade and remodel Terminal J to attract luxury cruise operations by replacing carpet, installing new elevators and completing various terminal repair/upgrades

LOCATION: Dante B. Fascell Port of Miami-Dade District Located: 5
 Port of Miami District(s) Served: Countywide

REVENUE SCHEDULE:	PRIOR	2024-25	2025-26	2026-27	2027-28	2028-29	2029-30	FUTURE	TOTAL
Future Financing	0	1,750	1,750	0	0	0	0	0	3,500
Seaport Bonds/Loans	4,238	8,250	750	0	0	0	0	0	13,238
TOTAL REVENUES:	4,238	10,000	2,500	0	0	0	0	0	16,738
EXPENDITURE SCHEDULE:	PRIOR	2024-25	2025-26	2026-27	2027-28	2028-29	2029-30	FUTURE	TOTAL
Construction	4,238	10,000	2,500	0	0	0	0	0	16,738
TOTAL EXPENDITURES:	4,238	10,000	2,500	0	0	0	0	0	16,738

CRUISE TERMINAL V - NEW

PROGRAM #: 200000978



DESCRIPTION: Design and construct a new cruise terminal to support expanding operations with Virgin Voyages (CT-V achieved LEED Gold)

LOCATION: Dante B. Fascell Port of Miami-Dade District Located: 5
 Port of Miami District(s) Served: Countywide

REVENUE SCHEDULE:	PRIOR	2024-25	2025-26	2026-27	2027-28	2028-29	2029-30	FUTURE	TOTAL
FDOT Funds	959	0	0	0	0	0	0	0	959
Future Financing	0	1,000	0	0	0	0	0	0	1,000
Seaport Bonds/Loans	151,841	0	0	0	0	0	0	0	151,841
TOTAL REVENUES:	152,800	1,000	0	0	0	0	0	0	153,800
EXPENDITURE SCHEDULE:	PRIOR	2024-25	2025-26	2026-27	2027-28	2028-29	2029-30	FUTURE	TOTAL
Art Allowance	2,393	0	0	0	0	0	0	0	2,393
Construction	138,308	1,000	0	0	0	0	0	0	139,308
Furniture Fixtures and Equipment	11,489	0	0	0	0	0	0	0	11,489
Infrastructure Improvements	610	0	0	0	0	0	0	0	610
TOTAL EXPENDITURES:	152,800	1,000	0	0	0	0	0	0	153,800

FY 2024-25 Proposed Budget and Multi-Year Capital Plan

CRUISE TERMINALS A AND AA - ROADWAYS FLYOVER

PROGRAM #: 200000724



DESCRIPTION: Construct a new road to handle increased Port traffic for new terminals A and AA
 LOCATION: Dante B. Fascell Port of Miami-Dade District Located: 5
 Port of Miami District(s) Served: Countywide

REVENUE SCHEDULE:	PRIOR	2024-25	2025-26	2026-27	2027-28	2028-29	2029-30	FUTURE	TOTAL
FDOT Funds	12,053	0	0	0	0	0	0	0	12,053
Future Financing	0	1,000	0	0	0	0	0	0	1,000
Seaport Bonds/Loans	21,277	0	0	0	0	0	0	0	21,277
TOTAL REVENUES:	33,330	1,000	0	0	0	0	0	0	34,330
EXPENDITURE SCHEDULE:	PRIOR	2024-25	2025-26	2026-27	2027-28	2028-29	2029-30	FUTURE	TOTAL
Construction	22,200	1,000	0	0	0	0	0	0	23,200
Infrastructure Improvements	11,130	0	0	0	0	0	0	0	11,130
TOTAL EXPENDITURES:	33,330	1,000	0	0	0	0	0	0	34,330

CRUISE TERMINALS AA AND AAA - NEW

PROGRAM #: 200000570



DESCRIPTION: Design and construct new LEED Silver certified cruise terminals to support expanded operations of MSC Cruise Line
 LOCATION: Dante B. Fascell Port of Miami-Dade District Located: 5
 Port of Miami District(s) Served: Countywide

REVENUE SCHEDULE:	PRIOR	2024-25	2025-26	2026-27	2027-28	2028-29	2029-30	FUTURE	TOTAL
Future Financing	0	25,200	10,000	7,000	7,000	7,000	7,000	28,000	91,200
Seaport Bonds/Loans	78,799	0	0	0	0	0	0	0	78,799
TOTAL REVENUES:	78,799	25,200	10,000	7,000	7,000	7,000	7,000	28,000	169,999
EXPENDITURE SCHEDULE:	PRIOR	2024-25	2025-26	2026-27	2027-28	2028-29	2029-30	FUTURE	TOTAL
Art Allowance	0	1,368	0	0	0	0	0	0	1,368
Construction	78,501	23,832	10,000	7,000	7,000	7,000	7,000	28,000	168,333
Infrastructure Improvements	298	0	0	0	0	0	0	0	298
TOTAL EXPENDITURES:	78,799	25,200	10,000	7,000	7,000	7,000	7,000	28,000	169,999

DREDGE III

PROGRAM #: 649730



DESCRIPTION: Dredge southern part of Lummus Island to a depth of 50 feet allowing port capacity for larger ships
 LOCATION: Dante B. Fascell Port of Miami-Dade District Located: 5
 Port of Miami District(s) Served: Countywide

REVENUE SCHEDULE:	PRIOR	2024-25	2025-26	2026-27	2027-28	2028-29	2029-30	FUTURE	TOTAL
FDOT Funds	109,600	0	0	0	0	0	0	0	109,600
Future Financing	0	50	0	0	0	0	0	0	50
Seaport Bonds/Loans	100	0	0	0	0	0	0	0	100
TOTAL REVENUES:	109,700	50	0	0	0	0	0	0	109,750
EXPENDITURE SCHEDULE:	PRIOR	2024-25	2025-26	2026-27	2027-28	2028-29	2029-30	FUTURE	TOTAL
Construction	109,700	50	0	0	0	0	0	0	109,750
TOTAL EXPENDITURES:	109,700	50	0	0	0	0	0	0	109,750

FY 2024-25 Proposed Budget and Multi-Year Capital Plan

FEDERAL INSPECTION FACILITY

PROGRAM #: 641540



DESCRIPTION: Renovate Federal Inspection facility for Immigration and Customs Enforcement Operations
 LOCATION: Dante B. Fascell Port of Miami-Dade District Located: 5
 Port of Miami District(s) Served: Countywide

REVENUE SCHEDULE:	PRIOR	2024-25	2025-26	2026-27	2027-28	2028-29	2029-30	FUTURE	TOTAL
Future Financing	0	2,500	2,500	2,500	0	0	0	0	7,500
Seaport Bonds/Loans	2,500	0	0	0	0	0	0	0	2,500
TOTAL REVENUES:	2,500	2,500	2,500	2,500	0	0	0	0	10,000
EXPENDITURE SCHEDULE:	PRIOR	2024-25	2025-26	2026-27	2027-28	2028-29	2029-30	FUTURE	TOTAL
Art Allowance	0	0	0	78	0	0	0	0	78
Construction	2,500	2,500	2,500	2,422	0	0	0	0	9,922
TOTAL EXPENDITURES:	2,500	2,500	2,500	2,500	0	0	0	0	10,000

GANTRY CRANES

PROGRAM #: 200000131



DESCRIPTION: Purchase four additional post panamax gantry cranes (with option for up to four additional cranes) for increased cargo traffic to bring the total number of cranes to 17
 LOCATION: Dante B. Fascell Port of Miami-Dade District Located: 5
 Port of Miami District(s) Served: Countywide

REVENUE SCHEDULE:	PRIOR	2024-25	2025-26	2026-27	2027-28	2028-29	2029-30	FUTURE	TOTAL
Future Financing	0	8,632	60,000	49,000	0	0	0	0	117,632
Seaport Bonds/Loans	1,368	0	0	0	0	0	0	0	1,368
TOTAL REVENUES:	1,368	8,632	60,000	49,000	0	0	0	0	119,000
EXPENDITURE SCHEDULE:	PRIOR	2024-25	2025-26	2026-27	2027-28	2028-29	2029-30	FUTURE	TOTAL
Major Machinery and Equipment	1,368	8,632	60,000	49,000	0	0	0	0	119,000
TOTAL EXPENDITURES:	1,368	8,632	60,000	49,000	0	0	0	0	119,000

INFRASTRUCTURE IMPROVEMENTS - CARGO GATE MODIFICATIONS

PROGRAM #: 644010



DESCRIPTION: Purchase and install security systems for new gateway as required
 LOCATION: Dante B. Fascell Port of Miami-Dade District Located: 5
 Port of Miami District(s) Served: Countywide

REVENUE SCHEDULE:	PRIOR	2024-25	2025-26	2026-27	2027-28	2028-29	2029-30	FUTURE	TOTAL
Federal Transportation Grant	26,595	0	0	0	0	0	0	0	26,595
Future Financing	0	500	0	0	0	0	0	0	500
Seaport Bonds/Loans	15,285	0	0	0	0	0	0	0	15,285
TOTAL REVENUES:	41,880	500	0	0	0	0	0	0	42,380
EXPENDITURE SCHEDULE:	PRIOR	2024-25	2025-26	2026-27	2027-28	2028-29	2029-30	FUTURE	TOTAL
Construction	17,282	500	0	0	0	0	0	0	17,782
Major Machinery and Equipment	24,598	0	0	0	0	0	0	0	24,598
TOTAL EXPENDITURES:	41,880	500	0	0	0	0	0	0	42,380

FY 2024-25 Proposed Budget and Multi-Year Capital Plan

INFRASTRUCTURE IMPROVEMENTS - CHANNEL MODIFICATIONS

PROGRAM #: 200000028

DESCRIPTION: Provide infrastructure improvements to Seaport channels as a result of the new terminal additions at the Port of Miami

LOCATION: Dante B. Fascell Port of Miami-Dade District Located: 5
 Port of Miami District(s) Served: Countywide

REVENUE SCHEDULE:	PRIOR	2024-25	2025-26	2026-27	2027-28	2028-29	2029-30	FUTURE	TOTAL
FDOT Funds	350	350	0	0	0	0	0	0	700
Future Financing	0	0	350	450	0	0	0	0	800
Seaport Bonds/Loans	1,700	0	0	0	0	0	0	0	1,700
TOTAL REVENUES:	2,050	350	350	450	0	0	0	0	3,200
EXPENDITURE SCHEDULE:	PRIOR	2024-25	2025-26	2026-27	2027-28	2028-29	2029-30	FUTURE	TOTAL
Construction	2,050	350	350	450	0	0	0	0	3,200
TOTAL EXPENDITURES:	2,050	350	350	450	0	0	0	0	3,200

INFRASTRUCTURE IMPROVEMENTS - CONTAINER YARD (SEABOARD)

PROGRAM #: 644520



DESCRIPTION: Provide drainage improvements and various other improvements in the container yard area

LOCATION: Dante B. Fascell Port of Miami-Dade District Located: 5
 Port of Miami District(s) Served: Countywide

REVENUE SCHEDULE:	PRIOR	2024-25	2025-26	2026-27	2027-28	2028-29	2029-30	FUTURE	TOTAL
Future Financing	0	3,659	28,659	8,256	0	0	0	0	40,574
Seaport Bonds/Loans	7,721	0	0	0	0	0	0	0	7,721
US DOT	1,341	1,341	1,341	2,682	0	0	0	0	6,705
TOTAL REVENUES:	9,062	5,000	30,000	10,938	0	0	0	0	55,000
EXPENDITURE SCHEDULE:	PRIOR	2024-25	2025-26	2026-27	2027-28	2028-29	2029-30	FUTURE	TOTAL
Construction	9,060	5,000	30,000	10,938	0	0	0	0	54,998
Major Machinery and Equipment	2	0	0	0	0	0	0	0	2
TOTAL EXPENDITURES:	9,062	5,000	30,000	10,938	0	0	0	0	55,000

FY 2024-25 Proposed Budget and Multi-Year Capital Plan

INFRASTRUCTURE IMPROVEMENTS - CRUISE CAMPUS

PROGRAM #: 2000001290



DESCRIPTION: Provide infrastructure improvements including but not limited to road work and relocations for future buildings constructed by Royal Caribbean Cruise Line

LOCATION: Dante B. Fascell Port of Miami-Dade District Located: 5
 Port of Miami District(s) Served: Countywide

REVENUE SCHEDULE:	PRIOR	2024-25	2025-26	2026-27	2027-28	2028-29	2029-30	FUTURE	TOTAL
Seaport Bonds/Loans	263	0	0	0	0	0	0	0	263
Seaport Revenue Bonds 2023	458,983	0	0	0	0	0	0	0	458,983
Tenant Financing	11,754	0	0	0	150,000	0	0	0	161,754
TOTAL REVENUES:	471,000	0	0	0	150,000	0	0	0	621,000
EXPENDITURE SCHEDULE:	PRIOR	2024-25	2025-26	2026-27	2027-28	2028-29	2029-30	FUTURE	TOTAL
Art Allowance	0	3,000	800	126	1,800	0	0	0	5,726
Construction	82,895	251,858	103,047	8,274	169,200	0	0	0	615,274
TOTAL EXPENDITURES:	82,895	254,858	103,847	8,400	171,000	0	0	0	621,000

INFRASTRUCTURE IMPROVEMENTS - NORTH BULKHEAD REHABILITATION AND REPLACEMENT

PROGRAM #: 644300



DESCRIPTION: Provide repairs and improvements to the north bulkhead

LOCATION: Dante B. Fascell Port of Miami-Dade District Located: 5
 Port of Miami District(s) Served: Countywide

REVENUE SCHEDULE:	PRIOR	2024-25	2025-26	2026-27	2027-28	2028-29	2029-30	FUTURE	TOTAL
Florida Department of Environmental Protection	288	0	0	0	0	0	0	0	288
Future Financing	0	34,840	0	50,000	0	50,000	0	319,000	453,840
Seaport Bonds/Loans	5,654	0	0	0	0	0	0	0	5,654
TOTAL REVENUES:	5,942	34,840	0	50,000	0	50,000	0	319,000	459,782
EXPENDITURE SCHEDULE:	PRIOR	2024-25	2025-26	2026-27	2027-28	2028-29	2029-30	FUTURE	TOTAL
Construction	5,615	34,840	0	50,000	0	50,000	0	319,000	459,455
Infrastructure Improvements	39	0	0	0	0	0	0	0	39
Planning and Design	288	0	0	0	0	0	0	0	288
TOTAL EXPENDITURES:	5,942	34,840	0	50,000	0	50,000	0	319,000	459,782

FY 2024-25 Proposed Budget and Multi-Year Capital Plan

INFRASTRUCTURE IMPROVEMENTS - PASSENGER BOARDING BRIDGES

PROGRAM #: 200001344



DESCRIPTION: Purchase passenger boarding bridges for various terminals throughout the port
 LOCATION: Dante B. Fascell Port of Miami-Dade District Located: 5
 Port of Miami District(s) Served: Countywide

REVENUE SCHEDULE:	PRIOR	2024-25	2025-26	2026-27	2027-28	2028-29	2029-30	FUTURE	TOTAL
FDOT Funds	0	0	2,300	0	0	0	0	0	2,300
Future Financing	0	10	3,190	11,000	10	11,000	10	14,980	40,200
Seaport Bonds/Loans	12,500	0	0	0	0	0	0	0	12,500
TOTAL REVENUES:	12,500	10	5,490	11,000	10	11,000	10	14,980	55,000
EXPENDITURE SCHEDULE:	PRIOR	2024-25	2025-26	2026-27	2027-28	2028-29	2029-30	FUTURE	TOTAL
Construction	0	0	2,300	0	0	0	0	0	2,300
Major Machinery and Equipment	12,500	10	3,190	11,000	10	11,000	10	14,980	52,700
TOTAL EXPENDITURES:	12,500	10	5,490	11,000	10	11,000	10	14,980	55,000

INFRASTRUCTURE IMPROVEMENTS - PORT WIDE

PROGRAM #: 645430



DESCRIPTION: Provide infrastructure improvements in various areas of the Port including drainage, wayfinding port beautification projects, dredging, etc.
 LOCATION: Dante B. Fascell Port of Miami-Dade District Located: 5
 Port of Miami District(s) Served: Countywide

REVENUE SCHEDULE:	PRIOR	2024-25	2025-26	2026-27	2027-28	2028-29	2029-30	FUTURE	TOTAL
FDOT Funds	127	810	810	710	710	0	0	0	3,167
Future Financing	0	48,373	40,033	32,883	32,883	33,593	32,593	0	220,358
General Construction Overhead	1,845	0	0	0	0	0	0	0	1,845
Seaport Bonds/Loans	75,259	0	0	0	0	0	0	0	75,259
TOTAL REVENUES:	77,231	49,183	40,843	33,593	33,593	33,593	32,593	0	300,629
EXPENDITURE SCHEDULE:	PRIOR	2024-25	2025-26	2026-27	2027-28	2028-29	2029-30	FUTURE	TOTAL
Art Allowance	461	0	0	0	0	0	0	0	461
Construction	70,729	49,183	40,843	33,593	33,593	33,593	32,593	0	294,127
Infrastructure Improvements	6,041	0	0	0	0	0	0	0	6,041
TOTAL EXPENDITURES:	77,231	49,183	40,843	33,593	33,593	33,593	32,593	0	300,629

FY 2024-25 Proposed Budget and Multi-Year Capital Plan

INFRASTRUCTURE IMPROVEMENTS - SOUTH BULKHEAD REHABILITATION

PROGRAM #: 646300

DESCRIPTION: Provide repairs and improvements to the Port's south bulkhead
 LOCATION: Dante B. Fascell Port of Miami-Dade District Located: 5
 Port of Miami District(s) Served: Countywide

REVENUE SCHEDULE:	PRIOR	2024-25	2025-26	2026-27	2027-28	2028-29	2029-30	FUTURE	TOTAL
Future Financing	0	7,500	7,500	0	0	0	0	0	15,000
Seaport Bonds/Loans	5,151	0	0	0	0	0	0	0	5,151
TOTAL REVENUES:	5,151	7,500	7,500	0	0	0	0	0	20,151
EXPENDITURE SCHEDULE:	PRIOR	2024-25	2025-26	2026-27	2027-28	2028-29	2029-30	FUTURE	TOTAL
Construction	5,151	7,500	7,500	0	0	0	0	0	20,151
TOTAL EXPENDITURES:	5,151	7,500	7,500	0	0	0	0	0	20,151

INFRASTRUCTURE IMPROVEMENTS - SOUTH FLORIDA CONTAINER TERMINAL AND NEW GARAGE

PROGRAM #: 647150



DESCRIPTION: Construct a new garage, provide drainage improvements and various other improvements to the cargo yard
 LOCATION: Dante B. Fascell Port of Miami-Dade District Located: 5
 Port of Miami District(s) Served: 13,Countywide

REVENUE SCHEDULE:	PRIOR	2024-25	2025-26	2026-27	2027-28	2028-29	2029-30	FUTURE	TOTAL
FDOT Funds	4,161	4,585	4,585	0	0	0	0	0	13,331
Future Financing	0	28,925	13,457	24,710	0	0	0	0	67,092
Seaport Bonds/Loans	10,639	0	0	0	0	0	0	0	10,639
US DOT	1,490	1,490	5,958	0	0	0	0	0	8,938
TOTAL REVENUES:	16,290	35,000	24,000	24,710	0	0	0	0	100,000
EXPENDITURE SCHEDULE:	PRIOR	2024-25	2025-26	2026-27	2027-28	2028-29	2029-30	FUTURE	TOTAL
Construction	12,129	30,415	19,415	24,710	0	0	0	0	86,669
Major Machinery and Equipment	4,161	4,585	4,585	0	0	0	0	0	13,331
TOTAL EXPENDITURES:	16,290	35,000	24,000	24,710	0	0	0	0	100,000

INFRASTRUCTURE IMPROVEMENTS - WATER AND SEWER UPGRADES

PROGRAM #: 647720



DESCRIPTION: Upgrade the Port's water and sewer system for new services
 LOCATION: Dante B. Fascell Port of Miami-Dade District Located: 5
 Port of Miami District(s) Served: Countywide

REVENUE SCHEDULE:	PRIOR	2024-25	2025-26	2026-27	2027-28	2028-29	2029-30	FUTURE	TOTAL
FDOT Funds	92	81	0	0	0	0	0	0	173
Future Financing	0	1,919	1,000	6,000	10,000	25,517	0	0	44,436
Seaport Bonds/Loans	5,391	0	0	0	0	0	0	0	5,391
TOTAL REVENUES:	5,483	2,000	1,000	6,000	10,000	25,517	0	0	50,000
EXPENDITURE SCHEDULE:	PRIOR	2024-25	2025-26	2026-27	2027-28	2028-29	2029-30	FUTURE	TOTAL
Construction	5,483	2,000	1,000	6,000	10,000	25,517	0	0	50,000
TOTAL EXPENDITURES:	5,483	2,000	1,000	6,000	10,000	25,517	0	0	50,000

FY 2024-25 Proposed Budget and Multi-Year Capital Plan

INLAND PORT - PHASE II - IV

PROGRAM #: 2000004236



DESCRIPTION: Continue to plan and develop additional facilities and acreage in an off-dock logistics yard
 LOCATION: Dante B. Fascell Port of Miami-Dade District Located: 5
 Port of Miami District(s) Served: Countywide

REVENUE SCHEDULE:	PRIOR	2024-25	2025-26	2026-27	2027-28	2028-29	2029-30	FUTURE	TOTAL
Future Financing	0	10	0	0	5,990	6,000	6,000	90,000	108,000
US DOT	0	0	0	0	9,000	9,000	9,000	135,000	162,000
TOTAL REVENUES:	0	10	0	0	14,990	15,000	15,000	225,000	270,000
EXPENDITURE SCHEDULE:	PRIOR	2024-25	2025-26	2026-27	2027-28	2028-29	2029-30	FUTURE	TOTAL
Construction	0	10	0	0	14,990	15,000	15,000	225,000	270,000
TOTAL EXPENDITURES:	0	10	0	0	14,990	15,000	15,000	225,000	270,000

INLAND PORT DEVELOPMENT - PHASE 1

PROGRAM #: 2000000572



DESCRIPTION: Continue Inland Port Phase 1 development of the container storage and transfer staging areas
 LOCATION: Dante B. Fascell Port of Miami-Dade District Located: 5
 Port of Miami District(s) Served: Countywide

REVENUE SCHEDULE:	PRIOR	2024-25	2025-26	2026-27	2027-28	2028-29	2029-30	FUTURE	TOTAL
Future Financing	0	4,583	17,083	44,491	0	0	0	0	66,157
Seaport Bonds/Loans	1,343	0	0	0	0	0	0	0	1,343
US DOT	0	1,667	1,667	1,666	0	0	0	0	5,000
TOTAL REVENUES:	1,343	6,250	18,750	46,157	0	0	0	0	72,500
EXPENDITURE SCHEDULE:	PRIOR	2024-25	2025-26	2026-27	2027-28	2028-29	2029-30	FUTURE	TOTAL
Construction	1,343	6,250	18,750	46,157	0	0	0	0	72,500
TOTAL EXPENDITURES:	1,343	6,250	18,750	46,157	0	0	0	0	72,500

INSPECTION AND FUMIGATION FACILITIES

PROGRAM #: 2000001418



DESCRIPTION: Construct a LEED Silver certified fumigation and cold chain processing center
 LOCATION: Dante B. Fascell Port of Miami-Dade District Located: 5
 Port of Miami District(s) Served: Countywide

REVENUE SCHEDULE:	PRIOR	2024-25	2025-26	2026-27	2027-28	2028-29	2029-30	FUTURE	TOTAL
FDOT Funds	379	0	0	0	0	0	0	0	379
Future Financing	0	6,997	1,290	1,290	3,954	0	0	0	13,531
Seaport Bonds/Loans	108	0	0	0	0	0	0	0	108
Tenant Financing	0	2,217	2,217	2,217	6,649	0	0	0	13,300
US DOT	0	4,786	4,786	4,786	14,356	0	0	0	28,714
TOTAL REVENUES:	487	14,000	8,293	8,293	24,959	0	0	0	56,032
EXPENDITURE SCHEDULE:	PRIOR	2024-25	2025-26	2026-27	2027-28	2028-29	2029-30	FUTURE	TOTAL
Art Allowance	0	104	19	19	0	0	0	0	142
Construction	487	13,896	8,274	8,274	24,959	0	0	0	55,890
TOTAL EXPENDITURES:	487	14,000	8,293	8,293	24,959	0	0	0	56,032

FY 2024-25 Proposed Budget and Multi-Year Capital Plan

NETZERO CARGO PROGRAM

PROGRAM #: 2000002955



DESCRIPTION: Construct additional rail capacity and increase cargo gate optimization to reduce traffic congestion at the Port and lower carbon emissions

LOCATION: Dante B. Fascell Port of Miami-Dade
Port of Miami

District Located: 5
District(s) Served: Countywide

REVENUE SCHEDULE:	PRIOR	2024-25	2025-26	2026-27	2027-28	2028-29	2029-30	FUTURE	TOTAL
Future Financing	0	8,600	8,600	8,800	0	0	0	0	26,000
Seaport Bonds/Loans	75	0	0	0	0	0	0	0	75
US DOT	0	5,400	5,400	5,200	0	0	0	0	16,000
TOTAL REVENUES:	75	14,000	14,000	14,000	0	0	0	0	42,075
EXPENDITURE SCHEDULE:	PRIOR	2024-25	2025-26	2026-27	2027-28	2028-29	2029-30	FUTURE	TOTAL
Construction	75	14,000	14,000	14,000	0	0	0	0	42,075
TOTAL EXPENDITURES:	75	14,000	14,000	14,000	0	0	0	0	42,075

PORT ADMINISTRATION FACILITY

PROGRAM #: 2000004017



DESCRIPTION: Replace Port Offices and Port Services currently provided in World Trade Center being demolished to construct new Cruise Terminal G

LOCATION: Dante B. Fascell Port of Miami-Dade
Port of Miami

District Located: 5
District(s) Served: Countywide

REVENUE SCHEDULE:	PRIOR	2024-25	2025-26	2026-27	2027-28	2028-29	2029-30	FUTURE	TOTAL
Future Financing	0	5,000	20,000	40,000	50,000	11,500	0	0	126,500
Seaport Bonds/Loans	500	0	0	0	0	0	0	0	500
TOTAL REVENUES:	500	5,000	20,000	40,000	50,000	11,500	0	0	127,000
EXPENDITURE SCHEDULE:	PRIOR	2024-25	2025-26	2026-27	2027-28	2028-29	2029-30	FUTURE	TOTAL
Art Allowance	0	75	300	600	750	172	0	0	1,897
Construction	500	4,925	19,700	39,400	49,250	11,328	0	0	125,103
TOTAL EXPENDITURES:	500	5,000	20,000	40,000	50,000	11,500	0	0	127,000

FY 2024-25 Proposed Budget and Multi-Year Capital Plan

PORT WIDE SECURITY ENHANCEMENTS

PROGRAM #: 2000002759



DESCRIPTION: Purchase marine vessels for the Harbor Patrol Unit of the Sheriff of Miami-Dade; to provide Security Zone enforcement for cruise ships

LOCATION: Dante B. Fascell Port of Miami-Dade District Located: 5
 Port of Miami District(s) Served: Countywide

REVENUE SCHEDULE:	PRIOR	2024-25	2025-26	2026-27	2027-28	2028-29	2029-30	FUTURE	TOTAL
FDOT Funds	118	103	0	0	0	0	0	0	221
Future Financing	0	0	500	500	500	500	500	0	2,500
US Department of Homeland Security	1,639	1,423	0	0	0	0	0	0	3,062
TOTAL REVENUES:	1,757	1,526	500	500	500	500	500	0	5,783
EXPENDITURE SCHEDULE:	PRIOR	2024-25	2025-26	2026-27	2027-28	2028-29	2029-30	FUTURE	TOTAL
Automobiles/Vehicles	866	0	0	0	0	0	0	0	866
Furniture Fixtures and Equipment	118	103	0	0	0	0	0	0	221
Infrastructure Improvements	773	1,423	500	500	500	500	500	0	4,696
TOTAL EXPENDITURES:	1,757	1,526	500	500	500	500	500	0	5,783

ROADWAY IMPROVEMENTS - TRANSPORTATION MASTER PLAN

PROGRAM #: 2000004237



DESCRIPTION: Develop roadway expansion and improvement projects to enable the Seaport to manage increased cargo and cruise traffic

LOCATION: Dante B. Fascell Port of Miami-Dade District Located: 5
 Port of Miami District(s) Served: Countywide

REVENUE SCHEDULE:	PRIOR	2024-25	2025-26	2026-27	2027-28	2028-29	2029-30	FUTURE	TOTAL
Future Financing	0	10	3,990	15,000	15,000	15,000	15,000	35,000	99,000
Seaport Bonds/Loans	1,000	0	0	0	0	0	0	0	1,000
TOTAL REVENUES:	1,000	10	3,990	15,000	15,000	15,000	15,000	35,000	100,000
EXPENDITURE SCHEDULE:	PRIOR	2024-25	2025-26	2026-27	2027-28	2028-29	2029-30	FUTURE	TOTAL
Construction	1,000	10	3,990	15,000	15,000	15,000	15,000	35,000	100,000
TOTAL EXPENDITURES:	1,000	10	3,990	15,000	15,000	15,000	15,000	35,000	100,000

FY 2024-25 Proposed Budget and Multi-Year Capital Plan

SHORE POWER

PROGRAM #: 2000001675



DESCRIPTION: Provide Shore Power to all cruise terminals which will allow ships to turn off their primary engines while docked resulting in reduced air emissions

LOCATION: Dante B. Fascell Port of Miami-Dade District Located: 5
 Port of Miami District(s) Served: Countywide

REVENUE SCHEDULE:	PRIOR	2024-25	2025-26	2026-27	2027-28	2028-29	2029-30	FUTURE	TOTAL
FDOT Funds	39,423	1,259	1,259	0	0	0	0	0	41,941
Future Financing	0	23,741	38,741	0	0	0	0	0	62,482
Seaport Bonds/Loans	67,313	0	0	0	0	0	0	0	67,313
US Department of Environmental Protection Agency	2,264	0	0	0	0	0	0	0	2,264
TOTAL REVENUES:	109,000	25,000	40,000	0	0	0	0	0	174,000
EXPENDITURE SCHEDULE:	PRIOR	2024-25	2025-26	2026-27	2027-28	2028-29	2029-30	FUTURE	TOTAL
Construction	109,000	25,000	40,000	0	0	0	0	0	174,000
TOTAL EXPENDITURES:	109,000	25,000	40,000	0	0	0	0	0	174,000

UNFUNDED CAPITAL PROGRAMS

PROGRAM NAME	LOCATION	(dollars in thousands) ESTIMATED PROGRAM COST
EAST END - DEVELOPMENT	Dante B. Fascell Port of Miami-Dade	225,000
ELECTRICAL CAPACITY - INCREASE	Dante B. Fascell Port of Miami-Dade	200,000
HARBOR ENTRANCE AND SOUTH CHANNEL - DREDGE EXPANSION	Dante B. Fascell Port of Miami-Dade	650,000
SHORE POWER - CARGO	Dante B. Fascell Port of Miami-Dade	48,000
SOUTHSIDE - CRUISE TERMINAL K	Dante B. Fascell Port of Miami-Dade	275,000
SOUTHWEST CORNER - DEVELOPMENT	Dante B. Fascell Port of Miami-Dade	250,000
TRANSPORTATION MASTERPLAN - IMPROVEMENTS	Dante B. Fascell Port of Miami-Dade	50,000
UNFUNDED TOTAL		1,698,000