

PROJECT UPDATE

MIAMI-DADE COUNTY DEPARTMENT OF SOLID WASTE MANAGEMENT NEW SUSTAINABLE SOLID WASTE CAMPUS



DESCRIPTION

The proposed Sustainable Solid Waste Campus offers our best option to invest in the future of our solid waste system – meeting our current and future disposal needs while protecting human health and the environment and accommodating zero-waste technologies, for a fiscally and environmentally sustainable solution. The campus offers safety, innovation, efficiency and sustainability. The campus will divert a million tons of post-recycled waste annually from entering the landfill, drastically diminishing landfill burdens. It is expected to offset emissions that otherwise would be emitted from electricity generation and methane production in landfills. The campus will generate clean electricity from waste energy, adding power and offsetting emissions from the local grid and sustaining up to 70,000 households annually in Miami-Dade County. Additionally, it is estimated that the campus will retrieve approximately 25,000 tons of metal for recycling each year.

COMMUNITY BENEFITS

- | | |
|--|---|
| 1 Reducing municipal solid waste sent to landfills | 6 Recycling and reusing of ash from the plant in other products |
| 2 Recovering and recycling metals from solid waste | 7 Safe for residents and the environment |
| 3 Reducing greenhouse gas emissions | 8 Creating new “green” jobs at the SSW Campus |
| 4 Recovering energy from solid waste to generate electricity, adding power to the local power grid | 9 Reducing impact on the environment and water quality from potential chemical contaminants in residential and industrial waste |
| 5 Waste-to-energy plants can also fuel themselves | 10 No fossil fuels or non-renewable sources are required to facilitate waste-to-energy |

CURRENT WASTE DIVERSION EFFORTS

- | | |
|---|--|
| Education and Outreach: Conducting mobile events, school presentations, webinars, community meetings, and participating in events and fairs to boost engagement and accessibility. | Home Composting: Initiative to encourage and facilitate residents in composting organic waste at home, reducing landfill use and creating natural fertilizer. |
| Expanding Waste Diversion Efforts: Used Oil Collection is being expanded to seven additional Trash & Recycling Centers (URCS). | Major Appliance Recycling (“White Goods”): Program dedicated to recycling large household appliances such as refrigerators, washers, and dryers. |
| E-waste Recycling: Expanded at Home Chemical Collection Centers. | Mulching: Pilot program aimed at converting yard waste into mulch for gardening and landscaping purposes. |
| Curbside Recycling Program: Program processing approximately 60,000 annual tons through curbside recycling efforts. | “Chem Again” Reuse Program: Program allowing residents to reuse usable household chemicals. |

The Department will continue to explore new, proven technologies for waste processing and diversion as part of the Zero Waste Master Plan.

CONCEPTUAL ARTISTIC RENDERING



PROJECT UPDATE

MIAMI-DADE COUNTY DEPARTMENT OF SOLID WASTE MANAGEMENT NEW SUSTAINABLE SOLID WASTE CAMPUS



SCHEDULE

Miami-Dade County Department of Solid Waste will seek resident input on the four proposed sites. In September, the Board of County Commissioners will propose a site for the new Sustainable Solid Waste Campus. After selection and design, detailed air dispersion modeling, studies, and site investigations will be required for regulatory approval.

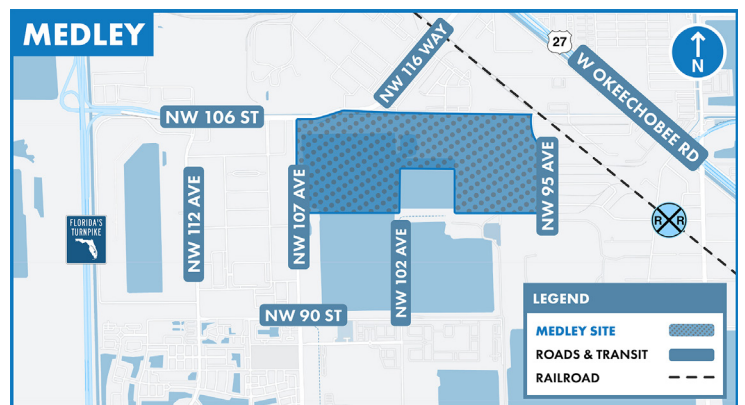
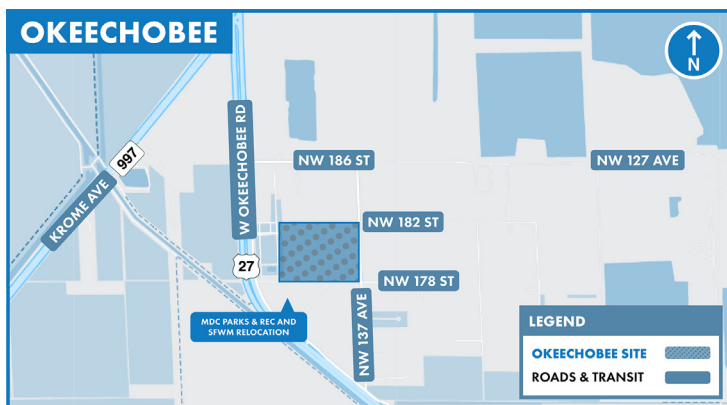
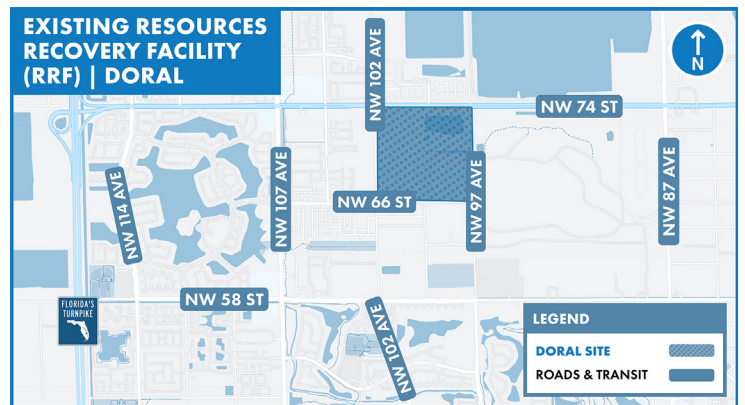
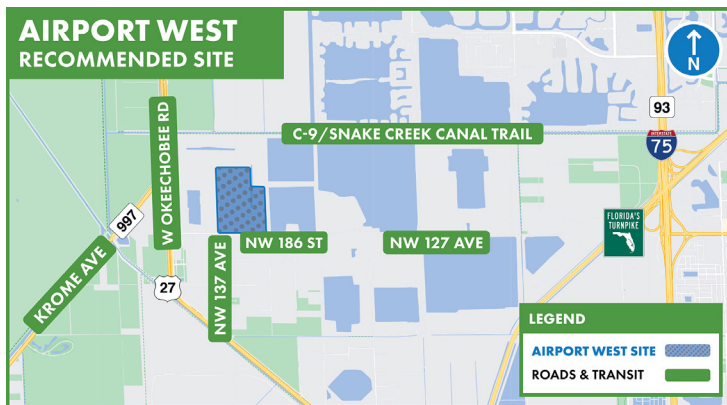
CONSTRUCTION

The timeline for establishing the new Sustainable Solid Waste Campus is seven to ten years, depending on the chosen site. This period includes planning, permitting, financing, procurement, design, and construction, and varies based on the project's complexity and the level of regulatory and public considerations involved.

PROPOSED CAMPUS LOCATIONS *All locations are within County Commission District 12

- **Airport West:** Located in the NW portion of Miami-Dade County with US-27 on the western border and Florida's Turnpike half a mile to the east of the site.*
- **Existing Resources Recovery Facility (RRF):** 6990 NW 97 Avenue in the City of Doral*
- **Okeechobee:** Located east of US-27/Okeechobee Road, between NW 178th Street and NW 182nd Street*
- **Medley:** South of NW 106 Street bordering NW 107 Avenue.*

Airport West is the site currently recommended by the Miami-Dade County administration. The Board of County Commissioners will vote on this recommendation.



DID YOU KNOW?

Waste-to-energy emissions pose **115% less health risk** exposure compared to exposure from vehicular exhaust and refueling gasoline-powered vehicles.