



TRANSPORTATION AND PUBLIC WORKS

RIDERSHIP TECHNICAL REPORT

Division of Performance Analysis



Table of Contents

<i>Table of Contents</i>	2-3
All Modes Overview	4
Total Monthly Weekday, Saturday and Sunday Monthly Boardings By Mode	5
Average Weekday, Saturday and Sunday Boardings by Mode	6
Metrobus Total Monthly Ridership Comparisons by Fiscal Year	7
Metrorail Total Monthly Ridership Comparisons by Fiscal Year	8
Metromover Total Monthly Ridership Comparisons by Fiscal Year	9
STS Total Monthly Ridership Comparisons by Fiscal Year	10
All-Modes Combined Total Monthly Ridership Comparisons By Fiscal Year	11
All Modes Combined Total Monthly and Average Weekday Ridership – Year over Year Comparison Charts	12
Average Weekday Ridership – Modal Splits	13
Daily Ridership for All Modes Combined since 2/1/20	14
Metrobus	15
Better Bus Network (BBN, 11/13/2023 Lineup) Bus Route Changes, Pt 1 and Pt 2	16-17
Metrobus Average Weekday Boardings by Route	18-20
Metrobus Average Saturday Boardings by Route	21-22
Metrobus Average Sunday Boardings by Route	23-24
Metrobus Monthly Total Boardings by Route	25-27
Bus Ridership by Route Service Type Lineups Comparison (month-over-month & month-over-8 months)	28-31
Bus Routes as Ranked by Percentage of Average Weekday Ridership	32
Metrobus Cumulative Percentage Average Weekday Ridership Share by Route (Top 75%)	33
Total Monthly and Average Weekday Bus Ridership – Year over Year Comparison Charts	34
Bus “Top 10 / Bottom 10” Bus Routes Average Weekday Ridership Performance – Month-over-Month Comparisons	35
Bus “Top 10 / Bottom 10” Bus Routes Sets Average Weekday Ridership Performance – Year-over-Year Comparisons	36
Bus “Top 10 / Bottom 10” Bus Routes Sets Average Weekday Ridership Performance – Month-over-8 Month Comparisons	37
Daily Metrobus Ridership since 2/1/20	38
Metrobus Parking Patronage Summary	39

Table of Contents (continued)

Metrorail	40
Metrorail Average Weekday Boardings by Station	41
Metrorail Average Saturday Boardings by Station	42
Metrorail Average Sunday Boardings by Station	43
Metrorail Total Monthly Boardings by Station	44
Metrorail Cumulative Percentage Average Weekday Ridership Share	45
Total Monthly and Average Weekday Rail Ridership – Year over Year Comparison Charts	46
“Top 5 / Bottom 5” Stations Average Weekday Ridership Performance	47
Daily Metrorail Ridership since 2/1/20	48
Metrorail Parking Patronage Summary	49
Metromover	50
Monthly and Average Daily Mover Boardings by Station	51
Metromover Cumulative Percentage Average Weekday Ridership Share	52
Total Monthly and Average Weekday Mover Ridership – Year over Year Comparison Charts	53
“Top 5 / Bottom 5” Stations Average Weekday Ridership Performance	54
Daily Metromover Ridership since 2/1/20	55
Special Transportation Services (STS)	56
STS Monthly and Average Daily Boardings	57
Total Monthly and Average Weekday STS Ridership – Year over Year Comparison Charts	58
Daily STS Ridership since 2/1/20	59
Ridership Seasonality	60
Ridership Seasonality – Percent Ridership Share by Month and Calendar Year for Each Mode	61

All Modes Overview



**TOTAL MONTHLY WEEKDAY, SATURDAY AND SUNDAY BOARDINGS BY MODE
June 2024**

TRAVEL MODE	MONTH'S TOTAL WEEKDAYS RIDERSHIP	MONTH'S TOTAL SATURDAYS RIDERSHIP	MONTH'S TOTAL SUNDAYS RIDERSHIP	TOTAL MONTHLY RIDERSHIP	% CHANGE vs June 2023 TOTAL MONTH RIDERSHIP
METROBUS (1)	3,755,997	626,846	422,196	4,805,039	5.7%
METRORAIL (2)	923,244	98,219	70,597	1,092,060	2.4%
METROMOVER	414,966	77,404	67,543	559,913	-11.5%
STS PARATRANSIT (3)	97,924	11,443	9,493	118,860	-0.6%
TOTAL	5,192,131	813,912	569,829	6,575,872	3.3%

- (1) Bus ridership reporting through automatic passenger counters coupled with a new enhanced sensor system resumed on October 1, 2022.
- (2) Metrorail fares resumed on June 1, 2021, following a 14-month period of fare-free rides as a result of the SARS-CoV-2 pandemic. The NextFare System faregate data replaced the video data as ridership data of record starting on that date, until free fares were reinstated for the Better Bus Network launch on 11/13/23. The NextFare System faregate data collection and reporting resumed on New Year's Day 2024.
- (3) Paratransit ridership data as reported by the contractor and subsequently audited by the Department.

AVERAGE WEEKDAY, SATURDAY AND SUNDAY BOARDINGS BY MODE
June 2024

Travel Mode	Average Weekday	Average Saturday	Average Sunday	% Change June 2023 Weekday	% Change June 2023 Saturday	% Change June 2023 Sunday
METROBUS	187,867	125,369	84,439	8.9%	15.9%	6.1%
METRORAIL	46,750	19,644	14,119	7.9%	5.6%	1.1%
METROMOVER	20,874	15,481	13,509	-11.7%	-5.1%	-11.1%
STS PARATRANSIT	4,896	2,289	1,899	3.5%	9.1%	7.2%
Totals	260,386	162,782	113,966	6.6%	12.1%	3.1%

(*) Average ridership is calculated and published only for those days and stations or routes with nontrivial amounts of reported data.

METROBUS TOTAL MONTHLY RIDERSHIP COMPARISONS BY FISCAL YEAR

Bus Month	FY 19	FY 20	Variance 19 to 20	FY 21	FY 22	FY 23	FY 24	Variance 19 to 23	Variance 22 to 23	Variance 19 to 24	Variance 23 to 24
Oct	4,554,886	4,507,012	-1.1%	2,805,139	3,081,157	4,679,725	4,912,151	2.7%	51.9%	7.8%	5.0%
Nov	4,245,535	4,197,225	-1.1%	2,651,290	3,056,726	4,549,666	5,135,172	7.2%	48.8%	21.0%	12.9%
Dec	4,081,581	4,126,990	1.1%	3,022,530	3,123,883	4,677,460	5,857,057	14.6%	49.7%	43.5%	25.2%
Jan	4,195,911	4,316,998	2.9%	3,082,746	3,029,055	4,785,128	5,103,257	14.0%	58.0%	21.6%	6.6%
Feb	3,994,019	4,123,083	3.2%	3,076,966	2,995,789	4,526,317	5,053,665	13.3%	51.1%	26.5%	11.7%
Mar	4,266,768	3,136,162	-26.5%	3,660,639	3,218,562	5,183,872	5,461,317	21.5%	61.1%	28.0%	5.4%
Apr	4,291,135	1,544,316	-64.0%	3,625,048	3,105,797	4,618,302	5,548,614	7.6%	48.7%	29.3%	20.1%
May	4,330,922	1,734,609	-59.9%	3,683,343	3,097,574	4,953,197	5,308,711	14.4%	59.9%	22.6%	7.2%
Jun	3,823,863	2,210,725	-42.2%	2,672,570	3,064,059	4,545,050	4,805,039	18.9%	48.3%	25.7%	5.7%
Jul	4,094,906	2,366,749	-42.2%	2,769,907	3,189,994	4,484,458		9.5%	40.6%		
Aug	4,109,613	2,422,014	-41.1%	2,843,552	3,442,006	4,756,063		15.7%	38.2%		
Sep	3,971,220	2,546,923	-35.9%	2,877,110	3,123,572	4,525,426		14.0%	44.9%		
FY Total	49,960,359	37,232,806	-25.5%	36,770,840	37,528,174	56,284,664		12.7%	50.0%		

METRORAIL TOTAL MONTHLY RIDERSHIP COMPARISONS BY FISCAL YEAR

Rail Month	FY 19	FY 20	Variance 19 to 20	FY 21	FY 22	FY 23	FY 24	Variance 19 to 23	Variance 22 to 23	Variance 19 to 24	Variance 23 to 24
Oct	1,757,225	1,643,166	-6.5%	769,525	844,383	1,053,191	1,237,096	-40.1%	24.7%	-29.6%	17.5%
Nov	1,656,929	1,469,448	-11.3%	699,492	850,881	1,055,066	935,121	-36.3%	24.0%	-43.6%	-11.4%
Dec	1,553,804	1,433,928	-7.7%	769,194	860,436	1,063,096	1,177,272	-31.6%	23.6%	-24.2%	10.7%
Jan	1,708,695	1,576,340	-7.7%	799,119	832,924	1,127,340	1,233,350	-34.0%	35.3%	-27.8%	9.4%
Feb	1,501,458	1,549,118	3.2%	730,792	905,162	1,072,791	1,240,316	-28.6%	18.5%	-17.4%	15.6%
Mar	1,554,851	1,027,319	-33.9%	917,097	1,084,978	1,239,336	1,302,854	-20.3%	14.2%	-16.2%	5.1%
Apr	1,559,446	287,803	-81.5%	827,414	1,027,139	1,087,816	1,336,511	-30.2%	5.9%	-14.3%	22.9%
May	1,531,597	337,696	-78.0%	887,111	1,023,322	1,151,819	1,314,112	-24.8%	12.6%	-14.2%	14.1%
Jun	1,359,966	608,758	-55.2%	723,469	975,477	1,066,861	1,092,060	-21.6%	9.4%	-19.7%	2.4%
Jul	1,419,158	632,964	-55.4%	722,159	953,331	1,022,937		-27.9%	7.3%		
Aug	1,463,646	641,275	-56.2%	749,578	1,076,490	1,174,138		-19.8%	9.1%		
Sep	1,427,726	654,244	-54.2%	795,749	1,012,331	1,146,864		-19.7%	13.3%		
FY Total	18,494,501	11,862,059	-35.9%	9,390,699	11,446,854	13,261,255		-28.3%	15.9%		

METROMOVER TOTAL MONTHLY RIDERSHIP COMPARISONS BY FISCAL YEAR

Mover Month	FY 19	FY 20	Variance 19 to 20	FY 21	FY 22	FY 23	FY 24	Variance 19 to 23	Variance 22 to 23	Variance 19 to 24	Variance 23 to 24
Oct	790,533	831,234	5.1%	250,044	389,065	514,308	614,479	-34.9%	32.2%	-22.3%	19.5%
Nov	735,198	799,632	8.8%	232,422	418,929	439,150	584,887	-40.3%	4.8%	-20.4%	33.2%
Dec	767,239	849,832	10.8%	251,019	450,320	426,073	616,455	-44.5%	-5.4%	-19.7%	44.7%
Jan	746,728	847,773	13.5%	255,968	451,566	498,566	644,639	-33.2%	10.4%	-13.7%	29.3%
Feb	675,160	855,398	26.7%	260,332	465,968	459,264	570,242	-32.0%	-1.4%	-15.5%	24.2%
Mar	737,814	441,200	-40.2%	302,502	535,857	558,396	753,107	-24.3%	4.2%	2.1%	34.9%
Apr	795,696	130,549	-83.6%	310,772	495,982	565,943	640,281	-28.9%	14.1%	-19.5%	13.1%
May	734,645	146,454	-80.1%	292,922	455,120	547,948	597,232	-25.4%	20.4%	-18.7%	9.0%
Jun	701,318	203,637	-71.0%	286,145	477,286	632,423	559,913	-9.8%	32.5%	-20.2%	-11.5%
Jul	739,814	210,596	-71.5%	368,847	512,094	635,954		-14.0%	24.2%		
Aug	739,785	205,995	-72.2%	344,319	508,359	657,267		-11.2%	29.3%		
Sep	699,879	219,696	-68.6%	331,915	305,185	610,810		-12.7%	100.1%		
FY Total	8,863,809	5,741,996	-35.2%	3,487,207	5,465,731	6,546,102		-26.1%	19.8%		

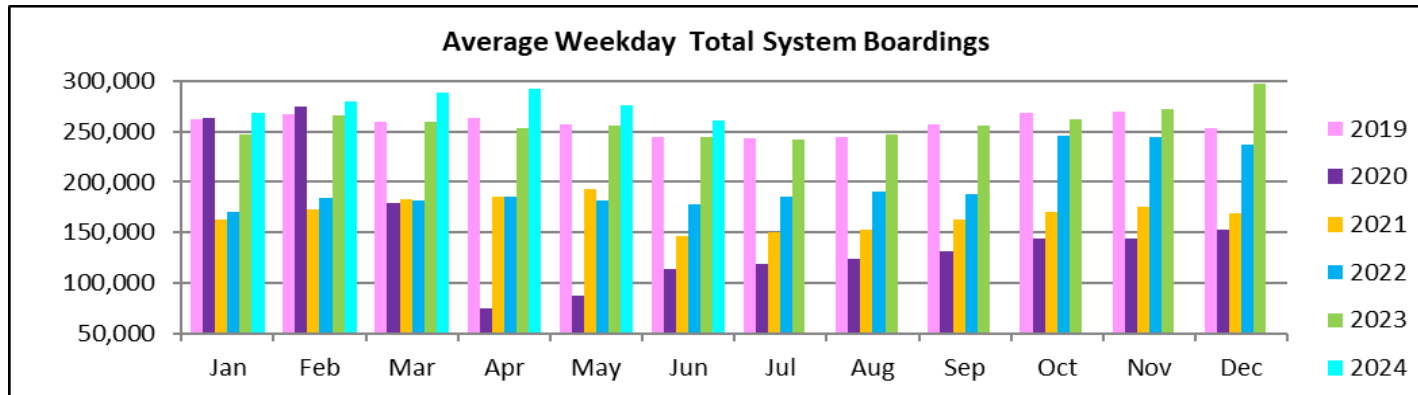
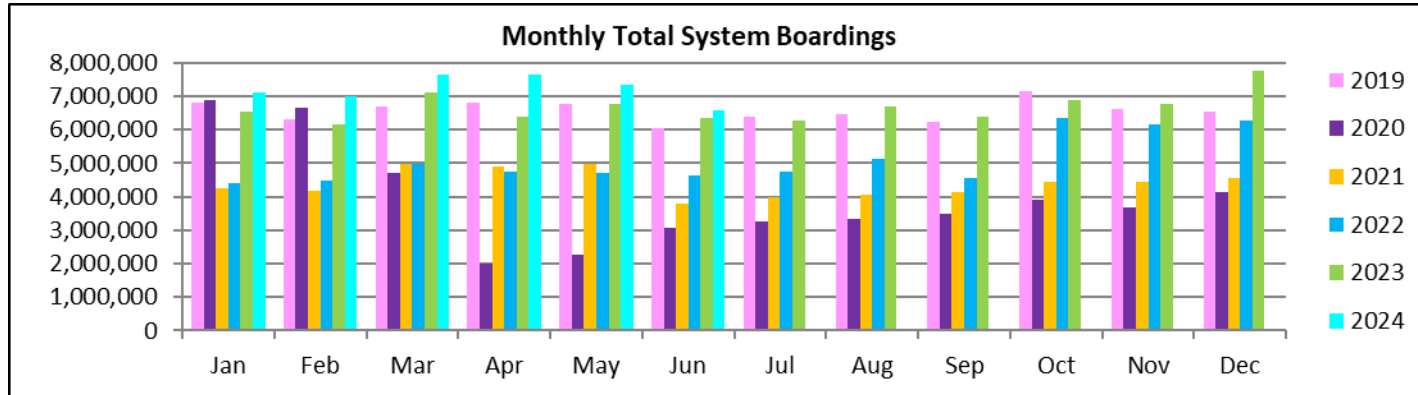
SPECIAL TRANSPORTATION SERVICES (STS) TOTAL MONTHLY RIDERSHIP COMPARISONS BY FISCAL YEAR

STS Month	FY 19	FY 20	Variance 19 to 20	FY 21	FY 22	FY 23	FY 24	Variance 19 to 23	Variance 22 to 23	Variance 19 to 24	Variance 23 to 24
Oct	162,564	162,704	0.1%	97,388	115,122	122,189	130,958	-24.8%	6.1%	-19.4%	7.2%
Nov	145,653	144,366	-0.9%	89,387	110,289	111,578	127,025	-23.4%	1.2%	-12.8%	13.8%
Dec	136,110	138,642	1.9%	96,366	104,496	112,019	130,093	-17.7%	7.2%	-4.4%	16.1%
Jan	146,268	149,114	1.9%	97,928	97,541	112,632	125,513	-23.0%	15.5%	-14.2%	11.4%
Feb	141,396	144,392	2.1%	98,285	105,706	111,748	125,732	-21.0%	5.7%	-11.1%	12.5%
Mar	153,191	89,634	-41.5%	112,930	120,718	126,819	130,203	-17.2%	5.1%	-15.0%	2.7%
Apr	155,808	26,877	-82.7%	120,122	114,912	116,882	134,677	-25.0%	1.7%	-13.6%	15.2%
May	158,665	39,654	-75.0%	118,636	114,505	127,782	137,958	-19.5%	11.6%	-13.1%	8.0%
Jun	141,320	59,093	-58.2%	112,397	109,054	119,527	118,860	-15.4%	9.6%	-15.9%	-0.6%
Jul	148,232	61,765	-58.3%	110,059	107,188	113,623		-23.3%	6.0%		
Aug	147,331	66,563	-54.8%	110,766	117,941	125,510		-14.8%	6.4%		
Sep	141,387	80,346	-43.2%	115,406	108,788	122,065		-13.7%	12.2%		
FY Total	1,777,925	1,163,150	-34.6%	1,279,670	1,326,260	1,422,374		-20.0%	7.2%		

ALL-MODES COMBINED TOTAL MONTHLY RIDERSHIP COMPARISONS BY FISCAL YEAR

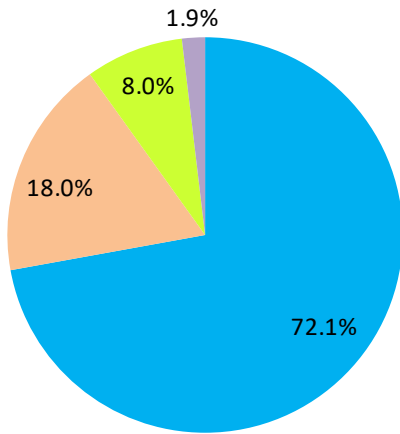
All Modes													
Month	FY 19	FY 20	FY 21	FY 22	FY 23	FY 24	19 TO 20	20 TO 21	21 TO 22	22 TO 23	19 TO 23	23 TO 24	19 TO 24
Oct	7,265,208	7,144,116	3,922,096	4,429,727	6,369,413	6,894,684	-1.7%	-45.1%	12.9%	43.8%	-12.3%	8.2%	-5.1%
Nov	6,783,315	6,610,671	3,672,591	4,436,825	6,155,460	6,782,205	-2.5%	-44.4%	20.8%	38.7%	-9.3%	10.2%	0.0%
Dec	6,538,734	6,549,392	4,139,109	4,539,135	6,278,648	7,780,877	0.2%	-36.8%	9.7%	38.3%	-4.0%	23.9%	19.0%
Jan	6,797,602	6,890,225	4,235,761	4,411,086	6,523,666	7,106,759	1.4%	-38.5%	4.1%	47.9%	-4.0%	8.9%	4.5%
Feb	6,312,033	6,671,991	4,166,375	4,472,625	6,170,120	6,989,955	5.7%	-37.6%	7.4%	38.0%	-2.2%	13.3%	10.7%
Mar	6,712,624	4,694,315	4,993,168	4,960,115	7,108,423	7,647,481	-30.1%	6.4%	-0.7%	43.3%	5.9%	7.6%	13.9%
Apr	6,802,085	1,989,545	4,883,356	4,743,830	6,388,943	7,660,083	-70.8%	145.5%	-2.9%	34.7%	-6.1%	19.9%	12.6%
May	6,755,829	2,258,413	4,982,012	4,690,521	6,780,746	7,358,013	-66.6%	120.6%	-5.9%	44.6%	0.4%	8.5%	8.9%
Jun	6,026,467	3,082,213	3,794,581	4,625,876	6,363,861	6,575,872	-48.9%	23.1%	21.9%	37.6%	5.6%	3.3%	9.1%
Jul	6,402,110	3,272,074	3,970,972	4,762,607	6,256,972		-48.9%	21.4%	19.9%	31.4%	-2.3%		
Aug	6,460,375	3,335,847	4,048,215	5,144,796	6,712,978		-48.4%	21.4%	27.1%	30.5%	3.9%		
Sep	6,240,212	3,501,209	4,120,180	4,549,876	6,405,165		-43.9%	17.7%	10.4%	40.8%	2.6%		
FY Total	79,096,594	56,000,011	50,928,416	55,767,019	77,514,395		-29.2%	-9.1%	9.5%	39.0%	-2.0%		

TOTAL MONTHLY AND AVERAGE WEEKDAY RIDERSHIP YEAR OVER YEAR COMPARISON CHARTS – ALL MODES COMBINED



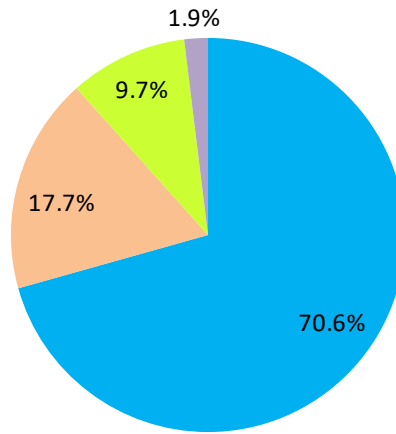
AVERAGE WEEKDAY RIDERSHIP - MODAL SPLITS

June 2024



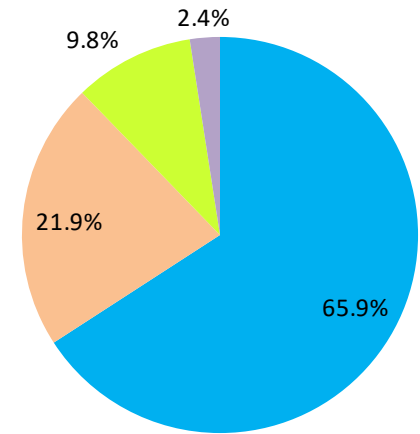
boardings

June 2023



boardings

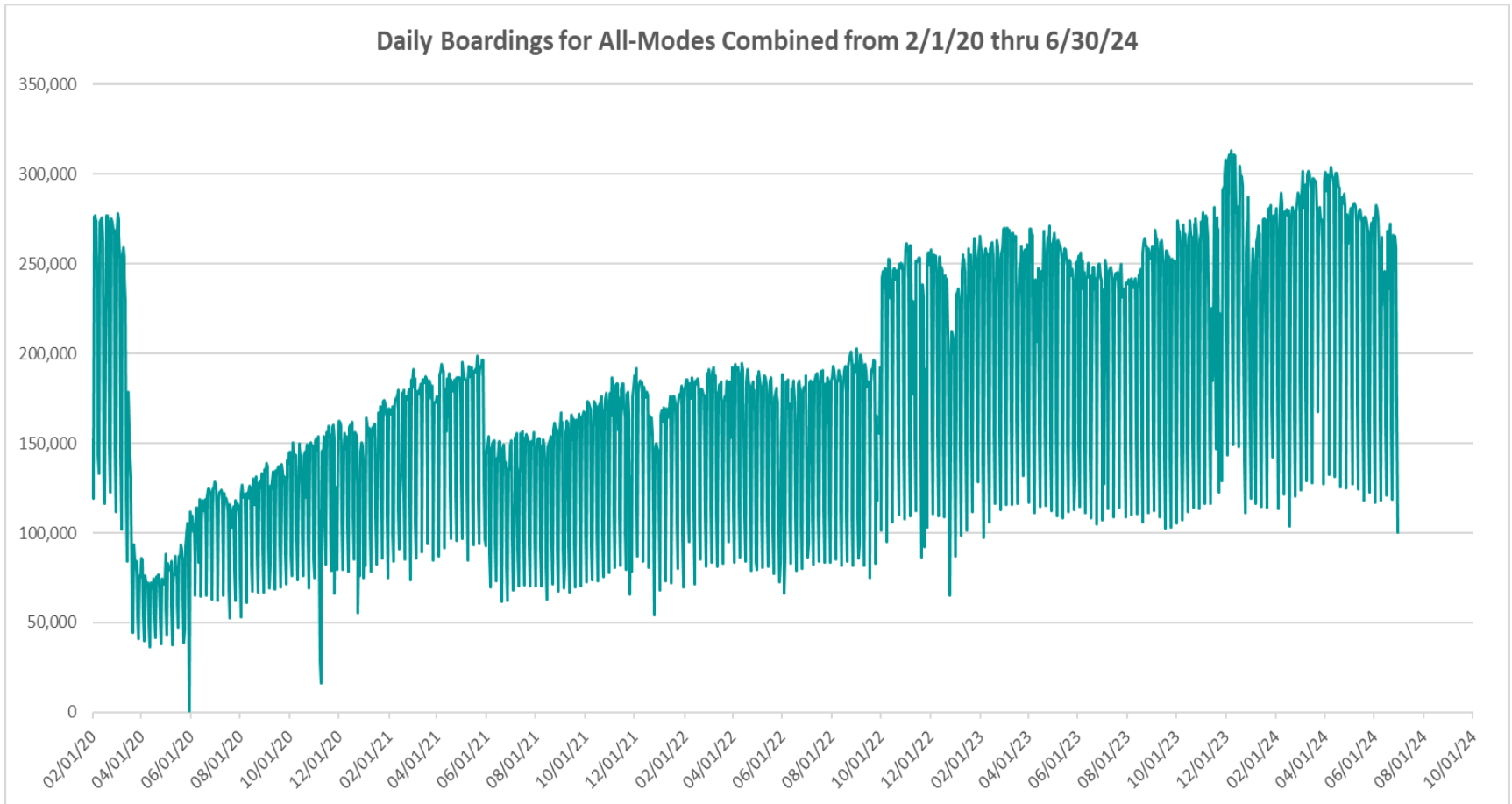
June 2022



boardings



DAILY RIDERSHIP FOR ALL MODES COMBINED SINCE FEBRUARY 1, 2020



- (1) There was no Metrobus, Metrorail and Metromover service on 5/31/20, as a safety precaution, and no service for any of the four modes on 9/28/22 as a result of Hurricane Ian..
- (2) The dip at the start of the second week of Nov-20 is due to Hurricane Eta.
- (3) Daily variations from Oct-22 onward are, for the Bus portion, estimated from reports made available by the Bus APC data vendor..
- (4) The reduction seen beginning 6/1/21 is partly due to the resumption of fares for bus and rail, and partly the result of having resumed reporting Cubic farebox data rather than bus APC counts, as well as Cubic rail faregate counts instead of video camera counts on that date. The jump seen at the start of Oct-22 is due to the return to APC bus ridership counts reporting begun on 10/1/22.
- (5) The marked peak in Dec-23 is attributable to the Better Bus Network launch period and attendant free fares.
- (6) Periodic (weekly) variations are prominent, since weekday ridership is almost always significantly higher than weekend or holiday ridership.

Metrobus



Better Bus Network (BBN, 11/13/2023 lineup) Bus Route Changes (Pt 1)

The listings below and on the following page are to serve as an aid in identifying individual routes for comparison of ridership data between periods prior to and following the launch of the BBN on 11/13/2023. In Nov-23, both old and new route numbers appear in data tables, since the launch took place near mid-month; beginning with Dec-23, only the current (BBN) numbering system appear in tables, to allow for direct comparisons.

BBN Numbering Changes:

Contracted **Route 1** was renumbered **Route 97**

Directly operated **Route 33** was renumbered **Route 103** (new, recycled number, not the same as former **Route 103 - C**)

Directly operated **Route 51** (Flagler MAX) was renumbered **Route 211** (recycled number, not the same as the OVERTOWN CIRCULATOR)

Contracted **Route 71** was renumbered **Route 107** (new, recycled number, not the same as **Route 107 - G** further below) and became directly operated

Directly operated **Route 79** was renumbered **Route 279** (79th Steet MAX)

Directly operated **Route 93** was renumbered **Route 203** (Biscayne MAX)

Directly operated **Route 99** was renumbered **Route 199**

Contracted **Route 101 - A** was renumbered **Route 15**

Directly operated **Route 102 - B** was renumbered **Route 26** (under the BBN's first phase, 07/24/2023 lineup)

Directly operated **Route 107 - G** (old, not the same as the **Route 107** appearing above) was renumbered **Route 125**

Directly operated **Route 112 - L** was renumbered **Route 79** (recycled number, not the same as the **Route 79** appearing above)

Directly operated **Route 120** was renumbered **Route 100**

Directly operated **Route 200** (CUTLER BAY LOCAL) was renumbered **Route 500** (recycled number, not the same as the **Route 500** further below)

Contracted **Route 210** was renumbered **Route 510** (SKYLAKE CIRCULATOR)

Contracted **Route 246** was renumbered **Route 401** (NORTH OWL)

Contracted **Route 248** (Princeton Circulator) was renumbered **Route 70** (recycled number, not the same as former **Route 70**)

Directly operated **Route 252** became contractor-operated, under the new name and number **Route 152**

Directly operated **Route 500** was renumbered **Route 400** (SOUTH OWL)

*The above routes, along with many others who retained their numbering, underwent modifications in various ways (realignment, new headways, days of operation, etc., some major), as part of the BBN design and its resulting lineup. Details for each DTPW Bus route are provided in the Miami-Dade County web site. (Directly operated **Route 2** became contractor-operated but kept its number).*

Better Bus Network (BBN, 11/13/2023 lineup) Bus Route Changes (Pt 2)

BBN New Routes and Numbers:

Two new routes with new numbering were created to support the Better Bus Network:

Route 14 corresponds to a newly created route

Route 20 corresponds to a newly created route

BBN Eliminated Routes:

The following routes were discontinued, as part of the Better Bus Network realignments:

Route 10

Route 16

Route 19

Route 29

Route 31 (BUSWAY LOCAL)

Route 42

Route 46 (LIBERTY CITY CONNECTION)

Route 57

Route 82 (WESTCHESTER CIRCULATOR)

Route 103 - C (old, previously used numbering, not the same as the Route 103 in the list on the previous page)

Route 211 (OVERTOWN CIRCULATOR, previously used numbering, not the same as the Route 211 in the list on the previous page)

Route 105 - E

Route 108 - H

Route 110 - J

Route 113 - M

Route 115

Route 119 - S

Route 155 (BISCAYNE GARDENS CIRCULATOR)

Route 202 (LITTLE HAITI CONNECTION)

Route 212 (SWEETWATER CIRCULATOR)

Route 217 (BUNCHE PARK CIRCULATOR)

Route 238 (EAST-WEST CONNECTION)

Route 241 (TUTTLE LIMITED)

Route 254 (BROWNSVILLE CIRCULATOR)

Route 267 (LUDLAM LIMITED)

Route 277 (7th AVENUE MAX)

Route 286 (NORTH POINTE CIRCULATOR)

Route 297 (27th AVENUE ORANGE MAX)

Previously Eliminated Routes:

The following five express routes were suspended soon after the start of the SARS-CoV-2 pandemic, and never reinstated; their ridership appears in some of the tables in this report, as then-components of the reported bus system performance measures:

Route 175 (NW MIAMI-DADE EXPRESS)

Route 195 EXPRESS – BROWARD BLVD

Route 196 EXPRESS – BROWARD BLVD-CIVIC CENTER

Route 295 EXPRESS – SHERIDAN STREET

Route 296 EXPRESS – SHERIDAN STREET-CIVIC CENTER

The preceding listings are not exhaustive, and the reader is referred to the Miami-Dade County web site for further BBN details or additional changes.

METROBUS AVERAGE WEEKDAY BOARDINGS BY ROUTE (†)

Route	Average Weekday	Average Weekday	Percent Change	Average Weekday	Percent Change	Average Weekday	Percent Change	Average Weekday	Percent Change
	weekdays Jun-24	May-24	MOM	Oct-23	MO8M	Jun-23	YOY	Feb-20	Current vs Feb-20
2	2,076	2,208	-6.0%	2,977	-30.3%	2,701	-23.1%	3,102	-33.1%
3	8,012	8,339	-3.9%	5,416	47.9%	5,212	53.7%	5,137	56.0%
7	3,547	3,635	-2.4%	4,021	-11.8%	3,695	-4.0%	3,501	1.3%
8	4,773	4,910	-2.8%	4,650	2.7%	4,662	2.4%	3,909	22.1%
9	11,386	12,065	-5.6%	6,490	75.4%	5,902	92.9%	5,528	106.0%
10				2,443		2,269		2,482	
11	10,899	11,464	-4.9%	9,621	13.3%	8,252	32.1%	7,292	49.5%
12	2,699	3,012	-10.4%	2,891	-6.7%	2,633	2.5%	2,779	-2.9%
14	916	953	-3.8%						
15	539	554	-2.7%	178	203.3%	81	565.0%	177	204.5%
16				2,009		1,860		1,862	
17	6,673	7,392	-9.7%	4,133	61.5%	3,464	92.6%	3,878	72.0%
19				1,807		1,475		1,542	
20	3,765	3,850	-2.2%						
21	2,134	2,268	-5.9%	2,107	1.3%	1,866	14.4%	1,817	17.5%
22	2,308	2,515	-8.2%	4,502	-48.7%	4,023	-42.6%	3,640	-36.6%
24-CORAL WAY LIMITED	2,186	2,405	-9.1%	2,195	-0.4%	2,193	-0.3%	1,340	63.2%
26	2,140	2,445	-12.5%	1,877	14.0%	2,060	3.9%	1,778	20.4%
27	9,618	9,982	-3.6%	7,110	35.3%	6,739	42.7%	6,972	38.0%
29				516		336		534	
31-BUSWAY LOCAL						1,087		1,089	
32	1,802	1,792	0.5%	2,699	-33.2%	2,524	-28.6%	2,390	-24.6%
34 TRANSITWAY EXPRESS	1,720	1,843	-6.7%	1,636	5.1%	1,503	14.4%	2,008	-14.3%
35	2,263	2,429	-6.8%	3,070	-26.3%	2,658	-14.9%	2,421	-6.5%
36	6,133	6,392	-4.1%	2,645	131.9%	2,576	138.1%	2,536	141.9%
37	4,520	4,633	-2.4%	3,475	30.1%	3,454	30.9%	3,273	38.1%
38 TRANSITWAY MAX	6,911	7,453	-7.3%	5,714	21.0%	6,064	14.0%	6,361	8.7%
39 TRANSITWAY EXPRESS	730	816	-10.6%	742	-1.7%			893	-18.3%
40	1,807	2,002	-9.7%	2,344	-22.9%	2,229	-18.9%	1,772	2.0%
42				1,001		1,033		820	
46 - LIBERTY CITY CONN.				22		10		41	
52	1,555	1,737	-10.5%	1,390	11.8%	1,228	26.7%	1,261	23.2%
54	2,783	2,927	-4.9%	3,086	-9.8%	3,093	-10.0%	2,940	-5.3%
56	531	558	-4.8%	391	35.9%	199	166.9%	354	50.2%
57				522		520		433	
62	2,838	2,952	-3.9%	2,496	13.7%	1,771	60.3%	1,815	56.3%
70	269	302	-11.0%	161	66.9%	36	657.6%	135	100.0%

(†) In this table and those which follow, "YOY" stands for "year-over-year", "MOM" for "month-over-month" and, e.g., "MOZM" for "month over Z months", i.e., current month vs 12 months prior, one month prior, and compared to pre-BBN, respectively. The Feb-20 numbers serve as a pre-pandemic benchmark.

METROBUS AVERAGE WEEKDAY BOARDINGS BY ROUTE

Route	Average Weekday	Average Weekday	Percent Change	Average Weekday	Percent Change	Average Weekday	Percent Change	Average Weekday	Percent Change
	weekdays Jun-24	May-24	MOM	Oct-23	MO8M	Jun-23	YOY	Feb-20	Current vs Feb-20
72	828	952	-13.1%	670	23.6%	520	59.1%	781	5.9%
73	1,361	1,437	-5.3%	2,868	-52.5%	2,915	-53.3%	2,124	-35.9%
75	3,128	3,172	-1.4%	1,594	96.3%	1,199	161.0%	1,429	119.0%
77	11,448	12,434	-7.9%	9,959	14.9%	8,592	33.2%	7,129	60.6%
79	8,651	7,981	8.4%	8,481	2.0%	8,394	3.1%	7,636	13.3%
82 - WESTCHESTER CIRC				61		66		62	
87	2,177	2,483	-12.3%	1,924	13.2%	1,807	20.5%	1,499	45.2%
88	1,815	2,032	-10.7%	2,419	-25.0%	2,276	-20.3%	2,076	-12.6%
95-EXPRESS GOLDEN GLADES	1,261	1,381	-8.7%	1,195	5.5%	1,080	16.8%	1,690	-25.4%
97	184	227	-18.7%	225	-17.9%	141	31.1%	184	0.2%
100	16,084	14,955	7.5%	6,128	162.5%	6,194	159.7%	6,667	141.2%
103 - C								463	
103	2,074	2,340	-11.4%	1,967	5.5%	1,747	18.7%	1,687	23.0%
104	1,116	1,234	-9.5%	1,024	9.0%	903	23.6%	837	33.4%
105 - E				1,402		1,338		1,287	
107	1,984	2,143	-7.4%	825	140.4%	448	342.9%	711	179.2%
108 - H				487		507		473	
110 - J				2,955		2,922		2,508	
113 - M				887		916		866	
115				151		117		180	
119 - S				9,588		9,287		8,970	
125	4,622	4,844	-4.6%	2,099	120.2%	1,890	144.5%	1,713	169.8%
132 -TRI-RAIL DORAL SHUTTLE	41	42	-1.1%	37	13.3%	45	-7.6%	16	165.4%
135	1,888	2,141	-11.8%	1,755	7.6%	1,394	35.4%	1,399	35.0%
136	152	164	-7.0%	162	-5.9%	153	-0.8%	126	20.5%
137-WEST DADE CONNECTION	2,300	2,523	-8.9%	2,119	8.5%	2,140	7.5%	1,626	41.5%
150-MIAMI BEACH AIRPORT EXPRESS	1,433	1,530	-6.3%	2,149	-33.3%	2,110	-32.1%	1,867	-23.2%
152	366	402	-9.0%	1,051	-65.2%	1,007	-63.6%	851	-57.0%
155 - BISCAYNE GARDENS CIRC				45		55		44	
175 - NW MIAMI-DADE EXPRESS								33	
183	4,776	5,419	-11.9%	3,653	30.8%	3,256	46.7%	3,149	51.7%
195 EXPRESS - BROWARD BLVD								372	
196 EXPRESS - SHERIDAN ST								383	
199	1,928	2,159	-10.7%	1,899	1.6%	1,702	13.3%	1,473	31.0%
202 - LITTLE HAITI CONN				110		102		140	
203 - BISCAYNE MAX	978	1,257	-22.2%	3,666	-73.3%	3,490	-72.0%	3,334	-70.7%

METROBUS AVERAGE WEEKDAY BOARDINGS BY ROUTE

Route	Average Weekday	Average Weekday	Percent Change	Average Weekday	Percent Change	Average Weekday	Percent Change	Average Weekday	Percent Change
	weekdays Jun-24	May-24	MOM	Oct-23	MO8M	Jun-23	YOY	Feb-20	Current vs Feb-20
204 KILLIAN MAX	549	622	-11.8%	620	-11.4%	689	-20.4%	1,071	-48.8%
207 (7th St)-LITTLE HAVANA CONN	1,573	1,655	-5.0%	1,819	-13.5%	1,712	-8.1%	1,489	5.6%
208 (8th St)-LITTLE HAVANA CONN	1,551	1,585	-2.2%	1,659	-6.5%	1,589	-2.4%	1,308	18.6%
211 OVERTOWN CIRCULATOR				71		87		58	
211 - FLAGLER MAX	1,496	1,628	-8.1%	3,824	-60.9%	3,620	-58.7%	3,109	-51.9%
212-SWEETWATER CIRC				22		27		15	
217 - BUNCHE PARK CIRC				80		35		97	
238-EAST/WEST CONN				593		597		449	
241 TUTTLE LIMITED				348		296			
254-BROWNSVILLE CIRC				5		8		19	
267-LUDLAM LIMITED				162		106		149	
272 SUNSET MAX (*)	358	409	-12.6%	428	-16.5%	226	58.3%	550	-35.0%
277-7TH AVENUE MAX				879		766		683	
279 - 79 STREET MAX	756	636	18.9%	469	61.1%	505	49.7%	361	109.1%
286-NORTH POINTE CIRC				93		78		97	
287-SAGA BAY MAX	351	439	-20.0%	341	3.0%	313	12.2%	358	-1.9%
288 KENDALL MAX	439	487	-9.9%	372	18.0%	455	-3.4%	762	-42.4%
295								233	
296								215	
297-27th AVENUE ORANGE MAX				1,229		1,138		1,356	
301-DADE MONROE EXPRESS	1,019	1,027	-0.8%	955	6.7%	1,009	1.0%	841	21.1%
302-CARD SOUND EXPRESS	105	104	0.4%	91	15.4%	100	4.2%	86	21.3%
338 - WEEKEND EXPRESS									
344	118	131	-9.9%	76	55.6%	32	263.1%	96	22.8%
400 - SOUTH OWL	76	84	-9.1%	71	7.4%	73	3.7%	81	-6.0%
401 - NORTH OWL	68	63	7.5%	61	11.6%	37	81.9%	94	-27.6%
500 - CUTLER BAY LOCAL	251	278	-9.7%	176	42.9%	158	58.9%	158	59.4%
510 - SKYLAKE CIRCULATOR (*)	436	462	-5.5%	471	-7.5%	210	107.6%	282	54.8%
836 EXPRESS	314	317	-0.9%	247	27.3%	308	2.1%		
837 EXPRESS	193	214	-9.7%	195	-0.8%	145	32.7%		
AHEPA SHUTTLE	20	20	-1.3%	18	11.3%	18	9.7%	21	-4.8%
FEDERATION GARDENS SHUTTLE									
GREEN HILLS SHUTTLE	8	7	14.3%	5	53.8%	5	68.4%	9	-11.1%
KINGS CREEK SHUTTLE	9	10	-10.7%	14	-36.4%	11	-19.0%	13	-32.7%
ROBERT SHARP SHUTTLE	30	30	-0.7%	23	30.4%	20	53.8%	10	215.8%
SIERRA LAKES SHUTTLE	17	20	-14.6%	16	11.3%	17	0.3%	45	-61.7%
Total	187,867	197,313	-4.8%	185,320	1.4%	172,509	8.9%	167,711	12.0%

(*) To see which routes fully or partly operated under contract this month, please refer to the ranking table furtherin the Metrobus portion of this document.

(1) Includes shuttles and those routes which were not run some years.

(2) Several express routes were suspended beginning at the end of Mar-20, due to the SARS-CoV-2 pandemic, while other routes had alignment and schedule modifications made to them, in an ongoing effort to optimize service delivery.

METROBUS AVERAGE SATURDAY BOARDINGS BY ROUTE

Route	Average Saturday	Average Saturday	Percent Change	Average Saturday	Percent Change	Average Saturday	Percent Change	Average Saturday	Percent Change
	Jun-24	May-24	MOM	Oct-23	MO8M	Jun-23	YOY	Feb-20	Current vs Feb-20
Saturdays									
2	1,125	1,051	7.1%	1,605	-29.9%	1,633	-31.1%	1,616	-30.4%
3	6,781	6,137	10.5%	5,754	17.9%	6,096	11.2%	5,229	29.7%
7	2,028	1,994	1.7%	1,972	2.8%	2,100	-3.4%	1,887	7.4%
8	2,304	2,369	-2.7%	2,334	-1.3%	2,529	-8.9%	2,027	13.6%
9	7,441	7,152	4.0%	3,677	102.4%	3,373	120.6%	3,034	145.3%
10				2,107		1,903		1,896	
11	8,050	8,028	0.3%	5,787	39.1%	6,339	27.0%	5,182	55.3%
14	777	776	0.1%						
15	343	338	1.5%	93	267.4%	36	851.7%	71	383.9%
16				1,662		1,593		1,566	
17	4,712	4,762	-1.0%	2,553	84.6%	2,384	97.7%	2,363	99.4%
20	2,899	2,957	-1.9%						
22	1,458	1,462	-0.3%	2,425	-39.9%	2,357	-38.1%	2,084	-30.0%
24-CORAL WAY LIMITED	1,644	1,733	-5.1%	1,400	17.4%	1,443	13.9%	1,165	41.1%
26	1,163	1,356	-14.2%	966	20.4%	1,039	12.0%	851	36.7%
27	6,568	5,766	13.9%	4,006	64.0%	4,108	59.9%	4,034	62.8%
31-BUSWAY LOCAL				0		1,041		896	
32	1,100	1,159	-5.1%	1,261	-12.8%	1,234	-10.9%	1,029	6.9%
35	1,660	1,658	0.1%	1,540	7.8%	1,492	11.2%	1,372	21.0%
36	4,566	4,822	-5.3%	1,677	172.3%	1,543	196.0%	1,289	254.1%
37	3,017	3,162	-4.6%	2,062	46.3%	2,148	40.4%	2,090	44.3%
38 TRANSITWAY MAX	5,804	6,000	-3.3%	6,328	-8.3%	5,945	-2.4%	4,715	23.1%
40	1,054	1,141	-7.6%	926	13.8%	904	16.6%	655	61.0%
42				617		656		552	
52	1,040	1,042	-0.2%	694	49.9%	711	46.3%	686	51.6%
54	1,812	1,776	2.0%	1,925	-5.9%	2,002	-9.5%	1,727	4.9%
56	210	271	-22.4%						
62	1,902	1,834	3.7%	1,823	4.3%	1,438	32.3%	1,343	41.6%
70	210	202	3.9%						
72	500	521	-4.0%	357	40.3%	398	25.6%	350	43.1%
73	547	602	-9.0%	1,202	-54.4%	1,358	-59.7%	860	-36.4%
75	1,934	2,016	-4.0%	550	251.7%	474	308.1%	468	313.3%
77	7,504	7,658	-2.0%	5,510	36.2%	5,278	42.2%	4,197	78.8%
79	7,348	6,759	8.7%	7,094	3.6%	6,982	5.2%	5,667	29.7%
82 - WESTCHESTER CIRC				38		34		50	

METROBUS AVERAGE SATURDAY BOARDINGS BY ROUTE

Route	Average Saturday	Average Saturday	Percent Change	Average Saturday	Percent Change	Average Saturday	Percent Change	Average Saturday	Percent Change
	Jun-24	May-24	MOM	Oct-23	MO8M	Jun-23	YOY	Feb-20	Current vs Feb-20
Saturdays									
87	931	988	-5.8%	532	75.2%	627	48.6%	402	131.4%
88	1,430	1,543	-7.3%	1,661	-13.9%	1,719	-16.8%	1,620	-11.7%
97	162	183	-11.4%	163	-0.5%	173	-6.0%	215	-24.5%
100	14,403	14,865	-3.1%	5,637	155.5%	5,912	143.6%	4,744	203.6%
103 - C						0		315	
103	1,331	1,312	1.4%	1,239	7.4%	1,202	10.8%	951	40.0%
104	790	814	-3.0%	445	77.6%	520	51.8%	468	68.6%
105 - E						683		619	
107	1,241	1,379	-10.0%	238	422.6%	255	386.3%	252	392.9%
108 - H				401		414		372	
110 - J				1,394		2,078		1,952	
113 - M				577		614		503	
115				80		60		82	
119 - S				8,118		8,137		6,861	
125	2,780	3,202	-13.2%	1,297	114.4%	1,325	109.8%	1,066	160.7%
135	862	893	-3.5%	556	55.0%	532	62.1%	539	60.0%
137-WEST DADE CONNECTION	1,486	1,545	-3.8%	1,337	11.2%	1,424	4.3%	1,027	44.7%
150-MIAMI BEACH AIRPORT EXPRESS	1,412	1,619	-12.7%	2,161	-34.7%	1,902	-25.8%	1,604	-11.9%
152	238	248	-4.0%	375	-36.5%	410	-42.0%	302	-21.3%
183	3,043	3,180	-4.3%	1,960	55.3%	1,954	55.8%	1,790	70.0%
199	1,375	1,301	5.8%	1,106	24.4%	1,055	30.4%	849	62.1%
202 - LITTLE HAITI CONN				22		26		50	
207 (7th St)-LITTLE HAVANA CONN	690	794	-13.1%	929	-25.7%	953	-27.6%	1,032	-33.2%
208 (8th St)-LITTLE HAVANA CONN	938	962	-2.5%	1,030	-8.9%	1,069	-12.2%	1,044	-10.1%
241 TUTTLE LIMITED				222		206			
286-NORTH POINTE CIRC				61		33		41	
301-DADE MONROE EXPRESS	960	949	1.3%	885	8.5%	902	6.5%	801	19.9%
302-CARD SOUND EXPRESS	113	106	6.6%	94	20.2%	96	18.0%	57	99.6%
338 - WEEKEND EXPRESS	157	176	-10.6%	259	-39.3%	225	-30.0%	237	-33.5%
344	76	69	10.8%						
400 - SOUTH OWL	95	94	1.8%	104	-8.2%	54	77.1%	70	36.0%
401 - NORTH OWL	55	64	-14.7%	61	-9.4%	51	8.0%	84	-35.1%
500 - CUTLER BAY LOCAL	221	245	-9.9%	152	45.4%	142	55.9%	119	85.1%
510 - SKYLAKE CIRCULATOR (*)	272	293	-7.2%	217	25.1%	80	240.8%	165	64.7%
12/21 WEEKEND INTERLINE	2,774	3,022	-8.2%	3,290	-15.7%	2,735	1.4%	2,528	9.7%
FEDERATION GARDENS SHUTTLE	33	31	6.9%	20	67.0%	23	46.8%	28	17.6%
Total	125,369	126,372	-0.8%	107,331	16.8%	108,155	15.9%	93,742	33.7%

METROBUS AVERAGE SUNDAY BOARDINGS BY ROUTE

Route	Average Sunday	Average Sunday	Percent Change	Average Sunday	Percent Change	Average Sunday	Percent Change	Average Sunday	Percent Change
	Jun-24	May-24	MOM	Oct-23	MO8M	Jun-23	YOY	Feb-20	Current vs Feb-20
Sundays									
2	717	823	-12.9%	1,214	-41.0%	1,047	-31.5%	1,335	-46.3%
3	4,755	5,053	-5.9%	4,408	7.9%	4,687	1.4%	4,353	9.3%
7	1,345	1,489	-9.6%	1,632	-17.6%	1,506	-10.6%	1,654	-18.7%
8	1,472	1,746	-15.7%	1,838	-19.9%	1,847	-20.3%	1,746	-15.7%
9	4,980	5,257	-5.3%	2,756	80.7%	2,688	85.3%	2,549	95.4%
10				1,632		1,408		1,441	
11	4,940	5,753	-14.1%	3,803	29.9%	3,934	25.6%	3,917	26.1%
14	775	871	-10.9%						
15	226	312	-27.5%	53	326.4%	14	1574.1%	56	307.2%
16				1,023		1,021		997	
17	3,036	3,135	-3.2%	1,920	58.1%	1,710	77.6%	1,833	65.6%
20	2,051	2,290	-10.4%						
22	1,062	1,157	-8.2%	1,915	-44.6%	1,720	-38.3%	1,548	-31.4%
24-CORAL WAY LIMITED	1,043	1,156	-9.8%	1,108	-5.9%	1,083	-3.7%	905	15.3%
26	855	1,016	-15.8%	871	-1.8%	836	2.3%	717	19.4%
27	3,868	3,882	-0.4%	3,146	23.0%	2,894	33.7%	2,918	32.6%
31-BUSWAY LOCAL				0		738		715	
32	812	843	-3.7%	768	5.7%	719	13.0%	772	5.2%
35	1,367	1,364	0.2%	1,175	16.3%	1,119	22.1%	942	45.2%
36	3,215	3,889	-17.3%	1,160	177.1%	1,214	165.0%	1,111	189.5%
37	2,099	2,275	-7.7%	1,755	19.6%	1,672	25.5%	1,739	20.7%
38 TRANSITWAY MAX	4,502	4,691	-4.0%	4,957	-9.2%	5,406	-16.7%	4,147	8.6%
40	652	753	-13.5%	542	20.2%	570	14.4%	447	45.7%
42				425		395		416	
52	827	964	-14.2%	496	66.6%	462	79.1%	466	77.4%
54	1,146	1,222	-6.2%	1,181	-2.9%	1,300	-11.8%	1,171	-2.1%
62	1,196	1,265	-5.4%	1,040	15.0%	857	39.5%	891	34.3%
70	164	158	4.3%						
72	388	395	-1.9%	259	49.7%	270	43.6%	265	46.7%
73	208	231	-9.8%	602	-65.5%	657	-68.3%	495	-58.0%
75	1,311	1,495	-12.3%	352	272.8%	293	347.4%	271	384.1%
77	4,936	4,994	-1.2%	3,980	24.0%	3,310	49.1%	2,815	75.4%
79	4,697	5,640	-16.7%	4,837	-2.9%	4,927	-4.7%	4,804	-2.2%

METROBUS AVERAGE SUNDAY BOARDINGS BY ROUTE

Route	Average Sunday	Average Sunday	Percent Change	Average Sunday	Percent Change	Average Sunday	Percent Change	Average Sunday	Percent Change
	Jun-24	May-24	MOM	Oct-23	MO8M	Jun-23	YOY	Feb-20	Current vs Feb-20
Sundays									
87	528	532	-0.7%	362	46.0%	339	55.8%	319	65.6%
88	1,001	1,113	-10.0%	1,255	-20.3%	1,267	-21.0%	1,286	-22.1%
97	132	146	-9.6%	149	-11.2%	143	-7.2%	201	-34.1%
100	9,026	10,134	-10.9%	3,492	158.4%	3,416	164.2%	3,469	160.2%
103 - C						0		212	
103	783	906	-13.5%	729	7.5%	682	14.8%	607	29.1%
104	546	639	-14.6%	348	57.0%	384	42.1%	317	72.3%
105 - E				634		623		616	
107	962	1,167	-17.6%	187	414.4%	177	443.5%	162	493.8%
108 - H				363		392		328	
110 - J				1,699		1,630		1,638	
113 - M				444		448		431	
115				66		56		80	
119 - S				7,612		7,717		7,141	
125	1,793	2,041	-12.2%	1,036	73.1%	945	89.7%	895	100.3%
135	654	708	-7.6%	474	38.0%	376	73.8%	349	87.3%
137-WEST DADE CONNECTION	967	1,121	-13.7%	956	1.2%	934	3.5%	879	10.0%
150-MIAMI BEACH AIRPORT EXPRESS	1,184	1,405	-15.7%	1,966	-39.8%	1,685	-29.8%	1,574	-24.8%
152	139	171	-18.4%	331	-58.0%	293	-52.5%	199	-30.0%
183	2,000	2,122	-5.7%	1,569	27.5%	1,638	22.1%	1,413	41.6%
199	990	1,090	-9.1%	887	11.7%	783	26.5%	658	50.5%
202 - LITTLE HAITI CONN				21		23		39	
207 (7th St)-LITTLE HAVANA CONN	477	539	-11.5%	648	-26.4%	731	-34.8%	796	-40.1%
208 (8th St)-LITTLE HAVANA CONN	742	754	-1.6%	862	-13.9%	812	-8.6%	911	-18.6%
241 TUTTLE LIMITED				187		157			
301-DADE MONROE EXPRESS	950	881	7.8%	867	9.6%	890	6.8%	751	26.5%
302-CARD SOUND EXPRESS	93	96	-2.9%	72	30.2%	70	32.7%	57	63.5%
338 - WEEKEND EXPRESS	177	131	35.5%	247	-28.5%	203	-12.9%	252	-29.8%
400 - SOUTH OWL	91	85	7.8%	70	30.6%	81	12.5%	83	10.5%
401 - NORTH OWL	65	71	-7.9%	65	0.6%	51	28.1%	87	-25.3%
500 - CUTLER BAY LOCAL	100	93	8.0%	86	16.0%	54	86.0%	59	70.9%
510 - SKYLAKE CIRCULATOR (*)	210	302	-30.6%	194	7.9%	87	141.6%	143	46.6%
12/21 WEEKEND INTERLINE	2,182	2,407	-9.3%	2,700	-19.2%	2,227	-2.0%	2,048	6.6%
Total	84,439	92,768	-9.0%	81,427	3.7%	79,614	6.1%	75,428	11.9%

METROBUS TOTAL MONTHLY BOARDINGS BY ROUTE

Route	Total Month	Total Month	Percent Change	Total Month	Percent Change	Total Month	Percent Change	Total Month	Percent Change
	Jun-24	May-24	MOM	Oct-23	MO8M	Jun-23	YOY	Feb-20	Current vs Feb-20
total month									
2	50,727	56,887	-10.8%	77,976	-34.9%	70,141	-27.7%	75,463	-32.8%
3	217,925	233,269	-6.6%	164,203	32.7%	157,801	38.1%	146,294	49.0%
7	87,802	95,381	-7.9%	104,507	-16.0%	95,720	-8.3%	86,077	2.0%
8	114,338	126,228	-9.4%	120,821	-5.4%	120,064	-4.8%	95,295	20.0%
9	289,825	320,326	-9.5%	171,265	69.2%	154,090	88.1%	135,924	113.2%
10				70,338		63,163		64,874	
11	282,921	313,091	-9.6%	253,837	11.5%	222,625	27.1%	187,425	51.0%
12	53,975	66,266	-18.5%	63,603	-15.1%	57,934	-6.8%	55,585	-2.9%
14	26,088	28,413	-8.2%						
15	13,616	15,091	-9.8%	4,545	199.6%	1,980	587.7%	4,114	231.0%
16				55,959		51,367		49,061	
17	172,193	197,352	-12.7%	110,727	55.5%	92,585	86.0%	96,715	78.0%
19				39,745		32,440		30,847	
20	100,057	107,968	-7.3%						
21	42,685	49,904	-14.5%	46,355	-7.9%	41,047	4.0%	36,341	17.5%
22	58,755	66,961	-12.3%	118,329	-50.3%	104,819	-43.9%	89,404	-34.3%
24-CORAL WAY LIMITED	57,159	65,619	-12.9%	59,432	-3.8%	58,338	-2.0%	36,237	57.7%
26	52,893	64,302	-17.7%	49,521	6.8%	52,819	0.1%	42,683	23.9%
27	244,547	262,086	-6.7%	188,160	30.0%	176,270	38.7%	171,282	42.8%
29				11,342		7,394		10,684	
31-BUSWAY LOCAL						31,036		29,125	
32	45,600	48,286	-5.6%	68,263	-33.2%	63,341	-28.0%	56,027	-18.6%
34 TRANSITWAY EXPRESS	34,400	40,539	-15.1%	36,002	-4.4%	33,072	4.0%	40,159	-14.3%
35	60,390	66,889	-9.7%	79,573	-24.1%	68,916	-12.4%	59,041	2.3%
36	161,570	179,363	-9.9%	70,698	128.5%	67,687	138.7%	61,606	162.3%
37	115,987	125,949	-7.9%	93,471	24.1%	91,276	27.1%	82,870	40.0%
38 TRANSITWAY MAX	189,752	211,416	-10.2%	175,803	7.9%	178,820	6.1%	167,379	13.4%
39 TRANSITWAY EXPRESS	14,591	17,956	-18.7%	16,333	-10.7%			17,853	-18.3%
40	44,675	52,369	-14.7%	57,992	-23.0%	54,925	-18.7%	40,497	10.3%
42				26,611		26,927		20,825	
46 - LIBERTY CITY CONN.				477		220		814	
52	40,426	47,207	-14.4%	35,844	12.8%	31,694	27.6%	30,522	32.4%
54	70,458	77,604	-9.2%	81,490	-13.5%	81,258	-13.3%	72,125	-2.3%
56	11,673	13,352	-12.6%	8,598	35.8%	4,377	166.7%	7,071	65.1%
57				11,491		11,430		8,665	
62	72,252	78,598	-8.1%	67,398	7.2%	48,137	50.1%	46,582	55.1%
70	7,250	8,247	-12.1%	3,546	104.5%	781	828.3%	2,690	169.5%

METROBUS TOTAL MONTHLY BOARDINGS BY ROUTE

Route	Total Month	Total Month	Percent Change	Total Month	Percent Change	Total Month	Percent Change	Total Month	Percent Change
	Jun-24	May-24	MOM	Oct-23	MO8M	Jun-23	YOY	Feb-20	Current vs Feb-20
total month									
72	20,997	25,006	-16.0%	17,459	20.3%	14,118	48.7%	18,433	13.9%
73	31,000	35,177	-11.9%	70,903	-56.3%	72,190	-57.1%	48,767	-36.4%
75	78,793	85,321	-7.7%	39,021	101.9%	29,436	167.7%	31,994	146.3%
77	291,152	329,149	-11.5%	261,039	11.5%	223,378	30.3%	174,833	66.5%
79	233,253	230,808	1.1%	239,146	-2.5%	232,307	0.4%	200,268	16.5%
82 - WESTCHESTER CIRC				1,488		1,584		1,482	
87	50,843	61,231	-17.0%	46,254	9.9%	43,624	16.5%	33,273	52.8%
88	48,454	56,435	-14.1%	66,138	-26.7%	62,015	-21.9%	54,772	-11.5%
95-EXPRESS GOLDEN GLADES	25,228	30,391	-17.0%	26,295	-4.1%	23,752	6.2%	33,796	-25.4%
97	5,160	6,455	-20.1%	6,337	-18.6%	4,354	18.5%	5,558	-7.2%
100	438,828	439,147	-0.1%	174,819	151.0%	173,583	152.8%	170,942	156.7%
103 - C								11,682	
103	52,052	61,251	-15.0%	51,871	0.3%	45,976	13.2%	40,918	27.2%
104	29,005	33,592	-13.7%	26,049	11.3%	23,487	23.5%	20,351	42.5%
105 - E								31,302	
107	50,698	58,490	-13.3%	20,040	153.0%	11,584	337.7%	16,118	214.5%
108 - H				14,133		14,380		12,624	
110 - J				79,080		79,113		66,481	
113 - M				24,040		24,403		21,548	
115				3,968		3,032		4,334	
119 - S				281,456		267,738		242,257	
125	115,307	129,573	-11.0%	56,547	103.9%	50,663	127.6%	43,178	167.1%
132 - TRI-RAIL DORAL SHUTTLE	828	921	-10.1%	804	3.0%	986	-16.0%	312	165.4%
135	45,337	54,224	-16.4%	43,211	4.9%	34,299	32.2%	32,067	41.4%
136	3,042	3,598	-15.5%	3,557	-14.5%	3,373	-9.8%	2,524	20.5%
137-WEST DADE CONNECTION	58,261	67,300	-13.4%	56,750	2.7%	56,511	3.1%	41,167	41.5%
150-MIAMI BEACH AIRPORT EXPRESS	41,643	47,153	-11.7%	65,763	-36.7%	60,769	-31.5%	51,651	-19.4%
152	9,204	10,691	-13.9%	26,285	-65.0%	24,955	-63.1%	19,325	-52.4%
155 - BISCAYNE GARDENS CIRC				985		1,211		881	
175 - NW MIAMI-DADE EXPRESS								661	
183	120,745	142,542	-15.3%	96,050	25.7%	85,992	40.4%	77,570	55.7%
195 EXPRESS - BROWARD BLVD								7,441	
196 EXPRESS - SHERIDAN ST								7,658	
199	50,397	58,143	-13.3%	50,634	-0.5%	44,786	12.5%	36,325	38.7%
202 - LITTLE HAITI CONN				2,620		2,437		3,200	
203 - BISCAYNE MAX	19,560	27,657	-29.3%	80,650	-75.7%	76,782	-74.5%	66,684	-70.7%

METROBUS TOTAL MONTHLY BOARDINGS BY ROUTE

Route	Total Month	Total Month	Percent Change	Total Month	Percent Change	Total Month	Percent Change	Total Month	Percent Change
	Jun-24	May-24	MOM	Oct-23	MO8M	Jun-23	YOY	Feb-20	Current vs Feb-20
total month									
204 KILLIAN MAX	10,975	13,689	-19.8%	13,632	-19.5%	15,165	-27.6%	21,418	-48.8%
207 (7th St)-LITTLE HAVANA CONN	37,291	42,278	-11.8%	46,970	-20.6%	44,397	-16.0%	38,127	-2.2%
208 (8th St)-LITTLE HAVANA CONN	39,411	42,493	-7.3%	44,922	-12.3%	42,485	-7.2%	35,018	12.5%
211 OVERTOWN CIRCULATOR				1,567		1,909		1,159	
211 - FLAGLER MAX	29,921	35,813	-16.5%	84,135	-64.4%	79,642	-62.4%	62,186	-51.9%
212-SWEETWATER CIRC				494		591		295	
217 - BUNCHE PARK CIRC				1,759		769		1,949	
238-EAST/WEST CONN				13,036		13,140		8,987	
241 TUTTLE LIMITED				9,471		7,968			
254-BROWNSVILLE CIRC				105		170		384	
267-LUDLAM LIMITED				3,567		2,330		2,978	
272 SUNSET MAX (*)	7,153	9,006	-20.6%	9,423	-24.1%	4,969	44.0%	11,004	-35.0%
277-7TH AVENUE MAX				19,345		16,852		13,669	
279 - 79 STREET MAX	15,111	13,983	8.1%	10,318	46.5%	11,101	36.1%	7,228	109.1%
286-NORTH POINTE CIRC				2,279		1,853		2,145	
287-SAGA BAY MAX	7,022	9,660	-27.3%	7,499	-6.4%	6,886	2.0%	7,160	-1.9%
288 KENDALL MAX	8,781	10,721	-18.1%	8,189	7.2%	10,002	-12.2%	15,249	-42.4%
295								4,668	
296								4,297	
297-27th AVENUE ORANGE MAX				27,047		25,028		27,125	
301-DADE MONROE EXPRESS	29,933	30,799	-2.8%	28,889	3.6%	29,356	2.0%	23,838	25.6%
302-CARD SOUND EXPRESS	3,123	3,196	-2.3%	2,728	14.5%	2,873	8.7%	2,236	39.7%
338 - WEEKEND EXPRESS	1,672	1,357	23.2%	2,274	-26.5%	1,712	-2.3%	2,191	-23.7%
344	2,738	3,151	-13.1%	1,666	64.3%	714	283.5%	1,919	42.7%
400 - SOUTH OWL	2,455	2,639	-7.0%	2,324	5.6%	2,155	13.9%	2,301	6.7%
401 - NORTH OWL	1,953	1,996	-2.2%	1,899	2.8%	1,225	59.4%	2,641	-26.1%
500 - CUTLER BAY LOCAL	6,629	7,567	-12.4%	4,907	35.1%	4,261	55.6%	3,984	66.4%
510 - SKYLAKE CIRCULATOR (*)	11,130	12,839	-13.3%	12,211	-8.9%	5,288	110.5%	7,033	58.3%
836 EXPRESS	6,284	6,977	-9.9%	5,428	15.8%	6,773	-7.2%		
837 EXPRESS	3,860	4,703	-17.9%	4,281	-9.8%	3,200	20.6%		
12/21 WEEKEND INTERLINE	24,778	24,123	2.7%	26,661	-7.1%	19,847	24.8%	20,830	19.0%
AHEPA SHUTTLE	79	100	-21.0%	71	11.3%	90	-12.2%	83	-4.8%
FEDERATION GARDENS SHUTTLE	167	125	33.6%	80	108.8%	91	83.5%	142	17.6%
GREEN HILLS SHUTTLE	32	21	52.4%	26	23.1%	19	68.4%	36	-11.1%
KINGS CREEK SHUTTLE	35	49	-28.6%	55	-36.4%	54	-35.2%	52	-32.7%
ROBERT SHARP SHUTTLE	120	151	-20.5%	92	30.4%	78	53.8%	38	215.8%
SIERRA LAKES SHUTTLE	69	101	-31.7%	62	11.3%	86	-19.8%	180	-61.7%
Total	4,805,039	5,308,711	-9.5%	4,912,151	-2.2%	4,545,050	5.7%	4,123,083	16.5%

BUS RIDERSHIP BY ROUTE SERVICE TYPE LINEUPS COMPARISON (MONTH-OVER-MONTH)

Boardings by Service Type and Route	Average Weekday	Average Weekday	Percent Change	Average Saturday	Average Saturday	Percent Change	Average Sunday	Average Sunday	Percent Change	Total Monthly	Total Monthly	Percent Change
	Jun-24	May-24	24 vs 23	Jun-24	May-24	24 vs 23	Jun-24	May-24	24 vs 23	Jun-24	May-24	24 vs 23
Directly Operated Express Routes												
34 TRANSITWAY EXPRESS	1,720	1,843	-6.7%							34,400	40,539	-15.1%
39 TRANSITWAY EXPRESS	730	816	-10.6%							14,591	17,956	-18.7%
95-EXPRESS GOLDEN GLADES	1,261	1,381	-8.7%							25,228	30,391	-17.0%
150-MIAMI BEACH AIRPORT EXPRESS	1,433	1,530	-6.3%	1,412	1,619	-12.7%	1,184	1,406	-15.7%	41,643	47,153	-11.7%
338 - WEEKEND EXPRESS				157	176	-10.6%	177	131	35.5%	1,672	1,357	23.2%
836 EXPRESS	314	317	-0.9%							6,284	6,977	-9.9%
837 EXPRESS	193	214	-9.7%							3,860	4,703	-17.9%
Subtotal Express Routes	5,651	6,101	-7.4%	1,570	1,795	-12.5%	1,361	1,536	-11.4%	127,678	149,076	-14.4%
Percentage of All Bus Routes	3.0%	3.1%		1.3%	1.4%		1.6%	1.7%		2.7%	2.8%	
Contracted Routes - Local Service (*)												
2	2,076	2,208	-6.0%	1,125	1,051	7.1%	717	826	-12.9%	50,727	56,887	-10.8%
15	539	554	-2.7%	343	338	1.5%	226	312	-27.5%	13,616	15,091	-9.8%
29												
46 - LIBERTY CITY CONN.												
56	531	558	-4.8%	210	271					11,673	13,352	-12.6%
70	269	302	-11.0%	210	202		164	156		7,250	8,247	-12.1%
72	828	952	-13.1%	500	521	-4.0%	386	396	-1.9%	20,997	25,006	-16.0%
82 - WESTCHESTER CIRC												
97	184	227	-18.7%	162	183	-11.4%	132	146	-9.6%	5,160	6,455	-20.1%
115											0	
152	366	402	-9.0%	238	248	-4.0%	136	171	-18.4%	9,204	10,691	-13.9%
155 - BISCAYNE GARDENS CIRC												
202 - LITTLE HAITI CONN												
211 OVERTOWN CIRCULATOR												
212-SWEETWATER CIRC												
217 - BUNCHE PARK CIRC												
254-BROWNSVILLE CIRC												
267-LUDLAM LIMITED												
286-NORTH POINTE CIRC												
344	118	131	-9.9%	76	68					2,738	3,151	-13.1%
401 - NORTH OWL	68	63	7.5%	55	64	-14.7%	66	71	-7.9%	1,953	1,996	-2.2%
Subtotal Contracted Reg. & Circ. Routes	4,978	5,396	-7.7%	2,919	2,946	-0.9%	1,832	2,076	-11.7%	123,318	140,876	-12.5%
Percentage of All Bus Routes	2.6%	2.7%		2.3%	2.3%		2.2%	2.2%		2.6%	2.7%	

(1) Several express routes were suspended beginning at the end of Mar-20, due to the SARS-CoV-2 pandemic, while other routes had alignment and schedule modifications made to them, in an ongoing effort to optimize service delivery.
(2) A second major round of changes took place with the 11/13/23 lineup known as the Better Bus Network, as listed at the start of this Metrobus section.

BUS RIDERSHIP BY ROUTE SERVICE TYPE LINEUPS COMPARISON (MONTH-OVER-MONTH)

Boardings by Service Type and Route	Average Weekday	Average Weekday	Percent Change	Average Saturday	Average Saturday	Percent Change	Average Sunday	Average Sunday	Percent Change	Total Monthly	Total Monthly	Percent Change
	Jun-24	May-24	24 vs 23	Jun-24	May-24	24 vs 23	Jun-24	May-24	24 vs 23	Jun-24	May-24	24 vs 23
Contracted Express Routes												
301-DADE MONROE EXPRESS	1,019	1,027	-0.8%	960	949	1.3%	950	881	7.8%	29,933	30,799	-2.8%
302-CARD SOUND EXPRESS	105	104	0.4%	113	106	6.6%	93	96	-2.9%	3,123	3,196	-2.3%
Subtotal Contracted Express Routes	1,124	1,131	-0.7%	1,073	1,055	1.8%	1,043	977	6.8%	33,056	33,995	-2.8%
Percentage of All Bus Routes	0.6%	0.6%		0.9%	0.8%		1.2%	1.1%		0.7%	0.6%	
Limited Stop Routes												
24-CORAL WAY LIMITED	2,186	2,405	-9.1%	1,644	1,733	-5.1%	1,043	1,156	-9.8%	57,159	65,619	-12.9%
38 TRANSITWAY MAX	6,911	7,453	-7.3%	5,804	6,000	-3.3%	4,502	4,691	-4.0%	189,752	211,416	-10.2%
203 - BISCAYNE MAX	978	1,257	-22.2%							19,560	27,657	-29.3%
204 KILLIAN MAX	549	622	-11.8%							10,975	13,689	-19.8%
211 - FLAGLER MAX	1,496	1,628	-8.1%							29,921	35,813	-16.5%
241 TUTTLE LIMITED												
272 SUNSET MAX (*)	358	409	-12.6%							7,153	9,006	-20.6%
277-7TH AVENUE MAX												
279 - 79 STREET MAX	756	636	18.9%							15,111	13,983	8.1%
287-SAGA BAY MAX	351	439	-20.0%							7,022	9,660	-27.3%
288 KENDALL MAX	439	487	-9.9%							8,781	10,721	-18.1%
297-27th AVENUE ORANGE MAX												
Subtotal Limited Stop Routes	14,024	15,336	-8.6%	7,448	7,733	-3.7%	5,545	5,847	-5.2%	345,434	397,564	-13.1%
Percentage of All Bus Routes	7.5%	7.8%		5.9%	6.1%		6.6%	6.3%		7.2%	7.5%	
Directly Operated Free Routes												
132 -TRI-RAIL DORAL SHUTTLE	41	42	-1.1%							828	921	-10.1%
500 - CUTLER BAY LOCAL	251	278	-9.7%	221	245	-9.9%	100	93	8.0%	6,629	7,567	-12.4%
510 - SKYLAKE CIRCULATOR (*)	436	462	-5.5%	272	293	-7.2%	210	302	-30.6%	11,130	12,839	-13.3%
Subtotal Free Directly Operated Routes	729	782	-6.8%	492	538	-8.4%	310	395	-21.6%	18,587	21,327	-12.8%
Percentage of All Bus Routes	0.4%	0.4%		0.4%	0.4%		0.4%	0.4%		0.4%	0.4%	
Contractor-Operated Lifeline Routes												
GREEN HILLS SHUTTLE	8	7	14.3%							32	21	52.4%
KINGS CREEK SHUTTLE	9	10	-10.7%							35	49	-28.6%
SIERRA LAKES SHUTTLE	17	20	-14.6%							69	101	-31.7%
ROBERT SHARP SHUTTLE	30	30	-0.7%							120	151	-20.5%
AHEPA SHUTTLE	20	20	-1.3%							79	100	-21.0%
FEDERATION GARDENS SHUTTLE				33	31	6.9%				167	125	33.6%
Subtotal Contractor-Operated Lifeline Routes	84	87	-4.0%	33	31	6.9%				502	547	-8.2%
Percentage of All Bus Routes	0.0%	0.0%		0.0%	0.0%					0.0%	0.0%	
All Other (Regular) Routes	161,278	168,479	-4.3%	111,833	112,275	-0.4%	74,349	81,938	-9.3%	4,156,464	4,565,326	-9.0%
Percentage of All Bus Routes	85.8%	85.4%		89.2%	88.8%		88.1%	88.3%		86.5%	86.0%	
Total Bus System	187,867	197,313	-4.8%	125,369	126,372	-0.8%	84,439	92,768	-9.0%	4,805,039	5,308,711	-9.5%

BUS RIDERSHIP BY ROUTE SERVICE TYPE LINEUPS COMPARISON (MONTH-OVER-8 MONTH)

Boardings by Service Type and Route	Average Weekday	Average Weekday	Percent Change	Average Saturday	Average Saturday	Percent Change	Average Sunday	Average Sunday	Percent Change	Total Monthly	Total Monthly	Percent Change
	Jun-24	Oct-23	24 vs 23	Jun-24	Oct-23	24 vs 23	Jun-24	Oct-23	24 vs 23	Jun-24	Oct-23	24 vs 23
Directly Operated Express Routes												
34 TRANSITWAY EXPRESS	1,720	1,636	5.1%							34,400	36,002	-4.4%
39 TRANSITWAY EXPRESS	730	742	-1.7%							14,591	16,333	-10.7%
95-EXPRESS GOLDEN GLADES	1,261	1,195	5.5%							25,228	26,295	-4.1%
150-MIAMI BEACH AIRPORT EXPRESS	1,433	2,149	-33.3%	1,412	2,161	-34.7%	1,184	1,966	-39.8%	41,643	65,763	-36.7%
338 - WEEKEND EXPRESS				157	258	-39.3%	177	247	-28.5%	1,672	2,274	-26.5%
836 EXPRESS	314	247	27.3%							6,284	5,428	15.8%
837 EXPRESS	193	195	-0.8%							3,860	4,281	-9.8%
Subtotal Express Routes	5,651	6,165	-8.3%	1,570	2,420	-35.1%	1,361	2,214	-38.5%	127,678	156,376	-18.4%
Percentage of All Bus Routes	3.0%	3.3%		1.3%	2.3%		1.6%	2.7%		2.7%	3.2%	
Contracted Routes - Local Service (*)												
2	2,076	2,977	-30.3%	1,125	1,605	-29.9%	717	1,214	-41.0%	50,727	77,976	-34.9%
15	539	178	203.3%	343	93	267.4%	226	53	326.4%	13,616	4,545	199.6%
29		516									11,342	
46 - LIBERTY CITY CONN.		22									477	
56	531	391	35.9%	210						11,673	8,598	35.8%
70	269	161	66.9%	210			164			7,250	3,546	104.5%
72	828	670	23.6%	500	357	40.3%	386	256	49.7%	20,997	17,458	20.3%
82 - WESTCHESTER CIRC		61			38						1,488	
97	184	225	-17.9%	162	163	-0.5%	132	146	-11.2%	5,160	6,337	-18.6%
115		151			80			66			3,968	
152	366	1,051	-65.2%	238	375	-36.5%	136	331	-58.0%	9,204	26,285	-65.0%
155 - BISCAYNE GARDENS CIRC		45									985	
202 - LITTLE HAITI CONN		110			22			21			2,620	
211 OVERTOWN CIRCULATOR		71									1,567	
212-SWEETWATER CIRC		22									494	
217 - BUNCHE PARK CIRC		80									1,759	
254-BROWNSVILLE CIRC		5									105	
267-LUDLAM LIMITED		162									3,567	
286-NORTH POINTE CIRC		93		0	61						2,279	
344	118	76	55.6%	76						2,738	1,666	64.3%
401 - NORTH OWL	68	61	11.6%	55	61	-9.4%	66	66	0.6%	1,953	1,899	2.8%
Subtotal Contracted Reg. & Circ. Routes	4,978	7,125	-30.1%	2,919	2,854	2.3%	1,832	2,156	-15.1%	123,318	178,962	-31.1%
Percentage of All Bus Routes	2.6%	3.8%		2.3%	2.7%		2.2%	2.7%		2.6%	3.6%	

(1) Several express routes were suspended beginning at the end of Mar20, due to the SARS-CoV-2 pandemic, while other routes had alignment and schedule modifications made to them, in an ongoing effort to optimize service delivery.
(2) A second major round of changes took place with the 11/13/23 lineup known as the Better Bus Network, as listed at the start of this Metrobus section.

BUS RIDERSHIP BY ROUTE SERVICE TYPE LINEUPS COMPARISON (MONTH-OVER-8 MONTH)

Boardings by Service Type and Route	Average Weekday	Average Weekday	Percent Change	Average Saturday	Average Saturday	Percent Change	Average Sunday	Average Sunday	Percent Change	Total Monthly	Total Monthly	Percent Change
	Jun-24	Oct-23	24 vs 23	Jun-24	Oct-23	24 vs 23	Jun-24	Oct-23	24 vs 23	Jun-24	Oct-23	24 vs 23
Contracted Express Routes												
301-DADE MONROE EXPRESS	1,019	955	6.7%	960	885	8.5%	950	867	9.6%	29,930	28,880	3.6%
302-CARD SOUND EXPRESS	105	91	15.4%	113	94	20.2%	93	72	30.2%	3,120	2,720	14.5%
Subtotal Contracted Express Routes	1,124	1,046	7.4%	1,073	979	9.6%	1,043	938	11.2%	33,050	31,617	4.6%
Percentage of All Bus Routes	0.6%	0.6%		0.9%	0.9%		1.2%	1.2%		0.7%	0.6%	
Limited Stop Routes												
24-CORAL WAY LIMITED	2,186	2,195	-0.4%	1,644	1,400	17.4%	1,043	1,108	-5.9%	57,150	59,430	-3.8%
38 TRANSITWAY MAX	6,911	5,714	21.0%	5,804	6,328	-8.3%	4,502	4,957	-9.2%	189,750	175,800	7.9%
203 - BISCAYNE MAX	978	3,666	-73.3%							19,560	80,650	-75.7%
204 KILLIAN MAX	549	620	-11.4%							10,970	13,630	-19.5%
211 - FLAGLER MAX	1,496	3,824	-60.9%							29,920	84,130	-64.4%
241 TUTTLE LIMITED		348			222			187			9,470	
272 SUNSET MAX (*)	358	428	-16.5%							7,150	9,420	-24.1%
277-7TH AVENUE MAX		879									19,340	
279 - 79 STREET MAX	756	469	61.1%							15,110	10,310	46.5%
287-SAGA BAY MAX	351	341	3.0%							7,020	7,490	-6.4%
288 KENDALL MAX	439	372	18.0%							8,780	8,180	7.2%
297-27th AVENUE ORANGE MAX		1,229									27,040	
Subtotal Limited Stop Routes	14,024	20,086	-30.2%	7,448	7,950	-6.3%	5,545	6,252	-11.3%	345,434	504,944	-31.6%
Percentage of All Bus Routes	7.5%	10.8%		5.9%	7.4%		6.6%	7.7%		7.2%	10.3%	
Directly Operated Free Routes												
132 -TRI-RAIL DORAL SHUTTLE	41	37	13.3%							800	804	3.0%
500 - CUTLER BAY LOCAL	251	176	42.9%	221	152	45.4%	100	86	16.0%	6,620	4,900	35.1%
510 - SKYLAKE CIRCULATOR (*)	436	471	-7.5%	272	217	25.1%	210	194	7.9%	11,130	12,210	-8.9%
Subtotal Free Directly Operated Routes	729	684	6.6%	492	369	33.4%	310	280	10.4%	18,587	17,922	3.7%
Percentage of All Bus Routes	0.4%	0.4%		0.4%	0.3%		0.4%	0.3%		0.4%	0.4%	
Contractor-Operated Lifeline Routes												
GREEN HILLS SHUTTLE	8	5	53.8%							30	20	23.1%
KINGS CREEK SHUTTLE	9	14	-36.4%							30	50	-36.4%
SIERRA LAKES SHUTTLE	17	16	11.3%							60	60	11.3%
ROBERT SHARP SHUTTLE	30	23	30.4%							120	90	30.4%
AHEPA SHUTTLE	20	18	11.3%							70	70	11.3%
FEDERATION GARDENS SHUTTLE				33	20	67.0%				160	80	108.8%
Subtotal Contractor-Operated Lifeline Routes	84	75	11.4%	33	20	67.0%				502	380	30.1%
Percentage of All Bus Routes	0.0%	0.0%		0.0%	0.0%					0.0%	0.0%	
All Other (Regular) Routes												
	161,278	150,140	7.4%	111,833	92,739	20.6%	74,349	69,584	6.8%	4,156,464	4,021,944	3.3%
Percentage of All Bus Routes	85.8%	81.0%		89.2%	86.4%		88.1%	85.5%		86.5%	81.9%	
Total Bus System	187,867	185,320	1.4%	125,369	107,331	16.8%	84,439	81,427	3.7%	4,805,030	4,912,151	-2.2%

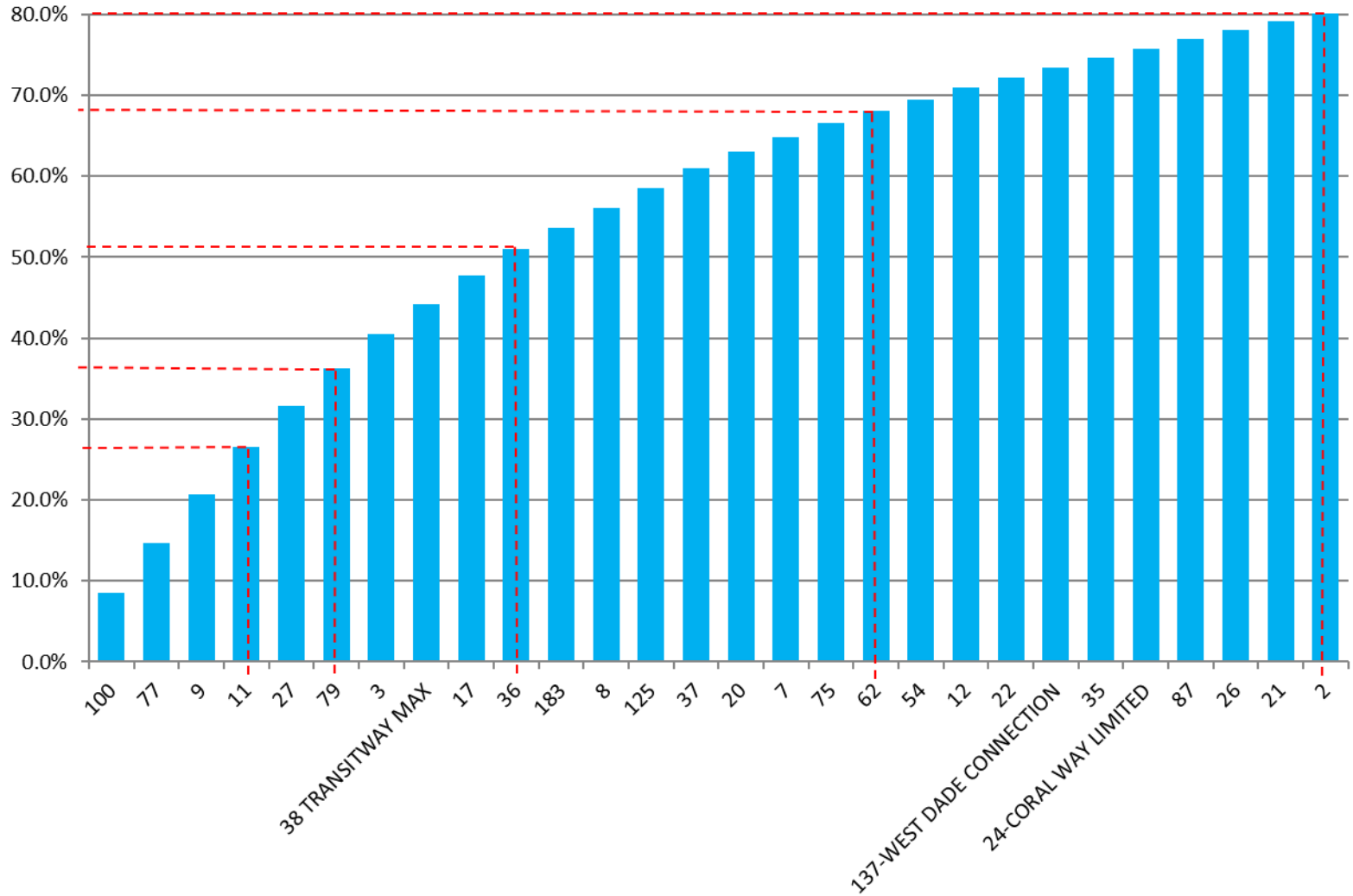
Bus Routes as Ranked by Percentage of Average Weekday Ridership June 2024

Rank	Route	Average Weekday	Percent Share	Cumul Pct Share	Rank	Route	Average Weekday	Percent Share	Cumul Pct Share	Rank	Route	Average Weekday	Percent Share	Cumul Pct Share
1	100	16,084	8.6%	8.6%	29	26	2,140	1.1%	78.1%	57	272	358	0.2%	98.8%
2	77	11,448	6.1%	14.7%	30	21	2,134	1.1%	79.2%	58	287	351	0.2%	99.0%
3	9	11,386	6.1%	20.7%	31	199	1,928	1.0%	83.5%	59	836	314	0.2%	99.2%
4	11	10,899	5.8%	26.5%	32	135	1,888	1.0%	84.5%	60	70	269	0.1%	99.3%
5	27	9,618	5.1%	31.6%	33	88	1,815	1.0%	85.5%	61	500	251	0.1%	99.5%
6	79	8,651	4.6%	36.2%	34	40	1,807	1.0%	86.4%	62	837	193	0.1%	99.6%
7	3	8,012	4.3%	40.5%	35	32	1,802	1.0%	87.4%	63	97	184	0.1%	99.7%
8	38	6,911	3.7%	44.2%	36	34	1,720	0.9%	88.3%	64	136	152	0.1%	99.7%
9	17	6,673	3.6%	47.7%	37	207	1,573	0.8%	89.1%	65	344	118	0.1%	99.8%
10	36	6,133	3.3%	51.0%	38	52	1,555	0.8%	90.0%	66	302	105	0.1%	99.9%
11	183	4,776	2.5%	53.5%	39	208	1,551	0.8%	90.8%	67	400	76	0.0%	99.9%
12	8	4,773	2.5%	56.1%	40	new 211	1,496	0.8%	91.6%	68	401	68	0.0%	99.9%
13	125	4,622	2.5%	58.5%	41	150	1,433	0.8%	92.3%	69	132	41	0.0%	100.0%
14	37	4,520	2.4%	61.0%	42	73	1,361	0.7%	93.1%	70	RS	30	0.0%	100.0%
15	20	3,765	2.0%	63.0%	43	95	1,261	0.7%	93.7%	71	AS	20	0.0%	100.0%
16	7	3,547	1.9%	64.8%	44	104	1,116	0.6%	94.3%	72	SL	17	0.0%	100.0%
17	75	3,128	1.7%	66.5%	45	301	1,019	0.5%	94.9%	73	KC	9	0.0%	100.0%
18	62	2,838	1.5%	68.0%	46	203	978	0.5%	95.4%	74	GH	8	0.0%	100.0%
19	54	2,783	1.5%	69.5%	47	14	916	0.5%	95.9%					
20	12	2,699	1.4%	70.9%	48	72	828	0.4%	96.3%					
21	22	2,308	1.2%	72.2%	49	279	756	0.4%	96.7%					
22	137	2,300	1.2%	73.4%	50	39	730	0.4%	97.1%					
23	35	2,263	1.2%	74.6%	51	204	549	0.3%	97.4%					
24	24	2,186	1.2%	75.8%	52	15	539	0.3%	97.7%					
25	87	2,177	1.2%	76.9%	53	56	531	0.3%	98.0%					
26	2	2,076	1.1%	80.3%	54	288	439	0.2%	98.2%					entirely contracted in Jun-24
27	new 103	2,074	1.1%	81.4%	55	510	436	0.2%	98.4%					
28	107	1,984	1.1%	82.5%	56	152	366	0.2%	98.6%					
Total Boardings												187,867	100.00%	100.0%

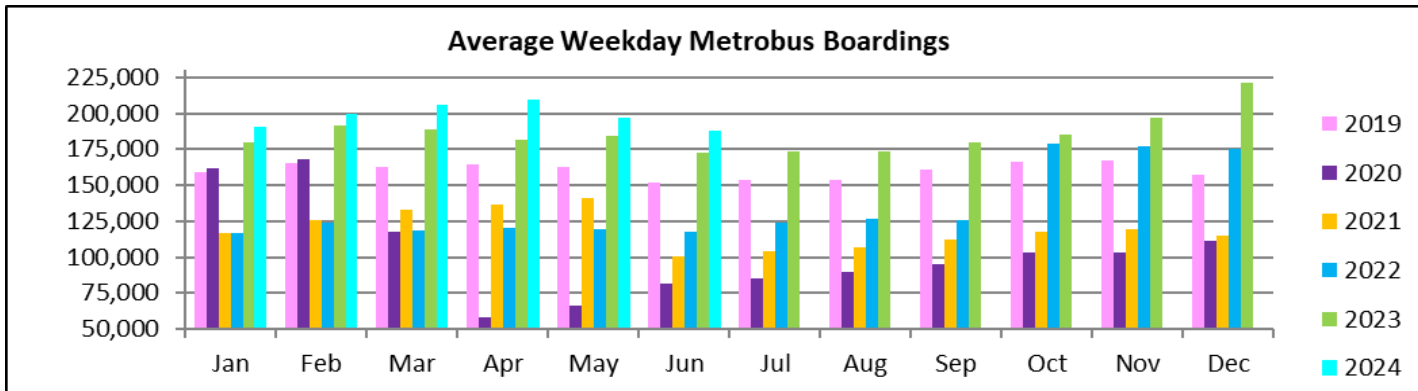
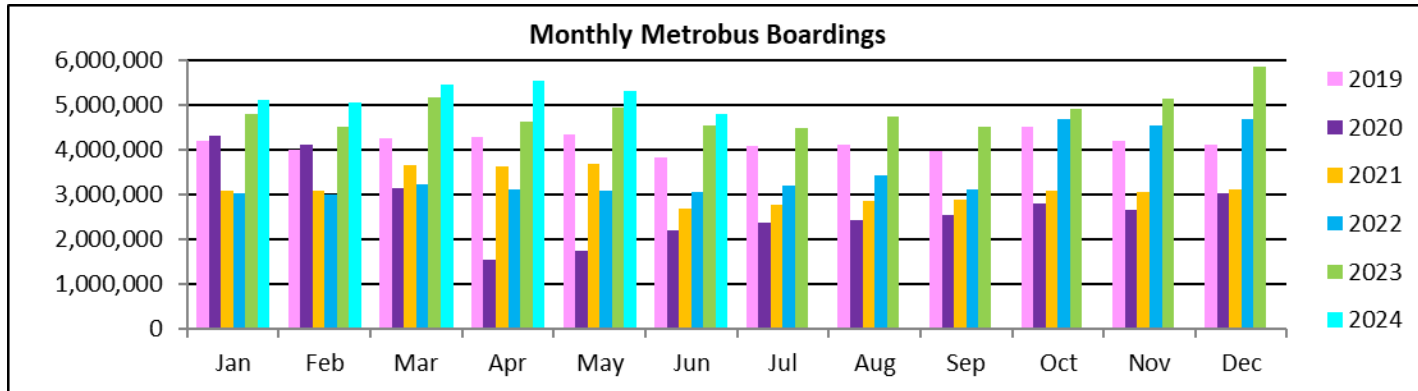
(1) Average weekday ridership rounded to the nearest unit.

(2) Includes the five Lifeline Shuttles that operate on weekdays: Ahepa (AS), Green Hills (GH), Kings Creek (KC), Robert Sharp (RS) and Sierra Lakes (SL).

**Bus - Cumulative Percentage Average Weekday Ridership Share
Top 1/4, 1/3, 1/2, 2/3 and 4/5 of Routes**



TOTAL MONTHLY AND AVERAGE WEEKDAY RIDERSHIP YEAR OVER YEAR COMPARISON CHARTS – METROBUS



**“TOP 10 / BOTTOM 10” BUS ROUTES AVERAGE WEEKDAY RIDERSHIP PERFORMANCE
MONTH OVER MONTH COMPARISON**

Route	Jun-24	May-24	Absolute Delta	Percent Delta
100	16,084	14,955	1,129	7.5%
79	8,651	7,981	671	8.4%
279 - 79 STREET MAX	756	636	120	18.9%
32	1,802	1,792	10	0.5%
401 - NORTH OWL	68	63	5	7.5%
302-CARD SOUND EXPRESS	105	104	0	0.4%
836 EXPRESS	314	317	-3	-0.9%
400 - SOUTH OWL	76	84	-8	-9.1%
301-DADE MONROE EXPRESS	1,019	1,027	-8	-0.8%
136	152	164	-11	-7.0%
77	11,448	12,434	-986	-7.9%
17	6,673	7,392	-720	-9.7%
9	11,386	12,065	-679	-5.6%
183	4,776	5,419	-642	-11.9%
11	10,899	11,464	-566	-4.9%
38 TRANSITWAY MAX	6,911	7,453	-542	-7.3%
27	9,618	9,982	-364	-3.6%
3	8,012	8,339	-327	-3.9%
12	2,699	3,012	-313	-10.4%
87	2,177	2,483	-305	-12.3%

(*) Averages rounded to the nearest boarding, data as estimated from automatic passenger counter (APC) system; Lifeline and other shuttles excluded.

“TOP 10 / BOTTOM 10” BUS ROUTES SETS AVERAGE WEEKDAY RIDERSHIP PERFORMANCE YEAR OVER YEAR COMPARISON

Route Set (*), (1), (2)	Jun-24	Jun-23	Absolute Delta	Percent Delta	routes included in set
{ 20 }	5,567	2,641	2,926	110.8%	20, 32, 115
{ 17 & 22 & 75 }	12,109	9,228	2,881	31.2%	17, 22, 75, 108, 217
{ 11 }	10,899	8,278	2,620	31.7%	11, 212
{ 77 }	11,448	9,358	2,089	22.3%	77, 277
{ 27 }	9,618	7,877	1,741	22.1%	27, 297
{ new 107 }	5,047	3,340	1,707	51.1%	35, 56, 70, 71, new 107, 248
{ 9 }	11,386	10,031	1,355	13.5%	9, 10, 16
{ 125 }	4,622	3,365	1,258	37.4%	19, 107, 125
{ 62 }	2,838	1,873	965	51.6%	62, 202
{ 36 }	6,133	5,498	636	11.6%	36, 110
{ new 211 }	10,755	12,680	-1,925	-15.2%	8, 24, 51, 82, 137, new 211
{ 73 & 183 }	6,138	7,472	-1,334	-17.9%	57, 73, 183, 238, 267, 286
{ 100 }	16,084	16,819	-735	-4.4%	100, 105, 119, 120
{ 2 }	2,076	2,788	-712	-25.5%	2, 211
150	1,433	2,110	-677	-32.1%	150
{ 37 & 54 }	7,304	7,924	-620	-7.8%	29, 37, 42, 54, 254
88	1,815	2,276	-461	-20.3%	88
40	1,807	2,229	-421	-18.9%	40
{ 52 }	1,921	2,234	-313	-14.0%	52, 152, 252
{ 14 }	916	1,212	-296	-24.4%	14, 113, 241

(*) Averages rounded to the nearest boarding, data as estimated from automatic passenger counter (APC) system; Lifeline shuttles excluded.

(1) The route sets, denoted by brackets, include the new 11/13/2023 lineup's Better Bus Network route designations, as well as older routes present for the first part of the month and previous months and years, then either renamed, absorbed, or eliminated. The sets were defined to enable reasonably fair comparisons between pre- and post-BBN timeframes, to the extent possible and practical, given the complexity of the changes for some of the routes and sets. The definitions are based on information from the DTPW website, and subject to future adjustments, if necessary.

(2) The adjective "new" in front of some new Better Bus Network-generated (recycled) route numbers was added to help prevent confusion with older but different routes with the same number present in previous months or years.

“TOP 10 / BOTTOM 10” BUS ROUTES SETS AVERAGE WEEKDAY RIDERSHIP PERFORMANCE MONTH OVER 8-MONTH PRIOR COMPARISON

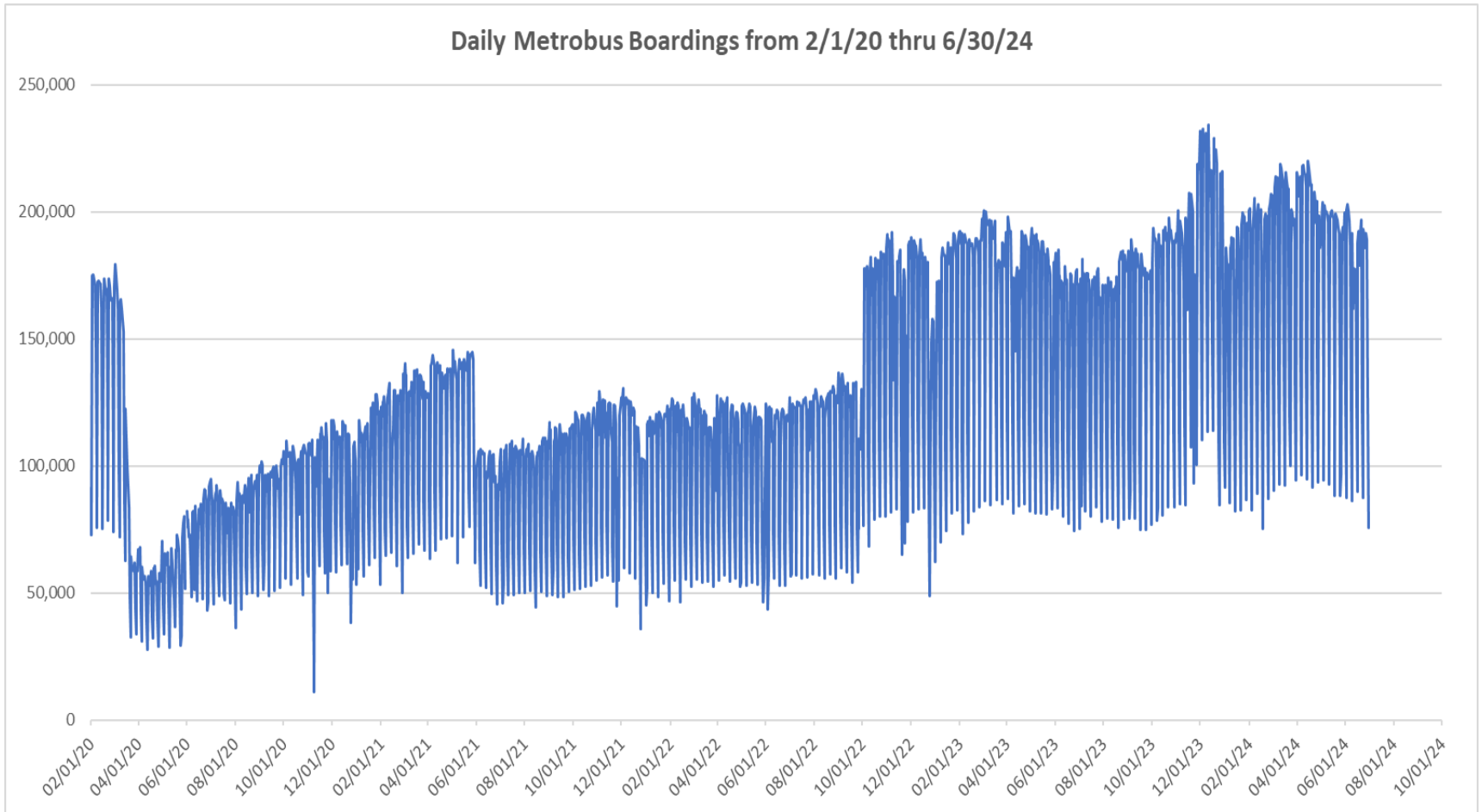
Route Set (*), (1), (2)	Jun-24	Oct-23	Absolute Delta	Percent Delta	routes included in set
{ 20 }	5,567	2,850	2,717	95.3%	20, 32, 115
{ 17 & 22 & 75 }	12,109	10,796	1,313	12.2%	17, 22, 75, 108, 217
{ 27 }	9,618	8,339	1,279	15.3%	27, 297
{ 11 }	10,899	9,644	1,255	13.0%	11, 212
{ 38 }	7,029	5,790	1,239	21.4%	38, 344
{ 125 }	4,622	3,906	717	18.3%	19, 107, 125
{ 77 }	11,448	10,838	609	5.6%	77, 277
{ new 107 }	5,047	4,447	600	13.5%	35, 56, 70, 71, new 107, 248
{ 36 }	6,133	5,600	533	9.5%	36, 110
{ 279 }	9,407	8,950	457	5.1%	79, 112, 279
{ new 211 }	10,755	12,849	-2,094	-16.3%	8, 24, 51, 82, 137, new 211
{ 73 & 183 }	6,138	7,890	-1,753	-22.2%	57, 73, 183, 238, 267, 286
{ 100 }	16,084	17,117	-1,032	-6.0%	100, 105, 119, 120
{ 2 }	2,076	3,048	-972	-31.9%	2, 211
{ 37 & 54 }	7,304	8,082	-778	-9.6%	29, 37, 42, 54, 254
150	1,433	2,149	-716	-33.3%	150
88	1,815	2,419	-604	-25.0%	88
40	1,807	2,344	-537	-22.9%	40
{ 52 }	1,921	2,442	-521	-21.3%	52, 152, 252
7	3,547	4,021	-474	-11.8%	7

(*) Averages rounded to the nearest boarding, data as estimated from automatic passenger counter (APC) system; Lifeline shuttles excluded.

(1) The route sets, denoted by brackets, include the new 11/13/2023 lineup's Better Bus Network route designations, as well as older routes present for the first part of the month and previous months and years, then either renamed, absorbed, or eliminated. The sets were defined to enable reasonably fair comparisons between pre- and post-BBN timeframes, to the extent possible and practical, given the complexity of the changes for some of the routes and sets. The definitions are based on information from the DTPW website, and subject to future adjustments, if necessary.

(2) The adjective "new" in front of some new Better Bus Network-generated (recycled) route numbers was added to help prevent confusion with older but different routes with the same number present in previous months or years.

DAILY METROBUS RIDERSHIP SINCE FEBRUARY 1, 2020



- (1) There was no Metrobus, Metrorail and Metromover service on 5/31/20, as a safety precaution, and no service for any of the four modes on 9/28/22, as a result of Hurricane Ian.
- (2) The dip at the start of the second week of Nov -20 is due to Hurricane Eta.
- (3) Daily variations from Oct-22 onward are estimated from reports made available by the Bus APC data vendor; the data is based on statistical sampling and are not daily actuals *per se*.
- (4) The reduction seen beginning 6/1/21 is partly due to the resumption of fares and partly the result of resuming reporting Cubic farebox data rather than bus APC counts; the jump seen at the very start of Oct-22 is due to the return to APC bus ridership counts reporting beginning 10/1/22; the marked peak in Dec-23 is attributable to the Better Bus Network launch period and attendant free fares.
- (5) Periodic (weekly) variations are prominent, since weekday ridership is almost always significantly higher than weekend or holiday ridership.

METROBUS PARKING PATRONAGE SUMMARY June 2024

PARK-RIDE LOT	ACTUAL AVAILABLE SPACES	ACTUAL OCCUPANCY	PERCENT OCCUPANCY
Transitway / SW 152nd St	200	128	64%
Transitway / SW 168th St	149	0	0%
Transitway / SW 200th Street	100	36	36%
Transitway / SW 112 Ave (Target)	450	140	31%
Transitway / SW 244th St	95	91	96%
Transitway / SW 296th St	139	19	14%
Transitway / SW 344th St	248	171	69%
Coral Reef Drive 117/ Turnpike	95	77	81%
Golden Glades Facility	2,150	428	20%
Hammocks Town Center (SW 152 Ave / SW 104 St)	50	17	34%
Kendall Dr./SW 127th Ave	161	11	7%
West Kendall Transit Term (Kendall Dr / SW162 Ave)	40	20	50%
NW 7th Avenue Transit Village (NW 7 Ave / NW 62 St)	25	22	88%
Miami Gardens Dr. / NW 73rd Ave	136	3	2%
Dolphin Station	348	75	22%
Tamiami Station (eff 11-2022)	442	53	12%
I-75 / Miami Gardens Dr	298	0	0%
TOTAL	5,126	1,291	25%

(*) Closed for construction beginning Jan-22

(**) Route 175 Suspended 3/27/2020

Metrorail



METRORAIL AVERAGE WEEKDAY BOARDINGS BY STATION (†)

Weekdays	Average Weekday	Average Weekday	Percent Change	Average Weekday	Percent Change	Average Weekday	Percent Change	Average Weekday	Percent Change
STATIONS	Jun-24	Jun-23	YOY	Feb-20	Current vs Feb-20	May-24	MOM	Jun-19	YO5Y
ALLAPATTAH	1,583	1,559	1.5%	1,942	-18.5%	1,727	-8.3%	1,697	-6.7%
BRICKELL	4,966	4,688	5.9%	6,529	-23.9%	5,532	-10.2%	5,720	-13.2%
BROWNSVILLE	561	587	-4.5%	862	-34.9%	594	-5.6%	765	-26.7%
CIVIC CENTER	4,405	4,122	6.9%	6,143	-28.3%	4,615	-4.5%	5,514	-20.1%
COCONUT GROVE	1,681	1,345	25.0%	1,795	-6.3%	1,856	-9.4%	1,478	13.7%
CULMER	818	914	-10.4%	1,392	-41.2%	1,020	-19.7%	1,109	-26.2%
DADELAND NORTH	3,878	3,771	2.8%	5,926	-34.6%	4,276	-9.3%	5,222	-25.7%
DADELAND SOUTH	4,349	4,265	2.0%	7,150	-39.2%	4,767	-8.8%	6,368	-31.7%
DOUGLAS ROAD	2,873	1,238	132.2%	3,624	-20.7%	3,353	-14.3%	3,115	-7.8%
DR. MARTIN LUTHER KING, JR.	883	811	8.9%	1,157	-23.6%	969	-8.8%	1,050	-15.9%
EARLINGTON HEIGHTS	1,134	1,260	-10.0%	1,662	-31.8%	1,428	-20.6%	1,425	-20.5%
GOVERNMENT CENTER	5,909	6,092	-3.0%	10,557	-44.0%	6,651	-11.1%	9,042	-34.7%
HIALEAH	1,203	789	52.6%	1,253	-4.0%	1,326	-9.3%	1,180	1.9%
MIAMI INTERNATIONAL AIRPORT	1,364	1,291	5.7%	1,711	-20.3%	1,426	-4.4%	1,495	-8.7%
NORTHSIDE	1,238	1,249	-0.9%	1,476	-16.1%	1,385	-10.6%	1,285	-3.7%
OKEECHOBEE	979	857	14.2%	1,164	-15.9%	1,024	-4.5%	1,102	-11.2%
OVERTOWN / ARENA	1,764	1,654	6.6%	2,274	-22.4%	1,881	-6.2%	2,068	-14.7%
PALMETTO	1,215	1,245	-2.4%	1,543	-21.2%	1,336	-9.0%	1,355	-10.3%
SANTA CLARA	746	644	15.8%	812	-8.1%	815	-8.5%	680	9.7%
SOUTH MIAMI	2,014	1,647	22.3%	3,015	-33.2%	2,201	-8.5%	2,612	-22.9%
TRI-RAIL	1,102	1,032	6.8%	1,207	-8.7%	1,170	-5.8%	1,071	2.9%
UNIVERSITY	983	1,250	-21.3%	2,784	-64.7%	1,531	-35.8%	1,749	-43.8%
VIZCAYA	1,100	1,018	8.1%	1,390	-20.8%	1,314	-16.3%	1,074	2.4%
TOTAL	46,750	43,325	7.9%	67,367	-30.6%	52,199	-10.4%	58,178	-19.6%

(†) In this table and those which follow, "YOY" stands for "year-over-year", "MOM" for "month-over-month" and, e.g., "YO5Y" for "year over five years", i.e., current month vs 12 months prior, one month prior, and 60 months prior, respectively. The Feb-20 numbers serve as a pre-pandemic benchmark.

METRORAIL AVERAGE SATURDAY BOARDINGS BY STATION

Saturdays	Average Saturday	Average Saturday	Percent Change	Average Saturday	Percent Change	Average Saturday	Percent Change	Average Saturday	Percent Change
STATIONS	Jun-24	Jun-23	YOY	Feb-20	Current vs Feb-20	May-24	MOM	Jun-19	YO5Y
ALLAPATTAH	847	844	0.4%	1,051	-19.4%	914	-7.3%	934	-9.3%
BRICKELL	2,312	2,251	2.7%	2,811	-17.8%	2,480	-6.8%	2,459	-6.0%
BROWNSVILLE	323	391	-17.3%	520	-37.8%	343	-5.8%	483	-33.1%
CIVIC CENTER	725	715	1.4%	959	-24.4%	739	-1.9%	887	-18.3%
COCONUT GROVE	841	711	18.3%	928	-9.4%	924	-9.0%	746	12.7%
CULMER	457	487	-6.1%	721	-36.5%	483	-5.3%	621	-26.4%
DADELAND NORTH	1,215	1,295	-6.1%	1,994	-39.0%	1,380	-11.9%	1,662	-26.9%
DADELAND SOUTH	1,725	1,857	-7.1%	2,625	-34.3%	1,882	-8.3%	2,239	-22.9%
DOUGLAS ROAD	1,329	387	243.8%	1,319	0.8%	1,393	-4.6%	1,120	18.7%
DR. MARTIN LUTHER KING, JR.	542	470	15.3%	625	-13.2%	578	-6.2%	570	-4.9%
EARLINGTON HEIGHTS	643	728	-11.6%	935	-31.2%	755	-14.8%	830	-22.5%
GOVERNMENT CENTER	2,435	2,604	-6.5%	4,262	-42.9%	2,748	-11.4%	3,304	-26.3%
HIALEAH	554	370	49.6%	583	-5.0%	596	-7.0%	541	2.4%
MIAMI INTERNATIONAL AIRPORT	967	961	0.7%	1,330	-27.3%	1,039	-6.9%	1,158	-16.5%
NORTHSIDE	770	772	-0.1%	878	-12.3%	794	-2.9%	776	-0.8%
OKEECHOBEE	412	319	29.2%	408	1.0%	445	-7.4%	377	9.5%
OVERTOWN / ARENA	525	586	-10.4%	678	-22.6%	604	-13.0%	539	-2.7%
PALMETTO	382	377	1.4%	458	-16.5%	399	-4.2%	365	4.7%
SANTA CLARA	365	329	10.9%	422	-13.4%	385	-5.1%	380	-3.9%
SOUTH MIAMI	935	807	16.0%	1,256	-25.5%	947	-1.3%	1,075	-13.0%
TRI-RAIL	505	470	7.4%	614	-17.8%	518	-2.6%	493	2.3%
UNIVERSITY	322	387	-16.7%	714	-54.9%	464	-30.7%	467	-31.1%
VIZCAYA	509	491	3.7%	622	-18.1%	542	-5.9%	517	-1.4%
TOTAL	19,644	18,605	5.6%	26,714	-26.5%	21,350	-8.0%	22,544	-12.9%

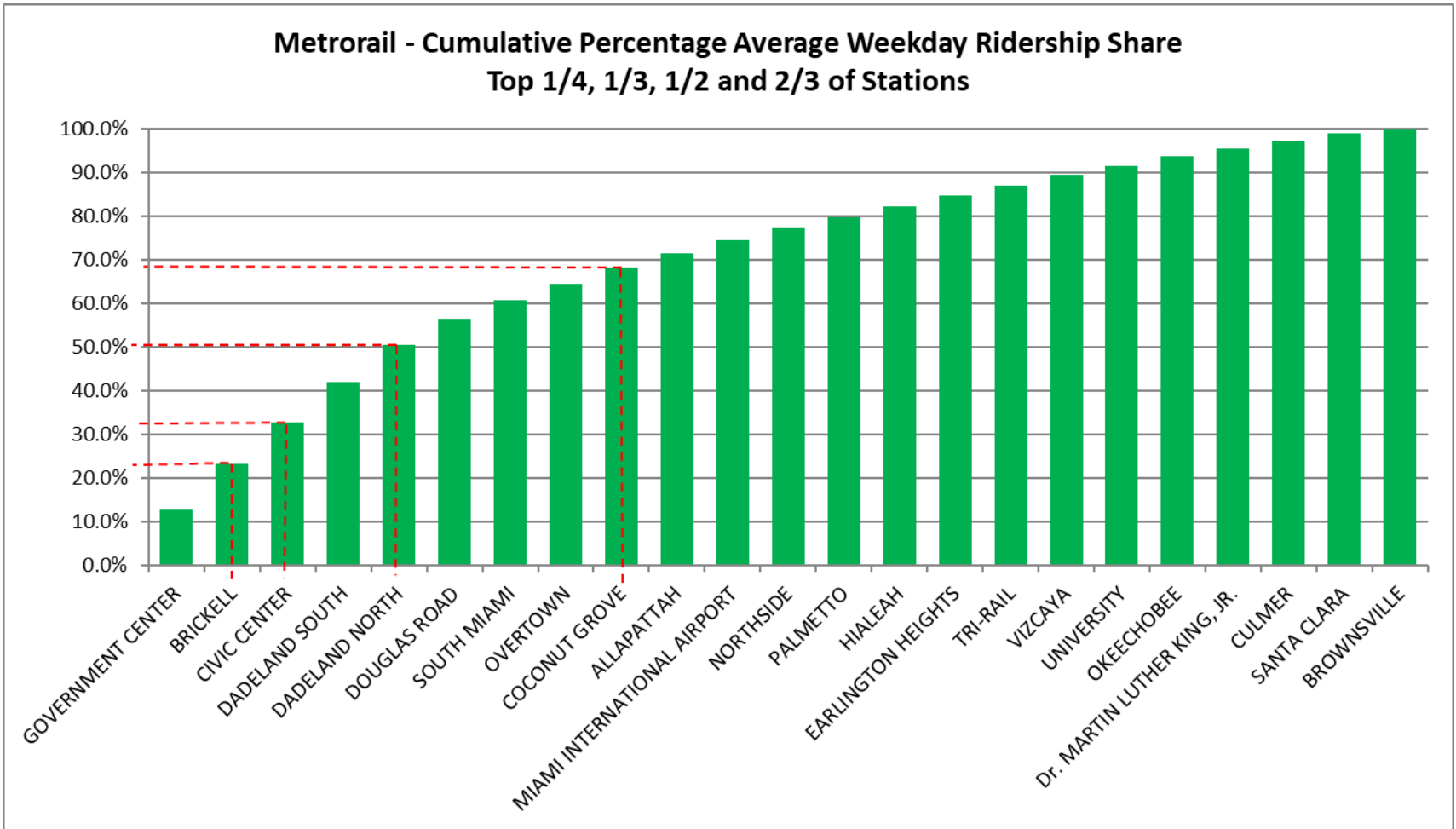
METRORAIL AVERAGE SUNDAY BOARDINGS BY STATION

Sundays	Average Sunday	Average Sunday	Percent Change	Average Sunday	Percent Change	Average Sunday	Percent Change	Average Sunday	Percent Change
STATIONS	Jun-24	Jun-23	YOY	Feb-20	Current vs Feb-20	May-24	MOM	Jun-19	YO5Y
ALLAPATTAH	598	612	-2.3%	791	-24.3%	623	-3.9%	682	-12.3%
BRICKELL	1,723	1,706	1.0%	2,379	-27.6%	1,924	-10.4%	1,865	-7.7%
BROWNSVILLE	238	279	-14.8%	406	-41.5%	239	-0.6%	348	-31.8%
CIVIC CENTER	571	578	-1.2%	791	-27.8%	590	-3.1%	718	-20.5%
COCONUT GROVE	630	505	24.7%	838	-24.9%	703	-10.5%	553	13.9%
CULMER	326	329	-0.9%	616	-47.0%	335	-2.6%	496	-34.2%
DADELAND NORTH	841	950	-11.4%	1,685	-50.1%	971	-13.4%	1,163	-27.7%
DADELAND SOUTH	1,259	1,404	-10.3%	2,210	-43.0%	1,461	-13.8%	1,712	-26.5%
DOUGLAS ROAD	827	314	163.5%	1,090	-24.1%	923	-10.4%	820	0.9%
DR. MARTIN LUTHER KING, JR.	382	349	9.4%	506	-24.5%	425	-10.1%	404	-5.6%
EARLINGTON HEIGHTS	465	545	-14.6%	799	-41.8%	552	-15.8%	624	-25.5%
GOVERNMENT CENTER	1,756	1,947	-9.8%	4,044	-56.6%	2,048	-14.3%	2,347	-25.2%
HIALEAH	375	288	30.1%	472	-20.6%	413	-9.3%	384	-2.3%
MIAMI INTERNATIONAL AIRPORT	899	894	0.6%	1,343	-33.1%	1,007	-10.8%	1,171	-23.2%
NORTHSIDE	527	581	-9.3%	653	-19.2%	565	-6.7%	567	-7.0%
OKEECHOBEE	272	241	13.0%	273	-0.5%	304	-10.6%	237	14.6%
OVERTOWN / ARENA	433	456	-5.1%	544	-20.5%	480	-9.8%	420	3.0%
PALMETTO	217	247	-12.0%	336	-35.3%	212	2.7%	218	-0.5%
SANTA CLARA	228	219	4.0%	280	-18.6%	250	-8.8%	220	3.5%
SOUTH MIAMI	650	540	20.4%	987	-34.1%	691	-5.9%	774	-16.0%
TRI-RAIL	345	341	1.2%	528	-34.6%	412	-16.2%	381	-9.4%
UNIVERSITY	214	304	-29.7%	608	-64.8%	337	-36.5%	282	-24.2%
VIZCAYA	345	333	3.7%	524	-34.2%	380	-9.3%	350	-1.5%
TOTAL	14,119	13,960	1.1%	22,701	-37.8%	15,843	-10.9%	16,739	-15.6%

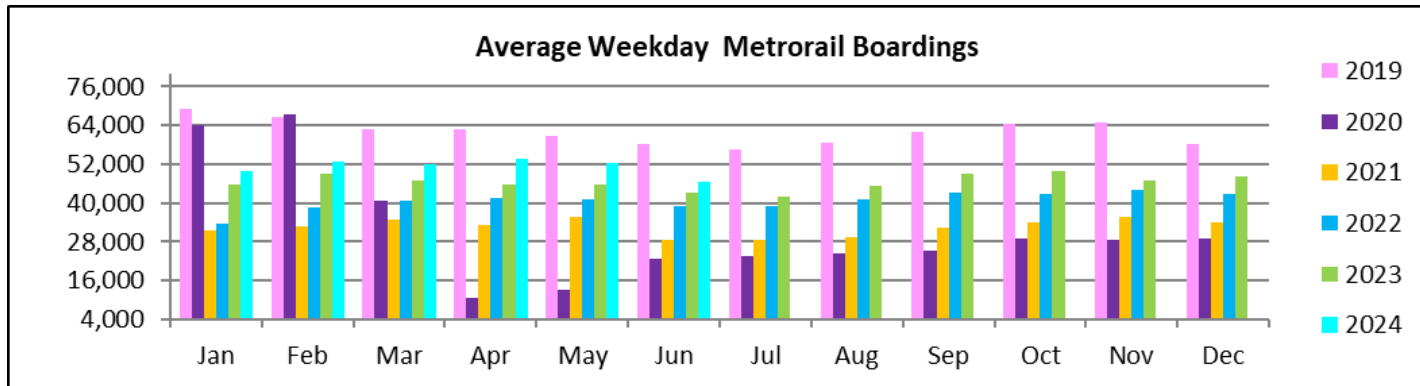
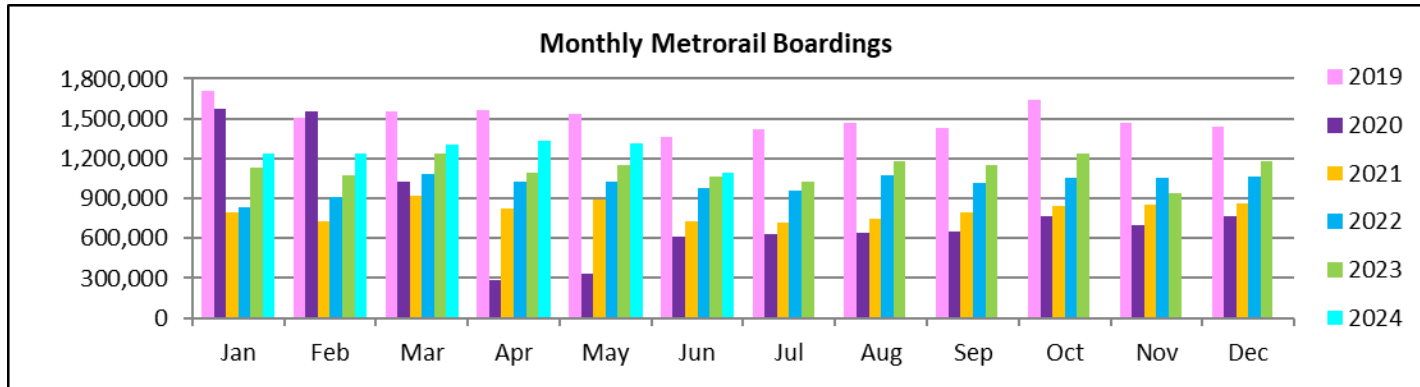
METRORAIL TOTAL MONTHLY BOARDINGS BY STATION

Monthly Totals	Total Month		Percent Change	Total Month		Percent Change	Total Month		Percent Change
STATIONS	Jun-24	Jun-23	YOY	Feb-20	Current vs Feb-20	May-24	MOM	Jun-19	YO5Y
ALLAPATTAH	38,702	39,889	-3.0%	46,868	-17.4%	45,046	-14.1%	42,011	-7.9%
BRICKELL	118,603	117,435	1.0%	152,259	-22.1%	141,702	-16.3%	136,028	-12.8%
BROWNSVILLE	13,967	15,469	-9.7%	21,285	-34.4%	15,697	-11.0%	19,447	-28.2%
CIVIC CENTER	92,087	93,303	-1.3%	128,921	-28.6%	107,050	-14.0%	118,318	-22.2%
COCONUT GROVE	40,826	34,065	19.8%	43,580	-6.3%	48,227	-15.3%	36,063	13.2%
CULMER	20,227	23,131	-12.6%	33,497	-39.6%	26,103	-22.5%	27,757	-27.1%
DADELAND NORTH	86,459	90,304	-4.3%	132,894	-34.9%	104,204	-17.0%	118,570	-27.1%
DADELAND SOUTH	100,692	105,439	-4.5%	162,416	-38.0%	119,569	-15.8%	147,123	-31.6%
DOUGLAS ROAD	67,744	28,089	141.2%	82,141	-17.5%	84,227	-19.6%	71,998	-5.9%
DR. MARTIN LUTHER KING, JR.	22,160	20,916	5.9%	27,980	-20.8%	25,830	-14.2%	25,881	-14.4%
EARLINGTON HEIGHTS	28,003	32,490	-13.8%	40,697	-31.2%	37,337	-25.0%	35,780	-21.7%
GOVERNMENT CENTER	137,407	150,004	-8.4%	243,414	-43.6%	167,231	-17.8%	209,101	-34.3%
HIALEAH	28,524	19,991	42.7%	29,516	-3.4%	33,766	-15.5%	28,221	1.1%
MIAMI INTERNATIONAL AIRPORT	36,573	35,697	2.5%	46,115	-20.7%	40,720	-10.2%	41,541	-12.0%
NORTHSIDE	31,133	32,647	-4.6%	36,127	-13.8%	36,611	-15.0%	32,422	-4.0%
OKEECHOBEE	22,781	20,848	9.3%	26,026	-12.5%	25,958	-12.2%	25,111	-9.3%
OVERTOWN / ARENA	39,329	39,753	-1.1%	49,911	-21.2%	45,880	-14.3%	46,162	-14.8%
PALMETTO	27,046	29,506	-8.3%	33,944	-20.3%	31,996	-15.5%	30,018	-9.9%
SANTA CLARA	17,848	16,224	10.0%	19,245	-7.3%	20,780	-14.1%	16,596	7.5%
SOUTH MIAMI	47,727	41,008	16.4%	69,412	-31.2%	55,779	-14.4%	61,491	-22.4%
TRI-RAIL	26,134	25,669	1.8%	29,120	-10.3%	29,930	-12.7%	25,786	1.3%
UNIVERSITY	21,915	29,586	-25.9%	61,253	-64.2%	37,365	-41.3%	38,727	-43.4%
VIZCAYA	26,173	25,398	3.1%	32,497	-19.5%	33,104	-20.9%	25,814	1.4%
TOTAL	1,092,060	1,066,861	2.4%	1,549,118	-29.5%	1,314,112	-16.9%	1,359,966	-19.7%

METRORAIL CUMULATIVE PERCENTAGE RIDERSHIP SHARE



TOTAL MONTHLY AND AVERAGE WEEKDAY RIDERSHIP YEAR OVER YEAR COMPARISON CHARTS – METRORAIL

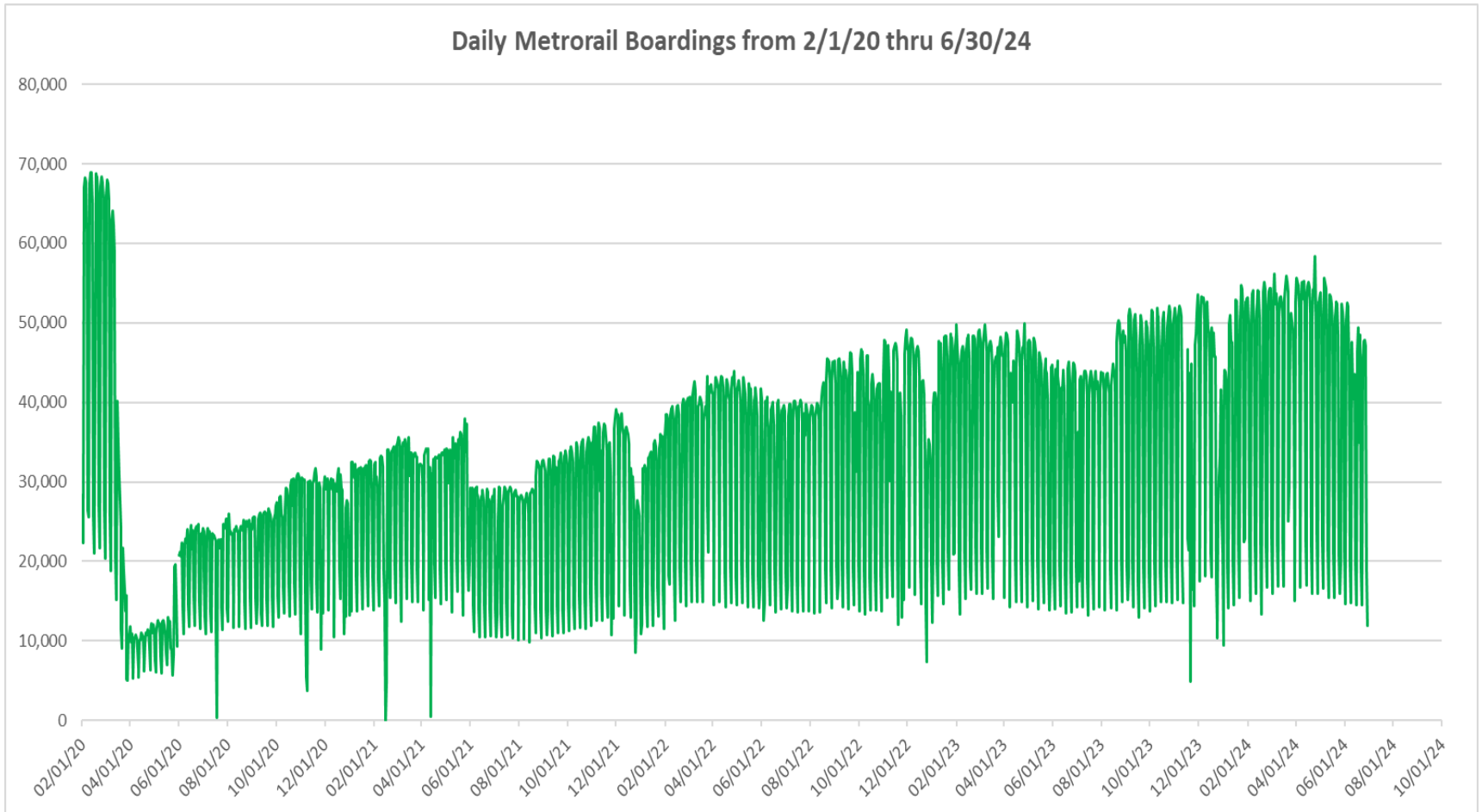


**“TOP 5 / BOTTOM 5” RAIL STATIONS AVERAGE WEEKDAY RIDERSHIP PERFORMANCE
YEAR OVER YEAR COMPARISONS**

Station	Jun-24	Jun-23	Absolute Delta (1)	Percent Delta
DOUGLAS ROAD	2,873	1,238	1,636	132.2%
HIALEAH	1,203	789	414	52.6%
SOUTH MIAMI	2,014	1,647	367	22.3%
COCONUT GROVE	1,681	1,345	336	25.0%
CIVIC CENTER	4,405	4,122	283	6.9%
UNIVERSITY	983	1,250	-267	-21.3%
GOVERNMENT CENTER	5,909	6,092	-183	-3.0%
EARLINGTON HEIGHTS	1,134	1,260	-126	-10.0%
CULMER	818	914	-95	-10.4%
PALMETTO	1,215	1,245	-29	-2.4%

(1) Averages rounded to the nearest boarding.

DAILY METRORAIL RIDERSHIP SINCE FEBRUARY 1, 2020



- (1) There was no Metrobus, Metrorail and Metromover service on 5/31/20, as a safety precaution, and no service for any of the four modes on 9/28/22 as a result of Hurricane Ian..
- (2) The dip at the start of the second week of Nov -20 is due to Hurricane Eta; these are *raw data* from the Unleash Live contractor AI video system.
- (3) The dip on 4/13/21 is due to a loss of connectivity at all stations, affecting a few stations over the next two days as well; a similar loss of connectivity is seen on 11/21/23.
- (4) The reduction seen beginning 6/1/21 is partly due to the resumption of fares and partly the result of resuming reporting Cubic faregate data rather than video camera counts.
- (5) As a result of free fares to launch the Better Bus Network, faregates are open beginning 11/13/23, and Unleash Live AI video system ridership counts are reported starting 11/17/23 thru 12/31/23.
- (6) Periodic (weekly) variations are prominent, since weekday ridership is almost always significantly higher than weekend or holiday ridership; a few low-count days are due to system outages, often associated with construction or renovation work.

METRORAIL PARKING PATRONAGE SUMMARY June 2024

PARK-RIDE LOT	ACTUAL CAPACITY (1)	ACTUAL OCCUPANCY (2)	PERCENT OCCUPANCY
DADELAND SOUTH	1,260	793	63%
DADELAND NORTH	1,702	1,046	61%
SOUTH MIAMI	816	329	40%
UNIVERSITY	260	203	78%
DOUGLAS ROAD	222		
COCONUT GROVE	100		
VIZCAYA	120	42	35%
CULMER	25	17	67%
SANTA CLARA	61	36	59%
ALLAPATTAH	74	7	10%
EARLINGTON HEIGHTS	361	149	41%
BROWNSVILLE	100	86	86%
DR. MARTIN LUTHER KING JR. (MDT)	62		
DR. MARTIN LUTHER KING JR. (GARAGE)	631		
NORTHSIDE	100	80	80%
HIALEAH	338	56	16%
OKEECHOBEE	1,398	149	11%
PALMETTO	700	156	22%
TOTAL	8,330	3,149	38%

- (1) Number of spaces could vary each week; shown are available spaces during final week of month, as submitted by DTPW Safety & Security of fice.
- (2) All sampled occupancy data provided by DTPW Safety & Security of fice; calculations are revisions to those submitted by that entity.
- (3) Daily averages rounded to nearest unit, with fewer counts at some stations than others, depending on staffing levels; calculations are based on sampled counted days only per raw data submitted, with resulting average daily occupancy shown.

Metromover



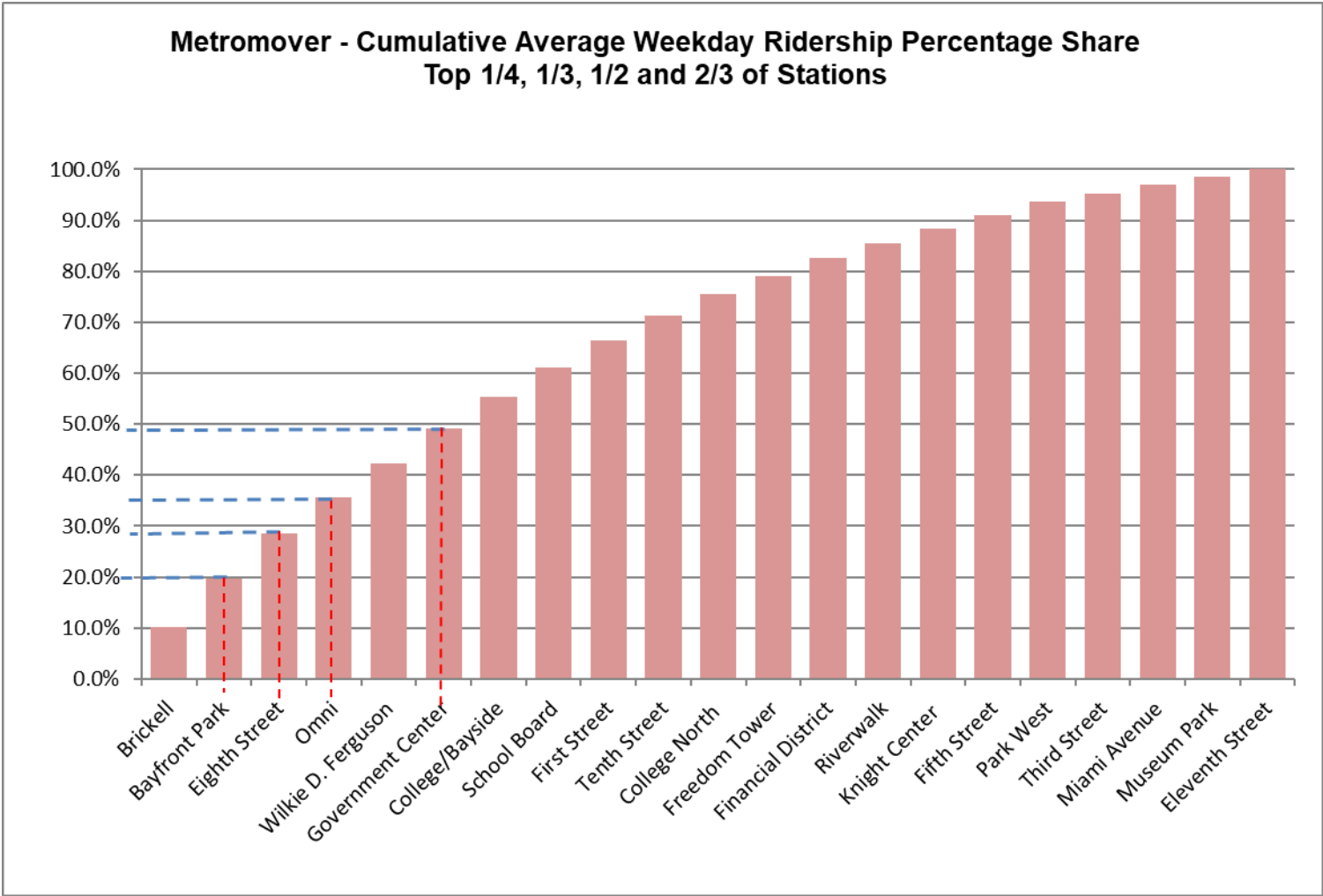
June 2024

METROMOVER MONTHLY AND AVERAGE DAILY BOARDINGS BY STATION

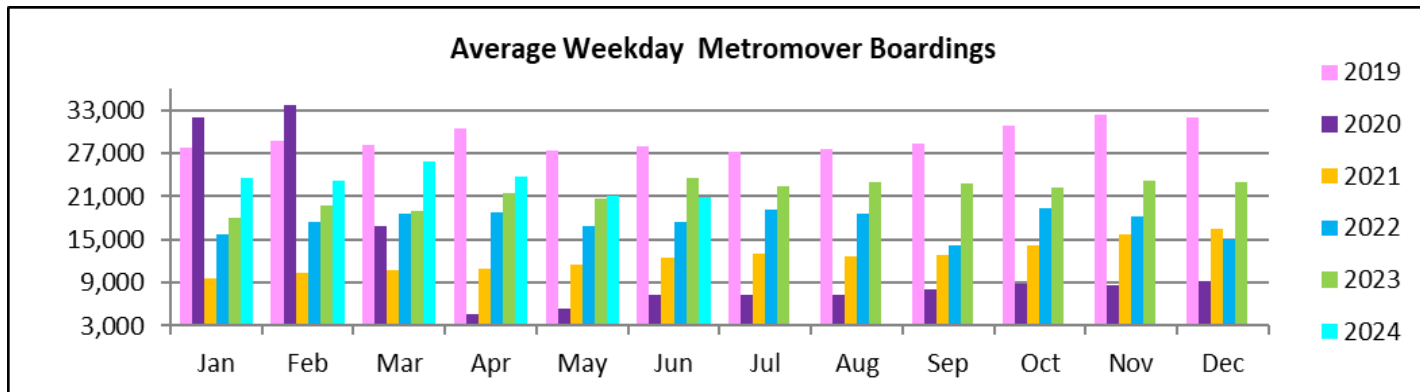
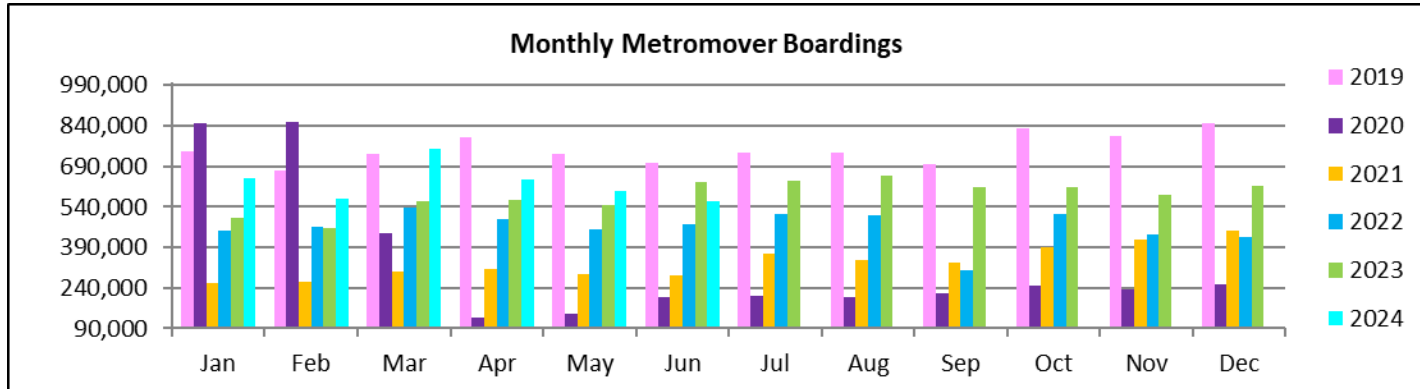
	Average Weekday	Average Weekday	Percent Change	Average Saturday	Average Saturday	Percent Change	Average Sunday	Average Sunday	Percent Change	Total Monthly	Total Monthly	Percent Change
STATIONS	Jun-24	Jun-23	24 vs 23	Jun-24	Jun-23	24 vs 23	Jun-24	Jun-23	24 vs 23	Jun-24	Jun-23	24 vs 23
School Board	1,195	1,258	-5.0%	929	885	4.9%	784	795	-1.4%	32,458	34,108	-4.8%
Omni	1,445	1,942	-25.6%	1,089	1,384	-21.3%	928	1,277	-27.3%	38,930	52,936	-26.5%
Museum Park	330	371	-11.1%	411	582	-29.4%	394	513	-23.1%	10,566	12,743	-17.1%
Eleventh Street	311	276	12.7%	224	232	-3.3%	180	211	-15.0%	8,236	7,769	6.0%
Park West	535	877	-38.9%	483	717	-32.6%	431	696	-38.1%	15,202	24,699	-38.5%
Freedom Tower	761			754			674			22,224		
Government Center	1,409	2,571	-45.2%	1,096	1,645	-33.4%	931	1,523	-38.9%	38,210	68,664	-44.4%
Miami Avenue	347	373	-7.0%	265	224	18.6%	216	231	-6.4%	9,305	9,949	-6.5%
Third Street	352	463	-24.0%	429	305	40.7%	328	351	-6.6%	10,822	12,699	-14.8%
Knight Center	575	394	46.2%	306			253			14,171	787	1700.6%
Bayfront Park	1,997	2,205	-9.4%	1,372	1,534	-10.5%	1,258	1,409	-10.7%	52,749	59,532	-11.4%
First Street	1,118	1,282	-12.8%	910	1,042	-12.6%	858	967	-11.2%	30,974	35,999	-14.0%
College/Bayside	1,310	1,371	-4.5%	1,123	1,050	7.0%	867	1,009	-14.1%	36,179	38,171	-5.2%
College North	841	1,021	-17.6%	518	468	10.7%	410	529	-22.4%	21,385	26,260	-18.6%
Wilkie D. Ferguson	1,428	1,451	-1.6%	906	898	0.9%	740	779	-5.1%	36,461	38,218	-4.6%
Riverwalk	599	792	-24.4%	381	555	-31.3%	384	473	-18.9%	15,674	21,239	-26.2%
Fifth Street	570	535	6.4%	398	343	16.1%	334	302	10.5%	14,941	14,157	5.5%
Eighth Street	1,848	2,173	-14.9%	1,592	1,810	-12.1%	1,406	1,562	-10.0%	51,795	60,623	-14.6%
Tenth Street	1,029	1,074	-4.2%	670	729	-8.0%	619	698	-11.3%	26,838	29,051	-7.6%
Brickell	2,124	2,143	-0.9%	1,243	1,377	-9.7%	1,191	1,316	-9.5%	54,333	57,310	-5.2%
Financial District	749	1,074	-30.3%	381	538	-29.1%	324	555	-41.5%	18,460	27,509	-32.9%
TOTAL	20,874	23,645	-11.7%	15,481	16,316	-5.1%	13,509	15,195	-11.1%	559,913	632,423	-11.5%

(*) Some Metromover stations were closed for construction during the 2023-2024 period, due to installation of new equipment and construction work.

METROMOVER CUMULATIVE PERCENTAGE RIDERSHIP SHARE



TOTAL MONTHLY AND AVERAGE WEEKDAY RIDERSHIP YEAR OVER YEAR COMPARISON CHARTS – METROMOVER

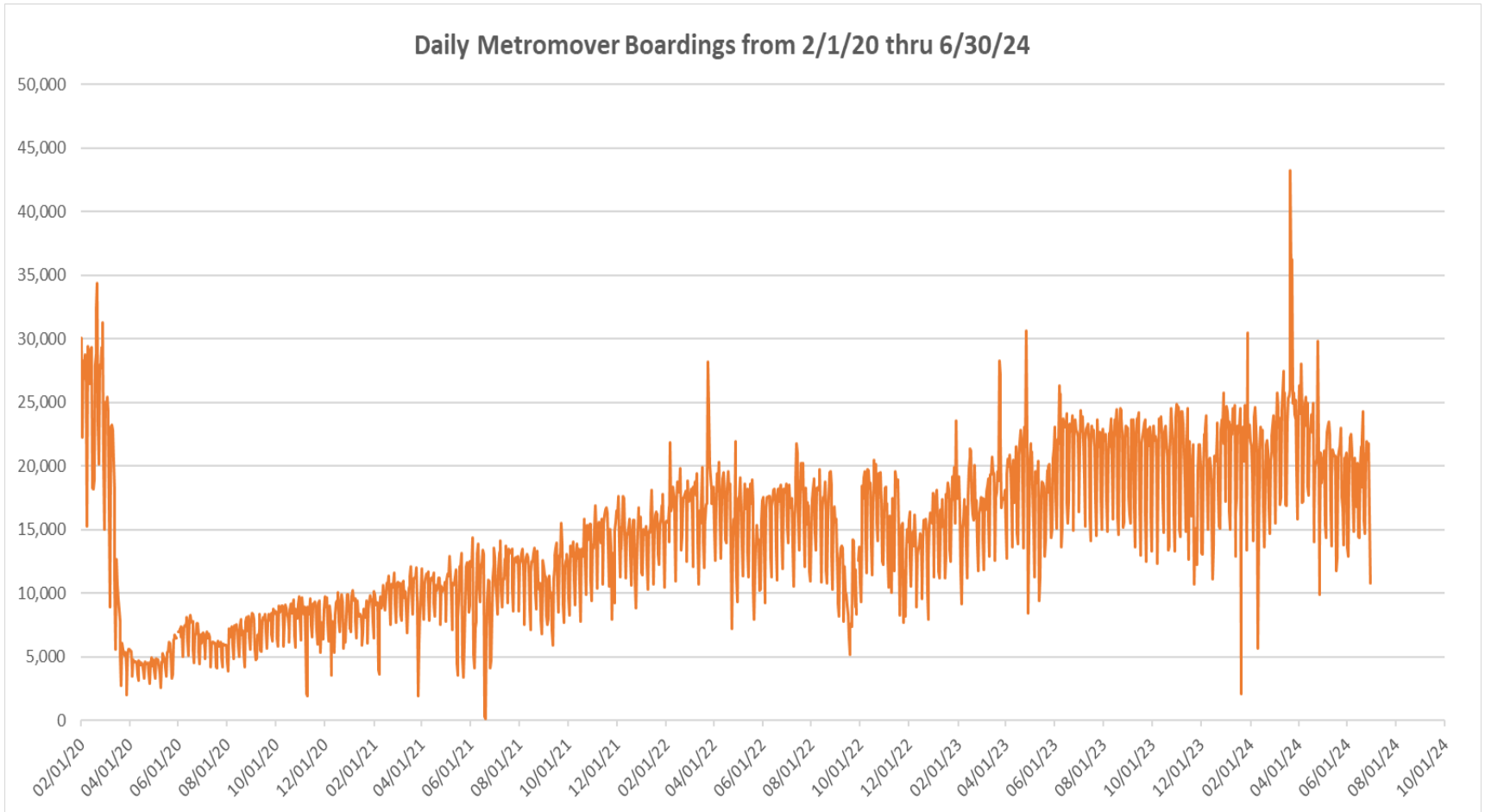


**“TOP 5 / BOTTOM 5” MOVER STATIONS AVERAGE WEEKDAY RIDERSHIP PERFORMANCE
YEAR OVER YEAR COMPARISONS**

Station	Jun-24	Jun-23	Absolute Delta (1)	Percent Delta
Knight Center	575	394	182	46.2%
Eleventh Street	311	276	35	12.7%
Fifth Street	570	535	34	6.4%
Brickell	2,124	2,143	-19	-0.9%
Wilkie D. Ferguson	1,428	1,451	-23	-1.6%
Government Center	1,409	2,571	-1,162	-45.2%
Omni	1,445	1,942	-496	-25.6%
Park West	535	877	-341	-38.9%
Financial District	749	1,074	-325	-30.3%
Eighth Street	1,848	2,173	-325	-14.9%

(1) Averages rounded to the nearest boarding.

DAILY METROMOVER RIDERSHIP SINCE FEBRUARY 1, 2020



- (1) There was no Metrobus, Metrorail and Metromover service on 5/31/20, as a safety precaution, and no service for any of the four modes on 9/28/22 as a result of Hurricane Ian.
- (2) The dip at the start of the second week of Nov -20 is due to Hurricane Eta; these are *raw data* from the UTA contractor APC system. Other more recent dips are due to various station closures (mostly on weekends) for system maintenance purposes.
- (3) Periodic (weekly) variations are prominent, since weekday ridership is almost always significantly higher than weekend or holiday ridership; a few low-count days are due to system outages, often associated with construction or renovation work.

Special Transportation Services

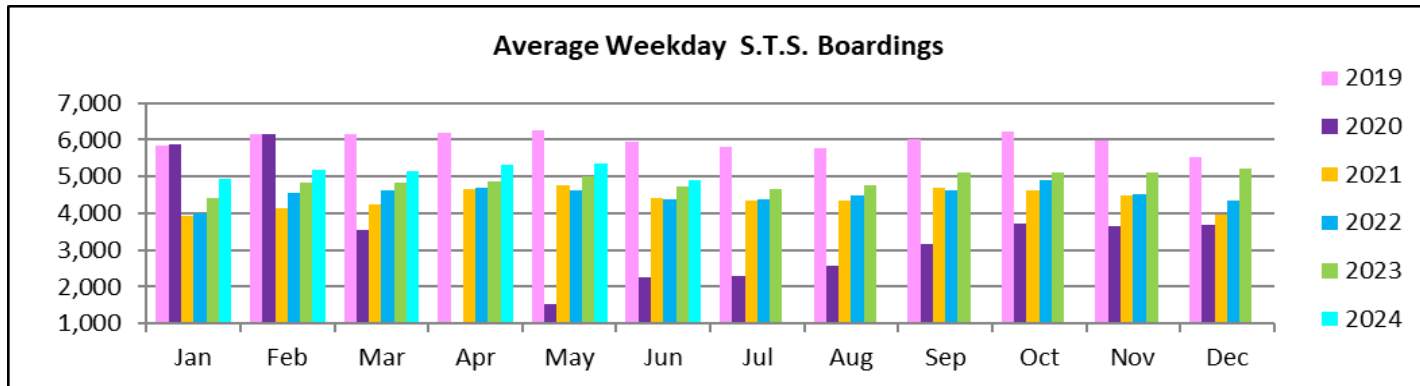
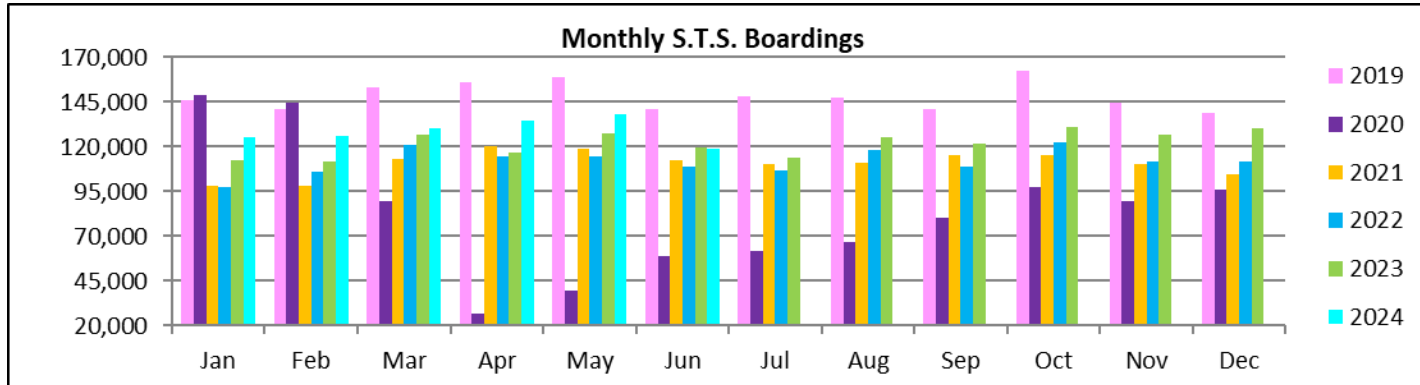


STS MONTHLY AND AVERAGE DAILY BOARDINGS June 2024

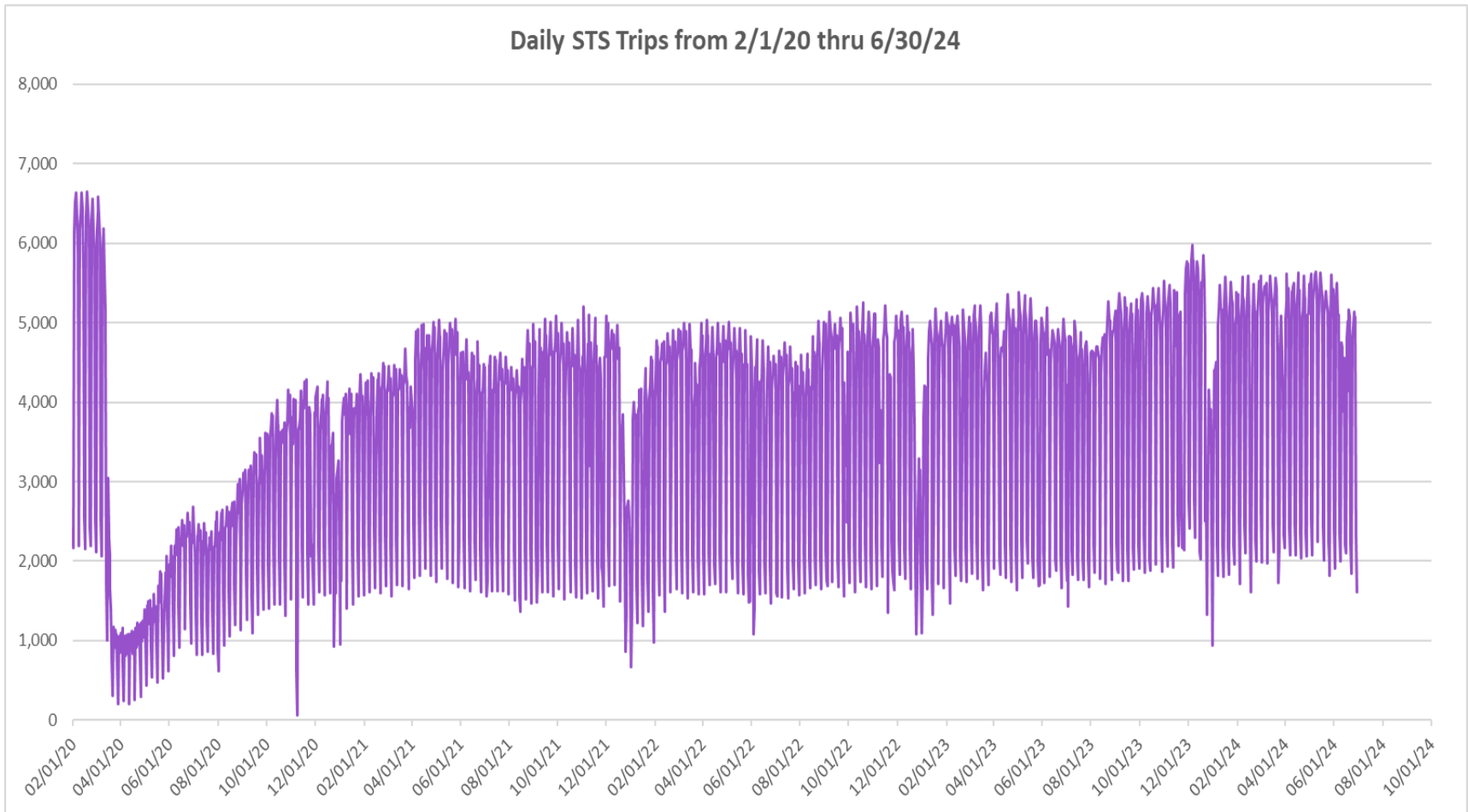
Measure	timeline	Ambulatory	Wheelchair	Total Clients (*)
Average Weekday	Jun-24	4,101	796	4,896
Average Saturday	Jun-24	1,915	373	2,289
Average Sunday	Jun-24	1,575	324	1,899
Total Monthly	Jun-24	99,462	19,398	118,860
Average Weekday	Jun-23	3,927	803	4,730
Average Saturday	Jun-23	1,724	373	2,097
Average Sunday	Jun-23	1,452	320	1,771
Total Monthly	Jun-23	99,091	20,436	119,527
Average Weekday	Jun-22	3,605	766	4,371
Average Saturday	Jun-22	1,405	304	1,709
Average Sunday	Jun-22	1,243	270	1,513
Total Monthly	Jun-22	89,913	19,141	109,054
% Change Current vs. June 2023 Weekday		4.4%	-0.9%	3.5%
% Change Current vs. June 2023 Saturday		11.1%	0.2%	9.1%
% Change Current vs. June 2023 Sunday		8.5%	1.2%	7.2%
% Change Current vs. June 2023 Month Total		0.4%	-5.1%	-0.6%
% Change Current vs. June 2022 Weekday		13.7%	3.9%	12.0%
% Change Current vs. June 2022 Saturday		36.3%	22.9%	33.9%
% Change Current vs. June 2022 Sunday		26.7%	20.0%	25.5%
% Change Current vs. June 2022 Month Total		10.6%	1.3%	9.0%

(*) Trip count data provided by STS contractor.

TOTAL MONTHLY AND AVERAGE WEEKDAY RIDERSHIP YEAR OVER YEAR COMPARISON CHARTS – SPECIAL TRANSPORTATION SERVICES (S.T.S.)

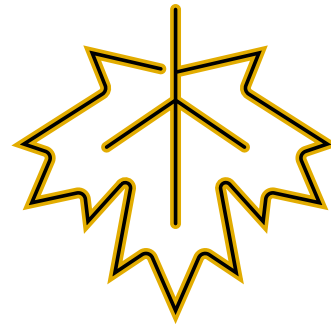
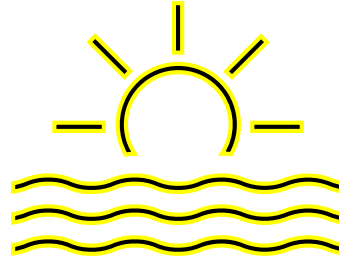
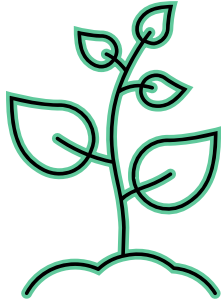


DAILY STS RIDERSHIP SINCE FEBRUARY 1, 2020

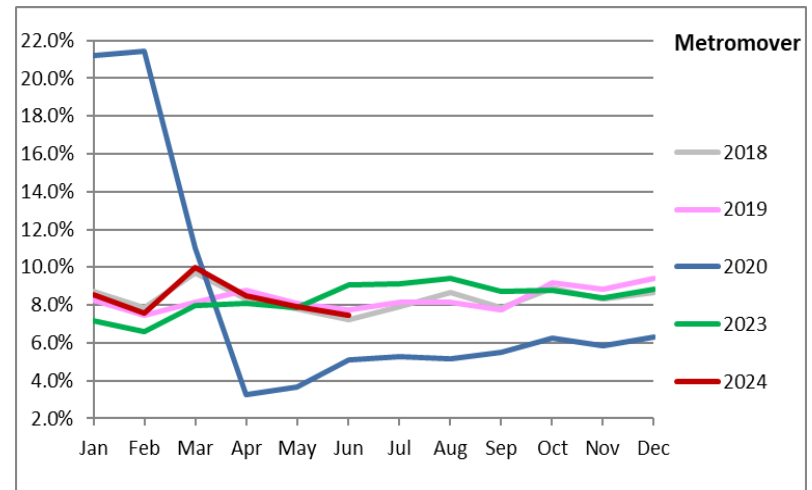
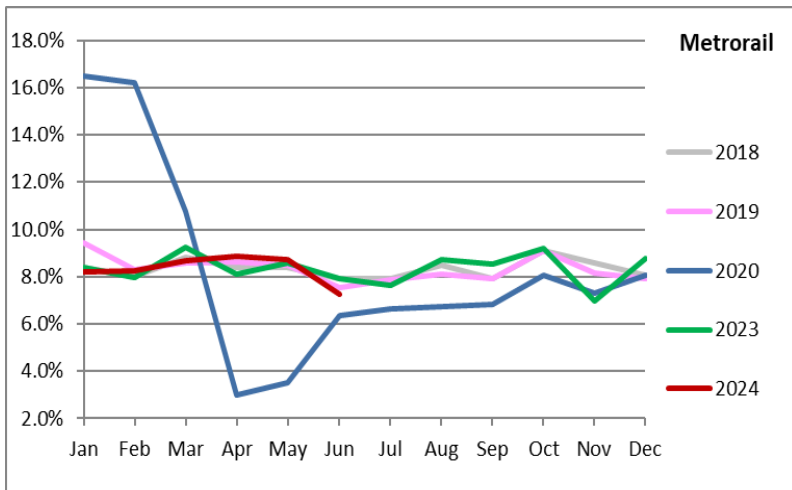
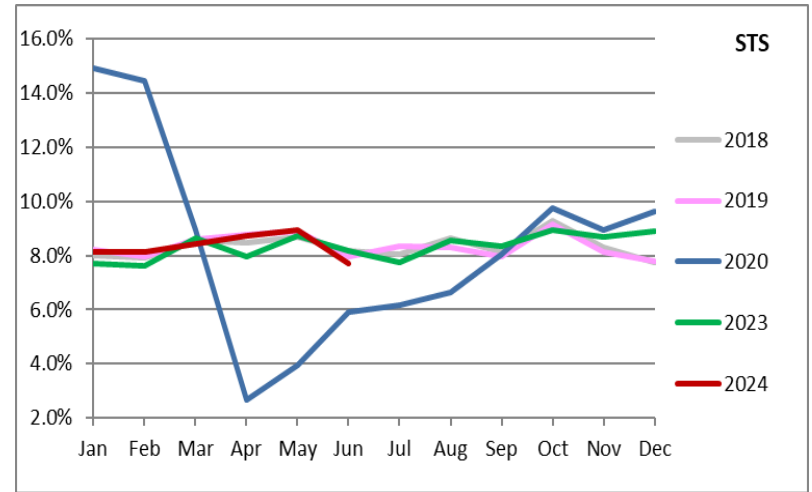
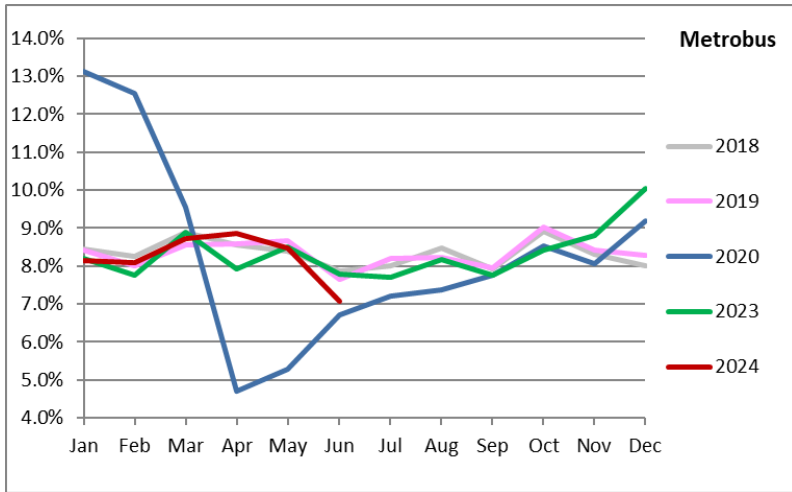


- (1) There was no service (for any of the four modes) on 9/28/22 as a result of Hurricane Ian.
- (2) The dip at the start of the second week of Nov -20 is due to Hurricane Eta.
- (3) Periodic (weekly) variations are prominent, since weekday ridership is almost always significantly higher than weekend or holiday ridership.

Ridership Seasonality



RIDERSHIP SEASONALITY – PERCENT RIDERSHIP SHARE BY MONTH AND CALENDAR YEAR FOR EACH MODE



Note: the prominent dips seen in the fall of 2017 and beginning in the spring of 2020 are due to Hurricane Irma and the SARS-CoV-2 pandemic, respectively. The pronounced rise beginning Nov-23 for Metrobus and Metrorail can be attributed to the launch of the Better Bus Network and the attendant free fares, which ended on New Year's Day 2024.