



TRANSPORTATION AND PUBLIC WORKS

RIDERSHIP TECHNICAL REPORT

Division of Performance Analysis



July 2024

Table of Contents

<i>Table of Contents</i>	2-3
All Modes Overview	4
Total Monthly Weekday, Saturday and Sunday Monthly Boardings By Mode	5
Average Weekday, Saturday and Sunday Boardings by Mode	6
Metrobus Total Monthly Ridership Comparisons by Fiscal Year	7
Metrorail Total Monthly Ridership Comparisons by Fiscal Year	8
Metromover Total Monthly Ridership Comparisons by Fiscal Year	9
STS Total Monthly Ridership Comparisons by Fiscal Year	10
All-Modes Combined Total Monthly Ridership Comparisons By Fiscal Year	11
All Modes Combined Total Monthly and Average Weekday Ridership – Year over Year Comparison Charts	12
Average Weekday Ridership – Modal Splits	13
Daily Ridership for All Modes Combined since 2/1/20	14
Metrobus	15
Better Bus Network (BBN, 11/13/2023 Lineup) Bus Route Changes, Pt 1 and Pt 2	16-17
Metrobus Average Weekday Boardings by Route	18-20
Metrobus Average Saturday Boardings by Route	21-22
Metrobus Average Sunday Boardings by Route	23-24
Metrobus Monthly Total Boardings by Route	25-27
Bus Ridership by Route Service Type Lineups Comparison (month-over-month & month-over-8 months)	28-31
Bus Routes as Ranked by Percentage of Average Weekday Ridership	32
Metrobus Cumulative Percentage Average Weekday Ridership Share by Route (Top 75%)	33
Total Monthly and Average Weekday Bus Ridership – Year over Year Comparison Charts	34
Bus “Top 10 / Bottom 10” Bus Routes Average Weekday Ridership Performance – Month-over-Month Comparisons	35
Bus “Top 10 / Bottom 10” Bus Routes Sets Average Weekday Ridership Performance – Year-over-Year Comparisons	36
Bus “Top 10 / Bottom 10” Bus Routes Sets Average Weekday Ridership Performance – Month-over-9 Month Comparisons	37
Daily Metrobus Ridership since 2/1/20	38
Metrobus Parking Patronage Summary	39

Table of Contents (continued)

Metrorail	40
Metrorail Average Weekday Boardings by Station	41
Metrorail Average Saturday Boardings by Station	42
Metrorail Average Sunday Boardings by Station	43
Metrorail Total Monthly Boardings by Station	44
Metrorail Cumulative Percentage Average Weekday Ridership Share	45
Total Monthly and Average Weekday Rail Ridership – Year over Year Comparison Charts	46
“Top 5 / Bottom 5” Stations Average Weekday Ridership Performance	47
Daily Metrorail Ridership since 2/1/20	48
Metrorail Parking Patronage Summary	49
Metromover	50
Monthly and Average Daily Mover Boardings by Station	51
Metromover Cumulative Percentage Average Weekday Ridership Share	52
Total Monthly and Average Weekday Mover Ridership – Year over Year Comparison Charts	53
“Top 5 / Bottom 5” Stations Average Weekday Ridership Performance	54
Daily Metromover Ridership since 2/1/20	55
Special Transportation Services (STS)	56
STS Monthly and Average Daily Boardings	57
Total Monthly and Average Weekday STS Ridership – Year over Year Comparison Charts	58
Daily STS Ridership since 2/1/20	59
Ridership Seasonality	60
Ridership Seasonality – Percent Ridership Share by Month and Calendar Year for Each Mode	61

All Modes Overview



**TOTAL MONTHLY WEEKDAY, SATURDAY AND SUNDAY BOARDINGS BY MODE
July 2024**

TRAVEL MODE	MONTH'S TOTAL WEEKDAYS RIDERSHIP	MONTH'S TOTAL SATURDAYS RIDERSHIP	MONTH'S TOTAL SUNDAYS RIDERSHIP	TOTAL MONTHLY RIDERSHIP	% CHANGE vs July 2023 TOTAL MONTH RIDERSHIP
METROBUS (1)	4,258,422	518,357	454,115	5,230,894	16.6%
METRORAIL (2)	1,007,948	76,395	75,032	1,159,375	13.3%
METROMOVER	469,104	60,886	80,447	610,437	-4.0%
STS PARATRANSIT (3)	107,659	9,241	9,491	126,391	11.2%
TOTAL	5,843,133	664,879	619,085	7,127,097	13.9%

- (1) Bus ridership reporting through automatic passenger counters coupled with a new enhanced sensor system resumed on October 1, 2022.
- (2) Metrorail fares resumed on June 1, 2021, following a 14-month period of fare-free rides as a result of the SARS-CoV-2 pandemic. The NextFare System faregate data replaced the video data as ridership data of record starting on that date, until free fares were reinstated for the Better Bus Network launch on 11/13/23. The NextFare System faregate data collection and reporting resumed on New Year's Day 2024.
- (3) Paratransit ridership data as reported by the contractor and subsequently audited by the Department.

**AVERAGE WEEKDAY, SATURDAY AND SUNDAY BOARDINGS BY MODE
July 2024**

Travel Mode	Average Weekday	Average Saturday	Average Sunday	% Change July 2023 Weekday	% Change July 2023 Saturday	% Change July 2023 Sunday
METROBUS	193,645	129,589	90,823	11.7%	18.0%	9.5%
METRORAIL	45,816	19,099	14,132	8.8%	2.1%	1.1%
METROMOVER	21,323	15,222	14,243	-4.8%	-13.8%	-5.4%
STS PARATRANSIT	4,894	2,310	1,898	5.0%	13.0%	11.4%
Totals	265,677	166,220	121,097	9.6%	12.2%	6.5%

(*) Average ridership is calculated and published only for those days and stations or routes with nontrivial amounts of reported data.

METROBUS TOTAL MONTHLY RIDERSHIP COMPARISONS BY FISCAL YEAR

Bus Month	FY 19	FY 20	Variance 19 to 20	FY 21	FY 22	FY 23	FY 24	Variance 19 to 23	Variance 22 to 23	Variance 19 to 24	Variance 23 to 24
Oct	4,554,886	4,507,012	-1.1%	2,805,139	3,081,157	4,679,725	4,912,151	2.7%	51.9%	7.8%	5.0%
Nov	4,245,535	4,197,225	-1.1%	2,651,290	3,056,726	4,549,666	5,135,172	7.2%	48.8%	21.0%	12.9%
Dec	4,081,581	4,126,990	1.1%	3,022,530	3,123,883	4,677,460	5,857,057	14.6%	49.7%	43.5%	25.2%
Jan	4,195,911	4,316,998	2.9%	3,082,746	3,029,055	4,785,128	5,103,257	14.0%	58.0%	21.6%	6.6%
Feb	3,994,019	4,123,083	3.2%	3,076,966	2,995,789	4,526,317	5,053,665	13.3%	51.1%	26.5%	11.7%
Mar	4,266,768	3,136,162	-26.5%	3,660,639	3,218,562	5,183,872	5,461,317	21.5%	61.1%	28.0%	5.4%
Apr	4,291,135	1,544,316	-64.0%	3,625,048	3,105,797	4,618,302	5,548,614	7.6%	48.7%	29.3%	20.1%
May	4,330,922	1,734,609	-59.9%	3,683,343	3,097,574	4,953,197	5,308,711	14.4%	59.9%	22.6%	7.2%
Jun	3,823,863	2,210,725	-42.2%	2,672,570	3,064,059	4,545,050	4,805,039	18.9%	48.3%	25.7%	5.7%
Jul	4,094,906	2,366,749	-42.2%	2,769,907	3,189,994	4,484,458	5,230,894	9.5%	40.6%	27.7%	16.6%
Aug	4,109,613	2,422,014	-41.1%	2,843,552	3,442,006	4,756,063		15.7%	38.2%		
Sep	3,971,220	2,546,923	-35.9%	2,877,110	3,123,572	4,525,426		14.0%	44.9%		
FY Total	49,960,359	37,232,806	-25.5%	36,770,840	37,528,174	56,284,664		12.7%	50.0%		

METRORAIL TOTAL MONTHLY RIDERSHIP COMPARISONS BY FISCAL YEAR

Rail Month	FY 19	FY 20	Variance 19 to 20	FY 21	FY 22	FY 23	FY 24	Variance 19 to 23	Variance 22 to 23	Variance 19 to 24	Variance 23 to 24
Oct	1,757,225	1,643,166	-6.5%	769,525	844,383	1,053,191	1,237,096	-40.1%	24.7%	-29.6%	17.5%
Nov	1,656,929	1,469,448	-11.3%	699,492	850,881	1,055,066	935,121	-36.3%	24.0%	-43.6%	-11.4%
Dec	1,553,804	1,433,928	-7.7%	769,194	860,436	1,063,096	1,177,272	-31.6%	23.6%	-24.2%	10.7%
Jan	1,708,695	1,576,340	-7.7%	799,119	832,924	1,127,340	1,233,350	-34.0%	35.3%	-27.8%	9.4%
Feb	1,501,458	1,549,118	3.2%	730,792	905,162	1,072,791	1,240,316	-28.6%	18.5%	-17.4%	15.6%
Mar	1,554,851	1,027,319	-33.9%	917,097	1,084,978	1,239,336	1,302,854	-20.3%	14.2%	-16.2%	5.1%
Apr	1,559,446	287,803	-81.5%	827,414	1,027,139	1,087,816	1,336,511	-30.2%	5.9%	-14.3%	22.9%
May	1,531,597	337,696	-78.0%	887,111	1,023,322	1,151,819	1,314,112	-24.8%	12.6%	-14.2%	14.1%
Jun	1,359,966	608,758	-55.2%	723,469	975,477	1,066,861	1,092,060	-21.6%	9.4%	-19.7%	2.4%
Jul	1,419,158	632,964	-55.4%	722,159	953,331	1,022,937	1,159,375	-27.9%	7.3%	-18.3%	13.3%
Aug	1,463,646	641,275	-56.2%	749,578	1,076,490	1,174,138		-19.8%	9.1%		
Sep	1,427,726	654,244	-54.2%	795,749	1,012,331	1,146,864		-19.7%	13.3%		
FY Total	18,494,501	11,862,059	-35.9%	9,390,699	11,446,854	13,261,255		-28.3%	15.9%		

METROMOVER TOTAL MONTHLY RIDERSHIP COMPARISONS BY FISCAL YEAR

Mover Month	FY 19	FY 20	Variance 19 to 20	FY 21	FY 22	FY 23	FY 24	Variance 19 to 23	Variance 22 to 23	Variance 19 to 24	Variance 23 to 24
Oct	790,533	831,234	5.1%	250,044	389,065	514,308	614,479	-34.9%	32.2%	-22.3%	19.5%
Nov	735,198	799,632	8.8%	232,422	418,929	439,150	584,887	-40.3%	4.8%	-20.4%	33.2%
Dec	767,239	849,832	10.8%	251,019	450,320	426,073	616,455	-44.5%	-5.4%	-19.7%	44.7%
Jan	746,728	847,773	13.5%	255,968	451,566	498,566	644,639	-33.2%	10.4%	-13.7%	29.3%
Feb	675,160	855,398	26.7%	260,332	465,968	459,264	570,242	-32.0%	-1.4%	-15.5%	24.2%
Mar	737,814	441,200	-40.2%	302,502	535,857	558,396	753,107	-24.3%	4.2%	2.1%	34.9%
Apr	795,696	130,549	-83.6%	310,772	495,982	565,943	640,281	-28.9%	14.1%	-19.5%	13.1%
May	734,645	146,454	-80.1%	292,922	455,120	547,948	597,232	-25.4%	20.4%	-18.7%	9.0%
Jun	701,318	203,637	-71.0%	286,145	477,286	632,423	559,913	-9.8%	32.5%	-20.2%	-11.5%
Jul	739,814	210,596	-71.5%	368,847	512,094	635,954	610,437	-14.0%	24.2%	-17.5%	-4.0%
Aug	739,785	205,995	-72.2%	344,319	508,359	657,267		-11.2%	29.3%		
Sep	699,879	219,696	-68.6%	331,915	305,185	610,810		-12.7%	100.1%		
FY Total	8,863,809	5,741,996	-35.2%	3,487,207	5,465,731	6,546,102		-26.1%	19.8%		

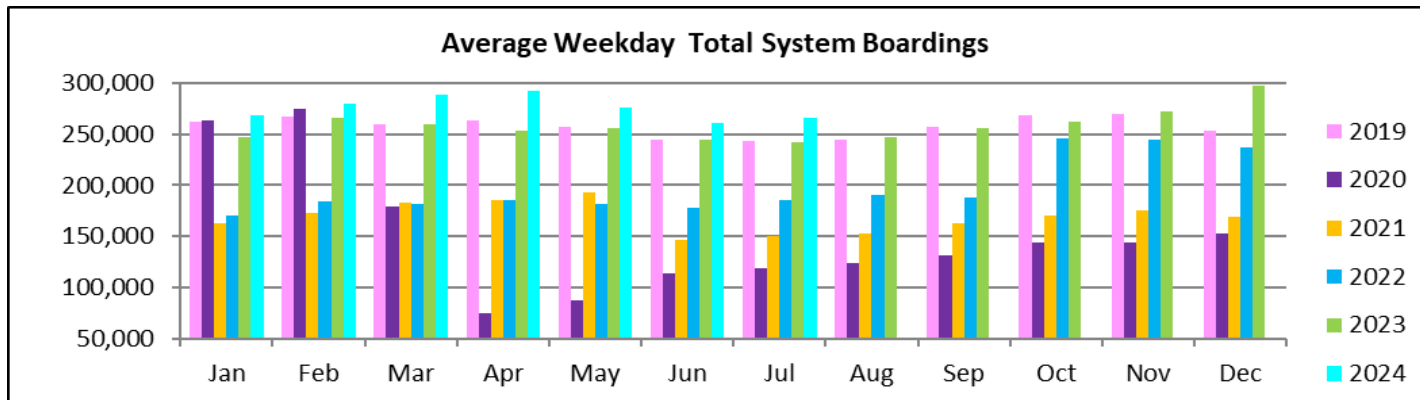
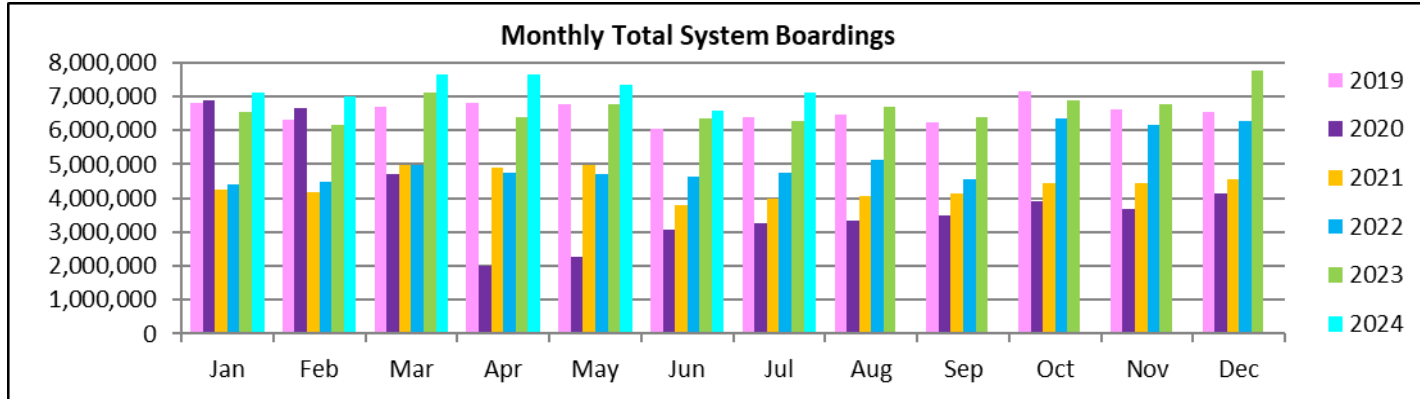
SPECIAL TRANSPORTATION SERVICES (STS) TOTAL MONTHLY RIDERSHIP COMPARISONS BY FISCAL YEAR

STS Month	FY 19	FY 20	Variance 19 to 20	FY 21	FY 22	FY 23	FY 24	Variance 19 to 23	Variance 22 to 23	Variance 19 to 24	Variance 23 to 24
Oct	162,564	162,704	0.1%	97,388	115,122	122,189	130,958	-24.8%	6.1%	-19.4%	7.2%
Nov	145,653	144,366	-0.9%	89,387	110,289	111,578	127,025	-23.4%	1.2%	-12.8%	13.8%
Dec	136,110	138,642	1.9%	96,366	104,496	112,019	130,093	-17.7%	7.2%	-4.4%	16.1%
Jan	146,268	149,114	1.9%	97,928	97,541	112,632	125,513	-23.0%	15.5%	-14.2%	11.4%
Feb	141,396	144,392	2.1%	98,285	105,706	111,748	125,732	-21.0%	5.7%	-11.1%	12.5%
Mar	153,191	89,634	-41.5%	112,930	120,718	126,819	130,203	-17.2%	5.1%	-15.0%	2.7%
Apr	155,808	26,877	-82.7%	120,122	114,912	116,882	134,677	-25.0%	1.7%	-13.6%	15.2%
May	158,665	39,654	-75.0%	118,636	114,505	127,782	137,958	-19.5%	11.6%	-13.1%	8.0%
Jun	141,320	59,093	-58.2%	112,397	109,054	119,527	118,860	-15.4%	9.6%	-15.9%	-0.6%
Jul	148,232	61,765	-58.3%	110,059	107,188	113,623	126,391	-23.3%	6.0%	-14.7%	11.2%
Aug	147,331	66,563	-54.8%	110,766	117,941	125,510		-14.8%	6.4%		
Sep	141,387	80,346	-43.2%	115,406	108,788	122,065		-13.7%	12.2%		
FY Total	1,777,925	1,163,150	-34.6%	1,279,670	1,326,260	1,422,374		-20.0%	7.2%		

ALL-MODES COMBINED TOTAL MONTHLY RIDERSHIP COMPARISONS BY FISCAL YEAR

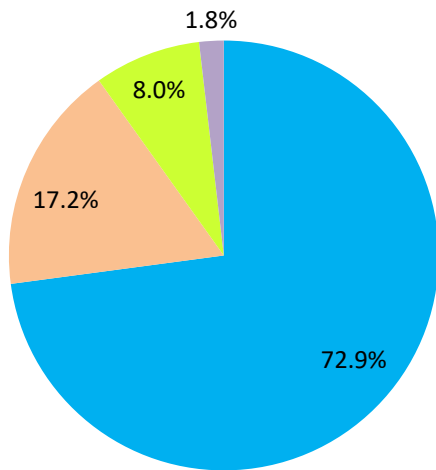
All Modes													
Month	FY 19	FY 20	FY 21	FY 22	FY 23	FY 24	19 TO 20	20 TO 21	21 TO 22	22 TO 23	19 TO 23	23 TO 24	19 TO 24
Oct	7,265,208	7,144,116	3,922,096	4,429,727	6,369,413	6,894,684	-1.7%	-45.1%	12.9%	43.8%	-12.3%	8.2%	-5.1%
Nov	6,783,315	6,610,671	3,672,591	4,436,825	6,155,460	6,782,205	-2.5%	-44.4%	20.8%	38.7%	-9.3%	10.2%	0.0%
Dec	6,538,734	6,549,392	4,139,109	4,539,135	6,278,648	7,780,877	0.2%	-36.8%	9.7%	38.3%	-4.0%	23.9%	19.0%
Jan	6,797,602	6,890,225	4,235,761	4,411,086	6,523,666	7,106,759	1.4%	-38.5%	4.1%	47.9%	-4.0%	8.9%	4.5%
Feb	6,312,033	6,671,991	4,166,375	4,472,625	6,170,120	6,989,955	5.7%	-37.6%	7.4%	38.0%	-2.2%	13.3%	10.7%
Mar	6,712,624	4,694,315	4,993,168	4,960,115	7,108,423	7,647,481	-30.1%	6.4%	-0.7%	43.3%	5.9%	7.6%	13.9%
Apr	6,802,085	1,989,545	4,883,356	4,743,830	6,388,943	7,660,083	-70.8%	145.5%	-2.9%	34.7%	-6.1%	19.9%	12.6%
May	6,755,829	2,258,413	4,982,012	4,690,521	6,780,746	7,358,013	-66.6%	120.6%	-5.9%	44.6%	0.4%	8.5%	8.9%
Jun	6,026,467	3,082,213	3,794,581	4,625,876	6,363,861	6,575,872	-48.9%	23.1%	21.9%	37.6%	5.6%	3.3%	9.1%
Jul	6,402,110	3,272,074	3,970,972	4,762,607	6,256,972	7,127,097	-48.9%	21.4%	19.9%	31.4%	-2.3%	13.9%	11.3%
Aug	6,460,375	3,335,847	4,048,215	5,144,796	6,712,978		-48.4%	21.4%	27.1%	30.5%	3.9%		
Sep	6,240,212	3,501,209	4,120,180	4,549,876	6,405,165		-43.9%	17.7%	10.4%	40.8%	2.6%		
FY Total	79,096,594	56,000,011	50,928,416	55,767,019	77,514,395		-29.2%	-9.1%	9.5%	39.0%	-2.0%		

TOTAL MONTHLY AND AVERAGE WEEKDAY RIDERSHIP YEAR OVER YEAR COMPARISON CHARTS – ALL MODES COMBINED



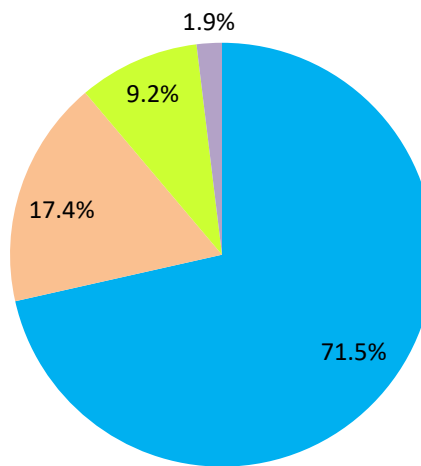
AVERAGE WEEKDAY RIDERSHIP - MODAL SPLITS

July 2024



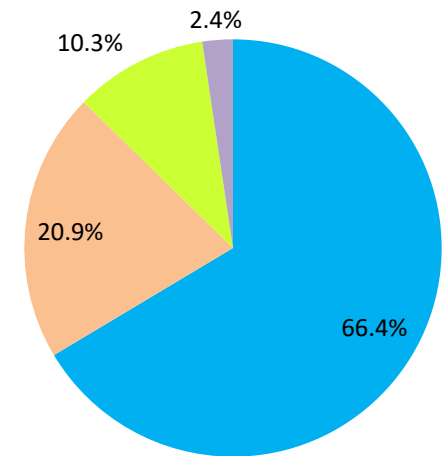
boardings

July 2023



boardings

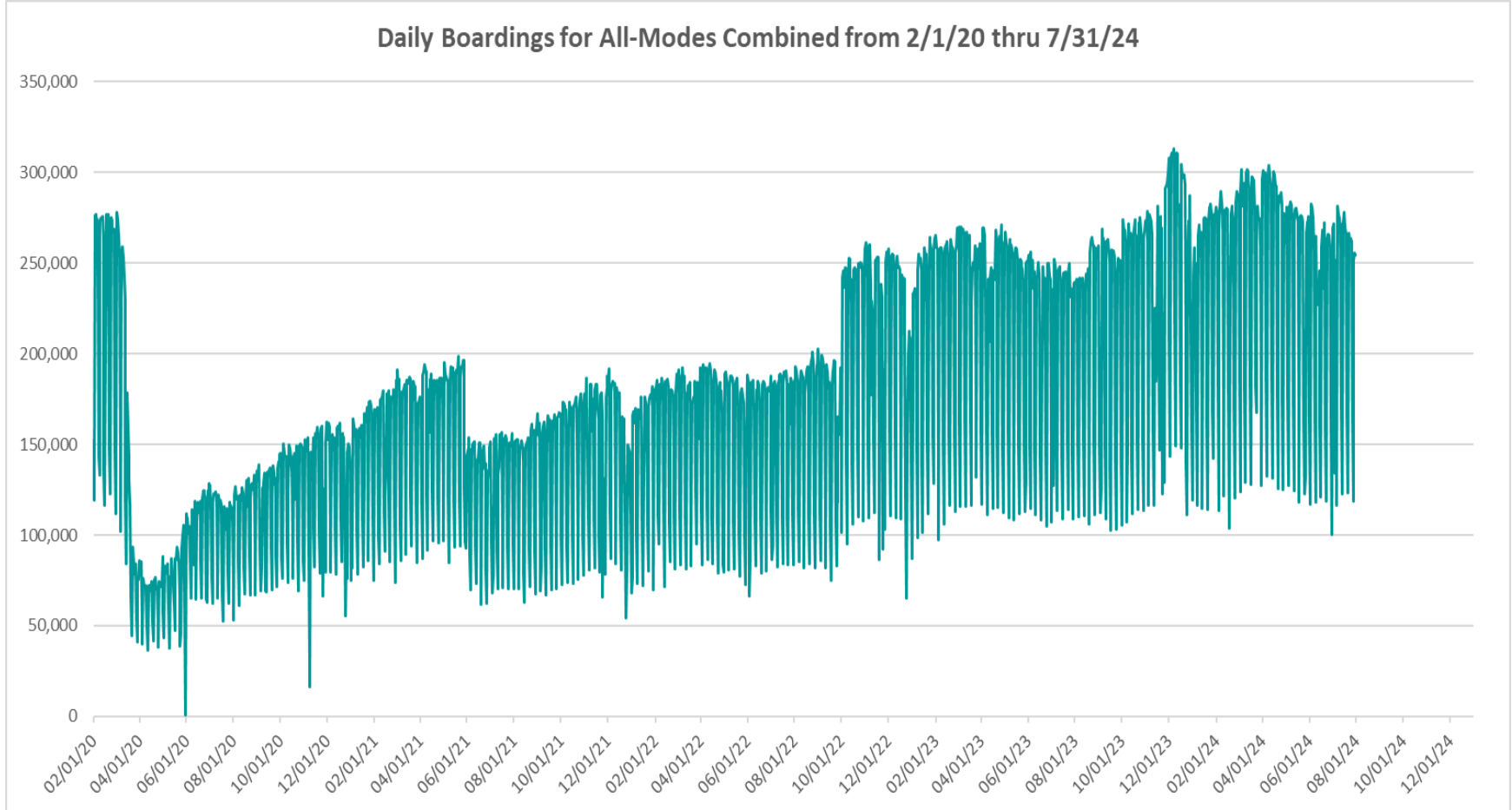
July 2022



boardings



DAILY RIDERSHIP FOR ALL MODES COMBINED SINCE FEBRUARY 1, 2020



- (1) There was no Metrobus, Metrorail and Metromover service on 5/31/20, as a safety precaution, and no service for any of the four modes on 9/28/22 as a result of Hurricane Ian..
- (2) The dip at the start of the second week of Nov-20 is due to Hurricane Eta.
- (3) Daily variations from Oct-22 onward are, for the Bus portion, a representation estimated from reports made available by the Bus APC data vendor, and finalized sampling for each month.
- (4) The reduction seen beginning 6/1/21 is partly due to the resumption of fares for bus and rail, and partly the result of having resumed reporting Cubic farebox data rather than bus APC counts, as well as Cubic rail faregate counts instead of video camera counts on that date. The jump seen at the start of Oct-22 is due to the switch to APC bus ridership counts reporting begun on 10/1/22.
- (5) The pronounced peak in Dec-23 is attributable to the Better Bus Network launch period and attendant free fares.
- (6) Periodic (weekly) variations are prominent, since weekday ridership is almost always significantly higher than weekend or holiday ridership.

Metrobus



Better Bus Network (BBN, 11/13/2023 lineup) Bus Route Changes (Pt 1)

The listings below and on the following page are to serve as an aid in identifying individual routes for comparison of ridership data between periods prior to and following the launch of the BBN on 11/13/2023. In Nov-23, both old and new route numbers appear in data tables, since the launch took place near mid-month; beginning with Dec-23, only the current (BBN) numbering system appear in tables, to allow for direct comparisons.

BBN Numbering Changes:

Contracted **Route 1** was renumbered **Route 97**

Directly operated **Route 33** was renumbered **Route 103** (new, recycled number, not the same as former **Route 103 - C**)

Directly operated **Route 51** (Flagler MAX) was renumbered **Route 211** (recycled number, not the same as the OVERTOWN CIRCULATOR)

Contracted **Route 71** was renumbered **Route 107** (new, recycled number, not the same as **Route 107 - G** further below) and became directly operated

Directly operated **Route 79** was renumbered **Route 279** (79th Steet MAX)

Directly operated **Route 93** was renumbered **Route 203** (Biscayne MAX)

Directly operated **Route 99** was renumbered **Route 199**

Contracted **Route 101 - A** was renumbered **Route 15**

Directly operated **Route 102 - B** was renumbered **Route 26** (under the BBN's first phase, 07/24/2023 lineup)

Directly operated **Route 107 - G** (old, not the same as the **Route 107** appearing above) was renumbered **Route 125**

Directly operated **Route 112 - L** was renumbered **Route 79** (recycled number, not the same as the **Route 79** appearing above)

Directly operated **Route 120** was renumbered **Route 100**

Directly operated **Route 200** (CUTLER BAY LOCAL) was renumbered **Route 500** (recycled number, not the same as the **Route 500** further below)

Contracted **Route 210** was renumbered **Route 510** (SKYLAKE CIRCULATOR)

Contracted **Route 246** was renumbered **Route 401** (NORTH OWL)

Contracted **Route 248** (Princeton Circulator) was renumbered **Route 70** (recycled number, not the same as former **Route 70**)

Directly operated **Route 252** became contractor-operated, under the new name and number **Route 152**

Directly operated **Route 500** was renumbered **Route 400** (SOUTH OWL)

The above routes, along with many others who retained their numbering, underwent modifications in various ways (realignment, new headways, days of operation, etc., some major), as part of the BBN design and its resulting lineup. Details for each DTPW Bus route are provided in the Miami-Dade County website. (Directly operated Route 2 became contractor-operated but kept its number).

Better Bus Network (BBN, 11/13/2023 lineup) Bus Route Changes (Pt 2)

BBN New Routes and Numbers:

Two new routes with new numbering were created to support the Better Bus Network:

Route 14 corresponds to a newly created route

Route 20 corresponds to a newly created route

BBN Eliminated Routes:

The following routes were discontinued, as part of the Better Bus Network realignments:

Route 10

Route 16

Route 19

Route 29

Route 31 (BUSWAY LOCAL)

Route 42

Route 46 (LIBERTY CITY CONNECTION)

Route 57

Route 82 (WESTCHESTER CIRCULATOR)

Route 103 - C (old, previously used numbering, not the same as the Route 103 in the list on the previous page)

Route 211 (OVERTOWN CIRCULATOR, previously used numbering, not the same as the Route 211 in the list on the previous page)

Route 105 - E

Route 108 - H

Route 110 - J

Route 113 - M

Route 115

Route 119 - S

Route 155 (BISCAYNE GARDENS CIRCULATOR)

Route 202 (LITTLE HAITI CONNECTION)

Route 212 (SWEETWATER CIRCULATOR)

Route 217 (BUNCHE PARK CIRCULATOR)

Route 238 (EAST-WEST CONNECTION)

Route 241 (TUTTLE LIMITED)

Route 254 (BROWNSVILLE CIRCULATOR)

Route 267 (LUDLAM LIMITED)

Route 277 (7th AVENUE MAX)

Route 286 (NORTH POINTE CIRCULATOR)

Route 297 (27th AVENUE ORANGE MAX)

Previously Eliminated Routes:

The following five express routes were suspended soon after the start of the SARS-CoV-2 pandemic, and never reinstated; their ridership appears in some of the tables in this report, as then-components of the reported bus system performance measures:

Route 175 (NW MIAMI-DADE EXPRESS)

Route 195 EXPRESS – BROWARD BLVD

Route 196 EXPRESS – BROWARD BLVD-CIVIC CENTER

Route 295 EXPRESS – SHERIDAN STREET

Route 296 EXPRESS – SHERIDAN STREET-CIVIC CENTER

The preceding listings are not exhaustive, and the reader is referred to the Miami-Dade County website for further BBN details or additional changes.

Six new MetroLink routes began running in July and August 2024 as a complement to the BBN.

METROBUS AVERAGE WEEKDAY BOARDINGS BY ROUTE (†)

Route	Average Weekday	Average Weekday	Percent Change	Average Weekday	Percent Change	Average Weekday	Percent Change	Average Weekday	Percent Change
	weekdays Jul-24	Jun-24	MOM	Oct-23	MO9M	Jul-23	YOY	Feb-20	Current vs Feb-20
2	2,334	2,076	12.4%	2,977	-21.6%	2,614	-10.7%	3,102	-24.8%
3	8,621	8,012	7.6%	5,416	59.2%	5,428	58.8%	5,137	67.8%
7	3,369	3,547	-5.0%	4,021	-16.2%	3,604	-6.5%	3,501	-3.8%
8	4,702	4,773	-1.5%	4,650	1.1%	4,438	6.0%	3,909	20.3%
9	12,030	11,386	5.7%	6,490	85.4%	6,040	99.2%	5,528	117.6%
10				2,443		2,321		2,482	
11	11,035	10,899	1.3%	9,621	14.7%	8,427	30.9%	7,292	51.3%
12	2,797	2,699	3.6%	2,891	-3.3%	2,626	6.5%	2,779	0.6%
14	968	916	5.7%						
15	548	539	1.7%	178	208.5%	174	215.5%	177	209.7%
16				2,009		1,880		1,862	
17	7,271	6,673	9.0%	4,133	75.9%	3,585	102.8%	3,878	87.5%
19				1,807		1,551		1,542	
20	4,107	3,765	9.1%						
21	2,139	2,134	0.2%	2,107	1.5%	1,849	15.7%	1,817	17.7%
22	2,315	2,308	0.3%	4,502	-48.6%	3,966	-41.6%	3,640	-36.4%
24-CORAL WAY LIMITED	2,204	2,186	0.8%	2,195	0.4%	2,142	2.9%	1,340	64.5%
26	2,072	2,140	-3.2%	1,877	10.4%	1,949	6.3%	1,778	16.6%
27	9,558	9,618	-0.6%	7,110	34.4%	6,638	44.0%	6,972	37.1%
29				516		485		534	
31-BUSWAY LOCAL						1,026		1,089	
32	1,752	1,802	-2.8%	2,699	-35.1%	2,457	-28.7%	2,390	-26.7%
34 TRANSITWAY EXPRESS	1,640	1,720	-4.6%	1,636	0.2%	1,378	19.1%	2,008	-18.3%
35	2,176	2,263	-3.9%	3,070	-29.1%	2,468	-11.9%	2,421	-10.1%
36	6,666	6,133	8.7%	2,645	152.0%	2,553	161.1%	2,536	162.9%
37	4,623	4,520	2.3%	3,475	33.0%	3,322	39.2%	3,273	41.2%
38 TRANSITWAY MAX	6,951	6,911	0.6%	5,714	21.6%	6,376	9.0%	6,361	9.3%
39 TRANSITWAY EXPRESS	706	730	-3.2%	742	-4.9%	423	67.0%	893	-20.9%
40	1,755	1,807	-2.9%	2,344	-25.1%	2,233	-21.4%	1,772	-0.9%
42				1,001		949		820	
46 - LIBERTY CITY CONN.				22		14		41	
52	1,519	1,555	-2.3%	1,390	9.2%	1,228	23.7%	1,261	20.4%
54	2,930	2,783	5.3%	3,086	-5.0%	2,963	-1.1%	2,940	-0.4%
56	495	531	-6.8%	391	26.6%	328	50.7%	354	39.9%
57				522		503		433	
62	2,998	2,838	5.6%	2,496	20.1%	1,894	58.3%	1,815	65.1%
70	269	269	-0.1%	161	66.6%	105	155.2%	135	99.7%

(†) In this table and those which follow, "YOY" stands for "year-over-year", "MOM" for "month-over-month" and, e.g., "MOZM" for "month over Z months", i.e., current month vs 12 months prior, one month prior, and compared to pre-BBN, respectively. The Feb-20 numbers serve as a pre-pandemic benchmark. To see which routes are fully or partly operated under contract this month, please refer to the ranking table further in the Metrobus portion of this document.

METROBUS AVERAGE WEEKDAY BOARDINGS BY ROUTE

Route	Average Weekday	Average Weekday	Percent Change	Average Weekday	Percent Change	Average Weekday	Percent Change	Average Weekday	Percent Change
	weekdays Jul-24	Jun-24	MOM	Oct-23	MO9M	Jul-23	YOY	Feb-20	Current vs Feb-20
72	841	828	1.6%	670	25.5%	626	34.4%	781	7.6%
73	1,291	1,361	-5.2%	2,868	-55.0%	2,760	-53.2%	2,124	-39.2%
75	3,135	3,128	0.2%	1,594	96.7%	1,157	170.9%	1,429	119.5%
77	12,347	11,448	7.9%	9,959	24.0%	8,670	42.4%	7,129	73.2%
79	8,750	8,651	1.1%	8,481	3.2%	8,375	4.5%	7,636	14.6%
82 - WESTCHESTER CIRC				61		70		62	
87	2,146	2,177	-1.4%	1,924	11.6%	1,791	19.8%	1,499	43.1%
88	1,794	1,815	-1.2%	2,419	-25.9%	2,207	-18.7%	2,076	-13.6%
95-EXPRESS GOLDEN GLADES	1,296	1,261	2.8%	1,195	8.5%	1,213	6.8%	1,690	-23.3%
97	198	184	7.7%	225	-11.6%	188	5.4%	184	7.9%
100	17,119	16,084	6.4%	6,128	179.4%	6,160	177.9%	6,667	156.8%
103 - C								463	
103	2,001	2,074	-3.5%	1,967	1.7%	1,717	16.5%	1,687	18.6%
104	1,068	1,116	-4.3%	1,024	4.3%	858	24.5%	837	27.6%
105 - E				1,402		1,333		1,287	
107	1,937	1,984	-2.4%	825	134.7%	643	201.0%	711	172.6%
108 - H				487		579		473	
110 - J				2,955		3,025		2,508	
113 - M				887		928		866	
115				151		142		180	
119 - S				9,588		9,395		8,970	
125	4,897	4,622	5.9%	2,099	133.3%	1,905	157.1%	1,713	185.8%
132 - TRI-RAIL DORAL SHUTTLE	43	41	4.7%	37	18.7%	41	6.8%	16	178.0%
135	2,200	1,888	16.5%	1,755	25.3%	1,383	59.0%	1,399	57.2%
136	146	152	-4.3%	162	-10.0%	146	-0.5%	126	15.4%
137-WEST DADE CONNECTION	2,277	2,300	-1.0%	2,119	7.4%	2,008	13.4%	1,626	40.0%
150-MIAMI BEACH AIRPORT EXPRESS	1,525	1,433	6.4%	2,149	-29.1%	2,172	-29.8%	1,867	-18.3%
152	375	366	2.3%	1,051	-64.4%	923	-59.4%	851	-56.0%
155 - BISCAYNE GARDENS CIRC				45		48		44	
175 - NW MIAMI-DADE EXPRESS								33	
183	4,841	4,776	1.4%	3,653	32.5%	3,213	50.7%	3,149	53.8%
195 EXPRESS - BROWARD BLVD								372	
196 EXPRESS - SHERIDAN ST								383	
199	1,925	1,928	-0.2%	1,899	1.4%	1,704	13.0%	1,473	30.7%
202 - LITTLE HAITI CONN				110		99		140	
203 - BISCAYNE MAX	1,154	978	18.0%	3,666	-68.5%	3,427	-66.3%	3,334	-65.4%

METROBUS AVERAGE WEEKDAY BOARDINGS BY ROUTE

Route	Average Weekday	Average Weekday	Percent Change	Average Weekday	Percent Change	Average Weekday	Percent Change	Average Weekday	Percent Change
	weekdays Jul-24	Jun-24	MOM	Oct-23	MO9M	Jul-23	YOY	Feb-20	Current vs Feb-20
204 KILLIAN MAX	562	549	2.4%	620	-9.3%	655	-14.2%	1,071	-47.5%
207 (7th St)-LITTLE HAVANA CONN	1,486	1,573	-5.6%	1,819	-18.3%	1,672	-11.1%	1,489	-0.2%
208 (8th St)-LITTLE HAVANA CONN	1,520	1,551	-2.0%	1,659	-8.4%	1,540	-1.3%	1,308	16.2%
211 OVERTOWN CIRCULATOR				71		66		58	
211 - FLAGLER MAX	1,428	1,496	-4.6%	3,824	-62.7%	3,564	-59.9%	3,109	-54.1%
212-SWEETWATER CIRC				22		23		15	
217 - BUNCHE PARK CIRC				80		55		97	
238-EAST/WEST CONN				593		585		449	
241 TUTTLE LIMITED				348		290			
254-BROWNSVILLE CIRC				5		6		19	
267-LUDLAM LIMITED				162		171		149	
272 SUNSET MAX (*)	354	358	-1.1%	428	-17.4%	393	-10.0%	550	-35.7%
277-7TH AVENUE MAX				879		719		683	
279 - 79 STREET MAX	813	756	7.6%	469	73.4%	475	71.3%	361	125.0%
286-NORTH POINTE CIRC				93		61		97	
287-SAGA BAY MAX	347	351	-1.2%	341	1.8%	303	14.4%	358	-3.1%
288 KENDALL MAX	451	439	2.8%	372	21.3%	418	8.0%	762	-40.8%
295								233	
296								215	
297-27th AVENUE ORANGE MAX				1,229		1,099		1,356	
301-DADE MONROE EXPRESS	1,015	1,019	-0.4%	955	6.2%	1,004	1.1%	841	20.6%
302-CARD SOUND EXPRESS	105	105	0.7%	91	16.2%	88	19.3%	86	22.1%
338 - WEEKEND EXPRESS									
344	116	118	-1.6%	76	53.1%	68	70.6%	96	20.8%
400 - SOUTH OWL	90	76	18.7%	71	27.5%	72	24.7%	81	11.5%
401 - NORTH OWL	81	68	19.2%	61	33.1%	50	62.3%	94	-13.7%
500 - CUTLER BAY LOCAL	254	251	1.2%	176	44.6%	183	39.2%	158	61.2%
510 - SKYLAKE CIRCULATOR (*)	441	436	1.2%	471	-6.4%	359	22.8%	282	56.7%
836 EXPRESS	322	314	2.6%	247	30.7%	337	-4.2%		
837 EXPRESS	193	193	-0.1%	195	-0.9%	144	33.9%		
MetroLink NoMi West	74								
MetroLink LeJeune	38								
MetroLink Opa-Locka	6								
AHEPA SHUTTLE	21	20	4.6%	18	16.4%	14	50.3%	21	-0.4%
FEDERATION GARDENS SHUTTLE									
GREEN HILLS SHUTTLE	8	8	2.5%	5	57.7%	7	20.6%	9	-8.9%
KINGS CREEK SHUTTLE	10	9	14.3%	14	-27.3%	9	11.1%	13	-23.1%
ROBERT SHARP SHUTTLE	36	30	20.7%	23	57.4%	22	62.7%	10	281.1%
SIERRA LAKES SHUTTLE	22	17	24.6%	16	38.7%	15	48.3%	45	-52.2%
Total	193,645	187,867	3.1%	185,320	4.5%	173,312	11.7%	167,711	15.5%

(1) Includes shuttles and other routes which were not run some years.

(2) Several express routes were suspended beginning at the end of Mar-20, due to the SARS-CoV-2 pandemic, while other routes had alignment and schedule modifications made to them, in an ongoing effort to optimize service delivery.

METROBUS AVERAGE SATURDAY BOARDINGS BY ROUTE

Route	Average Saturday	Average Saturday	Percent Change	Average Saturday	Percent Change	Average Saturday	Percent Change	Average Saturday	Percent Change
	Jul-24	Jun-24	MOM	Oct-23	MO9M	Jul-23	YOY	Feb-20	Current vs Feb-20
Saturdays									
2	1,173	1,125	4.3%	1,605	-26.9%	1,564	-25.0%	1,616	-27.4%
3	6,783	6,781	0.0%	5,754	17.9%	6,374	6.4%	5,229	29.7%
7	2,063	2,028	1.7%	1,972	4.6%	2,165	-4.7%	1,887	9.3%
8	2,435	2,304	5.7%	2,334	4.3%	2,498	-2.5%	2,027	20.1%
9	7,779	7,441	4.5%	3,677	111.5%	3,748	107.5%	3,034	156.4%
10				2,107		2,105		1,896	
11	7,945	8,050	-1.3%	5,787	37.3%	6,221	27.7%	5,182	53.3%
14	837	777	7.8%						
15	294	343	-14.3%	93	215.0%	43	583.1%	71	314.9%
16				1,662		1,680		1,566	
17	5,266	4,712	11.8%	2,553	106.3%	2,483	112.1%	2,363	122.8%
20	2,950	2,899	1.7%						
22	1,432	1,458	-1.8%	2,425	-41.0%	2,398	-40.3%	2,084	-31.3%
24-CORAL WAY LIMITED	1,590	1,644	-3.3%	1,400	13.6%	1,474	7.9%	1,165	36.4%
26	1,146	1,163	-1.5%	966	18.6%	988	16.0%	851	34.6%
27	6,704	6,568	2.1%	4,006	67.4%	4,235	58.3%	4,034	66.2%
31-BUSWAY LOCAL						910		896	
32	1,165	1,100	6.0%	1,261	-7.6%	1,193	-2.3%	1,029	13.3%
35	1,707	1,660	2.8%	1,540	10.8%	1,501	13.7%	1,372	24.4%
36	4,922	4,566	7.8%	1,677	193.6%	1,617	204.3%	1,289	281.7%
37	2,951	3,017	-2.2%	2,062	43.1%	2,171	35.9%	2,090	41.1%
38 TRANSITWAY MAX	6,063	5,804	4.5%	6,328	-4.2%	4,998	21.3%	4,715	28.6%
40	989	1,054	-6.1%	926	6.8%	885	11.8%	655	51.1%
42				617		628		552	
52	1,036	1,040	-0.3%	694	49.4%	738	40.3%	686	51.1%
54	1,930	1,812	6.5%	1,925	0.3%	1,968	-1.9%	1,727	11.8%
56	185	210	-12.2%						
62	2,233	1,902	17.4%	1,823	22.5%	1,520	46.9%	1,343	66.2%
70	205	210	-2.2%						
72	485	500	-3.1%	357	35.9%	390	24.2%	350	38.6%
73	561	547	2.4%	1,202	-53.3%	1,314	-57.3%	860	-34.8%
75	2,101	1,934	8.6%	550	282.0%	479	338.6%	468	348.9%
77	7,489	7,504	-0.2%	5,510	35.9%	5,485	36.5%	4,197	78.4%
79	7,063	7,348	-3.9%	7,094	-0.4%	7,112	-0.7%	5,667	24.6%
82 - WESTCHESTER CIRC				38		40		50	

METROBUS AVERAGE SATURDAY BOARDINGS BY ROUTE

Route	Average Saturday	Average Saturday	Percent Change	Average Saturday	Percent Change	Average Saturday	Percent Change	Average Saturday	Percent Change
Saturdays	Jul-24	Jun-24	MOM	Oct-23	MO9M	Jul-23	YOY	Feb-20	Current vs Feb-20
87	926	931	-0.5%	532	74.2%	596	55.4%	402	130.1%
88	1,523	1,430	6.5%	1,661	-8.3%	1,785	-14.7%	1,620	-6.0%
97	156	162	-4.1%	163	-4.6%	152	2.7%	215	-27.6%
100	15,828	14,403	9.9%	5,637	180.8%	5,998	163.9%	4,744	233.7%
103 - C								315	
103	1,194	1,331	-10.3%	1,239	-3.7%	1,167	2.3%	951	25.6%
104	841	790	6.5%	445	89.3%	497	69.4%	468	79.6%
105 - E								619	
107	1,388	1,241	11.8%	238	484.2%	254	445.8%	252	451.0%
108 - H								372	
110 - J				1,394		2,323		1,952	
113 - M								503	
115								97	
119 - S				8,118		8,351		6,861	
125	3,038	2,780	9.3%	1,297	134.3%	1,323	129.6%	1,066	184.9%
135	868	862	0.8%	556	56.2%	509	70.6%	539	61.2%
137-WEST DADE CONNECTION	1,611	1,486	8.4%	1,337	20.6%	1,451	11.0%	1,027	56.9%
150-MIAMI BEACH AIRPORT EXPRESS	1,310	1,412	-7.2%	2,161	-39.4%	2,043	-35.9%	1,604	-18.3%
152	240	238	0.9%	375	-36.0%	426	-43.7%	302	-20.5%
183	3,352	3,043	10.2%	1,960	71.1%	2,101	59.6%	1,790	87.3%
199	1,372	1,375	-0.3%	1,106	24.0%	1,062	29.1%	849	61.6%
202 - LITTLE HAITI CONN								50	
207 (7th St)-LITTLE HAVANA CONN	782	690	13.4%	929	-15.8%	883	-11.4%	1,032	-24.2%
208 (8th St)-LITTLE HAVANA CONN	1,023	938	9.0%	1,030	-0.7%	1,043	-1.9%	1,044	-2.0%
241 TUTTLE LIMITED								185	
286-NORTH POINTE CIRC								39	
301-DADE MONROE EXPRESS	943	960	-1.8%	885	6.5%	909	3.7%	801	17.7%
302-CARD SOUND EXPRESS	87	113	-22.8%	94	-7.2%	103	-15.0%	57	54.2%
338 - WEEKEND EXPRESS	203	157	28.8%	259	-21.8%	266	-23.8%	237	-14.3%
344	88	76	15.5%						
400 - SOUTH OWL	65	95	-31.5%	104	-37.1%	128	-49.0%	70	-6.8%
401 - NORTH OWL	77	55	39.6%	61	26.4%	62	23.4%	84	-9.4%
500 - CUTLER BAY LOCAL	219	221	-0.7%	152	44.3%	171	28.1%	119	83.7%
510 - SKYLAKE CIRCULATOR (*)	204	272	-24.9%	217	-6.0%	158	29.4%	165	23.8%
12/21 WEEKEND INTERLINE	2,740	2,774	-1.2%	3,290	-16.7%	2,977	-8.0%	2,528	8.4%
FEDERATION GARDENS SHUTTLE	35	33	3.3%	20	72.5%	27	30.2%	28	21.5%
Total	129,589	125,369	3.4%	107,331	20.7%	109,781	18.0%	93,742	38.2%

METROBUS AVERAGE SUNDAY BOARDINGS BY ROUTE

Route	Average Sunday	Average Sunday	Percent Change	Average Sunday	Percent Change	Average Sunday	Percent Change	Average Sunday	Percent Change
	Jul-24	Jun-24	MOM	Oct-23	MO9M	Jul-23	YOY	Feb-20	Current vs Feb-20
Sundays									
2	831	717	16.0%	1,214	-31.5%	1,108	-25.0%	1,335	-37.7%
3	5,212	4,755	9.6%	4,408	18.2%	4,696	11.0%	4,353	19.8%
7	1,515	1,345	12.6%	1,632	-7.2%	1,595	-5.0%	1,654	-8.4%
8	1,642	1,472	11.6%	1,838	-10.6%	1,916	-14.3%	1,746	-5.9%
9	5,295	4,980	6.3%	2,756	92.1%	2,870	84.5%	2,549	107.7%
10				1,632		1,564		1,441	
11	5,629	4,940	13.9%	3,803	48.0%	4,224	33.3%	3,917	43.7%
14	909	775	17.2%						
15	268	226	18.6%	53	405.7%	44	506.8%	56	382.9%
16				1,023		1,056		997	
17	3,099	3,036	2.1%	1,920	61.4%	1,820	70.2%	1,833	69.1%
20	2,273	2,051	10.8%						
22	1,099	1,062	3.6%	1,915	-42.6%	1,864	-41.0%	1,548	-29.0%
24-CORAL WAY LIMITED	1,146	1,043	9.9%	1,108	3.4%	1,119	2.4%	905	26.7%
26	931	855	8.8%	871	6.9%	834	11.6%	717	29.9%
27	4,211	3,868	8.9%	3,146	33.9%	3,037	38.6%	2,918	44.3%
31-BUSWAY LOCAL				0		831		715	
32	788	812	-2.9%	768	2.6%	699	12.7%	772	2.1%
35	1,320	1,367	-3.4%	1,175	12.3%	1,252	5.4%	942	40.2%
36	3,629	3,215	12.9%	1,160	212.7%	1,155	214.1%	1,111	226.8%
37	2,268	2,099	8.1%	1,755	29.3%	1,696	33.8%	1,739	30.4%
38 TRANSITWAY MAX	4,523	4,502	0.5%	4,957	-8.8%	4,801	-5.8%	4,147	9.1%
40	714	652	9.6%	542	31.7%	604	18.3%	447	59.7%
42				425		522		416	
52	829	827	0.3%	496	67.0%	572	44.9%	466	77.8%
54	1,209	1,146	5.5%	1,181	2.4%	1,261	-4.1%	1,171	3.3%
62	1,329	1,196	11.1%	1,040	27.8%	982	35.3%	891	49.2%
70	166	164	1.2%						
72	420	388	8.1%	259	61.9%	268	56.8%	265	58.6%
73	247	208	18.8%	602	-59.0%	639	-61.4%	495	-50.1%
75	1,385	1,311	5.7%	352	293.9%	337	310.8%	271	411.5%
77	5,497	4,936	11.4%	3,980	38.1%	3,776	45.6%	2,815	95.3%
79	4,989	4,697	6.2%	4,837	3.1%	5,153	-3.2%	4,804	3.9%

METROBUS AVERAGE SUNDAY BOARDINGS BY ROUTE

Route	Average Sunday	Average Sunday	Percent Change	Average Sunday	Percent Change	Average Sunday	Percent Change	Average Sunday	Percent Change
	Jul-24	Jun-24	MOM	Oct-23	MO9M	Jul-23	YOY	Feb-20	Current vs Feb-20
Sundays									
87	566	528	7.0%	362	56.3%	369	53.3%	319	77.3%
88	1,102	1,001	10.0%	1,255	-12.2%	1,294	-14.8%	1,286	-14.3%
97	141	132	6.4%	149	-5.5%	143	-1.8%	201	-30.0%
100	9,404	9,026	4.2%	3,492	169.3%	3,692	154.7%	3,469	171.1%
103 - C								212	
103	807	783	3.1%	729	10.8%	676	19.4%	607	33.0%
104	549	546	0.6%	348	58.0%	369	49.1%	317	73.3%
105 - E								616	
107	1,117	962	16.1%	187	497.4%	134	735.8%	162	589.6%
108 - H								328	
110 - J				1,699		1,721		1,638	
113 - M								431	
115								80	
119 - S				7,612		7,982		7,141	
125	1,974	1,793	10.1%	1,036	90.6%	1,051	87.8%	895	120.5%
135	687	654	5.0%	474	44.9%	387	77.6%	349	96.6%
137-WEST DADE CONNECTION	1,048	967	8.4%	956	9.7%	999	5.0%	879	19.2%
150-MIAMI BEACH AIRPORT EXPRESS	1,299	1,184	9.7%	1,966	-33.9%	1,900	-31.6%	1,574	-17.4%
152	147	139	5.6%	331	-55.6%	313	-53.0%	199	-26.0%
183	2,211	2,000	10.5%	1,569	40.9%	1,625	36.1%	1,413	56.5%
199	1,038	990	4.8%	887	17.0%	854	21.5%	658	57.7%
202 - LITTLE HAITI CONN				21		27		39	
207 (7th St)-LITTLE HAVANA CONN	584	477	22.4%	648	-9.9%	687	-15.1%	796	-26.7%
208 (8th St)-LITTLE HAVANA CONN	780	742	5.2%	862	-9.4%	820	-4.8%	911	-14.4%
241 TUTTLE LIMITED				187		177			
301-DADE MONROE EXPRESS	916	950	-3.6%	867	5.7%	879	4.2%	751	21.9%
302-CARD SOUND EXPRESS	93	93	0.0%	72	30.2%	81	14.6%	57	63.5%
338 - WEEKEND EXPRESS	172	177	-2.9%	247	-30.6%	207	-17.0%	252	-31.8%
400 - SOUTH OWL	82	91	-10.1%	70	17.4%	59	38.9%	83	-0.7%
401 - NORTH OWL	85	65	30.8%	65	31.6%	58	46.1%	87	-2.3%
500 - CUTLER BAY LOCAL	81	100	-18.8%	86	-5.8%	54	50.4%	59	38.8%
510 - SKYLAKE CIRCULATOR (*)	234	210	11.7%	194	20.6%	162	44.6%	143	63.8%
12/21 WEEKEND INTERLINE	2,332	2,182	6.9%	2,700	-13.6%	2,361	-1.2%	2,048	13.9%
Total	90,823	84,439	7.6%	81,427	11.5%	82,956	9.5%	75,428	20.4%

METROBUS TOTAL MONTHLY BOARDINGS BY ROUTE

Route	Total Month	Total Month	Percent Change	Total Month	Percent Change	Total Month	Percent Change	Total Month	Percent Change
	Jul-24	Jun-24	MOM	Oct-23	MO9M	Jul-23	YOY	Feb-20	Current vs Feb-20
total month									
2	60,189	50,727	18.7%	77,976	-22.8%	66,746	-9.8%	75,463	-20.2%
3	242,849	217,925	11.4%	164,203	47.9%	168,603	44.0%	146,294	66.0%
7	89,947	87,802	2.4%	104,507	-13.9%	92,469	-2.7%	86,077	4.5%
8	121,403	114,338	6.2%	120,821	0.5%	112,740	7.7%	95,295	27.4%
9	322,252	289,825	11.2%	171,265	88.2%	156,758	105.6%	135,924	137.1%
10				70,338		66,328		64,874	
11	302,691	282,921	7.0%	253,837	19.2%	224,992	34.5%	187,425	61.5%
12	61,535	53,975	14.0%	63,603	-3.3%	52,517	17.2%	55,585	10.7%
14	29,196	26,088	11.9%						
15	14,569	13,616	7.0%	4,545	220.6%	3,953	268.6%	4,114	254.1%
16				55,959		52,333		49,061	
17	196,512	172,193	14.1%	110,727	77.5%	95,036	106.8%	96,715	103.2%
19				39,745		31,028		30,847	
20	113,515	100,057	13.5%						
21	47,060	42,685	10.2%	46,355	1.5%	36,986	27.2%	36,341	29.5%
22	62,148	58,755	5.8%	118,329	-47.5%	102,503	-39.4%	89,404	-30.5%
24-CORAL WAY LIMITED	60,569	57,159	6.0%	59,432	1.9%	56,923	6.4%	36,237	67.1%
26	54,830	52,893	3.7%	49,521	10.7%	35,413	54.8%	42,683	28.5%
27	258,151	244,547	5.6%	188,160	37.2%	172,159	49.9%	171,282	50.7%
29				11,342		9,699		10,684	
31-BUSWAY LOCAL						22,162		29,125	
32	47,144	45,600	3.4%	68,263	-30.9%	59,295	-20.5%	56,027	-15.9%
34 TRANSITWAY EXPRESS	36,086	34,400	4.9%	36,002	0.2%	27,556	31.0%	40,159	-10.1%
35	61,292	60,390	1.5%	79,573	-23.0%	64,383	-4.8%	59,041	3.8%
36	184,481	161,570	14.2%	70,698	160.9%	66,074	179.2%	61,606	199.5%
37	124,844	115,987	7.6%	93,471	33.6%	87,471	42.7%	82,870	50.7%
38 TRANSITWAY MAX	199,784	189,752	5.3%	175,803	13.6%	181,322	10.2%	167,379	19.4%
39 TRANSITWAY EXPRESS	15,535	14,591	6.5%	16,333	-4.9%	2,537	512.3%	17,853	-13.0%
40	46,139	44,675	3.3%	57,992	-20.4%	52,712	-12.5%	40,497	13.9%
42				26,611		25,254		20,825	
46 - LIBERTY CITY CONN.				477		286		814	
52	41,699	40,426	3.1%	35,844	16.3%	31,682	31.6%	30,522	36.6%
54	78,223	70,458	11.0%	81,490	-4.0%	76,668	2.0%	72,125	8.5%
56	11,622	11,673	-0.4%	8,598	35.2%	6,564	77.1%	7,071	64.4%
57				11,491		10,068		8,665	
62	81,522	72,252	12.8%	67,398	21.0%	51,365	58.7%	46,582	75.0%
70	7,562	7,250	4.3%	3,546	113.3%	2,105	259.2%	2,690	181.1%

METROBUS TOTAL MONTHLY BOARDINGS BY ROUTE

Route	Total Month	Total Month	Percent Change	Total Month	Percent Change	Total Month	Percent Change	Total Month	Percent Change
total month	Jul-24	Jun-24	MOM	Oct-23	MO9M	Jul-23	YOY	Feb-20	Current vs Feb-20
72	22,535	20,997	7.3%	17,459	29.1%	16,070	40.2%	18,433	22.3%
73	31,877	31,000	2.8%	70,903	-55.0%	65,613	-51.4%	48,767	-34.6%
75	84,302	78,793	7.0%	39,021	116.0%	27,565	205.8%	31,994	163.5%
77	329,070	291,152	13.0%	261,039	26.1%	223,471	47.3%	174,833	88.2%
79	245,695	233,253	5.3%	239,146	2.7%	233,982	5.0%	200,268	22.7%
82 - WESTCHESTER CIRC				1,488		1,589		1,482	
87	53,746	50,843	5.7%	46,254	16.2%	41,019	31.0%	33,273	61.5%
88	51,056	48,454	5.4%	66,138	-22.8%	60,825	-16.1%	54,772	-6.8%
95-EXPRESS GOLDEN GLADES	28,522	25,228	13.1%	26,295	8.5%	24,267	17.5%	33,796	-15.6%
97	5,692	5,160	10.3%	6,337	-10.2%	5,383	5.7%	5,558	2.4%
100	486,936	438,828	11.0%	174,819	178.5%	175,330	177.7%	170,942	184.9%
103 - C								11,682	
103	52,831	52,052	1.5%	51,871	1.9%	44,234	19.4%	40,918	29.1%
104	29,603	29,005	2.1%	26,049	13.6%	21,848	35.5%	20,351	45.5%
105 - E				37,092		34,399		31,302	
107	53,746	50,698	6.0%	20,040	168.2%	14,941	259.7%	16,118	233.5%
108 - H				14,133		15,905		12,624	
110 - J				79,080		82,444		66,481	
113 - M				24,040		24,376		21,548	
115				3,968		3,693		4,334	
119 - S				281,456		277,543		242,257	
125	129,761	115,307	12.5%	56,547	129.5%	51,022	154.3%	43,178	200.5%
132 -TRI-RAIL DORAL SHUTTLE	954	828	15.2%	804	18.7%	812	17.5%	312	205.8%
135	55,298	45,337	22.0%	43,211	28.0%	32,533	70.0%	32,067	72.4%
136	3,203	3,042	5.3%	3,557	-10.0%	2,927	9.4%	2,524	26.9%
137-WEST DADE CONNECTION	61,778	58,261	6.0%	56,750	8.9%	53,407	15.7%	41,167	50.1%
150-MIAMI BEACH AIRPORT EXPRESS	45,281	41,643	8.7%	65,763	-31.1%	65,058	-30.4%	51,651	-12.3%
152	9,934	9,204	7.9%	26,285	-62.2%	22,468	-55.8%	19,325	-48.6%
155 - BISCAYNE GARDENS CIRC				985		956		881	
175 - NW MIAMI-DADE EXPRESS								661	
183	130,970	120,745	8.5%	96,050	36.4%	84,512	55.0%	77,570	68.8%
195 EXPRESS - BROWARD BLVD								7,441	
196 EXPRESS - SHERIDAN ST								7,658	
199	53,027	50,397	5.2%	50,634	4.7%	44,514	19.1%	36,325	46.0%
202 - LITTLE HAITI CONN				2,620		2,265		3,200	
203 - BISCAYNE MAX	25,384	19,560	29.8%	80,650	-68.5%	68,548	-63.0%	66,684	-61.9%

METROBUS TOTAL MONTHLY BOARDINGS BY ROUTE

Route	Total Month	Total Month	Percent Change	Total Month	Percent Change	Total Month	Percent Change	Total Month	Percent Change
	Jul-24	Jun-24	MOM	Oct-23	MO9M	Jul-23	YOY	Feb-20	Current vs Feb-20
total month									
204 KILLIAN MAX	12,360	10,975	12.6%	13,632	-9.3%	13,090	-5.6%	21,418	-42.3%
207 (7th St)-LITTLE HAVANA CONN	38,729	37,291	3.9%	46,970	-17.5%	41,977	-7.7%	38,127	1.6%
208 (8th St)-LITTLE HAVANA CONN	41,430	39,411	5.1%	44,922	-7.8%	40,933	1.2%	35,018	18.3%
211 OVERTOWN CIRCULATOR				1,567		1,325		1,159	
211 - FLAGLER MAX	31,406	29,921	5.0%	84,135	-62.7%	71,275	-55.9%	62,186	-49.5%
212-SWEETWATER CIRC				494		452		295	
217 - BUNCHE PARK CIRC				1,759		1,105		1,949	
238-EAST/WEST CONN				13,036		11,701		8,987	
241 TUTTLE LIMITED				9,471		7,794			
254-BROWNSVILLE CIRC				105		115		384	
267-LUDLAM LIMITED				3,567		3,427		2,978	
272 SUNSET MAX (*)	7,779	7,153	8.8%	9,423	-17.4%	7,856	-1.0%	11,004	-29.3%
277-7TH AVENUE MAX				19,345		14,383		13,669	
279 - 79 STREET MAX	17,893	15,111	18.4%	10,318	73.4%	9,494	88.5%	7,228	147.6%
286-NORTH POINTE CIRC				2,279		1,407		2,145	
287-SAGA BAY MAX	7,632	7,022	8.7%	7,499	1.8%	6,067	25.8%	7,160	6.6%
288 KENDALL MAX	9,931	8,781	13.1%	8,189	21.3%	8,363	18.7%	15,249	-34.9%
295								4,668	
296								4,297	
297-27th AVENUE ORANGE MAX				27,047		21,986		27,125	
301-DADE MONROE EXPRESS	30,677	29,933	2.5%	28,889	6.2%	29,890	2.6%	23,838	28.7%
302-CARD SOUND EXPRESS	3,132	3,123	0.3%	2,728	14.8%	2,767	13.2%	2,236	40.1%
338 - WEEKEND EXPRESS	1,670	1,672	-0.1%	2,274	-26.6%	2,573	-35.1%	2,191	-23.8%
344	2,902	2,738	6.0%	1,666	74.2%	1,359	113.5%	1,919	51.2%
400 - SOUTH OWL	2,659	2,455	8.3%	2,324	14.4%	2,443	8.8%	2,301	15.6%
401 - NORTH OWL	2,507	1,953	28.4%	1,899	32.0%	1,654	51.6%	2,641	-5.1%
500 - CUTLER BAY LOCAL	6,876	6,629	3.7%	4,907	40.1%	4,832	42.3%	3,984	72.6%
510 - SKYLAKE CIRCULATOR (*)	11,700	11,130	5.1%	12,211	-4.2%	8,949	30.7%	7,033	66.4%
836 EXPRESS	7,093	6,284	12.9%	5,428	30.7%	6,733	5.3%		
837 EXPRESS	4,242	3,860	9.9%	4,281	-0.9%	2,879	47.3%		
MetroLink NoMi West	1,633								
MetroLink LeJeune	832								
MetroLink Opa-Locka	113								
12/21 WEEKEND INTERLINE	22,620	24,778	-8.7%	26,661	-15.2%	29,051	-22.1%	20,830	8.6%
AHEPA SHUTTLE	62	79	-21.5%	71	-12.7%	55	12.7%	83	-25.3%
FEDERATION GARDENS SHUTTLE	138	167	-17.4%	80	72.5%	106	30.2%	142	-2.8%
GREEN HILLS SHUTTLE	41	32	28.1%	26	57.7%	34	20.6%	36	13.9%
KINGS CREEK SHUTTLE	20	35	-42.9%	55	-63.6%	27	-25.9%	52	-61.5%
ROBERT SHARP SHUTTLE	181	120	50.8%	92	96.7%	89	103.4%	38	376.3%
SIERRA LAKES SHUTTLE	86	69	24.6%	62	38.7%	58	48.3%	180	-52.2%
Total	5,230,894	4,805,039	8.9%	4,912,151	6.5%	4,484,458	16.6%	4,123,083	26.9%

BUS RIDERSHIP BY ROUTE SERVICE TYPE LINEUPS COMPARISON (MONTH-OVER-MONTH)

Boardings by Service Type and Route	Average Weekday	Average Weekday	Percent Change	Average Saturday	Average Saturday	Percent Change	Average Sunday	Average Sunday	Percent Change	Total Monthly	Total Monthly	Percent Change
	Jul-24	Jun-24	24 vs 23	Jul-24	Jun-24	24 vs 23	Jul-24	Jun-24	24 vs 23	Jul-24	Jun-24	24 vs 23
Directly Operated Express Routes												
34 TRANSITWAY EXPRESS	1,640	1,720	-4.6%							36,086	34,400	4.9%
39 TRANSITWAY EXPRESS	706	730	-3.2%							15,535	14,591	6.5%
95-EXPRESS GOLDEN GLADES	1,296	1,261	2.8%							28,522	25,228	13.1%
150-MIAMI BEACH AIRPORT EXPRESS	1,525	1,433	6.4%	1,310	1,412	-7.2%	1,299	1,184	9.7%	45,281	41,643	8.7%
338 - WEEKEND EXPRESS				203	157	28.8%	172	177	-2.9%	1,670	1,672	-0.1%
836 EXPRESS	322	314	2.6%							7,093	6,284	12.9%
837 EXPRESS	193	193	-0.1%							4,242	3,860	9.9%
Subtotal Express Routes	5,683	5,651	0.6%	1,513	1,570	-3.6%	1,471	1,361	8.1%	138,429	127,678	8.4%
Percentage of All Bus Routes	2.9%	3.0%		1.2%	1.3%		1.6%	1.6%		2.6%	2.7%	
Contracted Routes - Local Service (*)												
2	2,334	2,076	12.4%	1,173	1,125	4.3%	831	717	16.0%	60,189	50,727	18.7%
15	548	539	1.7%	294	343	-14.3%	268	226	18.6%	14,569	13,616	7.0%
29												
46 - LIBERTY CITY CONN.												
56	495	531	-6.8%	185	210	-12.2%				11,622	11,673	-0.4%
70	269	269	-0.1%	205	210	-2.2%	166	164	1.2%	7,562	7,250	4.3%
72	841	828	1.6%	485	500	-3.1%	420	388	8.1%	22,535	20,997	7.3%
82 - WESTCHESTER CIRC												
97	198	184	7.7%	156	162	-4.1%	141	132	6.4%	5,692	5,160	10.3%
115											0	
152	375	366	2.3%	240	238	0.9%	147	139	5.6%	9,934	9,204	7.9%
155 - BISCAYNE GARDENS CIRC												
202 - LITTLE HAITI CONN												
211 OVERTOWN CIRCULATOR												
212-SWEETWATER CIRC												
217 - BUNCHE PARK CIRC												
254-BROWNSVILLE CIRC												
267-LUDLAM LIMITED												
286-NORTH POINTE CIRC												
344	116	118	-1.6%	88	76	15.5%				2,902	2,738	6.0%
401 - NORTH OWL	81	68	19.2%	77	55	39.6%	85	65	30.8%	2,507	1,953	28.4%
MetroLink NoMi West	74									1,633		
MetroLink LeJeune	38									832		
MetroLink Opa-Locka	6									113		
Subtotal Contracted Reg. & Circ. Routes	5,374	4,978	7.9%	2,902	2,919	-0.6%	2,058	1,832	12.3%	140,090	123,318	13.6%
Percentage of All Bus Routes	2.8%	2.6%		2.2%	2.3%		2.3%	2.2%		2.7%	2.6%	

(1) Several express routes were suspended beginning at the end of Mar-20, due to the SARS-CoV-2 pandemic, while other routes had alignment and schedule modifications made to them, in an ongoing effort to optimize service delivery.

(2) A second major round of changes took place with the 11/13/23 lineup known as the Better Bus Network, as listed at the start of this Metrobus section.

BUS RIDERSHIP BY ROUTE SERVICE TYPE LINEUPS COMPARISON (MONTH-OVER-MONTH)

Boardings by Service Type and Route	Average Weekday	Average Weekday	Percent Change	Average Saturday	Average Saturday	Percent Change	Average Sunday	Average Sunday	Percent Change	Total Monthly	Total Monthly	Percent Change
	Jul-24	Jun-24	24 vs 23	Jul-24	Jun-24	24 vs 23	Jul-24	Jun-24	24 vs 23	Jul-24	Jun-24	24 vs 23
Contracted Express Routes												
301-DADE MONROE EXPRESS	1,015	1,019	-0.4%	943	960	-1.8%	916	950	-3.6%	30,677	29,933	2.5%
302-CARD SOUND EXPRESS	105	105	0.7%	87	113	-22.8%	93	93	0.0%	3,132	3,123	0.3%
Subtotal Contracted Express Routes	1,120	1,124	-0.3%	1,030	1,073	-4.0%	1,009	1,043	-3.3%	33,809	33,056	2.3%
Percentage of All Bus Routes	0.6%	0.6%		0.8%	0.9%		1.1%	1.2%		0.6%	0.7%	
Limited Stop Routes												
24-CORAL WAY LIMITED	2,204	2,186	0.8%	1,590	1,644	-3.3%	1,146	1,043	9.9%	60,569	57,159	6.0%
38 TRANSITWAY MAX	6,951	6,911	0.6%	6,063	5,804	4.5%	4,523	4,502	0.5%	199,784	189,752	5.3%
203 - BISCAYNE MAX	1,154	978	18.0%							25,384	19,560	29.8%
204 KILLIAN MAX	562	549	2.4%							12,360	10,975	12.6%
211 - FLAGLER MAX	1,428	1,496	-4.6%							31,406	29,921	5.0%
241 TUTTLE LIMITED												
272 SUNSET MAX (*)	354	358	-1.1%							7,779	7,153	8.8%
277-7TH AVENUE MAX												
279 - 79 STREET MAX	813	756	7.6%							17,893	15,111	18.4%
287-SAGA BAY MAX	347	351	-1.2%							7,632	7,022	8.7%
288 KENDALL MAX	451	439	2.8%							9,931	8,781	13.1%
297-27th AVENUE ORANGE MAX												
Subtotal Limited Stop Routes	14,263	14,024	1.7%	7,653	7,448	2.8%	5,669	5,545	2.3%	372,738	345,434	7.9%
Percentage of All Bus Routes	7.4%	7.5%		5.9%	5.9%		6.2%	6.6%		7.1%	7.2%	
Directly Operated Free Routes												
132 - TRI-RAIL DORAL SHUTTLE	43	41	4.7%							954	828	15.2%
500 - CUTLER BAY LOCAL	254	251	1.2%	219	221	-0.7%	81	100	-18.8%	6,876	6,629	3.7%
510 - SKYLAKE CIRCULATOR (*)	441	436	1.2%	204	272	-24.9%	234	210	11.7%	11,700	11,130	5.1%
Subtotal Free Directly Operated Routes	739	729	1.4%	423	492	-14.0%	315	310	1.9%	19,530	18,587	5.1%
Percentage of All Bus Routes	0.4%	0.4%		0.3%	0.4%		0.3%	0.4%		0.4%	0.4%	
Contractor-Operated Lifeline Routes												
GREEN HILLS SHUTTLE	8	8	2.5%							41	32	28.1%
KINGS CREEK SHUTTLE	10	9	14.3%							20	35	-42.9%
SIERRA LAKES SHUTTLE	22	17	24.6%							86	69	24.6%
ROBERT SHARP SHUTTLE	36	30	20.7%							181	120	50.8%
AHEPA SHUTTLE	21	20	4.6%							62	79	-21.5%
FEDERATION GARDENS SHUTTLE				35	33	3.3%				138	167	-17.4%
Subtotal Contractor-Operated Lifeline Routes	97	84	15.3%	35	33	3.3%				528	502	5.2%
Percentage of All Bus Routes	0.0%	0.0%		0.0%	0.0%					0.0%	0.0%	
All Other (Regular) Routes	166,370	161,278	3.2%	116,034	111,833	3.8%	80,300	74,349	8.0%	4,525,770	4,156,464	8.9%
Percentage of All Bus Routes	85.9%	85.8%		89.5%	89.2%		88.4%	88.1%		86.5%	86.5%	
Total Bus System	193,645	187,867	3.1%	129,589	125,369	3.4%	90,823	84,439	7.6%	5,230,894	4,805,039	8.9%

BUS RIDERSHIP BY ROUTE SERVICE TYPE LINEUPS COMPARISON (MONTH-OVER-9 MONTH)

Boardings by Service Type and Route	Average Weekday	Average Weekday	Percent Change	Average Saturday	Average Saturday	Percent Change	Average Sunday	Average Sunday	Percent Change	Total Monthly	Total Monthly	Percent Change
	Jul-24	Oct-23	24 vs 23	Jul-24	Oct-23	24 vs 23	Jul-24	Oct-23	24 vs 23	Jul-24	Oct-23	24 vs 23
Directly Operated Express Routes												
34 TRANSITWAY EXPRESS	1,640	1,636	0.2%							36,086	36,002	0.2%
39 TRANSITWAY EXPRESS	706	742	-4.9%							15,535	16,333	-4.9%
95-EXPRESS GOLDEN GLADES	1,296	1,195	8.5%							28,522	26,295	8.5%
150-MIAMI BEACH AIRPORT EXPRESS	1,525	2,149	-29.1%	1,310	2,161	-39.4%	1,299	1,966	-33.9%	45,281	65,763	-31.1%
338 - WEEKEND EXPRESS				203	259	-21.8%	172	247	-30.6%	1,670	2,274	-26.6%
836 EXPRESS	322	247	30.7%							7,093	5,428	30.7%
837 EXPRESS	193	195	-0.9%							4,242	4,281	-0.9%
Subtotal Express Routes	5,683	6,165	-7.8%	1,513	2,420	-37.5%	1,471	2,214	-33.5%	138,429	156,376	-11.5%
Percentage of All Bus Routes	2.9%	3.3%		1.2%	2.3%		1.6%	2.7%		2.6%	3.2%	
Contracted Routes - Local Service (*)												
2	2,334	2,977	-21.6%	1,173	1,605	-26.9%	831	1,214	-31.5%	60,189	77,976	-22.8%
15	548	178	208.5%	294	93	215.0%	268	53	405.7%	14,569	4,545	220.6%
29		516									11,342	
46 - LIBERTY CITY CONN.		22									477	
56	495	391	26.6%	185						11,622	8,598	35.2%
70	269	161	66.6%	205			166			7,562	3,546	113.3%
72	841	670	25.5%	485	357	35.9%	420	259	61.9%	22,535	17,459	29.1%
82 - WESTCHESTER CIRC		61			38						1,488	
97	198	225	-11.6%	156	163	-4.6%	141	149	-5.5%	5,692	6,337	-10.2%
115		151			80						3,968	
152	375	1,051	-64.4%	240	375	-36.0%	147	331	-55.6%	9,934	26,285	-62.2%
155 - BISCAYNE GARDENS CIRC		45									985	
202 - LITTLE HAITI CONN		110			22			21			2,620	
211 OVERTOWN CIRCULATOR		71									1,567	
212-SWEETWATER CIRC		22									494	
217 - BUNCHE PARK CIRC		80									1,759	
254-BROWNSVILLE CIRC		5									105	
267-LUDLAM LIMITED		162									3,567	
286-NORTH POINTE CIRC		93			61						2,279	
344	116	76	53.1%	88						2,902	1,666	74.2%
401 - NORTH OWL	81	61	33.1%	77	61	26.4%	85	65	31.6%	2,507	1,899	32.0%
MetroLink NoMi West	74									1,633		
MetroLink LeJeune	38									832		
MetroLink Opa-Locka	6									113		
Subtotal Contracted Reg. & Circ. Routes	5,374	7,125	-24.6%	2,902	2,854	1.7%	2,058	2,158	-4.7%	140,090	178,962	-21.7%
Percentage of All Bus Routes	2.8%	3.8%		2.2%	2.7%		2.3%	2.7%		2.7%	3.6%	

(1) Several express routes were suspended beginning at the end of Mar-20, due to the SARS-CoV-2 pandemic, while other routes had alignment and schedule modifications made to them, in an ongoing effort to optimize service delivery.
(2) A second major round of changes took place with the 11/13/23 lineup known as the Better Bus Network, as listed at the start of this Metrobus section.

BUS RIDERSHIP BY ROUTE SERVICE TYPE LINEUPS COMPARISON (MONTH-OVER-9 MONTH)

Boardings by Service Type and Route	Average Weekday	Average Weekday	Percent Change	Average Saturday	Average Saturday	Percent Change	Average Sunday	Average Sunday	Percent Change	Total Monthly	Total Monthly	Percent Change
	Jul-24	Oct-23	24 vs 23	Jul-24	Oct-23	24 vs 23	Jul-24	Oct-23	24 vs 23	Jul-24	Oct-23	24 vs 23
Contracted Express Routes												
301-DADE MONROE EXPRESS	1,015	955	6.2%	943	885	6.5%	916	867	5.7%	30,677	28,889	6.2%
302-CARD SOUND EXPRESS	105	91	16.2%	87	94	-7.2%	93	72	30.2%	3,132	2,728	14.8%
Subtotal Contracted Express Routes	1,120	1,046	7.1%	1,030	979	5.2%	1,009	938	7.5%	33,809	31,617	6.9%
Percentage of All Bus Routes	0.6%	0.6%		0.8%	0.9%		1.1%	1.2%		0.6%	0.6%	
Limited Stop Routes												
24-CORAL WAY LIMITED	2,204	2,195	0.4%	1,590	1,400	13.6%	1,146	1,108	3.4%	60,569	59,432	1.9%
38 TRANSITWAY MAX	6,951	5,714	21.6%	6,063	6,328	-4.2%	4,523	4,957	-8.8%	199,784	175,803	13.6%
203 - BISCAYNE MAX	1,154	3,666	-68.5%							25,384	80,650	-68.5%
204 KILLIAN MAX	562	620	-9.3%							12,360	13,632	-9.3%
211 - FLAGLER MAX	1,428	3,824	-62.7%							31,406	84,135	-62.7%
241 TUTTLE LIMITED		348			222			187			9,471	
272 SUNSET MAX (*)	354	428	-17.4%							7,779	9,423	-17.4%
277-7TH AVENUE MAX		879									19,345	
279 - 79 STREET MAX	813	469	73.4%							17,893	10,318	73.4%
287-SAGA BAY MAX	347	341	1.8%							7,632	7,499	1.8%
288 KENDALL MAX	451	372	21.3%							9,931	8,189	21.3%
297-27th AVENUE ORANGE MAX		1,229									27,047	
Subtotal Limited Stop Routes	14,263	20,086	-29.0%	7,653	7,950	-3.7%	5,669	6,252	-9.3%	372,738	504,944	-26.2%
Percentage of All Bus Routes	7.4%	10.8%		5.9%	7.4%		6.2%	7.7%		7.1%	10.3%	
Directly Operated Free Routes												
132 -TRI-RAIL DORAL SHUTTLE	43	37	18.7%							954	804	18.7%
500 - CUTLER BAY LOCAL	254	176	44.6%	219	152	44.3%	81	86	-5.8%	6,876	4,907	40.1%
510 - SKYLAKE CIRCULATOR (*)	441	471	-6.4%	204	217	-6.0%	234	194	20.6%	11,700	12,211	-4.2%
Subtotal Free Directly Operated Routes	739	684	8.1%	423	369	14.7%	315	280	12.5%	19,530	17,922	9.0%
Percentage of All Bus Routes	0.4%	0.4%		0.3%	0.3%		0.3%	0.3%		0.4%	0.4%	
Contractor-Operated Lifeline Routes												
GREEN HILLS SHUTTLE	8	5	57.7%							41	26	57.7%
KINGS CREEK SHUTTLE	10	14	-27.3%							20	55	-63.6%
SIERRA LAKES SHUTTLE	22	16	38.7%							86	62	38.7%
ROBERT SHARP SHUTTLE	36	23	57.4%							181	92	96.7%
AHEPA SHUTTLE	21	18	16.4%							62	71	-12.7%
FEDERATION GARDENS SHUTTLE				35	20	72.5%				138	80	72.5%
Subtotal Contractor-Operated Lifeline Routes	97	75	28.4%	35	20	72.5%				528	386	36.8%
Percentage of All Bus Routes	0.0%	0.0%		0.0%	0.0%					0.0%	0.0%	
All Other (Regular) Routes	166,370	150,140	10.8%	116,034	92,739	25.1%	80,300	69,584	15.4%	4,525,770	4,021,944	12.5%
Percentage of All Bus Routes	85.9%	81.0%		89.5%	86.4%		88.4%	85.5%		86.5%	81.9%	
Total Bus System	193,645	185,320	4.5%	129,589	107,331	20.7%	90,823	81,427	11.5%	5,230,894	4,912,151	6.5%

Bus Routes as Ranked by Percentage of Average Weekday Ridership July 2024

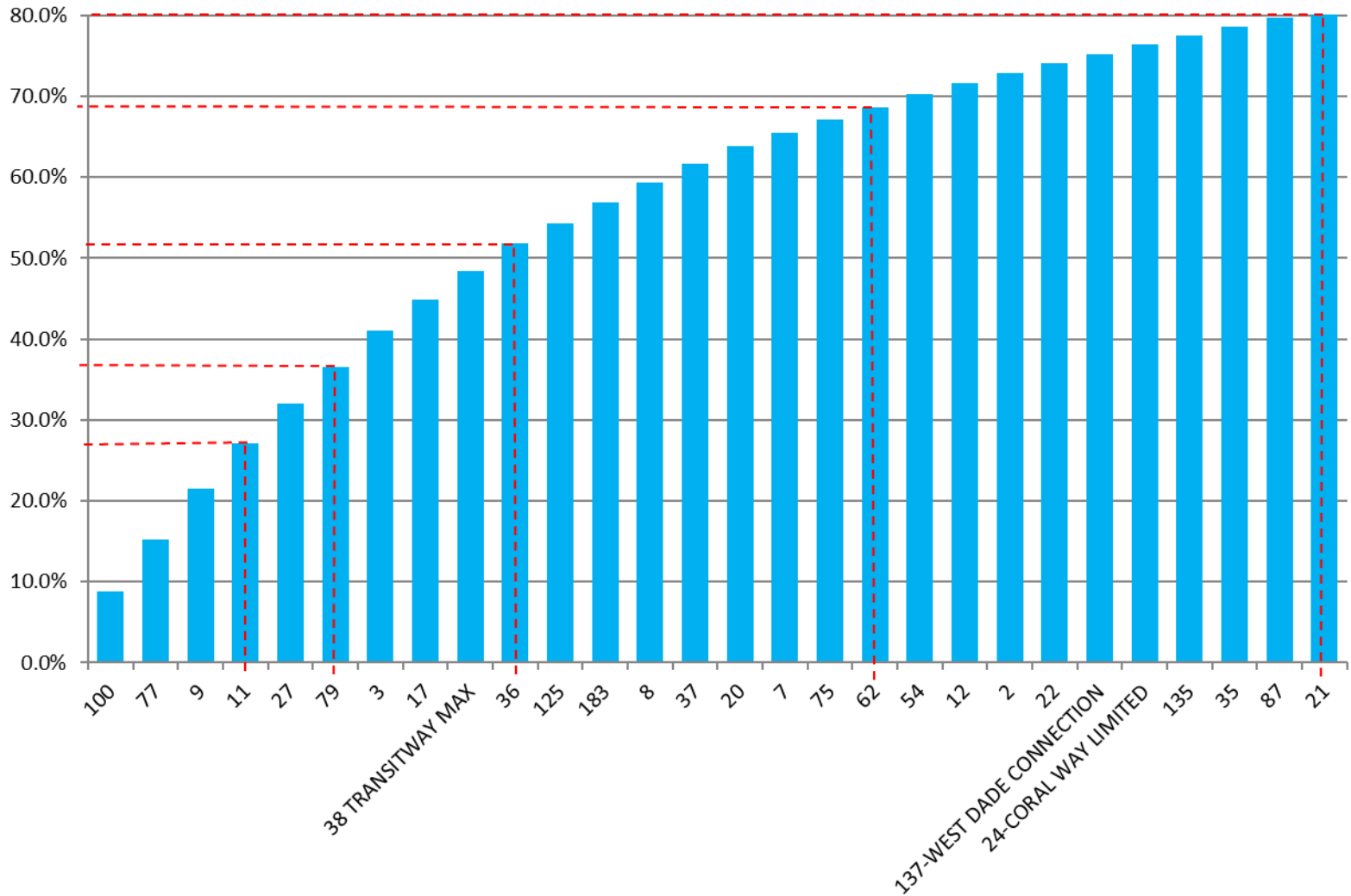
Rank	Route	Average Weekday	Percent Share	Cumul Pct Share	Rank	Route	Average Weekday	Percent Share	Cumul Pct Share	Rank	Route	Average Weekday	Percent Share	Cumul Pct Share
1	100	17,119	8.8%	8.8%	29	35	2,176	1.1%	78.6%	57	272	354	0.2%	98.8%
2	77	12,347	6.4%	15.2%	30	87	2,146	1.1%	79.7%	58	287	347	0.2%	99.0%
3	9	12,030	6.2%	21.4%	31	107	1,937	1.0%	83.9%	59	836	322	0.2%	99.1%
4	11	11,035	5.7%	27.1%	32	199	1,925	1.0%	84.9%	60	70	269	0.1%	99.3%
5	27	9,558	4.9%	32.1%	33	88	1,794	0.9%	85.9%	61	500	254	0.1%	99.4%
6	79	8,750	4.5%	36.6%	34	40	1,755	0.9%	86.8%	62	97	198	0.1%	99.5%
7	3	8,621	4.5%	41.0%	35	32	1,752	0.9%	87.7%	63	837	193	0.1%	99.6%
8	17	7,271	3.8%	44.8%	36	34	1,640	0.8%	88.5%	64	136	146	0.1%	99.7%
9	38	6,951	3.6%	48.4%	37	150	1,525	0.8%	89.3%	65	344	116	0.1%	99.7%
10	36	6,666	3.4%	51.8%	38	208	1,520	0.8%	90.1%	66	302	105	0.1%	99.8%
11	125	4,897	2.5%	54.3%	39	52	1,519	0.8%	90.9%	67	400	90	0.0%	99.8%
12	183	4,841	2.5%	56.8%	40	207	1,486	0.8%	91.6%	68	401	81	0.0%	99.9%
13	8	4,702	2.4%	59.3%	41	new 211	1,428	0.7%	92.4%	69	8000	74	0.0%	99.9%
14	37	4,623	2.4%	61.7%	42	95	1,296	0.7%	93.0%	70	132	43	0.0%	99.9%
15	20	4,107	2.1%	63.8%	43	73	1,291	0.7%	93.7%	71	8002	38	0.0%	99.9%
16	7	3,369	1.7%	65.5%	44	203	1,154	0.6%	94.3%	72	RS	36	0.0%	100.0%
17	75	3,135	1.6%	67.1%	45	104	1,068	0.6%	94.9%	73	SL	22	0.0%	100.0%
18	62	2,998	1.5%	68.7%	46	301	1,015	0.5%	95.4%	74	AS	21	0.0%	100.0%
19	54	2,930	1.5%	70.2%	47	14	968	0.5%	95.9%	75	KC	10	0.0%	100.0%
20	12	2,797	1.4%	71.6%	48	72	841	0.4%	96.3%	76	GH	8	0.0%	100.0%
21	2	2,334	1.2%	72.9%	49	279	813	0.4%	96.7%	77	8005	6	0.0%	100.0%
22	22	2,315	1.2%	74.1%	50	39	706	0.4%	97.1%					
23	137	2,277	1.2%	75.2%	51	204	562	0.3%	97.4%					
24	24	2,204	1.1%	76.4%	52	15	548	0.3%	97.7%					
25	135	2,200	1.1%	77.5%	53	56	495	0.3%	97.9%					
26	21	2,139	1.1%	80.8%	54	288	451	0.2%	98.2%					
27	26	2,072	1.1%	81.9%	55	510	441	0.2%	98.4%					
28	new 103	2,001	1.0%	82.9%	56	152	375	0.2%	98.6%					
											entirely contracted in Jul-24			
											Total Boardings	193,645	100.00%	100.0%

(1) Average weekday ridership rounded to the nearest unit.

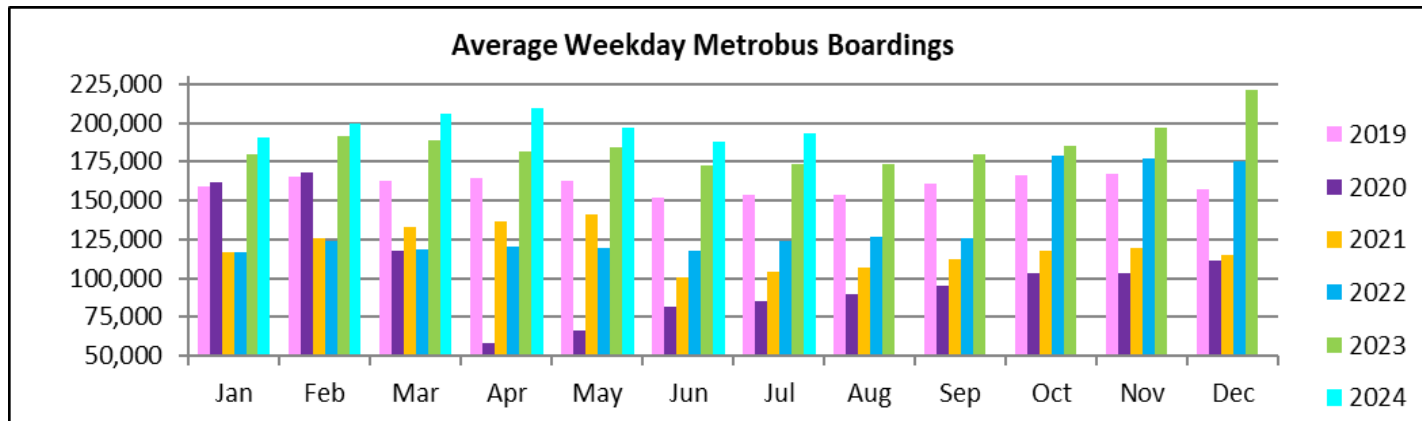
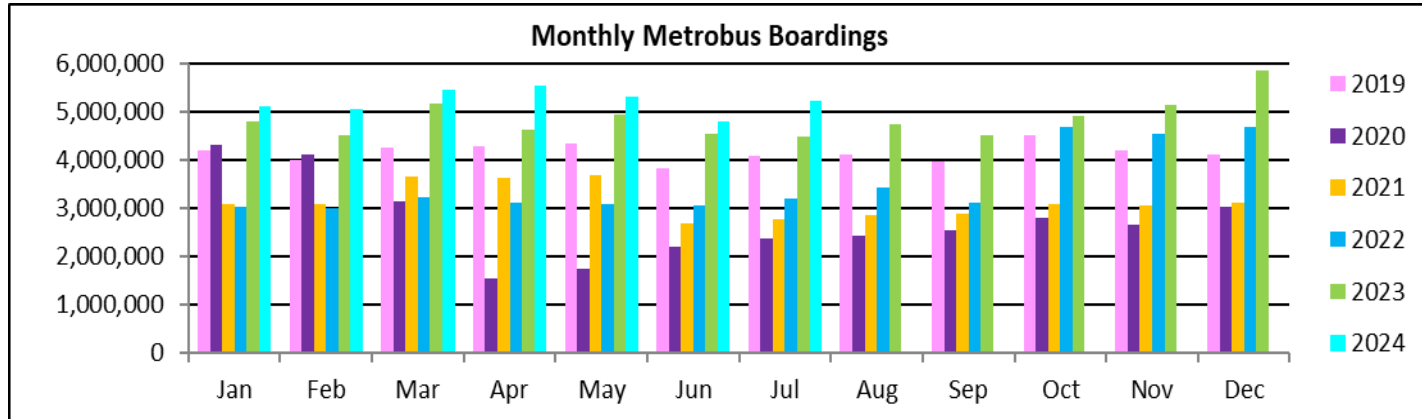
(2) Includes the five Lifeline Shuttles that operate on weekdays: Ahepa (AS), Green Hills (GH), Kings Creek (KC), Robert Sharp (RS) and Sierra Lakes (SL).

(3) Routes 8000, 8002, and 8005 refer to the first three of six Better Bus Network MetroLink supplementals, launched in July 2024: MetroLink NoMi West, MetroLink LeJeune, and MetroLink Opa-Locka, respectively.

**Bus - Cumulative Percentage Average Weekday Ridership Share
Top 1/4, 1/3, 1/2, 2/3 and 4/5 of Routes**



TOTAL MONTHLY AND AVERAGE WEEKDAY RIDERSHIP YEAR OVER YEAR COMPARISON CHARTS – METROBUS



**“TOP 10 / BOTTOM 10” BUS ROUTES AVERAGE WEEKDAY RIDERSHIP PERFORMANCE
MONTH OVER MONTH COMPARISON**

Route	Jul-24	Jun-24	Absolute Delta	Percent Delta
100	17,119	16,084	1,034	6.4%
77	12,347	11,448	899	7.9%
9	12,030	11,386	644	5.7%
3	8,621	8,012	609	7.6%
17	7,271	6,673	598	9.0%
36	6,666	6,133	533	8.7%
20	4,107	3,765	342	9.1%
135	2,200	1,888	312	16.5%
125	4,897	4,622	275	5.9%
2	2,334	2,076	258	12.4%
7	3,369	3,547	-178	-5.0%
207 (7th St)-LITTLE HAVANA CONN	1,486	1,573	-87	-5.6%
35	2,176	2,263	-87	-3.9%
34 TRANSITWAY EXPRESS	1,640	1,720	-80	-4.6%
103	2,001	2,074	-73	-3.5%
8	4,702	4,773	-71	-1.5%
73	1,291	1,361	-70	-5.2%
211 - FLAGLER MAX	1,428	1,496	-69	-4.6%
26	2,072	2,140	-68	-3.2%
27	9,558	9,618	-60	-0.6%

(*) Averages rounded to the nearest boarding, data as estimated from automatic passenger counter (APC) system; Lifeline shuttles excluded.

“TOP 10 / BOTTOM 10” BUS ROUTES SETS AVERAGE WEEKDAY RIDERSHIP PERFORMANCE YEAR OVER YEAR COMPARISON

Route Set (*), (1), (2)	Jul-24	Jul-23	Absolute Delta	Percent Delta	routes included in set
{ 17 & 22 & 75 }	12,721	9,343	3,377	36.1%	17, 22, 75, 108, 217
{ 20 }	5,859	2,598	3,260	125.5%	20, 32, 115
{ 77 }	12,347	9,389	2,958	31.5%	77, 277
{ 11 }	11,035	8,450	2,585	30.6%	11, 212
{ 27 }	9,558	7,737	1,821	23.5%	27, 297
{ 9 }	12,030	10,241	1,790	17.5%	9, 10, 16
{ 125 }	4,897	3,456	1,441	41.7%	19, 107, 125
{ new 107 }	4,876	3,545	1,331	37.5%	35, 56, 70, 71, new 107, 248
{ 36 }	6,666	5,578	1,088	19.5%	36, 110
{ 62 }	2,998	1,993	1,005	50.4%	62, 202
{ new 211 }	10,610	12,221	-1,611	-13.2%	8, 24, 51, 82, 137, new 211
{ 73 & 183 }	6,132	7,294	-1,162	-15.9%	57, 73, 183, 238, 267, 286
150	1,525	2,172	-648	-29.8%	150
40	1,755	2,233	-478	-21.4%	40
88	1,794	2,207	-413	-18.7%	88
{ 38 }	7,067	7,471	-404	-5.4%	38, 344
{ 2 }	2,334	2,680	-346	-12.9%	2, 211
{ 52 }	1,893	2,151	-258	-12.0%	52, 152, 252
{ 14 }	968	1,219	-250	-20.5%	14, 113, 241
7	3,369	3,604	-235	-6.5%	7

(*) Averages rounded to the nearest boarding, data as estimated from automatic passenger counter (APC) system; Lifeline shuttles excluded.

- (1) The route sets, denoted by brackets, include the new 11/13/2023 lineup's Better Bus Network route designations, as well as older routes present for the first part of the month and previous months and years, then either renamed, absorbed, or eliminated. The sets were defined to enable reasonably fair comparisons between pre- and post-BBN timeframes, to the extent possible and practical, given the complexity of the changes for some of the routes and sets. The definitions were based on information from the DTPW website, and subject to future adjustments, if necessary.
- (2) The adjective "new" in front of some new Better Bus Network-generated (recycled) route numbers was added to help prevent confusion with older but different routes with the same number present in previous months or years.

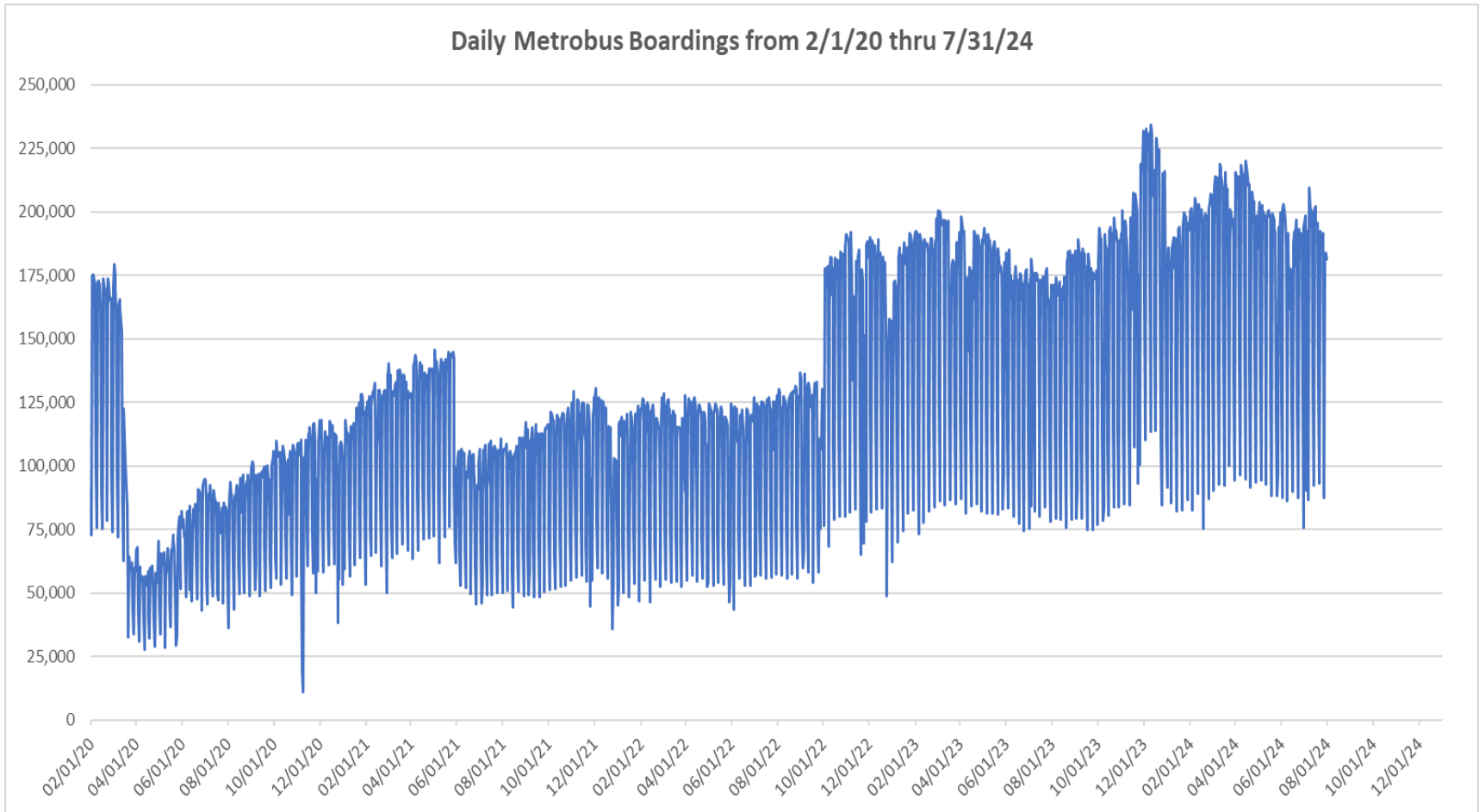
“TOP 10 / BOTTOM 10” BUS ROUTES SETS AVERAGE WEEKDAY RIDERSHIP PERFORMANCE MONTH OVER 9-MONTH PRIOR COMPARISON

Route Set (*), (1), (2)	Jul-24	Oct-23	Absolute Delta	Percent Delta	routes included in set
{ 20 }	5,859	2,850	3,009	105.6%	20, 32, 115
{ 17 & 22 & 75 }	12,721	10,796	1,925	17.8%	17, 22, 75, 108, 217
{ 77 }	12,347	10,838	1,508	13.9%	77, 277
{ 11 }	11,035	9,644	1,391	14.4%	11, 212
{ 38 }	7,067	5,790	1,277	22.1%	38, 344
{ 27 }	9,558	8,339	1,219	14.6%	27, 297
{ 9 }	12,030	10,942	1,088	9.9%	9, 10, 16
{ 36 }	6,666	5,600	1,066	19.0%	36, 110
{ 125 }	4,897	3,906	991	25.4%	19, 107, 125
{ 3 & 203 }	9,775	9,082	693	7.6%	3, 93, 203
{ new 211 }	10,610	12,849	-2,239	-17.4%	8, 24, 51, 82, 137, new 211
{ 73 & 183 }	6,132	7,890	-1,758	-22.3%	57, 73, 183, 238, 267, 286
{ 2 }	2,334	3,048	-714	-23.4%	2, 211
7	3,369	4,021	-652	-16.2%	7
88	1,794	2,419	-626	-25.9%	88
150	1,525	2,149	-625	-29.1%	150
40	1,755	2,344	-589	-25.1%	40
{ 52 }	1,893	2,442	-549	-22.5%	52, 152, 252
{ 37 & 54 }	7,553	8,082	-529	-6.5%	29, 37, 42, 54, 254
207	1,486	1,819	-333	-18.3%	207

(*) Averages rounded to the nearest boarding, data as estimated from automatic passenger counter (APC) system; Lifeline shuttles excluded.

- (1) The route sets, denoted by brackets, include the new 11/13/2023 lineup's Better Bus Network route designations, as well as older routes present for the first part of the month and previous months and years, then either renamed, absorbed, or eliminated. The sets were defined to enable reasonably fair comparisons between pre- and post-BBN timeframes, to the extent possible and practical, given the complexity of the changes for some of the routes and sets. The definitions were based on information from the DTPW website, and subject to future adjustments, if necessary.
- (2) The adjective "new" in front of some new Better Bus Network-generated (recycled) route numbers was added to help prevent confusion with older but different routes with the same number present in previous months or years.

DAILY METROBUS RIDERSHIP SINCE FEBRUARY 1, 2020



- (1) There was no Metrobus, Metrorail and Metromover service on 5/31/20, as a safety precaution, and no service for any of the four modes on 9/28/22, as a result of Hurricane Ian.
- (2) The dip at the start of the second week of Nov-20 is due to Hurricane Eta.
- (3) Daily variations from Oct-22 onward are a representation estimated from reports made available by the Bus APC data vendor; the finalized data is based on statistical sampling.
- (4) The reduction seen beginning 6/1/21 is partly due to the resumption of fares and partly the result of resuming reporting Cubic farebox data rather than bus APC counts; the jump seen at the very start of Oct-22 is due to the switch to APC bus ridership counts reporting beginning 10/1/22; the pronounced peak in Dec-23 is attributable to the Better Bus Network launch period and attendant free fares.
- (5) Periodic (weekly) variations are prominent, since weekday ridership is almost always significantly higher than weekend or holiday ridership.

METROBUS PARKING PATRONAGE SUMMARY July 2024

PARK-RIDE LOT	ACTUAL AVAILABLE SPACES	ACTUAL OCCUPANCY	PERCENT OCCUPANCY
Transitway / SW 152nd St	200	118	59%
Transitway / SW 168th St (*)	149		
Transitway / SW 200th Street	100	27	27%
Transitway / SW 112 Ave (Target)	450	104	23%
Transitway / SW 244th St	95	81	85%
Transitway / SW 296th St	139	24	17%
Transitway / SW 344th St	248	165	67%
Coral Reef Drive 117/ Turnpike	95	78	82%
Golden Glades Facility	2,150	396	18%
Hammocks Town Center (SW 152 Ave / SW 104 St)	50	14	28%
Kendall Dr./SW 127th Ave	161	15	9%
West Kendall Transit Term (Kendall Dr / SW162 Ave)	40	13	33%
NW 7th Avenue Transit Village (NW 7 Ave / NW 62 St)	25	18	72%
Miami Gardens Dr. / NW 73rd Ave	136	2	1%
Dolphin Station	348	71	20%
Tamiami Station (eff 11-2022)	442	54	12%
I-75 / Miami Gardens Dr (**)	298		
TOTAL	5,126	1,180	23%

(*) Closed for construction beginning Jan-22

(**) Route 175 Suspended 3/27/2020

Metrorail



METRORAIL AVERAGE WEEKDAY BOARDINGS BY STATION (†)

Weekdays	Average Weekday	Average Weekday	Percent Change	Average Weekday	Percent Change	Average Weekday	Percent Change	Average Weekday	Percent Change
STATIONS	Jul-24	Jul-23	YOY	Feb-20	Current vs Feb-20	Jun-24	MOM	Jul-19	YO5Y
ALLAPATTAH	1,545	1,513	2.1%	1,942	-20.5%	1,583	-2.4%	1,640	-5.8%
BRICKELL	4,922	4,618	6.6%	6,529	-24.6%	4,966	-0.9%	5,584	-11.9%
BROWNSVILLE	543	623	-12.9%	862	-37.0%	561	-3.2%	752	-27.8%
UHEALTH JACKSON	4,340	4,092	6.1%	6,143	-29.3%	4,405	-1.5%	5,490	-20.9%
COCONUT GROVE	1,648	1,259	30.9%	1,795	-8.2%	1,681	-2.0%	1,423	15.8%
CULMER	804	862	-6.8%	1,392	-42.2%	818	-1.7%	1,081	-25.6%
DADELAND NORTH	3,647	3,537	3.1%	5,926	-38.5%	3,878	-6.0%	5,082	-28.2%
DADELAND SOUTH	4,168	4,131	0.9%	7,150	-41.7%	4,349	-4.2%	6,168	-32.4%
DOUGLAS ROAD	2,768	1,826	51.6%	3,624	-23.6%	2,873	-3.6%	2,922	-5.3%
DR. MARTIN LUTHER KING, JR.	903	769	17.4%	1,157	-21.9%	883	2.3%	1,023	-11.7%
EARLINGTON HEIGHTS	1,079	1,233	-12.5%	1,662	-35.1%	1,134	-4.9%	1,398	-22.8%
GOVERNMENT CENTER	5,980	5,675	5.4%	10,557	-43.4%	5,909	1.2%	8,623	-30.7%
HIALEAH	1,156	710	62.9%	1,253	-7.7%	1,203	-3.9%	1,148	0.7%
MIAMI INTERNATIONAL AIRPORT	1,357	1,228	10.5%	1,711	-20.7%	1,364	-0.5%	1,497	-9.3%
NORTHSIDE	961	1,216	-21.0%	1,476	-34.9%	1,238	-22.4%	1,275	-24.7%
OKEECHOBEE	939	827	13.5%	1,164	-19.4%	979	-4.1%	1,071	-12.3%
OVERTOWN / ARENA	1,744	1,594	9.4%	2,274	-23.3%	1,764	-1.1%	2,019	-13.6%
PALMETTO	1,283	1,176	9.1%	1,543	-16.9%	1,215	5.6%	1,332	-3.7%
SANTA CLARA	747	613	21.9%	812	-8.0%	746	0.2%	665	12.4%
SOUTH MIAMI	1,889	1,556	21.4%	3,015	-37.4%	2,014	-6.2%	2,532	-25.4%
TRI-RAIL	1,106	987	12.1%	1,207	-8.3%	1,102	0.4%	1,054	5.0%
UNIVERSITY	1,210	1,198	1.0%	2,784	-56.5%	983	23.1%	1,673	-27.7%
VIZCAYA	1,076	857	25.6%	1,390	-22.6%	1,100	-2.2%	1,070	0.6%
TOTAL	45,816	42,100	8.8%	67,367	-32.0%	46,750	-2.0%	56,520	-18.9%

(†) In this table and those which follow, "YOY" stands for "year-over-year", "MOM" for "month-over-month" and, e.g., "YO5Y" for "year over five years", i.e., current month vs 12 months prior, one month prior, and 60 months prior, respectively. The Feb-20 numbers serve as a pre-pandemic benchmark.

METRORAIL AVERAGE SATURDAY BOARDINGS BY STATION

Saturdays	Average Saturday	Average Saturday	Percent Change	Average Saturday	Percent Change	Average Saturday	Percent Change	Average Saturday	Percent Change
STATIONS	Jul-24	Jul-23	YOY	Feb-20	Current vs Feb-20	Jun-24	MOM	Jul-19	YO5Y
ALLAPATTAH	812	845	-3.9%	1,051	-22.8%	847	-4.2%	891	-8.9%
BRICKELL	2,239	2,335	-4.1%	2,811	-20.4%	2,312	-3.2%	2,356	-5.0%
BROWNSVILLE	311	390	-20.2%	520	-40.1%	323	-3.7%	463	-32.8%
UHEALTH JACKSON	718	747	-3.8%	959	-25.2%	725	-1.0%	846	-15.1%
COCONUT GROVE	860	729	17.9%	928	-7.4%	841	2.2%	706	21.8%
CULMER	428	483	-11.5%	721	-40.7%	457	-6.5%	628	-31.9%
DADELAND NORTH	1,130	1,251	-9.7%	1,994	-43.3%	1,215	-7.0%	1,576	-28.3%
DADELAND SOUTH	1,657	1,783	-7.1%	2,625	-36.9%	1,725	-4.0%	2,159	-23.3%
DOUGLAS ROAD	1,203	656	83.3%	1,319	-8.8%	1,329	-9.5%	1,083	11.1%
DR. MARTIN LUTHER KING, JR.	523	454	15.0%	625	-16.3%	542	-3.6%	561	-6.8%
EARLINGTON HEIGHTS	595	729	-18.4%	935	-36.4%	643	-7.6%	924	-35.6%
GOVERNMENT CENTER	2,527	2,598	-2.7%	4,262	-40.7%	2,435	3.8%	3,149	-19.7%
HIALEAH	551	343	60.7%	583	-5.4%	554	-0.4%	523	5.4%
MIAMI INTERNATIONAL AIRPORT	996	919	8.4%	1,330	-25.1%	967	3.0%	827	20.4%
NORTHSIDE	599	804	-25.5%	878	-31.8%	770	-22.3%	769	-22.1%
OKEECHOBEE	408	316	29.0%	408	-0.2%	412	-1.2%	356	14.5%
OVERTOWN / ARENA	520	554	-6.1%	678	-23.3%	525	-0.9%	549	-5.2%
PALMETTO	449	384	17.0%	458	-1.9%	382	17.5%	349	28.7%
SANTA CLARA	354	314	12.8%	422	-16.1%	365	-3.1%	349	1.5%
SOUTH MIAMI	874	768	13.7%	1,256	-30.4%	935	-6.6%	1,052	-17.0%
TRI-RAIL	514	477	7.8%	614	-16.4%	505	1.8%	496	3.6%
UNIVERSITY	318	395	-19.5%	714	-55.5%	322	-1.3%	395	-19.5%
VIZCAYA	517	433	19.5%	622	-16.8%	509	1.5%	482	7.3%
TOTAL	19,099	18,705	2.1%	26,714	-28.5%	19,644	-2.8%	21,486	-11.1%

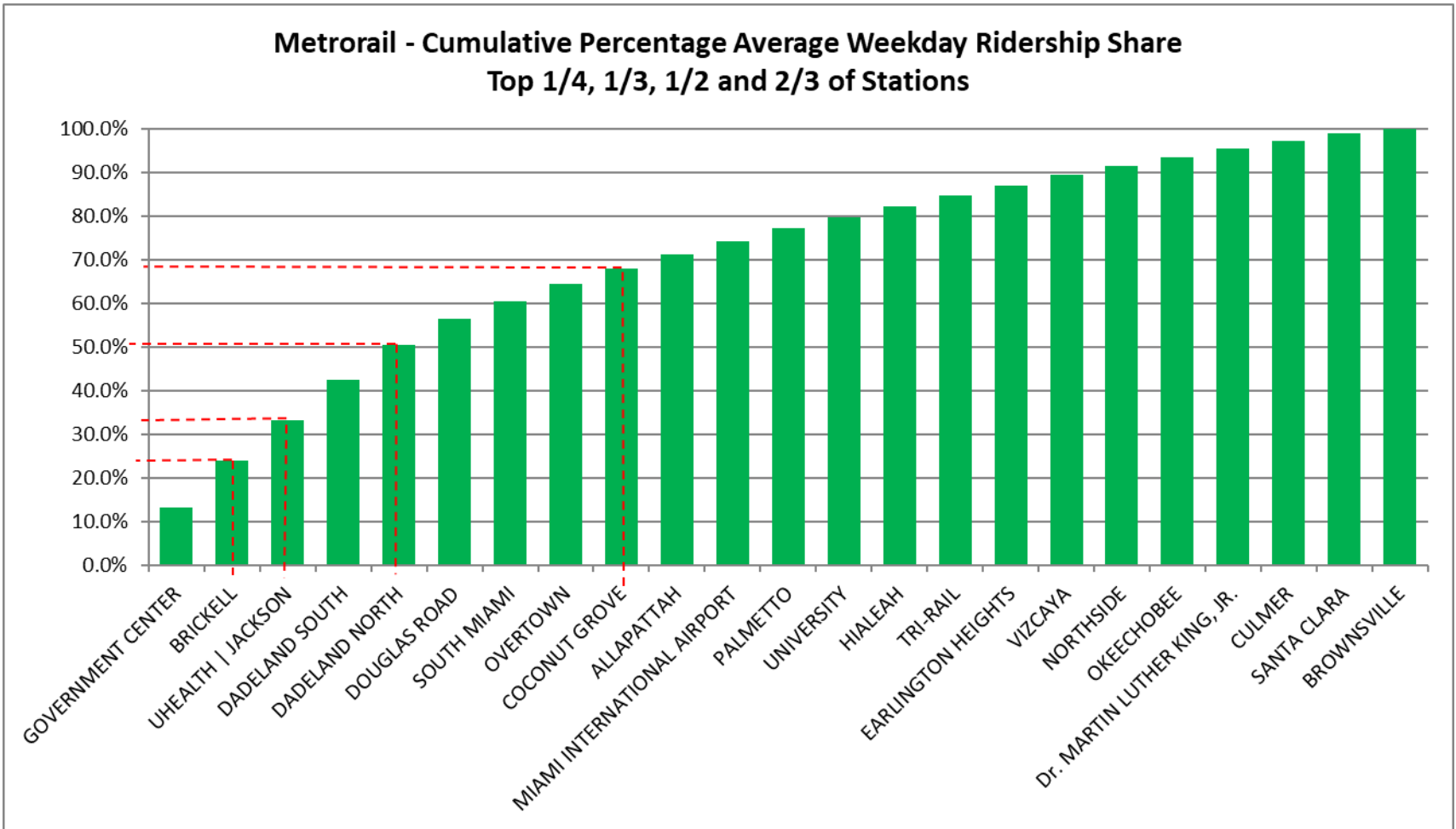
METRORAIL AVERAGE SUNDAY BOARDINGS BY STATION

Sundays	Average Sunday	Average Sunday	Percent Change	Average Sunday	Percent Change	Average Sunday	Percent Change	Average Sunday	Percent Change
STATIONS	Jul-24	Jul-23	YOY	Feb-20	Current vs Feb-20	Jun-24	MOM	Jul-19	YO5Y
ALLAPATTAH	614	623	-1.4%	791	-22.4%	598	2.6%	649	-5.4%
BRICKELL	1,720	1,772	-3.0%	2,379	-27.7%	1,723	-0.2%	1,768	-2.7%
BROWNSVILLE	215	282	-24.0%	406	-47.2%	238	-9.7%	369	-41.8%
UHEALTH JACKSON	582	594	-2.1%	791	-26.4%	571	1.9%	707	-17.7%
COCONUT GROVE	631	523	20.5%	838	-24.8%	630	0.2%	545	15.8%
CULMER	339	346	-2.2%	616	-45.0%	326	3.8%	502	-32.6%
DADELAND NORTH	790	893	-11.5%	1,685	-53.1%	841	-6.0%	1,194	-33.8%
DADELAND SOUTH	1,256	1,365	-8.0%	2,210	-43.2%	1,259	-0.3%	1,685	-25.5%
DOUGLAS ROAD	772	437	76.8%	1,090	-29.2%	827	-6.6%	837	-7.8%
DR. MARTIN LUTHER KING, JR.	373	331	12.6%	506	-26.3%	382	-2.3%	416	-10.4%
EARLINGTON HEIGHTS	490	559	-12.4%	799	-38.7%	465	5.4%	685	-28.4%
GOVERNMENT CENTER	1,922	1,928	-0.3%	4,044	-52.5%	1,756	9.5%	2,477	-22.4%
HIALEAH	369	267	37.9%	472	-21.8%	375	-1.6%	411	-10.2%
MIAMI INTERNATIONAL AIRPORT	808	886	-8.8%	1,343	-39.8%	899	-10.1%	969	-16.6%
NORTHSIDE	439	571	-23.1%	653	-32.8%	527	-16.8%	594	-26.1%
OKEECHOBEE	288	206	39.9%	273	5.4%	272	5.9%	248	16.0%
OVERTOWN / ARENA	404	423	-4.6%	544	-25.8%	433	-6.7%	386	4.5%
PALMETTO	249	225	10.7%	336	-26.0%	217	14.4%	228	9.2%
SANTA CLARA	227	206	10.2%	280	-19.0%	228	-0.5%	221	2.4%
SOUTH MIAMI	671	564	19.0%	987	-32.0%	650	3.3%	760	-11.7%
TRI-RAIL	376	332	13.2%	528	-28.8%	345	8.7%	398	-5.6%
UNIVERSITY	256	330	-22.4%	608	-57.9%	214	19.9%	263	-2.5%
VIZCAYA	344	321	7.0%	524	-34.4%	345	-0.3%	352	-2.4%
TOTAL	14,132	13,985	1.1%	22,701	-37.7%	14,119	0.1%	16,664	-15.2%

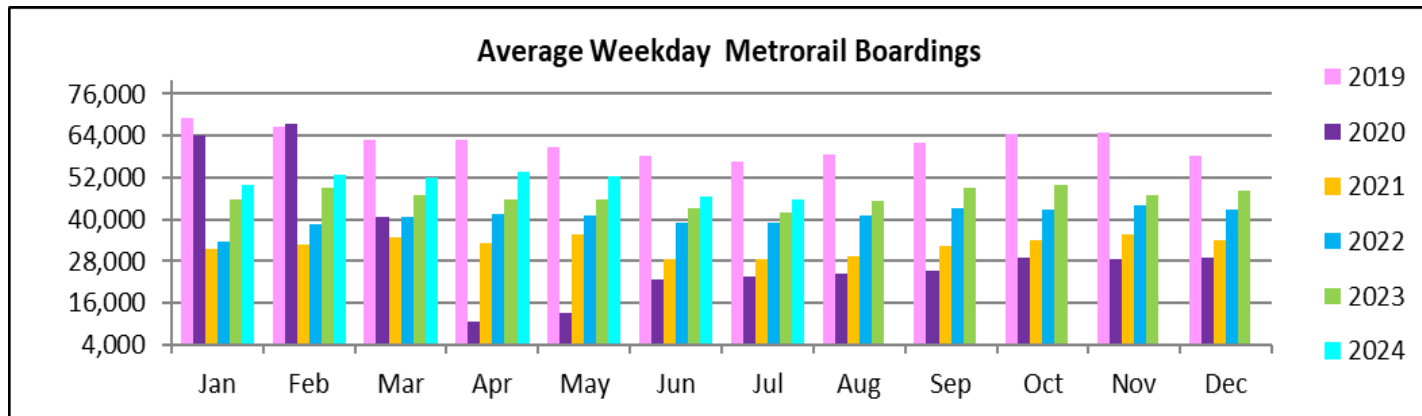
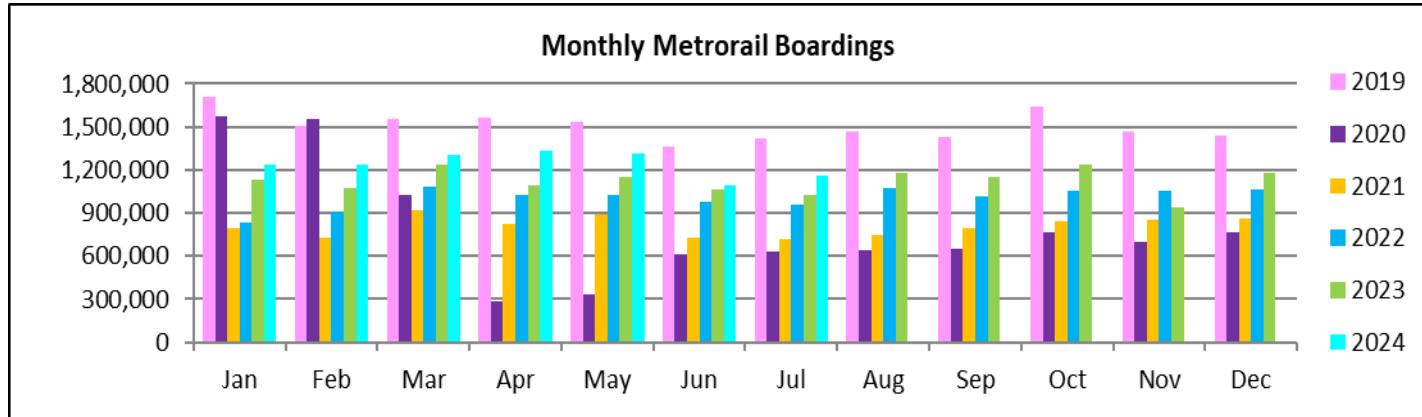
METRORAIL TOTAL MONTHLY BOARDINGS BY STATION

Monthly Totals	Total Month	Total Month	Percent Change	Total Month	Percent Change	Total Month	Percent Change	Total Month	Percent Change
STATIONS	Jul-24	Jul-23	YOY	Feb-20	Current vs Feb-20	Jun-24	MOM	Jul-19	YO5Y
ALLAPATTAH	40,477	38,349	5.5%	46,868	-13.6%	38,702	4.6%	43,221	-6.3%
BRICKELL	126,107	114,848	9.8%	152,259	-17.2%	118,603	6.3%	141,584	-10.9%
BROWNSVILLE	14,360	16,138	-11.0%	21,285	-32.5%	13,967	2.8%	20,345	-29.4%
UHEALTH JACKSON	101,493	89,310	13.6%	128,921	-21.3%	92,087	10.2%	127,879	-20.6%
COCONUT GROVE	43,050	32,051	34.3%	43,580	-1.2%	40,826	5.4%	37,039	16.2%
CULMER	21,261	21,861	-2.7%	33,497	-36.5%	20,227	5.1%	28,883	-26.4%
DADELAND NORTH	88,997	82,674	7.6%	132,894	-33.0%	86,459	2.9%	124,774	-28.7%
DADELAND SOUTH	104,998	100,057	4.9%	162,416	-35.4%	100,692	4.3%	153,423	-31.6%
DOUGLAS ROAD	69,798	42,619	63.8%	82,141	-15.0%	67,744	3.0%	72,989	-4.4%
DR. MARTIN LUTHER KING, JR.	23,945	19,710	21.5%	27,980	-14.4%	22,160	8.1%	26,999	-11.3%
EARLINGTON HEIGHTS	28,650	31,790	-9.9%	40,697	-29.6%	28,003	2.3%	38,058	-24.7%
GOVERNMENT CENTER	152,265	139,068	9.5%	243,414	-37.4%	137,407	10.8%	216,152	-29.6%
HIALEAH	29,656	17,557	68.9%	29,516	0.5%	28,524	4.0%	29,597	0.2%
MIAMI INTERNATIONAL AIRPORT	38,031	34,546	10.1%	46,115	-17.5%	36,573	4.0%	41,412	-8.2%
NORTHSIDE	25,763	31,874	-19.2%	36,127	-28.7%	31,133	-17.2%	34,222	-24.7%
OKEECHOBEE	23,775	19,508	21.9%	26,026	-8.6%	22,781	4.4%	26,369	-9.8%
OVERTOWN / ARENA	42,488	37,240	14.1%	49,911	-14.9%	39,329	8.0%	48,634	-12.6%
PALMETTO	31,461	26,885	17.0%	33,944	-7.3%	27,046	16.3%	32,008	-1.7%
SANTA CLARA	19,071	15,141	26.0%	19,245	-0.9%	17,848	6.9%	17,232	10.7%
SOUTH MIAMI	48,490	38,376	26.4%	69,412	-30.1%	47,727	1.6%	64,028	-24.3%
TRI-RAIL	28,356	24,148	17.4%	29,120	-2.6%	26,134	8.5%	27,130	4.5%
UNIVERSITY	29,220	27,906	4.7%	61,253	-52.3%	21,915	33.3%	39,789	-26.6%
VIZCAYA	27,663	21,281	30.0%	32,497	-14.9%	26,173	5.7%	27,391	1.0%
TOTAL	1,159,375	1,022,937	13.3%	1,549,118	-25.2%	1,092,060	6.2%	1,419,158	-18.3%

METRORAIL CUMULATIVE PERCENTAGE RIDERSHIP SHARE



TOTAL MONTHLY AND AVERAGE WEEKDAY RIDERSHIP YEAR OVER YEAR COMPARISON CHARTS – METRORAIL

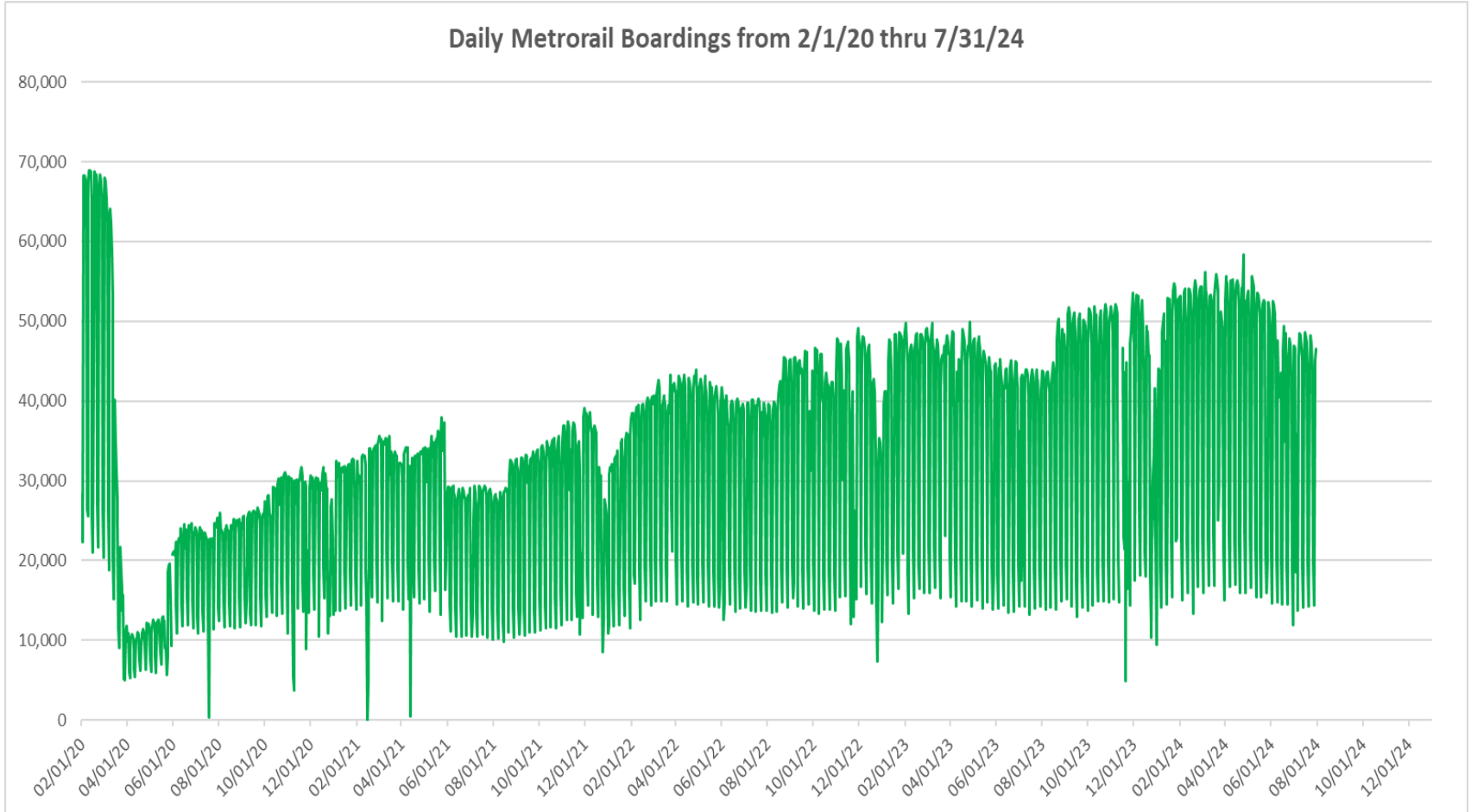


**“TOP 5 / BOTTOM 5” RAIL STATIONS AVERAGE WEEKDAY RIDERSHIP PERFORMANCE
YEAR OVER YEAR COMPARISONS**

Station	Jul-24	Jul-23	Absolute Delta (1)	Percent Delta
DOUGLAS ROAD	2,768	1,826	943	51.6%
HIALEAH	1,156	710	446	62.9%
COCONUT GROVE	1,648	1,259	389	30.9%
SOUTH MIAMI	1,889	1,556	333	21.4%
GOVERNMENT CENTER	5,980	5,675	305	5.4%
NORTHSIDE	961	1,216	-256	-21.0%
EARLINGTON HEIGHTS	1,079	1,233	-154	-12.5%
BROWNSVILLE	543	623	-80	-12.9%
CULMER	804	862	-58	-6.8%
UNIVERSITY	1,210	1,198	12	1.0%

(1) Averages rounded to the nearest boarding.

DAILY METRORAIL RIDERSHIP SINCE FEBRUARY 1, 2020



- (1) There was no Metrobus, Metrorail and Metromover service on 5/31/20, as a safety precaution, and no service for any of the four modes on 9/28/22 as a result of Hurricane Ian..
- (2) The dip at the start of the second week of Nov-20 is due to Hurricane Eta; these are *raw data* from the Unleash Live contractor AI video system.
- (3) The dip on 4/13/21 is due to a loss of connectivity at all stations, affecting a few stations over the next two days as well; a similar loss of connectivity is seen on 11/21/23.
- (4) The reduction seen beginning 6/1/21 is partly due to the resumption of fares and partly the result of resuming reporting Cubic faregate data rather than video camera counts.
- (5) As a result of free fares to launch the Better Bus Network, faregates are open beginning 11/13/23, and Unleash Live AI video system ridership counts are reported starting 11/17/23; the isolated peak in Dec-23 is visible.
- (6) Periodic (weekly) variations are prominent, since weekday ridership is almost always significantly higher than weekend or holiday ridership; a few low-count days are due to system outages, often associated with construction or renovation work.

METRORAIL PARKING PATRONAGE SUMMARY July 2024

PARK-RIDE LOT	ACTUAL CAPACITY (1)	ACTUAL OCCUPANCY (2)	PERCENT OCCUPANCY
DADELAND SOUTH	1,260	778	62%
DADELAND NORTH	1,702	990	58%
SOUTH MIAMI	816	331	41%
UNIVERSITY	260	194	75%
DOUGLAS ROAD	222		
COCONUT GROVE	100		
VIZCAYA	120	43	36%
CULMER	25	17	70%
SANTA CLARA	61	36	58%
ALLAPATTAH	74	7	9%
EARLINGTON HEIGHTS	361	160	44%
BROWNSVILLE	100	81	81%
DR. MARTIN LUTHER KING JR. (MDT)	62		
DR. MARTIN LUTHER KING JR. (GARAGE)	631		
NORTHSIDE	100	80	80%
HIALEAH	338	57	17%
OKEECHOBEE	1,398	146	10%
PALMETTO	700	155	22%
TOTAL	8,330	3,074	37%

- (1) Number of spaces could vary each week; shown are available spaces during final week of month, as submitted by DTPW Safety & Security office.
(2) All sampled occupancy data provided by DTPW Safety & Security office; calculations are revisions to those submitted by that entity.
(3) Daily averages rounded to nearest unit, with fewer samples at some stations than others, depending on staffing levels; calculations are based on sampled counted days only per raw data submitted, with resulting average daily occupancy shown.

Metromover

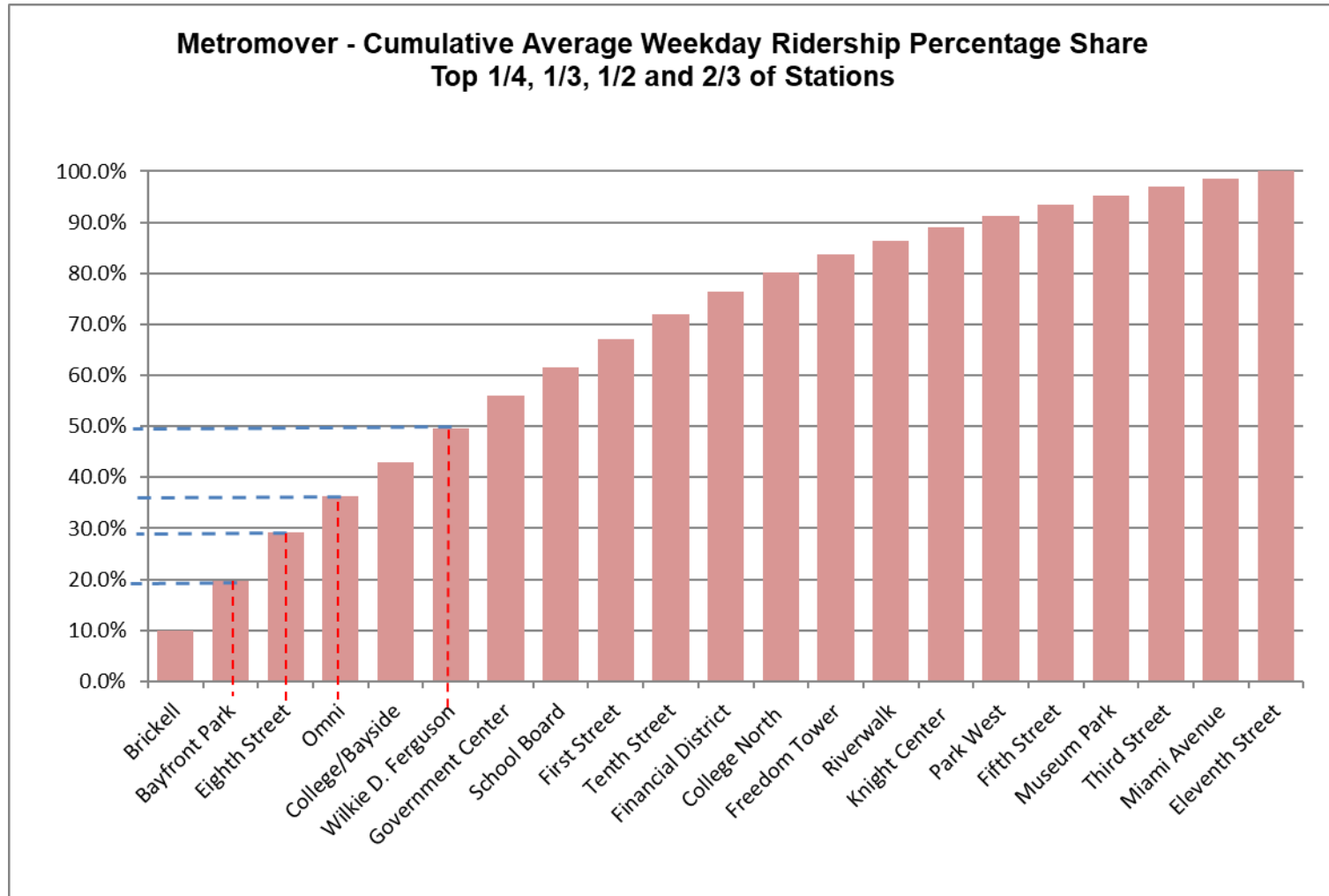


METROMOVER MONTHLY AND AVERAGE DAILY BOARDINGS BY STATION

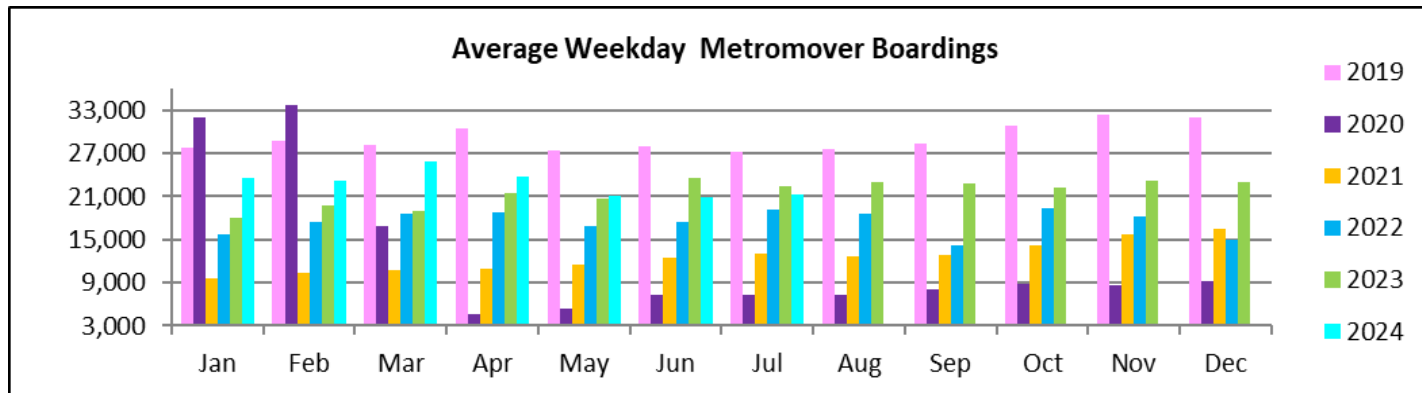
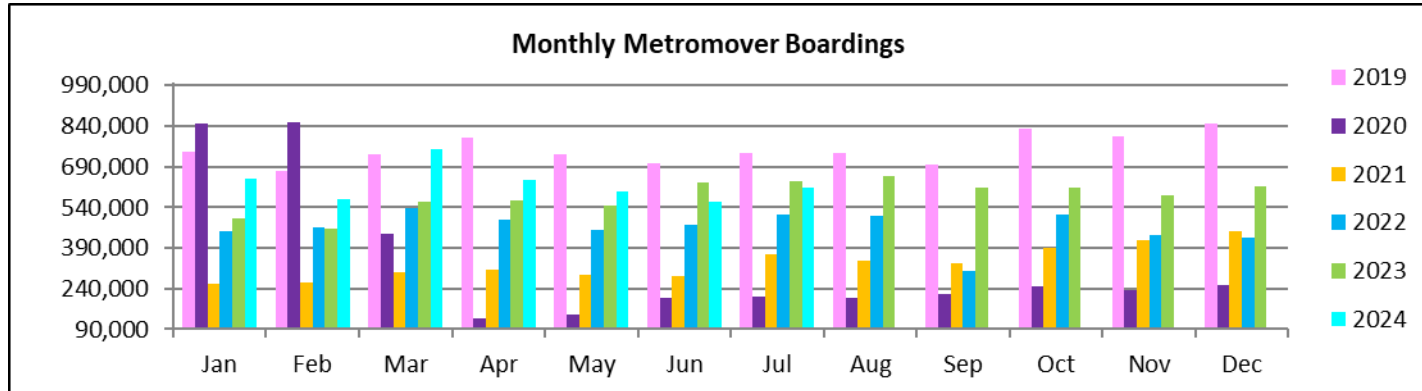
	Average Weekday	Average Weekday	Percent Change	Average Saturday	Average Saturday	Percent Change	Average Sunday	Average Sunday	Percent Change	Total Monthly	Total Monthly	Percent Change
STATIONS	Jul-24	Jul-23	24 vs 23	Jul-24	Jul-23	24 vs 23	Jul-24	Jul-23	24 vs 23	Jul-24	Jul-23	24 vs 23
School Board	1,200	1,163	3.2%	784	859	-8.8%	809	849	-4.7%	34,025	32,941	3.3%
Omni	1,506	1,908	-21.1%	1,045	1,552	-32.7%	1,026	1,272	-19.3%	42,888	53,946	-20.5%
Museum Park	382	428	-10.7%	470	635	-26.0%	364	510	-28.6%	12,190	14,738	-17.3%
Eleventh Street	319	264	20.7%	231	253	-8.6%	198	192	2.8%	8,984	7,748	16.0%
Park West	487	778	-37.5%	372	784	-52.6%	365	572	-36.1%	14,209	23,212	-38.8%
Freedom Tower	744			569			626			22,002		
Government Center	1,366	2,481	-44.9%	983	1,781	-44.8%	898	1,560	-42.5%	39,359	68,614	-42.6%
Miami Avenue	333	384	-13.4%	279	275	1.2%	223	234	-4.7%	9,692	10,624	-8.8%
Third Street	375	461	-18.8%	455	349	30.5%	287	344	-16.4%	11,588	13,164	-12.0%
Knight Center	565	566	0.0%	335	335	-0.2%	273	253	7.9%	15,280	14,550	5.0%
Bayfront Park	2,087	2,238	-6.7%	1,480	1,662	-11.0%	1,391	1,506	-7.7%	60,917	64,486	-5.5%
First Street	1,168	1,338	-12.7%	943	1,170	-19.4%	867	1,006	-13.8%	34,112	39,034	-12.6%
College/Bayside	1,418	1,355	4.7%	1,319	1,188	11.0%	1,215	1,130	7.5%	43,473	40,643	7.0%
College North	831	964	-13.8%	509	660	-23.0%	440	504	-12.8%	22,629	25,828	-12.4%
Wilkie D. Ferguson	1,408	1,483	-5.1%	888	1,013	-12.4%	749	839	-10.7%	38,817	40,327	-3.7%
Riverwalk	584	746	-21.7%	349	568	-38.6%	391	514	-23.9%	16,496	21,105	-21.8%
Fifth Street	436	518	-15.8%	293	391	-25.1%	283	320	-11.6%	12,420	14,439	-14.0%
Eighth Street	2,035	1,119	81.9%	1,639	1,267	29.4%	1,507	980	53.8%	59,212	35,590	66.4%
Tenth Street	1,042	1,028	1.3%	673	766	-12.1%	650	644	1.0%	29,160	28,496	2.3%
Brickell	2,119	2,135	-0.7%	1,219	1,557	-21.7%	1,276	1,387	-8.0%	58,933	59,668	-1.2%
Financial District	920	1,046	-12.0%	389	599	-35.1%	407	440	-7.5%	24,051	26,801	-10.3%
TOTAL	21,323	22,402	-4.8%	15,222	17,665	-13.8%	14,243	15,055	-5.4%	610,437	635,954	-4.0%

(*) Some Metromover stations were closed for construction during the 2023-2024 period, due to installation of new equipment and construction work.

METROMOVER CUMULATIVE PERCENTAGE RIDERSHIP SHARE



TOTAL MONTHLY AND AVERAGE WEEKDAY RIDERSHIP YEAR OVER YEAR COMPARISON CHARTS – METROMOVER

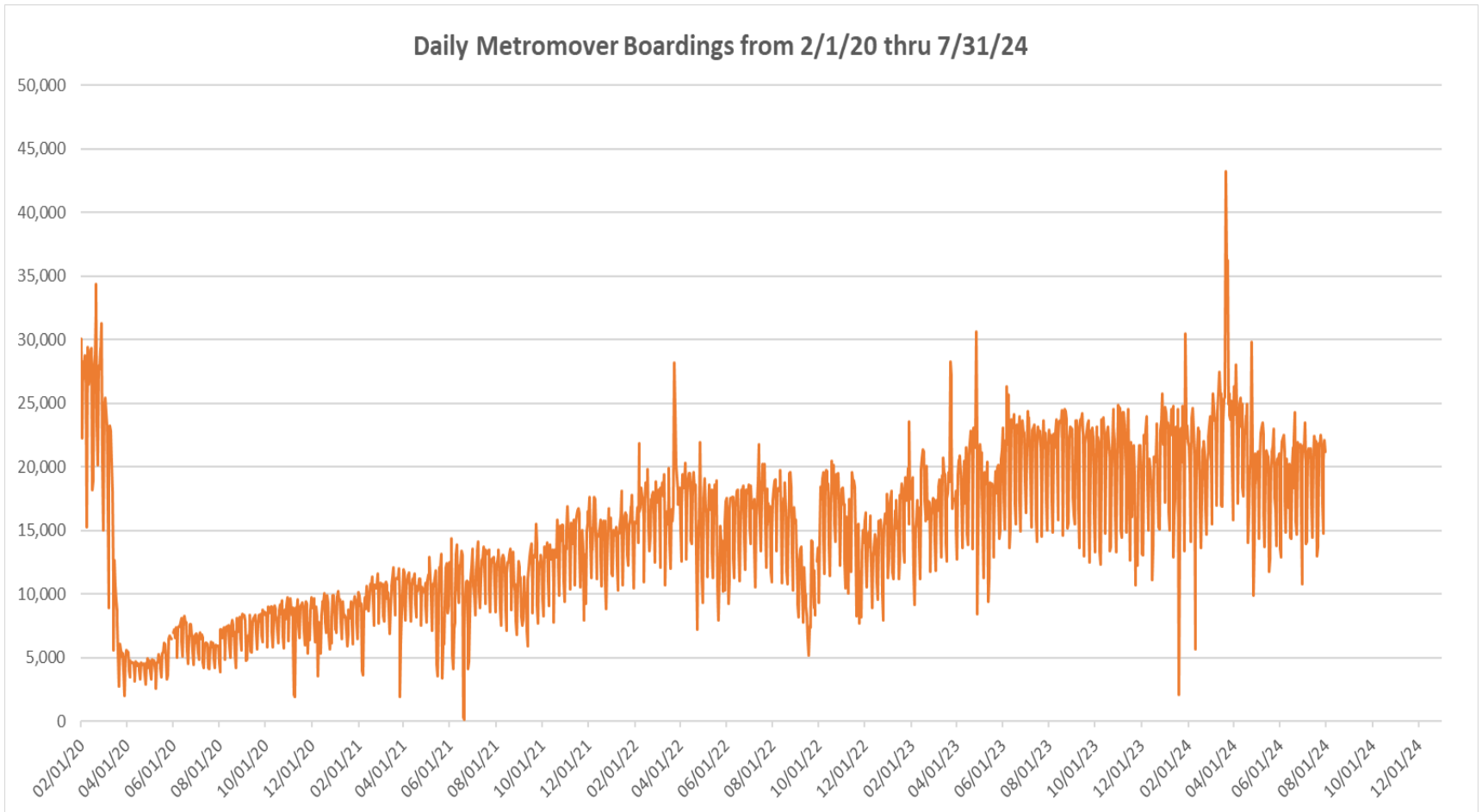


**“TOP 5 / BOTTOM 5” MOVER STATIONS AVERAGE WEEKDAY RIDERSHIP PERFORMANCE
YEAR OVER YEAR COMPARISONS**

Station	Jul-24	Jul-23	Absolute Delta (1)	Percent Delta
Eighth Street	2,035	1,119	916	81.9%
College/Bayside	1,418	1,355	63	4.7%
Eleventh Street	319	264	55	20.7%
School Board	1,200	1,163	37	3.2%
Tenth Street	1,042	1,028	14	1.3%
Government Center	1,366	2,481	-1,115	-44.9%
Omni	1,506	1,908	-402	-21.1%
Park West	487	778	-292	-37.5%
First Street	1,168	1,338	-170	-12.7%
Riverwalk	584	746	-162	-21.7%

(1) Averages rounded to the nearest boarding.

DAILY METROMOVER RIDERSHIP SINCE FEBRUARY 1, 2020



- (1) There was no Metrobus, Metrorail and Metromover service on 5/31/20, as a safety precaution, and no service for any of the four modes on 9/28/22 as a result of Hurricane Ian.
- (2) The dip at the start of the second week of Nov-20 is due to Hurricane Eta; these are *raw data* from the UTA contractor APC system. Other more recent dips are due to various station closures (mostly on weekends) for system maintenance purposes. Pronounced peaks are associated with major events in Downtown Miami, such as the Corporate Run and Ultramusical Festival.
- (3) Periodic (weekly) variations are prominent, since weekday ridership is almost always significantly higher than weekend or holiday ridership; a few low-count days are due to system outages, often associated with construction or renovation work.

Special Transportation Services

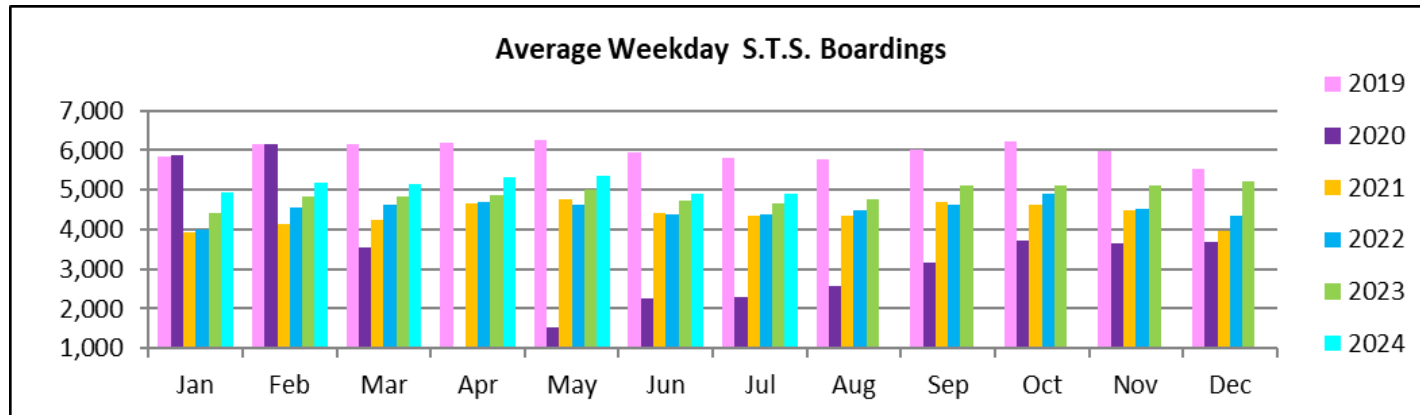
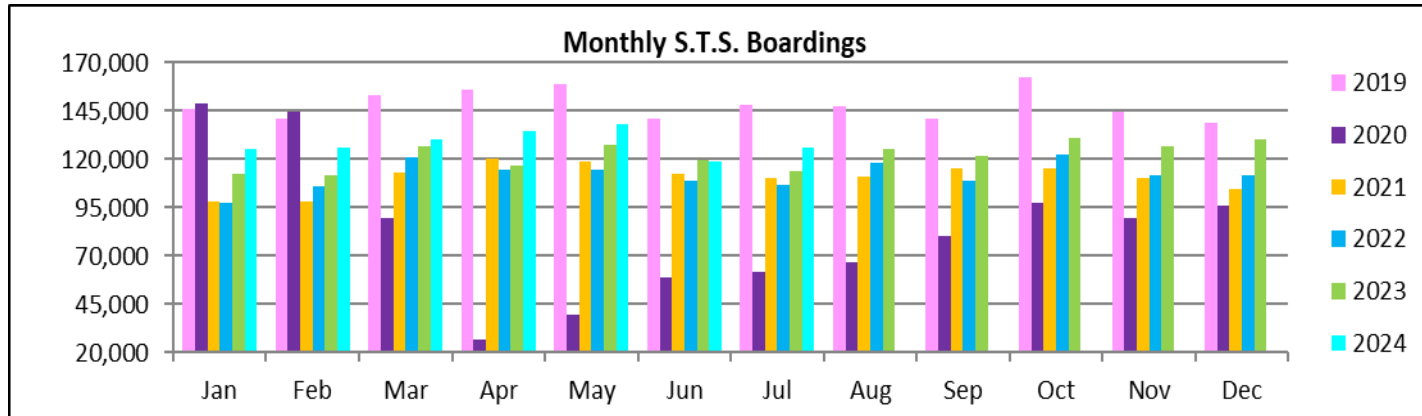


STS MONTHLY AND AVERAGE DAILY BOARDINGS July 2024

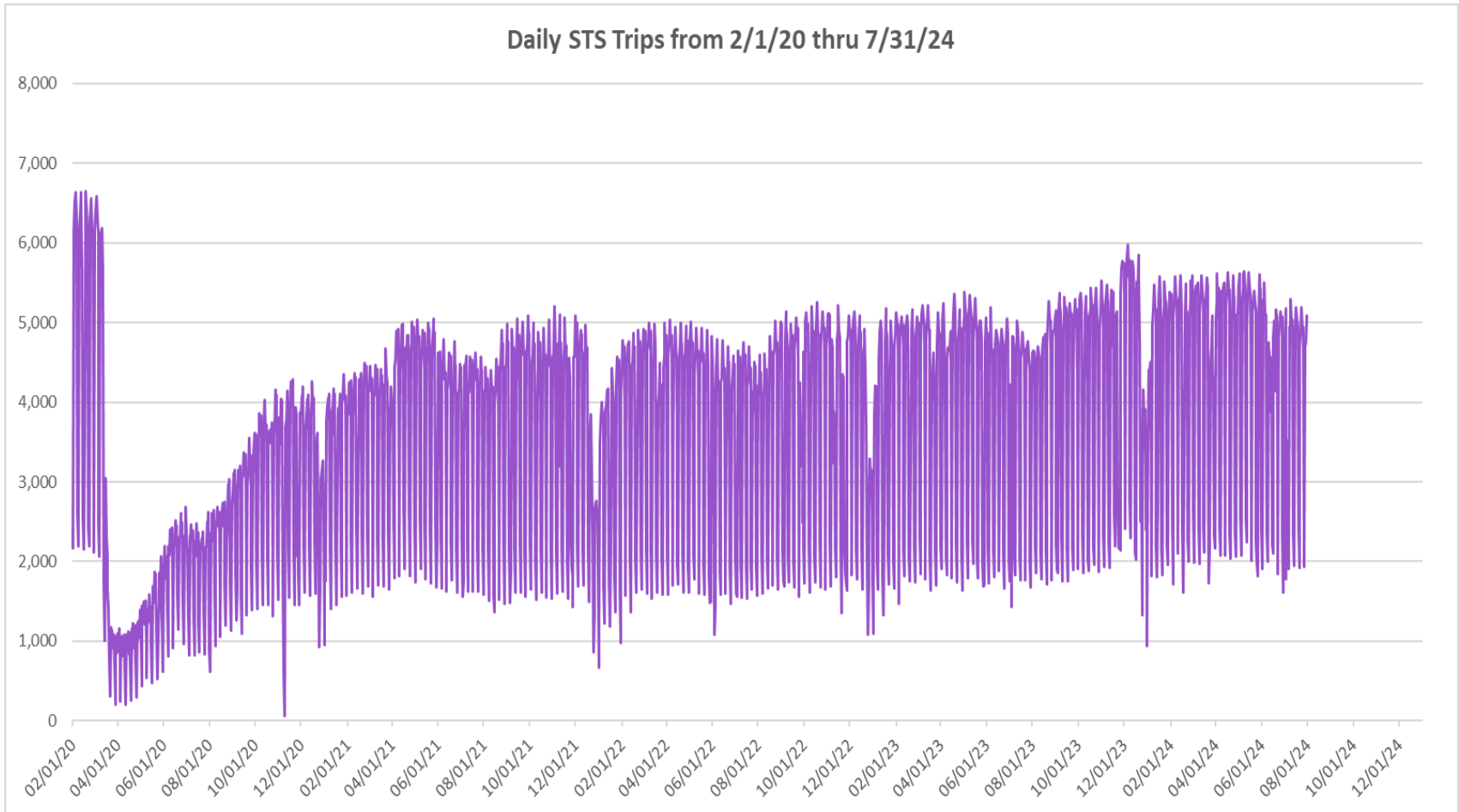
Measure	timeline	Ambulatory	Wheelchair	Total Clients (*)
Average Weekday	Jul-24	4,072	822	4,894
Average Saturday	Jul-24	1,934	377	2,310
Average Sunday	Jul-24	1,566	332	1,898
Total Monthly	Jul-24	105,140	21,251	126,391
Average Weekday	Jul-23	3,870	788	4,659
Average Saturday	Jul-23	1,694	350	2,044
Average Sunday	Jul-23	1,385	320	1,704
Total Monthly	Jul-23	94,186	19,437	113,623
Average Weekday	Jul-22	3,621	776	4,397
Average Saturday	Jul-22	1,615	339	1,954
Average Sunday	Jul-22	1,282	297	1,579
Total Monthly	Jul-22	88,186	19,002	107,188
% Change Current vs. July 2023 Weekday		5.2%	4.2%	5.0%
% Change Current vs. July 2023 Saturday		14.1%	7.6%	13.0%
% Change Current vs. July 2023 Sunday		13.1%	4.0%	11.4%
% Change Current vs. July 2023 Month Total		11.6%	9.3%	11.2%
% Change Current vs. July 2022 Weekday		12.5%	5.9%	11.3%
% Change Current vs. July 2022 Saturday		19.7%	11.1%	18.2%
% Change Current vs. July 2022 Sunday		22.1%	12.0%	20.2%
% Change Current vs. July 2022 Month Total		19.2%	11.8%	17.9%

(*) Trip count data provided by STS contractor.

TOTAL MONTHLY AND AVERAGE WEEKDAY RIDERSHIP YEAR OVER YEAR COMPARISON CHARTS – SPECIAL TRANSPORTATION SERVICES (S.T.S.)

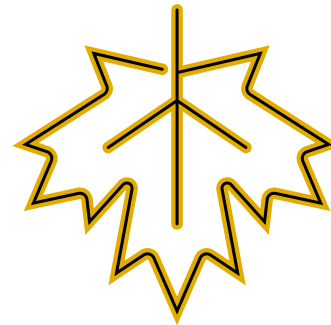
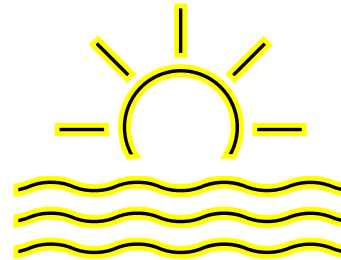


DAILY STS RIDERSHIP SINCE FEBRUARY 1, 2020

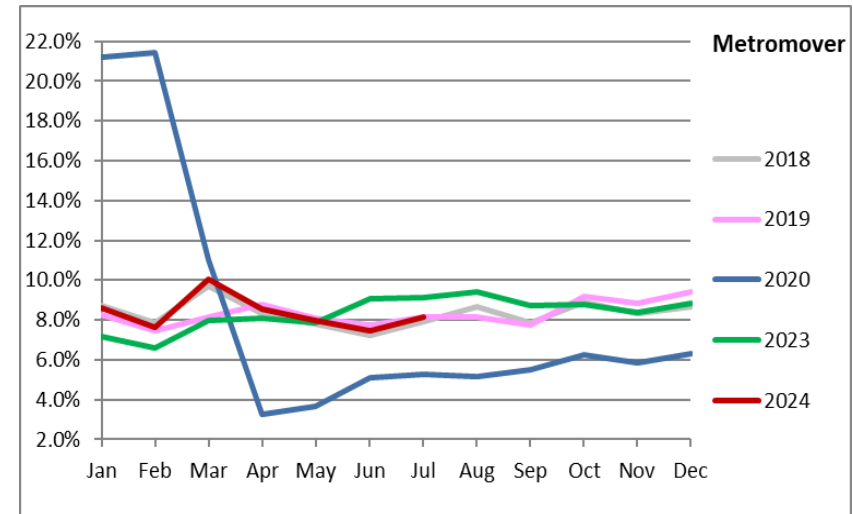
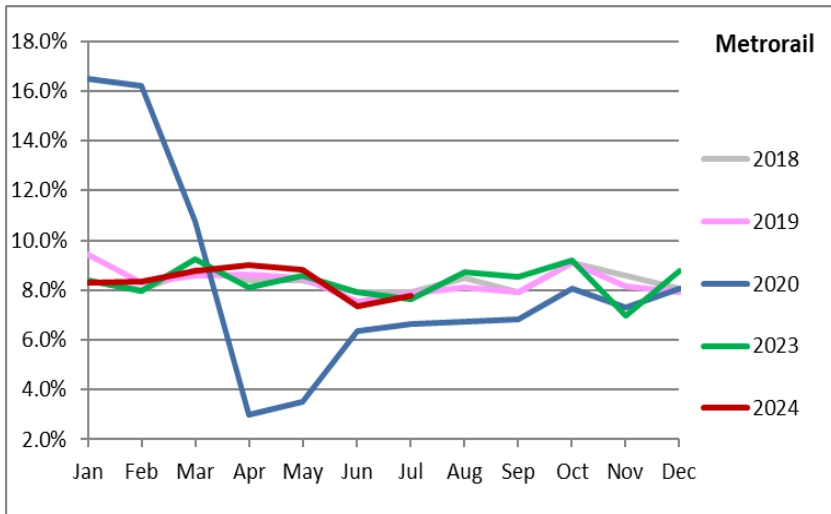
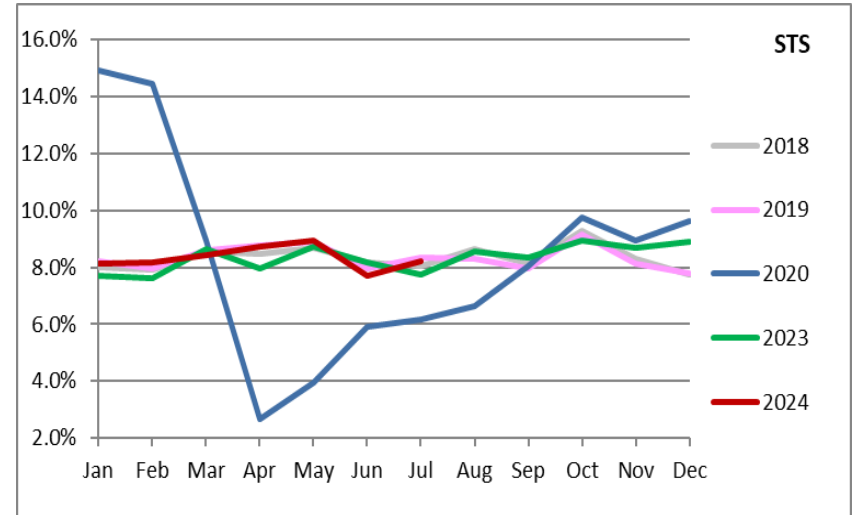
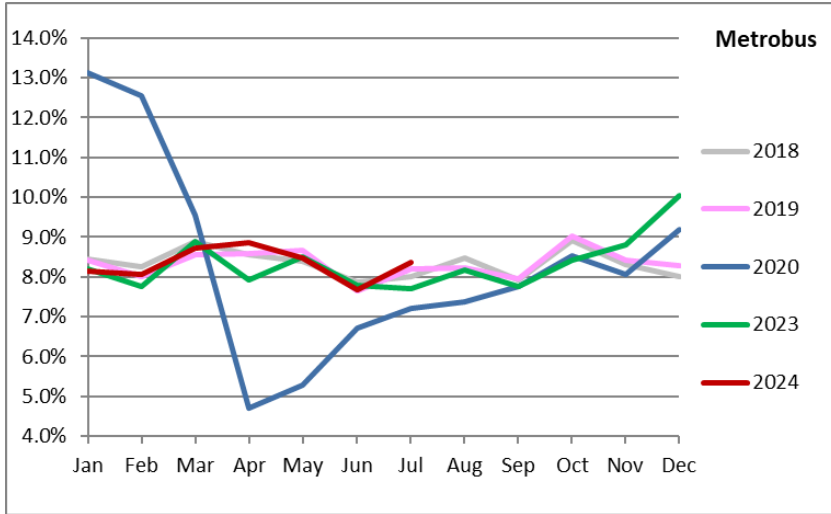


- (1) There was no service (for any of the four modes) on 9/28/22 as a result of Hurricane Ian.
- (2) The dip at the start of the second week of Nov-20 is due to Hurricane Eta; the peak in Dec-23 is due to the free fares from the Better Bus Network.
- (3) Periodic (weekly) variations are prominent, since weekday ridership is almost always significantly higher than weekend or holiday ridership.

Ridership Seasonality



RIDERSHIP SEASONALITY – PERCENT RIDERSHIP SHARE BY MONTH AND CALENDAR YEAR FOR EACH MODE



Note: the prominent dip seen in the beginning in the spring of 2020 is due to the SARS-CoV-2 pandemic. The pronounced rise beginning Nov-23 for Metrobus and Metrorail can be attributed to the launch of the Better Bus Network and the attendant free fares, which ended on New Year's Day 2024.