



TRANSPORTATION AND PUBLIC WORKS

RIDERSHIP TECHNICAL REPORT

Division of Performance Analysis



August 2024

Table of Contents

<i>Table of Contents</i>	2-3
All Modes Overview	4
Total Monthly Weekday, Saturday and Sunday Monthly Boardings By Mode	5
Average Weekday, Saturday and Sunday Boardings by Mode	6
Metrobus Total Monthly Ridership Comparisons by Fiscal Year	7
Metrorail Total Monthly Ridership Comparisons by Fiscal Year	8
Metromover Total Monthly Ridership Comparisons by Fiscal Year	9
STS Total Monthly Ridership Comparisons by Fiscal Year	10
All-Modes Combined Total Monthly Ridership Comparisons By Fiscal Year	11
All Modes Combined Total Monthly and Average Weekday Ridership – Year over Year Comparison Charts	12
Average Weekday Ridership – Modal Splits	13
Daily Ridership for All Modes Combined since 2/1/20	14
Metrobus	15
Better Bus Network (BBN, 11/13/2023 Lineup) Bus Route Changes, Pt 1 and Pt 2	16-17
Metrobus Average Weekday Boardings by Route	18-20
Metrobus Average Saturday Boardings by Route	21-22
Metrobus Average Sunday Boardings by Route	23-24
Metrobus Monthly Total Boardings by Route	25-27
Bus Ridership by Route Service Type Lineups Comparison (month-over-month & month-over-10 months)	28-31
Bus Routes as Ranked by Percentage of Average Weekday Ridership	32
Metrobus Cumulative Percentage Average Weekday Ridership Share by Route (Top 75%)	33
Total Monthly and Average Weekday Bus Ridership – Year over Year Comparison Charts	34
Bus “Top 10 / Bottom 10” Bus Routes Average Weekday Ridership Performance – Month-over-Month Comparisons	35
Bus “Top 10 / Bottom 10” Bus Routes Sets Average Weekday Ridership Performance – Year-over-Year Comparisons	36
Bus “Top 10 / Bottom 10” Bus Routes Sets Average Weekday Ridership Performance – Month-over-10 Month Comparisons	37
Daily Metrobus Ridership since 2/1/20	38
Metrobus Parking Patronage Summary	39

Table of Contents (continued)

Metrorail	40
Metrorail Average Weekday Boardings by Station	41
Metrorail Average Saturday Boardings by Station	42
Metrorail Average Sunday Boardings by Station	43
Metrorail Total Monthly Boardings by Station	44
Metrorail Cumulative Percentage Average Weekday Ridership Share	45
Total Monthly and Average Weekday Rail Ridership – Year over Year Comparison Charts	46
“Top 5 / Bottom 5” Stations Average Weekday Ridership Performance	47
Daily Metrorail Ridership since 2/1/20	48
Metrorail Parking Patronage Summary	49
Metromover	50
Monthly and Average Daily Mover Boardings by Station	51
Metromover Cumulative Percentage Average Weekday Ridership Share	52
Total Monthly and Average Weekday Mover Ridership – Year over Year Comparison Charts	53
“Top 5 / Bottom 5” Stations Average Weekday Ridership Performance	54
Daily Metromover Ridership since 2/1/20	55
Special Transportation Services (STS)	56
STS Monthly and Average Daily Boardings	57
Total Monthly and Average Weekday STS Ridership – Year over Year Comparison Charts	58
Daily STS Ridership since 2/1/20	59
Ridership Seasonality	60
Ridership Seasonality – Percent Ridership Share by Month and Calendar Year for Each Mode	61

All Modes Overview



**TOTAL MONTHLY WEEKDAY, SATURDAY AND SUNDAY BOARDINGS BY MODE
August 2024**

TRAVEL MODE	MONTH'S TOTAL WEEKDAYS RIDERSHIP	MONTH'S TOTAL SATURDAYS RIDERSHIP	MONTH'S TOTAL SUNDAYS RIDERSHIP	TOTAL MONTHLY RIDERSHIP	% CHANGE vs August 2023 TOTAL MONTH RIDERSHIP
METROBUS (1)	4,119,786	588,275	343,285	5,051,346	6.2%
METRORAIL (2)	1,081,545	103,738	61,736	1,247,019	6.2%
METROMOVER	463,866	78,041	55,454	597,361	-9.1%
STS PARATRANSIT (3)	113,361	11,349	7,793	132,503	5.6%
TOTAL	5,778,558	781,403	468,268	7,028,229	4.7%

- (1) Bus ridership reporting through automatic passenger counters coupled with a new enhanced sensor system resumed on October 1, 2022.
- (2) Metrorail fares resumed on June 1, 2021, following a 14-month period of fare-free rides as a result of the SARS-CoV-2 pandemic. The NextFare System faregate data replaced the video data as ridership data of record starting on that date, until free fares were reinstated for the Better Bus Network launch on 11/13/23. The NextFare System faregate data collection and reporting resumed on New Year's Day 2024.
- (3) Paratransit ridership data as reported by the contractor and subsequently audited by the Department.

AVERAGE WEEKDAY, SATURDAY AND SUNDAY BOARDINGS BY MODE
August 2024

Travel Mode	Average Weekday	Average Saturday	Average Sunday	% Change August 2023 Weekday	% Change August 2023 Saturday	% Change August 2023 Sunday
METROBUS	187,356	117,655	85,821	7.7%	8.0%	6.4%
METRORAIL	49,161	20,748	15,434	8.4%	7.2%	7.4%
METROMOVER	21,085	15,608	13,864	-8.2%	-8.6%	-8.9%
STS PARATRANSIT	5,153	2,270	1,948	7.9%	5.8%	9.5%
Totals	262,755	156,281	117,067	6.4%	6.0%	4.5%

(*) Average ridership is calculated and published only for those days and stations or routes with nontrivial amounts of reported data.

METROBUS TOTAL MONTHLY RIDERSHIP COMPARISONS BY FISCAL YEAR

Bus Month	FY 19	FY 20	Variance 19 to 20	FY 21	FY 22	FY 23	FY 24	Variance 19 to 23	Variance 22 to 23	Variance 19 to 24	Variance 23 to 24
Oct	4,554,886	4,507,012	-1.1%	2,805,139	3,081,157	4,679,725	4,912,151	2.7%	51.9%	7.8%	5.0%
Nov	4,245,535	4,197,225	-1.1%	2,651,290	3,056,726	4,549,666	5,135,172	7.2%	48.8%	21.0%	12.9%
Dec	4,081,581	4,126,990	1.1%	3,022,530	3,123,883	4,677,460	5,857,057	14.6%	49.7%	43.5%	25.2%
Jan	4,195,911	4,316,998	2.9%	3,082,746	3,029,055	4,785,128	5,103,257	14.0%	58.0%	21.6%	6.6%
Feb	3,994,019	4,123,083	3.2%	3,076,966	2,995,789	4,526,317	5,053,665	13.3%	51.1%	26.5%	11.7%
Mar	4,266,768	3,136,162	-26.5%	3,660,639	3,218,562	5,183,872	5,461,317	21.5%	61.1%	28.0%	5.4%
Apr	4,291,135	1,544,316	-64.0%	3,625,048	3,105,797	4,618,302	5,548,614	7.6%	48.7%	29.3%	20.1%
May	4,330,922	1,734,609	-59.9%	3,683,343	3,097,574	4,953,197	5,308,711	14.4%	59.9%	22.6%	7.2%
Jun	3,823,863	2,210,725	-42.2%	2,672,570	3,064,059	4,545,050	4,805,039	18.9%	48.3%	25.7%	5.7%
Jul	4,094,906	2,366,749	-42.2%	2,769,907	3,189,994	4,484,458	5,230,894	9.5%	40.6%	27.7%	16.6%
Aug	4,109,613	2,422,014	-41.1%	2,843,552	3,442,006	4,756,063	5,051,346	15.7%	38.2%	22.9%	6.2%
Sep	3,971,220	2,546,923	-35.9%	2,877,110	3,123,572	4,525,426		14.0%	44.9%		
FY Total	49,960,359	37,232,806	-25.5%	36,770,840	37,528,174	56,284,664		12.7%	50.0%		

METRORAIL TOTAL MONTHLY RIDERSHIP COMPARISONS BY FISCAL YEAR

Rail Month	FY 19	FY 20	Variance 19 to 20	FY 21	FY 22	FY 23	FY 24	Variance 19 to 23	Variance 22 to 23	Variance 19 to 24	Variance 23 to 24
Oct	1,757,225	1,643,166	-6.5%	769,525	844,383	1,053,191	1,237,096	-40.1%	24.7%	-29.6%	17.5%
Nov	1,656,929	1,469,448	-11.3%	699,492	850,881	1,055,066	935,121	-36.3%	24.0%	-43.6%	-11.4%
Dec	1,553,804	1,433,928	-7.7%	769,194	860,436	1,063,096	1,177,272	-31.6%	23.6%	-24.2%	10.7%
Jan	1,708,695	1,576,340	-7.7%	799,119	832,924	1,127,340	1,233,350	-34.0%	35.3%	-27.8%	9.4%
Feb	1,501,458	1,549,118	3.2%	730,792	905,162	1,072,791	1,240,316	-28.6%	18.5%	-17.4%	15.6%
Mar	1,554,851	1,027,319	-33.9%	917,097	1,084,978	1,239,336	1,302,854	-20.3%	14.2%	-16.2%	5.1%
Apr	1,559,446	287,803	-81.5%	827,414	1,027,139	1,087,816	1,336,511	-30.2%	5.9%	-14.3%	22.9%
May	1,531,597	337,696	-78.0%	887,111	1,023,322	1,151,819	1,314,112	-24.8%	12.6%	-14.2%	14.1%
Jun	1,359,966	608,758	-55.2%	723,469	975,477	1,066,861	1,092,060	-21.6%	9.4%	-19.7%	2.4%
Jul	1,419,158	632,964	-55.4%	722,159	953,331	1,022,937	1,159,375	-27.9%	7.3%	-18.3%	13.3%
Aug	1,463,646	641,275	-56.2%	749,578	1,076,490	1,174,138	1,247,019	-19.8%	9.1%	-14.8%	6.2%
Sep	1,427,726	654,244	-54.2%	795,749	1,012,331	1,146,864		-19.7%	13.3%		
FY Total	18,494,501	11,862,059	-35.9%	9,390,699	11,446,854	13,261,255		-28.3%	15.9%		

METROMOVER TOTAL MONTHLY RIDERSHIP COMPARISONS BY FISCAL YEAR

Mover Month	FY 19	FY 20	Variance 19 to 20	FY 21	FY 22	FY 23	FY 24	Variance 19 to 23	Variance 22 to 23	Variance 19 to 24	Variance 23 to 24
Oct	790,533	831,234	5.1%	250,044	389,065	514,308	614,479	-34.9%	32.2%	-22.3%	19.5%
Nov	735,198	799,632	8.8%	232,422	418,929	439,150	584,887	-40.3%	4.8%	-20.4%	33.2%
Dec	767,239	849,832	10.8%	251,019	450,320	426,073	616,455	-44.5%	-5.4%	-19.7%	44.7%
Jan	746,728	847,773	13.5%	255,968	451,566	498,566	644,639	-33.2%	10.4%	-13.7%	29.3%
Feb	675,160	855,398	26.7%	260,332	465,968	459,264	570,242	-32.0%	-1.4%	-15.5%	24.2%
Mar	737,814	441,200	-40.2%	302,502	535,857	558,396	753,107	-24.3%	4.2%	2.1%	34.9%
Apr	795,696	130,549	-83.6%	310,772	495,982	565,943	640,281	-28.9%	14.1%	-19.5%	13.1%
May	734,645	146,454	-80.1%	292,922	455,120	547,948	597,232	-25.4%	20.4%	-18.7%	9.0%
Jun	701,318	203,637	-71.0%	286,145	477,286	632,423	559,913	-9.8%	32.5%	-20.2%	-11.5%
Jul	739,814	210,596	-71.5%	368,847	512,094	635,954	610,437	-14.0%	24.2%	-17.5%	-4.0%
Aug	739,785	205,995	-72.2%	344,319	508,359	657,267	597,361	-11.2%	29.3%	-19.3%	-9.1%
Sep	699,879	219,696	-68.6%	331,915	305,185	610,810		-12.7%	100.1%		
FY Total	8,863,809	5,741,996	-35.2%	3,487,207	5,465,731	6,546,102		-26.1%	19.8%		

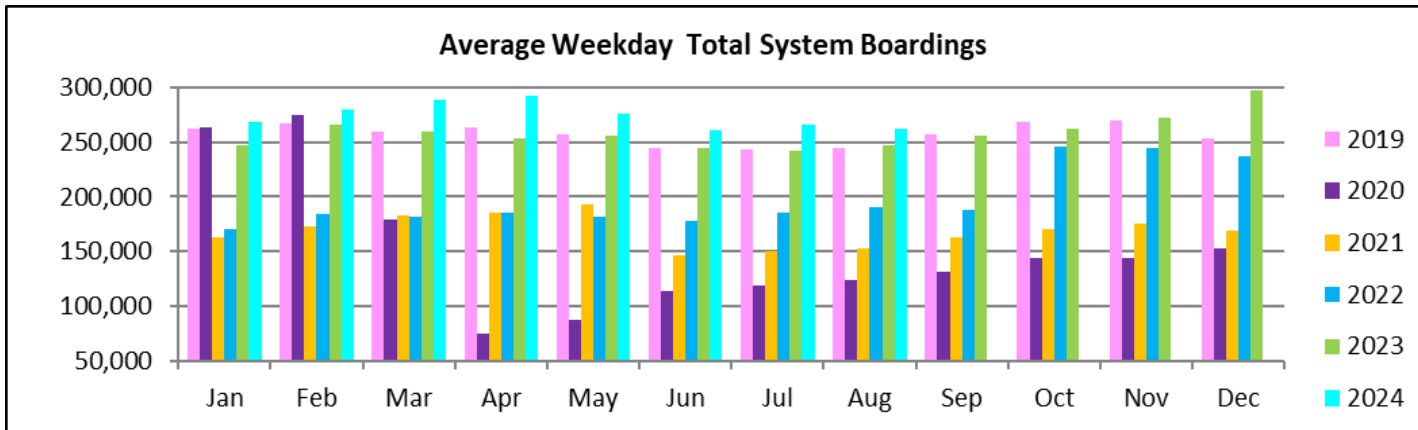
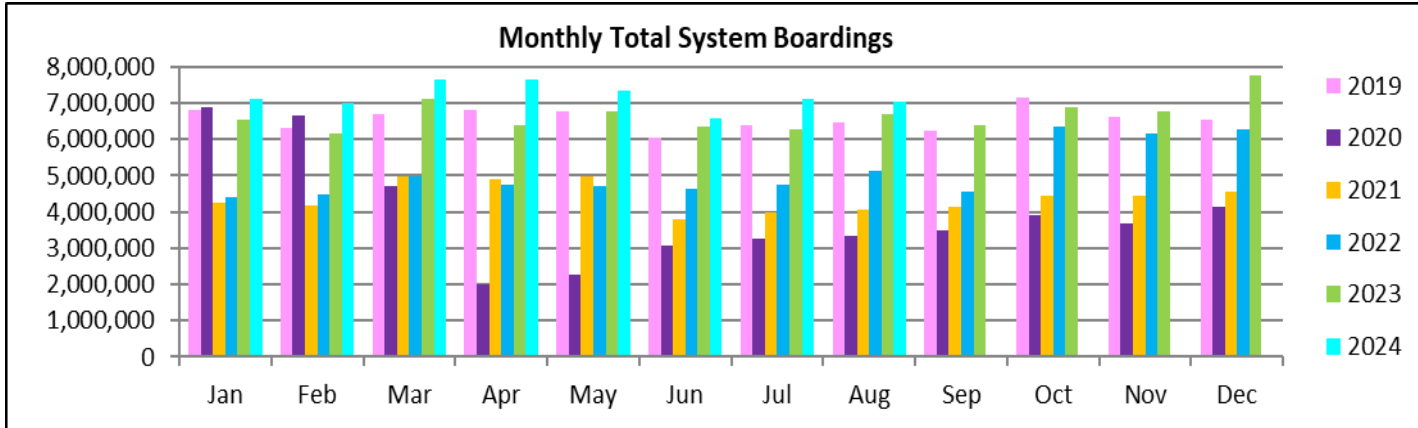
SPECIAL TRANSPORTATION SERVICES (STS) TOTAL MONTHLY RIDERSHIP COMPARISONS BY FISCAL YEAR

STS Month	FY 19	FY 20	Variance 19 to 20	FY 21	FY 22	FY 23	FY 24	Variance 19 to 23	Variance 22 to 23	Variance 19 to 24	Variance 23 to 24
Oct	162,564	162,704	0.1%	97,388	115,122	122,189	130,958	-24.8%	6.1%	-19.4%	7.2%
Nov	145,653	144,366	-0.9%	89,387	110,289	111,578	127,025	-23.4%	1.2%	-12.8%	13.8%
Dec	136,110	138,642	1.9%	96,366	104,496	112,019	130,093	-17.7%	7.2%	-4.4%	16.1%
Jan	146,268	149,114	1.9%	97,928	97,541	112,632	125,513	-23.0%	15.5%	-14.2%	11.4%
Feb	141,396	144,392	2.1%	98,285	105,706	111,748	125,732	-21.0%	5.7%	-11.1%	12.5%
Mar	153,191	89,634	-41.5%	112,930	120,718	126,819	130,203	-17.2%	5.1%	-15.0%	2.7%
Apr	155,808	26,877	-82.7%	120,122	114,912	116,882	134,677	-25.0%	1.7%	-13.6%	15.2%
May	158,665	39,654	-75.0%	118,636	114,505	127,782	137,958	-19.5%	11.6%	-13.1%	8.0%
Jun	141,320	59,093	-58.2%	112,397	109,054	119,527	118,860	-15.4%	9.6%	-15.9%	-0.6%
Jul	148,232	61,765	-58.3%	110,059	107,188	113,623	126,391	-23.3%	6.0%	-14.7%	11.2%
Aug	147,331	66,563	-54.8%	110,766	117,941	125,510	132,503	-14.8%	6.4%	-10.1%	5.6%
Sep	141,387	80,346	-43.2%	115,406	108,788	122,065		-13.7%	12.2%		
FY Total	1,777,925	1,163,150	-34.6%	1,279,670	1,326,260	1,422,374		-20.0%	7.2%		

ALL-MODES COMBINED TOTAL MONTHLY RIDERSHIP COMPARISONS BY FISCAL YEAR

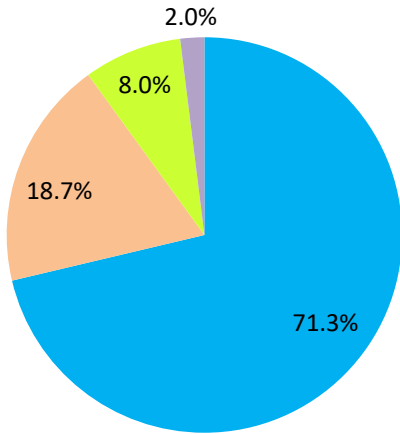
All Modes													
Month	FY 19	FY 20	FY 21	FY 22	FY 23	FY 24	19 TO 20	20 TO 21	21 TO 22	22 TO 23	19 TO 23	23 TO 24	19 TO 24
Oct	7,265,208	7,144,116	3,922,096	4,429,727	6,369,413	6,894,684	-1.7%	-45.1%	12.9%	43.8%	-12.3%	8.2%	-5.1%
Nov	6,783,315	6,610,671	3,672,591	4,436,825	6,155,460	6,782,205	-2.5%	-44.4%	20.8%	38.7%	-9.3%	10.2%	0.0%
Dec	6,538,734	6,549,392	4,139,109	4,539,135	6,278,648	7,780,877	0.2%	-36.8%	9.7%	38.3%	-4.0%	23.9%	19.0%
Jan	6,797,602	6,890,225	4,235,761	4,411,086	6,523,666	7,106,759	1.4%	-38.5%	4.1%	47.9%	-4.0%	8.9%	4.5%
Feb	6,312,033	6,671,991	4,166,375	4,472,625	6,170,120	6,989,955	5.7%	-37.6%	7.4%	38.0%	-2.2%	13.3%	10.7%
Mar	6,712,624	4,694,315	4,993,168	4,960,115	7,108,423	7,647,481	-30.1%	6.4%	-0.7%	43.3%	5.9%	7.6%	13.9%
Apr	6,802,085	1,989,545	4,883,356	4,743,830	6,388,943	7,660,083	-70.8%	145.5%	-2.9%	34.7%	-6.1%	19.9%	12.6%
May	6,755,829	2,258,413	4,982,012	4,690,521	6,780,746	7,358,013	-66.6%	120.6%	-5.9%	44.6%	0.4%	8.5%	8.9%
Jun	6,026,467	3,082,213	3,794,581	4,625,876	6,363,861	6,575,872	-48.9%	23.1%	21.9%	37.6%	5.6%	3.3%	9.1%
Jul	6,402,110	3,272,074	3,970,972	4,762,607	6,256,972	7,127,097	-48.9%	21.4%	19.9%	31.4%	-2.3%	13.9%	11.3%
Aug	6,460,375	3,335,847	4,048,215	5,144,796	6,712,978	7,028,229	-48.4%	21.4%	27.1%	30.5%	3.9%	4.7%	8.8%
Sep	6,240,212	3,501,209	4,120,180	4,549,876	6,405,165		-43.9%	17.7%	10.4%	40.8%	2.6%		
FY Total	79,096,594	56,000,011	50,928,416	55,767,019	77,514,395		-29.2%	-9.1%	9.5%	39.0%	-2.0%		

TOTAL MONTHLY AND AVERAGE WEEKDAY RIDERSHIP YEAR OVER YEAR COMPARISON CHARTS – ALL MODES COMBINED



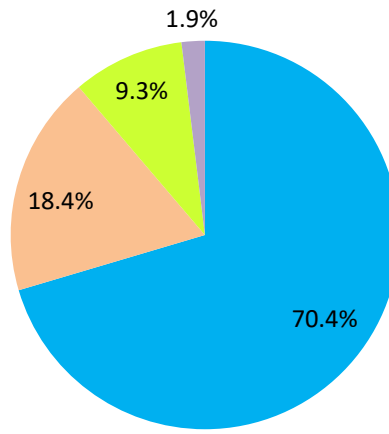
AVERAGE WEEKDAY RIDERSHIP - MODAL SPLITS

August 2024



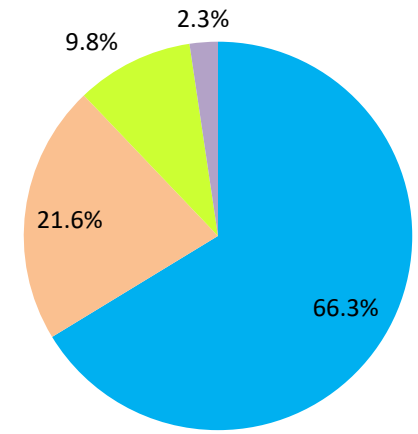
boardings

August 2023



boardings

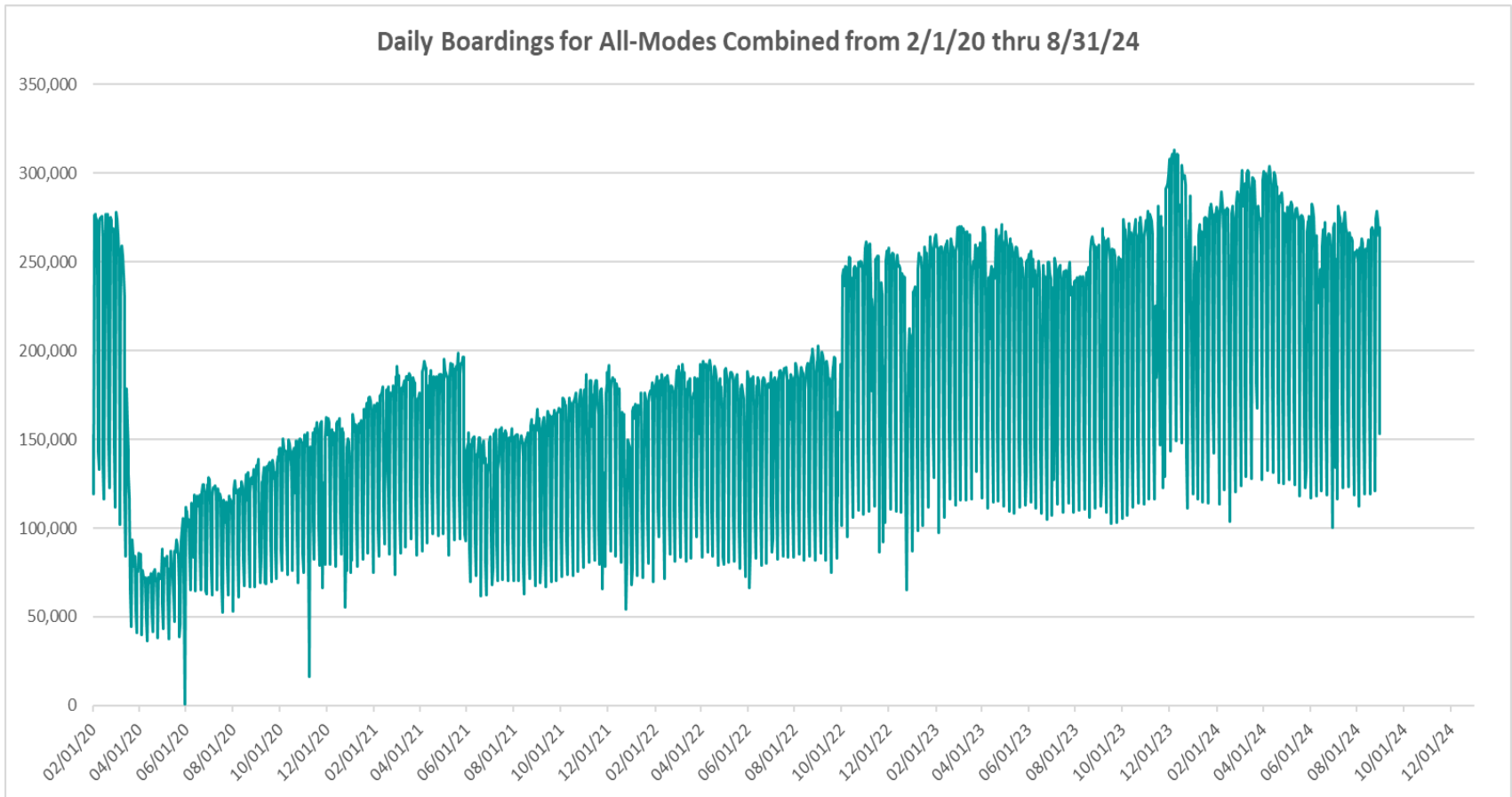
August 2022



boardings



DAILY RIDERSHIP FOR ALL MODES COMBINED SINCE FEBRUARY 1, 2020



- (1) There was no Metrobus, Metrorail and Metromover service on 5/31/20, as a safety precaution, and no service for any of the four modes on 9/28/22 as a result of Hurricane Ian..
- (2) The dip at the start of the second week of Nov-20 is due to Hurricane Eta.
- (3) Daily variations from Oct-22 onward are, for the Bus portion, a representation estimated from reports made available by the Bus APC data vendor, and finalized sampling for each month.
- (4) The reduction seen beginning 6/1/21 is partly due to the resumption of fares for bus and rail, and partly the result of having resumed reporting Cubic farebox data rather than bus APC counts, as well as Cubic rail faregate counts instead of video camera counts on that date. The jump seen at the start of Oct-22 is due to the switch to APC bus ridership counts reporting begun on 10/1/22.
- (5) The pronounced peak in Dec-23 is attributable to the Better Bus Network launch period and attendant free fares.
- (6) Periodic (weekly) variations are prominent, since weekday ridership is almost always significantly higher than weekend or holiday ridership.

Metrobus



Better Bus Network (BBN, 11/13/2023 lineup) Bus Route Changes (Pt 1)

The listings below and on the following page are to serve as an aid in identifying individual routes for comparison of ridership data between periods prior to and following the launch of the BBN on 11/13/2023. In Nov-23, both old and new route numbers appear in data tables, since the launch took place near mid-month; beginning with Dec-23, only the current (BBN) numbering system appear in tables, to allow for direct comparisons.

BBN Numbering Changes:

Contracted **Route 1** was renumbered **Route 97**

Directly operated **Route 33** was renumbered **Route 103** (new, recycled number, not the same as former **Route 103 - C**)

Directly operated **Route 51** (Flagler MAX) was renumbered **Route 211** (recycled number, not the same as the OVERTOWN CIRCULATOR)

Contracted **Route 71** was renumbered **Route 107** (new, recycled number, not the same as **Route 107 - G** further below) and became directly operated

Directly operated **Route 79** was renumbered **Route 279** (79th Steet MAX)

Directly operated **Route 93** was renumbered **Route 203** (Biscayne MAX)

Directly operated **Route 99** was renumbered **Route 199**

Contracted **Route 101 - A** was renumbered **Route 15**

Directly operated **Route 102 - B** was renumbered **Route 26** (under the BBN's first phase, 07/24/2023 lineup)

Directly operated **Route 107 - G** (old, not the same as the **Route 107** appearing above) was renumbered **Route 125**

Directly operated **Route 112 - L** was renumbered **Route 79** (recycled number, not the same as the **Route 79** appearing above)

Directly operated **Route 120** was renumbered **Route 100**

Directly operated **Route 200** (CUTLER BAY LOCAL) was renumbered **Route 500** (recycled number, not the same as the **Route 500** further below)

Contracted **Route 210** was renumbered **Route 510** (SKYLAKE CIRCULATOR)

Contracted **Route 246** was renumbered **Route 401** (NORTH OWL)

Contracted **Route 248** (Princeton Circulator) was renumbered **Route 70** (recycled number, not the same as former **Route 70**)

Directly operated **Route 252** became contractor-operated, under the new name and number **Route 152**

Directly operated **Route 500** was renumbered **Route 400** (SOUTH OWL)

The above routes, along with many others who retained their numbering, underwent modifications in various ways (realignment, new headways, days of operation, etc., some major), as part of the BBN design and its resulting lineup. Details for each DTPW Bus route are provided in the Miami-Dade County website. (Directly operated Route 2 became contractor-operated but kept its number).

Better Bus Network (BBN, 11/13/2023 lineup) Bus Route Changes (Pt 2)

BBN New Routes and Numbers:

Two new routes with new numbering were created to support the Better Bus Network:

Route 14 corresponds to a newly created route

Route 20 corresponds to a newly created route

BBN Eliminated Routes:

The following routes were discontinued, as part of the Better Bus Network realignments:

Route 10

Route 16

Route 19

Route 29

Route 31 (BUSWAY LOCAL)

Route 42

Route 46 (LIBERTY CITY CONNECTION)

Route 57

Route 82 (WESTCHESTER CIRCULATOR)

Route 103 - C (old, previously used numbering, not the same as the Route 103 in the list on the previous page)

Route 211 (OVERTOWN CIRCULATOR, previously used numbering, not the same as the Route 211 in the list on the previous page)

Route 105 - E

Route 108 - H

Route 110 - J

Route 113 - M

Route 115

Route 119 - S

Route 155 (BISCAYNE GARDENS CIRCULATOR)

Route 202 (LITTLE HAITI CONNECTION)

Route 212 (SWEETWATER CIRCULATOR)

Route 217 (BUNCHE PARK CIRCULATOR)

Route 238 (EAST-WEST CONNECTION)

Route 241 (TUTTLE LIMITED)

Route 254 (BROWNSVILLE CIRCULATOR)

Route 267 (LUDLAM LIMITED)

Route 277 (7th AVENUE MAX)

Route 286 (NORTH POINTE CIRCULATOR)

Route 297 (27th AVENUE ORANGE MAX)

Previously Eliminated Routes:

The following five express routes were suspended soon after the start of the SARS-CoV-2 pandemic, and never reinstated; their ridership appears in some of the tables in this report, as then-components of the reported bus system performance measures:

Route 175 (NW MIAMI-DADE EXPRESS)

Route 195 EXPRESS – BROWARD BLVD

Route 196 EXPRESS – BROWARD BLVD-CIVIC CENTER

Route 295 EXPRESS – SHERIDAN STREET

Route 296 EXPRESS – SHERIDAN STREET-CIVIC CENTER

The preceding listings are not exhaustive, and the reader is referred to the Miami-Dade County website for further BBN details or additional changes.

Six new MetroLink routes began running in August and August 2024 as a complement to the BBN.

METROBUS AVERAGE WEEKDAY BOARDINGS BY ROUTE (†)

Route	Average Weekday	Average Weekday	Percent Change	Average Weekday	Percent Change	Average Weekday	Percent Change	Average Weekday	Percent Change
	weekdays Aug-24	Jul-24	MOM	Oct-23	MO10M	Aug-23	YOY	Feb-20	Current vs Feb-20
2	2,345	2,334	0.5%	2,977	-21.2%	2,777	-15.6%	3,102	-24.4%
3	8,345	8,621	-3.2%	5,416	54.1%	5,093	63.8%	5,137	62.4%
7	3,272	3,369	-2.9%	4,021	-18.6%	3,771	-13.2%	3,501	-6.6%
8	4,722	4,702	0.4%	4,650	1.5%	4,459	5.9%	3,909	20.8%
9	11,447	12,030	-4.8%	6,490	76.4%	6,151	86.1%	5,528	107.1%
10				2,443		2,331		2,482	
11	11,301	11,035	2.4%	9,621	17.5%	9,049	24.9%	7,292	55.0%
12	2,800	2,797	0.1%	2,891	-3.1%	2,711	3.3%	2,779	0.8%
14	820	968	-15.3%						
15	523	548	-4.5%	178	194.6%	181	189.2%	177	195.7%
16				2,009		1,879		1,862	
17	7,073	7,271	-2.7%	4,133	71.1%	3,851	83.7%	3,878	82.4%
19				1,807		1,561		1,542	
20	3,575	4,107	-13.0%						
21	1,930	2,139	-9.8%	2,107	-8.4%	1,936	-0.3%	1,817	6.2%
22	2,255	2,315	-2.6%	4,502	-49.9%	4,235	-46.7%	3,640	-38.0%
24-CORAL WAY LIMITED	2,349	2,204	6.6%	2,195	7.0%	2,164	8.5%	1,340	75.3%
26	2,257	2,072	8.9%	1,877	20.2%	1,726	30.7%	1,778	26.9%
27	9,538	9,558	-0.2%	7,110	34.2%	6,703	42.3%	6,972	36.8%
29				516		490		534	
31-BUSWAY LOCAL						0		1,089	
32	1,705	1,752	-2.7%	2,699	-36.8%	2,524	-32.5%	2,390	-28.7%
34 TRANSITWAY EXPRESS	1,699	1,640	3.6%	1,636	3.8%	1,437	18.2%	2,008	-15.4%
35	2,277	2,176	4.6%	3,070	-25.8%	2,723	-16.4%	2,421	-6.0%
36	5,876	6,666	-11.8%	2,645	122.2%	2,592	126.7%	2,536	131.7%
37	4,240	4,623	-8.3%	3,475	22.0%	3,348	26.6%	3,273	29.5%
38 TRANSITWAY MAX	7,200	6,951	3.6%	5,714	26.0%	4,474	60.9%	6,361	13.2%
39 TRANSITWAY EXPRESS	772	706	9.4%	742	4.0%	544	42.0%	893	-13.5%
40	1,872	1,755	6.6%	2,344	-20.2%	2,199	-14.9%	1,772	5.6%
42				1,001		943		820	
46 - LIBERTY CITY CONN.				22		18		41	
52	1,558	1,519	2.6%	1,390	12.0%	1,287	21.0%	1,261	23.5%
54	2,768	2,930	-5.5%	3,086	-10.3%	3,006	-7.9%	2,940	-5.9%
56	522	495	5.5%	391	33.6%	348	50.2%	354	47.6%
57				522		497		433	
62	2,848	2,998	-5.0%	2,496	14.1%	2,183	30.5%	1,815	56.9%
70	284	269	5.8%	161	76.3%	147	93.8%	135	111.3%

(†) In this table and those which follow, "YOY" stands for "year-over-year", "MOM" for "month-over-month" and, e.g., "MOZM" for "month over Z months", i.e., current month vs 12 months prior, one month prior, and compared to pre-BBN, respectively. The Feb-20 numbers serve as a pre-pandemic benchmark. To see which routes are fully or partly operated under contract this month, please refer to the ranking table further in the Metrobus portion of this document.

METROBUS AVERAGE WEEKDAY BOARDINGS BY ROUTE

Route	Average Weekday	Average Weekday	Percent Change	Average Weekday	Percent Change	Average Weekday	Percent Change	Average Weekday	Percent Change
	weekdays Aug-24	Jul-24	MOM	Oct-23	MO10M	Aug-23	YOY	Feb-20	Current vs Feb-20
72	913	841	8.6%	670	36.3%	649	40.6%	781	16.8%
73	1,344	1,291	4.1%	2,868	-53.1%	2,826	-52.4%	2,124	-36.7%
75	2,955	3,135	-5.7%	1,594	85.4%	1,325	123.0%	1,429	106.9%
77	11,494	12,347	-6.9%	9,959	15.4%	8,873	29.5%	7,129	61.2%
79	7,498	8,750	-14.3%	8,481	-11.6%	8,245	-9.1%	7,636	-1.8%
82 - WESTCHESTER CIRC				61		70		62	
87	2,199	2,146	2.5%	1,924	14.3%	1,864	18.0%	1,499	46.7%
88	1,830	1,794	2.0%	2,419	-24.3%	2,270	-19.4%	2,076	-11.9%
95-EXPRESS GOLDEN GLADES	1,331	1,296	2.7%	1,195	11.4%	1,178	13.0%	1,690	-21.2%
97	199	198	0.3%	225	-11.3%	213	-6.7%	184	8.2%
100	14,853	17,119	-13.2%	6,128	142.4%	6,019	146.8%	6,667	122.8%
103 - C								463	
103	1,867	2,001	-6.7%	1,967	-5.1%	1,779	4.9%	1,687	10.7%
104	1,075	1,068	0.6%	1,024	4.9%	888	21.0%	837	28.4%
105 - E				1,402		1,351		1,287	
107	2,038	1,937	5.2%	825	146.9%	683	198.1%	711	186.7%
108 - H				487		471		473	
110 - J				2,955		3,099		2,508	
113 - M				887		922		866	
115				151		134		180	
119 - S				9,588		9,587		8,970	
125	4,725	4,897	-3.5%	2,099	125.1%	2,003	135.9%	1,713	175.8%
132 -TRI-RAIL DORAL SHUTTLE	39	43	-10.4%	37	6.3%	42	-7.1%	16	149.1%
135	1,909	2,200	-13.2%	1,755	8.8%	1,472	29.8%	1,399	36.5%
136	146	146	0.0%	162	-10.0%	147	-1.0%	126	15.3%
137-WEST DADE CONNECTION	2,450	2,277	7.6%	2,119	15.6%	2,093	17.1%	1,626	50.7%
150-MIAMI BEACH AIRPORT EXPRESS	1,494	1,525	-2.0%	2,149	-30.5%	2,278	-34.4%	1,867	-20.0%
152	383	375	2.3%	1,051	-63.5%	973	-60.6%	851	-55.0%
155 - BISCAYNE GARDENS CIRC				45		48		44	
175 - NW MIAMI-DADE EXPRESS								33	
183	4,838	4,841	-0.1%	3,653	32.4%	3,335	45.1%	3,149	53.6%
195 EXPRESS - BROWARD BLVD								372	
196 EXPRESS - SHERIDAN ST								383	
199	1,950	1,925	1.3%	1,899	2.7%	1,724	13.1%	1,473	32.4%
202 - LITTLE HAITI CONN				110		111		140	
203 - BISCAYNE MAX	1,299	1,154	12.6%	3,666	-64.6%	3,429	-62.1%	3,334	-61.0%

METROBUS AVERAGE WEEKDAY BOARDINGS BY ROUTE

Route	Average Weekday	Average Weekday	Percent Change	Average Weekday	Percent Change	Average Weekday	Percent Change	Average Weekday	Percent Change
	weekdays Aug-24	Jul-24	MOM	Oct-23	MO10M	Aug-23	YOY	Feb-20	Current vs Feb-20
204 KILLIAN MAX	581	562	3.5%	620	-6.2%	594	-2.2%	1,071	-45.7%
207 (7th St)-LITTLE HAVANA CONN	1,660	1,486	11.8%	1,819	-8.7%	1,652	0.5%	1,489	11.5%
208 (8th St)-LITTLE HAVANA CONN	1,583	1,520	4.1%	1,659	-4.6%	1,561	1.4%	1,308	21.0%
211 OVERTOWN CIRCULATOR				71		83		58	
211 - FLAGLER MAX	1,695	1,428	18.8%	3,824	-55.7%	3,536	-52.1%	3,109	-45.5%
212-SWEETWATER CIRC				22		25		15	
217 - BUNCHE PARK CIRC				80		62		97	
238-EAST/WEST CONN				593		607		449	
241 TUTTLE LIMITED				348		306			
254-BROWNSVILLE CIRC				5		6		19	
267-LUDLAM LIMITED				162		153		149	
272 SUNSET MAX (*)	363	354	2.5%	428	-15.4%	428	-15.3%	550	-34.1%
277-7TH AVENUE MAX				879		755		683	
279 - 79 STREET MAX	587	813	-27.9%	469	25.1%	457	28.3%	361	62.3%
286-NORTH POINTE CIRC				93		77		97	
287-SAGA BAY MAX	363	347	4.8%	341	6.6%	317	14.5%	358	1.5%
288 KENDALL MAX	458	451	1.5%	372	23.0%	367	24.6%	762	-39.9%
295								233	
296								215	
297-27th AVENUE ORANGE MAX				1,229		1,167		1,356	
301-DADE MONROE EXPRESS	962	1,015	-5.2%	955	0.7%	1,030	-6.7%	841	14.3%
302-CARD SOUND EXPRESS	115	105	8.9%	91	26.6%	93	23.8%	86	33.0%
338 - WEEKEND EXPRESS									
344	124	116	6.9%	76	63.7%	77	60.3%	96	29.2%
400 - SOUTH OWL	74	90	-17.7%	71	4.9%	72	2.7%	81	-8.2%
401 - NORTH OWL	78	81	-3.0%	61	29.1%	56	39.2%	94	-16.3%
500 - CUTLER BAY LOCAL	222	254	-12.7%	176	26.3%	183	21.3%	158	40.8%
510 - SKYLAKE CIRCULATOR (*)	427	441	-3.2%	471	-9.4%	285	50.0%	282	51.6%
836 EXPRESS	327	322	1.3%	247	32.4%	253	29.3%		
837 EXPRESS	186	193	-3.6%	195	-4.4%	166	12.0%		
12/21 WEEKEND INTERLINE									
MetroLink NoMi West	137	74	84.1%						
MetroLink North Miami	75								
MetroLink LeJeune	49	38	29.9%						
MetroLink Killian Parkway	98								
MetroLink Alton Road	93								
MetroLink Opa-Locka	14	6	115.8%						
AHEPA SHUTTLE	19	21	-9.0%	18	5.9%	15	23.7%	21	-9.4%
FEDERATION GARDENS SHUTTLE									
GREEN HILLS SHUTTLE	8	8	-2.4%	5	53.8%	7	14.3%	9	-11.1%
KINGS CREEK SHUTTLE	8	10	-16.0%	14	-38.9%	11	-22.2%	13	-35.4%
ROBERT SHARP SHUTTLE	30	36	-18.5%	23	28.3%	19	52.1%	10	210.5%
SIERRA LAKES SHUTTLE	22	22	3.3%	16	43.2%	23	-1.3%	45	-50.7%
Total	187,356	193,645	-3.2%	185,320	1.1%	173,885	7.7%	167,711	11.7%

(1) Includes shuttles and those routes which were not run some years.

(2) Several express routes were suspended beginning at the end of Mar-20, due to the SARS-CoV-2 pandemic, while other routes had alignment and schedule modifications made to them, in an ongoing effort to optimize service delivery.

METROBUS AVERAGE SATURDAY BOARDINGS BY ROUTE

Route	Average Saturday	Average Saturday	Percent Change	Average Saturday	Percent Change	Average Saturday	Percent Change	Average Saturday	Percent Change
	Aug-24	Jul-24	MOM	Oct-23	MO10M	Aug-23	YOY	Feb-20	Current vs Feb-20
Saturdays									
2	1,177	1,173	0.4%	1,605	-26.7%	1,706	-31.0%	1,616	-27.2%
3	6,017	6,783	-11.3%	5,754	4.6%	5,910	1.8%	5,229	15.1%
7	1,946	2,063	-5.7%	1,972	-1.3%	2,076	-6.3%	1,887	3.1%
8	2,232	2,435	-8.3%	2,334	-4.4%	2,583	-13.6%	2,027	10.1%
9	7,147	7,779	-8.1%	3,677	94.4%	3,885	83.9%	3,034	135.6%
10				2,107		2,095		1,896	
11	7,653	7,945	-3.7%	5,787	32.2%	6,351	20.5%	5,182	47.7%
14	744	837	-11.1%						
15	349	294	18.9%	93	274.5%	81	332.4%	71	393.2%
16				1,662		1,809		1,566	
17	4,332	5,266	-17.7%	2,553	69.7%	2,584	67.6%	2,363	83.3%
20	2,656	2,950	-10.0%						
22	1,385	1,432	-3.3%	2,425	-42.9%	2,456	-43.6%	2,084	-33.5%
24-CORAL WAY LIMITED	1,518	1,590	-4.5%	1,400	8.4%	1,406	8.0%	1,165	30.3%
26	1,102	1,146	-3.8%	966	14.1%	917	20.2%	851	29.5%
27	6,051	6,704	-9.7%	4,006	51.1%	4,343	39.3%	4,034	50.0%
31-BUSWAY LOCAL				0		0		896	
32	1,081	1,165	-7.2%	1,261	-14.3%	1,214	-11.0%	1,029	5.1%
35	1,613	1,707	-5.5%	1,540	4.7%	1,545	4.4%	1,372	17.6%
36	4,280	4,922	-13.0%	1,677	155.3%	1,627	163.1%	1,289	231.9%
37	2,773	2,951	-6.0%	2,062	34.5%	2,092	32.6%	2,090	32.7%
38 TRANSITWAY MAX	5,578	6,063	-8.0%	6,328	-11.8%	5,928	-5.9%	4,715	18.3%
40	930	989	-6.0%	926	0.4%	890	4.4%	655	42.0%
42				617		647		552	
52	997	1,036	-3.8%	694	43.8%	679	46.9%	686	45.4%
54	1,887	1,930	-2.2%	1,925	-2.0%	1,984	-4.9%	1,727	9.3%
56	160	185	-13.5%						
62	2,001	2,233	-10.4%	1,823	9.8%	1,726	16.0%	1,343	49.0%
70	174	205	-15.2%						
72	518	485	6.8%	357	45.2%	367	41.0%	350	48.1%
73	571	561	1.9%	1,202	-52.5%	1,311	-56.4%	860	-33.6%
75	1,876	2,101	-10.7%	550	241.2%	496	278.7%	468	300.9%
77	7,328	7,489	-2.2%	5,510	33.0%	5,477	33.8%	4,197	74.6%
79	6,112	7,063	-13.5%	7,094	-13.8%	6,796	-10.1%	5,667	7.8%
82 - WESTCHESTER CIRC				38		45		50	

METROBUS AVERAGE SATURDAY BOARDINGS BY ROUTE

Route	Average Saturday	Average Saturday	Percent Change	Average Saturday	Percent Change	Average Saturday	Percent Change	Average Saturday	Percent Change
	Aug-24	Jul-24	MOM	Oct-23	MO10M	Aug-23	YOY	Feb-20	Current vs Feb-20
Saturdays									
87	895	926	-3.3%	532	68.4%	660	35.6%	402	122.4%
88	1,409	1,523	-7.5%	1,661	-15.2%	1,717	-17.9%	1,620	-13.0%
97	160	156	2.7%	163	-2.0%	158	1.1%	215	-25.6%
100	13,101	15,828	-17.2%	5,637	132.4%	5,589	134.4%	4,744	176.2%
103 - C						0		315	
103	1,164	1,194	-2.5%	1,239	-6.1%	1,115	4.4%	951	22.4%
104	739	841	-12.2%	445	66.2%	486	52.1%	468	57.7%
105 - E				772		777		619	
107	1,167	1,388	-15.9%	238	391.2%	240	386.6%	252	363.3%
108 - H				401		423		372	
110 - J				1,394		1,821		1,952	
113 - M				577		584		503	
115				80		74		82	
119 - S				8,118		8,002		6,861	
125	2,786	3,038	-8.3%	1,297	114.9%	1,369	103.5%	1,066	161.3%
135	831	868	-4.3%	556	49.5%	524	58.7%	539	54.3%
137-WEST DADE CONNECTION	1,471	1,611	-8.7%	1,337	10.1%	1,554	-5.3%	1,027	43.3%
150-MIAMI BEACH AIRPORT EXPRESS	1,416	1,310	8.1%	2,161	-34.5%	2,287	-38.1%	1,604	-11.7%
152	199	240	-17.2%	375	-47.0%	388	-48.7%	302	-34.2%
183	2,799	3,352	-16.5%	1,960	42.8%	2,010	39.3%	1,790	56.4%
199	1,361	1,372	-0.8%	1,106	23.0%	1,085	25.4%	849	60.4%
202 - LITTLE HAITI CONN				22		23		50	
207 (7th St)-LITTLE HAVANA CONN	664	782	-15.1%	929	-28.5%	882	-24.7%	1,032	-35.7%
208 (8th St)-LITTLE HAVANA CONN	891	1,023	-12.9%	1,030	-13.5%	1,058	-15.8%	1,044	-14.7%
241 TUTTLE LIMITED				222		193			
286-NORTH POINTE CIRC				61		34		41	
301-DADE MONROE EXPRESS	924	943	-2.0%	885	4.4%	982	-5.9%	801	15.4%
302-CARD SOUND EXPRESS	130	87	49.2%	94	38.5%	90	45.5%	57	130.0%
338 - WEEKEND EXPRESS	221	203	8.8%	259	-14.9%	252	-12.4%	237	-6.8%
344	76	88	-13.6%						
400 - SOUTH OWL	74	65	14.0%	104	-28.3%	83	-9.8%	70	6.3%
401 - NORTH OWL	72	77	-6.1%	61	18.7%	35	106.6%	84	-14.9%
500 - CUTLER BAY LOCAL	155	219	-29.2%	152	2.1%	165	-6.2%	119	30.0%
510 - SKYLAKE CIRCULATOR (*)	166	204	-18.9%	217	-23.8%	80	107.6%	165	0.4%
12/21 WEEKEND INTERLINE	2,569	2,740	-6.2%	3,290	-21.9%	3,109	-17.4%	2,528	1.6%
FEDERATION GARDENS SHUTTLE	31	35	-11.3%	20	53.0%	25	24.1%	28	7.7%
Total	117,655	129,589	-9.2%	107,331	9.6%	108,894	8.0%	93,742	25.5%

METROBUS AVERAGE SUNDAY BOARDINGS BY ROUTE

Route	Average Sunday	Average Sunday	Percent Change	Average Sunday	Percent Change	Average Sunday	Percent Change	Average Sunday	Percent Change
	Aug-24	Jul-24	MOM	Oct-23	MO10M	Aug-23	YOY	Feb-20	Current vs Feb-20
Sundays									
2	777	831	-6.5%	1,214	-36.0%	1,117	-30.4%	1,335	-41.8%
3	4,724	5,212	-9.4%	4,408	7.2%	4,845	-2.5%	4,353	8.5%
7	1,546	1,515	2.0%	1,632	-5.3%	1,595	-3.1%	1,654	-6.6%
8	1,590	1,642	-3.2%	1,838	-13.5%	1,814	-12.3%	1,746	-8.9%
9	5,060	5,295	-4.4%	2,756	83.6%	2,852	77.4%	2,549	98.5%
10				1,632		1,581		1,441	
11	5,597	5,629	-0.6%	3,803	47.2%	3,958	41.4%	3,917	42.9%
14	798	909	-12.3%						
15	320	268	19.2%	53	502.8%	31	930.6%	56	475.7%
16				1,023		940		997	
17	3,000	3,099	-3.2%	1,920	56.3%	1,742	72.3%	1,833	63.7%
20	2,110	2,273	-7.2%						
22	1,020	1,099	-7.2%	1,915	-46.7%	1,768	-42.3%	1,548	-34.1%
24-CORAL WAY LIMITED	1,113	1,146	-2.9%	1,108	0.5%	1,061	5.0%	905	23.1%
26	839	931	-9.9%	871	-3.7%	761	10.3%	717	17.0%
27	3,724	4,211	-11.6%	3,146	18.4%	2,858	30.3%	2,918	27.6%
31-BUSWAY LOCAL				0		0		715	
32	856	788	8.6%	768	11.5%	694	23.5%	772	10.9%
35	1,289	1,320	-2.3%	1,175	9.7%	1,131	14.0%	942	36.9%
36	3,292	3,629	-9.3%	1,160	183.7%	1,198	174.8%	1,111	196.4%
37	2,017	2,268	-11.1%	1,755	14.9%	1,688	19.5%	1,739	16.0%
38 TRANSITWAY MAX	4,669	4,523	3.2%	4,957	-5.8%	5,415	-13.8%	4,147	12.6%
40	713	714	-0.2%	542	31.5%	572	24.6%	447	59.4%
42				425		412		416	
52	846	829	2.0%	496	70.4%	502	68.6%	466	81.4%
54	1,133	1,209	-6.3%	1,181	-4.0%	1,185	-4.3%	1,171	-3.2%
62	1,221	1,329	-8.1%	1,040	17.4%	987	23.7%	891	37.1%
70	139	166	-16.3%						
72	422	420	0.6%	259	62.8%	273	54.4%	265	59.5%
73	194	247	-21.5%	602	-67.8%	676	-71.3%	495	-60.8%
75	1,430	1,385	3.3%	352	306.8%	311	359.5%	271	428.3%
77	4,591	5,497	-16.5%	3,980	15.3%	3,800	20.8%	2,815	63.1%
79	4,625	4,989	-7.3%	4,837	-4.4%	4,696	-1.5%	4,804	-3.7%

METROBUS AVERAGE SUNDAY BOARDINGS BY ROUTE

Route	Average Sunday	Average Sunday	Percent Change	Average Sunday	Percent Change	Average Sunday	Percent Change	Average Sunday	Percent Change
	Aug-24	Jul-24	MOM	Oct-23	MO10M	Aug-23	YOY	Feb-20	Current vs Feb-20
Sundays									
87	498	566	-12.0%	362	37.6%	339	47.0%	319	56.0%
88	1,092	1,102	-0.9%	1,255	-13.0%	1,239	-11.8%	1,286	-15.1%
97	140	141	-0.8%	149	-6.3%	152	-8.1%	201	-30.5%
100	9,173	9,404	-2.5%	3,492	162.6%	3,464	164.8%	3,469	164.4%
103 - C						0		212	
103	789	807	-2.3%	729	8.2%	642	22.8%	607	30.0%
104	522	549	-5.0%	348	50.1%	326	60.1%	317	64.7%
105 - E						653		616	
107	932	1,117	-16.6%	187	398.4%	184	406.5%	162	475.3%
108 - H						488		328	
110 - J				1,699		1,895		1,638	
113 - M						465		431	
115						60		80	
119 - S				7,612		7,792		7,141	
125	1,896	1,974	-3.9%	1,036	83.0%	1,047	81.2%	895	111.8%
135	687	687	0.1%	474	45.0%	393	74.8%	349	96.7%
137-WEST DADE CONNECTION	1,083	1,048	3.3%	956	13.3%	947	14.3%	879	23.2%
150-MIAMI BEACH AIRPORT EXPRESS	1,174	1,299	-9.7%	1,966	-40.3%	1,970	-40.4%	1,574	-25.4%
152	163	147	11.1%	331	-50.7%	299	-45.4%	199	-17.9%
183	2,001	2,211	-9.5%	1,569	27.5%	1,550	29.2%	1,413	41.7%
199	954	1,038	-8.1%	887	7.5%	757	26.0%	658	44.9%
202 - LITTLE HAITI CONN				21		23		39	
207 (7th St)-LITTLE HAVANA CONN	590	584	1.1%	648	-8.9%	609	-3.1%	796	-25.9%
208 (8th St)-LITTLE HAVANA CONN	762	780	-2.4%	862	-11.6%	762	0.0%	911	-16.4%
241 TUTTLE LIMITED				187		172			
301-DADE MONROE EXPRESS	833	916	-9.0%	867	-3.8%	895	-6.9%	751	10.9%
302-CARD SOUND EXPRESS	101	93	7.8%	72	40.4%	73	38.1%	57	76.3%
338 - WEEKEND EXPRESS	196	172	14.2%	247	-20.7%	316	-37.9%	252	-22.1%
400 - SOUTH OWL	84	82	2.5%	70	20.4%	74	13.9%	83	1.8%
401 - NORTH OWL	86	85	1.2%	65	33.1%	67	29.3%	87	-1.1%
500 - CUTLER BAY LOCAL	100	81	23.5%	86	16.3%	64	57.3%	59	71.4%
510 - SKYLAKE CIRCULATOR (*)	138	234	-41.1%	194	-28.9%	139	-0.9%	143	-3.5%
12/21 WEEKEND INTERLINE	2,176	2,332	-6.7%	2,700	-19.4%	2,325	-6.4%	2,048	6.3%
Total	85,821	90,823	-5.5%	81,427	5.4%	80,634	6.4%	75,428	13.8%

METROBUS TOTAL MONTHLY BOARDINGS BY ROUTE

Route	Total Month	Total Month	Percent Change	Total Month	Percent Change	Total Month	Percent Change	Total Month	Percent Change
total month	Aug-24	Jul-24	MOM	Oct-23	MO10M	Aug-23	YOY	Feb-20	Current vs Feb-20
2	60,586	60,189	0.7%	77,976	-22.3%	75,168	-19.4%	75,463	-19.7%
3	232,562	242,849	-4.2%	164,203	41.6%	160,159	45.2%	146,294	59.0%
7	87,889	89,947	-2.3%	104,507	-15.9%	101,416	-13.3%	86,077	2.1%
8	121,398	121,403	0.0%	120,821	0.5%	120,139	1.0%	95,295	27.4%
9	307,807	322,252	-4.5%	171,265	79.7%	168,420	82.8%	135,924	126.5%
10				70,338		68,315		64,874	
11	309,273	302,691	2.2%	253,837	21.8%	249,354	24.0%	187,425	65.0%
12	61,606	61,535	0.1%	63,603	-3.1%	62,361	-1.2%	55,585	10.8%
14	24,959	29,196	-14.5%						
15	14,533	14,569	-0.2%	4,545	219.8%	4,607	215.5%	4,114	253.3%
16				55,959		54,224		49,061	
17	189,253	196,512	-3.7%	110,727	70.9%	105,869	78.8%	96,715	95.7%
19				39,745		35,896		30,847	
20	100,360	113,515	-11.6%						
21	42,467	47,060	-9.8%	46,355	-8.4%	44,523	-4.6%	36,341	16.9%
22	60,624	62,148	-2.5%	118,329	-48.8%	114,304	-47.0%	89,404	-32.2%
24-CORAL WAY LIMITED	63,721	60,569	5.2%	59,432	7.2%	59,645	6.8%	36,237	75.8%
26	58,506	54,830	6.7%	49,521	18.1%	46,419	26.0%	42,683	37.1%
27	254,978	258,151	-1.2%	188,160	35.5%	182,968	39.4%	171,282	48.9%
29				11,342		11,262		10,684	
31-BUSWAY LOCAL						0		29,125	
32	46,338	47,144	-1.7%	68,263	-32.1%	65,686	-29.5%	56,027	-17.3%
34 TRANSITWAY EXPRESS	37,371	36,086	3.6%	36,002	3.8%	33,049	13.1%	40,159	-6.9%
35	63,306	61,292	3.3%	79,573	-20.4%	73,338	-13.7%	59,041	7.2%
36	163,842	184,481	-11.2%	70,698	131.7%	70,916	131.0%	61,606	166.0%
37	115,204	124,844	-7.7%	93,471	23.3%	92,134	25.0%	82,870	39.0%
38 TRANSITWAY MAX	204,972	199,784	2.6%	175,803	16.6%	148,274	38.2%	167,379	22.5%
39 TRANSITWAY EXPRESS	16,991	15,535	9.4%	16,333	4.0%	12,506	35.9%	17,853	-4.8%
40	48,672	46,139	5.5%	57,992	-16.1%	56,429	-13.7%	40,497	20.2%
42				26,611		25,931		20,825	
46 - LIBERTY CITY CONN.				477		418		814	
52	42,642	41,699	2.3%	35,844	19.0%	34,327	24.2%	30,522	39.7%
54	74,869	78,223	-4.3%	81,490	-8.1%	81,807	-8.5%	72,125	3.8%
56	12,283	11,622	5.7%	8,598	42.9%	7,995	53.6%	7,071	73.7%
57				11,491		11,421		8,665	
62	77,544	81,522	-4.9%	67,398	15.1%	61,064	27.0%	46,582	66.5%
70	7,680	7,562	1.6%	3,546	116.6%	3,374	127.6%	2,690	185.5%

METROBUS TOTAL MONTHLY BOARDINGS BY ROUTE

Route	Total Month	Total Month	Percent Change	Total Month	Percent Change	Total Month	Percent Change	Total Month	Percent Change
	total month Aug-24	Jul-24	MOM	Oct-23	MO10M	Aug-23	YOY	Feb-20	Current vs Feb-20
72	24,362	22,535	8.1%	17,459	39.5%	17,498	39.2%	18,433	32.2%
73	33,194	31,877	4.1%	70,903	-53.2%	72,942	-54.5%	48,767	-31.9%
75	80,117	84,302	-5.0%	39,021	105.3%	33,713	137.6%	31,994	150.4%
77	307,865	329,070	-6.4%	261,039	17.9%	241,187	27.6%	174,833	76.1%
79	214,012	245,695	-12.9%	239,146	-10.5%	235,611	-9.2%	200,268	6.9%
82 - WESTCHESTER CIRC				1,488		1,783		1,482	
87	54,847	53,746	2.0%	46,254	18.6%	46,870	17.0%	33,273	64.8%
88	51,676	51,056	1.2%	66,138	-21.9%	64,036	-19.3%	54,772	-5.7%
95-EXPRESS GOLDEN GLADES	29,286	28,522	2.7%	26,295	11.4%	27,093	8.1%	33,796	-13.3%
97	5,738	5,692	0.8%	6,337	-9.5%	6,149	-6.7%	5,558	3.2%
100	428,970	486,936	-11.9%	174,819	145.4%	174,639	145.6%	170,942	150.9%
103 - C								11,682	
103	50,048	52,831	-5.3%	51,871	-3.5%	47,954	4.4%	40,918	22.3%
104	29,420	29,603	-0.6%	26,049	12.9%	23,676	24.3%	20,351	44.6%
105 - E				37,092		36,790		31,302	
107	54,386	53,746	1.2%	20,040	171.4%	17,413	212.3%	16,118	237.4%
108 - H				14,133		14,475		12,624	
110 - J				79,080		86,147		66,481	
113 - M				24,040		25,413		21,548	
115				3,968		3,614		4,334	
119 - S				281,456		283,670		242,257	
125	125,453	129,761	-3.3%	56,547	121.9%	55,724	125.1%	43,178	190.5%
132 -TRI-RAIL DORAL SHUTTLE	855	954	-10.4%	804	6.3%	962	-11.1%	312	174.0%
135	48,907	55,298	-11.6%	43,211	13.2%	37,511	30.4%	32,067	52.5%
136	3,202	3,203	0.0%	3,557	-10.0%	3,382	-5.3%	2,524	26.9%
137-WEST DADE CONNECTION	65,593	61,778	6.2%	56,750	15.6%	58,142	12.8%	41,167	59.3%
150-MIAMI BEACH AIRPORT EXPRESS	44,643	45,281	-1.4%	65,763	-32.1%	69,413	-35.7%	51,651	-13.6%
152	10,079	9,934	1.5%	26,285	-61.7%	25,125	-59.9%	19,325	-47.8%
155 - BISCAYNE GARDENS CIRC				985		1,099		881	
175 - NW MIAMI-DADE EXPRESS								661	
183	128,426	130,970	-1.9%	96,050	33.7%	90,932	41.2%	77,570	65.6%
195 EXPRESS - BROWARD BLVD								7,441	
196 EXPRESS - SHERIDAN ST								7,658	
199	53,522	53,027	0.9%	50,634	5.7%	47,014	13.8%	36,325	47.3%
202 - LITTLE HAITI CONN				2,620		2,732		3,200	
203 - BISCAYNE MAX	28,580	25,384	12.6%	80,650	-64.6%	78,859	-63.8%	66,684	-57.1%

METROBUS TOTAL MONTHLY BOARDINGS BY ROUTE

Route	Total Month	Total Month	Percent Change	Total Month	Percent Change	Total Month	Percent Change	Total Month	Percent Change
	Aug-24	Jul-24	MOM	Oct-23	MO10M	Aug-23	YOY	Feb-20	Current vs Feb-20
total month									
204 KILLIAN MAX	12,792	12,360	3.5%	13,632	-6.2%	13,673	-6.4%	21,418	-40.3%
207 (7th St)-LITTLE HAVANA CONN	42,201	38,729	9.0%	46,970	-10.2%	43,965	-4.0%	38,127	10.7%
208 (8th St)-LITTLE HAVANA CONN	42,322	41,430	2.2%	44,922	-5.8%	43,175	-2.0%	35,018	20.9%
211 OVERTOWN CIRCULATOR				1,567		1,915		1,159	
211 - FLAGLER MAX	37,299	31,406	18.8%	84,135	-55.7%	81,333	-54.1%	62,186	-40.0%
212-SWEETWATER CIRC				494		581		295	
217 - BUNCHE PARK CIRC				1,759		1,428		1,949	
238-EAST/WEST CONN				13,036		13,959		8,987	
241 TUTTLE LIMITED				9,471		8,495			
254-BROWNSVILLE CIRC				105		146		384	
267-LUDLAM LIMITED				3,567		3,524		2,978	
272 SUNSET MAX (*)	7,975	7,779	2.5%	9,423	-15.4%	9,839	-18.9%	11,004	-27.5%
277-7TH AVENUE MAX				19,345		17,363		13,669	
279 - 79 STREET MAX	12,905	17,893	-27.9%	10,318	25.1%	10,513	22.8%	7,228	78.5%
286-NORTH POINTE CIRC				2,279		1,916		2,145	
287-SAGA BAY MAX	7,996	7,632	4.8%	7,499	6.6%	7,298	9.6%	7,160	11.7%
288 KENDALL MAX	10,076	9,931	1.5%	8,189	23.0%	8,451	19.2%	15,249	-33.9%
295								4,668	
296								4,297	
297-27th AVENUE ORANGE MAX				27,047		26,845		27,125	
301-DADE MONROE EXPRESS	29,108	30,677	-5.1%	28,889	0.8%	31,202	-6.7%	23,838	22.1%
302-CARD SOUND EXPRESS	3,577	3,132	14.2%	2,728	31.1%	2,780	28.7%	2,236	60.0%
338 - WEEKEND EXPRESS	1,888	1,670	13.1%	2,274	-17.0%	2,271	-16.9%	2,191	-13.8%
344	3,107	2,902	7.1%	1,666	86.5%	1,779	74.6%	1,919	61.9%
400 - SOUTH OWL	2,344	2,659	-11.8%	2,324	0.9%	2,291	2.3%	2,301	1.9%
401 - NORTH OWL	2,425	2,507	-3.3%	1,899	27.7%	1,698	42.8%	2,641	-8.2%
500 - CUTLER BAY LOCAL	6,062	6,876	-11.8%	4,907	23.5%	5,126	18.3%	3,984	52.2%
510 - SKYLAKE CIRCULATOR (*)	10,779	11,700	-7.9%	12,211	-11.7%	7,428	45.1%	7,033	53.3%
836 EXPRESS	7,184	7,093	1.3%	5,428	32.4%	5,808	23.7%		
837 EXPRESS	4,091	4,242	-3.6%	4,281	-4.4%	3,820	7.1%		
MetroLink NoMi West	3,006	1,633	84.1%						
MetroLink North Miami	1,490								
MetroLink LeJeune	1,081	832	29.9%						
MetroLink Killian Parkway	1,959								
MetroLink Alton Road	1,862								
MetroLink Opa-Locka	298	113	163.7%						
12/21 WEEKEND INTERLINE	21,552	22,620	-4.7%	26,661	-19.2%	21,736	-0.8%	20,830	3.5%
AHEPA SHUTTLE	94	62	51.6%	71	32.4%	76	23.7%	83	13.3%
FEDERATION GARDENS SHUTTLE	153	138	10.9%	80	91.3%	74	106.8%	142	7.7%
GREEN HILLS SHUTTLE	32	41	-22.0%	26	23.1%	28	14.3%	36	-11.1%
KINGS CREEK SHUTTLE	42	20	110.0%	55	-23.6%	54	-22.2%	52	-19.2%
ROBERT SHARP SHUTTLE	118	181	-34.8%	92	28.3%	97	21.6%	38	210.5%
SIERRA LAKES SHUTTLE	111	86	29.1%	62	79.0%	90	23.3%	180	-38.3%
Total	5,051,346	5,230,894	-3.4%	4,912,151	2.8%	4,756,063	6.2%	4,123,083	22.5%

BUS RIDERSHIP BY ROUTE SERVICE TYPE LINEUPS COMPARISON (MONTH-OVER-MONTH)

Boardings by Service Type and Route	Average Weekday	Average Weekday	Percent Change	Average Saturday	Average Saturday	Percent Change	Average Sunday	Average Sunday	Percent Change	Total Monthly	Total Monthly	Percent Change
	Aug-24	Jul-24	24 vs 23	Aug-24	Jul-24	24 vs 23	Aug-24	Jul-24	24 vs 23	Aug-24	Jul-24	24 vs 23
Directly Operated Express Routes												
34 TRANSITWAY EXPRESS	1,699	1,640	3.6%							37,371	36,086	3.6%
39 TRANSITWAY EXPRESS	772	706	9.4%							16,991	15,535	9.4%
95-EXPRESS GOLDEN GLADES	1,331	1,296	2.7%							29,286	28,522	2.7%
150-MIAMI BEACH AIRPORT EXPRESS	1,494	1,525	-2.0%	1,416	1,310	8.1%	1,174	1,299	-9.7%	44,643	45,281	-1.4%
338 - WEEKEND EXPRESS				221	203	8.8%	196	172	14.2%	1,888	1,670	13.1%
836 EXPRESS	327	322	1.3%							7,184	7,093	1.3%
837 EXPRESS	186	193	-3.6%							4,091	4,242	-3.6%
Subtotal Express Routes	5,809	5,683	2.2%	1,636	1,513	8.2%	1,370	1,471	-6.9%	141,454	138,429	2.2%
Percentage of All Bus Routes	3.1%	2.9%		1.4%	1.2%		1.6%	1.6%		2.8%	2.6%	
Contracted Routes - Local Service (*)												
2	2,345	2,334	0.5%	1,177	1,173	0.4%	777	831	-6.5%	60,586	60,189	0.7%
15	523	548	-4.5%	349	294	18.9%	320	268	19.2%	14,533	14,569	-0.2%
29												
46 - LIBERTY CITY CONN.												
56	522	495	5.5%	160	185	-13.5%				12,283	11,622	5.7%
70	284	269	5.8%	174	205	-15.2%	139	166	-16.3%	7,680	7,562	1.6%
72	913	841	8.6%	518	485	6.8%	422	420	0.6%	24,362	22,535	8.1%
82 - WESTCHESTER CIRC												
97	199	198	0.3%	160	156	2.7%	140	141	-0.8%	5,738	5,692	0.8%
115											0	
152	383	375	2.3%	199	240	-17.2%	163	147	11.1%	10,079	9,934	1.5%
155 - BISCAYNE GARDENS CIRC												
202 - LITTLE HAITI CONN												
211 OVERTOWN CIRCULATOR												
212-SWEETWATER CIRC												
217 - BUNCHE PARK CIRC												
254-BROWNSVILLE CIRC												
267-LUDLAM LIMITED												
286-NORTH POINTE CIRC												
344	124	116	6.9%	76	88	-13.6%				3,107	2,902	7.1%
401 - NORTH OWL	78	81	-3.0%	72	77	-6.1%	86	85	1.2%	2,425	2,507	-3.3%
MetroLink NoMi West	137	74	84.1%							3,006	1,633	84.1%
MetroLink North Miami	75									1,490		
MetroLink LeJeune	49	38	29.9%							1,081	832	29.9%
MetroLink Killian Parkway	98									1,959		
MetroLink Alton Road	93									1,862		
MetroLink Opa-Locka	14	6	115.8%							298	113	163.7%
Subtotal Contracted Reg. & Circ. Routes	5,837	5,374	8.6%	2,885	2,902	-0.6%	2,047	2,058	-0.5%	150,489	140,090	7.4%
Percentage of All Bus Routes	3.1%	2.8%		2.5%	2.2%		2.4%	2.3%		3.0%	2.7%	

(1) Several express routes were suspended beginning at the end of Mar-20, due to the SARS-CoV-2 pandemic, while other routes had alignment and schedule modifications made to them, in an ongoing effort to optimize service delivery.

(2) A second major round of changes took place with the 11/13/23 lineup known as the Better Bus Network, as listed at the start of this Metrobus section.

BUS RIDERSHIP BY ROUTE SERVICE TYPE LINEUPS COMPARISON (MONTH-OVER-MONTH)

Boardings by Service Type and Route	Average Weekday	Average Weekday	Percent Change	Average Saturday	Average Saturday	Percent Change	Average Sunday	Average Sunday	Percent Change	Total Monthly	Total Monthly	Percent Change
	Aug-24	Jul-24	24 vs 23	Aug-24	Jul-24	24 vs 23	Aug-24	Jul-24	24 vs 23	Aug-24	Jul-24	24 vs 23
Contracted Express Routes												
301-DADE MONROE EXPRESS	962	1,015	-5.2%	924	943	-2.0%	833	916	-9.0%	29,108	30,677	-5.1%
302-CARD SOUND EXPRESS	115	105	8.9%	130	87	49.2%	101	93	7.8%	3,577	3,132	14.2%
Subtotal Contracted Express Routes	1,076	1,120	-3.9%	1,054	1,030	2.3%	934	1,009	-7.5%	32,685	33,809	-3.3%
Percentage of All Bus Routes	0.6%	0.6%		0.9%	0.8%		1.1%	1.1%		0.6%	0.6%	
Limited Stop Routes												
24-CORAL WAY LIMITED	2,349	2,204	6.6%	1,518	1,590	-4.5%	1,113	1,146	-2.9%	63,721	60,569	5.2%
38 TRANSITWAY MAX	7,200	6,951	3.6%	5,578	6,063	-8.0%	4,669	4,523	3.2%	204,972	199,784	2.6%
203 - BISCAYNE MAX	1,299	1,154	12.6%							28,580	25,384	12.6%
204 KILLIAN MAX	581	562	3.5%							12,792	12,360	3.5%
211 - FLAGLER MAX	1,695	1,428	18.8%							37,299	31,406	18.8%
241 TUTTLE LIMITED												
272 SUNSET MAX (*)	363	354	2.5%							7,975	7,779	2.5%
277-7TH AVENUE MAX												
279 - 79 STREET MAX	587	813	-27.9%							12,905	17,893	-27.9%
287-SAGA BAY MAX	363	347	4.8%							7,996	7,632	4.8%
288 KENDALL MAX	458	451	1.5%							10,076	9,931	1.5%
297-27th AVENUE ORANGE MAX												
Subtotal Limited Stop Routes	14,896	14,263	4.4%	7,096	7,653	-7.3%	5,783	5,669	2.0%	386,316	372,738	3.6%
Percentage of All Bus Routes	8.0%	7.4%		6.0%	5.9%		6.7%	6.2%		7.6%	7.1%	
Directly Operated Free Routes												
132 -TRI-RAIL DORAL SHUTTLE	39	43	-10.4%							855	954	-10.4%
500 - CUTLER BAY LOCAL	222	254	-12.7%	155	219	-29.2%	100	81	23.5%	6,062	6,876	-11.8%
510 - SKYLAKE CIRCULATOR (*)	427	441	-3.2%	166	204	-18.9%	138	234	-41.1%	10,779	11,700	-7.9%
Subtotal Free Directly Operated Routes	688	739	-6.9%	321	423	-24.3%	238	315	-24.5%	17,696	19,530	-9.4%
Percentage of All Bus Routes	0.4%	0.4%		0.3%	0.3%		0.3%	0.3%		0.4%	0.4%	
Contractor-Operated Lifeline Routes												
GREEN HILLS SHUTTLE	8	8	-2.4%							32	41	-22.0%
KINGS CREEK SHUTTLE	8	10	-16.0%							42	20	110.0%
SIERRA LAKES SHUTTLE	22	22	3.3%							111	86	29.1%
ROBERT SHARP SHUTTLE	30	36	-18.5%							118	181	-34.8%
AHEPA SHUTTLE	19	21	-9.0%							94	62	51.6%
FEDERATION GARDENS SHUTTLE				31	35	-11.3%				153	138	10.9%
Subtotal Contractor-Operated Lifeline Routes	87	97	-10.0%	31	35	-11.3%				550	528	4.2%
Percentage of All Bus Routes	0.0%	0.0%		0.0%	0.0%					0.0%	0.0%	
All Other (Regular) Routes	158,963	166,370	-4.5%	104,632	116,034	-9.8%	75,450	80,300	-6.0%	4,322,156	4,525,770	-4.5%
Percentage of All Bus Routes	84.8%	85.9%		88.9%	89.5%		87.9%	88.4%		85.6%	86.5%	
Total Bus System	187,356	193,645	-3.2%	117,655	129,589	-9.2%	85,821	90,823	-5.5%	5,051,346	5,230,894	-3.4%

BUS RIDERSHIP BY ROUTE SERVICE TYPE LINEUPS COMPARISON (MONTH-OVER-10 MONTH)

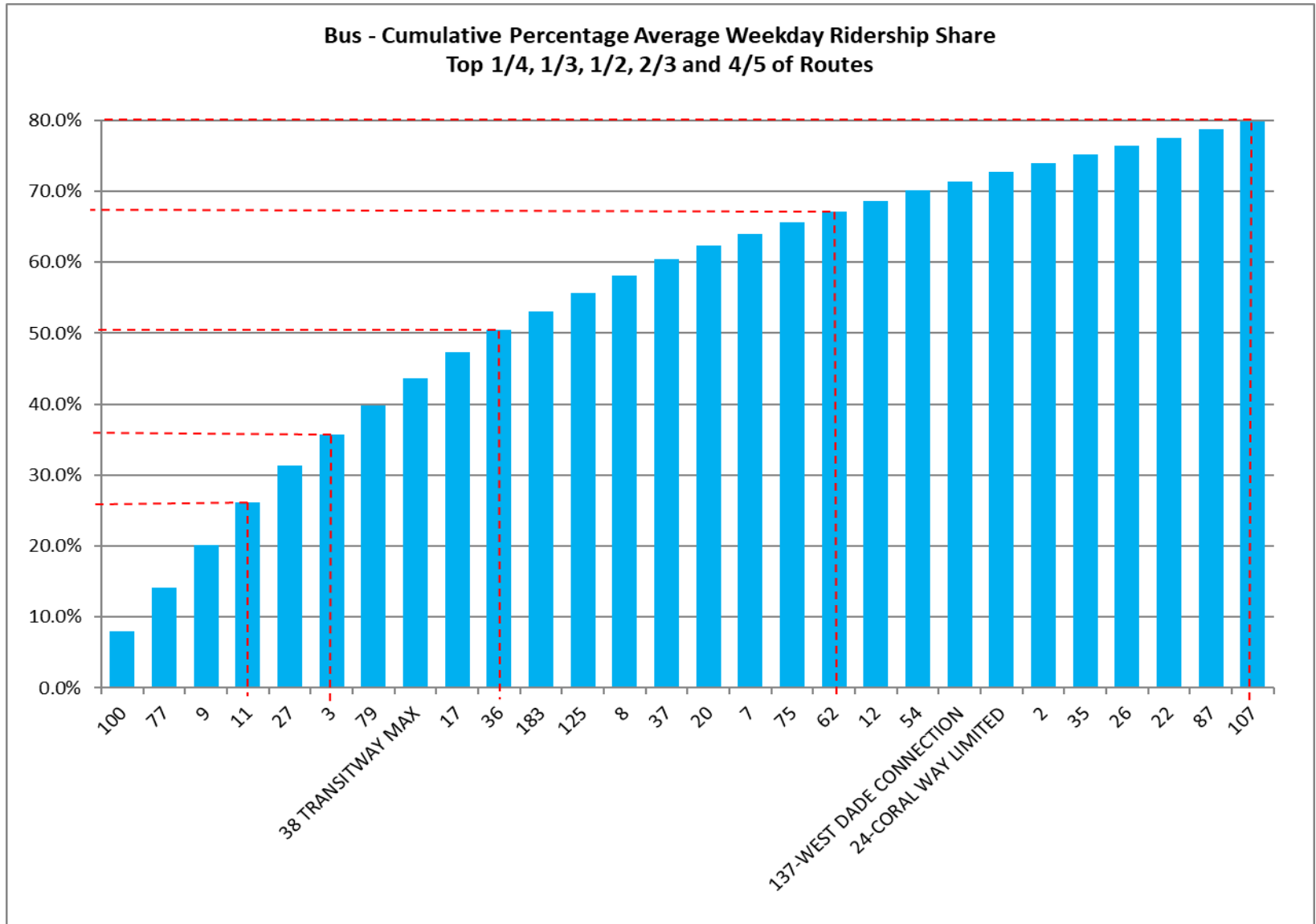
Boardings by Service Type and Route	Average Weekday	Average Weekday	Percent Change	Average Saturday	Average Saturday	Percent Change	Average Sunday	Average Sunday	Percent Change	Total Monthly	Total Monthly	Percent Change
	Aug-24	Oct-23	24 vs 23	Aug-24	Oct-23	24 vs 23	Aug-24	Oct-23	24 vs 23	Aug-24	Oct-23	24 vs 23
Directly Operated Express Routes												
34 TRANSITWAY EXPRESS	1,699	1,636	3.8%							37,371	36,002	3.8%
39 TRANSITWAY EXPRESS	772	742	4.0%							16,991	16,333	4.0%
95-EXPRESS GOLDEN GLADES	1,331	1,195	11.4%							29,286	26,295	11.4%
150-MIAMI BEACH AIRPORT EXPRESS	1,494	2,149	-30.5%	1,416	2,161	-34.5%	1,174	1,966	-40.3%	44,643	65,763	-32.1%
338 - WEEKEND EXPRESS				221	259	-14.9%	196	247	-20.7%	1,888	2,274	-17.0%
836 EXPRESS	327	247	32.4%							7,184	5,428	32.4%
837 EXPRESS	186	195	-4.4%							4,091	4,281	-4.4%
Subtotal Express Routes	5,809	6,165	-5.8%	1,636	2,420	-32.4%	1,370	2,214	-38.1%	141,454	156,376	-9.5%
Percentage of All Bus Routes	3.1%	3.3%		1.4%	2.3%		1.6%	2.7%		2.8%	3.2%	
Contracted Routes - Local Service (*)												
2	2,345	2,977	-21.2%	1,177	1,605	-26.7%	777	1,214	-36.0%	60,586	77,976	-22.3%
15	523	178	194.6%	349	93	274.5%	320	53	502.8%	14,533	4,545	219.8%
29		516									11,342	
46 - LIBERTY CITY CONN.		22									477	
56	522	391	33.6%	160						12,283	8,598	42.9%
70	284	161	76.3%	174			139			7,680	3,546	116.6%
72	913	670	36.3%	518	357	45.2%	422	259	62.8%	24,362	17,459	39.5%
82 - WESTCHESTER CIRC		61			38						1,488	
97	199	225	-11.3%	160	163	-2.0%	140	149	-6.3%	5,738	6,337	-9.5%
115		151			80						3,968	
152	383	1,051	-63.5%	199	375	-47.0%	163	331	-50.7%	10,079	26,285	-61.7%
155 - BISCAYNE GARDENS CIRC		45									985	
202 - LITTLE HAITI CONN		110			22			21			2,620	
211 OVERTOWN CIRCULATOR		71									1,567	
212-SWEETWATER CIRC		22									494	
217 - BUNCHE PARK CIRC		80									1,759	
254-BROWNSVILLE CIRC		5									105	
267-LUDLAM LIMITED		162									3,567	
286-NORTH POINTE CIRC		93			61						2,279	
344	124	76	63.7%	76						3,107	1,666	86.5%
401 - NORTH OWL	78	61	29.1%	72	61	18.7%	86	65	33.1%	2,425	1,899	27.7%
MetroLink NoMi West	137									3,006		
MetroLink North Miami	75									1,490		
MetroLink LeJeune	49									1,081		
MetroLink Killian Parkway	98									1,959		
MetroLink Alton Road	93									1,862		
MetroLink Opa-Locka	14									298		
Subtotal Contracted Reg. & Circ. Routes	5,837	7,125	-18.1%	2,885	2,854	1.1%	2,047	2,158	-5.2%	150,489	178,962	-15.9%
Percentage of All Bus Routes	3.1%	3.8%		2.5%	2.7%		2.4%	2.7%		3.0%	3.6%	

(1) Several express routes were suspended beginning at the end of Mar-20, due to the SARS-CoV-2 pandemic, while other routes had alignment and schedule modifications made to them, in an ongoing effort to optimize service delivery.
(2) A second major round of changes took place with the 11/13/23 lineup known as the Better Bus Network, as listed at the start of this Metrobus section.

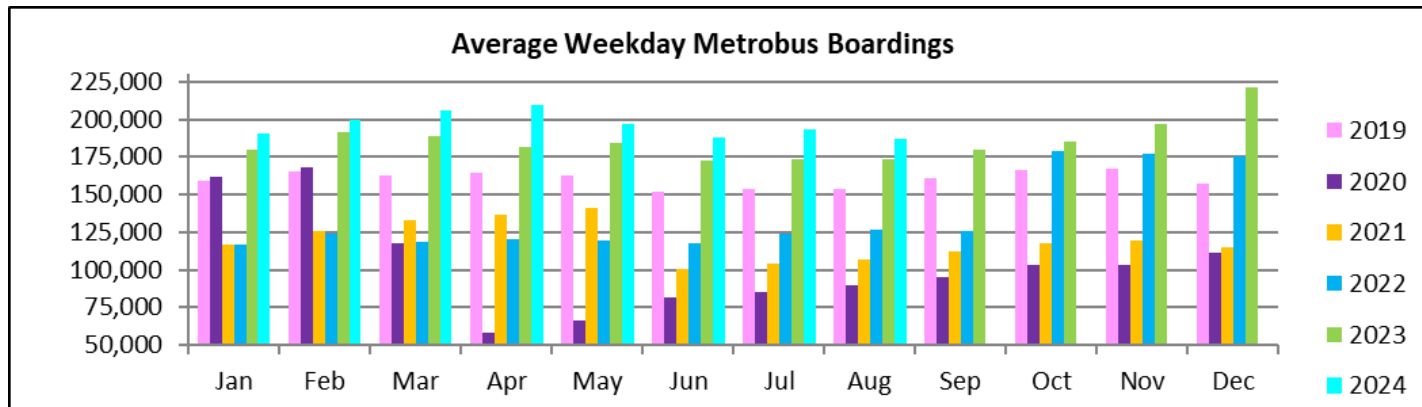
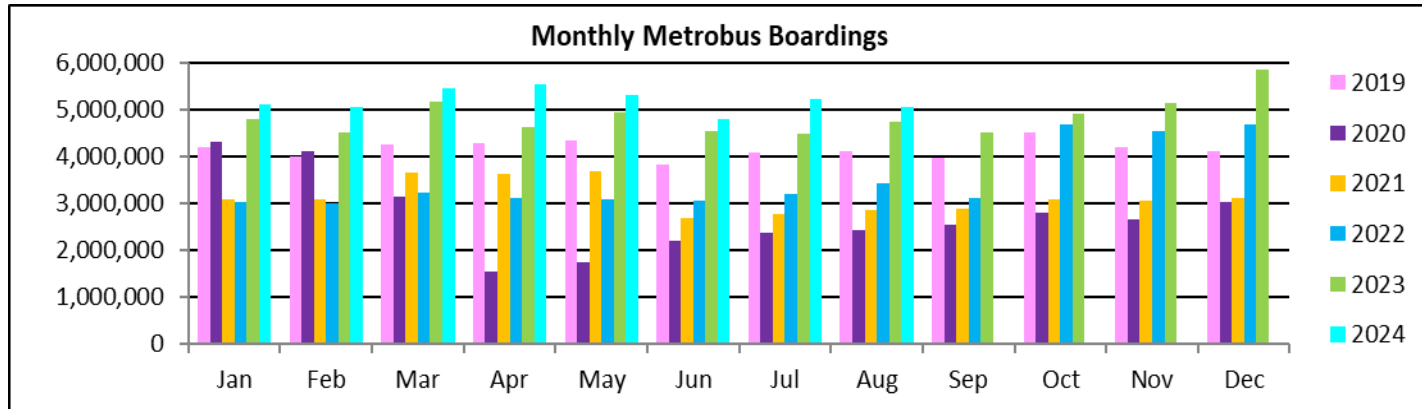
BUS RIDERSHIP BY ROUTE SERVICE TYPE LINEUPS COMPARISON (MONTH-OVER-10 MONTH)

Boardings by Service Type and Route	Average Weekday	Average Weekday	Percent Change	Average Saturday	Average Saturday	Percent Change	Average Sunday	Average Sunday	Percent Change	Total Monthly	Total Monthly	Percent Change
	Aug-24	Oct-23	24 vs 23	Aug-24	Oct-23	24 vs 23	Aug-24	Oct-23	24 vs 23	Aug-24	Oct-23	24 vs 23
Contracted Express Routes												
301-DADE MONROE EXPRESS	962	955	0.7%	924	885	4.4%	833	867	-3.8%	29,108	28,889	0.8%
302-CARD SOUND EXPRESS	115	91	26.6%	130	94	38.5%	101	72	40.4%	3,577	2,728	31.1%
Subtotal Contracted Express Routes	1,076	1,046	2.9%	1,054	979	7.7%	934	938	-0.5%	32,685	31,617	3.4%
Percentage of All Bus Routes	0.6%	0.6%		0.9%	0.9%		1.1%	1.2%		0.6%	0.6%	
Limited Stop Routes												
24-CORAL WAY LIMITED	2,349	2,195	7.0%	1,518	1,400	8.4%	1,113	1,108	0.5%	63,721	59,432	7.2%
38 TRANSITWAY MAX	7,200	5,714	26.0%	5,578	6,328	-11.8%	4,669	4,957	-5.8%	204,972	175,803	16.6%
203 - BISCAYNE MAX	1,299	3,666	-64.6%							28,580	80,650	-64.6%
204 KILLIAN MAX	581	620	-6.2%							12,792	13,632	-6.2%
211 - FLAGLER MAX	1,695	3,824	-55.7%							37,299	84,135	-55.7%
241 TUTTLE LIMITED		348			222			187			9,471	
272 SUNSET MAX (*)	363	428	-15.4%							7,975	9,423	-15.4%
277-7TH AVENUE MAX		879									19,345	
279 - 79 STREET MAX	587	469	25.1%							12,905	10,318	25.1%
287-SAGA BAY MAX	363	341	6.6%							7,996	7,499	6.6%
288 KENDALL MAX	458	372	23.0%							10,076	8,189	23.0%
297-27th AVENUE ORANGE MAX		1,229									27,047	
Subtotal Limited Stop Routes	14,896	20,086	-25.8%	7,096	7,950	-10.7%	5,783	6,252	-7.5%	386,316	504,944	-23.5%
Percentage of All Bus Routes	8.0%	10.8%		6.0%	7.4%		6.7%	7.7%		7.6%	10.3%	
Directly Operated Free Routes												
132 -TRI-RAIL DORAL SHUTTLE	39	37	6.3%							855	804	6.3%
500 - CUTLER BAY LOCAL	222	176	26.3%	155	152	2.1%	100	86	16.3%	6,062	4,907	23.5%
510 - SKYLAKE CIRCULATOR (*)	427	471	-9.4%	166	217	-23.8%	138	194	-28.9%	10,779	12,211	-11.7%
Subtotal Free Directly Operated Routes	688	684	0.6%	321	369	-13.1%	238	280	-15.0%	17,696	17,922	-1.3%
Percentage of All Bus Routes	0.4%	0.4%		0.3%	0.3%		0.3%	0.3%		0.4%	0.4%	
Contractor-Operated Lifeline Routes												
GREEN HILLS SHUTTLE	8	5	53.8%							32	26	23.1%
KINGS CREEK SHUTTLE	8	14	-38.9%							42	55	-23.6%
SIERRA LAKES SHUTTLE	22	16	43.2%							111	62	79.0%
ROBERT SHARP SHUTTLE	30	23	28.3%							118	92	28.3%
AHEPA SHUTTLE	19	18	5.9%							94	71	32.4%
FEDERATION GARDENS SHUTTLE				31	20	53.0%				153	80	91.3%
Subtotal Contractor-Operated Lifeline Routes	87	75	15.6%	31	20	53.0%				550	386	42.5%
Percentage of All Bus Routes	0.0%	0.0%		0.0%	0.0%					0.0%	0.0%	
All Other (Regular) Routes												
	158,963	150,140	5.9%	104,632	92,739	12.8%	75,450	69,584	8.4%	4,322,156	4,021,944	7.5%
Percentage of All Bus Routes	84.8%	81.0%		88.9%	86.4%		87.9%	85.5%		85.6%	81.9%	
Total Bus System	187,356	185,320	1.1%	117,655	107,331	9.6%	85,821	81,427	5.4%	5,051,346	4,912,151	2.8%

METROBUS CUMULATIVE PERCENTAGE RIDERSHIP SHARE – BY ROUTE



TOTAL MONTHLY AND AVERAGE WEEKDAY RIDERSHIP YEAR OVER YEAR COMPARISON CHARTS – METROBUS



**“TOP 10 / BOTTOM 10” BUS ROUTES AVERAGE WEEKDAY RIDERSHIP PERFORMANCE
MONTH OVER MONTH COMPARISON**

Route	Aug-24	Jul-24	Absolute Delta	Percent Delta
211 - FLAGLER MAX	1,695	1,428	268	18.8%
11	11,301	11,035	266	2.4%
38 TRANSITWAY MAX	7,200	6,951	250	3.6%
26	2,257	2,072	184	8.9%
207 (7th St)-LITTLE HAVANA CONN	1,660	1,486	175	11.8%
137-WEST DADE CONNECTION	2,450	2,277	173	7.6%
24-CORAL WAY LIMITED	2,349	2,204	145	6.6%
203 - BISCAYNE MAX	1,299	1,154	145	12.6%
40	1,872	1,755	116	6.6%
35	2,277	2,176	101	4.6%
100	14,853	17,119	-2,265	-13.2%
79	7,498	8,750	-1,252	-14.3%
77	11,494	12,347	-853	-6.9%
36	5,876	6,666	-790	-11.8%
9	11,447	12,030	-583	-4.8%
20	3,575	4,107	-532	-13.0%
37	4,240	4,623	-383	-8.3%
135	1,909	2,200	-290	-13.2%
3	8,345	8,621	-276	-3.2%
279 - 79 STREET MAX	587	813	-227	-27.9%

(*) Averages rounded to the nearest boarding, data as estimated from automatic passenger counter (APC) system; Lifeline shuttles excluded.

“TOP 10 / BOTTOM 10” BUS ROUTES SETS AVERAGE WEEKDAY RIDERSHIP PERFORMANCE YEAR OVER YEAR COMPARISON

Route Set (*), (1), (2)	Aug-24	Aug-23	Absolute Delta	Percent Delta	routes included in set
{ 38 }	7,324	4,551	2,773	60.9%	38, 344
{ 20 }	5,280	2,658	2,622	98.6%	20, 32, 115
{ 17 & 22 & 75 }	12,283	9,945	2,339	23.5%	17, 22, 75, 108, 217
{ 11 }	11,301	9,074	2,227	24.5%	11, 212
{ 77 }	11,494	9,628	1,866	19.4%	77, 277
{ 27 }	9,538	7,870	1,668	21.2%	27, 297
{ new 107 }	5,120	3,901	1,219	31.3%	35, 56, 70, 71, new 107, 248
{ 125 }	4,725	3,563	1,161	32.6%	19, 107, 125
{ 3 & 203 }	9,644	8,522	1,122	13.2%	3, 93, 203
{ 9 }	11,447	10,361	1,086	10.5%	9, 10, 16
{ 100 }	14,853	16,956	-2,103	-12.4%	100, 105, 119, 120
{ 73 & 183 }	6,181	7,495	-1,313	-17.5%	57, 73, 183, 238, 267, 286
{ new 211 }	11,216	12,322	-1,106	-9.0%	8, 24, 51, 82, 137, new 211
{ 37 & 54 }	7,008	7,794	-786	-10.1%	29, 37, 42, 54, 254
150	1,494	2,278	-784	-34.4%	150
{ 279 }	8,085	8,702	-618	-7.1%	79, 112, 279
{ 2 }	2,345	2,861	-515	-18.0%	2, 211
7	3,272	3,771	-499	-13.2%	7
88	1,830	2,270	-440	-19.4%	88
{ 14 }	820	1,228	-408	-33.2%	14, 113, 241

(*) Averages rounded to the nearest boarding, data as estimated from automatic passenger counter (APC) system; Lifeline shuttles excluded.

- (1) The route sets, denoted by brackets, include the new 11/13/2023 lineup's Better Bus Network route designations, as well as older routes present for the first part of the month and previous months and years, then either renamed, absorbed, or eliminated. The sets were defined to enable reasonably fair comparisons between pre- and post-BBN timeframes, to the extent possible and practical, given the complexity of the changes for some of the routes and sets. The definitions were based on information from the DTPW website, and subject to future adjustments, if necessary.
- (2) The adjective "new" in front of some new Better Bus Network-generated (recycled) route numbers was added to help prevent confusion with older but different routes with the same number present in previous months or years.

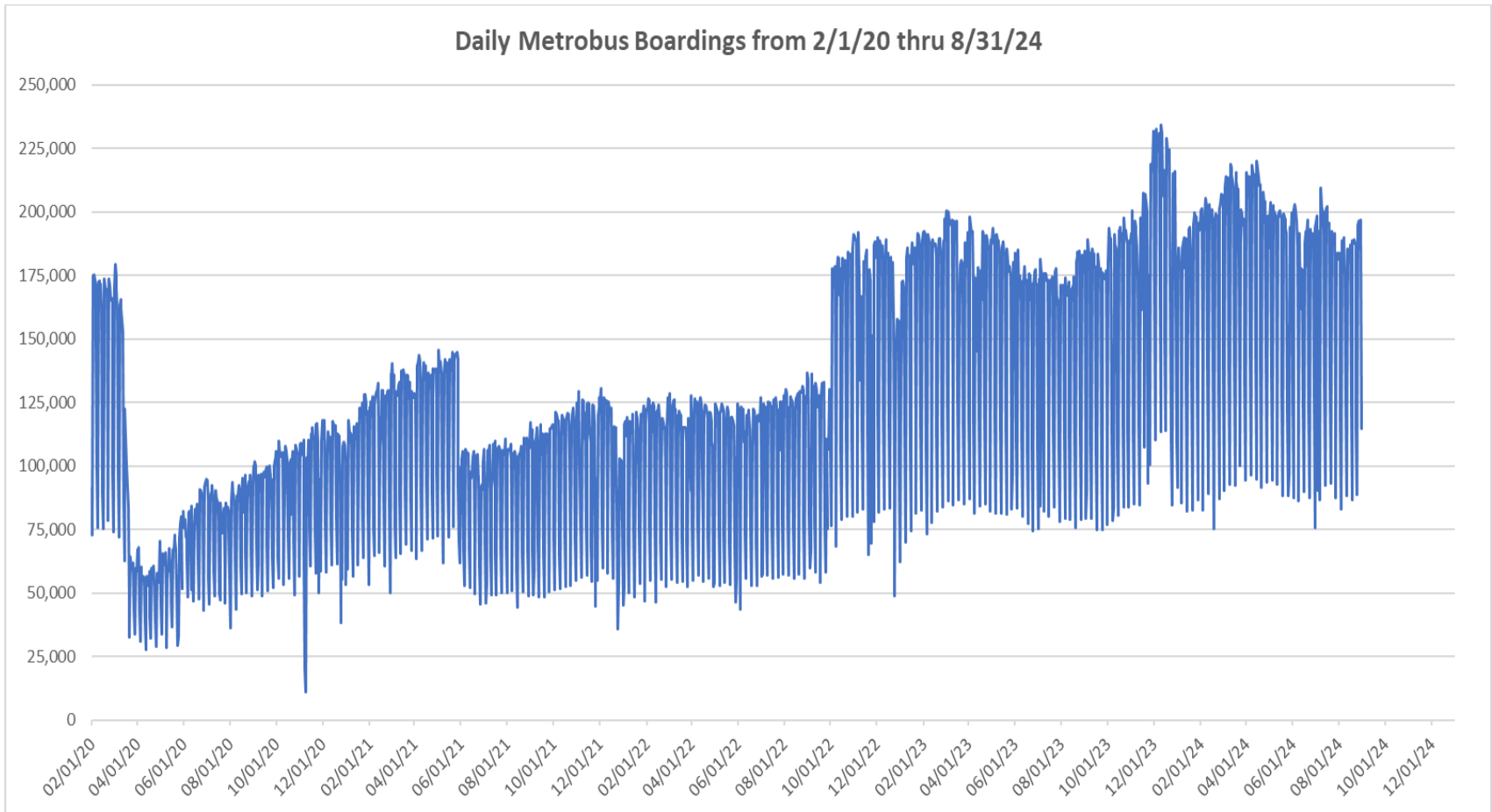
“TOP 10 / BOTTOM 10” BUS ROUTES SETS AVERAGE WEEKDAY RIDERSHIP PERFORMANCE MONTH OVER 10-MONTH PRIOR COMPARISON

Route Set (*), (1), (2)	Aug-24	Oct-23	Absolute Delta	Percent Delta	routes included in set
{ 20 }	5,280	2,850	2,430	85.3%	20, 32, 115
{ 11 }	11,301	9,644	1,657	17.2%	11, 212
{ 38 }	7,324	5,790	1,535	26.5%	38, 344
{ 17 & 22 & 75 }	12,283	10,796	1,487	13.8%	17, 22, 75, 108, 217
{ 27 }	9,538	8,339	1,199	14.4%	27, 297
{ 125 }	4,725	3,906	819	21.0%	19, 107, 125
{ new 107 }	5,120	4,447	673	15.1%	35, 56, 70, 71, new 107, 248
{ 77 }	11,494	10,838	655	6.0%	77, 277
{ 3 & 203 }	9,644	9,082	562	6.2%	3, 93, 203
{ 9 }	11,447	10,942	505	4.6%	9, 10, 16
{ 100 }	14,853	17,117	-2,263	-13.2%	100, 105, 119, 120
{ 73 & 183 }	6,181	7,890	-1,709	-21.7%	57, 73, 183, 238, 267, 286
{ new 211 }	11,216	12,849	-1,633	-12.7%	8, 24, 51, 82, 137, new 211
{ 37 & 54 }	7,008	8,082	-1,074	-13.3%	29, 37, 42, 54, 254
{ 279 }	8,085	8,950	-866	-9.7%	79, 112, 279
7	3,272	4,021	-749	-18.6%	7
{ 2 }	2,345	3,048	-703	-23.1%	2, 211
150	1,494	2,149	-655	-30.5%	150
88	1,830	2,419	-589	-24.3%	88
{ 52 }	1,941	2,442	-501	-20.5%	52, 152, 252

(*) Averages rounded to the nearest boarding, data as estimated from automatic passenger counter (APC) system; Lifeline shuttles excluded.

- (1) The route sets, denoted by brackets, include the new 11/13/2023 lineup's Better Bus Network route designations, as well as older routes present for the first part of the month and previous months and years, then either renamed, absorbed, or eliminated. The sets were defined to enable reasonably fair comparisons between pre- and post-BBN timeframes, to the extent possible and practical, given the complexity of the changes for some of the routes and sets. The definitions were based on information from the DTPW website, and subject to future adjustments, if necessary.
- (2) The adjective "new" in front of some new Better Bus Network-generated (recycled) route numbers was added to help prevent confusion with older but different routes with the same number present in previous months or years.

DAILY METROBUS RIDERSHIP SINCE FEBRUARY 1, 2020



- (1) There was no Metrobus, Metrorail and Metromover service on 5/31/20, as a safety precaution, and no service for any of the four modes on 9/28/22, as a result of Hurricane Ian.
- (2) The dip at the start of the second week of Nov-20 is due to Hurricane Eta.
- (3) Daily variations from Oct-22 onward are a representation estimated from reports made available by the Bus APC data vendor; the finalized data is based on statistical sampling.
- (4) The reduction seen beginning 6/1/21 is partly due to the resumption of fares and partly the result of resuming reporting Cubic farebox data rather than bus APC counts; the jump seen at the very start of Oct-22 is due to the switch to APC bus ridership counts reporting beginning 10/1/22; the pronounced peak in Dec-23 is attributable to the Better Bus Network launch period and attendant free fares.
- (5) Periodic (weekly) variations are prominent, since weekday ridership is almost always significantly higher than weekend or holiday ridership.

METROBUS PARKING PATRONAGE SUMMARY August 2024

PARK-RIDE LOT	ACTUAL AVAILABLE SPACES	ACTUAL OCCUPANCY	PERCENT OCCUPANCY
Transitway / SW 152nd St	200	133	67%
Transitway / SW 168th St (*)	149		
Transitway / SW 200th Street	100	31	31%
Transitway / SW 112 Ave (Target)	450	147	33%
Transitway / SW 244th St	95	82	86%
Transitway / SW 296th St	139	24	17%
Transitway / SW 344th St	248	178	72%
Coral Reef Drive 117/ Turnpike	95	75	79%
Golden Glades Facility	2,150	407	19%
Hammocks Town Center (SW 152 Ave / SW 104 St)	50	16	32%
Kendall Dr./SW 127th Ave	161	16	10%
West Kendall Transit Term (Kendall Dr / SW162 Ave)	40	6	15%
NW 7th Avenue Transit Village (NW 7 Ave / NW 62 St)	25	18	72%
Miami Gardens Dr. / NW 73rd Ave	136	1	1%
Dolphin Station	348	63	18%
Tamiami Station (eff 11-2022)	442	67	15%
I-75 / Miami Gardens Dr (**)	298		
TOTAL	5,126	1,264	25%

(*) Closed for construction beginning Jan-22

(**) Route 175 Suspended 3/27/2020

Metrorail



August 2024

METRORAIL AVERAGE WEEKDAY BOARDINGS BY STATION (†)

Weekdays	Average Weekday	Average Weekday	Percent Change	Average Weekday	Percent Change	Average Weekday	Percent Change	Average Weekday	Percent Change
STATIONS	Aug-24	Aug-23	YOY	Feb-20	Current vs Feb-20	Jul-24	MOM	Aug-19	YO5Y
ALLAPATTAH	1,600	1,528	4.7%	1,942	-17.6%	1,545	3.6%	1,671	-4.2%
BRICKELL	5,306	4,862	9.1%	6,529	-18.7%	4,922	7.8%	5,846	-9.2%
BROWNSVILLE	559	510	9.6%	862	-35.1%	543	3.0%	786	-28.8%
UHEALTH JACKSON	4,478	4,266	5.0%	6,143	-27.1%	4,340	3.2%	5,546	-19.3%
COCONUT GROVE	1,789	1,252	43.0%	1,795	-0.3%	1,648	8.6%	1,472	21.5%
CULMER	875	933	-6.2%	1,392	-37.1%	804	8.8%	1,129	-22.5%
DADELAND NORTH	4,070	3,810	6.8%	5,926	-31.3%	3,647	11.6%	5,335	-23.7%
DADELAND SOUTH	4,316	4,351	-0.8%	7,150	-39.6%	4,168	3.5%	6,414	-32.7%
DOUGLAS ROAD	3,011	2,583	16.6%	3,624	-16.9%	2,768	8.8%	3,034	-0.8%
DR. MARTIN LUTHER KING, JR.	933	808	15.6%	1,157	-19.3%	903	3.3%	1,039	-10.1%
EARLINGTON HEIGHTS	1,108	1,273	-12.9%	1,662	-33.3%	1,079	2.8%	1,461	-24.1%
GOVERNMENT CENTER	6,365	6,263	1.6%	10,557	-39.7%	5,980	6.5%	8,881	-28.3%
HIALEAH	1,189	748	58.8%	1,253	-5.1%	1,156	2.8%	1,157	2.8%
MIAMI INTERNATIONAL AIRPORT	1,404	1,281	9.6%	1,711	-17.9%	1,357	3.5%	1,510	-7.0%
NORTHSIDE	1,024	1,144	-10.5%	1,476	-30.6%	961	6.6%	1,304	-21.5%
OKEECHOBEE	1,006	839	19.8%	1,164	-13.6%	939	7.1%	1,065	-5.6%
OVERTOWN / ARENA	1,787	1,657	7.9%	2,274	-21.4%	1,744	2.5%	2,010	-11.1%
PALMETTO	1,263	1,193	5.9%	1,543	-18.2%	1,283	-1.6%	1,356	-6.9%
SANTA CLARA	744	623	19.5%	812	-8.3%	747	-0.4%	660	12.8%
SOUTH MIAMI	2,090	1,785	17.1%	3,015	-30.7%	1,889	10.7%	2,586	-19.2%
TRI-RAIL	1,133	997	13.7%	1,207	-6.1%	1,106	2.4%	1,034	9.6%
UNIVERSITY	1,931	1,664	16.0%	2,784	-30.7%	1,210	59.6%	2,196	-12.1%
VIZCAYA	1,178	973	21.1%	1,390	-15.2%	1,076	9.5%	1,101	7.0%
TOTAL	49,161	45,342	8.4%	67,367	-27.0%	45,816	7.3%	58,592	-16.1%

(†) In this table and those which follow, "YOY" stands for "year-over-year", "MOM" for "month-over-month" and, e.g., "YO5Y" for "year over five years", i.e., current month vs 12 months prior, one month prior, and 60 months prior, respectively. The Feb-20 numbers serve as a pre-pandemic benchmark.

METRORAIL AVERAGE SATURDAY BOARDINGS BY STATION

Saturdays	Average Saturday	Average Saturday	Percent Change	Average Saturday	Percent Change	Average Saturday	Percent Change	Average Saturday	Percent Change
STATIONS	Aug-24	Aug-23	YOY	Feb-20	Current vs Feb-20	Jul-24	MOM	Aug-19	YO5Y
ALLAPATTAH	830	860	-3.5%	1,051	-21.1%	812	2.2%	856	-3.1%
BRICKELL	2,379	2,307	3.1%	2,811	-15.4%	2,239	6.3%	2,255	5.5%
BROWNSVILLE	306	311	-1.5%	520	-41.1%	311	-1.5%	482	-36.5%
UHEALTH JACKSON	748	727	2.9%	959	-22.1%	718	4.2%	791	-5.5%
COCONUT GROVE	970	650	49.3%	928	4.5%	860	12.8%	700	38.6%
CULMER	433	451	-4.0%	721	-39.9%	428	1.3%	590	-26.6%
DADELAND NORTH	1,364	1,354	0.8%	1,994	-31.6%	1,130	20.8%	1,625	-16.1%
DADELAND SOUTH	1,725	1,832	-5.8%	2,625	-34.3%	1,657	4.1%	2,242	-23.1%
DOUGLAS ROAD	1,252	1,009	24.1%	1,319	-5.1%	1,203	4.1%	1,079	16.0%
DR. MARTIN LUTHER KING, JR.	544	471	15.5%	625	-13.0%	523	4.0%	540	0.7%
EARLINGTON HEIGHTS	597	725	-17.6%	935	-36.2%	595	0.4%	833	-28.3%
GOVERNMENT CENTER	2,983	2,621	13.8%	4,262	-30.0%	2,527	18.0%	3,041	-1.9%
HIALEAH	543	371	46.7%	583	-6.8%	551	-1.4%	540	0.6%
MIAMI INTERNATIONAL AIRPORT	998	1,009	-1.1%	1,330	-25.0%	996	0.2%	1,108	-10.0%
NORTHSIDE	596	749	-20.4%	878	-32.1%	599	-0.4%	802	-25.7%
OKEECHOBEE	425	302	41.0%	408	4.1%	408	4.3%	337	26.2%
OVERTOWN / ARENA	547	610	-10.3%	678	-19.3%	520	5.2%	454	20.4%
PALMETTO	523	353	48.2%	458	14.3%	449	16.5%	354	47.9%
SANTA CLARA	353	315	12.1%	422	-16.3%	354	-0.2%	345	2.2%
SOUTH MIAMI	962	840	14.6%	1,256	-23.4%	874	10.1%	975	-1.3%
TRI-RAIL	524	499	5.0%	614	-14.8%	514	1.9%	481	8.9%
UNIVERSITY	637	544	17.1%	714	-10.8%	318	100.5%	527	20.9%
VIZCAYA	507	445	14.0%	622	-18.5%	517	-2.0%	487	4.2%
TOTAL	20,748	19,352	7.2%	26,714	-22.3%	19,099	8.6%	21,445	-3.3%

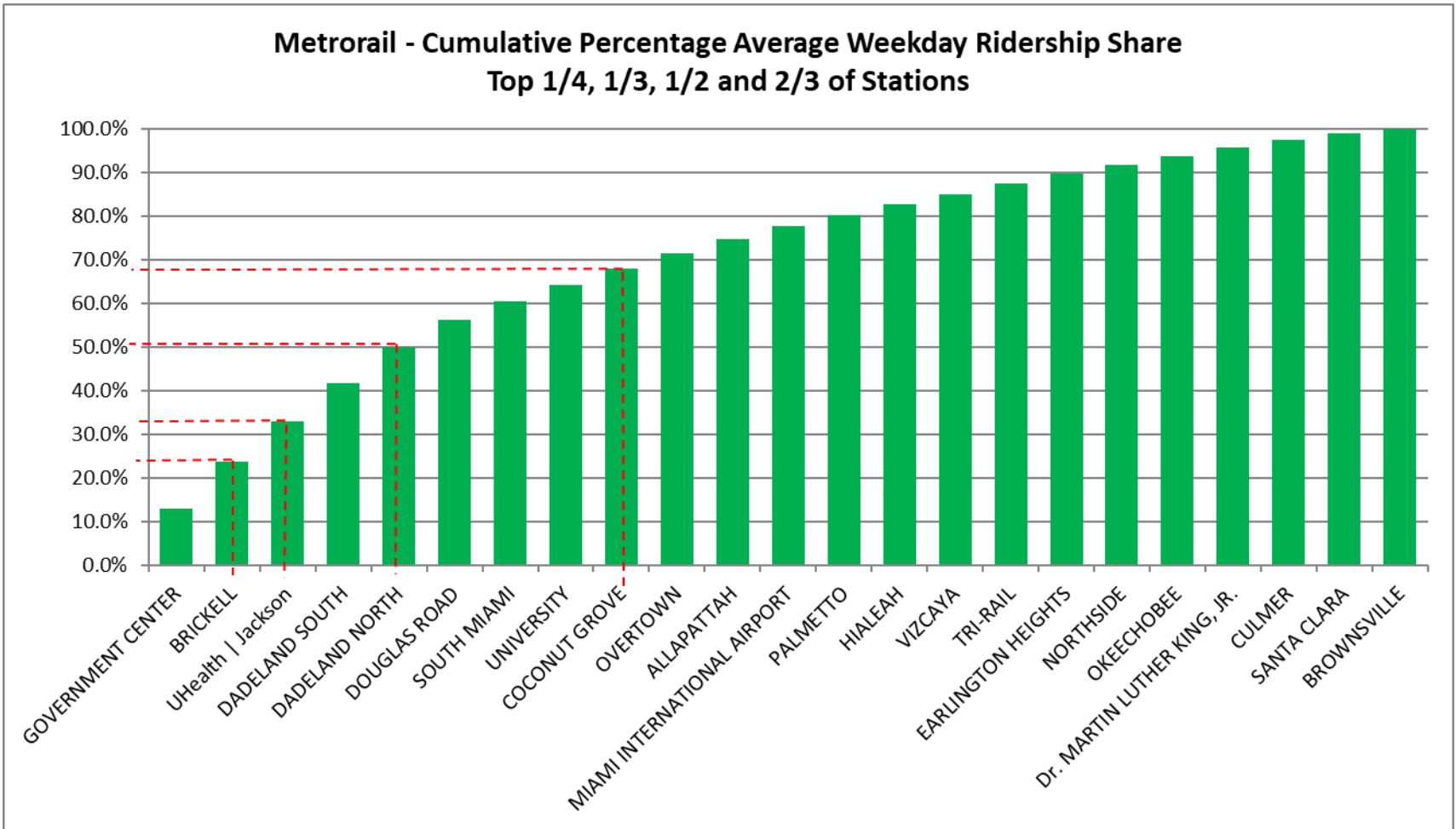
METRORAIL AVERAGE SUNDAY BOARDINGS BY STATION

Sundays	Average Sunday	Average Sunday	Percent Change	Average Sunday	Percent Change	Average Sunday	Percent Change	Average Sunday	Percent Change
STATIONS	Aug-24	Aug-23	YOY	Feb-20	Current vs Feb-20	Jul-24	MOM	Aug-19	YO5Y
ALLAPATTAH	610	634	-3.9%	791	-22.9%	614	-0.7%	630	-3.2%
BRICKELL	1,854	1,666	11.3%	2,379	-22.1%	1,720	7.8%	1,812	2.3%
BROWNSVILLE	230	219	4.9%	406	-43.5%	215	7.0%	382	-39.8%
UHEALTH JACKSON	577	579	-0.3%	791	-27.1%	582	-0.9%	677	-14.8%
COCONUT GROVE	733	483	51.8%	838	-12.6%	631	16.2%	561	30.6%
CULMER	339	323	5.0%	616	-45.0%	339	-0.1%	473	-28.4%
DADELAND NORTH	963	958	0.5%	1,685	-42.9%	790	21.9%	1,264	-23.8%
DADELAND SOUTH	1,277	1,405	-9.1%	2,210	-42.2%	1,256	1.7%	1,732	-26.2%
DOUGLAS ROAD	921	754	22.2%	1,090	-15.5%	772	19.3%	797	15.5%
DR. MARTIN LUTHER KING, JR.	429	320	34.4%	506	-15.2%	373	15.1%	420	2.3%
EARLINGTON HEIGHTS	460	533	-13.7%	799	-42.5%	490	-6.3%	678	-32.2%
GOVERNMENT CENTER	2,049	2,031	0.9%	4,044	-49.3%	1,922	6.6%	2,379	-13.9%
HIALEAH	389	267	45.7%	472	-17.6%	369	5.4%	398	-2.2%
MIAMI INTERNATIONAL AIRPORT	918	920	-0.3%	1,343	-31.7%	808	13.6%	1,076	-14.8%
NORTHSIDE	478	580	-17.6%	653	-26.7%	439	8.9%	654	-26.9%
OKEECHOBEE	287	187	53.8%	273	4.9%	288	-0.4%	239	20.1%
OVERTOWN / ARENA	460	428	7.4%	544	-15.5%	404	13.9%	369	24.6%
PALMETTO	235	220	6.9%	336	-30.1%	249	-5.5%	217	8.2%
SANTA CLARA	243	217	11.8%	280	-13.2%	227	7.1%	207	17.4%
SOUTH MIAMI	742	599	23.9%	987	-24.8%	671	10.5%	714	4.0%
TRI-RAIL	368	327	12.5%	528	-30.4%	376	-2.1%	425	-13.5%
UNIVERSITY	495	411	20.3%	608	-18.7%	256	93.1%	377	31.1%
VIZCAYA	382	311	23.0%	524	-27.1%	344	11.1%	371	2.9%
TOTAL	15,434	14,369	7.4%	22,701	-32.0%	14,132	9.2%	16,850	-8.4%

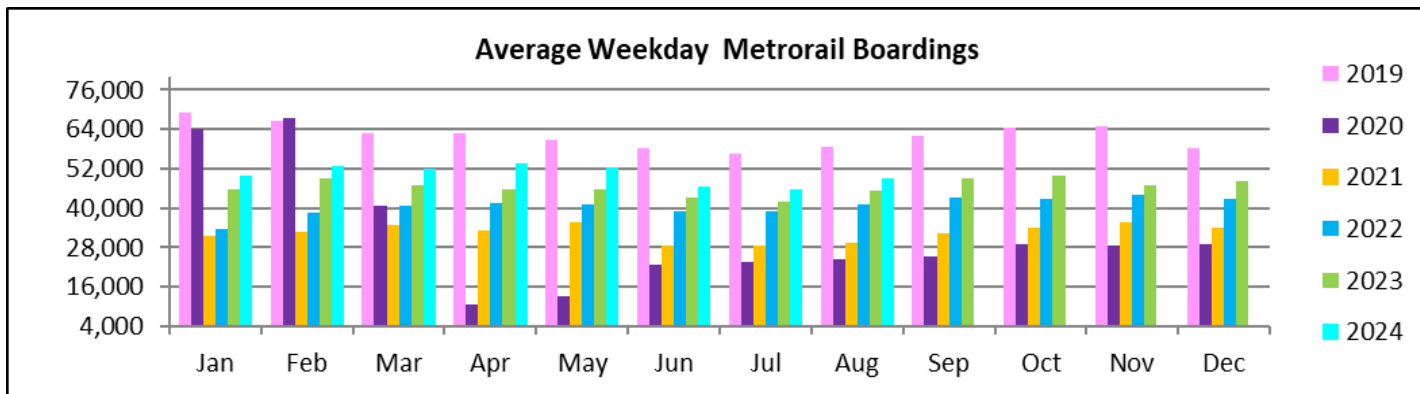
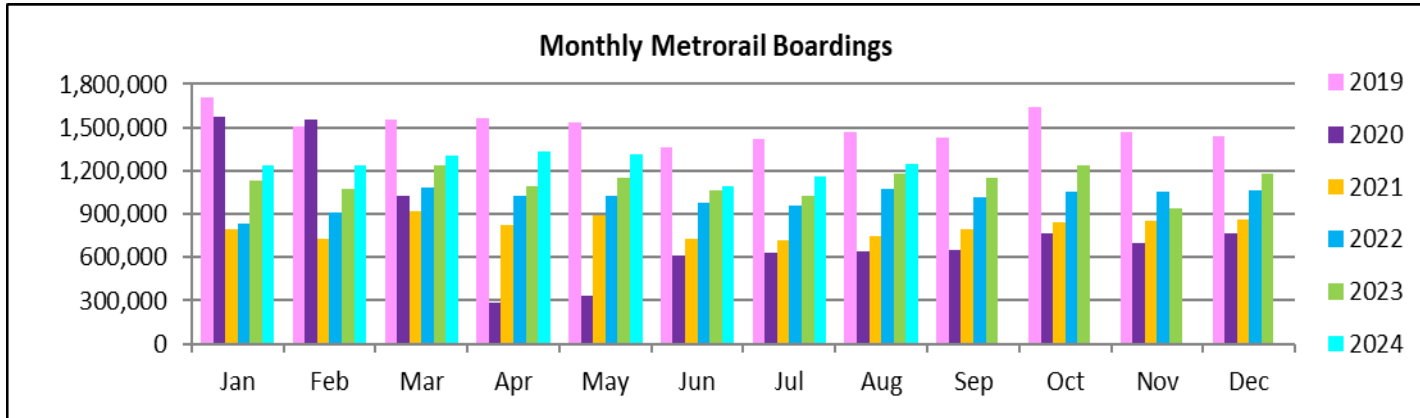
METRORAIL TOTAL MONTHLY BOARDINGS BY STATION

Monthly Totals	Total Month	Total Month	Percent Change	Total Month	Percent Change	Total Month	Percent Change	Total Month	Percent Change
STATIONS	Aug-24	Aug-23	YOY	Feb-20	Current vs Feb-20	Jul-24	MOM	Aug-19	YO5Y
ALLAPATTAH	41,793	41,128	1.6%	46,868	-10.8%	40,477	3.3%	43,550	-4.0%
BRICKELL	136,054	127,727	6.5%	152,259	-10.6%	126,107	7.9%	147,140	-7.5%
BROWNSVILLE	14,749	13,852	6.5%	21,285	-30.7%	14,360	2.7%	21,221	-30.5%
UHEALTH JACKSON	104,559	103,341	1.2%	128,921	-18.9%	101,493	3.0%	128,682	-18.7%
COCONUT GROVE	47,150	33,318	41.5%	43,580	8.2%	43,050	9.5%	38,134	23.6%
CULMER	22,766	24,550	-7.3%	33,497	-32.0%	21,261	7.1%	29,681	-23.3%
DADELAND NORTH	100,207	96,871	3.4%	132,894	-24.6%	88,997	12.6%	130,550	-23.2%
DADELAND SOUTH	108,682	113,014	-3.8%	162,416	-33.1%	104,998	3.5%	159,249	-31.8%
DOUGLAS ROAD	76,181	66,449	14.6%	82,141	-7.3%	69,798	9.1%	75,332	1.1%
DR. MARTIN LUTHER KING, JR.	24,969	21,736	14.9%	27,980	-10.8%	23,945	4.3%	27,229	-8.3%
EARLINGTON HEIGHTS	29,205	34,297	-14.8%	40,697	-28.2%	28,650	1.9%	39,009	-25.1%
GOVERNMENT CENTER	163,151	162,662	0.3%	243,414	-33.0%	152,265	7.1%	220,103	-25.9%
HIALEAH	30,425	19,762	54.0%	29,516	3.1%	29,656	2.6%	29,733	2.3%
MIAMI INTERNATIONAL AIRPORT	39,555	37,176	6.4%	46,115	-14.2%	38,031	4.0%	43,067	-8.2%
NORTHSIDE	27,426	28,009	-2.1%	36,127	-24.1%	25,763	6.5%	35,320	-22.3%
OKEECHOBEE	25,395	21,260	19.4%	26,026	-2.4%	23,775	6.8%	26,079	-2.6%
OVERTOWN / ARENA	43,899	42,271	3.9%	49,911	-12.0%	42,488	3.3%	47,965	-8.5%
PALMETTO	31,338	29,725	5.4%	33,944	-7.7%	31,461	-0.4%	32,479	-3.5%
SANTA CLARA	19,105	16,453	16.1%	19,245	-0.7%	19,071	0.2%	17,064	12.0%
SOUTH MIAMI	53,767	46,800	14.9%	69,412	-22.5%	48,490	10.9%	64,626	-16.8%
TRI-RAIL	29,024	26,239	10.6%	29,120	-0.3%	28,356	2.4%	26,854	8.1%
UNIVERSITY	47,642	42,100	13.2%	61,253	-22.2%	29,220	63.0%	52,449	-9.2%
VIZCAYA	29,977	25,398	18.0%	32,497	-7.8%	27,663	8.4%	28,130	6.6%
TOTAL	1,247,019	1,174,138	6.2%	1,549,118	-19.5%	1,159,375	7.6%	1,463,646	-14.8%

METRORAIL CUMULATIVE PERCENTAGE RIDERSHIP SHARE



TOTAL MONTHLY AND AVERAGE WEEKDAY RIDERSHIP YEAR OVER YEAR COMPARISON CHARTS – METRORAIL

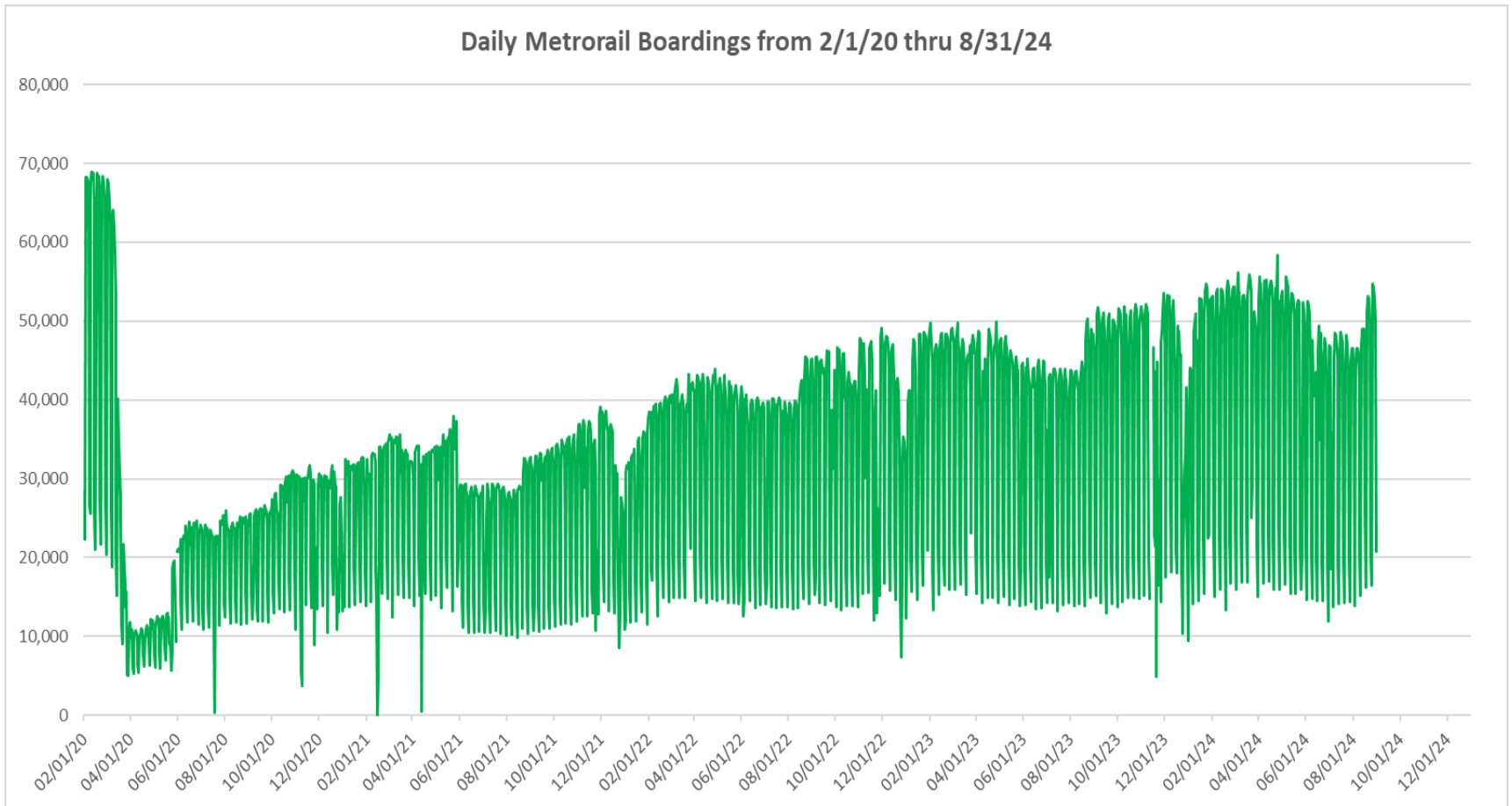


**“TOP 5 / BOTTOM 5” RAIL STATIONS AVERAGE WEEKDAY RIDERSHIP PERFORMANCE
YEAR OVER YEAR COMPARISONS**

Station	Aug-24	Aug-23	Absolute Delta (1)	Percent Delta
COCONUT GROVE	1,789	1,252	538	43.0%
BRICKELL	5,306	4,862	444	9.1%
HIALEAH	1,189	748	440	58.8%
DOUGLAS ROAD	3,011	2,583	428	16.6%
SOUTH MIAMI	2,090	1,785	306	17.1%
EARLINGTON HEIGHTS	1,108	1,273	-164	-12.9%
NORTHSIDE	1,024	1,144	-120	-10.5%
CULMER	875	933	-58	-6.2%
DADELAND SOUTH	4,316	4,351	-35	-0.8%
BROWNSVILLE	559	510	49	9.6%

(1) Averages rounded to the nearest boarding.

DAILY METRORAIL RIDERSHIP SINCE FEBRUARY 1, 2020



- (1) There was no Metrobus, Metrorail and Metromover service on 5/31/20, as a safety precaution, and no service for any of the four modes on 9/28/22 as a result of Hurricane Ian..
- (2) The dip at the start of the second week of Nov-20 is due to Hurricane Eta; these are *raw data* from the Unleash Live contractor AI video system.
- (3) The dip on 4/13/21 is due to a loss of connectivity at all stations, affecting a few stations over the next two days as well; a similar loss of connectivity is seen on 11/21/23.
- (4) The reduction seen beginning 6/1/21 is partly due to the resumption of fares and partly the result of resuming reporting Cubic faregate data rather than video camera counts.
- (5) As a result of free fares to launch the Better Bus Network, faregates are open beginning 11/13/23, and Unleash Live AI video system ridership counts are reported starting 11/17/23; the isolated peak in Dec-23 is visible.
- (6) Periodic (weekly) variations are prominent, since weekday ridership is almost always significantly higher than weekend or holiday ridership; a few low-count days are due to system outages, often associated with construction or renovation work.

METRORAIL PARKING PATRONAGE SUMMARY August 2024

PARK-RIDE LOT	ACTUAL CAPACITY (1)	ACTUAL OCCUPANCY (2)	PERCENT OCCUPANCY
DADELAND SOUTH	1,260	784	62%
DADELAND NORTH	1,702	992	58%
SOUTH MIAMI	816	342	42%
UNIVERSITY	260	203	78%
DOUGLAS ROAD	222		
COCONUT GROVE	100		
VIZCAYA	120	42	35%
CULMER	25	16	63%
SANTA CLARA	61	36	60%
ALLAPATTAH	74	7	9%
EARLINGTON HEIGHTS	361	160	44%
BROWNSVILLE	100	81	81%
DR. MARTIN LUTHER KING JR. (MDT)	62		
DR. MARTIN LUTHER KING JR. (GARAGE)	631		
NORTHSIDE	100	83	83%
HIALEAH	338	61	18%
OKEECHOBEE	1,398	150	11%
PALMETTO	700	163	23%
TOTAL	8,330	3,120	37%

- (1) Number of spaces could vary each week; shown are available spaces during final week of month, as submitted by DTPW Safety & Security office.
(2) All sampled occupancy data provided by DTPW Safety & Security office; calculations are revisions to those submitted by that entity.
(3) Daily averages rounded to nearest unit, with fewer samples at some stations than others, depending on staffing levels; calculations are based on sampled counted days only per raw data submitted, with resulting average daily occupancy shown.

Metromover



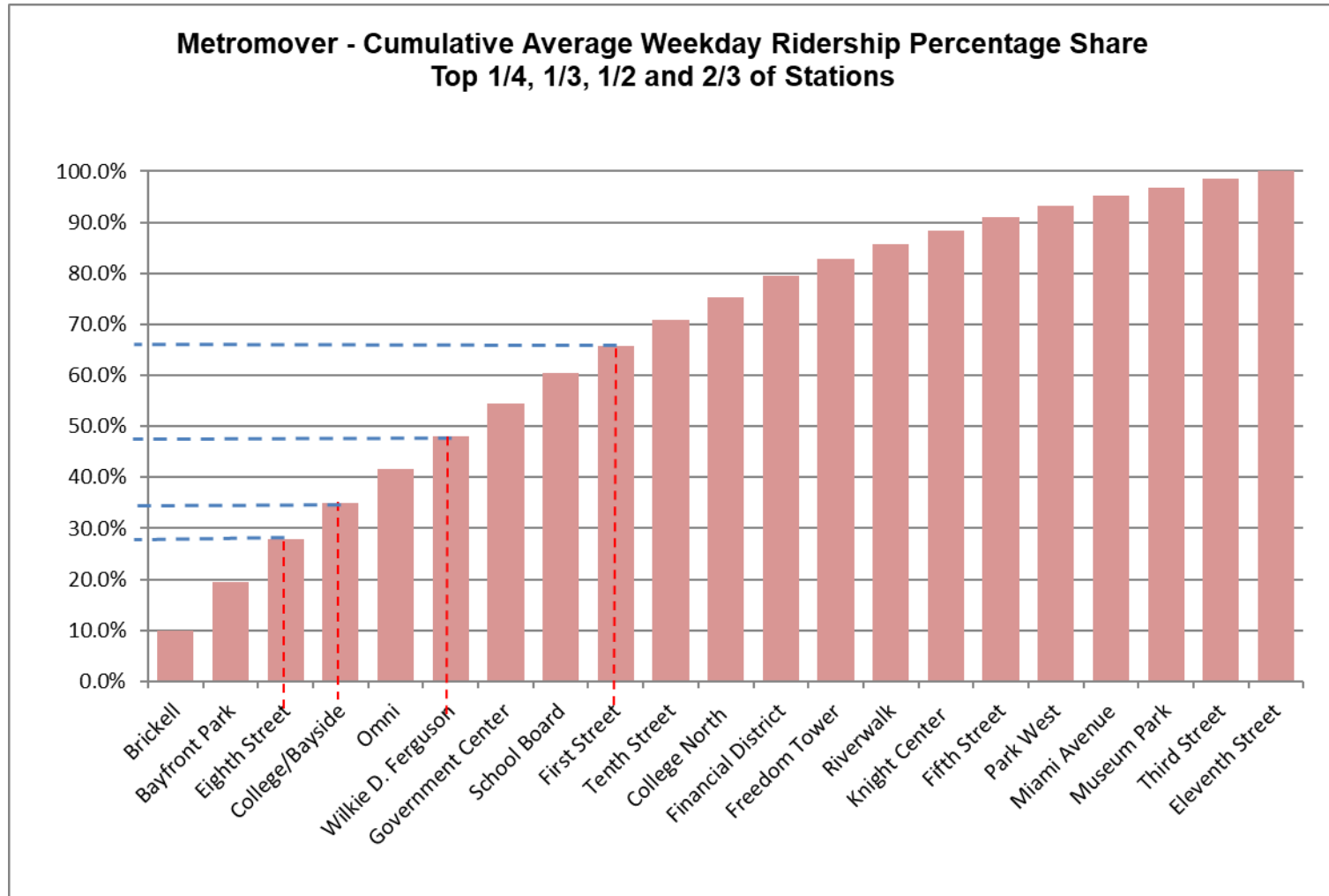
August 2024

METROMOVER MONTHLY AND AVERAGE DAILY BOARDINGS BY STATION

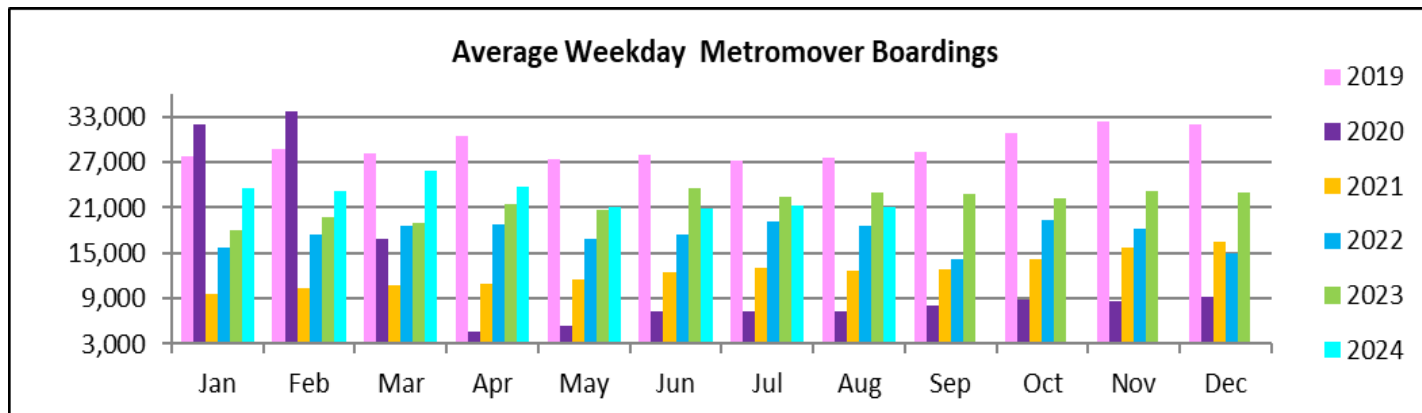
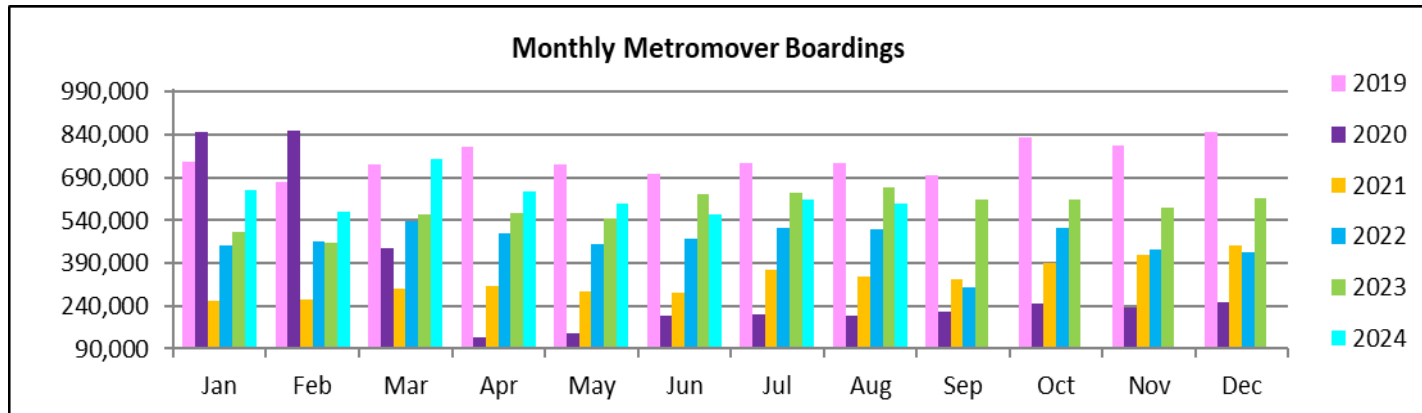
	Average Weekday	Average Weekday	Percent Change	Average Saturday	Average Saturday	Percent Change	Average Sunday	Average Sunday	Percent Change	Total Monthly	Total Monthly	Percent Change
STATIONS	Aug-24	Aug-23	24 vs 23	Aug-24	Aug-23	24 vs 23	Aug-24	Aug-23	24 vs 23	Aug-24	Aug-23	24 vs 23
School Board	1,247	1,198	4.2%	919	826	11.4%	890	859	3.6%	35,595	34,280	3.8%
Omni	1,397	1,887	-26.0%	968	1,360	-28.8%	1,013	1,233	-17.9%	39,617	53,782	-26.3%
Museum Park	360	376	-4.3%	421	614	-31.5%	340	485	-29.9%	11,372	13,040	-12.8%
Eleventh Street	311	266	17.0%	227	319	-28.9%	203	196	3.8%	8,778	8,164	7.5%
Park West	476	752	-36.7%	367	612	-40.0%	346	544	-36.5%	13,688	21,914	-37.5%
Freedom Tower	723			626			578			21,354		
Government Center	1,363	2,528	-46.1%	1,135	1,759	-35.5%	947	1,542	-38.6%	39,452	71,346	-44.7%
Miami Avenue	380	373	1.9%	240	259	-7.2%	233	237	-1.7%	10,498	10,570	-0.7%
Third Street	358	477	-24.9%	400	365	9.6%	337	334	1.0%	11,227	13,768	-18.5%
Knight Center	573	608	-5.8%	326	368	-11.4%	257	295	-13.1%	15,261	16,642	-8.3%
Bayfront Park	1,995	2,213	-9.9%	1,770	1,611	9.9%	1,324	1,489	-11.1%	58,041	63,302	-8.3%
First Street	1,144	1,299	-11.9%	916	1,047	-12.5%	854	941	-9.3%	33,171	37,817	-12.3%
College/Bayside	1,463	1,369	6.8%	1,239	1,229	0.8%	1,094	1,168	-6.3%	42,759	41,082	4.1%
College North	974	986	-1.2%	489	633	-22.7%	406	535	-24.2%	25,503	27,348	-6.7%
Wilkie D. Ferguson	1,365	1,482	-7.9%	758	1,025	-26.1%	662	876	-24.5%	36,460	41,690	-12.5%
Riverwalk	605	712	-15.0%	425	499	-14.8%	405	456	-11.2%	17,062	20,201	-15.5%
Fifth Street	559	516	8.4%	350	328	6.8%	309	291	6.2%	15,284	14,341	6.6%
Eighth Street	1,797	1,682	6.8%	1,494	1,498	-0.2%	1,402	1,311	7.0%	52,610	49,928	5.4%
Tenth Street	1,040	1,023	1.6%	690	764	-9.7%	635	619	2.6%	28,859	29,053	-0.7%
Brickell	2,108	2,185	-3.5%	1,382	1,421	-2.7%	1,257	1,293	-2.8%	58,306	61,118	-4.6%
Financial District	847	1,030	-17.8%	468	538	-13.0%	375	510	-26.6%	22,464	27,881	-19.4%
TOTAL	21,085	22,962	-8.2%	15,608	17,070	-8.6%	13,864	15,213	-8.9%	597,361	657,267	-9.1%

(*) Some Metromover stations were closed for construction during the 2023-2024 period, due to installation of new equipment and construction work.

METROMOVER CUMULATIVE PERCENTAGE RIDERSHIP SHARE



TOTAL MONTHLY AND AVERAGE WEEKDAY RIDERSHIP YEAR OVER YEAR COMPARISON CHARTS – METROMOVER

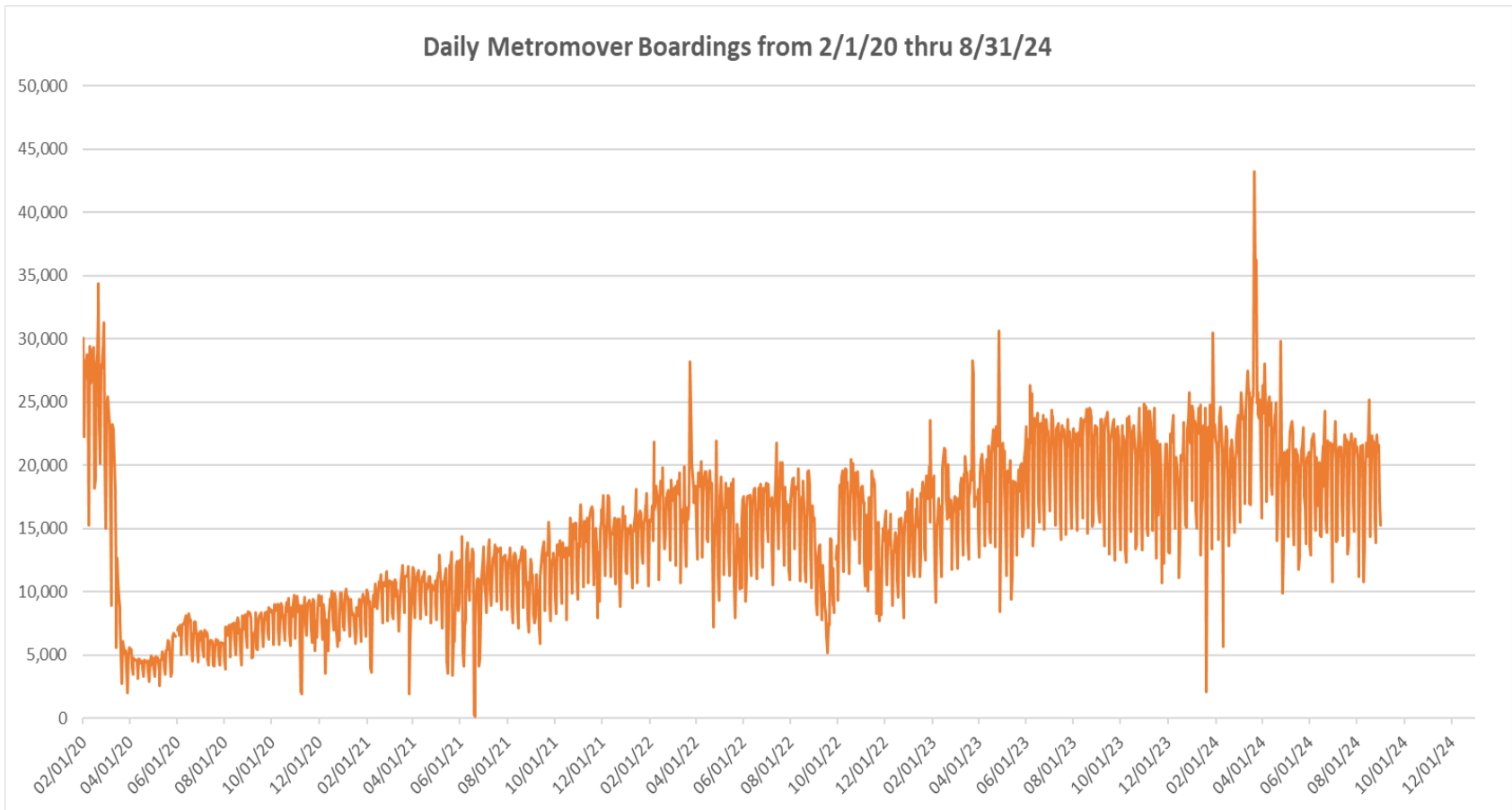


**“TOP 5 / BOTTOM 5” MOVER STATIONS AVERAGE WEEKDAY RIDERSHIP PERFORMANCE
YEAR OVER YEAR COMPARISONS**

Station	Aug-24	Aug-23	Absolute Delta (1)	Percent Delta
Eighth Street	1,797	1,682	114	6.8%
College/Bayside	1,463	1,369	94	6.8%
School Board	1,247	1,198	50	4.2%
Eleventh Street	311	266	45	17.0%
Fifth Street	559	516	43	8.4%
Government Center	1,363	2,528	-1,165	-46.1%
Omni	1,397	1,887	-491	-26.0%
Park West	476	752	-276	-36.7%
Bayfront Park	1,995	2,213	-218	-9.9%
Financial District	847	1,030	-183	-17.8%

(1) Averages rounded to the nearest boarding.

DAILY METROMOVER RIDERSHIP SINCE FEBRUARY 1, 2020



- (1) There was no Metrobus, Metrorail and Metromover service on 5/31/20, as a safety precaution, and no service for any of the four modes on 9/28/22 as a result of Hurricane Ian.
- (2) The dip at the start of the second week of Nov-20 is due to Hurricane Eta; these are *raw data* from the UTA contractor APC system. Other more recent dips are due to various station closures (mostly on weekends) for system maintenance purposes. Pronounced peaks are associated with major events in Downtown Miami, such as the Corporate Run and Ultramusic Festival.
- (3) Periodic (weekly) variations are prominent, since weekday ridership is almost always significantly higher than weekend or holiday ridership; a few low-count days are due to system outages, often associated with construction or renovation work.

Special Transportation Services

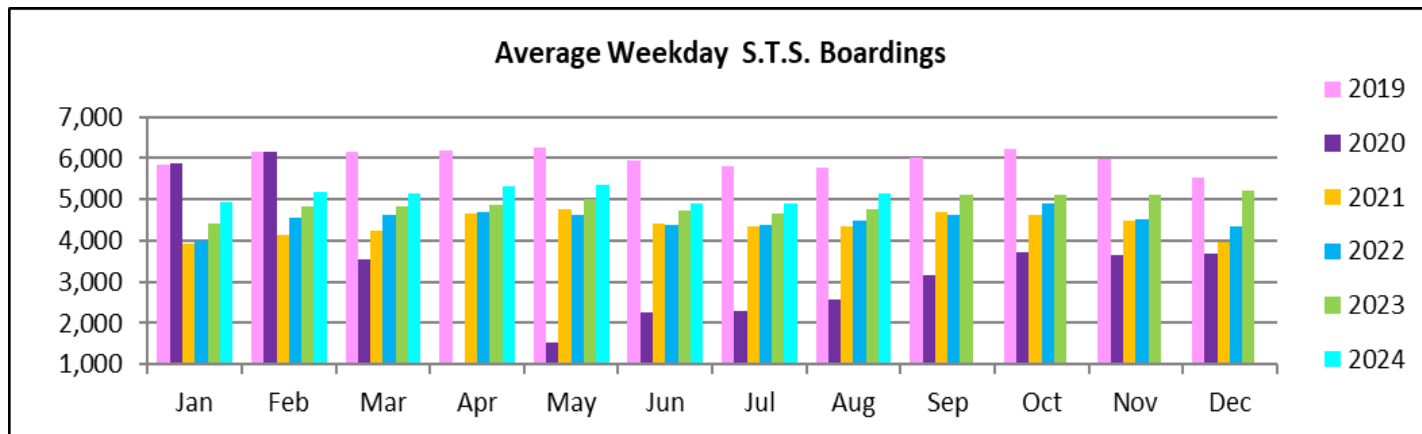
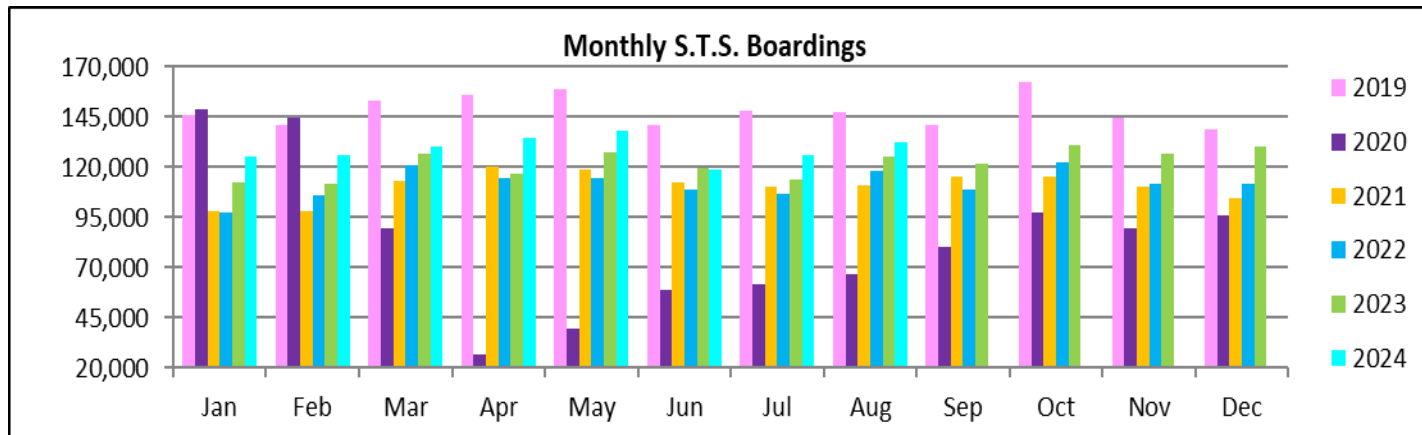


**STS MONTHLY AND AVERAGE DAILY BOARDINGS
August 2024**

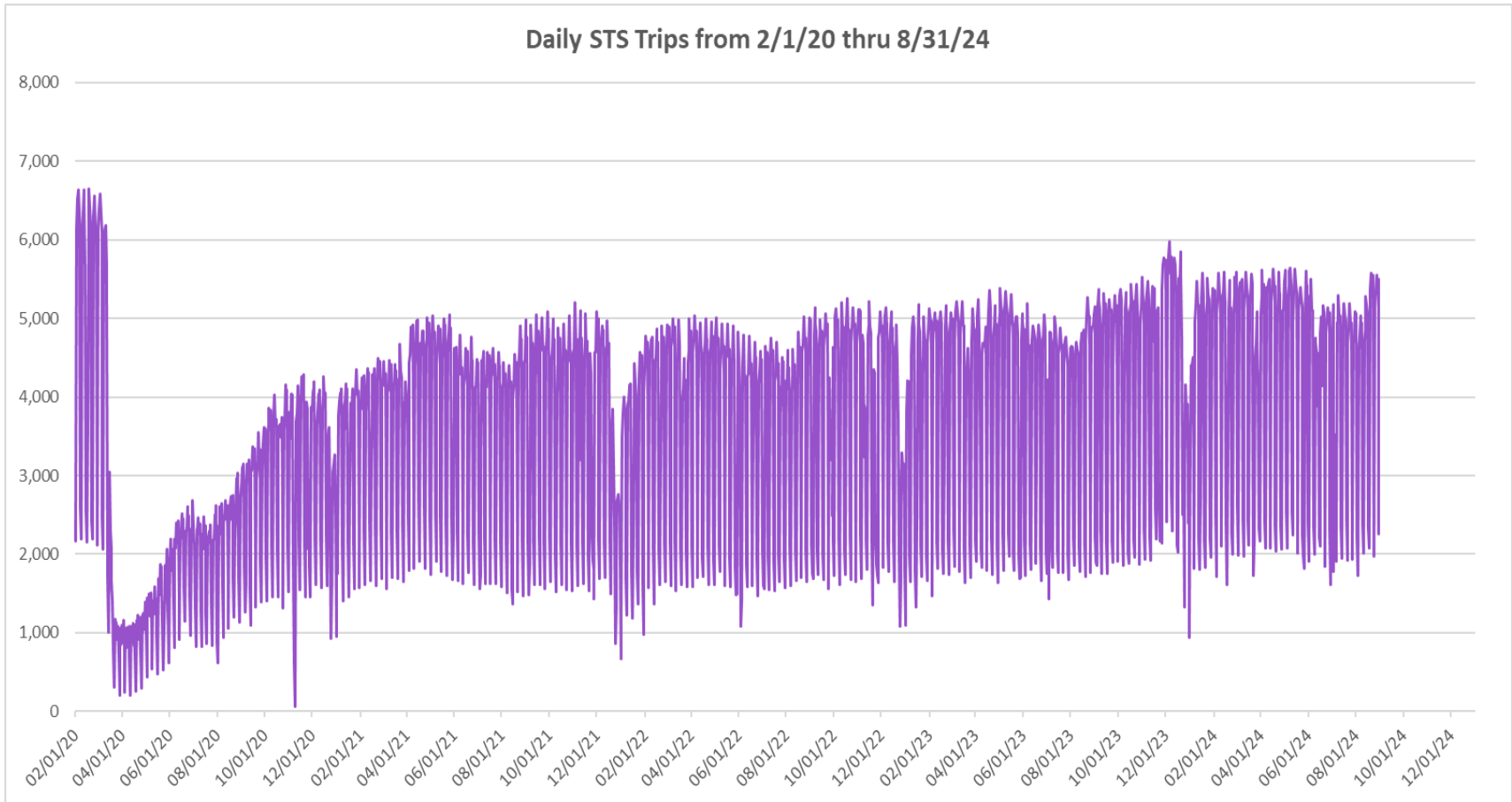
Measure	timeline	Ambulatory	Wheelchair	Total Clients (*)
Average Weekday	Aug-24	4,305	847	5,153
Average Saturday	Aug-24	1,901	369	2,270
Average Sunday	Aug-24	1,623	326	1,948
Total Monthly	Aug-24	110,715	21,788	132,503
Average Weekday	Aug-23	3,969	806	4,775
Average Saturday	Aug-23	1,788	356	2,145
Average Sunday	Aug-23	1,468	311	1,779
Total Monthly	Aug-23	104,309	21,201	125,510
Average Weekday	Aug-22	3,704	780	4,484
Average Saturday	Aug-22	1,690	359	2,049
Average Sunday	Aug-22	1,360	295	1,655
Total Monthly	Aug-22	97,394	20,547	117,941
% Change Current vs. August 2023 Weekday		8.5%	5.2%	7.9%
% Change Current vs. August 2023 Saturday		6.3%	3.5%	5.8%
% Change Current vs. August 2023 Sunday		10.5%	4.9%	9.5%
% Change Current vs. August 2023 Month Total		6.1%	2.8%	5.6%
% Change Current vs. August 2022 Weekday		16.2%	8.7%	14.9%
% Change Current vs. August 2022 Saturday		12.5%	2.6%	10.8%
% Change Current vs. August 2022 Sunday		19.3%	10.5%	17.7%
% Change Current vs. August 2022 Month Total		13.7%	6.0%	12.3%

(*) Trip count data provided by STS contractor.

TOTAL MONTHLY AND AVERAGE WEEKDAY RIDERSHIP YEAR OVER YEAR COMPARISON CHARTS – SPECIAL TRANSPORTATION SERVICES (S.T.S.)

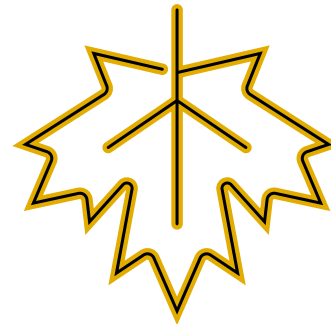
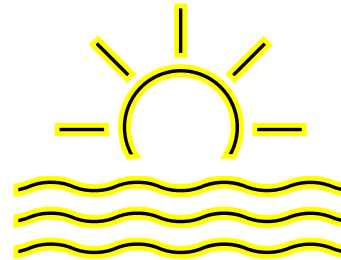


DAILY STS RIDERSHIP SINCE FEBRUARY 1, 2020

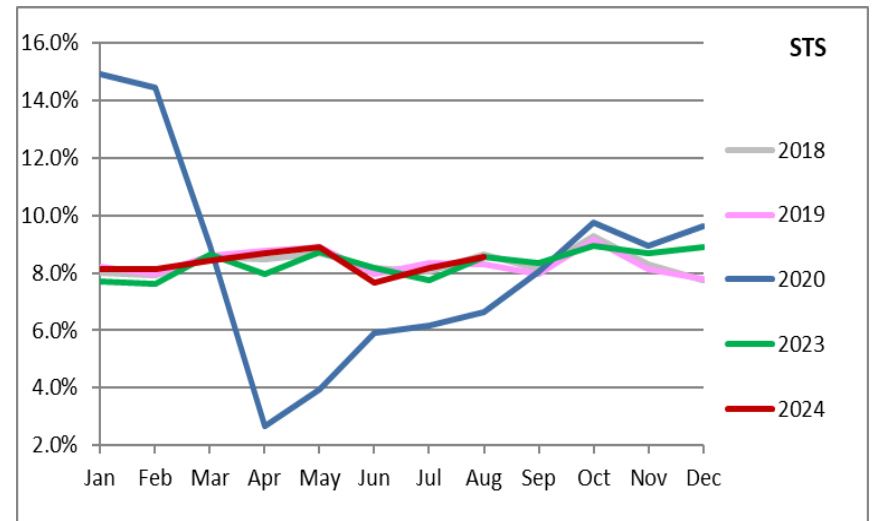
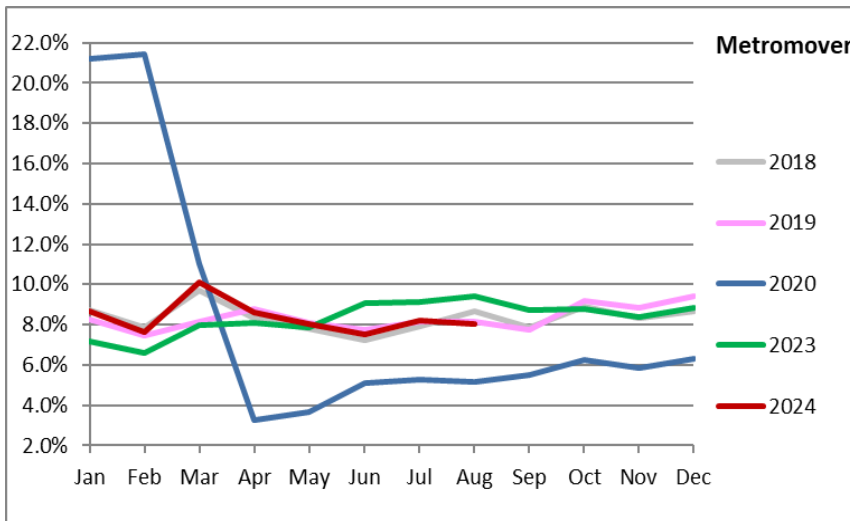
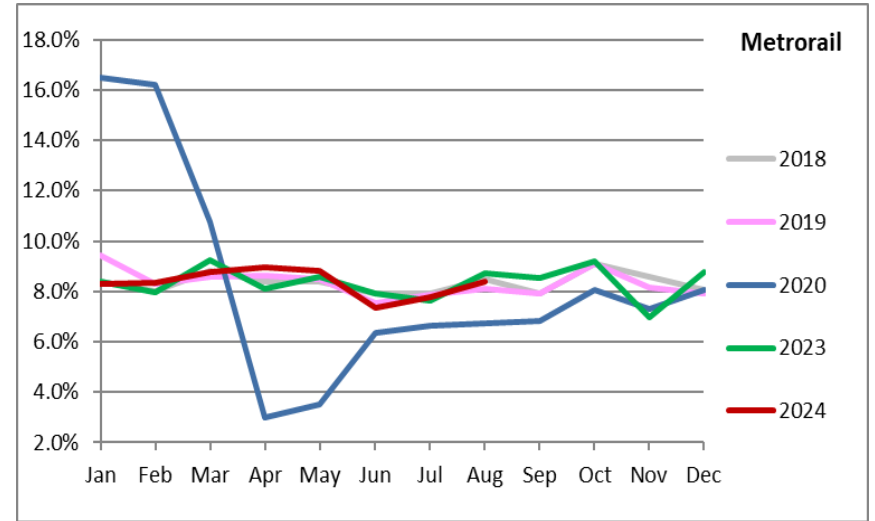
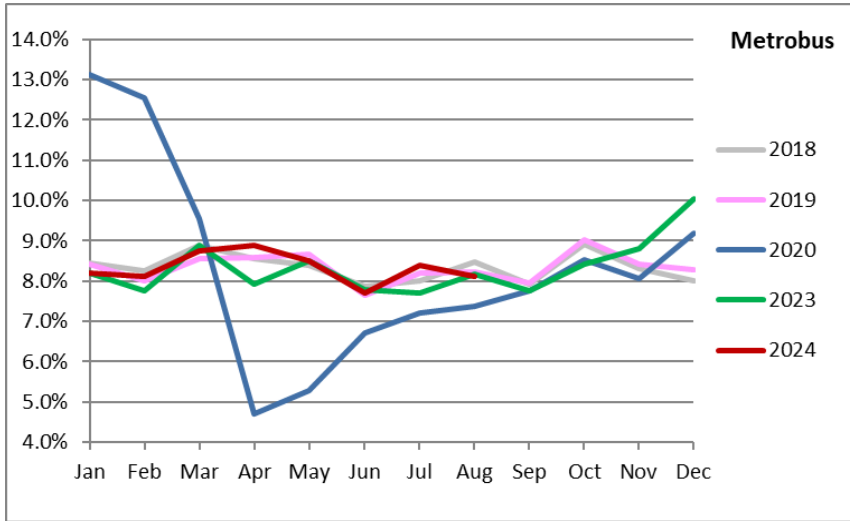


- (1) There was no service (for any of the four modes) on 9/28/22 as a result of Hurricane Ian.
- (2) The dip at the start of the second week of Nov-20 is due to Hurricane Eta; the peak in Dec-23 is due to the free fares from the Better Bus Network.
- (3) Periodic (weekly) variations are prominent, since weekday ridership is almost always significantly higher than weekend or holiday ridership.

Ridership Seasonality



RIDERSHIP SEASONALITY – PERCENT RIDERSHIP SHARE BY MONTH AND CALENDAR YEAR FOR EACH MODE



Note: the prominent dip seen in the beginning in the spring of 2020 is due to the SARS-CoV-2 pandemic. The pronounced rise beginning Nov-23 for Metrobus and Metrorail can be attributed to the launch of the Better Bus Network and the attendant free fares, which ended on New Year's Day 2024.