



TRANSPORTATION AND PUBLIC WORKS

RIDERSHIP TECHNICAL REPORT

Division of Performance Analysis



Table of Contents

<i>Table of Contents</i>	2-3
All Modes Overview	4
Total Monthly Weekday, Saturday and Sunday Monthly Boardings By Mode	5
Average Weekday, Saturday and Sunday Boardings by Mode	6
Metrobus Total Monthly Ridership Comparisons by Fiscal Year	7
Metrorail Total Monthly Ridership Comparisons by Fiscal Year	8
Metromover Total Monthly Ridership Comparisons by Fiscal Year	9
STS Total Monthly Ridership Comparisons by Fiscal Year	10
All-Modes Combined Total Monthly Ridership Comparisons By Fiscal Year	11
All Modes Combined Total Monthly and Average Weekday Ridership – Year over Year Comparison Charts	12
Average Weekday Ridership – Modal Splits	13
Daily Ridership for All Modes Combined since 2/1/20	14
Metrobus	15
Better Bus Network (BBN, 11/13/2023 Lineup) Bus Route Changes, Pt 1 and Pt 2	16-17
Metrobus Average Weekday Boardings by Route	18-20
Metrobus Average Saturday Boardings by Route	21-22
Metrobus Average Sunday Boardings by Route	23-24
Metrobus Monthly Total Boardings by Route	25-27
Bus Ridership by Route Service Type Lineups Comparison (month-over-month & month-over-11 months)	28-31
Bus Routes as Ranked by Percentage of Average Weekday Ridership	32
Metrobus Cumulative Percentage Average Weekday Ridership Share by Route (Top 75%)	33
Total Monthly and Average Weekday Bus Ridership – Year over Year Comparison Charts	34
Bus “Top 10 / Bottom 10” Bus Routes Average Weekday Ridership Performance – Month-over-Month Comparisons	35
Bus “Top 10 / Bottom 10” Bus Routes Sets Average Weekday Ridership Performance – Year-over-Year Comparisons	36
Bus “Top 10 / Bottom 10” Bus Routes Sets Average Weekday Ridership Performance – Month-over-11 Month Comparisons	37
Daily Metrobus Ridership since 2/1/20	38
Metrobus Parking Patronage Summary	39

Table of Contents (continued)

Metrorail	40
Metrorail Average Weekday Boardings by Station	41
Metrorail Average Saturday Boardings by Station	42
Metrorail Average Sunday Boardings by Station	43
Metrorail Total Monthly Boardings by Station	44
Metrorail Cumulative Percentage Average Weekday Ridership Share	45
Total Monthly and Average Weekday Rail Ridership – Year over Year Comparison Charts	46
“Top 5 / Bottom 5” Stations Average Weekday Ridership Performance	47
Daily Metrorail Ridership since 2/1/20	48
Metrorail Parking Patronage Summary	49
Metromover	50
Monthly and Average Daily Mover Boardings by Station	51
Metromover Cumulative Percentage Average Weekday Ridership Share	52
Total Monthly and Average Weekday Mover Ridership – Year over Year Comparison Charts	53
“Top 5 / Bottom 5” Stations Average Weekday Ridership Performance	54
Daily Metromover Ridership since 2/1/20	55
Special Transportation Services (STS)	56
STS Monthly and Average Daily Boardings	57
Total Monthly and Average Weekday STS Ridership – Year over Year Comparison Charts	58
Daily STS Ridership since 2/1/20	59
Ridership Seasonality	60
Ridership Seasonality – Average Weekday Ridership by Month and Fiscal Year for Metrobus and Metrorail	61
Ridership Seasonality – Percent Share of Total Ridership by Month and Calendar Year for Each Mode	62

All Modes Overview



**TOTAL MONTHLY WEEKDAY, SATURDAY AND SUNDAY BOARDINGS BY MODE
September 2024**

TRAVEL MODE	MONTH'S TOTAL WEEKDAYS RIDERSHIP	MONTH'S TOTAL SATURDAYS RIDERSHIP	MONTH'S TOTAL SUNDAYS RIDERSHIP	TOTAL MONTHLY RIDERSHIP	% CHANGE vs Sep-23 TOTAL MONTH RIDERSHIP
METROBUS (1)	3,850,060	482,704	527,302	4,860,066	7.4%
METRORAIL (2)	1,057,454	84,664	98,339	1,240,457	8.2%
METROMOVER	410,639	39,145	77,876	527,660	-13.6%
STS PARATRANSIT (3)	108,061	9,859	12,324	130,244	6.7%
TOTAL	5,426,214	616,372	715,841	6,758,427	5.5%

- (1) Metrobus ridership reporting through automatic passenger counters coupled with a new enhanced sensor system resumed on October 1, 2022.
- (2) Metrorail fares resumed on June 1, 2021, following a 14-month period of fare-free rides as a result of the SARS-CoV-2 pandemic. The NextFare System faregate data replaced the video data as Rail ridership data of record starting on that date, until free fares were reinstated for the Better Bus Network launch on 11/13/23. The NextFare System Rail faregate data collection and reporting resumed on New Year's Day 2024.
- (3) Paratransit (STS) ridership data as reported by the contractor and subsequently audited by the Department.

AVERAGE WEEKDAY, SATURDAY AND SUNDAY BOARDINGS BY MODE
September 2024

Travel Mode	Average Weekday	Average Saturday	Average Sunday	% Change vs. Sep-23 Weekday	% Change vs. Sep-23 Saturday	% Change vs. Sep-23 Sunday
METROBUS	192,573	120,676	87,884	7.2%	15.1%	7.5%
METRORAIL	52,873	21,166	15,642	8.1%	12.8%	10.8%
METROMOVER	20,532	9,786	12,768	-10.2%	-41.0%	-7.6%
STS PARATRANSIT	5,403	2,465	2,054	6.0%	12.5%	12.0%
Totals	271,381	154,093	118,348	5.8%	8.2%	6.2%

(*) Average ridership is calculated and published only for those days and stations or routes with nontrivial amounts of reported data.

METROBUS TOTAL MONTHLY RIDERSHIP COMPARISONS BY FISCAL YEAR

Bus Month	FY 19	FY 20	Variance 19 to 20	FY 21	FY 22	FY 23	FY 24	Variance 19 to 23	Variance 22 to 23	Variance 19 to 24	Variance 23 to 24
Oct	4,554,886	4,507,012	-1.1%	2,805,139	3,081,157	4,679,725	4,912,151	2.7%	51.9%	7.8%	5.0%
Nov	4,245,535	4,197,225	-1.1%	2,651,290	3,056,726	4,549,666	5,135,172	7.2%	48.8%	21.0%	12.9%
Dec	4,081,581	4,126,990	1.1%	3,022,530	3,123,883	4,677,460	5,857,057	14.6%	49.7%	43.5%	25.2%
Jan	4,195,911	4,316,998	2.9%	3,082,746	3,029,055	4,785,128	5,103,257	14.0%	58.0%	21.6%	6.6%
Feb	3,994,019	4,123,083	3.2%	3,076,966	2,995,789	4,526,317	5,053,665	13.3%	51.1%	26.5%	11.7%
Mar	4,266,768	3,136,162	-26.5%	3,660,639	3,218,562	5,183,872	5,461,317	21.5%	61.1%	28.0%	5.4%
Apr	4,291,135	1,544,316	-64.0%	3,625,048	3,105,797	4,618,302	5,548,614	7.6%	48.7%	29.3%	20.1%
May	4,330,922	1,734,609	-59.9%	3,683,343	3,097,574	4,953,197	5,308,711	14.4%	59.9%	22.6%	7.2%
Jun	3,823,863	2,210,725	-42.2%	2,672,570	3,064,059	4,545,050	4,805,039	18.9%	48.3%	25.7%	5.7%
Jul	4,094,906	2,366,749	-42.2%	2,769,907	3,189,994	4,484,458	5,230,894	9.5%	40.6%	27.7%	16.6%
Aug	4,109,613	2,422,014	-41.1%	2,843,552	3,442,006	4,756,063	5,051,346	15.7%	38.2%	22.9%	6.2%
Sep	3,971,220	2,546,923	-35.9%	2,877,110	3,123,572	4,525,426	4,860,066	14.0%	44.9%	22.4%	7.4%
FY Total	49,960,359	37,232,806	-25.5%	36,770,840	37,528,174	56,284,664	62,327,289	12.7%	50.0%	24.8%	10.7%

METRORAIL TOTAL MONTHLY RIDERSHIP COMPARISONS BY FISCAL YEAR

Rail Month	FY 19	FY 20	Variance 19 to 20	FY 21	FY 22	FY 23	FY 24	Variance 19 to 23	Variance 22 to 23	Variance 19 to 24	Variance 23 to 24
Oct	1,757,225	1,643,166	-6.5%	769,525	844,383	1,053,191	1,237,096	-40.1%	24.7%	-29.6%	17.5%
Nov	1,656,929	1,469,448	-11.3%	699,492	850,881	1,055,066	935,121	-36.3%	24.0%	-43.6%	-11.4%
Dec	1,553,804	1,433,928	-7.7%	769,194	860,436	1,063,096	1,177,272	-31.6%	23.6%	-24.2%	10.7%
Jan	1,708,695	1,576,340	-7.7%	799,119	832,924	1,127,340	1,233,350	-34.0%	35.3%	-27.8%	9.4%
Feb	1,501,458	1,549,118	3.2%	730,792	905,162	1,072,791	1,240,316	-28.6%	18.5%	-17.4%	15.6%
Mar	1,554,851	1,027,319	-33.9%	917,097	1,084,978	1,239,336	1,302,854	-20.3%	14.2%	-16.2%	5.1%
Apr	1,559,446	287,803	-81.5%	827,414	1,027,139	1,087,816	1,336,511	-30.2%	5.9%	-14.3%	22.9%
May	1,531,597	337,696	-78.0%	887,111	1,023,322	1,151,819	1,314,112	-24.8%	12.6%	-14.2%	14.1%
Jun	1,359,966	608,758	-55.2%	723,469	975,477	1,066,861	1,092,060	-21.6%	9.4%	-19.7%	2.4%
Jul	1,419,158	632,964	-55.4%	722,159	953,331	1,022,937	1,159,375	-27.9%	7.3%	-18.3%	13.3%
Aug	1,463,646	641,275	-56.2%	749,578	1,076,490	1,174,138	1,247,019	-19.8%	9.1%	-14.8%	6.2%
Sep	1,427,726	654,244	-54.2%	795,749	1,012,331	1,146,864	1,240,457	-19.7%	13.3%	-13.1%	8.2%
FY Total	18,494,501	11,862,059	-35.9%	9,390,699	11,446,854	13,261,255	14,515,543	-28.3%	15.9%	-21.5%	9.5%

METROMOVER TOTAL MONTHLY RIDERSHIP COMPARISONS BY FISCAL YEAR

Mover Month	FY 19	FY 20	Variance 19 to 20	FY 21	FY 22	FY 23	FY 24	Variance 19 to 23	Variance 22 to 23	Variance 19 to 24	Variance 23 to 24
Oct	790,533	831,234	5.1%	250,044	389,065	514,308	614,479	-34.9%	32.2%	-22.3%	19.5%
Nov	735,198	799,632	8.8%	232,422	418,929	439,150	584,887	-40.3%	4.8%	-20.4%	33.2%
Dec	767,239	849,832	10.8%	251,019	450,320	426,073	616,455	-44.5%	-5.4%	-19.7%	44.7%
Jan	746,728	847,773	13.5%	255,968	451,566	498,566	644,639	-33.2%	10.4%	-13.7%	29.3%
Feb	675,160	855,398	26.7%	260,332	465,968	459,264	570,242	-32.0%	-1.4%	-15.5%	24.2%
Mar	737,814	441,200	-40.2%	302,502	535,857	558,396	753,107	-24.3%	4.2%	2.1%	34.9%
Apr	795,696	130,549	-83.6%	310,772	495,982	565,943	640,281	-28.9%	14.1%	-19.5%	13.1%
May	734,645	146,454	-80.1%	292,922	455,120	547,948	597,232	-25.4%	20.4%	-18.7%	9.0%
Jun	701,318	203,637	-71.0%	286,145	477,286	632,423	559,913	-9.8%	32.5%	-20.2%	-11.5%
Jul	739,814	210,596	-71.5%	368,847	512,094	635,954	610,437	-14.0%	24.2%	-17.5%	-4.0%
Aug	739,785	205,995	-72.2%	344,319	508,359	657,267	597,361	-11.2%	29.3%	-19.3%	-9.1%
Sep	699,879	219,696	-68.6%	331,915	305,185	610,810	527,660	-12.7%	100.1%	-24.6%	-13.6%
FY Total	8,863,809	5,741,996	-35.2%	3,487,207	5,465,731	6,546,102	7,316,693	-26.1%	19.8%	-17.5%	11.8%

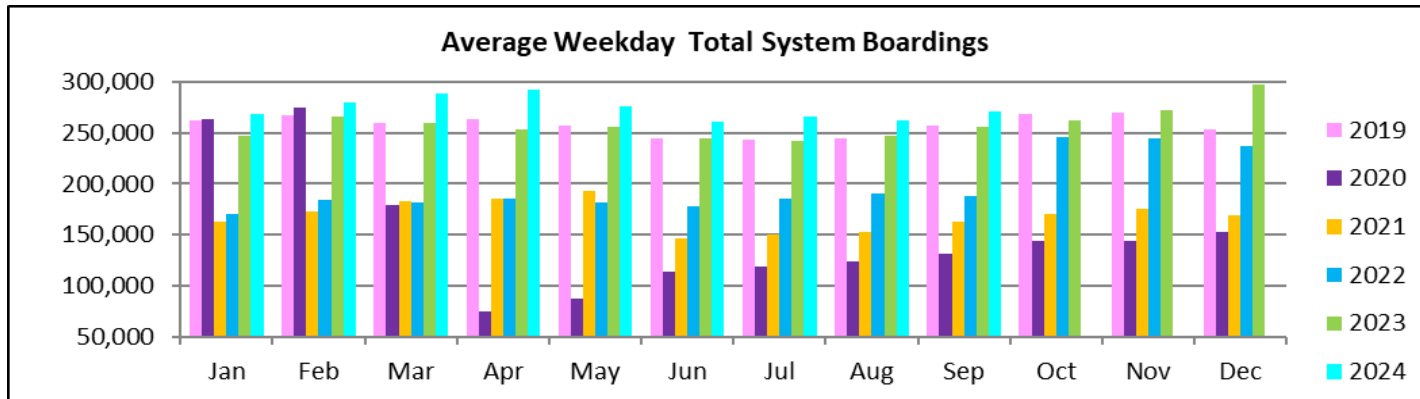
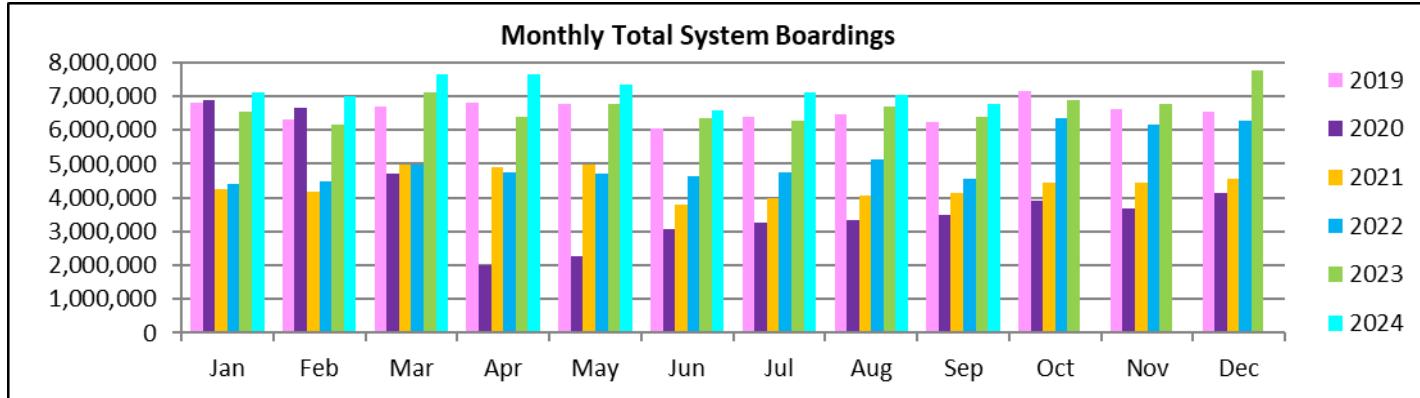
SPECIAL TRANSPORTATION SERVICES (STS) TOTAL MONTHLY RIDERSHIP COMPARISONS BY FISCAL YEAR

STS Month	FY 19	FY 20	Variance 19 to 20	FY 21	FY 22	FY 23	FY 24	Variance 19 to 23	Variance 22 to 23	Variance 19 to 24	Variance 23 to 24
Oct	162,564	162,704	0.1%	97,388	115,122	122,189	130,958	-24.8%	6.1%	-19.4%	7.2%
Nov	145,653	144,366	-0.9%	89,387	110,289	111,578	127,025	-23.4%	1.2%	-12.8%	13.8%
Dec	136,110	138,642	1.9%	96,366	104,496	112,019	130,093	-17.7%	7.2%	-4.4%	16.1%
Jan	146,268	149,114	1.9%	97,928	97,541	112,632	125,513	-23.0%	15.5%	-14.2%	11.4%
Feb	141,396	144,392	2.1%	98,285	105,706	111,748	125,732	-21.0%	5.7%	-11.1%	12.5%
Mar	153,191	89,634	-41.5%	112,930	120,718	126,819	130,203	-17.2%	5.1%	-15.0%	2.7%
Apr	155,808	26,877	-82.7%	120,122	114,912	116,882	134,677	-25.0%	1.7%	-13.6%	15.2%
May	158,665	39,654	-75.0%	118,636	114,505	127,782	137,958	-19.5%	11.6%	-13.1%	8.0%
Jun	141,320	59,093	-58.2%	112,397	109,054	119,527	118,860	-15.4%	9.6%	-15.9%	-0.6%
Jul	148,232	61,765	-58.3%	110,059	107,188	113,623	126,391	-23.3%	6.0%	-14.7%	11.2%
Aug	147,331	66,563	-54.8%	110,766	117,941	125,510	132,503	-14.8%	6.4%	-10.1%	5.6%
Sep	141,387	80,346	-43.2%	115,406	108,788	122,065	130,244	-13.7%	12.2%	-7.9%	6.7%
FY Total	1,777,925	1,163,150	-34.6%	1,279,670	1,326,260	1,422,374	1,550,157	-20.0%	7.2%	-12.8%	9.0%

ALL-MODES COMBINED TOTAL MONTHLY RIDERSHIP COMPARISONS BY FISCAL YEAR

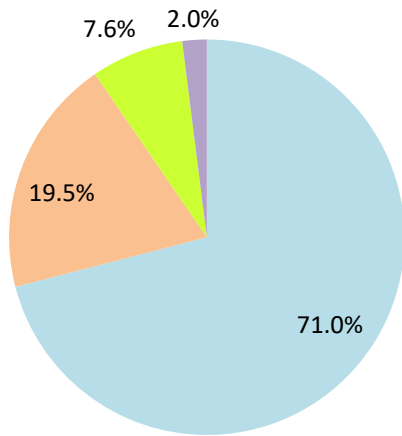
All Modes Month	FY 19	FY 20	FY 21	FY 22	FY 23	FY 24	19 TO 20	20 TO 21	21 TO 22	22 TO 23	19 TO 23	23 TO 24	19 TO 24
Oct	7,265,208	7,144,116	3,922,096	4,429,727	6,369,413	6,894,684	-1.7%	-45.1%	12.9%	43.8%	-12.3%	8.2%	-5.1%
Nov	6,783,315	6,610,671	3,672,591	4,436,825	6,155,460	6,782,205	-2.5%	-44.4%	20.8%	38.7%	-9.3%	10.2%	0.0%
Dec	6,538,734	6,549,392	4,139,109	4,539,135	6,278,648	7,780,877	0.2%	-36.8%	9.7%	38.3%	-4.0%	23.9%	19.0%
Jan	6,797,602	6,890,225	4,235,761	4,411,086	6,523,666	7,106,759	1.4%	-38.5%	4.1%	47.9%	-4.0%	8.9%	4.5%
Feb	6,312,033	6,671,991	4,166,375	4,472,625	6,170,120	6,989,955	5.7%	-37.6%	7.4%	38.0%	-2.2%	13.3%	10.7%
Mar	6,712,624	4,694,315	4,993,168	4,960,115	7,108,423	7,647,481	-30.1%	6.4%	-0.7%	43.3%	5.9%	7.6%	13.9%
Apr	6,802,085	1,989,545	4,883,356	4,743,830	6,388,943	7,660,083	-70.8%	145.5%	-2.9%	34.7%	-6.1%	19.9%	12.6%
May	6,755,829	2,258,413	4,982,012	4,690,521	6,780,746	7,358,013	-66.6%	120.6%	-5.9%	44.6%	0.4%	8.5%	8.9%
Jun	6,026,467	3,082,213	3,794,581	4,625,876	6,363,861	6,575,872	-48.9%	23.1%	21.9%	37.6%	5.6%	3.3%	9.1%
Jul	6,402,110	3,272,074	3,970,972	4,762,607	6,256,972	7,127,097	-48.9%	21.4%	19.9%	31.4%	-2.3%	13.9%	11.3%
Aug	6,460,375	3,335,847	4,048,215	5,144,796	6,712,978	7,028,229	-48.4%	21.4%	27.1%	30.5%	3.9%	4.7%	8.8%
Sep	6,240,212	3,501,209	4,120,180	4,549,876	6,405,165	6,758,427	-43.9%	17.7%	10.4%	40.8%	2.6%	5.5%	8.3%
FY Total	79,096,594	56,000,011	50,928,416	55,767,019	77,514,395	85,709,682	-29.2%	-9.1%	9.5%	39.0%	-2.0%	10.6%	8.4%

TOTAL MONTHLY AND AVERAGE WEEKDAY RIDERSHIP YEAR OVER YEAR COMPARISON CHARTS – ALL MODES COMBINED



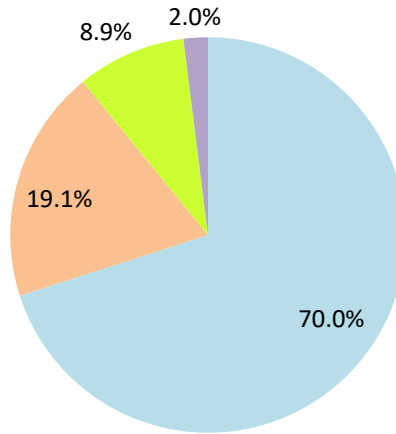
AVERAGE WEEKDAY RIDERSHIP - MODAL SPLITS

September 2024



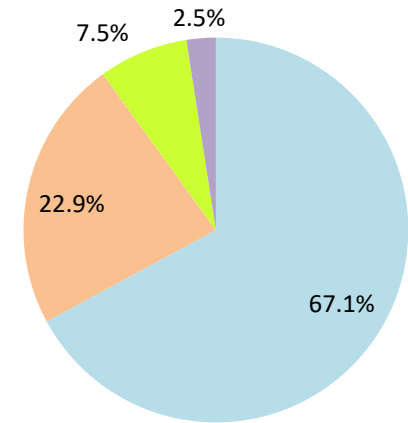
boardings

September 2023



boardings

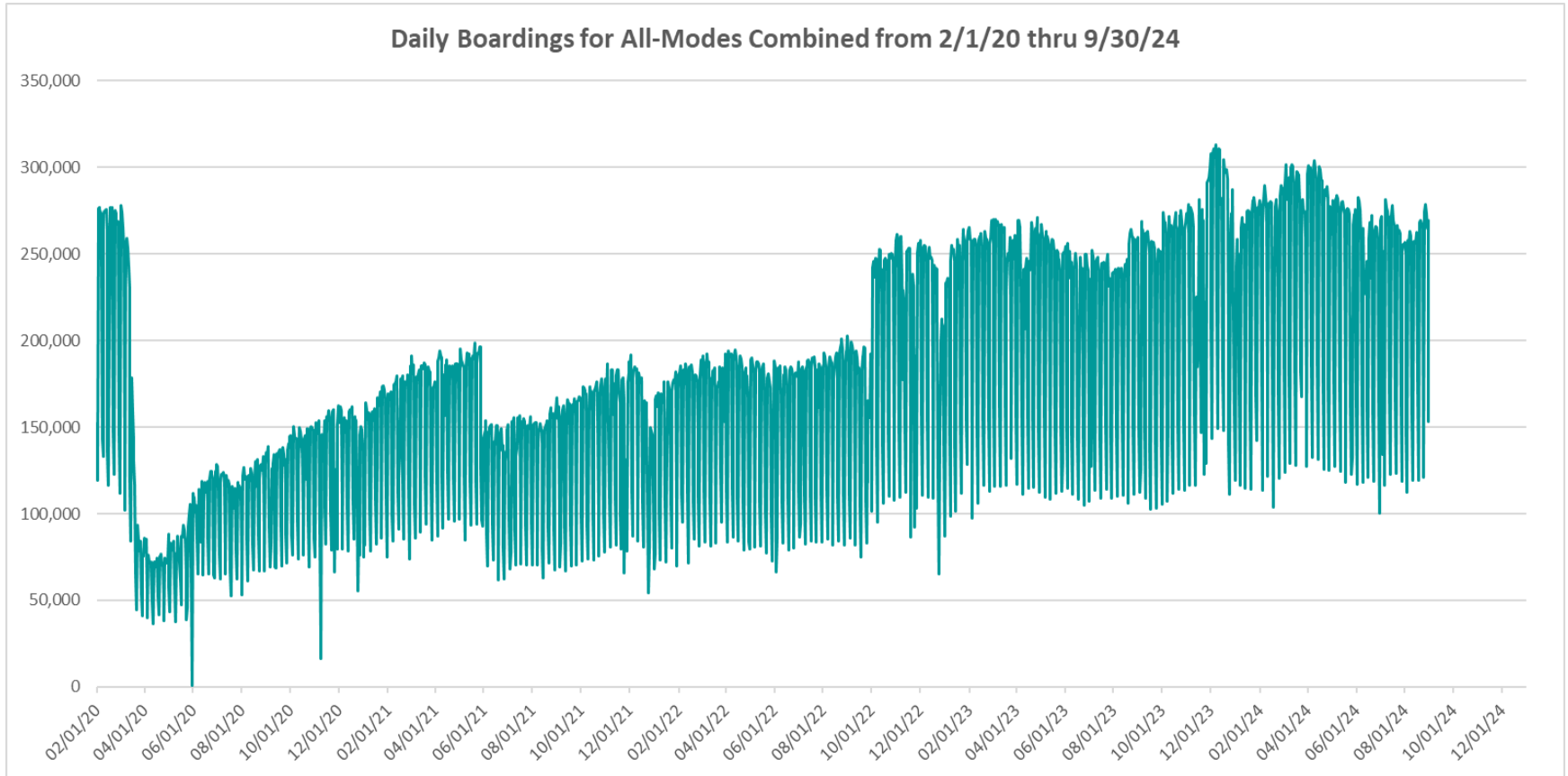
September 2022



boardings



DAILY RIDERSHIP FOR ALL MODES COMBINED SINCE FEBRUARY 1, 2020



- (1) There was no Metrobus, Metrorail and Metromover service on 5/31/20, as a safety precaution, and no service for any of the four modes on 9/28/22 as a result of Hurricane Ian..
- (2) The dip at the start of the second week of Nov-20 is due to Hurricane Eta.
- (3) Daily variations from Oct-22 onward are, for the Bus portion, a representation estimated from reports made available by the Bus APC data vendor, and finalized sampling for each month.
- (4) The reduction seen beginning 6/1/21 is partly due to the resumption of fares for bus and rail, and partly the result of having resumed reporting Cubic farebox data rather than bus APC counts, as well as Cubic rail faregate counts instead of video camera counts on that date. The jump seen at the start of Oct-22 is due to the switch to APC bus ridership counts reporting begun on 10/1/22.
- (5) The pronounced peak in Dec-23 is attributable to the Better Bus Network launch period and attendant free fares.
- (6) Periodic (weekly) variations are prominent, since weekday ridership is almost always significantly higher than weekend or holiday ridership.

Metrobus



Better Bus Network (BBN, 11/13/2023 lineup) Bus Route Changes (Pt 1)

The listings below and on the following page are to serve as an aid in identifying individual routes for comparison of ridership data between periods prior to and following the launch of the BBN on 11/13/2023. In Nov-23, both old and new route numbers appear in data tables, since the launch took place near mid-month; beginning with Dec-23, only the current (BBN) numbering system appear in tables, to allow for direct comparisons.

BBN Numbering Changes:

Contracted **Route 1** was renumbered **Route 97**

Directly operated **Route 33** was renumbered **Route 103** (new, recycled number, not the same as former **Route 103 - C**)

Directly operated **Route 51** (Flagler MAX) was renumbered **Route 211** (recycled number, not the same as the OVERTOWN CIRCULATOR)

Contracted **Route 71** was renumbered **Route 107** (new, recycled number, not the same as **Route 107 - G** further below) and became directly operated

Directly operated **Route 79** was renumbered **Route 279** (79th Steet MAX)

Directly operated **Route 93** was renumbered **Route 203** (Biscayne MAX)

Directly operated **Route 99** was renumbered **Route 199**

Contracted **Route 101 - A** was renumbered **Route 15**

Directly operated **Route 102 - B** was renumbered **Route 26** (under the BBN's first phase, 07/24/2023 lineup)

Directly operated **Route 107 - G** (old, not the same as the **Route 107** appearing above) was renumbered **Route 125**

Directly operated **Route 112 - L** was renumbered **Route 79** (recycled number, not the same as the **Route 79** appearing above)

Directly operated **Route 120** was renumbered **Route 100**

Directly operated **Route 200** (CUTLER BAY LOCAL) was renumbered **Route 500** (recycled number, not the same as the **Route 500** further below)

Contracted **Route 210** was renumbered **Route 510** (SKYLAKE CIRCULATOR)

Contracted **Route 246** was renumbered **Route 401** (NORTH OWL)

Contracted **Route 248** (Princeton Circulator) was renumbered **Route 70** (recycled number, not the same as former **Route 70**)

Directly operated **Route 252** became contractor-operated, under the new name and number **Route 152**

Directly operated **Route 500** was renumbered **Route 400** (SOUTH OWL)

*The above routes, along with many others who retained their numbering, underwent modifications in various ways (realignment, new headways, days of operation, etc., some major), as part of the BBN design and its resulting lineup. Details for each DTPW Bus route are provided in the Miami-Dade County website. (Directly operated **Route 2** became contractor-operated but kept its number).*

Better Bus Network (BBN, 11/13/2023 lineup) Bus Route Changes (Pt 2)

BBN New Routes and Numbers:

Two new routes with new numbering were created to support the Better Bus Network:

Route 14 corresponds to a newly created route

Route 20 corresponds to a newly created route

BBN Eliminated Routes:

The following routes were discontinued, as part of the Better Bus Network realignments:

Route 10

Route 16

Route 19

Route 29

Route 31 (BUSWAY LOCAL)

Route 42

Route 46 (LIBERTY CITY CONNECTION)

Route 57

Route 82 (WESTCHESTER CIRCULATOR)

Route 103 - C (old, previously used numbering, not the same as the Route 103 in the list on the previous page)

Route 211 (OVERTOWN CIRCULATOR, previously used numbering, not the same as the Route 211 in the list on the previous page)

Route 105 - E

Route 108 - H

Route 110 - J

Route 113 - M

Route 115

Route 119 - S

Route 155 (BISCAYNE GARDENS CIRCULATOR)

Route 202 (LITTLE HAITI CONNECTION)

Route 212 (SWEETWATER CIRCULATOR)

Route 217 (BUNCHE PARK CIRCULATOR)

Route 238 (EAST-WEST CONNECTION)

Route 241 (TUTTLE LIMITED)

Route 254 (BROWNSVILLE CIRCULATOR)

Route 267 (LUDLAM LIMITED)

Route 277 (7th AVENUE MAX)

Route 286 (NORTH POINTE CIRCULATOR)

Route 297 (27th AVENUE ORANGE MAX)

Previously Eliminated Routes:

The following five express routes were suspended soon after the start of the SARS-CoV-2 pandemic, and never reinstated; their ridership appears in some of the tables in this report, as then-components of the reported bus system performance measures:

Route 175 (NW MIAMI-DADE EXPRESS)

Route 195 EXPRESS – BROWARD BLVD

Route 196 EXPRESS – BROWARD BLVD-CIVIC CENTER

Route 295 EXPRESS – SHERIDAN STREET

Route 296 EXPRESS – SHERIDAN STREET-CIVIC CENTER

The preceding listings are not exhaustive, and the reader is referred to the Miami-Dade County website for further BBN details or additional changes.

Six new MetroLink routes began running in September and September 2024 as a complement to the BBN.

METROBUS AVERAGE WEEKDAY BOARDINGS BY ROUTE (†)

Route	Average Weekday	Average Weekday	Percent Change	Average Weekday	Percent Change	Average Weekday	Percent Change	Average Weekday	Percent Change
	weekdays Sep-24	Aug-24	MOM	Oct-23	MO11M	Sep-23	YOY	Feb-20	Current vs Feb-20
2	2,314	2,345	-1.3%	2,977	-22.3%	2,980	-22.4%	3,102	-25.4%
3	8,128	8,345	-2.6%	5,416	50.1%	5,272	54.2%	5,137	58.2%
7	3,531	3,272	7.9%	4,021	-12.2%	3,948	-10.6%	3,501	0.8%
8	4,733	4,722	0.2%	4,650	1.8%	4,593	3.0%	3,909	21.1%
9	11,659	11,447	1.8%	6,490	79.6%	6,462	80.4%	5,528	110.9%
10				2,443		2,440		2,482	
11	11,462	11,301	1.4%	9,621	19.1%	9,340	22.7%	7,292	57.2%
12	2,965	2,800	5.9%	2,891	2.6%	2,983	-0.6%	2,779	6.7%
14	829	820	1.1%						
15	535	523	2.2%	178	201.2%	177	202.3%	177	202.3%
16				2,009		1,959		1,862	
17	7,234	7,073	2.3%	4,133	75.1%	4,026	79.7%	3,878	86.5%
19				1,807		1,855		1,542	
20	3,732	3,575	4.4%						
21	2,110	1,930	9.3%	2,107	0.1%	2,048	3.0%	1,817	16.1%
22	2,493	2,255	10.6%	4,502	-44.6%	4,434	-43.8%	3,640	-31.5%
24-CORAL WAY LIMITED	2,406	2,349	2.4%	2,195	9.6%	2,161	11.3%	1,340	79.6%
26	2,398	2,257	6.3%	1,877	27.7%	1,825	31.4%	1,778	34.9%
27	9,865	9,538	3.4%	7,110	38.8%	6,945	42.1%	6,972	41.5%
29				516		521		534	
31-BUSWAY LOCAL								1,089	
32	1,809	1,705	6.1%	2,699	-33.0%	2,647	-31.7%	2,390	-24.3%
34 TRANSITWAY EXPRESS	1,850	1,699	8.9%	1,636	13.0%	1,569	17.9%	2,008	-7.9%
35	2,472	2,277	8.6%	3,070	-19.5%	2,986	-17.2%	2,421	2.1%
36	6,147	5,876	4.6%	2,645	132.4%	2,592	137.2%	2,536	142.4%
37	4,618	4,240	8.9%	3,475	32.9%	3,385	36.4%	3,273	41.1%
38 TRANSITWAY MAX	7,051	7,200	-2.1%	5,714	23.4%	4,529	55.7%	6,361	10.9%
39 TRANSITWAY EXPRESS	857	772	11.0%	742	15.5%	674	27.1%	893	-4.0%
40	1,916	1,872	2.4%	2,344	-18.3%	2,258	-15.1%	1,772	8.2%
42				1,001		1,012		820	
46 - LIBERTY CITY CONN.				22		19		41	
52	1,649	1,558	5.9%	1,390	18.6%	1,375	20.0%	1,261	30.8%
54	2,864	2,768	3.4%	3,086	-7.2%	3,068	-6.7%	2,940	-2.6%
56	536	522	2.6%	391	37.0%	374	43.3%	354	51.5%
57				522		525		433	
62	2,965	2,848	4.1%	2,496	18.8%	2,388	24.2%	1,815	63.4%
70	317	284	11.5%	161	96.6%	155	104.5%	135	135.6%

(†) In this table and those which follow, "YOY" stands for "year-over-year", "MOM" for "month-over-month" and, e.g., "MOZM" for "month over Z months", i.e., current month vs 12 months prior, one month prior, and compared to pre-BBN, respectively. The Feb-20 numbers serve as a pre-pandemic benchmark. To see which routes are fully or partly operated under contract this month, please refer to the ranking table further in the Metrobus portion of this document.

METROBUS AVERAGE WEEKDAY BOARDINGS BY ROUTE

Route	Average Weekday	Average Weekday	Percent Change	Average Weekday	Percent Change	Average Weekday	Percent Change	Average Weekday	Percent Change
	weekdays Sep-24	Aug-24	MOM	Oct-23	MO11M	Sep-23	YOY	Feb-20	Current vs Feb-20
72	1,002	913	9.7%	670	49.6%	725	38.2%	781	28.2%
73	1,374	1,344	2.3%	2,868	-52.1%	2,792	-50.8%	2,124	-35.3%
75	2,994	2,955	1.3%	1,594	87.9%	1,483	101.9%	1,429	109.6%
77	11,586	11,494	0.8%	9,959	16.3%	9,456	22.5%	7,129	62.5%
79	7,855	7,498	4.8%	8,481	-7.4%	8,249	-4.8%	7,636	2.9%
82 - WESTCHESTER CIRC				61		73		62	
87	2,228	2,199	1.3%	1,924	15.8%	1,893	17.7%	1,499	48.6%
88	1,854	1,830	1.3%	2,419	-23.3%	2,385	-22.3%	2,076	-10.7%
95-EXPRESS GOLDEN GLADES	1,489	1,331	11.9%	1,195	24.6%	1,146	29.9%	1,690	-11.9%
97	222	199	11.7%	225	-1.0%	222	0.2%	184	20.9%
100	14,853	14,853	0.0%	6,128	142.4%	5,945	149.9%	6,667	122.8%
103 - C								463	
103	1,956	1,867	4.8%	1,967	-0.5%	1,826	7.2%	1,687	16.0%
104	1,188	1,075	10.6%	1,024	16.0%	1,029	15.5%	837	42.0%
105 - E				1,402		1,360		1,287	
107	2,273	2,038	11.6%	825	175.5%	775	193.5%	711	219.9%
108 - H				487		486		473	
110 - J				2,955		2,981		2,508	
113 - M				887		892		866	
115				151		146		180	
119 - S				9,588		9,244		8,970	
125	4,734	4,725	0.2%	2,099	125.5%	1,984	138.6%	1,713	176.3%
132 - TRI-RAIL DORAL SHUTTLE	42	39	7.0%	37	13.8%	39	6.0%	16	166.7%
135	2,197	1,909	15.1%	1,755	25.1%	1,688	30.2%	1,399	57.0%
136	146	146	0.4%	162	-9.6%	149	-1.8%	126	15.8%
137-WEST DADE CONNECTION	2,444	2,450	-0.3%	2,119	15.3%	2,166	12.9%	1,626	50.3%
150-MIAMI BEACH AIRPORT EXPRESS	1,408	1,494	-5.8%	2,149	-34.5%	2,151	-34.5%	1,867	-24.6%
152	410	383	6.9%	1,051	-61.0%	989	-58.5%	851	-51.8%
155 - BISCAYNE GARDENS CIRC				45		49		44	
175 - NW MIAMI-DADE EXPRESS								33	
183	5,133	4,838	6.1%	3,653	40.5%	3,464	48.2%	3,149	63.0%
195 EXPRESS - BROWARD BLVD								372	
196 EXPRESS - SHERIDAN ST								383	
199	1,913	1,950	-1.9%	1,899	0.8%	1,834	4.3%	1,473	29.9%
202 - LITTLE HAITI CONN				110		112		140	
203 - BISCAYNE MAX	1,106	1,299	-14.9%	3,666	-69.8%	3,490	-68.3%	3,334	-66.8%

METROBUS AVERAGE WEEKDAY BOARDINGS BY ROUTE

Route	Average Weekday	Average Weekday	Percent Change	Average Weekday	Percent Change	Average Weekday	Percent Change	Average Weekday	Percent Change
	weekdays Sep-24	Aug-24	MOM	Oct-23	MO11M	Sep-23	YOY	Feb-20	Current vs Feb-20
204 KILLIAN MAX	604	581	3.9%	620	-2.5%	620	-2.6%	1,071	-43.6%
207 (7th St)-LITTLE HAVANA CONN	1,710	1,660	3.0%	1,819	-6.0%	1,681	1.7%	1,489	14.8%
208 (8th St)-LITTLE HAVANA CONN	1,587	1,583	0.3%	1,659	-4.3%	1,536	3.3%	1,308	21.4%
211 OVERTOWN CIRCULATOR				71		83		58	
211 - FLAGLER MAX	1,751	1,695	3.3%	3,824	-54.2%	3,717	-52.9%	3,109	-43.7%
212-SWEETWATER CIRC				22		29		15	
217 - BUNCHE PARK CIRC				80		74		97	
238-EAST/WEST CONN				593		601		449	
241 TUTTLE LIMITED				348		306			
254-BROWNSVILLE CIRC				5		6		19	
267-LUDLAM LIMITED				162		152		149	
272 SUNSET MAX (*)	370	363	2.1%	428	-13.6%	446	-16.9%	550	-32.7%
277-7TH AVENUE MAX				879		851		683	
279 - 79 STREET MAX	645	587	10.0%	469	37.6%	455	41.8%	361	78.5%
286-NORTH POINTE CIRC				93		88		97	
287-SAGA BAY MAX	383	363	5.3%	341	12.3%	324	18.2%	358	6.9%
288 KENDALL MAX	457	458	-0.2%	372	22.7%	367	24.4%	762	-40.1%
295								233	
296								215	
297-27th AVENUE ORANGE MAX				1,229		1,215		1,356	
301-DADE MONROE EXPRESS	858	962	-10.7%	955	-10.1%	993	-13.5%	841	2.0%
302-CARD SOUND EXPRESS	107	115	-6.7%	91	18.1%	87	22.4%	86	24.1%
338 - WEEKEND EXPRESS									
344	149	124	20.1%	76	96.6%	72	108.0%	96	55.1%
400 - SOUTH OWL	76	74	2.9%	71	7.9%	69	10.6%	81	-5.6%
401 - NORTH OWL	75	78	-4.4%	61	23.4%	56	34.1%	94	-20.0%
500 - CUTLER BAY LOCAL	207	222	-7.0%	176	17.5%	201	3.0%	158	31.0%
510 - SKYLAKE CIRCULATOR (*)	406	427	-4.9%	471	-13.8%	393	3.5%	282	44.2%
836 EXPRESS	342	327	4.7%	247	38.5%	255	34.2%		
837 EXPRESS	199	186	6.7%	195	2.0%	187	6.3%		
MetroLink NoMi West	211	137	54.5%						
MetroLink North Miami	143	75	92.1%						
MetroLink LeJeune	67	49	37.0%						
MetroLink Killian Parkway	142	98	44.9%						
MetroLink Alton Road	128	93	37.2%						
MetroLink Opa-Locka	17	14	24.8%						
AHEPA SHUTTLE	20	19	6.4%	18	12.7%	14	42.9%	21	-3.6%
FEDERATION GARDENS SHUTTLE									
GREEN HILLS SHUTTLE	7	8	-15.6%	5	29.8%	6	12.5%	9	-25.0%
KINGS CREEK SHUTTLE	10	8	13.1%	14	-30.9%	9	2.7%	13	-26.9%
ROBERT SHARP SHUTTLE	30	30	0.0%	23	28.3%	21	40.5%	10	210.5%
SIERRA LAKES SHUTTLE	22	22	-3.2%	16	38.7%	15	43.3%	45	-52.2%
Total	192,573	187,356	2.8%	185,320	3.9%	179,668	7.2%	167,711	14.8%

(1) Includes shuttles and those routes which were not run some years.

(2) Several express routes were suspended beginning at the end of Mar-20, due to the SARS-CoV-2 pandemic, while other routes had alignment and schedule modifications made to them, in an ongoing effort to optimize service delivery.

METROBUS AVERAGE SATURDAY BOARDINGS BY ROUTE

Route	Average Saturday	Average Saturday	Percent Change	Average Saturday	Percent Change	Average Saturday	Percent Change	Average Saturday	Percent Change
	Sep-24	Aug-24	MOM	Oct-23	MO11M	Sep-23	YOY	Feb-20	Current vs Feb-20
Saturdays									
2	1,128	1,177	-4.2%	1,605	-29.7%	1,579	-28.6%	1,616	-30.2%
3	6,466	6,017	7.5%	5,754	12.4%	5,565	16.2%	5,229	23.6%
7	2,050	1,946	5.3%	1,972	4.0%	2,017	1.6%	1,887	8.6%
8	2,199	2,232	-1.5%	2,334	-5.8%	2,476	-11.2%	2,027	8.5%
9	7,603	7,147	6.4%	3,677	106.7%	3,734	103.6%	3,034	150.6%
10				2,107		1,995		1,896	
11	8,147	7,653	6.5%	5,787	40.8%	6,277	29.8%	5,182	57.2%
14	719	744	-3.4%						
15	299	349	-14.3%	93	220.9%	64	370.5%	71	322.7%
16				1,662		1,696		1,566	
17	4,541	4,332	4.8%	2,553	77.9%	2,424	87.3%	2,363	92.2%
20	2,578	2,656	-2.9%						
22	1,562	1,385	12.8%	2,425	-35.6%	2,317	-32.6%	2,084	-25.0%
24-CORAL WAY LIMITED	1,648	1,518	8.5%	1,400	17.7%	1,341	22.9%	1,165	41.4%
26	1,241	1,102	12.6%	966	28.5%	964	28.7%	851	45.8%
27	5,926	6,051	-2.1%	4,006	47.9%	4,017	47.5%	4,034	46.9%
31-BUSWAY LOCAL				0		0		896	
32	1,143	1,081	5.8%	1,261	-9.4%	1,129	1.2%	1,029	11.1%
35	1,732	1,613	7.4%	1,540	12.5%	1,422	21.9%	1,372	26.3%
36	4,406	4,280	2.9%	1,677	162.8%	1,588	177.5%	1,289	241.7%
37	2,788	2,773	0.5%	2,062	35.2%	2,013	38.5%	2,090	33.4%
38 TRANSITWAY MAX	5,570	5,578	-0.2%	6,328	-12.0%	5,657	-1.5%	4,715	18.1%
40	1,062	930	14.3%	926	14.7%	877	21.2%	655	62.3%
42				617		609		552	
52	1,041	997	4.4%	694	50.1%	699	48.9%	686	51.8%
54	1,909	1,887	1.2%	1,925	-0.8%	1,907	0.1%	1,727	10.5%
56	199	160	24.5%						
62	2,038	2,001	1.8%	1,823	11.8%	1,782	14.3%	1,343	51.7%
70	190	174	9.1%						
72	585	518	12.9%	357	64.0%	351	66.7%	350	67.2%
73	590	571	3.2%	1,202	-50.9%	1,272	-53.7%	860	-31.5%
75	1,901	1,876	1.3%	550	245.7%	490	288.0%	468	306.3%
77	6,986	7,328	-4.7%	5,510	26.8%	5,633	24.0%	4,197	66.4%
79	6,250	6,112	2.3%	7,094	-11.9%	6,567	-4.8%	5,667	10.3%
82 - WESTCHESTER CIRC				38		49		50	

METROBUS AVERAGE SATURDAY BOARDINGS BY ROUTE

Route	Average Saturday	Average Saturday	Percent Change	Average Saturday	Percent Change	Average Saturday	Percent Change	Average Saturday	Percent Change
	Saturdays Sep-24	Aug-24	MOM	Oct-23	MO11M	Sep-23	YOY	Feb-20	Current vs Feb-20
87	956	895	6.8%	532	79.9%	554	72.5%	402	137.6%
88	1,480	1,409	5.0%	1,661	-10.9%	1,666	-11.2%	1,620	-8.7%
97	172	160	7.3%	163	5.2%	156	9.8%	215	-20.1%
100	12,967	13,101	-1.0%	5,637	130.0%	5,176	150.5%	4,744	173.3%
103 - C						0		315	
103	1,189	1,164	2.2%	1,239	-4.0%	1,158	2.7%	951	25.1%
104	747	739	1.1%	445	67.9%	463	61.1%	468	59.4%
105 - E						736		619	
107	1,223	1,167	4.8%	238	414.7%	256	377.9%	252	385.5%
108 - H				401		393		372	
110 - J				1,394		2,088		1,952	
113 - M				577		569		503	
115				80		78		82	
119 - S				8,118		7,329		6,861	
125	2,779	2,786	-0.2%	1,297	114.3%	1,287	115.9%	1,066	160.6%
135	930	831	11.9%	556	67.3%	532	74.9%	539	72.6%
137-WEST DADE CONNECTION	1,590	1,471	8.1%	1,337	19.0%	1,342	18.4%	1,027	54.8%
150-MIAMI BEACH AIRPORT EXPRESS	1,356	1,416	-4.2%	2,161	-37.3%	2,073	-34.6%	1,604	-15.5%
152	203	199	1.9%	375	-46.0%	366	-44.7%	302	-32.9%
183	2,993	2,799	6.9%	1,960	52.7%	2,068	44.7%	1,790	67.2%
199	1,355	1,361	-0.4%	1,106	22.5%	1,085	24.9%	849	59.7%
202 - LITTLE HAITI CONN				22		24		50	
207 (7th St)-LITTLE HAVANA CONN	777	664	17.0%	929	-16.4%	850	-8.6%	1,032	-24.8%
208 (8th St)-LITTLE HAVANA CONN	891	891	0.0%	1,030	-13.5%	1,054	-15.5%	1,044	-14.7%
241 TUTTLE LIMITED				222		206			
286-NORTH POINTE CIRC				61		65		41	
301-DADE MONROE EXPRESS	874	924	-5.4%	885	-1.2%	921	-5.1%	801	9.1%
302-CARD SOUND EXPRESS	125	130	-4.0%	94	33.0%	80	57.0%	57	120.8%
338 - WEEKEND EXPRESS	196	221	-11.2%	259	-24.4%	227	-13.7%	237	-17.2%
344	79	76	4.3%						
400 - SOUTH OWL	54	74	-27.1%	104	-47.7%	79	-31.7%	70	-22.5%
401 - NORTH OWL	75	72	4.1%	61	23.6%	51	46.6%	84	-11.4%
500 - CUTLER BAY LOCAL	163	155	5.3%	152	7.6%	160	1.8%	119	37.0%
510 - SKYLAKE CIRCULATOR (*)	169	166	1.9%	217	-22.3%	243	-30.7%	165	2.3%
12/21 WEEKEND INTERLINE	2,820	2,569	9.8%	3,290	-14.3%	3,013	-6.4%	2,528	11.6%
FEDERATION GARDENS SHUTTLE	22	31	-28.1%	20	10.0%	28	-22.0%	28	-22.5%
Total	120,676	117,655	2.6%	107,331	12.4%	104,890	15.1%	93,742	28.7%

METROBUS AVERAGE SUNDAY BOARDINGS BY ROUTE

Route	Average Sunday	Average Sunday	Percent Change	Average Sunday	Percent Change	Average Sunday	Percent Change	Average Sunday	Percent Change
	Sep-24	Aug-24	MOM	Oct-23	MO11M	Sep-23	YOY	Feb-20	Current vs Feb-20
Sundays									
2	882	777	13.5%	1,214	-27.4%	1,114	-20.9%	1,335	-33.9%
3	4,637	4,724	-1.8%	4,408	5.2%	4,625	0.2%	4,353	6.5%
7	1,563	1,546	1.1%	1,632	-4.2%	1,744	-10.4%	1,654	-5.5%
8	1,615	1,590	1.6%	1,838	-12.1%	1,860	-13.2%	1,746	-7.5%
9	5,043	5,060	-0.3%	2,756	83.0%	2,849	77.0%	2,549	97.8%
10				1,632		1,620		1,441	
11	5,967	5,597	6.6%	3,803	56.9%	4,070	46.6%	3,917	52.3%
14	719	798	-9.8%						
15	246	320	-22.9%	53	364.8%	57	333.7%	56	343.8%
16				1,023		1,034		997	
17	3,167	3,000	5.6%	1,920	64.9%	1,790	76.9%	1,833	72.8%
20	2,126	2,110	0.7%						
22	1,078	1,020	5.7%	1,915	-43.7%	1,806	-40.3%	1,548	-30.4%
24-CORAL WAY LIMITED	1,139	1,113	2.3%	1,108	2.8%	1,140	-0.1%	905	25.9%
26	996	839	18.8%	871	14.4%	852	16.9%	717	39.1%
27	3,905	3,724	4.9%	3,146	24.1%	3,000	30.1%	2,918	33.8%
31-BUSWAY LOCAL				0		0		715	
32	881	856	2.9%	768	14.7%	736	19.8%	772	14.1%
35	1,420	1,289	10.2%	1,175	20.9%	1,234	15.1%	942	50.9%
36	3,282	3,292	-0.3%	1,160	182.9%	1,201	173.3%	1,111	195.6%
37	2,132	2,017	5.7%	1,755	21.5%	1,709	24.8%	1,739	22.6%
38 TRANSITWAY MAX	4,649	4,669	-0.4%	4,957	-6.2%	4,431	4.9%	4,147	12.1%
40	691	713	-3.0%	542	27.5%	580	19.1%	447	54.5%
42				425		449		416	
52	820	846	-3.1%	496	65.1%	585	40.1%	466	75.8%
54	1,205	1,133	6.4%	1,181	2.1%	1,251	-3.7%	1,171	3.0%
62	1,423	1,221	16.6%	1,040	36.8%	1,069	33.1%	891	59.8%
70	168	139	20.6%						
72	433	422	2.6%	259	67.0%	290	49.3%	265	63.6%
73	234	194	20.7%	602	-61.1%	670	-65.0%	495	-52.7%
75	1,417	1,430	-0.9%	352	302.9%	312	354.4%	271	423.2%
77	4,911	4,591	7.0%	3,980	23.4%	3,856	27.3%	2,815	74.5%
79	4,564	4,625	-1.3%	4,837	-5.7%	5,099	-10.5%	4,804	-5.0%

METROBUS AVERAGE SUNDAY BOARDINGS BY ROUTE

Route	Average Sunday	Average Sunday	Percent Change	Average Sunday	Percent Change	Average Sunday	Percent Change	Average Sunday	Percent Change
	Sep-24	Aug-24	MOM	Oct-23	MO11M	Sep-23	YOY	Feb-20	Current vs Feb-20
Sundays									
87	531	498	6.7%	362	46.8%	380	39.7%	319	66.5%
88	1,166	1,092	6.8%	1,255	-7.1%	1,294	-9.9%	1,286	-9.4%
97	154	140	10.5%	149	3.6%	144	6.8%	201	-23.2%
100	8,744	9,173	-4.7%	3,492	150.4%	3,449	153.5%	3,469	152.0%
103 - C						0		212	
103	818	789	3.7%	729	12.2%	709	15.4%	607	34.8%
104	554	522	6.1%	348	59.2%	343	61.3%	317	74.7%
105 - E				634		661		616	
107	979	932	5.0%	187	423.4%	166	491.0%	162	504.1%
108 - H				363		411		328	
110 - J				1,699		1,862		1,638	
113 - M				444		418		431	
115				66		73		80	
119 - S				7,612		7,750		7,141	
125	2,074	1,896	9.3%	1,036	100.1%	1,029	101.5%	895	131.6%
135	733	687	6.6%	474	54.6%	403	81.7%	349	109.8%
137-WEST DADE CONNECTION	1,133	1,083	4.6%	956	18.5%	1,064	6.5%	879	28.8%
150-MIAMI BEACH AIRPORT EXPRESS	1,168	1,174	-0.5%	1,966	-40.6%	1,959	-40.4%	1,574	-25.8%
152	142	163	-13.2%	331	-57.3%	314	-54.9%	199	-28.7%
183	2,111	2,001	5.5%	1,569	34.5%	1,609	31.2%	1,413	49.4%
199	1,059	954	11.0%	887	19.4%	855	23.9%	658	60.9%
202 - LITTLE HAITI CONN				21		30		39	
207 (7th St)-LITTLE HAVANA CONN	625	590	5.8%	648	-3.6%	664	-6.0%	796	-21.6%
208 (8th St)-LITTLE HAVANA CONN	767	762	0.6%	862	-11.0%	904	-15.1%	911	-15.8%
241 TUTTLE LIMITED				187		207			
301-DADE MONROE EXPRESS	831	833	-0.2%	867	-4.1%	864	-3.8%	751	10.7%
302-CARD SOUND EXPRESS	96	101	-4.6%	72	33.8%	72	33.1%	57	68.1%
338 - WEEKEND EXPRESS	199	196	1.3%	247	-19.6%	235	-15.2%	252	-21.1%
400 - SOUTH OWL	82	84	-2.9%	70	16.9%	70	16.2%	83	-1.1%
401 - NORTH OWL	77	86	-10.3%	65	19.5%	56	37.3%	87	-11.3%
500 - CUTLER BAY LOCAL	89	100	-11.4%	86	3.1%	75	19.1%	59	51.9%
510 - SKYLAKE CIRCULATOR (*)	158	138	14.5%	194	-18.6%	221	-28.5%	143	10.5%
12/21 WEEKEND INTERLINE	2,288	2,176	5.1%	2,700	-15.3%	2,409	-5.0%	2,048	11.7%
Total	87,884	85,821	2.4%	81,427	7.9%	81,731	7.5%	75,428	16.5%

METROBUS TOTAL MONTHLY BOARDINGS BY ROUTE

Route	Total Month	Total Month	Percent Change	Total Month	Percent Change	Total Month	Percent Change	Total Month	Percent Change
	Sep-24	Aug-24	MOM	Oct-23	MO11M	Sep-23	YOY	Feb-20	Current vs Feb-20
total month									
2	56,074	60,586	-7.4%	77,976	-28.1%	73,061	-23.3%	75,463	-25.7%
3	216,246	232,562	-7.0%	164,203	31.7%	156,392	38.3%	146,294	47.8%
7	88,188	87,889	0.3%	104,507	-15.6%	97,756	-9.8%	86,077	2.5%
8	113,144	121,398	-6.8%	120,821	-6.4%	113,537	-0.3%	95,295	18.7%
9	293,843	307,807	-4.5%	171,265	71.6%	162,147	81.2%	135,924	116.2%
10				70,338		66,869		64,874	
11	297,634	309,273	-3.8%	253,837	17.3%	238,529	24.8%	187,425	58.8%
12	59,309	61,606	-3.7%	63,603	-6.8%	59,652	-0.6%	55,585	6.7%
14	23,779	24,959	-4.7%						
15	13,372	14,533	-8.0%	4,545	194.2%	4,140	223.0%	4,114	225.0%
16				55,959		52,826		49,061	
17	181,848	189,253	-3.9%	110,727	64.2%	101,592	79.0%	96,715	88.0%
19				39,745		37,093		30,847	
20	97,696	100,360	-2.7%						
21	42,191	42,467	-0.6%	46,355	-9.0%	40,961	3.0%	36,341	16.1%
22	62,586	60,624	3.2%	118,329	-47.1%	109,281	-42.7%	89,404	-30.0%
24-CORAL WAY LIMITED	61,536	63,721	-3.4%	59,432	3.5%	55,632	10.6%	36,237	69.8%
26	58,898	58,506	0.7%	49,521	18.9%	45,589	29.2%	42,683	38.0%
27	244,439	254,978	-4.1%	188,160	29.9%	173,978	40.5%	171,282	42.7%
29				11,342		10,418		10,684	
31-BUSWAY LOCAL						0		29,125	
32	46,033	46,338	-0.7%	68,263	-32.6%	62,261	-26.1%	56,027	-17.8%
34 TRANSITWAY EXPRESS	36,997	37,371	-1.0%	36,002	2.8%	31,375	17.9%	40,159	-7.9%
35	64,892	63,306	2.5%	79,573	-18.4%	72,991	-11.1%	59,041	9.9%
36	160,258	163,842	-2.2%	70,698	126.7%	65,781	143.6%	61,606	160.1%
37	116,307	115,204	1.0%	93,471	24.4%	86,306	34.8%	82,870	40.3%
38 TRANSITWAY MAX	191,196	204,972	-6.7%	175,803	8.8%	141,014	35.6%	167,379	14.2%
39 TRANSITWAY EXPRESS	17,143	16,991	0.9%	16,333	5.0%	13,489	27.1%	17,853	-4.0%
40	46,722	48,672	-4.0%	57,992	-19.4%	52,436	-10.9%	40,497	15.4%
42				26,611		25,525		20,825	
46 - LIBERTY CITY CONN.				477		386		814	
52	42,071	42,642	-1.3%	35,844	17.4%	33,917	24.0%	30,522	37.8%
54	72,141	74,869	-3.6%	81,490	-11.5%	77,158	-6.5%	72,125	0.0%
56	11,507	12,283	-6.3%	8,598	33.8%	7,476	53.9%	7,071	62.7%
57				11,491		10,491		8,665	
62	75,993	77,544	-2.0%	67,398	12.8%	62,012	22.5%	46,582	63.1%
70	8,104	7,680	5.5%	3,546	128.5%	3,099	161.5%	2,690	201.3%

METROBUS TOTAL MONTHLY BOARDINGS BY ROUTE

Route	Total Month	Total Month	Percent Change	Total Month	Percent Change	Total Month	Percent Change	Total Month	Percent Change
total month	Sep-24	Aug-24	MOM	Oct-23	MO11M	Sep-23	YOY	Feb-20	Current vs Feb-20
72	24,972	24,362	2.5%	17,459	43.0%	17,703	41.1%	18,433	35.5%
73	31,248	33,194	-5.9%	70,903	-55.9%	65,546	-52.3%	48,767	-35.9%
75	75,990	80,117	-5.2%	39,021	94.7%	33,669	125.7%	31,994	137.5%
77	289,118	307,865	-6.1%	261,039	10.8%	236,567	22.2%	174,833	65.4%
79	209,476	214,012	-2.1%	239,146	-12.4%	223,305	-6.2%	200,268	4.6%
82 - WESTCHESTER CIRC				1,488		1,698		1,482	
87	51,571	54,847	-6.0%	46,254	11.5%	42,522	21.3%	33,273	55.0%
88	49,997	51,676	-3.2%	66,138	-24.4%	62,498	-20.0%	54,772	-8.7%
95-EXPRESS GOLDEN GLADES	29,785	29,286	1.7%	26,295	13.3%	22,923	29.9%	33,796	-11.9%
97	6,060	5,738	5.6%	6,337	-4.4%	5,941	2.0%	5,558	9.0%
100	401,387	428,970	-6.4%	174,819	129.6%	162,014	147.7%	170,942	134.8%
103 - C								11,682	
103	48,790	50,048	-2.5%	51,871	-5.9%	45,847	6.4%	40,918	19.2%
104	30,075	29,420	2.2%	26,049	15.5%	24,618	22.2%	20,351	47.8%
105 - E				37,092		34,185		31,302	
107	56,227	54,386	3.4%	20,040	180.6%	17,597	219.5%	16,118	248.8%
108 - H				14,133		13,743		12,624	
110 - J				79,080		79,369		66,481	
113 - M				24,040		22,778		21,548	
115				3,968		3,678		4,334	
119 - S				281,456		260,282		242,257	
125	118,231	125,453	-5.8%	56,547	109.1%	51,253	130.7%	43,178	173.8%
132 -TRI-RAIL DORAL SHUTTLE	832	855	-2.7%	804	3.5%	785	6.0%	312	166.7%
135	52,052	48,907	6.4%	43,211	20.5%	38,429	35.4%	32,067	62.3%
136	2,922	3,202	-8.7%	3,557	-17.9%	2,977	-1.8%	2,524	15.8%
137-WEST DADE CONNECTION	62,036	65,593	-5.4%	56,750	9.3%	55,343	12.1%	41,167	50.7%
150-MIAMI BEACH AIRPORT EXPRESS	40,586	44,643	-9.1%	65,763	-38.3%	63,175	-35.8%	51,651	-21.4%
152	9,857	10,079	-2.2%	26,285	-62.5%	23,174	-57.5%	19,325	-49.0%
155 - BISCAYNE GARDENS CIRC				985		987		881	
175 - NW MIAMI-DADE EXPRESS								661	
183	127,287	128,426	-0.9%	96,050	32.5%	87,671	45.2%	77,570	64.1%
195 EXPRESS - BROWARD BLVD								7,441	
196 EXPRESS - SHERIDAN ST								7,658	
199	50,038	53,522	-6.5%	50,634	-1.2%	46,388	7.9%	36,325	37.8%
202 - LITTLE HAITI CONN				2,620		2,516		3,200	
203 - BISCAYNE MAX	22,123	28,580	-22.6%	80,650	-72.6%	69,806	-68.3%	66,684	-66.8%

METROBUS TOTAL MONTHLY BOARDINGS BY ROUTE

Route	Total Month	Total Month	Percent Change	Total Month	Percent Change	Total Month	Percent Change	Total Month	Percent Change
	Sep-24	Aug-24	MOM	Oct-23	MO11M	Sep-23	YOY	Feb-20	Current vs Feb-20
total month									
204 KILLIAN MAX	12,081	12,792	-5.6%	13,632	-11.4%	12,398	-2.6%	21,418	-43.6%
207 (7th St)-LITTLE HAVANA CONN	41,052	42,201	-2.7%	46,970	-12.6%	41,191	-0.3%	38,127	7.7%
208 (8th St)-LITTLE HAVANA CONN	39,900	42,322	-5.7%	44,922	-11.2%	40,501	-1.5%	35,018	13.9%
211 OVERTOWN CIRCULATOR				1,567		1,668		1,159	
211 - FLAGLER MAX	35,018	37,299	-6.1%	84,135	-58.4%	74,340	-52.9%	62,186	-43.7%
212-SWEETWATER CIRC				494		574		295	
217 - BUNCHE PARK CIRC				1,759		1,481		1,949	
238-EAST/WEST CONN				13,036		12,020		8,987	
241 TUTTLE LIMITED				9,471		8,181			
254-BROWNSVILLE CIRC				105		120		384	
267-LUDLAM LIMITED				3,567		3,039		2,978	
272 SUNSET MAX (*)	7,401	7,975	-7.2%	9,423	-21.5%	8,911	-16.9%	11,004	-32.7%
277-7TH AVENUE MAX				19,345		17,025		13,669	
279 - 79 STREET MAX	12,904	12,905	0.0%	10,318	25.1%	9,103	41.8%	7,228	78.5%
286-NORTH POINTE CIRC				2,279		2,085		2,145	
287-SAGA BAY MAX	7,653	7,996	-4.3%	7,499	2.1%	6,473	18.2%	7,160	6.9%
288 KENDALL MAX	9,138	10,076	-9.3%	8,189	11.6%	7,346	24.4%	15,249	-40.1%
295								4,668	
296								4,297	
297-27th AVENUE ORANGE MAX				27,047		24,295		27,125	
301-DADE MONROE EXPRESS	25,651	29,108	-11.9%	28,889	-11.2%	28,782	-10.9%	23,838	7.6%
302-CARD SOUND EXPRESS	3,215	3,577	-10.1%	2,728	17.9%	2,506	28.3%	2,236	43.8%
338 - WEEKEND EXPRESS	1,977	1,888	4.7%	2,274	-13.1%	2,308	-14.3%	2,191	-9.8%
344	3,294	3,107	6.0%	1,666	97.7%	1,431	130.2%	1,919	71.7%
400 - SOUTH OWL	2,237	2,344	-4.6%	2,324	-3.7%	2,132	4.9%	2,301	-2.8%
401 - NORTH OWL	2,259	2,425	-6.8%	1,899	19.0%	1,652	36.7%	2,641	-14.5%
500 - CUTLER BAY LOCAL	5,319	6,062	-12.3%	4,907	8.4%	5,187	2.5%	3,984	33.5%
510 - SKYLAKE CIRCULATOR (*)	9,749	10,779	-9.6%	12,211	-20.2%	10,177	-4.2%	7,033	38.6%
836 EXPRESS	6,836	7,184	-4.8%	5,428	25.9%	5,092	34.2%		
837 EXPRESS	3,970	4,091	-3.0%	4,281	-7.3%	3,733	6.3%		
MetroLink NoMi West	4,221	3,006	40.4%						
MetroLink North Miami	2,862	1,490	92.1%						
MetroLink LeJeune	1,346	1,081	24.5%						
MetroLink Killian Parkway	2,838	1,959	44.9%						
MetroLink Alton Road	2,555	1,862	37.2%						
MetroLink Opa-Locka	338	298	13.4%						
12/21 WEEKEND INTERLINE	25,008	21,552	16.0%	26,661	-6.2%	27,107	-7.7%	20,830	20.1%
AHEPA SHUTTLE	80	94	-14.9%	71	12.7%	56	42.9%	83	-3.6%
FEDERATION GARDENS SHUTTLE	88	153	-42.5%	80	10.0%	141	-37.6%	142	-38.0%
GREEN HILLS SHUTTLE	27	32	-15.6%	26	3.8%	18	50.0%	36	-25.0%
KINGS CREEK SHUTTLE	38	42	-9.5%	55	-30.9%	37	2.7%	52	-26.9%
ROBERT SHARP SHUTTLE	118	118	0.0%	92	28.3%	84	40.5%	38	210.5%
SIERRA LAKES SHUTTLE	86	111	-22.5%	62	38.7%	75	14.7%	180	-52.2%
Total	4,860,066	5,051,346	-3.8%	4,912,151	-1.1%	4,525,426	7.4%	4,123,083	17.9%

BUS RIDERSHIP BY ROUTE SERVICE TYPE LINEUPS COMPARISON (MONTH-OVER-MONTH)

Boardings by Service Type and Route	Average Weekday	Average Weekday	Percent Change	Average Saturday	Average Saturday	Percent Change	Average Sunday	Average Sunday	Percent Change	Total Monthly	Total Monthly	Percent Change
	Sep-24	Aug-24	MOM	Sep-24	Aug-24	MOM	Sep-24	Aug-24	MOM	Sep-24	Aug-24	MOM
Directly Operated Express Routes												
34 TRANSITWAY EXPRESS	1,850	1,699	8.9%							36,997	37,371	-1.0%
39 TRANSITWAY EXPRESS	857	772	11.0%							17,143	16,991	0.9%
95-EXPRESS GOLDEN GLADES	1,489	1,331	11.9%							29,785	29,286	1.7%
150-MIAMI BEACH AIRPORT EXPRESS	1,408	1,494	-5.8%	1,356	1,416	-4.2%	1,168	1,174	-0.5%	40,586	44,643	-9.1%
338 - WEEKEND EXPRESS				196	221	-11.2%	199	196	1.3%	1,977	1,888	4.7%
836 EXPRESS	342	327	4.7%							6,836	7,184	-4.8%
837 EXPRESS	199	186	6.7%							3,970	4,091	-3.0%
Subtotal Express Routes	6,144	5,809	5.8%	1,552	1,636	-5.2%	1,366	1,370	-0.3%	137,294	141,454	-2.9%
Percentage of All Bus Routes	3.2%	3.1%		1.3%	1.4%		1.6%	1.6%		2.8%	2.8%	
Contracted Routes - Local Service (*)												
2	2,314	2,345	-1.3%	1,128	1,177	-4.2%	882	777	13.5%	56,074	60,586	-7.4%
15	535	523	2.2%	299	349	-14.3%	246	320	-22.9%	13,372	14,533	-8.0%
29												
46 - LIBERTY CITY CONN.												
56	536	522	2.6%	199	160	24.5%				11,507	12,283	-6.3%
70	317	284	11.5%	190	174	9.1%	168	139	20.6%	8,104	7,680	5.5%
72	1,002	913	9.7%	585	518	12.9%	433	422	2.6%	24,972	24,362	2.5%
82 - WESTCHESTER CIRC												
97	222	199	11.7%	172	160	7.3%	154	140	10.5%	6,060	5,738	5.6%
115												
152	410	383	6.9%	203	199	1.9%	142	163	-13.2%	9,857	10,079	-2.2%
155 - BISCAYNE GARDENS CIRC												
202 - LITTLE HAITI CONN												
211 OVERTOWN CIRCULATOR												
212-SWEETWATER CIRC												
217 - BUNCHE PARK CIRC												
254-BROWNSVILLE CIRC												
267-LUDLAM LIMITED												
286-NORTH POINTE CIRC												
344	149	124	20.1%	79	76	4.3%				3,294	3,107	6.0%
401 - NORTH OWL	75	78	-4.4%	75	72	4.1%	77	86	-10.3%	2,259	2,425	-6.8%
MetroLink NoMi West	211	137	54.5%							4,221	3,006	40.4%
MetroLink North Miami	143	75	92.1%							2,862	1,490	92.1%
MetroLink LeJeune	67	49	37.0%							1,346	1,081	24.5%
MetroLink Killian Parkway	142	98	44.9%							2,838	1,959	44.9%
MetroLink Alton Road	128	93	37.2%							2,555	1,862	37.2%
MetroLink Opa-Locka	17	14	24.8%							338	298	13.4%
Subtotal Contracted Reg. & Circ. Routes	6,267	5,837	7.4%	2,929	2,885	1.5%	2,102	2,047	2.7%	149,659	150,489	-0.6%
Percentage of All Bus Routes	3.3%	3.1%		2.4%	2.5%		2.4%	2.4%		3.1%	3.0%	

(1) Several express routes were suspended beginning at the end of Mar-20, due to the SARS-CoV-2 pandemic, while other routes had alignment and schedule modifications made to them, in an ongoing effort to optimize service delivery.

(2) A second major round of changes took place with the 11/13/23 lineup known as the Better Bus Network, as listed at the start of this Metrobus section.

BUS RIDERSHIP BY ROUTE SERVICE TYPE LINEUPS COMPARISON (MONTH-OVER-MONTH)

Boardings by Service Type and Route	Average Weekday	Average Weekday	Percent Change	Average Saturday	Average Saturday	Percent Change	Average Sunday	Average Sunday	Percent Change	Total Monthly	Total Monthly	Percent Change
	Sep-24	Aug-24	MOM	Sep-24	Aug-24	MOM	Sep-24	Aug-24	MOM	Sep-24	Aug-24	MOM
Contracted Express Routes												
301-DADE MONROE EXPRESS	858	962	-10.7%	874	924	-5.4%	831	833	-0.2%	25,651	29,108	-11.9%
302-CARD SOUND EXPRESS	107	115	-6.7%	125	130	-4.0%	96	101	-4.6%	3,215	3,577	-10.1%
Subtotal Contracted Express Routes	965	1,076	-10.3%	999	1,054	-5.2%	927	934	-0.7%	28,866	32,685	-11.7%
Percentage of All Bus Routes	0.5%	0.6%		0.8%	0.9%		1.1%	1.1%		0.6%	0.6%	
Limited Stop Routes												
24-CORAL WAY LIMITED	2,406	2,349	2.4%	1,648	1,518	8.5%	1,139	1,113	2.3%	61,536	63,721	-3.4%
38 TRANSITWAY MAX	7,051	7,200	-2.1%	5,570	5,578	-0.2%	4,649	4,669	-0.4%	191,196	204,972	-6.7%
203 - BISCAYNE MAX	1,106	1,299	-14.9%							22,123	28,580	-22.6%
204 KILLIAN MAX	604	581	3.9%							12,081	12,792	-5.6%
211 - FLAGLER MAX	1,751	1,695	3.3%							35,018	37,299	-6.1%
241 TUTTLE LIMITED												
272 SUNSET MAX (*)	370	363	2.1%							7,401	7,975	-7.2%
277-7TH AVENUE MAX												
279 - 79 STREET MAX	645	587	10.0%							12,904	12,905	0.0%
287-SAGA BAY MAX	383	363	5.3%							7,653	7,996	-4.3%
288 KENDALL MAX	457	458	-0.2%							9,138	10,076	-9.3%
297-27th AVENUE ORANGE MAX												
Subtotal Limited Stop Routes	14,773	14,896	-0.8%	7,217	7,096	1.7%	5,788	5,783	0.1%	359,050	386,316	-7.1%
Percentage of All Bus Routes	7.7%	8.0%		6.0%	6.0%		6.6%	6.7%		7.4%	7.6%	
Directly Operated Free Routes												
132 -TRI-RAIL DORAL SHUTTLE	42	39	7.0%							832	855	-2.7%
500 - CUTLER BAY LOCAL	207	222	-7.0%	163	155	5.3%	89	100	-11.4%	5,319	6,062	-12.3%
510 - SKYLAKE CIRCULATOR (*)	406	427	-4.9%	169	166	1.9%	158	138	14.5%	9,749	10,779	-9.6%
Subtotal Free Directly Operated Routes	655	688	-4.9%	332	321	3.6%	247	238	3.6%	15,900	17,696	-10.1%
Percentage of All Bus Routes	0.3%	0.4%		0.3%	0.3%		0.3%	0.3%		0.3%	0.4%	
Contractor-Operated Lifeline Routes												
GREEN HILLS SHUTTLE	7	8	-15.6%							27	32	-15.6%
KINGS CREEK SHUTTLE	10	8	13.1%							38	42	-9.5%
SIERRA LAKES SHUTTLE	22	22	-3.2%							86	111	-22.5%
ROBERT SHARP SHUTTLE	30	30	0.0%							118	118	0.0%
AHEPA SHUTTLE	20	19	6.4%							80	94	-14.9%
FEDERATION GARDENS SHUTTLE				22	31	-28.1%				88	153	-42.5%
Subtotal Contractor-Operated Lifeline Routes	87	87	0.4%	22	31	-28.1%				437	550	-20.5%
Percentage of All Bus Routes	0.0%	0.0%		0.0%	0.0%					0.0%	0.0%	
All Other (Regular) Routes	163,682	158,963	3.0%	107,625	104,632	2.9%	77,454	75,450	2.7%	4,168,860	4,322,156	-3.5%
Percentage of All Bus Routes	85.0%	84.8%		89.2%	88.9%		88.1%	87.9%		85.8%	85.6%	
Total Bus System	192,573	187,356	2.8%	120,676	117,655	2.6%	87,884	85,821	2.4%	4,860,066	5,051,346	-3.8%

BUS RIDERSHIP BY ROUTE SERVICE TYPE LINEUPS COMPARISON (MONTH-OVER-11 MONTH)

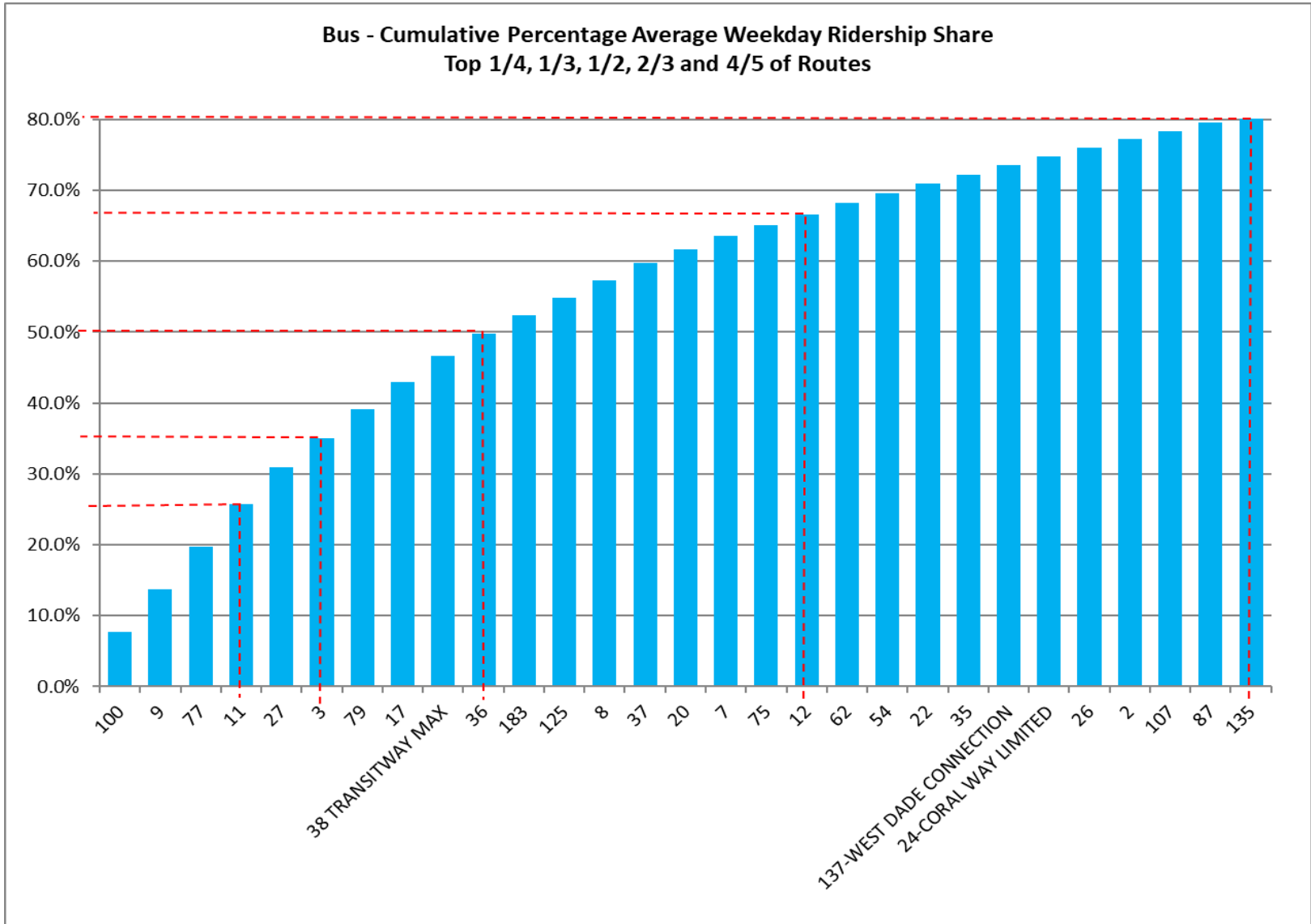
Boardings by Service Type and Route	Average Weekday	Average Weekday	Percent Change	Average Saturday	Average Saturday	Percent Change	Average Sunday	Average Sunday	Percent Change	Total Monthly	Total Monthly	Percent Change
	Sep-24	Oct-23	24 vs 23	Sep-24	Oct-23	24 vs 23	Sep-24	Oct-23	24 vs 23	Sep-24	Oct-23	24 vs 23
Directly Operated Express Routes												
34 TRANSITWAY EXPRESS	1,850	1,636	13.0%							36,997	36,002	2.8%
39 TRANSITWAY EXPRESS	857	742	15.5%							17,143	16,333	5.0%
95-EXPRESS GOLDEN GLADES	1,489	1,195	24.6%							29,785	26,295	13.3%
150-MIAMI BEACH AIRPORT EXPRESS	1,408	2,149	-34.5%	1,356	2,161	-37.3%	1,168	1,966	-40.6%	40,586	65,763	-38.3%
338 - WEEKEND EXPRESS				196	259	-24.4%	199	247	-19.6%	1,977	2,274	-13.1%
836 EXPRESS	342	247	38.5%							6,836	5,428	25.9%
837 EXPRESS	199	195	2.0%							3,970	4,281	-7.3%
Subtotal Express Routes	6,144	6,165	-0.3%	1,552	2,420	-35.9%	1,366	2,214	-38.3%	137,294	156,376	-12.2%
Percentage of All Bus Routes	3.2%	3.3%		1.3%	2.3%		1.6%	2.7%		2.8%	3.2%	
Contracted Routes - Local Service (*)												
2	2,314	2,977	-22.3%	1,128	1,605	-29.7%	882	1,214	-27.4%	56,074	77,976	-28.1%
15	535	178	201.2%	299	93	220.9%	246	53	364.8%	13,372	4,545	194.2%
29		516									11,342	
46 - LIBERTY CITY CONN.		22									477	
56	536	391	37.0%	199						11,507	8,598	33.8%
70	317	161	96.6%	190			168			8,104	3,546	128.5%
72	1,002	670	49.6%	585	357	64.0%	433	259	67.0%	24,972	17,459	43.0%
82 - WESTCHESTER CIRC		61									1,488	
97	222	225	-1.0%	172	163	5.2%	154	149	3.6%	6,060	6,337	-4.4%
115		151									3,968	
152	410	1,051	-61.0%	203	375	-46.0%	142	331	-57.3%	9,857	26,285	-62.5%
155 - BISCAYNE GARDENS CIRC		45									985	
202 - LITTLE HAITI CONN		110			22			21			2,620	
211 OVERTOWN CIRCULATOR		71									1,567	
212-SWEETWATER CIRC		22									494	
217 - BUNCHE PARK CIRC		80									1,759	
254-BROWNSVILLE CIRC		5									105	
267-LUDLAM LIMITED		162									3,567	
286-NORTH POINTE CIRC		93			61						2,279	
344	149	76	96.6%	79						3,294	1,666	97.7%
401 - NORTH OWL	75	61	23.4%	75	61	23.6%	77	65	19.5%	2,259	1,899	19.0%
MetroLink NoMi West	211									4,221		
MetroLink LeJeune	67									1,346		
MetroLink Opa-Locka	17									338		
Subtotal Contracted Reg. & Circ. Routes	6,267	7,125	-12.1%	2,929	2,854	2.6%	2,102	2,158	-2.6%	149,659	178,962	-16.4%
Percentage of All Bus Routes	3.3%	3.8%		2.4%	2.7%		2.4%	2.7%		3.1%	3.6%	

(1) Several express routes were suspended beginning at the end of Mar-20, due to the SARS-CoV-2 pandemic, while other routes had alignment and schedule modifications made to them, in an ongoing effort to optimize service delivery.
(2) A second major round of changes took place with the 11/13/23 lineup known as the Better Bus Network, as listed at the start of this Metrobus section.

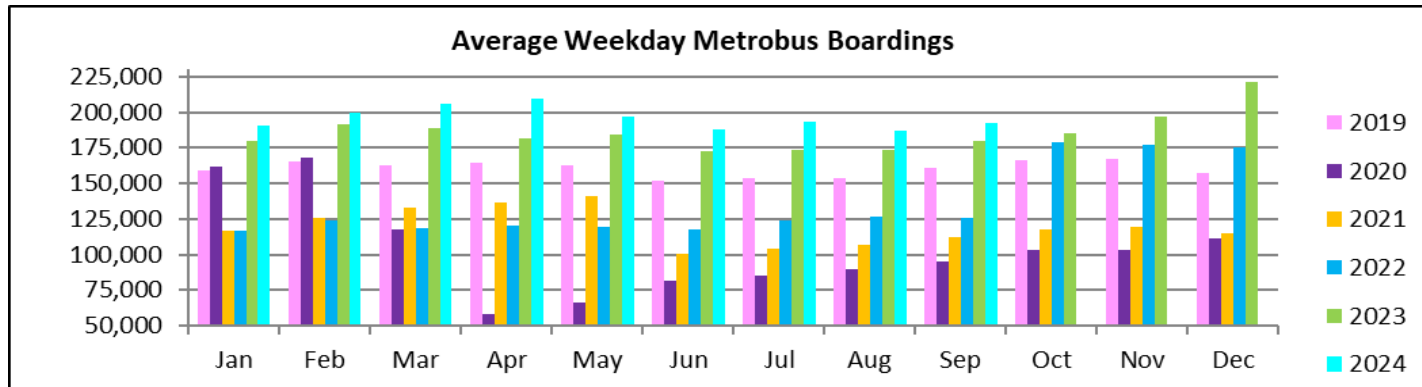
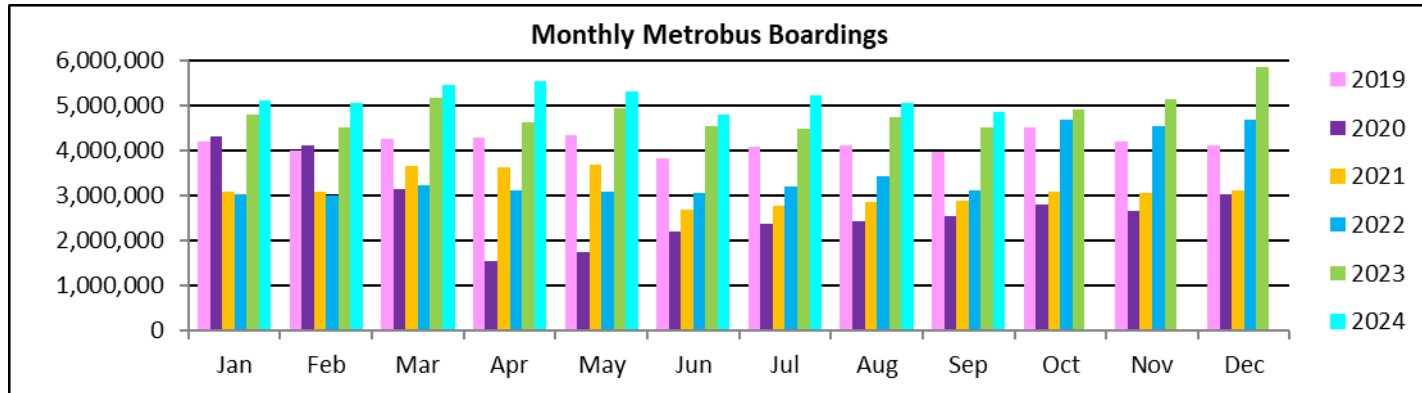
BUS RIDERSHIP BY ROUTE SERVICE TYPE LINEUPS COMPARISON (MONTH-OVER-11 MONTH)

Boardings by Service Type and Route	Average Weekday	Average Weekday	Percent Change	Average Saturday	Average Saturday	Percent Change	Average Sunday	Average Sunday	Percent Change	Total Monthly	Total Monthly	Percent Change
	Sep-24	Oct-23	24 vs 23	Sep-24	Oct-23	24 vs 23	Sep-24	Oct-23	24 vs 23	Sep-24	Oct-23	24 vs 23
Contracted Express Routes												
301-DADE MONROE EXPRESS	858	955	-10.1%	874	885	-1.2%	831	867	-4.1%	25,651	28,889	-11.2%
302-CARD SOUND EXPRESS	107	91	18.1%	125	94	33.0%	96	72	33.8%	3,215	2,728	17.9%
Subtotal Contracted Express Routes	965	1,046	-7.7%	999	979	2.0%	927	938	-1.2%	28,866	31,617	-8.7%
Percentage of All Bus Routes	0.5%	0.6%		0.8%	0.9%		1.1%	1.2%		0.6%	0.6%	
Limited Stop Routes												
24-CORAL WAY LIMITED	2,406	2,195	9.6%	1,648	1,400	17.7%	1,139	1,108	2.8%	61,536	59,432	3.5%
38 TRANSITWAY MAX	7,051	5,714	23.4%	5,570	6,328	-12.0%	4,649	4,957	-6.2%	191,196	175,803	8.8%
203 - BISCAYNE MAX	1,106	3,666	-69.8%							22,123	80,650	-72.6%
204 KILLIAN MAX	604	620	-2.5%							12,081	13,632	-11.4%
211 - FLAGLER MAX	1,751	3,824	-54.2%							35,018	84,135	-58.4%
241 TUTTLE LIMITED		348			222			187			9,471	9,471
272 SUNSET MAX (*)	370	428	-13.6%							7,401	9,423	-21.5%
277-7TH AVENUE MAX		879									19,345	19,345
279 - 79 STREET MAX	645	469	37.6%							12,904	10,318	25.1%
287-SAGA BAY MAX	383	341	12.3%							7,653	7,499	2.1%
288 KENDALL MAX	457	372	22.7%							9,138	8,189	11.6%
297-27th AVENUE ORANGE MAX		1,229									27,047	27,047
Subtotal Limited Stop Routes	14,773	20,086	-26.5%	7,217	7,950	-9.2%	5,788	6,252	-7.4%	359,050	504,944	-28.9%
Percentage of All Bus Routes	7.7%	10.8%		6.0%	7.4%		6.6%	7.7%		7.4%	10.3%	
Directly Operated Free Routes												
132 -TRI-RAIL DORAL SHUTTLE	42	37	13.8%							832	804	3.5%
500 - CUTLER BAY LOCAL	207	176	17.5%	163	152	7.6%	89	86	3.1%	5,319	4,907	8.4%
510 - SKYLAKE CIRCULATOR (*)	406	471	-13.8%	169	217	-22.3%	158	194	-18.6%	9,749	12,211	-20.2%
Subtotal Free Directly Operated Routes	655	684	-4.3%	332	369	-10.0%	247	280	-12.0%	15,900	17,922	-11.3%
Percentage of All Bus Routes	0.3%	0.4%		0.3%	0.3%		0.3%	0.3%		0.3%	0.4%	
Contractor-Operated Lifeline Routes												
GREEN HILLS SHUTTLE	7	5	29.8%							27	26	3.8%
KINGS CREEK SHUTTLE	10	14	-30.9%							38	55	-30.9%
SIERRA LAKES SHUTTLE	22	16	38.7%							86	62	38.7%
ROBERT SHARP SHUTTLE	30	23	28.3%							118	92	28.3%
AHEPA SHUTTLE	20	18	12.7%							80	71	12.7%
FEDERATION GARDENS SHUTTLE				22	20	10.0%				88	80	10.0%
Subtotal Contractor-Operated Lifeline Routes	87	75	16.0%	22	20	10.0%				437	386	13.2%
Percentage of All Bus Routes	0.0%	0.0%		0.0%	0.0%					0.0%	0.0%	
All Other (Regular) Routes	163,682	150,140	9.0%	107,625	92,739	16.1%	77,454	69,584	11.3%	4,168,860	4,021,944	3.7%
Percentage of All Bus Routes	85.0%	81.0%		89.2%	86.4%		88.1%	85.5%		85.8%	81.9%	
Total Bus System	192,573	185,320	3.9%	120,676	107,331	12.4%	87,884	81,427	7.9%	4,860,066	4,912,151	-1.1%

METROBUS CUMULATIVE PERCENTAGE RIDERSHIP SHARE – BY ROUTE



TOTAL MONTHLY AND AVERAGE WEEKDAY RIDERSHIP YEAR OVER YEAR COMPARISON CHARTS – METROBUS



**“TOP 10 / BOTTOM 10” BUS ROUTES AVERAGE WEEKDAY RIDERSHIP PERFORMANCE
MONTH OVER MONTH COMPARISON**

Route	Sep-24	Aug-24	Absolute Delta	Percent Delta
37	4,618	4,240	379	8.9%
79	7,855	7,498	357	4.8%
27	9,865	9,538	328	3.4%
183	5,133	4,838	295	6.1%
135	2,197	1,909	288	15.1%
36	6,147	5,876	271	4.6%
7	3,531	3,272	259	7.9%
22	2,493	2,255	238	10.6%
107	2,273	2,038	236	11.6%
9	11,659	11,447	212	1.8%
3	8,128	8,345	-217	-2.6%
203 - BISCAYNE MAX	1,106	1,299	-193	-14.9%
38 TRANSITWAY MAX	7,051	7,200	-149	-2.1%
301-DADE MONROE EXPRESS	858	962	-103	-10.7%
150-MIAMI BEACH AIRPORT EXPRESS	1,408	1,494	-86	-5.8%
199	1,913	1,950	-37	-1.9%
2	2,314	2,345	-31	-1.3%
510 - SKYLAKE CIRCULATOR (*)	406	427	-21	-4.9%
500 - CUTLER BAY LOCAL	207	222	-15	-7.0%
302-CARD SOUND EXPRESS	107	115	-8	-6.7%

(*) Averages rounded to the nearest boarding, data as estimated from automatic passenger counter (APC) system; Lifeline shuttles excluded.

“TOP 10 / BOTTOM 10” BUS ROUTES SETS AVERAGE WEEKDAY RIDERSHIP PERFORMANCE YEAR OVER YEAR COMPARISON

Route Set (*), (1), (2)	Sep-24	Sep-23	Absolute Delta	Percent Delta	routes included in set
{ 20 }	5,540	2,793	2,747	98.4%	20, 32, 115
{ 38 }	7,200	4,600	2,600	56.5%	38, 344
{ 17 & 22 & 75 }	12,722	10,503	2,219	21.1%	17, 22, 75, 108, 217
{ 11 }	11,462	9,368	2,094	22.4%	11, 212
{ 27 }	9,865	8,159	1,706	20.9%	27, 297
{ new 107 }	5,598	4,289	1,309	30.5%	35, 56, 70, 71, new 107, 248
{ 77 }	11,586	10,307	1,278	12.4%	77, 277
{ 125 }	4,734	3,838	895	23.3%	19, 107, 125
{ 9 }	11,659	10,860	799	7.4%	9, 10, 16
{ 36 }	6,147	5,573	574	10.3%	36, 110
{ 100 }	14,853	16,549	-1,696	-10.2%	100, 105, 119, 120
{ new 211 }	11,333	12,709	-1,376	-10.8%	8, 24, 51, 82, 137, new 211
{ 73 & 183 }	6,507	7,622	-1,115	-14.6%	57, 73, 183, 238, 267, 286
{ 2 }	2,314	3,063	-750	-24.5%	2, 211
150	1,408	2,151	-743	-34.5%	150
88	1,854	2,385	-531	-22.3%	88
{ 37 & 54 }	7,482	7,992	-510	-6.4%	29, 37, 42, 54, 254
7	3,531	3,948	-417	-10.6%	7
{ 14 }	829	1,198	-369	-30.8%	14, 113, 241
40	1,916	2,258	-341	-15.1%	40

(*) Averages rounded to the nearest boarding, data as estimated from automatic passenger counter (APC) system; Lifeline shuttles excluded.

(1) The route sets, denoted by brackets, include the new 11/13/2023 lineup's Better Bus Network route designations, as well as older routes present for the first part of the month and previous months and years, then either renamed, absorbed, or eliminated. The sets were defined to enable reasonably fair comparisons between pre- and post-BBN timeframes, to the extent possible and practical, given the complexity of the changes for some of the routes and sets. The definitions were based on information from the DTPW website, and subject to future adjustments, if necessary.

(2) The adjective "new" in front of some new Better Bus Network-generated (recycled) route numbers was added to help distinguish those routes from older but different routes with the same number present in previous months or years.

“TOP 10 / BOTTOM 10” BUS ROUTES SETS AVERAGE WEEKDAY RIDERSHIP PERFORMANCE MONTH OVER 11-MONTH PRIOR COMPARISON

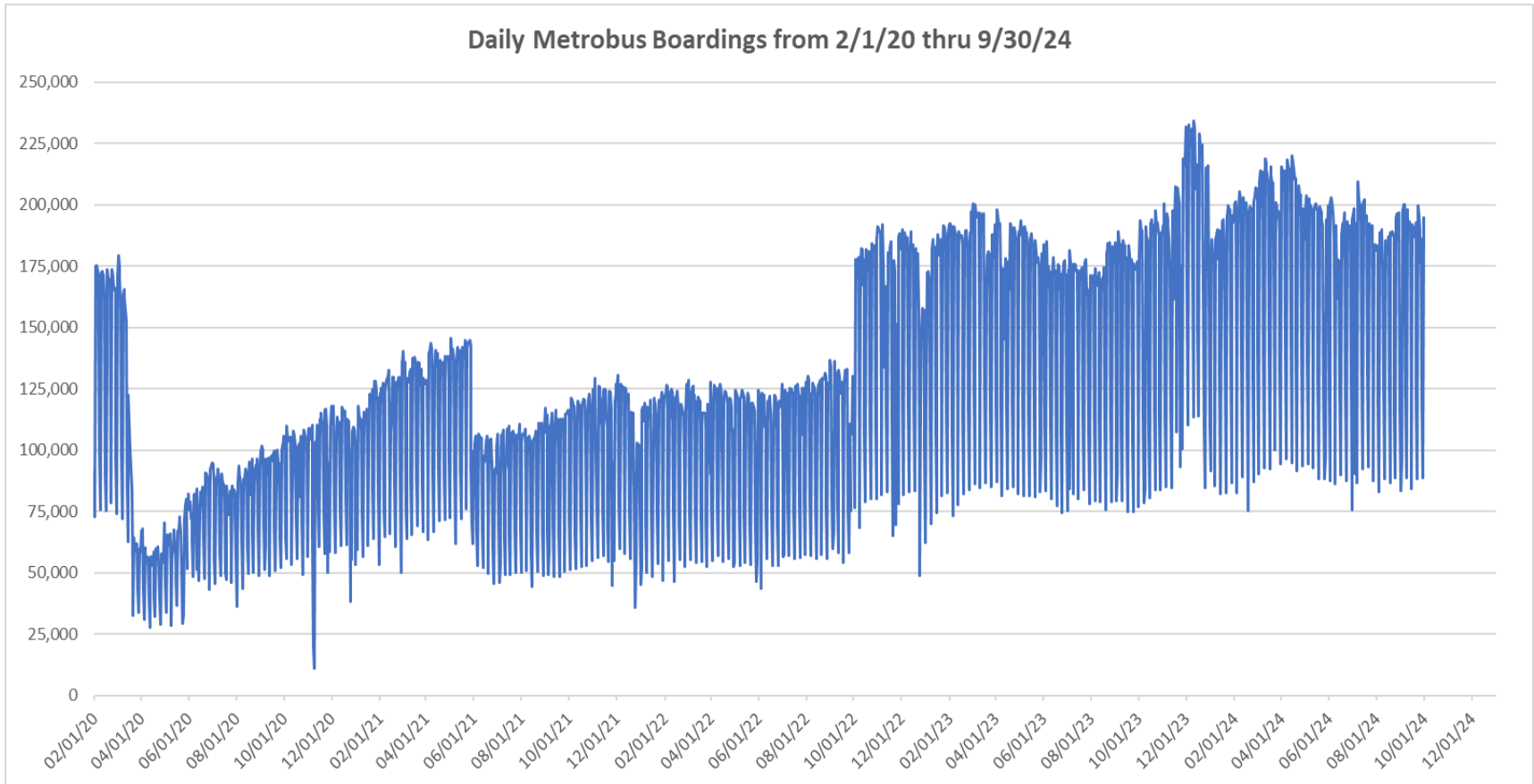
Route Set (*), (1), (2)	Sep-24	Oct-23	Absolute Delta	Percent Delta	routes included in set
{ 20 }	5,540	2,850	2,690	94.4%	20, 32, 115
{ 17 & 22 & 75 }	12,722	10,796	1,926	17.8%	17, 22, 75, 108, 217
{ 11 }	11,462	9,644	1,818	18.9%	11, 212
{ 27 }	9,865	8,339	1,526	18.3%	27, 297
{ 38 }	7,200	5,790	1,410	24.4%	38, 344
{ new 107 }	5,598	4,447	1,151	25.9%	35, 56, 70, 71, new 107, 248
{ 125 }	4,734	3,906	828	21.2%	19, 107, 125
{ 77 }	11,586	10,838	747	6.9%	77, 277
{ 9 }	11,659	10,942	717	6.6%	9, 10, 16
{ 36 }	6,147	5,600	547	9.8%	36, 110
{ 100 }	14,853	17,117	-2,264	-13.2%	100, 105, 119, 120
{ new 211 }	11,333	12,849	-1,516	-11.8%	8, 24, 51, 82, 137, new 211
{ 73 & 183 }	6,507	7,890	-1,383	-17.5%	57, 73, 183, 238, 267, 286
150	1,408	2,149	-742	-34.5%	150
{ 2 }	2,314	3,048	-734	-24.1%	2, 211
{ 37 & 54 }	7,482	8,082	-600	-7.4%	29, 37, 42, 54, 254
88	1,854	2,419	-565	-23.3%	88
7	3,531	4,021	-490	-12.2%	7
{ 279 }	8,500	8,950	-450	-5.0%	79, 112, 279
40	1,916	2,344	-428	-18.3%	40

(*) Averages rounded to the nearest boarding, data as estimated from automatic passenger counter (APC) system; Lifeline shuttles excluded.

(1) The route sets, denoted by brackets, include the new 11/13/2023 lineup's Better Bus Network route designations, as well as older routes present for the first part of the month and previous months and years, then either renamed, absorbed, or eliminated. The sets were defined to enable reasonably fair comparisons between pre- and post-BBN timeframes, to the extent possible and practical, given the complexity of the changes for some of the routes and sets. The definitions were based on information from the DTPW website, and subject to future adjustments, if necessary.

(2) The adjective "new" in front of some new Better Bus Network-generated (recycled) route numbers was added to help distinguish those routes from older but different routes with the same number present in previous months or years.

DAILY METROBUS RIDERSHIP SINCE FEBRUARY 1, 2020



- (1) There was no Metrobus, Metrorail and Metromover service on 5/31/20, as a safety precaution, and no service for any of the four modes on 9/28/22, as a result of Hurricane Ian.
- (2) The dip at the start of the second week of Nov-20 is due to Hurricane Eta.
- (3) Daily variations from Oct-22 onward are a representation estimated from reports made available by the Bus APC data vendor; the finalized data is based on statistical sampling.
- (4) The reduction seen beginning 6/1/21 is partly due to the resumption of fares and partly the result of resuming reporting Cubic farebox data rather than bus APC counts; the jump seen at the very start of Oct-22 is due to the switch to APC bus ridership counts reporting beginning 10/1/22; the pronounced peak in Dec-23 is attributable to the Better Bus Network launch period and attendant free fares.
- (5) Periodic (weekly) variations are prominent, since weekday ridership is almost always significantly higher than weekend or holiday ridership.

METROBUS PARKING PATRONAGE SUMMARY September 2024

PARK-RIDE LOT	ACTUAL AVAILABLE SPACES	ACTUAL OCCUPANCY	PERCENT OCCUPANCY
Transitway / SW 152nd St	200	134	67%
Transitway / SW 168th St (*)	149		
Transitway / SW 200th Street	100	33	33%
Transitway / SW 112 Ave (Target)	450	177	39%
Transitway / SW 244th St	95	73	77%
Transitway / SW 296th St	139	26	19%
Transitway / SW 344th St	248	177	71%
Coral Reef Drive 117/ Turnpike	95	79	83%
Golden Glades Facility	2,150	473	22%
Hammocks Town Center (SW 152 Ave / SW 104 St)	50	16	32%
Kendall Dr./SW 127th Ave	161	15	9%
West Kendall Transit Term (Kendall Dr / SW162 Ave)	40	8	20%
NW 7th Avenue Transit Village (NW 7 Ave / NW 62 St)	25	16	64%
Miami Gardens Dr. / NW 73rd Ave	136	1	1%
Dolphin Station	348	72	21%
Tamiami Station (eff 11-2022)	442	64	14%
I-75 / Miami Gardens Dr (**)	298		
TOTAL	5,126	1,364	27%

(*) Closed for construction beginning Jan-22

(**) Route 175 Suspended 3/27/2020

Metrorail



September 2024

METRORAIL AVERAGE WEEKDAY BOARDINGS BY STATION (†)

Weekdays	Average Weekday	Average Weekday	Percent Change	Average Weekday	Percent Change	Average Weekday	Percent Change	Average Weekday	Percent Change
STATIONS	Sep-24	Sep-23	YOY	Feb-20	Current vs Feb-20	Aug-24	MOM	Sep-19	YO5Y
ALLAPATTAH	1,680	1,584	6.1%	1,942	-13.5%	1,600	5.0%	1,771	-5.2%
BRICKELL	5,559	5,097	9.1%	6,529	-14.9%	5,306	4.8%	5,931	-6.3%
BROWNSVILLE	578	681	-15.1%	862	-33.0%	559	3.3%	811	-28.8%
UHEALTH JACKSON	4,791	4,469	7.2%	6,143	-22.0%	4,478	7.0%	5,821	-17.7%
COCONUT GROVE	1,898	1,346	41.0%	1,795	5.7%	1,789	6.1%	1,584	19.8%
CULMER	959	1,024	-6.3%	1,392	-31.1%	875	9.6%	1,259	-23.8%
DADELAND NORTH	4,377	4,055	7.9%	5,926	-26.1%	4,070	7.5%	5,673	-22.9%
DADELAND SOUTH	4,616	4,607	0.2%	7,150	-35.4%	4,316	6.9%	6,793	-32.1%
DOUGLAS ROAD	3,386	2,702	25.3%	3,624	-6.6%	3,011	12.5%	3,133	8.1%
DR. MARTIN LUTHER KING, JR.	952	860	10.6%	1,157	-17.7%	933	1.9%	1,054	-9.8%
EARLINGTON HEIGHTS	1,136	1,308	-13.2%	1,662	-31.7%	1,108	2.5%	1,525	-25.6%
GOVERNMENT CENTER	6,907	6,768	2.0%	10,557	-34.6%	6,365	8.5%	9,503	-27.3%
HIALEAH	1,258	891	41.3%	1,253	0.4%	1,189	5.8%	1,218	3.3%
MIAMI INTERNATIONAL AIRPORT	1,389	1,319	5.3%	1,711	-18.8%	1,404	-1.1%	1,542	-10.0%
NORTHSIDE	1,112	1,241	-10.4%	1,476	-24.6%	1,024	8.6%	1,355	-17.9%
OKEECHOBEE	1,051	857	22.6%	1,164	-9.7%	1,006	4.5%	1,148	-8.4%
OVERTOWN / ARENA	1,902	1,716	10.9%	2,274	-16.4%	1,787	6.4%	2,068	-8.0%
PALMETTO	1,354	1,247	8.5%	1,543	-12.3%	1,263	7.2%	1,402	-3.4%
SANTA CLARA	772	672	14.8%	812	-4.9%	744	3.8%	718	7.6%
SOUTH MIAMI	2,285	2,033	12.4%	3,015	-24.2%	2,090	9.3%	2,736	-16.5%
TRI-RAIL	975	1,067	-8.7%	1,207	-19.2%	1,133	-14.0%	1,045	-6.7%
UNIVERSITY	2,651	2,305	15.0%	2,784	-4.8%	1,931	37.3%	2,643	0.3%
VIZCAYA	1,287	1,068	20.5%	1,390	-7.4%	1,178	9.2%	1,228	4.8%
TOTAL	52,873	48,917	8.1%	67,367	-21.5%	49,161	7.5%	61,961	-14.7%

(†) In this table and those which follow, "YOY" stands for "year-over-year", "MOM" for "month-over-month" and, e.g., "YO5Y" for "year over five years", i.e., current month vs 12 months prior, one month prior, and 60 months prior, respectively. The Feb-20 numbers serve as a pre-pandemic benchmark.

METRORAIL AVERAGE SATURDAY BOARDINGS BY STATION

Saturdays	Average Saturday	Average Saturday	Percent Change	Average Saturday	Percent Change	Average Saturday	Percent Change	Average Saturday	Percent Change
STATIONS	Sep-24	Sep-23	YOY	Feb-20	Current vs Feb-20	Aug-24	MOM	Sep-19	YO5Y
ALLAPATTAH	880	772	13.9%	1,051	-16.3%	830	6.0%	957	-8.1%
BRICKELL	2,649	2,216	19.6%	2,811	-5.8%	2,379	11.3%	2,395	10.6%
BROWNSVILLE	305	398	-23.4%	520	-41.3%	306	-0.4%	507	-39.8%
UHEALTH JACKSON	774	736	5.2%	959	-19.3%	748	3.5%	895	-13.5%
COCONUT GROVE	991	645	53.5%	928	6.7%	970	2.1%	748	32.5%
CULMER	450	462	-2.6%	721	-37.5%	433	4.0%	614	-26.6%
DADELAND NORTH	1,355	1,311	3.3%	1,994	-32.0%	1,364	-0.7%	1,690	-19.8%
DADELAND SOUTH	1,815	1,803	0.7%	2,625	-30.9%	1,725	5.2%	2,411	-24.7%
DOUGLAS ROAD	1,346	879	53.1%	1,319	2.0%	1,252	7.5%	1,130	19.1%
DR. MARTIN LUTHER KING, JR.	557	370	50.5%	625	-10.9%	544	2.4%	551	1.1%
EARLINGTON HEIGHTS	617	632	-2.4%	935	-34.1%	597	3.3%	851	-27.5%
GOVERNMENT CENTER	2,610	2,464	5.9%	4,262	-38.8%	2,983	-12.5%	3,333	-21.7%
HIALEAH	581	412	41.0%	583	-0.4%	543	6.9%	556	4.4%
MIAMI INTERNATIONAL AIRPORT	962	936	2.8%	1,330	-27.7%	998	-3.5%	1,132	-15.0%
NORTHSIDE	666	727	-8.4%	878	-24.1%	596	11.7%	798	-16.5%
OKEECHOBEE	437	298	46.8%	408	6.9%	425	2.7%	363	20.2%
OVERTOWN / ARENA	666	548	21.5%	678	-1.8%	547	21.6%	493	35.0%
PALMETTO	420	360	16.7%	458	-8.4%	523	-19.8%	382	10.0%
SANTA CLARA	376	321	17.0%	422	-10.9%	353	6.5%	356	5.5%
SOUTH MIAMI	980	868	12.9%	1,256	-22.0%	962	1.8%	1,055	-7.1%
TRI-RAIL	438	477	-8.1%	614	-28.6%	524	-16.3%	471	-7.0%
UNIVERSITY	754	658	14.6%	714	5.6%	637	18.3%	608	24.0%
VIZCAYA	540	470	14.9%	622	-13.2%	507	6.5%	470	15.0%
TOTAL	21,166	18,763	12.8%	26,714	-20.8%	20,748	2.0%	22,761	-7.0%

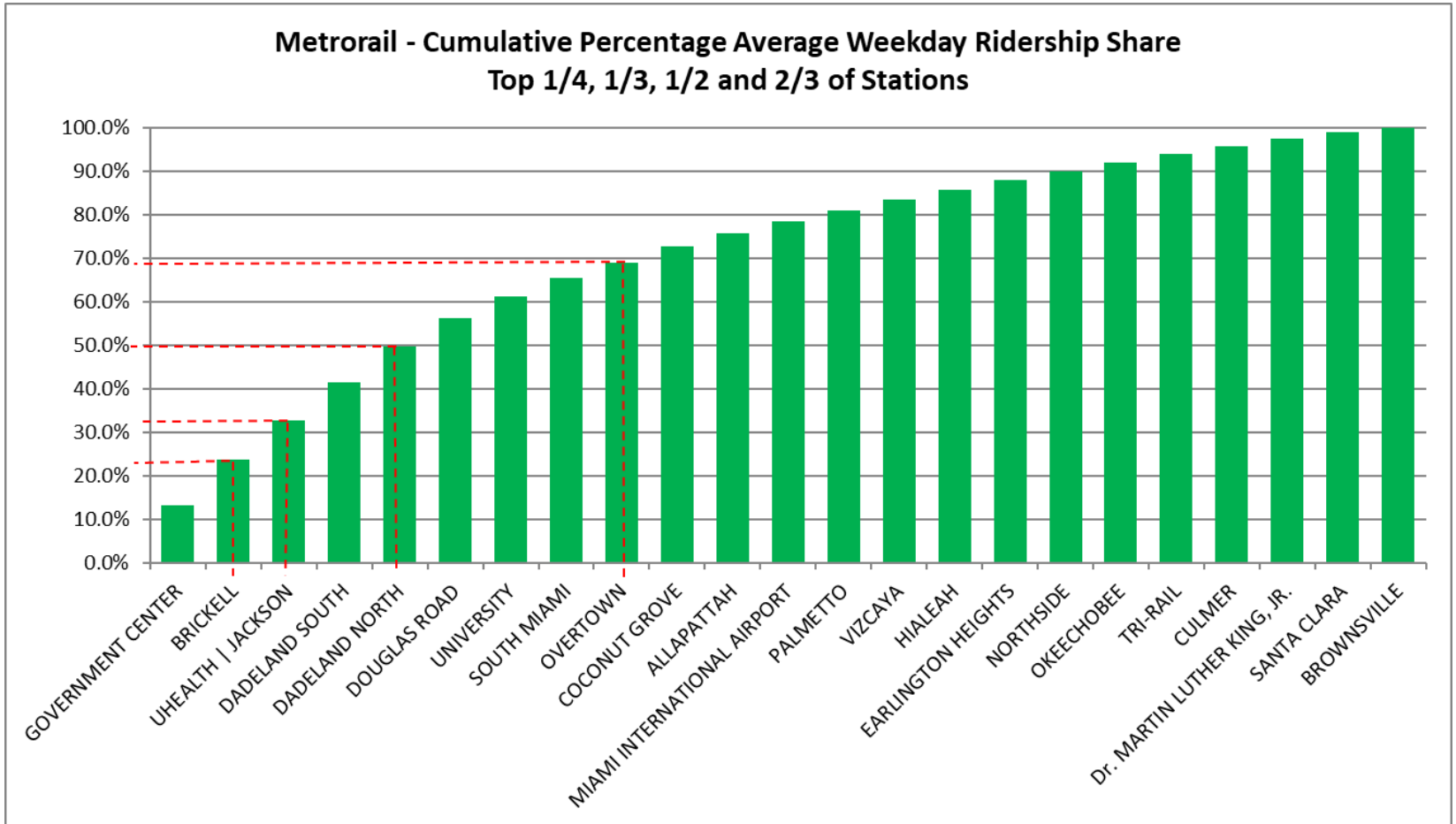
METRORAIL AVERAGE SUNDAY BOARDINGS BY STATION

Sundays	Average Sunday	Average Sunday	Percent Change	Average Sunday	Percent Change	Average Sunday	Percent Change	Average Sunday	Percent Change
STATIONS	Sep-24	Sep-23	YOY	Feb-20	Current vs Feb-20	Aug-24	MOM	Sep-19	YO5Y
ALLAPATTAH	635	580	9.5%	791	-19.7%	610	4.1%	676	-6.1%
BRICKELL	1,885	1,676	12.5%	2,379	-20.7%	1,854	1.7%	1,799	4.8%
BROWNSVILLE	240	267	-10.3%	406	-40.9%	230	4.5%	381	-37.1%
UHEALTH JACKSON	591	553	7.0%	791	-25.3%	577	2.5%	704	-16.0%
COCONUT GROVE	756	467	61.9%	838	-9.8%	733	3.1%	577	31.1%
CULMER	345	325	6.0%	616	-44.1%	339	1.8%	455	-24.3%
DADELAND NORTH	990	970	2.0%	1,685	-41.3%	963	2.8%	1,252	-20.9%
DADELAND SOUTH	1,306	1,365	-4.3%	2,210	-40.9%	1,277	2.3%	1,800	-27.4%
DOUGLAS ROAD	913	580	57.6%	1,090	-16.2%	921	-0.8%	772	18.3%
DR. MARTIN LUTHER KING, JR.	386	350	10.4%	506	-23.7%	429	-10.1%	403	-4.3%
EARLINGTON HEIGHTS	457	527	-13.2%	799	-42.8%	460	-0.5%	636	-28.1%
GOVERNMENT CENTER	1,993	1,923	3.7%	4,044	-50.7%	2,049	-2.7%	2,349	-15.1%
HIALEAH	389	288	35.0%	472	-17.6%	389	0.0%	396	-1.7%
MIAMI INTERNATIONAL AIRPORT	938	928	1.1%	1,343	-30.2%	918	2.2%	1,119	-16.2%
NORTHSIDE	490	554	-11.4%	653	-24.8%	478	2.6%	623	-21.3%
OKEECHOBEE	299	186	60.6%	273	9.4%	287	4.2%	227	31.4%
OVERTOWN / ARENA	509	417	21.9%	544	-6.6%	460	10.6%	379	34.1%
PALMETTO	250	201	24.6%	336	-25.5%	235	6.6%	228	9.7%
SANTA CLARA	251	201	24.9%	280	-10.2%	243	3.5%	229	9.7%
SOUTH MIAMI	681	623	9.5%	987	-30.9%	742	-8.2%	725	-6.0%
TRI-RAIL	326	339	-3.7%	528	-38.2%	368	-11.2%	412	-20.9%
UNIVERSITY	639	487	31.2%	608	5.1%	495	29.2%	397	61.0%
VIZCAYA	373	308	21.0%	524	-28.9%	382	-2.5%	365	2.2%
TOTAL	15,642	14,113	10.8%	22,701	-31.1%	15,434	1.4%	16,905	-7.5%

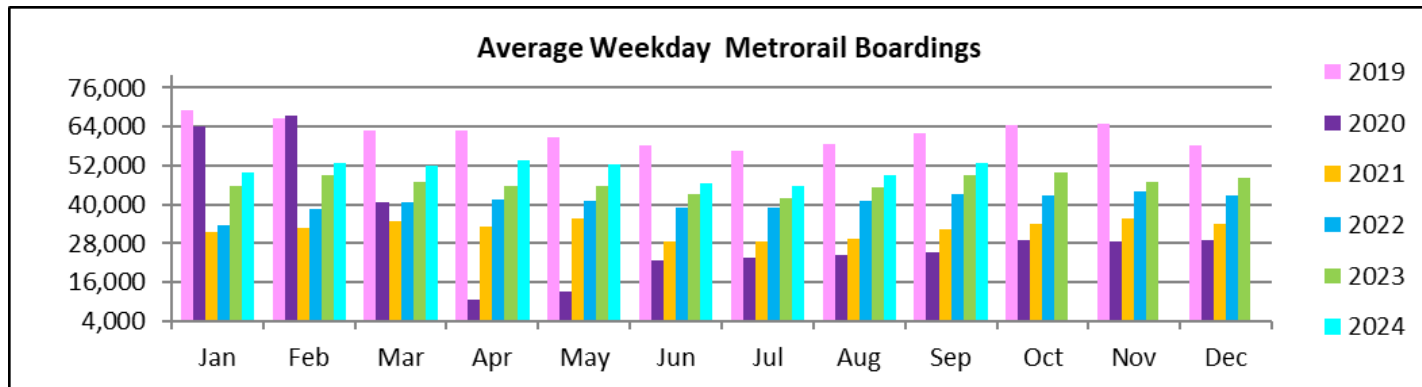
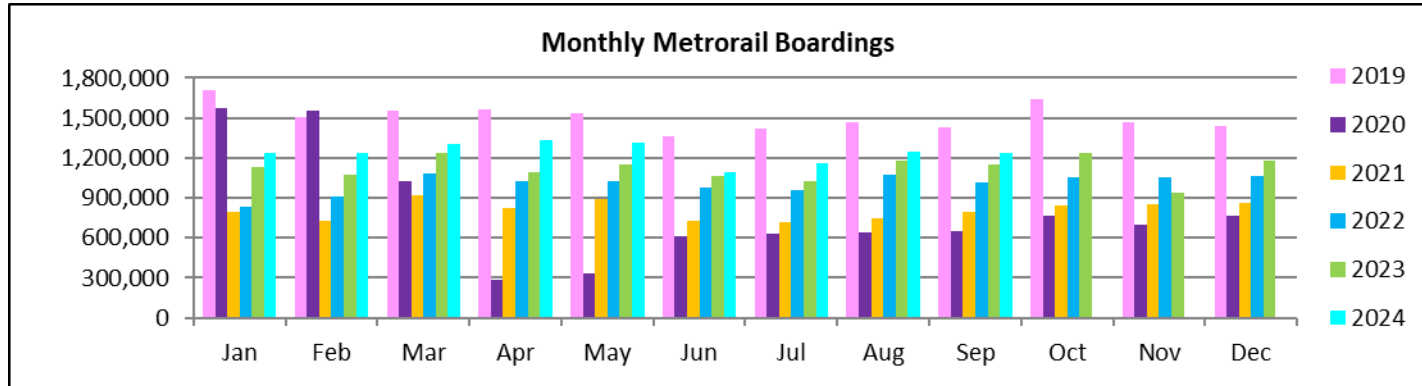
METRORAIL TOTAL MONTHLY BOARDINGS BY STATION

Monthly Totals	Total Month	Total Month	Percent Change	Total Month	Percent Change	Total Month	Percent Change	Total Month	Percent Change
STATIONS	Sep-24	Sep-23	YOY	Feb-20	Current vs Feb-20	Aug-24	MOM	Sep-19	YO5Y
ALLAPATTAH	41,140	38,642	6.5%	46,868	-12.2%	41,793	-1.6%	43,214	-4.8%
BRICKELL	133,744	122,044	9.6%	152,259	-12.2%	136,054	-1.7%	138,586	-3.5%
BROWNSVILLE	14,297	17,002	-15.9%	21,285	-32.8%	14,749	-3.1%	20,472	-30.2%
UHEALTH JACKSON	102,721	96,104	6.9%	128,921	-20.3%	104,559	-1.8%	124,087	-17.2%
COCONUT GROVE	46,615	32,636	42.8%	43,580	7.0%	47,150	-1.1%	37,962	22.8%
CULMER	23,122	24,511	-5.7%	33,497	-31.0%	22,766	1.6%	30,279	-23.6%
DADELAND NORTH	99,275	92,788	7.0%	132,894	-25.3%	100,207	-0.9%	127,402	-22.1%
DADELAND SOUTH	107,768	108,323	-0.5%	162,416	-33.6%	108,682	-0.8%	155,912	-30.9%
DOUGLAS ROAD	78,920	61,807	27.7%	82,141	-3.9%	76,181	3.6%	71,713	10.0%
DR. MARTIN LUTHER KING, JR.	23,687	20,894	13.4%	27,980	-15.3%	24,969	-5.1%	25,611	-7.5%
EARLINGTON HEIGHTS	28,039	32,136	-12.7%	40,697	-31.1%	29,205	-4.0%	37,580	-25.4%
GOVERNMENT CENTER	160,934	157,399	2.2%	243,414	-33.9%	163,151	-1.4%	216,868	-25.8%
HIALEAH	29,951	21,349	40.3%	29,516	1.5%	30,425	-1.6%	28,867	3.8%
MIAMI INTERNATIONAL AIRPORT	37,461	35,981	4.1%	46,115	-18.8%	39,555	-5.3%	41,945	-10.7%
NORTHSIDE	27,962	31,352	-10.8%	36,127	-22.6%	27,426	2.0%	33,874	-17.5%
OKEECHOBEE	24,653	19,676	25.3%	26,026	-5.3%	25,395	-2.9%	25,733	-4.2%
OVERTOWN / ARENA	43,817	39,226	11.7%	49,911	-12.2%	43,899	-0.2%	45,480	-3.7%
PALMETTO	30,323	27,844	8.9%	33,944	-10.7%	31,338	-3.2%	30,873	-1.8%
SANTA CLARA	18,445	16,110	14.5%	19,245	-4.2%	19,105	-3.5%	17,109	7.8%
SOUTH MIAMI	53,982	48,248	11.9%	69,412	-22.2%	53,767	0.4%	63,104	-14.5%
TRI-RAIL	23,365	25,504	-8.4%	29,120	-19.8%	29,024	-19.5%	25,026	-6.6%
UNIVERSITY	59,993	51,915	15.6%	61,253	-2.1%	47,642	25.9%	57,513	4.3%
VIZCAYA	30,243	25,373	19.2%	32,497	-6.9%	29,977	0.9%	28,516	6.1%
TOTAL	1,240,457	1,146,864	8.2%	1,549,118	-19.9%	1,247,019	-0.5%	1,427,726	-13.1%

METRORAIL CUMULATIVE PERCENTAGE RIDERSHIP SHARE



TOTAL MONTHLY AND AVERAGE WEEKDAY RIDERSHIP YEAR OVER YEAR COMPARISON CHARTS – METRORAIL

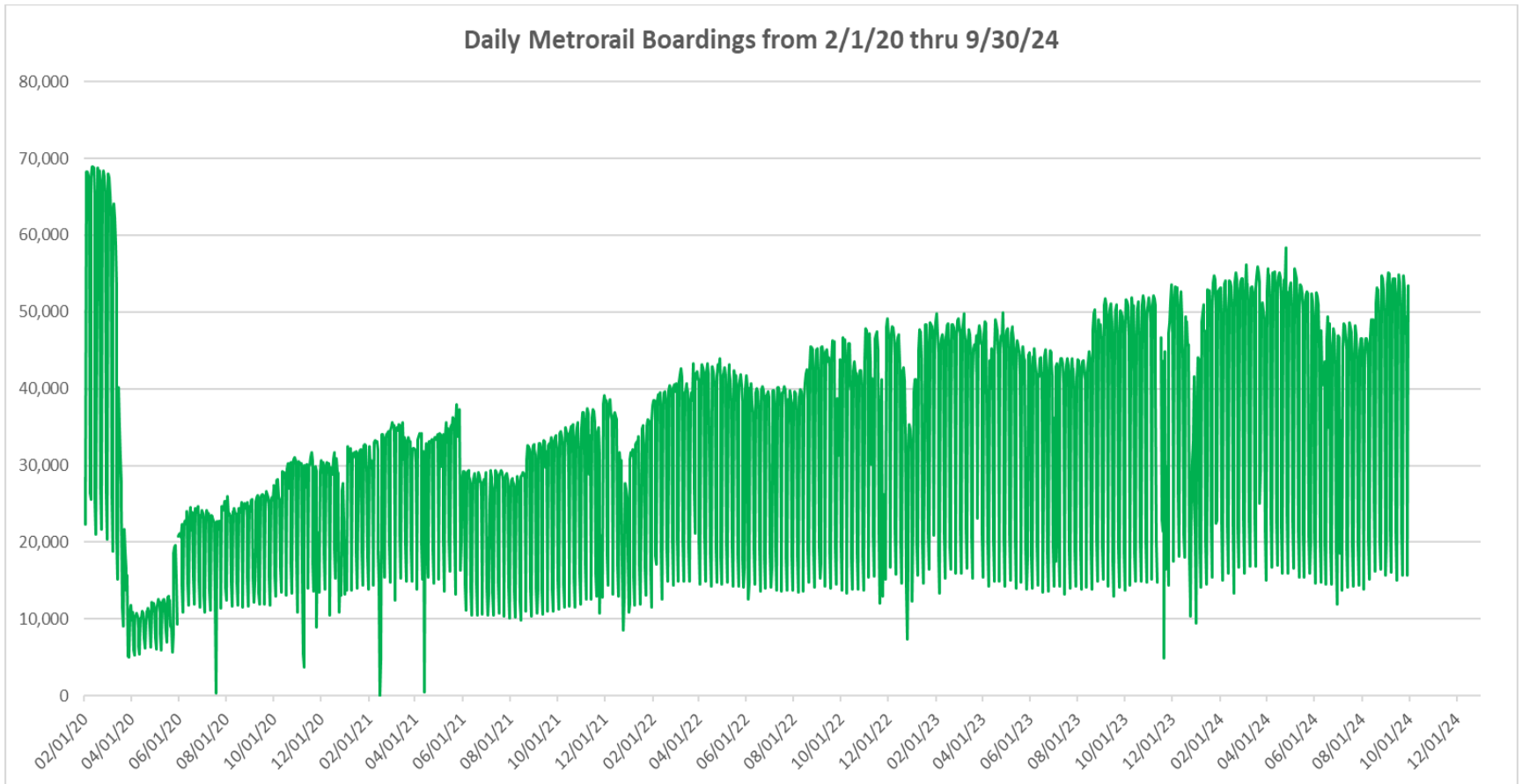


**“TOP 5 / BOTTOM 5” RAIL STATIONS AVERAGE WEEKDAY RIDERSHIP PERFORMANCE
YEAR OVER YEAR COMPARISONS**

Station	Sep-24	Sep-23	Absolute Delta (1)	Percent Delta
DOUGLAS ROAD	3,386	2,702	684	25.3%
COCONUT GROVE	1,898	1,346	552	41.0%
BRICKELL	5,559	5,097	463	9.1%
HIALEAH	1,258	891	368	41.3%
UNIVERSITY	2,651	2,305	346	15.0%
EARLINGTON HEIGHTS	1,136	1,308	-173	-13.2%
NORTHSIDE	1,112	1,241	-129	-10.4%
BROWNSVILLE	578	681	-103	-15.1%
TRI-RAIL	975	1,067	-92	-8.7%
CULMER	959	1,024	-65	-6.3%

(1) Averages rounded to the nearest boarding.

DAILY METRORAIL RIDERSHIP SINCE FEBRUARY 1, 2020



- (1) There was no Metrobus, Metrorail and Metromover service on 5/31/20, as a safety precaution, and no service for any of the four modes on 9/28/22 as a result of Hurricane Ian..
- (2) The dip at the start of the second week of Nov-20 is due to Hurricane Eta; these are *raw data* from the Unleash Live contractor AI video system.
- (3) The dip on 4/13/21 is due to a loss of connectivity at all stations, affecting a few stations over the next two days as well; a similar loss of connectivity is seen on 11/21/23.
- (4) The reduction seen beginning 6/1/21 is partly due to the resumption of fares and partly the result of resuming reporting Cubic faregate data rather than video camera counts.
- (5) As a result of free fares to launch the Better Bus Network, faregates are open beginning 11/13/23, and Unleash Live AI video system ridership counts are reported starting 11/17/23; the isolated peak in Dec-23 is visible.
- (6) Periodic (weekly) variations are prominent, since weekday ridership is almost always significantly higher than weekend or holiday ridership; a few low-count days are due to system outages, often associated with construction or renovation work.

METRORAIL PARKING PATRONAGE SUMMARY September 2024

PARK-RIDE LOT	ACTUAL CAPACITY (1)	ACTUAL OCCUPANCY (2)	PERCENT OCCUPANCY
DADELAND SOUTH	1,260	779	62%
DADELAND NORTH	1,702	998	59%
SOUTH MIAMI	816	350	43%
UNIVERSITY	260	199	77%
DOUGLAS ROAD	222		
COCONUT GROVE	100		
VIZCAYA	120	43	36%
CULMER	25	15	58%
SANTA CLARA	61	37	61%
ALLAPATTAH	74	7	9%
EARLINGTON HEIGHTS	361	164	45%
BROWNSVILLE	100	81	81%
DR. MARTIN LUTHER KING JR. (MDT)	62		
DR. MARTIN LUTHER KING JR. (GARAGE)	631		
NORTHSIDE	100	81	81%
HIALEAH	338	59	17%
OKEECHOBEE	1,398	155	11%
PALMETTO	700	164	23%
TOTAL	8,330	3,132	38%

- (1) Number of spaces could vary each week; shown are available spaces during final week of month, as submitted by DTPW Safety & Security office.
(2) All sampled occupancy data provided by DTPW Safety & Security office; calculations are revisions to those submitted by that entity.
(3) Daily averages rounded to nearest unit, with fewer samples at some stations than others, depending on staffing levels; calculations are based on sampled counted days only per raw data submitted, with resulting average daily occupancy shown.

Metromover



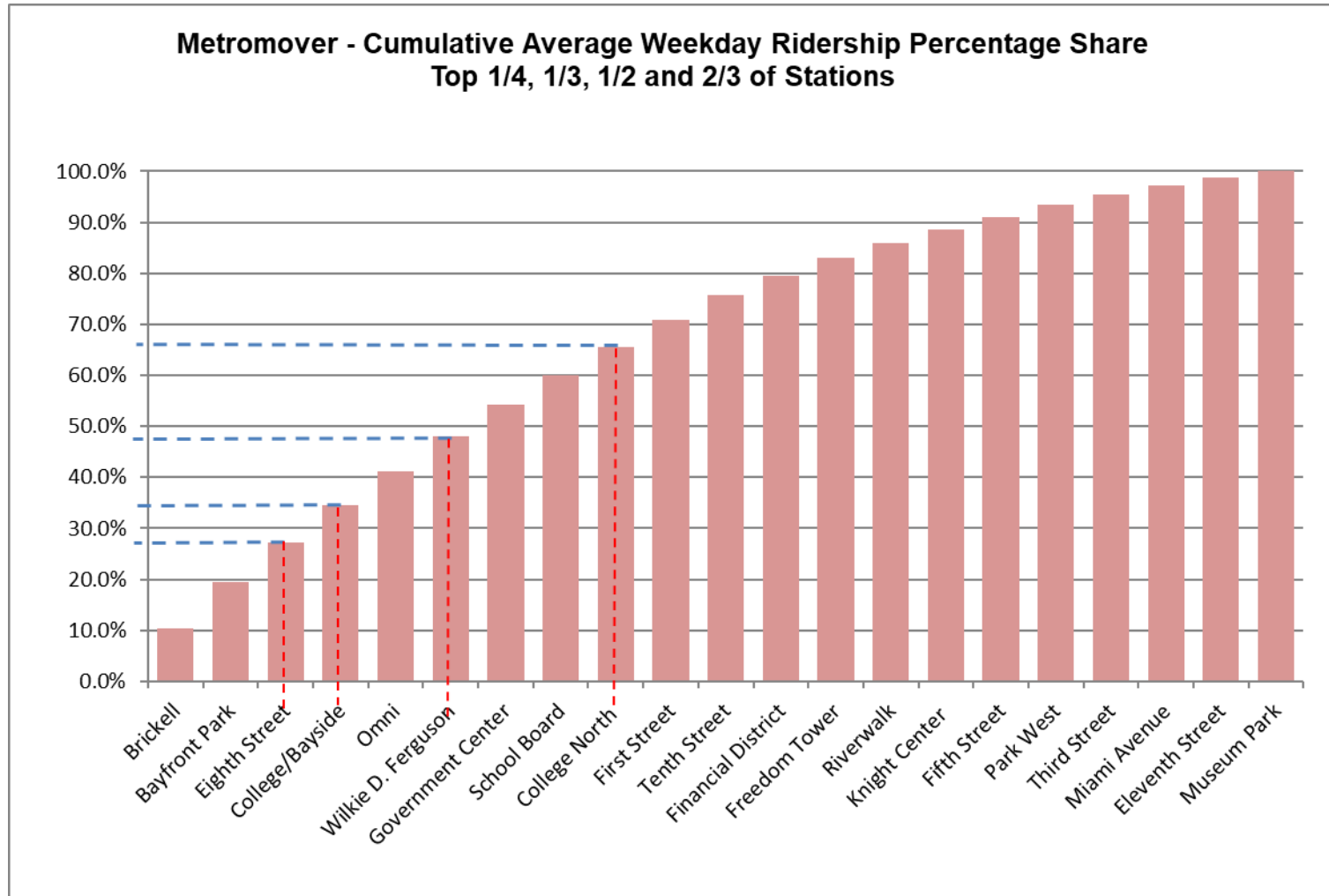
September 2024

METROMOVER MONTHLY AND AVERAGE DAILY BOARDINGS BY STATION

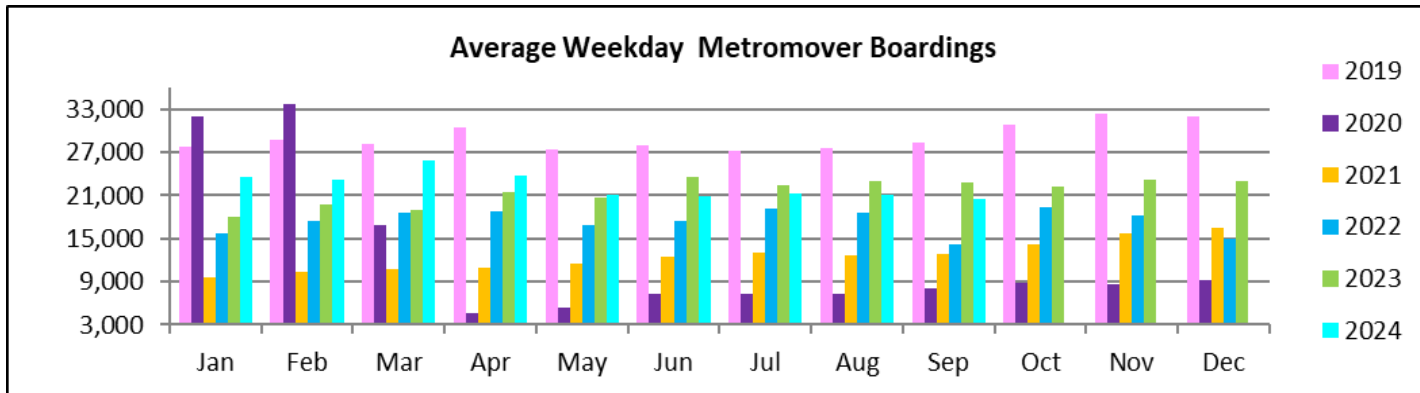
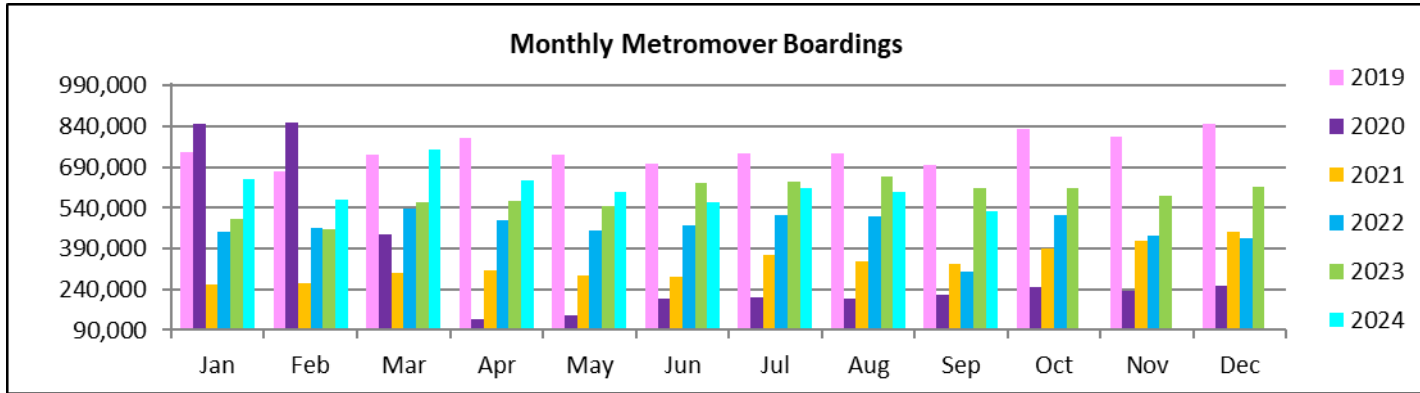
	Average Weekday	Average Weekday	Percent Change	Average Saturday	Average Saturday	Percent Change	Average Sunday	Average Sunday	Percent Change	Total Monthly	Total Monthly	Percent Change
STATIONS	Sep-24	Sep-23	24 vs 23	Sep-24	Sep-23	24 vs 23	Sep-24	Sep-23	24 vs 23	Sep-24	Sep-23	24 vs 23
School Board	1,181	1,260	-6.3%	594	934	-36.4%	881	848	3.9%	31,416	34,118	-7.9%
Omni	1,391	1,900	-26.8%	660	1,308	-49.6%	906	1,166	-22.3%	36,091	50,563	-28.6%
Museum Park	266	262	1.6%	274	422	-35.2%	302	413	-26.8%	8,244	9,529	-13.5%
Eleventh Street	308	280	9.8%	154	241	-36.3%	193	207	-7.0%	7,937	7,895	0.5%
Park West	488	831	-41.3%	261	757	-65.6%	366	534	-31.6%	13,017	23,113	-43.7%
Freedom Tower	724			393			537			19,233		
Government Center	1,308	2,533	-48.4%	721	1,743	-58.6%	805	1,369	-41.2%	34,095	66,425	-48.7%
Miami Avenue	377	362	4.2%	153	274	-44.4%	218	238	-8.2%	9,519	9,814	-3.0%
Third Street	389	450	-13.6%	306	333	-8.1%	338	275	23.2%	11,001	12,161	-9.5%
Knight Center	549	582	-5.6%	220	328	-32.9%	250	251	-0.6%	13,401	14,564	-8.0%
Bayfront Park	1,856	2,179	-14.8%	846	1,572	-46.2%	1,089	1,349	-19.3%	47,184	58,157	-18.9%
First Street	1,083	1,265	-14.3%	570	1,028	-44.6%	782	883	-11.4%	28,623	34,866	-17.9%
College/Bayside	1,484	1,507	-1.5%	716	1,174	-39.0%	994	1,027	-3.3%	38,562	41,136	-6.3%
College North	1,120	1,117	0.2%	415	645	-35.7%	413	471	-12.3%	26,546	28,016	-5.2%
Wilkie D. Ferguson	1,385	1,521	-8.9%	498	1,043	-52.3%	689	756	-8.8%	33,817	39,551	-14.5%
Riverwalk	574	720	-20.2%	263	557	-52.9%	341	417	-18.2%	14,642	19,264	-24.0%
Fifth Street	532	432	23.2%	217	317	-31.7%	310	263	17.8%	13,448	11,596	16.0%
Eighth Street	1,607	1,525	5.3%	943	1,201	-21.4%	1,241	1,123	10.5%	43,395	42,439	2.3%
Tenth Street	1,009	1,046	-3.5%	468	758	-38.3%	609	616	-1.1%	25,753	27,809	-7.4%
Brickell	2,119	2,226	-4.8%	963	1,510	-36.2%	1,147	1,233	-7.0%	53,279	58,370	-8.7%
Financial District	782	859	-9.0%	154	443	-65.2%	358	374	-4.2%	18,457	21,424	-13.8%
TOTAL	20,532	22,856	-10.2%	9,786	16,590	-41.0%	12,768	13,813	-7.6%	527,660	610,810	-13.6%

(*) Some Metromover stations were closed for construction during the 2023-2024 period, due to construction work; associated were numerous power and data outages, including on weekends

METROMOVER CUMULATIVE PERCENTAGE RIDERSHIP SHARE



TOTAL MONTHLY AND AVERAGE WEEKDAY RIDERSHIP YEAR OVER YEAR COMPARISON CHARTS – METROMOVER

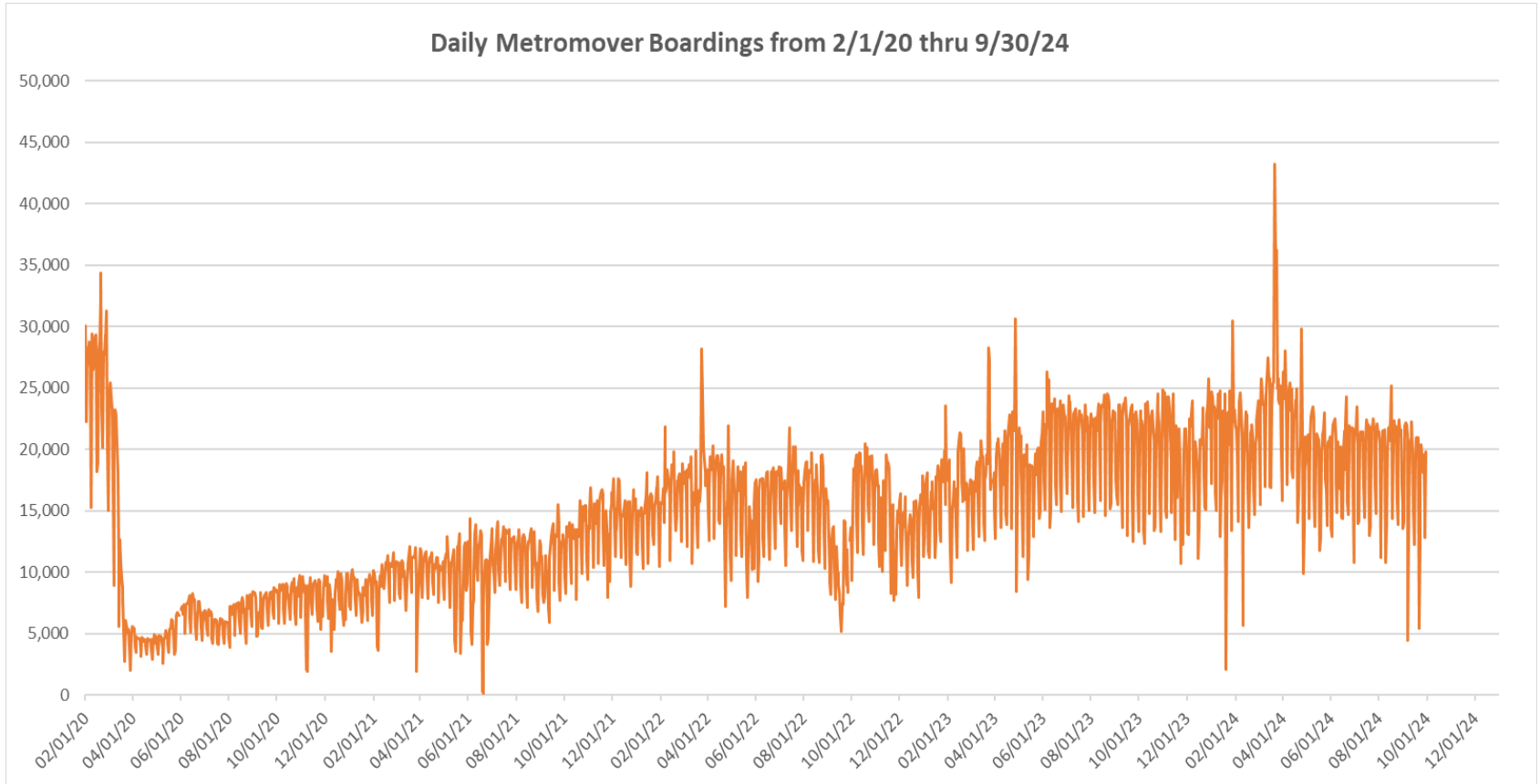


**“TOP 5 / BOTTOM 5” MOVER STATIONS AVERAGE WEEKDAY RIDERSHIP PERFORMANCE
YEAR OVER YEAR COMPARISONS**

Station	Sep-24	Sep-23	Absolute Delta (1)	Percent Delta
Fifth Street	532	432	100	23.2%
Eighth Street	1,607	1,525	82	5.3%
Eleventh Street	308	280	27	9.8%
Miami Avenue	377	362	15	4.2%
Museum Park	266	262	4	1.6%
Government Center	1,308	2,533	-1,225	-48.4%
Omni	1,391	1,900	-509	-26.8%
Park West	488	831	-343	-41.3%
Bayfront Park	1,856	2,179	-324	-14.8%
First Street	1,083	1,265	-181	-14.3%

(1) Averages rounded to the nearest boarding.

DAILY METROMOVER RIDERSHIP SINCE FEBRUARY 1, 2020



- (1) There was no Metrobus, Metrorail and Metromover service on 5/31/20, as a safety precaution, and no service for any of the four modes on 9/28/22 as a result of Hurricane Ian.
- (2) The dip at the start of the second week of Nov-20 is due to Hurricane Eta; these are *raw data* from the UTA contractor APC system. Other more recent dips are due to various station closures (mostly on weekends) for system maintenance purposes. Pronounced peaks are associated with major events in Downtown Miami, such as the Corporate Run and Ultramusic Festival.
- (3) Periodic (weekly) variations are prominent, since weekday ridership is almost always significantly higher than weekend or holiday ridership; a few low-count days are due to system outages, often associated with construction or renovation work, including on weekends.

Special Transportation Services

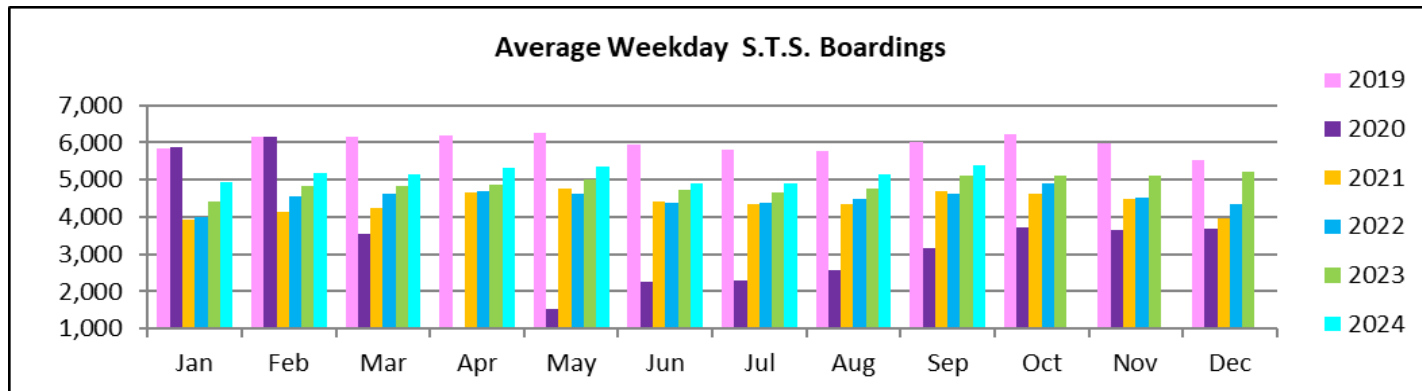
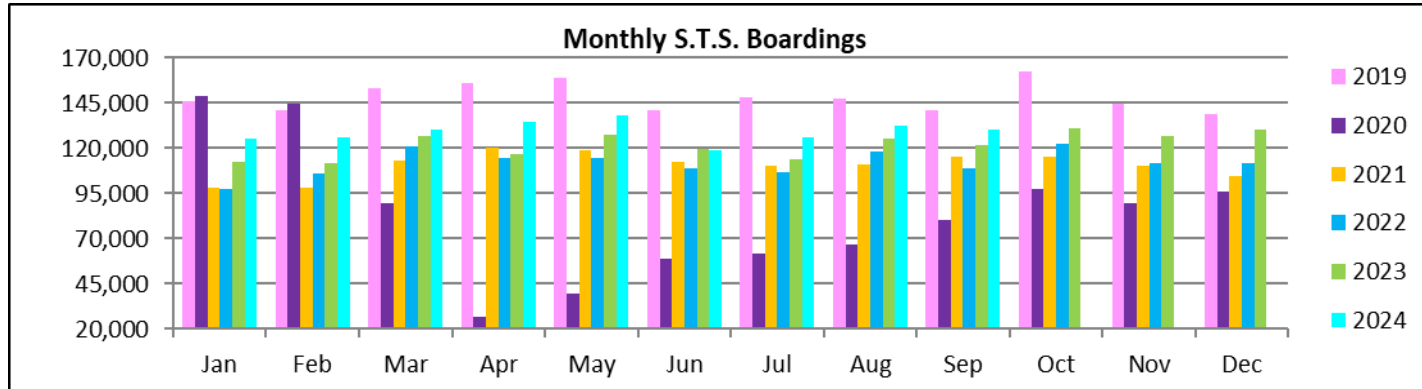


STS MONTHLY AND AVERAGE DAILY BOARDINGS September 2024

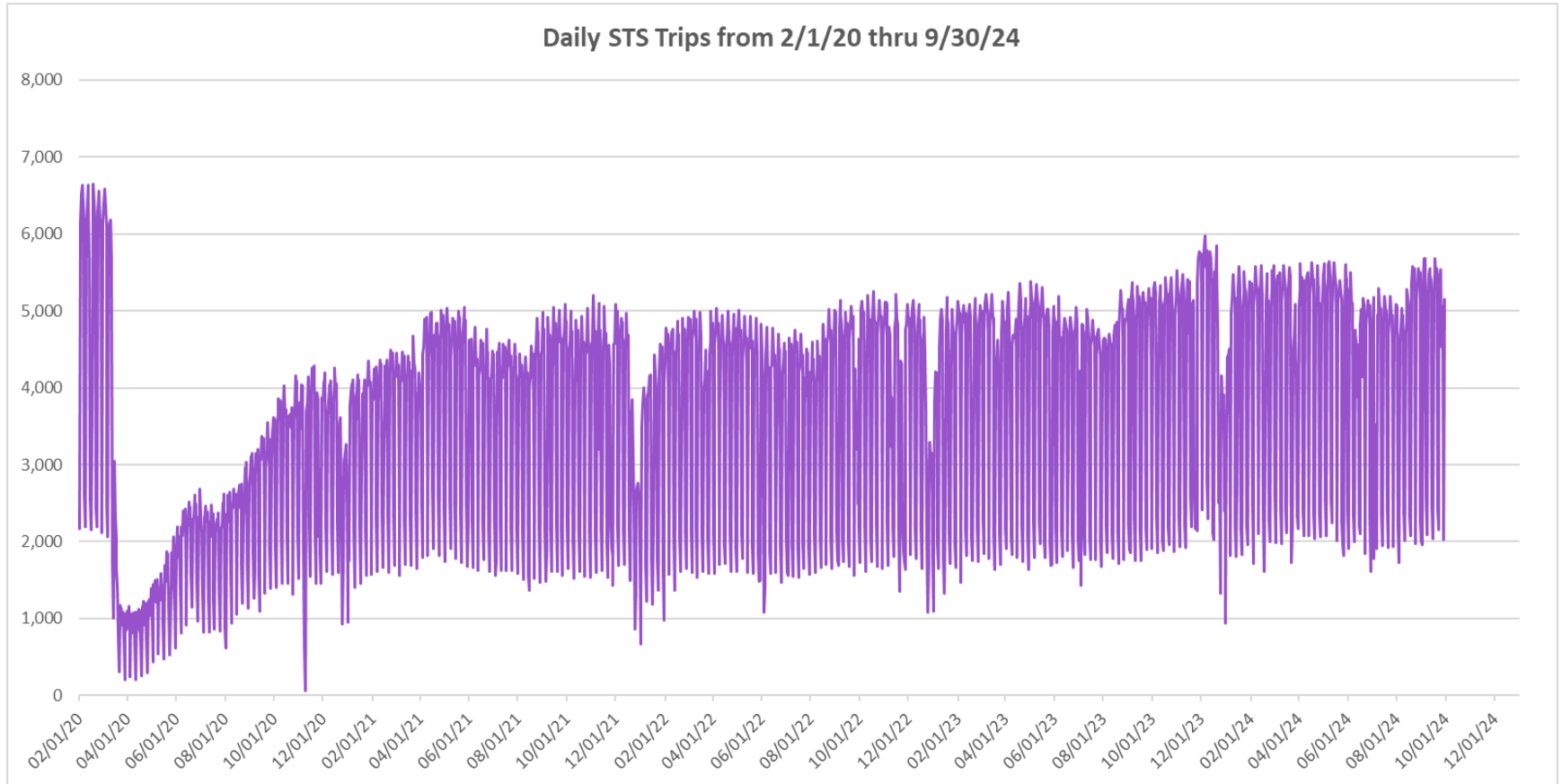
Measure	timeline	Ambulatory	Wheelchair	Total Clients (*)
Average Weekday	Sep-24	4,536	867	5,403
Average Saturday	Sep-24	2,069	396	2,465
Average Sunday	Sep-24	1,707	347	2,054
Total Monthly	Sep-24	109,234	21,010	130,244
Average Weekday	Sep-23	4,266	831	5,097
Average Saturday	Sep-23	1,790	401	2,191
Average Sunday	Sep-23	1,489	345	1,834
Total Monthly	Sep-23	101,708	20,357	122,065
Average Weekday	Sep-22	3,817	795	4,612
Average Saturday	Sep-22	1,662	373	2,035
Average Sunday	Sep-22	1,359	325	1,684
Total Monthly	Sep-22	89,777	19,011	108,788
% Change Current vs. September 2023 Weekday		6.3%	4.3%	6.0%
% Change Current vs. September 2023 Saturday		15.6%	-1.2%	12.5%
% Change Current vs. September 2023 Sunday		14.6%	0.6%	12.0%
% Change Current vs. September 2023 Month Total		7.4%	3.2%	6.7%
% Change Current vs. September 2022 Weekday		18.8%	9.1%	17.2%
% Change Current vs. September 2022 Saturday		24.5%	6.3%	21.1%
% Change Current vs. September 2022 Sunday		25.6%	6.8%	22.0%
% Change Current vs. September 2022 Month Total		21.7%	10.5%	19.7%

(*) Trip count data provided by STS contractor.

TOTAL MONTHLY AND AVERAGE WEEKDAY RIDERSHIP YEAR OVER YEAR COMPARISON CHARTS – SPECIAL TRANSPORTATION SERVICES (S.T.S.)

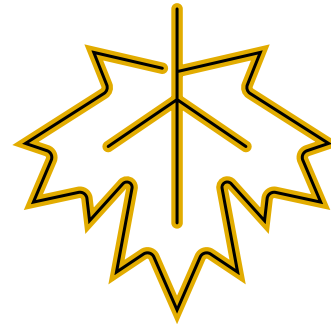
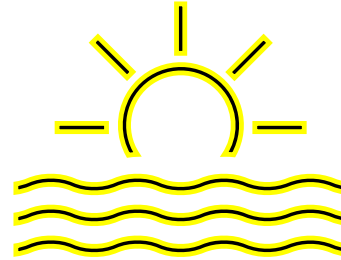


DAILY STS RIDERSHIP SINCE FEBRUARY 1, 2020

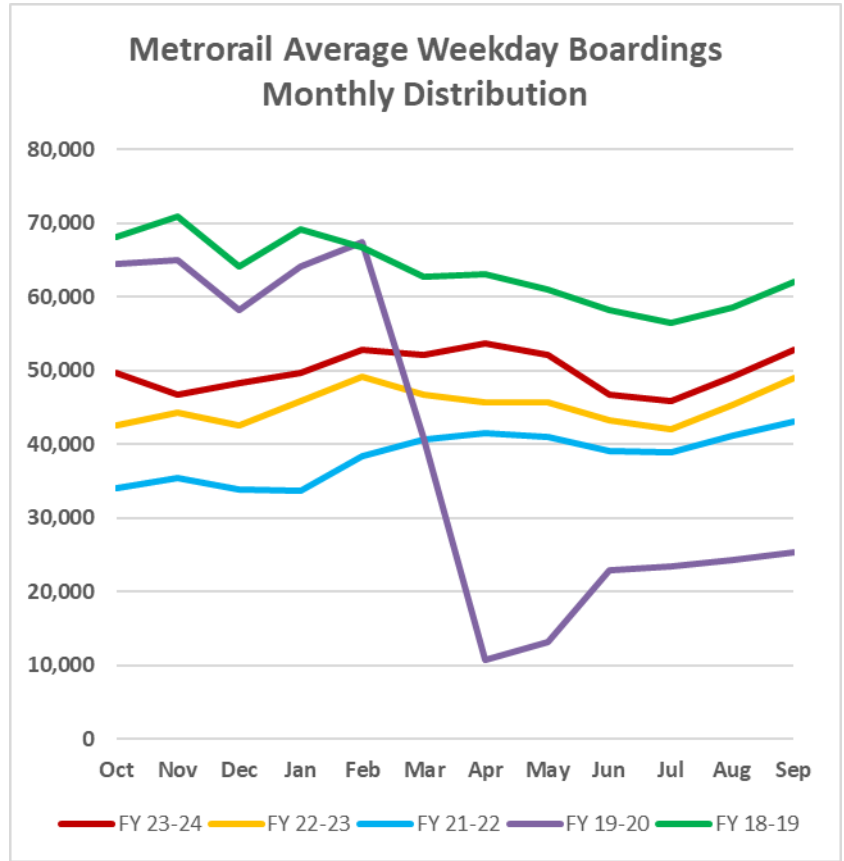
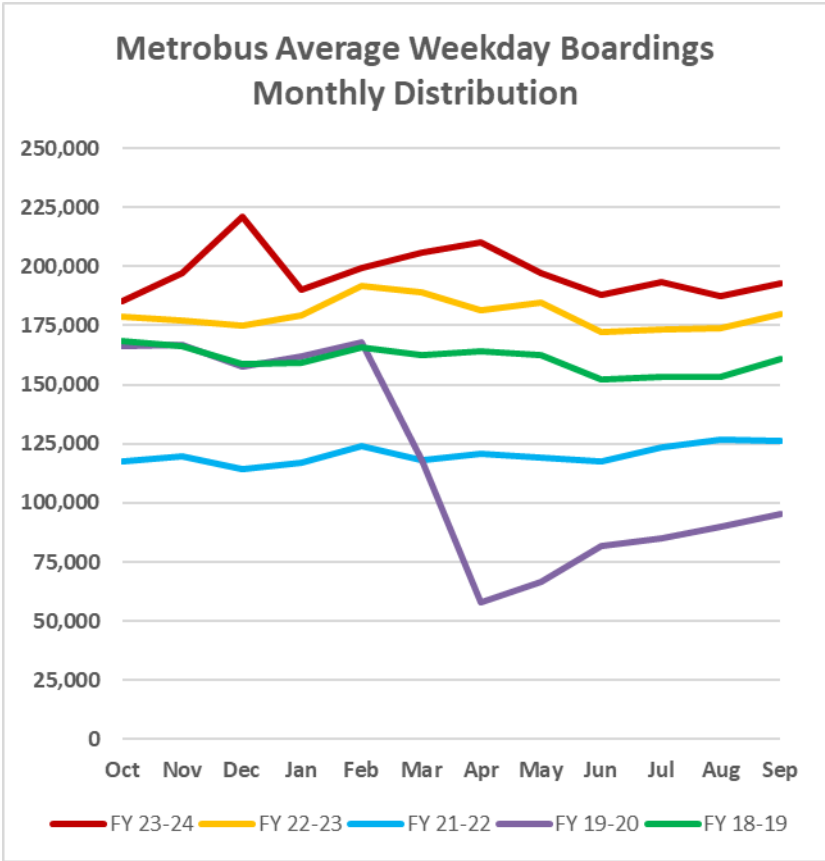


- (1) There was no service (for any of the four modes) on 9/28/22 as a result of Hurricane Ian.
- (2) The dip at the start of the second week of Nov-20 is due to Hurricane Eta; the peak in Dec-23 is due to the free fares from the Better Bus Network.
- (3) Periodic (weekly) variations are prominent, since weekday ridership is almost always significantly higher than weekend or holiday ridership.

Ridership Seasonality

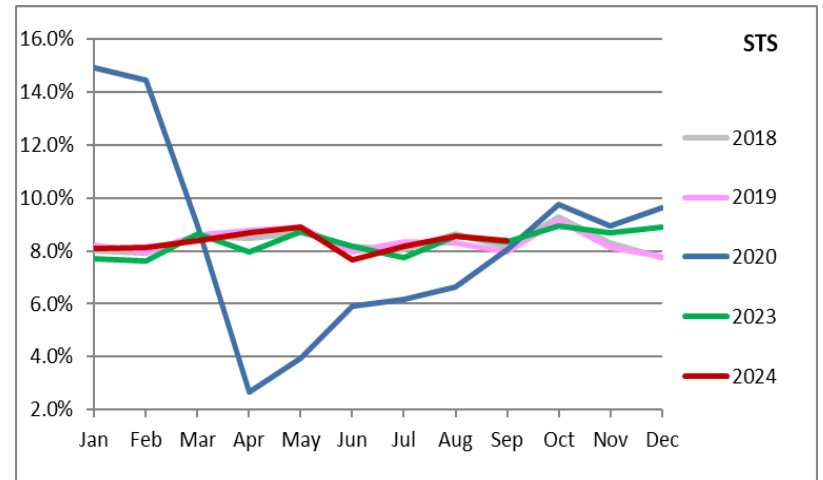
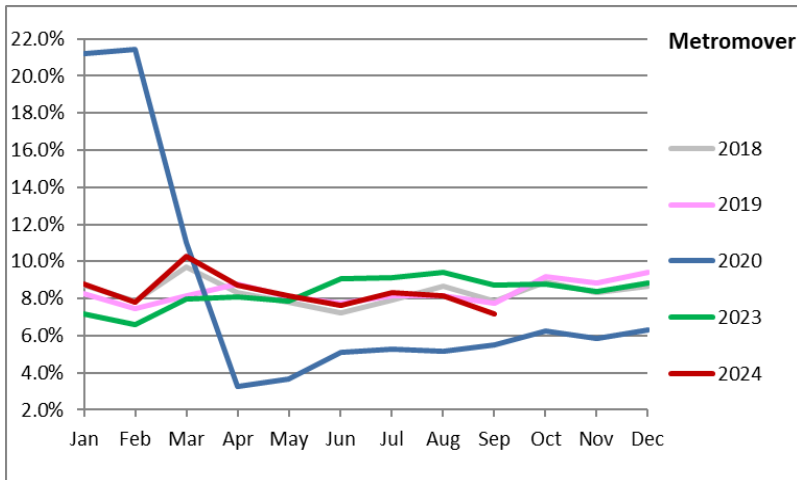
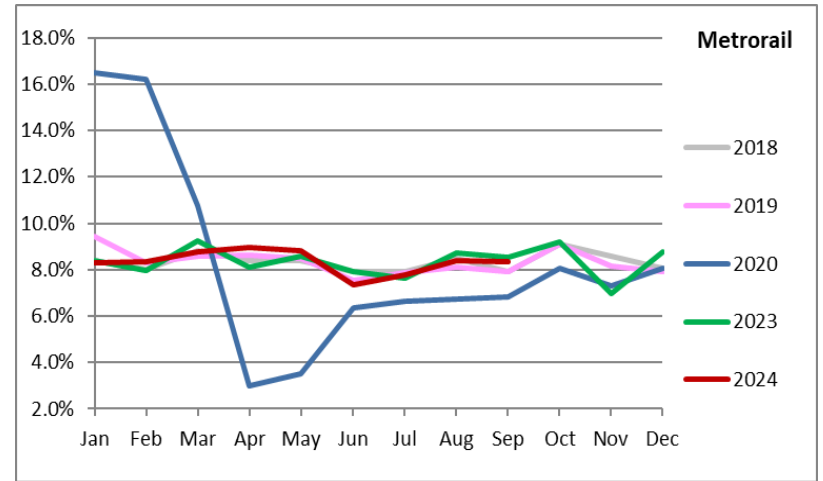
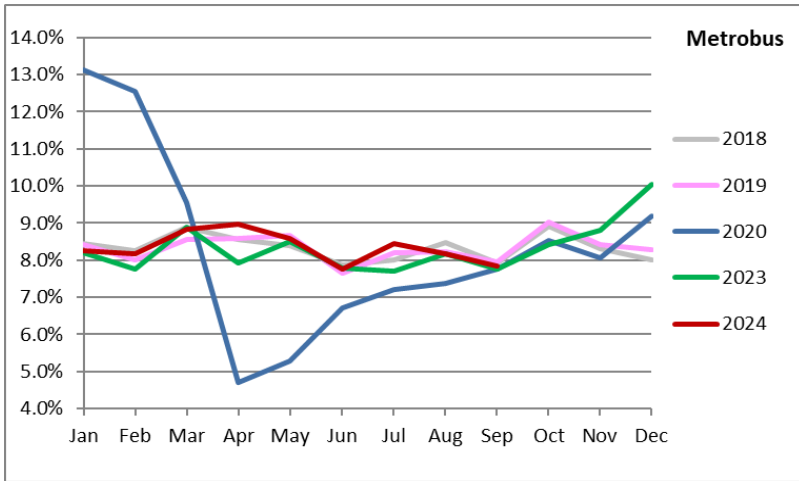


RIDERSHIP SEASONALITY – AVERAGE WEEKDAY RIDERSHIP BY MONTH AND FISCAL YEAR FOR METROBUS AND METRO RAIL



Note: the prominent dip seen in the beginning in the spring of 2020 is due to the SARS-CoV-2 pandemic. The pronounced rise beginning Nov-23 for Metrobus and Metrorail can be attributed to the launch of the Better Bus Network and the attendant free fares, which ended on New Year's Day 2024.

RIDERSHIP SEASONALITY – PERCENT SHARE OF TOTAL RIDERSHIP BY MONTH AND CALENDAR YEAR FOR EACH MODE



Note: the prominent dip seen in the beginning in the spring of 2020 is due to the SARS-CoV-2 pandemic. The pronounced rise beginning Nov-23 for Metrobus and Metrorail can be attributed to the launch of the Better Bus Network and the attendant free fares, which ended on New Year's Day 2024.