



# TRANSPORTATION AND PUBLIC WORKS

## RIDERSHIP TECHNICAL REPORT

*Division of Performance Analysis*



October 2024

# Table of Contents

<i>Table of Contents</i>	2-3
<b>All Modes Overview</b>	<b>4</b>
Total Monthly Weekday, Saturday and Sunday Monthly Boardings By Mode	5
Average Weekday, Saturday and Sunday Boardings by Mode	6
Metrobus Total Monthly Ridership Comparisons by Fiscal Year	7
Metrorail Total Monthly Ridership Comparisons by Fiscal Year	8
Metromover Total Monthly Ridership Comparisons by Fiscal Year	9
STS Total Monthly Ridership Comparisons by Fiscal Year	10
All-Modes Combined Total Monthly Ridership Comparisons By Fiscal Year	11
All Modes Combined Total Monthly and Average Weekday Ridership – Year over Year Comparison Charts	12
Average Weekday Ridership – Modal Splits	13
Daily Ridership for All Modes Combined since 2/1/20	14
<b>Metrobus</b>	<b>15</b>
Better Bus Network (BBN, 11/13/2023 Lineup) Bus Route Changes, Pt 1 and Pt 2	16-17
Metrobus Average Weekday Boardings by Route	18-20
Metrobus Average Saturday Boardings by Route	21-22
Metrobus Average Sunday Boardings by Route	23-24
Metrobus Monthly Total Boardings by Route	25-27
Bus Ridership by Route Service Type Lineups Comparison (month-over-month & month-over-12 months)	28-31
Bus Routes as Ranked by Percentage of Average Weekday Ridership	32
Metrobus Cumulative Percentage Average Weekday Ridership Share by Route (Top 75%)	33
Metrobus Estimated Weekday Ridership since 02/01/20 (two-week moving averages)	34
Total Monthly and Average Weekday Bus Ridership – Year over Year Comparison Charts	35
Bus “Top 10 / Bottom 10” Bus Routes Average Weekday Ridership Performance – Month-over-Month Comparisons	36
Bus “Top 10 / Bottom 10” Bus Routes Sets Average Weekday Ridership Performance – Year-over-Year Comparisons	37
Bus “Top 10 / Bottom 10” Bus Routes Sets Average Weekday Ridership Performance – Month-over-60 Month Comparisons	38
Daily Metrobus Ridership since 2/1/20	39
Metrobus Parking Patronage Summary	40

## Table of Contents (continued)

<b>Metrorail</b>	<b>41</b>
Metrorail Average Weekday Boardings by Station	42
Metrorail Average Saturday Boardings by Station	43
Metrorail Average Sunday Boardings by Station	44
Metrorail Total Monthly Boardings by Station	45
Metrorail Cumulative Percentage Average Weekday Ridership Share	46
Metrorail Weekday Ridership since 02/01/20 (two-week moving averages)	47
Total Monthly and Average Weekday Rail Ridership – Year over Year Comparison Charts	48
“Top 5 / Bottom 5” Stations Average Weekday Ridership Performance	49
Daily Metrorail Ridership since 2/1/20	50
Metrorail Parking Patronage Summary	51
<b>Metromover</b>	<b>52</b>
Monthly and Average Daily Mover Boardings by Station	53
Metromover Cumulative Percentage Average Weekday Ridership Share	54
Total Monthly and Average Weekday Mover Ridership – Year over Year Comparison Charts	55
“Top 5 / Bottom 5” Stations Average Weekday Ridership Performance	56
Daily Metromover Ridership since 2/1/20	57
<b>Special Transportation Services (STS)</b>	<b>58</b>
STS Monthly and Average Daily Boardings	59
Total Monthly and Average Weekday STS Ridership – Year over Year Comparison Charts	60
Daily STS Ridership since 2/1/20	61
<b>Ridership Seasonality</b>	<b>62</b>
Ridership Seasonality – Average Weekday Ridership by Month and Fiscal Year for Metrobus and Metrorail	63
Ridership Seasonality – Percent Share of Total Ridership by Month and Calendar Year for Each Mode	64

# All Modes Overview



**TOTAL MONTHLY WEEKDAY, SATURDAY AND SUNDAY BOARDINGS BY MODE  
October 2024**

<b>TRAVEL MODE</b>	<b>MONTH'S TOTAL WEEKDAYS RIDERSHIP</b>	<b>MONTH'S TOTAL SATURDAYS RIDERSHIP</b>	<b>MONTH'S TOTAL SUNDAYS RIDERSHIP</b>	<b>TOTAL MONTHLY RIDERSHIP</b>	<b>% CHANGE vs Oct-23 TOTAL MONTH RIDERSHIP</b>
<b>METROBUS (1)</b>	4,249,803	468,516	325,010	5,043,329	2.7%
<b>METRORAIL (2)</b>	1,174,070	85,350	61,693	1,321,113	6.8%
<b>METROMOVER</b>	445,100	53,355	51,599	550,054	-10.5%
<b>STS PARATRANSIT (3)</b>	117,210	9,826	7,816	134,852	3.0%
<b>TOTAL</b>	<b>5,986,183</b>	<b>617,047</b>	<b>446,118</b>	<b>7,049,348</b>	<b>2.2%</b>

- (1) Metrobus ridership reporting through automatic passenger counters coupled with a new enhanced sensor system resumed on October 1, 2022.
- (2) Metrorail fares resumed on June 1, 2021, following a 14-month period of fare-free rides as a result of the SARS-CoV-2 pandemic. The NextFare System faregate data replaced the video data as Rail ridership data of record starting on that date, until free fares were reinstated for the Better Bus Network launch on 11/13/23. The NextFare System Rail faregate data collection and reporting resumed on New Year's Day 2024.
- (3) Paratransit (STS) ridership data as reported by the contractor and subsequently audited by the Department.

**AVERAGE WEEKDAY, SATURDAY AND SUNDAY BOARDINGS BY MODE  
October 2024**

<b>Travel Mode</b>	<b>Average Weekday</b>	<b>Average Saturday</b>	<b>Average Sunday</b>	<b>% Change vs. Oct-23 Weekday</b>	<b>% Change vs. Oct-23 Saturday</b>	<b>% Change vs. Oct-23 Sunday</b>
<b>METROBUS</b>	184,845	117,129	81,253	-0.3%	9.1%	-0.2%
<b>METRORAIL</b>	51,311	21,338	15,423	3.2%	9.9%	6.1%
<b>METROMOVER</b>	19,549	13,339	12,900	-12.3%	-11.2%	-4.3%
<b>STS PARATRANSIT</b>	5,096	2,457	1,954	-0.5%	11.4%	3.1%
<b>Totals</b>	<b>260,801</b>	<b>154,262</b>	<b>111,530</b>	<b>-0.6%</b>	<b>7.1%</b>	<b>0.2%</b>

(\*) Average ridership is calculated and published only for those days and stations or routes with nontrivial amounts of reported data.

## METROBUS TOTAL MONTHLY RIDERSHIP COMPARISONS BY FISCAL YEAR

<b>Bus Month</b>	<b>FY 19</b>	<b>FY 20</b>	<b>FY 21</b>	<b>FY 22</b>	<b>FY 23</b>	<b>FY 24</b>	<b>FY 25</b>	<b>Variance 19 to 20</b>	<b>Variance 20 to 21</b>	<b>Variance 21 to 22</b>	<b>Variance 22 to 23</b>	<b>Variance 23 to 24</b>	<b>Variance 24 to 25</b>
<b>Oct</b>	4,554,886	4,507,012	2,805,139	3,081,157	4,679,725	4,912,151	5,043,329	-1.1%	-37.8%	9.8%	51.9%	5.0%	2.7%
<b>Nov</b>	4,245,535	4,197,225	2,651,290	3,056,726	4,549,666	5,135,172		-1.1%	-36.8%	15.3%	48.8%	12.9%	
<b>Dec</b>	4,081,581	4,126,990	3,022,530	3,123,883	4,677,460	5,857,057		1.1%	-26.8%	3.4%	49.7%	25.2%	
<b>Jan</b>	4,195,911	4,316,998	3,082,746	3,029,055	4,785,128	5,103,257		2.9%	-28.6%	-1.7%	58.0%	6.6%	
<b>Feb</b>	3,994,019	4,123,083	3,076,966	2,995,789	4,526,317	5,053,665		3.2%	-25.4%	-2.6%	51.1%	11.7%	
<b>Mar</b>	4,266,768	3,136,162	3,660,639	3,218,562	5,183,872	5,461,317		-26.5%	16.7%	-12.1%	61.1%	5.4%	
<b>Apr</b>	4,291,135	1,544,316	3,625,048	3,105,797	4,618,302	5,548,614		-64.0%	134.7%	-14.3%	48.7%	20.1%	
<b>May</b>	4,330,922	1,734,609	3,683,343	3,097,574	4,953,197	5,308,711		-59.9%	112.3%	-15.9%	59.9%	7.2%	
<b>Jun</b>	3,823,863	2,210,725	2,672,570	3,064,059	4,545,050	4,805,039		-42.2%	20.9%	14.6%	48.3%	5.7%	
<b>Jul</b>	4,094,906	2,366,749	2,769,907	3,189,994	4,484,458	5,230,894		-42.2%	17.0%	15.2%	40.6%	16.6%	
<b>Aug</b>	4,109,613	2,422,014	2,843,552	3,442,006	4,756,063	5,051,346		-41.1%	17.4%	21.0%	38.2%	6.2%	
<b>Sep</b>	3,971,220	2,546,923	2,877,110	3,123,572	4,525,426	4,860,066		-35.9%	13.0%	8.6%	44.9%	7.4%	
<b>FY Total</b>	<b>49,960,359</b>	<b>37,232,806</b>	<b>36,770,840</b>	<b>37,528,174</b>	<b>56,284,664</b>	<b>62,327,289</b>		<b>-25.5%</b>	<b>-1.2%</b>	<b>2.1%</b>	<b>50.0%</b>	<b>10.7%</b>	

## METRORAIL TOTAL MONTHLY RIDERSHIP COMPARISONS BY FISCAL YEAR

<b>Rail</b>								<b>Variance</b>	<b>Variance</b>	<b>Variance</b>	<b>Variance</b>	<b>Variance</b>	<b>Variance</b>
<b>Month</b>	<b>FY 19</b>	<b>FY 20</b>	<b>FY 21</b>	<b>FY 22</b>	<b>FY 23</b>	<b>FY 24</b>	<b>FY 25</b>	<b>19 to 20</b>	<b>20 to 21</b>	<b>21 to 22</b>	<b>22 to 23</b>	<b>23 to 24</b>	<b>24 to 25</b>
<b>Oct</b>	1,757,225	1,643,166	769,525	844,383	1,053,191	1,237,096	1,321,113	-6.5%	-53.2%	9.7%	24.7%	17.5%	6.8%
<b>Nov</b>	1,656,929	1,469,448	699,492	850,881	1,055,066	935,121		-11.3%	-52.4%	21.6%	24.0%	-11.4%	
<b>Dec</b>	1,553,804	1,433,928	769,194	860,436	1,063,096	1,177,272		-7.7%	-46.4%	11.9%	23.6%	10.7%	
<b>Jan</b>	1,708,695	1,576,340	799,119	832,924	1,127,340	1,233,350		-7.7%	-49.3%	4.2%	35.3%	9.4%	
<b>Feb</b>	1,501,458	1,549,118	730,792	905,162	1,072,791	1,240,316		3.2%	-52.8%	23.9%	18.5%	15.6%	
<b>Mar</b>	1,554,851	1,027,319	917,097	1,084,978	1,239,336	1,302,854		-33.9%	-10.7%	18.3%	14.2%	5.1%	
<b>Apr</b>	1,559,446	287,803	827,414	1,027,139	1,087,816	1,336,511		-81.5%	187.5%	24.1%	5.9%	22.9%	
<b>May</b>	1,531,597	337,696	887,111	1,023,322	1,151,819	1,314,112		-78.0%	162.7%	15.4%	12.6%	14.1%	
<b>Jun</b>	1,359,966	608,758	723,469	975,477	1,066,861	1,092,060		-55.2%	18.8%	34.8%	9.4%	2.4%	
<b>Jul</b>	1,419,158	632,964	722,159	953,331	1,022,937	1,159,375		-55.4%	14.1%	32.0%	7.3%	13.3%	
<b>Aug</b>	1,463,646	641,275	749,578	1,076,490	1,174,138	1,247,019		-56.2%	16.9%	43.6%	9.1%	6.2%	
<b>Sep</b>	1,427,726	654,244	795,749	1,012,331	1,146,864	1,240,457		-54.2%	21.6%	27.2%	13.3%	8.2%	
<b>FY Total</b>	<b>18,494,501</b>	<b>11,862,059</b>	<b>9,390,699</b>	<b>11,446,854</b>	<b>13,261,255</b>	<b>14,515,543</b>		<b>-35.9%</b>	<b>-20.8%</b>	<b>21.9%</b>	<b>15.9%</b>	<b>9.5%</b>	



## METROMOVER TOTAL MONTHLY RIDERSHIP COMPARISONS BY FISCAL YEAR

<b>Mover Month</b>	<b>FY 19</b>	<b>FY 20</b>	<b>FY 21</b>	<b>FY 22</b>	<b>FY 23</b>	<b>FY 24</b>	<b>FY 25</b>	<b>Variance 19 to 20</b>	<b>Variance 20 to 21</b>	<b>Variance 21 to 22</b>	<b>Variance 22 to 23</b>	<b>Variance 23 to 24</b>	<b>Variance 24 to 25</b>
<b>Oct</b>	790,533	831,234	250,044	389,065	514,308	614,479	550,054	5.1%	-69.9%	55.6%	32.2%	19.5%	-10.5%
<b>Nov</b>	735,198	799,632	232,422	418,929	439,150	584,887		8.8%	-70.9%	80.2%	4.8%	33.2%	
<b>Dec</b>	767,239	849,832	251,019	450,320	426,073	616,455		10.8%	-70.5%	79.4%	-5.4%	44.7%	
<b>Jan</b>	746,728	847,773	255,968	451,566	498,566	644,639		13.5%	-69.8%	76.4%	10.4%	29.3%	
<b>Feb</b>	675,160	855,398	260,332	465,968	459,264	570,242		26.7%	-69.6%	79.0%	-1.4%	24.2%	
<b>Mar</b>	737,814	441,200	302,502	535,857	558,396	753,107		-40.2%	-31.4%	77.1%	4.2%	34.9%	
<b>Apr</b>	795,696	130,549	310,772	495,982	565,943	640,281		-83.6%	138.1%	59.6%	14.1%	13.1%	
<b>May</b>	734,645	146,454	292,922	455,120	547,948	597,232		-80.1%	100.0%	55.4%	20.4%	9.0%	
<b>Jun</b>	701,318	203,637	286,145	477,286	632,423	559,913		-71.0%	40.5%	66.8%	32.5%	-11.5%	
<b>Jul</b>	739,814	210,596	368,847	512,094	635,954	610,437		-71.5%	75.1%	38.8%	24.2%	-4.0%	
<b>Aug</b>	739,785	205,995	344,319	508,359	657,267	597,361		-72.2%	67.1%	47.6%	29.3%	-9.1%	
<b>Sep</b>	699,879	219,696	331,915	305,185	610,810	527,660		-68.6%	51.1%	-8.1%	100.1%	-13.6%	
<b>FY Total</b>	<b>8,863,809</b>	<b>5,741,996</b>	<b>3,487,207</b>	<b>5,465,731</b>	<b>6,546,102</b>	<b>7,316,693</b>		<b>-35.2%</b>	<b>-39.3%</b>	<b>56.7%</b>	<b>19.8%</b>	<b>11.8%</b>	

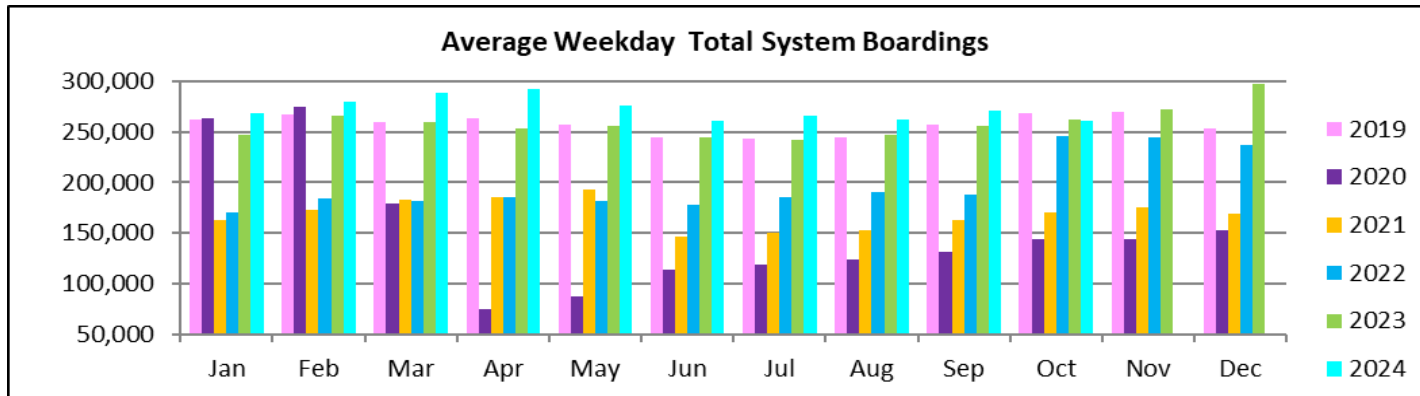
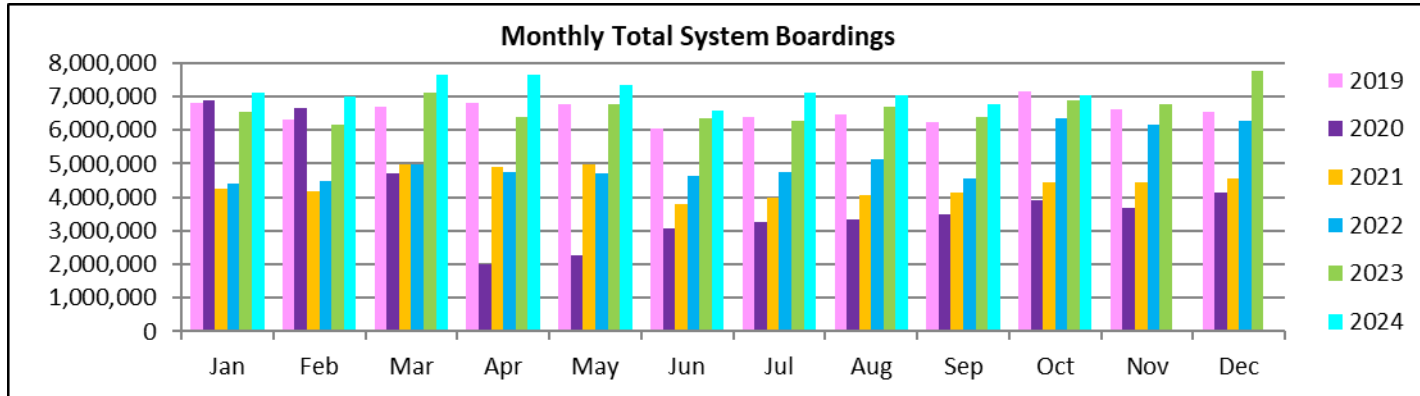
## SPECIAL TRANSPORTATION SERVICES (STS) TOTAL MONTHLY RIDERSHIP COMPARISONS BY FISCAL YEAR

<b>STS</b>							Variance	Variance	Variance	Variance	Variance	Variance	
Month	FY 19	FY 20	FY 21	FY 22	FY 23	FY 24	FY 25	19 to 20	20 to 21	21 to 22	22 to 23	23 to 24	24 to 25
<b>Oct</b>	162,564	162,704	97,388	115,122	122,189	130,958	134,852	0.1%	-40.1%	18.2%	6.1%	7.2%	3.0%
<b>Nov</b>	145,653	144,366	89,387	110,289	111,578	127,025		-0.9%	-38.1%	23.4%	1.2%	13.8%	
<b>Dec</b>	136,110	138,642	96,366	104,496	112,019	130,093		1.9%	-30.5%	8.4%	7.2%	16.1%	
<b>Jan</b>	146,268	149,114	97,928	97,541	112,632	125,513		1.9%	-34.3%	-0.4%	15.5%	11.4%	
<b>Feb</b>	141,396	144,392	98,285	105,706	111,748	125,732		2.1%	-31.9%	7.6%	5.7%	12.5%	
<b>Mar</b>	153,191	89,634	112,930	120,718	126,819	130,203		-41.5%	26.0%	6.9%	5.1%	2.7%	
<b>Apr</b>	155,808	26,877	120,122	114,912	116,882	134,677		-82.7%	346.9%	-4.3%	1.7%	15.2%	
<b>May</b>	158,665	39,654	118,636	114,505	127,782	137,958		-75.0%	199.2%	-3.5%	11.6%	8.0%	
<b>Jun</b>	141,320	59,093	112,397	109,054	119,527	118,860		-58.2%	90.2%	-3.0%	9.6%	-0.6%	
<b>Jul</b>	148,232	61,765	110,059	107,188	113,623	126,391		-58.3%	78.2%	-2.6%	6.0%	11.2%	
<b>Aug</b>	147,331	66,563	110,766	117,941	125,510	132,503		-54.8%	66.4%	6.5%	6.4%	5.6%	
<b>Sep</b>	141,387	80,346	115,406	108,788	122,065	130,244		-43.2%	43.6%	-5.7%	12.2%	6.7%	
<b>FY Total</b>	<b>1,777,925</b>	<b>1,163,150</b>	<b>1,279,670</b>	<b>1,326,260</b>	<b>1,422,374</b>	<b>1,550,157</b>		<b>-34.6%</b>	<b>10.0%</b>	<b>3.6%</b>	<b>7.2%</b>	<b>9.0%</b>	

## ALL-MODES COMBINED TOTAL MONTHLY RIDERSHIP COMPARISONS BY FISCAL YEAR

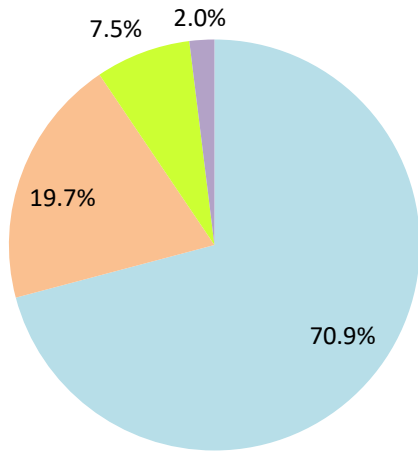
All Modes														
Month	FY 19	FY 20	FY 21	FY 22	FY 23	FY 24	FY 25	19 TO 20	20 TO 21	21 TO 22	22 TO 23	23 TO 24	24 TO 25	19 TO 25
Oct	7,265,208	7,144,116	3,922,096	4,429,727	6,369,413	6,894,684	7,049,348	-1.7%	-45.1%	12.9%	43.8%	8.2%	2.2%	-3.0%
Nov	6,783,315	6,610,671	3,672,591	4,436,825	6,155,460	6,782,205		-2.5%	-44.4%	20.8%	38.7%	10.2%		
Dec	6,538,734	6,549,392	4,139,109	4,539,135	6,278,648	7,780,877		0.2%	-36.8%	9.7%	38.3%	23.9%		
Jan	6,797,602	6,890,225	4,235,761	4,411,086	6,523,666	7,106,759		1.4%	-38.5%	4.1%	47.9%	8.9%		
Feb	6,312,033	6,671,991	4,166,375	4,472,625	6,170,120	6,989,955		5.7%	-37.6%	7.4%	38.0%	13.3%		
Mar	6,712,624	4,694,315	4,993,168	4,960,115	7,108,423	7,647,481		-30.1%	6.4%	-0.7%	43.3%	7.6%		
Apr	6,802,085	1,989,545	4,883,356	4,743,830	6,388,943	7,660,083		-70.8%	145.5%	-2.9%	34.7%	19.9%		
May	6,755,829	2,258,413	4,982,012	4,690,521	6,780,746	7,358,013		-66.6%	120.6%	-5.9%	44.6%	8.5%		
Jun	6,026,467	3,082,213	3,794,581	4,625,876	6,363,861	6,575,872		-48.9%	23.1%	21.9%	37.6%	3.3%		
Jul	6,402,110	3,272,074	3,970,972	4,762,607	6,256,972	7,127,097		-48.9%	21.4%	19.9%	31.4%	13.9%		
Aug	6,460,375	3,335,847	4,048,215	5,144,796	6,712,978	7,028,229		-48.4%	21.4%	27.1%	30.5%	4.7%		
Sep	6,240,212	3,501,209	4,120,180	4,549,876	6,405,165	6,758,427		-43.9%	17.7%	10.4%	40.8%	5.5%		
<b>FY Total</b>	<b>79,096,594</b>	<b>56,000,011</b>	<b>50,928,416</b>	<b>55,767,019</b>	<b>77,514,395</b>	<b>85,709,682</b>		<b>-29.2%</b>	<b>-9.1%</b>	<b>9.5%</b>	<b>39.0%</b>	<b>10.6%</b>		

## TOTAL MONTHLY AND AVERAGE WEEKDAY RIDERSHIP YEAR OVER YEAR COMPARISON CHARTS – ALL MODES COMBINED



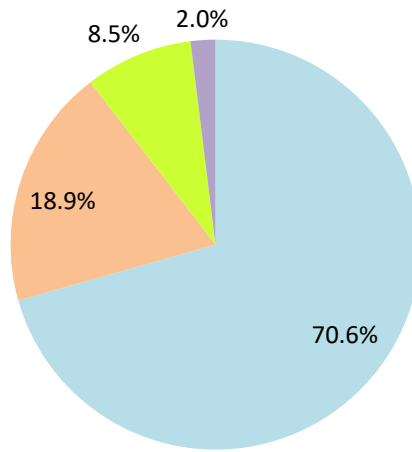
# AVERAGE WEEKDAY RIDERSHIP - MODAL SPLITS

October 2024



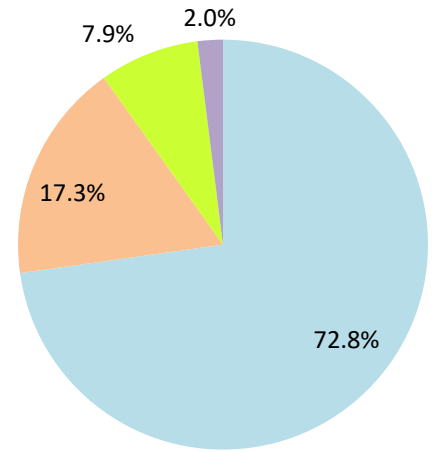
boardings

October 2023



boardings

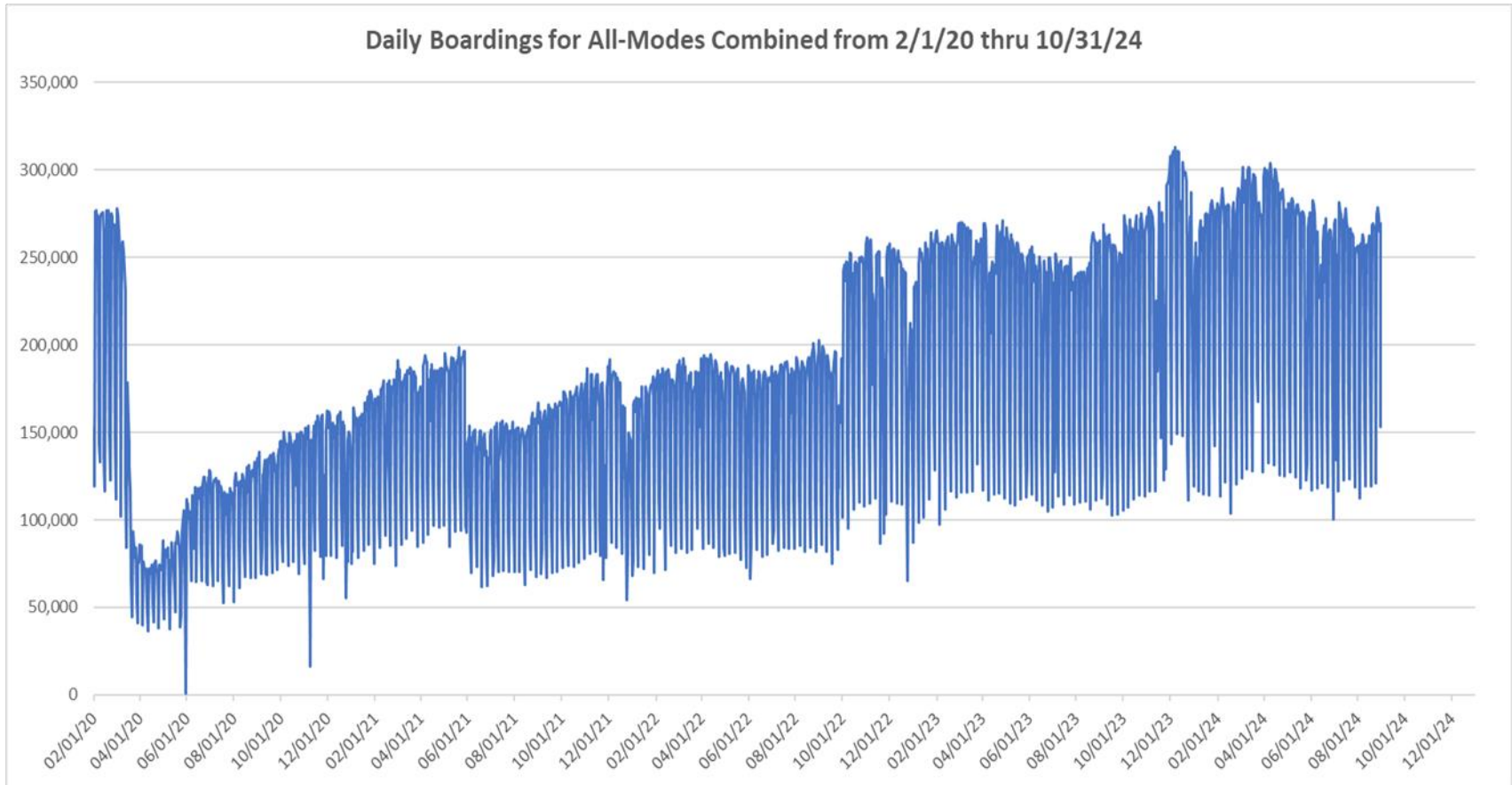
October 2022



boardings



## DAILY RIDERSHIP FOR ALL MODES COMBINED SINCE FEBRUARY 1, 2020



- (1) There was no Metrobus, Metrorail and Metromover service on 5/31/20, as a safety precaution, and no service for any of the four modes on 9/28/22 as a result of Hurricane Ian..
- (2) The dip at the start of the second week of Nov-20 is due to Hurricane Eta.
- (3) Daily variations from Oct-22 onward are, for the Bus portion, a representation estimated from reports made available by the Bus APC data vendor, and finalized sampling for each month.
- (4) The reduction seen beginning 6/1/21 is partly due to the resumption of fares for bus and rail, and partly the result of having resumed reporting Cubic farebox data rather than bus APC counts, as well as Cubic rail faregate counts instead of video camera counts on that date. The jump seen at the start of Oct-22 is due to the switch to APC bus ridership counts reporting begun on 10/1/22.
- (5) The pronounced peak in Dec-23 is attributable to the Better Bus Network launch period and attendant free fares.
- (6) Periodic (weekly) variations are prominent, since weekday ridership is almost always significantly higher than weekend or holiday ridership.

# Metrobus



# Better Bus Network (BBN, 11/13/2023 lineup) Bus Route Changes (Pt 1)

The listings below and on the following page are to serve as an aid in identifying individual routes for comparison of ridership data between periods prior to and following the launch of the BBN on 11/13/2023. In Nov-23, both old and new route numbers appear in data tables, since the launch took place near mid-month; beginning with Dec-23, only the current (BBN) numbering system appear in tables, to allow for direct comparisons.

## BBN Numbering Changes:

Contracted **Route 1** was renumbered **Route 97**

Directly operated **Route 33** was renumbered **Route 103** (new, recycled number, not the same as former **Route 103 - C**)

Directly operated **Route 51** (Flagler MAX) was renumbered **Route 211** (recycled number, not the same as the OVERTOWN CIRCULATOR)

Contracted **Route 71** was renumbered **Route 107** (new, recycled number, not the same as **Route 107 - G** further below) and became directly operated

Directly operated **Route 79** was renumbered **Route 279** (79th Steet MAX)

Directly operated **Route 93** was renumbered **Route 203** (Biscayne MAX)

Directly operated **Route 99** was renumbered **Route 199**

Contracted **Route 101 - A** was renumbered **Route 15**

Directly operated **Route 102 - B** was renumbered **Route 26** (under the BBN's first phase, 07/24/2023 lineup)

Directly operated **Route 107 - G** (old, not the same as the **Route 107** appearing above) was renumbered **Route 125**

Directly operated **Route 112 - L** was renumbered **Route 79** (recycled number, not the same as the **Route 79** appearing above)

Directly operated **Route 120** was renumbered **Route 100**

Directly operated **Route 200** (CUTLER BAY LOCAL) was renumbered **Route 500** (recycled number, not the same as the **Route 500** further below)

Contracted **Route 210** was renumbered **Route 510** (SKYLAKE CIRCULATOR)

Contracted **Route 246** was renumbered **Route 401** (NORTH OWL)

Contracted **Route 248** (Princeton Circulator) was renumbered **Route 70** (recycled number, not the same as former **Route 70**)

Directly operated **Route 252** became contractor-operated, under the new name and number **Route 152**

Directly operated **Route 500** was renumbered **Route 400** (SOUTH OWL)

*The above routes, along with many others who retained their numbering, underwent modifications in various ways (realignment, new headways, days of operation, etc., some major), as part of the BBN design and its resulting lineup. Details for each DTPW Bus route are provided in the Miami-Dade County website. (Directly operated **Route 2** became contractor-operated but kept its number).*



# Better Bus Network (BBN, 11/13/2023 lineup) Bus Route Changes (Pt 2)

## BBN New Routes and Numbers:

Two new routes with new numbering were created to support the Better Bus Network:

Route 14 corresponds to a newly created route

Route 20 corresponds to a newly created route

## BBN Eliminated Routes:

The following routes were discontinued, as part of the Better Bus Network realignments:

Route 10	Route 105 - E	Route 212 (SWEETWATER CIRCULATOR)
Route 16	Route 108 - H	Route 217 (BUNCHE PARK CIRCULATOR)
Route 19	Route 110 - J	Route 238 (EAST-WEST CONNECTION)
Route 29	Route 113 - M	Route 241 (TUTTLE LIMITED)
Route 31 (BUSWAY LOCAL)	Route 115	Route 254 (BROWNSVILLE CIRCULATOR)
Route 42	Route 119 - S	Route 267 (LUDLAM LIMITED)
Route 46 (LIBERTY CITY CONNECTION)	Route 155 (BISCAYNE GARDENS CIRCULATOR)	Route 277 (7th AVENUE MAX)
Route 57	Route 202 (LITTLE HAITI CONNECTION)	Route 286 (NORTH POINTE CIRCULATOR)
Route 82 (WESTCHESTER CIRCULATOR)		Route 297 (27th AVENUE ORANGE MAX)
Route 103 - C (old, previously used numbering, not the same as the Route 103 in the list on the previous page)		
Route 211 (OVERTOWN CIRCULATOR, previously used numbering, not the same as the Route 211 in the list on the previous page)		

## Previously Eliminated Routes:

The following five express routes were suspended soon after the start of the SARS-CoV-2 pandemic, and never reinstated; their ridership appears in some of the tables in this report, as then-components of the reported bus system performance measures:

- Route 175 (NW MIAMI-DADE EXPRESS)
- Route 195 EXPRESS – BROWARD BLVD
- Route 196 EXPRESS – BROWARD BLVD-CIVIC CENTER
- Route 295 EXPRESS – SHERIDAN STREET
- Route 296 EXPRESS – SHERIDAN STREET-CIVIC CENTER

*The preceding listings are not exhaustive, and the reader is referred to the Miami-Dade County website for further BBN details or additional changes.  
Six new MetroLink routes began running in October and October 2024 as a complement to the BBN.*

## METROBUS AVERAGE WEEKDAY BOARDINGS BY ROUTE (†)

Route	Average Weekday	Average Weekday	Percent Change	Average Weekday	Percent Change	Average Weekday	Percent Change	Average Weekday	Percent Change
	<b>weekdays</b> Oct-24	Sep-24	MOM	Oct-23	YOY	Oct-19	YO5Y	Feb-20	Current vs Feb-20
2	2,377	2,314	2.7%	2,977	-20.1%	2,529	-6.0%	3,102	-23.4%
3	7,529	8,128	-7.4%	5,416	39.0%	4,945	52.3%	5,137	46.6%
7	3,334	3,531	-5.6%	4,021	-17.1%	3,299	1.1%	3,501	-4.8%
8	4,594	4,733	-2.9%	4,650	-1.2%	3,804	20.8%	3,909	17.5%
9	10,868	11,659	-6.8%	6,490	67.5%	5,426	100.3%	5,528	96.6%
10				2,443		2,219		2,482	
11	11,032	11,462	-3.8%	9,621	14.7%	7,135	54.6%	7,292	51.3%
12	2,810	2,965	-5.2%	2,891	-2.8%	2,767	1.6%	2,779	1.1%
14	797	829	-3.8%						
15	518	535	-3.1%	178	191.8%	150	246.5%	177	192.9%
16				2,009		1,761		1,862	
17	6,911	7,234	-4.5%	4,133	67.2%	3,837	80.1%	3,878	78.2%
19				1,807		1,593		1,542	
20	3,546	3,732	-5.0%						
21	2,027	2,110	-3.9%	2,107	-3.8%	1,856	9.2%	1,817	11.5%
22	2,349	2,493	-5.8%	4,502	-47.8%	3,773	-37.7%	3,640	-35.5%
24-CORAL WAY LIMITED	2,399	2,406	-0.3%	2,195	9.3%	1,795	33.6%	1,340	79.1%
26	2,329	2,398	-2.9%	1,877	24.0%	1,657	40.6%	1,778	31.0%
27	9,168	9,865	-7.1%	7,110	28.9%	6,819	34.4%	6,972	31.5%
29				516		632		534	
31-BUSWAY LOCAL						1,081		1,089	
32	1,746	1,809	-3.5%	2,699	-35.3%	2,432	-28.2%	2,390	-26.9%
34 TRANSITWAY EXPRESS	1,843	1,850	-0.4%	1,636	12.6%	1,948	-5.4%	2,008	-8.2%
35	2,409	2,472	-2.6%	3,070	-21.5%	2,738	-12.0%	2,421	-0.5%
36	5,833	6,147	-5.1%	2,645	120.5%	2,463	136.8%	2,536	130.0%
37	4,385	4,618	-5.0%	3,475	26.2%	3,344	31.1%	3,273	34.0%
38 TRANSITWAY MAX	6,559	7,051	-7.0%	5,714	14.8%	6,605	-0.7%	6,361	3.1%
39 TRANSITWAY EXPRESS	839	857	-2.1%	742	13.0%	953	-11.9%	893	-6.0%
40	1,810	1,916	-5.6%	2,344	-22.8%	1,705	6.1%	1,772	2.1%
42				1,001		854		820	
46 - LIBERTY CITY CONN.				22		36		41	
52	1,611	1,649	-2.3%	1,390	15.9%	1,267	27.1%	1,261	27.7%
54	2,747	2,864	-4.1%	3,086	-11.0%	3,022	-9.1%	2,940	-6.6%
56	495	536	-7.6%	391	26.6%	363	36.4%	354	40.0%
57				522		440		433	
62	2,729	2,965	-8.0%	2,496	9.3%	1,918	42.3%	1,815	50.3%
70	319	317	0.8%	161	98.2%	104	208.5%	135	137.5%

(†) In this table and those which follow, "YOY" stands for "year-over-year", "MOM" for "month-over-month" and, e.g., "MOZM" for "month over Z months", i.e., current month vs 12 months prior, one month prior, and compared to pre-BBN, respectively. The Feb-20 numbers serve as a pre-pandemic benchmark. To see which routes are fully or partly operated under contract this month, please refer to the ranking table further in the Metrobus portion of this document.

## METROBUS AVERAGE WEEKDAY BOARDINGS BY ROUTE

Route	Average Weekday	Average Weekday	Percent Change	Average Weekday	Percent Change	Average Weekday	Percent Change	Average Weekday	Percent Change
	weekdays	Oct-24	Sep-24	MOM	Oct-23	YOY	Oct-19	YO5Y	Feb-20
72	926	1,002	-7.6%	670	38.2%	744	24.5%	781	18.5%
73	1,297	1,374	-5.6%	2,868	-54.8%	2,156	-39.9%	2,124	-39.0%
75	2,826	2,994	-5.6%	1,594	77.3%	1,578	79.0%	1,429	97.8%
77	11,541	11,586	-0.4%	9,959	15.9%	7,342	57.2%	7,129	61.9%
79	7,352	7,855	-6.4%	8,481	-13.3%	7,447	-1.3%	7,636	-3.7%
<b>82 - WESTCHESTER CIRC</b>				61		58		62	
87	2,192	2,228	-1.6%	1,924	13.9%	1,496	46.5%	1,499	46.2%
88	1,795	1,854	-3.2%	2,419	-25.8%	2,058	-12.8%	2,076	-13.6%
<b>95-EXPRESS GOLDEN GLADES</b>	1,372	1,489	-7.9%	1,195	14.8%	1,875	-26.8%	1,690	-18.8%
97	221	222	-0.6%	225	-1.6%	268	-17.6%	184	20.1%
100	14,573	14,853	-1.9%	6,128	137.8%	6,266	132.6%	6,667	118.6%
<b>103 - C</b>						422		463	
103	1,889	1,956	-3.5%	1,967	-4.0%	1,771	6.6%	1,687	12.0%
104	1,159	1,188	-2.5%	1,024	13.1%	956	21.2%	837	38.4%
<b>105 - E</b>				1,402		1,205		1,287	
107	2,273	2,273	0.0%	825	175.4%	686	231.6%	711	219.9%
<b>108 - H</b>				487		451		473	
<b>110 - J</b>				2,955		2,616		2,508	
<b>113 - M</b>				887		781		866	
115				151		142		180	
<b>119 - S</b>				9,588		8,437		8,970	
125	4,668	4,734	-1.4%	2,099	122.4%	1,698	174.9%	1,713	172.4%
<b>132 -TRI-RAIL DORAL SHUTTLE</b>	37	42	-11.6%	37	0.6%	8	389.0%	16	135.8%
135	2,091	2,197	-4.8%	1,755	19.1%	1,333	56.8%	1,399	49.4%
136	139	146	-4.9%	162	-14.1%	144	-3.7%	126	10.0%
<b>137-WEST DADE CONNECTION</b>	2,468	2,444	1.0%	2,119	16.4%	1,605	53.7%	1,626	51.8%
<b>150-MIAMI BEACH AIRPORT EXPRESS</b>	1,333	1,408	-5.3%	2,149	-38.0%	1,640	-18.7%	1,867	-28.6%
152	406	410	-1.1%	1,051	-61.4%	861	-52.9%	851	-52.3%
<b>155 - BISCAYNE GARDENS CIRC</b>				45		44		44	
<b>175 - NW MIAMI-DADE EXPRESS</b>								33	
183	4,991	5,133	-2.8%	3,653	36.6%	3,018	65.4%	3,149	58.5%
<b>195 EXPRESS - BROWARD BLVD</b>						406		372	
<b>196 EXPRESS - SHERIDAN ST</b>						386		383	
199	1,867	1,913	-2.4%	1,899	-1.7%	1,471	26.9%	1,473	26.8%
<b>202 - LITTLE HAITI CONN</b>				110		138		140	
<b>203 - BISCAYNE MAX</b>	1,127	1,106	1.9%	3,666	-69.3%	3,339	-66.2%	3,334	-66.2%

## METROBUS AVERAGE WEEKDAY BOARDINGS BY ROUTE

Route	Average Weekday	Average Weekday	Percent Change	Average Weekday	Percent Change	Average Weekday	Percent Change	Average Weekday	Percent Change
	weekdays Oct-24	Sep-24	MOM	Oct-23	YOY	Oct-19	YO5Y	Feb-20	Current vs Feb-20
204 KILLIAN MAX	596	604	-1.3%	620	-3.8%	1,043	-42.9%	1,071	-44.3%
207 (7th St)-LITTLE HAVANA CONN	1,687	1,710	-1.3%	1,819	-7.3%	1,522	10.9%	1,489	13.3%
208 (8th St)-LITTLE HAVANA CONN	1,550	1,587	-2.3%	1,659	-6.6%	1,433	8.1%	1,308	18.5%
211 OVERTOWN CIRCULATOR				71		68		58	
211 - FLAGLER MAX	1,698	1,751	-3.0%	3,824	-55.6%	3,125	-45.7%	3,109	-45.4%
212-SWEETWATER CIRC				22		38		15	
217 - BUNCHE PARK CIRC				80		85		97	
238-EAST/WEST CONN				593		519		449	
241 TUTTLE LIMITED				348					
254-BROWNSVILLE CIRC				5		17		19	
267-LUDLAM LIMITED				162		132		149	
272 SUNSET MAX (*)	360	370	-2.6%	428	-15.8%	551	-34.6%	550	-34.5%
277-7TH AVENUE MAX				879		627		683	
279 - 79 STREET MAX	577	645	-10.6%	469	22.9%	370	55.7%	361	59.5%
286-NORTH POINTE CIRC				93		86		97	
287-SAGA BAY MAX	369	383	-3.5%	341	8.3%	321	15.0%	358	3.1%
288 KENDALL MAX	441	457	-3.6%	372	18.4%	784	-43.8%	762	-42.2%
295						236		233	
296						212		215	
297-27th AVENUE ORANGE MAX				1,229		1,337		1,356	
301-DADE MONROE EXPRESS	823	858	-4.1%	955	-13.8%	807	2.0%	841	-2.1%
302-CARD SOUND EXPRESS	106	107	-0.6%	91	17.3%	70	52.4%	86	23.3%
338 - WEEKEND EXPRESS									
344	133	149	-10.6%	76	75.8%	125	6.5%	96	38.7%
400 - SOUTH OWL	67	76	-12.0%	71	-5.1%	34	99.9%	81	-17.0%
401 - NORTH OWL	79	75	6.0%	61	30.8%	93	-15.0%	94	-15.2%
500 - CUTLER BAY LOCAL	215	207	3.9%	176	22.1%	160	33.9%	158	36.2%
510 - SKYLAKE CIRCULATOR (*)	326	406	-19.8%	471	-30.9%	283	15.3%	282	15.6%
836 EXPRESS	330	342	-3.3%	247	33.9%				
837 EXPRESS	186	199	-6.2%	195	-4.3%				
MetroLink NoMi West	240	211	13.8%						
MetroLink North Miami	167	143	16.5%						
MetroLink LeJeune	68	67	0.5%						
MetroLink Killian Parkway	147	142	3.7%						
MetroLink Alton Road	120	128	-6.2%						
MetroLink Opa-Locka	18	17	6.8%						
AHEPA SHUTTLE	20	20	0.0%	18	12.7%	22	-9.9%	21	-3.6%
FEDERATION GARDENS SHUTTLE									
GREEN HILLS SHUTTLE	6	7	-11.1%	5	15.4%	7	-7.7%	9	-33.3%
KINGS CREEK SHUTTLE	10	10	2.6%	14	-29.1%	21	-53.6%	13	-25.0%
ROBERT SHARP SHUTTLE	31	30	5.1%	23	34.8%	5	545.8%	10	226.3%
SIERRA LAKES SHUTTLE	22	22	3.5%	16	43.5%	25	-11.0%	45	-50.6%
<b>Total</b>	<b>184,845</b>	<b>192,573</b>	<b>-4.0%</b>	<b>185,320</b>	<b>-0.3%</b>	<b>166,269</b>	<b>11.2%</b>	<b>167,711</b>	<b>10.2%</b>

(1) Includes shuttles and those routes which were not run some years.

(2) Several express routes were suspended beginning at the end of Mar-20, due to the SARS-CoV-2 pandemic, while other routes had alignment and schedule modifications made to them, in an ongoing effort to optimize service delivery.

## METROBUS AVERAGE SATURDAY BOARDINGS BY ROUTE

Route	Average Saturday	Average Saturday	Percent Change	Average Saturday	Percent Change	Average Saturday	Percent Change	Average Saturday	Percent Change
	Oct-24	Sep-24	MOM	Oct-23	YOY	Oct-19	YO5Y	Feb-20	Current vs Feb-20
<b>Saturdays</b>									
2	1,140	1,128	1.0%	1,605	-29.0%	1,490	-23.5%	1,616	-29.5%
3	6,068	6,466	-6.2%	5,754	5.5%	5,352	13.4%	5,229	16.0%
7	2,051	2,050	0.1%	1,972	4.0%	1,944	5.5%	1,887	8.7%
8	2,199	2,199	0.0%	2,334	-5.8%	2,038	7.9%	2,027	8.5%
9	7,340	7,603	-3.5%	3,677	99.6%	3,230	127.3%	3,034	141.9%
10				2,107		1,834		1,896	
11	8,132	8,147	-0.2%	5,787	40.5%	5,705	42.5%	5,182	56.9%
14	565	719	-21.5%						
15	285	299	-4.8%	93	205.6%	68	320.7%	71	302.5%
16				1,662		1,488		1,566	
17	4,281	4,541	-5.7%	2,553	67.7%	2,538	68.6%	2,363	81.1%
20	2,675	2,578	3.8%						
22	1,600	1,562	2.4%	2,425	-34.0%	2,127	-24.8%	2,084	-23.2%
<b>24-CORAL WAY LIMITED</b>	1,640	1,648	-0.5%	1,400	17.1%	1,213	35.2%	1,165	40.7%
26	1,162	1,241	-6.4%	966	20.3%	785	47.9%	851	36.5%
27	5,939	5,926	0.2%	4,006	48.3%	4,378	35.7%	4,034	47.2%
<b>31-BUSWAY LOCAL</b>				0		941		896	
32	1,085	1,143	-5.1%	1,261	-14.0%	1,059	2.4%	1,029	5.4%
35	1,708	1,732	-1.4%	1,540	10.9%	1,169	46.1%	1,372	24.5%
36	4,318	4,406	-2.0%	1,677	157.5%	1,436	200.7%	1,289	234.9%
37	2,815	2,788	1.0%	2,062	36.5%	2,336	20.5%	2,090	34.7%
<b>38 TRANSITWAY MAX</b>	4,809	5,570	-13.7%	6,328	-24.0%	4,907	-2.0%	4,715	2.0%
40	1,026	1,062	-3.4%	926	10.8%	707	45.2%	655	56.8%
42				617		560		552	
52	977	1,041	-6.2%	694	40.8%	693	40.9%	686	42.4%
54	1,777	1,909	-6.9%	1,925	-7.7%	1,744	1.9%	1,727	2.9%
56	191	199	-4.1%						
62	1,975	2,038	-3.1%	1,823	8.3%	1,400	41.1%	1,343	47.0%
70	184	190	-3.0%						
72	537	585	-8.2%	357	50.5%	313	71.4%	350	53.5%
73	564	590	-4.4%	1,202	-53.1%	1,011	-44.2%	860	-34.5%
75	1,824	1,901	-4.1%	550	231.6%	459	297.8%	468	289.7%
77	6,713	6,986	-3.9%	5,510	21.8%	4,324	55.3%	4,197	59.9%
79	6,282	6,250	0.5%	7,094	-11.4%	6,120	2.7%	5,667	10.8%
<b>82 - WESTCHESTER CIRC</b>				38		50		50	

## METROBUS AVERAGE SATURDAY BOARDINGS BY ROUTE

Route	Average Saturday	Average Saturday	Percent Change	Average Saturday	Percent Change	Average Saturday	Percent Change	Average Saturday	Percent Change
	Oct-24	Sep-24	MOM	Oct-23	YOY	Oct-19	YO5Y	Feb-20	Current vs Feb-20
<b>Saturdays</b>									
87	863	956	-9.7%	532	62.4%	504	71.3%	402	114.5%
88	1,437	1,480	-2.9%	1,661	-13.5%	1,714	-16.2%	1,620	-11.3%
97	151	172	-12.1%	163	-7.5%	262	-42.4%	215	-29.8%
100	13,113	12,967	1.1%	5,637	132.6%	4,707	178.6%	4,744	176.4%
103 - C						245		315	
103	1,117	1,189	-6.1%	1,239	-9.9%	1,026	8.8%	951	17.5%
104	742	747	-0.6%	445	66.9%	533	39.3%	468	58.4%
105 - E				772		680		619	
107	1,166	1,223	-4.6%	238	390.8%	269	333.8%	252	363.0%
108 - H				401		405		372	
110 - J				1,394		1,983		1,952	
113 - M				577		472		503	
115				80		76		82	
119 - S				8,118		7,178		6,861	
125	2,912	2,779	4.8%	1,297	124.6%	1,086	168.2%	1,066	173.1%
135	901	930	-3.1%	556	62.2%	510	76.9%	539	67.3%
137-WEST DADE CONNECTION	1,414	1,590	-11.1%	1,337	5.8%	1,032	37.0%	1,027	37.6%
150-MIAMI BEACH AIRPORT EXPRESS	1,328	1,356	-2.0%	2,161	-38.5%	1,494	-11.1%	1,604	-17.2%
152	183	203	-9.6%	375	-51.2%	317	-42.3%	302	-39.4%
183	2,811	2,993	-6.1%	1,960	43.5%	1,783	57.7%	1,790	57.1%
199	1,259	1,355	-7.1%	1,106	13.8%	922	36.5%	849	48.3%
202 - LITTLE HAITI CONN				22		67		50	
207 (7th St)-LITTLE HAVANA CONN	825	777	6.2%	929	-11.2%	956	-13.8%	1,032	-20.1%
208 (8th St)-LITTLE HAVANA CONN	834	891	-6.3%	1,030	-19.0%	1,044	-20.1%	1,044	-20.1%
241 TUTTLE LIMITED				222		0			
286-NORTH POINTE CIRC				61		39		41	
301-DADE MONROE EXPRESS	901	874	3.1%	885	1.8%	819	10.0%	801	12.5%
302-CARD SOUND EXPRESS	111	125	-11.4%	94	17.8%	54	105.1%	57	95.7%
338 - WEEKEND EXPRESS	249	196	26.9%	259	-4.1%	224	11.2%	237	5.1%
344	64	79	-19.2%						
400 - SOUTH OWL	87	54	59.4%	104	-16.6%	46	87.0%	70	23.6%
401 - NORTH OWL	78	75	4.3%	61	28.9%	86	-9.0%	84	-7.6%
500 - CUTLER BAY LOCAL	141	163	-13.5%	152	-6.9%	122	15.5%	119	18.5%
510 - SKYLAKE CIRCULATOR (*)	129	169	-23.9%	217	-40.9%	148	-13.3%	165	-22.1%
12/21 WEEKEND INTERLINE	2,436	2,820	-13.6%	3,290	-26.0%	2,569	-5.2%	2,528	-3.6%
FEDERATION GARDENS SHUTTLE	23	22	3.4%	20	13.8%	23	-1.1%	28	-19.9%
<b>Total</b>	<b>117,129</b>	<b>120,676</b>	<b>-2.9%</b>	<b>107,331</b>	<b>9.1%</b>	<b>96,809</b>	<b>21.0%</b>	<b>93,742</b>	<b>24.9%</b>

## METROBUS AVERAGE SUNDAY BOARDINGS BY ROUTE

Route	Average Sunday	Average Sunday	Percent Change	Average Sunday	Percent Change	Average Sunday	Percent Change	Average Sunday	Percent Change
	Oct-24	Sep-24	MOM	Oct-23	YOY	Oct-19	YO5Y	Feb-20	Current vs Feb-20
<b>Sundays</b>									
2	740	882	-16.1%	1,214	-39.1%	1,111	-33.4%	1,335	-44.5%
3	4,561	4,637	-1.6%	4,408	3.5%	4,365	4.5%	4,353	4.8%
7	1,342	1,563	-14.1%	1,632	-17.8%	1,543	-13.0%	1,654	-18.9%
8	1,547	1,615	-4.2%	1,838	-15.8%	1,682	-8.0%	1,746	-11.4%
9	4,669	5,043	-7.4%	2,756	69.4%	2,533	84.3%	2,549	83.2%
10				1,632		1,422		1,441	
11	5,339	5,967	-10.5%	3,803	40.4%	3,852	38.6%	3,917	36.3%
14	712	719	-1.1%						
15	236	246	-4.1%	53	345.8%	41	476.2%	56	325.7%
16				1,023		881		997	
17	2,917	3,167	-7.9%	1,920	51.9%	1,729	68.7%	1,833	59.1%
20	2,005	2,126	-5.7%						
22	1,019	1,078	-5.5%	1,915	-46.8%	1,621	-37.1%	1,548	-34.2%
<b>24-CORAL WAY LIMITED</b>	1,050	1,139	-7.8%	1,108	-5.3%	940	11.6%	905	16.0%
26	873	996	-12.4%	871	0.2%	719	21.3%	717	21.8%
27	3,343	3,905	-14.4%	3,146	6.3%	3,052	9.5%	2,918	14.6%
<b>31-BUSWAY LOCAL</b>				0		655		715	
32	841	881	-4.6%	768	9.4%	786	6.9%	772	8.9%
35	1,329	1,420	-6.5%	1,175	13.0%	853	55.8%	942	41.1%
36	3,099	3,282	-5.6%	1,160	167.1%	1,174	164.0%	1,111	179.1%
37	2,005	2,132	-5.9%	1,755	14.2%	1,783	12.5%	1,739	15.3%
<b>38 TRANSITWAY MAX</b>	3,862	4,649	-16.9%	4,957	-22.1%	4,091	-5.6%	4,147	-6.9%
40	641	691	-7.3%	542	18.2%	501	27.9%	447	43.3%
42				425		363		416	
52	791	820	-3.5%	496	59.3%	511	54.9%	466	69.7%
54	1,125	1,205	-6.7%	1,181	-4.7%	1,210	-7.0%	1,171	-3.9%
62	1,201	1,423	-15.6%	1,040	15.5%	887	35.4%	891	34.9%
70	179	168	6.4%						
72	400	433	-7.6%	259	54.2%	237	68.7%	265	51.1%
73	212	234	-9.5%	602	-64.8%	508	-58.3%	495	-57.2%
75	1,276	1,417	-9.9%	352	262.9%	266	379.7%	271	371.3%
77	4,371	4,911	-11.0%	3,980	9.8%	2,963	47.5%	2,815	55.3%
79	4,628	4,564	1.4%	4,837	-4.3%	4,693	-1.4%	4,804	-3.7%

## METROBUS AVERAGE SUNDAY BOARDINGS BY ROUTE

Route	Average Sunday	Average Sunday	Percent Change	Average Sunday	Percent Change	Average Sunday	Percent Change	Average Sunday	Percent Change
	<b>Sundays</b> Oct-24	Sep-24	MOM	Oct-23	YOY	Oct-19	YO5Y	Feb-20	Current vs Feb-20
87	467	531	-12.0%	362	29.1%	307	52.2%	319	46.5%
88	1,053	1,166	-9.7%	1,255	-16.1%	1,224	-14.0%	1,286	-18.1%
97	139	154	-10.0%	149	-6.8%	209	-33.5%	201	-30.9%
100	8,591	8,744	-1.7%	3,492	146.0%	3,463	148.1%	3,469	147.6%
103 - C						162		212	
103	705	818	-13.8%	729	-3.3%	654	7.8%	607	16.1%
104	505	554	-8.9%	348	45.1%	343	47.1%	317	59.2%
105 - E				634		616		616	
107	940	979	-4.0%	187	402.7%	140	571.4%	162	480.2%
108 - H				363		346		328	
110 - J				1,699		1,519		1,638	
113 - M				444		374		431	
115				66		76		80	
119 - S				7,612		6,834		7,141	
125	1,753	2,074	-15.5%	1,036	69.2%	880	99.2%	895	95.8%
135	576	733	-21.4%	474	21.5%	362	59.3%	349	64.9%
137-WEST DADE CONNECTION	1,026	1,133	-9.4%	956	7.3%	856	19.8%	879	16.7%
150-MIAMI BEACH AIRPORT EXPRESS	1,198	1,168	2.6%	1,966	-39.1%	1,410	-15.1%	1,574	-23.9%
152	120	142	-15.5%	331	-63.9%	248	-51.6%	199	-39.7%
183	2,059	2,111	-2.4%	1,569	31.2%	1,380	49.2%	1,413	45.7%
199	1,007	1,059	-4.9%	887	13.5%	741	35.8%	658	53.0%
202 - LITTLE HAITI CONN				21		43		39	
207 (7th St)-LITTLE HAVANA CONN	544	625	-12.9%	648	-16.0%	706	-22.9%	796	-31.7%
208 (8th St)-LITTLE HAVANA CONN	669	767	-12.7%	862	-22.3%	967	-30.8%	911	-26.6%
241 TUTTLE LIMITED				187		0			
301-DADE MONROE EXPRESS	854	831	2.8%	867	-1.4%	739	15.7%	751	13.7%
302-CARD SOUND EXPRESS	101	96	5.4%	72	41.1%	57	78.0%	57	77.2%
338 - WEEKEND EXPRESS	196	199	-1.3%	247	-20.7%	172	14.1%	252	-22.1%
400 - SOUTH OWL	71	82	-13.5%	70	1.1%	40	75.8%	83	-14.5%
401 - NORTH OWL	84	77	8.2%	65	29.3%	82	2.1%	87	-4.0%
500 - CUTLER BAY LOCAL	93	89	4.1%	86	7.3%	51	80.5%	59	58.1%
510 - SKYLAKE CIRCULATOR (*)	108	158	-32.0%	194	-44.6%	172	-37.6%	143	-24.8%
12/21 WEEKEND INTERLINE	2,089	2,288	-8.7%	2,700	-22.6%	2,124	-1.6%	2,048	2.0%
<b>Total</b>	<b>81,253</b>	<b>87,884</b>	<b>-7.5%</b>	<b>81,427</b>	<b>-0.2%</b>	<b>74,263</b>	<b>9.4%</b>	<b>75,428</b>	<b>7.7%</b>



## METROBUS TOTAL MONTHLY BOARDINGS BY ROUTE

Route	Total Month	Total Month	Percent Change	Total Month	Percent Change	Total Month	Percent Change	Total Month	Percent Change
	<b>total month</b> Oct-24	Sep-24	MOM	Oct-23	YOY	Oct-19	YO5Y	Feb-20	Current vs Feb-20
2	62,189	56,074	10.9%	77,976	-20.2%	68,570	-9.3%	75,463	-17.6%
3	215,691	216,246	-0.3%	164,203	31.4%	152,608	41.3%	146,294	47.4%
7	90,262	88,188	2.4%	104,507	-13.6%	89,828	0.5%	86,077	4.9%
8	120,635	113,144	6.6%	120,821	-0.2%	102,362	17.9%	95,295	26.6%
9	298,005	293,843	1.4%	171,265	74.0%	147,848	101.6%	135,924	119.2%
10				70,338		64,064		64,874	
11	307,625	297,634	3.4%	253,837	21.2%	202,332	52.0%	187,425	64.1%
12	64,630	59,309	9.0%	63,603	1.6%	63,630	1.6%	55,585	16.3%
14	23,446	23,779	-1.4%						
15	14,003	13,372	4.7%	4,545	208.1%	3,875	261.4%	4,114	240.4%
16				55,959		49,970		49,061	
17	187,733	181,848	3.2%	110,727	69.5%	105,317	78.3%	96,715	94.1%
19				39,745		36,643		30,847	
20	100,273	97,696	2.6%						
21	46,611	42,191	10.5%	46,355	0.6%	42,696	9.2%	36,341	28.3%
22	64,505	62,586	3.1%	118,329	-45.5%	101,764	-36.6%	89,404	-27.8%
24-CORAL WAY LIMITED	65,933	61,536	7.1%	59,432	10.9%	49,909	32.1%	36,237	81.9%
26	61,696	58,898	4.8%	49,521	24.6%	44,119	39.8%	42,683	44.5%
27	247,985	244,439	1.5%	188,160	31.8%	186,566	32.9%	171,282	44.8%
29				11,342		14,533		10,684	
31-BUSWAY LOCAL						31,245		29,125	
32	47,862	46,033	4.0%	68,263	-29.9%	63,304	-24.4%	56,027	-14.6%
34 TRANSITWAY EXPRESS	42,384	36,997	14.6%	36,002	17.7%	44,795	-5.4%	40,159	5.5%
35	67,544	64,892	4.1%	79,573	-15.1%	71,063	-5.0%	59,041	14.4%
36	163,824	160,258	2.2%	70,698	131.7%	67,083	144.2%	61,606	165.9%
37	120,138	116,307	3.3%	93,471	28.5%	93,383	28.7%	82,870	45.0%
38 TRANSITWAY MAX	185,551	191,196	-3.0%	175,803	5.5%	187,914	-1.3%	167,379	10.9%
39 TRANSITWAY EXPRESS	19,294	17,143	12.5%	16,333	18.1%	21,910	-11.9%	17,853	8.1%
40	48,288	46,722	3.4%	57,992	-16.7%	44,044	9.6%	40,497	19.2%
42				26,611		23,323		20,825	
46 - LIBERTY CITY CONN.				477		837		814	
52	44,126	42,071	4.9%	35,844	23.1%	33,968	29.9%	30,522	44.6%
54	74,798	72,141	3.7%	81,490	-8.2%	81,312	-8.0%	72,125	3.7%
56	12,146	11,507	5.6%	8,598	41.3%	8,344	45.6%	7,071	71.8%
57				11,491		10,115		8,665	
62	75,463	75,993	-0.7%	67,398	12.0%	53,264	41.7%	46,582	62.0%
70	8,799	8,104	8.6%	3,546	148.1%	2,382	269.4%	2,690	227.1%

## METROBUS TOTAL MONTHLY BOARDINGS BY ROUTE

Route	Total Month	Total Month	Percent Change	Total Month	Percent Change	Total Month	Percent Change	Total Month	Percent Change
	Oct-24	Sep-24	MOM	Oct-23	YOY	Oct-19	YO5Y	Feb-20	Current vs Feb-20
<b>total month</b>									
72	25,033	24,972	0.2%	17,459	43.4%	19,305	29.7%	18,433	35.8%
73	32,930	31,248	5.4%	70,903	-53.6%	55,673	-40.9%	48,767	-32.5%
75	77,387	75,990	1.8%	39,021	98.3%	39,197	97.4%	31,994	141.9%
77	309,785	289,118	7.1%	261,039	18.7%	198,022	56.4%	174,833	77.2%
79	212,735	209,476	1.6%	239,146	-11.0%	214,529	-0.8%	200,268	6.2%
<b>82 - WESTCHESTER CIRC</b>				1,488		1,543		1,482	
87	55,731	51,571	8.1%	46,254	20.5%	37,648	48.0%	33,273	67.5%
88	51,231	49,997	2.5%	66,138	-22.5%	59,093	-13.3%	54,772	-6.5%
<b>95-EXPRESS GOLDEN GLADES</b>	31,546	29,785	5.9%	26,295	20.0%	43,125	-26.8%	33,796	-6.7%
97	6,242	6,060	3.0%	6,337	-1.5%	8,049	-22.4%	5,558	12.3%
100	422,003	401,387	5.1%	174,819	141.4%	176,787	138.7%	170,942	146.9%
<b>103 - C</b>						11,336		11,682	
103	50,725	48,790	4.0%	51,871	-2.2%	47,463	6.9%	40,918	24.0%
104	31,636	30,075	5.2%	26,049	21.4%	25,496	24.1%	20,351	55.5%
<b>105 - E</b>				37,092		32,893		31,302	
107	60,704	56,227	8.0%	20,040	202.9%	17,403	248.8%	16,118	276.6%
108 - H				14,133		13,385		12,624	
110 - J				79,080		74,168		66,481	
113 - M				24,040		21,345		21,548	
115				3,968		3,872		4,334	
<b>119 - S</b>				281,456		250,096		242,257	
125	126,015	118,231	6.6%	56,547	122.9%	46,917	168.6%	43,178	191.9%
<b>132 - TRI-RAIL DORAL SHUTTLE</b>	846	832	1.7%	804	5.2%	173	389.0%	312	171.2%
135	53,991	52,052	3.7%	43,211	24.9%	34,140	58.1%	32,067	68.4%
136	3,194	2,922	9.3%	3,557	-10.2%	3,316	-3.7%	2,524	26.5%
<b>137-WEST DADE CONNECTION</b>	66,514	62,036	7.2%	56,750	17.2%	44,468	49.6%	41,167	61.6%
<b>150-MIAMI BEACH AIRPORT EXPRESS</b>	40,768	40,586	0.4%	65,763	-38.0%	49,335	-17.4%	51,651	-21.1%
152	10,538	9,857	6.9%	26,285	-59.9%	22,064	-52.2%	19,325	-45.5%
<b>155 - BISCAYNE GARDENS CIRC</b>				985		1,018		881	
<b>175 - NW MIAMI-DADE EXPRESS</b>								661	
183	134,280	127,287	5.5%	96,050	39.8%	82,054	63.6%	77,570	73.1%
<b>195 EXPRESS - BROWARD BLVD</b>						9,332		7,441	
<b>196 EXPRESS - SHERIDAN ST</b>						8,877		7,658	
199	51,997	50,038	3.9%	50,634	2.7%	40,476	28.5%	36,325	43.1%
<b>202 - LITTLE HAITI CONN</b>				2,620		3,602		3,200	
<b>203 - BISCAYNE MAX</b>	25,923	22,123	17.2%	80,650	-67.9%	76,791	-66.2%	66,684	-61.1%

## METROBUS TOTAL MONTHLY BOARDINGS BY ROUTE

Route	Total Month	Total Month	Percent Change	Total Month	Percent Change	Total Month	Percent Change	Total Month	Percent Change
	Oct-24	Sep-24	MOM	Oct-23	YOY	Oct-19	YO5Y	Feb-20	Current vs Feb-20
<b>total month</b>									
204 KILLIAN MAX	13,711	12,081	13.5%	13,632	0.6%	23,996	-42.9%	21,418	-36.0%
207 (7th St)-LITTLE HAVANA CONN	44,273	41,052	7.8%	46,970	-5.7%	41,645	6.3%	38,127	16.1%
208 (8th St)-LITTLE HAVANA CONN	41,660	39,900	4.4%	44,922	-7.3%	41,006	1.6%	35,018	19.0%
211 OVERTOWN CIRCULATOR				1,567		1,569		1,159	
211 - FLAGLER MAX	39,062	35,018	11.5%	84,135	-53.6%	71,878	-45.7%	62,186	-37.2%
212-SWEETWATER CIRC				494		879		295	
217 - BUNCHE PARK CIRC				1,759		1,952		1,949	
238-EAST/WEST CONN				13,036		11,945		8,987	
241 TUTTLE LIMITED				9,471					
254-BROWNSVILLE CIRC				105		386		384	
267-LUDLAM LIMITED				3,567		3,028		2,978	
272 SUNSET MAX (*)	8,290	7,401	12.0%	9,423	-12.0%	12,674	-34.6%	11,004	-24.7%
277-7TH AVENUE MAX				19,345		14,421		13,669	
279 - 79 STREET MAX	13,261	12,904	2.8%	10,318	28.5%	8,517	55.7%	7,228	83.5%
286-NORTH POINTE CIRC				2,279		2,134		2,145	
287-SAGA BAY MAX	8,489	7,653	10.9%	7,499	13.2%	7,384	15.0%	7,160	18.6%
288 KENDALL MAX	10,133	9,138	10.9%	8,189	23.7%	18,021	-43.8%	15,249	-33.5%
295						5,417		4,668	
296						4,876		4,297	
297-27th AVENUE ORANGE MAX				27,047		30,746		27,125	
301-DADE MONROE EXPRESS	25,960	25,651	1.2%	28,889	-10.1%	24,789	4.7%	23,838	8.9%
302-CARD SOUND EXPRESS	3,293	3,215	2.4%	2,728	20.7%	2,048	60.8%	2,236	47.3%
338 - WEEKEND EXPRESS	1,780	1,977	-10.0%	2,274	-21.7%	1,583	12.4%	2,191	-18.8%
344	3,318	3,294	0.7%	1,666	99.2%	2,874	15.4%	1,919	72.9%
400 - SOUTH OWL	2,176	2,237	-2.7%	2,324	-6.4%	1,120	94.3%	2,301	-5.4%
401 - NORTH OWL	2,470	2,259	9.3%	1,899	30.1%	2,816	-12.3%	2,641	-6.5%
500 - CUTLER BAY LOCAL	5,874	5,319	10.4%	4,907	19.7%	4,383	34.0%	3,984	47.4%
510 - SKYLAKE CIRCULATOR (*)	8,439	9,749	-13.4%	12,211	-30.9%	7,785	8.4%	7,033	20.0%
836 EXPRESS	7,600	6,836	11.2%	5,428	40.0%				
837 EXPRESS	4,282	3,970	7.9%	4,281	0.0%				
MetroLink NoMi West	5,522	4,221	30.8%						
MetroLink North Miami	3,833	2,862	33.9%						
MetroLink LeJeune	1,556	1,346	15.6%						
MetroLink Killian Parkway	3,385	2,838	19.3%						
MetroLink Alton Road	2,757	2,555	7.9%						
MetroLink Opa-Locka	415	338	22.8%						
12/21 WEEKEND INTERLINE	18,099	25,008	-27.6%	26,661	-32.1%	18,771	-3.6%	20,830	-13.1%
AHEPA SHUTTLE	100	80	25.0%	71	40.8%	111	-9.9%	83	20.5%
FEDERATION GARDENS SHUTTLE	91	88	3.4%	80	13.8%	92	-1.1%	142	-35.9%
GREEN HILLS SHUTTLE	24	27	-11.1%	26	-7.7%	26	-7.7%	36	-33.3%
KINGS CREEK SHUTTLE	39	38	2.6%	55	-29.1%	105	-62.9%	52	-25.0%
ROBERT SHARP SHUTTLE	155	118	31.4%	92	68.5%	24	545.8%	38	307.9%
SIERRA LAKES SHUTTLE	89	86	3.5%	62	43.5%	100	-11.0%	180	-50.6%
<b>Total</b>	<b>5,043,329</b>	<b>4,860,066</b>	<b>3.8%</b>	<b>4,912,151</b>	<b>2.7%</b>	<b>4,507,012</b>	<b>11.9%</b>	<b>4,123,083</b>	<b>22.3%</b>

## BUS RIDERSHIP BY ROUTE SERVICE TYPE LINEUPS COMPARISON (MONTH-OVER-MONTH)

Boardings by Service Type and Route	Average Weekday	Average Weekday	Percent Change	Average Saturday	Average Saturday	Percent Change	Average Sunday	Average Sunday	Percent Change	Total Monthly	Total Monthly	Percent Change
	Oct-24	Sep-24	MOM	Oct-24	Sep-24	MOM	Oct-24	Sep-24	MOM	Oct-24	Sep-24	MOM
<b>Directly Operated Express Routes</b>												
34 TRANSITWAY EXPRESS	1,843	1,850	-0.4%							42,384	36,997	14.6%
39 TRANSITWAY EXPRESS	839	857	-2.1%							19,294	17,143	12.5%
95-EXPRESS GOLDEN GLADES	1,372	1,489	-7.9%							31,546	29,785	5.9%
150-MIAMI BEACH AIRPORT EXPRESS	1,333	1,408	-5.3%	1,328	1,356	-2.0%	1,198	1,168	2.6%	40,768	40,586	0.4%
338 - WEEKEND EXPRESS				249	196	26.9%	196	199	-1.3%	1,780	1,977	-10.0%
836 EXPRESS	330	342	-3.3%							7,600	6,836	11.2%
837 EXPRESS	186	199	-6.2%							4,282	3,970	7.9%
<b>Subtotal Express Routes</b>	<b>5,903</b>	<b>6,144</b>	<b>-3.9%</b>	<b>1,577</b>	<b>1,552</b>	<b>1.6%</b>	<b>1,394</b>	<b>1,366</b>	<b>2.0%</b>	<b>147,654</b>	<b>137,294</b>	<b>7.5%</b>
<b>Percentage of All Bus Routes</b>	<b>3.2%</b>	<b>3.2%</b>		<b>1.3%</b>	<b>1.3%</b>		<b>1.7%</b>	<b>1.6%</b>		<b>2.9%</b>	<b>2.8%</b>	
<b>Contracted Routes - Local Service (*)</b>												
2	2,377	2,314	2.7%	1,140	1,128	1.0%	740	882	-16.1%	62,189	56,074	10.9%
15	518	535	-3.1%	285	299	-4.8%	236	246	-4.1%	14,003	13,372	4.7%
29												
46 - LIBERTY CITY CONN.												
56	495	536	-7.6%	191	199	-4.1%				12,146	11,507	5.6%
70	319	317	0.8%	184	190	-3.0%	179	168	6.4%	8,799	8,104	8.6%
72	926	1,002	-7.6%	537	585	-8.2%	400	433	-7.6%	25,033	24,972	0.2%
82 - WESTCHESTER CIRC												
97	221	222	-0.6%	151	172	-12.1%	139	154	-10.0%	6,242	6,060	3.0%
115											0	
152	406	410	-1.1%	183	203	-9.6%	120	142	-15.5%	10,538	9,857	6.9%
155 - BISCAYNE GARDENS CIRC												
202 - LITTLE HAITI CONN												
211 OVERTOWN CIRCULATOR												
212-SWEETWATER CIRC												
217 - BUNCHE PARK CIRC												
254-BROWNSVILLE CIRC												
267-LUDLAM LIMITED												
286-NORTH POINTE CIRC												
344	133	149	-10.6%	64	79	-19.2%				3,318	3,294	0.7%
401 - NORTH OWL	79	75	6.0%	78	75	4.3%	84	77	8.2%	2,470	2,259	9.3%
MetroLink NoMi West	240	211	13.8%							5,522	4,221	30.8%
MetroLink North Miami	167	143	16.5%							3,833	2,862	33.9%
MetroLink LeJeune	68	67	0.5%							1,556	1,346	15.6%
MetroLink Killian Parkway	147	142	3.7%							3,385	2,838	19.3%
MetroLink Alton Road	120	128	-6.2%							2,757	2,555	7.9%
MetroLink Opa-Locka	18	17	6.8%							415	338	22.8%
<b>Subtotal Contracted Reg. &amp; Circ. Routes</b>	<b>6,234</b>	<b>6,267</b>	<b>-0.5%</b>	<b>2,812</b>	<b>2,929</b>	<b>-4.0%</b>	<b>1,897</b>	<b>2,102</b>	<b>-9.8%</b>	<b>162,206</b>	<b>149,659</b>	<b>8.4%</b>
<b>Percentage of All Bus Routes</b>	<b>3.4%</b>	<b>3.3%</b>		<b>2.4%</b>	<b>2.4%</b>		<b>2.3%</b>	<b>2.4%</b>		<b>3.2%</b>	<b>3.1%</b>	

(1) Several express routes were suspended beginning at the end of Mar-20, due to the SARS-CoV-2 pandemic, while other routes had alignment and schedule modifications made to them, in an ongoing effort to optimize service delivery.

(2) A second major round of changes took place with the 11/13/23 lineup known as the Better Bus Network, as listed at the start of this Metrobus section.

## BUS RIDERSHIP BY ROUTE SERVICE TYPE LINEUPS COMPARISON (MONTH-OVER-MONTH)

Boardings by Service Type and Route	Average Weekday	Average Weekday	Percent Change	Average Saturday	Average Saturday	Percent Change	Average Sunday	Average Sunday	Percent Change	Total Monthly	Total Monthly	Percent Change
	Oct-24	Sep-24	MOM	Oct-24	Sep-24	MOM	Oct-24	Sep-24	MOM	Oct-24	Sep-24	MOM
<b>Contracted Express Routes</b>												
301-DADE MONROE EXPRESS	823	858	-4.1%	901	874	3.1%	854	831	2.8%	25,960	25,651	1.2%
302-CARD SOUND EXPRESS	106	107	-0.6%	111	125	-11.4%	101	96	5.4%	3,293	3,215	2.4%
<b>Subtotal Contracted Express Routes</b>	<b>930</b>	<b>965</b>	<b>-3.7%</b>	<b>1,012</b>	<b>999</b>	<b>1.3%</b>	<b>955</b>	<b>927</b>	<b>3.0%</b>	<b>29,253</b>	<b>28,866</b>	<b>1.3%</b>
<b>Percentage of All Bus Routes</b>	<b>0.5%</b>	<b>0.5%</b>		<b>0.9%</b>	<b>0.8%</b>		<b>1.2%</b>	<b>1.1%</b>		<b>0.6%</b>	<b>0.6%</b>	
<b>Limited Stop Routes</b>												
24-CORAL WAY LIMITED	2,399	2,406	-0.3%	1,640	1,648	-0.5%	1,050	1,139	-7.8%	65,933	61,536	7.1%
38 TRANSITWAY MAX	6,559	7,051	-7.0%	4,809	5,570	-13.7%	3,862	4,649	-16.9%	185,551	191,196	-3.0%
203 - BISCAYNE MAX	1,127	1,106	1.9%							25,923	22,123	17.2%
204 KILLIAN MAX	596	604	-1.3%							13,711	12,081	13.5%
211 - FLAGLER MAX	1,698	1,751	-3.0%							39,062	35,018	11.5%
241 TUTTLE LIMITED												
272 SUNSET MAX (*)	360	370	-2.6%							8,290	7,401	12.0%
277-7TH AVENUE MAX												
279 - 79 STREET MAX	577	645	-10.6%							13,261	12,904	2.8%
287-SAGA BAY MAX	369	383	-3.5%							8,489	7,653	10.9%
288 KENDALL MAX	441	457	-3.6%							10,133	9,138	10.9%
297-27th AVENUE ORANGE MAX												
<b>Subtotal Limited Stop Routes</b>	<b>14,127</b>	<b>14,773</b>	<b>-4.4%</b>	<b>6,449</b>	<b>7,217</b>	<b>-10.6%</b>	<b>4,912</b>	<b>5,788</b>	<b>-15.1%</b>	<b>370,353</b>	<b>359,050</b>	<b>3.1%</b>
<b>Percentage of All Bus Routes</b>	<b>7.6%</b>	<b>7.7%</b>		<b>5.5%</b>	<b>6.0%</b>		<b>6.0%</b>	<b>6.6%</b>		<b>7.3%</b>	<b>7.4%</b>	
<b>Directly Operated Free Routes</b>												
132 - TRI-RAIL DORAL SHUTTLE	37	42	-11.6%							846	832	1.7%
500 - CUTLER BAY LOCAL	215	207	3.9%	141	163	-13.5%	93	89	4.1%	5,874	5,319	10.4%
510 - SKYLAKE CIRCULATOR (*)	326	406	-19.8%	129	169	-23.9%	108	158	-32.0%	8,439	9,749	-13.4%
<b>Subtotal Free Directly Operated Routes</b>	<b>577</b>	<b>655</b>	<b>-11.8%</b>	<b>270</b>	<b>332</b>	<b>-18.8%</b>	<b>200</b>	<b>247</b>	<b>-19.0%</b>	<b>15,159</b>	<b>15,900</b>	<b>-4.7%</b>
<b>Percentage of All Bus Routes</b>	<b>0.3%</b>	<b>0.3%</b>		<b>0.2%</b>	<b>0.3%</b>		<b>0.2%</b>	<b>0.3%</b>		<b>0.3%</b>	<b>0.3%</b>	
<b>Contractor-Operated Lifeline Routes</b>												
GREEN HILLS SHUTTLE	6	7	-11.1%							24	27	-11.1%
KINGS CREEK SHUTTLE	10	10	2.6%							39	38	2.6%
SIERRA LAKES SHUTTLE	22	22	3.5%							89	86	3.5%
ROBERT SHARP SHUTTLE	31	30	5.1%							155	118	31.4%
AHEPA SHUTTLE	20	20	0.0%							100	80	25.0%
FEDERATION GARDENS SHUTTLE				23	22	3.4%				91	88	3.4%
<b>Subtotal Contractor-Operated Lifeline Routes</b>	<b>89</b>	<b>87</b>	<b>2.0%</b>	<b>23</b>	<b>22</b>	<b>3.4%</b>				<b>498</b>	<b>437</b>	<b>14.0%</b>
<b>Percentage of All Bus Routes</b>	<b>0.0%</b>	<b>0.0%</b>		<b>0.0%</b>	<b>0.0%</b>					<b>0.0%</b>	<b>0.0%</b>	
<b>All Other (Regular) Routes</b>	<b>156,986</b>	<b>163,682</b>	<b>-4.1%</b>	<b>104,987</b>	<b>107,625</b>	<b>-2.5%</b>	<b>71,895</b>	<b>77,454</b>	<b>-7.2%</b>	<b>4,318,206</b>	<b>4,168,860</b>	<b>3.6%</b>
<b>Percentage of All Bus Routes</b>	<b>84.9%</b>	<b>85.0%</b>		<b>89.6%</b>	<b>89.2%</b>		<b>88.5%</b>	<b>88.1%</b>		<b>85.6%</b>	<b>85.8%</b>	
<b>Total Bus System</b>	<b>184,845</b>	<b>192,573</b>	<b>-4.0%</b>	<b>117,129</b>	<b>120,676</b>	<b>-2.9%</b>	<b>81,253</b>	<b>87,884</b>	<b>-7.5%</b>	<b>5,043,329</b>	<b>4,860,066</b>	<b>3.8%</b>

## BUS RIDERSHIP BY ROUTE SERVICE TYPE LINEUPS COMPARISON (MONTH-OVER-12 MONTH)

Boardings by Service Type and Route	Average Weekday	Average Weekday	Percent Change	Average Saturday	Average Saturday	Percent Change	Average Sunday	Average Sunday	Percent Change	Total Monthly	Total Monthly	Percent Change
	Oct-24	Oct-23	24 vs 23	Oct-24	Oct-23	24 vs 23	Oct-24	Oct-23	24 vs 23	Oct-24	Oct-23	24 vs 23
<b>Directly Operated Express Routes</b>												
34 TRANSITWAY EXPRESS	1,843	1,636	12.6%							42,384	36,002	17.7%
39 TRANSITWAY EXPRESS	839	742	13.0%							19,294	16,333	18.1%
95-EXPRESS GOLDEN GLADES	1,372	1,195	14.8%							31,546	26,295	20.0%
150-MIAMI BEACH AIRPORT EXPRESS	1,333	2,149	-38.0%	1,328	2,161	-38.5%	1,198	1,966	-39.1%	40,768	65,763	-38.0%
338 - WEEKEND EXPRESS				249	259	-4.1%	196	247	-20.7%	1,780	2,274	-21.7%
836 EXPRESS	330	247	33.9%							7,600	5,428	40.0%
837 EXPRESS	186	195	-4.3%							4,282	4,281	0.0%
<b>Subtotal Express Routes</b>	<b>5,903</b>	<b>6,165</b>	<b>-4.2%</b>	<b>1,577</b>	<b>2,420</b>	<b>-34.8%</b>	<b>1,394</b>	<b>2,214</b>	<b>-37.0%</b>	<b>147,654</b>	<b>156,376</b>	<b>-5.6%</b>
<b>Percentage of All Bus Routes</b>	<b>3.2%</b>	<b>3.3%</b>		<b>1.3%</b>	<b>2.3%</b>		<b>1.7%</b>	<b>2.7%</b>		<b>2.9%</b>	<b>3.2%</b>	
<b>Contracted Routes - Local Service (*)</b>												
2	2,377	2,977	-20.1%	1,140	1,605	-29.0%	740	1,214	-39.1%	62,189	77,976	-20.2%
15	518	178	191.8%	285	93	205.6%	236	53	345.8%	14,003	4,545	208.1%
29		516									11,342	
46 - LIBERTY CITY CONN.		22									477	
56	495	391	26.6%	191						12,146	8,598	41.3%
70	319	161	98.2%	184			179			8,799	3,546	148.1%
72	926	670	38.2%	537	357	50.5%	400	259	54.2%	25,033	17,459	43.4%
82 - WESTCHESTER CIRC		61			38						1,488	
97	221	225	-1.6%	151	163	-7.5%	139	149	-6.8%	6,242	6,337	-1.5%
115		151			80						3,968	
152	406	1,051	-61.4%	183	375	-51.2%	120	331	-63.9%	10,538	26,285	-59.9%
155 - BISCAIYNE GARDENS CIRC		45									985	
202 - LITTLE HAITI CONN		110			22			21			2,620	
211 OVERTOWN CIRCULATOR		71									1,567	
212-SWEETWATER CIRC		22									494	
217 - BUNCHE PARK CIRC		80									1,759	
254-BROWNSVILLE CIRC		5									105	
267-LUDLAM LIMITED		162									3,567	
286-NORTH POINTE CIRC		93			61						2,279	
344	133	76	75.8%	64						3,318	1,666	99.2%
401 - NORTH OWL	79	61	30.8%	78	61	28.9%	84	65	29.3%	2,470	1,899	30.1%
MetroLink NoMi West	240									5,522		
MetroLink LeJeune	68									1,556		
MetroLink Opa-Locka	18									415		
<b>Subtotal Contracted Reg. &amp; Circ. Routes</b>	<b>6,234</b>	<b>7,125</b>	<b>-12.5%</b>	<b>2,812</b>	<b>2,854</b>	<b>-1.5%</b>	<b>1,897</b>	<b>2,158</b>	<b>-12.1%</b>	<b>162,206</b>	<b>178,962</b>	<b>-9.4%</b>
<b>Percentage of All Bus Routes</b>	<b>3.4%</b>	<b>3.8%</b>		<b>2.4%</b>	<b>2.7%</b>		<b>2.3%</b>	<b>2.7%</b>		<b>3.2%</b>	<b>3.6%</b>	

(1) Several express routes were suspended beginning at the end of Mar-20, due to the SARS-CoV-2 pandemic, while other routes had alignment and schedule modifications made to them, in an ongoing effort to optimize service delivery.  
(2) A second major round of changes took place with the 11/13/23 lineup known as the Better Bus Network, as listed at the start of this Metrobus section.

## BUS RIDERSHIP BY ROUTE SERVICE TYPE LINEUPS COMPARISON (MONTH-OVER-12 MONTH)

Boardings by Service Type and Route	Average Weekday	Average Weekday	Percent Change	Average Saturday	Average Saturday	Percent Change	Average Sunday	Average Sunday	Percent Change	Total Monthly	Total Monthly	Percent Change
	Oct-24	Oct-23	24 vs 23	Oct-24	Oct-23	24 vs 23	Oct-24	Oct-23	24 vs 23	Oct-24	Oct-23	24 vs 23
<b>Contracted Express Routes</b>												
301-DADE MONROE EXPRESS	823	955	-13.8%	901	885	1.8%	854	867	-1.4%	25,960	28,889	-10.1%
302-CARD SOUND EXPRESS	106	91	17.3%	111	94	17.8%	101	72	41.1%	3,293	2,728	20.7%
<b>Subtotal Contracted Express Routes</b>	<b>930</b>	<b>1,046</b>	<b>-11.1%</b>	<b>1,012</b>	<b>979</b>	<b>3.3%</b>	<b>955</b>	<b>938</b>	<b>1.8%</b>	<b>29,253</b>	<b>31,617</b>	<b>-7.5%</b>
<b>Percentage of All Bus Routes</b>	<b>0.5%</b>	<b>0.6%</b>		<b>0.9%</b>	<b>0.9%</b>		<b>1.2%</b>	<b>1.2%</b>		<b>0.6%</b>	<b>0.6%</b>	
<b>Limited Stop Routes</b>												
24-CORAL WAY LIMITED	2,399	2,195	9.3%	1,640	1,400	17.1%	1,050	1,108	-5.3%	65,933	59,432	10.9%
38 TRANSITWAY MAX	6,559	5,714	14.8%	4,809	6,328	-24.0%	3,862	4,957	-22.1%	185,551	175,803	5.5%
203 - BISCAYNE MAX	1,127	3,666	-69.3%							25,923	80,650	-67.9%
204 KILLIAN MAX	596	620	-3.8%							13,711	13,632	0.6%
211 - FLAGLER MAX	1,698	3,824	-55.6%							39,062	84,135	-53.6%
241 TUTTLE LIMITED		348			222			187			9,471	
272 SUNSET MAX (*)	360	428	-15.8%							8,290	9,423	-12.0%
277-7TH AVENUE MAX		879									19,345	
279 - 79 STREET MAX	577	469	22.9%							13,261	10,318	28.5%
287-SAGA BAY MAX	369	341	8.3%							8,489	7,499	13.2%
288 KENDALL MAX	441	372	18.4%							10,133	8,189	23.7%
297-27th AVENUE ORANGE MAX		1,229									27,047	
<b>Subtotal Limited Stop Routes</b>	<b>14,127</b>	<b>20,086</b>	<b>-29.7%</b>	<b>6,449</b>	<b>7,950</b>	<b>-18.9%</b>	<b>4,912</b>	<b>6,252</b>	<b>-21.4%</b>	<b>370,353</b>	<b>504,944</b>	<b>-26.7%</b>
<b>Percentage of All Bus Routes</b>	<b>7.6%</b>	<b>10.8%</b>		<b>5.5%</b>	<b>7.4%</b>		<b>6.0%</b>	<b>7.7%</b>		<b>7.3%</b>	<b>10.3%</b>	
<b>Directly Operated Free Routes</b>												
132 -TRI-RAIL DORAL SHUTTLE	37	37	0.6%							846	804	5.2%
500 - CUTLER BAY LOCAL	215	176	22.1%	141	152	-6.9%	93	86	7.3%	5,874	4,907	19.7%
510 - SKYLAKE CIRCULATOR (*)	326	471	-30.9%	129	217	-40.9%	108	194	-44.6%	8,439	12,211	-30.9%
<b>Subtotal Free Directly Operated Routes</b>	<b>577</b>	<b>684</b>	<b>-15.6%</b>	<b>270</b>	<b>369</b>	<b>-26.9%</b>	<b>200</b>	<b>280</b>	<b>-28.7%</b>	<b>15,159</b>	<b>17,922</b>	<b>-15.4%</b>
<b>Percentage of All Bus Routes</b>	<b>0.3%</b>	<b>0.4%</b>		<b>0.2%</b>	<b>0.3%</b>		<b>0.2%</b>	<b>0.3%</b>		<b>0.3%</b>	<b>0.4%</b>	
<b>Contractor-Operated Lifeline Routes</b>												
GREEN HILLS SHUTTLE	6	5	15.4%							24	26	-7.7%
KINGS CREEK SHUTTLE	10	14	-29.1%							39	55	-29.1%
SIERRA LAKES SHUTTLE	22	16	43.5%							89	62	43.5%
ROBERT SHARP SHUTTLE	31	23	34.8%							155	92	68.5%
AHEPA SHUTTLE	20	18	12.7%							100	71	40.8%
FEDERATION GARDENS SHUTTLE				23	20	13.8%				91	80	13.8%
<b>Subtotal Contractor-Operated Lifeline Routes</b>	<b>89</b>	<b>75</b>	<b>18.4%</b>	<b>23</b>	<b>20</b>	<b>13.8%</b>				<b>498</b>	<b>386</b>	<b>29.0%</b>
<b>Percentage of All Bus Routes</b>	<b>0.0%</b>	<b>0.0%</b>		<b>0.0%</b>	<b>0.0%</b>					<b>0.0%</b>	<b>0.0%</b>	
<b>All Other (Regular) Routes</b>	<b>156,986</b>	<b>150,140</b>	<b>4.6%</b>	<b>104,987</b>	<b>92,739</b>	<b>13.2%</b>	<b>71,895</b>	<b>69,584</b>	<b>3.3%</b>	<b>4,318,206</b>	<b>4,021,944</b>	<b>7.4%</b>
<b>Percentage of All Bus Routes</b>	<b>84.9%</b>	<b>81.0%</b>		<b>89.6%</b>	<b>86.4%</b>		<b>88.5%</b>	<b>85.5%</b>		<b>85.6%</b>	<b>81.9%</b>	
<b>Total Bus System</b>	<b>184,845</b>	<b>185,320</b>	<b>-0.3%</b>	<b>117,129</b>	<b>107,331</b>	<b>9.1%</b>	<b>81,253</b>	<b>81,427</b>	<b>-0.2%</b>	<b>5,043,329</b>	<b>4,912,151</b>	<b>2.7%</b>

## Bus Routes as Ranked by Percentage of Average Weekday Ridership October 2024

Rank	Route	Average Weekday	Percent Share	Cumul Pct Share	Rank	Route	Average Weekday	Percent Share	Cumul Pct Share	Rank	Route	Average Weekday	Percent Share	Cumul Pct Share		
1	100	14,573	7.9%	7.9%	29	26	2,329	1.3%	77.0%	57	272	360	0.2%	98.4%		
2	77	11,541	6.2%	14.1%	30	107	2,273	1.2%	78.2%	58	836	330	0.2%	98.6%		
3	11	11,032	6.0%	20.1%	31	new 103	1,889	1.0%	82.7%	59	510	326	0.2%	98.7%		
4	9	10,868	5.9%	26.0%	32	199	1,867	1.0%	83.7%	60	70	319	0.2%	98.9%		
5	27	9,168	5.0%	30.9%	33	34	1,843	1.0%	84.7%	61	8000	240	0.1%	99.0%		
6	3	7,529	4.1%	35.0%	34	40	1,810	1.0%	85.6%	62	97	221	0.1%	99.2%		
7	79	7,352	4.0%	39.0%	35	88	1,795	1.0%	86.6%	63	500	215	0.1%	99.3%		
8	17	6,911	3.7%	42.7%	36	32	1,746	0.9%	87.6%	64	837	186	0.1%	99.4%		
9	38	6,559	3.5%	46.3%	37	new 211	1,698	0.9%	88.5%	65	8001	167	0.1%	99.5%		
10	36	5,833	3.2%	49.4%	38	207	1,687	0.9%	89.4%	66	8003	147	0.1%	99.5%		
11	183	4,991	2.7%	52.1%	39	52	1,611	0.9%	90.3%	67	136	139	0.1%	99.6%		
12	125	4,668	2.5%	54.7%	40	208	1,550	0.8%	91.1%	68	344	133	0.1%	99.7%		
13	8	4,594	2.5%	57.1%	41	95	1,372	0.7%	91.8%	69	8004	120	0.1%	99.7%		
14	37	4,385	2.4%	59.5%	42	150	1,333	0.7%	92.6%	70	302	106	0.1%	99.8%		
15	20	3,546	1.9%	61.4%	43	73	1,297	0.7%	93.3%	71	401	79	0.0%	99.8%		
16	7	3,334	1.8%	63.2%	44	104	1,159	0.6%	93.9%	72	8002	68	0.0%	99.9%		
17	75	2,826	1.5%	64.8%	45	203	1,127	0.6%	94.5%	73	400	67	0.0%	99.9%		
18	12	2,810	1.5%	66.3%	46	72	926	0.5%	95.0%	74	132	37	0.0%	99.9%		
19	54	2,747	1.5%	67.8%	47	39	839	0.5%	95.5%	75	RS	31	0.0%	100.0%		
20	62	2,729	1.5%	69.2%	48	301	823	0.4%	95.9%	76	SL	22	0.0%	100.0%		
21	137	2,468	1.3%	70.6%	49	14	797	0.4%	96.3%	77	AS	20	0.0%	100.0%		
22	35	2,409	1.3%	71.9%	50	204	596	0.3%	96.7%	78	8005	18	0.0%	100.0%		
23	24	2,399	1.3%	73.2%	51	279	577	0.3%	97.0%	79	KC	10	0.0%	100.0%		
24	2	2,377	1.3%	74.5%	52	15	518	0.3%	97.3%	80	GH	6	0.0%	100.0%		
25	22	2,349	1.3%	75.7%	53	56	495	0.3%	97.5%							
26	87	2,192	1.2%	79.4%	54	288	441	0.2%	97.8%							
27	135	2,091	1.1%	80.5%	55	152	406	0.2%	98.0%							
28	21	2,027	1.1%	81.6%	56	287	369	0.2%	98.2%							
											entirely contracted in Oct-24					
											<b>Total Boardings</b>	<b>184,845</b>	<b>100.00%</b>			

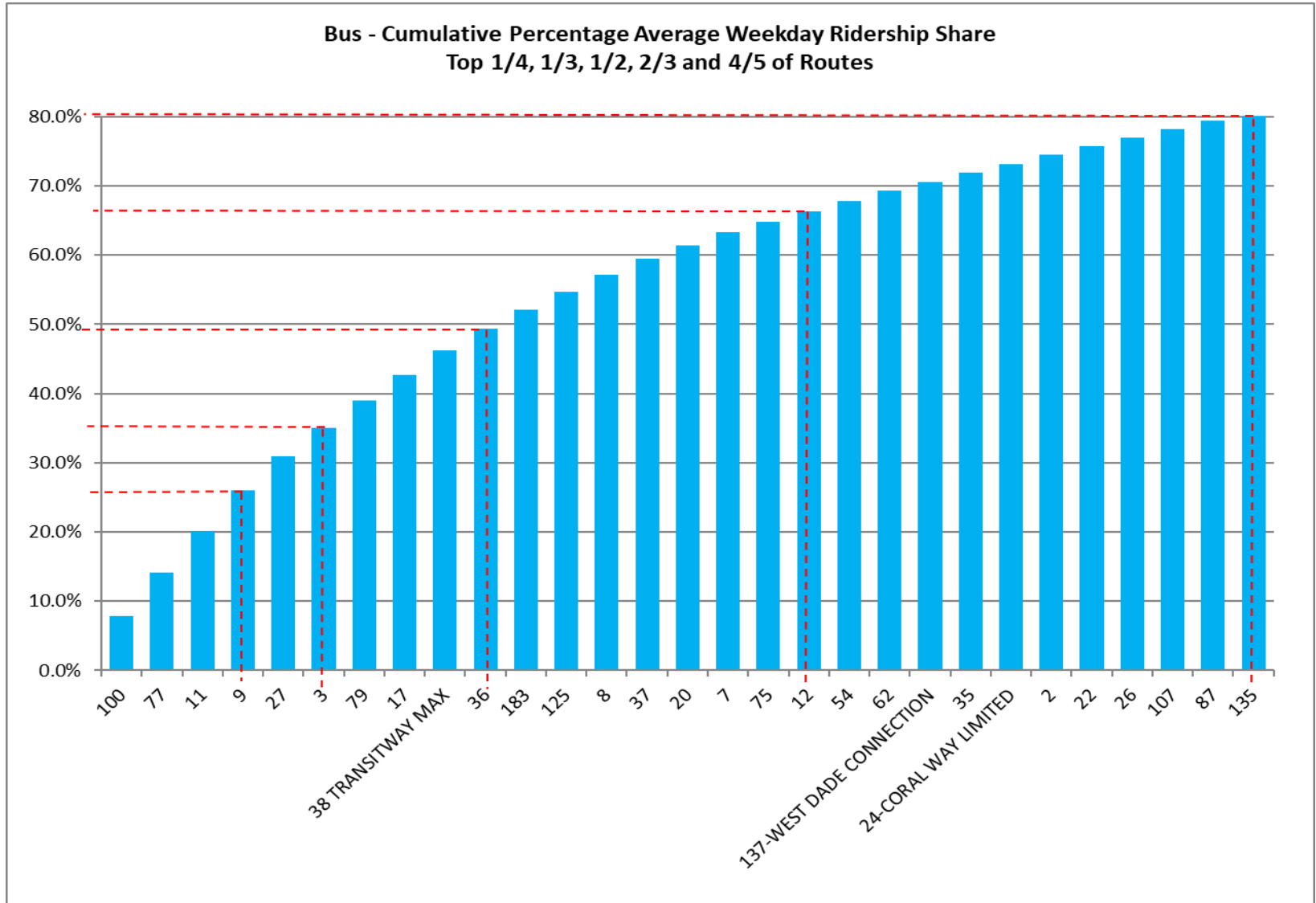
(1) Average weekday ridership rounded to the nearest unit.

(2) Includes the five Lifeline Shuttles that operate on weekdays: Ahepa (AS), Green Hills (GH), Kings Creek (KC), Robert Sharp (RS) and Sierra Lakes (SL).

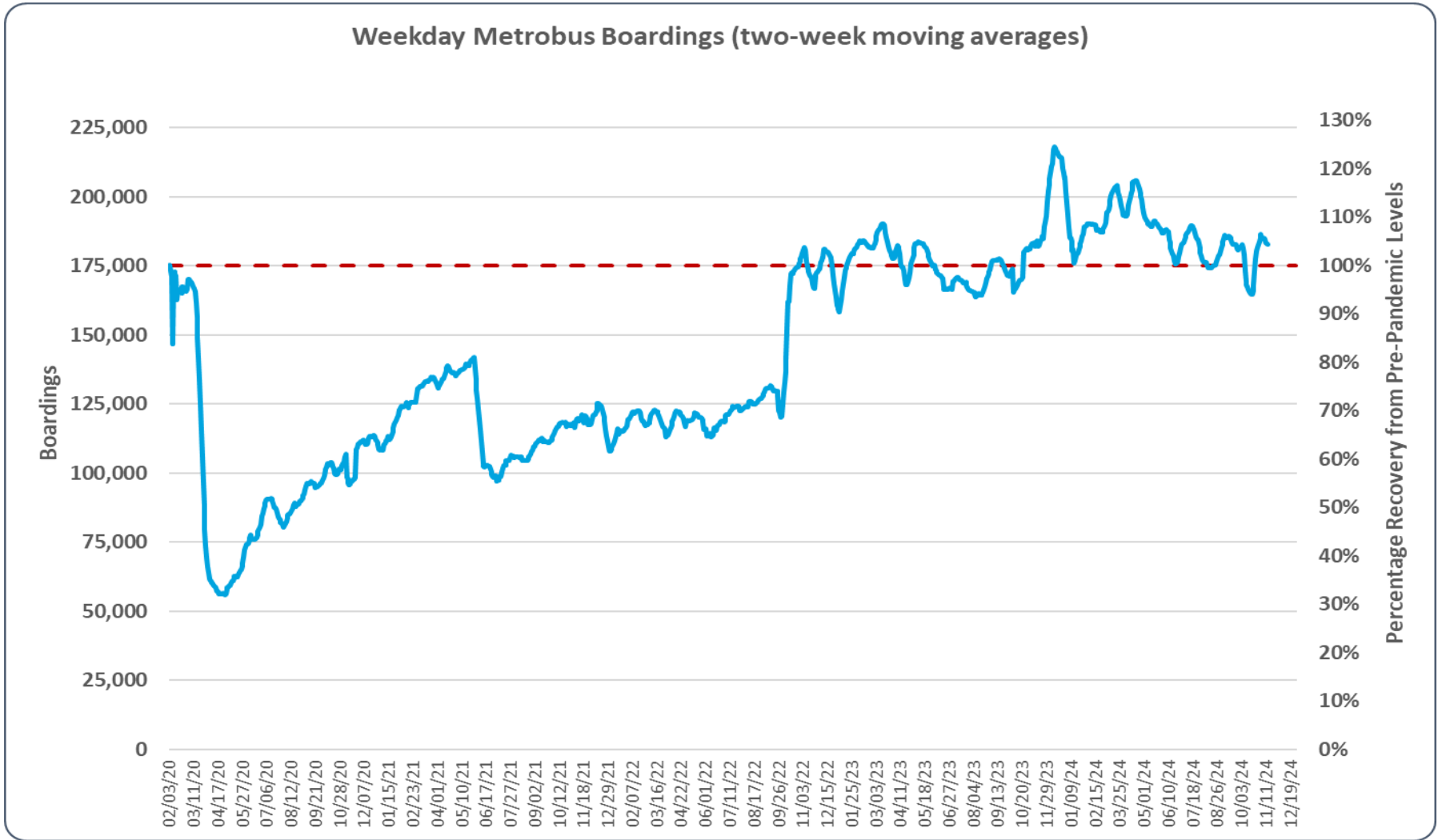
(3) Routes 8000, 8001, 8002, 8003, 8004 and 8005 refer to the six Better Bus Network MetroLink contracted supplemental routes, launched in July and August 2024: MetroLink NoMi West, MetroLink North Miami, MetroLink LeJeune, MetroLink Killian Parkway, MetroLink Alton Road, and MetroLink Opa-Locka, respectively.



# METROBUS CUMULATIVE PERCENTAGE RIDERSHIP SHARE – BY ROUTE



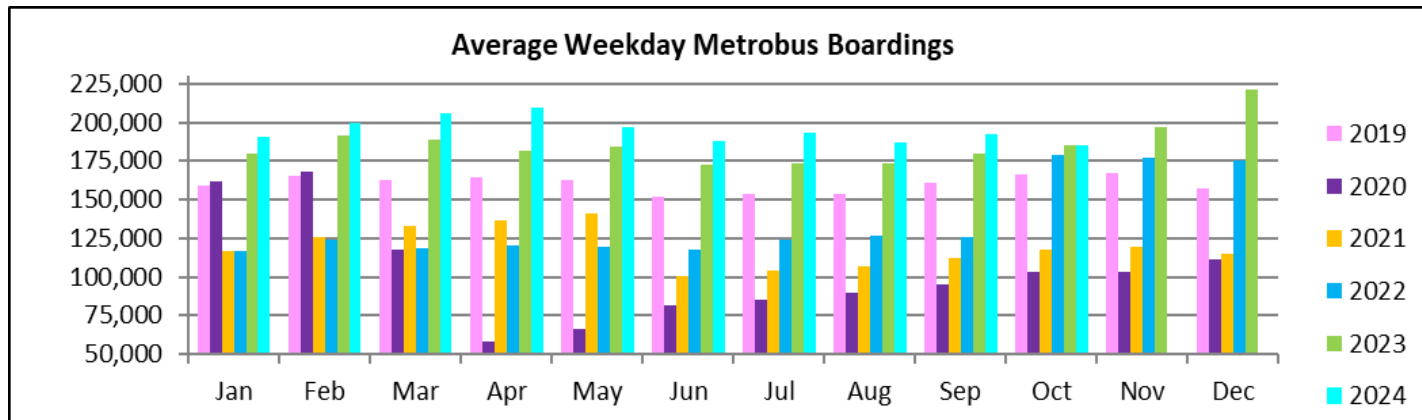
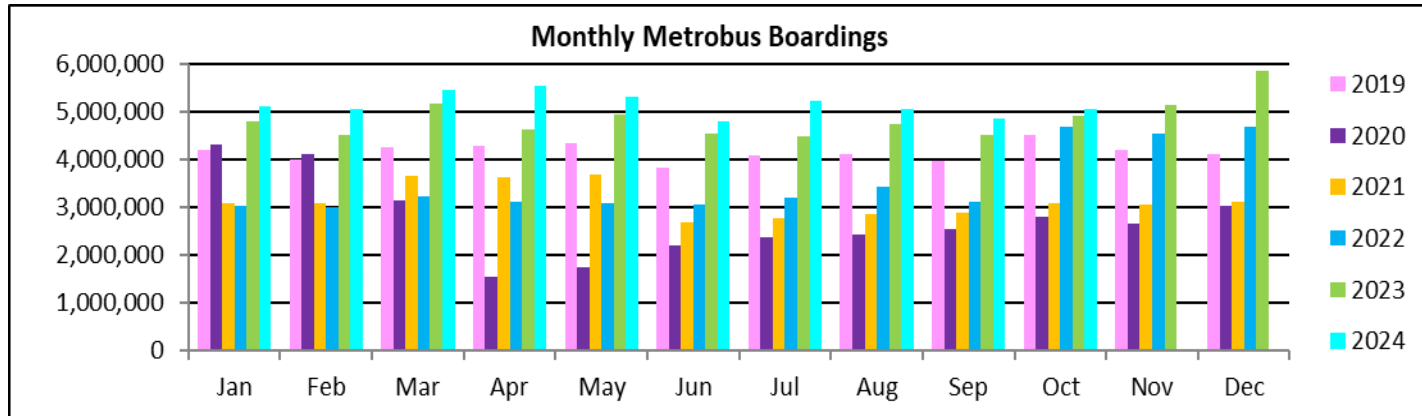
# METROBUS ESTIMATED WEEKDAY RIDERSHIP SINCE 02/01/20 (TWO-WEEK MOVING AVERAGES)



(1) The red dotted line represents the pre-pandemic benchmark month (Feb-20) maximum.

(2) The pronounced dip in June 2021 is due to resumption of fares at the start of recovery from the SARS-CoV-2 pandemic; the pronounced increase in October 2022 is due to the switchover to automatic passenger counter sampling-based estimates for metrobus ridership; the isolated peak around December 2023 is due to the free fares marking the launch of the Better Bus Network.

## TOTAL MONTHLY AND AVERAGE WEEKDAY RIDERSHIP YEAR OVER YEAR COMPARISON CHARTS – METROBUS



**“TOP 10 / BOTTOM 10” BUS ROUTES AVERAGE WEEKDAY RIDERSHIP PERFORMANCE  
MONTH OVER MONTH COMPARISON**

Route	Oct-24	Sep-24	Absolute Delta	Percent Delta
<b>2</b>	2,377	2,314	63	2.7%
<b>Metrolink NoMi West</b>	240	211	29	13.8%
<b>137-WEST DADE CONNECTION</b>	2,468	2,444	24	1.0%
<b>Metrolink North Miami</b>	167	143	24	16.5%
<b>203 - BISCAYNE MAX</b>	1,127	1,106	21	1.9%
<b>500 - CUTLER BAY LOCAL</b>	215	207	8	3.9%
<b>Metrolink Killian Parkway</b>	147	142	5	3.7%
<b>401 - NORTH OWL</b>	79	75	4	6.0%
<b>70</b>	319	317	3	0.8%
<b>Metrolink Opa-Locka</b>	18	17	1	6.8%
<b>9</b>	10,868	11,659	-791	-6.8%
<b>27</b>	9,168	9,865	-698	-7.1%
<b>3</b>	7,529	8,128	-599	-7.4%
<b>79</b>	7,352	7,855	-503	-6.4%
<b>38 TRANSITWAY MAX</b>	6,559	7,051	-492	-7.0%
<b>11</b>	11,032	11,462	-430	-3.8%
<b>17</b>	6,911	7,234	-324	-4.5%
<b>36</b>	5,833	6,147	-314	-5.1%
<b>100</b>	14,573	14,853	-280	-1.9%
<b>62</b>	2,729	2,965	-236	-8.0%

(\*) Averages rounded to the nearest boarding, data as estimated from automatic passenger counter (APC) system; Lifeline shuttles excluded.

## “TOP 10 / BOTTOM 10” BUS ROUTES SETS AVERAGE WEEKDAY RIDERSHIP PERFORMANCE YEAR OVER YEAR COMPARISON

Route Set (*), (1), (2)	Oct-24	Oct-23	Absolute Delta	Percent Delta	routes included in set
<b>{ 20 }</b>	5,292	2,850	2,442	85.7%	<b>20, 32, 115</b>
<b>{ 11 }</b>	11,032	9,644	1,388	14.4%	<b>11, 212</b>
<b>{ 17 &amp; 22 &amp; 75 }</b>	12,085	10,796	1,289	11.9%	<b>17, 22, 75, 108, 217</b>
<b>{ new 107 }</b>	5,496	4,447	1,049	23.6%	<b>35, 56, 70, 71, new 107, 248</b>
<b>{ 38 }</b>	6,693	5,790	903	15.6%	<b>31, 38, 344</b>
<b>{ 27 }</b>	9,168	8,339	829	9.9%	<b>27, 297</b>
<b>{ 125 }</b>	4,668	3,906	762	19.5%	<b>19, 107, 125</b>
<b>{ 77 }</b>	11,541	10,838	703	6.5%	<b>77, 277</b>
<b>26</b>	2,329	1,877	451	24.0%	<b>26</b>
<b>15</b>	518	178	341	191.8%	<b>15</b>
<b>{ 100 }</b>	14,573	17,117	-2,543	-14.9%	<b>100, 105, 119, 120</b>
<b>{ new 211 }</b>	11,159	12,849	-1,691	-13.2%	<b>8, 24, 51, 82, 137, new 211</b>
<b>{ 73 &amp; 183 }</b>	6,288	7,890	-1,602	-20.3%	<b>57, 73, 183, 238, 267, 286</b>
<b>{ 279 }</b>	7,929	8,950	-1,022	-11.4%	<b>79, 112, 279</b>
<b>{ 37 &amp; 54 }</b>	7,133	8,082	-950	-11.7%	<b>29, 37, 42, 54, 254</b>
<b>150</b>	1,333	2,149	-816	-38.0%	<b>150</b>
<b>7</b>	3,334	4,021	-687	-17.1%	<b>7</b>
<b>{ 2 }</b>	2,377	3,048	-671	-22.0%	<b>2, 211</b>
<b>88</b>	1,795	2,419	-624	-25.8%	<b>88</b>
<b>40</b>	1,810	2,344	-535	-22.8%	<b>40</b>

(\*) Averages rounded to the nearest boarding, data as estimated from automatic passenger counter (APC) system; Lifeline shuttles excluded.

(1) The route sets, denoted by brackets, include the new 11/13/2023 lineup's Better Bus Network route designations, as well as older routes present for the first part of the month and previous months and years, then either renamed, absorbed, or eliminated. The sets were defined to enable reasonably fair comparisons between pre- and post-BBN timeframes, to the extent possible and practical, given the complexity of the changes for some of the routes and sets. The definitions were based on information from the DTPW website, and subject to future adjustments, if necessary.

(2) The adjective "new" in front of some new Better Bus Network-generated (recycled) route numbers was added to help distinguish those routes from older but different routes with the same number present in previous months or years.

## “TOP 10 / BOTTOM 10” BUS ROUTES SETS AVERAGE WEEKDAY RIDERSHIP PERFORMANCE MONTH OVER 60-MONTH PRIOR COMPARISON

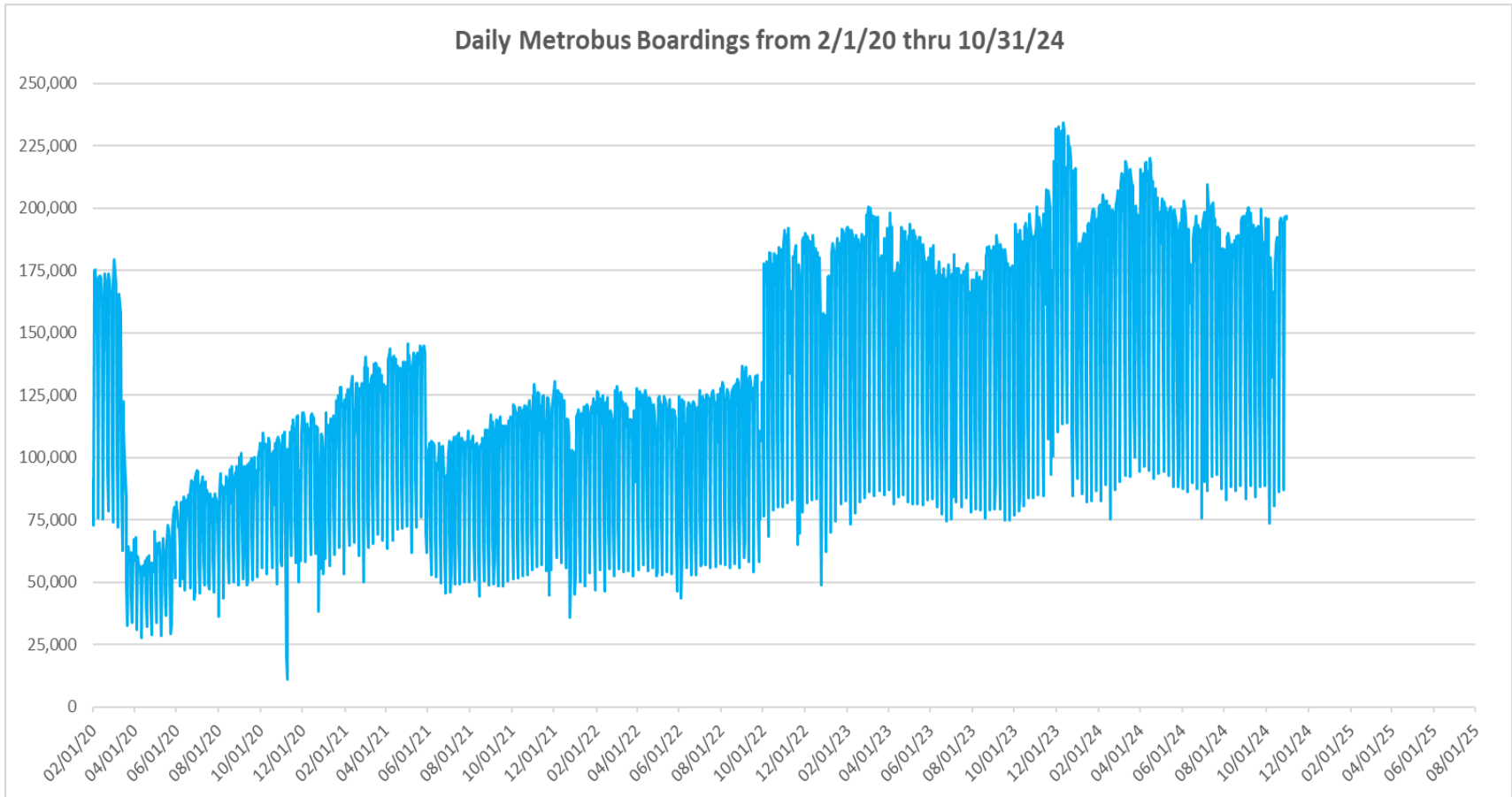
Route Set (*), (1), (2)	Oct-24	Oct-19	Absolute Delta	Percent Delta	routes included in set
{ 11 }	11,032	7,173	3,859	53.8%	11, 212
{ 77 }	11,541	7,969	3,572	44.8%	77, 277
{ 20 }	5,292	2,573	2,719	105.6%	20, 32, 115
{ 17 & 22 & 75 }	12,085	9,724	2,361	24.3%	17, 22, 75, 108, 217
{ new 107 }	5,496	3,890	1,606	41.3%	35, 56, 70, 71, new 107, 248
{ 9 }	10,868	9,406	1,462	15.5%	9, 10, 16
{ 125 }	4,668	3,291	1,376	41.8%	19, 107, 125
{ 27 }	9,168	8,156	1,012	12.4%	27, 297
{ new 211 }	11,159	10,388	771	7.4%	8, 24, 51, 82, 137, new 211
135	2,091	1,333	758	56.8%	135
{ 95 }	1,372	3,114	-1,743	-56.0%	95, 195, 196, 295, 296
{ 100 }	14,573	15,907	-1,334	-8.4%	100, 105, 119, 120
{ 38 }	6,693	7,811	-1,119	-14.3%	31, 38, 344
{ 37 & 54 }	7,133	7,868	-735	-9.3%	29, 37, 42, 54, 254
204	596	1,043	-447	-42.9%	204
{ 14 }	797	1,203	-406	-33.7%	14, 113, 241
288	441	784	-343	-43.8%	288
150	1,333	1,640	-307	-18.7%	150
88	1,795	2,058	-264	-12.8%	88
{ 2 }	2,377	2,597	-220	-8.5%	2, 211

(\*) Averages rounded to the nearest boarding, data as estimated from automatic passenger counter (APC) system; Lifeline shuttles excluded.

(1) The route sets, denoted by brackets, include the new 11/13/2023 lineup's Better Bus Network route designations, as well as older routes present for the first part of the month and previous months and years, then either renamed, absorbed, or eliminated. The sets were defined to enable reasonably fair comparisons between pre- and post-BBN timeframes, to the extent possible and practical, given the complexity of the changes for some of the routes and sets. The definitions were based on information from the DTPW website, and subject to future adjustments, if necessary.

(2) The adjective "new" in front of some new Better Bus Network-generated (recycled) route numbers was added to help distinguish those routes from older but different routes with the same number present in previous months or years.

## DAILY METROBUS RIDERSHIP SINCE FEBRUARY 1, 2020



- (1) There was no Metrobus, Metrorail and Metromover service on 5/31/20, as a safety precaution, and no service for any of the four modes on 9/28/22, as a result of Hurricane Ian.
- (2) The dip at the start of the second week of Nov-20 is due to Hurricane Eta.
- (3) Daily variations from Oct-22 onward are a representation estimated from reports made available by the Bus APC data vendor; the finalized data is based on statistical sampling.
- (4) The reduction seen beginning 6/1/21 is partly due to the resumption of fares and partly the result of resuming reporting Cubic farebox data rather than bus APC counts; the jump seen at the very start of Oct-22 is due to the switch to APC bus ridership counts reporting beginning 10/1/22; the pronounced peak in Dec-23 is attributable to the Better Bus Network launch period and attendant free fares.
- (5) Periodic (weekly) variations are prominent, since weekday ridership is almost always significantly higher than weekend or holiday ridership.

## METROBUS PARKING PATRONAGE SUMMARY October 2024

PARK-RIDE LOT	ACTUAL AVAILABLE SPACES	ACTUAL OCCUPANCY	PERCENT OCCUPANCY
Transitway / SW 152nd St	200	159	80%
Transitway / SW 168th St (*)	149		
Transitway / SW 200th Street	100	38	38%
Transitway / SW 112 Ave (Target)	450	170	38%
Transitway / SW 244th St	95	77	81%
Transitway / SW 296th St	139	25	18%
Transitway / SW 344th St	248	183	74%
Coral Reef Drive 117/ Turnpike	95	95	100%
Golden Glades Facility	2,150	361	17%
Hammocks Town Center (SW 152 Ave / SW 104 St)	50	17	34%
Kendall Dr./SW 127th Ave	161	13	8%
West Kendall Transit Term (Kendall Dr / SW162 Ave)	40	15	38%
NW 7th Avenue Transit Village (NW 7 Ave / NW 62 St)	25	16	64%
Miami Gardens Dr. / NW 73rd Ave	136	0	0%
Dolphin Station	348	68	20%
Tamiami Station (eff 11-2022)	442	62	14%
I-75 / Miami Gardens Dr (**)	298		
<b>TOTAL</b>	<b>5,126</b>	<b>1,299</b>	<b>25%</b>

(\*) Closed for construction beginning Jan-22

(\*\*) Route 175 Suspended 3/27/2020



# Metrorail



## METRORAIL AVERAGE WEEKDAY BOARDINGS BY STATION (†)

<b>Weekdays</b>	<b>Average Weekday</b>	<b>Average Weekday</b>	<b>Percent Change</b>	<b>Average Weekday</b>	<b>Percent Change</b>	<b>Average Weekday</b>	<b>Percent Change</b>	<b>Average Weekday</b>	<b>Percent Change</b>
<b>STATIONS</b>	<b>Oct-24</b>	<b>Oct-23</b>	<b>YOY</b>	<b>Feb-20</b>	<b>Current vs Feb-20</b>	<b>Sep-24</b>	<b>MOM</b>	<b>Oct-19</b>	<b>YO5Y</b>
ALLAPATTAH	1,613	1,616	-0.2%	1,942	-16.9%	1,680	-4.0%	1,819	-11.3%
BRICKELL	5,288	5,158	2.5%	6,529	-19.0%	5,559	-4.9%	6,144	-13.9%
BROWNSVILLE	543	695	-21.9%	862	-37.0%	578	-6.0%	838	-35.2%
UHEALTH   JACKSON	4,537	4,439	2.2%	6,143	-26.1%	4,791	-5.3%	5,980	-24.1%
COCONUT GROVE	1,890	1,390	36.0%	1,795	5.3%	1,898	-0.4%	1,651	14.5%
CULMER	933	1,042	-10.5%	1,392	-33.0%	959	-2.7%	1,284	-27.3%
DADELAND NORTH	4,232	4,091	3.4%	5,926	-28.6%	4,377	-3.3%	5,770	-26.7%
DADELAND SOUTH	4,443	4,719	-5.8%	7,150	-37.9%	4,616	-3.7%	7,067	-37.1%
DOUGLAS ROAD	3,210	3,038	5.7%	3,624	-11.4%	3,386	-5.2%	3,452	-7.0%
DR. MARTIN LUTHER KING, JR.	913	843	8.3%	1,157	-21.1%	952	-4.1%	1,157	-21.1%
EARLINGTON HEIGHTS	1,383	1,352	2.3%	1,662	-16.7%	1,136	21.8%	1,578	-12.3%
GOVERNMENT CENTER	6,721	6,896	-2.5%	10,557	-36.3%	6,907	-2.7%	9,979	-32.6%
HIALEAH	1,206	800	50.7%	1,253	-3.7%	1,258	-4.2%	1,265	-4.7%
MIAMI INTERNATIONAL AIRPORT	1,319	1,331	-0.9%	1,711	-22.9%	1,389	-5.0%	1,578	-16.4%
NORTHSIDE	1,071	1,253	-14.6%	1,476	-27.5%	1,112	-3.8%	1,405	-23.8%
OKEECHOBEE	995	891	11.6%	1,164	-14.5%	1,051	-5.3%	1,178	-15.5%
OVERTOWN / ARENA	1,913	1,749	9.4%	2,274	-15.9%	1,902	0.6%	2,167	-11.7%
PALMETTO	1,283	1,241	3.4%	1,543	-16.9%	1,354	-5.3%	1,449	-11.5%
SANTA CLARA	775	704	10.2%	812	-4.5%	772	0.4%	750	3.4%
SOUTH MIAMI	2,188	2,088	4.8%	3,015	-27.4%	2,285	-4.3%	2,900	-24.6%
TRI-RAIL	981	1,114	-11.9%	1,207	-18.7%	975	0.6%	1,112	-11.8%
UNIVERSITY	2,411	2,189	10.1%	2,784	-13.4%	2,651	-9.0%	2,663	-9.4%
VIZCAYA	1,463	1,096	33.4%	1,390	5.3%	1,287	13.7%	1,303	12.2%
<b>TOTAL</b>	<b>51,311</b>	<b>49,735</b>	<b>3.2%</b>	<b>67,367</b>	<b>-23.8%</b>	<b>52,873</b>	<b>-3.0%</b>	<b>64,488</b>	<b>-20.4%</b>

(†) In this table and those which follow, "YOY" stands for "year-over-year", "MOM" for "month-over-month" and, e.g., "YO5Y" for "year over five years", i.e., current month vs 12 months prior, one month prior, and 60 months prior, respectively. The Feb-20 numbers serve as a pre-pandemic benchmark.

## METRORAIL AVERAGE SATURDAY BOARDINGS BY STATION

<b>Saturdays</b>	Average Saturday	Average Saturday	Percent Change	Average Saturday	Percent Change	Average Saturday	Percent Change	Average Saturday	Percent Change
STATIONS	Oct-24	Oct-23	YOY	Feb-20	Current vs Feb-20	Sep-24	MOM	Oct-19	YO5Y
ALLAPATTAH	880	797	10.5%	1,051	-16.3%	880	0.1%	961	-8.4%
BRICKELL	2,467	2,254	9.4%	2,811	-12.2%	2,649	-6.9%	2,511	-1.7%
BROWNSVILLE	340	411	-17.2%	520	-34.6%	305	11.5%	507	-33.0%
UHEALTH   JACKSON	745	712	4.6%	959	-22.3%	774	-3.7%	936	-20.4%
COCONUT GROVE	962	659	46.1%	928	3.6%	991	-2.9%	790	21.8%
CULMER	453	455	-0.5%	721	-37.2%	450	0.5%	641	-29.4%
DADELAND NORTH	1,365	1,265	8.0%	1,994	-31.5%	1,355	0.8%	1,830	-25.4%
DADELAND SOUTH	1,915	1,876	2.0%	2,625	-27.1%	1,815	5.5%	2,514	-23.9%
DOUGLAS ROAD	1,283	1,119	14.7%	1,319	-2.7%	1,346	-4.6%	1,261	1.8%
DR. MARTIN LUTHER KING, JR.	550	465	18.3%	625	-12.0%	557	-1.3%	620	-11.2%
EARLINGTON HEIGHTS	759	745	1.9%	935	-18.9%	617	23.1%	873	-13.1%
GOVERNMENT CENTER	2,728	2,596	5.1%	4,262	-36.0%	2,610	4.5%	3,650	-25.3%
HIALEAH	575	403	42.7%	583	-1.3%	581	-0.9%	583	-1.2%
MIAMI INTERNATIONAL AIRPORT	913	937	-2.6%	1,330	-31.4%	962	-5.2%	1,162	-21.4%
NORTHSIDE	621	737	-15.8%	878	-29.3%	666	-6.8%	857	-27.6%
OKEECHOBEE	430	324	32.5%	408	5.2%	437	-1.7%	378	13.7%
OVERTOWN / ARENA	692	570	21.5%	678	2.1%	666	4.0%	546	26.9%
PALMETTO	417	368	13.4%	458	-9.0%	420	-0.7%	378	10.3%
SANTA CLARA	378	311	21.4%	422	-10.5%	376	0.4%	373	1.3%
SOUTH MIAMI	971	903	7.5%	1,256	-22.7%	980	-0.9%	1,130	-14.1%
TRI-RAIL	511	510	0.2%	614	-16.9%	438	16.5%	478	6.7%
UNIVERSITY	766	558	37.3%	714	7.3%	754	1.6%	648	18.3%
VIZCAYA	619	446	38.9%	622	-0.5%	540	14.7%	553	12.0%
<b>TOTAL</b>	<b>21,338</b>	<b>19,419</b>	<b>9.9%</b>	<b>26,714</b>	<b>-20.1%</b>	<b>21,166</b>	<b>0.8%</b>	<b>24,177</b>	<b>-11.7%</b>

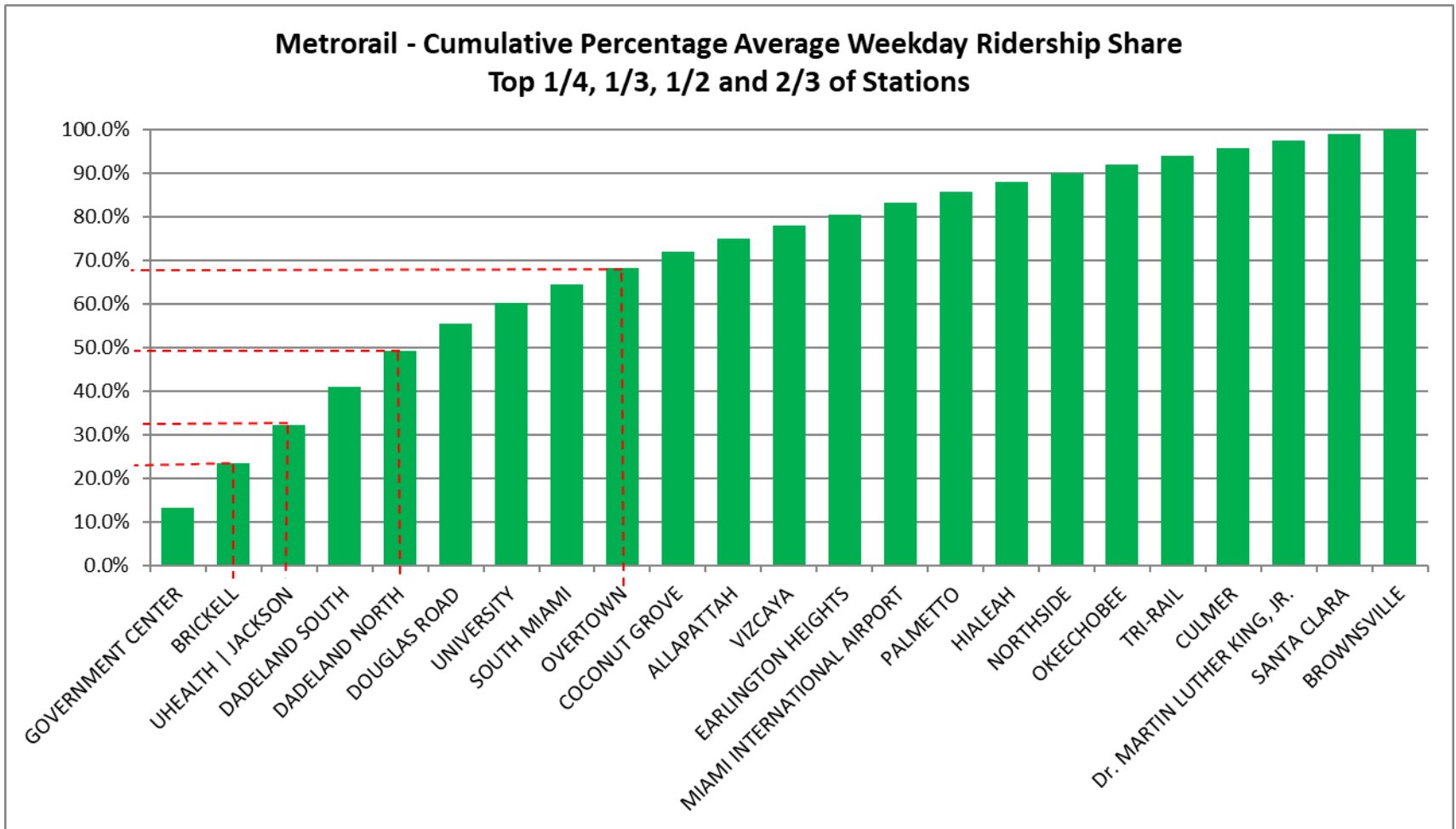
## METRORAIL AVERAGE SUNDAY BOARDINGS BY STATION

<b>Sundays</b>	Average Sunday	Average Sunday	Percent Change	Average Sunday	Percent Change	Average Sunday	Percent Change	Average Sunday	Percent Change
<b>STATIONS</b>	Oct-24	Oct-23	YOY	Feb-20	Current vs Feb-20	Sep-24	MOM	Oct-19	YO5Y
ALLAPATTAH	623	596	4.6%	791	-21.2%	635	-1.9%	730	-14.6%
BRICKELL	1,831	1,749	4.7%	2,379	-23.0%	1,885	-2.9%	1,994	-8.2%
BROWNSVILLE	226	282	-19.9%	406	-44.5%	240	-6.0%	400	-43.6%
UHEALTH   JACKSON	564	526	7.1%	791	-28.8%	591	-4.7%	721	-21.9%
COCONUT GROVE	722	494	46.2%	838	-13.9%	756	-4.5%	630	14.6%
CULMER	317	327	-3.1%	616	-48.5%	345	-8.0%	481	-34.1%
DADELAND NORTH	941	928	1.4%	1,685	-44.2%	990	-4.9%	1,327	-29.1%
DADELAND SOUTH	1,374	1,428	-3.8%	2,210	-37.8%	1,306	5.2%	1,935	-29.0%
DOUGLAS ROAD	849	774	9.8%	1,090	-22.1%	913	-7.0%	894	-5.0%
DR. MARTIN LUTHER KING, JR.	418	359	16.6%	506	-17.3%	386	8.4%	455	-8.1%
EARLINGTON HEIGHTS	579	533	8.5%	799	-27.6%	457	26.6%	693	-16.5%
GOVERNMENT CENTER	1,989	2,005	-0.8%	4,044	-50.8%	1,993	-0.2%	2,634	-24.5%
HIALEAH	383	319	20.2%	472	-18.8%	389	-1.5%	446	-14.1%
MIAMI INTERNATIONAL AIRPORT	816	858	-5.0%	1,343	-39.3%	938	-13.0%	1,246	-34.5%
NORTHSIDE	432	562	-23.1%	653	-33.8%	490	-11.9%	661	-34.6%
OKEECHOBEE	276	199	38.6%	273	0.8%	299	-7.8%	242	14.1%
OVERTOWN / ARENA	531	441	20.3%	544	-2.4%	509	4.4%	430	23.4%
PALMETTO	219	222	-1.5%	336	-34.9%	250	-12.5%	238	-7.8%
SANTA CLARA	245	207	18.0%	280	-12.4%	251	-2.5%	236	3.7%
SOUTH MIAMI	698	606	15.2%	987	-29.2%	681	2.4%	800	-12.8%
TRI-RAIL	355	367	-3.2%	528	-32.7%	326	8.9%	430	-17.4%
UNIVERSITY	552	427	29.3%	608	-9.3%	639	-13.7%	428	28.9%
VIZCAYA	486	331	47.0%	524	-7.3%	373	30.4%	409	18.9%
<b>TOTAL</b>	<b>15,423</b>	<b>14,538</b>	<b>6.1%</b>	<b>22,701</b>	<b>-32.1%</b>	<b>15,642</b>	<b>-1.4%</b>	<b>18,458</b>	<b>-16.4%</b>

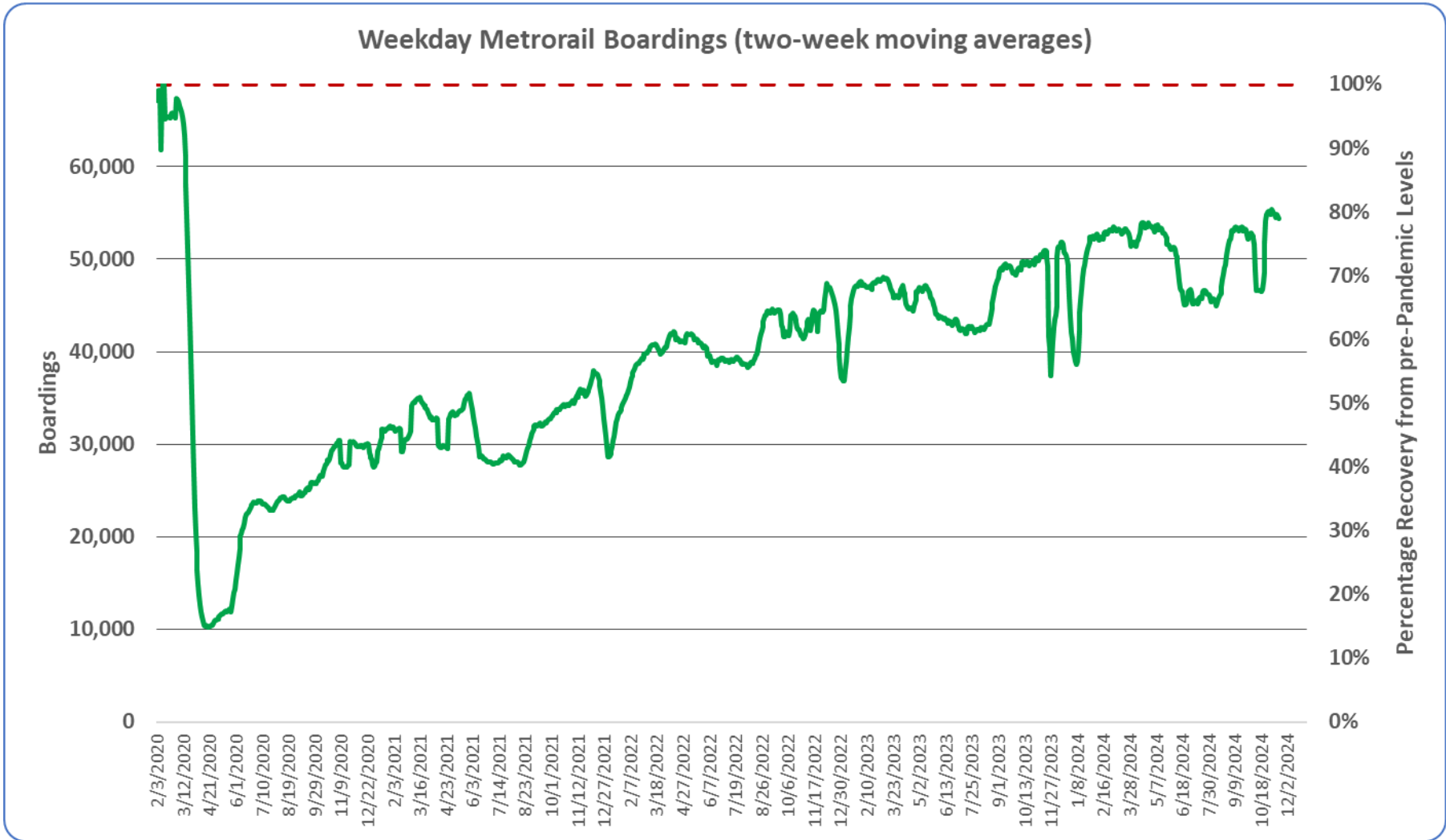
## METRORAIL TOTAL MONTHLY BOARDINGS BY STATION

<b>Monthly Totals</b>	Total Month	Total Month	Percent Change	Total Month	Percent Change	Total Month	Percent Change	Total Month	Percent Change
<b>STATIONS</b>	Oct-24	Oct-23	YOY	Feb-20	Current vs Feb-20	Sep-24	MOM	Oct-19	YO5Y
ALLAPATTAH	43,134	41,576	3.7%	46,868	-8.0%	41,140	4.8%	48,502	-11.1%
BRICKELL	138,398	130,471	6.1%	152,259	-9.1%	133,744	3.5%	158,549	-12.7%
BROWNSVILLE	14,742	18,310	-19.5%	21,285	-30.7%	14,297	3.1%	22,851	-35.5%
UHEALTH   JACKSON	108,958	102,333	6.5%	128,921	-15.5%	102,721	6.1%	142,848	-23.7%
COCONUT GROVE	49,993	35,491	40.9%	43,580	14.7%	46,615	7.2%	43,458	15.0%
CULMER	24,463	26,293	-7.0%	33,497	-27.0%	23,122	5.8%	33,967	-28.0%
DADELAND NORTH	105,773	98,950	6.9%	132,894	-20.4%	99,275	6.5%	144,203	-26.6%
DADELAND SOUTH	114,852	117,607	-2.3%	162,416	-29.3%	107,768	6.6%	179,071	-35.9%
DOUGLAS ROAD	81,946	74,846	9.5%	82,141	-0.2%	78,920	3.8%	87,630	-6.5%
DR. MARTIN LUTHER KING, JR.	24,820	22,114	12.2%	27,980	-11.3%	23,687	4.8%	30,724	-19.2%
EARLINGTON HEIGHTS	37,098	35,203	5.4%	40,697	-8.8%	28,039	32.3%	42,381	-12.5%
GOVERNMENT CENTER	172,147	170,596	0.9%	243,414	-29.3%	160,934	7.0%	251,960	-31.7%
HIALEAH	31,523	20,938	50.6%	29,516	6.8%	29,951	5.2%	32,988	-4.4%
MIAMI INTERNATIONAL AIRPORT	37,361	37,249	0.3%	46,115	-19.0%	37,461	-0.3%	45,935	-18.7%
NORTHSIDE	28,749	33,204	-13.4%	36,127	-20.4%	27,962	2.8%	38,281	-24.9%
OKEECHOBEE	25,568	21,755	17.5%	26,026	-1.8%	24,653	3.7%	29,311	-12.8%
OVERTOWN / ARENA	48,587	42,478	14.4%	49,911	-2.7%	43,817	10.9%	53,029	-8.4%
PALMETTO	31,913	29,706	7.4%	33,944	-6.0%	30,323	5.2%	35,499	-10.1%
SANTA CLARA	20,318	17,704	14.8%	19,245	5.6%	18,445	10.2%	19,627	3.5%
SOUTH MIAMI	56,745	52,310	8.5%	69,412	-18.2%	53,982	5.1%	73,925	-23.2%
TRI-RAIL	26,071	28,164	-7.4%	29,120	-10.5%	23,365	11.6%	29,168	-10.6%
UNIVERSITY	59,896	52,350	14.4%	61,253	-2.2%	59,993	-0.2%	65,589	-8.7%
VIZCAYA	38,058	27,448	38.7%	32,497	17.1%	30,243	25.8%	33,670	13.0%
<b>TOTAL</b>	<b>1,321,113</b>	<b>1,237,096</b>	<b>6.8%</b>	<b>1,549,118</b>	<b>-14.7%</b>	<b>1,240,457</b>	<b>6.5%</b>	<b>1,643,166</b>	<b>-19.6%</b>

# METRORAIL CUMULATIVE PERCENTAGE RIDERSHIP SHARE

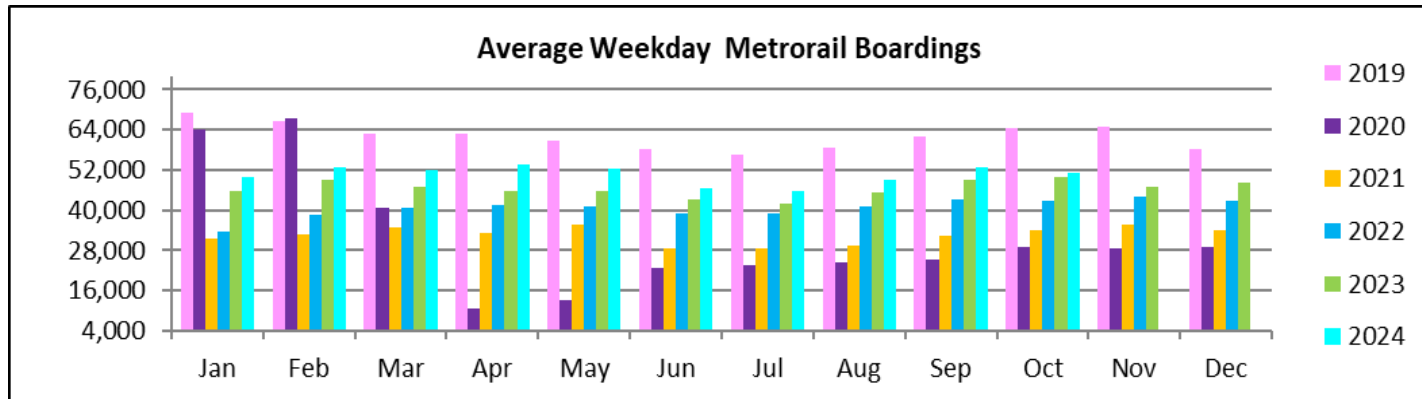
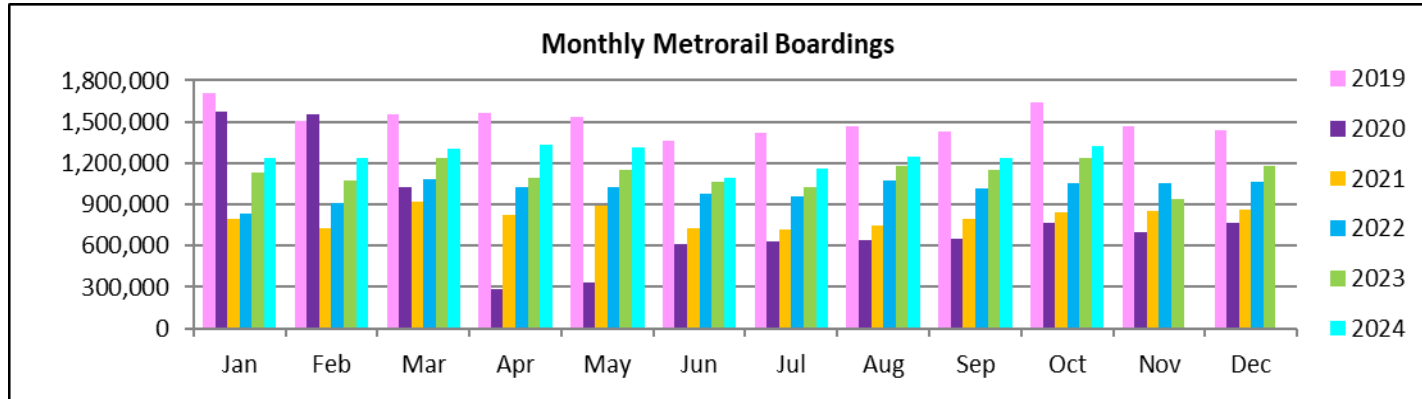


# METRORAIL WEEKDAY RIDERSHIP SINCE 02/01/20 (TWO-WEEK MOVING AVERAGES)



- (1) The red dotted line represents the pre-pandemic benchmark month (Feb-20) maximum.
- (2) Pronounced local minima are generally due to hurricanes or other storms, less often data outages, with associated delayed reductions in smoothed ridership.

# TOTAL MONTHLY AND AVERAGE WEEKDAY RIDERSHIP YEAR OVER YEAR COMPARISON CHARTS – METRORAIL



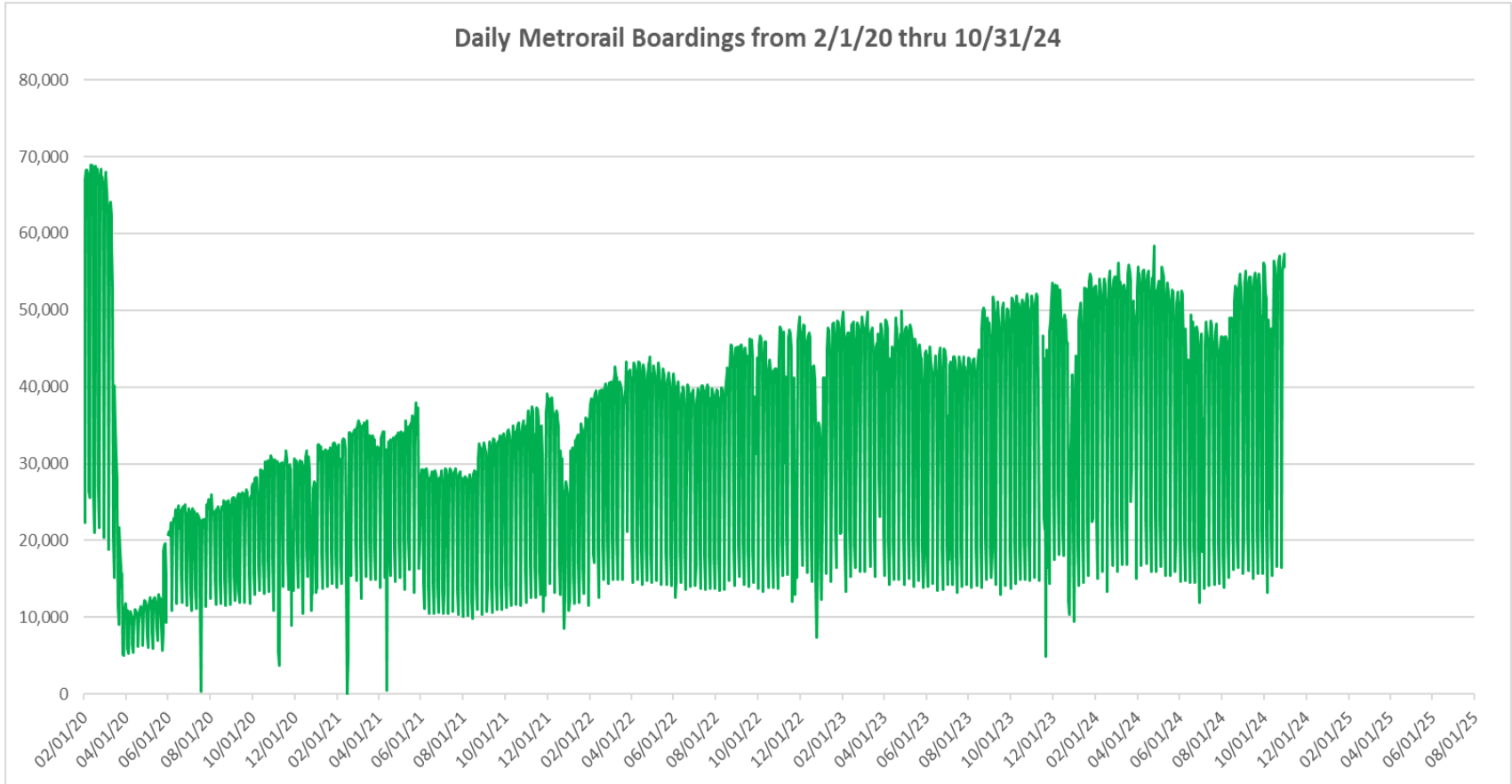


**“TOP 5 / BOTTOM 5” RAIL STATIONS AVERAGE WEEKDAY RIDERSHIP PERFORMANCE  
YEAR OVER YEAR COMPARISONS**

<b>Station</b>	<b>Oct-24</b>	<b>Oct-23</b>	<b>Absolute Delta (1)</b>	<b>Percent Delta</b>
COCONUT GROVE	1,890	1,390	501	36.0%
HIALEAH	1,206	800	405	50.7%
VIZCAYA	1,463	1,096	366	33.4%
UNIVERSITY	2,411	2,189	222	10.1%
DOUGLAS ROAD	3,210	3,038	172	5.7%
DADELAND SOUTH	4,443	4,719	-276	-5.8%
NORTHSIDE	1,071	1,253	-182	-14.6%
GOVERNMENT CENTER	6,721	6,896	-175	-2.5%
BROWNSVILLE	543	695	-152	-21.9%
TRI-RAIL	981	1,114	-133	-11.9%

(1) Averages rounded to the nearest boarding.

# DAILY METRORAIL RIDERSHIP SINCE FEBRUARY 1, 2020



- (1) There was no Metrobus, Metrorail and Metromover service on 5/31/20, as a safety precaution, and no service for any of the four modes on 9/28/22 as a result of Hurricane Ian..
- (2) The dip at the start of the second week of Nov-20 is due to Hurricane Eta; these are *raw data* from the Unleash Live contractor AI video system.
- (3) The dip on 4/13/21 is due to a loss of connectivity at all stations, affecting a few stations over the next two days as well; a similar loss of connectivity is seen on 11/21/23.
- (4) The reduction seen beginning 6/1/21 is partly due to the resumption of fares and partly the result of resuming reporting Cubic faregate data rather than video camera counts.
- (5) As a result of free fares to launch the Better Bus Network, faregates are open beginning 11/13/23, and Unleash Live AI video system ridership counts are reported starting 11/17/23; the isolated peak in Dec-23 is visible.
- (6) Periodic (weekly) variations are prominent, since weekday ridership is almost always significantly higher than weekend or holiday ridership; a few low-count days are due to system outages, often associated with construction or renovation work.

## METRORAIL PARKING PATRONAGE SUMMARY October 2024

PARK-RIDE LOT	ACTUAL CAPACITY (1)	ACTUAL OCCUPANCY (2)	PERCENT OCCUPANCY
DADELAND SOUTH	1,260	886	70%
DADELAND NORTH	1,702	1,000	59%
SOUTH MIAMI	816	361	44%
UNIVERSITY	260	190	73%
DOUGLAS ROAD	222		
COCONUT GROVE	100		
VIZCAYA	120	47	39%
CULMER	25	17	69%
SANTA CLARA	61	39	63%
ALLAPATTAH	74	7	10%
EARLINGTON HEIGHTS	361	165	46%
BROWNSVILLE	100	83	83%
DR. MARTIN LUTHER KING JR. (MDT)	62		
DR. MARTIN LUTHER KING JR. (GARAGE)	631		
NORTHSIDE	100	82	82%
HIALEAH	338	67	20%
OKEECHOBEE	1,398	160	11%
PALMETTO	700	170	24%
<b>TOTAL</b>	<b>8,330</b>	<b>3,274</b>	<b>39%</b>

- (1) Number of spaces could vary each week; shown are available spaces during final week of month, as submitted by DTPW Safety & Security office.  
(2) All sampled occupancy data provided by DTPW Safety & Security office; calculations are revisions to those submitted by that entity.  
(3) Daily averages rounded to nearest unit, with fewer samples at some stations than others, depending on staffing levels; calculations are based on sampled counted days only per raw data submitted, with resulting average daily occupancy shown.

# Metromover



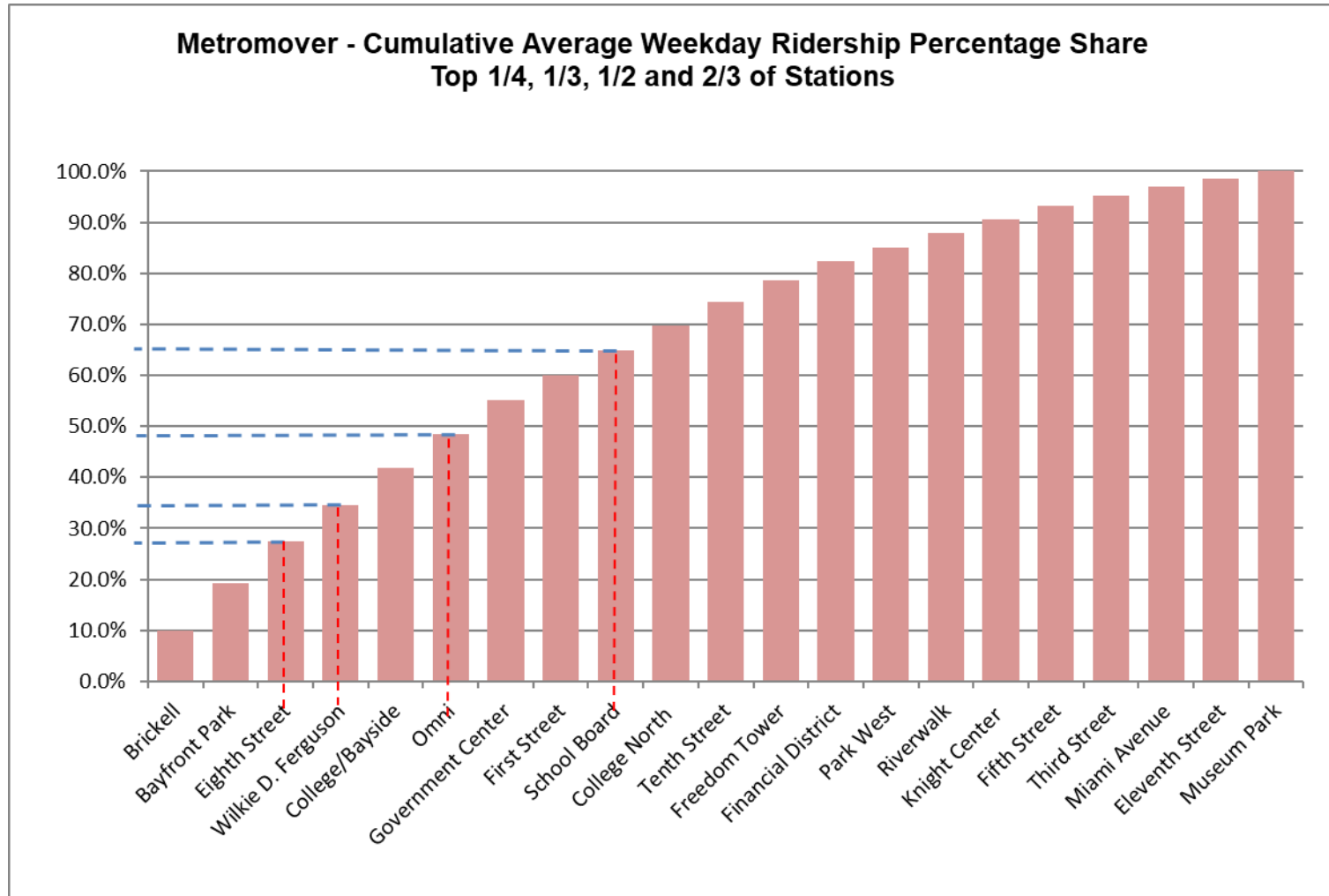
October 2024

## METROMOVER MONTHLY AND AVERAGE DAILY BOARDINGS BY STATION

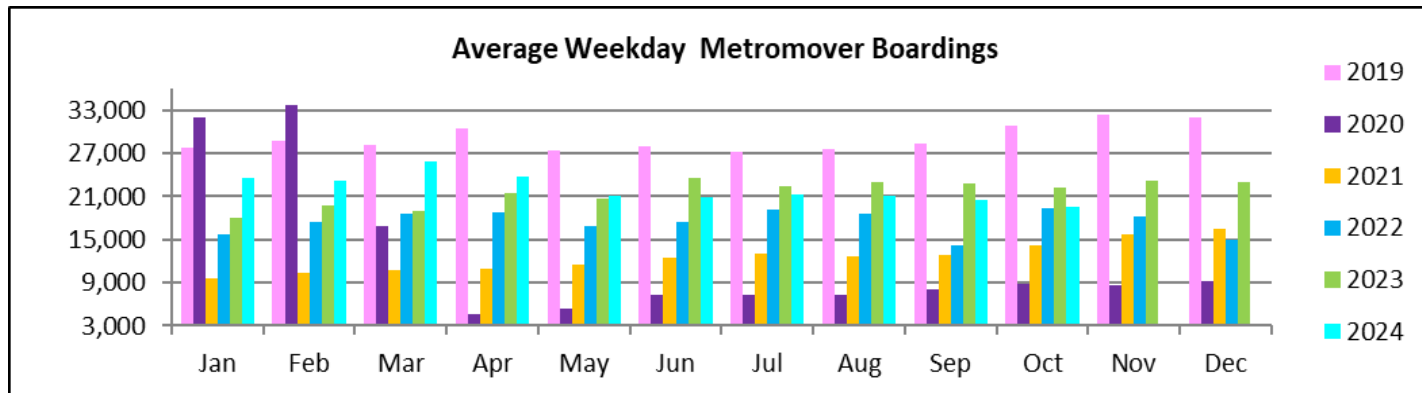
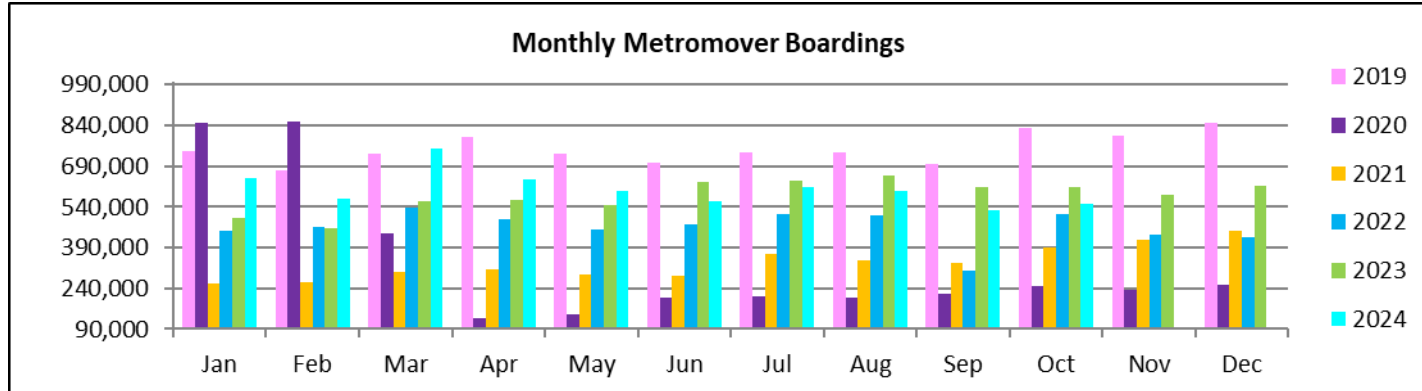
STATIONS	Average Weekday	Average Weekday	Percent Change	Average Saturday	Average Saturday	Percent Change	Average Sunday	Average Sunday	Percent Change	Total Monthly	Total Monthly	Percent Change
	Oct-24	Oct-23	24 vs 23	Oct-24	Oct-23	24 vs 23	Oct-24	Oct-23	24 vs 23	Oct-24	Oct-23	24 vs 23
School Board	965	1,288	-25.0%	696	942	-26.1%	706	837	-15.7%	27,238	36,217	-24.8%
Omni	1,306	2,004	-34.9%	939	1,285	-26.9%	874	1,270	-31.2%	36,332	55,301	-34.3%
Museum Park	282	274	2.9%	379	422	-10.2%	314	314	0.0%	9,035	9,262	-2.5%
Eleventh Street	295	295	-0.1%	240	230	4.0%	212	216	-1.8%	8,103	8,483	-4.5%
Park West	558	739	-24.5%	459	665	-31.0%	445	584	-23.7%	15,534	21,874	-29.0%
Freedom Tower	815			773			731			24,245		
Government Center	1,278	2,562	-50.1%	911	1,663	-45.2%	878	1,442	-39.1%	36,457	69,822	-47.8%
Miami Avenue	345	349	-1.1%	192	269	-28.8%	215	210	2.2%	9,509	9,753	-2.5%
Third Street	404	434	-6.9%	422	317	32.9%	235	349	-32.7%	11,763	12,532	-6.1%
Knight Center	522	589	-11.4%	222	375	-40.9%	227	271	-16.3%	13,684	15,662	-12.6%
Bayfront Park	1,850	2,173	-14.8%	1,167	1,497	-22.0%	1,071	1,314	-18.5%	51,247	59,919	-14.5%
First Street	977	1,224	-20.1%	686	975	-29.7%	758	878	-13.7%	28,177	35,129	-19.8%
College/Bayside	1,404	1,530	-8.2%	1,012	1,133	-10.6%	1,002	1,045	-4.1%	40,496	43,226	-6.3%
College North	938	1,110	-15.5%	429	620	-30.8%	384	515	-25.4%	25,099	29,333	-14.4%
Wilkie D. Ferguson	1,425	1,543	-7.7%	738	1,002	-26.3%	783	837	-6.5%	38,775	41,996	-7.7%
Riverwalk	553	698	-20.9%	389	441	-11.7%	424	460	-7.9%	15,863	19,338	-18.0%
Fifth Street	506	522	-3.2%	362	376	-3.7%	300	290	3.4%	14,189	14,365	-1.2%
Eighth Street	1,571	940	67.0%	1,075	501	114.5%	1,265	445	184.0%	45,349	24,620	84.2%
Tenth Street	919	1,060	-13.3%	593	688	-13.8%	613	634	-3.4%	25,864	29,013	-10.9%
Brickell	1,925	2,201	-12.6%	1,267	1,268	-0.1%	1,084	1,261	-14.1%	53,684	59,411	-9.6%
Financial District	712	750	-5.0%	393	353	11.2%	383	308	24.4%	19,411	19,223	1.0%
<b>TOTAL</b>	<b>19,549</b>	<b>22,286</b>	<b>-12.3%</b>	<b>13,339</b>	<b>15,019</b>	<b>-11.2%</b>	<b>12,900</b>	<b>13,479</b>	<b>-4.3%</b>	<b>550,054</b>	<b>614,479</b>	<b>-10.5%</b>

(\*) Some Metromover stations were closed for construction during the CY 2023-2024 period, due to construction work; associated were numerous power and data outages, including on weekends

# METROMOVER CUMULATIVE PERCENTAGE RIDERSHIP SHARE



# TOTAL MONTHLY AND AVERAGE WEEKDAY RIDERSHIP YEAR OVER YEAR COMPARISON CHARTS – METROMOVER



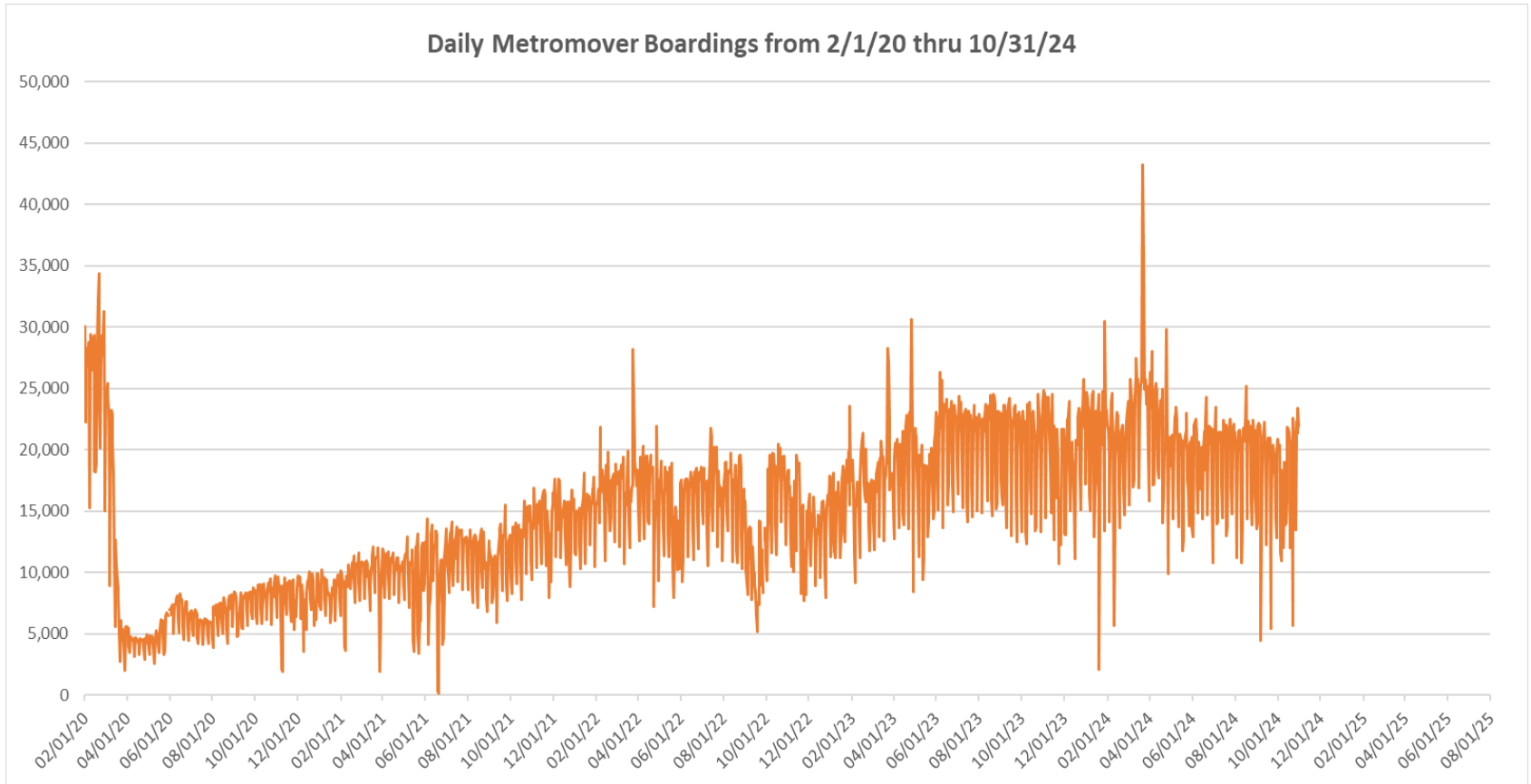
**“TOP 5 / BOTTOM 5” MOVER STATIONS AVERAGE WEEKDAY RIDERSHIP PERFORMANCE  
YEAR OVER YEAR COMPARISONS**

<b>Station</b>	<b>Oct-24</b>	<b>Oct-23</b>	<b>Absolute Delta (1)</b>	<b>Percent Delta</b>
Eighth Street	1,571	940	630	67.0%
Museum Park	282	274	8	2.9%
Eleventh Street	295	295	0	-0.1%
Miami Avenue	345	349	-4	-1.1%
Fifth Street	506	522	-16	-3.2%
Government Center	1,278	2,562	-1,284	-50.1%
Omni	1,306	2,004	-699	-34.9%
School Board	965	1,288	-323	-25.0%
Bayfront Park	1,850	2,173	-322	-14.8%
Brickell	1,925	2,201	-277	-12.6%

(1) Averages rounded to the nearest boarding.



## DAILY METROMOVER RIDERSHIP SINCE FEBRUARY 1, 2020



- (1) There was no Metrobus, Metrorail and Metromover service on 5/31/20, as a safety precaution, and no service for any of the four modes on 9/28/22 as a result of Hurricane Ian.
- (2) The dip at the start of the second week of Nov-20 is due to Hurricane Eta; these are *raw data* from the UTA contractor APC system. Other more recent dips are due to various station closures (mostly on weekends) for system maintenance purposes. Pronounced peaks are associated with major events in Downtown Miami, such as the Corporate Run and Ultramusic Festival.
- (3) Periodic (weekly) variations are prominent, since weekday ridership is almost always significantly higher than weekend or holiday ridership; a few low-count days are due to system outages, often associated with construction or renovation work, including on weekends.

## Special Transportation Services

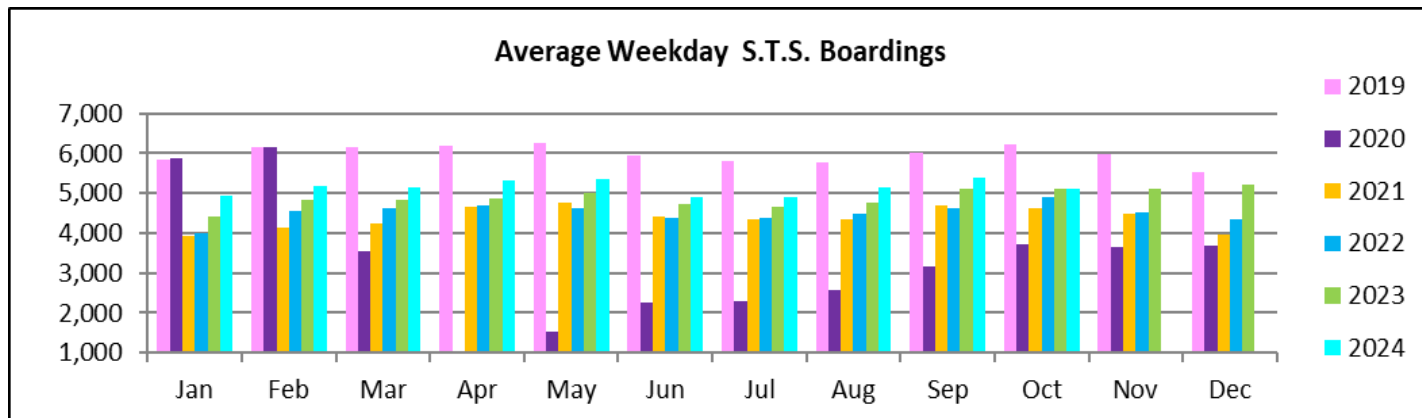
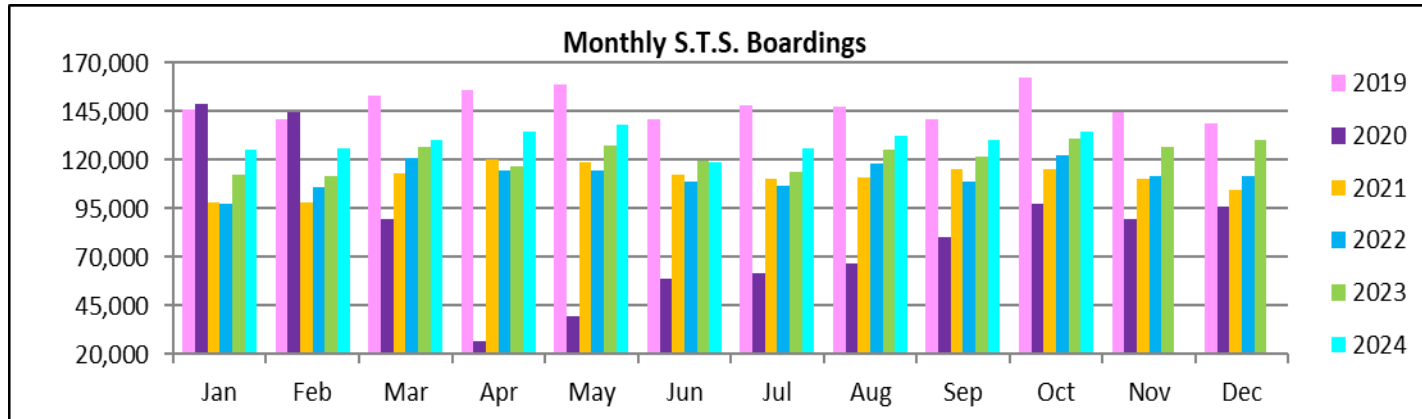


## STS MONTHLY AND AVERAGE DAILY BOARDINGS October 2024

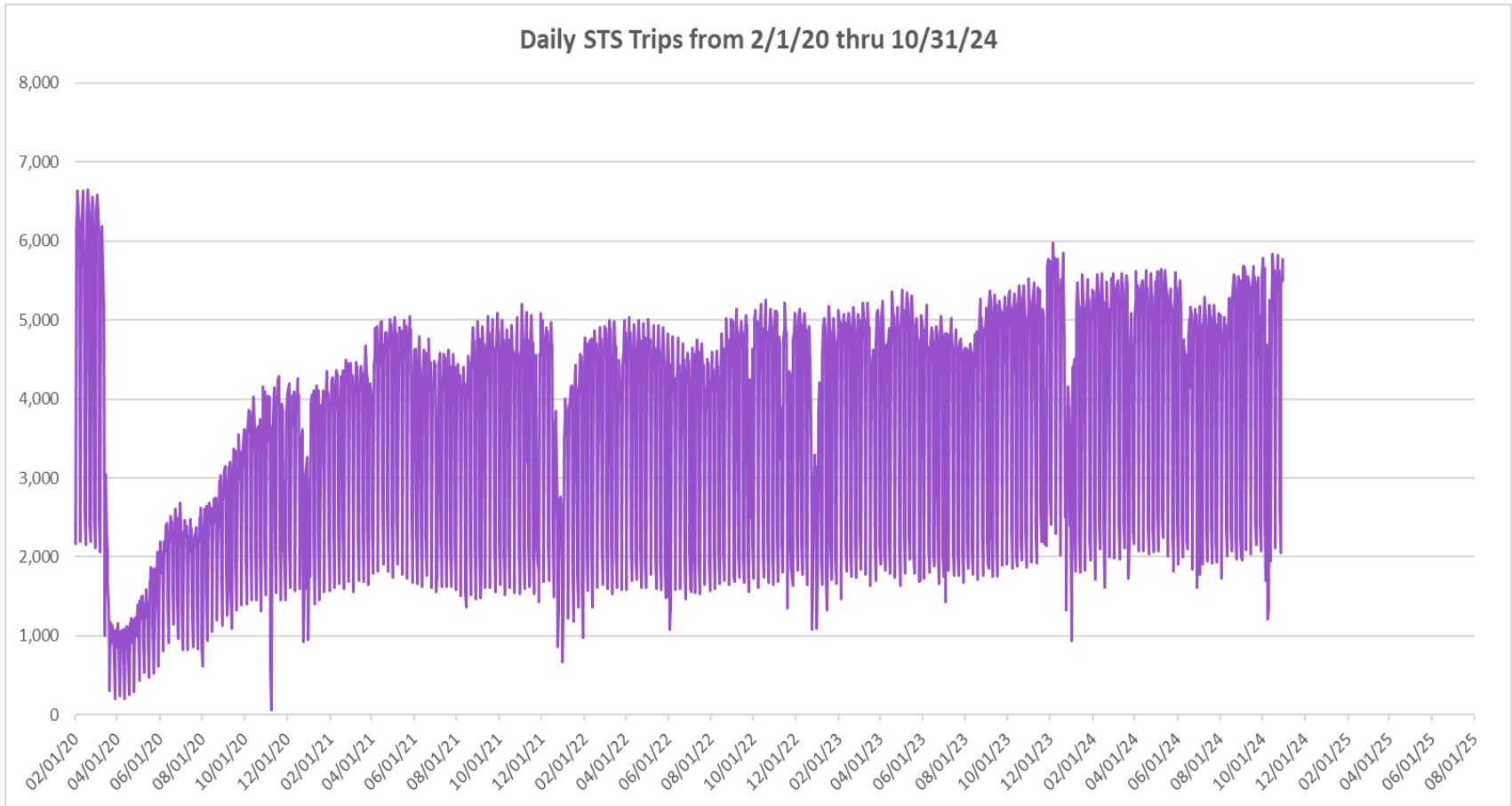
Measure	timeline	Ambulatory	Wheelchair	Total Clients (*)
<b>Average Weekday</b>	Oct-24	4,278	818	<b>5,096</b>
<b>Average Saturday</b>	Oct-24	2,049	408	<b>2,457</b>
<b>Average Sunday</b>	Oct-24	1,626	329	<b>1,954</b>
<b>Total Monthly</b>	<b>Oct-24</b>	<b>113,096</b>	<b>21,756</b>	<b>134,852</b>
<b>Average Weekday</b>	Oct-23	4,287	834	<b>5,121</b>
<b>Average Saturday</b>	Oct-23	1,806	400	<b>2,206</b>
<b>Average Sunday</b>	Oct-23	1,570	325	<b>1,895</b>
<b>Total Monthly</b>	<b>Oct-23</b>	<b>109,386</b>	<b>21,572</b>	<b>130,958</b>
<b>Average Weekday</b>	Oct-22	4,049	861	<b>4,910</b>
<b>Average Saturday</b>	Oct-22	1,760	371	<b>2,131</b>
<b>Average Sunday</b>	Oct-22	1,389	296	<b>1,685</b>
<b>Total Monthly</b>	<b>Oct-22</b>	<b>100,781</b>	<b>21,408</b>	<b>122,189</b>
<b>% Change Current vs. October 2023 Weekday</b>		-0.2%	-1.9%	-0.5%
<b>% Change Current vs. October 2023 Saturday</b>		13.4%	2.1%	11.4%
<b>% Change Current vs. October 2023 Sunday</b>		3.5%	1.0%	3.1%
<b>% Change Current vs. October 2023 Month Total</b>		<b>3.4%</b>	<b>0.9%</b>	<b>3.0%</b>
<b>% Change Current vs. October 2022 Weekday</b>		5.7%	-5.0%	3.8%
<b>% Change Current vs. October 2022 Saturday</b>		16.4%	10.0%	15.3%
<b>% Change Current vs. October 2022 Sunday</b>		17.0%	11.1%	16.0%
<b>% Change Current vs. October 2022 Month Total</b>		<b>12.2%</b>	<b>1.6%</b>	<b>10.4%</b>

(\*) Trip count data provided by STS contractor.

## TOTAL MONTHLY AND AVERAGE WEEKDAY RIDERSHIP YEAR OVER YEAR COMPARISON CHARTS – SPECIAL TRANSPORTATION SERVICES (S.T.S.)

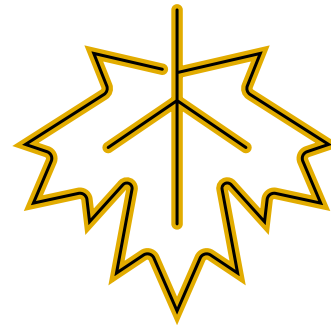
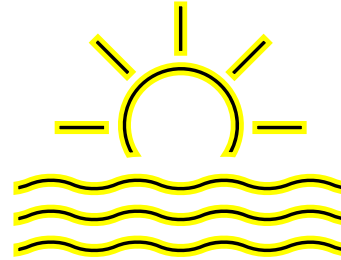


## DAILY STS RIDERSHIP SINCE FEBRUARY 1, 2020

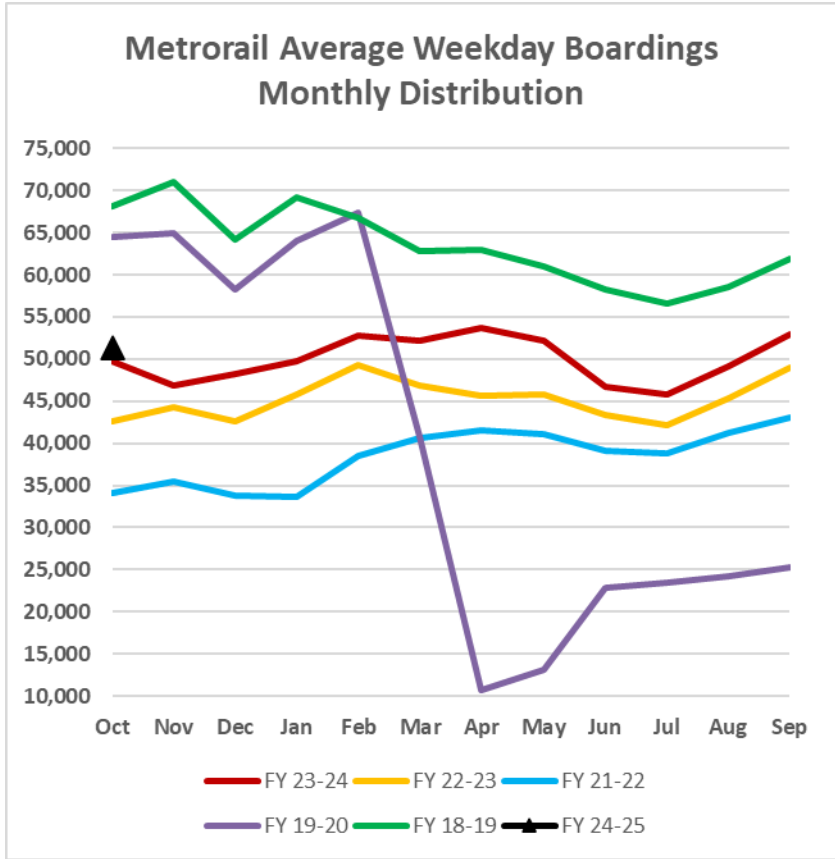
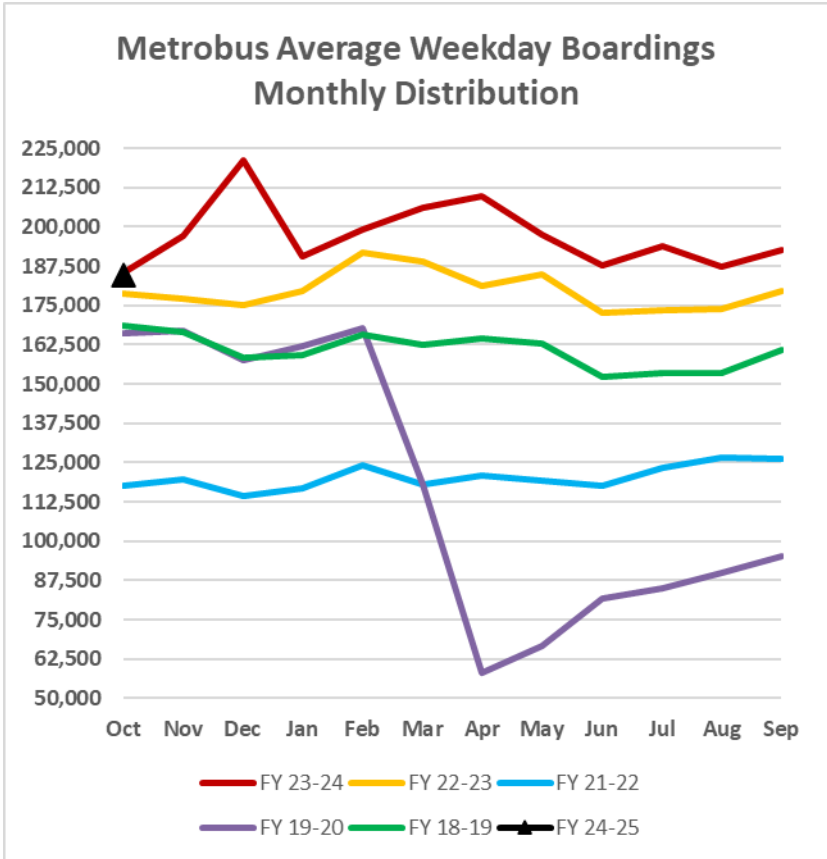


- (1) There was no service (for any of the four modes) on 9/28/22 as a result of Hurricane Ian.
- (2) The dip at the start of the second week of Nov-20 is due to Hurricane Eta; the peak in Dec-23 is due to the free fares from the Better Bus Network.
- (3) Periodic (weekly) variations are prominent, since weekday ridership is almost always significantly higher than weekend or holiday ridership.

# Ridership Seasonality

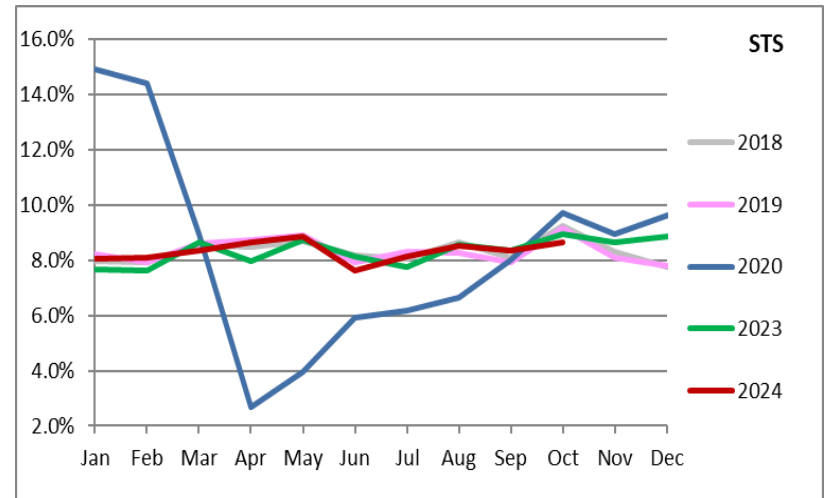
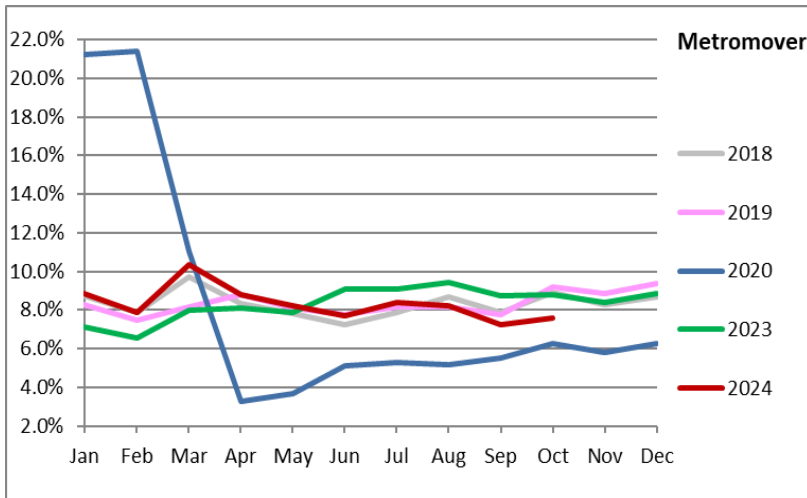
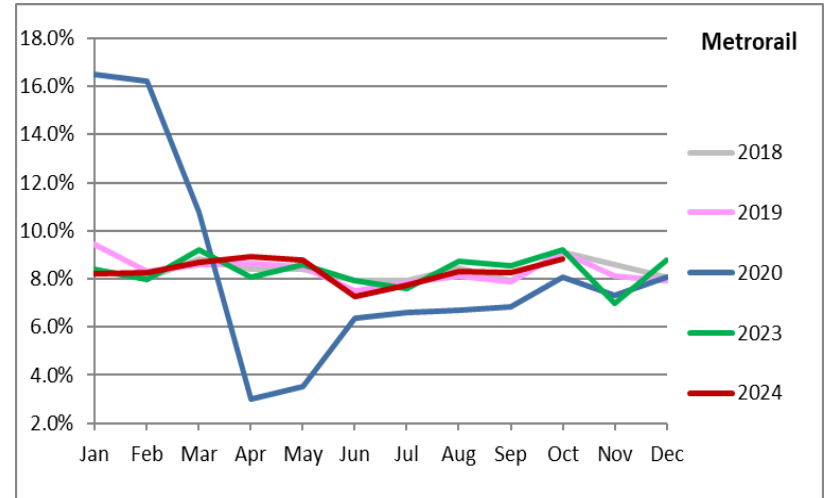
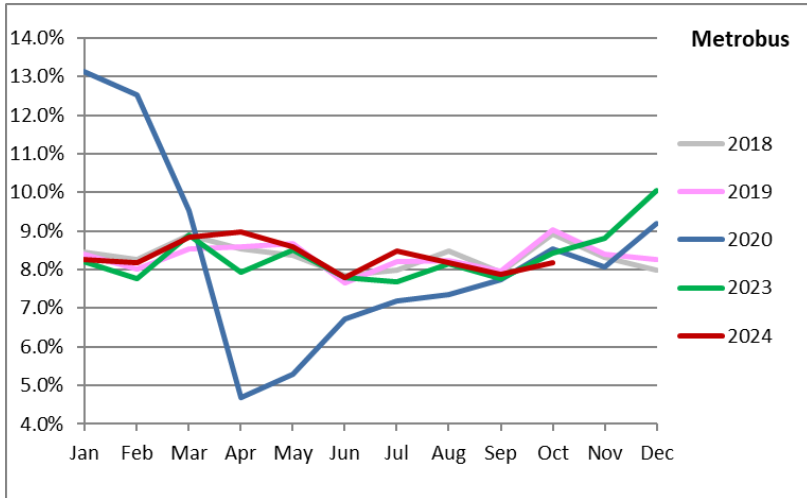


## RIDERSHIP SEASONALITY – AVERAGE WEEKDAY RIDERSHIP BY MONTH AND FISCAL YEAR FOR METROBUS AND METRORAIL



Note: the prominent dip seen in the beginning in the spring of 2020 is due to the SARS-CoV-2 pandemic. The pronounced rise beginning Nov-23 for Metrobus and Metrorail can be attributed to the launch of the Better Bus Network and the attendant free fares, which ended on New Year's Day 2024.

## RIDERSHIP SEASONALITY – PERCENT SHARE OF TOTAL RIDERSHIP BY MONTH AND CALENDAR YEAR FOR EACH MODE



Note: the prominent dip seen in the beginning in the spring of 2020 is due to the SARS-CoV-2 pandemic. The pronounced rise beginning Nov-23 for Metrobus and Metrorail can be attributed to the launch of the Better Bus Network and the attendant free fares, which ended on New Year's Day 2024.