



TRANSPORTATION AND PUBLIC WORKS

RIDERSHIP TECHNICAL REPORT

Division of Performance Analysis



Table of Contents

<i>Table of Contents</i>	2-3
All Modes Overview	4
Total Monthly Weekday, Saturday and Sunday Monthly Boardings By Mode	5
Average Weekday, Saturday and Sunday Boardings by Mode	6
Metrobus Total Monthly Ridership Comparisons by Fiscal Year	7
Metrorail Total Monthly Ridership Comparisons by Fiscal Year	8
Metromover Total Monthly Ridership Comparisons by Fiscal Year	9
STS Total Monthly Ridership Comparisons by Fiscal Year	10
All-Modes Combined Total Monthly Ridership Comparisons By Fiscal Year	11
All Modes Combined Total Monthly and Average Weekday Ridership – Year over Year Comparison Charts	12
Average Weekday Ridership – Modal Splits	13
Daily Ridership for All Modes Combined since 2/1/20	14
Metrobus	15
Better Bus Network (BBN, 11/13/2023 Lineup) Bus Route Changes, Pt 1 and Pt 2	16-17
Metrobus Average Weekday Boardings by Route	18-20
Metrobus Average Saturday Boardings by Route	21-22
Metrobus Average Sunday Boardings by Route	23-24
Metrobus Monthly Total Boardings by Route	25-27
Bus Ridership by Route Service Type Lineups Comparison (month-over-month & month-over-12 months)	28-31
Bus Routes as Ranked by Percentage of Average Weekday Ridership	32
Metrobus Cumulative Percentage Average Weekday Ridership Share by Route (Top 75%)	33
Metrobus Estimated Weekday Ridership since 02/01/20 (two-week moving averages)	34
Total Monthly and Average Weekday Bus Ridership – Year over Year Comparison Charts	35
Bus “Top 10 / Bottom 10” Bus Routes Average Weekday Ridership Performance – Month-over-Month Comparisons	36
Bus “Top 10 / Bottom 10” Bus Routes Sets Average Weekday Ridership Performance – Year-over-Year Comparisons	37
Bus “Top 10 / Bottom 10” Bus Routes Sets Average Weekday Ridership Performance – Month-over-13 Month Comparisons	38
Daily Metrobus Ridership since 2/1/20	39
Metrobus Parking Patronage Summary	40

Table of Contents (continued)

Metrorail	41
Metrorail Average Weekday Boardings by Station	42
Metrorail Average Saturday Boardings by Station	43
Metrorail Average Sunday Boardings by Station	44
Metrorail Total Monthly Boardings by Station	45
Metrorail Cumulative Percentage Average Weekday Ridership Share	46
Metrorail Weekday Ridership since 02/01/20 (two-week moving averages)	47
Total Monthly and Average Weekday Rail Ridership – Year over Year Comparison Charts	48
“Top 5 / Bottom 5” Stations Average Weekday Ridership Performance	49
Daily Metrorail Ridership since 2/1/20	50
Metrorail Parking Patronage Summary	51
Metromover	52
Monthly and Average Daily Mover Boardings by Station	53
Metromover Cumulative Percentage Average Weekday Ridership Share	54
Total Monthly and Average Weekday Mover Ridership – Year over Year Comparison Charts	55
“Top 5 / Bottom 5” Stations Average Weekday Ridership Performance	56
Daily Metromover Ridership since 2/1/20	57
Special Transportation Services (STS)	58
STS Monthly and Average Daily Boardings	59
Total Monthly and Average Weekday STS Ridership – Year over Year Comparison Charts	60
Daily STS Ridership since 2/1/20	61
Ridership Seasonality	62
Ridership Seasonality – Average Weekday Ridership by Month and Fiscal Year for Metrobus and Metrorail	63
Ridership Seasonality – Percent Share of Total Ridership by Month and Calendar Year for Each Mode	64

All Modes Overview



**TOTAL MONTHLY WEEKDAY, SATURDAY AND SUNDAY BOARDINGS BY MODE
November 2024**

TRAVEL MODE	MONTH'S TOTAL WEEKDAYS RIDERSHIP	MONTH'S TOTAL SATURDAYS RIDERSHIP	MONTH'S TOTAL SUNDAYS RIDERSHIP	TOTAL MONTHLY RIDERSHIP	% CHANGE vs Nov-23 TOTAL MONTH RIDERSHIP
METROBUS (1)	3,761,380	634,271	439,878	4,835,529	-5.8%
METRORAIL (2)	1,025,534	112,234	82,952	1,220,720	30.5%
METROMOVER	412,776	76,220	72,330	561,326	-4.0%
STS PARATRANSIT (3)	104,523	12,198	11,258	127,979	0.8%
TOTAL	5,304,213	834,923	606,418	6,745,554	-0.5%

- (1) Metrobus ridership reporting through automatic passenger counters coupled with a new enhanced sensor system resumed on October 1, 2022.
- (2) Metrorail fares resumed on June 1, 2021, following a 14-month period of fare-free rides as a result of the SARS-CoV-2 pandemic. The NextFare System faregate data replaced the video data as Rail ridership data of record starting on that date, until free fares were reinstated for the Better Bus Network launch on 11/13/23. The NextFare System Rail faregate data collection and reporting resumed on New Year's Day 2024.
- (3) Paratransit (STS) ridership data as reported by the contractor and subsequently audited by the Department.

**AVERAGE WEEKDAY, SATURDAY AND SUNDAY BOARDINGS BY MODE
November 2024**

Travel Mode	Average Weekday	Average Saturday	Average Sunday	% Change vs. Nov-23 Weekday	% Change vs. Nov-23 Saturday	% Change vs. Nov-23 Sunday
METROBUS	188,677	126,940	87,976	-4.3%	-1.4%	-8.4%
METRORAIL	53,119	22,447	17,300	13.5%	4.6%	3.1%
METROMOVER	20,894	15,244	15,295	-9.6%	-13.5%	1.1%
STS PARATRANSIT	5,226	2,440	2,252	2.6%	5.4%	4.4%
Totals	267,916	167,071	122,822	-1.6%	-1.8%	-5.6%

(*) Average ridership is calculated and published only for those days and stations or routes with nontrivial amounts of reported data.

(**) The Nov-24 vs. Nov-23 Bus ridership reductions are largely due to the 49-day fare-free period and schedule changes that began on 11/13/23 at launch of the Better Bus Network (BBN) lineup, leading to significantly higher Bus boarding levels in Nov-23 than observed prior.

METROBUS TOTAL MONTHLY RIDERSHIP COMPARISONS BY FISCAL YEAR

Bus Month	FY 19	FY 20	FY 21	FY 22	FY 23	FY 24	FY 25	Variance 19 to 20 (*)	Variance 20 to 21 (*)	Variance 21 to 22	Variance 22 to 23 (**)	Variance 23 to 24	Variance 24 to 25	Variance 19 TO 25
Oct	4,554,886	4,507,012	2,805,139	3,081,157	4,679,725	4,912,151	5,043,329	-1.1%	-37.8%	9.8%	51.9%	5.0%	2.7%	10.7%
Nov	4,245,535	4,197,225	2,651,290	3,056,726	4,549,666	5,135,172	4,835,529	-1.1%	-36.8%	15.3%	48.8%	12.9%	-5.8%	13.9%
Dec	4,081,581	4,126,990	3,022,530	3,123,883	4,677,460	5,857,057		1.1%	-26.8%	3.4%	49.7%	25.2%		
Jan	4,195,911	4,316,998	3,082,746	3,029,055	4,785,128	5,103,257		2.9%	-28.6%	-1.7%	58.0%	6.6%		
Feb	3,994,019	4,123,083	3,076,966	2,995,789	4,526,317	5,053,665		3.2%	-25.4%	-2.6%	51.1%	11.7%		
Mar	4,266,768	3,136,162	3,660,639	3,218,562	5,183,872	5,461,317		-26.5%	16.7%	-12.1%	61.1%	5.4%		
Apr	4,291,135	1,544,316	3,625,048	3,105,797	4,618,302	5,548,614		-64.0%	134.7%	-14.3%	48.7%	20.1%		
May	4,330,922	1,734,609	3,683,343	3,097,574	4,953,197	5,308,711		-59.9%	112.3%	-15.9%	59.9%	7.2%		
Jun	3,823,863	2,210,725	2,672,570	3,064,059	4,545,050	4,805,039		-42.2%	20.9%	14.6%	48.3%	5.7%		
Jul	4,094,906	2,366,749	2,769,907	3,189,994	4,484,458	5,230,894		-42.2%	17.0%	15.2%	40.6%	16.6%		
Aug	4,109,613	2,422,014	2,843,552	3,442,006	4,756,063	5,051,346		-41.1%	17.4%	21.0%	38.2%	6.2%		
Sep	3,971,220	2,546,923	2,877,110	3,123,572	4,525,426	4,860,066		-35.9%	13.0%	8.6%	44.9%	7.4%		
FY Total	49,960,359	37,232,806	36,770,840	37,528,174	56,284,664	62,327,289		-25.5%	-1.2%	2.1%	50.0%	10.7%		

(*) The severe losses in ridership beginning in March 2020 are due to the SARS-CoV-2 pandemic, followed by an overall gradual recovery beginning in March 2021.

(**) The consistently very high increases seen at the start of FY 23 are largely due to the 10/01/2022 switchover from fareboxes to Automatic Passenger Counters in estimating ridership on the directly operated (non-contracted) bus routes.

METRORAIL TOTAL MONTHLY RIDERSHIP COMPARISONS BY FISCAL YEAR

Rail Month	FY 19	FY 20	FY 21	FY 22	FY 23	FY 24	FY 25	Variance 19 to 20 (*)	Variance 20 to 21 (*)	Variance 21 to 22	Variance 22 to 23	Variance 23 to 24	Variance 24 to 25	Variance 19 TO 25
Oct	1,757,225	1,643,166	769,525	844,383	1,053,191	1,237,096	1,321,113	-6.5%	-53.2%	9.7%	24.7%	17.5%	6.8%	-24.8%
Nov	1,656,929	1,469,448	699,492	850,881	1,055,066	935,121	1,220,720	-11.3%	-52.4%	21.6%	24.0%	-11.4%	30.5%	-26.3%
Dec	1,553,804	1,433,928	769,194	860,436	1,063,096	1,177,272		-7.7%	-46.4%	11.9%	23.6%	10.7%		
Jan	1,708,695	1,576,340	799,119	832,924	1,127,340	1,233,350		-7.7%	-49.3%	4.2%	35.3%	9.4%		
Feb	1,501,458	1,549,118	730,792	905,162	1,072,791	1,240,316		3.2%	-52.8%	23.9%	18.5%	15.6%		
Mar	1,554,851	1,027,319	917,097	1,084,978	1,239,336	1,302,854		-33.9%	-10.7%	18.3%	14.2%	5.1%		
Apr	1,559,446	287,803	827,414	1,027,139	1,087,816	1,336,511		-81.5%	187.5%	24.1%	5.9%	22.9%		
May	1,531,597	337,696	887,111	1,023,322	1,151,819	1,314,112		-78.0%	162.7%	15.4%	12.6%	14.1%		
Jun	1,359,966	608,758	723,469	975,477	1,066,861	1,092,060		-55.2%	18.8%	34.8%	9.4%	2.4%		
Jul	1,419,158	632,964	722,159	953,331	1,022,937	1,159,375		-55.4%	14.1%	32.0%	7.3%	13.3%		
Aug	1,463,646	641,275	749,578	1,076,490	1,174,138	1,247,019		-56.2%	16.9%	43.6%	9.1%	6.2%		
Sep	1,427,726	654,244	795,749	1,012,331	1,146,864	1,240,457		-54.2%	21.6%	27.2%	13.3%	8.2%		
FY Total	18,494,501	11,862,059	9,390,699	11,446,854	13,261,255	14,515,543		-35.9%	-20.8%	21.9%	15.9%	9.5%		

(*) The severe losses in ridership beginning in March 2020 are due to the SARS-CoV-2 pandemic, followed by an overall gradual recovery beginning in April 2021.

METROMOVER TOTAL MONTHLY RIDERSHIP COMPARISONS BY FISCAL YEAR

Mover Month	FY 19	FY 20	FY 21	FY 22	FY 23	FY 24	FY 25	Variance 19 to 20 (*)	Variance 20 to 21 (*)	Variance 21 to 22	Variance 22 to 23	Variance 23 to 24	Variance 24 to 25	Variance 19 TO 25
Oct	790,533	831,234	250,044	389,065	514,308	614,479	550,054	5.1%	-69.9%	55.6%	32.2%	19.5%	-10.5%	-30.4%
Nov	735,198	799,632	232,422	418,929	439,150	584,887	561,326	8.8%	-70.9%	80.2%	4.8%	33.2%	-4.0%	-23.6%
Dec	767,239	849,832	251,019	450,320	426,073	616,455		10.8%	-70.5%	79.4%	-5.4%	44.7%		
Jan	746,728	847,773	255,968	451,566	498,566	644,639		13.5%	-69.8%	76.4%	10.4%	29.3%		
Feb	675,160	855,398	260,332	465,968	459,264	570,242		26.7%	-69.6%	79.0%	-1.4%	24.2%		
Mar	737,814	441,200	302,502	535,857	558,396	753,107		-40.2%	-31.4%	77.1%	4.2%	34.9%		
Apr	795,696	130,549	310,772	495,982	565,943	640,281		-83.6%	138.1%	59.6%	14.1%	13.1%		
May	734,645	146,454	292,922	455,120	547,948	597,232		-80.1%	100.0%	55.4%	20.4%	9.0%		
Jun	701,318	203,637	286,145	477,286	632,423	559,913		-71.0%	40.5%	66.8%	32.5%	-11.5%		
Jul	739,814	210,596	368,847	512,094	635,954	610,437		-71.5%	75.1%	38.8%	24.2%	-4.0%		
Aug	739,785	205,995	344,319	508,359	657,267	597,361		-72.2%	67.1%	47.6%	29.3%	-9.1%		
Sep	699,879	219,696	331,915	305,185	610,810	527,660		-68.6%	51.1%	-8.1%	100.1%	-13.6%		
FY Total	8,863,809	5,741,996	3,487,207	5,465,731	6,546,102	7,316,693		-35.2%	-39.3%	56.7%	19.8%	11.8%		

(*) The severe losses in ridership beginning in March 2020 are due to the SARS-CoV-2 pandemic, followed by an overall gradual recovery beginning in April 2021.

SPECIAL TRANSPORTATION SERVICES (STS) TOTAL MONTHLY RIDERSHIP COMPARISONS BY FISCAL YEAR

STS								Variance	Variance	Variance	Variance	Variance	Variance	Variance
Month	FY 19	FY 20	FY 21	FY 22	FY 23	FY 24	FY 25	19 to 20 (*)	20 to 21 (*)	21 to 22	22 to 23	23 to 24	24 to 25	19 to 25
Oct	162,564	162,704	97,388	115,122	122,189	130,958	134,852	0.1%	-40.1%	18.2%	6.1%	7.2%	3.0%	-17.0%
Nov	145,653	144,366	89,387	110,289	111,578	127,025	127,979	-0.9%	-38.1%	23.4%	1.2%	13.8%	0.8%	-12.1%
Dec	136,110	138,642	96,366	104,496	112,019	130,093		1.9%	-30.5%	8.4%	7.2%	16.1%		
Jan	146,268	149,114	97,928	97,541	112,632	125,513		1.9%	-34.3%	-0.4%	15.5%	11.4%		
Feb	141,396	144,392	98,285	105,706	111,748	125,732		2.1%	-31.9%	7.6%	5.7%	12.5%		
Mar	153,191	89,634	112,930	120,718	126,819	130,203		-41.5%	26.0%	6.9%	5.1%	2.7%		
Apr	155,808	26,877	120,122	114,912	116,882	134,677		-82.7%	346.9%	-4.3%	1.7%	15.2%		
May	158,665	39,654	118,636	114,505	127,782	137,958		-75.0%	199.2%	-3.5%	11.6%	8.0%		
Jun	141,320	59,093	112,397	109,054	119,527	118,860		-58.2%	90.2%	-3.0%	9.6%	-0.6%		
Jul	148,232	61,765	110,059	107,188	113,623	126,391		-58.3%	78.2%	-2.6%	6.0%	11.2%		
Aug	147,331	66,563	110,766	117,941	125,510	132,503		-54.8%	66.4%	6.5%	6.4%	5.6%		
Sep	141,387	80,346	115,406	108,788	122,065	130,244		-43.2%	43.6%	-5.7%	12.2%	6.7%		
FY Total	1,777,925	1,163,150	1,279,670	1,326,260	1,422,374	1,550,157		-34.6%	10.0%	3.6%	7.2%	9.0%		

(*) The severe losses in ridership beginning in March 2020 are due to the SARS-CoV-2 pandemic, followed by an overall gradual recovery beginning in April 2021.

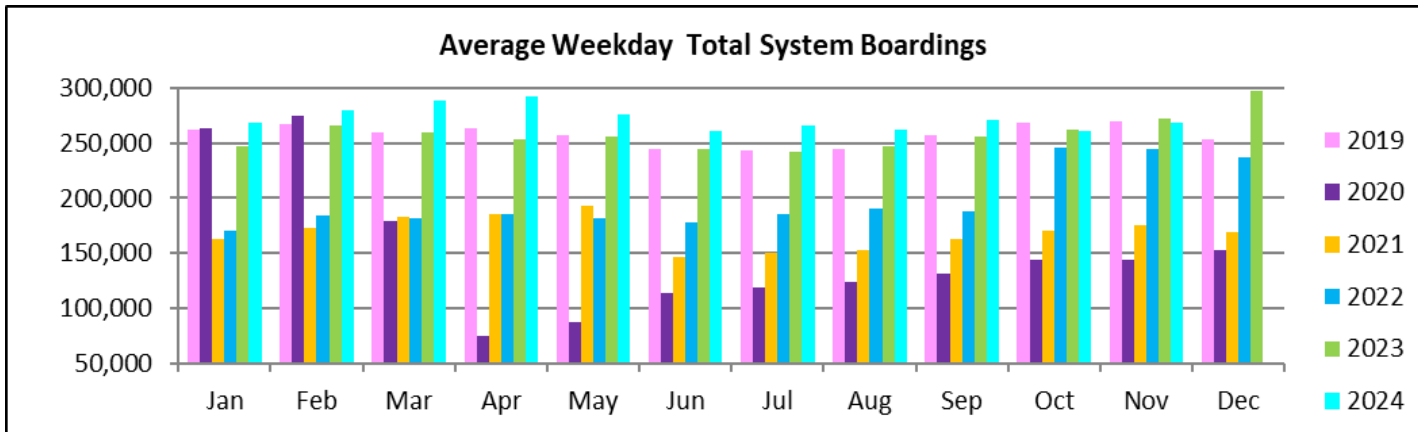
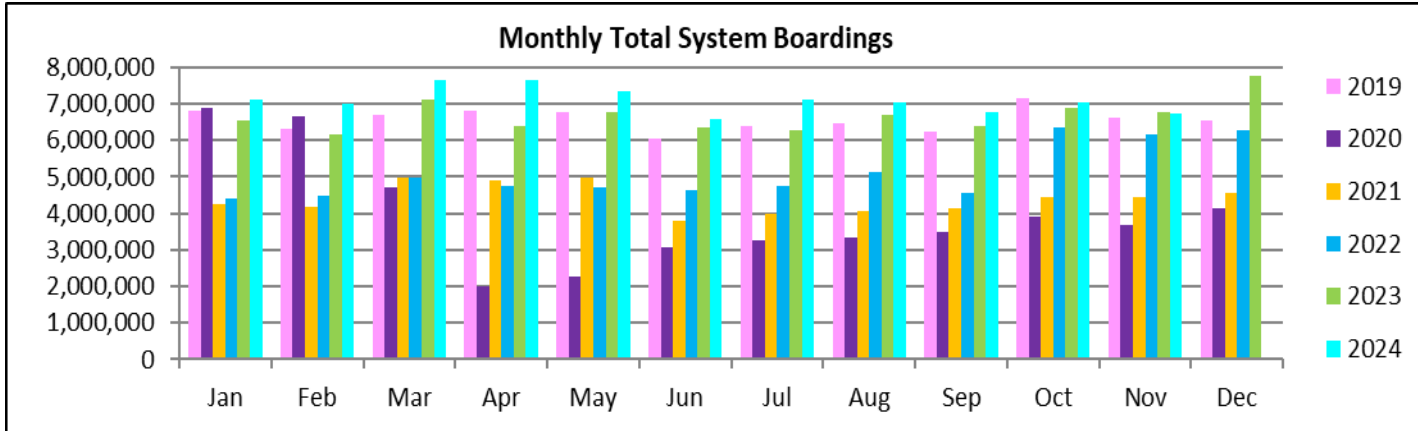
ALL-MODES COMBINED TOTAL MONTHLY RIDERSHIP COMPARISONS BY FISCAL YEAR

All Modes								Variance	Variance	Variance	Variance	Variance	Variance	
Month	FY 19	FY 20	FY 21	FY 22	FY 23	FY 24	FY 25	19 TO 20	20 TO 21	21 TO 22	22 TO 23	23 TO 24	24 TO 25	19 TO 25
Oct	7,265,208	7,144,116	3,922,096	4,429,727	6,369,413	6,894,684	7,049,348	-1.7%	-45.1%	12.9%	43.8%	8.2%	2.2%	-3.0%
Nov	6,783,315	6,610,671	3,672,591	4,436,825	6,155,460	6,782,205	6,745,554	-2.5%	-44.4%	20.8%	38.7%	10.2%	-0.5%	-0.6%
Dec	6,538,734	6,549,392	4,139,109	4,539,135	6,278,648	7,780,877		0.2%	-36.8%	9.7%	38.3%	23.9%		
Jan	6,797,602	6,890,225	4,235,761	4,411,086	6,523,666	7,106,759		1.4%	-38.5%	4.1%	47.9%	8.9%		
Feb	6,312,033	6,671,991	4,166,375	4,472,625	6,170,120	6,989,955		5.7%	-37.6%	7.4%	38.0%	13.3%		
Mar	6,712,624	4,694,315	4,993,168	4,960,115	7,108,423	7,647,481		-30.1%	6.4%	-0.7%	43.3%	7.6%		
Apr	6,802,085	1,989,545	4,883,356	4,743,830	6,388,943	7,660,083		-70.8%	145.5%	-2.9%	34.7%	19.9%		
May	6,755,829	2,258,413	4,982,012	4,690,521	6,780,746	7,358,013		-66.6%	120.6%	-5.9%	44.6%	8.5%		
Jun	6,026,467	3,082,213	3,794,581	4,625,876	6,363,861	6,575,872		-48.9%	23.1%	21.9%	37.6%	3.3%		
Jul	6,402,110	3,272,074	3,970,972	4,762,607	6,256,972	7,127,097		-48.9%	21.4%	19.9%	31.4%	13.9%		
Aug	6,460,375	3,335,847	4,048,215	5,144,796	6,712,978	7,028,229		-48.4%	21.4%	27.1%	30.5%	4.7%		
Sep	6,240,212	3,501,209	4,120,180	4,549,876	6,405,165	6,758,427		-43.9%	17.7%	10.4%	40.8%	5.5%		
FY Total	79,096,594	56,000,011	50,928,416	55,767,019	77,514,395	85,709,682		-29.2%	-9.1%	9.5%	39.0%	10.6%		

(*) The severe losses in ridership beginning in March 2020 are due to the SARS-CoV-2 pandemic, followed by an overall gradual recovery beginning in March 2021.

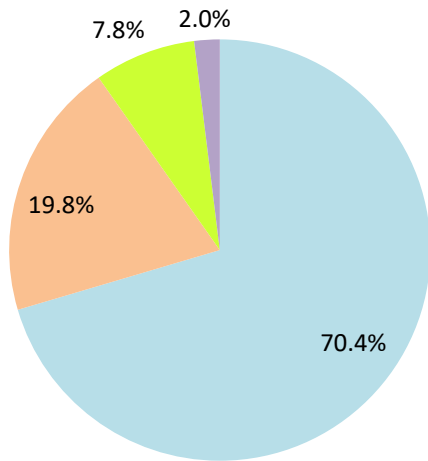
(**) The consistently very high increases seen at the start of FY 23 are largely due to the 10/01/2022 switchover from fareboxes to Automatic Passenger Counters in estimating ridership on the directly operated (non-contracted) bus routes.

TOTAL MONTHLY AND AVERAGE WEEKDAY RIDERSHIP YEAR OVER YEAR COMPARISON CHARTS – ALL MODES COMBINED



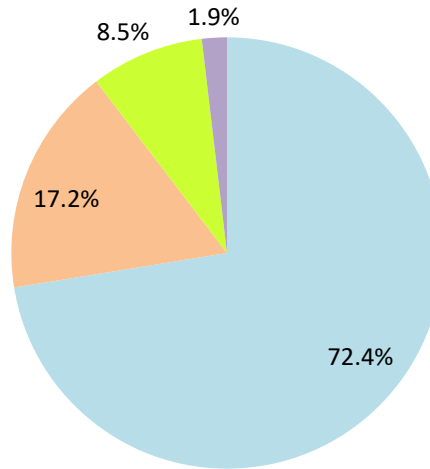
AVERAGE WEEKDAY RIDERSHIP - MODAL SPLITS

November 2024



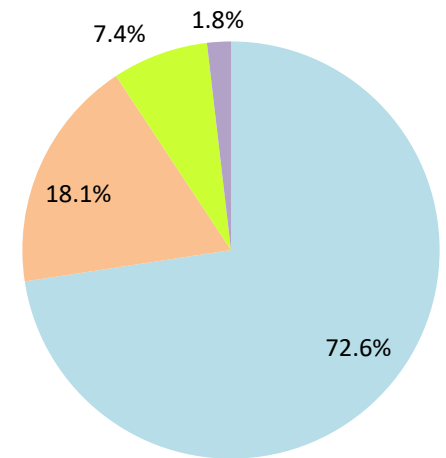
boardings

November 2023



boardings

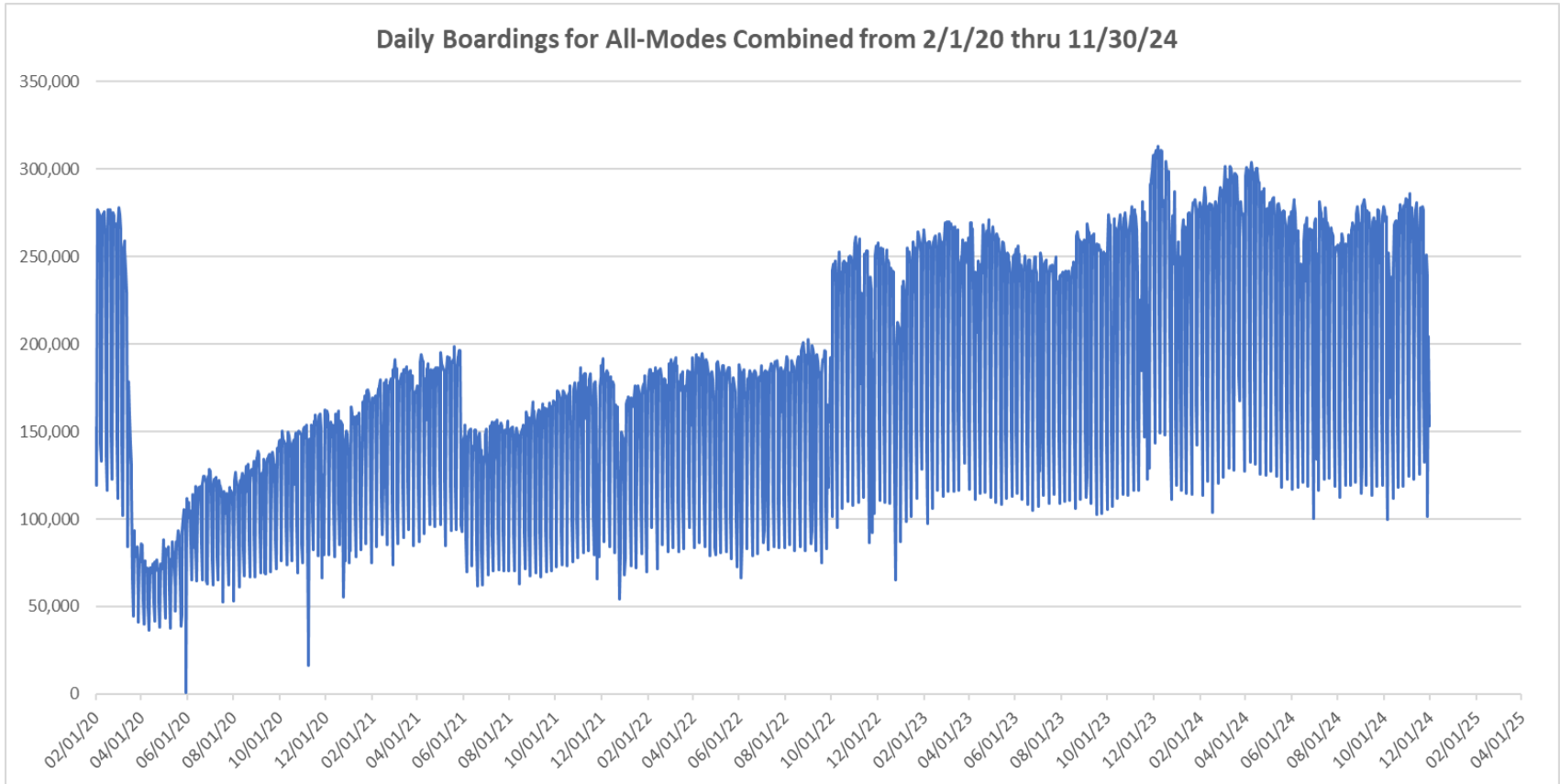
November 2022



boardings



DAILY RIDERSHIP FOR ALL MODES COMBINED SINCE FEBRUARY 1, 2020



- (1) There was no Metrobus, Metrorail and Metromover service on 5/31/20, as a safety precaution, and no service for any of the four modes on 9/28/22 as a result of Hurricane Ian..
- (2) The dip at the start of the second week of Nov-20 is due to Hurricane Eta.
- (3) Daily variations from Oct-22 onward are, for the Bus portion, a representation estimated from reports made available by the Bus APC data vendor and finalized sampling for each month.
- (4) The reduction seen beginning 6/1/21 is partly due to the resumption of fares for bus and rail, and partly the result of having resumed reporting Cubic farebox data rather than bus APC counts, as well as Cubic rail faregate counts instead of video camera counts on that date. The jump seen at the start of Oct-22 is due to the switch to APC bus ridership counts reporting begun on 10/1/22.
- (5) The pronounced peak in Dec-23 is attributable to the Better Bus Network launch period and attendant free fares.
- (6) Periodic (weekly) variations are prominent, since weekday ridership is almost always significantly higher than weekend or holiday ridership.

Metrobus



Better Bus Network (BBN, 11/13/2023 lineup) Bus Route Changes (Pt 1)

The listings below and on the following page are to serve as an aid in identifying individual routes for comparison of ridership data between periods prior to and following the launch of the BBN on 11/13/2023. In Nov-23, both old and new route numbers appear in data tables, since the launch took place near mid-month; beginning with Dec-23, only the current (BBN) numbering system appear in tables, to conveniently allow for direct comparisons.

BBN Route Numbering Changes:

Contracted **Route 1** was renumbered **Route 97**

Directly operated **Route 33** was renumbered **Route 103** (new, recycled number, not the same as former **Route 103 - C**)

Directly operated **Route 51** (Flagler MAX) was renumbered **Route 211** (recycled number, not the same as the OVERTOWN CIRCULATOR)

Contracted **Route 71** was renumbered **Route 107** (new, recycled number, not the same as **Route 107 - G** further below) and became directly operated

Directly operated **Route 79** was renumbered **Route 279** (79th Steet MAX)

Directly operated **Route 93** was renumbered **Route 203** (Biscayne MAX)

Directly operated **Route 99** was renumbered **Route 199**

Contracted **Route 101 - A** was renumbered **Route 15**

Directly operated **Route 102 - B** was renumbered **Route 26** (under the BBN's first phase, 07/24/2023 lineup)

Directly operated **Route 107 - G** (old, not the same as the **Route 107** appearing above) was renumbered **Route 125**

Directly operated **Route 112 - L** was renumbered **Route 79** (recycled number, not the same as the **Route 79** appearing above)

Directly operated **Route 120** was renumbered **Route 100**

Directly operated **Route 200** (CUTLER BAY LOCAL) was renumbered **Route 500** (recycled number, not the same as the **Route 500** further below)

Contracted **Route 210** was renumbered **Route 510** (SKYLAKE CIRCULATOR)

Contracted **Route 246** was renumbered **Route 401** (NORTH OWL)

Contracted **Route 248** (Princeton Circulator) was renumbered **Route 70** (recycled number, not the same as former **Route 70**)

Directly operated **Route 252** became contractor-operated, under the new name and number **Route 152**

Directly operated **Route 500** was renumbered **Route 400** (SOUTH OWL)

*The above routes, along with many others who retained their numbering, underwent modifications in various ways (realignment, new headways, days of operation, etc., some major), as part of the BBN design and its resulting lineup. Details for each DTPW Bus route are provided in the Miami-Dade County website. (Directly operated **Route 2** became contractor-operated but kept its number).*

Better Bus Network (BBN, 11/13/2023 et seq. lineups) Bus Route Changes (Pt 2)

BBN New Routes:

Two new routes with new numbering, and later two new routes with recycled numbers were created to support the Better Bus Network:

Route 14 corresponds to a newly created route

Route 57 (recycled number) corresponds to a newly created route

Route 20 corresponds to a newly created route

Route 101 (recycled number, not the same as old Route 101 A, now

Route 15) corresponds to a newly created route

BBN Eliminated Routes:

The following routes were discontinued, as part of the Better Bus Network realignments:

Route 10

Route 105 - E

Route 212 (SWEETWATER CIRCULATOR)

Route 16

Route 108 - H

Route 217 (BUNCHE PARK CIRCULATOR)

Route 19

Route 110 - J

Route 238 (EAST-WEST CONNECTION)

Route 29

Route 113 - M

Route 241 (TUTTLE LIMITED)

Route 31 (BUSWAY LOCAL)

Route 115

Route 254 (BROWNSVILLE CIRCULATOR)

Route 42

Route 119 - S

Route 267 (LUDLAM LIMITED)

Route 46 (LIBERTY CITY CONNECTION)

Route 155 (BISCAYNE GARDENS CIRCULATOR)

Route 277 (7th AVENUE MAX)

Route 57

Route 202 (LITTLE HAITI CONNECTION)

Route 286 (NORTH POINTE CIRCULATOR)

Route 82 (WESTCHESTER CIRCULATOR)

Route 297 (27th AVENUE ORANGE MAX)

Route 103 - C (old, previously used numbering, not the same as the Route 103 in the list on the previous page)

Route 211 (OVERTOWN CIRCULATOR, previously used numbering, not the same as the Route 211 in the list on the previous page)

Previously Eliminated Routes:

The following five express routes were suspended soon after the start of the SARS-CoV-2 pandemic, and never reinstated; their ridership appears in some of the tables in this report, as then-components of the reported bus system performance metrics:

Route 175 (NW MIAMI-DADE EXPRESS)

Route 195 EXPRESS – BROWARD BLVD

Route 196 EXPRESS – BROWARD BLVD-CIVIC CENTER

Route 295 EXPRESS – SHERIDAN STREET

Route 296 EXPRESS – SHERIDAN STREET-CIVIC CENTER

The preceding listings are not exhaustive, and the reader is referred to the Miami-Dade County website for further BBN details or additional changes.

Six new MetroLink routes began running in July and August 2024 as a complement to the BBN; one (Alton Rd) is now the New Route 101 (different from old Route 101 / A).

METROBUS AVERAGE WEEKDAY BOARDINGS BY ROUTE (†)

Route	Average Weekday	Average Weekday	Percent Change	Average Weekday	Percent Change	Average Weekday	Percent Change	Average Weekday	Percent Change
	Nov-24	Oct-24	MOM	Oct-23	MO13M	Nov-23	YOY	Feb-20	Current vs Feb-20
weekdays									
2	2,376	2,377	0.0%	2,977	-20.2%	2,120	12.1%	3,102	-23.4%
3	8,238	7,529	9.4%	5,416	52.1%	7,646	7.7%	5,137	60.4%
7	3,498	3,334	4.9%	4,021	-13.0%	4,370	-20.0%	3,501	-0.1%
8	4,693	4,594	2.2%	4,650	0.9%	5,092	-7.8%	3,909	20.1%
9	11,273	10,868	3.7%	6,490	73.7%	10,105	11.6%	5,528	103.9%
10				2,443		973		2,482	
11	10,877	11,032	-1.4%	9,621	13.1%	11,155	-2.5%	7,292	49.2%
12	2,857	2,810	1.7%	2,891	-1.2%	3,171	-9.9%	2,779	2.8%
14	908	797	13.8%			682	33.1%		
15	570	518	9.9%	178	220.8%	289	97.4%	177	222.0%
16				2,009		754		1,862	
17	6,946	6,911	0.5%	4,133	68.1%	5,517	25.9%	3,878	79.1%
19				1,807		684		1,542	
20	3,571	3,546	0.7%			2,576	38.6%		
21	2,026	2,027	-0.1%	2,107	-3.9%	2,357	-14.1%	1,817	11.5%
22	2,410	2,349	2.6%	4,502	-46.5%	3,451	-30.2%	3,640	-33.8%
24-CORAL WAY LIMITED	2,457	2,399	2.4%	2,195	11.9%	2,635	-6.7%	1,340	83.4%
26	2,405	2,329	3.3%	1,877	28.1%	2,243	7.2%	1,778	35.3%
27	9,114	9,168	-0.6%	7,110	28.2%	8,649	5.4%	6,972	30.7%
29				516		191		534	
31-BUSWAY LOCAL						0		1,089	
32	1,833	1,746	5.0%	2,699	-32.1%	2,277	-19.5%	2,390	-23.3%
34 TRANSITWAY EXPRESS	1,763	1,843	-4.3%	1,636	7.7%	1,629	8.2%	2,008	-12.2%
35	2,409	2,409	0.0%	3,070	-21.5%	2,634	-8.5%	2,421	-0.5%
36	6,127	5,833	5.0%	2,645	131.6%	5,084	20.5%	2,536	141.6%
37	4,649	4,385	6.0%	3,475	33.8%	4,377	6.2%	3,273	42.0%
38 TRANSITWAY MAX	6,363	6,559	-3.0%	5,714	11.4%	6,597	-3.5%	6,361	0.0%
39 TRANSITWAY EXPRESS	879	839	4.8%	742	18.4%	718	22.5%	893	-1.5%
40	1,889	1,810	4.4%	2,344	-19.4%	2,120	-10.9%	1,772	6.6%
42				1,001		367		820	
46 - LIBERTY CITY CONN.				22		8		41	
52	1,603	1,611	-0.5%	1,390	15.3%	1,583	1.2%	1,261	27.1%
54	2,809	2,747	2.2%	3,086	-9.0%	3,204	-12.3%	2,940	-4.5%
56	457	495	-7.6%	391	17.0%	505	-9.4%	354	29.3%
57				522		187		433	
new 57	156								
62	2,660	2,729	-2.5%	2,496	6.6%	2,797	-4.9%	1,815	46.5%
70	323	319	1.0%	161	100.2%	241	34.0%	135	140.0%

(†) In this table and those which follow, "YOY" stands for "year-over-year", "MOM" for "month-over-month" and, e.g., "MOZM" for "month over Z months", i.e., current month vs 12 months prior, one month prior, and compared to pre-BBN, respectively. The Feb-20 numbers serve as a pre-pandemic benchmark. To see which routes are fully or partly operated under contract this month, please refer to the ranking table further in the Metrobus portion of this document.

METROBUS AVERAGE WEEKDAY BOARDINGS BY ROUTE

Route	Average Weekday	Average Weekday	Percent Change	Average Weekday	Percent Change	Average Weekday	Percent Change	Average Weekday	Percent Change
	Nov-24	Oct-24	MOM	Oct-23	MO13M	Nov-23	YOY	Feb-20	Current vs Feb-20
weekdays									
72	898	926	-3.0%	670	34.1%	786	14.3%	781	15.0%
73	1,303	1,297	0.5%	2,868	-54.6%	2,109	-38.2%	2,124	-38.7%
75	2,927	2,826	3.6%	1,594	83.6%	2,465	18.8%	1,429	104.9%
77	10,829	11,541	-6.2%	9,959	8.7%	10,823	0.1%	7,129	51.9%
79	7,688	7,352	4.6%	8,481	-9.3%	8,944	-14.0%	7,636	0.7%
82 - WESTCHESTER CIRC				61		24		62	
87	2,148	2,192	-2.0%	1,924	11.7%	2,193	-2.0%	1,499	43.3%
88	1,891	1,795	5.4%	2,419	-21.8%	2,311	-18.2%	2,076	-8.9%
95-EXPRESS GOLDEN GLADES	1,378	1,372	0.4%	1,195	15.3%	1,149	19.9%	2,893	-52.4%
97	253	221	14.3%	225	12.4%	197	28.2%	184	37.2%
100	15,325	14,573	5.2%	6,128	150.1%	13,972	9.7%	6,667	129.8%
new 101	475								
103 - C								463	
103	1,918	1,889	1.5%	1,967	-2.5%	2,181	-12.1%	1,687	13.7%
104	1,152	1,159	-0.6%	1,024	12.4%	1,091	5.6%	837	37.6%
105 - E				1,402		532		1,287	
107	2,172	2,273	-4.5%	825	163.2%	1,717	26.5%	711	205.6%
108 - H				487		206		473	
110 - J				2,955		1,238		2,508	
113 - M				887		345		866	
115				151		56		180	
119 - S				9,588		3,702		8,970	
125	4,774	4,668	2.3%	2,099	127.4%	3,356	42.3%	1,713	178.7%
132 - TRI-RAIL DORAL SHUTTLE	39	37	6.3%	37	7.0%	48	-18.1%	16	150.6%
135	1,957	2,091	-6.4%	1,755	11.5%	1,881	4.1%	1,399	39.9%
136	151	139	8.8%	162	-6.5%	197	-23.3%	126	19.7%
137-WEST DADE CONNECTION	2,390	2,468	-3.2%	2,119	12.8%	2,409	-0.8%	1,626	47.0%
150-MIAMI BEACH AIRPORT EXPRESS	1,477	1,333	10.8%	2,149	-31.3%	2,118	-30.3%	1,867	-20.9%
152	389	406	-4.1%	1,051	-63.0%	667	-41.7%	851	-54.3%
155 - BISCAYNE GARDENS CIRC				45		20		44	
175 - NW MIAMI-DADE EXPRESS								33	
183	5,061	4,991	1.4%	3,653	38.6%	4,584	10.4%	3,149	60.8%
199	2,018	1,867	8.1%	1,899	6.3%	2,009	0.4%	1,473	37.0%
202 - LITTLE HAITI CONN				110		43		140	
203 - BISCAYNE MAX	1,056	1,127	-6.3%	3,666	-71.2%	2,286	-53.8%	3,334	-68.3%

METROBUS AVERAGE WEEKDAY BOARDINGS BY ROUTE

Route	Average Weekday	Average Weekday	Percent Change	Average Weekday	Percent Change	Average Weekday	Percent Change	Average Weekday	Percent Change
	weekdays Nov-24	Oct-24	MOM	Oct-23	MO13M	Nov-23	YOY	Feb-20	Current vs Feb-20
204 KILLIAN MAX	578	596	-3.0%	620	-6.7%	619	-6.7%	1,071	-46.0%
207 (7th St)-LITTLE HAVANA CONN	1,570	1,687	-6.9%	1,819	-13.7%	1,904	-17.5%	1,489	5.5%
208 (8th St)-LITTLE HAVANA CONN	1,552	1,550	0.1%	1,659	-6.4%	1,778	-12.7%	1,308	18.7%
211 OVERTOWN CIRCULATOR				71		32		58	
211 - FLAGLER MAX	1,615	1,698	-4.9%	3,824	-57.8%	2,484	-35.0%	3,109	-48.0%
212-SWEETWATER CIRC				22		11		15	
217 - BUNCHE PARK CIRC				80		32		97	
238-EAST/WEST CONN				593		240		449	
241 TUTTLE LIMITED				348		128			
254-BROWNSVILLE CIRC				5		2		19	
267-LUDLAM LIMITED				162		59		149	
272 SUNSET MAX (*)	358	360	-0.7%	428	-16.4%	383	-6.6%	550	-34.9%
277-7TH AVENUE MAX				879		397		683	
279 - 79 STREET MAX	606	577	5.1%	469	29.2%	638	-5.0%	361	67.7%
286-NORTH POINTE CIRC				93		32		97	
287-SAGA BAY MAX	378	369	2.3%	341	10.8%	343	10.0%	358	5.5%
288 KENDALL MAX	442	441	0.3%	372	18.8%	453	-2.4%	762	-42.0%
297-27th AVENUE ORANGE MAX				1,229		457		1,356	
301-DADE MONROE EXPRESS	1,299	823	57.8%	955	36.0%	1,042	24.7%	841	54.4%
302-CARD SOUND EXPRESS	136	106	27.7%	91	49.8%	103	31.3%	86	57.4%
338 - WEEKEND EXPRESS									
344	143	133	7.4%	76	88.8%	97	47.5%	96	49.0%
400 - SOUTH OWL	80	67	18.3%	71	12.3%	75	6.6%	81	-1.8%
401 - NORTH OWL	78	79	-1.7%	61	28.6%	52	51.3%	94	-16.7%
500 - CUTLER BAY LOCAL	199	215	-7.1%	176	13.4%	262	-23.9%	158	26.4%
510 - SKYLAKE CIRCULATOR (*)	385	326	18.0%	471	-18.4%	375	2.6%	282	36.5%
836 EXPRESS	342	330	3.6%	247	38.7%	282	21.2%		
837 EXPRESS	184	186	-1.1%	195	-5.4%	191	-3.4%		
MetroLink NoMi West	259	240	7.8%						
MetroLink North Miami	204	167	22.6%						
MetroLink LeJeune	77	68	14.0%						
MetroLink Killian Parkway	152	147	3.4%						
MetroLink Alton Road	127	120	5.8%						
MetroLink Opa-Locka	21	18	15.8%						
AHEPA SHUTTLE	15	20	-26.7%	18	-17.4%	18	-17.4%	21	-29.3%
FEDERATION GARDENS SHUTTLE									
GREEN HILLS SHUTTLE	8	6	33.3%	5	53.8%	7	23.1%	9	-11.1%
KINGS CREEK SHUTTLE	10	10	2.6%	14	-27.3%	8	33.3%	13	-23.1%
ROBERT SHARP SHUTTLE	27	31	-14.5%	23	15.2%	23	13.2%	10	178.9%
SIERRA LAKES SHUTTLE	28	22	24.9%	16	79.4%	18	58.9%	45	-38.2%
Total	188,677	184,845	2.1%	185,320	1.8%	197,191	-4.3%	167,711	12.5%

(1) Includes shuttles and those routes which were not run some years.

(2) Several express routes were suspended beginning at the end of Mar-20, due to the SARS-CoV-2 pandemic, while other routes had alignment and schedule modifications made to them, in an ongoing effort to optimize service delivery.

METROBUS AVERAGE SATURDAY BOARDINGS BY ROUTE

Route	Average Saturday	Average Saturday	Percent Change	Average Saturday	Percent Change	Average Saturday	Percent Change	Average Saturday	Percent Change
	Nov-24	Oct-24	MOM	Oct-23	MO13M	Nov-23	YOY	Feb-20	Current vs Feb-20
Saturdays									
2	1,175	1,140	3.1%	1,605	-26.8%	1,381	-14.9%	1,616	-27.3%
3	6,549	6,068	7.9%	5,754	13.8%	6,767	-3.2%	5,229	25.2%
7	2,156	2,051	5.1%	1,972	9.3%	2,481	-13.1%	1,887	14.2%
8	2,303	2,199	4.7%	2,334	-1.3%	2,794	-17.6%	2,027	13.6%
9	7,476	7,340	1.9%	3,677	103.3%	6,079	23.0%	3,034	146.4%
10				2,107		948		1,896	
11	8,537	8,132	5.0%	5,787	47.5%	8,049	6.1%	5,182	64.7%
14	804	565	42.4%			604	33.1%		
15	370	285	29.9%	93	297.0%	260	42.5%	71	422.9%
16				1,662		855		1,566	
17	4,584	4,281	7.1%	2,553	79.6%	3,606	27.1%	2,363	94.0%
20	2,787	2,675	4.2%			1,846	51.0%		
22	1,647	1,600	3.0%	2,425	-32.1%	2,186	-24.6%	2,084	-21.0%
24-CORAL WAY LIMITED	1,727	1,640	5.3%	1,400	23.4%	1,810	-4.6%	1,165	48.2%
26	1,246	1,162	7.3%	966	29.0%	1,234	1.0%	851	46.4%
27	5,996	5,939	1.0%	4,006	49.7%	5,491	9.2%	4,034	48.6%
31-BUSWAY LOCAL				0				896	
32	1,184	1,085	9.2%	1,261	-6.1%	1,242	-4.6%	1,029	15.1%
35	1,795	1,708	5.1%	1,540	16.5%	1,774	1.2%	1,372	30.8%
36	4,538	4,318	5.1%	1,677	170.6%	3,271	38.7%	1,289	251.9%
37	3,098	2,815	10.1%	2,062	50.3%	2,818	10.0%	2,090	48.2%
38 TRANSITWAY MAX	5,479	4,809	13.9%	6,328	-13.4%	6,510	-15.8%	4,715	16.2%
40	1,142	1,026	11.3%	926	23.3%	1,041	9.7%	655	74.5%
42				617		290		552	
52	1,164	977	19.2%	694	67.9%	959	21.4%	686	69.8%
54	2,013	1,777	13.3%	1,925	4.6%	2,067	-2.6%	1,727	16.6%
56	180	191	-5.7%			103	75.0%		
new 57	62								
62	2,271	1,975	15.0%	1,823	24.6%	2,038	11.5%	1,343	69.1%
70	238	184	29.3%			108	121.4%		
72	563	537	4.9%	357	57.9%	430	30.9%	350	61.0%
73	597	564	5.9%	1,202	-50.3%	971	-38.5%	860	-30.6%
75	2,044	1,824	12.0%	550	271.6%	1,295	57.8%	468	336.7%
77	7,211	6,713	7.4%	5,510	30.9%	7,044	2.4%	4,197	71.8%
79	6,911	6,282	10.0%	7,094	-2.6%	7,733	-10.6%	5,667	21.9%
82 - WESTCHESTER CIRC				38		22		50	

METROBUS AVERAGE SATURDAY BOARDINGS BY ROUTE

Route	Average Saturday	Average Saturday	Percent Change	Average Saturday	Percent Change	Average Saturday	Percent Change	Average Saturday	Percent Change
	Nov-24	Oct-24	MOM	Oct-23	MO13M	Nov-23	YOY	Feb-20	Current vs Feb-20
Saturdays									
87	946	863	9.6%	532	78.0%	952	-0.6%	402	135.1%
88	1,565	1,437	8.9%	1,661	-5.8%	1,835	-14.7%	1,620	-3.4%
97	179	151	18.5%	163	9.6%	191	-6.0%	215	-16.7%
100	14,833	13,113	13.1%	5,637	163.1%	12,103	22.6%	4,744	212.7%
103 - C								315	
103	1,222	1,117	9.4%	1,239	-1.4%	1,428	-14.4%	951	28.5%
104	814	742	9.6%	445	83.0%	642	26.8%	468	73.7%
105 - E								619	
107	1,315	1,166	12.8%	238	453.6%	808	62.8%	252	422.2%
108 - H								372	
110 - J				1,394		907		1,952	
113 - M				577		255		503	
115				80		46		82	
119 - S				8,118		4,130		6,861	
125	2,894	2,912	-0.6%	1,297	123.2%	2,036	42.2%	1,066	171.4%
135	930	901	3.2%	556	67.4%	826	12.6%	539	72.7%
137-WEST DADE CONNECTION	1,627	1,414	15.1%	1,337	21.8%	1,627	0.0%	1,027	58.4%
150-MIAMI BEACH AIRPORT EXPRESS	1,439	1,328	8.4%	2,161	-33.4%	1,933	-25.5%	1,604	-10.3%
152	199	183	8.5%	375	-47.0%	339	-41.3%	302	-34.2%
183	3,047	2,811	8.4%	1,960	55.5%	2,664	14.4%	1,790	70.3%
195 EXPRESS - BROWARD BLVD									
196 EXPRESS - SHERIDAN ST									
199	1,301	1,259	3.4%	1,106	17.6%	1,257	3.5%	849	53.3%
202 - LITTLE HAITI CONN				22		8		50	
207 (7th St)-LITTLE HAVANA CONN	987	825	19.7%	929	6.3%	1,044	-5.4%	1,032	-4.4%
208 (8th St)-LITTLE HAVANA CONN	907	834	8.7%	1,030	-11.9%	1,246	-27.2%	1,044	-13.2%
241 TUTTLE LIMITED				222		119			
286-NORTH POINTE CIRC				61		34		41	
295									
296									
301-DADE MONROE EXPRESS	1,271	901	41.1%	885	43.6%	1,000	27.1%	801	58.6%
302-CARD SOUND EXPRESS	121	111	9.4%	94	28.9%	95	27.9%	57	114.1%
338 - WEEKEND EXPRESS	182	249	-26.9%	259	-29.9%	145	25.3%	237	-23.2%
344	94	64	47.2%			24	288.5%		
400 - SOUTH OWL	94	87	8.4%	104	-9.6%	71	31.6%	70	34.0%
401 - NORTH OWL	77	78	-0.8%	61	27.9%	72	7.9%	84	-8.3%
500 - CUTLER BAY LOCAL	162	141	14.4%	152	6.5%	241	-32.9%	119	35.6%
510 - SKYLAKE CIRCULATOR (*)	128	129	-0.5%	217	-41.2%	179	-28.7%	165	-22.5%
12/21 WEEKEND INTERLINE	2,734	2,436	12.3%	3,290	-16.9%	3,792	-27.9%	2,528	8.2%
FEDERATION GARDENS SHUTTLE	25	23	9.0%	20	24.0%	24	4.4%	28	-12.7%
Total	126,940	117,129	8.4%	107,331	18.3%	128,731	-1.4%	93,742	35.4%

METROBUS AVERAGE SUNDAY BOARDINGS BY ROUTE

Route	Average Sunday	Average Sunday	Percent Change	Average Sunday	Percent Change	Average Sunday	Percent Change	Average Sunday	Percent Change
	Nov-24	Oct-24	MOM	Oct-23	MO13M	Nov-23	YOY	Feb-20	Current vs Feb-20
Sundays									
2	757	740	2.4%	1,214	-37.6%	991	-23.6%	1,335	-43.2%
3	4,981	4,561	9.2%	4,408	13.0%	5,317	-6.3%	4,353	14.4%
7	1,527	1,342	13.8%	1,632	-6.4%	1,901	-19.7%	1,654	-7.7%
8	1,517	1,547	-1.9%	1,838	-17.4%	2,072	-26.8%	1,746	-13.1%
9	4,607	4,669	-1.3%	2,756	67.2%	4,342	6.1%	2,549	80.7%
10				1,632		660		1,441	
11	5,539	5,339	3.7%	3,803	45.6%	5,353	3.5%	3,917	41.4%
14	907	712	27.5%			723	25.4%		
15	291	236	23.3%	53	449.8%	243	19.7%	56	425.0%
16				1,023		397		997	
17	3,193	2,917	9.5%	1,920	66.3%	2,707	18.0%	1,833	74.2%
20	2,215	2,005	10.5%			1,492	48.5%		
22	1,217	1,019	19.5%	1,915	-36.4%	1,571	-22.5%	1,548	-21.4%
24-CORAL WAY LIMITED	1,111	1,050	5.9%	1,108	0.3%	1,369	-18.9%	905	22.8%
26	956	873	9.5%	871	9.8%	1,031	-7.3%	717	33.4%
27	3,565	3,343	6.6%	3,146	13.3%	3,730	-4.4%	2,918	22.2%
31-BUSWAY LOCAL								715	
32	893	841	6.3%	768	16.3%	972	-8.1%	772	15.7%
35	1,396	1,329	5.1%	1,175	18.8%	1,259	10.8%	942	48.3%
36	3,546	3,099	14.4%	1,160	205.6%	2,806	26.4%	1,111	219.4%
37	2,208	2,005	10.1%	1,755	25.8%	2,246	-1.7%	1,739	26.9%
38 TRANSITWAY MAX	3,971	3,862	2.8%	4,957	-19.9%	5,940	-33.1%	4,147	-4.2%
40	764	641	19.3%	542	41.0%	711	7.5%	447	70.9%
42				425		226		416	
52	894	791	13.1%	496	80.2%	781	14.5%	466	91.8%
54	1,174	1,125	4.4%	1,181	-0.5%	1,333	-11.9%	1,171	0.3%
62	1,336	1,201	11.3%	1,040	28.5%	1,284	4.0%	891	50.1%
70	167	179	-6.5%			83	102.4%		
72	448	400	12.2%	259	73.0%	320	40.3%	265	69.5%
73	247	212	16.7%	602	-58.9%	468	-47.1%	495	-50.0%
75	1,355	1,276	6.2%	352	285.4%	1,019	33.0%	271	400.5%
77	4,432	4,371	1.4%	3,980	11.4%	4,786	-7.4%	2,815	57.5%
79	4,951	4,628	7.0%	4,837	2.3%	5,757	-14.0%	4,804	3.1%

METROBUS AVERAGE SUNDAY BOARDINGS BY ROUTE

Route	Average Sunday	Average Sunday	Percent Change	Average Sunday	Percent Change	Average Sunday	Percent Change	Average Sunday	Percent Change
	Nov-24	Oct-24	MOM	Oct-23	MO13M	Nov-23	YOY	Feb-20	Current vs Feb-20
Sundays									
87	495	467	6.0%	362	36.9%	447	10.9%	319	55.3%
88	1,098	1,053	4.3%	1,255	-12.6%	1,271	-13.7%	1,286	-14.6%
97	152	139	9.5%	149	2.2%	153	-0.9%	201	-24.3%
100	9,910	8,591	15.4%	3,492	183.8%	9,261	7.0%	3,469	185.7%
103 - C								212	
103	792	705	12.4%	729	8.7%	837	-5.4%	607	30.5%
104	526	505	4.2%	348	51.3%	484	8.8%	317	66.0%
105 - E								616	
107	988	940	5.1%	187	428.6%	726	36.1%	162	510.1%
108 - H								328	
110 - J				1,699		725		1,638	
113 - M				444		131		431	
115				66		27		80	
119 - S				7,612		3,274		7,141	
125	1,830	1,753	4.4%	1,036	76.6%	1,451	26.1%	895	104.4%
135	707	576	22.8%	474	49.2%	670	5.4%	349	102.4%
137-WEST DADE CONNECTION	1,139	1,026	11.1%	956	19.2%	1,150	-0.9%	879	29.6%
150-MIAMI BEACH AIRPORT EXPRESS	1,616	1,198	34.9%	1,966	-17.8%	1,982	-18.4%	1,574	2.7%
152	173	120	44.1%	331	-47.9%	225	-23.2%	199	-13.2%
183	2,039	2,059	-1.0%	1,569	29.9%	1,960	4.0%	1,413	44.4%
199	1,003	1,007	-0.3%	887	13.1%	922	8.7%	658	52.4%
202 - LITTLE HAITI CONN				21		8		39	
207 (7th St)-LITTLE HAVANA CONN	601	544	10.5%	648	-7.2%	629	-4.5%	796	-24.5%
208 (8th St)-LITTLE HAVANA CONN	709	669	5.9%	862	-17.7%	888	-20.1%	911	-22.2%
241 TUTTLE LIMITED				187		74			
301-DADE MONROE EXPRESS	1,097	854	28.4%	867	26.5%	1,066	2.9%	751	46.0%
302-CARD SOUND EXPRESS	109	101	8.3%	72	52.8%	82	34.1%	57	91.9%
338 - WEEKEND EXPRESS	169	196	-13.9%	247	-31.7%	123	37.4%	252	-32.9%
400 - SOUTH OWL	73	71	2.6%	70	3.7%	74	-2.2%	83	-12.3%
401 - NORTH OWL	76	84	-9.0%	65	17.6%	50	53.2%	87	-12.6%
500 - CUTLER BAY LOCAL	72	93	-21.9%	86	-16.2%	55	30.8%	59	23.4%
510 - SKYLAKE CIRCULATOR (*)	164	108	52.6%	194	-15.6%	181	-9.3%	143	14.7%
12/21 WEEKEND INTERLINE	2,266	2,089	8.5%	2,700	-16.1%	2,831	-20.0%	2,048	10.7%
Total	87,976	81,253	8.3%	81,427	8.0%	96,088	-8.4%	75,428	16.6%

METROBUS TOTAL MONTHLY BOARDINGS BY ROUTE

Route	Total Month	Total Month	Percent Change	Total Month	Percent Change	Total Month	Percent Change	Total Month	Percent Change
	Nov-24	Oct-24	MOM	Oct-23	MO13M	Nov-23	YOY	Feb-20	Current vs Feb-20
total month									
2	57,185	62,189	-8.0%	77,976	-26.7%	55,002	4.0%	75,463	-24.2%
3	222,406	215,691	3.1%	164,203	35.4%	214,225	3.8%	146,294	52.0%
7	88,370	90,262	-2.1%	104,507	-15.4%	111,189	-20.5%	86,077	2.7%
8	112,968	120,635	-6.4%	120,821	-6.5%	128,457	-12.1%	95,295	18.5%
9	285,875	298,005	-4.1%	171,265	66.9%	258,220	10.7%	135,924	110.3%
10				70,338		27,532		64,874	
11	287,927	307,625	-6.4%	253,837	13.4%	293,222	-1.8%	187,425	53.6%
12	57,131	64,630	-11.6%	63,603	-10.2%	66,597	-14.2%	55,585	2.8%
14	26,714	23,446	13.9%			20,355	31.2%		
15	14,702	14,003	5.0%	4,545	223.5%	8,316	76.8%	4,114	257.4%
16				55,959		21,239		49,061	
17	177,808	187,733	-5.3%	110,727	60.6%	143,814	23.6%	96,715	83.8%
19				39,745		14,364		30,847	
20	96,431	100,273	-3.8%			68,947	39.9%		
21	40,510	46,611	-13.1%	46,355	-12.6%	49,494	-18.2%	36,341	11.5%
22	62,531	64,505	-3.1%	118,329	-47.2%	89,079	-29.8%	89,404	-30.1%
24-CORAL WAY LIMITED	63,335	65,933	-3.9%	59,432	6.6%	69,420	-8.8%	36,237	74.8%
26	59,114	61,696	-4.2%	49,521	19.4%	57,191	3.4%	42,683	38.5%
27	230,087	247,985	-7.2%	188,160	22.3%	222,250	3.5%	171,282	34.3%
29				11,342		4,003		10,684	
31-BUSWAY LOCAL								29,125	
32	47,042	47,862	-1.7%	68,263	-31.1%	57,636	-18.4%	56,027	-16.0%
34 TRANSITWAY EXPRESS	35,265	42,384	-16.8%	36,002	-2.0%	34,216	3.1%	40,159	-12.2%
35	64,128	67,544	-5.1%	79,573	-19.4%	68,700	-6.7%	59,041	8.6%
36	162,961	163,824	-0.5%	70,698	130.5%	133,885	21.7%	61,606	164.5%
37	119,503	120,138	-0.5%	93,471	27.9%	114,412	4.4%	82,870	44.2%
38 TRANSITWAY MAX	174,511	185,551	-5.9%	175,803	-0.7%	194,265	-10.2%	167,379	4.3%
39 TRANSITWAY EXPRESS	17,577	19,294	-8.9%	16,333	7.6%	15,069	16.6%	17,853	-1.5%
40	47,307	48,288	-2.0%	57,992	-18.4%	52,235	-9.4%	40,497	16.8%
42				26,611		10,000		20,825	
46 - LIBERTY CITY CONN.				477		170		814	
52	42,354	44,126	-4.0%	35,844	18.2%	40,994	3.3%	30,522	38.8%
54	72,110	74,798	-3.6%	81,490	-11.5%	82,219	-12.3%	72,125	0.0%
56	10,041	12,146	-17.3%	8,598	16.8%	11,008	-8.8%	7,071	42.0%
57				11,491		3,927		8,665	
new 57	687								
62	71,237	75,463	-5.6%	67,398	5.7%	73,318	-2.8%	46,582	52.9%
70	8,481	8,799	-3.6%	3,546	139.2%	5,900	43.7%	2,690	215.3%

METROBUS TOTAL MONTHLY BOARDINGS BY ROUTE

Route	Total Month	Total Month	Percent Change	Total Month	Percent Change	Total Month	Percent Change	Total Month	Percent Change
	Nov-24	Oct-24	MOM	Oct-23	MO13M	Nov-23	YOY	Feb-20	Current vs Feb-20
total month									
72	23,022	25,033	-8.0%	17,459	31.9%	19,821	16.1%	18,433	24.9%
73	30,278	32,930	-8.1%	70,903	-57.3%	50,502	-40.0%	48,767	-37.9%
75	75,531	77,387	-2.4%	39,021	93.6%	62,030	21.8%	31,994	136.1%
77	274,788	309,785	-11.3%	261,039	5.3%	279,394	-1.6%	174,833	57.2%
79	213,071	212,735	0.2%	239,146	-10.9%	247,534	-13.9%	200,268	6.4%
82 - WESTCHESTER CIRC				1,488		589		1,482	
87	50,175	55,731	-10.0%	46,254	8.5%	52,099	-3.7%	33,273	50.8%
88	51,124	51,231	-0.2%	66,138	-22.7%	62,229	-17.8%	54,772	-6.7%
95-EXPRESS GOLDEN GLADES	27,551	31,546	-12.7%	26,295	4.8%	24,131	14.2%	57,860	-52.4%
97	6,705	6,242	7.4%	6,337	5.8%	5,664	18.4%	5,558	20.6%
100	430,211	422,003	1.9%	174,819	146.1%	388,128	10.8%	170,942	151.7%
new 101	1,900								
103 - C								11,682	
103	48,427	50,725	-4.5%	51,871	-6.6%	55,702	-13.1%	40,918	18.4%
104	29,732	31,636	-6.0%	26,049	14.1%	27,897	6.6%	20,351	46.1%
105 - E				37,092		14,076		31,302	
107	54,951	60,704	-9.5%	20,040	174.2%	42,919	28.0%	16,118	240.9%
108 - H				14,133		5,882		12,624	
110 - J				79,080		33,241		66,481	
113 - M				24,040		8,926		21,548	
115				3,968		1,498		4,334	
119 - S				281,456		110,641		242,257	
125	119,105	126,015	-5.5%	56,547	110.6%	85,868	38.7%	43,178	175.8%
132 -TRI-RAIL DORAL SHUTTLE	782	846	-7.6%	804	-2.7%	1,002	-22.0%	312	150.6%
135	47,333	53,991	-12.3%	43,211	9.5%	46,155	2.6%	32,067	47.6%
136	3,022	3,194	-5.4%	3,557	-15.0%	4,137	-27.0%	2,524	19.7%
137-WEST DADE CONNECTION	61,626	66,514	-7.3%	56,750	8.6%	62,841	-1.9%	41,167	49.7%
150-MIAMI BEACH AIRPORT EXPRESS	44,810	40,768	9.9%	65,763	-31.9%	62,124	-27.9%	51,651	-13.2%
152	9,634	10,538	-8.6%	26,285	-63.3%	16,494	-41.6%	19,325	-50.1%
155 - BISCAYNE GARDENS CIRC				985		419		881	
175 - NW MIAMI-DADE EXPRESS								661	
183	126,657	134,280	-5.7%	96,050	31.9%	116,711	8.5%	77,570	63.3%
199	51,871	51,997	-0.2%	50,634	2.4%	51,820	0.1%	36,325	42.8%
202 - LITTLE HAITI CONN				2,620		973		3,200	
203 - BISCAYNE MAX	21,124	25,923	-18.5%	80,650	-73.8%	48,014	-56.0%	66,684	-68.3%

METROBUS TOTAL MONTHLY BOARDINGS BY ROUTE

Route	Total Month	Total Month	Percent Change	Total Month	Percent Change	Total Month	Percent Change	Total Month	Percent Change
	Nov-24	Oct-24	MOM	Oct-23	MO13M	Nov-23	YOY	Feb-20	Current vs Feb-20
total month									
204 KILLIAN MAX	11,562	13,711	-15.7%	13,632	-15.2%	13,006	-11.1%	21,418	-46.0%
207 (7th St)-LITTLE HAVANA CONN	39,347	44,273	-11.1%	46,970	-16.2%	47,311	-16.8%	38,127	3.2%
208 (8th St)-LITTLE HAVANA CONN	39,119	41,660	-6.1%	44,922	-12.9%	46,758	-16.3%	35,018	11.7%
211 OVERTOWN CIRCULATOR				1,567		681		1,159	
211 - FLAGLER MAX	32,309	39,062	-17.3%	84,135	-61.6%	52,162	-38.1%	62,186	-48.0%
212-SWEETWATER CIRC				494		232		295	
217 - BUNCHE PARK CIRC				1,759		665		1,949	
238-EAST/WEST CONN				13,036		5,043		8,987	
241 TUTTLE LIMITED				9,471		3,544			
254-BROWNSVILLE CIRC				105		39		384	
267-LUDLAM LIMITED				3,567		1,243		2,978	
272 SUNSET MAX (*)	7,159	8,290	-13.6%	9,423	-24.0%	8,051	-11.1%	11,004	-34.9%
277-7TH AVENUE MAX				19,345		8,343		13,669	
279 - 79 STREET MAX	12,119	13,261	-8.6%	10,318	17.5%	13,393	-9.5%	7,228	67.7%
286-NORTH POINTE CIRC				2,279		806		2,145	
287-SAGA BAY MAX	7,552	8,489	-11.0%	7,499	0.7%	7,209	4.8%	7,160	5.5%
288 KENDALL MAX	8,842	10,133	-12.7%	8,189	8.0%	9,517	-7.1%	15,249	-42.0%
297-27th AVENUE ORANGE MAX				27,047		9,598		27,125	
301-DADE MONROE EXPRESS	37,819	25,960	45.7%	28,889	30.9%	31,216	21.2%	23,838	58.7%
302-CARD SOUND EXPRESS	3,869	3,293	17.5%	2,728	41.8%	2,959	30.8%	2,236	73.0%
338 - WEEKEND EXPRESS	1,572	1,780	-11.7%	2,274	-30.9%	1,195	31.5%	2,191	-28.3%
344	3,331	3,318	0.4%	1,666	99.9%	2,133	56.2%	1,919	73.6%
400 - SOUTH OWL	2,264	2,176	4.0%	2,324	-2.6%	2,223	1.8%	2,301	-1.6%
401 - NORTH OWL	2,326	2,470	-5.8%	1,899	22.5%	1,617	43.8%	2,641	-11.9%
500 - CUTLER BAY LOCAL	5,157	5,874	-12.2%	4,907	5.1%	6,743	-23.5%	3,984	29.4%
510 - SKYLAKE CIRCULATOR (*)	9,152	8,439	8.4%	12,211	-25.1%	9,492	-3.6%	7,033	30.1%
836 EXPRESS	6,844	7,600	-9.9%	5,428	26.1%	5,927	15.5%		
837 EXPRESS	3,683	4,282	-14.0%	4,281	-14.0%	4,003	-8.0%		
MetroLink NoMi West	5,177	5,522	-6.2%						
MetroLink North Miami	4,087	3,833	6.6%						
MetroLink LeJeune	1,543	1,556	-0.8%						
MetroLink Killian Parkway	3,044	3,385	-10.1%						
MetroLink Alton Road	2,029	2,757	-26.4%						
MetroLink Opa-Locka	418	415	0.7%						
12/21 WEEKEND INTERLINE	25,002	18,099	38.1%	26,661	-6.2%	29,323	-14.7%	20,830	20.0%
AHEPA SHUTTLE	44	100	-56.0%	71	-38.0%	71	-38.0%	83	-47.0%
FEDERATION GARDENS SHUTTLE	124	91	36.3%	80	55.0%	95	30.5%	142	-12.7%
GREEN HILLS SHUTTLE	32	24	33.3%	26	23.1%	26	23.1%	36	-11.1%
KINGS CREEK SHUTTLE	30	39	-23.1%	55	-45.5%	30	0.0%	52	-42.3%
ROBERT SHARP SHUTTLE	106	155	-31.6%	92	15.2%	117	-9.4%	38	178.9%
SIERRA LAKES SHUTTLE	139	89	56.2%	62	124.2%	70	98.6%	180	-22.8%
Total	4,835,529	5,043,329	-4.1%	4,912,151	-1.6%	5,135,172	-5.8%	4,123,083	17.3%

BUS RIDERSHIP BY ROUTE SERVICE COMPARISON (MONTH-OVER-MONTH)

Boardings by Service Type and Route	Average Weekday	Average Weekday	Percent Change	Average Saturday	Average Saturday	Percent Change	Average Sunday	Average Sunday	Percent Change	Total Monthly	Total Monthly	Percent Change
	Nov-24	Oct-24	MOM	Nov-24	Oct-24	MOM	Nov-24	Oct-24	MOM	Nov-24	Oct-24	MOM
Directly Operated Express Routes												
34 TRANSITWAY EXPRESS	1,763	1,843	-4.3%							35,265	42,384	-16.8%
39 TRANSITWAY EXPRESS	879	839	4.8%							17,577	19,294	-8.9%
95-EXPRESS GOLDEN GLADES	1,378	1,372	0.4%							27,551	31,546	-12.7%
150-MIAMI BEACH AIRPORT EXPRESS	1,477	1,333	10.8%	1,439	1,328	8.4%	1,616	1,198	34.9%	44,810	40,768	9.9%
338 - WEEKEND EXPRESS				182	249	-26.9%	169	196	-13.9%	1,572	1,780	-11.7%
836 EXPRESS	342	330	3.6%							6,844	7,600	-9.9%
837 EXPRESS	184	186	-1.1%							3,683	4,282	-14.0%
Subtotal Express Routes	6,023	5,903	2.0%	1,621	1,577	2.8%	1,785	1,394	28.1%	137,302	147,654	-7.0%
Percentage of All Bus Routes	3.2%	3.2%		1.3%	1.3%		2.0%	1.7%		2.8%	2.9%	
Contracted Routes - Local Service (*)												
2	2,376	2,377	0.0%	1,175	1,140	3.1%	757	740	2.4%	57,185	62,189	-8.0%
15	570	518	9.9%	370	285	29.9%	291	236	23.3%	14,702	14,003	5.0%
29												
46 - LIBERTY CITY CONN.												
56	457	495	-7.6%	180	191	-5.7%				10,041	12,146	-17.3%
new 57	156			62						687		
70	323	319	1.0%	238	184	29.3%	167	179	-6.5%	8,481	8,799	-3.6%
72	898	926	-3.0%	563	537	4.9%	448	400	12.2%	23,022	25,033	-8.0%
82 - WESTCHESTER CIRC												
97	253	221	14.3%	179	151	18.5%	152	139	9.5%	6,705	6,242	7.4%
115										0		
152	389	406	-4.1%	199	183	8.5%	173	120	44.1%	9,634	10,538	-8.6%
155 - BISCAYNE GARDENS CIRC												
202 - LITTLE HAITI CONN												
211 OVERTOWN CIRCULATOR												
212-SWEETWATER CIRC												
217 - BUNCHE PARK CIRC												
254-BROWNSVILLE CIRC												
267-LUDLAM LIMITED												
286-NORTH POINTE CIRC												
344	143	133	7.4%	94	64	47.2%				3,331	3,318	0.4%
401 - NORTH OWL	78	79	-1.7%	77	78	-0.8%	76	84	-9.0%	2,326	2,470	-5.8%
MetroLink NoMi West	259	240	7.8%							5,177	5,522	-6.2%
MetroLink North Miami	204	167	22.6%							4,087	3,833	6.6%
MetroLink LeJeune	77	68	14.0%							1,543	1,556	-0.8%
MetroLink Killian Parkway	152	147	3.4%							3,044	3,385	-10.1%
MetroLink Alton Road	127	120	5.8%							2,029	2,757	-26.4%
MetroLink Opa-Locka	21	18	15.8%							418	415	0.7%
Subtotal Contracted Reg. & Circ. Routes	6,483	6,234	4.0%	3,138	2,812	11.6%	2,065	1,897	8.9%	152,412	162,206	-6.0%
Percentage of All Bus Routes	3.4%	3.4%		2.5%	2.4%		2.3%	2.3%		3.2%	3.2%	

(1) Several express routes were suspended beginning at the end of Mar-20, due to the SARS-CoV-2 pandemic, while other routes had alignment and schedule modifications made to them, in an ongoing effort to optimize service delivery.

(2) A second major round of changes took place with the 11/13/23 lineup known as the Better Bus Network, as listed at the start of this Metrobus section.

BUS RIDERSHIP BY ROUTE SERVICE COMPARISON (MONTH-OVER-MONTH)

Boardings by Service Type and Route	Average Weekday	Average Weekday	Percent Change	Average Saturday	Average Saturday	Percent Change	Average Sunday	Average Sunday	Percent Change	Total Monthly	Total Monthly	Percent Change
	Nov-24	Oct-24	MOM	Nov-24	Oct-24	MOM	Nov-24	Oct-24	MOM	Nov-24	Oct-24	MOM
Contracted Express Routes												
301-DADE MONROE EXPRESS	1,299	823	57.8%	1,271	901	41.1%	1,097	854	28.4%	37,819	25,960	45.7%
302-CARD SOUND EXPRESS	136	106	27.7%	121	111	9.4%	109	101	8.3%	3,869	3,293	17.5%
Subtotal Contracted Express Routes	1,435	930	54.3%	1,392	1,012	37.6%	1,206	955	26.2%	41,688	29,253	42.5%
Percentage of All Bus Routes	0.8%	0.5%		1.1%	0.9%		1.4%	1.2%		0.9%	0.6%	
Limited Stop Routes												
24-CORAL WAY LIMITED	2,457	2,399	2.4%	1,727	1,640	5.3%	1,111	1,050	5.9%	63,335	65,933	-3.9%
38 TRANSITWAY MAX	6,363	6,559	-3.0%	5,479	4,809	13.9%	3,971	3,862	2.8%	174,511	185,551	-5.9%
203 - BISCAYNE MAX	1,056	1,127	-6.3%							21,124	25,923	-18.5%
204 KILLIAN MAX	578	596	-3.0%							11,562	13,711	-15.7%
211 - FLAGLER MAX	1,615	1,698	-4.9%							32,309	39,062	-17.3%
241 TUTTLE LIMITED												
272 SUNSET MAX (*)	358	360	-0.7%							7,159	8,290	-13.6%
277-7TH AVENUE MAX												
279 - 79 STREET MAX	606	577	5.1%							12,119	13,261	-8.6%
287-SAGA BAY MAX	378	369	2.3%							7,552	8,489	-11.0%
288 KENDALL MAX	442	441	0.3%							8,842	10,133	-12.7%
297-27th AVENUE ORANGE MAX												
Subtotal Limited Stop Routes	13,854	14,127	-1.9%	7,206	6,449	11.7%	5,082	4,912	3.5%	338,513	370,353	-8.6%
Percentage of All Bus Routes	7.3%	7.6%		5.7%	5.5%		5.8%	6.0%		7.0%	7.3%	
Directly Operated Free Routes												
132 -TRI-RAIL DORAL SHUTTLE	39	37	6.3%							782	846	-7.6%
500 - CUTLER BAY LOCAL	199	215	-7.1%	162	141	14.4%	72	93	-21.9%	5,157	5,874	-12.2%
510 - SKYLAKE CIRCULATOR (*)	385	326	18.0%	128	129	-0.5%	164	108	52.6%	9,152	8,439	8.4%
Subtotal Free Directly Operated Routes	623	577	7.9%	289	270	7.3%	236	200	18.1%	15,091	15,159	-0.4%
Percentage of All Bus Routes	0.3%	0.3%		0.2%	0.2%		0.3%	0.2%		0.3%	0.3%	
Contractor-Operated Lifeline Routes												
GREEN HILLS SHUTTLE	8	6	33.3%							32	24	33.3%
KINGS CREEK SHUTTLE	10	10	2.6%							30	39	-23.1%
SIERRA LAKES SHUTTLE	28	22	24.9%							139	89	56.2%
ROBERT SHARP SHUTTLE	27	31	-14.5%							106	155	-31.6%
AHEPA SHUTTLE	15	20	-26.7%							44	100	-56.0%
FEDERATION GARDENS SHUTTLE				25	23	9.0%				124	91	36.3%
Subtotal Contractor-Operated Lifeline Routes	87	89	-2.3%	25	23	9.0%				475	498	-4.6%
Percentage of All Bus Routes	0.0%	0.0%		0.0%	0.0%					0.0%	0.0%	
All Other (Regular) Routes	160,173	156,986	2.0%	113,269	104,987	7.9%	77,601	71,895	7.9%	4,150,048	4,318,206	-3.9%
Percentage of All Bus Routes	84.9%	84.9%		89.2%	89.6%		88.2%	88.5%		85.8%	85.6%	
Total Bus System	188,677	184,845	2.1%	126,940	117,129	8.4%	87,976	81,253	8.3%	4,835,529	5,043,329	-4.1%

BUS RIDERSHIP BY ROUTE SERVICE TYPE LINEUPS COMPARISON (MONTH-OVER-13 MONTH)

Boardings by Service Type and Route	Average Weekday	Average Weekday	Percent Change	Average Saturday	Average Saturday	Percent Change	Average Sunday	Average Sunday	Percent Change	Total Monthly	Total Monthly	Percent Change
	Nov-24	Oct-23	24 vs 23	Nov-24	Oct-23	24 vs 23	Nov-24	Oct-23	24 vs 23	Nov-24	Oct-23	24 vs 23
Directly Operated Express Routes												
34 TRANSITWAY EXPRESS	1,763	1,636	7.7%							35,265	36,002	-2.0%
39 TRANSITWAY EXPRESS	879	742	18.4%							17,577	16,333	7.6%
95-EXPRESS GOLDEN GLADES	1,378	1,195	15.3%							27,551	26,295	4.8%
150-MIAMI BEACH AIRPORT EXPRESS	1,477	2,149	-31.3%	1,439	2,161	-33.4%	1,616	1,966	-17.8%	44,810	65,763	-31.9%
338 - WEEKEND EXPRESS				182	259	-29.9%	169	247	-31.7%	1,572	2,274	-30.9%
836 EXPRESS	342	247	38.7%							6,844	5,428	26.1%
837 EXPRESS	184	195	-5.4%							3,683	4,281	-14.0%
Subtotal Express Routes	6,023	6,165	-2.3%	1,621	2,420	-33.0%	1,785	2,214	-19.3%	137,302	156,376	-12.2%
Percentage of All Bus Routes	3.2%	3.3%		1.3%	2.3%		2.0%	2.7%		2.8%	3.2%	
Contracted Routes - Local Service (*)												
2	2,376	2,977	-20.2%	1,175	1,605	-26.8%	757	1,214	-37.6%	57,185	77,976	-26.7%
15	570	178	220.8%	370	93	297.0%	291	53	449.8%	14,702	4,545	223.5%
29		516									11,342	
46 - LIBERTY CITY CONN.		22									477	
56	457	391	17.0%	180						10,041	8,598	16.8%
new 57	156			62						687		
70	323	161	100.2%	238			167			8,481	3,546	139.2%
72	898	670	34.1%	563	357	57.9%	448	259	73.0%	23,022	17,459	31.9%
82 - WESTCHESTER CIRC		61			38						1,488	
97	253	225	12.4%	179	163	9.6%	152	149	2.2%	6,705	6,337	5.8%
115		151			80						3,968	
152	389	1,051	-63.0%	199	375	-47.0%	173	331	-47.9%	9,634	26,285	-63.3%
155 - BISCAYNE GARDENS CIRC		45									985	
202 - LITTLE HAITI CONN		110			22			21			2,620	
211 OVERTOWN CIRCULATOR		71									1,567	
212-SWEETWATER CIRC		22									494	
217 - BUNCHE PARK CIRC		80									1,759	
254-BROWNSVILLE CIRC		5									105	
267-LUDLAM LIMITED		162									3,567	
286-NORTH POINTE CIRC		93			61						2,279	
344	143	76	88.8%	94						3,331	1,666	99.9%
401 - NORTH OWL	78	61	28.6%	77	61	27.9%	76	65	17.6%	2,326	1,899	22.5%
MetroLink NoMi West	259									5,177		
MetroLink LeJeune	77									1,543		
MetroLink Opa-Locka	21									418		
Subtotal Contracted Reg. & Circ. Routes	6,483	7,125	-9.0%	3,138	2,854	9.9%	2,065	2,158	-4.3%	152,412	178,962	-14.8%
Percentage of All Bus Routes	3.4%	3.8%		2.5%	2.7%		2.3%	2.7%		3.2%	3.6%	

(1) Several express routes were suspended beginning at the end of Mar-20, due to the SARS-CoV-2 pandemic, while other routes had alignment and schedule modifications made to them, in an ongoing effort to optimize service delivery.

(2) A second major round of changes took place with the 11/13/23 lineup known as the Better Bus Network, as listed at the start of this Metrobus section.

BUS RIDERSHIP BY ROUTE SERVICE TYPE LINEUPS COMPARISON (MONTH-OVER-13 MONTH)

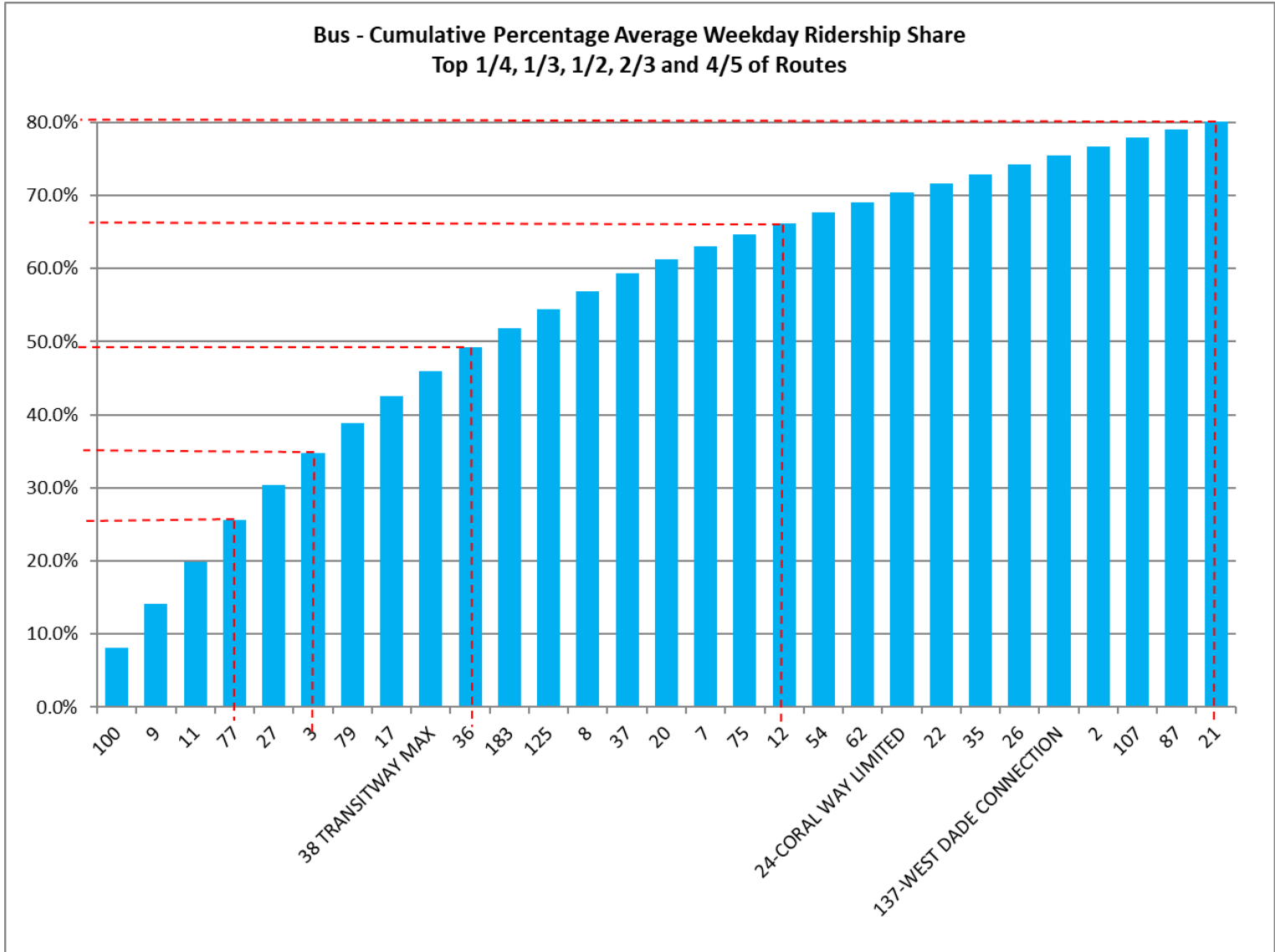
Boardings by Service Type and Route	Average Weekday	Average Weekday	Percent Change	Average Saturday	Average Saturday	Percent Change	Average Sunday	Average Sunday	Percent Change	Total Monthly	Total Monthly	Percent Change
	Nov-24	Oct-23	24 vs 23	Nov-24	Oct-23	24 vs 23	Nov-24	Oct-23	24 vs 23	Nov-24	Oct-23	24 vs 23
Contracted Express Routes												
301-DADE MONROE EXPRESS	1,299	955	36.0%	1,271	885	43.6%	1,097	867	26.5%	37,819	28,889	30.9%
302-CARD SOUND EXPRESS	136	91	49.8%	121	94	28.9%	109	72	52.8%	3,869	2,728	41.8%
Subtotal Contracted Express Routes	1,435	1,046	37.2%	1,392	979	42.2%	1,206	938	28.5%	41,688	31,617	31.9%
Percentage of All Bus Routes	0.8%	0.6%		1.1%	0.9%		1.4%	1.2%		0.9%	0.6%	
Limited Stop Routes												
24-CORAL WAY LIMITED	2,457	2,195	11.9%	1,727	1,400	23.4%	1,111	1,108	0.3%	63,335	59,432	6.6%
38 TRANSITWAY MAX	6,363	5,714	11.4%	5,479	6,328	-13.4%	3,971	4,957	-19.9%	174,511	175,803	-0.7%
203 - BISCAYNE MAX	1,056	3,666	-71.2%							21,124	80,650	-73.8%
204 KILLIAN MAX	578	620	-6.7%							11,562	13,632	-15.2%
211 - FLAGLER MAX	1,615	3,824	-57.8%							32,309	84,135	-61.6%
241 TUTTLE LIMITED		348			222			187			9,471	
272 SUNSET MAX (*)	358	428	-16.4%							7,159	9,423	-24.0%
277-7TH AVENUE MAX		879									19,345	
279 - 79 STREET MAX	606	469	29.2%							12,119	10,318	17.5%
287-SAGA BAY MAX	378	341	10.8%							7,552	7,499	0.7%
288 KENDALL MAX	442	372	18.8%							8,842	8,189	8.0%
297-27th AVENUE ORANGE MAX		1,229									27,047	
Subtotal Limited Stop Routes	13,854	20,086	-31.0%	7,206	7,950	-9.3%	5,082	6,252	-18.7%	338,513	504,944	-33.0%
Percentage of All Bus Routes	7.3%	10.8%		5.7%	7.4%		5.8%	7.7%		7.0%	10.3%	
Directly Operated Free Routes												
132 -TRI-RAIL DORAL SHUTTLE	39	37	7.0%							782	804	-2.7%
500 - CUTLER BAY LOCAL	199	176	13.4%	162	152	6.5%	72	86	-16.2%	5,157	4,907	5.1%
510 - SKYLAKE CIRCULATOR (*)	385	471	-18.4%	128	217	-41.2%	164	194	-15.6%	9,152	12,211	-25.1%
Subtotal Free Directly Operated Routes	623	684	-8.9%	289	369	-21.6%	236	280	-15.8%	15,091	17,922	-15.8%
Percentage of All Bus Routes	0.3%	0.4%		0.2%	0.3%		0.3%	0.3%		0.3%	0.4%	
Contractor-Operated Lifeline Routes												
GREEN HILLS SHUTTLE	8	5	53.8%							32	26	23.1%
KINGS CREEK SHUTTLE	10	14	-27.3%							30	55	-45.5%
SIERRA LAKES SHUTTLE	28	16	79.4%							139	62	124.2%
ROBERT SHARP SHUTTLE	27	23	15.2%							106	92	15.2%
AHEPA SHUTTLE	15	18	-17.4%							44	71	-38.0%
FEDERATION GARDENS SHUTTLE				25	20	24.0%				124	80	55.0%
Subtotal Contractor-Operated Lifeline Routes	87	75	15.6%	25	20	24.0%				475	386	23.1%
Percentage of All Bus Routes	0.0%	0.0%		0.0%	0.0%					0.0%	0.0%	
All Other (Regular) Routes	160,173	150,140	6.7%	113,269	92,739	22.1%	77,601	69,584	11.5%	4,150,048	4,021,944	3.2%
Percentage of All Bus Routes	84.9%	81.0%		89.2%	86.4%		88.2%	85.5%		85.8%	81.9%	
Total Bus System	188,677	185,320	1.8%	126,940	107,331	18.3%	87,976	81,427	8.0%	4,835,529	4,912,151	-1.6%

Bus Routes as Ranked by Percentage of Average Weekday Ridership November 2024

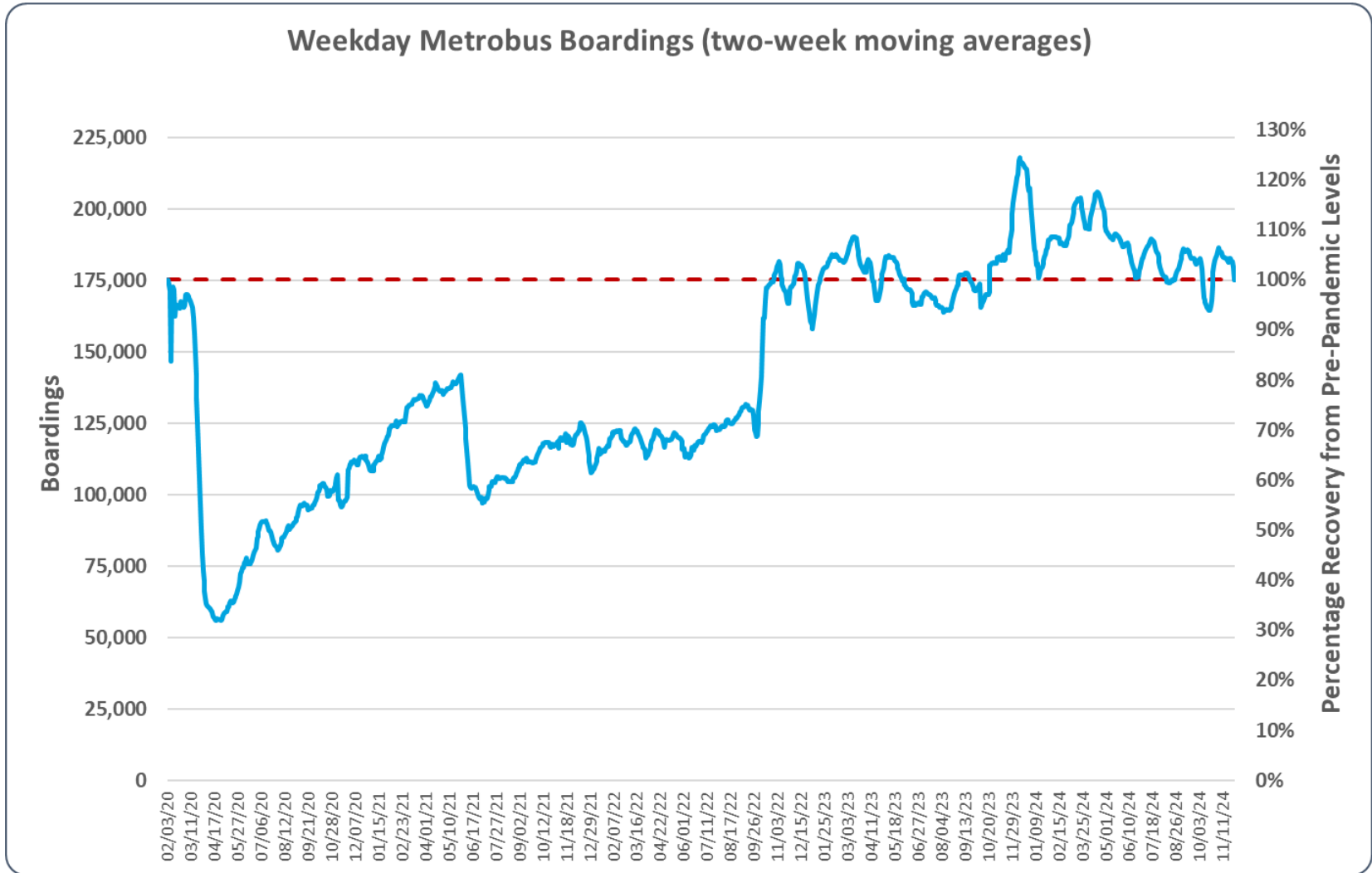
Rank	Route	Average Weekday	Percent Share	Cumul Pct Share	Rank	Route	Average Weekday	Percent Share	Cumul Pct Share	Rank	Route	Average Weekday	Percent Share	Cumul Pct Share
1	100	15,325	8.1%	8.1%	32	new 103	1,918	1.0%	83.2%	63	97	253	0.1%	99.0%
2	9	11,273	6.0%	14.1%	33	88	1,891	1.0%	84.2%	64	8001	204	0.1%	99.1%
3	11	10,877	5.8%	19.9%	34	40	1,889	1.0%	85.2%	65	500	199	0.1%	99.2%
4	77	10,829	5.7%	25.6%	35	32	1,833	1.0%	86.2%	66	837	184	0.1%	99.3%
5	27	9,114	4.8%	30.4%	36	34	1,763	0.9%	87.1%	67	new 57	156	0.1%	99.4%
6	3	8,238	4.4%	34.8%	37	new 211	1,615	0.9%	88.0%	68	8003	152	0.1%	99.5%
7	79	7,688	4.1%	38.9%	38	52	1,603	0.8%	88.8%	69	136	151	0.1%	99.6%
8	17	6,946	3.7%	42.6%	39	207	1,570	0.8%	89.6%	70	344	143	0.1%	99.7%
9	38	6,363	3.4%	45.9%	40	208	1,552	0.8%	90.5%	71	302	136	0.1%	99.7%
10	36	6,127	3.2%	49.2%	41	150	1,477	0.8%	91.2%	72	8004	127	0.1%	99.8%
11	183	5,061	2.7%	51.9%	42	95	1,378	0.7%	92.0%	73	400	80	0.0%	99.8%
12	125	4,774	2.5%	54.4%	43	73	1,303	0.7%	92.7%	74	401	78	0.0%	99.9%
13	8	4,693	2.5%	56.9%	44	301	1,299	0.7%	93.4%	75	8002	77	0.0%	99.9%
14	37	4,649	2.5%	59.3%	45	104	1,152	0.6%	94.0%	76	132	39	0.0%	99.9%
15	20	3,571	1.9%	61.2%	46	203	1,056	0.6%	94.5%	77	SL	28	0.0%	100.0%
16	7	3,498	1.9%	63.1%	47	14	908	0.5%	95.0%	78	RS	27	0.0%	100.0%
17	75	2,927	1.6%	64.6%	48	72	898	0.5%	95.5%	79	8005	21	0.0%	100.0%
18	12	2,857	1.5%	66.1%	49	39	879	0.5%	95.9%	80	AS	15	0.0%	100.0%
19	54	2,809	1.5%	67.6%	50	279	606	0.3%	96.3%	81	KC	10	0.0%	100.0%
20	62	2,660	1.4%	69.0%	51	204	578	0.3%	96.6%	82	GH	8	0.0%	100.0%
21	24	2,457	1.3%	70.4%	52	15	570	0.3%	96.9%					
22	22	2,410	1.3%	71.6%	53	new 101	475	0.3%	97.1%					
23	35	2,409	1.3%	72.9%	54	56	457	0.2%	97.4%					
24	26	2,405	1.3%	74.2%	55	288	442	0.2%	97.6%					
25	137	2,390	1.3%	75.4%	56	152	389	0.2%	97.8%					
26	2	2,376	1.3%	76.7%	57	510	385	0.2%	98.0%					
27	107	2,172	1.2%	77.9%	58	287	378	0.2%	98.2%					
28	87	2,148	1.1%	79.0%	59	272	358	0.2%	98.4%					
29	21	2,026	1.1%	80.1%	60	836	342	0.2%	98.6%					
30	199	2,018	1.1%	81.1%	61	70	323	0.2%	98.8%					
31	135	1,957	1.0%	82.2%	62	8000	259	0.1%	98.9%					
												entirely contracted in Nov-24		
												Total Boardings	188,677	100.00%

- (1) Average weekday ridership rounded to the nearest unit.
(2) Includes the five Lifeline Shuttles that operate on weekdays: Ahepa (AS), Green Hills (GH), Kings Creek (KC), Robert Sharp (RS) and Sierra Lakes (SL).
(3) Routes 8000, 8001, 8002, 8003, 8004 and 8005 refer to the six Better Bus Network MetroLink contracted supplemental routes, launched in July and August 2024: MetroLink NoMi West, MetroLink North Miami, MetroLink LeJeune, MetroLink Killian Parkway, MetroLink Alton Road, and MetroLink Opa-Locka, respectively.

METROBUS CUMULATIVE PERCENTAGE RIDERSHIP SHARE – BY ROUTE



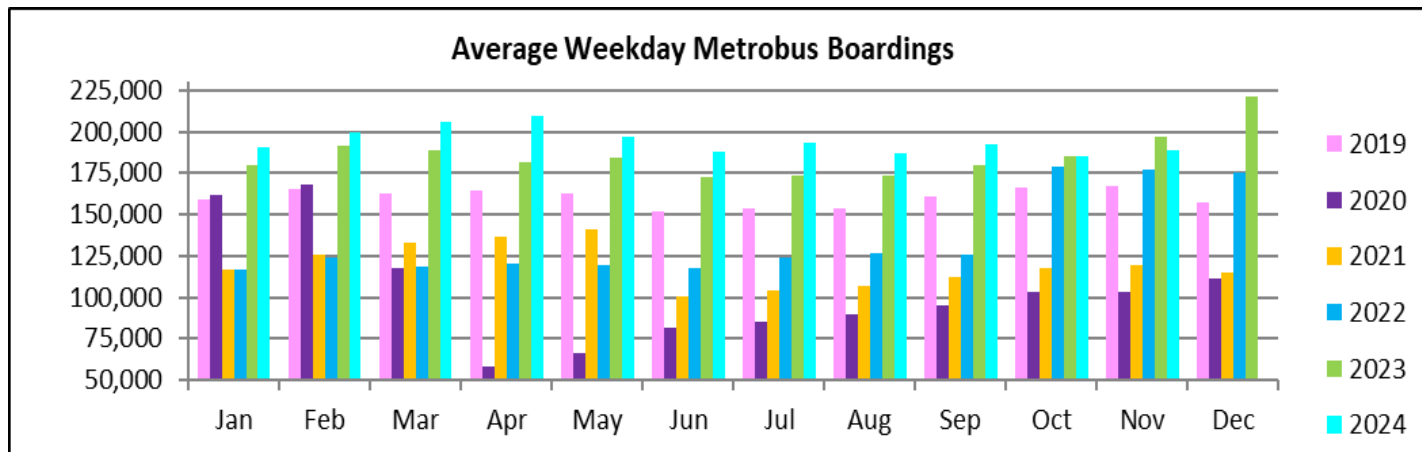
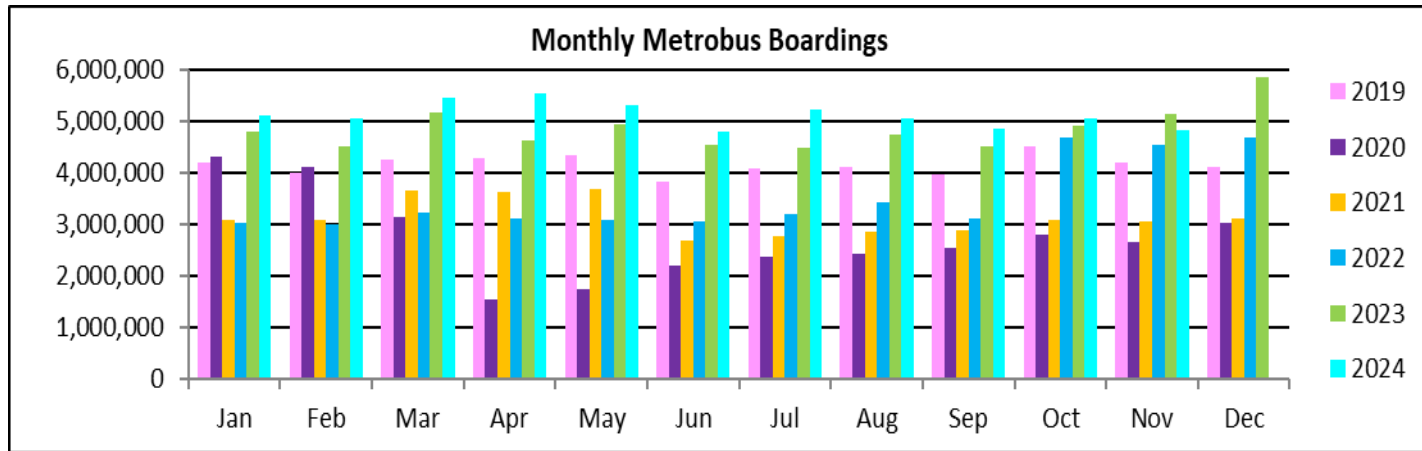
METROBUS ESTIMATED WEEKDAY RIDERSHIP SINCE 02/01/20 (TWO-WEEK MOVING AVERAGES)



(1) The red dotted line represents the pre-pandemic benchmark month (Feb-20) maximum.

(2) The pronounced dip in June 2021 is due to resumption of fares at the start of recovery from the SARS-CoV-2 pandemic; the pronounced increase in October 2022 is due to the switchover to automatic passenger counter sampling-based estimates for metrobus ridership; the isolated peak around December 2023 is due to the free fares marking the launch of the Better Bus Network.

TOTAL MONTHLY AND AVERAGE WEEKDAY RIDERSHIP YEAR OVER YEAR COMPARISON CHARTS – METROBUS



**“TOP 10 / BOTTOM 10” BUS ROUTES AVERAGE WEEKDAY RIDERSHIP PERFORMANCE
MONTH OVER MONTH COMPARISON**

Route	Nov-24	Oct-24	Absolute Delta	Percent Delta
100	15,325	14,573	751	5.2%
3	8,238	7,529	708	9.4%
301-DADE MONROE EXPRESS	1,299	823	476	57.8%
9	11,273	10,868	405	3.7%
79	7,688	7,352	336	4.6%
36	6,127	5,833	294	5.0%
37	4,649	4,385	264	6.0%
7	3,498	3,334	163	4.9%
199	2,018	1,867	151	8.1%
150-MIAMI BEACH AIRPORT EXPRESS	1,477	1,333	143	10.8%
77	10,829	11,541	-713	-6.2%
38 TRANSITWAY MAX	6,363	6,559	-196	-3.0%
11	10,877	11,032	-155	-1.4%
135	1,957	2,091	-133	-6.4%
207 (7th St)-LITTLE HAVANA CONN	1,570	1,687	-117	-6.9%
107	2,172	2,273	-101	-4.5%
211 - FLAGLER MAX	1,615	1,698	-83	-4.9%
34 TRANSITWAY EXPRESS	1,763	1,843	-80	-4.3%
137-WEST DADE CONNECTION	2,390	2,468	-78	-3.2%
203 - BISCAYNE MAX	1,056	1,127	-71	-6.3%

(*) Averages rounded to the nearest boarding, data as estimated from automatic passenger counter (APC) system; Lifeline shuttles excluded.

“TOP 10 / BOTTOM 10” BUS ROUTES SETS AVERAGE WEEKDAY RIDERSHIP PERFORMANCE YEAR OVER YEAR COMPARISON

Route Set (*), (1), (2)	Nov-24	Nov-23	Absolute Delta	Percent Delta	routes included in set
{ 125 }	4,774	4,040	735	18.2%	19, 107, 125
{ 17 & 22 & 75 }	12,283	11,671	612	5.2%	17, 22, 75, 108, 217
{ 20 }	5,404	4,909	495	10.1%	20, 32, 115
15	570	289	281	97.4%	15
{ new 107 }	5,360	5,096	264	5.2%	35, 56, 70, 71, new 107, 248
301	1,299	1,042	257	24.7%	301
{ 95 }	1,378	1,149	228	19.9%	95, 195, 196, 295, 296
{ 2 }	2,376	2,152	224	10.4%	2, 211
26	2,405	2,243	162	7.2%	26
39	879	718	161	22.5%	39
{ 100 }	15,325	18,207	-2,882	-15.8%	100, 105, 119, 120
{ new 211 }	11,156	12,643	-1,488	-11.8%	8, 24, 51, 82, 137, new 211
{ 279 }	8,294	9,581	-1,287	-13.4%	79, 112, 279
7	3,498	4,370	-872	-20.0%	7
{ 73 & 183 }	6,364	7,210	-846	-11.7%	57, 73, 183, 238, 267, 286
{ 37 & 54 }	7,457	8,140	-683	-8.4%	29, 37, 42, 54, 254
150	1,477	2,118	-642	-30.3%	150
{ 3 & 203 }	9,294	9,933	-639	-6.4%	3, 93, 203
{ 9 }	11,273	11,832	-559	-4.7%	9, 10, 16
88	1,891	2,311	-421	-18.2%	88

(*) Averages rounded to the nearest boarding, data as estimated from automatic passenger counter (APC) system; Lifeline shuttles excluded.

- (1) The route sets, denoted by brackets, include the new 11/13/2023 lineup's Better Bus Network route designations, as well as older routes present for the first part of the month and previous months and years, then either renamed, absorbed, or eliminated. The sets were defined to enable reasonably fair comparisons between pre- and post-BBN timeframes, to the extent possible and practical, given the complexity of the changes for some of the routes and sets. The definitions were based on information from the DTPW website, and subject to future adjustments, if necessary.
- (2) The adjective "new" in front of some new Better Bus Network-generated (recycled) route numbers was added to help distinguish those routes from older but different routes with the same number present in previous months or years.

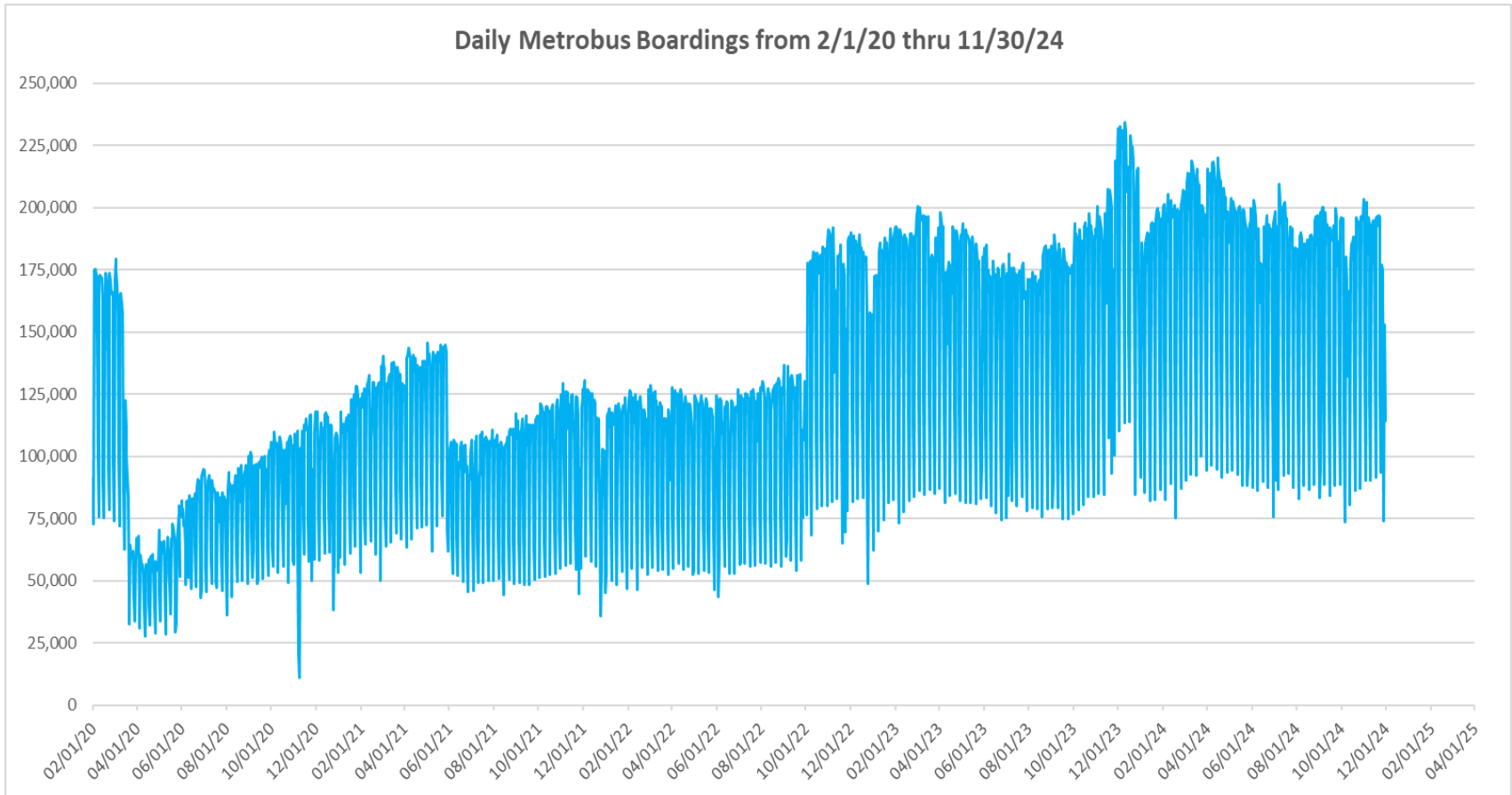
“TOP 10 / BOTTOM 10” BUS ROUTES SETS AVERAGE WEEKDAY RIDERSHIP PERFORMANCE MONTH OVER 13-MONTH PRIOR COMPARISON

Route Set (*), (1), (2)	Nov-24	Oct-23	Absolute Delta	Percent Delta	routes included in set
{ 20 }	5,404	2,850	2,554	89.6%	20, 32, 115
{ 17 & 22 & 75 }	12,283	10,796	1,487	13.8%	17, 22, 75, 108, 217
{ 11 }	10,877	9,644	1,233	12.8%	11, 212
{ new 107 }	5,360	4,447	913	20.5%	35, 56, 70, 71, new 107, 248
{ 125 }	4,774	3,906	869	22.2%	19, 107, 125
{ 27 }	9,114	8,339	775	9.3%	27, 297
{ 38 }	6,506	5,790	716	12.4%	31, 38, 344
26	2,405	1,877	528	28.1%	26
{ 36 }	6,127	5,600	527	9.4%	36, 110
15	570	178	392	220.8%	15
{ 100 }	15,325	17,117	-1,792	-10.5%	100, 105, 119, 120
{ new 211 }	11,156	12,849	-1,694	-13.2%	8, 24, 51, 82, 137, new 211
{ 73 & 183 }	6,364	7,890	-1,526	-19.3%	57, 73, 183, 238, 267, 286
150	1,477	2,149	-673	-31.3%	150
{ 2 }	2,376	3,048	-672	-22.0%	2, 211
{ 279 }	8,294	8,950	-656	-7.3%	79, 112, 279
{ 37 & 54 }	7,457	8,082	-625	-7.7%	29, 37, 42, 54, 254
88	1,891	2,419	-528	-21.8%	88
7	3,498	4,021	-523	-13.0%	7
40	1,889	2,344	-456	-19.4%	40

(*) Averages rounded to the nearest boarding, data as estimated from automatic passenger counter (APC) system; Lifeline shuttles excluded.

- (1) The route sets, denoted by brackets, include the new 11/13/2023 lineup's Better Bus Network route designations, as well as older routes present for the first part of the month and previous months and years, then either renamed, absorbed, or eliminated. The sets were defined to enable reasonably fair comparisons between pre- and post-BBN timeframes, to the extent possible and practical, given the complexity of the changes for some of the routes and sets. The definitions were based on information from the DTPW website, and subject to future adjustments, if necessary.
- (2) The adjective "new" in front of some new Better Bus Network-generated (recycled) route numbers was added to help distinguish those routes from older but different routes with the same number present in previous months or years.

DAILY METROBUS RIDERSHIP SINCE FEBRUARY 1, 2020



- (1) There was no Metrobus, Metrorail and Metromover service on 5/31/20, as a safety precaution, and no service for any of the four modes on 9/28/22, as a result of Hurricane Ian.
- (2) The dip at the start of the second week of Nov-20 is due to Hurricane Eta.
- (3) Daily variations from Oct-22 onward are a representation estimated from reports made available by the Bus APC data vendor; the finalized data is based on statistical sampling.
- (4) The reduction seen beginning 6/1/21 is partly due to the resumption of fares and partly the result of resuming reporting Cubic farebox data rather than bus APC counts; the jump seen at the very start of Oct-22 is due to the switch to APC bus ridership counts reporting beginning 10/1/22; the pronounced peak in Dec-23 is attributable to the Better Bus Network launch period and attendant free fares.
- (5) Periodic (weekly) variations are prominent, since weekday ridership is almost always significantly higher than weekend or holiday ridership.

METROBUS PARKING PATRONAGE SUMMARY November 2024

PARK-RIDE LOT	ACTUAL AVAILABLE SPACES	ACTUAL OCCUPANCY	PERCENT OCCUPANCY
Transitway / SW 152nd St	200	156	78%
Transitway / SW 168th St (*)	149		
Transitway / SW 200th Street	100	36	36%
Transitway / SW 112 Ave (Target)	450	182	40%
Transitway / SW 244th St	95	72	76%
Transitway / SW 296th St	139	29	21%
Transitway / SW 344th St	248	209	84%
Coral Reef Drive 117/ Turnpike	95	95	100%
Golden Glades Facility	2,150	316	15%
Hammocks Town Center (SW 152 Ave / SW 104 St)	50	23	46%
Kendall Dr./SW 127th Ave	161	17	11%
West Kendall Transit Term (Kendall Dr / SW162 Ave)	40	22	55%
NW 7th Avenue Transit Village (NW 7 Ave / NW 62 St)	25	20	80%
Miami Gardens Dr. / NW 73rd Ave	136		
Dolphin Station	348	76	22%
Tamiami Station (eff 11-2022)	442	70	16%
I-75 / Miami Gardens Dr (**)	298		
TOTAL	5,126	1,323	26%

(*) Closed for construction beginning Jan-22

(**) Route 175 Suspended 3/27/2020, discontinued with Better Bus Network 11/13/23

Metrorail



METRORAIL AVERAGE WEEKDAY BOARDINGS BY STATION (†)

Weekdays	Average Weekday	Average Weekday	Percent Change	Average Weekday	Percent Change	Average Weekday	Percent Change	Average Weekday	Percent Change
STATIONS	Nov-24	Nov-23	YOY	Feb-20	Current vs Feb-20	Oct-24	MOM	Nov-19	YO5Y
ALLAPATTAH	1,735	1,667	4.1%	1,942	-10.7%	1,613	7.6%	1,885	-8.0%
BRICKELL	5,269	4,966	6.1%	6,529	-19.3%	5,288	-0.4%	6,232	-15.5%
BROWNSVILLE	548	597	-8.2%	862	-36.4%	543	0.9%	839	-34.7%
UHEALTH JACKSON	4,240	4,032	5.2%	6,143	-31.0%	4,537	-6.6%	5,926	-28.5%
COCONUT GROVE	1,999	1,451	37.8%	1,795	11.4%	1,890	5.8%	1,701	17.5%
CULMER	957	987	-3.0%	1,392	-31.2%	933	2.6%	1,321	-27.5%
DADELAND NORTH	4,494	3,584	25.4%	5,926	-24.2%	4,232	6.2%	5,832	-22.9%
DADELAND SOUTH	4,598	4,009	14.7%	7,150	-35.7%	4,443	3.5%	7,120	-35.4%
DOUGLAS ROAD	3,411	2,913	17.1%	3,624	-5.9%	3,210	6.3%	3,555	-4.1%
DR. MARTIN LUTHER KING, JR.	925	788	17.4%	1,157	-20.1%	913	1.3%	1,162	-20.5%
EARLINGTON HEIGHTS	1,491	1,360	9.6%	1,662	-10.3%	1,383	7.8%	1,582	-5.8%
GOVERNMENT CENTER	7,181	6,291	14.2%	10,557	-32.0%	6,721	6.8%	10,067	-28.7%
HIALEAH	1,258	875	43.7%	1,253	0.4%	1,206	4.3%	1,286	-2.2%
MIAMI INTERNATIONAL AIRPORT	1,339	1,214	10.4%	1,711	-21.7%	1,319	1.5%	1,692	-20.8%
NORTHSIDE	1,087	1,343	-19.0%	1,476	-26.3%	1,071	1.6%	1,367	-20.5%
OKEECHOBEE	1,040	908	14.5%	1,164	-10.7%	995	4.5%	1,137	-8.6%
OVERTOWN / ARENA	2,054	1,679	22.3%	2,274	-9.7%	1,913	7.3%	2,166	-5.2%
PALMETTO	1,363	1,244	9.6%	1,543	-11.7%	1,283	6.3%	1,358	0.4%
SANTA CLARA	842	691	21.9%	812	3.7%	775	8.6%	778	8.2%
SOUTH MIAMI	2,315	1,903	21.7%	3,015	-23.2%	2,188	5.8%	2,914	-20.6%
TRI-RAIL	998	1,140	-12.4%	1,207	-17.3%	981	1.8%	1,139	-12.4%
UNIVERSITY	2,411	1,997	20.7%	2,784	-13.4%	2,411	0.0%	2,595	-7.1%
VIZCAYA	1,566	1,169	33.9%	1,390	12.6%	1,463	7.0%	1,321	18.5%
TOTAL	53,119	46,807	13.5%	67,367	-21.1%	51,311	3.5%	64,976	-18.2%

(†) In this table and those which follow, "YOY" stands for "year-over-year", "MOM" for "month-over-month" and, e.g., "YO5Y" for "year over five years", i.e., current month vs 12 months prior, one month prior, and 60 months prior, respectively. The Feb-20 numbers serve as a pre-pandemic benchmark.

METRORAIL AVERAGE SATURDAY BOARDINGS BY STATION

Saturdays	Average Saturday	Average Saturday	Percent Change	Average Saturday	Percent Change	Average Saturday	Percent Change	Average Saturday	Percent Change
STATIONS	Nov-24	Nov-23	YOY	Feb-20	Current vs Feb-20	Oct-24	MOM	Nov-19	YO5Y
ALLAPATTAH	931	971	-4.2%	1,051	-11.5%	880	5.7%	996	-6.5%
BRICKELL	2,551	1,984	28.6%	2,811	-9.3%	2,467	3.4%	2,604	-2.0%
BROWNSVILLE	319	390	-18.2%	520	-38.7%	340	-6.3%	520	-38.7%
UHEALTH JACKSON	678	824	-17.7%	959	-29.3%	745	-9.0%	926	-26.7%
COCONUT GROVE	1,042	832	25.3%	928	12.3%	962	8.3%	833	25.1%
CULMER	453	517	-12.5%	721	-37.2%	453	0.0%	677	-33.1%
DADELAND NORTH	1,530	1,447	5.8%	1,994	-23.3%	1,365	12.1%	1,924	-20.5%
DADELAND SOUTH	1,872	1,864	0.5%	2,625	-28.7%	1,915	-2.2%	2,580	-27.4%
DOUGLAS ROAD	1,372	1,309	4.8%	1,319	4.0%	1,283	6.9%	1,333	2.9%
DR. MARTIN LUTHER KING, JR.	562	513	9.5%	625	-10.1%	550	2.1%	621	-9.6%
EARLINGTON HEIGHTS	767	883	-13.2%	935	-18.0%	759	1.1%	894	-14.2%
GOVERNMENT CENTER	3,022	3,008	0.5%	4,262	-29.1%	2,728	10.8%	3,753	-19.5%
HIALEAH	623	528	18.0%	583	7.0%	575	8.4%	613	1.8%
MIAMI INTERNATIONAL AIRPORT	1,014	840	20.7%	1,330	-23.7%	913	11.1%	1,304	-22.2%
NORTHSIDE	689	892	-22.8%	878	-21.6%	621	11.0%	851	-19.1%
OKEECHOBEE	434	386	12.3%	408	6.2%	430	1.0%	398	9.0%
OVERTOWN / ARENA	756	615	22.9%	678	11.6%	692	9.3%	552	37.0%
PALMETTO	425	469	-9.4%	458	-7.3%	417	1.9%	348	21.9%
SANTA CLARA	411	397	3.7%	422	-2.6%	378	8.9%	394	4.3%
SOUTH MIAMI	1,057	962	9.9%	1,256	-15.8%	971	8.9%	1,173	-9.9%
TRI-RAIL	482	640	-24.6%	614	-21.5%	511	-5.5%	542	-11.0%
UNIVERSITY	731	592	23.6%	714	2.4%	766	-4.6%	662	10.5%
VIZCAYA	727	606	20.0%	622	16.9%	619	17.4%	604	20.4%
TOTAL	22,447	21,465	4.6%	26,714	-16.0%	21,338	5.2%	25,101	-10.6%

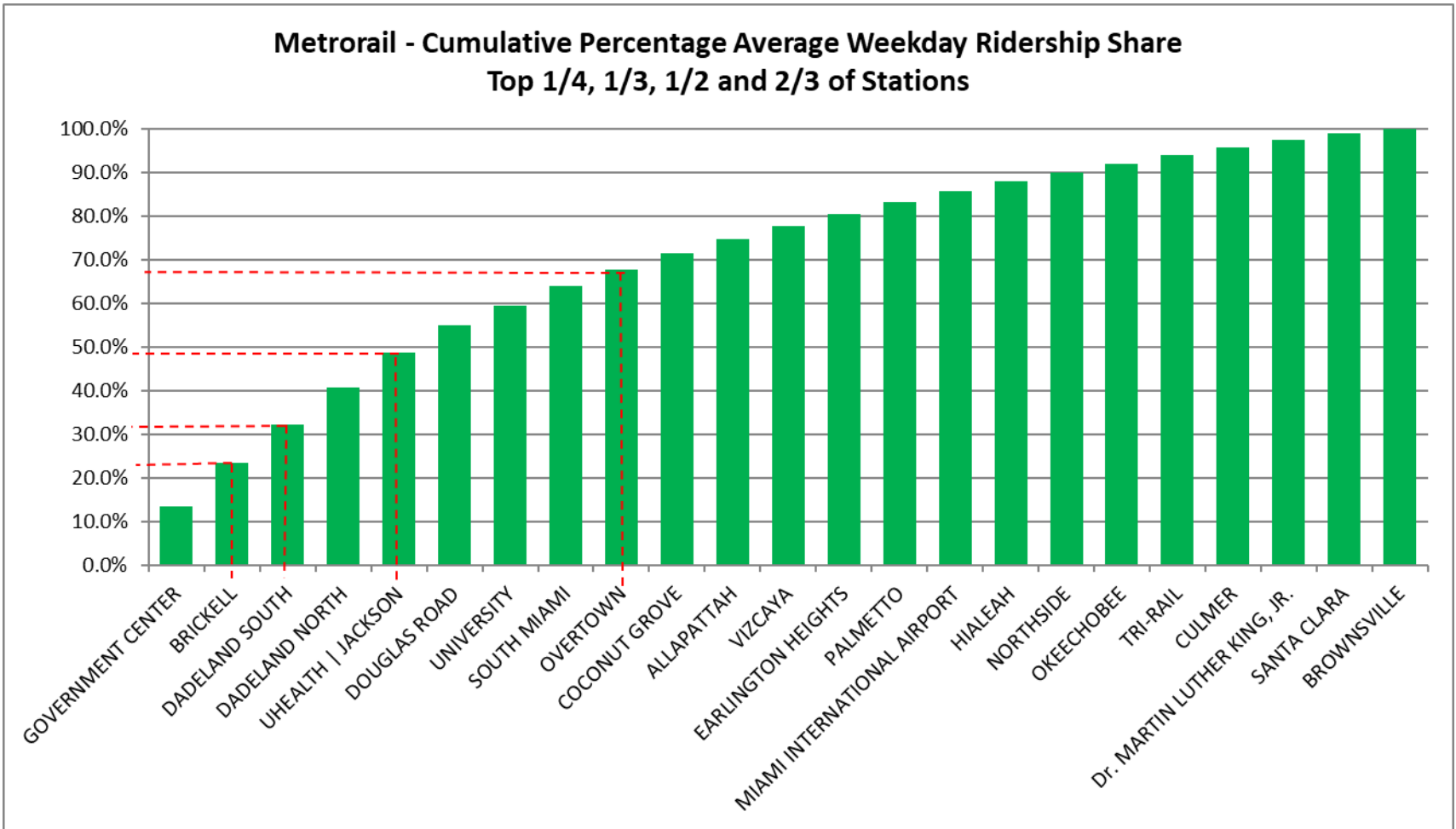
METRORAIL AVERAGE SUNDAY BOARDINGS BY STATION

Sundays	Average Sunday	Average Sunday	Percent Change	Average Sunday	Percent Change	Average Sunday	Percent Change	Average Sunday	Percent Change
STATIONS	Nov-24	Nov-23	YOY	Feb-20	Current vs Feb-20	Oct-24	MOM	Nov-19	YO5Y
ALLAPATTAH	689	710	-2.9%	791	-12.9%	623	10.6%	772	-10.7%
BRICKELL	1,935	1,693	14.3%	2,379	-18.7%	1,831	5.7%	2,097	-7.7%
BROWNSVILLE	269	290	-7.2%	406	-33.7%	226	19.3%	382	-29.5%
UHEALTH JACKSON	547	626	-12.5%	791	-30.8%	564	-2.9%	713	-23.2%
COCONUT GROVE	834	619	34.7%	838	-0.6%	722	15.5%	651	28.1%
CULMER	358	387	-7.4%	616	-41.9%	317	12.9%	536	-33.2%
DADELAND NORTH	1,113	1,113	0.0%	1,685	-34.0%	941	18.2%	1,454	-23.5%
DADELAND SOUTH	1,479	1,459	1.4%	2,210	-33.1%	1,374	7.6%	2,000	-26.1%
DOUGLAS ROAD	989	953	3.8%	1,090	-9.2%	849	16.4%	969	2.0%
DR. MARTIN LUTHER KING, JR.	444	410	8.4%	506	-12.3%	418	6.2%	472	-5.9%
EARLINGTON HEIGHTS	680	620	9.6%	799	-15.0%	579	17.5%	730	-6.9%
GOVERNMENT CENTER	2,444	2,383	2.5%	4,044	-39.6%	1,989	22.9%	2,956	-17.3%
HIALEAH	454	351	29.2%	472	-3.9%	383	18.4%	449	1.0%
MIAMI INTERNATIONAL AIRPORT	746	1,092	-31.7%	1,343	-44.4%	816	-8.5%	1,265	-41.0%
NORTHSIDE	531	680	-21.9%	653	-18.6%	432	22.9%	652	-18.5%
OKEECHOBEE	307	239	28.6%	273	12.3%	276	11.3%	253	21.5%
OVERTOWN / ARENA	665	477	39.3%	544	22.1%	531	25.1%	464	43.2%
PALMETTO	246	297	-17.0%	336	-26.8%	219	12.4%	216	14.3%
SANTA CLARA	276	241	14.6%	280	-1.2%	245	12.9%	271	1.9%
SOUTH MIAMI	770	722	6.6%	987	-22.0%	698	10.2%	849	-9.4%
TRI-RAIL	381	520	-26.8%	528	-27.9%	355	7.1%	437	-12.9%
UNIVERSITY	614	467	31.5%	608	0.9%	552	11.3%	490	25.3%
VIZCAYA	533	441	20.8%	524	1.6%	486	9.6%	448	18.8%
TOTAL	17,300	16,787	3.1%	22,701	-23.8%	15,423	12.2%	19,523	-11.4%

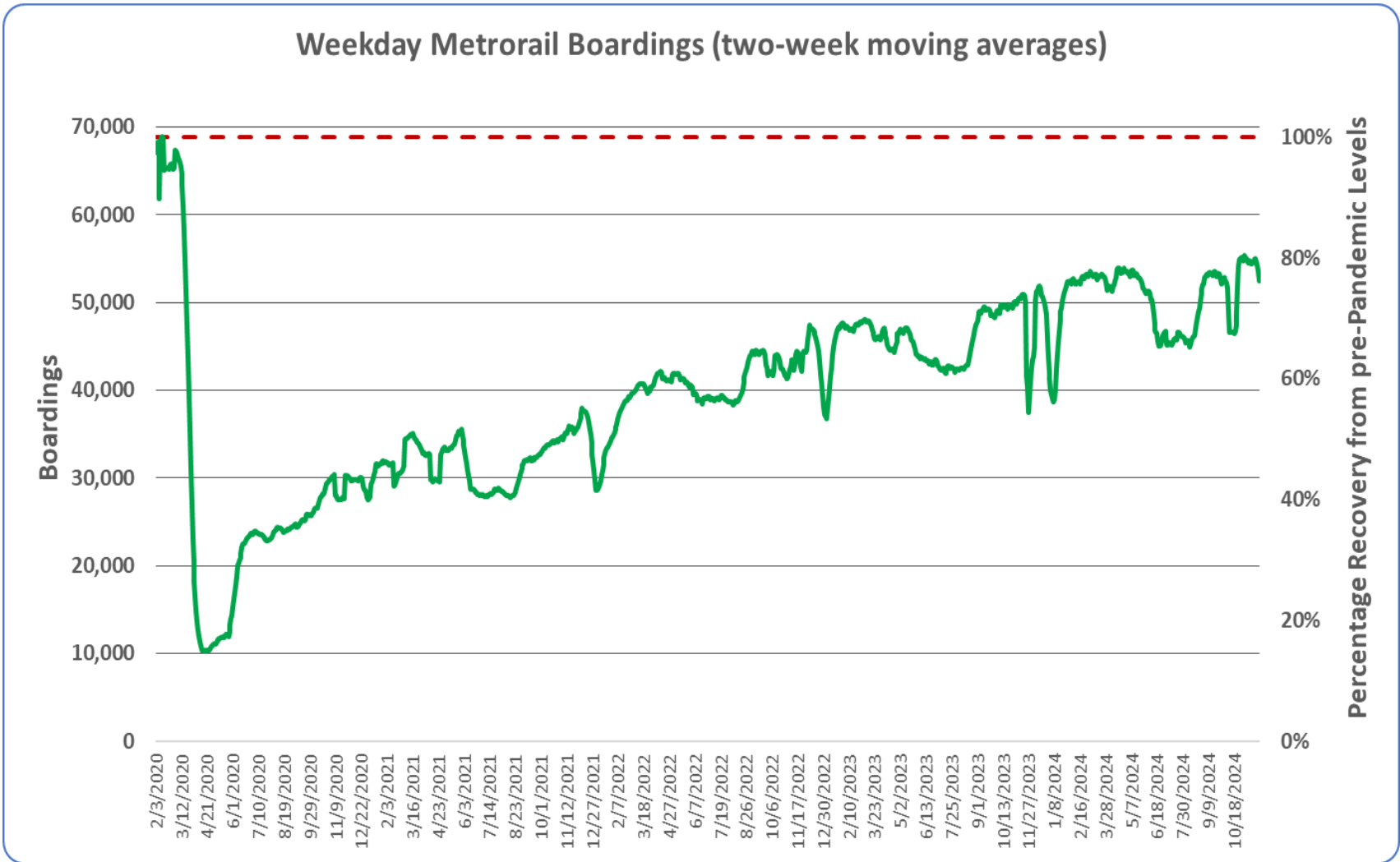
METRORAIL TOTAL MONTHLY BOARDINGS BY STATION

Monthly Totals	Total Month	Total Month	Percent Change	Total Month	Percent Change	Total Month	Percent Change	Total Month	Percent Change
STATIONS	Nov-24	Nov-23	YOY	Feb-20	Current vs Feb-20	Oct-24	MOM	Nov-19	YO5Y
ALLAPATTAH	41,888	35,468	18.1%	46,868	-10.6%	43,134	-2.9%	45,416	-7.8%
BRICKELL	124,423	98,955	25.7%	152,259	-18.3%	138,398	-10.1%	144,016	-13.6%
BROWNSVILLE	13,702	13,018	5.3%	21,285	-35.6%	14,742	-7.1%	20,905	-34.5%
UHEALTH JACKSON	87,145	71,754	21.4%	128,921	-32.4%	108,958	-20.0%	121,023	-28.0%
COCONUT GROVE	47,965	30,660	56.4%	43,580	10.1%	49,993	-4.1%	40,217	19.3%
CULMER	22,495	20,015	12.4%	33,497	-32.8%	24,463	-8.0%	31,624	-28.9%
DADELAND NORTH	99,270	70,076	41.7%	132,894	-25.3%	105,773	-6.1%	128,684	-22.9%
DADELAND SOUTH	105,027	80,936	29.8%	162,416	-35.3%	114,852	-8.6%	159,249	-34.0%
DOUGLAS ROAD	77,247	54,965	40.5%	82,141	-6.0%	81,946	-5.7%	79,562	-2.9%
DR. MARTIN LUTHER KING, JR.	22,897	17,266	32.6%	27,980	-18.2%	24,820	-7.7%	27,936	-18.0%
EARLINGTON HEIGHTS	36,041	29,337	22.9%	40,697	-11.4%	37,098	-2.8%	38,851	-7.2%
GOVERNMENT CENTER	164,108	126,108	30.1%	243,414	-32.6%	172,147	-4.7%	224,191	-26.8%
HIALEAH	29,789	18,384	62.0%	29,516	0.9%	31,523	-5.5%	30,242	-1.5%
MIAMI INTERNATIONAL AIRPORT	35,545	29,066	22.3%	46,115	-22.9%	37,361	-4.9%	46,394	-23.4%
NORTHSIDE	27,202	29,410	-7.5%	36,127	-24.7%	28,749	-5.4%	34,296	-20.7%
OKEECHOBEE	23,740	17,700	34.1%	26,026	-8.8%	25,568	-7.1%	25,070	-5.3%
OVERTOWN / ARENA	46,281	32,046	44.4%	49,911	-7.3%	48,587	-4.7%	45,787	1.1%
PALMETTO	29,649	23,848	24.3%	33,944	-12.7%	31,913	-7.1%	28,742	3.2%
SANTA CLARA	19,861	14,187	40.0%	19,245	3.2%	20,318	-2.2%	18,470	7.5%
SOUTH MIAMI	53,732	36,932	45.5%	69,412	-22.6%	56,745	-5.3%	65,953	-18.5%
TRI-RAIL	23,694	24,211	-2.1%	29,120	-18.6%	26,071	-9.1%	26,974	-12.2%
UNIVERSITY	52,585	37,106	41.7%	61,253	-14.2%	59,896	-12.2%	55,224	-4.8%
VIZCAYA	36,434	23,673	53.9%	32,497	12.1%	38,058	-4.3%	30,622	19.0%
TOTAL	1,220,720	935,121	30.5%	1,549,118	-21.2%	1,321,113	-7.6%	1,469,448	-16.9%

METRORAIL CUMULATIVE PERCENTAGE RIDERSHIP SHARE

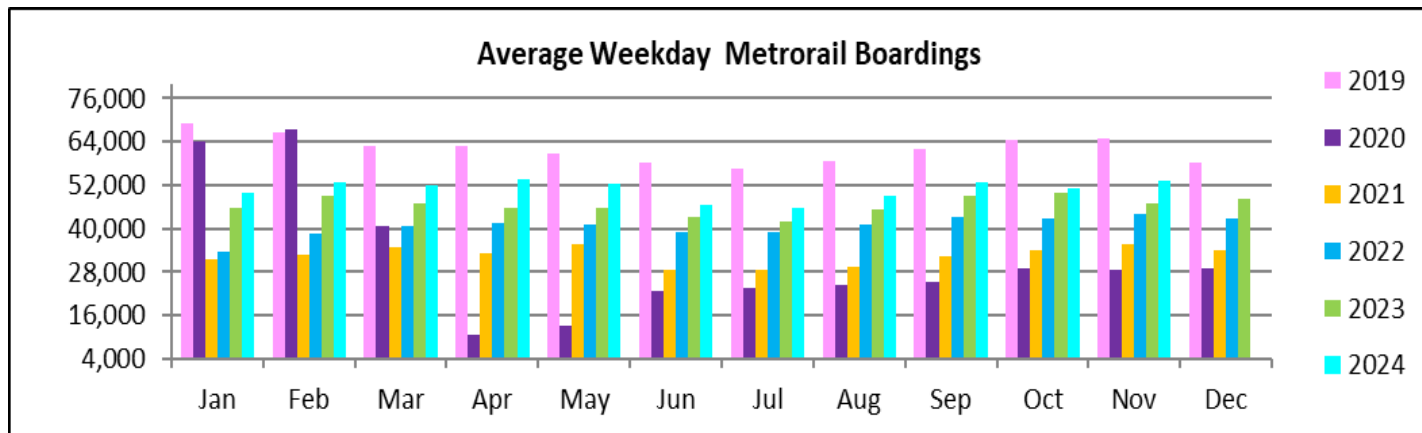
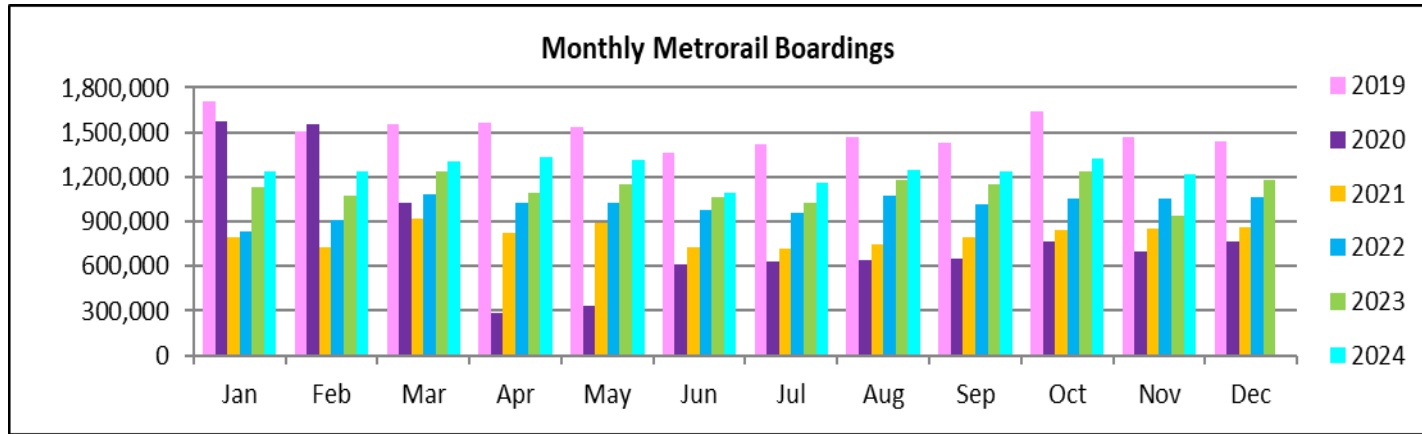


METRORAIL WEEKDAY RIDERSHIP SINCE 02/01/20 (TWO-WEEK MOVING AVERAGES)



- (1) The red dotted line represents the pre-pandemic benchmark month (Feb-20) maximum.
- (2) Pronounced local minima are generally due to hurricanes or other storms, less often data outages, with associated delayed reductions in smoothed ridership.

TOTAL MONTHLY AND AVERAGE WEEKDAY RIDERSHIP YEAR OVER YEAR COMPARISON CHARTS – METRORAIL

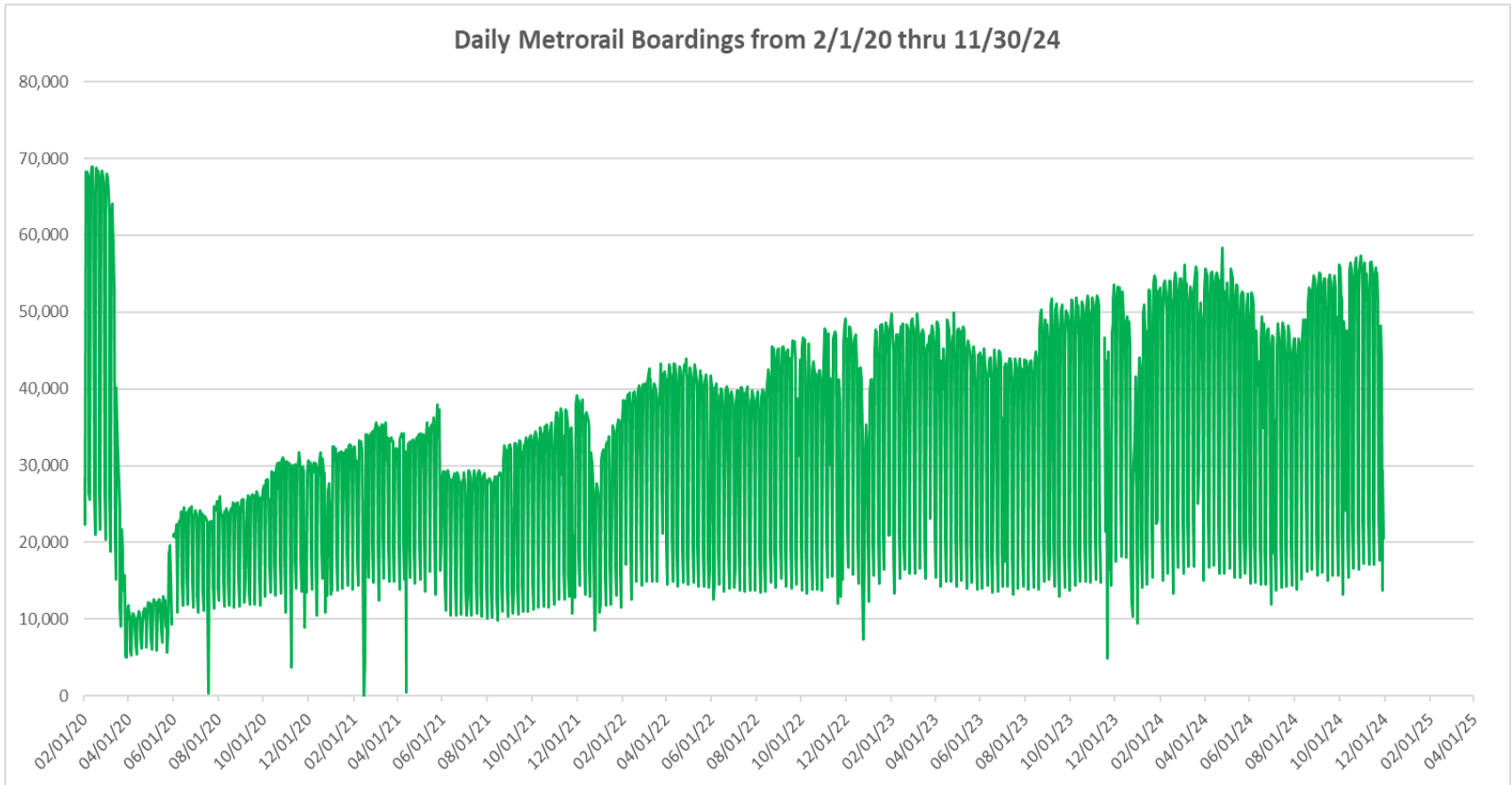


**“TOP 5 / BOTTOM 5” RAIL STATIONS AVERAGE WEEKDAY RIDERSHIP PERFORMANCE
YEAR OVER YEAR COMPARISONS**

Station	Nov-24	Nov-23	Absolute Delta (1)	Percent Delta
DADELAND NORTH	4,494	3,584	910	25.4%
GOVERNMENT CENTER	7,181	6,291	890	14.2%
DADELAND SOUTH	4,598	4,009	589	14.7%
COCONUT GROVE	1,999	1,451	548	37.8%
DOUGLAS ROAD	3,411	2,913	497	17.1%
NORTHSIDE	1,087	1,343	-256	-19.0%
TRI-RAIL	998	1,140	-142	-12.4%
BROWNSVILLE	548	597	-49	-8.2%
CULMER	957	987	-30	-3.0%
ALLAPATTAH	1,735	1,667	68	4.1%

(1) Averages rounded to the nearest boarding.

DAILY METRORAIL RIDERSHIP SINCE FEBRUARY 1, 2020



- (1) There was no Metrobus, Metrorail and Metromover service on 5/31/20, as a safety precaution, and no service for any of the four modes on 9/28/22 as a result of Hurricane Ian..
- (2) The dip at the start of the second week of Nov-20 is due to Hurricane Eta; these are *raw data* from the Unleash Live contractor AI video system.
- (3) The dip on 4/13/21 is due to a loss of connectivity at all stations, affecting a few stations over the next two days as well; a similar loss of connectivity is seen on 11/21/23.
- (4) The reduction seen beginning 6/1/21 is partly due to the resumption of fares and partly the result of resuming reporting Cubic faregate data rather than video camera counts.
- (5) As a result of free fares to launch the Better Bus Network, faregates are open beginning 11/13/23, and Unleash Live AI video system ridership counts are reported starting 11/17/23; the isolated peak in Dec-23 is visible.
- (6) Periodic (weekly) variations are prominent, since weekday ridership is almost always significantly higher than weekend or holiday ridership; a few low-count days are due to system outages, often associated with construction or renovation work.

METRORAIL PARKING PATRONAGE SUMMARY November 2024

PARK-RIDE LOT	ACTUAL CAPACITY (1)	ACTUAL OCCUPANCY (2)	PERCENT OCCUPANCY
DADELAND SOUTH	1,260	781	62%
DADELAND NORTH	1,702	1,022	60%
SOUTH MIAMI	816	359	44%
UNIVERSITY	260	202	78%
DOUGLAS ROAD	222	48	22%
COCONUT GROVE	100		
VIZCAYA	120	48	40%
CULMER	25	17	69%
SANTA CLARA	61	35	57%
ALLAPATTAH	74	9	12%
EARLINGTON HEIGHTS	361	163	45%
BROWNSVILLE	100	82	82%
DR. MARTIN LUTHER KING JR. (MDT)	62		
DR. MARTIN LUTHER KING JR. (GARAGE)	631		
NORTHSIDE	100	84	84%
HIALEAH	338	77	23%
OKEECHOBEE	1,398	177	13%
PALMETTO	700	181	26%
TOTAL	8,330	3,285	39%

- (1) Number of spaces could vary each week; shown are available spaces during final week of month, as submitted by DTPW Safety & Security office.
(2) All sampled occupancy data provided by DTPW Safety & Security office; calculations are revisions to those submitted by that entity.
(3) Daily averages rounded to nearest unit, with fewer samples at some stations than others, depending on staffing levels; calculations are based on sampled counted days only per raw data submitted, with resulting average daily occupancy shown.

Metromover

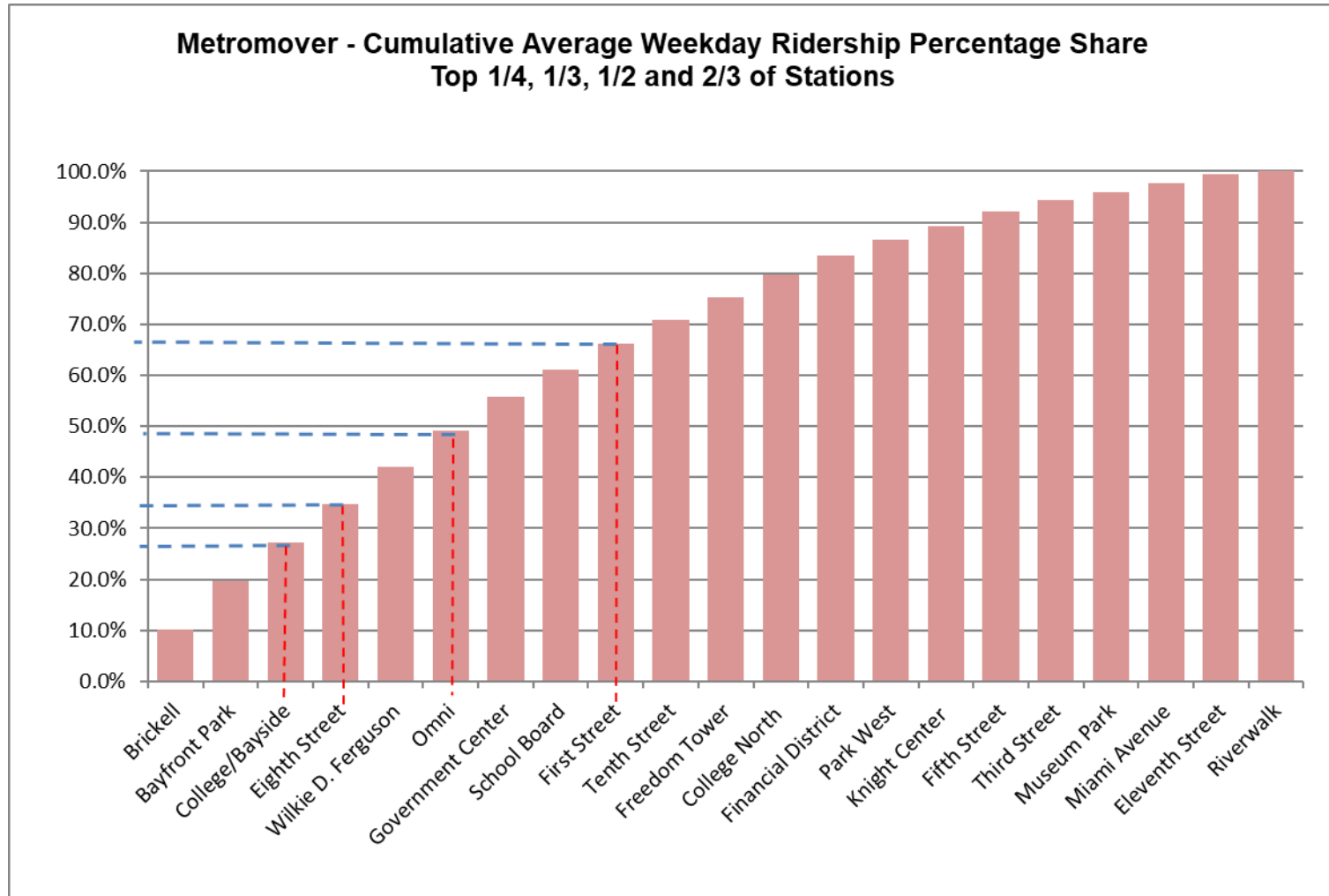


METROMOVER MONTHLY AND AVERAGE DAILY BOARDINGS BY STATION

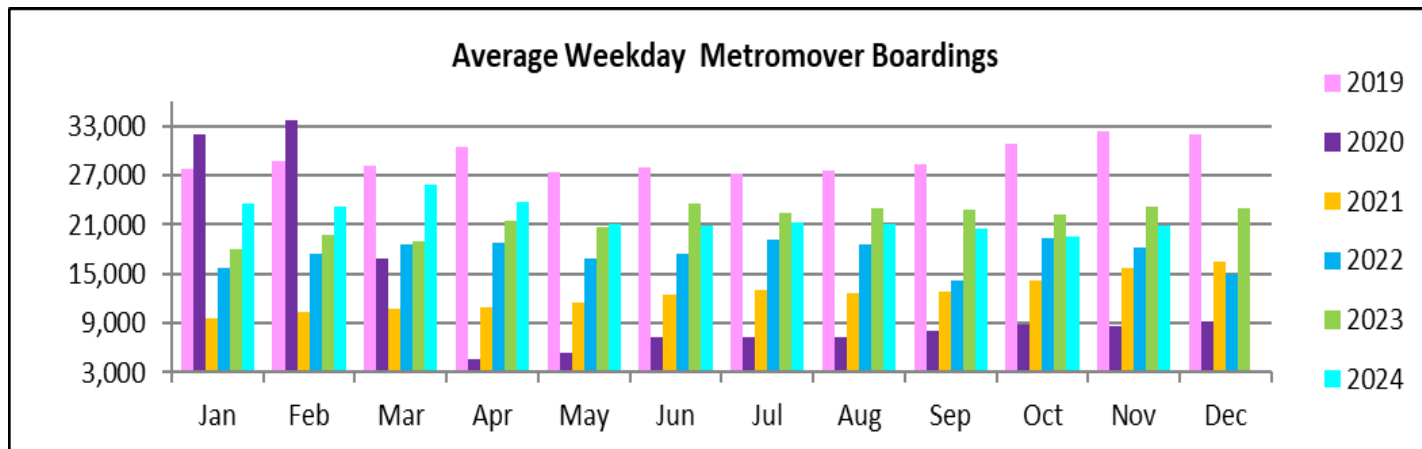
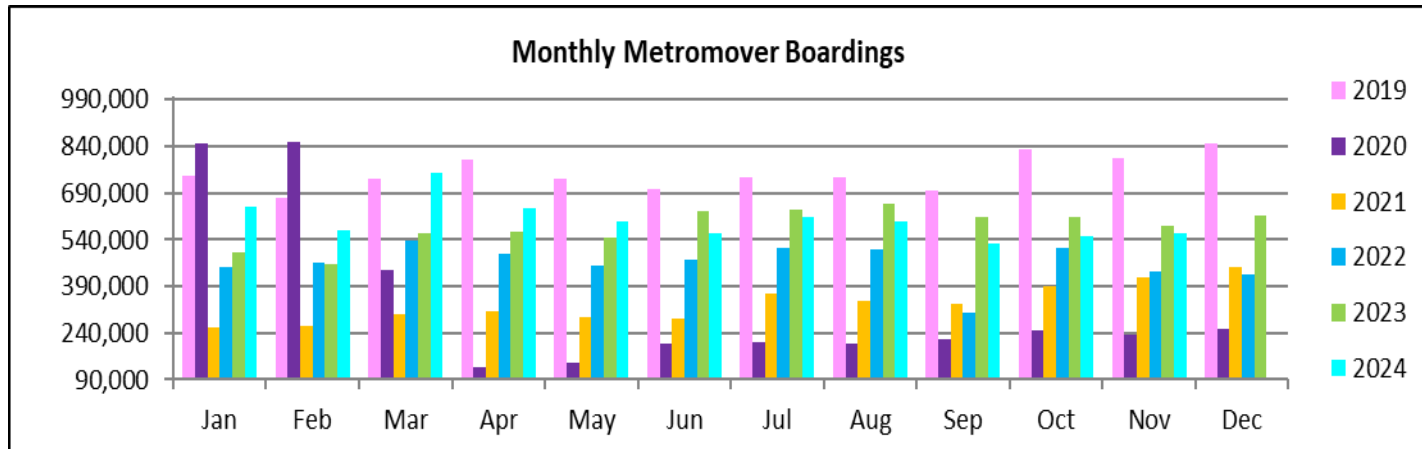
	Average Weekday	Average Weekday	Percent Change	Average Saturday	Average Saturday	Percent Change	Average Sunday	Average Sunday	Percent Change	Total Monthly	Total Monthly	Percent Change
STATIONS	Nov-24	Nov-23	24 vs 23	Nov-24	Nov-23	24 vs 23	Nov-24	Nov-23	24 vs 23	Nov-24	Nov-23	24 vs 23
School Board	1,089	1,175	-7.3%	788	918	-14.2%	868	858	1.1%	29,689	32,444	-8.5%
Omni	1,457	1,846	-21.1%	1,058	1,423	-25.6%	1,144	1,367	-16.3%	39,337	50,403	-22.0%
Museum Park	365	279	30.9%	478	457	4.7%	376	359	4.8%	11,427	9,523	20.0%
Eleventh Street	347	317	9.3%	257	317	-18.7%	253	231	9.5%	9,317	8,968	3.9%
Park West	608	615	-1.0%	500	570	-12.2%	528	404	30.6%	17,178	17,018	0.9%
Freedom Tower	925			783			886			26,679		
Government Center	1,395	2,595	-46.2%	1,035	1,732	-40.3%	998	1,413	-29.4%	37,482	31,880	17.6%
Miami Avenue	362	378	-4.2%	238	279	-14.4%	218	203	7.4%	9,405	9,952	-5.5%
Third Street	450	448	0.5%	422	491	-14.1%	306	450	-31.9%	12,597	13,512	-6.8%
Knight Center	593	606	-2.2%	261	354	-26.2%	262	273	-3.9%	14,091	15,083	-6.6%
Bayfront Park	1,988	2,182	-8.9%	1,368	1,736	-21.2%	1,396	1,454	-4.0%	53,047	59,172	-10.4%
First Street	1,078	1,253	-14.0%	846	1,053	-19.6%	880	922	-4.5%	29,694	34,670	-14.4%
College/Bayside	1,586	1,456	9.0%	1,350	1,454	-7.1%	1,316	1,247	5.5%	43,921	41,848	5.0%
College North	910	1,085	-16.1%	551	652	-15.5%	562	564	-0.3%	22,745	26,946	-15.6%
Wilkie D. Ferguson	1,538	1,490	3.3%	859	969	-11.3%	821	836	-1.9%	38,417	38,408	0.0%
Riverwalk	127	732	-82.7%	123	477	-74.3%	132	411	-67.9%	3,895	18,961	-79.5%
Fifth Street	578	572	1.1%	393	402	-2.1%	421	339	24.0%	15,251	15,178	0.5%
Eighth Street	1,583	2,079	-23.9%	1,425	1,724	-17.3%	1,457	1,463	-0.4%	45,831	57,480	-20.3%
Tenth Street	994	1,062	-6.4%	677	776	-12.7%	680	647	5.0%	26,207	27,036	-3.1%
Brickell	2,112	2,173	-2.8%	1,364	1,421	-4.0%	1,350	1,300	3.8%	54,674	56,844	-3.8%
Financial District	810	783	3.4%	468	413	13.2%	443	387	14.3%	20,442	19,561	4.5%
TOTAL	20,894	23,124	-9.6%	15,244	17,613	-13.5%	15,295	15,128	1.1%	561,326	584,887	-4.0%

(*) Some Metromover stations were closed for construction during the CY 2023-2024 period, due to construction work; associated were numerous power and data outages, including on weekends

METROMOVER CUMULATIVE PERCENTAGE RIDERSHIP SHARE



TOTAL MONTHLY AND AVERAGE WEEKDAY RIDERSHIP YEAR OVER YEAR COMPARISON CHARTS – METROMOVER

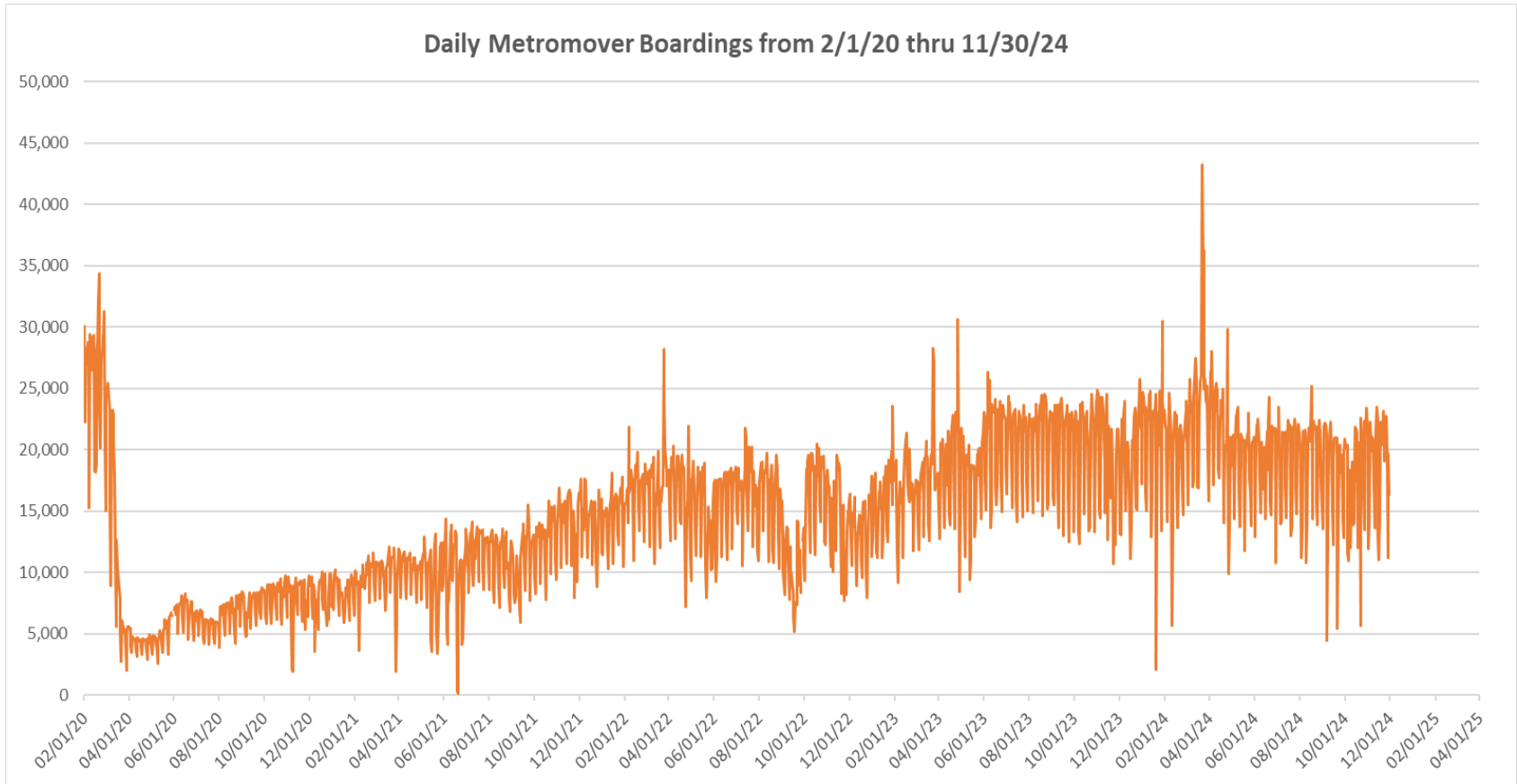


**“TOP 5 / BOTTOM 5” MOVER STATIONS AVERAGE WEEKDAY RIDERSHIP PERFORMANCE
YEAR OVER YEAR COMPARISONS**

Station	Nov-24	Nov-23	Absolute Delta (1)	Percent Delta
College/Bayside	1,586	1,456	130	9.0%
Museum Park	365	279	86	30.9%
Wilkie D. Ferguson	1,538	1,490	48	3.3%
Eleventh Street	347	317	30	9.3%
Financial District	810	783	27	3.4%
Government Center	1,395	2,595	-1,200	-46.2%
Riverwalk	127	732	-605	-82.7%
Eighth Street	1,583	2,079	-496	-23.9%
Omni	1,457	1,846	-390	-21.1%
Bayfront Park	1,988	2,182	-194	-8.9%

(1) Averages rounded to the nearest boarding.

DAILY METROMOVER RIDERSHIP SINCE FEBRUARY 1, 2020



- (1) There was no Metrobus, Metrorail and Metromover service on 5/31/20, as a safety precaution, and no service for any of the four modes on 9/28/22 as a result of Hurricane Ian.
- (2) The dip at the start of the second week of Nov-20 is due to Hurricane Eta; these are *raw data* from the UTA contractor APC system. Other more recent dips are due to various station closures (mostly on weekends) for system maintenance purposes. Pronounced peaks are associated with major events in Downtown Miami, such as the Corporate Run and Ultramusic Festival.
- (3) Periodic (weekly) variations are prominent, since weekday ridership is almost always significantly higher than weekend or holiday ridership; a few low-count days are due to system outages, often associated with construction or renovation work, including on weekends.

Special Transportation Services

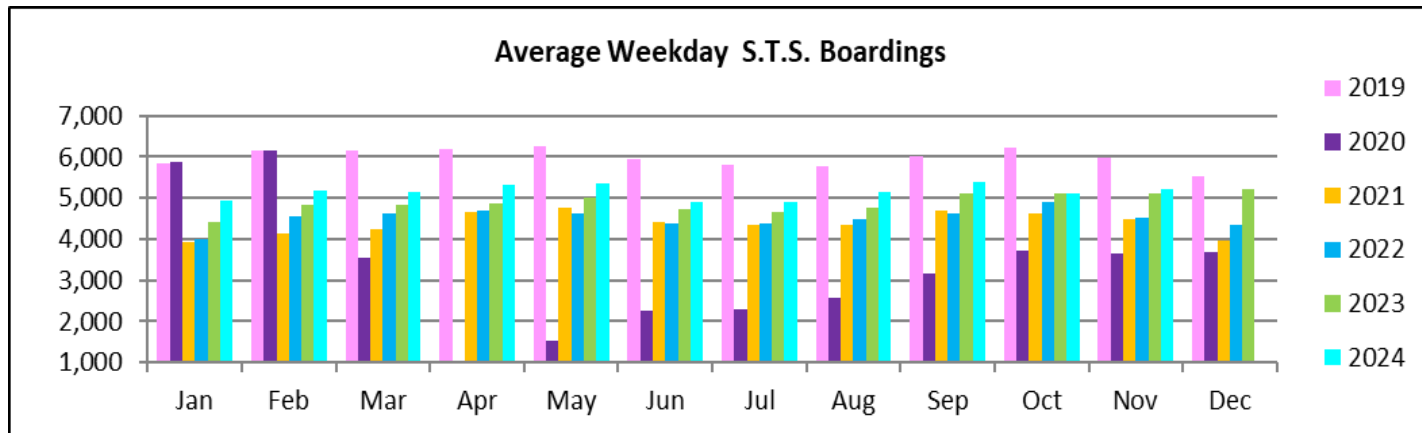
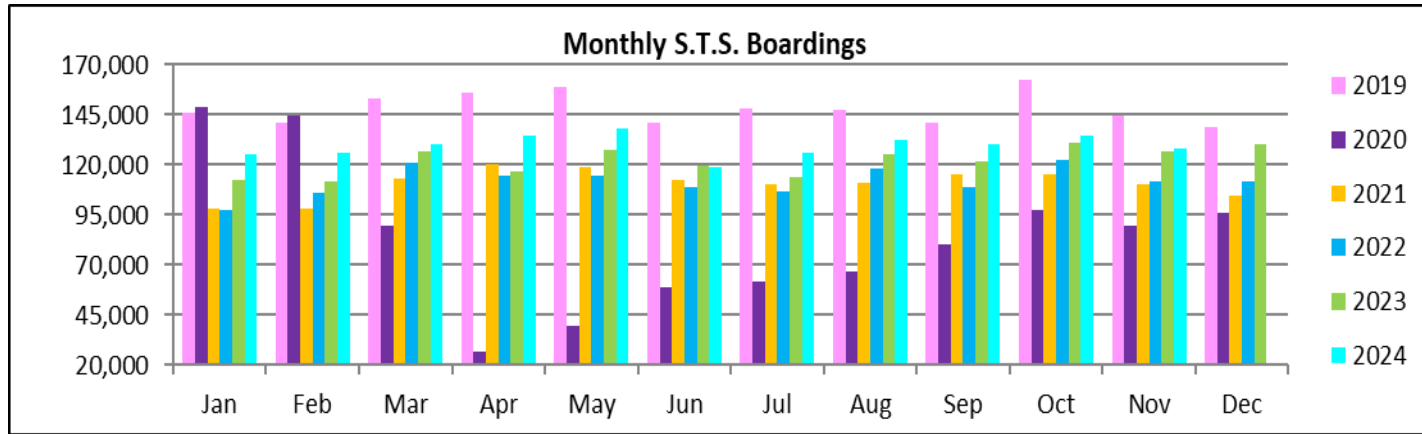


STS MONTHLY AND AVERAGE DAILY BOARDINGS November 2024

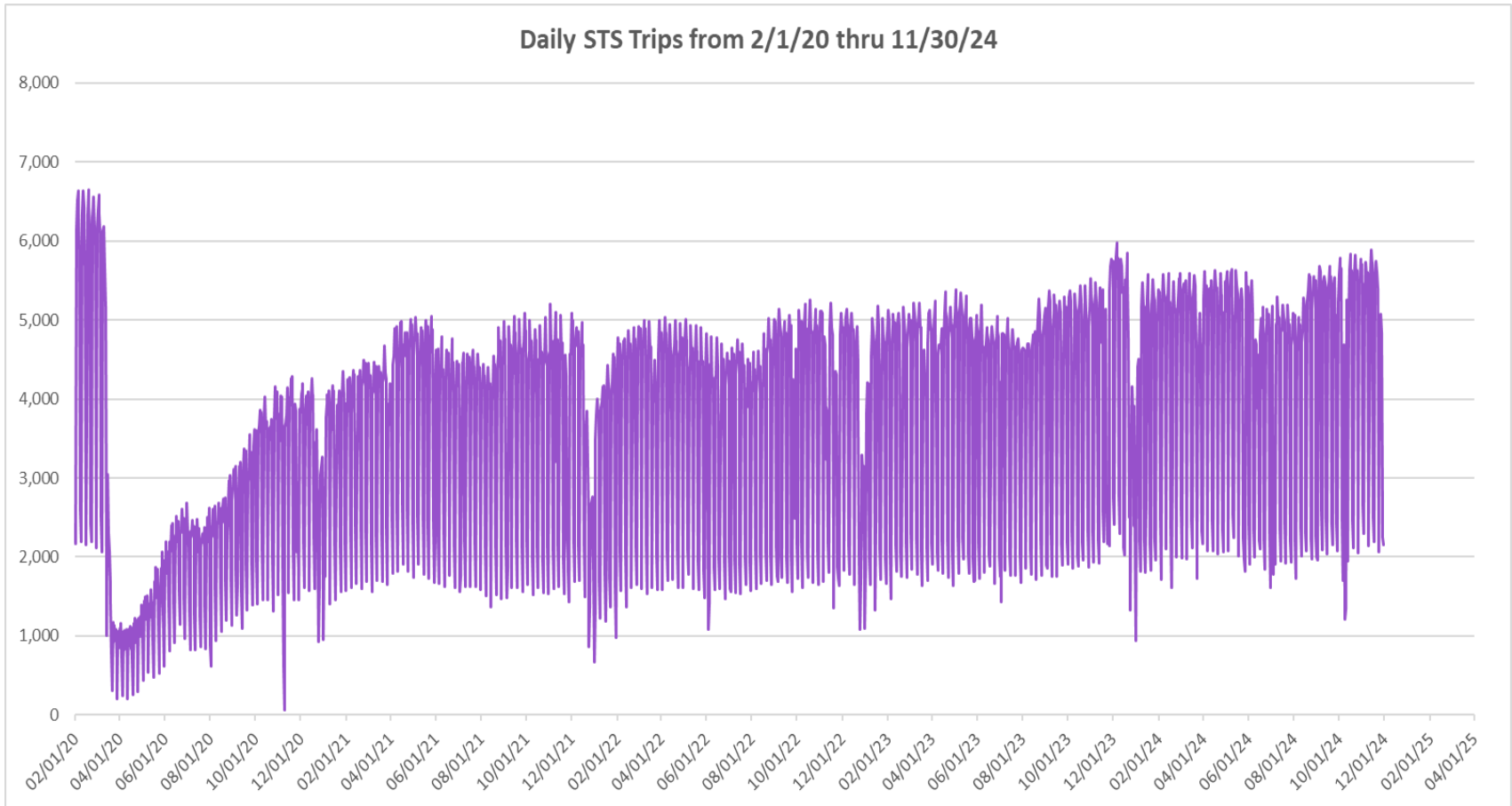
Measure	timeline	Ambulatory	Wheelchair	Total Clients (*)
Average Weekday	Nov-24	4,361	865	5,226
Average Saturday	Nov-24	2,023	416	2,440
Average Sunday	Nov-24	1,824	427	2,252
Total Monthly	Nov-24	106,460	21,519	127,979
Average Weekday	Nov-23	4,261	833	5,094
Average Saturday	Nov-23	1,903	411	2,314
Average Sunday	Nov-23	1,737	420	2,157
Total Monthly	Nov-23	105,785	21,240	127,025
Average Weekday	Nov-22	3,701	802	4,503
Average Saturday	Nov-22	1,686	380	2,067
Average Sunday	Nov-22	1,408	342	1,750
Total Monthly	Nov-22	91,514	20,064	111,578
% Change Current vs. November 2023 Weekday		2.3%	3.8%	2.6%
% Change Current vs. November 2023 Saturday		6.3%	1.3%	5.4%
% Change Current vs. November 2023 Sunday		5.0%	1.8%	4.4%
% Change Current vs. November 2023 Month Total		0.6%	1.3%	0.8%
% Change Current vs. November 2022 Weekday		17.8%	7.9%	16.1%
% Change Current vs. November 2022 Saturday		20.0%	9.5%	18.1%
% Change Current vs. November 2022 Sunday		29.6%	24.8%	28.7%
% Change Current vs. November 2022 Month Total		16.3%	7.3%	14.7%

(*) Trip count data provided by STS contractor.

TOTAL MONTHLY AND AVERAGE WEEKDAY RIDERSHIP YEAR OVER YEAR COMPARISON CHARTS – SPECIAL TRANSPORTATION SERVICES (S.T.S.)

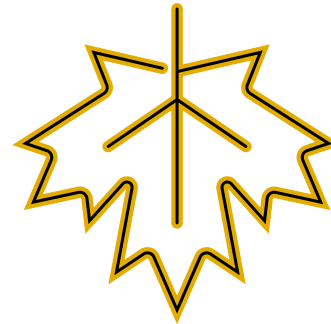
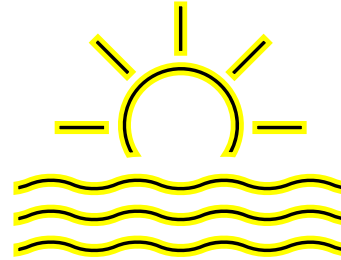


DAILY STS RIDERSHIP SINCE FEBRUARY 1, 2020

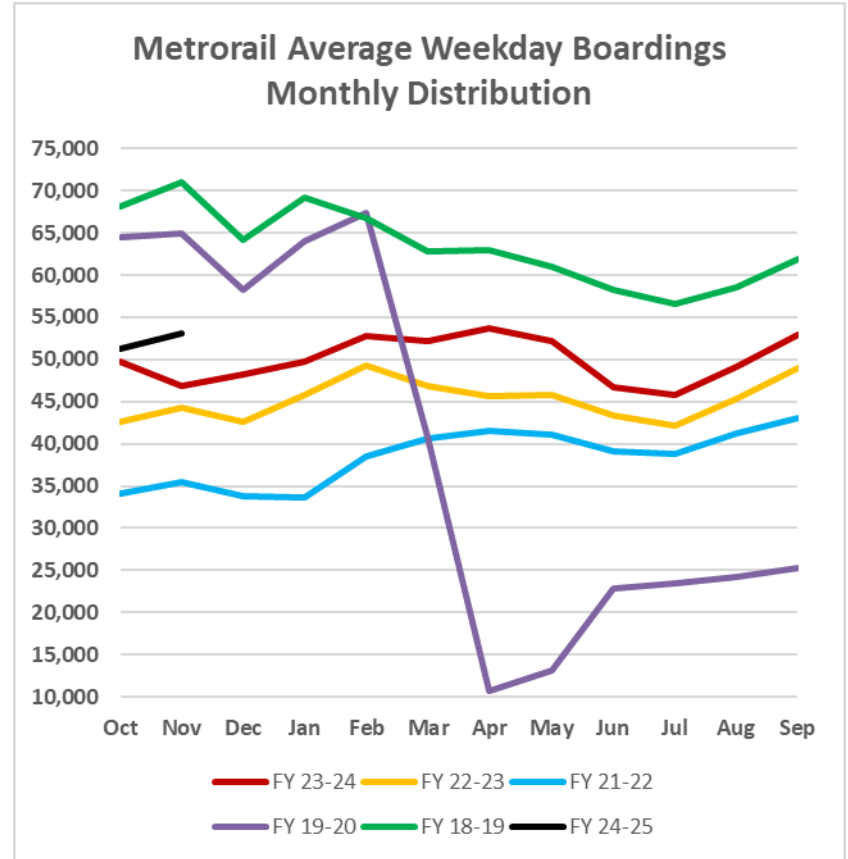
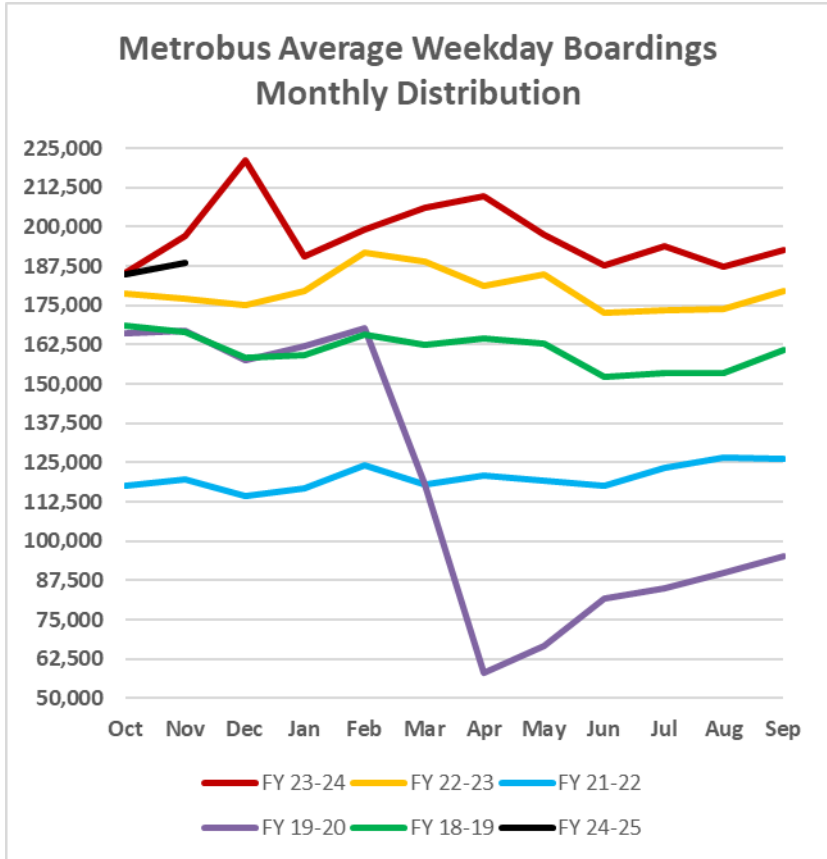


- (1) There was no service (for any of the four modes) on 9/28/22 as a result of Hurricane Ian.
- (2) The dip at the start of the second week of Nov-20 is due to Hurricane Eta; the peak in Dec-23 is due to the free fares from the Better Bus Network.
- (3) Periodic (weekly) variations are prominent, since weekday ridership is almost always significantly higher than weekend or holiday ridership.

Ridership Seasonality

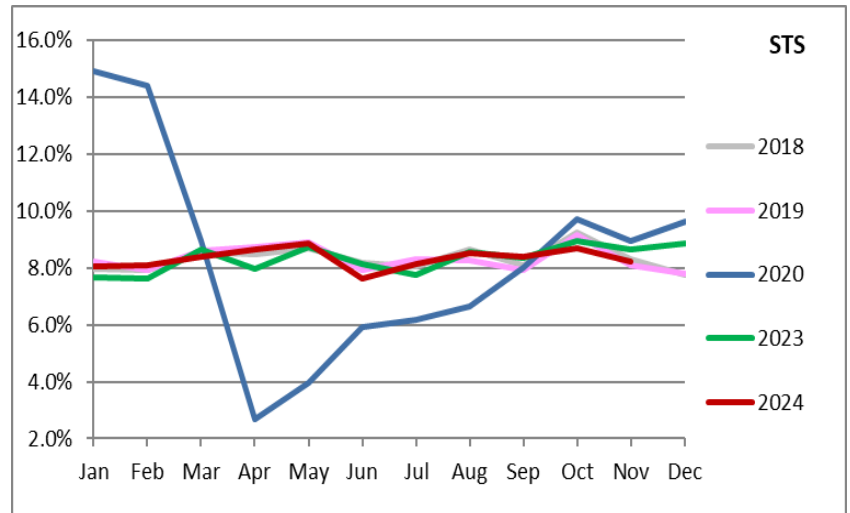
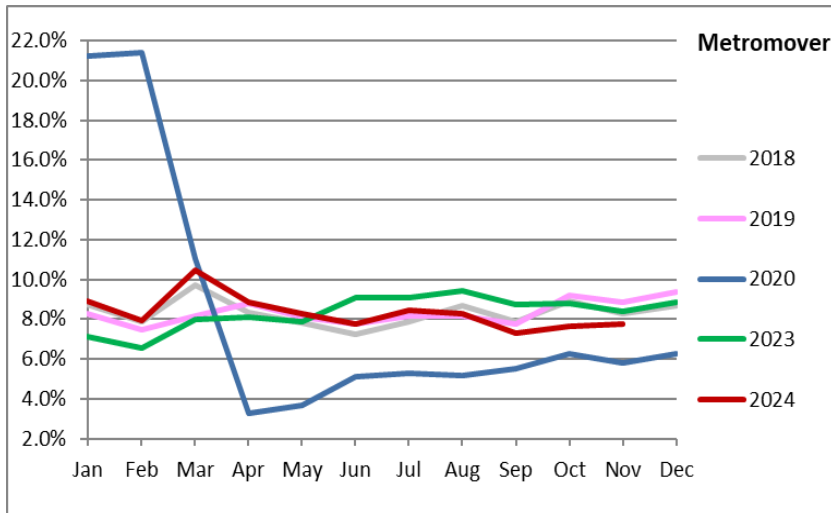
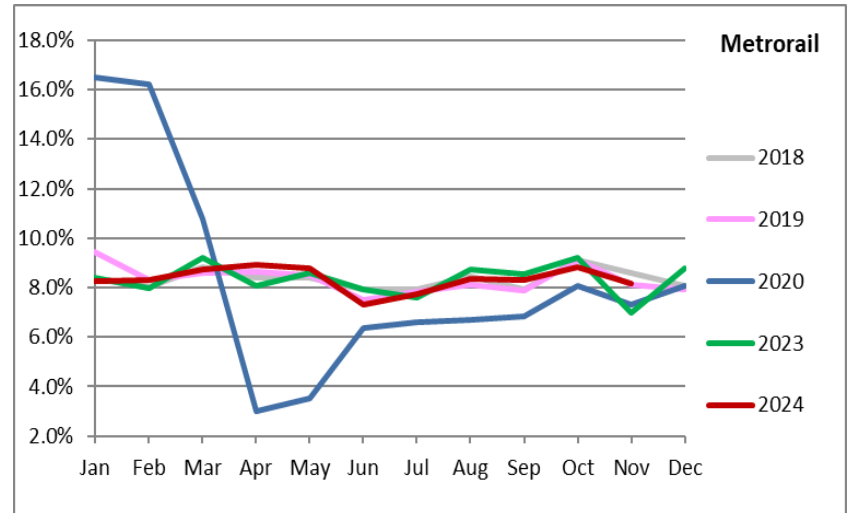
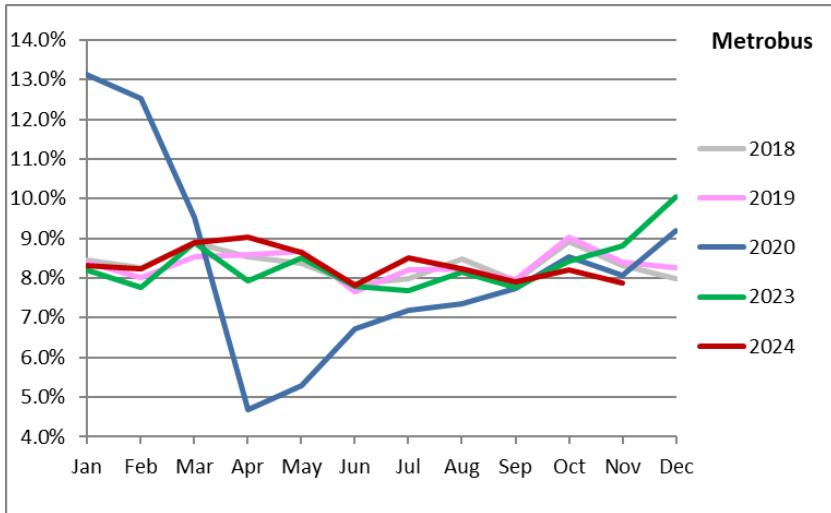


RIDERSHIP SEASONALITY – AVERAGE WEEKDAY RIDERSHIP BY MONTH AND FISCAL YEAR FOR METROBUS AND METRORAIL



Note: the prominent dip seen in the beginning in the spring of 2020 is due to the SARS-CoV-2 pandemic. The pronounced peak for Metrobus beginning Nov-23 can be attributed to the launch of the Better Bus Network and the attendant free fares, which ended on New Year's Day 2024.

RIDERSHIP SEASONALITY – PERCENT SHARE OF TOTAL RIDERSHIP BY MONTH AND CALENDAR YEAR FOR EACH MODE



Note: the prominent dip seen in the beginning in the spring of 2020 is due to the SARS-CoV-2 pandemic. The pronounced rise beginning Nov-23 for Metrobus and Metrorail can be attributed to the launch of the Better Bus Network and the attendant free fares, which ended on New Year's Day 2024.