

# Northeast Corridor Rapid Transit Project

## Project Description

- Commuter rail service between MiamiCentral Station and W. Aventura Station
- 13-mile-long corridor, within the FEC Railroad right of way
- Five new commuter rail stations proposed
  - New Stations: Wynwood, Design District, Little Haiti, North Miami, Florida International University (FIU) North Campus
- Two 440 ft long platforms will be added at each station
- Additional features include lighting, ticket kiosks, canopies
- Maintenance Facility at the existing FDOT-owned Rail Yard
- No business or residential displacements

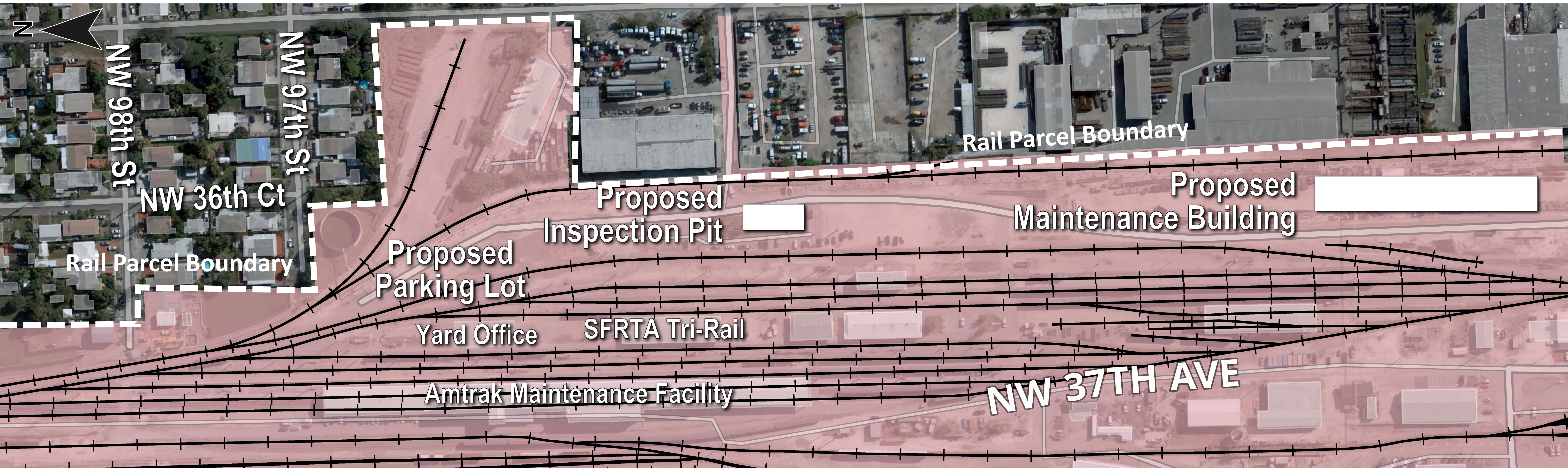


***Commuter Rail Station Conceptual Illustration***



# Northeast Corridor Rapid Transit Project

## Proposed Northeast Corridor Vehicle Facility

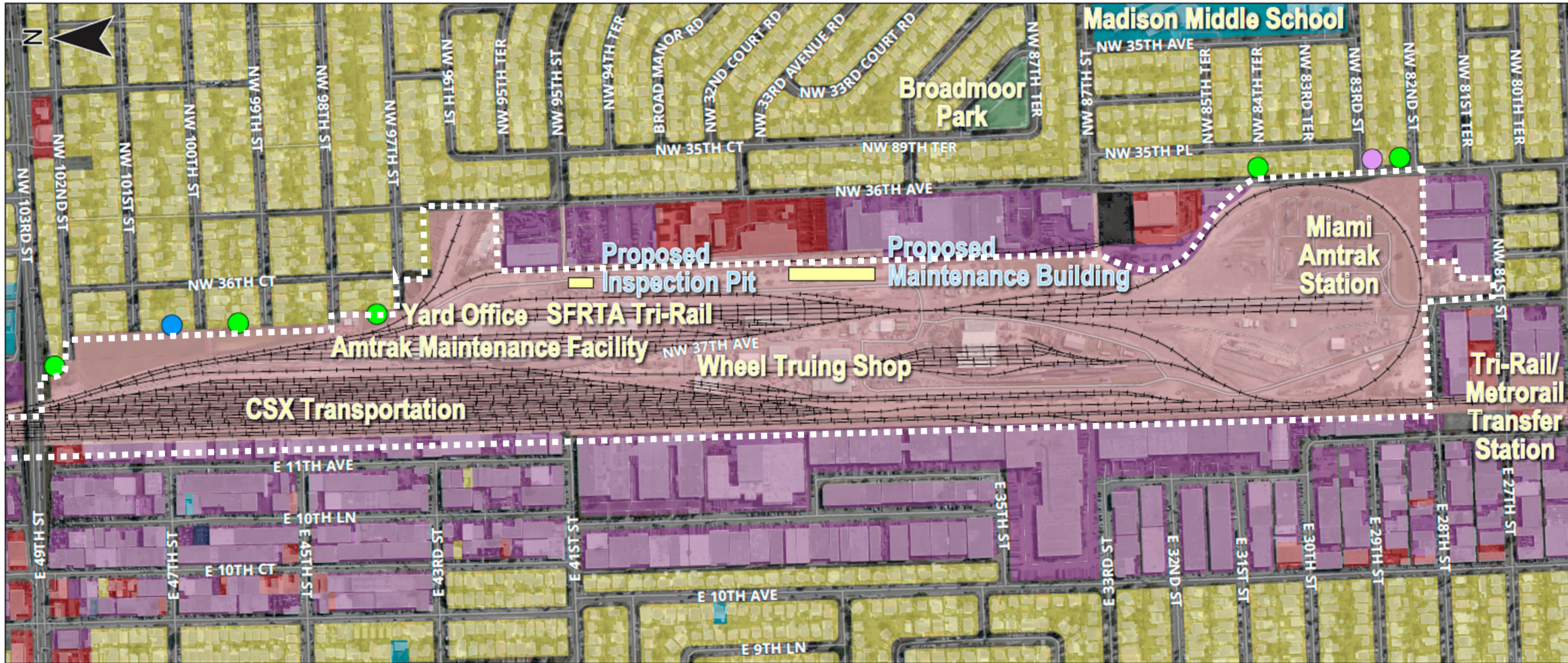


- All work will be within an existing FDOT-Owned Rail Yard parcel
- Proposed onsite Northeast Corridor improvements: Tracks, Parking Lot Reconfiguration, Inspection Pit, and Maintenance Building
- Rail Yard currently services CSX Transportation freight, SFRTA (Tri-Rail), and Amtrak trains.
- Eight Northeast Corridor Trains would be maintained and stored at this location.



# Northeast Corridor Rapid Transit Project

## Land Uses, Community Facilities, and Noise Analysis



LEGEND	
<b>Land Use</b>	<b>Noise Analysis</b>
Residential	Receptor - Residential - No Noise Impact
Commercial	Short-Term Monitoring - No Noise Impact
Industrial	Long-Term Monitoring - No Noise Impact
Institutional	
Office	
Parks, Preserves, Conservation Areas	
Communications, Utilities, Transportation	
Right-of-Way	
Other	
Vacant	

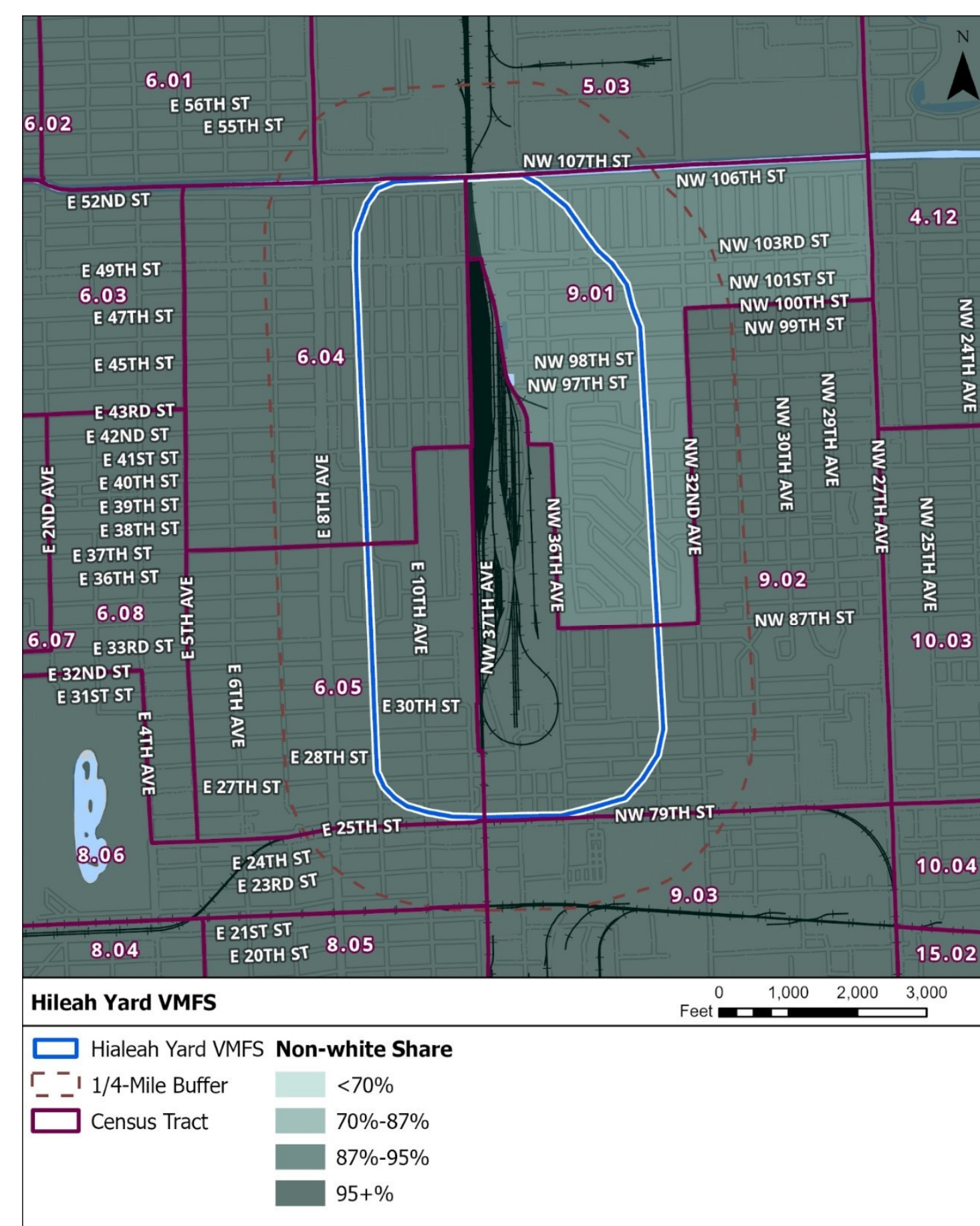


# Northeast Corridor Rapid Transit Project

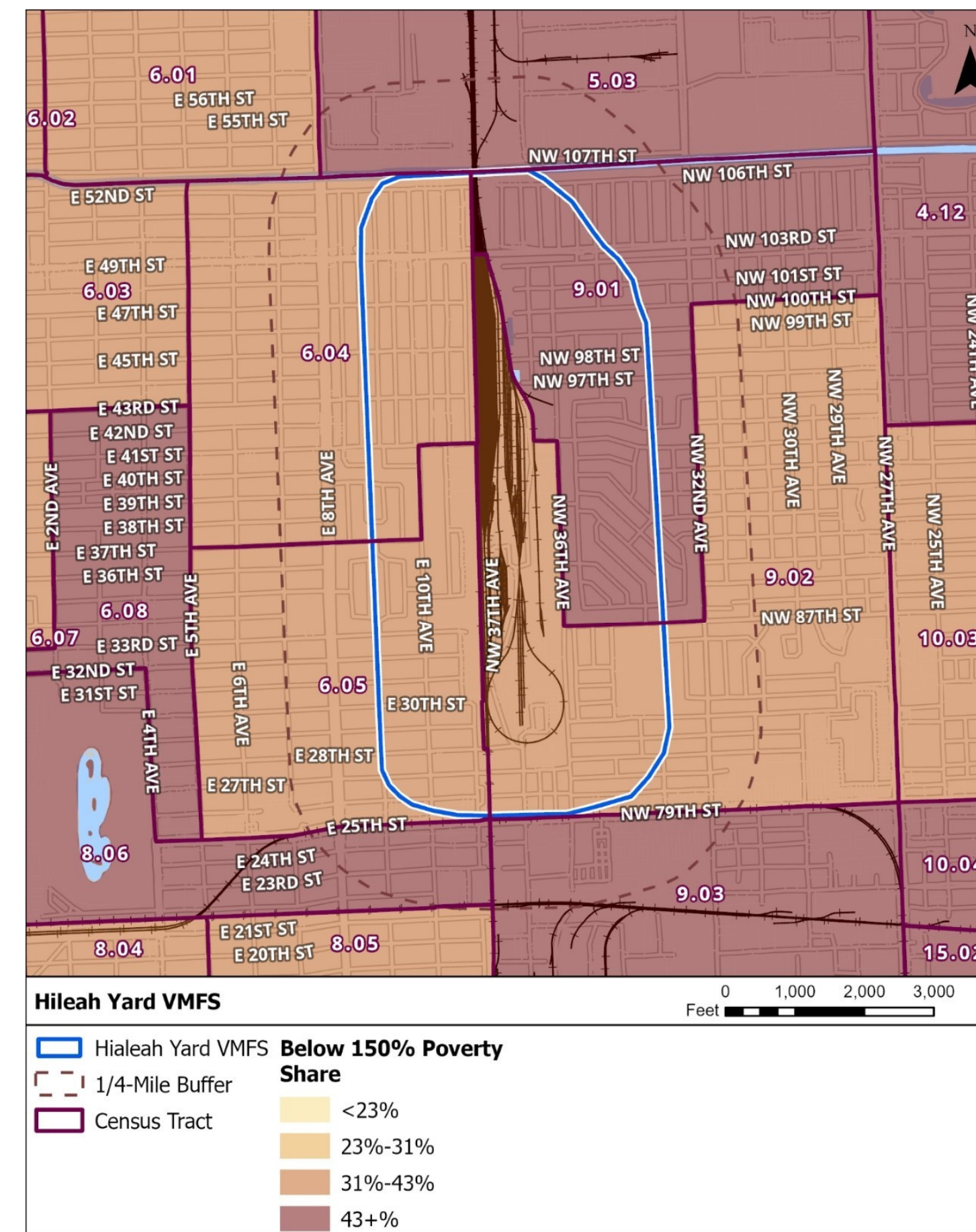
## Title VI Analysis

- Project area (including the vehicle facility site) includes minority, low income and limited English populations
- No displacement or relocation of any residents or businesses
- No impacts were found on the Title VI populations
- Project does not disproportionately affect any Title VI populations

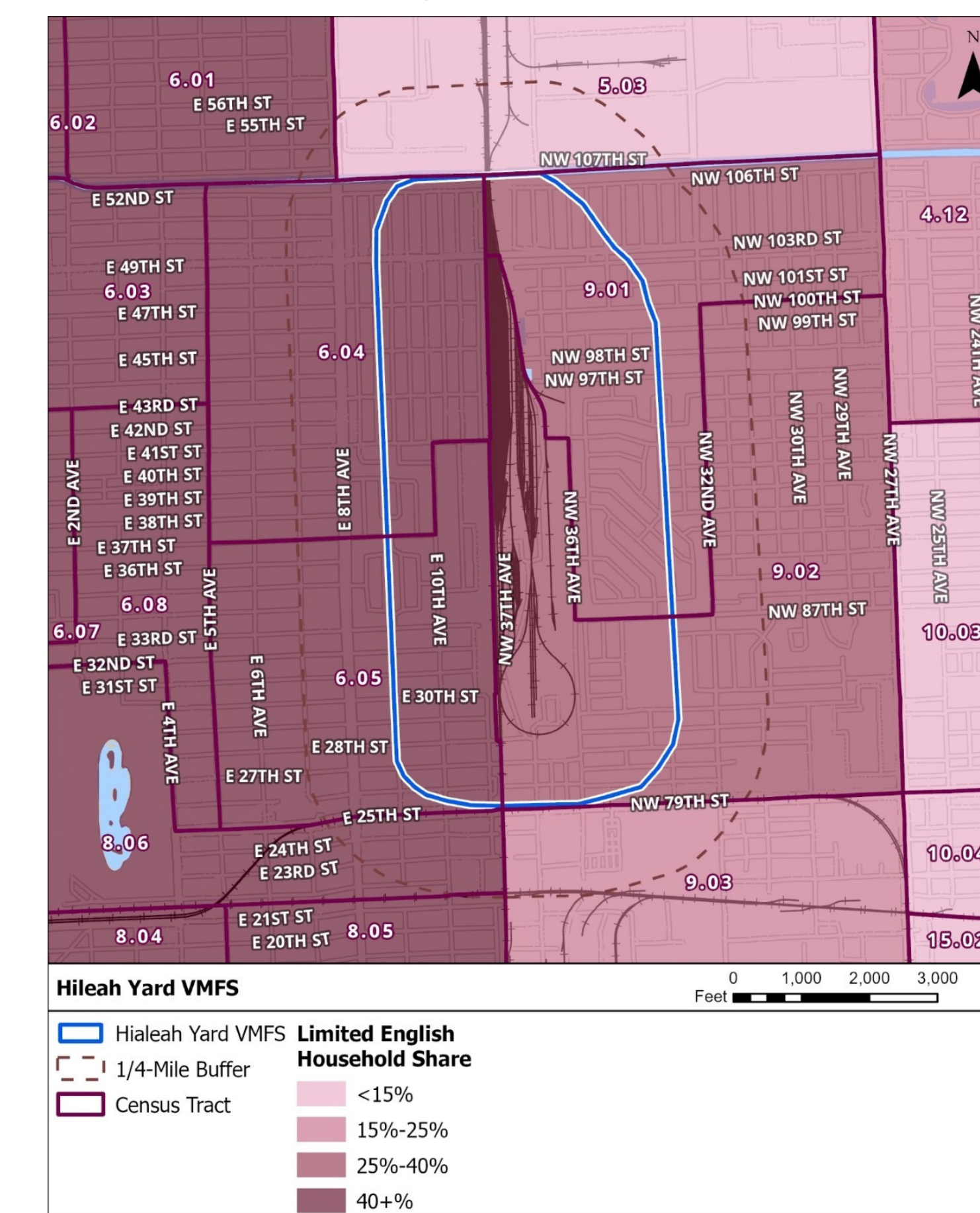
Minority (Non-White) Populations



Poverty Levels



Limited English Proficiency (LEP)



Source: U.S. Census 2020 American Community Survey (ACS) Estimates



# Northeast Corridor Rapid Transit Project

## Environmental Analysis and Impacts

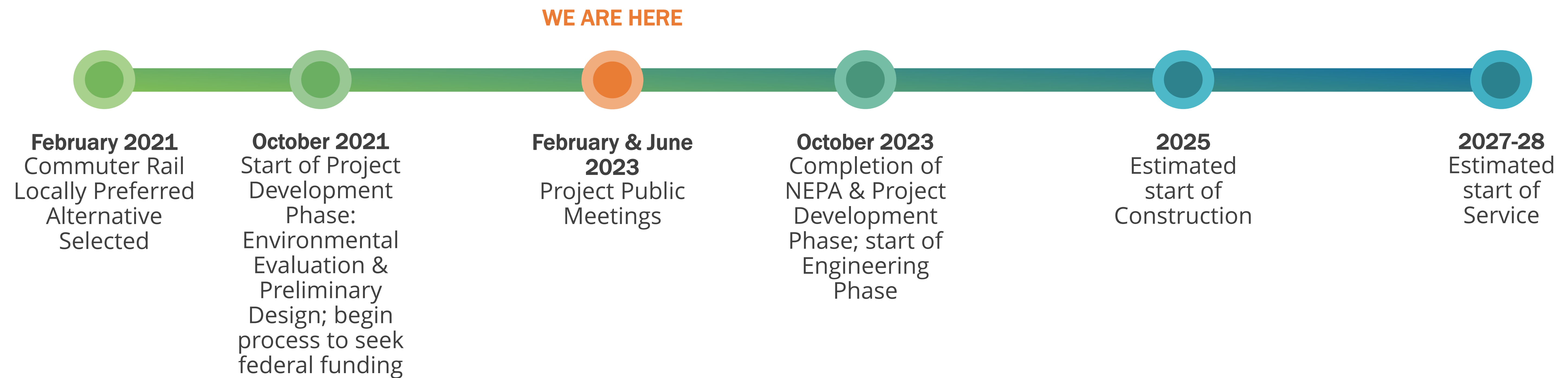
*The project will comply with National Environmental Policy Act (NEPA) and relevant environmental laws and regulations. In accordance with NEPA, a Documented Categorical Exclusion (DCE) has been prepared for this project.*

Resource		Impacts
Land Use Changes / Relocations	None	No change in land use or residential or business relocations.
Visual Impacts	None	Proposed facilities are within the existing FDOT Rail Yard. No Impacts.
Air Quality	Improvement	Overall, Northeast Corridor project will improve air quality.
Noise	None	No noise impacts anticipated.
Vibration	None	No vibration impacts anticipated.
Cultural Resources	None	A Cultural Resources assessment was conducted. The project does not have any adverse effects on any historic resources.
Temporary Effects of Construction	Minimal	Construction specifications and requirements by FDOT, DTPW and the Americans with Disabilities Act (ADA) will ensure that temporary impacts of construction, including dust (air quality), noise, vibration, traffic and access are eliminated or minimized.



# Northeast Corridor Rapid Transit Project

## Project Schedule Timeline





# Northeast Corridor Rapid Transit Project

## Project Contacts

### DTPW NORTHEAST CORRIDOR PROJECT MANAGER

Ms. Lisa Colmenares, AICP | Chief Planning Officer

Tel: 786-469-5394

Email: [MariaElisa.Colmenares@miamidade.gov](mailto:MariaElisa.Colmenares@miamidade.gov)

### DTPW PUBLIC INFORMATION OFFICER

Ms. Sandra Antonio

Tel: 305-375-2810

Email: [SMARTNortheast@miamidade.gov](mailto:SMARTNortheast@miamidade.gov)

*Miami-Dade County and its Department of Transportation and Public Works (DTPW) do not discriminate on the basis of race, color, national origin, sex, religion, age, disability, marital status, or any other protected class as described in local, State, or Federal laws. For questions and concerns related to Title VI please contact:*

James Rowan, Chief  
Office of Civil Rights and Labor Relations  
Department of Transportation and Public Works  
701 NW 1st Court, 17<sup>th</sup> Floor  
Miami, Florida 33136  
Email: [james.rowan@miamidade.gov](mailto:james.rowan@miamidade.gov)  
Phone: (786) 469-5042  
Hearing Impaired: RELAY 711



Scan to visit the project web page  
[miamidade.gov/smartprogram](http://miamidade.gov/smartprogram)