



TRANSPORTATION AND PUBLIC WORKS

RIDERSHIP TECHNICAL REPORT

Division of Performance Analysis



March 2024

Table of Contents

<i>Table of Contents</i>	2-3
All Modes Overview	4
Total Monthly Weekday, Saturday and Sunday Monthly Boardings By Mode	5
Average Weekday, Saturday and Sunday Boardings by Mode	6
Metrobus Total Monthly Ridership Comparisons by Fiscal Year	7
Metrorail Total Monthly Ridership Comparisons by Fiscal Year	8
Metromover Total Monthly Ridership Comparisons by Fiscal Year	9
STS Total Monthly Ridership Comparisons by Fiscal Year	10
All-Modes Combined Total Monthly Ridership Comparisons By Fiscal Year	11
All Modes Combined Total Monthly and Average Weekday Ridership – Year over Year Comparison Charts	12
Average Weekday Ridership – Modal Splits	13
Daily Ridership for All Modes Combined since 2/1/20	14
Metrobus	15
Better Bus Network (BBN, 11/13/2023 Lineup) Bus Route Changes, Pt 1 and Pt 2	16-17
Metrobus Average Weekday Boardings by Route	18-20
Metrobus Average Saturday Boardings by Route	21-22
Metrobus Average Sunday Boardings by Route	23-24
Metrobus Monthly Total Boardings by Route	25-27
Bus Ridership by Route Service Type Lineups Comparison (month-over-month & month-over-5 months)	28-31
Bus Routes as Ranked by Percentage of Average Weekday Ridership	32
Metrobus Cumulative Percentage Average Weekday Ridership Share by Route (Top 75%)	33
Total Monthly and Average Weekday Bus Ridership – Year over Year Comparison Charts	34
Bus “Top 10 / Bottom 10” Bus Routes Average Weekday Ridership Performance – Month-over-Month Comparisons	35
Bus “Top 10 / Bottom 10” Bus Routes Sets Average Weekday Ridership Performance – Year-over-Year Comparisons	36
Bus “Top 10 / Bottom 10” Bus Routes Sets Average Weekday Ridership Performance – Month-over-5 Month Comparisons	37
Daily Metrobus Ridership since 2/1/20	38
Metrobus Parking Patronage Summary	39

Table of Contents (continued)

Metrorail	40
Metrorail Average Weekday Boardings by Station	41
Metrorail Average Saturday Boardings by Station	42
Metrorail Average Sunday Boardings by Station	43
Metrorail Total Monthly Boardings by Station	44
Metrorail Cumulative Percentage Average Weekday Ridership Share	45
Total Monthly and Average Weekday Rail Ridership – Year over Year Comparison Charts	46
“Top 5 / Bottom 5” Stations Average Weekday Ridership Performance	47
Daily Metrorail Ridership since 2/1/20	48
Metrorail Parking Patronage Summary	49
Metromover	50
Monthly and Average Daily Mover Boardings by Station	51
Metromover Cumulative Percentage Average Weekday Ridership Share	52
Total Monthly and Average Weekday Mover Ridership – Year over Year Comparison Charts	53
“Top 5 / Bottom 5” Stations Average Weekday Ridership Performance	54
Daily Metromover Ridership since 2/1/20	55
Special Transportation Services (STS)	56
STS Monthly and Average Daily Boardings	57
Total Monthly and Average Weekday STS Ridership – Year over Year Comparison Charts	58
Daily STS Ridership since 2/1/20	59
Ridership Seasonality	60
Ridership Seasonality – Percent Ridership Share by Month and Calendar Year for Each Mode	61

All Modes Overview



TOTAL MONTHLY WEEKDAY, SATURDAY AND SUNDAY BOARDINGS BY MODE
March 2024

TRAVEL MODE	MONTH'S TOTAL WEEKDAYS RIDERSHIP	MONTH'S TOTAL SATURDAYS RIDERSHIP	MONTH'S TOTAL SUNDAYS RIDERSHIP	TOTAL MONTHLY RIDERSHIP	% CHANGE vs Mar 2023 TOTAL MONTH RIDERSHIP
METROBUS (1)	4,323,102	658,011	480,204	5,461,317	5.4%
METRORAIL (2)	1,094,257	114,717	93,880	1,302,854	5.1%
METROMOVER	541,176	109,941	101,990	753,107	34.9%
STS PARATRANSIT (3)	108,296	11,501	10,406	130,203	2.7%
TOTAL	6,066,831	894,170	686,480	7,647,481	7.6%

- (1) Bus ridership reporting through automatic passenger counters coupled with a new enhanced sensor system resumed on October 1, 2022.
- (2) Metrorail fares resumed on June 1, 2021, following a 14-month period of fare-free rides as a result of the SARS-CoV-2 pandemic. The NextFare System faregate data replaced the video data as ridership data of record starting on that date, until free fares were reinstated for the Better Bus Network launch on 11/13/23. The NextFare System faregate data collection and reporting resumed on New Year's Day 2024.
- (3) Paratransit ridership data as reported by the contractor and subsequently audited by the Department.

AVERAGE WEEKDAY, SATURDAY AND SUNDAY BOARDINGS BY MODE
March 2024

Travel Mode	Average Weekday	Average Saturday	Average Sunday	% Change Mar 2023 Weekday	% Change Mar 2023 Saturday	% Change Mar 2023 Sunday
METROBUS	205,935	131,602	96,041	8.9%	8.7%	9.0%
METRORAIL	52,107	22,943	18,776	11.3%	-0.1%	5.8%
METROMOVER	25,915	22,166	20,604	35.9%	22.5%	35.8%
STS PARATRANSIT	5,157	2,300	2,081	6.7%	6.1%	19.4%
Totals	289,114	179,012	137,502	11.3%	9.0%	12.0%

(*) Average ridership is calculated and published only for those days and stations or routes with nontrivial amounts of reported data.

METROBUS TOTAL MONTHLY RIDERSHIP COMPARISONS BY FISCAL YEAR

Bus Month	FY 19	FY 20	Variance 19 to 20	FY 21	FY 22	FY 23	FY 24	Variance 19 to 23	Variance 22 to 23	Variance 19 to 24	Variance 23 to 24
Oct	4,554,886	4,507,012	-1.1%	2,805,139	3,081,157	4,679,725	4,912,151	2.7%	51.9%	7.8%	5.0%
Nov	4,245,535	4,197,225	-1.1%	2,651,290	3,056,726	4,549,666	5,135,172	7.2%	48.8%	21.0%	12.9%
Dec	4,081,581	4,126,990	1.1%	3,022,530	3,123,883	4,677,460	5,857,057	14.6%	49.7%	43.5%	25.2%
Jan	4,195,911	4,316,998	2.9%	3,082,746	3,029,055	4,785,128	5,103,257	14.0%	58.0%	21.6%	6.6%
Feb	3,994,019	4,123,083	3.2%	3,076,966	2,995,789	4,526,317	5,053,665	13.3%	51.1%	26.5%	11.7%
Mar	4,266,768	3,136,162	-26.5%	3,660,639	3,218,562	5,183,872	5,461,317	21.5%	61.1%	28.0%	5.4%
Apr	4,291,135	1,544,316	-64.0%	3,625,048	3,105,797	4,618,302		7.6%	48.7%		
May	4,330,922	1,734,609	-59.9%	3,683,343	3,097,574	4,953,197		14.4%	59.9%		
Jun	3,823,863	2,210,725	-42.2%	2,672,570	3,064,059	4,545,050		18.9%	48.3%		
Jul	4,094,906	2,366,749	-42.2%	2,769,907	3,189,994	4,484,458		9.5%	40.6%		
Aug	4,109,613	2,422,014	-41.1%	2,843,552	3,442,006	4,756,063		15.7%	38.2%		
Sep	3,971,220	2,546,923	-35.9%	2,877,110	3,123,572	4,525,426		14.0%	44.9%		
FY Total	49,960,359	37,232,806	-25.5%	36,770,840	37,528,174	56,284,664		12.7%	50.0%		

METRORAIL TOTAL MONTHLY RIDERSHIP COMPARISONS BY FISCAL YEAR

Rail Month	FY 19	FY 20	Variance 19 to 20	FY 21	FY 22	FY 23	FY 24	Variance 19 to 23	Variance 22 to 23	Variance 19 to 24	Variance 23 to 24
Oct	1,757,225	1,643,166	-6.5%	769,525	844,383	1,053,191	1,237,096	-40.1%	24.7%	-29.6%	17.5%
Nov	1,656,929	1,469,448	-11.3%	699,492	850,881	1,055,066	935,121	-36.3%	24.0%	-43.6%	-11.4%
Dec	1,553,804	1,433,928	-7.7%	769,194	860,436	1,063,096	1,177,272	-31.6%	23.6%	-24.2%	10.7%
Jan	1,708,695	1,576,340	-7.7%	799,119	832,924	1,127,340	1,233,350	-34.0%	35.3%	-27.8%	9.4%
Feb	1,501,458	1,549,118	3.2%	730,792	905,162	1,072,791	1,240,316	-28.6%	18.5%	-17.4%	15.6%
Mar	1,554,851	1,027,319	-33.9%	917,097	1,084,978	1,239,336	1,302,854	-20.3%	14.2%	-16.2%	5.1%
Apr	1,559,446	287,803	-81.5%	827,414	1,027,139	1,087,816		-30.2%	5.9%		
May	1,531,597	337,696	-78.0%	887,111	1,023,322	1,151,819		-24.8%	12.6%		
Jun	1,359,966	608,758	-55.2%	723,469	975,477	1,066,861		-21.6%	9.4%		
Jul	1,419,158	632,964	-55.4%	722,159	953,331	1,022,937		-27.9%	7.3%		
Aug	1,463,646	641,275	-56.2%	749,578	1,076,490	1,174,138		-19.8%	9.1%		
Sep	1,427,726	654,244	-54.2%	795,749	1,012,331	1,146,864		-19.7%	13.3%		
FY Total	18,494,501	11,862,059	-35.9%	9,390,699	11,446,854	13,261,255		-28.3%	15.9%		

METROMOVER TOTAL MONTHLY RIDERSHIP COMPARISONS BY FISCAL YEAR

Mover Month	FY 19	FY 20	Variance 19 to 20	FY 21	FY 22	FY 23	FY 24	Variance 19 to 23	Variance 22 to 23	Variance 19 to 24	Variance 23 to 24
Oct	790,533	831,234	5.1%	250,044	389,065	514,308	614,479	-34.9%	32.2%	-22.3%	19.5%
Nov	735,198	799,632	8.8%	232,422	418,929	439,150	584,887	-40.3%	4.8%	-20.4%	33.2%
Dec	767,239	849,832	10.8%	251,019	450,320	426,073	616,455	-44.5%	-5.4%	-19.7%	44.7%
Jan	746,728	847,773	13.5%	255,968	451,566	498,566	644,639	-33.2%	10.4%	-13.7%	29.3%
Feb	675,160	855,398	26.7%	260,332	465,968	459,264	570,242	-32.0%	-1.4%	-15.5%	24.2%
Mar	737,814	441,200	-40.2%	302,502	535,857	558,396	753,107	-24.3%	4.2%	2.1%	34.9%
Apr	795,696	130,549	-83.6%	310,772	495,982	565,943		-28.9%	14.1%		
May	734,645	146,454	-80.1%	292,922	455,120	547,948		-25.4%	20.4%		
Jun	701,318	203,637	-71.0%	286,145	477,286	632,423		-9.8%	32.5%		
Jul	739,814	210,596	-71.5%	368,847	512,094	635,954		-14.0%	24.2%		
Aug	739,785	205,995	-72.2%	344,319	508,359	657,267		-11.2%	29.3%		
Sep	699,879	219,696	-68.6%	331,915	305,185	610,810		-12.7%	100.1%		
FY Total	8,863,809	5,741,996	-35.2%	3,487,207	5,465,731	6,546,102		-26.1%	19.8%		

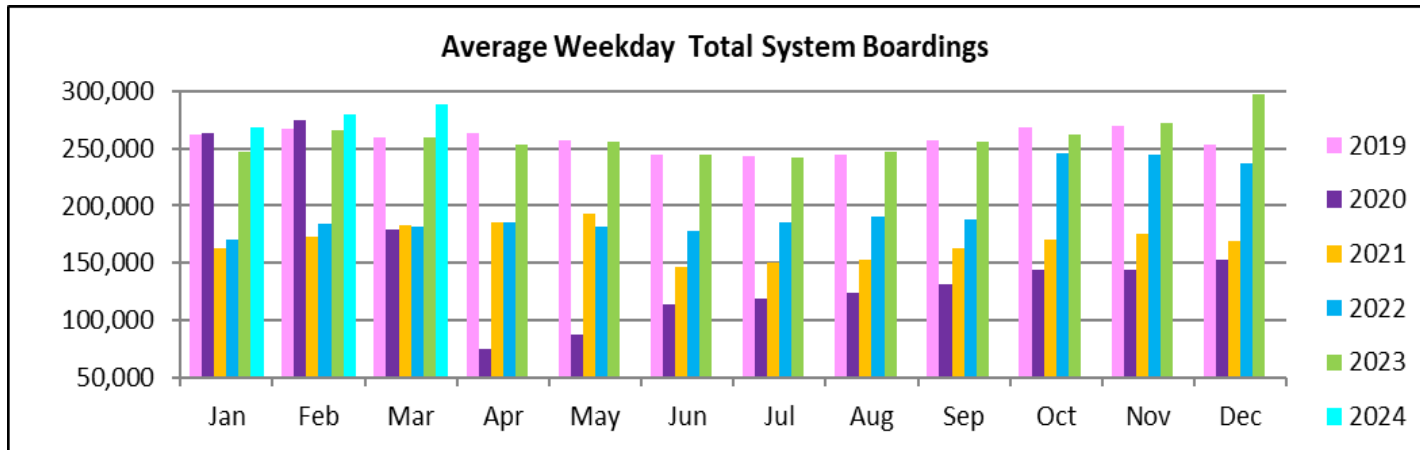
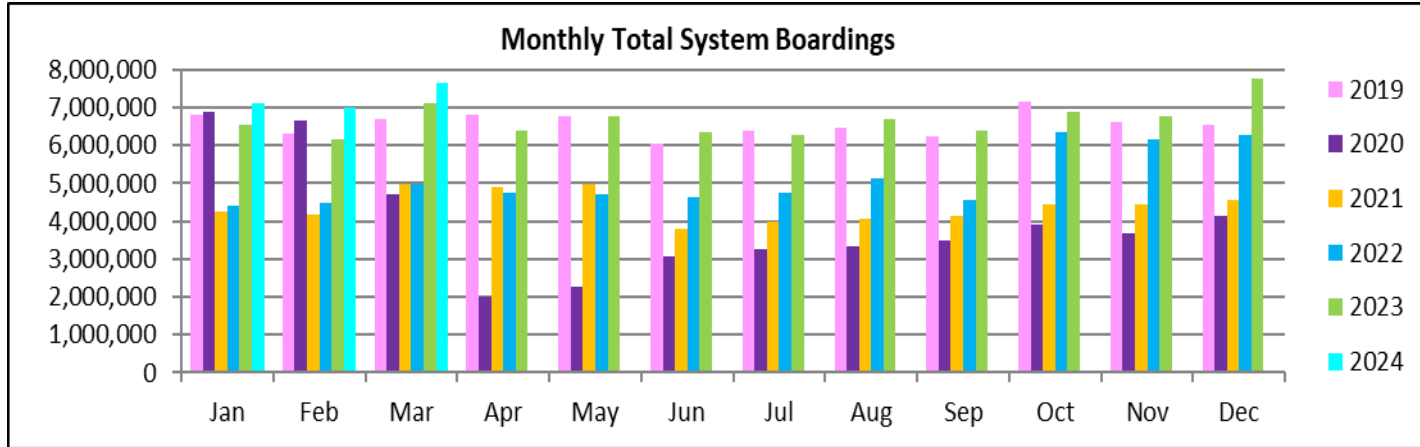
SPECIAL TRANSPORTATION SERVICES (STS) TOTAL MONTHLY RIDERSHIP COMPARISONS BY FISCAL YEAR

STS Month	FY 19	FY 20	Variance 19 to 20	FY 21	FY 22	FY 23	FY 24	Variance 19 to 23	Variance 22 to 23	Variance 19 to 24	Variance 23 to 24
Oct	162,564	162,704	0.1%	97,388	115,122	122,189	130,958	-24.8%	6.1%	-19.4%	7.2%
Nov	145,653	144,366	-0.9%	89,387	110,289	111,578	127,025	-23.4%	1.2%	-12.8%	13.8%
Dec	136,110	138,642	1.9%	96,366	104,496	112,019	130,093	-17.7%	7.2%	-4.4%	16.1%
Jan	146,268	149,114	1.9%	97,928	97,541	112,632	125,513	-23.0%	15.5%	-14.2%	11.4%
Feb	141,396	144,392	2.1%	98,285	105,706	111,748	125,732	-21.0%	5.7%	-11.1%	12.5%
Mar	153,191	89,634	-41.5%	112,930	120,718	126,819	130,203	-17.2%	5.1%	-15.0%	2.7%
Apr	155,808	26,877	-82.7%	120,122	114,912	116,882		-25.0%	1.7%		
May	158,665	39,654	-75.0%	118,636	114,505	127,782		-19.5%	11.6%		
Jun	141,320	59,093	-58.2%	112,397	109,054	119,527		-15.4%	9.6%		
Jul	148,232	61,765	-58.3%	110,059	107,188	113,623		-23.3%	6.0%		
Aug	147,331	66,563	-54.8%	110,766	117,941	125,510		-14.8%	6.4%		
Sep	141,387	80,346	-43.2%	115,406	108,788	122,065		-13.7%	12.2%		
FY Total	1,777,925	1,163,150	-34.6%	1,279,670	1,326,260	1,422,374		-20.0%	7.2%		

ALL-MODES COMBINED TOTAL MONTHLY RIDERSHIP COMPARISONS BY FISCAL YEAR

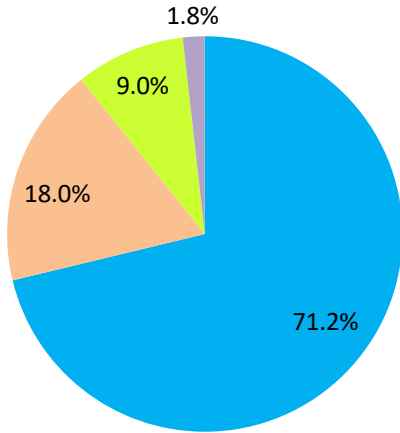
All Modes													
Month	FY 19	FY 20	FY 21	FY 22	FY 23	FY 24	19 TO 20	20 TO 21	21 TO 22	22 TO 23	19 TO 23	23 TO 24	19 TO 24
Oct	7,265,208	7,144,116	3,922,096	4,429,727	6,369,413	6,894,684	-1.7%	-45.1%	12.9%	43.8%	-12.3%	8.2%	-5.1%
Nov	6,783,315	6,610,671	3,672,591	4,436,825	6,155,460	6,782,205	-2.5%	-44.4%	20.8%	38.7%	-9.3%	10.2%	0.0%
Dec	6,538,734	6,549,392	4,139,109	4,539,135	6,278,648	7,780,877	0.2%	-36.8%	9.7%	38.3%	-4.0%	23.9%	19.0%
Jan	6,797,602	6,890,225	4,235,761	4,411,086	6,523,666	7,106,759	1.4%	-38.5%	4.1%	47.9%	-4.0%	8.9%	4.5%
Feb	6,312,033	6,671,991	4,166,375	4,472,625	6,170,120	6,989,955	5.7%	-37.6%	7.4%	38.0%	-2.2%	13.3%	10.7%
Mar	6,712,624	4,694,315	4,993,168	4,960,115	7,108,423	7,647,481	-30.1%	6.4%	-0.7%	43.3%	5.9%	7.6%	13.9%
Apr	6,802,085	1,989,545	4,883,356	4,743,830	6,388,943		-70.8%	145.5%	-2.9%	34.7%	-6.1%		
May	6,755,829	2,258,413	4,982,012	4,690,521	6,780,746		-66.6%	120.6%	-5.9%	44.6%	0.4%		
Jun	6,026,467	3,082,213	3,794,581	4,625,876	6,363,861		-48.9%	23.1%	21.9%	37.6%	5.6%		
Jul	6,402,110	3,272,074	3,970,972	4,762,607	6,256,972		-48.9%	21.4%	19.9%	31.4%	-2.3%		
Aug	6,460,375	3,335,847	4,048,215	5,144,796	6,712,978		-48.4%	21.4%	27.1%	30.5%	3.9%		
Sep	6,240,212	3,501,209	4,120,180	4,549,876	6,405,165		-43.9%	17.7%	10.4%	40.8%	2.6%		
FY Total	79,096,594	56,000,011	50,928,416	55,767,019	77,514,395		-29.2%	-9.1%	9.5%	39.0%	-2.0%		

TOTAL MONTHLY AND AVERAGE WEEKDAY RIDERSHIP YEAR OVER YEAR COMPARISON CHARTS – ALL MODES COMBINED



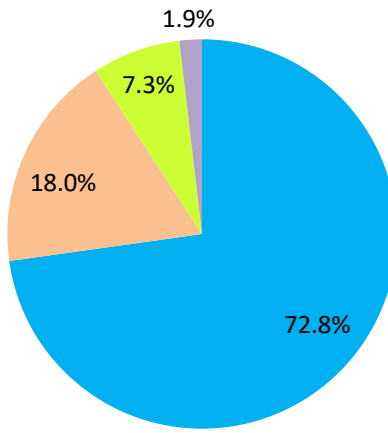
AVERAGE WEEKDAY RIDERSHIP - MODAL SPLITS

March 2024



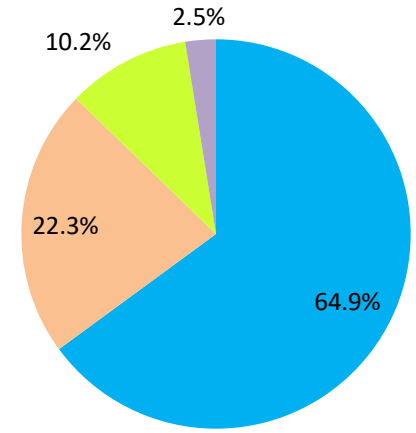
boardings

March 2023



boardings

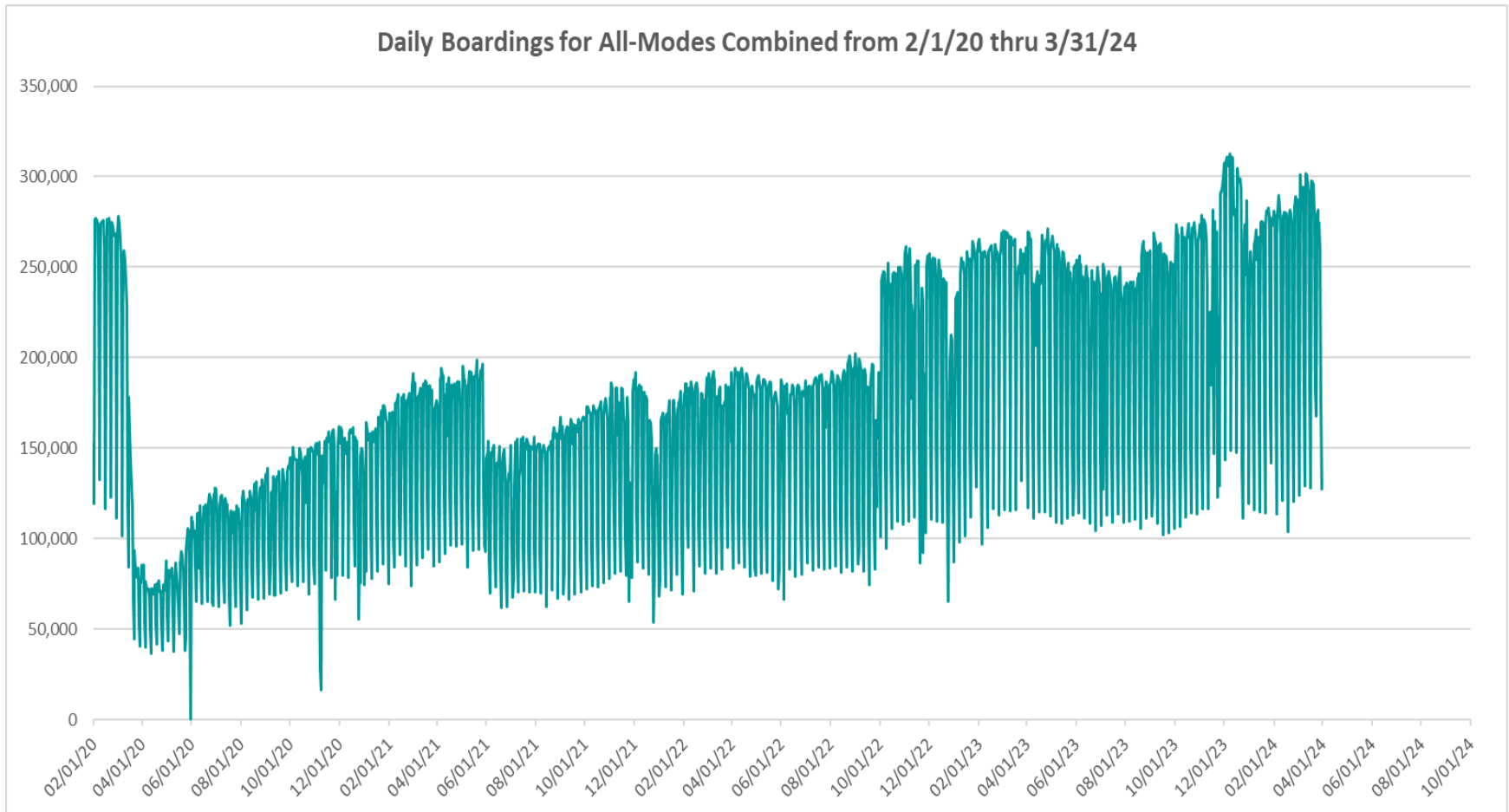
March 2022



boardings



DAILY RIDERSHIP FOR ALL MODES COMBINED SINCE FEBRUARY 1, 2020



- (1) There was no Metrobus, Metrorail and Metromover service on 5/31/20, as a safety precaution, and no service for any of the four modes on 9/28/22 as a result of Hurricane Ian..
- (2) The dip at the start of the second week of December 2020 is due to Hurricane Eta.
- (3) Daily variations from October 2022 onward are, for the Bus portion, estimated from reports made available by the Bus APC data vendor..
- (4) The reduction seen beginning 6/1/21 is partly due to the resumption of fares for bus and rail, and partly the result of having resumed reporting Cubic farebox data rather than bus APC counts, as well as Cubic rail faregate counts instead of video camera counts on that date. The jump seen at the start of October 2022 is due to the return to APC bus ridership counts reporting begun on 10/1/22.
- (5) The marked peak in Dec 2023 is attributable to the Better Bus Network launch period and attendant free fares.
- (6) Periodic (weekly) variations are prominent, since weekday ridership is almost always significantly higher than weekend or holiday ridership.

Metrobus



Better Bus Network (BBN, 11/13/2023 lineup) Bus Route Changes (Pt 1)

The listings below and on the following page are to serve as an aid in identifying individual routes for comparison of ridership data between periods prior to and following the launch of the BBN on 11/13/2023. In November 2023, both old and new route numbers appear in data tables, since the launch took place near mid-month; beginning with March 2024, only the current (BBN) numbering system appear in tables, to allow for direct comparisons.

BBN Numbering Changes:

Contracted **Route 1** was renumbered **Route 97**

Directly operated **Route 33** was renumbered **Route 103** (new, recycled number, not the same as former **Route 103 - C**)

Directly operated **Route 51** (Flagler MAX) was renumbered **Route 211** (recycled number, not the same as the OVERTOWN CIRCULATOR)

Contracted **Route 71** was renumbered **Route 107** (new, recycled number, not the same as **Route 107 - G** further below) and became directly operated

Directly operated **Route 79** was renumbered **Route 279** (79th Steet MAX)

Directly operated **Route 93** was renumbered **Route 203** (Biscayne MAX)

Directly operated **Route 99** was renumbered **Route 199**

Contracted **Route 101 - A** was renumbered **Route 15**

Directly operated **Route 102 - B** was renumbered **Route 26** (under the BBN's first phase, 07/24/2023 lineup)

Directly operated **Route 107 - G** (old, not the same as the **Route 107** appearing above) was renumbered **Route 125**

Directly operated **Route 112 - L** was renumbered **Route 79** (recycled number, not the same as the **Route 79** appearing above)

Directly operated **Route 120** was renumbered **Route 100**

Directly operated **Route 200** (CUTLER BAY LOCAL) was renumbered **Route 500** (recycled number, not the same as the **Route 500** further below)

Contracted **Route 210** was renumbered **Route 510** (SKYLAKE CIRCULATOR)

Contracted **Route 246** was renumbered **Route 401** (NORTH OWL)

Contracted **Route 248** (Princeton Circulator) was renumbered **Route 70** (recycled number, not the same as former **Route 70**)

Directly operated **Route 252** became contractor-operated, under the new name and number **Route 152**

Directly operated **Route 500** was renumbered **Route 400** (SOUTH OWL)

*The above routes, along with many others who retained their numbering, underwent modifications in various ways (realignment, new headways, days of operation, etc., some major), as part of the BBN design and its resulting lineup. Details for each DTPW Bus route are provided in the Miami-Dade County website. (Directly operated **Route 2** became contractor-operated but kept its number).*

Better Bus Network (BBN, 11/13/2023 lineup) Bus Route Changes (Pt 2)

BBN New Routes and Numbers:

Two new routes with new numbering were created to support the Better Bus Network:

Route 14 corresponds to a newly created route

Route 20 corresponds to a newly created route

BBN Eliminated Routes:

The following routes were discontinued, as part of the Better Bus Network realignments:

Route 10

Route 16

Route 19

Route 29

Route 31 (BUSWAY LOCAL)

Route 42

Route 46 (LIBERTY CITY CONNECTION)

Route 57

Route 82 (WESTCHESTER CIRCULATOR)

Route 103 - C (old, previously used numbering, not the same as the Route 103 in the list on the previous page)

Route 211 (OVERTOWN CIRCULATOR, previously used numbering, not the same as the Route 211 in the list on the previous page)

Route 105 - E

Route 108 - H

Route 110 - J

Route 113 - M

Route 115

Route 119 - S

Route 155 (BISCAYNE GARDENS CIRCULATOR)

Route 202 (LITTLE HAITI CONNECTION)

Route 212 (SWEETWATER CIRCULATOR)

Route 217 (BUNCHE PARK CIRCULATOR)

Route 238 (EAST-WEST CONNECTION)

Route 241 (TUTTLE LIMITED)

Route 254 (BROWNSVILLE CIRCULATOR)

Route 267 (LUDLAM LIMITED)

Route 277 (7th AVENUE MAX)

Route 286 (NORTH POINTE CIRCULATOR)

Route 297 (27th AVENUE ORANGE MAX)

Previously Eliminated Routes:

The following five express routes were suspended soon after the start of the SARS-CoV-2 pandemic, and never reinstated; their ridership appears in some of the tables in this report, as then-components of the reported bus system performance measures:

Route 175 (NW MIAMI-DADE EXPRESS)

Route 195 EXPRESS – BROWARD BLVD

Route 196 EXPRESS – BROWARD BLVD-CIVIC CENTER

Route 295 EXPRESS – SHERIDAN STREET

Route 296 EXPRESS – SHERIDAN STREET-CIVIC CENTER

The preceding listings are not exhaustive, and the reader is referred to the Miami-Dade County website for further BBN details or additional changes.

METROBUS AVERAGE WEEKDAY BOARDINGS BY ROUTE (†)

Route	Average Weekday	Average Weekday	Percent Change	Average Weekday	Percent Change	Average Weekday	Percent Change	Average Weekday	Percent Change
	weekdays Mar-24	Feb-24	MOM	Oct-23	MO5M	Mar-23	YOY	Feb-20	Current vs Feb-20
2	2,115	2,018	4.8%	2,977	-29.0%	2,779	-23.9%	3,102	-31.8%
3	8,857	8,981	-1.4%	5,416	63.5%	5,298	67.2%	5,137	72.4%
7	4,501	4,248	6.0%	4,021	11.9%	4,076	10.4%	3,501	28.6%
8	5,139	4,979	3.2%	4,650	10.5%	5,102	0.7%	3,909	31.5%
9	11,530	11,460	0.6%	6,490	77.7%	6,091	89.3%	5,528	108.6%
10				2,443		2,434		2,482	
11	11,928	11,491	3.8%	9,621	24.0%	9,171	30.1%	7,292	63.6%
12	2,993	2,977	0.6%	2,891	3.5%	3,041	-1.6%	2,779	7.7%
14	1,251	975	28.3%						
15	441	425	3.7%	178	148.1%	273	61.3%	177	149.1%
16				2,009		2,010		1,862	
17	7,158	7,233	-1.0%	4,133	73.2%	3,849	86.0%	3,878	84.6%
19				1,807		1,589		1,542	
20	4,520	3,861	17.1%						
21	2,094	2,007	4.3%	2,107	-0.6%	1,857	12.8%	1,817	15.2%
22	2,708	2,617	3.5%	4,502	-39.9%	4,445	-39.1%	3,640	-25.6%
24-CORAL WAY LIMITED	2,617	2,544	2.9%	2,195	19.2%	2,399	9.1%	1,340	95.4%
26	2,522	2,556	-1.3%	1,877	34.3%	2,302	9.6%	1,778	41.8%
27	9,686	9,634	0.5%	7,110	36.2%	7,399	30.9%	6,972	38.9%
29				516		517		534	
31-BUSWAY LOCAL						1,209		1,089	
32	2,034	1,962	3.7%	2,699	-24.6%	2,693	-24.5%	2,390	-14.9%
34 TRANSITWAY EXPRESS	1,768	1,850	-4.4%	1,636	8.1%	1,571	12.6%	2,008	-11.9%
35	2,315	2,435	-4.9%	3,070	-24.6%	2,726	-15.1%	2,421	-4.4%
36	6,926	6,222	11.3%	2,645	161.8%	2,799	147.4%	2,536	173.1%
37	5,352	4,728	13.2%	3,475	54.0%	3,756	42.5%	3,273	63.5%
38 TRANSITWAY MAX	7,198	7,402	-2.7%	5,714	26.0%	6,272	14.8%	6,361	13.2%
39 TRANSITWAY EXPRESS	801	869	-7.8%	742	7.9%			893	-10.3%
40	1,941	1,989	-2.4%	2,344	-17.2%	2,467	-21.3%	1,772	9.6%
42				1,001		1,099		820	
46 - LIBERTY CITY CONN.				22		22		41	
52	1,648	1,706	-3.5%	1,390	18.5%	1,326	24.2%	1,261	30.6%
54	3,082	2,961	4.1%	3,086	-0.1%	3,318	-7.1%	2,940	4.8%
56	582	609	-4.4%	391	48.9%	370	57.5%	354	64.6%
57				522		542		433	
62	2,963	2,753	7.6%	2,496	18.7%	1,858	59.5%	1,815	63.2%
70	281	315	-11.0%	161	74.2%	93	201.1%	135	108.7%

(†) In this table and those which follow, "YOY" stands for "year-over-year", "MOM" for "month-over-month" and, e.g., "MO5M" for "month over five months", i.e., current month vs 12 months prior, one month prior, and compared to pre-BBN, respectively. The February 2020 numbers serve as a pre-pandemic benchmark.

METROBUS AVERAGE WEEKDAY BOARDINGS BY ROUTE

Route	Average Weekday	Average Weekday	Percent Change	Average Weekday	Percent Change	Average Weekday	Percent Change	Average Weekday	Percent Change
	Mar-24	Feb-24	MOM	Oct-23	MO5M	Mar-23	YOY	Feb-20	Current vs Feb-20
weekdays									
72	875	946	-7.6%	670	30.6%	719	21.8%	781	12.0%
73	1,432	1,464	-2.2%	2,868	-50.1%	3,282	-56.4%	2,124	-32.6%
75	2,932	2,986	-1.8%	1,594	83.9%	1,412	107.7%	1,429	105.2%
77	11,737	12,375	-5.2%	9,959	17.8%	9,107	28.9%	7,129	64.6%
79	9,974	8,584	16.2%	8,481	17.6%	8,914	11.9%	7,636	30.6%
82 - WESTCHESTER CIRC				61		73		62	
87	2,361	2,438	-3.2%	1,924	22.7%	2,037	15.9%	1,499	57.5%
88	2,024	2,041	-0.8%	2,419	-16.3%	2,524	-19.8%	2,076	-2.5%
95-EXPRESS GOLDEN GLADES	1,397	1,317	6.1%	1,195	16.9%	1,094	27.8%	1,690	-17.3%
97	203	185	9.5%	225	-9.6%	217	-6.5%	184	10.3%
100	18,376	15,894	15.6%	6,128	199.9%	7,210	154.9%	6,667	175.6%
103 - C								463	
103	2,230	2,270	-1.8%	1,967	13.4%	1,968	13.3%	1,687	32.2%
104	1,200	1,247	-3.8%	1,024	17.1%	987	21.5%	837	43.3%
105 - E				1,402		1,469		1,287	
107	2,308	2,263	2.0%	825	179.7%	756	205.3%	711	224.8%
108 - H				487		570		473	
110 - J				2,955		3,302		2,508	
113 - M				887		912		866	
115				151		147		180	
119 - S				9,588		10,553		8,970	
125	4,888	4,669	4.7%	2,099	132.8%	2,115	131.1%	1,713	185.3%
132 -TRI-RAIL DORAL SHUTTLE	45	49	-6.7%	37	24.3%	44	3.0%	16	191.2%
135	2,097	2,159	-2.9%	1,755	19.4%	1,565	34.0%	1,399	49.9%
136	169	178	-5.6%	162	4.2%	158	6.5%	126	33.5%
137-WEST DADE CONNECTION	2,541	2,504	1.5%	2,119	19.9%	2,351	8.1%	1,626	56.3%
150-MIAMI BEACH AIRPORT EXPRESS	1,776	1,549	14.7%	2,149	-17.4%	2,432	-27.0%	1,867	-4.9%
152	386	402	-3.9%	1,051	-63.3%	1,063	-63.7%	851	-54.6%
155 - BISCAYNE GARDENS CIRC				45		46		44	
175 - NW MIAMI-DADE EXPRESS								33	
183	5,328	5,325	0.1%	3,653	45.9%	3,595	48.2%	3,149	69.2%
195 EXPRESS - BROWARD BLVD								372	
196 EXPRESS - SHERIDAN ST								383	
199	2,052	1,959	4.8%	1,899	8.1%	1,806	13.6%	1,473	39.4%
202 - LITTLE HAITI CONN				110		77		140	
203 - BISCAYNE MAX	1,252	1,649	-24.1%	3,666	-65.9%	3,731	-66.5%	3,334	-62.5%

METROBUS AVERAGE WEEKDAY BOARDINGS BY ROUTE

Route	Average Weekday	Average Weekday	Percent Change	Average Weekday	Percent Change	Average Weekday	Percent Change	Average Weekday	Percent Change
	weekdays Mar-24	Feb-24	MOM	Oct-23	MO5M	Mar-23	YOY	Feb-20	Current vs Feb-20
204 KILLIAN MAX	631	667	-5.3%	620	1.9%	749	-15.7%	1,071	-41.1%
207 (7th St)-LITTLE HAVANA CONN	1,886	1,823	3.5%	1,819	3.7%	1,810	4.2%	1,489	26.7%
208 (8th St)-LITTLE HAVANA CONN	1,757	1,792	-2.0%	1,659	5.9%	1,749	0.4%	1,308	34.3%
211 OVERTOWN CIRCULATOR				71		86		58	
211 - FLAGLER MAX	2,100	1,985	5.8%	3,824	-45.1%	4,069	-48.4%	3,109	-32.5%
212-SWEETWATER CIRC				22		23		15	
217 - BUNCHE PARK CIRC				80		59		97	
238-EAST/WEST CONN				593		604		449	
241 TUTTLE LIMITED				348		367			
254-BROWNSVILLE CIRC				5		6		19	
267-LUDLAM LIMITED				162		191		149	
272 SUNSET MAX (*)	378	374	1.0%	428	-11.8%	410	-7.9%	550	-31.3%
277-7TH AVENUE MAX				879		847		683	
279 - 79 STREET MAX	970	717	35.2%	469	106.8%	576	68.3%	361	168.4%
286-NORTH POINTE CIRC				93		93		97	
287-SAGA BAY MAX	402	404	-0.5%	341	18.0%	336	19.5%	358	12.3%
288 KENDALL MAX	504	531	-5.1%	372	35.4%	495	1.9%	762	-33.9%
295								233	
296								215	
297-27th AVENUE ORANGE MAX				1,229		1,392		1,356	
301-DADE MONROE EXPRESS	1,054	1,047	0.7%	955	10.3%	993	6.1%	841	25.3%
302-CARD SOUND EXPRESS	105	106	-1.0%	91	16.1%	136	-22.9%	86	22.0%
338 - WEEKEND EXPRESS									
344	113	118	-4.1%	76	49.3%	66	70.8%	96	17.9%
400 - SOUTH OWL	80	82	-2.9%	71	12.2%	69	15.5%	81	-1.8%
401 - NORTH OWL	65	65	0.4%	61	7.1%	60	8.6%	94	-30.6%
500 - CUTLER BAY LOCAL	292	289	1.1%	176	66.2%	106	175.0%	158	85.3%
510 - SKYLAKE CIRCULATOR (*)	449	377	19.0%	471	-4.7%	303	48.3%	282	59.4%
836 EXPRESS	332	335	-1.1%	247	34.5%	274	21.0%		
837 EXPRESS	191	203	-6.3%	195	-2.0%	128	49.3%		
AHEPA SHUTTLE	21	17	23.5%	18	15.5%	22	-6.0%	21	-1.2%
FEDERATION GARDENS SHUTTLE									
GREEN HILLS SHUTTLE	9	8	9.1%	5	73.1%	10	-12.2%	9	0.0%
KINGS CREEK SHUTTLE	10	9	13.9%	14	-25.5%	21	-51.2%	13	-21.2%
ROBERT SHARP SHUTTLE	29	28	1.8%	23	25.0%	19	54.6%	10	202.6%
SIERRA LAKES SHUTTLE	22	25	-10.4%	16	44.5%	20	12.0%	45	-50.2%
Total	205,935	199,263	3.3%	185,320	11.1%	189,075	8.9%	167,711	22.8%

(*) To see which routes fully or partly operated under contract this month, please refer to the ranking table in Slide 32.

(1) Includes shuttles and those routes which were not run some years.

(2) Several express routes were suspended beginning at the end of March 2020, due to the SARS-CoV-2 pandemic, while other routes had alignment and schedule modifications made to them, in an ongoing effort to optimize service delivery.

METROBUS AVERAGE SATURDAY BOARDINGS BY ROUTE

Route	Average Saturday	Average Saturday	Percent Change	Average Saturday	Percent Change	Average Saturday	Percent Change	Average Saturday	Percent Change
	Mar-24	Feb-24	MOM	Oct-23	MO5M	Mar-23	YOY	Feb-20	Current vs Feb-20
Saturdays									
2	947	969	-2.3%	1,605	-41.0%	1,601	-40.9%	1,616	-41.4%
3	6,967	6,771	2.9%	5,754	21.1%	6,161	13.1%	5,229	33.2%
7	2,380	2,641	-9.9%	1,972	20.7%	2,342	1.6%	1,887	26.1%
8	2,643	2,777	-4.8%	2,334	13.2%	2,604	1.5%	2,027	30.4%
9	7,580	7,483	1.3%	3,677	106.1%	3,916	93.6%	3,034	149.9%
10				2,107		2,147		1,896	
11	8,863	9,703	-8.7%	5,787	53.1%	7,621	16.3%	5,182	71.0%
14	1,101	858	28.4%						
15	350	348	0.4%	93	275.1%	33	960.0%	71	394.1%
16				1,662		2,014		1,566	
17	4,359	4,692	-7.1%	2,553	70.7%	2,508	73.8%	2,363	84.5%
20	3,567	3,165	12.7%						
22	1,491	1,748	-14.7%	2,425	-38.5%	2,768	-46.1%	2,084	-28.5%
24-CORAL WAY LIMITED	1,858	2,017	-7.9%	1,400	32.7%	1,723	7.8%	1,165	59.4%
26	1,250	1,357	-7.9%	966	29.4%	1,238	0.9%	851	46.8%
27	6,803	6,768	0.5%	4,006	69.9%	5,018	35.6%	4,034	68.7%
31-BUSWAY LOCAL				0		1,077		896	
32	1,117	1,222	-8.6%	1,261	-11.4%	1,209	-7.6%	1,029	8.6%
35	1,589	1,742	-8.8%	1,540	3.2%	1,603	-0.9%	1,372	15.8%
36	4,903	4,904	0.0%	1,677	192.4%	1,560	214.3%	1,289	280.2%
37	3,057	3,237	-5.6%	2,062	48.3%	2,647	15.5%	2,090	46.2%
38 TRANSITWAY MAX	6,015	6,217	-3.2%	6,328	-4.9%	6,281	-4.2%	4,715	27.6%
40	1,028	1,054	-2.5%	926	11.0%	994	3.5%	655	57.1%
42				617		757		552	
52	1,196	1,125	6.3%	694	72.4%	767	56.0%	686	74.4%
54	2,036	2,000	1.8%	1,925	5.8%	2,126	-4.2%	1,727	17.9%
56	254	230	10.4%						
62	1,905	1,954	-2.5%	1,823	4.5%	1,436	32.7%	1,343	41.8%
70	163	172	-5.0%						
72	485	522	-7.0%	357	36.2%	417	16.3%	350	38.8%
73	594	627	-5.4%	1,202	-50.6%	1,415	-58.1%	860	-31.0%
75	1,892	1,877	0.8%	550	244.0%	543	248.4%	468	304.3%
77	7,692	7,588	1.4%	5,510	39.6%	5,887	30.7%	4,197	83.3%
79	7,323	7,280	0.6%	7,094	3.2%	8,159	-10.2%	5,667	29.2%
82 - WESTCHESTER CIRC				38		40		50	

METROBUS AVERAGE SATURDAY BOARDINGS BY ROUTE

Route	Average Saturday	Average Saturday	Percent Change	Average Saturday	Percent Change	Average Saturday	Percent Change	Average Saturday	Percent Change
	Mar-24	Feb-24	MOM	Oct-23	MO5M	Mar-23	YOY	Feb-20	Current vs Feb-20
Saturdays									
87	993	991	0.2%	532	86.9%	661	50.2%	402	146.8%
88	1,576	1,580	-0.3%	1,661	-5.1%	1,983	-20.5%	1,620	-2.7%
97	165	184	-10.3%	163	0.9%	162	1.7%	215	-23.3%
100	15,018	14,680	2.3%	5,637	166.4%	6,764	122.0%	4,744	216.6%
103 - C						0		315	
103	1,358	1,395	-2.7%	1,239	9.6%	1,326	2.4%	951	42.8%
104	860	817	5.3%	445	93.4%	551	56.1%	468	83.6%
105 - E				772		848		619	
107	1,571	1,402	12.0%	238	561.4%	249	530.2%	252	523.8%
108 - H				401		516		372	
110 - J				1,394		2,368		1,952	
113 - M				577		803		503	
115				80		69		82	
119 - S				8,118		9,603		6,861	
125	3,114	2,792	11.5%	1,297	140.2%	1,509	106.3%	1,066	192.0%
135	914	972	-5.9%	556	64.5%	582	57.0%	539	69.7%
137-WEST DADE CONNECTION	1,516	1,658	-8.6%	1,337	13.4%	1,516	0.0%	1,027	47.6%
150-MIAMI BEACH AIRPORT EXPRESS	1,597	1,536	3.9%	2,161	-26.1%	2,140	-25.4%	1,604	-0.4%
152	229	243	-5.7%	375	-38.8%	439	-47.7%	302	-24.1%
183	3,152	3,189	-1.1%	1,960	60.9%	2,224	41.7%	1,790	76.1%
199	1,359	1,364	-0.3%	1,106	22.9%	1,199	13.4%	849	60.2%
202 - LITTLE HAITI CONN				22		25		50	
207 (7th St)-LITTLE HAVANA CONN	818	999	-18.1%	929	-11.9%	1,281	-36.1%	1,032	-20.8%
208 (8th St)-LITTLE HAVANA CONN	903	1,013	-10.8%	1,030	-12.3%	1,316	-31.4%	1,044	-13.6%
241 TUTTLE LIMITED				222		206			
286-NORTH POINTE CIRC				61		71		41	
301-DADE MONROE EXPRESS	958	967	-0.8%	885	8.3%	909	5.5%	801	19.7%
302-CARD SOUND EXPRESS	100	102	-1.3%	94	6.6%	108	-6.8%	57	77.0%
338 - WEEKEND EXPRESS	235	165	42.3%	259	-9.3%	231	2.0%	237	-0.6%
344	74	68	10.2%						
400 - SOUTH OWL	102	87	17.1%	104	-2.1%	38	165.6%	70	45.1%
401 - NORTH OWL	76	76	0.9%	61	26.0%	68	11.6%	84	-9.7%
500 - CUTLER BAY LOCAL	217	257	-15.4%	152	43.1%	90	142.0%	119	82.2%
510 - SKYLAKE CIRCULATOR (*)	261	287	-8.8%	217	20.3%	91	187.3%	165	58.4%
12/21 WEEKEND INTERLINE	3,006	3,050	-1.4%	3,290	-8.6%	2,491	20.7%	2,528	18.9%
FEDERATION GARDENS SHUTTLE	22	25	-9.4%	20	11.0%	28	-19.3%	28	-21.8%
Total	131,602	132,941	-1.0%	107,331	22.6%	121,066	8.7%	93,742	40.4%

METROBUS AVERAGE SUNDAY BOARDINGS BY ROUTE

Route	Average Sunday	Average Sunday	Percent Change	Average Sunday	Percent Change	Average Sunday	Percent Change	Average Sunday	Percent Change
	Mar-24	Feb-24	MOM	Oct-23	MO5M	Mar-23	YOY	Feb-20	Current vs Feb-20
Sundays									
2	773	792	-2.5%	1,214	-36.4%	1,153	-33.0%	1,335	-42.1%
3	5,304	4,659	13.8%	4,408	20.3%	4,937	7.5%	4,353	21.9%
7	1,776	1,691	5.1%	1,632	8.8%	1,778	-0.1%	1,654	7.4%
8	1,706	1,597	6.8%	1,838	-7.2%	1,945	-12.3%	1,746	-2.3%
9	4,870	4,265	14.2%	2,756	76.7%	2,850	70.9%	2,549	91.0%
10				1,632		1,672		1,441	
11	6,439	5,501	17.1%	3,803	69.3%	4,869	32.2%	3,917	64.4%
14	1,068	920	16.0%						
15	293	280	4.5%	53	452.5%	43	580.9%	56	427.6%
16				1,023		1,120		997	
17	3,114	2,706	15.1%	1,920	62.2%	1,825	70.6%	1,833	69.9%
20	2,558	2,069	23.7%						
22	1,095	1,148	-4.6%	1,915	-42.8%	1,922	-43.0%	1,548	-29.3%
24-CORAL WAY LIMITED	1,325	1,171	13.1%	1,108	19.5%	1,290	2.7%	905	46.4%
26	1,078	890	21.1%	871	23.7%	974	10.6%	717	50.4%
27	4,208	3,532	19.1%	3,146	33.8%	3,444	22.2%	2,918	44.2%
31-BUSWAY LOCAL				0		755		715	
32	836	812	3.0%	768	8.9%	762	9.8%	772	8.3%
35	1,331	1,194	11.5%	1,175	13.3%	1,144	16.4%	942	41.4%
36	3,919	3,166	23.8%	1,160	237.7%	1,299	201.7%	1,111	252.9%
37	2,366	2,157	9.7%	1,755	34.8%	1,965	20.4%	1,739	36.1%
38 TRANSITWAY MAX	5,104	4,739	7.7%	4,957	3.0%	4,554	12.1%	4,147	23.1%
40	836	675	23.9%	542	54.1%	631	32.5%	447	86.9%
42				425		476		416	
52	859	811	6.0%	496	73.1%	521	65.0%	466	84.3%
54	1,267	1,112	14.0%	1,181	7.3%	1,257	0.8%	1,171	8.2%
62	1,253	1,162	7.8%	1,040	20.5%	903	38.8%	891	40.7%
70	150	143	5.4%						
72	439	399	10.2%	259	69.4%	373	17.8%	265	66.0%
73	247	219	12.7%	602	-59.0%	725	-65.9%	495	-50.0%
75	1,379	1,253	10.1%	352	292.2%	333	314.1%	271	409.3%
77	4,866	4,275	13.8%	3,980	22.3%	4,043	20.4%	2,815	72.9%
79	5,846	5,094	14.8%	4,837	20.9%	5,933	-1.5%	4,804	21.7%

METROBUS AVERAGE SUNDAY BOARDINGS BY ROUTE

Route	Average Sunday	Average Sunday	Percent Change	Average Sunday	Percent Change	Average Sunday	Percent Change	Average Sunday	Percent Change
Sundays	Mar-24	Feb-24	MOM	Oct-23	MO5M	Mar-23	YOY	Feb-20	Current vs Feb-20
87	524	446	17.5%	362	44.9%	406	29.2%	319	64.4%
88	1,159	1,052	10.1%	1,255	-7.7%	1,394	-16.9%	1,286	-9.9%
97	150	130	15.9%	149	1.1%	158	-4.5%	201	-25.1%
100	10,743	9,603	11.9%	3,492	207.6%	4,056	164.9%	3,469	209.7%
103 - C						0		212	
103	846	788	7.3%	729	16.1%	691	22.4%	607	39.4%
104	560	505	11.0%	348	61.1%	353	58.6%	317	76.8%
105 - E				634		790		616	
107	1,161	1,018	14.1%	187	520.7%	177	555.8%	162	616.5%
108 - H				363		465		328	
110 - J				1,699		2,060		1,638	
113 - M				444		666		431	
115				66		66		80	
119 - S				7,612		9,496		7,141	
125	1,996	1,683	18.6%	1,036	92.6%	1,146	74.1%	895	122.9%
135	650	580	12.2%	474	37.3%	376	73.2%	349	86.2%
137-WEST DADE CONNECTION	1,140	984	15.9%	956	19.3%	1,077	5.9%	879	29.7%
150-MIAMI BEACH AIRPORT EXPRESS	1,765	1,526	15.7%	1,966	-10.2%	2,283	-22.7%	1,574	12.2%
152	128	142	-9.7%	331	-61.4%	365	-64.9%	199	-35.6%
183	2,207	1,911	15.5%	1,569	40.6%	1,711	29.0%	1,413	56.2%
199	1,004	828	21.2%	887	13.2%	892	12.5%	658	52.5%
202 - LITTLE HAITI CONN				21		27		39	
207 (7th St)-LITTLE HAVANA CONN	709	545	30.2%	648	9.5%	808	-12.2%	796	-10.9%
208 (8th St)-LITTLE HAVANA CONN	733	677	8.2%	862	-15.0%	961	-23.7%	911	-19.6%
241 TUTTLE LIMITED				187		185			
301-DADE MONROE EXPRESS	911	892	2.1%	867	5.1%	835	9.1%	751	21.2%
302-CARD SOUND EXPRESS	86	83	4.0%	72	19.8%	72	20.0%	57	50.5%
338 - WEEKEND EXPRESS	168	210	-19.8%	247	-31.9%	193	-12.7%	252	-33.2%
400 - SOUTH OWL	109	102	6.5%	70	55.1%	81	34.5%	83	31.2%
401 - NORTH OWL	80	71	14.0%	65	24.5%	59	36.9%	87	-7.6%
500 - CUTLER BAY LOCAL	104	77	36.0%	86	21.1%	131	-20.5%	59	78.5%
510 - SKYLAKE CIRCULATOR (*)	313	274	14.2%	194	61.0%	81	284.7%	143	118.6%
12/21 WEEKEND INTERLINE	2,491	2,155	15.6%	2,700	-7.7%	590	322.4%	2,048	21.7%
Total	96,041	84,707	13.4%	81,427	17.9%	88,140	9.0%	75,428	27.3%

METROBUS TOTAL MONTHLY BOARDINGS BY ROUTE

Route	Total Month	Total Month	Percent Change	Total Month	Percent Change	Total Month	Percent Change	Total Month	Percent Change
	Mar-24	Feb-24	MOM	Oct-23	MO5M	Mar-23	YOY	Feb-20	Current vs Feb-20
total month									
2	53,003	49,414	7.3%	77,976	-32.0%	74,930	-29.3%	75,463	-29.8%
3	247,361	234,324	5.6%	164,203	50.6%	166,238	48.8%	146,294	69.1%
7	115,307	106,539	8.2%	104,507	10.3%	110,220	4.6%	86,077	34.0%
8	129,663	122,048	6.2%	120,821	7.3%	135,533	-4.3%	95,295	36.1%
9	304,385	287,645	5.8%	171,265	77.7%	167,165	82.1%	135,924	123.9%
10				70,338		71,259		64,874	
11	327,004	302,115	8.2%	253,837	28.8%	260,895	25.3%	187,425	74.5%
12	62,859	62,508	0.6%	63,603	-1.2%	69,948	-10.1%	55,585	13.1%
14	37,120	27,597	34.5%						
15	12,467	11,434	9.0%	4,545	174.3%	6,589	89.2%	4,114	203.0%
16				55,959		58,756		49,061	
17	187,674	181,483	3.4%	110,727	69.5%	105,851	77.3%	96,715	94.0%
19				39,745		36,540		30,847	
20	125,553	102,009	23.1%						
21	43,972	42,153	4.3%	46,355	-5.1%	42,700	3.0%	36,341	21.0%
22	69,795	66,545	4.9%	118,329	-41.0%	120,988	-42.3%	89,404	-21.9%
24-CORAL WAY LIMITED	70,874	66,170	7.1%	59,432	19.3%	67,217	5.4%	36,237	95.6%
26	64,595	62,656	3.1%	49,521	30.4%	61,789	4.5%	42,683	51.3%
27	258,452	243,521	6.1%	188,160	37.4%	204,016	26.7%	171,282	50.9%
29				11,342		11,893		10,684	
31-BUSWAY LOCAL						35,129		29,125	
32	52,491	49,335	6.4%	68,263	-23.1%	69,827	-24.8%	56,027	-6.3%
34 TRANSITWAY EXPRESS	37,138	38,852	-4.4%	36,002	3.2%	36,134	2.8%	40,159	-7.5%
35	63,221	62,884	0.5%	79,573	-20.5%	73,684	-14.2%	59,041	7.1%
36	189,545	162,935	16.3%	70,698	168.1%	75,810	150.0%	61,606	207.7%
37	139,516	120,855	15.4%	93,471	49.3%	104,841	33.1%	82,870	68.4%
38 TRANSITWAY MAX	206,754	199,253	3.8%	175,803	17.6%	187,599	10.2%	167,379	23.5%
39 TRANSITWAY EXPRESS	16,823	18,246	-7.8%	16,333	3.0%			17,853	-5.8%
40	50,090	48,675	2.9%	57,992	-13.6%	63,243	-20.8%	40,497	23.7%
42				26,611		30,204		20,825	
46 - LIBERTY CITY CONN.				477		510		814	
52	44,875	43,579	3.0%	35,844	25.2%	35,653	25.9%	30,522	47.0%
54	81,240	74,625	8.9%	81,490	-0.3%	89,841	-9.6%	72,125	12.6%
56	13,488	13,705	-1.6%	8,598	56.9%	8,500	58.7%	7,071	90.8%
57				11,491		12,461		8,665	
62	78,013	70,274	11.0%	67,398	15.7%	52,087	49.8%	46,582	67.5%
70	7,465	7,882	-5.3%	3,546	110.5%	2,145	248.0%	2,690	177.5%

METROBUS TOTAL MONTHLY BOARDINGS BY ROUTE

Route	Total Month	Total Month	Percent Change	Total Month	Percent Change	Total Month	Percent Change	Total Month	Percent Change
	Mar-24	Feb-24	MOM	Oct-23	MO5M	Mar-23	YOY	Feb-20	Current vs Feb-20
total month									
72	22,997	23,557	-2.4%	17,459	31.7%	19,686	16.8%	18,433	24.8%
73	34,266	34,139	0.4%	70,903	-51.7%	84,042	-59.2%	48,767	-29.7%
75	77,919	75,233	3.6%	39,021	99.7%	35,974	116.6%	31,994	143.5%
77	309,258	307,325	0.6%	261,039	18.5%	249,180	24.1%	174,833	76.9%
79	275,303	229,766	19.8%	239,146	15.1%	261,385	5.3%	200,268	37.5%
82 - WESTCHESTER CIRC				1,488		1,837		1,482	
87	57,171	56,957	0.4%	46,254	23.6%	51,130	11.8%	33,273	71.8%
88	56,185	53,393	5.2%	66,138	-15.0%	71,551	-21.5%	54,772	2.6%
95-EXPRESS GOLDEN GLADES	29,346	27,665	6.1%	26,295	11.6%	25,159	16.6%	33,796	-13.2%
97	5,838	5,146	13.4%	6,337	-7.9%	6,273	-6.9%	5,558	5.0%
100	514,701	430,914	19.4%	174,819	194.4%	209,099	146.2%	170,942	201.1%
103 - C								11,682	
103	57,847	56,406	2.6%	51,871	11.5%	53,338	8.5%	40,918	41.4%
104	32,294	31,480	2.6%	26,049	24.0%	26,320	22.7%	20,351	58.7%
105 - E				37,092		40,345		31,302	
107	62,130	57,198	8.6%	20,040	210.0%	19,094	225.4%	16,118	285.5%
108 - H				14,133		17,037		12,624	
110 - J				79,080		93,650		66,481	
113 - M				24,040		26,844		21,548	
115				3,968		3,913		4,334	
119 - S				281,456		319,122		242,257	
125	128,189	115,943	10.6%	56,547	126.7%	59,267	116.3%	43,178	196.9%
132 - TRI-RAIL DORAL SHUTTLE	954	1,023	-6.7%	804	18.7%	1,014	-5.9%	312	205.8%
135	51,855	51,537	0.6%	43,211	20.0%	39,823	30.2%	32,067	61.7%
136	3,539	3,748	-5.6%	3,557	-0.5%	3,639	-2.7%	2,524	40.2%
137-WEST DADE CONNECTION	66,636	63,144	5.5%	56,750	17.4%	64,441	3.4%	41,167	61.9%
150-MIAMI BEACH AIRPORT EXPRESS	54,101	44,769	20.8%	65,763	-17.7%	73,621	-26.5%	51,651	4.7%
152	9,899	9,983	-0.8%	26,285	-62.3%	27,659	-64.2%	19,325	-48.8%
155 - BISCAYNE GARDENS CIRC				985		1,054		881	
175 - NW MIAMI-DADE EXPRESS								661	
183	138,690	132,219	4.9%	96,050	44.4%	98,412	40.9%	77,570	78.8%
195 EXPRESS - BROWARD BLVD								7,441	
196 EXPRESS - SHERIDAN ST								7,658	
199	54,913	49,896	10.1%	50,634	8.5%	49,910	10.0%	36,325	51.2%
202 - LITTLE HAITI CONN				2,620		1,978		3,200	
203 - BISCAYNE MAX	26,284	34,637	-24.1%	80,650	-67.4%	85,812	-69.4%	66,684	-60.6%

METROBUS TOTAL MONTHLY BOARDINGS BY ROUTE

Route	Total Month	Total Month	Percent Change	Total Month	Percent Change	Total Month	Percent Change	Total Month	Percent Change
	Mar-24	Feb-24	MOM	Oct-23	MO5M	Mar-23	YOY	Feb-20	Current vs Feb-20
total month									
204 KILLIAN MAX	13,257	14,001	-5.3%	13,632	-2.8%	17,233	-23.1%	21,418	-38.1%
207 (7th St)-LITTLE HAVANA CONN	47,252	44,460	6.3%	46,970	0.6%	49,991	-5.5%	38,127	23.9%
208 (8th St)-LITTLE HAVANA CONN	45,064	44,388	1.5%	44,922	0.3%	49,339	-8.7%	35,018	28.7%
211 OVERTOWN CIRCULATOR				1,567		1,976		1,159	
211 - FLAGLER MAX	44,100	41,687	5.8%	84,135	-47.6%	93,577	-52.9%	62,186	-29.1%
212-SWEETWATER CIRC				494		522		295	
217 - BUNCHE PARK CIRC				1,759		1,351		1,949	
238-EAST/WEST CONN				13,036		13,893		8,987	
241 TUTTLE LIMITED				9,471		10,006			
254-BROWNSVILLE CIRC				105		143		384	
267-LUDLAM LIMITED				3,567		4,399		2,978	
272 SUNSET MAX (*)	7,934	7,859	1.0%	9,423	-15.8%	9,432	-15.9%	11,004	-27.9%
277-7TH AVENUE MAX				19,345		19,473		13,669	
279 - 79 STREET MAX	20,370	15,066	35.2%	10,318	97.4%	13,255	53.7%	7,228	181.8%
286-NORTH POINTE CIRC				2,279		2,431		2,145	
287-SAGA BAY MAX	8,444	8,488	-0.5%	7,499	12.6%	7,739	9.1%	7,160	17.9%
288 KENDALL MAX	10,584	11,151	-5.1%	8,189	29.2%	11,379	-7.0%	15,249	-30.6%
295								4,668	
296								4,297	
297-27th AVENUE ORANGE MAX				27,047		32,007		27,125	
301-DADE MONROE EXPRESS	31,478	29,413	7.0%	28,889	9.0%	29,820	5.6%	23,838	32.0%
302-CARD SOUND EXPRESS	3,140	2,968	5.8%	2,728	15.1%	3,855	-18.5%	2,236	40.4%
338 - WEEKEND EXPRESS	2,018	1,501	34.4%	2,274	-11.3%	1,694	19.1%	2,191	-7.9%
344	2,747	2,747	0.0%	1,666	64.9%	1,523	80.4%	1,919	43.1%
400 - SOUTH OWL	2,721	2,475	9.9%	2,324	17.1%	2,060	32.1%	2,301	18.3%
401 - NORTH OWL	2,147	1,943	10.5%	1,899	13.1%	1,883	14.0%	2,641	-18.7%
500 - CUTLER BAY LOCAL	7,745	7,405	4.6%	4,907	57.8%	3,328	132.7%	3,984	94.4%
510 - SKYLAKE CIRCULATOR (*)	12,305	10,168	21.0%	12,211	0.8%	7,658	60.7%	7,033	75.0%
836 EXPRESS	6,968	7,043	-1.1%	5,428	28.4%	6,306	-10.5%		
837 EXPRESS	4,003	4,273	-6.3%	4,281	-6.5%	2,937	36.3%		
12/21 WEEKEND INTERLINE	27,485	20,818	32.0%	26,661	3.1%	12,321	123.1%	20,830	31.9%
AHEPA SHUTTLE	82	83	-1.2%	71	15.5%	109	-24.8%	83	-1.2%
FEDERATION GARDENS SHUTTLE	111	98	13.3%	80	38.8%	110	0.9%	142	-21.8%
GREEN HILLS SHUTTLE	36	33	9.1%	26	38.5%	41	-12.2%	36	0.0%
KINGS CREEK SHUTTLE	41	45	-8.9%	55	-25.5%	84	-51.2%	52	-21.2%
ROBERT SHARP SHUTTLE	115	113	1.8%	92	25.0%	93	23.7%	38	202.6%
SIERRA LAKES SHUTTLE	112	100	12.0%	62	80.6%	100	12.0%	180	-37.8%
Total	5,461,317	5,053,665	8.1%	4,912,151	11.2%	5,183,872	5.4%	4,123,083	32.5%

BUS RIDERSHIP BY ROUTE SERVICE TYPE LINEUPS COMPARISON (MONTH-OVER-MONTH)

Boardings by Service Type and Route	Average Weekday	Average Weekday	Percent Change	Average Saturday	Average Saturday	Percent Change	Average Sunday	Average Sunday	Percent Change	Total Monthly	Total Monthly	Percent Change
	Mar-24	Feb-24	24 vs 23	Mar-24	Feb-24	24 vs 23	Mar-24	Feb-24	24 vs 23	Mar-24	Feb-24	24 vs 23
Directly Operated Express Routes												
34 TRANSITWAY EXPRESS	1,768	1,850	-4.4%							37,138	38,852	-4.4%
39 TRANSITWAY EXPRESS	801	869	-7.8%							16,823	18,246	-7.8%
95-EXPRESS GOLDEN GLADES	1,397	1,317	6.1%							29,346	27,665	6.1%
150-MIAMI BEACH AIRPORT EXPRESS	1,776	1,549	14.7%	1,597	1,536	3.9%	1,765	1,526	15.7%	54,101	44,769	20.8%
338 - WEEKEND EXPRESS				235	165	42.3%	168	210	-19.8%	2,018	1,501	34.4%
836 EXPRESS	332	335	-1.1%							6,968	7,043	-1.1%
837 EXPRESS	191	203	-6.3%							4,003	4,273	-6.3%
Subtotal Express Routes	6,265	6,124	2.3%	1,832	1,701	7.7%	1,933	1,736	11.4%	150,397	142,349	5.7%
Percentage of All Bus Routes	3.0%	3.1%		1.4%	1.3%		2.0%	2.0%		2.8%	2.8%	
Contracted Routes - Local Service (*)												
2	2,115	2,018	4.8%	947	969	-2.3%	773	792	-2.5%	53,003	49,414	7.3%
15	441	425	3.7%	350	348	0.4%	293	280	4.5%	12,467	11,434	9.0%
29												
46 - LIBERTY CITY CONN.												
56	582	609	-4.4%	254	230					13,488	13,705	-1.6%
70	281	315	-11.0%	163	172		150	143		7,465	7,882	-5.3%
72	875	946	-7.6%	485	522	-7.0%	439	399	10.2%	22,997	23,557	-2.4%
82 - WESTCHESTER CIRC												
97	203	185	9.5%	165	184	-10.3%	150	130	15.9%	5,838	5,146	13.4%
115												
152	386	402	-3.9%	229	243	-5.7%	128	142	-9.7%	9,899	9,983	-0.8%
155 - BISCAYNE GARDENS CIRC												
202 - LITTLE HAITI CONN												
211 OVERTOWN CIRCULATOR												
212-SWEETWATER CIRC												
217 - BUNCHE PARK CIRC												
254-BROWNSVILLE CIRC												
267-LUDLAM LIMITED												
286-NORTH POINTE CIRC												
344	113	118	-4.1%	74	68					2,747	2,747	0.0%
401 - NORTH OWL	65	65	0.4%	76	76	0.9%	80	71	14.0%	2,147	1,943	10.5%
Subtotal Contracted Reg. & Circ. Routes	5,060	5,083	-0.4%	2,743	2,811	-2.4%	2,014	1,956	3.0%	130,051	125,811	3.4%
Percentage of All Bus Routes	2.5%	2.6%		2.1%	2.1%		2.1%	2.3%		2.4%	2.5%	

- (1) Several express routes were suspended beginning at the end of March 2020, due to the SARS-CoV-2 pandemic, while other routes had alignment and schedule modifications made to them, in an ongoing effort to optimize service delivery.
- (2) A second major round of changes took place with the 11/13/23 lineup known as the Better Bus Network, as listed at the start of this Metrobus section.

BUS RIDERSHIP BY ROUTE SERVICE TYPE LINEUPS COMPARISON (MONTH-OVER-MONTH)

Boardings by Service Type and Route	Average Weekday	Average Weekday	Percent Change	Average Saturday	Average Saturday	Percent Change	Average Sunday	Average Sunday	Percent Change	Total Monthly	Total Monthly	Percent Change
	Mar-24	Feb-24	24 vs 23	Mar-24	Feb-24	24 vs 23	Mar-24	Feb-24	24 vs 23	Mar-24	Feb-24	24 vs 23
Contracted Express Routes												
301-DADE MONROE EXPRESS	1,054	1,047	0.7%	958	967	-0.8%	911	892	2.1%	31,478	29,413	7.0%
302-CARD SOUND EXPRESS	105	106	-1.0%	100	102	-1.3%	86	83	4.0%	3,140	2,968	5.8%
Subtotal Contracted Express Routes	1,159	1,153	0.5%	1,059	1,068	-0.9%	997	975	2.2%	34,618	32,381	6.9%
Percentage of All Bus Routes	0.6%	0.6%		0.8%	0.8%		1.0%	1.2%		0.6%	0.6%	
Limited Stop Routes												
24-CORAL WAY LIMITED	2,617	2,544	2.9%	1,858	2,017	-7.9%	1,325	1,171	13.1%	70,874	66,170	7.1%
38 TRANSITWAY MAX	7,198	7,402	-2.7%	6,015	6,217	-3.2%	5,104	4,739	7.7%	206,754	199,253	3.8%
203 - BISCAYNE MAX	1,252	1,649	-24.1%							26,284	34,637	-24.1%
204 KILLIAN MAX	631	667	-5.3%							13,257	14,001	-5.3%
211 - FLAGLER MAX	2,100	1,985	5.8%							44,100	41,687	5.8%
241 TUTTLE LIMITED												
272 SUNSET MAX (*)	378	374	1.0%							7,934	7,859	1.0%
277-7TH AVENUE MAX												
279 - 79 STREET MAX	970	717	35.2%							20,370	15,066	35.2%
287-SAGA BAY MAX	402	404	-0.5%							8,444	8,488	-0.5%
288 KENDALL MAX	504	531	-5.1%							10,584	11,151	-5.1%
297-27th AVENUE ORANGE MAX												
Subtotal Limited Stop Routes	16,052	16,273	-1.4%	7,872	8,234	-4.4%	6,428	5,910	8.8%	408,601	398,312	2.6%
Percentage of All Bus Routes	7.8%	8.2%		6.0%	6.2%		6.7%	7.0%		7.5%	7.9%	
Directly Operated Free Routes												
132 -TRI-RAIL DORAL SHUTTLE	45	49	-6.7%							954	1,023	-6.7%
500 - CUTLER BAY LOCAL	292	289	1.1%	217	257	-15.4%	104	77	36.0%	7,745	7,405	4.6%
510 - SKYLAKE CIRCULATOR (*)	449	377	19.0%	261	287	-8.8%	313	274	14.2%	12,305	10,168	21.0%
Subtotal Free Directly Operated Routes	787	715	10.0%	479	544	-11.9%	417	351	19.0%	21,004	18,596	12.9%
Percentage of All Bus Routes	0.4%	0.4%		0.4%	0.4%		0.4%	0.4%		0.4%	0.4%	
Contractor-Operated Lifeline Routes												
GREEN HILLS SHUTTLE	9	8	9.1%							36	33	9.1%
KINGS CREEK SHUTTLE	10	9	13.9%							41	45	-8.9%
SIERRA LAKES SHUTTLE	22	25	-10.4%							112	100	12.0%
ROBERT SHARP SHUTTLE	29	28	1.8%							115	113	1.8%
AHEPA SHUTTLE	21	17	23.5%							82	83	-1.2%
FEDERATION GARDENS SHUTTLE				22	25	-9.4%				111	98	13.3%
Subtotal Contractor-Operated Lifeline Routes	91	87	4.4%	22	25	-9.4%				497	472	5.3%
Percentage of All Bus Routes	0.0%	0.0%		0.0%	0.0%					0.0%	0.0%	
All Other (Regular) Routes	176,520	169,828	3.9%	117,595	118,559	-0.8%	84,252	73,781	14.2%	4,716,149	4,335,744	8.8%
Percentage of All Bus Routes	85.7%	85.2%		89.4%	89.2%		87.7%	87.1%		86.4%	85.8%	
Total Bus System	205,935	199,263	3.3%	131,602	132,941	-1.0%	96,041	84,707	13.4%	5,461,317	5,053,665	8.1%

BUS RIDERSHIP BY ROUTE SERVICE TYPE LINEUPS COMPARISON (MONTH-OVER-5 MONTH)

Boardings by Service Type and Route	Average Weekday	Average Weekday	Percent Change	Average Saturday	Average Saturday	Percent Change	Average Sunday	Average Sunday	Percent Change	Total Monthly	Total Monthly	Percent Change
	Mar-24	Oct-23	24 vs 23	Mar-24	Oct-23	24 vs 23	Mar-24	Oct-23	24 vs 23	Mar-24	Oct-23	24 vs 23
Directly Operated Express Routes												
34 TRANSITWAY EXPRESS	1,768	1,636	8.1%							37,138	36,002	3.2%
39 TRANSITWAY EXPRESS	801	742	7.9%							16,823	16,333	3.0%
95-EXPRESS GOLDEN GLADES	1,397	1,195	16.9%							29,346	26,295	11.6%
150-MIAMI BEACH AIRPORT EXPRESS	1,776	2,149	-17.4%	1,597	2,161	-26.1%	1,765	1,966	-10.2%	54,101	65,763	-17.7%
338 - WEEKEND EXPRESS				235	259	-9.3%	168	247	-31.9%	2,018	2,274	-11.3%
836 EXPRESS	332	247	34.5%							6,968	5,428	28.4%
837 EXPRESS	191	195	-2.0%							4,003	4,281	-6.5%
Subtotal Express Routes	6,265	6,165	1.6%	1,832	2,420	-24.3%	1,933	2,214	-12.7%	150,397	156,376	-3.8%
Percentage of All Bus Routes	3.0%	3.3%		1.4%	2.3%		2.0%	2.7%		2.8%	3.2%	
Contracted Routes - Local Service (*)												
2	2,115	2,977	-29.0%	947	1,605	-41.0%	773	1,214	-36.4%	53,003	77,976	-32.0%
15	441	178	148.1%	350	93	275.1%	293	53	452.5%	12,467	4,545	174.3%
29		516								11,342		
46 - LIBERTY CITY CONN.		22								477		
56	582	391	48.9%	254						13,488	8,598	56.9%
70	281	161	74.2%	163			150			7,465	3,546	110.5%
72	875	670	30.6%	485	357	36.2%	439	259	69.4%	22,997	17,459	31.7%
82 - WESTCHESTER CIRC		61			38					1,488		
97	203	225	-9.6%	165	163	0.9%	150	149	1.1%	5,838	6,337	-7.9%
115		151			80					3,968		
152	386	1,051	-63.3%	229	375	-38.8%	128	331	-61.4%	9,899	26,285	-62.3%
155 - BISCAYNE GARDENS CIRC		45								985		
202 - LITTLE HAITI CONN		110			22			21		2,620		
211 OVERTOWN CIRCULATOR		71								1,567		
212-SWEETWATER CIRC		22								494		
217 - BUNCHE PARK CIRC		80								1,759		
254-BROWNSVILLE CIRC		5								105		
267-LUDLAM LIMITED		162								3,567		
286-NORTH POINTE CIRC		93			61					2,279		
344	113	76	49.3%	74						2,747	1,666	64.9%
401 - NORTH OWL	65	61	7.1%	76	61	26.0%	80	65	24.5%	2,147	1,899	13.1%
Subtotal Contracted Reg. & Circ. Routes	5,060	7,125	-29.0%	2,743	2,854	-3.9%	2,014	2,158	-6.7%	130,051	178,962	-27.3%
Percentage of All Bus Routes	2.5%	3.8%		2.1%	2.7%		2.1%	2.7%		2.4%	3.6%	

(1) Several express routes were suspended beginning at the end of March 2020, due to the SARS-CoV-2 pandemic, while other routes had alignment and schedule modifications made to them, in an ongoing effort to optimize service delivery.
(2) A second major round of changes took place with the 11/13/23 lineup known as the Better Bus Network, as listed at the start of this Metrobus section.

BUS RIDERSHIP BY ROUTE SERVICE TYPE LINEUPS COMPARISON (MONTH-OVER-5 MONTH)

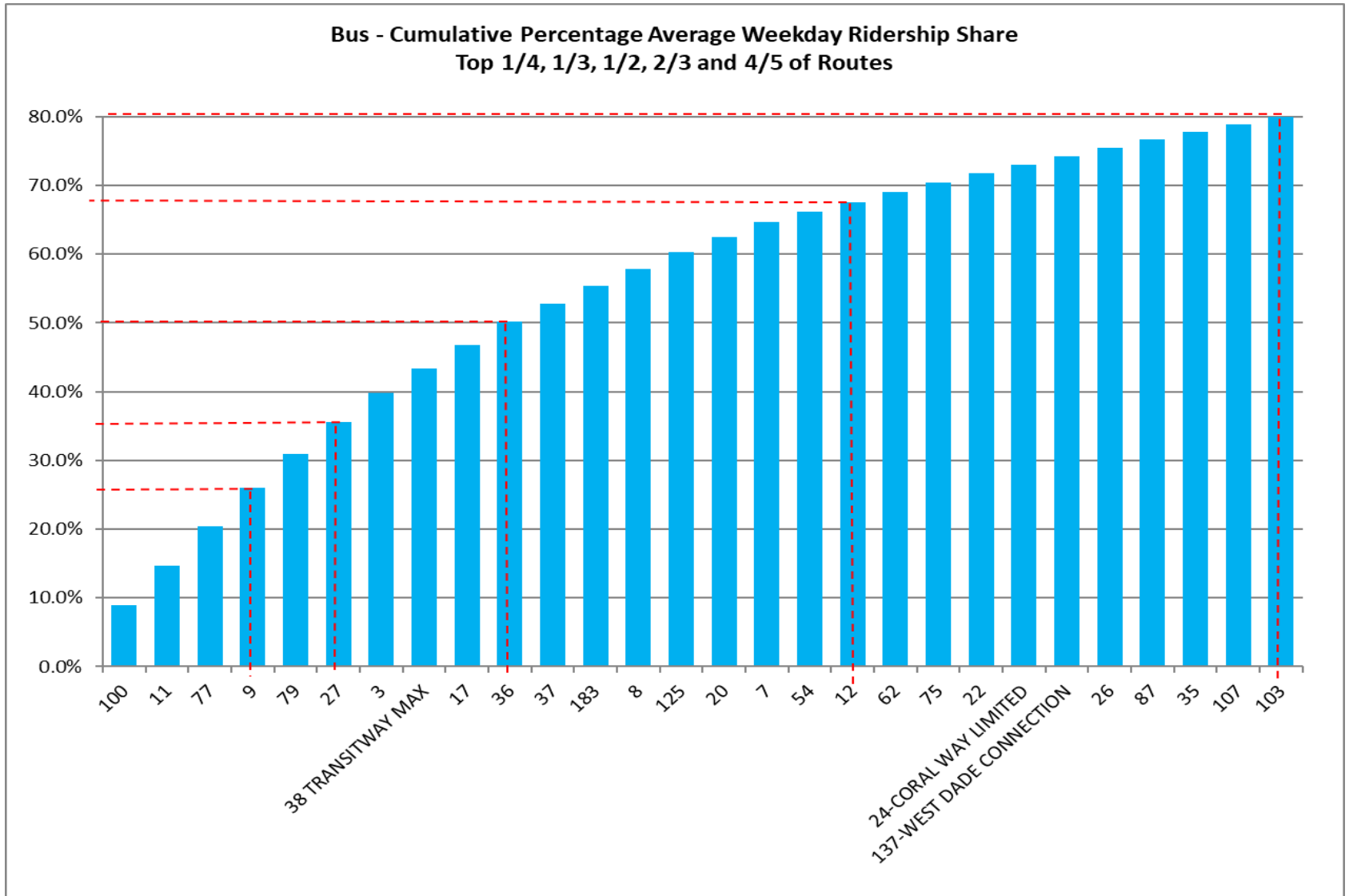
Boardings by Service Type and Route	Average Weekday	Average Weekday	Percent Change	Average Saturday	Average Saturday	Percent Change	Average Sunday	Average Sunday	Percent Change	Total Monthly	Total Monthly	Percent Change
	Mar-24	Oct-23	24 vs 23	Mar-24	Oct-23	24 vs 23	Mar-24	Oct-23	24 vs 23	Mar-24	Oct-23	24 vs 23
Contracted Express Routes												
301-DADE MONROE EXPRESS	1,054	955	10.3%	958	885	8.3%	911	867	5.1%	31,478	28,889	9.0%
302-CARD SOUND EXPRESS	105	91	16.1%	100	94	6.6%	86	72	19.8%	3,140	2,728	15.1%
Subtotal Contracted Express Routes	1,159	1,046	10.8%	1,059	979	8.1%	997	938	6.2%	34,618	31,617	9.5%
Percentage of All Bus Routes	0.6%	0.6%		0.8%	0.9%		1.0%	1.2%		0.6%	0.6%	
Limited Stop Routes												
24-CORAL WAY LIMITED	2,617	2,195	19.2%	1,858	1,400	32.7%	1,325	1,108	19.5%	70,874	59,432	19.3%
38 TRANSITWAY MAX	7,198	5,714	26.0%	6,015	6,328	-4.9%	5,104	4,957	3.0%	206,754	175,803	17.6%
203 - BISCAYNE MAX	1,252	3,666	-65.9%							26,284	80,650	-67.4%
204 KILLIAN MAX	631	620	1.9%							13,257	13,632	-2.8%
211 - FLAGLER MAX	2,100	3,824	-45.1%							44,100	84,135	-47.6%
241 TUTTLE LIMITED		348			222			187			9,471	
272 SUNSET MAX (*)	378	428	-11.8%							7,934	9,423	-15.8%
277-7TH AVENUE MAX		879									19,345	
279 - 79 STREET MAX	970	469	106.8%							20,370	10,318	97.4%
287-SAGA BAY MAX	402	341	18.0%							8,444	7,499	12.6%
288 KENDALL MAX	504	372	35.4%							10,584	8,189	29.2%
297-27th AVENUE ORANGE MAX		1,229									27,047	
Subtotal Limited Stop Routes	16,052	20,086	-20.1%	7,872	7,950	-1.0%	6,428	6,252	2.8%	408,601	504,944	-19.1%
Percentage of All Bus Routes	7.8%	10.8%		6.0%	7.4%		6.7%	7.7%		7.5%	10.3%	
Directly Operated Free Routes												
132 -TRI-RAIL DORAL SHUTTLE	45	37	24.3%							954	804	18.7%
500 - CUTLER BAY LOCAL	292	176	66.2%	217	152	43.1%	104	86	21.1%	7,745	4,907	57.8%
510 - SKYLAKE CIRCULATOR (*)	449	471	-4.7%	261	217	20.3%	313	194	61.0%	12,305	12,211	0.8%
Subtotal Free Directly Operated Routes	787	684	15.1%	479	369	29.7%	417	280	48.7%	21,004	17,922	17.2%
Percentage of All Bus Routes	0.4%	0.4%		0.4%	0.3%		0.4%	0.3%		0.4%	0.4%	
Contractor-Operated Lifeline Routes												
GREEN HILLS SHUTTLE	9	5	73.1%							36	26	38.5%
KINGS CREEK SHUTTLE	10	14	-25.5%							41	55	-25.5%
SIERRA LAKES SHUTTLE	22	16	44.5%							112	62	80.6%
ROBERT SHARP SHUTTLE	29	23	25.0%							115	92	25.0%
AHEPA SHUTTLE	21	18	15.5%							82	71	15.5%
FEDERATION GARDENS SHUTTLE				22	20	11.0%				111	80	38.8%
Subtotal Contractor-Operated Lifeline Routes	91	75	20.9%	22	20	11.0%				497	386	28.8%
Percentage of All Bus Routes	0.0%	0.0%		0.0%	0.0%					0.0%	0.0%	
All Other (Regular) Routes	176,520	150,140	17.6%	117,595	92,739	26.8%	84,252	69,584	21.1%	4,716,149	4,021,944	17.3%
Percentage of All Bus Routes	85.7%	81.0%		89.4%	86.4%		87.7%	85.5%		86.4%	81.9%	
Total Bus System	205,935	185,320	11.1%	131,602	107,331	22.6%	96,041	81,427	17.9%	5,461,317	4,912,151	11.2%

Bus Routes as Ranked by Percentage of Average Weekday Ridership March 2024

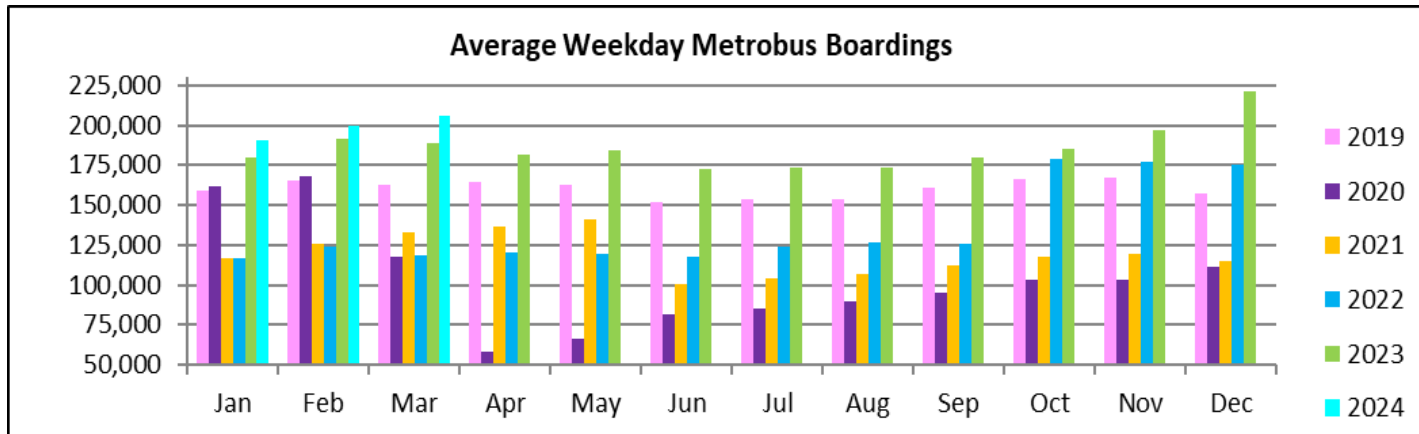
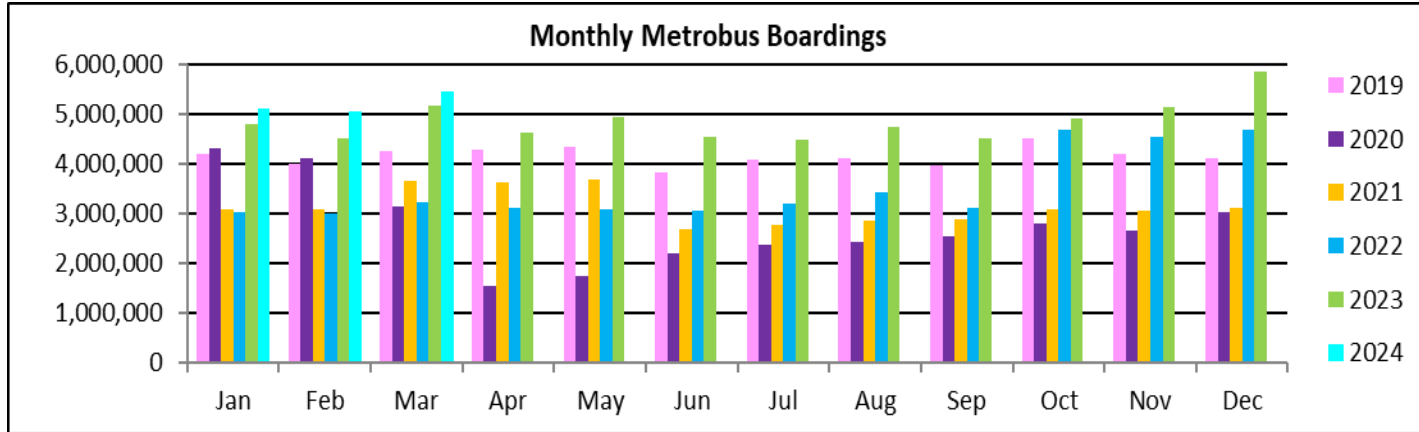
Rank	Route	Average Weekday	Percent Share	Cumul Pct Share	Rank	Route	Average Weekday	Percent Share	Cumul Pct Share	Rank	Route	Average Weekday	Percent Share	Cumul Pct Share
1	100	18,376	8.9%	8.9%	29	35	2,315	1.1%	77.8%	57	152	386	0.2%	98.9%
2	11	11,928	5.8%	14.7%	30	107	2,308	1.1%	78.9%	58	272	378	0.2%	99.0%
3	77	11,737	5.7%	20.4%	31	135	2,097	1.0%	83.0%	59	836	332	0.2%	99.2%
4	9	11,530	5.6%	26.0%	32	21	2,094	1.0%	84.0%	60	500	292	0.1%	99.3%
5	79	9,974	4.8%	30.9%	33	199	2,052	1.0%	85.0%	61	70	281	0.1%	99.5%
6	27	9,686	4.7%	35.6%	34	32	2,034	1.0%	86.0%	62	97	203	0.1%	99.6%
7	3	8,857	4.3%	39.9%	35	88	2,024	1.0%	87.0%	63	837	191	0.1%	99.7%
8	38	7,198	3.5%	43.4%	36	40	1,941	0.9%	88.0%	64	136	169	0.1%	99.8%
9	17	7,158	3.5%	46.8%	37	207	1,886	0.9%	88.9%	65	344	113	0.1%	99.8%
10	36	6,926	3.4%	50.2%	38	150	1,776	0.9%	89.7%	66	302	105	0.1%	99.9%
11	37	5,352	2.6%	52.8%	39	34	1,768	0.9%	90.6%	67	400	80	0.0%	99.9%
12	183	5,328	2.6%	55.4%	40	208	1,757	0.9%	91.4%	68	401	65	0.0%	99.9%
13	8	5,139	2.5%	57.9%	41	52	1,648	0.8%	92.2%	69	132	45	0.0%	100.0%
14	125	4,888	2.4%	60.3%	42	73	1,432	0.7%	92.9%	70	RS	29	0.0%	100.0%
15	20	4,520	2.2%	62.4%	43	95	1,397	0.7%	93.6%	71	SL	22	0.0%	100.0%
16	7	4,501	2.2%	64.6%	44	203	1,252	0.6%	94.2%	72	AS	21	0.0%	100.0%
17	54	3,082	1.5%	66.1%	45	14	1,251	0.6%	94.8%	73	KC	10	0.0%	100.0%
18	12	2,993	1.5%	67.6%	46	104	1,200	0.6%	95.4%	74	GH	9	0.0%	100.0%
19	62	2,963	1.4%	69.0%	47	301	1,054	0.5%	95.9%					
20	75	2,932	1.4%	70.4%	48	279	970	0.5%	96.4%					
21	22	2,708	1.3%	71.8%	49	72	875	0.4%	96.8%					
22	24	2,617	1.3%	73.0%	50	39	801	0.4%	97.2%					
23	137	2,541	1.2%	74.3%	51	204	631	0.3%	97.5%					
24	26	2,522	1.2%	75.5%	52	56	582	0.3%	97.8%					
25	87	2,361	1.1%	76.6%	53	288	504	0.2%	98.0%					
26	new 103	2,230	1.1%	80.0%	54	510	449	0.2%	98.3%					entirely contracted in Mar-24
27	2	2,115	1.0%	81.0%	55	15	441	0.2%	98.5%					
28	new 211	2,100	1.0%	82.0%	56	287	402	0.2%	98.7%					
		Total Boardings	205,935	100.00%	100.0%									

- (1) Average weekday ridership rounded to the nearest unit.
(2) Includes the five Lifeline Shuttles that operate on weekdays: Ahepa (AS), Green Hills (GH), Kings Creek (KC), Robert Sharp (RS) and Sierra Lakes (SL).

METROBUS CUMULATIVE PERCENTAGE RIDERSHIP SHARE – BY ROUTE



TOTAL MONTHLY AND AVERAGE WEEKDAY RIDERSHIP YEAR OVER YEAR COMPARISON CHARTS – METROBUS



**“TOP 10 / BOTTOM 10” BUS ROUTES AVERAGE WEEKDAY RIDERSHIP PERFORMANCE
MONTH OVER MONTH COMPARISON**

Route	Mar-24	Feb-24	Absolute Delta	Percent Delta
100	18,376	15,894	2,482	15.6%
79	9,974	8,584	1,390	16.2%
36	6,926	6,222	704	11.3%
20	4,520	3,861	660	17.1%
37	5,352	4,728	625	13.2%
11	11,928	11,491	438	3.8%
14	1,251	975	276	28.3%
7	4,501	4,248	253	6.0%
279 - 79 STREET MAX	970	717	253	35.2%
150-MIAMI BEACH AIRPORT EXPRESS	1,776	1,549	227	14.7%
77	11,737	12,375	-639	-5.2%
203 - BISCAYNE MAX	1,252	1,649	-398	-24.1%
38 TRANSITWAY MAX	7,198	7,402	-203	-2.7%
3	8,857	8,981	-124	-1.4%
35	2,315	2,435	-120	-4.9%
34 TRANSITWAY EXPRESS	1,768	1,850	-82	-4.4%
87	2,361	2,438	-77	-3.2%
17	7,158	7,233	-75	-1.0%
72	875	946	-71	-7.6%
39 TRANSITWAY EXPRESS	801	869	-68	-7.8%

(*) Averages rounded to the nearest boarding, data as estimated from automatic passenger counter (APC) system; Lifeline shuttles excluded.

“TOP 10 / BOTTOM 10” BUS ROUTES SETS AVERAGE WEEKDAY RIDERSHIP PERFORMANCE YEAR OVER YEAR COMPARISON

Route Set (*), (1), (2)	Mar-24	Mar-23	Absolute Delta	Percent Delta	routes included in set
{ 20 }	6,555	2,840	3,715	130.8%	20, 32, 115
{ 11 }	11,928	9,194	2,735	29.7%	11, 212
{ 17 & 22 & 75 }	12,797	10,334	2,463	23.8%	17, 22, 75, 108, 217
{ 77 }	11,737	9,954	1,783	17.9%	77, 277
{ new 107 }	5,486	3,945	1,541	39.1%	35, 56, 70, 71, new 107, 248
{ 279 }	10,944	9,490	1,454	15.3%	79, 112, 279
{ 125 }	4,888	3,704	1,184	32.0%	19, 107, 125
{ 3 & 203 }	10,109	9,029	1,080	12.0%	3, 93, 203
{ 62 }	2,963	1,935	1,028	53.1%	62, 202
{ 9 }	11,530	10,535	995	9.4%	9, 10, 16
{ new 211 }	12,397	13,993	-1,596	-11.4%	8, 24, 51, 82, 137, new 211
{ 73 & 183 }	6,760	8,307	-1,547	-18.6%	57, 73, 183, 238, 267, 286
{ 100 }	18,376	19,232	-856	-4.5%	100, 105, 119, 120
{ 2 }	2,115	2,865	-750	-26.2%	2
150	1,776	2,432	-656	-27.0%	150
40	1,941	2,467	-526	-21.3%	40
88	2,024	2,524	-499	-19.8%	88
{ 52 }	2,034	2,389	-355	-14.9%	52, 152, 252
{ 37 & 54 }	8,434	8,696	-262	-3.0%	29, 37, 42, 54, 254
{ 38 }	7,311	7,547	-236	-3.1%	38, 344

(*) Averages rounded to the nearest boarding, data as estimated from automatic passenger counter (APC) system; Lifeline shuttles excluded.

(1) The route sets, denoted by brackets, include the new 11/13/2023 lineup's Better Bus Network route designations, as well as older routes present for the first part of the month and previous months and years, then either renamed, absorbed, or eliminated. The sets were defined to enable reasonably fair comparisons between pre- and post-BBN timeframes, to the extent possible and practical, given the complexity of the changes for some of the routes and sets. The definitions are based on information from the DTPW website, and subject to future adjustments, if necessary.

(2) The adjective "new" in front of some new Better Bus Network-generated (recycled) route numbers was added to help prevent confusion with older but different routes with the same number present in previous months or years.

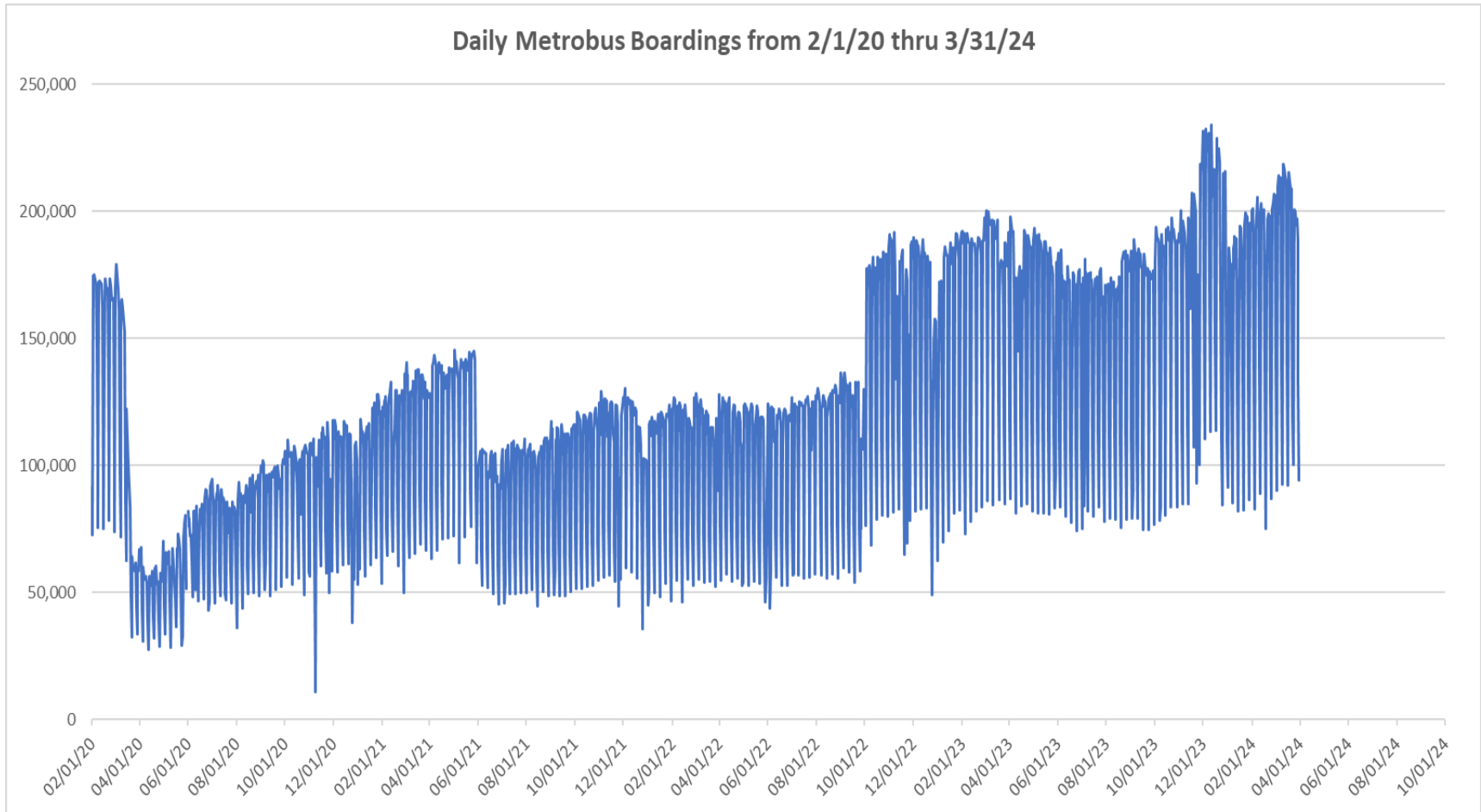
**“TOP 10 / BOTTOM 10” BUS ROUTES SETS AVERAGE WEEKDAY RIDERSHIP PERFORMANCE
MONTH OVER 5-MONTH PRIOR COMPARISON**

Route Set (*), (1), (2)	Mar-24	Oct-23	Absolute Delta	Percent Delta	routes included in set
{ 20 }	6,555	2,850	3,705	130.0%	20, 32, 115
{ 11 }	11,928	9,644	2,285	23.7%	11, 212
{ 17 & 22 & 75 }	12,797	10,796	2,001	18.5%	17, 22, 75, 108, 217
{ 279 }	10,944	8,950	1,994	22.3%	79, 112, 279
{ 38 }	7,311	5,790	1,522	26.3%	38, 344
{ 27 }	9,686	8,339	1,347	16.1%	27, 297
{ 36 }	6,926	5,600	1,326	23.7%	36, 110
{ 100 }	18,376	17,117	1,259	7.4%	100, 105, 119, 120
{ new 107 }	5,486	4,447	1,039	23.4%	35, 56, 70, 71, new 107, 248
{ 3 & 203 }	10,109	9,082	1,027	11.3%	3, 93, 203
{ 73 & 183 }	6,760	7,890	-1,130	-14.3%	57, 73, 183, 238, 267, 286
{ 2 }	2,115	3,048	-933	-30.6%	2
{ new 211 }	12,397	12,849	-452	-3.5%	8, 24, 51, 82, 137, new 211
{ 52 }	2,034	2,442	-408	-16.7%	52, 152, 252
40	1,941	2,344	-403	-17.2%	40
88	2,024	2,419	-395	-16.3%	88
150	1,776	2,149	-374	-17.4%	150
272	378	428	-51	-11.8%	272
510	449	471	-22	-4.7%	510
97	203	225	-22	-9.6%	97

(*) Averages rounded to the nearest boarding, data as estimated from automatic passenger counter (APC) system; Lifeline shuttles excluded.

- (1) The route sets, denoted by brackets, include the new 11/13/2023 lineup's Better Bus Network route designations, as well as older routes present for the first part of the month and previous months and years, then either renamed, absorbed, or eliminated. The sets were defined to enable reasonably fair comparisons between pre- and post-BBN timeframes, to the extent possible and practical, given the complexity of the changes for some of the routes and sets. The definitions are based on information from the DTPW website, and subject to future adjustments, if necessary.
- (2) The adjective "new" in front of some new Better Bus Network-generated (recycled) route numbers was added to help prevent confusion with older but different routes with the same number present in previous months or years.

DAILY METROBUS RIDERSHIP SINCE FEBRUARY 1, 2020



- (1) There was no Metrobus, Metrorail and Metromover service on 5/31/20, as a safety precaution, and no service for any of the four modes on 9/28/22, as a result of Hurricane Ian.
- (2) The dip at the start of the second week of December 2020 is due to Hurricane Eta.
- (3) Daily variations from October 2022 onward are estimated from reports made available by the Bus APC data vendor; the data is based on statistical sampling.
- (4) The reduction seen beginning 6/1/21 is partly due to the resumption of fares and partly the result of resuming reporting Cubic farebox data rather than bus APC counts; the jump seen at the start of December 2022 is due to the return to APC bus ridership counts reporting beginning 10/1/22; the peak in Dec 2023 is attributable to the Better Bus Network launch period and attendant free fares.
- (5) Periodic (weekly) variations are prominent, since weekday ridership is almost always significantly higher than weekend or holiday ridership.

METROBUS PARKING PATRONAGE SUMMARY

March 2024

PARK-RIDE LOT	ACTUAL AVAILABLE SPACES	ACTUAL OCCUPANCY	PERCENT OCCUPANCY
Transitway / SW 152nd St	200	131	66%
Transitway / SW 168th St (*)	149	0	0%
Transitway / SW 200th Street	100	37	37%
Transitway / SW 112 Ave (Target)	450	142	32%
Transitway / SW 244th St	95	92	97%
Transitway / SW 296th St	139	27	19%
Transitway / SW 344th St	248	197	79%
Coral Reef Drive 117/ Turnpike	95	82	86%
Golden Glades Facility	2,150	389	18%
Hammocks Town Center (SW 152 Ave / SW 104 St)	50	18	36%
Kendall Dr./SW 127th Ave	161	12	7%
West Kendall Transit Term (Kendall Dr / SW162 Ave)	40	21	53%
NW 7th Avenue Transit Village (NW 7 Ave / NW 62 St)	25	23	92%
Miami Gardens Dr. / NW 73rd Ave	136	2	1%
Dolphin Station	348	73	21%
Tamiami Station (eff 11-2022)	442	57	13%
I-75 / Miami Gardens Dr (**)	298	0	0%
TOTAL	5,126	1,303	25%

(*) Closed for construction beginning March 2022

(**) Route 175 Suspended 3/27/2020

Metrorail



March 2024

METRORAIL AVERAGE WEEKDAY BOARDINGS BY STATION (†)

Weekdays	Average Weekday	Average Weekday	Percent Change	Average Weekday	Percent Change	Average Weekday	Percent Change	Average Weekday	Percent Change
STATIONS	Mar-24	Mar-23	YOY	Feb-20	Current vs Feb-20	Feb-24	MOM	Mar-19	YO5Y
ALLAPATTAH	1,716	1,691	1.5%	1,942	-11.6%	1,772	-3.1%	1,782	-3.7%
BRICKELL	5,651	5,326	6.1%	6,529	-13.4%	5,758	-1.9%	6,136	-7.9%
BROWNSVILLE	536	701	-23.6%	862	-37.8%	501	6.9%	790	-32.2%
CIVIC CENTER	4,187	4,179	0.2%	6,143	-31.8%	4,172	0.3%	5,656	-26.0%
COCONUT GROVE	1,786	1,521	17.4%	1,795	-0.5%	1,751	2.0%	1,625	9.9%
CULMER	958	1,044	-8.3%	1,392	-31.2%	1,042	-8.1%	1,182	-19.0%
DADELAND NORTH	4,196	3,848	9.1%	5,926	-29.2%	4,356	-3.7%	5,729	-26.8%
DADELAND SOUTH	4,795	4,478	7.1%	7,150	-32.9%	5,034	-4.7%	6,661	-28.0%
DOUGLAS ROAD	3,310			3,624	-8.7%	3,406	-2.8%	3,502	-5.5%
DR. MARTIN LUTHER KING, JR.	722	856	-15.7%	1,157	-37.6%	776	-7.0%	1,070	-32.5%
EARLINGTON HEIGHTS	1,483	1,326	11.8%	1,662	-10.8%	1,474	0.6%	1,500	-1.1%
GOVERNMENT CENTER	7,039	7,092	-0.7%	10,557	-33.3%	7,026	0.2%	9,827	-28.4%
HIALEAH	1,285	1,067	20.4%	1,253	2.6%	1,153	11.5%	1,260	2.0%
MIAMI INTERNATIONAL AIRPORT	1,336	1,417	-5.7%	1,711	-21.9%	1,224	9.1%	1,637	-18.4%
NORTHSIDE	1,380	1,328	4.0%	1,476	-6.5%	1,191	15.9%	1,353	2.0%
OKEECHOBEE	1,011	909	11.2%	1,164	-13.2%	1,012	-0.1%	1,149	-12.1%
OVERTOWN / ARENA	1,942	1,694	14.7%	2,274	-14.6%	1,968	-1.3%	2,139	-9.2%
PALMETTO	1,214	1,292	-6.1%	1,543	-21.3%	1,253	-3.2%	1,459	-16.8%
SANTA CLARA	796	700	13.7%	812	-2.0%	792	0.5%	754	5.4%
SOUTH MIAMI	2,218	2,013	10.2%	3,015	-26.5%	2,281	-2.8%	2,832	-21.7%
TRI-RAIL	1,205	1,181	2.0%	1,207	-0.2%	1,170	2.9%	1,182	1.9%
UNIVERSITY	2,067	1,951	6.0%	2,784	-25.8%	2,343	-11.8%	2,248	-8.0%
VIZCAYA	1,276	1,190	7.2%	1,390	-8.2%	1,297	-1.6%	1,313	-2.9%
TOTAL	52,107	46,804	11.3%	67,367	-22.7%	52,755	-1.2%	62,786	-17.0%

(†) In this table and those which follow, “YOY” stands for “year-over-year”, “MOM” for “month-over-month” and, e.g., “YO5Y” for “year over five years”, i.e., current month vs 12 months prior, one month prior, and 60 months prior, respectively. The February 2020 numbers serve as a pre-pandemic benchmark.

METRORAIL AVERAGE SATURDAY BOARDINGS BY STATION

Saturdays	Average Saturday	Average Saturday	Percent Change	Average Saturday	Percent Change	Average Saturday	Percent Change	Average Saturday	Percent Change
STATIONS	Mar-24	Mar-23	YOY	Feb-20	Current vs Feb-20	Feb-24	MOM	Mar-19	YO5Y
ALLAPATTAH	898	957	-6.2%	1,051	-14.6%	935	-3.9%	1,031	-12.9%
BRICKELL	2,698	2,729	-1.1%	2,811	-4.0%	2,733	-1.3%	2,861	-5.7%
BROWNSVILLE	302	427	-29.4%	520	-42.0%	287	5.2%	522	-42.2%
CIVIC CENTER	684	781	-12.5%	959	-28.7%	655	4.4%	979	-30.2%
COCONUT GROVE	973	989	-1.6%	928	4.8%	997	-2.4%	879	10.7%
CULMER	456	533	-14.4%	721	-36.8%	466	-2.2%	663	-31.3%
DADELAND NORTH	1,513	1,567	-3.5%	1,994	-24.1%	1,400	8.0%	2,042	-25.9%
DADELAND SOUTH	1,973	2,032	-2.9%	2,625	-24.8%	2,092	-5.7%	2,590	-23.8%
DOUGLAS ROAD	1,489			1,319	12.9%	1,385	7.5%	1,381	7.8%
DR. MARTIN LUTHER KING, JR.	430	483	-10.8%	625	-31.1%	426	1.2%	624	-31.0%
EARLINGTON HEIGHTS	837	770	8.7%	935	-10.6%	818	2.2%	892	-6.2%
GOVERNMENT CENTER	3,309	4,165	-20.5%	4,262	-22.3%	2,868	15.4%	3,964	-16.5%
HIALEAH	616	558	10.3%	583	5.7%	540	14.1%	609	1.1%
MIAMI INTERNATIONAL AIRPORT	975	1,094	-10.9%	1,330	-26.7%	834	16.9%	1,317	-26.0%
NORTHSIDE	791	846	-6.4%	878	-9.9%	717	10.4%	898	-11.9%
OKEECHOBEE	435	333	30.8%	408	6.5%	402	8.2%	433	0.4%
OVERTOWN / ARENA	677	671	0.8%	678	-0.2%	680	-0.4%	620	9.1%
PALMETTO	411	497	-17.3%	458	-10.3%	390	5.2%	436	-5.9%
SANTA CLARA	378	375	0.9%	422	-10.3%	364	3.9%	416	-9.0%
SOUTH MIAMI	1,051	1,046	0.5%	1,256	-16.3%	1,045	0.6%	1,330	-20.9%
TRI-RAIL	584	625	-6.6%	614	-4.9%	610	-4.3%	579	0.8%
UNIVERSITY	855	881	-2.9%	714	19.7%	783	9.2%	697	22.6%
VIZCAYA	609	603	1.0%	622	-2.1%	576	5.7%	990	-38.5%
TOTAL	22,943	22,958	-0.1%	26,714	-14.1%	22,001	4.3%	26,752	-14.2%

METRORAIL AVERAGE SUNDAY BOARDINGS BY STATION

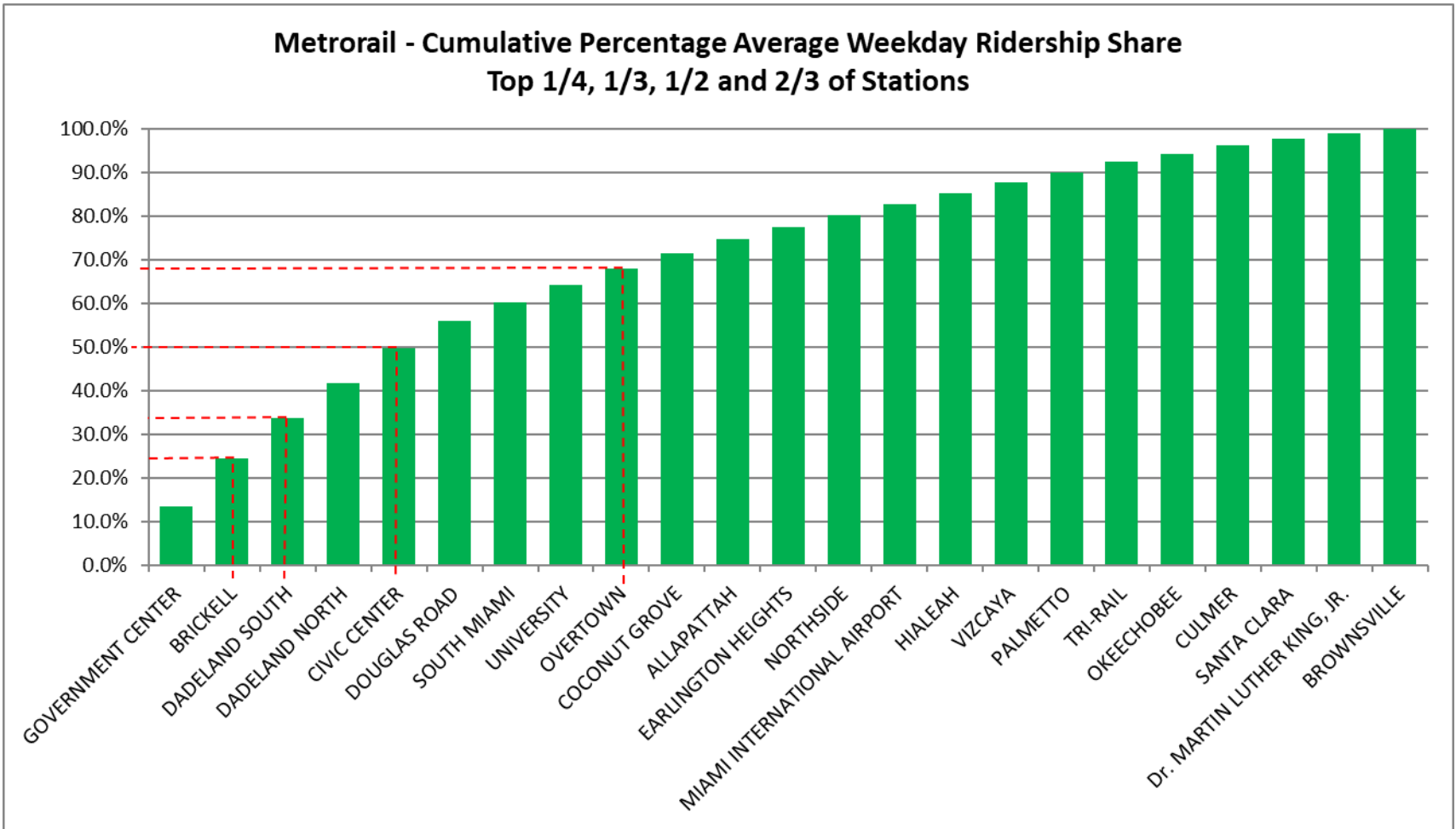
Sundays	Average Sunday	Average Sunday	Percent Change	Average Sunday	Percent Change	Average Sunday	Percent Change	Average Sunday	Percent Change
STATIONS	Mar-24	Mar-23	YOY	Feb-20	Current vs Feb-20	Feb-24	MOM	Mar-19	YO5Y
ALLAPATTAH	647	691	-6.4%	791	-18.2%	622	4.1%	739	-12.4%
BRICKELL	2,144	2,077	3.3%	2,379	-9.8%	1,877	14.2%	2,237	-4.1%
BROWNSVILLE	227	314	-27.8%	406	-44.2%	203	11.5%	402	-43.6%
CIVIC CENTER	525	606	-13.3%	791	-33.7%	484	8.5%	760	-31.0%
COCONUT GROVE	755	734	2.9%	838	-9.9%	614	23.0%	703	7.5%
CULMER	354	389	-8.9%	616	-42.5%	339	4.6%	546	-35.2%
DADELAND NORTH	1,066	1,092	-2.4%	1,685	-36.7%	918	16.2%	1,452	-26.6%
DADELAND SOUTH	1,576	1,538	2.5%	2,210	-28.7%	1,473	7.0%	1,958	-19.5%
DOUGLAS ROAD	1,094			1,090	0.4%	884	23.8%	1,012	8.1%
DR. MARTIN LUTHER KING, JR.	326	364	-10.4%	506	-35.6%	307	6.4%	438	-25.5%
EARLINGTON HEIGHTS	623	604	3.1%	799	-22.1%	558	11.7%	741	-16.0%
GOVERNMENT CENTER	3,628	3,592	1.0%	4,044	-10.3%	2,115	71.5%	2,922	24.2%
HIALEAH	438	415	5.7%	472	-7.1%	362	21.0%	463	-5.4%
MIAMI INTERNATIONAL AIRPORT	990	1,160	-14.7%	1,343	-26.3%	831	19.1%	1,249	-20.8%
NORTHSIDE	626	633	-1.2%	653	-4.1%	521	20.0%	664	-5.7%
OKEECHOBEE	292	242	20.7%	273	6.7%	257	13.4%	262	11.2%
OVERTOWN / ARENA	597	502	18.8%	544	9.6%	534	11.8%	523	14.0%
PALMETTO	261	265	-1.6%	336	-22.4%	239	9.0%	280	-7.0%
SANTA CLARA	255	252	1.4%	280	-8.7%	211	21.2%	257	-0.6%
SOUTH MIAMI	762	750	1.6%	987	-22.7%	689	10.6%	897	-15.0%
TRI-RAIL	442	438	1.1%	528	-16.2%	361	22.6%	502	-11.9%
UNIVERSITY	695	650	6.9%	608	14.2%	482	44.2%	495	40.3%
VIZCAYA	454	448	1.2%	524	-13.5%	364	24.7%	1,011	-55.1%
TOTAL	18,776	17,753	5.8%	22,701	-17.3%	15,242	23.2%	20,515	-8.5%

METRORAIL TOTAL MONTHLY BOARDINGS BY STATION

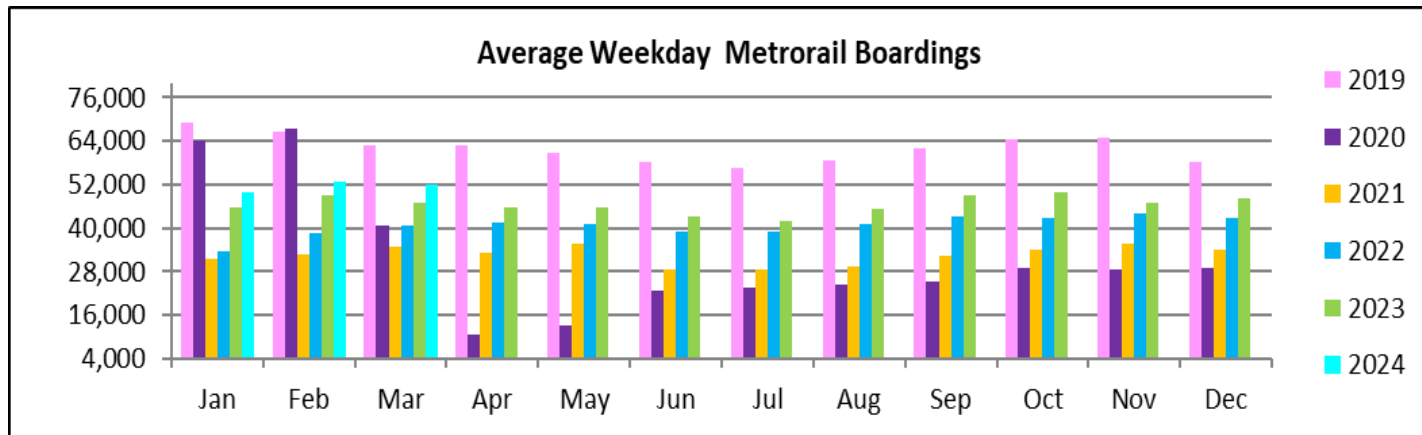
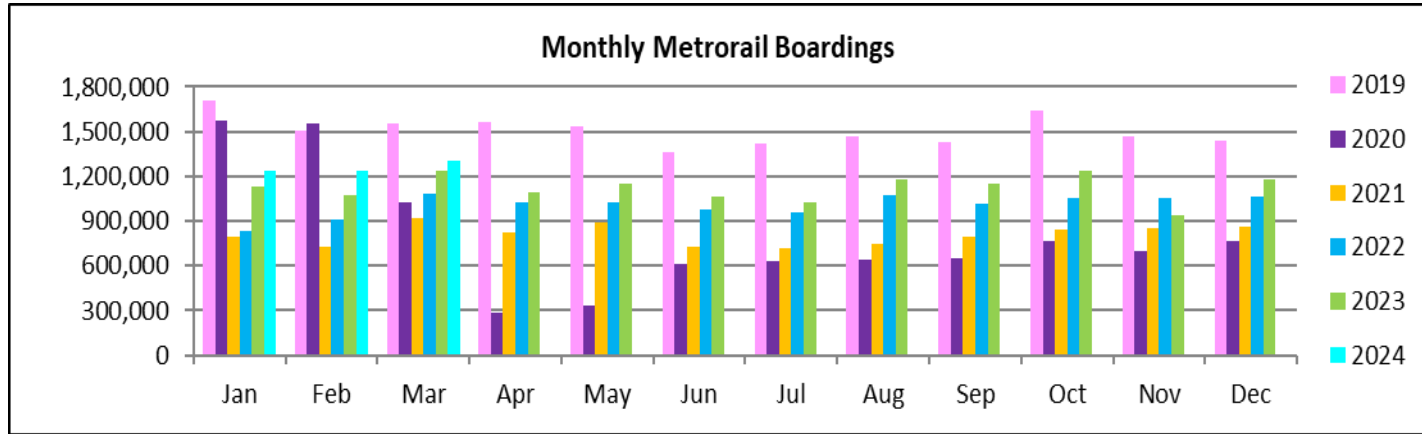
Monthly Totals	Total Month	Total Month	Percent Change	Total Month	Percent Change	Total Month	Percent Change	Total Month	Percent Change
	Mar-24	Mar-23	YOY	Feb-20	Current vs Feb-20	Feb-24	MOM	Mar-19	YO5Y
STATIONS	Mar-24	Mar-23	YOY	Feb-20	Current vs Feb-20	Feb-24	MOM	Mar-19	YO5Y
ALLAPATTAH	43,769	45,476	-3.8%	46,868	-6.6%	43,045	1.7%	46,269	-5.4%
BRICKELL	142,883	141,718	0.8%	152,259	-6.2%	137,776	3.7%	154,349	-7.4%
BROWNSVILLE	13,890	19,082	-27.2%	21,285	-34.7%	12,422	11.8%	21,199	-34.5%
CIVIC CENTER	93,970	101,666	-7.6%	128,921	-27.1%	90,903	3.4%	127,468	-26.3%
COCONUT GROVE	46,137	41,882	10.2%	43,580	5.9%	42,945	7.4%	42,037	9.8%
CULMER	24,161	27,704	-12.8%	33,497	-27.9%	24,675	-2.1%	30,862	-21.7%
DADELAND NORTH	101,018	99,135	1.9%	132,894	-24.0%	99,058	2.0%	137,782	-26.7%
DADELAND SOUTH	118,446	117,273	1.0%	162,416	-27.1%	118,318	0.1%	162,630	-27.2%
DOUGLAS ROAD	82,420			82,141	0.3%	79,221	4.0%	85,517	-3.6%
DR. MARTIN LUTHER KING, JR.	18,945	23,080	-17.9%	27,980	-32.3%	19,033	-0.5%	27,781	-31.8%
EARLINGTON HEIGHTS	38,433	36,003	6.7%	40,697	-5.6%	36,028	6.7%	39,656	-3.1%
GOVERNMENT CENTER	182,515	194,132	-6.0%	243,414	-25.0%	164,409	11.0%	240,794	-24.2%
HIALEAH	32,266	28,438	13.5%	29,516	9.3%	27,504	17.3%	31,823	1.4%
MIAMI INTERNATIONAL AIRPORT	37,881	41,603	-8.9%	46,115	-17.9%	32,242	17.5%	47,202	-19.7%
NORTHSIDE	36,067	36,452	-1.1%	36,127	-0.2%	29,722	21.3%	36,230	-0.4%
OKEECHOBEE	24,854	23,200	7.1%	26,026	-4.5%	23,576	5.4%	27,611	-10.0%
OVERTOWN / ARENA	47,154	43,652	8.0%	49,911	-5.5%	45,277	4.1%	50,628	-6.9%
PALMETTO	28,847	32,769	-12.0%	33,944	-15.0%	28,453	1.4%	34,218	-15.7%
SANTA CLARA	19,874	18,600	6.8%	19,245	3.3%	18,727	6.1%	19,207	3.5%
SOUTH MIAMI	55,638	53,482	4.0%	69,412	-19.8%	54,171	2.7%	70,613	-21.2%
TRI-RAIL	30,428	31,422	-3.2%	29,120	4.5%	28,307	7.5%	30,227	0.7%
UNIVERSITY	51,154	50,987	0.3%	61,253	-16.5%	53,938	-5.2%	53,164	-3.8%
VIZCAYA	32,104	31,580	1.7%	32,497	-1.2%	30,566	5.0%	37,584	-14.6%
TOTAL	1,302,854	1,239,336	5.1%	1,549,118	-15.9%	1,240,316	5.0%	1,554,851	-16.2%

(†) A transition from Nextfare (faregate) data to a video camera system at all Rail stations was made necessary by the Better Bus Network launch on 11/13/2023 and its attendant free fares. NextFare data from the faregate resumed on New year's Day 2024.

METRORAIL CUMULATIVE PERCENTAGE RIDERSHIP SHARE



TOTAL MONTHLY AND AVERAGE WEEKDAY RIDERSHIP YEAR OVER YEAR COMPARISON CHARTS – METRORAIL

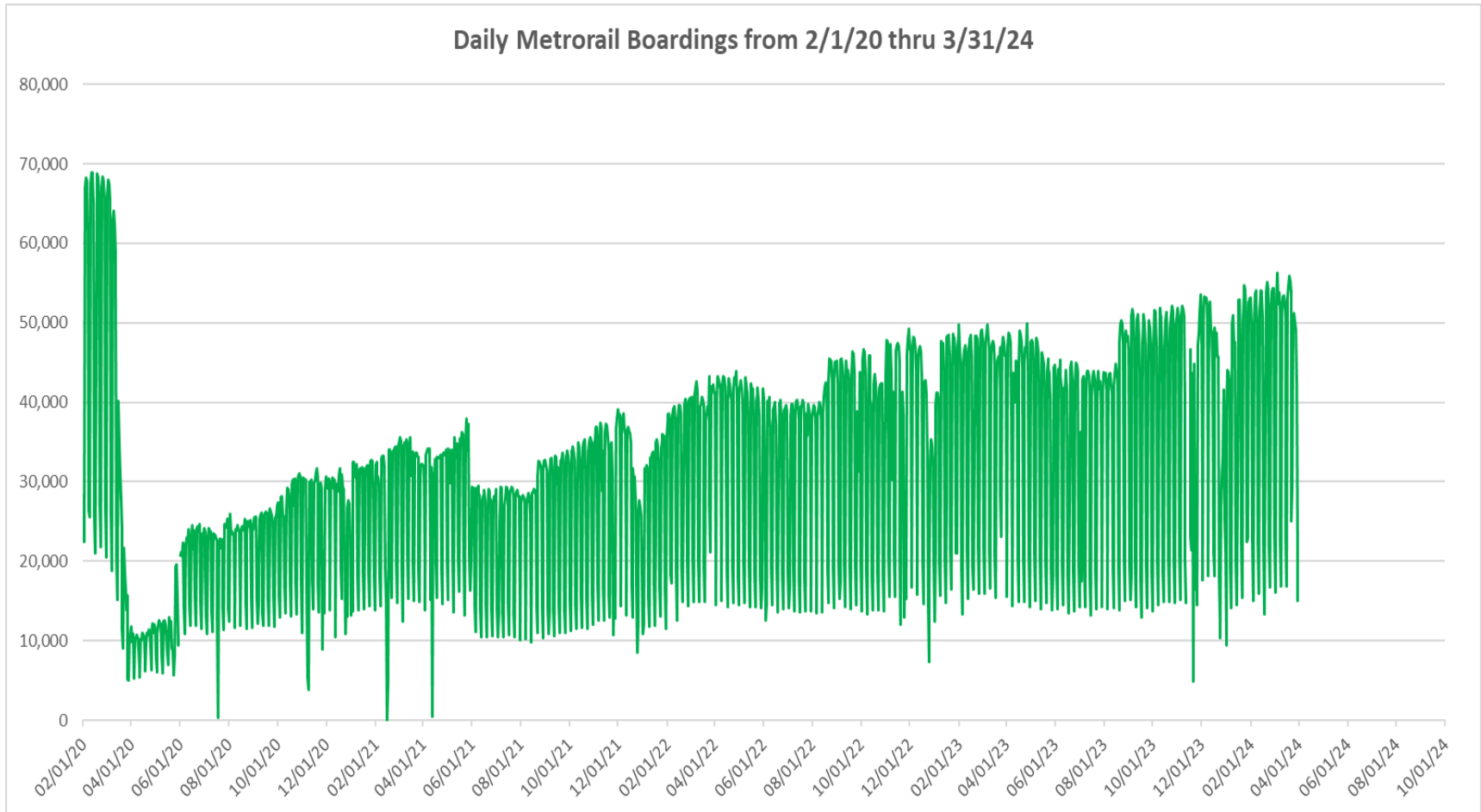


**“TOP 5 / BOTTOM 5” RAIL STATIONS AVERAGE WEEKDAY RIDERSHIP PERFORMANCE
YEAR OVER YEAR COMPARISONS**

Station	Mar-24	Mar-23	Absolute Delta (1)	Percent Delta
DADELAND NORTH	4,196	3,848	349	9.1%
BRICKELL	5,651	5,326	325	6.1%
DADELAND SOUTH	4,795	4,478	317	7.1%
COCONUT GROVE	1,786	1,521	264	17.4%
OVERTOWN	1,942	1,694	248	14.7%
BROWNSVILLE	536	701	-165	-23.6%
Dr. MARTIN LUTHER KING, JR.	722	856	-134	-15.7%
CULMER	958	1,044	-87	-8.3%
MIAMI INTERNATIONAL AIRPORT	1,336	1,417	-81	-5.7%
PALMETTO	1,214	1,292	-78	-6.1%

- (1) Averages rounded to the nearest boarding.
- (2) As a result of the SARS-CoV-2 pandemic, rides were fare-free beginning March 22, 2020, leading to the use of a video camera counter system from that date going forward. Fares were reinstated June 1, 2021, and ridership data from the faregate system rather than the video cameras resumed. Video camera use was reinstated a second time, for the launch of the Better Bus Network on 11/13/2023, and its attendant free fares. NextFare faregate data resumed along with fares on New Year's Day 2024.

DAILY METRORAIL RIDERSHIP SINCE FEBRUARY 1, 2020



- (1) There was no Metrobus, Metrorail and Metromover service on 5/31/20, as a safety precaution, and no service for any of the four modes on 9/28/22 as a result of Hurricane Ian..
- (2) The dip at the start of the second week of December 2020 is due to Hurricane Eta; these are *raw data* from the Unleash Live contractor AI video system.
- (3) The dip on 4/13/21 is due to a loss of connectivity at all stations, affecting a few stations over the next two days as well; a similar loss of connectivity is seen on 11/21/23.
- (4) The reduction seen beginning 6/1/21 is partly due to the resumption of fares and partly the result of resuming reporting Cubic faregate data rather than video camera counts.
- (5) As a result of free fares to launch the Better Bus Network, faregates are open beginning 11/13/23, and Unleash Live AI video system ridership counts are reported starting 11/17/23.
- (6) Periodic (weekly) variations are prominent, since weekday ridership is almost always significantly higher than weekend or holiday ridership; a few low-count days are due to system outages, often associated with construction or renovation work..

METRORAIL PARKING PATRONAGE SUMMARY

March 2024

PARK-RIDE LOT	ACTUAL CAPACITY (1)	ACTUAL OCCUPANCY (2)	PERCENT OCCUPANCY
DADELAND SOUTH	1,260	804	64%
DADELAND NORTH	1,702	883	52%
SOUTH MIAMI	816	306	38%
UNIVERSITY	260	216	83%
COCONUT GROVE	100	6	6%
VIZCAYA	120	46	38%
CULMER	25	16	65%
SANTA CLARA	61	36	59%
ALLAPATTAH	74	10	14%
EARLINGTON HEIGHTS	361	146	40%
BROWNSVILLE	100	75	75%
DR. MARTIN LUTHER KING JR. (MDT)	62	0	0%
DR. MARTIN LUTHER KING JR. (GARAGE)	631	0	0%
NORTHSIDE	100	82	82%
HIALEAH	338	43	13%
OKEECHOBEE	1,398	145	10%
PALMETTO	700	154	22%
TOTAL	8,330	2,967	36%

- (1) Number of spaces could vary each week; shown are available spaces during final week of month, as submitted by DTPW Safety & Security office.
- (2) All sampled occupancy data provided by DTPW Safety & Security office; calculations are revisions to those submitted by that entity.
- (3) Daily averages rounded to nearest unit, with fewer counts at some stations than others, depending on staffing levels; calculations are based on sampled counted days only per raw data submitted, with resulting average daily occupancy shown.
- (*) Closed throughout the month.

Metromover



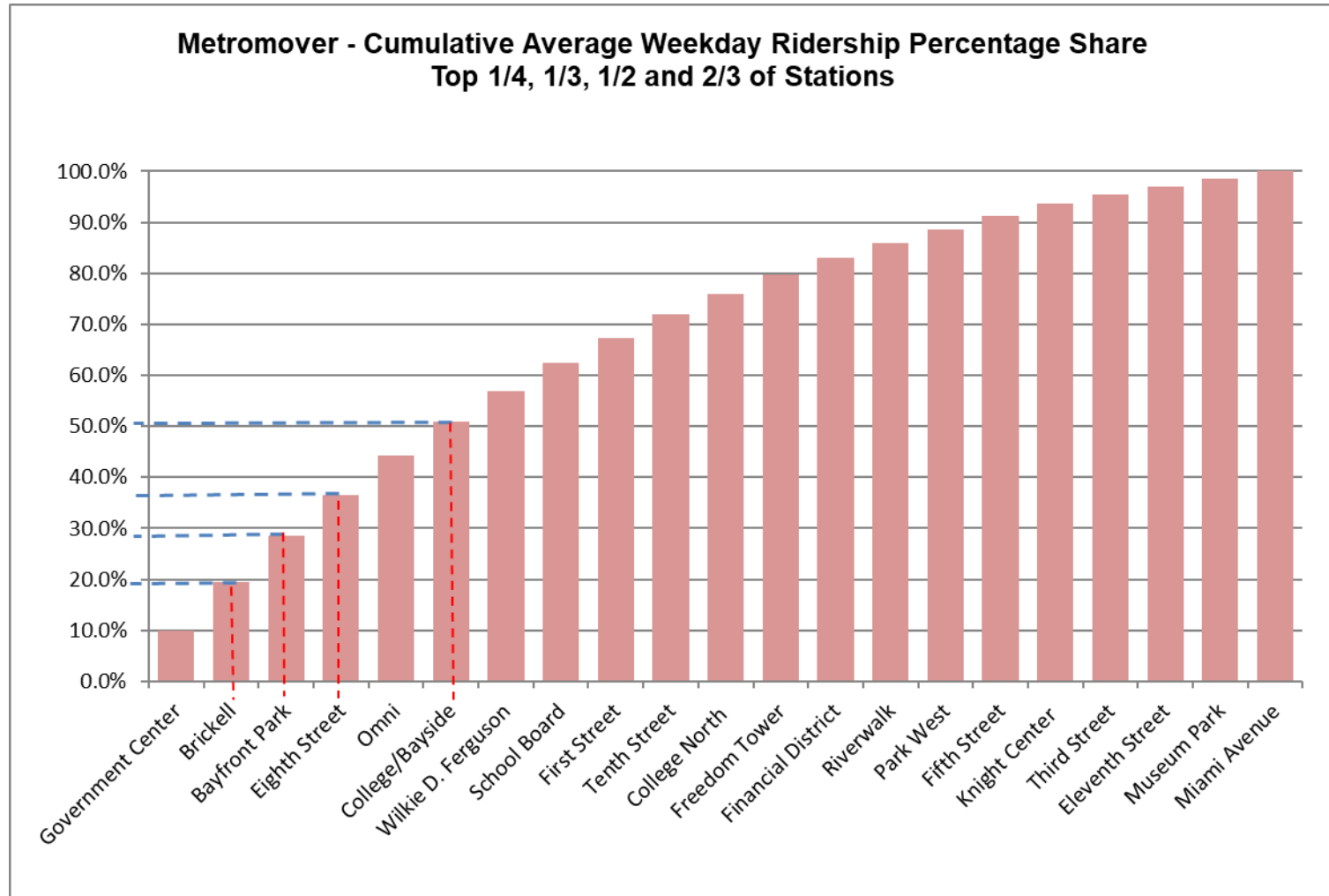
March 2024

METROMOVER MONTHLY AND AVERAGE DAILY BOARDINGS BY STATION

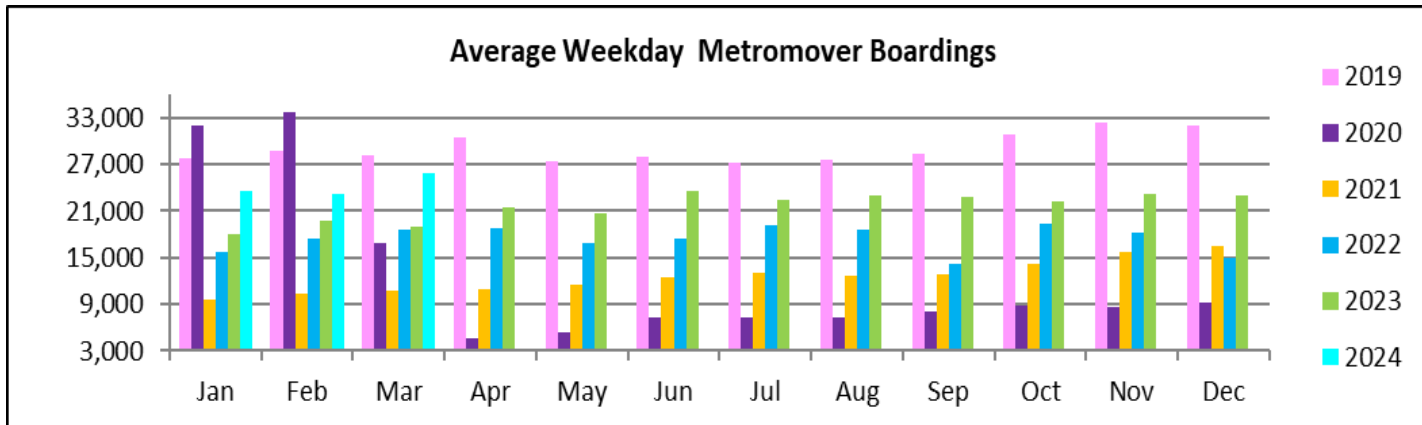
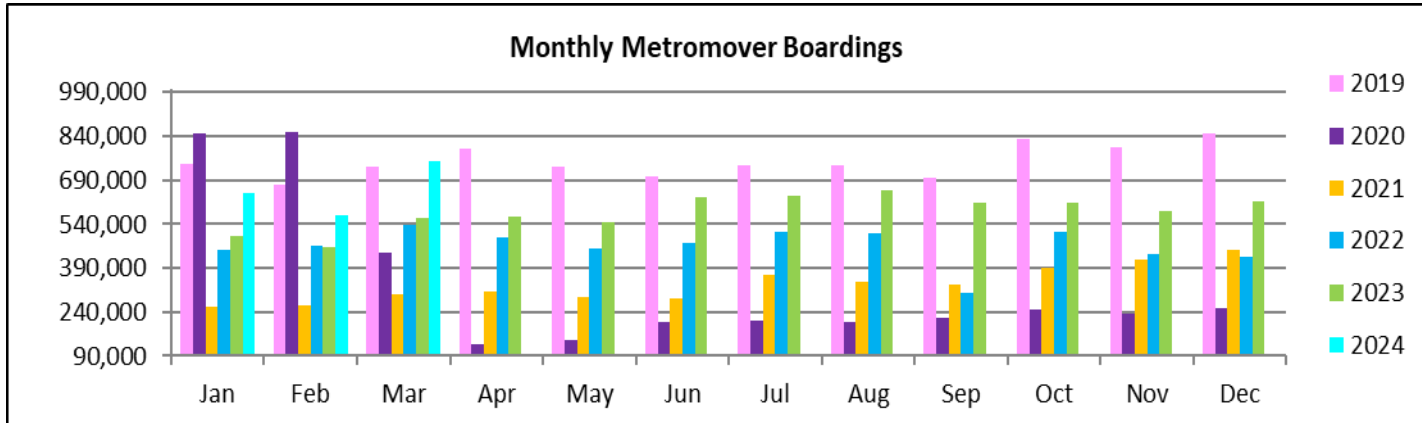
	Average Weekday	Average Weekday	Percent Change	Average Saturday	Average Saturday	Percent Change	Average Sunday	Average Sunday	Percent Change	Total Monthly	Total Monthly	Percent Change
STATIONS	Mar-24	Mar-23	24 vs 23	Mar-24	Mar-23	24 vs 23	Mar-24	Mar-23	24 vs 23	Mar-24	Mar-23	24 vs 23
School Board	1,417	1,030	37.6%	1,056	877	20.4%	1,069	824	29.8%	40,385	30,497	32.4%
Omni	2,004	1,815	10.4%	1,775	1,740	2.1%	1,754	1,511	16.1%	59,738	54,742	9.1%
Museum Park	402	378	6.1%	579	553		417	437	-4.6%	13,415	12,665	5.9%
Eleventh Street	407	306	33.0%	411	329	24.9%	387	323	19.8%	12,550	9,659	29.9%
Park West	726	896	-19.0%	737	1,076	-31.5%	618	837	-26.2%	22,014	28,259	-22.1%
Freedom Tower	1,011			888			1,032			25,870		
Government Center	2,546	706	260.8%	1,986	549		1,790	415	331.8%	72,342	13,216	447.4%
Miami Avenue	382	361	5.9%	346	267	29.4%	294	239	22.8%	11,218	3,898	187.8%
Third Street	468	301	55.5%	492	271	82.0%	514	255	101.5%	14,862	9,025	64.7%
Knight Center	593	634	-6.4%	415	456	-9.0%	322	394	-18.3%	16,148	17,990	-10.2%
Bayfront Park	2,389	2,261	5.7%	2,620	2,209	18.6%	2,137	2,013	6.2%	73,958	68,894	7.4%
First Street	1,300			1,567			1,497			42,628		
College/Bayside	1,727	1,804	-4.2%	1,665	2,176	-23.5%	1,599	1,609	-0.7%	52,588	56,623	-7.1%
College North	1,015	1,072	-5.3%	650	924	-29.7%	546	741	-26.2%	27,290	31,304	-12.8%
Wilkie D. Ferguson	1,537			1,109			919			42,420		
Riverwalk	749	510	46.9%	534	420	27.2%	541	354	52.9%	21,107	14,824	42.4%
Fifth Street	679	540	25.9%	508	461	10.0%	497	337	47.6%	19,290	15,605	23.6%
Eighth Street	2,063	2,069	-0.3%	1,666	2,020	-17.5%	1,567	1,621	-3.3%	59,489	62,145	-4.3%
Tenth Street	1,180	1,148	2.7%	904	1,008	-10.4%	846	926	-8.6%	33,521	34,149	-1.8%
Brickell	2,484	2,156	15.2%	1,727	1,993	-13.3%	1,774	1,683	5.4%	69,678	64,301	8.4%
Financial District	834	1,082	-22.9%	531	771	-31.1%	484	658	-26.4%	22,596	30,600	-26.2%
TOTAL	25,915	19,069	35.9%	22,166	18,097	22.5%	20,604	15,175	35.8%	753,107	558,396	34.9%

(*) Several Metromover stations were closed for construction during the 2023-2024 period, due to installation of new equipment and construction work.

METROMOVER CUMULATIVE PERCENTAGE RIDERSHIP SHARE



TOTAL MONTHLY AND AVERAGE WEEKDAY RIDERSHIP YEAR OVER YEAR COMPARISON CHARTS – METROMOVER



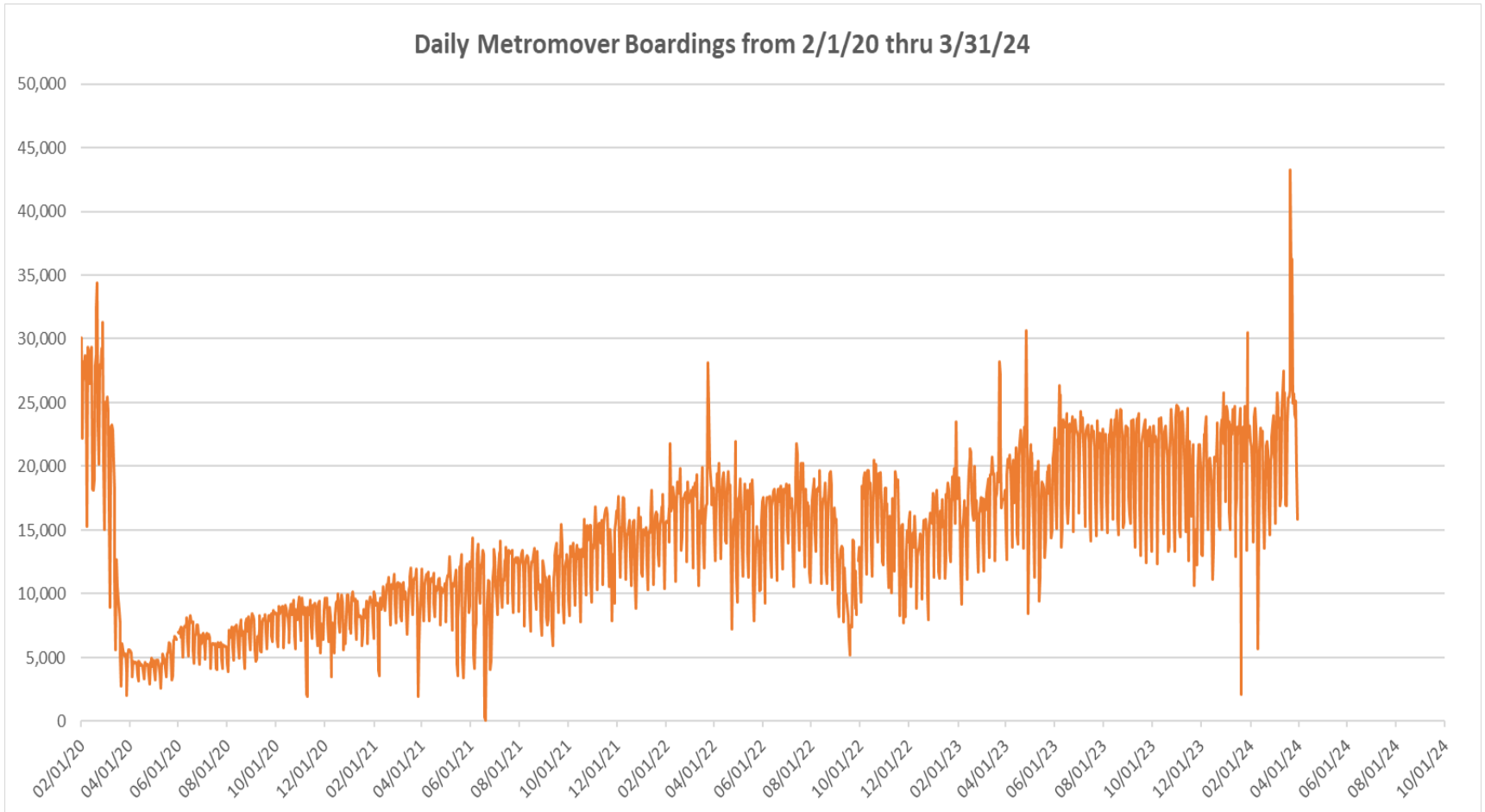
**“TOP 5 / BOTTOM 5” MOVER STATIONS AVERAGE WEEKDAY RIDERSHIP PERFORMANCE
YEAR OVER YEAR COMPARISONS**

Station	Mar-24	Mar-23	Absolute Delta (1)	Percent Delta
Government Center	2,546	706	1,840	260.8%
School Board	1,417	1,030	387	37.6%
Brickell	2,484	2,156	328	15.2%
Riverwalk	749	510	239	46.9%
Omni	2,004	1,815	190	10.4%

Financial District	834	1,082	-248	-22.9%
Park West	726	896	-170	-19.0%
College/Bayside	1,727	1,804	-76	-4.2%
College North	1,015	1,072	-57	-5.3%
Knight Center	593	634	-41	-6.4%

(1) Averages rounded to the nearest boarding.

DAILY METROMOVER RIDERSHIP SINCE FEBRUARY 1, 2020



- (1) There was no Metrobus, Metrorail and Metromover service on 5/31/20, as a safety precaution, and no service for any of the four modes on 9/28/22 as a result of Hurricane Ian.
- (2) The dip at the start of the second week of December 2020 is due to Hurricane Eta; these are *raw data* from the UTA contractor APC system. Other more recent dips are due to various station closures (mostly on weekends) for system maintenance purposes.
- (3) Periodic (weekly) variations are prominent, since weekday ridership is almost always significantly higher than weekend or holiday ridership; a few low-count days are due to system outages, often associated with construction or renovation work.

Special Transportation Services

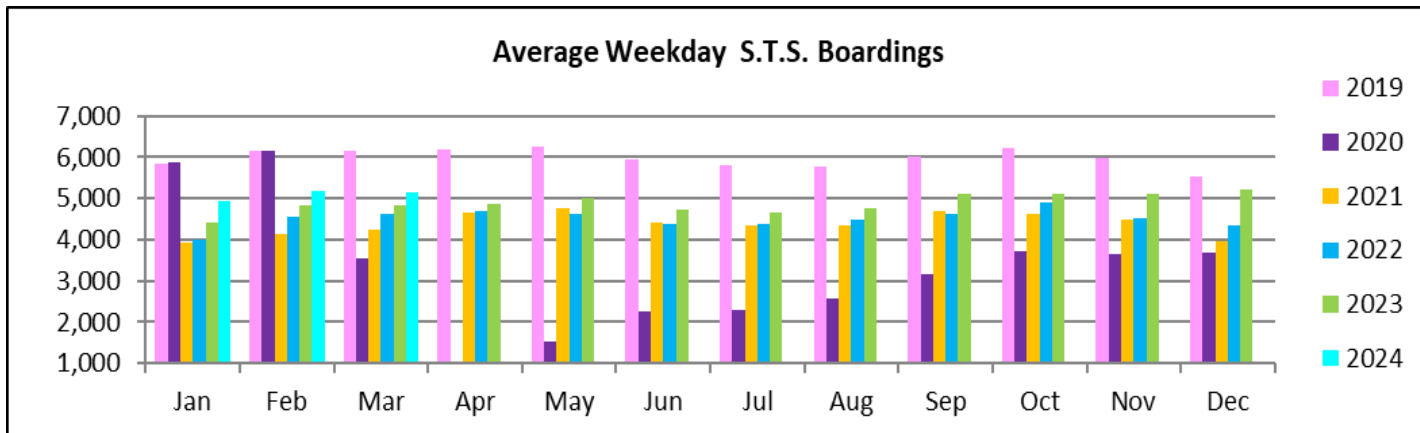
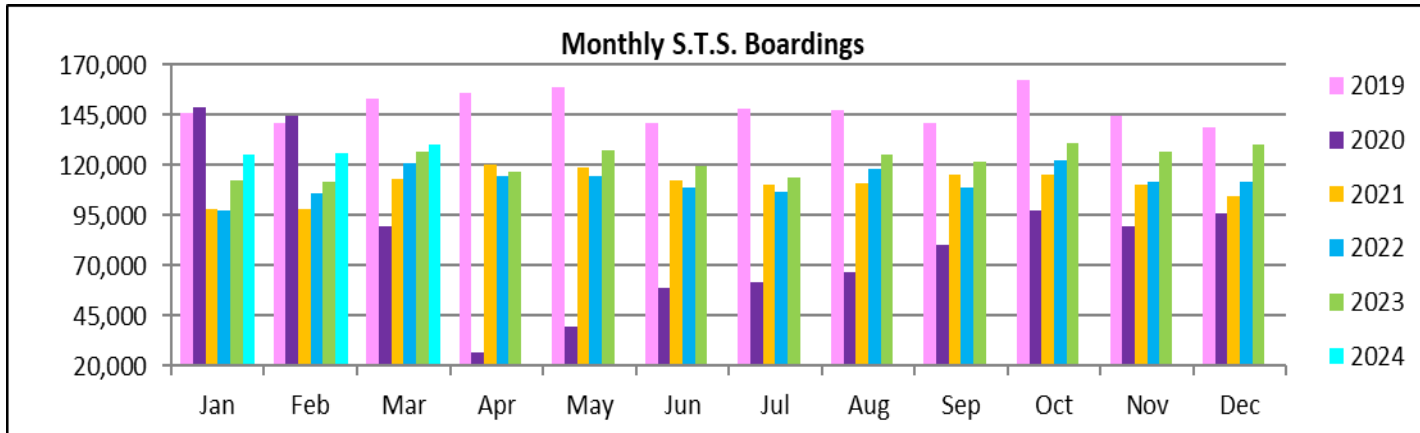


STS MONTHLY AND AVERAGE DAILY BOARDINGS
March 2024

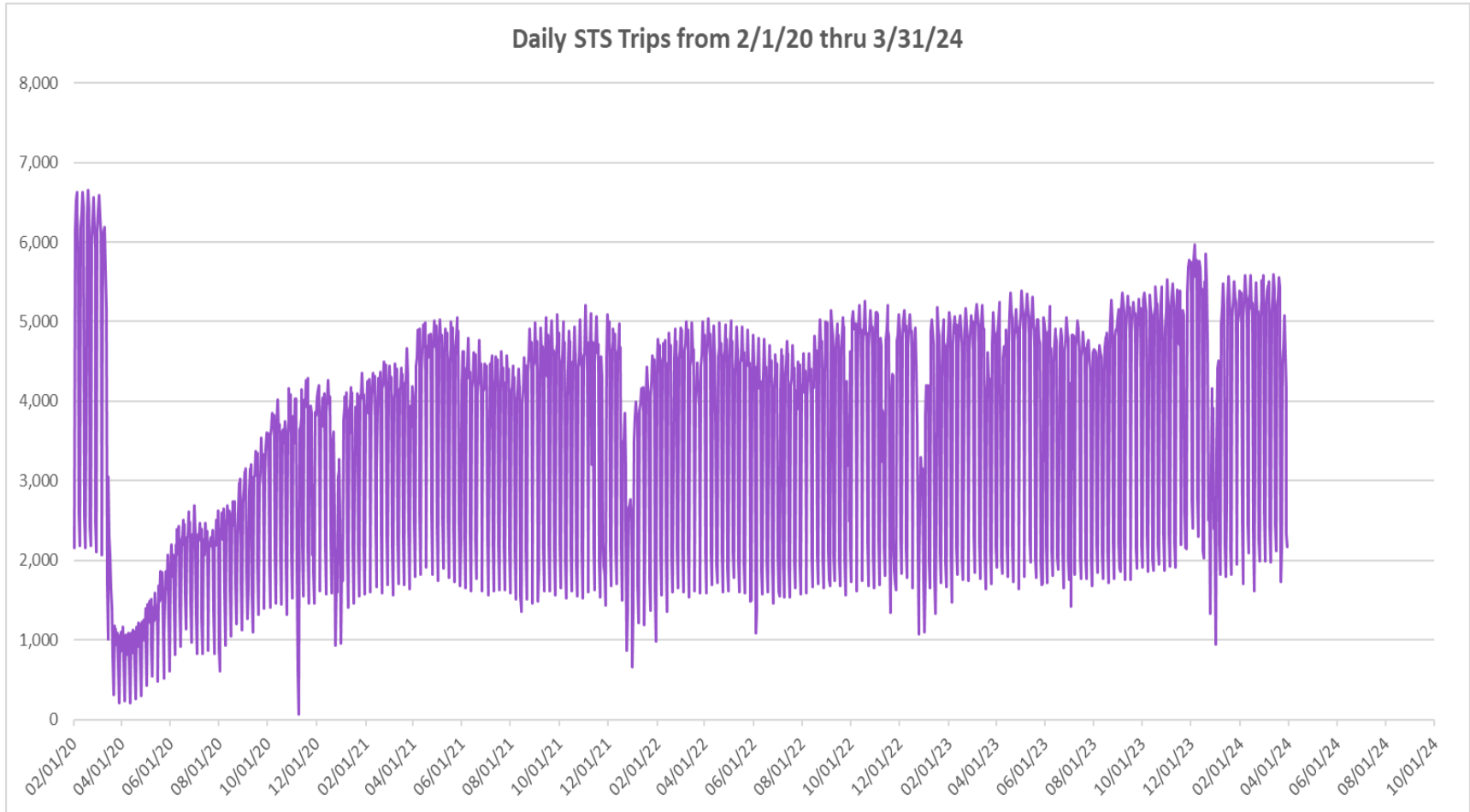
Measure	timeline	Ambulatory	Wheelchair	Total Clients (*)
Average Weekday	Mar-24	4,320	837	5,157
Average Saturday	Mar-24	1,933	367	2,300
Average Sunday	Mar-24	1,713	368	2,081
Total Monthly	Mar-24	108,941	21,262	130,203
Average Weekday	Mar-23	4,009	825	4,834
Average Saturday	Mar-23	1,775	393	2,168
Average Sunday	Mar-23	1,433	311	1,744
Total Monthly	Mar-23	105,037	21,782	126,819
Average Weekday	Mar-22	3,808	802	4,610
Average Saturday	Mar-22	1,697	390	2,087
Average Sunday	Mar-22	1,292	293	1,585
Total Monthly	Mar-22	99,541	21,177	120,718
% Change Current vs. March 2023 Weekday		7.7%	1.5%	6.7%
% Change Current vs. March 2023 Saturday		8.9%	-6.5%	6.1%
% Change Current vs. March 2023 Sunday		19.6%	18.5%	19.4%
% Change Current vs. March 2023 Month Total		3.7%	-2.4%	2.7%
% Change Current vs. March 2022 Weekday		13.4%	4.4%	11.9%
% Change Current vs. March 2022 Saturday		13.9%	-5.8%	10.2%
% Change Current vs. March 2022 Sunday		32.6%	25.7%	31.3%
% Change Current vs. March 2022 Month Total		9.4%	0.4%	7.9%

(*) Trip count data provided by STS contractor.

TOTAL MONTHLY AND AVERAGE WEEKDAY RIDERSHIP YEAR OVER YEAR COMPARISON CHARTS – SPECIAL TRANSPORTATION SERVICES (S.T.S.)

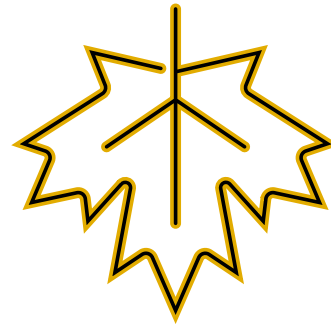
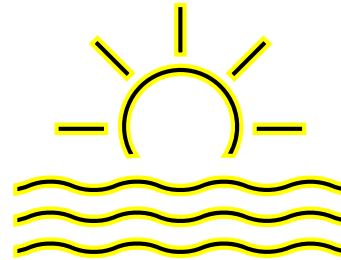
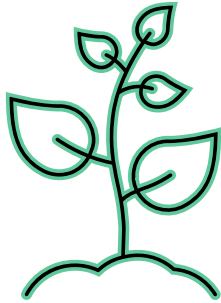


DAILY STS RIDERSHIP SINCE FEBRUARY 1, 2020

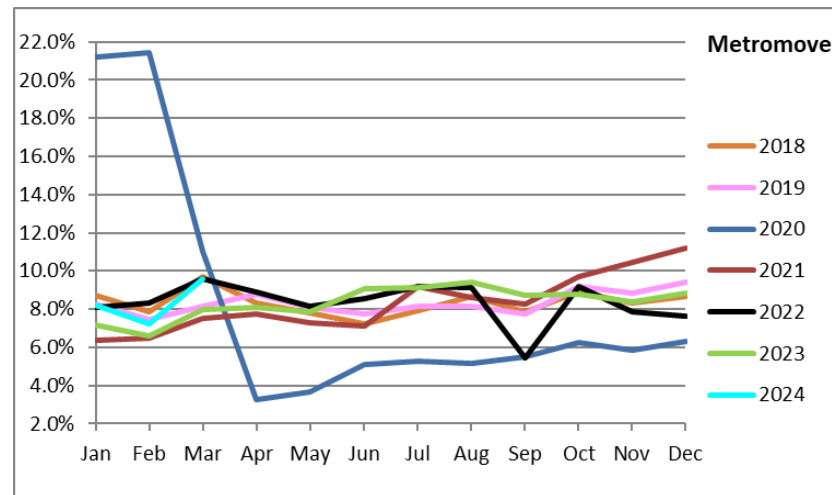
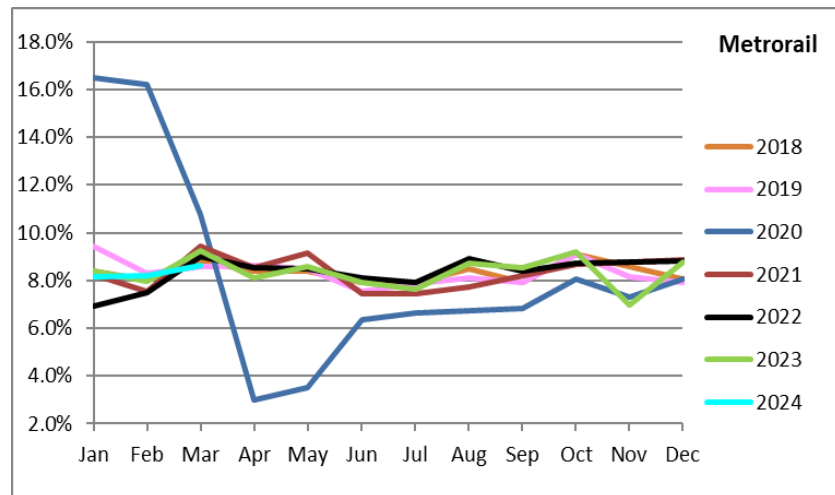
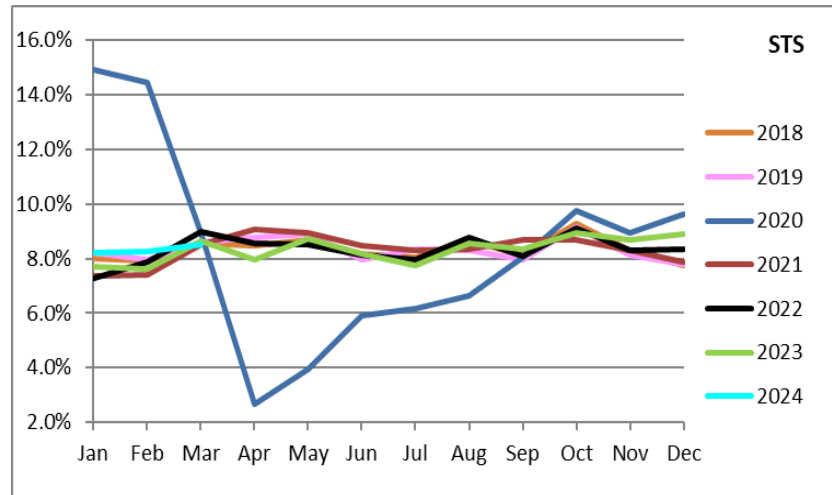
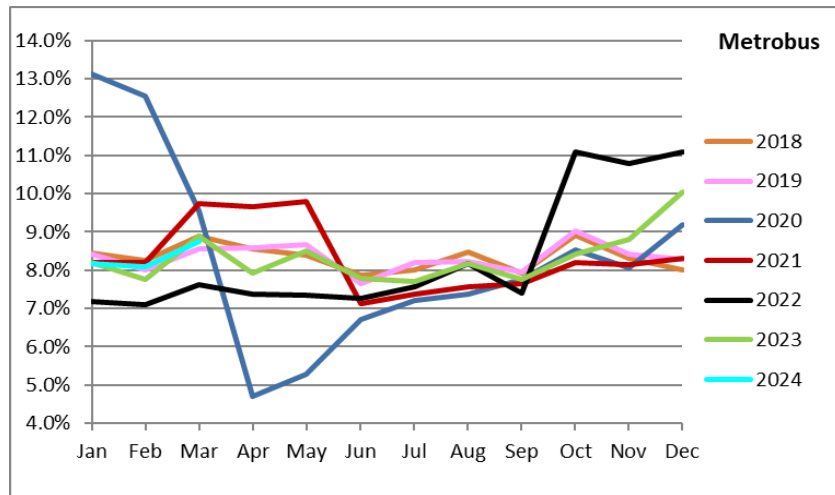


- (1) There was no service (for any of the four modes) on 9/28/22 as a result of Hurricane Ian.
- (2) The dip at the start of the second week of December 2020 is due to Hurricane Eta.
- (3) Periodic (weekly) variations are prominent, since weekday ridership is almost always significantly higher than weekend or holiday ridership.

Ridership Seasonality



RIDERSHIP SEASONALITY – PERCENT RIDERSHIP SHARE BY MONTH AND CALENDAR YEAR FOR EACH MODE



Note: the prominent dips seen in the fall of 2017 and beginning in the spring of 2020 are due to Hurricane Irma and the SARS-CoV-2 pandemic, respectively. Reductions in Bus and Rail ridership share seen beginning in June 2021 are due to reinstatement of fares as well changes in reporting tools and datasets, as discussed earlier in this report. The prominent peaks on Metrobus seen beginning October 2022 are due from a changeover from farebox counts to ridership obtained from new automatic passenger counter (APC) technology, while the pronounced rise beginning November 2023 can be attributed to the launch of the Better Bus Network and the attendant free fares.