



# TRANSPORTATION AND PUBLIC WORKS

## RIDERSHIP TECHNICAL REPORT

*Division of Performance Analysis*



# Table of Contents

<i>Table of Contents</i>	2-3
<b>All Modes Overview</b>	<b>4</b>
Total Monthly Weekday, Saturday and Sunday Monthly Boardings By Mode	5
Average Weekday, Saturday and Sunday Boardings by Mode	6
Metrobus Total Monthly Ridership Comparisons by Fiscal Year	7
Metrorail Total Monthly Ridership Comparisons by Fiscal Year	8
Metromover Total Monthly Ridership Comparisons by Fiscal Year	9
STS Total Monthly Ridership Comparisons by Fiscal Year	10
All-Modes Combined Total Monthly Ridership Comparisons By Fiscal Year	11
All Modes Combined Total Monthly and Average Weekday Ridership – Year over Year Comparison Charts	12
Average Weekday Ridership – Modal Splits	13
Daily Ridership for All Modes Combined since 2/1/20	14
<b>Metrobus</b>	<b>15</b>
Better Bus Network (BBN, 11/13/2023 Lineup) Bus Route Changes, Pt 1 and Pt 2	16-17
Metrobus Average Weekday Boardings by Route	18-20
Metrobus Average Saturday Boardings by Route	21-22
Metrobus Average Sunday Boardings by Route	23-24
Metrobus Monthly Total Boardings by Route	25-27
Bus Ridership by Route Service Type Lineups Comparison (month-over-month & month-over-6 months)	28-31
Bus Routes as Ranked by Percentage of Average Weekday Ridership	32
Metrobus Cumulative Percentage Average Weekday Ridership Share by Route (Top 75%)	33
Total Monthly and Average Weekday Bus Ridership – Year over Year Comparison Charts	34
Bus “Top 10 / Bottom 10” Bus Routes Average Weekday Ridership Performance – Month-over-Month Comparisons	35
Bus “Top 10 / Bottom 10” Bus Routes Sets Average Weekday Ridership Performance – Year-over-Year Comparisons	36
Bus “Top 10 / Bottom 10” Bus Routes Sets Average Weekday Ridership Performance – Month-over-6 Month Comparisons	37
Daily Metrobus Ridership since 2/1/20	38
Metrobus Parking Patronage Summary	39

## Table of Contents (continued)

<b>Metrorail</b>	<b>40</b>
Metrorail Average Weekday Boardings by Station	41
Metrorail Average Saturday Boardings by Station	42
Metrorail Average Sunday Boardings by Station	43
Metrorail Total Monthly Boardings by Station	44
Metrorail Cumulative Percentage Average Weekday Ridership Share	45
Total Monthly and Average Weekday Rail Ridership – Year over Year Comparison Charts	46
“Top 5 / Bottom 5” Stations Average Weekday Ridership Performance	47
Daily Metrorail Ridership since 2/1/20	48
Metrorail Parking Patronage Summary	49
<b>Metromover</b>	<b>50</b>
Monthly and Average Daily Mover Boardings by Station	51
Metromover Cumulative Percentage Average Weekday Ridership Share	52
Total Monthly and Average Weekday Mover Ridership – Year over Year Comparison Charts	53
“Top 5 / Bottom 5” Stations Average Weekday Ridership Performance	54
Daily Metromover Ridership since 2/1/20	55
<b>Special Transportation Services (STS)</b>	<b>56</b>
STS Monthly and Average Daily Boardings	57
Total Monthly and Average Weekday STS Ridership – Year over Year Comparison Charts	58
Daily STS Ridership since 2/1/20	59
<b>Ridership Seasonality</b>	<b>60</b>
Ridership Seasonality – Percent Ridership Share by Month and Calendar Year for Each Mode	61

# All Modes Overview



**TOTAL MONTHLY WEEKDAY, SATURDAY AND SUNDAY BOARDINGS BY MODE**  
**April 2024**

<b>TRAVEL MODE</b>	<b>MONTH'S TOTAL WEEKDAYS RIDERSHIP</b>	<b>MONTH'S TOTAL SATURDAYS RIDERSHIP</b>	<b>MONTH'S TOTAL SUNDAYS RIDERSHIP</b>	<b>TOTAL MONTHLY RIDERSHIP</b>	<b>% CHANGE vs Apr 2023 TOTAL MONTH RIDERSHIP</b>
<b>METROBUS (1)</b>	4,616,521	553,457	378,636	5,548,614	20.1%
<b>METRORAIL (2)</b>	1,180,466	90,444	65,601	1,336,511	22.9%
<b>METROMOVER</b>	515,958	59,380	64,943	640,281	13.1%
<b>STS PARATRANSIT (3)</b>	116,871	9,537	8,269	134,677	15.2%
<b>TOTAL</b>	<b>6,429,816</b>	<b>712,818</b>	<b>517,449</b>	<b>7,660,083</b>	<b>19.9%</b>

- (1) Bus ridership reporting through automatic passenger counters coupled with a new enhanced sensor system resumed on October 1, 2022.
- (2) Metrorail fares resumed on June 1, 2021, following a 14-month period of fare-free rides as a result of the SARS-CoV-2 pandemic. The NextFare System faregate data replaced the video data as ridership data of record starting on that date, until free fares were reinstated for the Better Bus Network launch on 11/13/23. The NextFare System faregate data collection and reporting resumed on New Year's Day 2024.
- (3) Paratransit ridership data as reported by the contractor and subsequently audited by the Department.

**AVERAGE WEEKDAY, SATURDAY AND SUNDAY BOARDINGS BY MODE**  
**April 2024**

<b>Travel Mode</b>	<b>Average Weekday</b>	<b>Average Saturday</b>	<b>Average Sunday</b>	<b>% Change Apr 2023 Weekday</b>	<b>% Change Apr 2023 Saturday</b>	<b>% Change Apr 2023 Sunday</b>
<b>METROBUS</b>	209,910	138,364	94,659	15.8%	20.8%	11.8%
<b>METRORAIL</b>	53,658	22,611	16,400	17.6%	11.7%	10.9%
<b>METROMOVER</b>	23,677	14,996	16,474	10.6%	0.0%	19.1%
<b>STS PARATRANSIT</b>	5,312	2,384	2,067	9.2%	11.7%	15.9%
<b>Totals</b>	<b>292,557</b>	<b>178,356</b>	<b>129,600</b>	<b>15.6%</b>	<b>17.4%</b>	<b>12.6%</b>

(\*) Average ridership is calculated and published only for those days and stations or routes with nontrivial amounts of reported data.

## METROBUS TOTAL MONTHLY RIDERSHIP COMPARISONS BY FISCAL YEAR

<b>Bus Month</b>	<b>FY 19</b>	<b>FY 20</b>	<b>Variance 19 to 20</b>	<b>FY 21</b>	<b>FY 22</b>	<b>FY 23</b>	<b>FY 24</b>	<b>Variance 19 to 23</b>	<b>Variance 22 to 23</b>	<b>Variance 19 to 24</b>	<b>Variance 23 to 24</b>
<b>Oct</b>	4,554,886	4,507,012	-1.1%	2,805,139	3,081,157	4,679,725	4,912,151	2.7%	51.9%	7.8%	5.0%
<b>Nov</b>	4,245,535	4,197,225	-1.1%	2,651,290	3,056,726	4,549,666	5,135,172	7.2%	48.8%	21.0%	12.9%
<b>Dec</b>	4,081,581	4,126,990	1.1%	3,022,530	3,123,883	4,677,460	5,857,057	14.6%	49.7%	43.5%	25.2%
<b>Jan</b>	4,195,911	4,316,998	2.9%	3,082,746	3,029,055	4,785,128	5,103,257	14.0%	58.0%	21.6%	6.6%
<b>Feb</b>	3,994,019	4,123,083	3.2%	3,076,966	2,995,789	4,526,317	5,053,665	13.3%	51.1%	26.5%	11.7%
<b>Mar</b>	4,266,768	3,136,162	-26.5%	3,660,639	3,218,562	5,183,872	5,461,317	21.5%	61.1%	28.0%	5.4%
<b>Apr</b>	4,291,135	1,544,316	-64.0%	3,625,048	3,105,797	4,618,302	5,548,614	7.6%	48.7%	29.3%	20.1%
<b>May</b>	4,330,922	1,734,609	-59.9%	3,683,343	3,097,574	4,953,197		14.4%	59.9%		
<b>Jun</b>	3,823,863	2,210,725	-42.2%	2,672,570	3,064,059	4,545,050		18.9%	48.3%		
<b>Jul</b>	4,094,906	2,366,749	-42.2%	2,769,907	3,189,994	4,484,458		9.5%	40.6%		
<b>Aug</b>	4,109,613	2,422,014	-41.1%	2,843,552	3,442,006	4,756,063		15.7%	38.2%		
<b>Sep</b>	3,971,220	2,546,923	-35.9%	2,877,110	3,123,572	4,525,426		14.0%	44.9%		
<b>FY Total</b>	<b>49,960,359</b>	<b>37,232,806</b>	<b>-25.5%</b>	<b>36,770,840</b>	<b>37,528,174</b>	<b>56,284,664</b>		<b>12.7%</b>	<b>50.0%</b>		

## METRORAIL TOTAL MONTHLY RIDERSHIP COMPARISONS BY FISCAL YEAR

<b>Rail Month</b>	<b>FY 19</b>	<b>FY 20</b>	<b>Variance 19 to 20</b>	<b>FY 21</b>	<b>FY 22</b>	<b>FY 23</b>	<b>FY 24</b>	<b>Variance 19 to 23</b>	<b>Variance 22 to 23</b>	<b>Variance 19 to 24</b>	<b>Variance 23 to 24</b>
<b>Oct</b>	1,757,225	1,643,166	-6.5%	769,525	844,383	1,053,191	1,237,096	-40.1%	24.7%	-29.6%	17.5%
<b>Nov</b>	1,656,929	1,469,448	-11.3%	699,492	850,881	1,055,066	935,121	-36.3%	24.0%	-43.6%	-11.4%
<b>Dec</b>	1,553,804	1,433,928	-7.7%	769,194	860,436	1,063,096	1,177,272	-31.6%	23.6%	-24.2%	10.7%
<b>Jan</b>	1,708,695	1,576,340	-7.7%	799,119	832,924	1,127,340	1,233,350	-34.0%	35.3%	-27.8%	9.4%
<b>Feb</b>	1,501,458	1,549,118	3.2%	730,792	905,162	1,072,791	1,240,316	-28.6%	18.5%	-17.4%	15.6%
<b>Mar</b>	1,554,851	1,027,319	-33.9%	917,097	1,084,978	1,239,336	1,302,854	-20.3%	14.2%	-16.2%	5.1%
<b>Apr</b>	1,559,446	287,803	-81.5%	827,414	1,027,139	1,087,816	1,336,511	-30.2%	5.9%	-14.3%	22.9%
<b>May</b>	1,531,597	337,696	-78.0%	887,111	1,023,322	1,151,819		-24.8%	12.6%		
<b>Jun</b>	1,359,966	608,758	-55.2%	723,469	975,477	1,066,861		-21.6%	9.4%		
<b>Jul</b>	1,419,158	632,964	-55.4%	722,159	953,331	1,022,937		-27.9%	7.3%		
<b>Aug</b>	1,463,646	641,275	-56.2%	749,578	1,076,490	1,174,138		-19.8%	9.1%		
<b>Sep</b>	1,427,726	654,244	-54.2%	795,749	1,012,331	1,146,864		-19.7%	13.3%		
<b>FY Total</b>	<b>18,494,501</b>	<b>11,862,059</b>	<b>-35.9%</b>	<b>9,390,699</b>	<b>11,446,854</b>	<b>13,261,255</b>		<b>-28.3%</b>	<b>15.9%</b>		



## METROMOVER TOTAL MONTHLY RIDERSHIP COMPARISONS BY FISCAL YEAR

<b>Mover Month</b>	<b>FY 19</b>	<b>FY 20</b>	<b>Variance 19 to 20</b>	<b>FY 21</b>	<b>FY 22</b>	<b>FY 23</b>	<b>FY 24</b>	<b>Variance 19 to 23</b>	<b>Variance 22 to 23</b>	<b>Variance 19 to 24</b>	<b>Variance 23 to 24</b>
<b>Oct</b>	790,533	831,234	5.1%	250,044	389,065	514,308	614,479	-34.9%	32.2%	-22.3%	19.5%
<b>Nov</b>	735,198	799,632	8.8%	232,422	418,929	439,150	584,887	-40.3%	4.8%	-20.4%	33.2%
<b>Dec</b>	767,239	849,832	10.8%	251,019	450,320	426,073	616,455	-44.5%	-5.4%	-19.7%	44.7%
<b>Jan</b>	746,728	847,773	13.5%	255,968	451,566	498,566	644,639	-33.2%	10.4%	-13.7%	29.3%
<b>Feb</b>	675,160	855,398	26.7%	260,332	465,968	459,264	570,242	-32.0%	-1.4%	-15.5%	24.2%
<b>Mar</b>	737,814	441,200	-40.2%	302,502	535,857	558,396	753,107	-24.3%	4.2%	2.1%	34.9%
<b>Apr</b>	795,696	130,549	-83.6%	310,772	495,982	565,943	640,281	-28.9%	14.1%	-19.5%	13.1%
<b>May</b>	734,645	146,454	-80.1%	292,922	455,120	547,948		-25.4%	20.4%		
<b>Jun</b>	701,318	203,637	-71.0%	286,145	477,286	632,423		-9.8%	32.5%		
<b>Jul</b>	739,814	210,596	-71.5%	368,847	512,094	635,954		-14.0%	24.2%		
<b>Aug</b>	739,785	205,995	-72.2%	344,319	508,359	657,267		-11.2%	29.3%		
<b>Sep</b>	699,879	219,696	-68.6%	331,915	305,185	610,810		-12.7%	100.1%		
<b>FY Total</b>	<b>8,863,809</b>	<b>5,741,996</b>	<b>-35.2%</b>	<b>3,487,207</b>	<b>5,465,731</b>	<b>6,546,102</b>		<b>-26.1%</b>	<b>19.8%</b>		

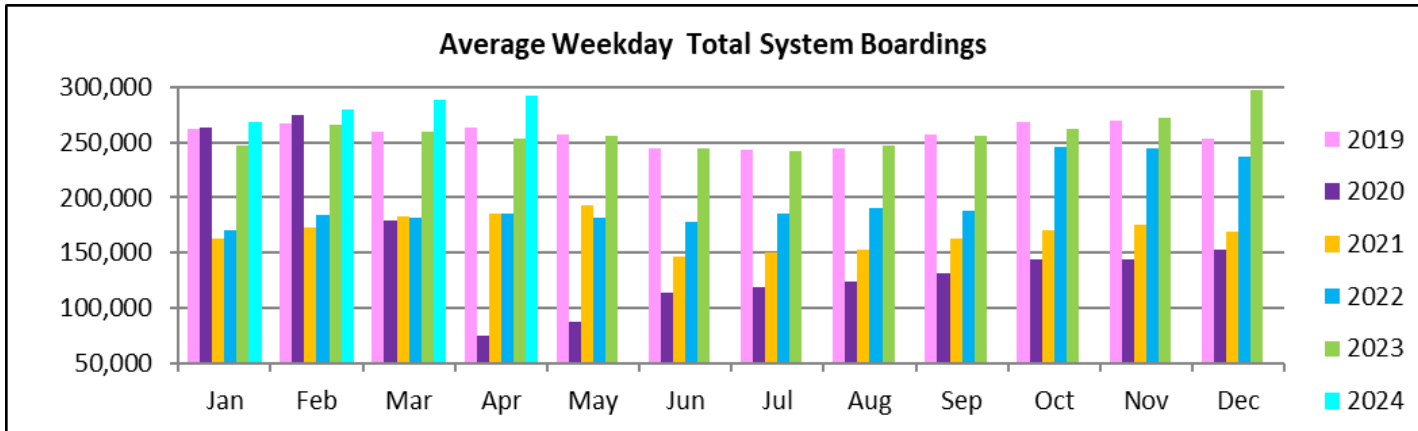
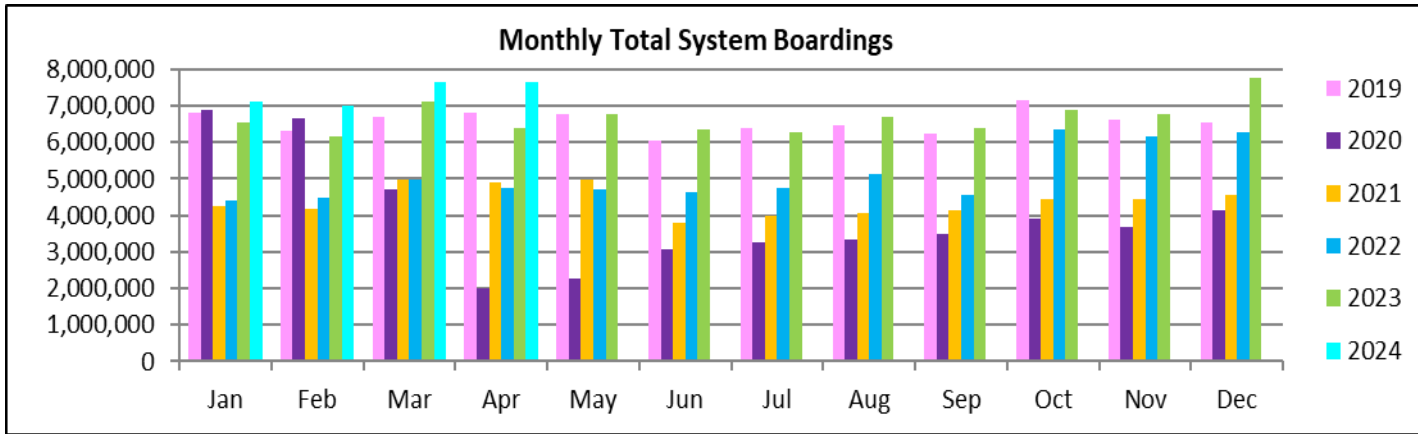
## SPECIAL TRANSPORTATION SERVICES (STS) TOTAL MONTHLY RIDERSHIP COMPARISONS BY FISCAL YEAR

<b>STS Month</b>	<b>FY 19</b>	<b>FY 20</b>	<b>Variance 19 to 20</b>	<b>FY 21</b>	<b>FY 22</b>	<b>FY 23</b>	<b>FY 24</b>	<b>Variance 19 to 23</b>	<b>Variance 22 to 23</b>	<b>Variance 19 to 24</b>	<b>Variance 23 to 24</b>
<b>Oct</b>	162,564	162,704	0.1%	97,388	115,122	122,189	130,958	-24.8%	6.1%	-19.4%	7.2%
<b>Nov</b>	145,653	144,366	-0.9%	89,387	110,289	111,578	127,025	-23.4%	1.2%	-12.8%	13.8%
<b>Dec</b>	136,110	138,642	1.9%	96,366	104,496	112,019	130,093	-17.7%	7.2%	-4.4%	16.1%
<b>Jan</b>	146,268	149,114	1.9%	97,928	97,541	112,632	125,513	-23.0%	15.5%	-14.2%	11.4%
<b>Feb</b>	141,396	144,392	2.1%	98,285	105,706	111,748	125,732	-21.0%	5.7%	-11.1%	12.5%
<b>Mar</b>	153,191	89,634	-41.5%	112,930	120,718	126,819	130,203	-17.2%	5.1%	-15.0%	2.7%
<b>Apr</b>	155,808	26,877	-82.7%	120,122	114,912	116,882	134,677	-25.0%	1.7%	-13.6%	15.2%
<b>May</b>	158,665	39,654	-75.0%	118,636	114,505	127,782		-19.5%	11.6%		
<b>Jun</b>	141,320	59,093	-58.2%	112,397	109,054	119,527		-15.4%	9.6%		
<b>Jul</b>	148,232	61,765	-58.3%	110,059	107,188	113,623		-23.3%	6.0%		
<b>Aug</b>	147,331	66,563	-54.8%	110,766	117,941	125,510		-14.8%	6.4%		
<b>Sep</b>	141,387	80,346	-43.2%	115,406	108,788	122,065		-13.7%	12.2%		
<b>FY Total</b>	<b>1,777,925</b>	<b>1,163,150</b>	<b>-34.6%</b>	<b>1,279,670</b>	<b>1,326,260</b>	<b>1,422,374</b>		<b>-20.0%</b>	<b>7.2%</b>		

## ALL-MODES COMBINED TOTAL MONTHLY RIDERSHIP COMPARISONS BY FISCAL YEAR

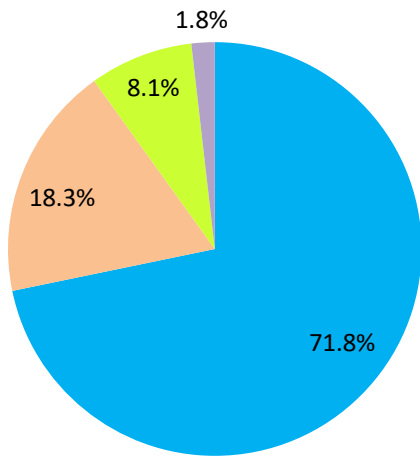
<b>All Modes</b>													
<b>Month</b>	<b>FY 19</b>	<b>FY 20</b>	<b>FY 21</b>	<b>FY 22</b>	<b>FY 23</b>	<b>FY 24</b>	<b>19 TO 20</b>	<b>20 TO 21</b>	<b>21 TO 22</b>	<b>22 TO 23</b>	<b>19 TO 23</b>	<b>23 TO 24</b>	<b>19 TO 24</b>
<b>Oct</b>	7,265,208	7,144,116	3,922,096	4,429,727	6,369,413	6,894,684	-1.7%	-45.1%	12.9%	43.8%	-12.3%	8.2%	-5.1%
<b>Nov</b>	6,783,315	6,610,671	3,672,591	4,436,825	6,155,460	6,782,205	-2.5%	-44.4%	20.8%	38.7%	-9.3%	10.2%	0.0%
<b>Dec</b>	6,538,734	6,549,392	4,139,109	4,539,135	6,278,648	7,780,877	0.2%	-36.8%	9.7%	38.3%	-4.0%	23.9%	19.0%
<b>Jan</b>	6,797,602	6,890,225	4,235,761	4,411,086	6,523,666	7,106,759	1.4%	-38.5%	4.1%	47.9%	-4.0%	8.9%	4.5%
<b>Feb</b>	6,312,033	6,671,991	4,166,375	4,472,625	6,170,120	6,989,955	5.7%	-37.6%	7.4%	38.0%	-2.2%	13.3%	10.7%
<b>Mar</b>	6,712,624	4,694,315	4,993,168	4,960,115	7,108,423	7,647,481	-30.1%	6.4%	-0.7%	43.3%	5.9%	7.6%	13.9%
<b>Apr</b>	6,802,085	1,989,545	4,883,356	4,743,830	6,388,943	7,660,083	-70.8%	145.5%	-2.9%	34.7%	-6.1%	19.9%	12.6%
<b>May</b>	6,755,829	2,258,413	4,982,012	4,690,521	6,780,746		-66.6%	120.6%	-5.9%	44.6%	0.4%		
<b>Jun</b>	6,026,467	3,082,213	3,794,581	4,625,876	6,363,861		-48.9%	23.1%	21.9%	37.6%	5.6%		
<b>Jul</b>	6,402,110	3,272,074	3,970,972	4,762,607	6,256,972		-48.9%	21.4%	19.9%	31.4%	-2.3%		
<b>Aug</b>	6,460,375	3,335,847	4,048,215	5,144,796	6,712,978		-48.4%	21.4%	27.1%	30.5%	3.9%		
<b>Sep</b>	6,240,212	3,501,209	4,120,180	4,549,876	6,405,165		-43.9%	17.7%	10.4%	40.8%	2.6%		
<b>FY Total</b>	<b>79,096,594</b>	<b>56,000,011</b>	<b>50,928,416</b>	<b>55,767,019</b>	<b>77,514,395</b>		<b>-29.2%</b>	<b>-9.1%</b>	<b>9.5%</b>	<b>39.0%</b>	<b>-2.0%</b>		

## TOTAL MONTHLY AND AVERAGE WEEKDAY RIDERSHIP YEAR OVER YEAR COMPARISON CHARTS – ALL MODES COMBINED



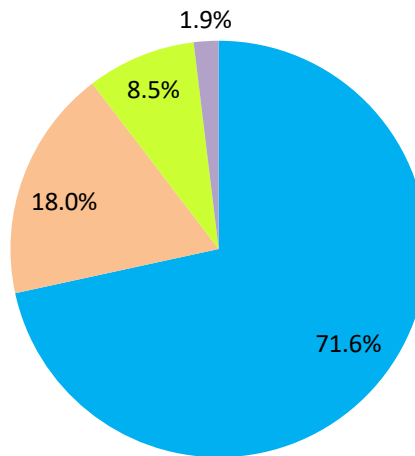
# AVERAGE WEEKDAY RIDERSHIP - MODAL SPLITS

April 2024



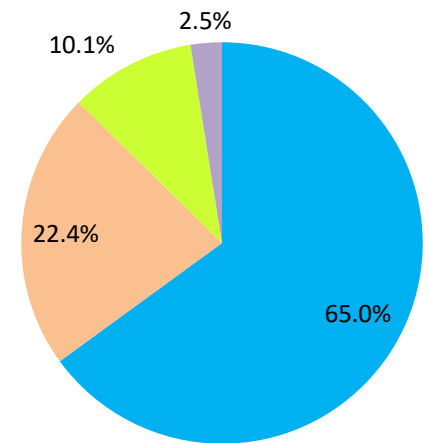
boardings

April 2023



boardings

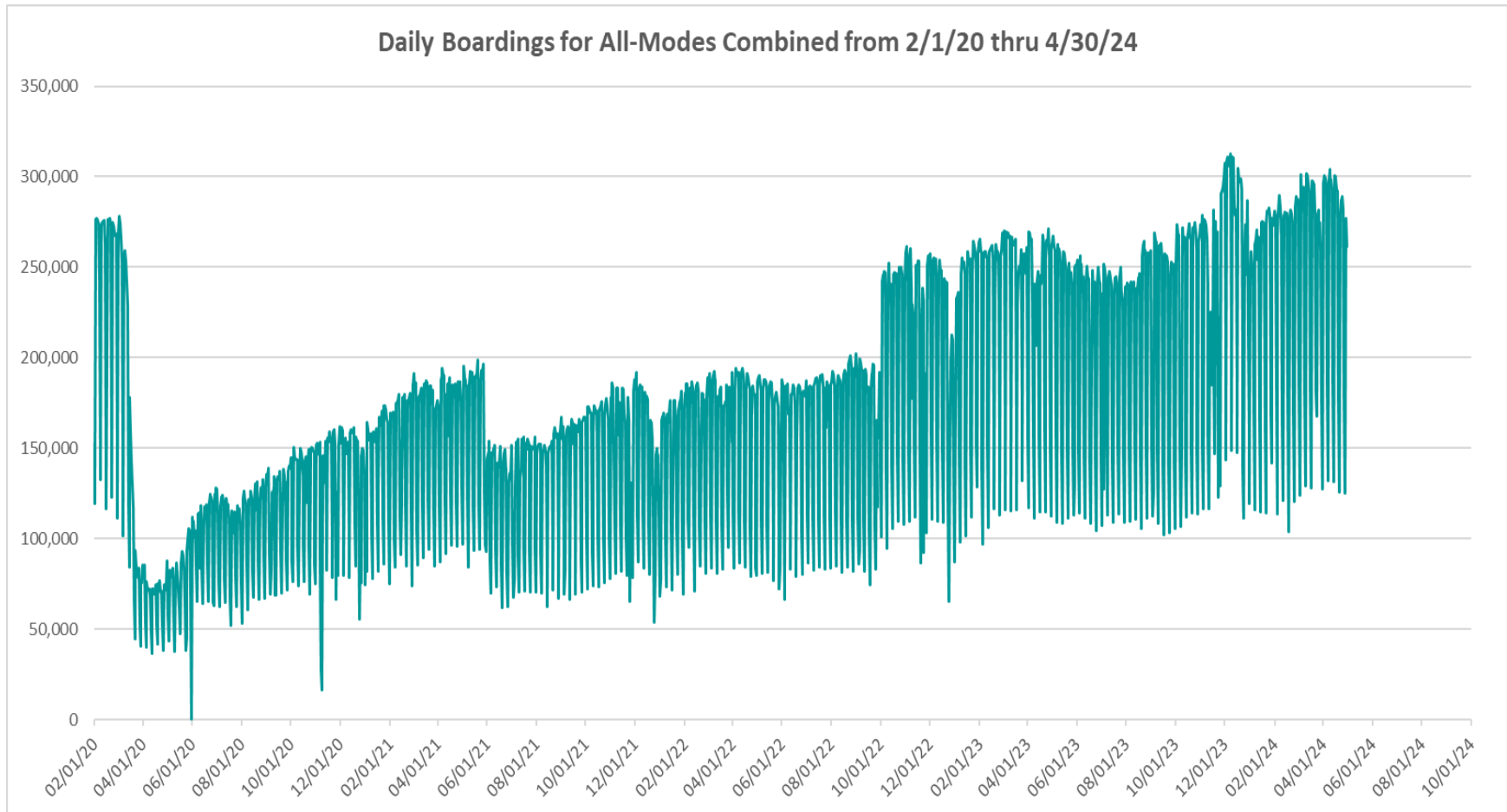
April 2022



boardings



## DAILY RIDERSHIP FOR ALL MODES COMBINED SINCE FEBRUARY 1, 2020



- (1) There was no Metrobus, Metrorail and Metromover service on 5/31/20, as a safety precaution, and no service for any of the four modes on 9/28/22 as a result of Hurricane Ian..
- (2) The dip at the start of the second week of December 2020 is due to Hurricane Eta.
- (3) Daily variations from October 2022 onward are, for the Bus portion, estimated from reports made available by the Bus APC data vendor..
- (4) The reduction seen beginning 6/1/21 is partly due to the resumption of fares for bus and rail, and partly the result of having resumed reporting Cubic farebox data rather than bus APC counts, as well as Cubic rail faregate counts instead of video camera counts on that date. The jump seen at the start of October 2022 is due to the return to APC bus ridership counts reporting begun on 10/1/22.
- (5) The marked peak in Dec 2023 is attributable to the Better Bus Network launch period and attendant free fares.
- (6) Periodic (weekly) variations are prominent, since weekday ridership is almost always significantly higher than weekend or holiday ridership.

# Metrobus



# Better Bus Network (BBN, 11/13/2023 lineup) Bus Route Changes (Pt 1)

The listings below and on the following page are to serve as an aid in identifying individual routes for comparison of ridership data between periods prior to and following the launch of the BBN on 11/13/2023. In November 2023, both old and new route numbers appear in data tables, since the launch took place near mid-month; beginning with March 2024, only the current (BBN) numbering system appear in tables, to allow for direct comparisons.

## BBN Numbering Changes:

Contracted **Route 1** was renumbered **Route 97**

Directly operated **Route 33** was renumbered **Route 103** (new, recycled number, not the same as former **Route 103 - C**)

Directly operated **Route 51** (Flagler MAX) was renumbered **Route 211** (recycled number, not the same as the OVERTOWN CIRCULATOR)

Contracted **Route 71** was renumbered **Route 107** (new, recycled number, not the same as **Route 107 - G** further below) and became directly operated

Directly operated **Route 79** was renumbered **Route 279** (79th Steet MAX)

Directly operated **Route 93** was renumbered **Route 203** (Biscayne MAX)

Directly operated **Route 99** was renumbered **Route 199**

Contracted **Route 101 - A** was renumbered **Route 15**

Directly operated **Route 102 - B** was renumbered **Route 26** (under the BBN's first phase, 07/24/2023 lineup)

Directly operated **Route 107 - G** (old, not the same as the **Route 107** appearing above) was renumbered **Route 125**

Directly operated **Route 112 - L** was renumbered **Route 79** (recycled number, not the same as the **Route 79** appearing above)

Directly operated **Route 120** was renumbered **Route 100**

Directly operated **Route 200** (CUTLER BAY LOCAL) was renumbered **Route 500** (recycled number, not the same as the **Route 500** further below)

Contracted **Route 210** was renumbered **Route 510** (SKYLAKE CIRCULATOR)

Contracted **Route 246** was renumbered **Route 401** (NORTH OWL)

Contracted **Route 248** (Princeton Circulator) was renumbered **Route 70** (recycled number, not the same as former **Route 70**)

Directly operated **Route 252** became contractor-operated, under the new name and number **Route 152**

Directly operated **Route 500** was renumbered **Route 400** (SOUTH OWL)

*The above routes, along with many others who retained their numbering, underwent modifications in various ways (realignment, new headways, days of operation, etc., some major), as part of the BBN design and its resulting lineup. Details for each DTPW Bus route are provided in the Miami-Dade County website. (Directly operated **Route 2** became contractor-operated but kept its number).*



# Better Bus Network (BBN, 11/13/2023 lineup) Bus Route Changes (Pt 2)

### BBN New Routes and Numbers:

Two new routes with new numbering were created to support the Better Bus Network:

Route 14 corresponds to a newly created route

Route 20 corresponds to a newly created route

### BBN Eliminated Routes:

The following routes were discontinued, as part of the Better Bus Network realignments:

- Route 10
- Route 16
- Route 19
- Route 29
- Route 31 (BUSWAY LOCAL)
- Route 42
- Route 46 (LIBERTY CITY CONNECTION)
- Route 57
- Route 82 (WESTCHESTER CIRCULATOR)
- Route 103 - C (old, previously used numbering, not the same as the Route 103 in the list on the previous page)
- Route 211 (OVERTOWN CIRCULATOR, previously used numbering, not the same as the Route 211 in the list on the previous page)
- Route 105 - E
- Route 108 - H
- Route 110 - J
- Route 113 - M
- Route 115
- Route 119 - S
- Route 155 (BISCAYNE GARDENS CIRCULATOR)
- Route 202 (LITTLE HAITI CONNECTION)
- Route 212 (SWEETWATER CIRCULATOR)
- Route 217 (BUNCHE PARK CIRCULATOR)
- Route 238 (EAST-WEST CONNECTION)
- Route 241 (TUTTLE LIMITED)
- Route 254 (BROWNSVILLE CIRCULATOR)
- Route 267 (LUDLAM LIMITED)
- Route 277 (7th AVENUE MAX)
- Route 286 (NORTH POINTE CIRCULATOR)
- Route 297 (27th AVENUE ORANGE MAX)

### Previously Eliminated Routes:

The following five express routes were suspended soon after the start of the SARS-CoV-2 pandemic, and never reinstated; their ridership appears in some of the tables in this report, as then-components of the reported bus system performance measures:

- Route 175 (NW MIAMI-DADE EXPRESS)
- Route 195 EXPRESS – BROWARD BLVD
- Route 196 EXPRESS – BROWARD BLVD-CIVIC CENTER
- Route 295 EXPRESS – SHERIDAN STREET
- Route 296 EXPRESS – SHERIDAN STREET-CIVIC CENTER

*The preceding listings are not exhaustive, and the reader is referred to the Miami-Dade County website for further BBN details or additional changes, including through the April 29, 2024 lineup.*

## METROBUS AVERAGE WEEKDAY BOARDINGS BY ROUTE (†)

Route	Average Weekday	Average Weekday	Percent Change	Average Weekday	Percent Change	Average Weekday	Percent Change	Average Weekday	Percent Change
	<b>weekdays</b> Apr-24	Mar-24	MOM	Oct-23	MO6M	Apr-23	YOY	Feb-20	Current vs Feb-20
2	2,177	2,115	2.9%	2,977	-26.9%	2,866	-24.0%	3,102	-29.8%
3	8,871	8,857	0.2%	5,416	63.8%	5,148	72.3%	5,137	72.7%
7	4,215	4,501	-6.3%	4,021	4.8%	3,852	9.4%	3,501	20.4%
8	5,212	5,139	1.4%	4,650	12.1%	4,703	10.8%	3,909	33.4%
9	12,310	11,530	6.8%	6,490	89.7%	6,004	105.0%	5,528	122.7%
10				2,443		2,298		2,482	
11	12,686	11,928	6.4%	9,621	31.9%	8,718	45.5%	7,292	74.0%
12	3,036	2,993	1.4%	2,891	5.0%	2,885	5.2%	2,779	9.2%
14	1,176	1,251	-6.0%						
15	494	441	12.1%	178	178.0%	222	122.9%	177	179.1%
16				2,009		1,880		1,862	
17	7,614	7,158	6.4%	4,133	84.2%	3,740	103.6%	3,878	96.3%
19				1,807		1,495		1,542	
20	4,383	4,520	-3.0%						
21	2,152	2,094	2.8%	2,107	2.1%	1,845	16.6%	1,817	18.4%
22	2,625	2,708	-3.1%	4,502	-41.7%	4,139	-36.6%	3,640	-27.9%
24-CORAL WAY LIMITED	2,648	2,617	1.2%	2,195	20.6%	2,269	16.7%	1,340	97.7%
26	2,505	2,522	-0.7%	1,877	33.4%	2,180	14.9%	1,778	40.9%
27	10,379	9,686	7.2%	7,110	46.0%	7,049	47.3%	6,972	48.9%
29				516		502		534	
31-BUSWAY LOCAL						1,143		1,089	
32	1,948	2,034	-4.3%	2,699	-27.8%	2,570	-24.2%	2,390	-18.5%
34 TRANSITWAY EXPRESS	1,897	1,768	7.3%	1,636	15.9%	1,606	18.1%	2,008	-5.5%
35	2,428	2,315	4.9%	3,070	-20.9%	2,779	-12.6%	2,421	0.3%
36	6,880	6,926	-0.7%	2,645	160.1%	2,704	154.4%	2,536	171.3%
37	5,032	5,352	-6.0%	3,475	44.8%	3,547	41.9%	3,273	53.7%
38 TRANSITWAY MAX	7,390	7,198	2.7%	5,714	29.3%	6,647	11.2%	6,361	16.2%
39 TRANSITWAY EXPRESS	858	801	7.1%	742	15.6%			893	-3.9%
40	2,020	1,941	4.0%	2,344	-13.9%	2,333	-13.4%	1,772	14.0%
42				1,001		1,042		820	
46 - LIBERTY CITY CONN.				22		22		41	
52	1,777	1,648	7.8%	1,390	27.8%	1,314	35.2%	1,261	40.9%
54	2,925	3,082	-5.1%	3,086	-5.2%	3,098	-5.6%	2,940	-0.5%
56	620	582	6.5%	391	58.5%	356	74.1%	354	75.3%
57				522		498		433	
62	3,126	2,963	5.5%	2,496	25.3%	1,724	81.4%	1,815	72.2%
70	296	281	5.4%	161	83.6%	124	138.9%	135	120.0%

(†) In this table and those which follow, "YOY" stands for "year-over-year", "MOM" for "month-over-month" and, e.g., "MO6M" for "month over six months", i.e., current month vs 12 months prior, one month prior, and compared to pre-BBN, respectively. The February 2020 numbers serve as a pre-pandemic benchmark.

## METROBUS AVERAGE WEEKDAY BOARDINGS BY ROUTE

Route	Average Weekday	Average Weekday	Percent Change	Average Weekday	Percent Change	Average Weekday	Percent Change	Average Weekday	Percent Change
	<b>weekdays</b> Apr-24	Mar-24	MOM	Oct-23	MO6M	Apr-23	YOY	Feb-20	Current vs Feb-20
72	953	875	8.9%	670	42.3%	724	31.6%	781	22.0%
73	1,527	1,432	6.7%	2,868	-46.7%	3,181	-52.0%	2,124	-28.1%
75	3,246	2,932	10.7%	1,594	103.7%	1,353	139.9%	1,429	127.2%
77	12,506	11,737	6.6%	9,959	25.6%	8,701	43.7%	7,129	75.4%
79	9,076	9,974	-9.0%	8,481	7.0%	8,505	6.7%	7,636	18.9%
82 - WESTCHESTER CIRC				61		71		62	
87	2,499	2,361	5.8%	1,924	29.9%	1,926	29.7%	1,499	66.7%
88	2,066	2,024	2.0%	2,419	-14.6%	2,421	-14.7%	2,076	-0.5%
95-EXPRESS GOLDEN GLADES	1,438	1,397	2.9%	1,195	20.3%	1,076	33.6%	1,690	-14.9%
97	234	203	15.3%	225	4.2%	196	19.2%	184	27.1%
100	18,101	18,376	-1.5%	6,128	195.4%	6,579	175.1%	6,667	171.5%
103 - C								463	
103	2,332	2,230	4.6%	1,967	18.6%	1,900	22.7%	1,687	38.3%
104	1,255	1,200	4.7%	1,024	22.6%	967	29.9%	837	50.0%
105 - E				1,402		1,450		1,287	
107	2,373	2,308	2.8%	825	187.6%	762	211.3%	711	234.0%
108 - H				487		516		473	
110 - J				2,955		3,142		2,508	
113 - M				887		955		866	
115				151		131		180	
119 - S				9,588		9,726		8,970	
125	5,300	4,888	8.4%	2,099	152.5%	1,972	168.7%	1,713	209.3%
132 -TRI-RAIL DORAL SHUTTLE	42	45	-7.0%	37	15.5%	56	-24.7%	16	170.7%
135	2,220	2,097	5.9%	1,755	26.5%	1,532	44.9%	1,399	58.7%
136	180	169	6.7%	162	11.2%	155	16.2%	126	42.5%
137-WEST DADE CONNECTION	2,566	2,541	1.0%	2,119	21.1%	2,220	15.6%	1,626	57.8%
150-MIAMI BEACH AIRPORT EXPRESS	1,707	1,776	-3.9%	2,149	-20.6%	2,212	-22.9%	1,867	-8.6%
152	411	386	6.3%	1,051	-60.9%	1,085	-62.2%	851	-51.7%
155 - BISCAYNE GARDENS CIRC				45		48		44	
175 - NW MIAMI-DADE EXPRESS								33	
183	5,557	5,328	4.3%	3,653	52.1%	3,442	61.4%	3,149	76.5%
195 EXPRESS - BROWARD BLVD								372	
196 EXPRESS - SHERIDAN ST								383	
199	2,091	2,052	1.9%	1,899	10.1%	1,771	18.0%	1,473	42.0%
202 - LITTLE HAITI CONN				110		78		140	
203 - BISCAYNE MAX	1,336	1,252	6.7%	3,666	-63.6%	3,466	-61.5%	3,334	-59.9%

## METROBUS AVERAGE WEEKDAY BOARDINGS BY ROUTE

Route	Average Weekday	Average Weekday	Percent Change	Average Weekday	Percent Change	Average Weekday	Percent Change	Average Weekday	Percent Change
	weekdays Apr-24	Mar-24	MOM	Oct-23	MO6M	Apr-23	YOY	Feb-20	Current vs Feb-20
204 KILLIAN MAX	658	631	4.2%	620	6.2%	758	-13.3%	1,071	-38.6%
207 (7th St)-LITTLE HAVANA CONN	1,901	1,886	0.8%	1,819	4.5%	1,735	9.6%	1,489	27.6%
208 (8th St)-LITTLE HAVANA CONN	1,769	1,757	0.7%	1,659	6.6%	1,655	6.9%	1,308	35.3%
211 OVERTOWN CIRCULATOR				71		87		58	
211 - FLAGLER MAX	1,898	2,100	-9.6%	3,824	-50.4%	3,825	-50.4%	3,109	-38.9%
212-SWEETWATER CIRC				22		21		15	
217 - BUNCHE PARK CIRC				80		61		97	
238-EAST/WEST CONN				593		599		449	
241 TUTTLE LIMITED				348		306			
254-BROWNSVILLE CIRC				5		6		19	
267-LUDLAM LIMITED				162		179		149	
272 SUNSET MAX (*)	403	378	6.6%	428	-6.0%	425	-5.2%	550	-26.8%
277-7TH AVENUE MAX				879		854		683	
279 - 79 STREET MAX	847	970	-12.7%	469	80.6%	543	55.9%	361	134.4%
286-NORTH POINTE CIRC				93		91		97	
287-SAGA BAY MAX	404	402	0.4%	341	18.5%	327	23.5%	358	12.8%
288 KENDALL MAX	537	504	6.5%	372	44.2%	501	7.1%	762	-29.6%
295								233	
296								215	
297-27th AVENUE ORANGE MAX				1,229		1,254		1,356	
301-DADE MONROE EXPRESS	1,037	1,054	-1.6%	955	8.6%	964	7.5%	841	23.2%
302-CARD SOUND EXPRESS	103	105	-2.5%	91	13.2%	130	-20.8%	86	18.9%
338 - WEEKEND EXPRESS									
344	113	113	0.0%	76	49.4%	62	81.9%	96	17.9%
400 - SOUTH OWL	82	80	3.5%	71	16.1%	70	17.5%	81	1.6%
401 - NORTH OWL	73	65	11.7%	61	19.6%	65	12.1%	94	-22.5%
500 - CUTLER BAY LOCAL	288	292	-1.3%	176	64.0%	154	87.7%	158	82.9%
510 - SKYLAKE CIRCULATOR (*)	464	449	3.3%	471	-1.5%	348	33.4%	282	64.8%
836 EXPRESS	348	332	4.8%	247	41.0%	307	13.4%		
837 EXPRESS	206	191	8.1%	195	5.9%	165	25.0%		
AHEPA SHUTTLE	17	21	-15.9%	18	-2.8%	25	-31.0%	21	-16.9%
FEDERATION GARDENS SHUTTLE									
GREEN HILLS SHUTTLE	8	9	-11.1%	5	53.8%	27	-69.8%	9	-11.1%
KINGS CREEK SHUTTLE	10	10	-7.3%	14	-30.9%	10	-7.3%	13	-26.9%
ROBERT SHARP SHUTTLE	27	29	-7.8%	23	15.2%	26	1.0%	10	178.9%
SIERRA LAKES SHUTTLE	22	22	-1.8%	16	41.9%	23	-5.4%	45	-51.1%
<b>Total</b>	<b>209,910</b>	<b>205,935</b>	<b>1.9%</b>	<b>185,320</b>	<b>13.3%</b>	<b>181,221</b>	<b>15.8%</b>	<b>167,711</b>	<b>25.2%</b>

(\*) To see which routes fully or partly operated under contract this month, please refer to the ranking table in Slide 32.

(1) Includes shuttles and those routes which were not run some years.

(2) Several express routes were suspended beginning at the end of March 2020, due to the SARS-CoV-2 pandemic, while other routes had alignment and schedule modifications made to them, in an ongoing effort to optimize service delivery.

## METROBUS AVERAGE SATURDAY BOARDINGS BY ROUTE

Route	Average Saturday	Average Saturday	Percent Change	Average Saturday	Percent Change	Average Saturday	Percent Change	Average Saturday	Percent Change
	Apr-24	Mar-24	MOM	Oct-23	MO6M	Apr-23	YOY	Feb-20	Current vs Feb-20
<b>Saturdays</b>									
2	1,227	947	29.6%	1,605	-23.6%	1,671	-26.6%	1,616	-24.1%
3	6,820	6,967	-2.1%	5,754	18.5%	6,207	9.9%	5,229	30.4%
7	2,436	2,380	2.3%	1,972	23.5%	2,245	8.5%	1,887	29.0%
8	2,731	2,643	3.3%	2,334	17.0%	2,640	3.4%	2,027	34.7%
9	7,703	7,580	1.6%	3,677	109.5%	3,629	112.2%	3,034	153.9%
10				2,107		2,120		1,896	
11	9,749	8,863	10.0%	5,787	68.5%	6,894	41.4%	5,182	88.1%
14	868	1,101	-21.2%						
15	325	350	-7.2%	93	248.0%	68	380.0%	71	358.3%
16				1,662		1,811		1,566	
17	5,155	4,359	18.2%	2,553	101.9%	2,405	114.4%	2,363	118.1%
20	3,569	3,567	0.1%						
22	1,521	1,491	2.0%	2,425	-37.3%	2,522	-39.7%	2,084	-27.0%
<b>24-CORAL WAY LIMITED</b>	1,953	1,858	5.1%	1,400	39.5%	1,626	20.1%	1,165	67.6%
26	1,315	1,250	5.2%	966	36.2%	1,228	7.1%	851	54.5%
27	7,697	6,803	13.1%	4,006	92.2%	4,418	74.2%	4,034	90.8%
<b>31-BUSWAY LOCAL</b>				0		1,098		896	
32	1,090	1,117	-2.4%	1,261	-13.5%	1,301	-16.2%	1,029	6.0%
35	1,784	1,589	12.3%	1,540	15.8%	1,558	14.5%	1,372	30.0%
36	4,959	4,903	1.2%	1,677	195.8%	1,576	214.7%	1,289	284.6%
37	3,333	3,057	9.0%	2,062	61.7%	2,294	45.3%	2,090	59.5%
<b>38 TRANSITWAY MAX</b>	6,596	6,015	9.7%	6,328	4.2%	5,486	20.2%	4,715	39.9%
40	1,182	1,028	14.9%	926	27.6%	936	26.3%	655	80.5%
42				617		703		552	
52	1,073	1,196	-10.3%	694	54.7%	825	30.0%	686	56.4%
54	1,937	2,036	-4.9%	1,925	0.6%	2,035	-4.8%	1,727	12.2%
56	252	254	-0.5%						
62	1,951	1,905	2.4%	1,823	7.0%	1,456	34.0%	1,343	45.2%
70	184	163	12.3%						
72	518	485	6.7%	357	45.3%	425	21.8%	350	48.2%
73	616	594	3.7%	1,202	-48.8%	1,432	-57.0%	860	-28.5%
75	2,002	1,892	5.8%	550	264.0%	530	278.0%	468	327.7%
77	8,000	7,692	4.0%	5,510	45.2%	5,747	39.2%	4,197	90.6%
79	7,612	7,323	3.9%	7,094	7.3%	7,153	6.4%	5,667	34.3%
<b>82 - WESTCHESTER CIRC</b>				38		54		50	

## METROBUS AVERAGE SATURDAY BOARDINGS BY ROUTE

Route	Average Saturday	Average Saturday	Percent Change	Average Saturday	Percent Change	Average Saturday	Percent Change	Average Saturday	Percent Change
	Apr-24	Mar-24	MOM	Oct-23	MO6M	Apr-23	YOY	Feb-20	Current vs Feb-20
<b>Saturdays</b>									
87	1,034	993	4.1%	532	94.5%	692	49.3%	402	156.9%
88	1,614	1,576	2.4%	1,661	-2.8%	1,913	-15.6%	1,620	-0.4%
97	175	165	6.2%	163	7.2%	189	-7.2%	215	-18.6%
100	15,865	15,018	5.6%	5,637	181.4%	6,263	153.3%	4,744	234.4%
103 - C						0		315	
103	1,340	1,358	-1.3%	1,239	8.1%	1,206	11.1%	951	40.9%
104	882	860	2.6%	445	98.4%	533	65.6%	468	88.2%
105 - E				772		786		619	
107	1,507	1,571	-4.0%	238	534.6%	243	521.3%	252	498.6%
108 - H				401		488		372	
110 - J				1,394		2,261		1,952	
113 - M				577		622		503	
115				80		78		82	
119 - S				8,118		8,475		6,861	
125	3,368	3,114	8.2%	1,297	159.7%	1,449	132.5%	1,066	215.8%
135	938	914	2.6%	556	68.7%	553	69.5%	539	74.1%
137-WEST DADE CONNECTION	1,766	1,516	16.5%	1,337	32.1%	1,467	20.4%	1,027	71.9%
150-MIAMI BEACH AIRPORT EXPRESS	1,673	1,597	4.8%	2,161	-22.6%	2,046	-18.3%	1,604	4.3%
152	244	229	6.5%	375	-34.9%	478	-48.9%	302	-19.2%
183	3,207	3,152	1.7%	1,960	63.7%	2,152	49.0%	1,790	79.2%
199	1,427	1,359	5.0%	1,106	29.0%	1,146	24.5%	849	68.1%
202 - LITTLE HAITI CONN				22		27		50	
207 (7th St)-LITTLE HAVANA CONN	944	818	15.4%	929	1.6%	1,210	-22.0%	1,032	-8.6%
208 (8th St)-LITTLE HAVANA CONN	1,156	903	28.0%	1,030	12.2%	1,246	-7.3%	1,044	10.6%
241 TUTTLE LIMITED				222		184			
286-NORTH POINTE CIRC				61		75		41	
301-DADE MONROE EXPRESS	937	958	-2.3%	885	5.8%	891	5.1%	801	16.9%
302-CARD SOUND EXPRESS	108	100	7.5%	94	14.6%	107	0.7%	57	90.4%
338 - WEEKEND EXPRESS	175	235	-25.6%	259	-32.5%	239	-26.9%	237	-26.0%
344	77	74	3.5%						
400 - SOUTH OWL	104	102	2.6%	104	0.5%	30	247.5%	70	48.9%
401 - NORTH OWL	81	76	5.6%	61	33.1%	75	7.0%	84	-4.6%
500 - CUTLER BAY LOCAL	281	217	29.3%	152	85.0%	178	57.9%	119	135.5%
510 - SKYLAKE CIRCULATOR (*)	329	261	25.7%	217	51.2%	124	164.5%	165	99.1%
12/21 WEEKEND INTERLINE	2,952	3,006	-1.8%	3,290	-10.3%	2,971	-0.6%	2,528	16.8%
FEDERATION GARDENS SHUTTLE	30	22	35.1%	20	50.0%	19	54.6%	28	5.6%
<b>Total</b>	<b>138,364</b>	<b>131,602</b>	<b>5.1%</b>	<b>107,331</b>	<b>28.9%</b>	<b>114,507</b>	<b>20.8%</b>	<b>93,742</b>	<b>47.6%</b>

## METROBUS AVERAGE SUNDAY BOARDINGS BY ROUTE

Route	Average Sunday	Average Sunday	Percent Change	Average Sunday	Percent Change	Average Sunday	Percent Change	Average Sunday	Percent Change
	Apr-24	Mar-24	MOM	Oct-23	MO6M	Apr-23	YOY	Feb-20	Current vs Feb-20
<b>Sundays</b>									
2	761	773	-1.5%	1,214	-37.3%	1,111	-31.5%	1,335	-43.0%
3	5,380	5,304	1.4%	4,408	22.0%	4,762	13.0%	4,353	23.6%
7	1,752	1,776	-1.4%	1,632	7.3%	1,660	5.5%	1,654	5.9%
8	1,795	1,706	5.2%	1,838	-2.4%	2,092	-14.2%	1,746	2.8%
9	4,995	4,870	2.6%	2,756	81.3%	2,848	75.4%	2,549	95.9%
10				1,632		1,620		1,441	
11	6,312	6,439	-2.0%	3,803	66.0%	4,556	38.5%	3,917	61.1%
14	1,104	1,068	3.4%						
15	258	293	-12.1%	53	385.8%	44	490.6%	56	364.0%
16				1,023		1,072		997	
17	3,092	3,114	-0.7%	1,920	61.1%	1,877	64.8%	1,833	68.7%
20	2,283	2,558	-10.8%						
22	999	1,095	-8.8%	1,915	-47.8%	1,862	-46.4%	1,548	-35.5%
<b>24-CORAL WAY LIMITED</b>	1,252	1,325	-5.5%	1,108	13.0%	1,157	8.2%	905	38.4%
26	1,029	1,078	-4.5%	871	18.2%	929	10.8%	717	43.6%
27	4,364	4,208	3.7%	3,146	38.7%	3,046	43.3%	2,918	49.6%
<b>31-BUSWAY LOCAL</b>				0		767		715	
32	797	836	-4.7%	768	3.8%	706	12.9%	772	3.3%
35	1,533	1,331	15.1%	1,175	30.4%	1,115	37.5%	942	62.8%
36	3,681	3,919	-6.1%	1,160	217.2%	1,257	192.7%	1,111	231.4%
37	2,244	2,366	-5.2%	1,755	27.8%	1,835	22.2%	1,739	29.0%
<b>38 TRANSITWAY MAX</b>	5,236	5,104	2.6%	4,957	5.6%	4,224	24.0%	4,147	26.3%
40	831	836	-0.5%	542	53.3%	696	19.5%	447	85.9%
42				425		503		416	
52	918	859	6.8%	496	84.9%	496	85.0%	466	96.9%
54	1,233	1,267	-2.7%	1,181	4.4%	1,312	-6.0%	1,171	5.3%
62	1,272	1,253	1.5%	1,040	22.3%	887	43.4%	891	42.9%
70	144	150	-4.4%						
72	432	439	-1.6%	259	66.8%	339	27.7%	265	63.4%
73	273	247	10.4%	602	-54.7%	734	-62.8%	495	-44.8%
75	1,459	1,379	5.8%	352	314.9%	340	328.8%	271	438.8%
77	5,024	4,866	3.2%	3,980	26.2%	3,888	29.2%	2,815	78.5%
79	5,461	5,846	-6.6%	4,837	12.9%	5,181	5.4%	4,804	13.7%

## METROBUS AVERAGE SUNDAY BOARDINGS BY ROUTE

Route	Average Sunday	Average Sunday	Percent Change	Average Sunday	Percent Change	Average Sunday	Percent Change	Average Sunday	Percent Change
	Apr-24	Mar-24	MOM	Oct-23	MO6M	Apr-23	YOY	Feb-20	Current vs Feb-20
<b>Sundays</b>									
87	543	524	3.5%	362	50.1%	389	39.6%	319	70.2%
88	1,126	1,159	-2.8%	1,255	-10.3%	1,326	-15.1%	1,286	-12.4%
97	161	150	6.9%	149	8.0%	150	7.5%	201	-19.9%
100	10,013	10,743	-6.8%	3,492	186.7%	3,692	171.2%	3,469	188.6%
103 - C						0		212	
103	845	846	-0.1%	729	16.0%	706	19.7%	607	39.3%
104	605	560	8.0%	348	74.0%	364	66.3%	317	90.9%
105 - E				634		684		616	
107	1,224	1,161	5.4%	187	554.4%	174	603.3%	162	655.4%
108 - H				363		413		328	
110 - J				1,699		1,832		1,638	
113 - M				444		497		431	
115				66		61		80	
119 - S				7,612		8,841		7,141	
125	2,021	1,996	1.2%	1,036	95.0%	1,045	93.4%	895	125.7%
135	650	650	-0.1%	474	37.1%	400	62.3%	349	86.0%
137-WEST DADE CONNECTION	1,187	1,140	4.1%	956	24.2%	1,011	17.4%	879	35.0%
150-MIAMI BEACH AIRPORT EXPRESS	1,436	1,765	-18.7%	1,966	-27.0%	2,115	-32.1%	1,574	-8.8%
152	165	128	28.7%	331	-50.3%	300	-45.1%	199	-17.1%
183	2,161	2,207	-2.1%	1,569	37.7%	1,505	43.6%	1,413	53.0%
199	1,019	1,004	1.5%	887	14.9%	768	32.6%	658	54.8%
202 - LITTLE HAITI CONN				21		26		39	
207 (7th St)-LITTLE HAVANA CONN	755	709	6.4%	648	16.5%	746	1.1%	796	-5.2%
208 (8th St)-LITTLE HAVANA CONN	739	733	0.8%	862	-14.3%	880	-16.0%	911	-18.9%
241 TUTTLE LIMITED				187		156			
301-DADE MONROE EXPRESS	873	911	-4.2%	867	0.7%	841	3.8%	751	16.2%
302-CARD SOUND EXPRESS	90	86	4.3%	72	25.0%	90	-0.1%	57	57.0%
338 - WEEKEND EXPRESS	188	168	11.3%	247	-24.2%	241	-22.3%	252	-25.6%
400 - SOUTH OWL	96	109	-12.1%	70	36.4%	62	55.0%	83	15.4%
401 - NORTH OWL	85	80	6.0%	65	32.0%	56	51.7%	87	-2.0%
500 - CUTLER BAY LOCAL	107	104	2.3%	86	23.8%	50	112.6%	59	82.5%
510 - SKYLAKE CIRCULATOR (*)	276	313	-11.8%	194	42.0%	100	176.9%	143	92.8%
12/21 WEEKEND INTERLINE	2,387	2,491	-4.2%	2,700	-11.6%	2,219	7.6%	2,048	16.6%
<b>Total</b>	<b>94,659</b>	<b>96,041</b>	<b>-1.4%</b>	<b>81,427</b>	<b>16.3%</b>	<b>84,656</b>	<b>11.8%</b>	<b>75,428</b>	<b>25.5%</b>



## METROBUS TOTAL MONTHLY BOARDINGS BY ROUTE

Route	Total Month	Total Month	Percent Change	Total Month	Percent Change	Total Month	Percent Change	Total Month	Percent Change
	Apr-24	Mar-24	MOM	Oct-23	MO6M	Apr-23	YOY	Feb-20	Current vs Feb-20
<b>total month</b>									
2	55,846	53,003	5.4%	77,976	-28.4%	71,227	-21.6%	75,463	-26.0%
3	243,965	247,361	-1.4%	164,203	48.6%	157,800	54.6%	146,294	66.8%
7	109,489	115,307	-5.0%	104,507	4.8%	96,560	13.4%	86,077	27.2%
8	132,773	129,663	2.4%	120,821	9.9%	117,709	12.8%	95,295	39.3%
9	321,608	304,385	5.7%	171,265	87.8%	152,475	110.9%	135,924	136.6%
10				70,338		64,653		64,874	
11	343,340	327,004	5.0%	253,837	35.3%	231,609	48.2%	187,425	83.2%
12	66,797	62,859	6.3%	63,603	5.0%	57,707	15.8%	55,585	20.2%
14	33,769	37,120	-9.0%						
15	13,191	12,467	5.8%	4,545	190.2%	4,987	164.5%	4,114	220.6%
16				55,959		52,016		49,061	
17	200,491	187,674	6.8%	110,727	81.1%	96,197	108.4%	96,715	107.3%
19				39,745		29,899		30,847	
20	119,839	125,553	-4.6%						
21	47,338	43,972	7.7%	46,355	2.1%	36,908	28.3%	36,341	30.3%
22	67,824	69,795	-2.8%	118,329	-42.7%	104,692	-35.2%	89,404	-24.1%
24-CORAL WAY LIMITED	71,078	70,874	0.3%	59,432	19.6%	59,289	19.9%	36,237	96.1%
26	64,484	64,595	-0.2%	49,521	30.2%	54,377	18.6%	42,683	51.1%
27	276,587	258,452	7.0%	188,160	47.0%	178,287	55.1%	171,282	61.5%
29				11,342		10,049		10,684	
31-BUSWAY LOCAL						32,195		29,125	
32	50,405	52,491	-4.0%	68,263	-26.2%	61,431	-17.9%	56,027	-10.0%
34 TRANSITWAY EXPRESS	41,739	37,138	12.4%	36,002	15.9%	32,125	29.9%	40,159	3.9%
35	66,691	63,221	5.5%	79,573	-16.2%	68,935	-3.3%	59,041	13.0%
36	185,915	189,545	-1.9%	70,698	163.0%	68,251	172.4%	61,606	201.8%
37	133,012	139,516	-4.7%	93,471	42.3%	91,595	45.2%	82,870	60.5%
38 TRANSITWAY MAX	209,908	206,754	1.5%	175,803	19.4%	181,498	15.7%	167,379	25.4%
39 TRANSITWAY EXPRESS	18,878	16,823	12.2%	16,333	15.6%			17,853	5.7%
40	52,483	50,090	4.8%	57,992	-9.5%	54,813	-4.3%	40,497	29.6%
42				26,611		26,868		20,825	
46 - LIBERTY CITY CONN.				477		440		814	
52	47,053	44,875	4.9%	35,844	31.3%	32,887	43.1%	30,522	54.2%
54	77,038	81,240	-5.2%	81,490	-5.5%	78,689	-2.1%	72,125	6.8%
56	14,641	13,488	8.5%	8,598	70.3%	7,120	105.6%	7,071	107.1%
57				11,491		9,956		8,665	
62	81,671	78,013	4.7%	67,398	21.2%	46,188	76.8%	46,582	75.3%
70	7,820	7,465	4.8%	3,546	120.5%	2,478	215.6%	2,690	190.7%

## METROBUS TOTAL MONTHLY BOARDINGS BY ROUTE

Route	Total Month	Total Month	Percent Change	Total Month	Percent Change	Total Month	Percent Change	Total Month	Percent Change
	Apr-24	Mar-24	MOM	Oct-23	MO6M	Apr-23	YOY	Feb-20	Current vs Feb-20
<b>total month</b>									
72	24,770	22,997	7.7%	17,459	41.9%	18,299	35.4%	18,433	34.4%
73	37,150	34,266	8.4%	70,903	-47.6%	74,441	-50.1%	48,767	-23.8%
75	85,259	77,919	9.4%	39,021	118.5%	31,416	171.4%	31,994	166.5%
77	327,234	309,258	5.8%	261,039	25.4%	222,183	47.3%	174,833	87.2%
79	251,972	275,303	-8.5%	239,146	5.4%	231,769	8.7%	200,268	25.8%
<b>82 - WESTCHESTER CIRC</b>				1,488		1,690		1,482	
87	61,276	57,171	7.2%	46,254	32.5%	43,926	39.5%	33,273	84.2%
88	56,405	56,185	0.4%	66,138	-14.7%	64,609	-12.7%	54,772	3.0%
<b>95-EXPRESS GOLDEN GLADES</b>	31,628	29,346	7.8%	26,295	20.3%	21,516	47.0%	33,796	-6.4%
97	6,489	5,838	11.2%	6,337	2.4%	5,616	15.5%	5,558	16.8%
100	501,730	514,701	-2.5%	174,819	187.0%	181,348	176.7%	170,942	193.5%
<b>103 - C</b>								11,682	
103	60,053	57,847	3.8%	51,871	15.8%	47,567	26.2%	40,918	46.8%
104	33,568	32,294	3.9%	26,049	28.9%	23,815	41.0%	20,351	64.9%
<b>105 - E</b>				37,092		36,348		31,302	
107	63,133	62,130	1.6%	20,040	215.0%	17,329	264.3%	16,118	291.7%
108 - H				14,133		14,824		12,624	
110 - J				79,080		83,299		66,481	
113 - M				24,040		24,692		21,548	
115				3,968		3,324		4,334	
119 - S				281,456		281,100		242,257	
125	138,141	128,189	7.8%	56,547	144.3%	51,908	166.1%	43,178	219.9%
<b>132 -TRI-RAIL DORAL SHUTTLE</b>	929	954	-2.6%	804	15.5%	1,122	-17.2%	312	197.8%
135	55,188	51,855	6.4%	43,211	27.7%	35,406	55.9%	32,067	72.1%
136	3,957	3,539	11.8%	3,557	11.2%	3,095	27.9%	2,524	56.8%
<b>137-WEST DADE CONNECTION</b>	68,254	66,636	2.4%	56,750	20.3%	56,795	20.2%	41,167	65.8%
<b>150-MIAMI BEACH AIRPORT EXPRESS</b>	49,977	54,101	-7.6%	65,763	-24.0%	65,052	-23.2%	51,651	-3.2%
152	10,671	9,899	7.8%	26,285	-59.4%	25,597	-58.3%	19,325	-44.8%
<b>155 - BISCAYNE GARDENS CIRC</b>				985		955		881	
<b>175 - NW MIAMI-DADE EXPRESS</b>								661	
183	143,721	138,690	3.6%	96,050	49.6%	87,128	65.0%	77,570	85.3%
<b>195 EXPRESS - BROWARD BLVD</b>								7,441	
<b>196 EXPRESS - SHERIDAN ST</b>								7,658	
199	55,784	54,913	1.6%	50,634	10.2%	44,998	24.0%	36,325	53.6%
<b>202 - LITTLE HAITI CONN</b>				2,620		1,817		3,200	
<b>203 - BISCAYNE MAX</b>	29,391	26,284	11.8%	80,650	-63.6%	69,325	-57.6%	66,684	-55.9%

## METROBUS TOTAL MONTHLY BOARDINGS BY ROUTE

Route	Total Month	Total Month	Percent Change	Total Month	Percent Change	Total Month	Percent Change	Total Month	Percent Change
	Apr-24	Mar-24	MOM	Oct-23	MO6M	Apr-23	YOY	Feb-20	Current vs Feb-20
<b>total month</b>									
204 KILLIAN MAX	14,472	13,257	9.2%	13,632	6.2%	15,166	-4.6%	21,418	-32.4%
207 (7th St)-LITTLE HAVANA CONN	48,609	47,252	2.9%	46,970	3.5%	44,478	9.3%	38,127	27.5%
208 (8th St)-LITTLE HAVANA CONN	46,495	45,064	3.2%	44,922	3.5%	43,731	6.3%	35,018	32.8%
211 OVERTOWN CIRCULATOR				1,567		1,745		1,159	
211 - FLAGLER MAX	41,762	44,100	-5.3%	84,135	-50.4%	76,494	-45.4%	62,186	-32.8%
212-SWEETWATER CIRC				494		424		295	
217 - BUNCHE PARK CIRC				1,759		1,214		1,949	
238-EAST/WEST CONN				13,036		11,988		8,987	
241 TUTTLE LIMITED				9,471		7,824			
254-BROWNSVILLE CIRC				105		118		384	
267-LUDLAM LIMITED				3,567		3,585		2,978	
272 SUNSET MAX (*)	8,861	7,934	11.7%	9,423	-6.0%	8,494	4.3%	11,004	-19.5%
277-7TH AVENUE MAX				19,345		17,073		13,669	
279 - 79 STREET MAX	18,636	20,370	-8.5%	10,318	80.6%	10,866	71.5%	7,228	157.8%
286-NORTH POINTE CIRC				2,279		2,185		2,145	
287-SAGA BAY MAX	8,884	8,444	5.2%	7,499	18.5%	6,540	35.8%	7,160	24.1%
288 KENDALL MAX	11,805	10,584	11.5%	8,189	44.2%	10,025	17.8%	15,249	-22.6%
295								4,668	
296								4,297	
297-27th AVENUE ORANGE MAX				27,047		25,088		27,125	
301-DADE MONROE EXPRESS	30,051	31,478	-4.5%	28,889	4.0%	27,951	7.5%	23,838	26.1%
302-CARD SOUND EXPRESS	3,046	3,140	-3.0%	2,728	11.7%	3,575	-14.8%	2,236	36.2%
338 - WEEKEND EXPRESS	1,450	2,018	-28.1%	2,274	-36.2%	2,404	-39.7%	2,191	-33.8%
344	2,797	2,747	1.8%	1,666	67.9%	1,244	124.8%	1,919	45.8%
400 - SOUTH OWL	2,609	2,721	-4.1%	2,324	12.3%	1,858	40.4%	2,301	13.4%
401 - NORTH OWL	2,259	2,147	5.2%	1,899	19.0%	1,951	15.8%	2,641	-14.5%
500 - CUTLER BAY LOCAL	7,894	7,745	1.9%	4,907	60.9%	4,059	94.5%	3,984	98.1%
510 - SKYLAKE CIRCULATOR (*)	12,631	12,305	2.6%	12,211	3.4%	8,080	56.3%	7,033	79.6%
836 EXPRESS	7,652	6,968	9.8%	5,428	41.0%	6,134	24.7%		
837 EXPRESS	4,532	4,003	13.2%	4,281	5.9%	3,296	37.5%		
12/21 WEEKEND INTERLINE	21,355	27,485	-22.3%	26,661	-19.9%	25,951	-17.7%	20,830	2.5%
AHEPA SHUTTLE	69	82	-15.9%	71	-2.8%	100	-31.0%	83	-16.9%
FEDERATION GARDENS SHUTTLE	120	111	8.1%	80	50.0%	97	23.7%	142	-15.5%
GREEN HILLS SHUTTLE	40	36	11.1%	26	53.8%	106	-62.3%	36	11.1%
KINGS CREEK SHUTTLE	38	41	-7.3%	55	-30.9%	41	-7.3%	52	-26.9%
ROBERT SHARP SHUTTLE	106	115	-7.8%	92	15.2%	105	1.0%	38	178.9%
SIERRA LAKES SHUTTLE	88	112	-21.4%	62	41.9%	93	-5.4%	180	-51.1%
<b>Total</b>	<b>5,548,614</b>	<b>5,461,317</b>	<b>1.6%</b>	<b>4,912,151</b>	<b>13.0%</b>	<b>4,618,302</b>	<b>20.1%</b>	<b>4,123,083</b>	<b>34.6%</b>

## BUS RIDERSHIP BY ROUTE SERVICE TYPE LINEUPS COMPARISON (MONTH-OVER-MONTH)

Boardings by Service Type and Route	Average Weekday	Average Weekday	Percent Change	Average Saturday	Average Saturday	Percent Change	Average Sunday	Average Sunday	Percent Change	Total Monthly	Total Monthly	Percent Change
	Apr-24	Mar-24	m.o.m.	Apr-24	Mar-24	m.o.m.	Apr-24	Mar-24	m.o.m.	Apr-24	Mar-24	m.o.m.
<b>Directly Operated Express Routes</b>												
34 TRANSITWAY EXPRESS	1,897	1,768	7.3%							41,739	37,138	12.4%
39 TRANSITWAY EXPRESS	858	801	7.1%							18,878	16,823	12.2%
95-EXPRESS GOLDEN GLADES	1,438	1,397	2.9%							31,628	29,346	7.8%
150-MIAMI BEACH AIRPORT EXPRESS	1,707	1,776	-3.9%	1,673	1,597	4.8%	1,436	1,765	-18.7%	49,977	54,101	-7.6%
338 - WEEKEND EXPRESS				175	235	-25.6%	188	168	11.3%	1,450	2,018	-28.1%
836 EXPRESS	348	332	4.8%							7,652	6,968	9.8%
837 EXPRESS	206	191	8.1%							4,532	4,003	13.2%
<b>Subtotal Express Routes</b>	<b>6,453</b>	<b>6,265</b>	<b>3.0%</b>	<b>1,848</b>	<b>1,832</b>	<b>0.9%</b>	<b>1,623</b>	<b>1,933</b>	<b>-16.0%</b>	<b>155,856</b>	<b>150,397</b>	<b>3.6%</b>
<b>Percentage of All Bus Routes</b>	<b>3.1%</b>	<b>3.0%</b>		<b>1.3%</b>	<b>1.4%</b>		<b>1.7%</b>	<b>2.0%</b>		<b>2.8%</b>	<b>2.8%</b>	
<b>Contracted Routes - Local Service (*)</b>												
2	2,177	2,115	2.9%	1,227	947	29.6%	761	773	-1.5%	55,846	53,003	5.4%
15	494	441	12.1%	325	350	-7.2%	258	293	-12.1%	13,191	12,467	5.8%
29												
46 - LIBERTY CITY CONN.												
56	620	582	6.5%	252	254					14,641	13,488	8.5%
70	296	281	5.4%	184	163		144	150		7,820	7,465	4.8%
72	953	875	8.9%	518	485	6.7%	432	439	-1.6%	24,770	22,997	7.7%
82 - WESTCHESTER CIRC												
97	234	203	15.3%	175	165	6.2%	161	150	6.9%	6,489	5,838	11.2%
115											0	
152	411	386	6.3%	244	229	6.5%	165	128	28.7%	10,671	9,899	7.8%
155 - BISCAYNE GARDENS CIRC												
202 - LITTLE HAITI CONN												
211 OVERTOWN CIRCULATOR												
212-SWEETWATER CIRC												
217 - BUNCHE PARK CIRC												
254-BROWNSVILLE CIRC												
267-LUDLAM LIMITED												
286-NORTH POINTE CIRC												
344	113	113	0.0%	77	74					2,797	2,747	1.8%
401 - NORTH OWL	73	65	11.7%	81	76	5.6%	85	80	6.0%	2,259	2,147	5.2%
<b>Subtotal Contracted Reg. &amp; Circ. Routes</b>	<b>5,370</b>	<b>5,060</b>	<b>6.1%</b>	<b>3,082</b>	<b>2,743</b>	<b>12.3%</b>	<b>2,006</b>	<b>2,014</b>	<b>-0.4%</b>	<b>138,484</b>	<b>130,051</b>	<b>6.5%</b>
<b>Percentage of All Bus Routes</b>	<b>2.6%</b>	<b>2.5%</b>		<b>2.2%</b>	<b>2.1%</b>		<b>2.1%</b>	<b>2.1%</b>		<b>2.5%</b>	<b>2.4%</b>	

(1) Several express routes were suspended beginning at the end of March 2020, due to the SARS-CoV-2 pandemic, while other routes had alignment and schedule modifications made to them, in an ongoing effort to optimize service delivery.

(2) A second major round of changes took place with the 11/13/23 lineup known as the Better Bus Network, as listed at the start of this Metrobus section.

## BUS RIDERSHIP BY ROUTE SERVICE TYPE LINEUPS COMPARISON (MONTH-OVER-MONTH)

Boardings by Service Type and Route	Average Weekday	Average Weekday	Percent Change	Average Saturday	Average Saturday	Percent Change	Average Sunday	Average Sunday	Percent Change	Total Monthly	Total Monthly	Percent Change
	Apr-24	Mar-24	m.o.m.	Apr-24	Mar-24	m.o.m.	Apr-24	Mar-24	m.o.m.	Apr-24	Mar-24	m.o.m.
<b>Contracted Express Routes</b>												
301-DADE MONROE EXPRESS	1,037	1,054	-1.6%	937	958	-2.3%	873	911	-4.2%	30,051	31,478	-4.5%
302-CARD SOUND EXPRESS	103	105	-2.5%	108	100	7.5%	90	86	4.3%	3,046	3,140	-3.0%
<b>Subtotal Contracted Express Routes</b>	<b>1,140</b>	<b>1,159</b>	<b>-1.7%</b>	<b>1,044</b>	<b>1,059</b>	<b>-1.4%</b>	<b>963</b>	<b>997</b>	<b>-3.4%</b>	<b>33,097</b>	<b>34,618</b>	<b>-4.4%</b>
<b>Percentage of All Bus Routes</b>	<b>0.5%</b>	<b>0.6%</b>		<b>0.8%</b>	<b>0.8%</b>		<b>1.0%</b>	<b>1.0%</b>		<b>0.6%</b>	<b>0.6%</b>	
<b>Limited Stop Routes</b>												
24-CORAL WAY LIMITED	2,648	2,617	1.2%	1,953	1,858	5.1%	1,252	1,325	-5.5%	71,078	70,874	0.3%
38 TRANSITWAY MAX	7,390	7,198	2.7%	6,596	6,015	9.7%	5,236	5,104	2.6%	209,908	206,754	1.5%
203 - BISCAYNE MAX	1,336	1,252	6.7%							29,391	26,284	11.8%
204 KILLIAN MAX	658	631	4.2%							14,472	13,257	9.2%
211 - FLAGLER MAX	1,898	2,100	-9.6%							41,762	44,100	-5.3%
241 TUTTLE LIMITED												
272 SUNSET MAX (*)	403	378	6.6%							8,861	7,934	11.7%
277-7TH AVENUE MAX												
279 - 79 STREET MAX	847	970	-12.7%							18,636	20,370	-8.5%
287-SAGA BAY MAX	404	402	0.4%							8,884	8,444	5.2%
288 KENDALL MAX	537	504	6.5%							11,805	10,584	11.5%
297-27th AVENUE ORANGE MAX												
<b>Subtotal Limited Stop Routes</b>	<b>16,120</b>	<b>16,052</b>	<b>0.4%</b>	<b>8,549</b>	<b>7,872</b>	<b>8.6%</b>	<b>6,488</b>	<b>6,428</b>	<b>0.9%</b>	<b>414,797</b>	<b>408,601</b>	<b>1.5%</b>
<b>Percentage of All Bus Routes</b>	<b>7.7%</b>	<b>7.8%</b>		<b>6.2%</b>	<b>6.0%</b>		<b>6.9%</b>	<b>6.7%</b>		<b>7.5%</b>	<b>7.5%</b>	
<b>Directly Operated Free Routes</b>												
132 -TRI-RAIL DORAL SHUTTLE	42	45	-7.0%							929	954	-2.6%
500 - CUTLER BAY LOCAL	288	292	-1.3%	281	217	29.3%	107	104	2.3%	7,894	7,745	1.9%
510 - SKYLAKE CIRCULATOR (*)	464	449	3.3%	329	261	25.7%	276	313	-11.8%	12,631	12,305	2.6%
<b>Subtotal Free Directly Operated Routes</b>	<b>795</b>	<b>787</b>	<b>1.0%</b>	<b>609</b>	<b>479</b>	<b>27.3%</b>	<b>383</b>	<b>417</b>	<b>-8.3%</b>	<b>21,454</b>	<b>21,004</b>	<b>2.1%</b>
<b>Percentage of All Bus Routes</b>	<b>0.4%</b>	<b>0.4%</b>		<b>0.4%</b>	<b>0.4%</b>		<b>0.4%</b>	<b>0.4%</b>		<b>0.4%</b>	<b>0.4%</b>	
<b>Contractor-Operated Lifeline Routes</b>												
GREEN HILLS SHUTTLE	8	9	-11.1%							40	36	11.1%
KINGS CREEK SHUTTLE	10	10	-7.3%							38	41	-7.3%
SIERRA LAKES SHUTTLE	22	22	-1.8%							88	112	-21.4%
ROBERT SHARP SHUTTLE	27	29	-7.8%							106	115	-7.8%
AHEPA SHUTTLE	17	21	-15.9%							69	82	-15.9%
FEDERATION GARDENS SHUTTLE				30	22	35.1%				120	111	8.1%
<b>Subtotal Contractor-Operated Lifeline Routes</b>	<b>83</b>	<b>91</b>	<b>-8.4%</b>	<b>30</b>	<b>22</b>	<b>35.1%</b>				<b>461</b>	<b>497</b>	<b>-7.2%</b>
<b>Percentage of All Bus Routes</b>	<b>0.0%</b>	<b>0.0%</b>		<b>0.0%</b>	<b>0.0%</b>					<b>0.0%</b>	<b>0.0%</b>	
<b>All Other (Regular) Routes</b>	<b>179,948</b>	<b>176,520</b>	<b>1.9%</b>	<b>123,202</b>	<b>117,595</b>	<b>4.8%</b>	<b>83,198</b>	<b>84,252</b>	<b>-1.3%</b>	<b>4,784,465</b>	<b>4,716,149</b>	<b>1.4%</b>
<b>Percentage of All Bus Routes</b>	<b>85.7%</b>	<b>85.7%</b>		<b>89.0%</b>	<b>89.4%</b>		<b>87.9%</b>	<b>87.7%</b>		<b>86.2%</b>	<b>86.4%</b>	
<b>Total Bus System</b>	<b>209,910</b>	<b>205,935</b>	<b>1.9%</b>	<b>138,364</b>	<b>131,602</b>	<b>5.1%</b>	<b>94,659</b>	<b>96,041</b>	<b>-1.4%</b>	<b>5,548,614</b>	<b>5,461,317</b>	<b>1.6%</b>

## BUS RIDERSHIP BY ROUTE SERVICE TYPE LINEUPS COMPARISON (MONTH-OVER-6 MONTH)

Boardings by Service Type and Route	Average Weekday	Average Weekday	Percent Change	Average Saturday	Average Saturday	Percent Change	Average Sunday	Average Sunday	Percent Change	Total Monthly	Total Monthly	Percent Change
	Apr-24	Oct-23	MO6M	Apr-24	Oct-23	MO6M	Apr-24	Oct-23	MO6M	Apr-24	Oct-23	MO6M
<b>Directly Operated Express Routes</b>												
34 TRANSITWAY EXPRESS	1,897	1,636	15.9%							41,739	36,002	15.9%
39 TRANSITWAY EXPRESS	858	742	15.6%							18,878	16,333	15.6%
95-EXPRESS GOLDEN GLADES	1,438	1,195	20.3%							31,628	26,295	20.3%
150-MIAMI BEACH AIRPORT EXPRESS	1,707	2,149	-20.6%	1,673	2,161	-22.6%	1,436	1,966	-27.0%	49,977	65,763	-24.0%
338 - WEEKEND EXPRESS				175	259	-32.5%	188	247	-24.2%	1,450	2,274	-36.2%
836 EXPRESS	348	247	41.0%							7,652	5,428	41.0%
837 EXPRESS	206	195	5.9%							4,532	4,281	5.9%
<b>Subtotal Express Routes</b>	<b>6,453</b>	<b>6,165</b>	<b>4.7%</b>	<b>1,848</b>	<b>2,420</b>	<b>-23.7%</b>	<b>1,623</b>	<b>2,214</b>	<b>-26.7%</b>	<b>155,856</b>	<b>156,376</b>	<b>-0.3%</b>
<b>Percentage of All Bus Routes</b>	<b>3.1%</b>	<b>3.3%</b>		<b>1.3%</b>	<b>2.3%</b>		<b>1.7%</b>	<b>2.7%</b>		<b>2.8%</b>	<b>3.2%</b>	
<b>Contracted Routes - Local Service (*)</b>												
2	2,177	2,977	-26.9%	1,227	1,605	-23.6%	761	1,214	-37.3%	55,846	77,976	-28.4%
15	494	178	178.0%	325	93	248.0%	258	53	385.8%	13,191	4,545	190.2%
29		516									11,342	
46 - LIBERTY CITY CONN.		22									477	
56	620	391	58.5%	252						14,641	8,598	70.3%
70	296	161	83.6%	184			144			7,820	3,546	120.5%
72	953	670	42.3%	518	357	45.3%	432	259	66.8%	24,770	17,459	41.9%
82 - WESTCHESTER CIRC		61									1,488	
97	234	225	4.2%	175	163	7.2%	161	149	8.0%	6,489	6,337	2.4%
115		151									3,968	
152	411	1,051	-60.9%	244	375	-34.9%	165	331	-50.3%	10,671	26,285	-59.4%
155 - BISCAYNE GARDENS CIRC		45									985	
202 - LITTLE HAITI CONN		110						21			2,620	
211 OVERTOWN CIRCULATOR		71									1,567	
212-SWEETWATER CIRC		22									494	
217 - BUNCHE PARK CIRC		80									1,759	
254-BROWNSVILLE CIRC		5									105	
267-LUDLAM LIMITED		162									3,567	
286-NORTH POINTE CIRC		93									2,279	
344	113	76	49.4%	77						2,797	1,666	67.9%
401 - NORTH OWL	73	61	19.6%	81	61	33.1%	85	65	32.0%	2,259	1,899	19.0%
<b>Subtotal Contracted Reg. &amp; Circ. Routes</b>	<b>5,370</b>	<b>7,125</b>	<b>-24.6%</b>	<b>3,082</b>	<b>2,854</b>	<b>8.0%</b>	<b>2,006</b>	<b>2,158</b>	<b>-7.1%</b>	<b>138,484</b>	<b>178,962</b>	<b>-22.6%</b>
<b>Percentage of All Bus Routes</b>	<b>2.6%</b>	<b>3.8%</b>		<b>2.2%</b>	<b>2.7%</b>		<b>2.1%</b>	<b>2.7%</b>		<b>2.5%</b>	<b>3.6%</b>	

(1) Several express routes were suspended beginning at the end of March 2020, due to the SARS-CoV-2 pandemic, while other routes had alignment and schedule modifications made to them, in an ongoing effort to optimize service delivery.  
(2) A second major round of changes took place with the 11/13/23 lineup known as the Better Bus Network, as listed at the start of this Metrobus section.

## BUS RIDERSHIP BY ROUTE SERVICE TYPE LINEUPS COMPARISON (MONTH-OVER-6 MONTH)

Boardings by Service Type and Route	Average Weekday	Average Weekday	Percent Change	Average Saturday	Average Saturday	Percent Change	Average Sunday	Average Sunday	Percent Change	Total Monthly	Total Monthly	Percent Change
	Apr-24	Oct-23	MO6M	Apr-24	Oct-23	MO6M	Apr-24	Oct-23	MO6M	Apr-24	Oct-23	MO6M
<b>Contracted Express Routes</b>												
301-DADE MONROE EXPRESS	1,037	955	8.6%	937	885	5.8%	873	867	0.7%	30,051	28,889	4.0%
302-CARD SOUND EXPRESS	103	91	13.2%	108	94	14.6%	90	72	25.0%	3,046	2,728	11.7%
<b>Subtotal Contracted Express Routes</b>	<b>1,140</b>	<b>1,046</b>	<b>9.0%</b>	<b>1,044</b>	<b>979</b>	<b>6.7%</b>	<b>963</b>	<b>938</b>	<b>2.6%</b>	<b>33,097</b>	<b>31,617</b>	<b>4.7%</b>
<b>Percentage of All Bus Routes</b>	<b>0.5%</b>	<b>0.6%</b>		<b>0.8%</b>	<b>0.9%</b>		<b>1.0%</b>	<b>1.2%</b>		<b>0.6%</b>	<b>0.6%</b>	
<b>Limited Stop Routes</b>												
24-CORAL WAY LIMITED	2,648	2,195	20.6%	1,953	1,400	39.5%	1,252	1,108	13.0%	71,078	59,432	19.6%
38 TRANSITWAY MAX	7,390	5,714	29.3%	6,596	6,328	4.2%	5,236	4,957	5.6%	209,908	175,803	19.4%
203 - BISCAYNE MAX	1,336	3,666	-63.6%							29,391	80,650	-63.6%
204 KILLIAN MAX	658	620	6.2%							14,472	13,632	6.2%
211 - FLAGLER MAX	1,898	3,824	-50.4%							41,762	84,135	-50.4%
241 TUTTLE LIMITED		348			222			187			9,471	
272 SUNSET MAX (*)	403	428	-6.0%							8,861	9,423	-6.0%
277-7TH AVENUE MAX		879									19,345	
279 - 79 STREET MAX	847	469	80.6%							18,636	10,318	80.6%
287-SAGA BAY MAX	404	341	18.5%							8,884	7,499	18.5%
288 KENDALL MAX	537	372	44.2%							11,805	8,189	44.2%
297-27th AVENUE ORANGE MAX		1,229									27,047	
<b>Subtotal Limited Stop Routes</b>	<b>16,120</b>	<b>20,086</b>	<b>-19.7%</b>	<b>8,549</b>	<b>7,950</b>	<b>7.5%</b>	<b>6,488</b>	<b>6,252</b>	<b>3.8%</b>	<b>414,797</b>	<b>504,944</b>	<b>-17.9%</b>
<b>Percentage of All Bus Routes</b>	<b>7.7%</b>	<b>10.8%</b>		<b>6.2%</b>	<b>7.4%</b>		<b>6.9%</b>	<b>7.7%</b>		<b>7.5%</b>	<b>10.3%</b>	
<b>Directly Operated Free Routes</b>												
132 -TRI-RAIL DORAL SHUTTLE	42	37	15.5%							929	804	15.5%
500 - CUTLER BAY LOCAL	288	176	64.0%	281	152	85.0%	107	86	23.8%	7,894	4,907	60.9%
510 - SKYLAKE CIRCULATOR (*)	464	471	-1.5%	329	217	51.2%	276	194	42.0%	12,631	12,211	3.4%
<b>Subtotal Free Directly Operated Routes</b>	<b>795</b>	<b>684</b>	<b>16.2%</b>	<b>609</b>	<b>369</b>	<b>65.1%</b>	<b>383</b>	<b>280</b>	<b>36.4%</b>	<b>21,454</b>	<b>17,922</b>	<b>19.7%</b>
<b>Percentage of All Bus Routes</b>	<b>0.4%</b>	<b>0.4%</b>		<b>0.4%</b>	<b>0.3%</b>		<b>0.4%</b>	<b>0.3%</b>		<b>0.4%</b>	<b>0.4%</b>	
<b>Contractor-Operated Lifeline Routes</b>												
GREEN HILLS SHUTTLE	8	5	53.8%							40	26	53.8%
KINGS CREEK SHUTTLE	10	14	-30.9%							38	55	-30.9%
SIERRA LAKES SHUTTLE	22	16	41.9%							88	62	41.9%
ROBERT SHARP SHUTTLE	27	23	15.2%							106	92	15.2%
AHEPA SHUTTLE	17	18	-2.8%							69	71	-2.8%
FEDERATION GARDENS SHUTTLE				30	20	50.0%				120	80	50.0%
<b>Subtotal Contractor-Operated Lifeline Routes</b>	<b>83</b>	<b>75</b>	<b>10.7%</b>	<b>30</b>	<b>20</b>	<b>50.0%</b>				<b>461</b>	<b>386</b>	<b>19.4%</b>
<b>Percentage of All Bus Routes</b>	<b>0.0%</b>	<b>0.0%</b>		<b>0.0%</b>	<b>0.0%</b>					<b>0.0%</b>	<b>0.0%</b>	
<b>All Other (Regular) Routes</b>	<b>179,948</b>	<b>150,140</b>	<b>19.9%</b>	<b>123,202</b>	<b>92,739</b>	<b>32.8%</b>	<b>83,198</b>	<b>69,584</b>	<b>19.6%</b>	<b>4,784,465</b>	<b>4,021,944</b>	<b>19.0%</b>
<b>Percentage of All Bus Routes</b>	<b>85.7%</b>	<b>81.0%</b>		<b>89.0%</b>	<b>86.4%</b>		<b>87.9%</b>	<b>85.5%</b>		<b>86.2%</b>	<b>81.9%</b>	
<b>Total Bus System</b>	<b>209,910</b>	<b>185,320</b>	<b>13.3%</b>	<b>138,364</b>	<b>107,331</b>	<b>28.9%</b>	<b>94,659</b>	<b>81,427</b>	<b>16.3%</b>	<b>5,548,614</b>	<b>4,912,151</b>	<b>13.0%</b>

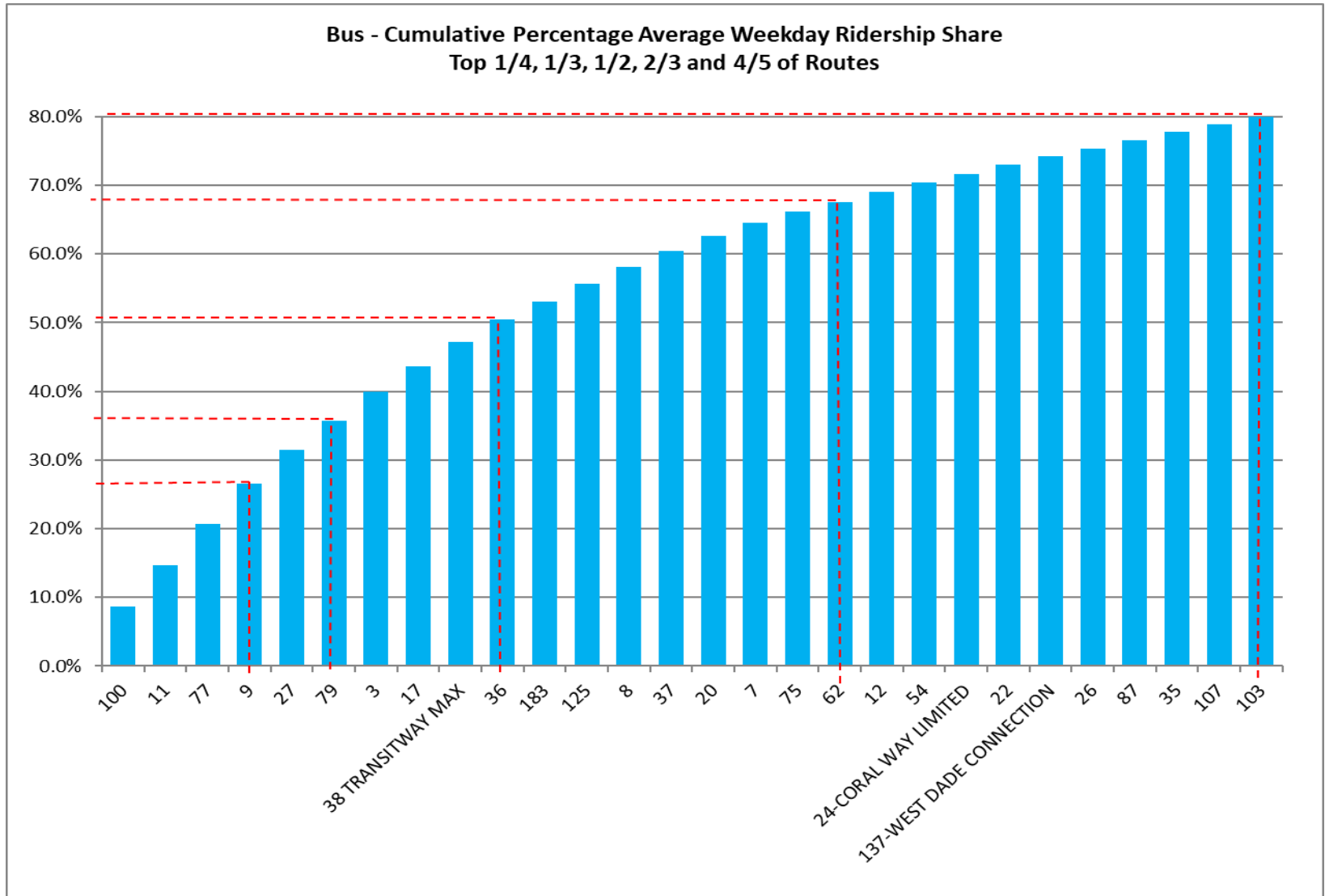
## Bus Routes as Ranked by Percentage of Average Weekday Ridership April 2024

Rank	Route	Average Weekday	Percent Share	Cumul Pct Share	Rank	Route	Average Weekday	Percent Share	Cumul Pct Share	Rank	Route	Average Weekday	Percent Share	Cumul Pct Share
1	100	18,101	8.6%	8.6%	29	35	2,428	1.2%	77.7%	57	287	404	0.2%	98.8%
2	11	12,686	6.0%	14.7%	30	107	2,373	1.1%	78.8%	58	272	403	0.2%	99.0%
3	77	12,506	6.0%	20.6%	31	21	2,152	1.0%	83.1%	59	836	348	0.2%	99.2%
4	9	12,310	5.9%	26.5%	32	199	2,091	1.0%	84.1%	60	70	296	0.1%	99.3%
5	27	10,379	4.9%	31.4%	33	88	2,066	1.0%	85.1%	61	500	288	0.1%	99.5%
6	79	9,076	4.3%	35.8%	34	40	2,020	1.0%	86.0%	62	97	234	0.1%	99.6%
7	3	8,871	4.2%	40.0%	35	32	1,948	0.9%	86.9%	63	837	206	0.1%	99.7%
8	17	7,614	3.6%	43.6%	36	207	1,901	0.9%	87.8%	64	136	180	0.1%	99.8%
9	38	7,390	3.5%	47.1%	37	new 211	1,898	0.9%	88.8%	65	344	113	0.1%	99.8%
10	36	6,880	3.3%	50.4%	38	34	1,897	0.9%	89.7%	66	302	103	0.0%	99.9%
11	183	5,557	2.6%	53.1%	39	52	1,777	0.8%	90.5%	67	400	82	0.0%	99.9%
12	125	5,300	2.5%	55.6%	40	208	1,769	0.8%	91.3%	68	401	73	0.0%	99.9%
13	8	5,212	2.5%	58.1%	41	150	1,707	0.8%	92.2%	69	132	42	0.0%	100.0%
14	37	5,032	2.4%	60.5%	42	73	1,527	0.7%	92.9%	70	RS	27	0.0%	100.0%
15	20	4,383	2.1%	62.5%	43	95	1,438	0.7%	93.6%	71	SL	22	0.0%	100.0%
16	7	4,215	2.0%	64.6%	44	203	1,336	0.6%	94.2%	72	AS	17	0.0%	100.0%
17	75	3,246	1.5%	66.1%	45	104	1,255	0.6%	94.8%	73	KC	10	0.0%	100.0%
18	62	3,126	1.5%	67.6%	46	14	1,176	0.6%	95.4%	74	GH	8	0.0%	100.0%
19	12	3,036	1.4%	69.0%	47	301	1,037	0.5%	95.9%					
20	54	2,925	1.4%	70.4%	48	72	953	0.5%	96.3%					
21	24	2,648	1.3%	71.7%	49	39	858	0.4%	96.7%					
22	22	2,625	1.3%	72.9%	50	279	847	0.4%	97.1%					
23	137	2,566	1.2%	74.2%	51	204	658	0.3%	97.4%					
24	26	2,505	1.2%	75.4%	52	56	620	0.3%	97.7%					
25	87	2,499	1.2%	76.6%	53	288	537	0.3%	98.0%					
26	new 103	2,332	1.1%	80.0%	54	15	494	0.2%	98.2%					entirely contracted in Apr-24
27	135	2,220	1.1%	81.0%	55	510	464	0.2%	98.4%					
28	2	2,177	1.0%	82.0%	56	152	411	0.2%	98.6%					
											<b>Total Boardings</b>	<b>209,910</b>	<b>100.00%</b>	<b>100.0%</b>

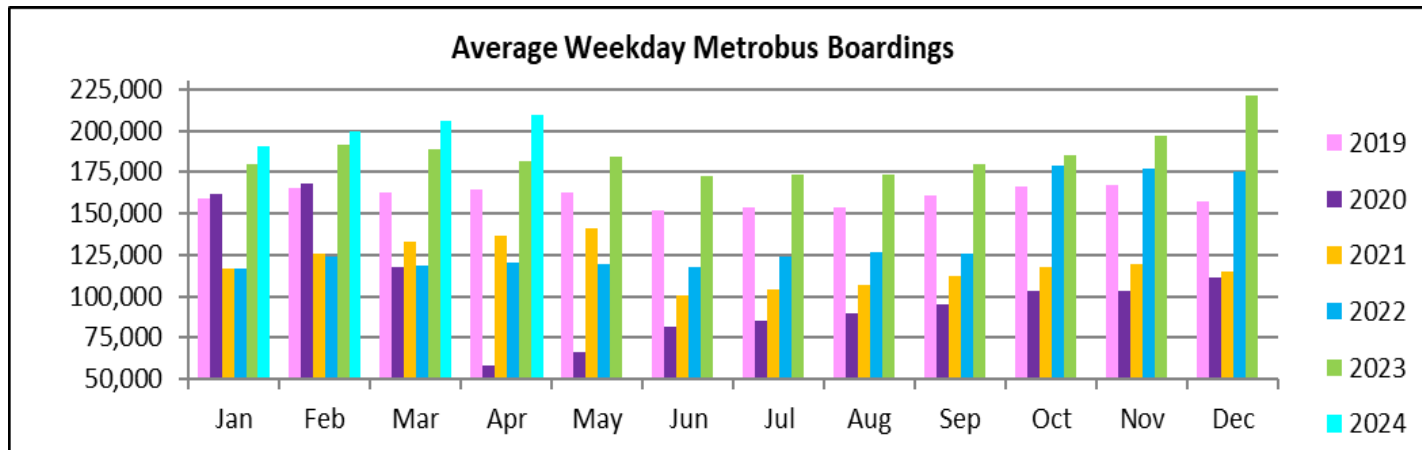
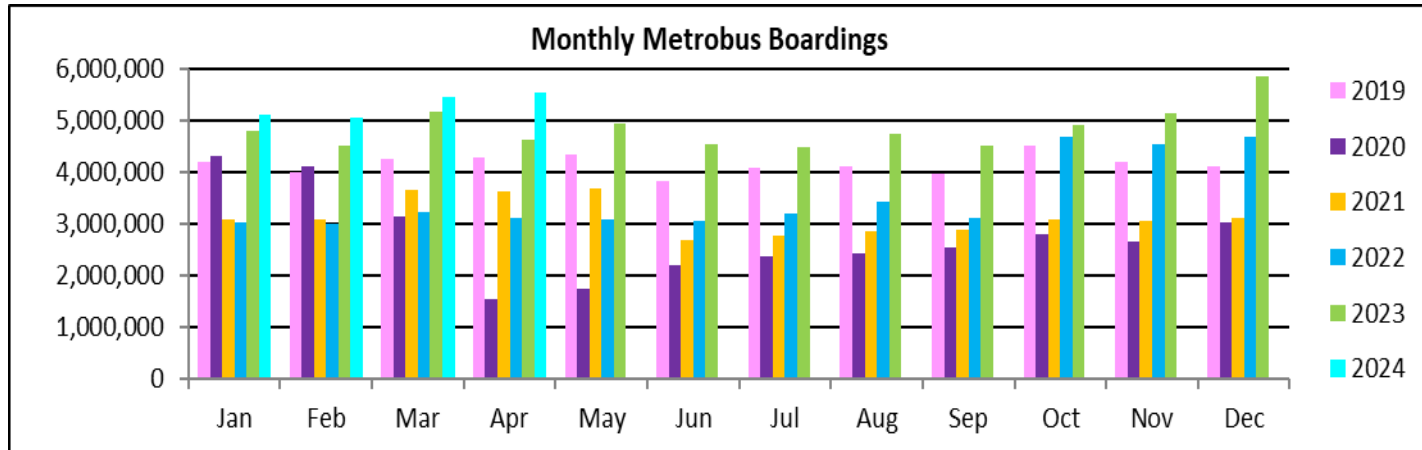
- (1) Average weekday ridership rounded to the nearest unit.  
(2) Includes the five Lifeline Shuttles that operate on weekdays: Ahepa (AS), Green Hills (GH), Kings Creek (KC), Robert Sharp (RS) and Sierra Lakes (SL).



# METROBUS CUMULATIVE PERCENTAGE RIDERSHIP SHARE – BY ROUTE



## TOTAL MONTHLY AND AVERAGE WEEKDAY RIDERSHIP YEAR OVER YEAR COMPARISON CHARTS – METROBUS



**“TOP 10 / BOTTOM 10” BUS ROUTES AVERAGE WEEKDAY RIDERSHIP PERFORMANCE  
MONTH OVER MONTH COMPARISON**

Route	Apr-24	Mar-24	Absolute Delta	Percent Delta
9	12,310	11,530	780	6.8%
77	12,506	11,737	770	6.6%
11	12,686	11,928	758	6.4%
27	10,379	9,686	694	7.2%
17	7,614	7,158	456	6.4%
125	5,300	4,888	412	8.4%
75	3,246	2,932	315	10.7%
183	5,557	5,328	228	4.3%
<b>38 TRANSITWAY MAX</b>	7,390	7,198	192	2.7%
62	3,126	2,963	163	5.5%
79	9,076	9,974	-898	-9.0%
37	5,032	5,352	-320	-6.0%
7	4,215	4,501	-286	-6.3%
100	18,101	18,376	-275	-1.5%
<b>211 - FLAGLER MAX</b>	1,898	2,100	-202	-9.6%
54	2,925	3,082	-157	-5.1%
20	4,383	4,520	-137	-3.0%
<b>279 - 79 STREET MAX</b>	847	970	-123	-12.7%
32	1,948	2,034	-87	-4.3%
22	2,625	2,708	-83	-3.1%

(\*) Averages rounded to the nearest boarding, data as estimated from automatic passenger counter (APC) system; Lifeline shuttles excluded.

## “TOP 10 / BOTTOM 10” BUS ROUTES SETS AVERAGE WEEKDAY RIDERSHIP PERFORMANCE YEAR OVER YEAR COMPARISON

Route Set (*), (1), (2)	Apr-24	Apr-23	Absolute Delta	Percent Delta	routes included in set
<b>{ 11 }</b>	12,686	8,739	3,947	45.2%	11, 212
<b>{ 17 &amp; 22 &amp; 75 }</b>	13,485	9,808	3,677	37.5%	17, 22, 75, 108, 217
<b>{ 20 }</b>	6,331	2,701	3,630	134.4%	20, 32, 115
<b>{ 77 }</b>	12,506	9,554	2,952	30.9%	77, 277
<b>{ 9 }</b>	12,310	10,182	2,128	20.9%	9, 10, 16
<b>{ 27 }</b>	10,379	8,303	2,076	25.0%	27, 297
<b>{ 125 }</b>	5,300	3,467	1,833	52.9%	19, 107, 125
<b>{ new 107 }</b>	5,717	4,021	1,696	42.2%	35, 56, 70, 71, new 107, 248
<b>{ 3 &amp; 203 }</b>	10,207	8,614	1,593	18.5%	3, 93, 203
<b>{ 62 }</b>	3,126	1,801	1,325	73.6%	62, 202
<b>{ 73 &amp; 183 }</b>	7,084	7,990	-906	-11.3%	57, 73, 183, 238, 267, 286
<b>{ 2 }</b>	2,177	2,953	-776	-26.3%	2
<b>{ new 211 }</b>	12,324	13,087	-763	-5.8%	8, 24, 51, 82, 137, new 211
<b>150</b>	1,707	2,212	-506	-22.9%	150
<b>88</b>	2,066	2,421	-355	-14.7%	88
<b>{ 38 }</b>	7,503	7,853	-350	-4.5%	31, 38, 344
<b>40</b>	2,020	2,333	-313	-13.4%	40
<b>{ 37 &amp; 54 }</b>	7,957	8,196	-238	-2.9%	29, 37, 42, 54, 254
<b>{ 52 }</b>	2,188	2,399	-212	-8.8%	52, 152, 252
<b>204</b>	658	758	-100	-13.3%	204

(\*) Averages rounded to the nearest boarding, data as estimated from automatic passenger counter (APC) system; Lifeline shuttles excluded.

(1) The route sets, denoted by brackets, include the new 11/13/2023 lineup's Better Bus Network route designations, as well as older routes present for the first part of the month and previous months and years, then either renamed, absorbed, or eliminated. The sets were defined to enable reasonably fair comparisons between pre- and post-BBN timeframes, to the extent possible and practical, given the complexity of the changes for some of the routes and sets. The definitions are based on information from the DTPW website, and subject to future adjustments, if necessary.

(2) The adjective "new" in front of some new Better Bus Network-generated (recycled) route numbers was added to help prevent confusion with older but different routes with the same number present in previous months or years.

**“TOP 10 / BOTTOM 10” BUS ROUTES SETS AVERAGE WEEKDAY RIDERSHIP PERFORMANCE  
MONTH OVER 6-MONTH PRIOR COMPARISON**

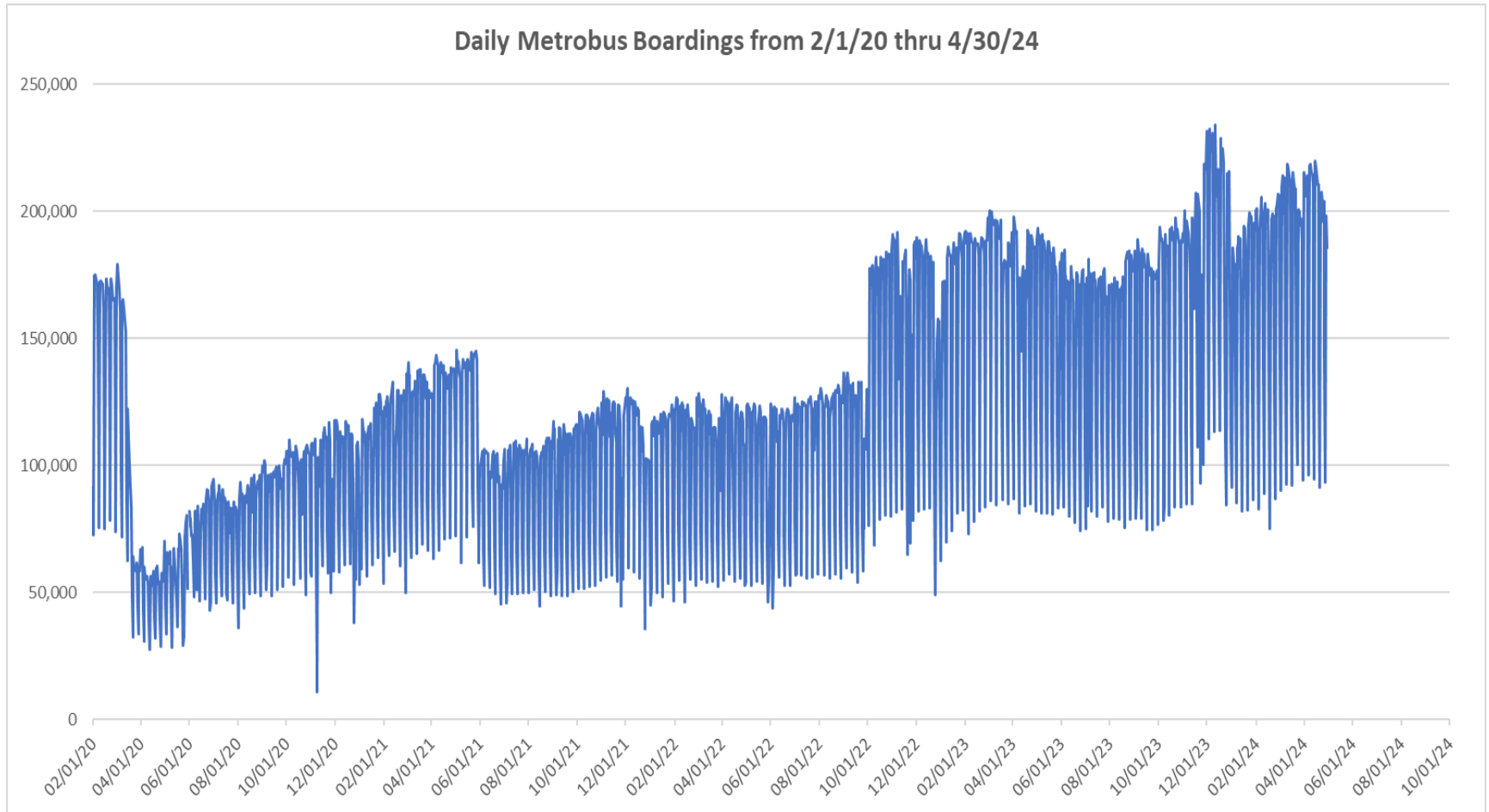
Route Set (*), (1), (2)	Apr-24	Oct-23	Absolute Delta	Percent Delta	routes included in set
{ 20 }	6,331	2,850	3,481	122.2%	20, 32, 115
{ 11 }	12,686	9,644	3,042	31.5%	11, 212
{ 17 & 22 & 75 }	13,485	10,796	2,689	24.9%	17, 22, 75, 108, 217
{ 27 }	10,379	8,339	2,040	24.5%	27, 297
{ 38 }	7,503	5,790	1,713	29.6%	31, 38, 344
{ 77 }	12,506	10,838	1,668	15.4%	77, 277
{ 125 }	5,300	3,906	1,394	35.7%	19, 107, 125
{ 9 }	12,310	10,942	1,368	12.5%	9, 10, 16
{ 36 }	6,880	5,600	1,280	22.9%	36, 110
{ 3 & 203 }	10,207	9,082	1,126	12.4%	3, 93, 203
{ 2 }	2,177	3,048	-871	-28.6%	2
{ 73 & 183 }	7,084	7,890	-806	-10.2%	57, 73, 183, 238, 267, 286
{ new 211 }	12,324	12,849	-525	-4.1%	8, 24, 51, 82, 137, new 211
150	1,707	2,149	-443	-20.6%	150
88	2,066	2,419	-353	-14.6%	88
40	2,020	2,344	-325	-13.9%	40
{ 52 }	2,188	2,442	-254	-10.4%	52, 152, 252
{ 37 & 54 }	7,957	8,082	-125	-1.5%	29, 37, 42, 54, 254
{ 14 }	1,176	1,234	-58	-4.7%	14, 113, 241
272	403	428	-26	-6.0%	272

(\*) Averages rounded to the nearest boarding, data as estimated from automatic passenger counter (APC) system; Lifeline shuttles excluded.

(1) The route sets, denoted by brackets, include the new 11/13/2023 lineup's Better Bus Network route designations, as well as older routes present for the first part of the month and previous months and years, then either renamed, absorbed, or eliminated. The sets were defined to enable reasonably fair comparisons between pre- and post-BBN timeframes, to the extent possible and practical, given the complexity of the changes for some of the routes and sets. The definitions are based on information from the DTPW website, and subject to future adjustments, if necessary.

(2) The adjective "new" in front of some new Better Bus Network-generated (recycled) route numbers was added to help prevent confusion with older but different routes with the same number present in previous months or years.

## DAILY METROBUS RIDERSHIP SINCE FEBRUARY 1, 2020



- (1) There was no Metrobus, Metrorail and Metromover service on 5/31/20, as a safety precaution, and no service for any of the four modes on 9/28/22, as a result of Hurricane Ian.
- (2) The dip at the start of the second week of December 2020 is due to Hurricane Eta.
- (3) Daily variations from October 2022 onward are estimated from reports made available by the Bus APC data vendor; the data is based on statistical sampling.
- (4) The reduction seen beginning 6/1/21 is partly due to the resumption of fares and partly the result of resuming reporting Cubic farebox data rather than bus APC counts; the jump seen at the start of December 2022 is due to the return to APC bus ridership counts reporting beginning 10/1/22; the peak in Dec 2023 is attributable to the Better Bus Network launch period and attendant free fares.
- (5) Periodic (weekly) variations are prominent, since weekday ridership is almost always significantly higher than weekend or holiday ridership.

## METROBUS PARKING PATRONAGE SUMMARY

### April 2024

PARK-RIDE LOT	ACTUAL AVAILABLE SPACES	ACTUAL OCCUPANCY	PERCENT OCCUPANCY
Transitway / SW 152nd St	200	148	74%
Transitway / SW 168th St (*)	149	0	0%
Transitway / SW 200th Street	100	29	29%
Transitway / SW 112 Ave (Target)	450	149	33%
Transitway / SW 244th St	95	76	80%
Transitway / SW 296th St	139	28	20%
Transitway / SW 344th St	248	248	100%
Coral Reef Drive 117/ Turnpike	95	87	92%
Golden Glades Facility	2,150	426	20%
Hammocks Town Center (SW 152 Ave / SW 104 St)	50	12	24%
Kendall Dr./SW 127th Ave	161	24	15%
West Kendall Transit Term (Kendall Dr / SW162 Ave)	40	19	48%
NW 7th Avenue Transit Village (NW 7 Ave / NW 62 St)	25	24	96%
Miami Gardens Dr. / NW 73rd Ave	136	3	2%
Dolphin Station	348	88	25%
Tamiami Station (eff 11-2022)	442	52	12%
I-75 / Miami Gardens Dr (**)	298	0	0%
<b>TOTAL</b>	<b>5,126</b>	<b>1,413</b>	<b>28%</b>

(\*) Closed for construction beginning March 2022

(\*\*) Route 175 Suspended 3/27/2020

# Metrorail





## METRORAIL AVERAGE WEEKDAY BOARDINGS BY STATION (†)

<b>Weekdays</b>	<b>Average Weekday</b>	<b>Average Weekday</b>	<b>Percent Change</b>	<b>Average Weekday</b>	<b>Percent Change</b>	<b>Average Weekday</b>	<b>Percent Change</b>	<b>Average Weekday</b>	<b>Percent Change</b>
<b>STATIONS</b>	<b>Apr-24</b>	<b>Apr-23</b>	<b>YOY</b>	<b>Feb-20</b>	<b>Current vs Feb-20</b>	<b>Mar-24</b>	<b>MOM</b>	<b>Apr-19</b>	<b>YO5Y</b>
ALLAPATTAH	1,757	1,624	8.2%	1,942	-9.5%	1,716	2.3%	1,795	-2.2%
BRICKELL	5,677	4,729	20.0%	6,529	-13.0%	5,651	0.5%	6,050	-6.2%
BROWNSVILLE	584	692	-15.6%	862	-32.2%	536	9.0%	809	-27.8%
CIVIC CENTER	4,421	4,005	10.4%	6,143	-28.0%	4,187	5.6%	5,671	-22.0%
COCONUT GROVE	1,863	1,461	27.5%	1,795	3.8%	1,786	4.4%	1,355	37.5%
CULMER	1,022	1,076	-5.0%	1,392	-26.6%	958	6.7%	1,265	-19.2%
DADELAND NORTH	4,426	4,018	10.2%	5,926	-25.3%	4,196	5.5%	5,731	-22.8%
DADELAND SOUTH	4,943	4,477	10.4%	7,150	-30.9%	4,795	3.1%	6,863	-28.0%
DOUGLAS ROAD	3,566			3,624	-1.6%	3,310	7.7%	3,569	-0.1%
DR. MARTIN LUTHER KING, JR.	803	822	-2.3%	1,157	-30.6%	722	11.2%	1,050	-23.5%
EARLINGTON HEIGHTS	1,477	1,275	15.9%	1,662	-11.1%	1,483	-0.4%	1,519	-2.8%
GOVERNMENT CENTER	6,809	6,844	-0.5%	10,557	-35.5%	7,039	-3.3%	10,089	-32.5%
HIALEAH	1,311	1,171	12.0%	1,253	4.7%	1,285	2.0%	1,233	6.3%
MIAMI INTERNATIONAL AIRPORT	1,443	1,274	13.3%	1,711	-15.6%	1,336	8.0%	1,603	-10.0%
NORTHSIDE	1,361	1,286	5.9%	1,476	-7.8%	1,380	-1.4%	1,327	2.6%
OKEECHOBEE	1,052	907	15.9%	1,164	-9.6%	1,011	4.1%	1,143	-8.0%
OVERTOWN / ARENA	1,994	1,709	16.7%	2,274	-12.3%	1,942	2.7%	2,072	-3.8%
PALMETTO	1,354	1,301	4.1%	1,543	-12.2%	1,214	11.6%	1,465	-7.6%
SANTA CLARA	828	674	22.8%	812	2.0%	796	4.1%	737	12.3%
SOUTH MIAMI	2,318	2,016	15.0%	3,015	-23.1%	2,218	4.5%	2,838	-18.3%
TRI-RAIL	1,194	1,122	6.4%	1,207	-1.1%	1,205	-0.9%	1,140	4.7%
UNIVERSITY	2,107	1,992	5.8%	2,784	-24.3%	2,067	1.9%	2,336	-9.8%
VIZCAYA	1,347	1,162	15.9%	1,390	-3.1%	1,276	5.6%	1,352	-0.3%
<b>TOTAL</b>	<b>53,658</b>	<b>45,635</b>	<b>17.6%</b>	<b>67,367</b>	<b>-20.4%</b>	<b>52,107</b>	<b>3.0%</b>	<b>63,011</b>	<b>-14.8%</b>

(†) In this table and those which follow, "YOY" stands for "year-over-year", "MOM" for "month-over-month" and, e.g., "YO5Y" for "year over five years", i.e., current month vs 12 months prior, one month prior, and 60 months prior, respectively. The February 2020 numbers serve as a pre-pandemic benchmark. Douglas Road station was under renovation and reported no data in Apr-23.

## METRORAIL AVERAGE SATURDAY BOARDINGS BY STATION

<b>Saturdays</b>	Average Saturday	Average Saturday	Percent Change	Average Saturday	Percent Change	Average Saturday	Percent Change	Average Saturday	Percent Change
STATIONS	Apr-24	Apr-23	YOY	Feb-20	Current vs Feb-20	Mar-24	MOM	Apr-19	YO5Y
ALLAPATTAH	914	922	-0.8%	1,051	-13.0%	898	1.8%	984	-7.1%
BRICKELL	2,728	2,327	17.2%	2,811	-3.0%	2,698	1.1%	2,706	0.8%
BROWNSVILLE	334	447	-25.3%	520	-35.8%	302	10.7%	511	-34.7%
CIVIC CENTER	769	767	0.2%	959	-19.9%	684	12.4%	911	-15.7%
COCONUT GROVE	958	768	24.8%	928	3.2%	973	-1.5%	652	47.0%
CULMER	463	493	-6.0%	721	-35.7%	456	1.7%	658	-29.6%
DADELAND NORTH	1,475	1,416	4.1%	1,994	-26.0%	1,513	-2.5%	1,916	-23.0%
DADELAND SOUTH	2,009	1,940	3.6%	2,625	-23.5%	1,973	1.8%	2,521	-20.3%
DOUGLAS ROAD	1,468			1,319	11.3%	1,489	-1.5%	1,330	10.4%
DR. MARTIN LUTHER KING, JR.	459	484	-5.2%	625	-26.5%	430	6.6%	581	-21.0%
EARLINGTON HEIGHTS	791	744	6.3%	935	-15.4%	837	-5.4%	836	-5.3%
GOVERNMENT CENTER	2,826	3,032	-6.8%	4,262	-33.7%	3,309	-14.6%	3,662	-22.8%
HIALEAH	618	621	-0.5%	583	6.0%	616	0.3%	592	4.4%
MIAMI INTERNATIONAL AIRPORT	1,060	951	11.5%	1,330	-20.3%	975	8.7%	1,254	-15.4%
NORTHSIDE	789	831	-5.1%	878	-10.2%	791	-0.3%	827	-4.6%
OKEECHOBEE	460	356	29.1%	408	12.6%	435	5.8%	397	15.9%
OVERTOWN / ARENA	679	635	6.9%	678	0.1%	677	0.3%	536	26.6%
PALMETTO	424	417	1.7%	458	-7.5%	411	3.2%	389	9.0%
SANTA CLARA	398	338	17.7%	422	-5.8%	378	5.0%	403	-1.2%
SOUTH MIAMI	1,037	954	8.6%	1,256	-17.5%	1,051	-1.4%	1,238	-16.3%
TRI-RAIL	577	537	7.4%	614	-6.1%	584	-1.2%	555	3.9%
UNIVERSITY	746	691	7.9%	714	4.4%	855	-12.7%	638	16.8%
VIZCAYA	632	566	11.6%	622	1.6%	609	3.8%	608	3.9%
<b>TOTAL</b>	<b>22,611</b>	<b>20,238</b>	<b>11.7%</b>	<b>26,714</b>	<b>-15.4%</b>	<b>22,943</b>	<b>-1.4%</b>	<b>24,702</b>	<b>-8.5%</b>

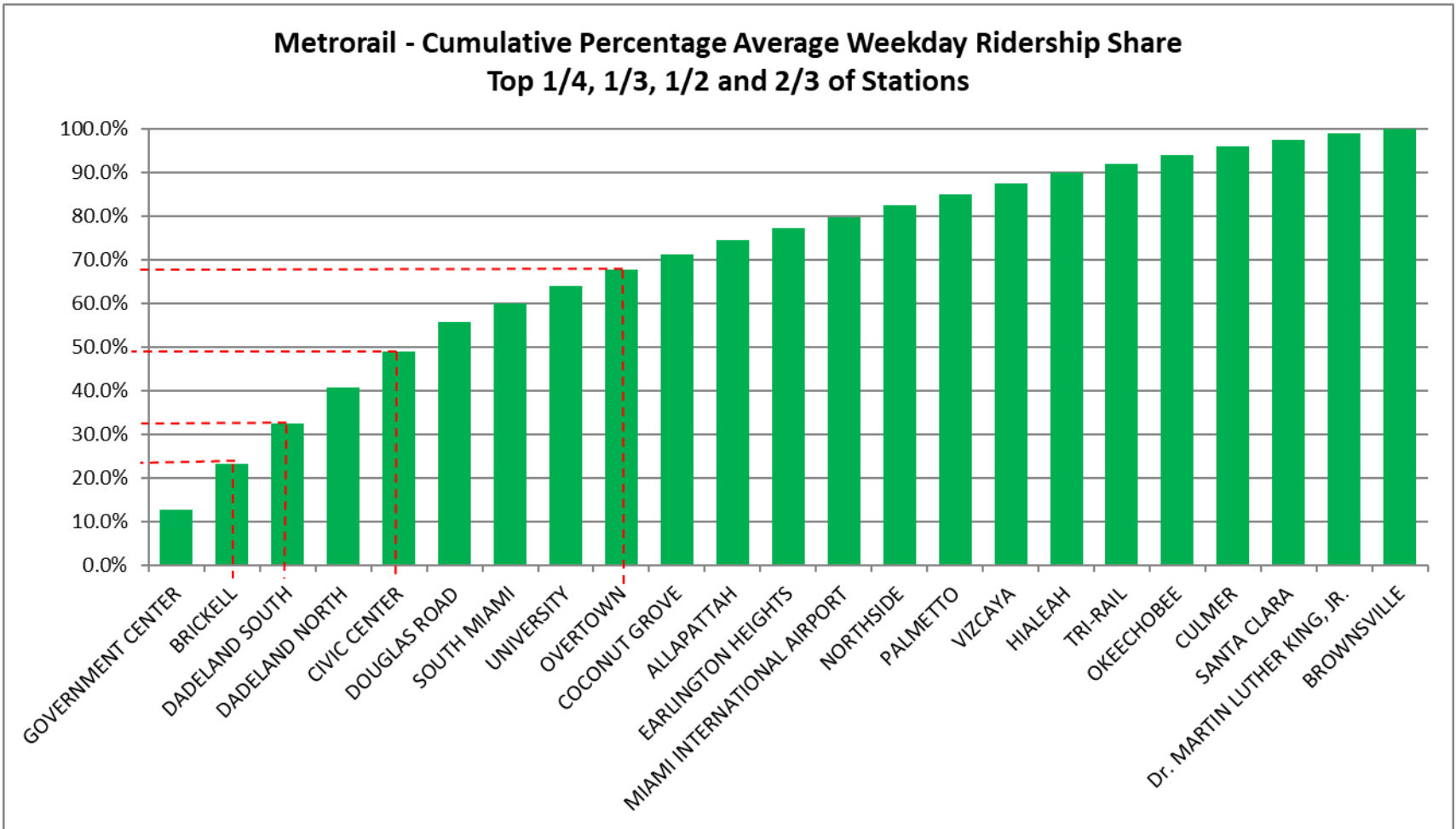
## METRORAIL AVERAGE SUNDAY BOARDINGS BY STATION

<b>Sundays</b>	Average Sunday	Average Sunday	Percent Change	Average Sunday	Percent Change	Average Sunday	Percent Change	Average Sunday	Percent Change
STATIONS	Apr-24	Apr-23	YOY	Feb-20	Current vs Feb-20	Mar-24	MOM	Apr-19	YO5Y
ALLAPATTAH	639	647	-1.2%	791	-19.2%	647	-1.3%	713	-10.4%
BRICKELL	1,993	1,680	18.6%	2,379	-16.2%	2,144	-7.1%	2,024	-1.5%
BROWNSVILLE	238	277	-13.9%	406	-41.3%	227	5.1%	382	-37.6%
CIVIC CENTER	556	541	2.8%	791	-29.7%	525	5.9%	722	-23.0%
COCONUT GROVE	704	557	26.5%	838	-16.0%	755	-6.8%	467	50.9%
CULMER	362	365	-1.0%	616	-41.3%	354	2.1%	548	-34.0%
DADELAND NORTH	1,024	978	4.7%	1,685	-39.3%	1,066	-4.0%	1,300	-21.3%
DADELAND SOUTH	1,485	1,450	2.4%	2,210	-32.8%	1,576	-5.8%	1,883	-21.1%
DOUGLAS ROAD	975			1,090	-10.5%	1,094	-10.9%	932	4.6%
DR. MARTIN LUTHER KING, JR.	316	350	-9.9%	506	-37.6%	326	-3.2%	420	-24.9%
EARLINGTON HEIGHTS	578	551	4.8%	799	-27.7%	623	-7.2%	658	-12.2%
GOVERNMENT CENTER	2,111	2,287	-7.7%	4,044	-47.8%	3,628	-41.8%	2,780	-24.1%
HIALEAH	433	432	0.2%	472	-8.2%	438	-1.2%	458	-5.5%
MIAMI INTERNATIONAL AIRPORT	1,048	945	10.9%	1,343	-22.0%	990	5.8%	1,311	-20.1%
NORTHSIDE	568	633	-10.3%	653	-13.0%	626	-9.2%	630	-9.8%
OKEECHOBEE	301	232	29.7%	273	10.2%	292	3.2%	253	19.2%
OVERTOWN / ARENA	552	482	14.4%	544	1.4%	597	-7.5%	455	21.3%
PALMETTO	225	244	-7.8%	336	-33.2%	261	-13.9%	244	-8.0%
SANTA CLARA	265	224	17.9%	280	-5.4%	255	3.6%	246	7.4%
SOUTH MIAMI	704	657	7.2%	987	-28.6%	762	-7.6%	878	-19.7%
TRI-RAIL	420	392	7.1%	528	-20.5%	442	-5.1%	442	-5.0%
UNIVERSITY	503	480	4.7%	608	-17.4%	695	-27.7%	449	11.9%
VIZCAYA	405	382	5.9%	524	-22.8%	454	-10.8%	410	-1.4%
<b>TOTAL</b>	<b>16,400</b>	<b>14,786</b>	<b>10.9%</b>	<b>22,701</b>	<b>-27.8%</b>	<b>18,776</b>	<b>-12.7%</b>	<b>18,601</b>	<b>-11.8%</b>

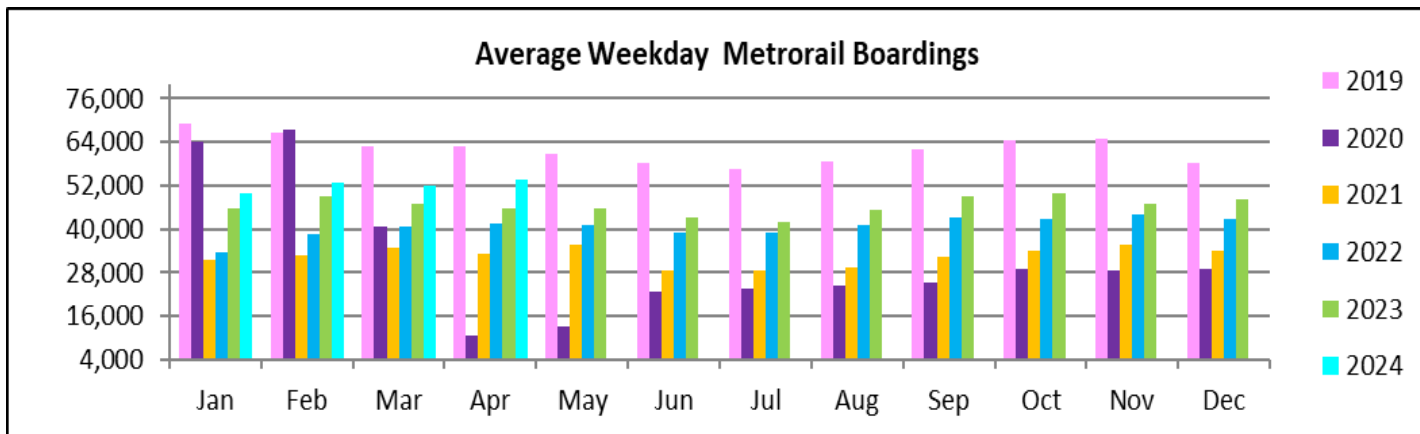
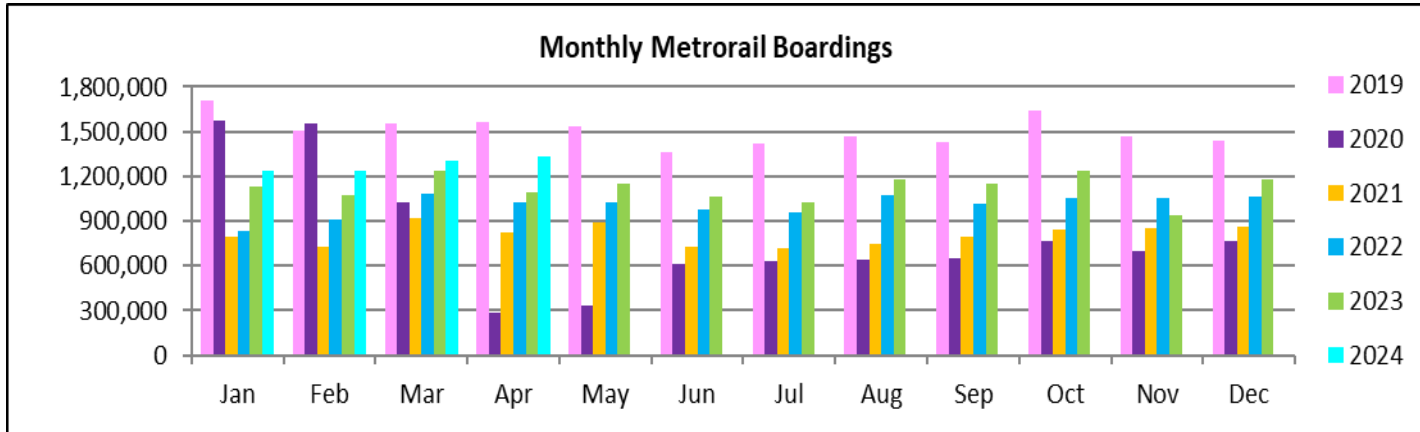
## METRORAIL TOTAL MONTHLY BOARDINGS BY STATION

<b>Monthly Totals</b>	Total Month	Total Month	Percent Change	Total Month	Percent Change	Total Month	Percent Change	Total Month	Percent Change
<b>STATIONS</b>	Apr-24	Apr-23	YOY	Feb-20	Current vs Feb-20	Mar-24	MOM	Apr-19	YO5Y
ALLAPATTAH	44,856	40,319	11.3%	46,868	-4.3%	43,769	2.5%	46,287	-3.1%
BRICKELL	143,784	114,619	25.4%	152,259	-5.6%	142,883	0.6%	152,021	-5.4%
BROWNSVILLE	15,139	17,455	-13.3%	21,285	-28.9%	13,890	9.0%	21,367	-29.1%
CIVIC CENTER	102,553	86,647	18.4%	128,921	-20.5%	93,970	9.1%	131,285	-21.9%
COCONUT GROVE	47,641	35,846	32.9%	43,580	9.3%	46,137	3.3%	34,284	39.0%
CULMER	25,783	25,808	-0.1%	33,497	-23.0%	24,161	6.7%	32,657	-21.0%
DADELAND NORTH	107,366	92,333	16.3%	132,894	-19.2%	101,018	6.3%	138,951	-22.7%
DADELAND SOUTH	122,717	106,479	15.2%	162,416	-24.4%	118,446	3.6%	168,591	-27.2%
DOUGLAS ROAD	88,220			82,141	7.4%	82,420	7.0%	87,560	0.8%
DR. MARTIN LUTHER KING, JR.	20,762	20,605	0.8%	27,980	-25.8%	18,945	9.6%	27,098	-23.4%
EARLINGTON HEIGHTS	37,979	31,967	18.8%	40,697	-6.7%	38,433	-1.2%	39,397	-3.6%
GOVERNMENT CENTER	169,546	163,480	3.7%	243,414	-30.3%	182,515	-7.1%	247,724	-31.6%
HIALEAH	33,050	28,678	15.2%	29,516	12.0%	32,266	2.4%	31,324	5.5%
MIAMI INTERNATIONAL AIRPORT	40,182	34,953	15.0%	46,115	-12.9%	37,881	6.1%	45,530	-11.7%
NORTHSIDE	35,374	33,037	7.1%	36,127	-2.1%	36,067	-1.9%	35,010	1.0%
OKEECHOBEE	26,187	21,088	24.2%	26,026	0.6%	24,854	5.4%	27,740	-5.6%
OVERTOWN / ARENA	48,799	39,765	22.7%	49,911	-2.2%	47,154	3.5%	49,557	-1.5%
PALMETTO	32,386	29,323	10.4%	33,944	-4.6%	28,847	12.3%	34,760	-6.8%
SANTA CLARA	20,861	16,290	28.1%	19,245	8.4%	19,874	5.0%	18,806	10.9%
SOUTH MIAMI	57,949	48,372	19.8%	69,412	-16.5%	55,638	4.2%	70,895	-18.3%
TRI-RAIL	30,245	27,077	11.7%	29,120	3.9%	30,428	-0.6%	29,067	4.1%
UNIVERSITY	51,347	45,692	12.4%	61,253	-16.2%	51,154	0.4%	55,730	-7.9%
VIZCAYA	33,785	27,983	20.7%	32,497	4.0%	32,104	5.2%	33,805	-0.1%
<b>TOTAL</b>	<b>1,336,511</b>	<b>1,087,816</b>	<b>22.9%</b>	<b>1,549,118</b>	<b>-13.7%</b>	<b>1,302,854</b>	<b>2.6%</b>	<b>1,559,446</b>	<b>-14.3%</b>

# METRORAIL CUMULATIVE PERCENTAGE RIDERSHIP SHARE



## TOTAL MONTHLY AND AVERAGE WEEKDAY RIDERSHIP YEAR OVER YEAR COMPARISON CHARTS – METRORAIL

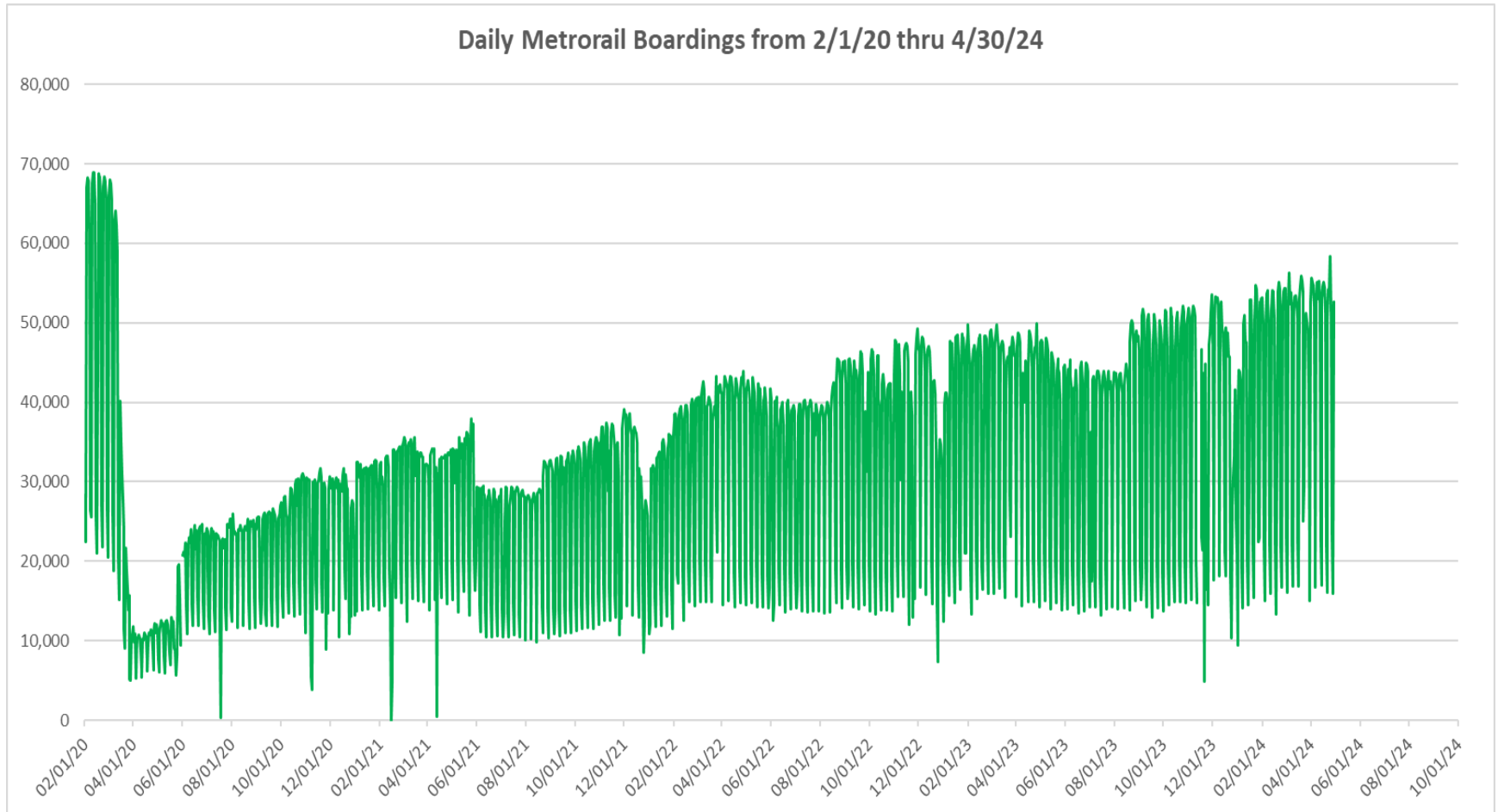


**“TOP 5 / BOTTOM 5” RAIL STATIONS AVERAGE WEEKDAY RIDERSHIP PERFORMANCE  
YEAR OVER YEAR COMPARISONS**

<b>Station</b>	<b>Apr-24</b>	<b>Apr-23</b>	<b>Absolute Delta (1)</b>	<b>Percent Delta</b>
BRICKELL	5,677	4,729	948	20.0%
DADELAND SOUTH	4,943	4,477	466	10.4%
CIVIC CENTER	4,421	4,005	415	10.4%
DADELAND NORTH	4,426	4,018	408	10.2%
COCONUT GROVE	1,863	1,461	402	27.5%
BROWNSVILLE	584	692	-108	-15.6%
CULMER	1,022	1,076	-54	-5.0%
GOVERNMENT CENTER	6,809	6,844	-35	-0.5%
Dr. MARTIN LUTHER KING, JR.	803	822	-19	-2.3%
PALMETTO	1,354	1,301	53	4.1%

(1) Averages rounded to the nearest boarding.

## DAILY METRORAIL RIDERSHIP SINCE FEBRUARY 1, 2020



- (1) There was no Metrobus, Metrorail and Metromover service on 5/31/20, as a safety precaution, and no service for any of the four modes on 9/28/22 as a result of Hurricane Ian..
- (2) The dip at the start of the second week of December 2020 is due to Hurricane Eta; these are *raw data* from the Unleash Live contractor AI video system.
- (3) The dip on 4/13/21 is due to a loss of connectivity at all stations, affecting a few stations over the next two days as well; a similar loss of connectivity is seen on 11/21/23.
- (4) The reduction seen beginning 6/1/21 is partly due to the resumption of fares and partly the result of resuming reporting Cubic faregate data rather than video camera counts.
- (5) As a result of free fares to launch the Better Bus Network, faregates are open beginning 11/13/23, and Unleash Live AI video system ridership counts are reported starting 11/17/23.
- (6) Periodic (weekly) variations are prominent, since weekday ridership is almost always significantly higher than weekend or holiday ridership; a few low-count days are due to system outages, often associated with construction or renovation work..



## METRORAIL PARKING PATRONAGE SUMMARY

### April 2024

PARK-RIDE LOT	ACTUAL CAPACITY (1)	ACTUAL OCCUPANCY (2)	PERCENT OCCUPANCY
DADELAND SOUTH	1,260	818	65%
DADELAND NORTH	1,702	1,028	60%
SOUTH MIAMI	816	340	42%
UNIVERSITY	260	208	80%
DOUGLAS ROAD	222		
COCONUT GROVE	100		
VIZCAYA	120	47	39%
CULMER	25	17	67%
SANTA CLARA	61	35	58%
ALLAPATTAH	74	6	8%
EARLINGTON HEIGHTS	361	154	43%
BROWNSVILLE	100	82	82%
DR. MARTIN LUTHER KING JR. (MDT)	62		
DR. MARTIN LUTHER KING JR. (GARAGE)	631		
NORTHSIDE	100	81	81%
HIALEAH	338	52	15%
OKEECHOBEE	1,398	143	10%
PALMETTO	700	153	22%
<b>TOTAL</b>	<b>8,330</b>	<b>3,163</b>	<b>38%</b>

- (1) Number of spaces could vary each week; shown are available spaces during final week of month, as submitted by DTPW Safety & Security office.
- (2) All sampled occupancy data provided by DTPW Safety & Security office; calculations are revisions to those submitted by that entity.
- (3) Daily averages rounded to nearest unit, with fewer counts at some stations than others, depending on staffing levels; calculations are based on sampled counted days only per raw data submitted, with resulting average daily occupancy shown.

# Metromover



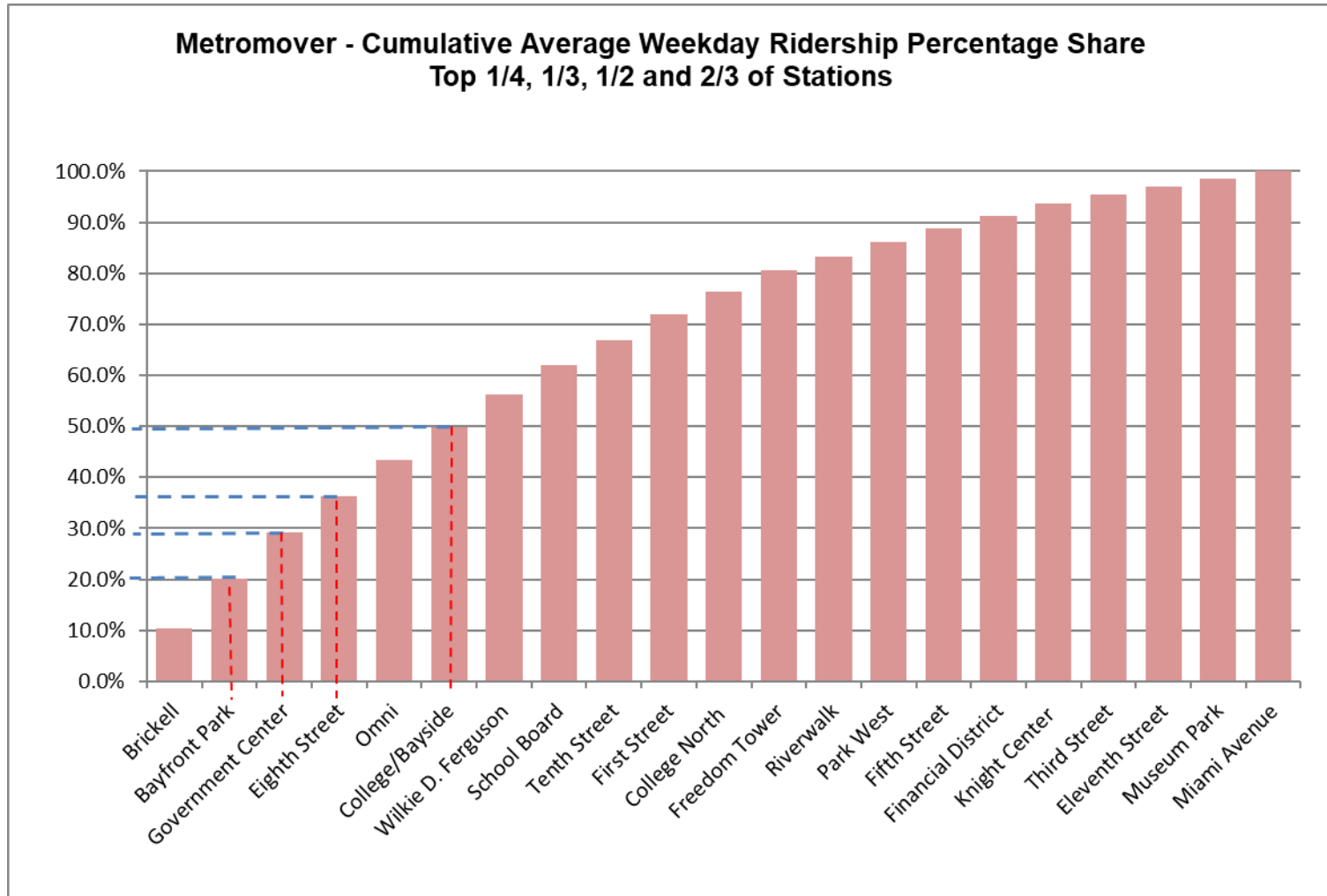
April 2024

## METROMOVER MONTHLY AND AVERAGE DAILY BOARDINGS BY STATION

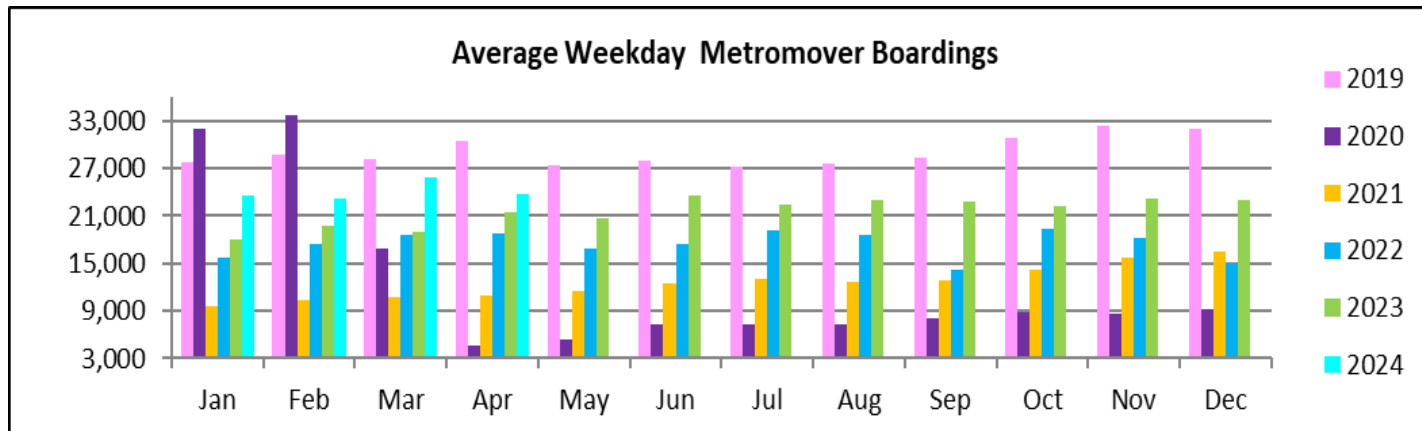
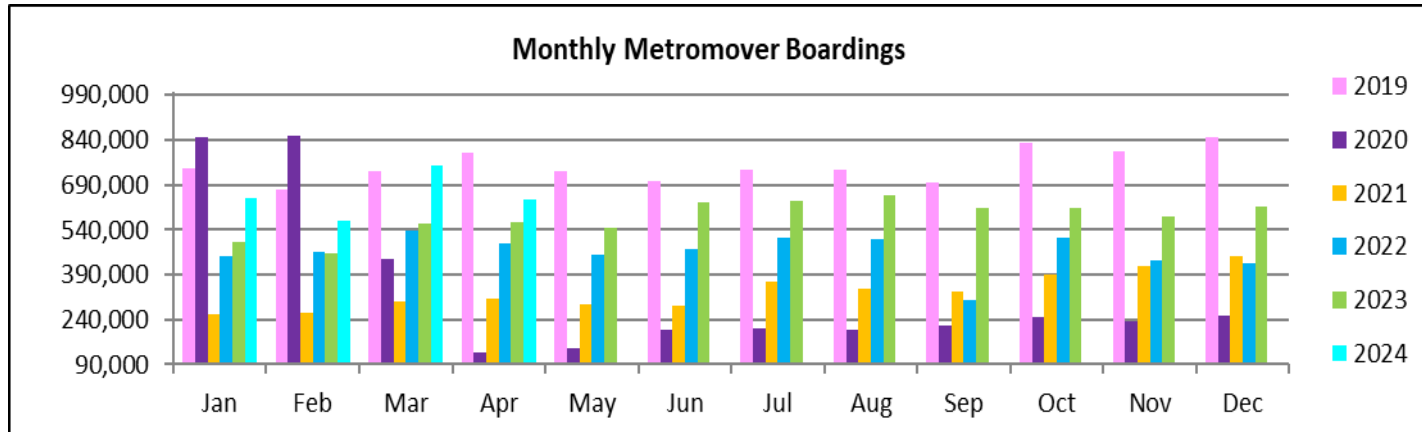
	Average Weekday	Average Weekday	Percent Change	Average Saturday	Average Saturday	Percent Change	Average Sunday	Average Sunday	Percent Change	Total Monthly	Total Monthly	Percent Change
STATIONS	Apr-24	Apr-23	24 vs 23	Apr-24	Apr-23	24 vs 23	Apr-24	Apr-23	24 vs 23	Apr-24	Apr-23	24 vs 23
School Board	1,349	1,291	4.5%	598	807	-26.0%	953	833	14.4%	35,884	34,028	5.5%
Omni	1,670	1,503	11.1%	1,056	1,137	-7.2%	1,321	1,040	27.1%	46,245	40,935	13.0%
Museum Park	369	363	1.8%	393	495	-20.6%	416	428	-2.7%	11,359	11,864	-4.3%
Eleventh Street	380	296	28.5%	249	241	3.1%	294	271	8.4%	10,539	8,482	24.3%
Park West	638	795	-19.7%	418	747	-44.1%	571	668	-14.5%	17,997	22,970	-21.6%
Freedom Tower	987			605			952			21,459		
Government Center	2,130	1,550	37.4%	1,450	859	68.8%	1,324	792	67.2%	57,960	39,251	47.7%
Miami Avenue	340	409	-16.9%	228	222	3.0%	211	248	-14.7%	9,233	4,210	119.3%
Third Street	416	278	49.7%	439	182	141.1%	479	162	195.2%	12,830	7,285	76.1%
Knight Center	578	595	-2.9%	377	344	9.6%	295	275	7.3%	15,393	14,987	2.7%
Bayfront Park	2,345	2,489	-5.8%	1,473	1,586	-7.1%	1,497	1,562	-4.2%	63,473	65,528	-3.1%
First Street	1,171			832			915			32,748		
College/Bayside	1,544	1,694	-8.9%	1,285	1,475	-12.9%	1,310	1,257	4.2%	44,337	47,537	-6.7%
College North	1,054	1,095	-3.7%	566	724	-21.9%	456	584	-22.0%	27,283	28,444	-4.1%
Wilkie D. Ferguson	1,526	1,526	0.0%	839	988	-15.1%	778	828	-6.1%	40,039	39,609	1.1%
Riverwalk	679	693	-2.1%	442	439	0.5%	451	412	9.6%	18,501	18,120	2.1%
Fifth Street	635	543	16.9%	369	351	5.3%	416	356	16.9%	17,104	14,392	18.8%
Eighth Street	1,671	2,072	-19.3%	1,234	1,752	-29.6%	1,322	1,507	-12.3%	46,990	57,726	-18.6%
Tenth Street	1,177	1,102	6.8%	687	750	-8.3%	700	728	-3.8%	31,439	29,426	6.8%
Brickell	2,437	2,132	14.3%	1,186	1,357	-12.6%	1,490	1,380	8.0%	64,321	56,317	14.2%
Financial District	580	982	-41.0%	274	539	-49.2%	325	498	-34.8%	15,147	24,832	-39.0%
<b>TOTAL</b>	<b>23,677</b>	<b>21,408</b>	<b>10.6%</b>	<b>14,996</b>	<b>14,995</b>	<b>0.0%</b>	<b>16,474</b>	<b>13,827</b>	<b>19.1%</b>	<b>640,281</b>	<b>565,943</b>	<b>13.1%</b>

(\*) Several Metromover stations were closed for construction during the 2023-2024 period, due to installation of new equipment and construction work.

## METROMOVER CUMULATIVE PERCENTAGE RIDERSHIP SHARE



## TOTAL MONTHLY AND AVERAGE WEEKDAY RIDERSHIP YEAR OVER YEAR COMPARISON CHARTS – METROMOVER

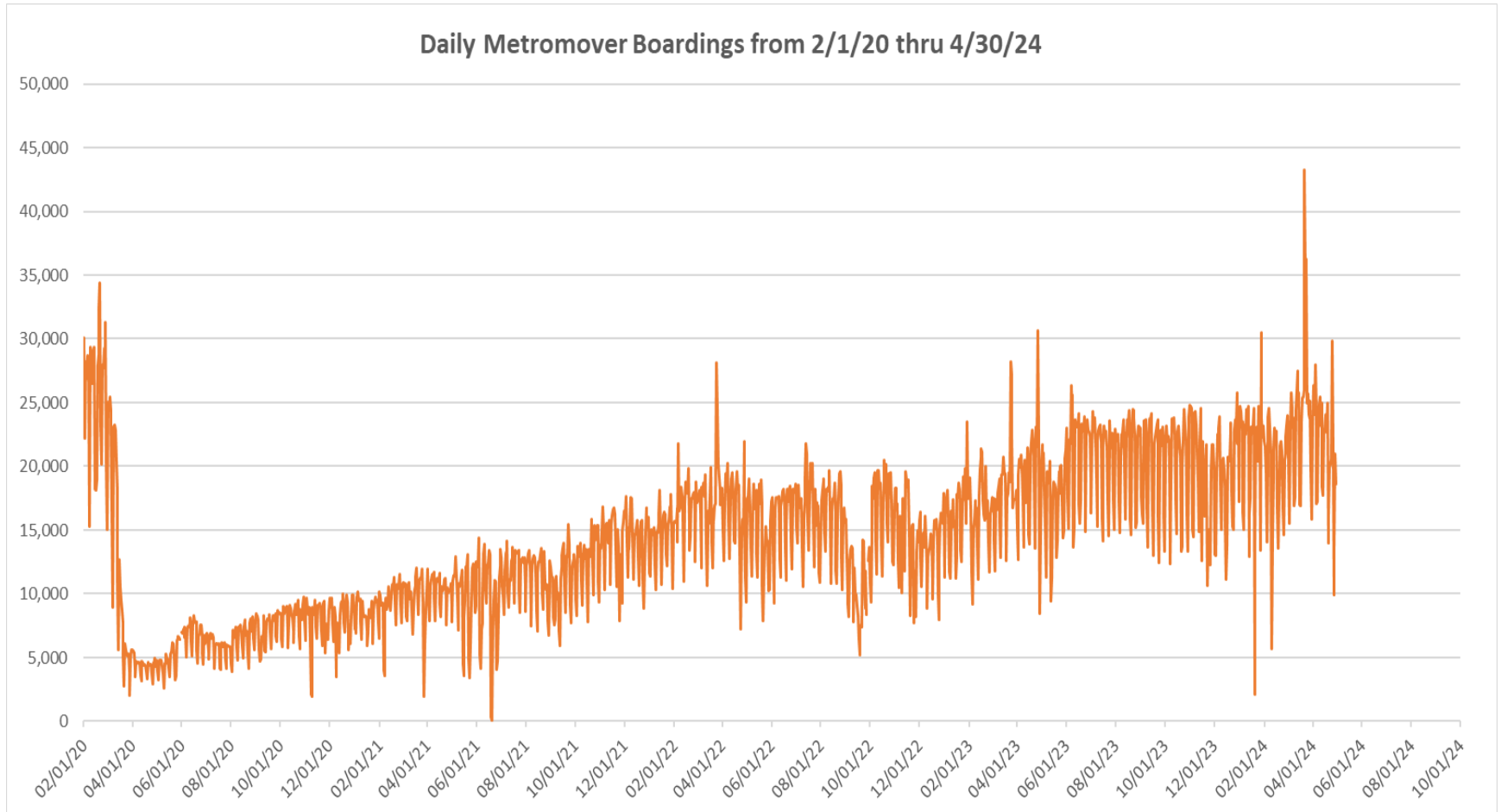


**“TOP 5 / BOTTOM 5” MOVER STATIONS AVERAGE WEEKDAY RIDERSHIP PERFORMANCE  
YEAR OVER YEAR COMPARISONS**

<b>Station</b>	<b>Apr-24</b>	<b>Apr-23</b>	<b>Absolute Delta (1)</b>	<b>Percent Delta</b>
Government Center	2,130	1,550	580	37.4%
Brickell	2,437	2,132	306	14.3%
Omni	1,670	1,503	167	11.1%
Third Street	416	278	138	49.7%
Fifth Street	635	543	92	16.9%
Financial District	580	982	-403	-41.0%
Eighth Street	1,671	2,072	-400	-19.3%
Park West	638	795	-156	-19.7%
College/Bayside	1,544	1,694	-150	-8.9%
Bayfront Park	2,345	2,489	-144	-5.8%

(1) Averages rounded to the nearest boarding.

## DAILY METROMOVER RIDERSHIP SINCE FEBRUARY 1, 2020



- (1) There was no Metrobus, Metrorail and Metromover service on 5/31/20, as a safety precaution, and no service for any of the four modes on 9/28/22 as a result of Hurricane Ian..
- (2) The dip at the start of the second week of December 2020 is due to Hurricane Eta; these are *raw data* from the UTA contractor APC system. Other more recent dips are due to various station closures (mostly on weekends) for system maintenance purposes.
- (3) Periodic (weekly) variations are prominent, since weekday ridership is almost always significantly higher than weekend or holiday ridership; a few low-count days are due to system outages, often associated with construction or renovation work.

## Special Transportation Services



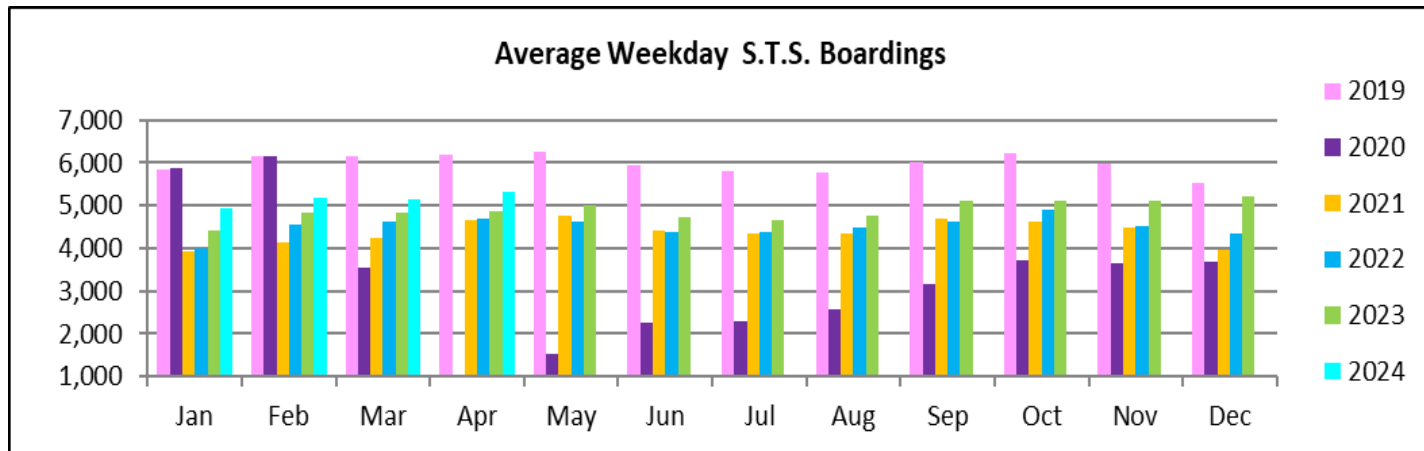
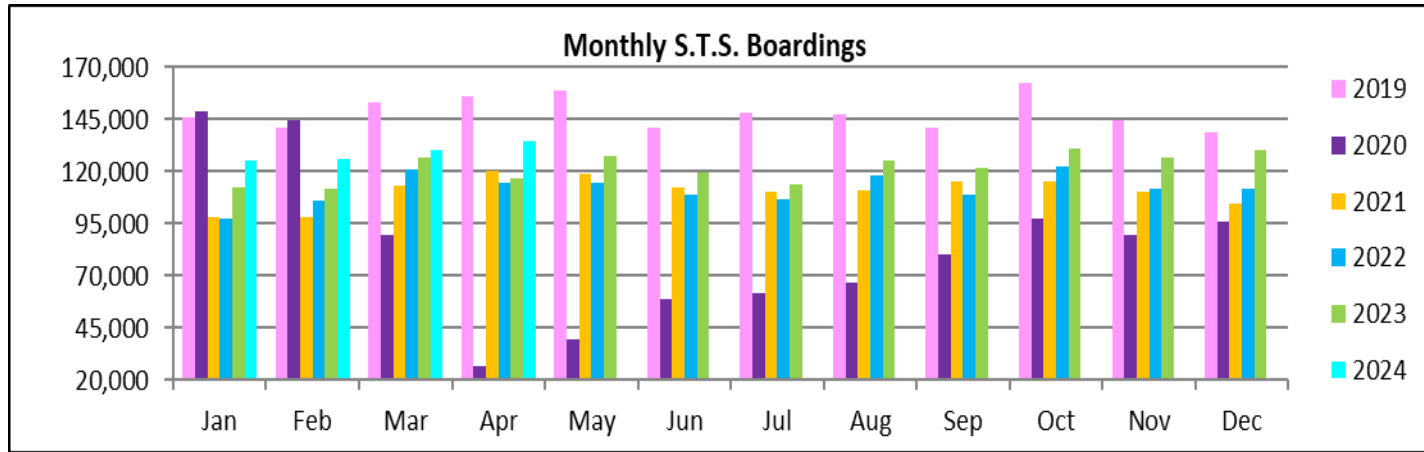


**STS MONTHLY AND AVERAGE DAILY BOARDINGS**  
**April 2024**

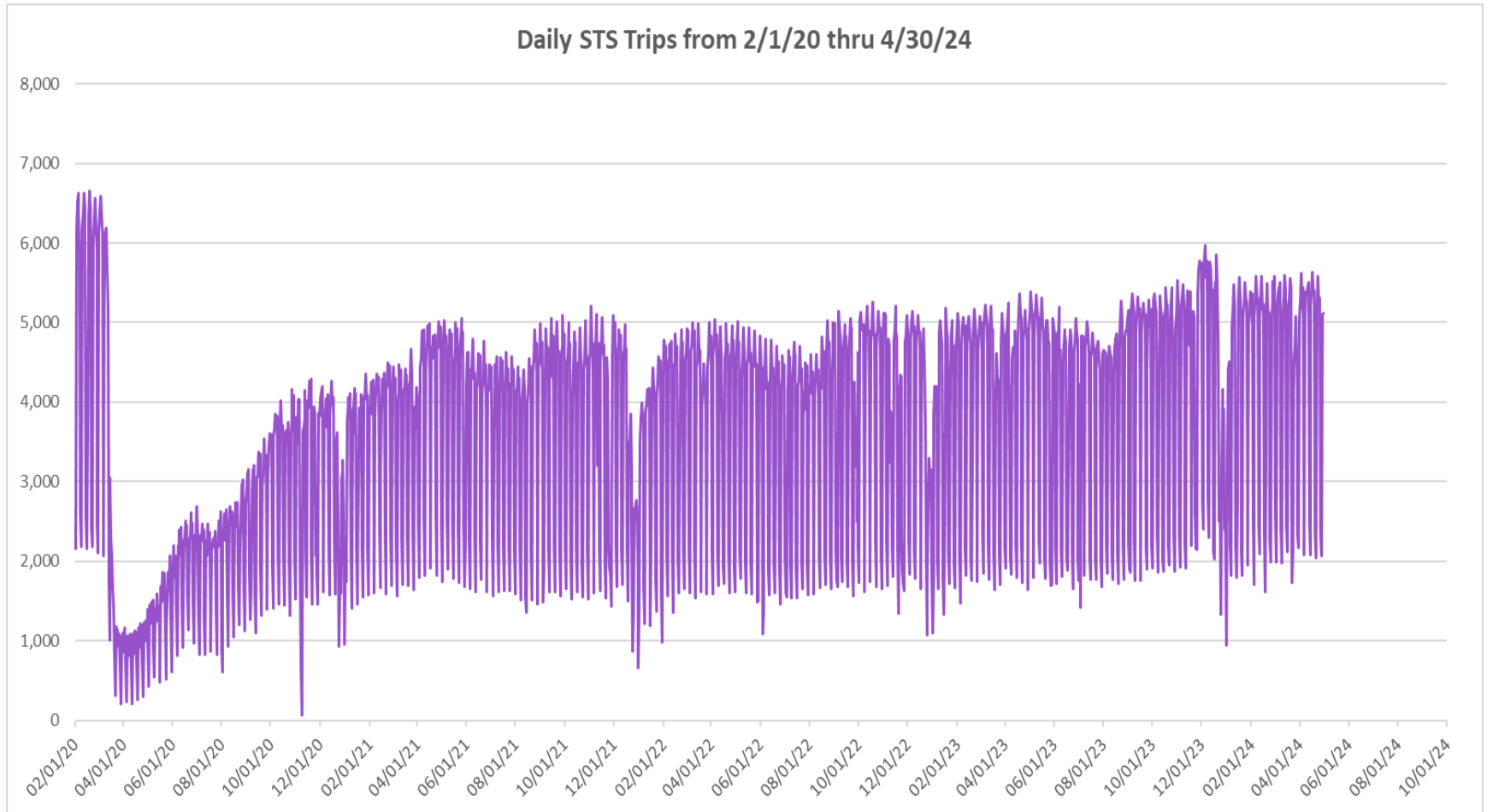
Measure	timeline	Ambulatory	Wheelchair	Total Clients (*)
<b>Average Weekday</b>	Apr-24	4,473	839	<b>5,312</b>
<b>Average Saturday</b>	Apr-24	1,992	392	<b>2,384</b>
<b>Average Sunday</b>	Apr-24	1,724	344	<b>2,067</b>
<b>Total Monthly</b>	<b>Apr-24</b>	<b>113,270</b>	<b>21,407</b>	<b>134,677</b>
<b>Average Weekday</b>	Apr-23	4,056	809	<b>4,865</b>
<b>Average Saturday</b>	Apr-23	1,747	387	<b>2,134</b>
<b>Average Sunday</b>	Apr-23	1,460	324	<b>1,783</b>
<b>Total Monthly</b>	<b>Apr-23</b>	<b>97,157</b>	<b>19,725</b>	<b>116,882</b>
<b>Average Weekday</b>	Apr-22	3,859	818	<b>4,677</b>
<b>Average Saturday</b>	Apr-22	1,646	372	<b>2,018</b>
<b>Average Sunday</b>	Apr-22	1,316	337	<b>1,653</b>
<b>Total Monthly</b>	<b>Apr-22</b>	<b>94,532</b>	<b>20,380</b>	<b>114,912</b>
<b>% Change Current vs. April 2023 Weekday</b>		10.3%	3.8%	9.2%
<b>% Change Current vs. April 2023 Saturday</b>		14.0%	1.4%	11.7%
<b>% Change Current vs. April 2023 Sunday</b>		18.1%	6.2%	15.9%
<b>% Change Current vs. April 2023 Month Total</b>		<b>16.6%</b>	<b>8.5%</b>	<b>15.2%</b>
<b>% Change Current vs. April 2022 Weekday</b>		15.9%	2.6%	13.6%
<b>% Change Current vs. April 2022 Saturday</b>		21.0%	5.5%	18.2%
<b>% Change Current vs. April 2022 Sunday</b>		31.0%	2.0%	25.1%
<b>% Change Current vs. April 2022 Month Total</b>		<b>19.8%</b>	<b>5.0%</b>	<b>17.2%</b>

(\*) Trip count data provided by STS contractor.

# TOTAL MONTHLY AND AVERAGE WEEKDAY RIDERSHIP YEAR OVER YEAR COMPARISON CHARTS – SPECIAL TRANSPORTATION SERVICES (S.T.S.)

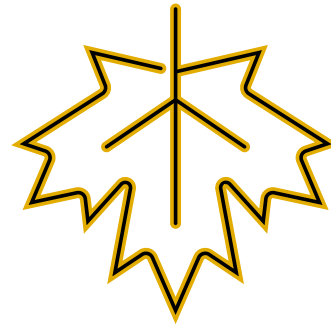
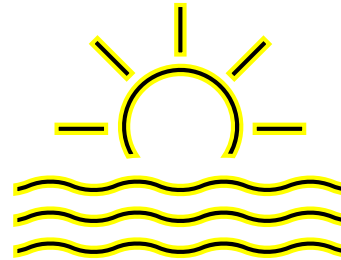
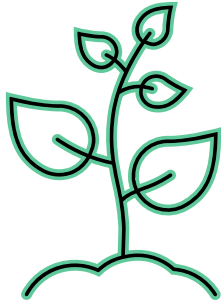


## DAILY STS RIDERSHIP SINCE FEBRUARY 1, 2020

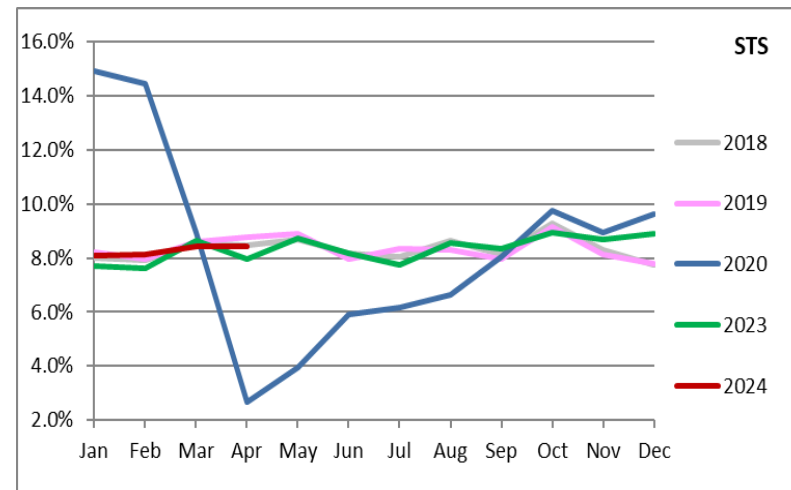
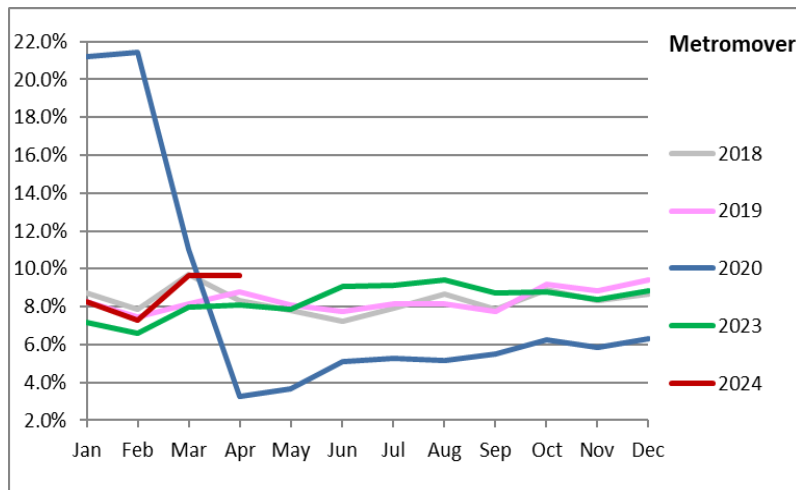
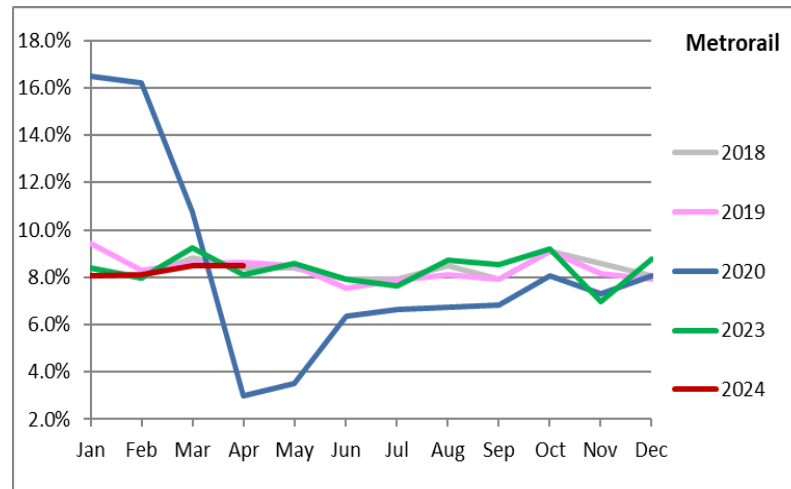
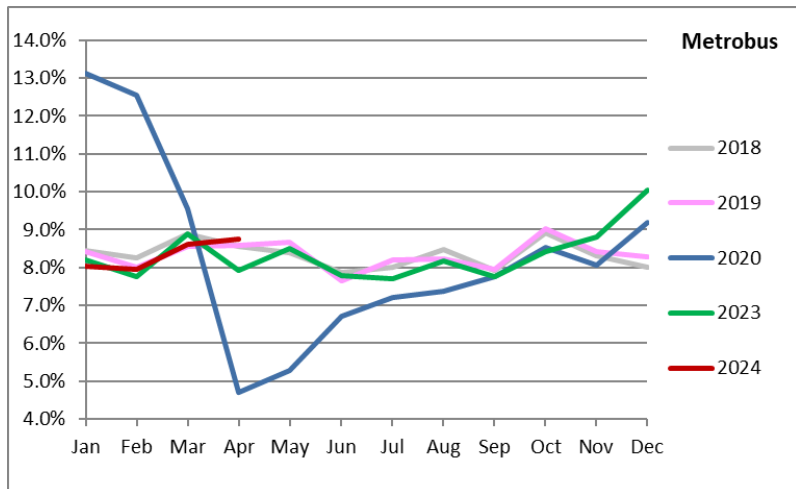


- (1) There was no service (for any of the four modes) on 9/28/22 as a result of Hurricane Ian.
- (2) The dip at the start of the second week of December 2020 is due to Hurricane Eta.
- (3) Periodic (weekly) variations are prominent, since weekday ridership is almost always significantly higher than weekend or holiday ridership.

# Ridership Seasonality



# RIDERSHIP SEASONALITY – PERCENT RIDERSHIP SHARE BY MONTH AND CALENDAR YEAR FOR EACH MODE



Note: the prominent dips seen in the fall of 2017 and beginning in the spring of 2020 are due to Hurricane Irma and the SARS-CoV-2 pandemic, respectively. The pronounced rise beginning November 2023 can be attributed to the launch of the Better Bus Network and the attendant free fares, which ended on New Year's Day 2024.